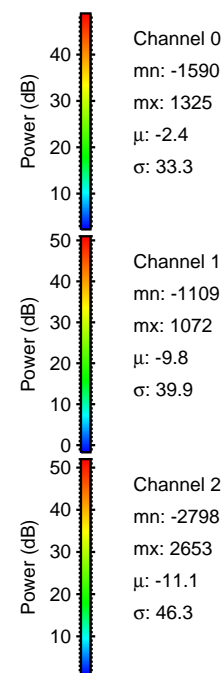
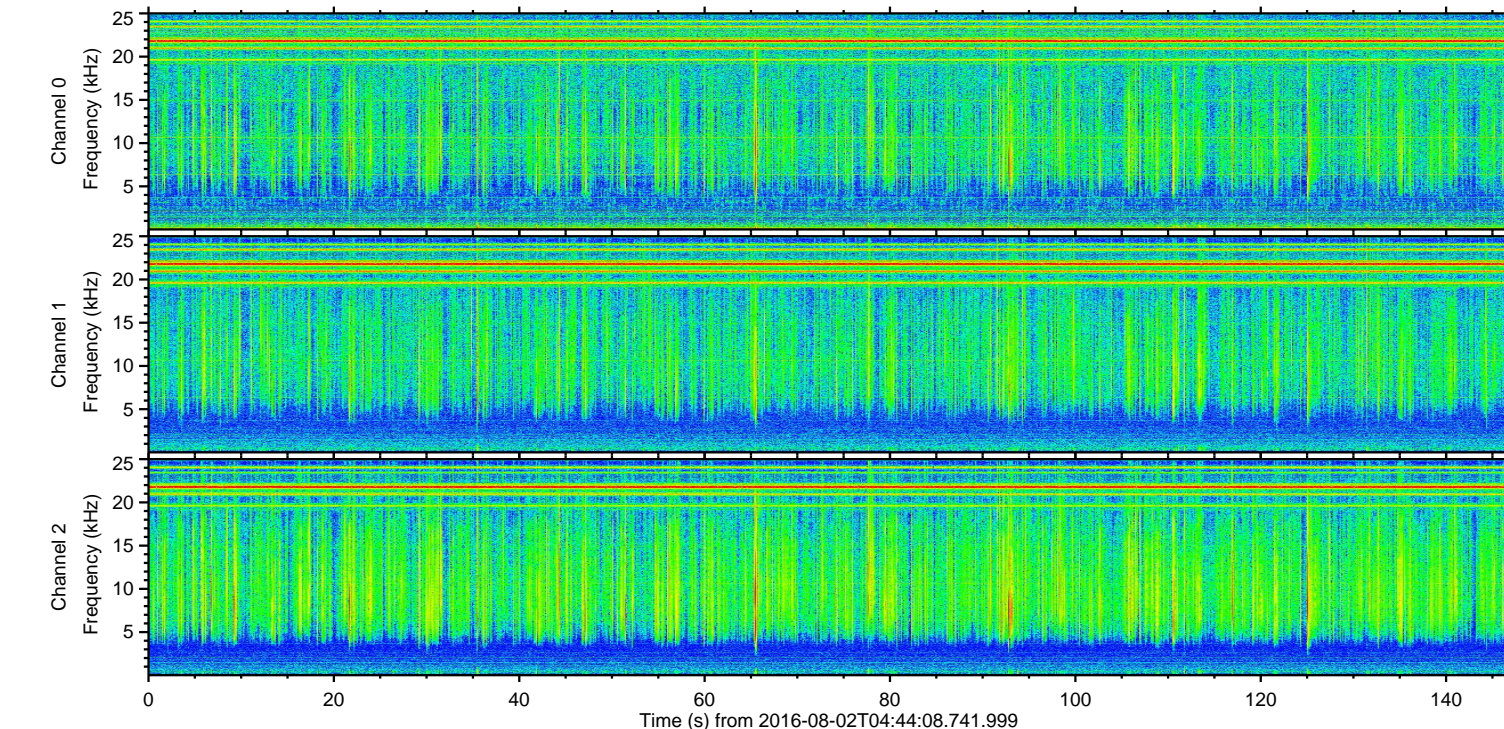
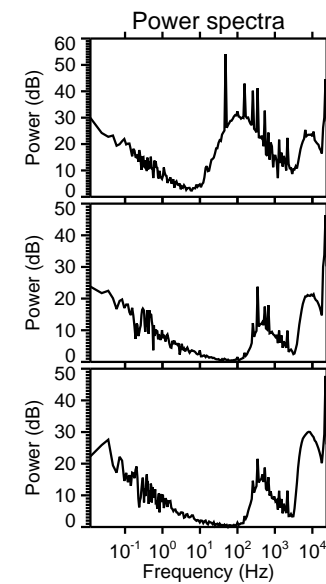
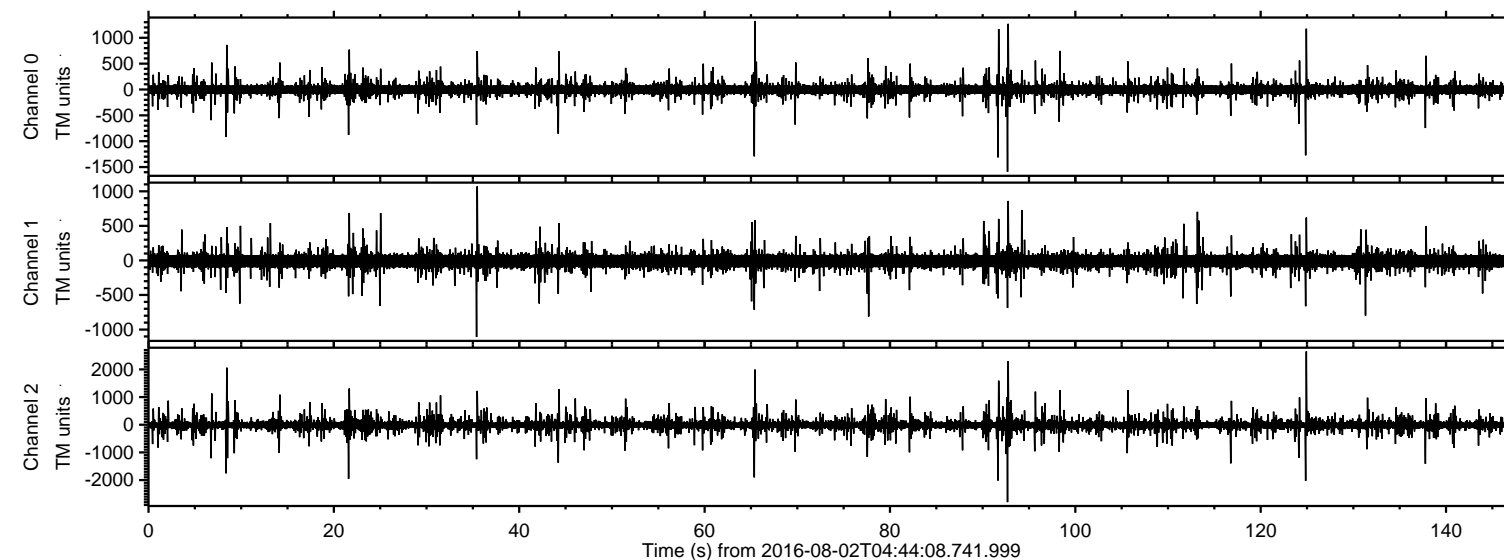
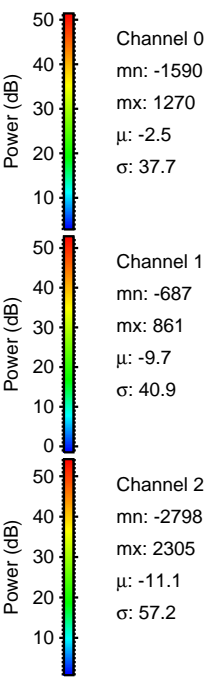
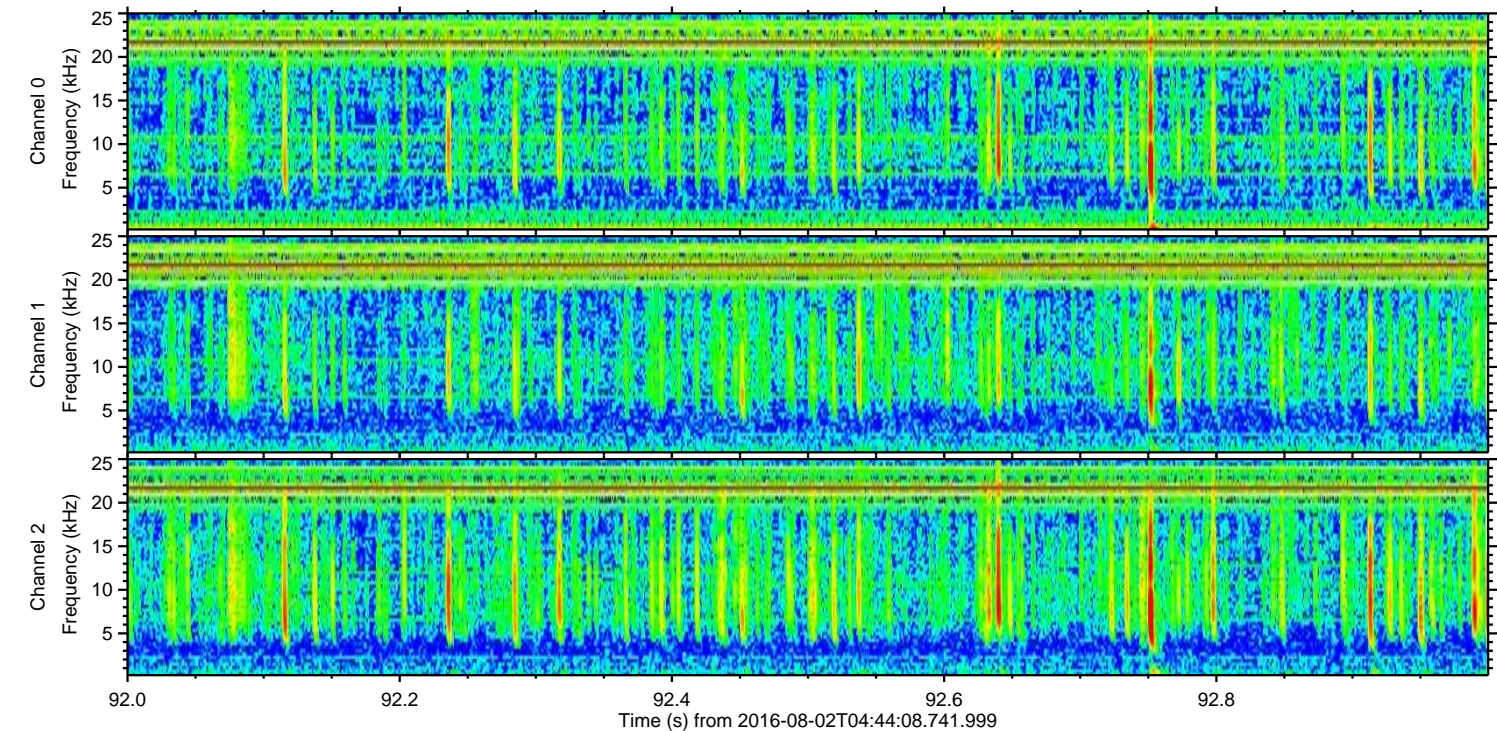
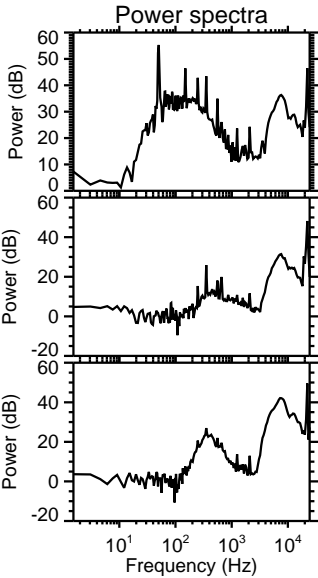
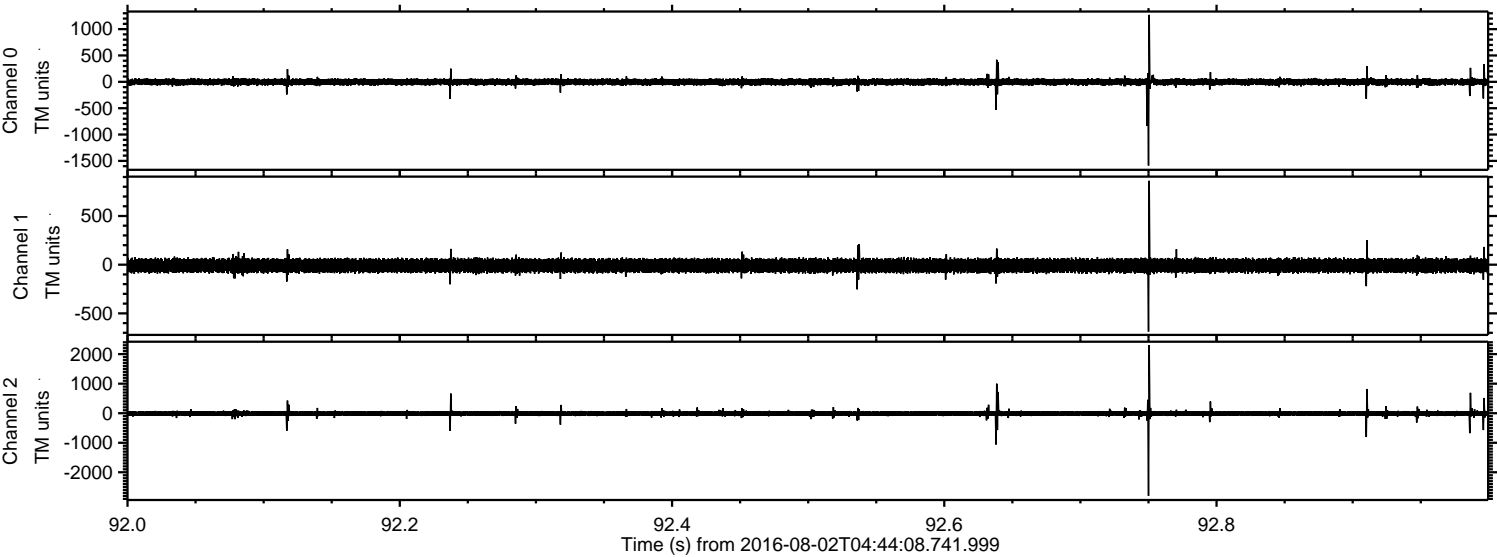


ELMAVAN 3D WAVEFORMS (Measured data sampled at 50 kHz) 51000 packets of 144 samples from 2016-08-02T04:44:08.741.999.

Processed Tue Aug 2 06:51:35 2016 by ELM ver.2012-10-06 from 001__elm20160802_044407__dat00.bin

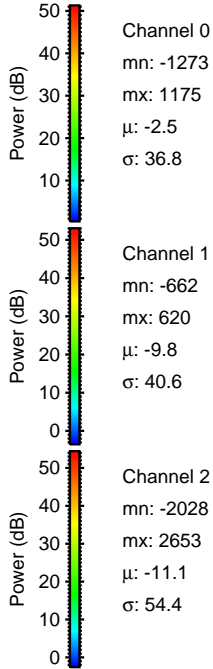
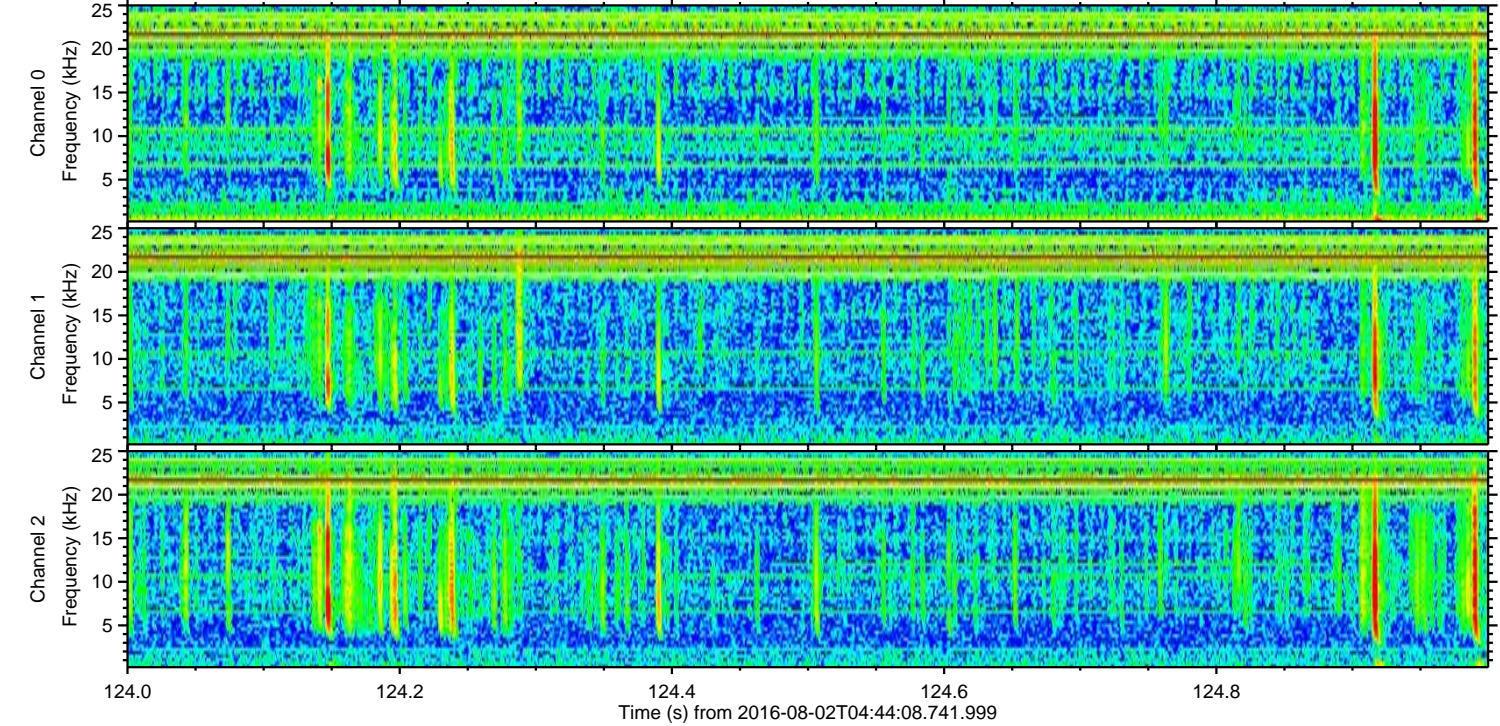
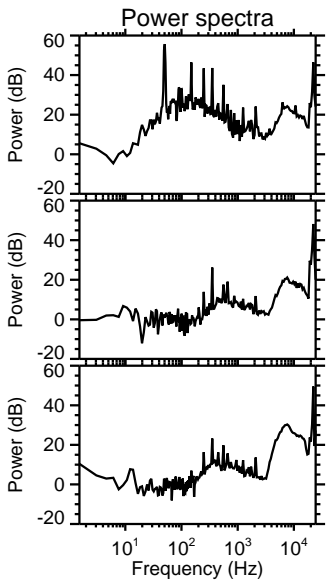
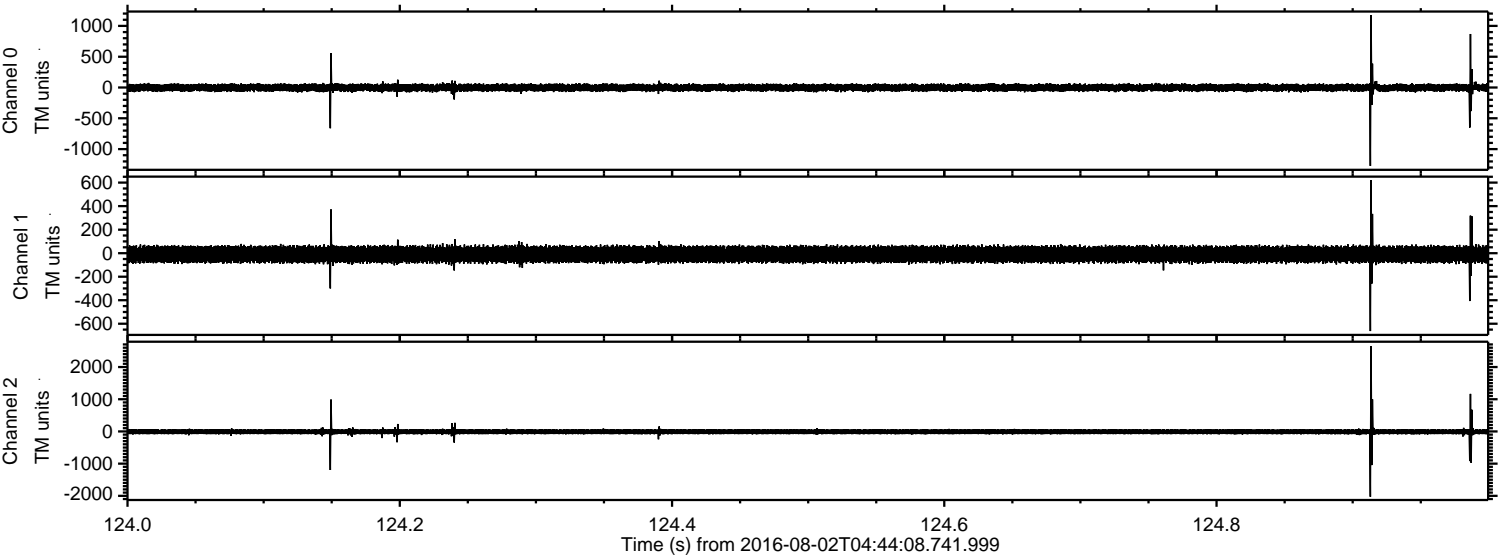


Processed Tue Aug 2 06:51:49 2016 by ELM ver.2012-10-06 from 001__elm20160802_044407__dat00.bin

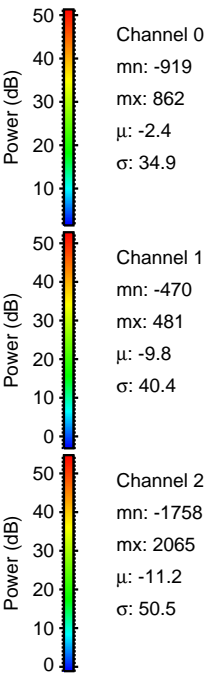
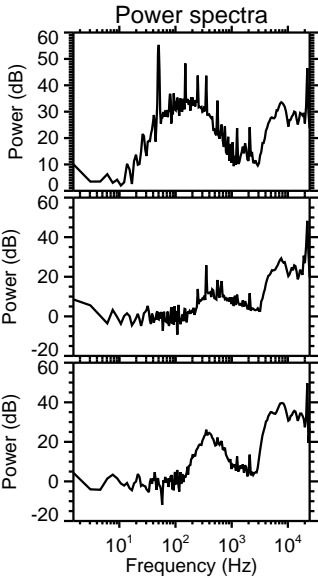
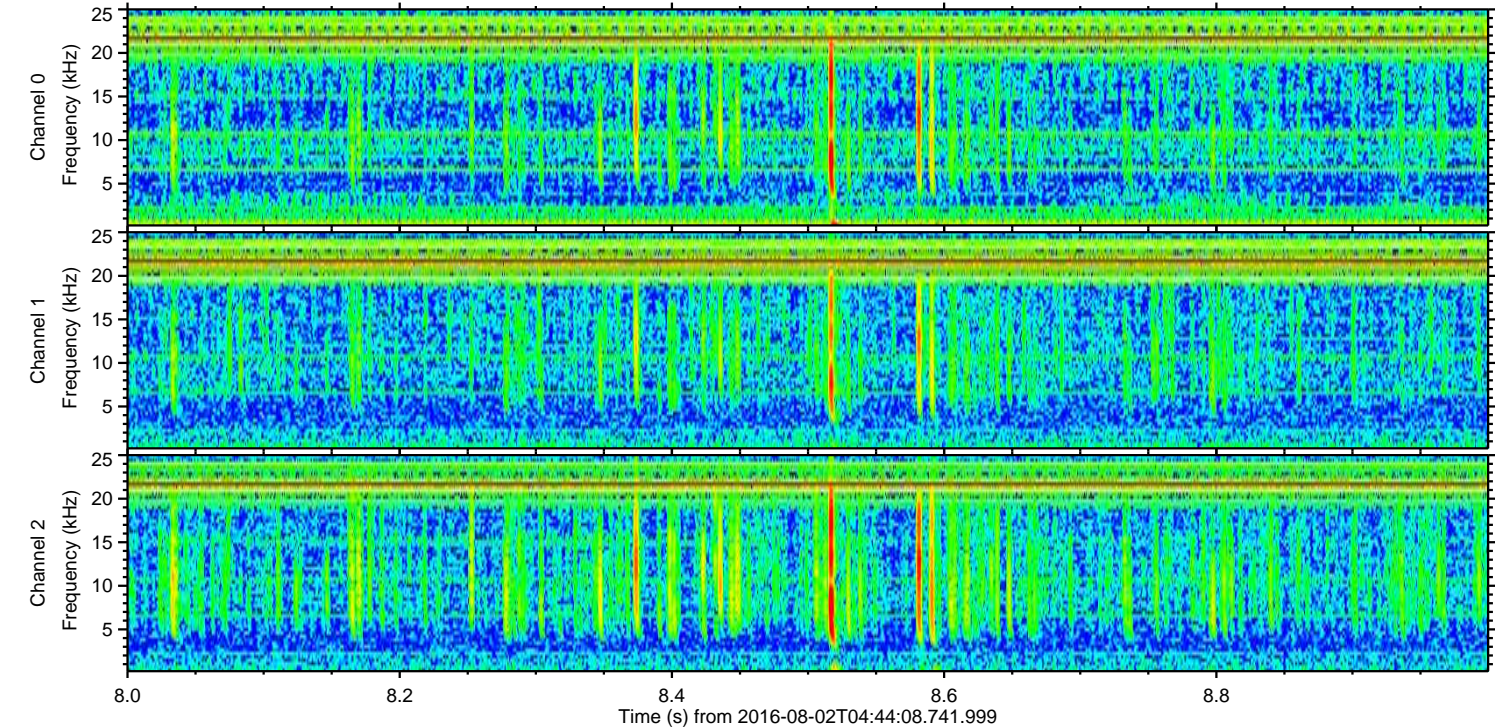
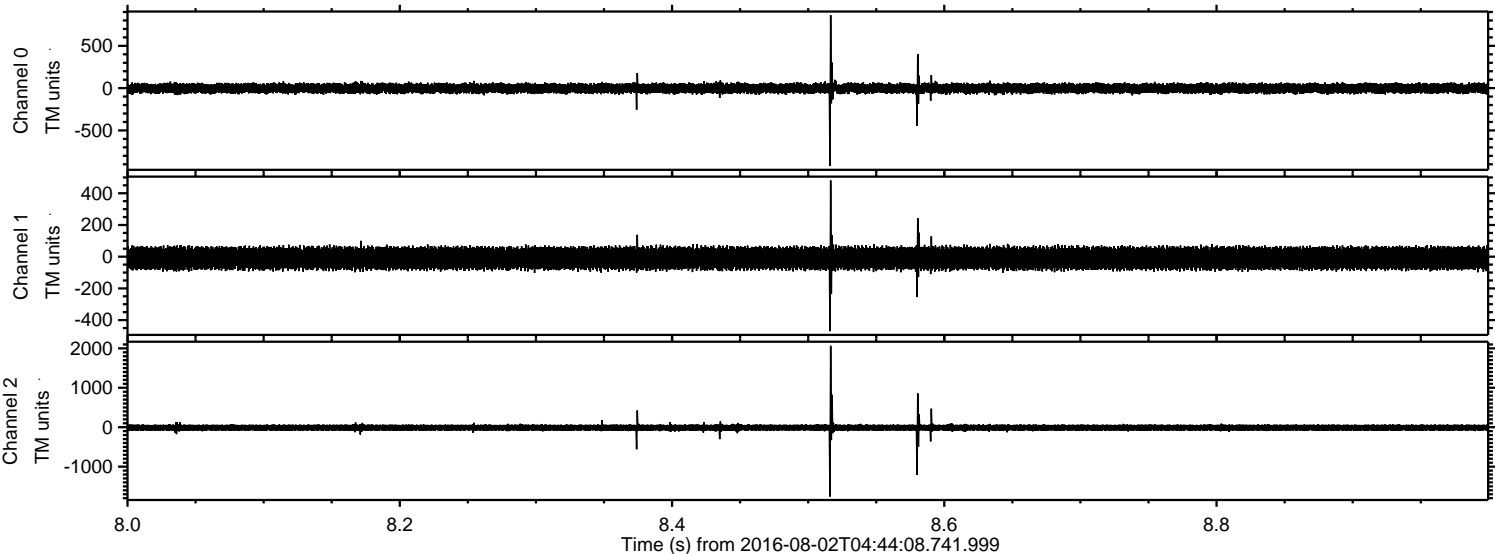


ELMAVAN 3D WAVEFORMS (Measured data sampled at 50 kHz) 51000 packets of 144 samples from 2016-08-02T04:44:08.741.999. Part 125/147

Processed Tue Aug 2 06:51:50 2016 by ELM ver.2012-10-06 from 001__elm20160802_044407__dat00.bin

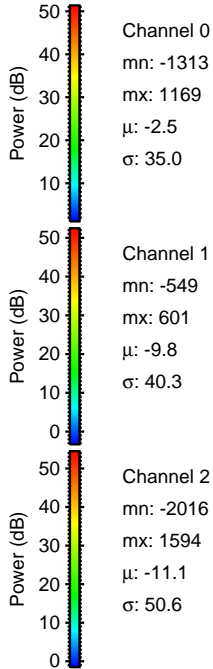
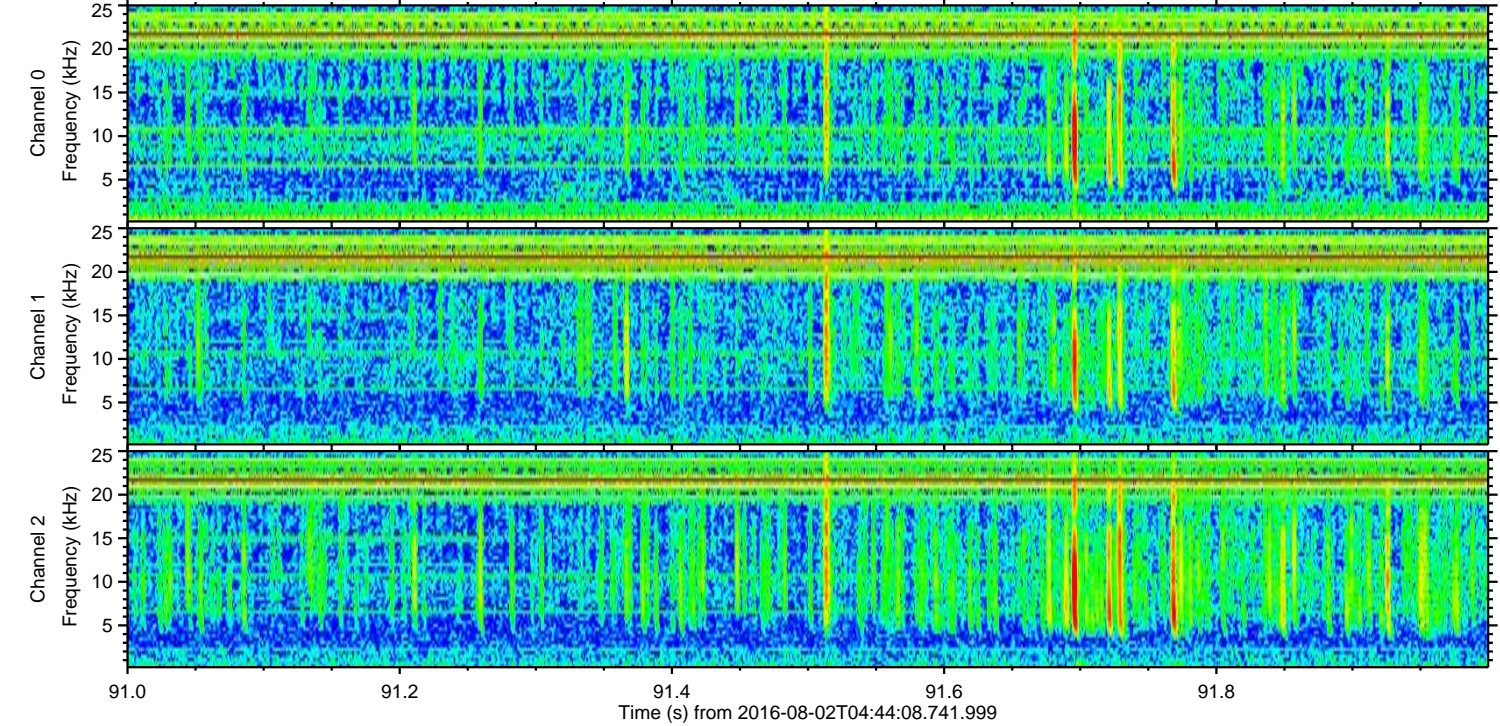
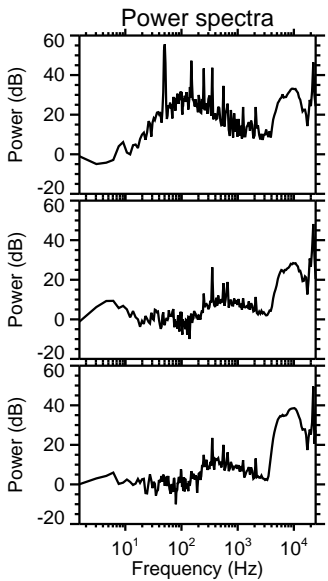
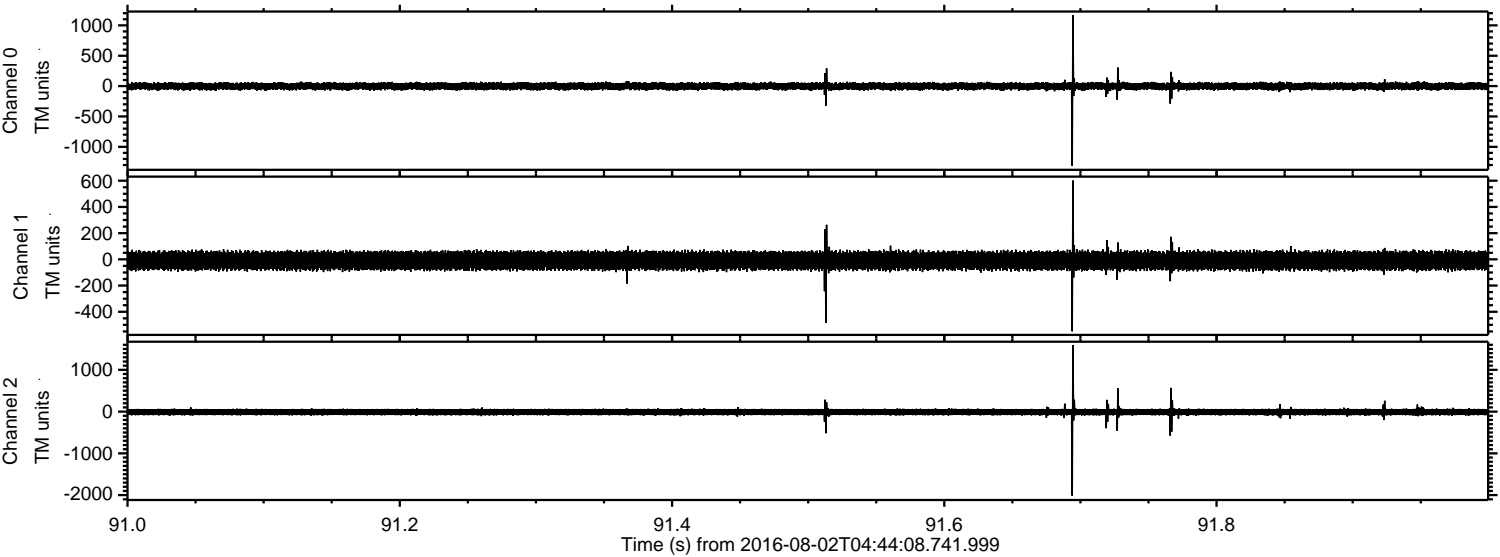


Processed Tue Aug 2 06:51:51 2016 by ELM ver.2012-10-06 from 001__elm20160802_044407__dat00.bin

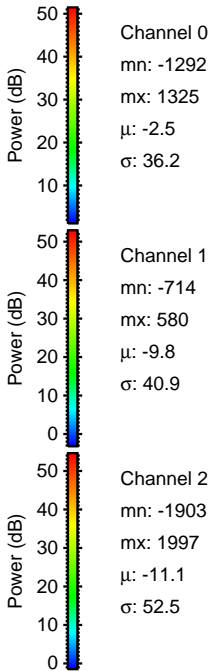
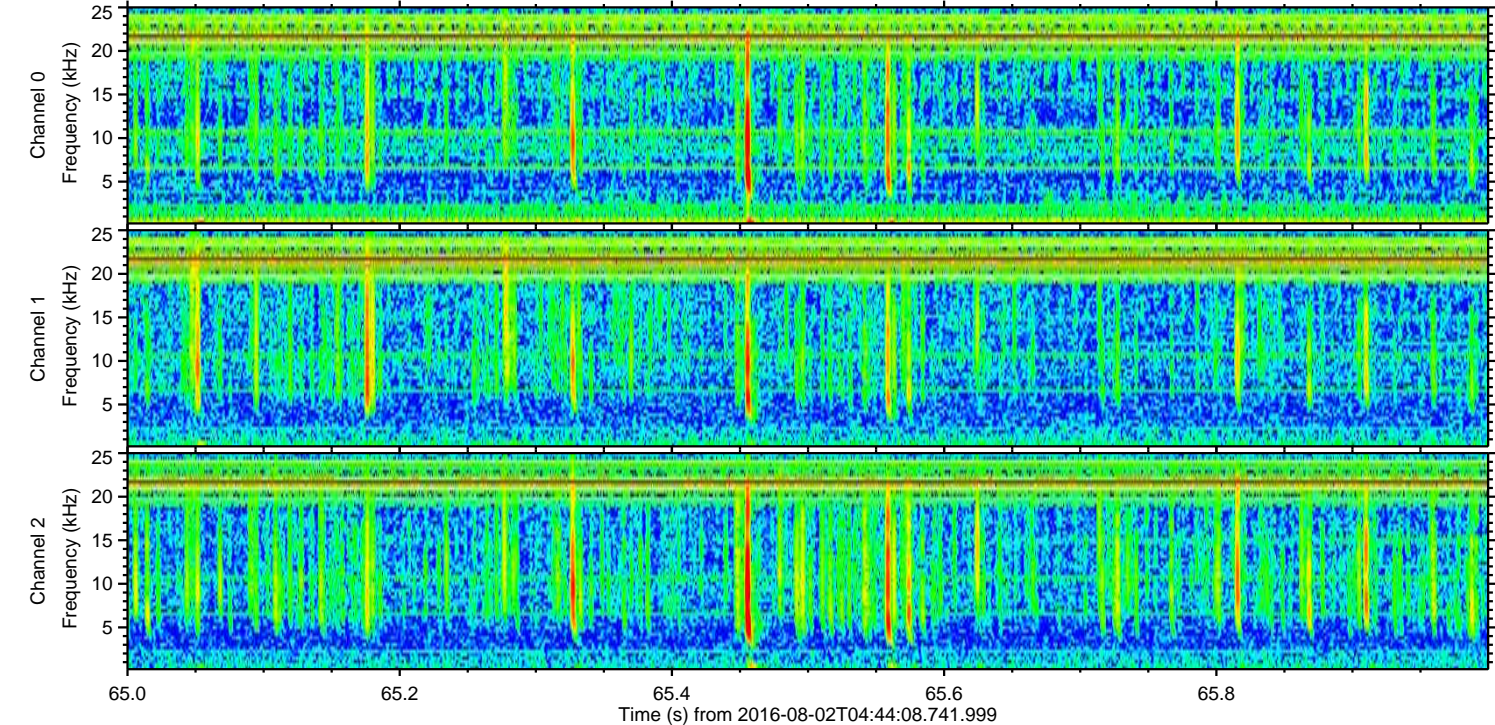
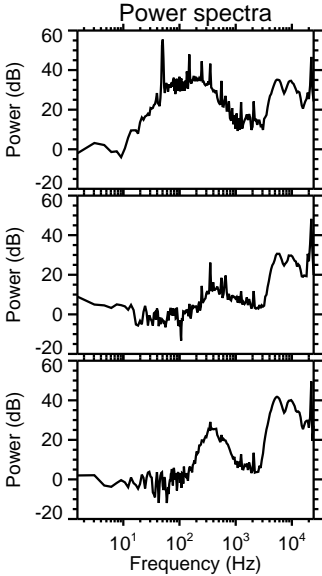
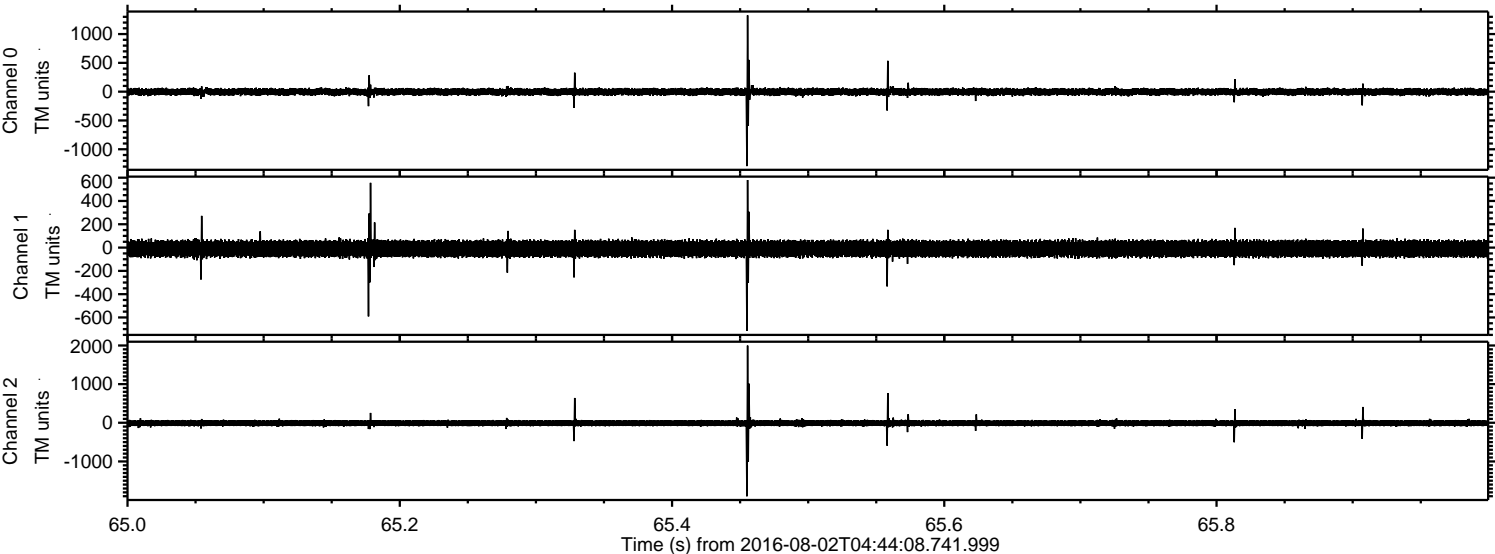


ELMAVAN 3D WAVEFORMS (Measured data sampled at 50 kHz) 51000 packets of 144 samples from 2016-08-02T04:44:08.741.999. Part 92/147

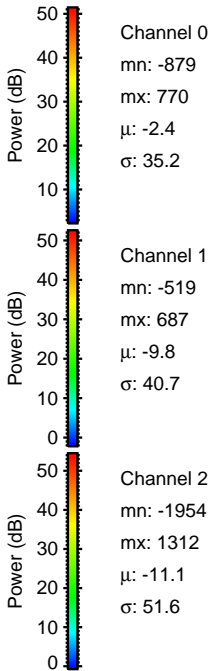
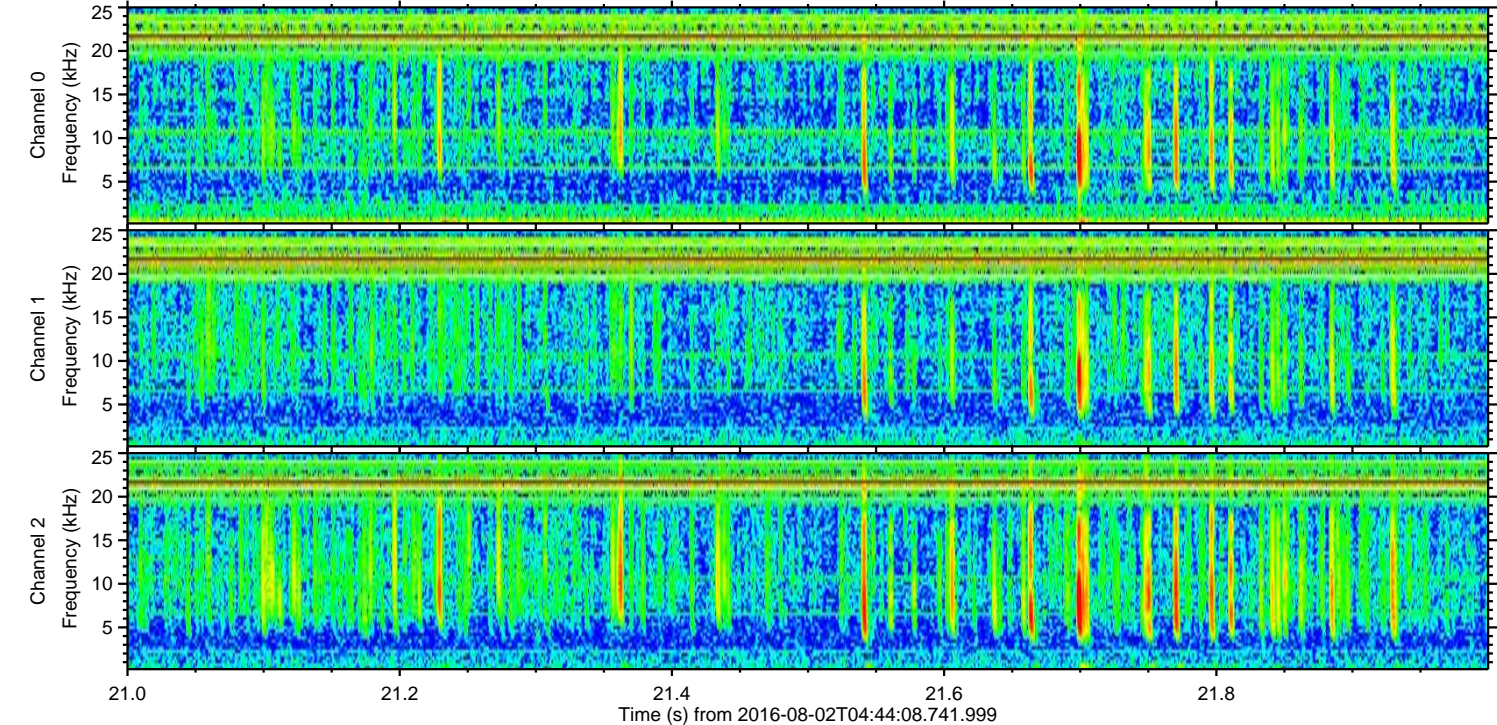
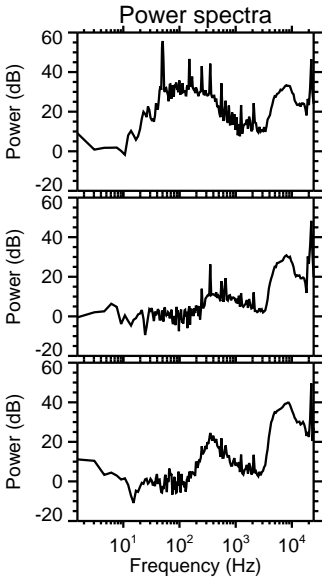
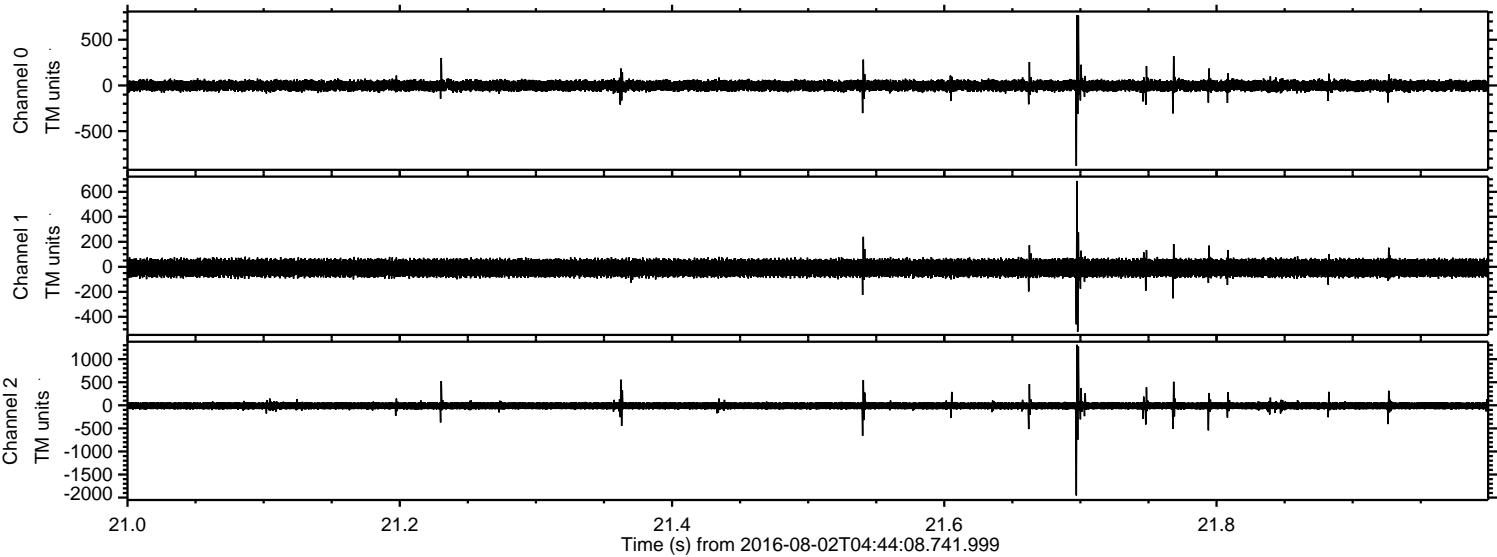
Processed Tue Aug 2 06:51:52 2016 by ELM ver.2012-10-06 from 001__elm20160802_044407__dat00.bin



Processed Tue Aug 2 06:51:53 2016 by ELM ver.2012-10-06 from 001__elm20160802_044407__dat00.bin

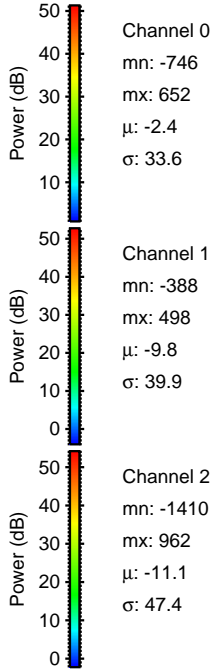
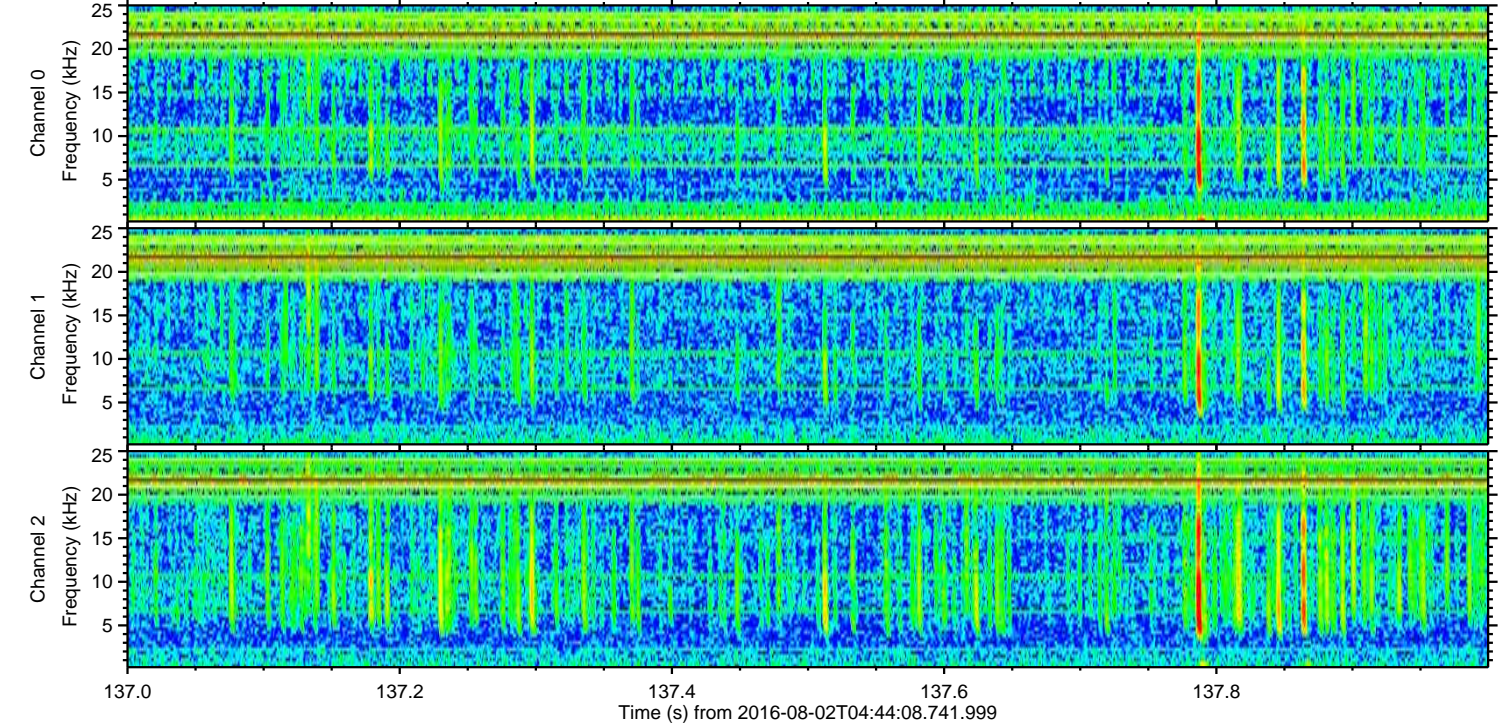
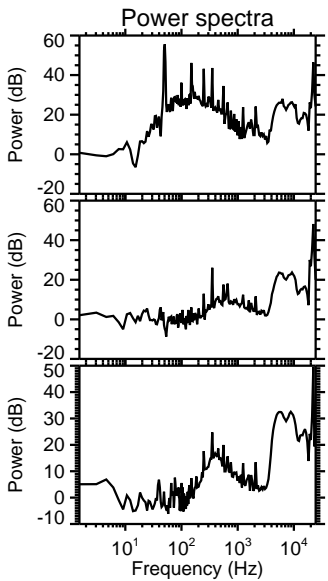
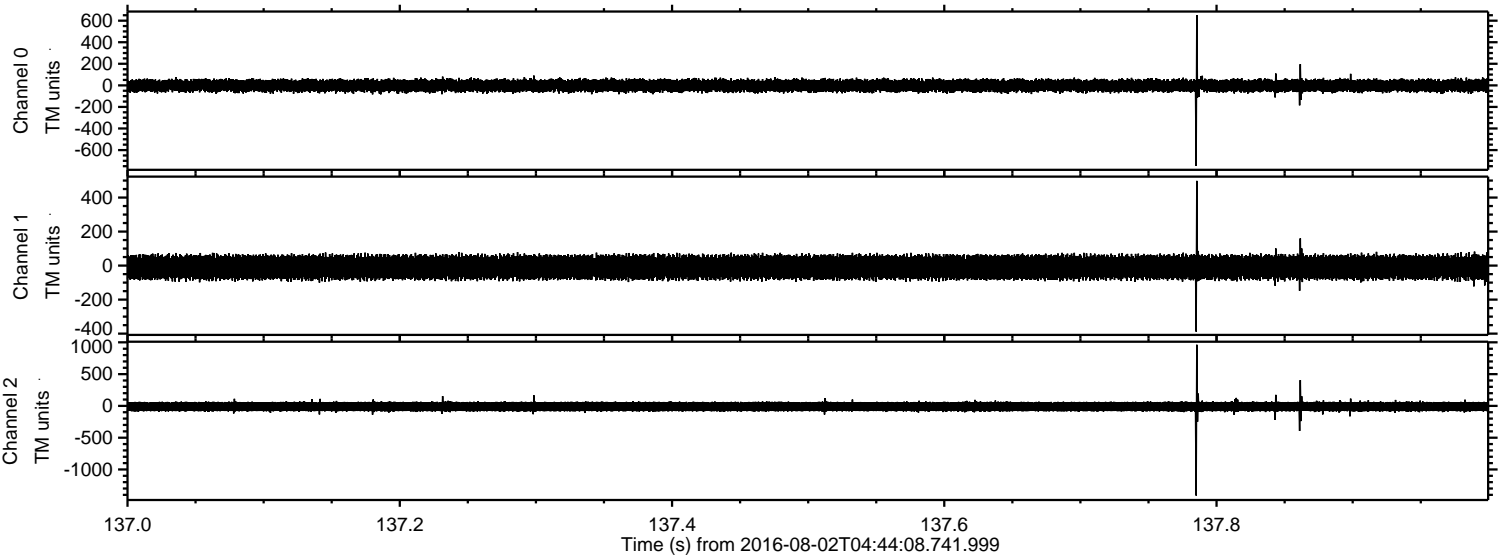


Processed Tue Aug 2 06:51:54 2016 by ELM ver.2012-10-06 from 001__elm20160802_044407__dat00.bin



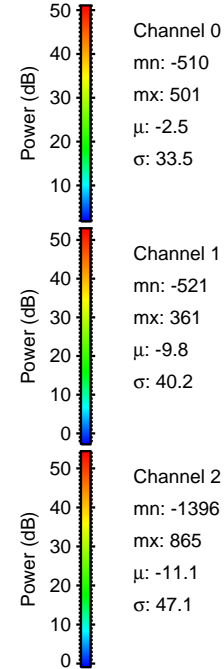
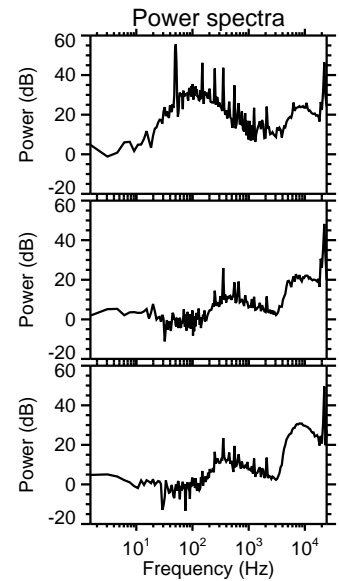
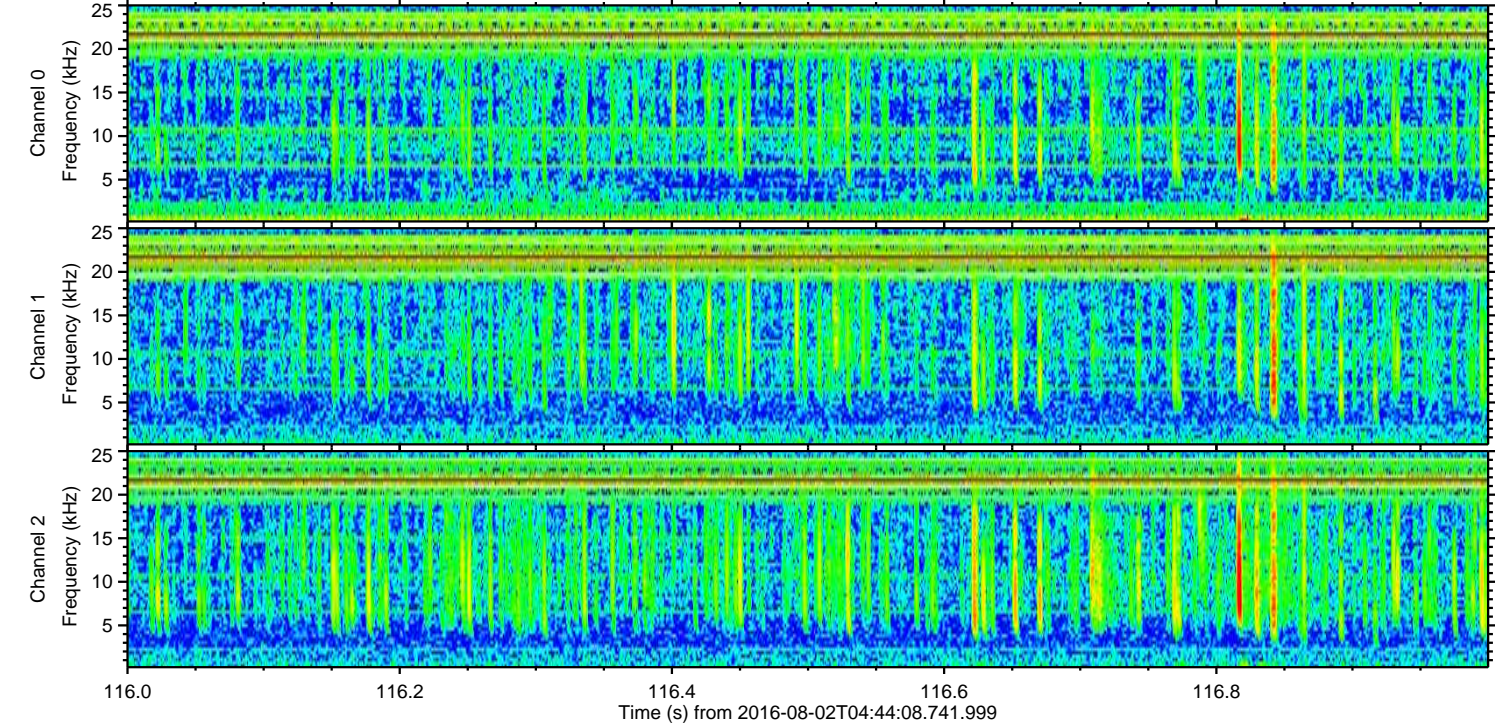
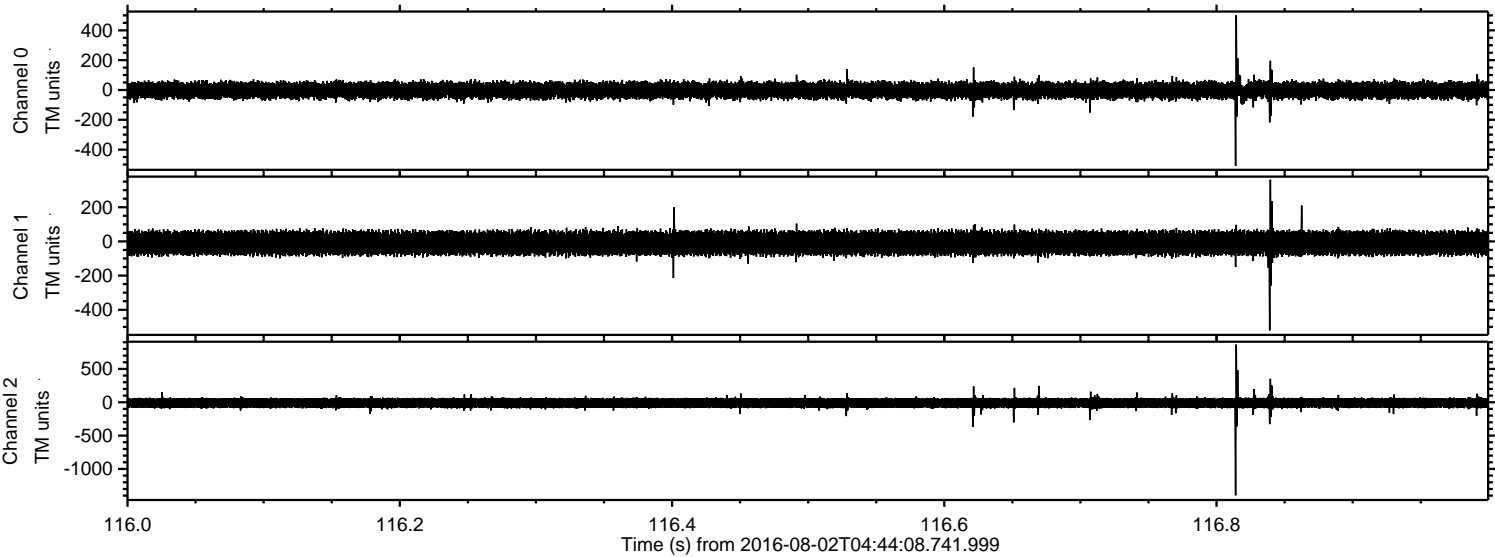
ELMAVAN 3D WAVEFORMS (Measured data sampled at 50 kHz) 51000 packets of 144 samples from 2016-08-02T04:44:08.741.999. Part 138/147

Processed Tue Aug 2 06:51:55 2016 by ELM ver.2012-10-06 from 001__elm20160802_044407__dat00.bin

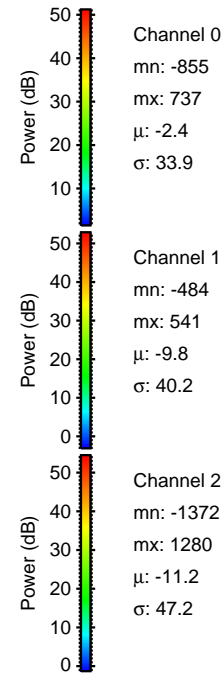
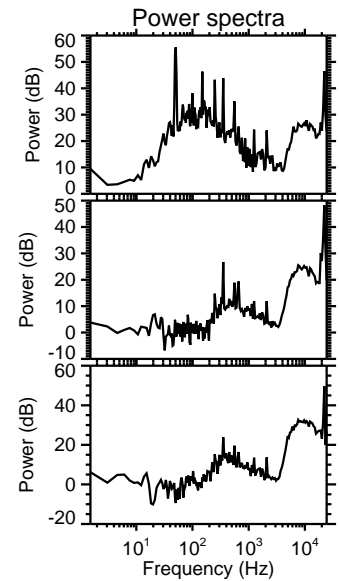
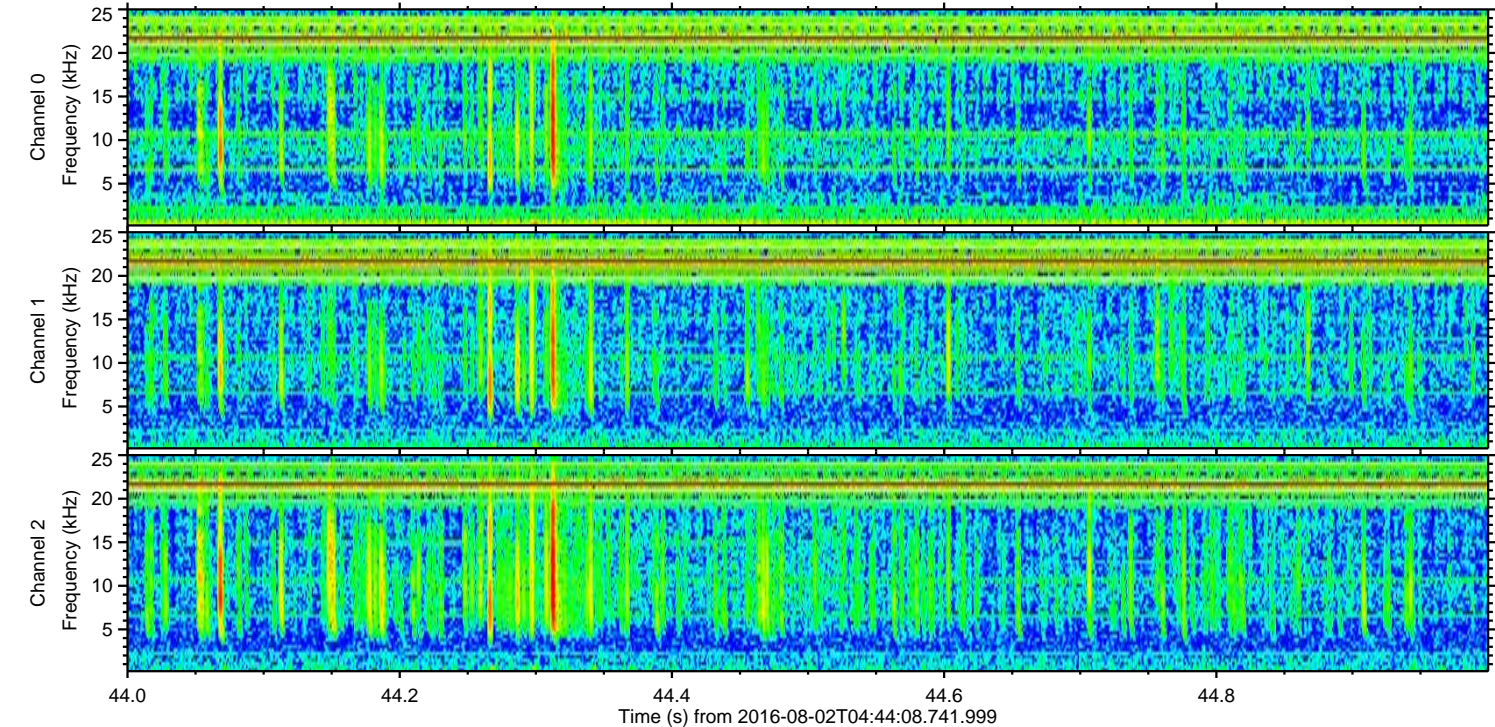
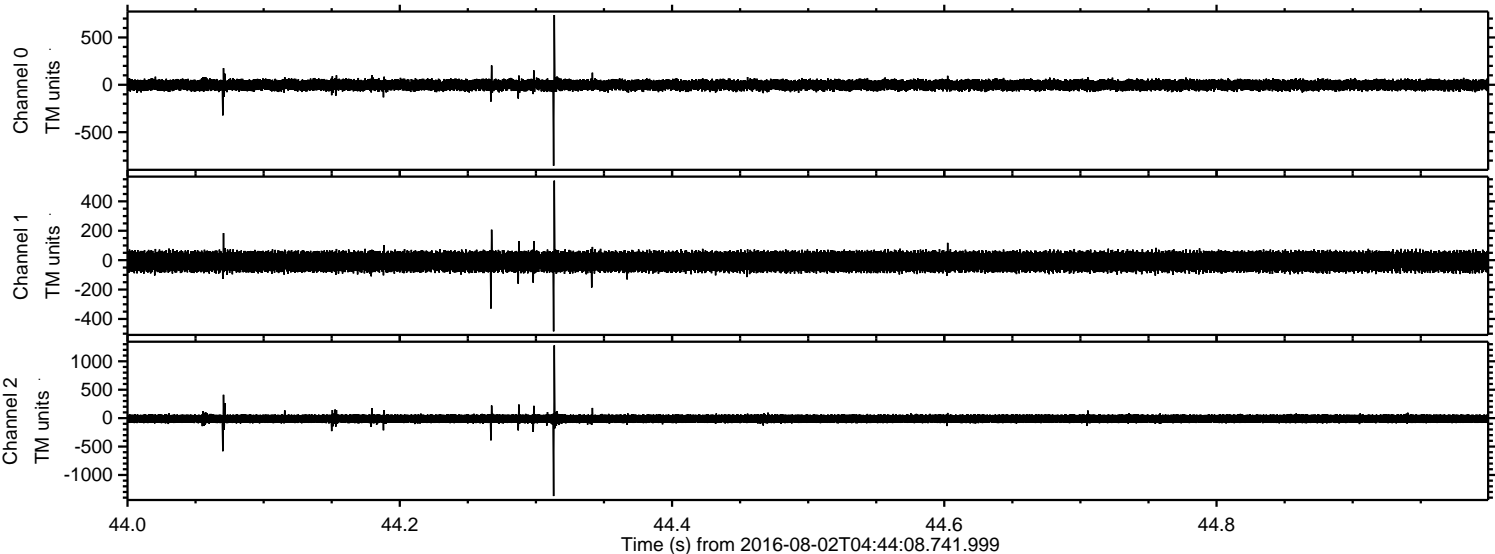


ELMAVAN 3D WAVEFORMS (Measured data sampled at 50 kHz) 51000 packets of 144 samples from 2016-08-02T04:44:08.741.999. Part 117/147

Processed Tue Aug 2 06:51:56 2016 by ELM ver.2012-10-06 from 001__elm20160802_044407__dat00.bin



Processed Tue Aug 2 06:51:57 2016 by ELM ver.2012-10-06 from 001__elm20160802_044407__dat00.bin



Channel 0
mn: -855
mx: 737
 μ : -2.4
 σ : 33.9

Channel 1
mn: -484
mx: 541
 μ : -9.8
 σ : 40.2

Channel 2
mn: -1372
mx: 1280
 μ : -11.2
 σ : 47.2

Processed Tue Aug 2 06:51:58 2016 by ELM ver.2012-10-06 from 001__elm20160802_044407__dat00.bin

