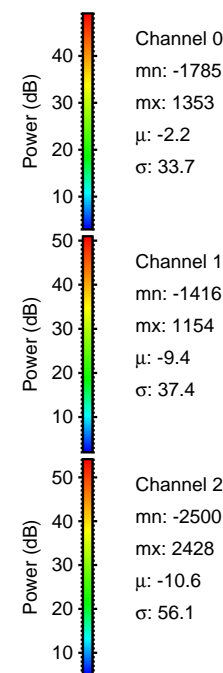
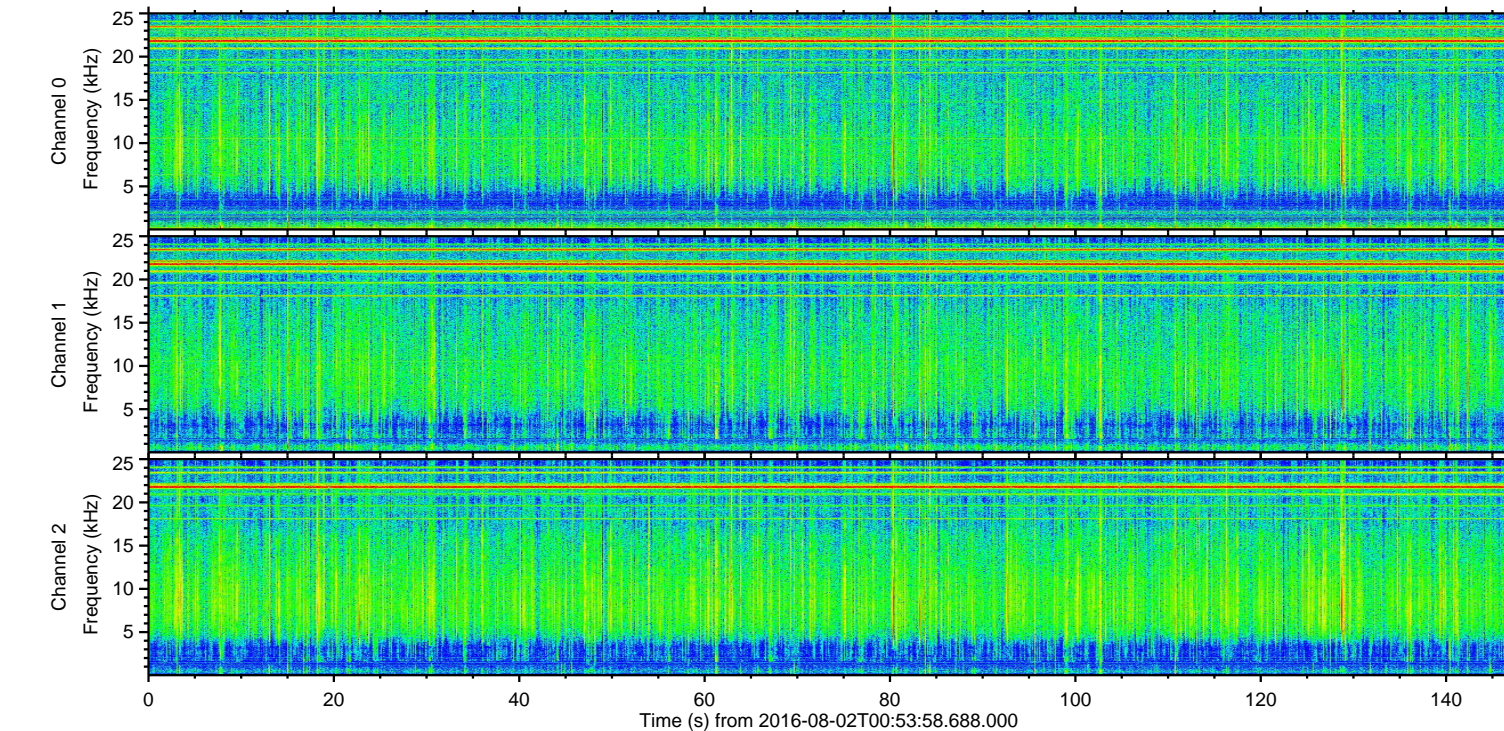
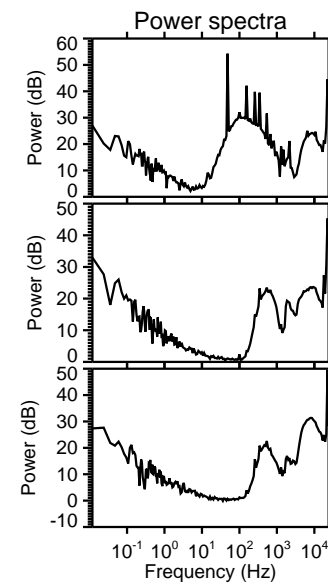
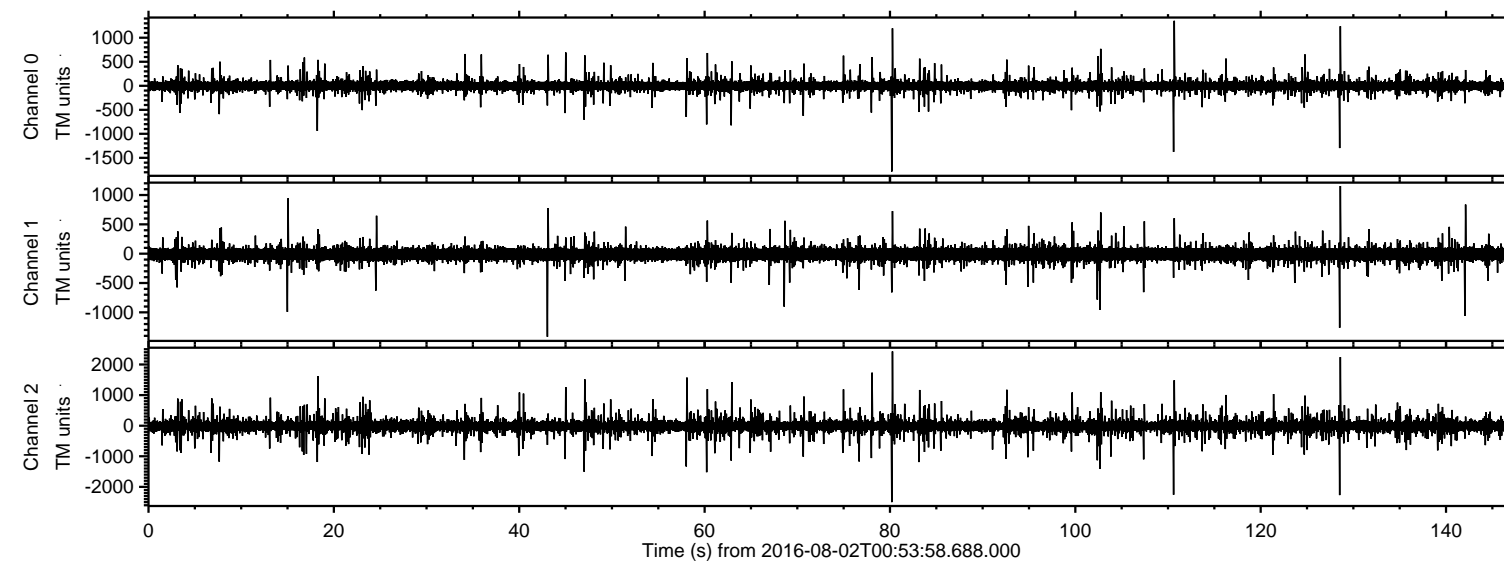


# ELMAVAN 3D WAVEFORMS (Measured data sampled at 50 kHz) 51000 packets of 144 samples from 2016-08-02T00:53:58.688.000.

Processed Tue Aug 2 03:01:35 2016 by ELM ver.2012-10-06 from 001\_\_elm20160802\_005357\_\_dat00.bin



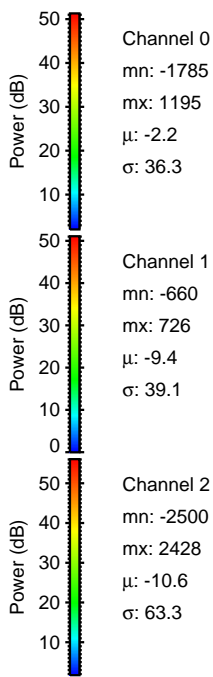
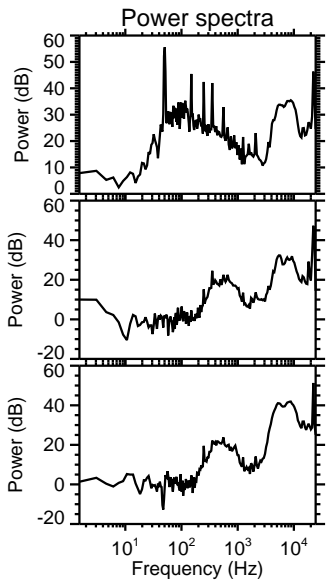
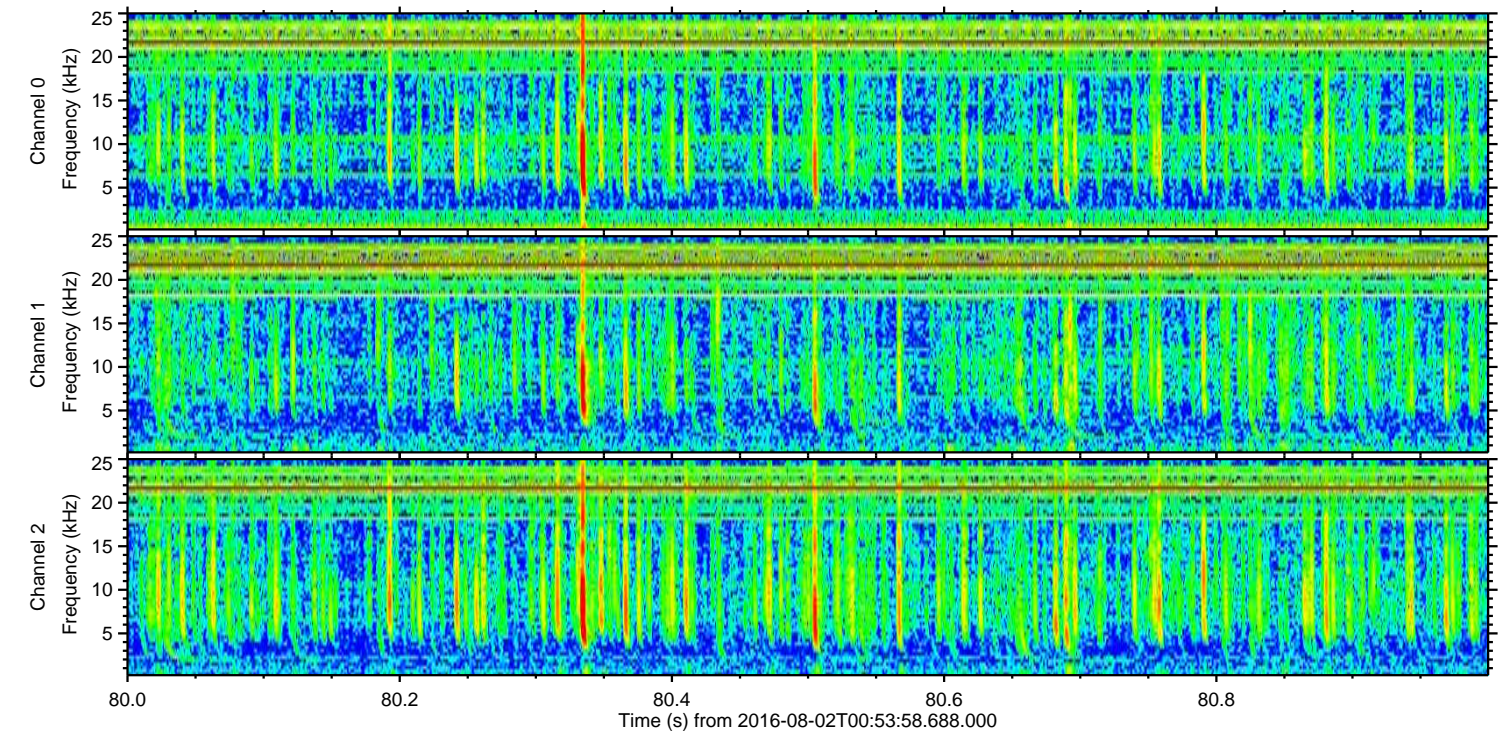
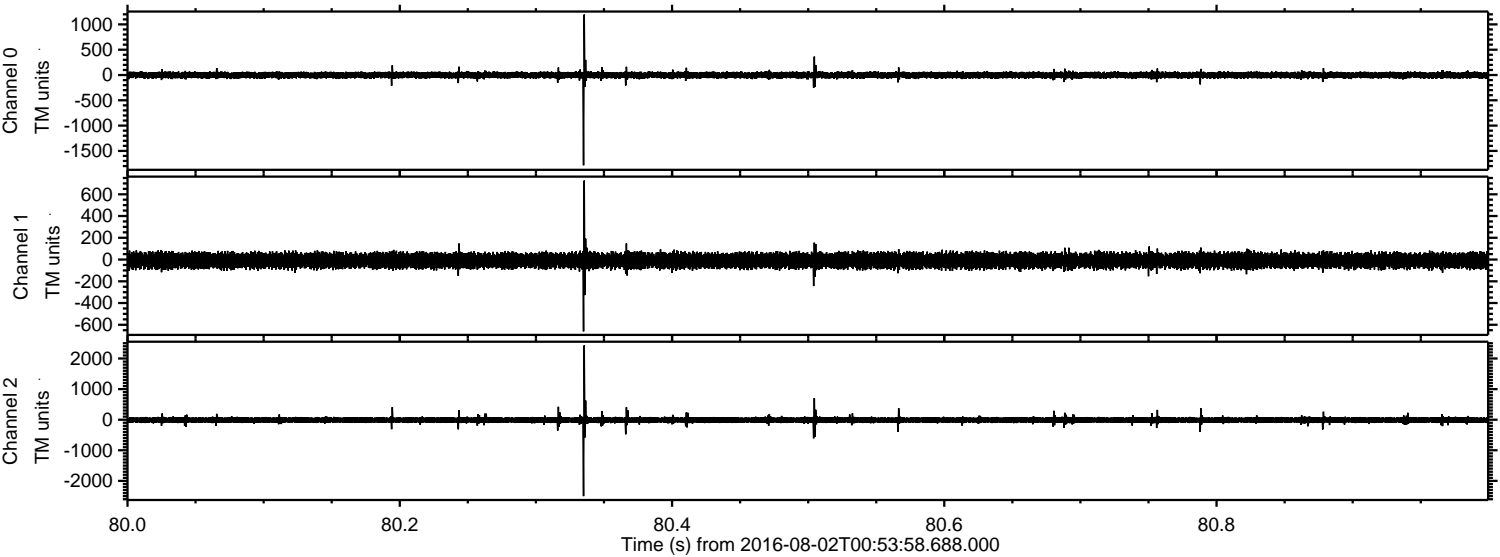
Channel 0  
mn: -1785  
mx: 1353  
 $\mu$ : -2.2  
 $\sigma$ : 33.7

Channel 1  
mn: -1416  
mx: 1154  
 $\mu$ : -9.4  
 $\sigma$ : 37.4

Channel 2  
mn: -2500  
mx: 2428  
 $\mu$ : -10.6  
 $\sigma$ : 56.1



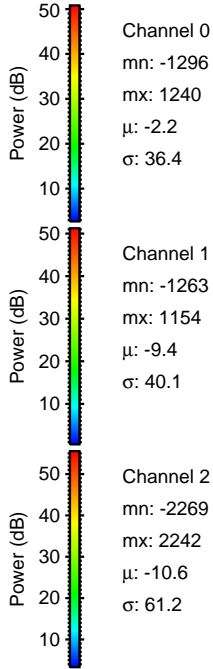
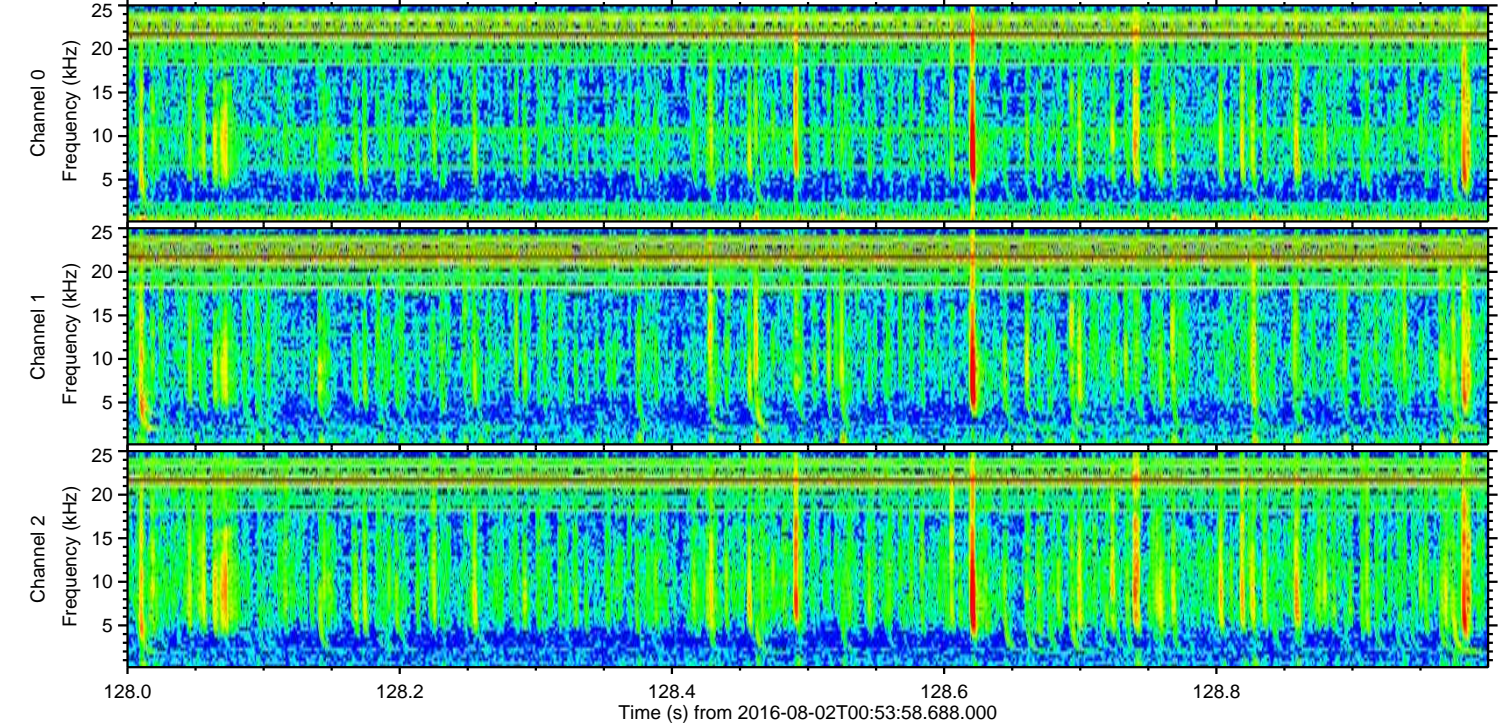
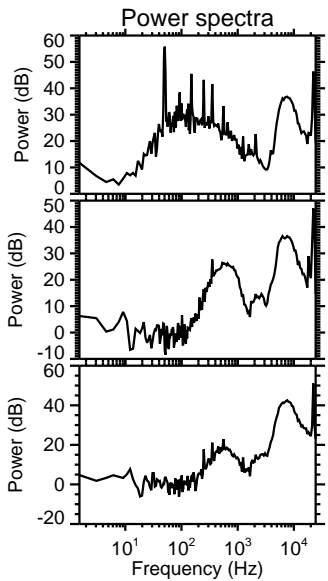
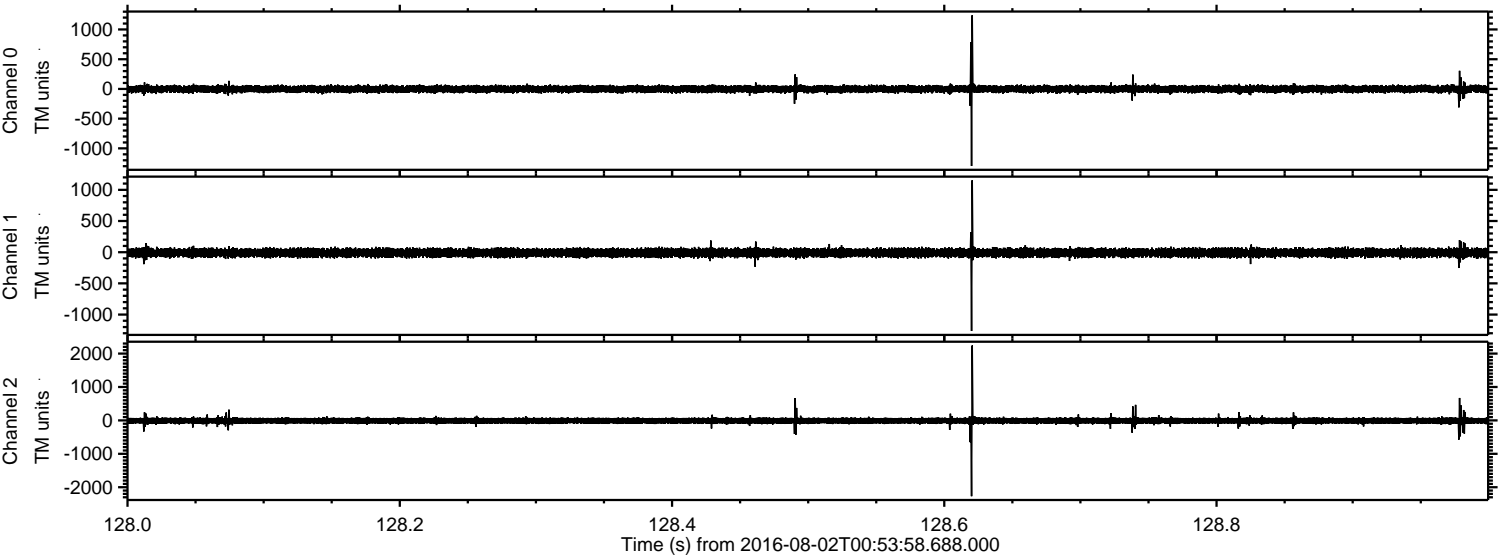
Processed Tue Aug 2 03:01:46 2016 by ELM ver.2012-10-06 from 001\_\_elm20160802\_005357\_\_dat00.bin





ELMAVAN 3D WAVEFORMS (Measured data sampled at 50 kHz) 51000 packets of 144 samples from 2016-08-02T00:53:58.688.000. Part 129/147

Processed Tue Aug 2 03:01:47 2016 by ELM ver.2012-10-06 from 001\_\_elm20160802\_005357\_\_dat00.bin



Channel 0  
mn: -1296  
mx: 1240  
 $\mu$ : -2.2  
 $\sigma$ : 36.4

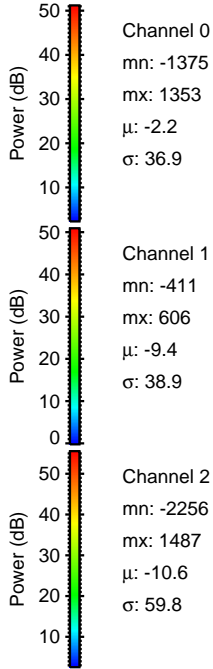
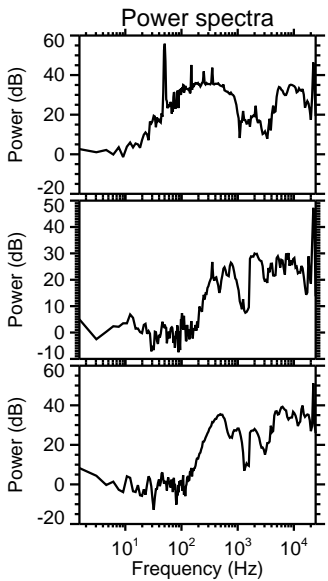
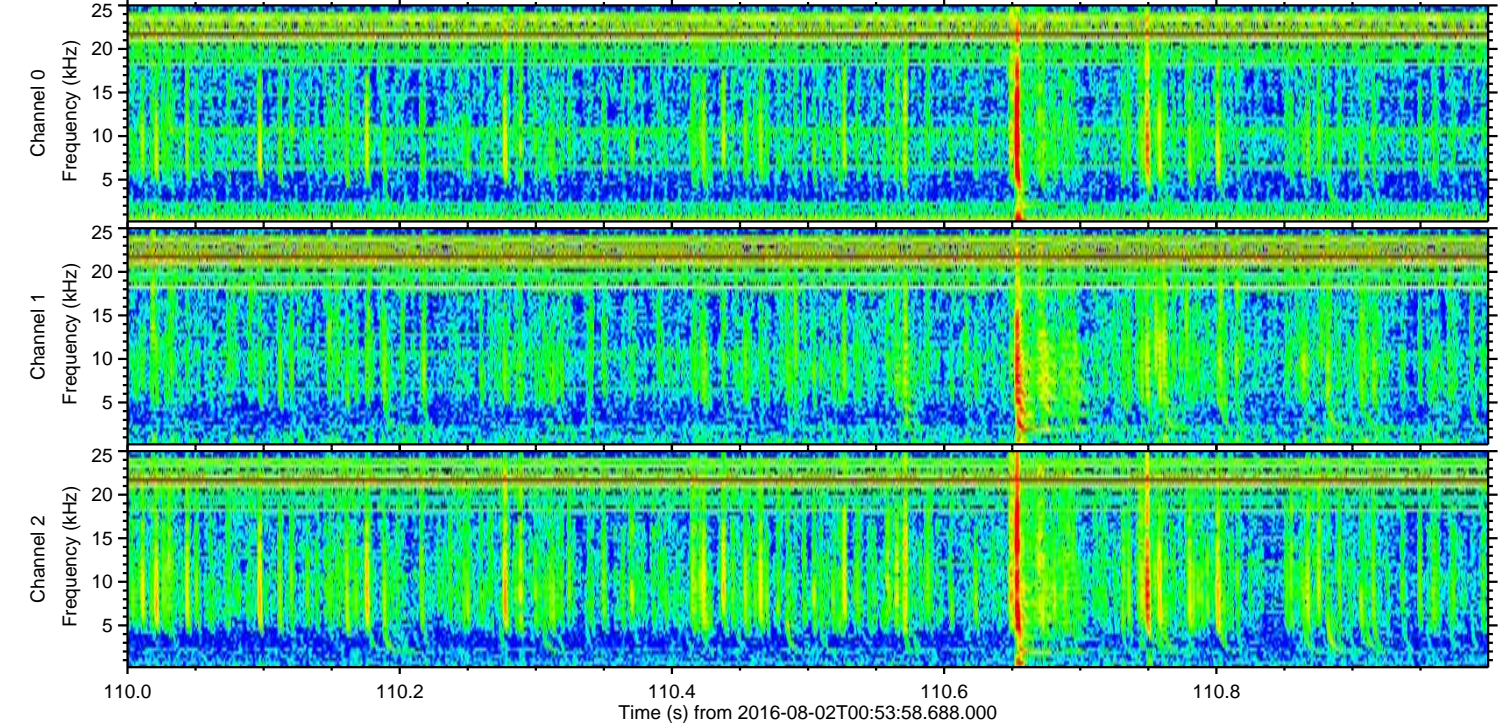
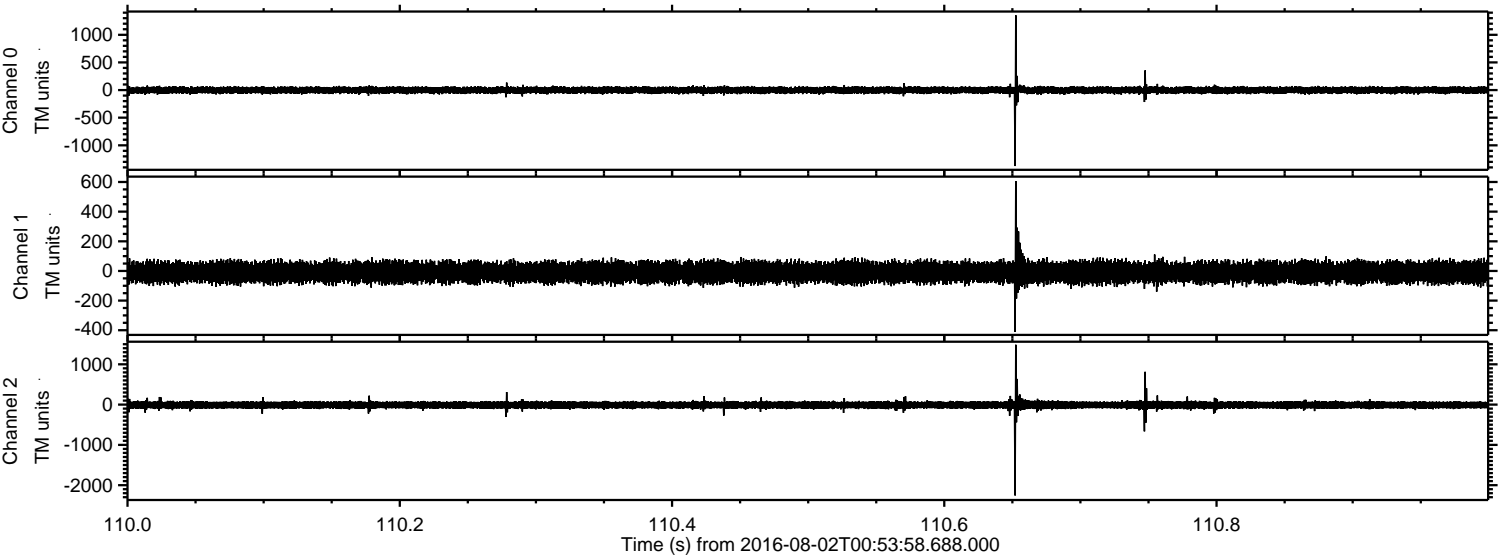
Channel 1  
mn: -1263  
mx: 1154  
 $\mu$ : -9.4  
 $\sigma$ : 40.1

Channel 2  
mn: -2269  
mx: 2242  
 $\mu$ : -10.6  
 $\sigma$ : 61.2



ELMAVAN 3D WAVEFORMS (Measured data sampled at 50 kHz) 51000 packets of 144 samples from 2016-08-02T00:53:58.688.000. Part 111/147

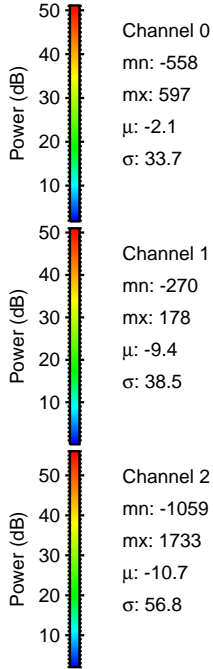
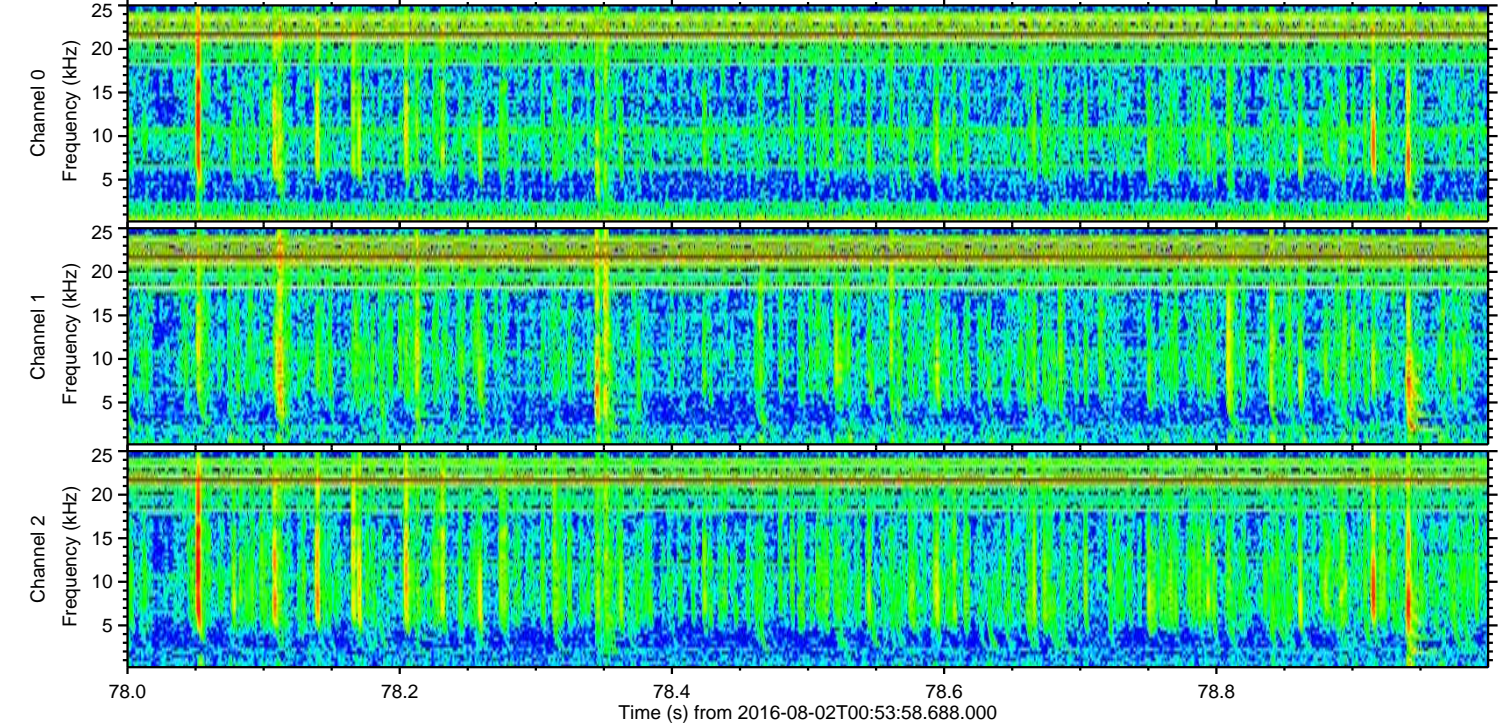
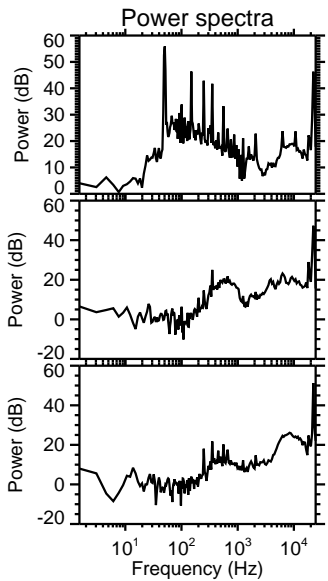
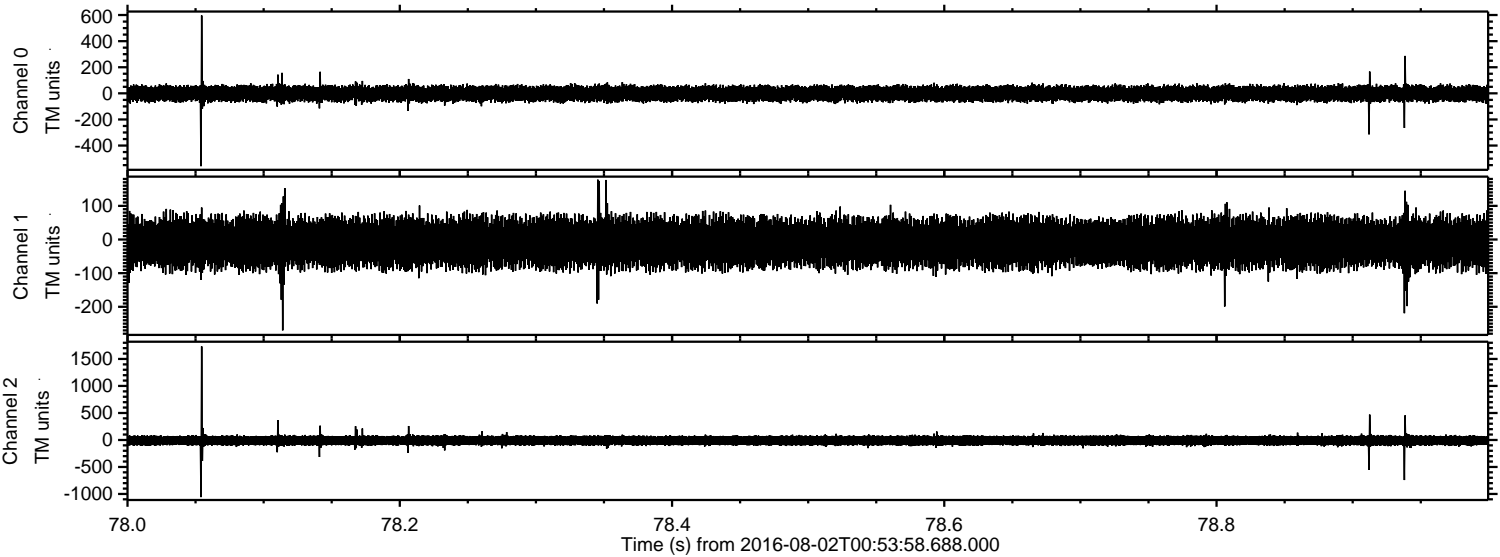
Processed Tue Aug 2 03:01:48 2016 by ELM ver.2012-10-06 from 001\_\_elm20160802\_005357\_\_dat00.bin





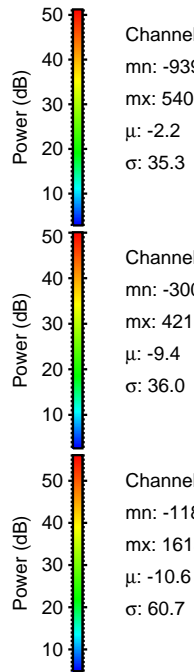
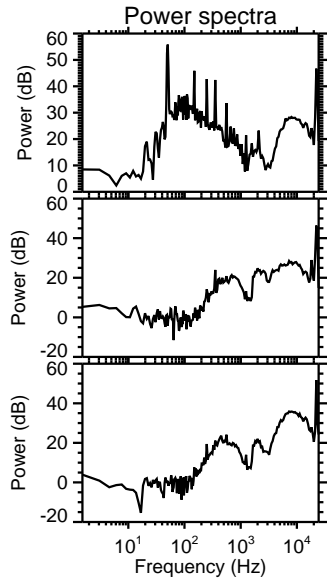
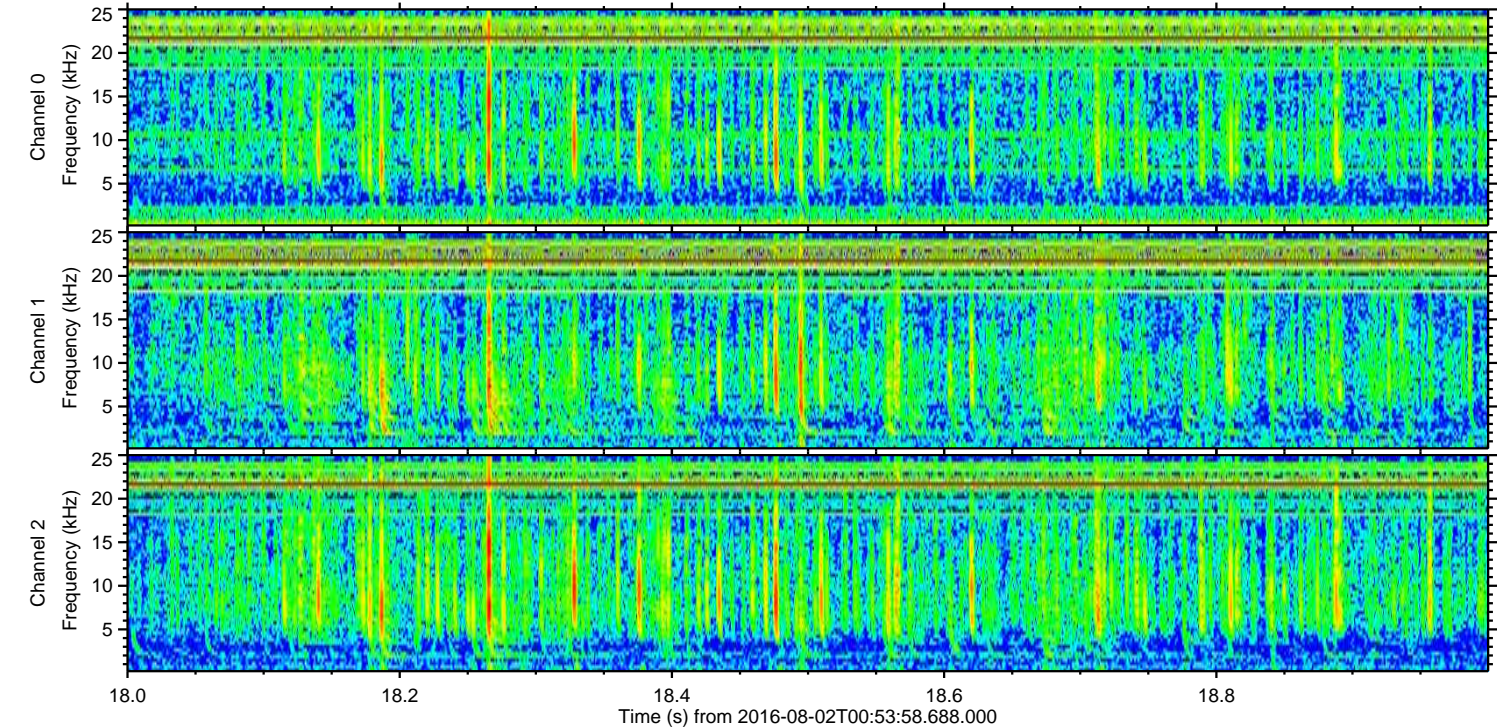
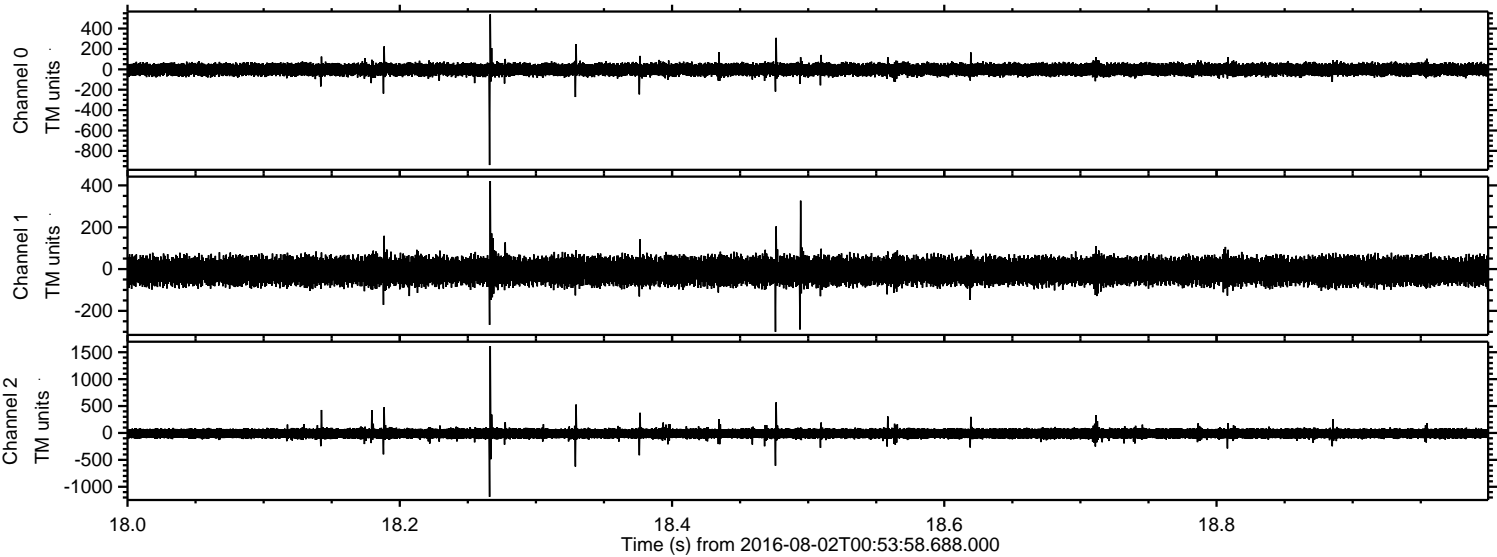
ELMAVAN 3D WAVEFORMS (Measured data sampled at 50 kHz) 51000 packets of 144 samples from 2016-08-02T00:53:58.688.000. Part 79/147

Processed Tue Aug 2 03:01:49 2016 by ELM ver.2012-10-06 from 001\_\_elm20160802\_005357\_\_dat00.bin





Processed Tue Aug 2 03:01:50 2016 by ELM ver.2012-10-06 from 001\_\_elm20160802\_005357\_\_dat00.bin



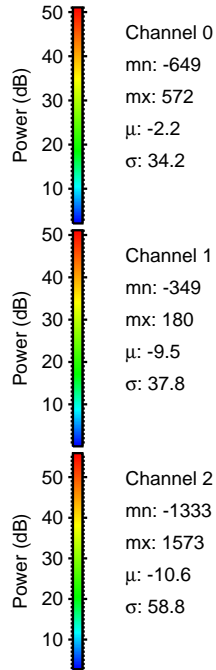
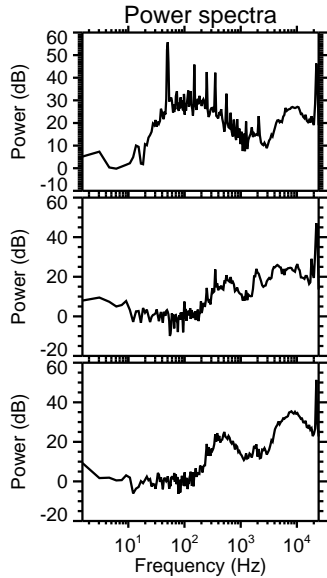
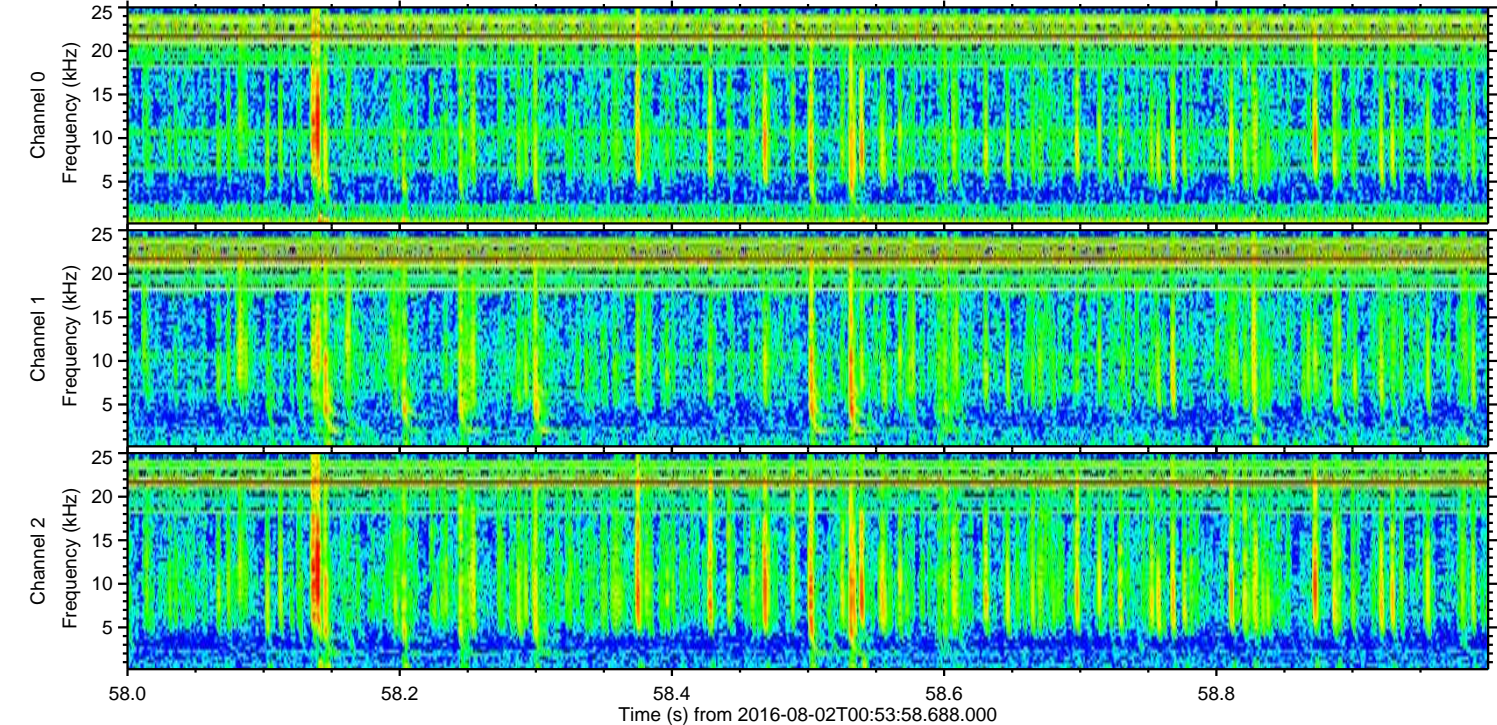
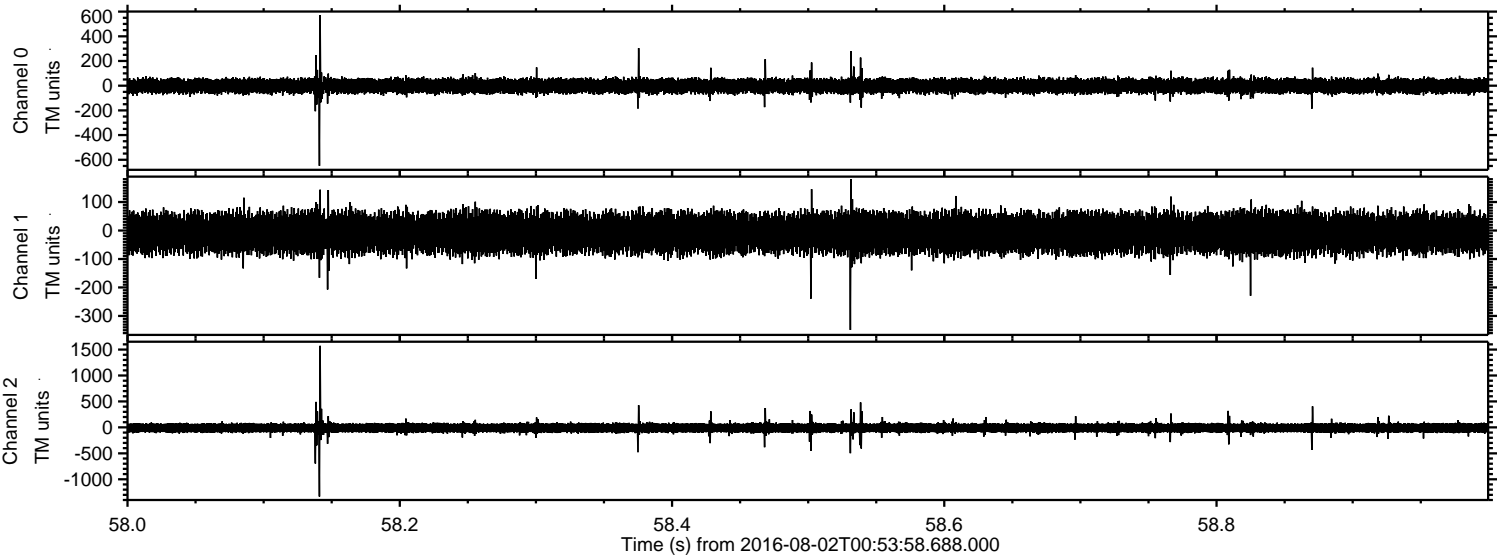
Channel 0  
mn: -939  
mx: 540  
 $\mu$ : -2.2  
 $\sigma$ : 35.3

Channel 1  
mn: -300  
mx: 421  
 $\mu$ : -9.4  
 $\sigma$ : 36.0

Channel 2  
mn: -1187  
mx: 1615  
 $\mu$ : -10.6  
 $\sigma$ : 60.7

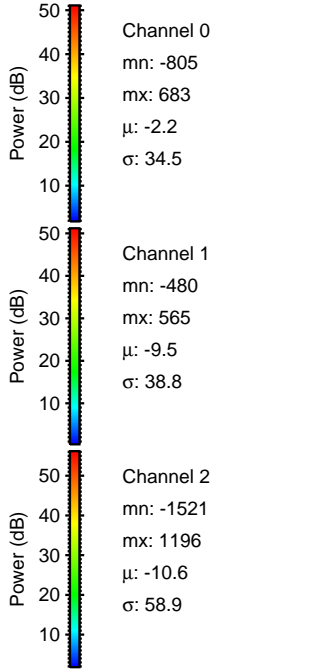
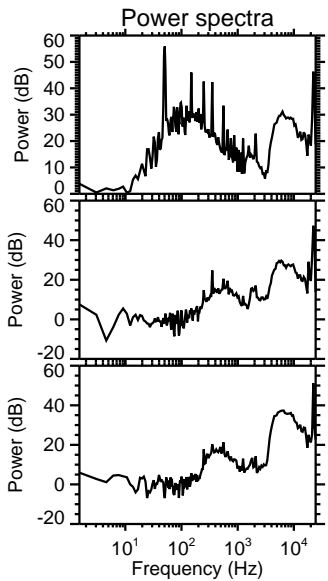
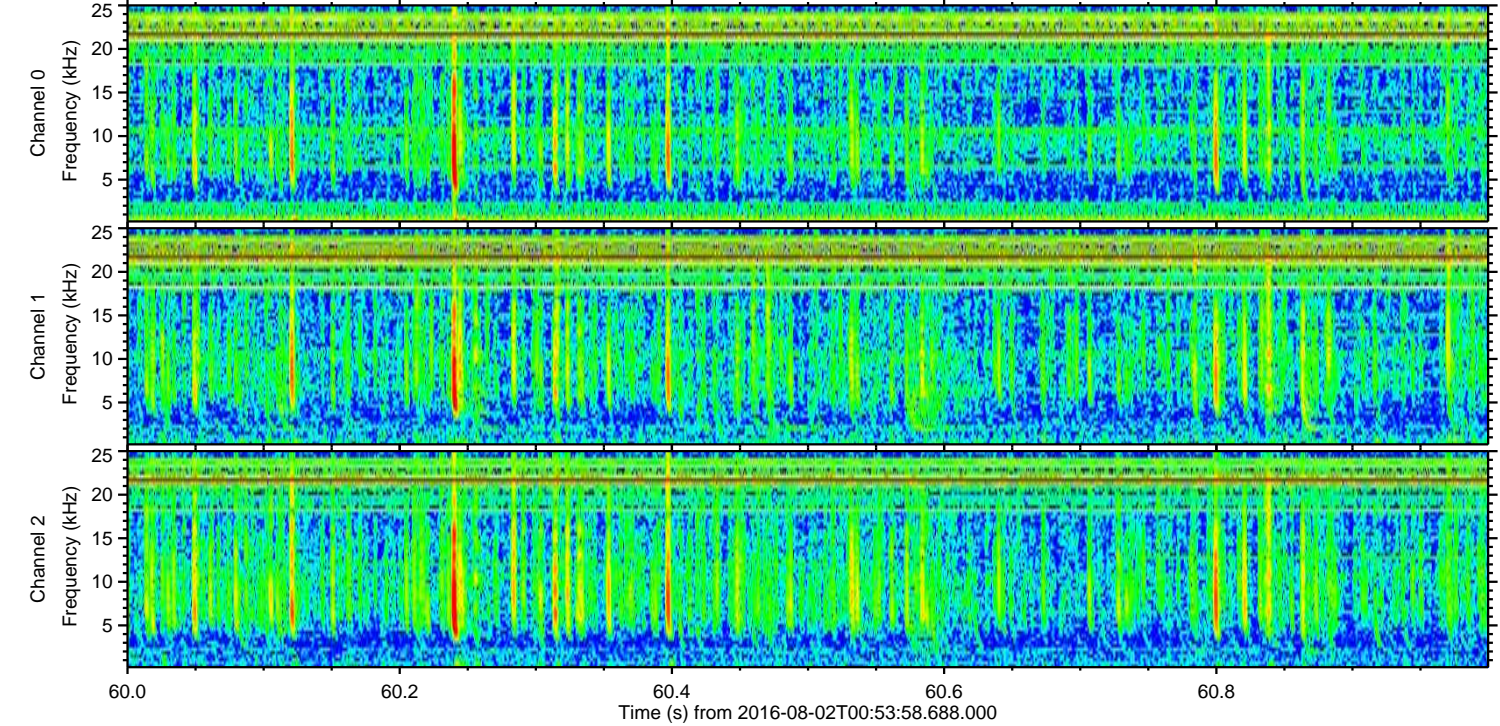
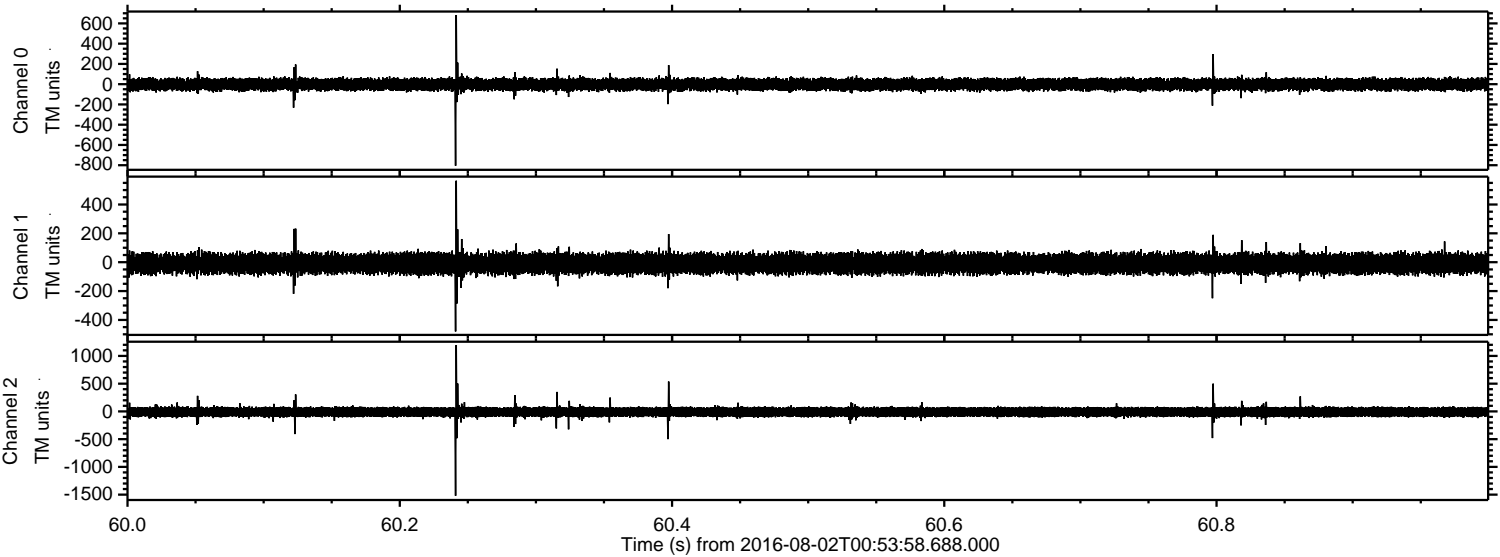


Processed Tue Aug 2 03:01:51 2016 by ELM ver.2012-10-06 from 001\_\_elm20160802\_005357\_\_dat00.bin





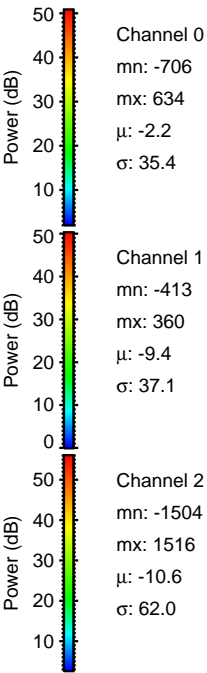
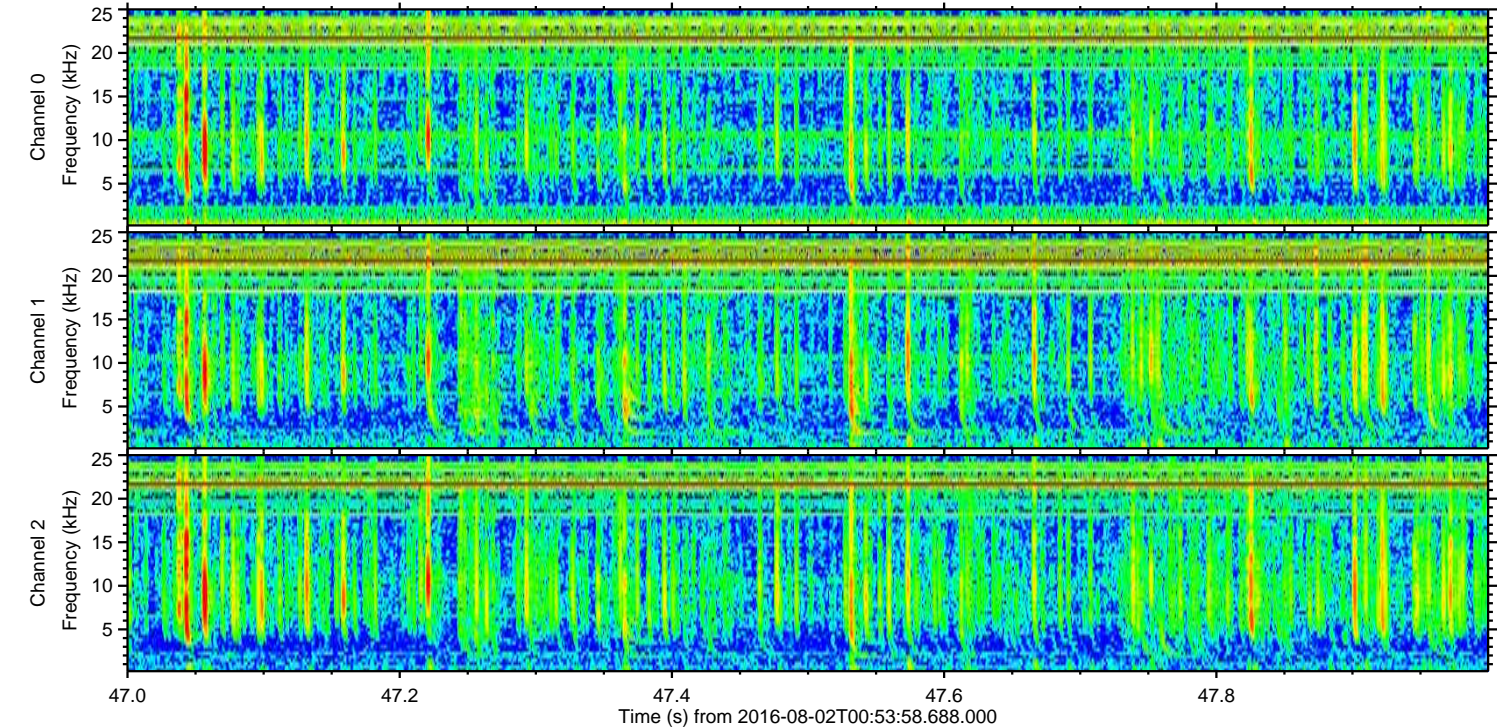
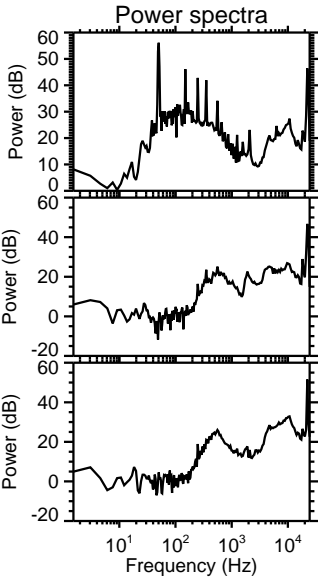
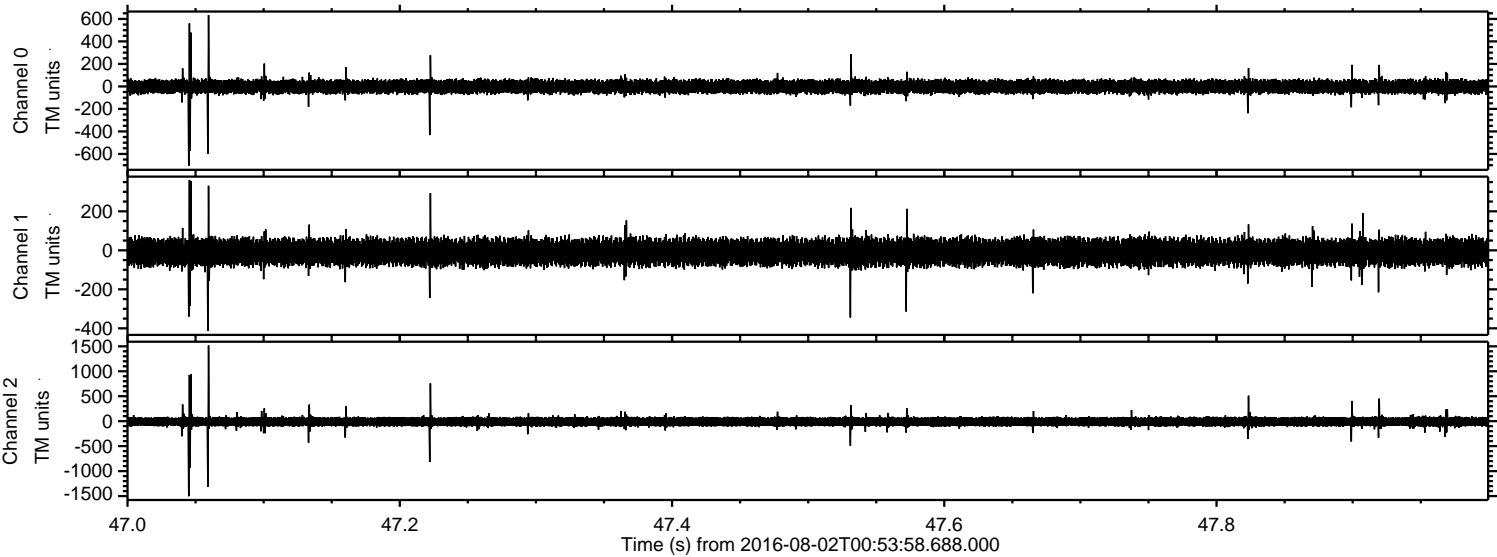
Processed Tue Aug 2 03:01:52 2016 by ELM ver.2012-10-06 from 001\_\_elm20160802\_005357\_\_dat00.bin





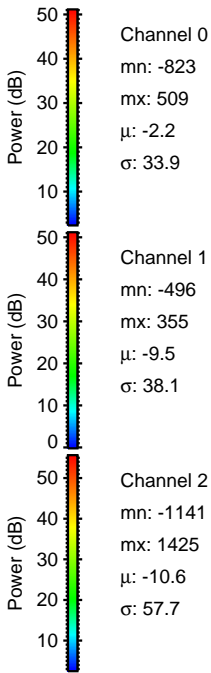
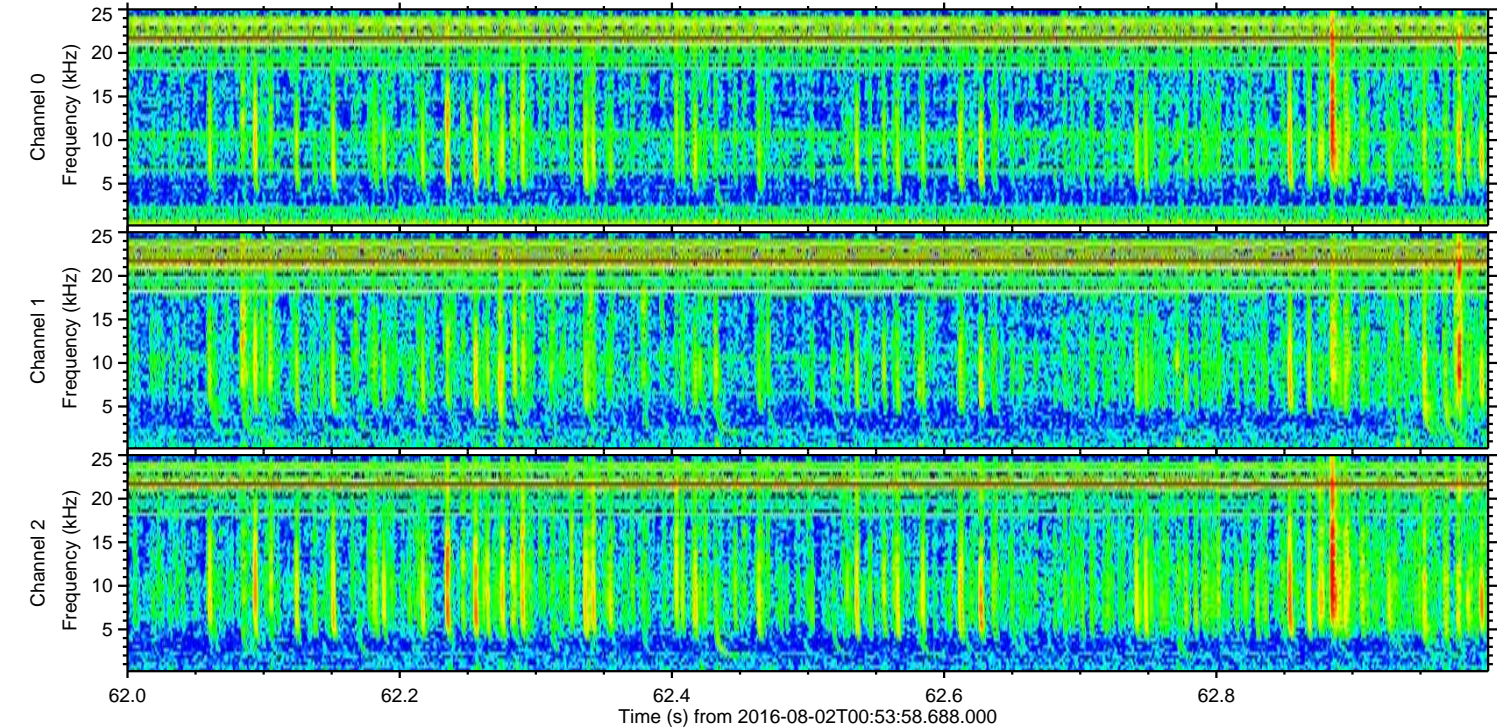
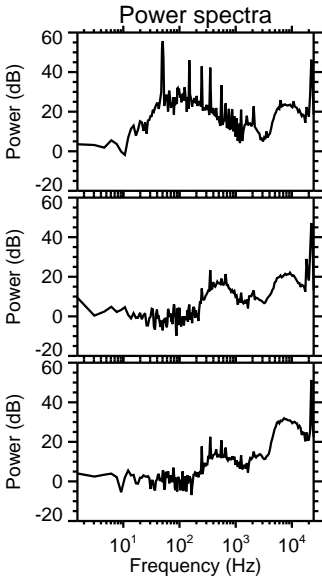
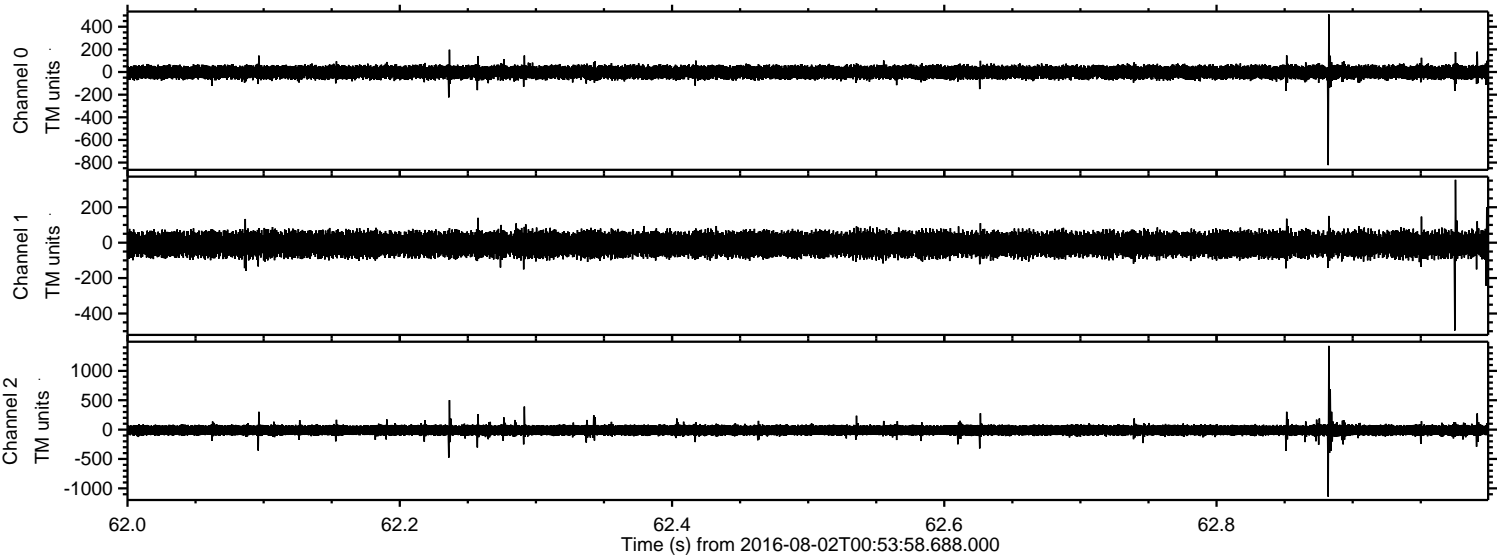
ELMAVAN 3D WAVEFORMS (Measured data sampled at 50 kHz) 51000 packets of 144 samples from 2016-08-02T00:53:58.688.000. Part 48/147

Processed Tue Aug 2 03:01:53 2016 by ELM ver.2012-10-06 from 001\_\_elm20160802\_005357\_\_dat00.bin





Processed Tue Aug 2 03:01:54 2016 by ELM ver.2012-10-06 from 001\_\_elm20160802\_005357\_\_dat00.bin





Processed Tue Aug 2 03:01:55 2016 by ELM ver.2012-10-06 from 001\_\_elm20160802\_005357\_\_dat00.bin

