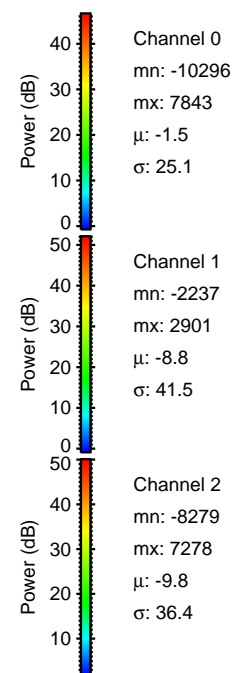
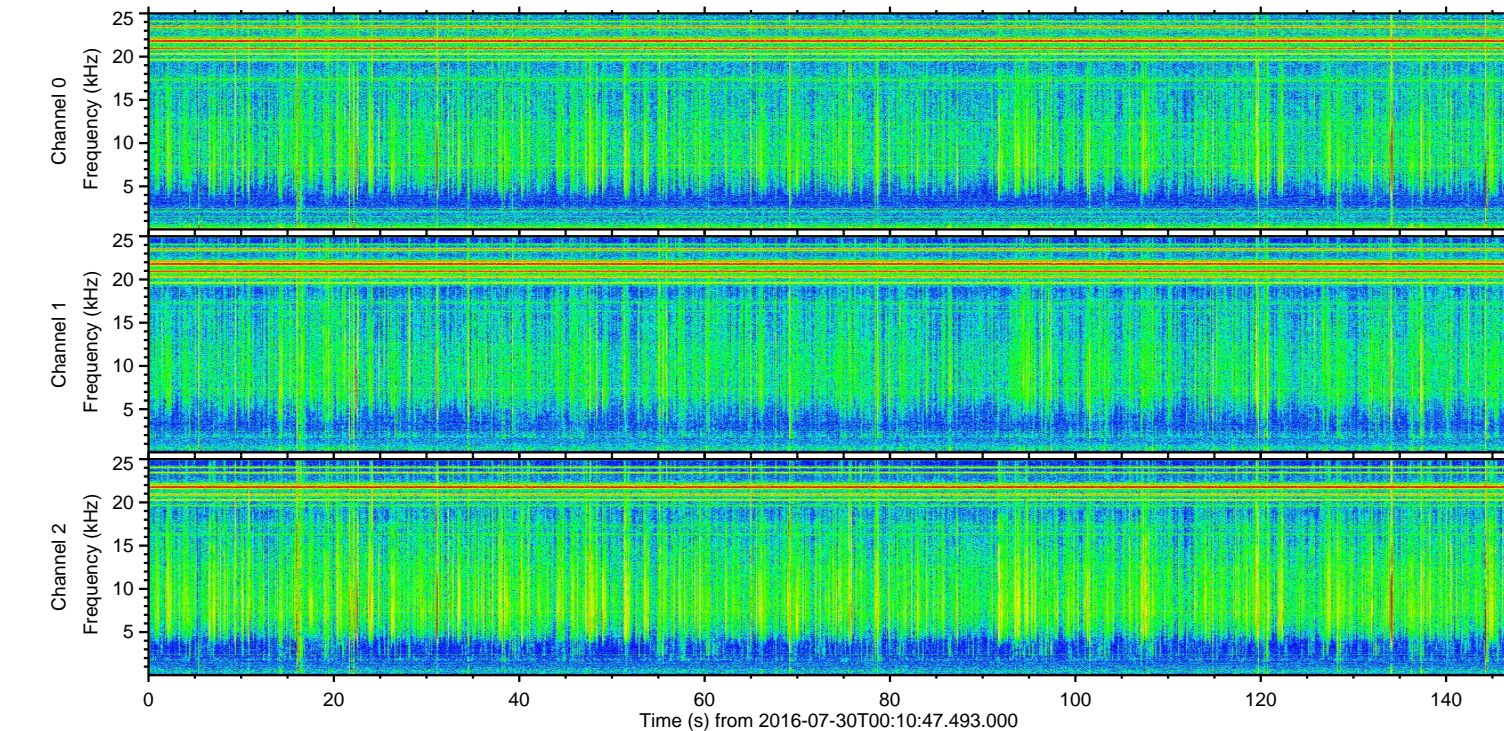
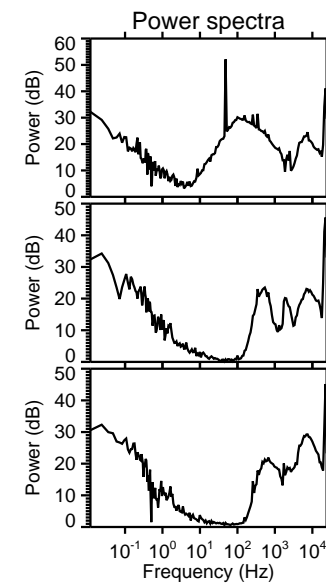
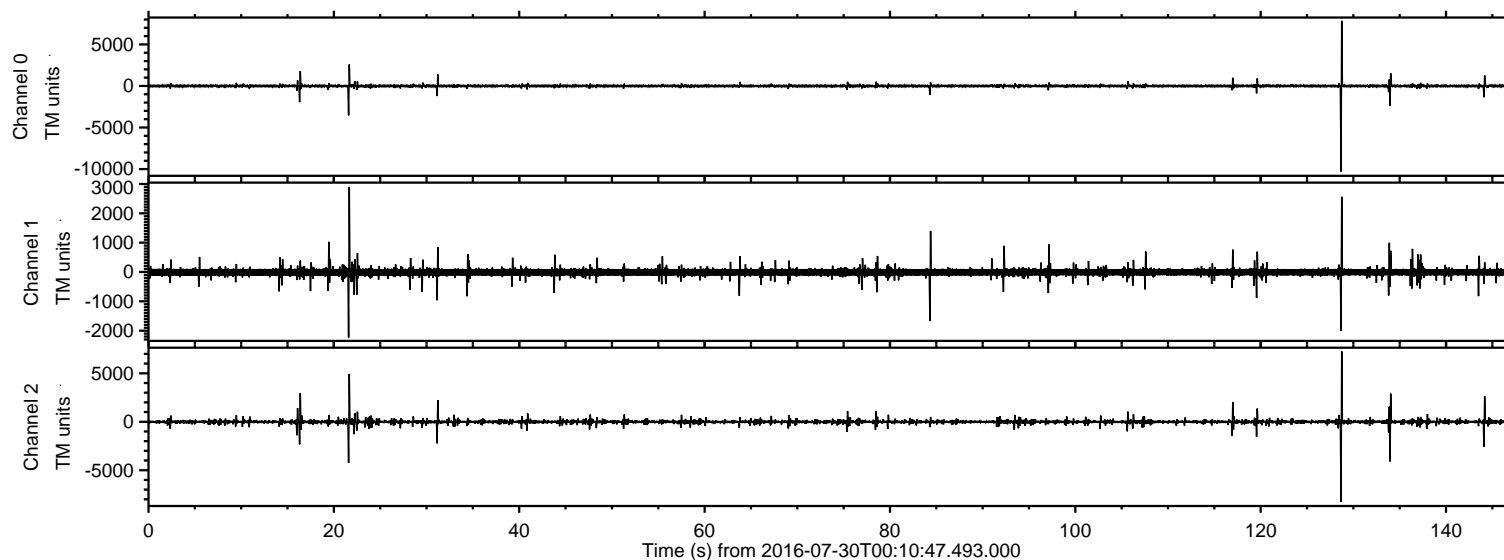


# ELMAVAN 3D WAVEFORMS (Measured data sampled at 50 kHz) 51000 packets of 144 samples from 2016-07-30T00:10:47.493.000.

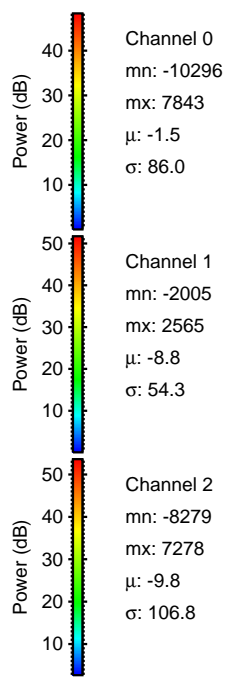
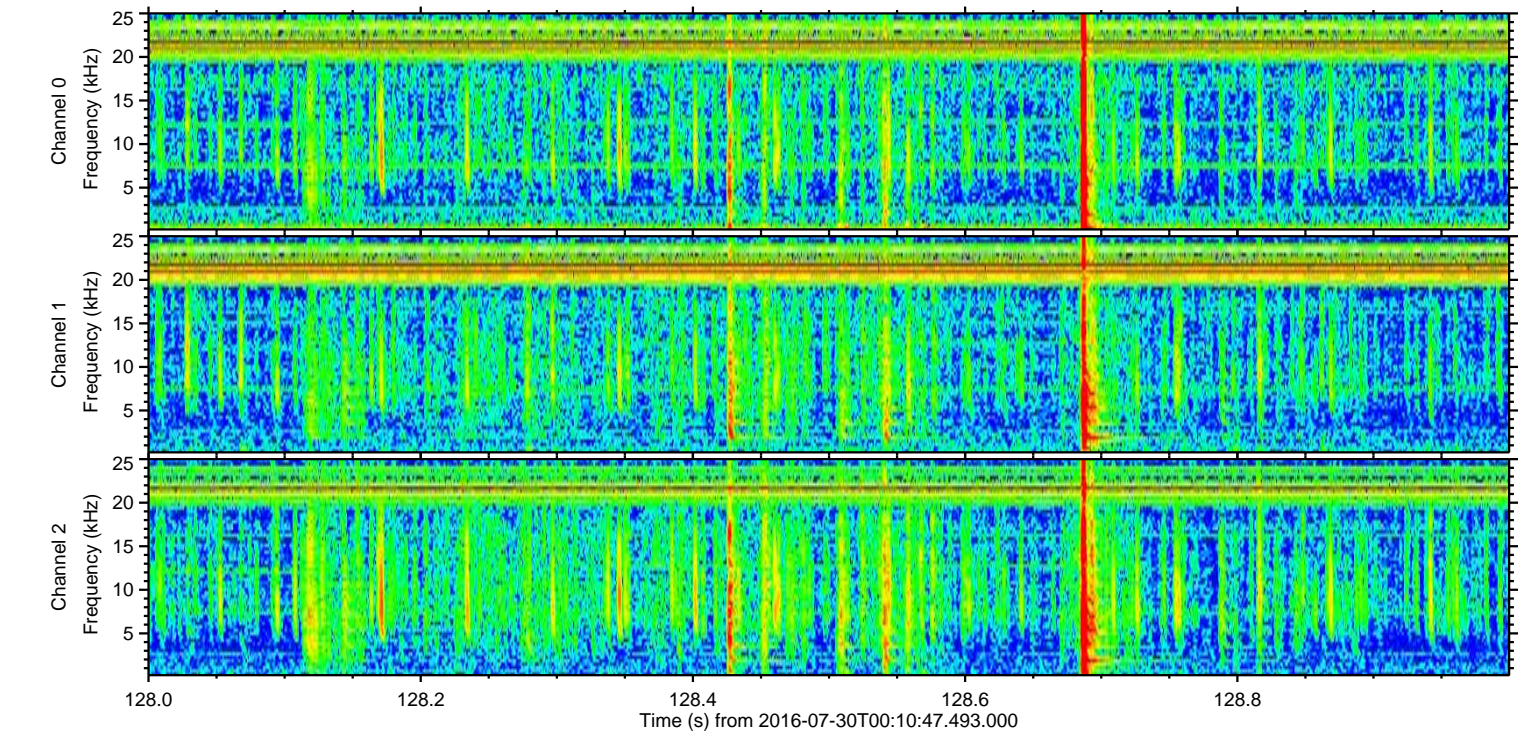
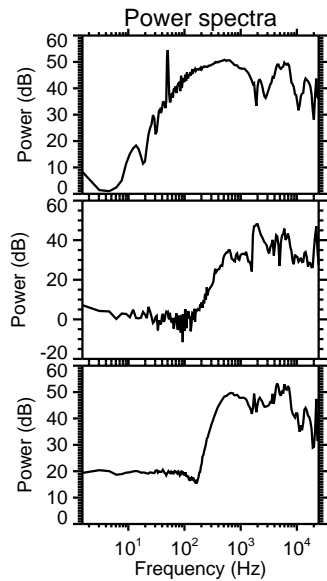
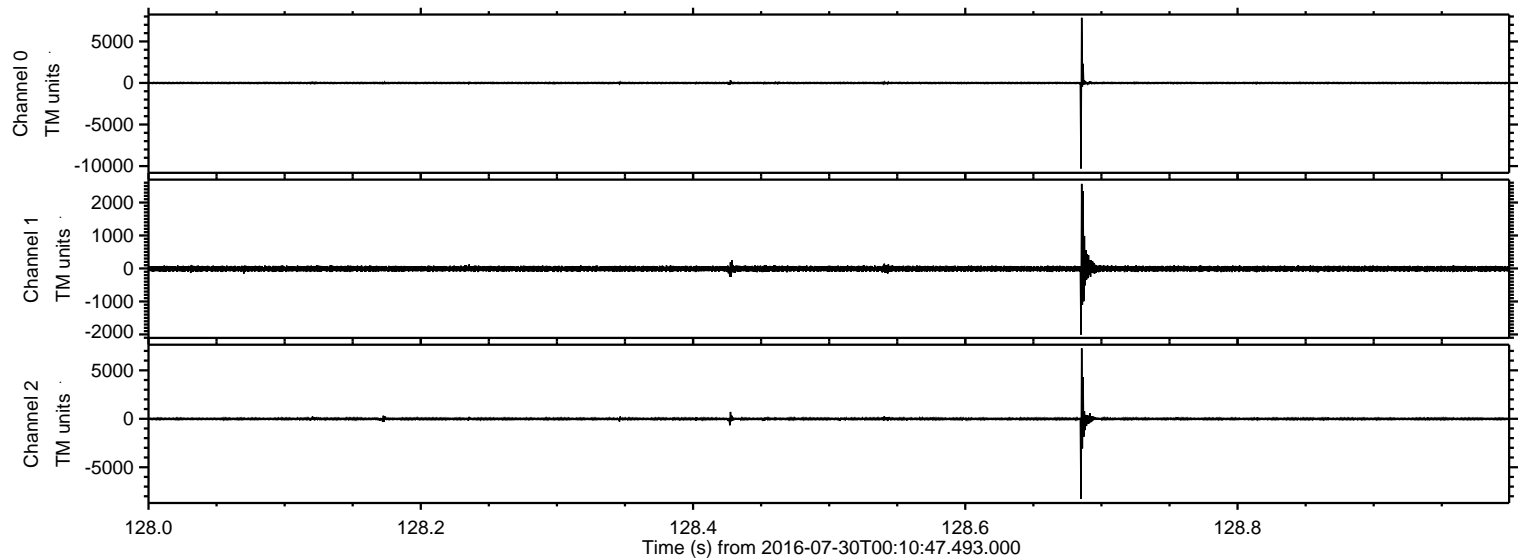
Processed Sat Jul 30 02:19:13 2016 by ELM ver.2012-10-06 from 001\_\_elm20160730\_001046\_\_dat00.bin





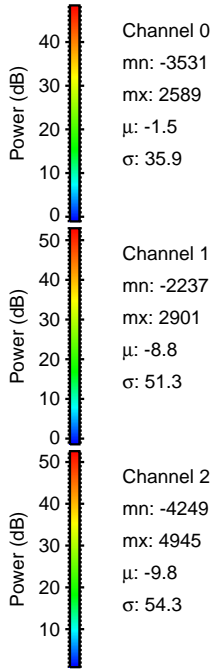
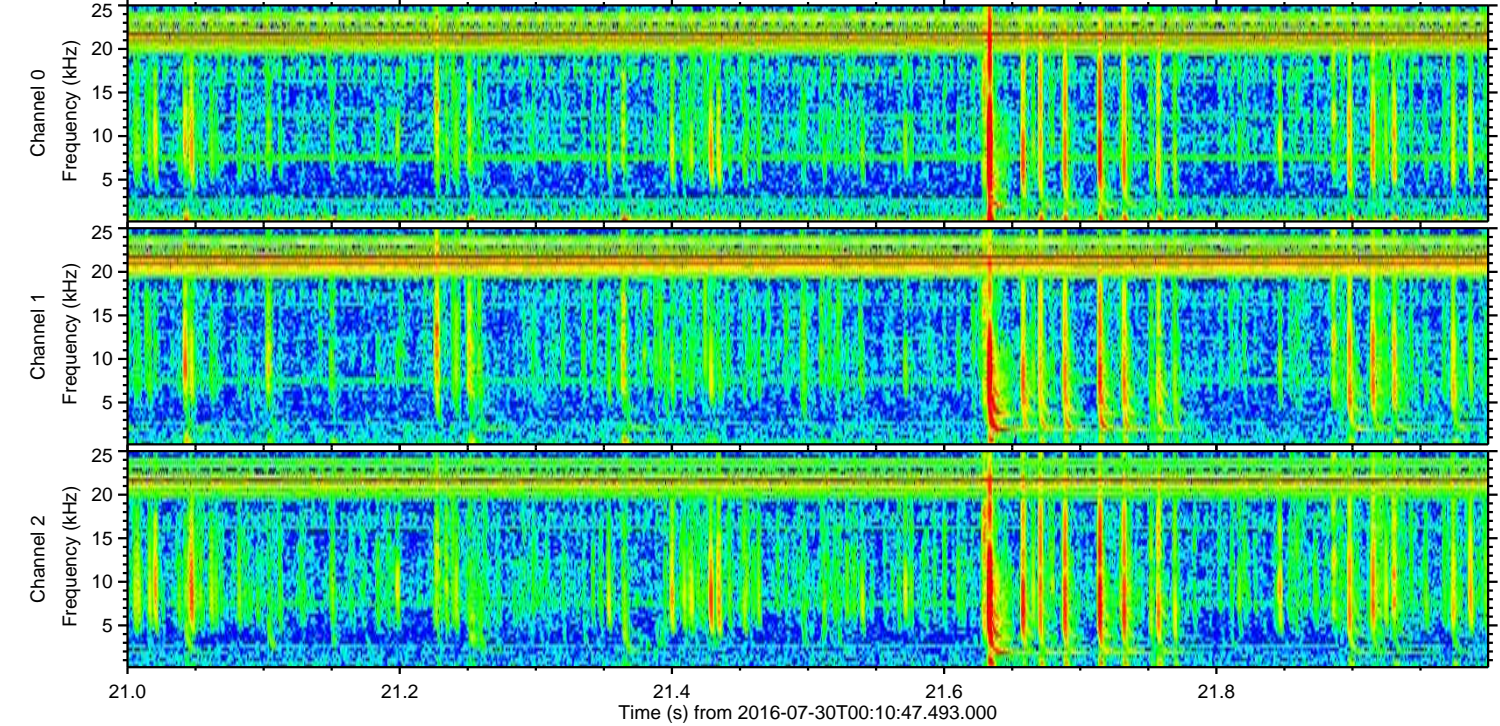
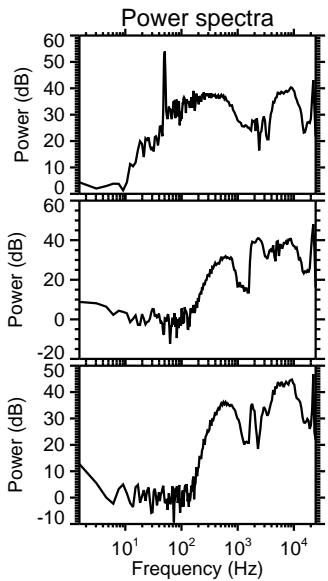
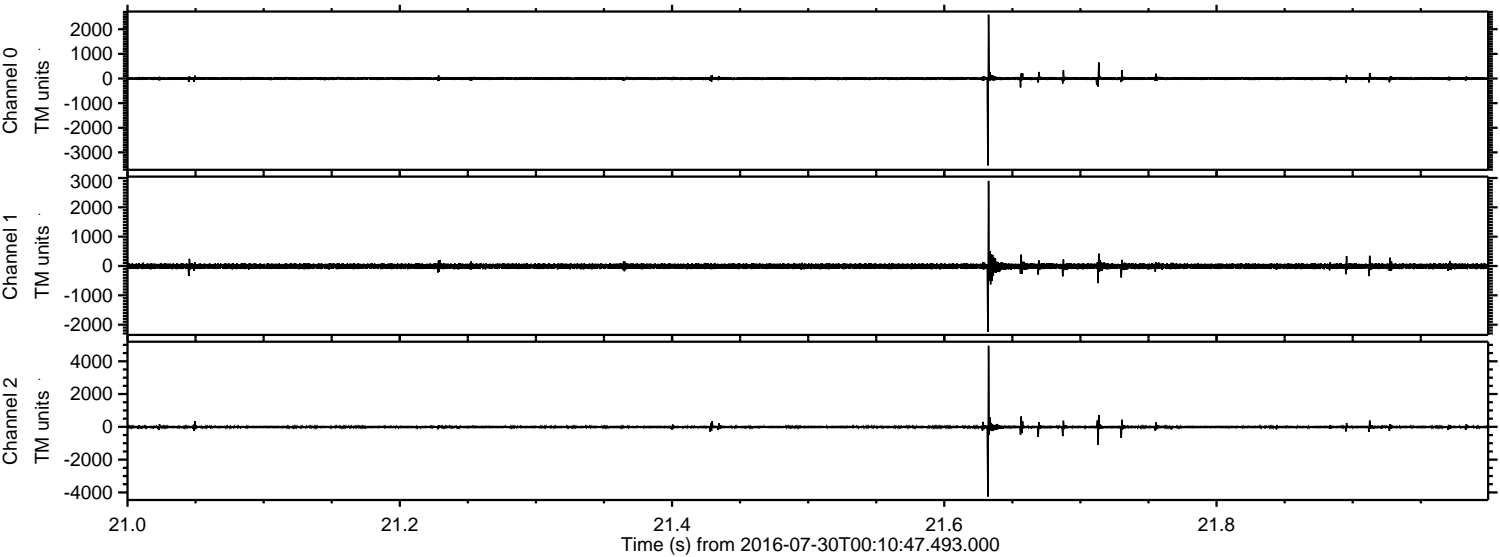
ELMAVAN 3D WAVEFORMS (Measured data sampled at 50 kHz) 51000 packets of 144 samples from 2016-07-30T00:10:47.493.000. Part 129/147

Processed Sat Jul 30 02:19:27 2016 by ELM ver.2012-10-06 from 001\_\_elm20160730\_001046\_\_dat00.bin





Processed Sat Jul 30 02:19:28 2016 by ELM ver.2012-10-06 from 001\_\_elm20160730\_001046\_\_dat00.bin



Channel 0  
mn: -3531  
mx: 2589  
 $\mu$ : -1.5  
 $\sigma$ : 35.9

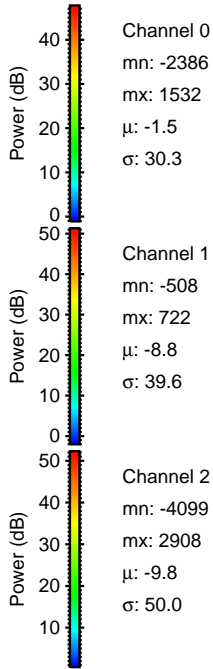
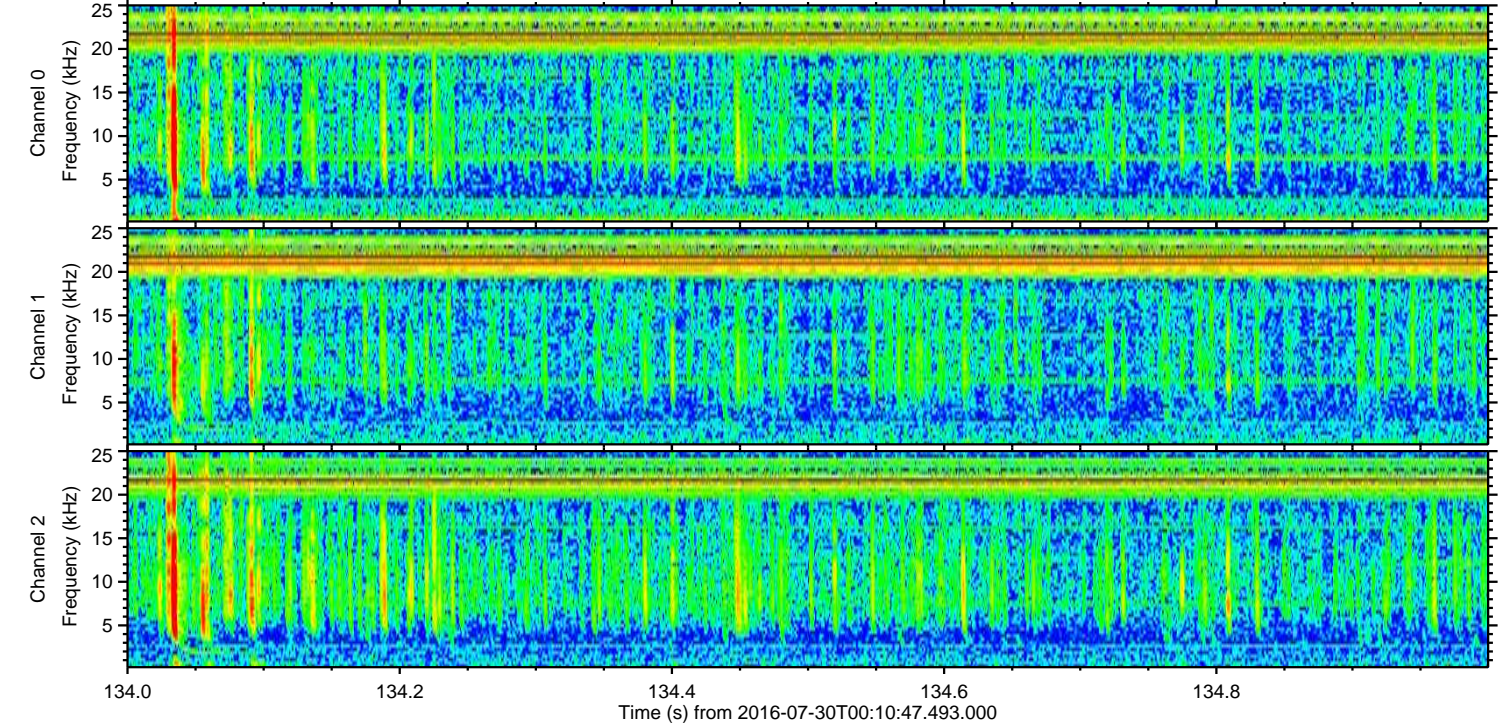
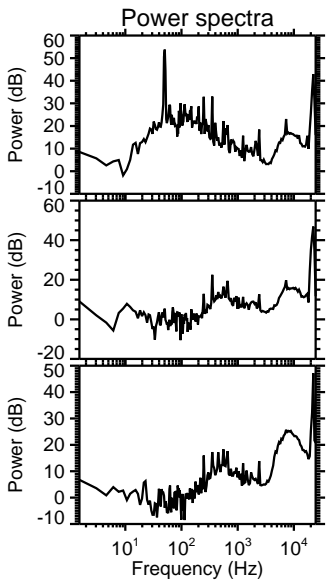
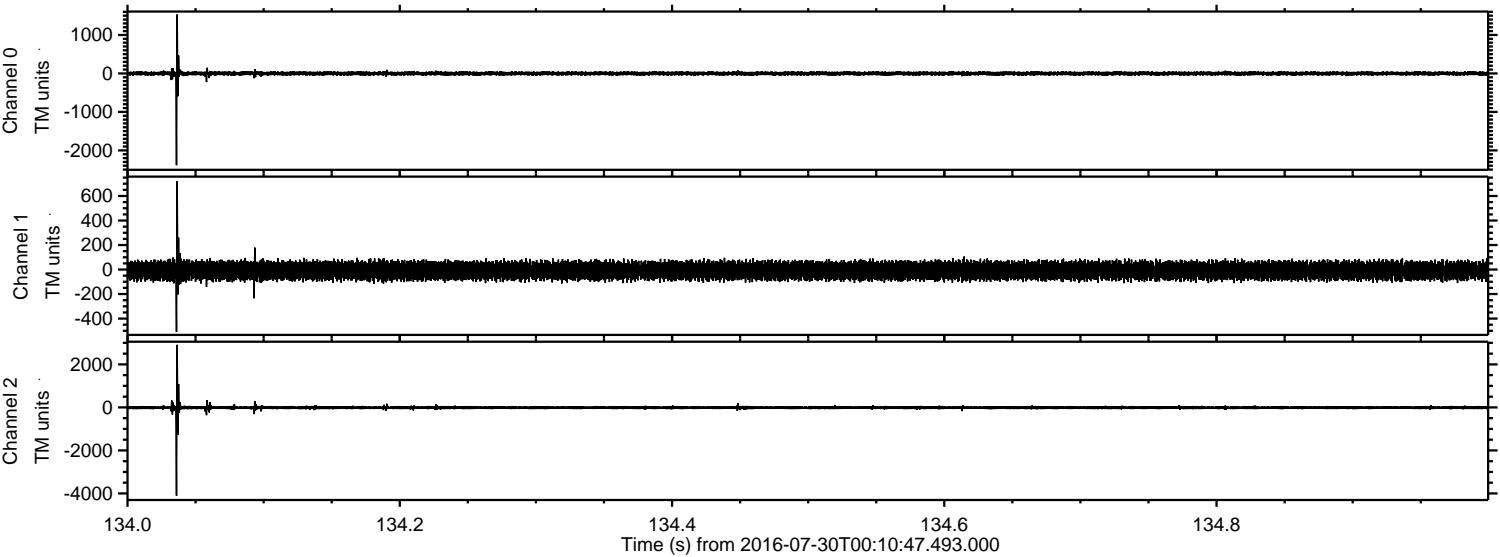
Channel 1  
mn: -2237  
mx: 2901  
 $\mu$ : -8.8  
 $\sigma$ : 51.3

Channel 2  
mn: -4249  
mx: 4945  
 $\mu$ : -9.8  
 $\sigma$ : 54.3



ELMAVAN 3D WAVEFORMS (Measured data sampled at 50 kHz) 51000 packets of 144 samples from 2016-07-30T00:10:47.493.000. Part 135/147

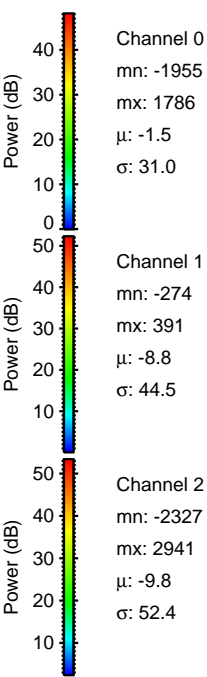
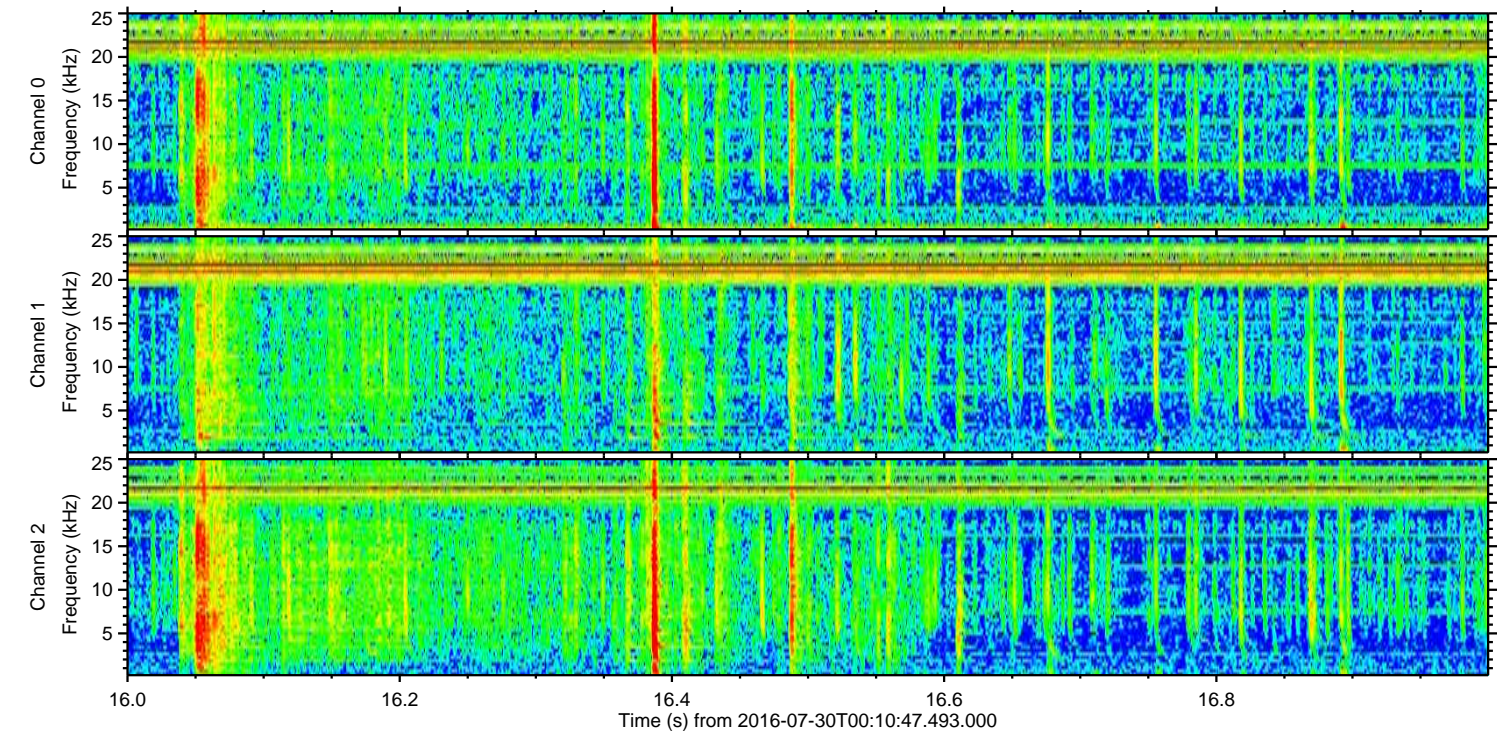
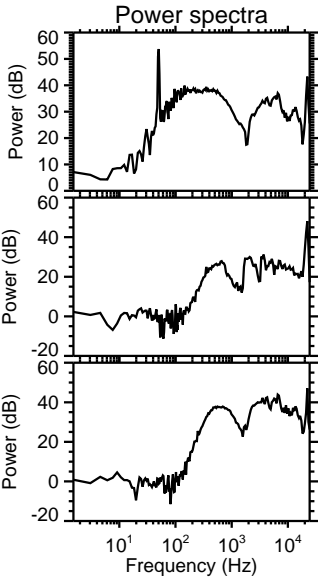
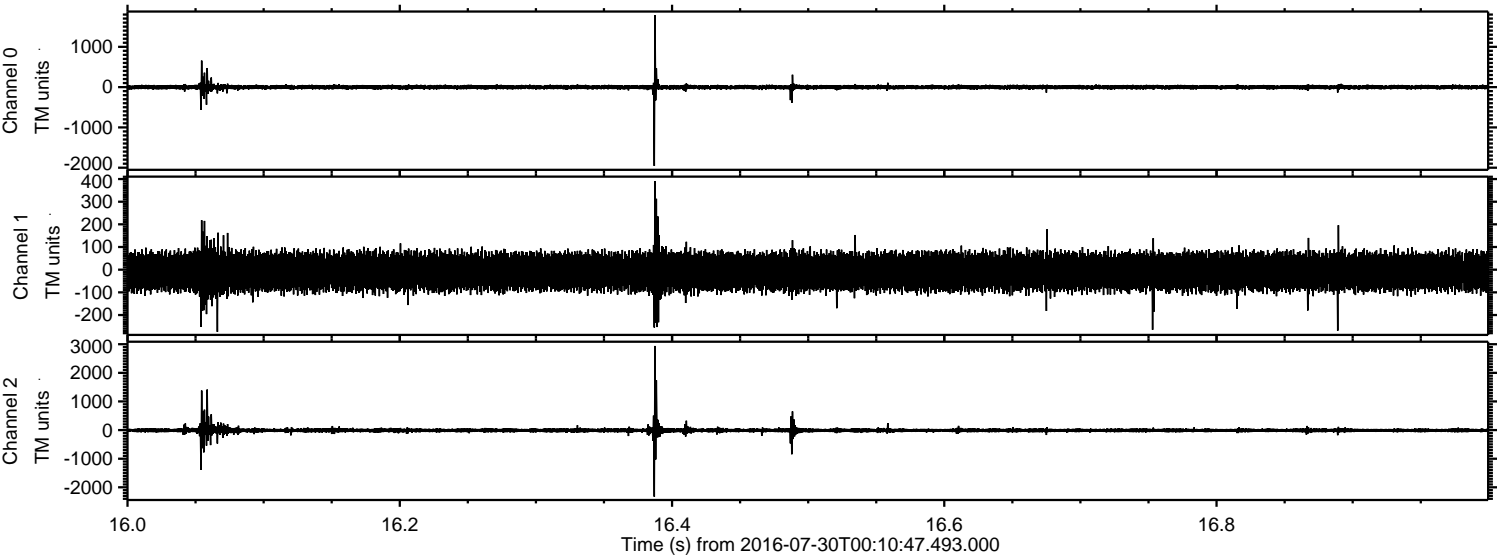
Processed Sat Jul 30 02:19:29 2016 by ELM ver.2012-10-06 from 001\_\_elm20160730\_001046\_\_dat00.bin





ELMAVAN 3D WAVEFORMS (Measured data sampled at 50 kHz) 51000 packets of 144 samples from 2016-07-30T00:10:47.493.000. Part 17/147

Processed Sat Jul 30 02:19:30 2016 by ELM ver.2012-10-06 from 001\_\_elm20160730\_001046\_\_dat00.bin



Channel 0  
mn: -1955  
mx: 1786  
 $\mu$ : -1.5  
 $\sigma$ : 31.0

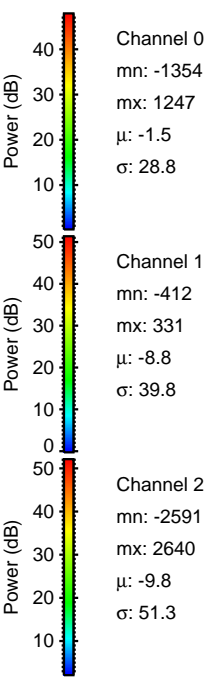
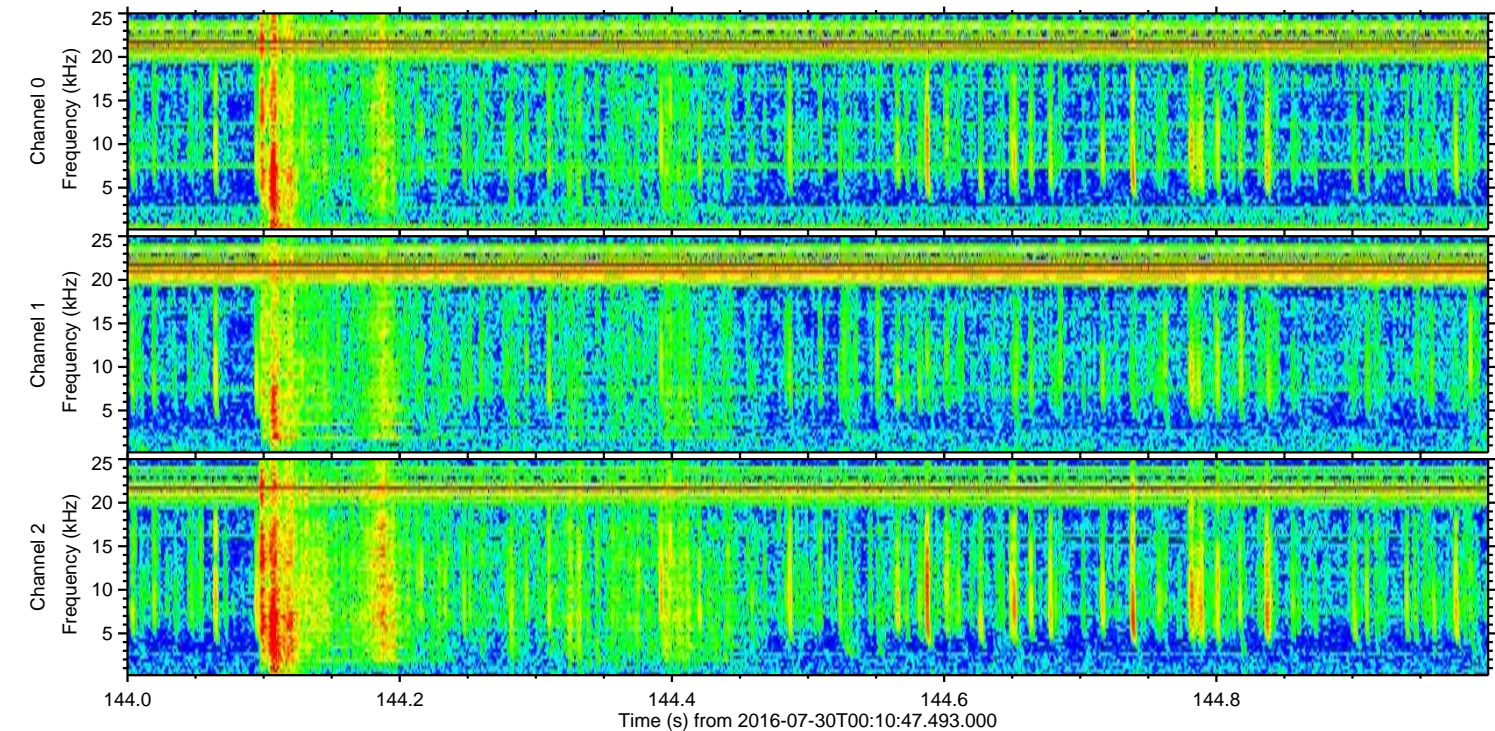
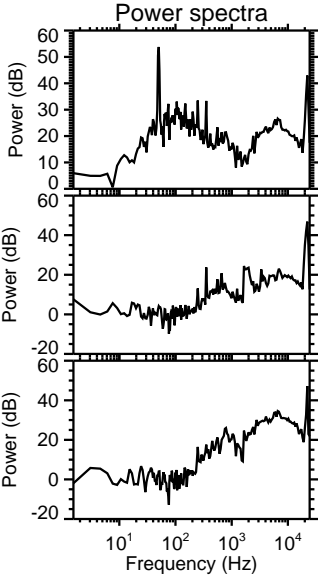
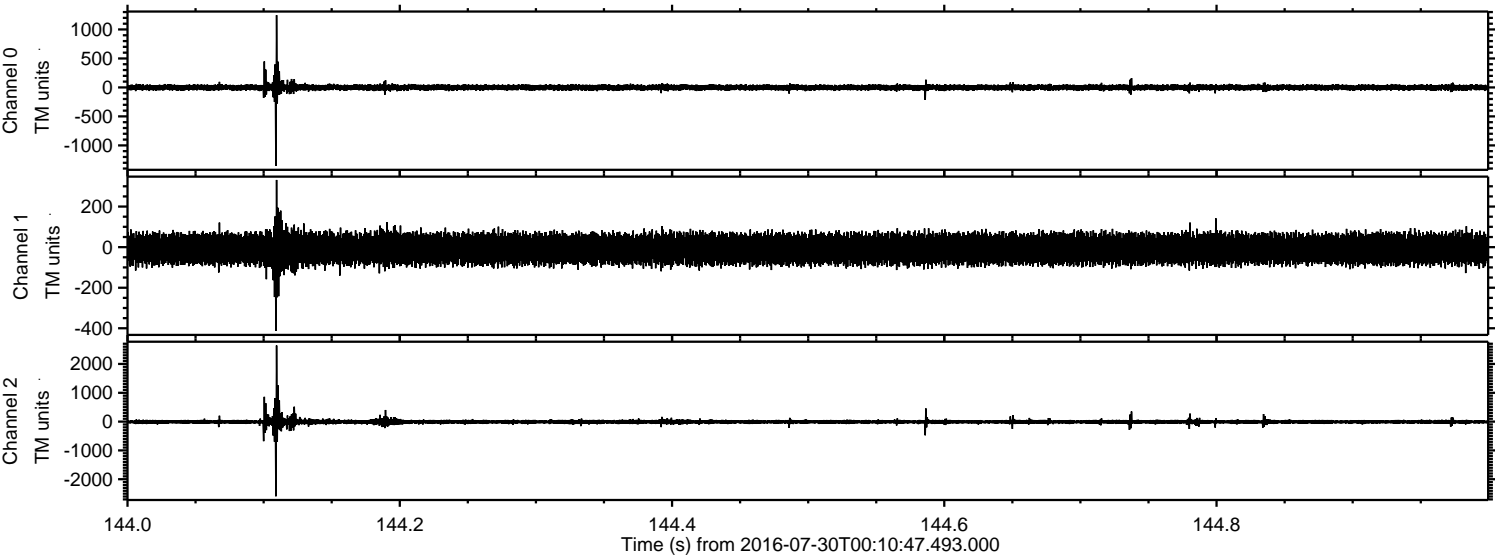
Channel 1  
mn: -274  
mx: 391  
 $\mu$ : -8.8  
 $\sigma$ : 44.5

Channel 2  
mn: -2327  
mx: 2941  
 $\mu$ : -9.8  
 $\sigma$ : 52.4



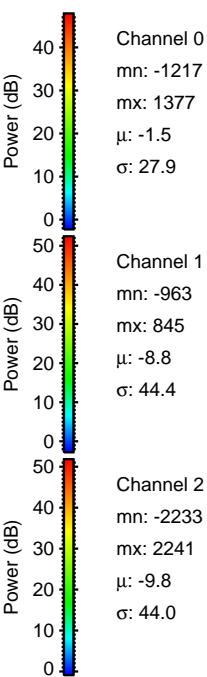
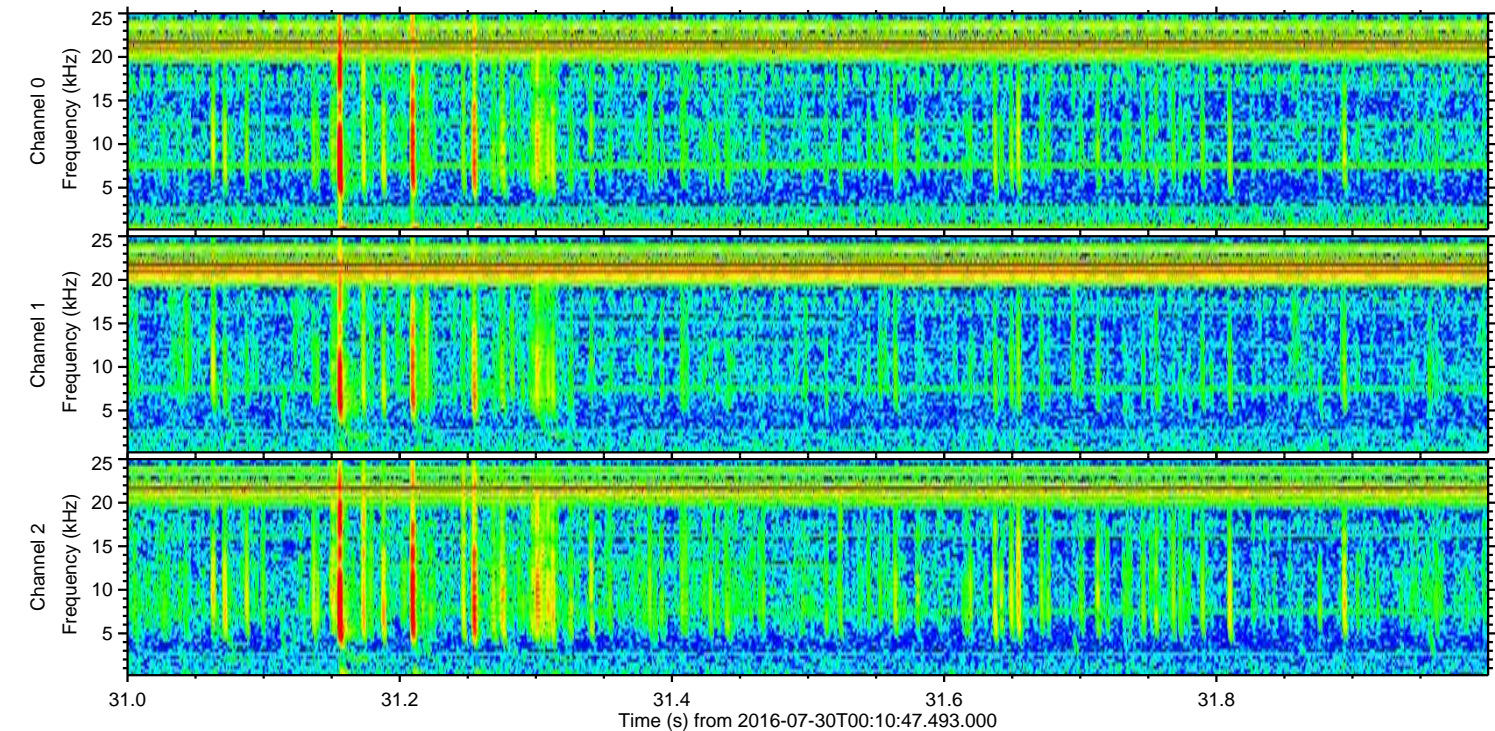
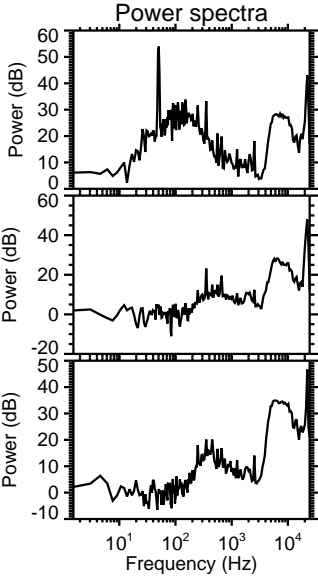
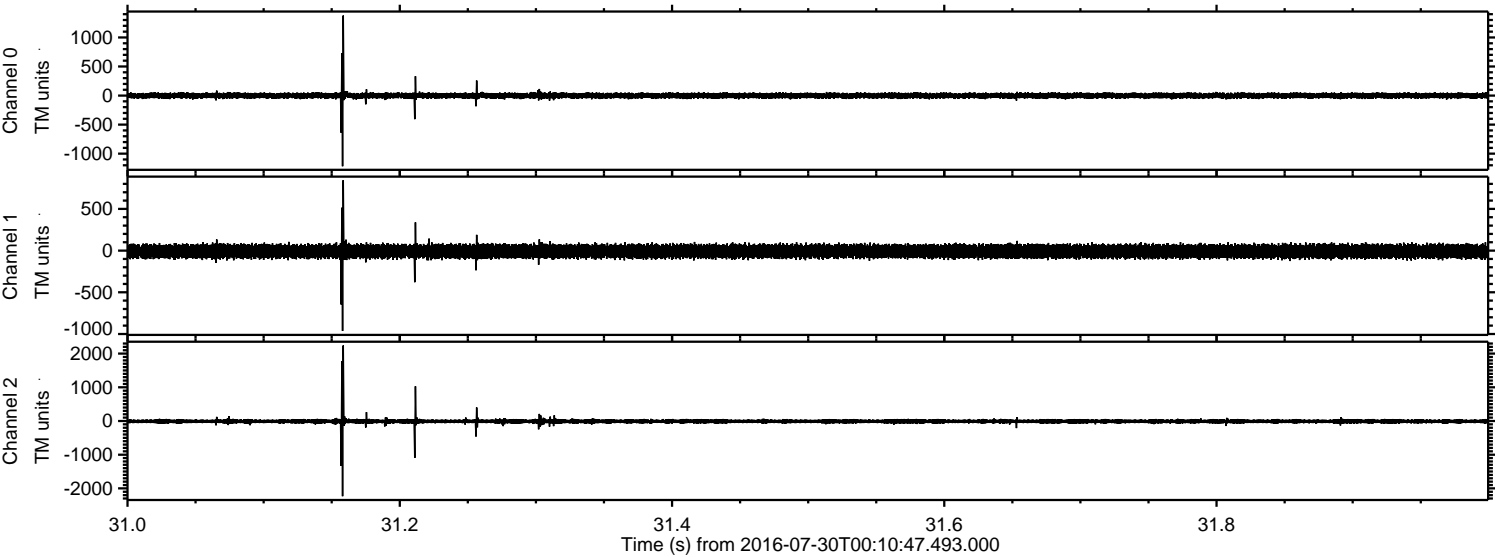
ELMAVAN 3D WAVEFORMS (Measured data sampled at 50 kHz) 51000 packets of 144 samples from 2016-07-30T00:10:47.493.000. Part 145/147

Processed Sat Jul 30 02:19:31 2016 by ELM ver.2012-10-06 from 001\_\_elm20160730\_001046\_\_dat00.bin





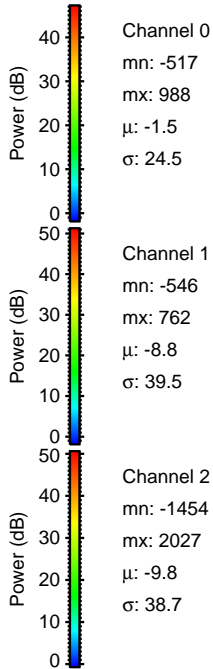
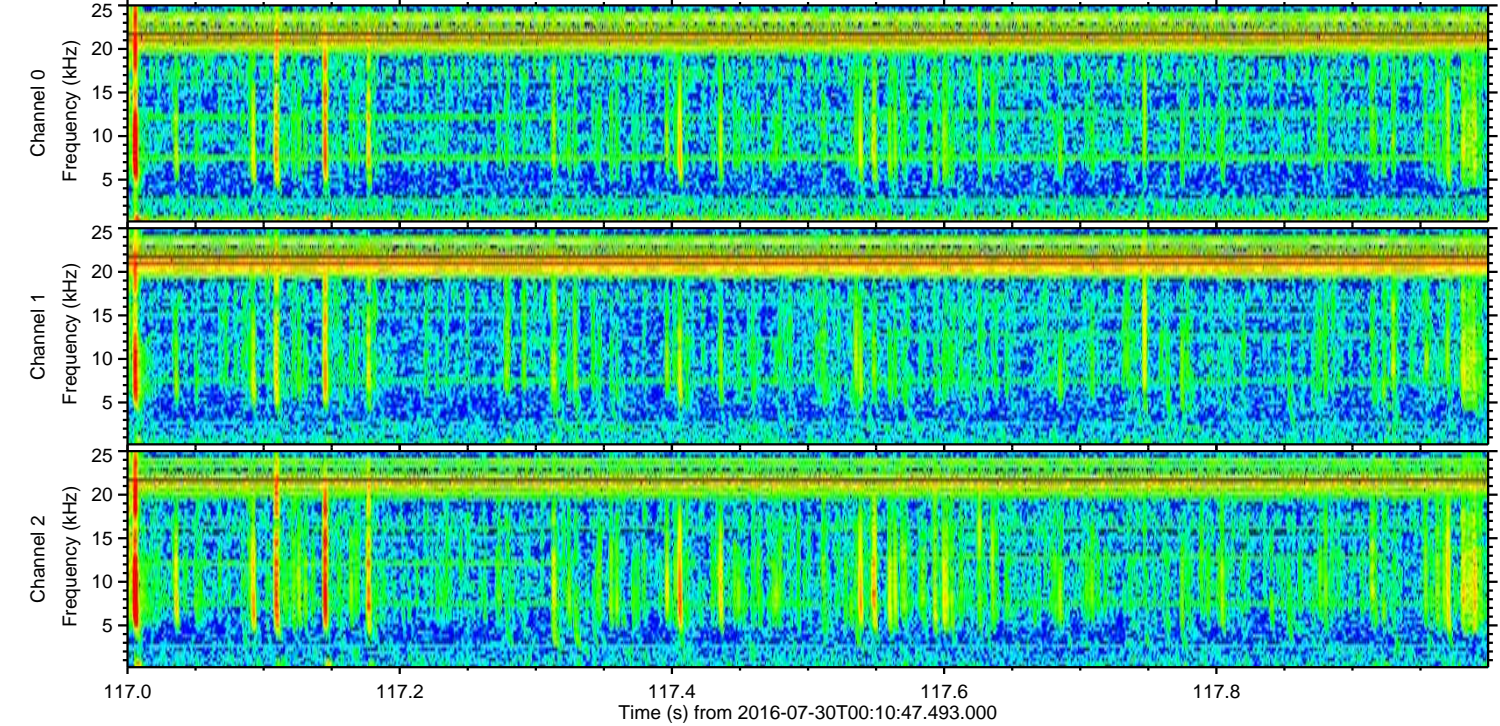
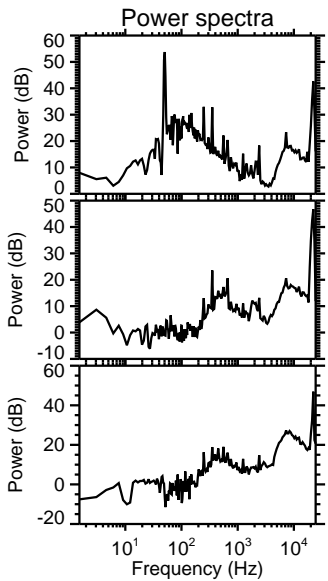
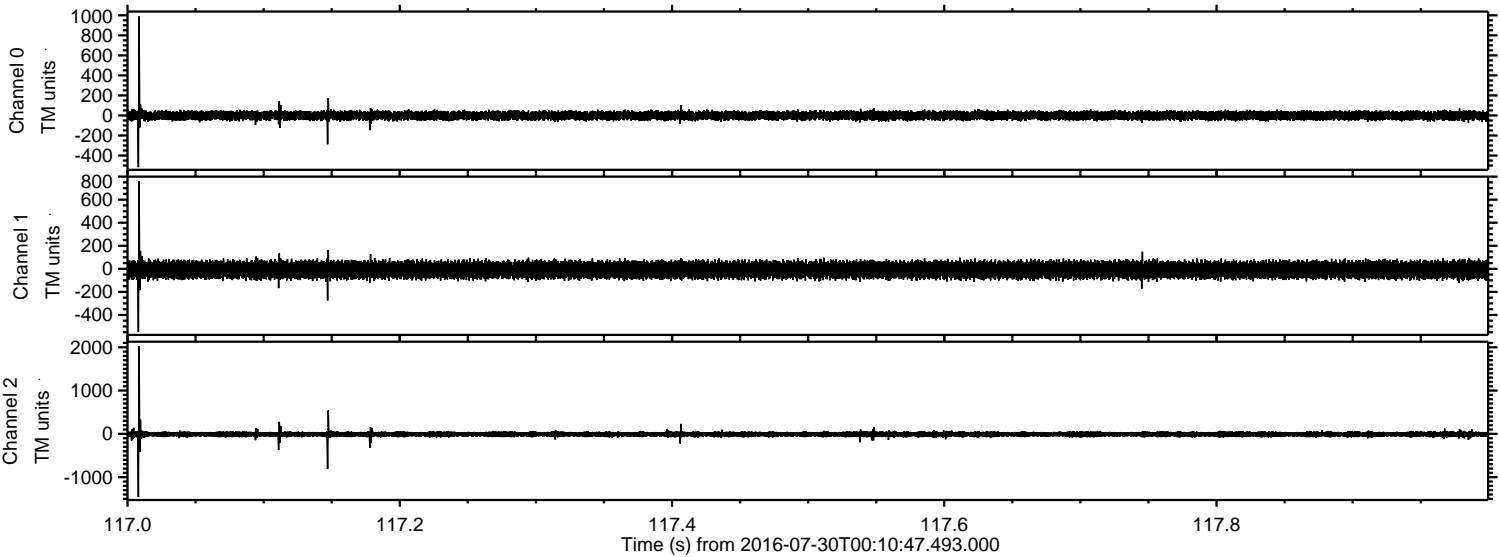
Processed Sat Jul 30 02:19:32 2016 by ELM ver.2012-10-06 from 001\_\_elm20160730\_001046\_\_dat00.bin





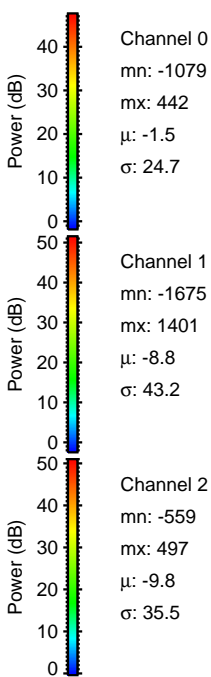
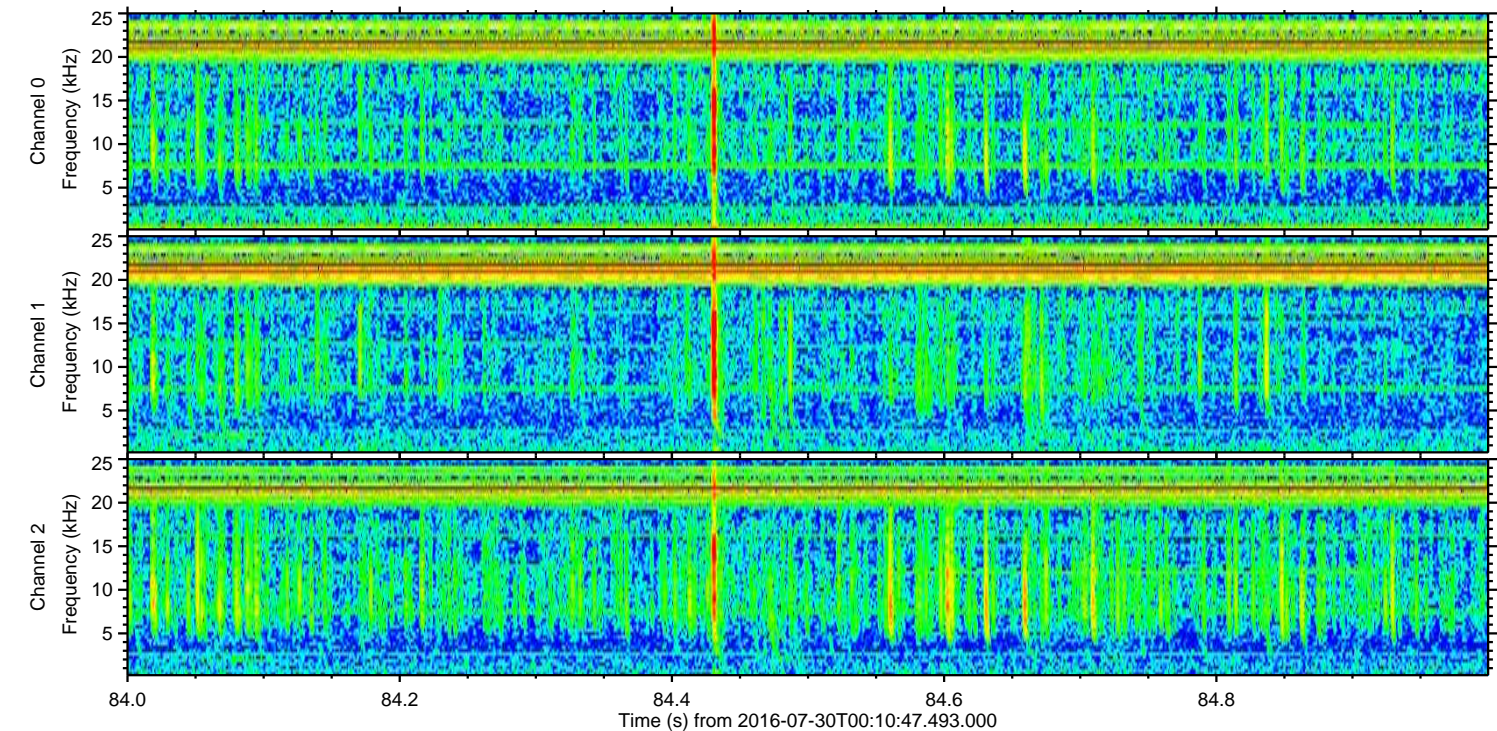
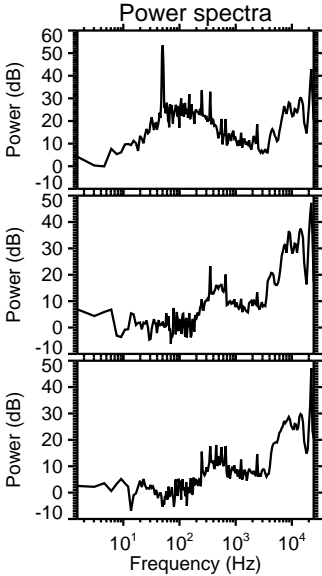
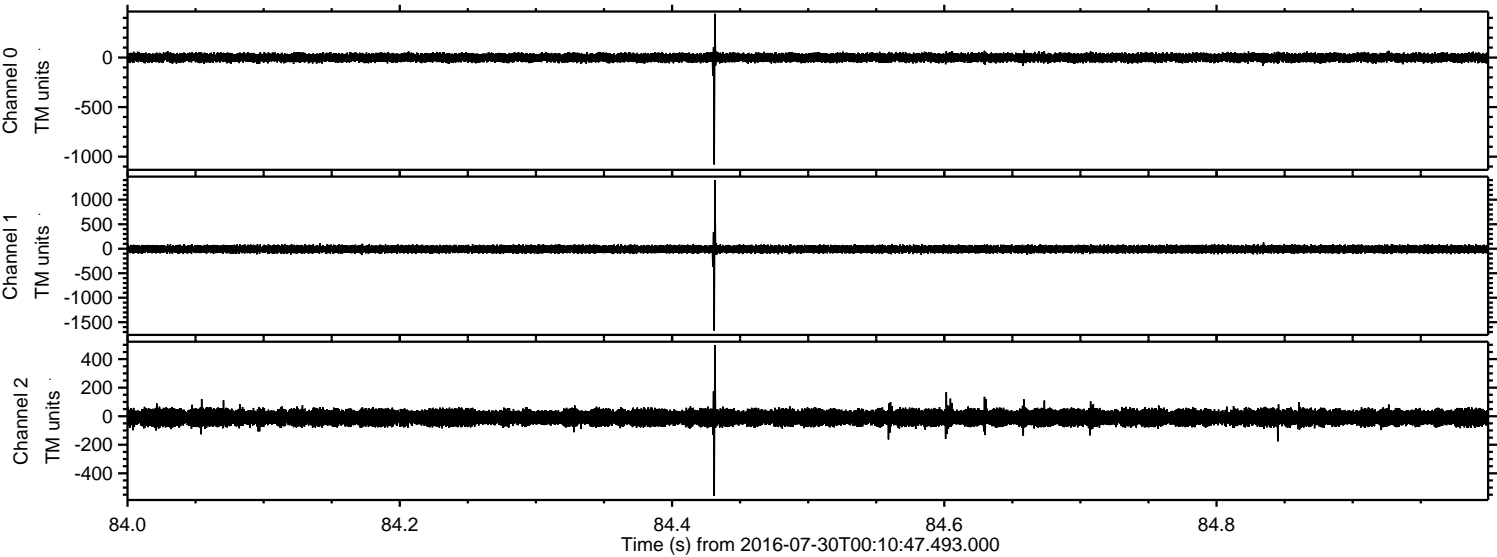
ELMAVAN 3D WAVEFORMS (Measured data sampled at 50 kHz) 51000 packets of 144 samples from 2016-07-30T00:10:47.493.000. Part 118/147

Processed Sat Jul 30 02:19:33 2016 by ELM ver.2012-10-06 from 001\_\_elm20160730\_001046\_\_dat00.bin





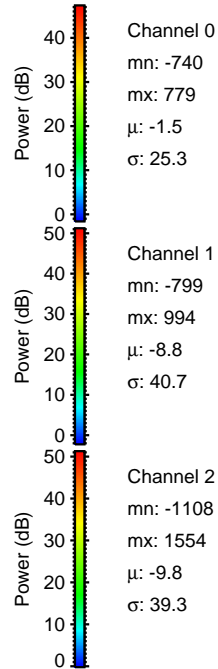
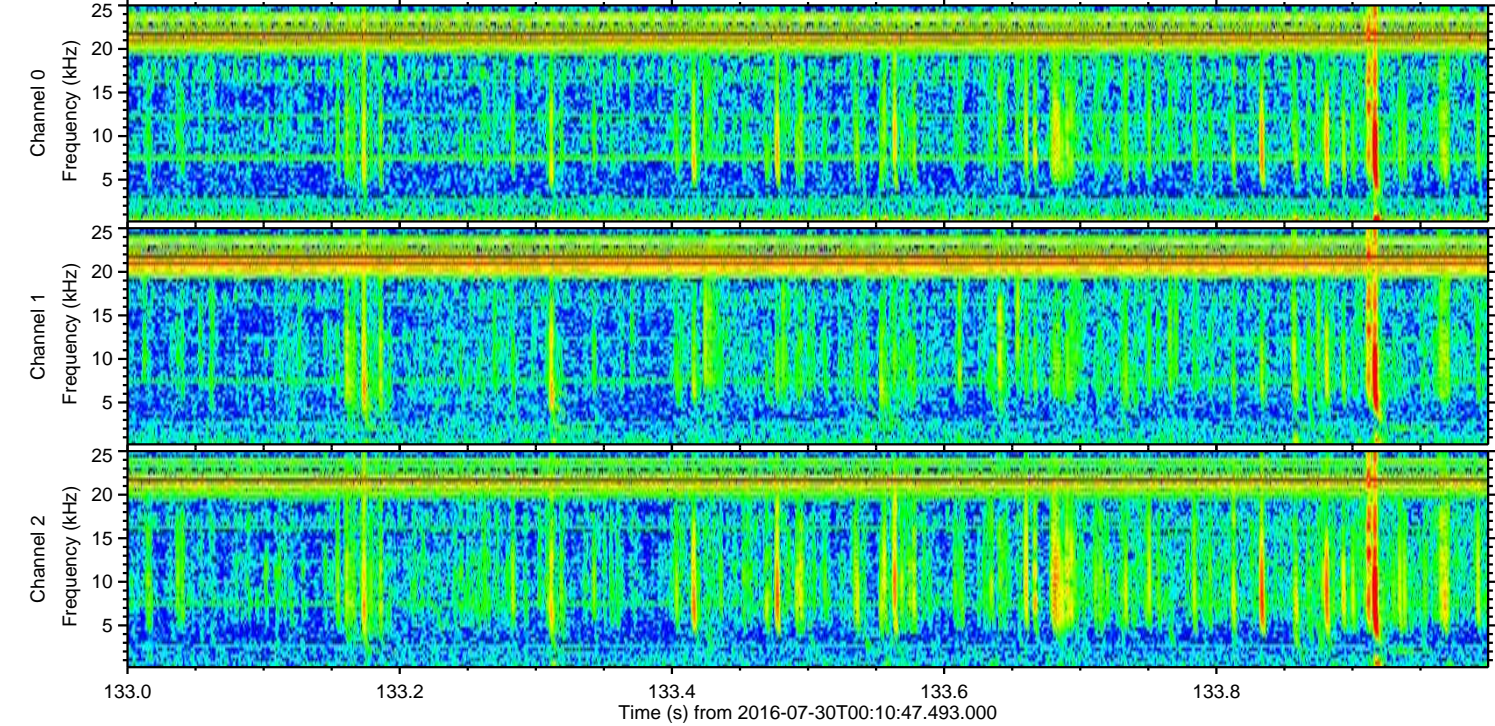
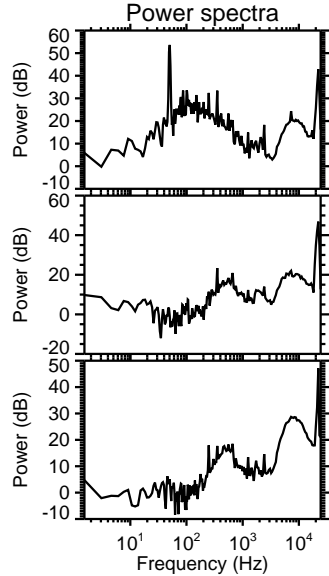
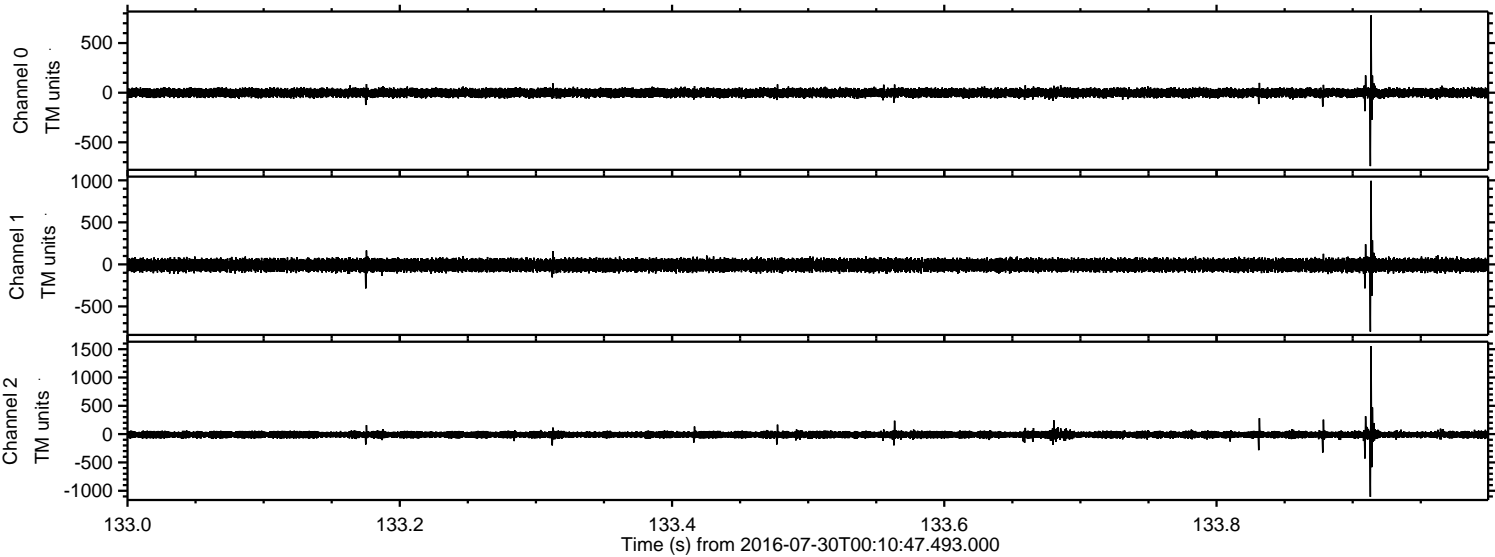
Processed Sat Jul 30 02:19:34 2016 by ELM ver.2012-10-06 from 001\_\_elm20160730\_001046\_\_dat00.bin





ELMAVAN 3D WAVEFORMS (Measured data sampled at 50 kHz) 51000 packets of 144 samples from 2016-07-30T00:10:47.493.000. Part 134/147

Processed Sat Jul 30 02:19:35 2016 by ELM ver.2012-10-06 from 001\_\_elm20160730\_001046\_\_dat00.bin



Channel 0  
mn: -740  
mx: 779  
 $\mu$ : -1.5  
 $\sigma$ : 25.3

Channel 1  
mn: -799  
mx: 994  
 $\mu$ : -8.8  
 $\sigma$ : 40.7

Channel 2  
mn: -1108  
mx: 1554  
 $\mu$ : -9.8  
 $\sigma$ : 39.3



Processed Sat Jul 30 02:19:36 2016 by ELM ver.2012-10-06 from 001\_\_elm20160730\_001046\_\_dat00.bin

