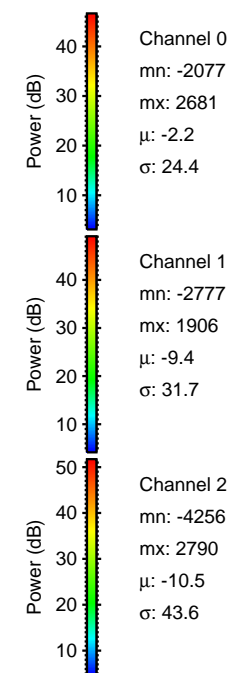
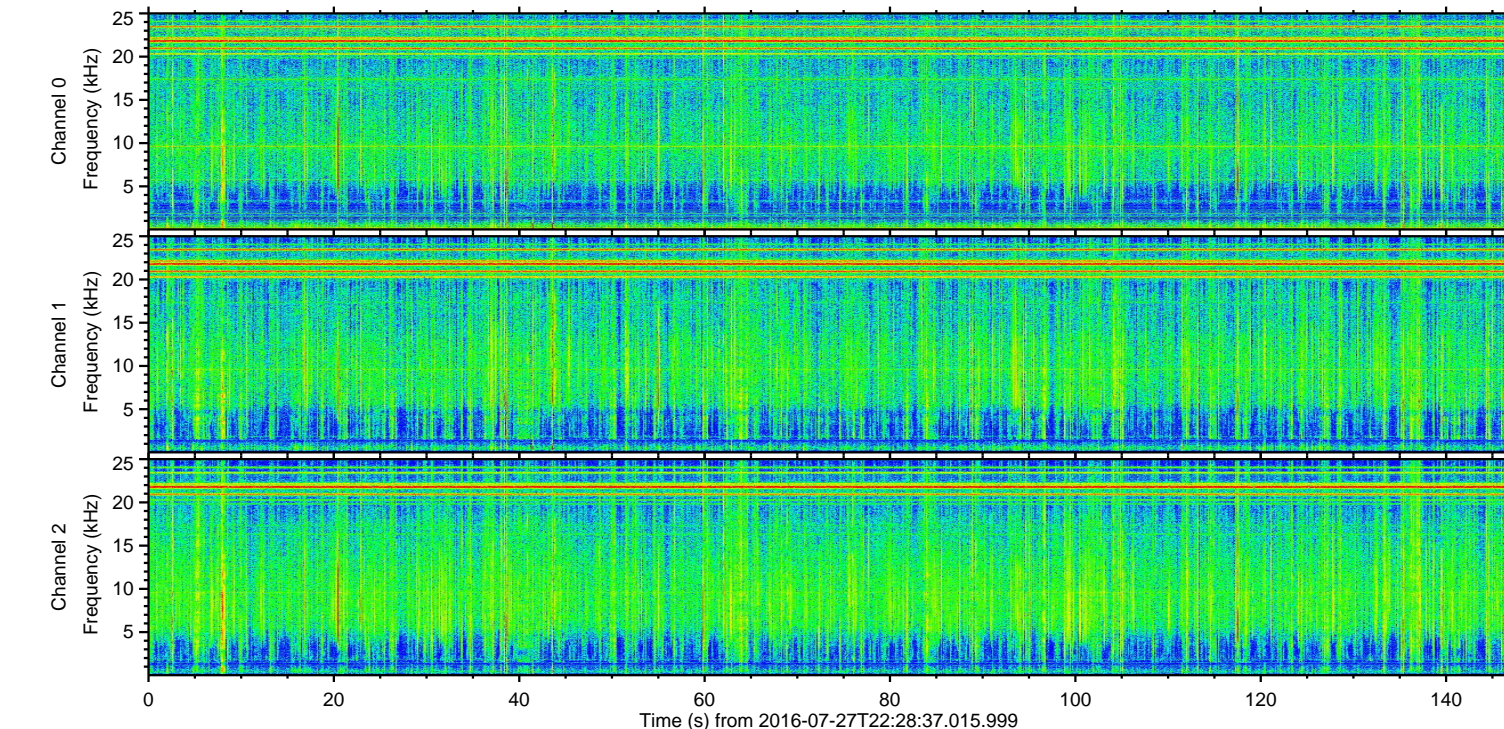
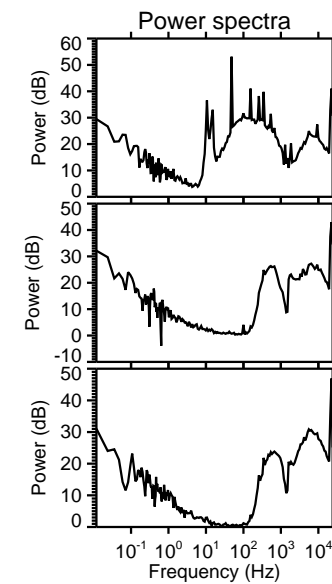
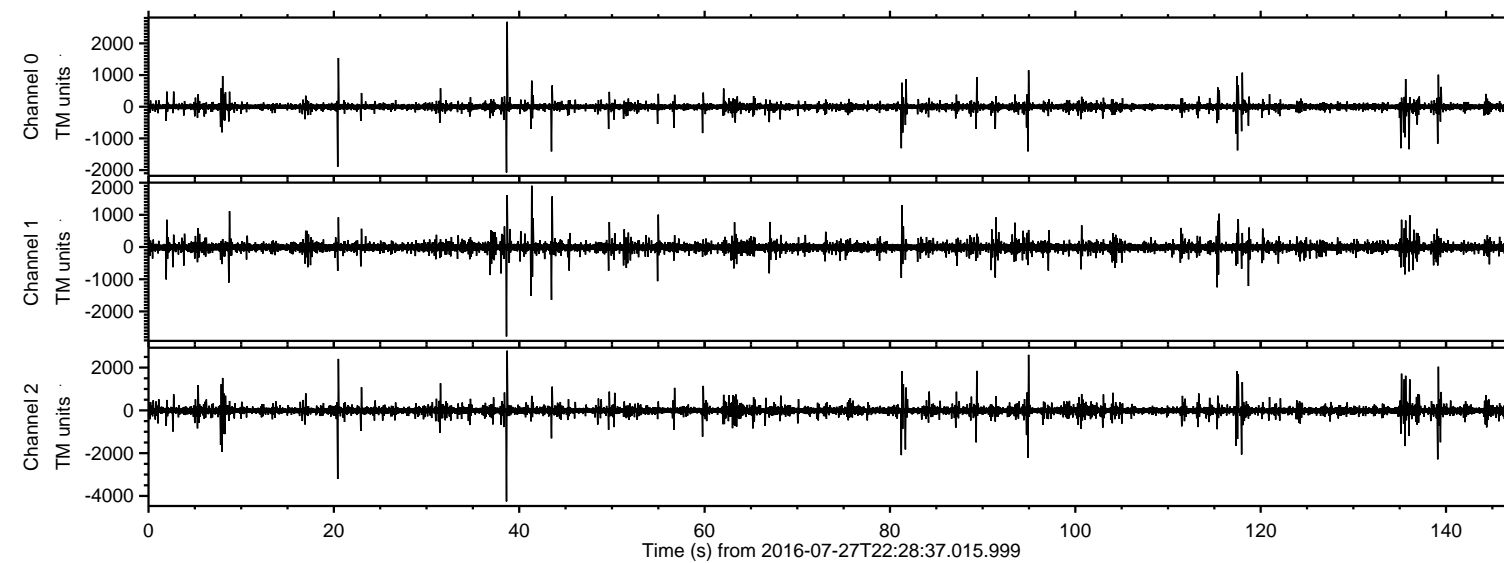
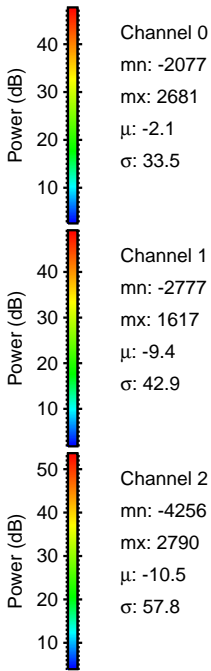
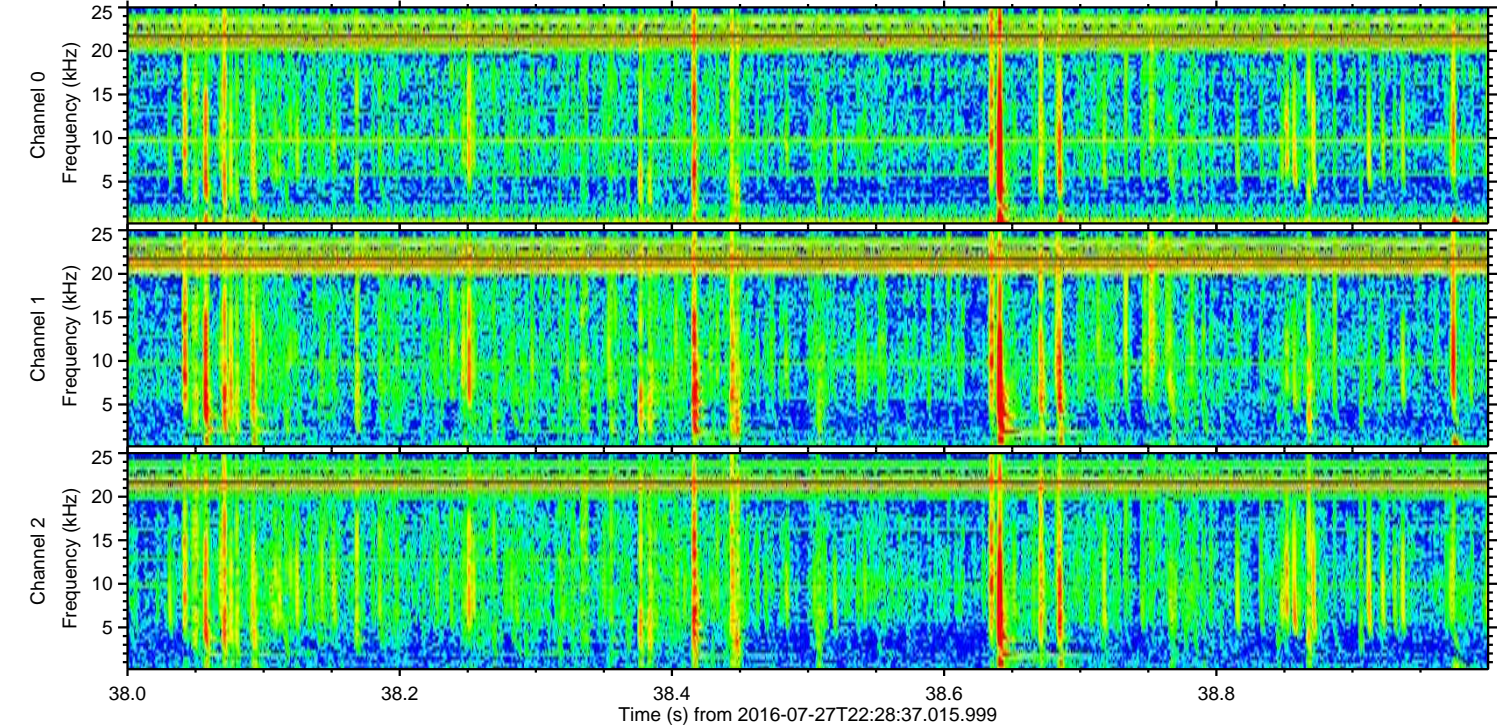
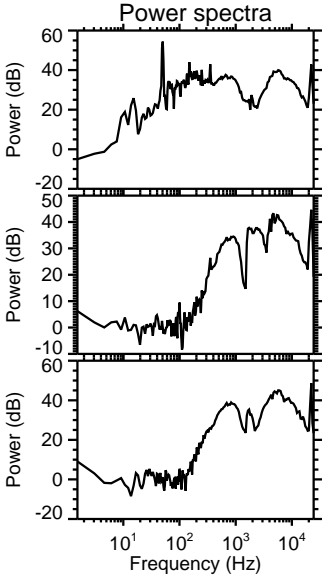
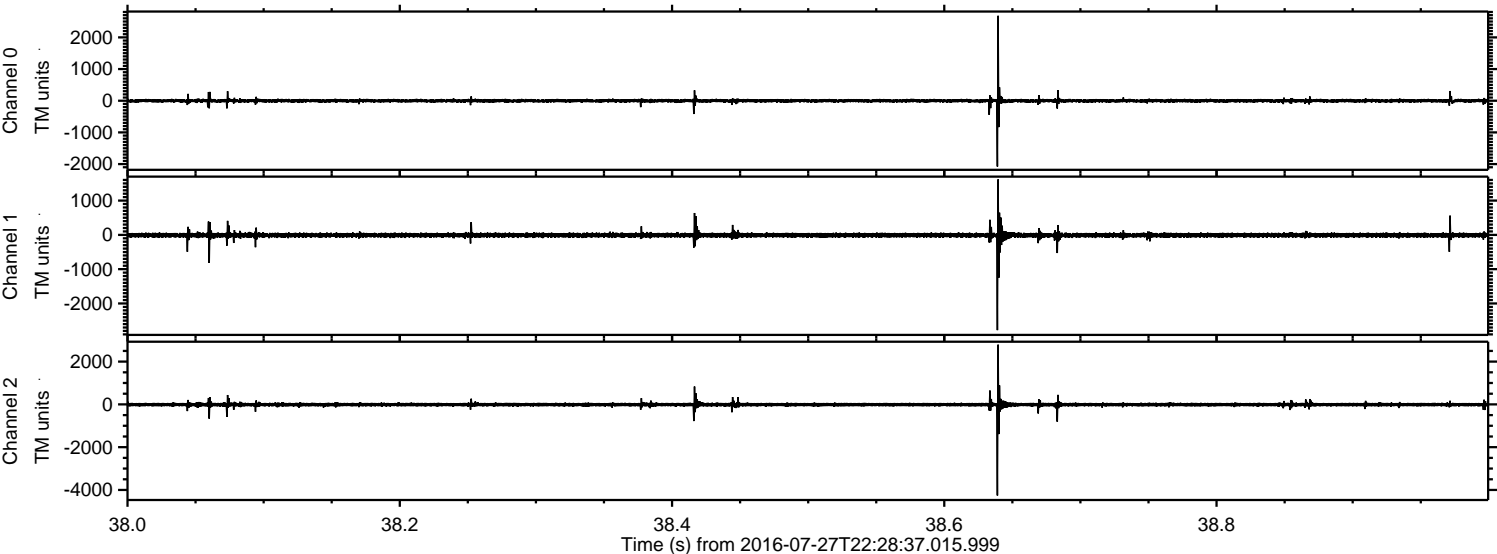


ELMAVAN 3D WAVEFORMS (Measured data sampled at 50 kHz) 51000 packets of 144 samples from 2016-07-27T22:28:37.015.999.

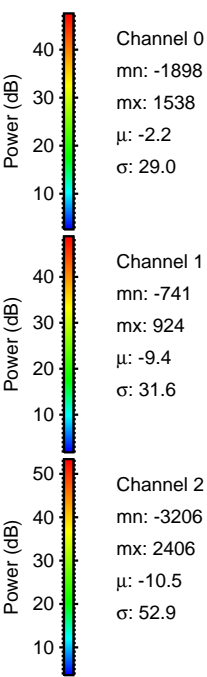
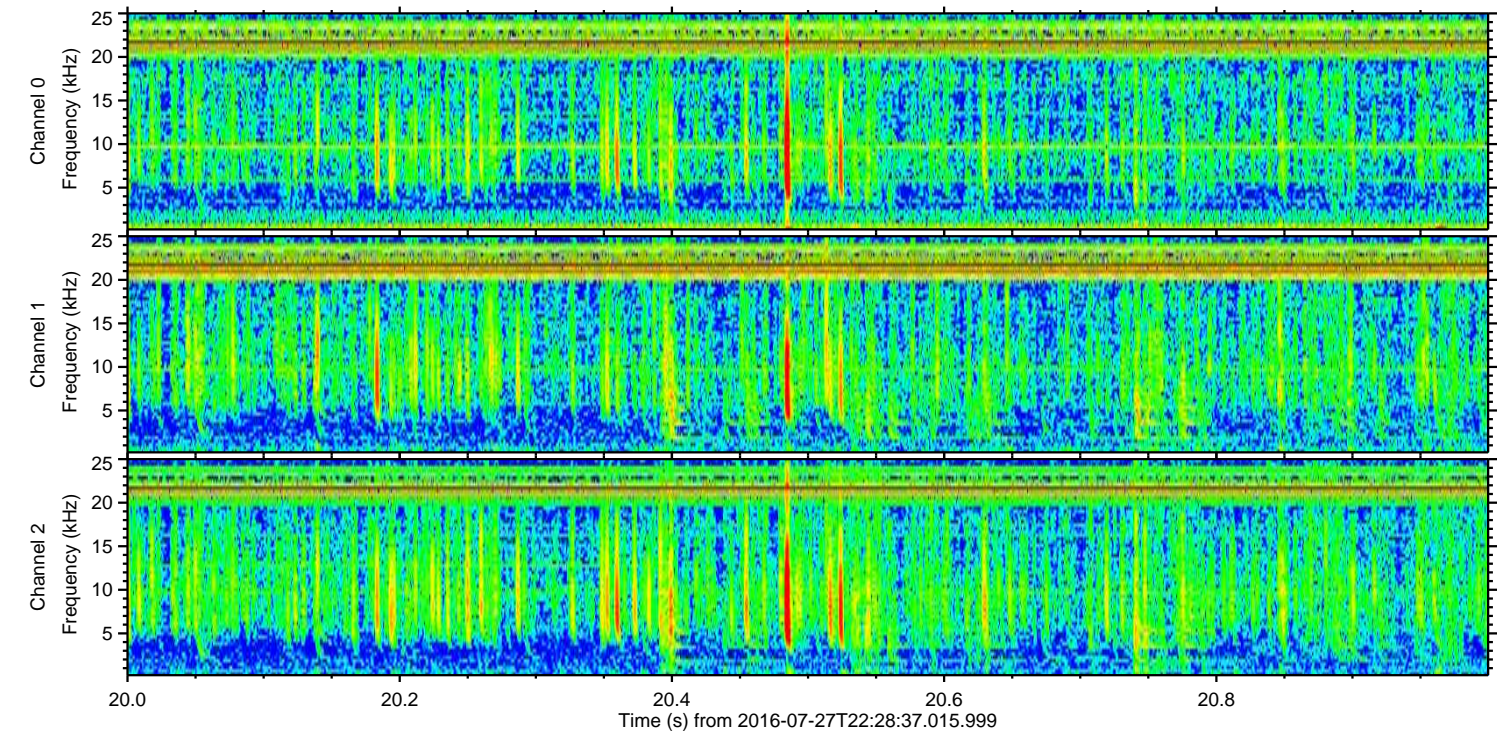
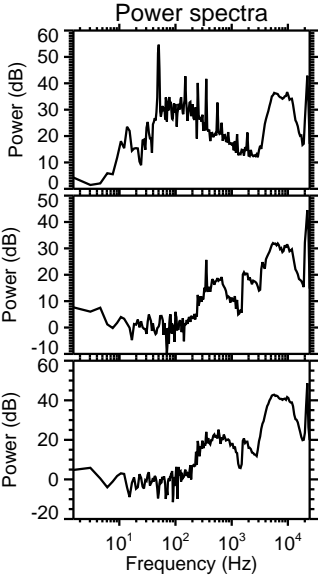
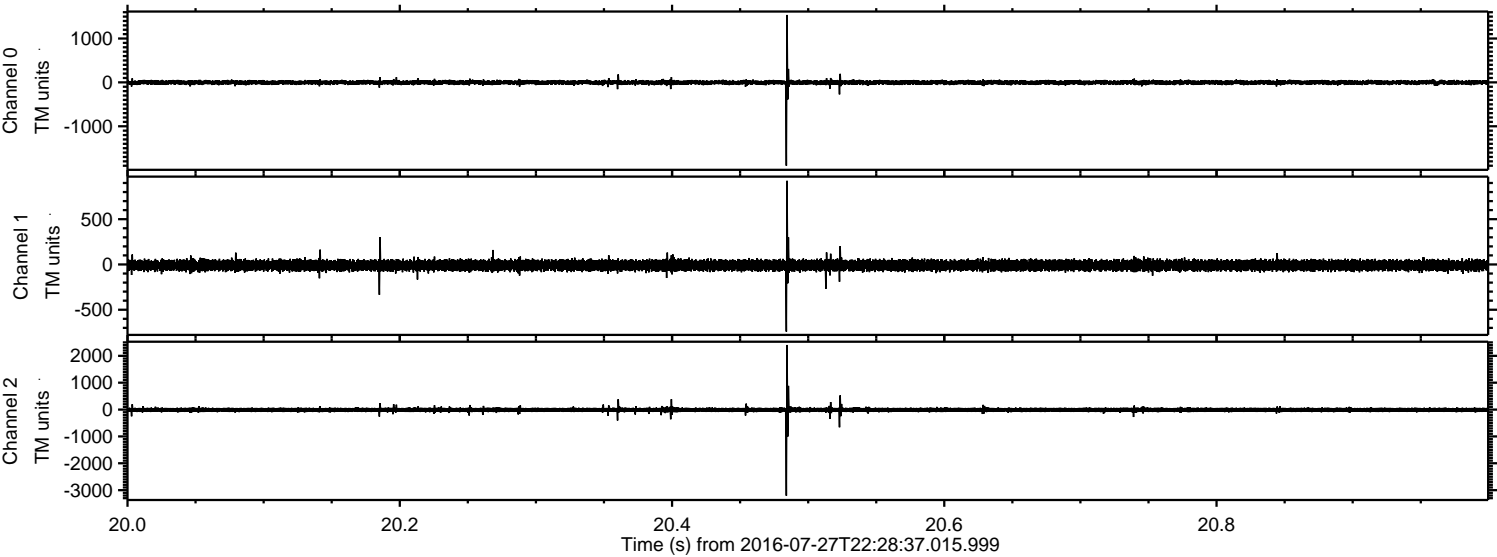
Processed Thu Jul 28 00:36:30 2016 by ELM ver.2012-10-06 from 001__elm20160727_222836__dat00.bin



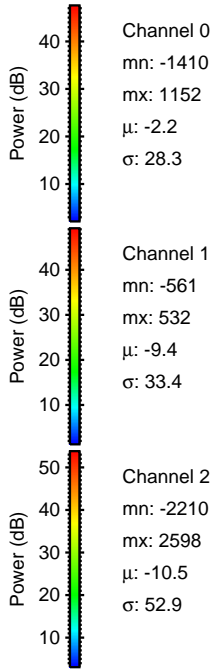
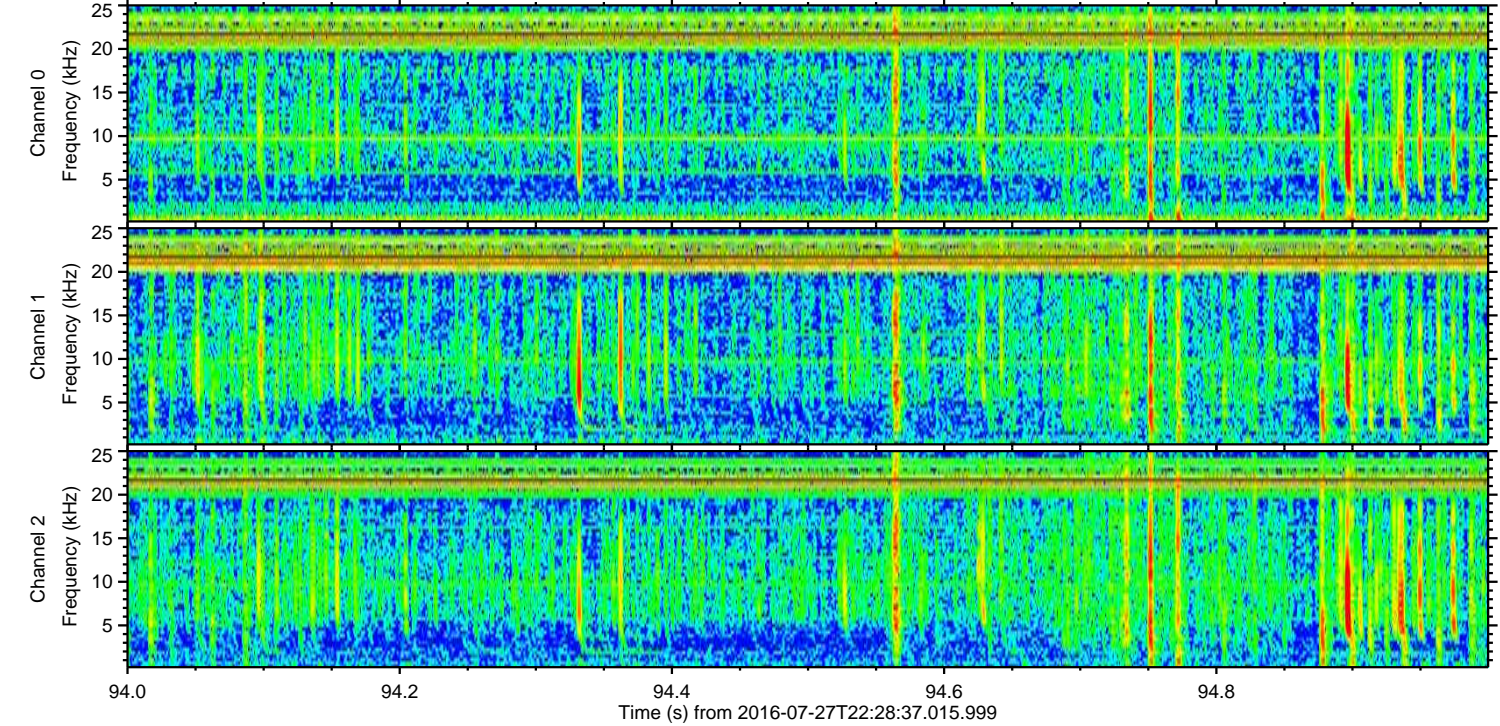
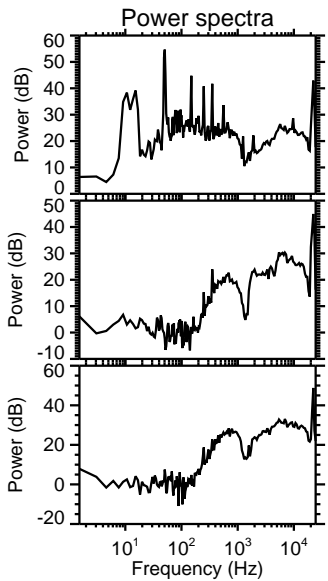
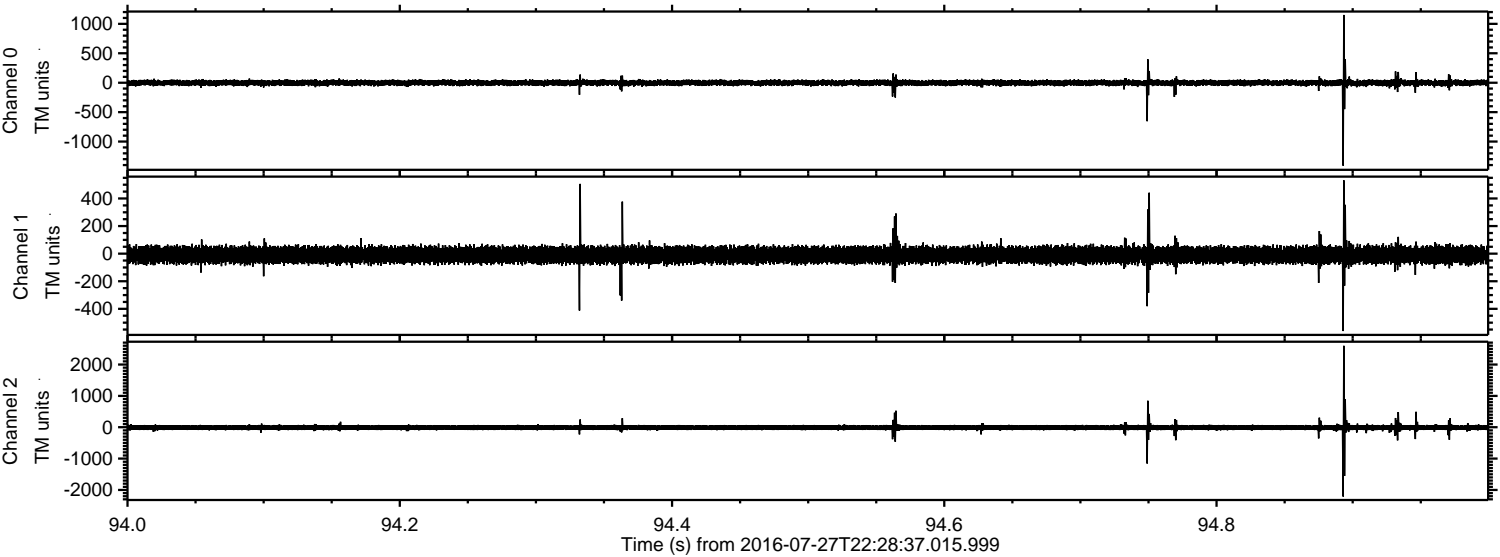
Processed Thu Jul 28 00:36:45 2016 by ELM ver.2012-10-06 from 001__elm20160727_222836__dat00.bin



Processed Thu Jul 28 00:36:46 2016 by ELM ver.2012-10-06 from 001__elm20160727_222836__dat00.bin

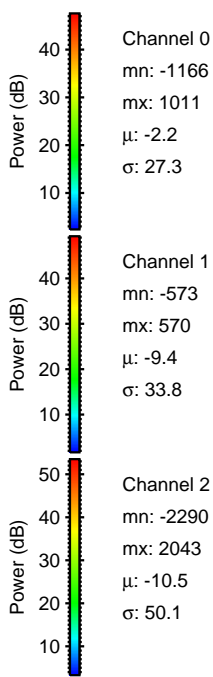
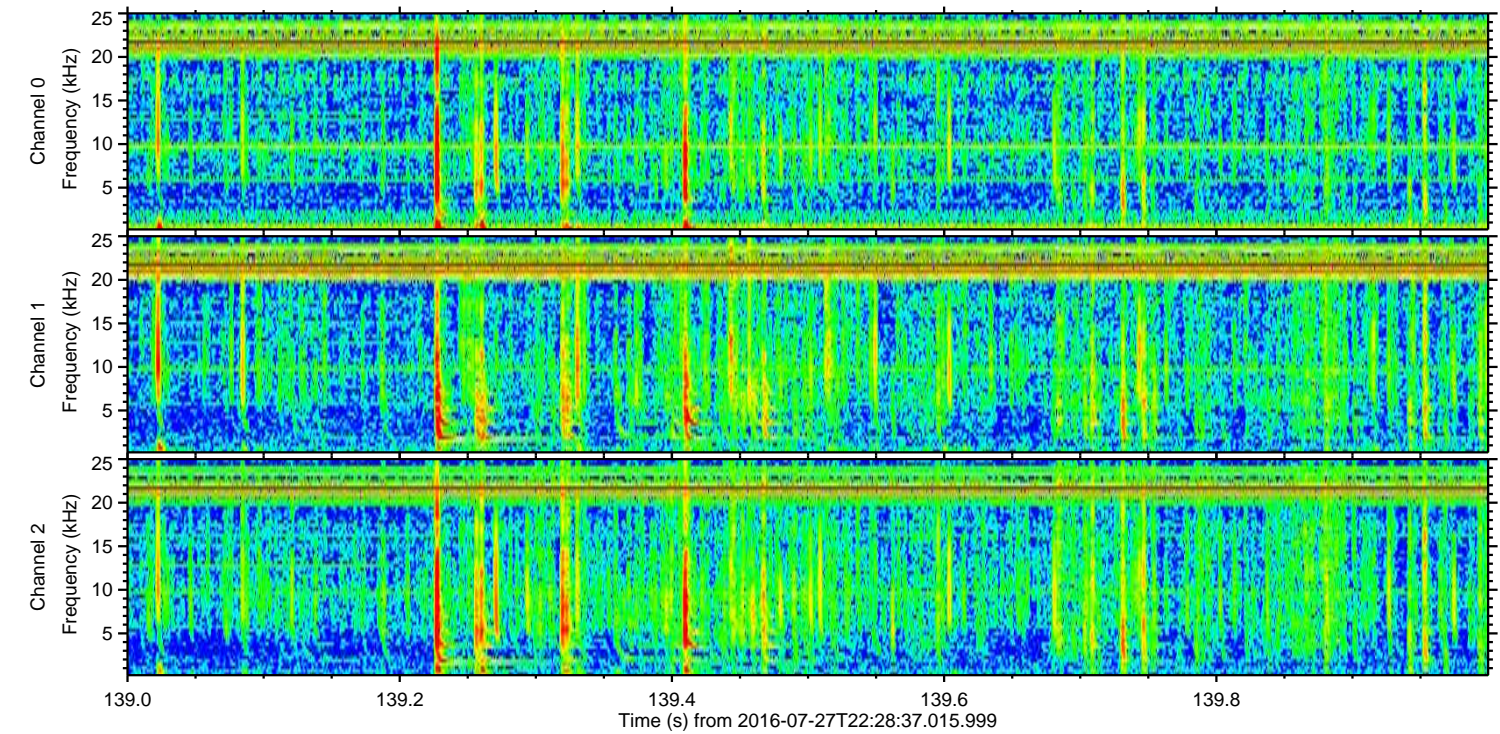
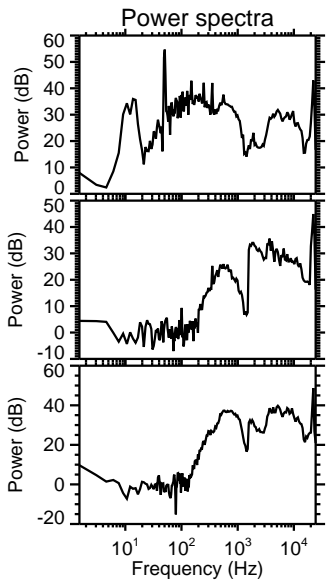
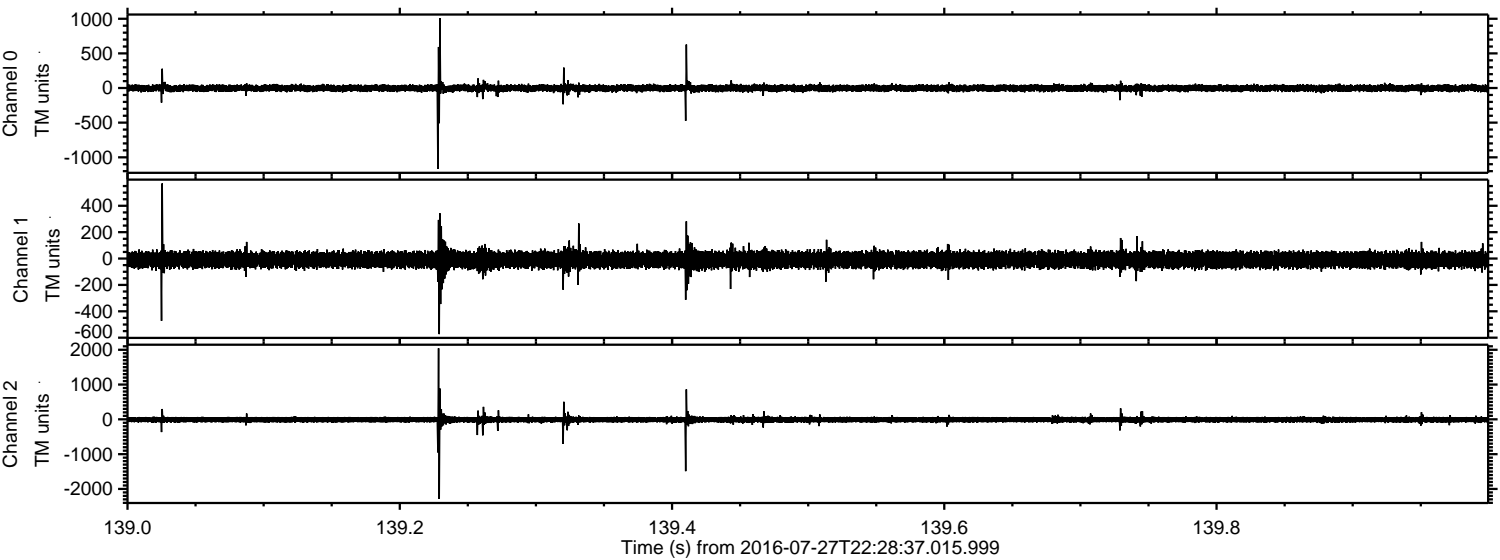


Processed Thu Jul 28 00:36:47 2016 by ELM ver.2012-10-06 from 001__elm20160727_222836__dat00.bin



ELMAVAN 3D WAVEFORMS (Measured data sampled at 50 kHz) 51000 packets of 144 samples from 2016-07-27T22:28:37.015.999. Part 140/147

Processed Thu Jul 28 00:36:48 2016 by ELM ver.2012-10-06 from 001__elm20160727_222836__dat00.bin

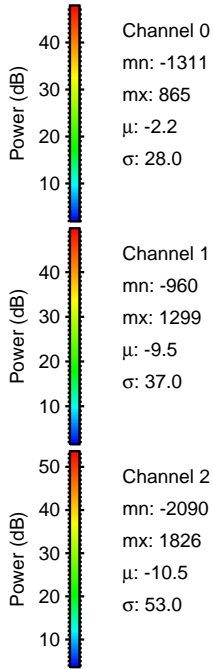
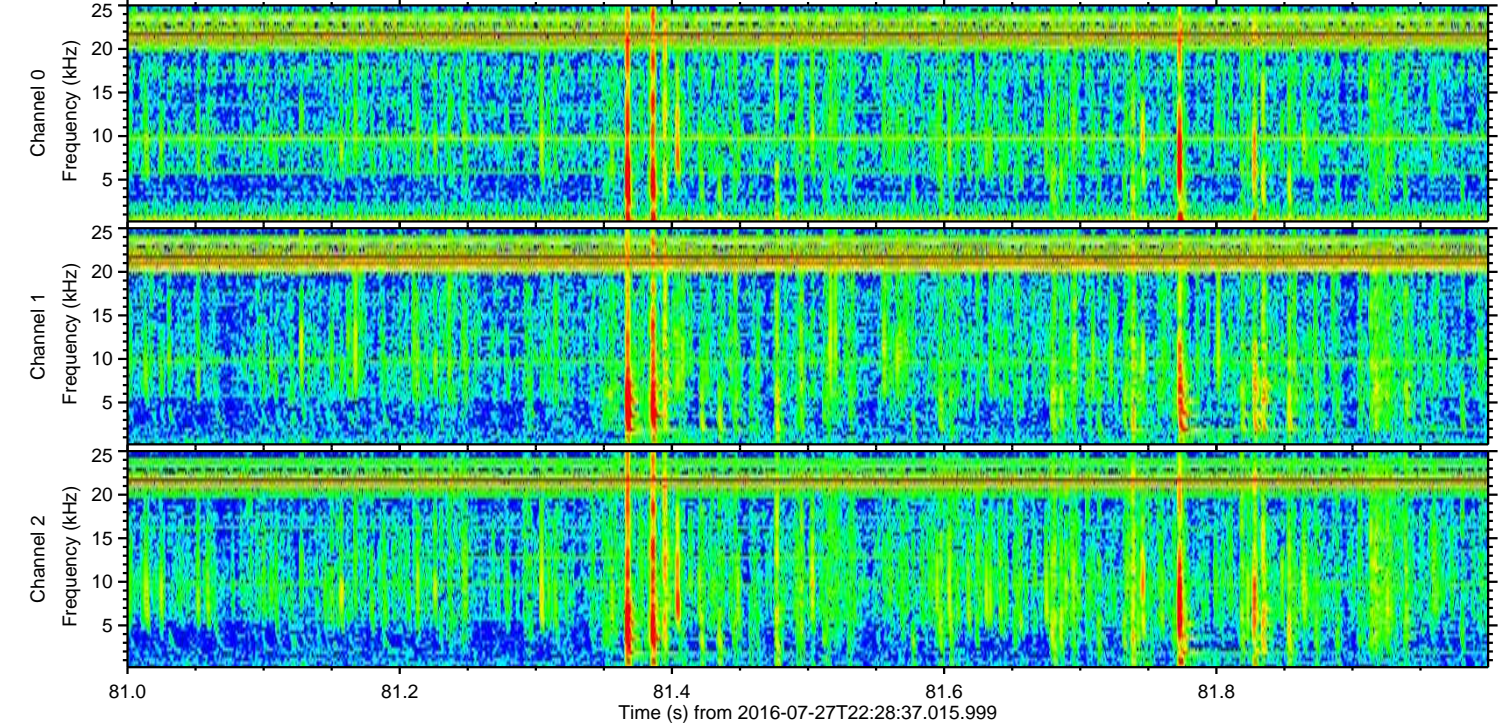
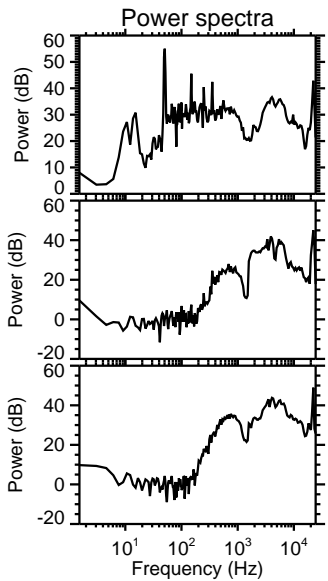
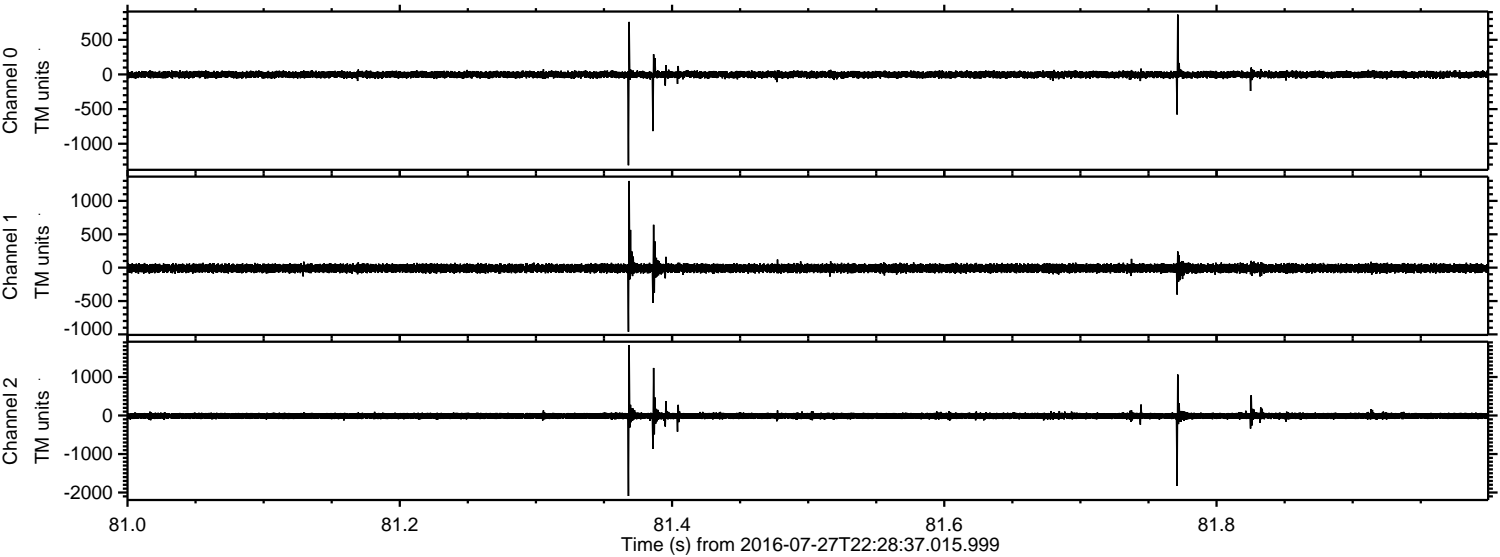


Channel 0
mn: -1166
mx: 1011
 μ : -2.2
 σ : 27.3

Channel 1
mn: -573
mx: 570
 μ : -9.4
 σ : 33.8

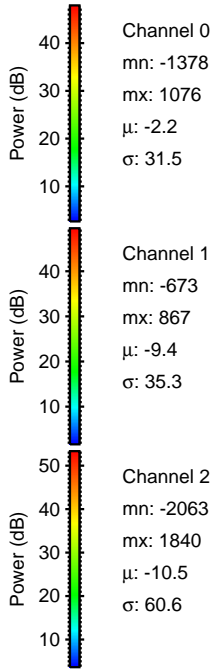
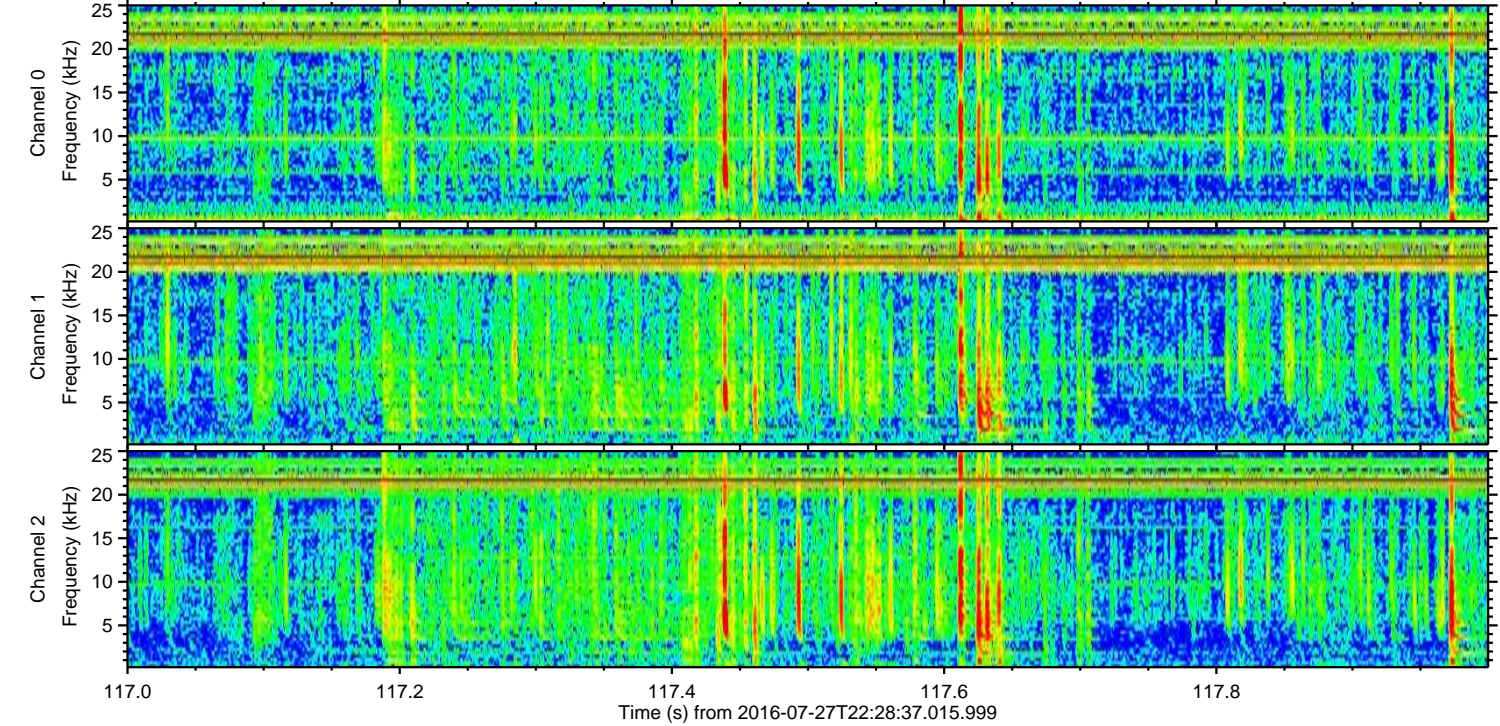
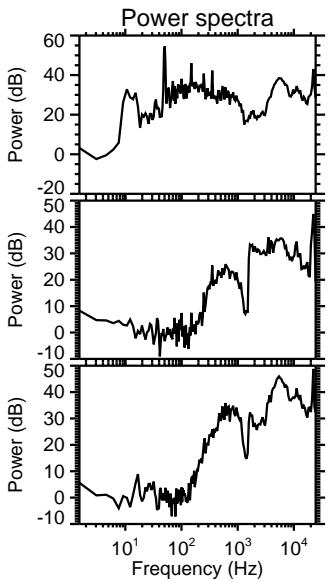
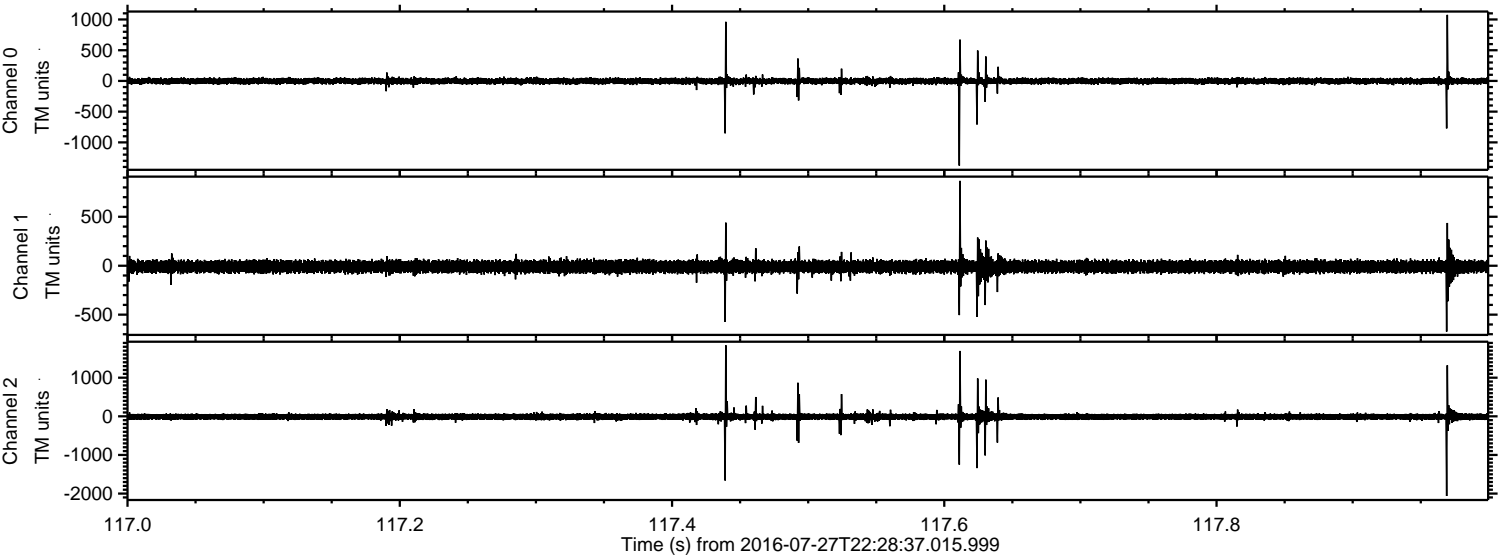
Channel 2
mn: -2290
mx: 2043
 μ : -10.5
 σ : 50.1

Processed Thu Jul 28 00:36:49 2016 by ELM ver.2012-10-06 from 001__elm20160727_222836__dat00.bin

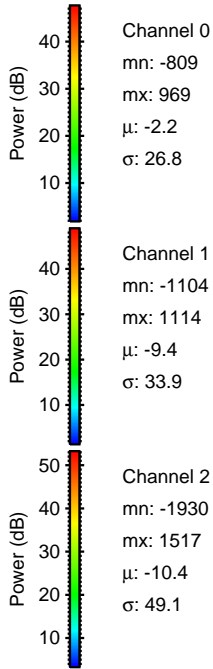
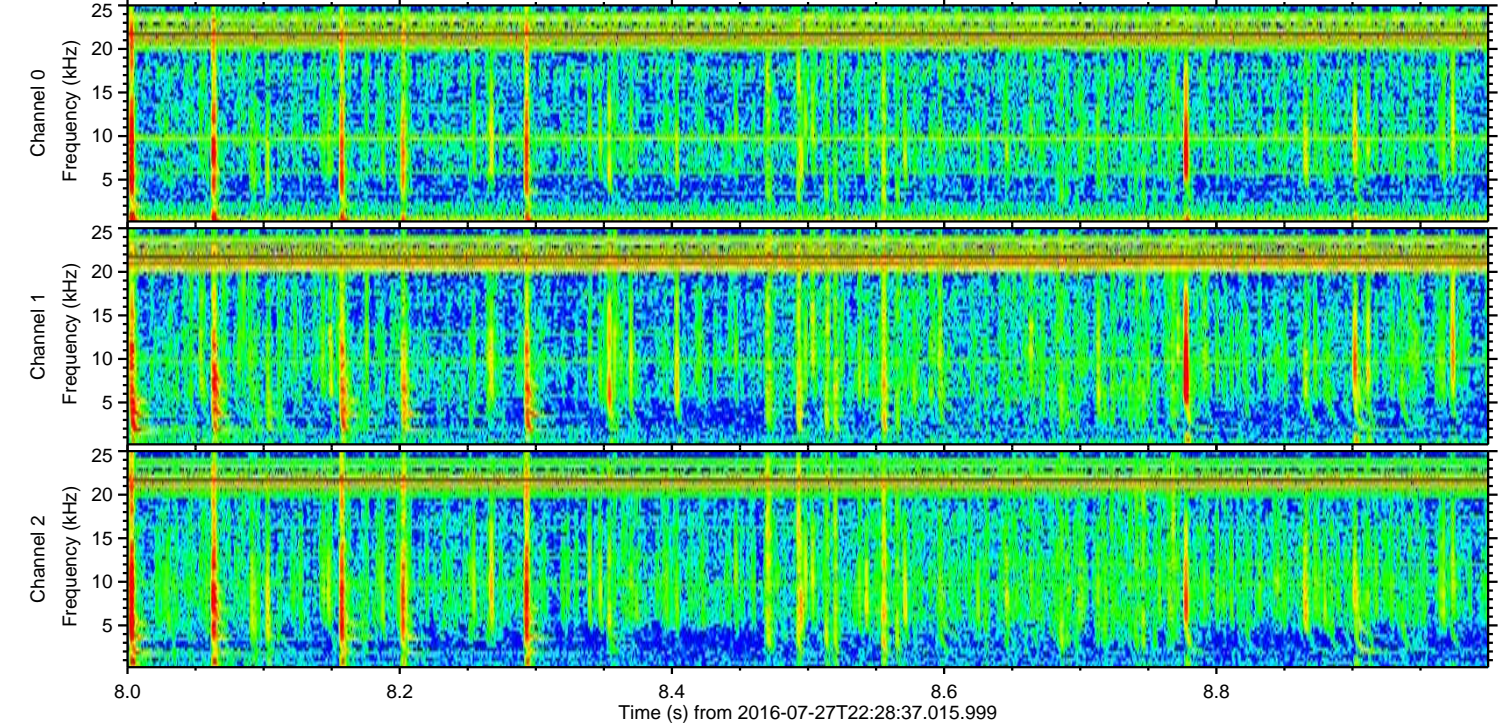
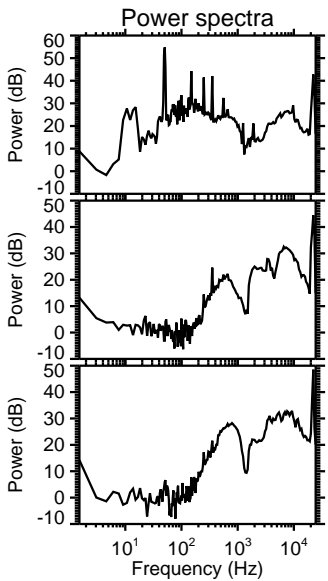
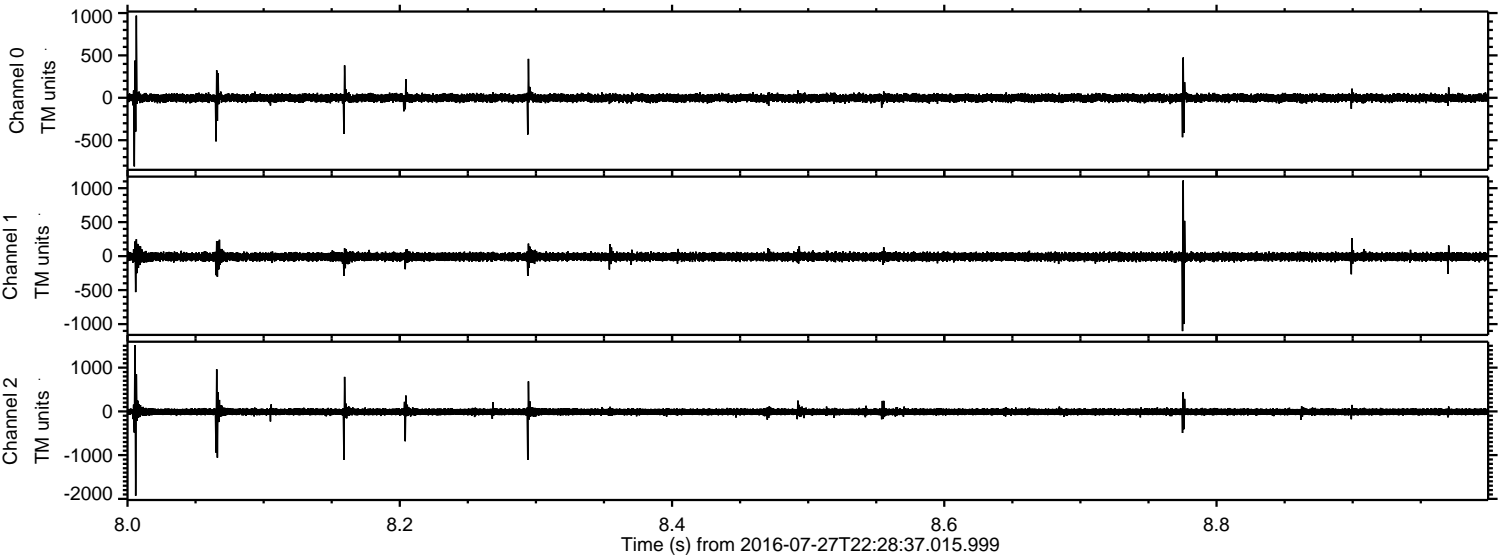


ELMAVAN 3D WAVEFORMS (Measured data sampled at 50 kHz) 51000 packets of 144 samples from 2016-07-27T22:28:37.015.999. Part 118/147

Processed Thu Jul 28 00:36:51 2016 by ELM ver.2012-10-06 from 001__elm20160727_222836__dat00.bin



Processed Thu Jul 28 00:36:52 2016 by ELM ver.2012-10-06 from 001__elm20160727_222836__dat00.bin

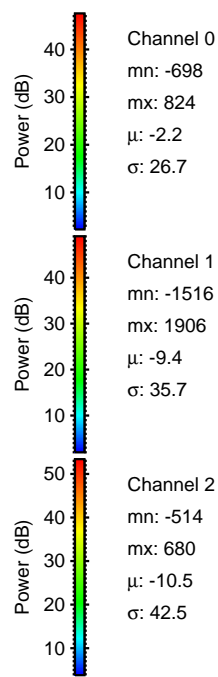
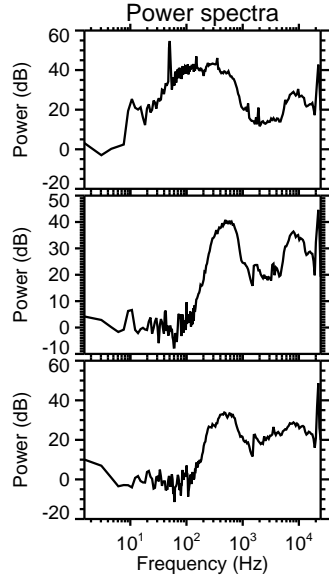
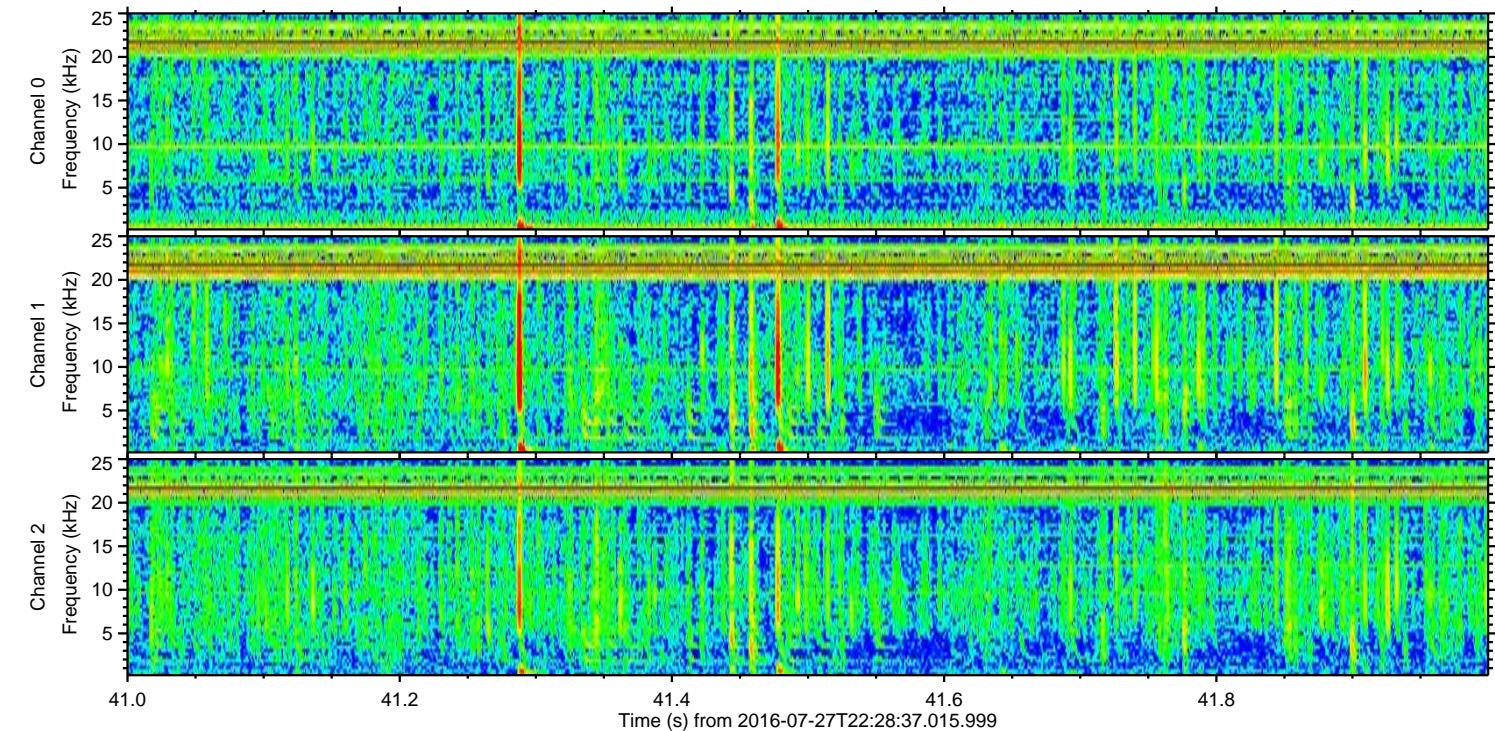
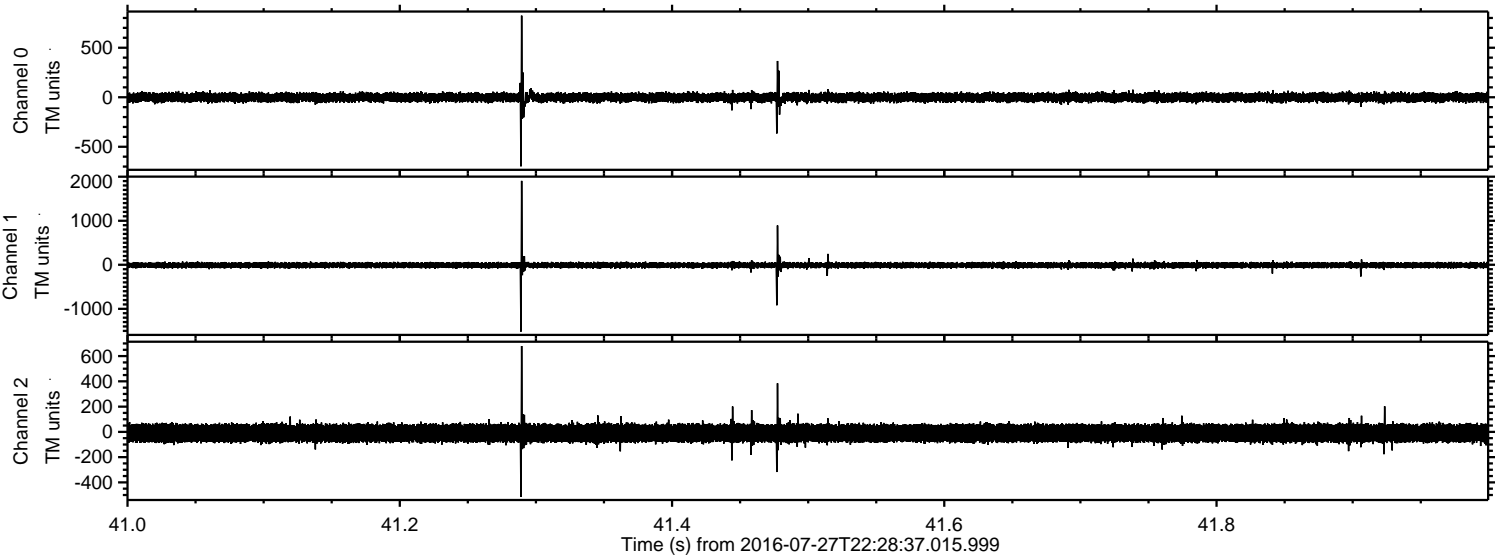


Channel 0
mn: -809
mx: 969
 μ : -2.2
 σ : 26.8

Channel 1
mn: -1104
mx: 1114
 μ : -9.4
 σ : 33.9

Channel 2
mn: -1930
mx: 1517
 μ : -10.4
 σ : 49.1

Processed Thu Jul 28 00:36:53 2016 by ELM ver.2012-10-06 from 001__elm20160727_222836__dat00.bin



Processed Thu Jul 28 00:36:54 2016 by ELM ver.2012-10-06 from 001__elm20160727_222836__dat00.bin

