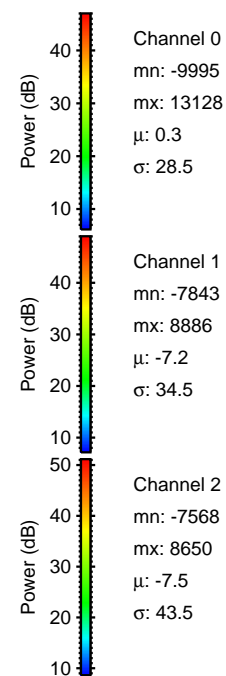
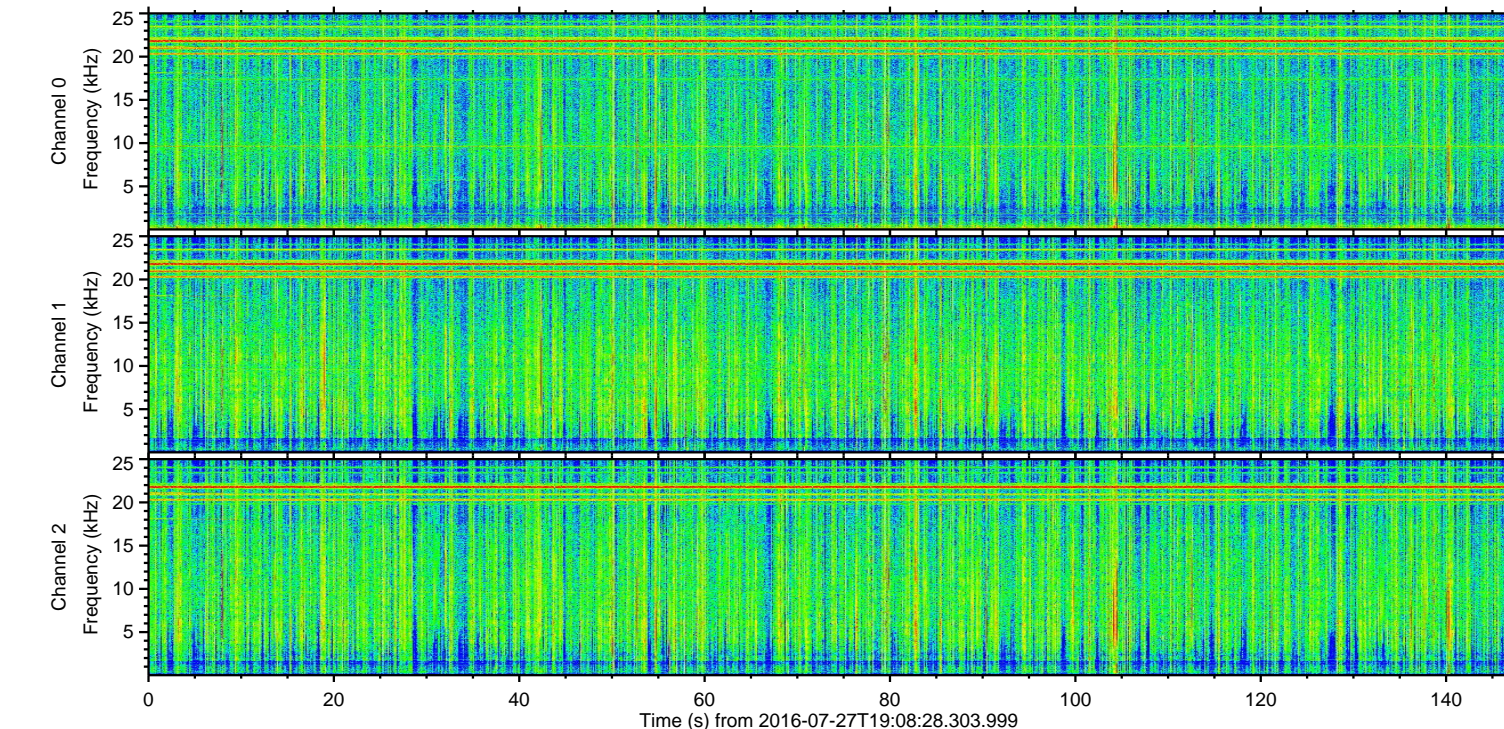
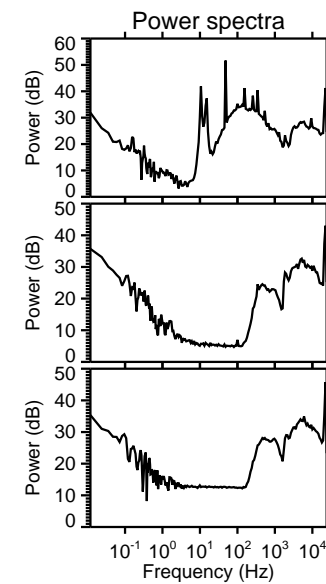
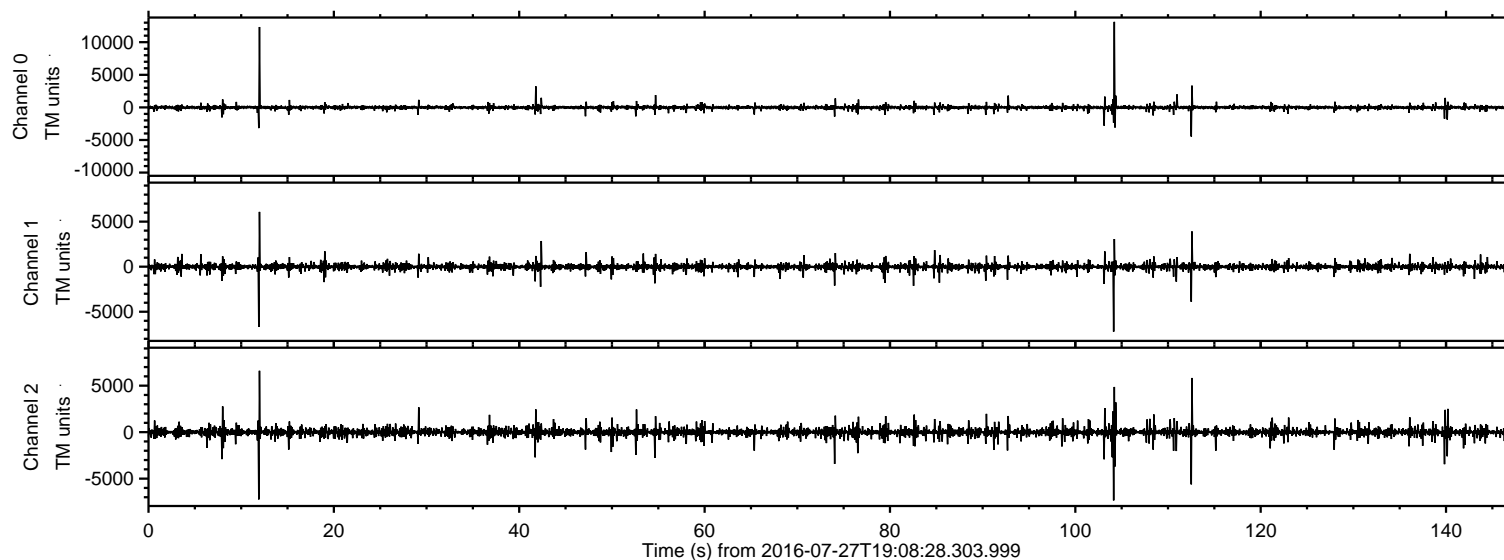


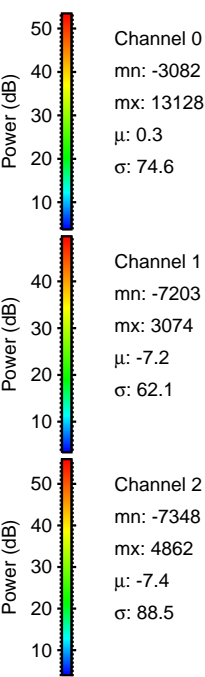
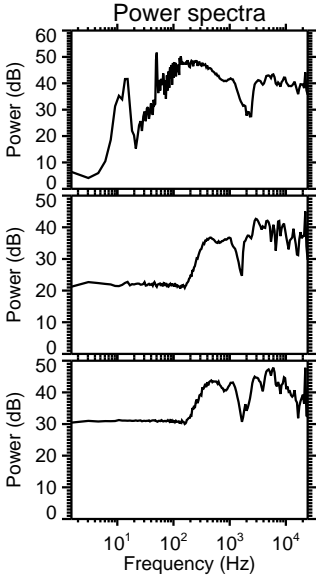
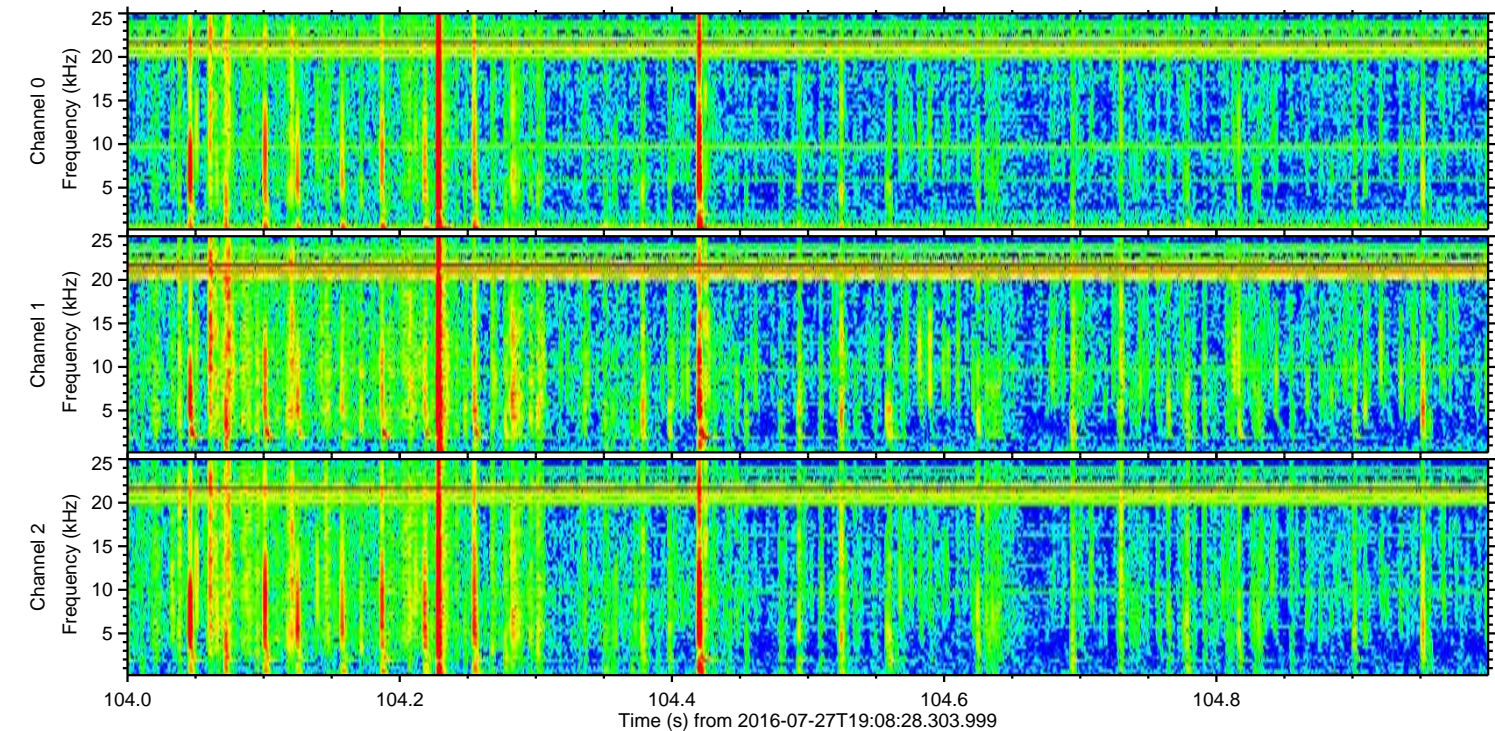
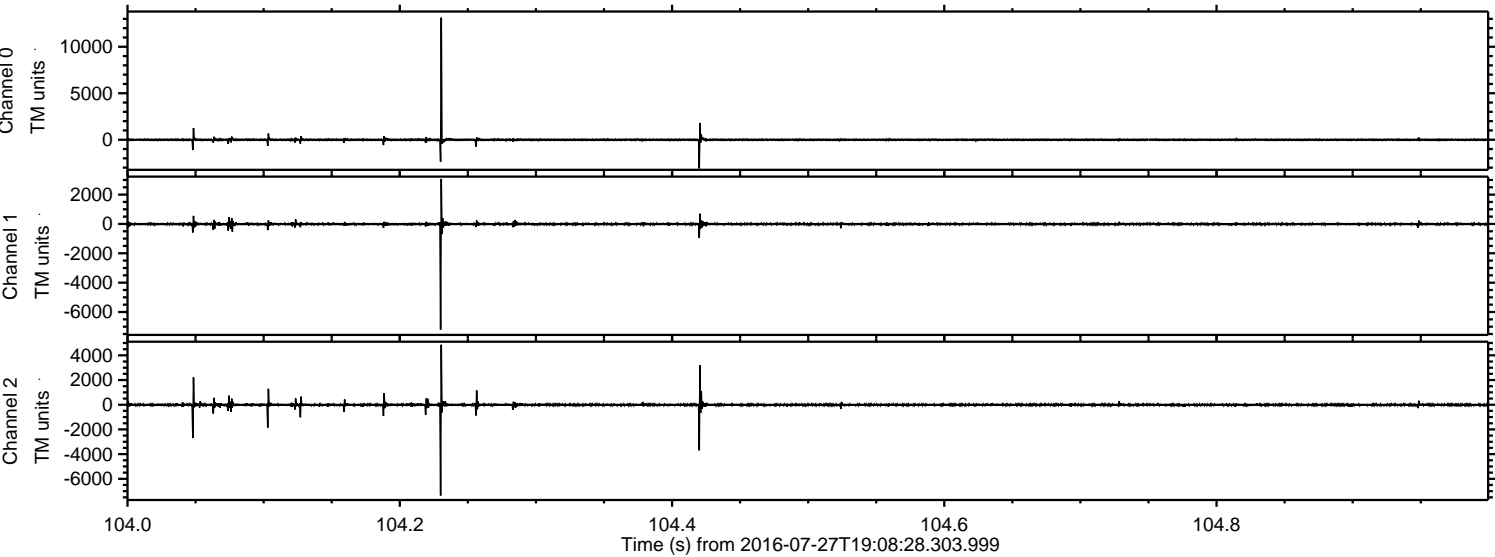
ELMAVAN 3D WAVEFORMS (Measured data sampled at 50 kHz) 51000 packets of 144 samples from 2016-07-27T19:08:28.303.999.

Processed Wed Jul 27 21:16:21 2016 by ELM ver.2012-10-06 from 001__elm20160727_190827__dat00.bin

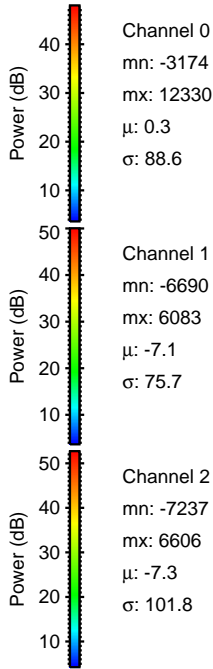
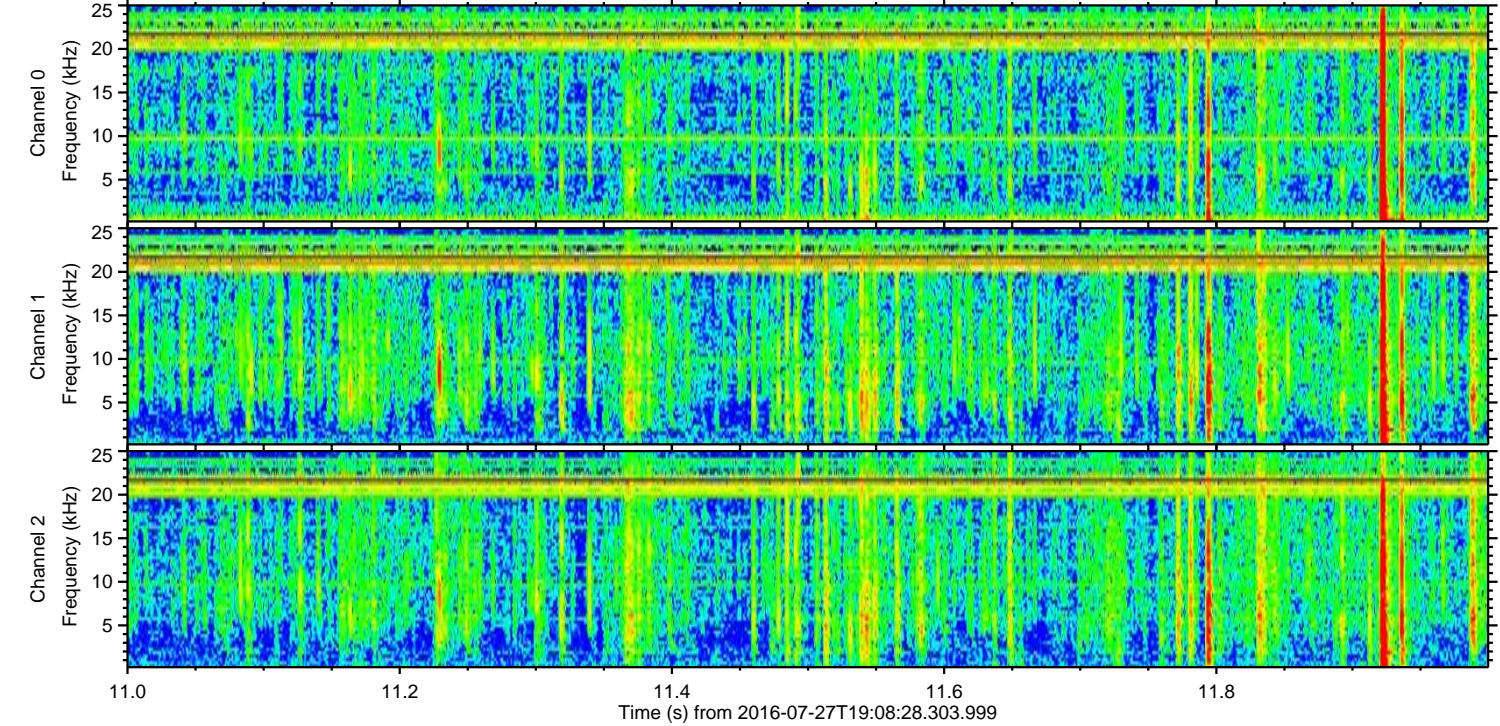
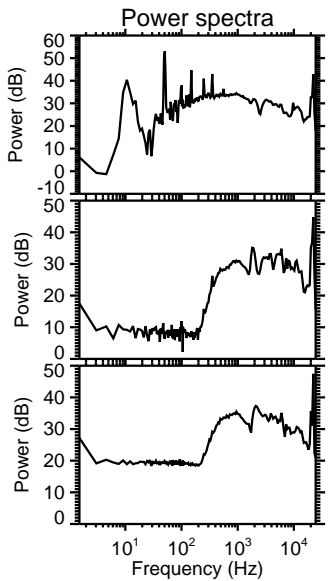
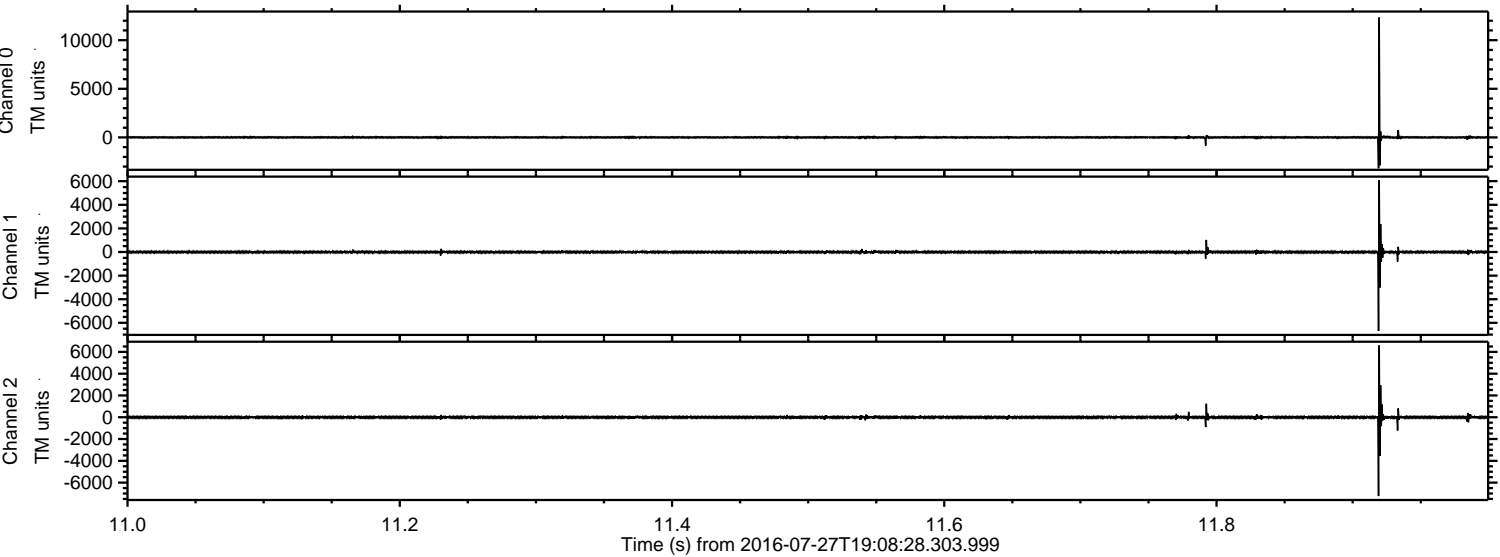


ELMAVAN 3D WAVEFORMS (Measured data sampled at 50 kHz) 51000 packets of 144 samples from 2016-07-27T19:08:28.303.999. Part 105/147

Processed Wed Jul 27 21:16:32 2016 by ELM ver.2012-10-06 from 001__elm20160727_190827__dat00.bin

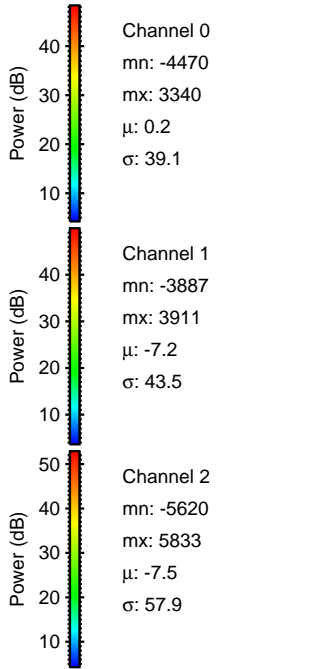
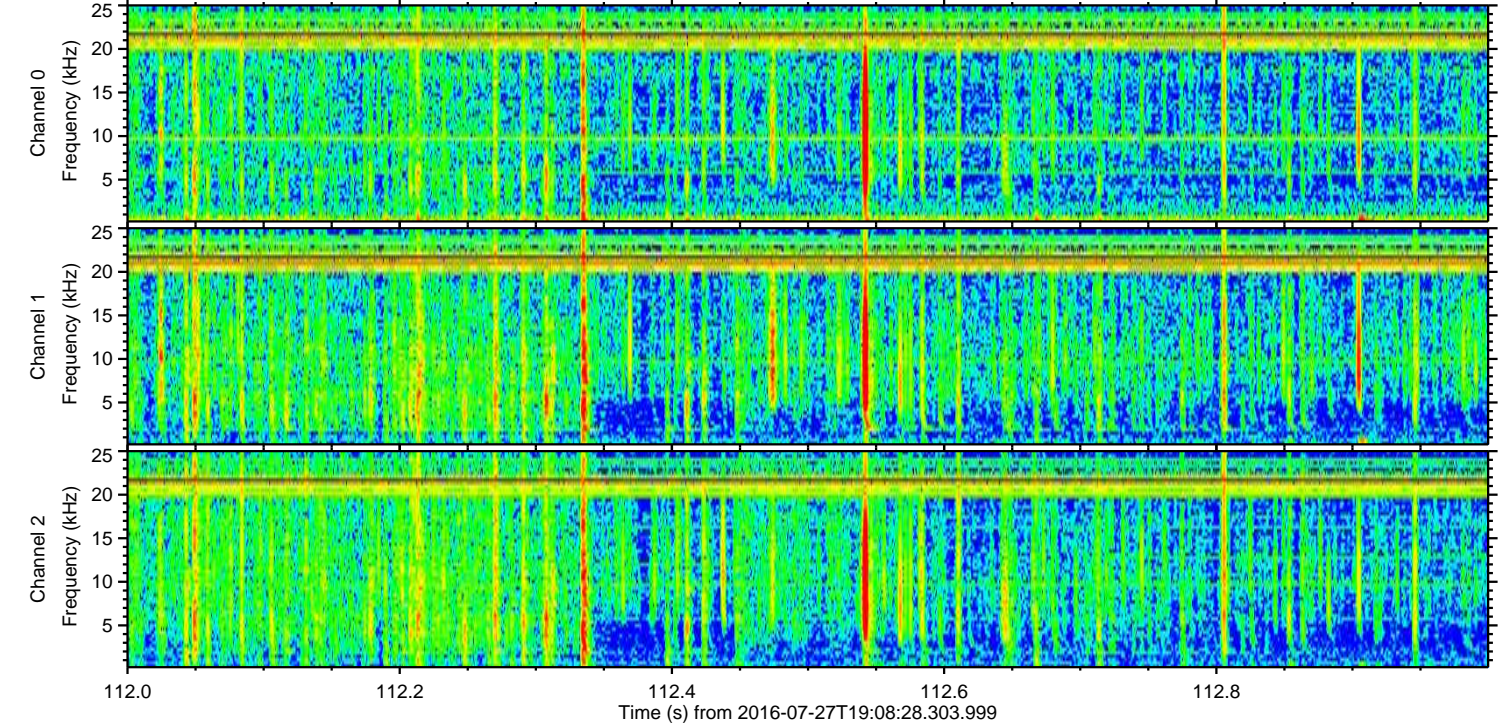
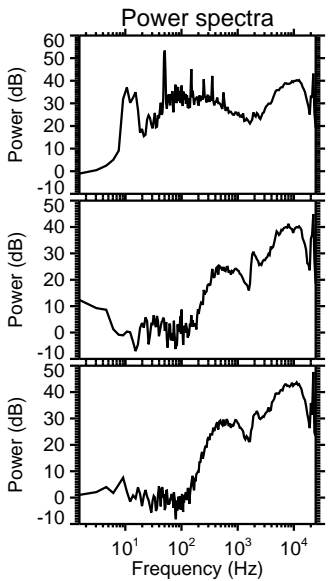
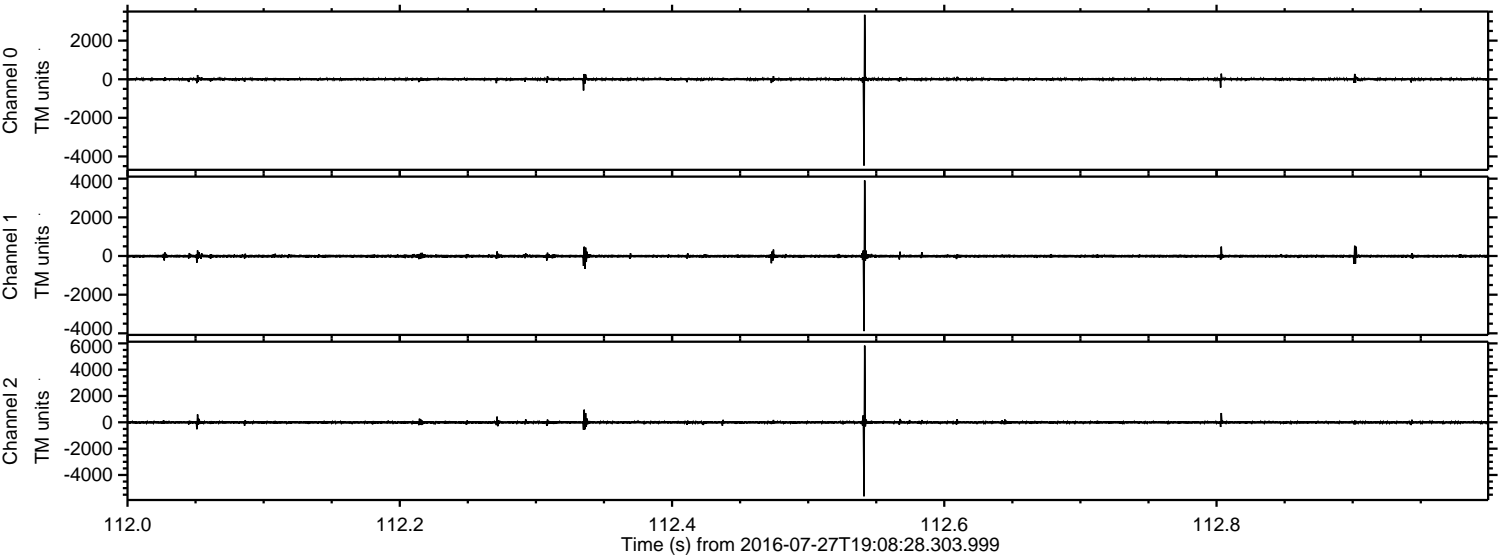


Processed Wed Jul 27 21:16:33 2016 by ELM ver.2012-10-06 from 001__elm20160727_190827__dat00.bin



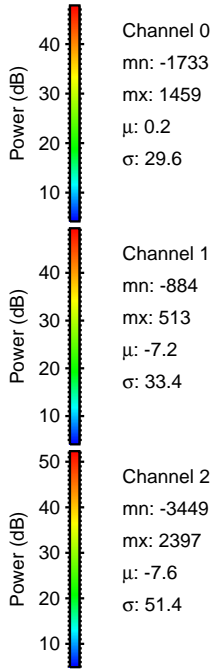
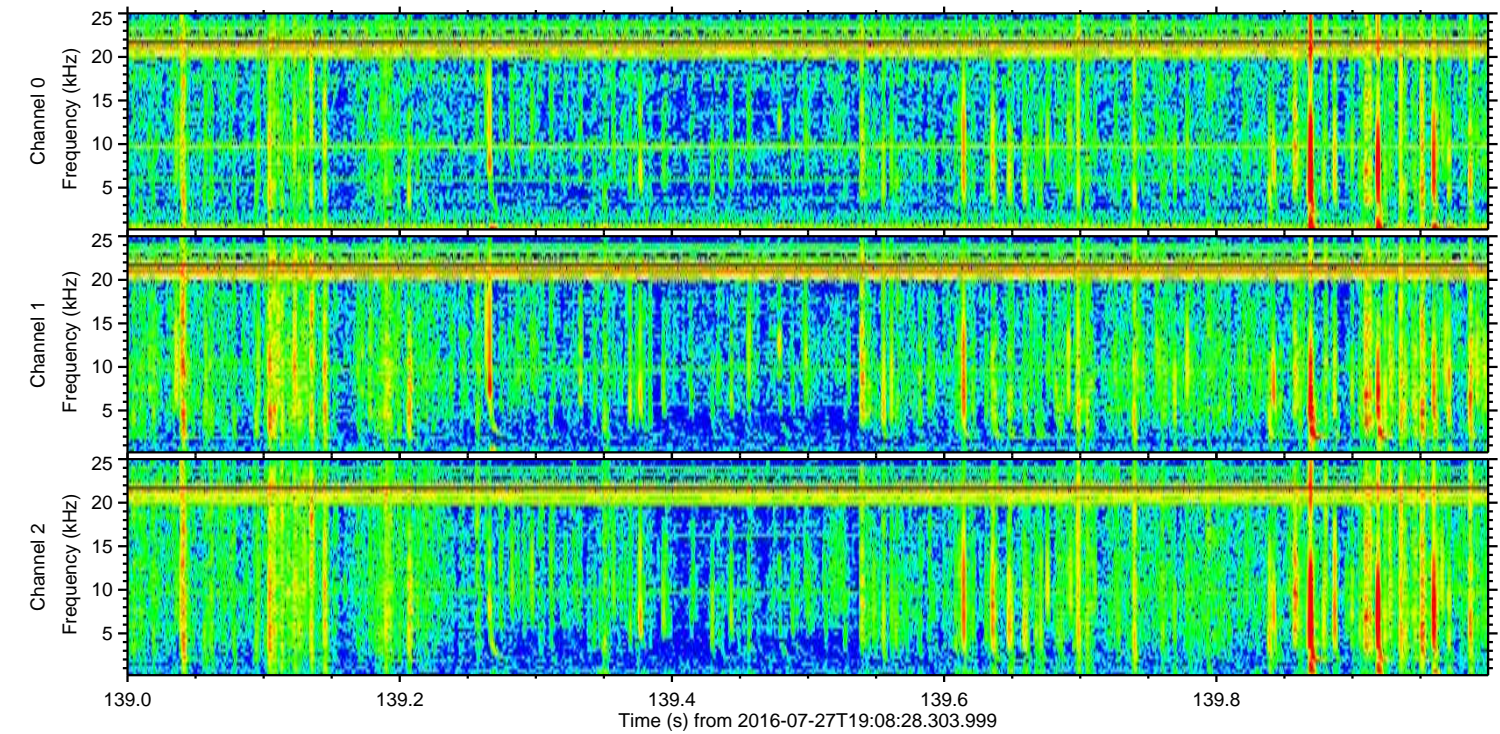
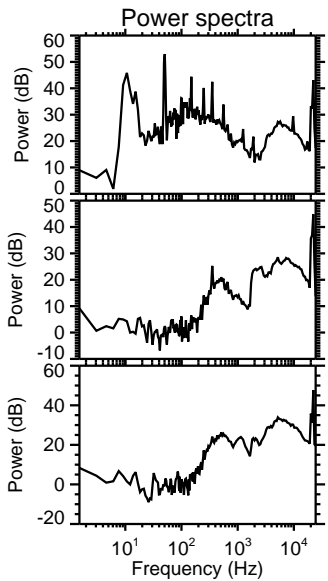
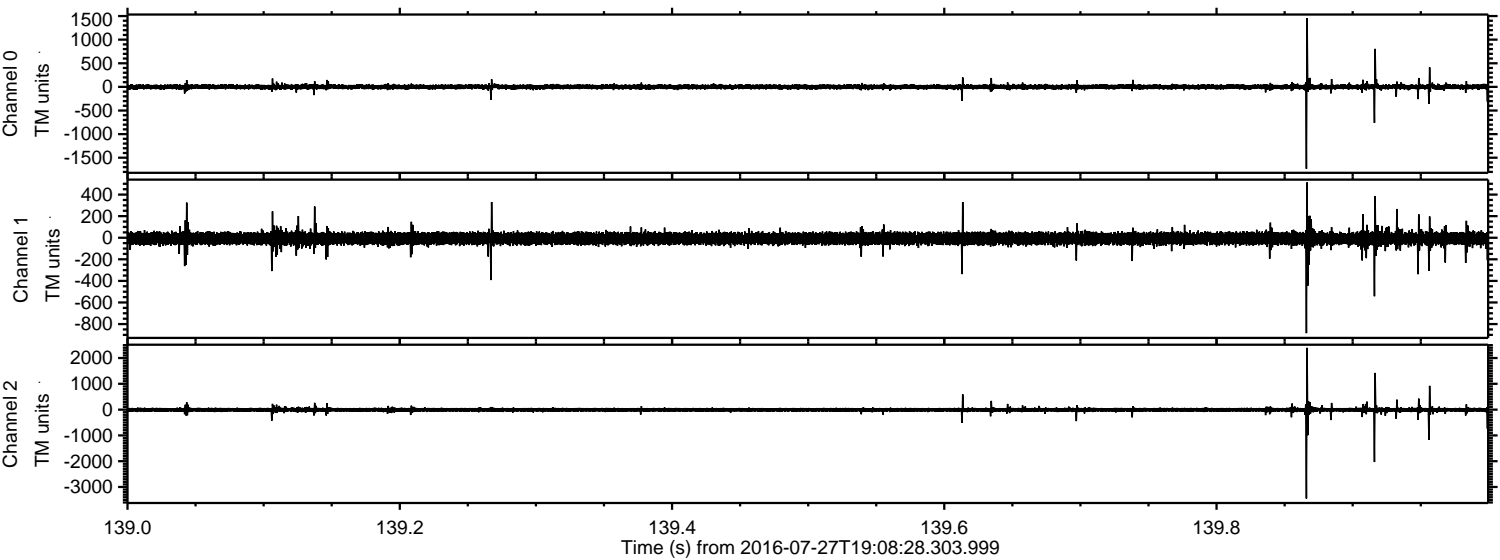
ELMAVAN 3D WAVEFORMS (Measured data sampled at 50 kHz) 51000 packets of 144 samples from 2016-07-27T19:08:28.303.999. Part 113/147

Processed Wed Jul 27 21:16:34 2016 by ELM ver.2012-10-06 from 001__elm20160727_190827__dat00.bin

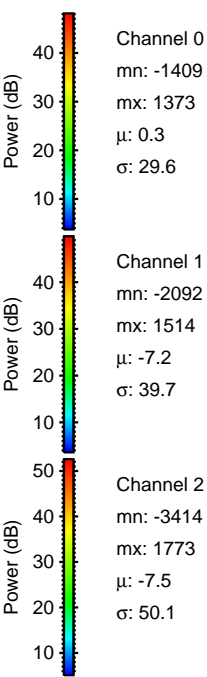
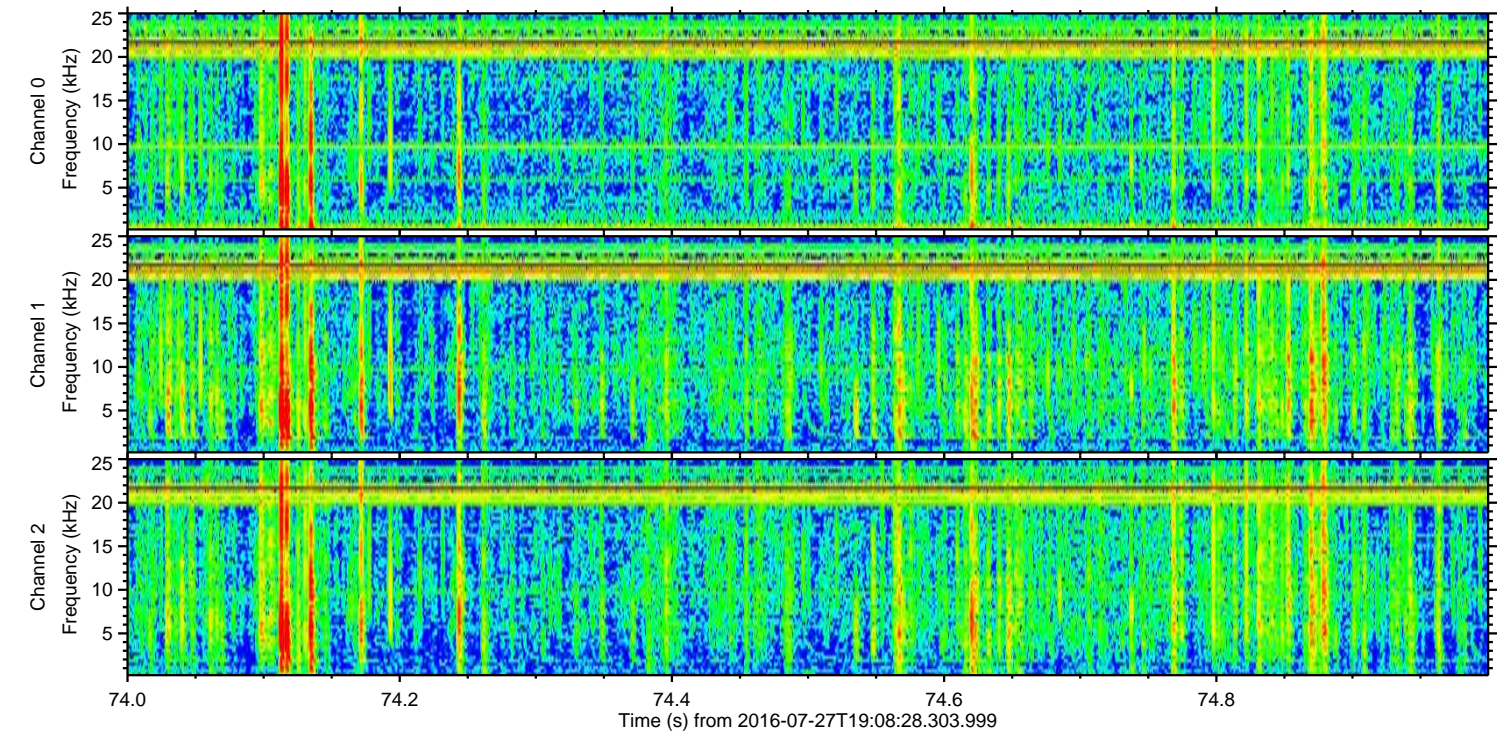
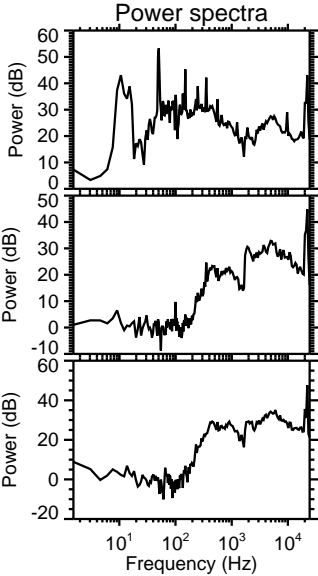
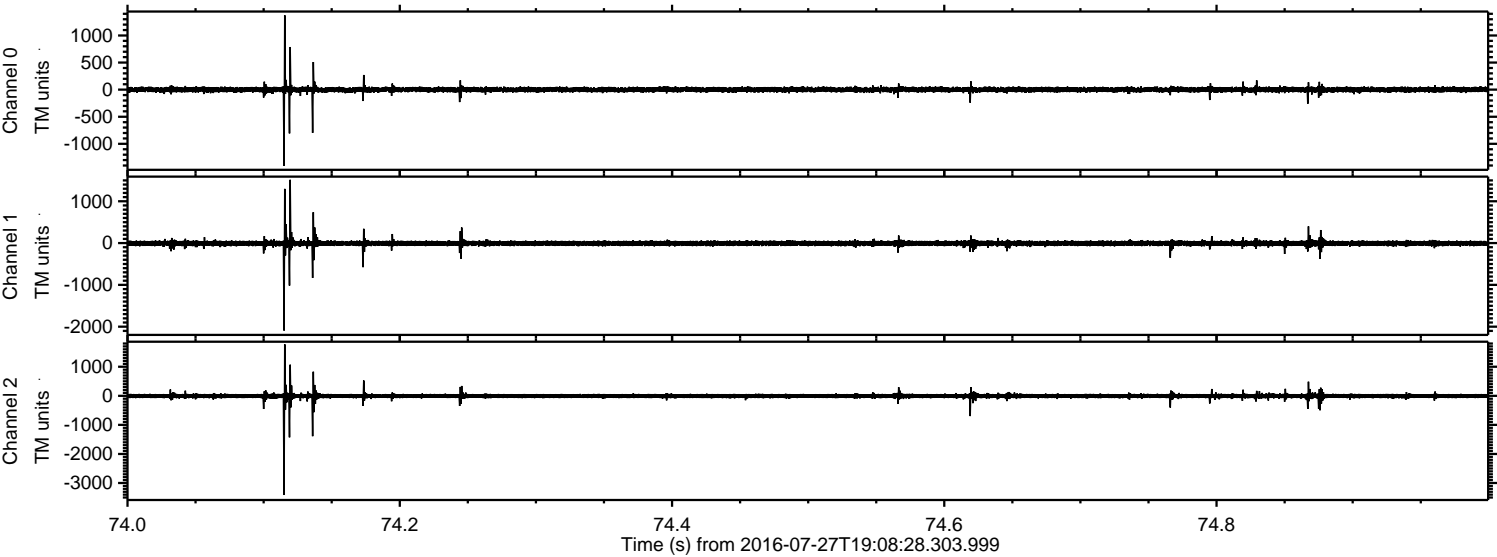


ELMAVAN 3D WAVEFORMS (Measured data sampled at 50 kHz) 51000 packets of 144 samples from 2016-07-27T19:08:28.303.999. Part 140/147

Processed Wed Jul 27 21:16:35 2016 by ELM ver.2012-10-06 from 001__elm20160727_190827__dat00.bin

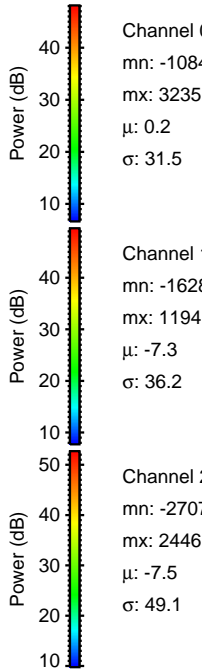
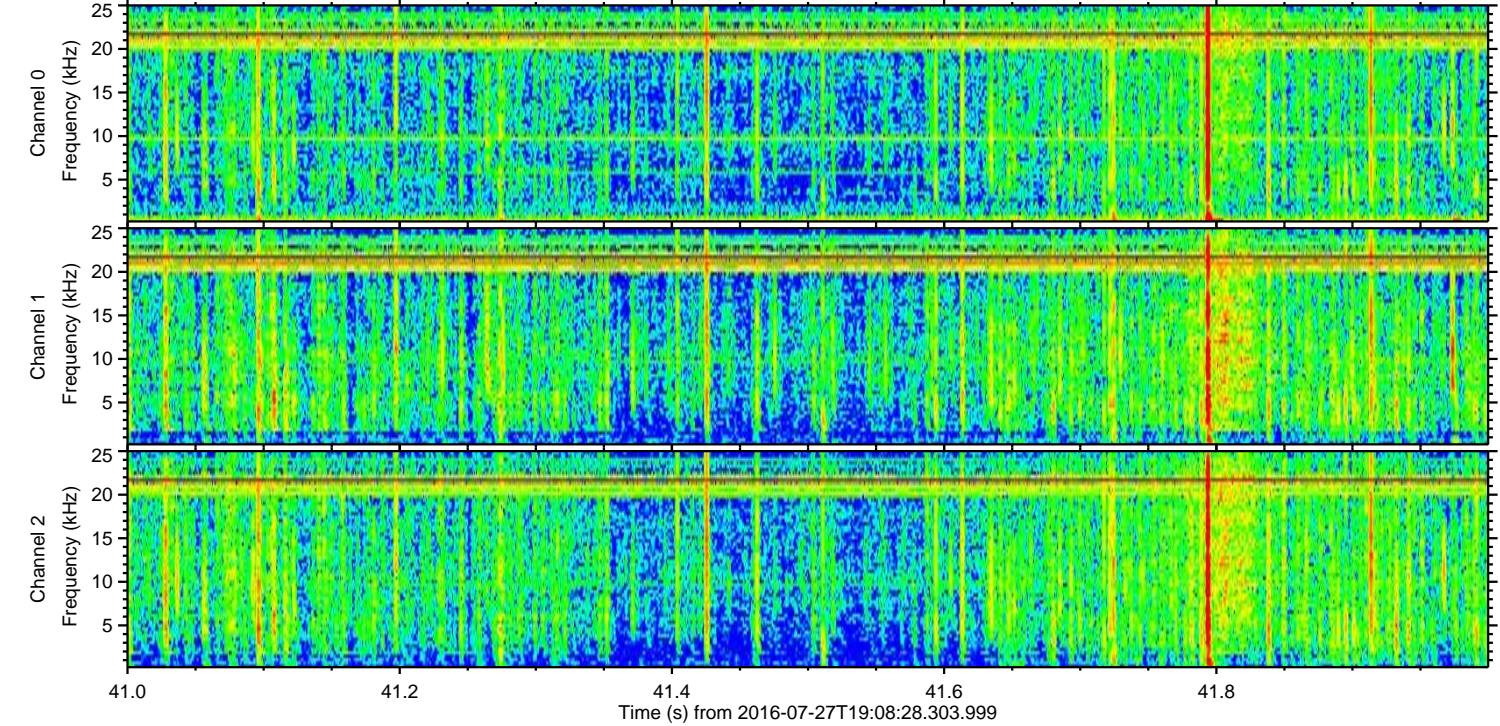
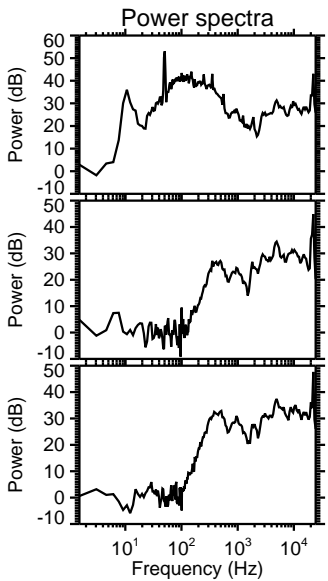
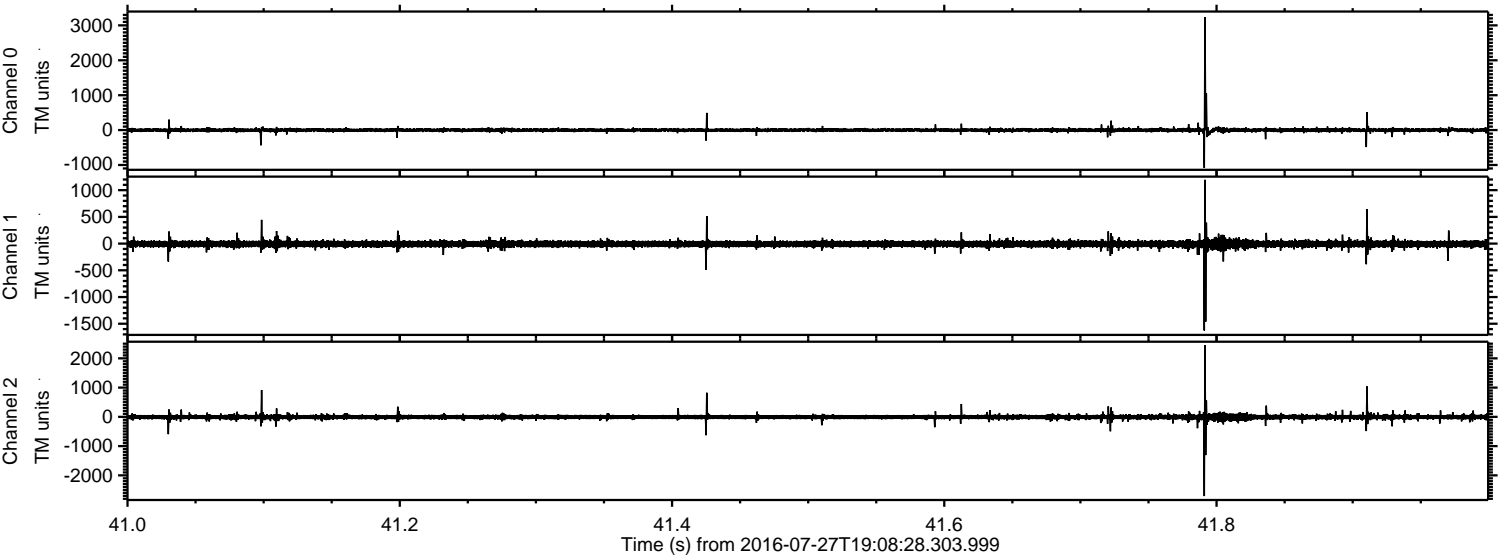


Processed Wed Jul 27 21:16:36 2016 by ELM ver.2012-10-06 from 001__elm20160727_190827__dat00.bin



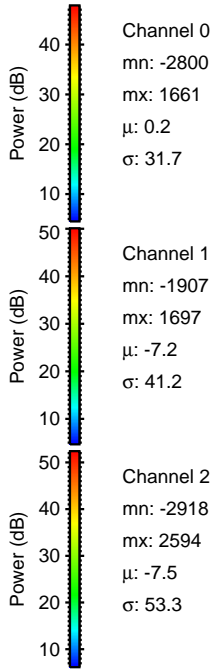
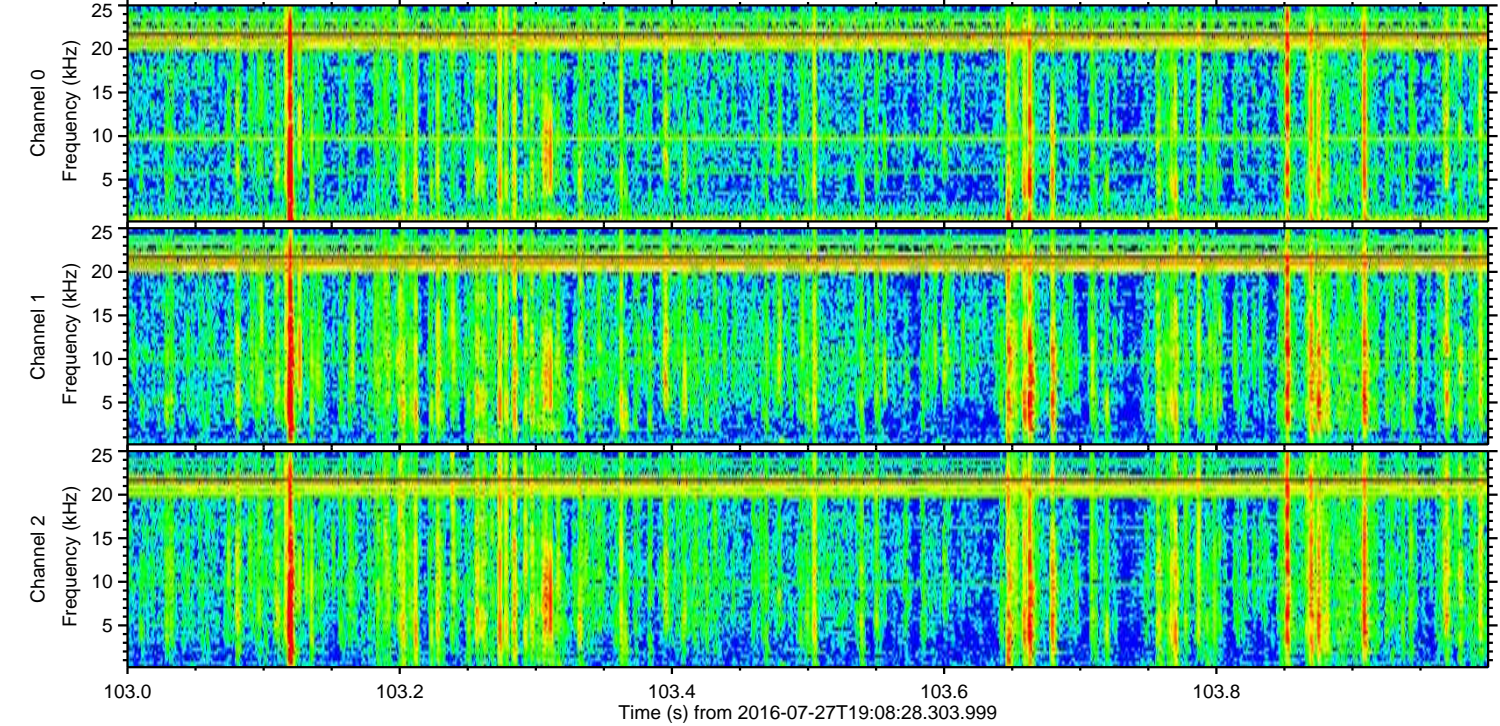
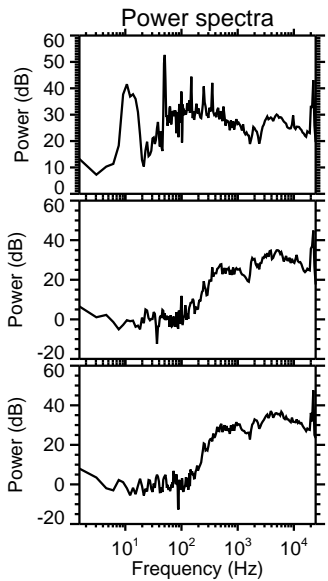
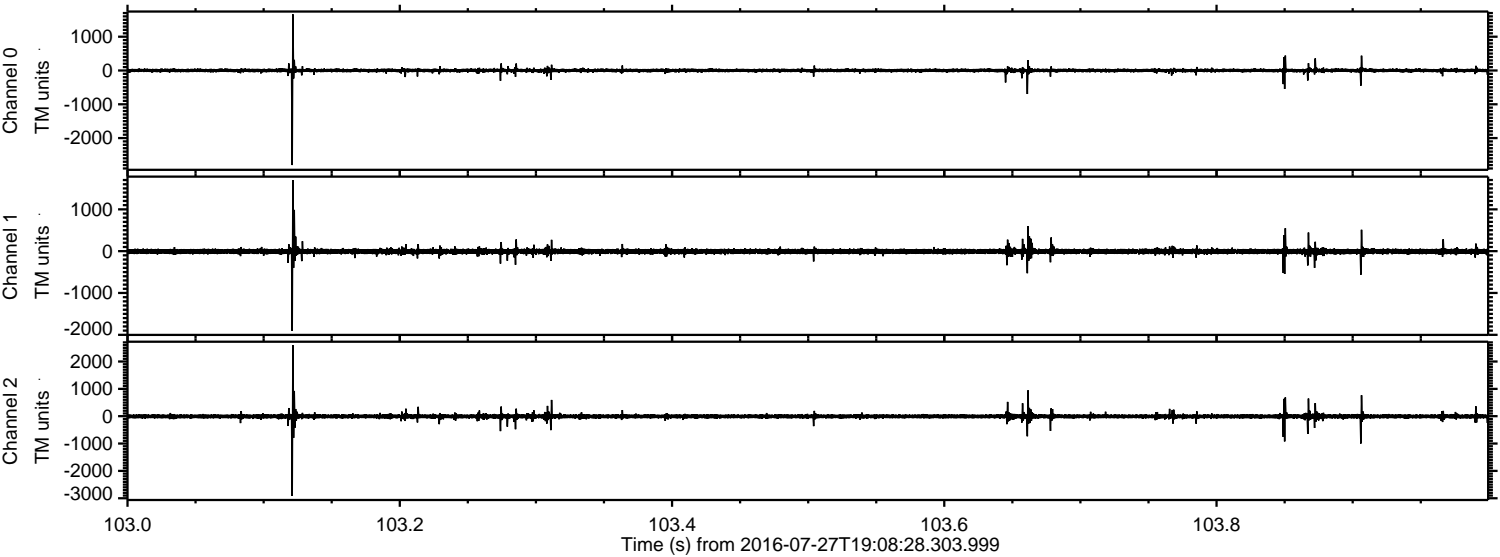
ELMAVAN 3D WAVEFORMS (Measured data sampled at 50 kHz) 51000 packets of 144 samples from 2016-07-27T19:08:28.303.999. Part 42/147

Processed Wed Jul 27 21:16:37 2016 by ELM ver.2012-10-06 from 001__elm20160727_190827__dat00.bin

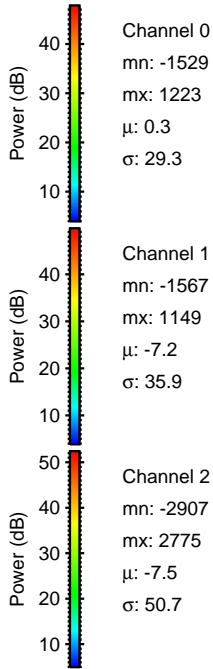
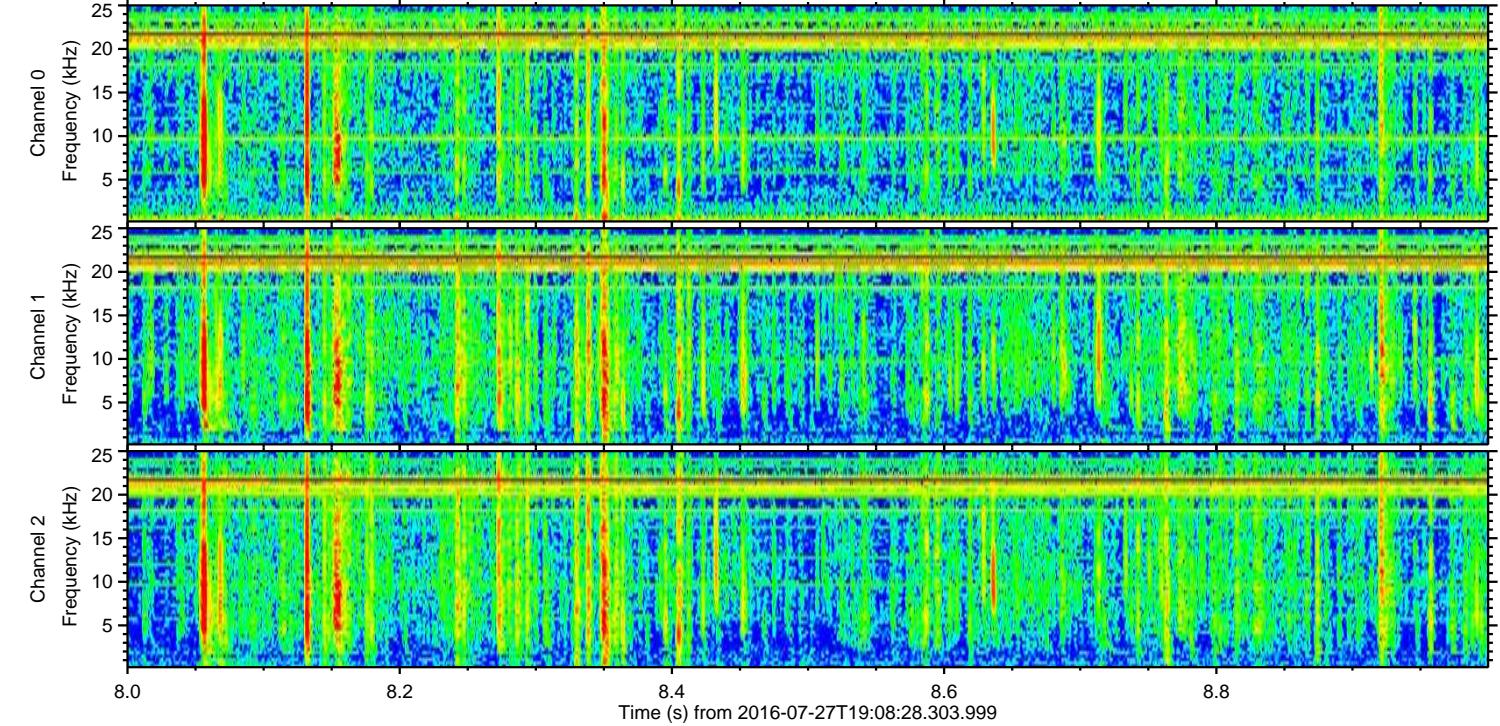
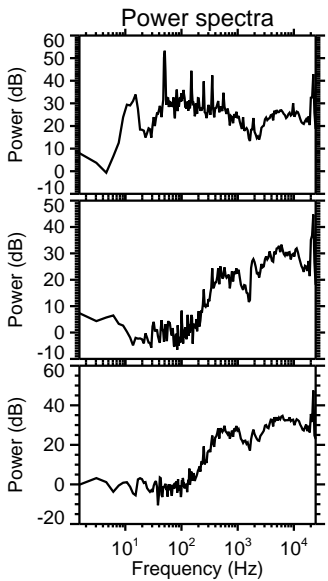
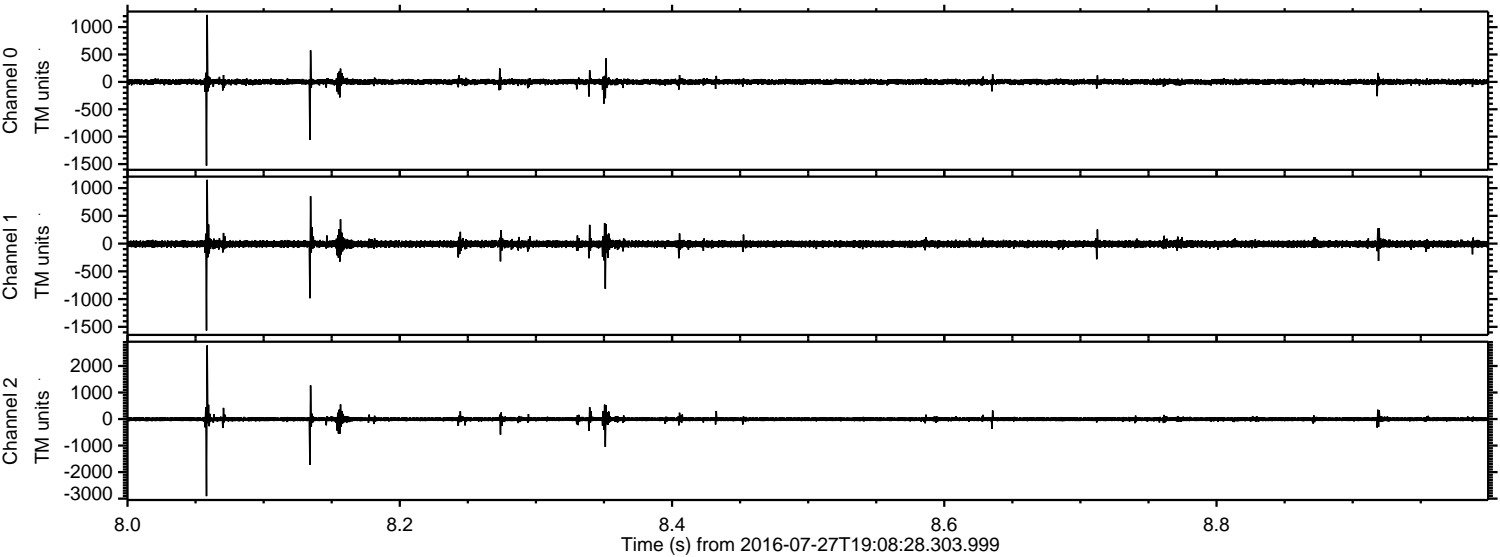


ELMAVAN 3D WAVEFORMS (Measured data sampled at 50 kHz) 51000 packets of 144 samples from 2016-07-27T19:08:28.303.999. Part 104/147

Processed Wed Jul 27 21:16:38 2016 by ELM ver.2012-10-06 from 001__elm20160727_190827__dat00.bin



Processed Wed Jul 27 21:16:39 2016 by ELM ver.2012-10-06 from 001__elm20160727_190827__dat00.bin



Channel 0
mn: -1529
mx: 1223
 μ : 0.3
 σ : 29.3

Channel 1
mn: -1567
mx: 1149
 μ : -7.2
 σ : 35.9

Channel 2
mn: -2907
mx: 2775
 μ : -7.5
 σ : 50.7

Processed Wed Jul 27 21:16:40 2016 by ELM ver.2012-10-06 from 001__elm20160727_190827__dat00.bin

