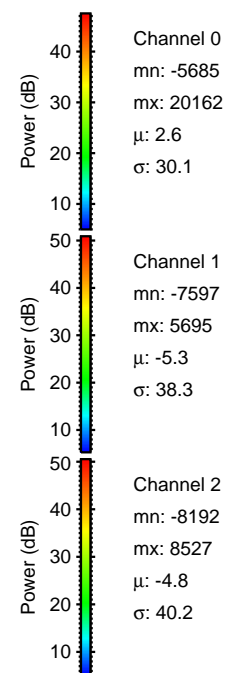
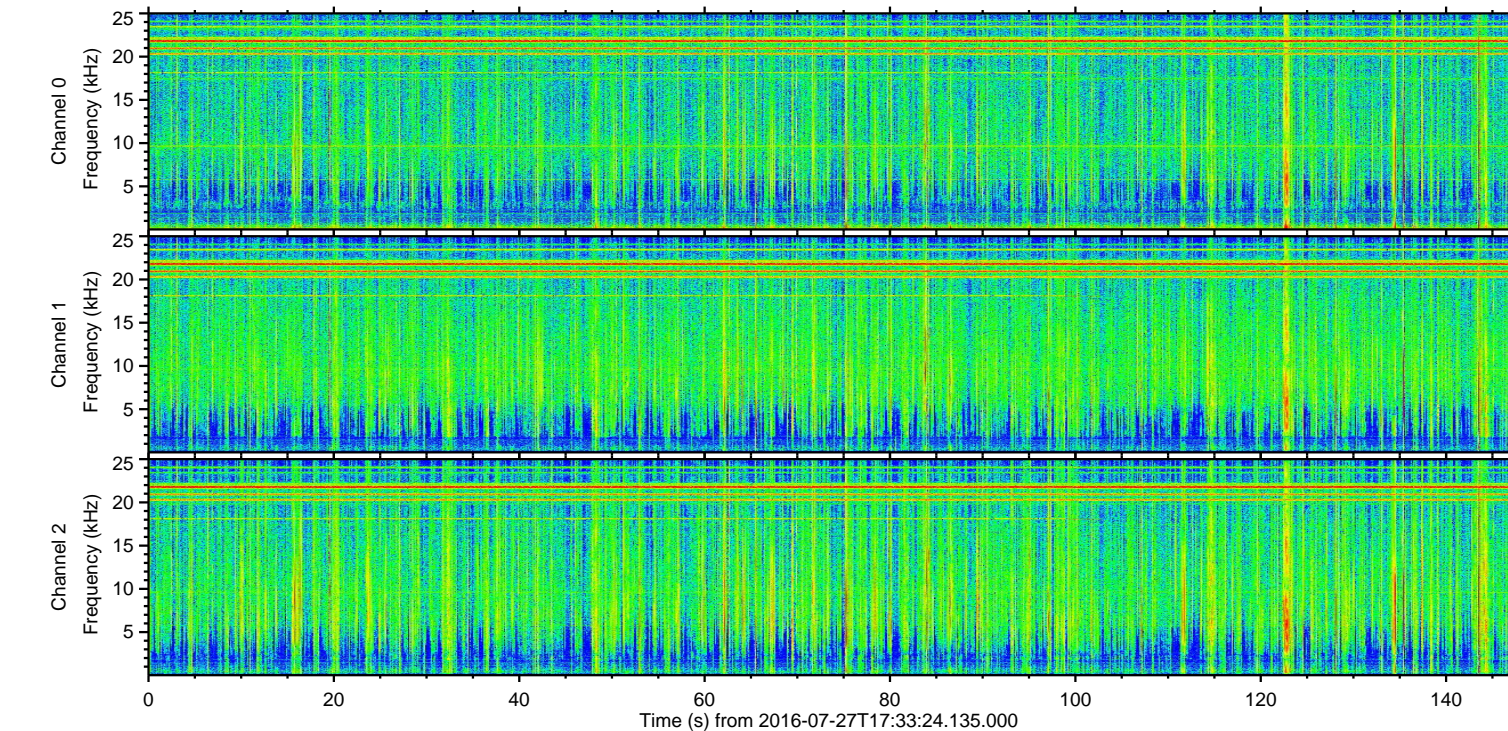
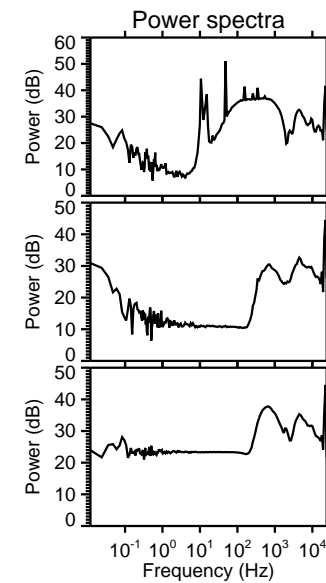
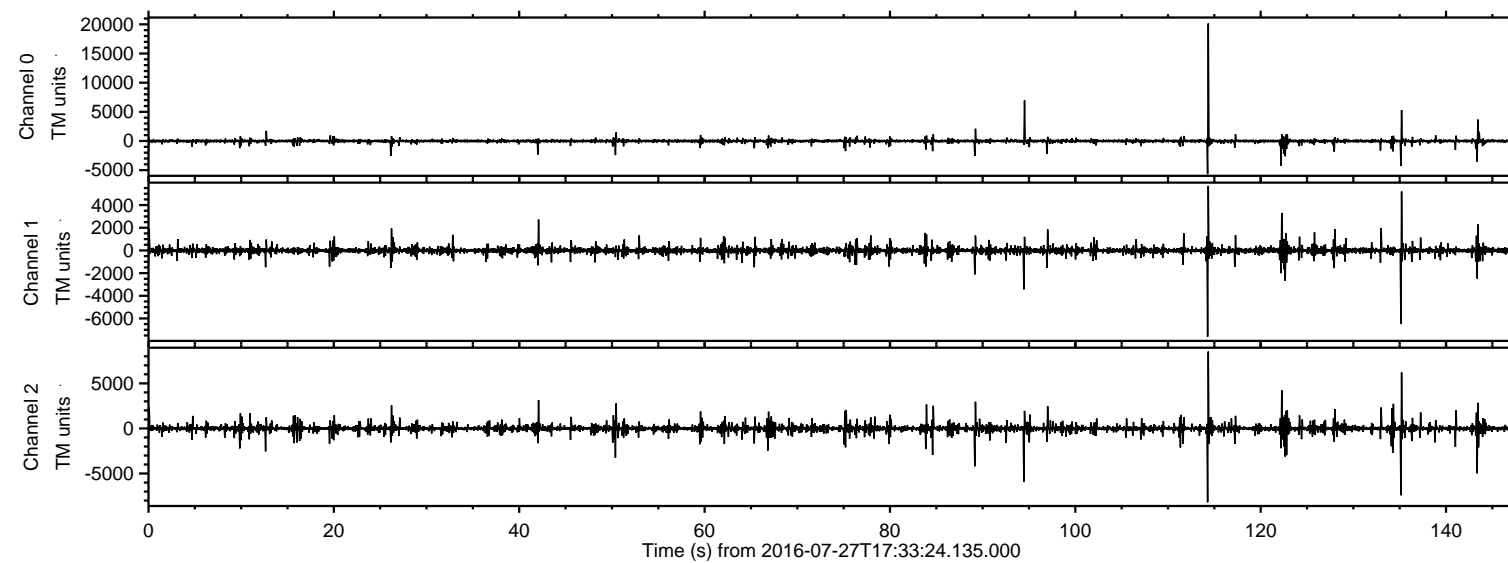


# ELMAVAN 3D WAVEFORMS (Measured data sampled at 50 kHz) 51000 packets of 144 samples from 2016-07-27T17:33:24.135.000.

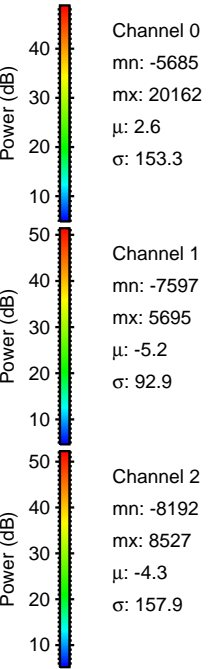
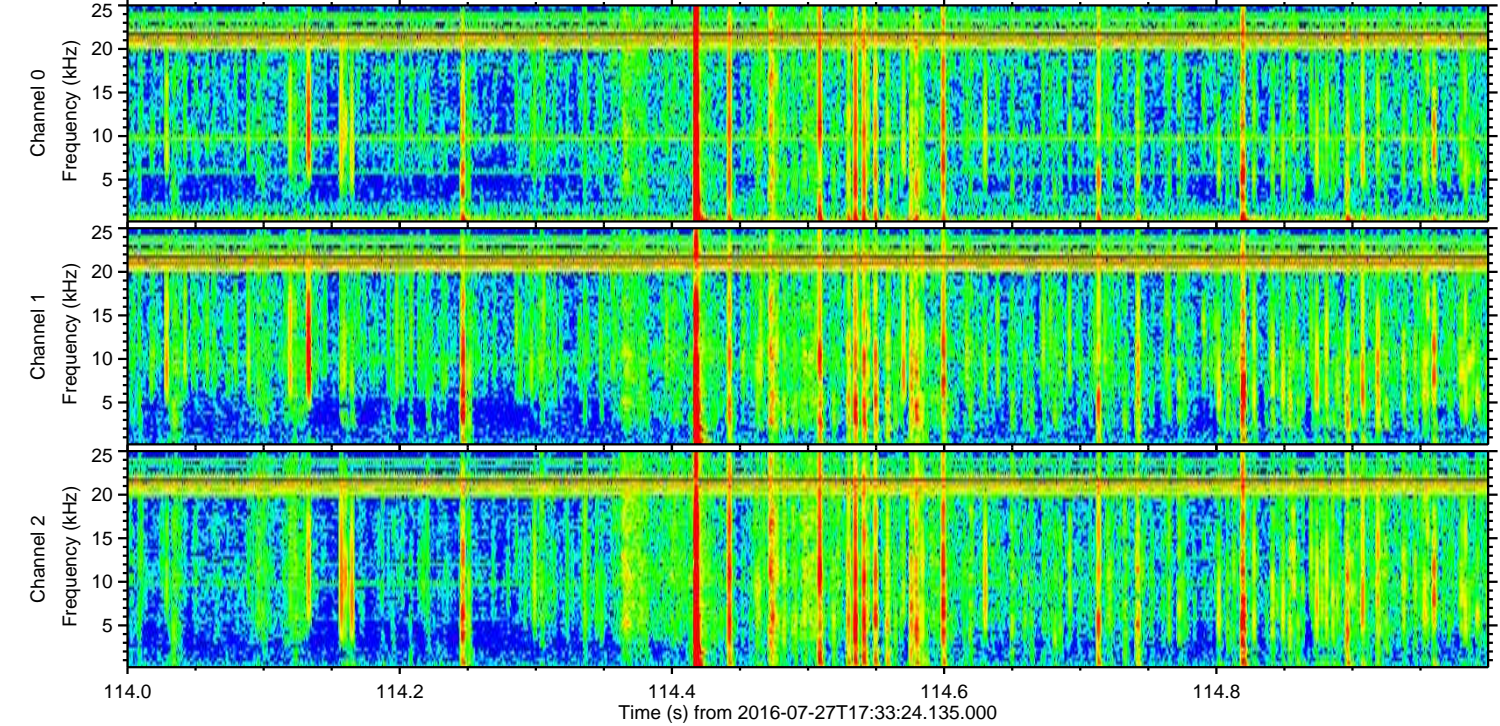
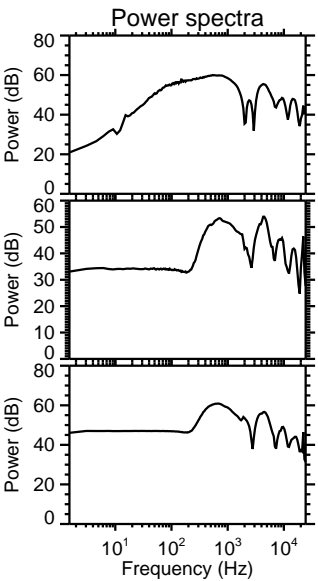
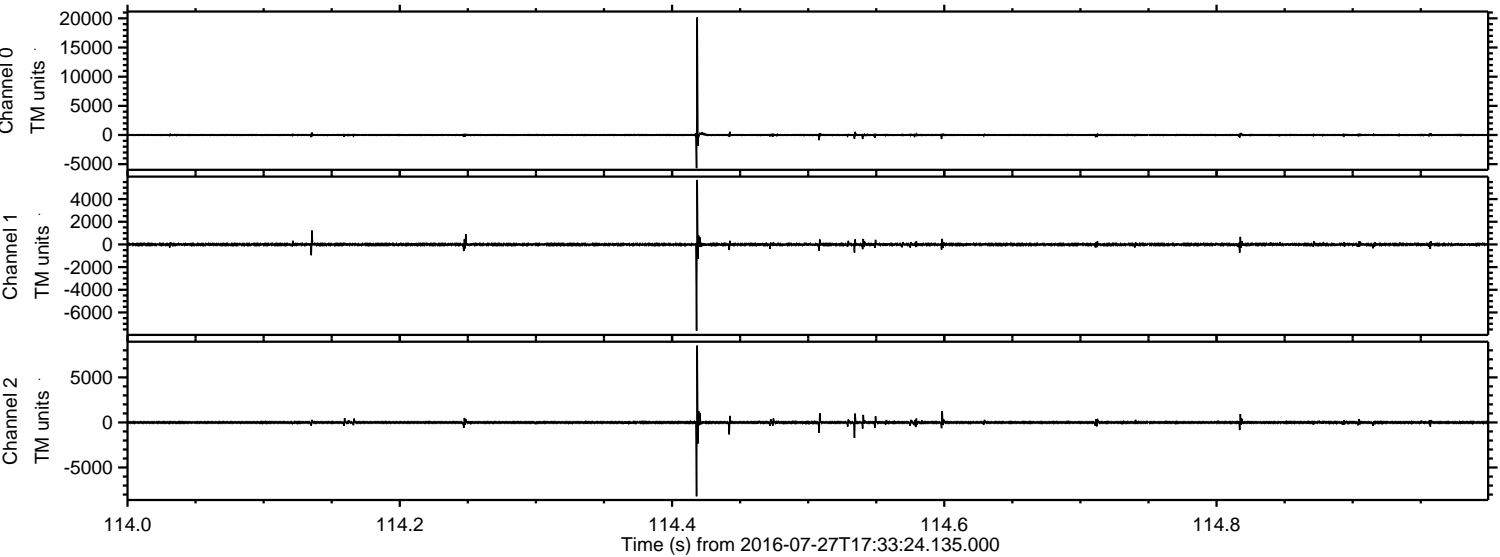
Processed Wed Jul 27 19:40:57 2016 by ELM ver.2012-10-06 from 001\_\_elm20160727\_173323\_\_dat00.bin





ELMAVAN 3D WAVEFORMS (Measured data sampled at 50 kHz) 51000 packets of 144 samples from 2016-07-27T17:33:24.135.000. Part 115/147

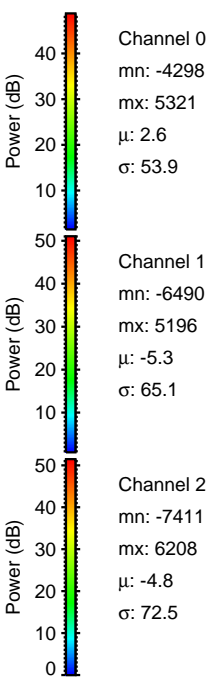
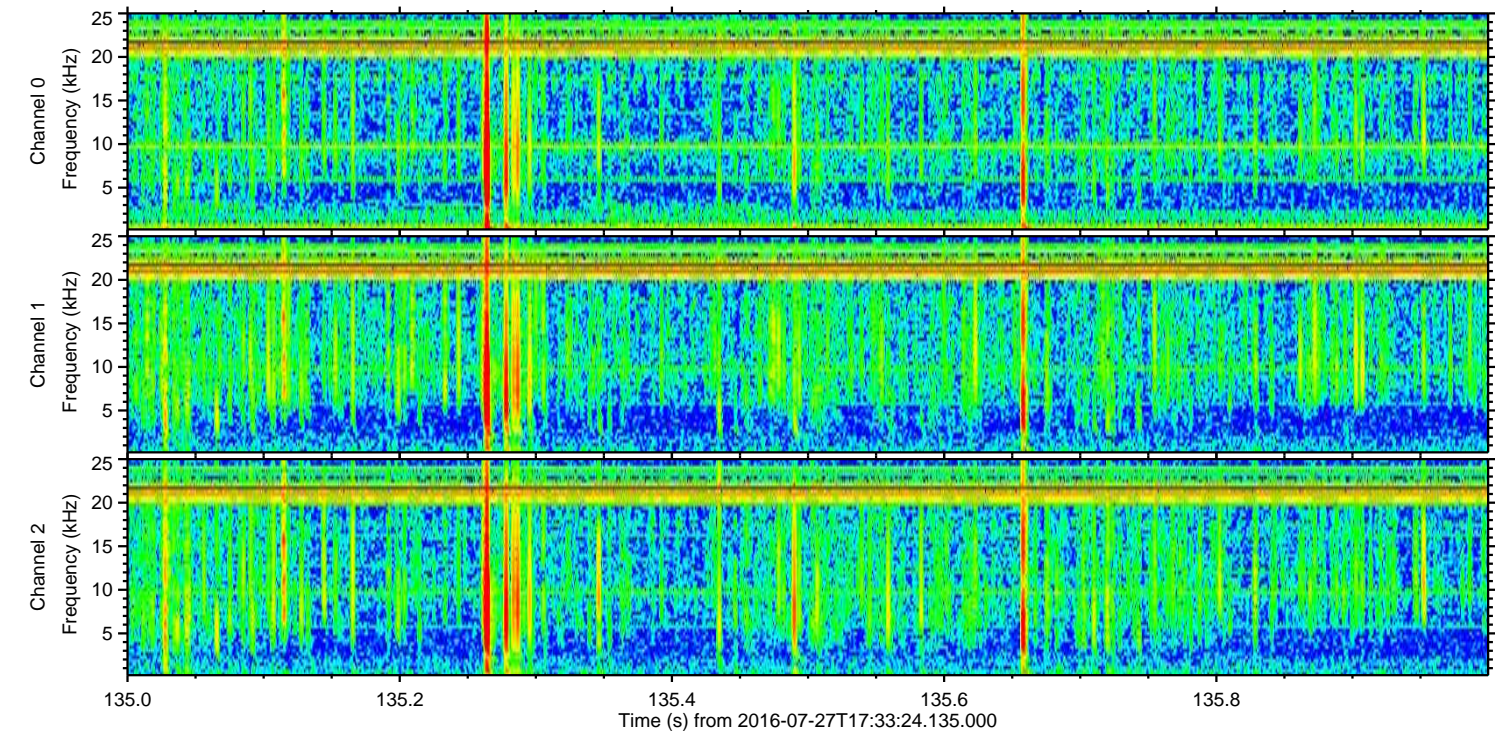
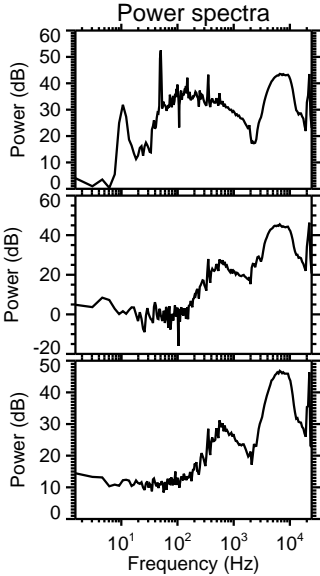
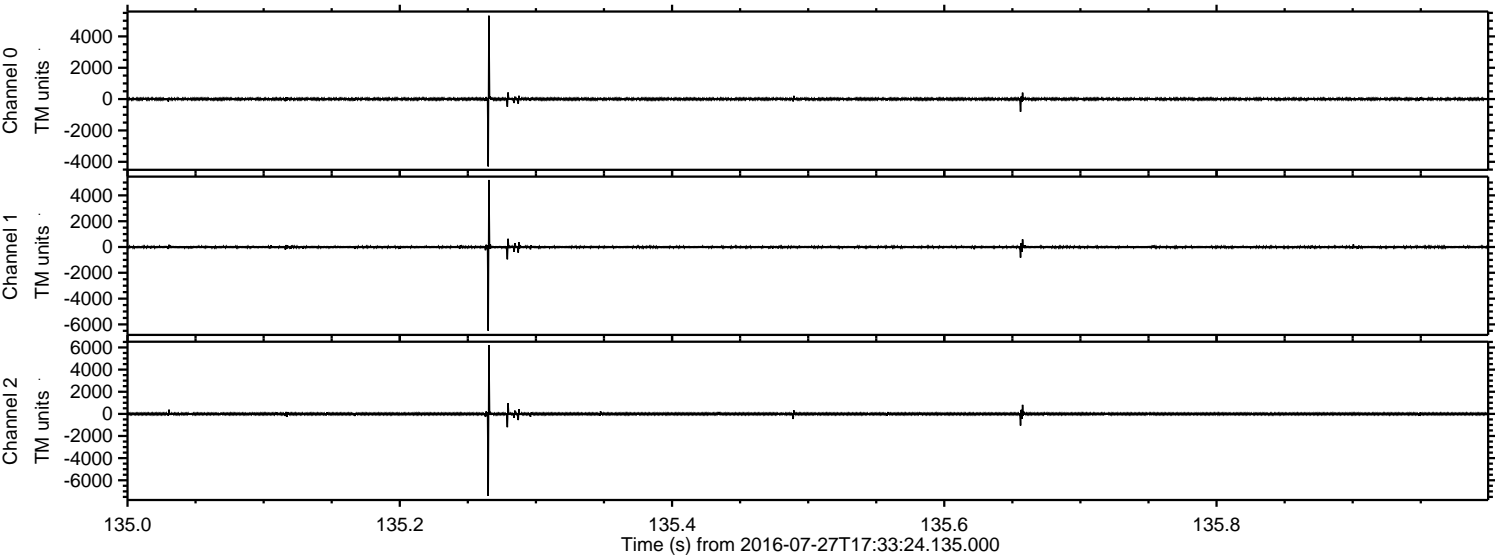
Processed Wed Jul 27 19:41:14 2016 by ELM ver.2012-10-06 from 001\_\_elm20160727\_173323\_\_dat00.bin





ELMAVAN 3D WAVEFORMS (Measured data sampled at 50 kHz) 51000 packets of 144 samples from 2016-07-27T17:33:24.135.000. Part 136/147

Processed Wed Jul 27 19:41:15 2016 by ELM ver.2012-10-06 from 001\_\_elm20160727\_173323\_\_dat00.bin



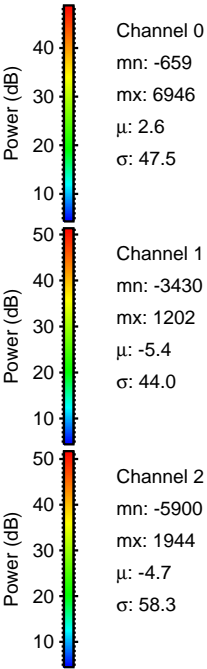
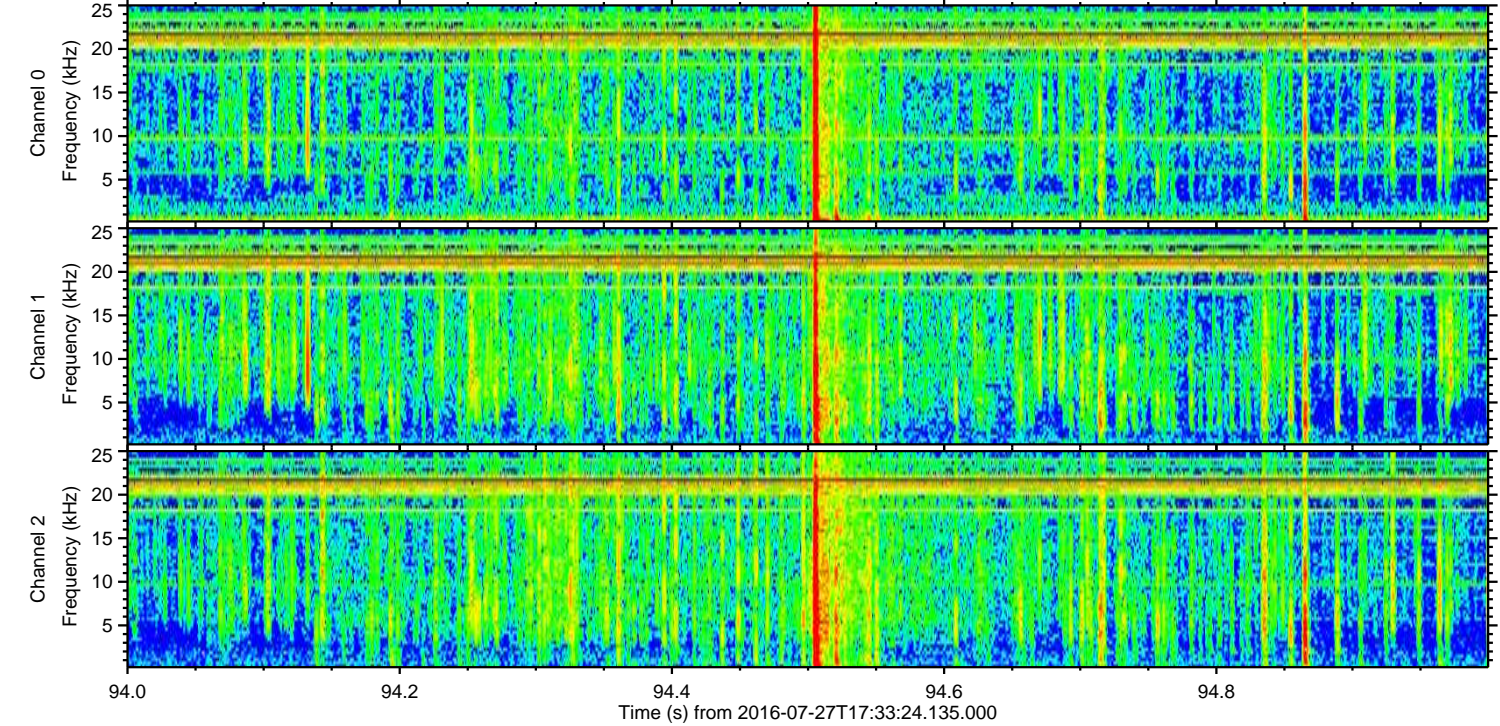
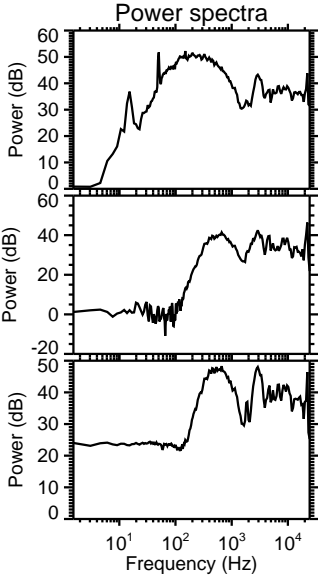
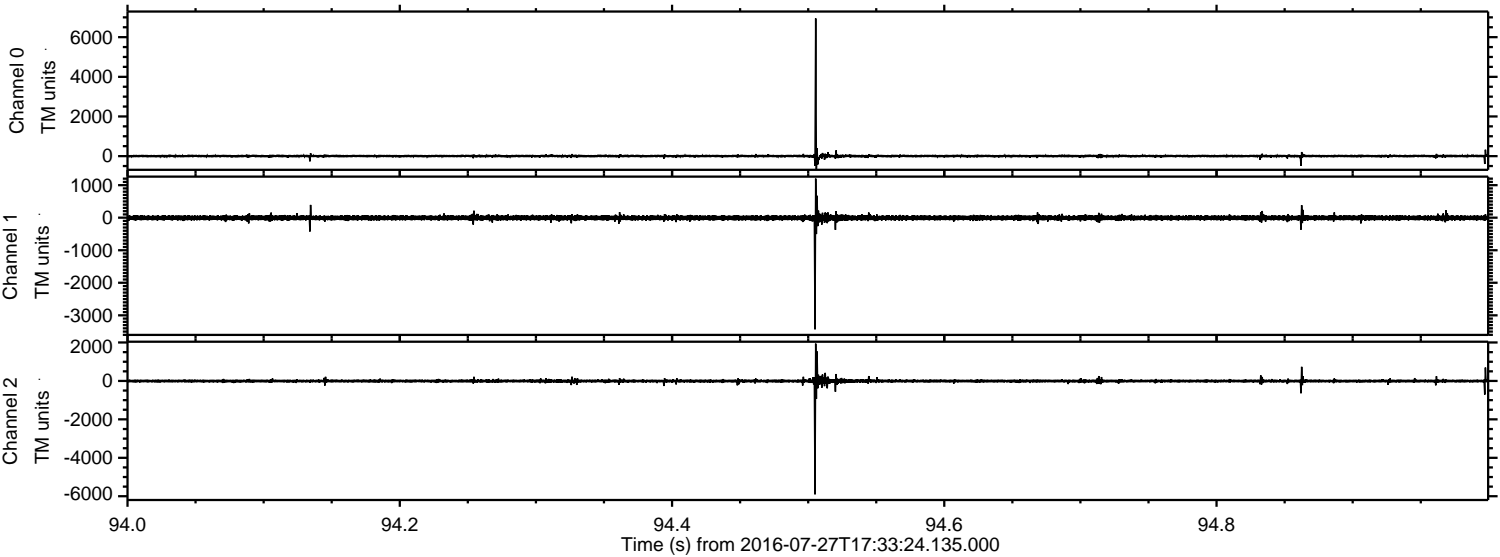
Channel 0  
mn: -4298  
mx: 5321  
 $\mu$ : 2.6  
 $\sigma$ : 53.9

Channel 1  
mn: -6490  
mx: 5196  
 $\mu$ : -5.3  
 $\sigma$ : 65.1

Channel 2  
mn: -7411  
mx: 6208  
 $\mu$ : -4.8  
 $\sigma$ : 72.5



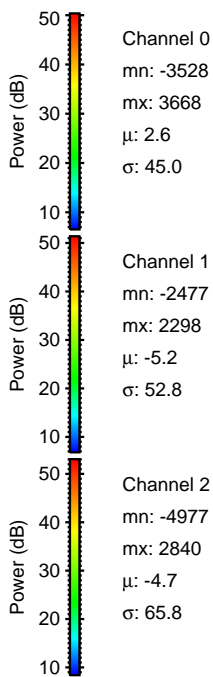
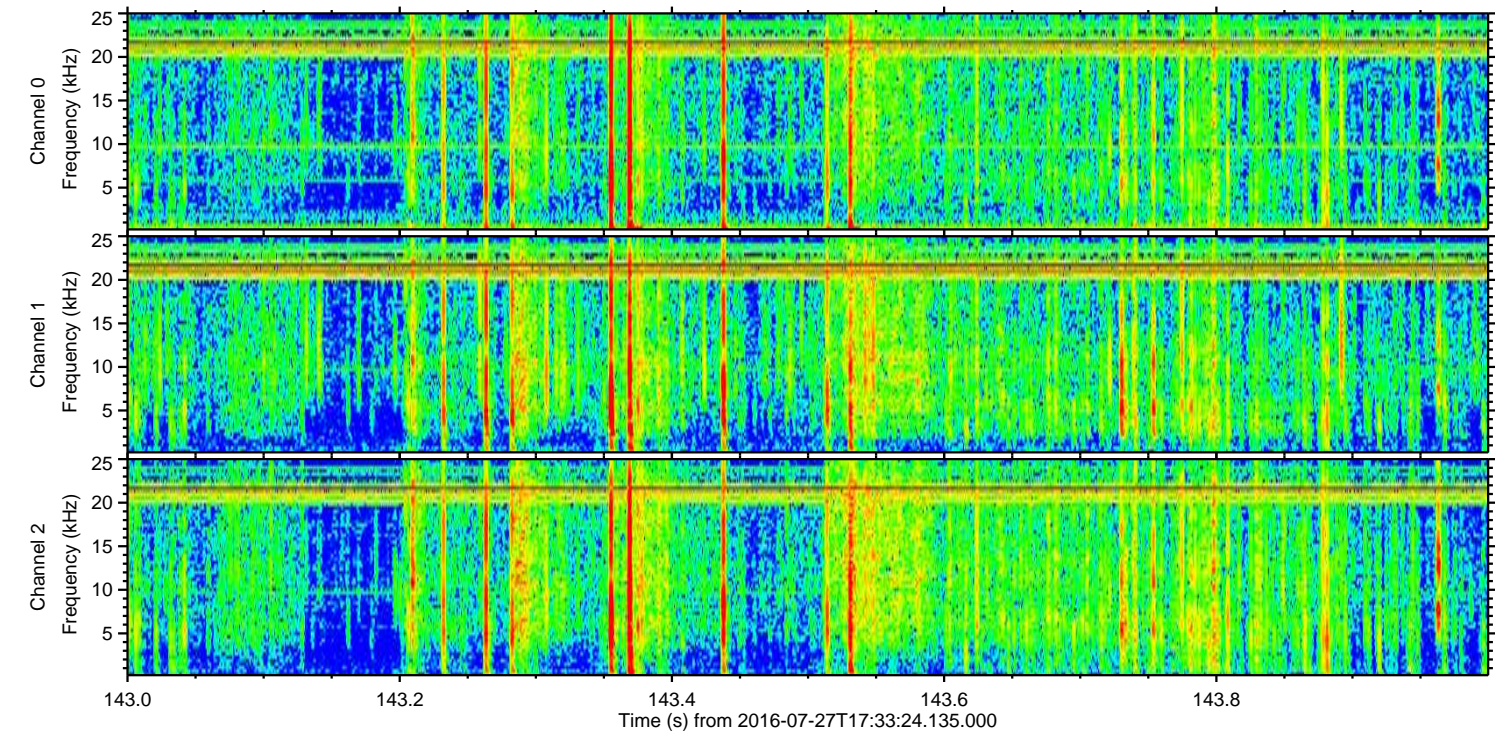
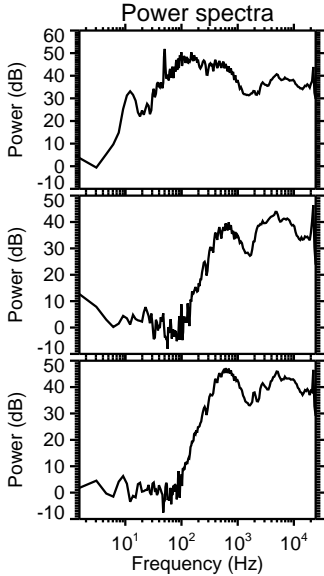
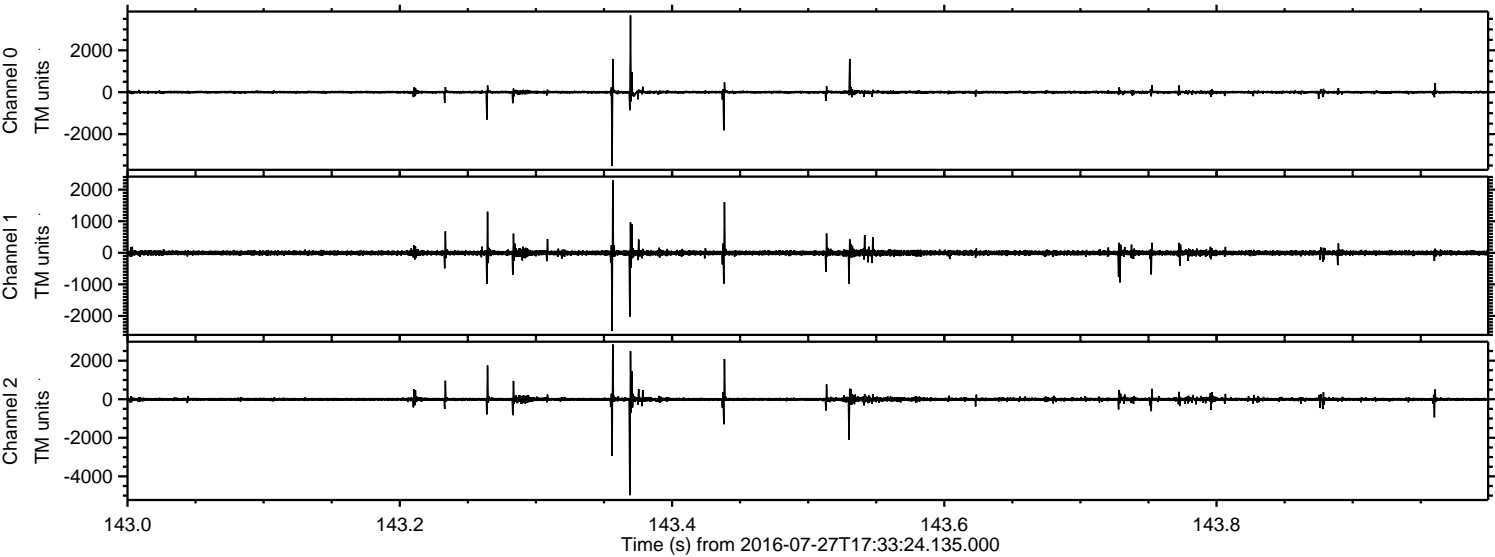
Processed Wed Jul 27 19:41:16 2016 by ELM ver.2012-10-06 from 001\_\_elm20160727\_173323\_\_dat00.bin





ELMAVAN 3D WAVEFORMS (Measured data sampled at 50 kHz) 51000 packets of 144 samples from 2016-07-27T17:33:24.135.000. Part 144/147

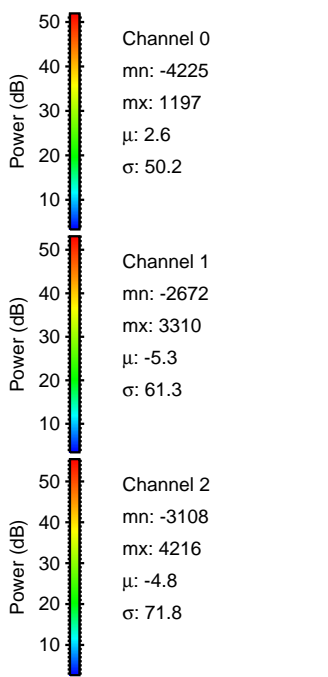
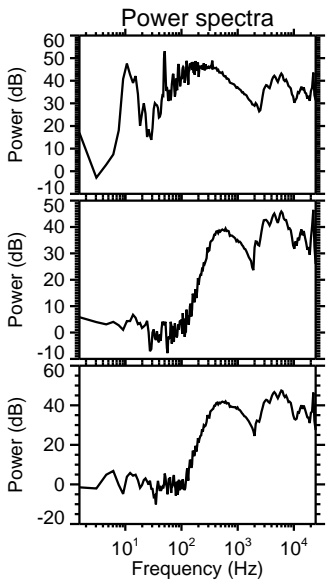
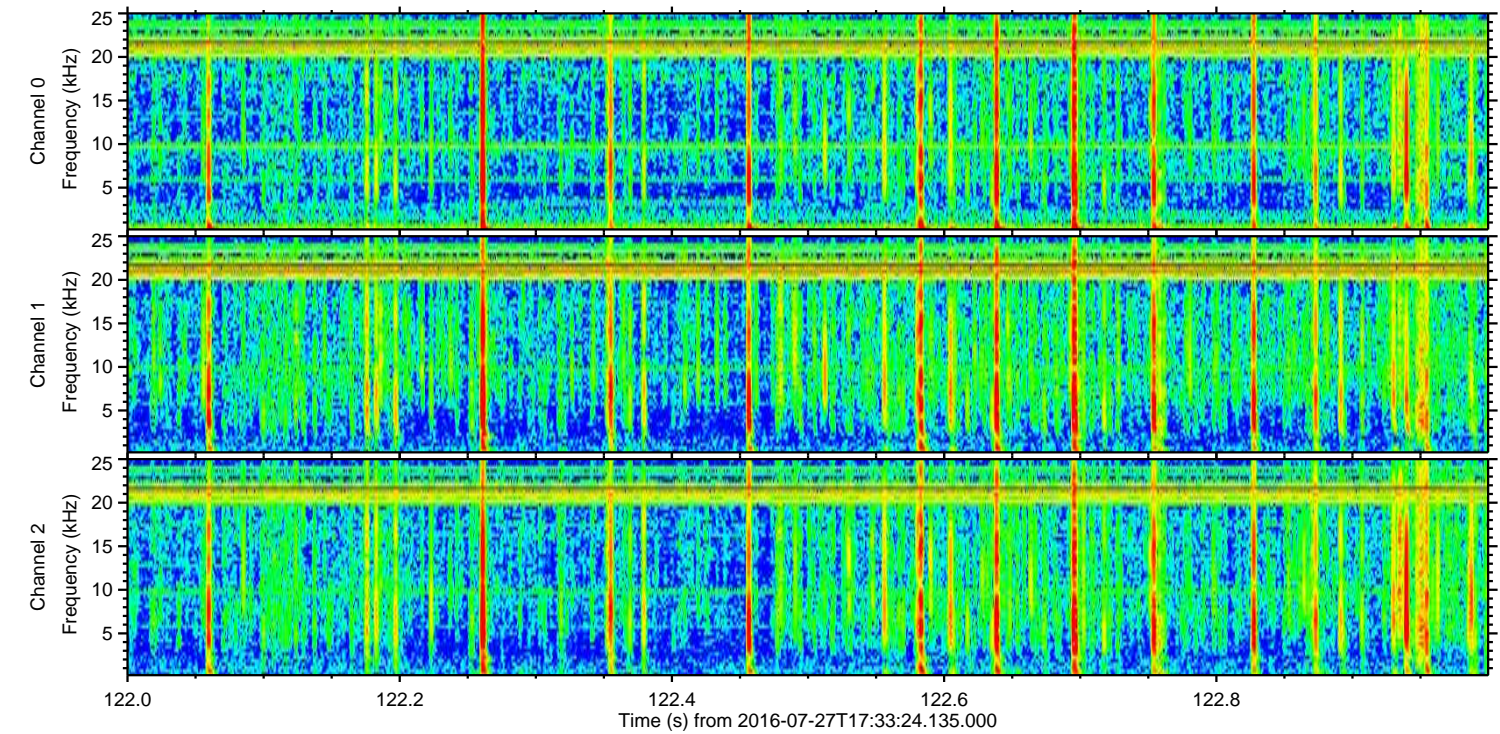
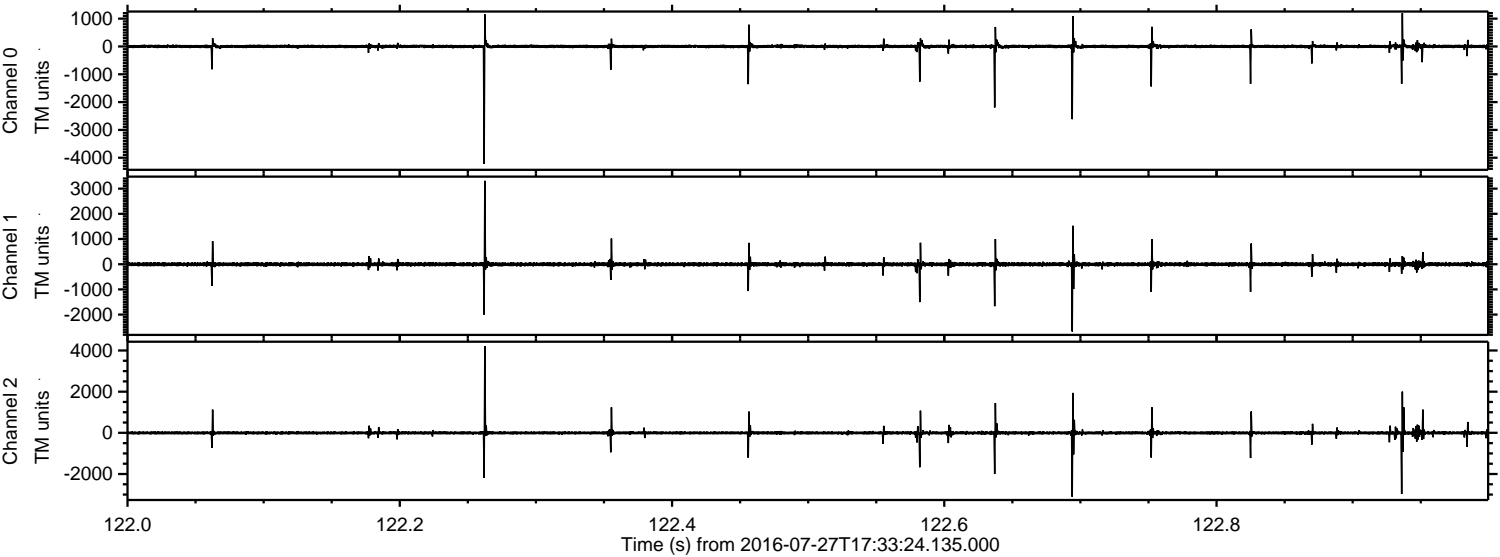
Processed Wed Jul 27 19:41:18 2016 by ELM ver.2012-10-06 from 001\_\_elm20160727\_173323\_\_dat00.bin





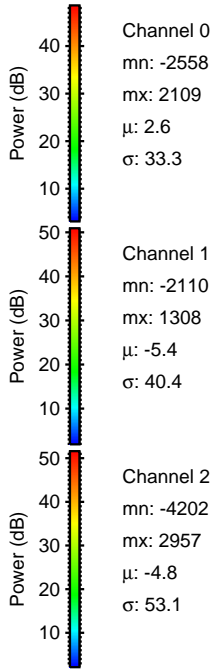
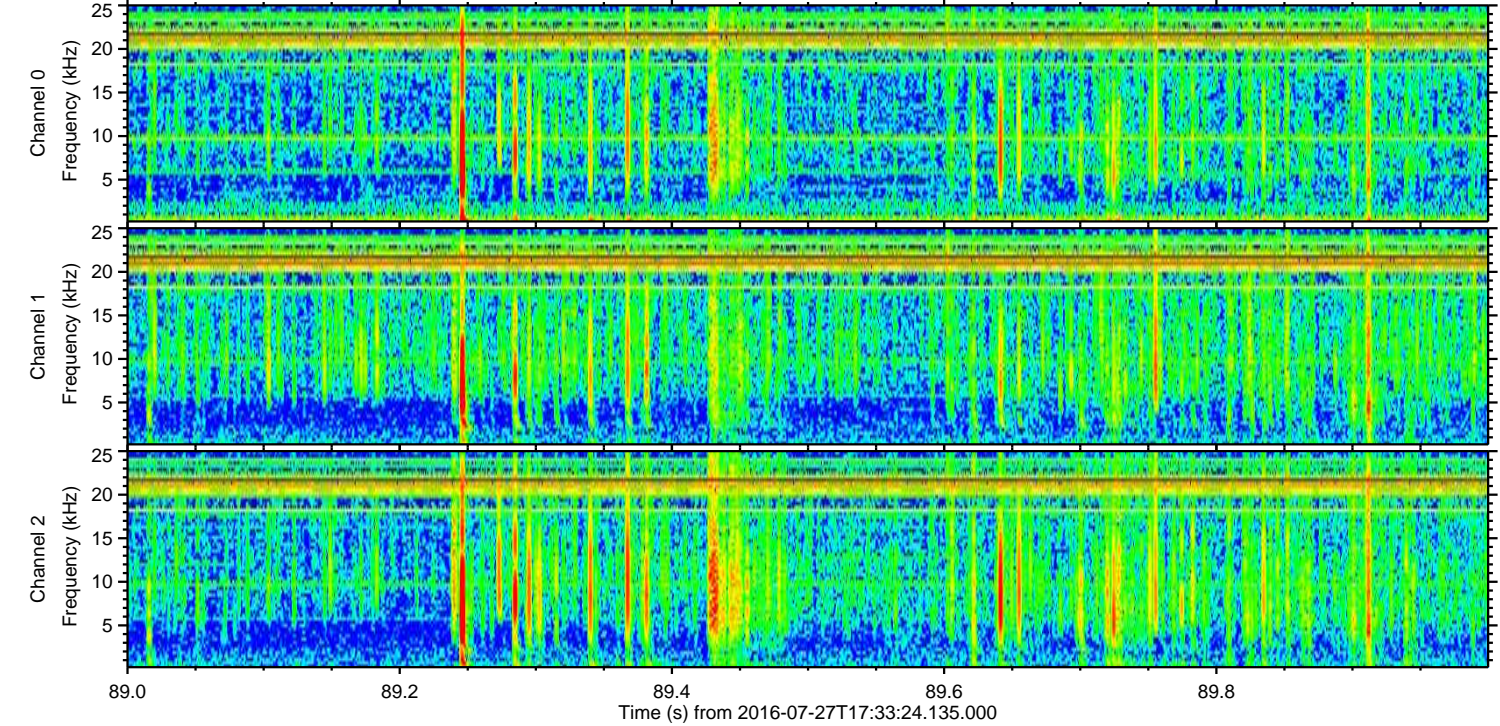
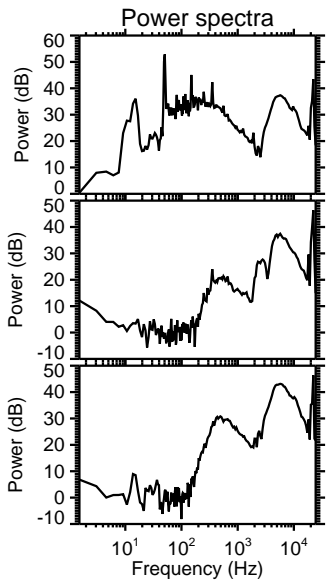
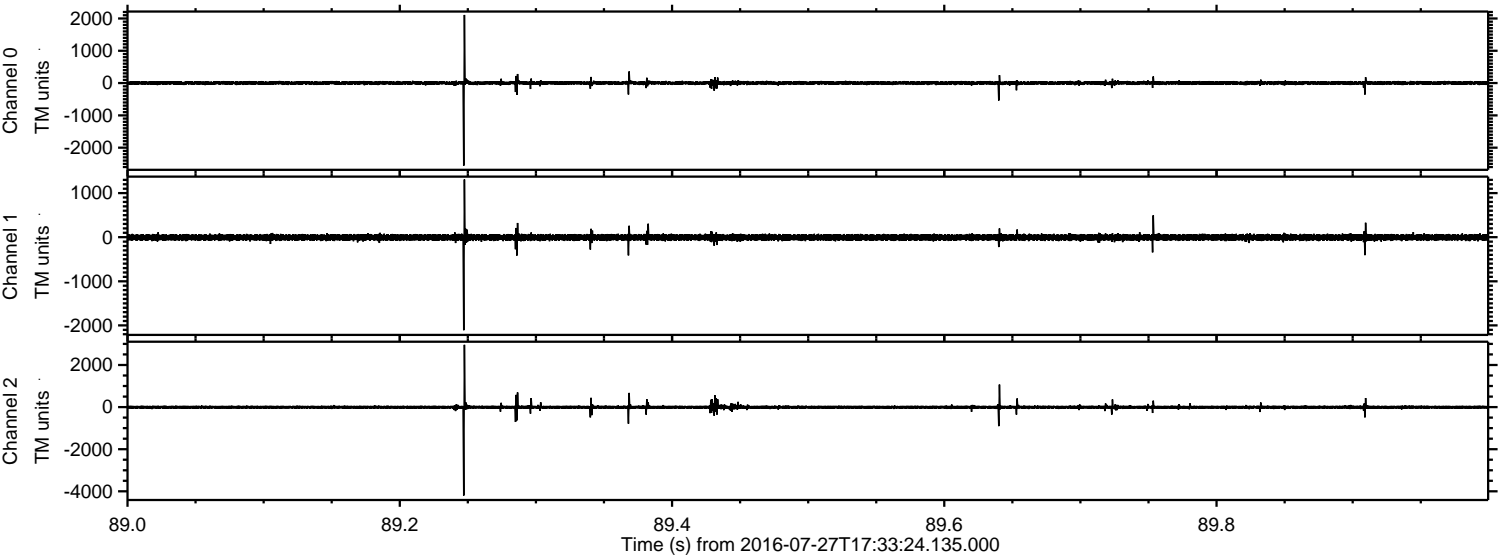
ELMAVAN 3D WAVEFORMS (Measured data sampled at 50 kHz) 51000 packets of 144 samples from 2016-07-27T17:33:24.135.000. Part 123/147

Processed Wed Jul 27 19:41:18 2016 by ELM ver.2012-10-06 from 001\_\_elm20160727\_173323\_\_dat00.bin



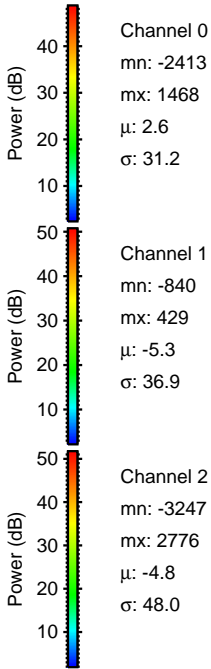
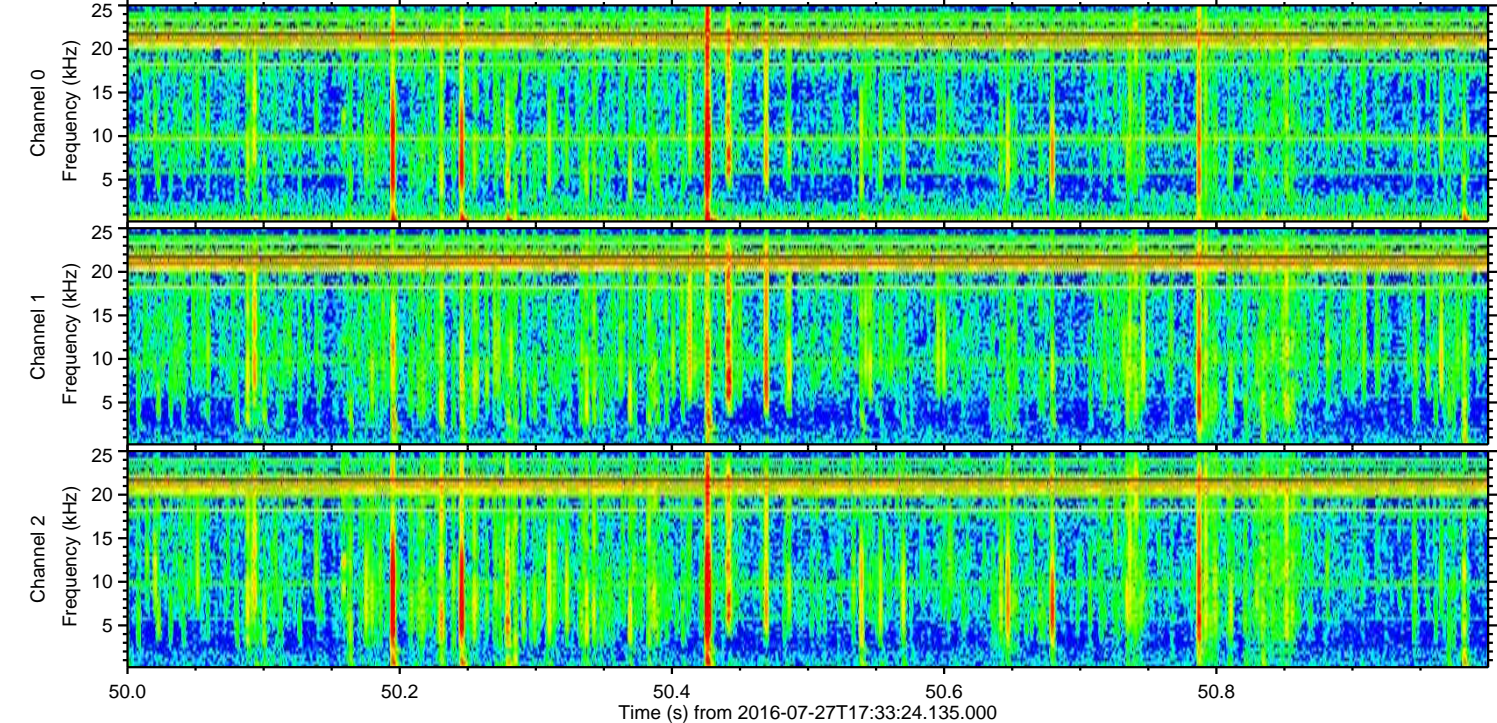
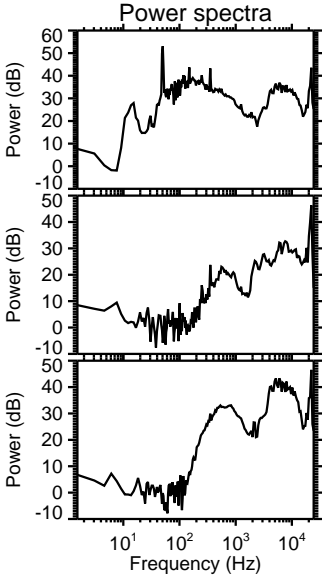
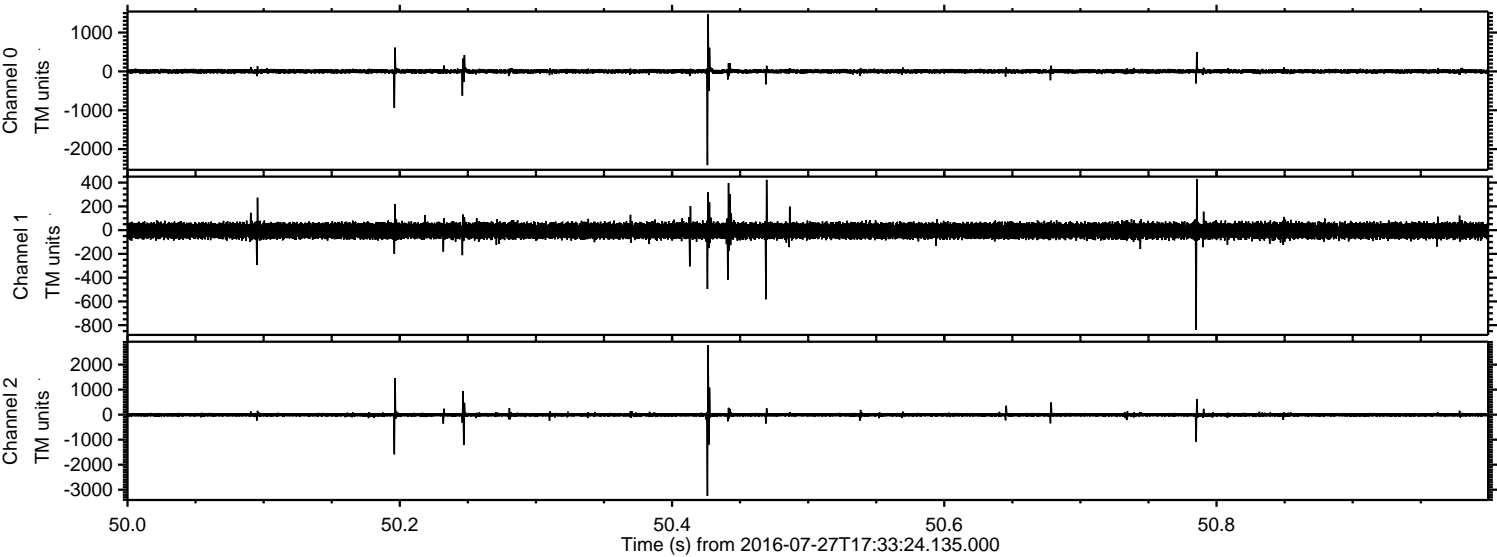


Processed Wed Jul 27 19:41:19 2016 by ELM ver.2012-10-06 from 001\_\_elm20160727\_173323\_\_dat00.bin



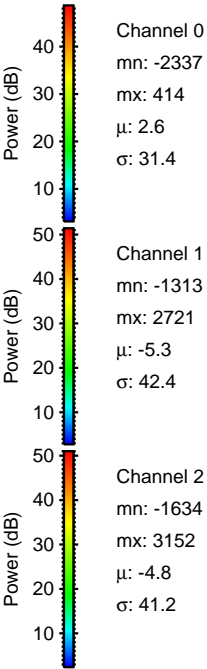
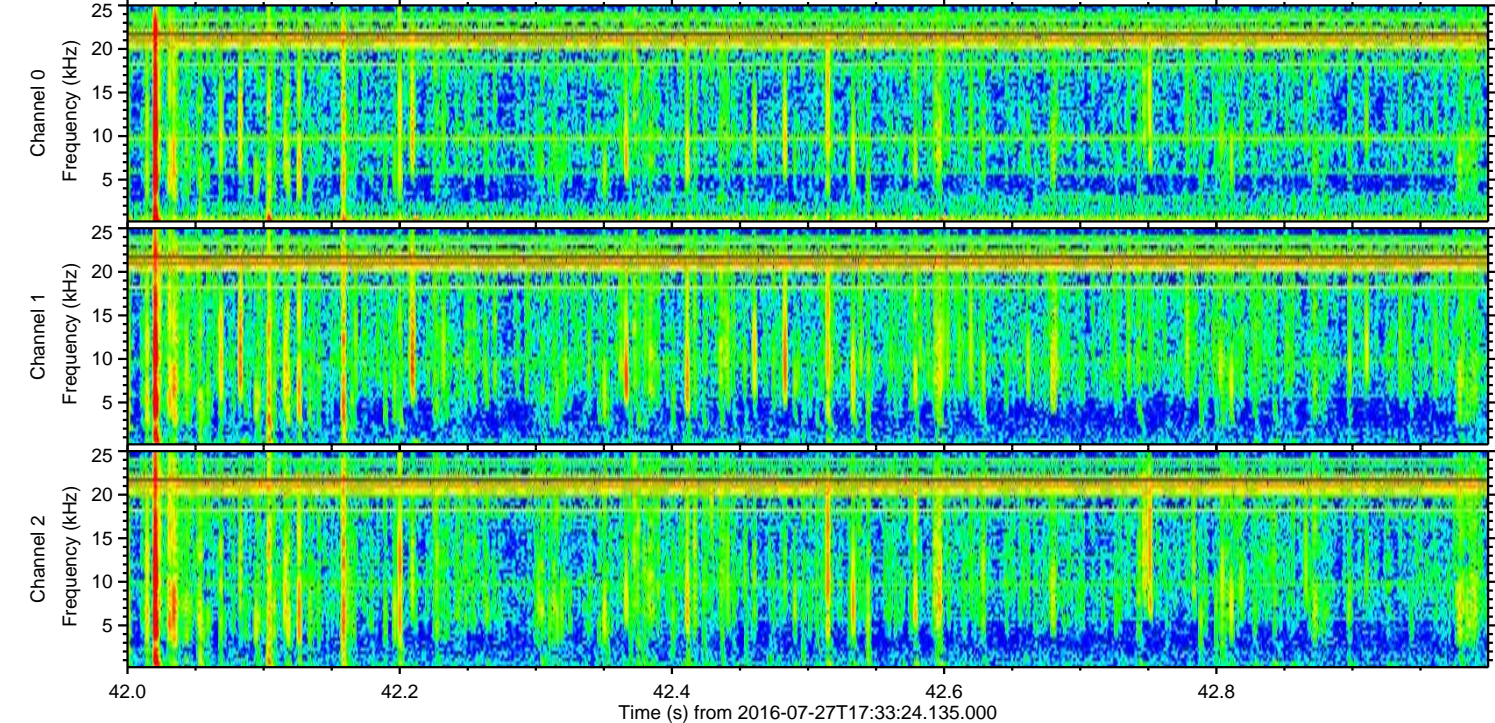
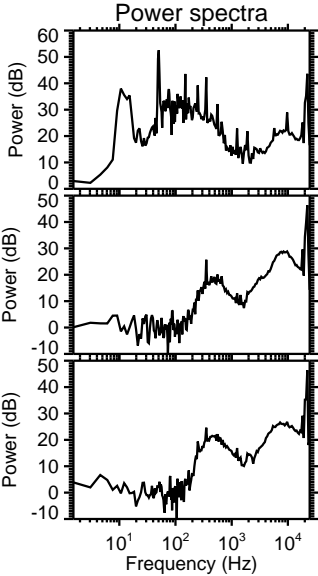
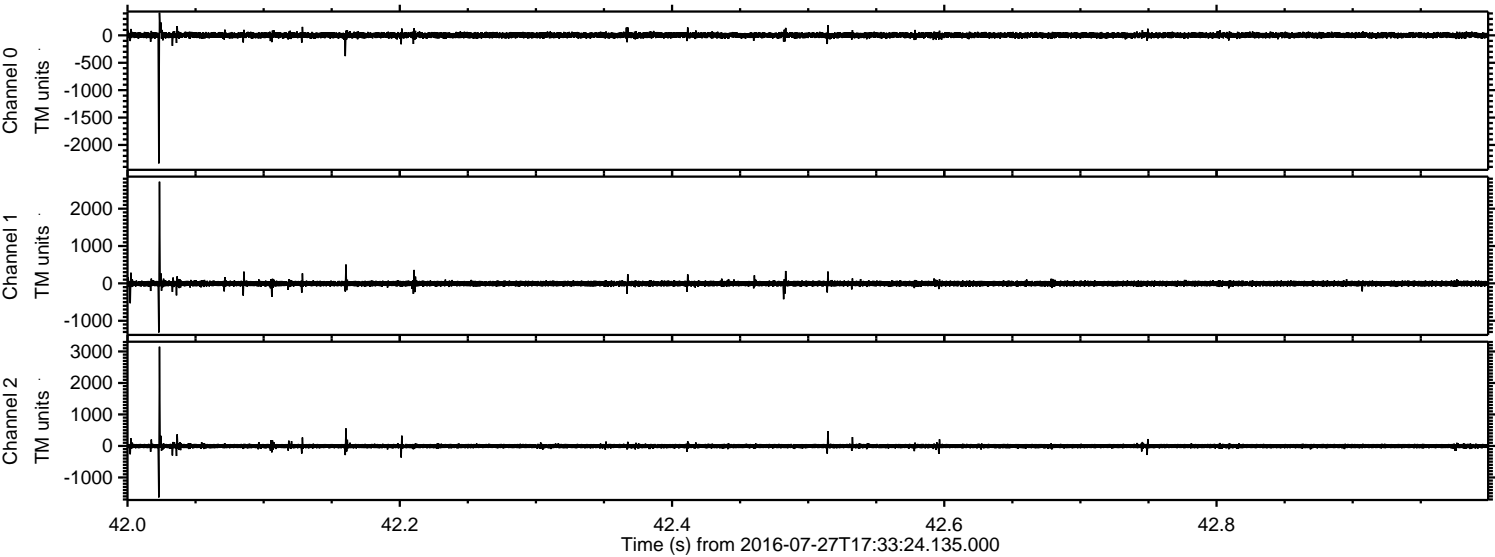


Processed Wed Jul 27 19:41:21 2016 by ELM ver.2012-10-06 from 001\_\_elm20160727\_173323\_\_dat00.bin



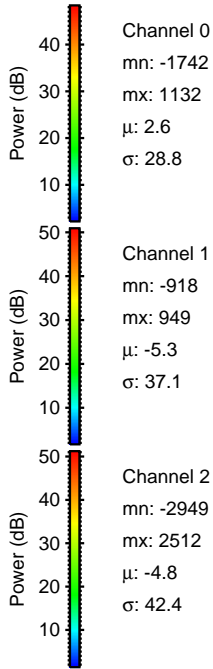
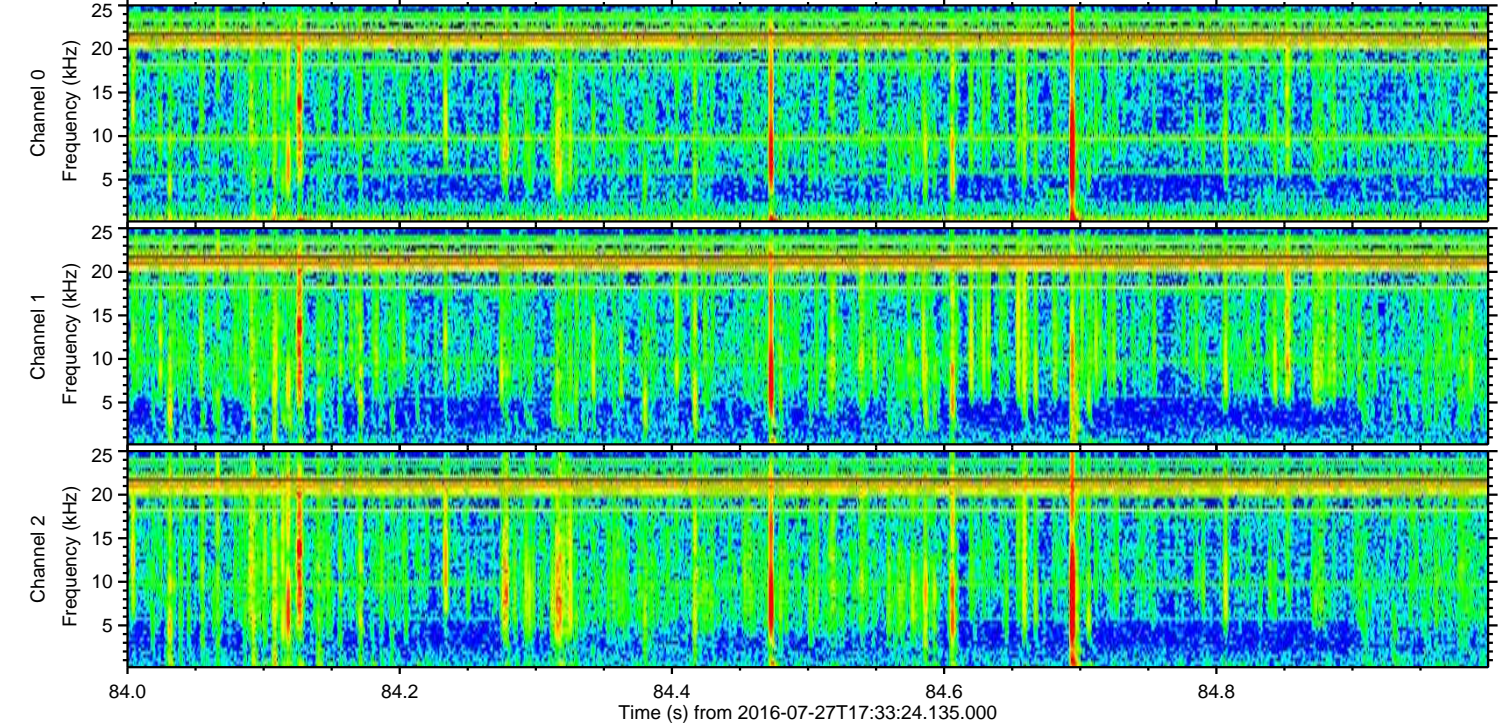
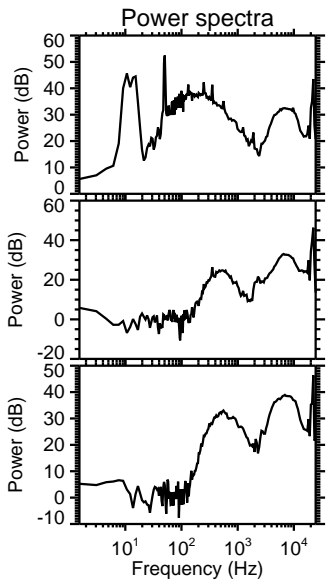
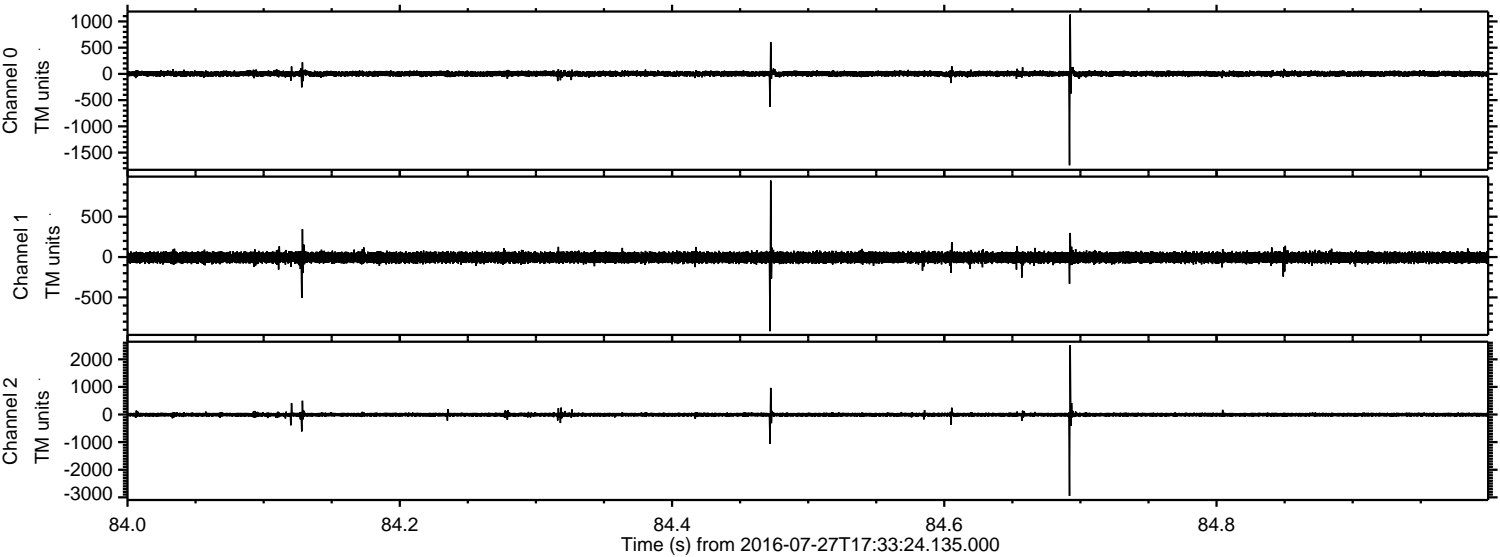


Processed Wed Jul 27 19:41:23 2016 by ELM ver.2012-10-06 from 001\_\_elm20160727\_173323\_\_dat00.bin





Processed Wed Jul 27 19:41:24 2016 by ELM ver.2012-10-06 from 001\_\_elm20160727\_173323\_\_dat00.bin



Channel 0  
mn: -1742  
mx: 1132  
 $\mu$ : 2.6  
 $\sigma$ : 28.8

Channel 1  
mn: -918  
mx: 949  
 $\mu$ : -5.3  
 $\sigma$ : 37.1

Channel 2  
mn: -2949  
mx: 2512  
 $\mu$ : -4.8  
 $\sigma$ : 42.4



Processed Wed Jul 27 19:41:26 2016 by ELM ver.2012-10-06 from 001\_\_elm20160727\_173323\_\_dat00.bin

