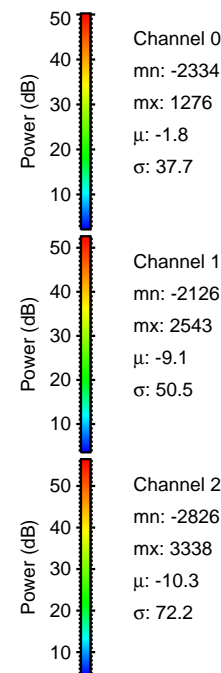
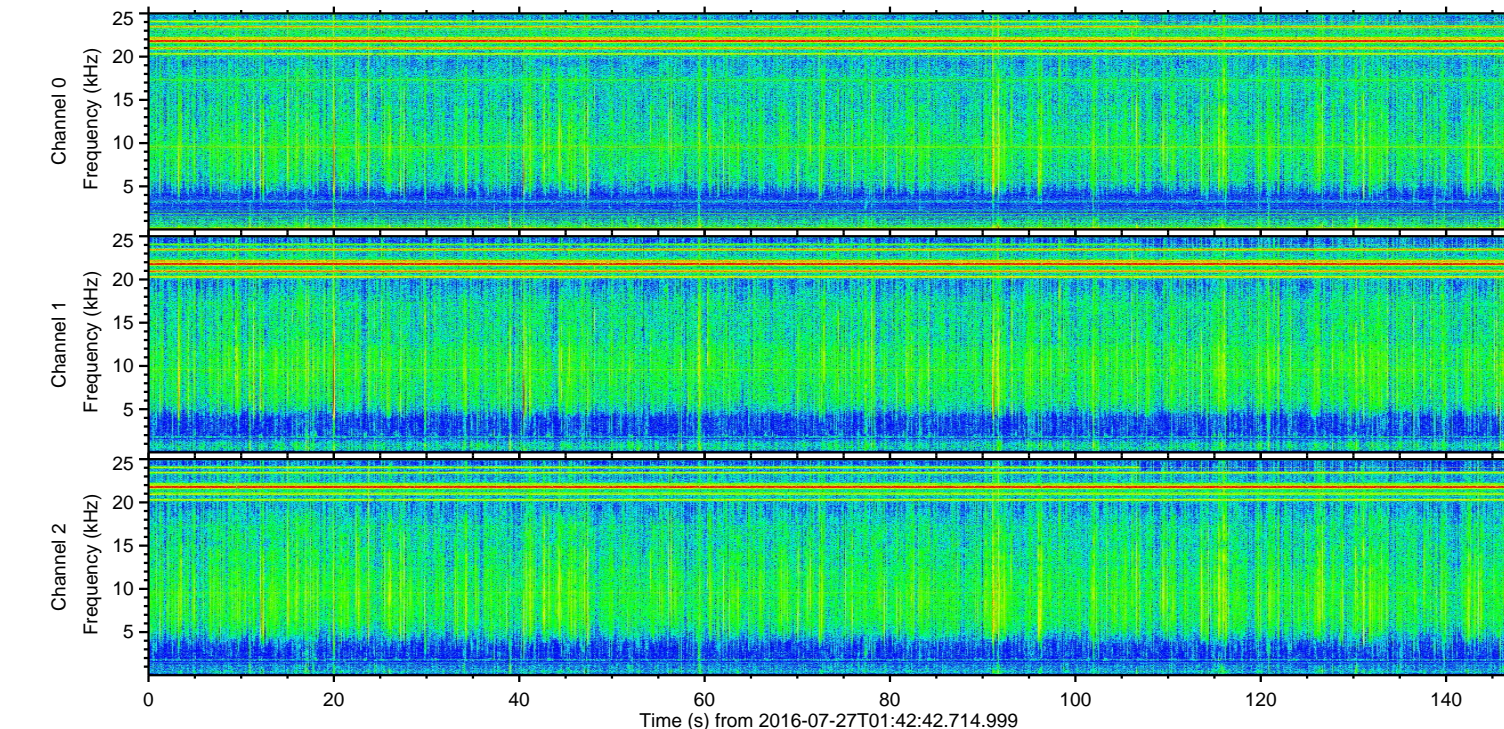
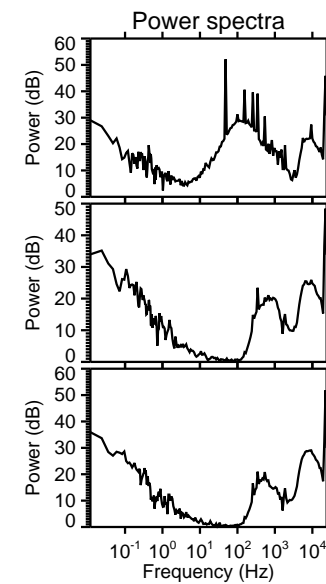
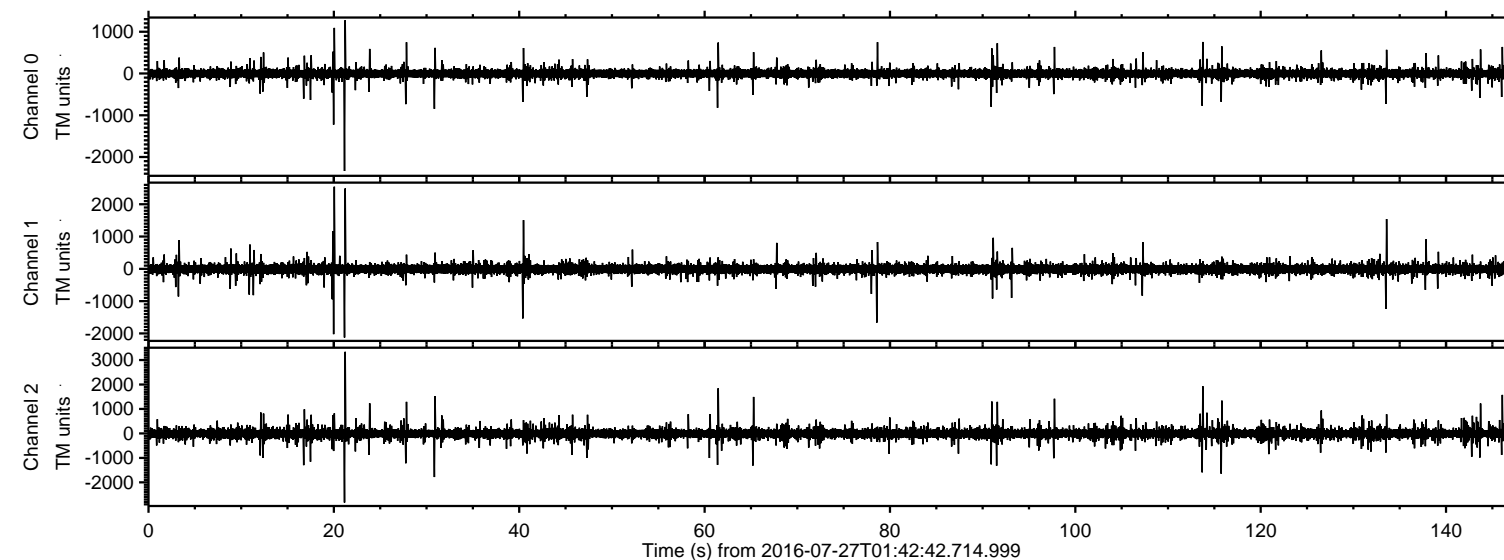
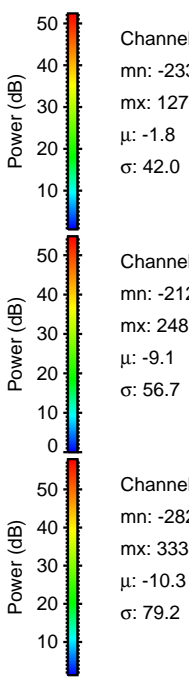
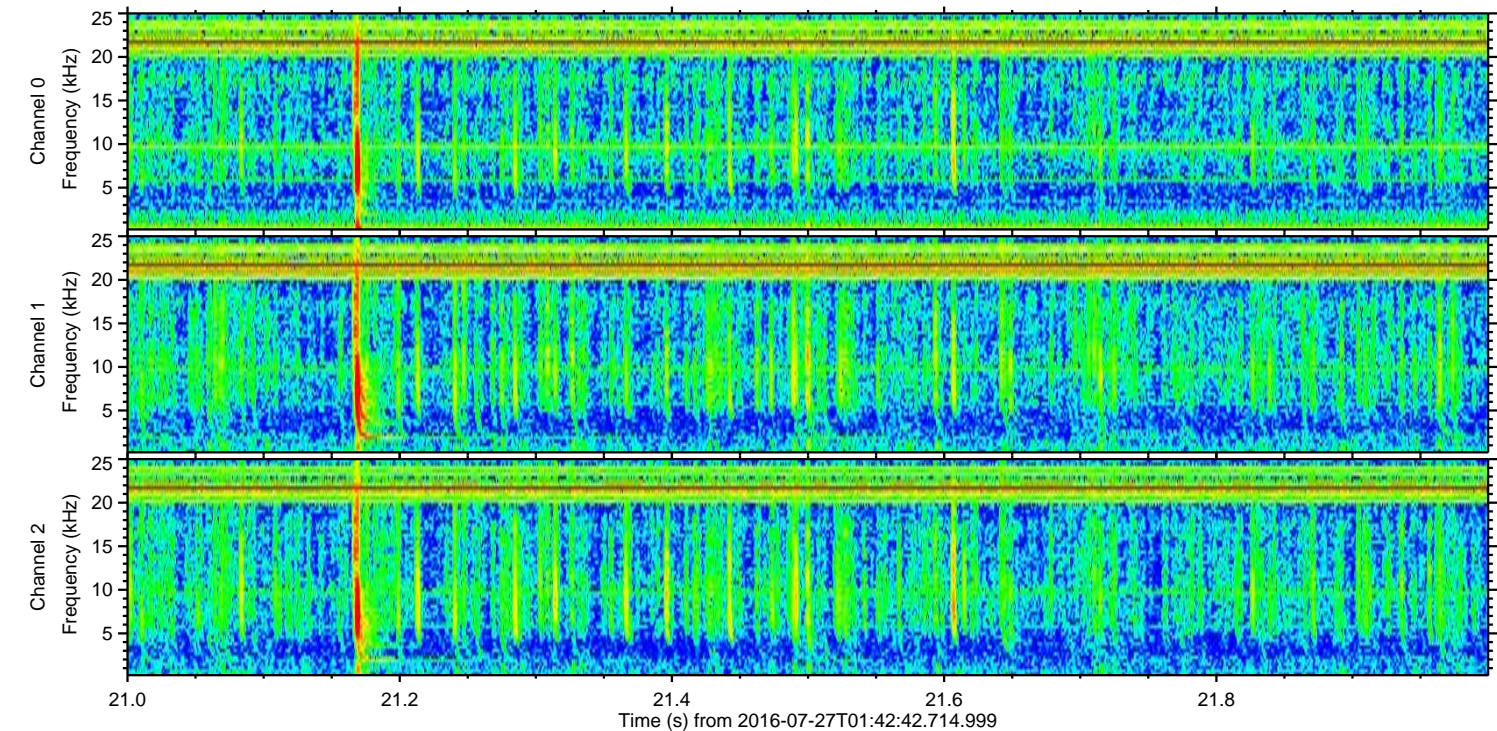
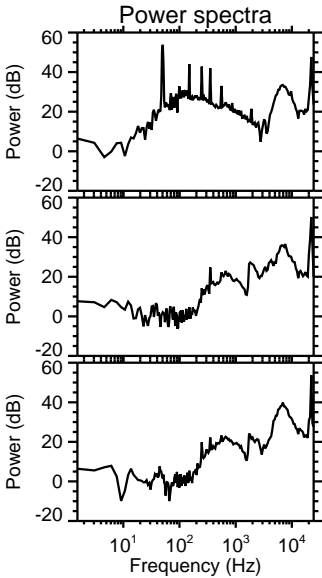
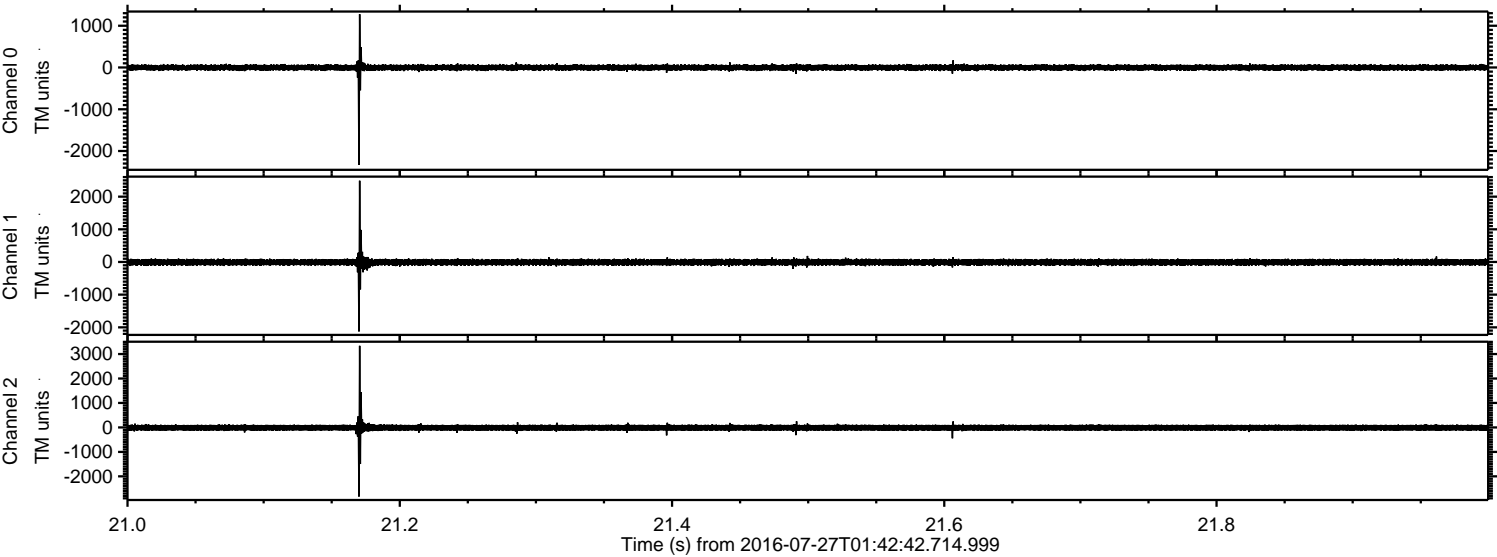


ELMAVAN 3D WAVEFORMS (Measured data sampled at 50 kHz) 51000 packets of 144 samples from 2016-07-27T01:42:42.714.999.

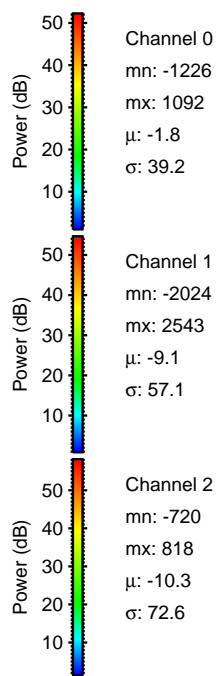
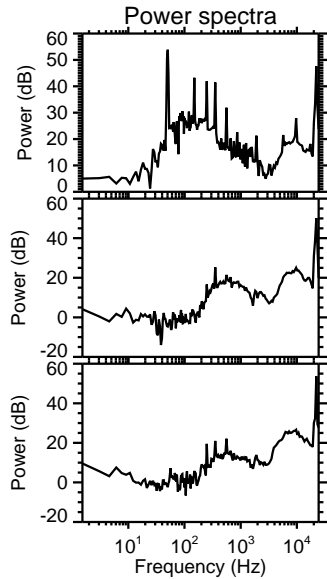
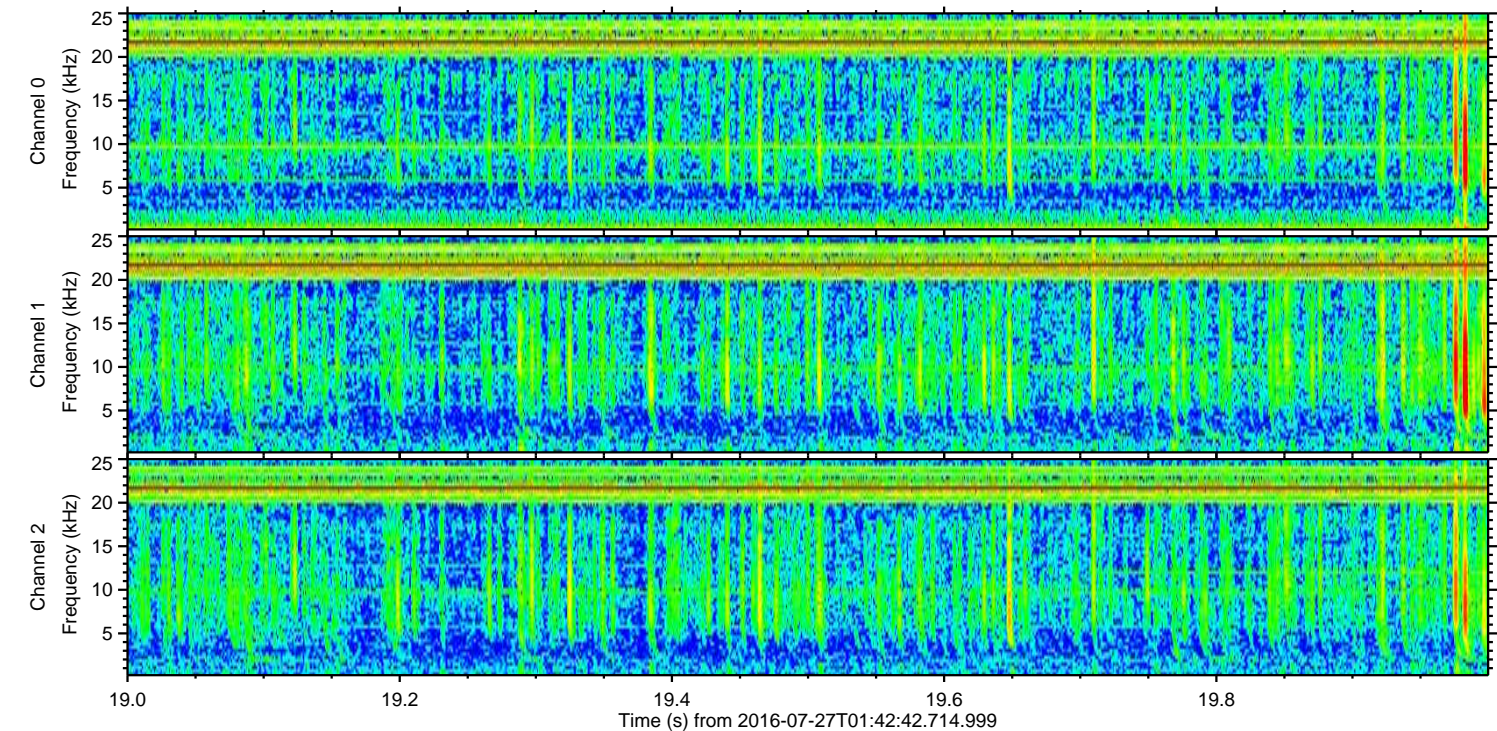
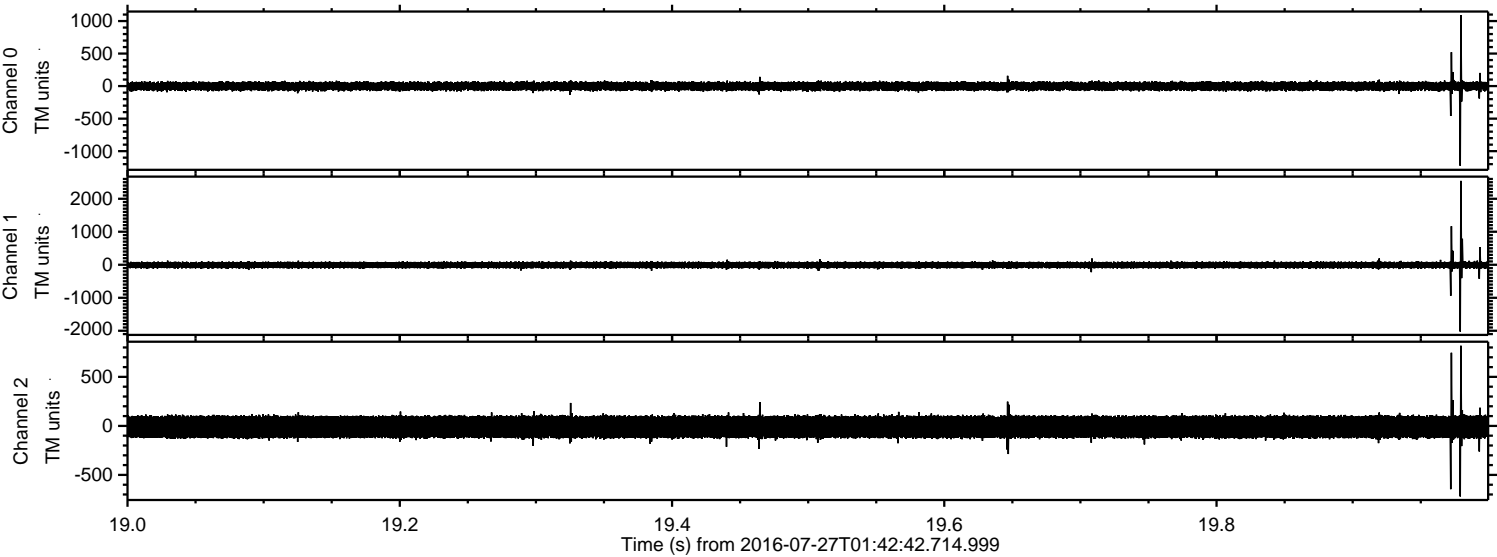
Processed Wed Jul 27 03:50:48 2016 by ELM ver.2012-10-06 from 001__elm20160727_014241__dat00.bin



Processed Wed Jul 27 03:51:00 2016 by ELM ver.2012-10-06 from 001__elm20160727_014241__dat00.bin

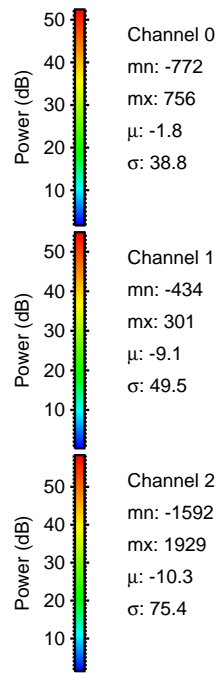
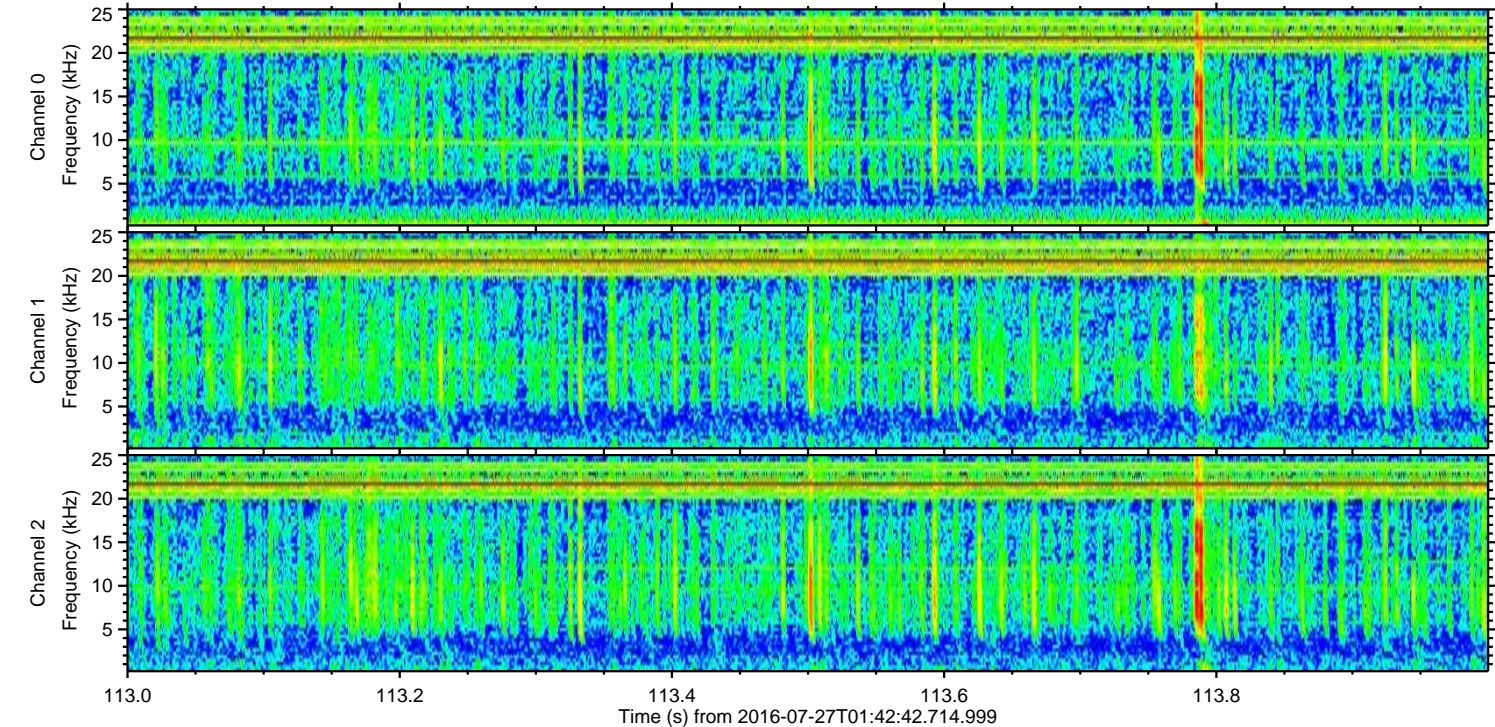
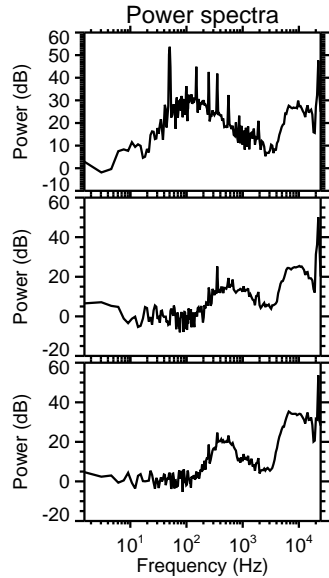
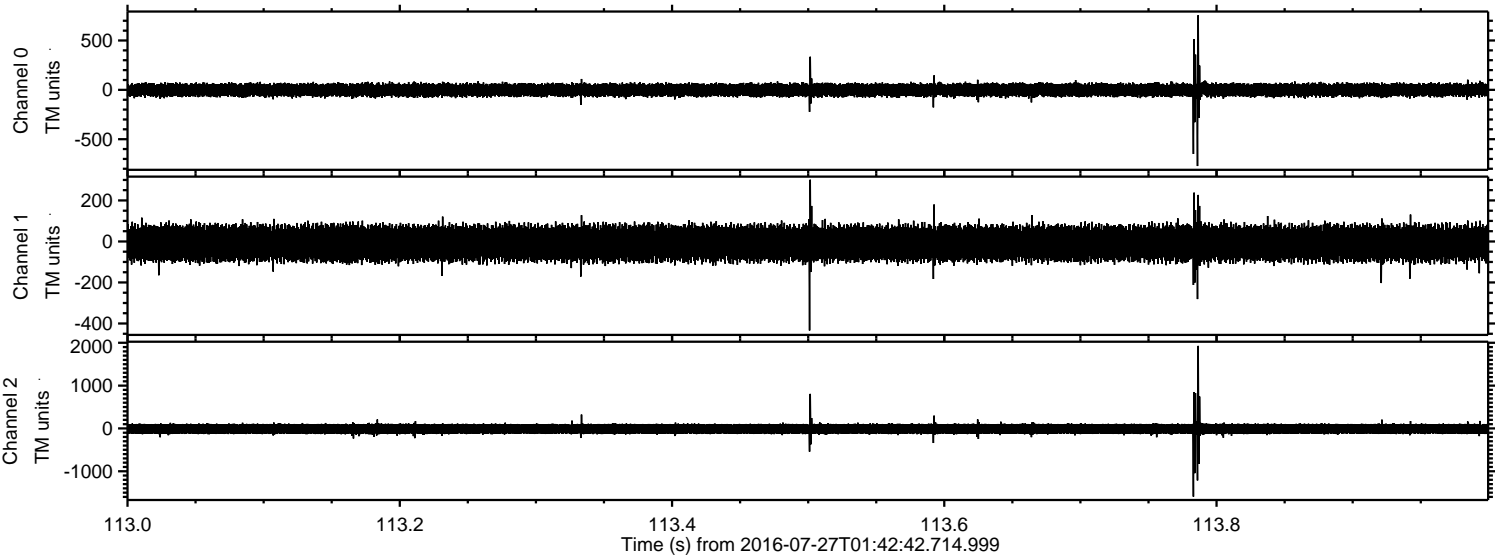


Processed Wed Jul 27 03:51:01 2016 by ELM ver.2012-10-06 from 001__elm20160727_014241__dat00.bin

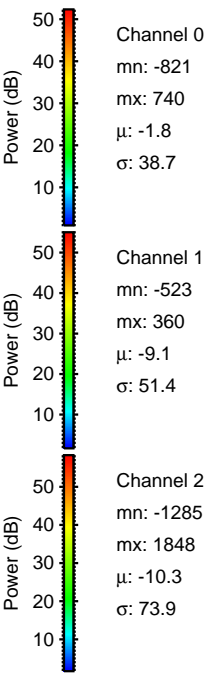
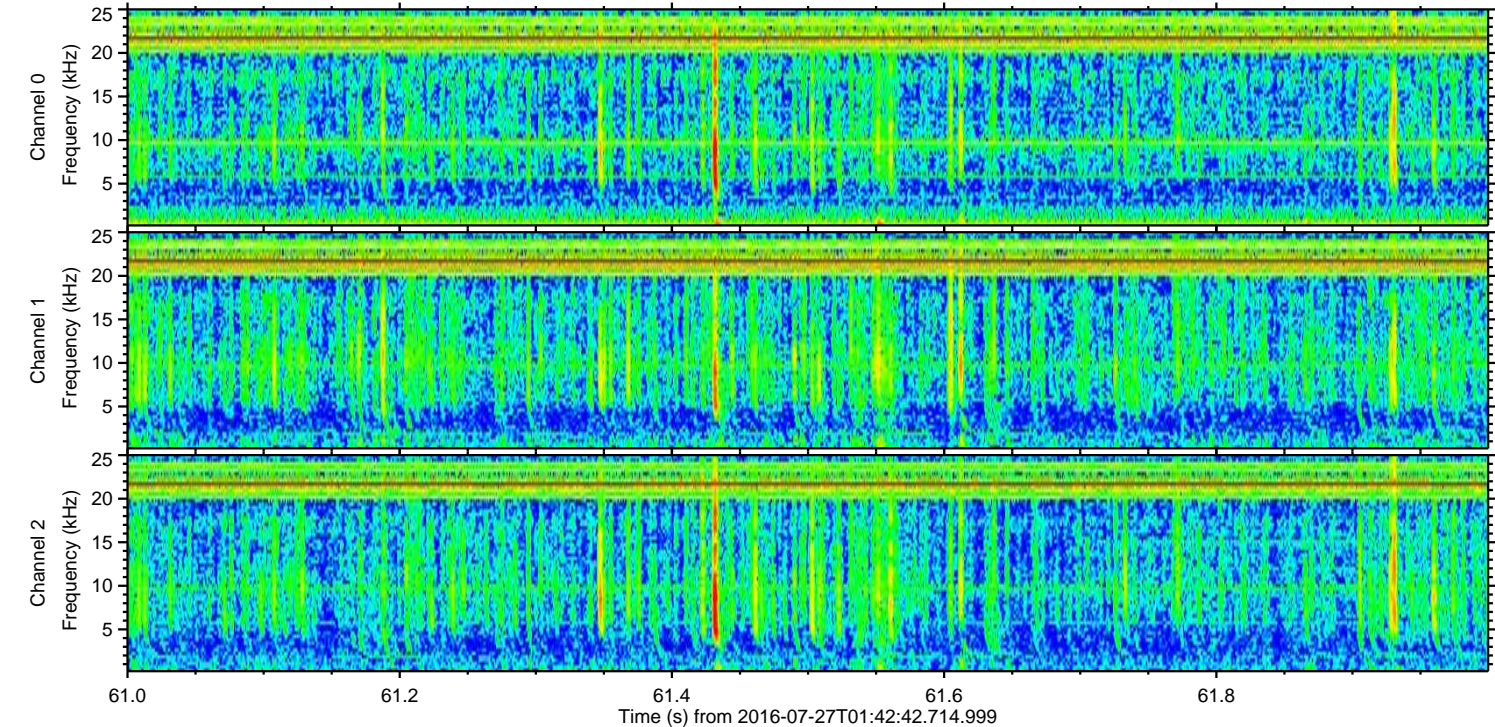
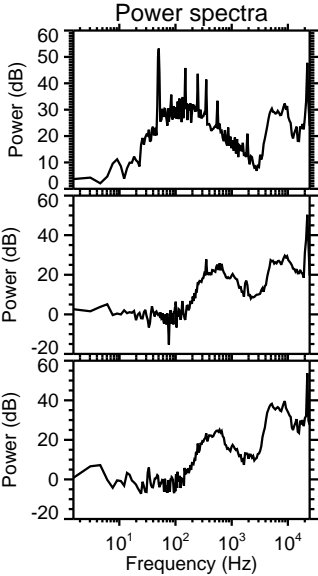
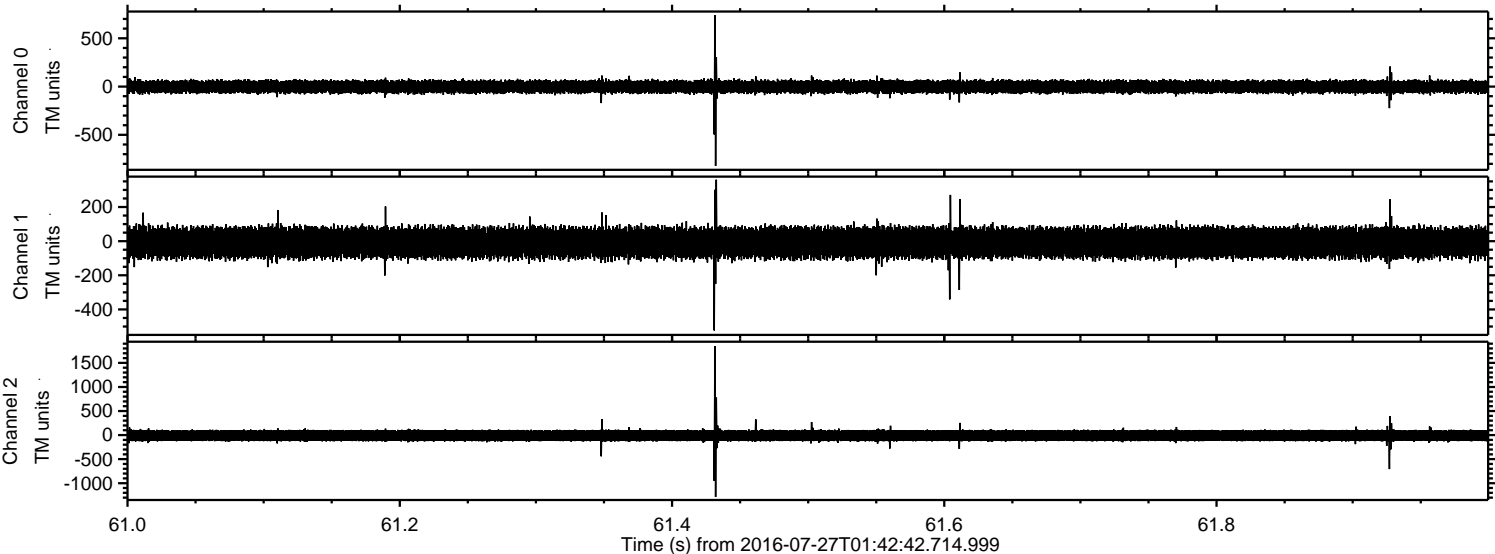


ELMAVAN 3D WAVEFORMS (Measured data sampled at 50 kHz) 51000 packets of 144 samples from 2016-07-27T01:42:42.714.999. Part 114/147

Processed Wed Jul 27 03:51:02 2016 by ELM ver.2012-10-06 from 001__elm20160727_014241__dat00.bin



Processed Wed Jul 27 03:51:03 2016 by ELM ver.2012-10-06 from 001__elm20160727_014241__dat00.bin

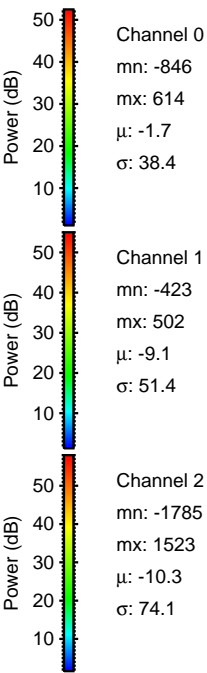
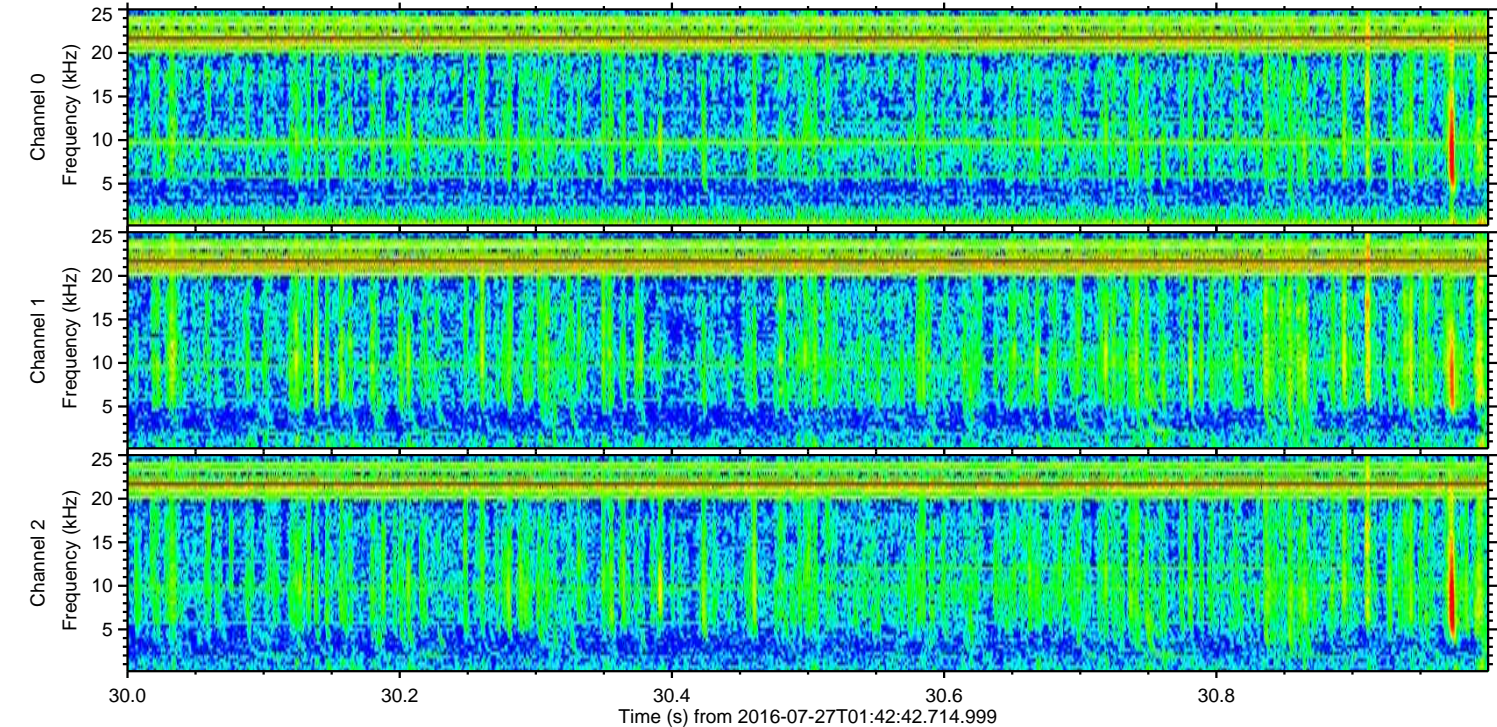
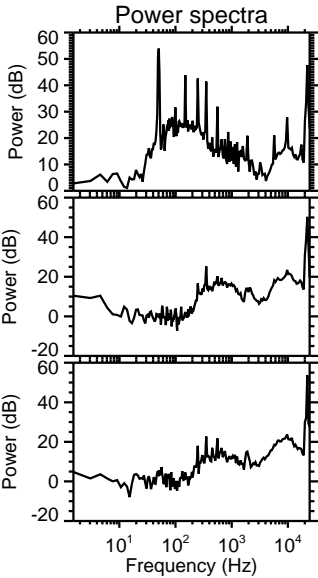
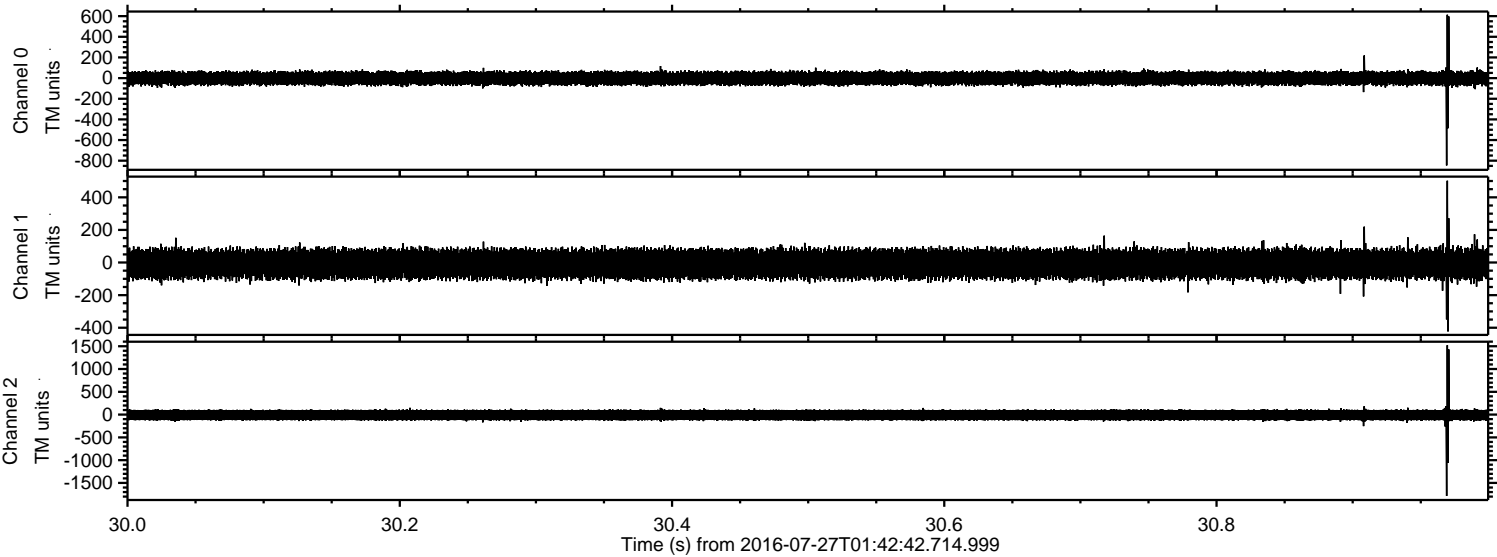


Channel 0
mn: -821
mx: 740
 μ : -1.8
 σ : 38.7

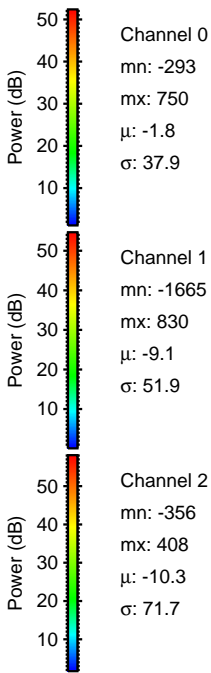
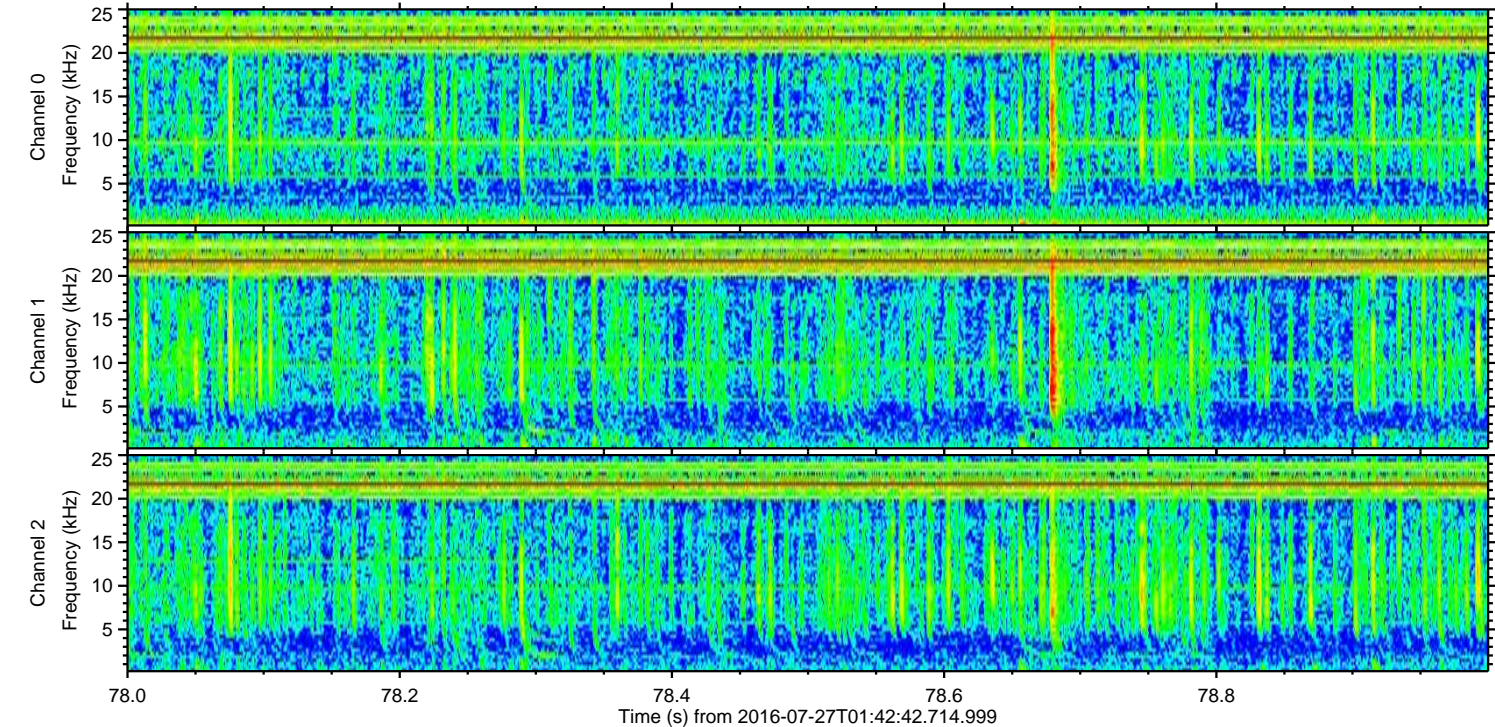
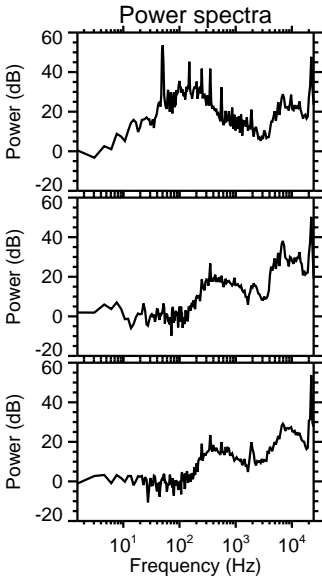
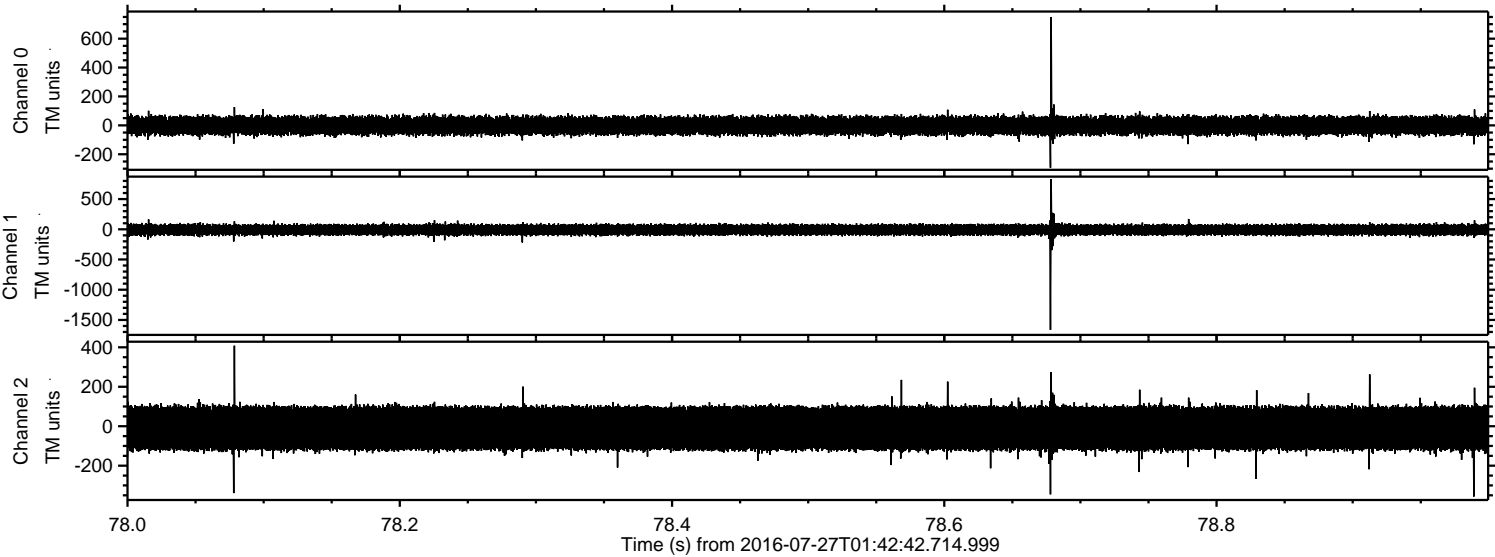
Channel 1
mn: -523
mx: 360
 μ : -9.1
 σ : 51.4

Channel 2
mn: -1285
mx: 1848
 μ : -10.3
 σ : 73.9

Processed Wed Jul 27 03:51:04 2016 by ELM ver.2012-10-06 from 001__elm20160727_014241__dat00.bin

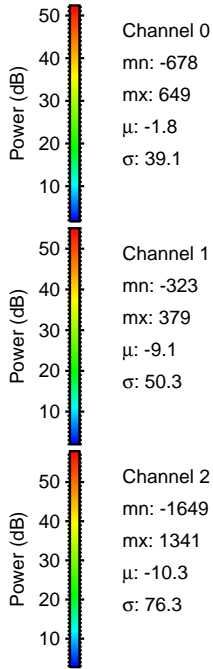
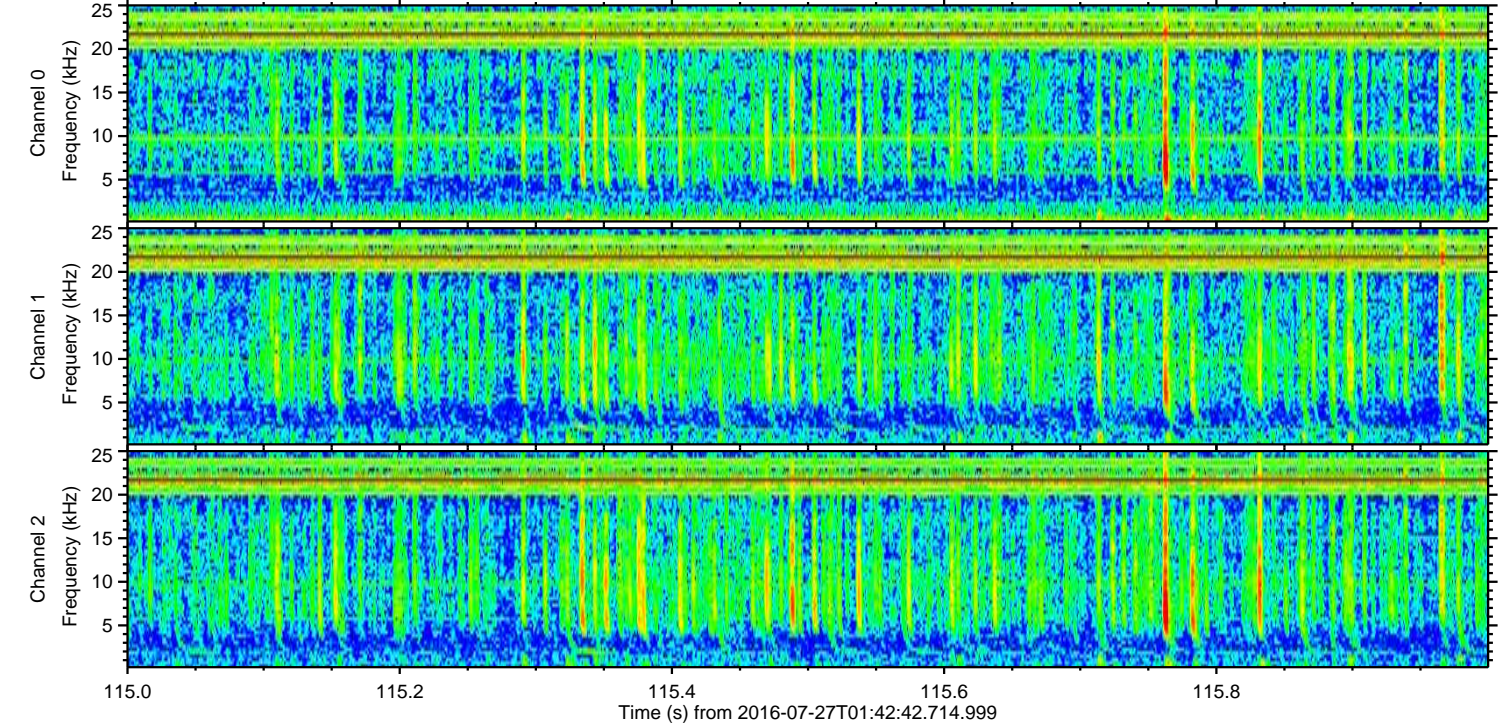
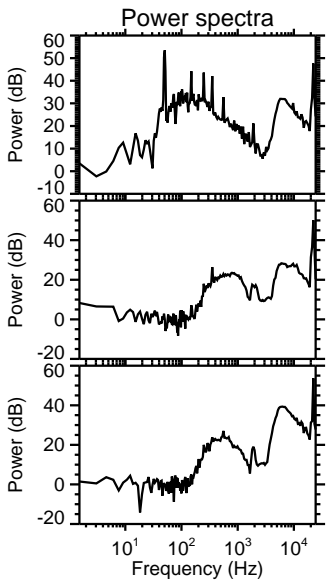
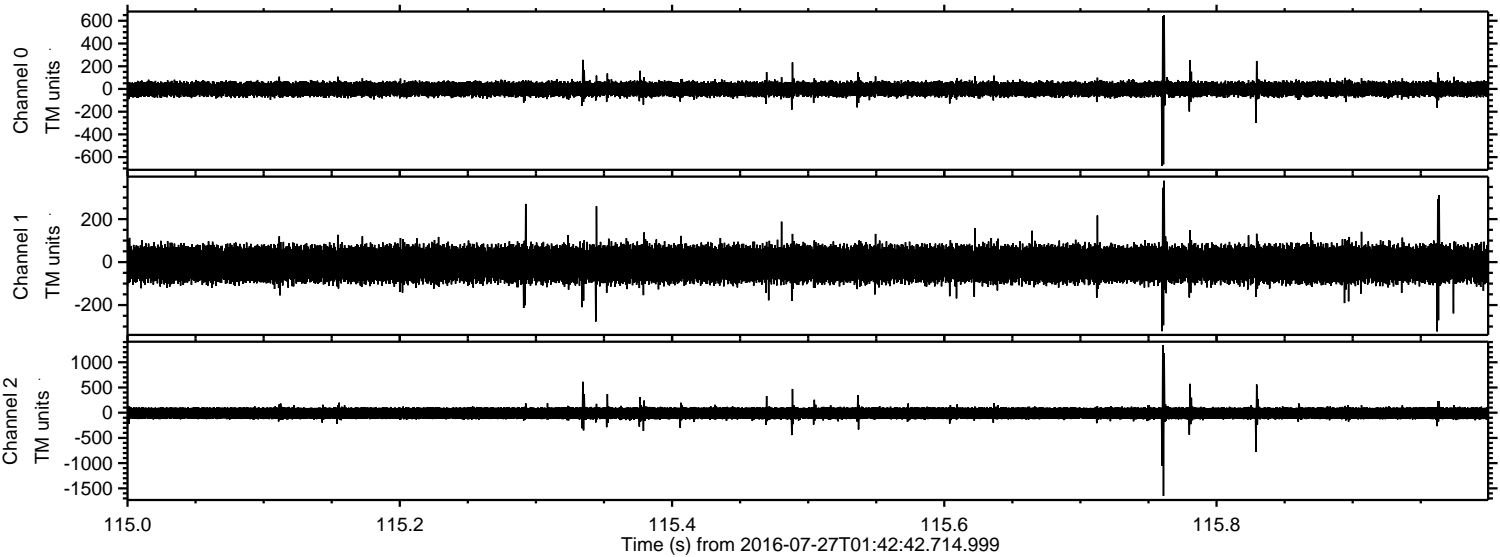


Processed Wed Jul 27 03:51:05 2016 by ELM ver.2012-10-06 from 001__elm20160727_014241__dat00.bin



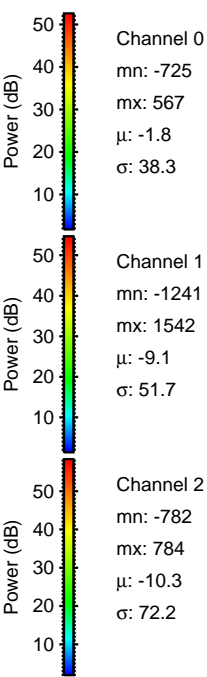
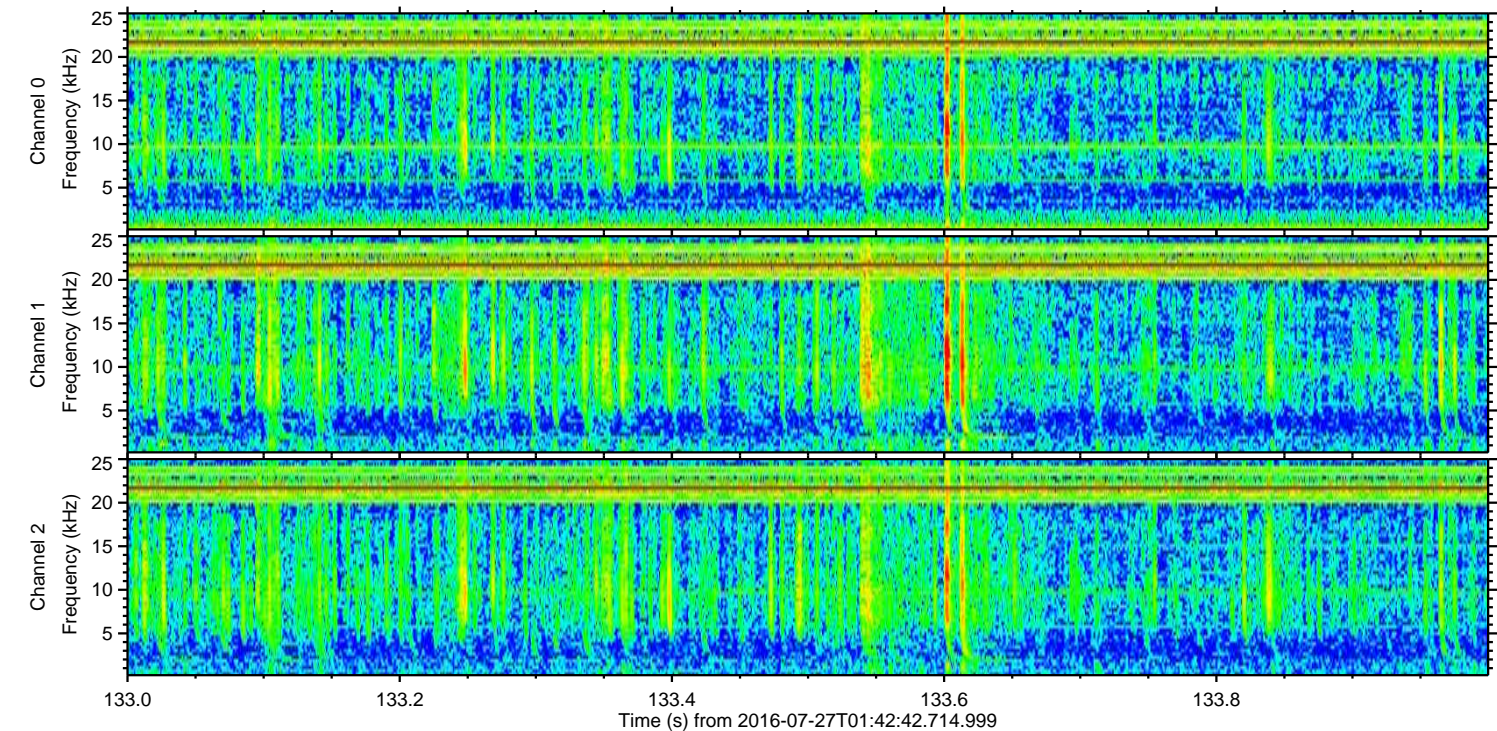
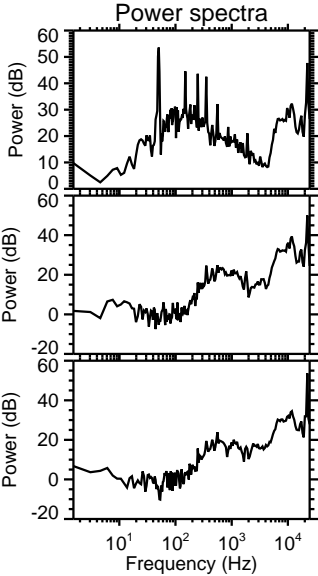
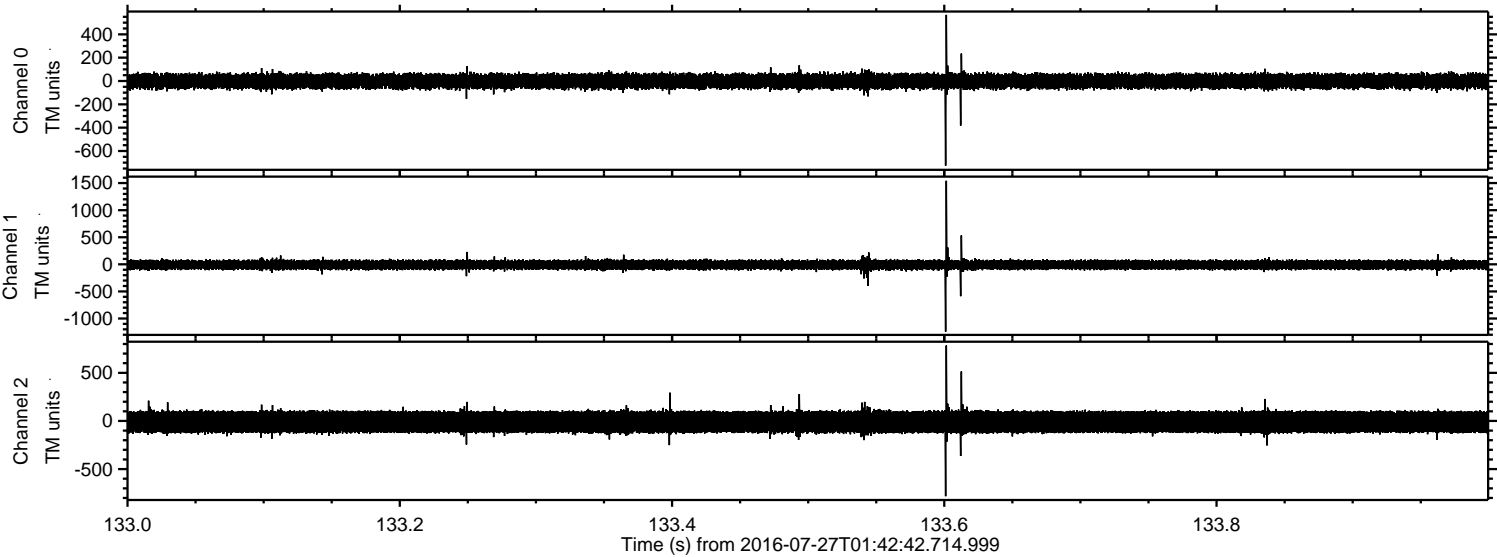
ELMAVAN 3D WAVEFORMS (Measured data sampled at 50 kHz) 51000 packets of 144 samples from 2016-07-27T01:42:42.714.999. Part 116/147

Processed Wed Jul 27 03:51:05 2016 by ELM ver.2012-10-06 from 001__elm20160727_014241__dat00.bin

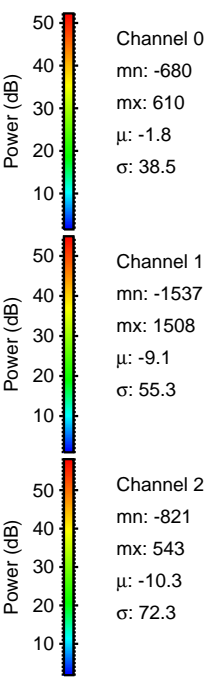
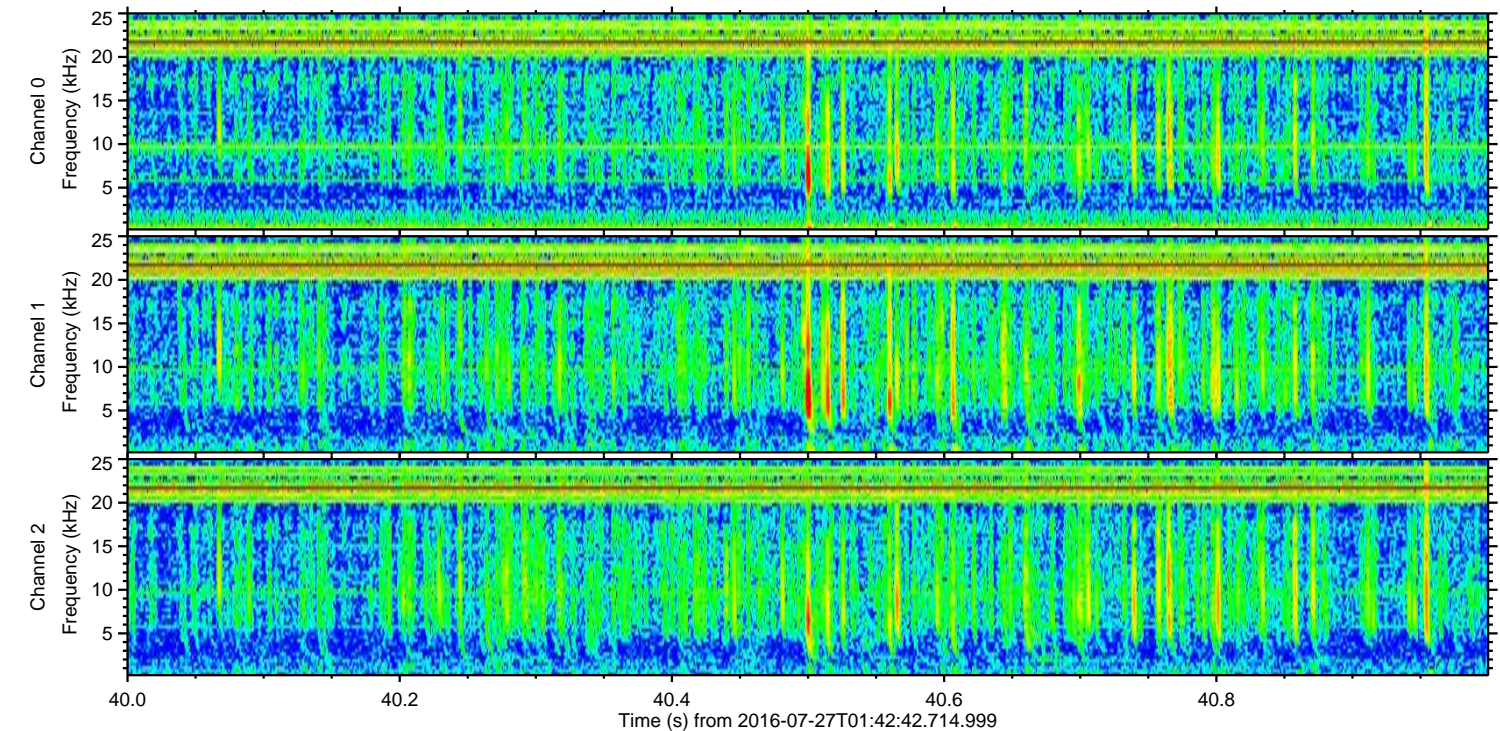
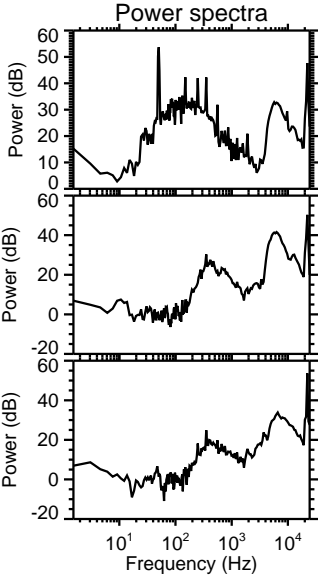
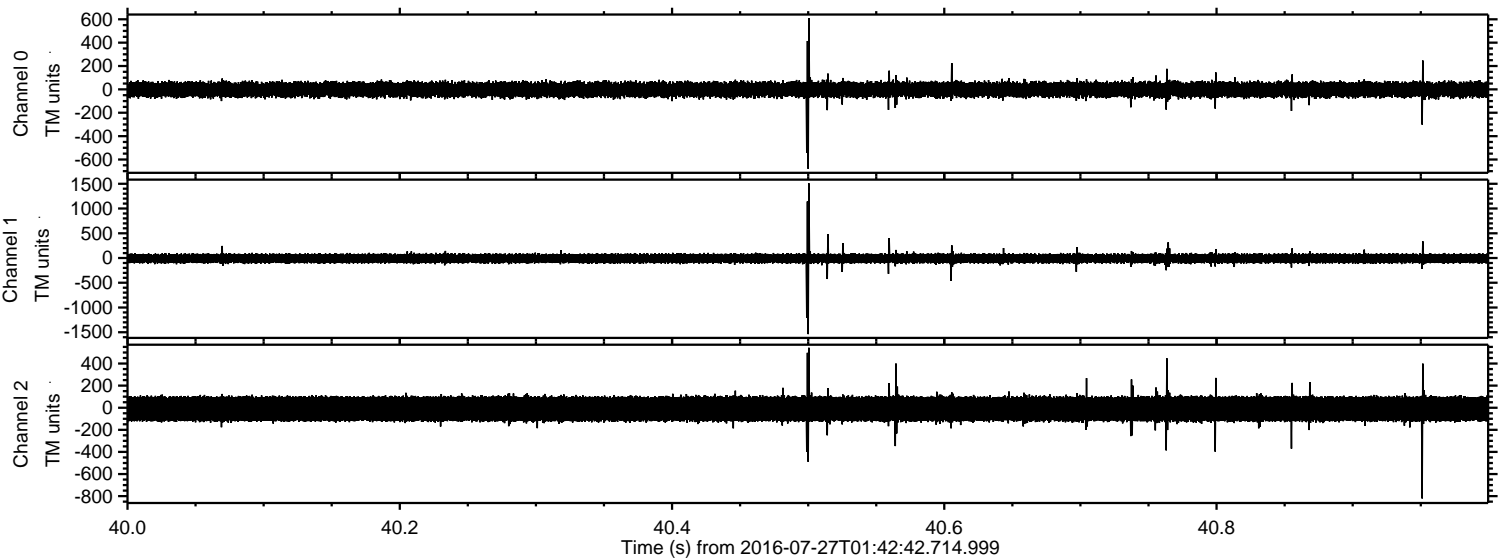


ELMAVAN 3D WAVEFORMS (Measured data sampled at 50 kHz) 51000 packets of 144 samples from 2016-07-27T01:42:42.714.999. Part 134/147

Processed Wed Jul 27 03:51:06 2016 by ELM ver.2012-10-06 from 001__elm20160727_014241__dat00.bin



Processed Wed Jul 27 03:51:07 2016 by ELM ver.2012-10-06 from 001__elm20160727_014241__dat00.bin



Channel 0
mn: -680
mx: 610
 μ : -1.8
 σ : 38.5

Channel 1
mn: -1537
mx: 1508
 μ : -9.1
 σ : 55.3

Channel 2
mn: -821
mx: 543
 μ : -10.3
 σ : 72.3

Processed Wed Jul 27 03:51:08 2016 by ELM ver.2012-10-06 from 001__elm20160727_014241__dat00.bin

