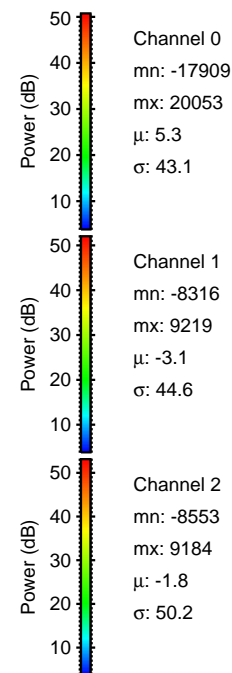
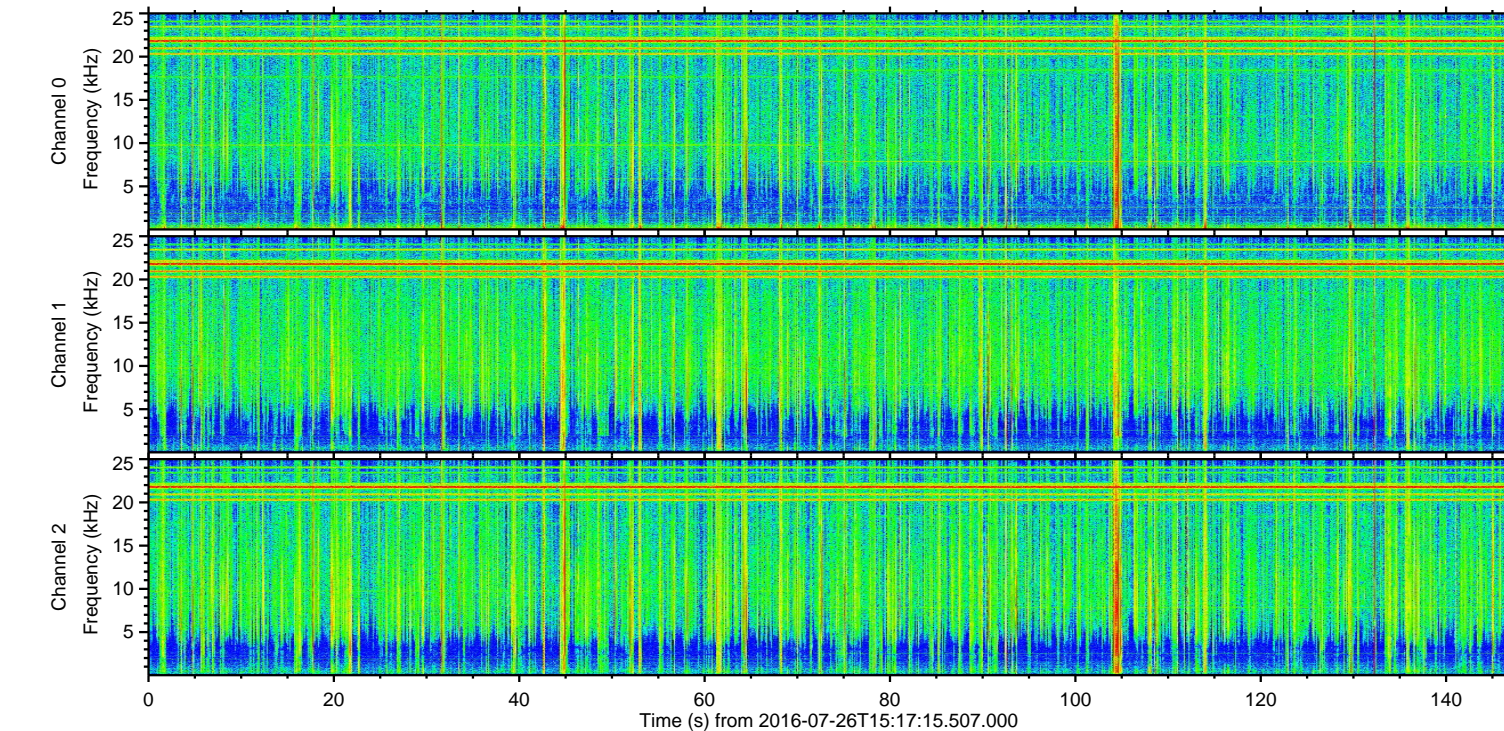
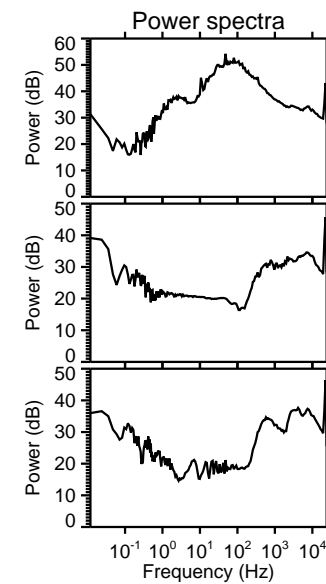
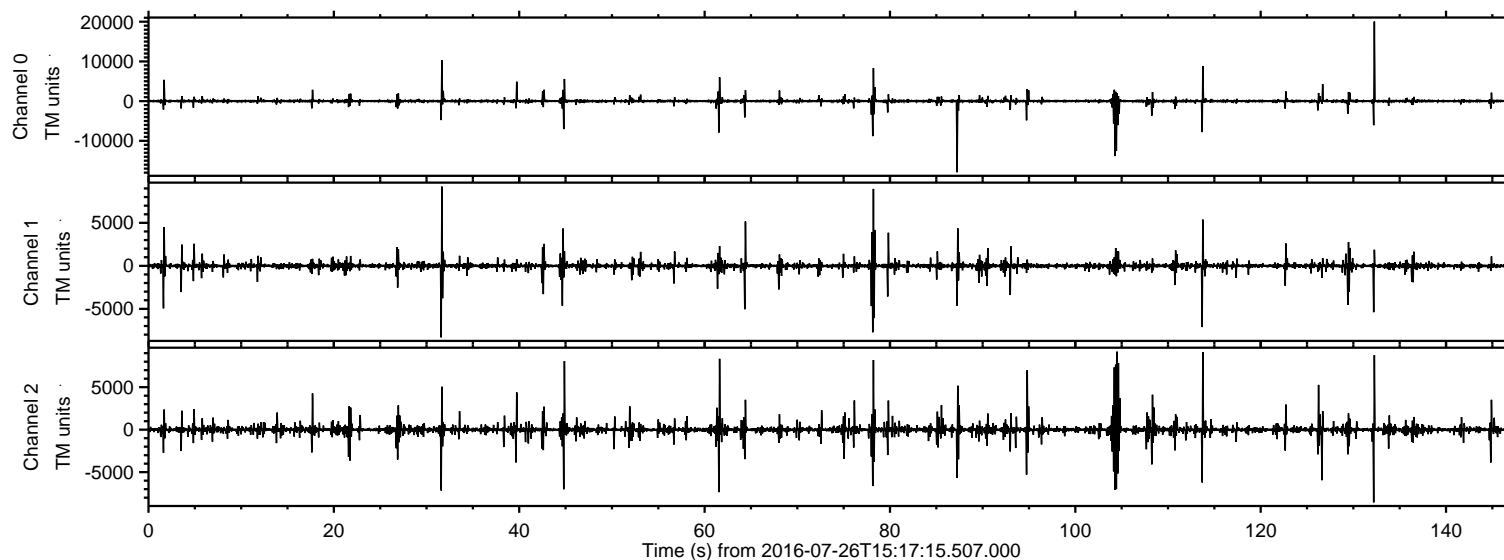


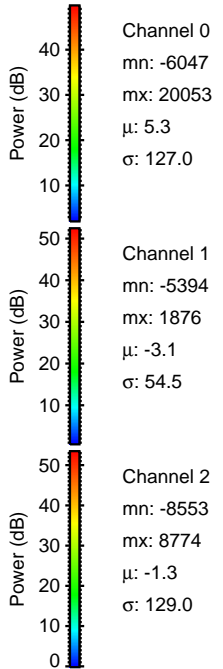
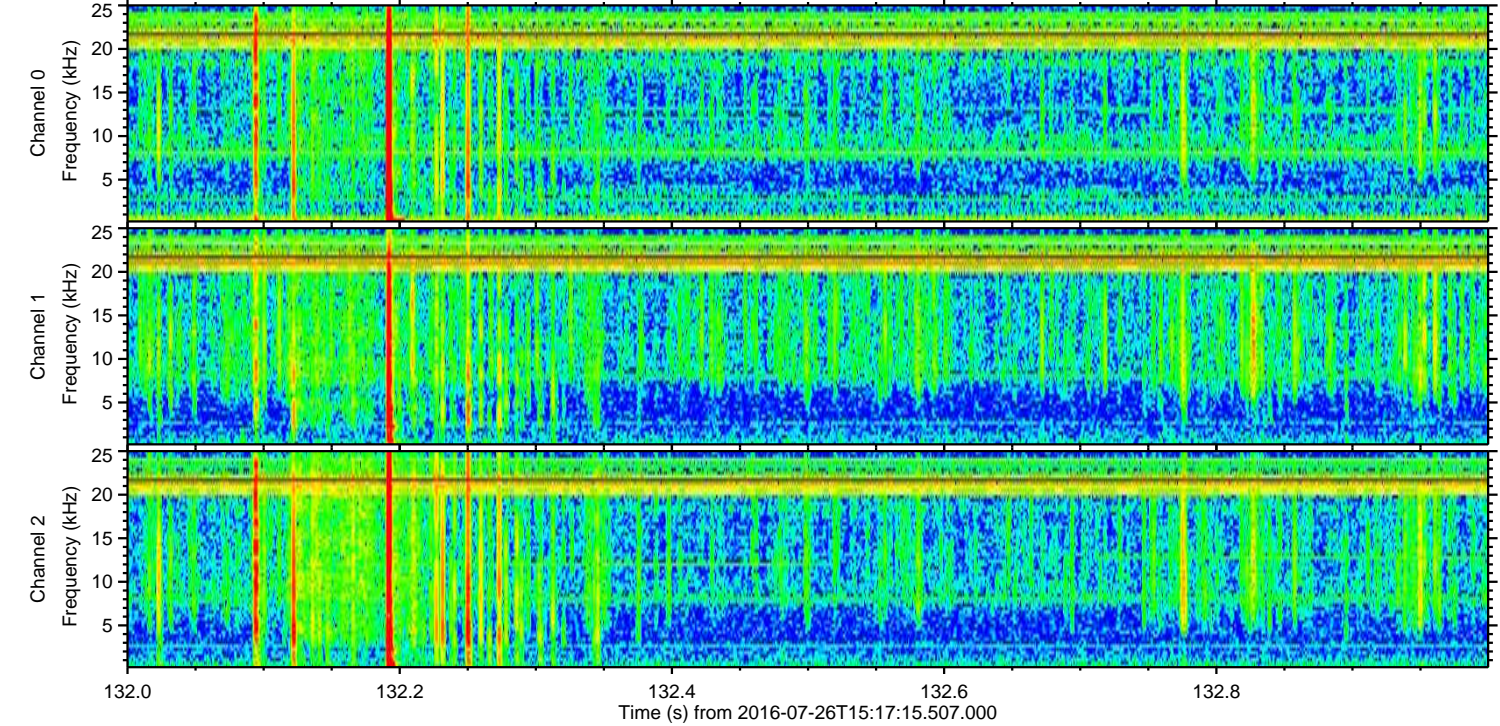
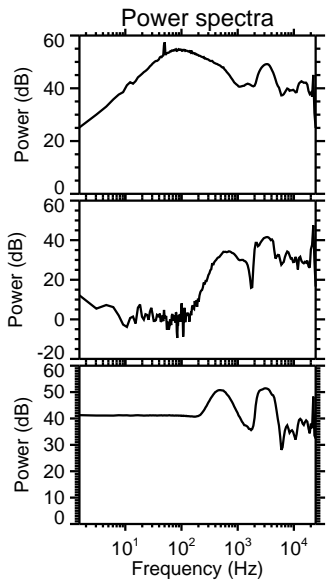
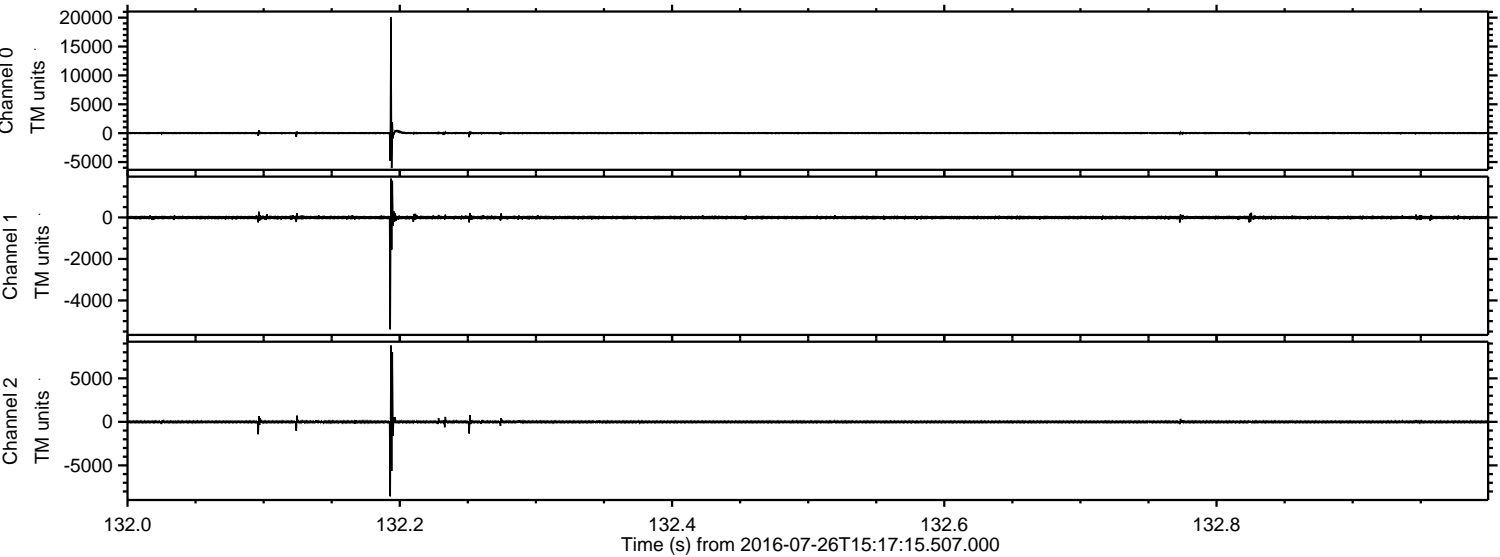
ELMAVAN 3D WAVEFORMS (Measured data sampled at 50 kHz) 51000 packets of 144 samples from 2016-07-26T15:17:15.507.000.

Processed Tue Jul 26 17:25:38 2016 by ELM ver.2012-10-06 from 001__elm20160726_151714__dat00.bin

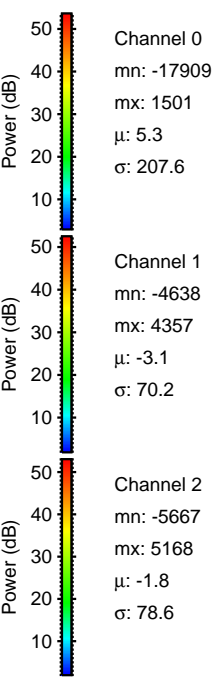
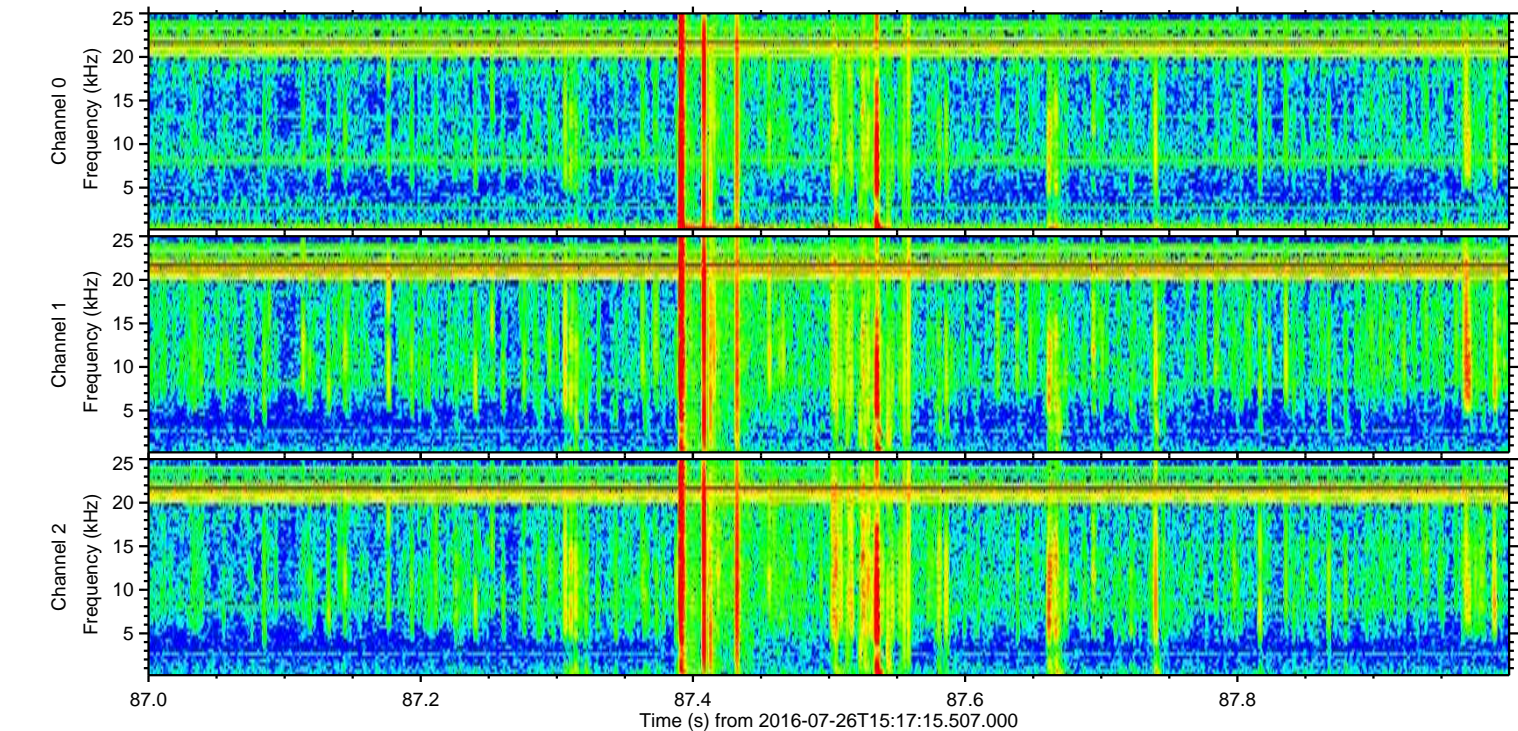
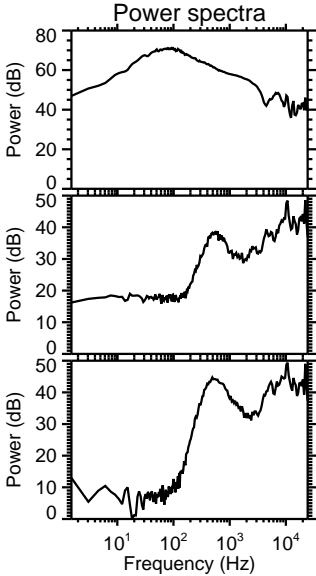
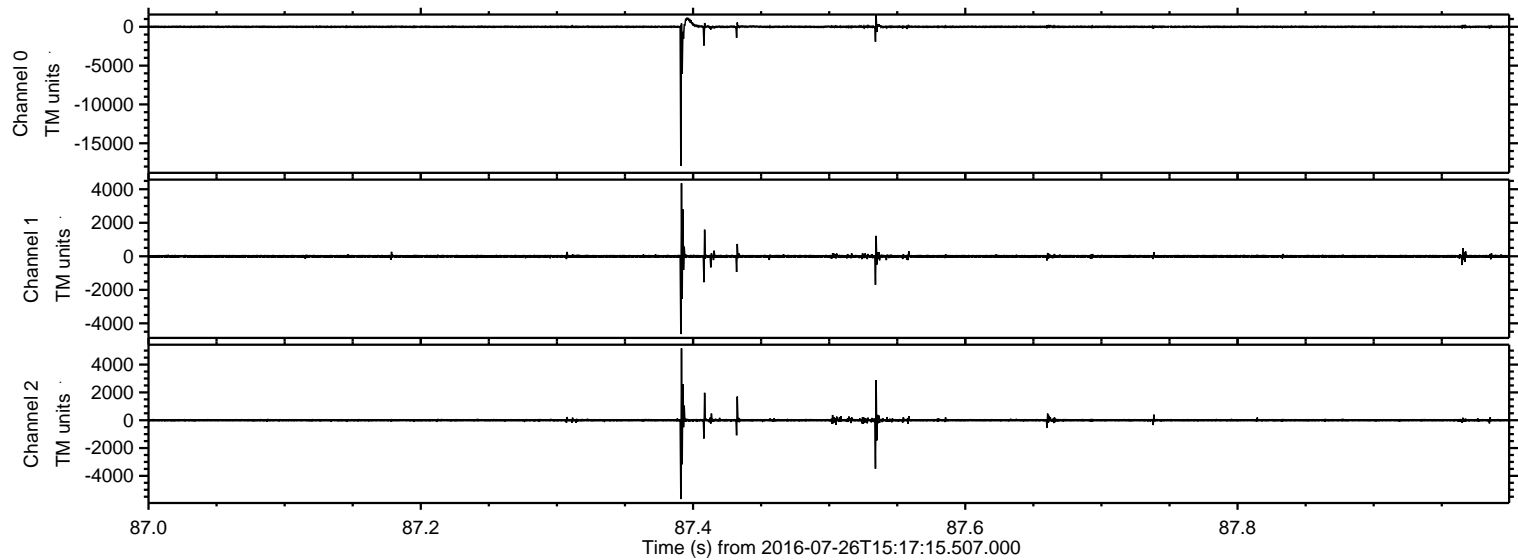


ELMAVAN 3D WAVEFORMS (Measured data sampled at 50 kHz) 51000 packets of 144 samples from 2016-07-26T15:17:15.507.000. Part 133/147

Processed Tue Jul 26 17:25:54 2016 by ELM ver.2012-10-06 from 001__elm20160726_151714__dat00.bin

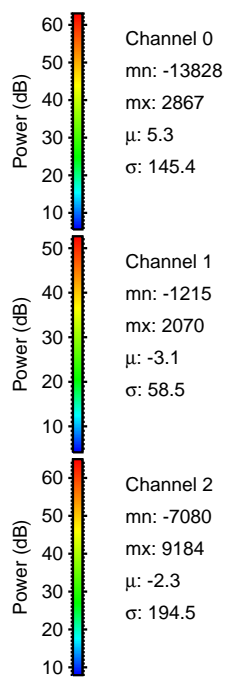
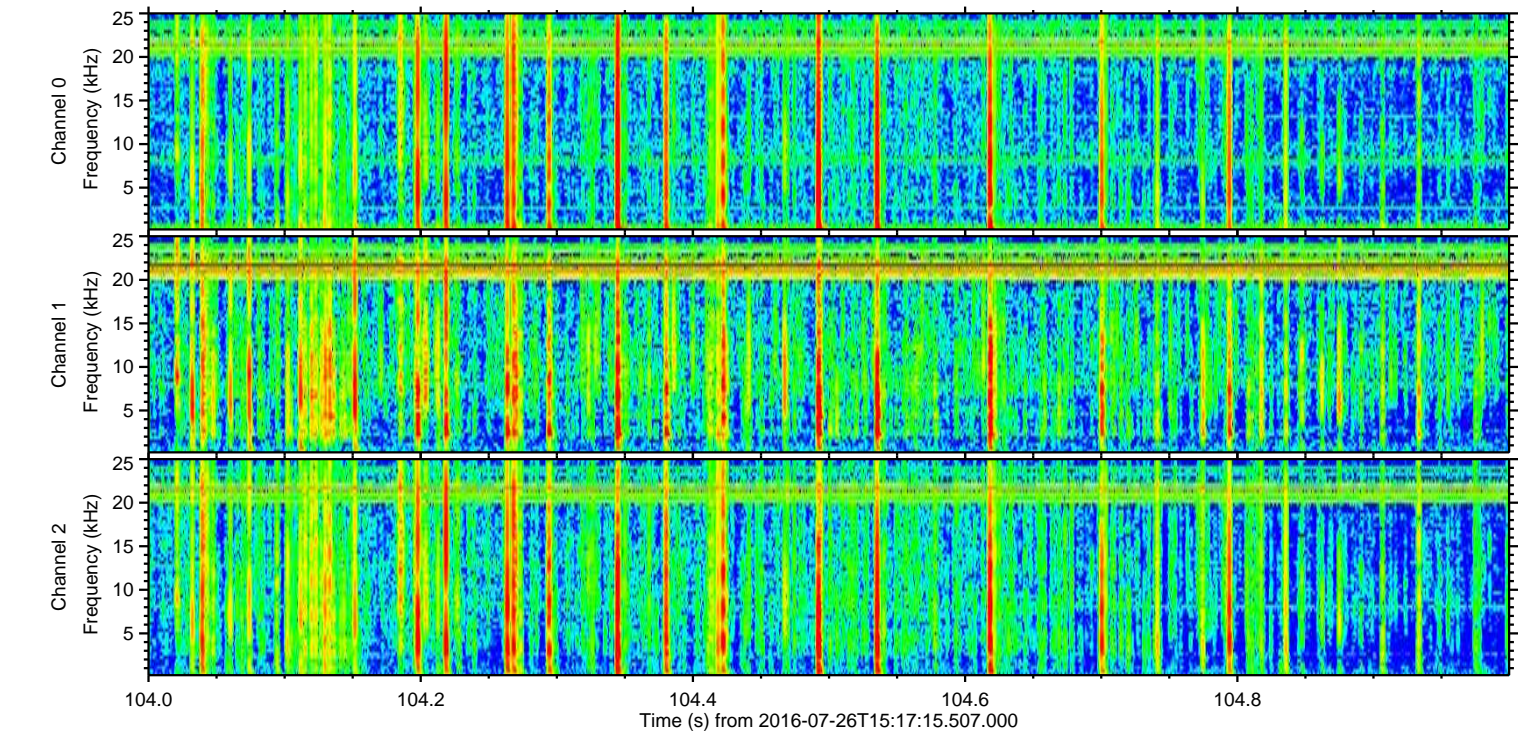
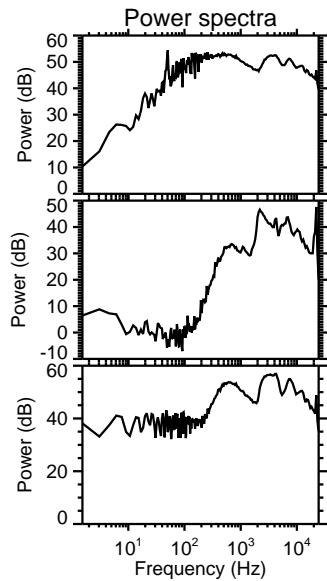
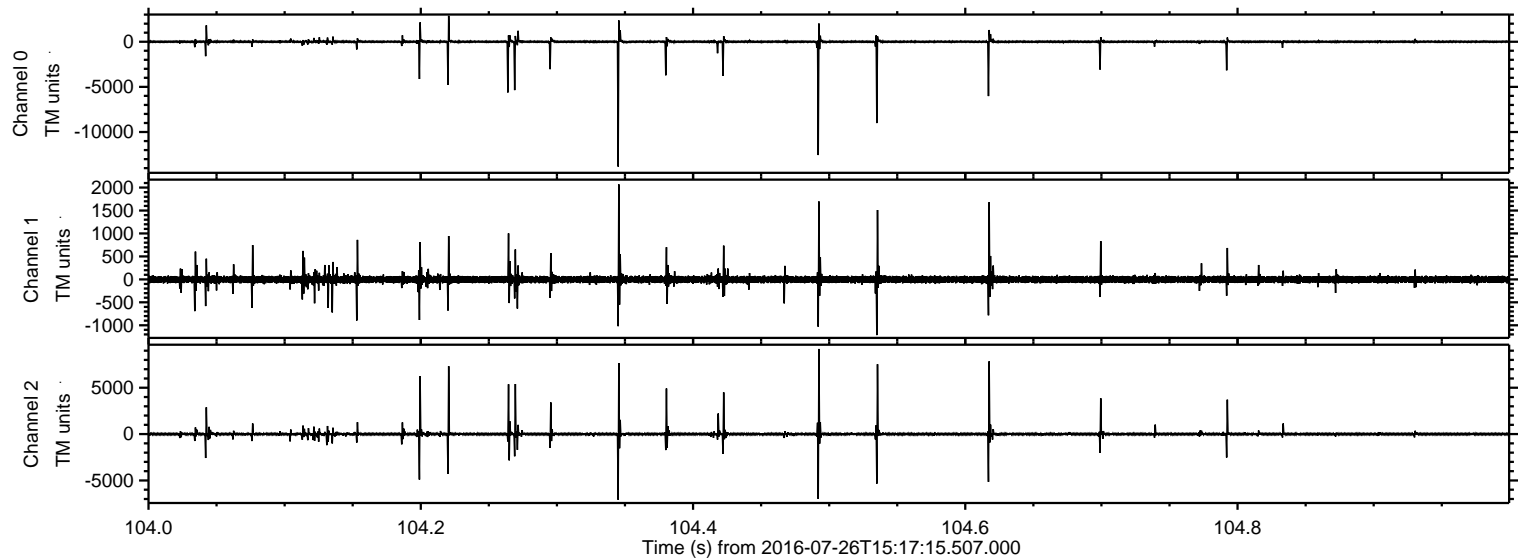


Processed Tue Jul 26 17:25:55 2016 by ELM ver.2012-10-06 from 001__elm20160726_151714__dat00.bin



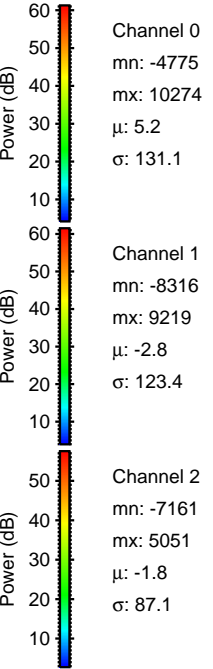
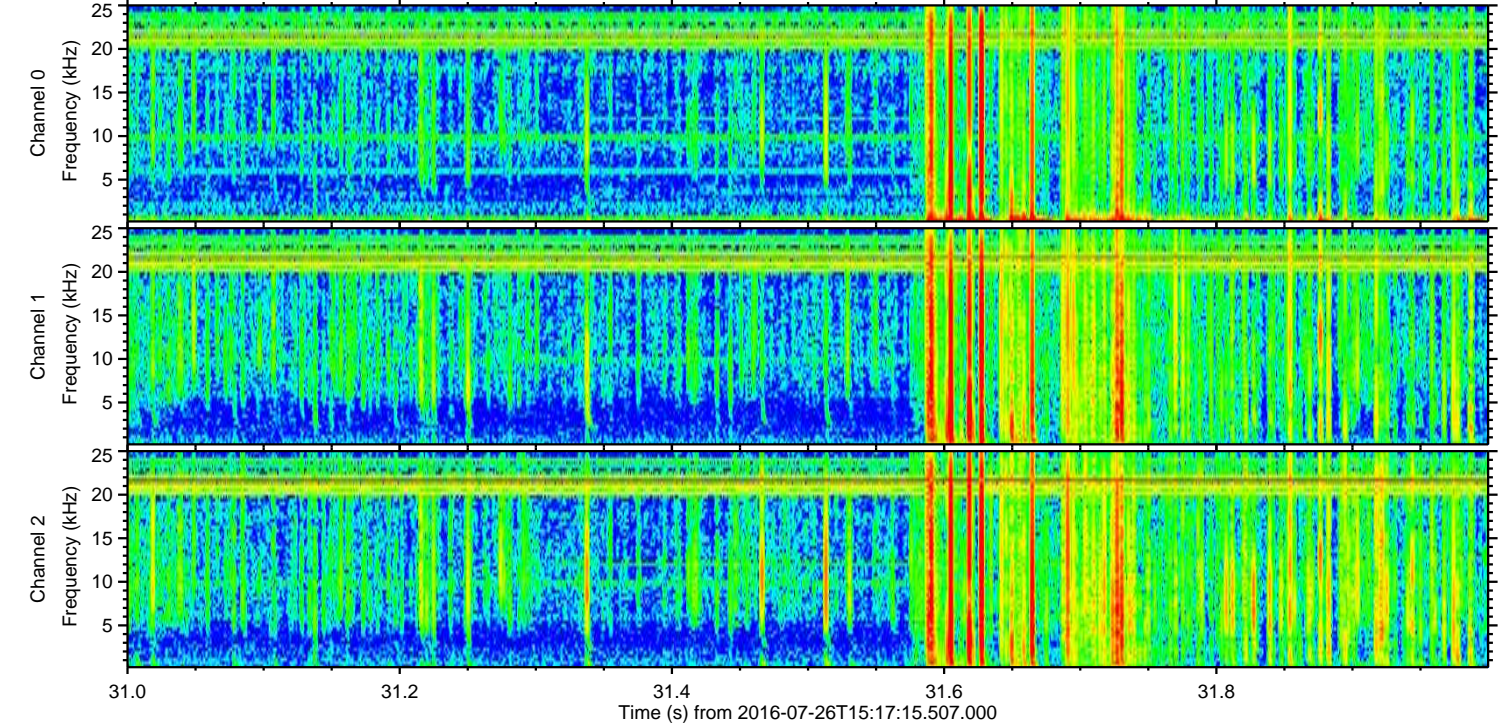
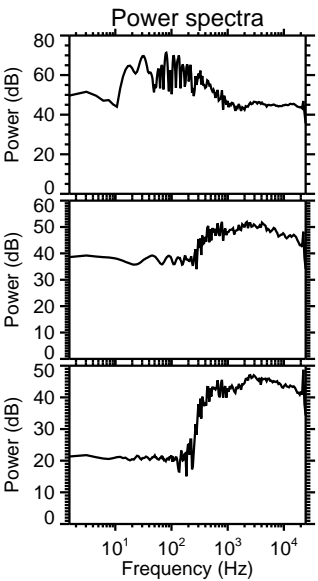
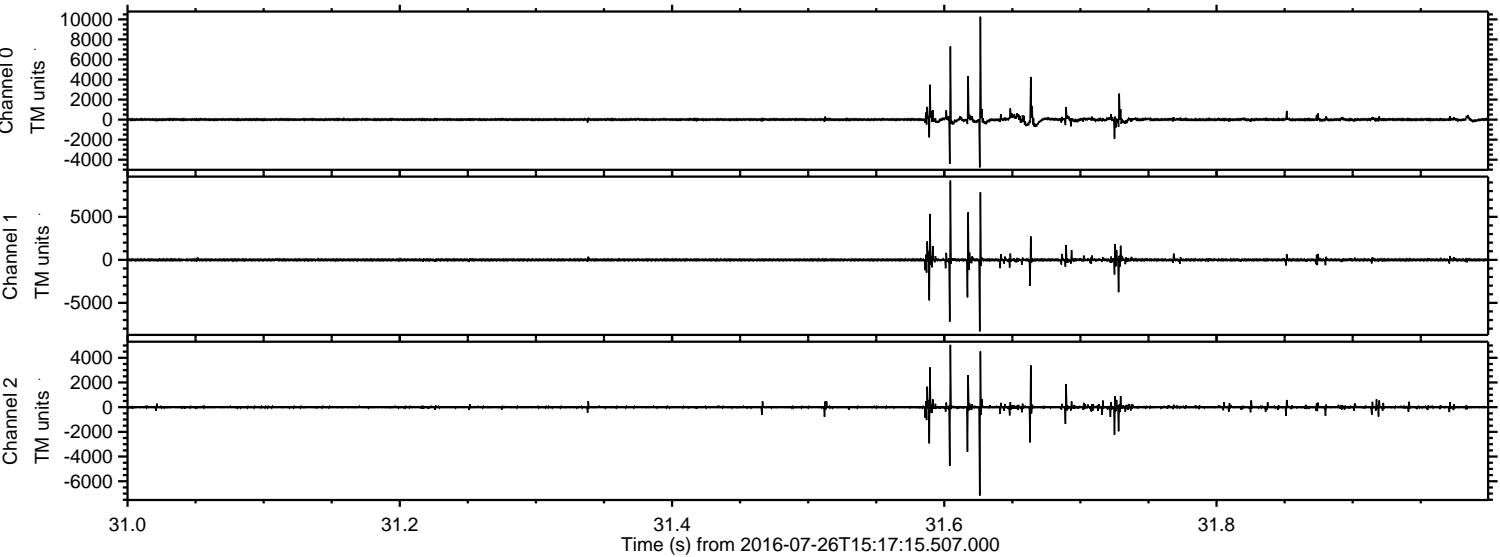
ELMAVAN 3D WAVEFORMS (Measured data sampled at 50 kHz) 51000 packets of 144 samples from 2016-07-26T15:17:15.507.000. Part 105/147

Processed Tue Jul 26 17:25:56 2016 by ELM ver.2012-10-06 from 001__elm20160726_151714__dat00.bin



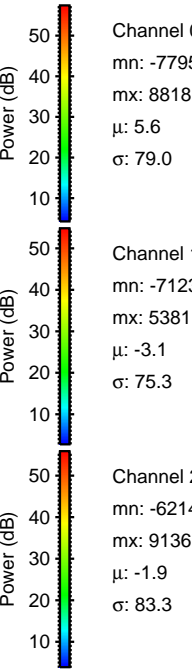
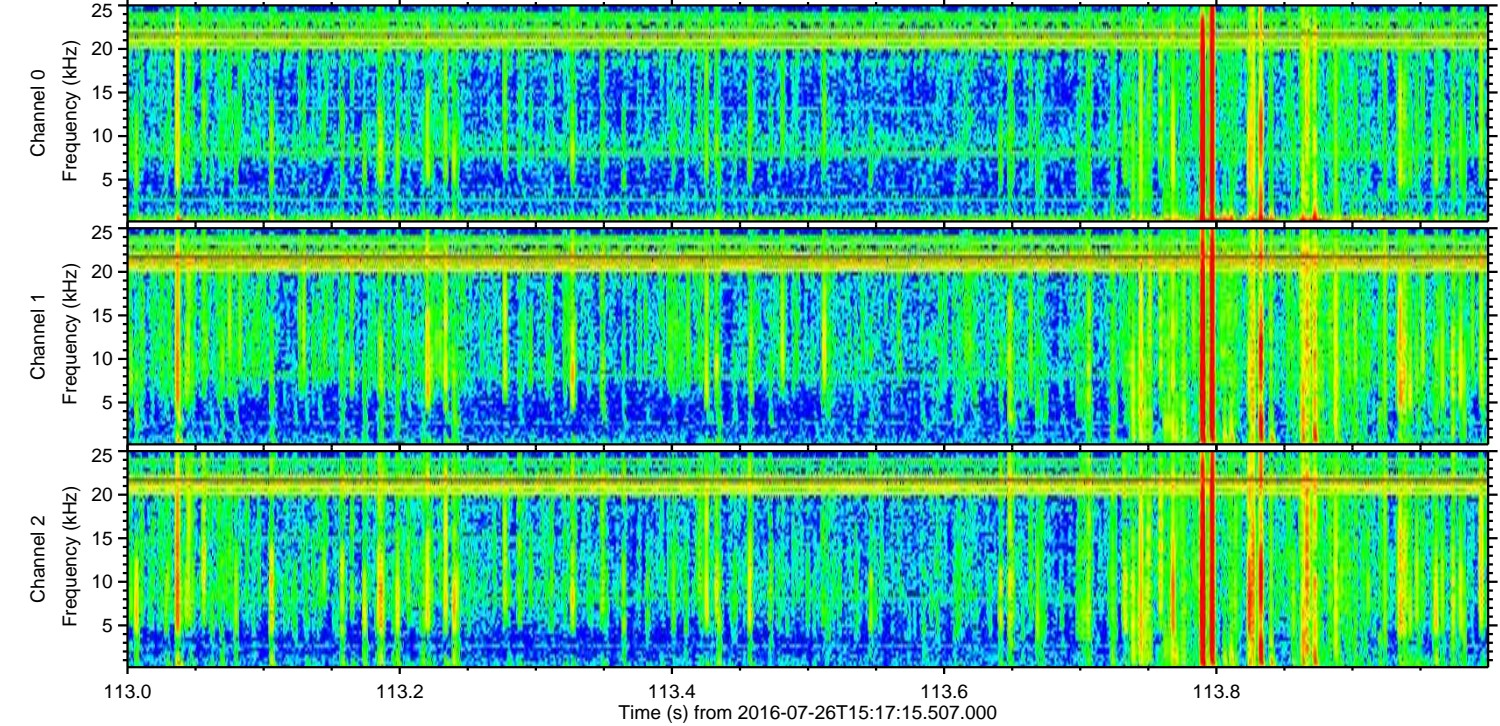
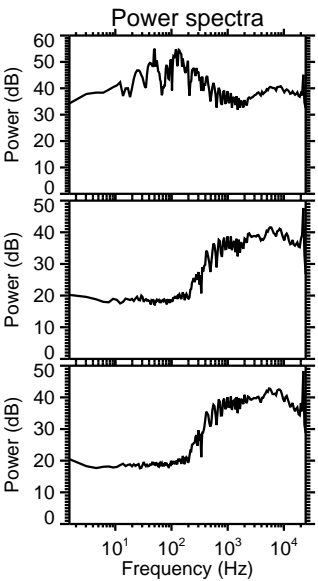
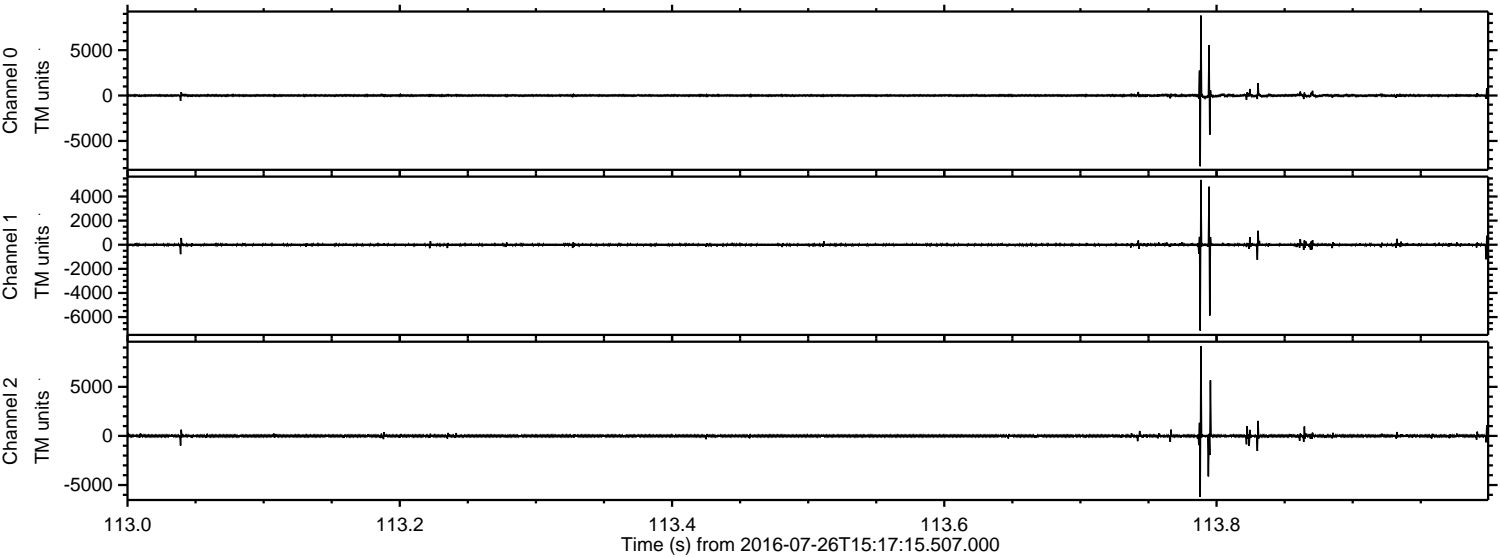
ELMAVAN 3D WAVEFORMS (Measured data sampled at 50 kHz) 51000 packets of 144 samples from 2016-07-26T15:17:15.507.000. Part 32/147

Processed Tue Jul 26 17:25:57 2016 by ELM ver.2012-10-06 from 001__elm20160726_151714__dat00.bin

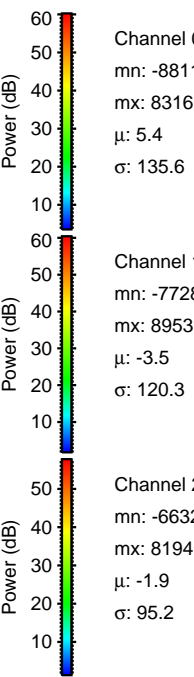
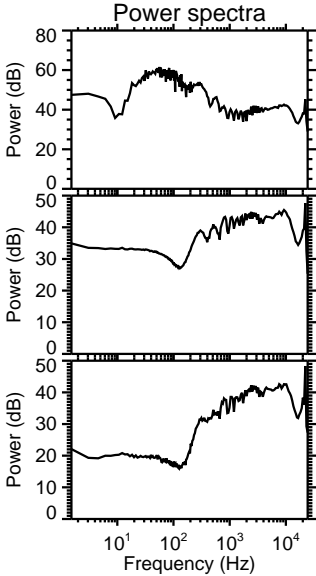
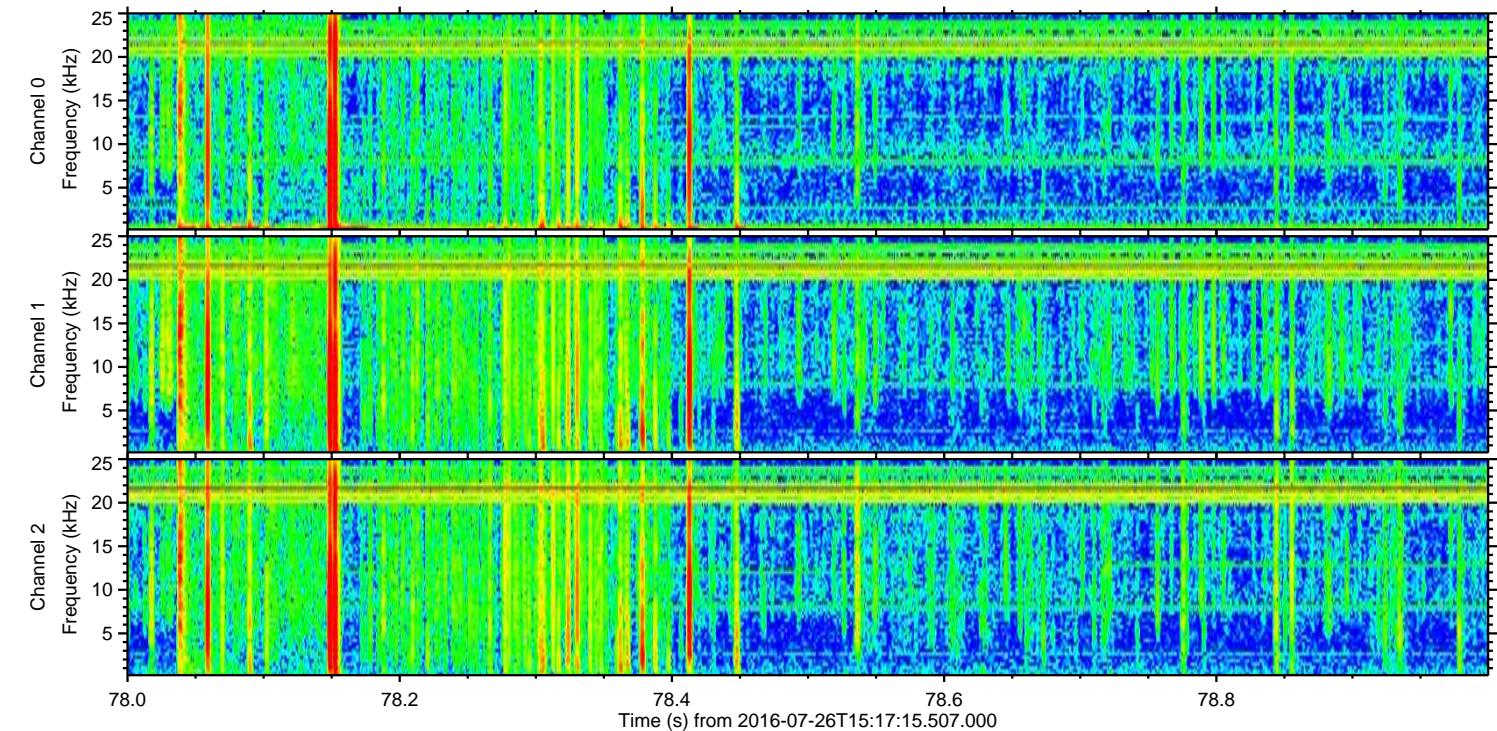
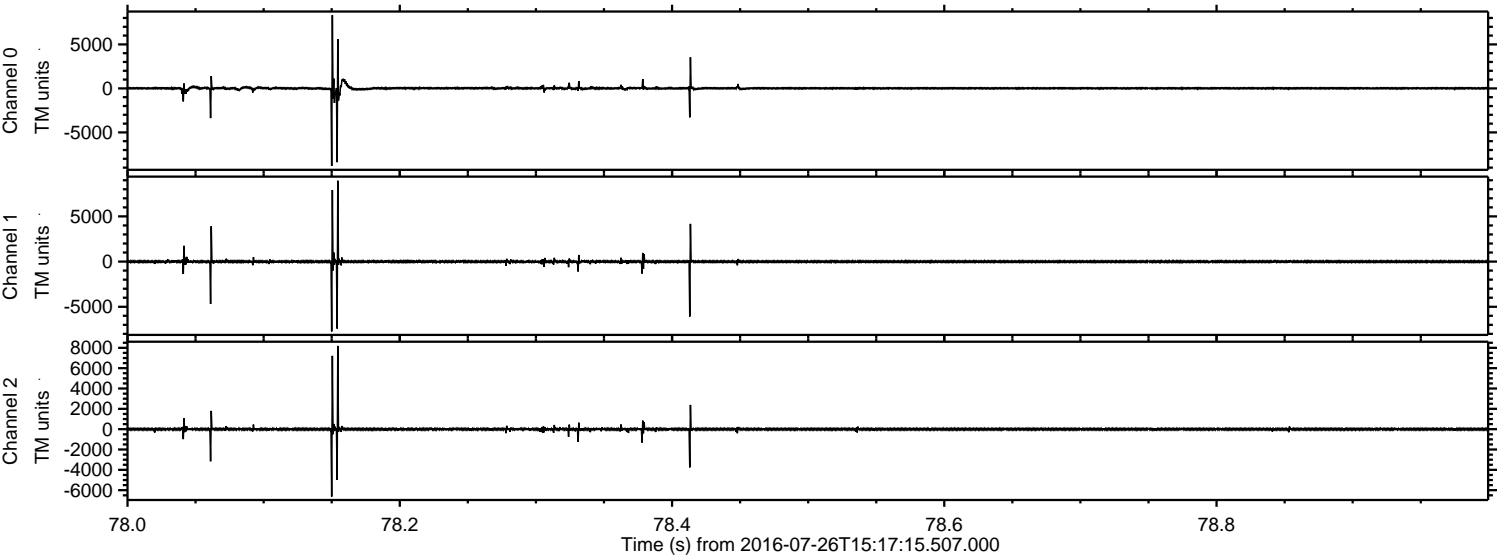


ELMAVAN 3D WAVEFORMS (Measured data sampled at 50 kHz) 51000 packets of 144 samples from 2016-07-26T15:17:15.507.000. Part 114/147

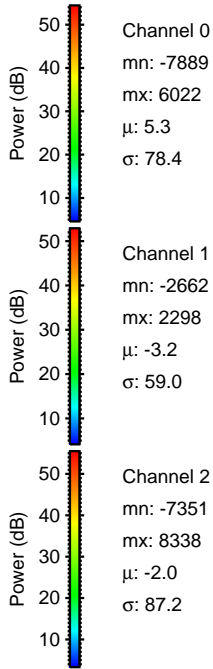
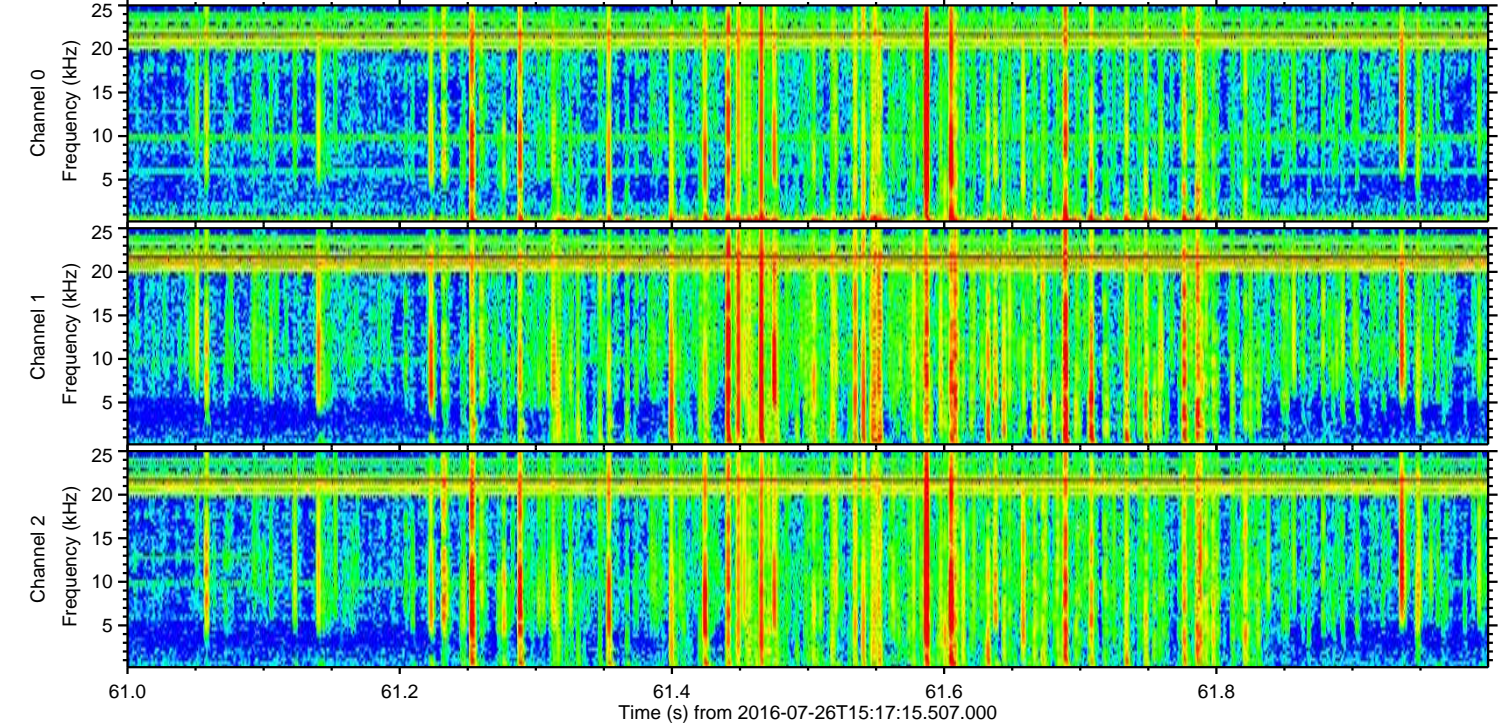
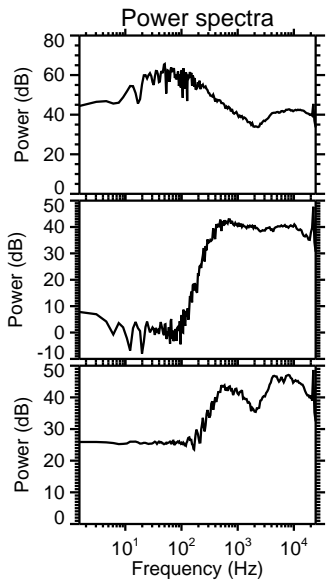
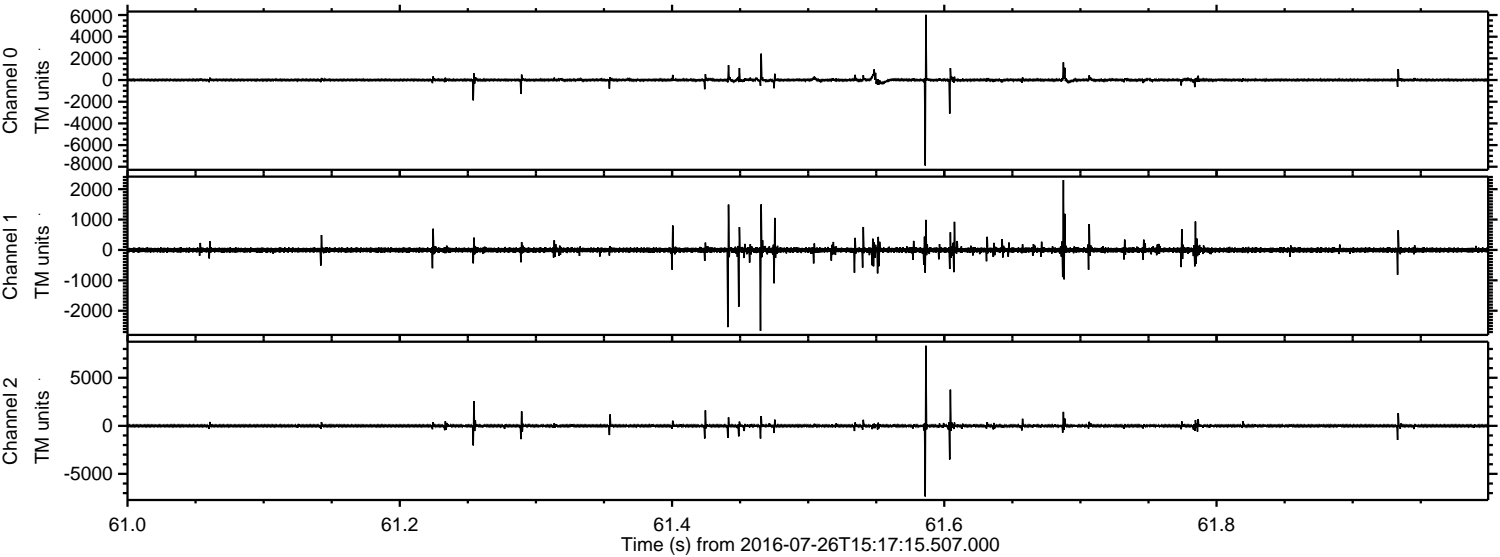
Processed Tue Jul 26 17:25:58 2016 by ELM ver.2012-10-06 from 001__elm20160726_151714__dat00.bin



Processed Tue Jul 26 17:26:00 2016 by ELM ver.2012-10-06 from 001__elm20160726_151714__dat00.bin



Processed Tue Jul 26 17:26:02 2016 by ELM ver.2012-10-06 from 001__elm20160726_151714__dat00.bin

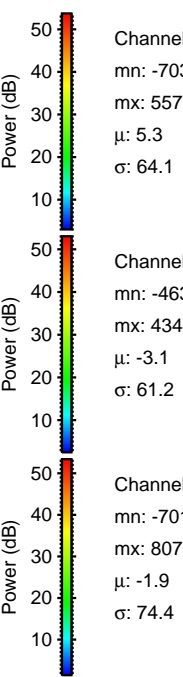
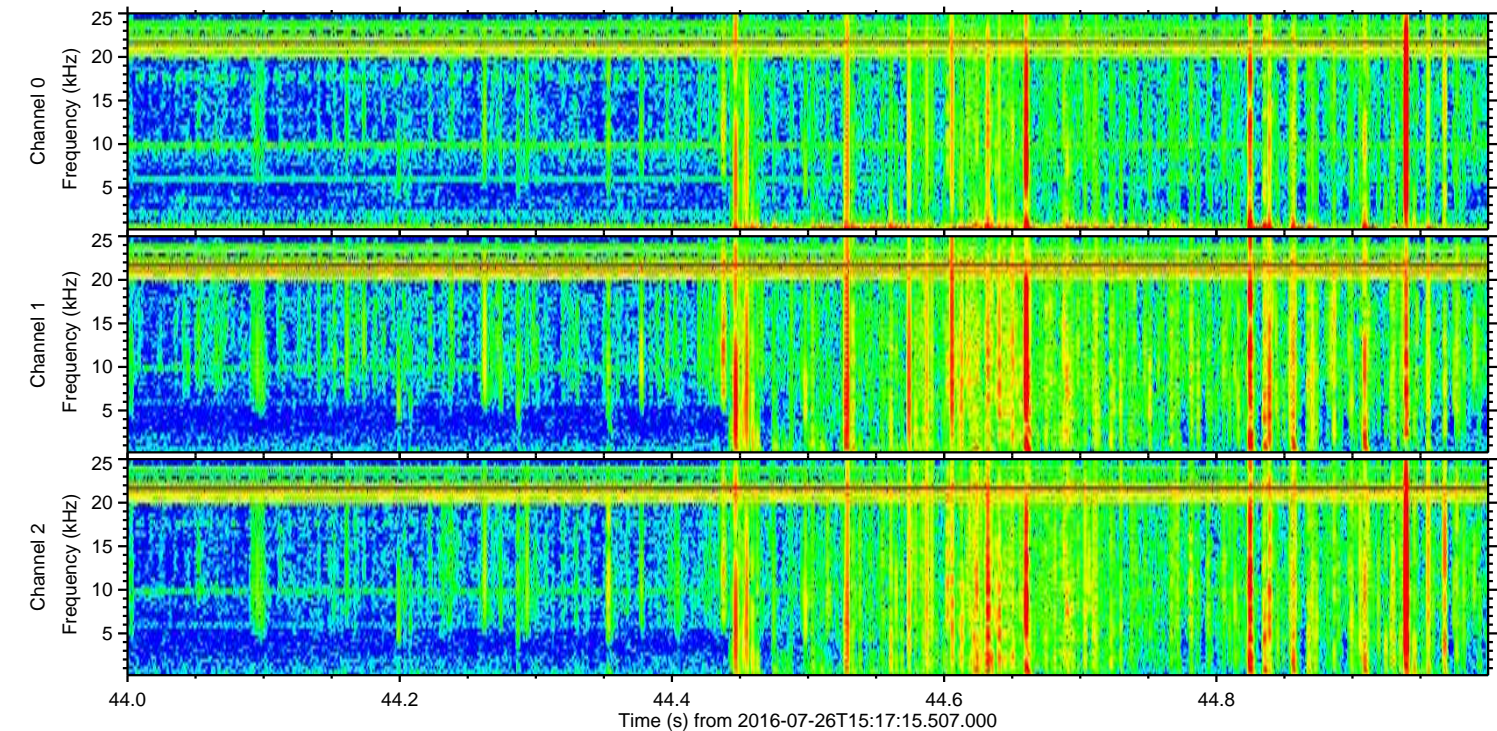
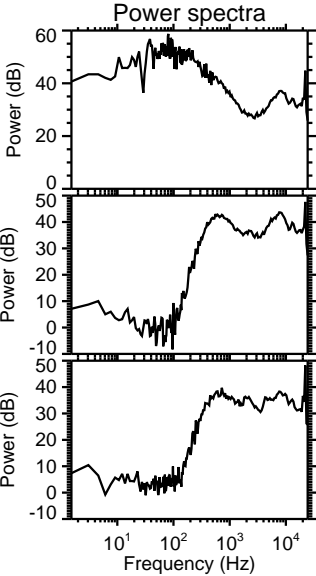
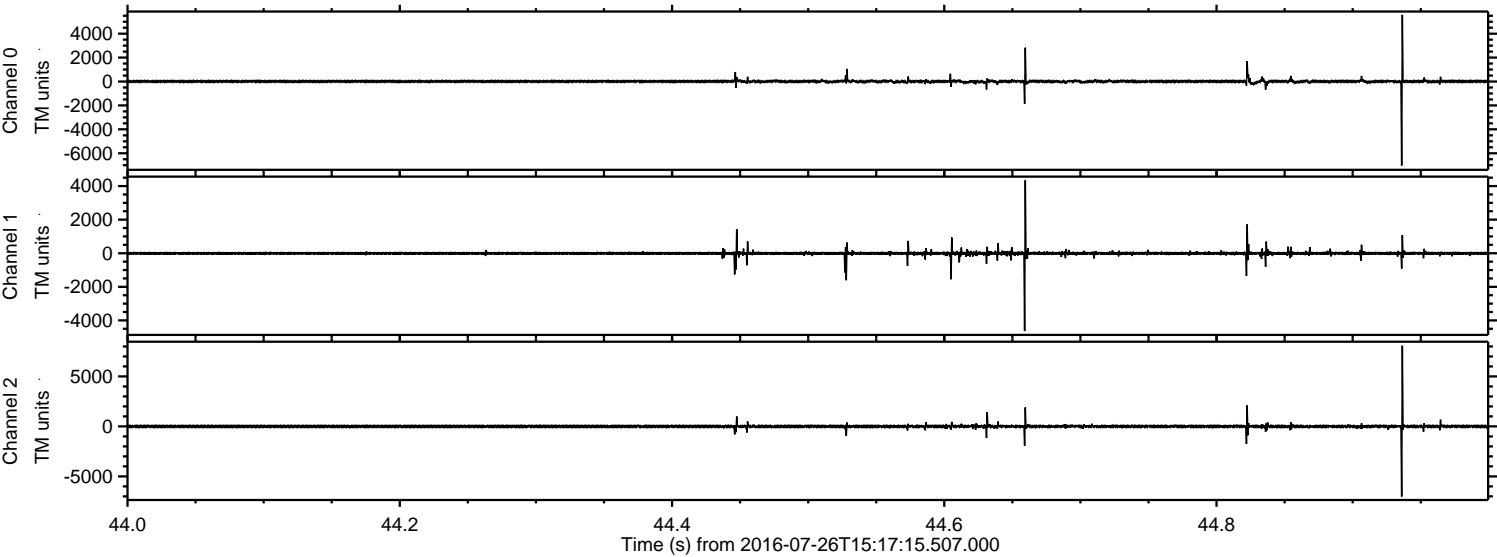


Channel 0
mn: -7889
mx: 6022
 μ : 5.3
 σ : 78.4

Channel 1
mn: -2662
mx: 2298
 μ : -3.2
 σ : 59.0

Channel 2
mn: -7351
mx: 8338
 μ : -2.0
 σ : 87.2

Processed Tue Jul 26 17:26:03 2016 by ELM ver.2012-10-06 from 001__elm20160726_151714__dat00.bin



Processed Tue Jul 26 17:26:04 2016 by ELM ver.2012-10-06 from 001__elm20160726_151714__dat00.bin

