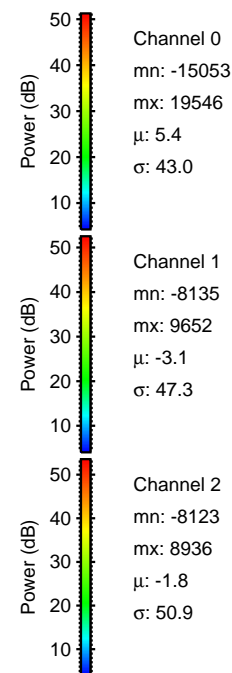
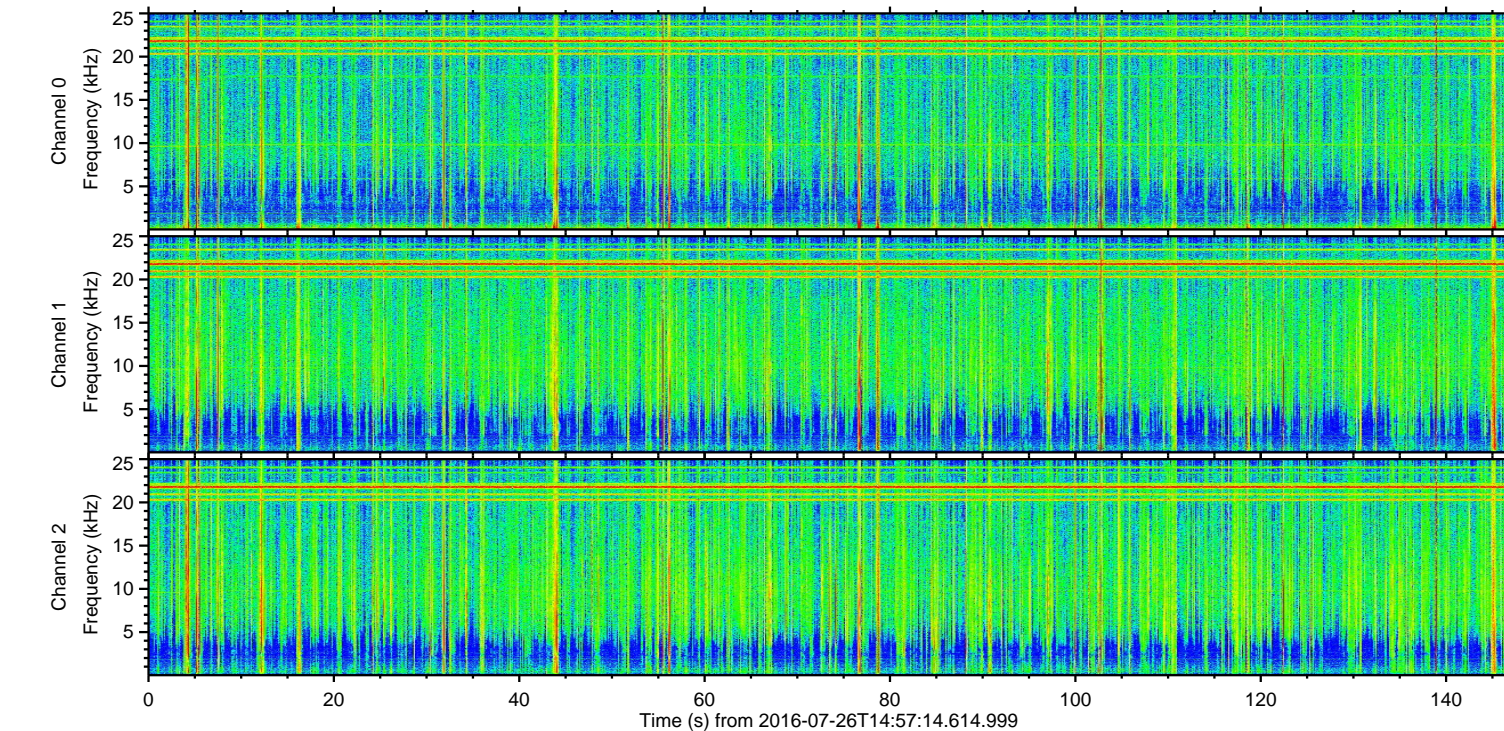
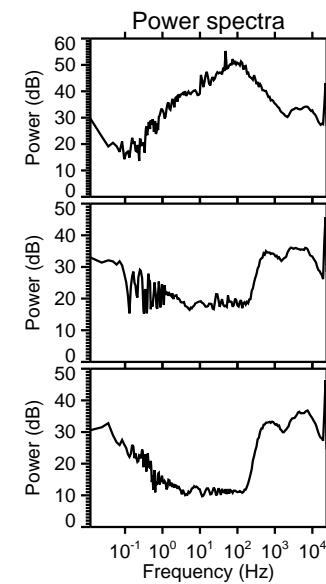
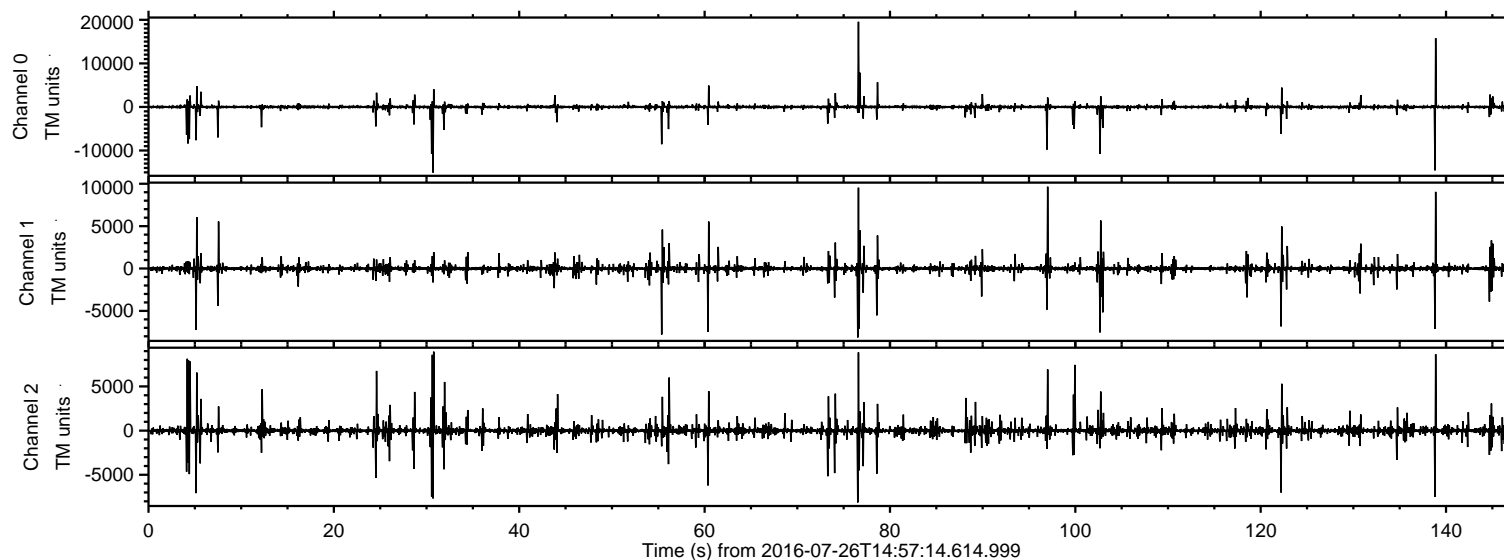
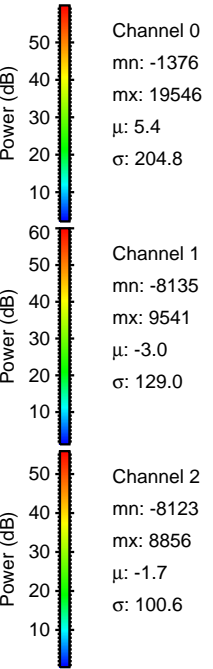
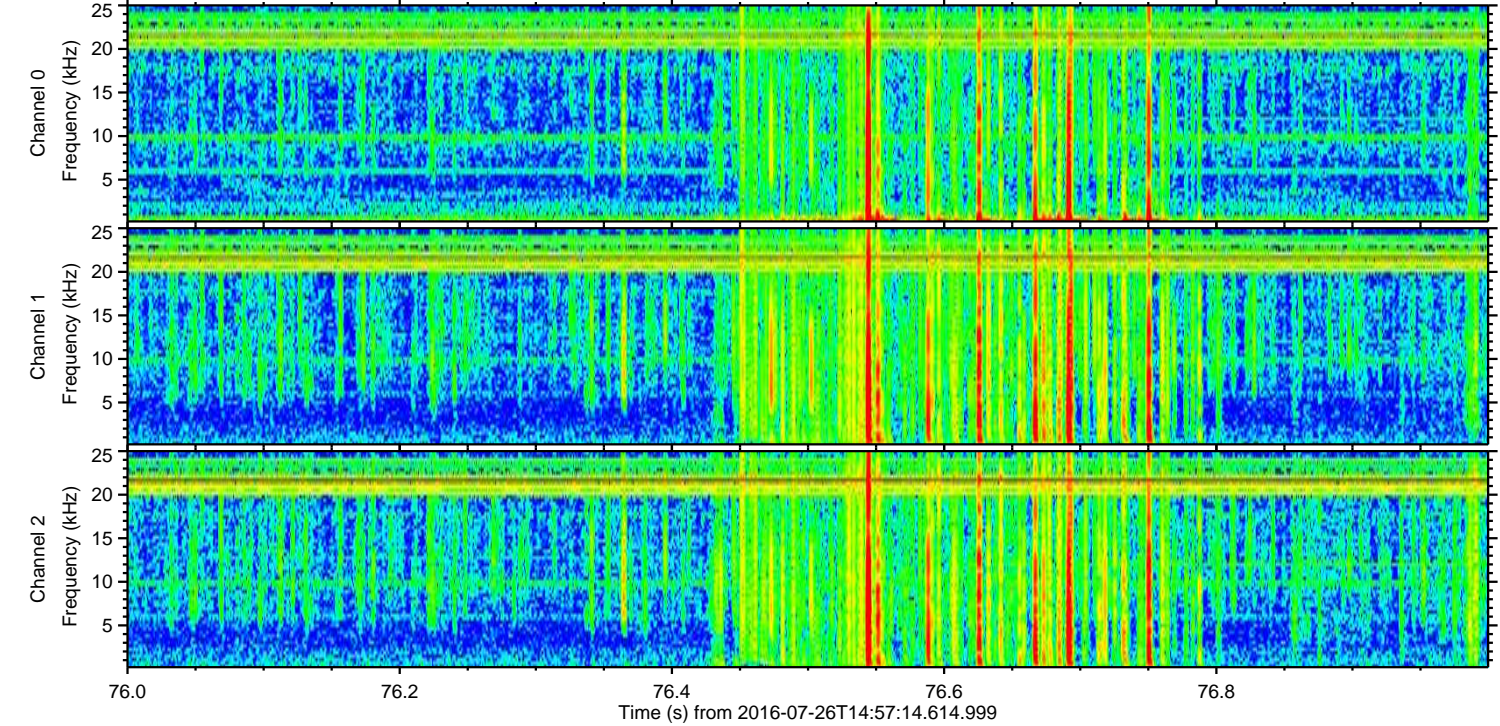
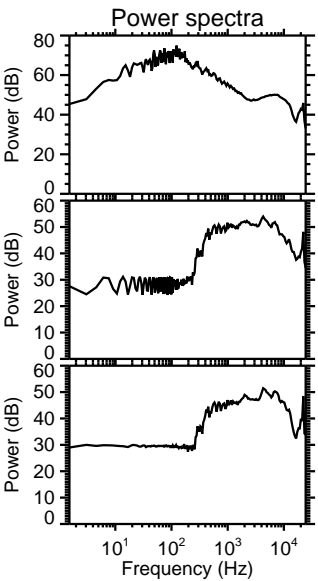
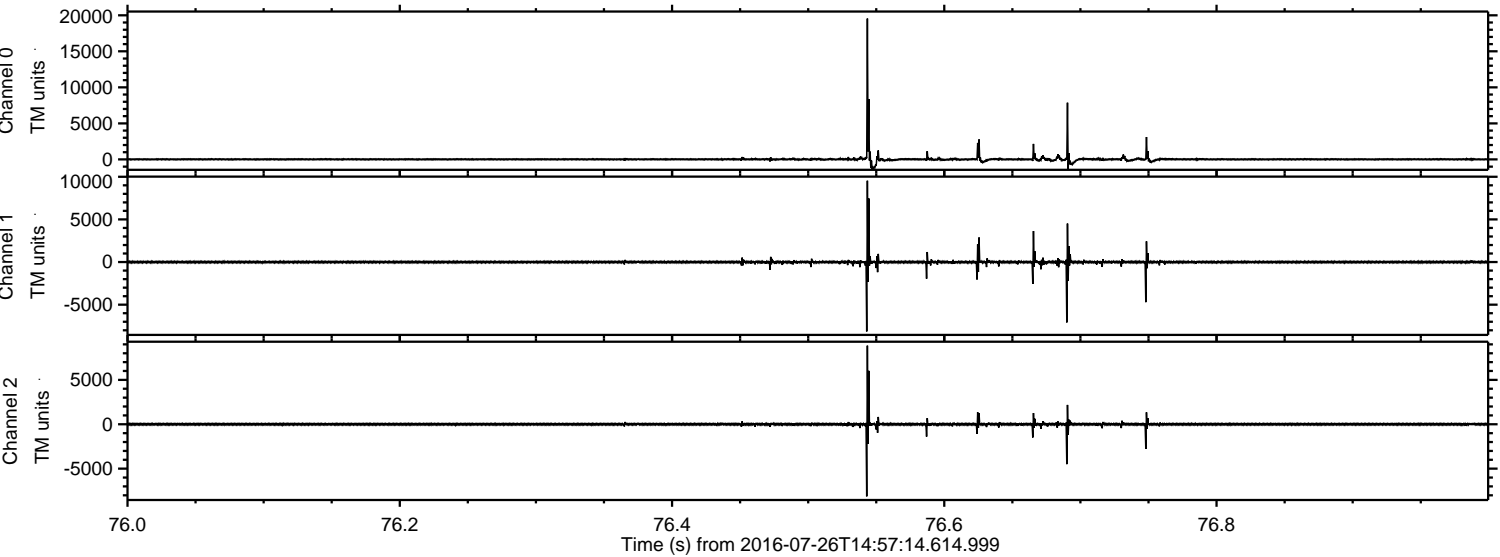


ELMAVAN 3D WAVEFORMS (Measured data sampled at 50 kHz) 51000 packets of 144 samples from 2016-07-26T14:57:14.614.999.

Processed Tue Jul 26 17:05:13 2016 by ELM ver.2012-10-06 from 001__elm20160726_145713__dat00.bin

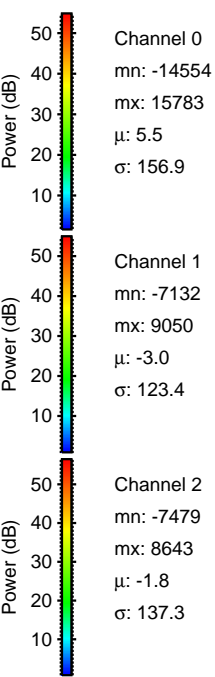
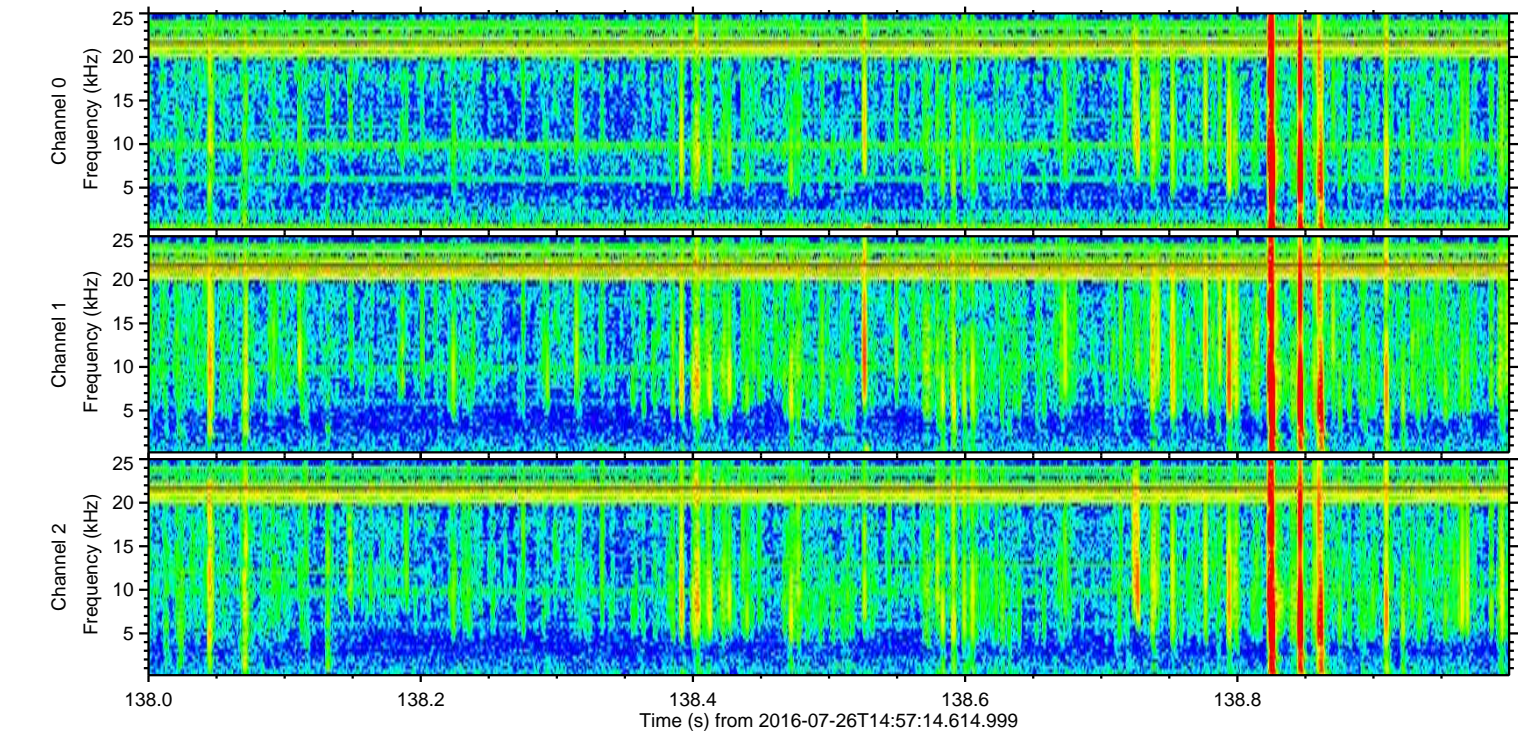
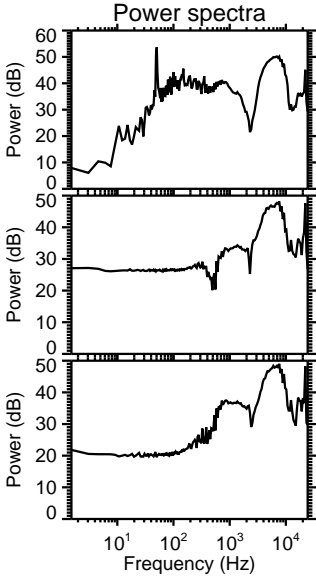
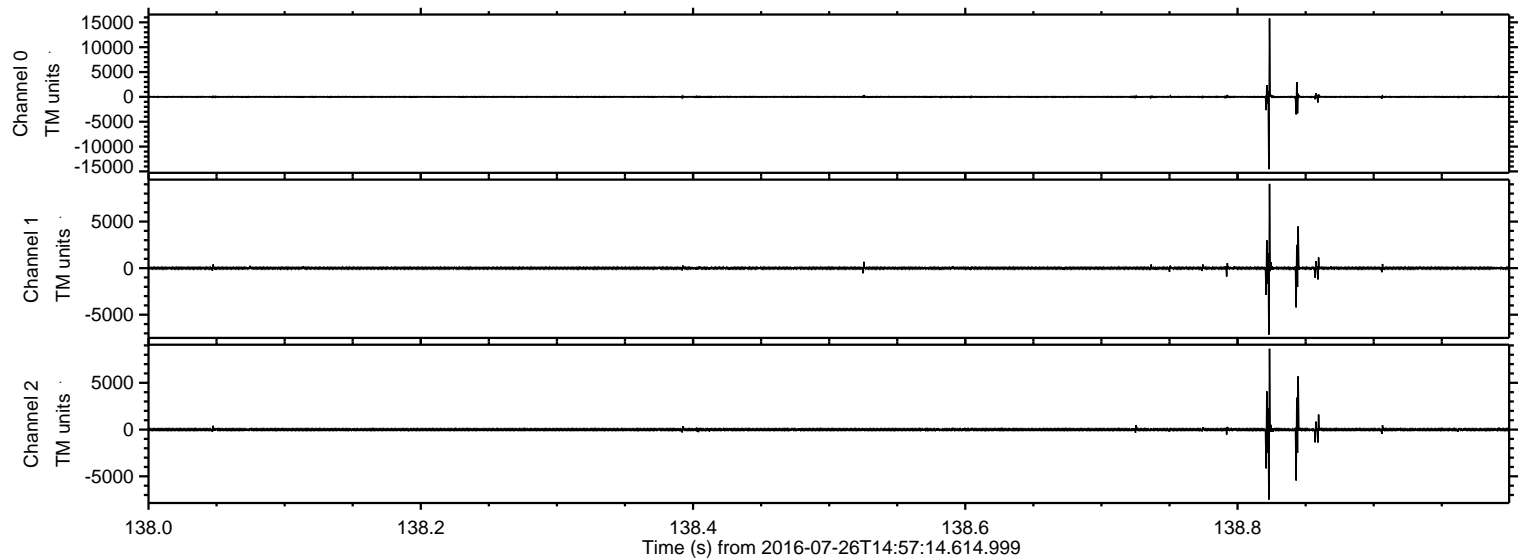


Processed Tue Jul 26 17:05:29 2016 by ELM ver.2012-10-06 from 001__elm20160726_145713__dat00.bin

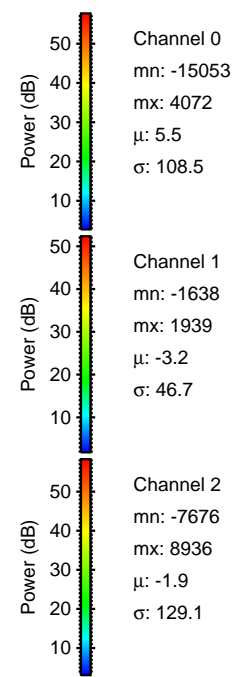
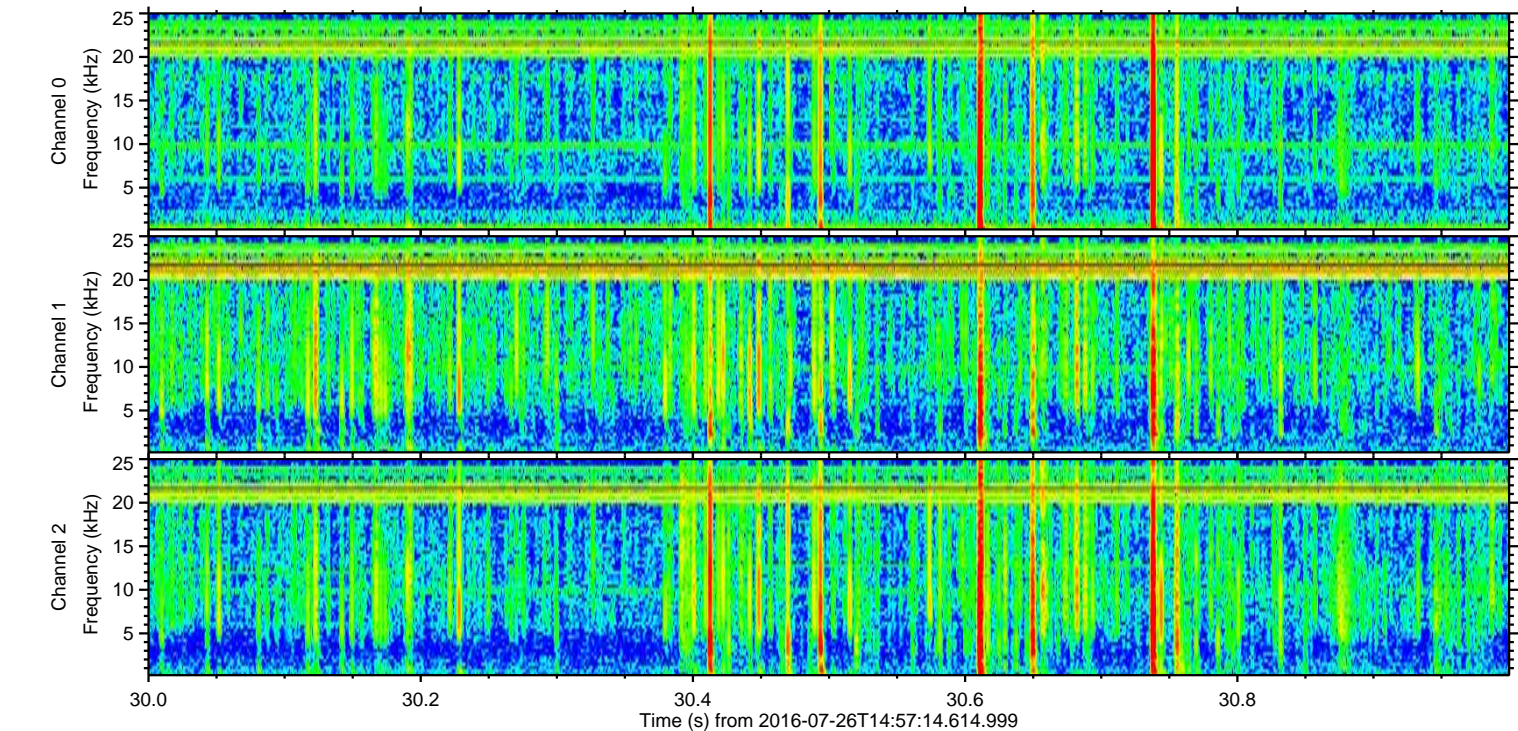
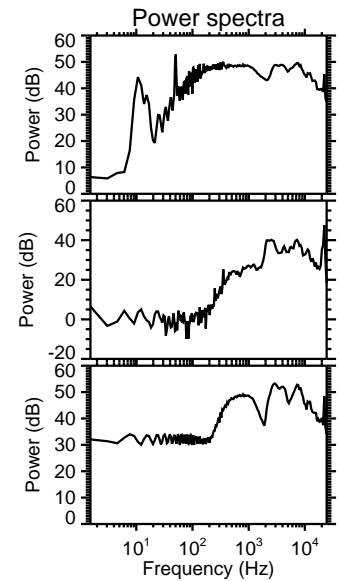
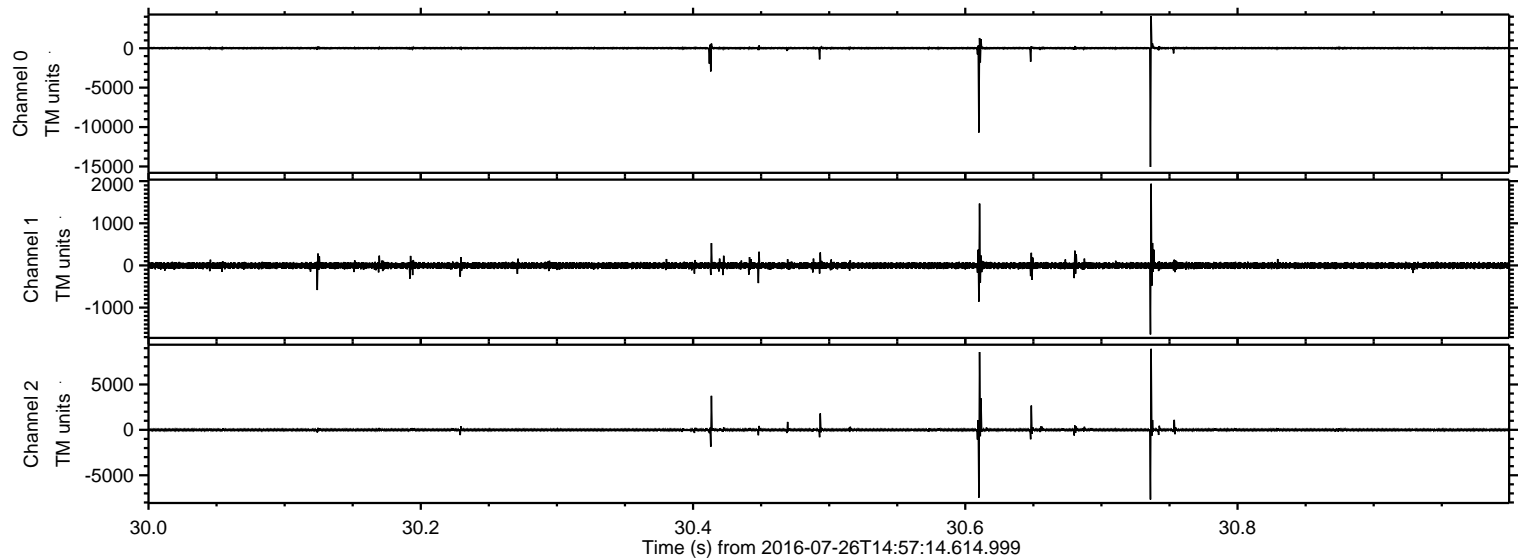


ELMAVAN 3D WAVEFORMS (Measured data sampled at 50 kHz) 51000 packets of 144 samples from 2016-07-26T14:57:14.614.999. Part 139/147

Processed Tue Jul 26 17:05:30 2016 by ELM ver.2012-10-06 from 001__elm20160726_145713__dat00.bin

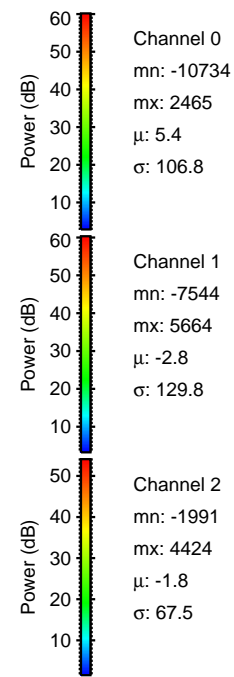
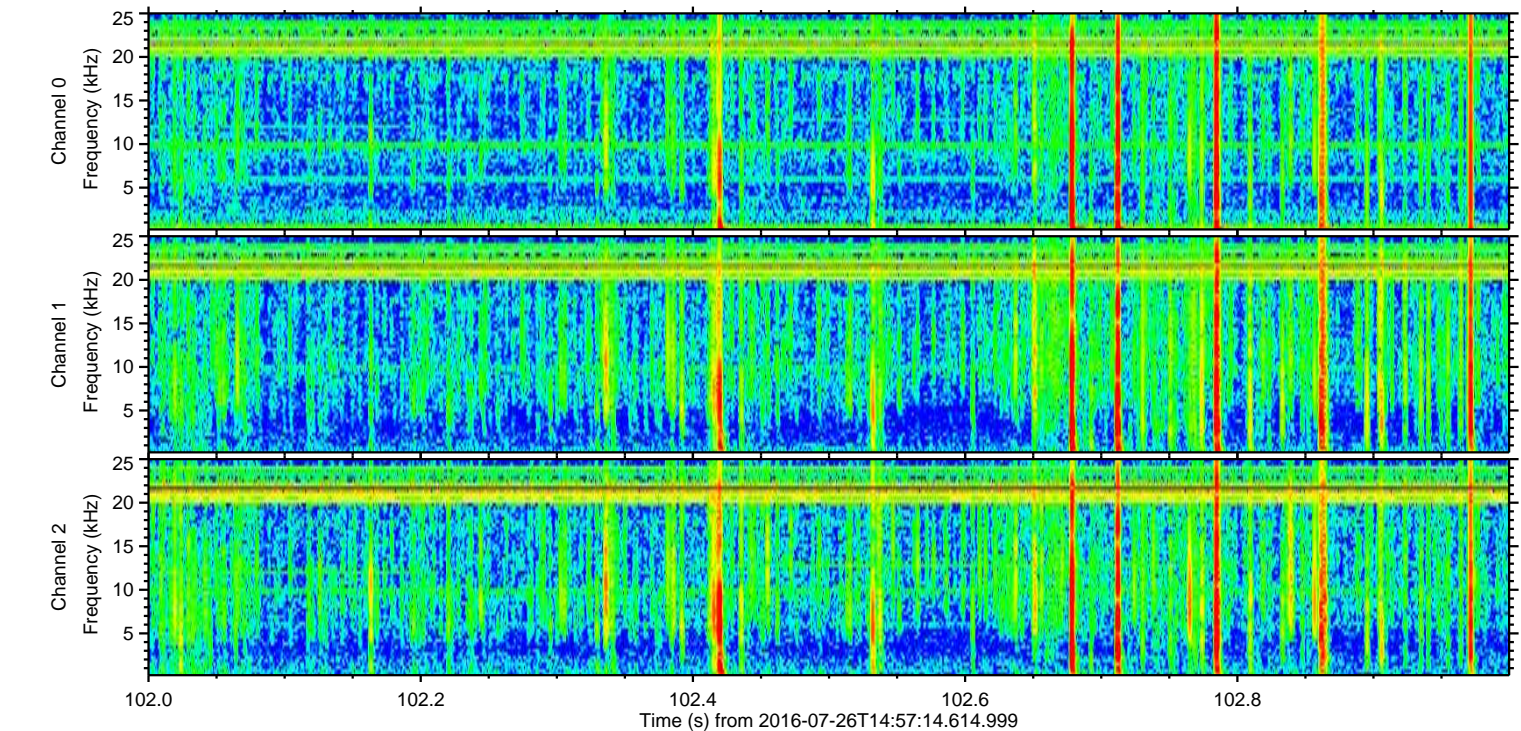
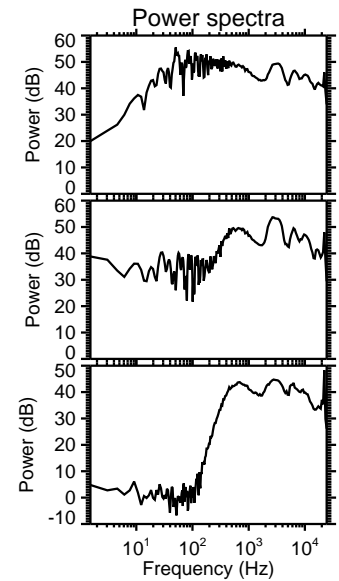
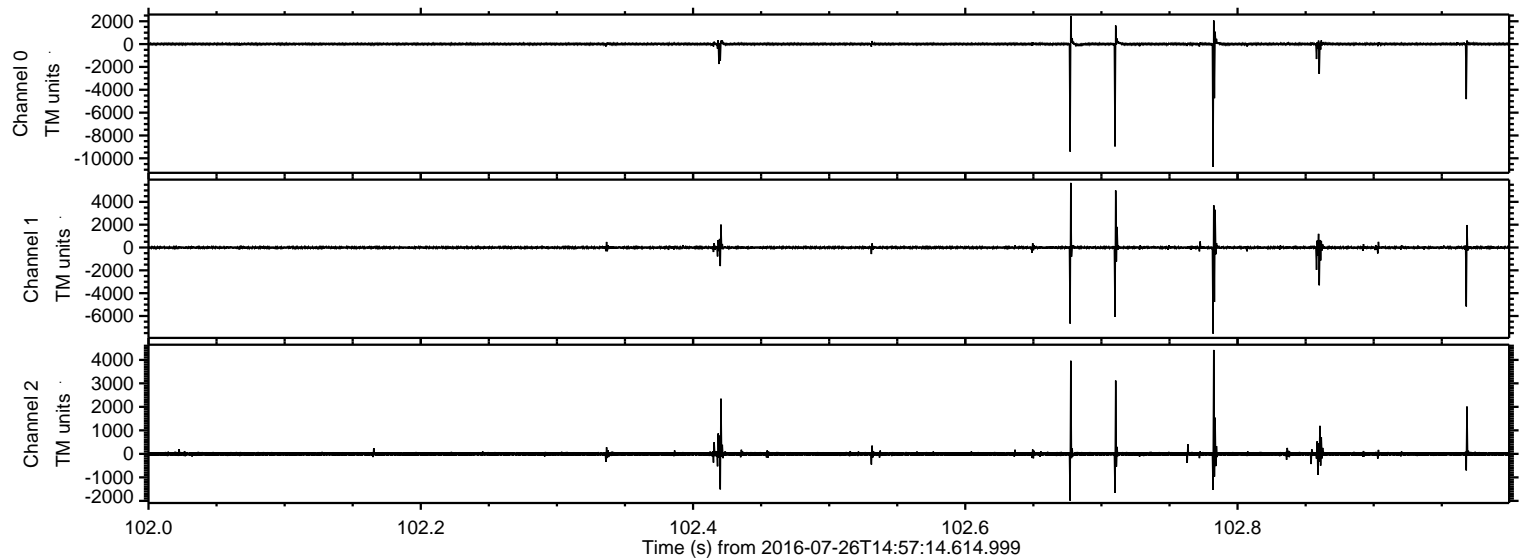


Processed Tue Jul 26 17:05:31 2016 by ELM ver.2012-10-06 from 001__elm20160726_145713__dat00.bin

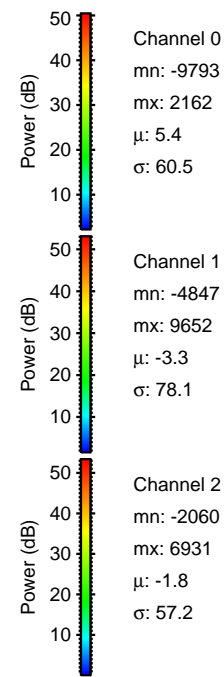
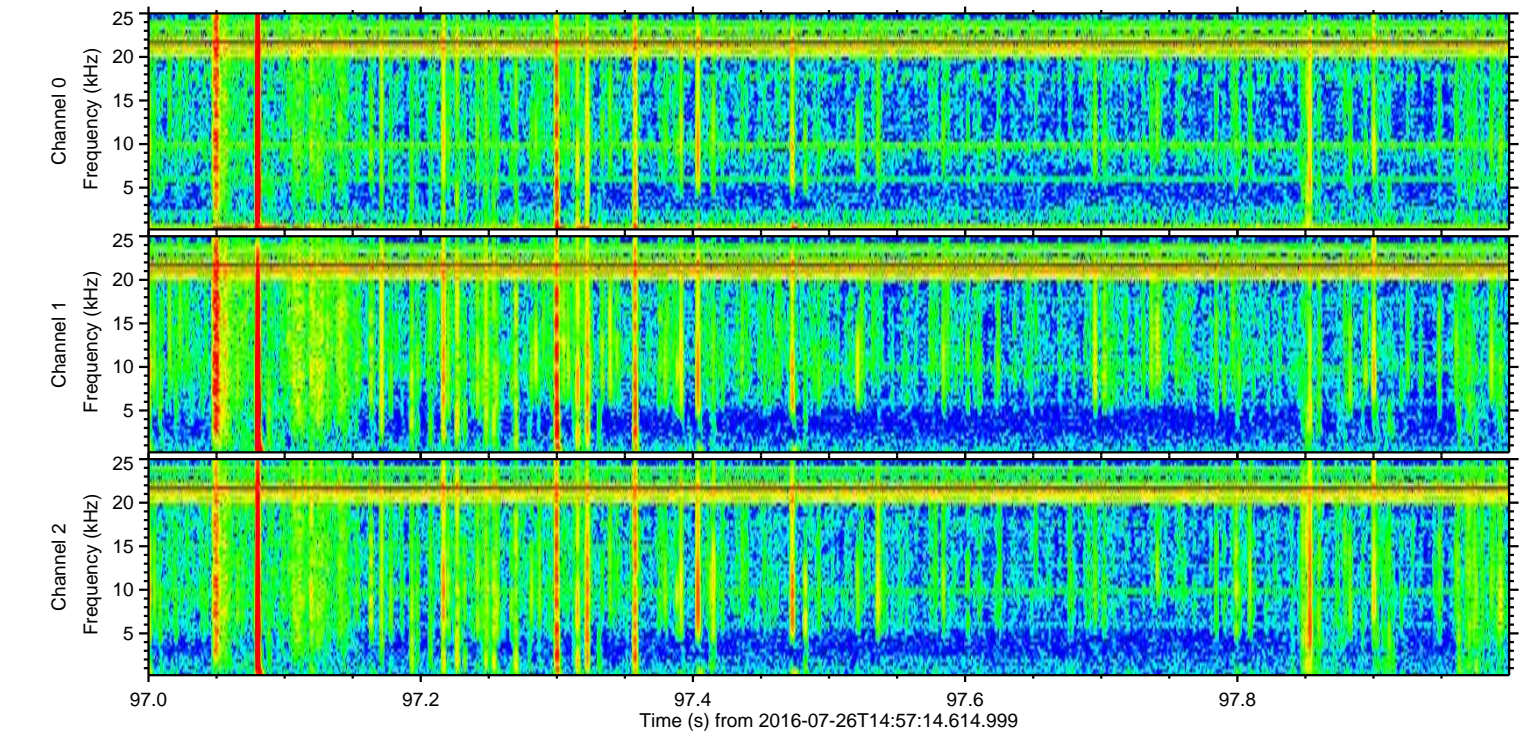
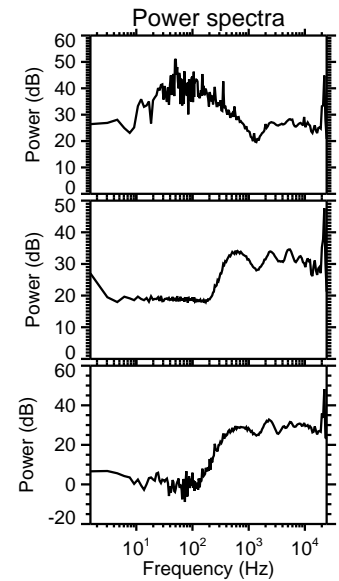
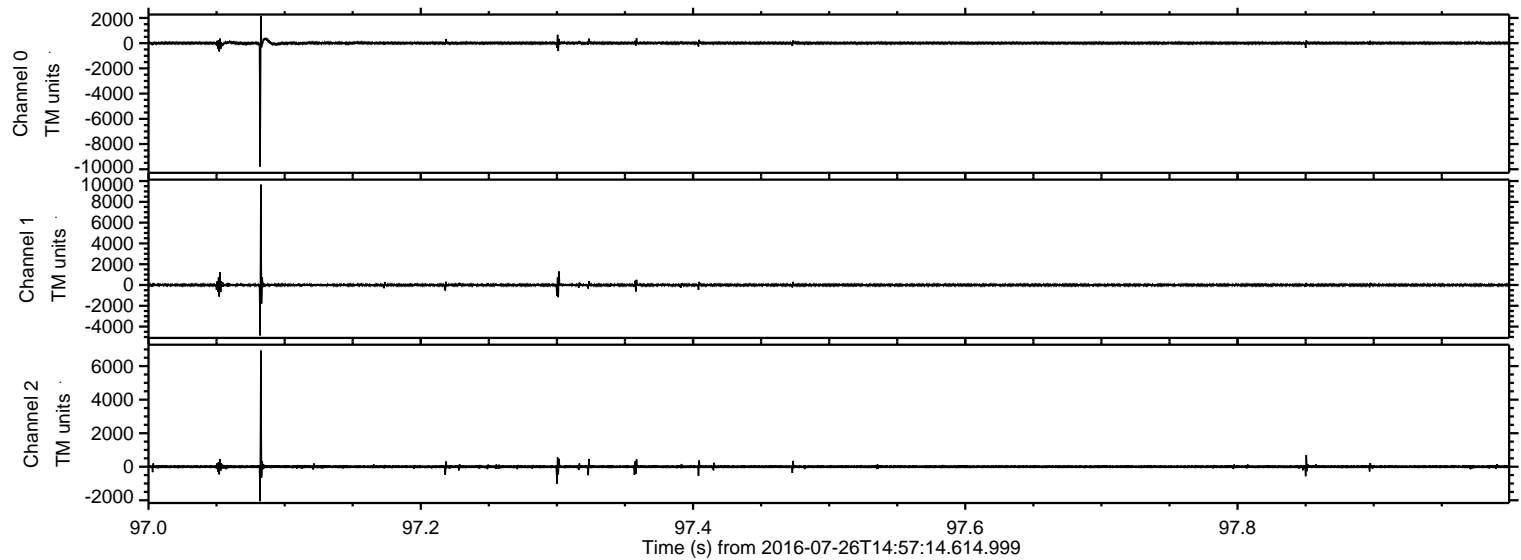


ELMAVAN 3D WAVEFORMS (Measured data sampled at 50 kHz) 51000 packets of 144 samples from 2016-07-26T14:57:14.614.999. Part 103/147

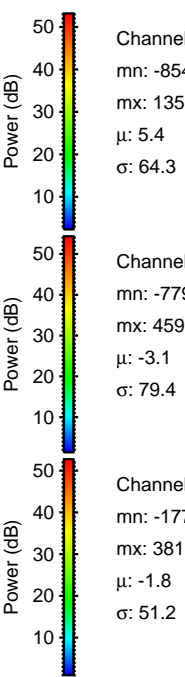
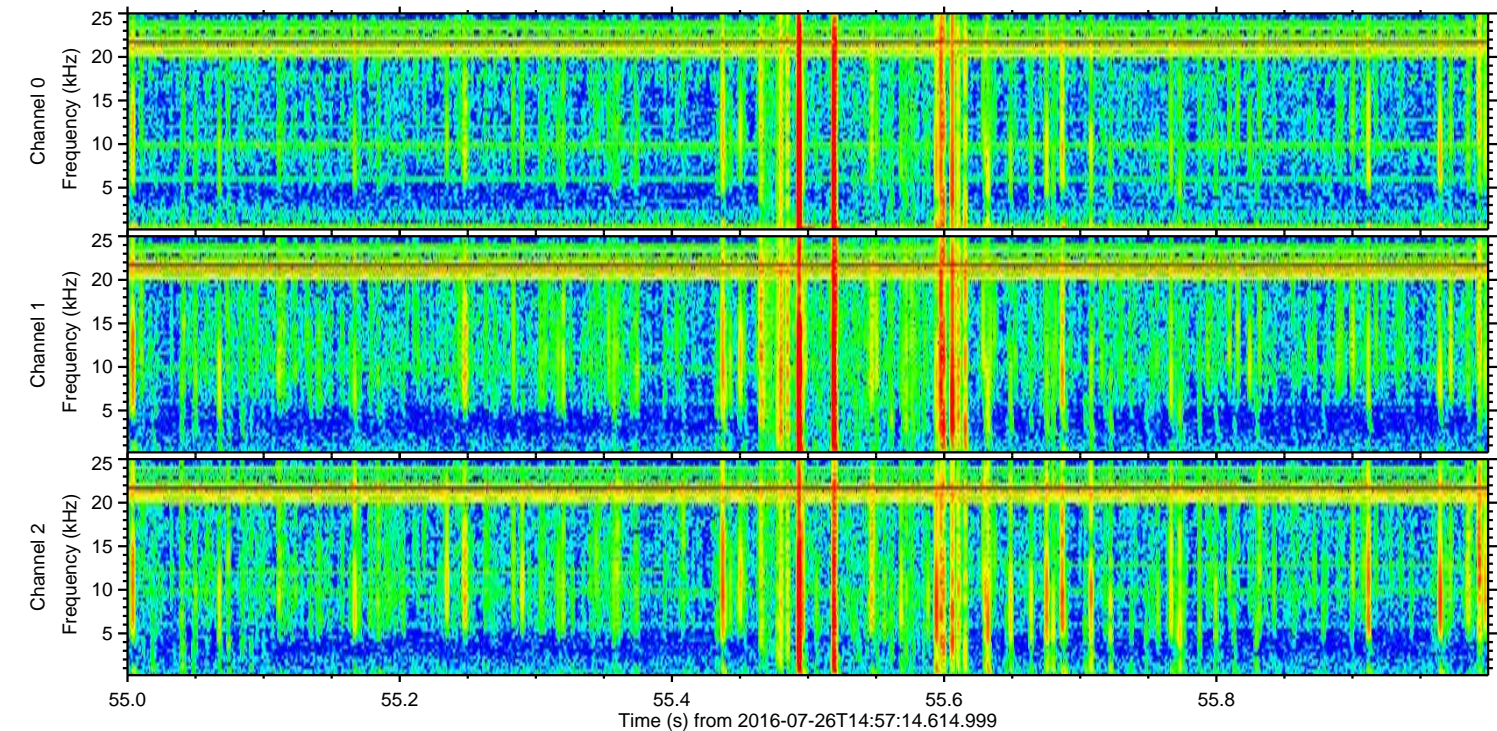
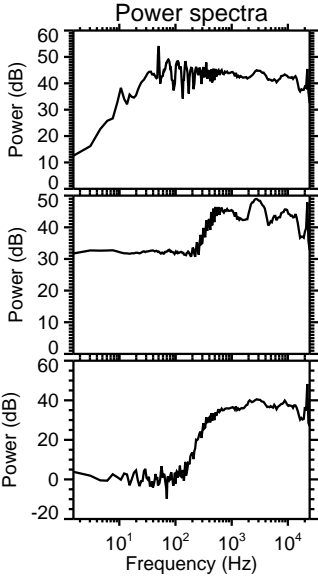
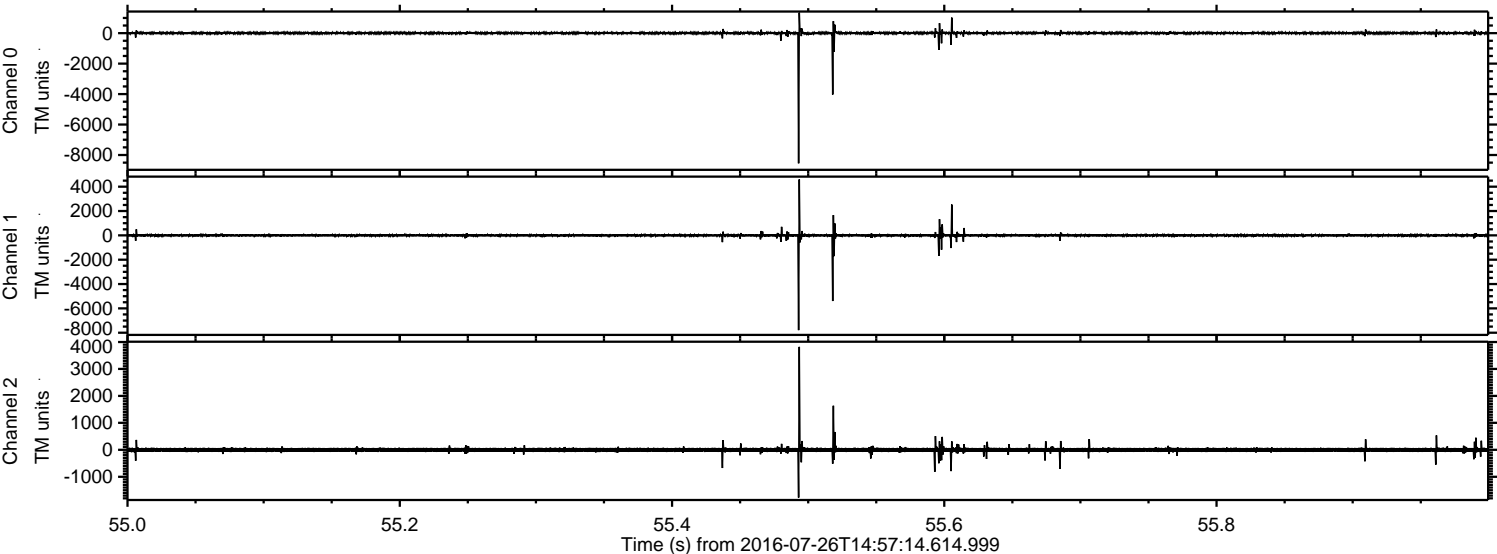
Processed Tue Jul 26 17:05:32 2016 by ELM ver.2012-10-06 from 001__elm20160726_145713__dat00.bin



Processed Tue Jul 26 17:05:33 2016 by ELM ver.2012-10-06 from 001__elm20160726_145713__dat00.bin



Processed Tue Jul 26 17:05:34 2016 by ELM ver.2012-10-06 from 001__elm20160726_145713__dat00.bin

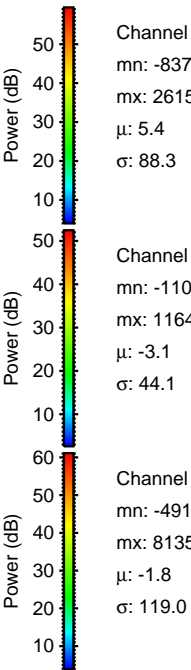
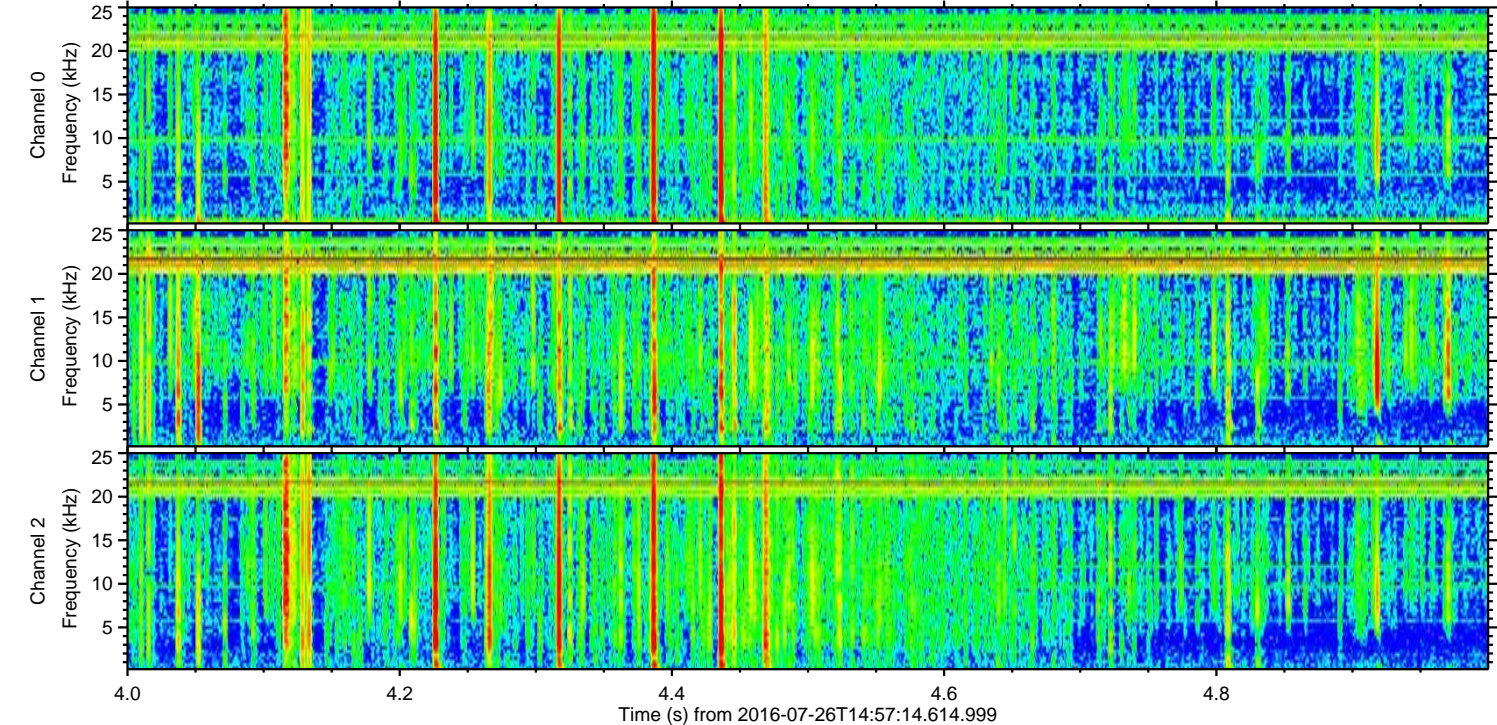
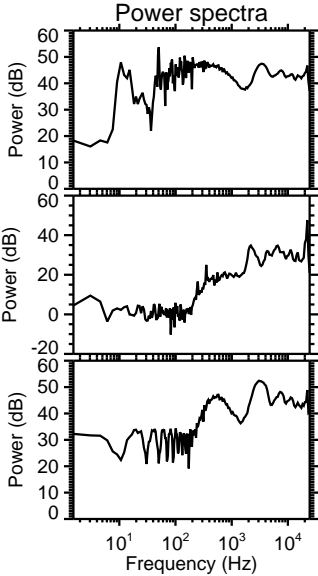
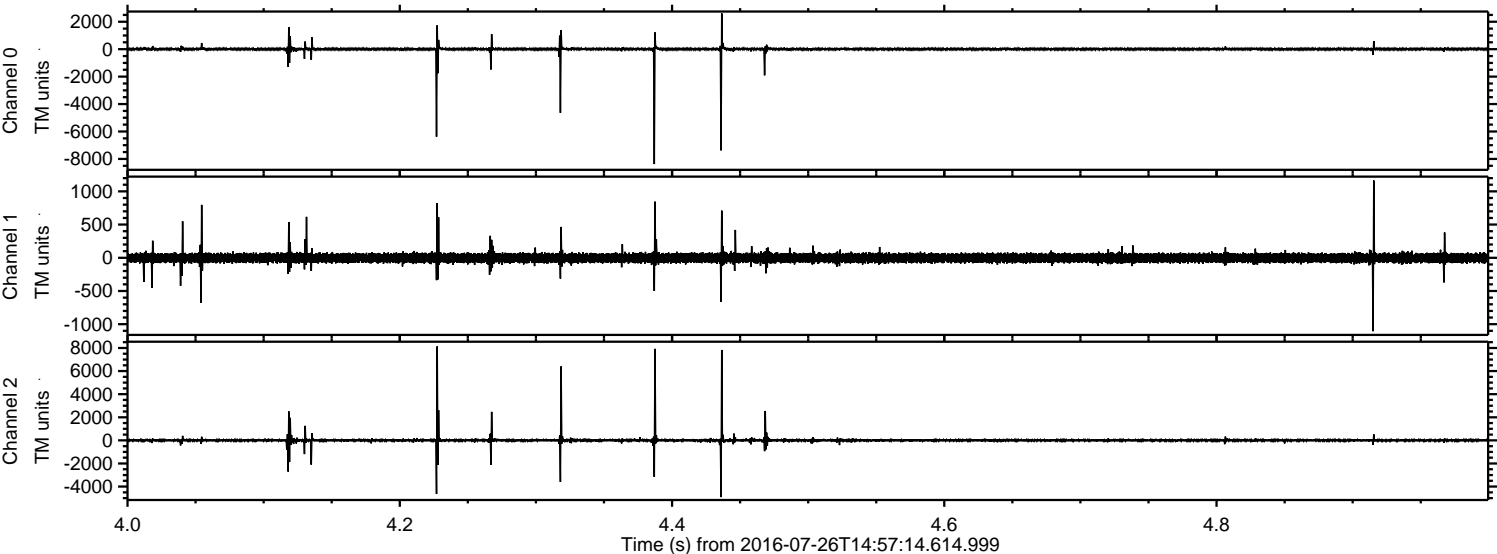


Channel 0
mn: -8546
mx: 1353
 μ : 5.4
 σ : 64.3

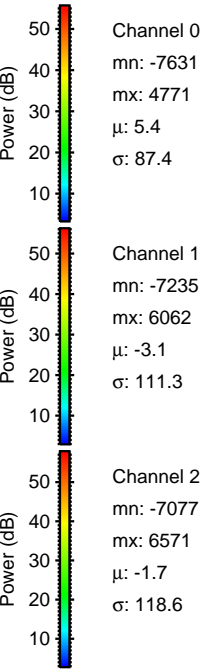
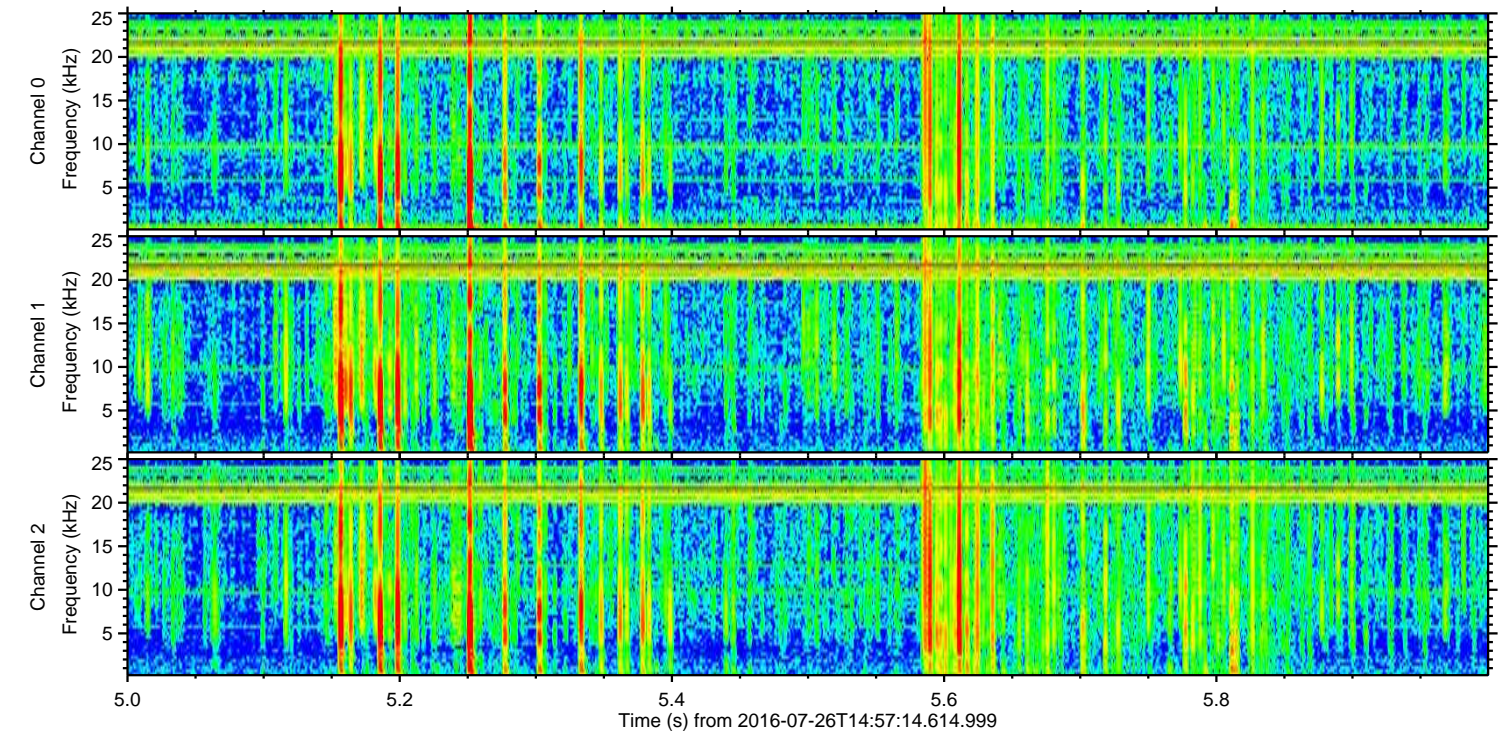
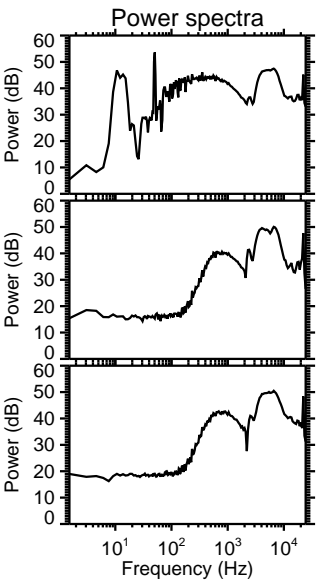
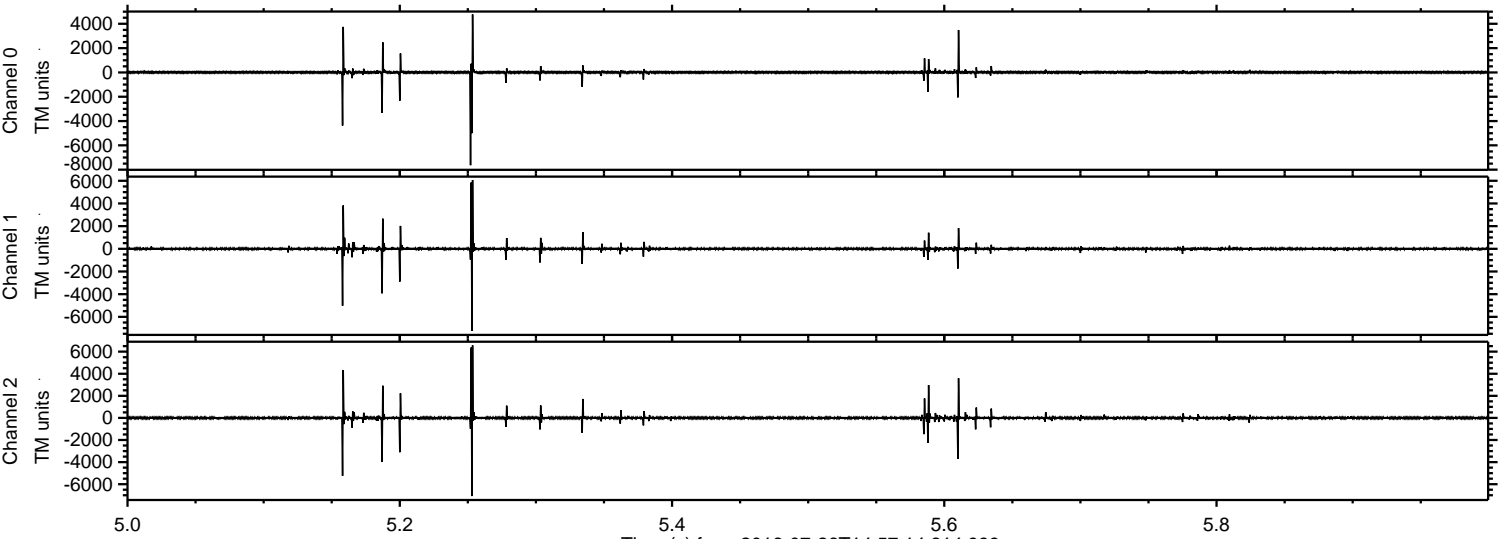
Channel 1
mn: -7793
mx: 4599
 μ : -3.1
 σ : 79.4

Channel 2
mn: -1773
mx: 3819
 μ : -1.8
 σ : 51.2

Processed Tue Jul 26 17:05:35 2016 by ELM ver.2012-10-06 from 001__elm20160726_145713__dat00.bin



Processed Tue Jul 26 17:05:36 2016 by ELM ver.2012-10-06 from 001__elm20160726_145713__dat00.bin



Channel 0
mn: -7631
mx: 4771
 μ : 5.4
 σ : 87.4

Channel 1
mn: -7235
mx: 6062
 μ : -3.1
 σ : 111.3

Channel 2
mn: -7077
mx: 6571
 μ : -1.7
 σ : 118.6

Processed Tue Jul 26 17:05:38 2016 by ELM ver.2012-10-06 from 001__elm20160726_145713__dat00.bin

