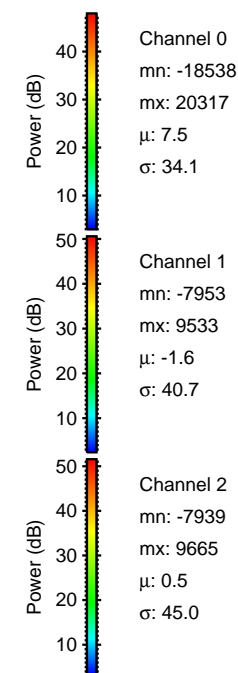
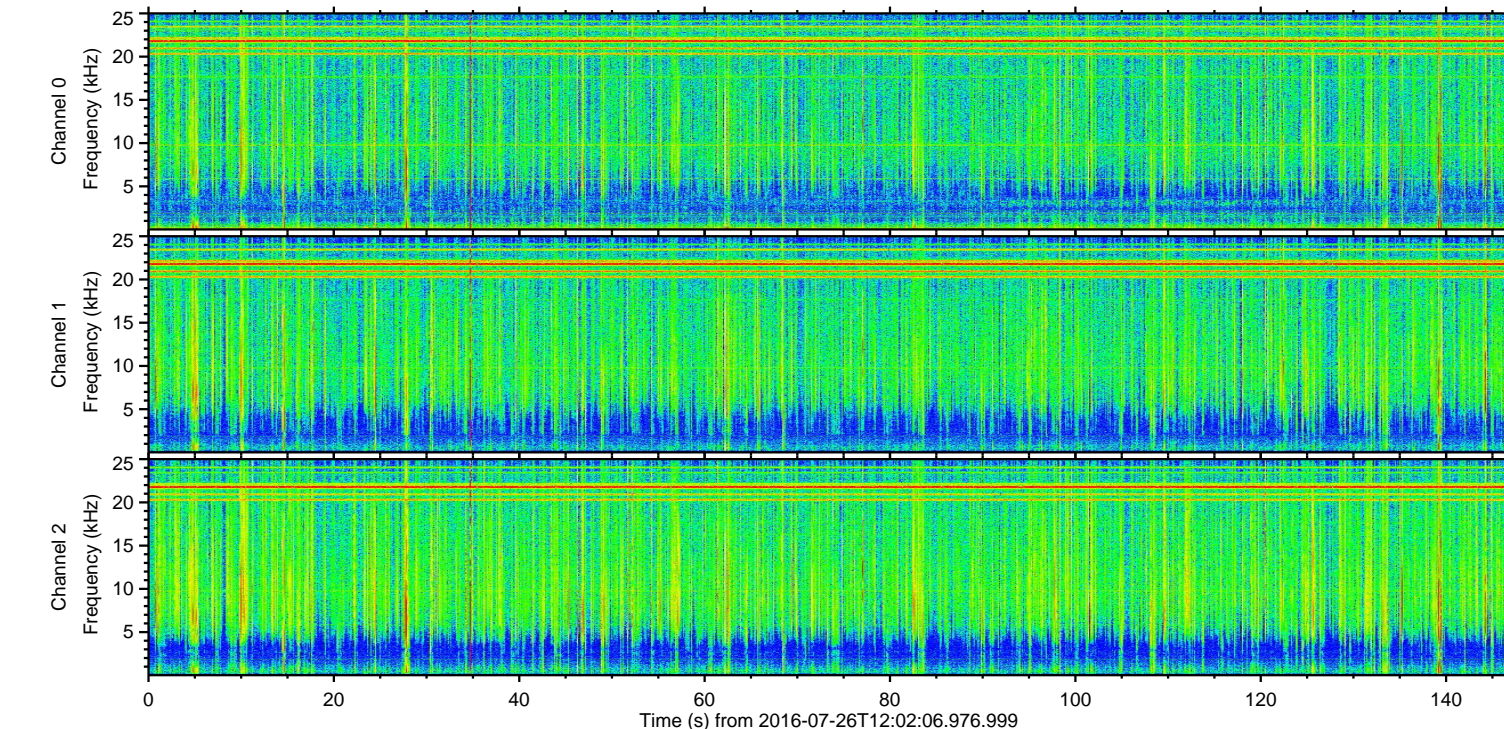
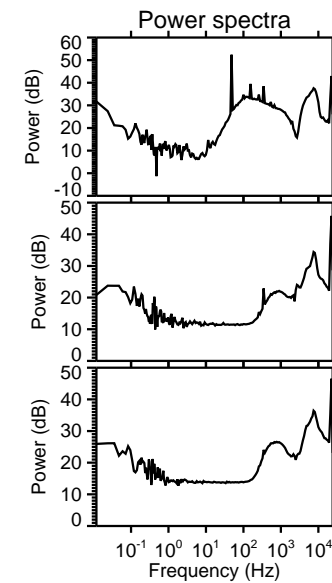
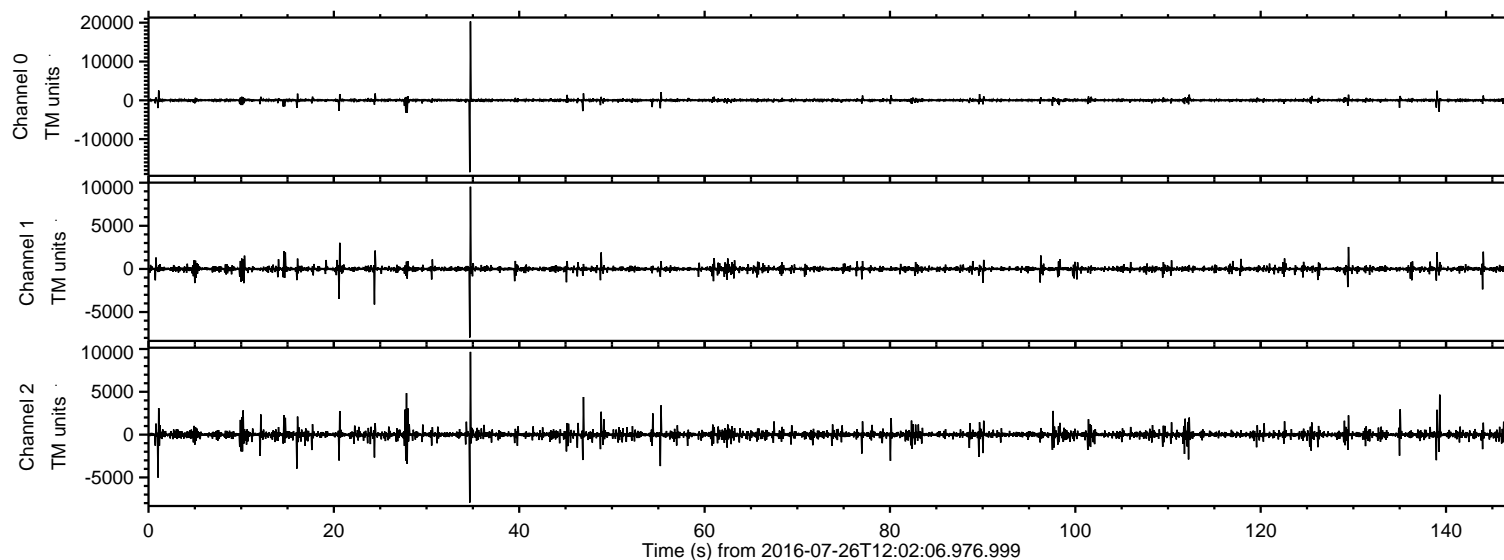


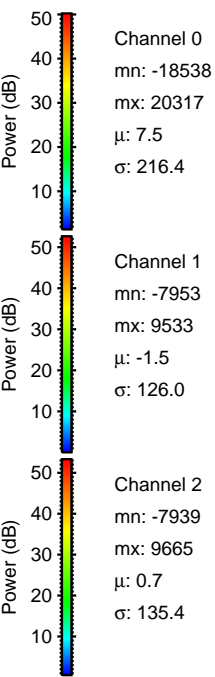
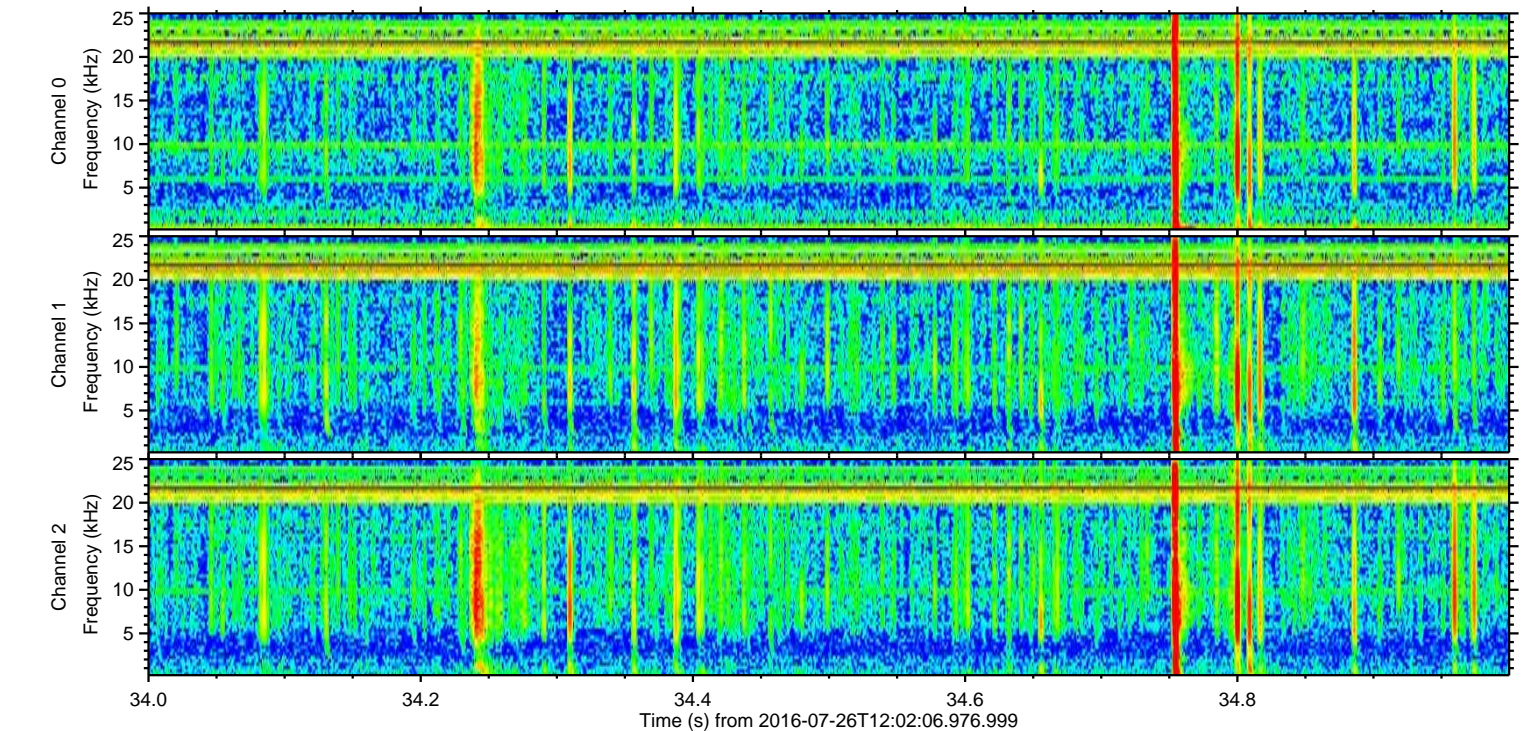
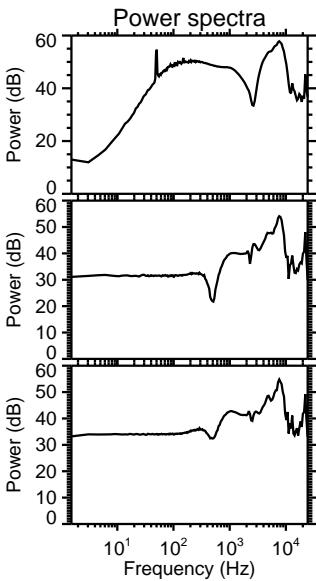
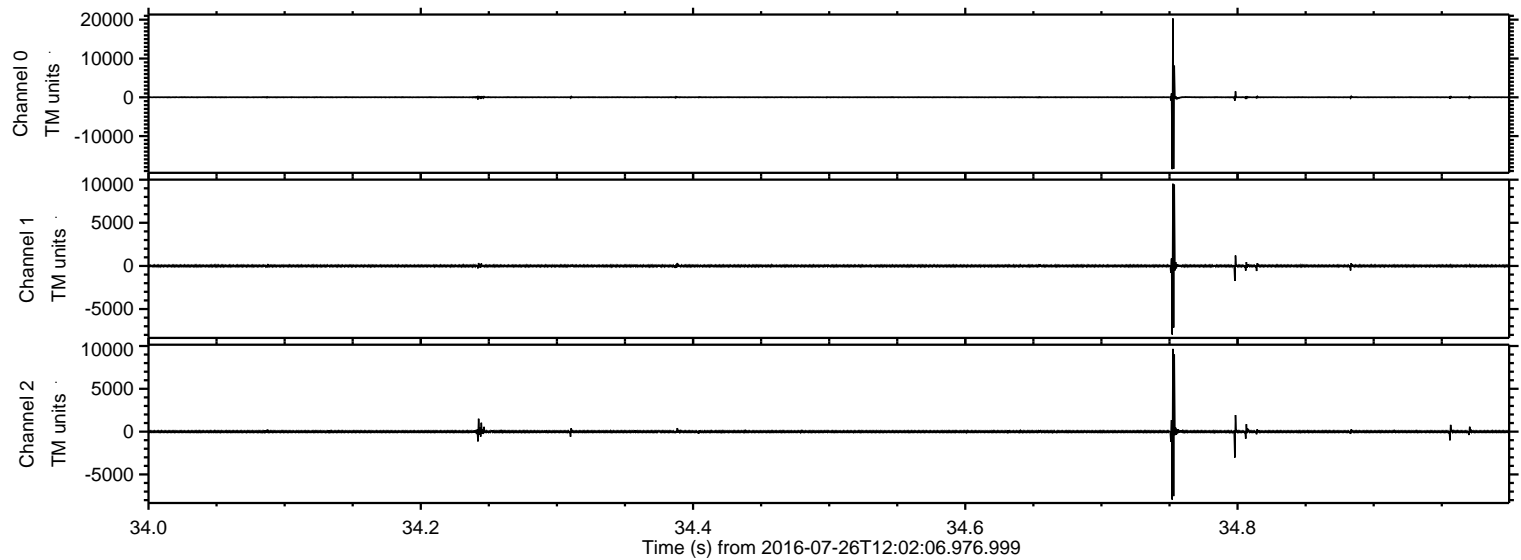
# ELMAVAN 3D WAVEFORMS (Measured data sampled at 50 kHz) 51000 packets of 144 samples from 2016-07-26T12:02:06.976.999.

Processed Tue Jul 26 14:10:25 2016 by ELM ver.2012-10-06 from 001\_\_elm20160726\_120205\_\_dat00.bin



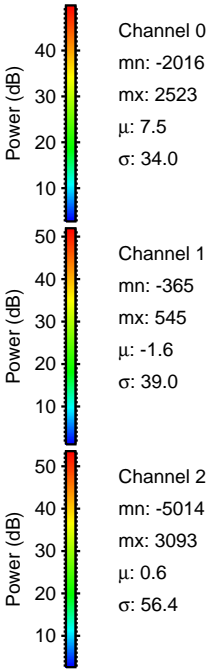
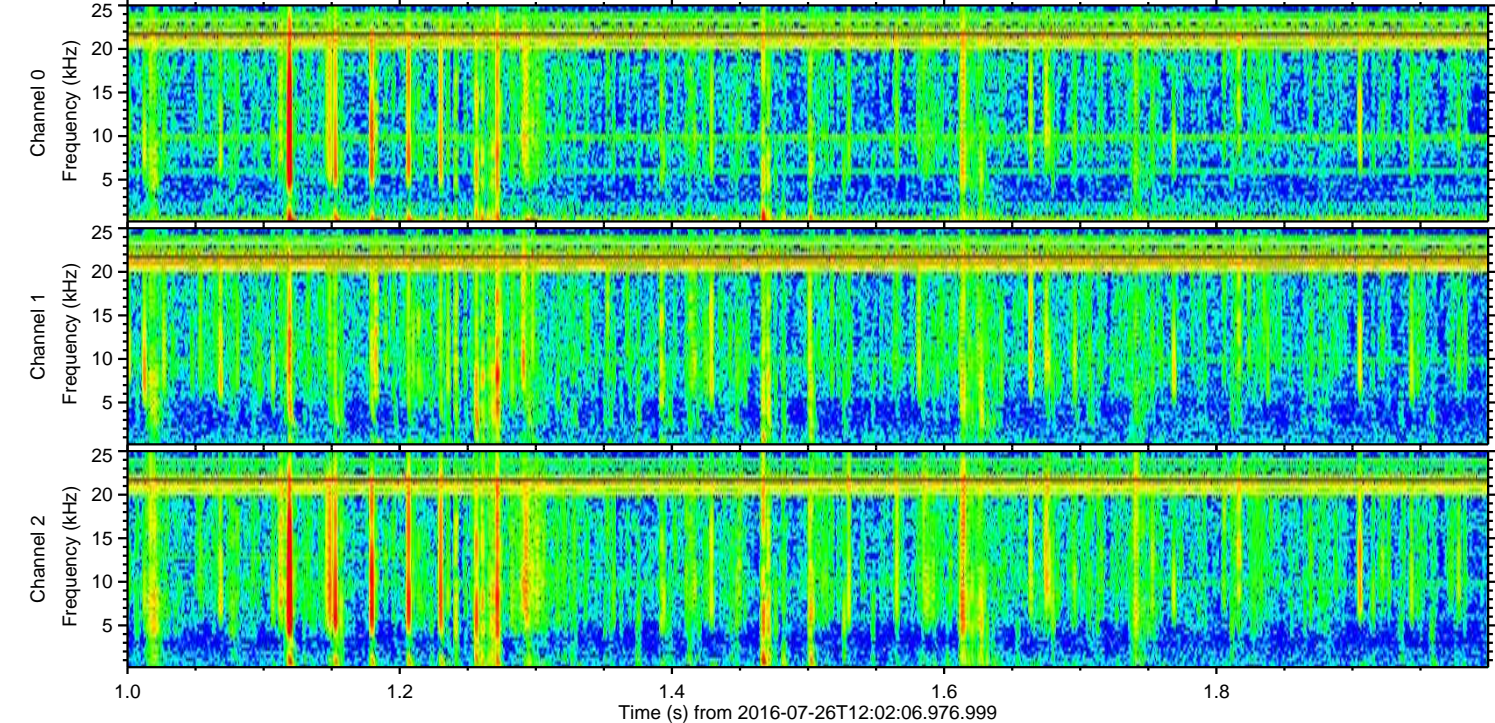
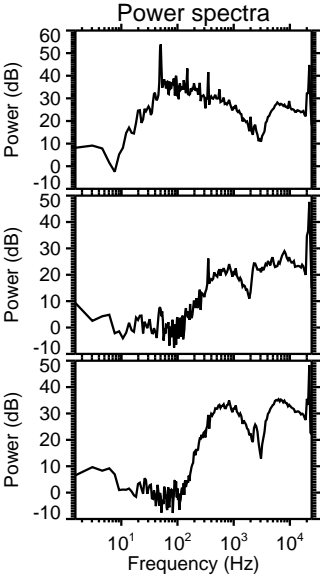
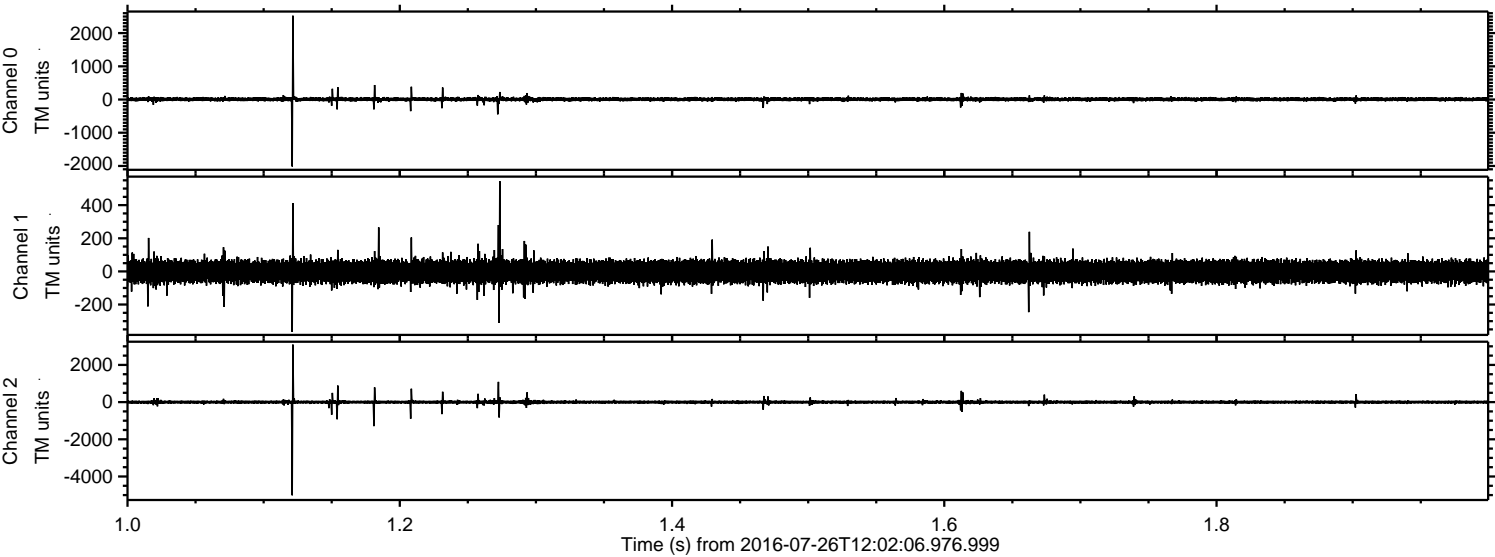


Processed Tue Jul 26 14:10:41 2016 by ELM ver.2012-10-06 from 001\_\_elm20160726\_120205\_\_dat00.bin



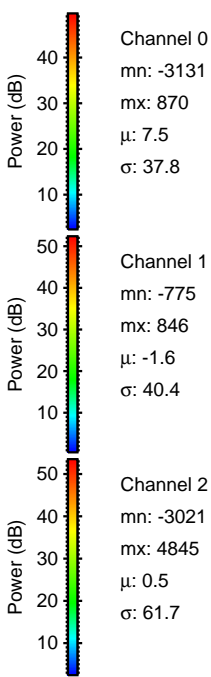
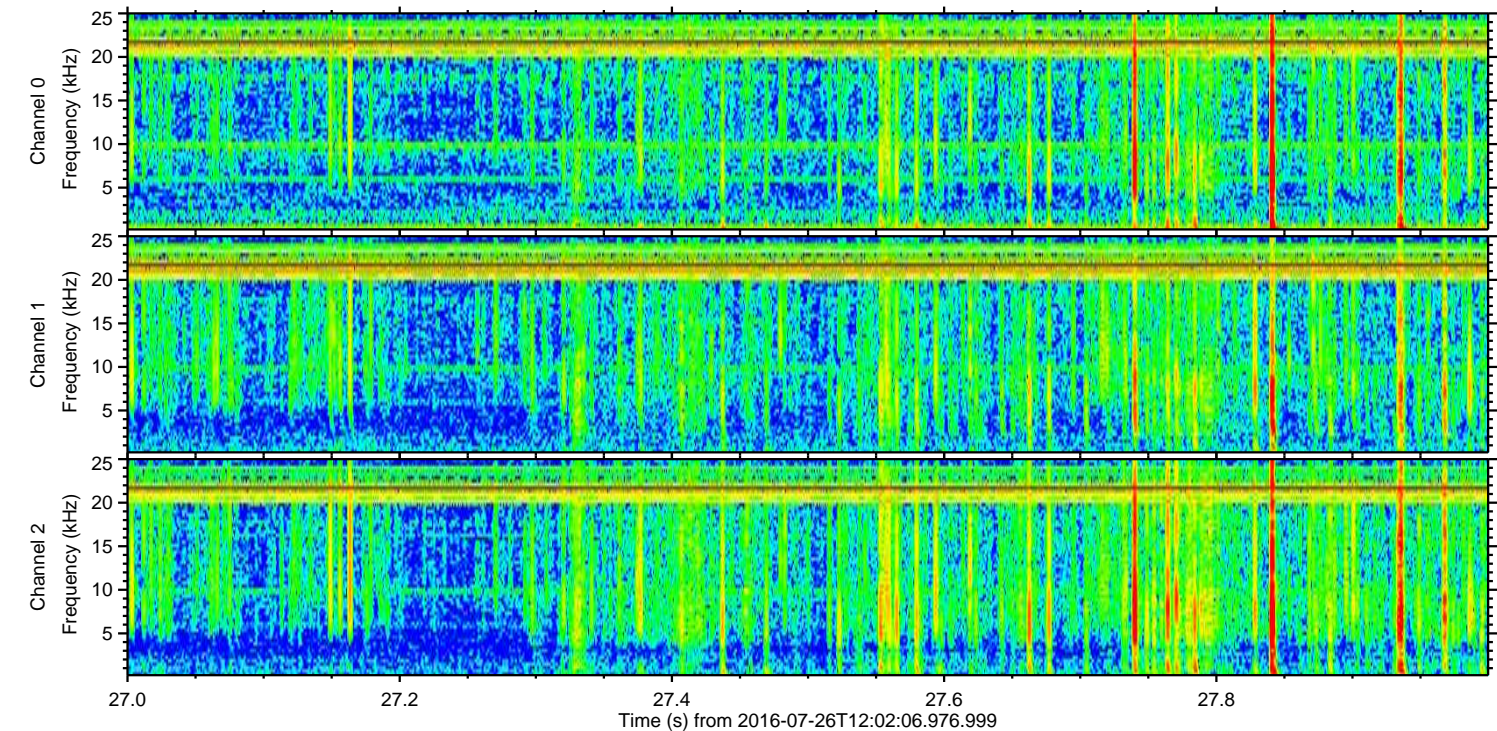
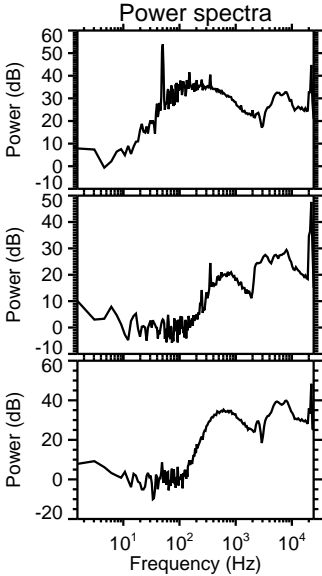
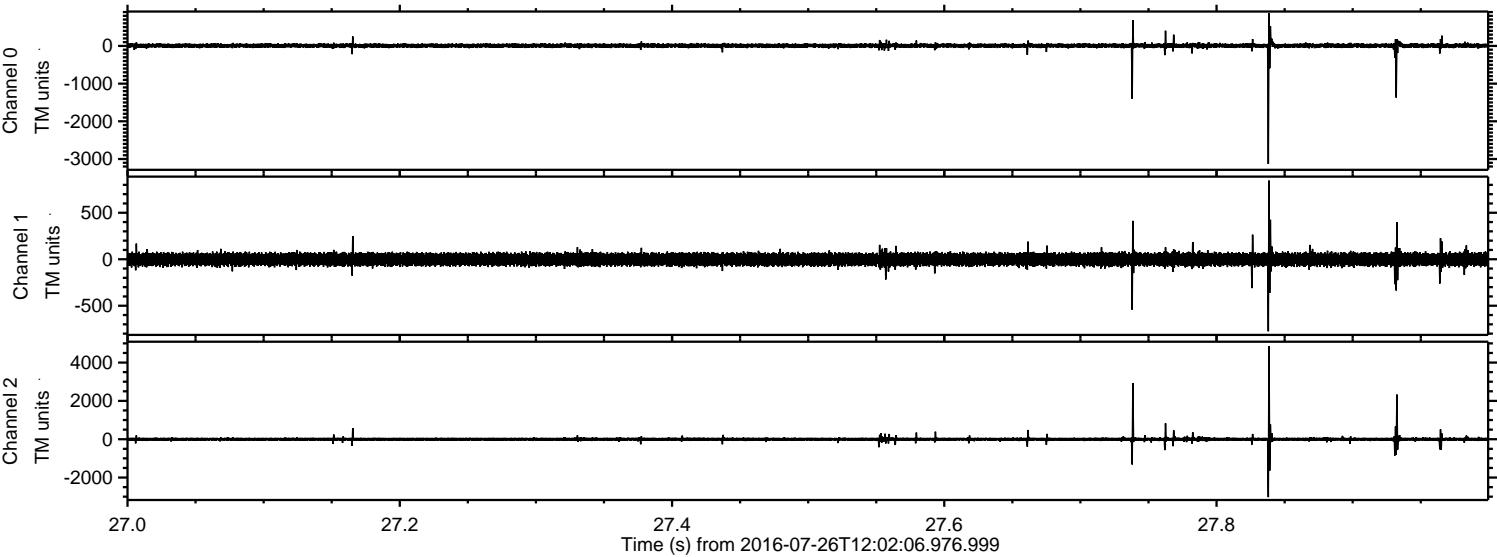


Processed Tue Jul 26 14:10:42 2016 by ELM ver.2012-10-06 from 001\_\_elm20160726\_120205\_\_dat00.bin





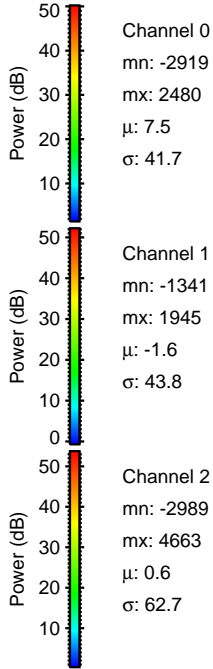
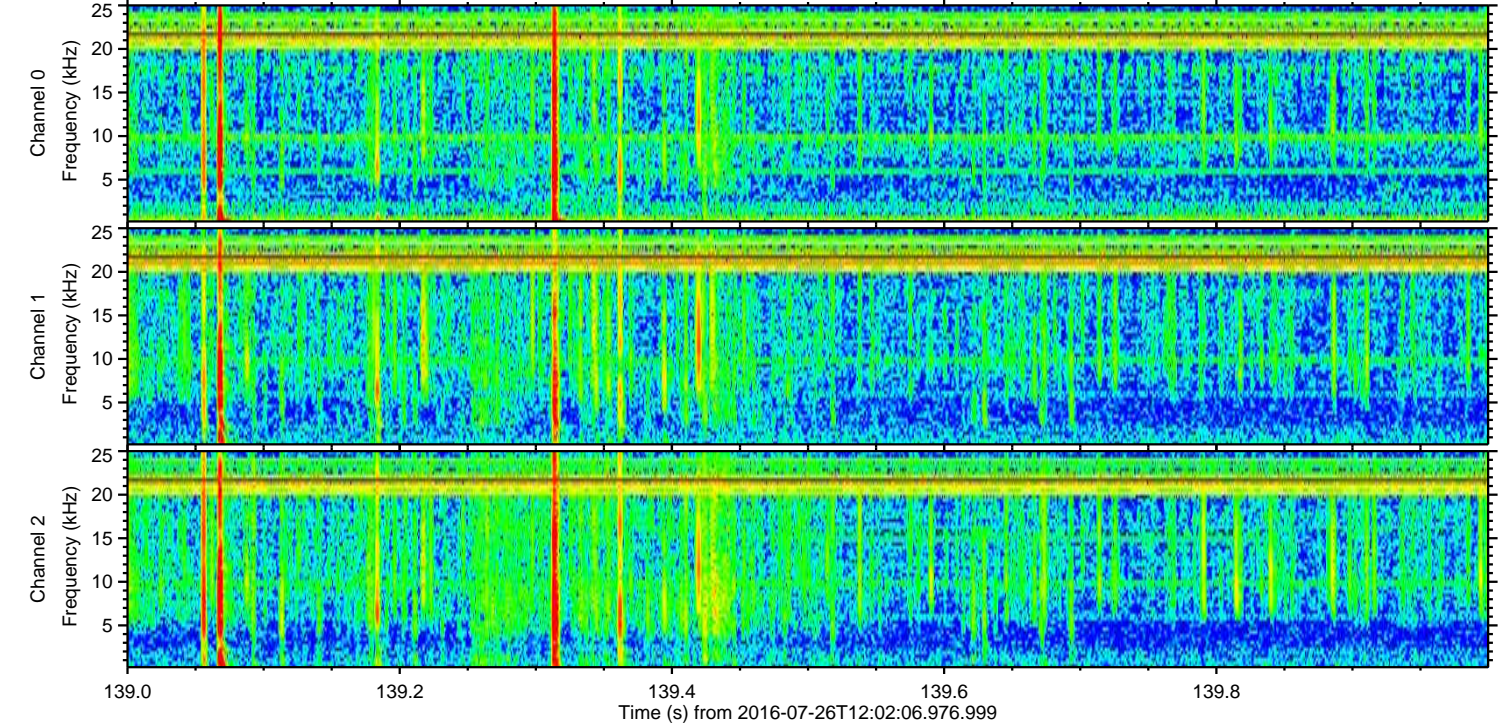
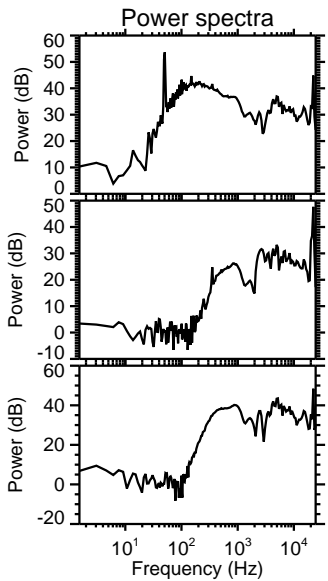
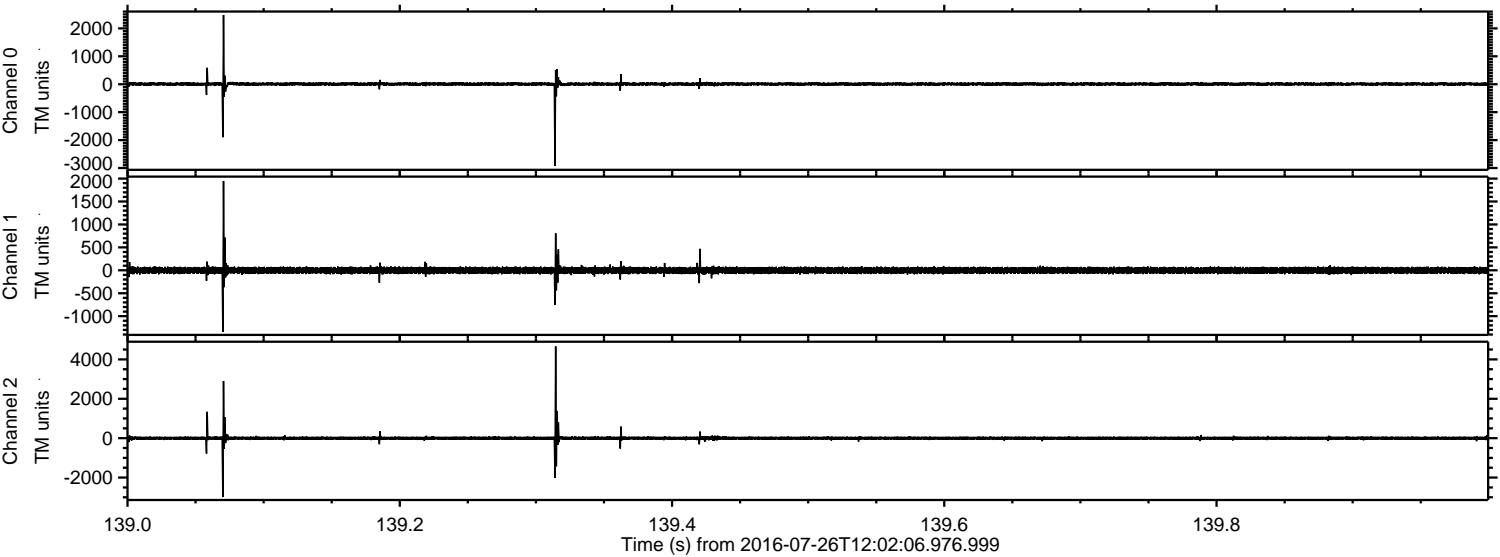
Processed Tue Jul 26 14:10:43 2016 by ELM ver.2012-10-06 from 001\_\_elm20160726\_120205\_\_dat00.bin





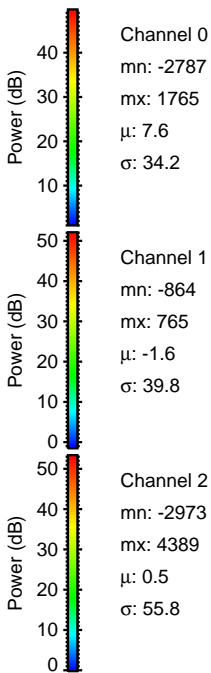
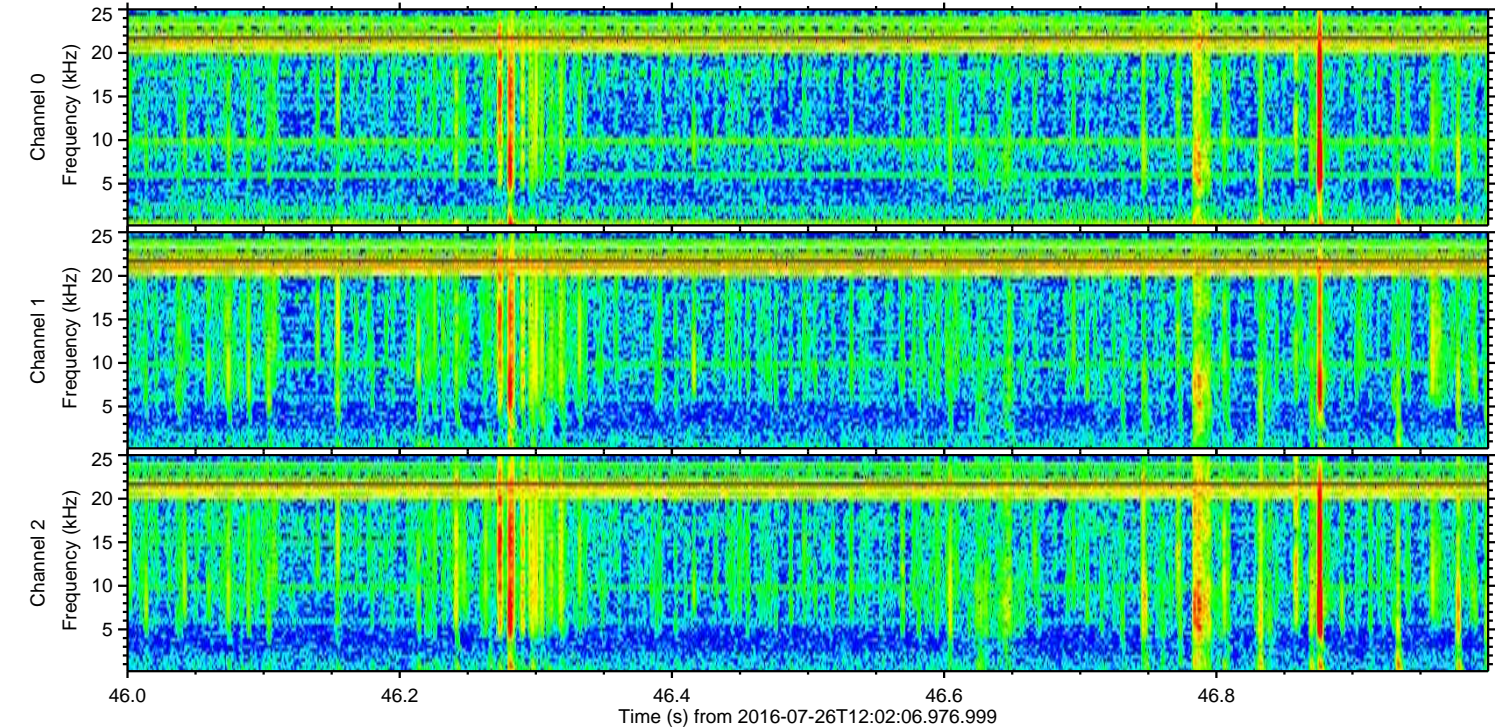
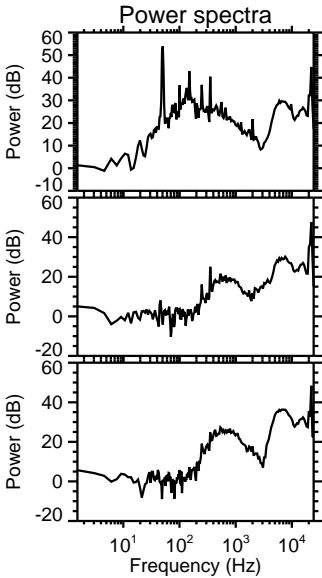
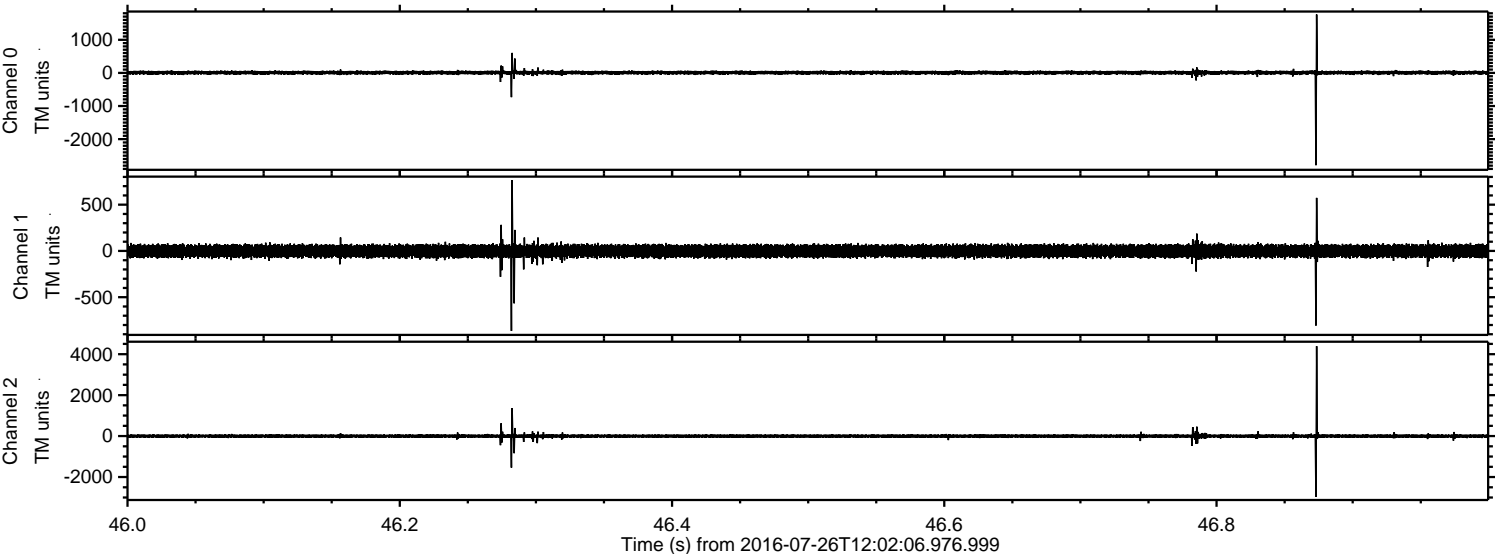
ELMAVAN 3D WAVEFORMS (Measured data sampled at 50 kHz) 51000 packets of 144 samples from 2016-07-26T12:02:06.976.999. Part 140/147

Processed Tue Jul 26 14:10:44 2016 by ELM ver.2012-10-06 from 001\_\_elm20160726\_120205\_\_dat00.bin



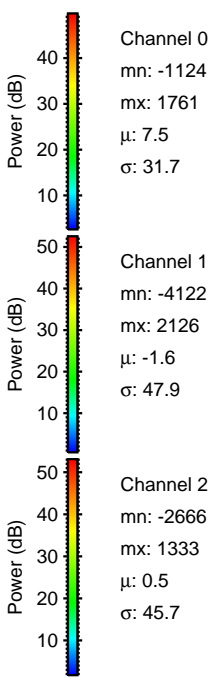
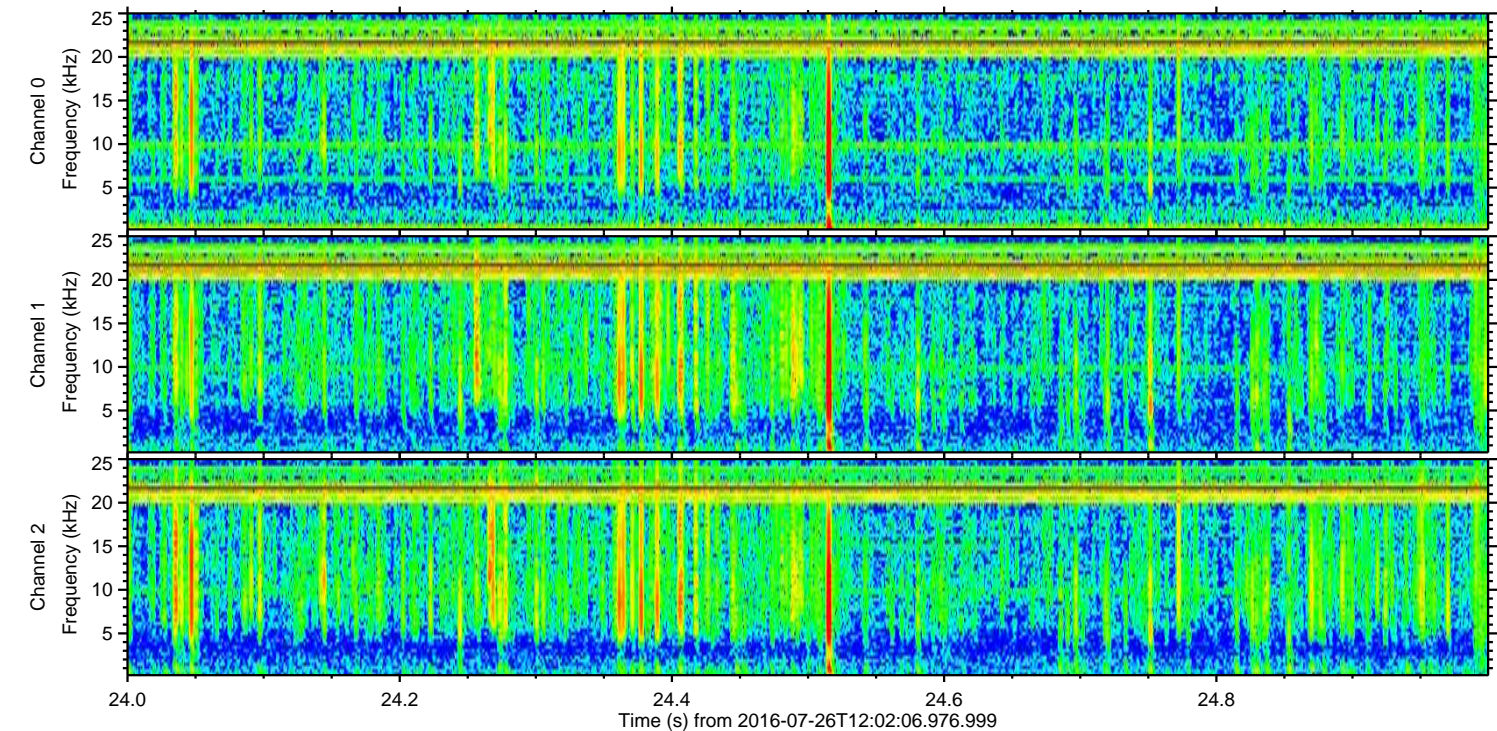
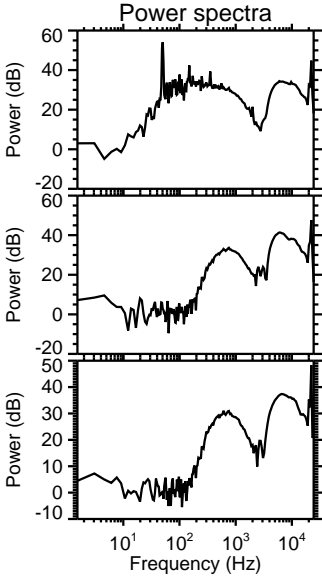
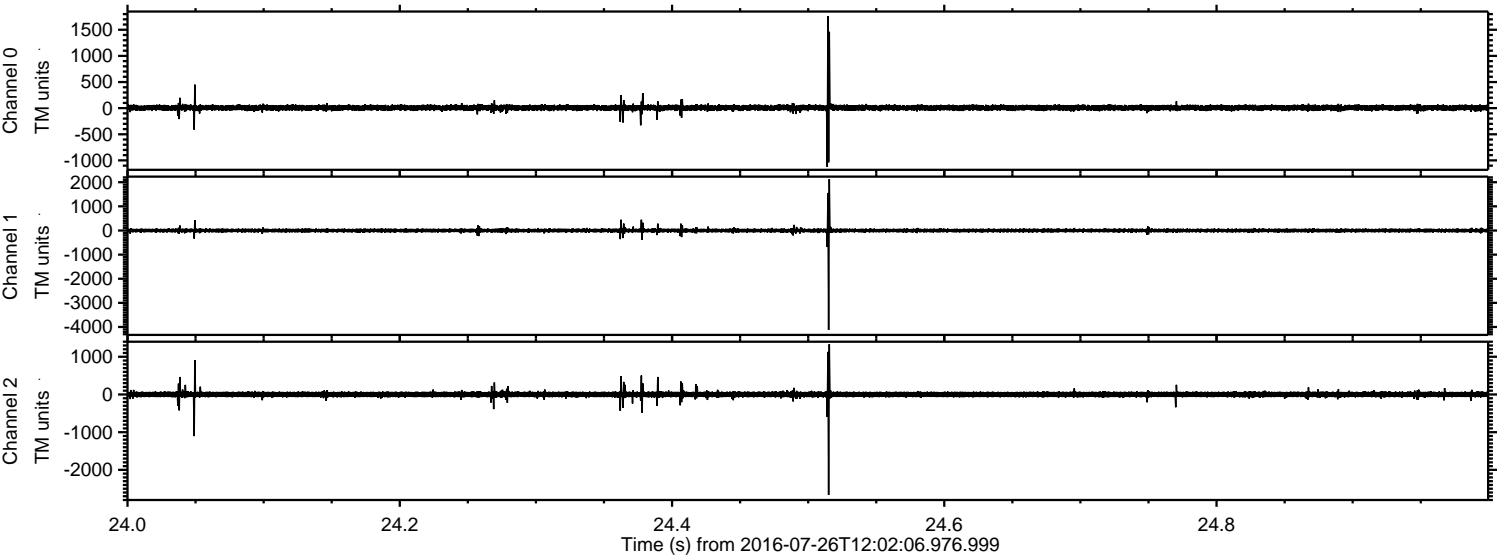


Processed Tue Jul 26 14:10:45 2016 by ELM ver.2012-10-06 from 001\_\_elm20160726\_120205\_\_dat00.bin





Processed Tue Jul 26 14:10:46 2016 by ELM ver.2012-10-06 from 001\_\_elm20160726\_120205\_\_dat00.bin



Channel 0  
mn: -1124  
mx: 1761  
 $\mu$ : 7.5  
 $\sigma$ : 31.7

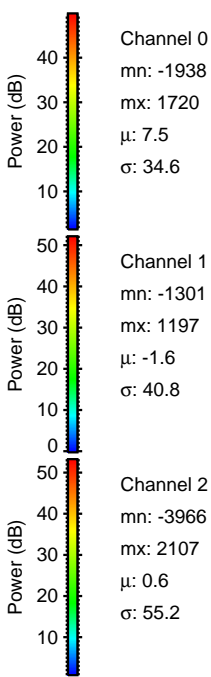
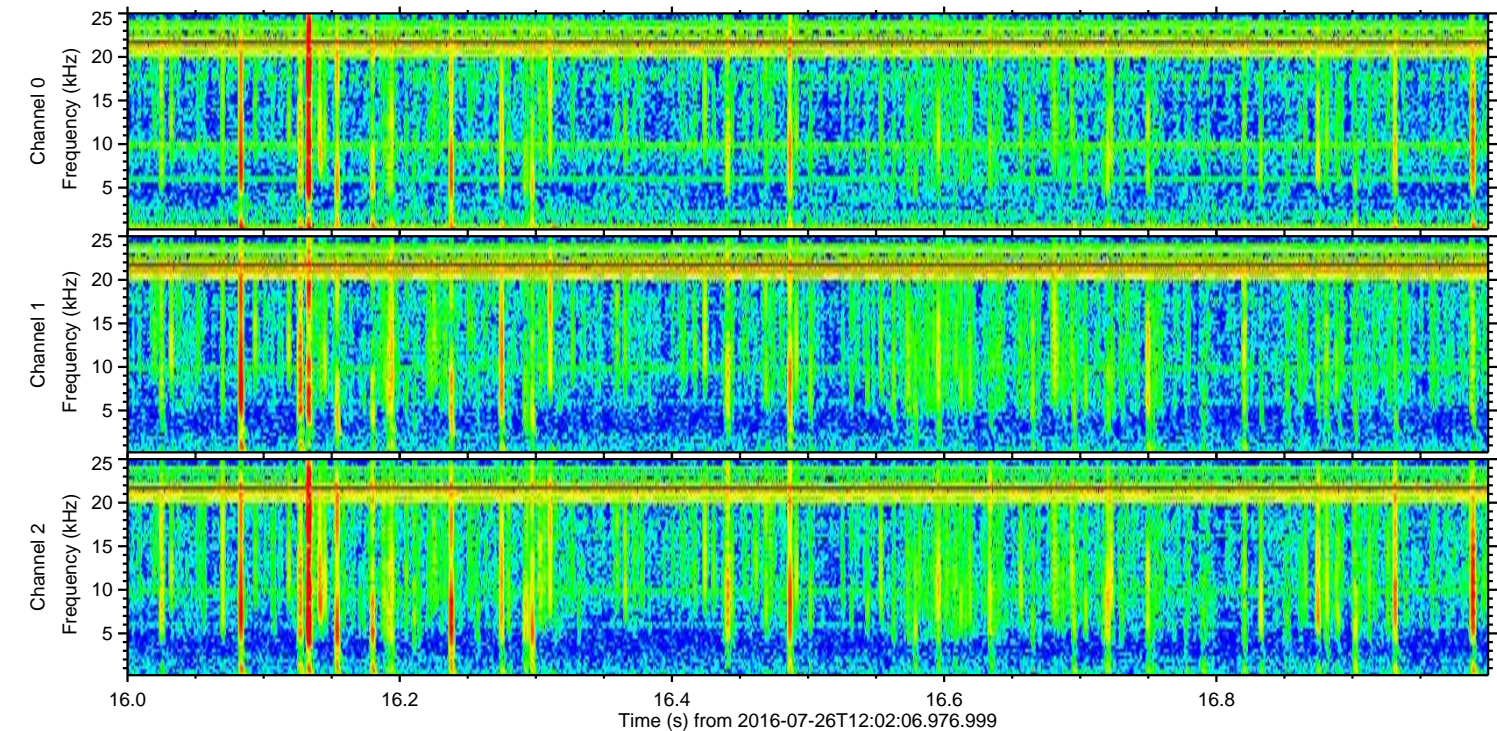
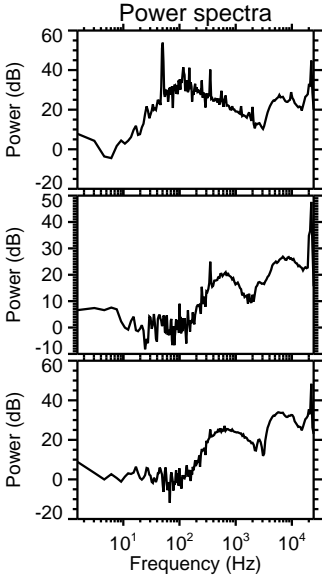
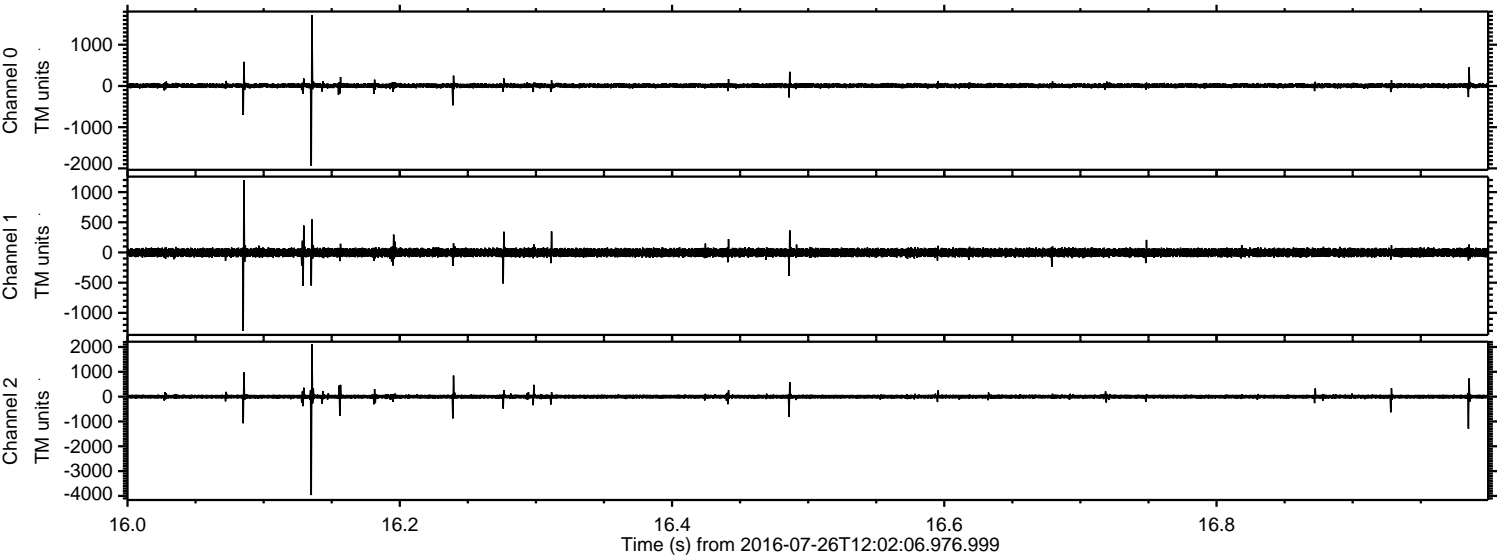
Channel 1  
mn: -4122  
mx: 2126  
 $\mu$ : -1.6  
 $\sigma$ : 47.9

Channel 2  
mn: -2666  
mx: 1333  
 $\mu$ : 0.5  
 $\sigma$ : 45.7



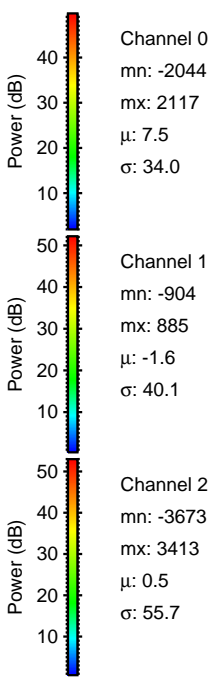
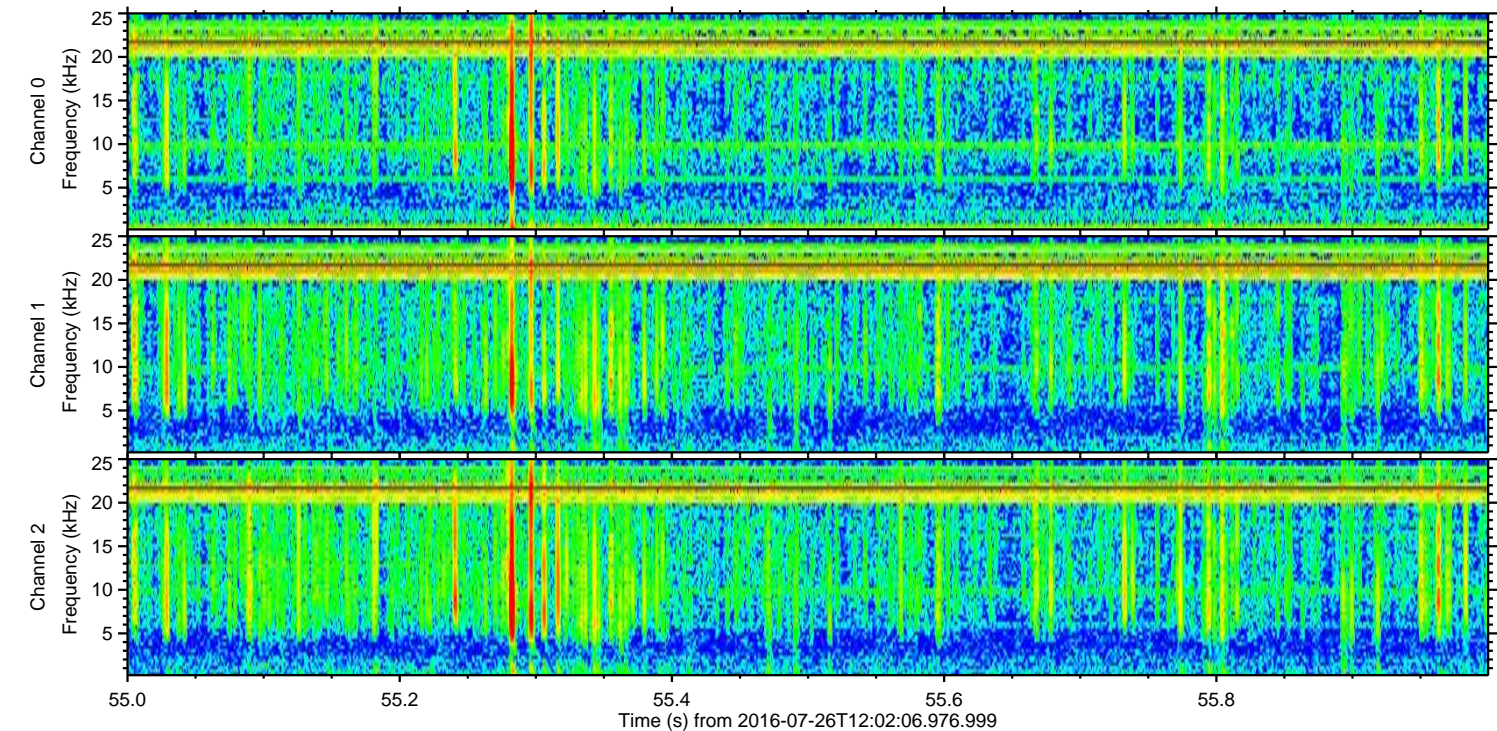
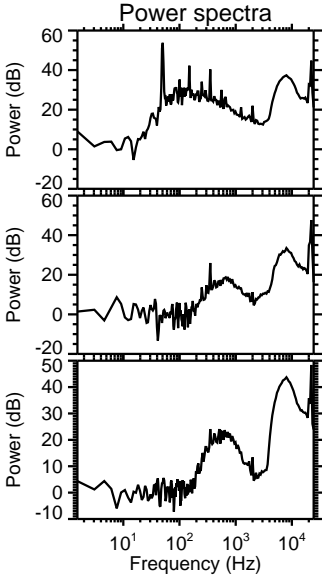
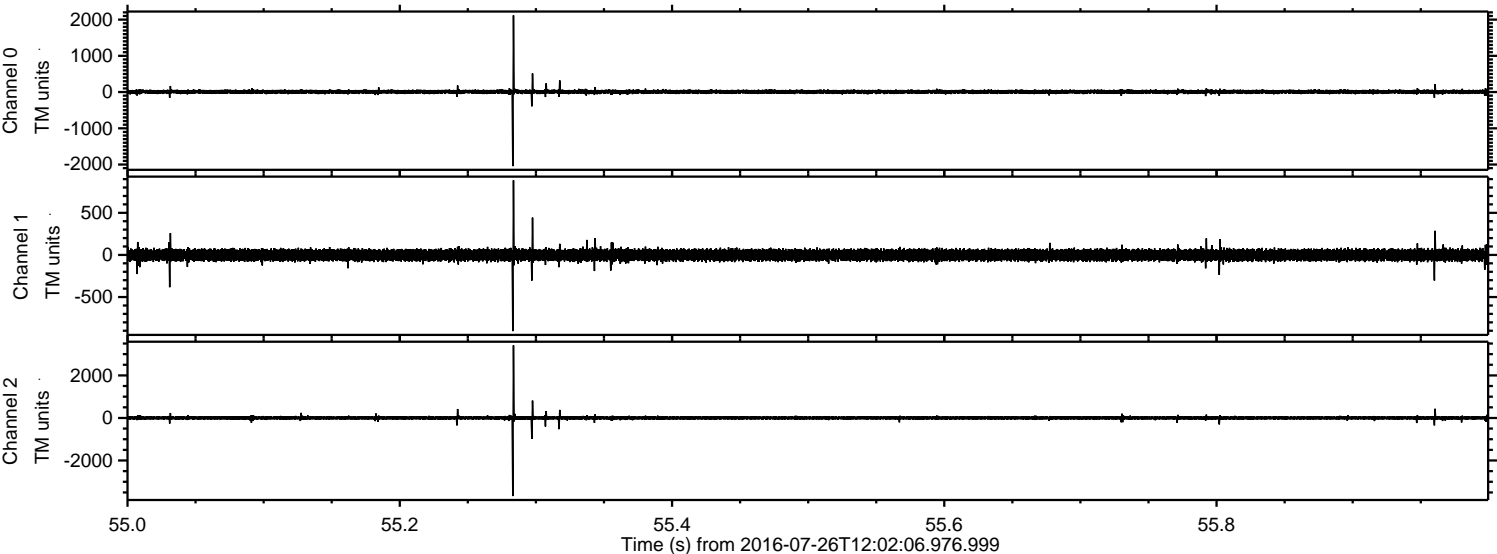
ELMAVAN 3D WAVEFORMS (Measured data sampled at 50 kHz) 51000 packets of 144 samples from 2016-07-26T12:02:06.976.999. Part 17/147

Processed Tue Jul 26 14:10:48 2016 by ELM ver.2012-10-06 from 001\_\_elm20160726\_120205\_\_dat00.bin



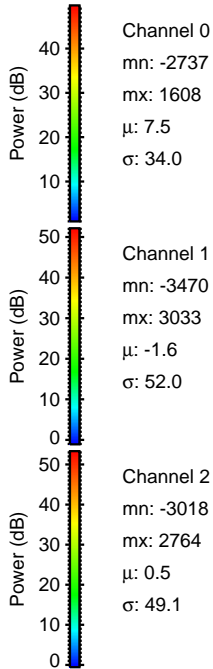
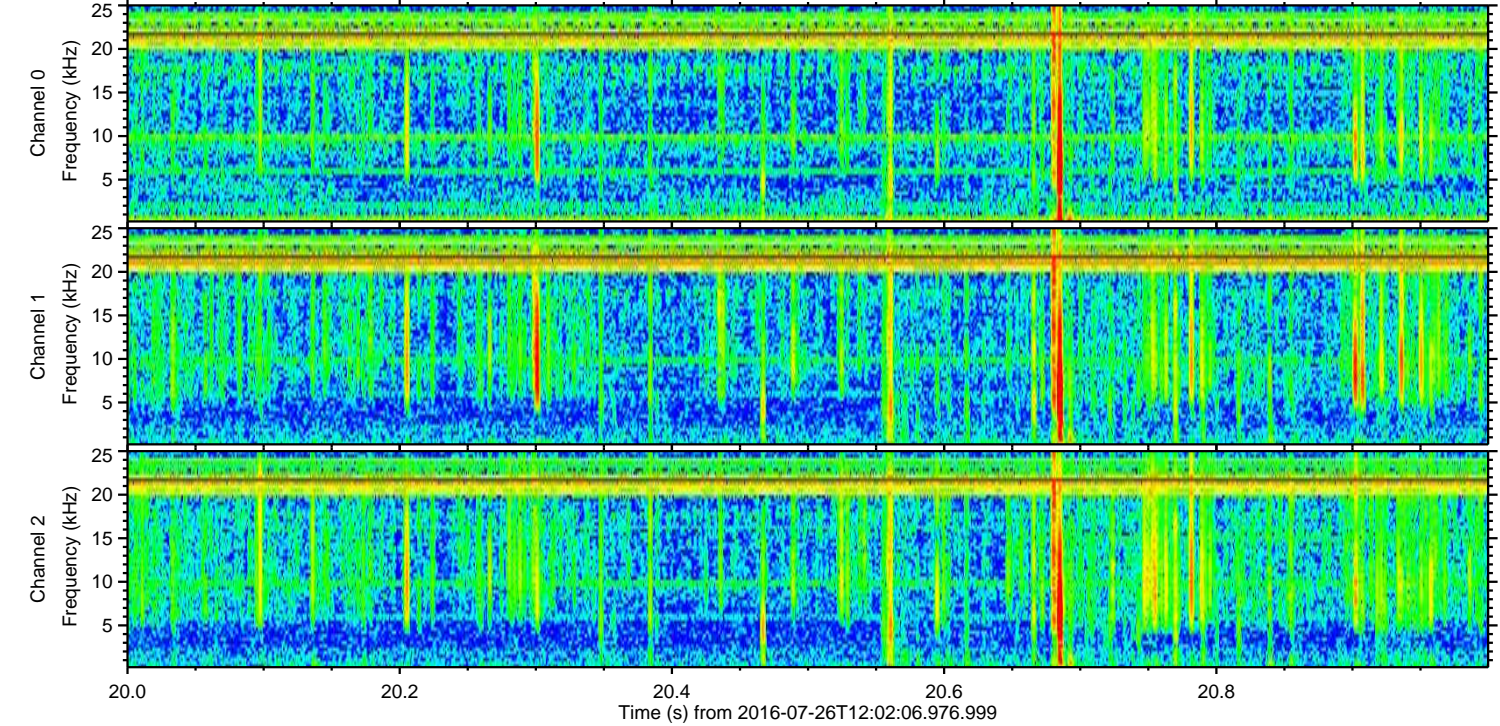
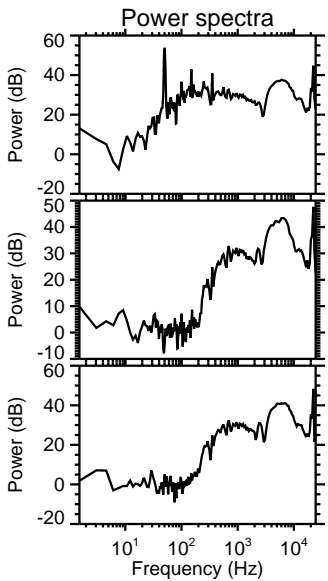
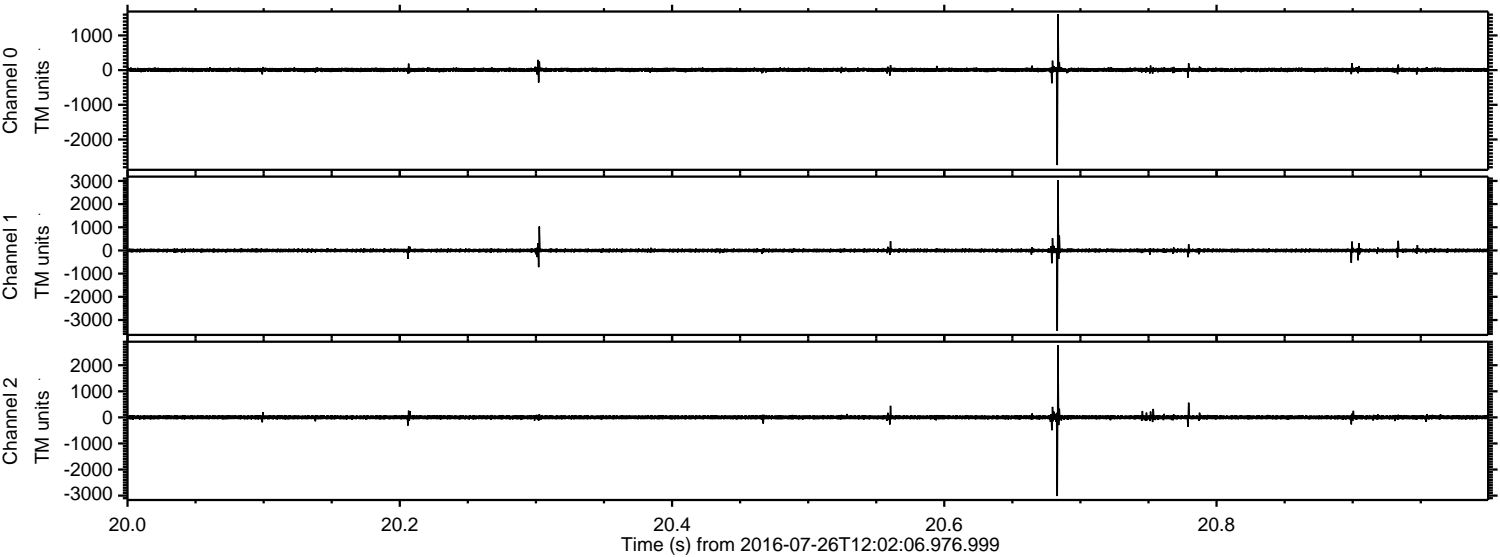


Processed Tue Jul 26 14:10:49 2016 by ELM ver.2012-10-06 from 001\_\_elm20160726\_120205\_\_dat00.bin





Processed Tue Jul 26 14:10:50 2016 by ELM ver.2012-10-06 from 001\_\_elm20160726\_120205\_\_dat00.bin





Processed Tue Jul 26 14:10:51 2016 by ELM ver.2012-10-06 from 001\_\_elm20160726\_120205\_\_dat00.bin

