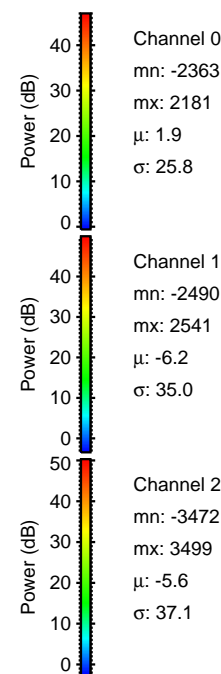
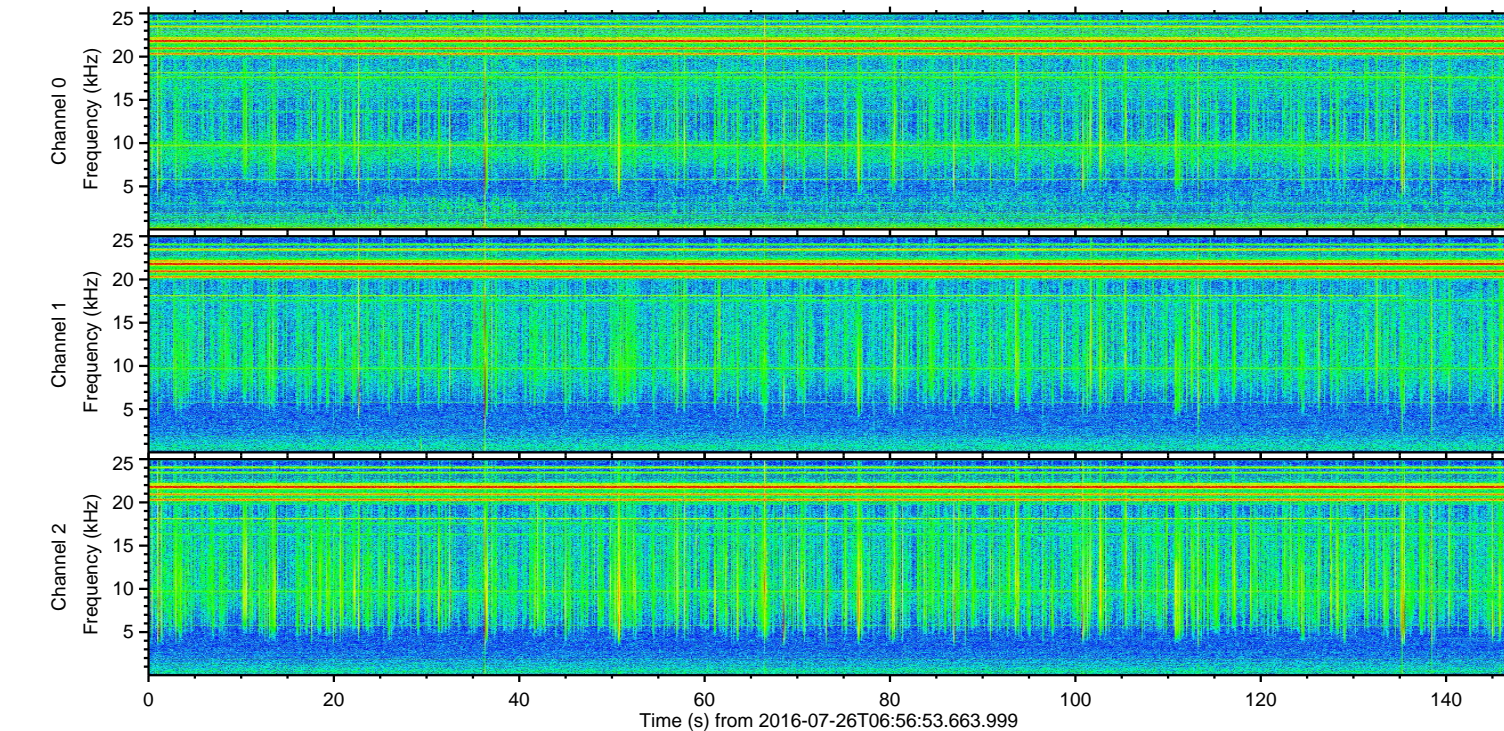
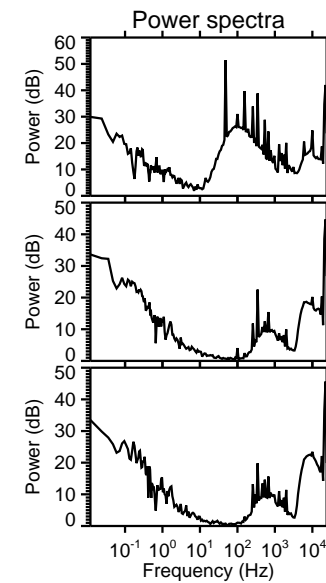
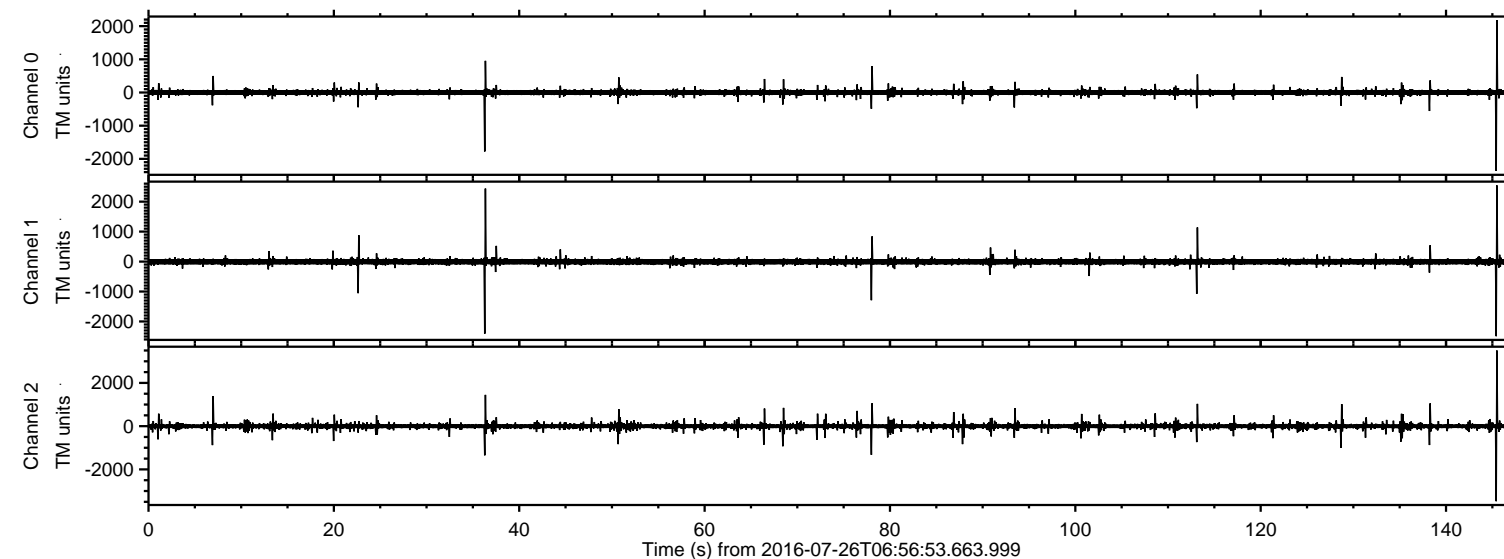


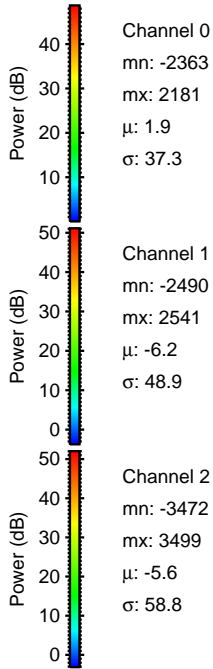
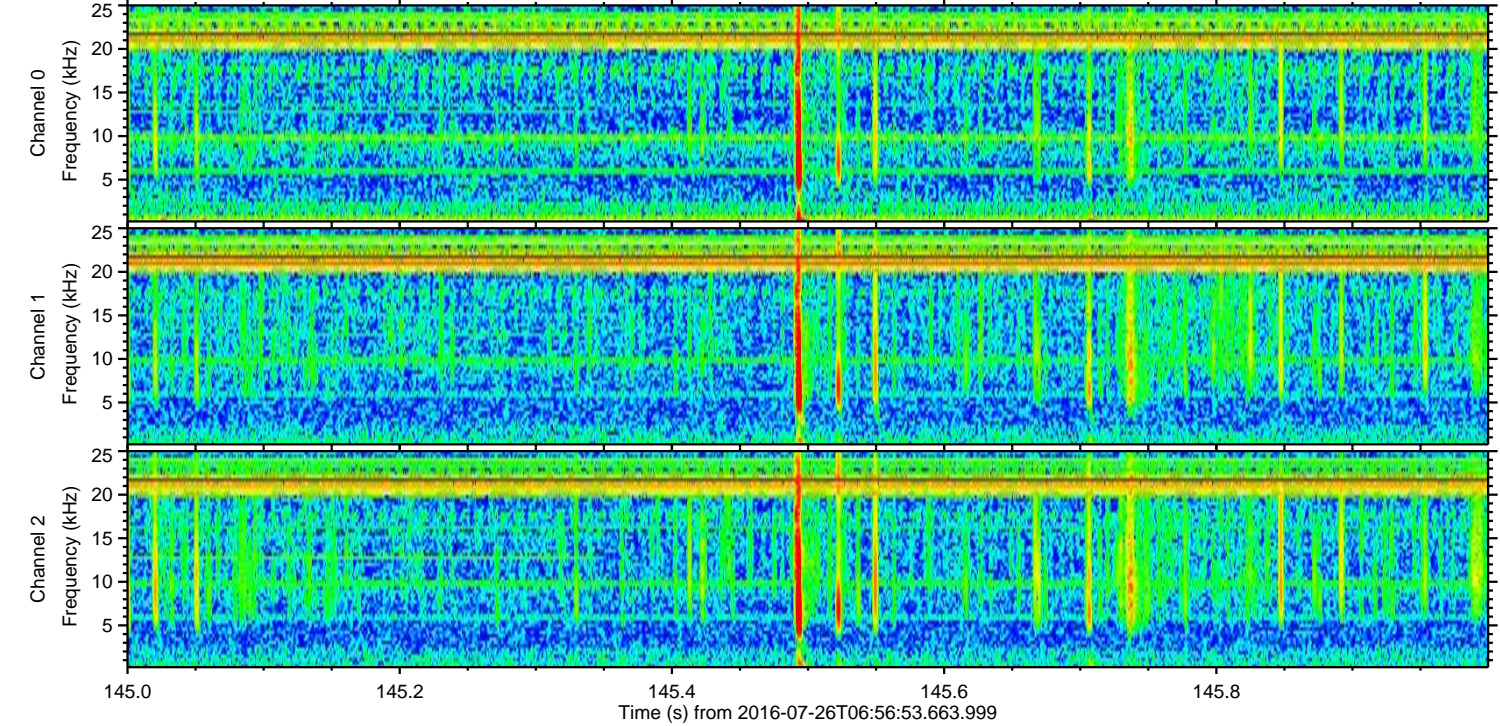
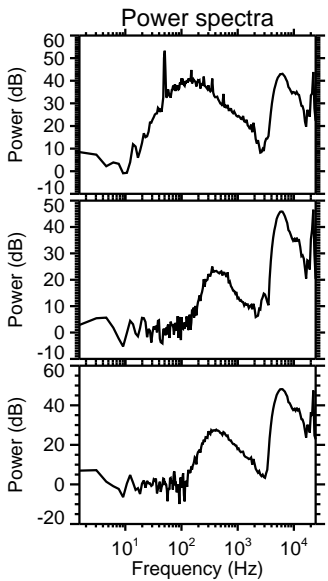
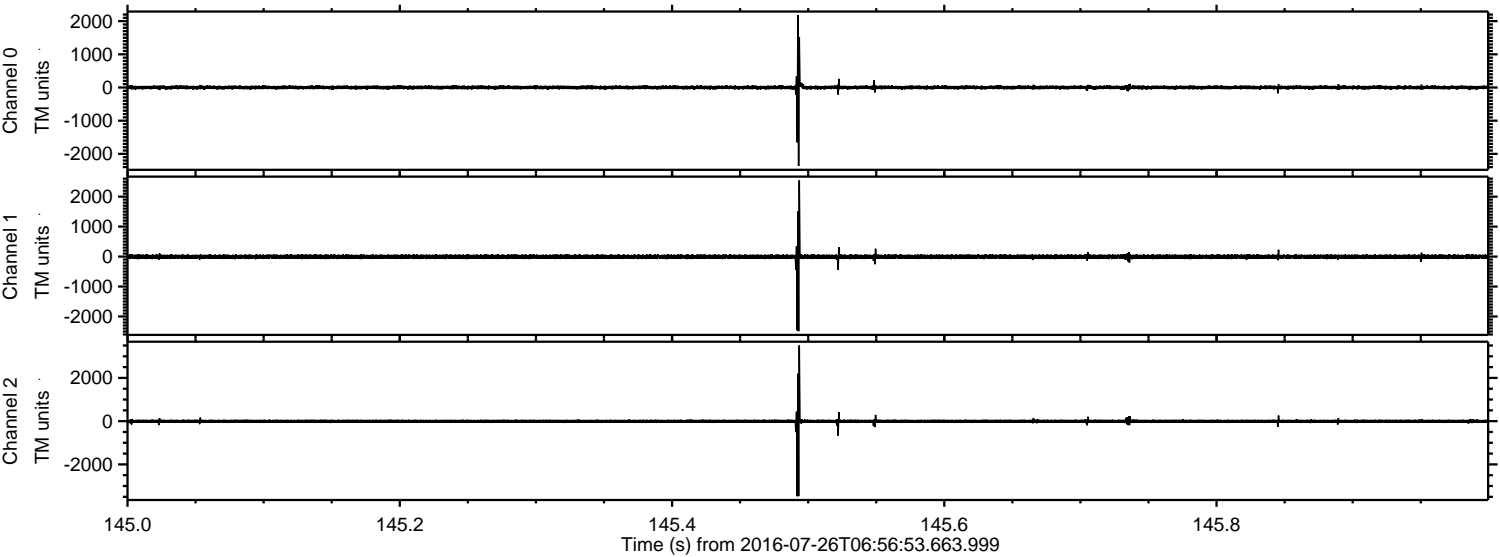
ELMAVAN 3D WAVEFORMS (Measured data sampled at 50 kHz) 51000 packets of 144 samples from 2016-07-26T06:56:53.663.999.

Processed Tue Jul 26 09:04:40 2016 by ELM ver.2012-10-06 from 001__elm20160726_065652__dat00.bin



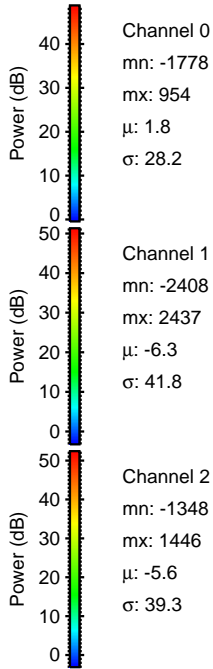
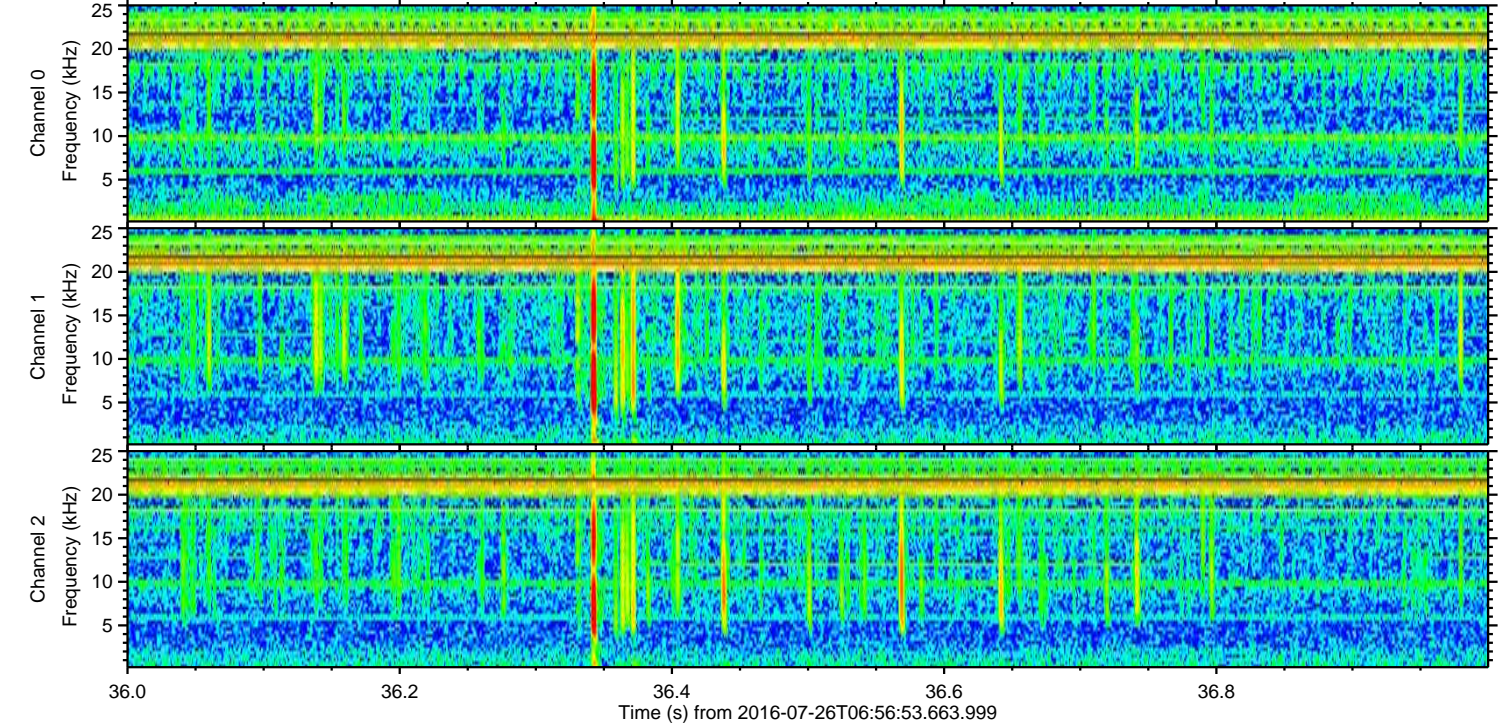
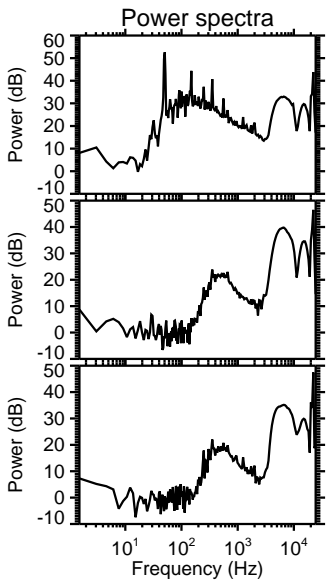
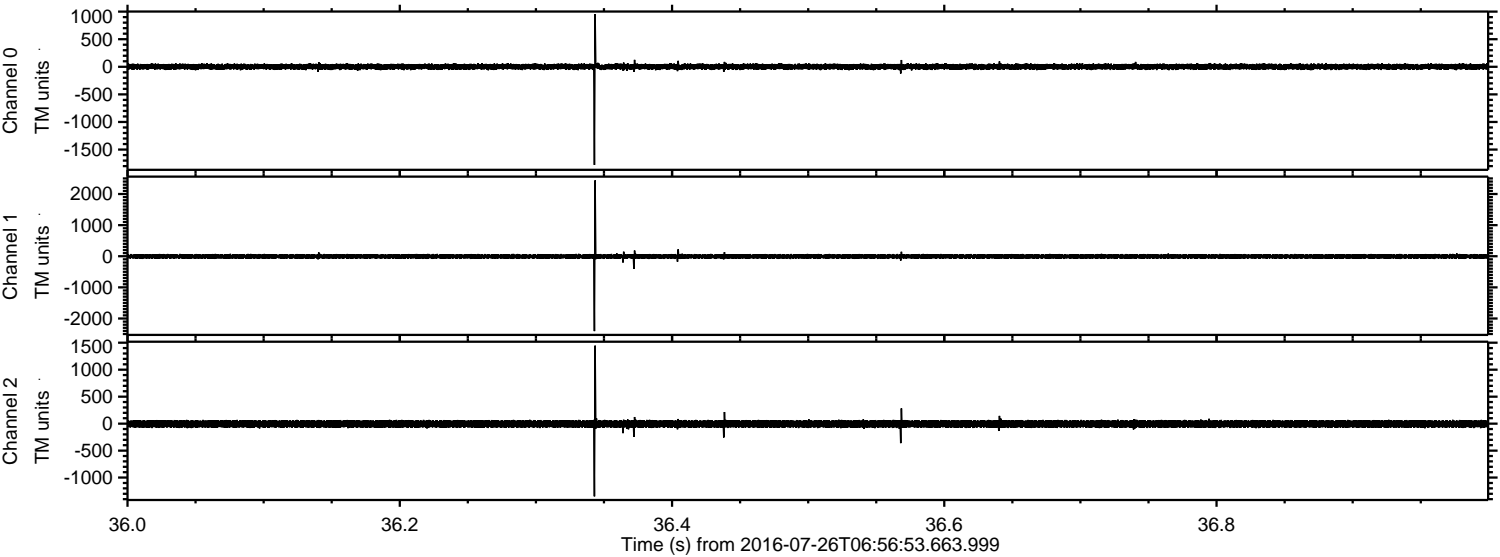
ELMAVAN 3D WAVEFORMS (Measured data sampled at 50 kHz) 51000 packets of 144 samples from 2016-07-26T06:56:53.663.999. Part 146/147

Processed Tue Jul 26 09:04:56 2016 by ELM ver.2012-10-06 from 001__elm20160726_065652__dat00.bin

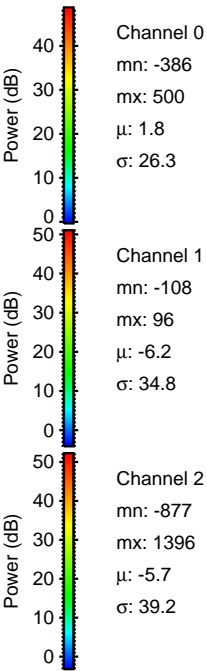
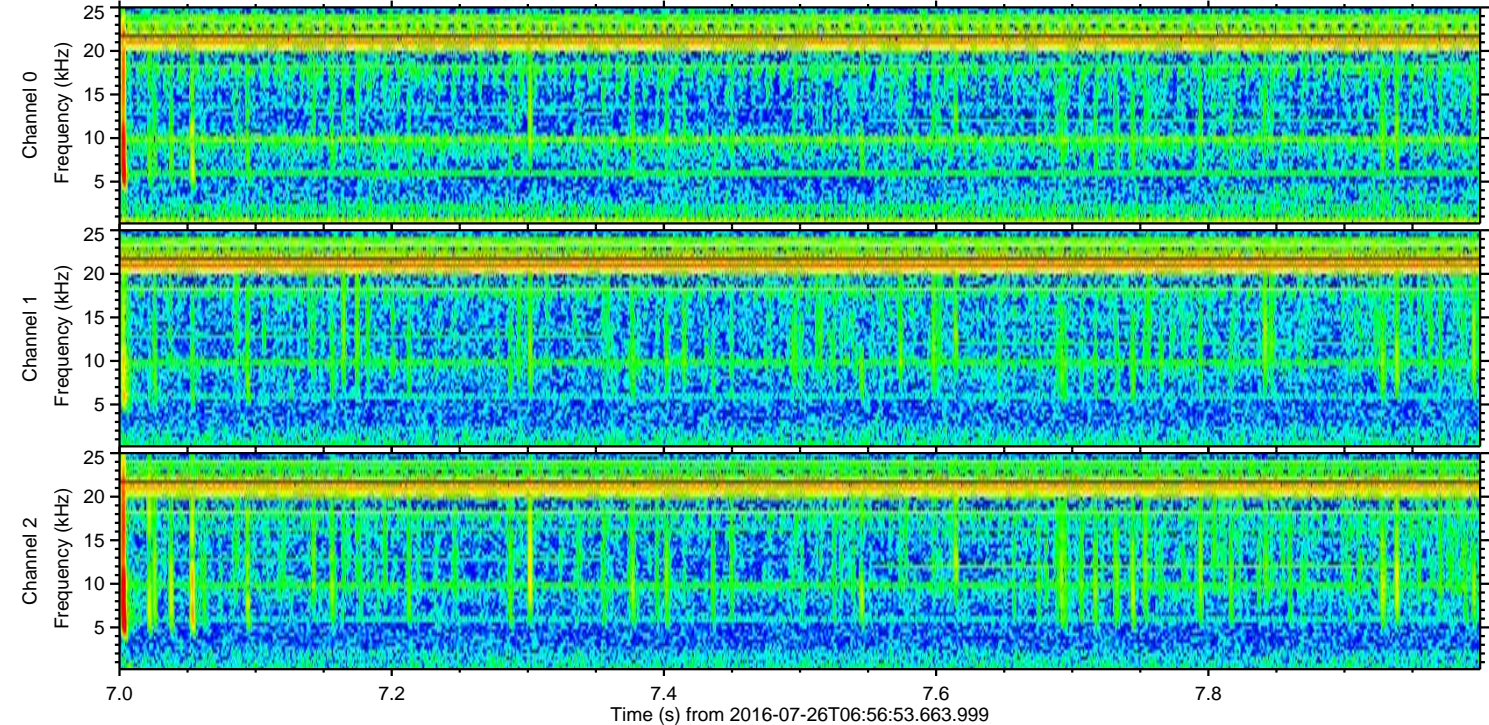
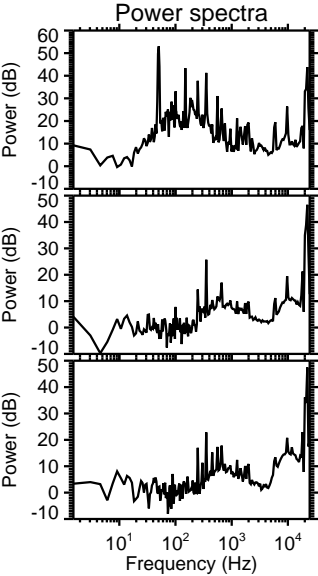
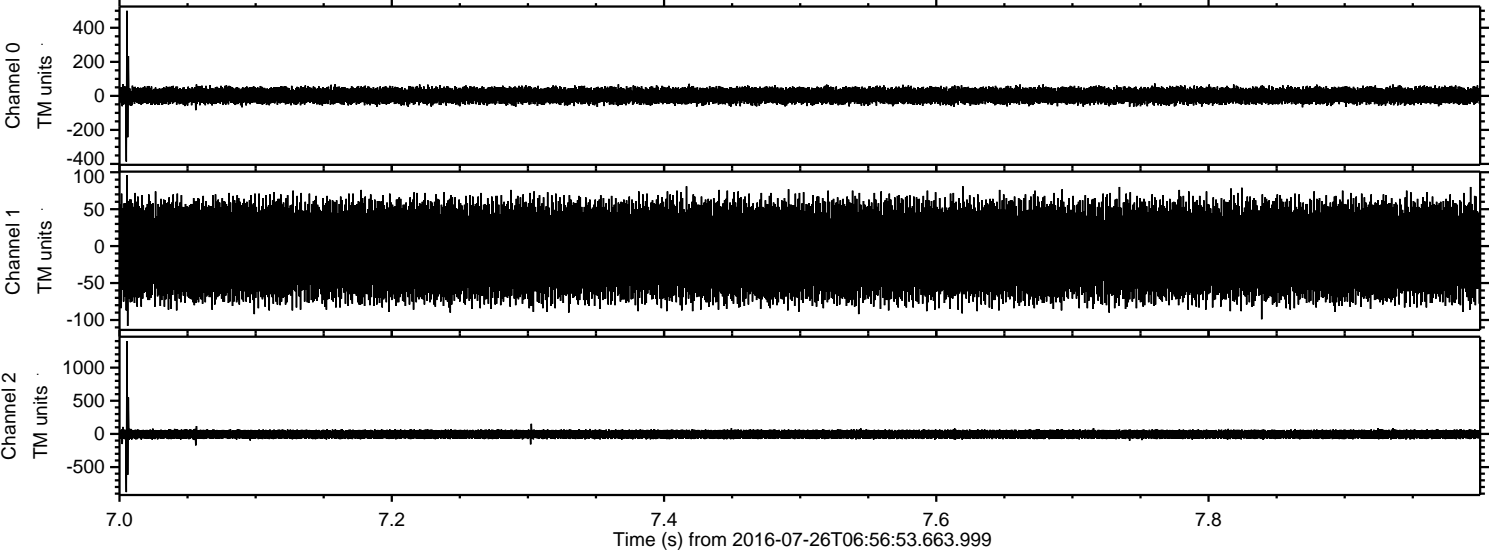


ELMAVAN 3D WAVEFORMS (Measured data sampled at 50 kHz) 51000 packets of 144 samples from 2016-07-26T06:56:53.663.999. Part 37/147

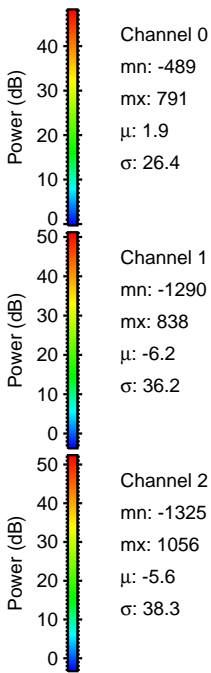
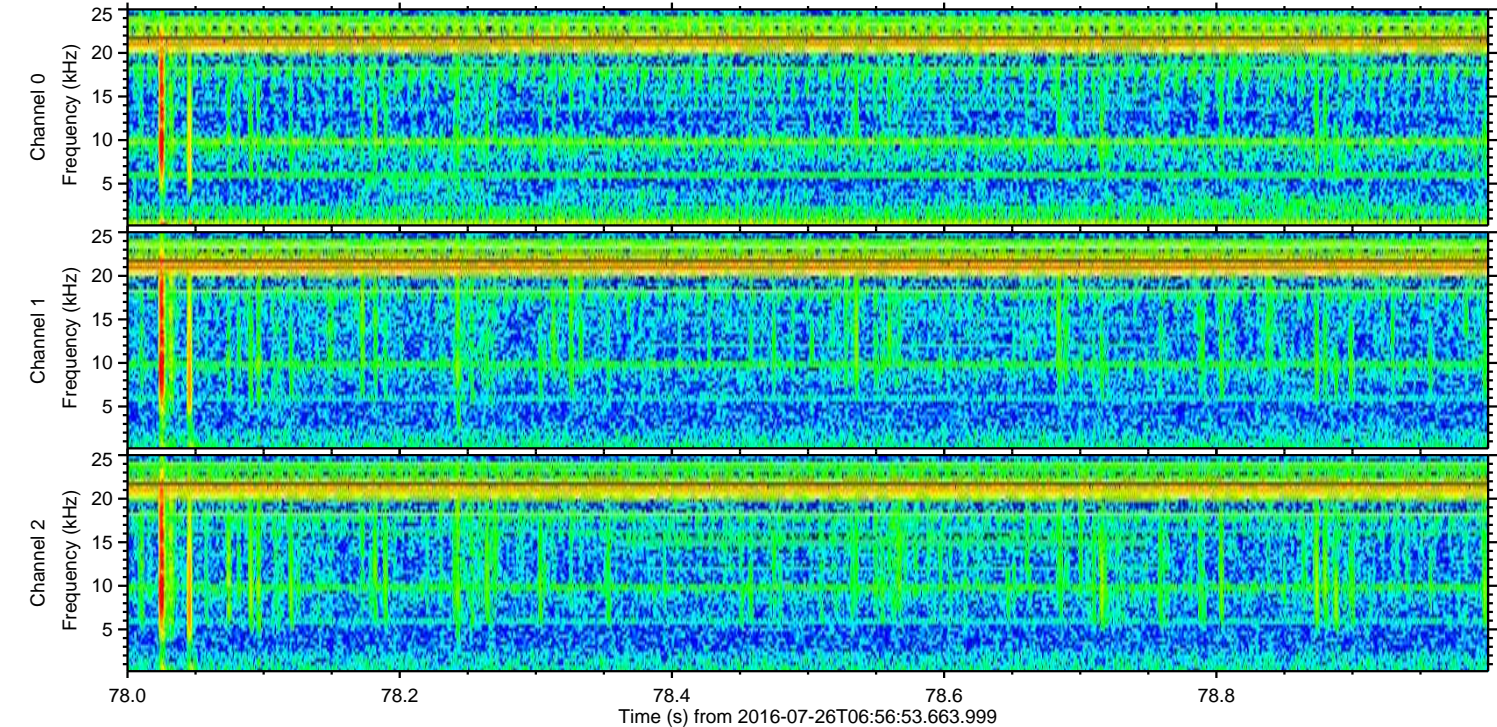
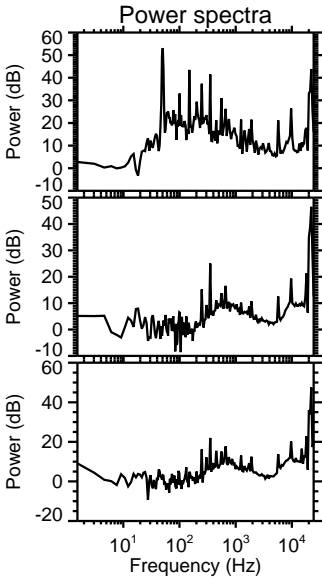
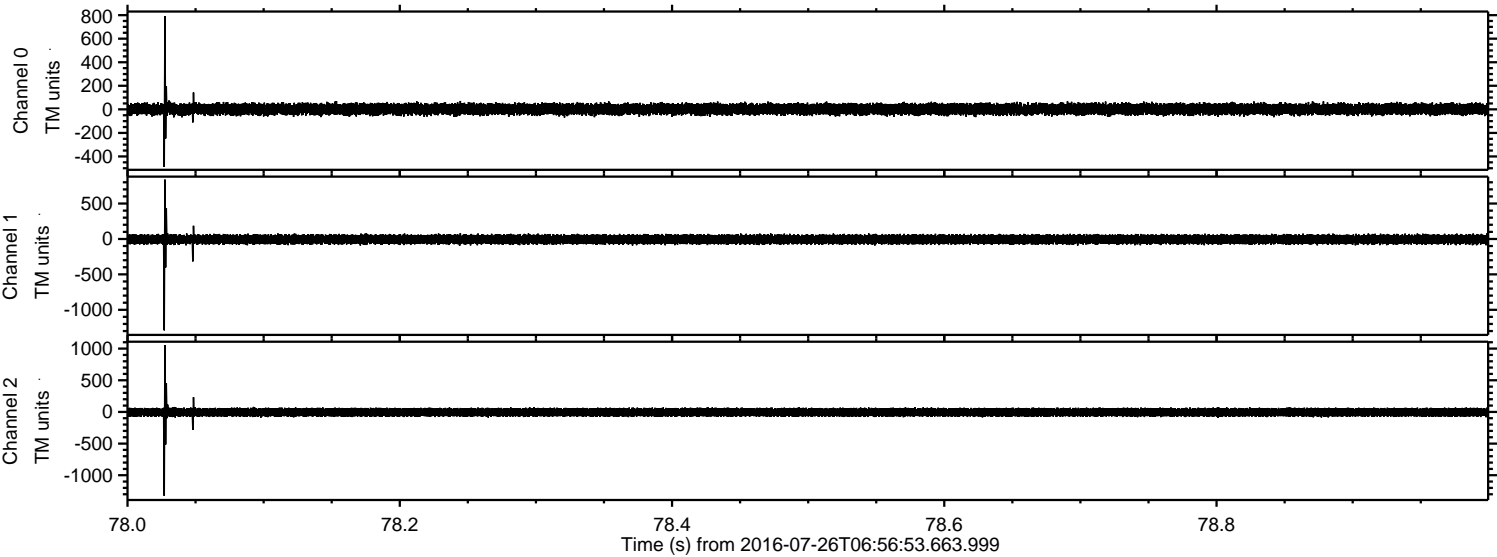
Processed Tue Jul 26 09:04:57 2016 by ELM ver.2012-10-06 from 001__elm20160726_065652__dat00.bin



Processed Tue Jul 26 09:04:58 2016 by ELM ver.2012-10-06 from 001__elm20160726_065652__dat00.bin

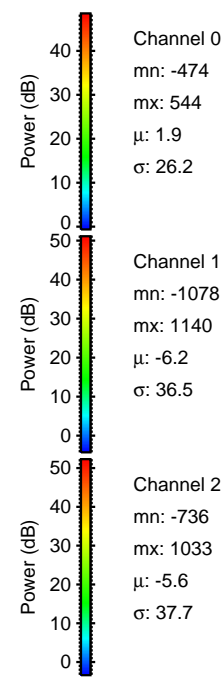
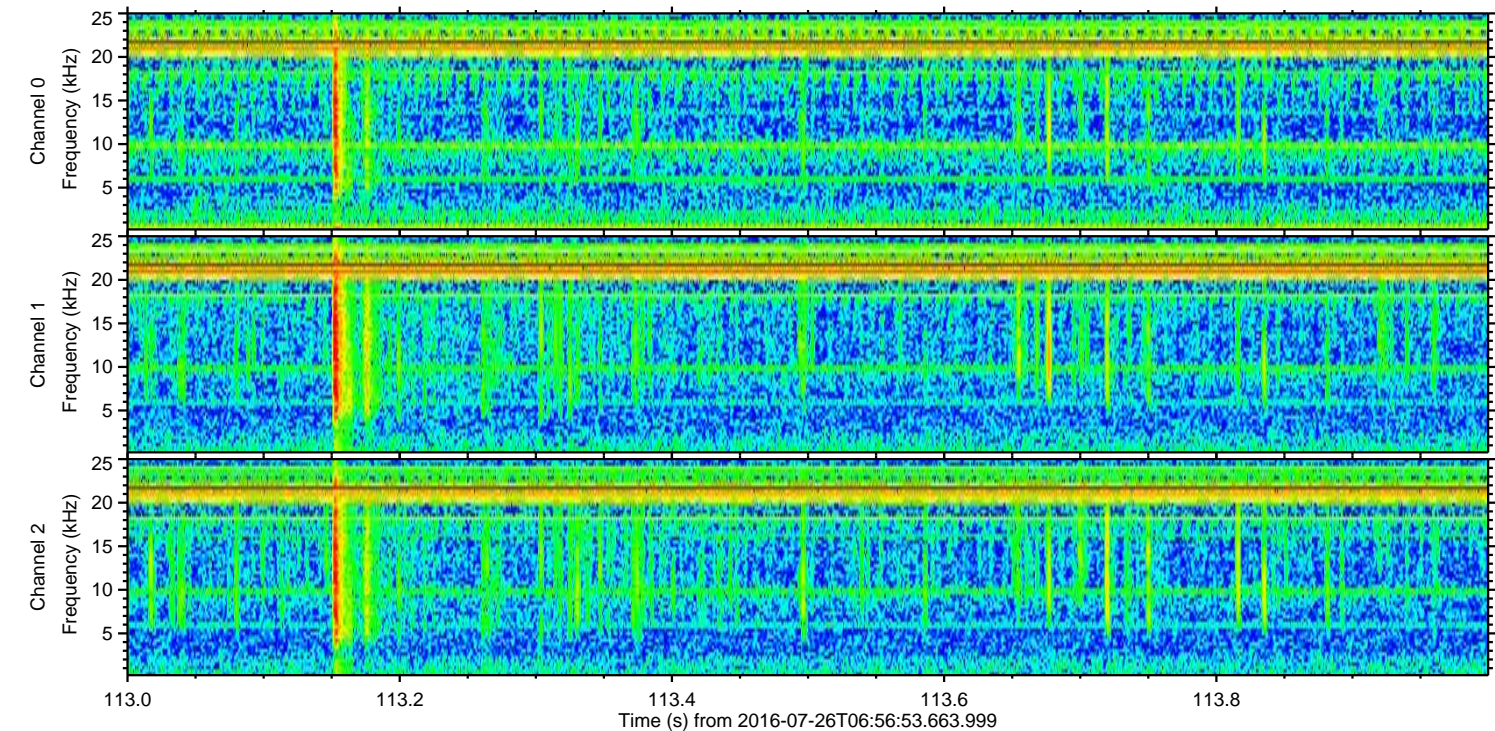
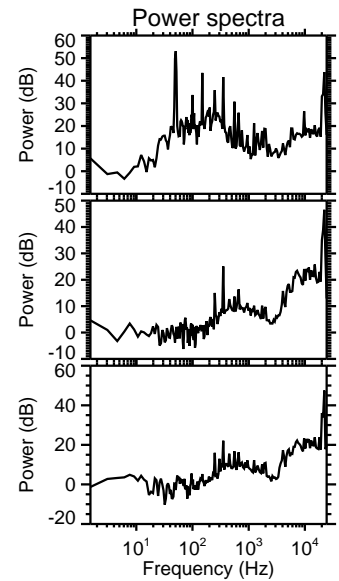
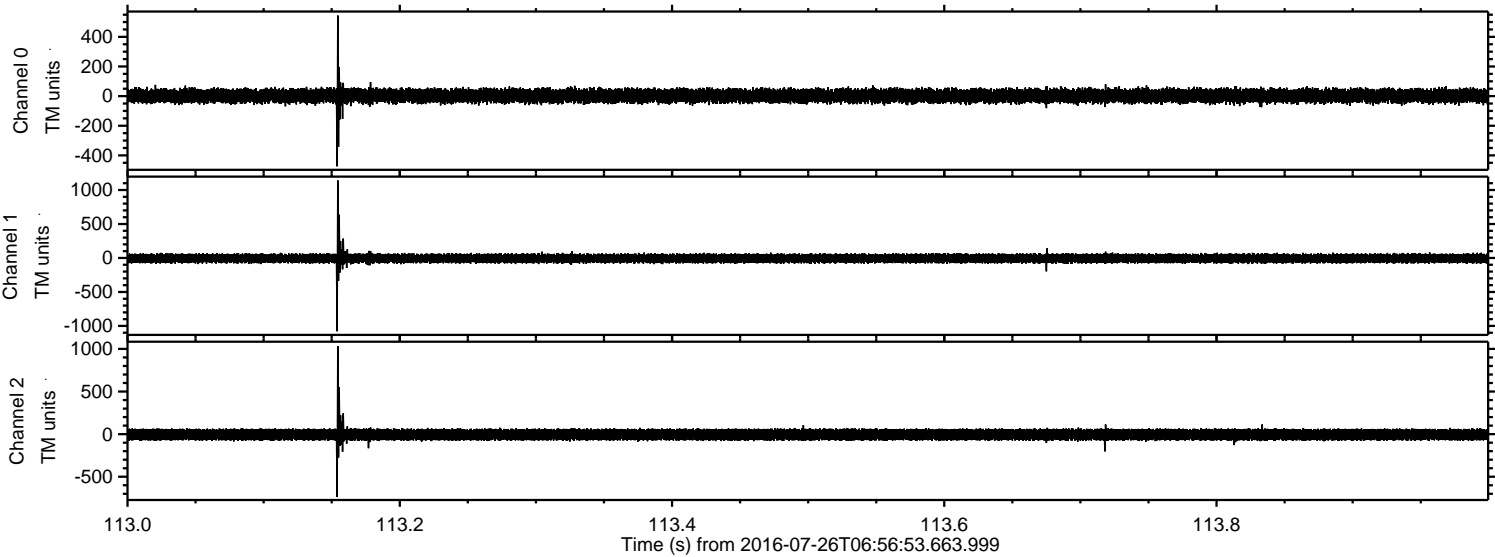


Processed Tue Jul 26 09:04:59 2016 by ELM ver.2012-10-06 from 001__elm20160726_065652__dat00.bin

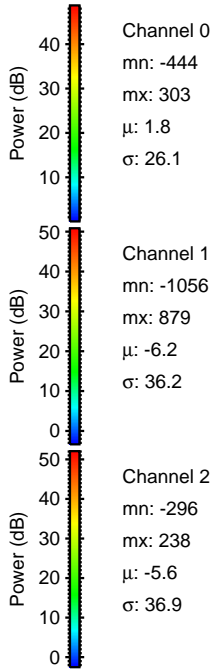
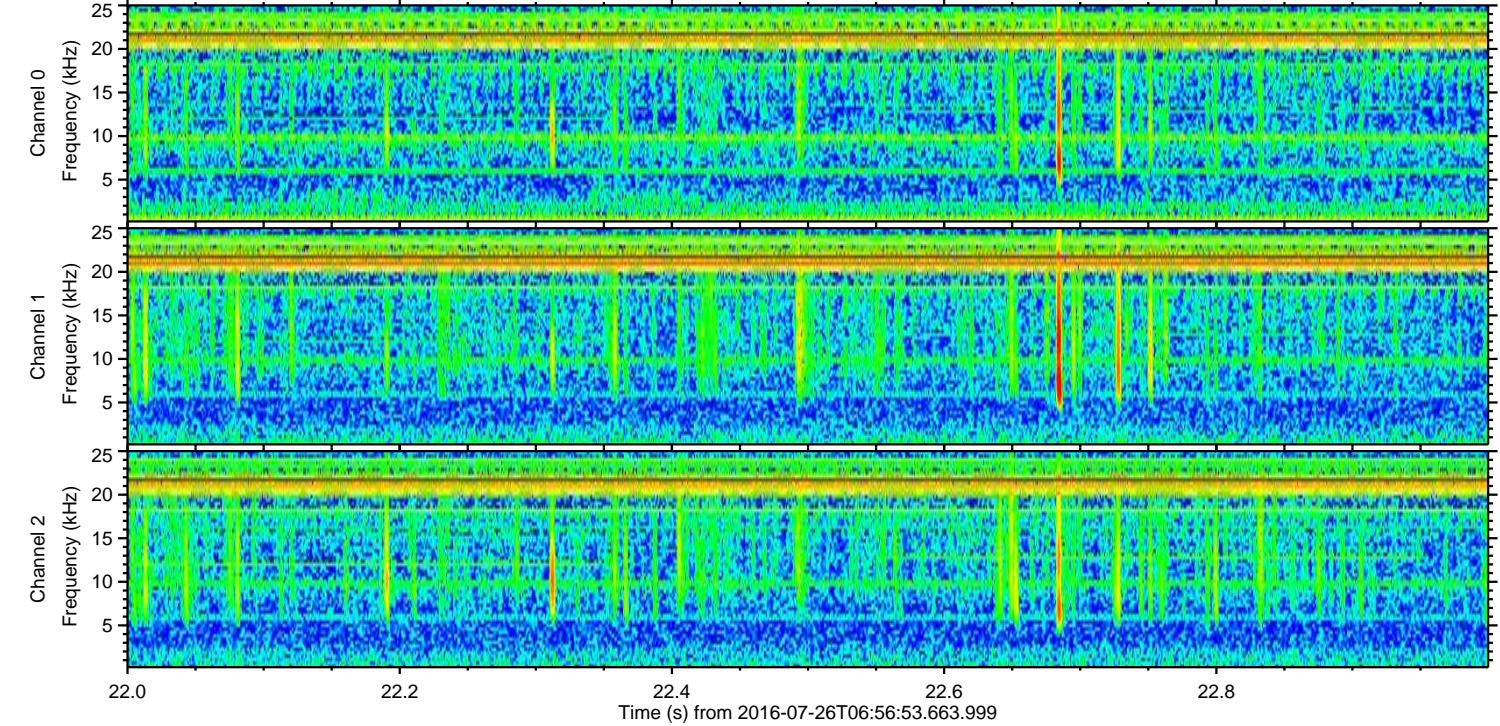
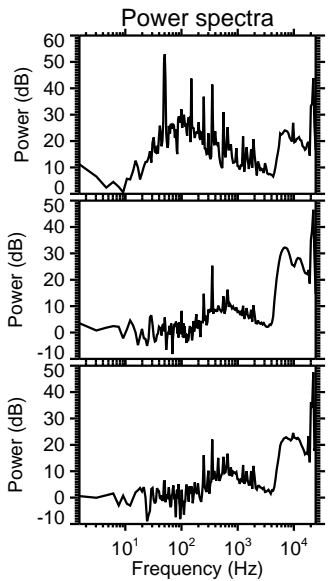
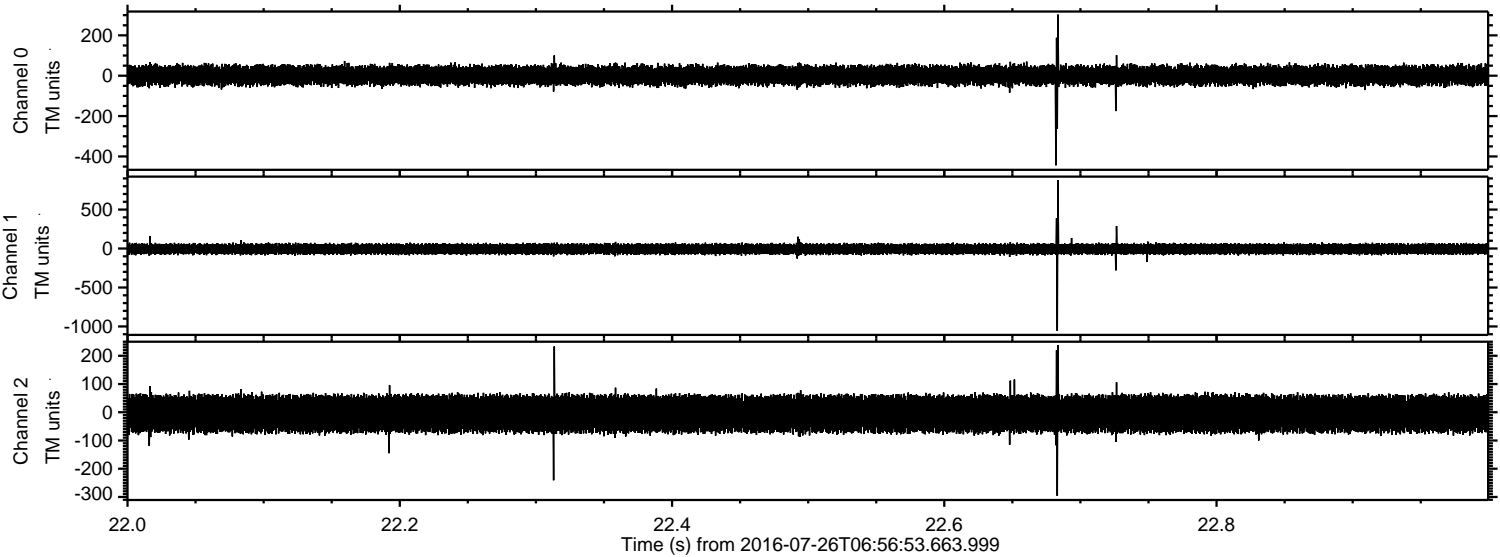


ELMAVAN 3D WAVEFORMS (Measured data sampled at 50 kHz) 51000 packets of 144 samples from 2016-07-26T06:56:53.663.999. Part 114/147

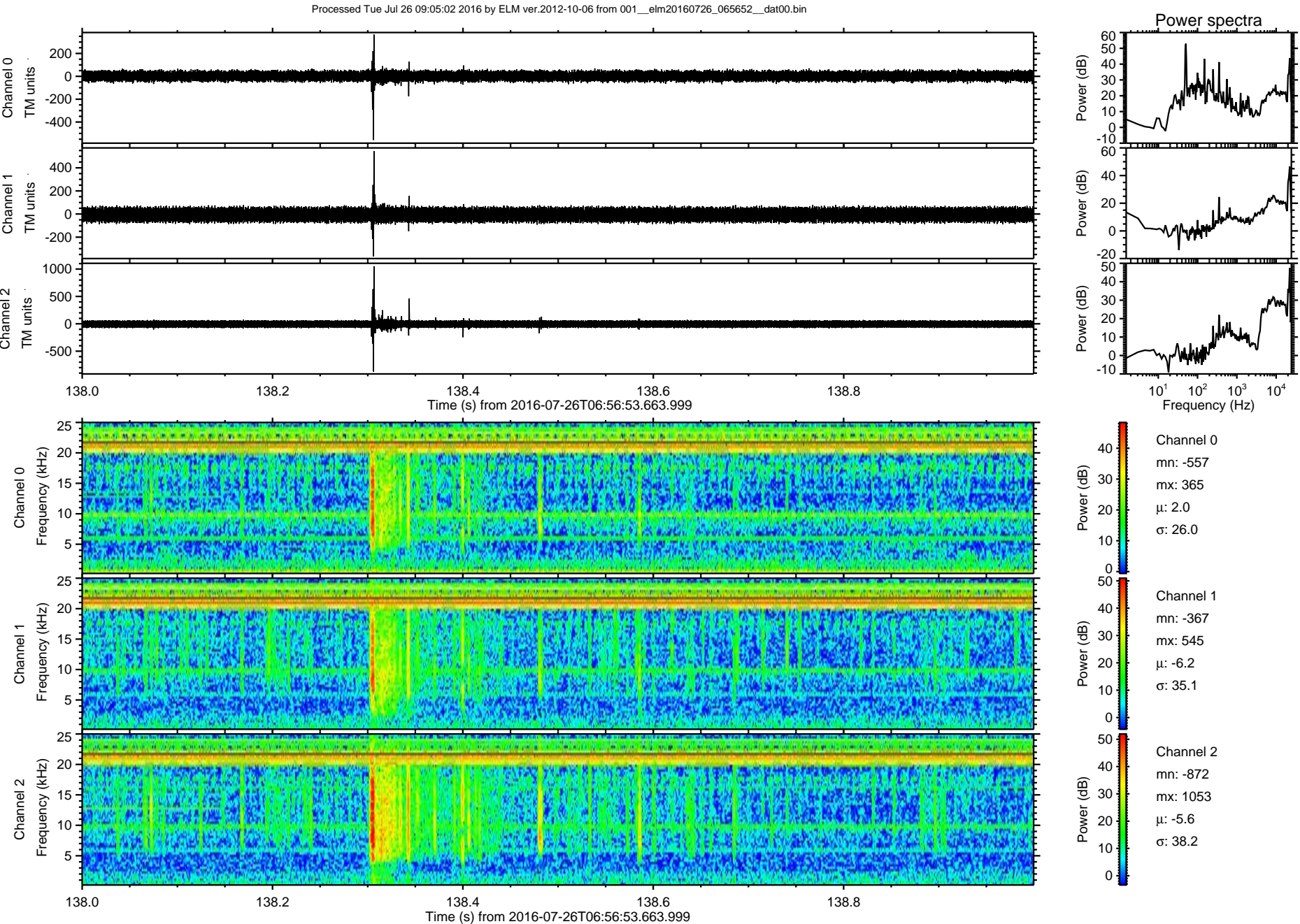
Processed Tue Jul 26 09:05:00 2016 by ELM ver.2012-10-06 from 001__elm20160726_065652__dat00.bin



Processed Tue Jul 26 09:05:01 2016 by ELM ver.2012-10-06 from 001__elm20160726_065652__dat00.bin

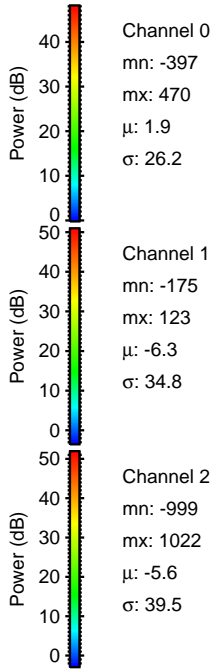
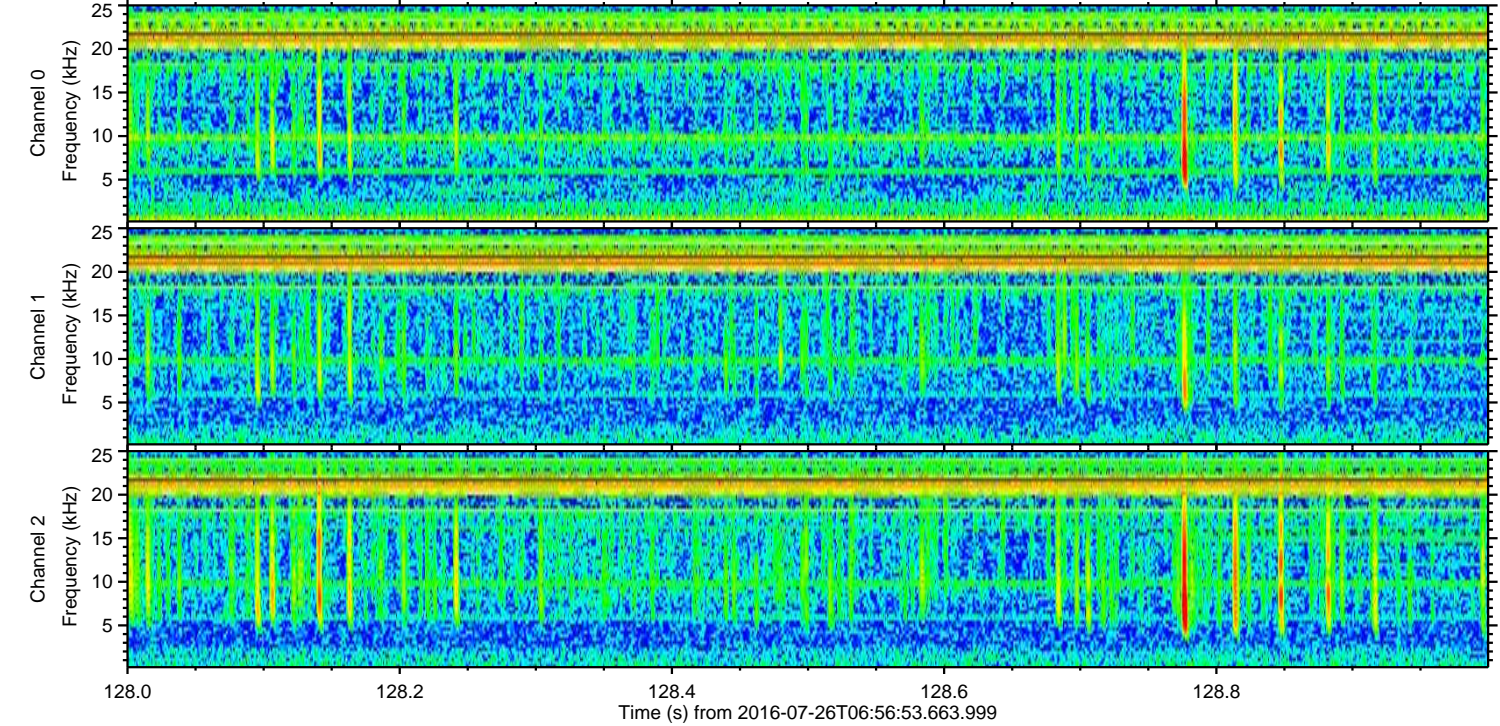
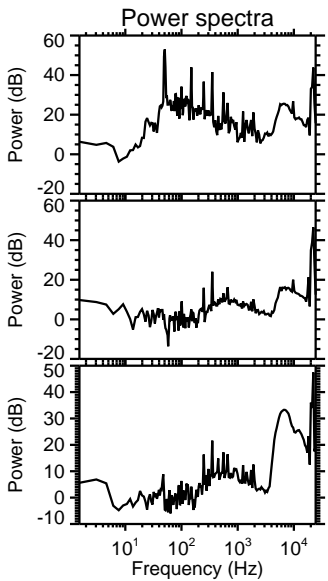
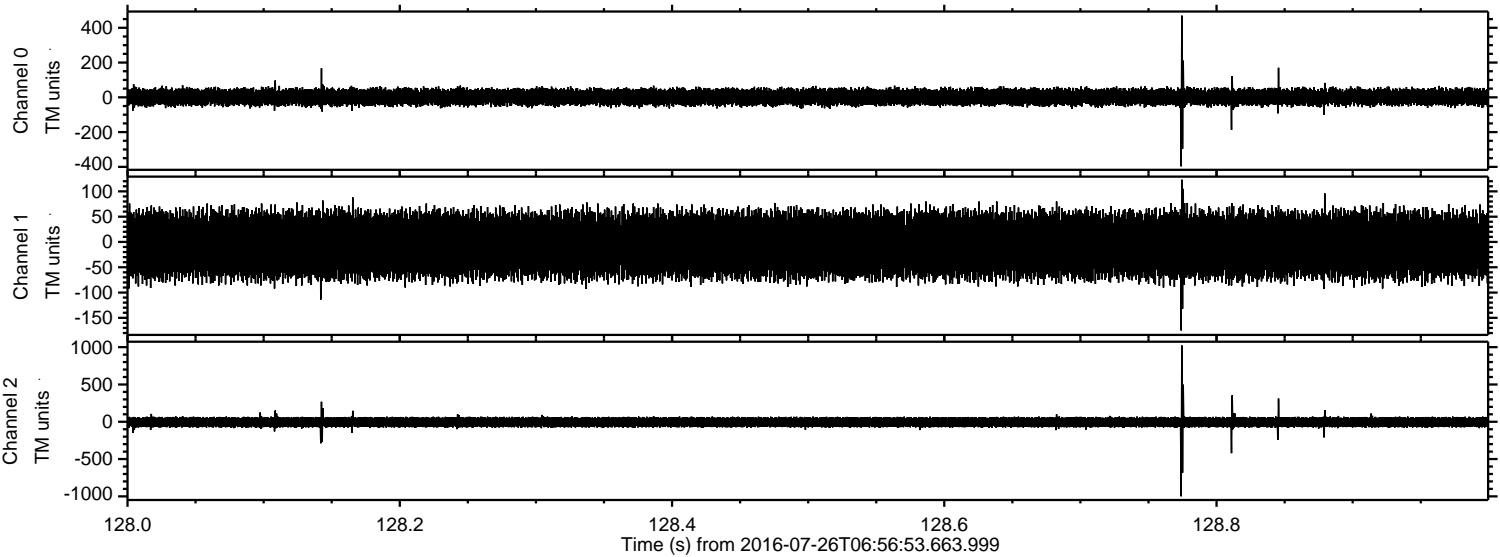


ELMAVAN 3D WAVEFORMS (Measured data sampled at 50 kHz) 51000 packets of 144 samples from 2016-07-26T06:56:53.663.999. Part 139/147

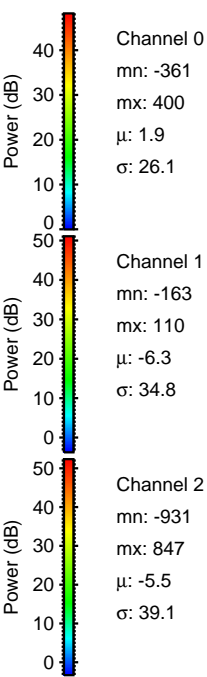
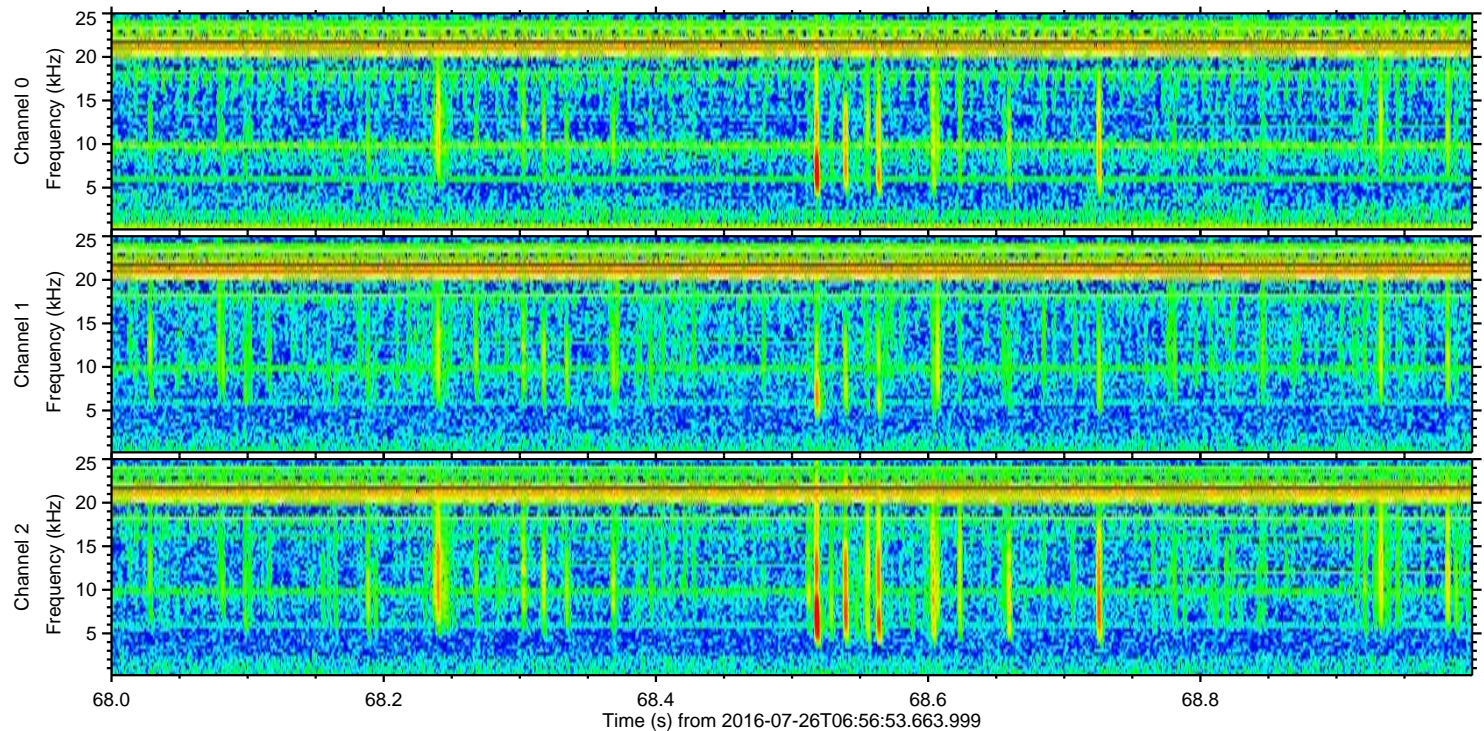
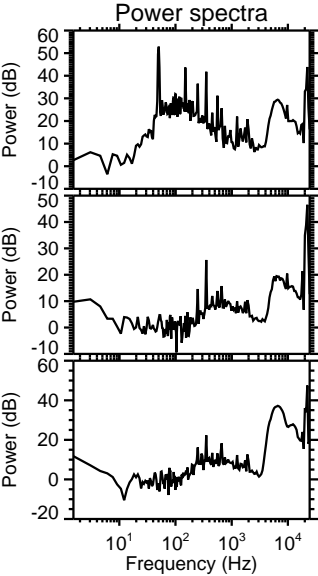
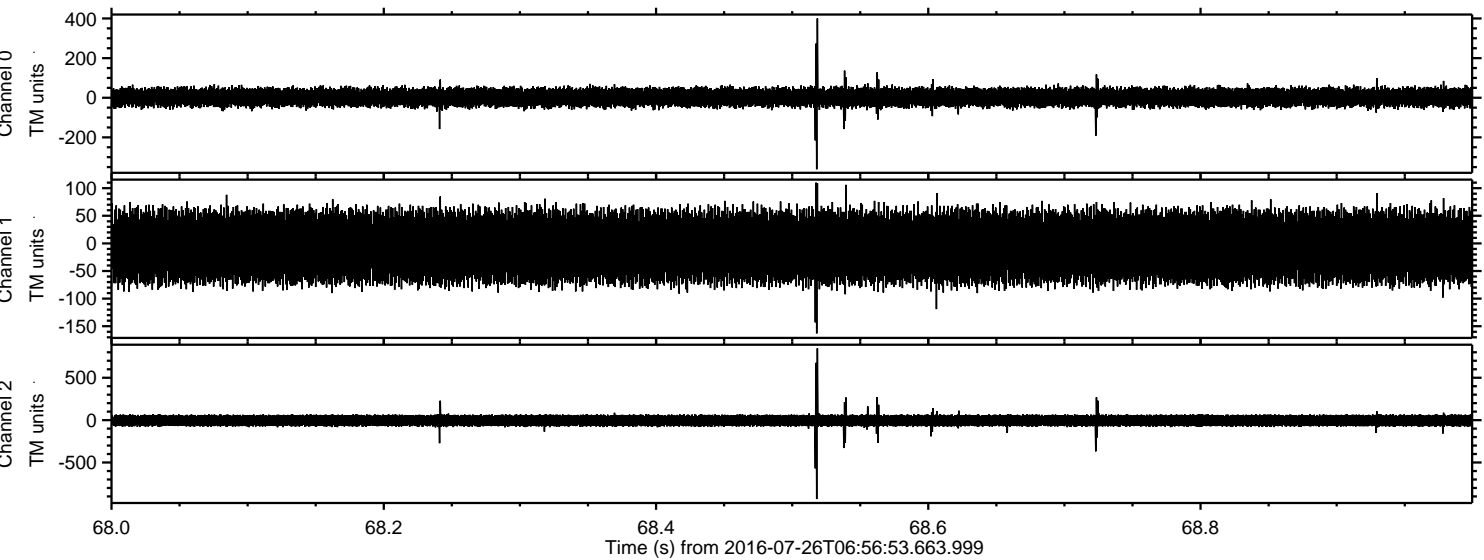


ELMAVAN 3D WAVEFORMS (Measured data sampled at 50 kHz) 51000 packets of 144 samples from 2016-07-26T06:56:53.663.999. Part 129/147

Processed Tue Jul 26 09:05:03 2016 by ELM ver.2012-10-06 from 001__elm20160726_065652__dat00.bin



Processed Tue Jul 26 09:05:04 2016 by ELM ver.2012-10-06 from 001__elm20160726_065652__dat00.bin



Channel 0
mn: -361
mx: 400
 μ : 1.9
 σ : 26.1

Channel 1
mn: -163
mx: 110
 μ : -6.3
 σ : 34.8

Channel 2
mn: -931
mx: 847
 μ : -5.5
 σ : 39.1

Processed Tue Jul 26 09:05:05 2016 by ELM ver.2012-10-06 from 001__elm20160726_065652__dat00.bin

