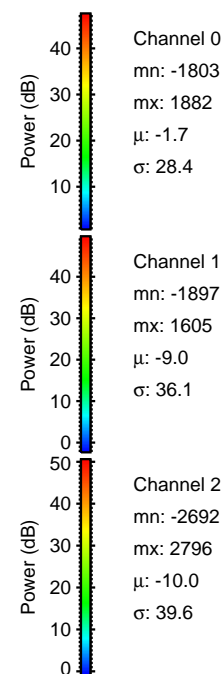
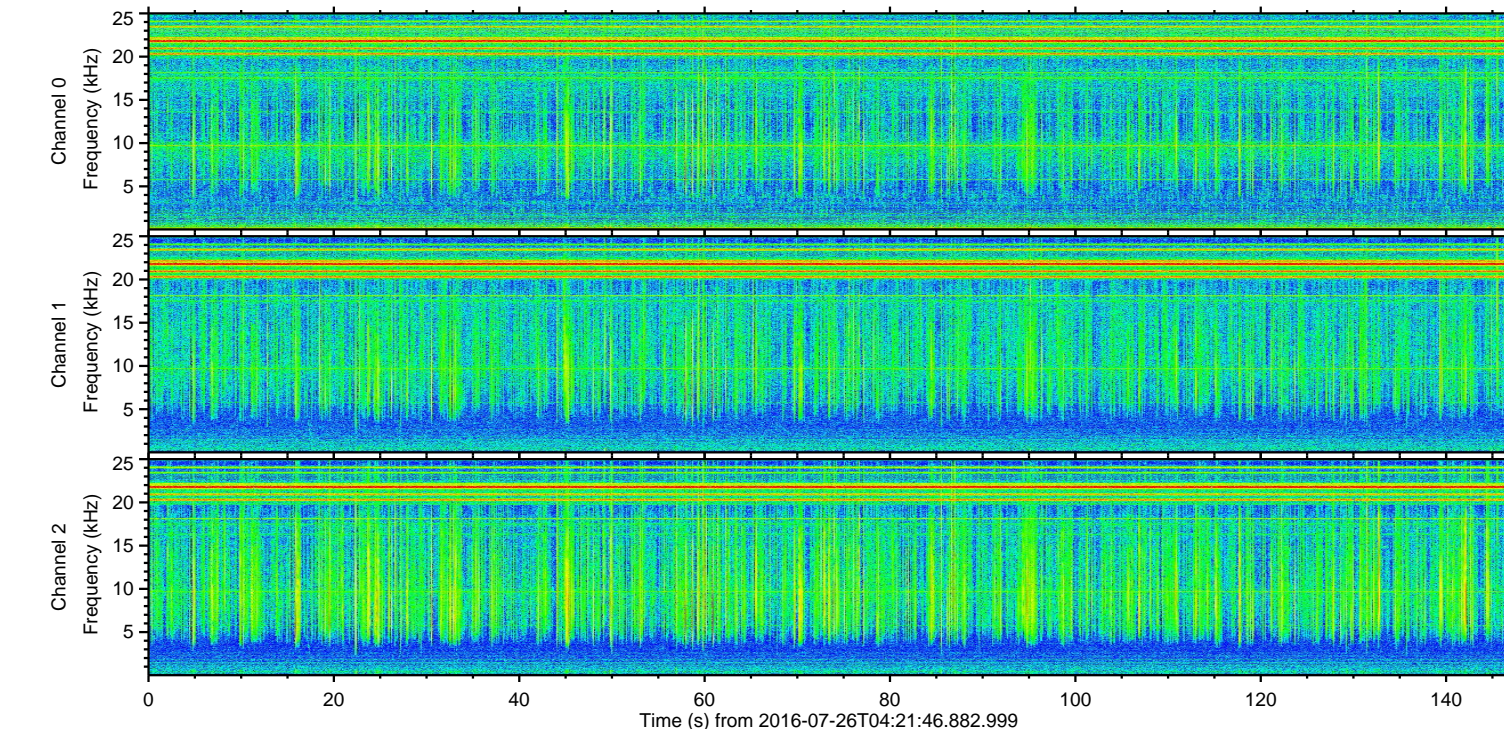
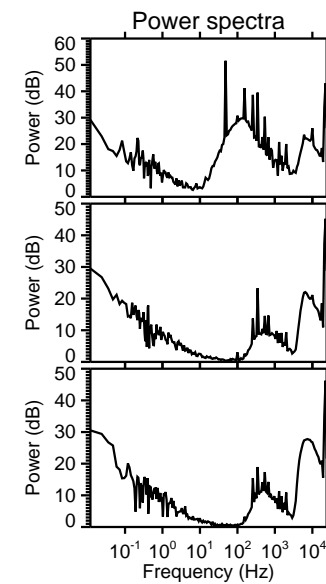
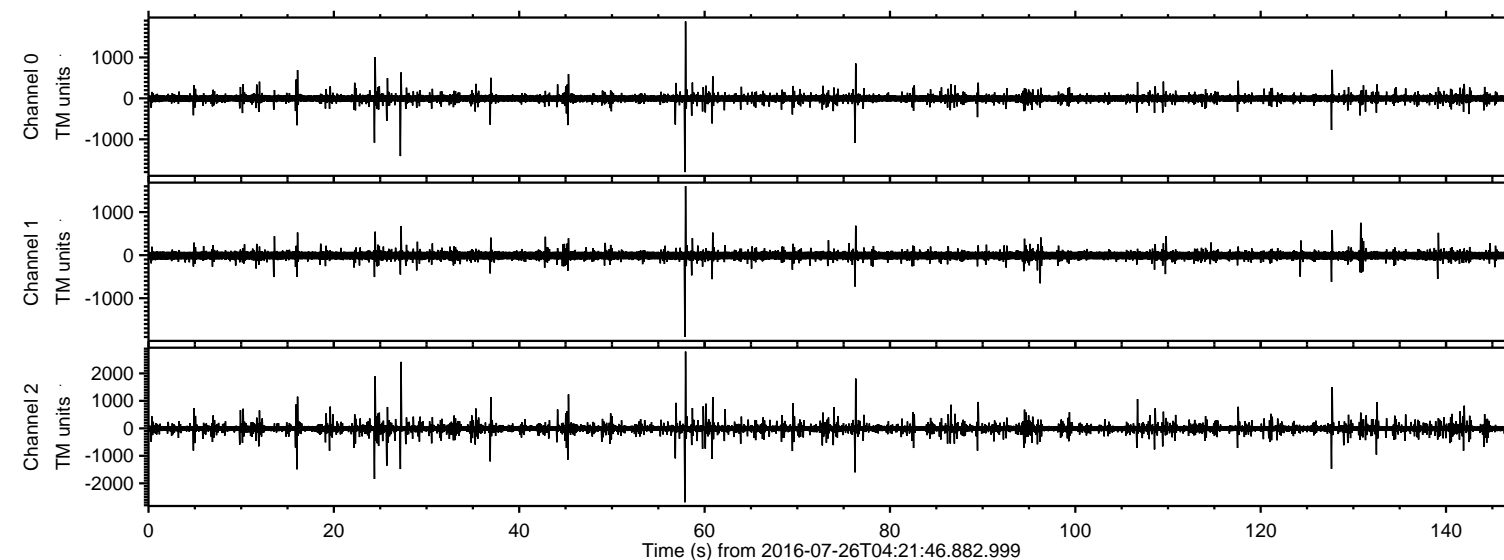
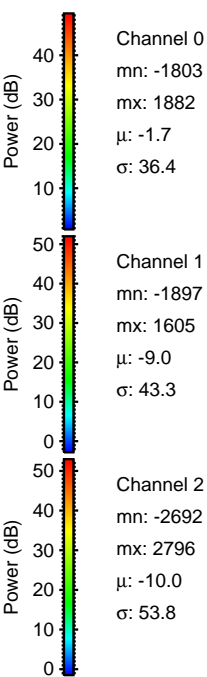
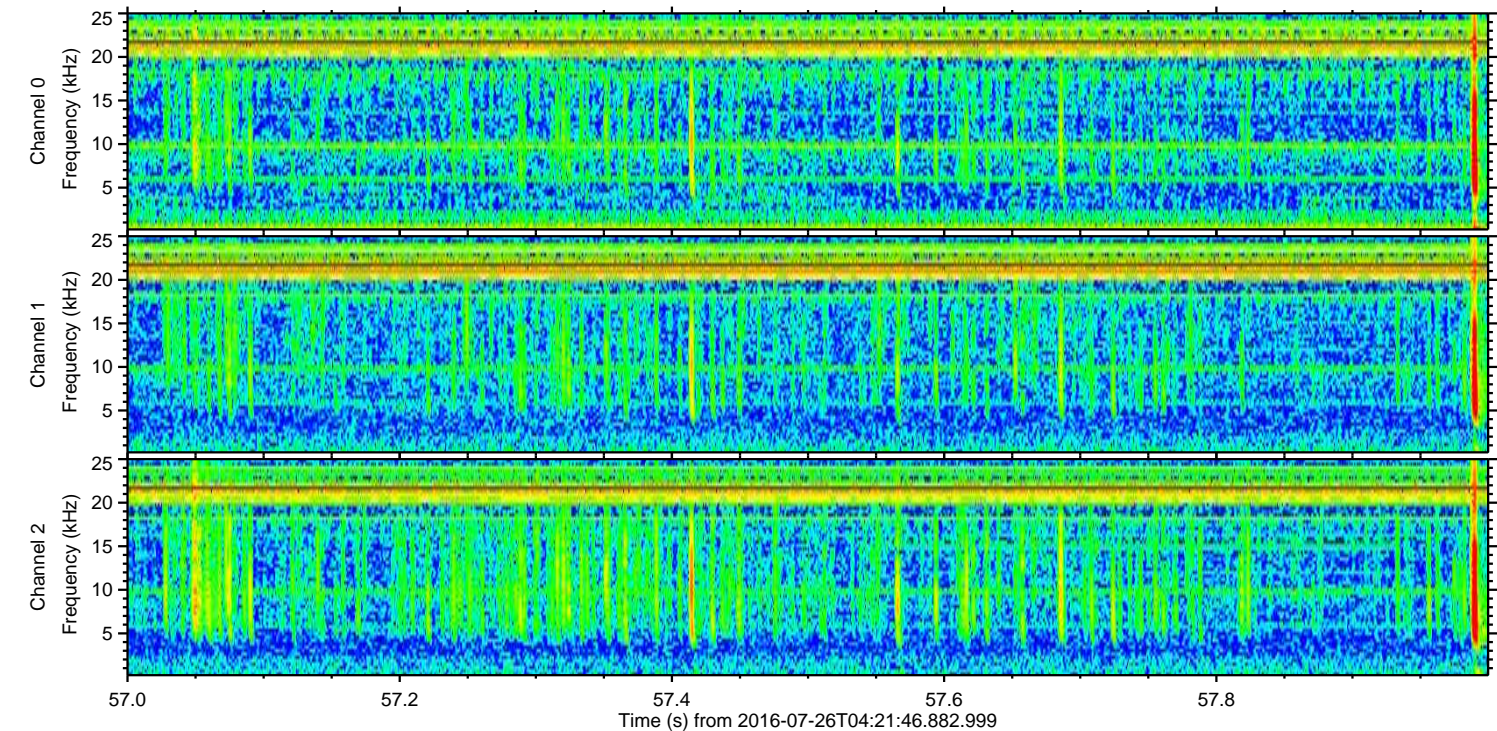
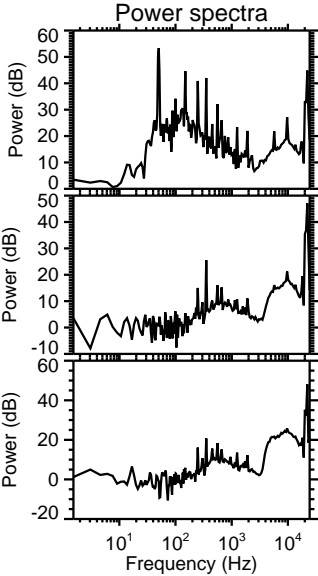
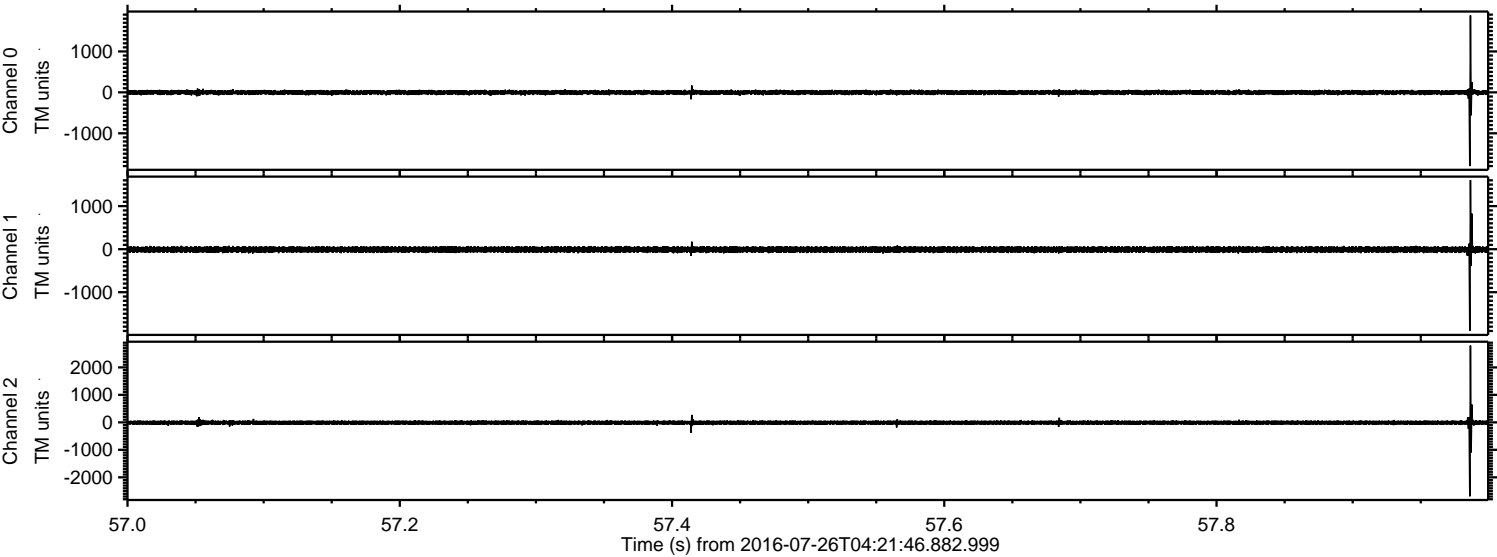


ELMAVAN 3D WAVEFORMS (Measured data sampled at 50 kHz) 51000 packets of 144 samples from 2016-07-26T04:21:46.882.999.

Processed Tue Jul 26 06:30:04 2016 by ELM ver.2012-10-06 from 001__elm20160726_042145__dat00.bin



Processed Tue Jul 26 06:30:16 2016 by ELM ver.2012-10-06 from 001__elm20160726_042145__dat00.bin

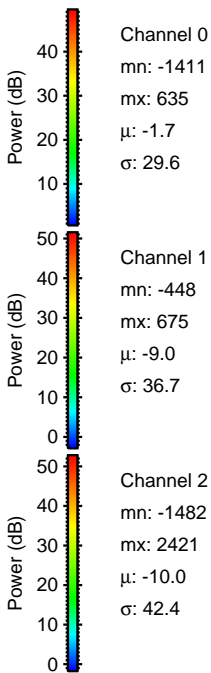
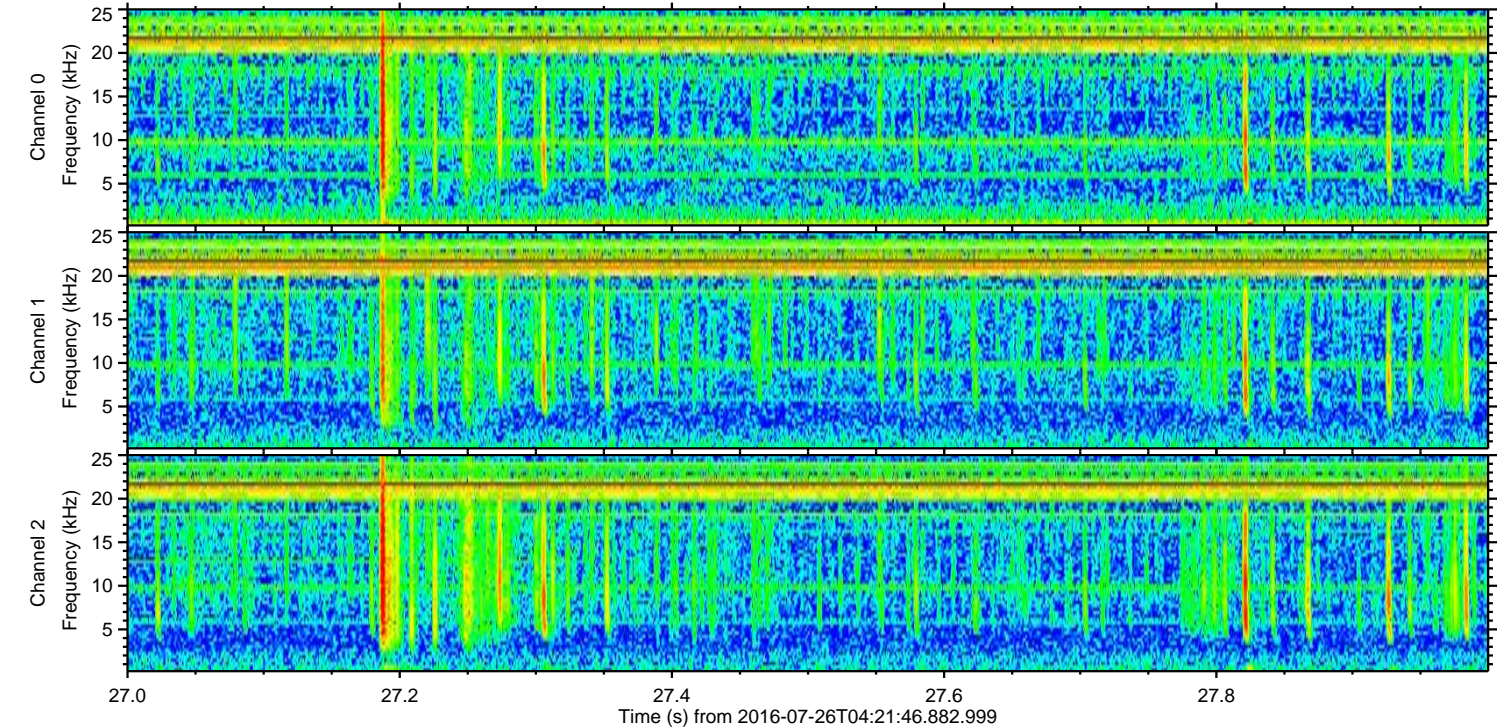
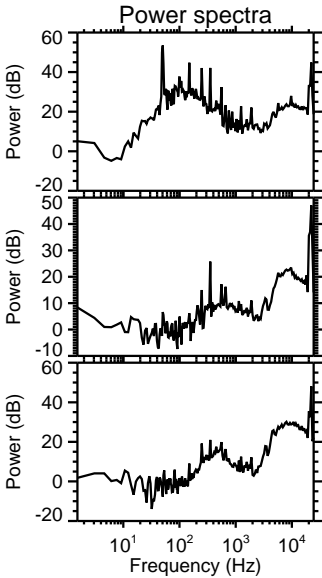
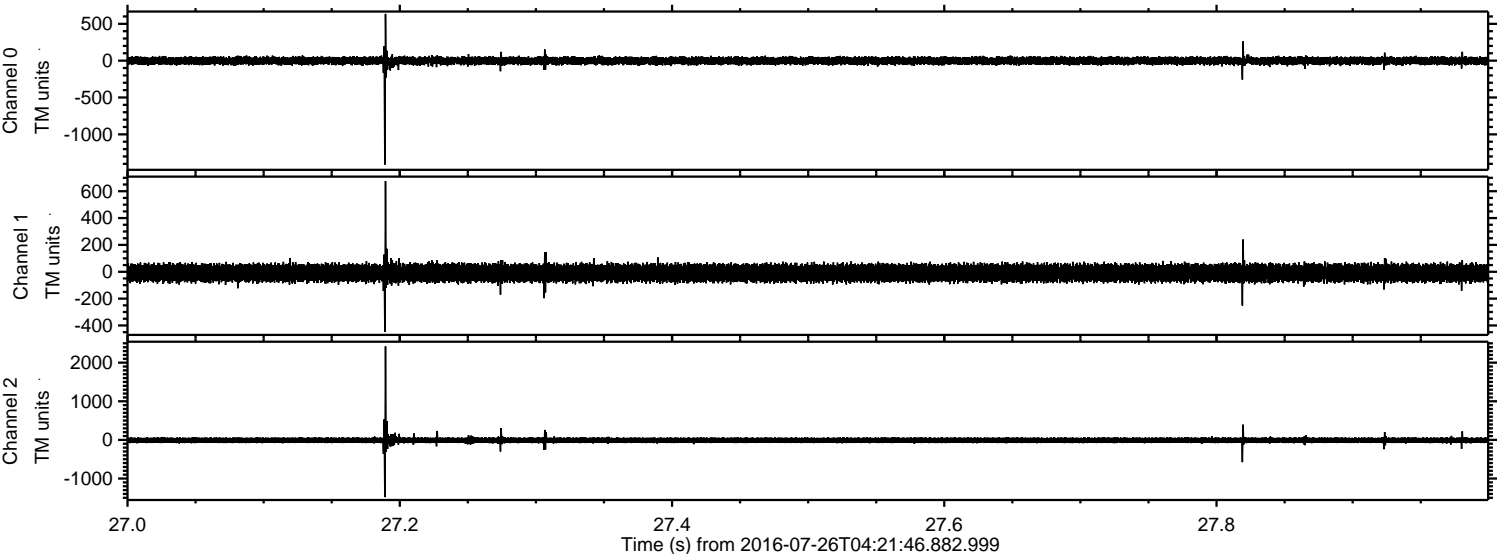


Channel 0
mn: -1803
mx: 1882
 μ : -1.7
 σ : 36.4

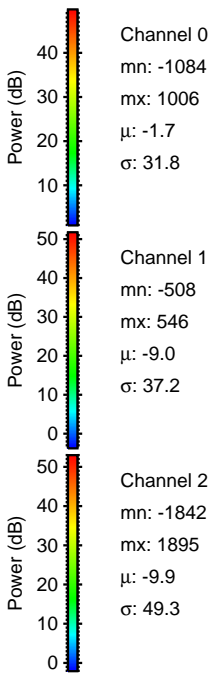
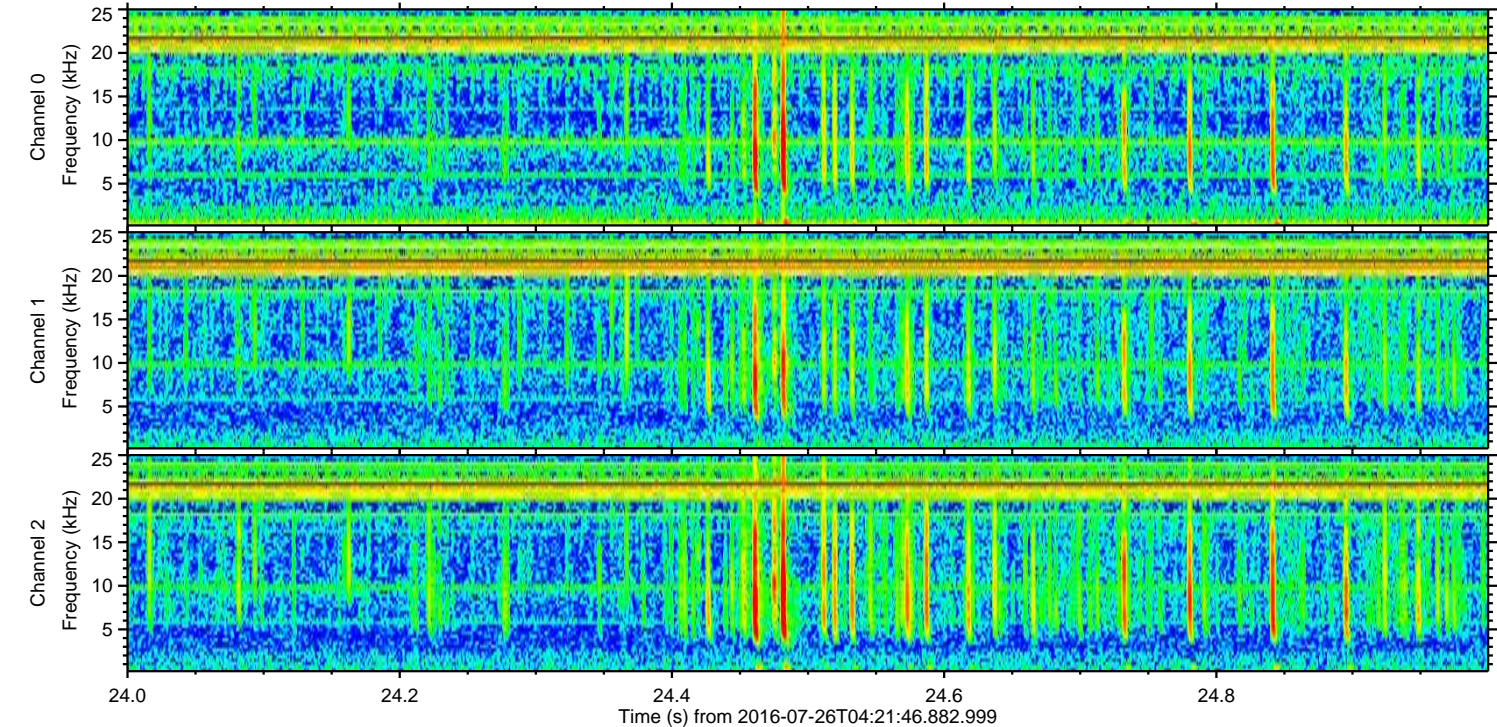
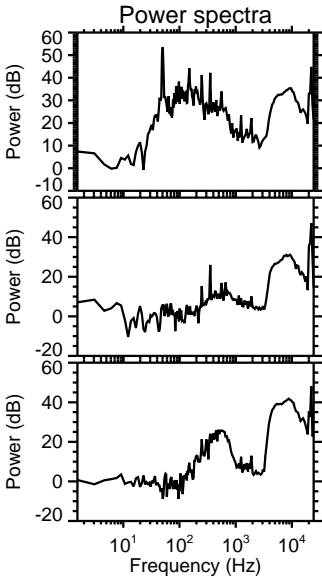
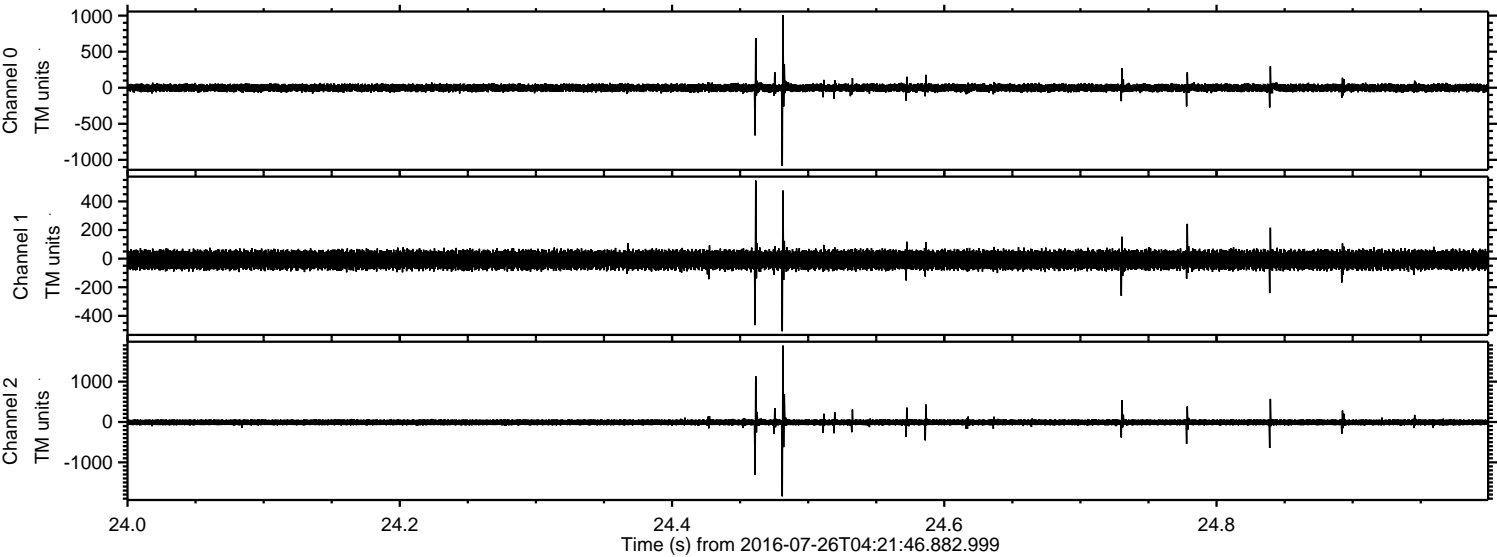
Channel 1
mn: -1897
mx: 1605
 μ : -9.0
 σ : 43.3

Channel 2
mn: -2692
mx: 2796
 μ : -10.0
 σ : 53.8

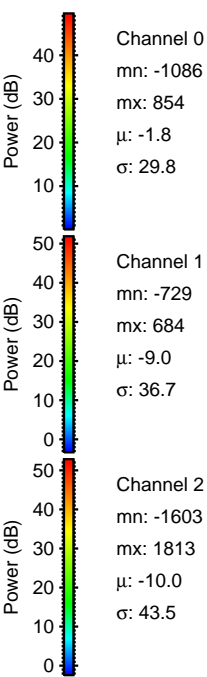
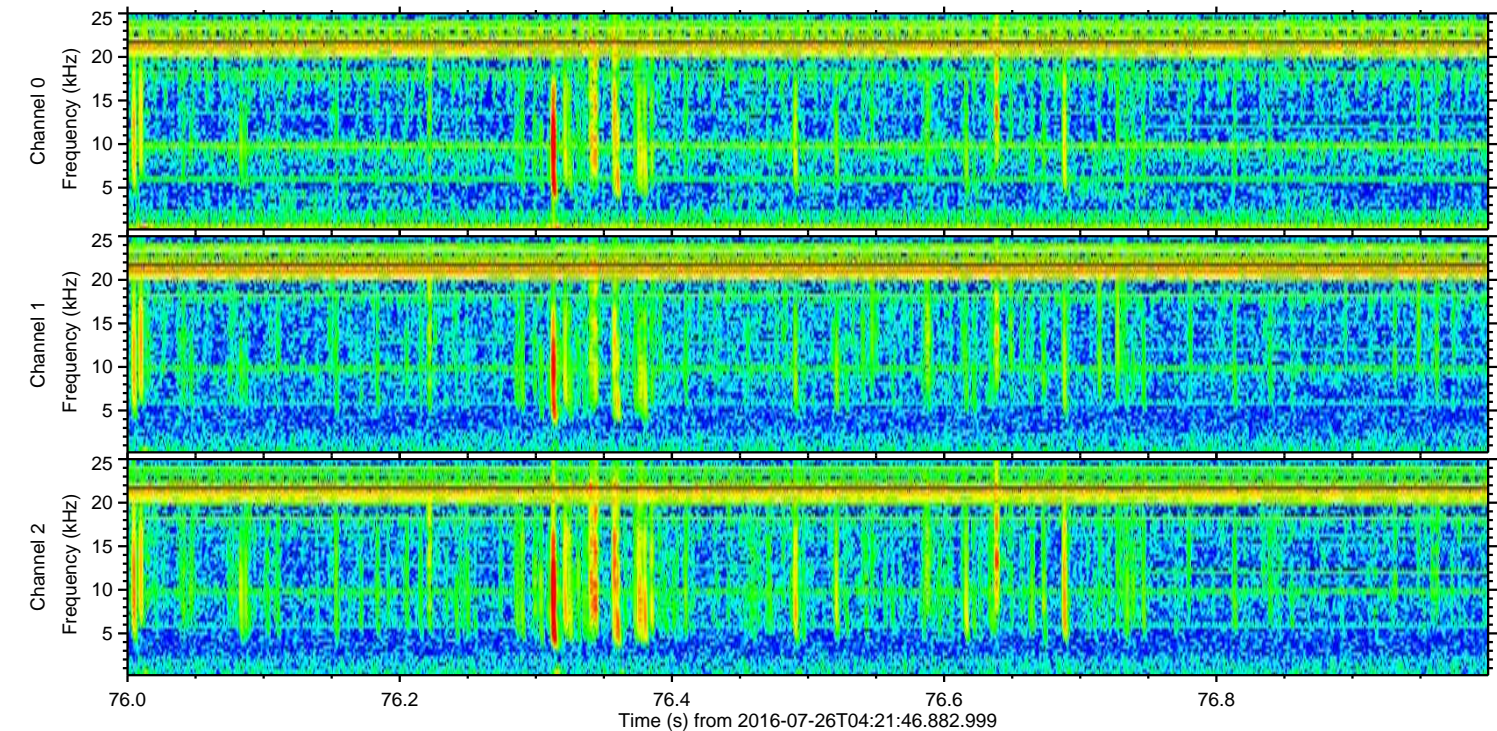
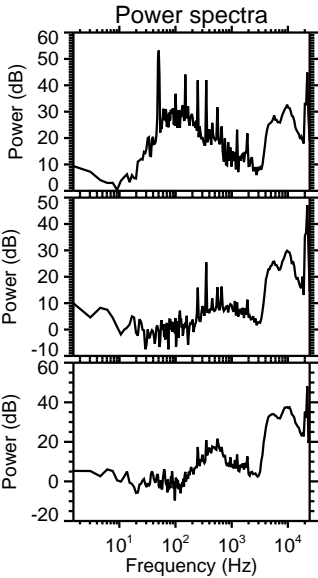
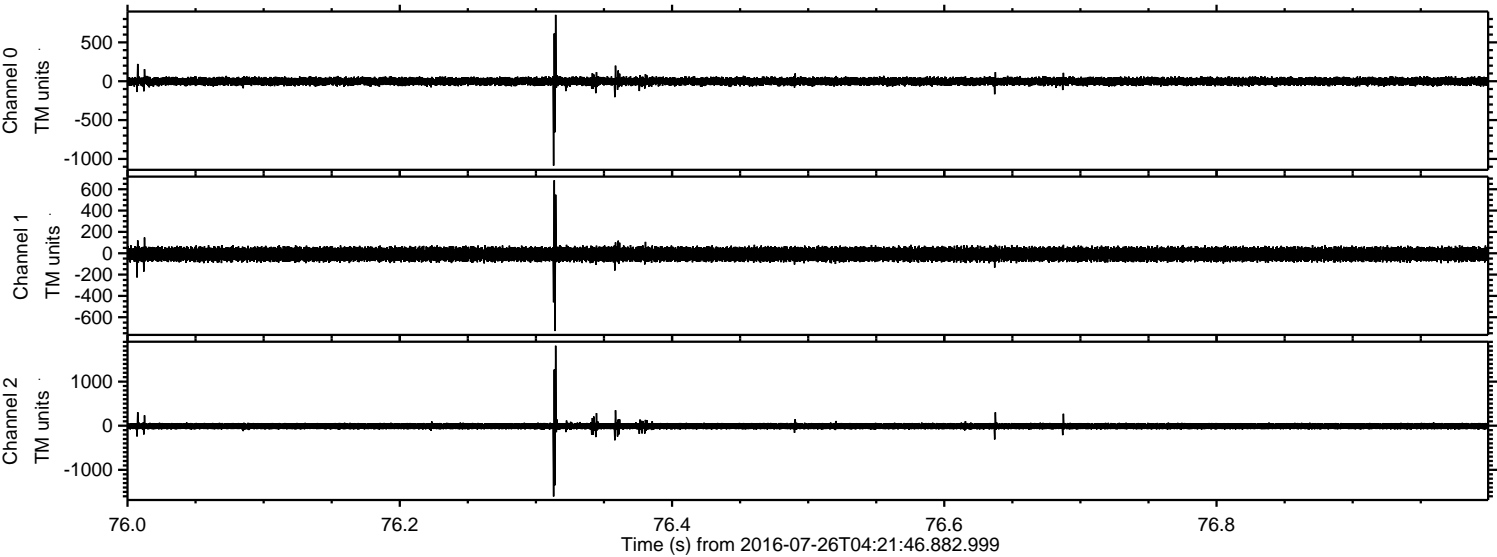
Processed Tue Jul 26 06:30:17 2016 by ELM ver.2012-10-06 from 001__elm20160726_042145__dat00.bin



Processed Tue Jul 26 06:30:18 2016 by ELM ver.2012-10-06 from 001__elm20160726_042145__dat00.bin

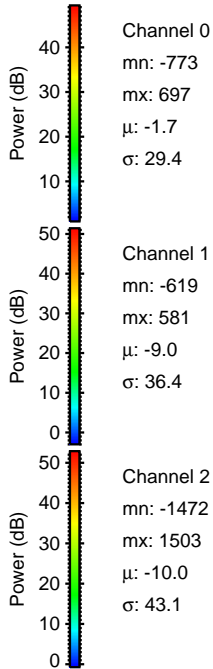
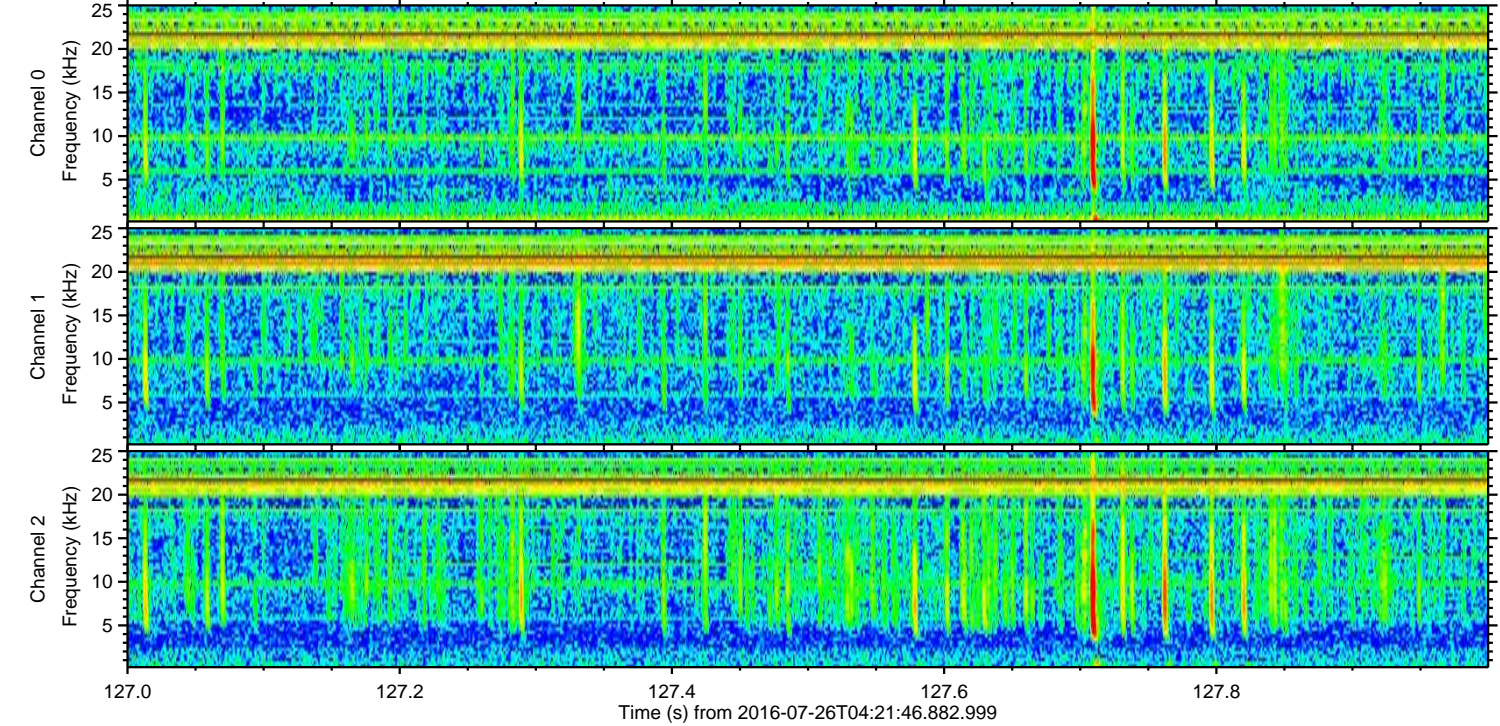
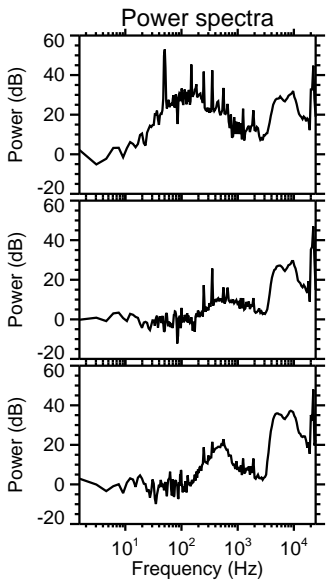
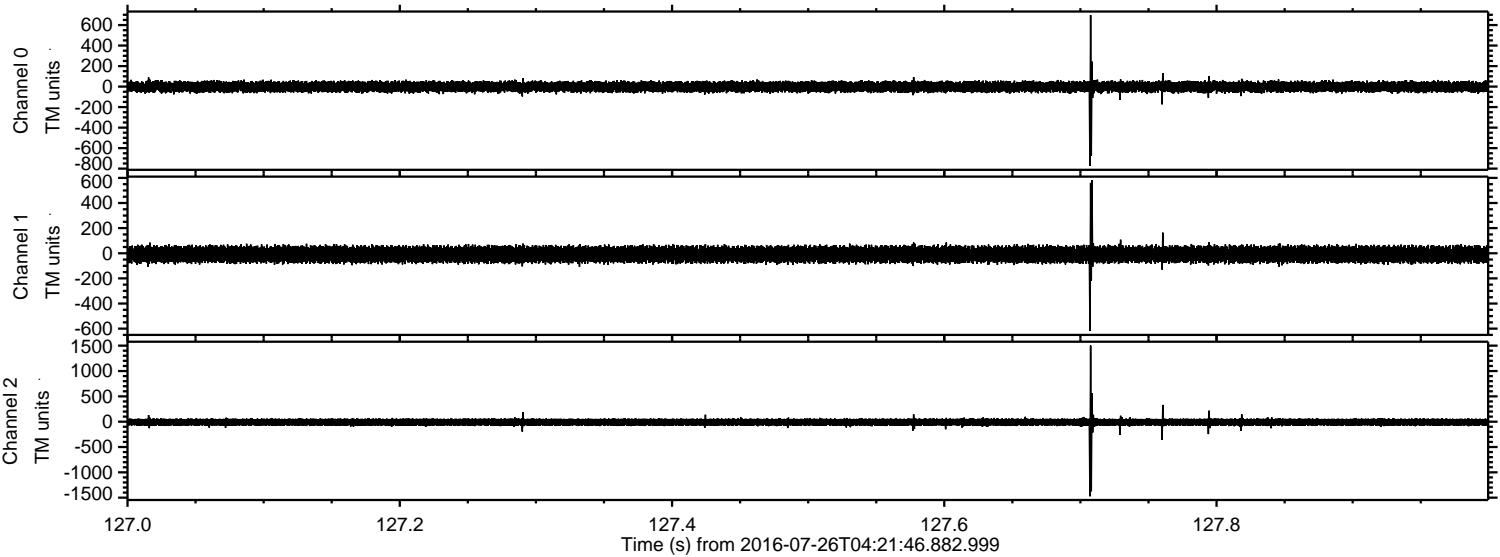


Processed Tue Jul 26 06:30:19 2016 by ELM ver.2012-10-06 from 001__elm20160726_042145__dat00.bin

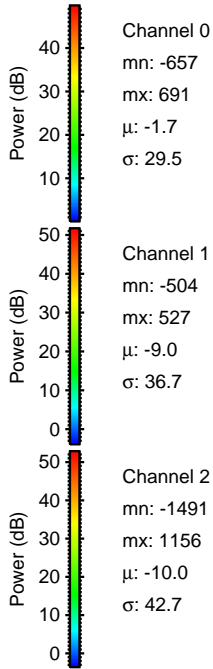
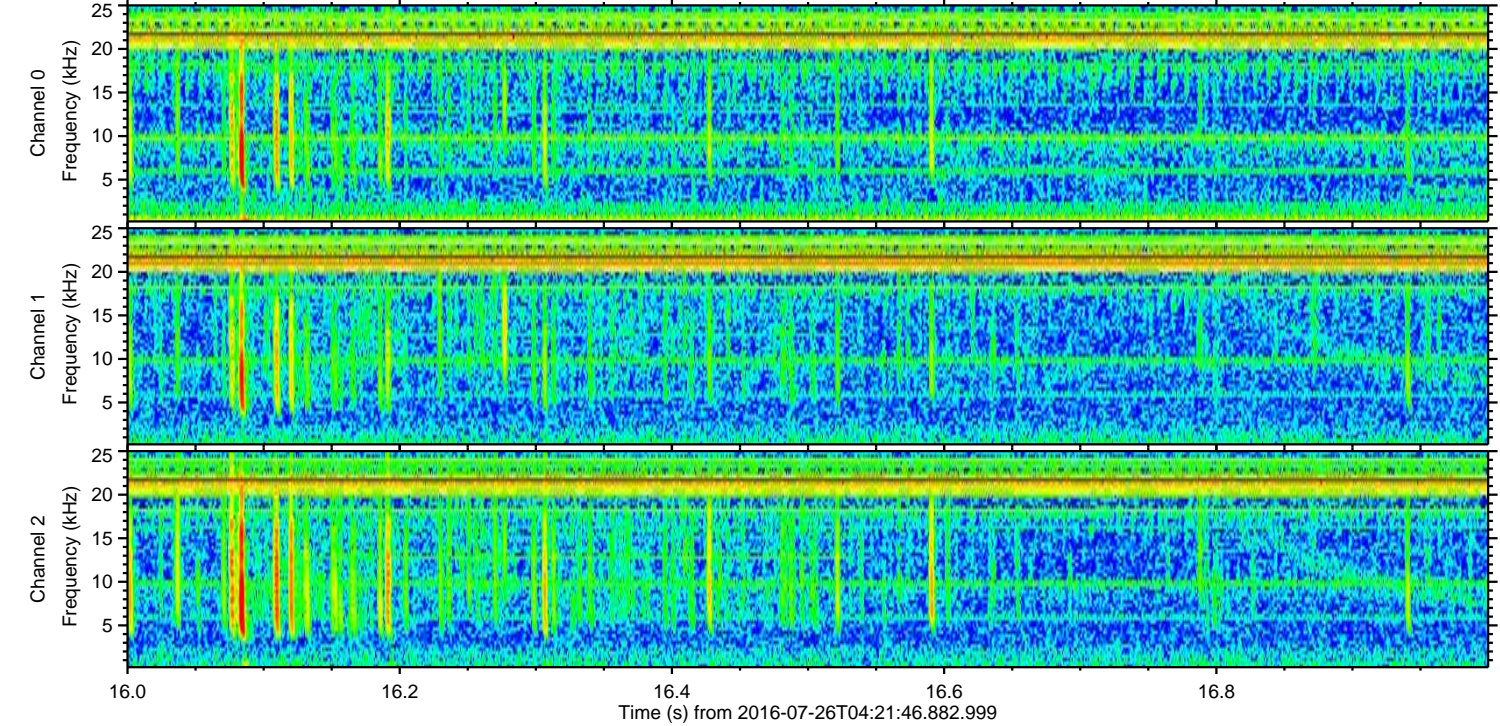
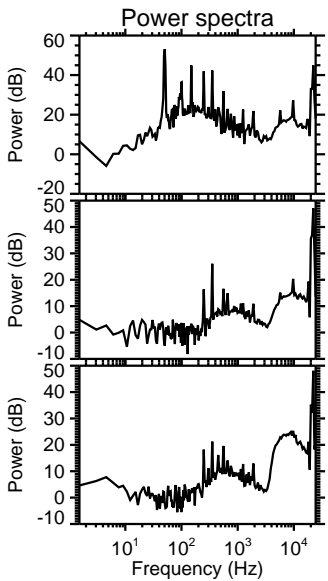
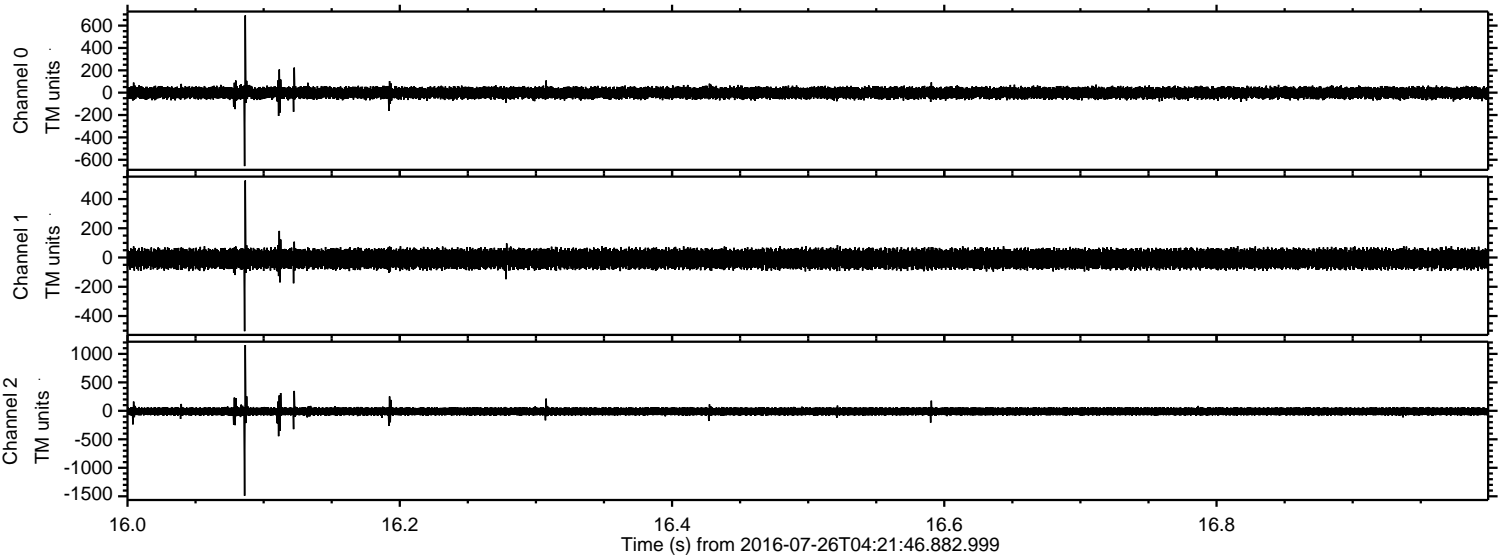


ELMAVAN 3D WAVEFORMS (Measured data sampled at 50 kHz) 51000 packets of 144 samples from 2016-07-26T04:21:46.882.999. Part 128/147

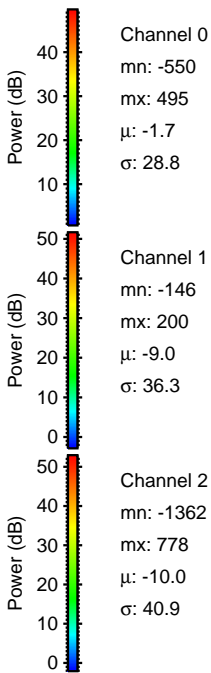
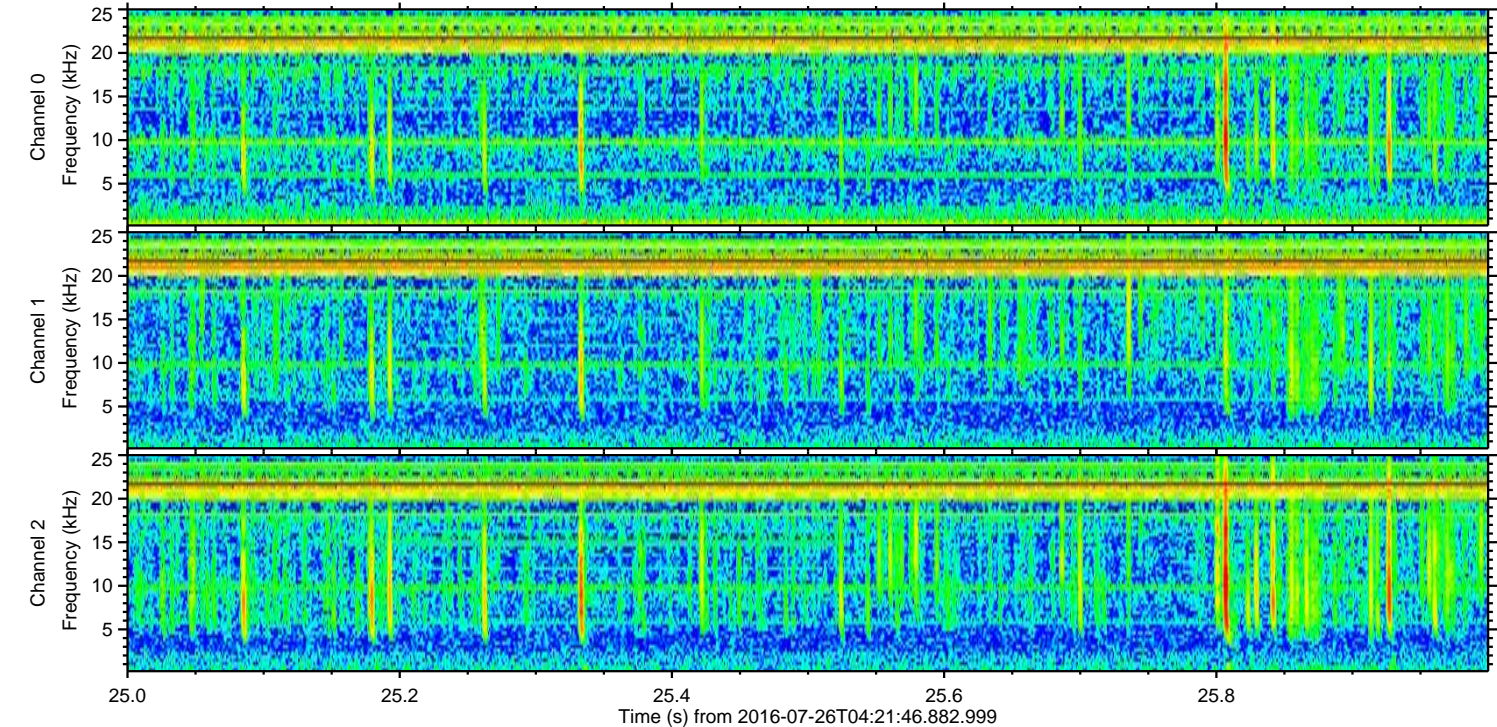
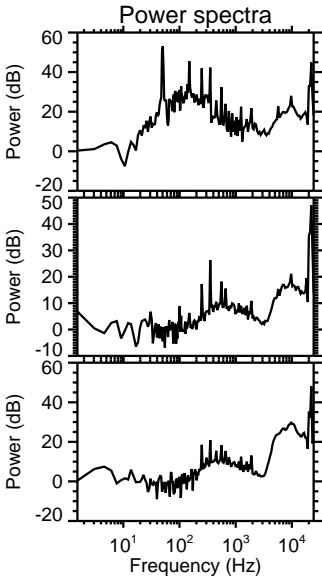
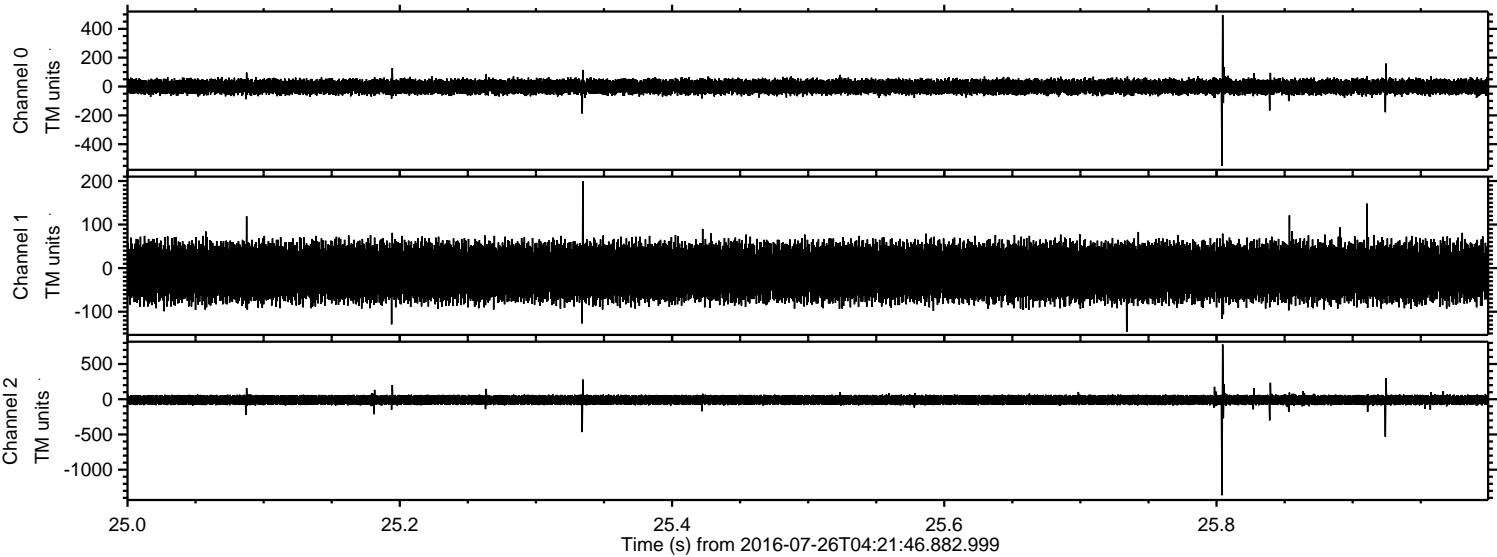
Processed Tue Jul 26 06:30:20 2016 by ELM ver.2012-10-06 from 001__elm20160726_042145__dat00.bin



Processed Tue Jul 26 06:30:21 2016 by ELM ver.2012-10-06 from 001__elm20160726_042145__dat00.bin

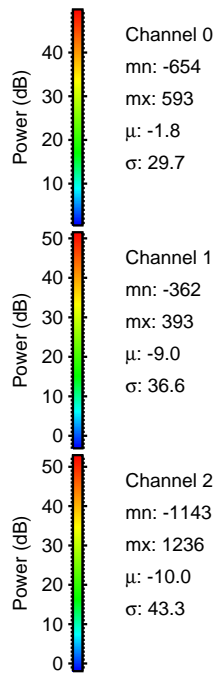
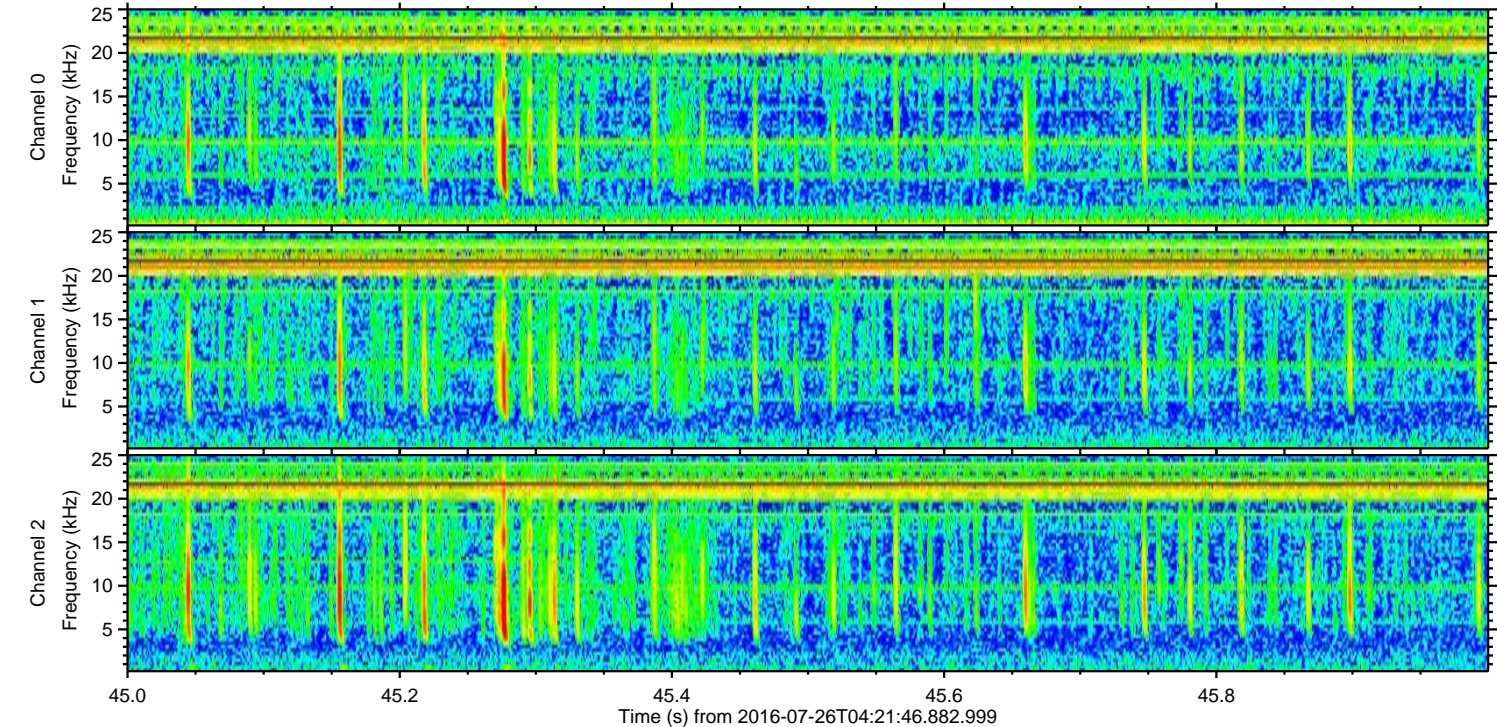
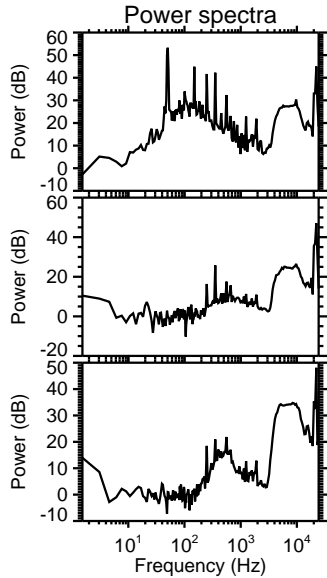
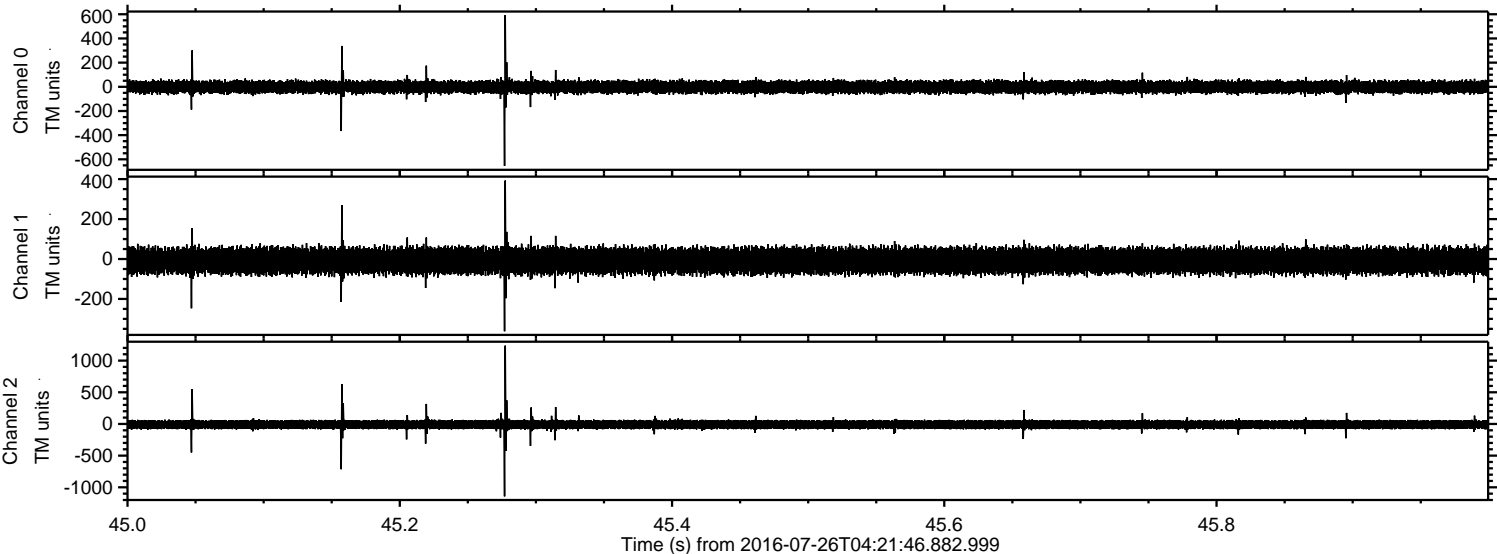


Processed Tue Jul 26 06:30:22 2016 by ELM ver.2012-10-06 from 001__elm20160726_042145__dat00.bin

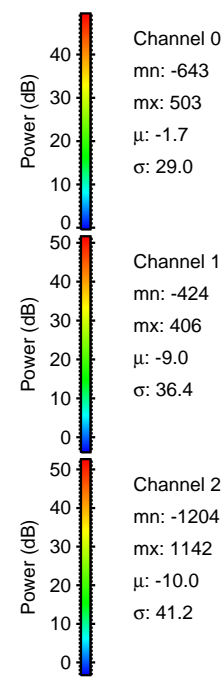
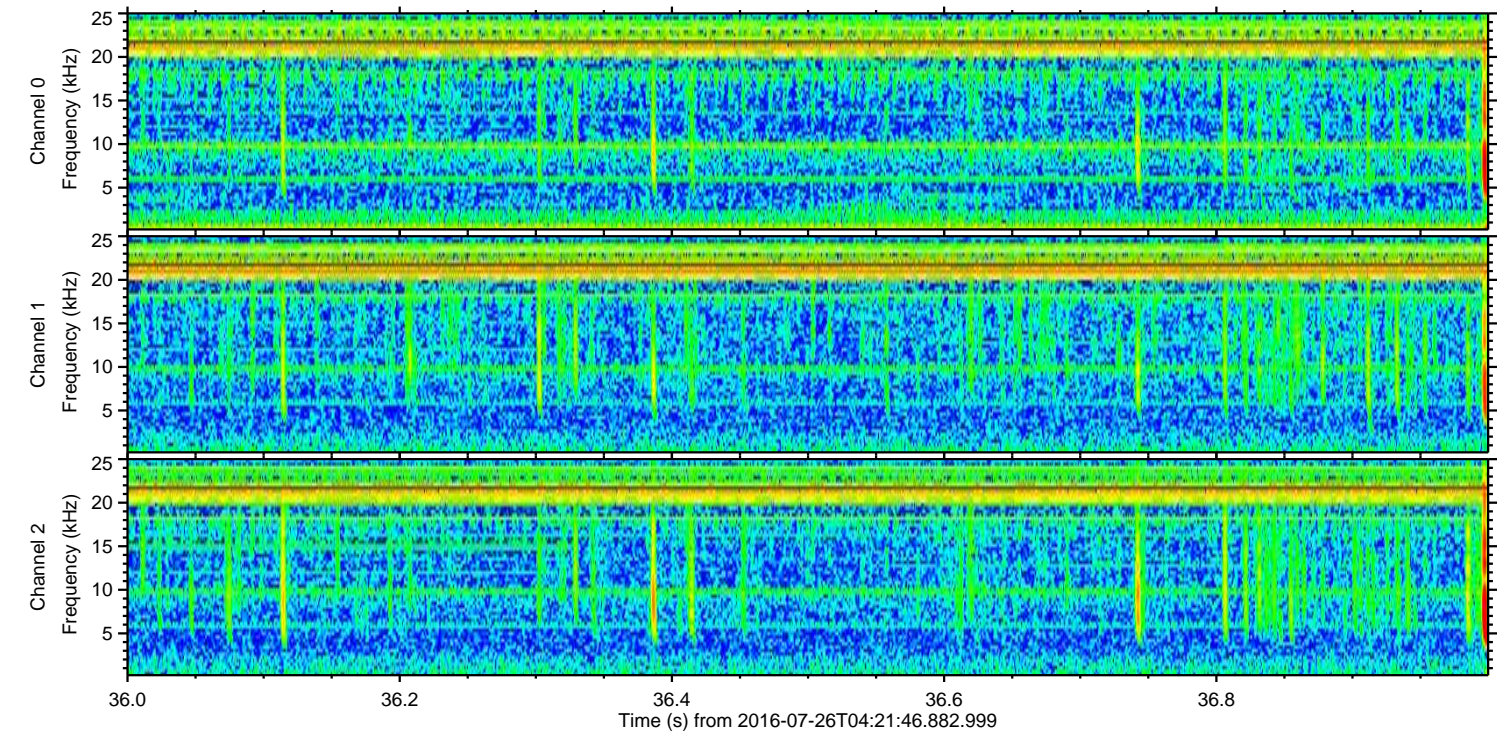
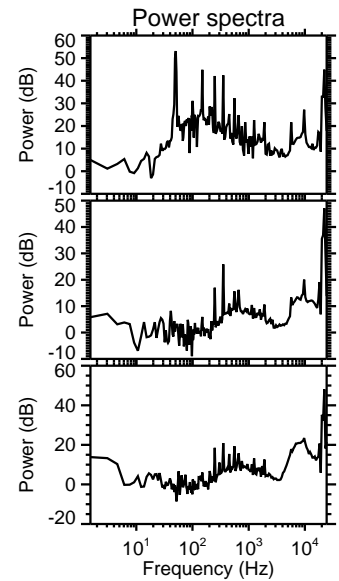
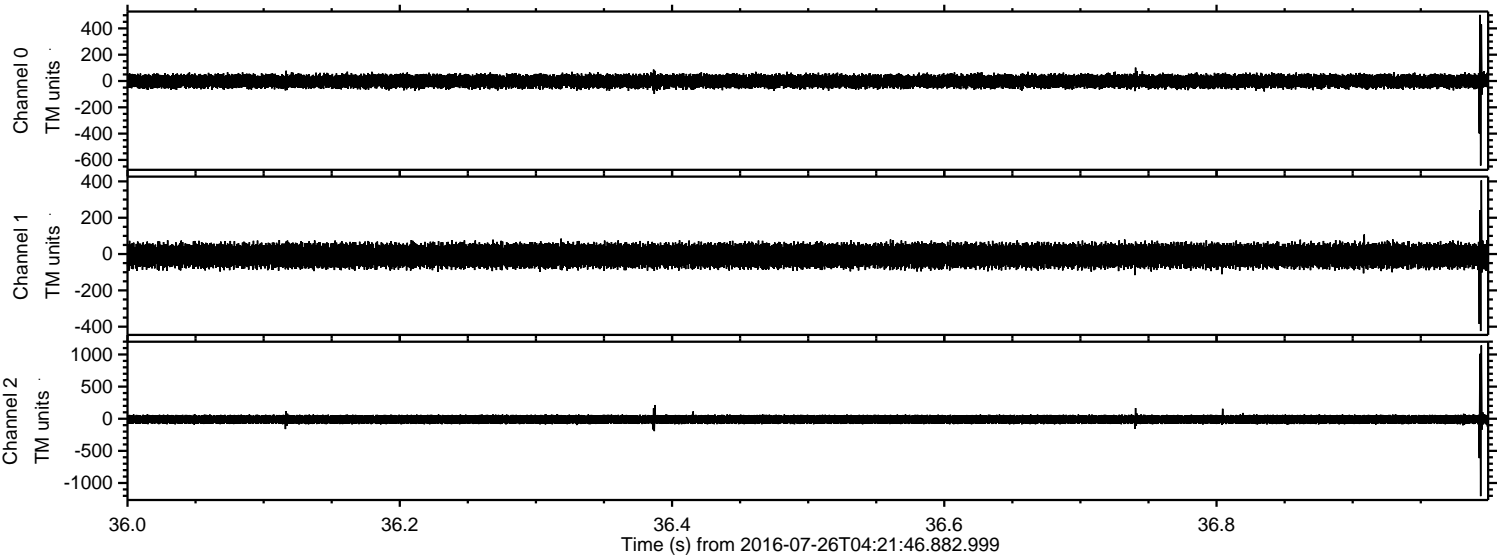


ELMAVAN 3D WAVEFORMS (Measured data sampled at 50 kHz) 51000 packets of 144 samples from 2016-07-26T04:21:46.882.999. Part 46/147

Processed Tue Jul 26 06:30:23 2016 by ELM ver.2012-10-06 from 001__elm20160726_042145__dat00.bin



Processed Tue Jul 26 06:30:23 2016 by ELM ver.2012-10-06 from 001__elm20160726_042145__dat00.bin



Processed Tue Jul 26 06:30:24 2016 by ELM ver.2012-10-06 from 001__elm20160726_042145__dat00.bin

