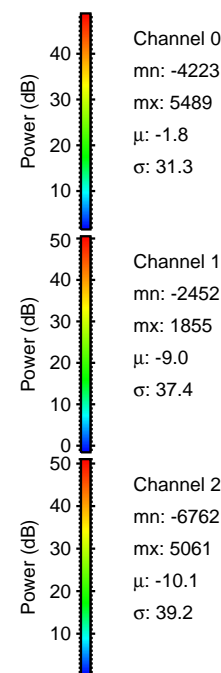
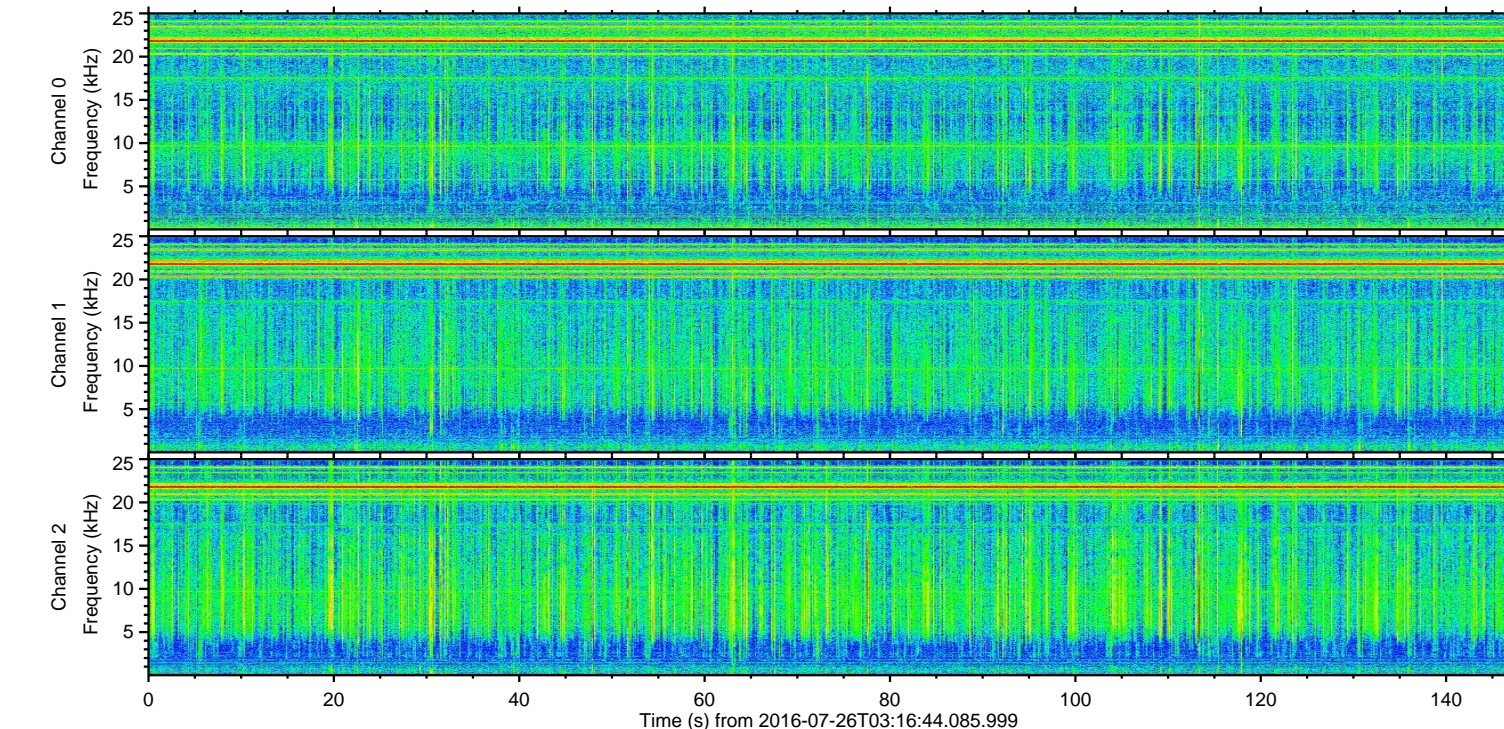
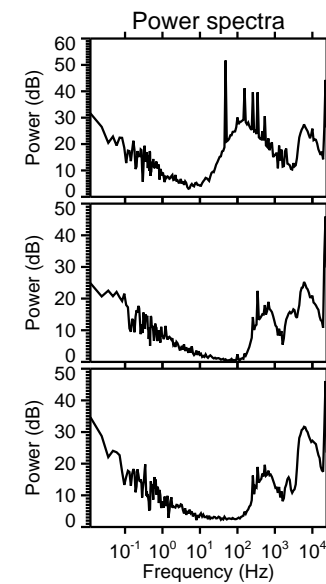
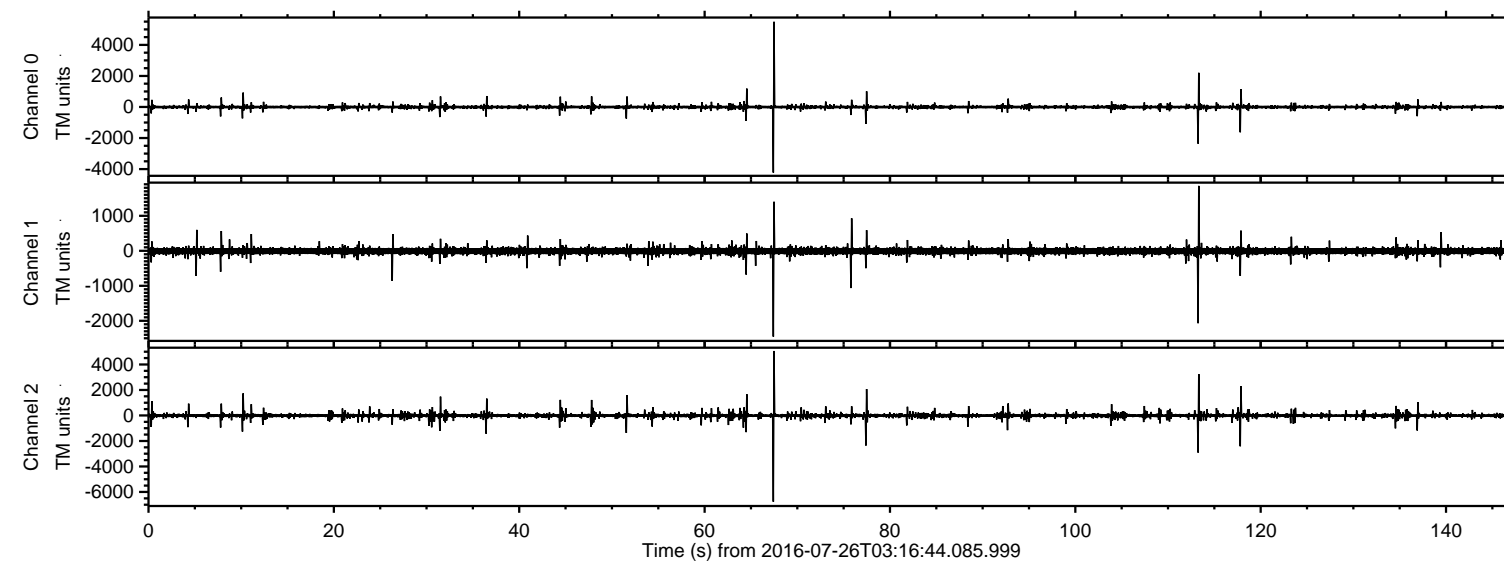


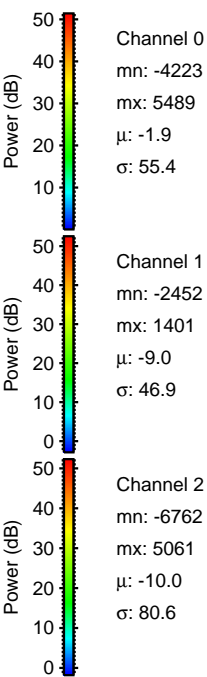
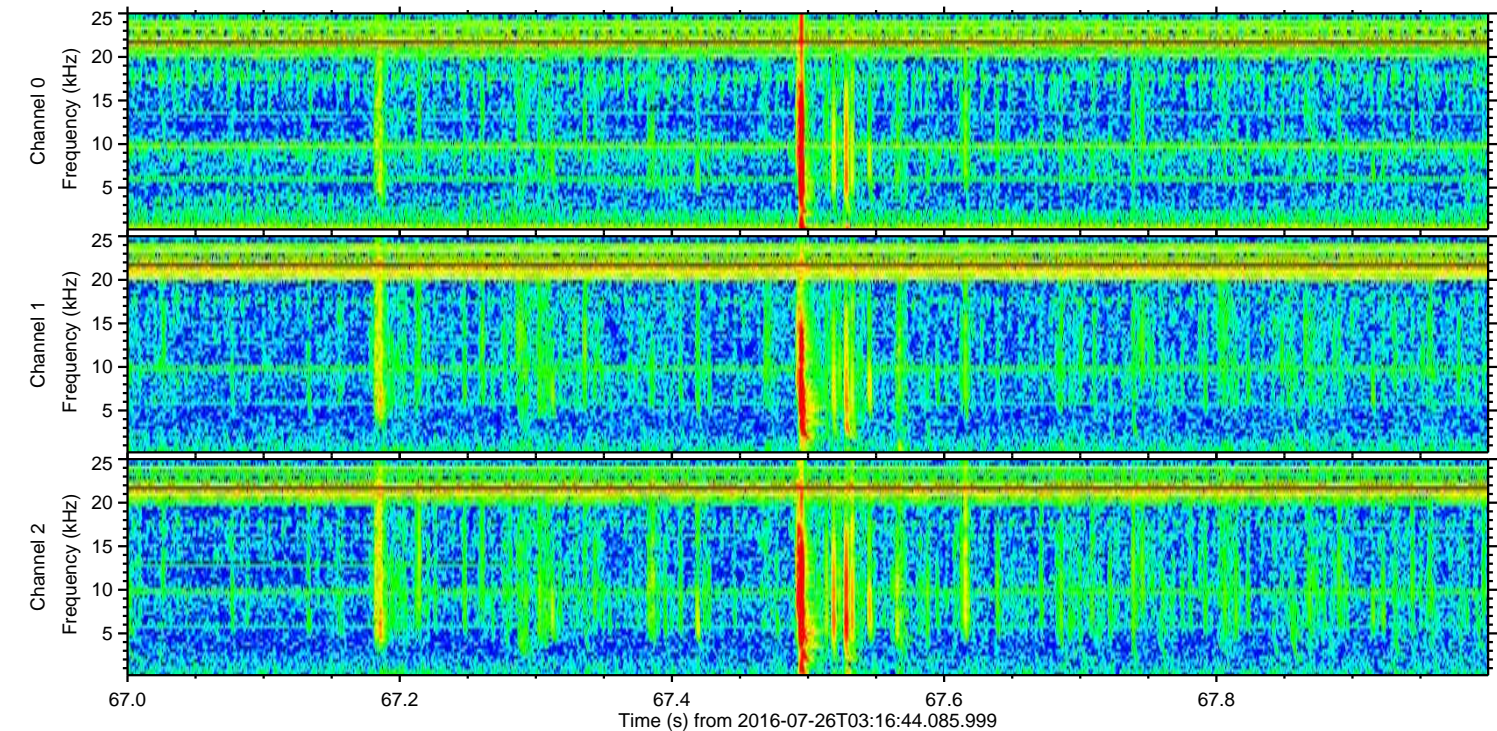
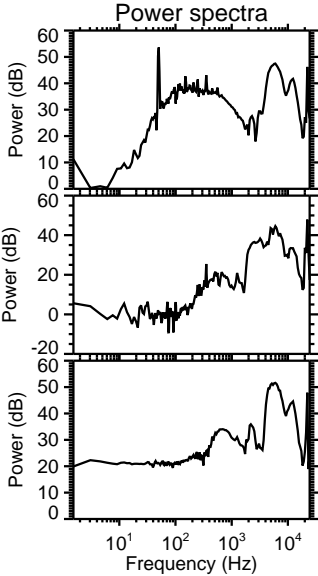
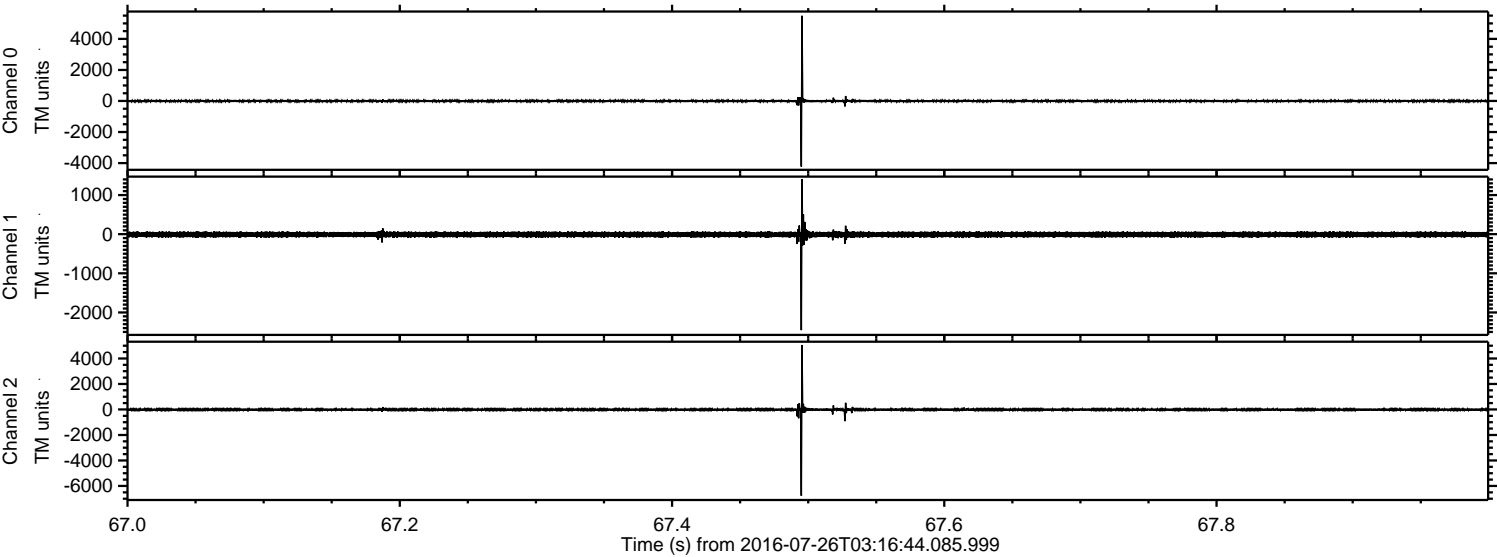
# ELMAVAN 3D WAVEFORMS (Measured data sampled at 50 kHz) 51000 packets of 144 samples from 2016-07-26T03:16:44.085.999.

Processed Tue Jul 26 05:24:31 2016 by ELM ver.2012-10-06 from 001\_\_elm20160726\_031643\_\_dat00.bin





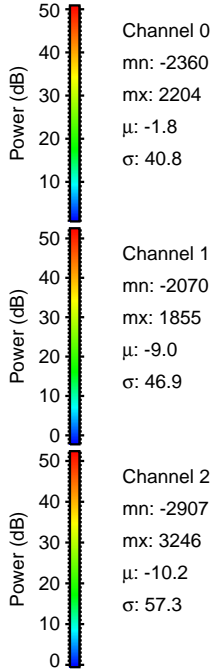
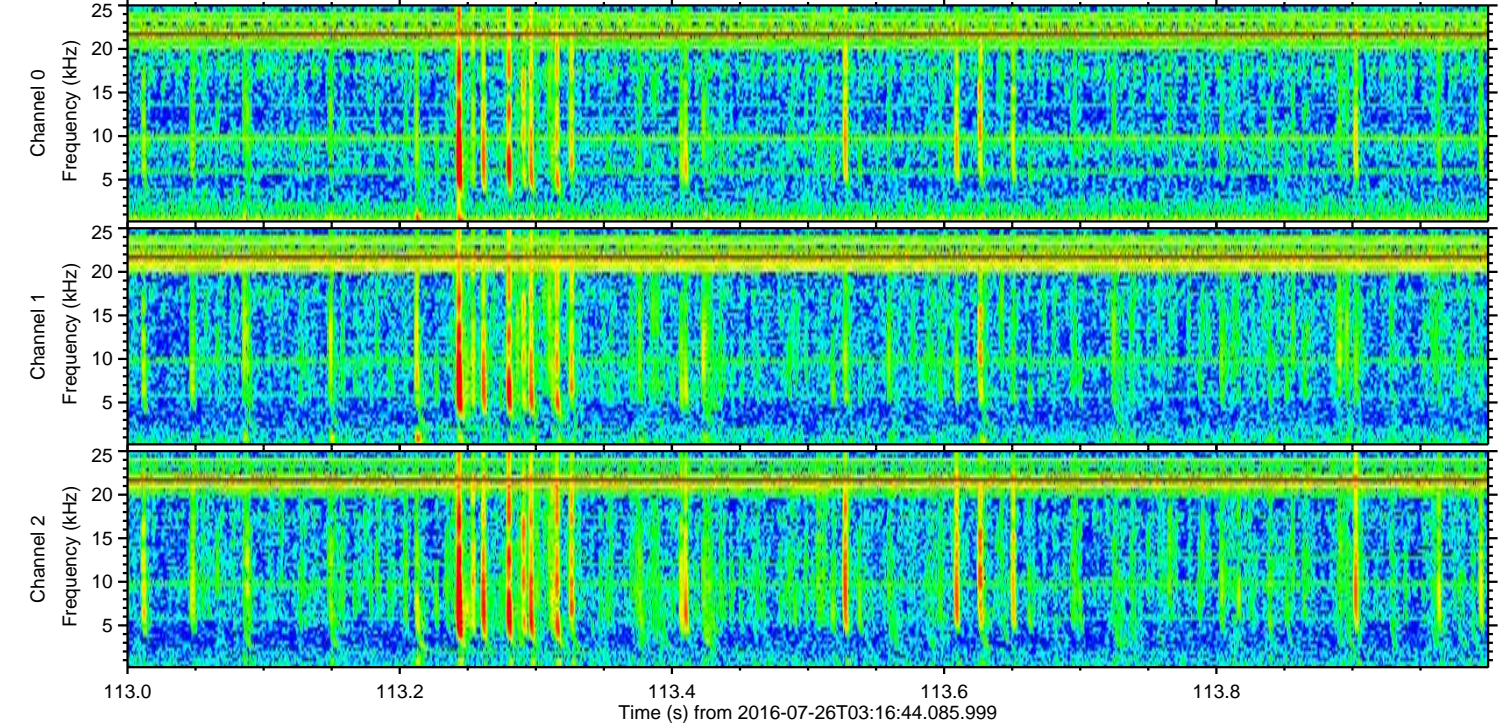
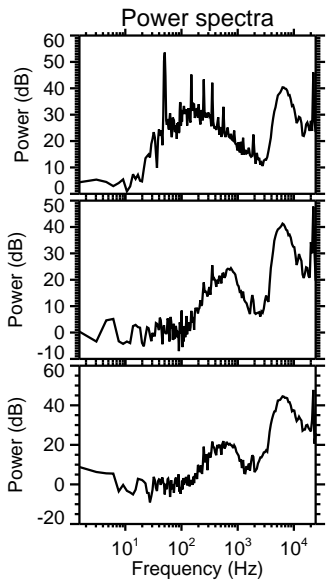
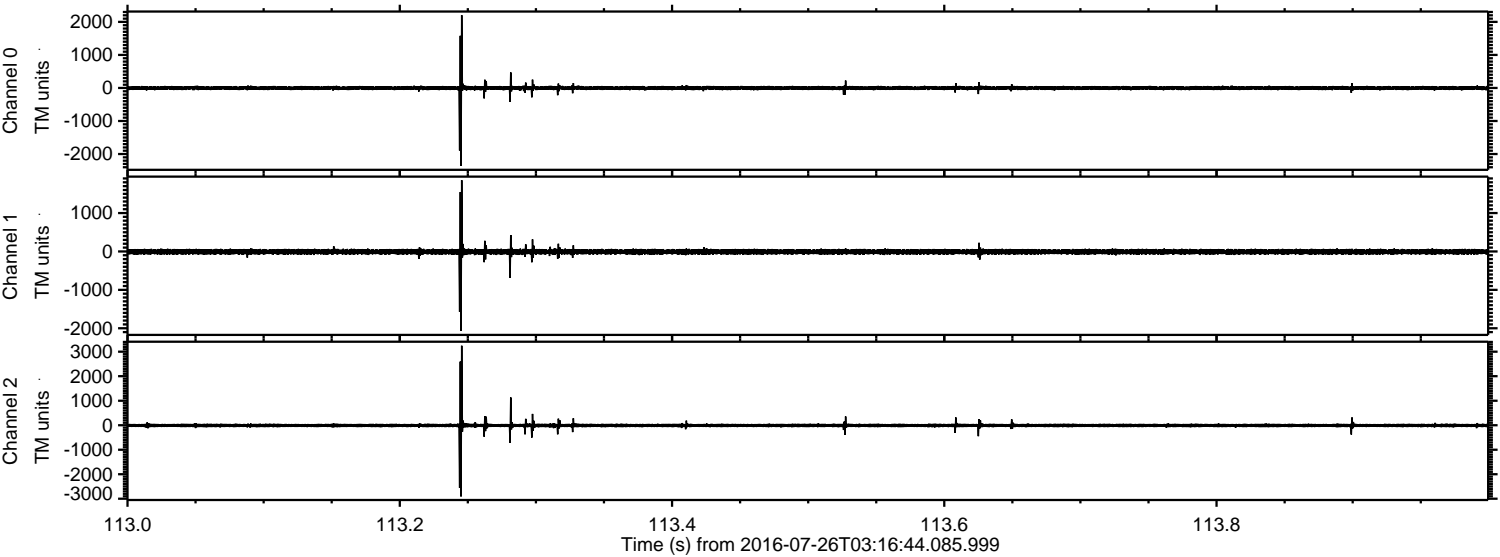
Processed Tue Jul 26 05:24:42 2016 by ELM ver.2012-10-06 from 001\_\_elm20160726\_031643\_\_dat00.bin





ELMAVAN 3D WAVEFORMS (Measured data sampled at 50 kHz) 51000 packets of 144 samples from 2016-07-26T03:16:44.085.999. Part 114/147

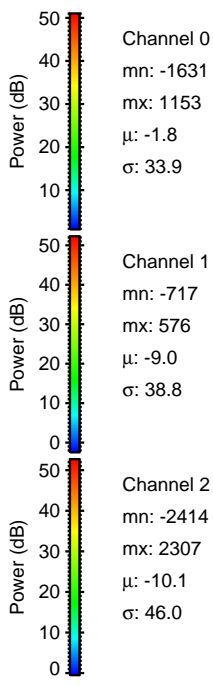
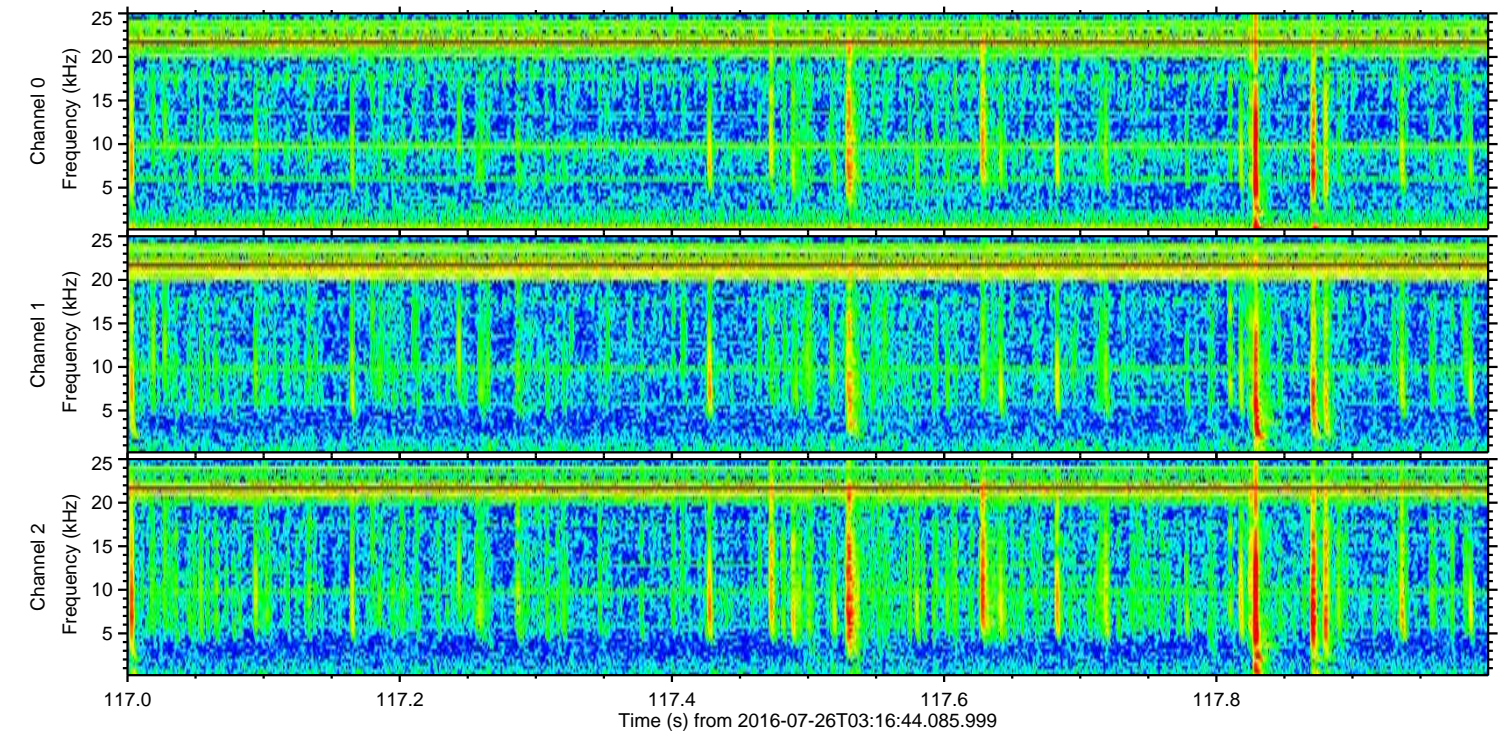
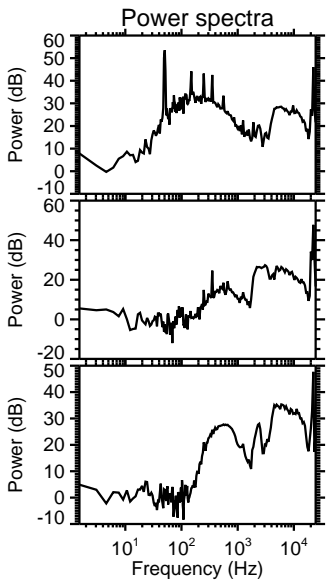
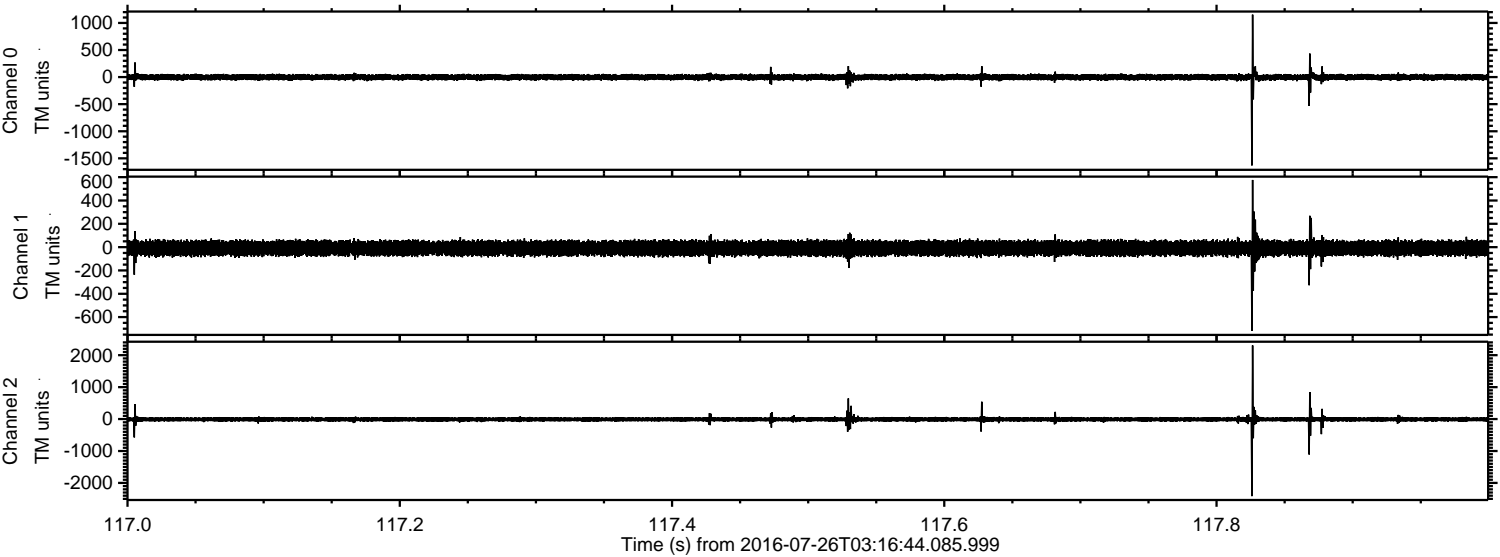
Processed Tue Jul 26 05:24:43 2016 by ELM ver.2012-10-06 from 001\_\_elm20160726\_031643\_\_dat00.bin





ELMAVAN 3D WAVEFORMS (Measured data sampled at 50 kHz) 51000 packets of 144 samples from 2016-07-26T03:16:44.085.999. Part 118/147

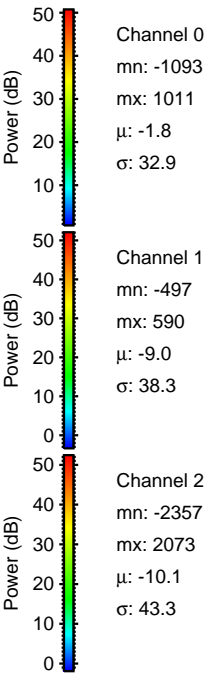
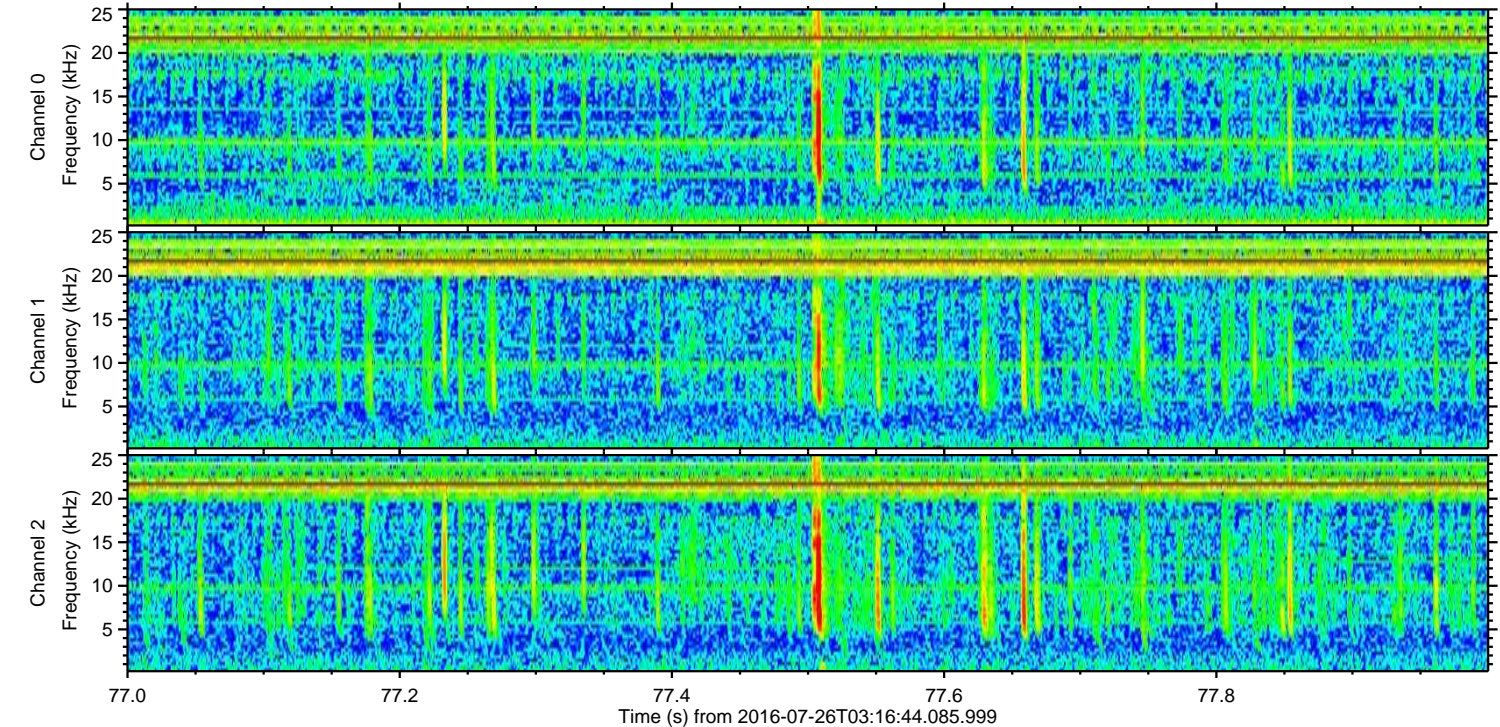
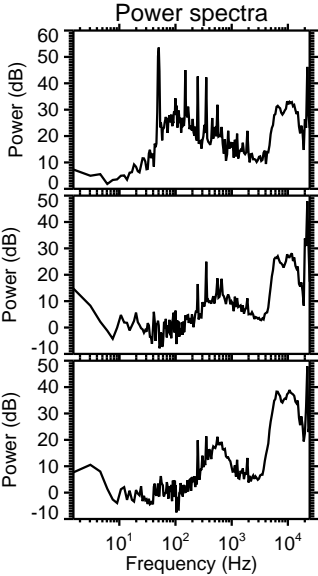
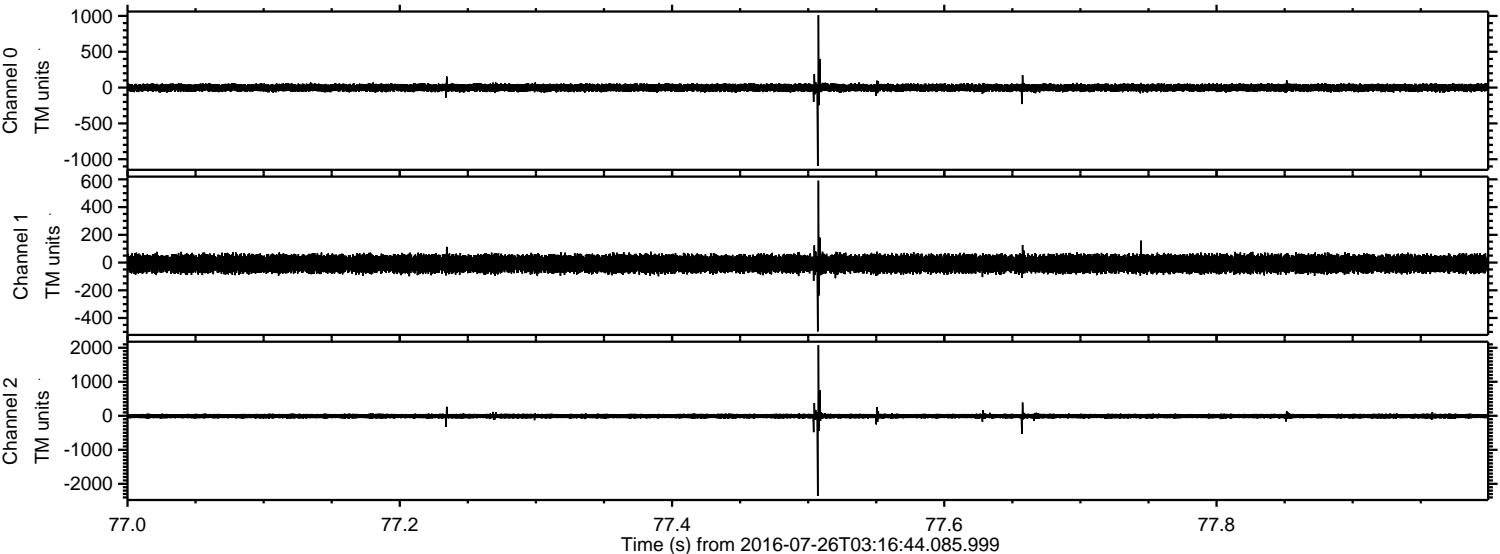
Processed Tue Jul 26 05:24:44 2016 by ELM ver.2012-10-06 from 001\_\_elm20160726\_031643\_\_dat00.bin





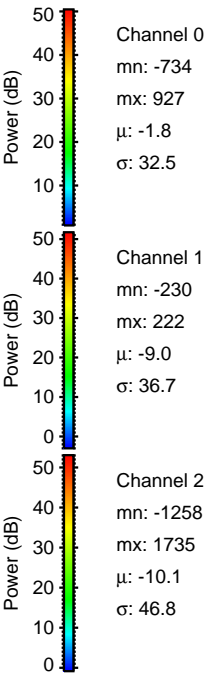
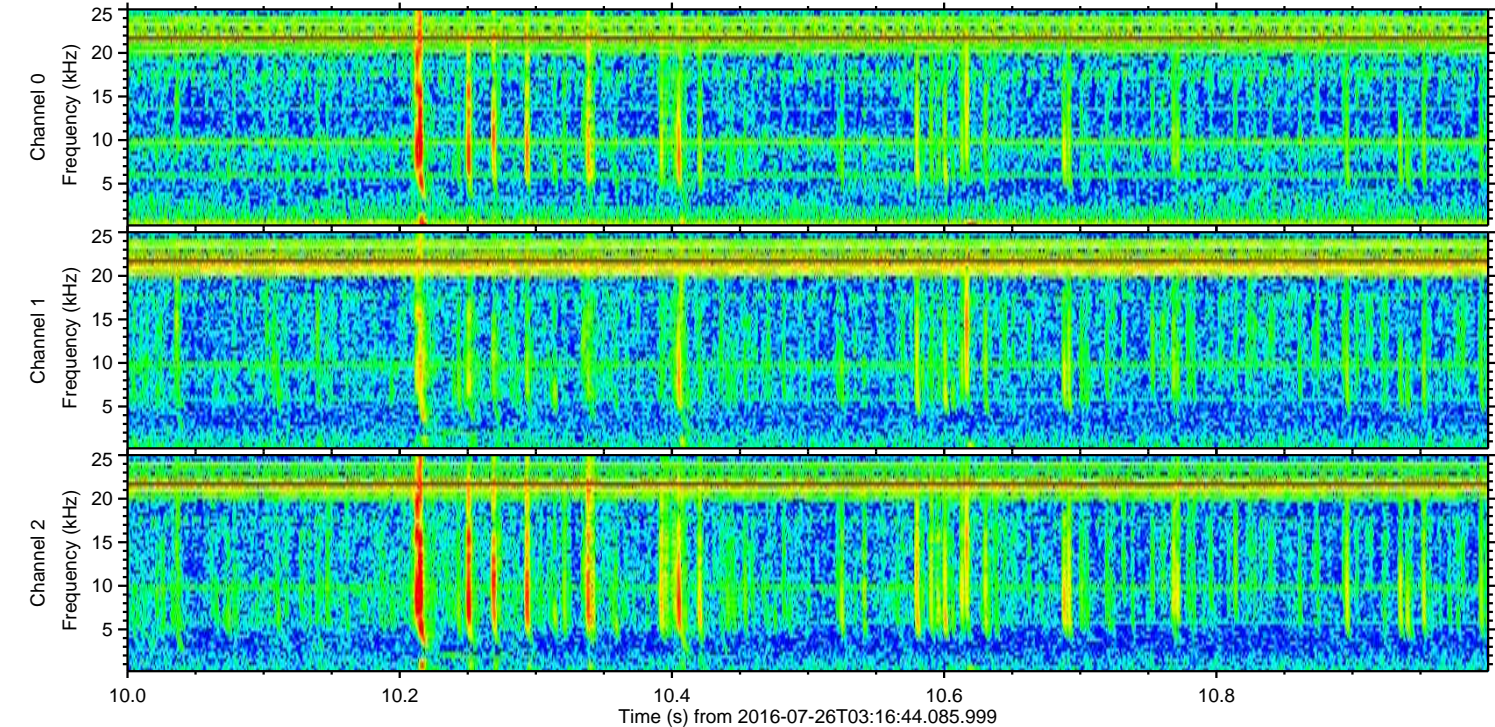
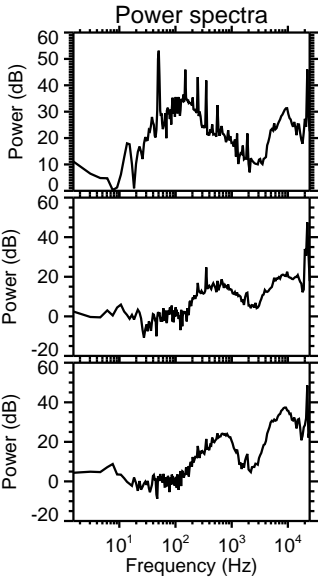
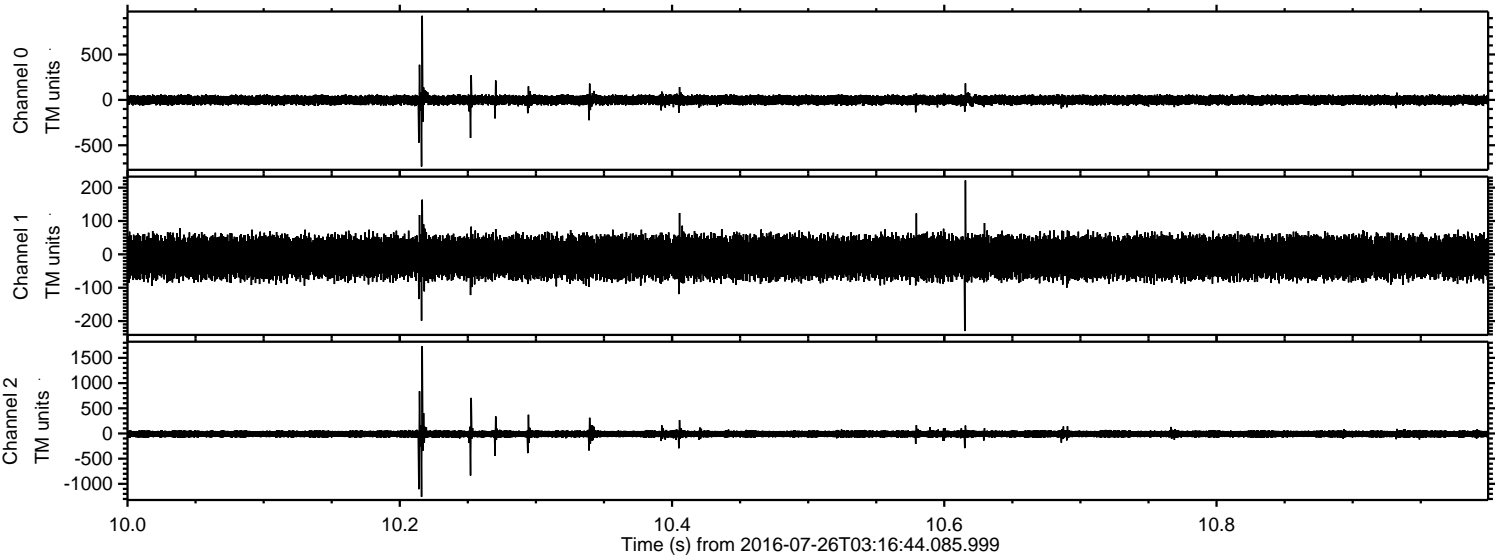
ELMAVAN 3D WAVEFORMS (Measured data sampled at 50 kHz) 51000 packets of 144 samples from 2016-07-26T03:16:44.085.999. Part 78/147

Processed Tue Jul 26 05:24:45 2016 by ELM ver.2012-10-06 from 001\_\_elm20160726\_031643\_\_dat00.bin



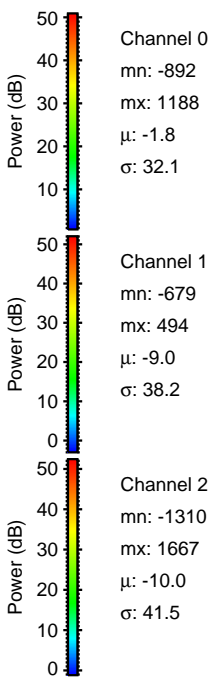
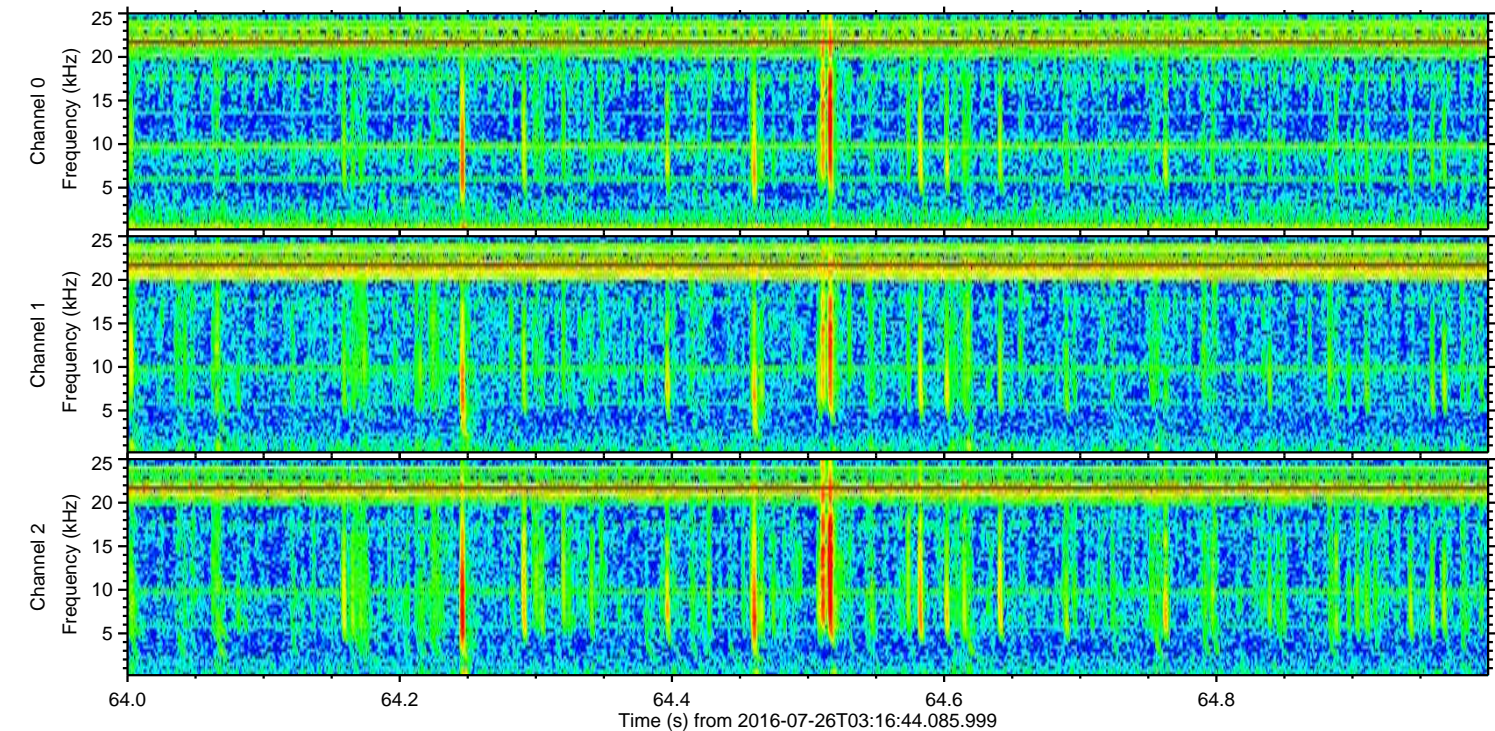
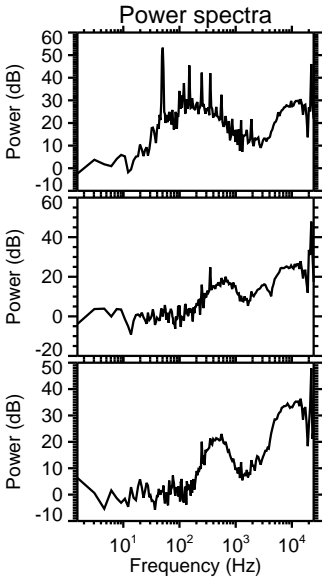
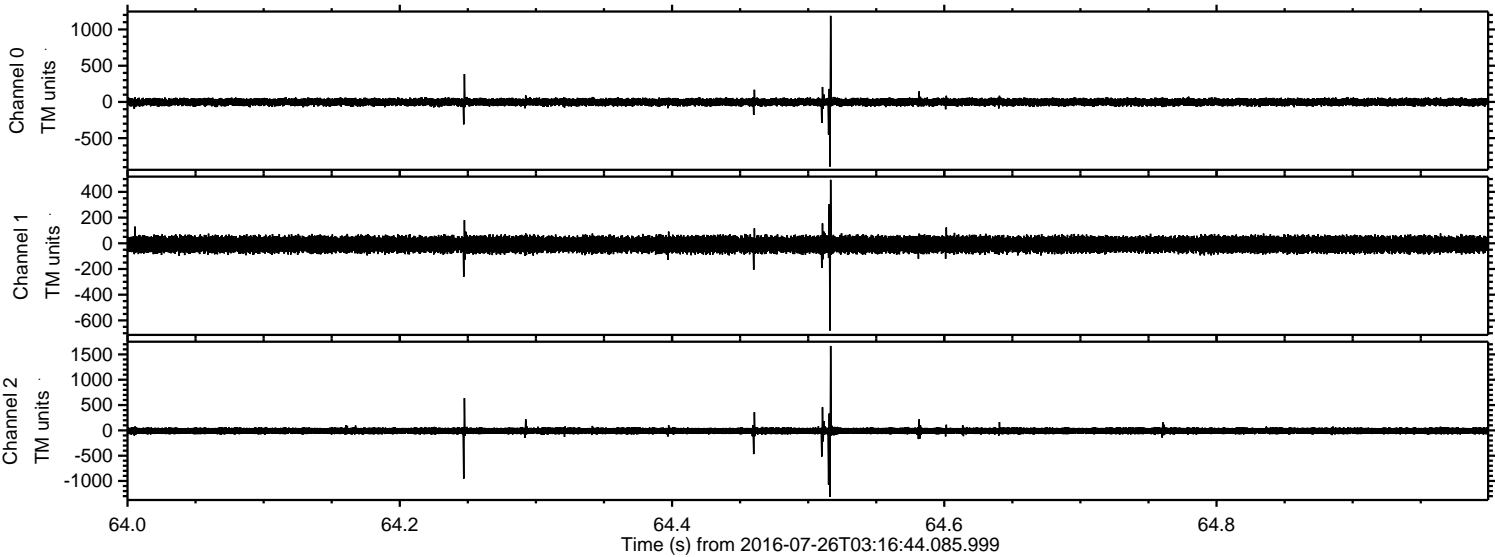


Processed Tue Jul 26 05:24:46 2016 by ELM ver.2012-10-06 from 001\_\_elm20160726\_031643\_\_dat00.bin



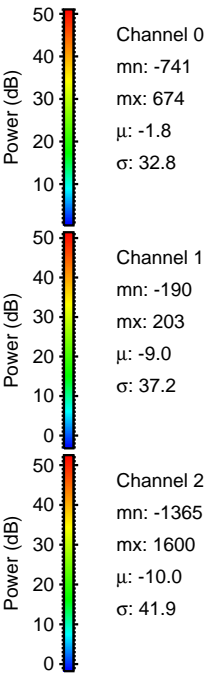
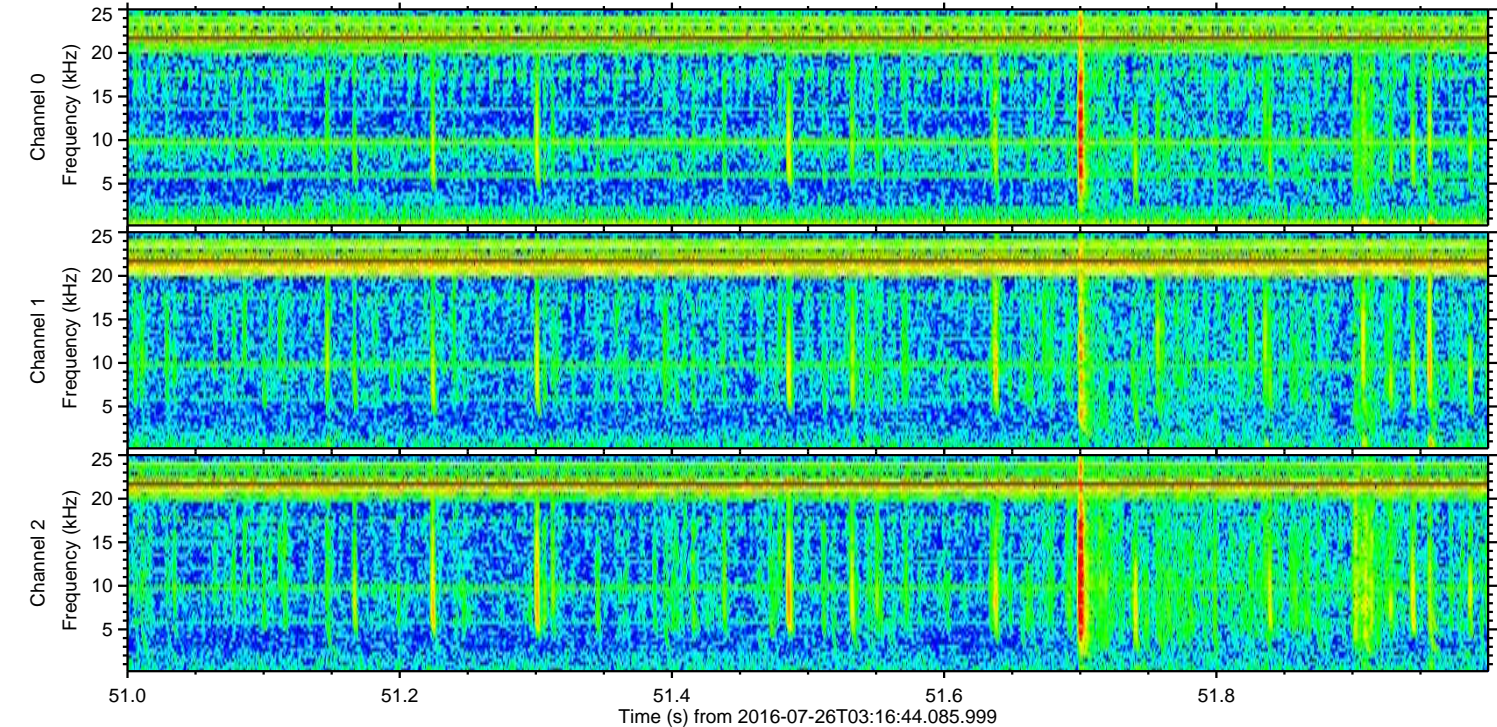
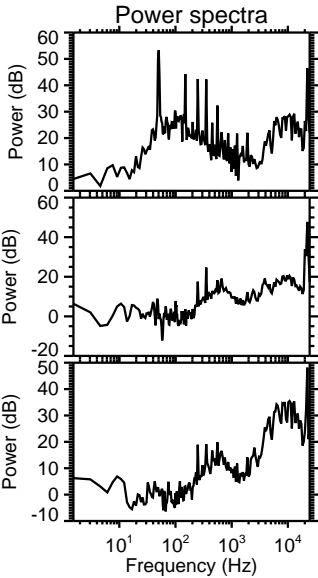
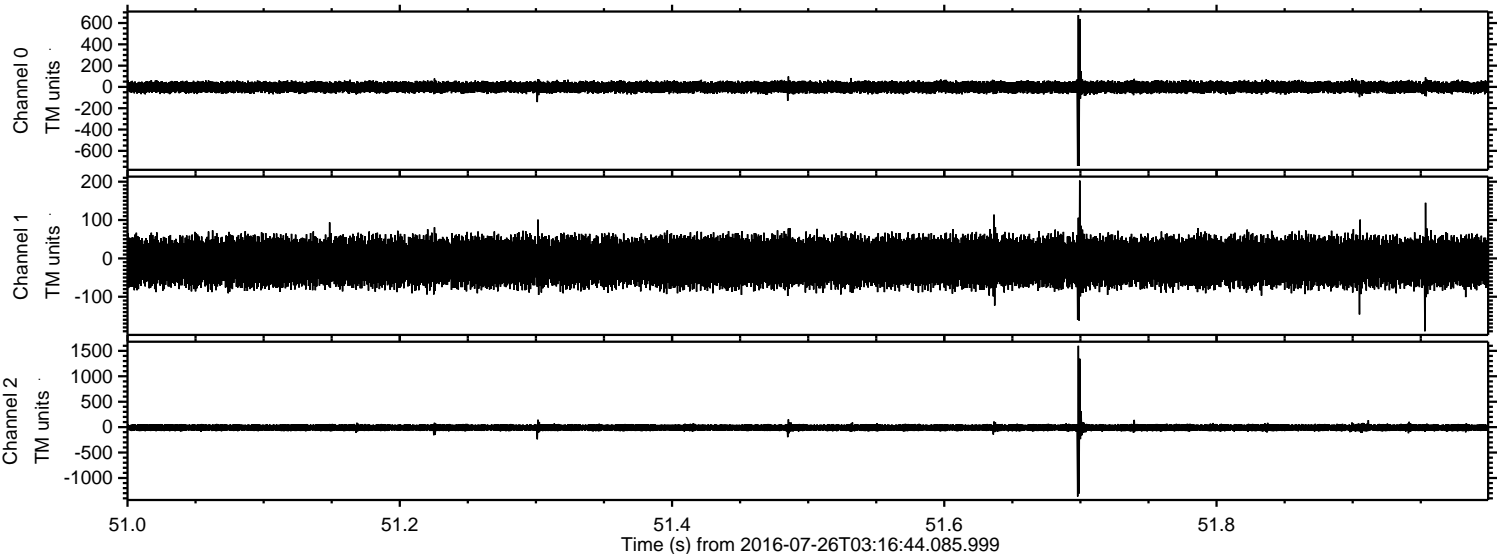


Processed Tue Jul 26 05:24:47 2016 by ELM ver.2012-10-06 from 001\_\_elm20160726\_031643\_\_dat00.bin



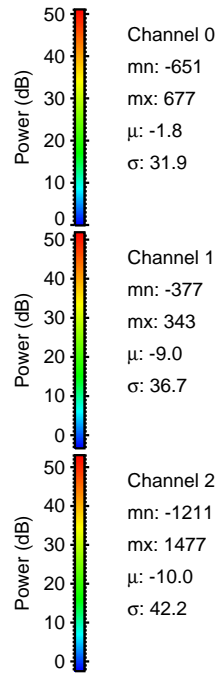
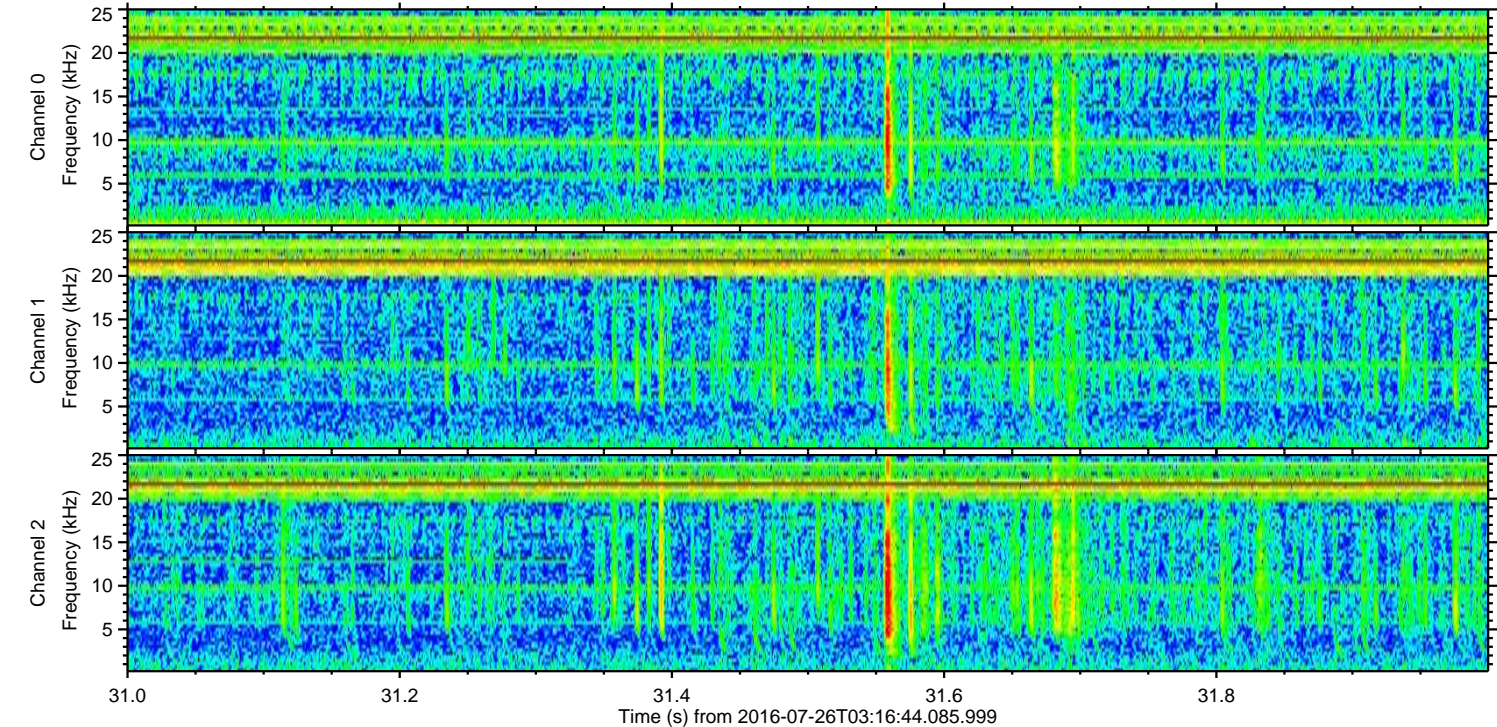
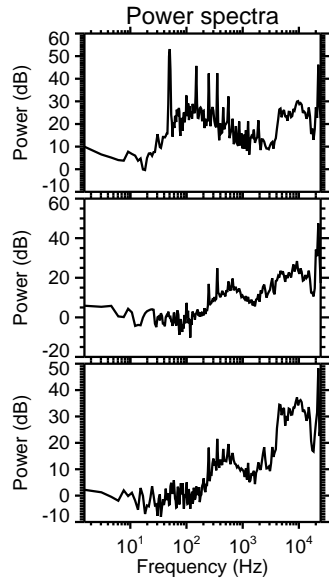
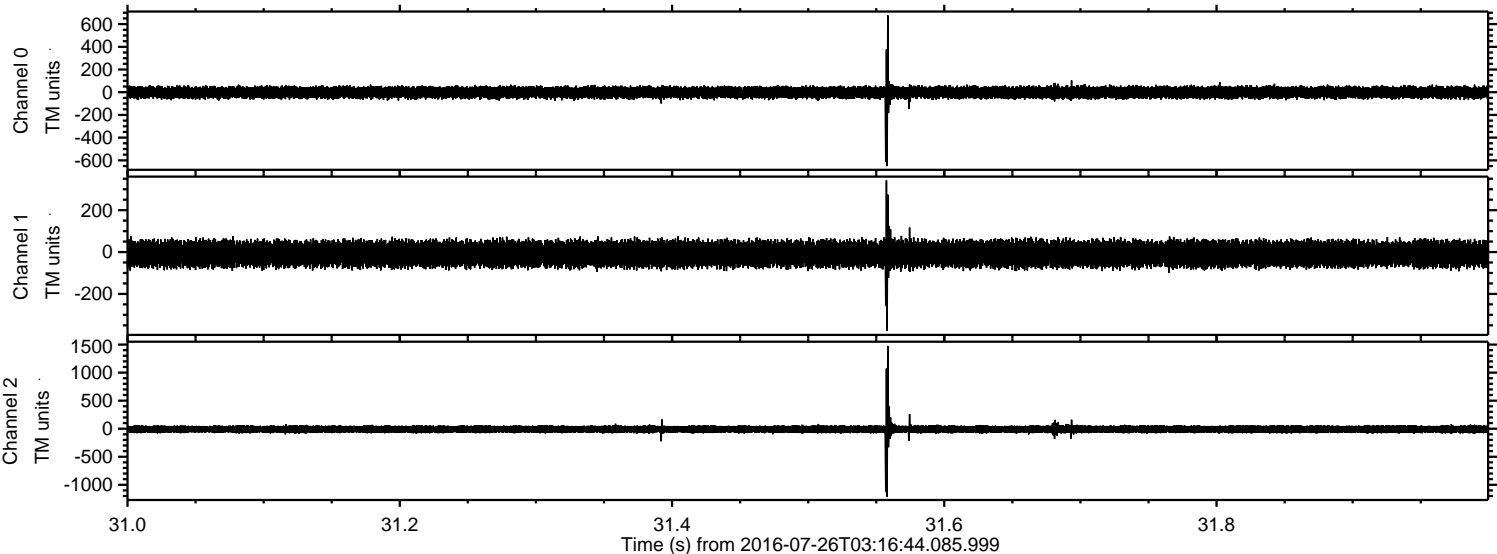


Processed Tue Jul 26 05:24:48 2016 by ELM ver.2012-10-06 from 001\_\_elm20160726\_031643\_\_dat00.bin



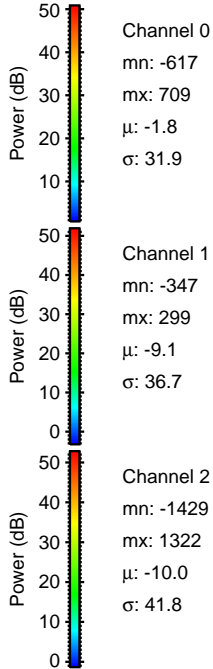
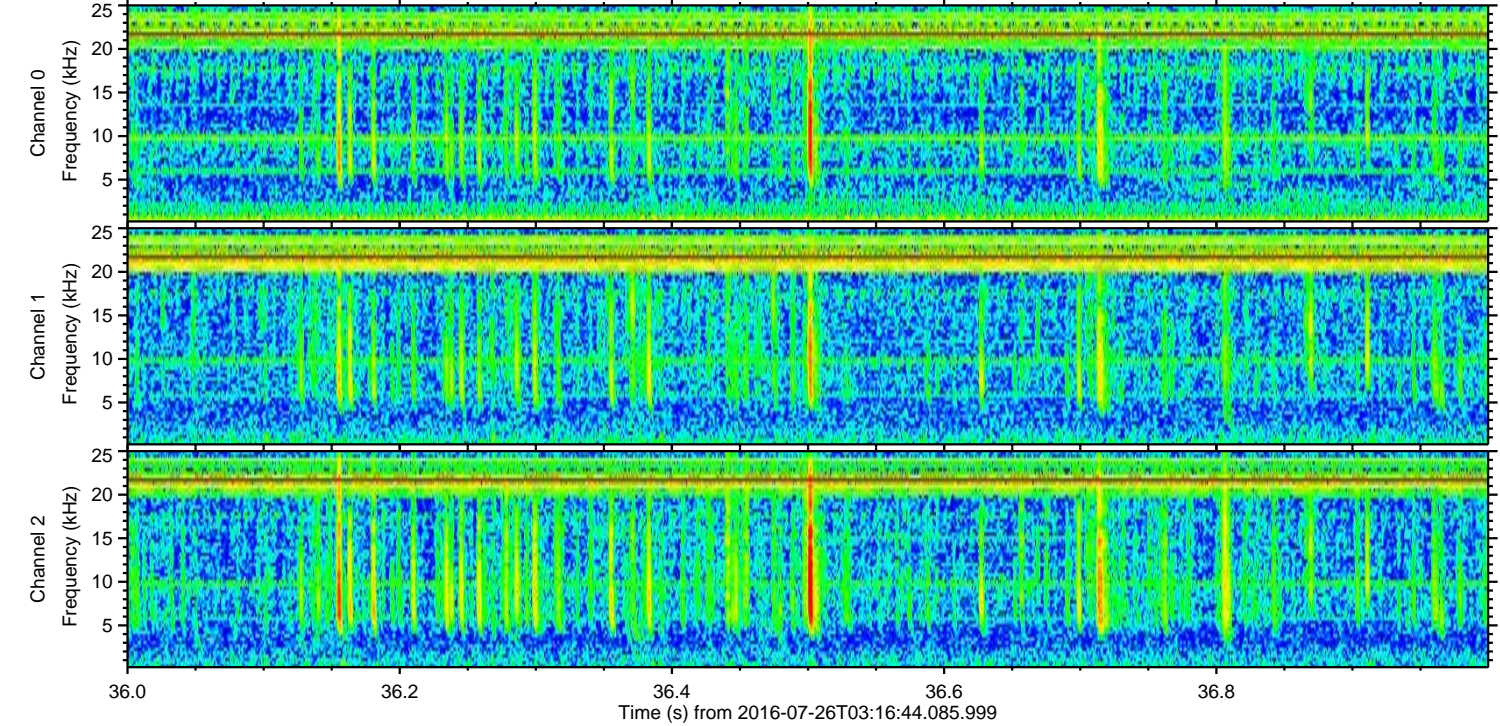
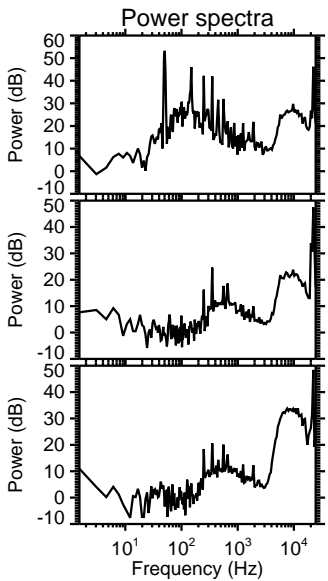
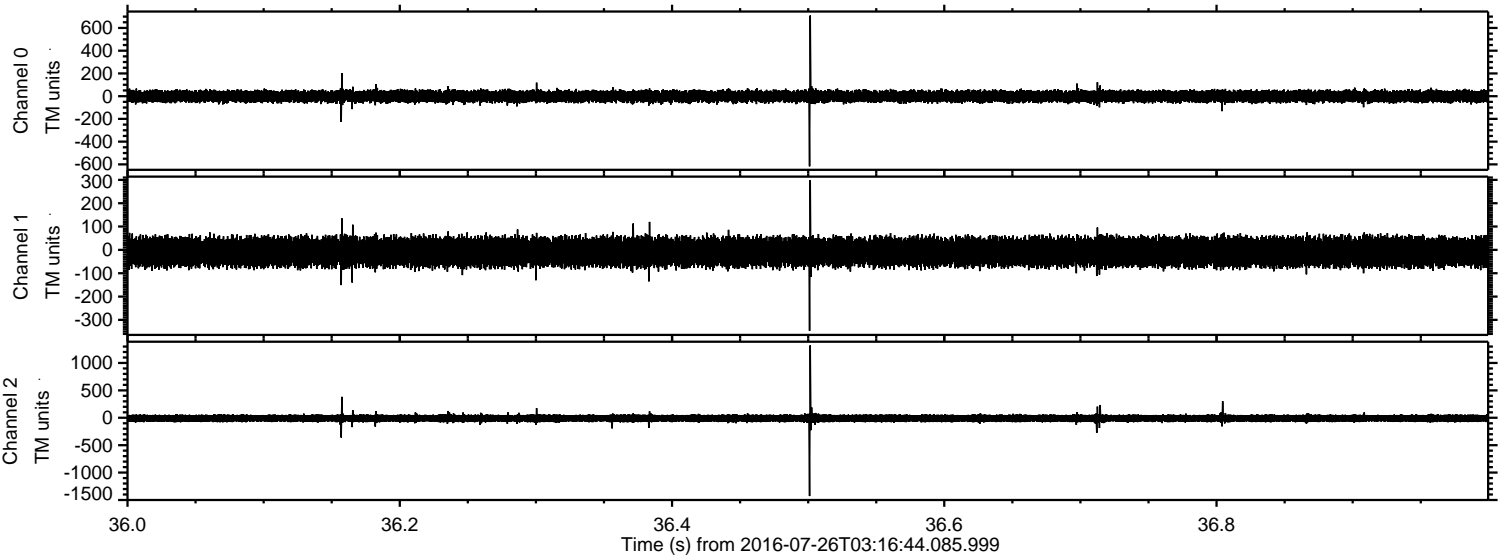


Processed Tue Jul 26 05:24:49 2016 by ELM ver.2012-10-06 from 001\_\_elm20160726\_031643\_\_dat00.bin





Processed Tue Jul 26 05:24:50 2016 by ELM ver.2012-10-06 from 001\_\_elm20160726\_031643\_\_dat00.bin



Channel 0  
mn: -617  
mx: 709  
 $\mu$ : -1.8  
 $\sigma$ : 31.9

Channel 1  
mn: -347  
mx: 299  
 $\mu$ : -9.1  
 $\sigma$ : 36.7

Channel 2  
mn: -1429  
mx: 1322  
 $\mu$ : -10.0  
 $\sigma$ : 41.8



Processed Tue Jul 26 05:24:51 2016 by ELM ver.2012-10-06 from 001\_\_elm20160726\_031643\_\_dat00.bin

