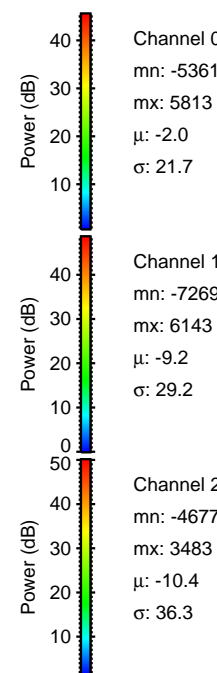
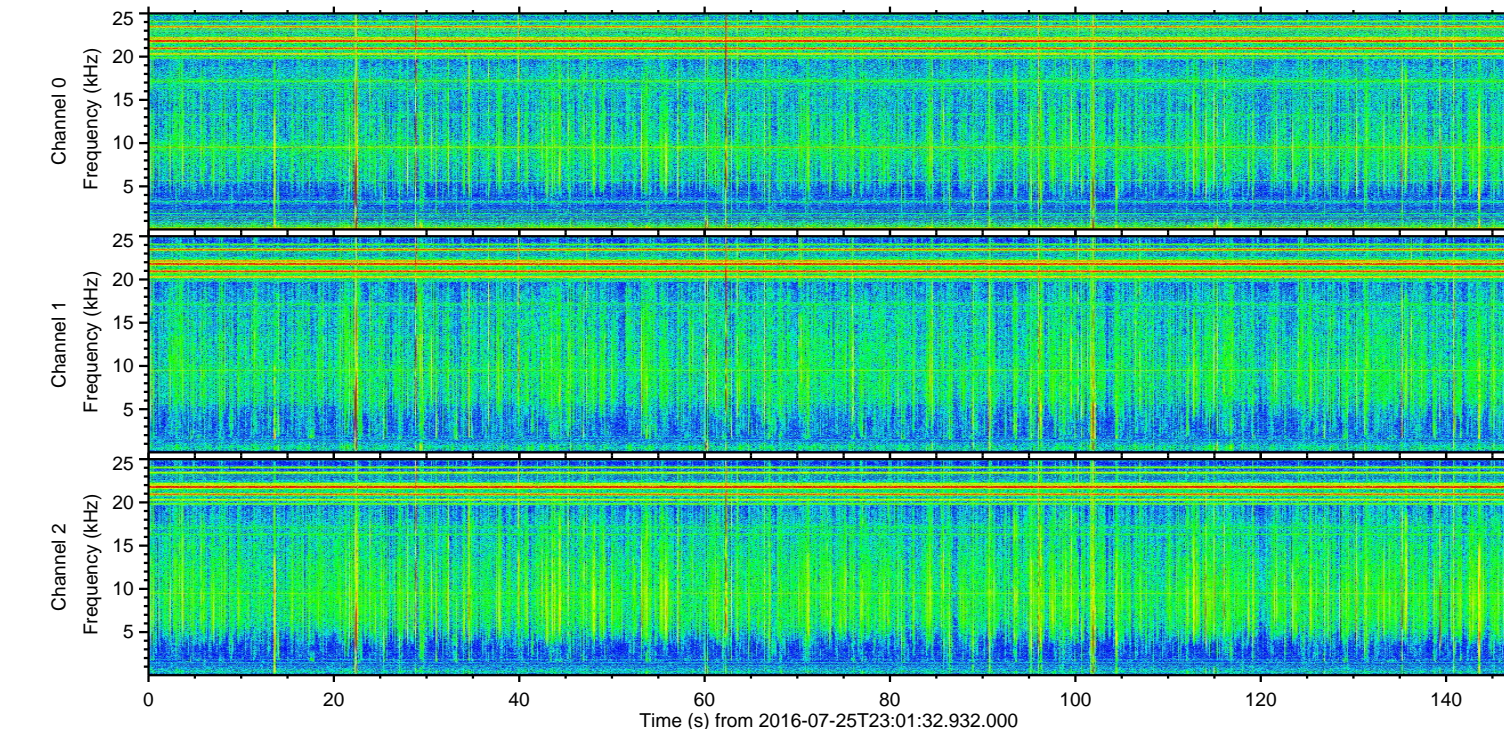
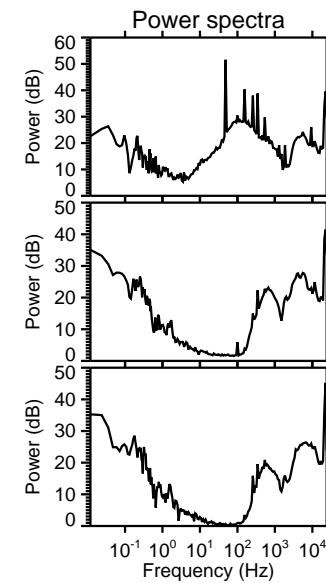
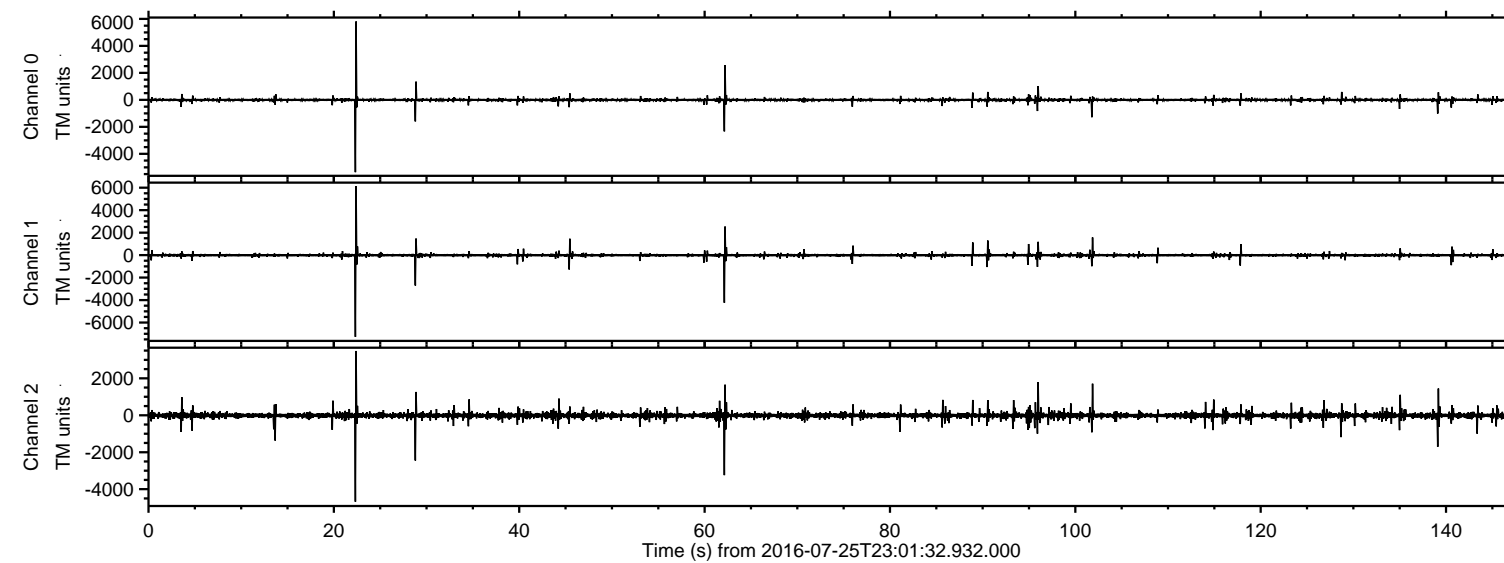
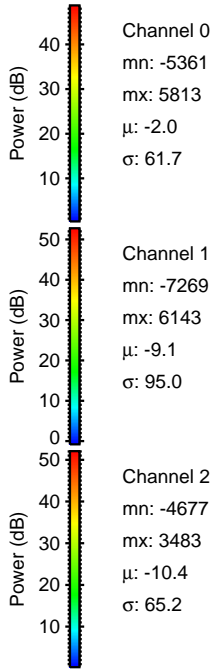
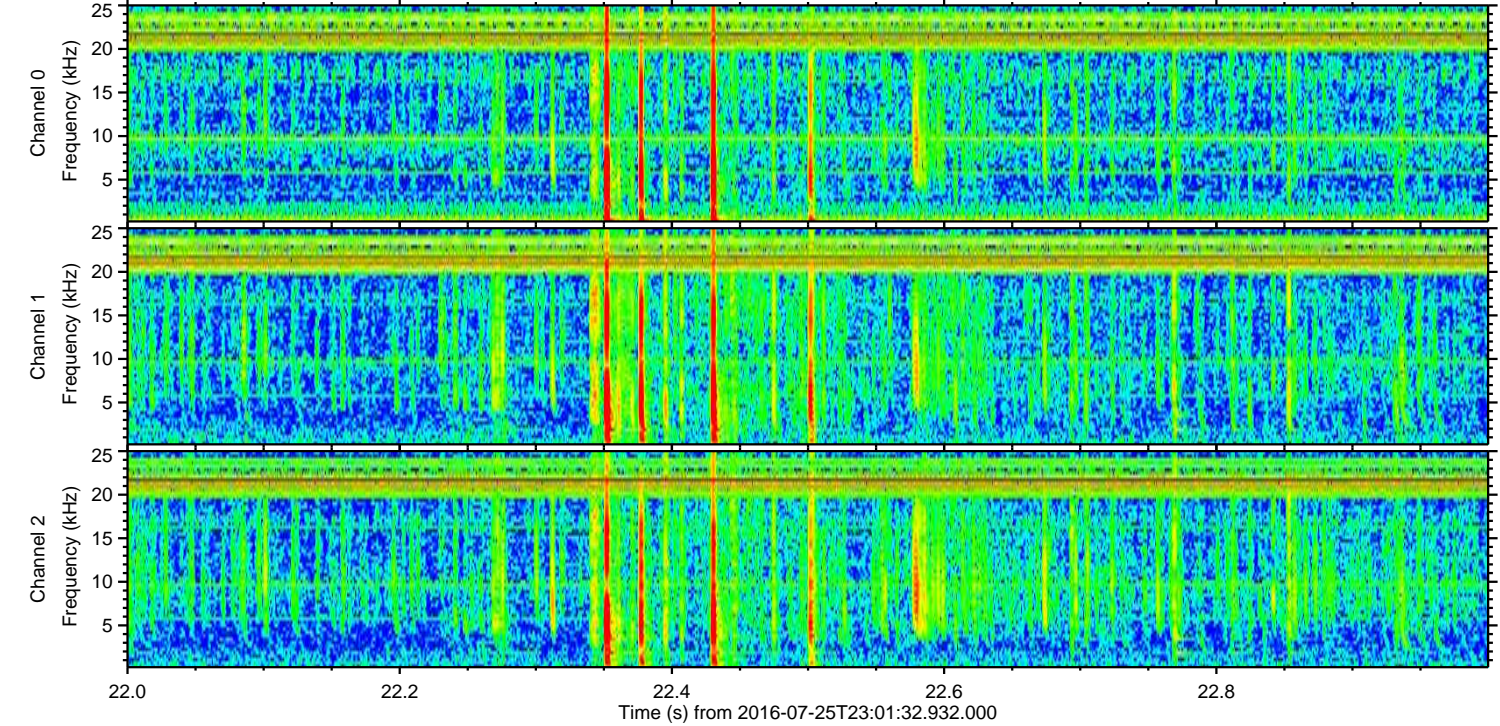
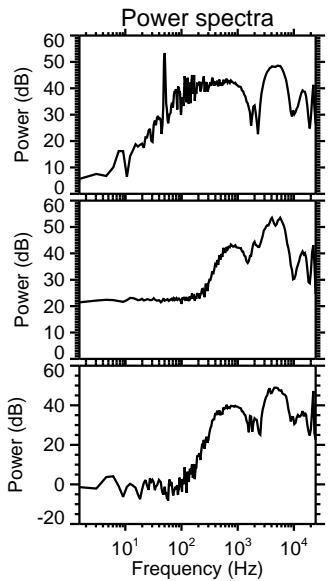
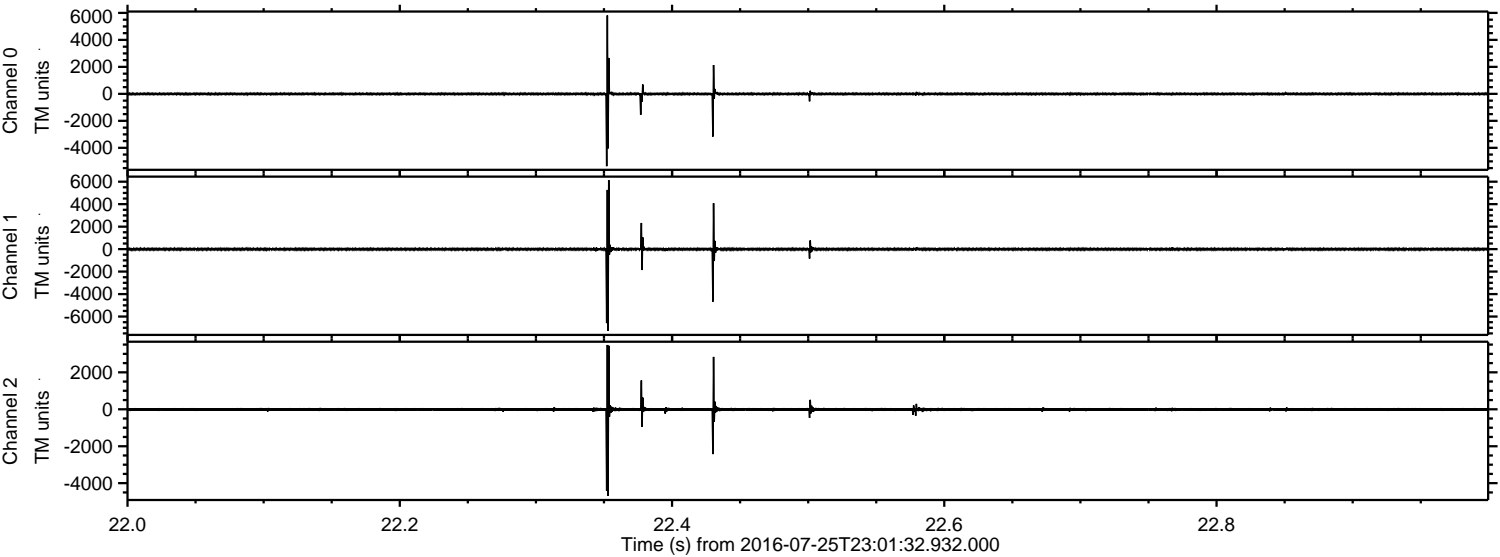


ELMAVAN 3D WAVEFORMS (Measured data sampled at 50 kHz) 51000 packets of 144 samples from 2016-07-25T23:01:32.932.000.

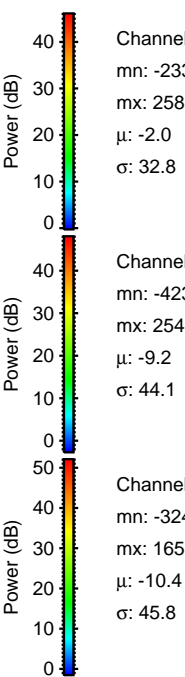
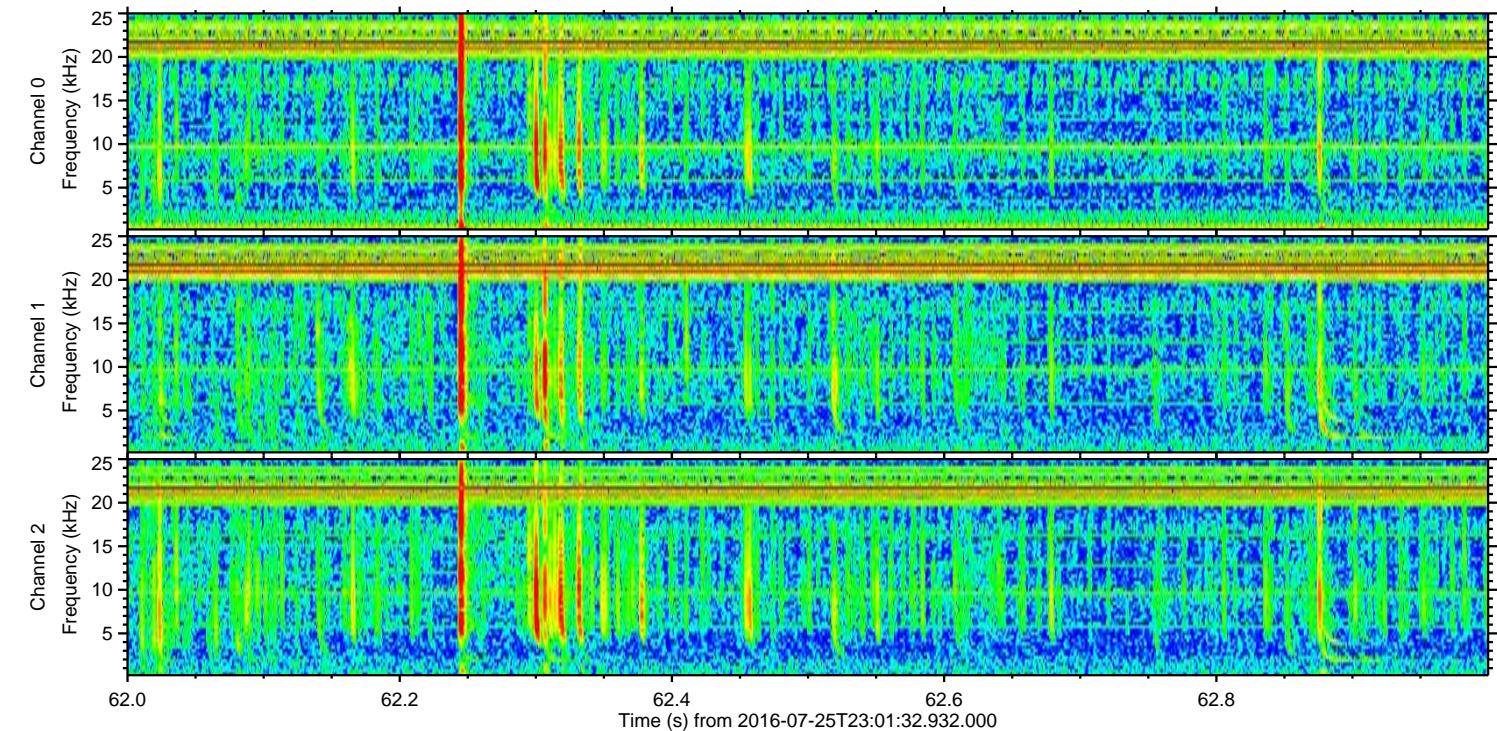
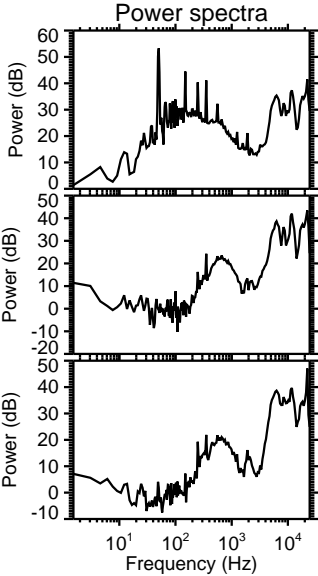
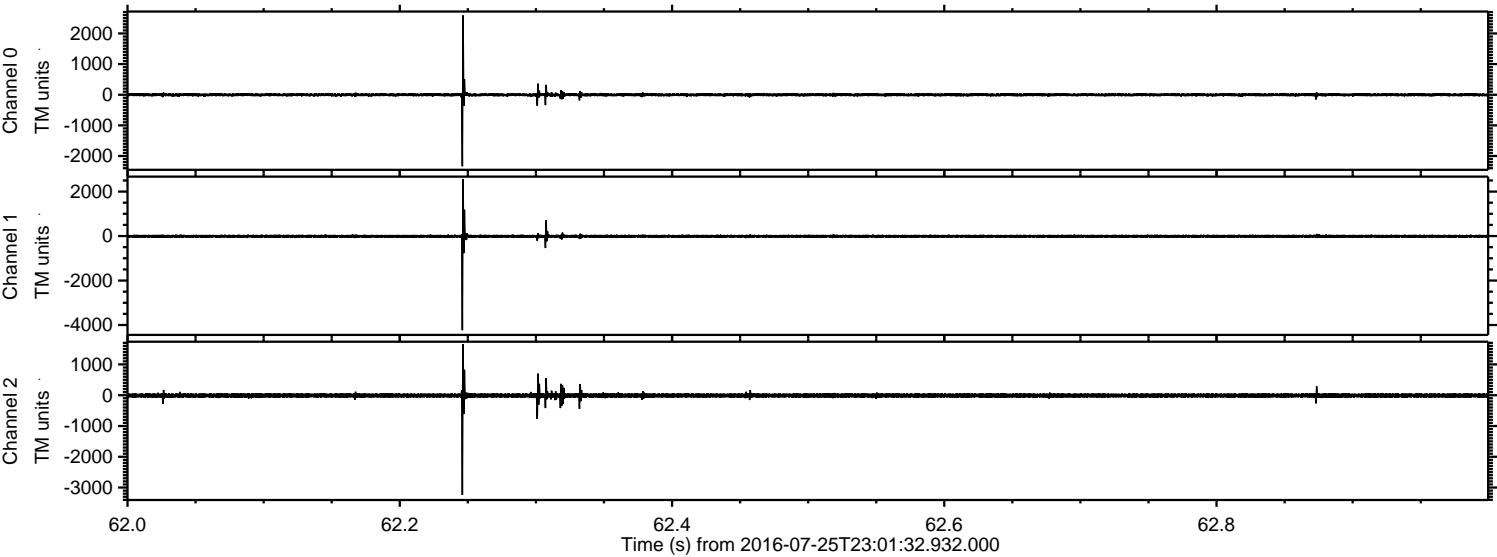
Processed Tue Jul 26 01:09:41 2016 by ELM ver.2012-10-06 from 001__elm20160725_230131__dat00.bin



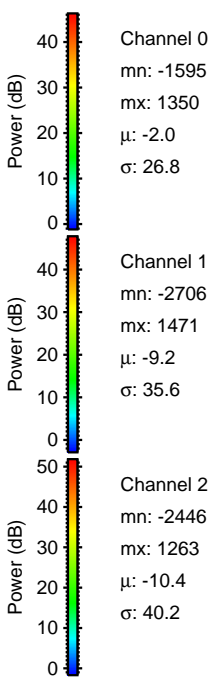
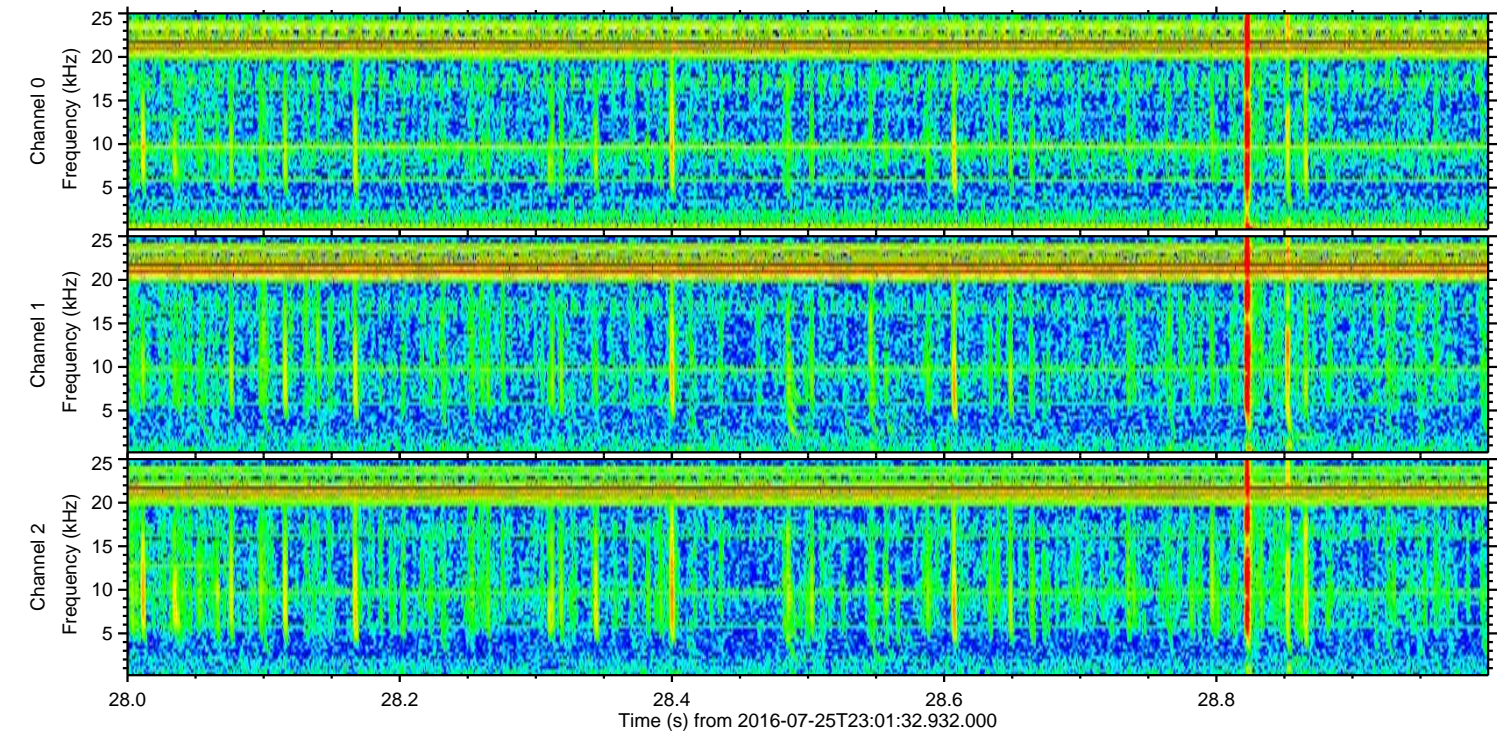
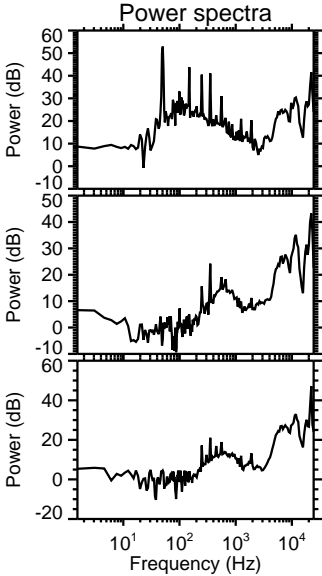
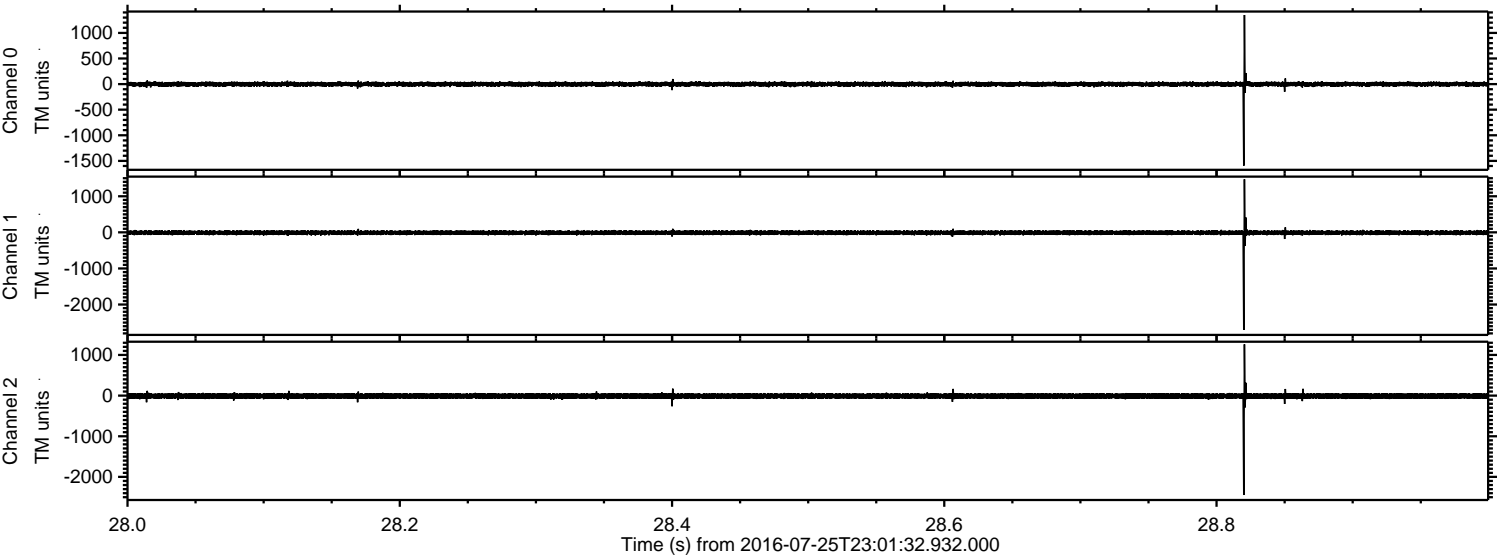
Processed Tue Jul 26 01:09:52 2016 by ELM ver.2012-10-06 from 001__elm20160725_230131__dat00.bin



Processed Tue Jul 26 01:09:53 2016 by ELM ver.2012-10-06 from 001__elm20160725_230131__dat00.bin



Processed Tue Jul 26 01:09:54 2016 by ELM ver.2012-10-06 from 001__elm20160725_230131__dat00.bin

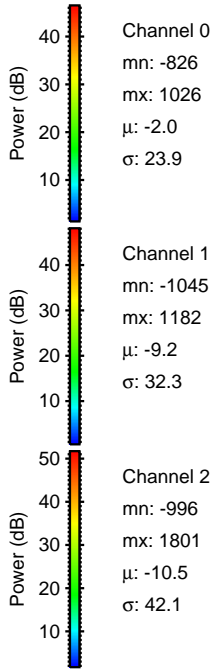
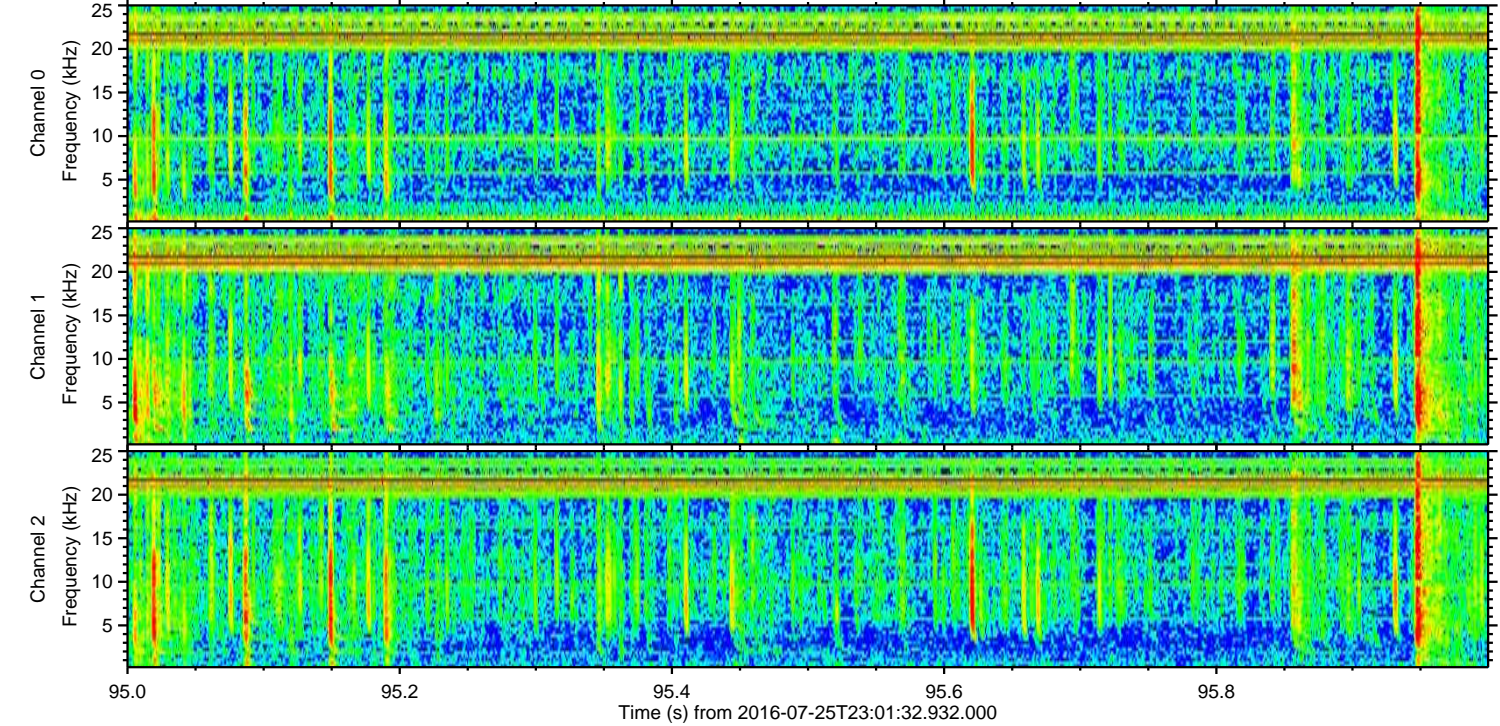
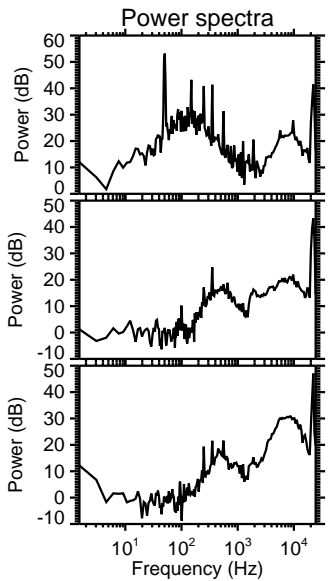
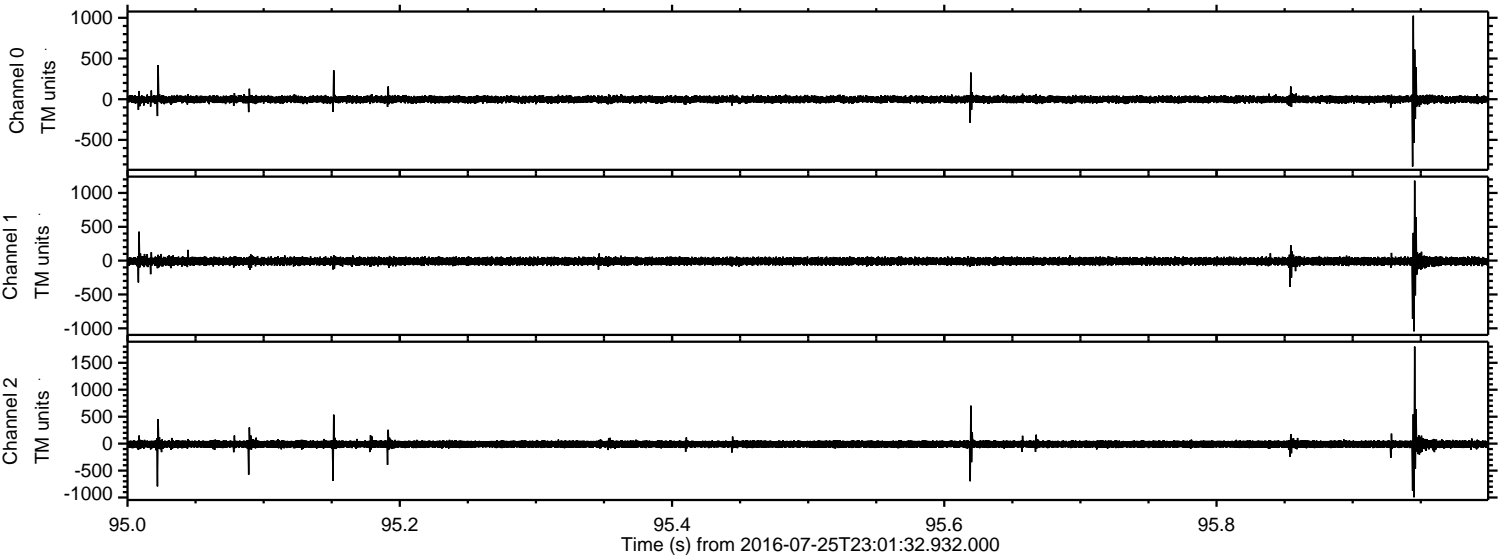


Channel 0
mn: -1595
mx: 1350
 μ : -2.0
 σ : 26.8

Channel 1
mn: -2706
mx: 1471
 μ : -9.2
 σ : 35.6

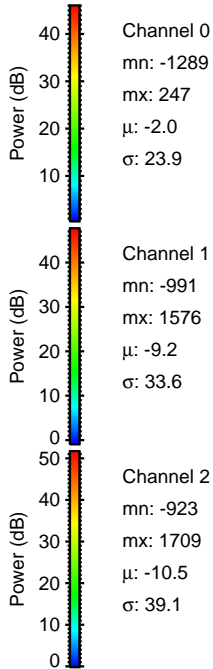
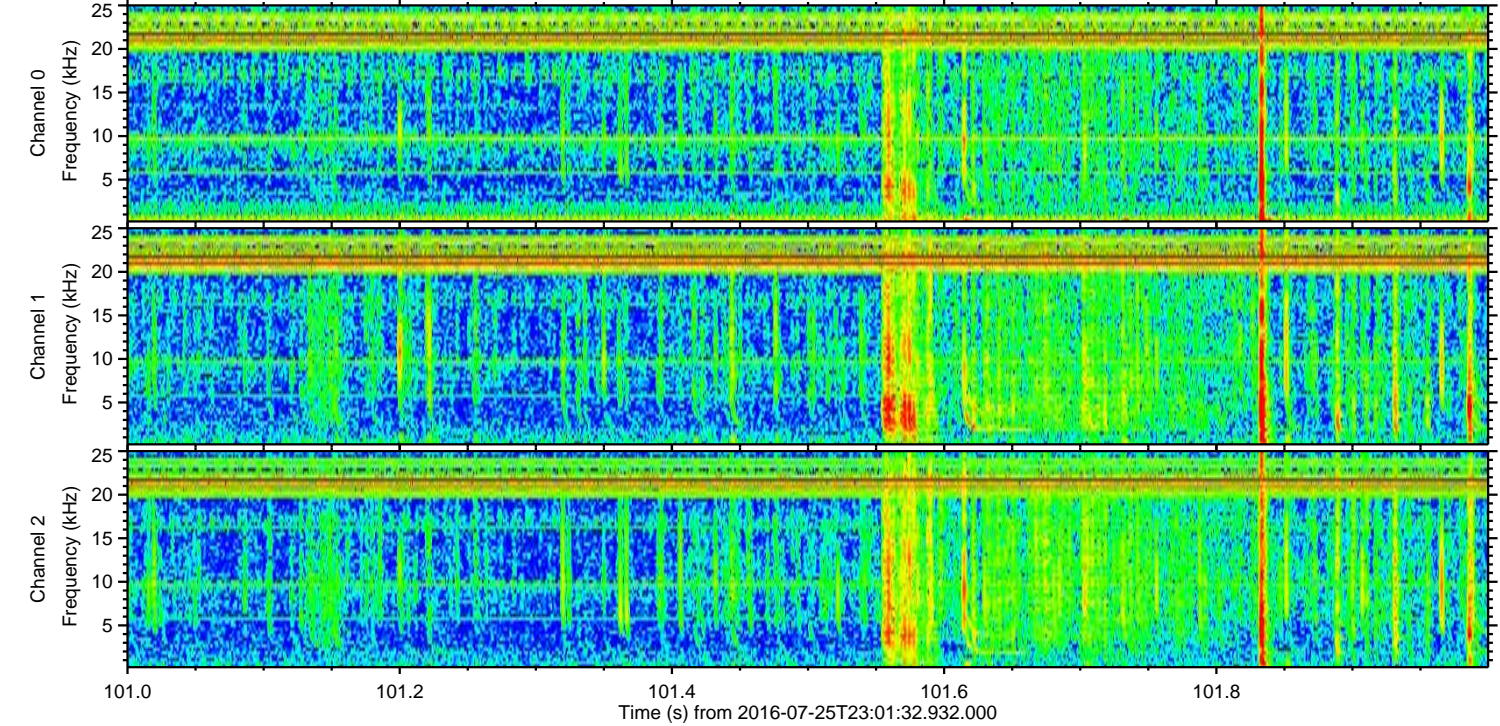
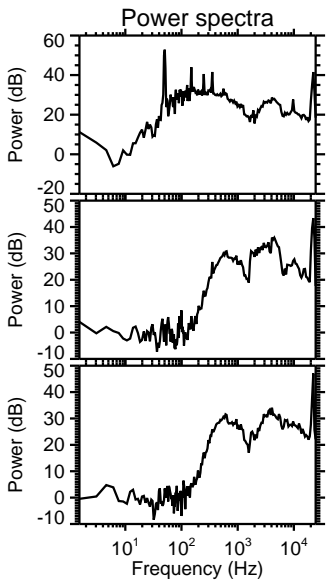
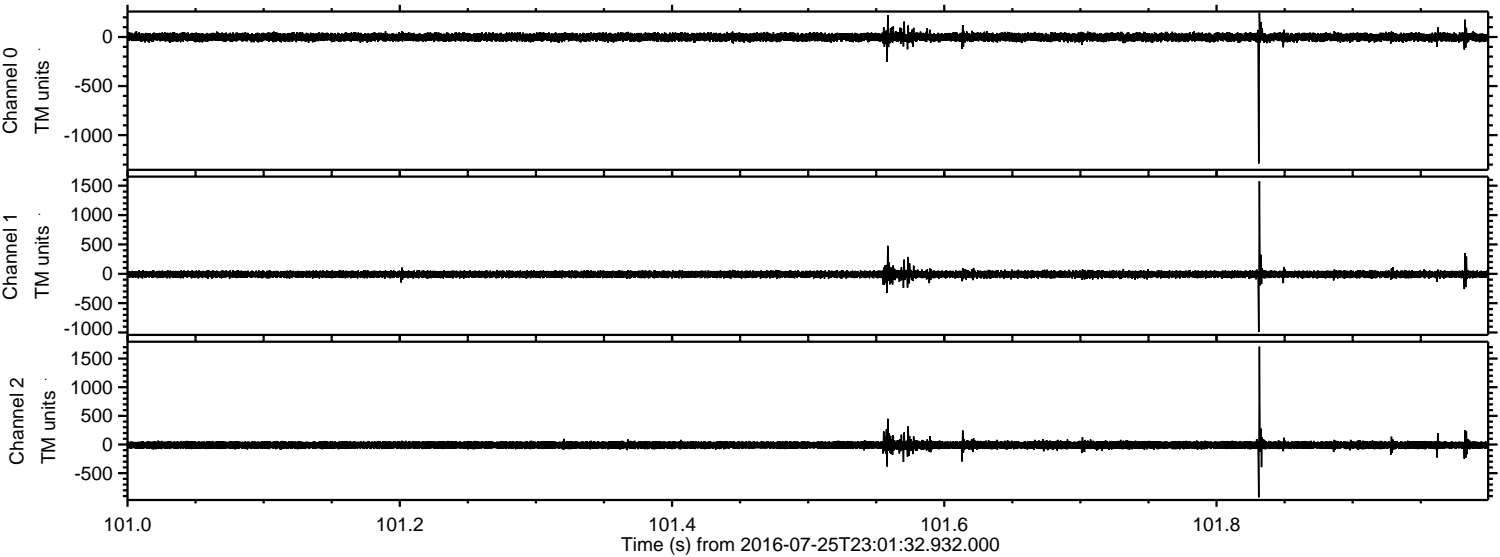
Channel 2
mn: -2446
mx: 1263
 μ : -10.4
 σ : 40.2

Processed Tue Jul 26 01:09:55 2016 by ELM ver.2012-10-06 from 001__elm20160725_230131__dat00.bin



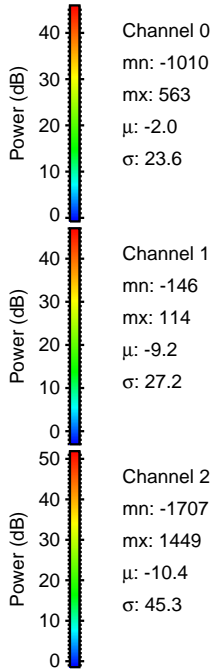
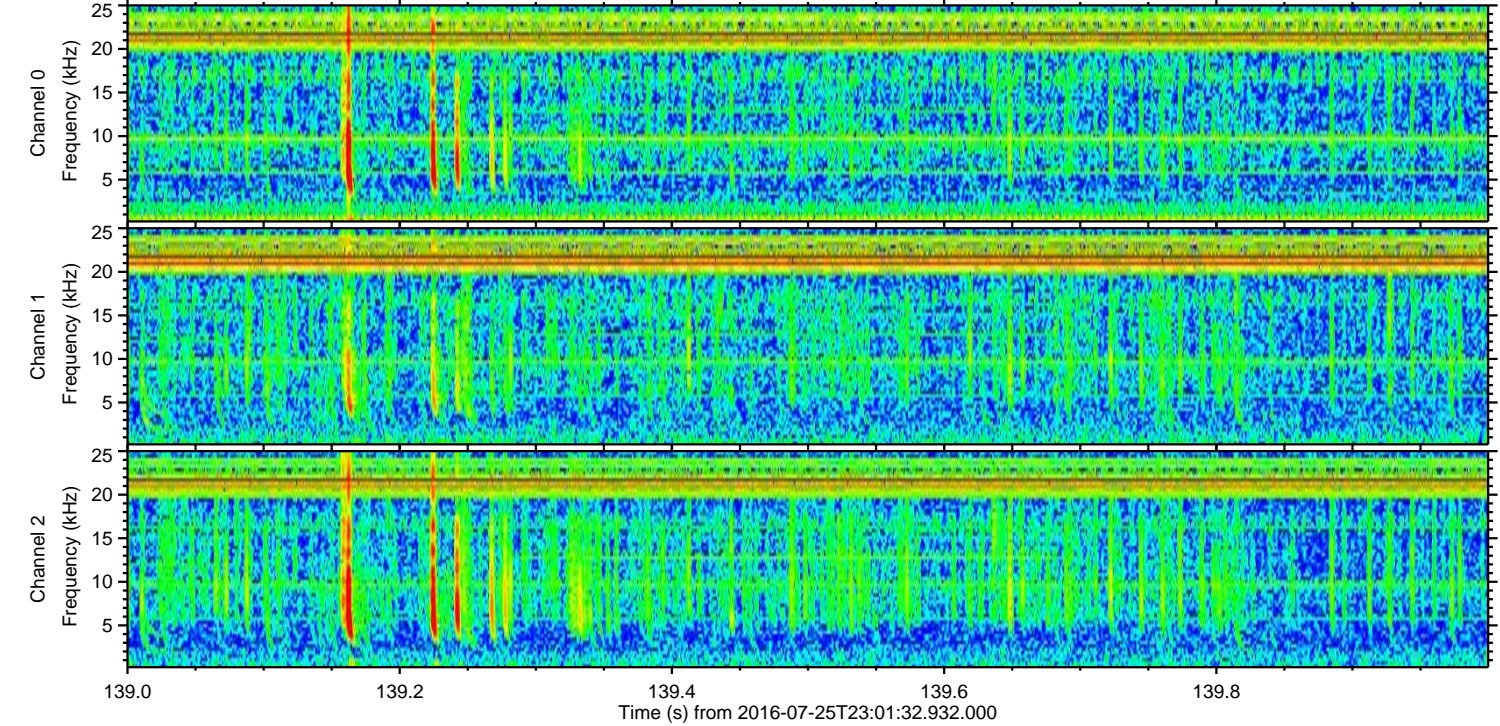
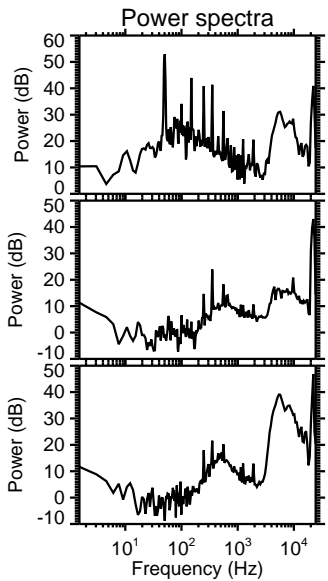
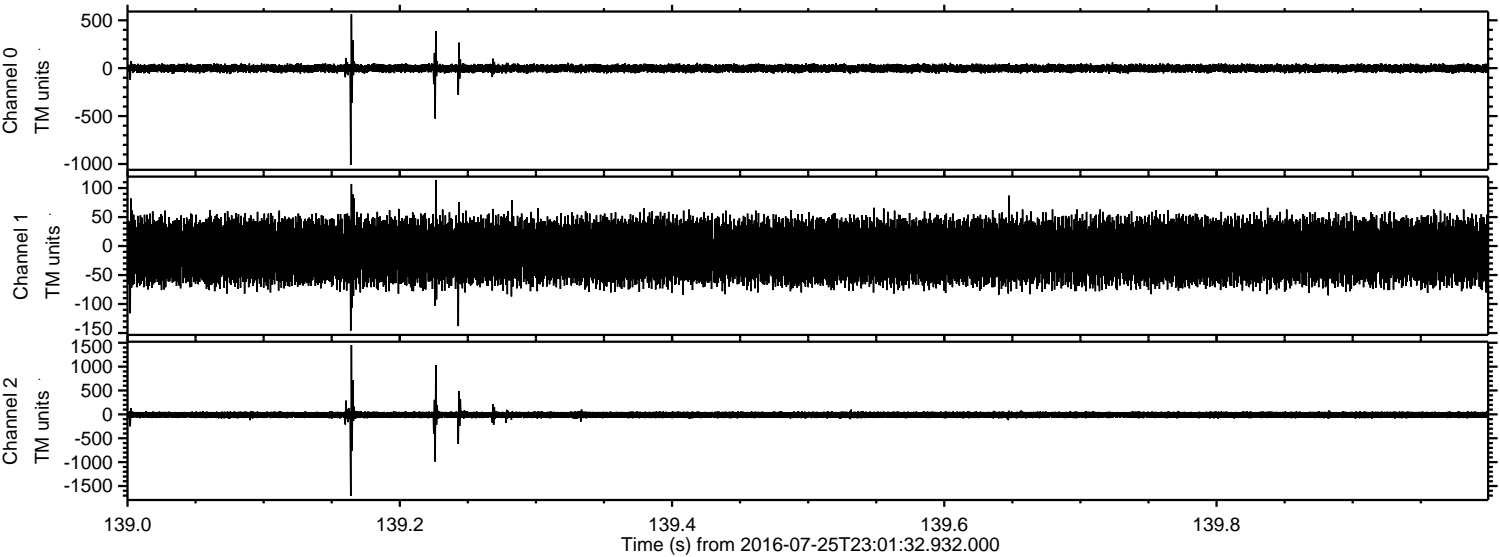
ELMAVAN 3D WAVEFORMS (Measured data sampled at 50 kHz) 51000 packets of 144 samples from 2016-07-25T23:01:32.932.000. Part 102/147

Processed Tue Jul 26 01:09:56 2016 by ELM ver.2012-10-06 from 001__elm20160725_230131__dat00.bin

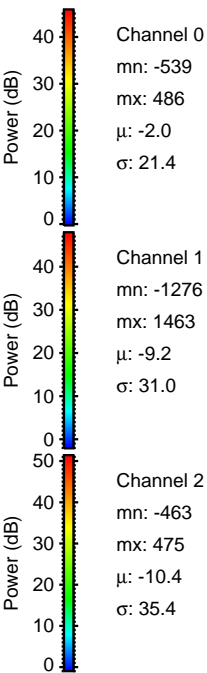
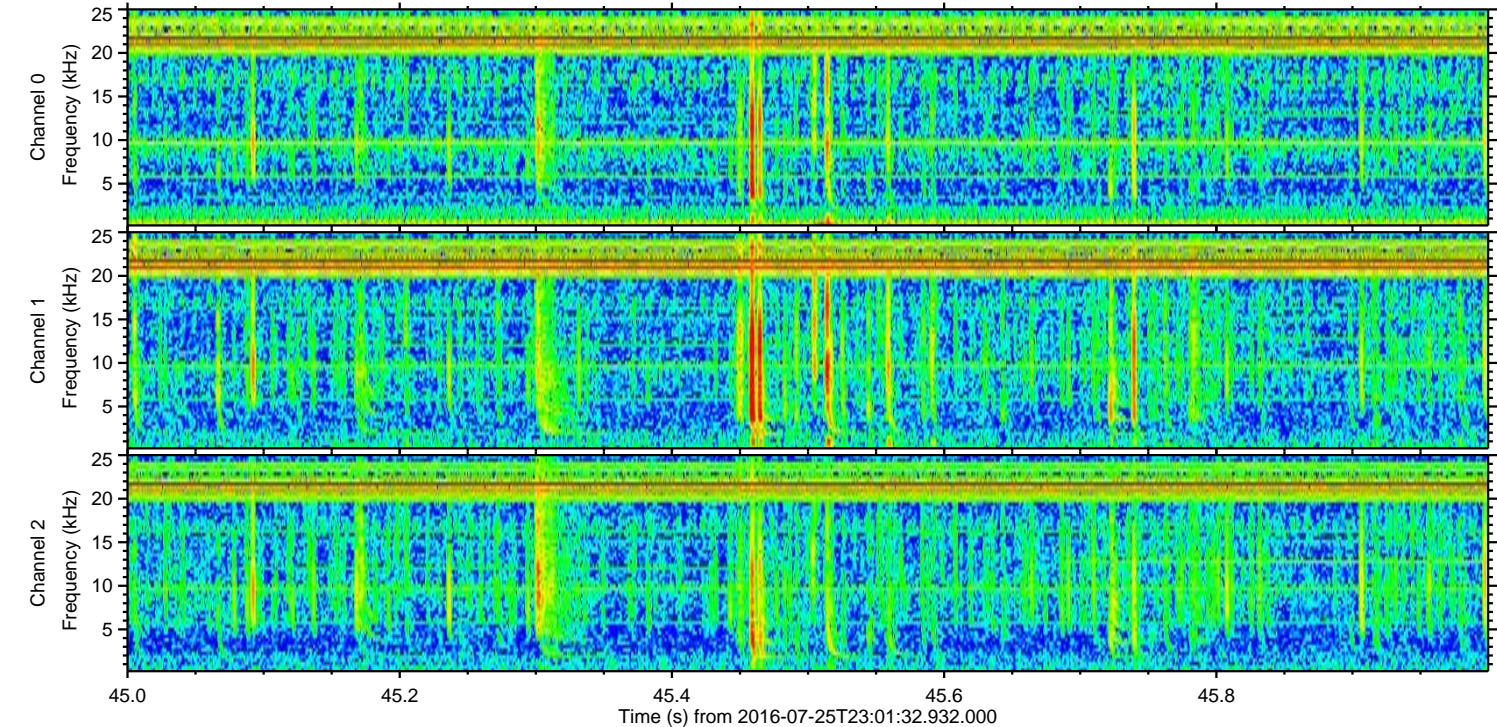
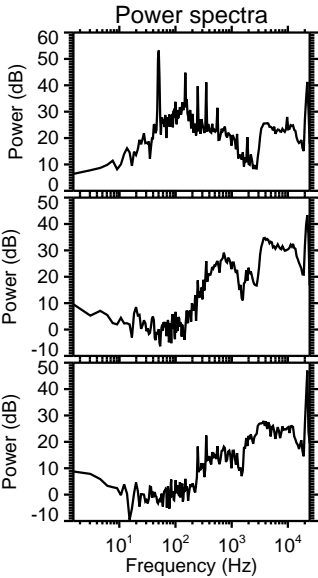
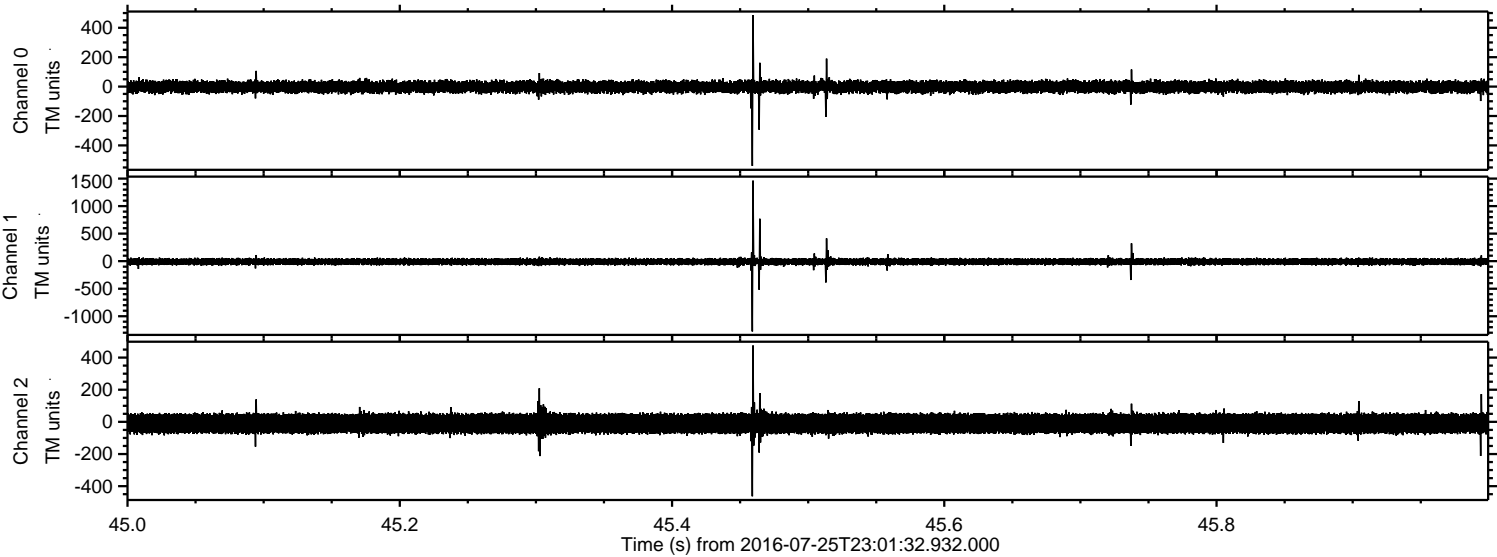


ELMAVAN 3D WAVEFORMS (Measured data sampled at 50 kHz) 51000 packets of 144 samples from 2016-07-25T23:01:32.932.000. Part 140/147

Processed Tue Jul 26 01:09:57 2016 by ELM ver.2012-10-06 from 001__elm20160725_230131__dat00.bin

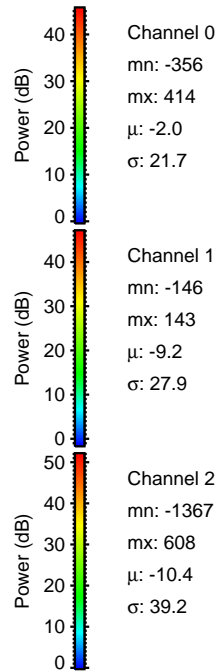
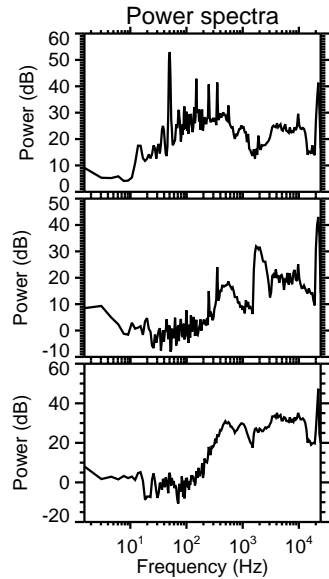
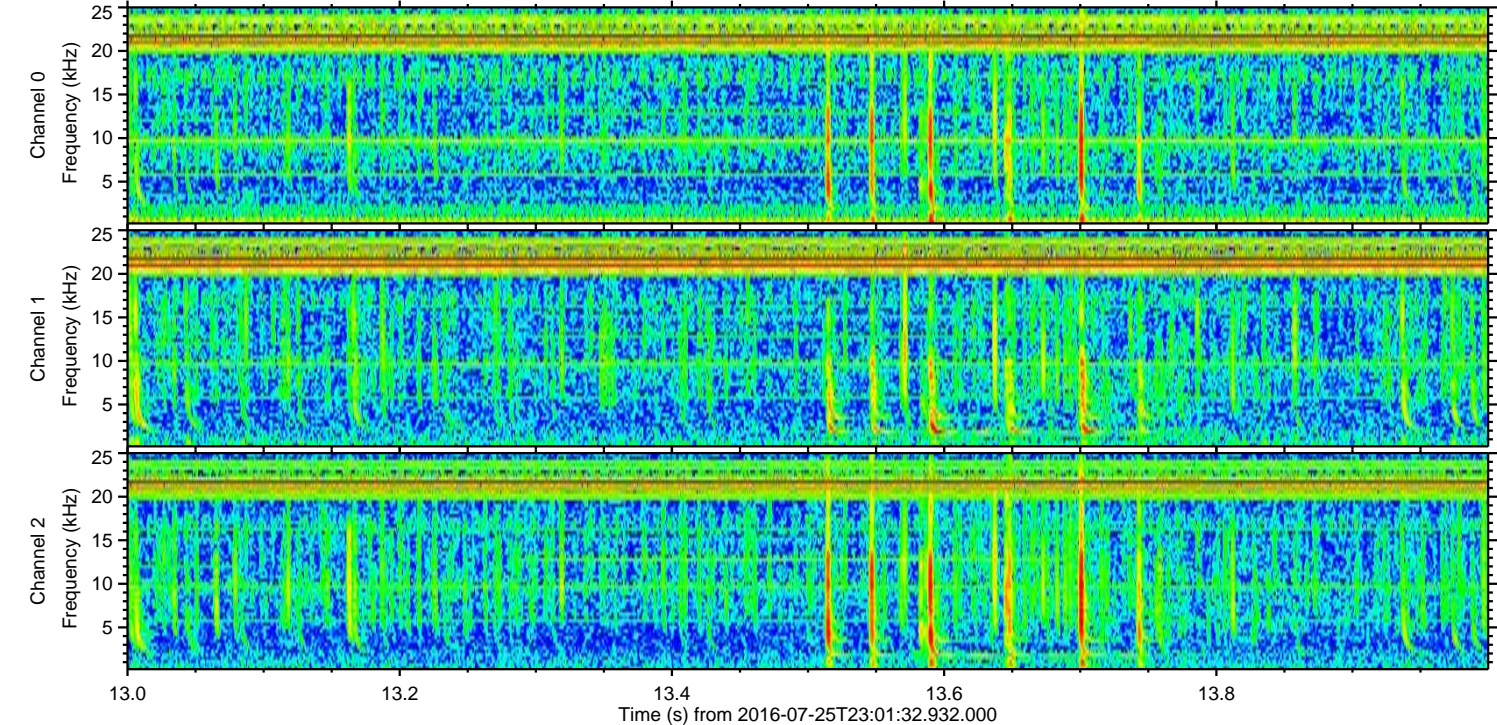
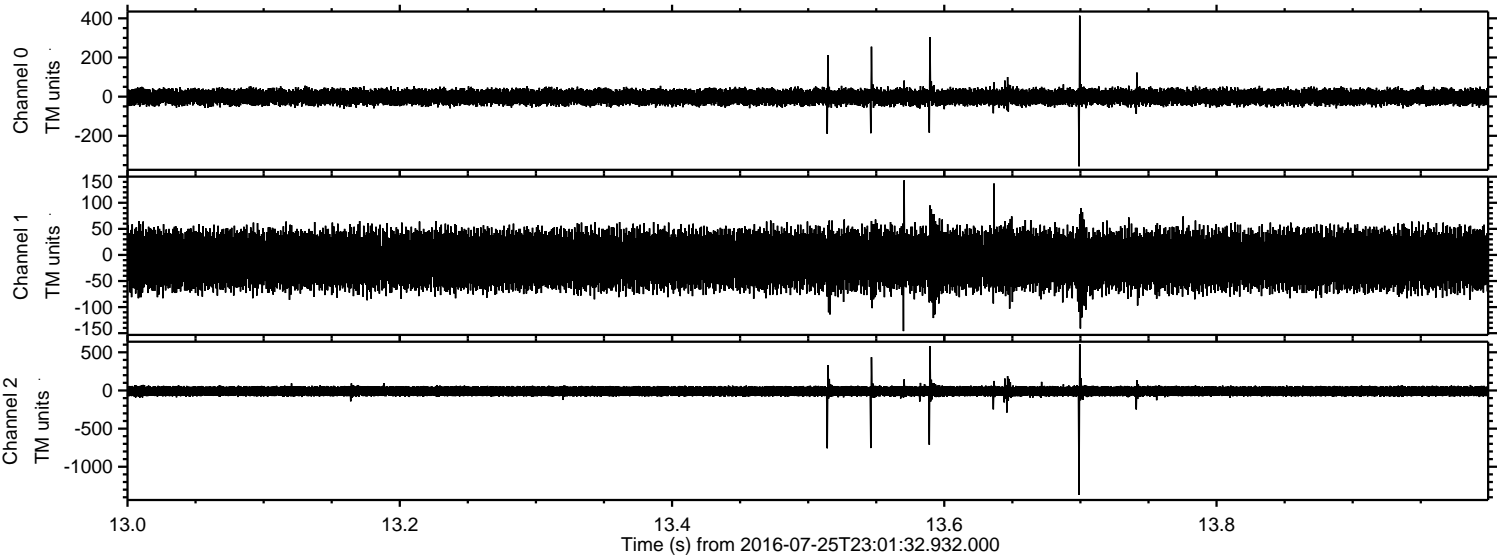


Processed Tue Jul 26 01:09:58 2016 by ELM ver.2012-10-06 from 001__elm20160725_230131__dat00.bin

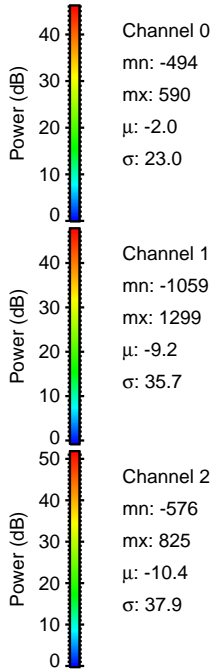
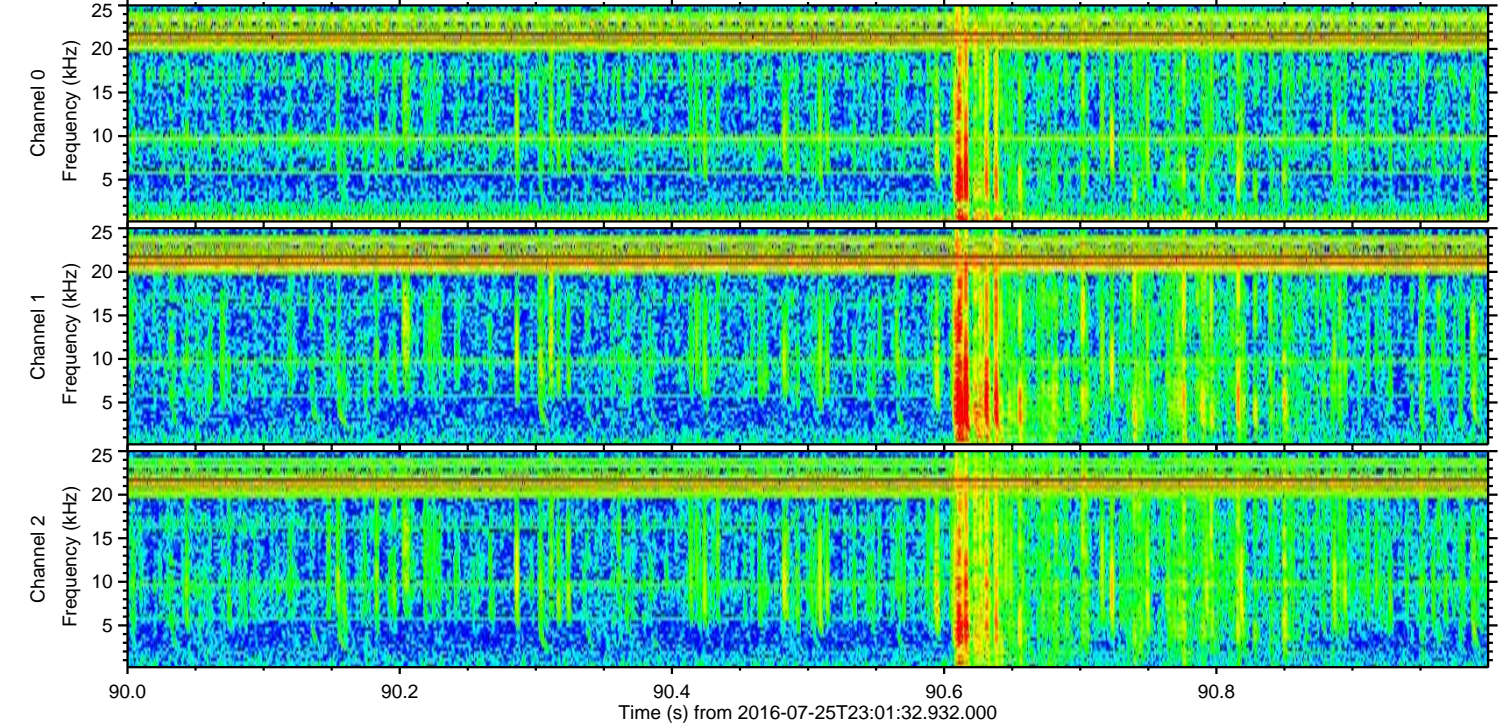
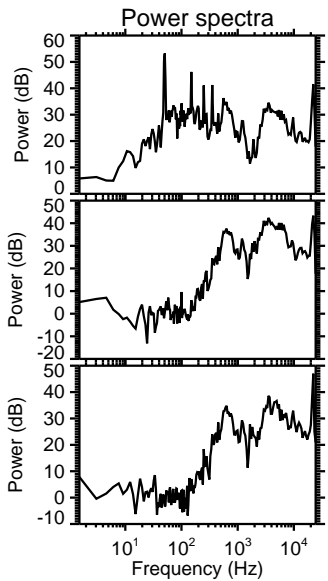
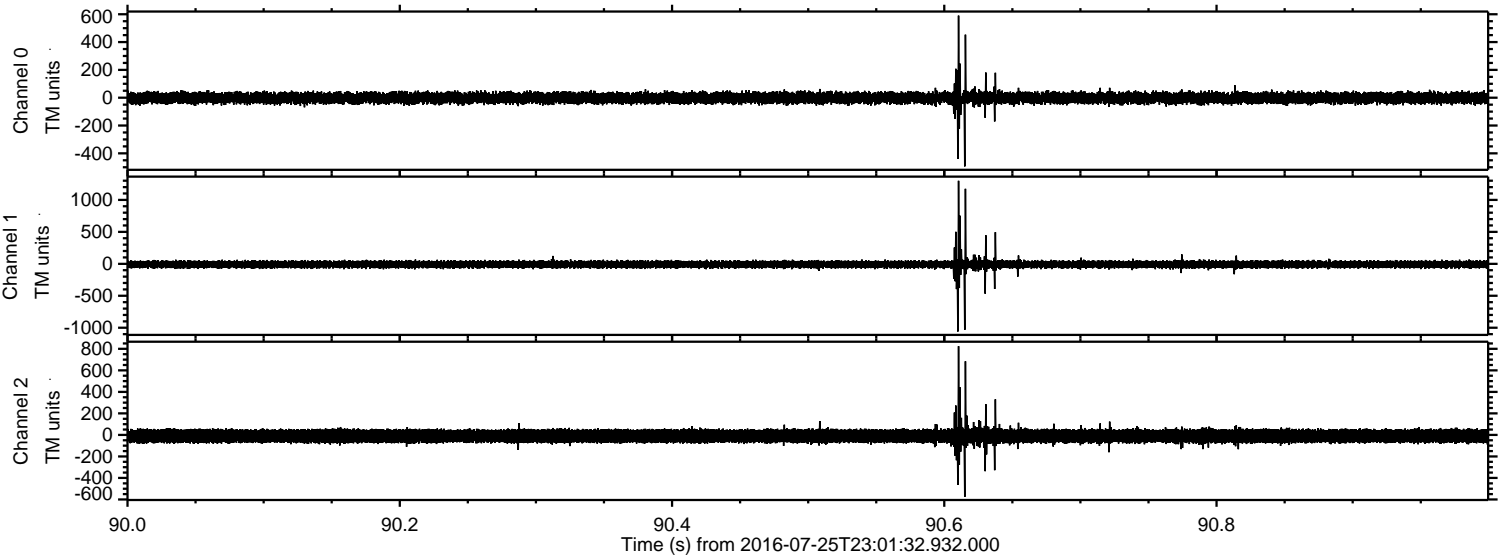


ELMAVAN 3D WAVEFORMS (Measured data sampled at 50 kHz) 51000 packets of 144 samples from 2016-07-25T23:01:32.932.000. Part 14/147

Processed Tue Jul 26 01:09:59 2016 by ELM ver.2012-10-06 from 001__elm20160725_230131__dat00.bin



Processed Tue Jul 26 01:10:00 2016 by ELM ver.2012-10-06 from 001__elm20160725_230131__dat00.bin



Channel 0
mn: -494
mx: 590
 μ : -2.0
 σ : 23.0

Channel 1
mn: -1059
mx: 1299
 μ : -9.2
 σ : 35.7

Channel 2
mn: -576
mx: 825
 μ : -10.4
 σ : 37.9

