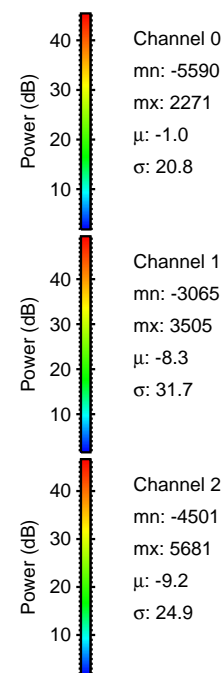
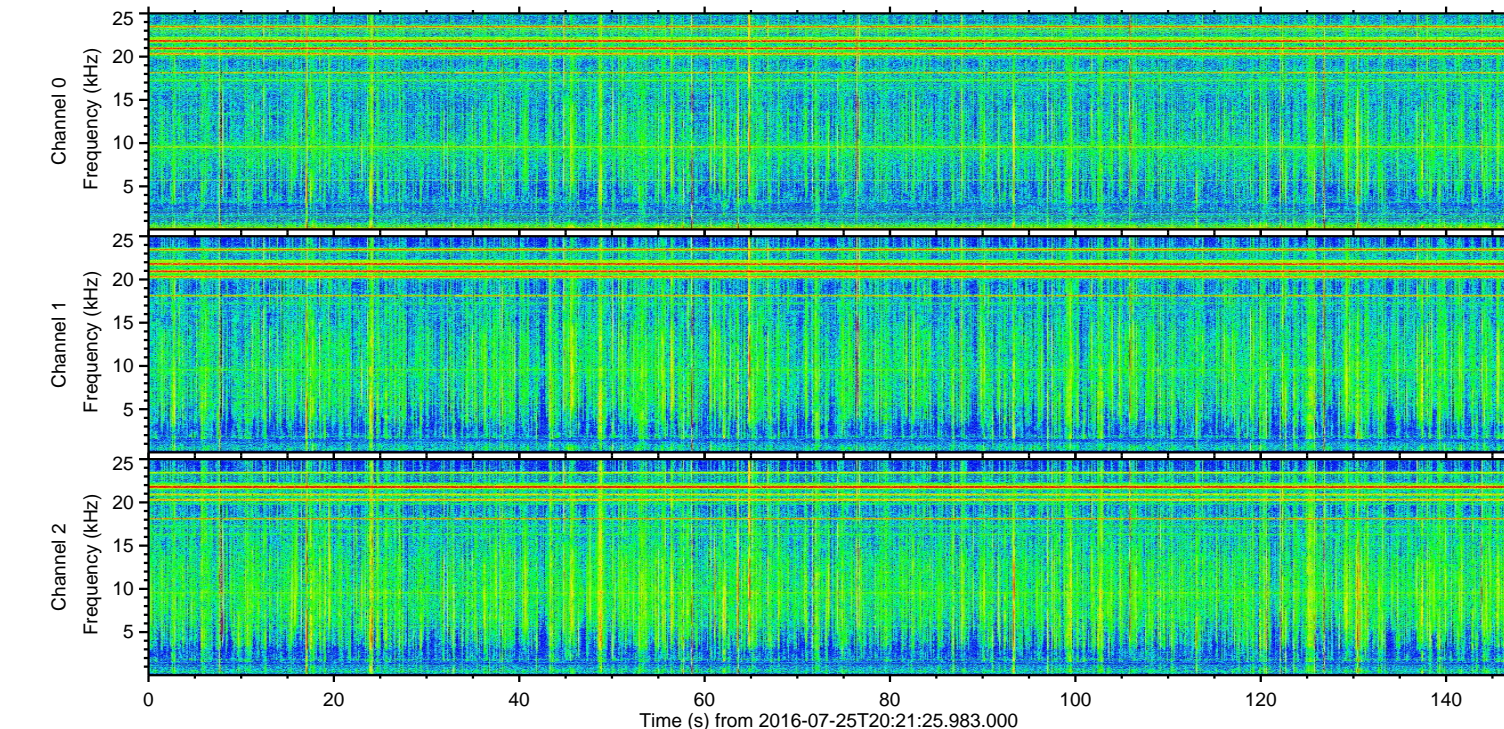
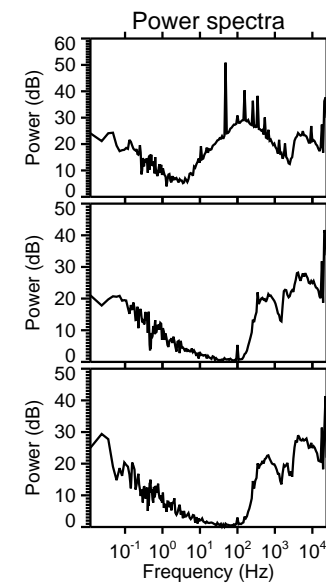
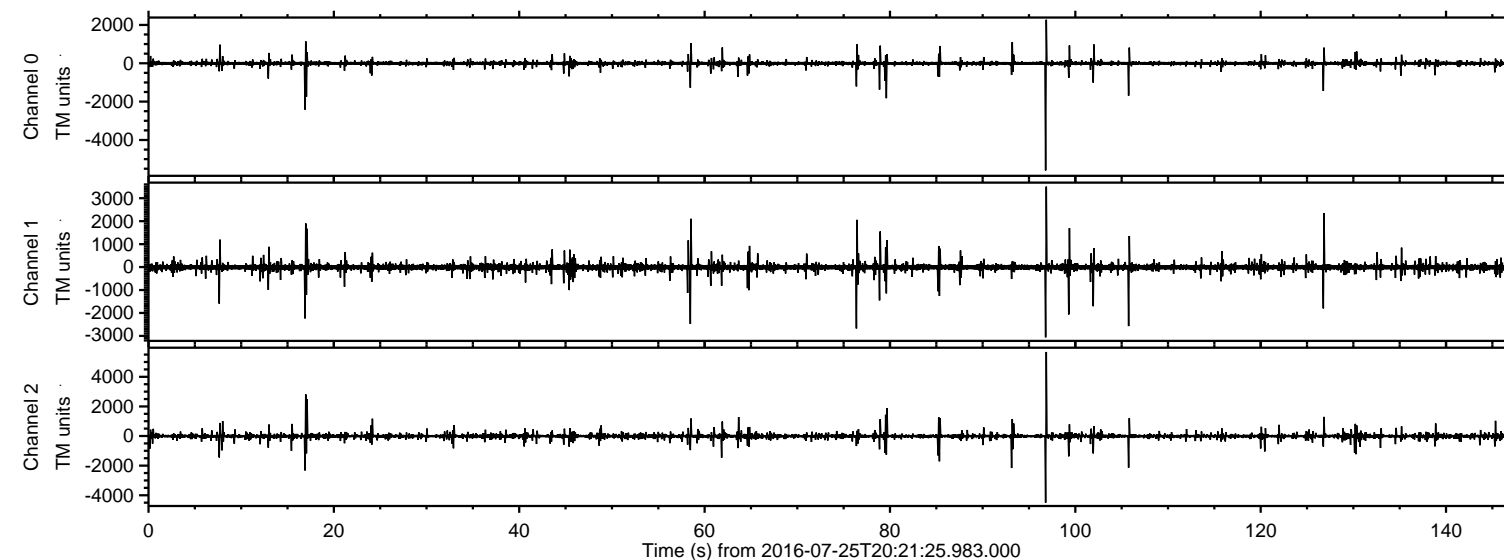
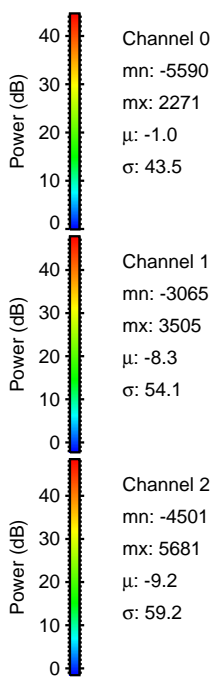
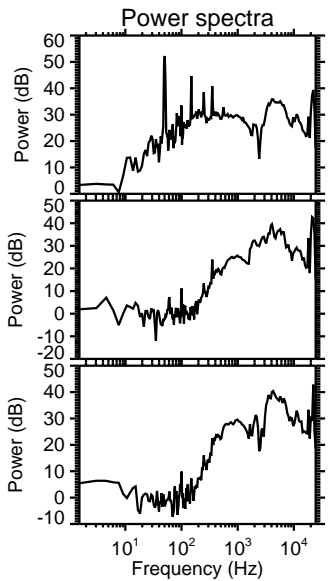
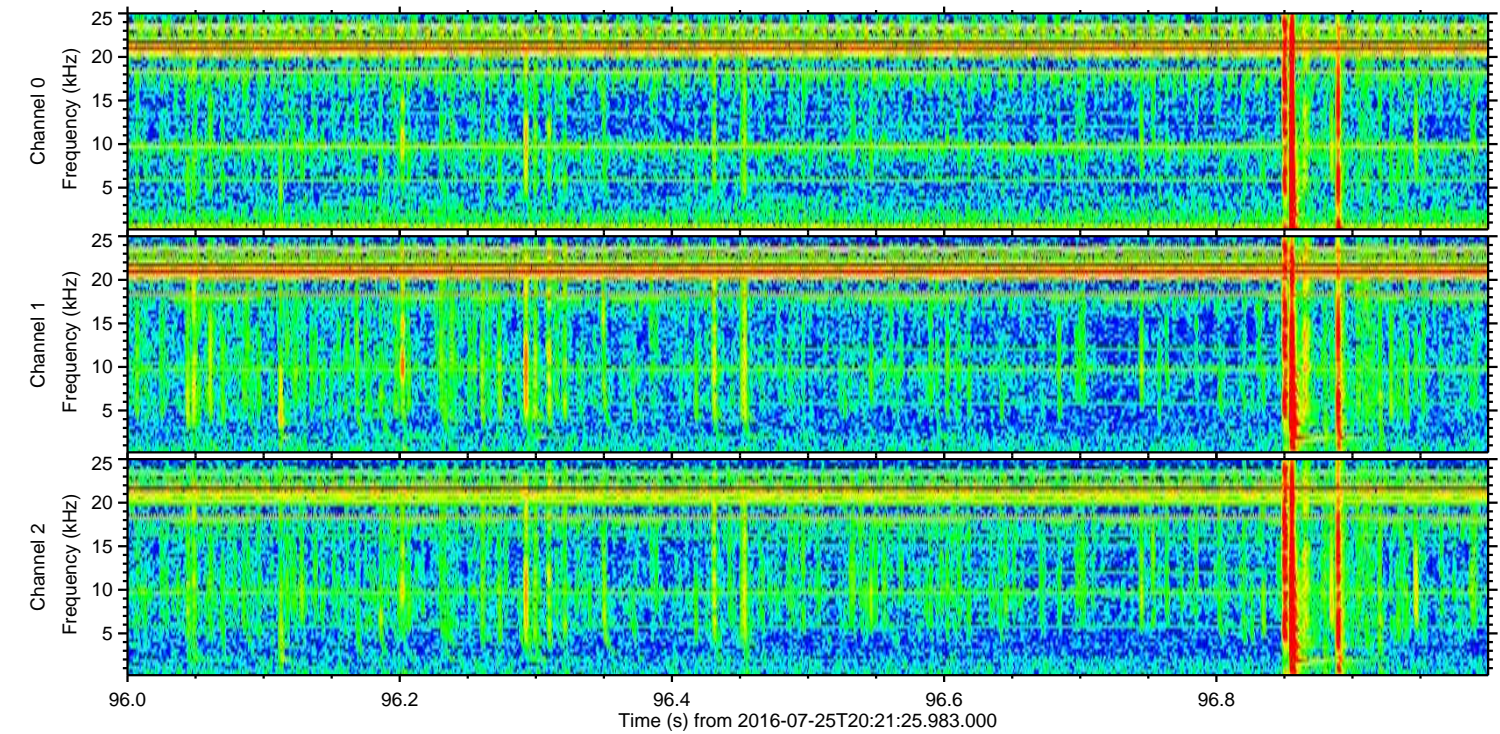
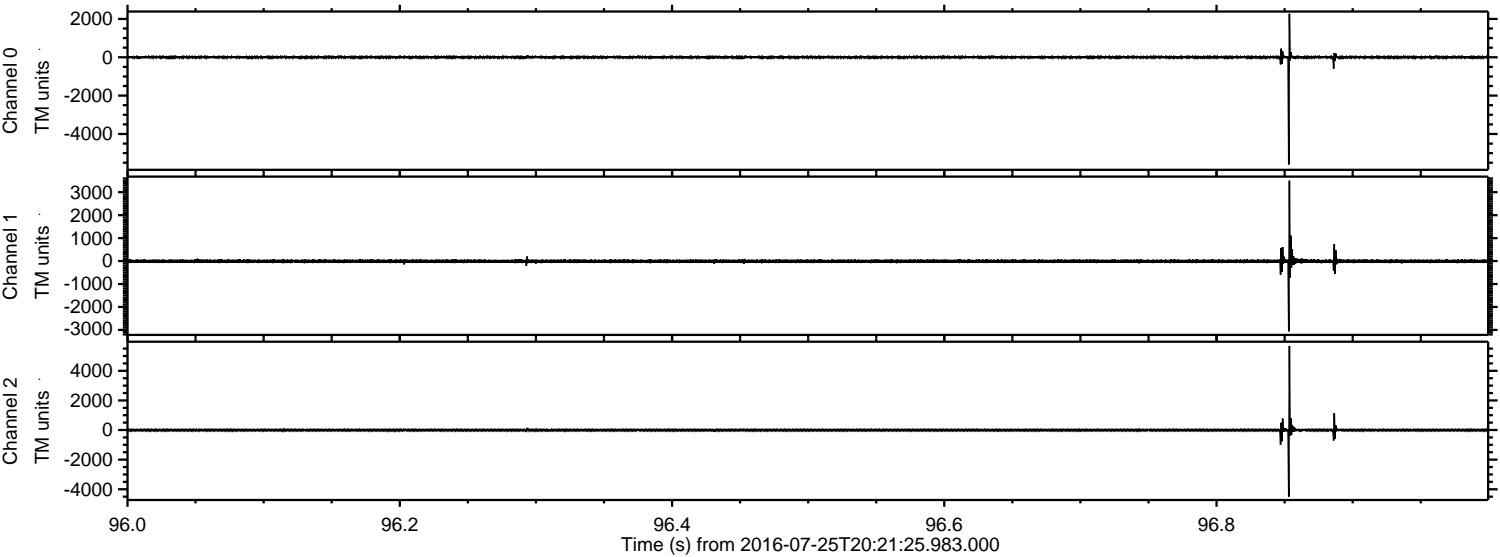


ELMAVAN 3D WAVEFORMS (Measured data sampled at 50 kHz) 51000 packets of 144 samples from 2016-07-25T20:21:25.983.000.

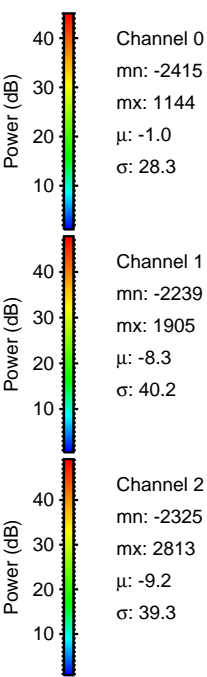
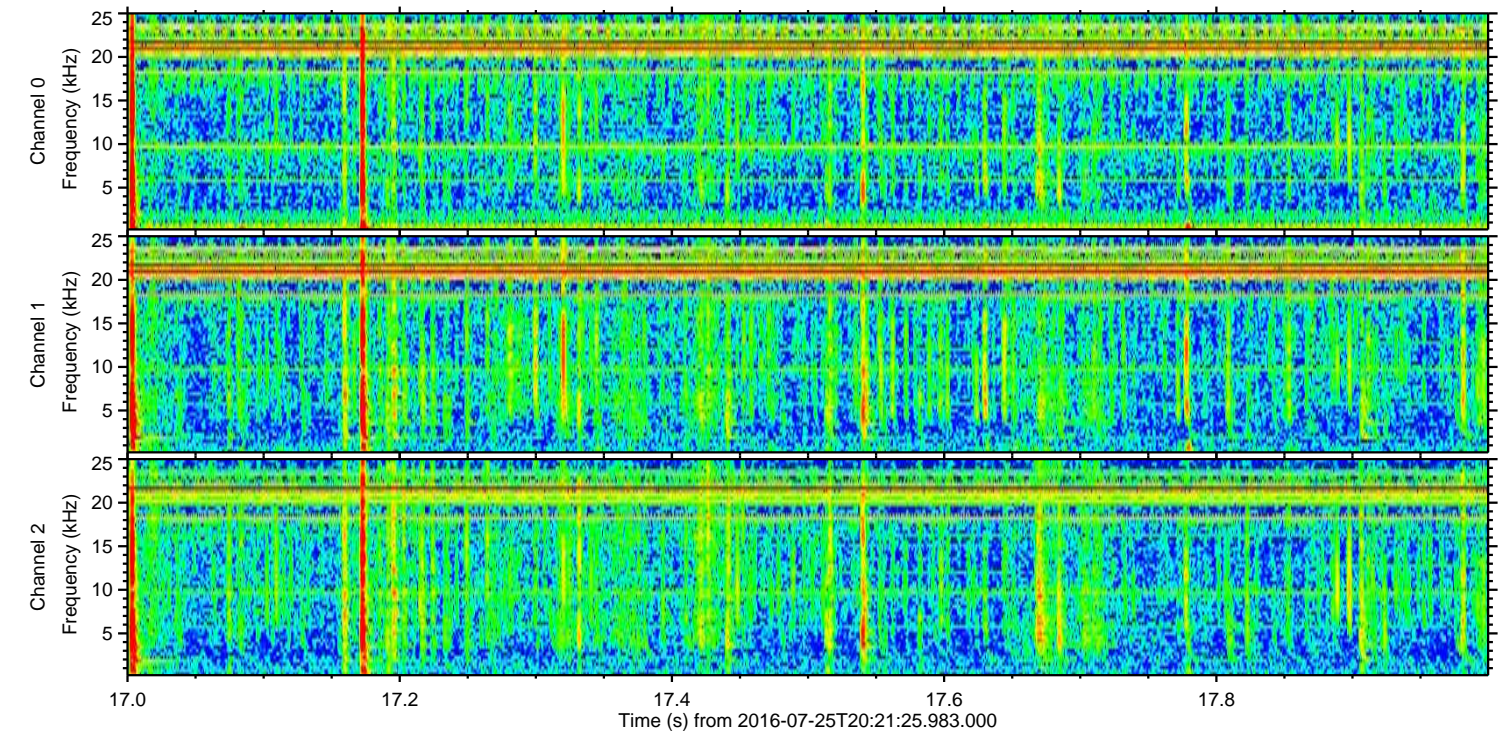
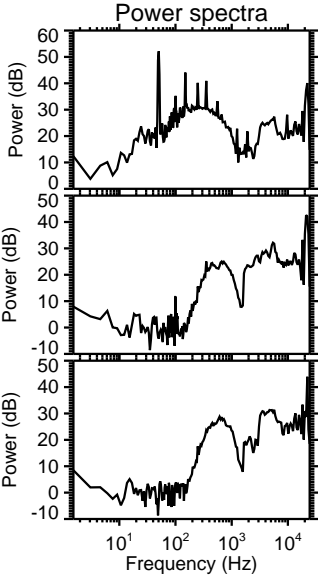
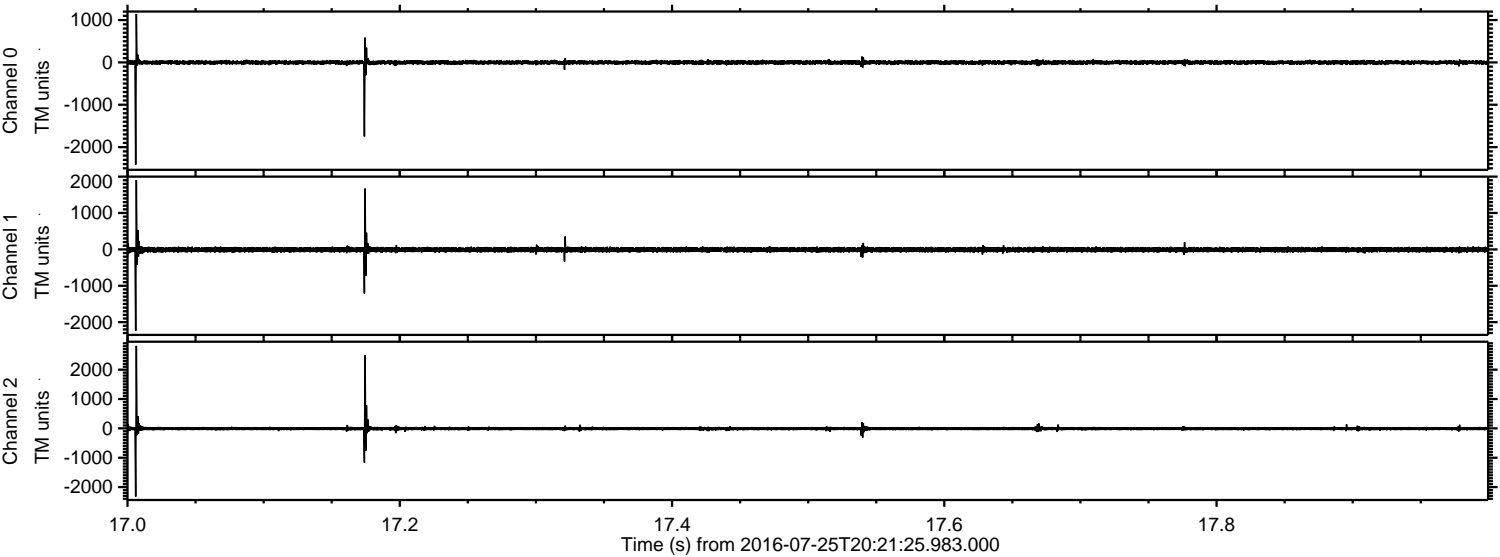
Processed Mon Jul 25 22:29:18 2016 by ELM ver.2012-10-06 from 001__elm20160725_202124__dat00.bin



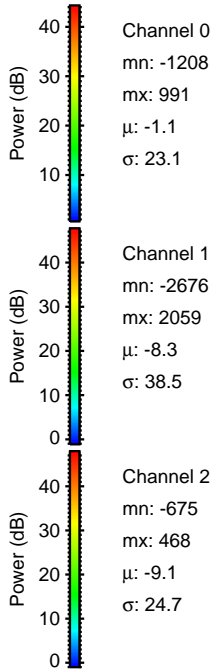
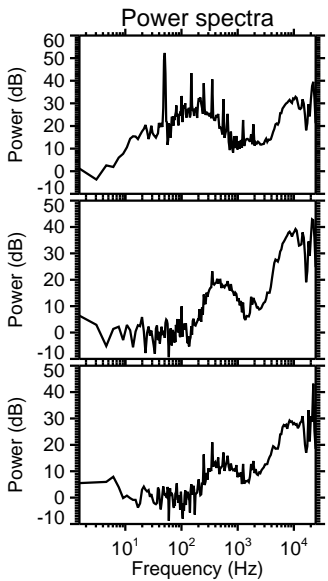
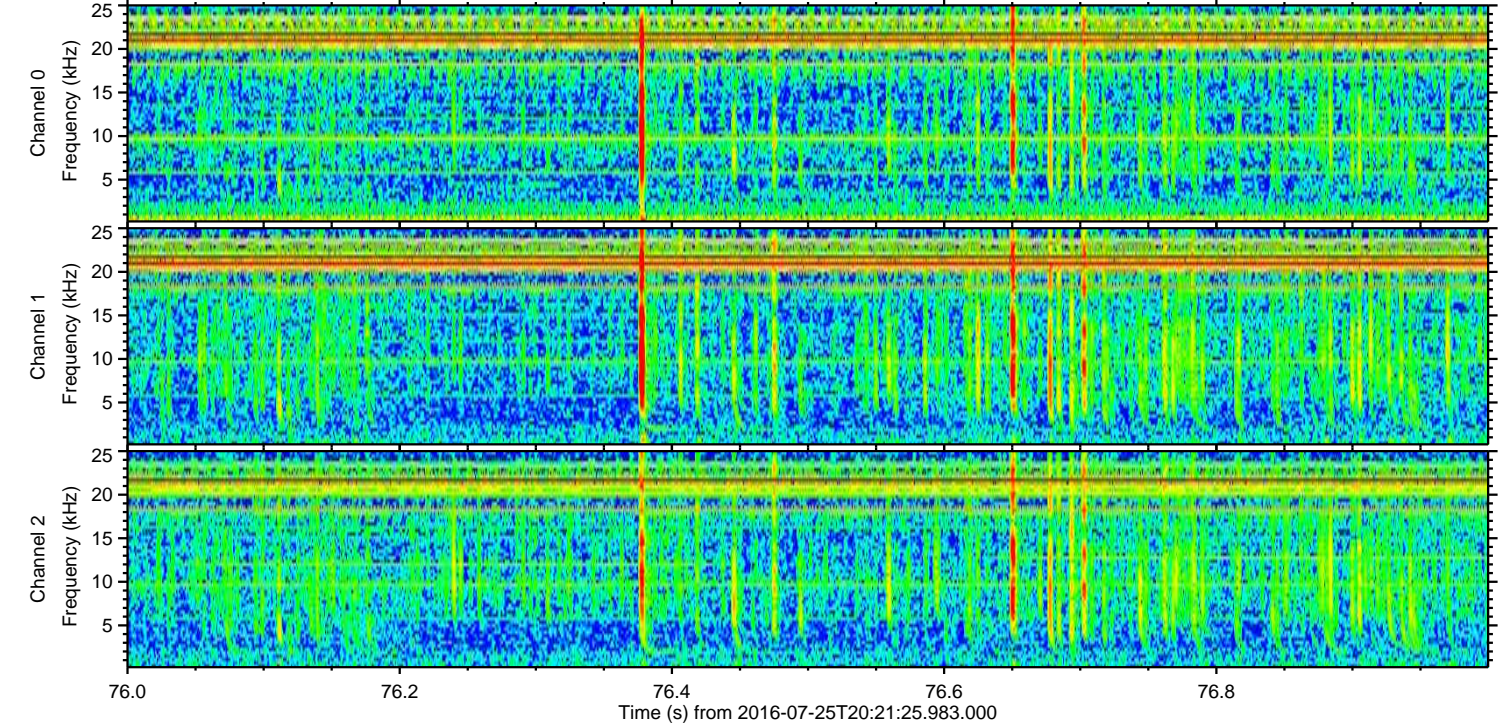
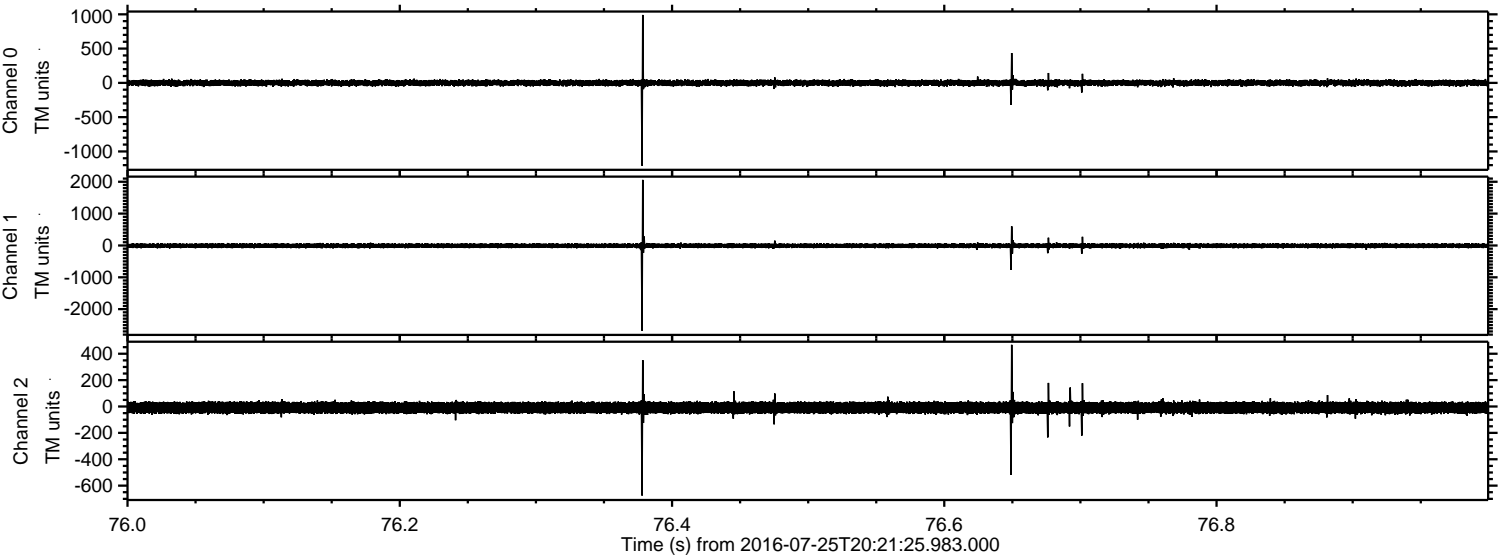
Processed Mon Jul 25 22:29:29 2016 by ELM ver.2012-10-06 from 001__elm20160725_202124__dat00.bin



Processed Mon Jul 25 22:29:30 2016 by ELM ver.2012-10-06 from 001__elm20160725_202124__dat00.bin

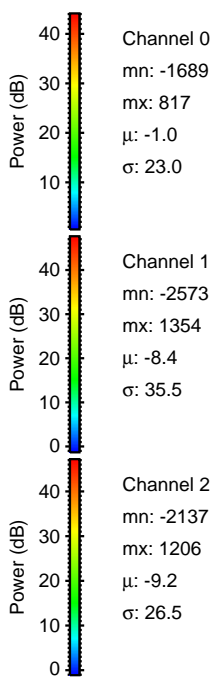
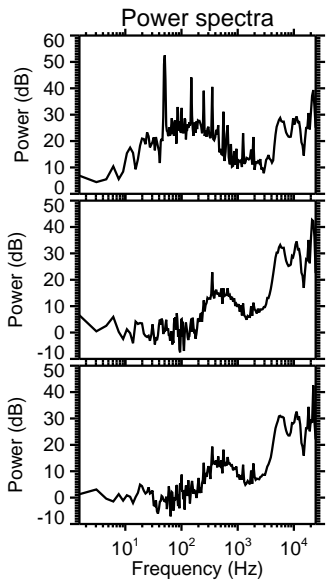
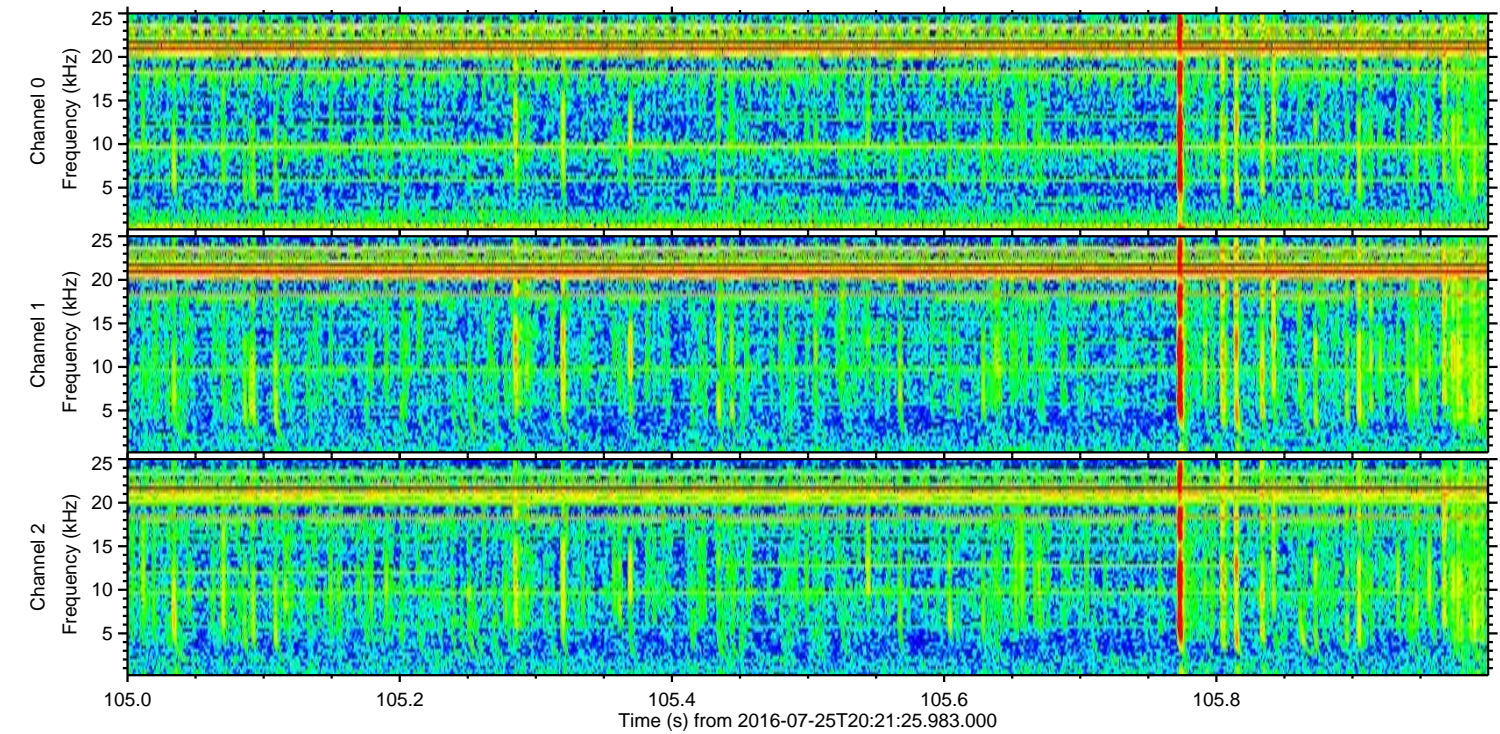
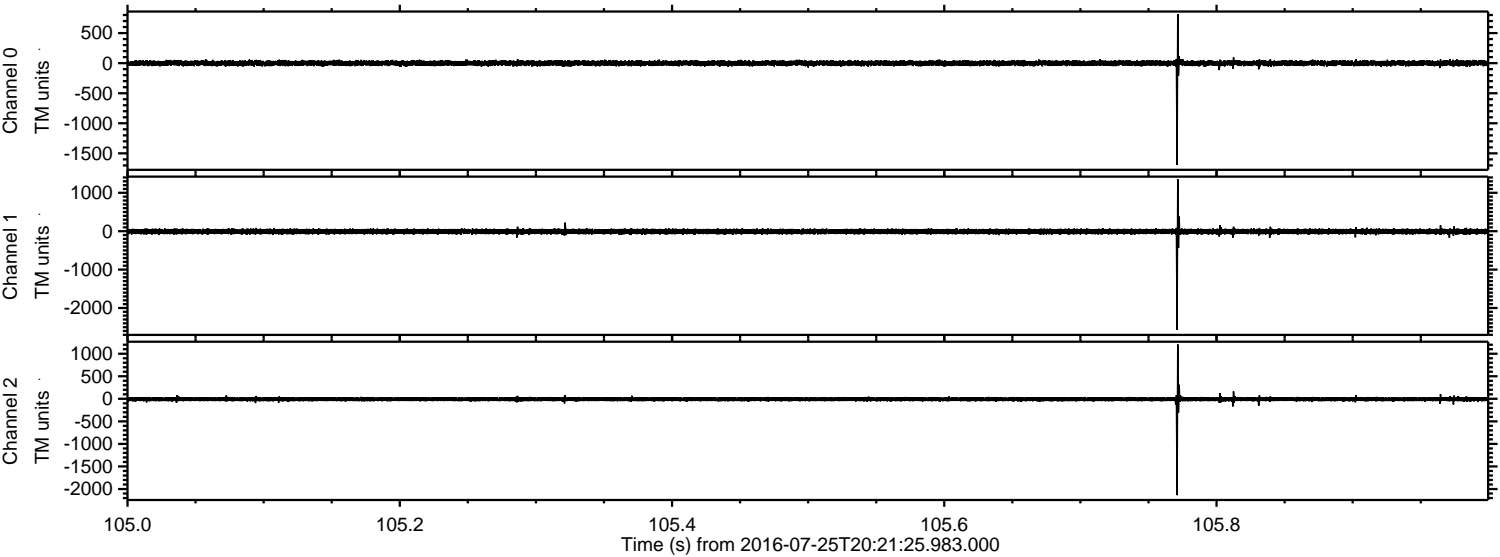


Processed Mon Jul 25 22:29:31 2016 by ELM ver.2012-10-06 from 001__elm20160725_202124__dat00.bin

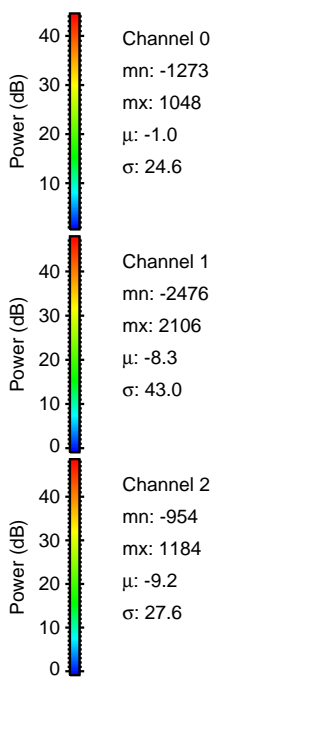
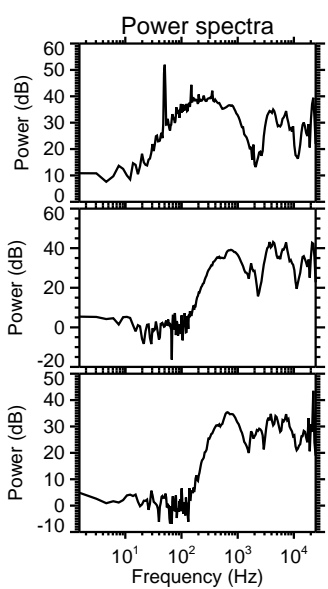
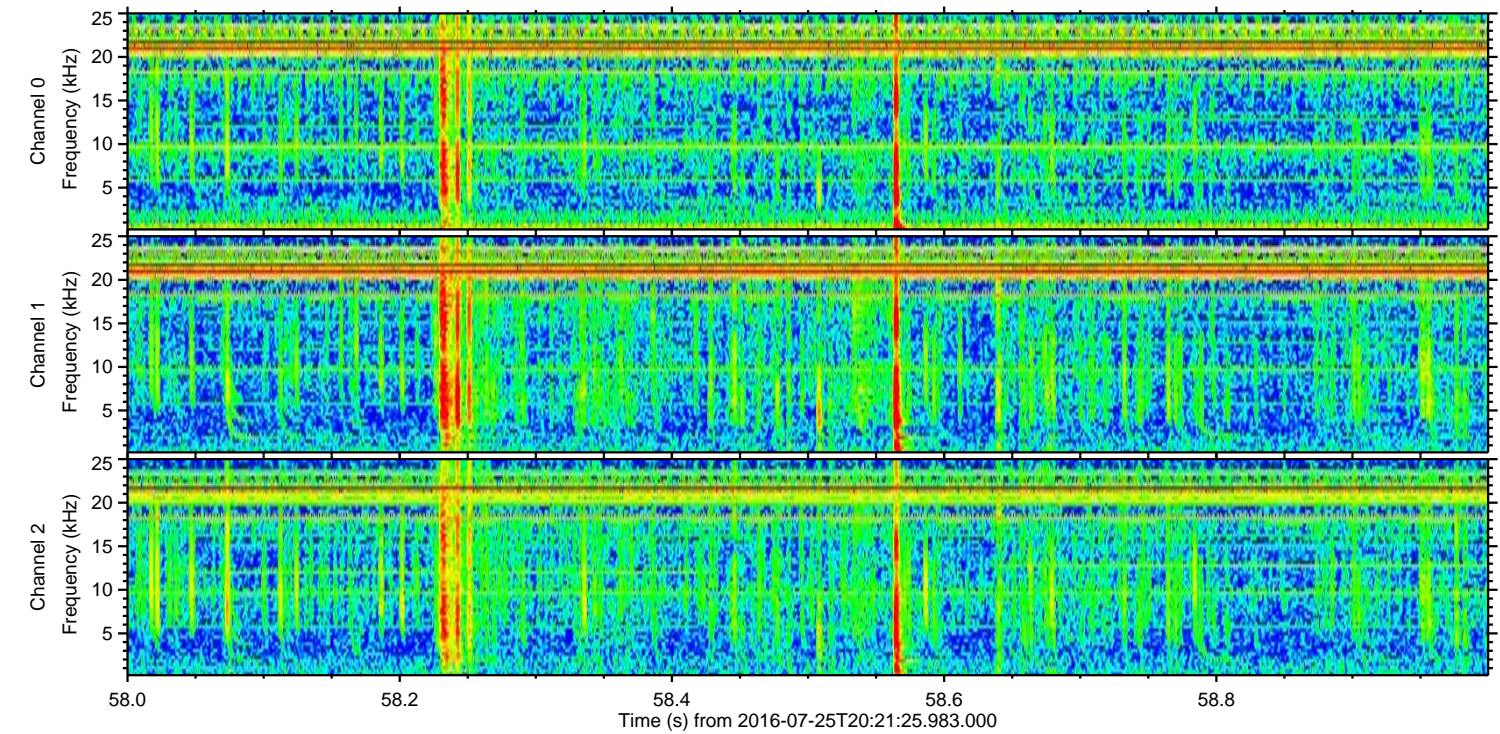
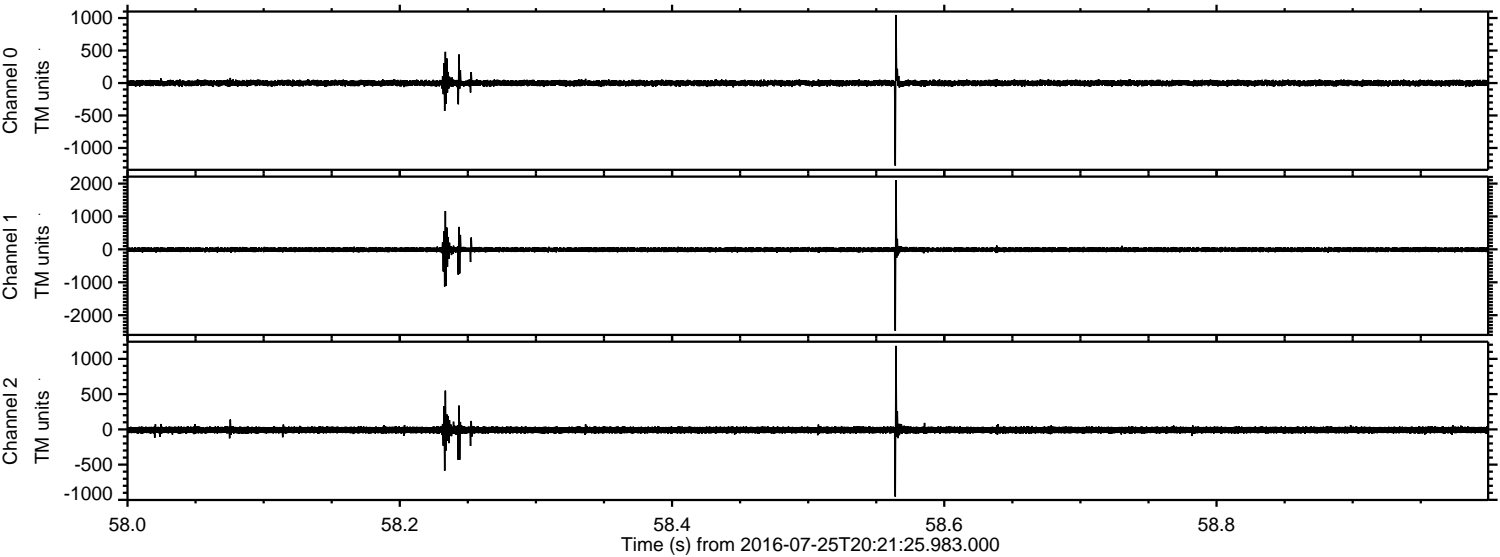


ELMAVAN 3D WAVEFORMS (Measured data sampled at 50 kHz) 51000 packets of 144 samples from 2016-07-25T20:21:25.983.000. Part 106/147

Processed Mon Jul 25 22:29:32 2016 by ELM ver.2012-10-06 from 001__elm20160725_202124__dat00.bin

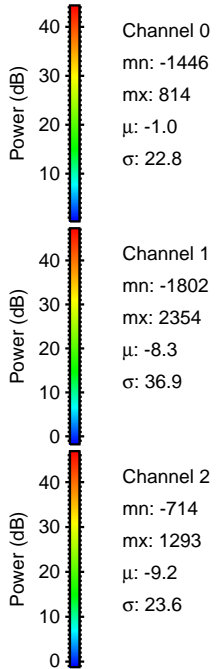
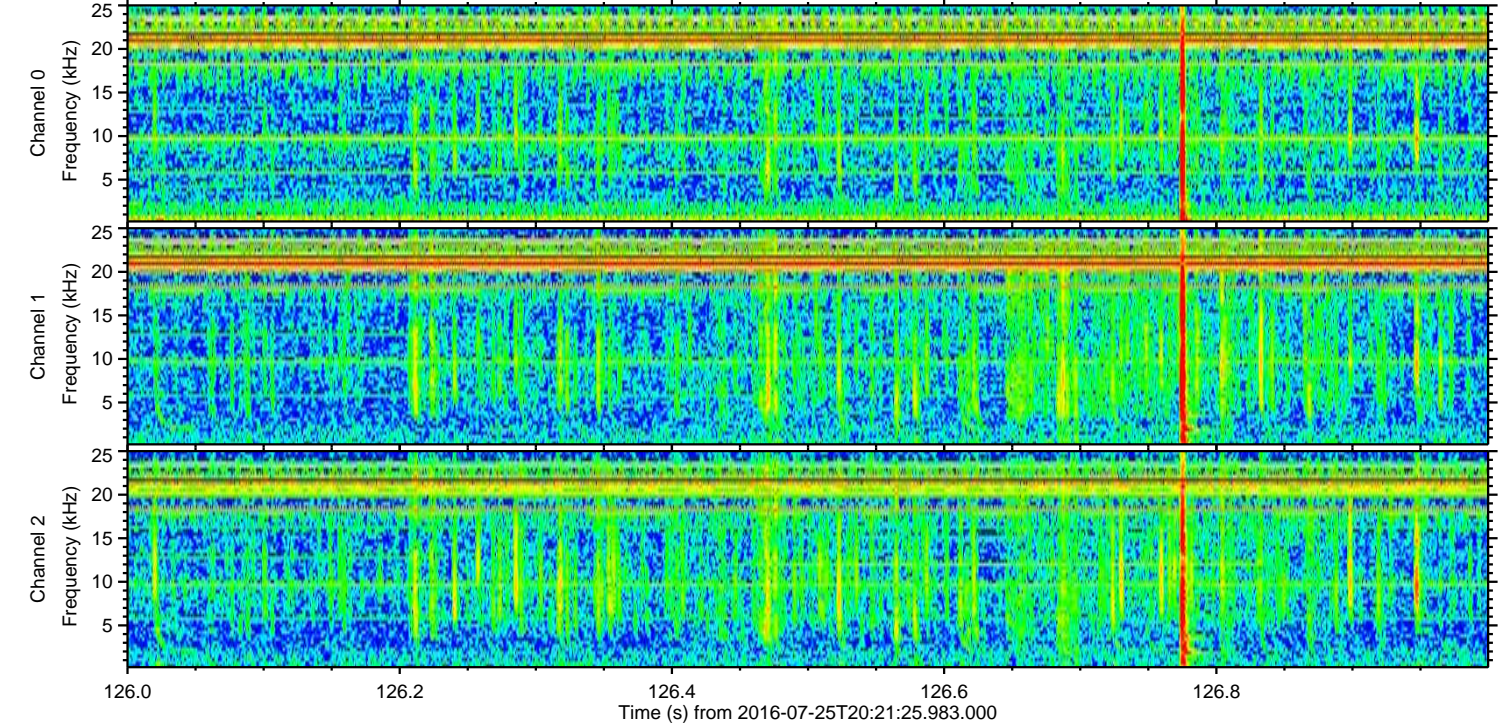
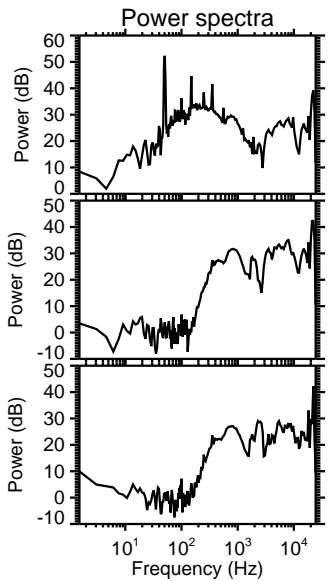
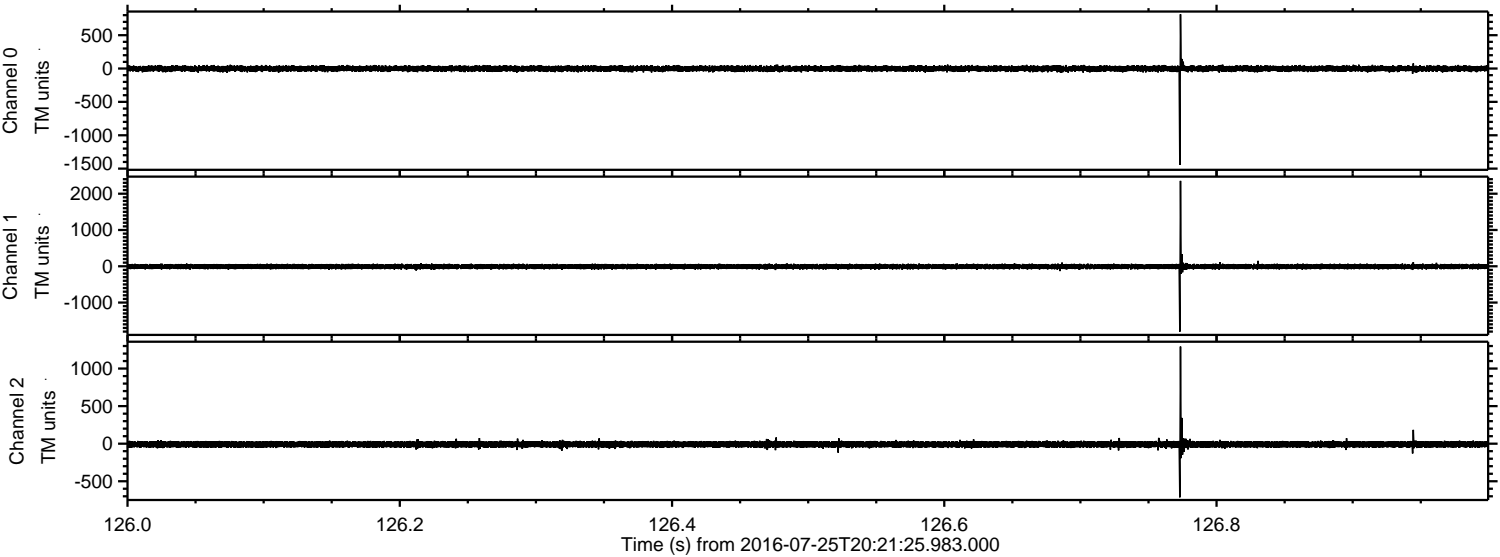


Processed Mon Jul 25 22:29:33 2016 by ELM ver.2012-10-06 from 001__elm20160725_202124__dat00.bin

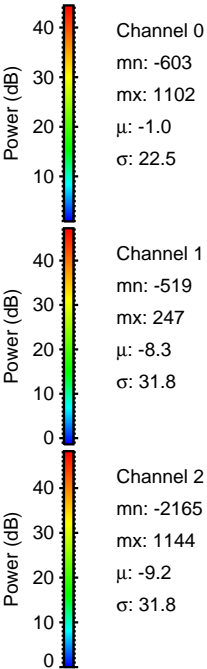
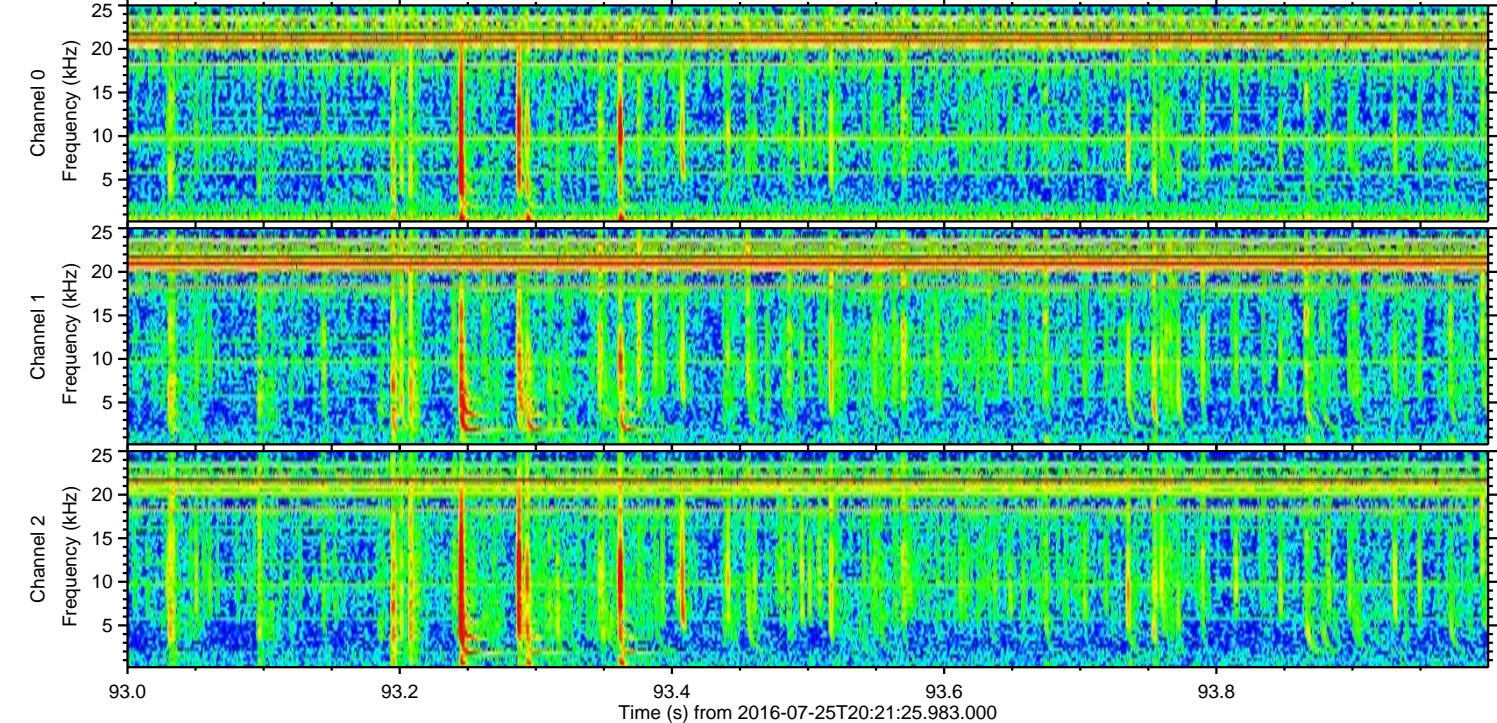
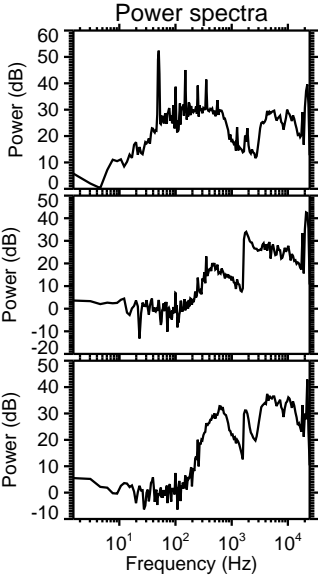
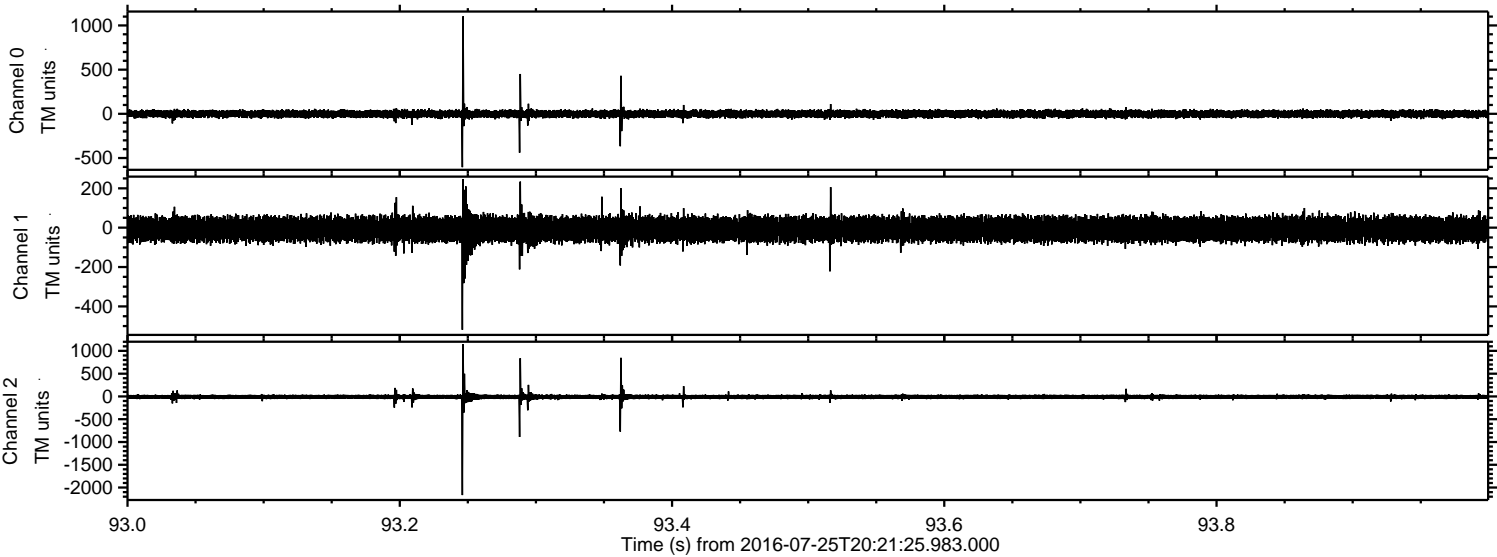


ELMAVAN 3D WAVEFORMS (Measured data sampled at 50 kHz) 51000 packets of 144 samples from 2016-07-25T20:21:25.983.000. Part 127/147

Processed Mon Jul 25 22:29:34 2016 by ELM ver.2012-10-06 from 001__elm20160725_202124__dat00.bin

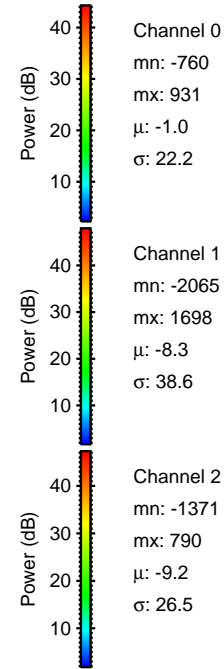
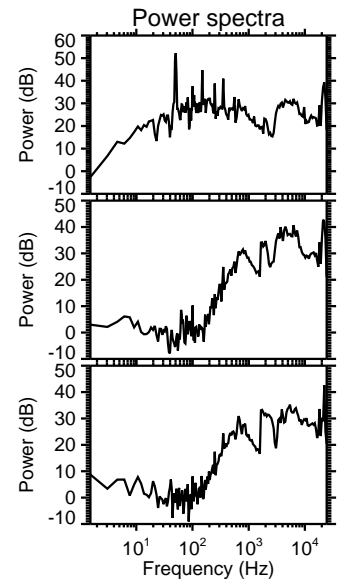
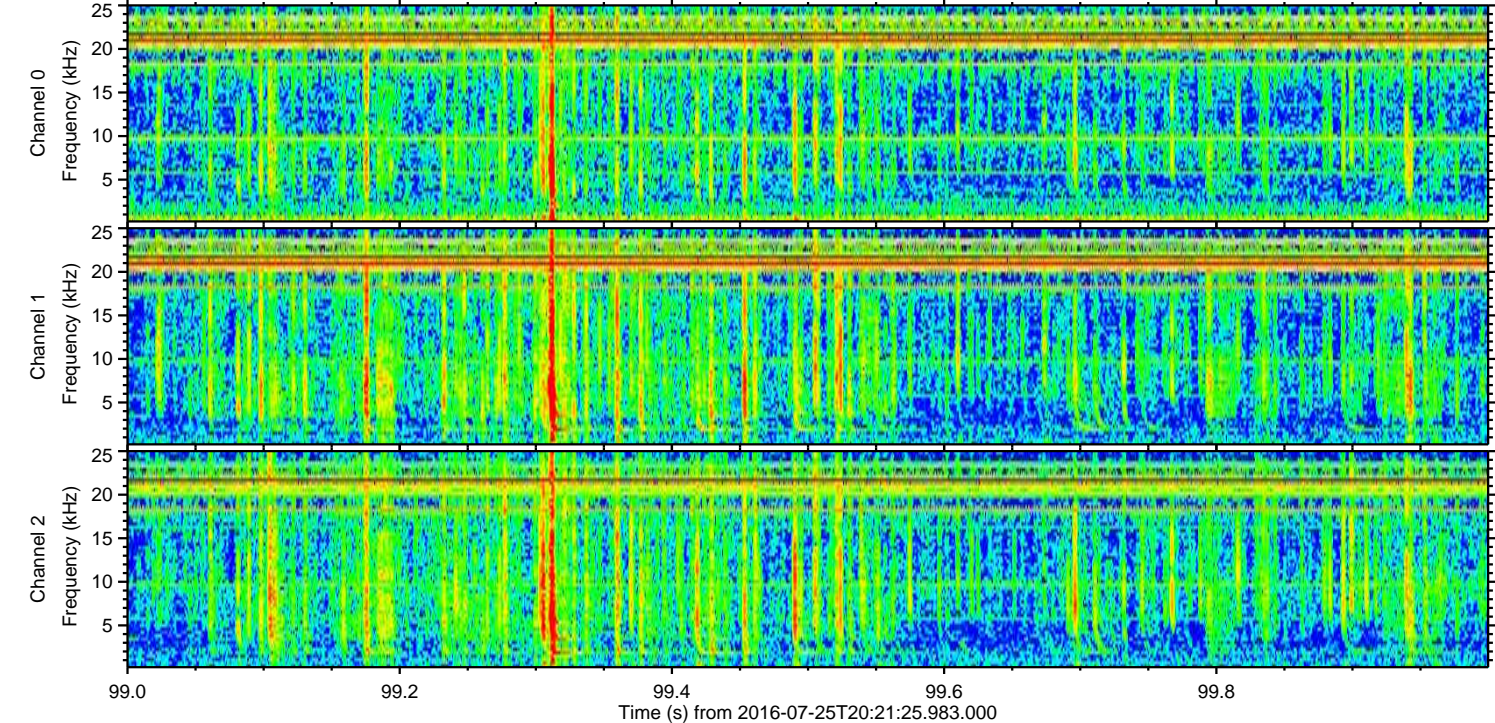
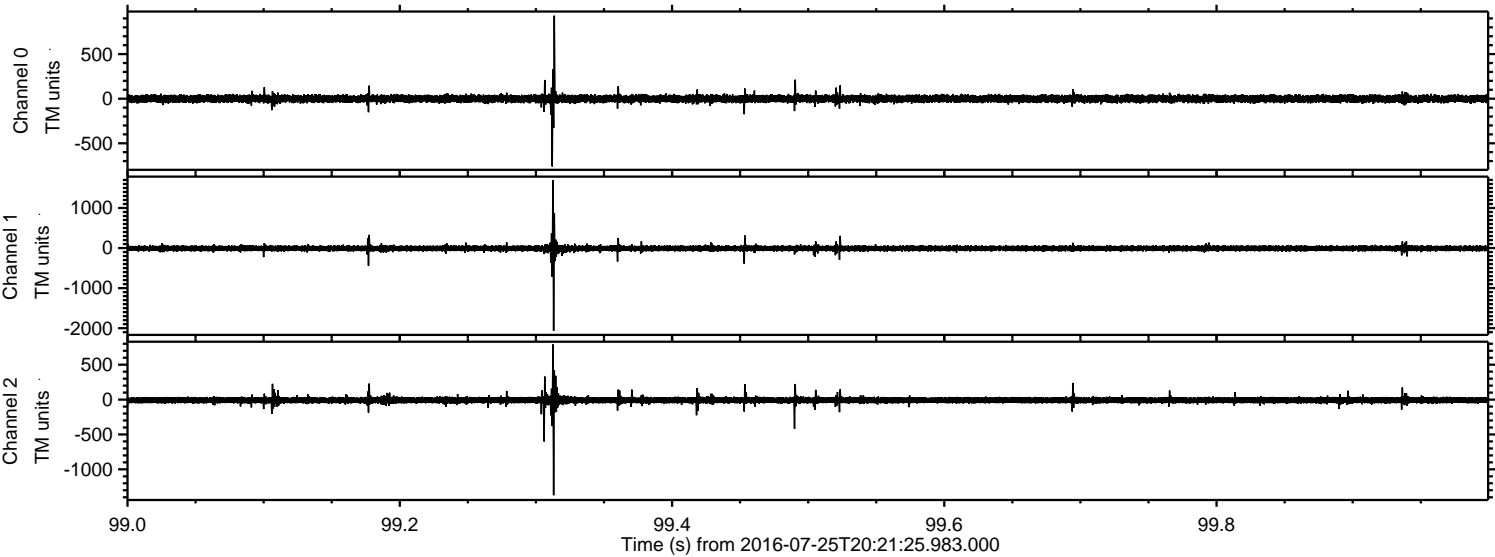


Processed Mon Jul 25 22:29:35 2016 by ELM ver.2012-10-06 from 001__elm20160725_202124__dat00.bin

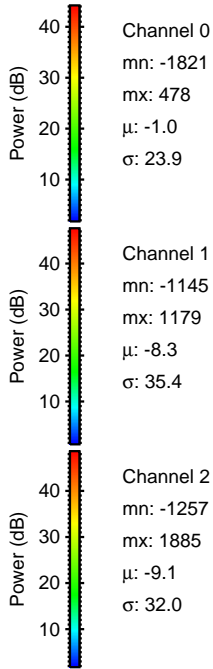
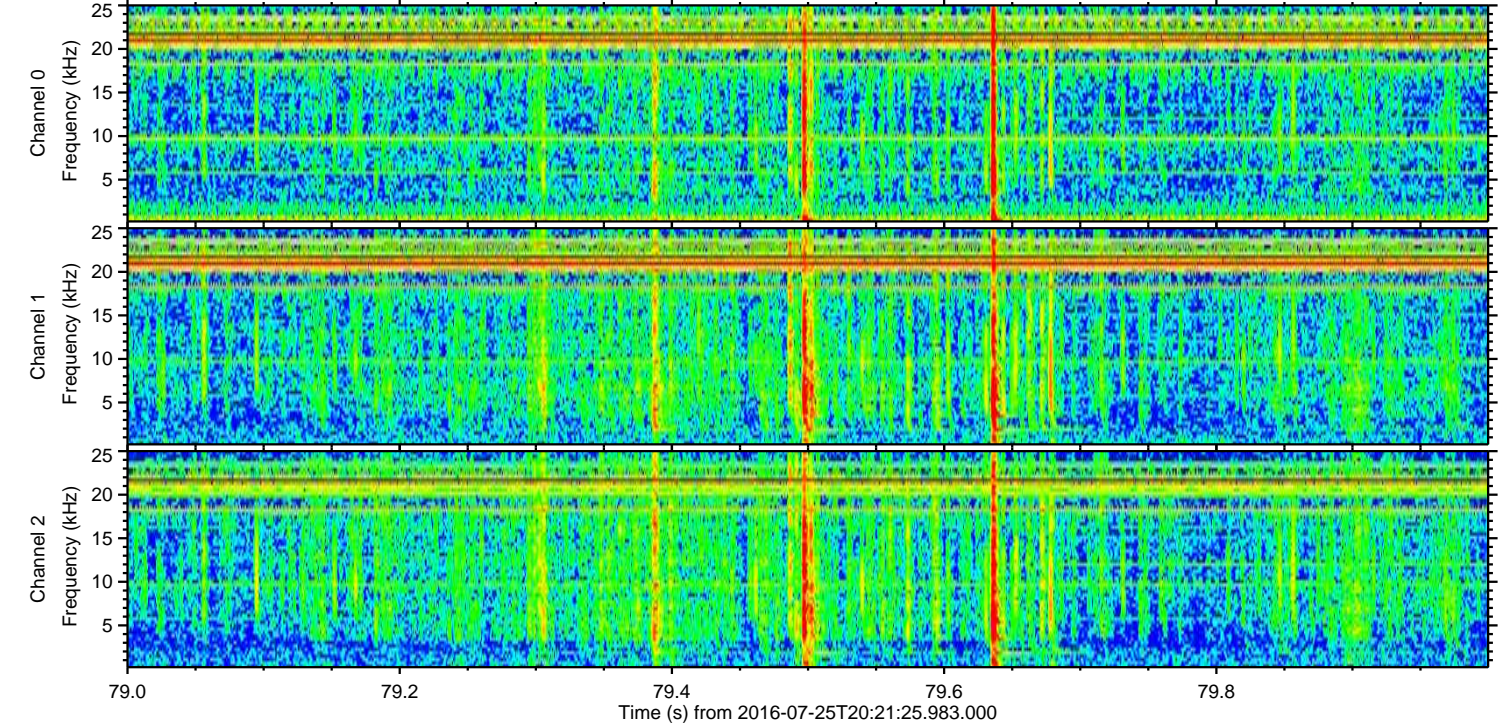
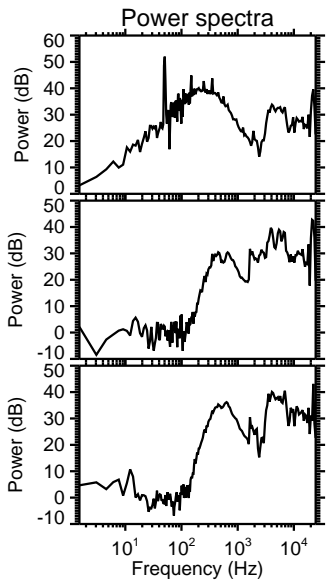
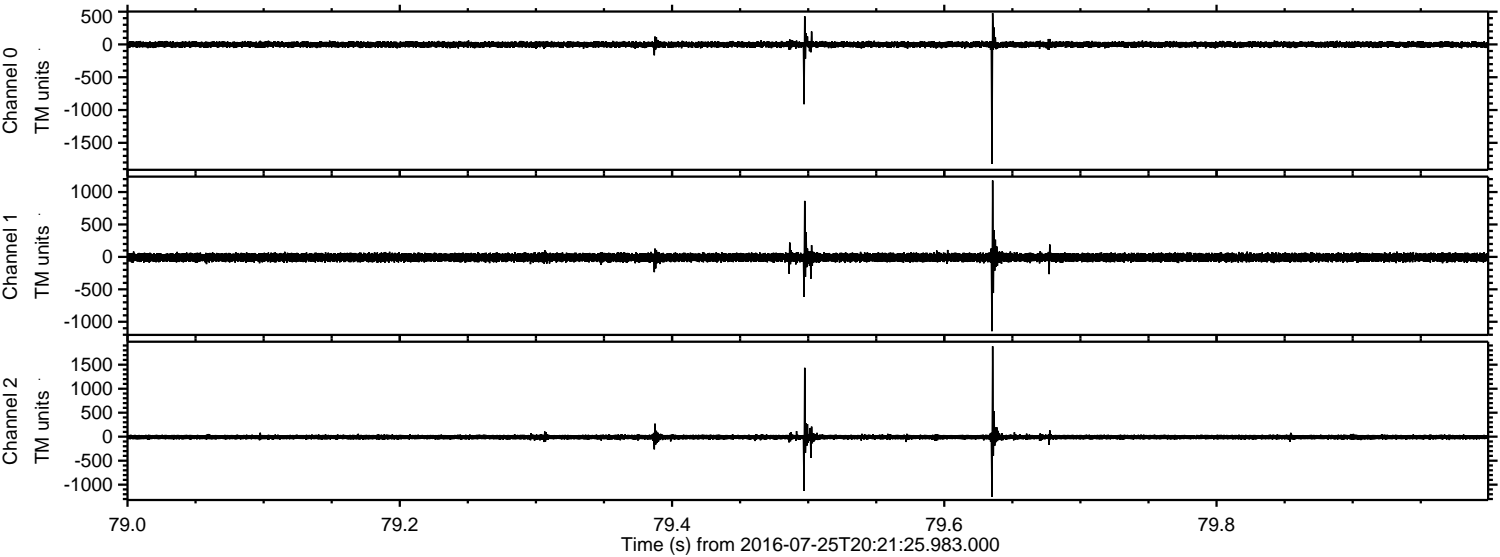


ELMAVAN 3D WAVEFORMS (Measured data sampled at 50 kHz) 51000 packets of 144 samples from 2016-07-25T20:21:25.983.000. Part 100/147

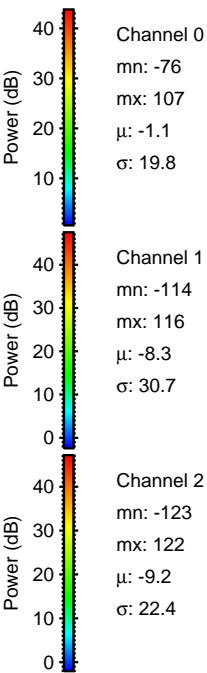
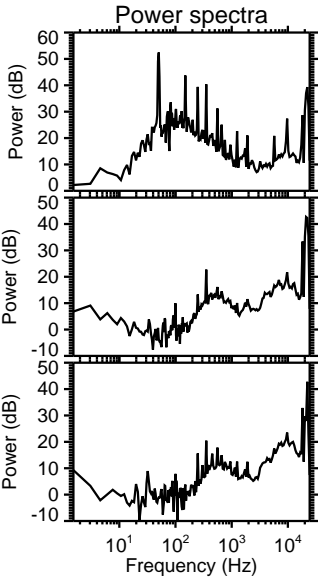
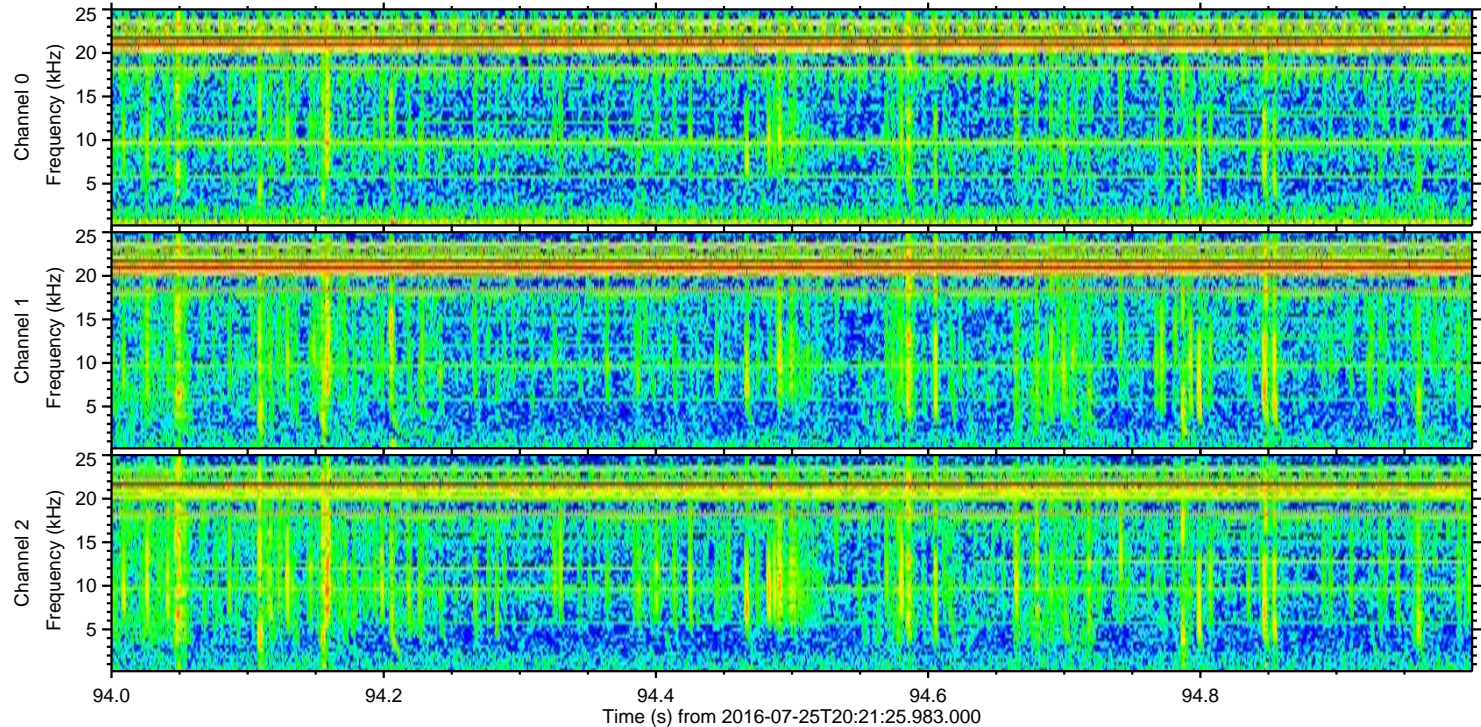
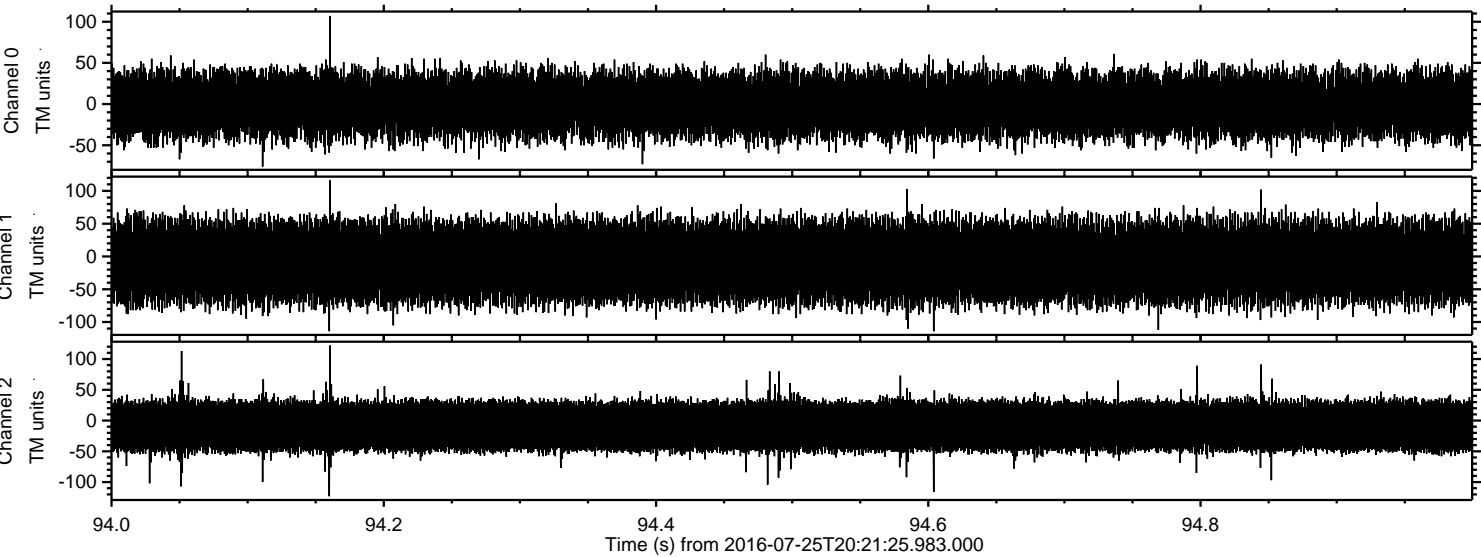
Processed Mon Jul 25 22:29:36 2016 by ELM ver.2012-10-06 from 001__elm20160725_202124__dat00.bin



Processed Mon Jul 25 22:29:37 2016 by ELM ver.2012-10-06 from 001__elm20160725_202124__dat00.bin



Processed Mon Jul 25 22:29:38 2016 by ELM ver.2012-10-06 from 001__elm20160725_202124__dat00.bin



Channel 0
mn: -76
mx: 107
 μ : -1.1
 σ : 19.8

Channel 1
mn: -114
mx: 116
 μ : -8.3
 σ : 30.7

Channel 2
mn: -123
mx: 122
 μ : -9.2
 σ : 22.4