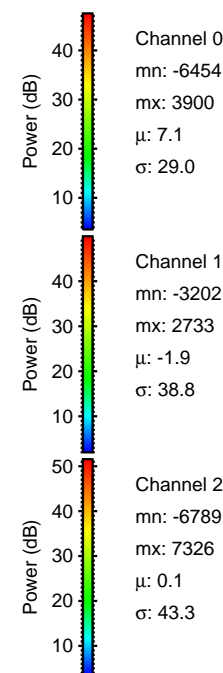
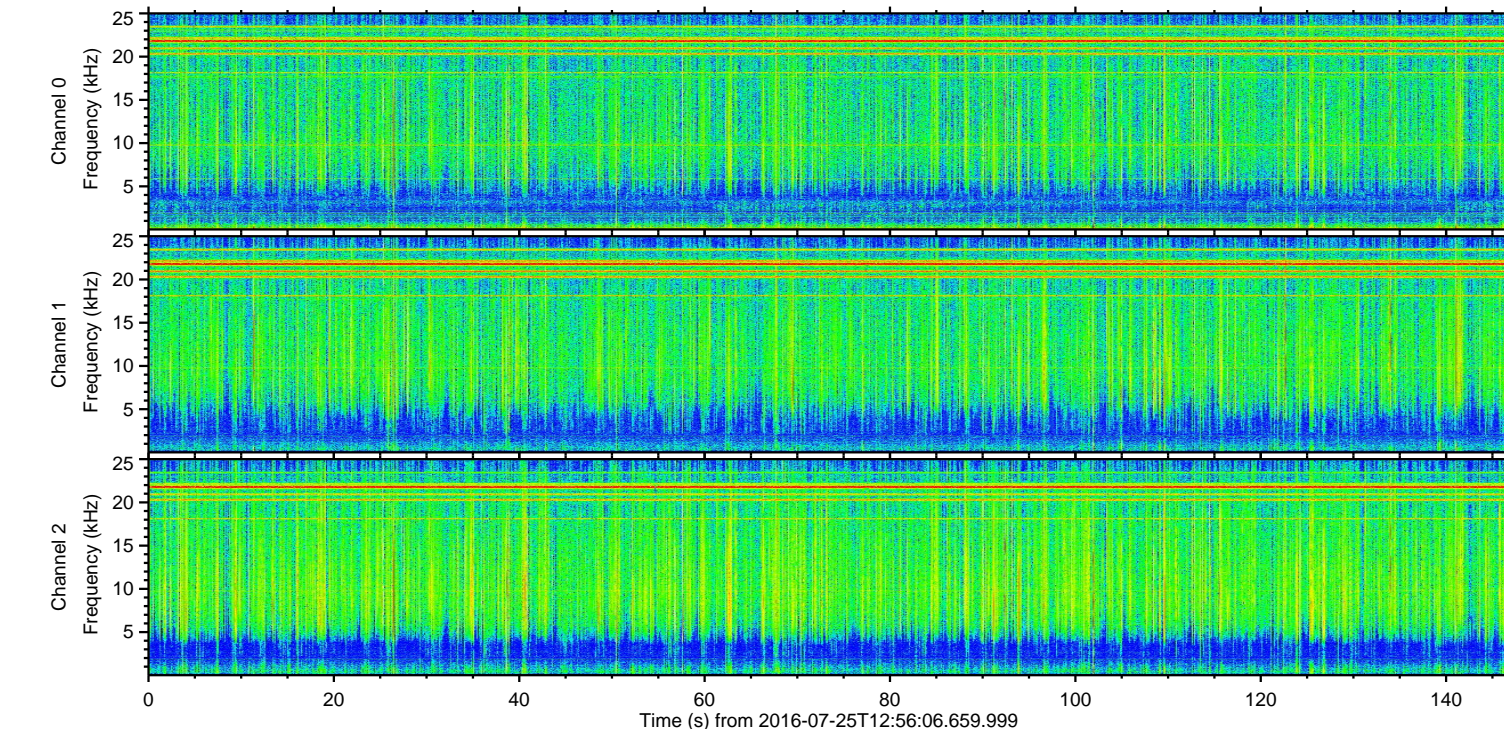
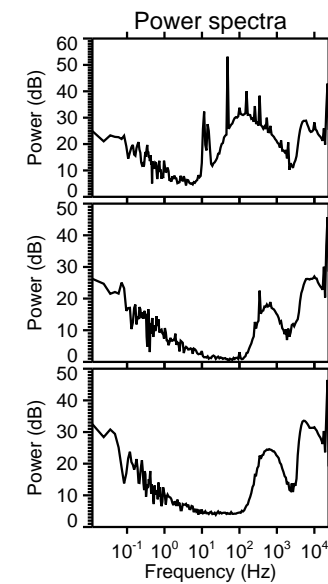
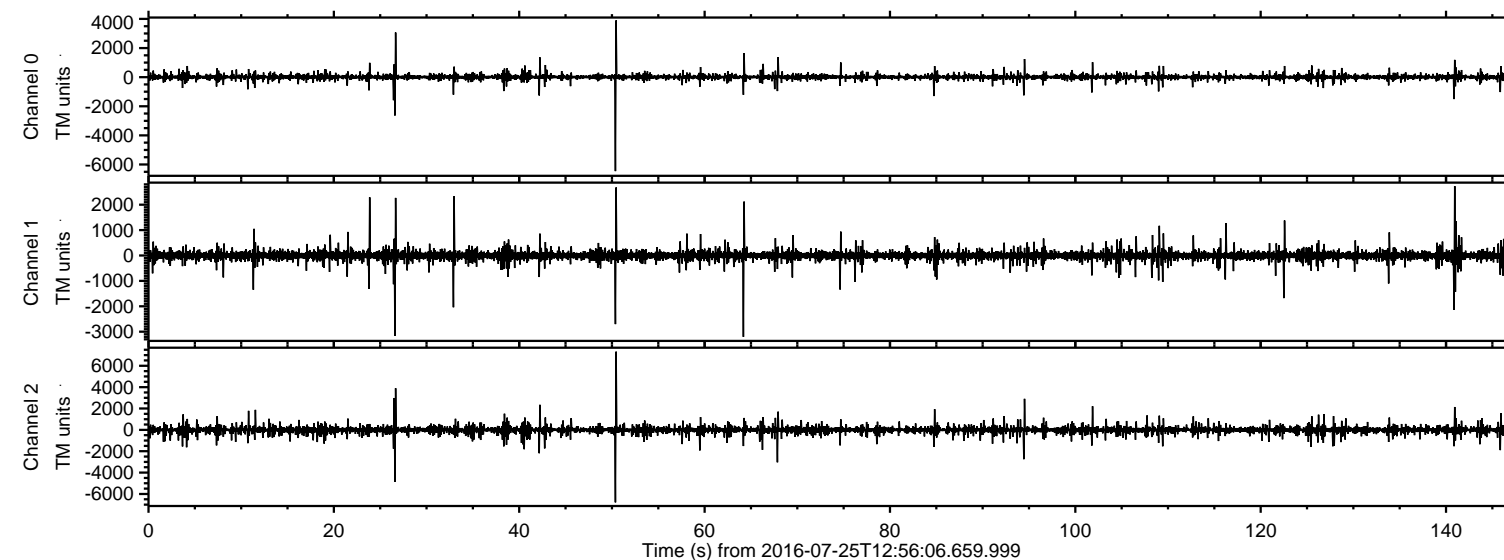
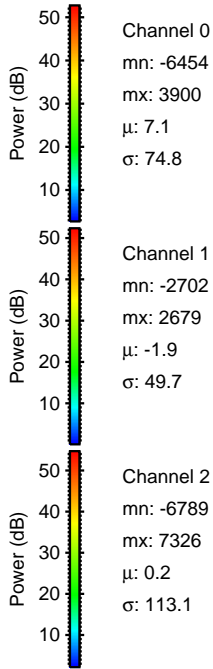
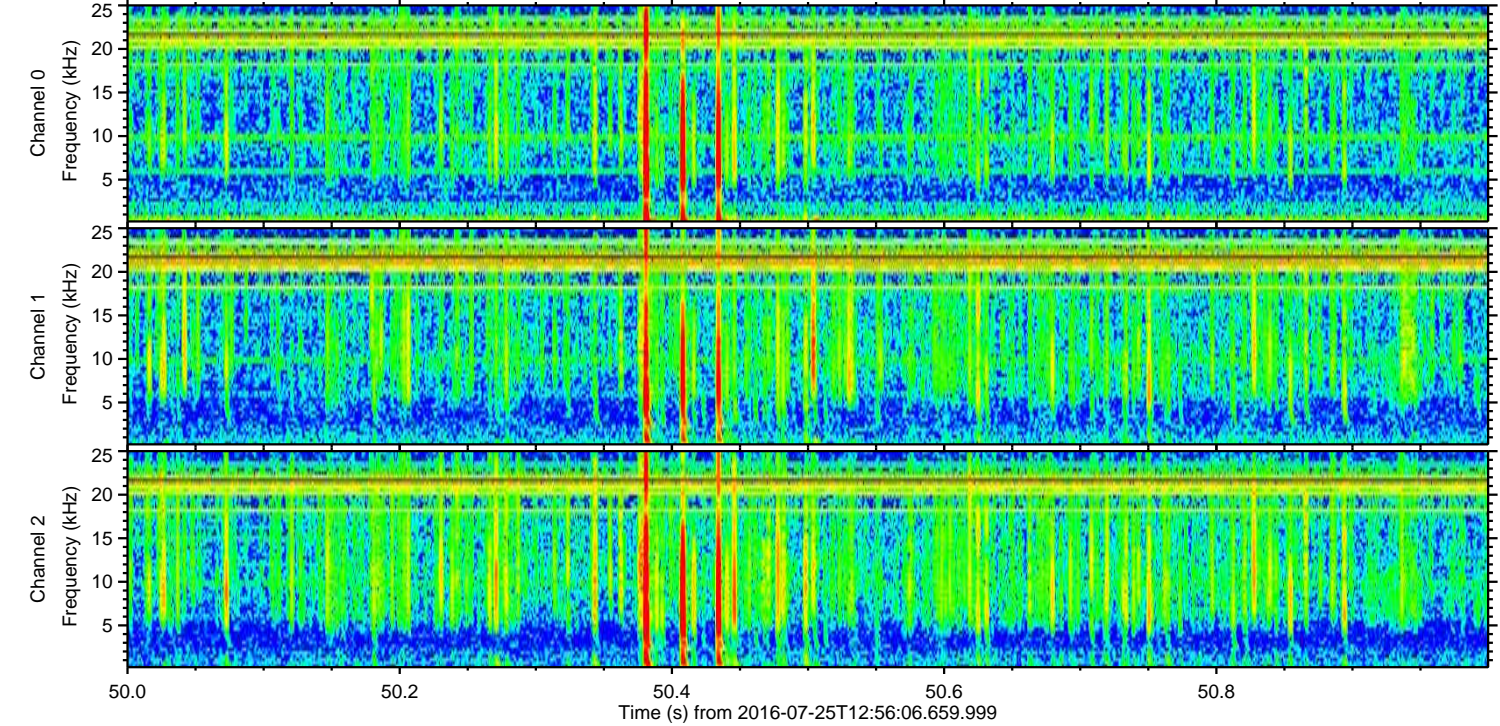
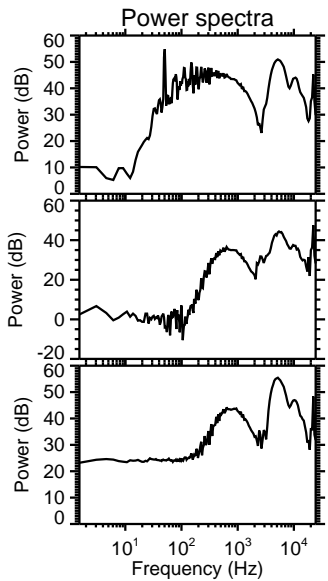
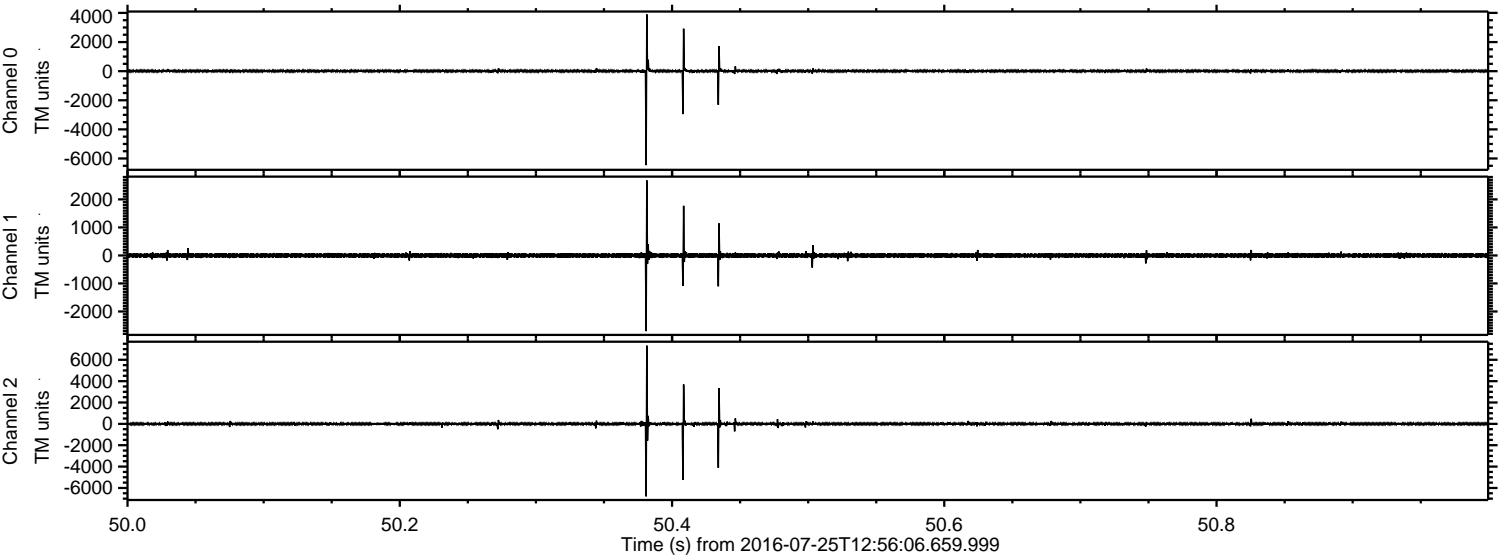


ELMAVAN 3D WAVEFORMS (Measured data sampled at 50 kHz) 51000 packets of 144 samples from 2016-07-25T12:56:06.659.999.

Processed Mon Jul 25 15:04:18 2016 by ELM ver.2012-10-06 from 001__elm20160725_125605__dat00.bin

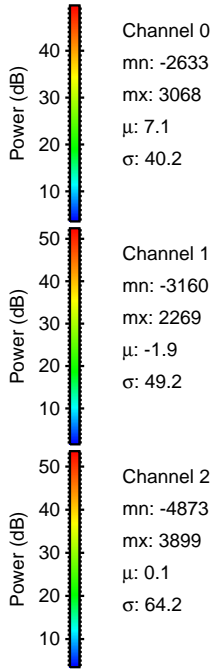
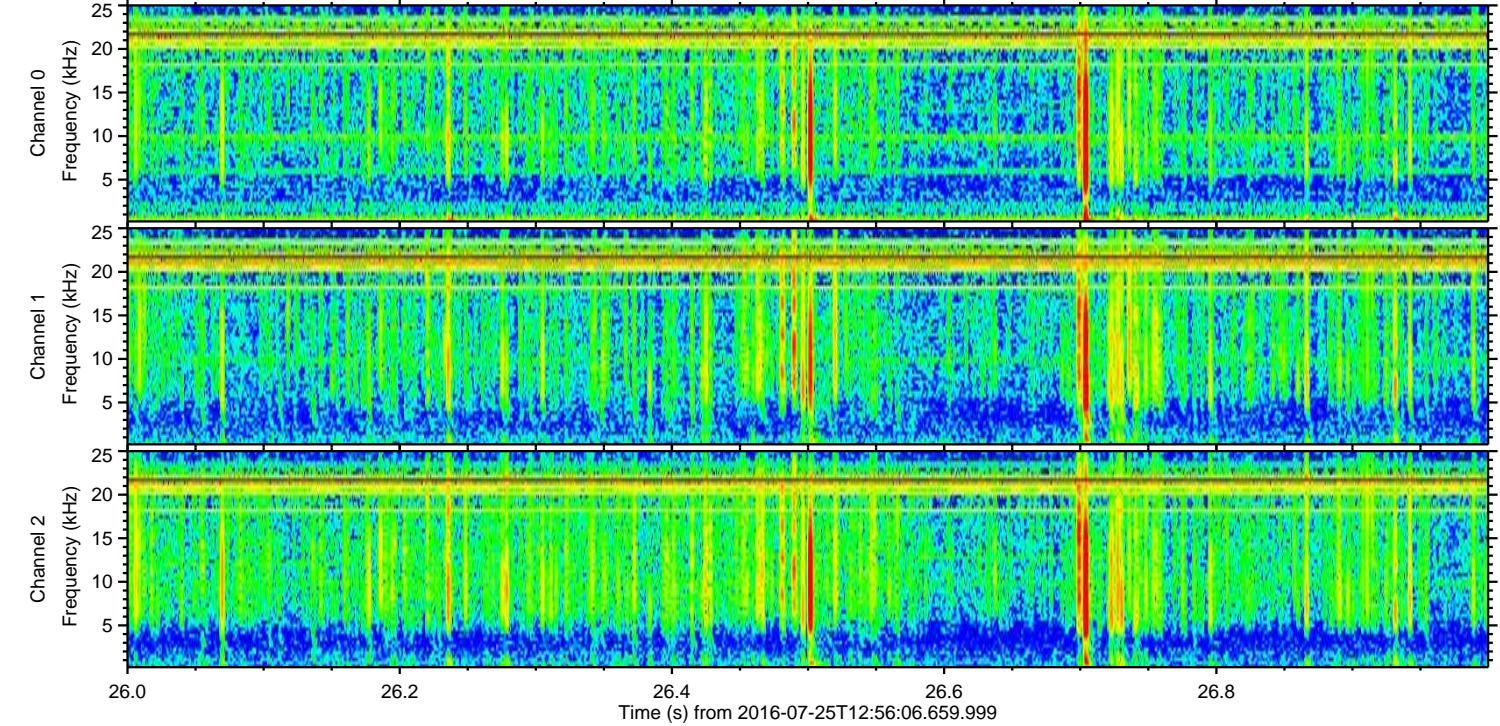
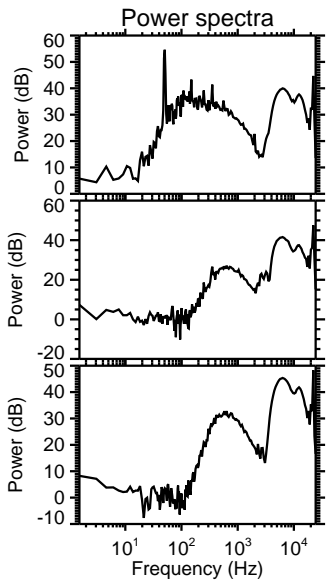
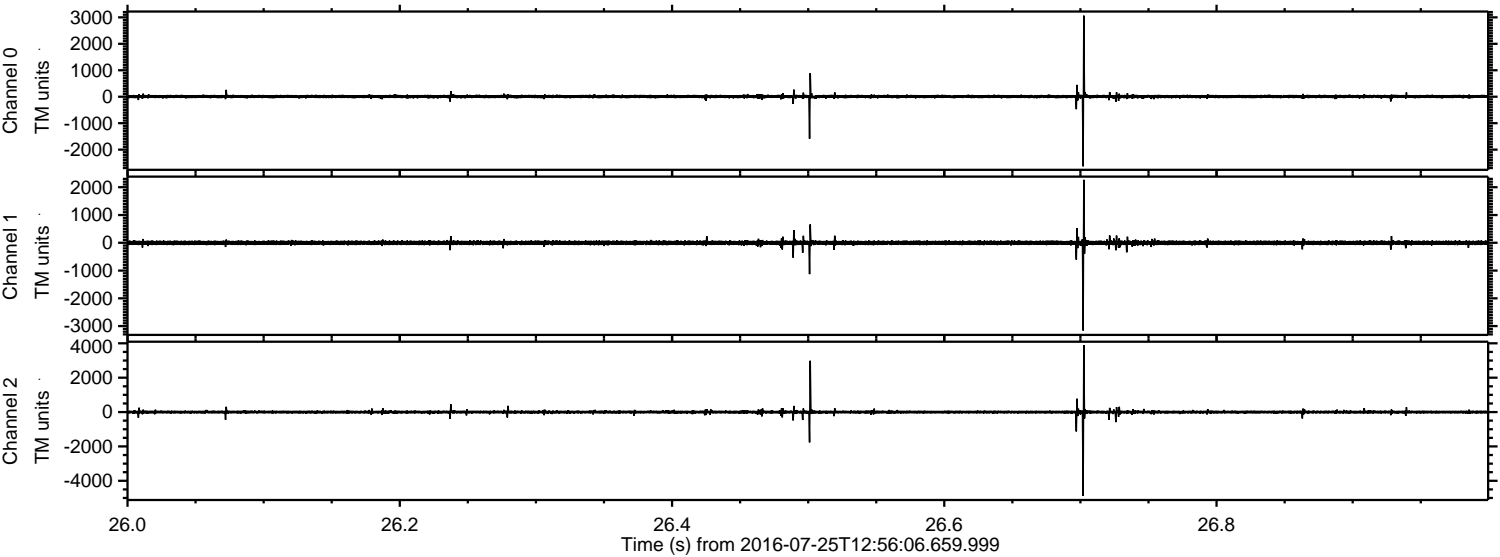


Processed Mon Jul 25 15:04:33 2016 by ELM ver.2012-10-06 from 001__elm20160725_125605__dat00.bin

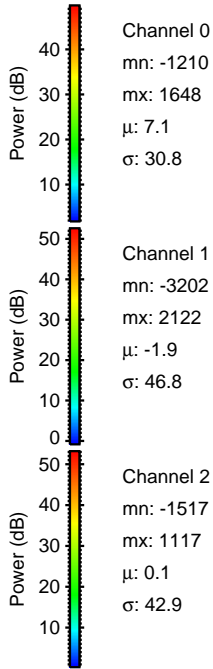
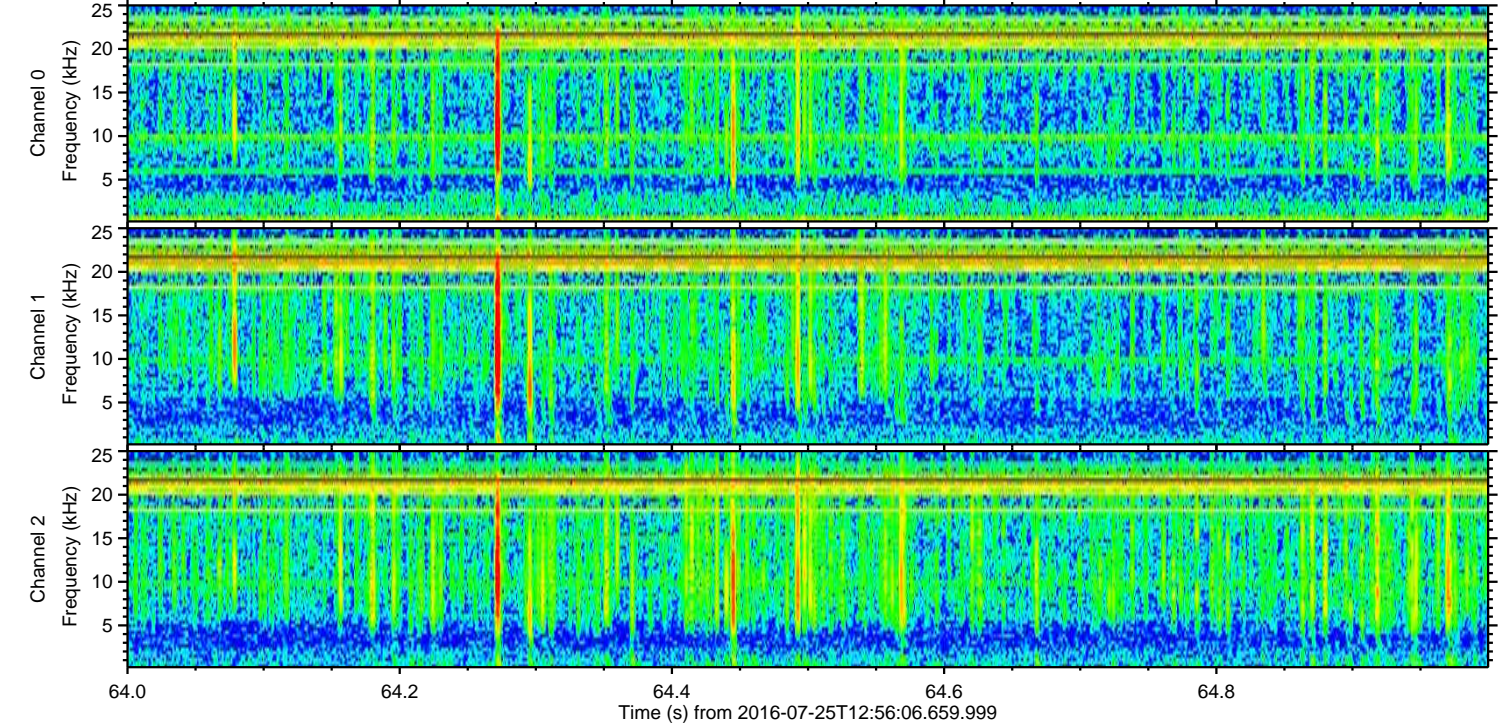
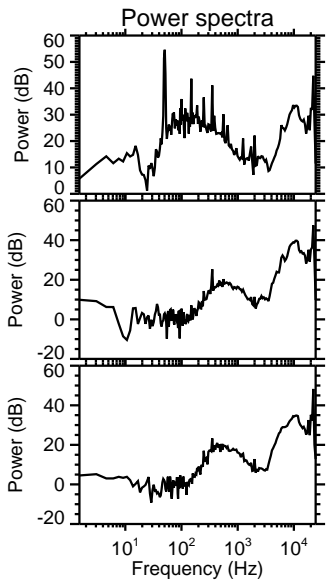
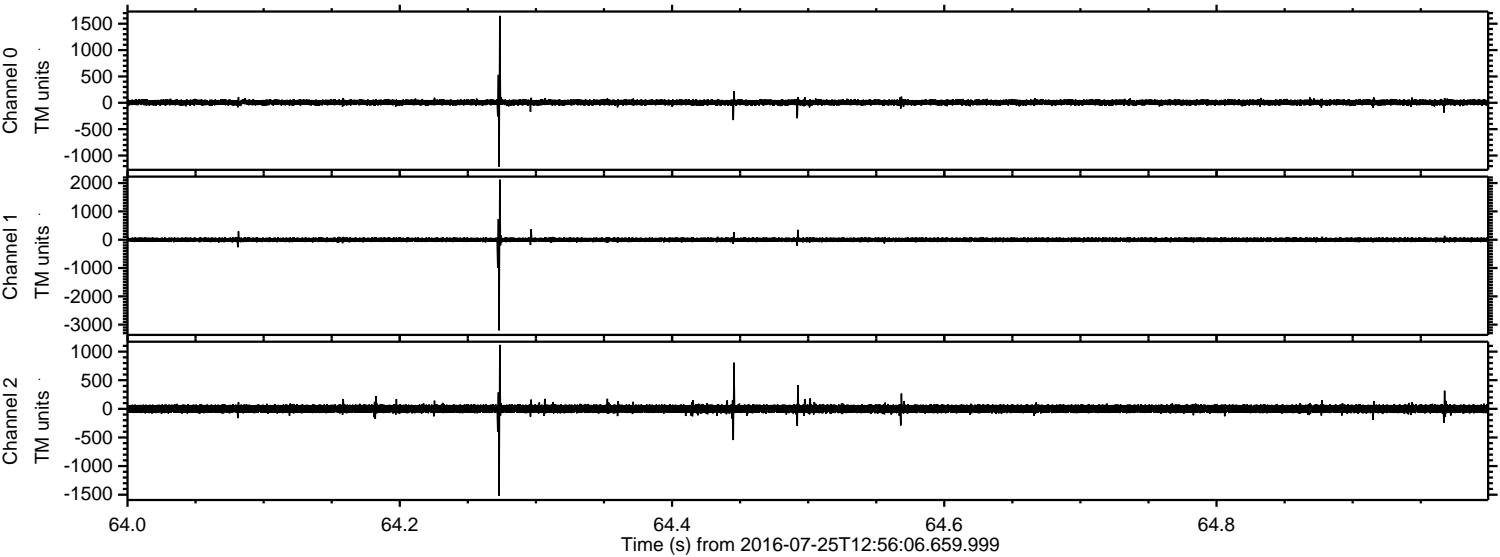


ELMAVAN 3D WAVEFORMS (Measured data sampled at 50 kHz) 51000 packets of 144 samples from 2016-07-25T12:56:06.659.999. Part 27/147

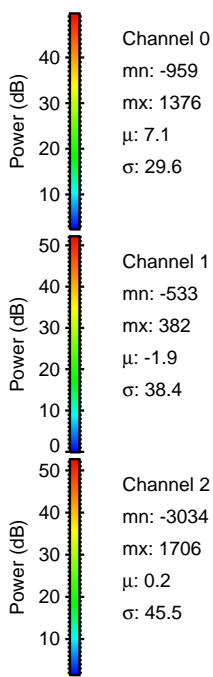
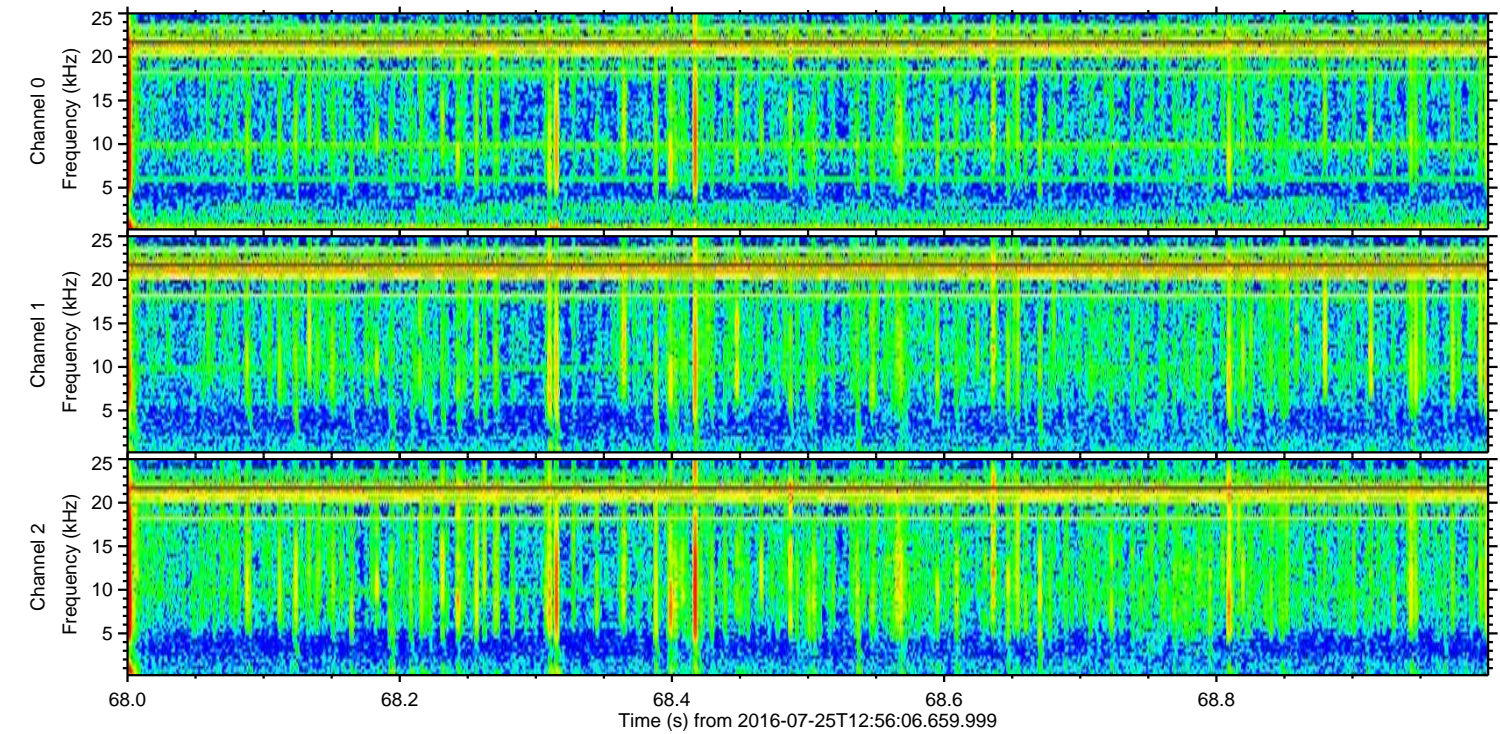
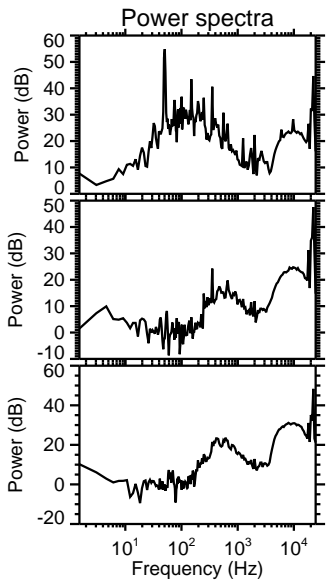
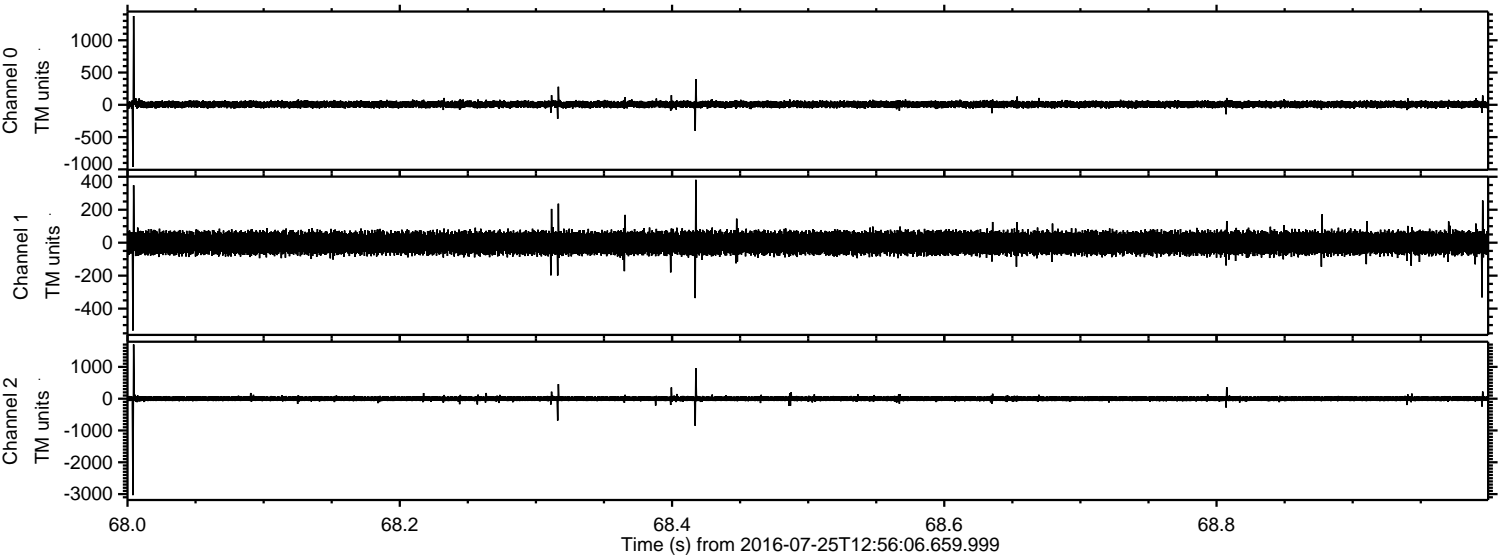
Processed Mon Jul 25 15:04:34 2016 by ELM ver.2012-10-06 from 001__elm20160725_125605__dat00.bin



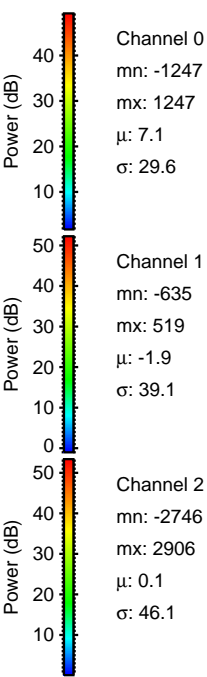
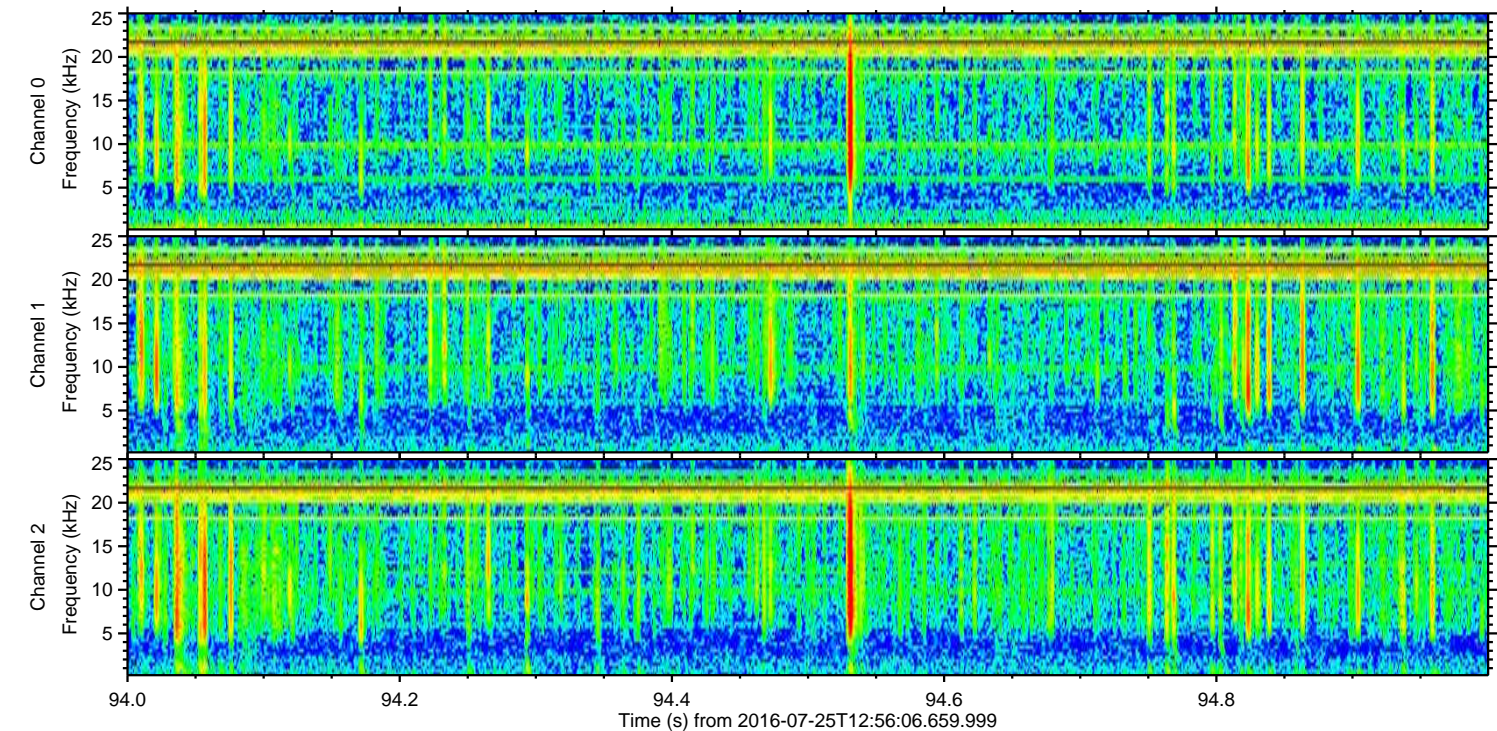
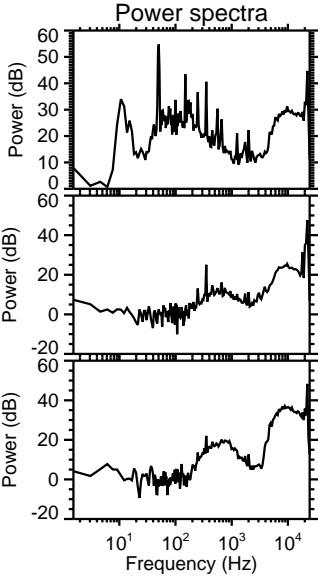
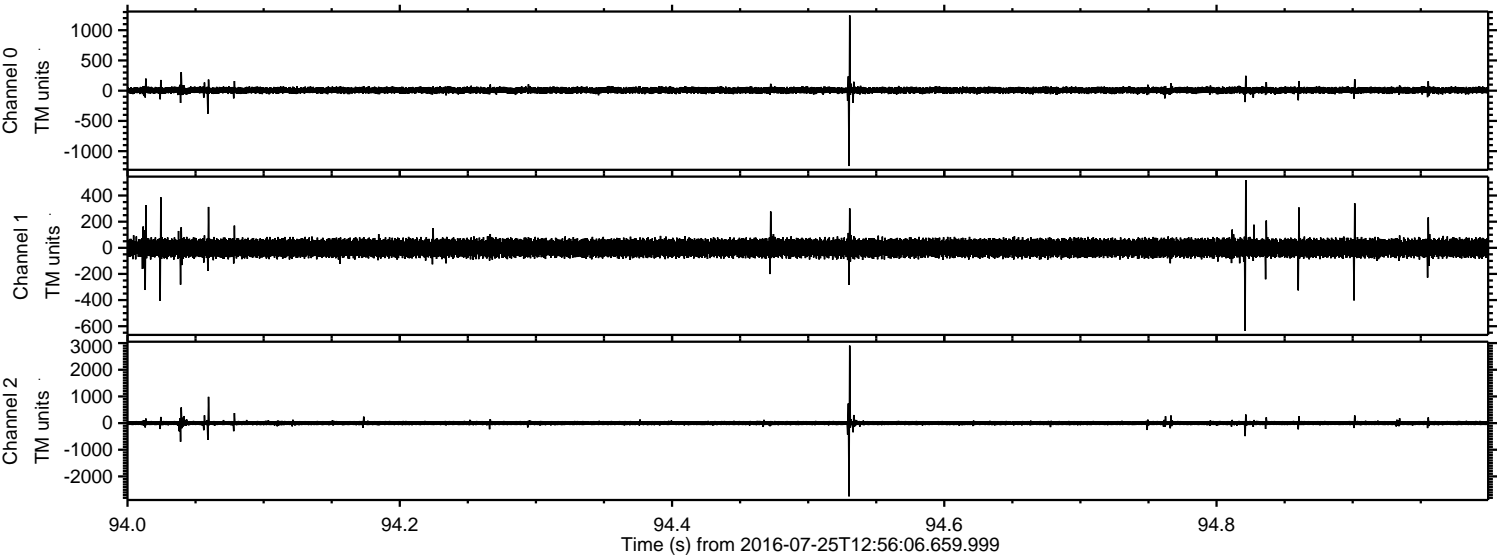
Processed Mon Jul 25 15:04:35 2016 by ELM ver.2012-10-06 from 001__elm20160725_125605__dat00.bin



Processed Mon Jul 25 15:04:37 2016 by ELM ver.2012-10-06 from 001__elm20160725_125605__dat00.bin

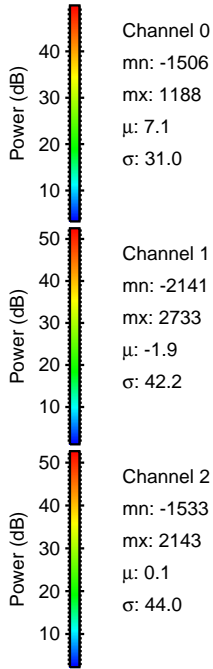
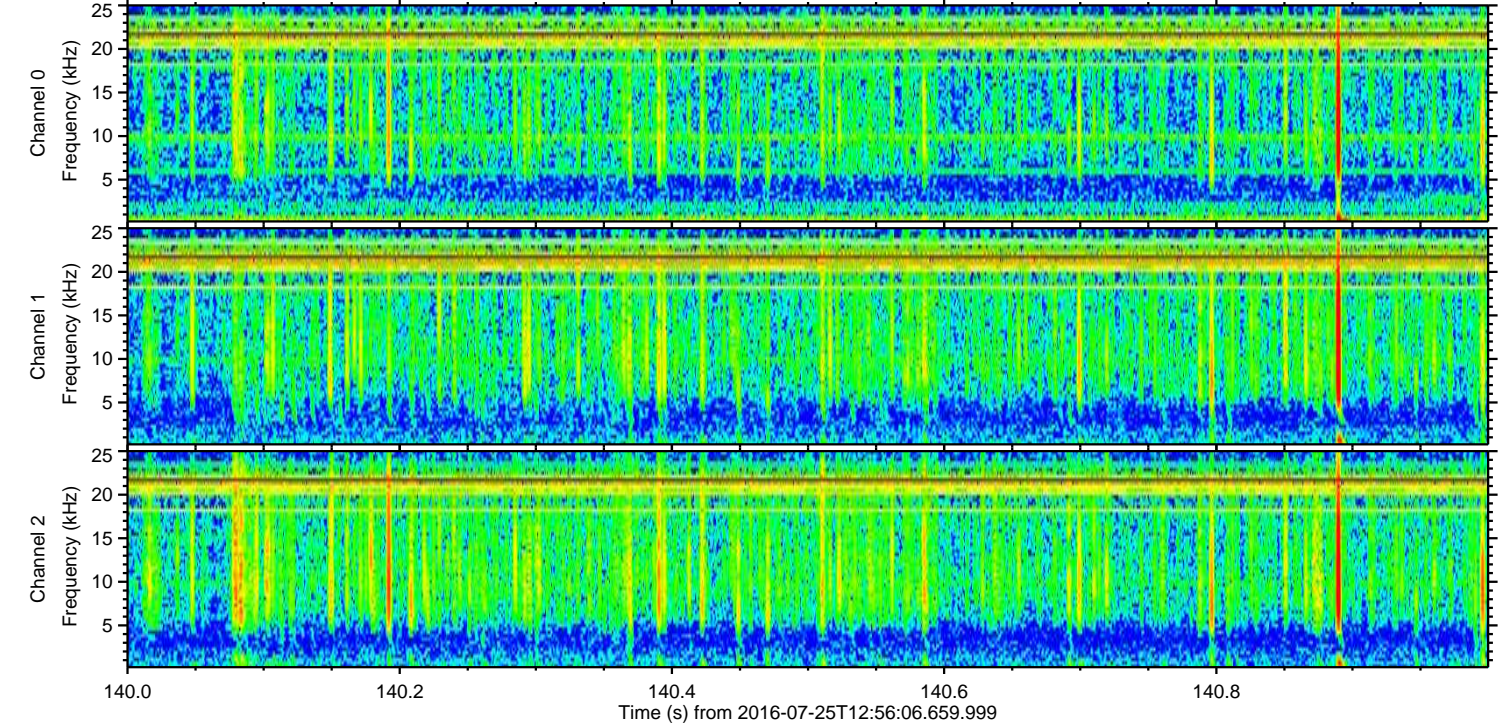
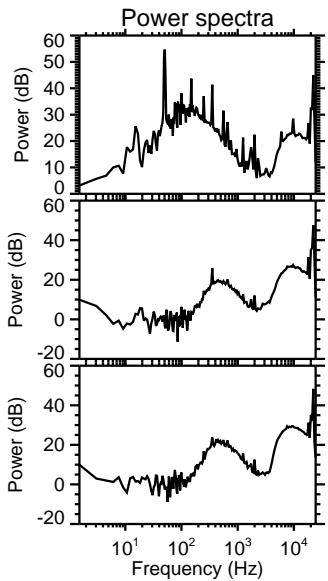
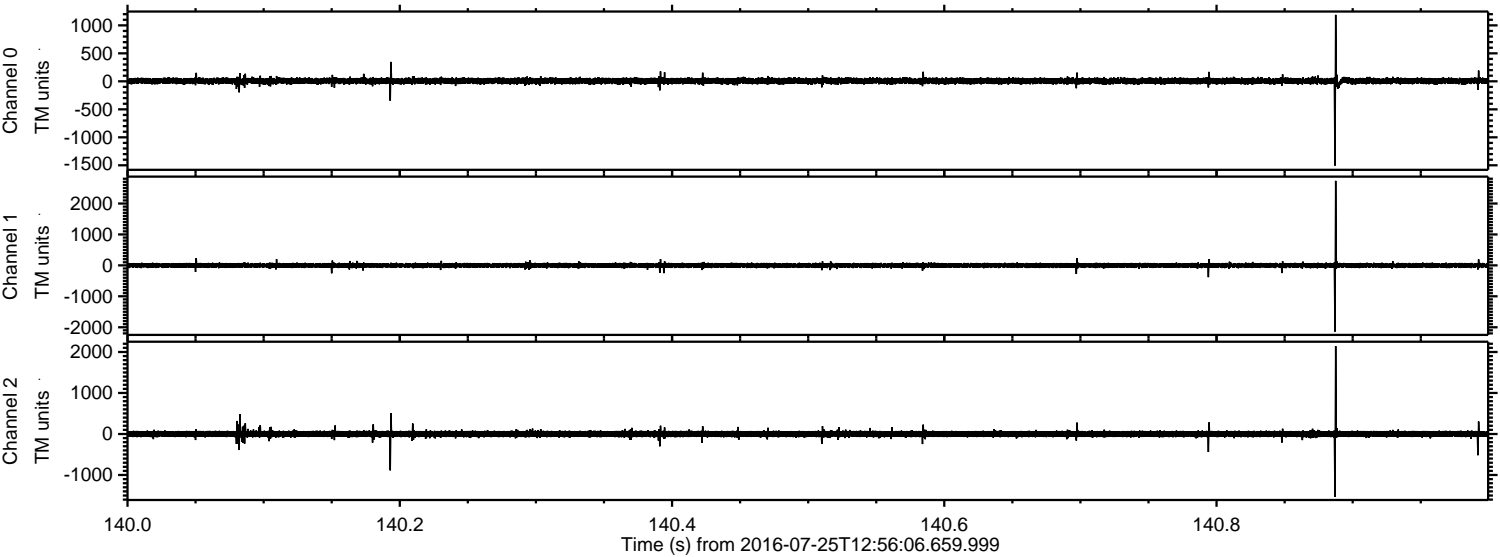


Processed Mon Jul 25 15:04:38 2016 by ELM ver.2012-10-06 from 001__elm20160725_125605__dat00.bin

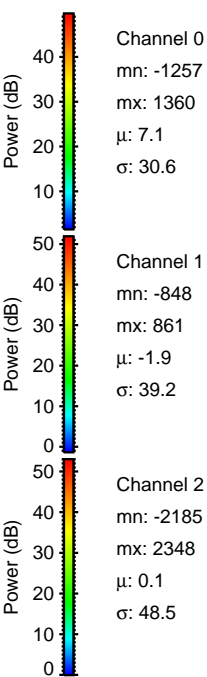
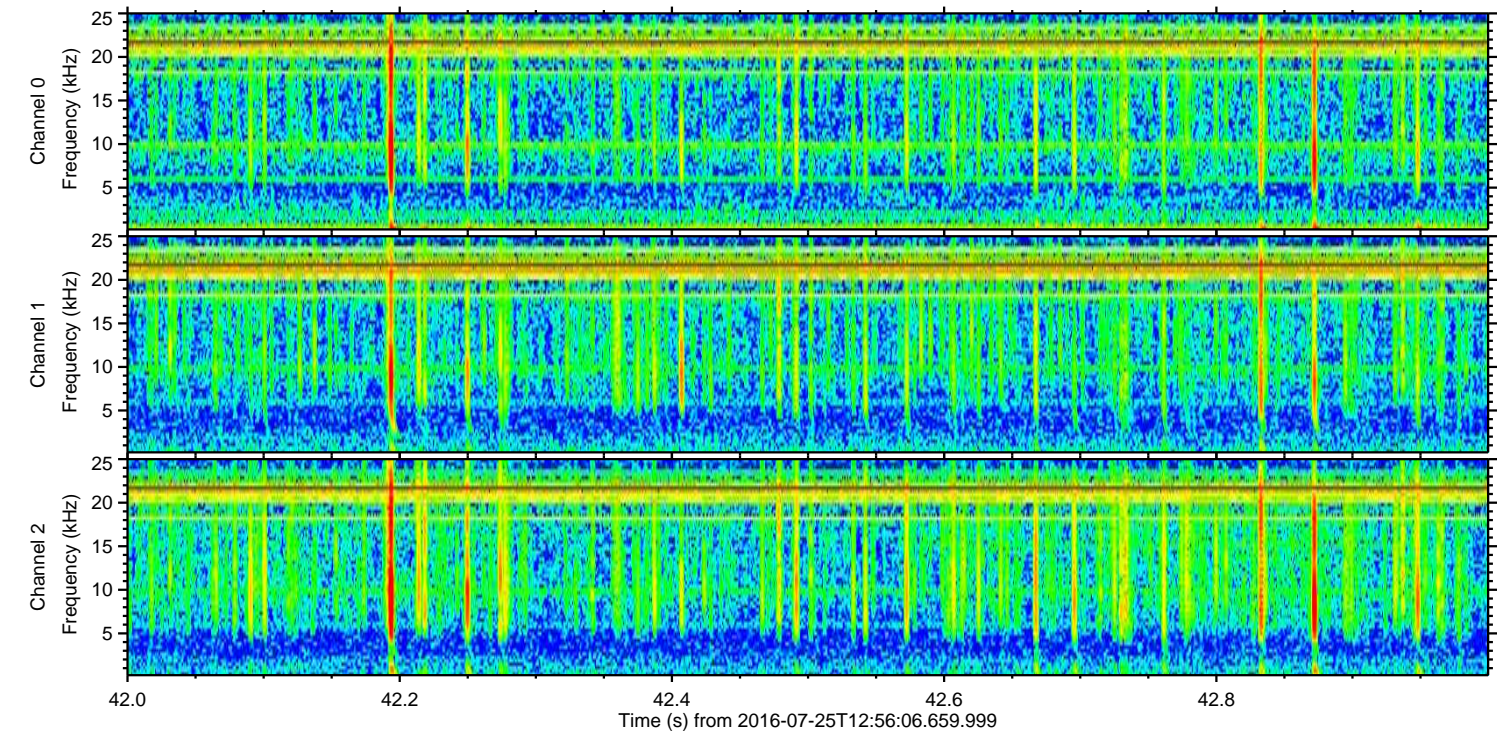
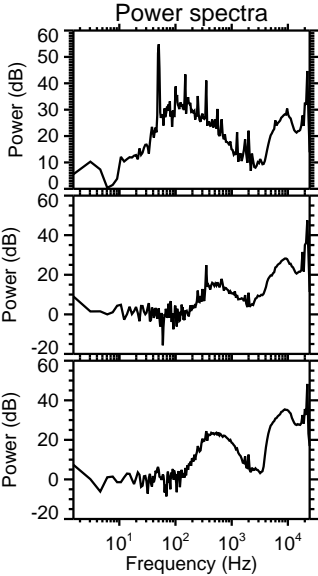
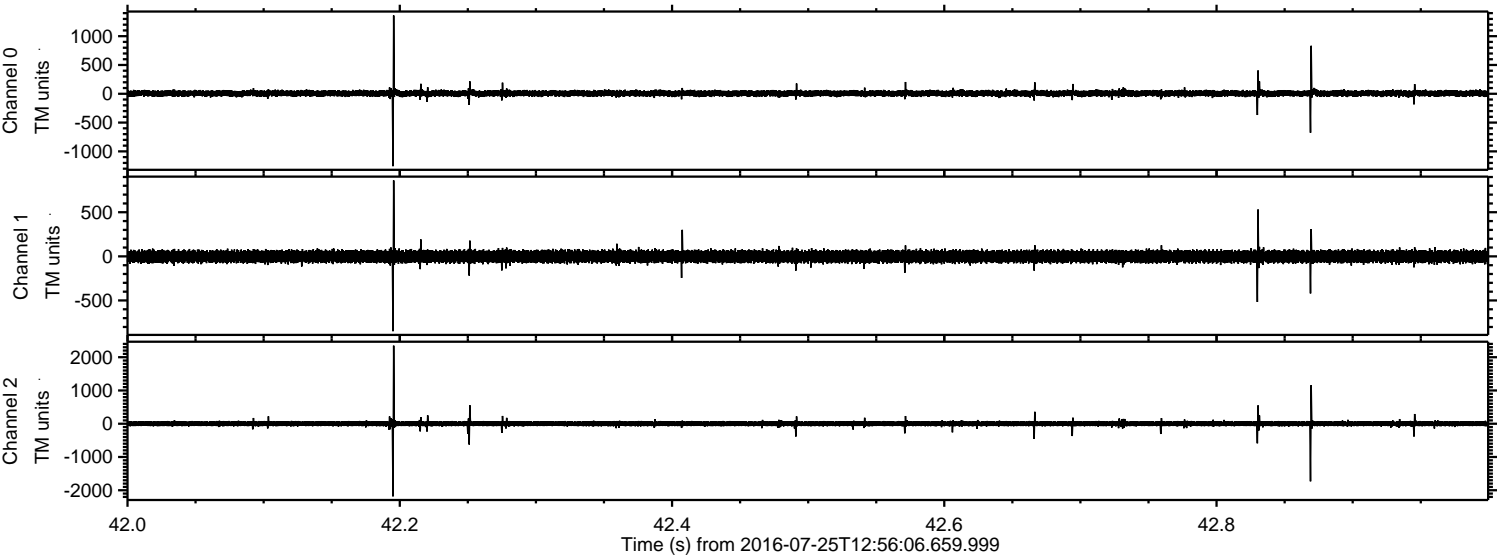


ELMAVAN 3D WAVEFORMS (Measured data sampled at 50 kHz) 51000 packets of 144 samples from 2016-07-25T12:56:06.659.999. Part 141/147

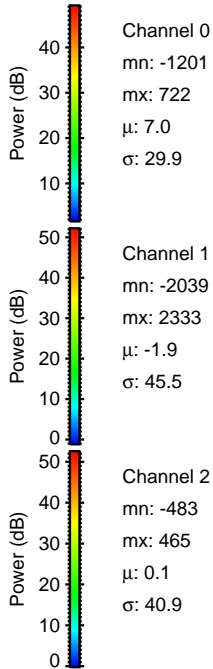
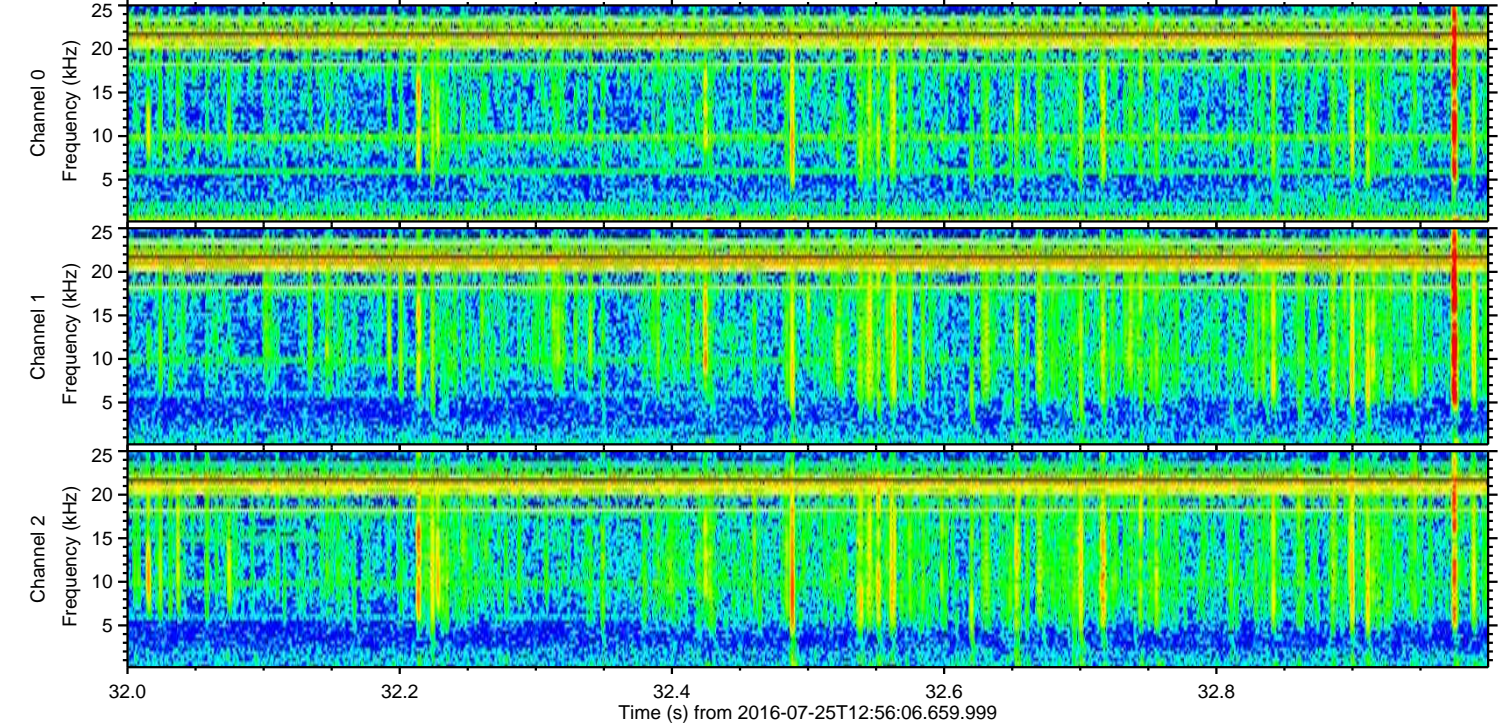
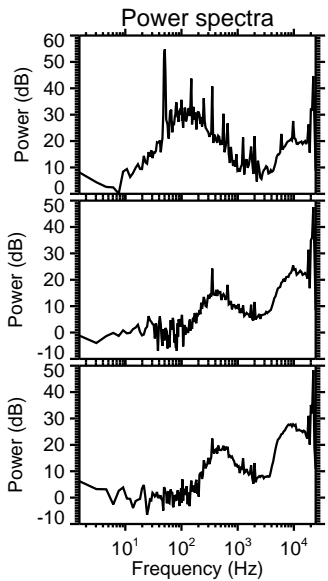
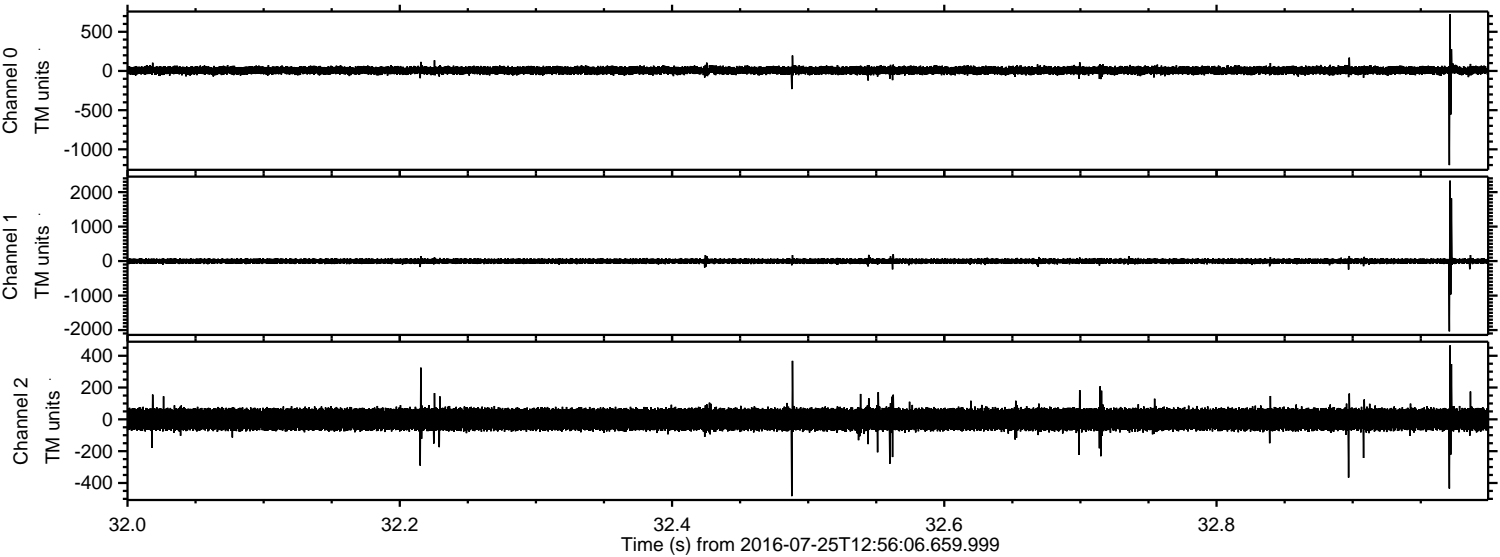
Processed Mon Jul 25 15:04:39 2016 by ELM ver.2012-10-06 from 001__elm20160725_125605__dat00.bin



Processed Mon Jul 25 15:04:40 2016 by ELM ver.2012-10-06 from 001__elm20160725_125605__dat00.bin



Processed Mon Jul 25 15:04:40 2016 by ELM ver.2012-10-06 from 001__elm20160725_125605__dat00.bin

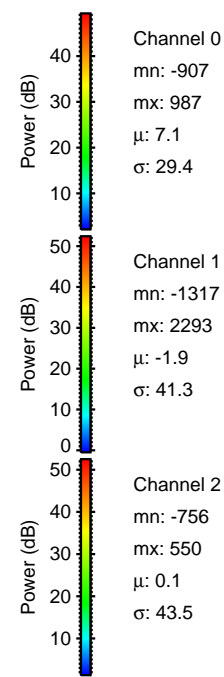
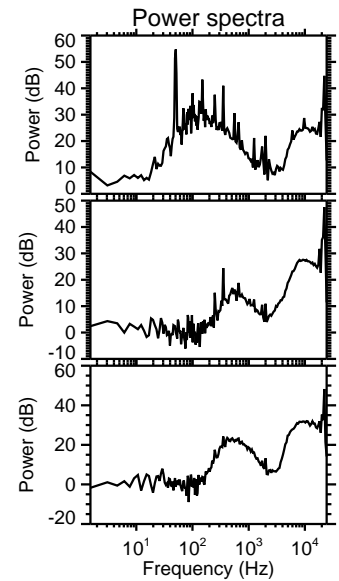
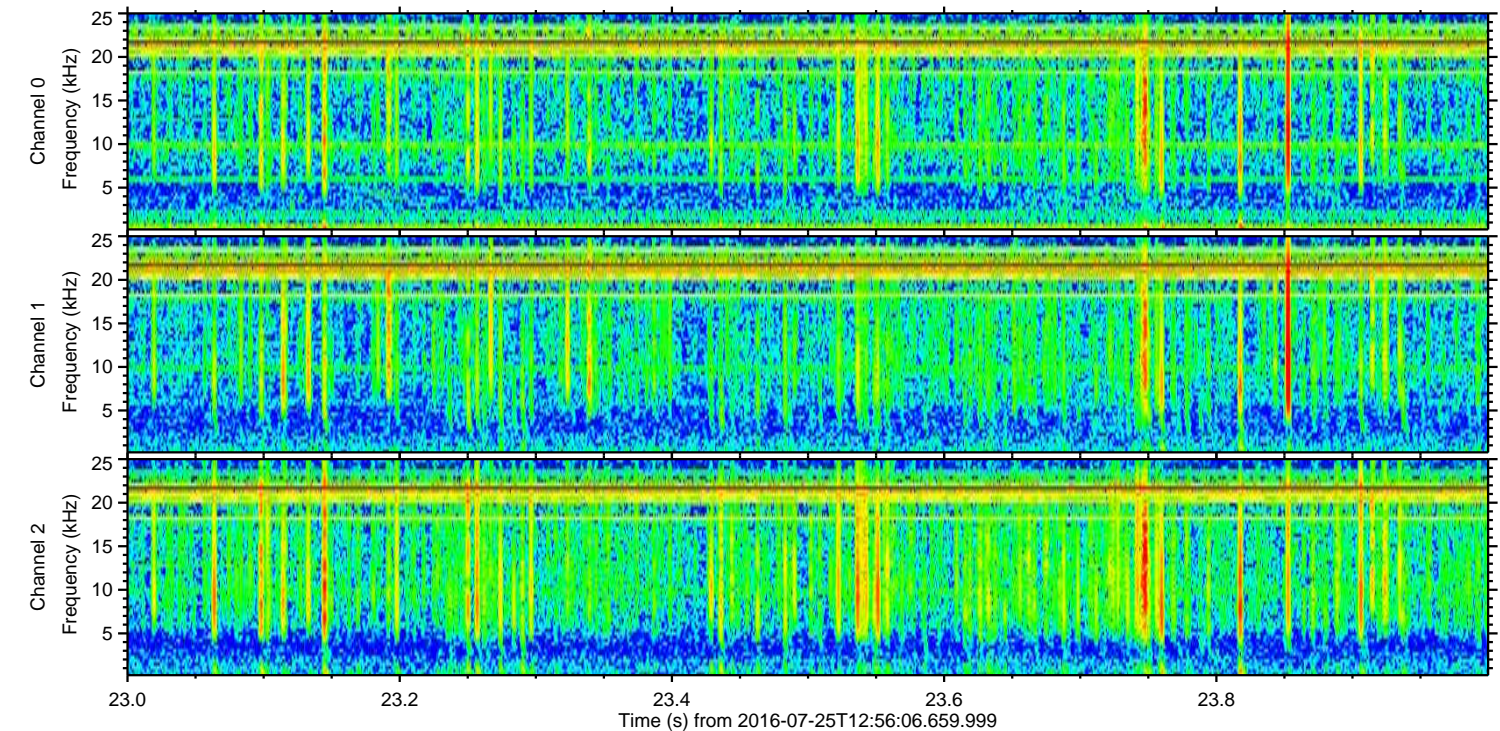
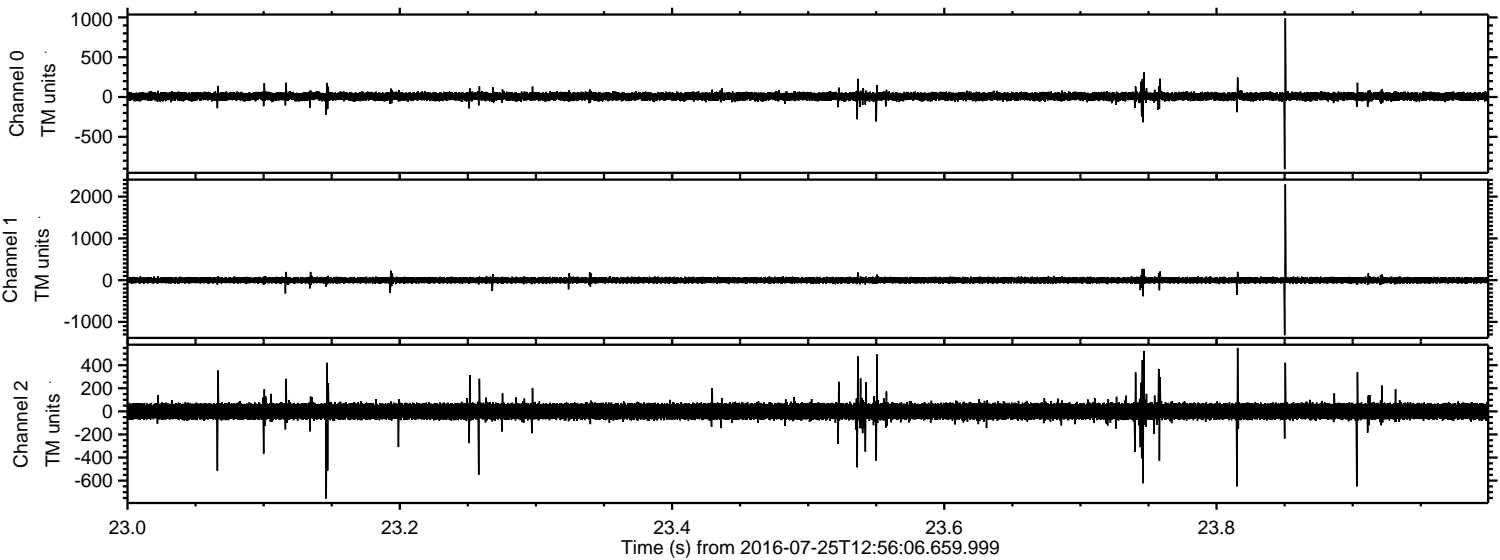


Channel 0
mn: -1201
mx: 722
 μ : 7.0
 σ : 29.9

Channel 1
mn: -2039
mx: 2333
 μ : -1.9
 σ : 45.5

Channel 2
mn: -483
mx: 465
 μ : 0.1
 σ : 40.9

Processed Mon Jul 25 15:04:42 2016 by ELM ver.2012-10-06 from 001__elm20160725_125605__dat00.bin



Channel 0
mn: -907
mx: 987
 μ : 7.1
 σ : 29.4

Channel 1
mn: -1317
mx: 2293
 μ : -1.9
 σ : 41.3

Channel 2
mn: -756
mx: 550
 μ : 0.1
 σ : 43.5

Processed Mon Jul 25 15:04:43 2016 by ELM ver.2012-10-06 from 001__elm20160725_125605__dat00.bin

