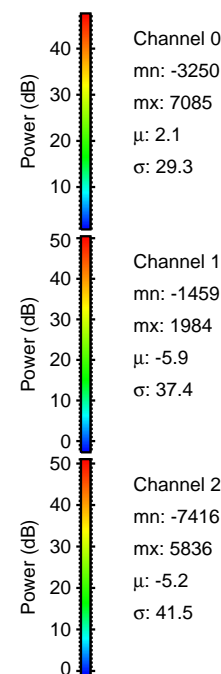
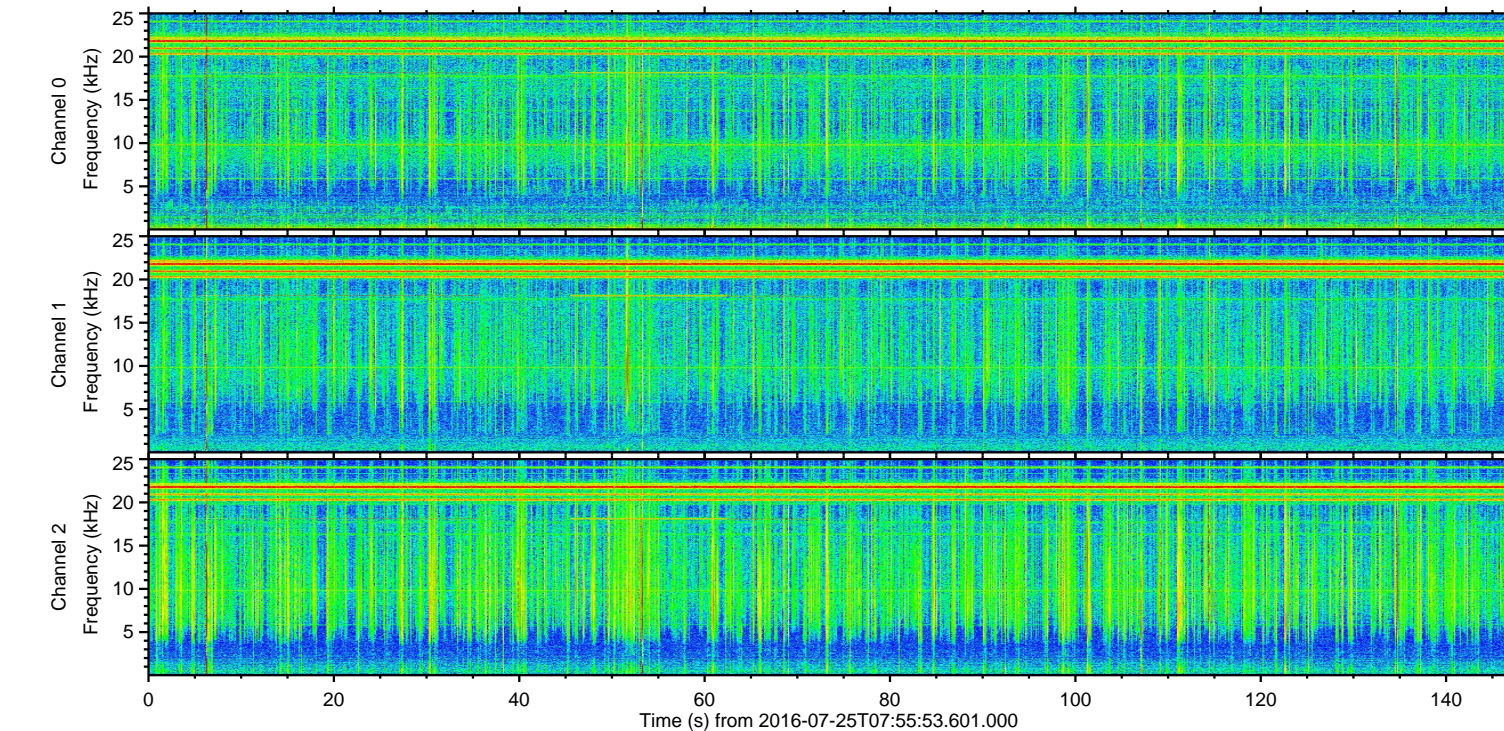
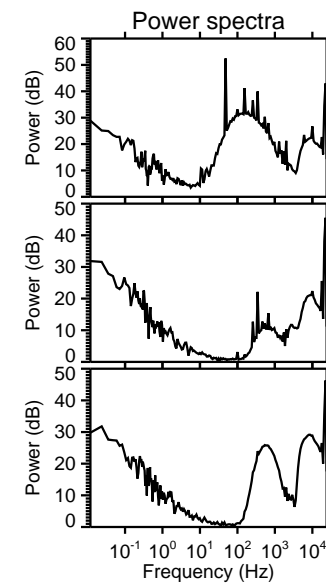
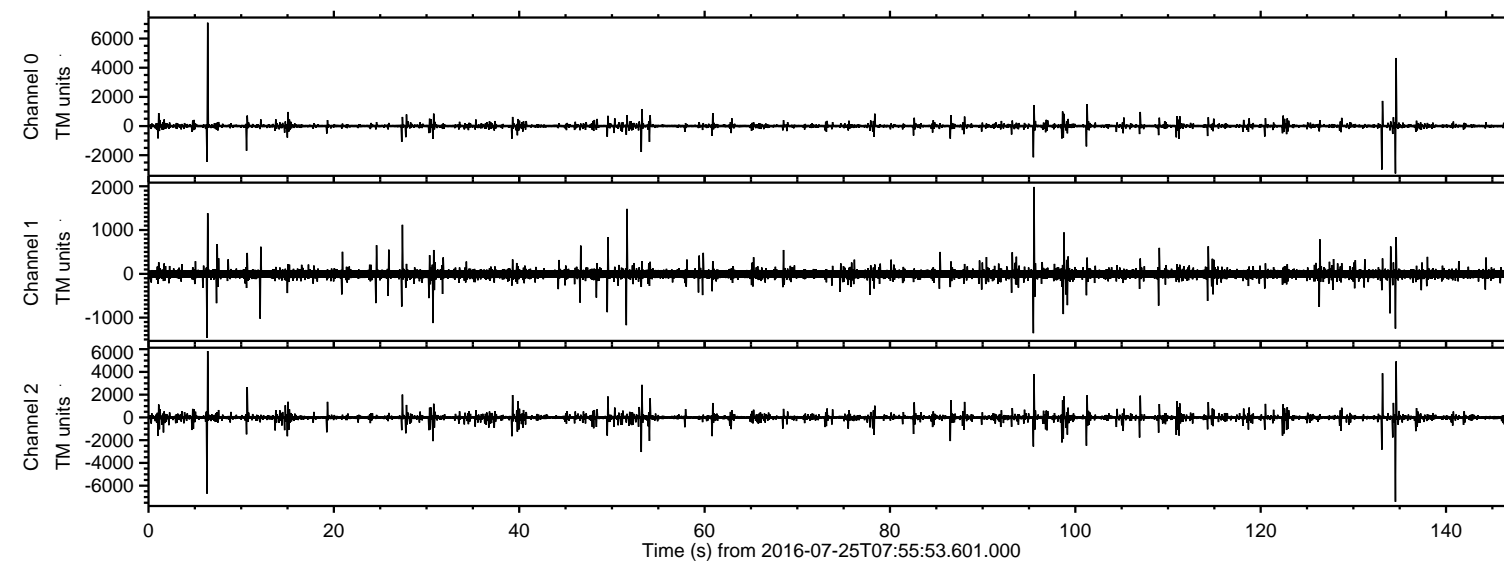


# ELMAVAN 3D WAVEFORMS (Measured data sampled at 50 kHz) 51000 packets of 144 samples from 2016-07-25T07:55:53.601.000.

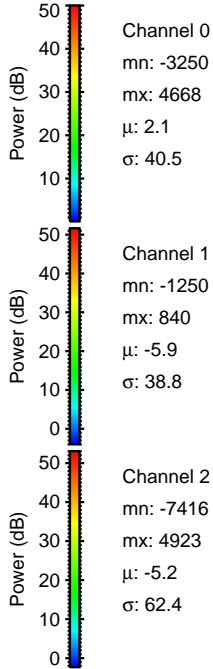
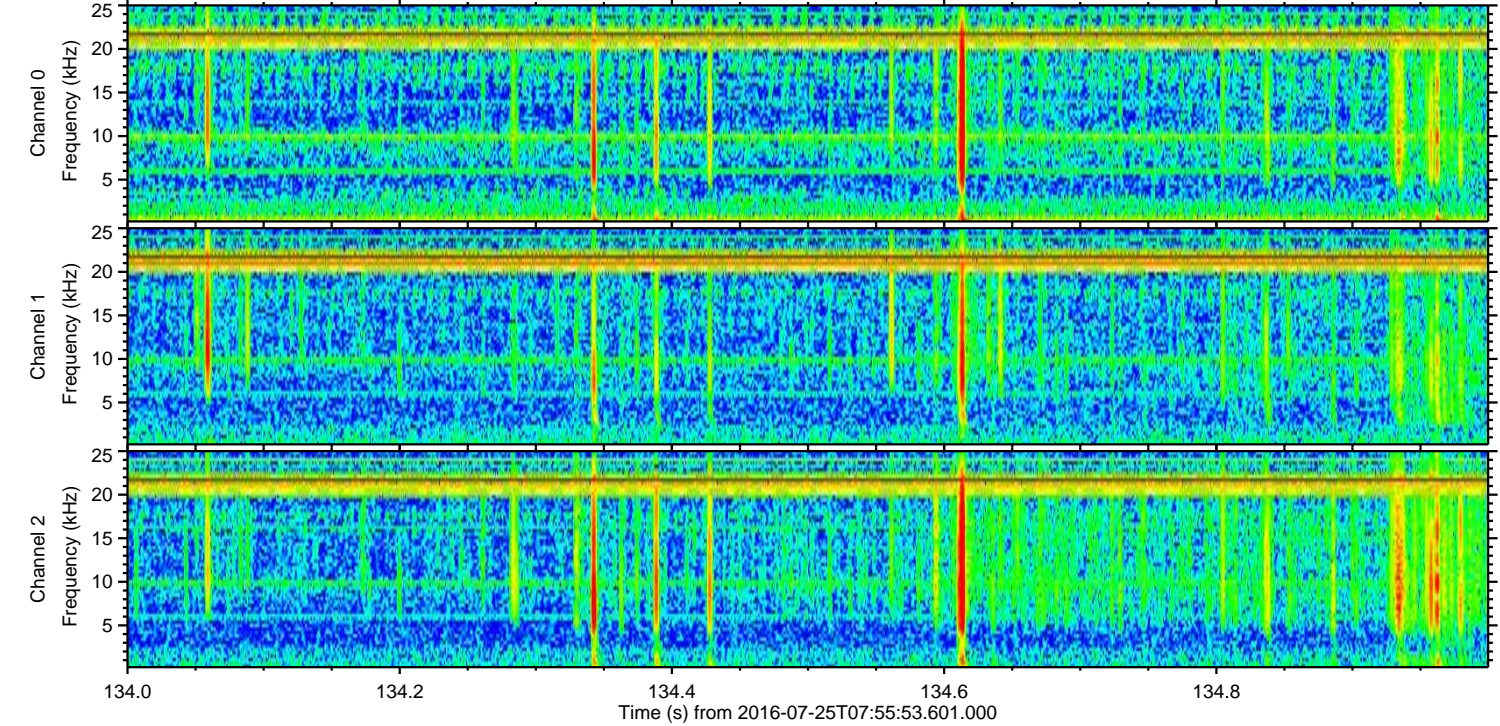
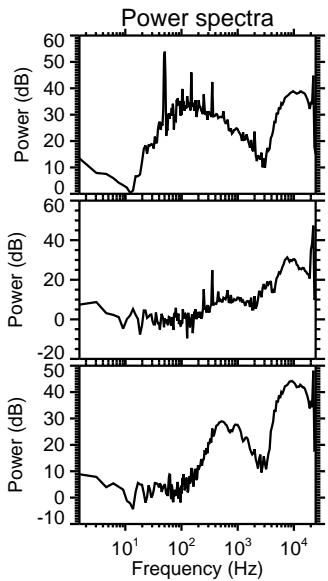
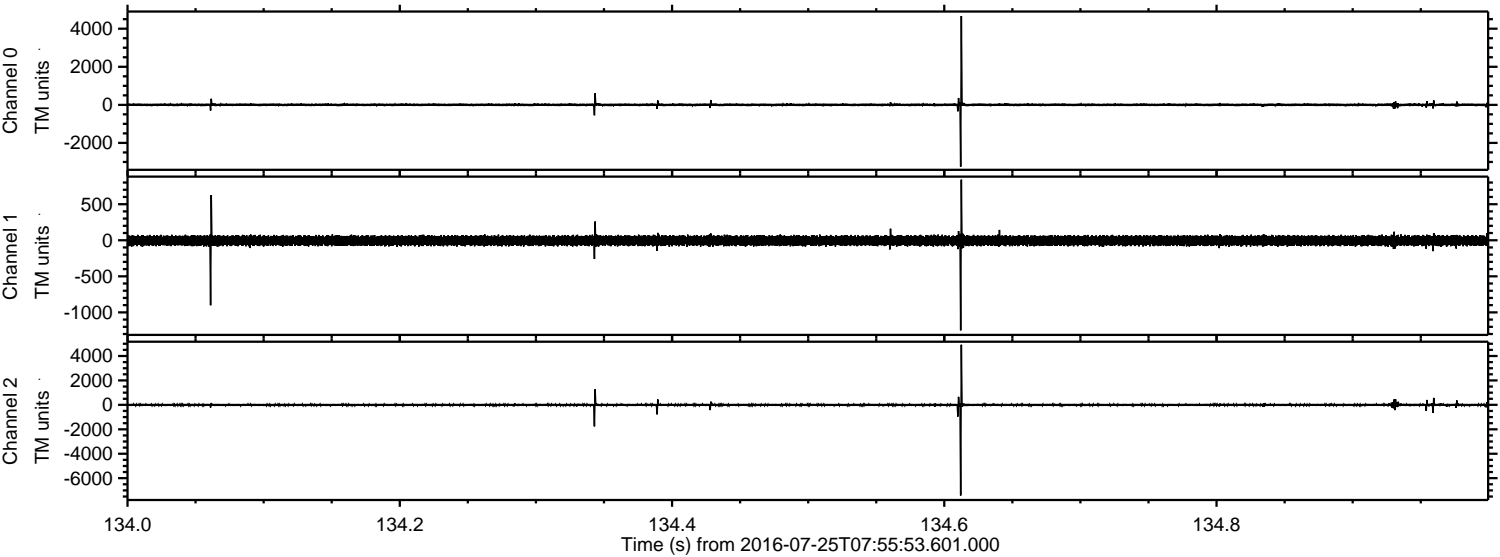
Processed Mon Jul 25 10:03:35 2016 by ELM ver.2012-10-06 from 001\_\_elm20160725\_075552\_\_dat00.bin





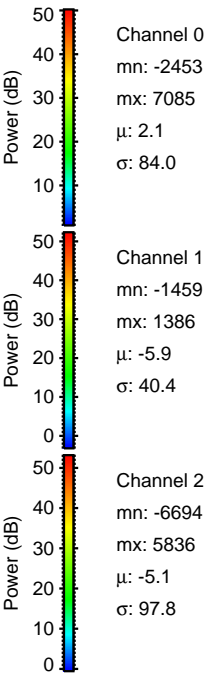
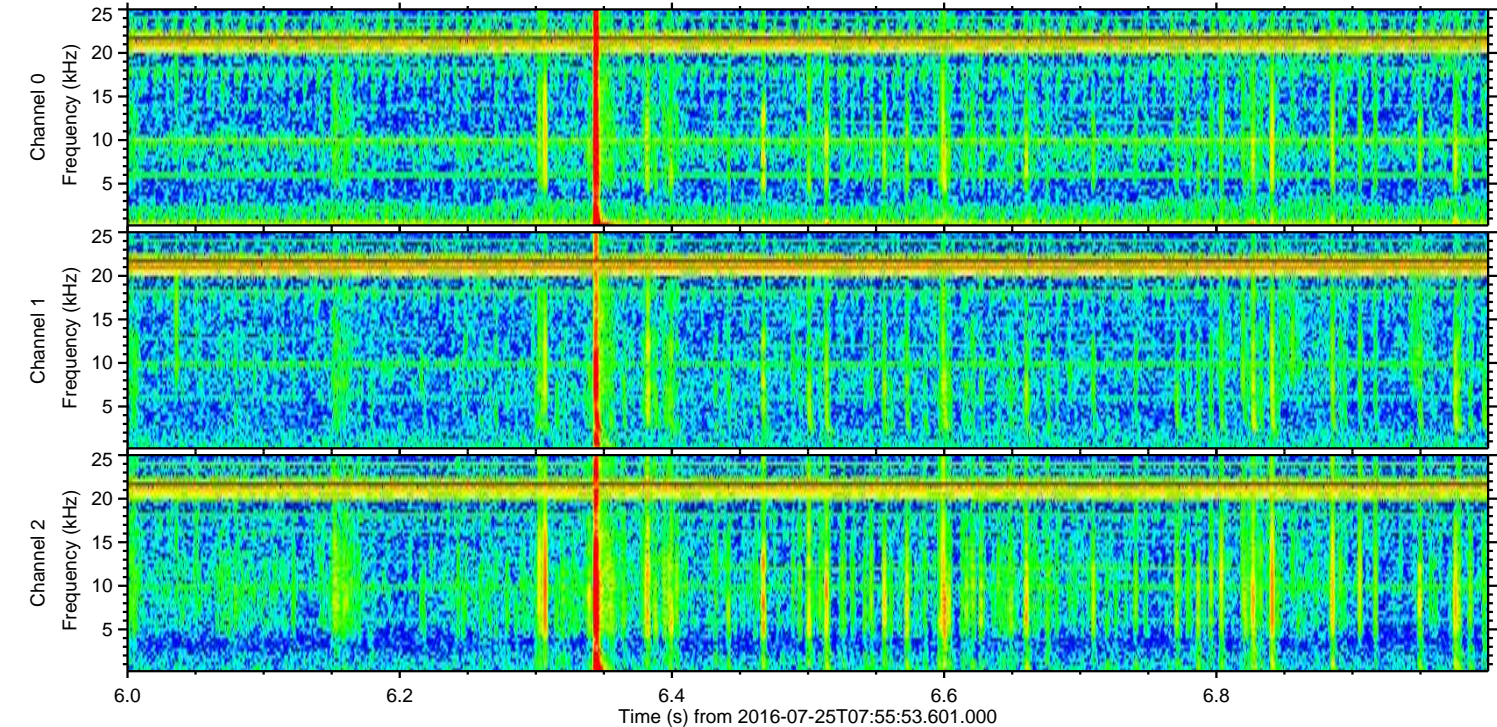
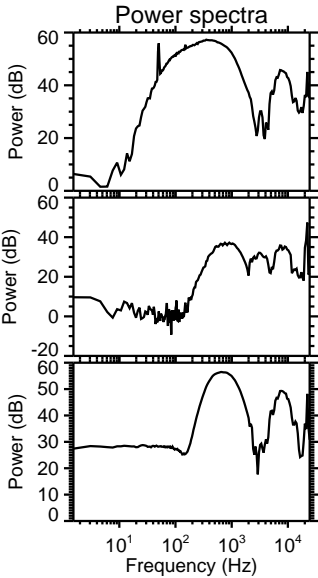
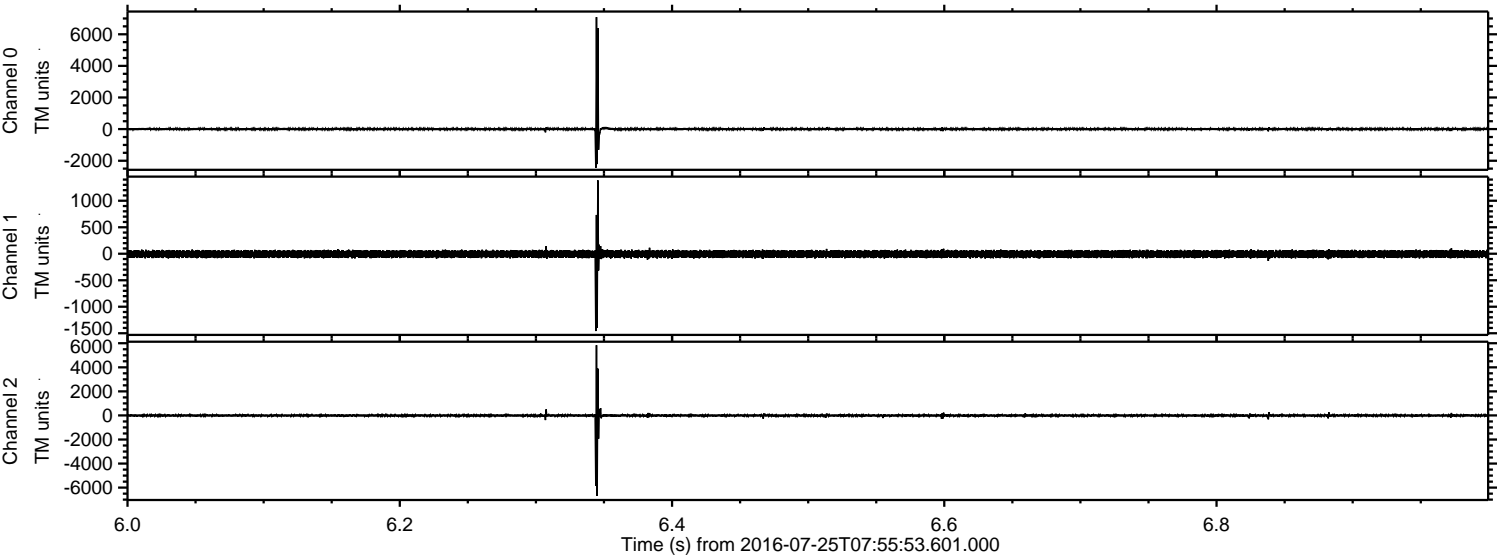
ELMAVAN 3D WAVEFORMS (Measured data sampled at 50 kHz) 51000 packets of 144 samples from 2016-07-25T07:55:53.601.000. Part 135/147

Processed Mon Jul 25 10:03:51 2016 by ELM ver.2012-10-06 from 001\_\_elm20160725\_075552\_\_dat00.bin





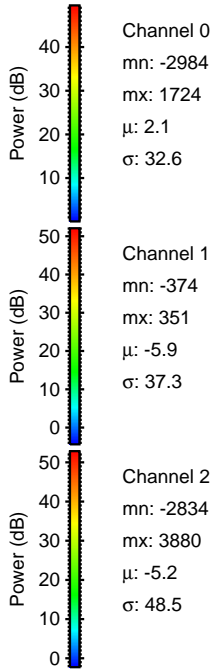
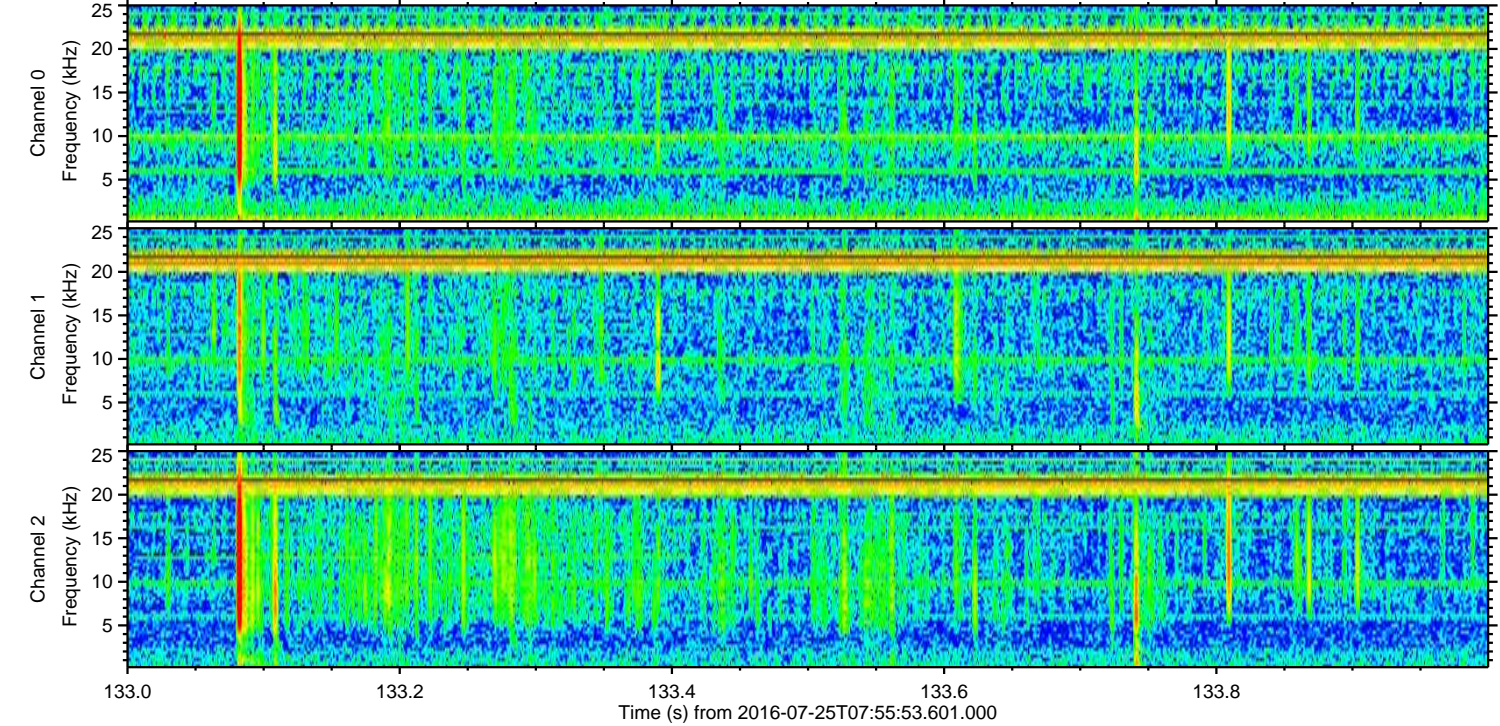
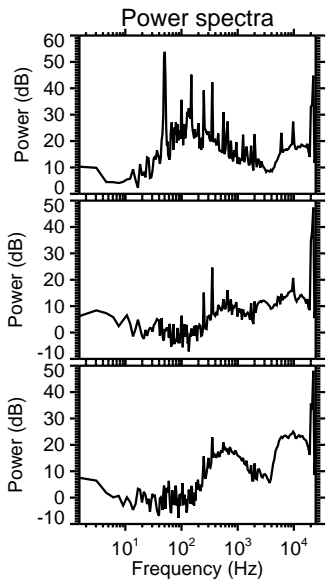
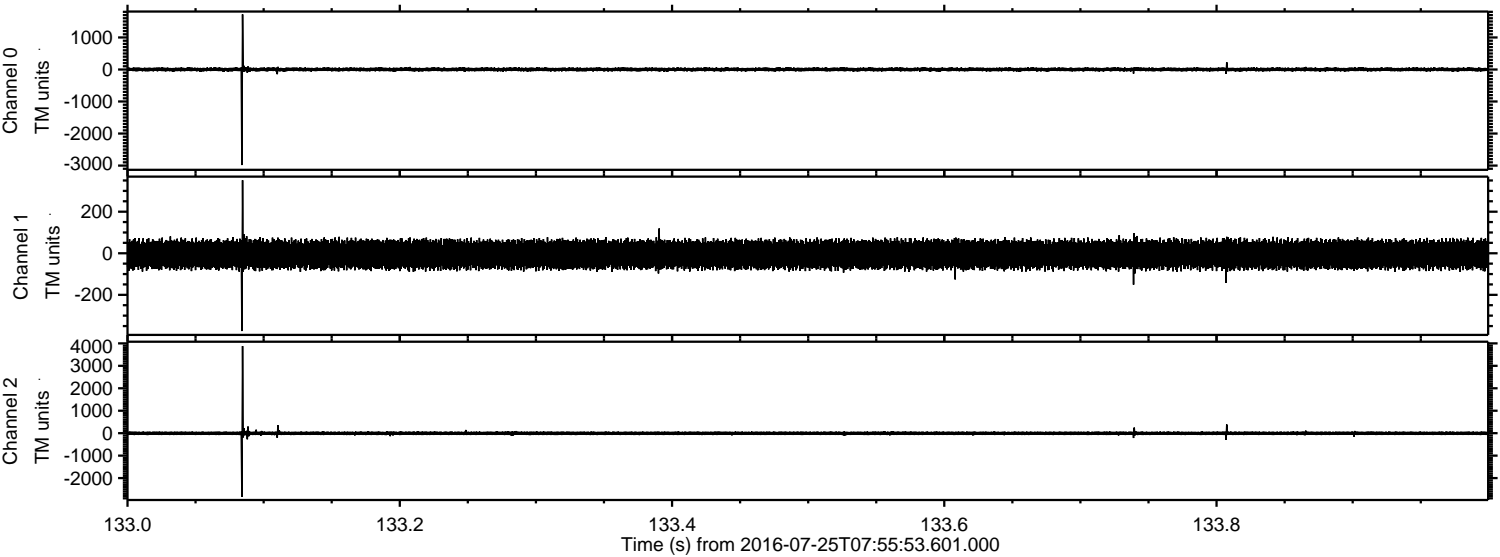
Processed Mon Jul 25 10:03:52 2016 by ELM ver.2012-10-06 from 001\_\_elm20160725\_075552\_\_dat00.bin





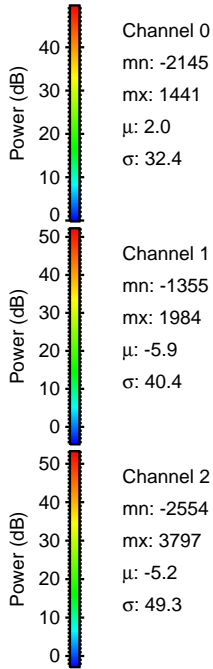
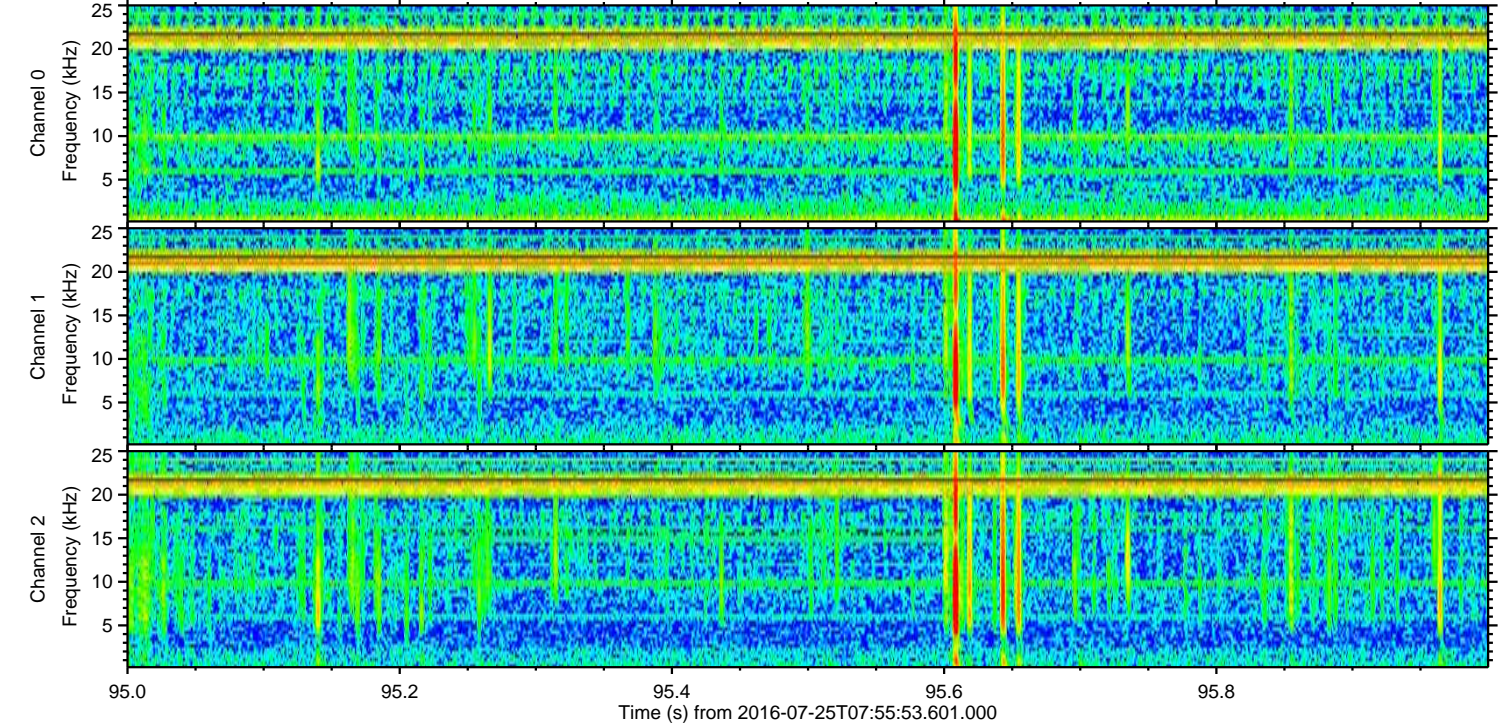
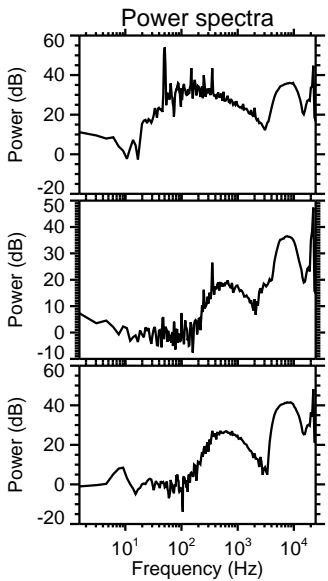
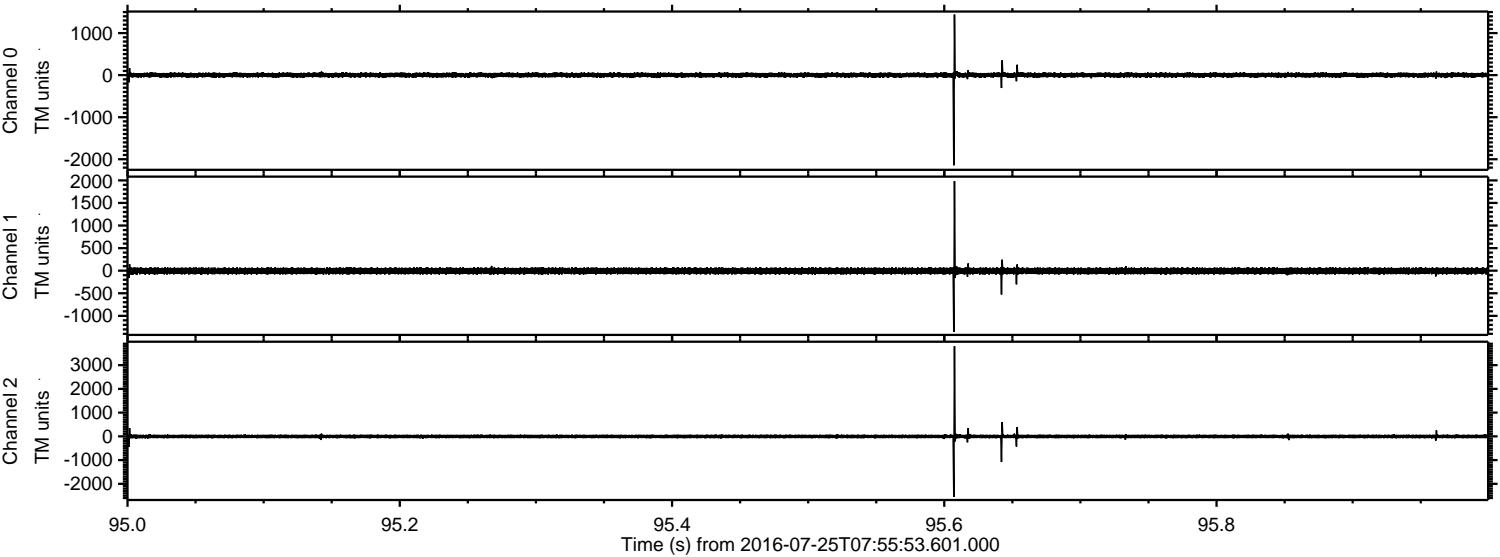
ELMAVAN 3D WAVEFORMS (Measured data sampled at 50 kHz) 51000 packets of 144 samples from 2016-07-25T07:55:53.601.000. Part 134/147

Processed Mon Jul 25 10:03:53 2016 by ELM ver.2012-10-06 from 001\_\_elm20160725\_075552\_\_dat00.bin



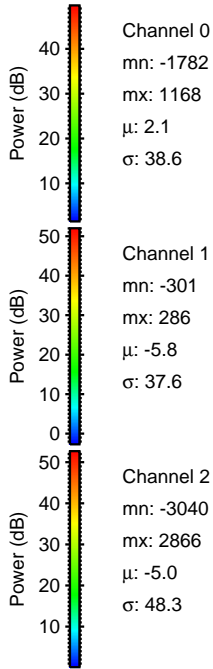
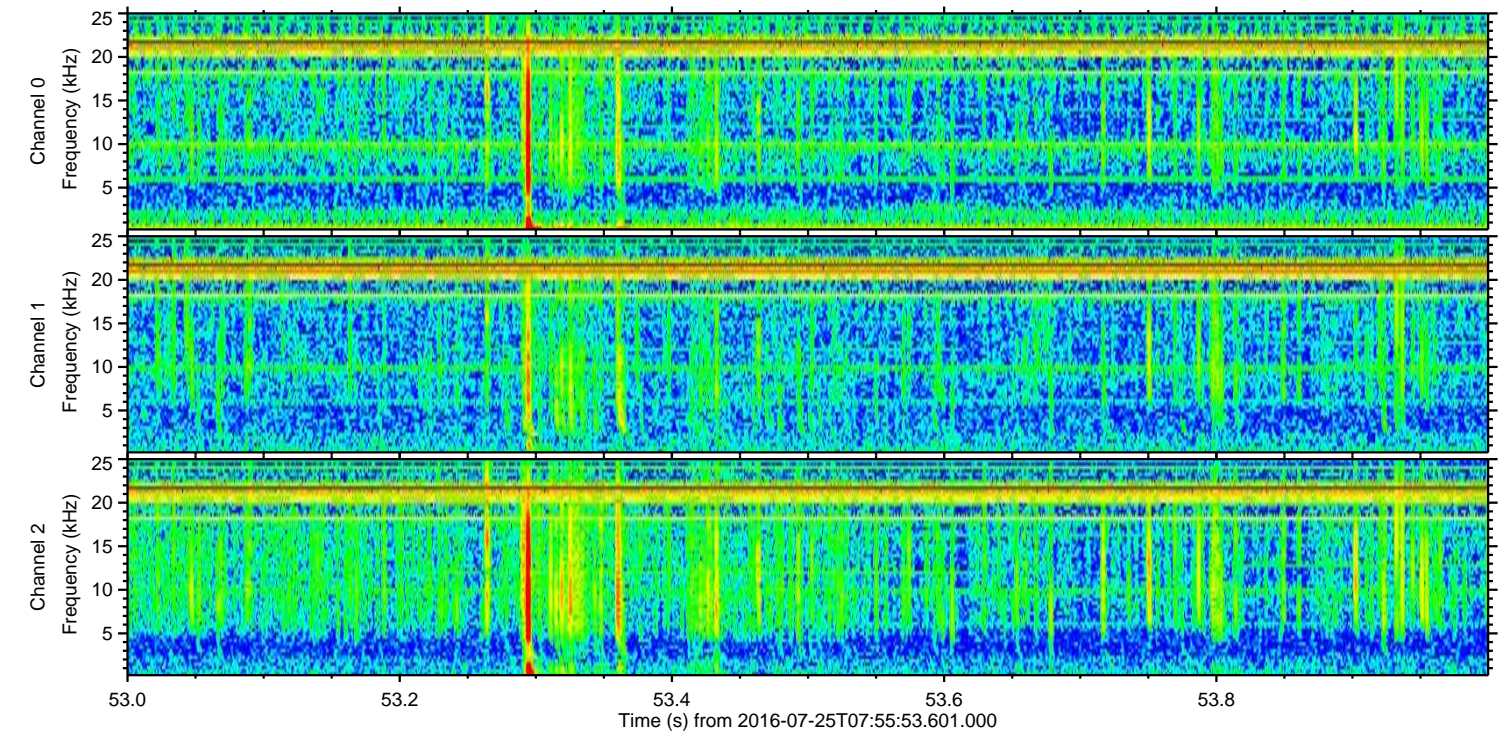
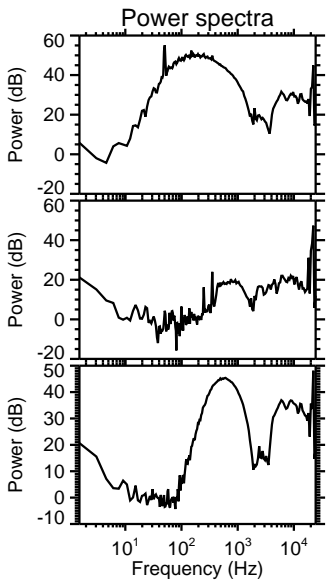
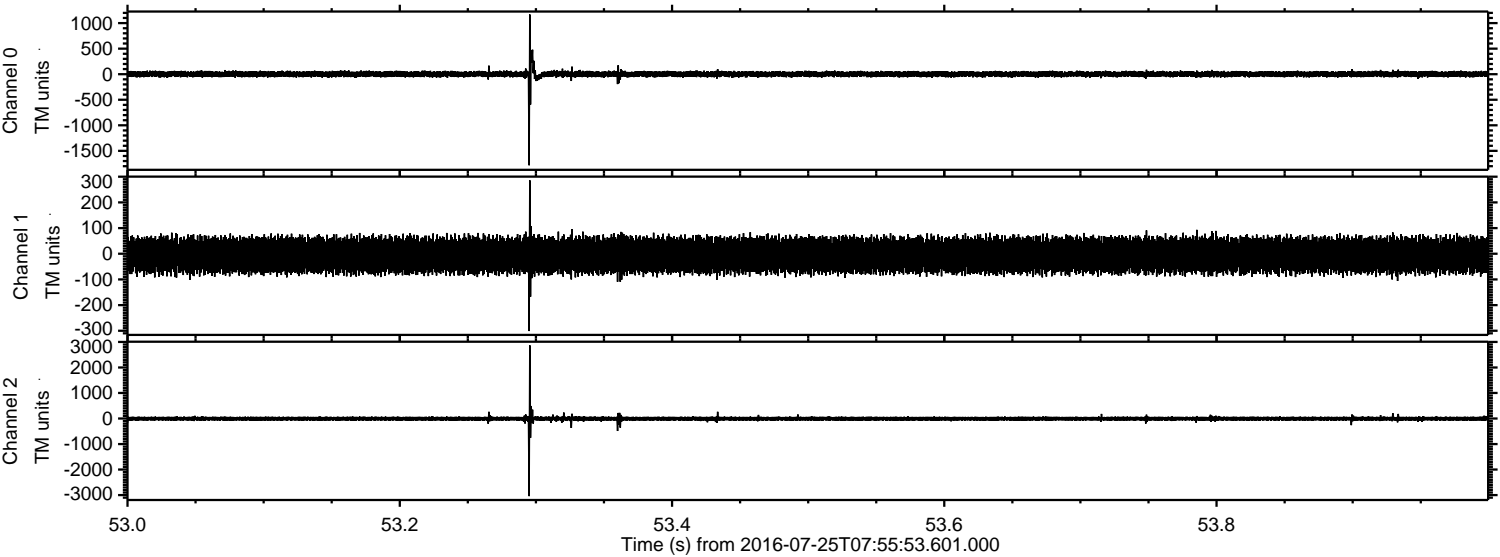


Processed Mon Jul 25 10:03:54 2016 by ELM ver.2012-10-06 from 001\_\_elm20160725\_075552\_\_dat00.bin



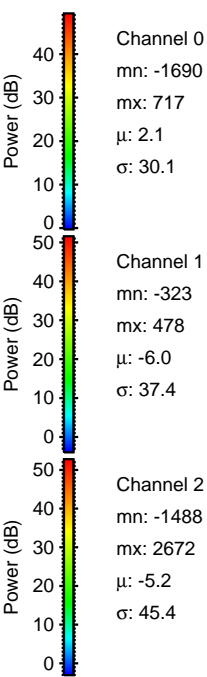
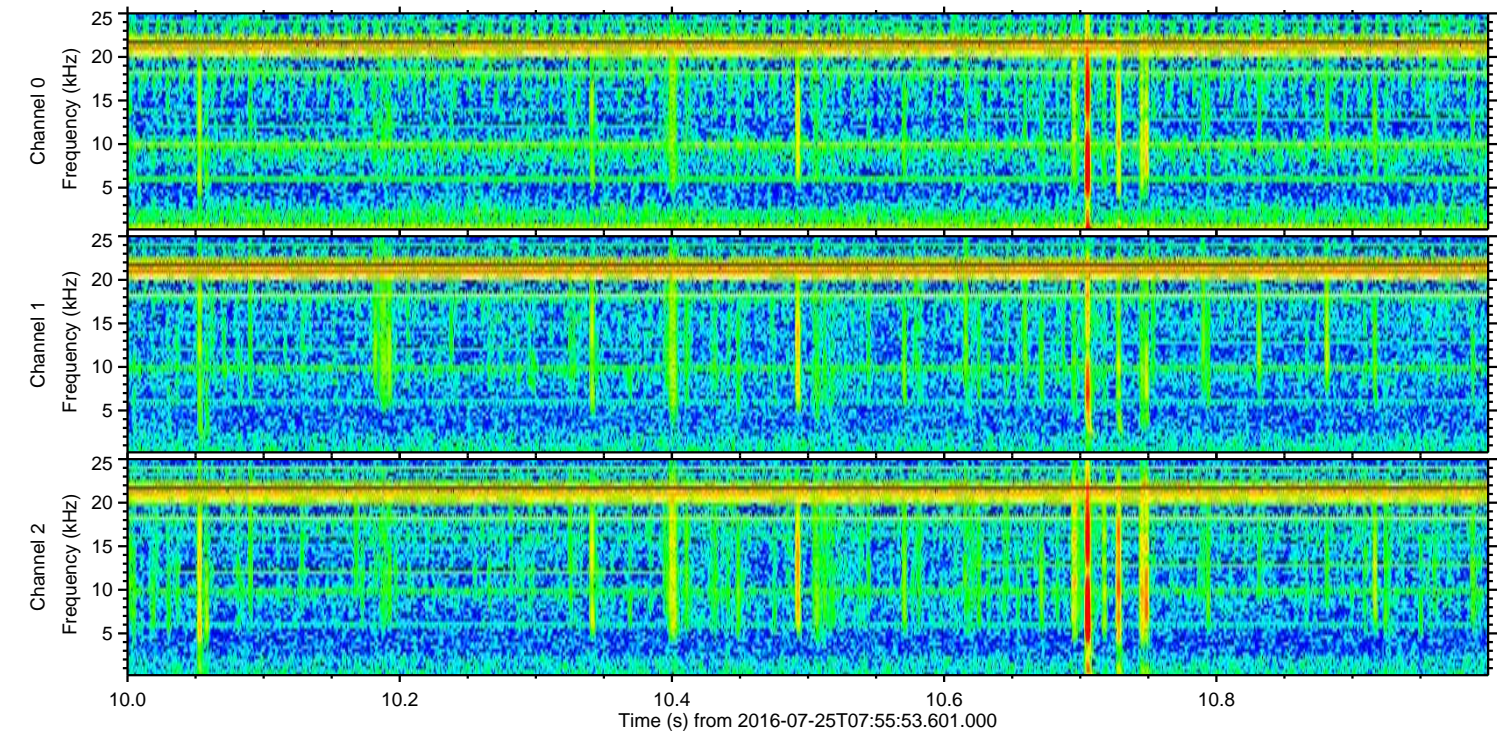
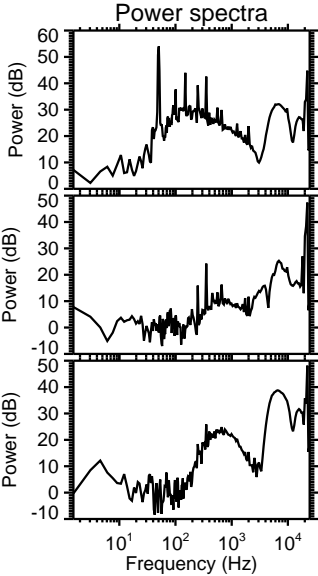
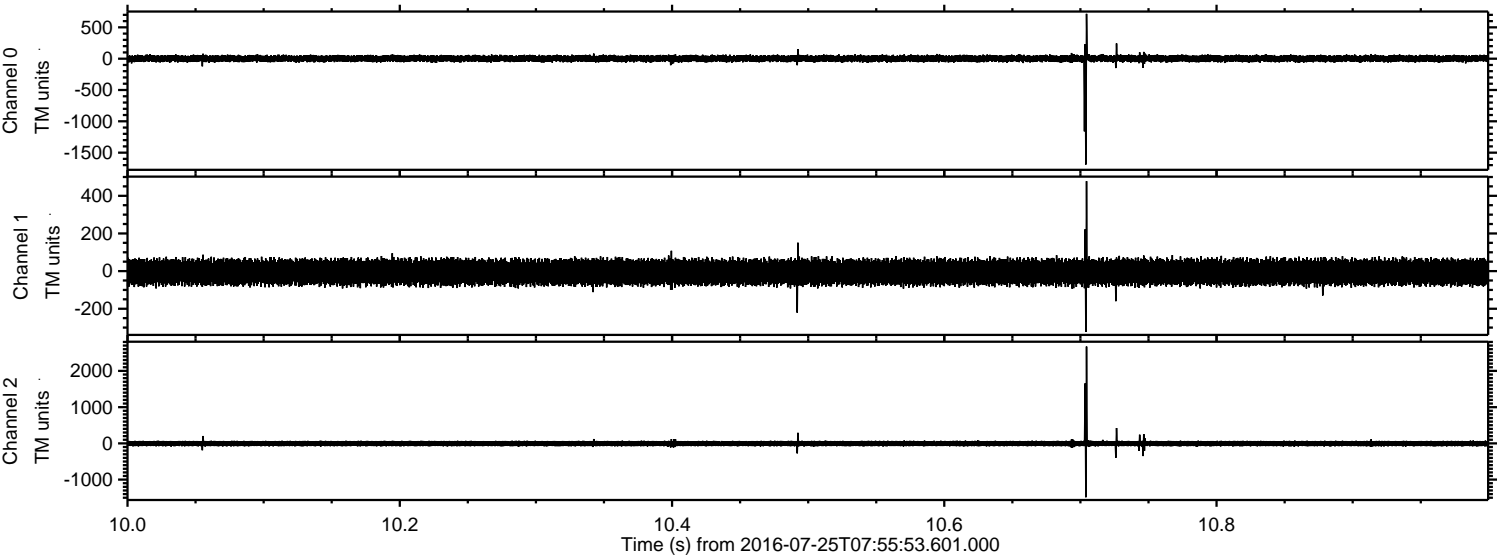


Processed Mon Jul 25 10:03:55 2016 by ELM ver.2012-10-06 from 001\_\_elm20160725\_075552\_\_dat00.bin





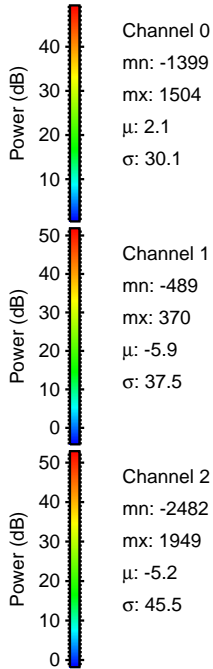
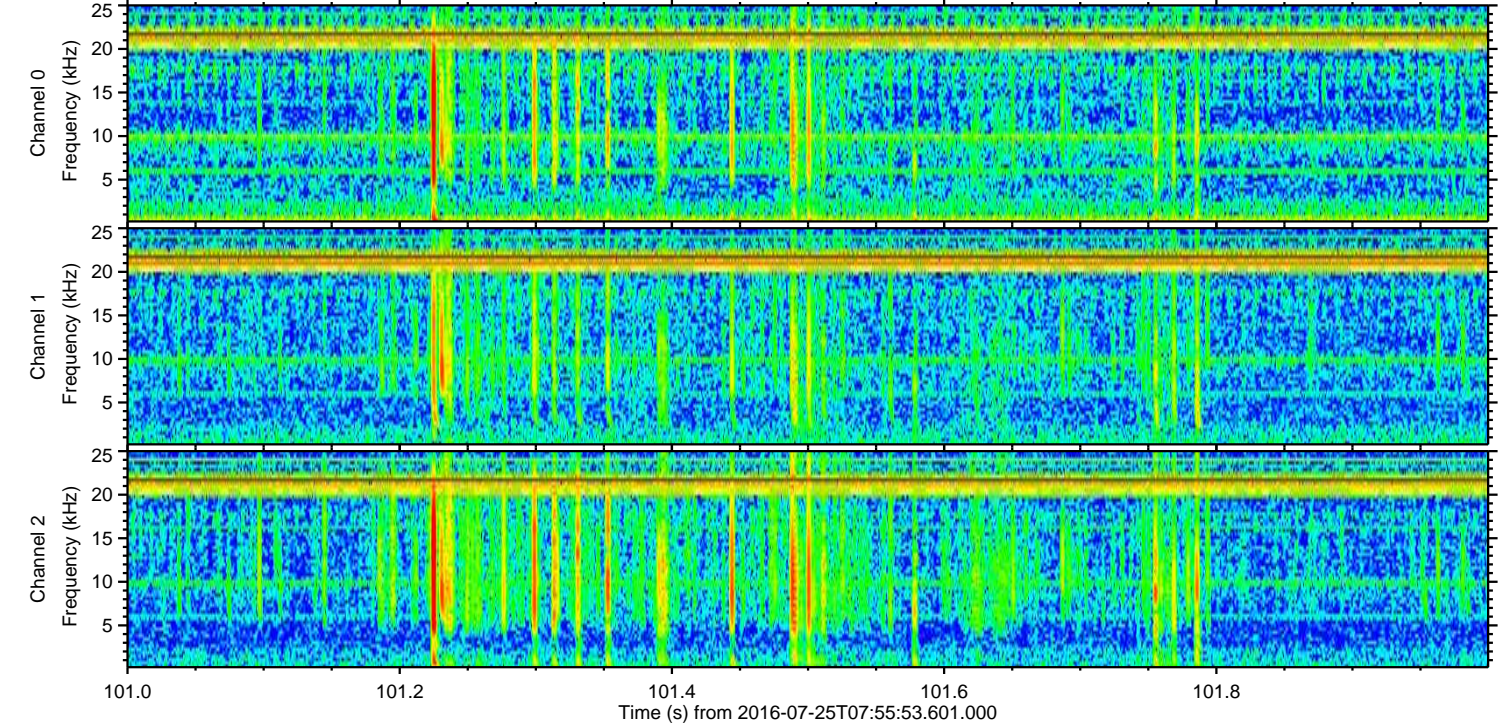
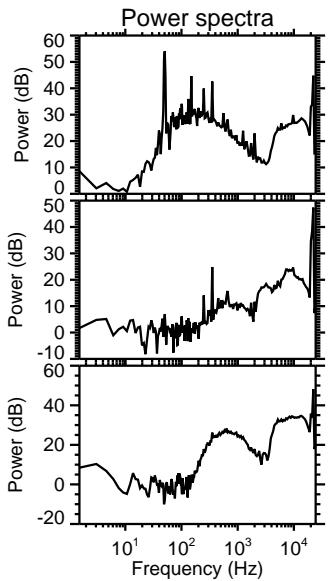
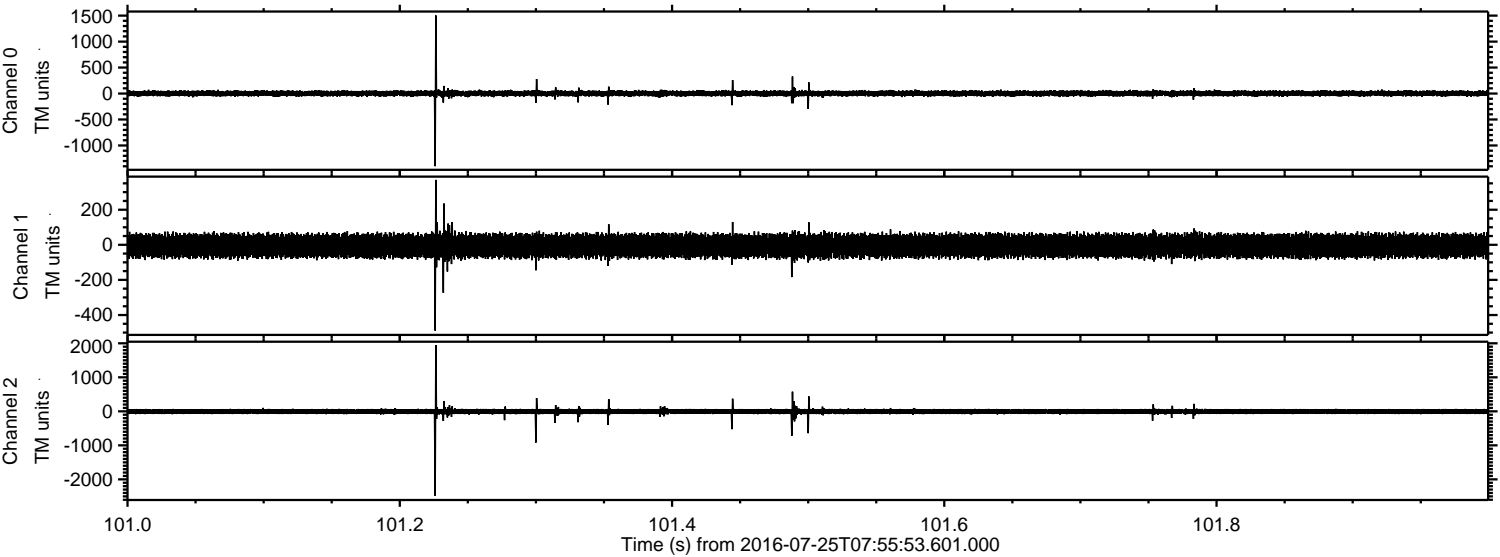
Processed Mon Jul 25 10:03:56 2016 by ELM ver.2012-10-06 from 001\_\_elm20160725\_075552\_\_dat00.bin





ELMAVAN 3D WAVEFORMS (Measured data sampled at 50 kHz) 51000 packets of 144 samples from 2016-07-25T07:55:53.601.000. Part 102/147

Processed Mon Jul 25 10:03:57 2016 by ELM ver.2012-10-06 from 001\_\_elm20160725\_075552\_\_dat00.bin



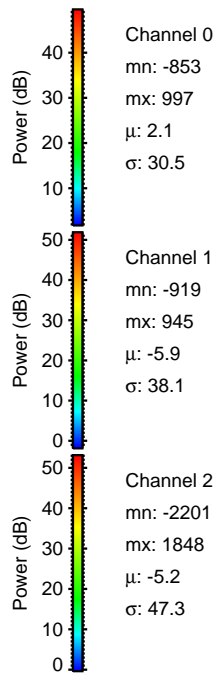
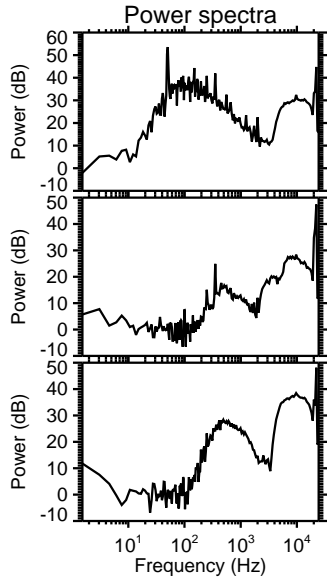
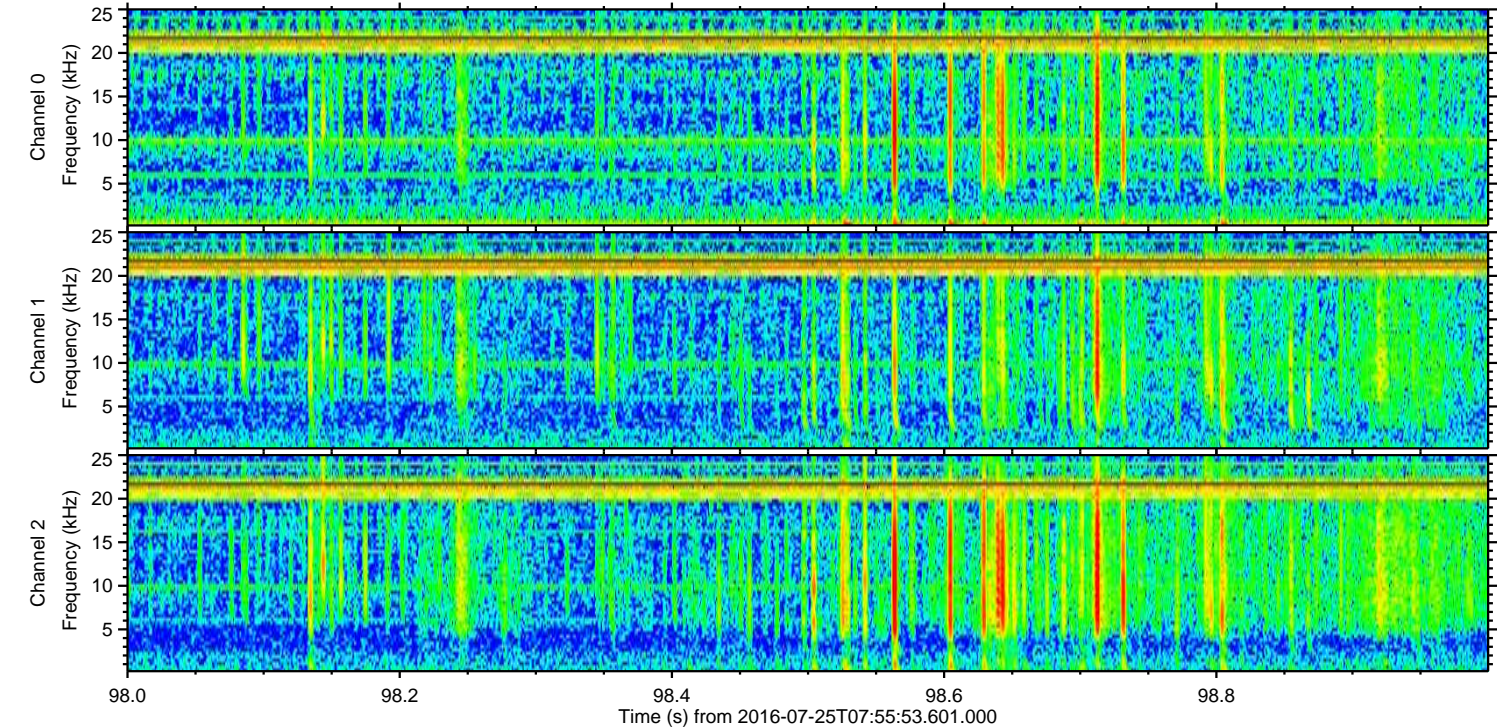
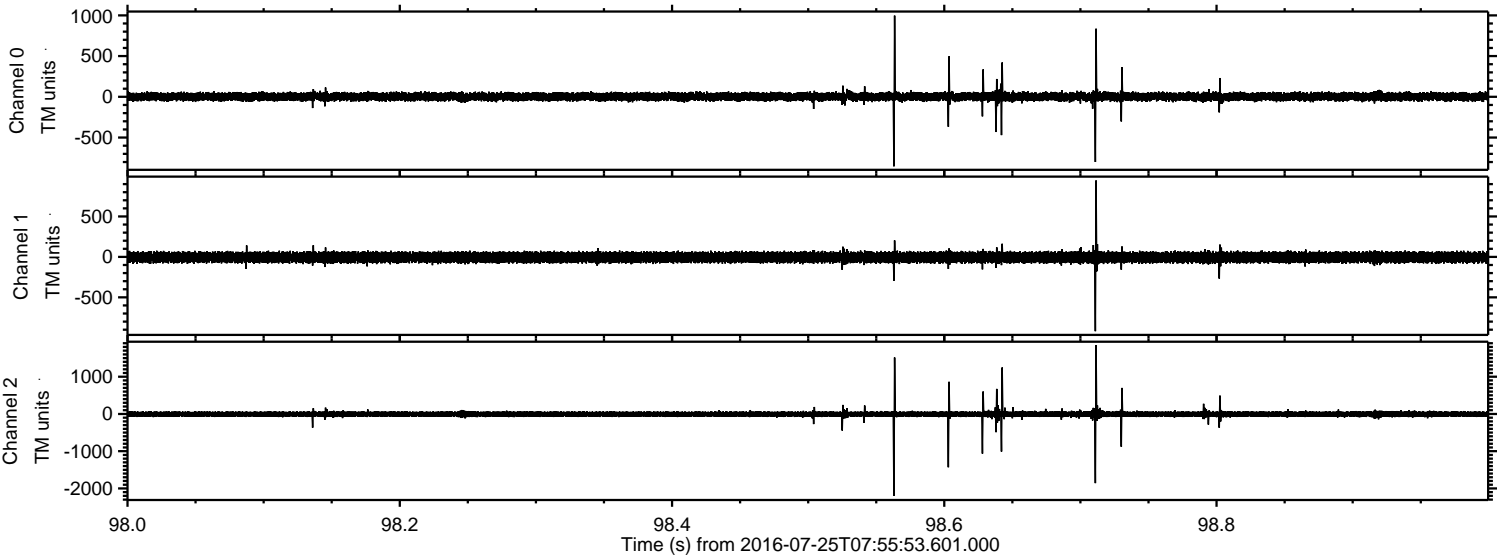
Channel 0  
mn: -1399  
mx: 1504  
 $\mu$ : 2.1  
 $\sigma$ : 30.1

Channel 1  
mn: -489  
mx: 370  
 $\mu$ : -5.9  
 $\sigma$ : 37.5

Channel 2  
mn: -2482  
mx: 1949  
 $\mu$ : -5.2  
 $\sigma$ : 45.5



Processed Mon Jul 25 10:03:58 2016 by ELM ver.2012-10-06 from 001\_\_elm20160725\_075552\_\_dat00.bin





Processed Mon Jul 25 10:03:59 2016 by ELM ver.2012-10-06 from 001\_\_elm20160725\_075552\_\_dat00.bin

