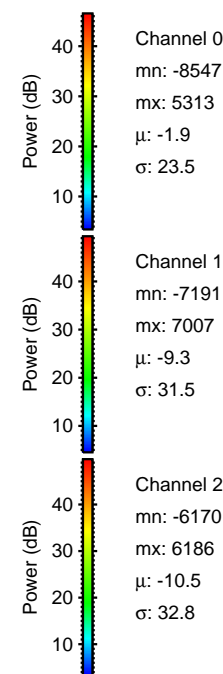
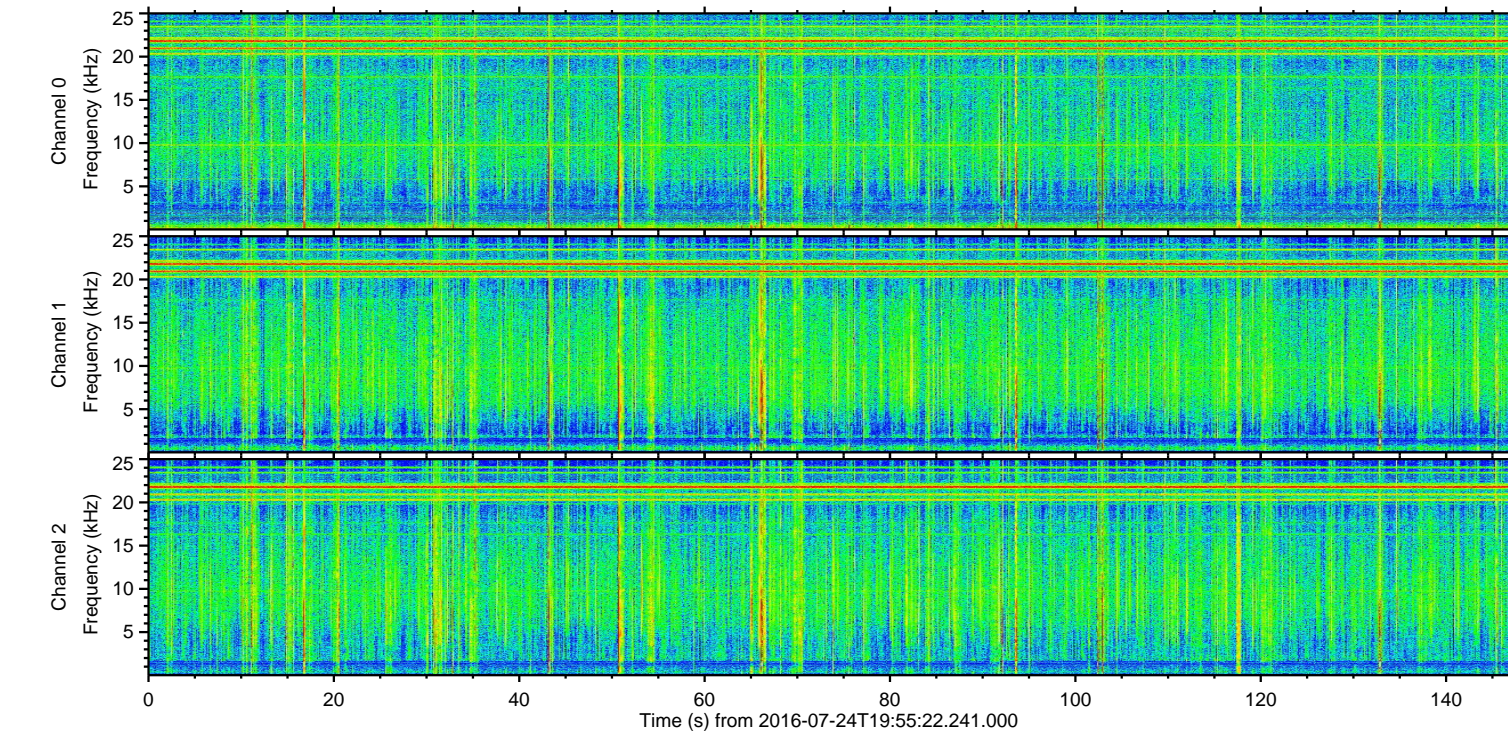
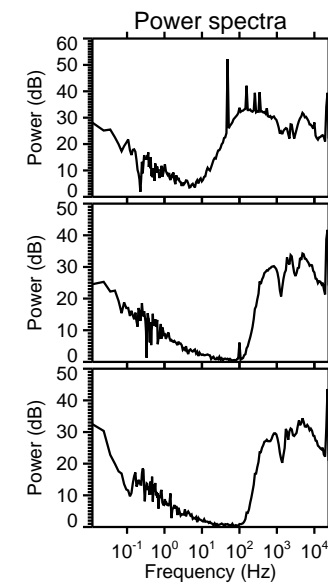
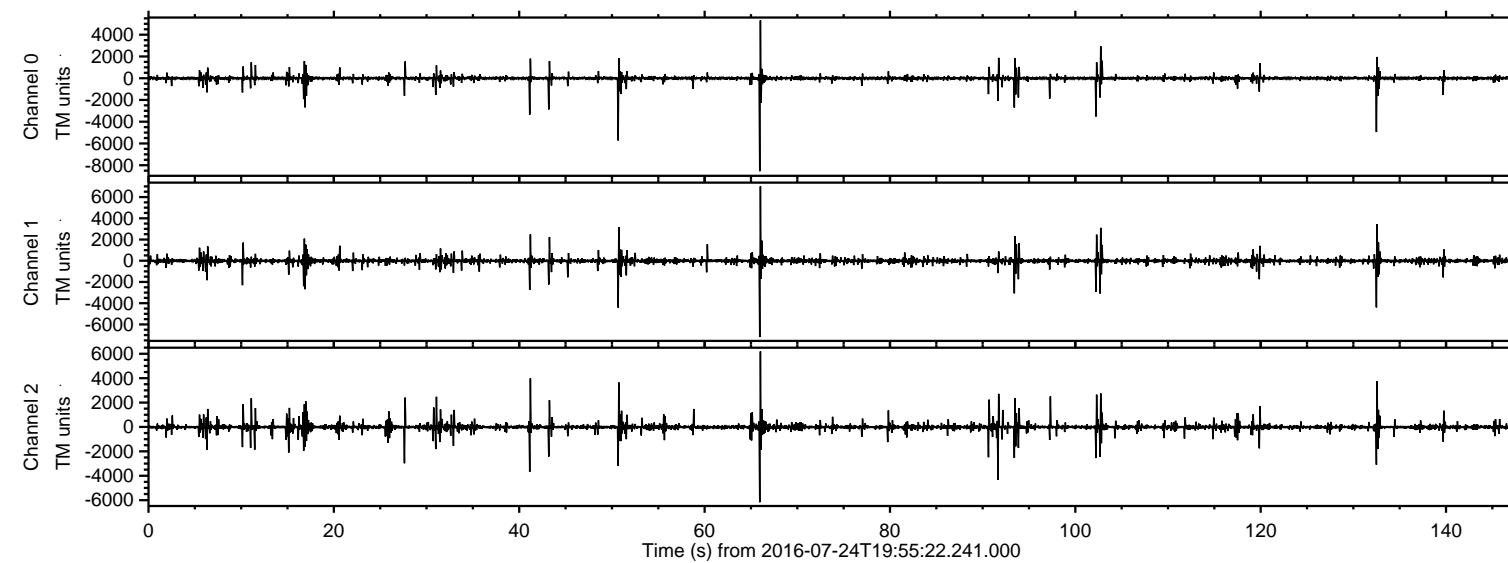
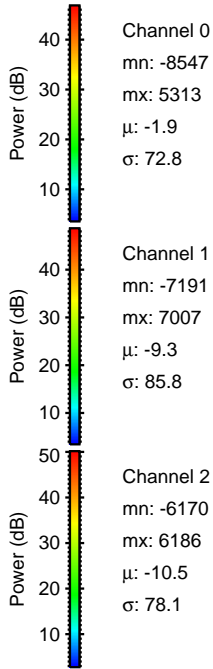
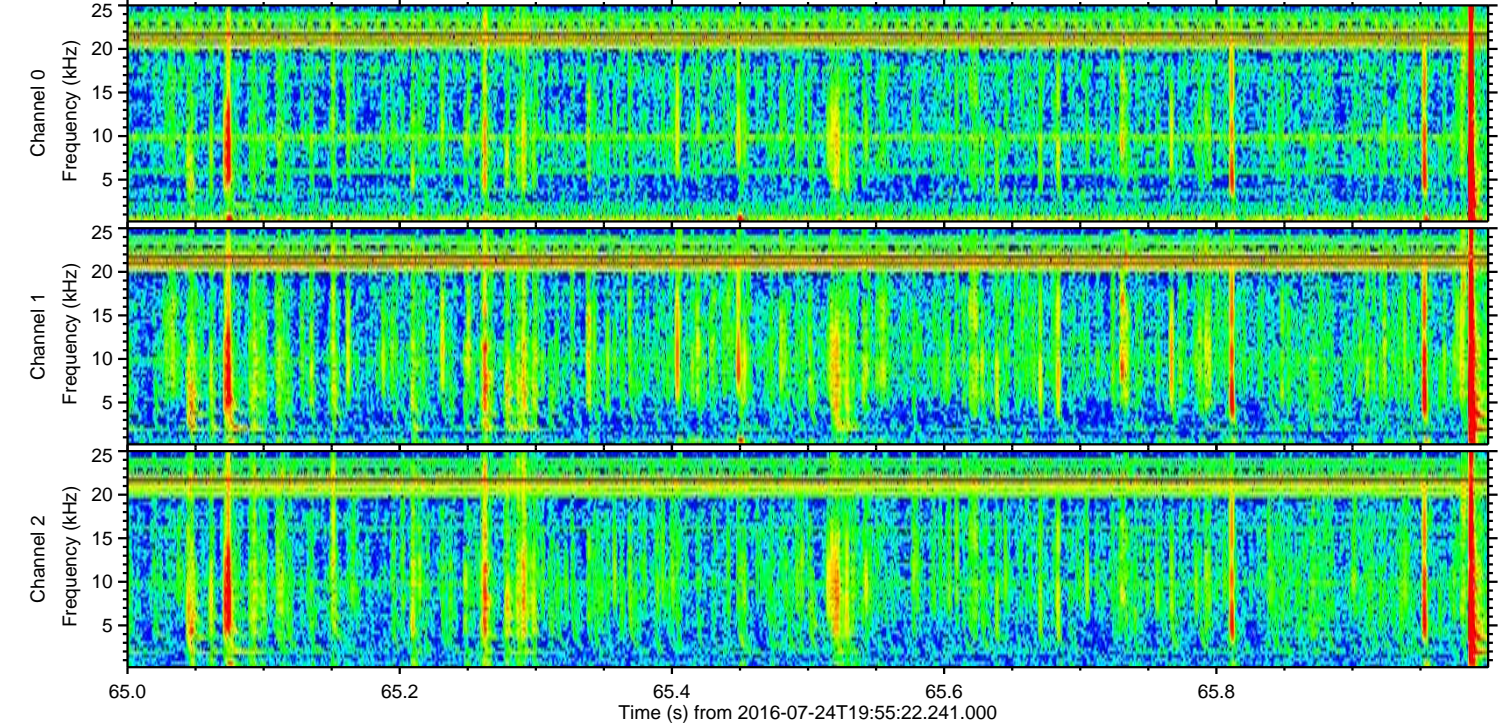
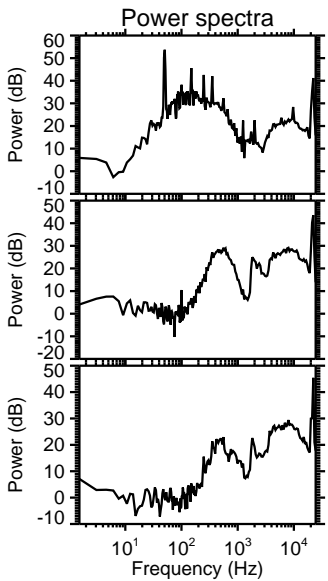
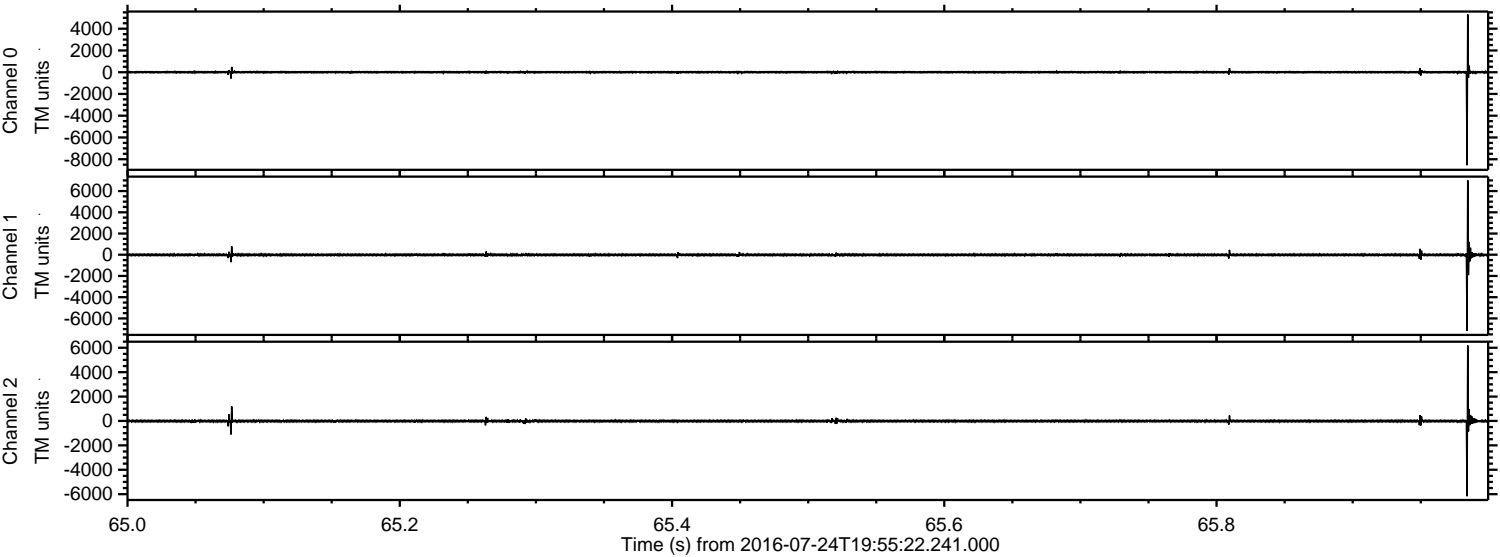


ELMAVAN 3D WAVEFORMS (Measured data sampled at 50 kHz) 51000 packets of 144 samples from 2016-07-24T19:55:22.241.000.

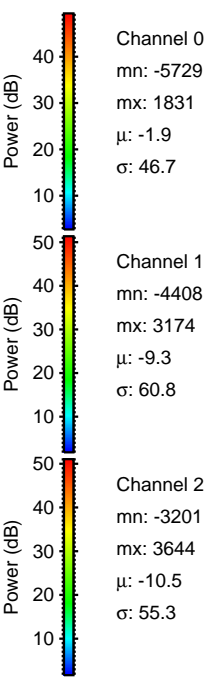
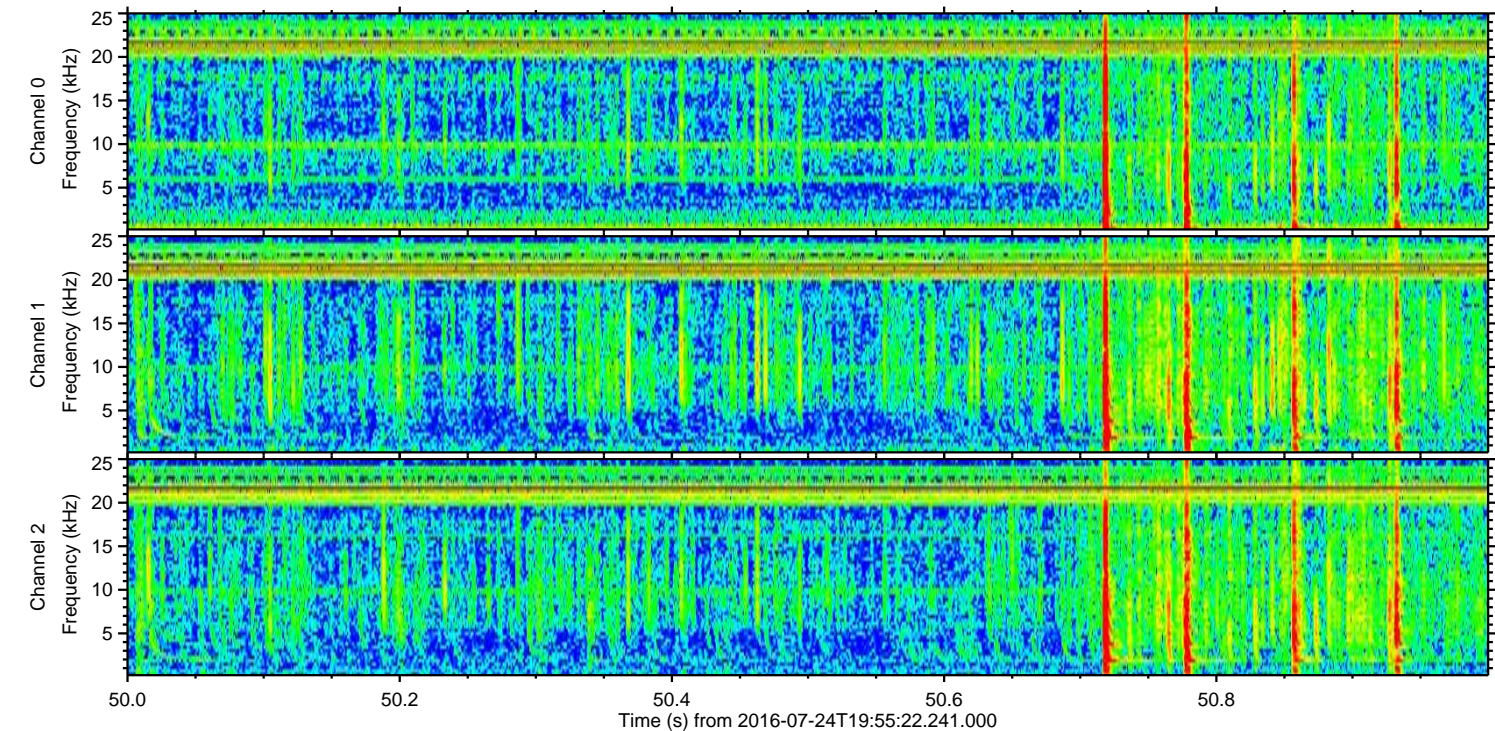
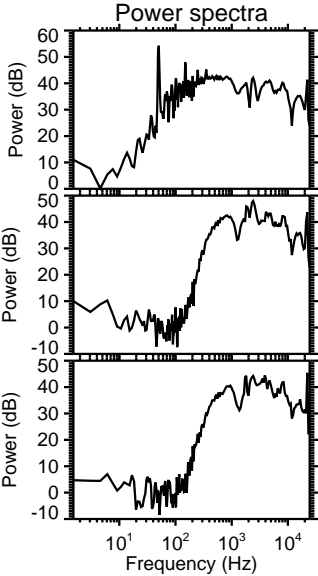
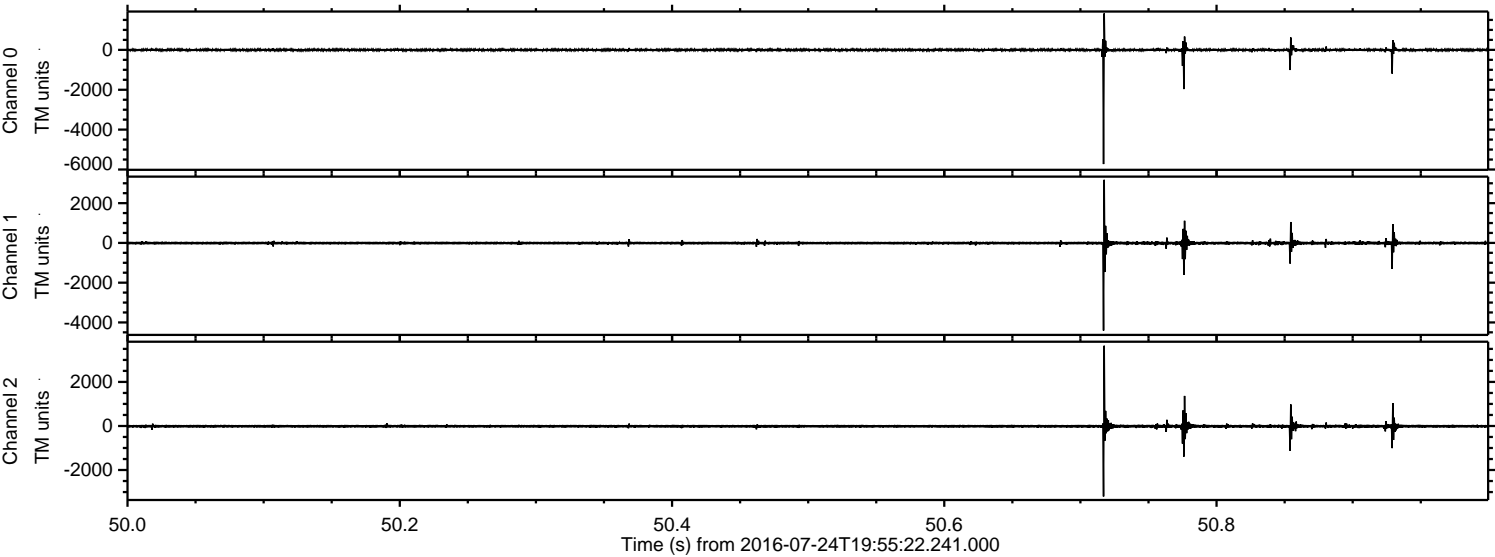
Processed Sun Jul 24 22:02:59 2016 by ELM ver.2012-10-06 from 001__elm20160724_195521__dat00.bin



Processed Sun Jul 24 22:03:11 2016 by ELM ver.2012-10-06 from 001__elm20160724_195521__dat00.bin

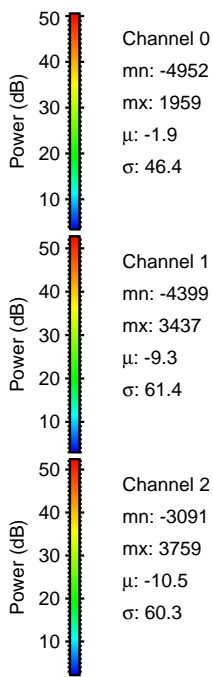
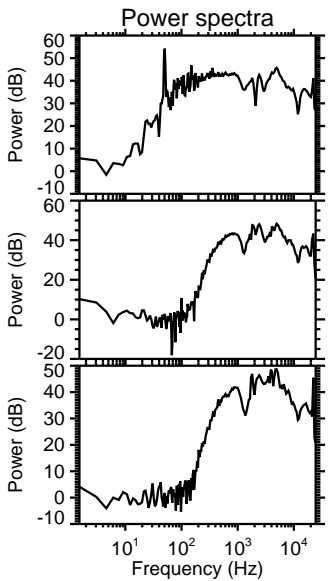
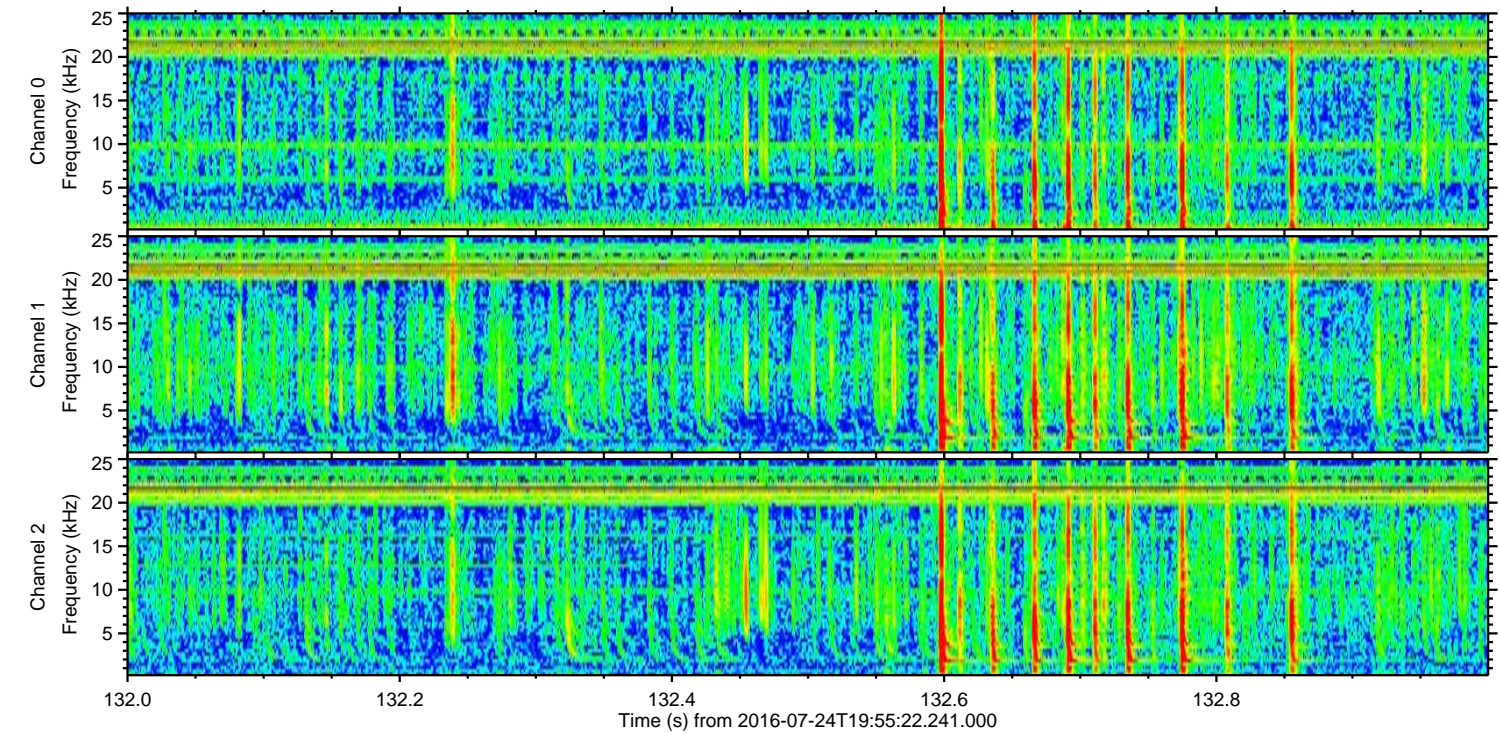
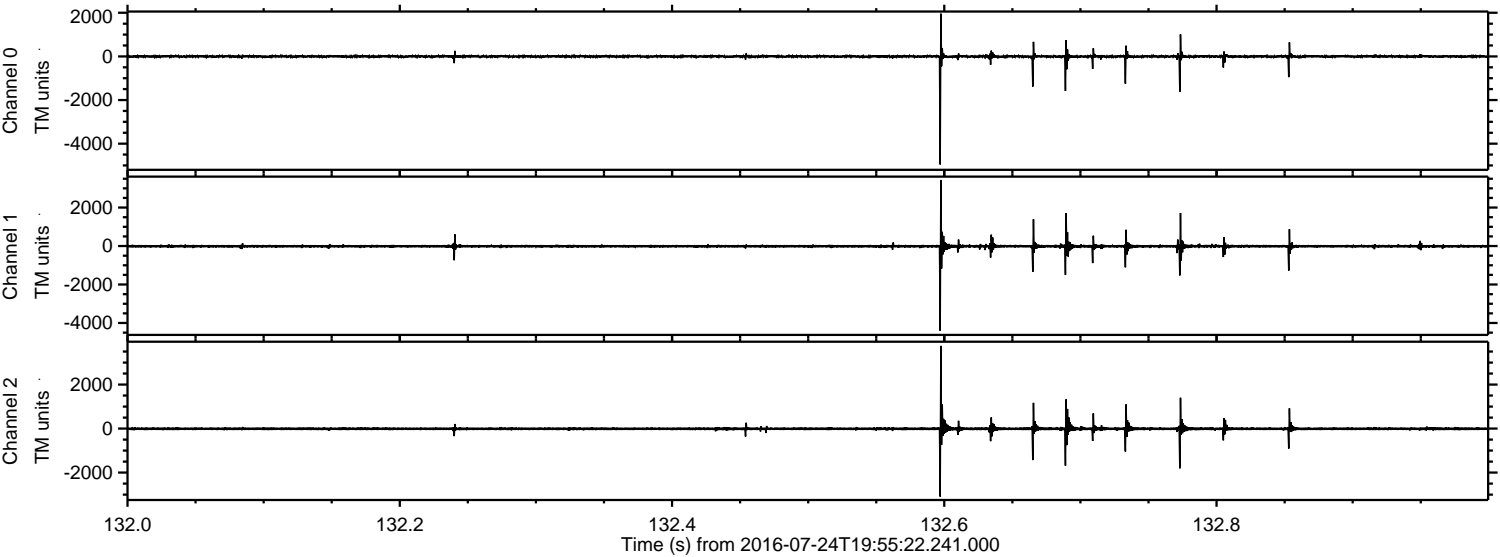


Processed Sun Jul 24 22:03:12 2016 by ELM ver.2012-10-06 from 001__elm20160724_195521__dat00.bin

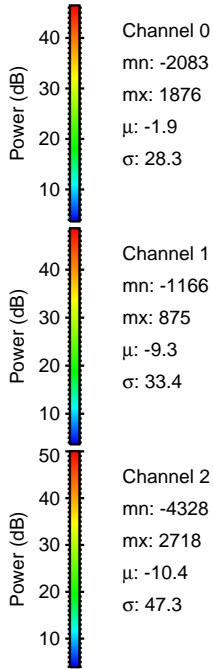
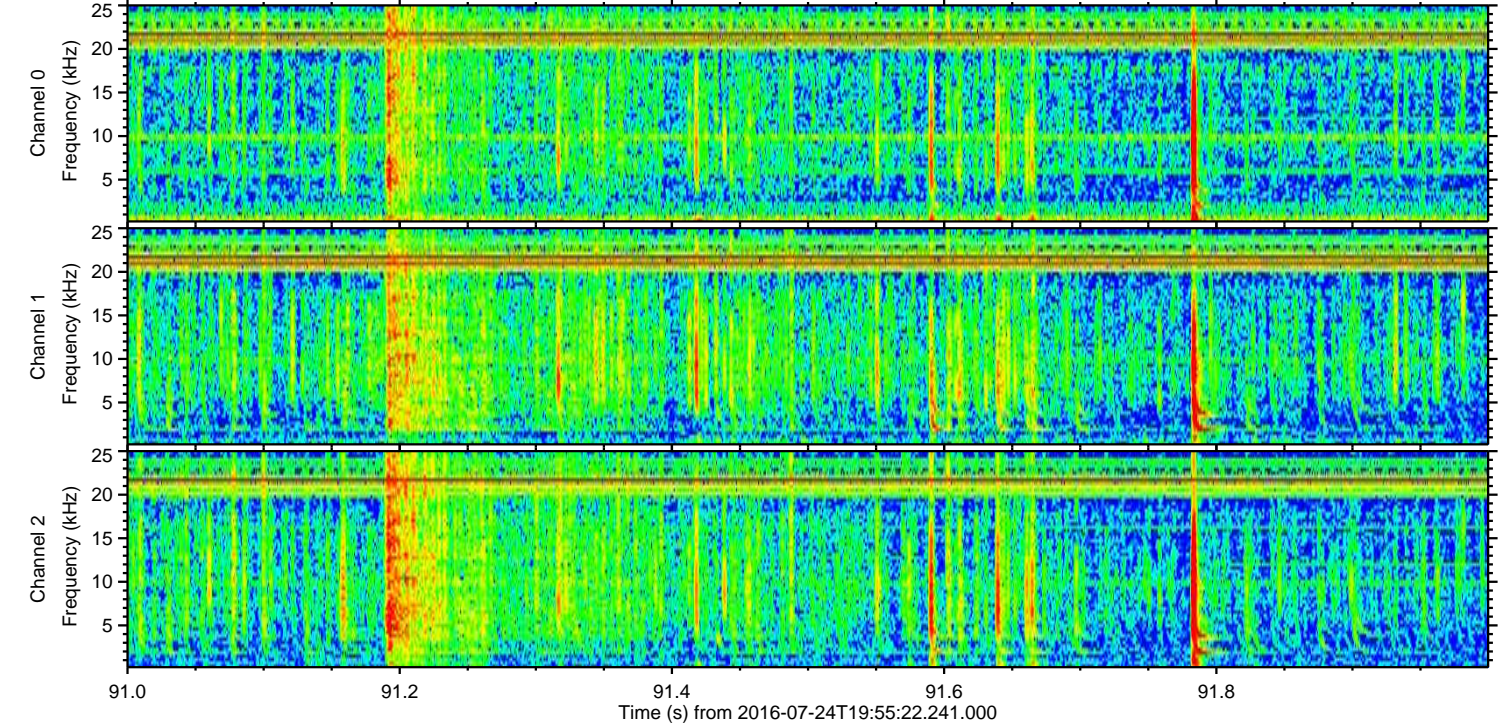
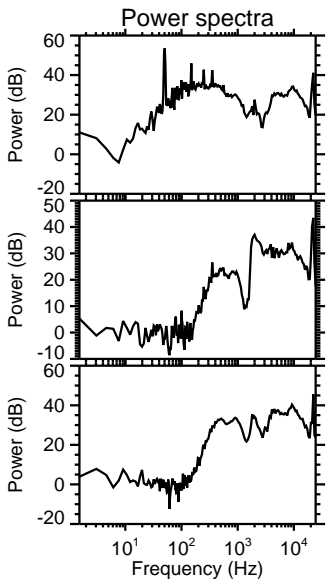
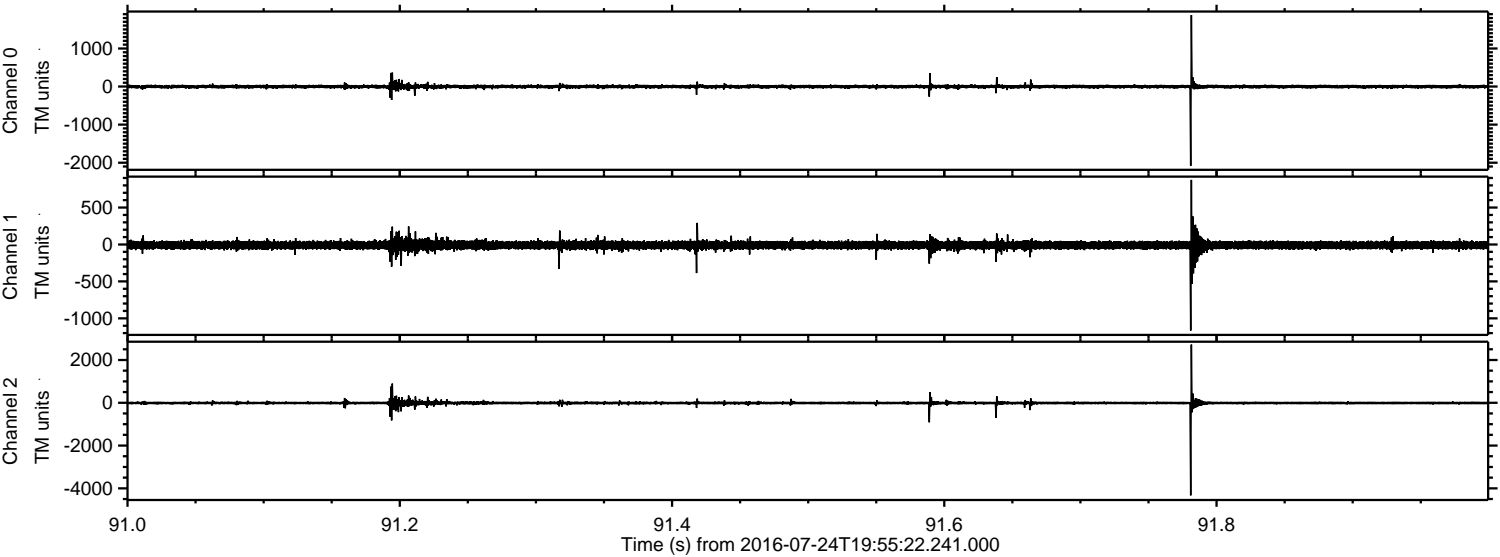


ELMAVAN 3D WAVEFORMS (Measured data sampled at 50 kHz) 51000 packets of 144 samples from 2016-07-24T19:55:22.241.000. Part 133/147

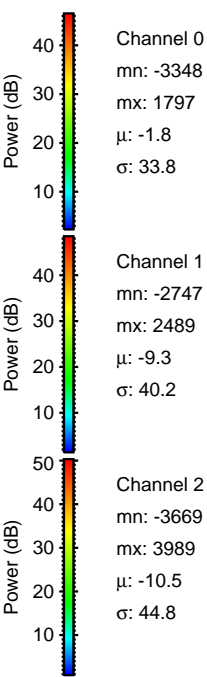
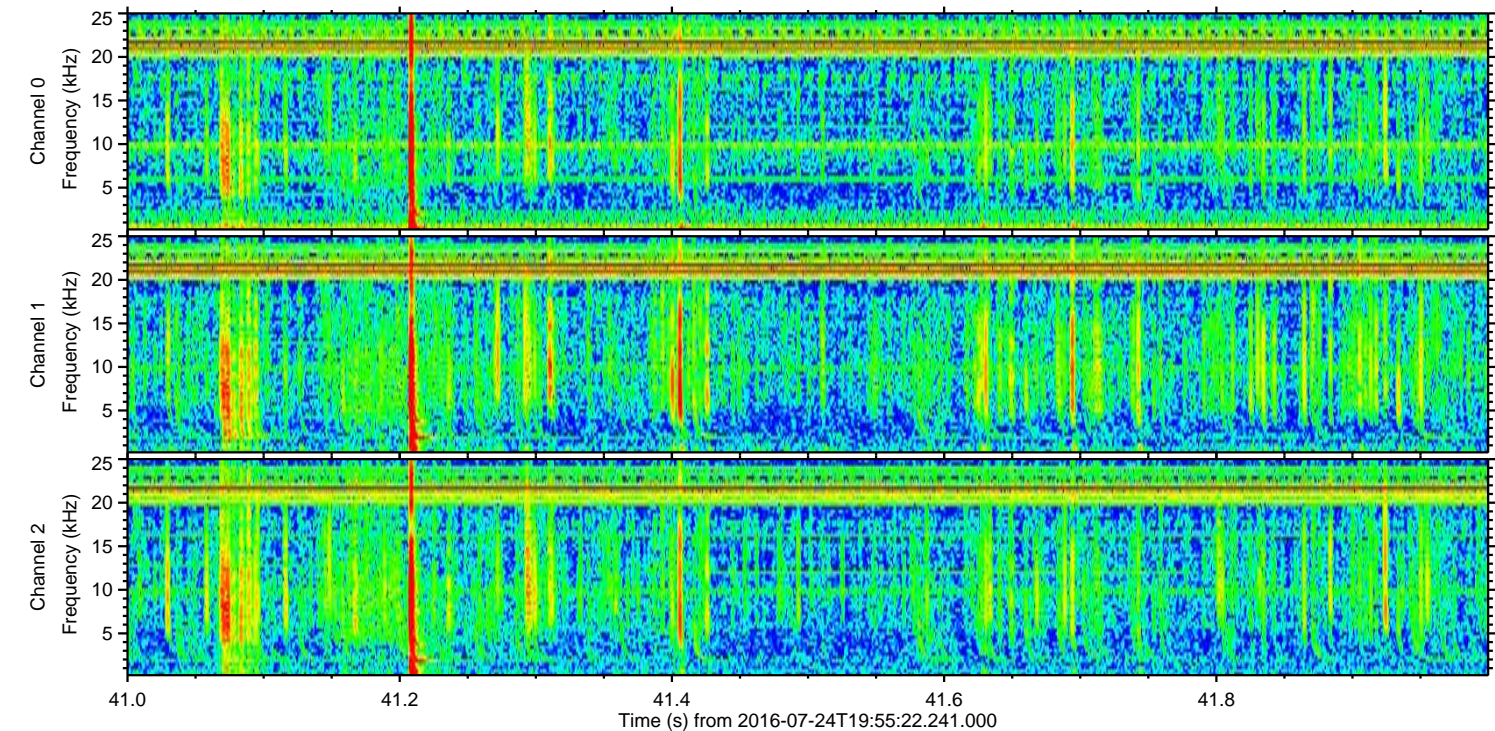
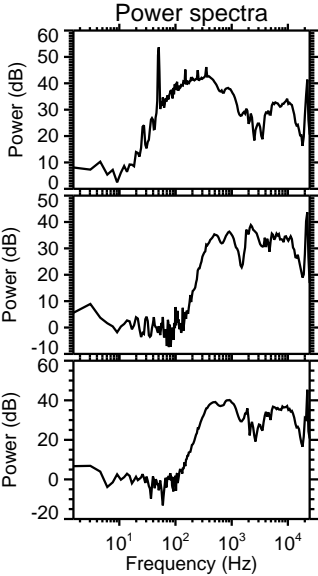
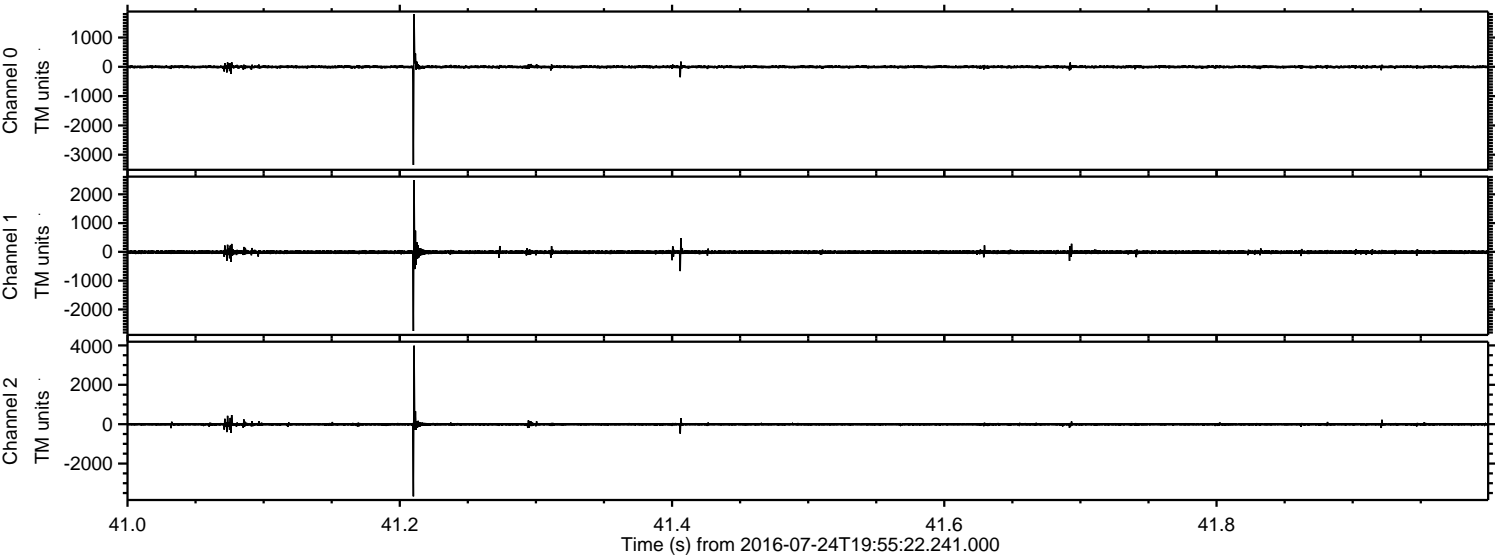
Processed Sun Jul 24 22:03:13 2016 by ELM ver.2012-10-06 from 001__elm20160724_195521__dat00.bin



Processed Sun Jul 24 22:03:14 2016 by ELM ver.2012-10-06 from 001__elm20160724_195521__dat00.bin

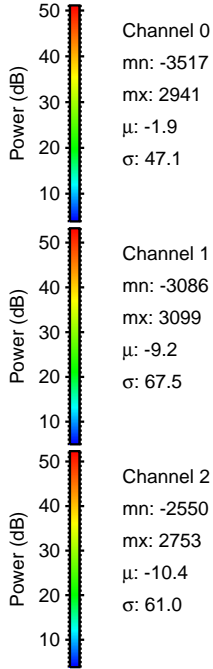
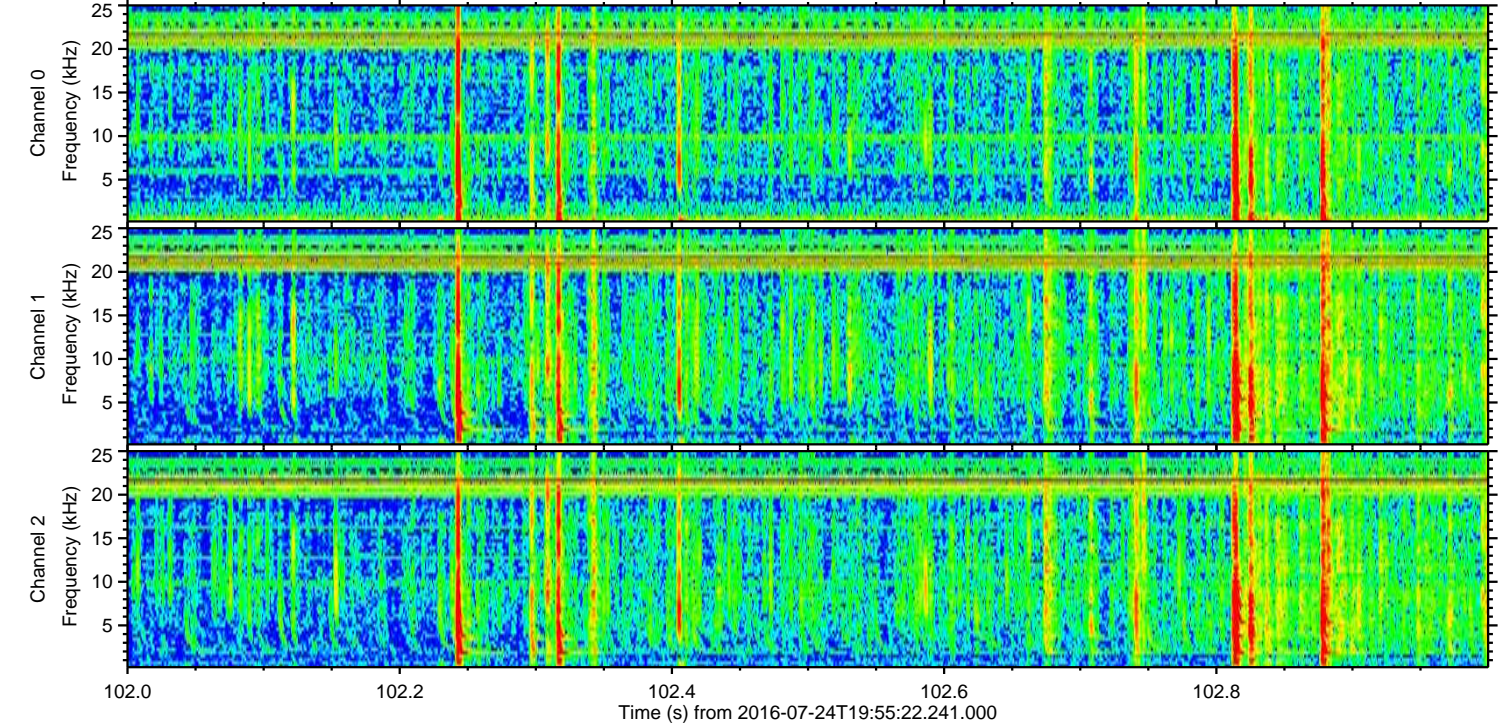
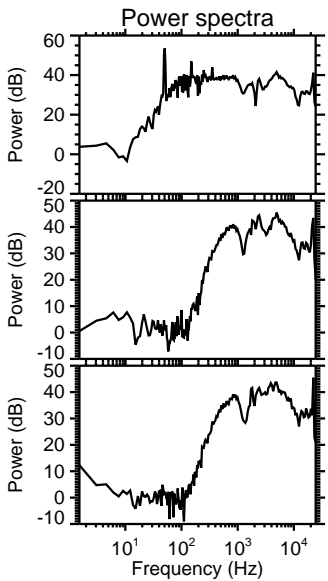
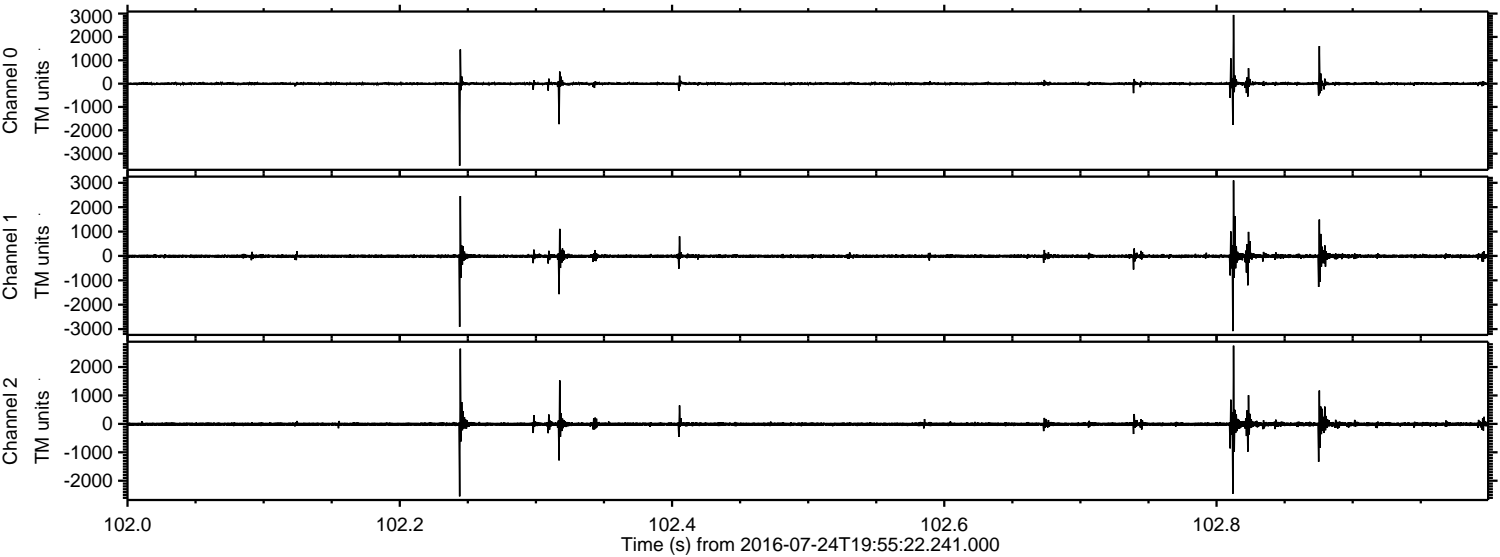


Processed Sun Jul 24 22:03:14 2016 by ELM ver.2012-10-06 from 001__elm20160724_195521__dat00.bin

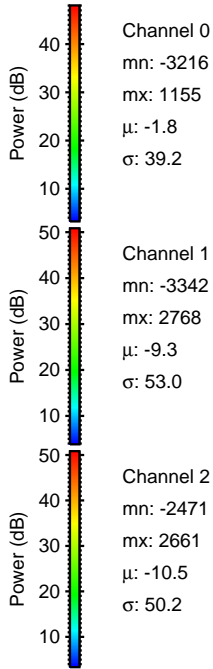
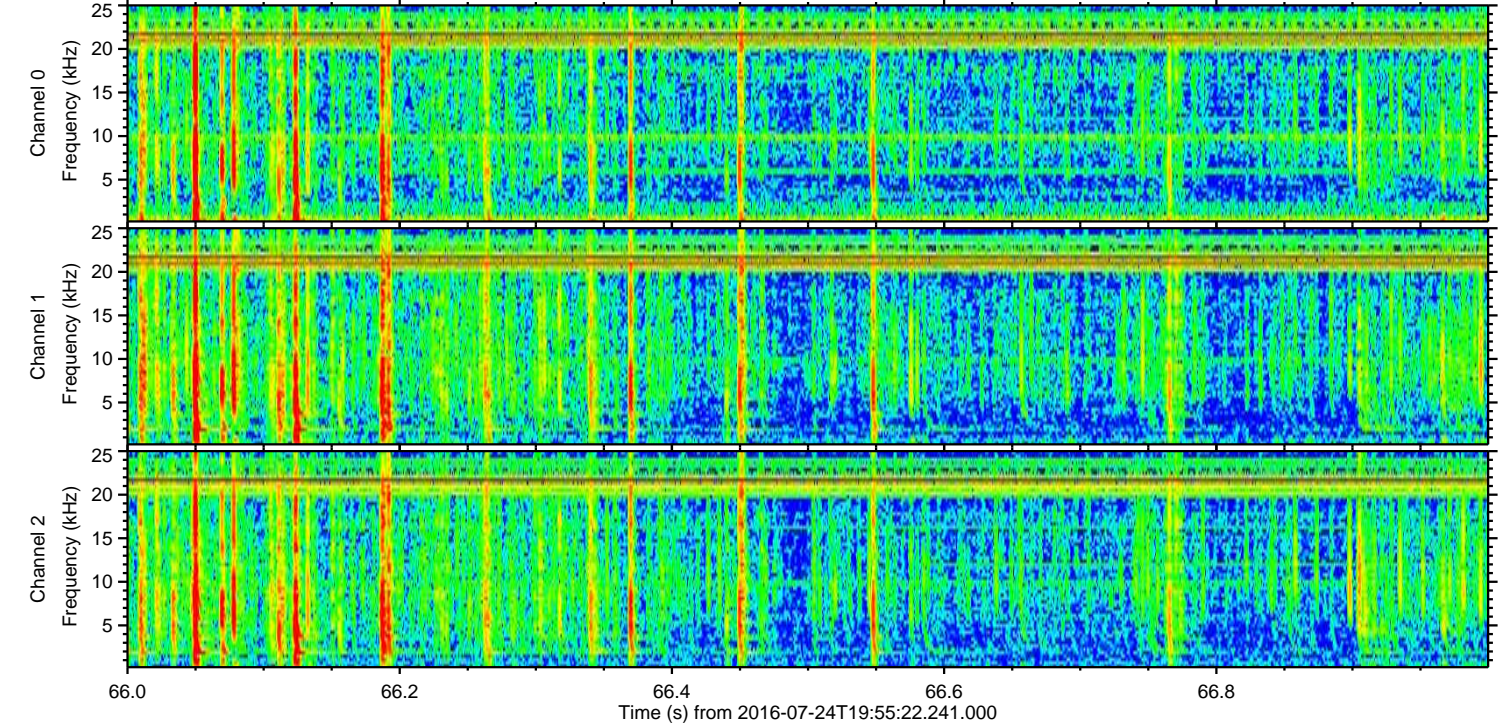
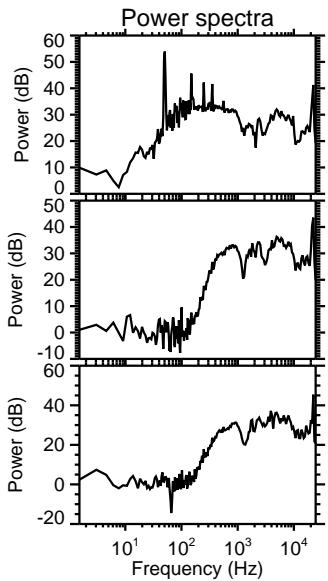
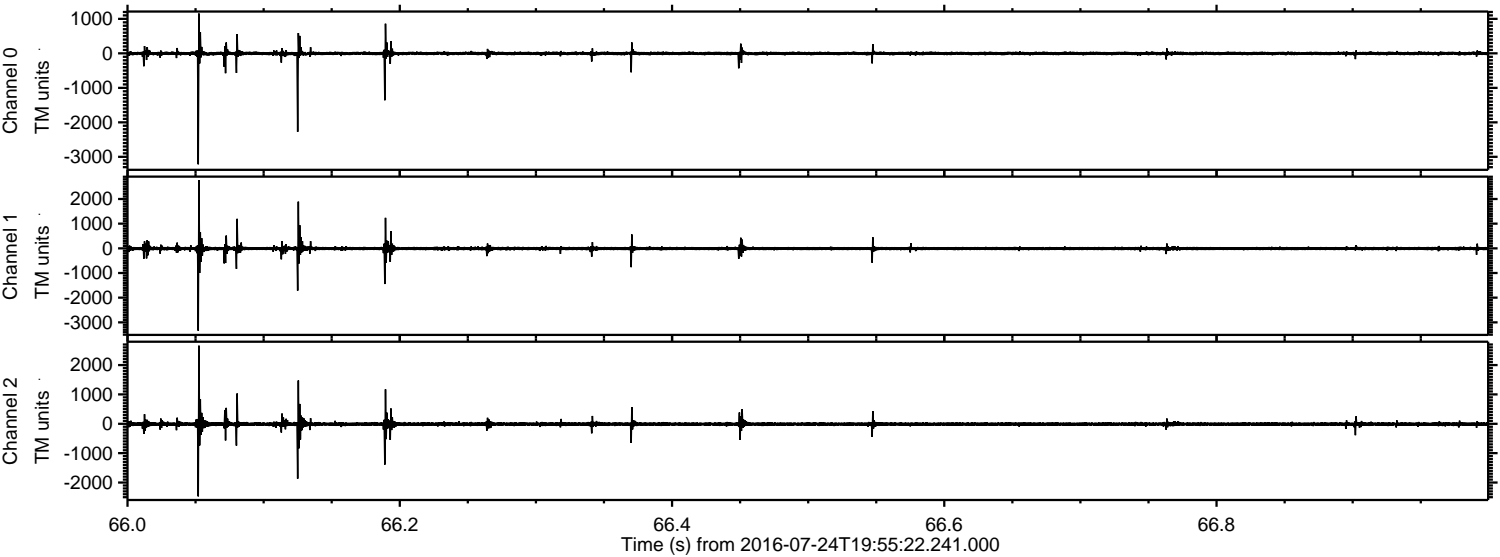


ELMAVAN 3D WAVEFORMS (Measured data sampled at 50 kHz) 51000 packets of 144 samples from 2016-07-24T19:55:22.241.000. Part 103/147

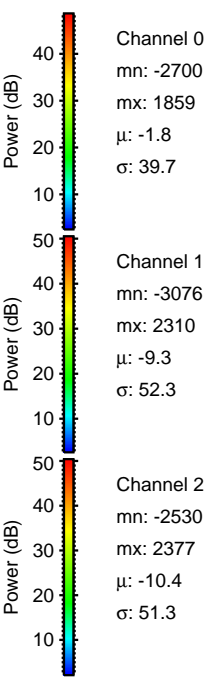
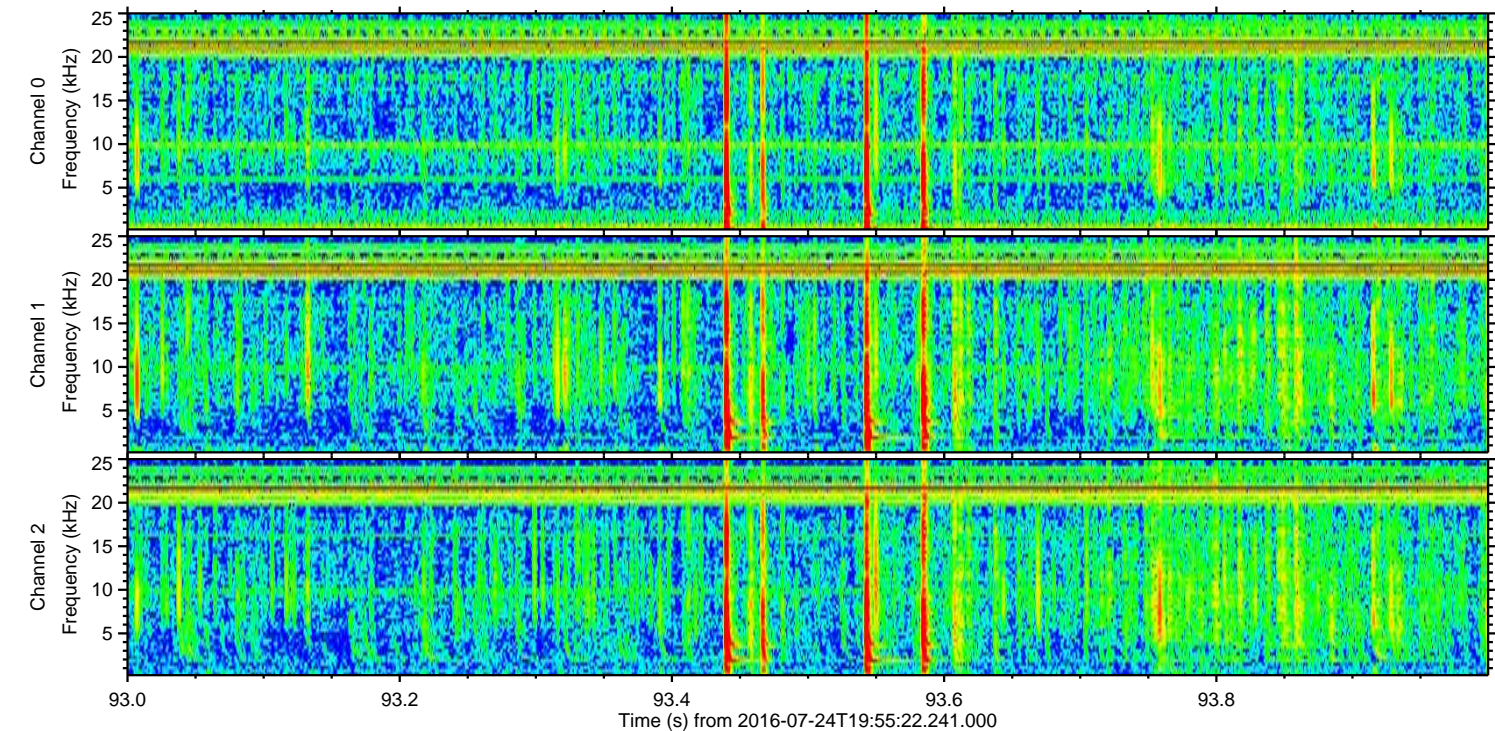
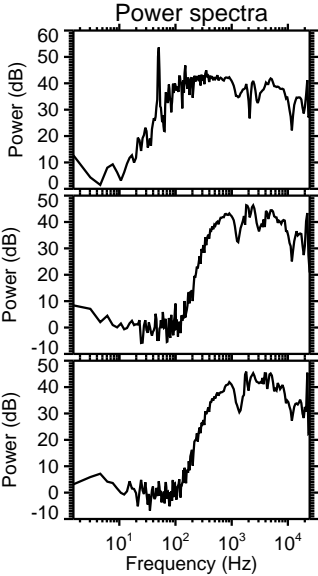
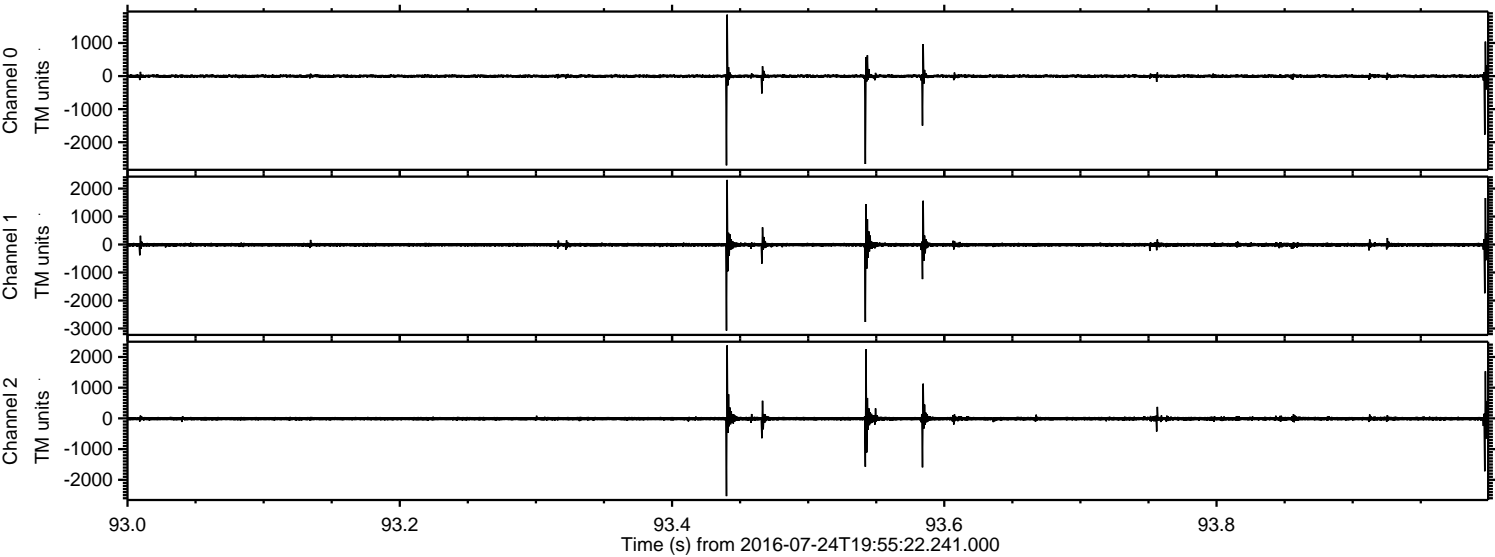
Processed Sun Jul 24 22:03:15 2016 by ELM ver.2012-10-06 from 001__elm20160724_195521__dat00.bin



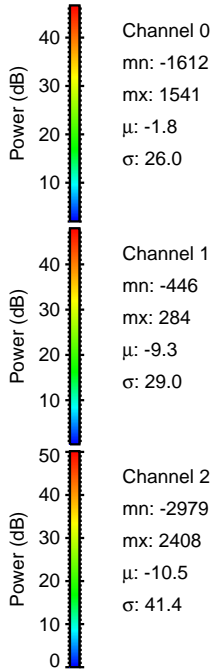
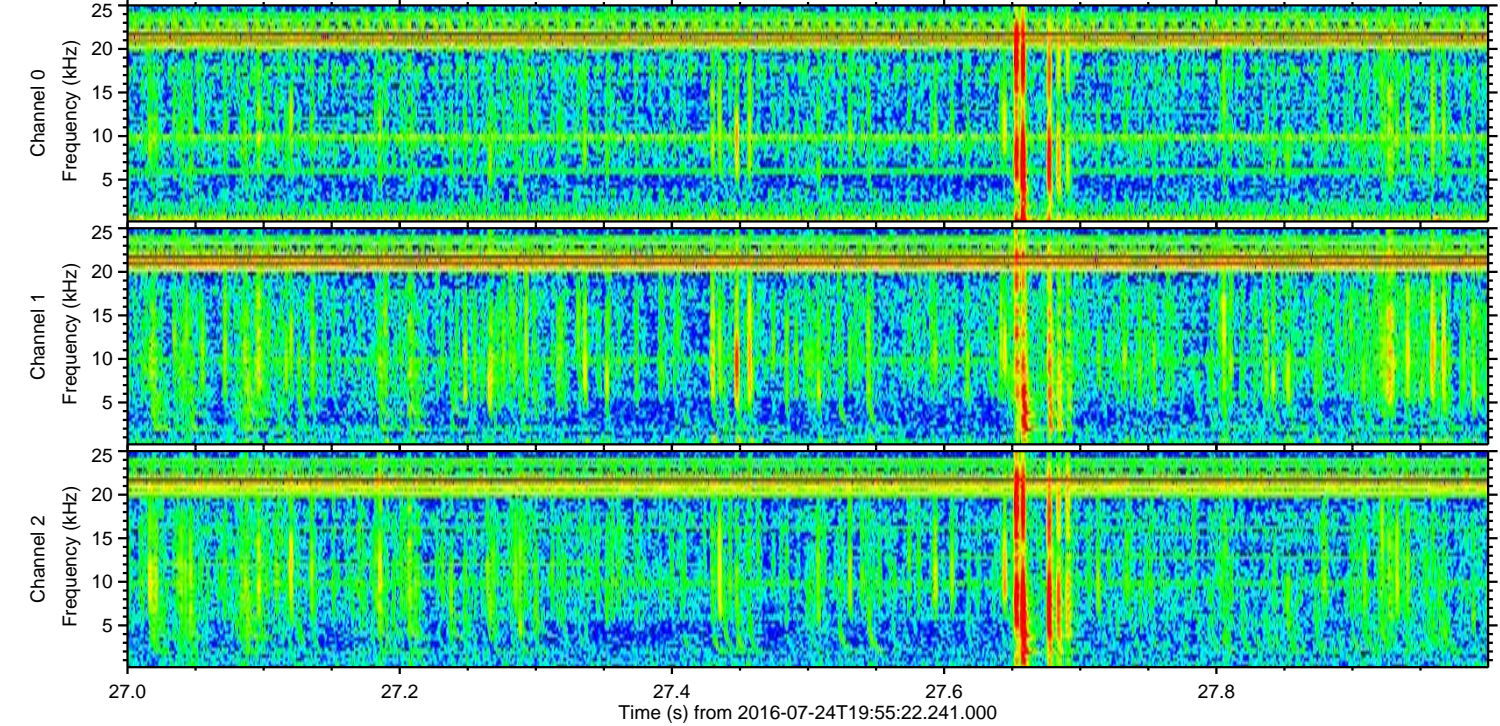
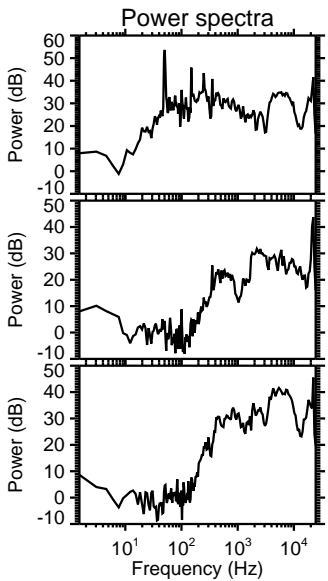
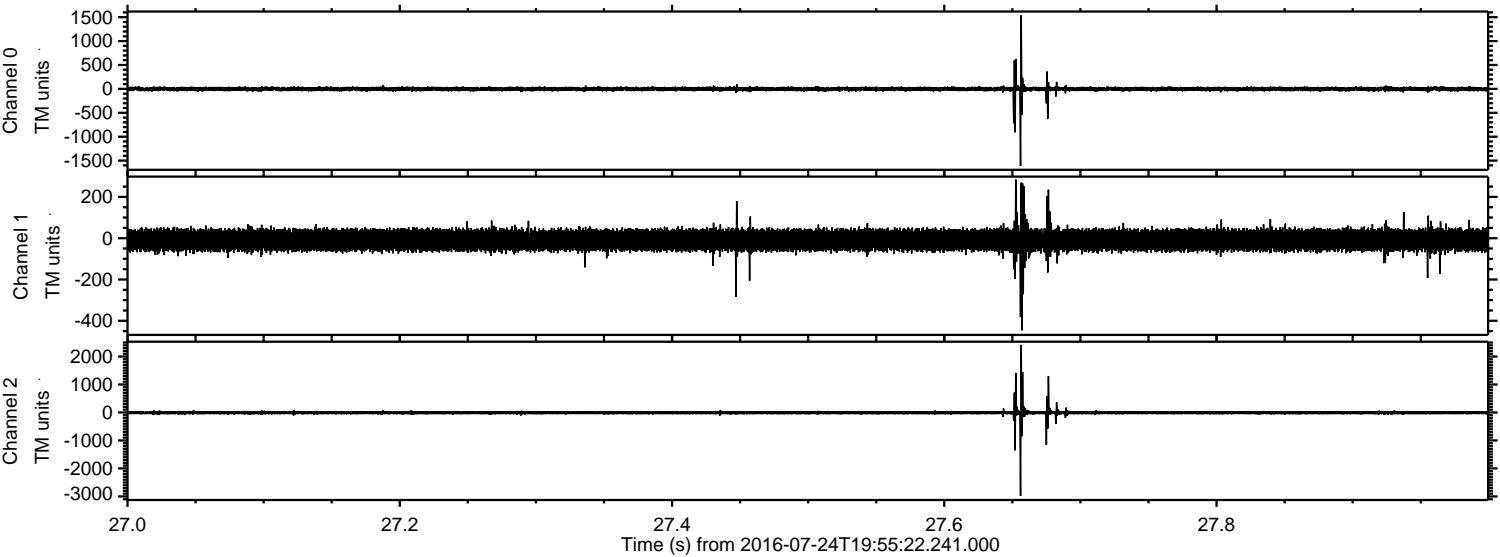
Processed Sun Jul 24 22:03:16 2016 by ELM ver.2012-10-06 from 001__elm20160724_195521__dat00.bin



Processed Sun Jul 24 22:03:17 2016 by ELM ver.2012-10-06 from 001__elm20160724_195521__dat00.bin



Processed Sun Jul 24 22:03:18 2016 by ELM ver.2012-10-06 from 001__elm20160724_195521__dat00.bin



Channel 0
mn: -1612
mx: 1541
 μ : -1.8
 σ : 26.0

Channel 1
mn: -446
mx: 284
 μ : -9.3
 σ : 29.0

Channel 2
mn: -2979
mx: 2408
 μ : -10.5
 σ : 41.4

Processed Sun Jul 24 22:03:19 2016 by ELM ver.2012-10-06 from 001__elm20160724_195521__dat00.bin

