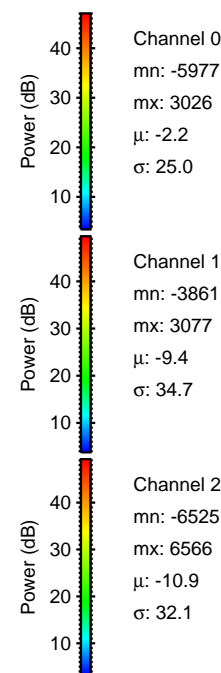
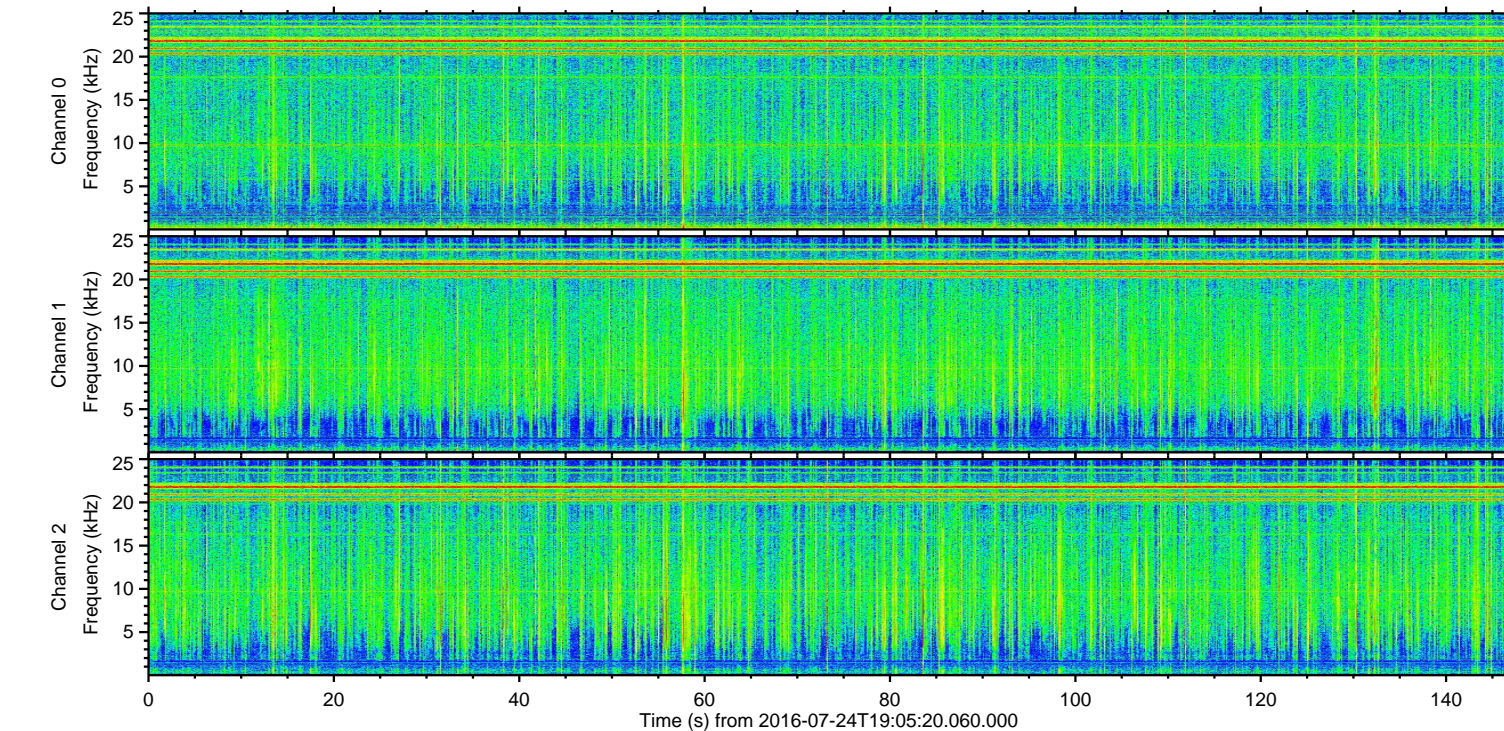
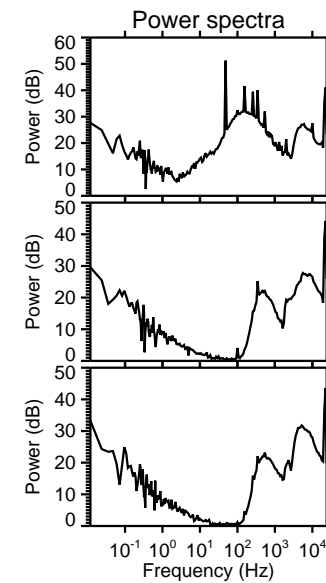
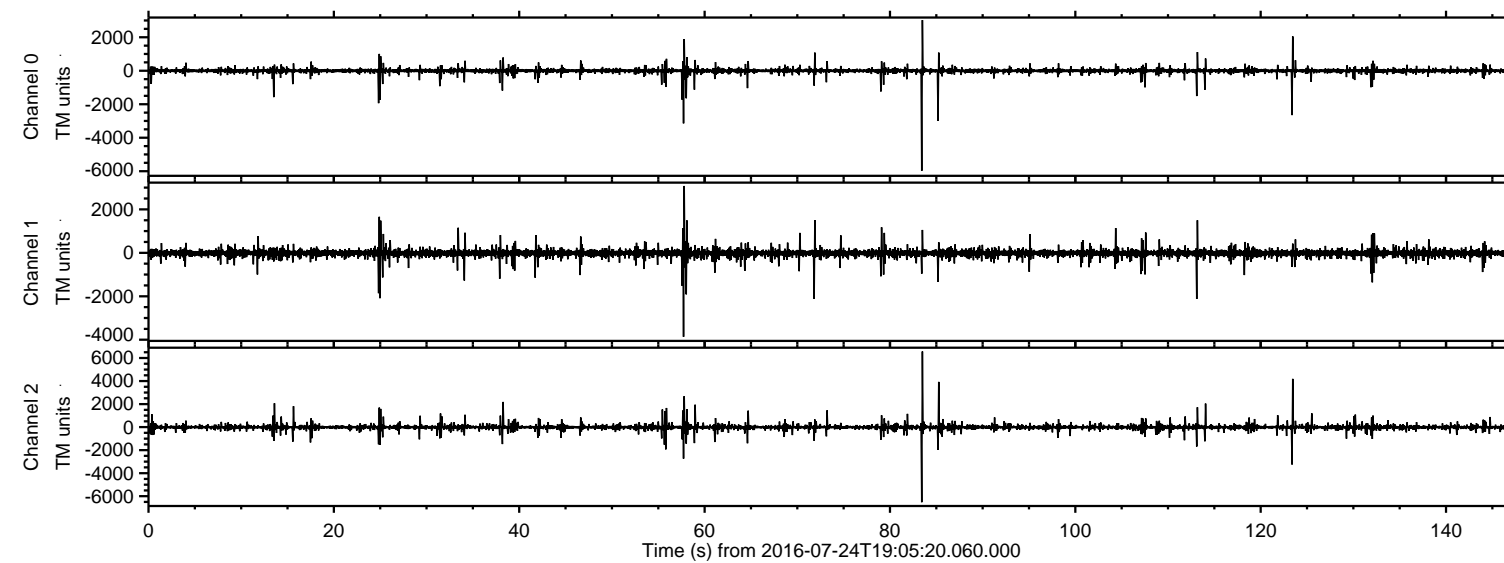


ELMAVAN 3D WAVEFORMS (Measured data sampled at 50 kHz) 51000 packets of 144 samples from 2016-07-24T19:05:20.060.000.

Processed Sun Jul 24 21:13:37 2016 by ELM ver.2012-10-06 from 001__elm20160724_190519__dat00.bin

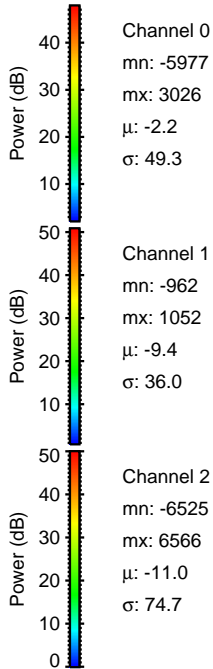
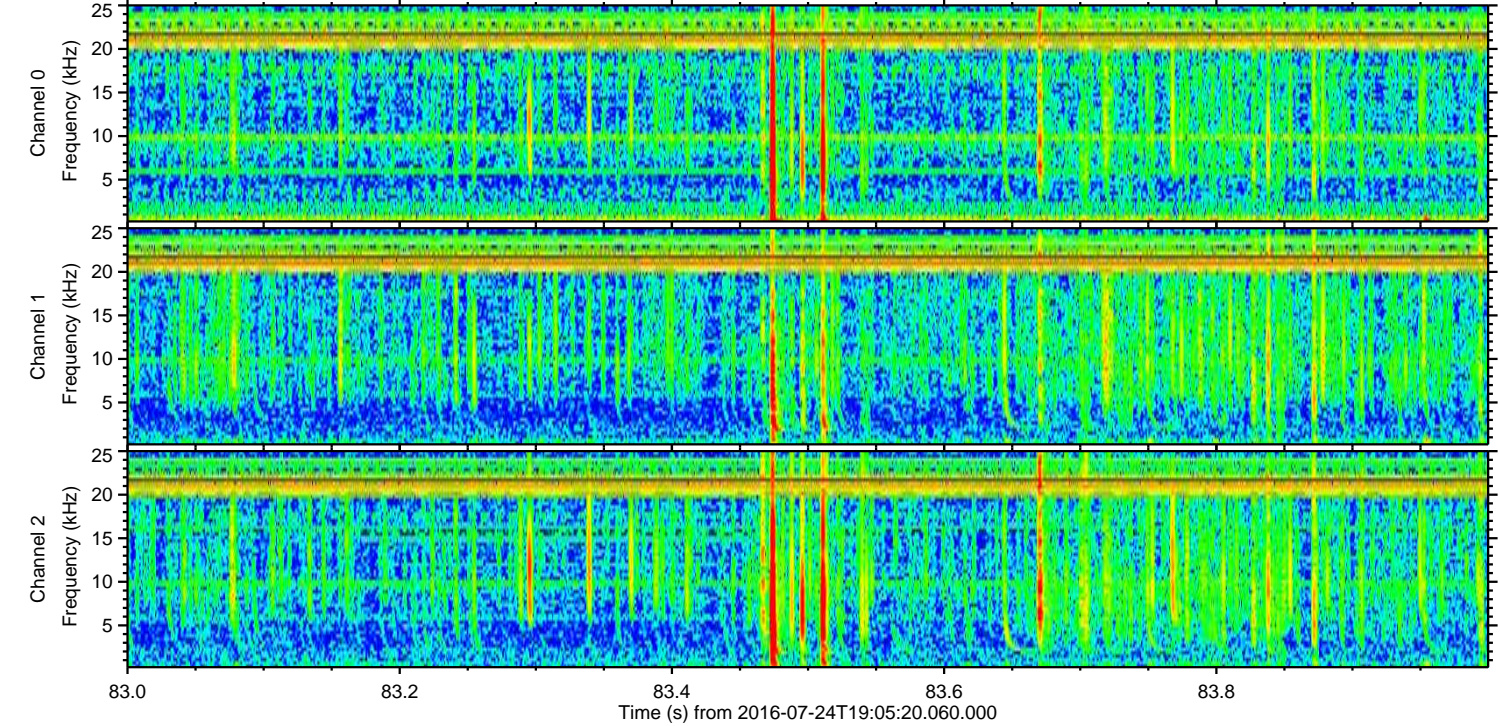
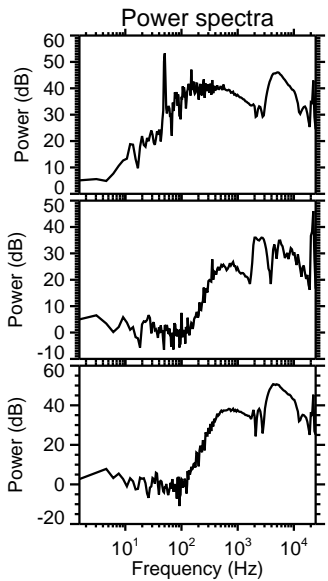
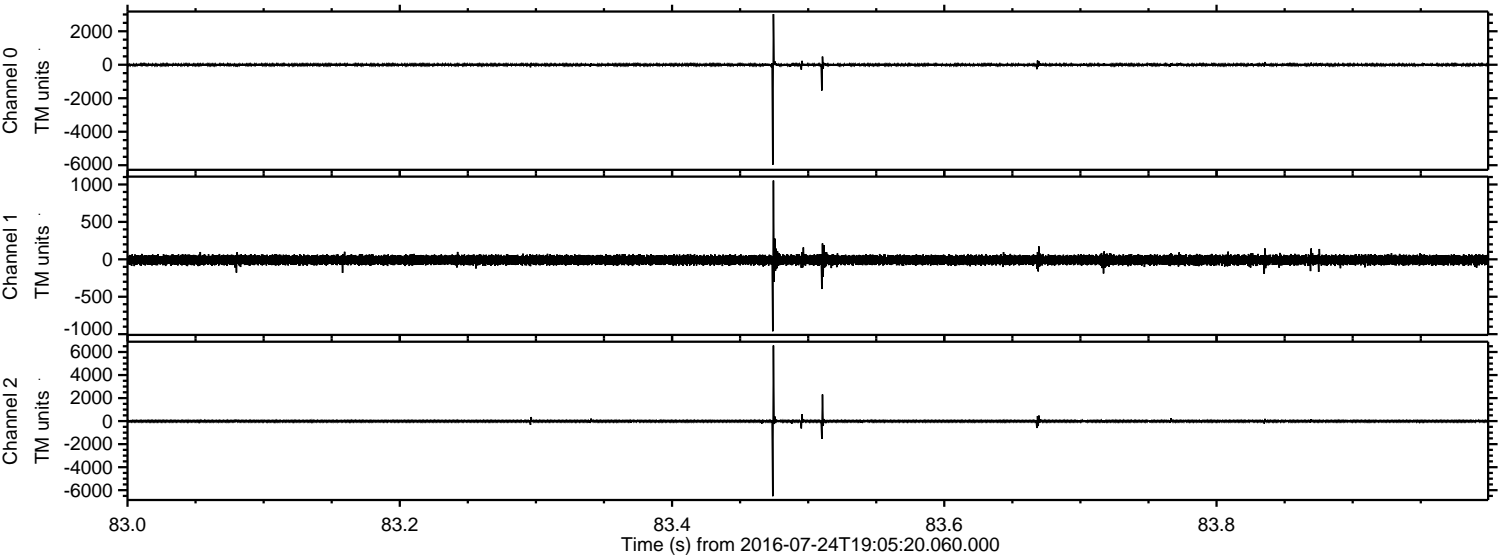


Channel 0
mn: -5977
mx: 3026
 μ : -2.2
 σ : 25.0

Channel 1
mn: -3861
mx: 3077
 μ : -9.4
 σ : 34.7

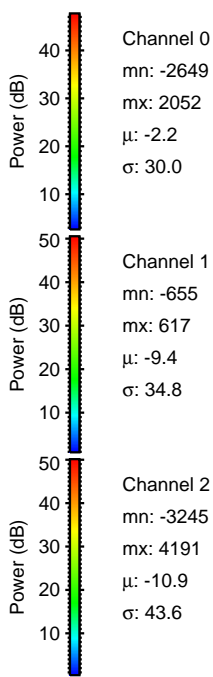
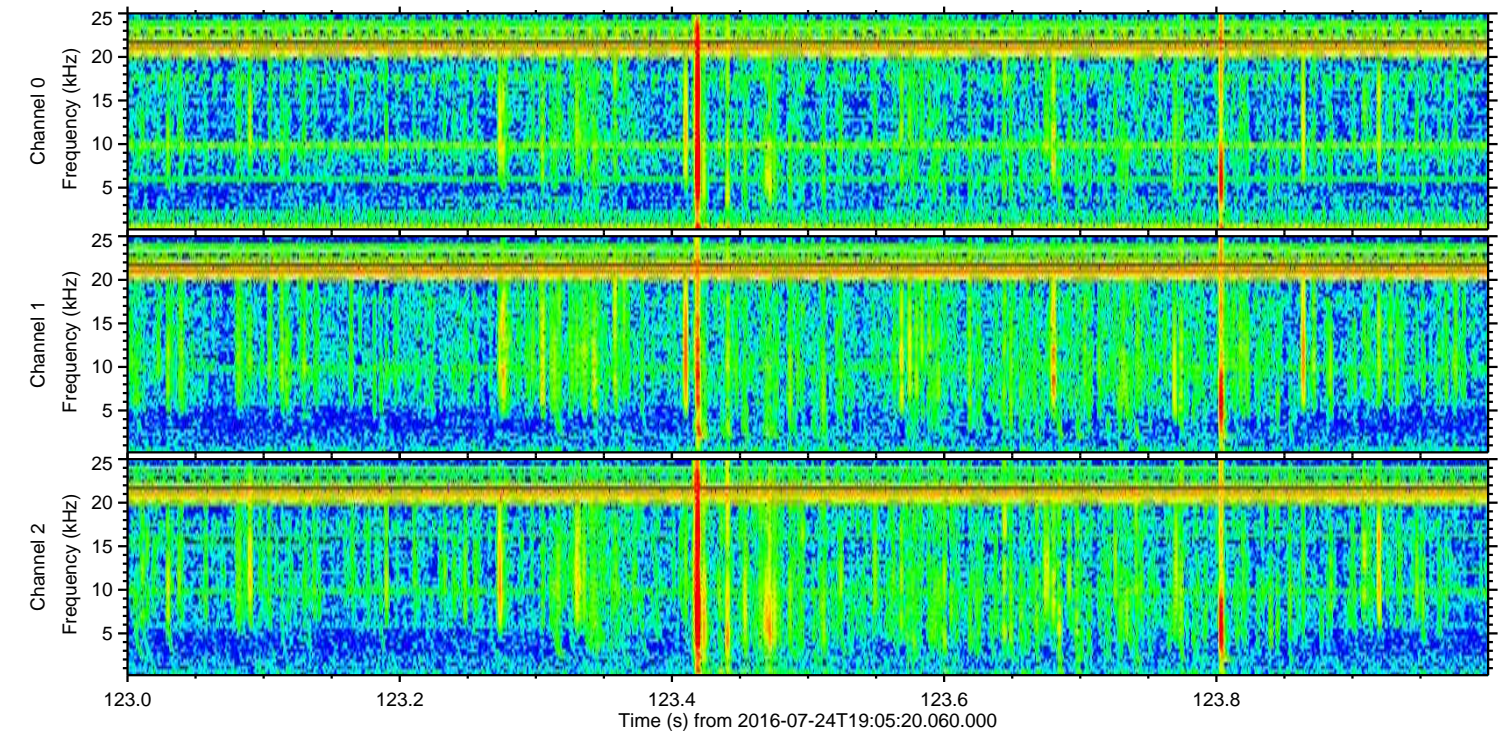
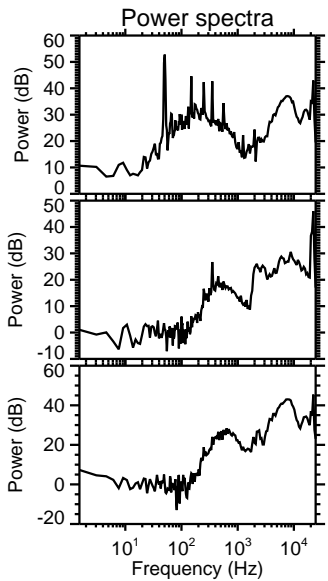
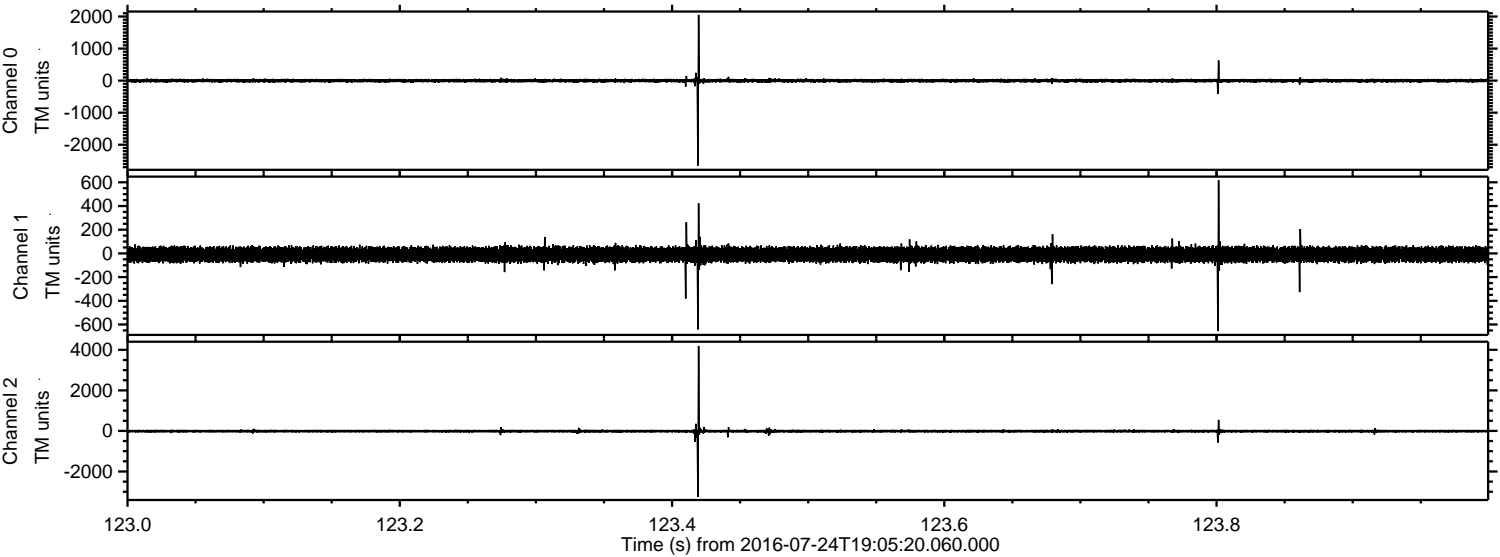
Channel 2
mn: -6525
mx: 6566
 μ : -10.9
 σ : 32.1

Processed Sun Jul 24 21:13:49 2016 by ELM ver.2012-10-06 from 001__elm20160724_190519__dat00.bin

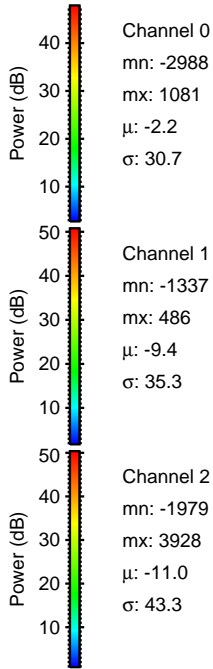
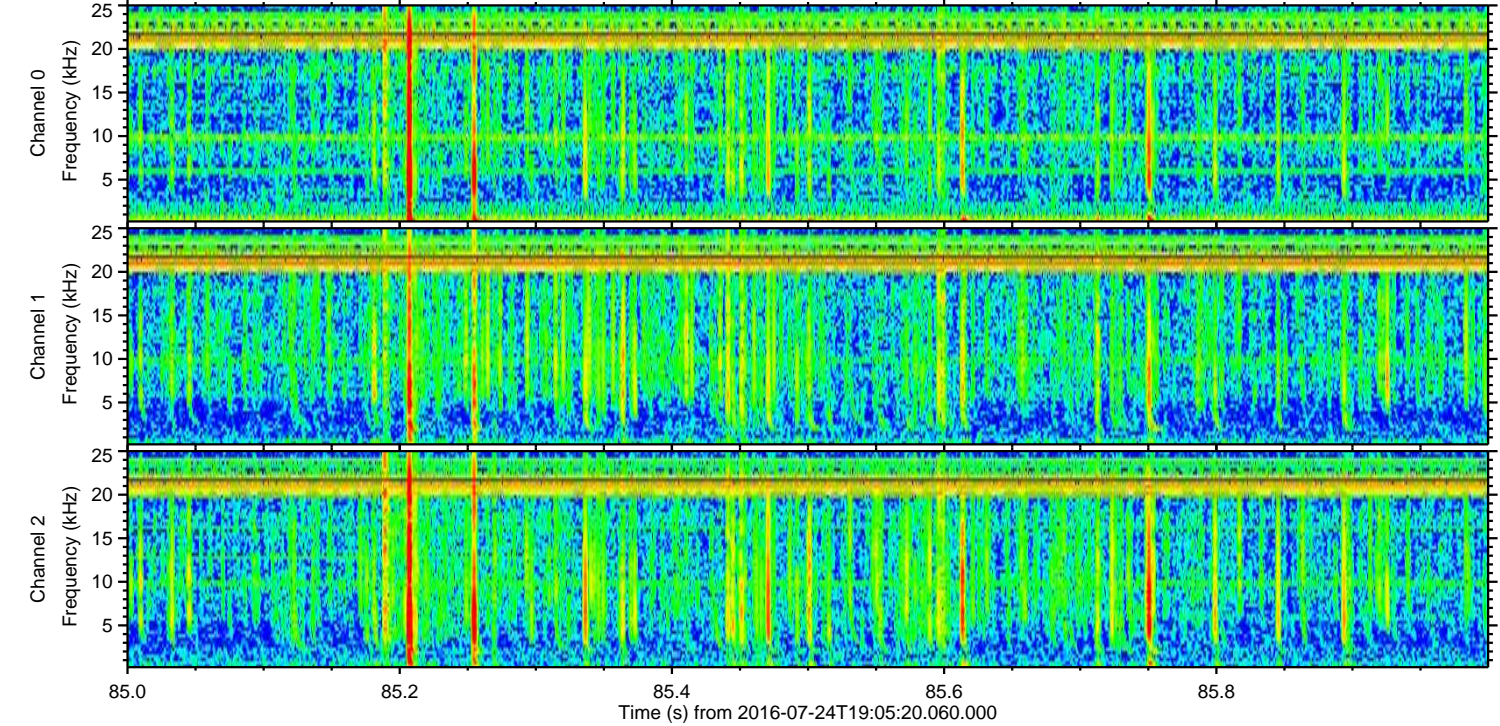
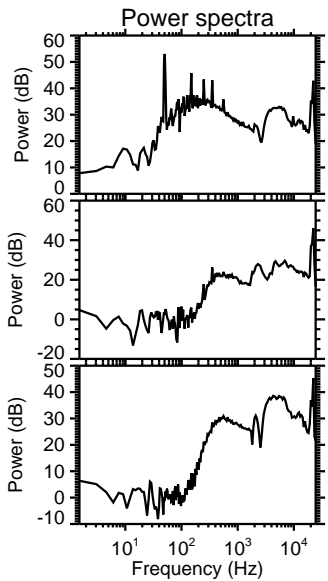
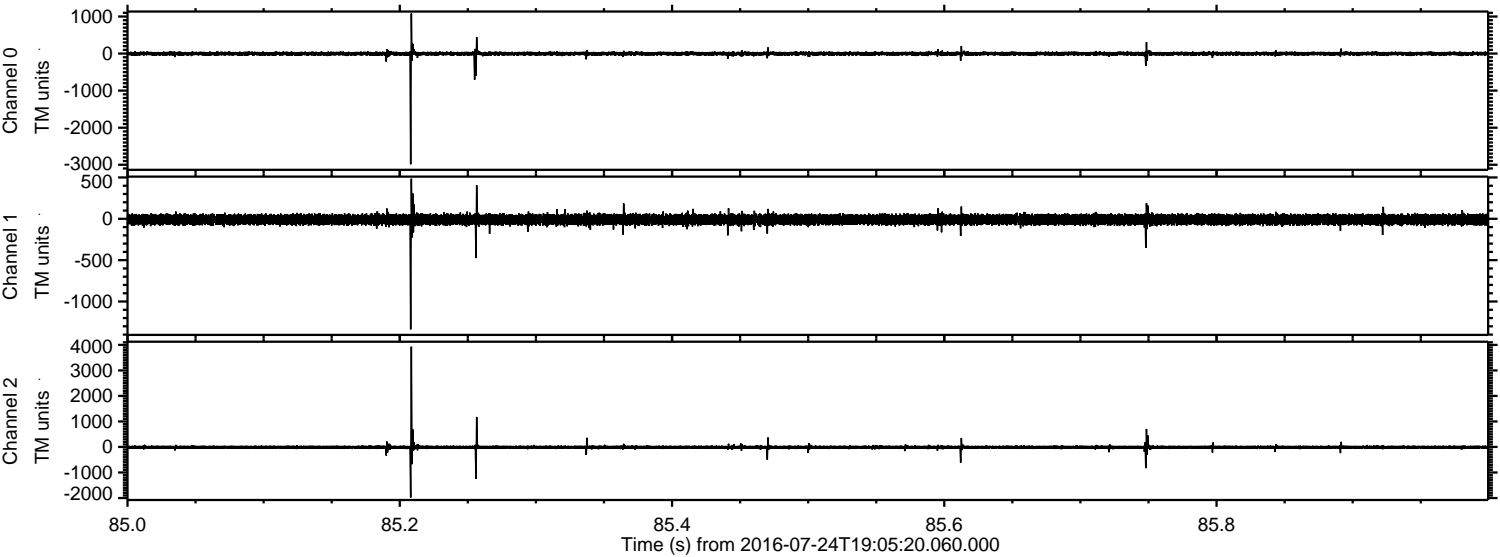


ELMAVAN 3D WAVEFORMS (Measured data sampled at 50 kHz) 51000 packets of 144 samples from 2016-07-24T19:05:20.060.000. Part 124/147

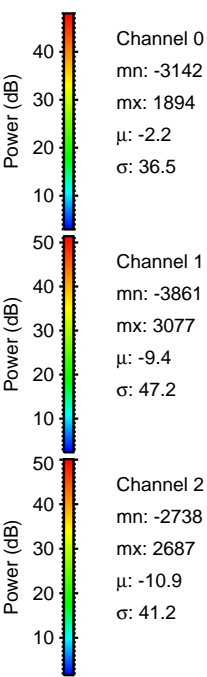
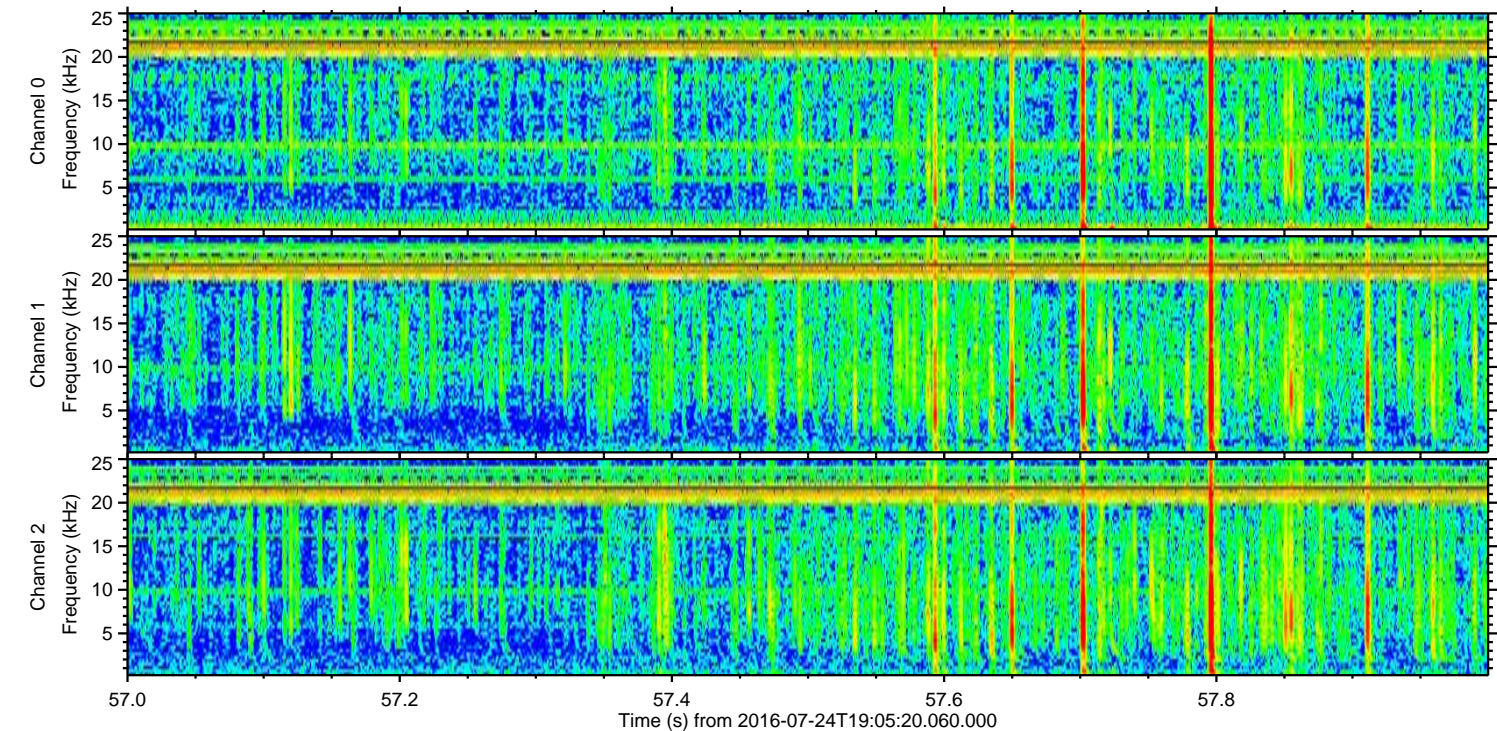
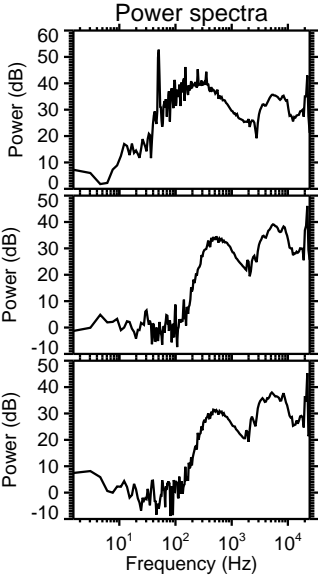
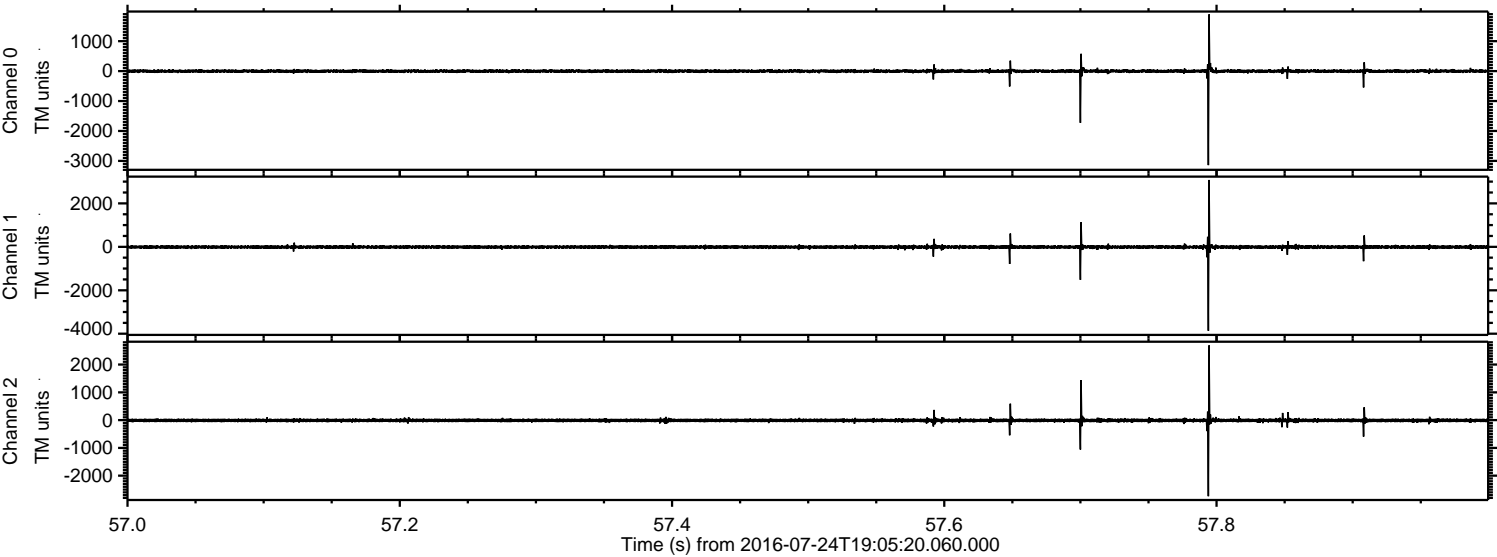
Processed Sun Jul 24 21:13:50 2016 by ELM ver.2012-10-06 from 001__elm20160724_190519__dat00.bin



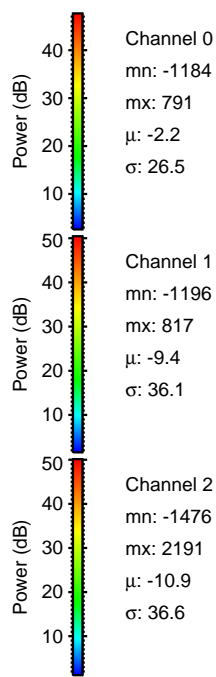
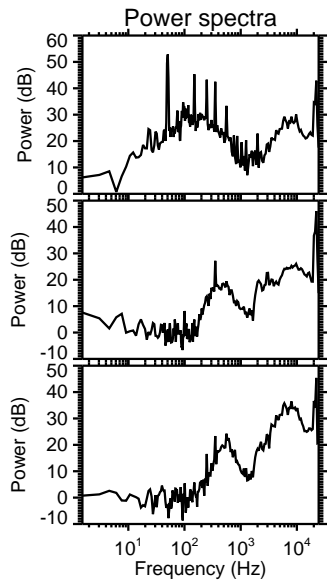
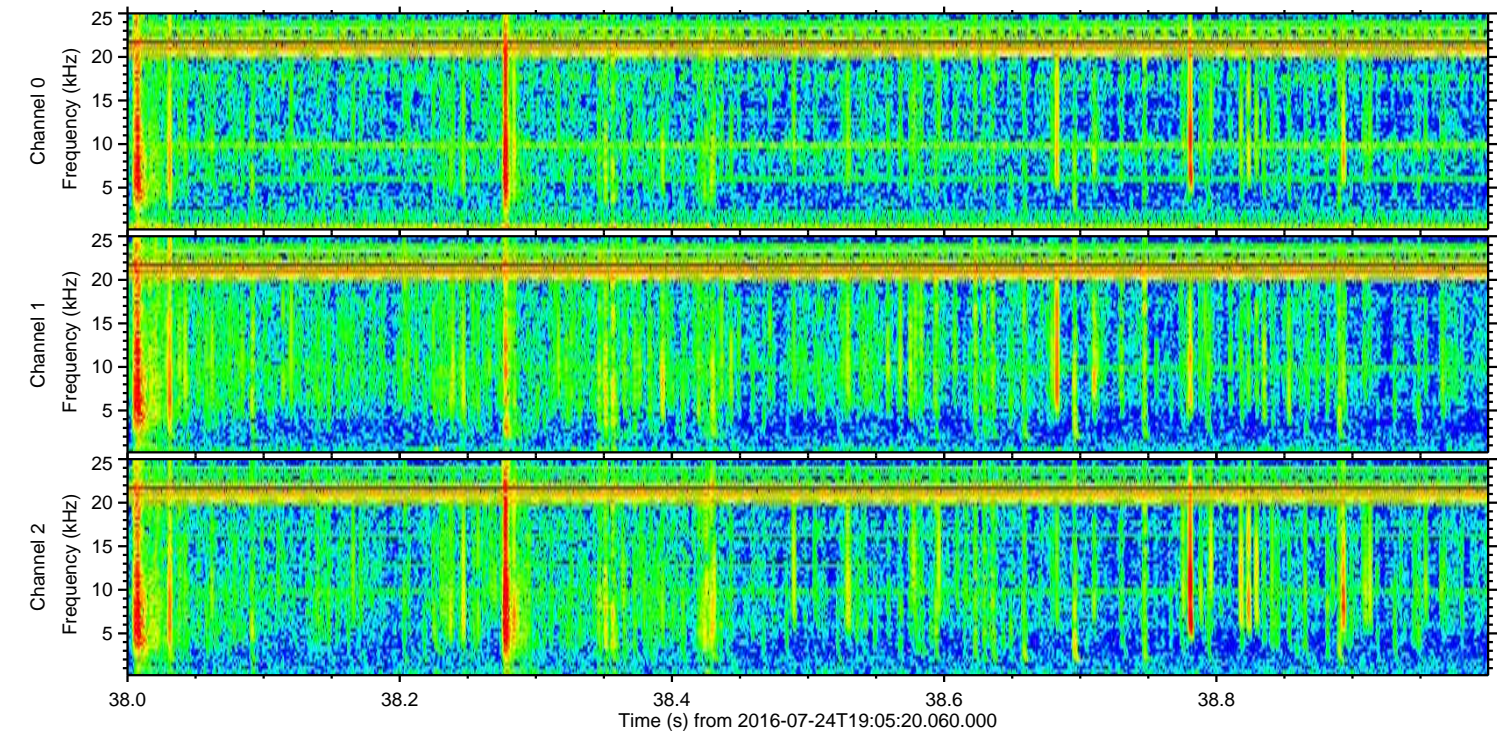
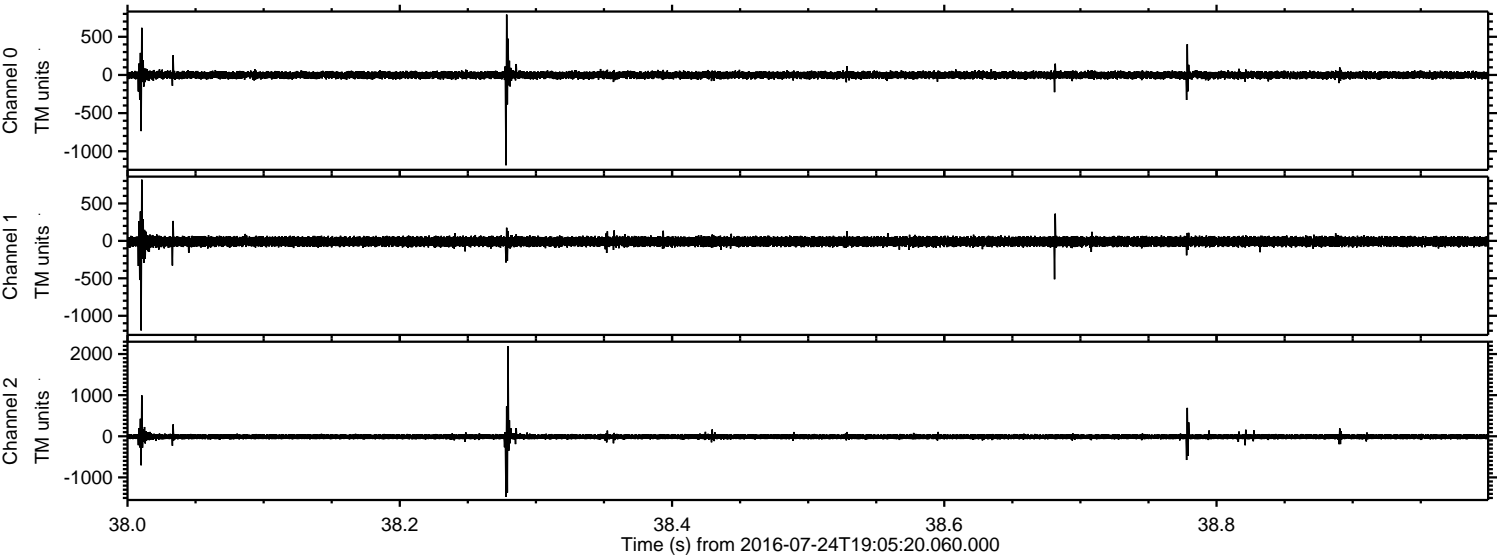
Processed Sun Jul 24 21:13:51 2016 by ELM ver.2012-10-06 from 001__elm20160724_190519__dat00.bin



Processed Sun Jul 24 21:13:52 2016 by ELM ver.2012-10-06 from 001__elm20160724_190519__dat00.bin

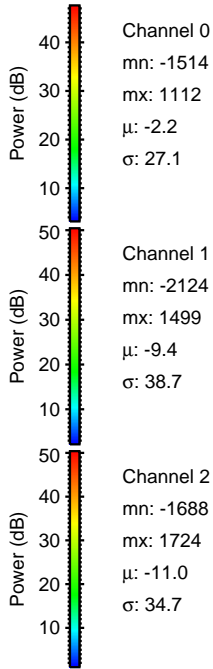
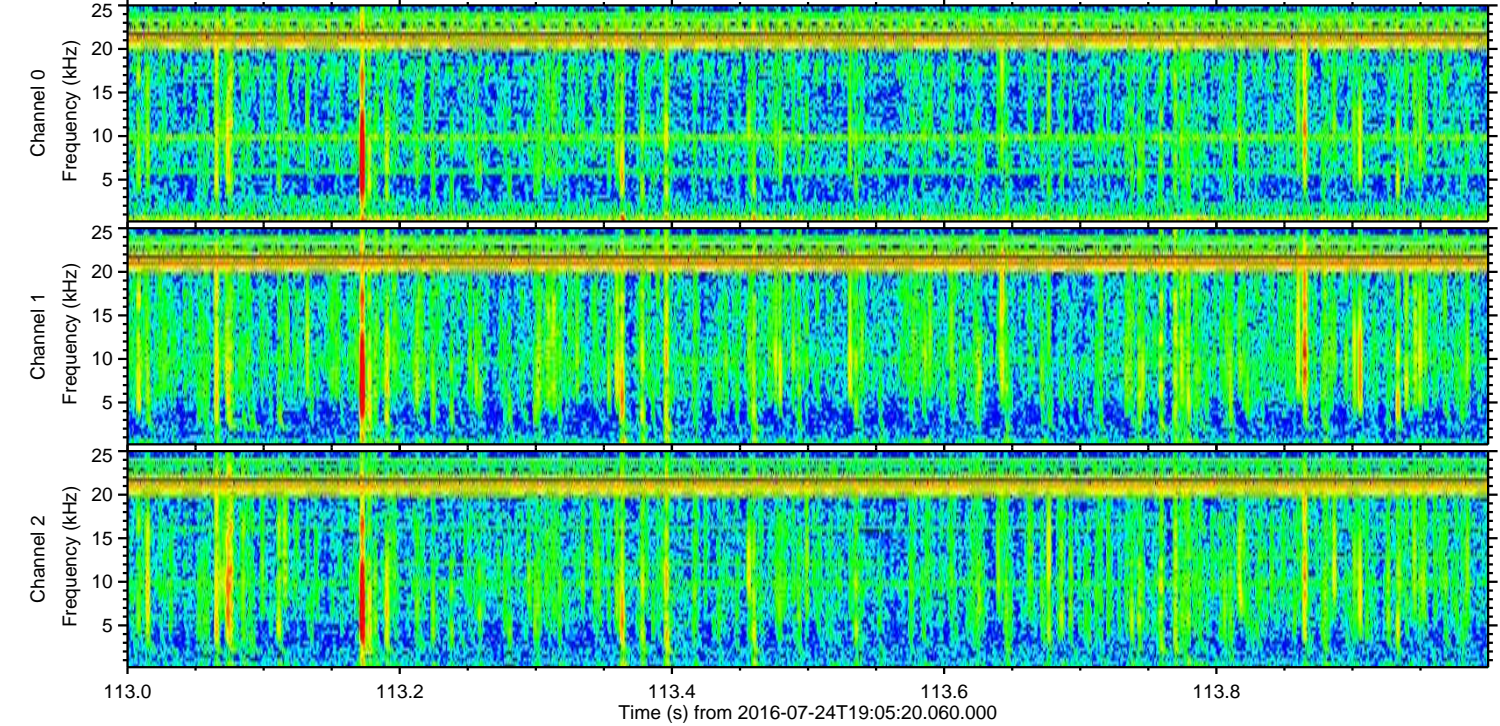
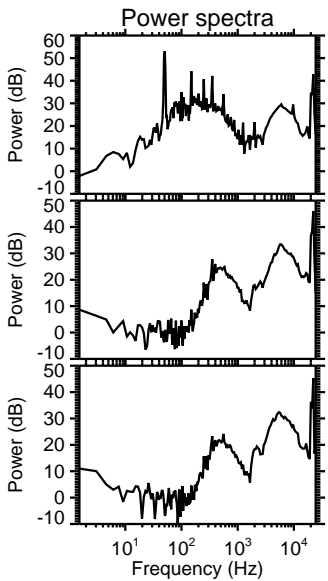
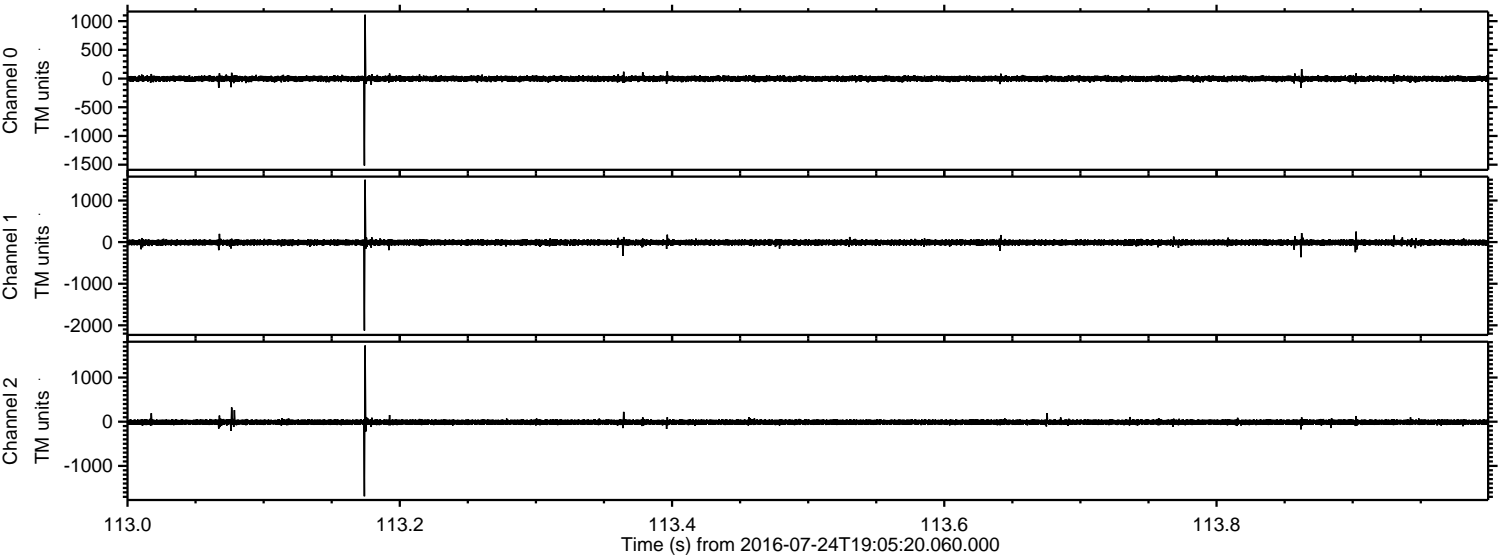


Processed Sun Jul 24 21:13:52 2016 by ELM ver.2012-10-06 from 001__elm20160724_190519__dat00.bin

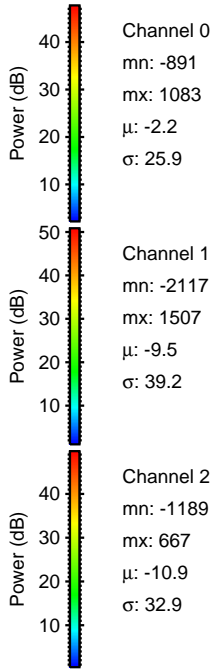
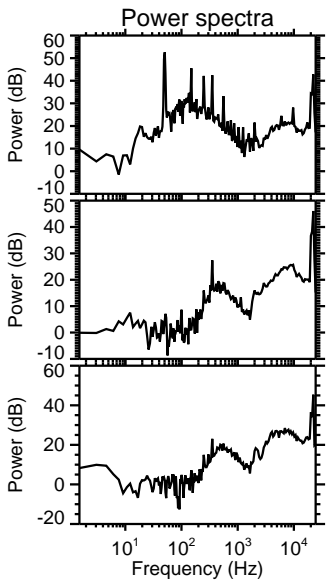
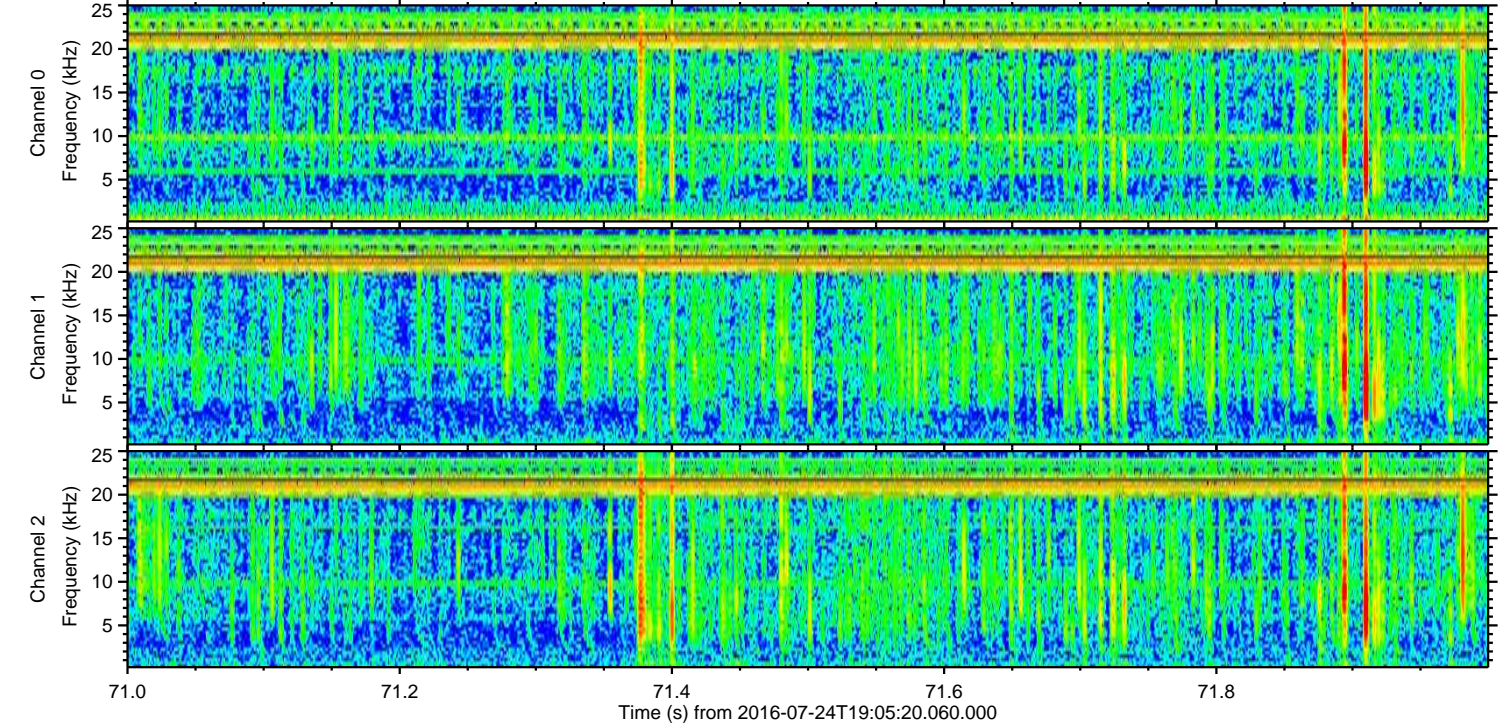
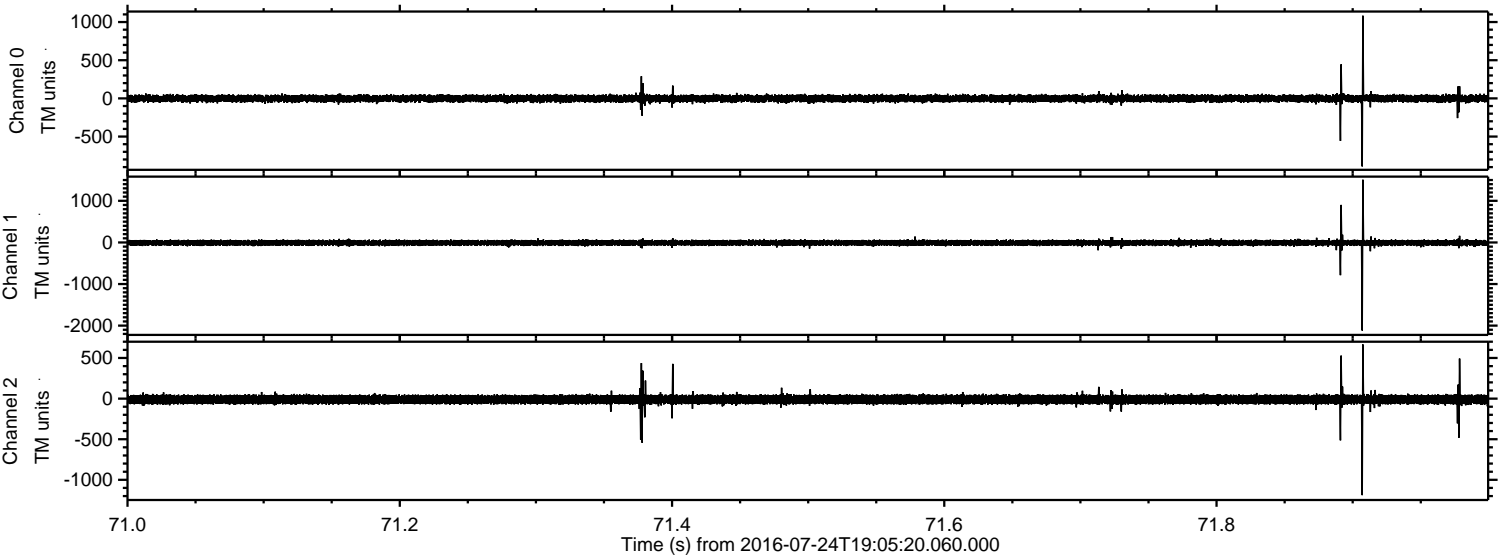


ELMAVAN 3D WAVEFORMS (Measured data sampled at 50 kHz) 51000 packets of 144 samples from 2016-07-24T19:05:20.060.000. Part 114/147

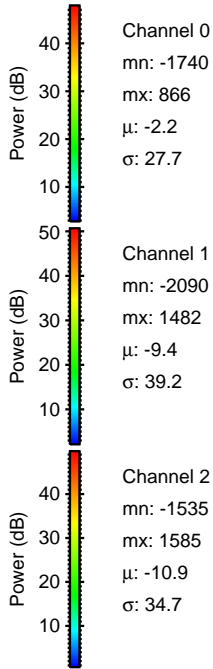
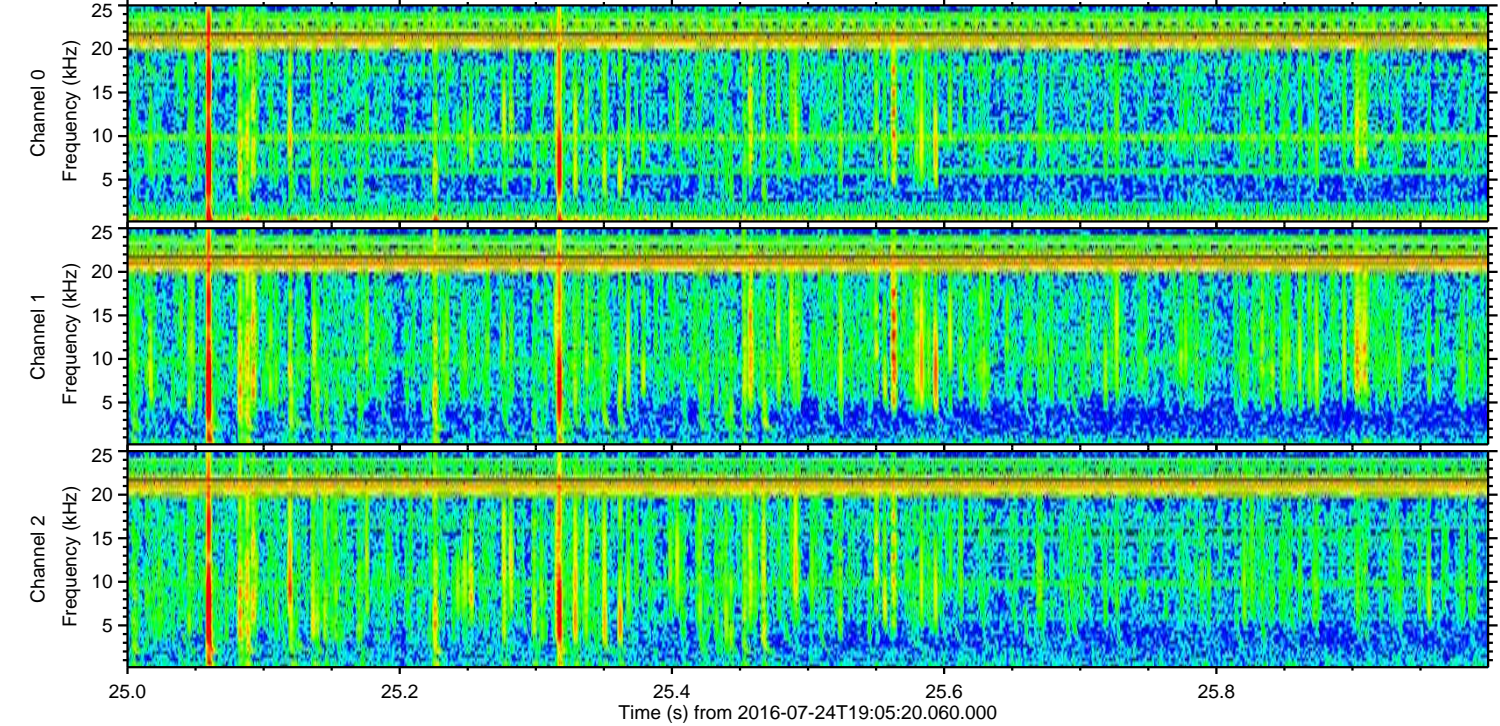
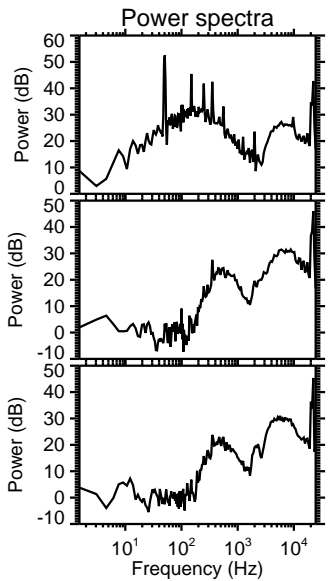
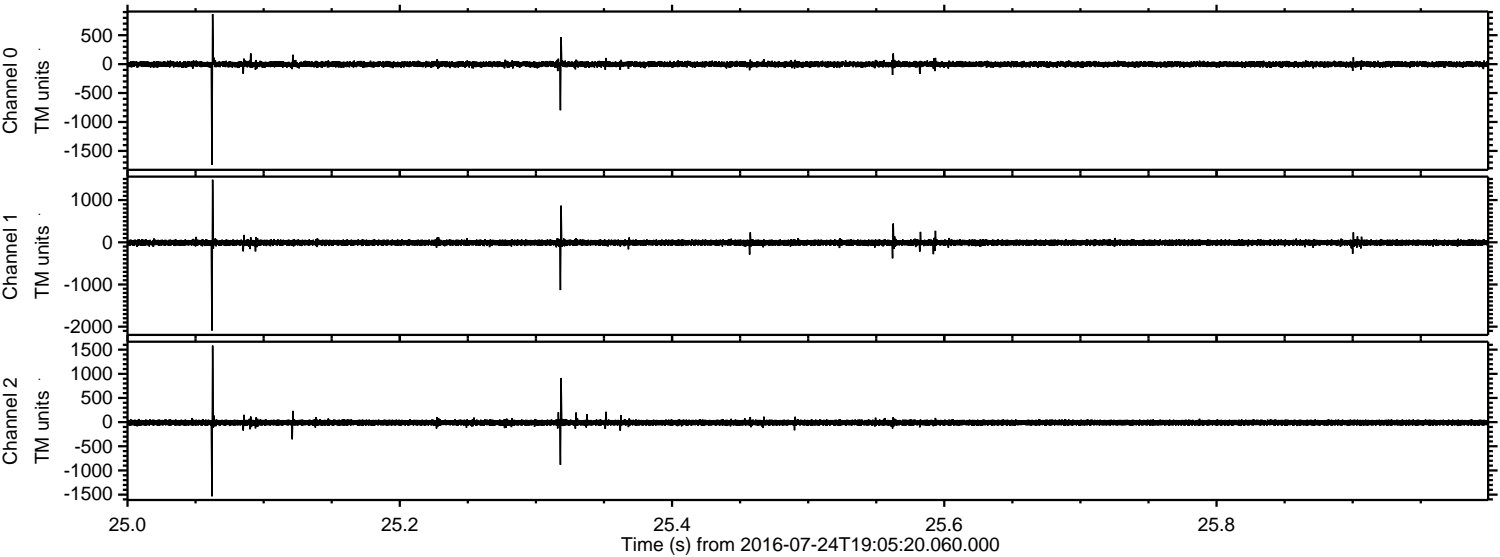
Processed Sun Jul 24 21:13:53 2016 by ELM ver.2012-10-06 from 001__elm20160724_190519__dat00.bin



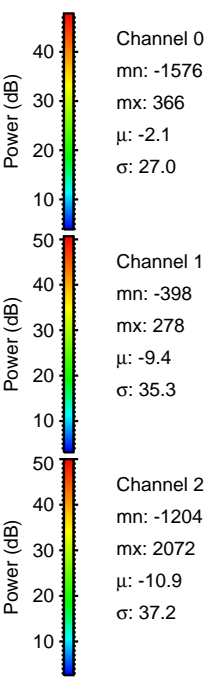
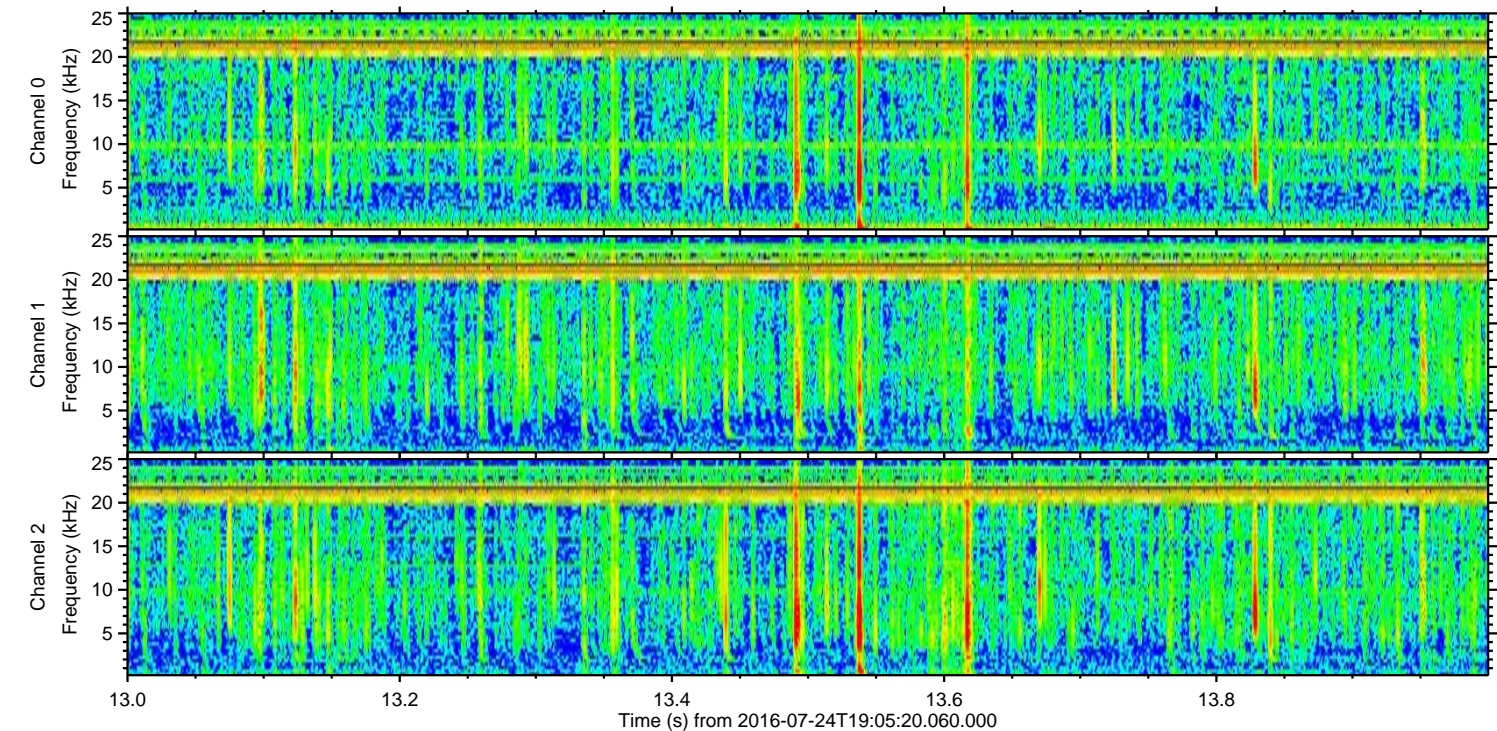
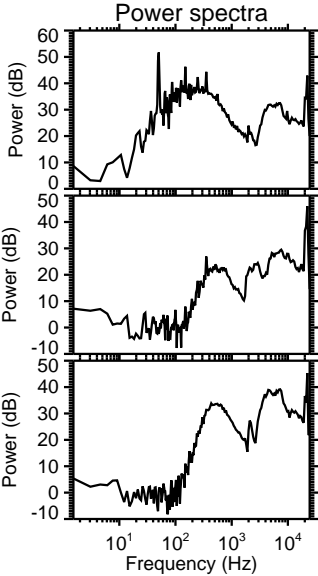
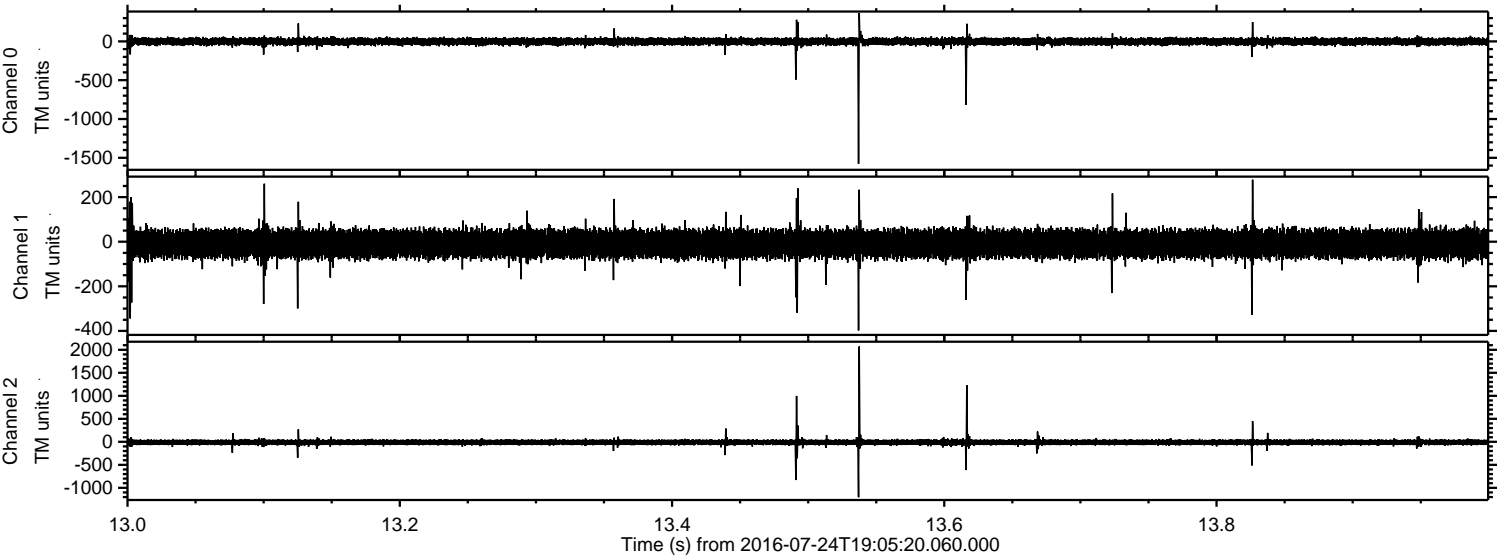
Processed Sun Jul 24 21:13:54 2016 by ELM ver.2012-10-06 from 001__elm20160724_190519__dat00.bin



Processed Sun Jul 24 21:13:55 2016 by ELM ver.2012-10-06 from 001__elm20160724_190519__dat00.bin



Processed Sun Jul 24 21:13:56 2016 by ELM ver.2012-10-06 from 001__elm20160724_190519__dat00.bin



Channel 0
mn: -1576
mx: 366
 μ : -2.1
 σ : 27.0

Channel 1
mn: -398
mx: 278
 μ : -9.4
 σ : 35.3

Channel 2
mn: -1204
mx: 2072
 μ : -10.9
 σ : 37.2

Processed Sun Jul 24 21:13:57 2016 by ELM ver.2012-10-06 from 001__elm20160724_190519__dat00.bin

