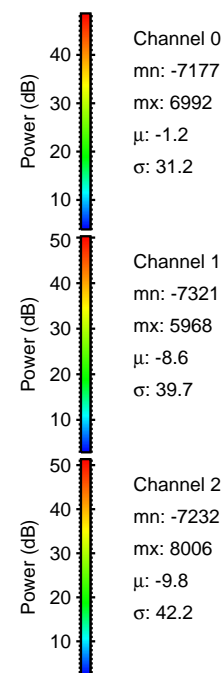
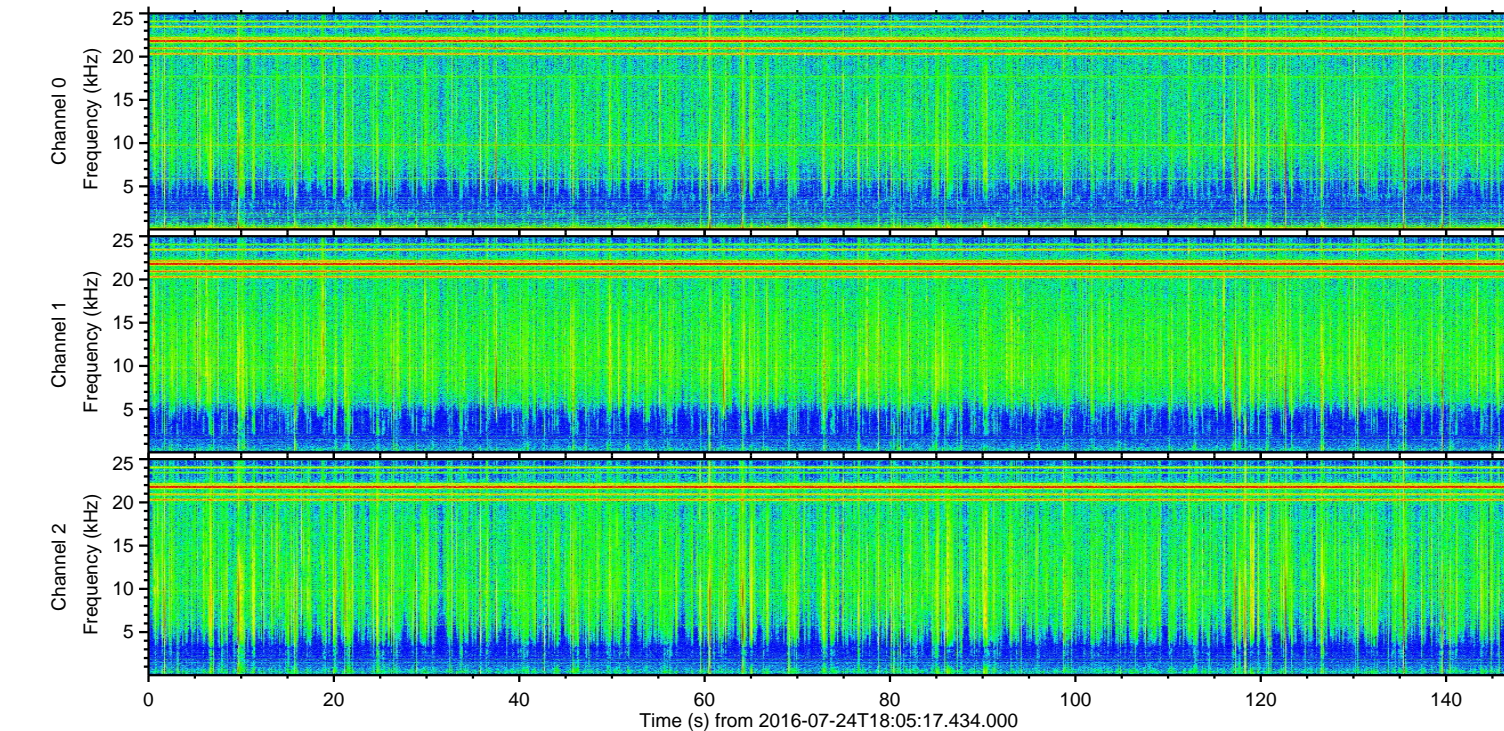
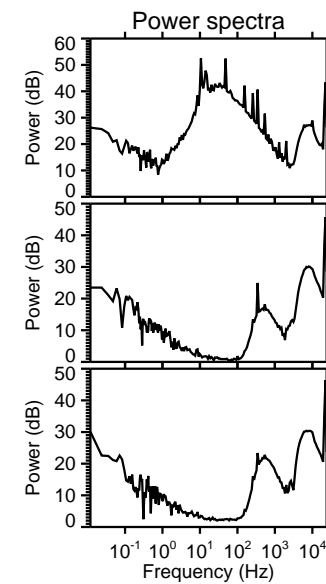
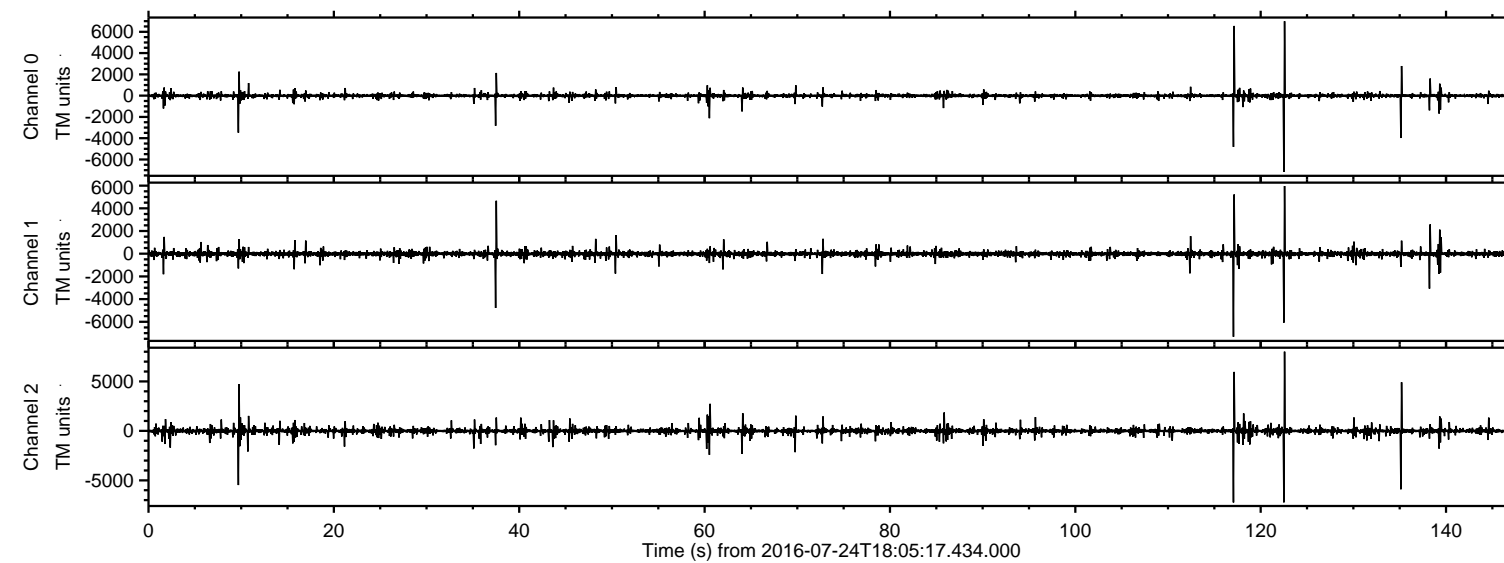


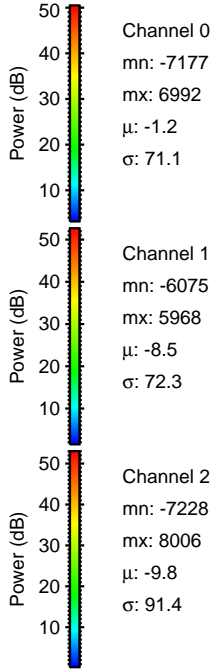
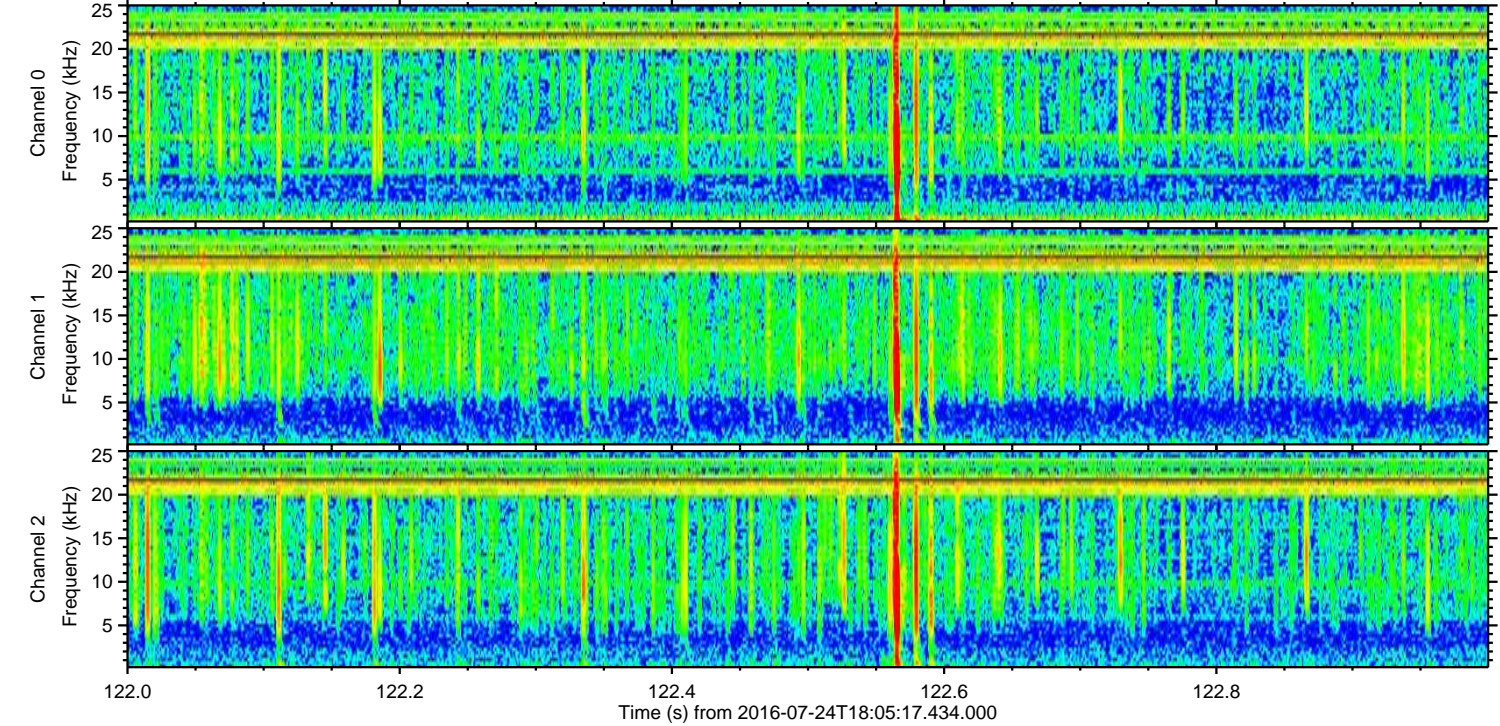
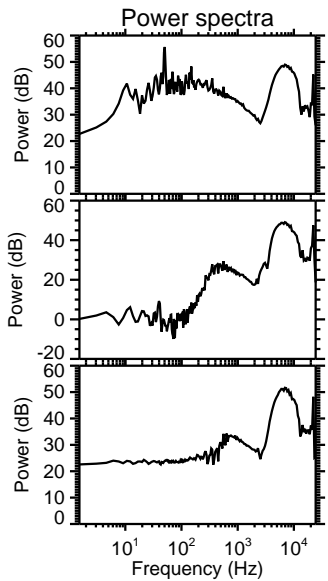
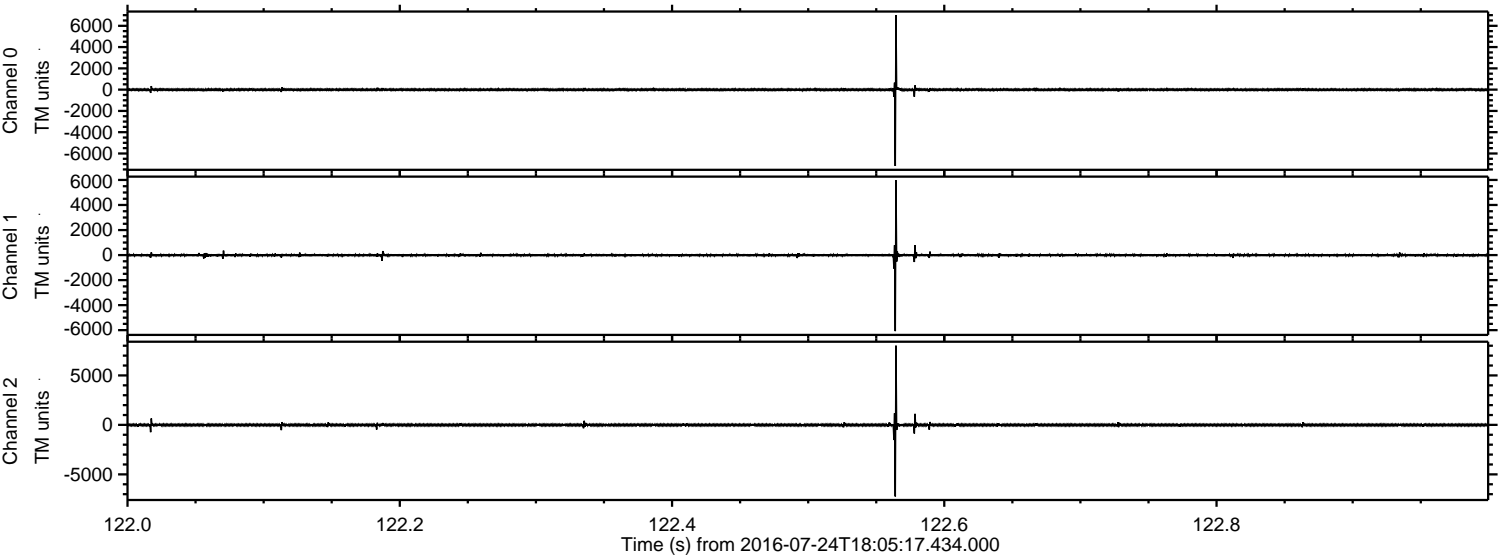
ELMAVAN 3D WAVEFORMS (Measured data sampled at 50 kHz) 51000 packets of 144 samples from 2016-07-24T18:05:17.434.000.

Processed Sun Jul 24 20:13:39 2016 by ELM ver.2012-10-06 from 001__elm20160724_180516__dat00.bin



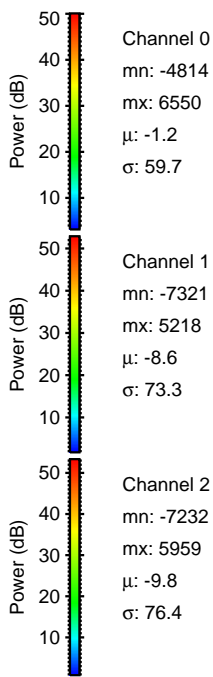
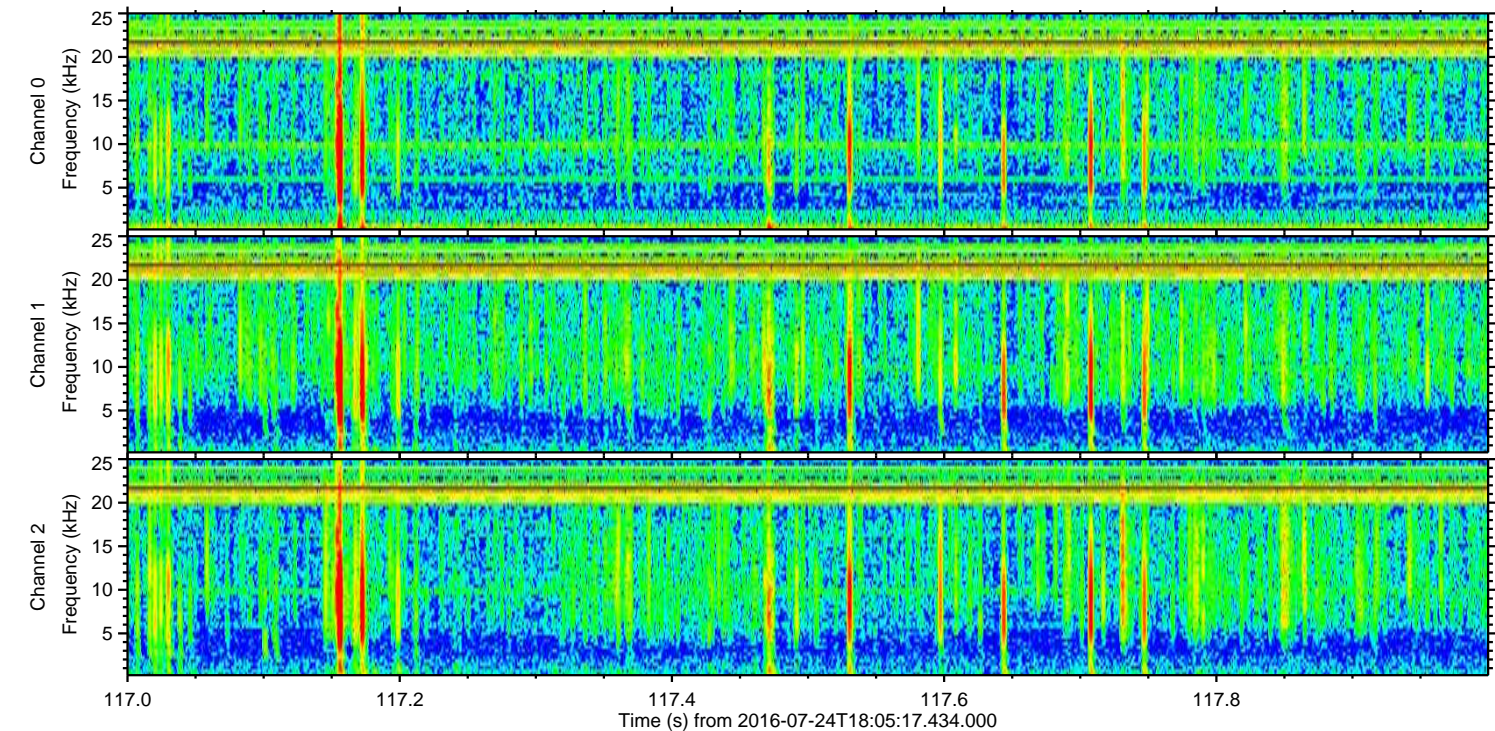
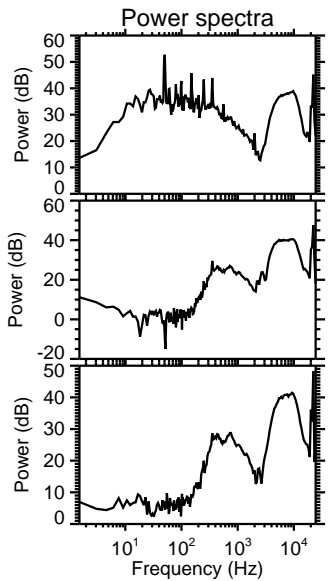
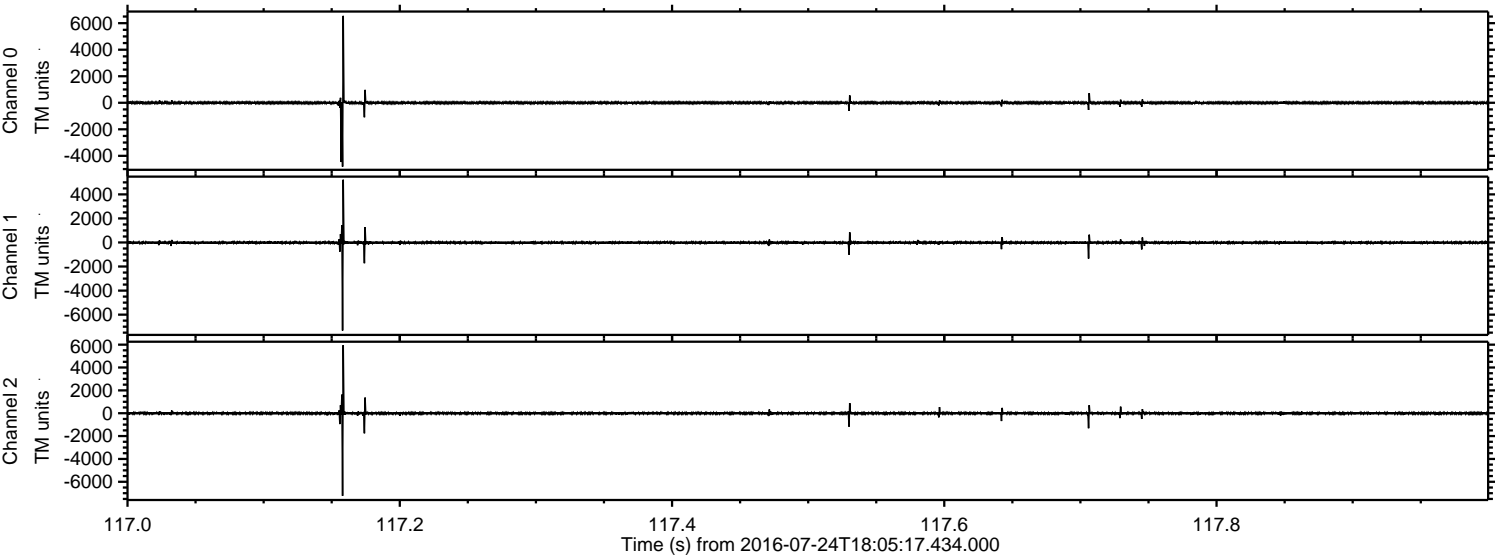
ELMAVAN 3D WAVEFORMS (Measured data sampled at 50 kHz) 51000 packets of 144 samples from 2016-07-24T18:05:17.434.000. Part 123/147

Processed Sun Jul 24 20:13:50 2016 by ELM ver.2012-10-06 from 001__elm20160724_180516__dat00.bin



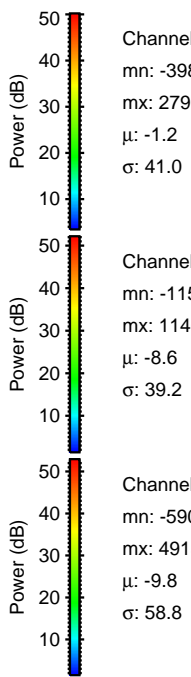
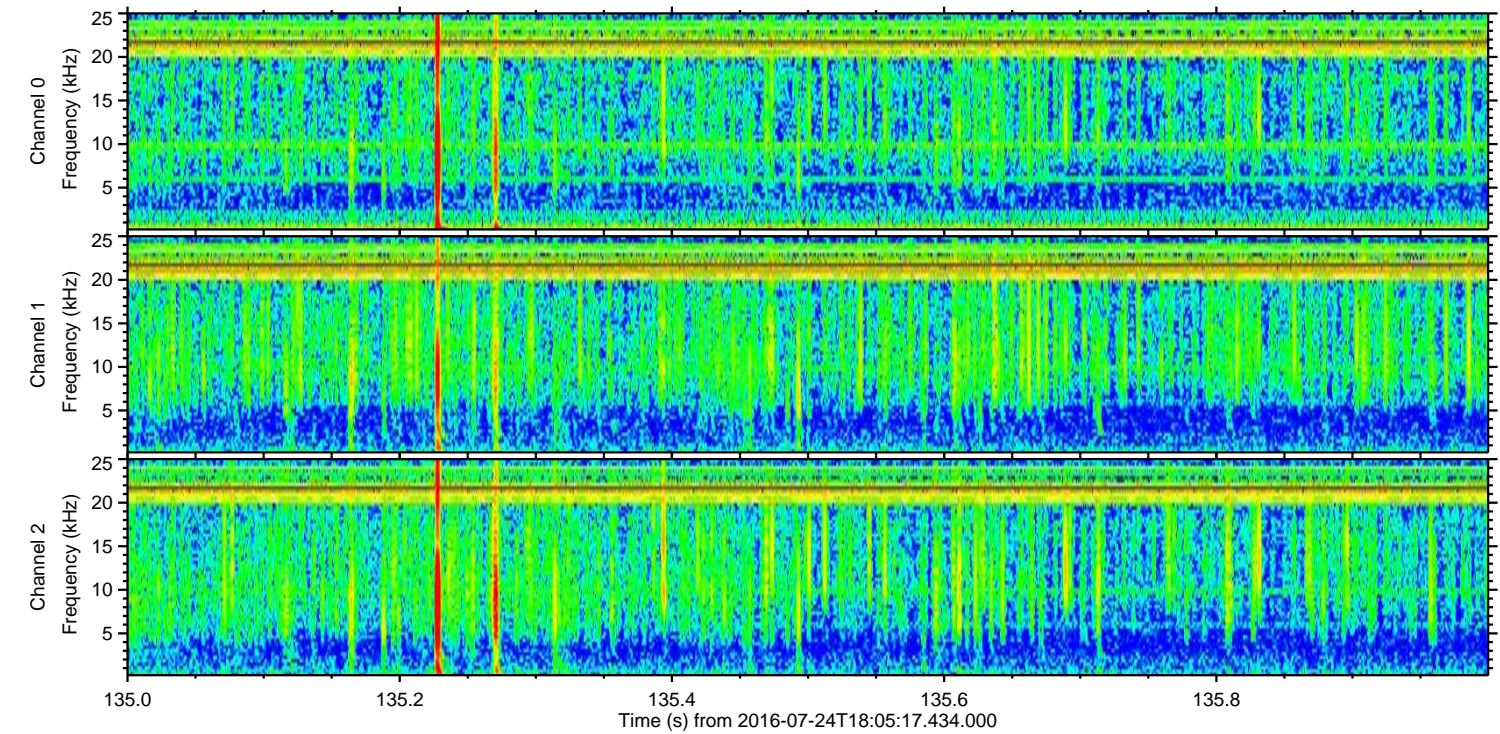
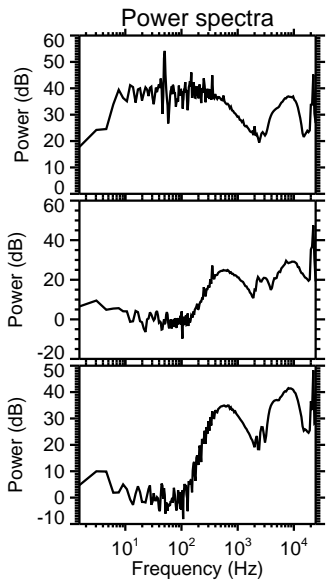
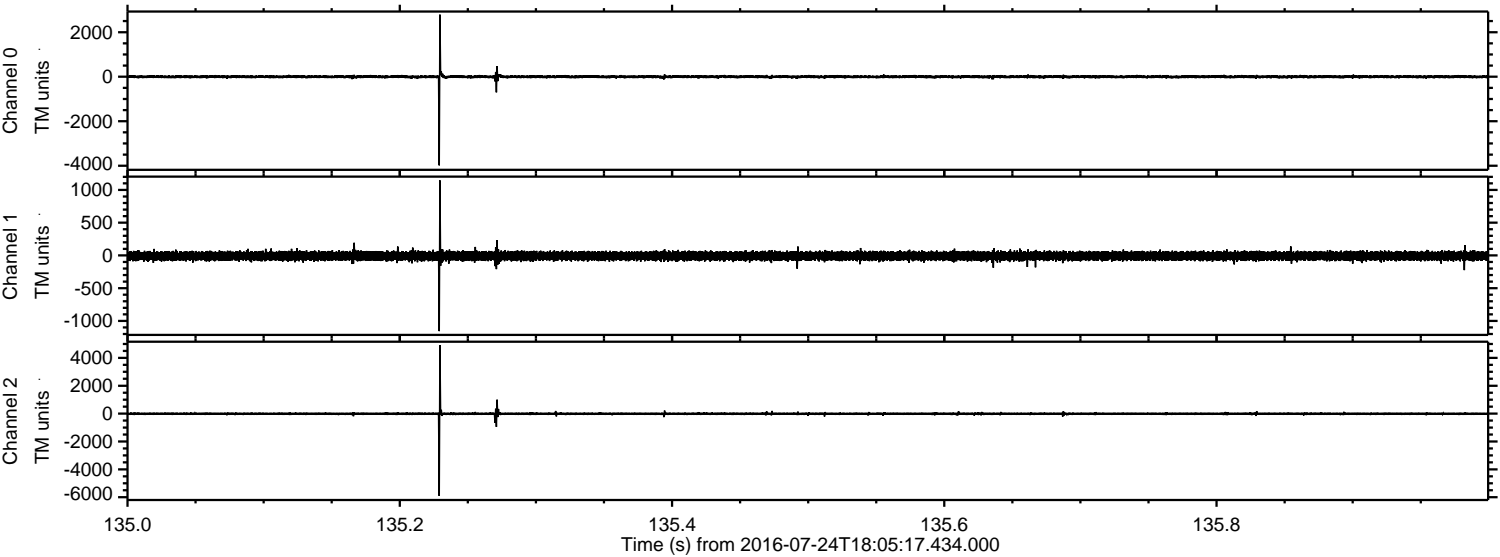
ELMAVAN 3D WAVEFORMS (Measured data sampled at 50 kHz) 51000 packets of 144 samples from 2016-07-24T18:05:17.434.000. Part 118/147

Processed Sun Jul 24 20:13:51 2016 by ELM ver.2012-10-06 from 001__elm20160724_180516__dat00.bin



ELMAVAN 3D WAVEFORMS (Measured data sampled at 50 kHz) 51000 packets of 144 samples from 2016-07-24T18:05:17.434.000. Part 136/147

Processed Sun Jul 24 20:13:52 2016 by ELM ver.2012-10-06 from 001__elm20160724_180516__dat00.bin

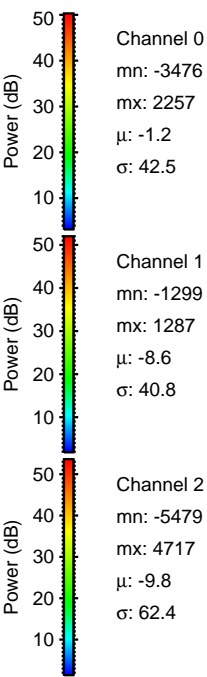
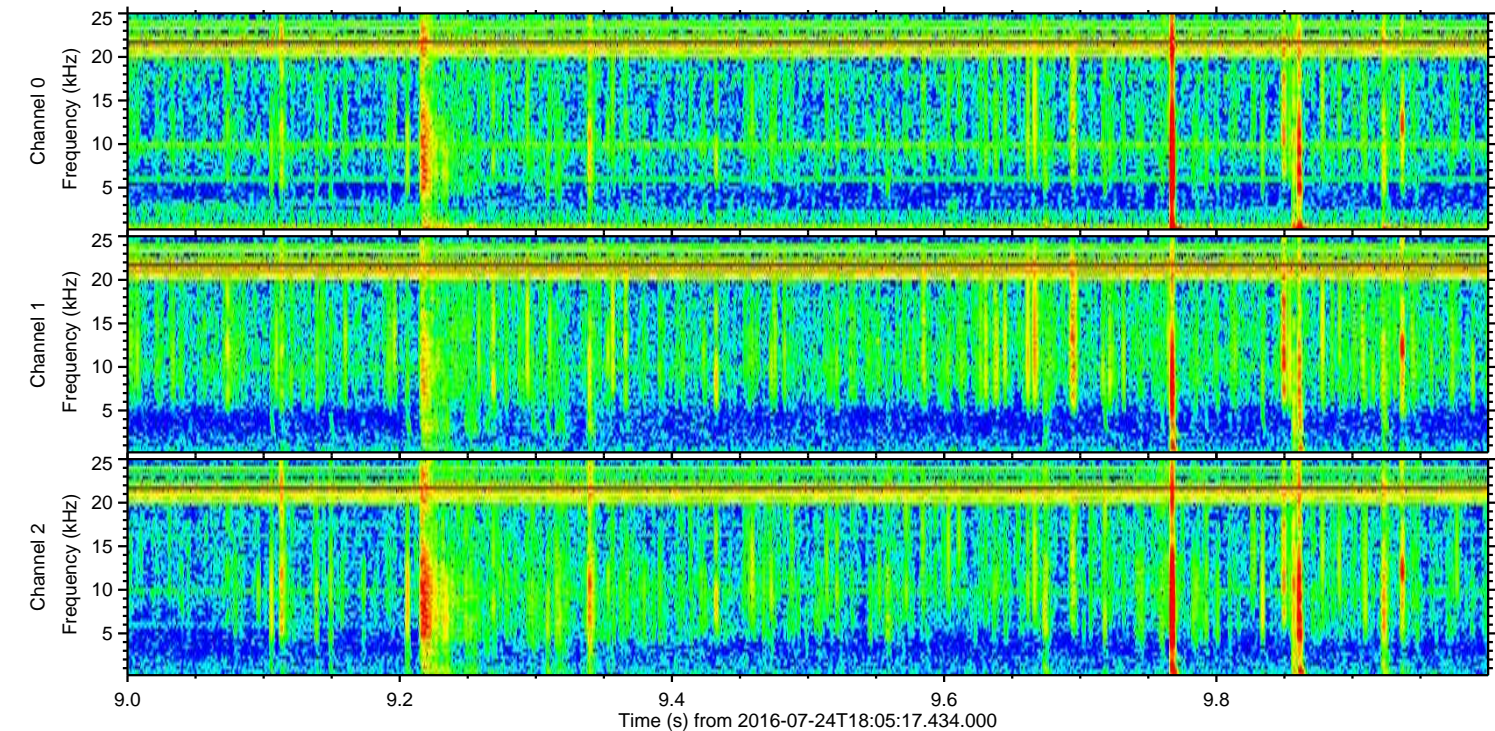
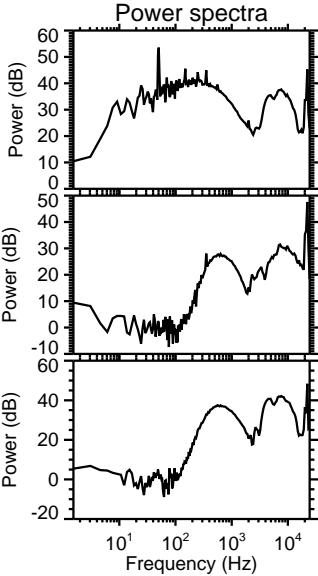
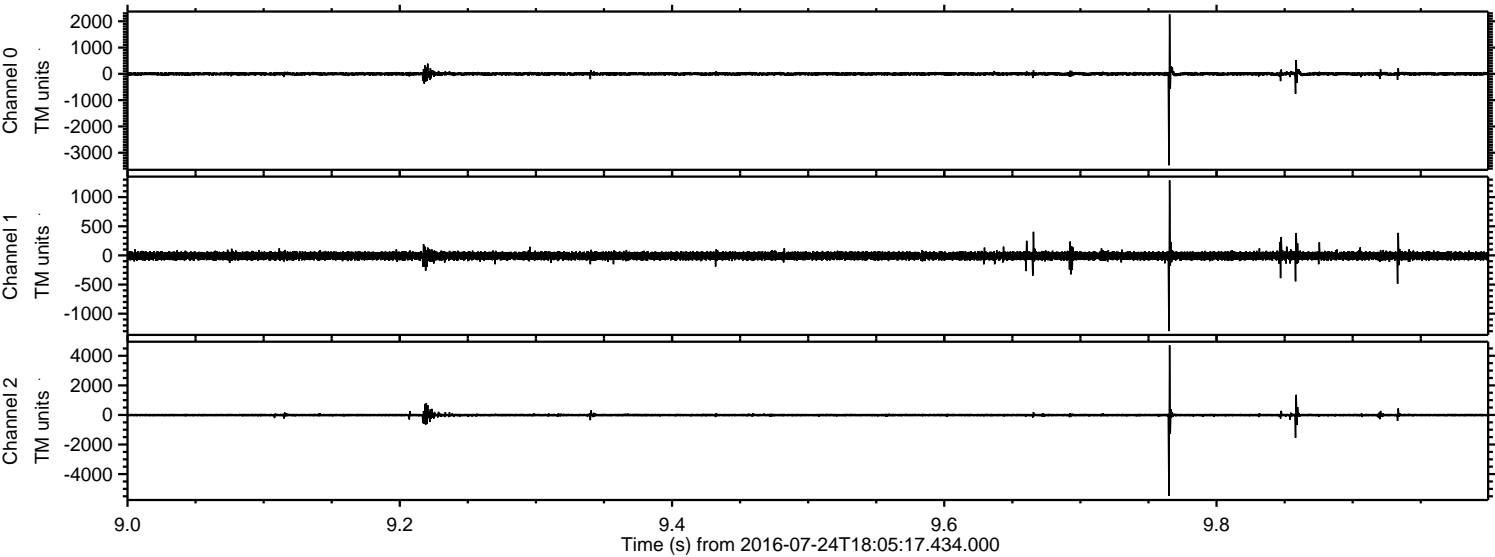


Channel 0
mn: -3985
mx: 2790
 μ : -1.2
 σ : 41.0

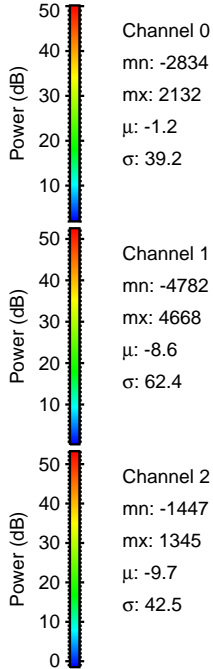
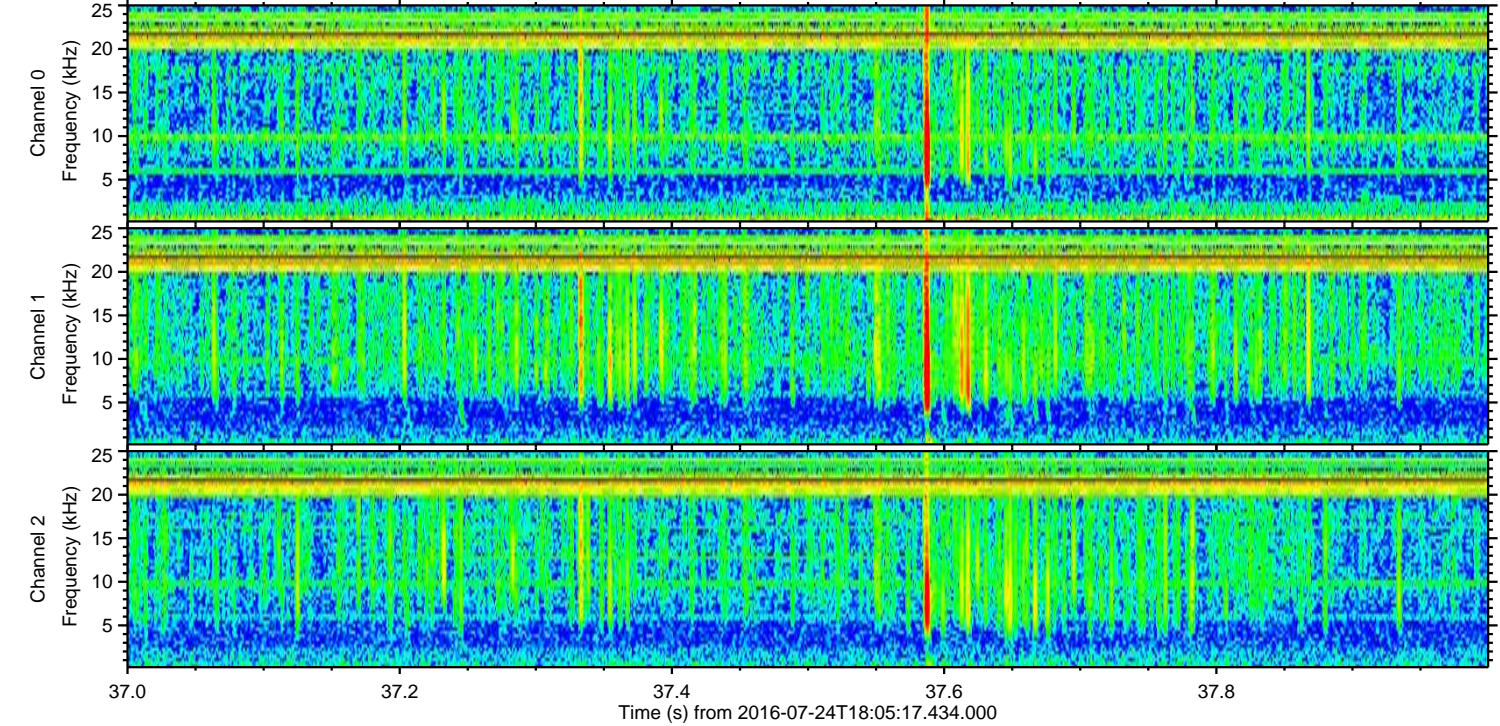
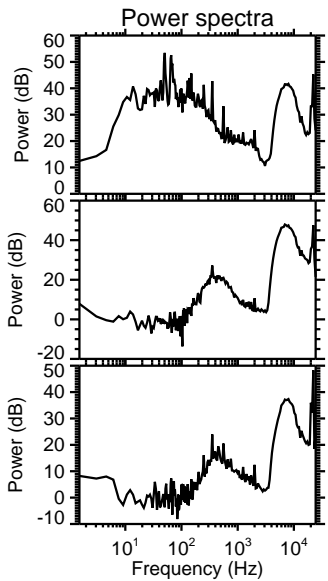
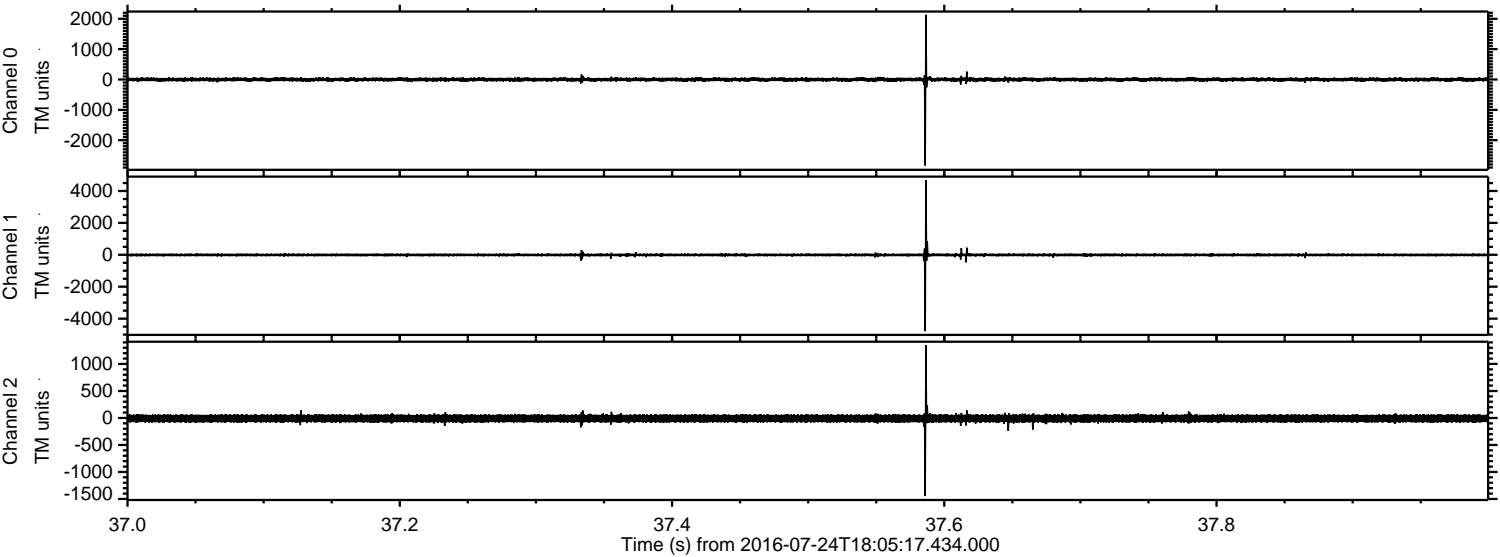
Channel 1
mn: -1156
mx: 1146
 μ : -8.6
 σ : 39.2

Channel 2
mn: -5904
mx: 4915
 μ : -9.8
 σ : 58.8

Processed Sun Jul 24 20:13:53 2016 by ELM ver.2012-10-06 from 001__elm20160724_180516__dat00.bin

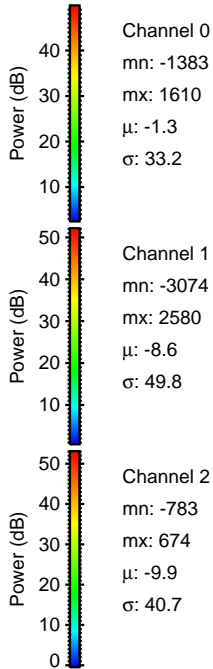
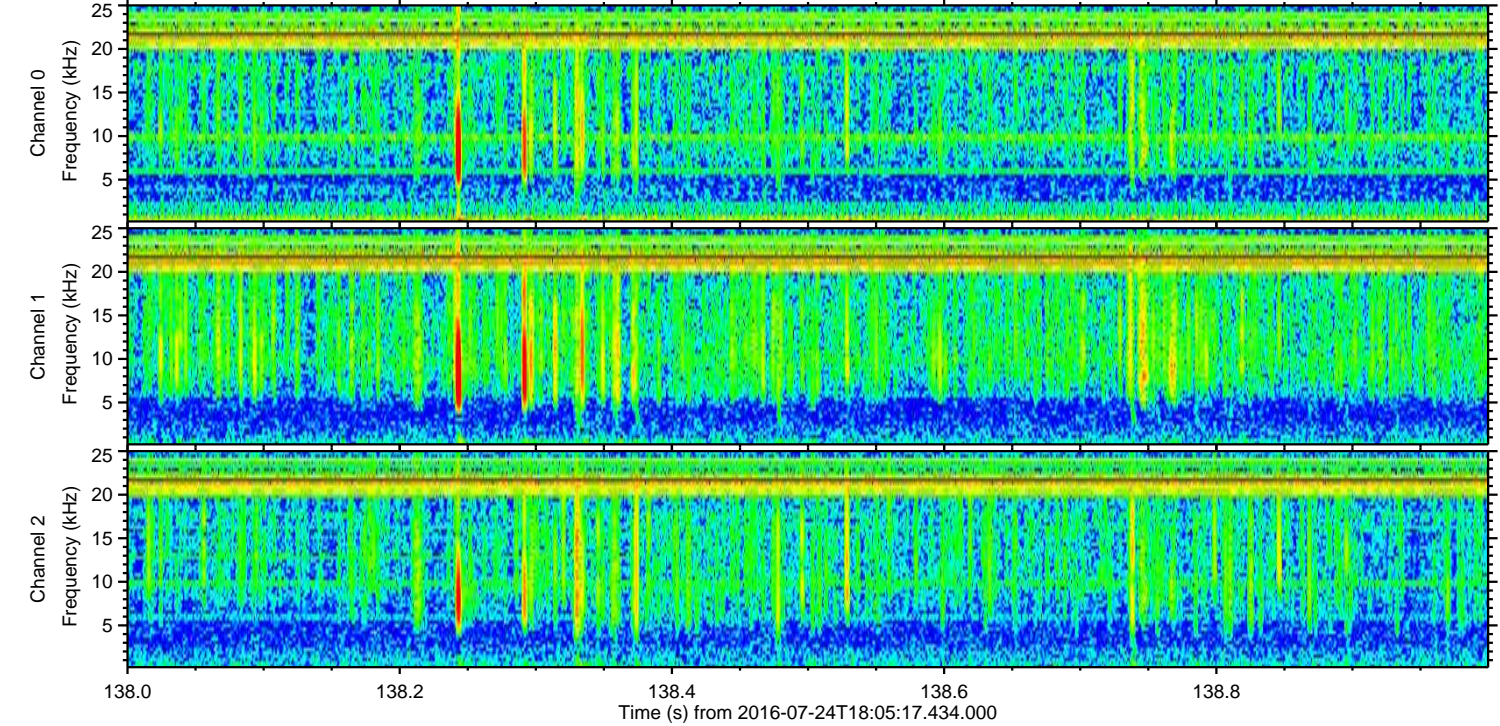
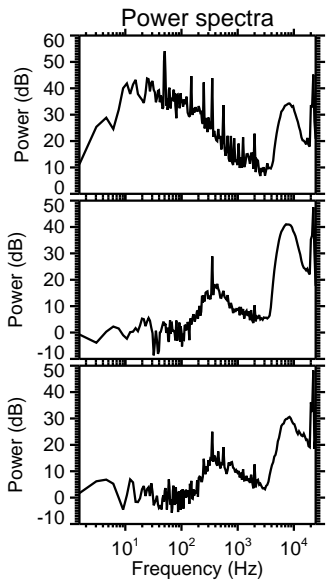
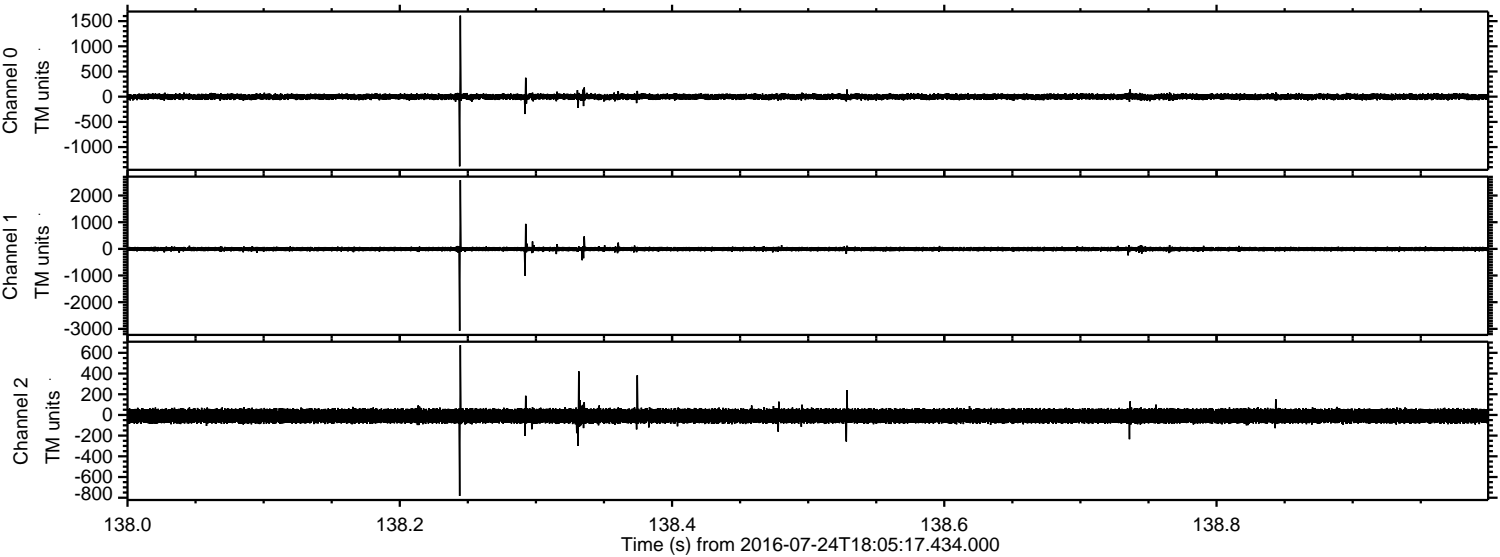


Processed Sun Jul 24 20:13:54 2016 by ELM ver.2012-10-06 from 001__elm20160724_180516__dat00.bin

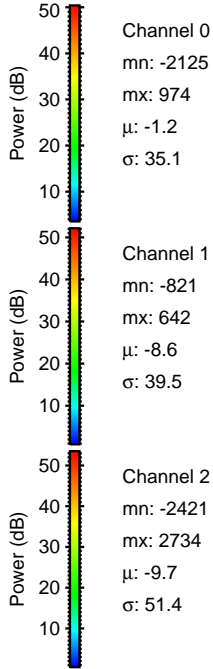
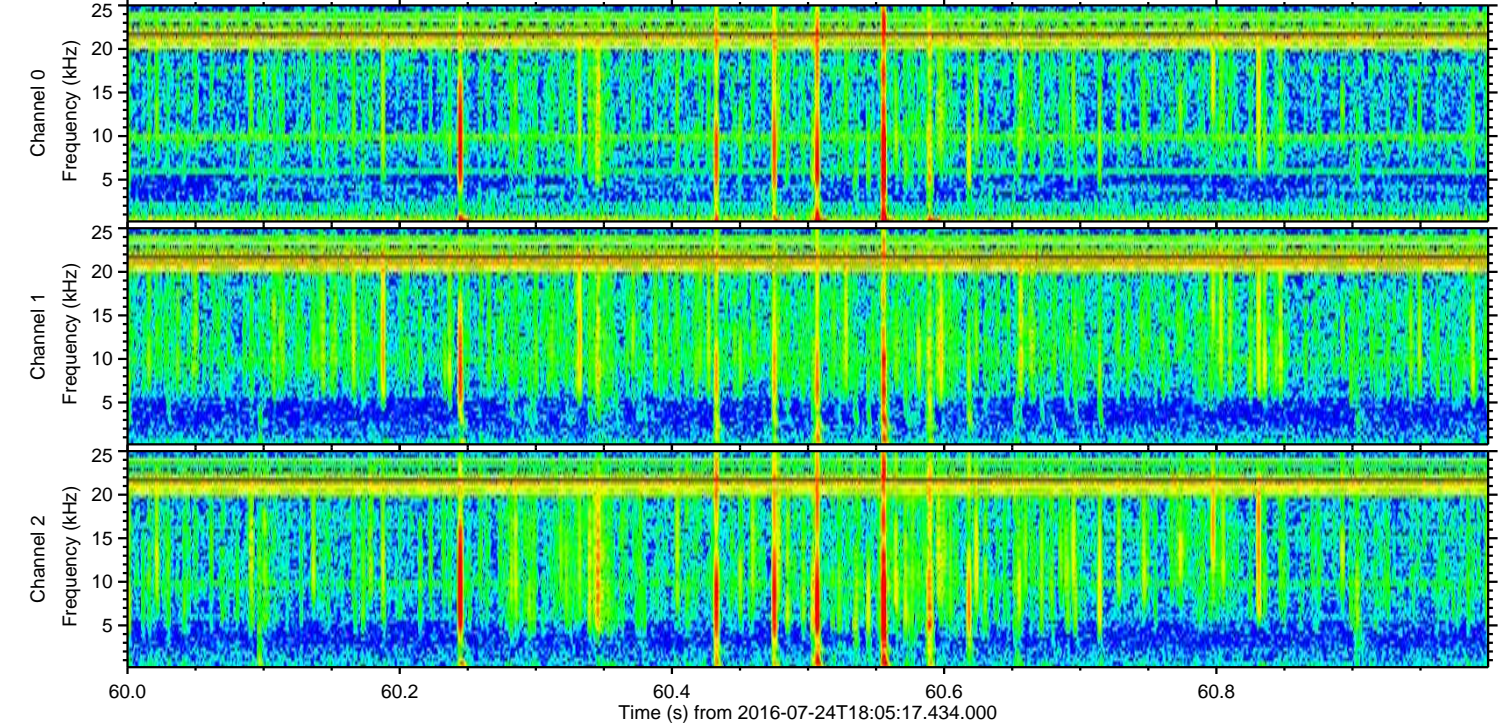
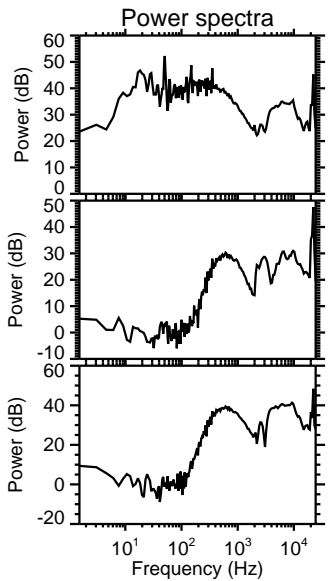
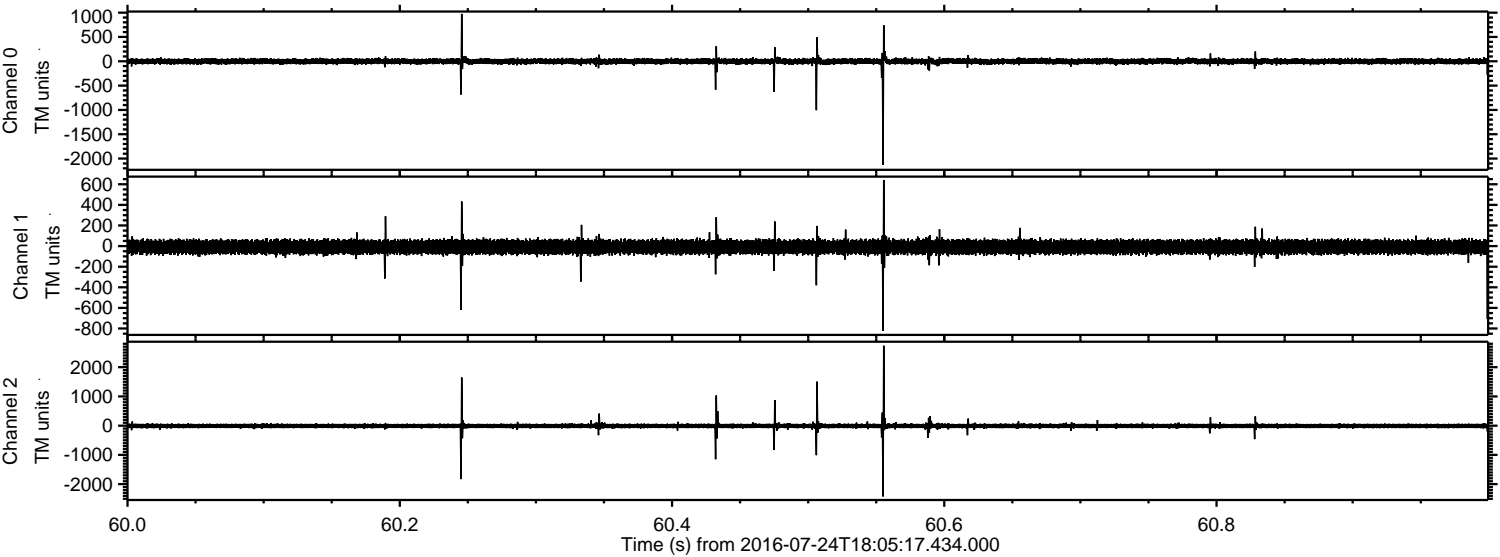


ELMAVAN 3D WAVEFORMS (Measured data sampled at 50 kHz) 51000 packets of 144 samples from 2016-07-24T18:05:17.434.000. Part 139/147

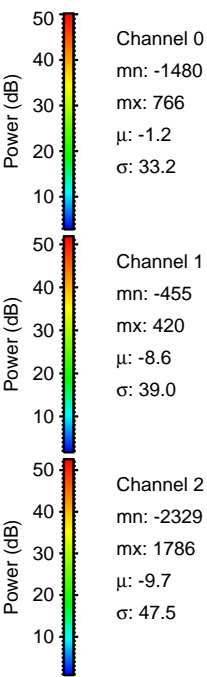
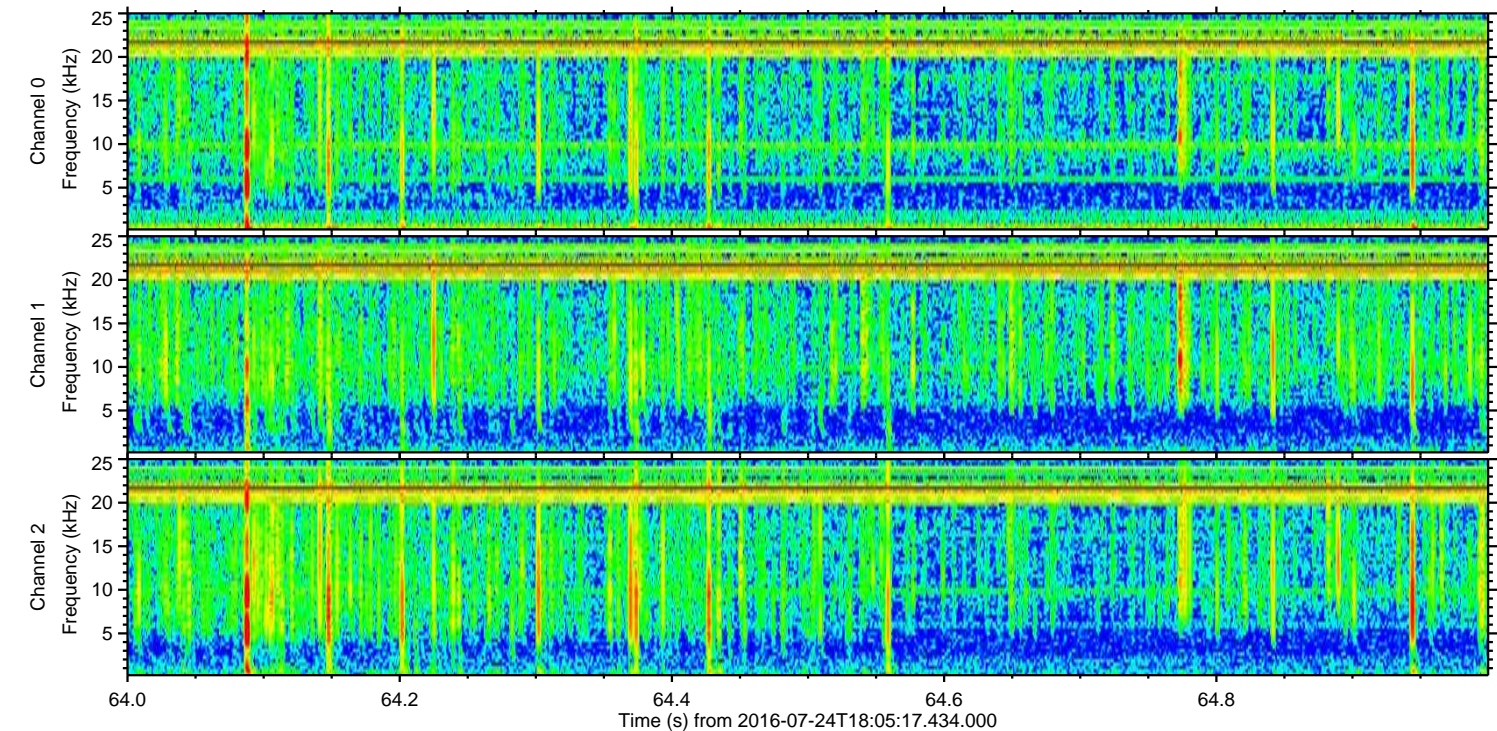
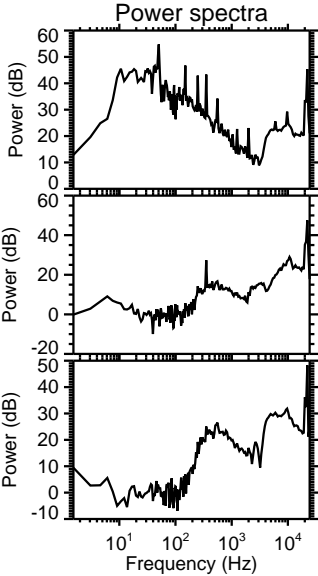
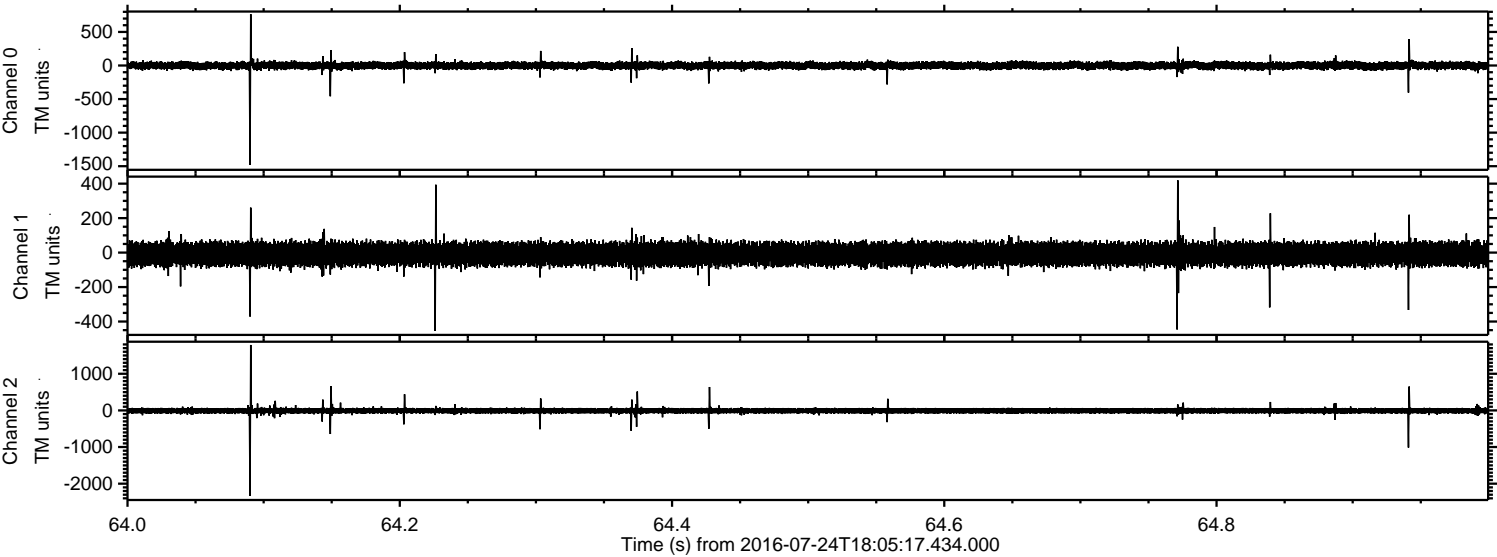
Processed Sun Jul 24 20:13:55 2016 by ELM ver.2012-10-06 from 001__elm20160724_180516__dat00.bin



Processed Sun Jul 24 20:13:56 2016 by ELM ver.2012-10-06 from 001__elm20160724_180516__dat00.bin



Processed Sun Jul 24 20:13:57 2016 by ELM ver.2012-10-06 from 001__elm20160724_180516__dat00.bin



Processed Sun Jul 24 20:13:58 2016 by ELM ver.2012-10-06 from 001__elm20160724_180516__dat00.bin

