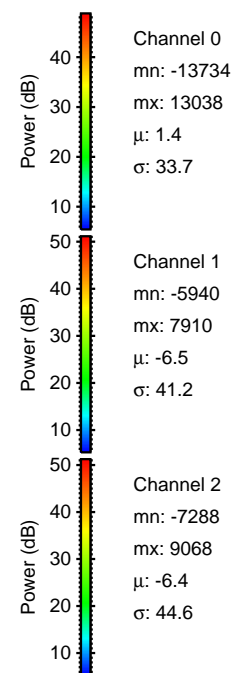
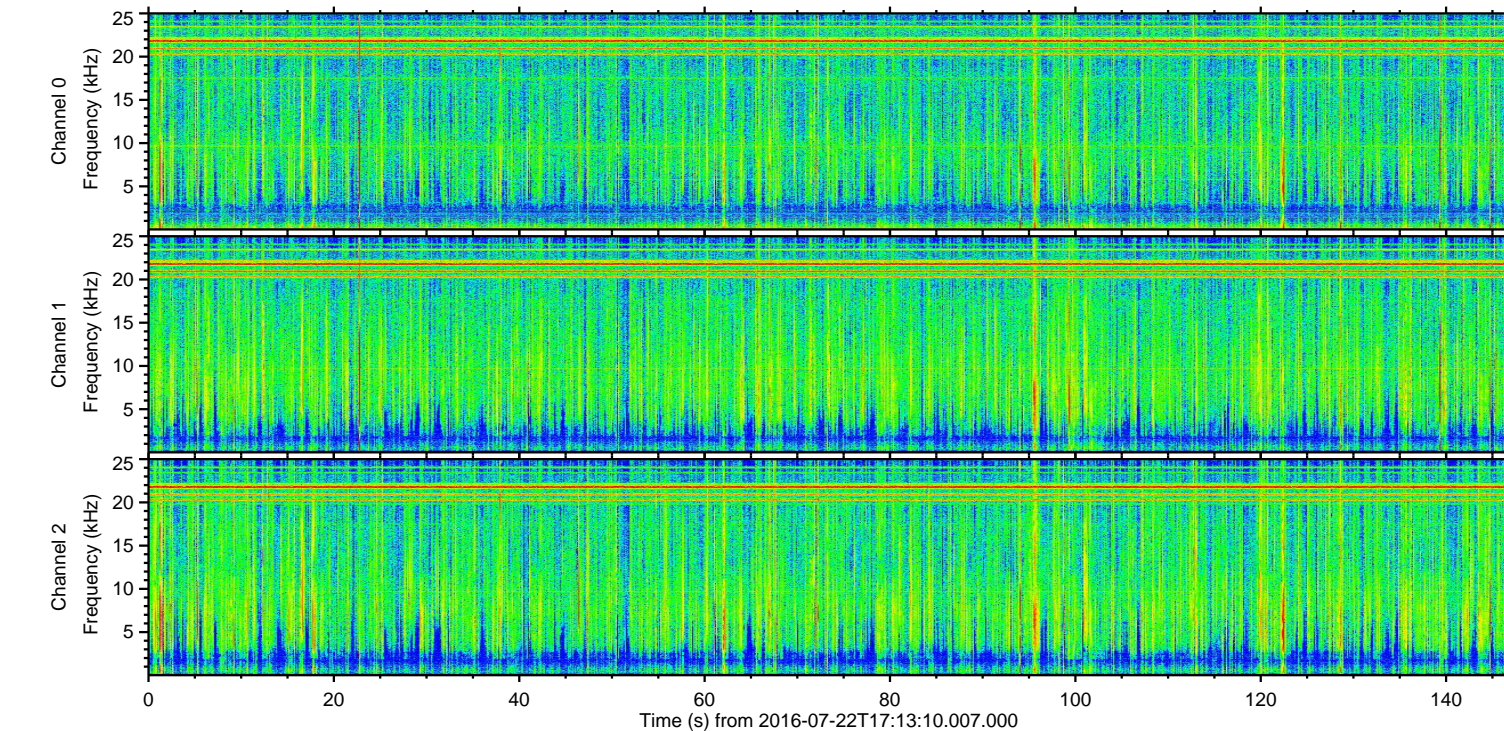
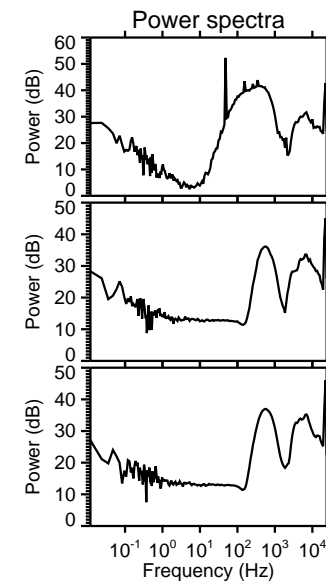
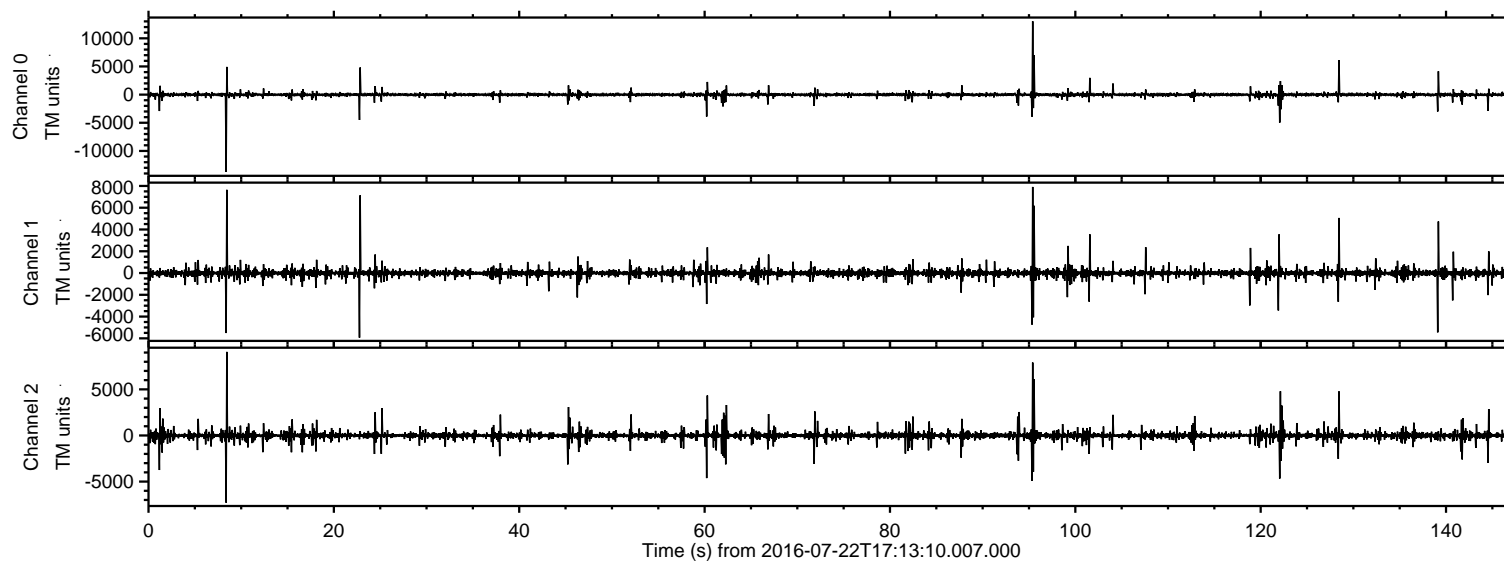


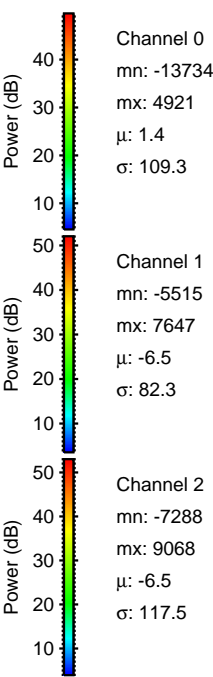
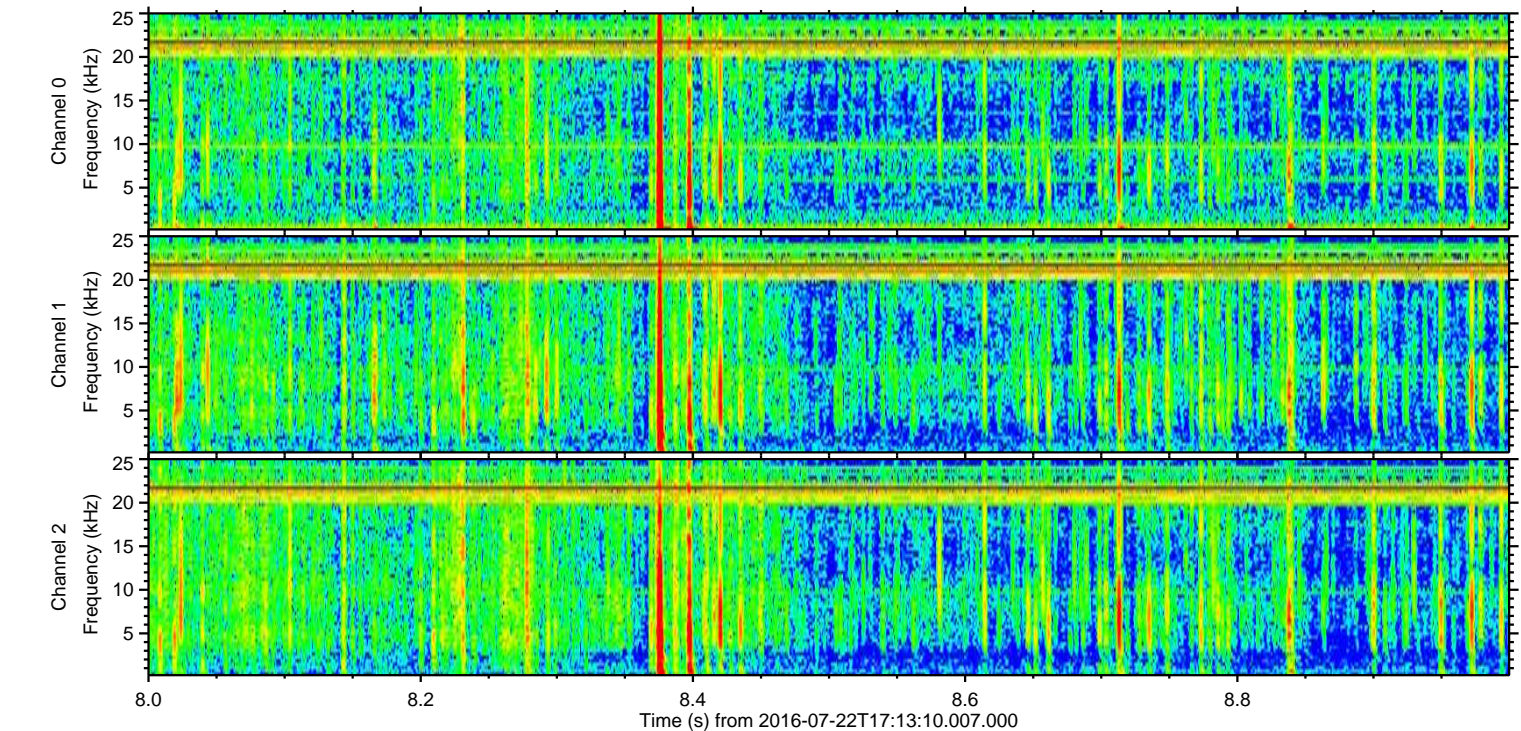
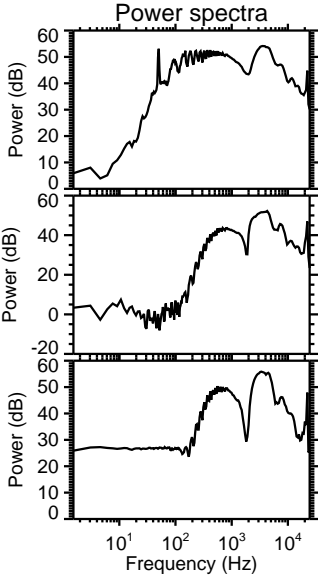
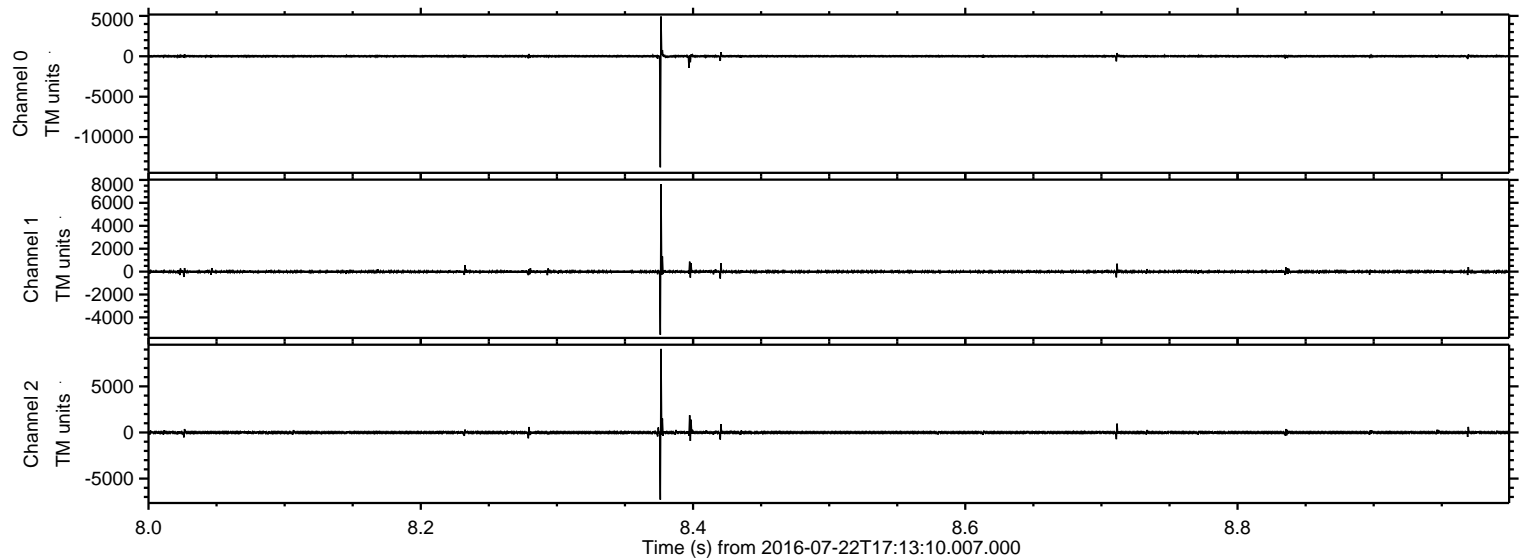
# ELMAVAN 3D WAVEFORMS (Measured data sampled at 50 kHz) 51000 packets of 144 samples from 2016-07-22T17:13:10.007.000.

Processed Fri Jul 22 19:21:20 2016 by ELM ver.2012-10-06 from 001\_\_elm20160722\_171309\_\_dat00.bin

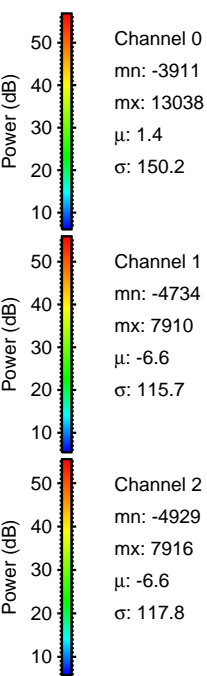
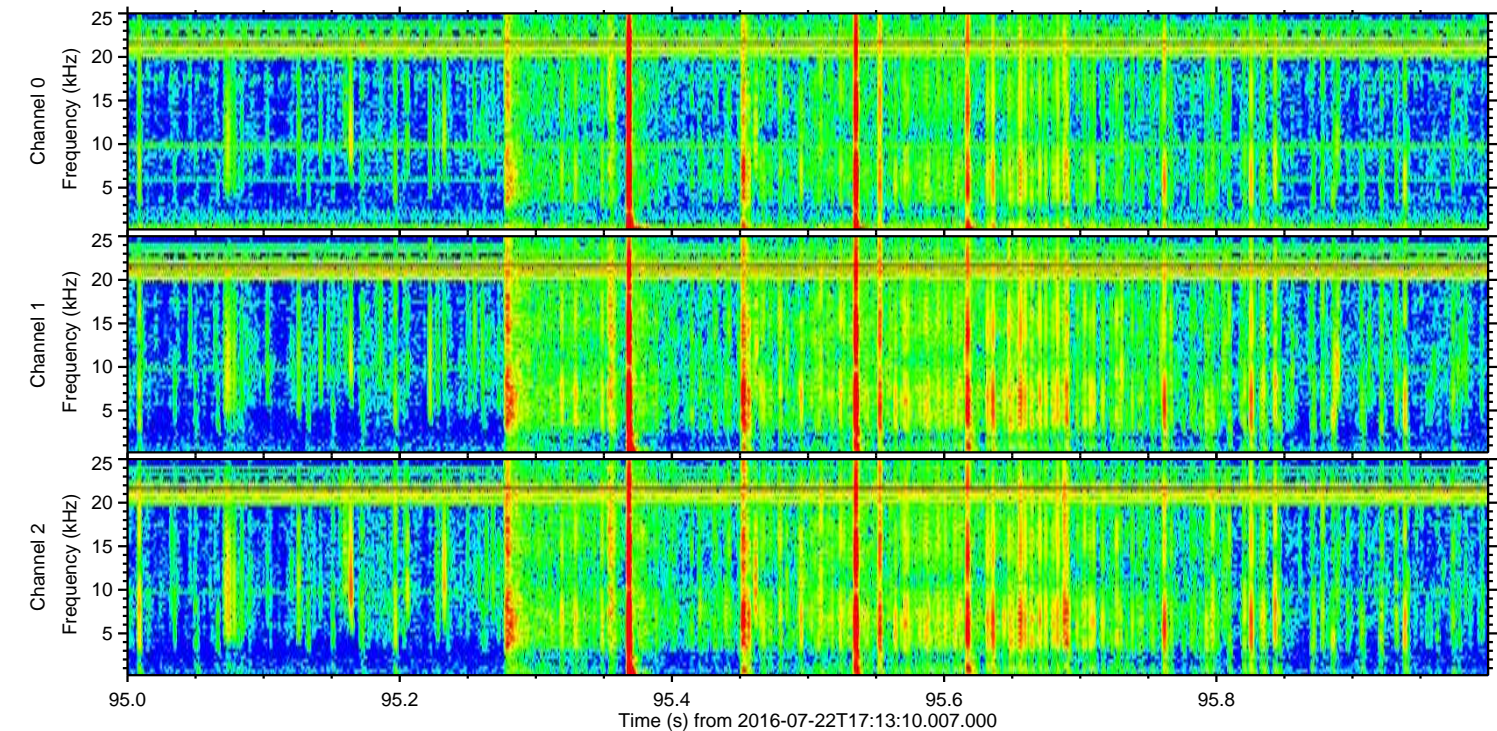
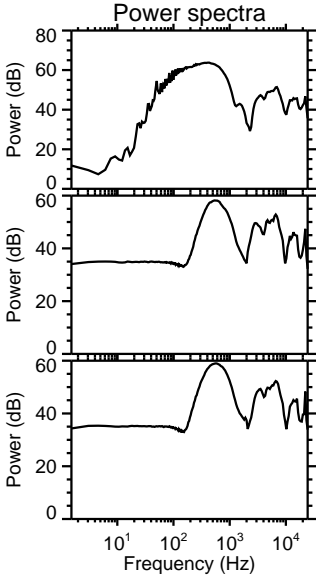
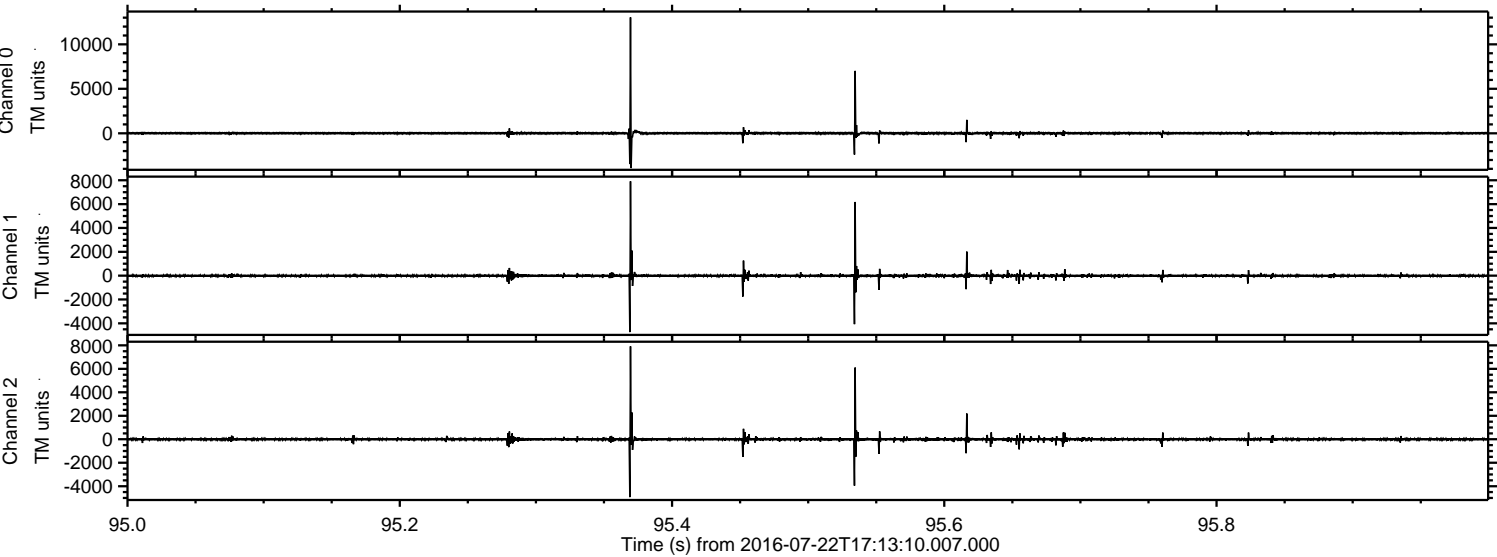




Processed Fri Jul 22 19:21:32 2016 by ELM ver.2012-10-06 from 001\_\_elm20160722\_171309\_\_dat00.bin

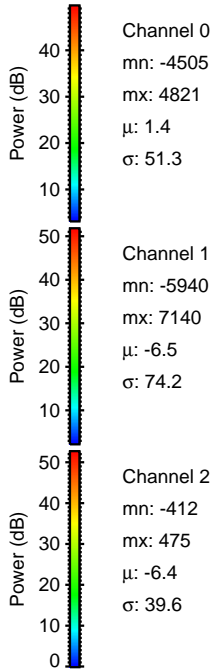
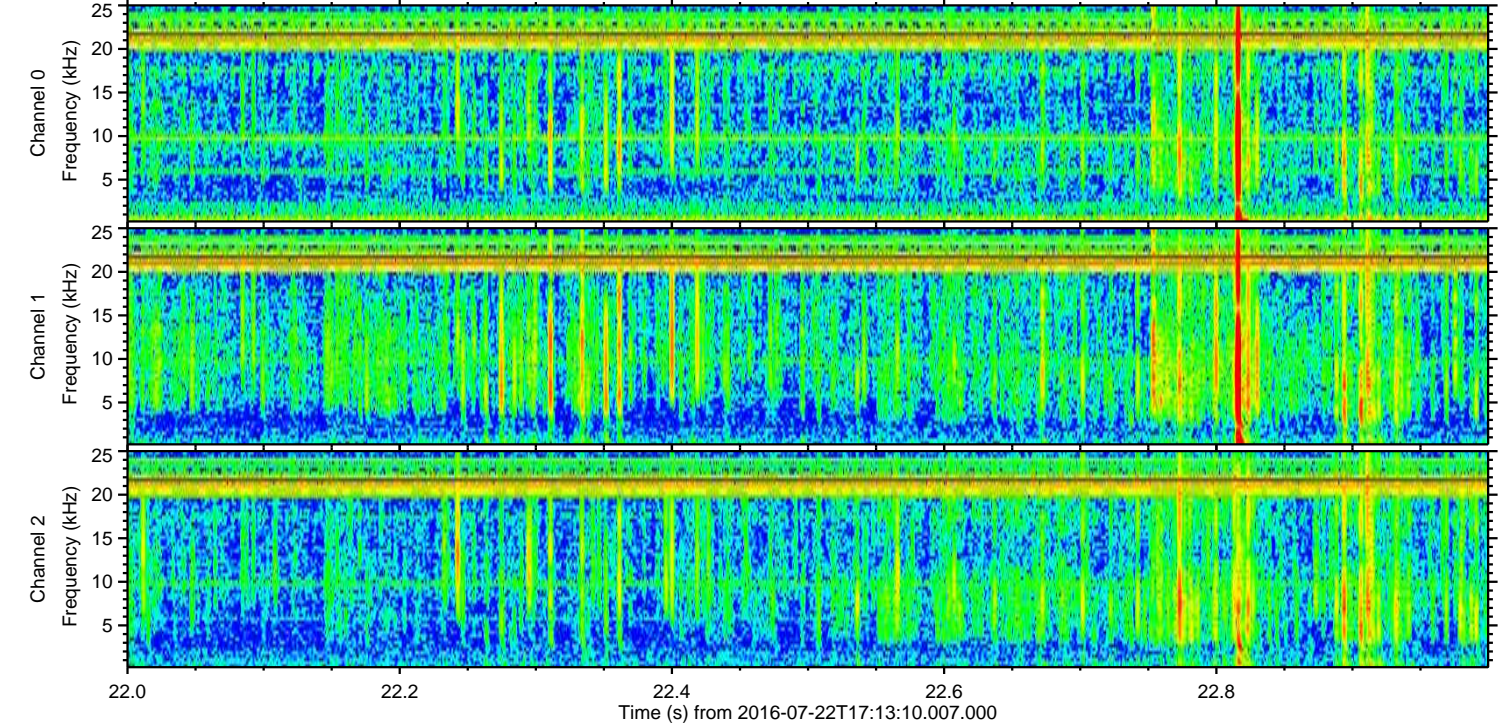
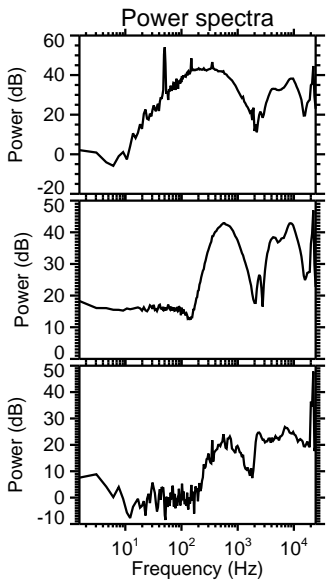
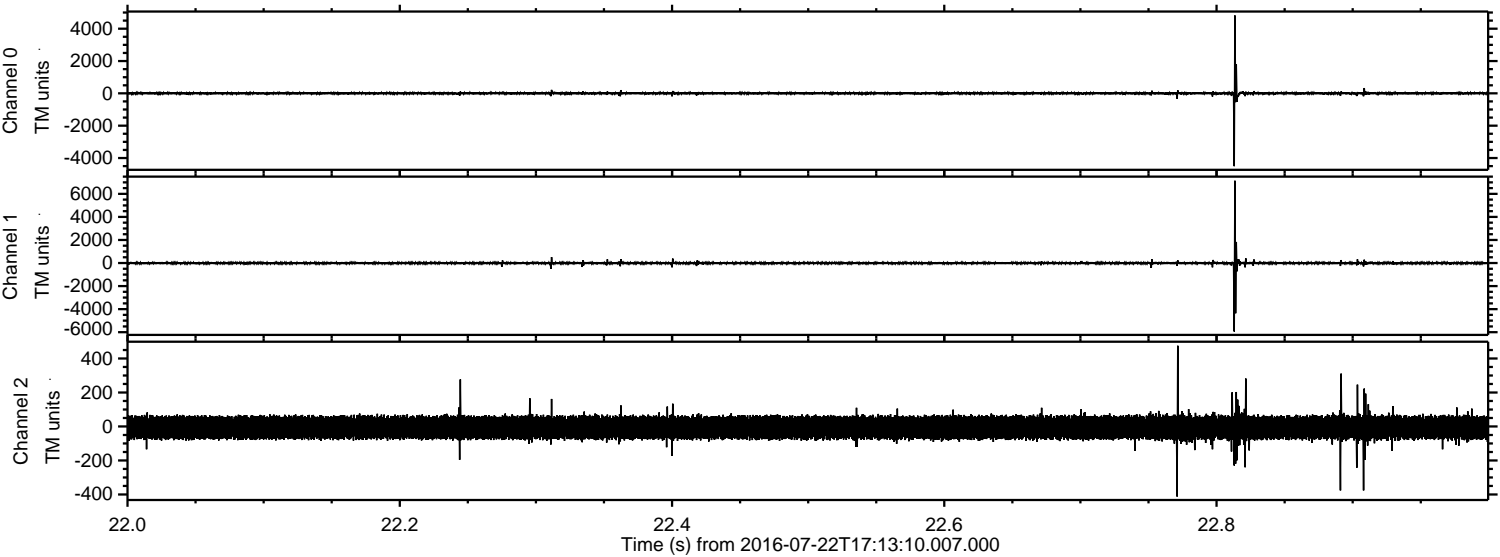


Processed Fri Jul 22 19:21:33 2016 by ELM ver.2012-10-06 from 001\_\_elm20160722\_171309\_\_dat00.bin





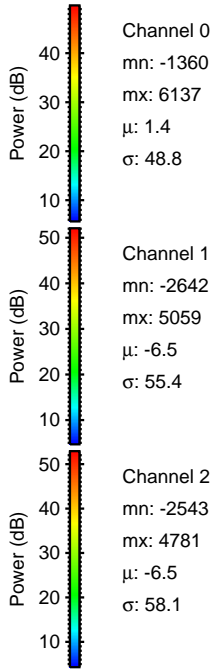
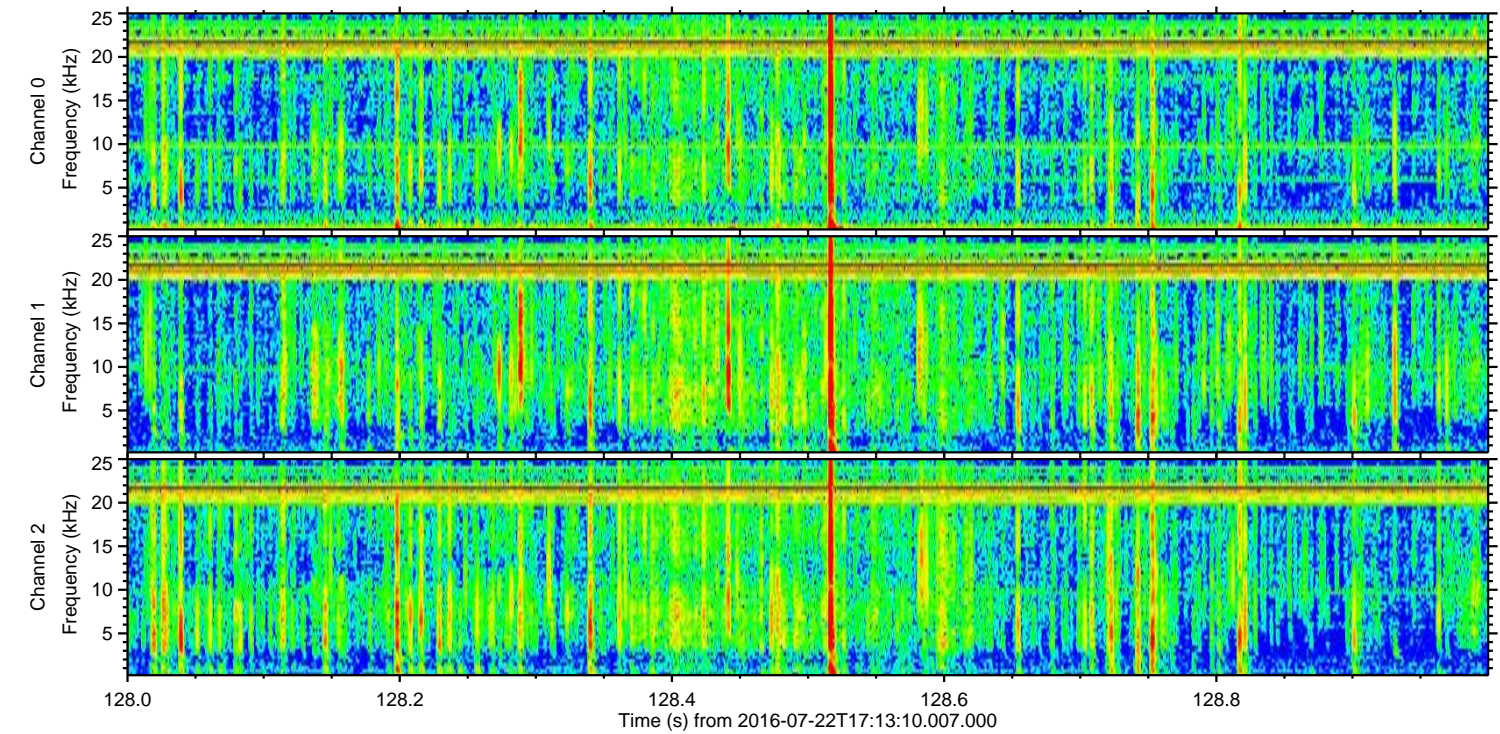
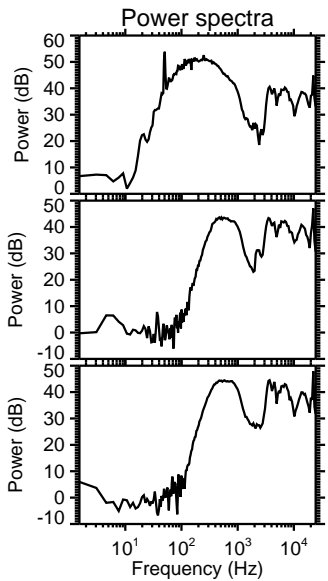
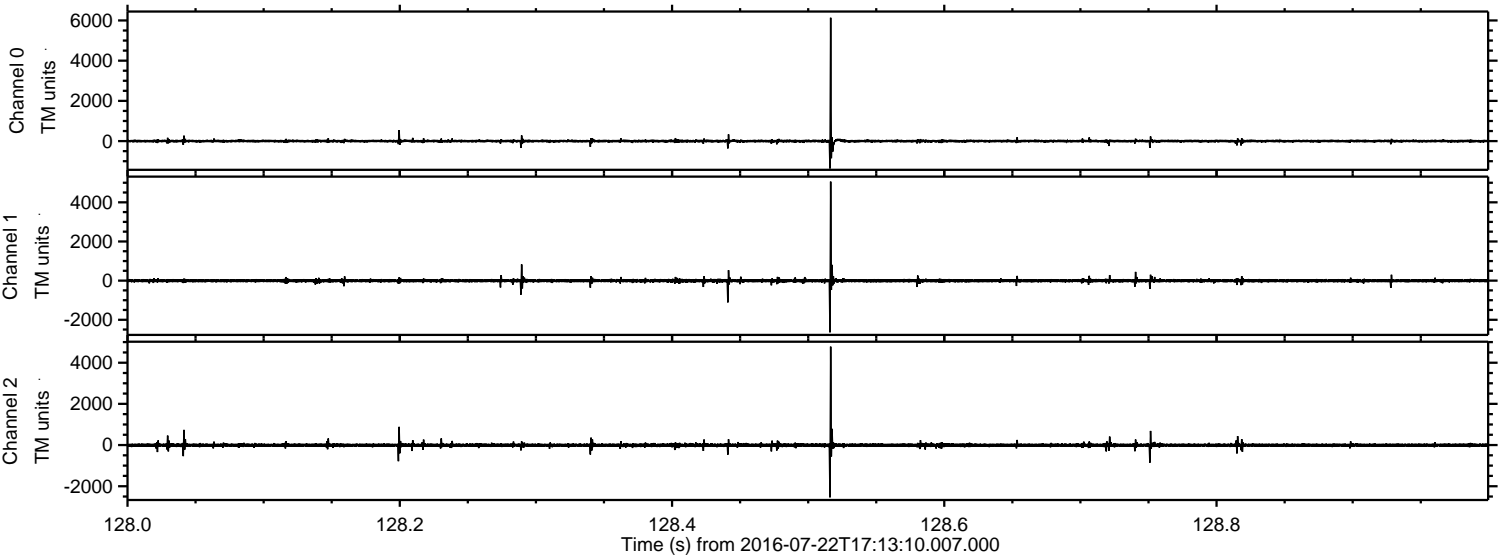
Processed Fri Jul 22 19:21:34 2016 by ELM ver.2012-10-06 from 001\_\_elm20160722\_171309\_\_dat00.bin





ELMAVAN 3D WAVEFORMS (Measured data sampled at 50 kHz) 51000 packets of 144 samples from 2016-07-22T17:13:10.007.000. Part 129/147

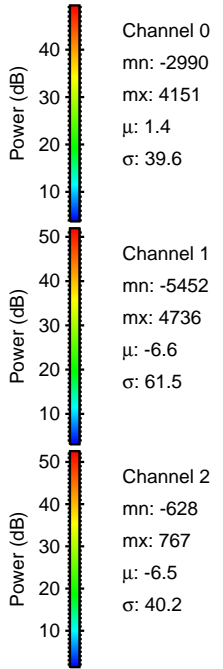
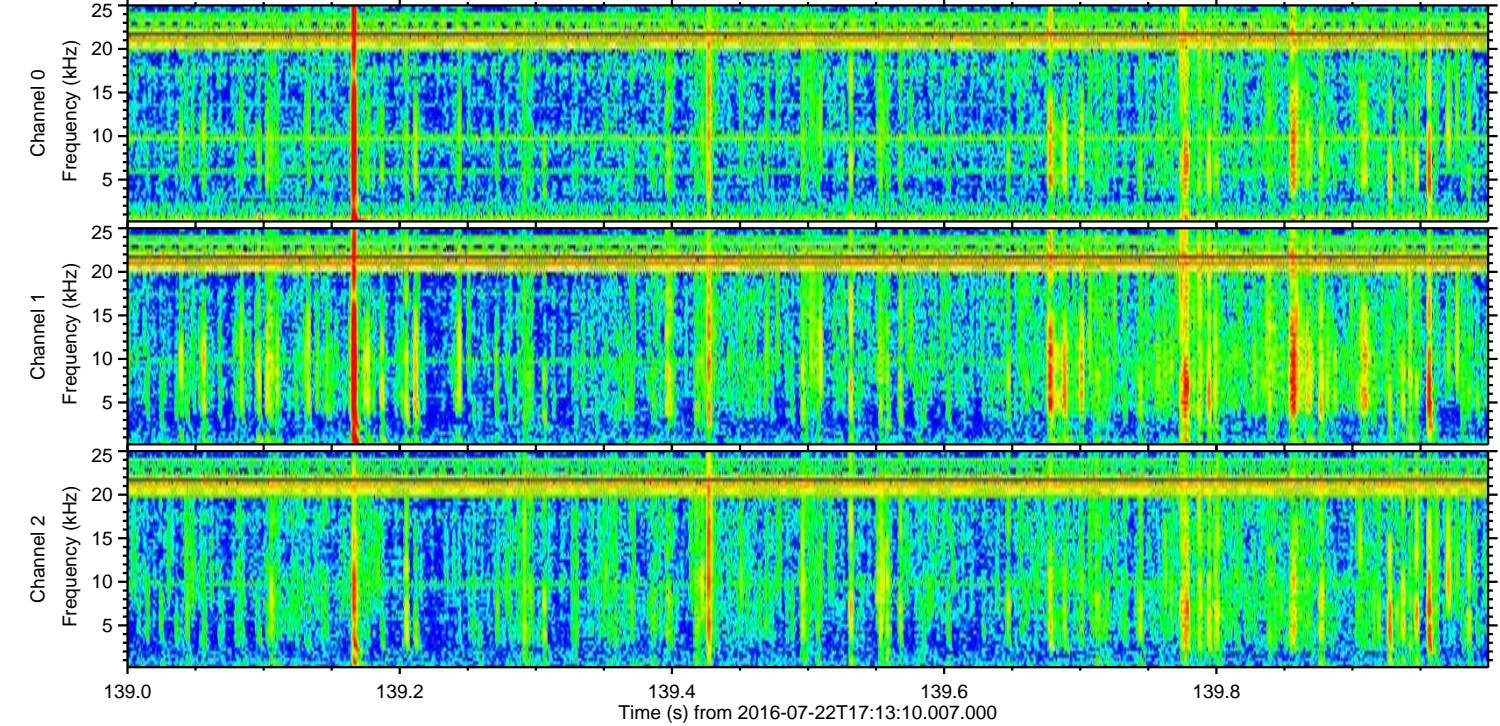
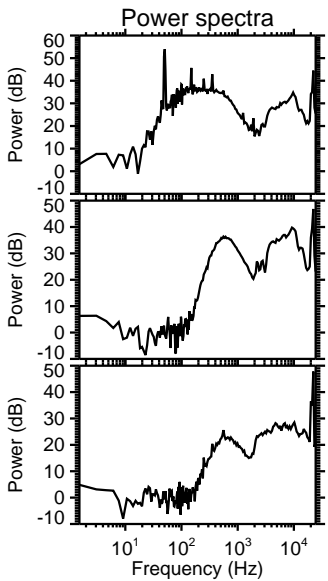
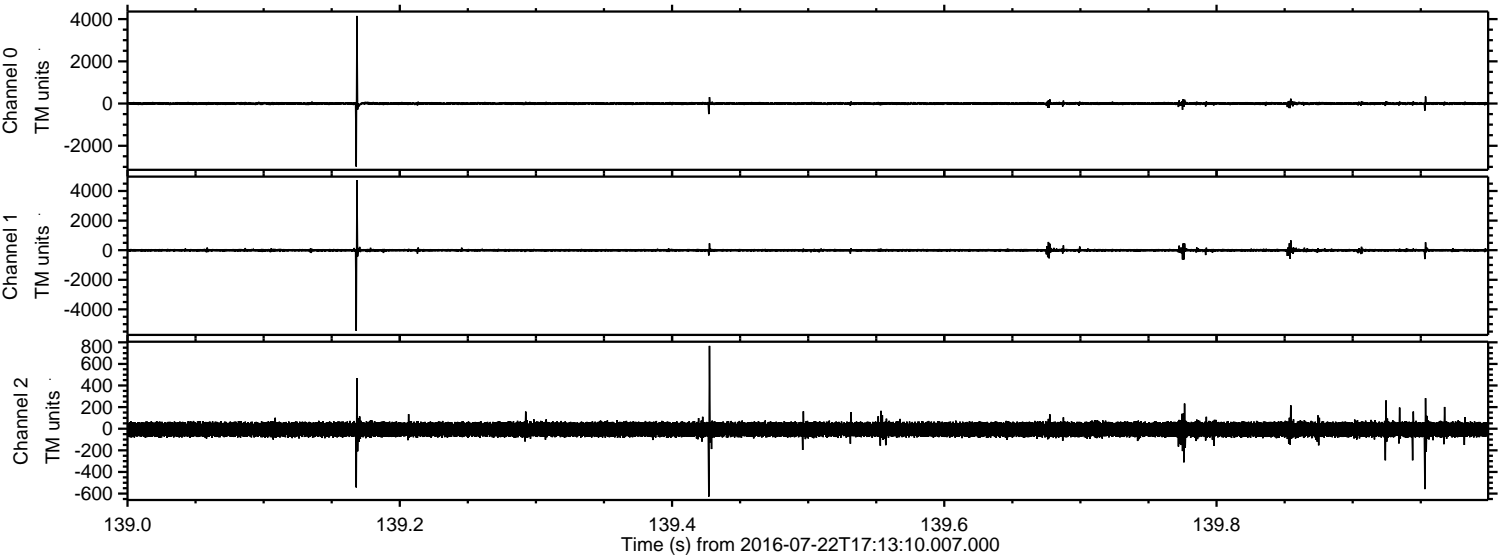
Processed Fri Jul 22 19:21:35 2016 by ELM ver.2012-10-06 from 001\_\_elm20160722\_171309\_\_dat00.bin





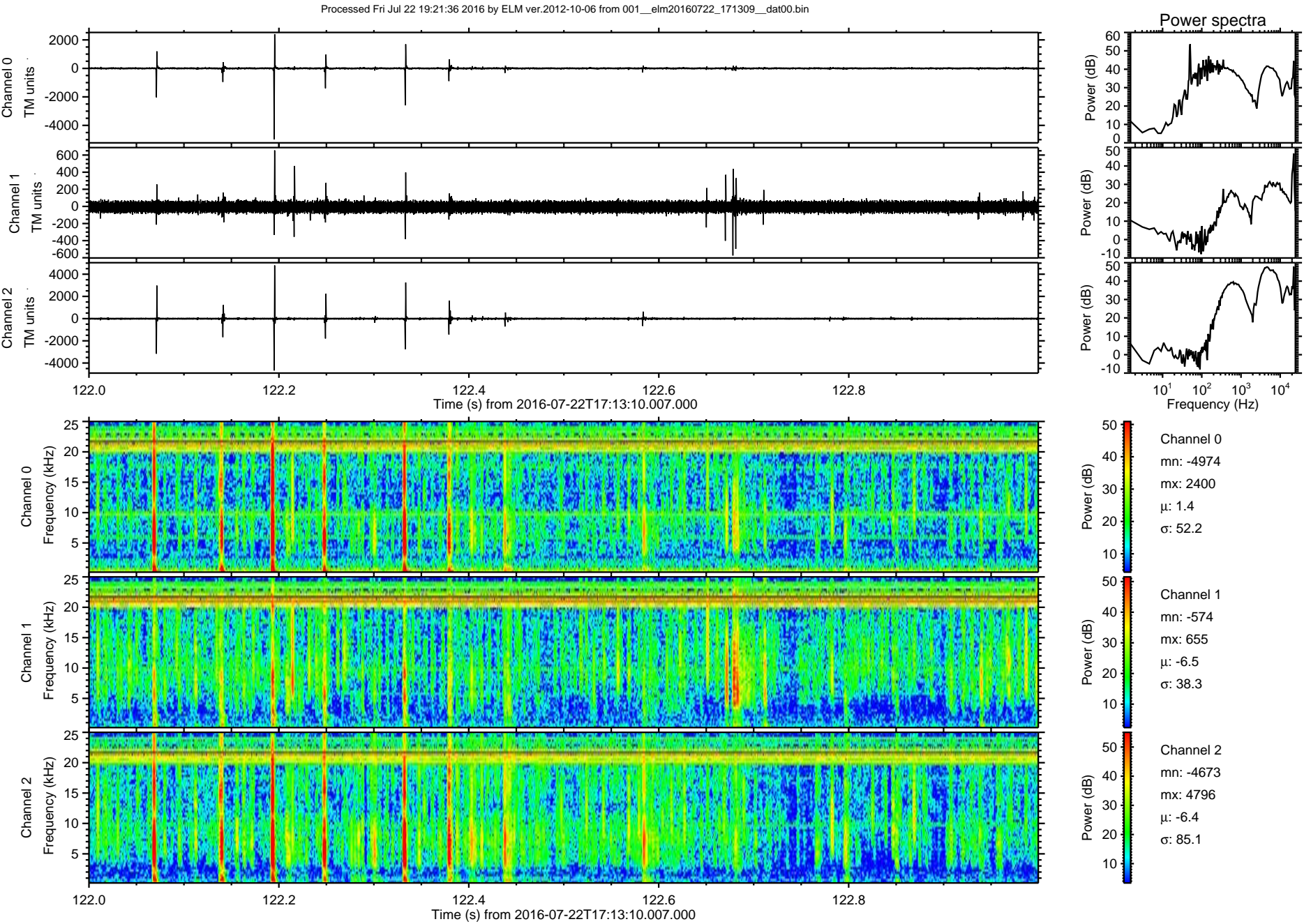
ELMAVAN 3D WAVEFORMS (Measured data sampled at 50 kHz) 51000 packets of 144 samples from 2016-07-22T17:13:10.007.000. Part 140/147

Processed Fri Jul 22 19:21:36 2016 by ELM ver.2012-10-06 from 001\_\_elm20160722\_171309\_\_dat00.bin



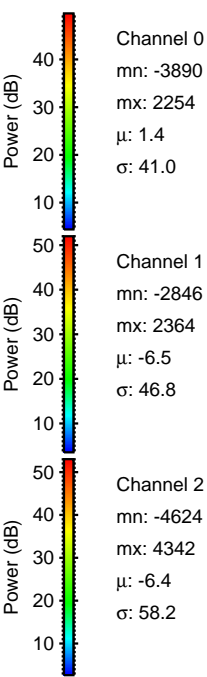
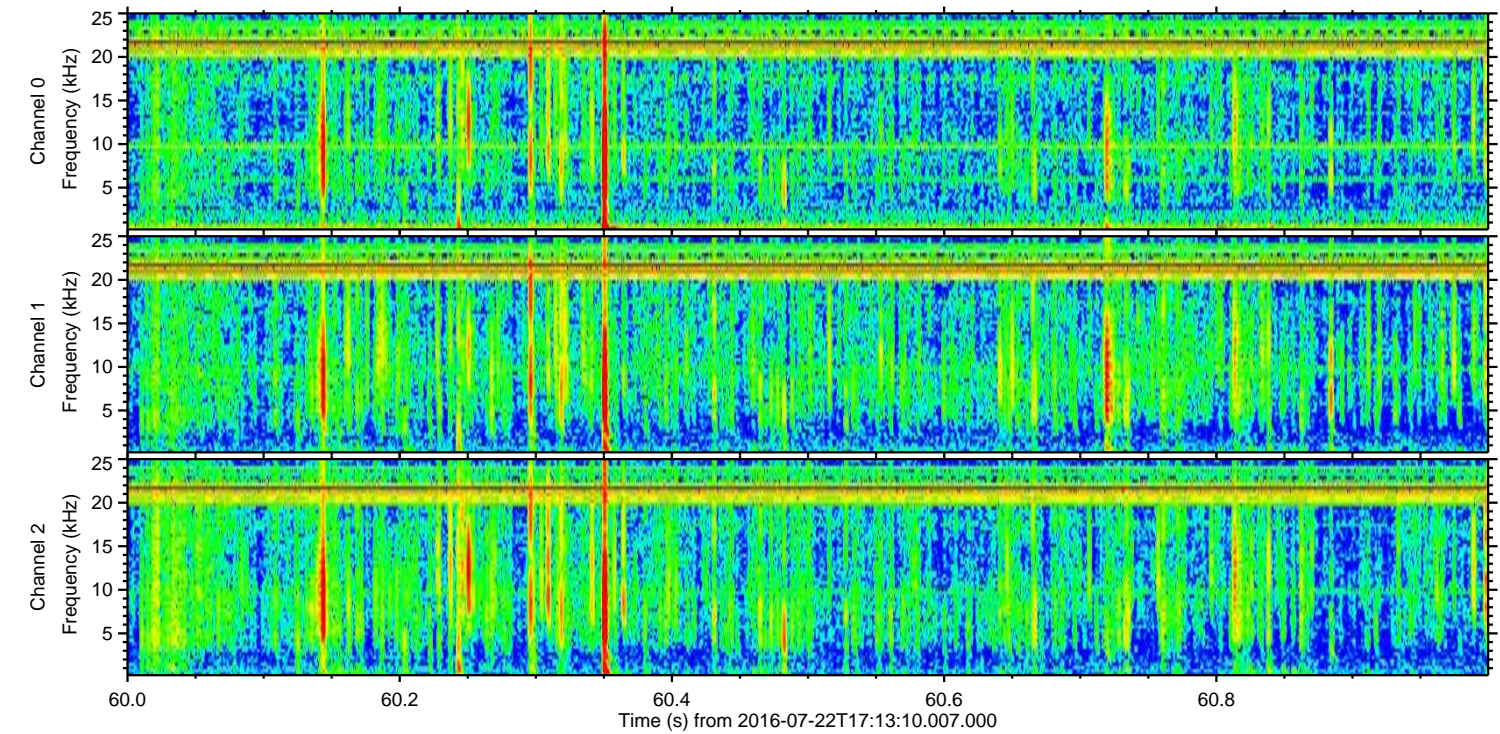
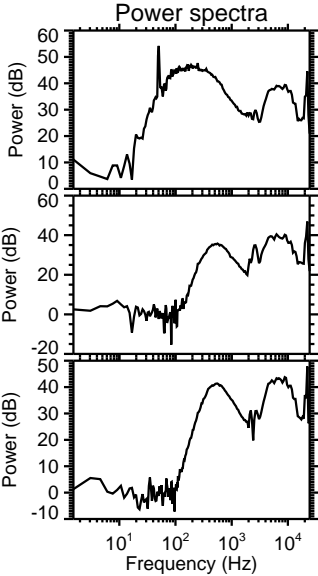
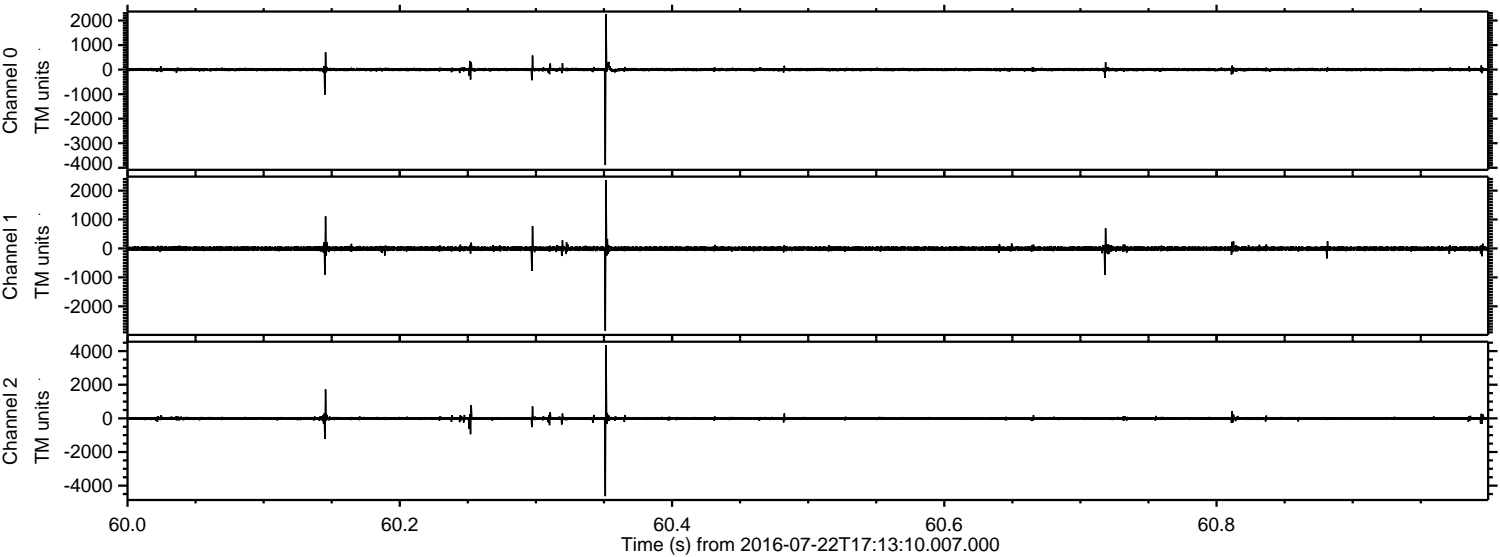


ELMAVAN 3D WAVEFORMS (Measured data sampled at 50 kHz) 51000 packets of 144 samples from 2016-07-22T17:13:10.007.000. Part 123/147



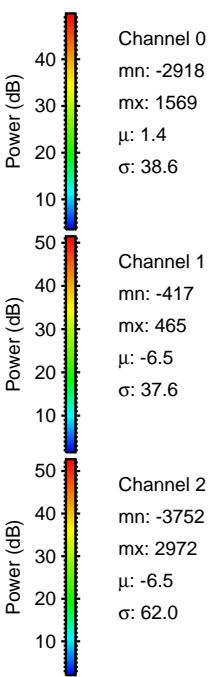
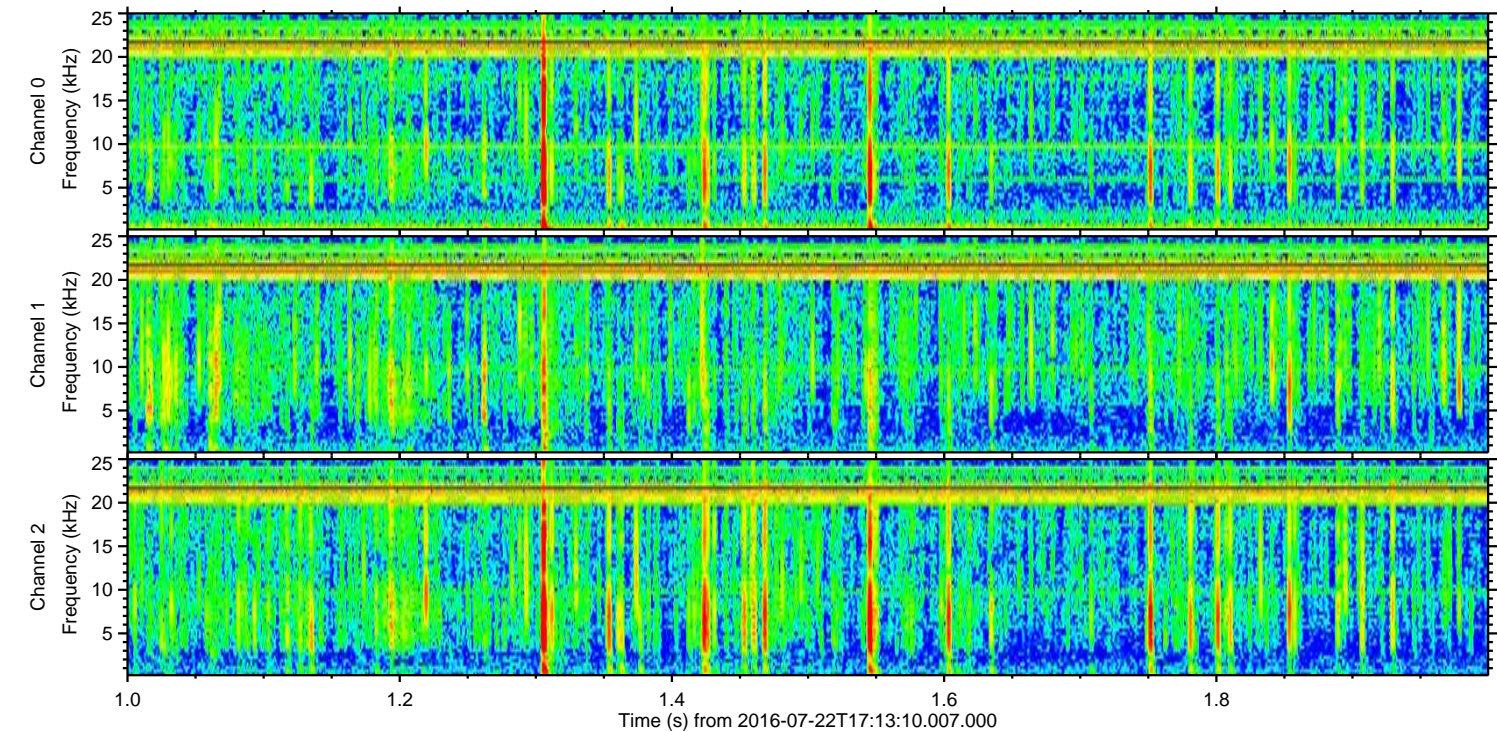
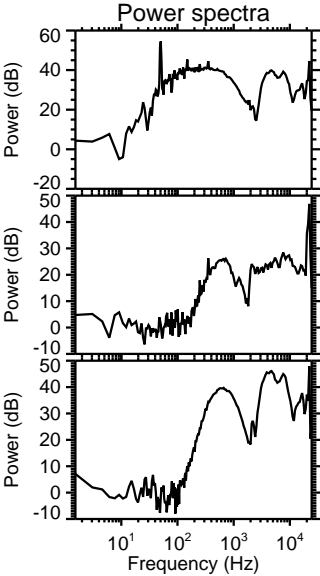
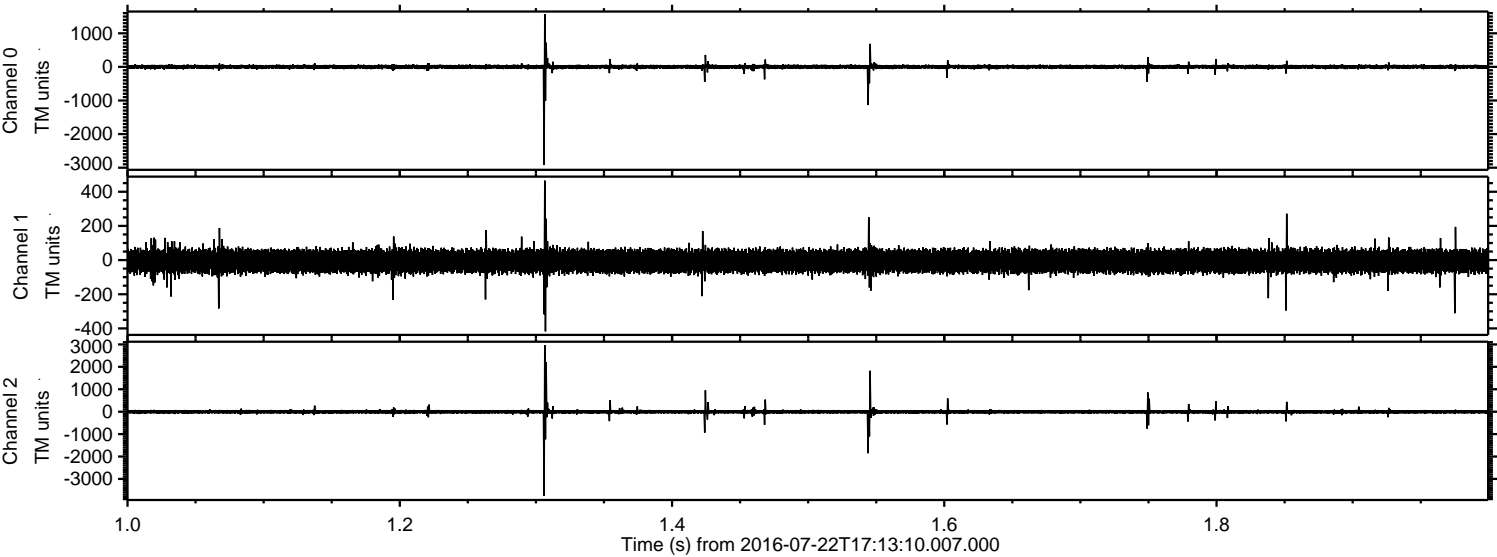


Processed Fri Jul 22 19:21:37 2016 by ELM ver.2012-10-06 from 001\_\_elm20160722\_171309\_\_dat00.bin





Processed Fri Jul 22 19:21:38 2016 by ELM ver.2012-10-06 from 001\_\_elm20160722\_171309\_\_dat00.bin





Processed Fri Jul 22 19:21:39 2016 by ELM ver.2012-10-06 from 001\_\_elm20160722\_171309\_\_dat00.bin

