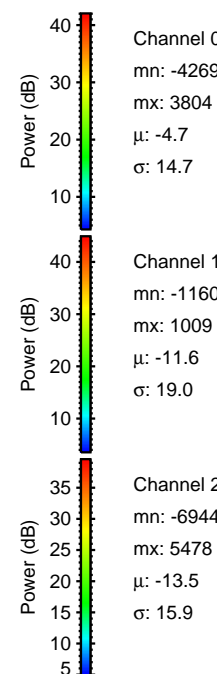
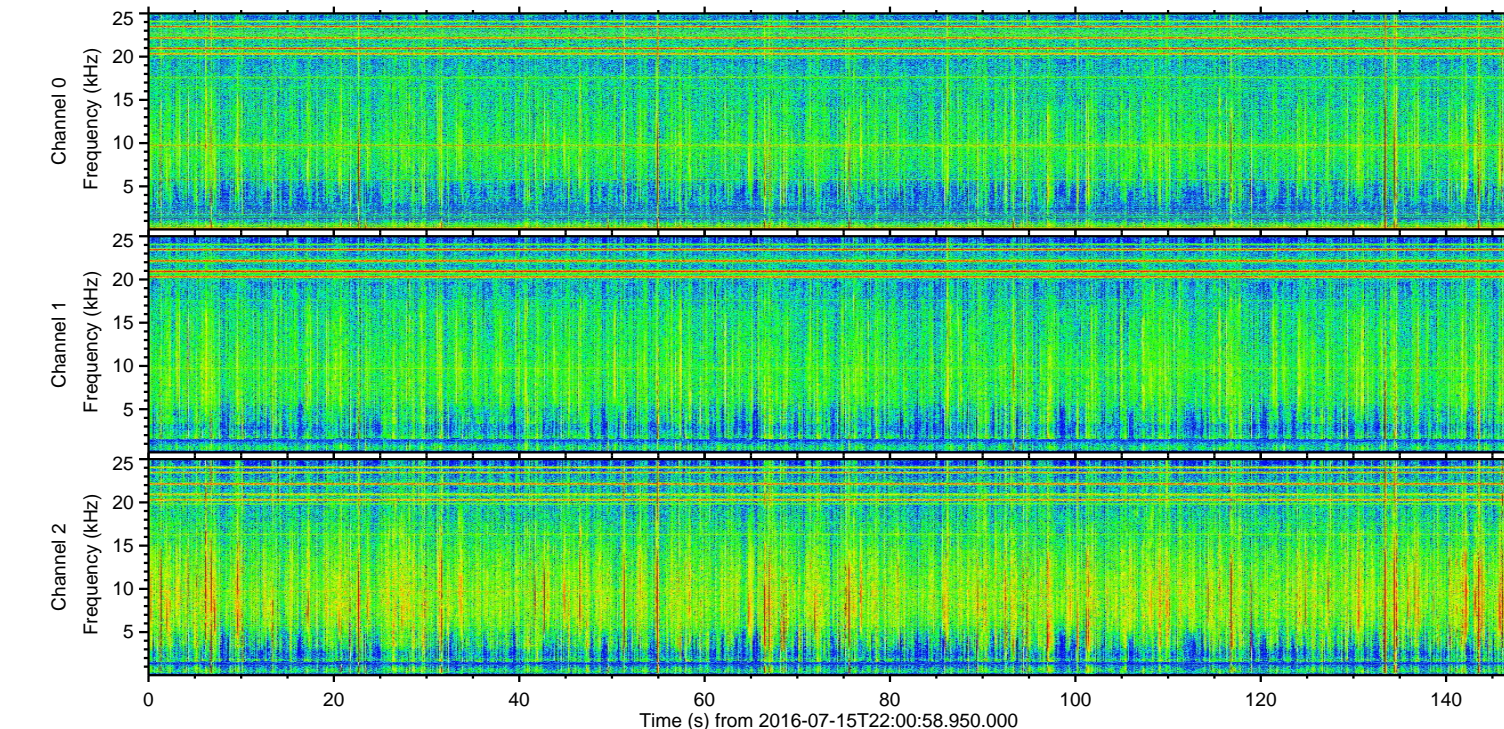
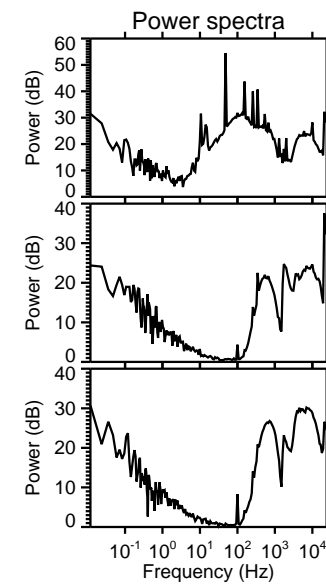
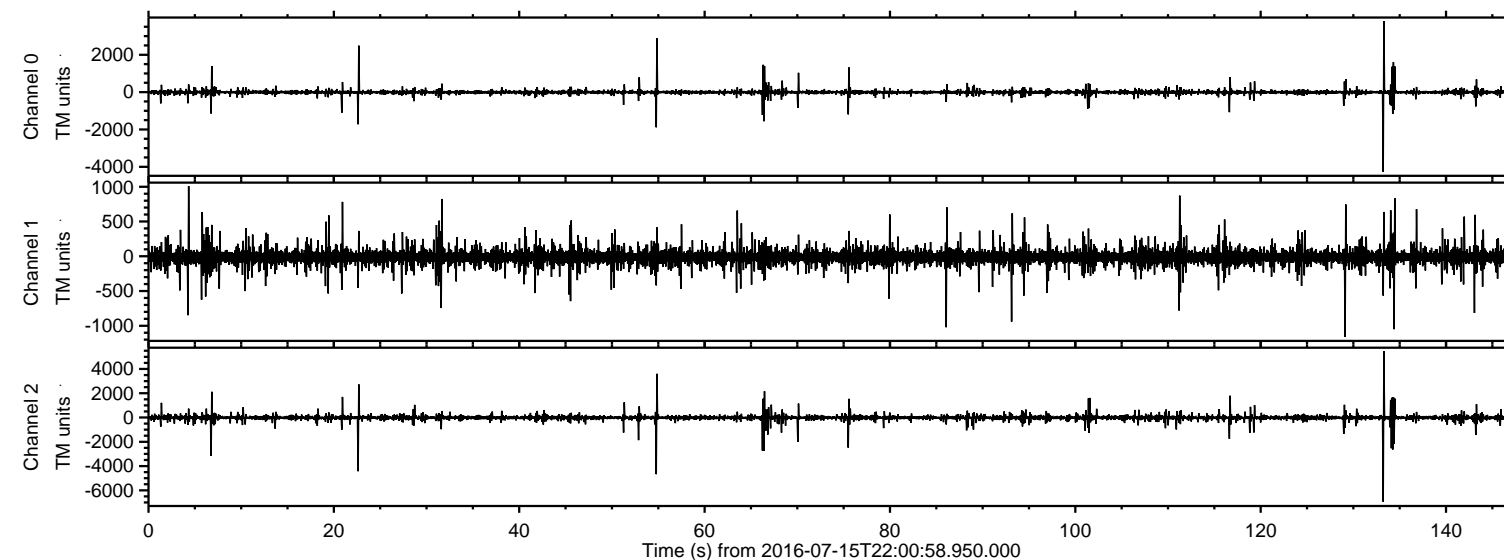


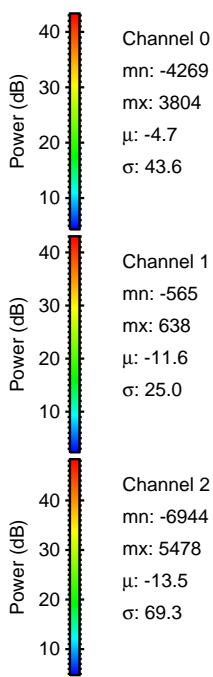
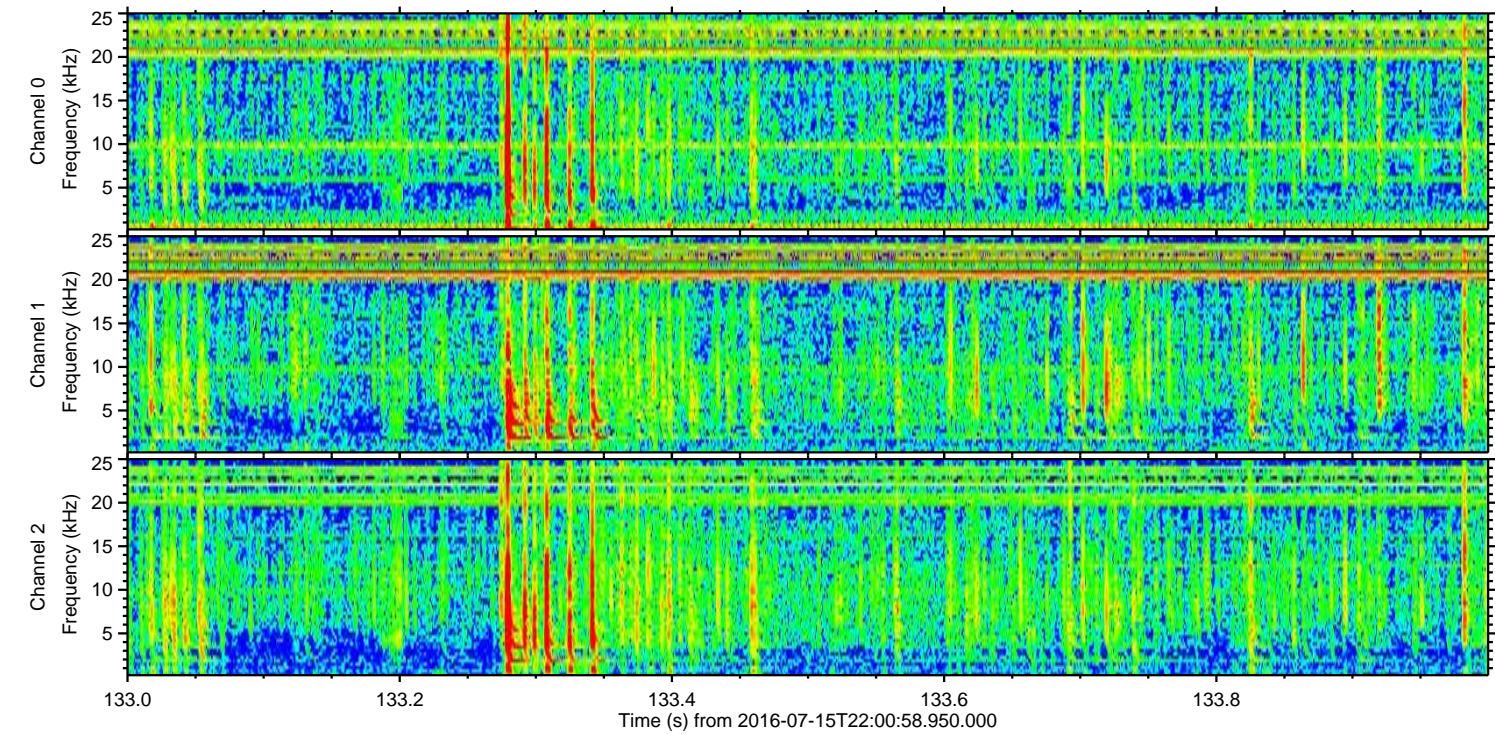
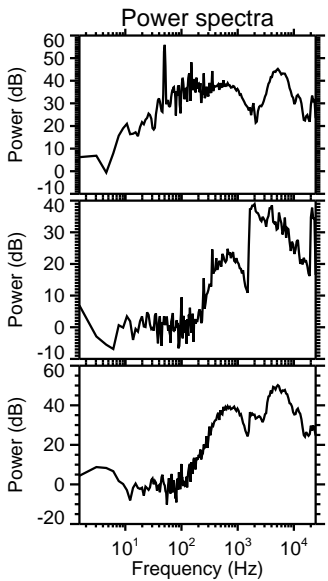
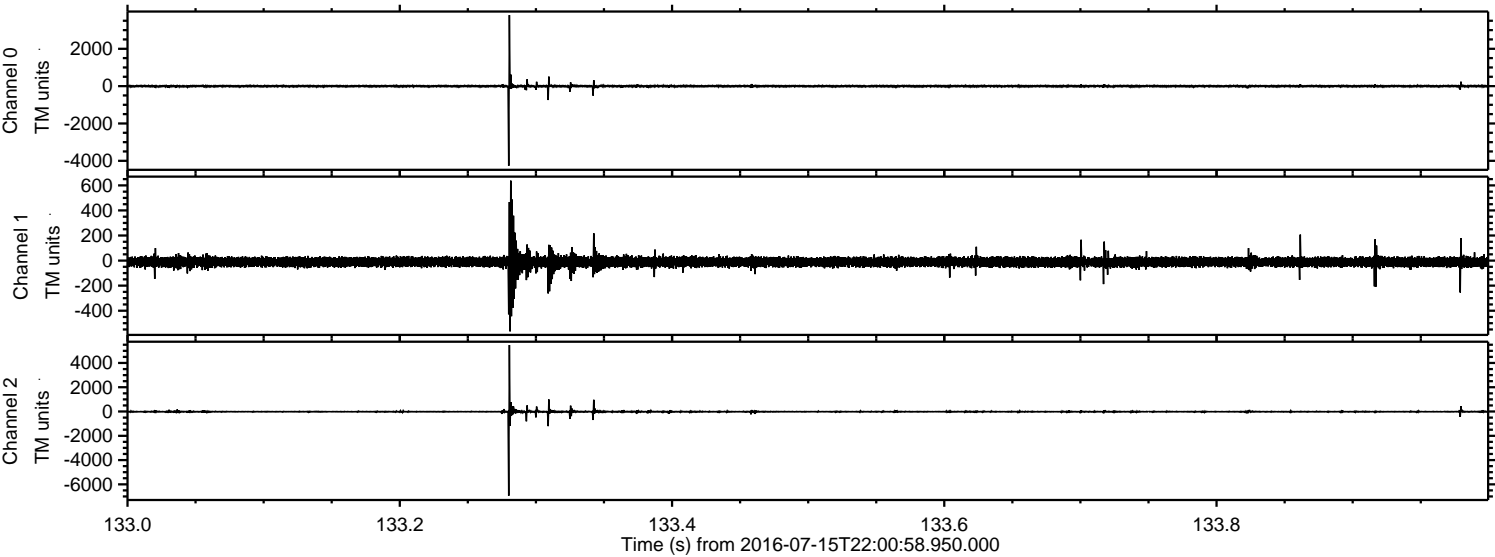
ELMAVAN 3D WAVEFORMS (Measured data sampled at 50 kHz) 51000 packets of 144 samples from 2016-07-15T22:00:58.950.000.

Processed Sat Jul 16 00:08:55 2016 by ELM ver.2012-10-06 from 001__elm20160715_220057__dat00.bin

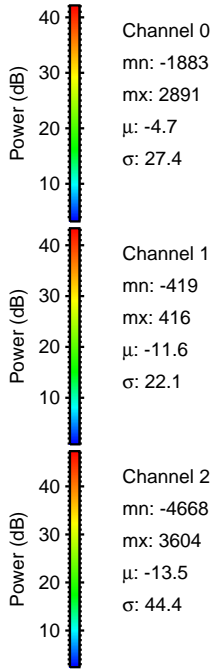
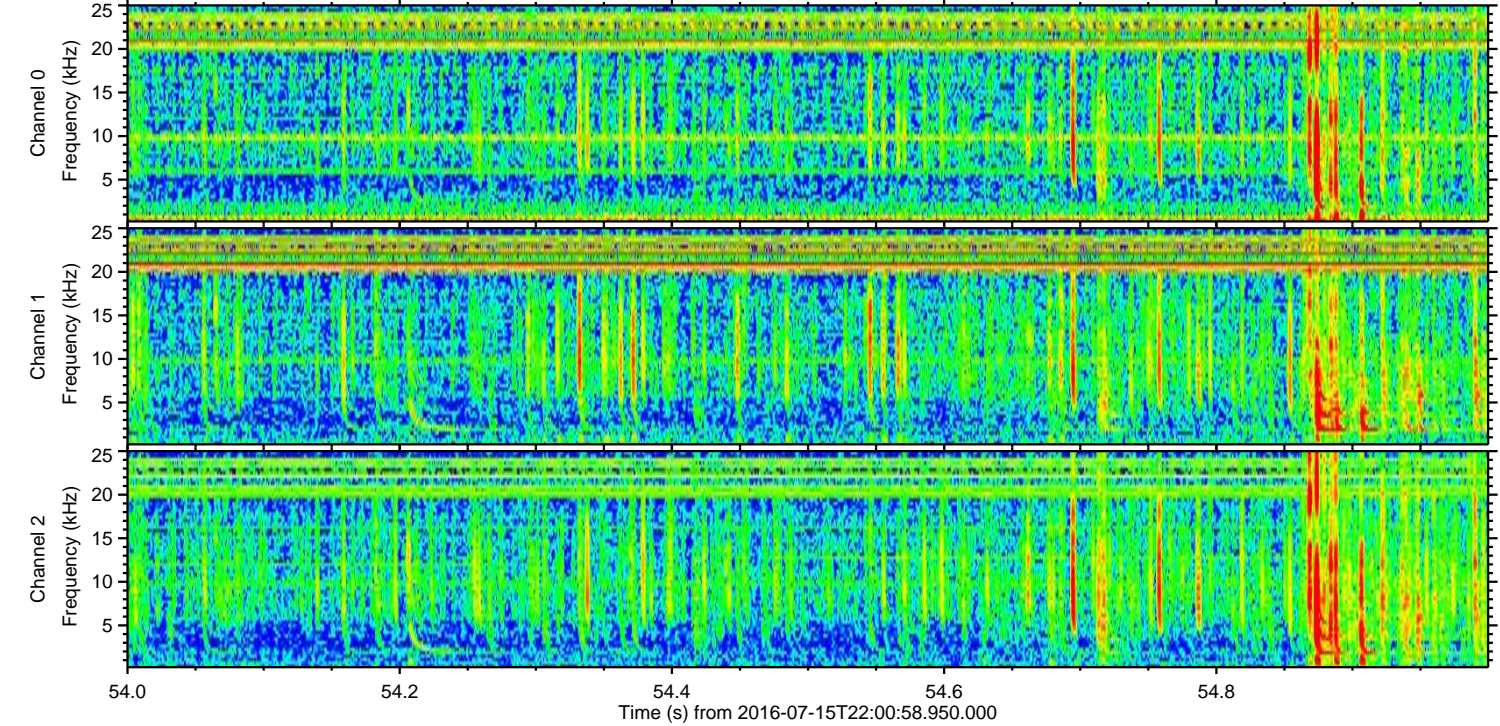
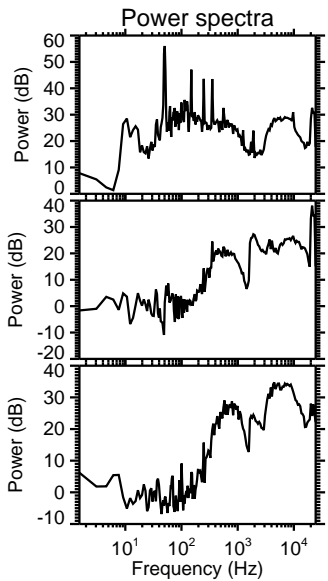
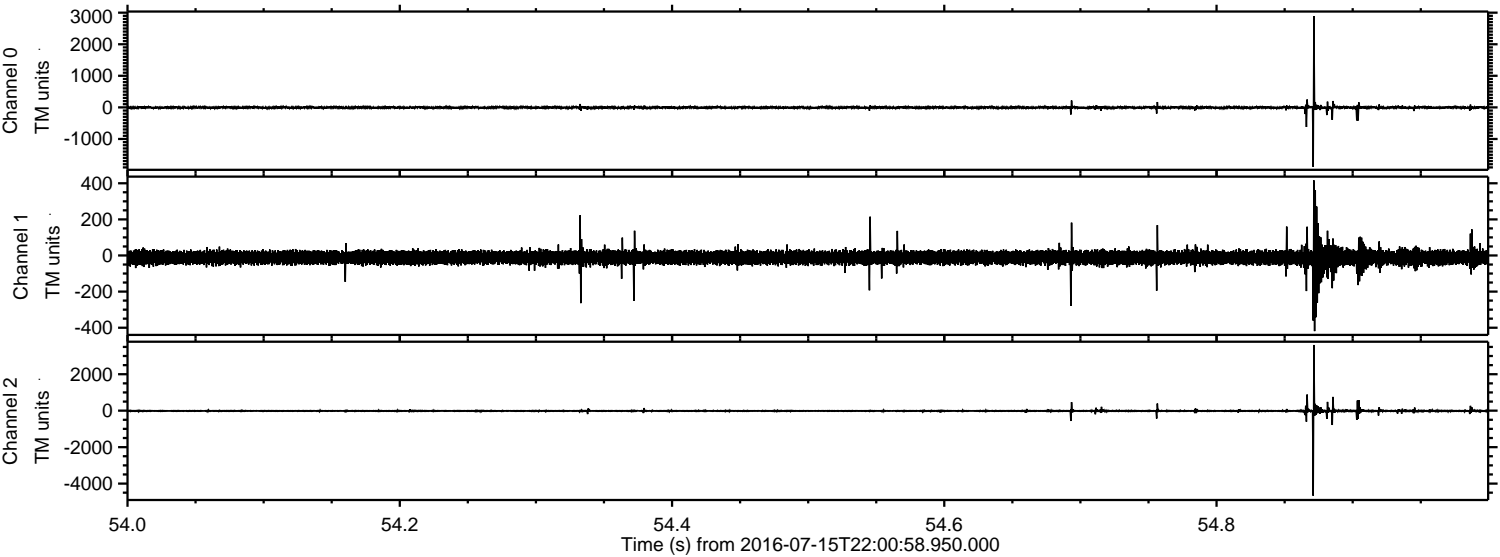


ELMAVAN 3D WAVEFORMS (Measured data sampled at 50 kHz) 51000 packets of 144 samples from 2016-07-15T22:00:58.950.000. Part 134/147

Processed Sat Jul 16 00:09:06 2016 by ELM ver.2012-10-06 from 001__elm20160715_220057__dat00.bin



Processed Sat Jul 16 00:09:07 2016 by ELM ver.2012-10-06 from 001__elm20160715_220057__dat00.bin

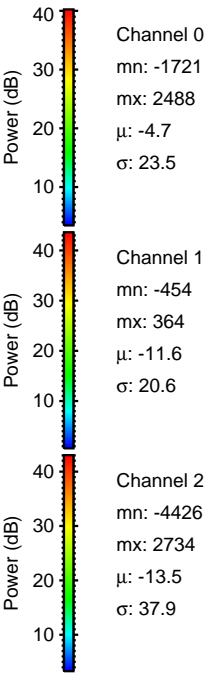
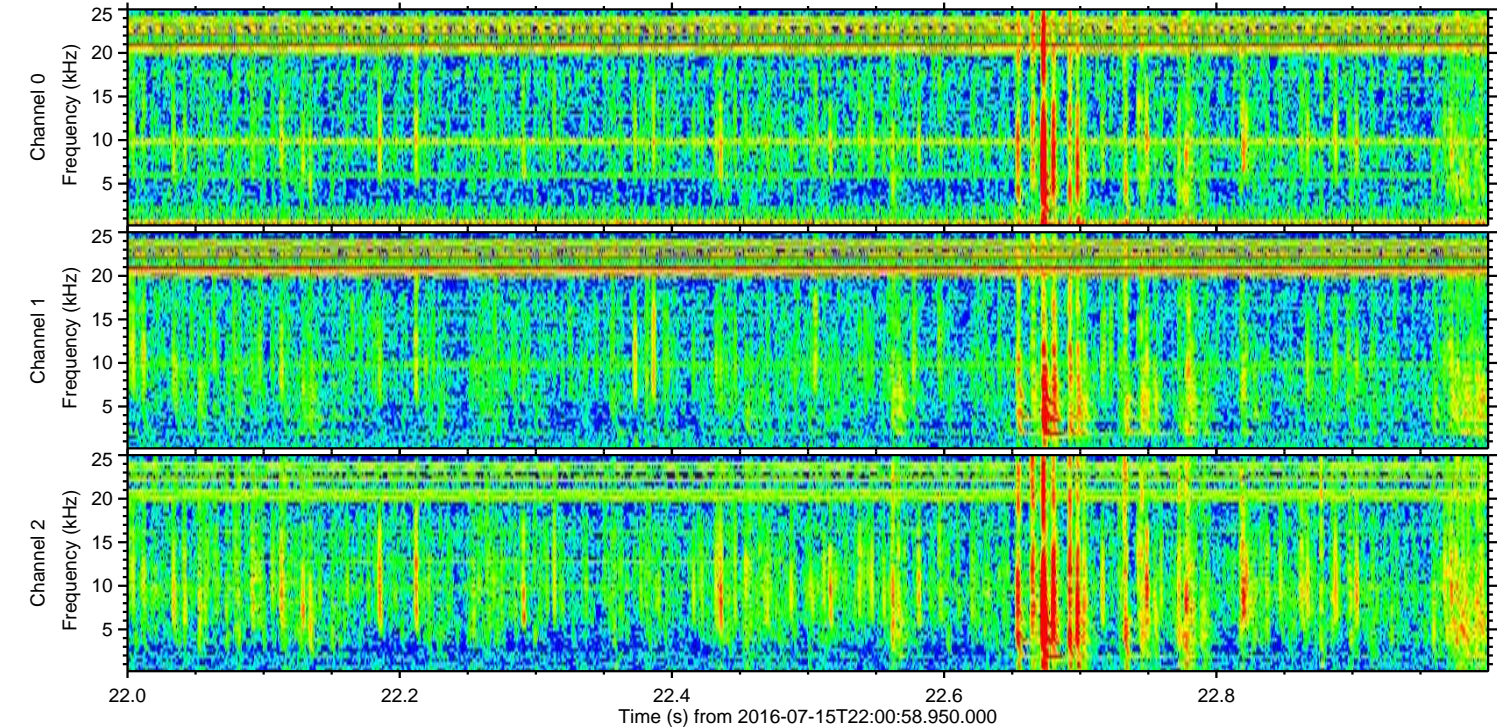
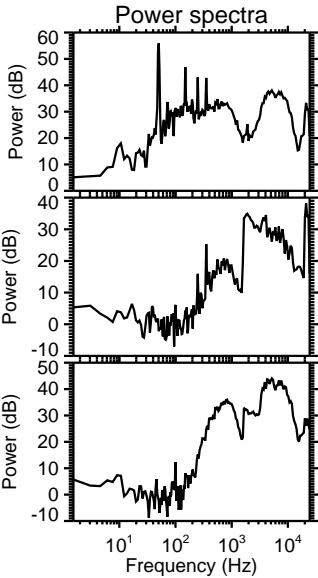
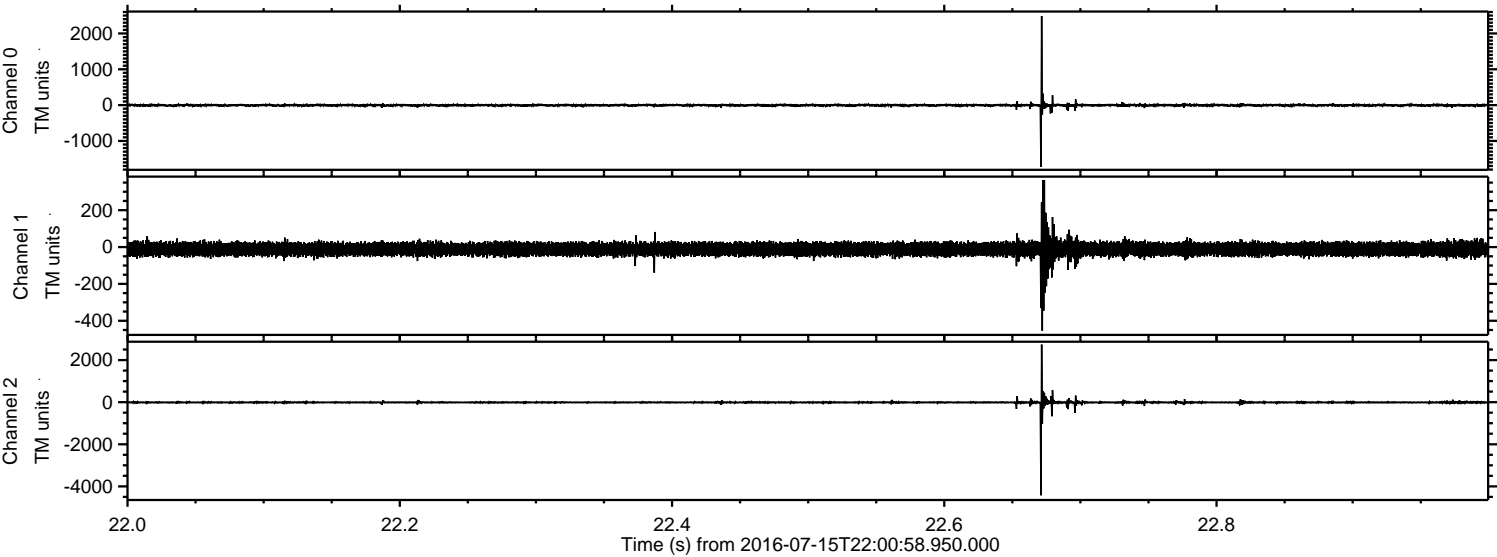


Channel 0
mn: -1883
mx: 2891
 μ : -4.7
 σ : 27.4

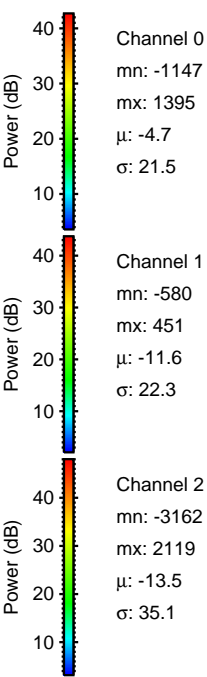
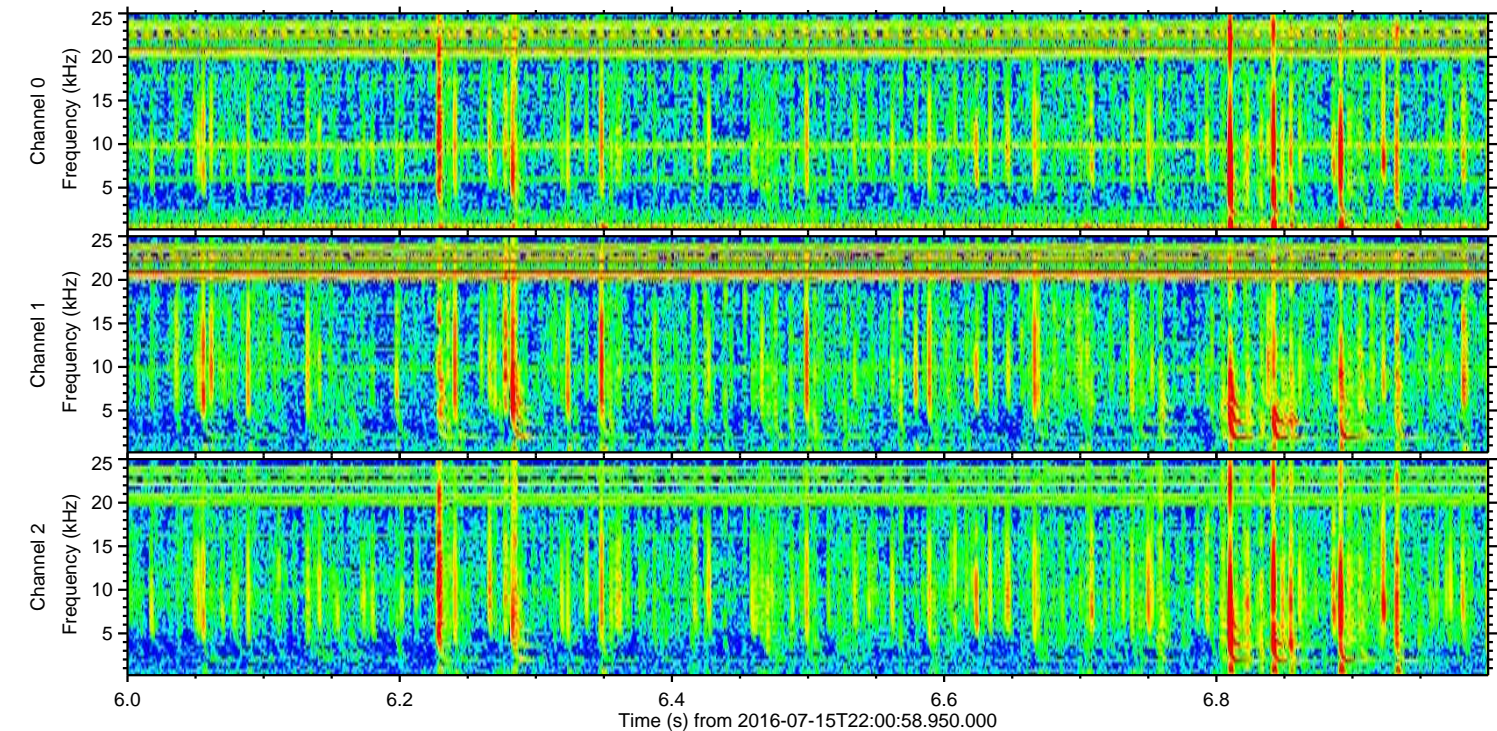
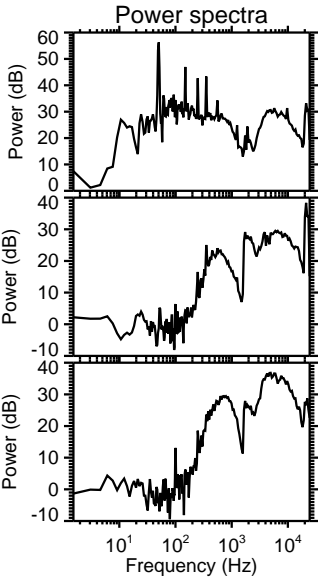
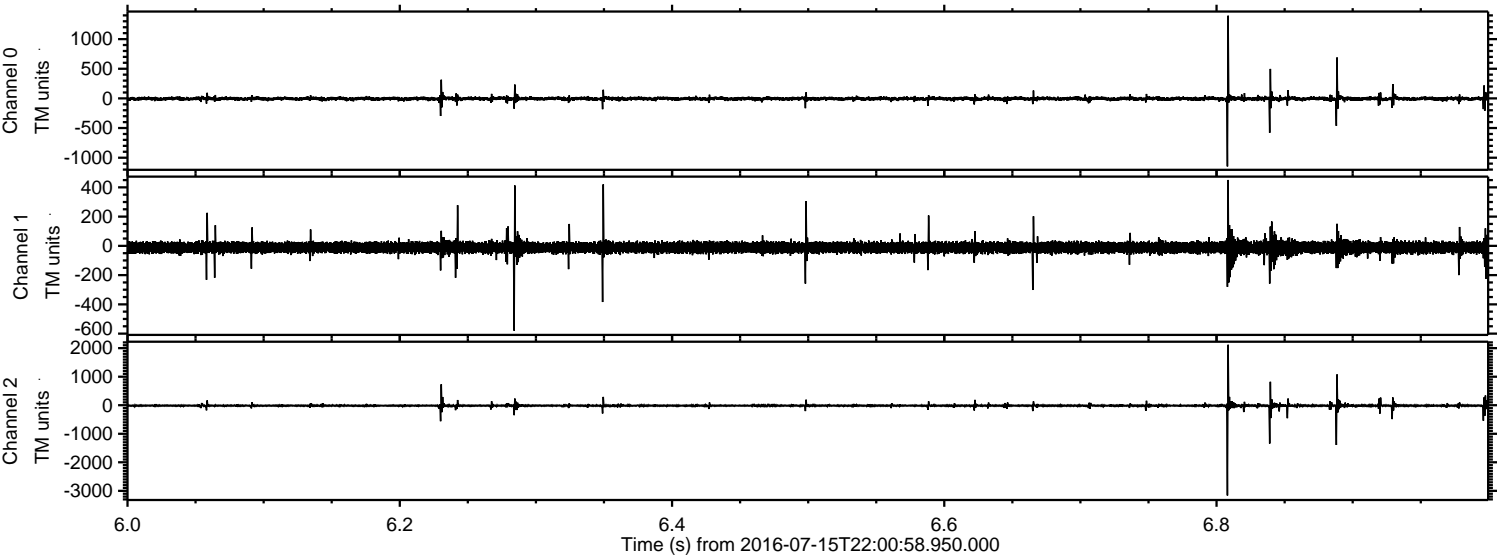
Channel 1
mn: -419
mx: 416
 μ : -11.6
 σ : 22.1

Channel 2
mn: -4668
mx: 3604
 μ : -13.5
 σ : 44.4

Processed Sat Jul 16 00:09:08 2016 by ELM ver.2012-10-06 from 001__elm20160715_220057__dat00.bin

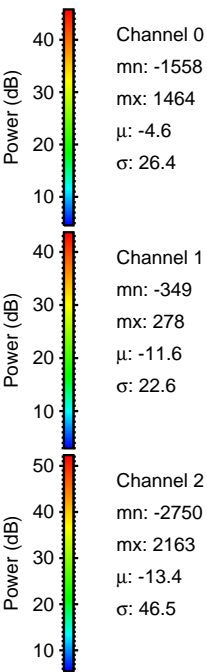
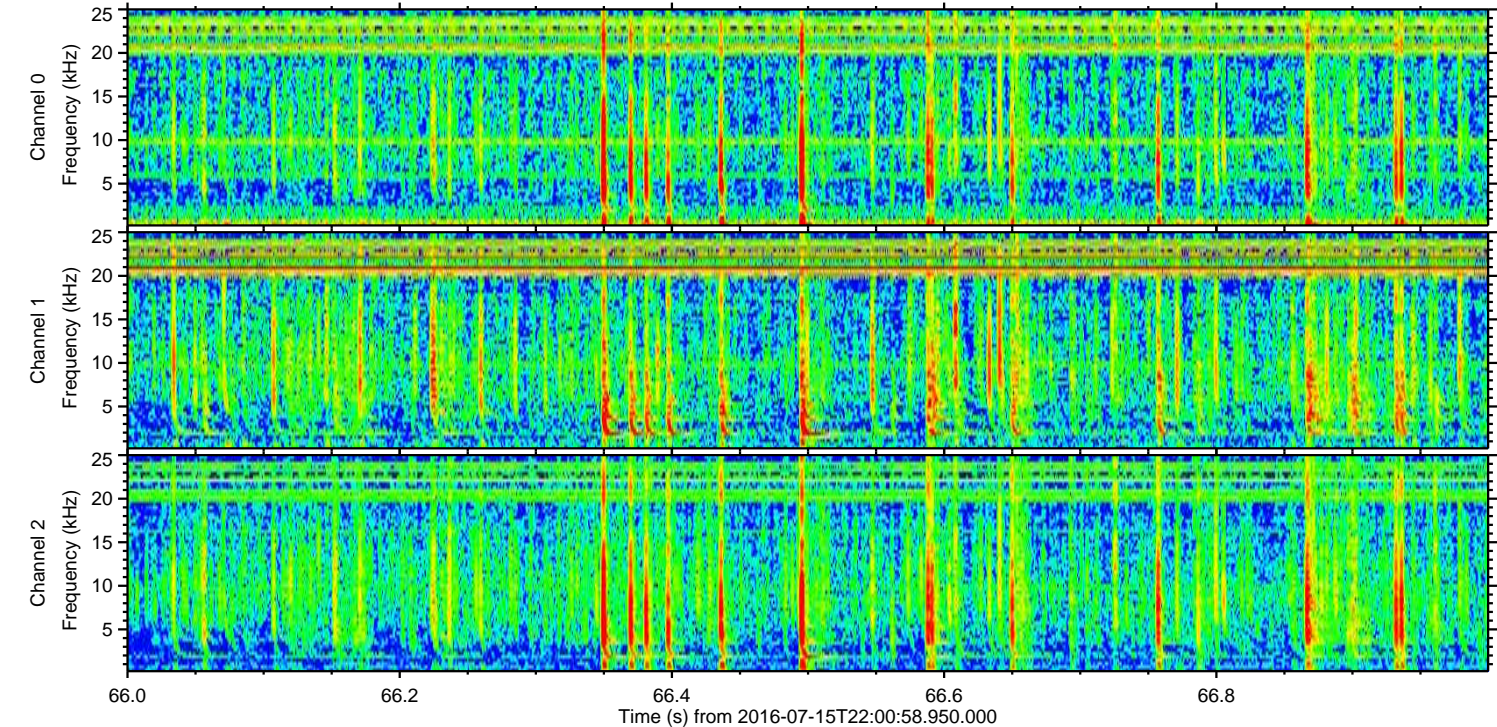
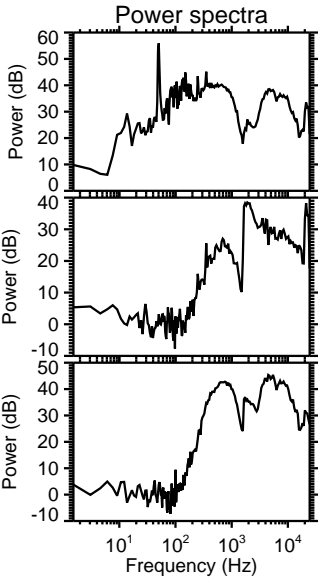
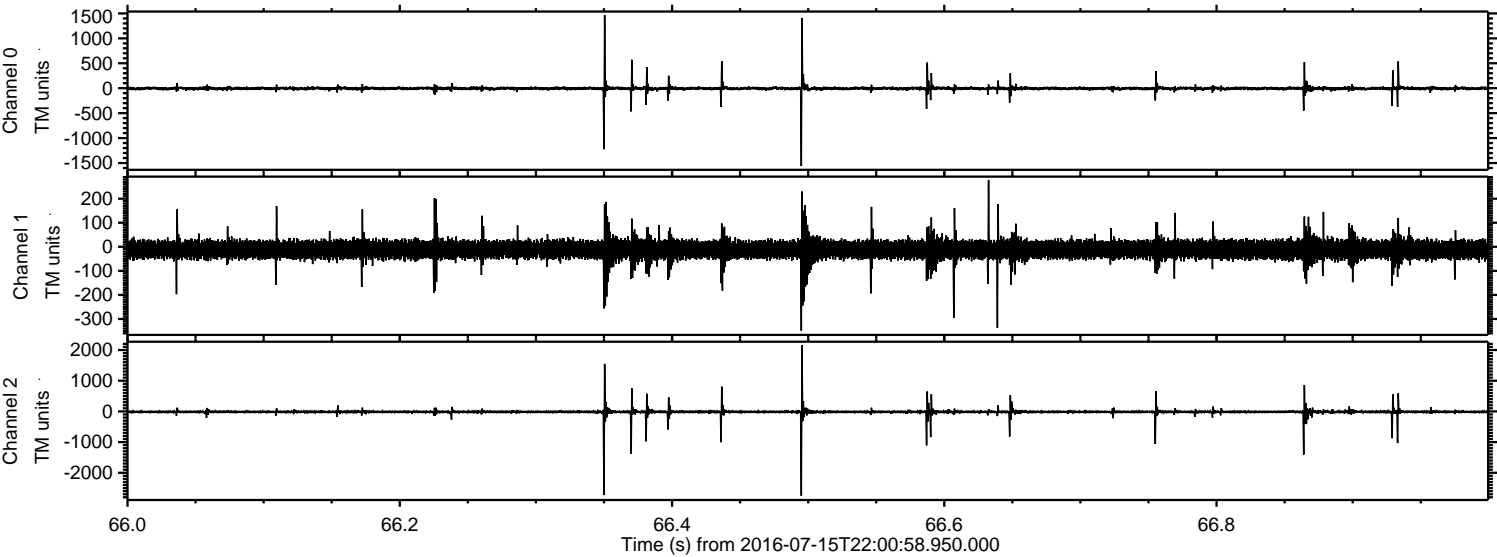


Processed Sat Jul 16 00:09:09 2016 by ELM ver.2012-10-06 from 001__elm20160715_220057__dat00.bin



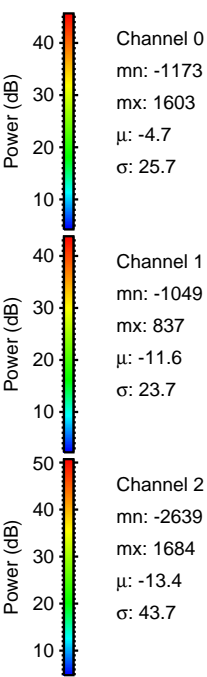
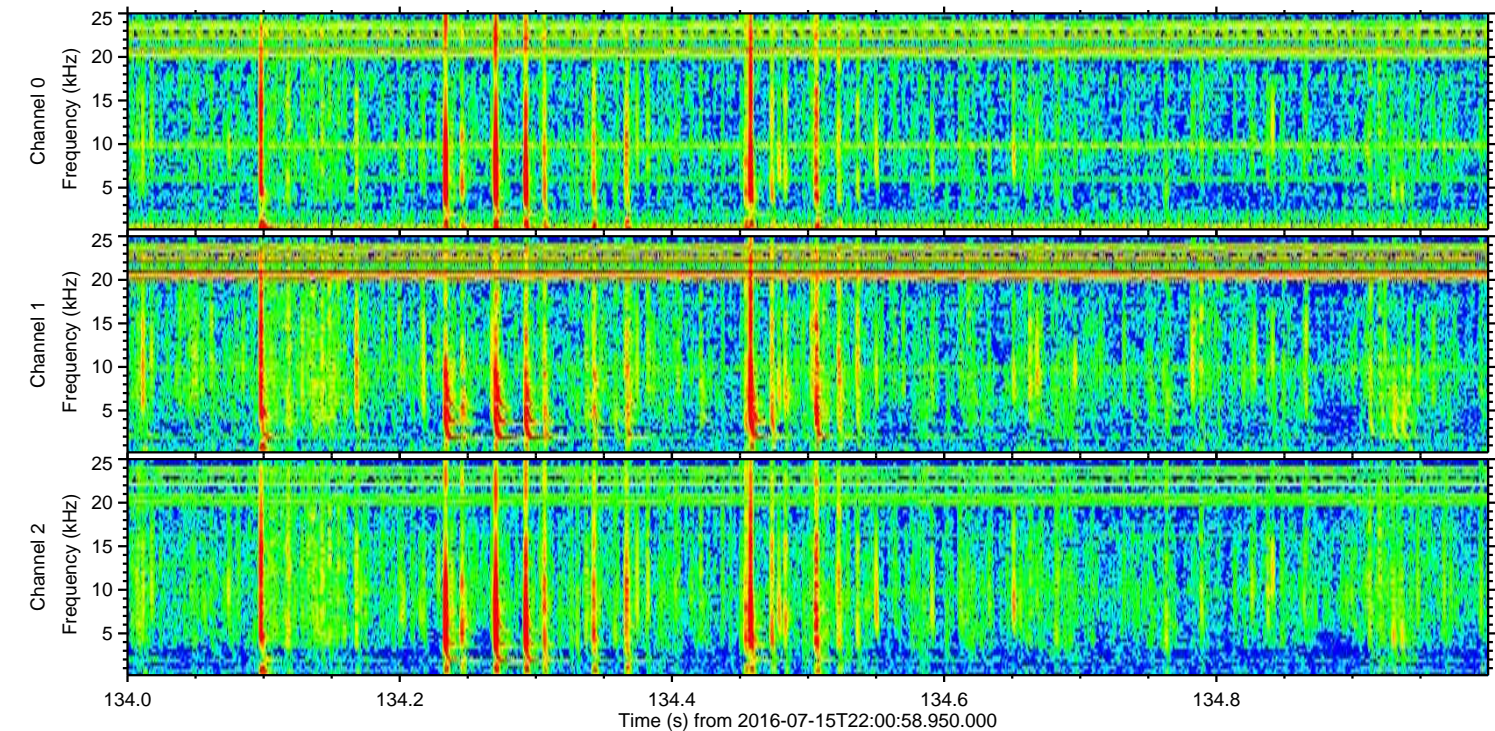
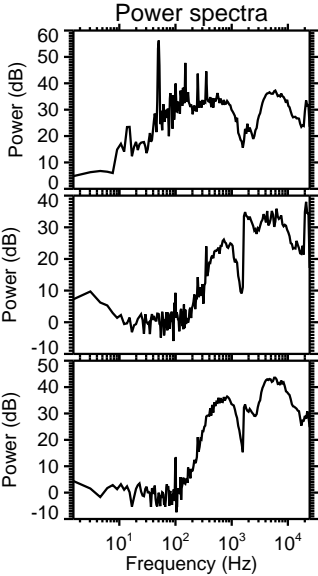
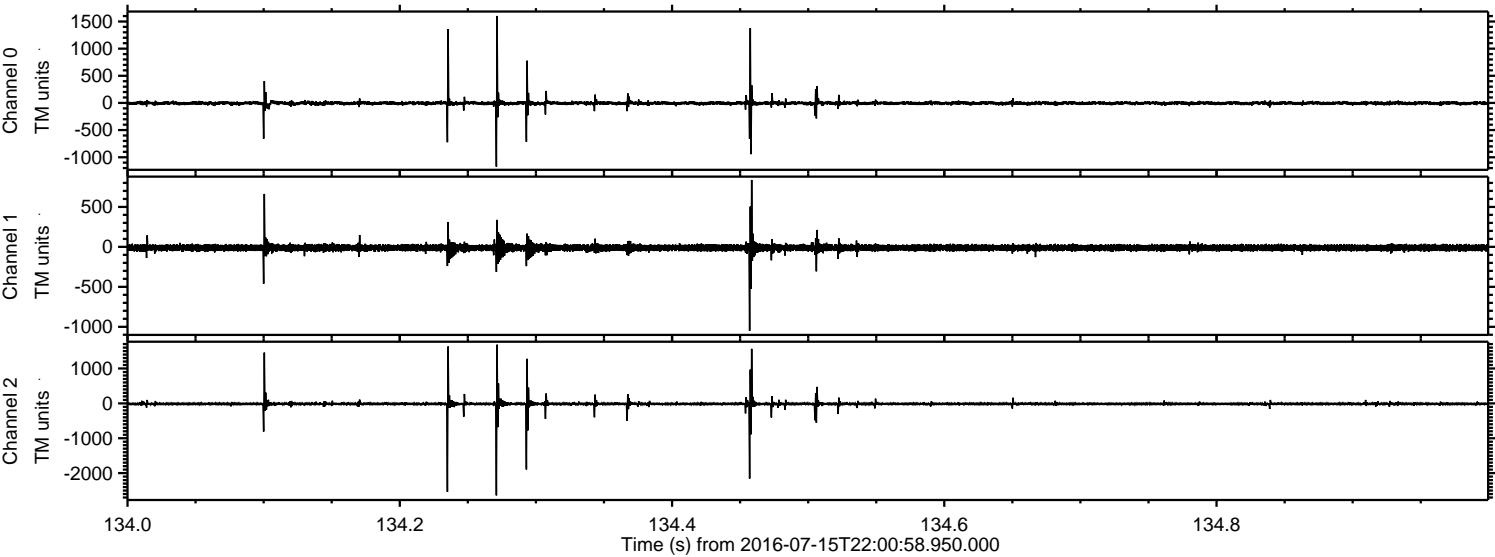
ELMAVAN 3D WAVEFORMS (Measured data sampled at 50 kHz) 51000 packets of 144 samples from 2016-07-15T22:00:58.950.000. Part 67/147

Processed Sat Jul 16 00:09:10 2016 by ELM ver.2012-10-06 from 001__elm20160715_220057__dat00.bin



ELMAVAN 3D WAVEFORMS (Measured data sampled at 50 kHz) 51000 packets of 144 samples from 2016-07-15T22:00:58.950.000. Part 135/147

Processed Sat Jul 16 00:09:11 2016 by ELM ver.2012-10-06 from 001__elm20160715_220057__dat00.bin

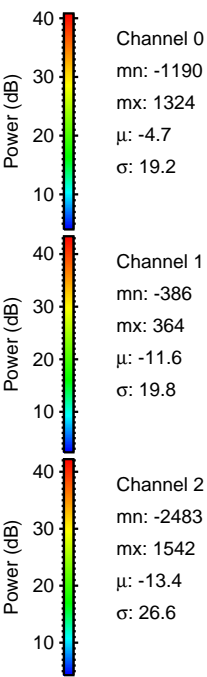
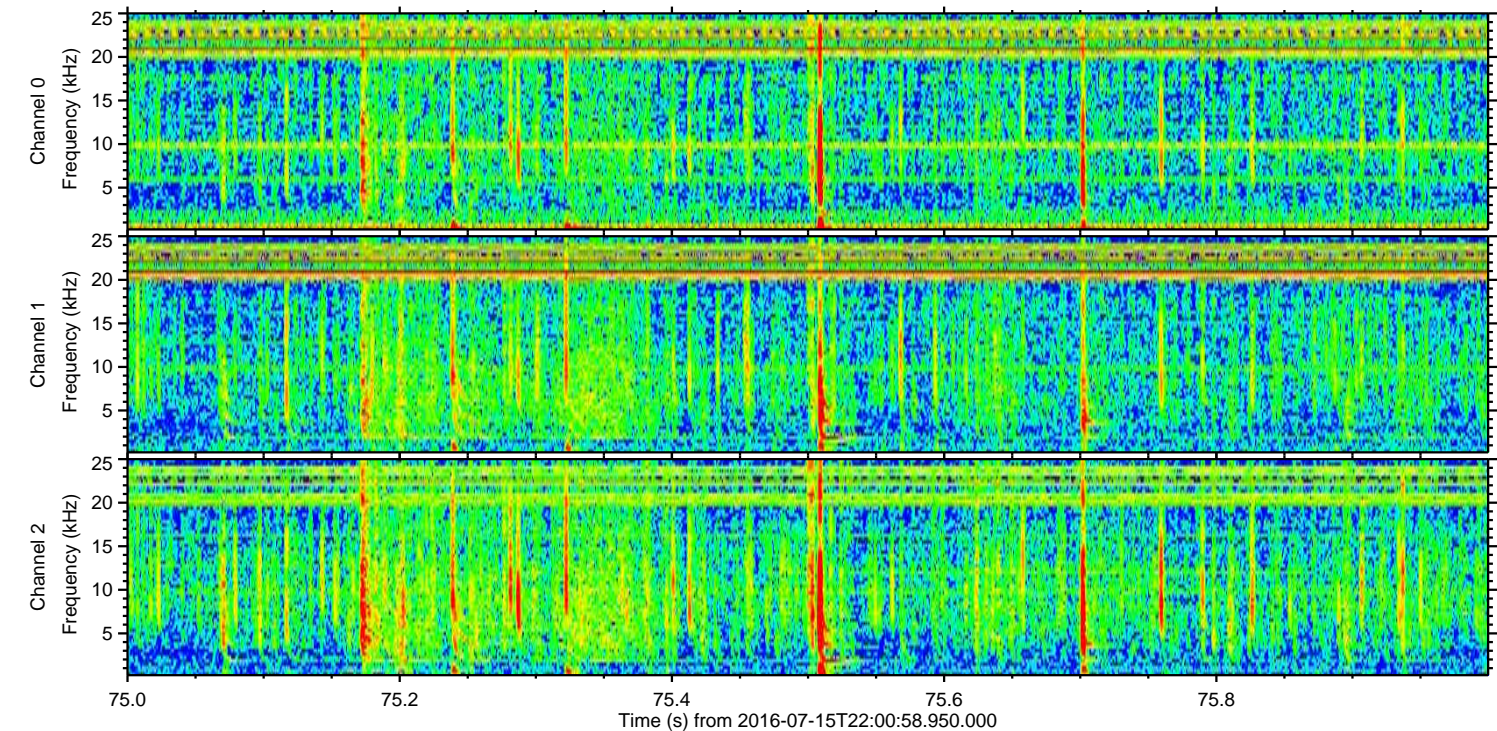
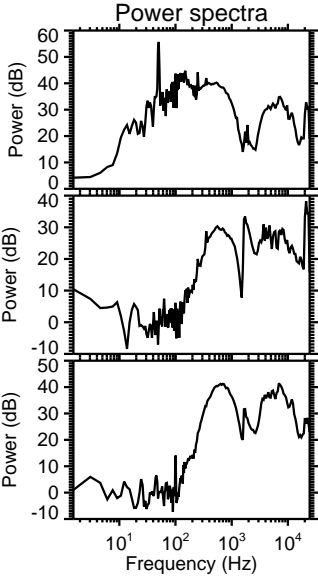
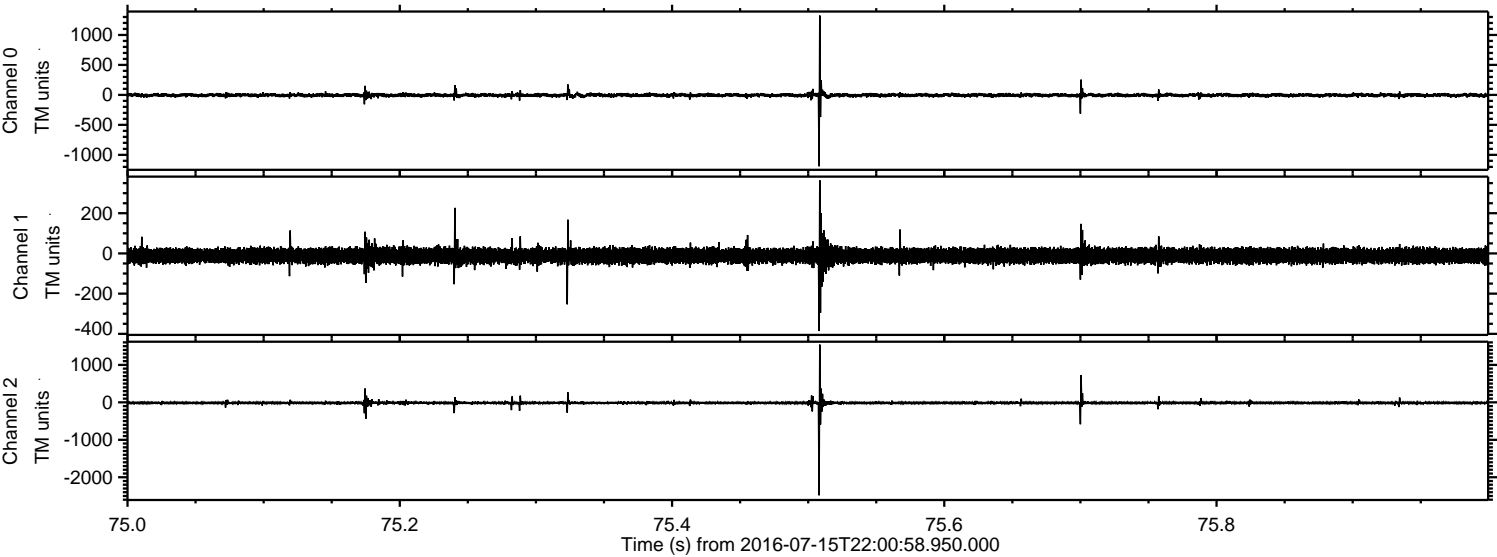


Channel 0
mn: -1173
mx: 1603
 μ : -4.7
 σ : 25.7

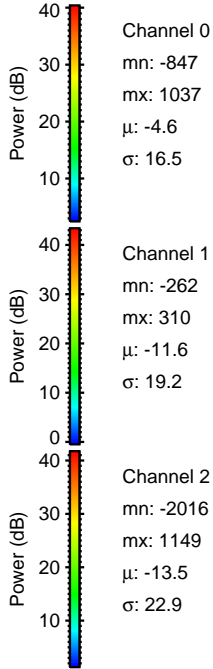
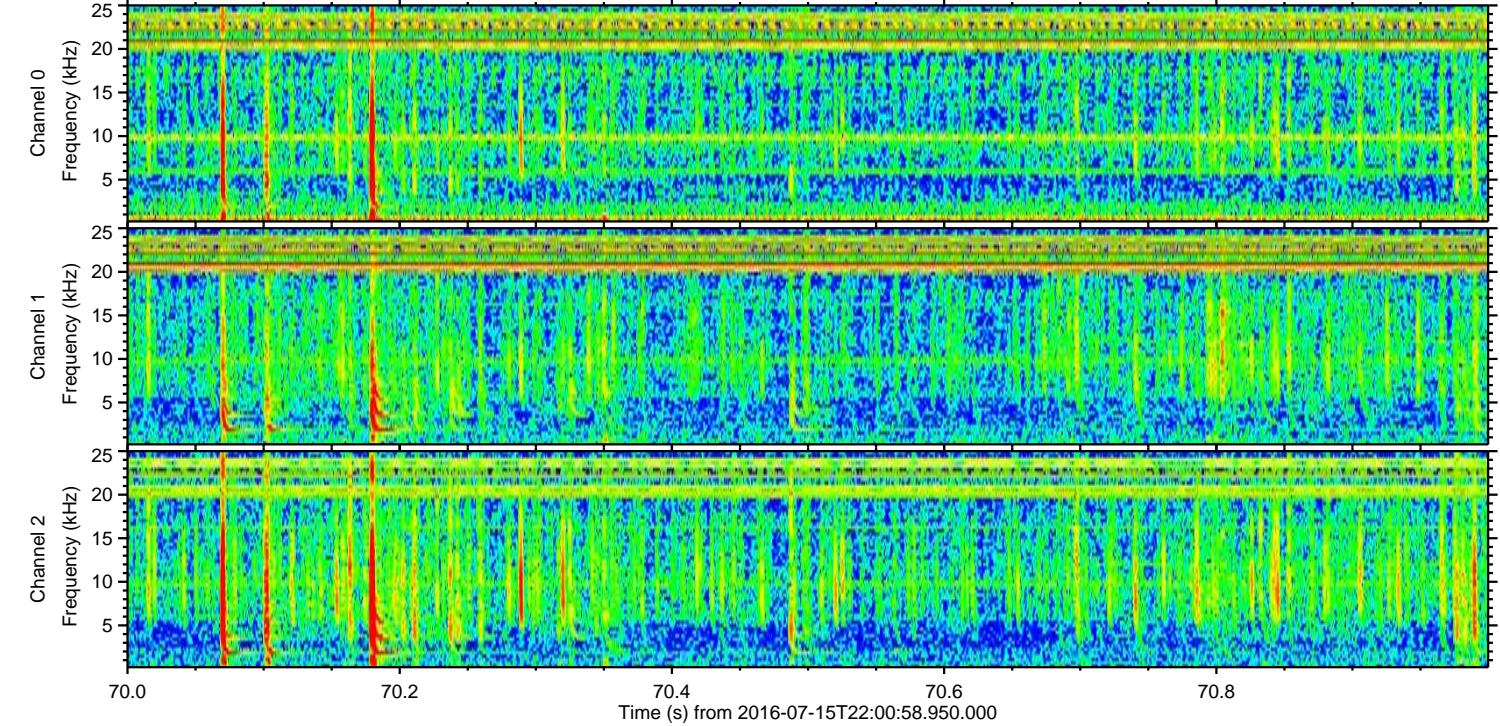
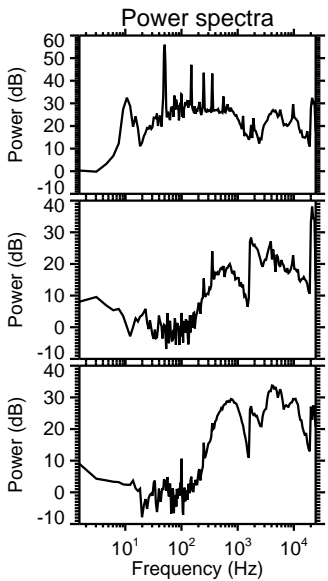
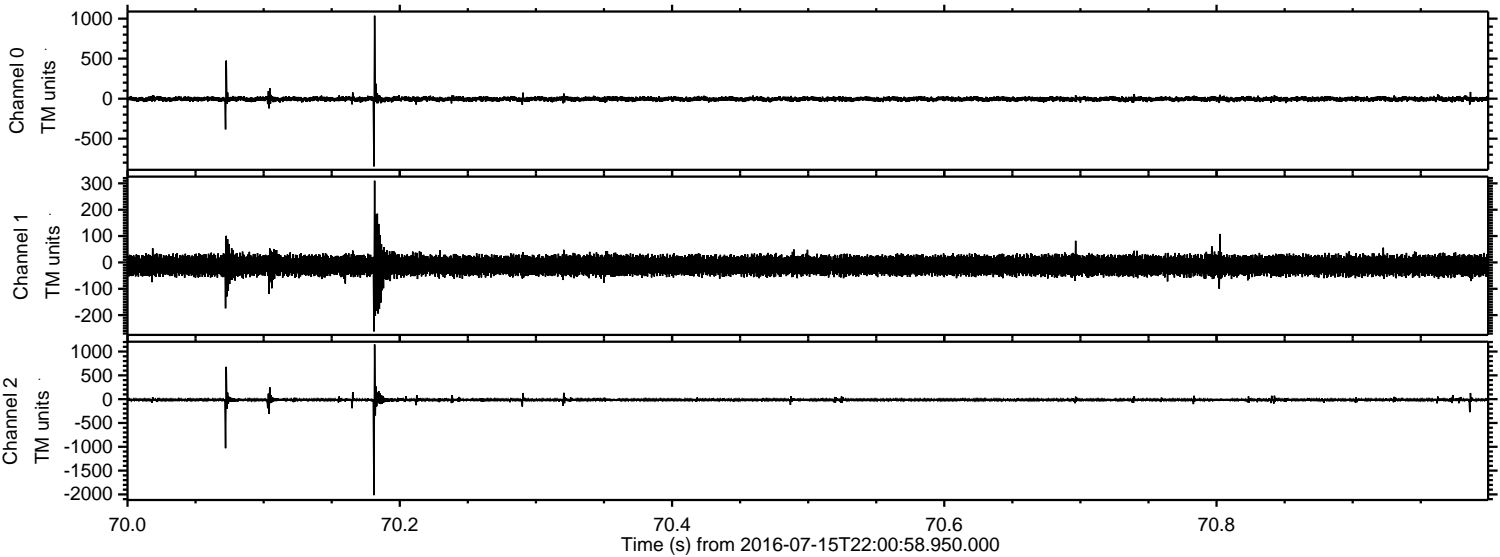
Channel 1
mn: -1049
mx: 837
 μ : -11.6
 σ : 23.7

Channel 2
mn: -2639
mx: 1684
 μ : -13.4
 σ : 43.7

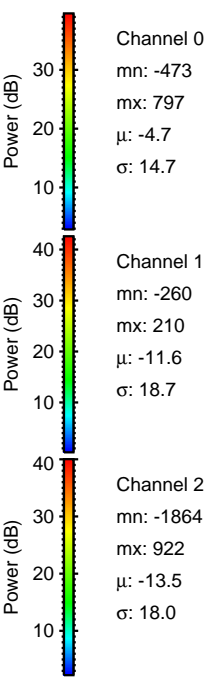
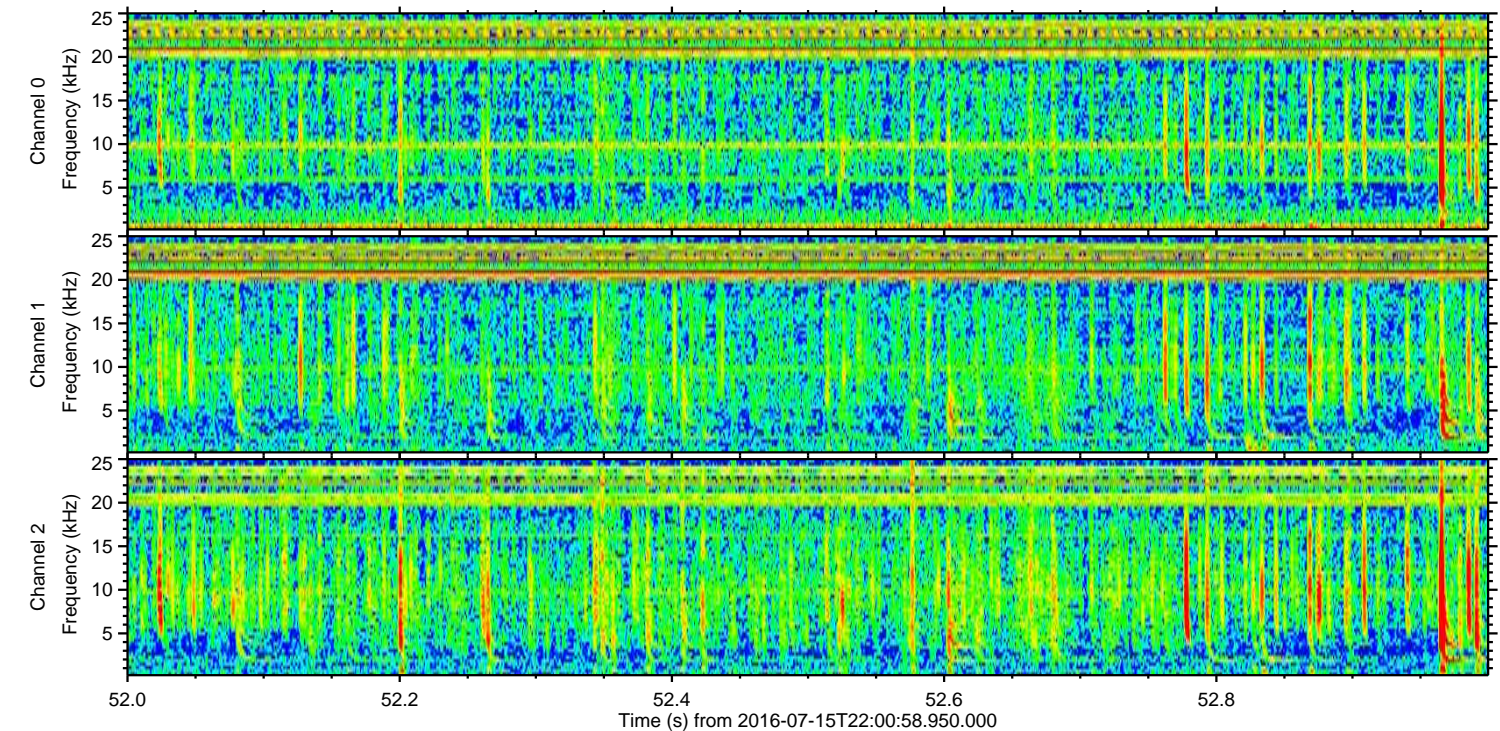
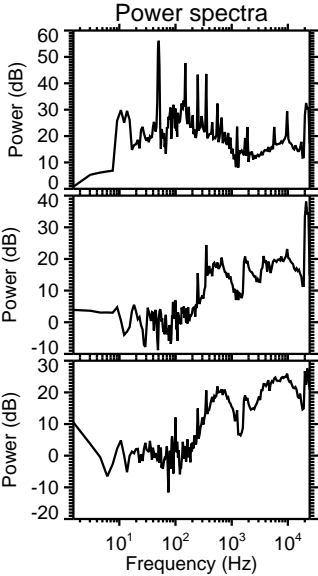
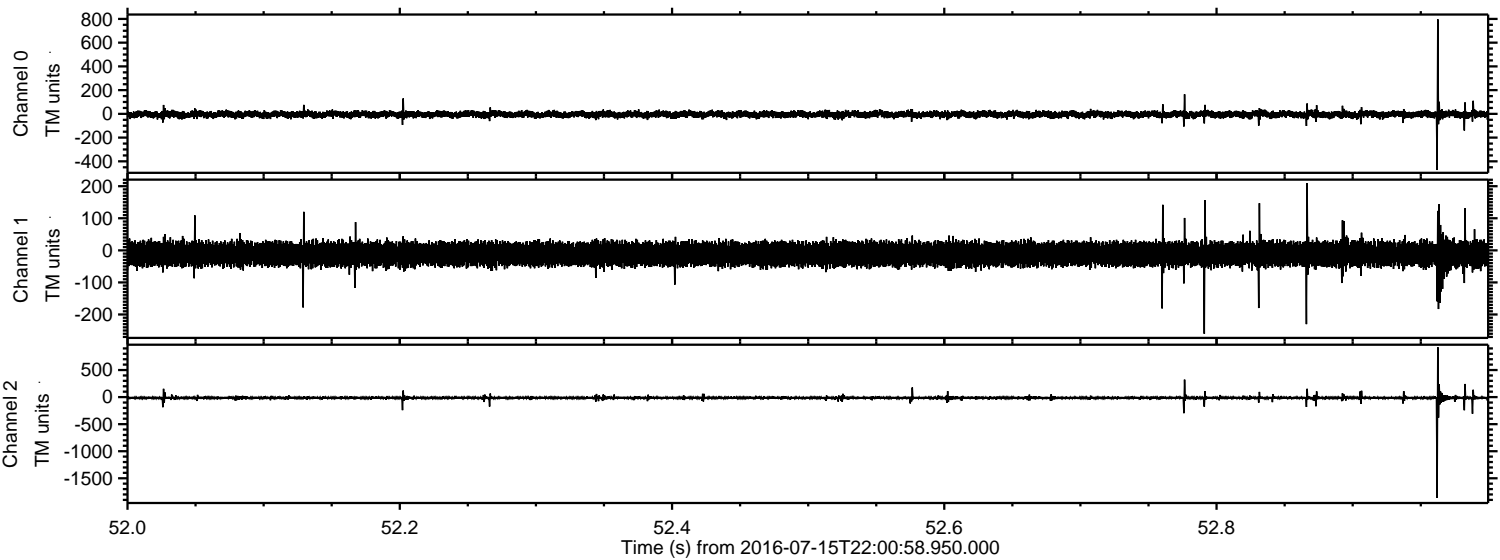
Processed Sat Jul 16 00:09:12 2016 by ELM ver.2012-10-06 from 001__elm20160715_220057__dat00.bin



Processed Sat Jul 16 00:09:13 2016 by ELM ver.2012-10-06 from 001__elm20160715_220057__dat00.bin



Processed Sat Jul 16 00:09:14 2016 by ELM ver.2012-10-06 from 001__elm20160715_220057__dat00.bin



Processed Sat Jul 16 00:09:14 2016 by ELM ver.2012-10-06 from 001__elm20160715_220057__dat00.bin

