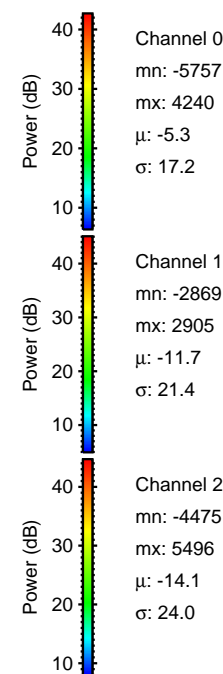
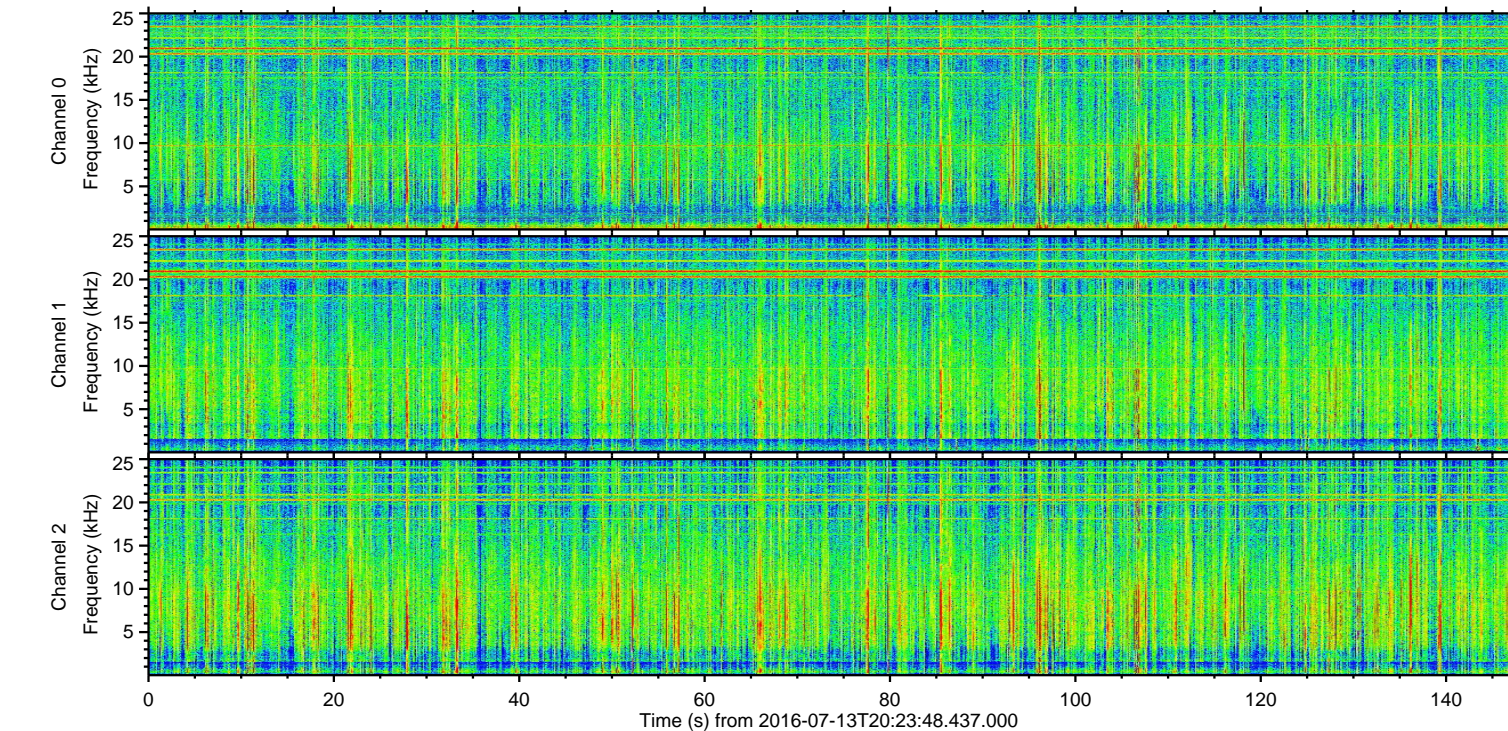
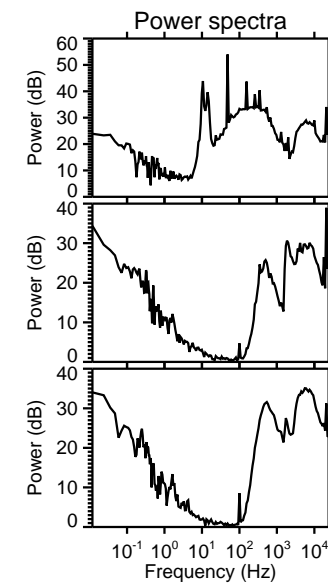
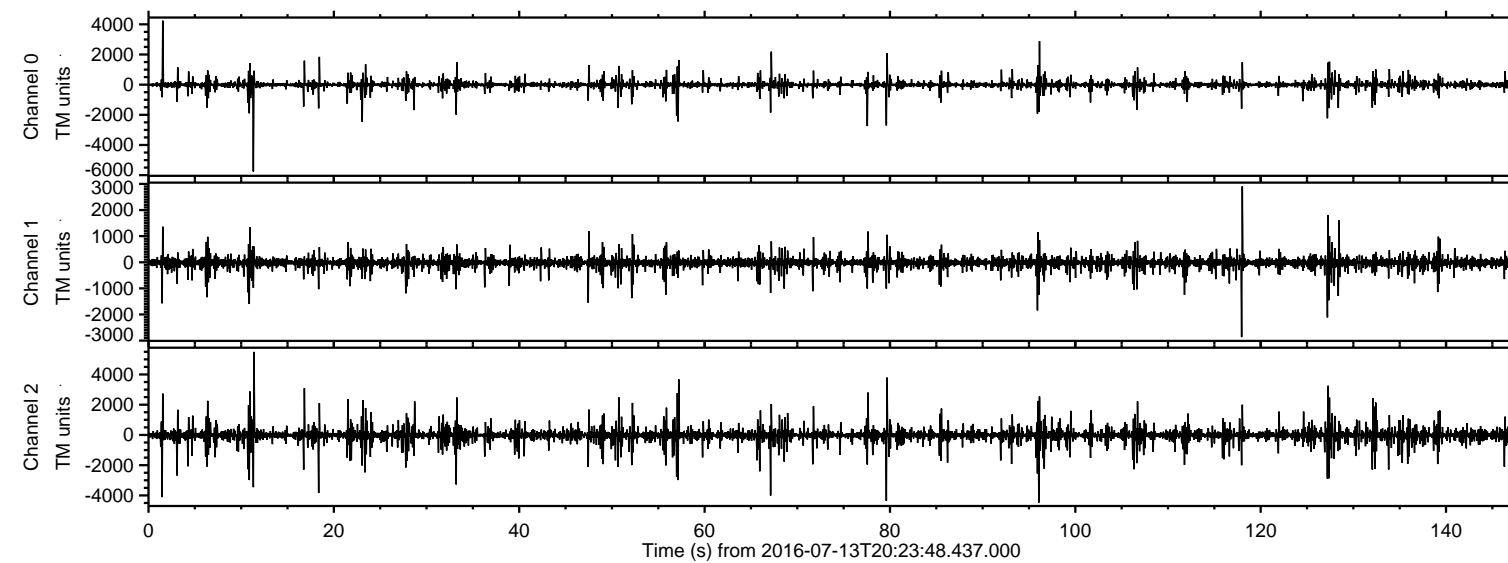


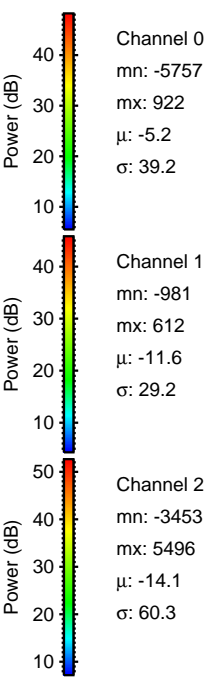
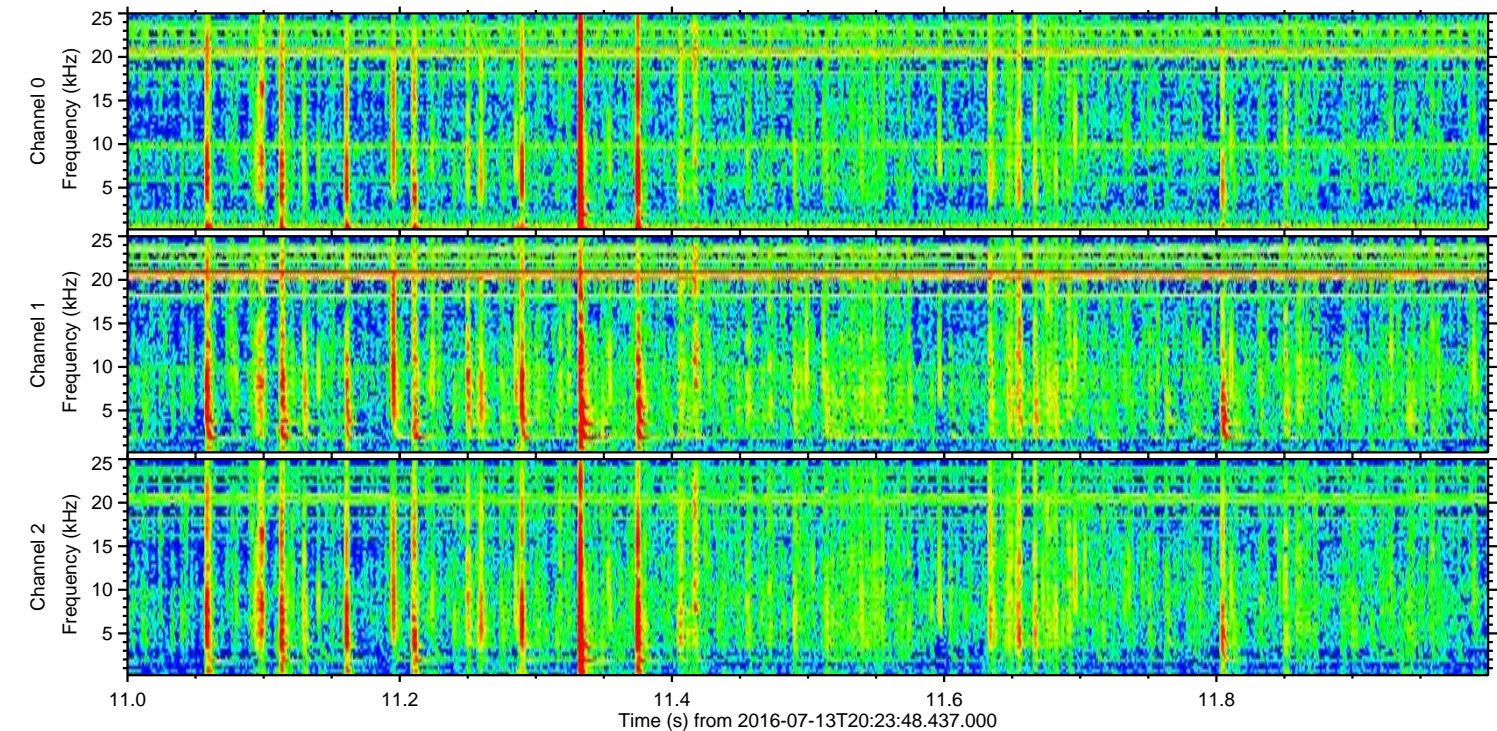
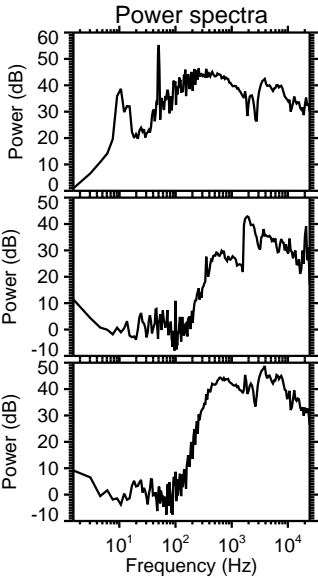
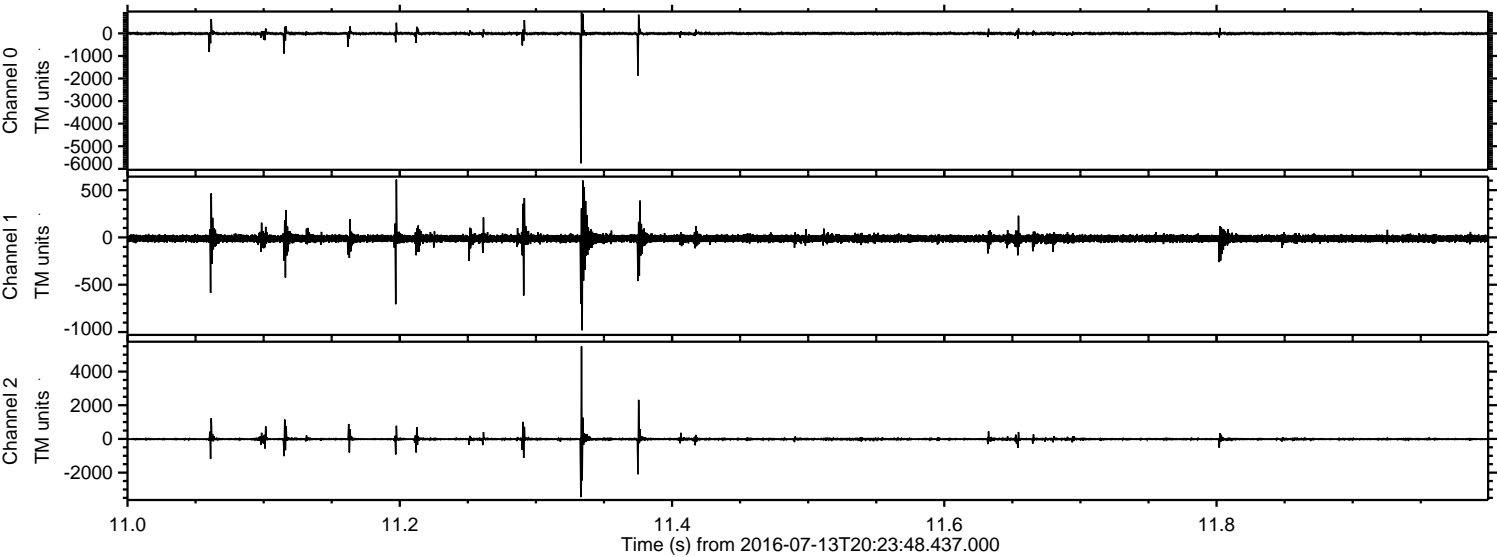
# ELMAVAN 3D WAVEFORMS (Measured data sampled at 50 kHz) 51000 packets of 144 samples from 2016-07-13T20:23:48.437.000.

Processed Wed Jul 13 22:31:37 2016 by ELM ver.2012-10-06 from 001\_\_elm20160713\_202347\_\_dat00.bin



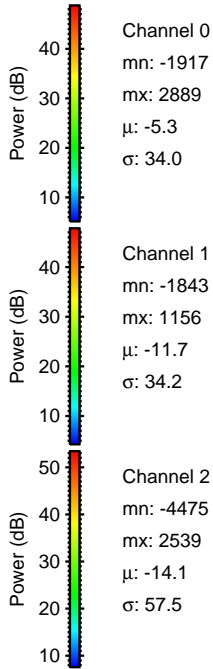
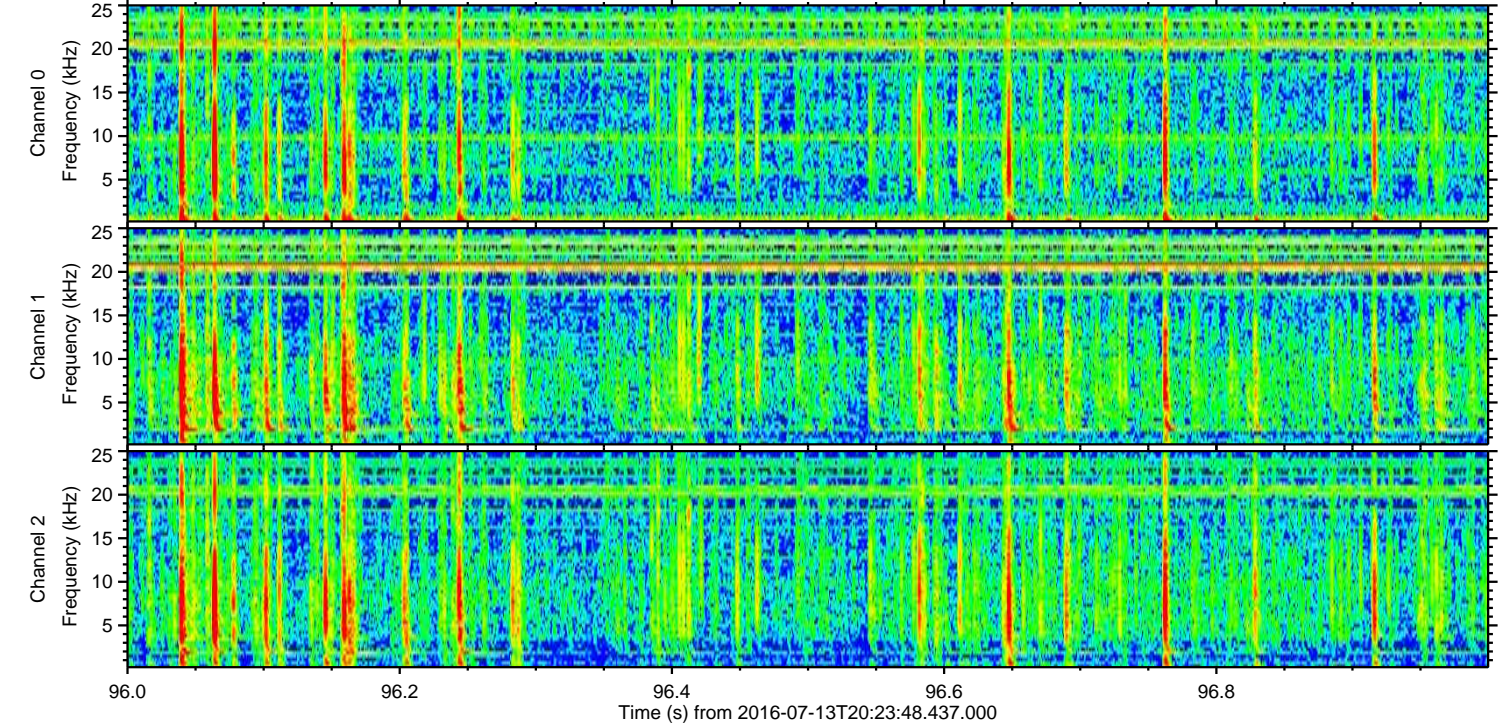
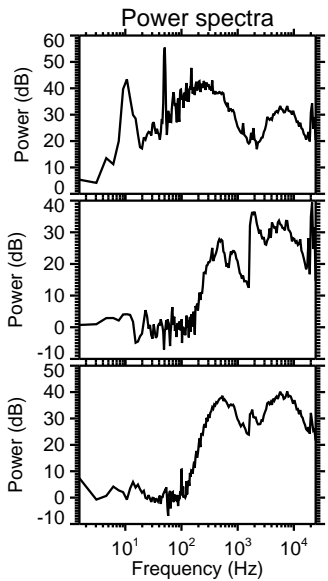
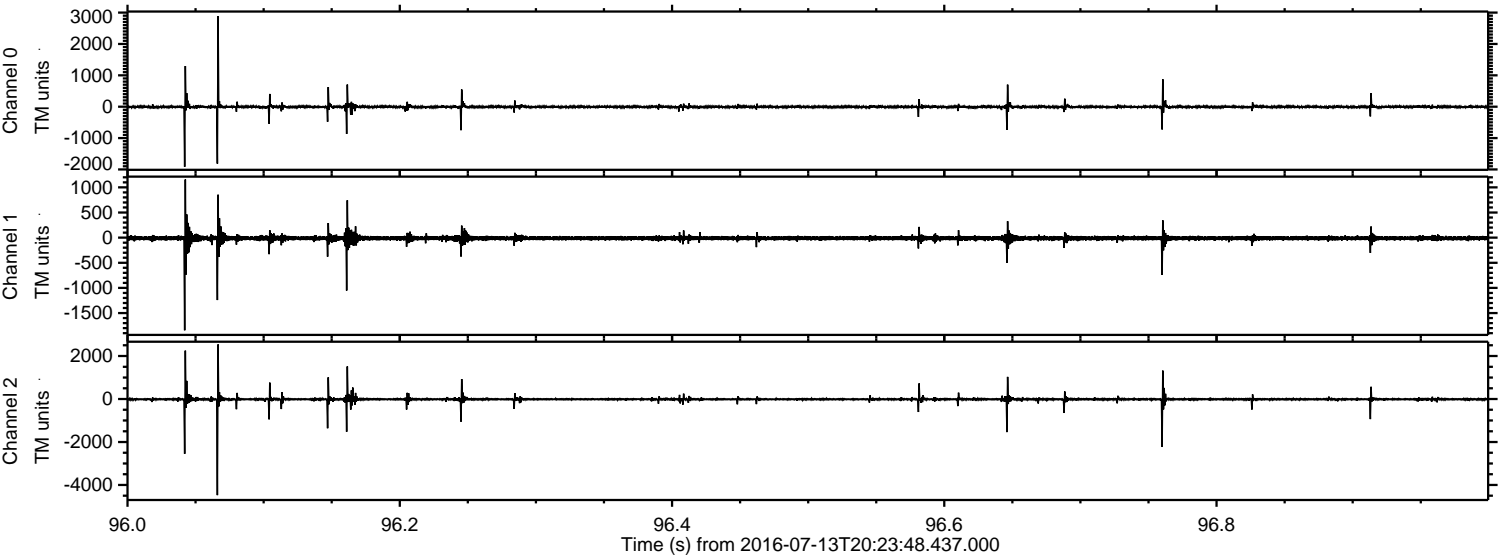


Processed Wed Jul 13 22:31:49 2016 by ELM ver.2012-10-06 from 001\_\_elm20160713\_202347\_\_dat00.bin



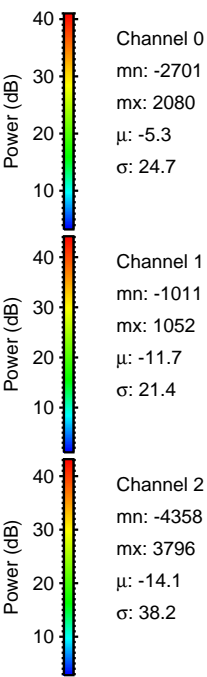
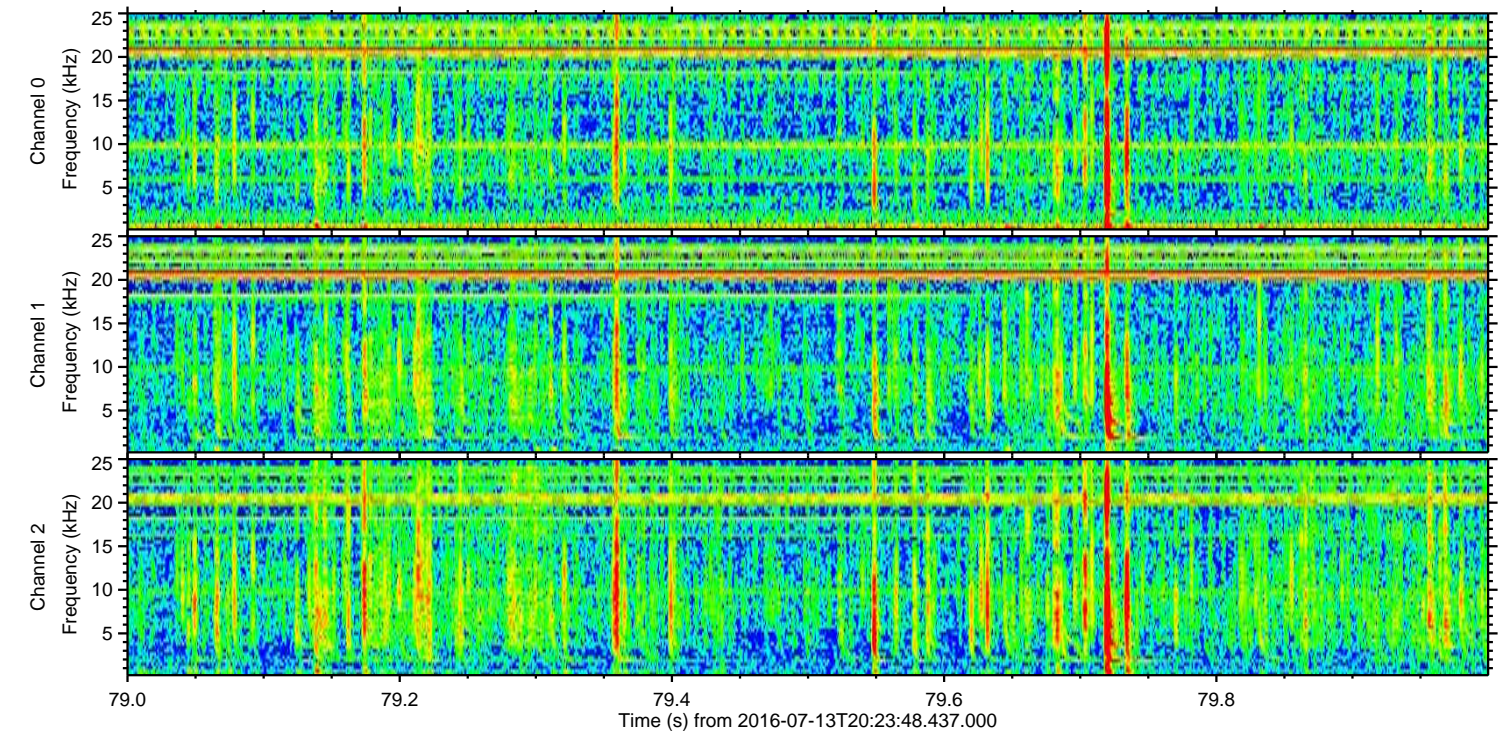
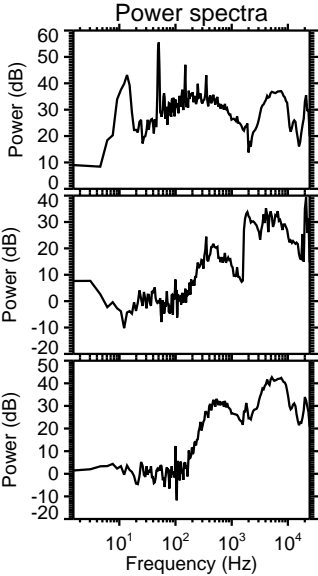
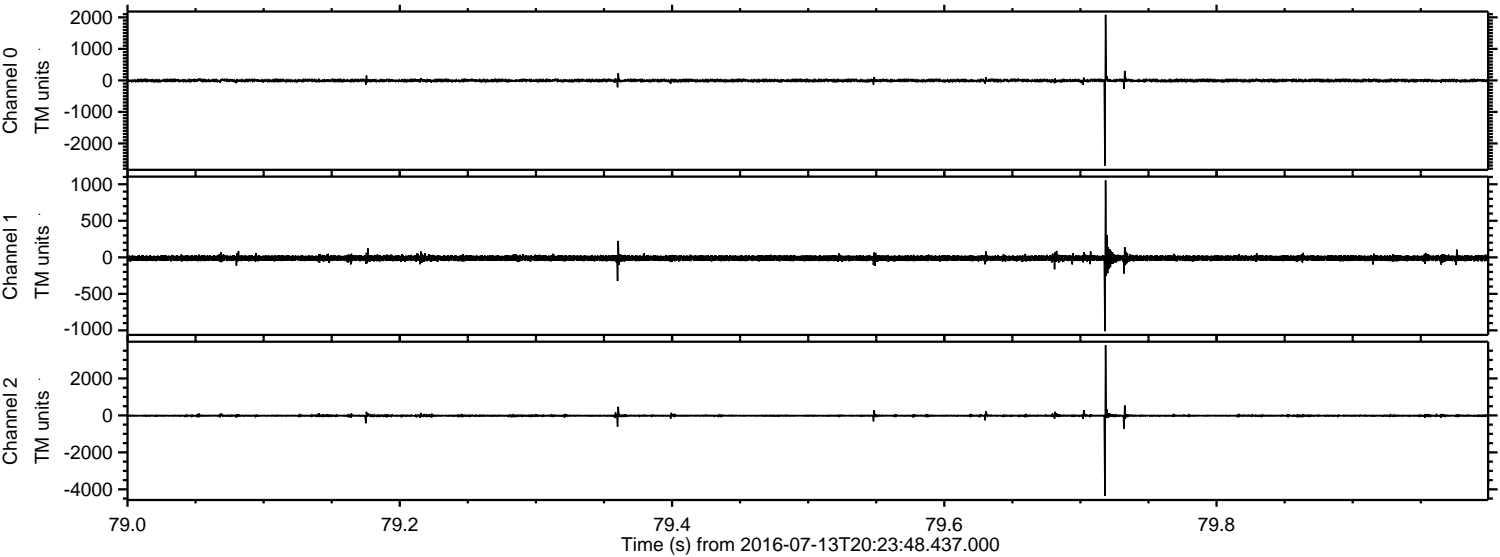


Processed Wed Jul 13 22:31:50 2016 by ELM ver.2012-10-06 from 001\_\_elm20160713\_202347\_\_dat00.bin



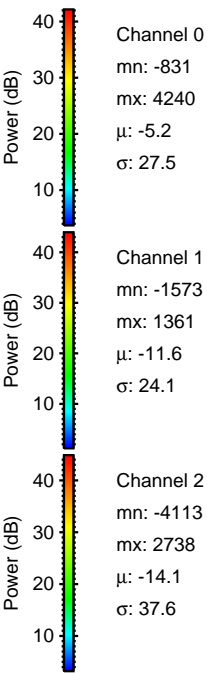
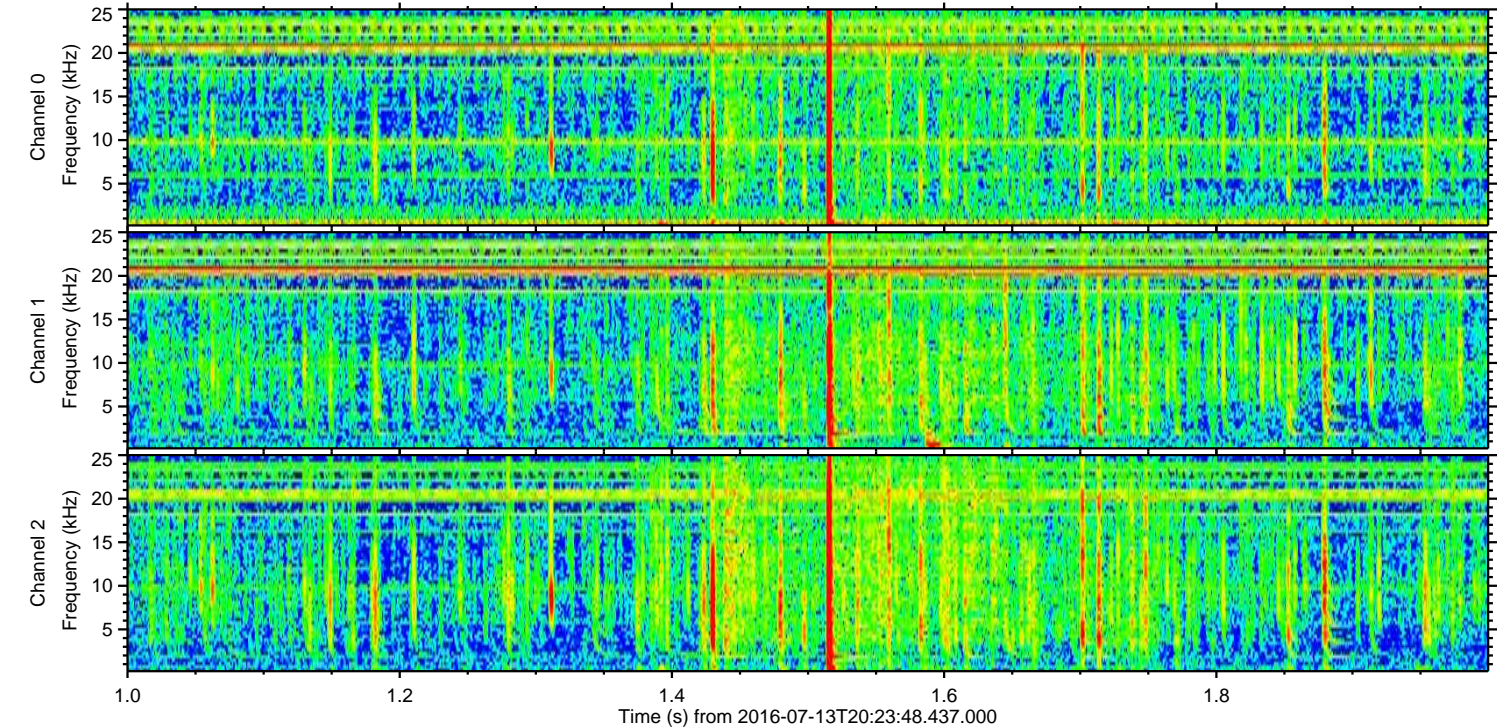
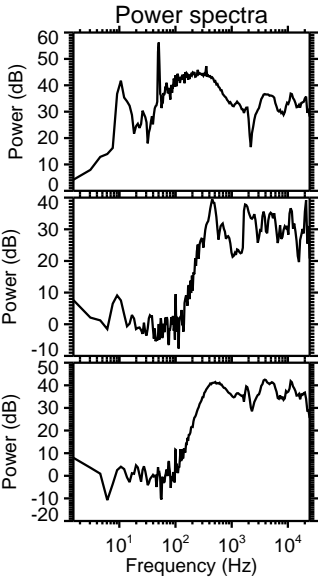
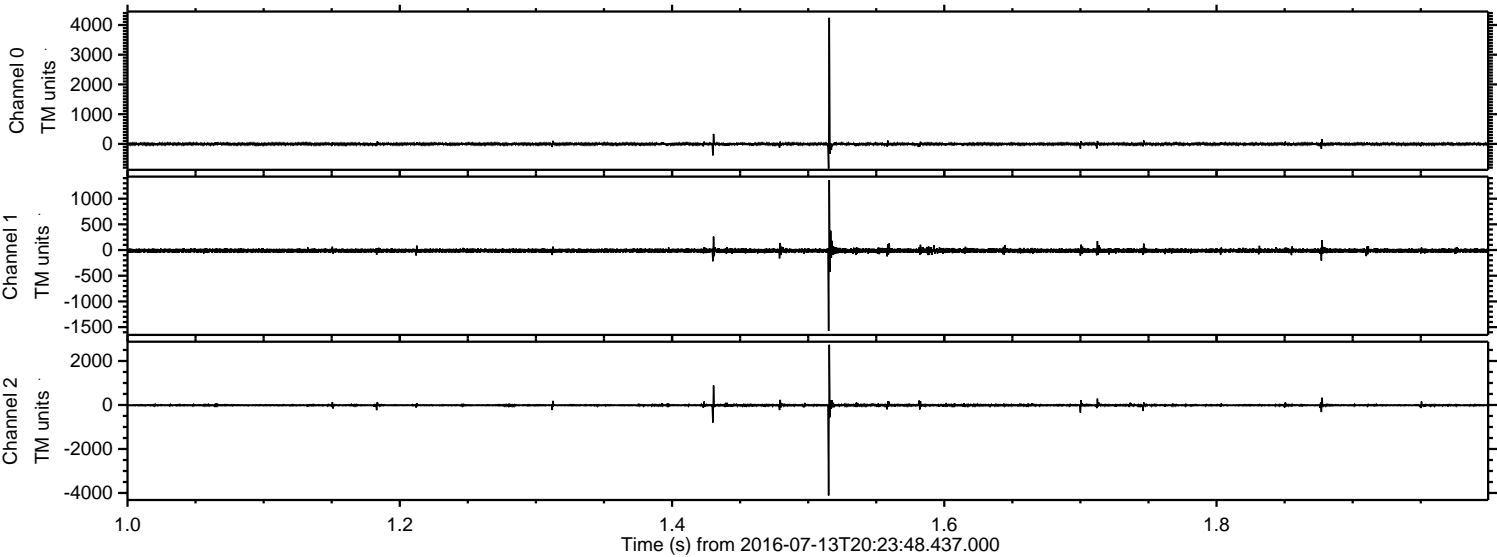


Processed Wed Jul 13 22:31:51 2016 by ELM ver.2012-10-06 from 001\_\_elm20160713\_202347\_\_dat00.bin



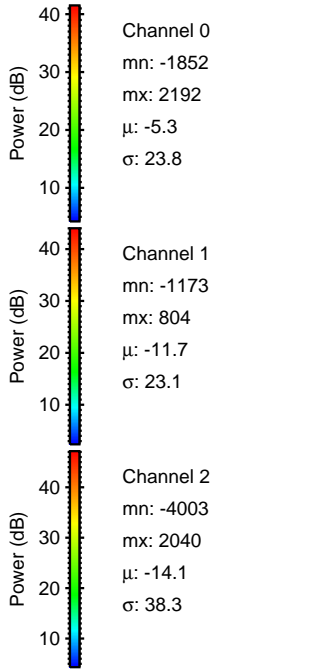
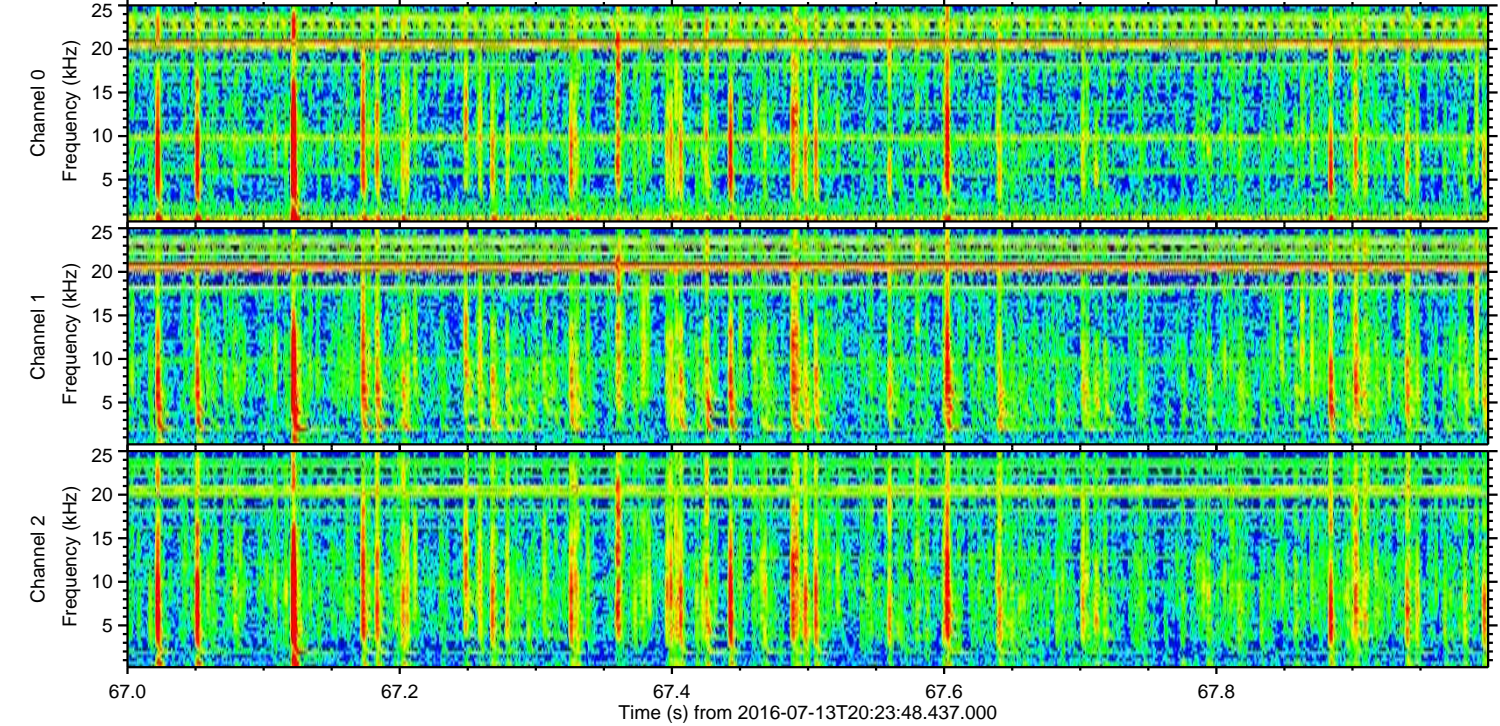
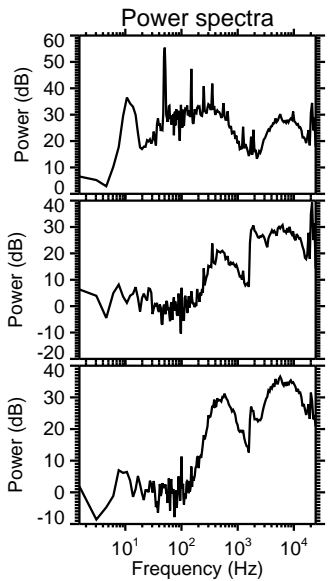
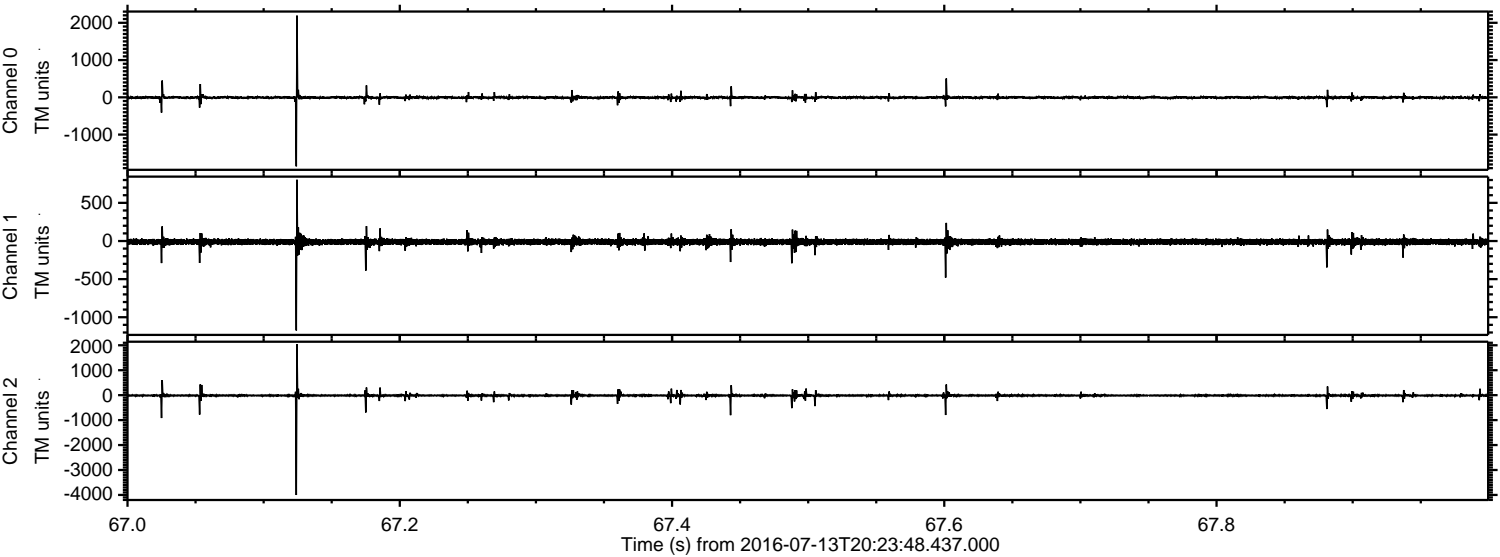


Processed Wed Jul 13 22:31:52 2016 by ELM ver.2012-10-06 from 001\_\_elm20160713\_202347\_\_dat00.bin



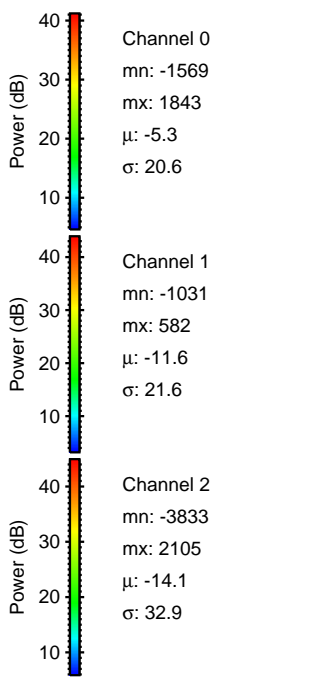
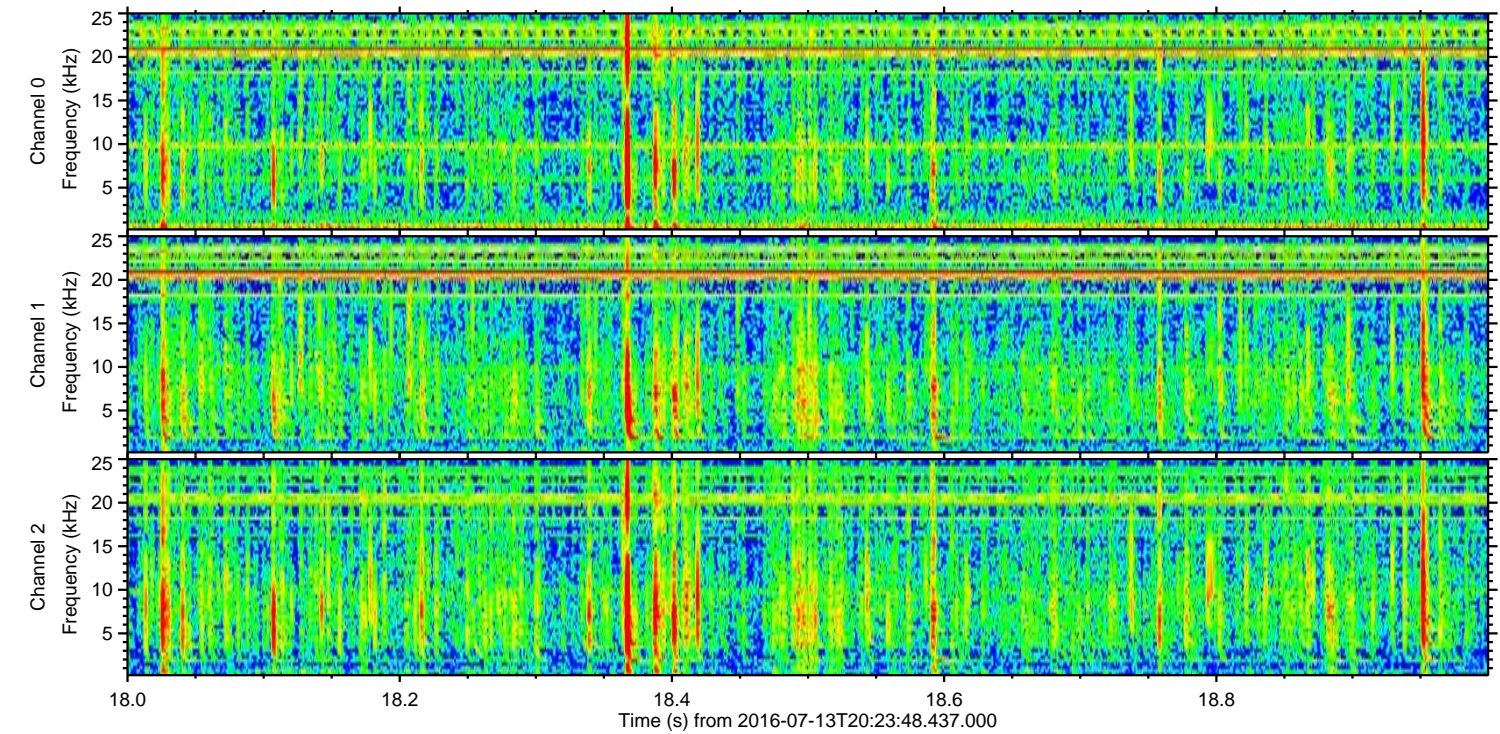
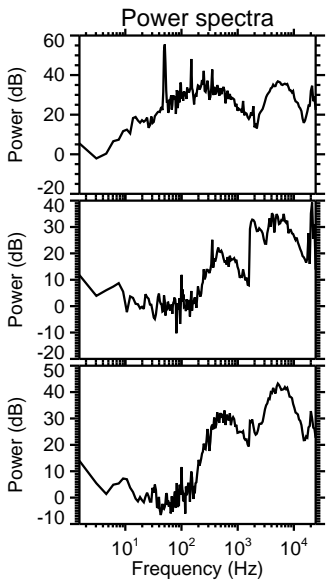
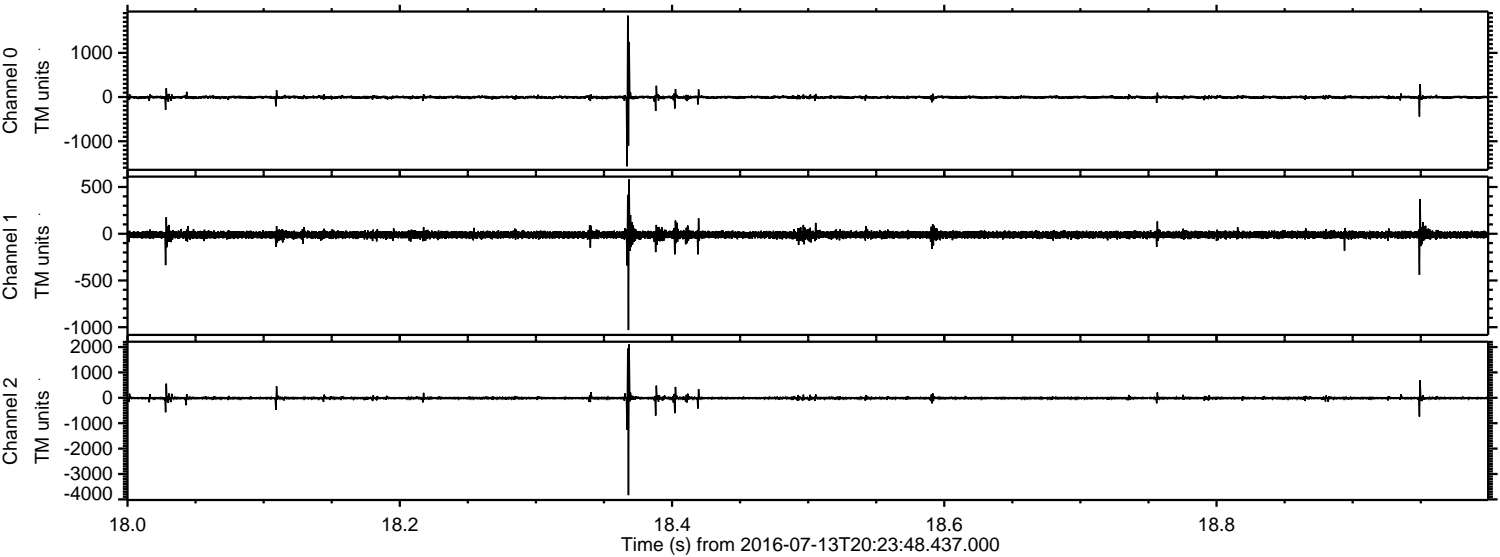


Processed Wed Jul 13 22:31:53 2016 by ELM ver.2012-10-06 from 001\_\_elm20160713\_202347\_\_dat00.bin



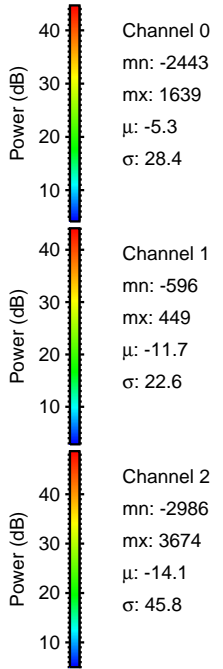
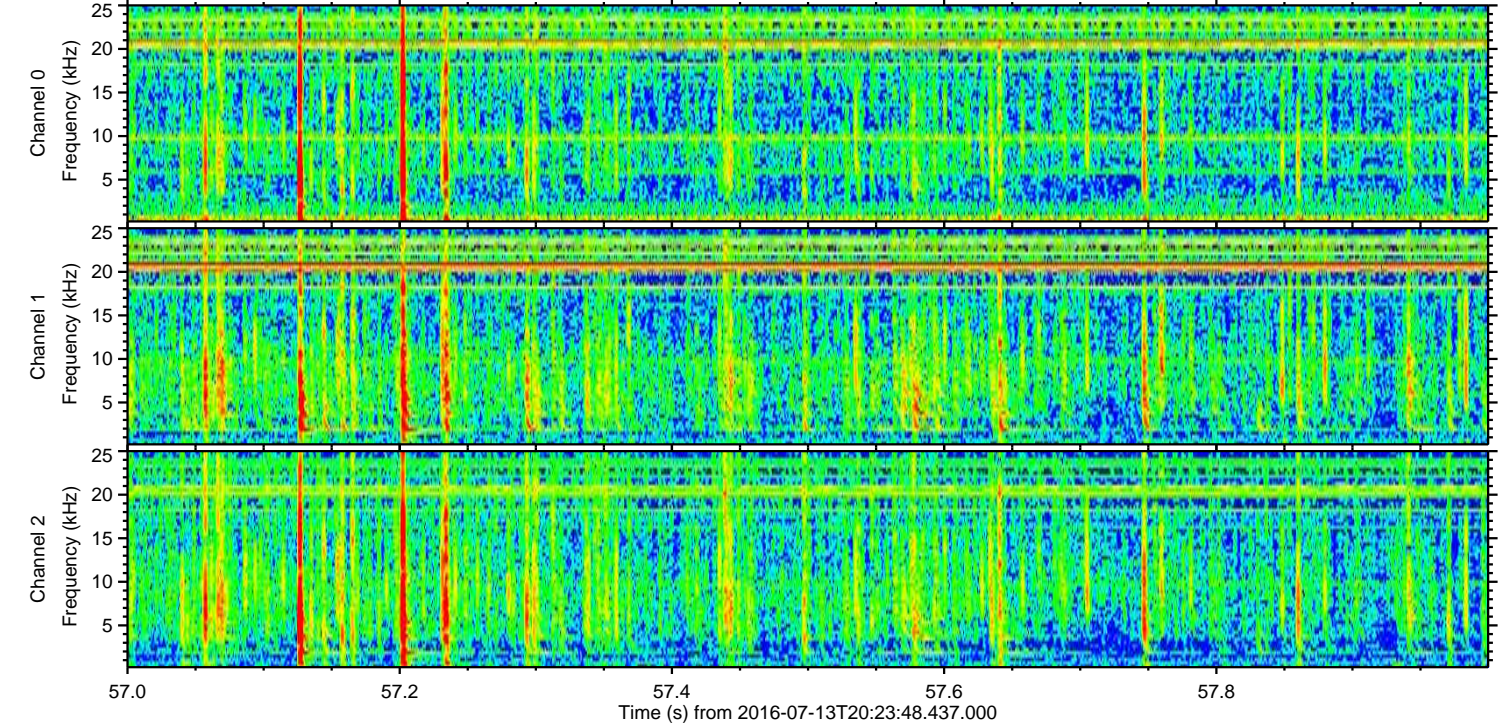
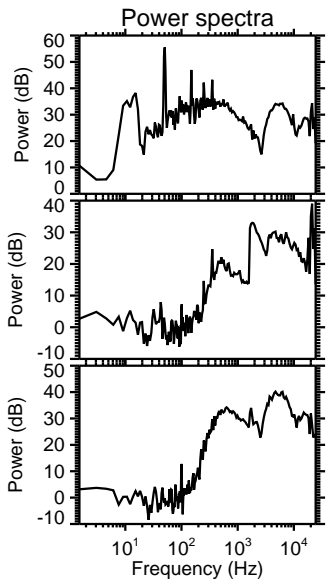
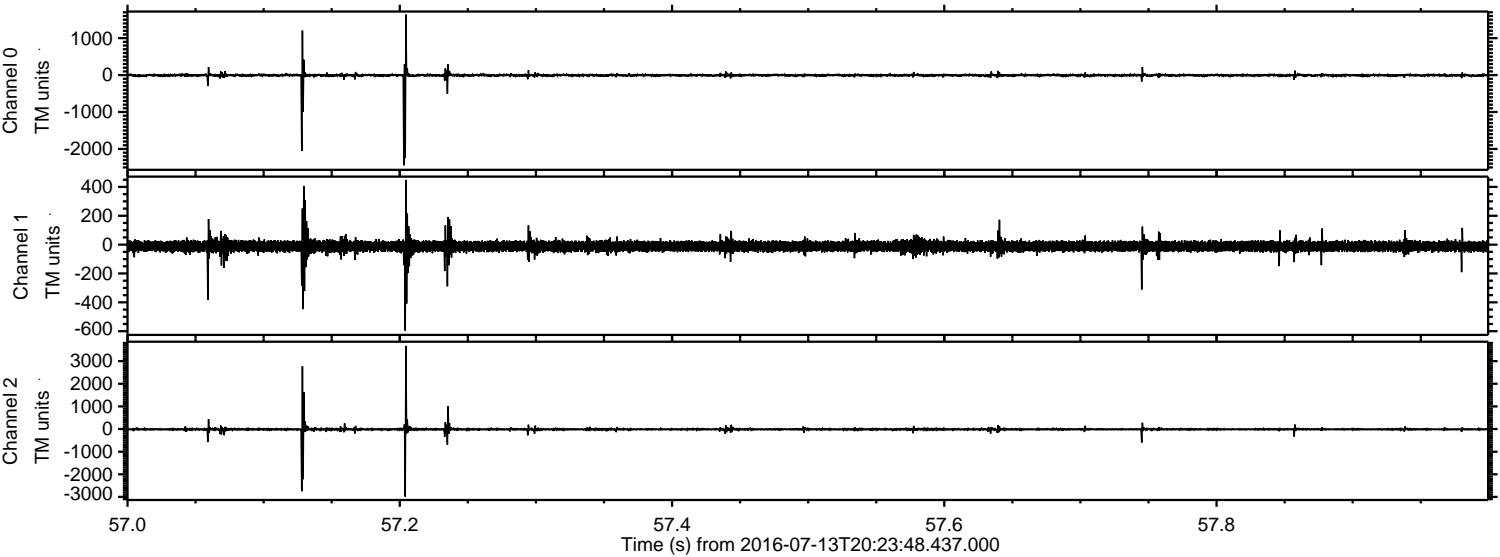


Processed Wed Jul 13 22:31:53 2016 by ELM ver.2012-10-06 from 001\_\_elm20160713\_202347\_\_dat00.bin



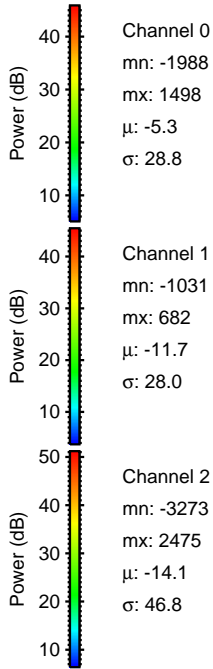
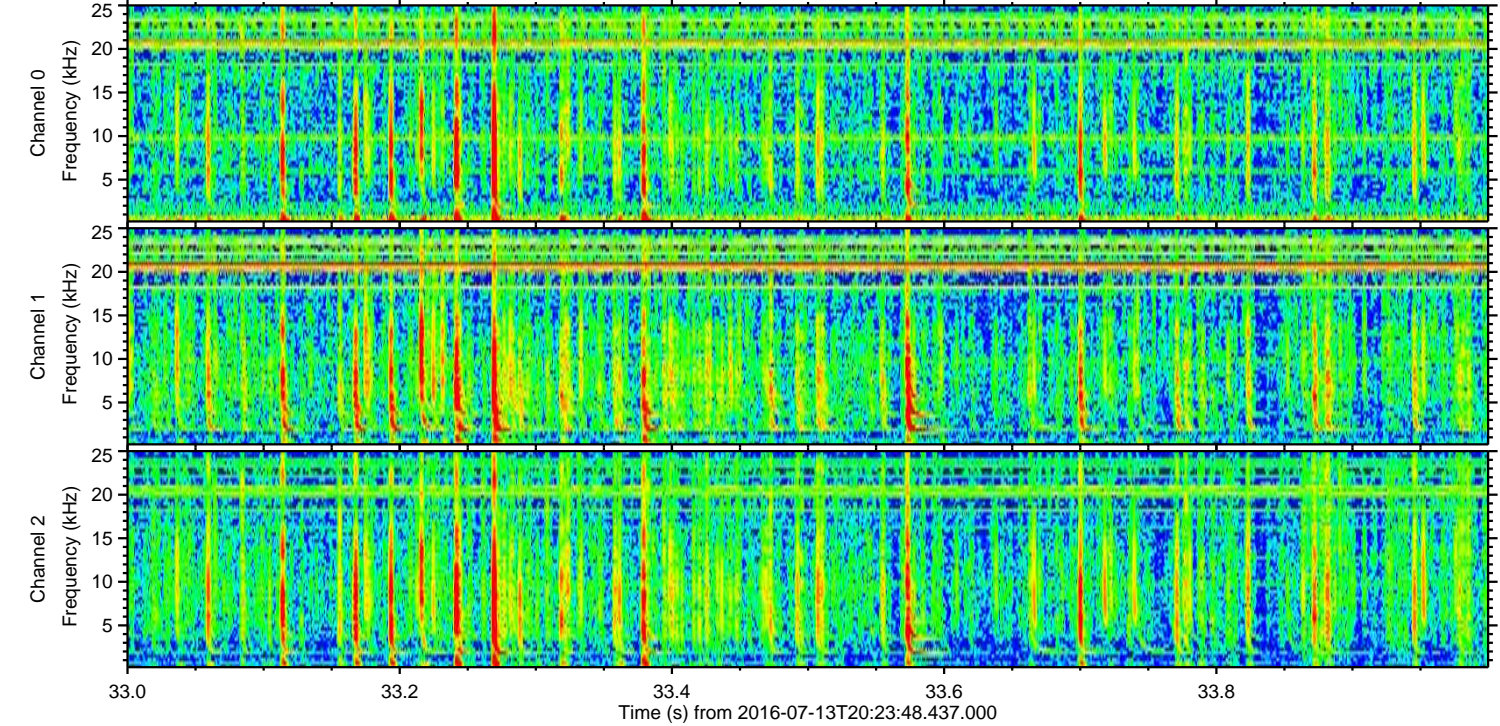
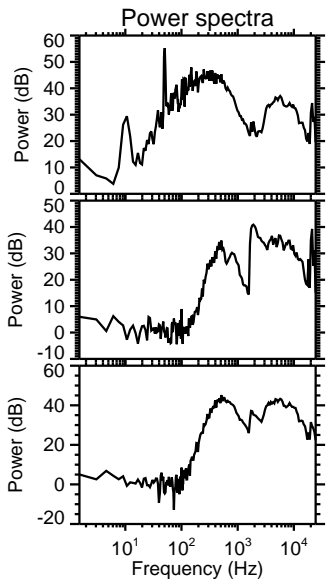
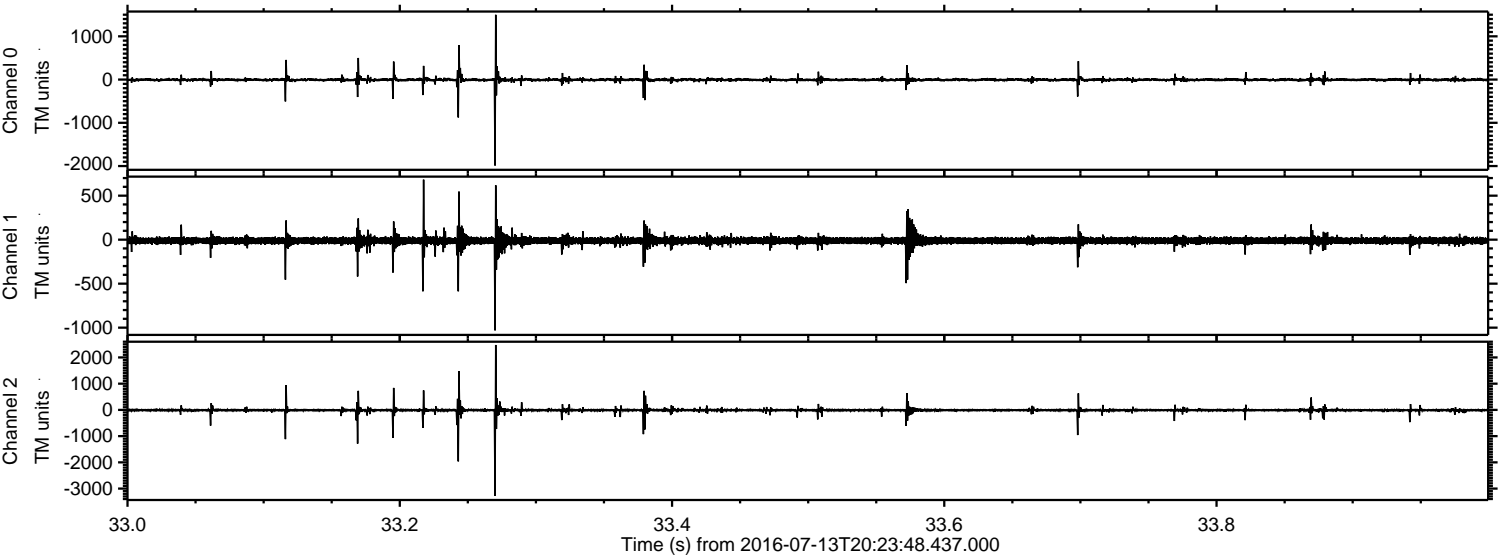


Processed Wed Jul 13 22:31:54 2016 by ELM ver.2012-10-06 from 001\_\_elm20160713\_202347\_\_dat00.bin





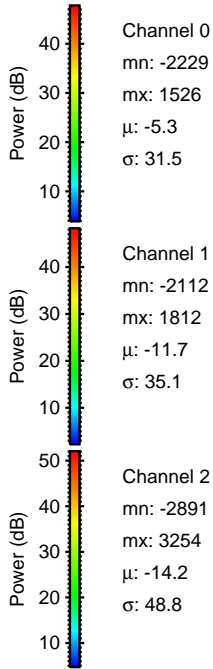
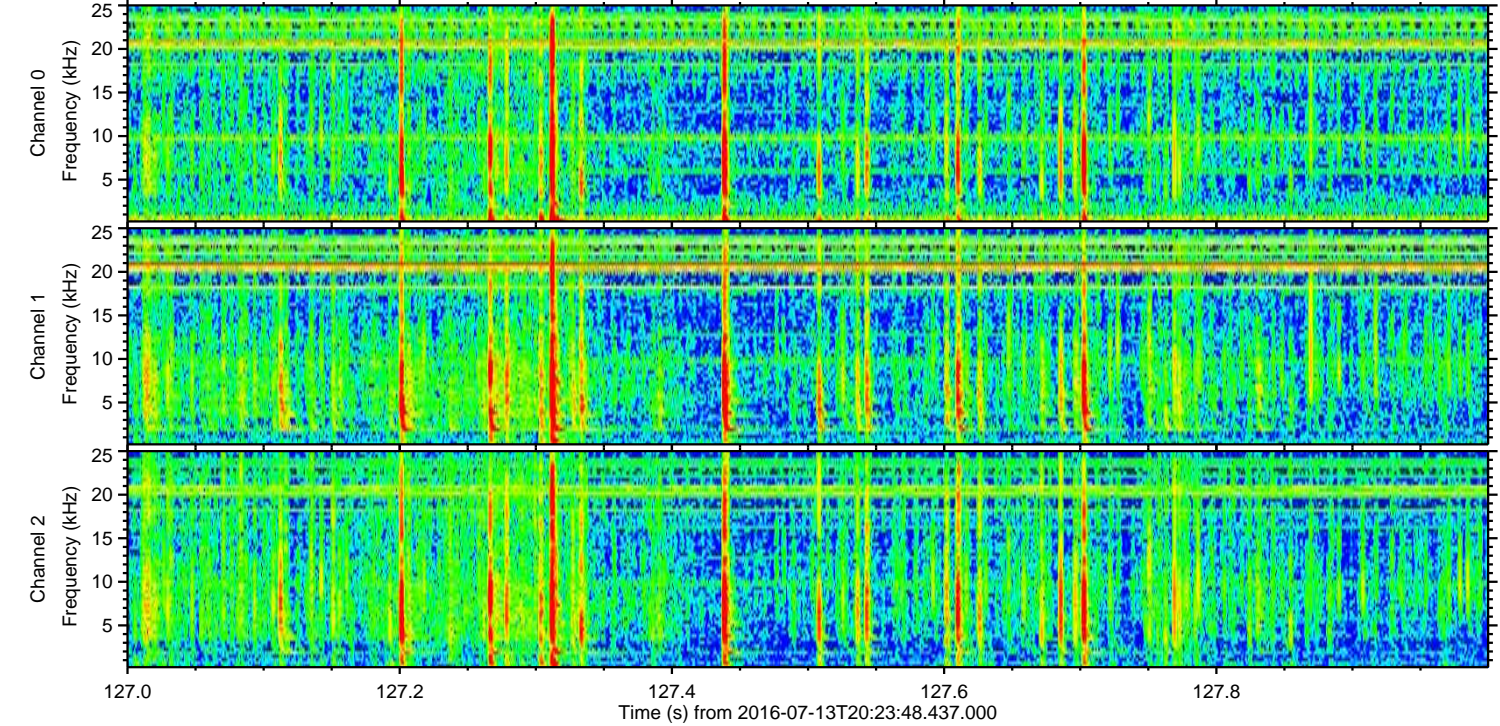
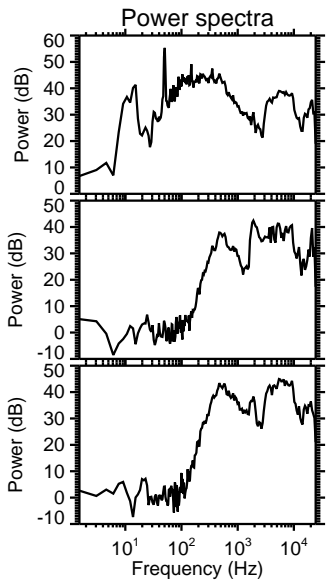
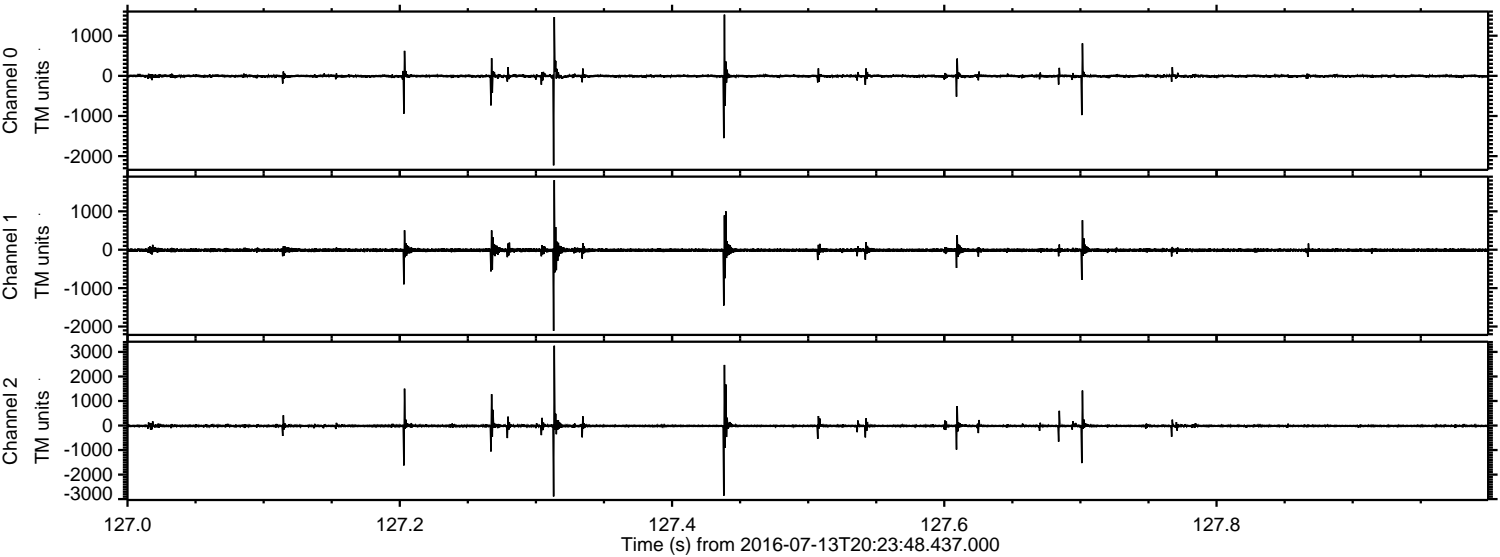
Processed Wed Jul 13 22:31:55 2016 by ELM ver.2012-10-06 from 001\_\_elm20160713\_202347\_\_dat00.bin





ELMAVAN 3D WAVEFORMS (Measured data sampled at 50 kHz) 51000 packets of 144 samples from 2016-07-13T20:23:48.437.000. Part 128/147

Processed Wed Jul 13 22:31:56 2016 by ELM ver.2012-10-06 from 001\_\_elm20160713\_202347\_\_dat00.bin



Channel 0  
mn: -2229  
mx: 1526  
 $\mu$ : -5.3  
 $\sigma$ : 31.5

Channel 1  
mn: -2112  
mx: 1812  
 $\mu$ : -11.7  
 $\sigma$ : 35.1

Channel 2  
mn: -2891  
mx: 3254  
 $\mu$ : -14.2  
 $\sigma$ : 48.8



Processed Wed Jul 13 22:31:57 2016 by ELM ver.2012-10-06 from 001\_\_elm20160713\_202347\_\_dat00.bin

