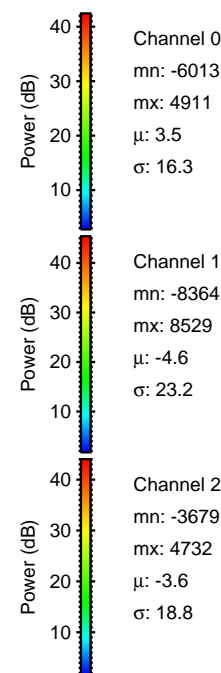
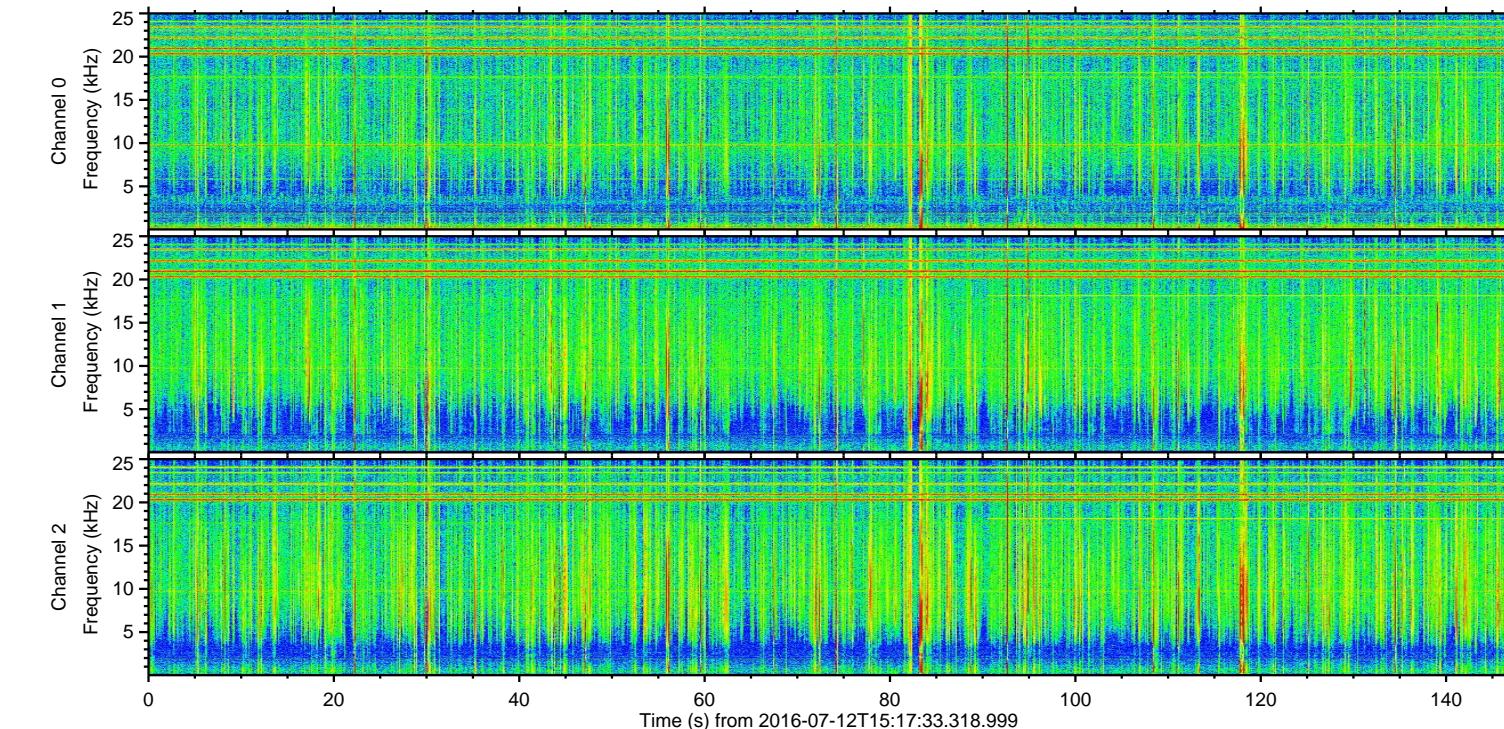
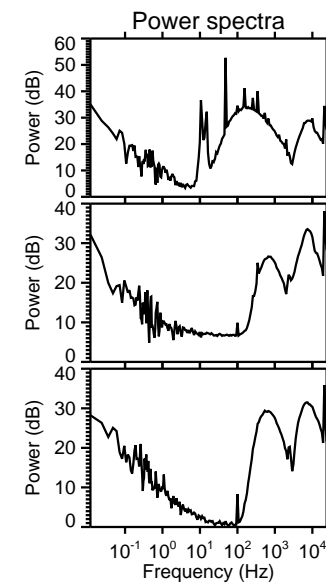
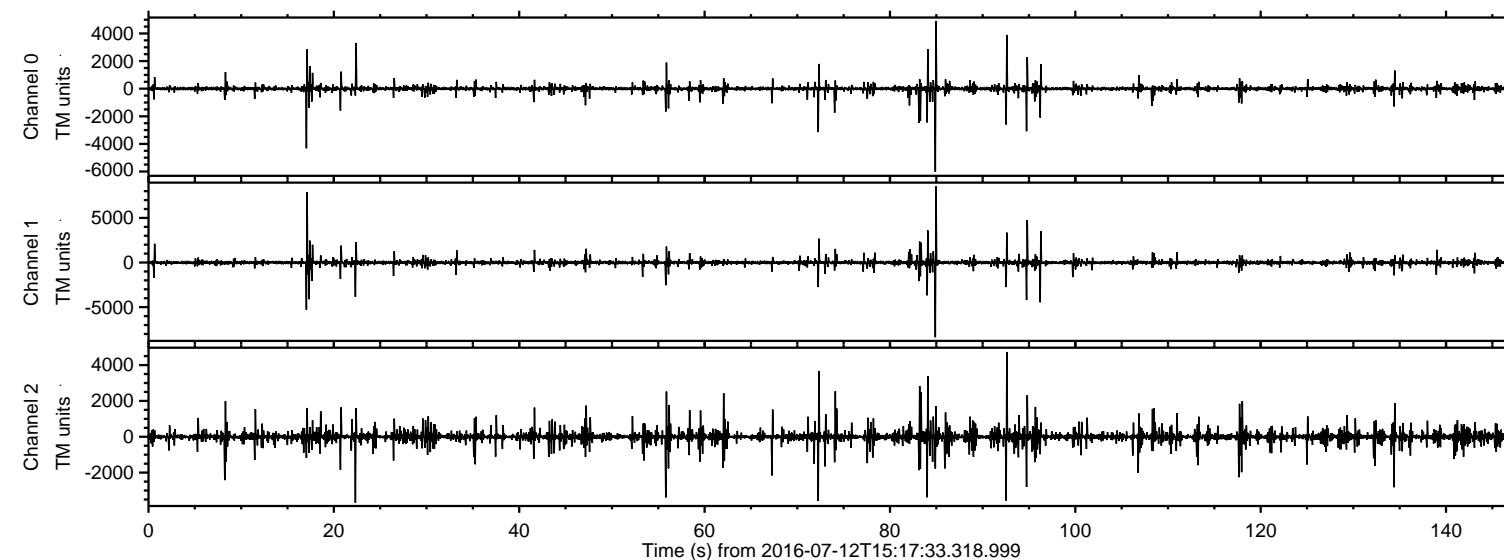
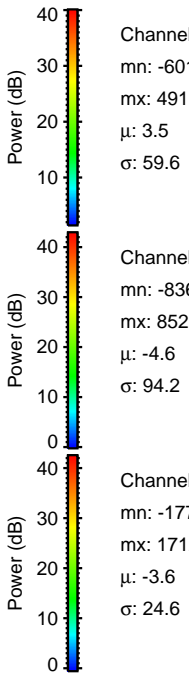
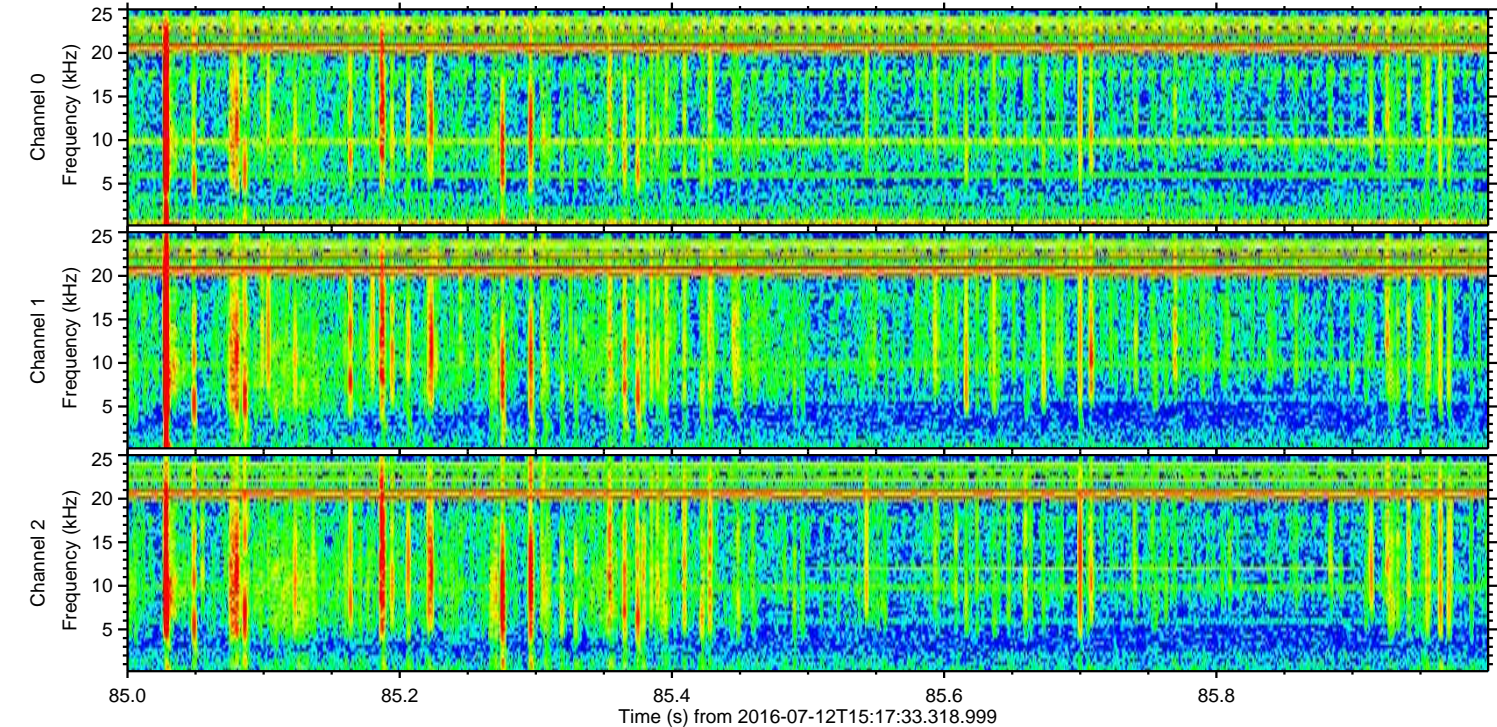
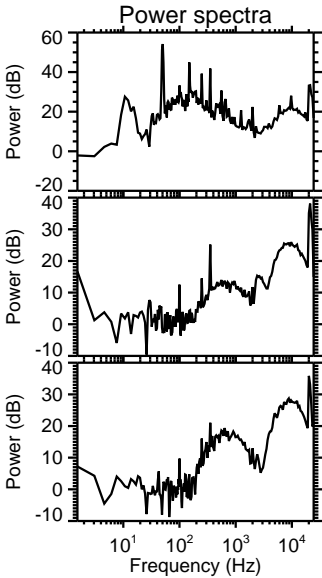
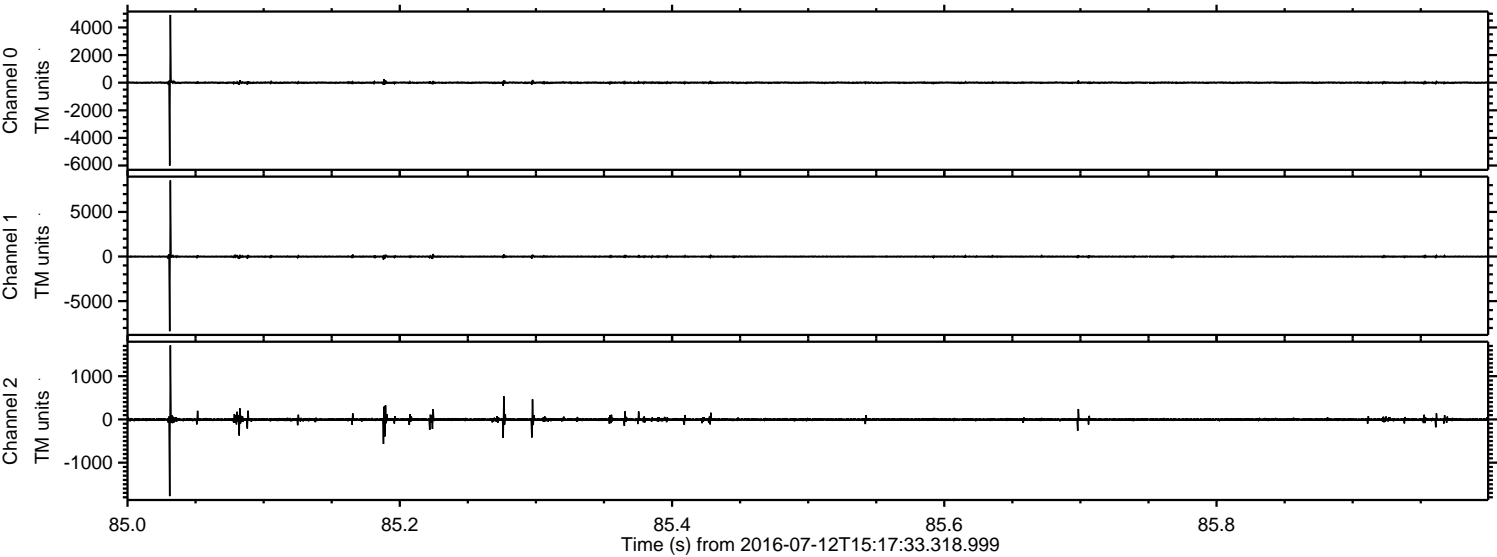


ELMAVAN 3D WAVEFORMS (Measured data sampled at 50 kHz) 51000 packets of 144 samples from 2016-07-12T15:17:33.318.999.

Processed Tue Jul 12 17:26:07 2016 by ELM ver.2012-10-06 from 001__elm20160712_151732__dat00.bin

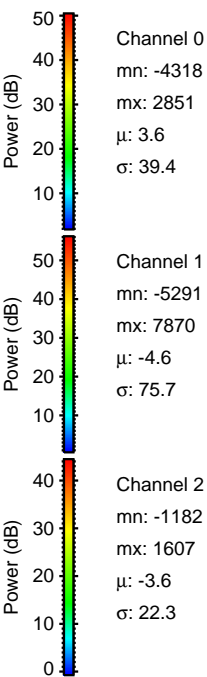
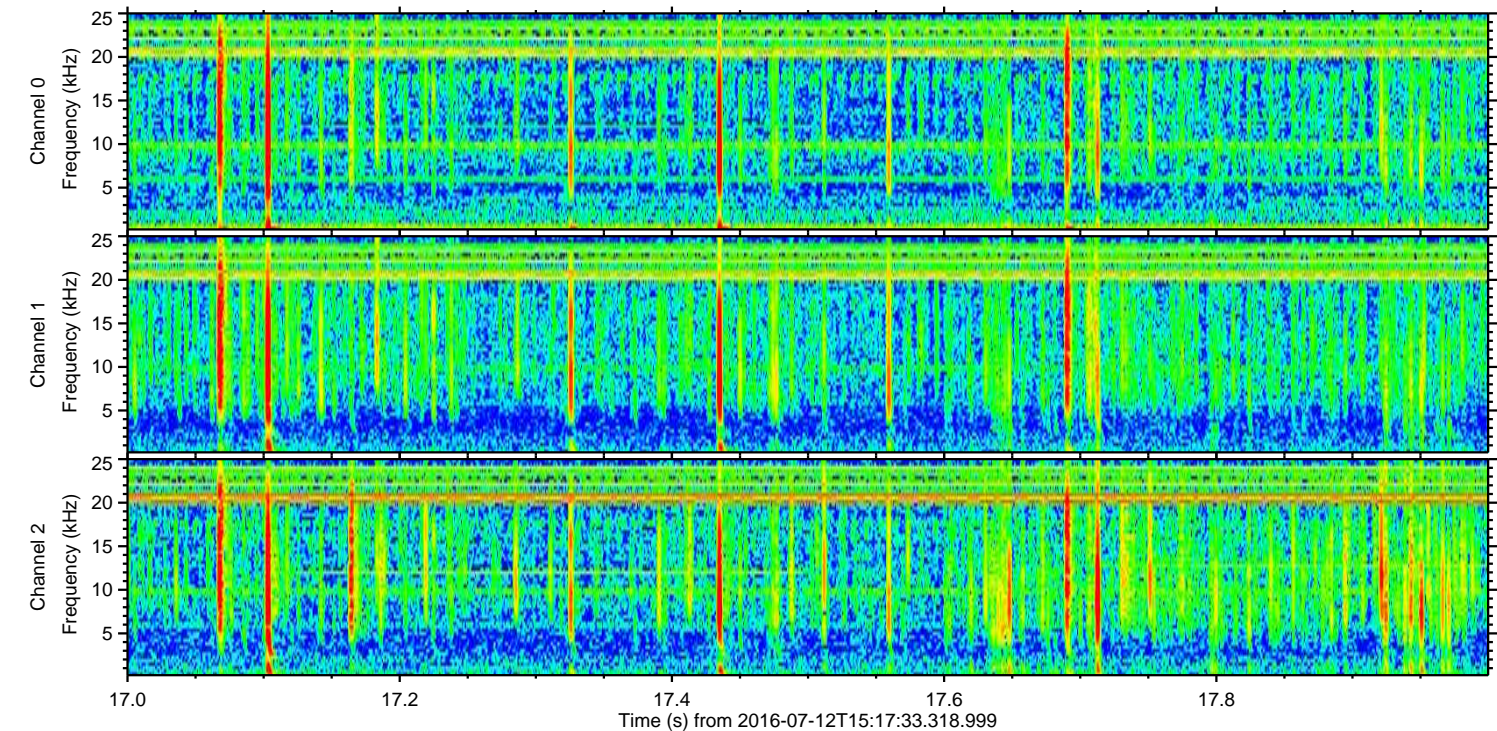
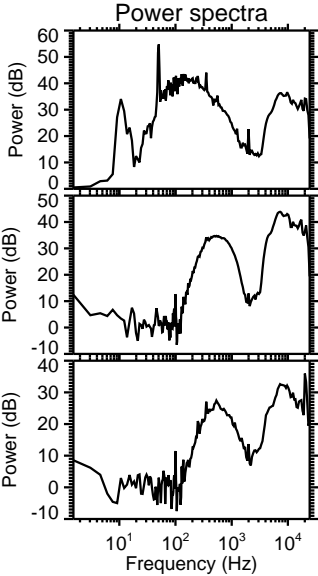
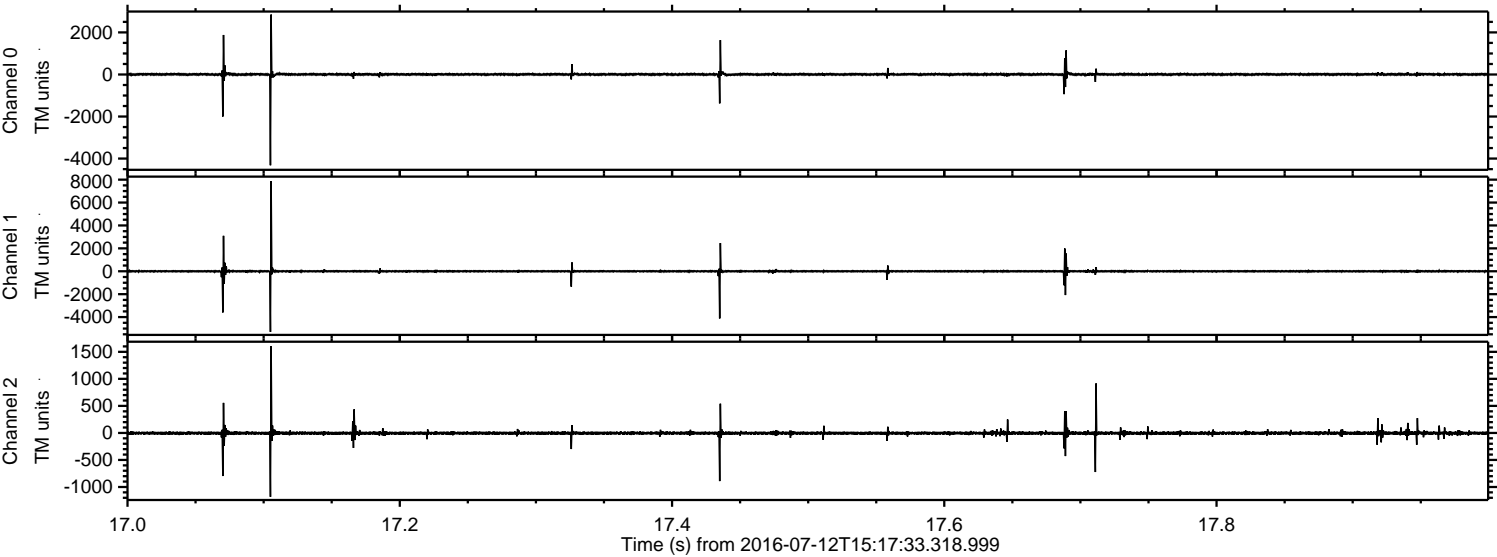


Processed Tue Jul 12 17:26:23 2016 by ELM ver.2012-10-06 from 001__elm20160712_151732__dat00.bin

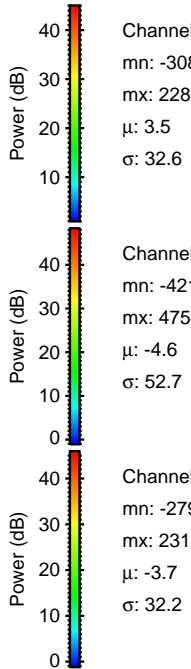
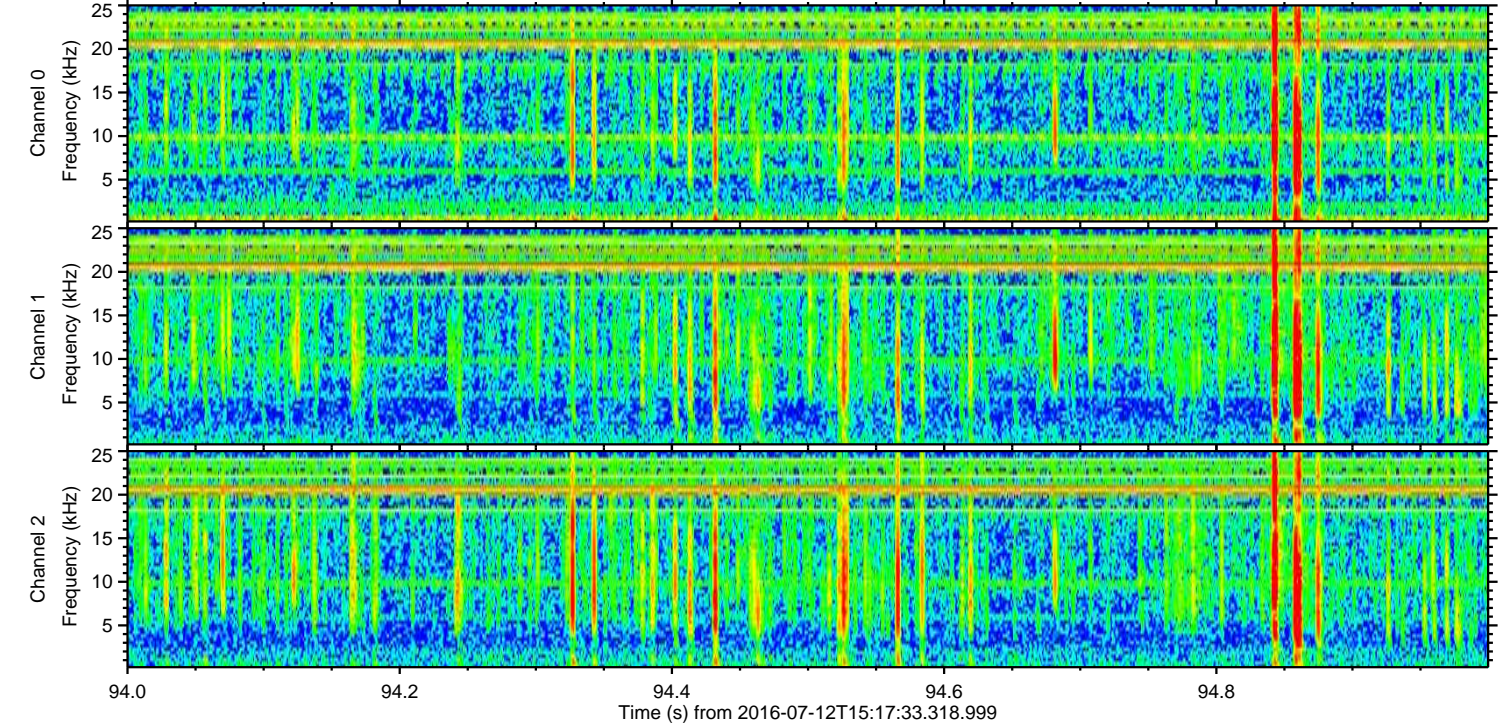
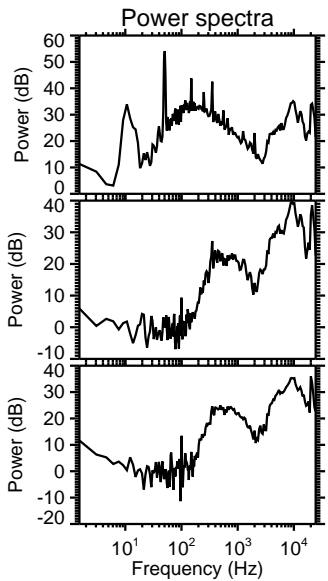
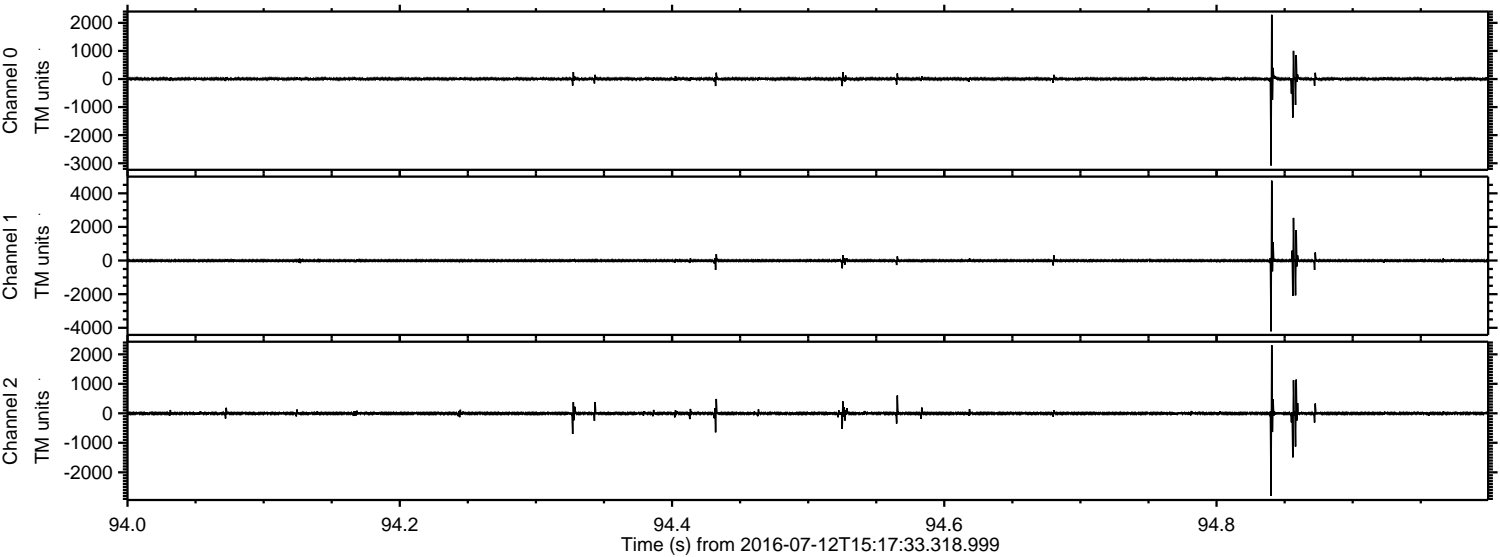


ELMAVAN 3D WAVEFORMS (Measured data sampled at 50 kHz) 51000 packets of 144 samples from 2016-07-12T15:17:33.318.999. Part 18/147

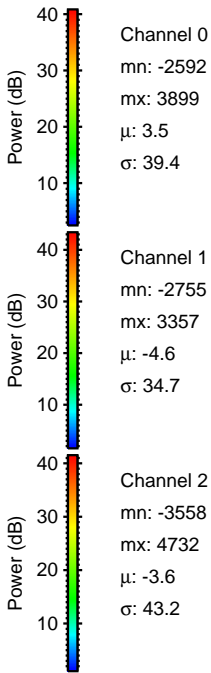
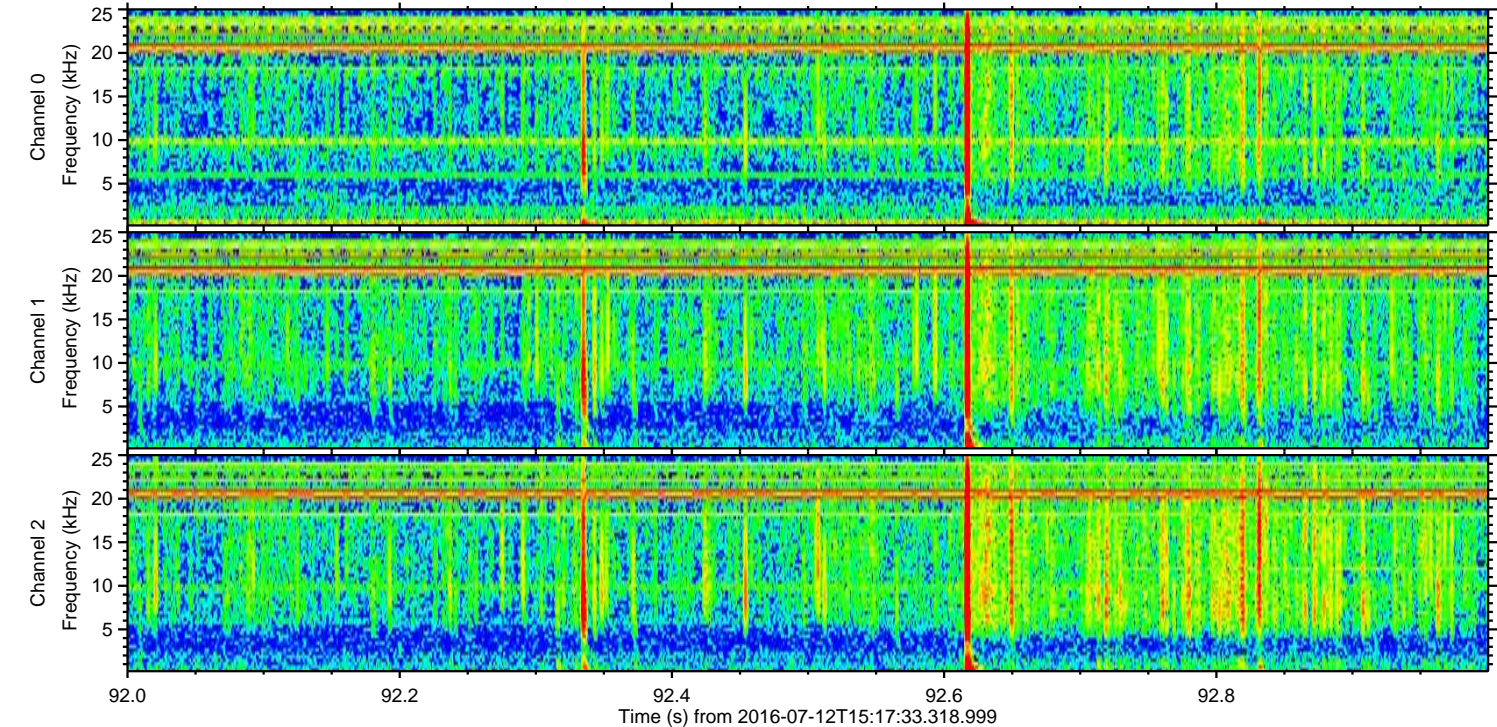
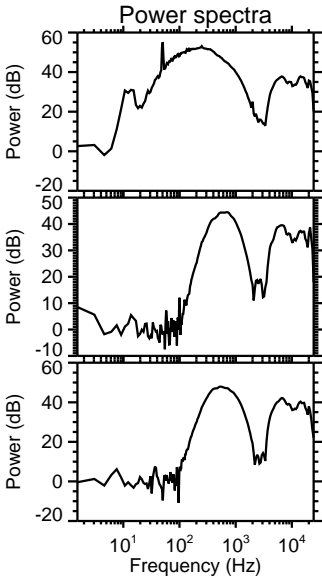
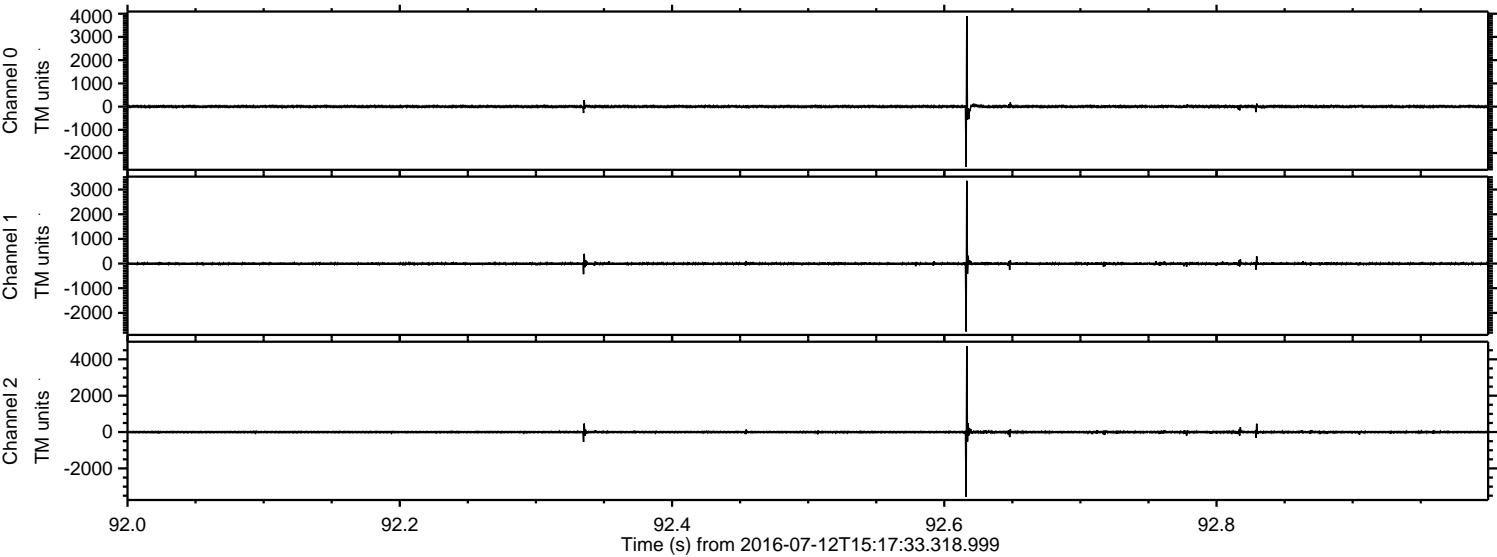
Processed Tue Jul 12 17:26:24 2016 by ELM ver.2012-10-06 from 001__elm20160712_151732__dat00.bin



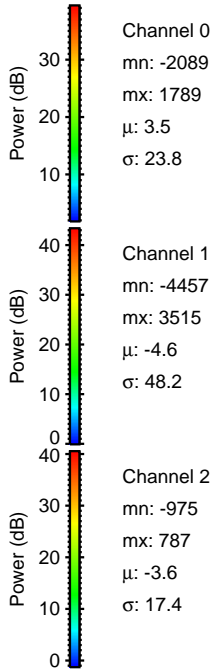
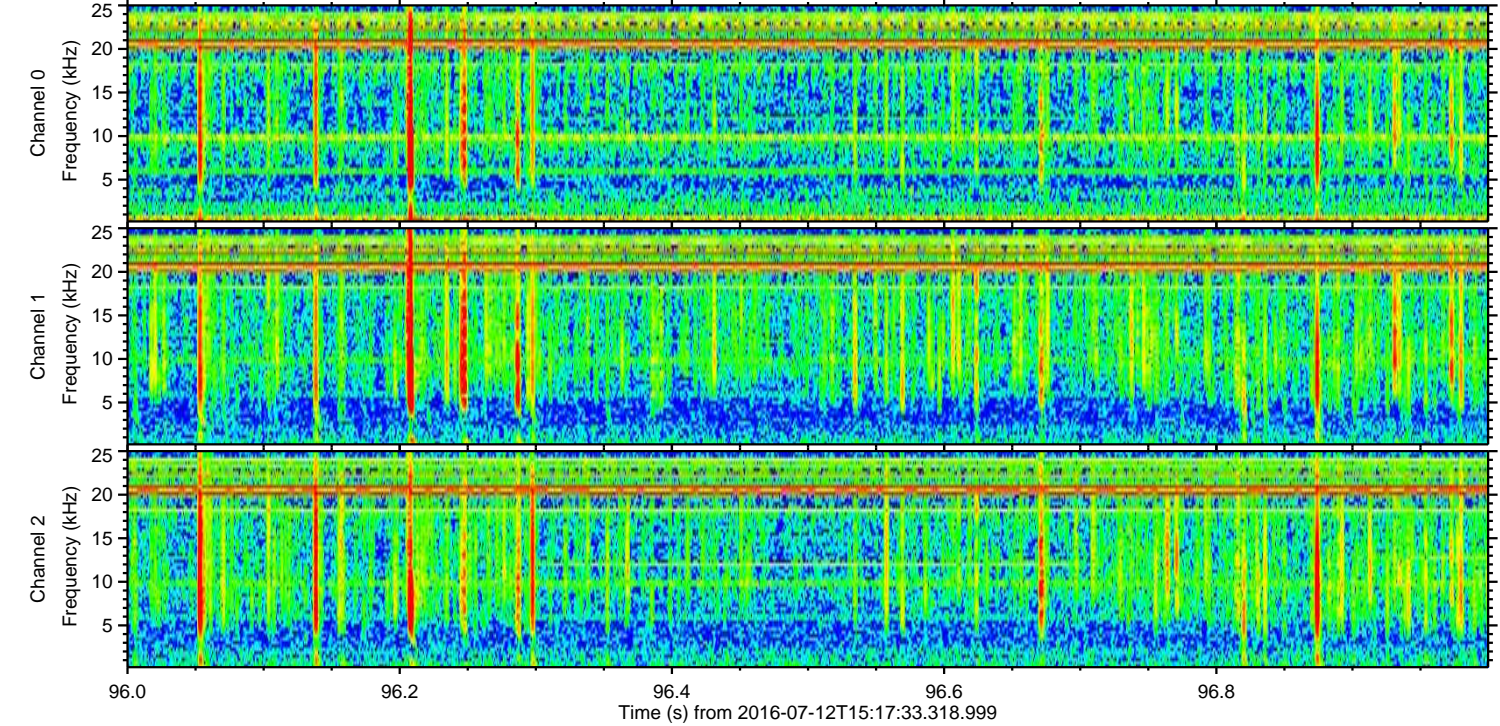
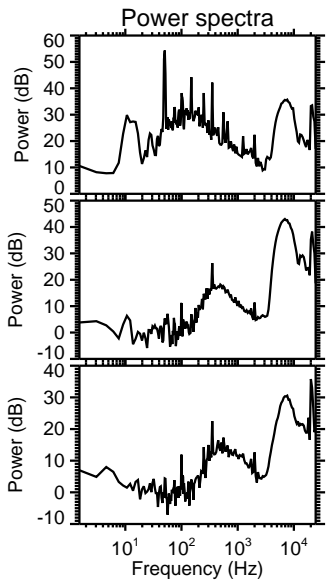
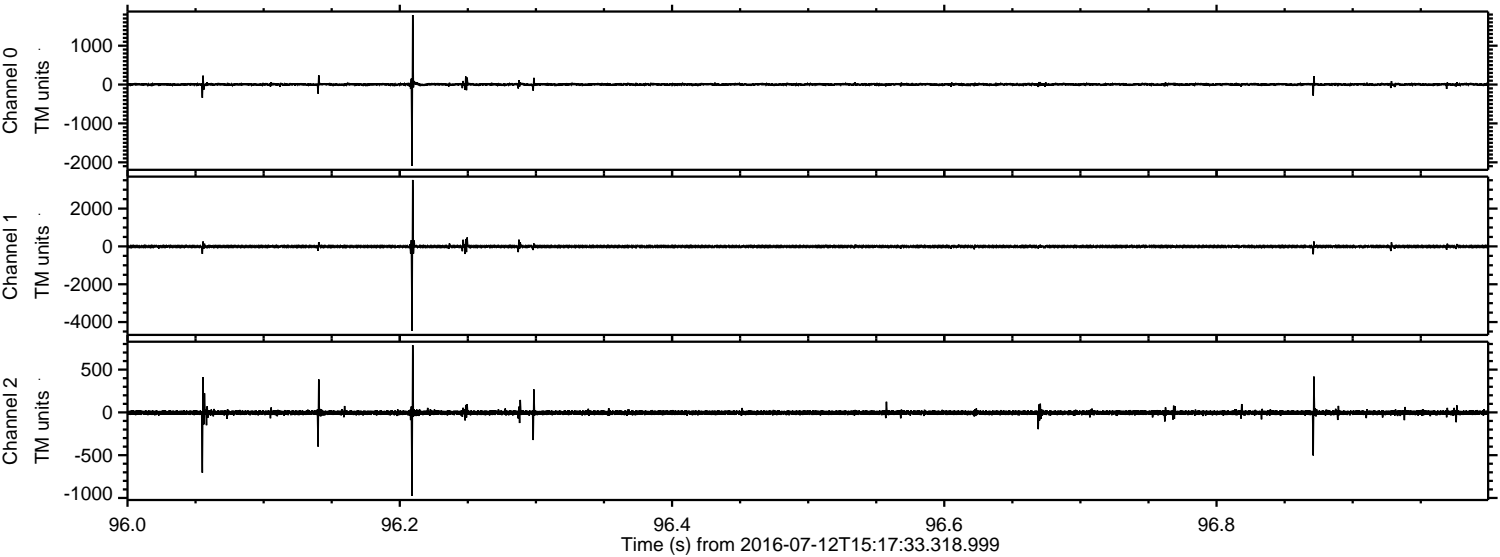
Processed Tue Jul 12 17:26:25 2016 by ELM ver.2012-10-06 from 001__elm20160712_151732__dat00.bin



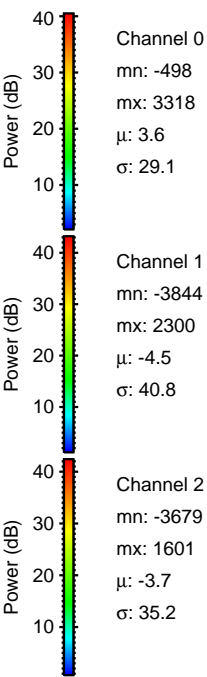
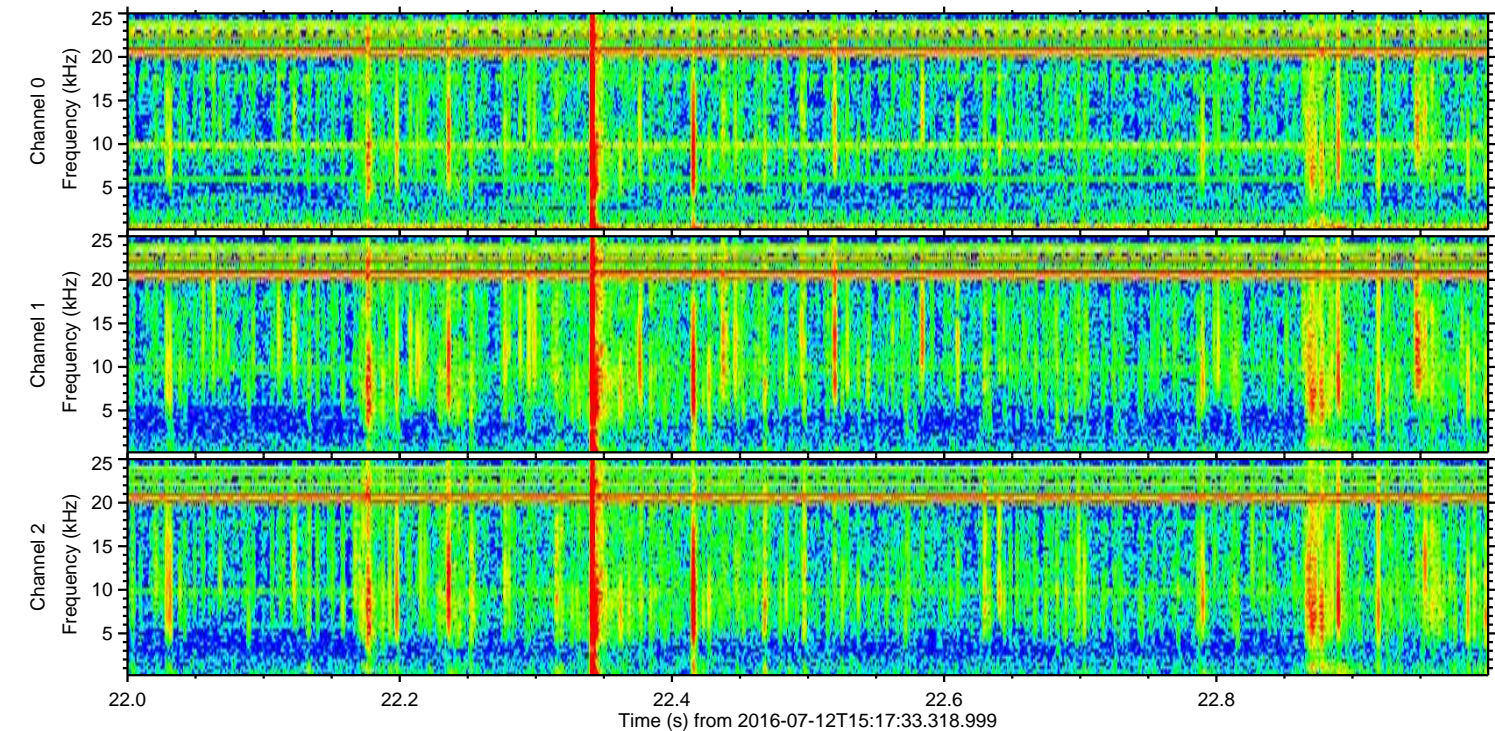
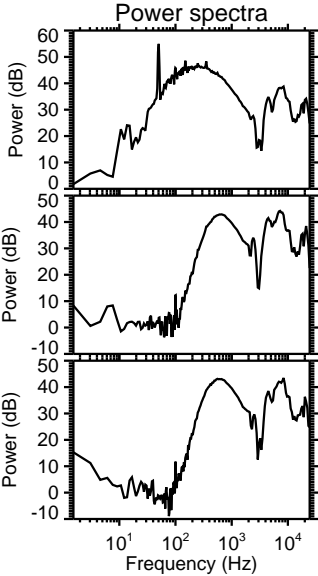
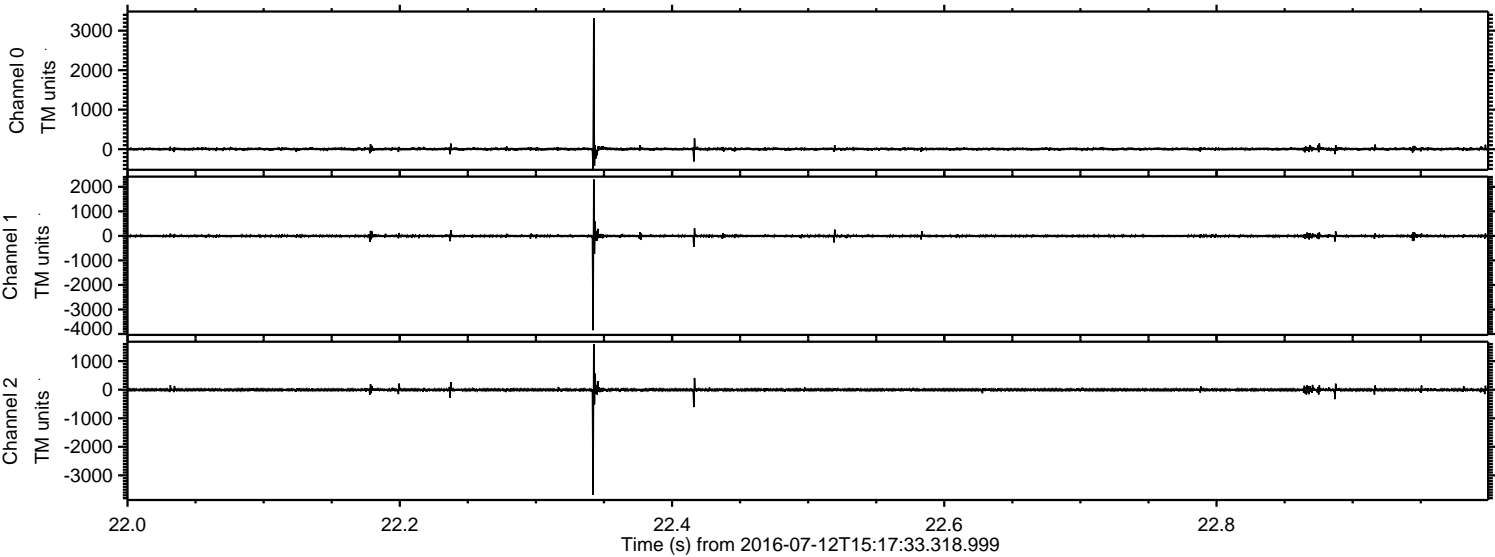
Processed Tue Jul 12 17:26:26 2016 by ELM ver.2012-10-06 from 001__elm20160712_151732__dat00.bin



Processed Tue Jul 12 17:26:27 2016 by ELM ver.2012-10-06 from 001__elm20160712_151732__dat00.bin

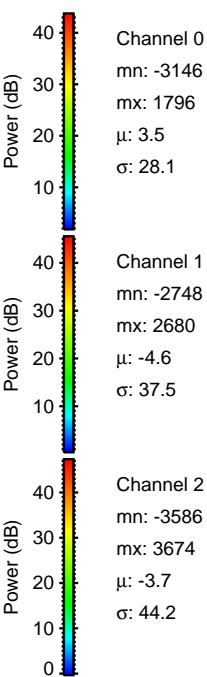
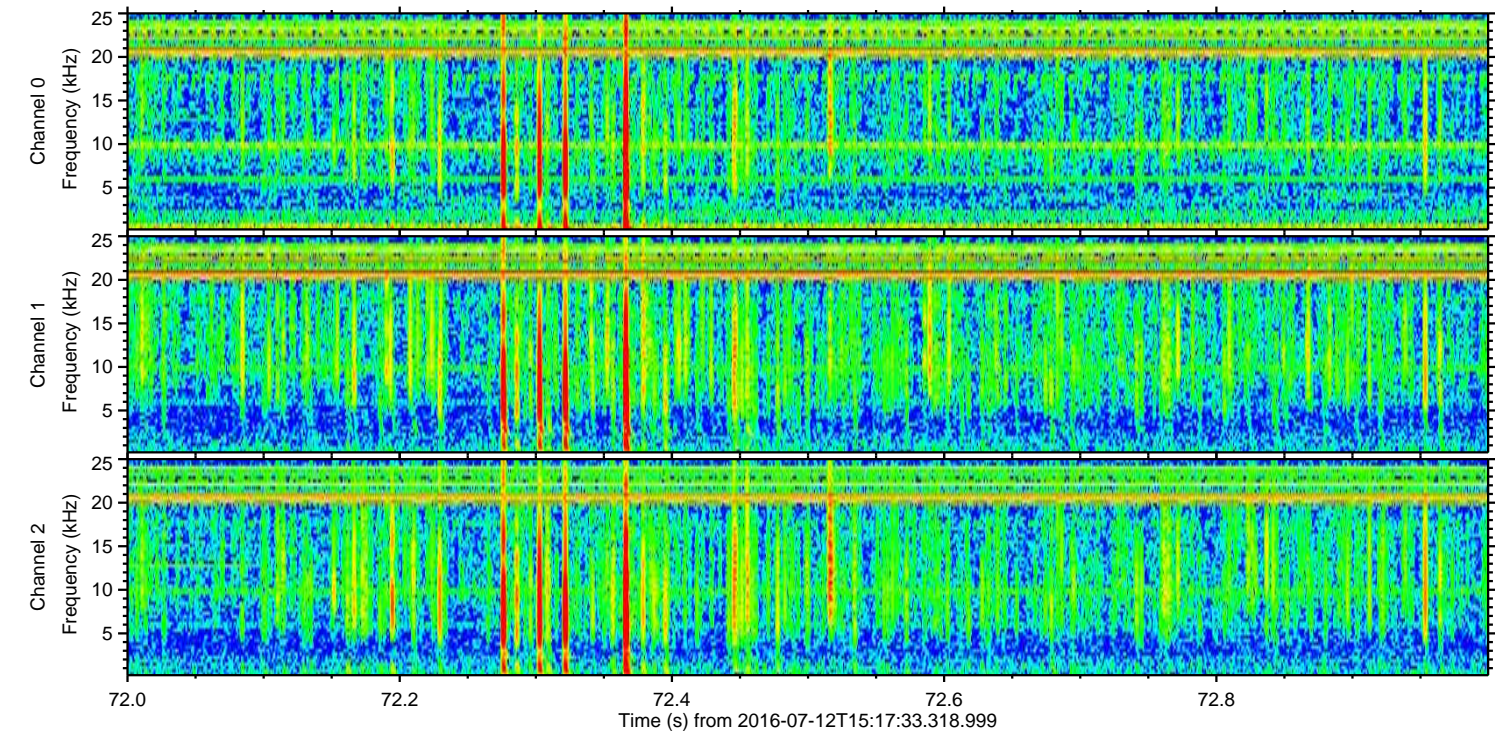
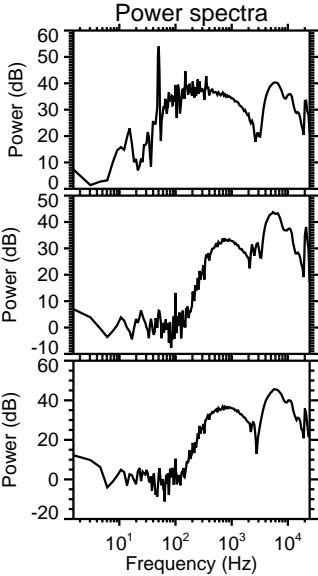
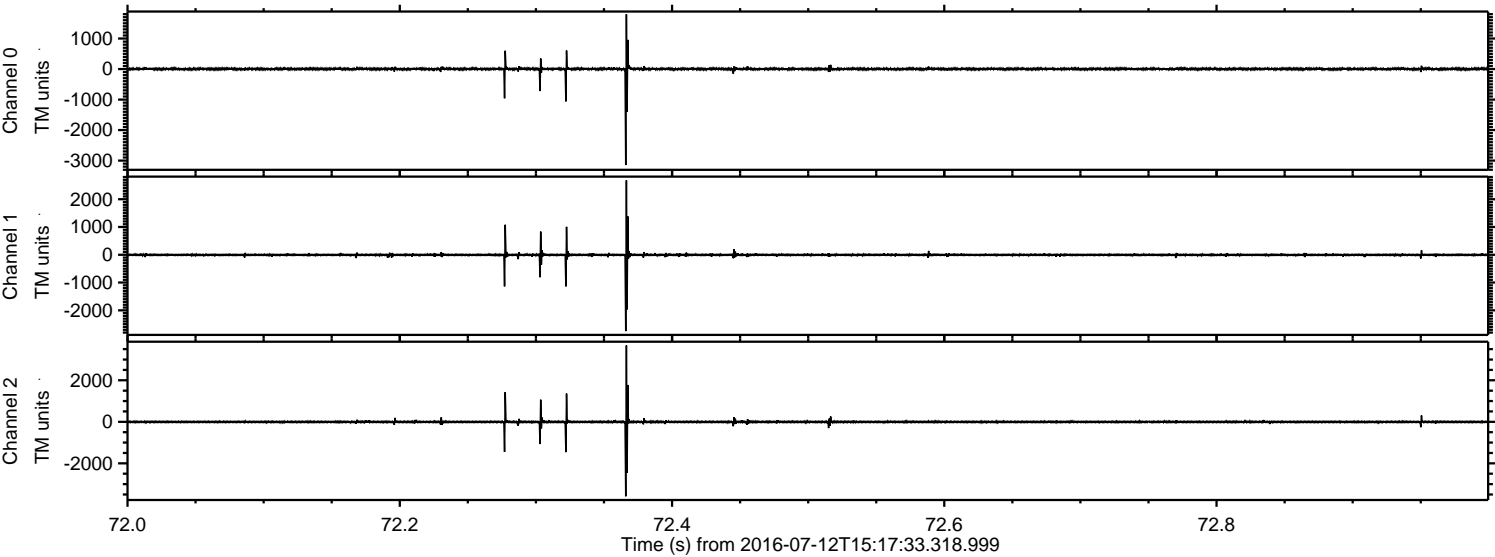


Processed Tue Jul 12 17:26:29 2016 by ELM ver.2012-10-06 from 001__elm20160712_151732__dat00.bin

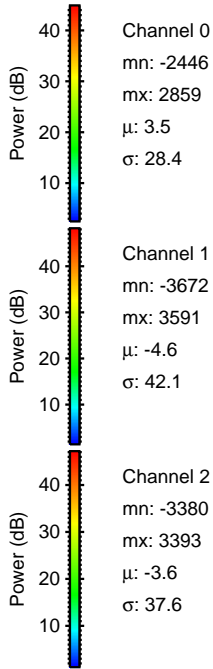
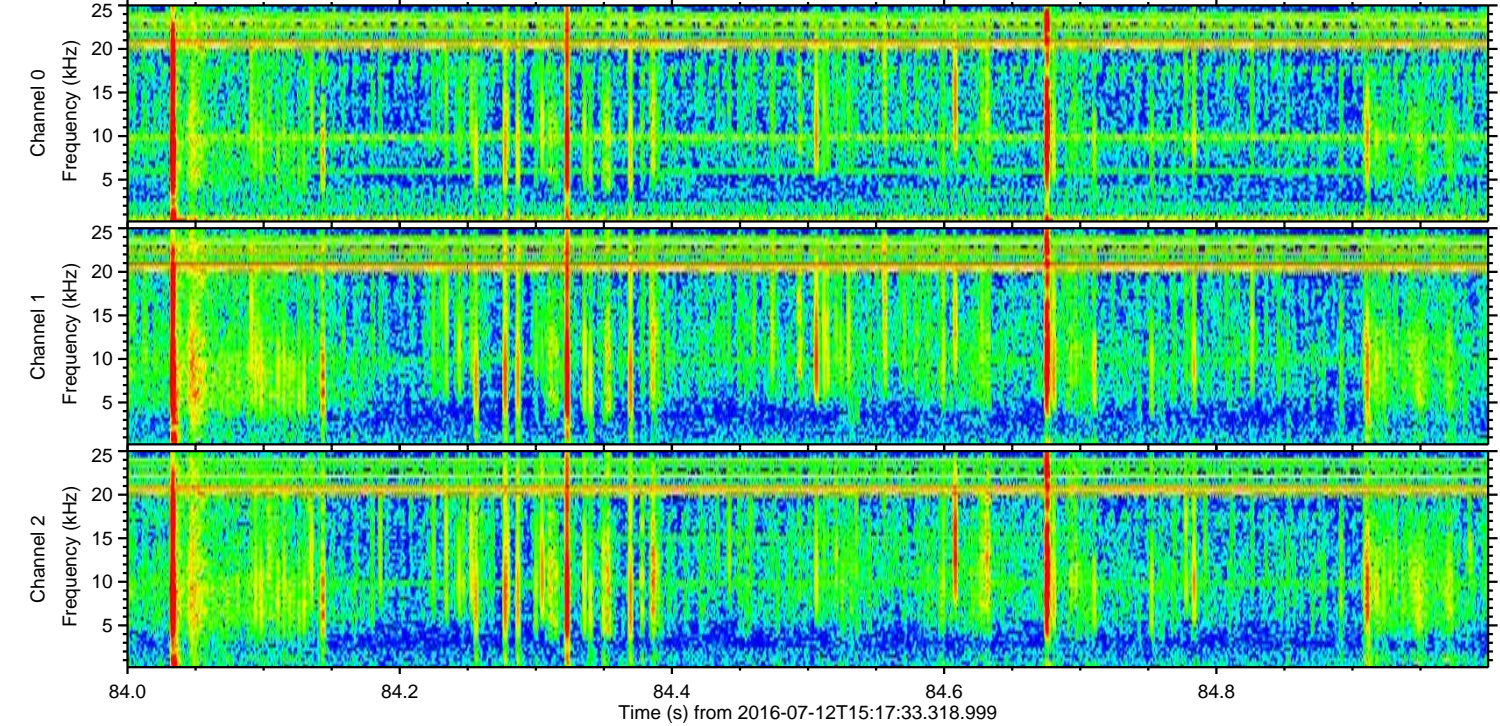
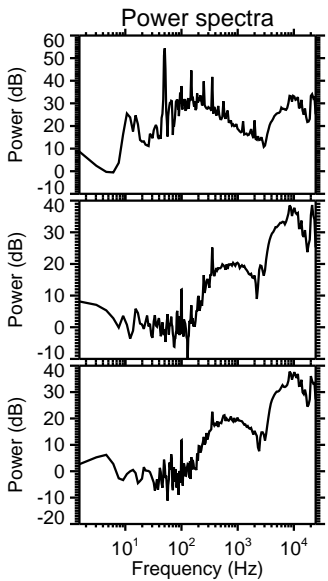
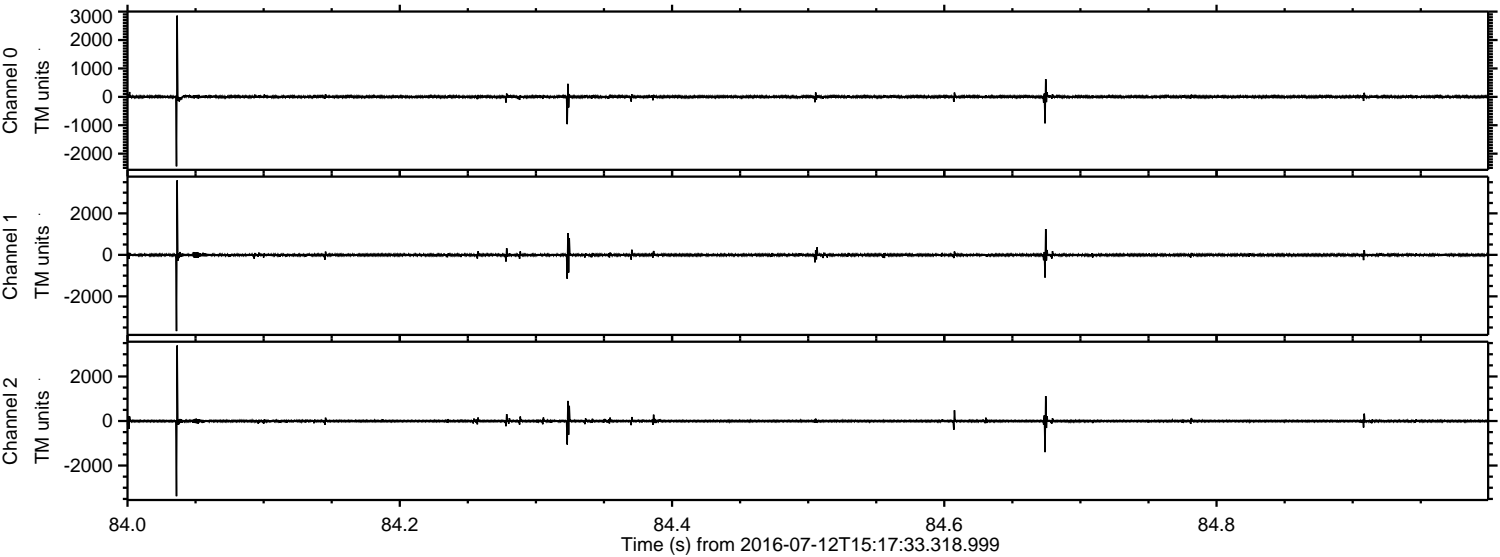


ELMAVAN 3D WAVEFORMS (Measured data sampled at 50 kHz) 51000 packets of 144 samples from 2016-07-12T15:17:33.318.999. Part 73/147

Processed Tue Jul 12 17:26:30 2016 by ELM ver.2012-10-06 from 001__elm20160712_151732__dat00.bin



Processed Tue Jul 12 17:26:31 2016 by ELM ver.2012-10-06 from 001__elm20160712_151732__dat00.bin

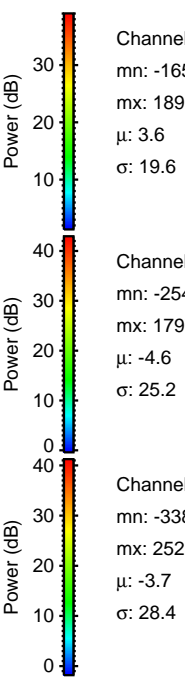
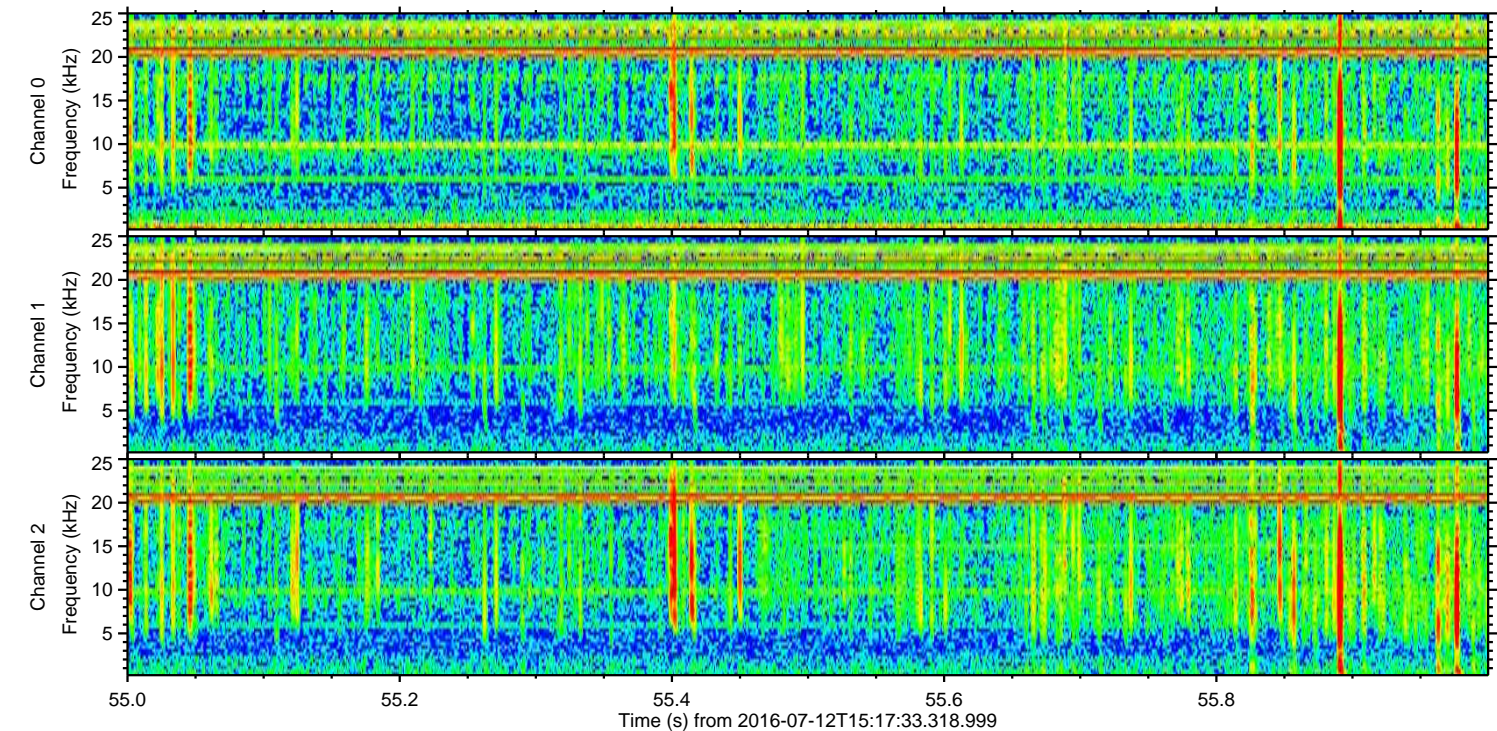
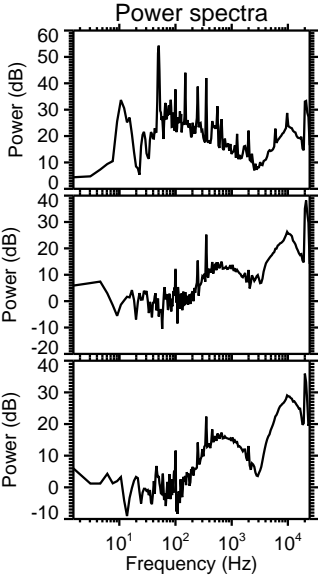
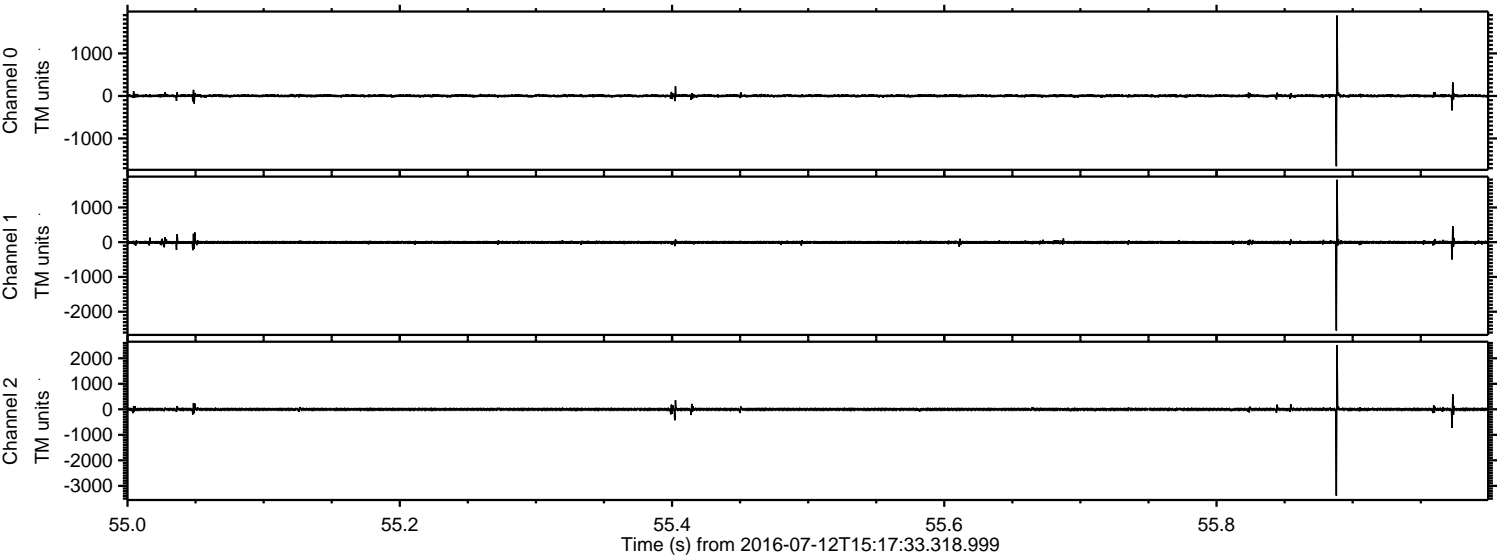


Channel 0
mn: -2446
mx: 2859
 μ : 3.5
 σ : 28.4

Channel 1
mn: -3672
mx: 3591
 μ : -4.6
 σ : 42.1

Channel 2
mn: -3380
mx: 3393
 μ : -3.6
 σ : 37.6

Processed Tue Jul 12 17:26:32 2016 by ELM ver.2012-10-06 from 001__elm20160712_151732__dat00.bin



Channel 0
mn: -1655
mx: 1891
 μ : 3.6
 σ : 19.6

Channel 1
mn: -2541
mx: 1797
 μ : -4.6
 σ : 25.2

Channel 2
mn: -3385
mx: 2523
 μ : -3.7
 σ : 28.4

