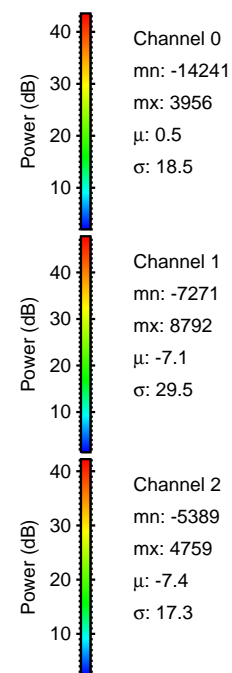
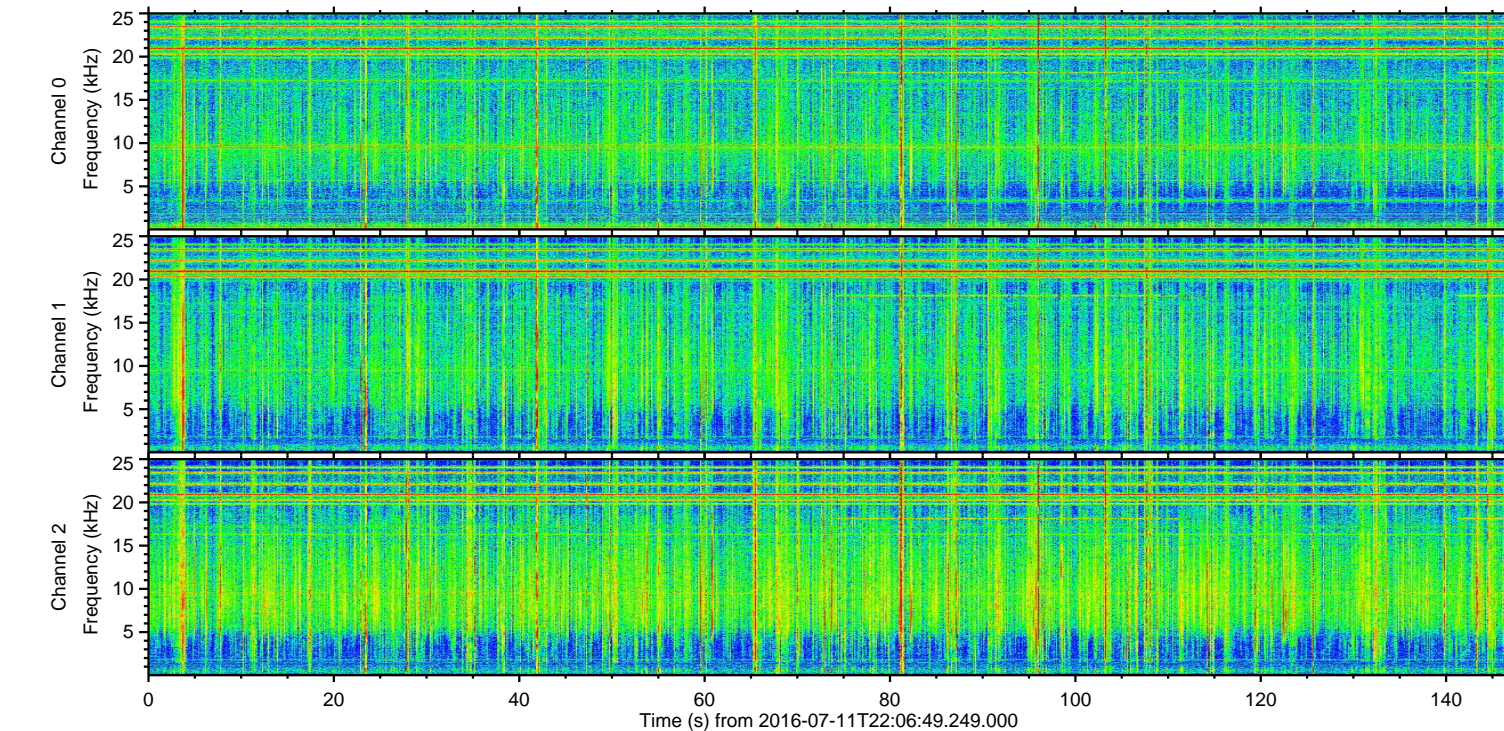
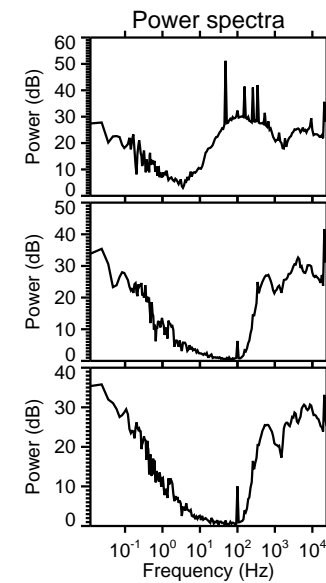
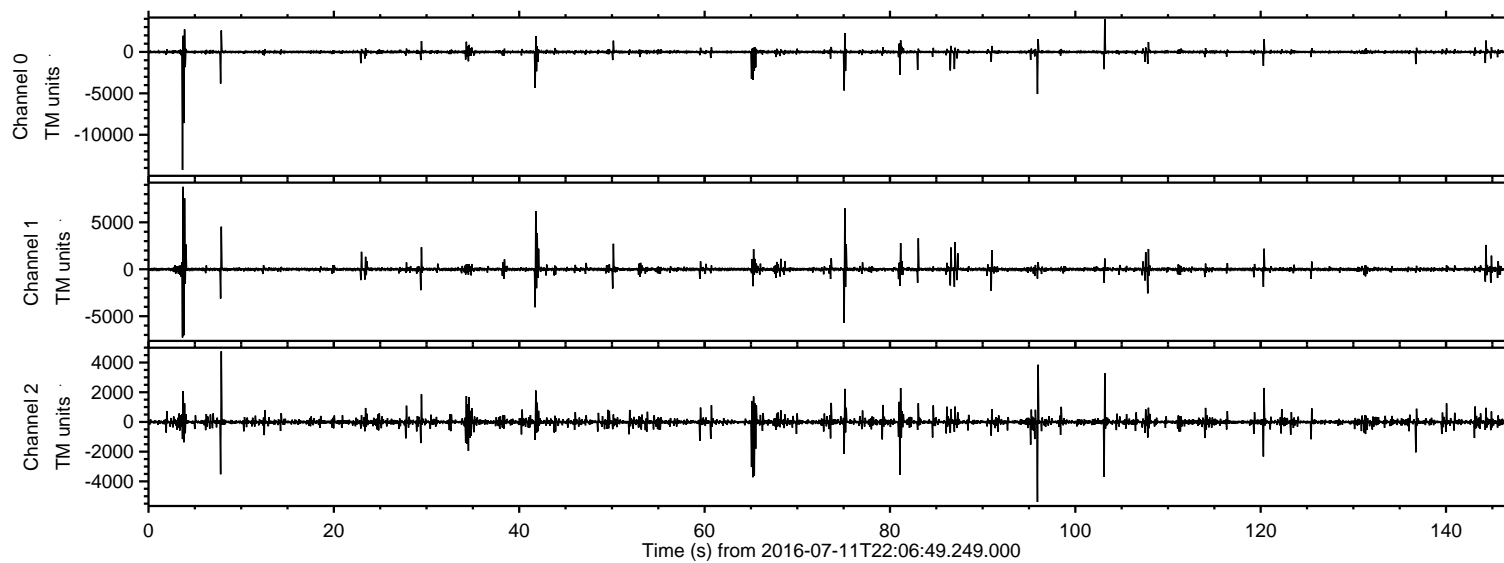
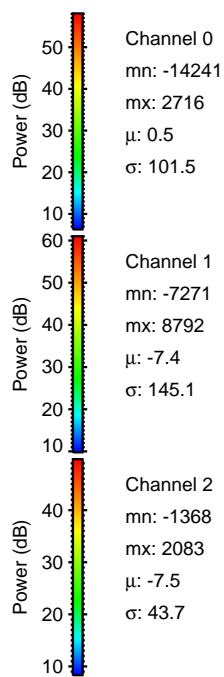
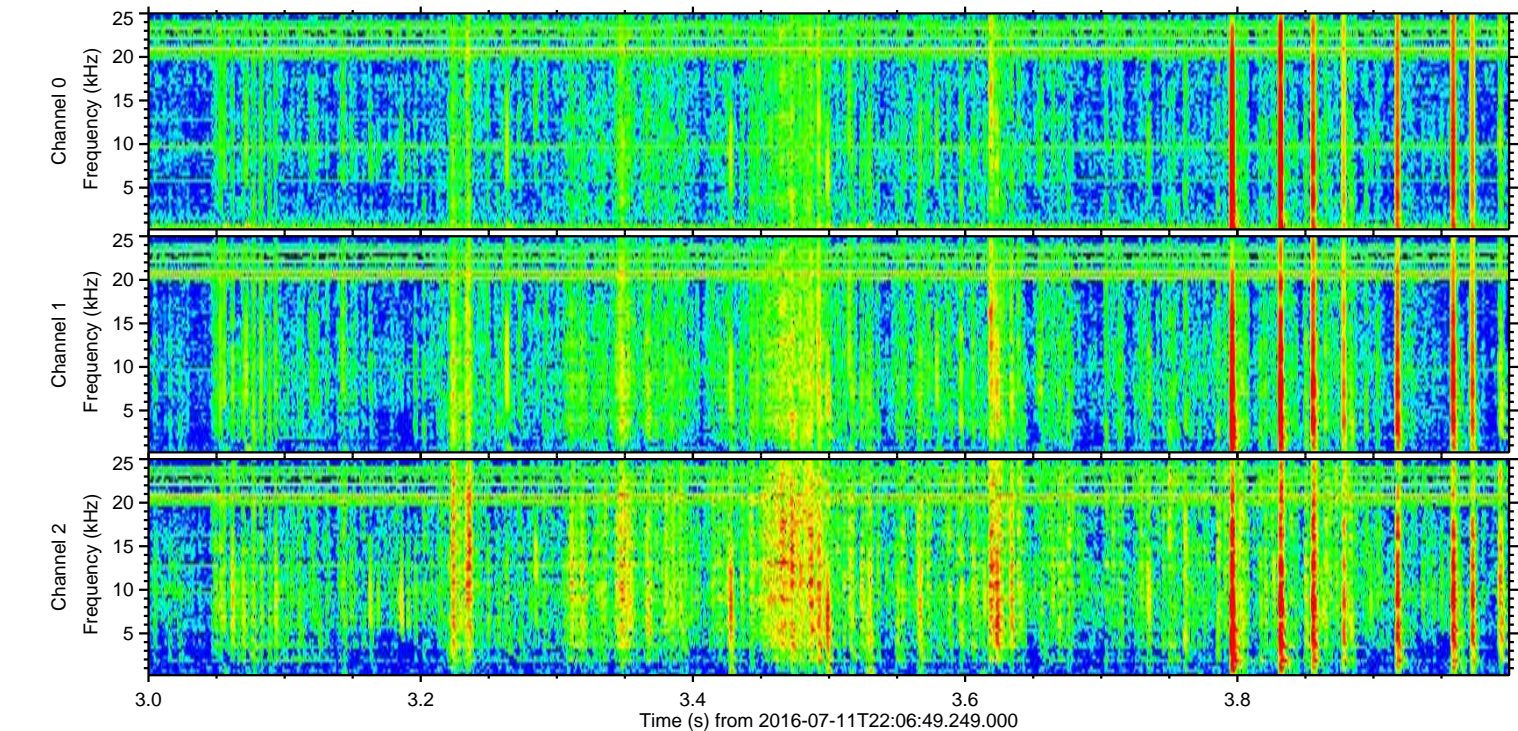
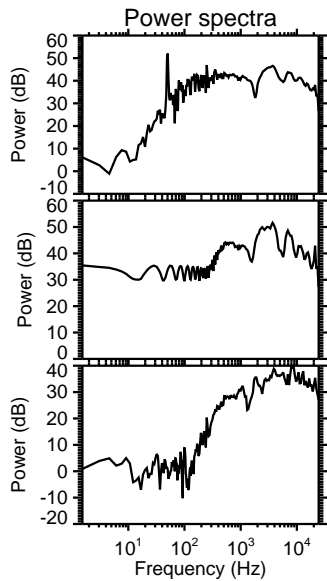
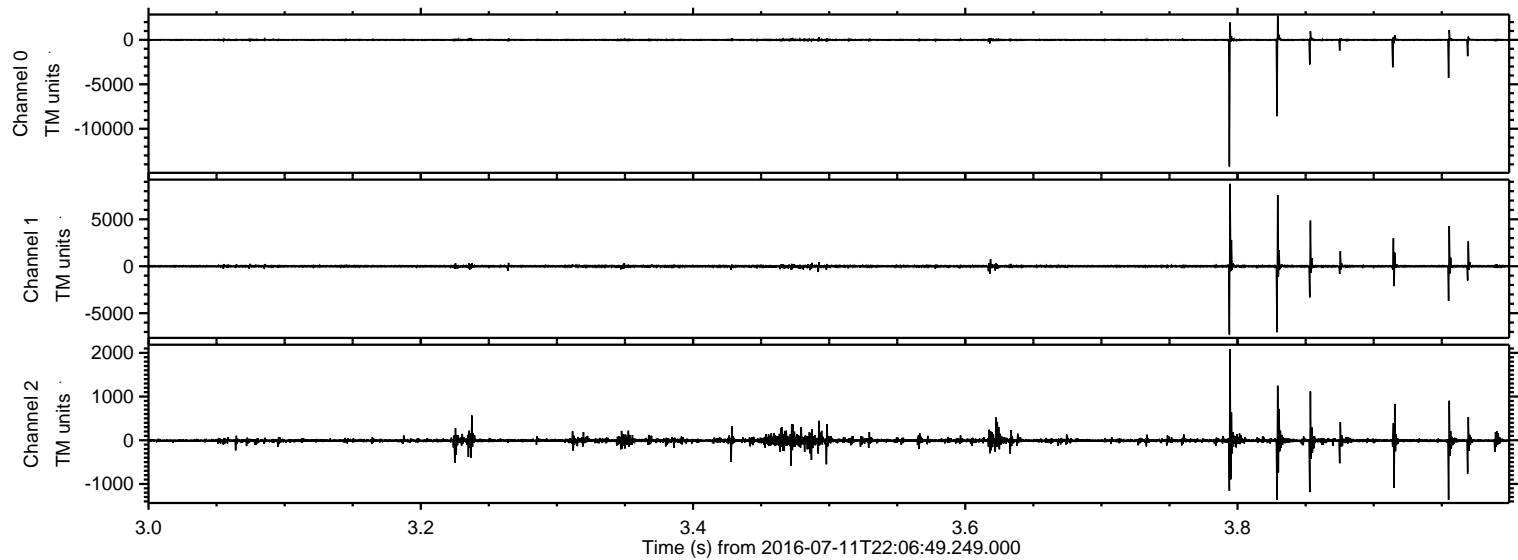


ELMAVAN 3D WAVEFORMS (Measured data sampled at 50 kHz) 51000 packets of 144 samples from 2016-07-11T22:06:49.249.000.

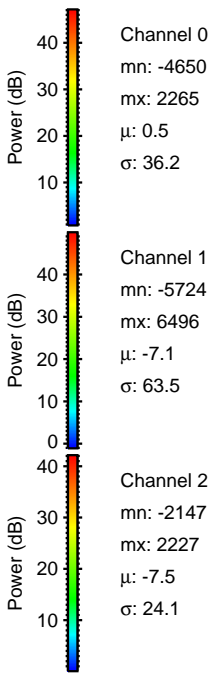
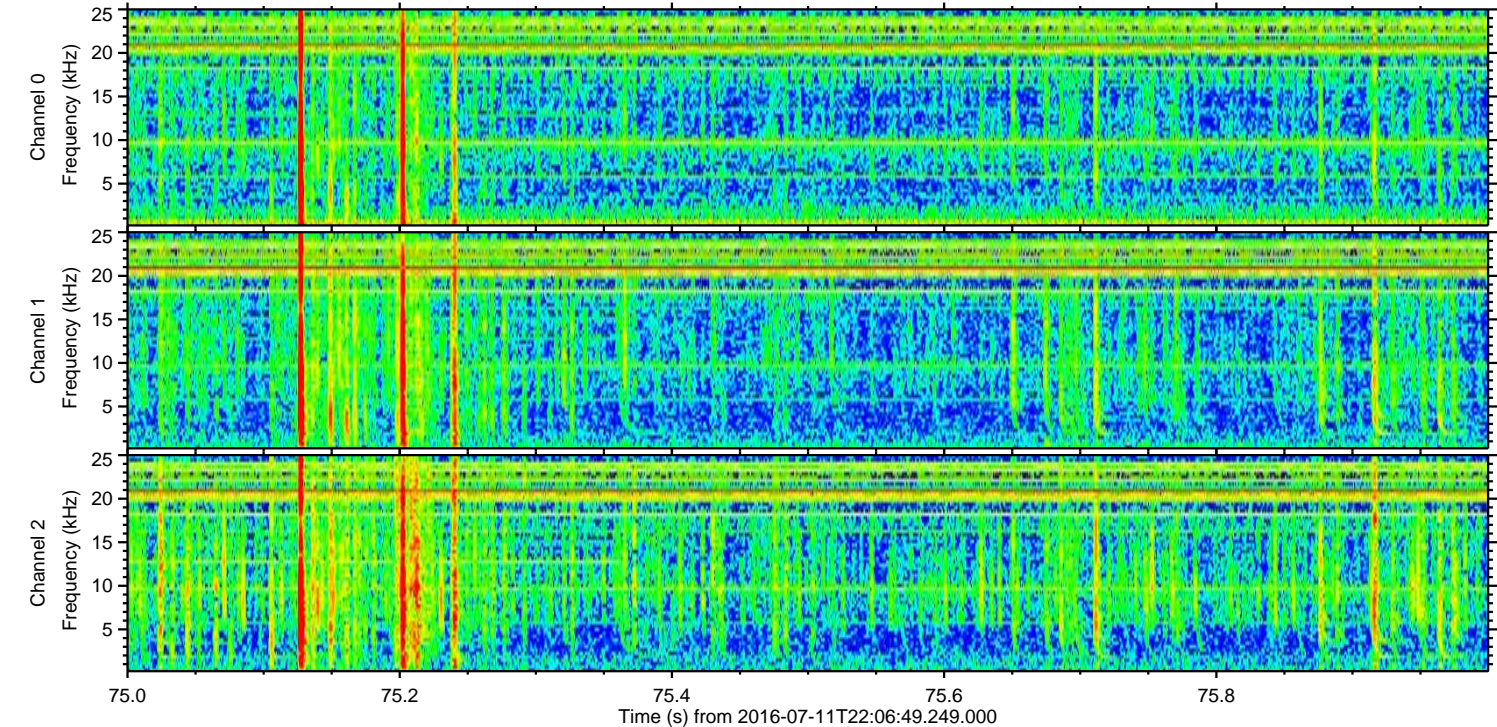
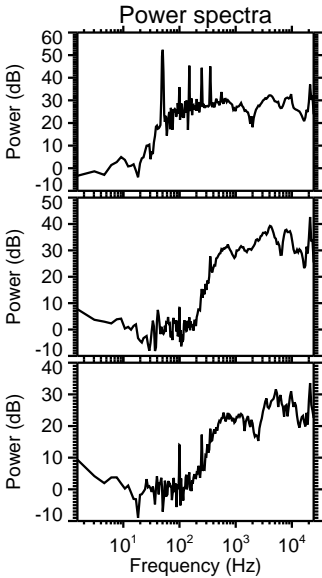
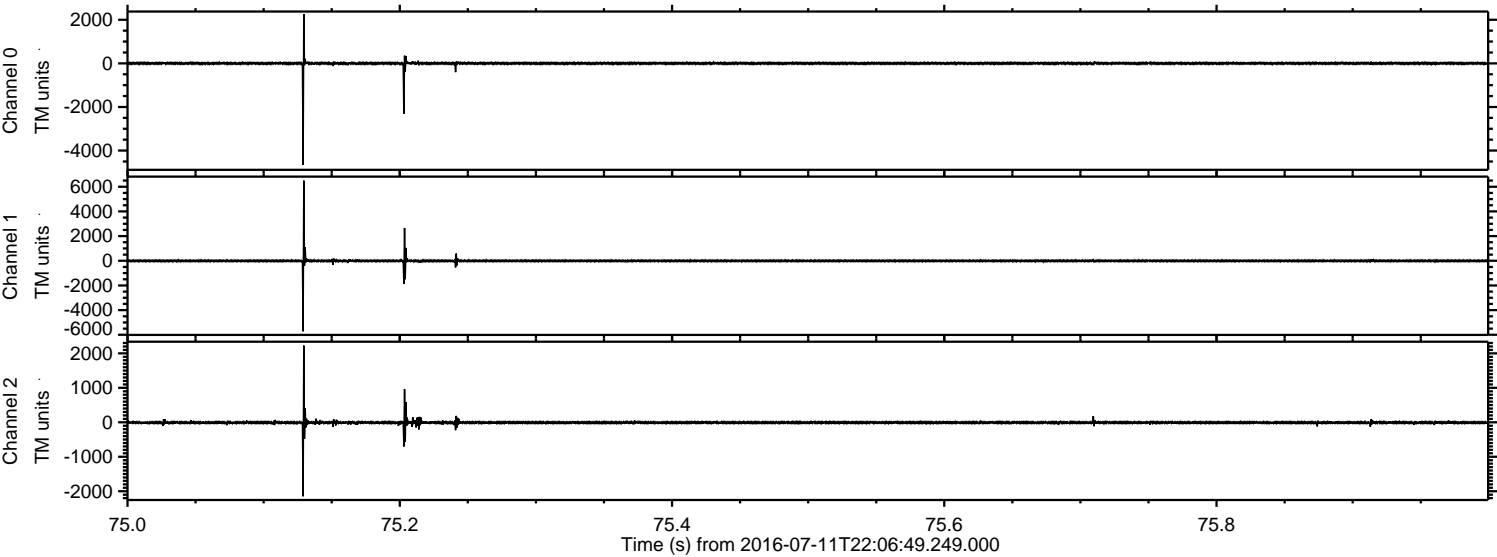
Processed Tue Jul 12 00:14:48 2016 by ELM ver.2012-10-06 from 001__elm20160711_220648__dat00.bin



Processed Tue Jul 12 00:15:02 2016 by ELM ver.2012-10-06 from 001__elm20160711_220648__dat00.bin

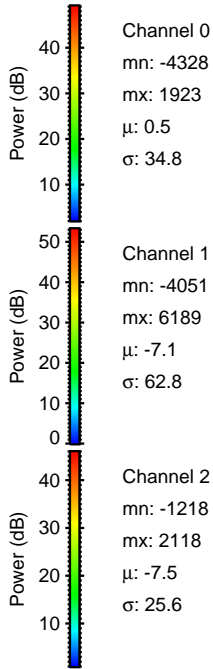
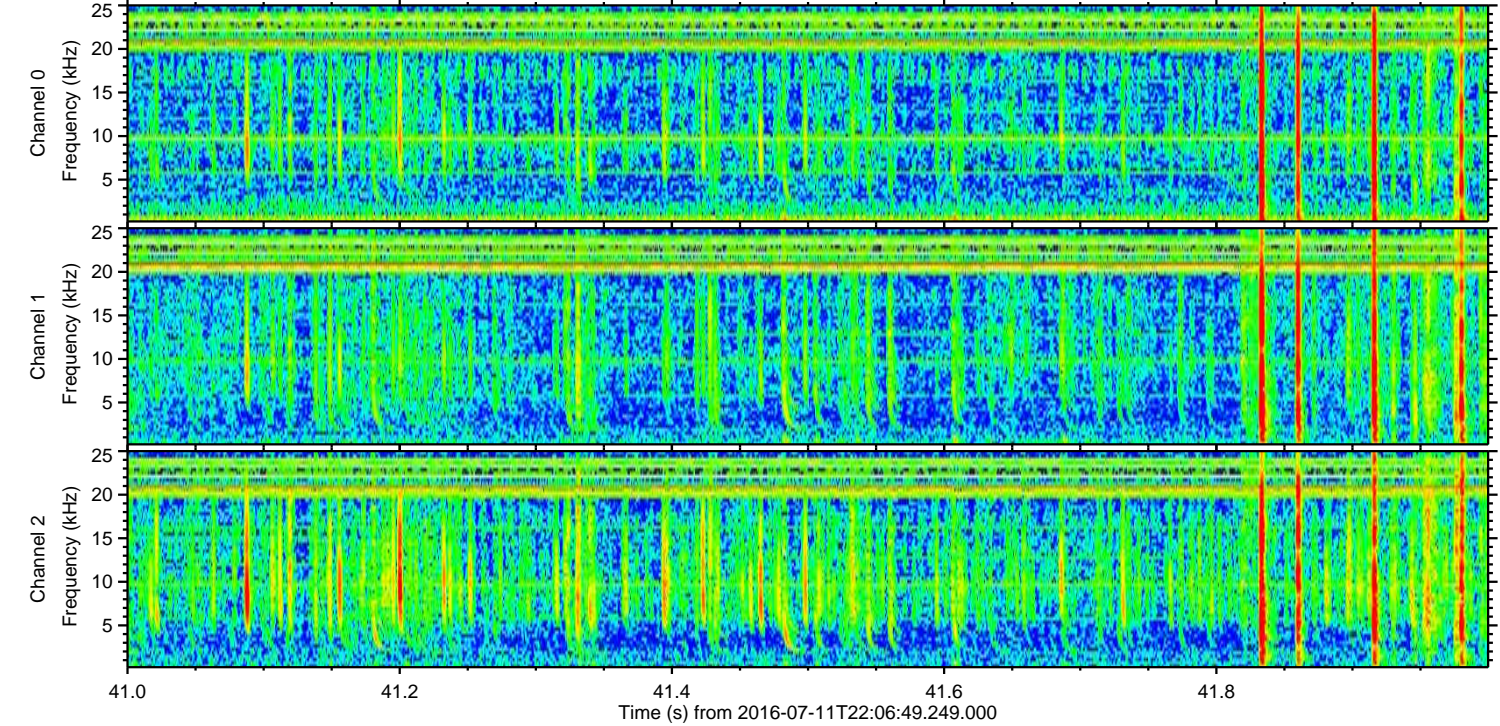
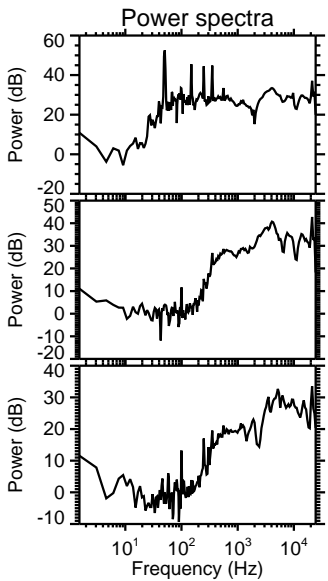
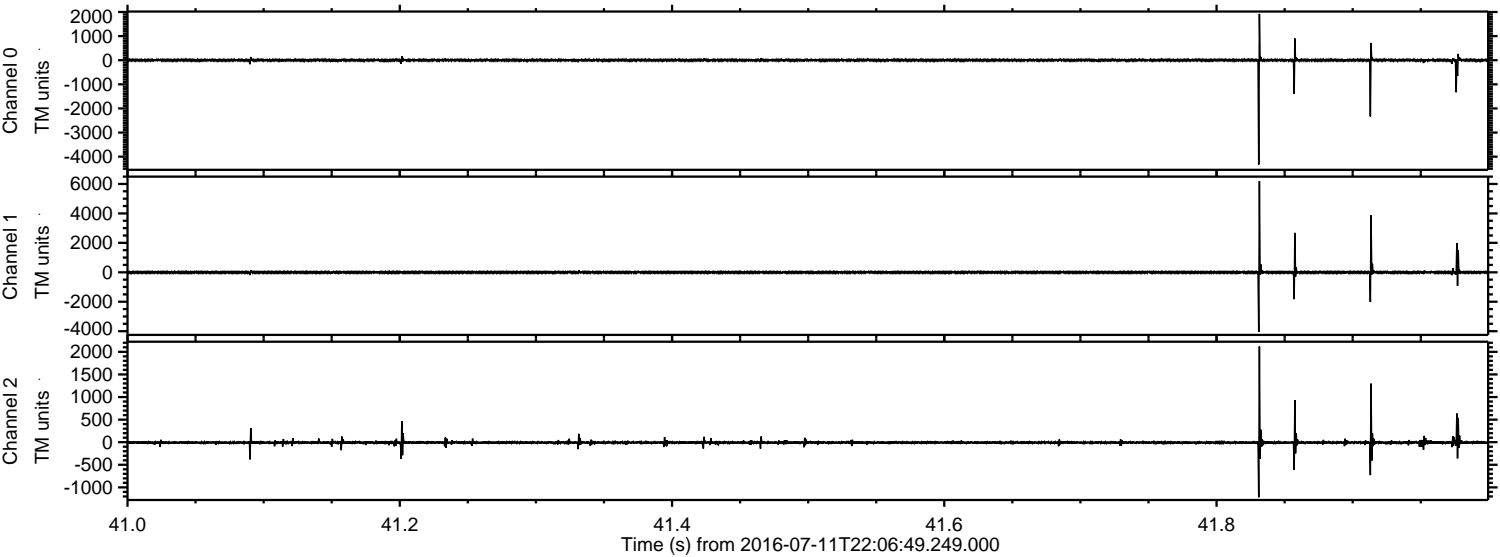


Processed Tue Jul 12 00:15:03 2016 by ELM ver.2012-10-06 from 001__elm20160711_220648__dat00.bin



ELMAVAN 3D WAVEFORMS (Measured data sampled at 50 kHz) 51000 packets of 144 samples from 2016-07-11T22:06:49.249.000. Part 42/147

Processed Tue Jul 12 00:15:04 2016 by ELM ver.2012-10-06 from 001__elm20160711_220648__dat00.bin

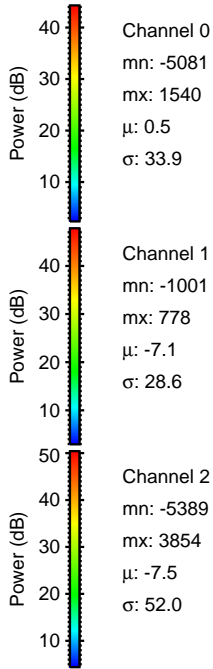
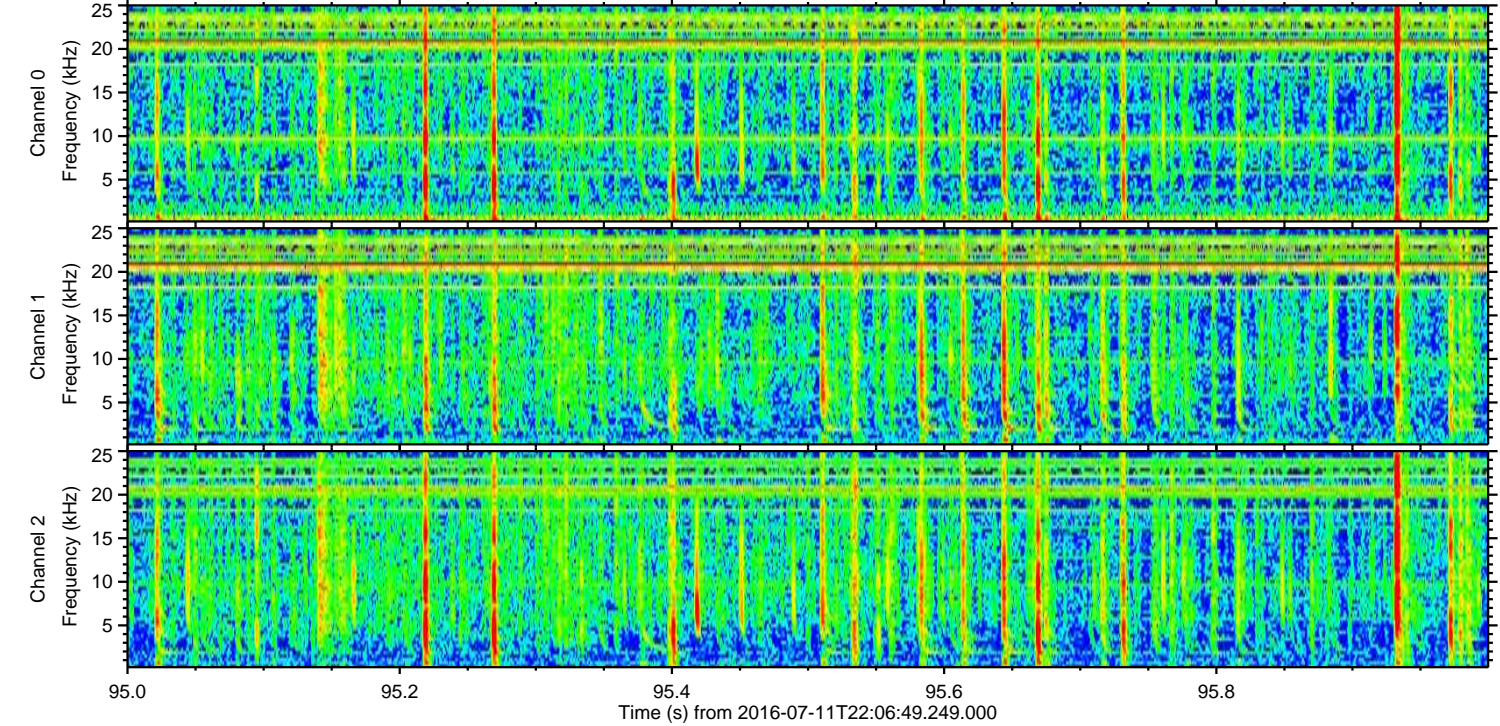
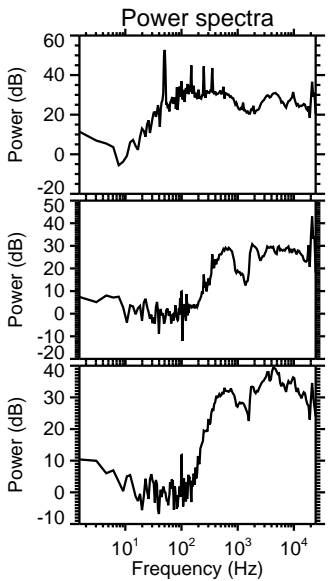
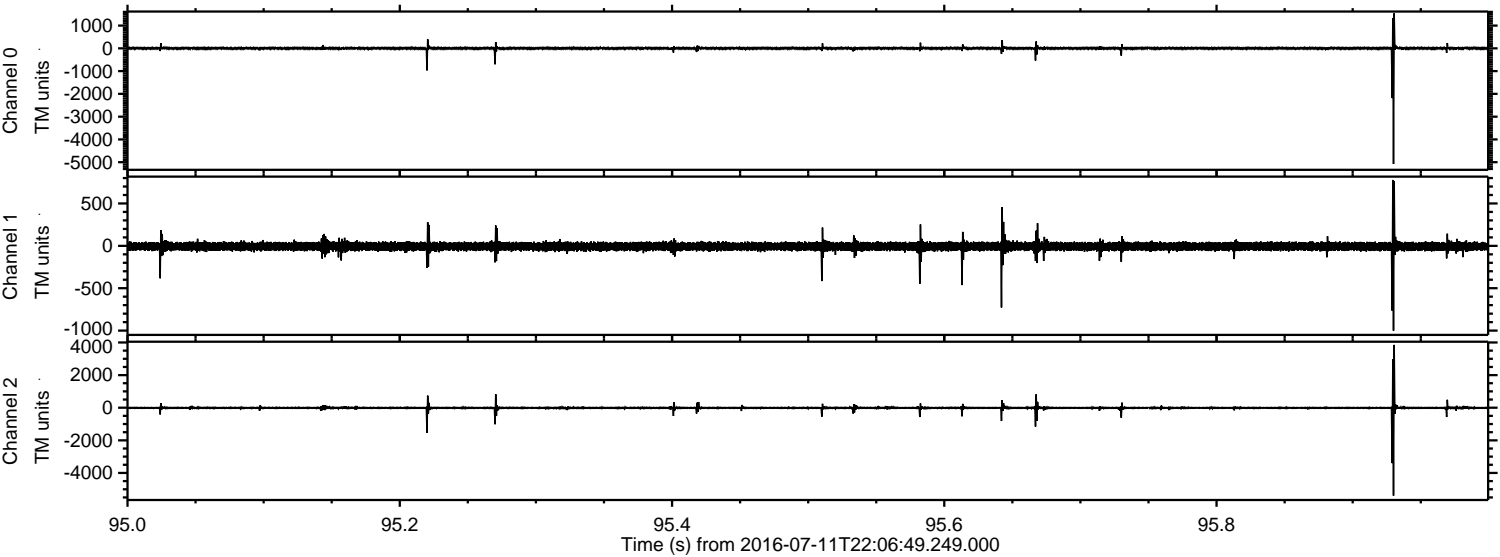


Channel 0
mn: -4328
mx: 1923
 μ : 0.5
 σ : 34.8

Channel 1
mn: -4051
mx: 6189
 μ : -7.1
 σ : 62.8

Channel 2
mn: -1218
mx: 2118
 μ : -7.5
 σ : 25.6

Processed Tue Jul 12 00:15:05 2016 by ELM ver.2012-10-06 from 001__elm20160711_220648__dat00.bin

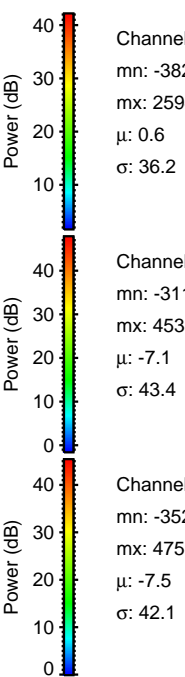
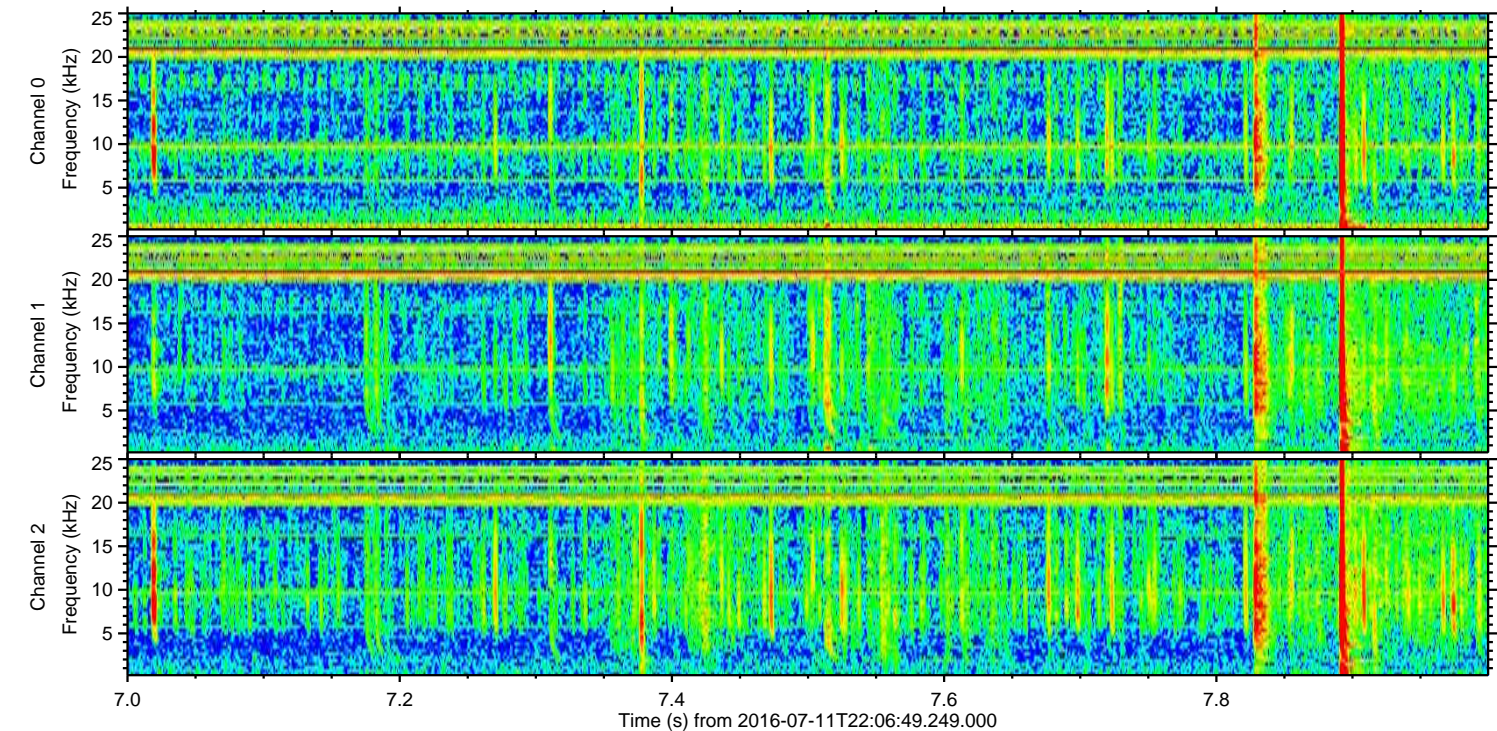
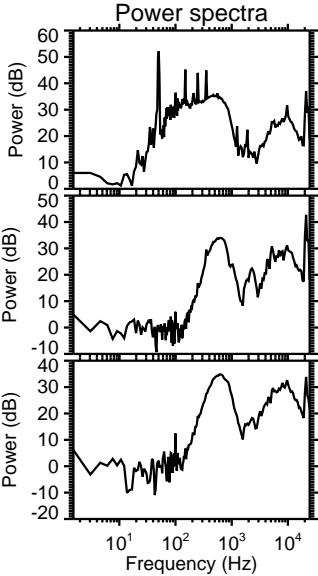
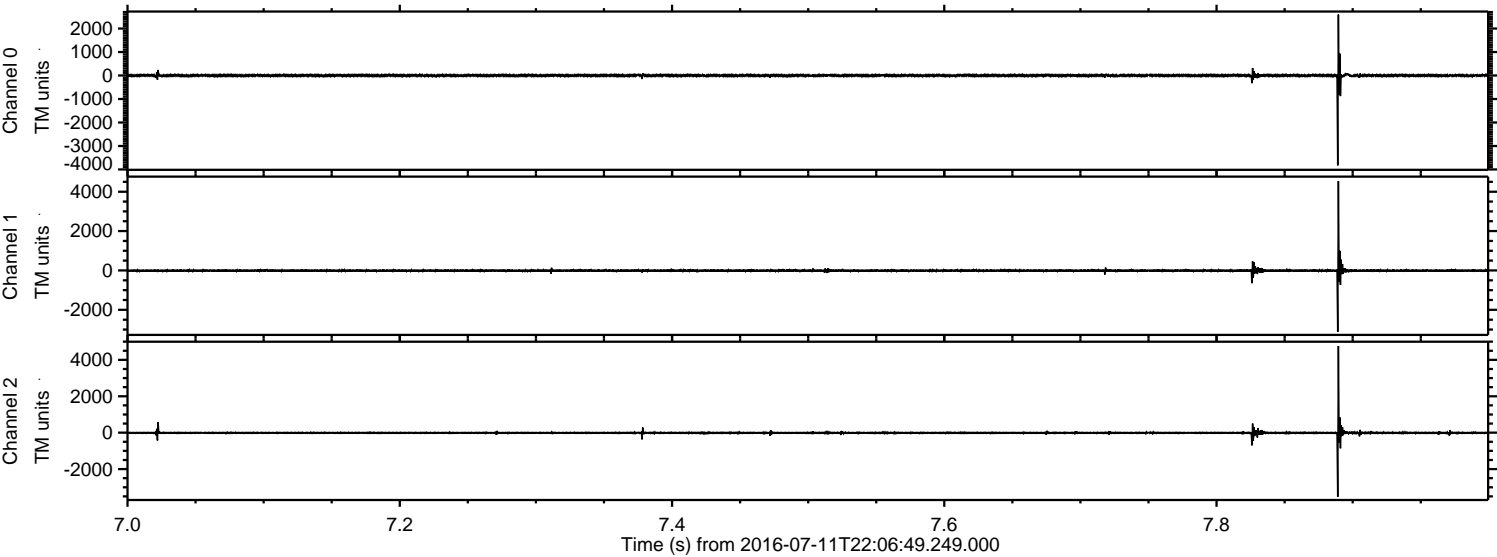


Channel 0
mn: -5081
mx: 1540
 μ : 0.5
 σ : 33.9

Channel 1
mn: -1001
mx: 778
 μ : -7.1
 σ : 28.6

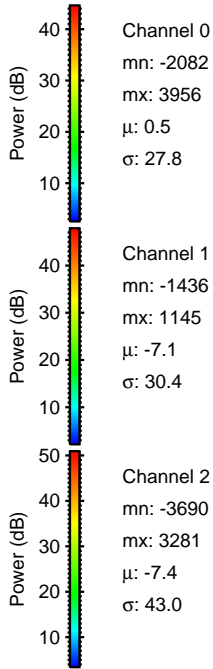
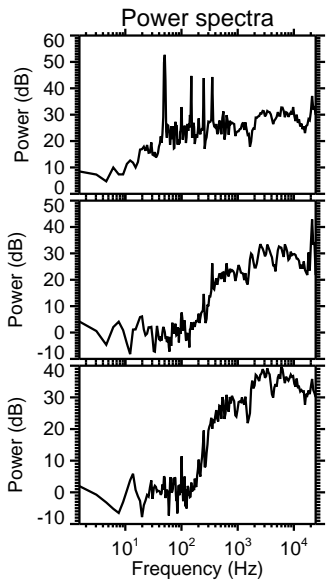
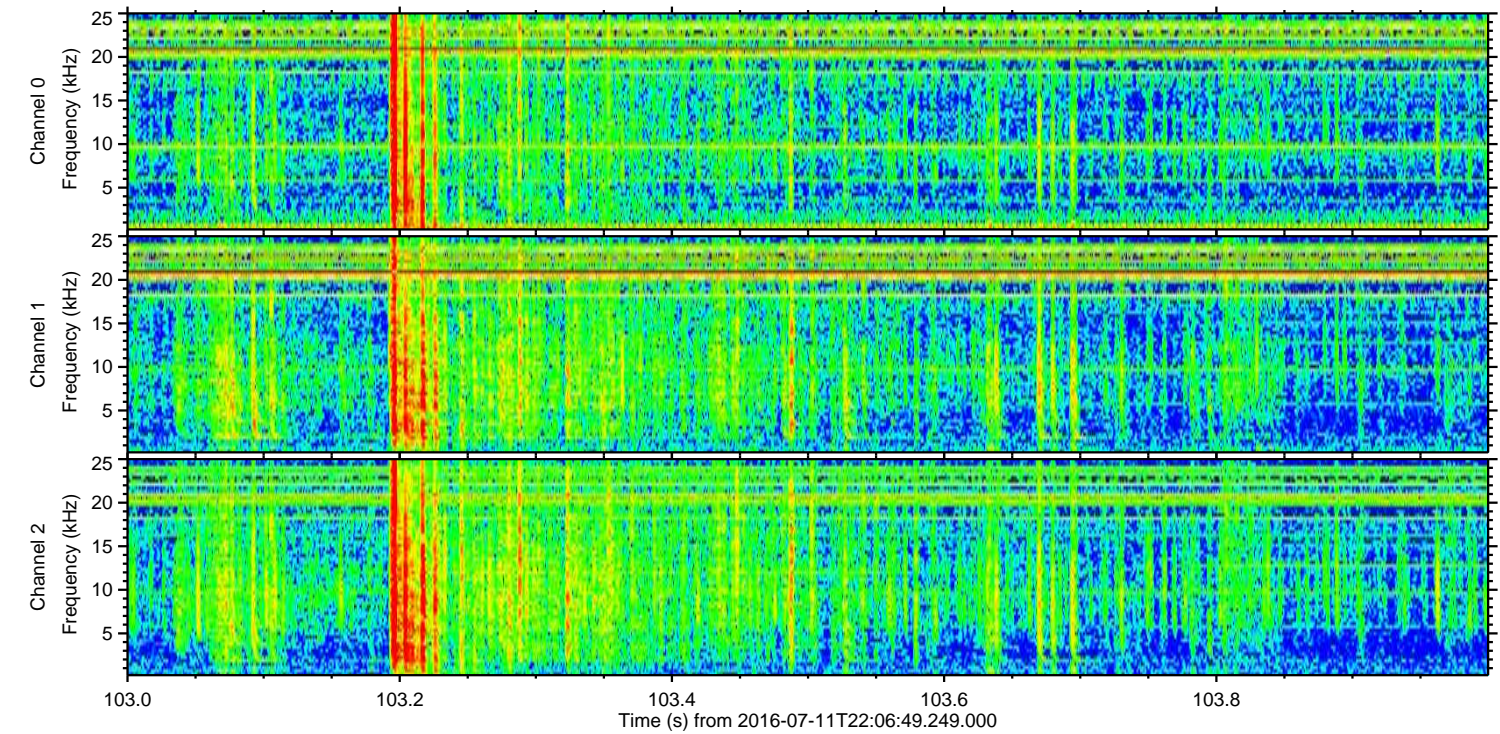
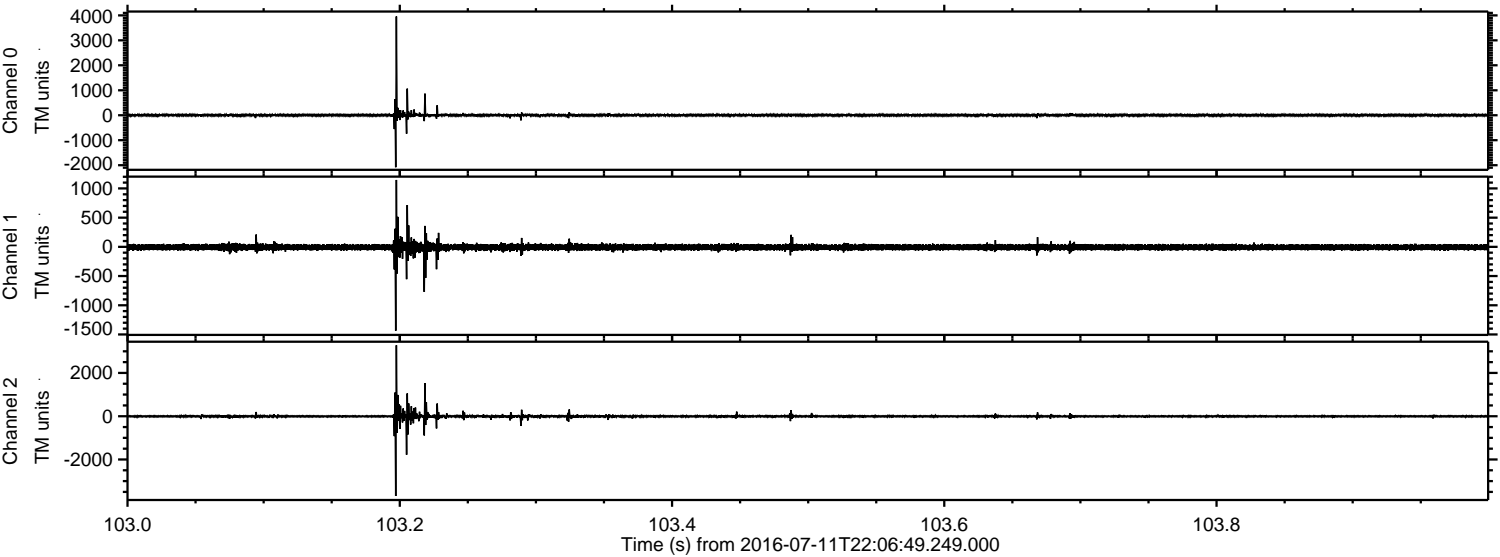
Channel 2
mn: -5389
mx: 3854
 μ : -7.5
 σ : 52.0

Processed Tue Jul 12 00:15:06 2016 by ELM ver.2012-10-06 from 001__elm20160711_220648__dat00.bin



ELMAVAN 3D WAVEFORMS (Measured data sampled at 50 kHz) 51000 packets of 144 samples from 2016-07-11T22:06:49.249.000. Part 104/147

Processed Tue Jul 12 00:15:07 2016 by ELM ver.2012-10-06 from 001__elm20160711_220648__dat00.bin

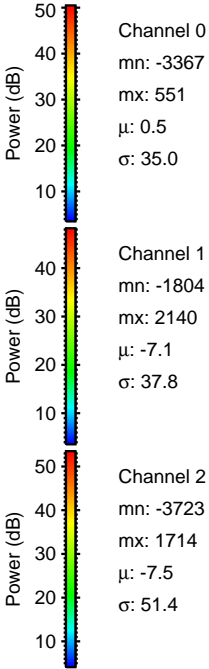
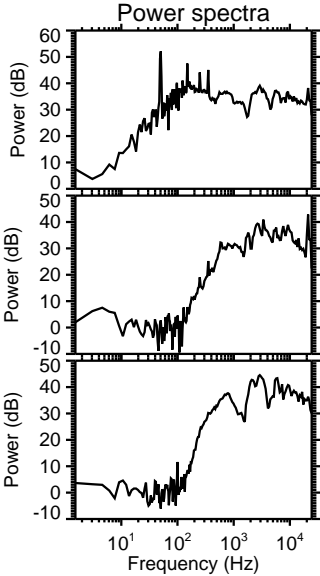
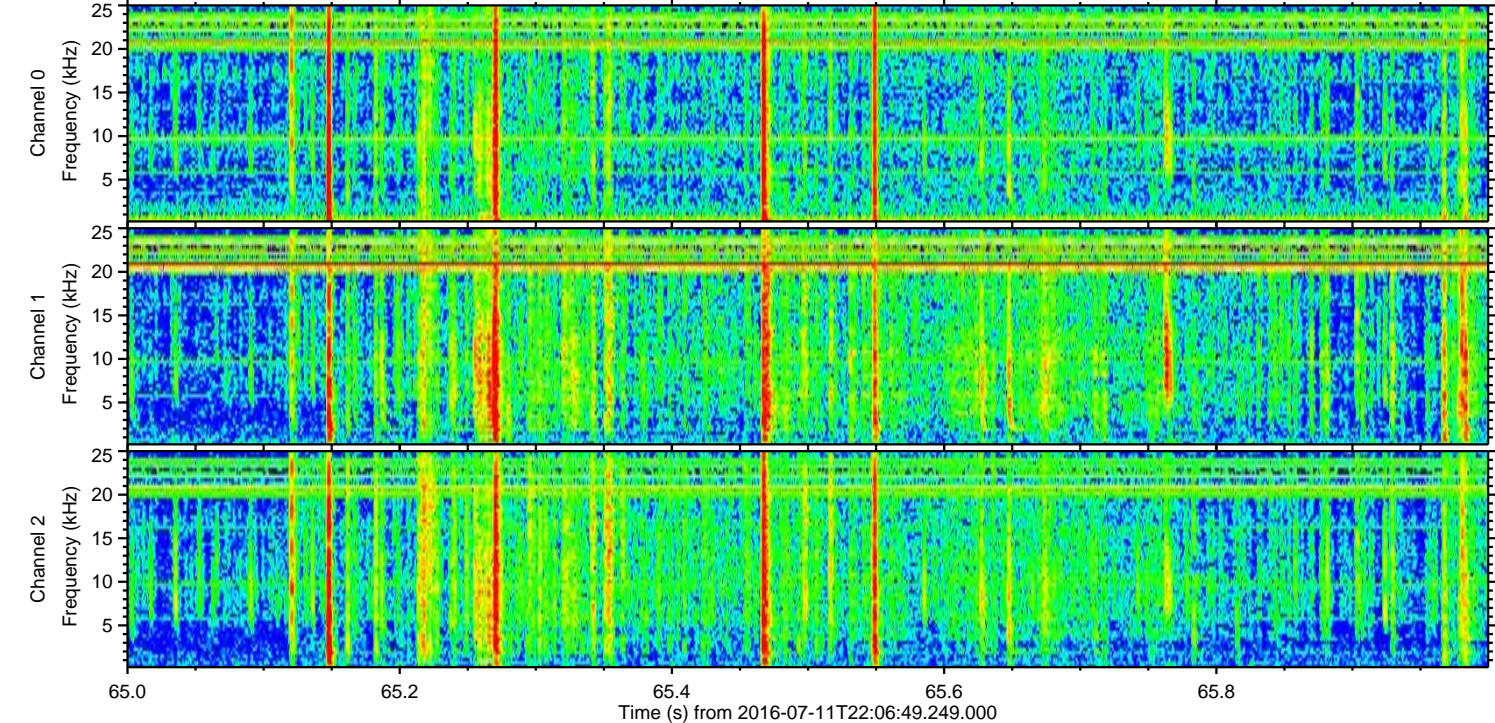
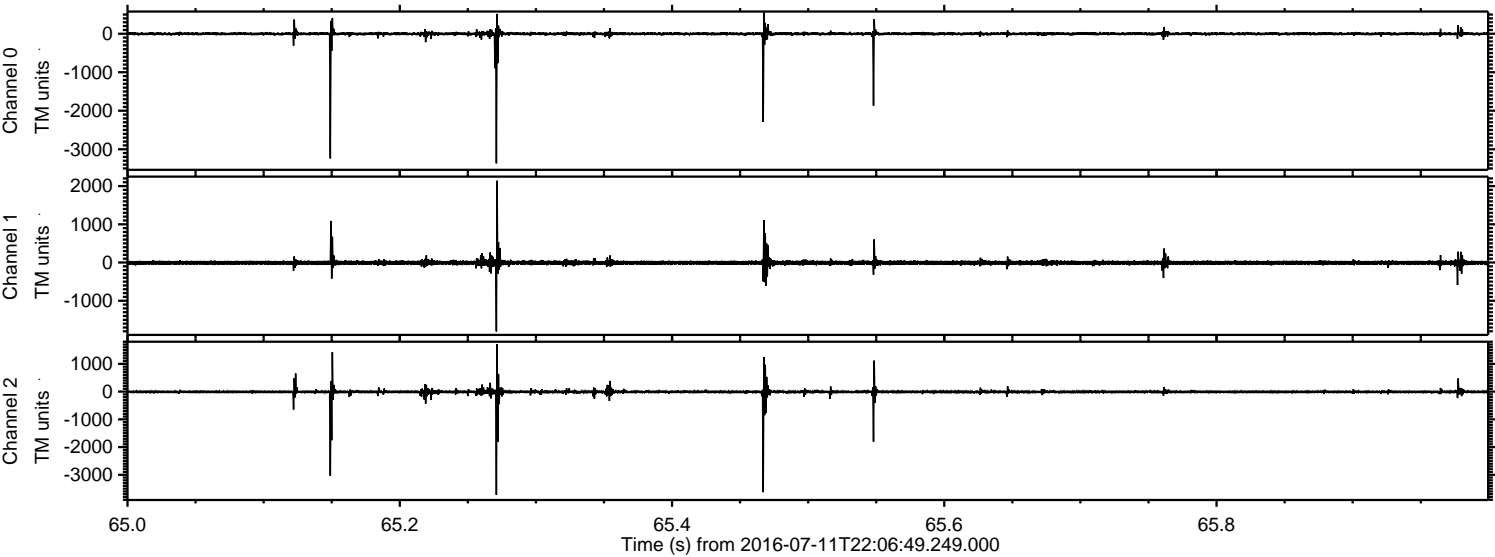


Channel 0
mn: -2082
mx: 3956
 μ : 0.5
 σ : 27.8

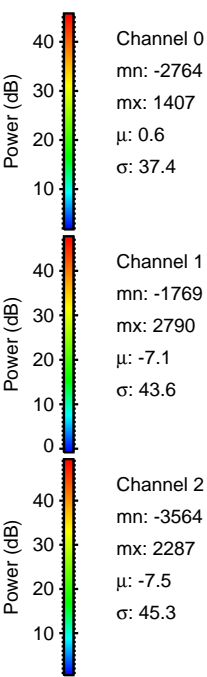
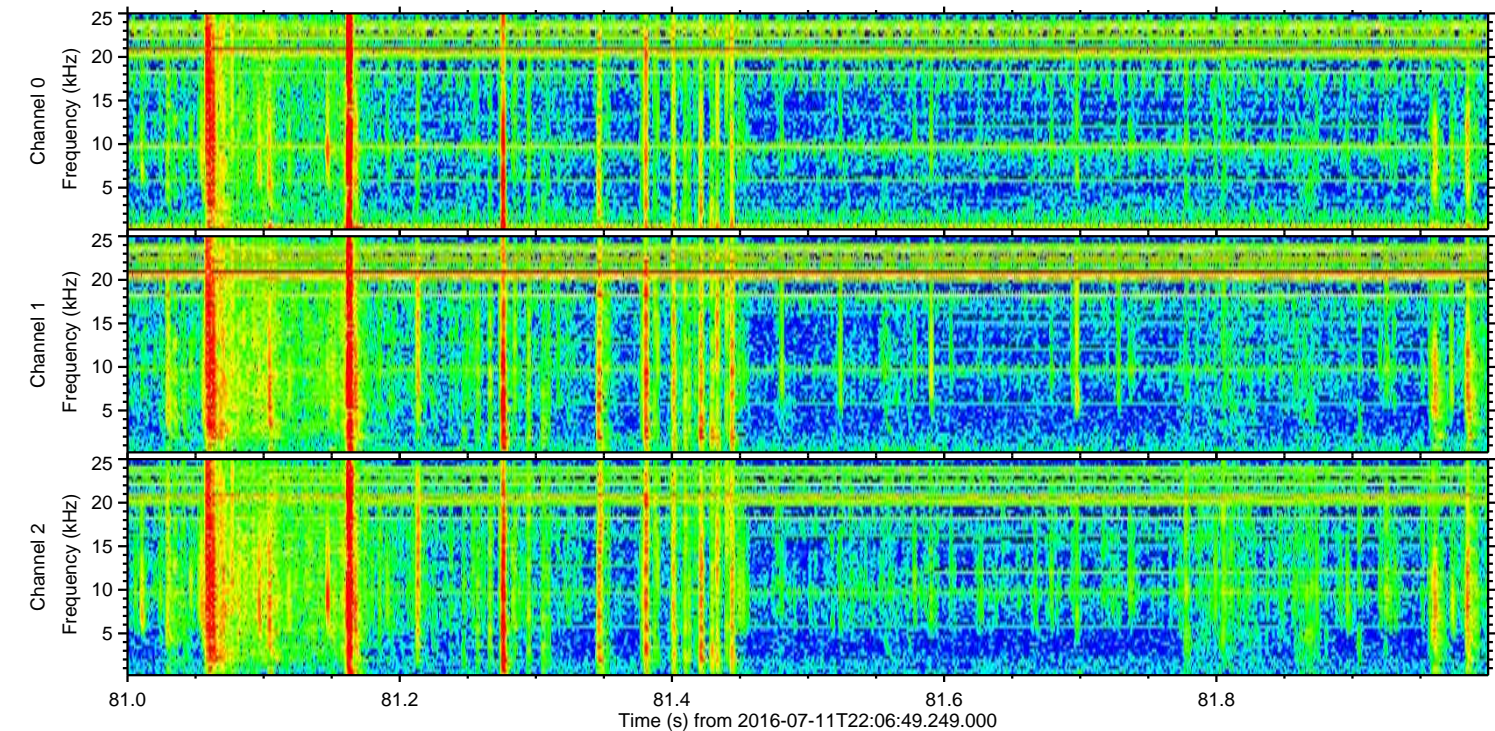
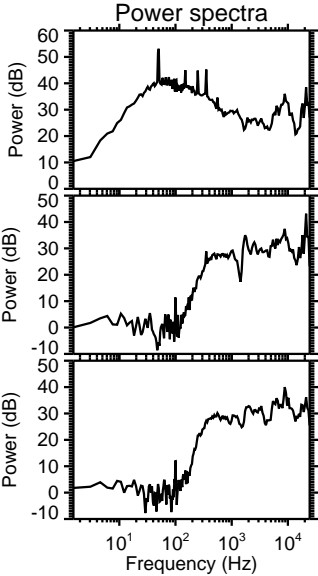
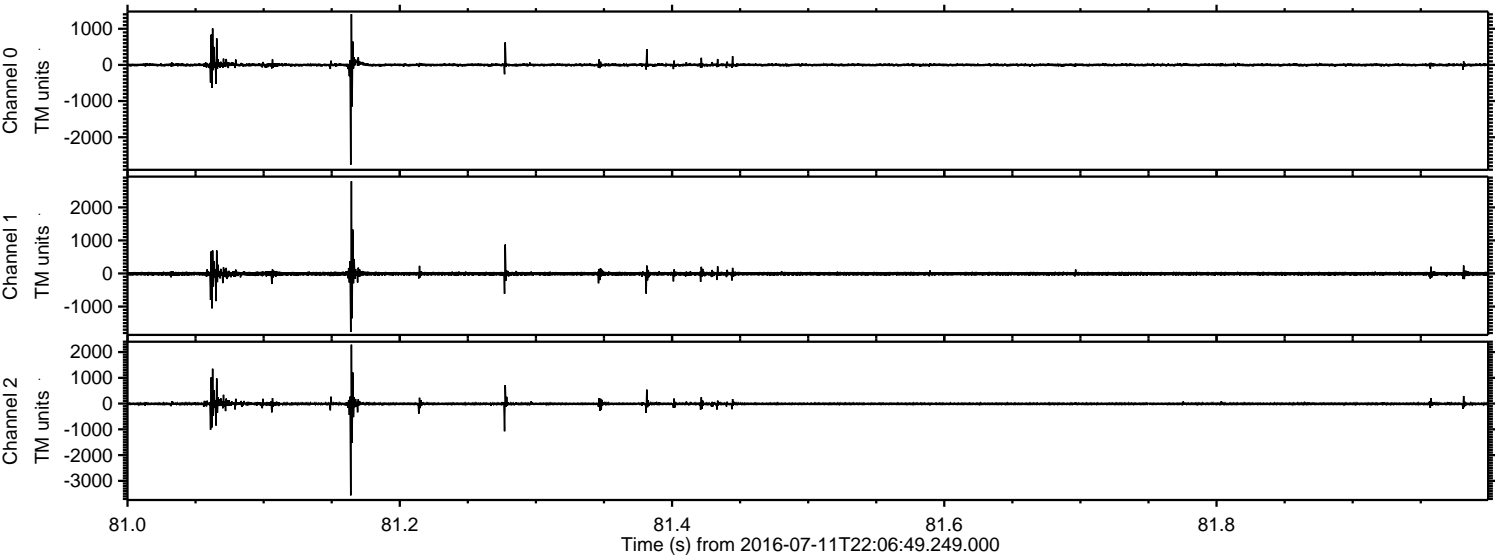
Channel 1
mn: -1436
mx: 1145
 μ : -7.1
 σ : 30.4

Channel 2
mn: -3690
mx: 3281
 μ : -7.4
 σ : 43.0

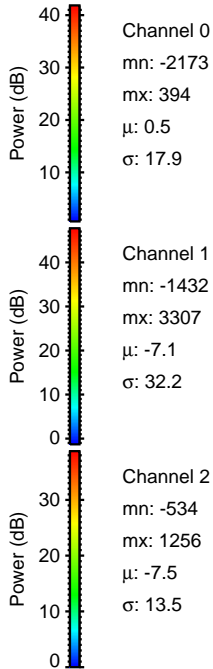
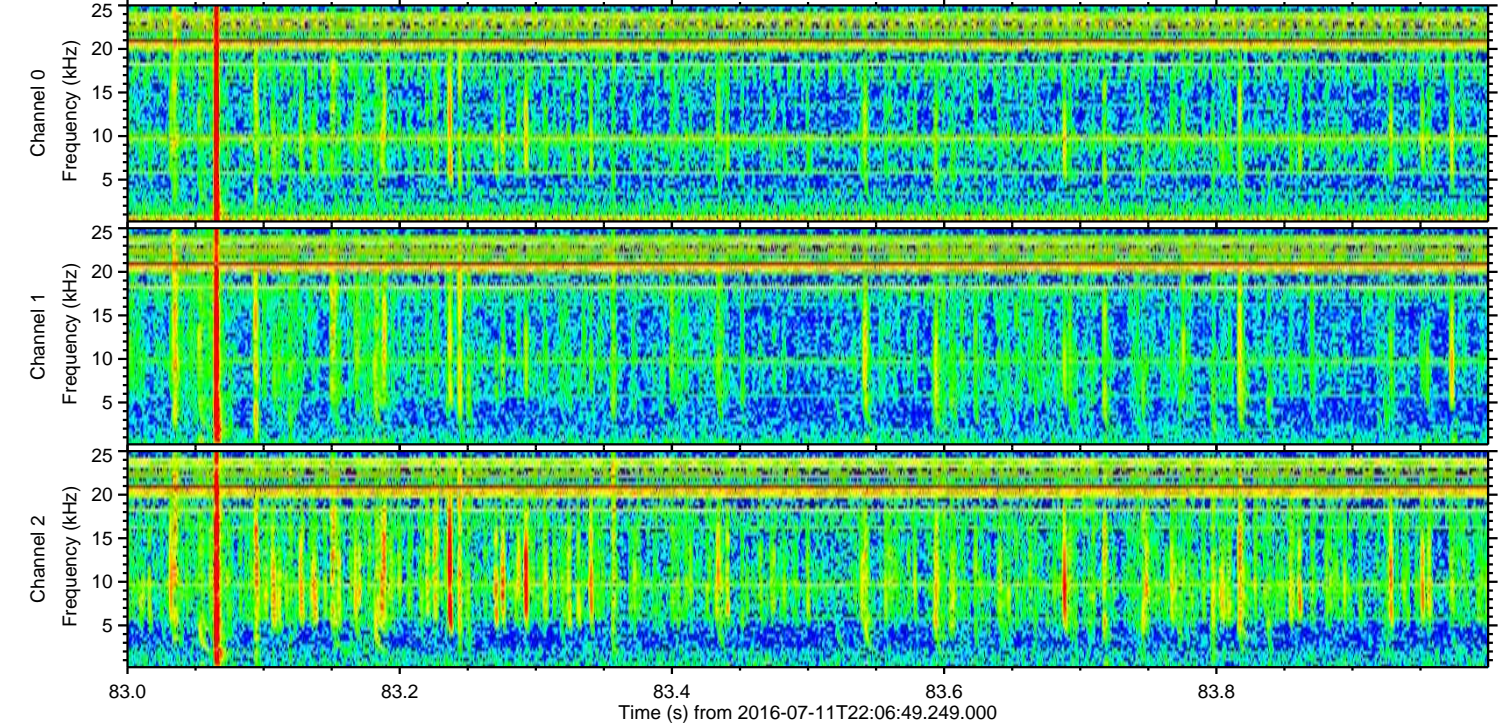
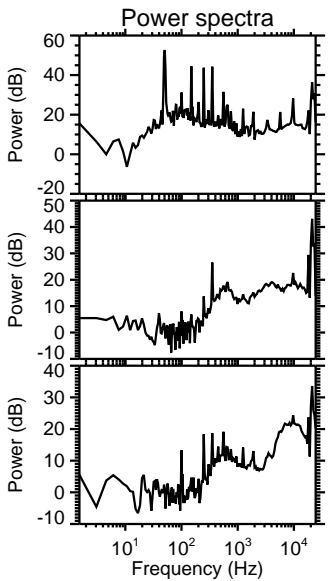
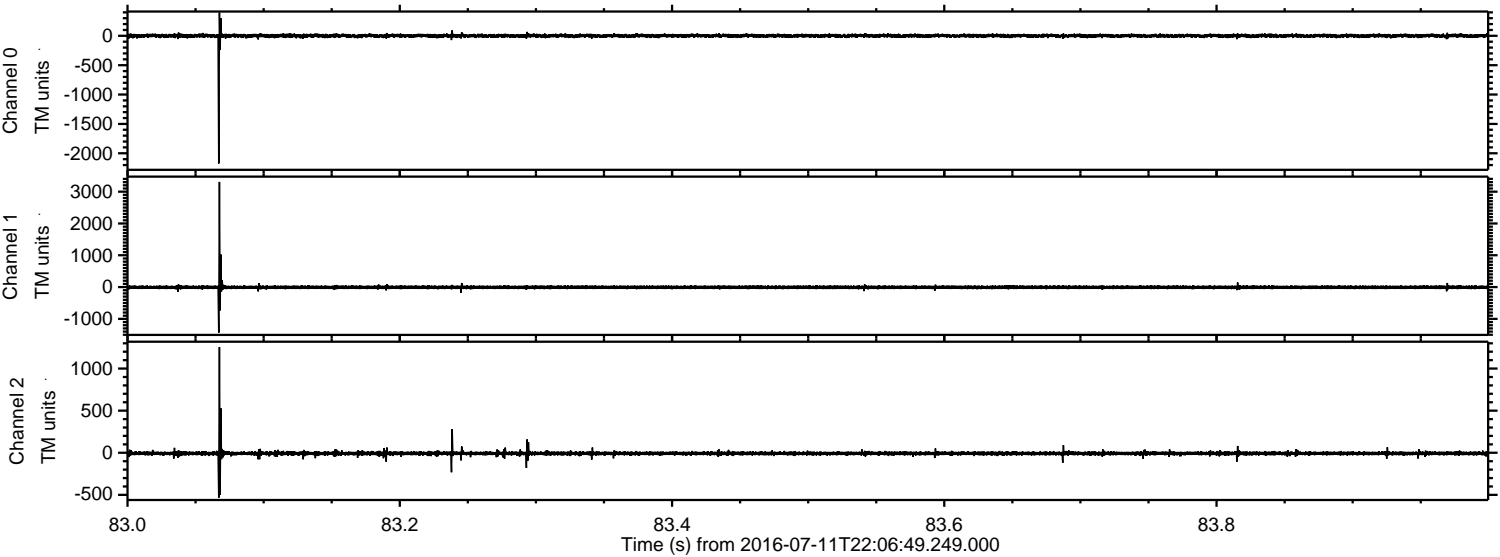
Processed Tue Jul 12 00:15:08 2016 by ELM ver.2012-10-06 from 001__elm20160711_220648__dat00.bin



Processed Tue Jul 12 00:15:09 2016 by ELM ver.2012-10-06 from 001__elm20160711_220648__dat00.bin



Processed Tue Jul 12 00:15:11 2016 by ELM ver.2012-10-06 from 001__elm20160711_220648__dat00.bin



Processed Tue Jul 12 00:15:12 2016 by ELM ver.2012-10-06 from 001__elm20160711_220648__dat00.bin

