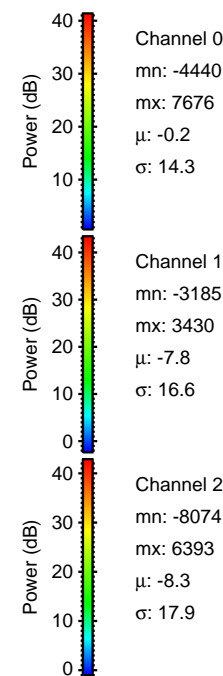
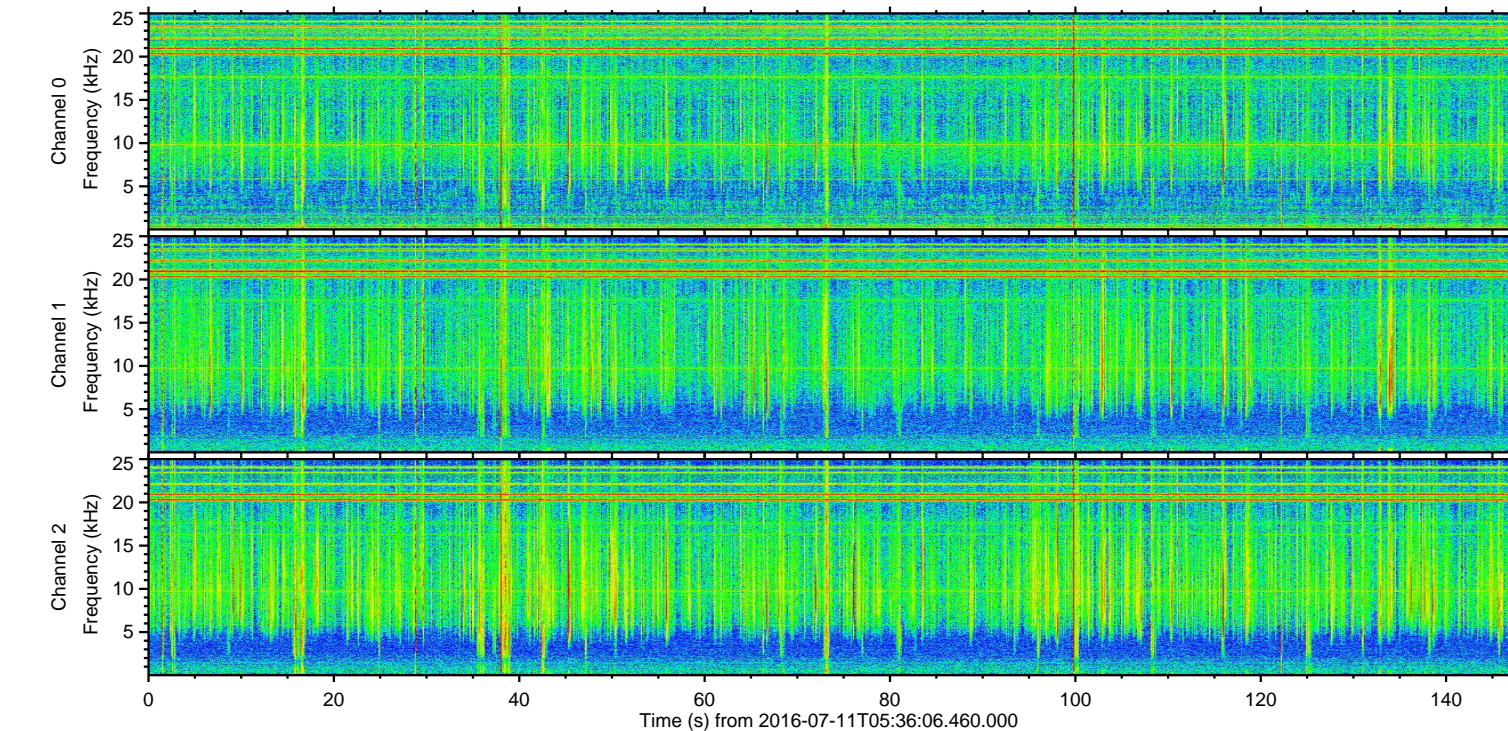
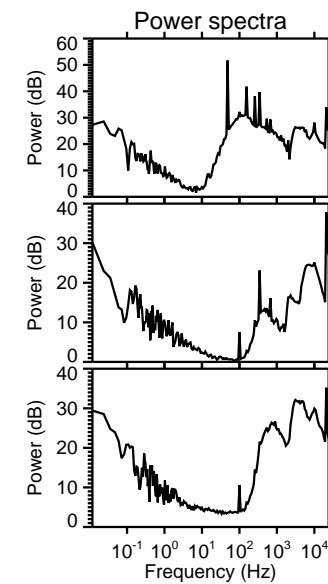
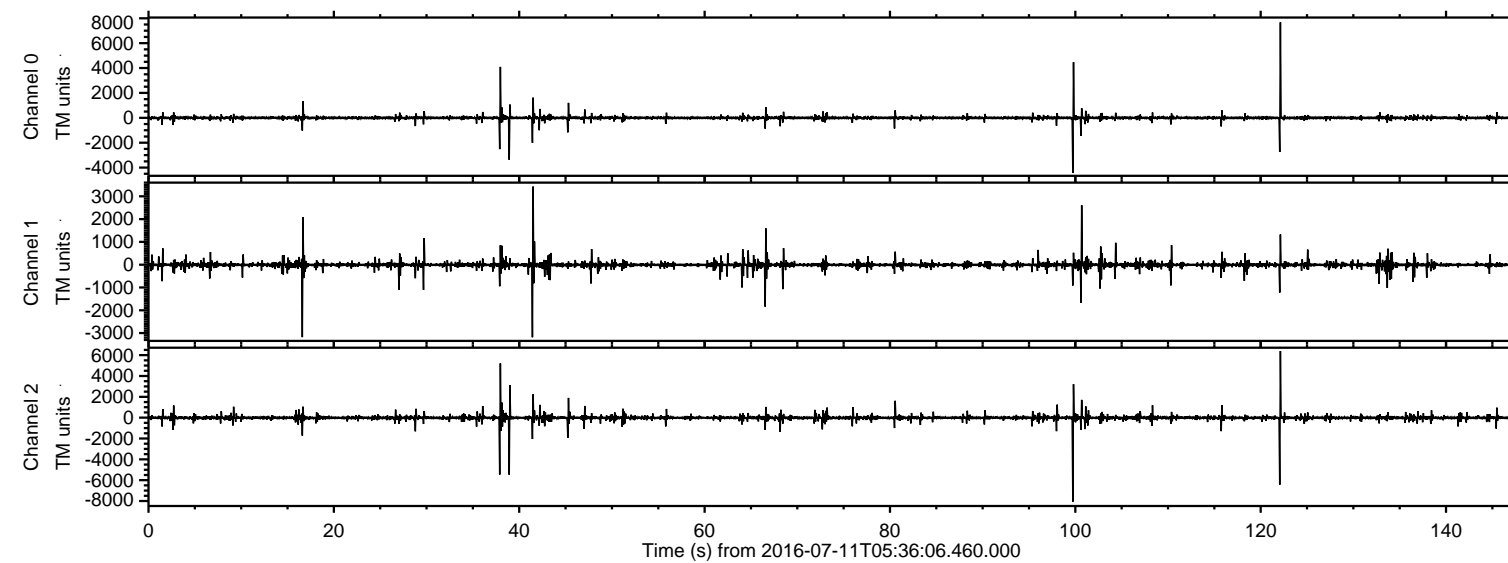


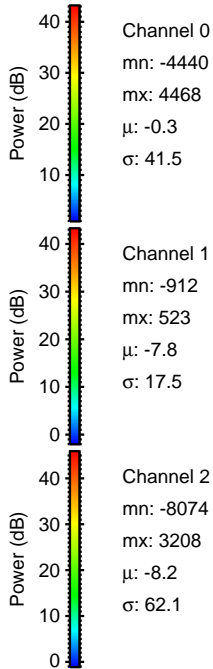
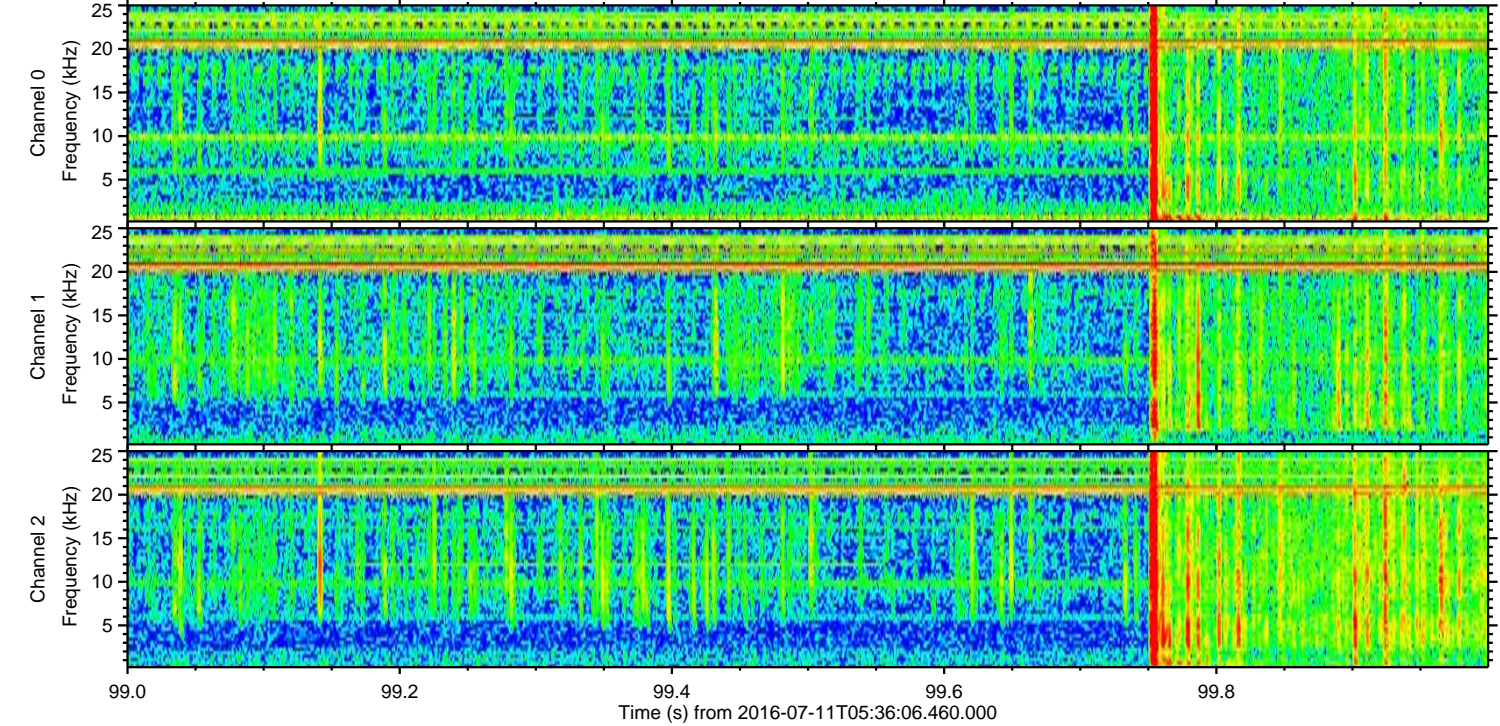
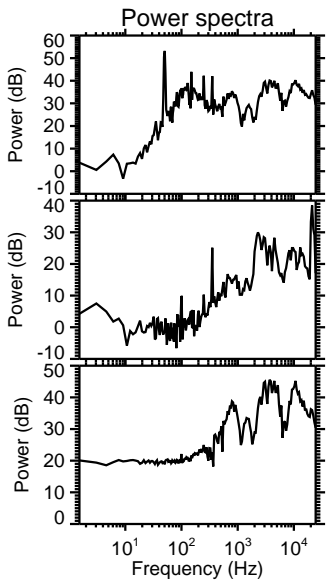
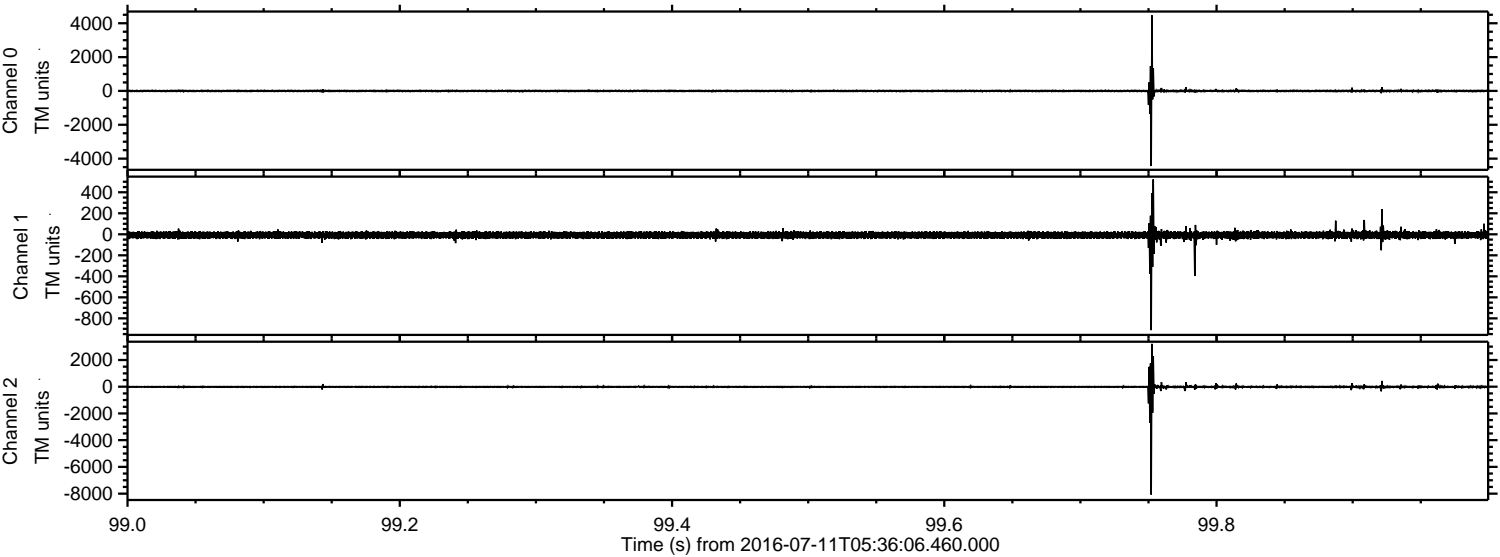
ELMAVAN 3D WAVEFORMS (Measured data sampled at 50 kHz) 51000 packets of 144 samples from 2016-07-11T05:36:06.460.000.

Processed Mon Jul 11 07:43:42 2016 by ELM ver.2012-10-06 from 001__elm20160711_053605__dat00.bin



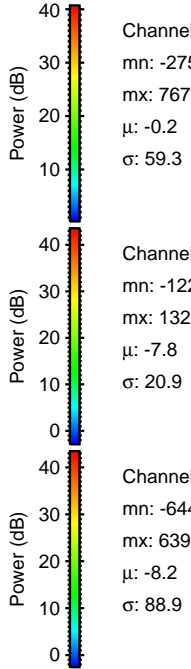
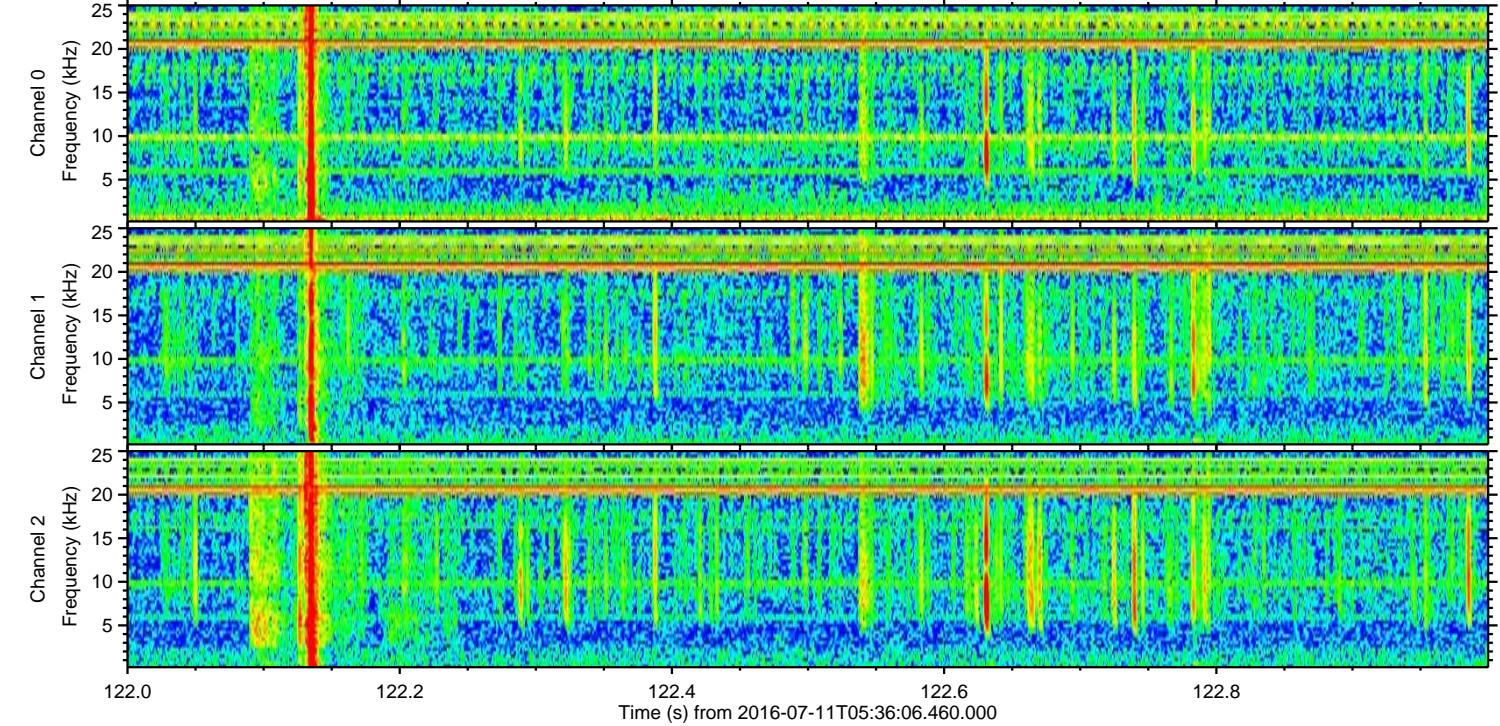
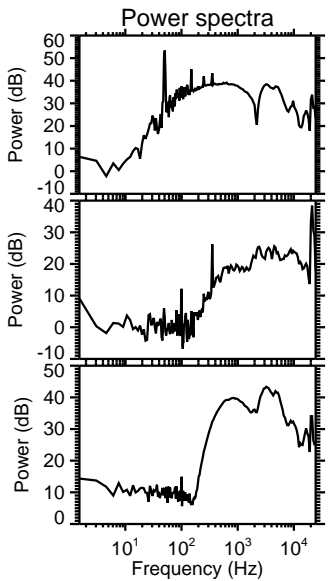
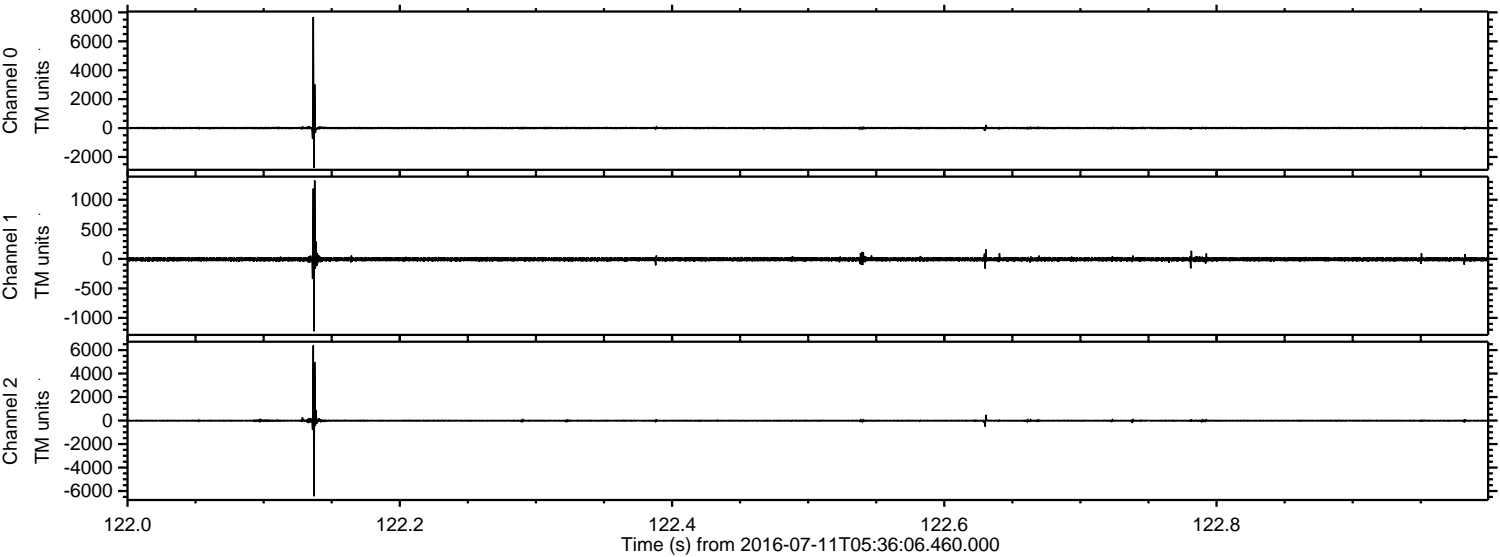
ELMAVAN 3D WAVEFORMS (Measured data sampled at 50 kHz) 51000 packets of 144 samples from 2016-07-11T05:36:06.460.000. Part 100/147

Processed Mon Jul 11 07:43:53 2016 by ELM ver.2012-10-06 from 001__elm20160711_053605__dat00.bin

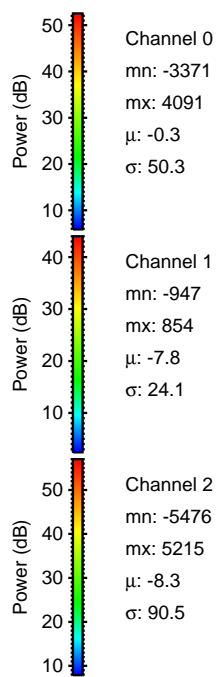
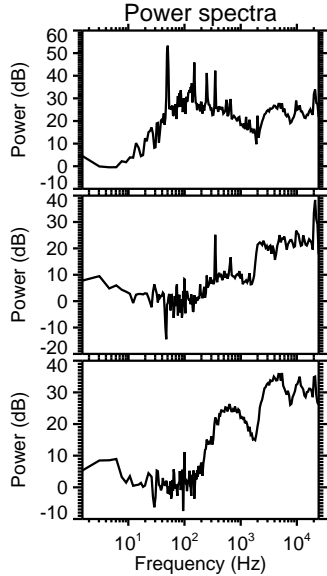
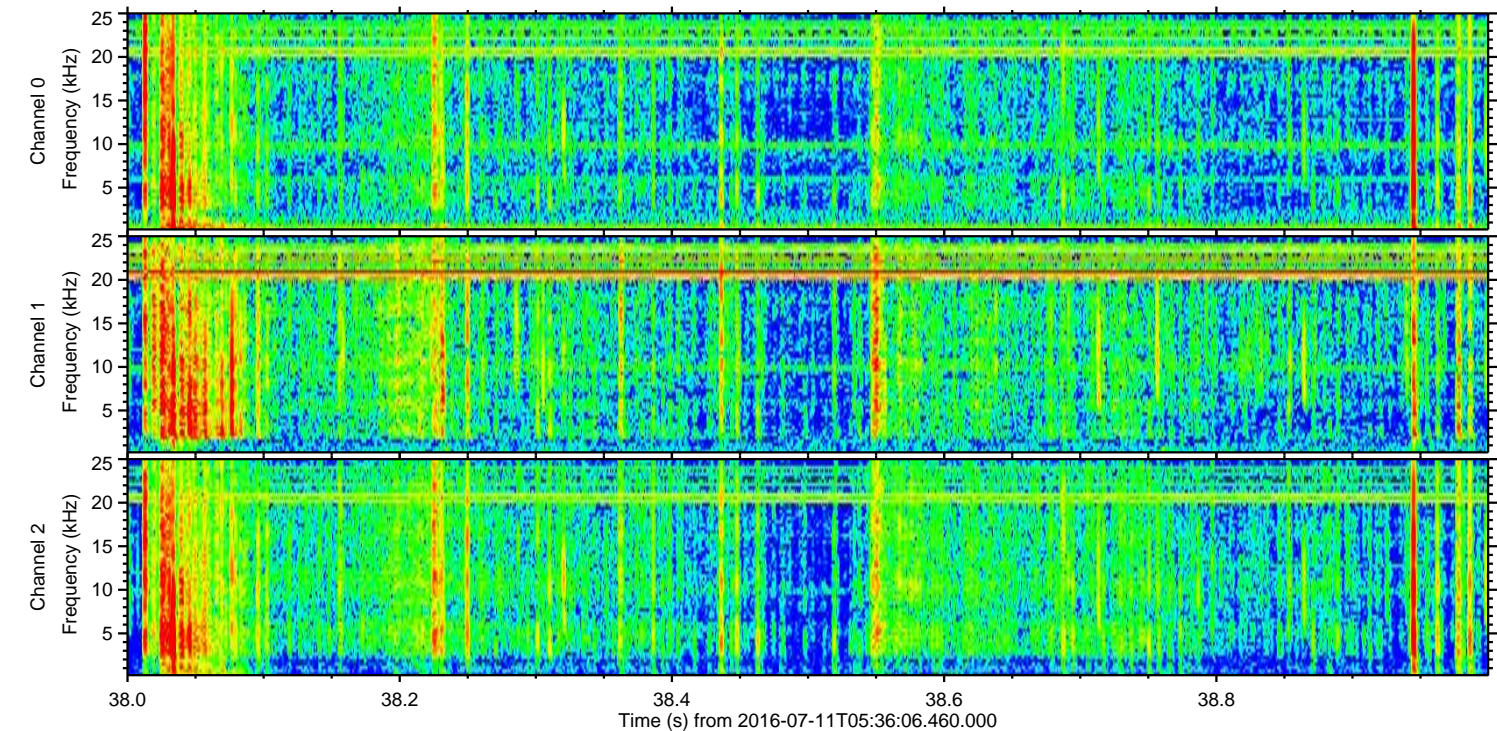
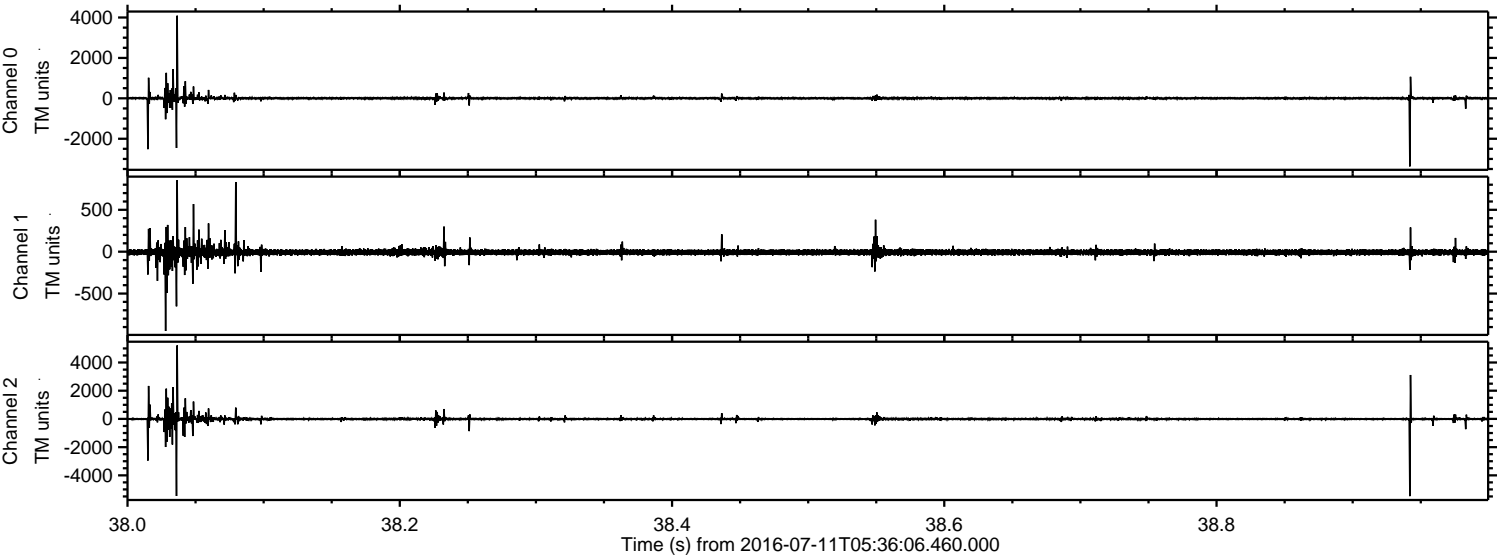


ELMAVAN 3D WAVEFORMS (Measured data sampled at 50 kHz) 51000 packets of 144 samples from 2016-07-11T05:36:06.460.000. Part 123/147

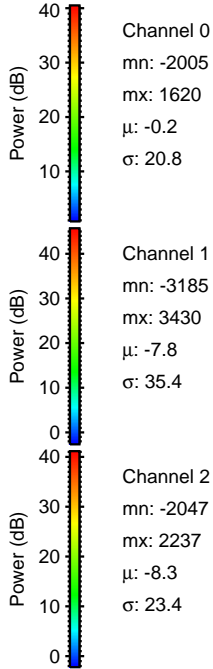
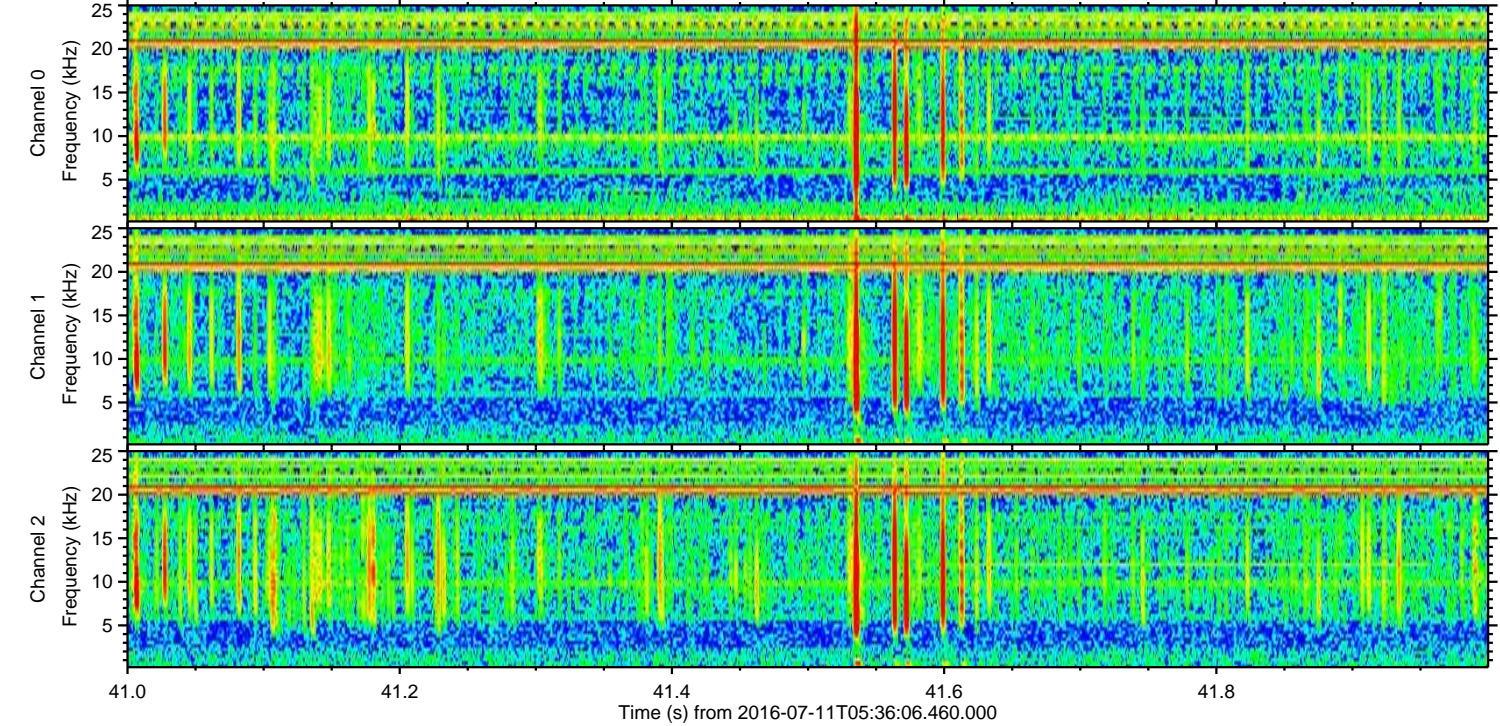
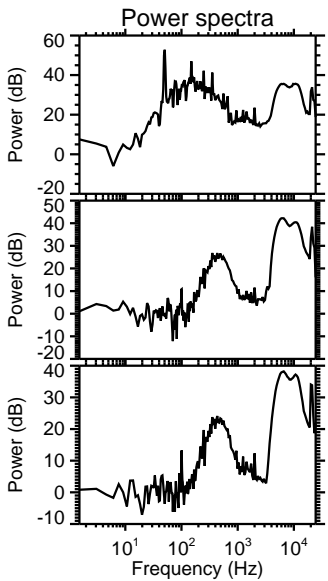
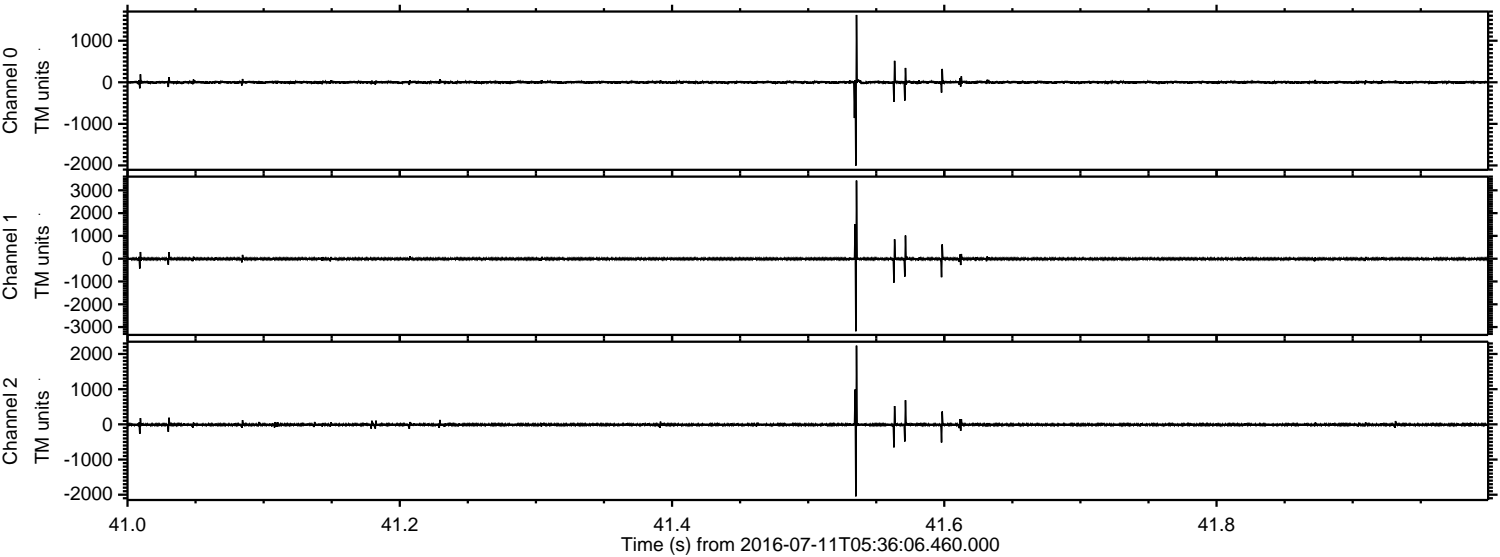
Processed Mon Jul 11 07:43:54 2016 by ELM ver.2012-10-06 from 001__elm20160711_053605__dat00.bin



Processed Mon Jul 11 07:43:55 2016 by ELM ver.2012-10-06 from 001__elm20160711_053605__dat00.bin

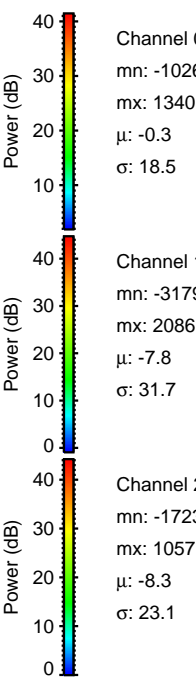
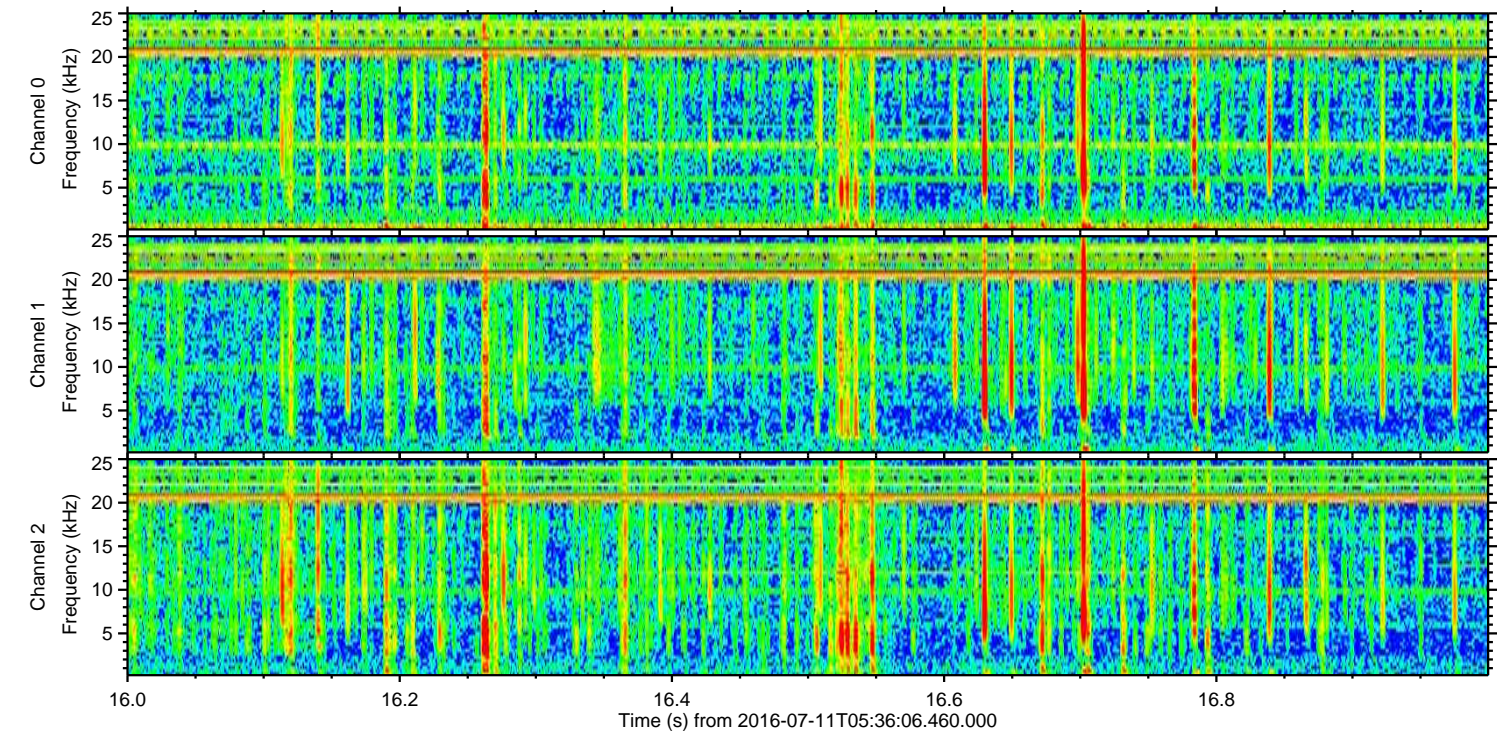
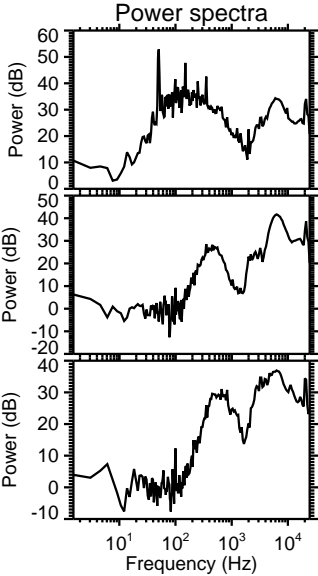
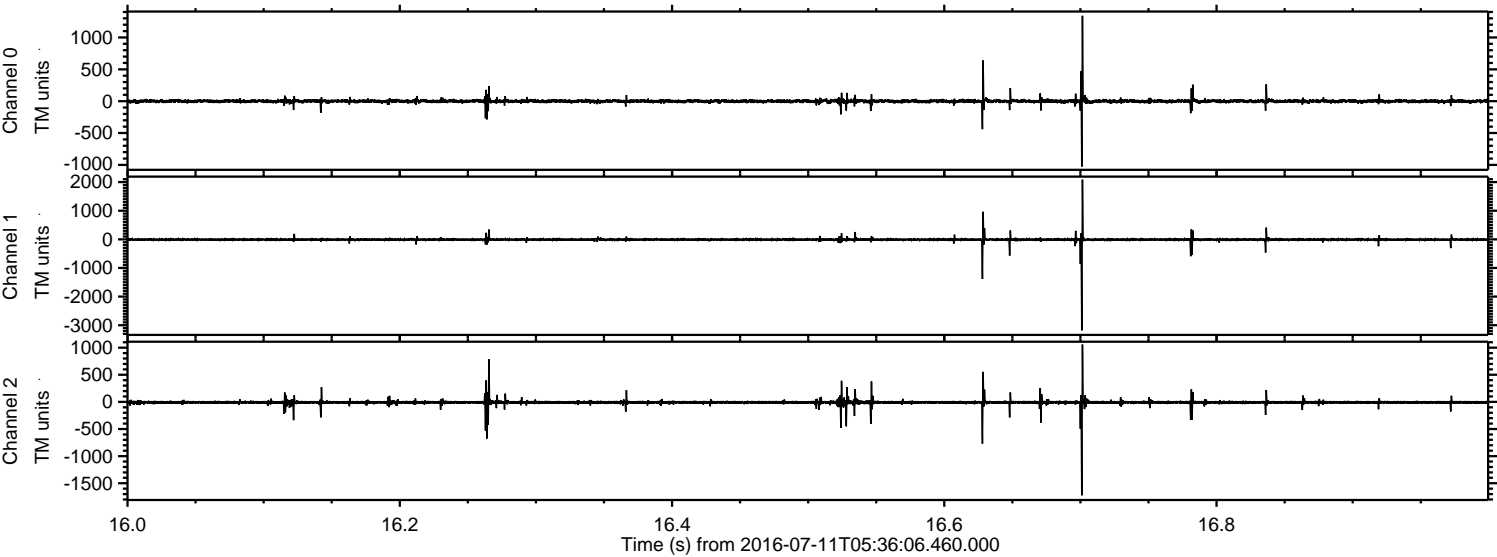


Processed Mon Jul 11 07:43:56 2016 by ELM ver.2012-10-06 from 001__elm20160711_053605__dat00.bin



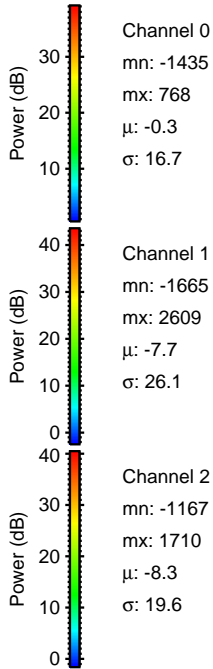
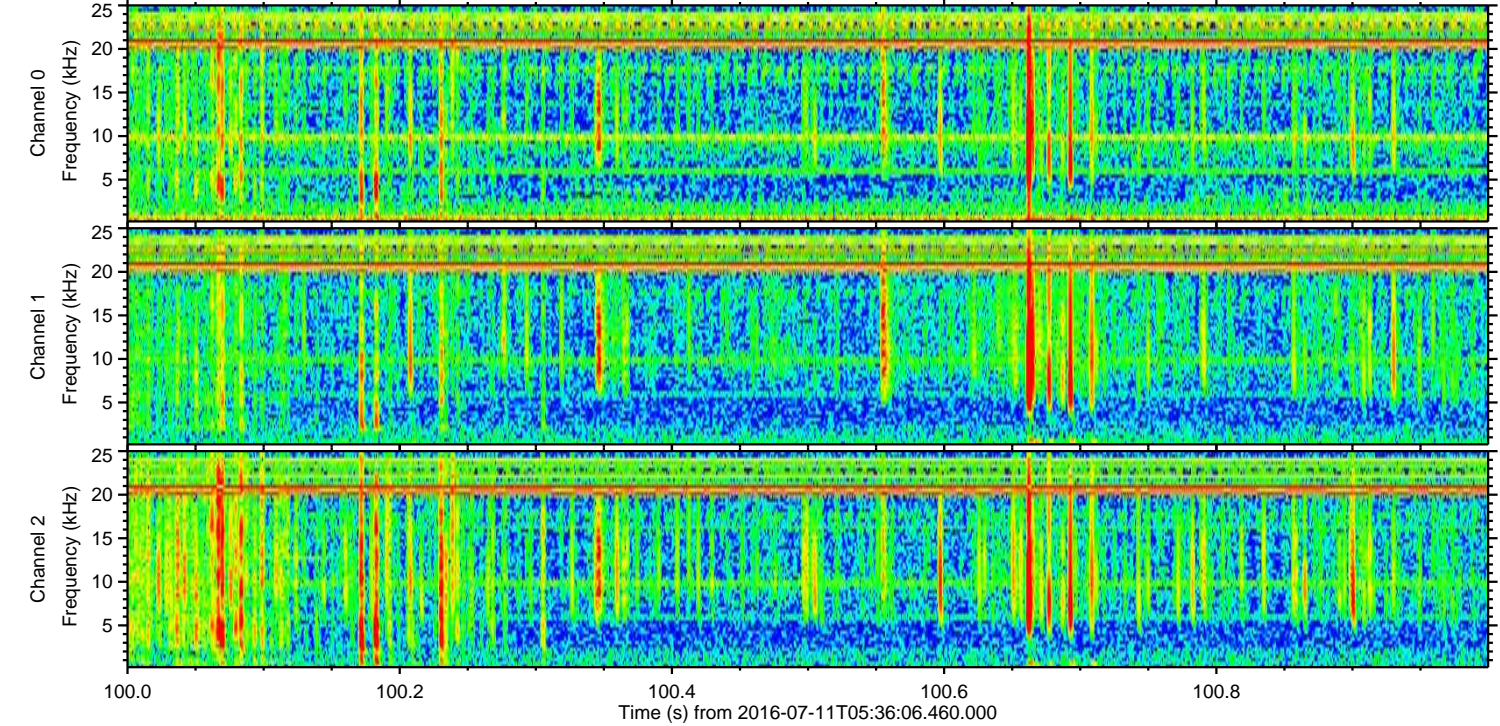
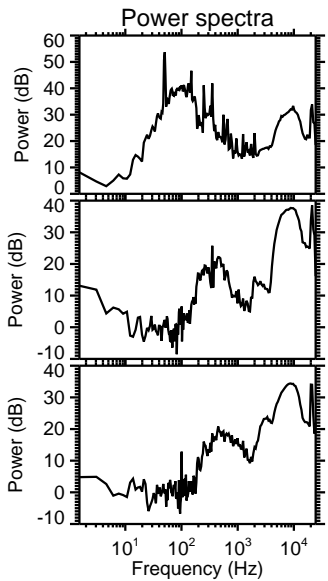
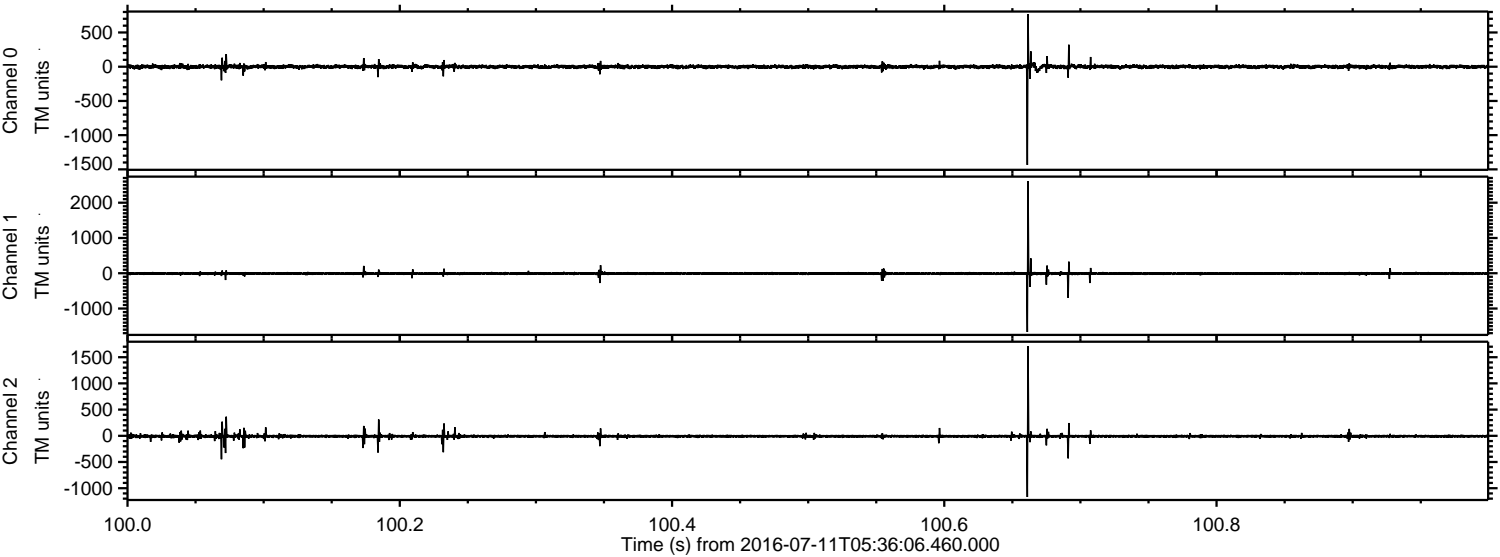
ELMAVAN 3D WAVEFORMS (Measured data sampled at 50 kHz) 51000 packets of 144 samples from 2016-07-11T05:36:06.460.000. Part 17/147

Processed Mon Jul 11 07:43:57 2016 by ELM ver.2012-10-06 from 001__elm20160711_053605__dat00.bin

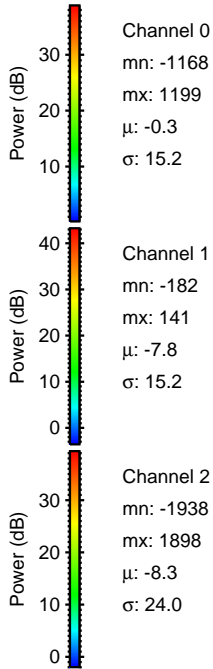
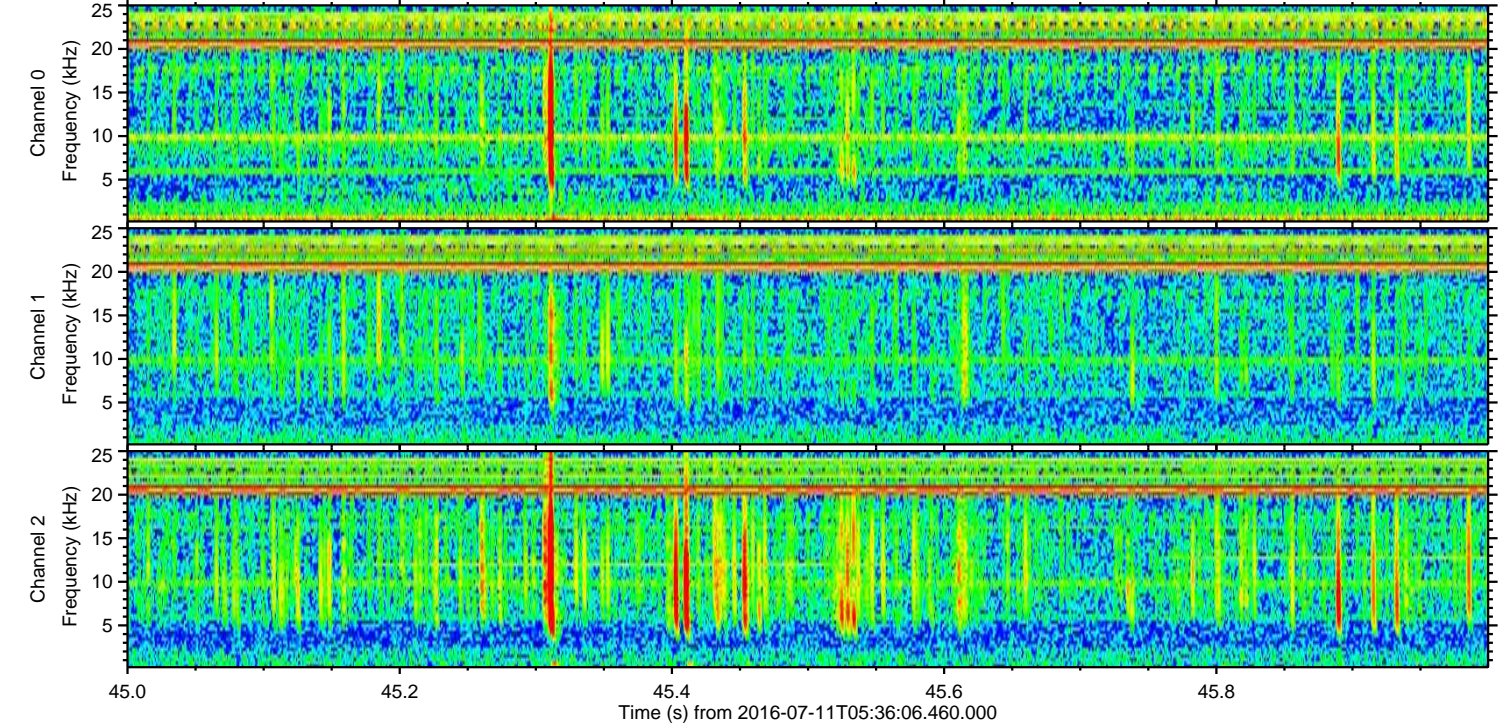
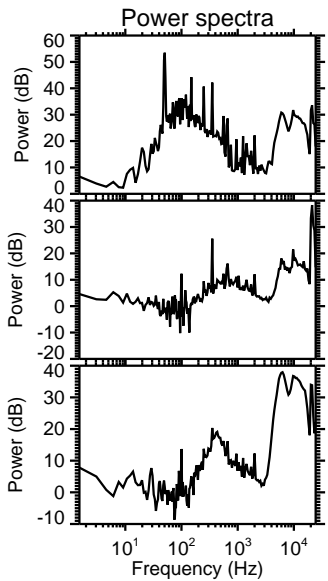
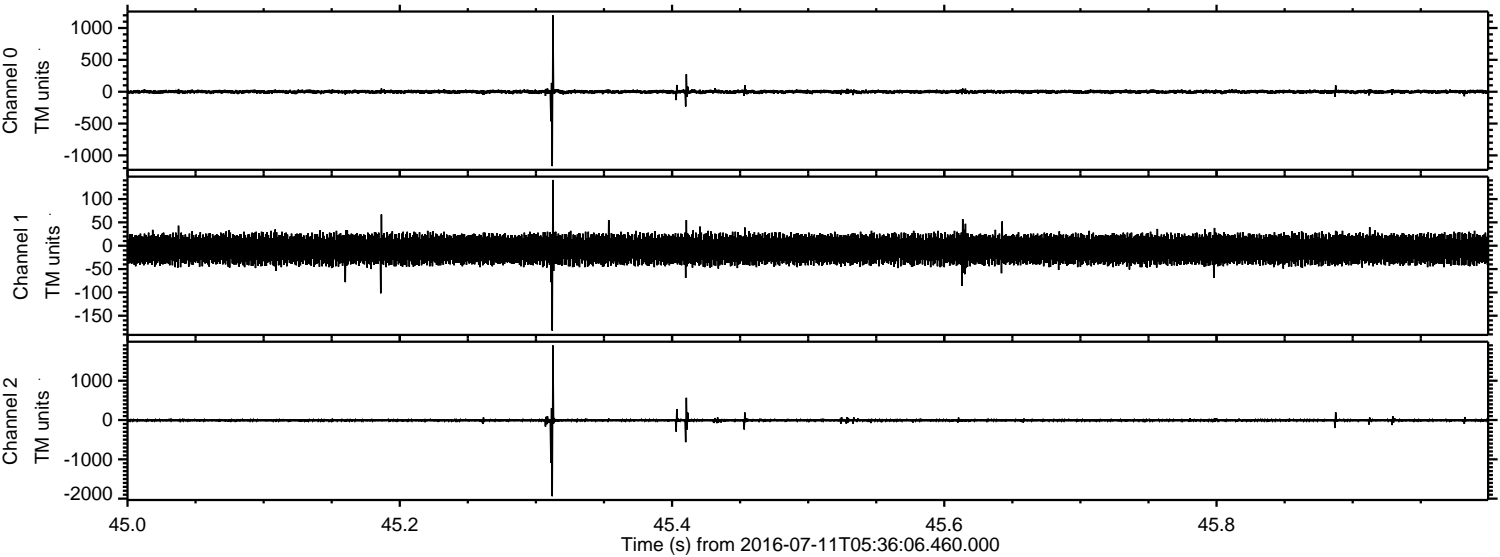


ELMAVAN 3D WAVEFORMS (Measured data sampled at 50 kHz) 51000 packets of 144 samples from 2016-07-11T05:36:06.460.000. Part 101/147

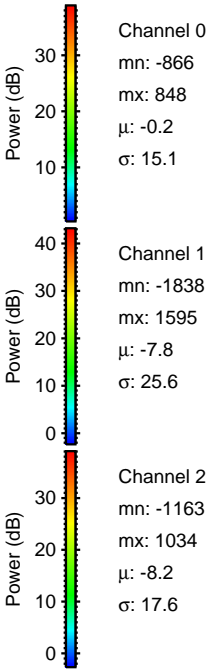
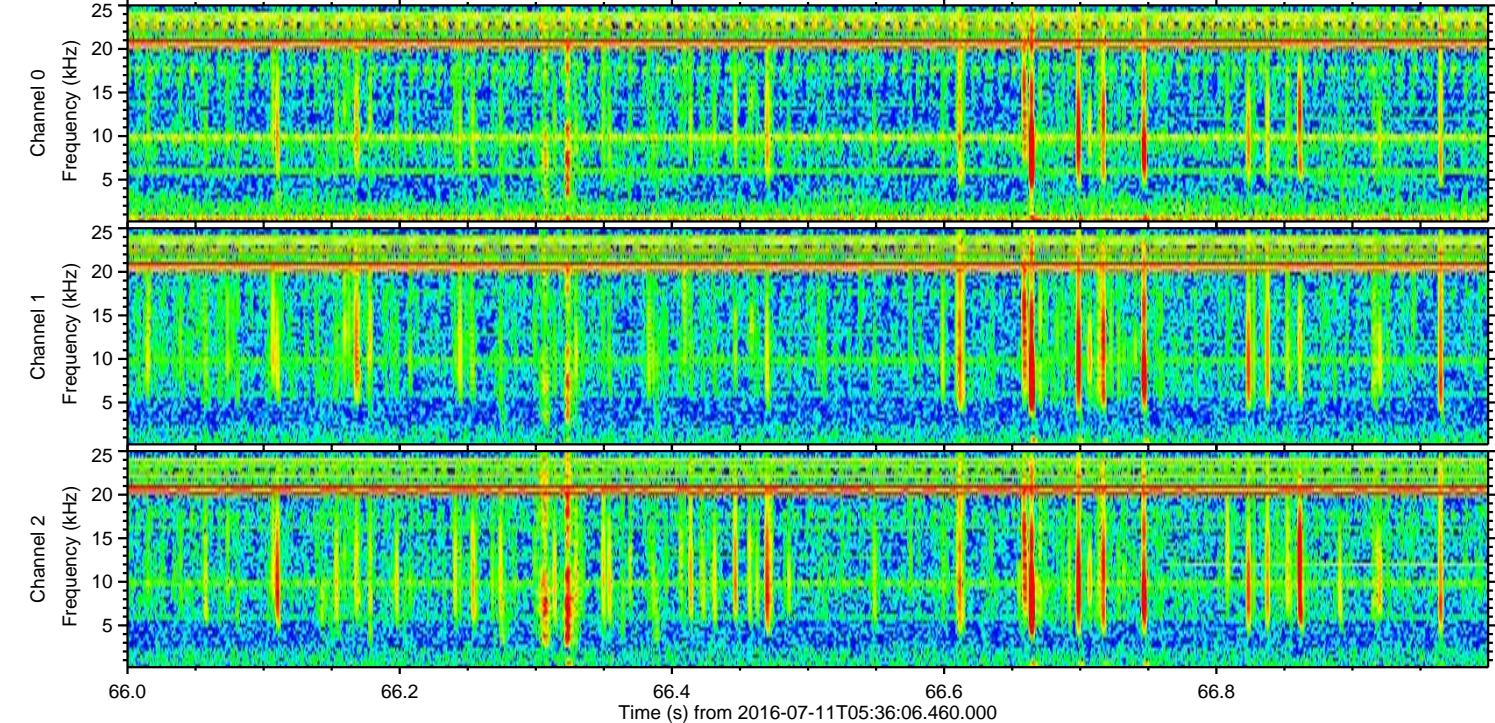
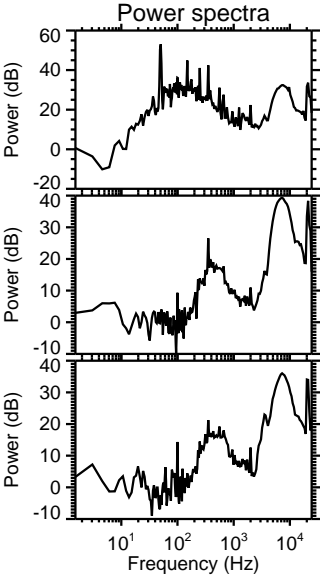
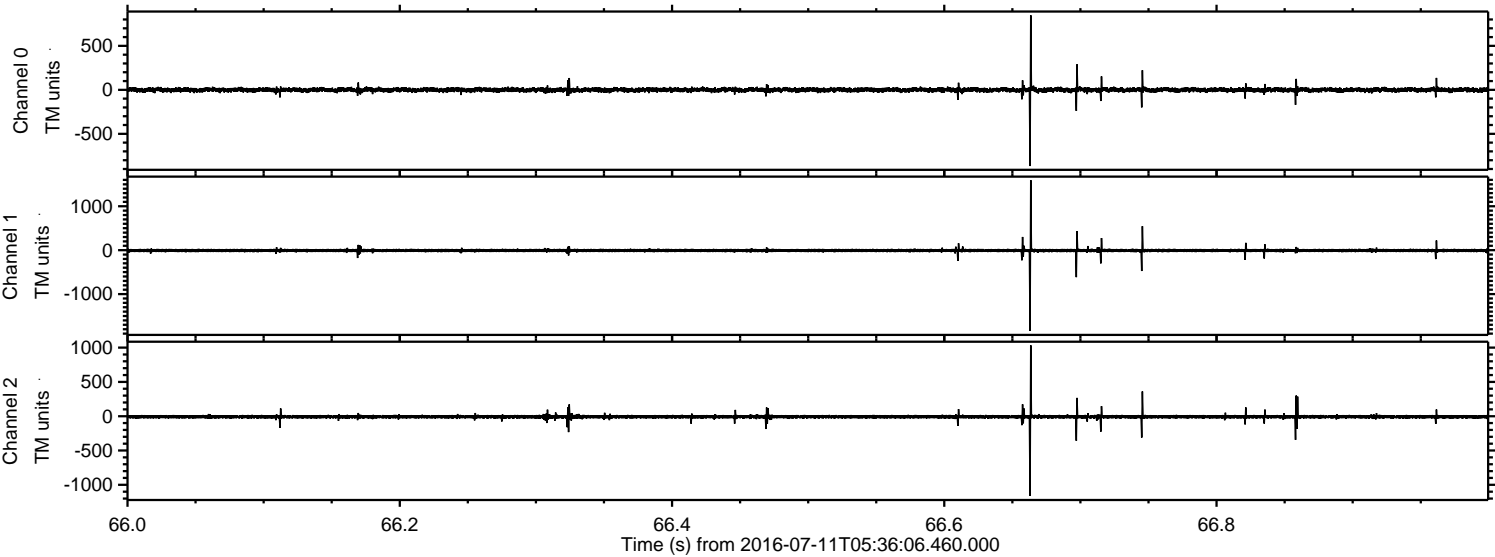
Processed Mon Jul 11 07:43:58 2016 by ELM ver.2012-10-06 from 001__elm20160711_053605__dat00.bin



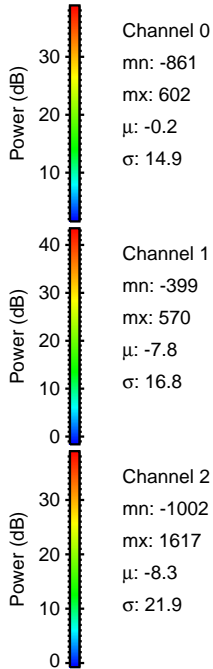
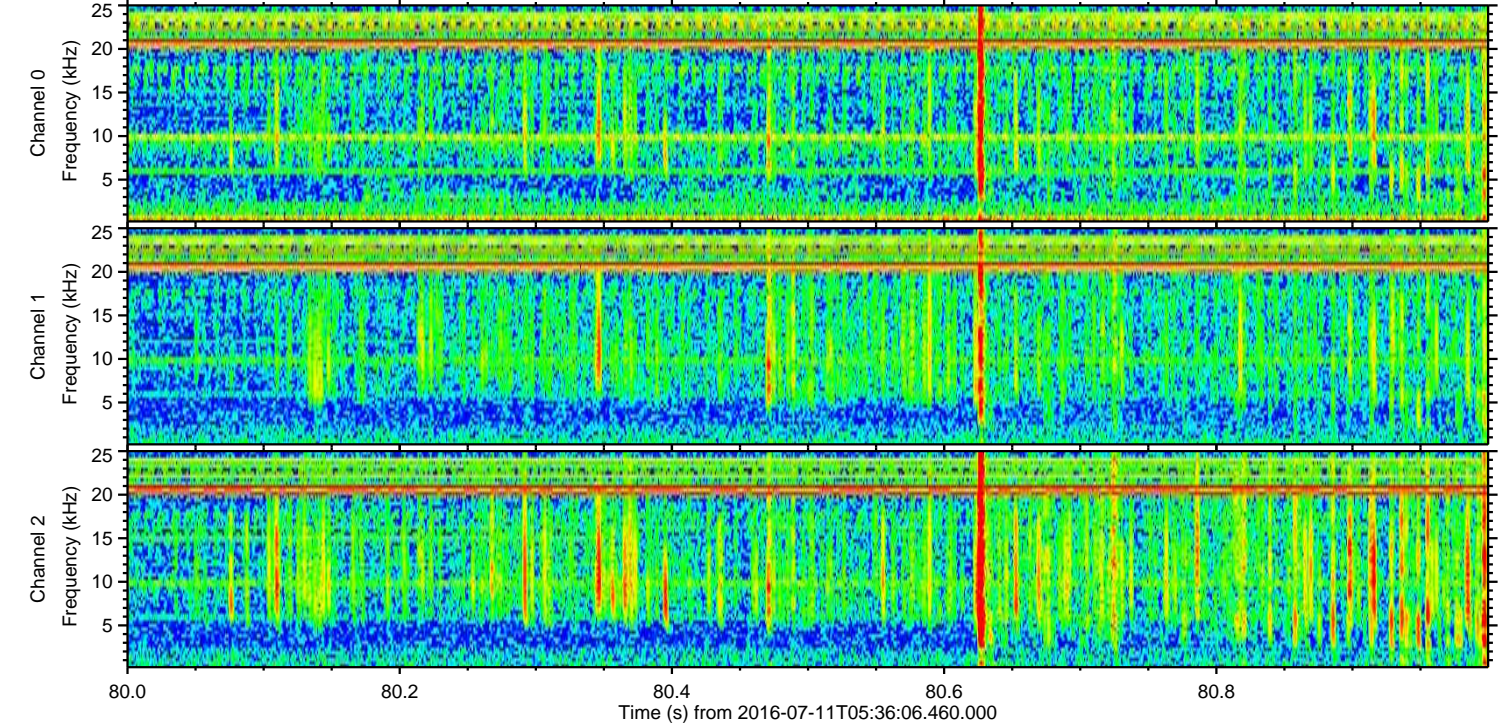
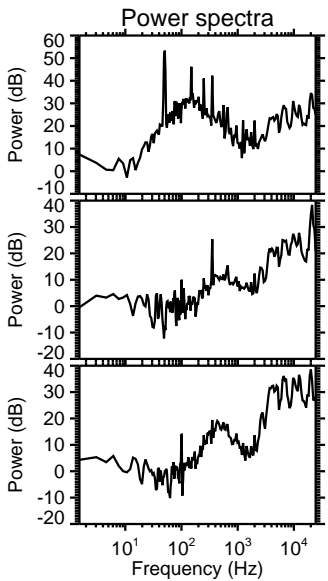
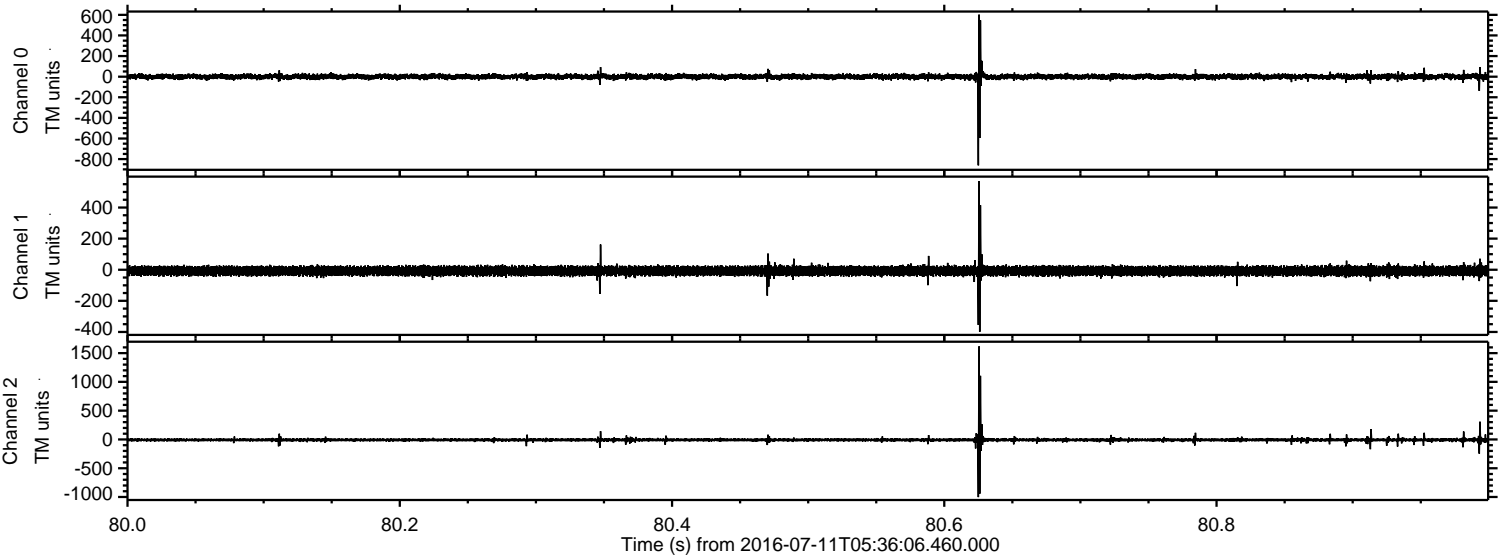
Processed Mon Jul 11 07:43:59 2016 by ELM ver.2012-10-06 from 001__elm20160711_053605__dat00.bin



Processed Mon Jul 11 07:44:00 2016 by ELM ver.2012-10-06 from 001__elm20160711_053605__dat00.bin



Processed Mon Jul 11 07:44:01 2016 by ELM ver.2012-10-06 from 001__elm20160711_053605__dat00.bin



Channel 0
mn: -861
mx: 602
 μ : -0.2
 σ : 14.9

Channel 1
mn: -399
mx: 570
 μ : -7.8
 σ : 16.8

Channel 2
mn: -1002
mx: 1617
 μ : -8.3
 σ : 21.9

