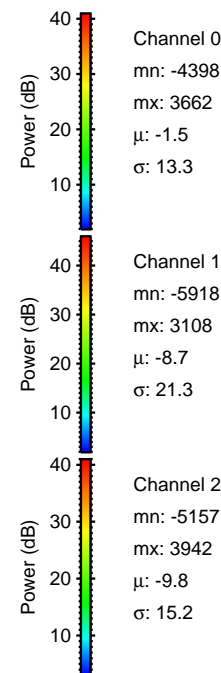
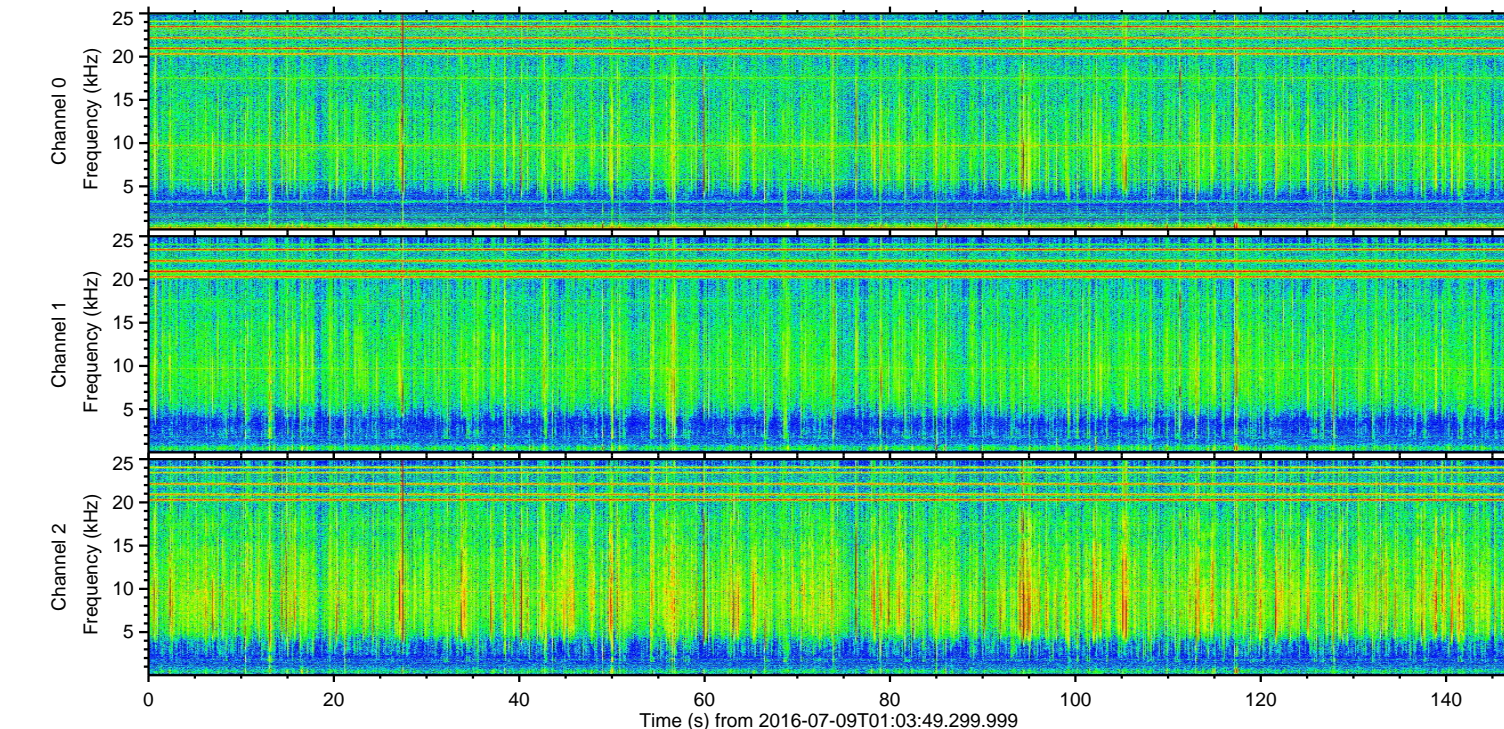
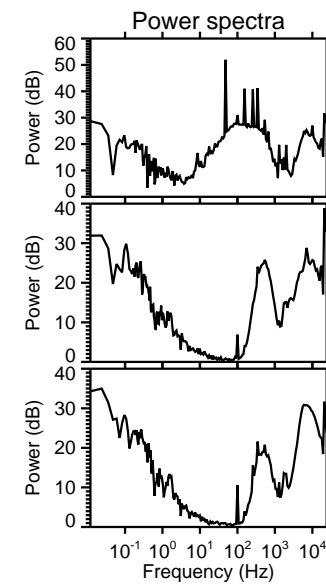
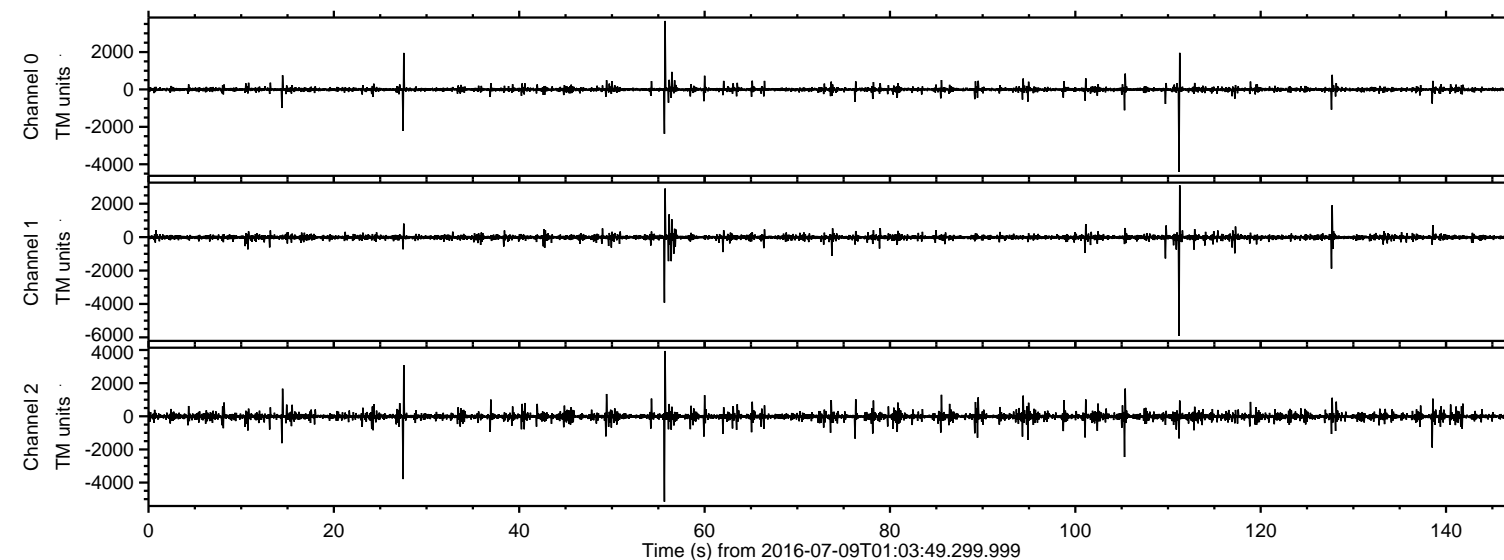


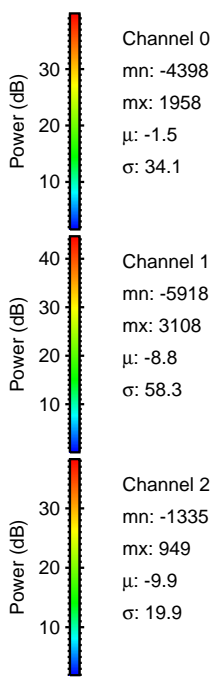
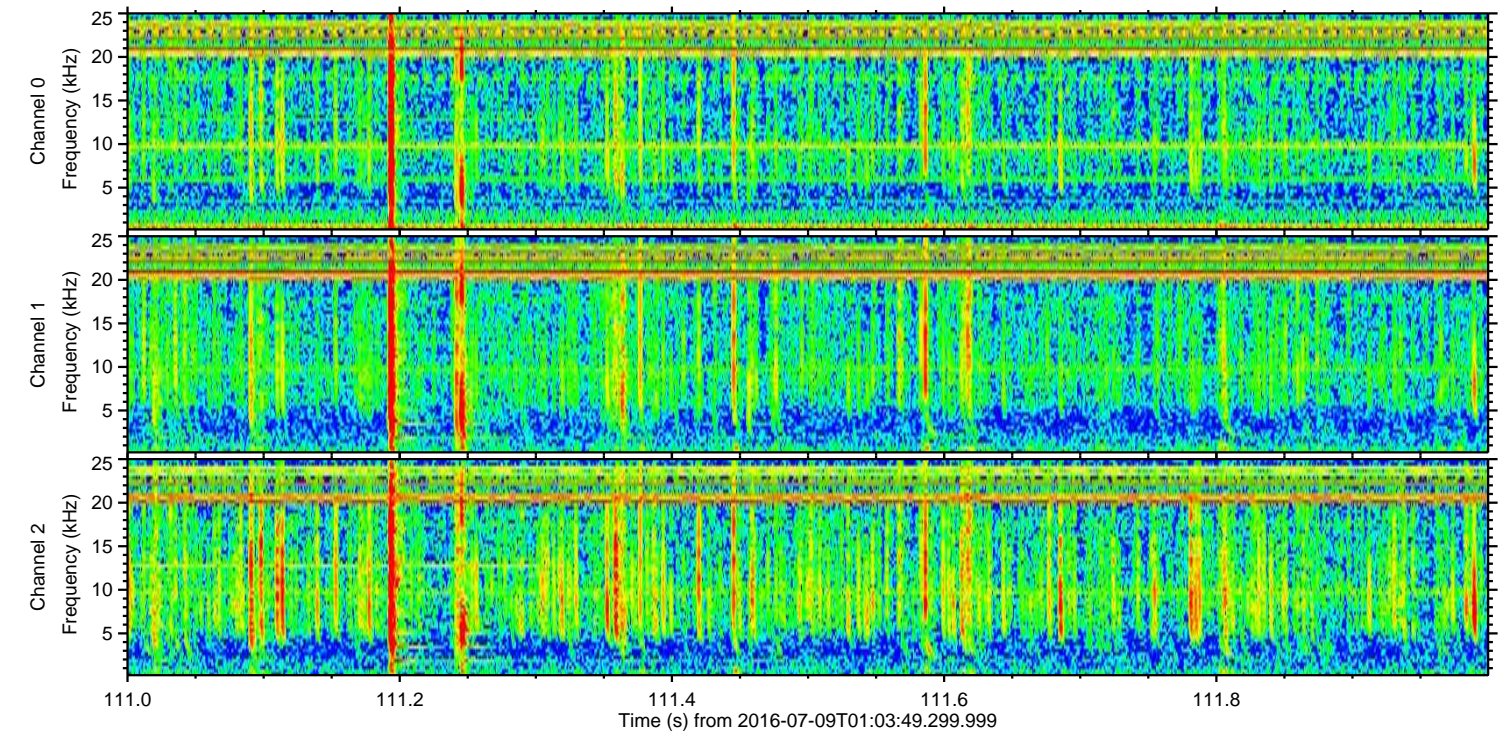
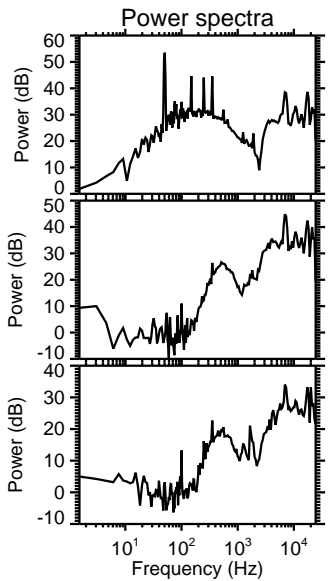
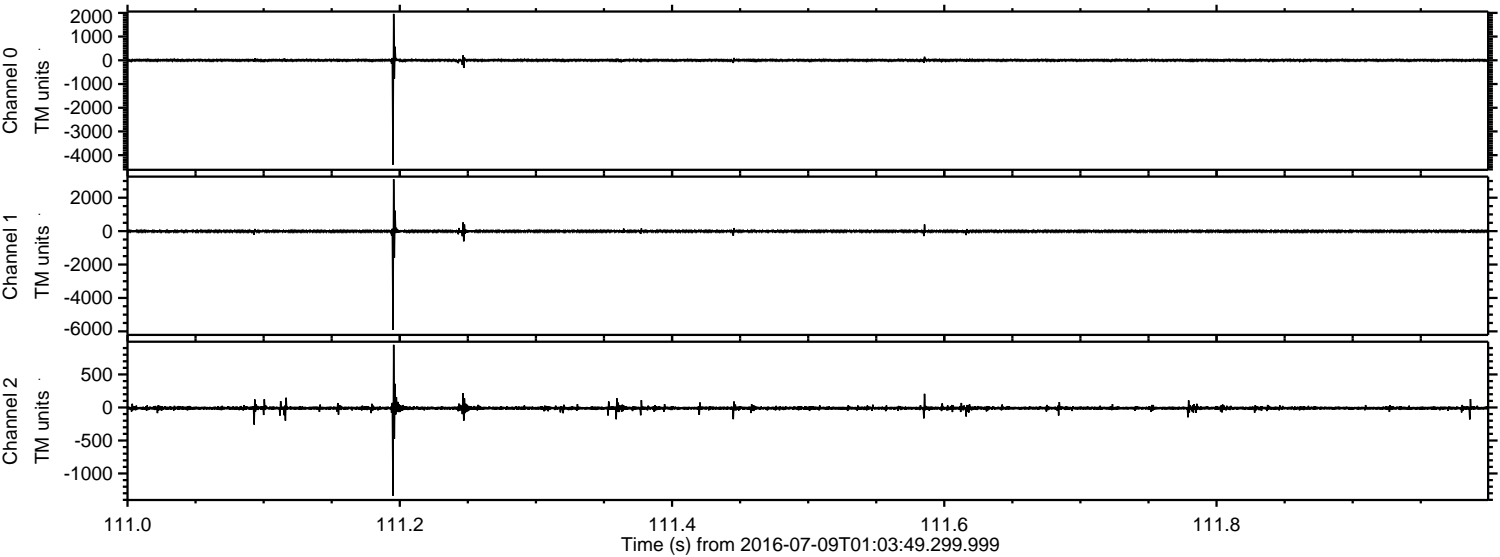
ELMAVAN 3D WAVEFORMS (Measured data sampled at 50 kHz) 51000 packets of 144 samples from 2016-07-09T01:03:49.299.999.

Processed Sat Jul 9 03:11:48 2016 by ELM ver.2012-10-06 from 001__elm20160709_010348__dat00.bin

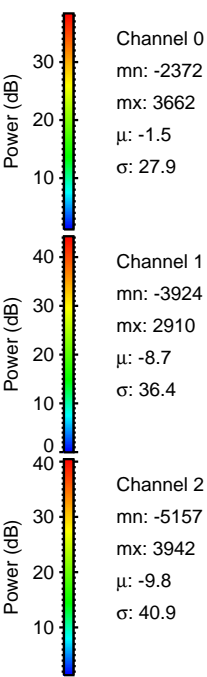
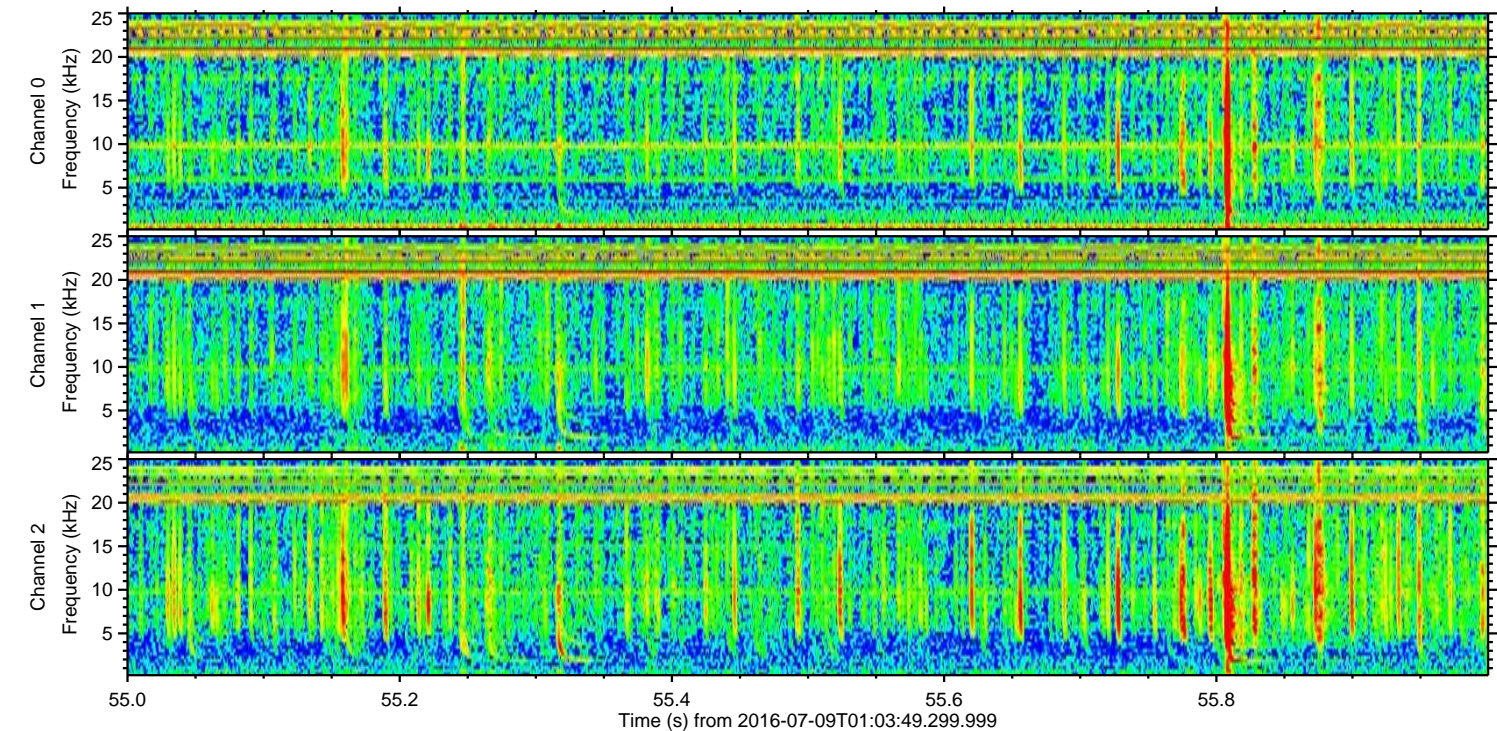
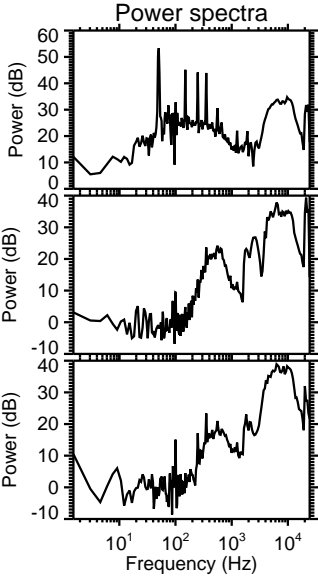
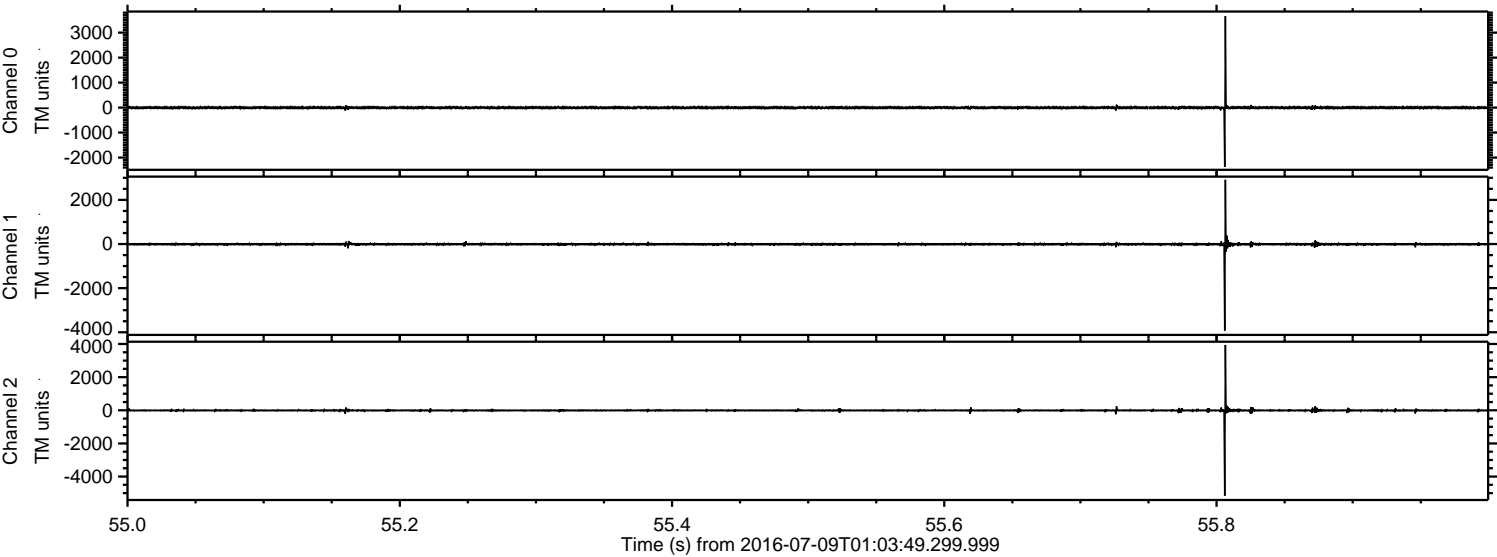


ELMAVAN 3D WAVEFORMS (Measured data sampled at 50 kHz) 51000 packets of 144 samples from 2016-07-09T01:03:49.299.999. Part 112/147

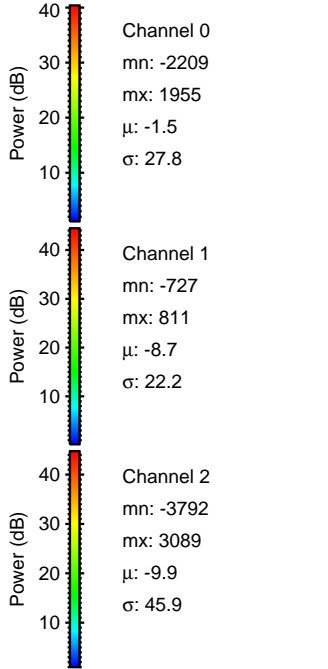
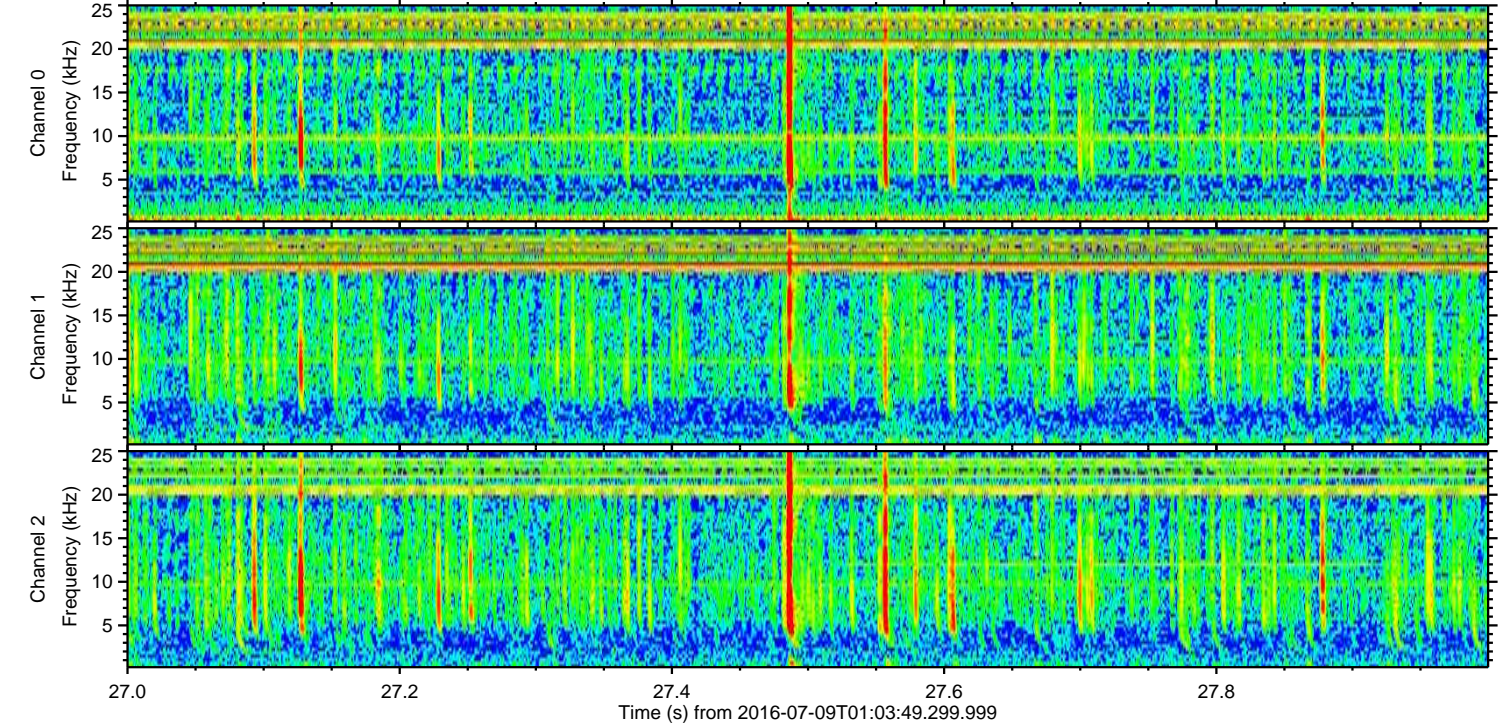
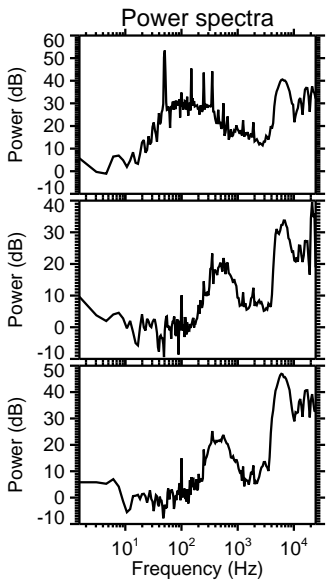
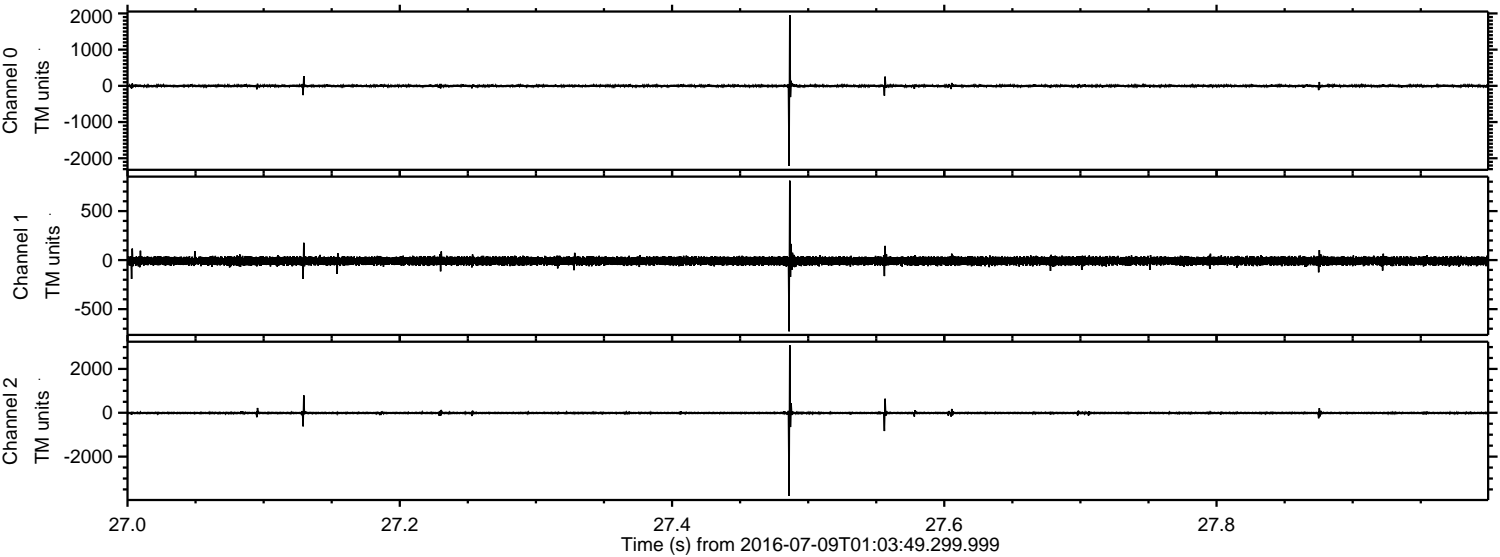
Processed Sat Jul 9 03:12:00 2016 by ELM ver.2012-10-06 from 001__elm20160709_010348__dat00.bin



Processed Sat Jul 9 03:12:01 2016 by ELM ver.2012-10-06 from 001__elm20160709_010348__dat00.bin

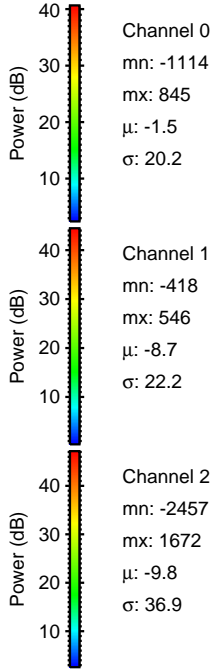
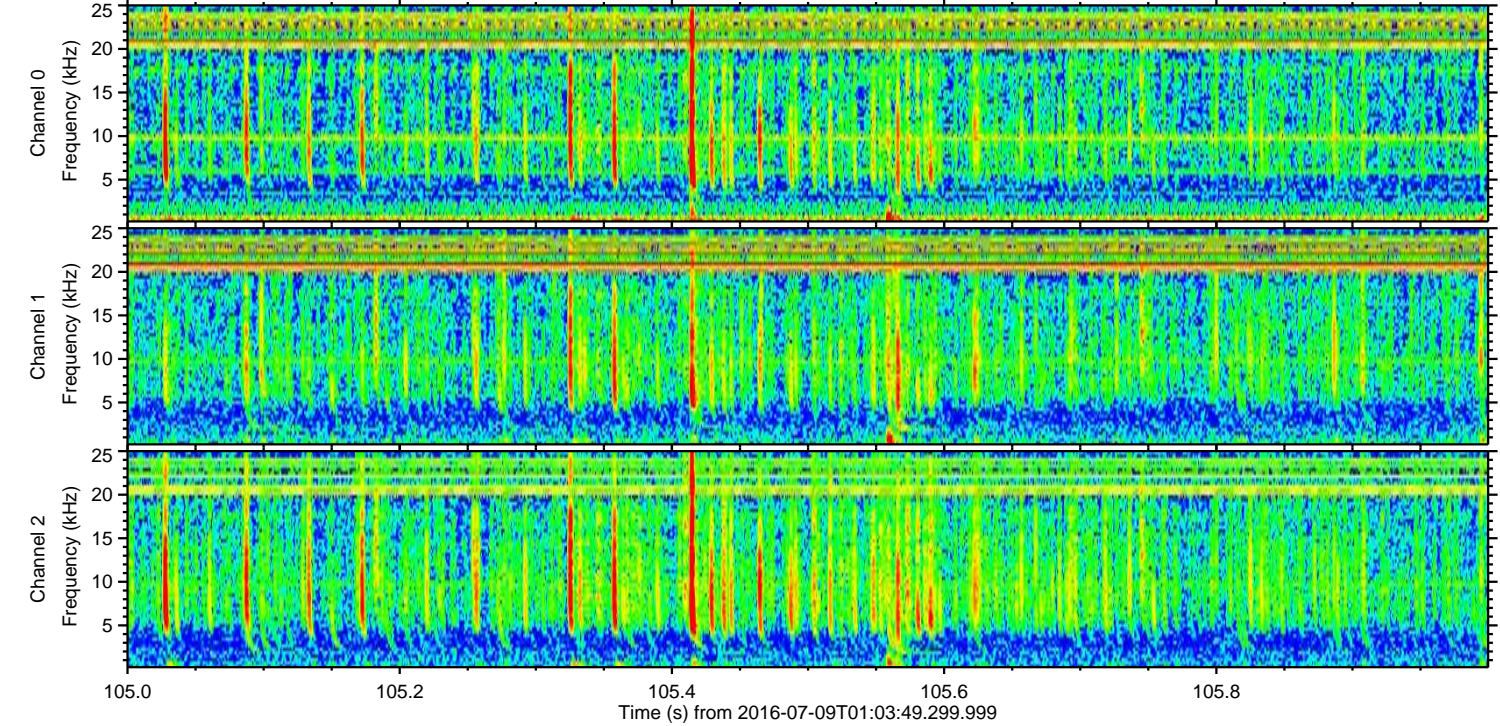
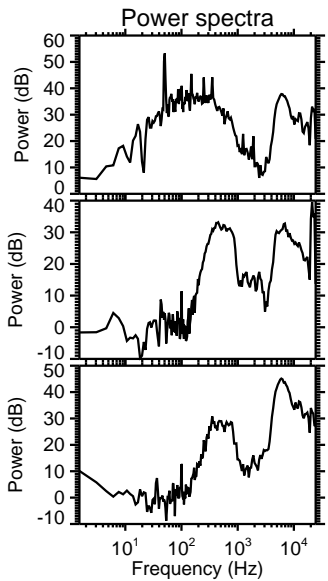
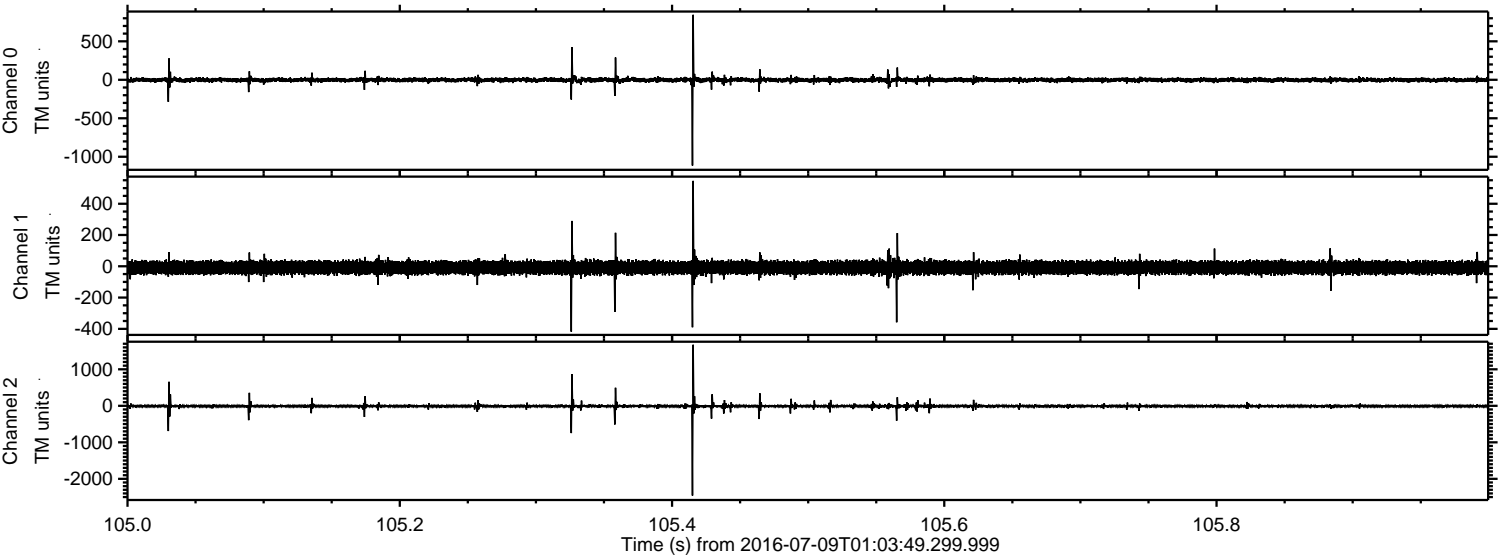


Processed Sat Jul 9 03:12:01 2016 by ELM ver.2012-10-06 from 001__elm20160709_010348__dat00.bin



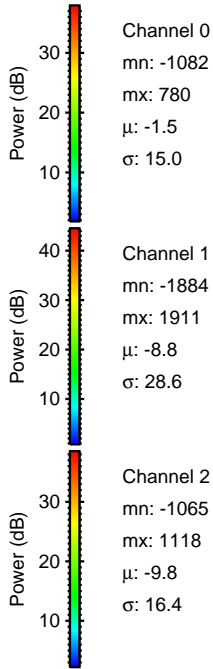
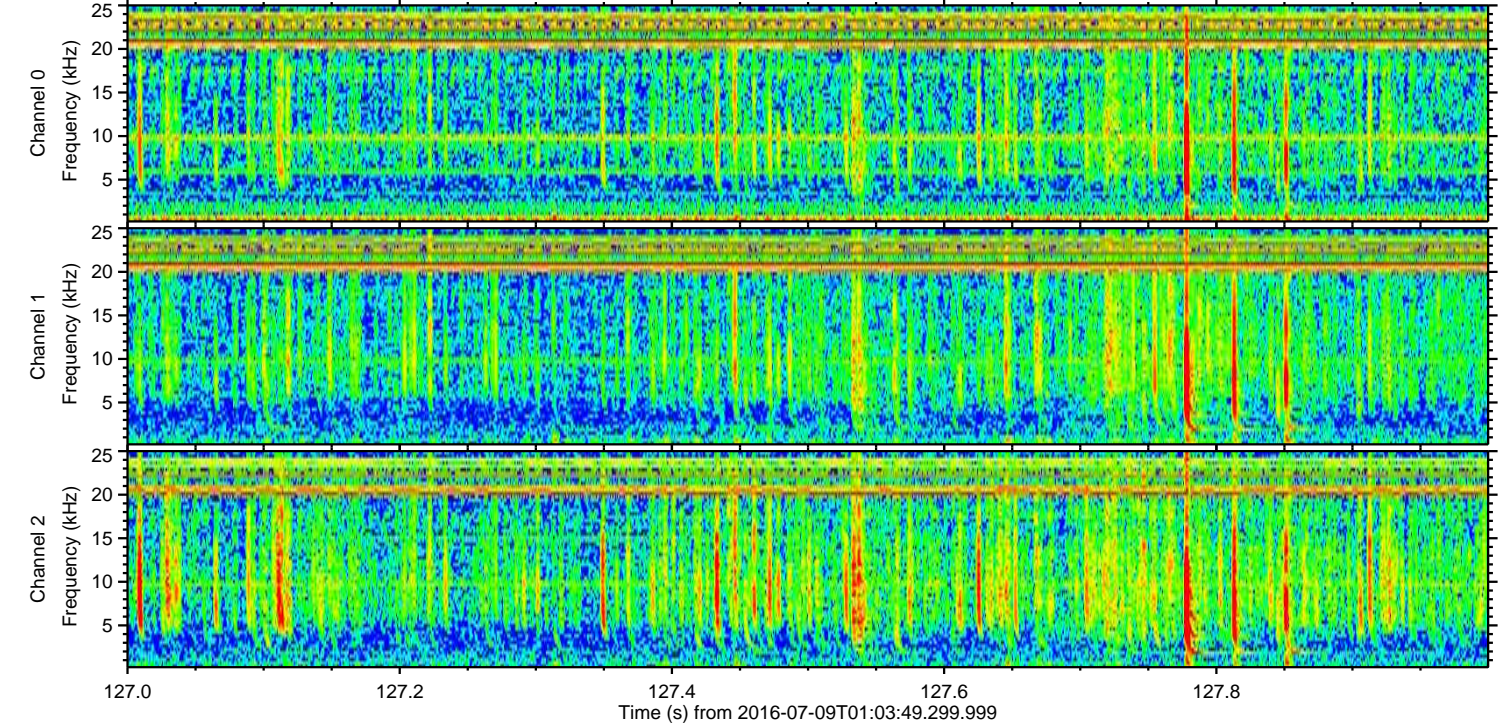
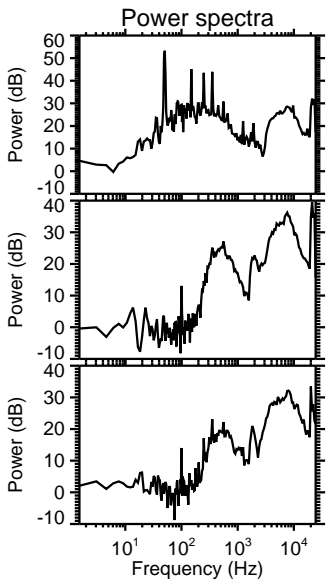
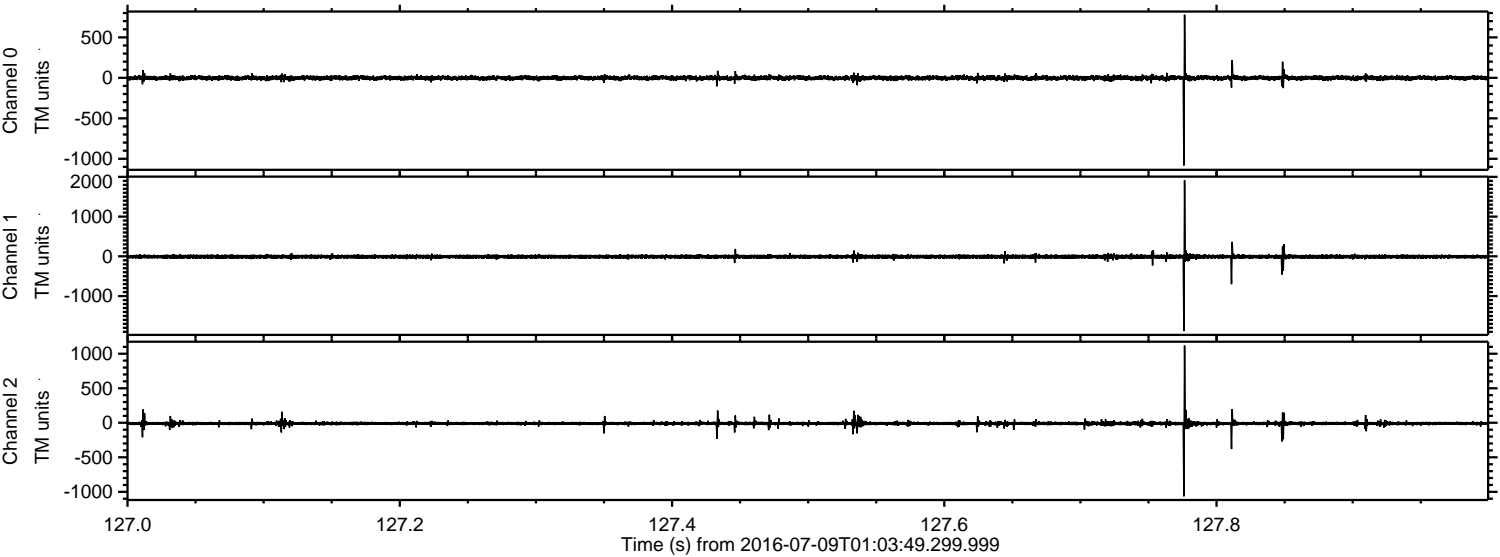
ELMAVAN 3D WAVEFORMS (Measured data sampled at 50 kHz) 51000 packets of 144 samples from 2016-07-09T01:03:49.299.999. Part 106/147

Processed Sat Jul 9 03:12:02 2016 by ELM ver.2012-10-06 from 001__elm20160709_010348__dat00.bin



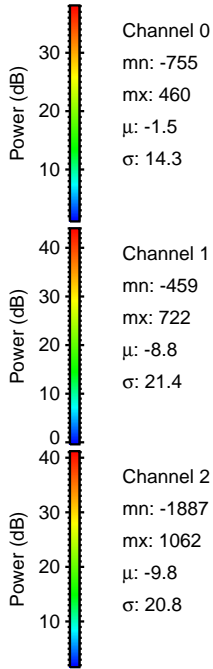
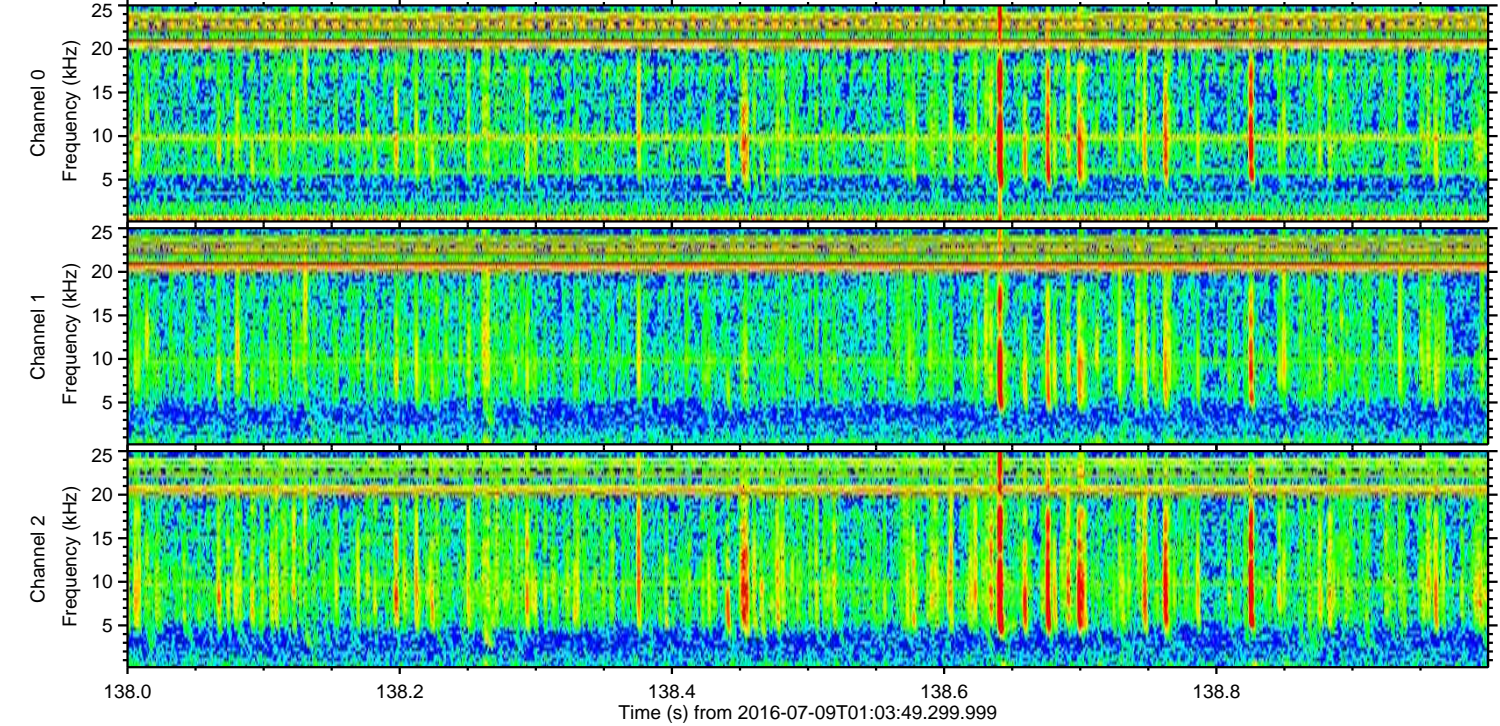
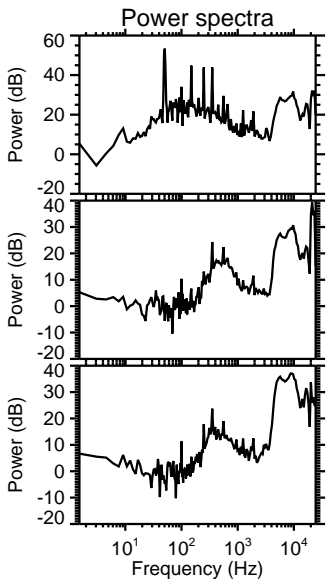
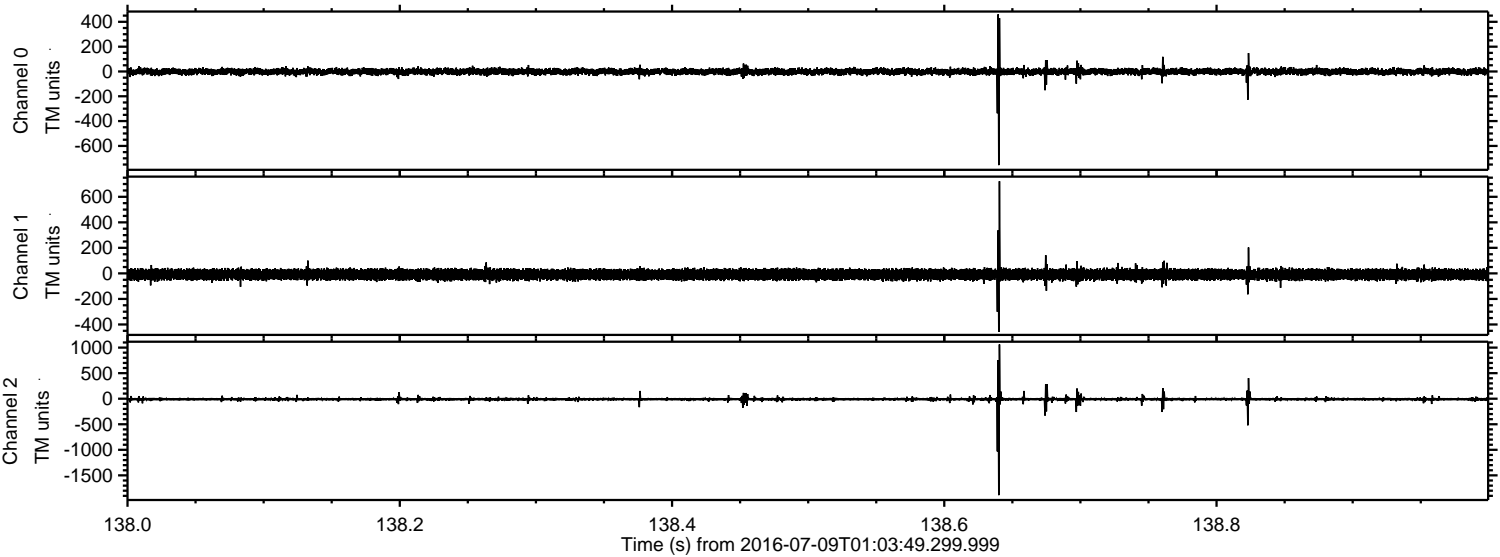
ELMAVAN 3D WAVEFORMS (Measured data sampled at 50 kHz) 51000 packets of 144 samples from 2016-07-09T01:03:49.299.999. Part 128/147

Processed Sat Jul 9 03:12:03 2016 by ELM ver.2012-10-06 from 001__elm20160709_010348__dat00.bin



ELMAVAN 3D WAVEFORMS (Measured data sampled at 50 kHz) 51000 packets of 144 samples from 2016-07-09T01:03:49.299.999. Part 139/147

Processed Sat Jul 9 03:12:04 2016 by ELM ver.2012-10-06 from 001__elm20160709_010348__dat00.bin

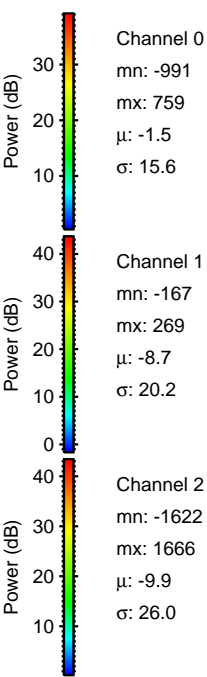
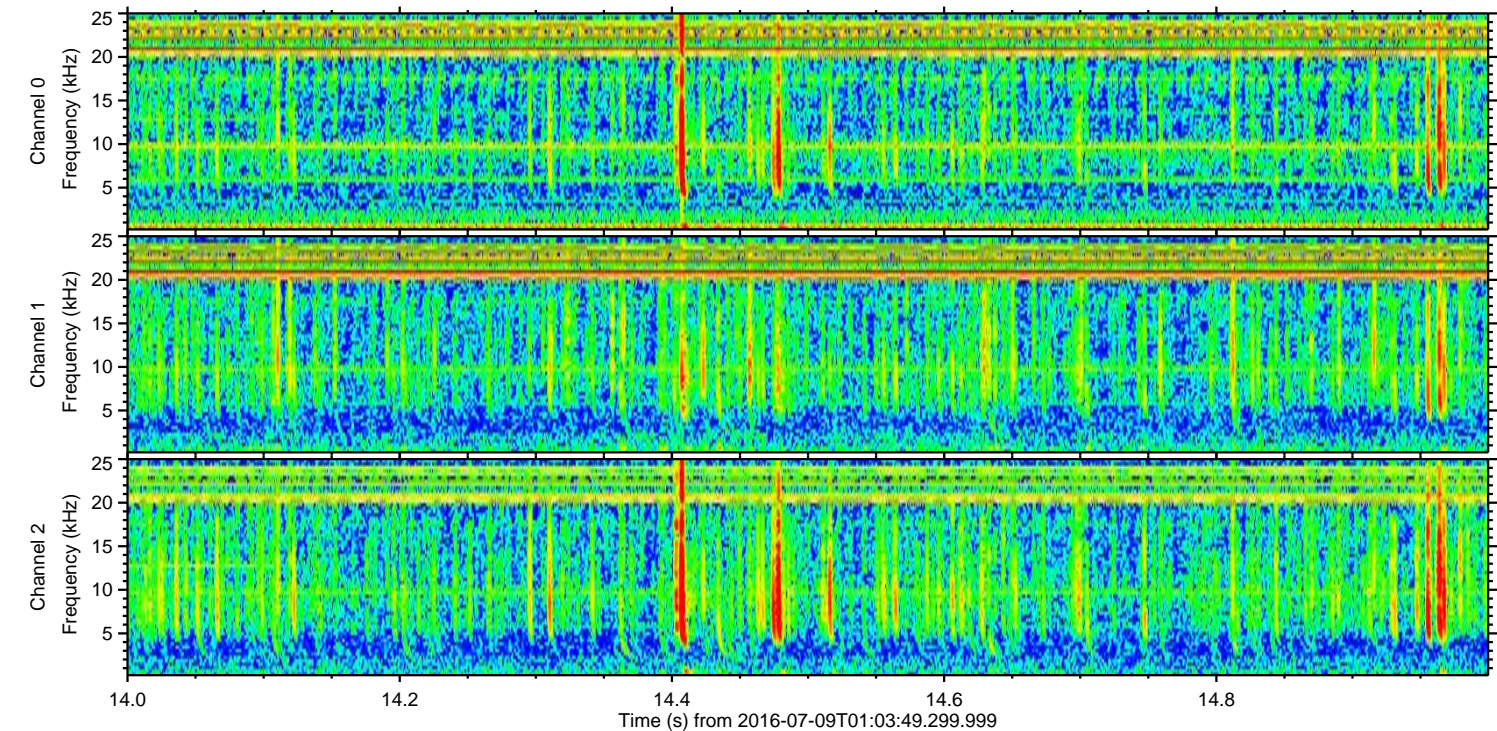
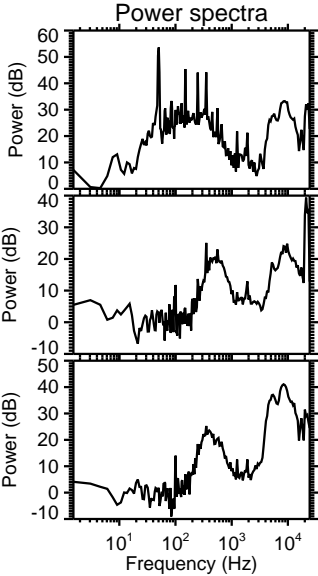
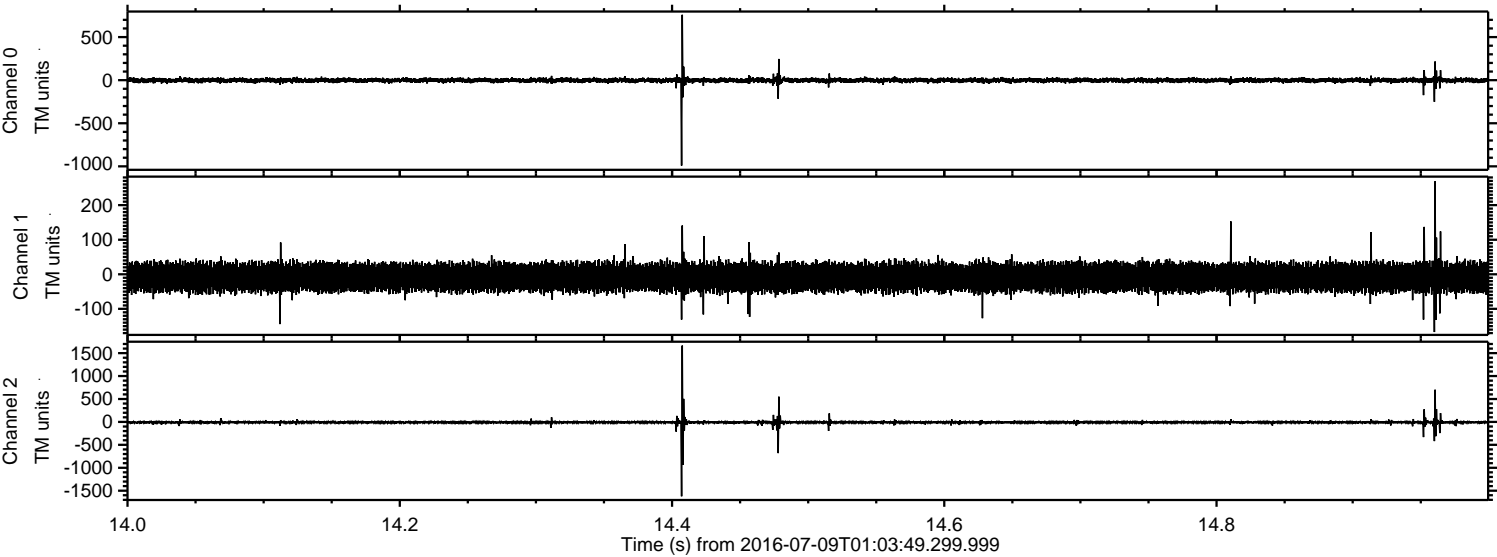


Channel 0
mn: -755
mx: 460
 μ : -1.5
 σ : 14.3

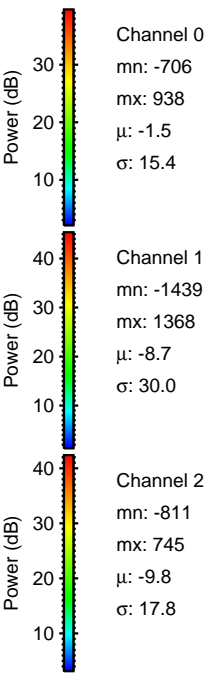
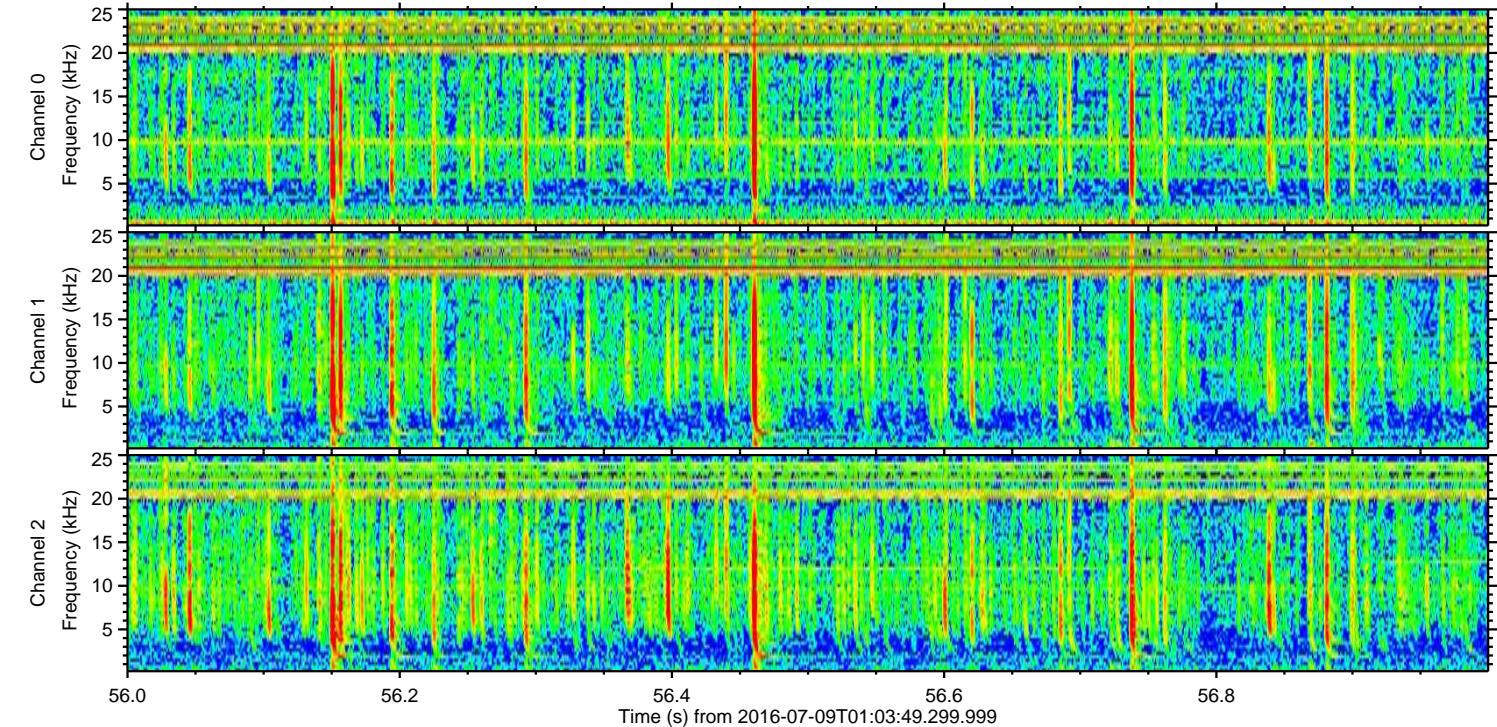
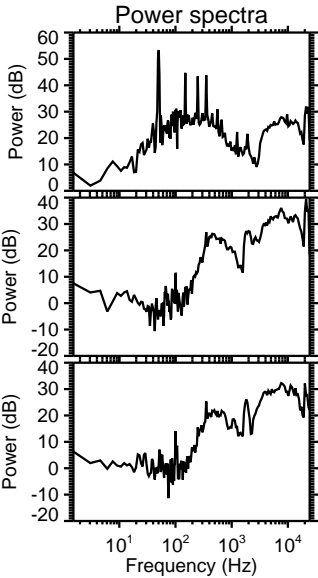
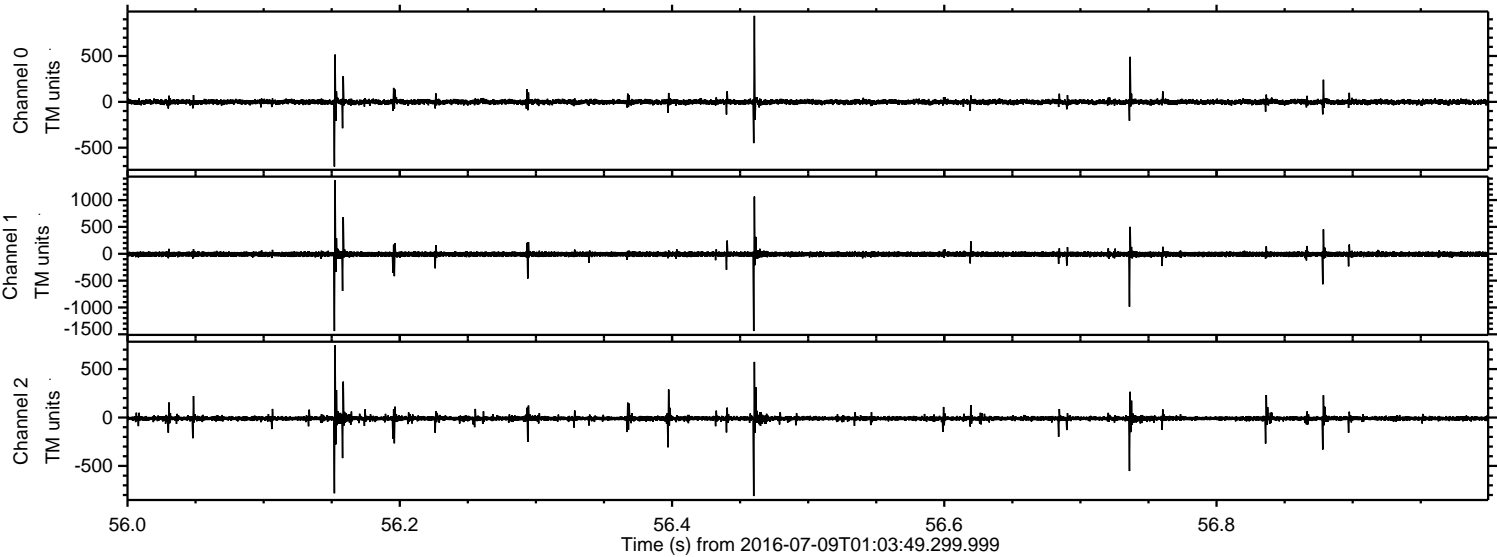
Channel 1
mn: -459
mx: 722
 μ : -8.8
 σ : 21.4

Channel 2
mn: -1887
mx: 1062
 μ : -9.8
 σ : 20.8

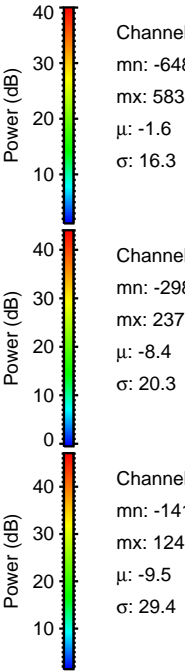
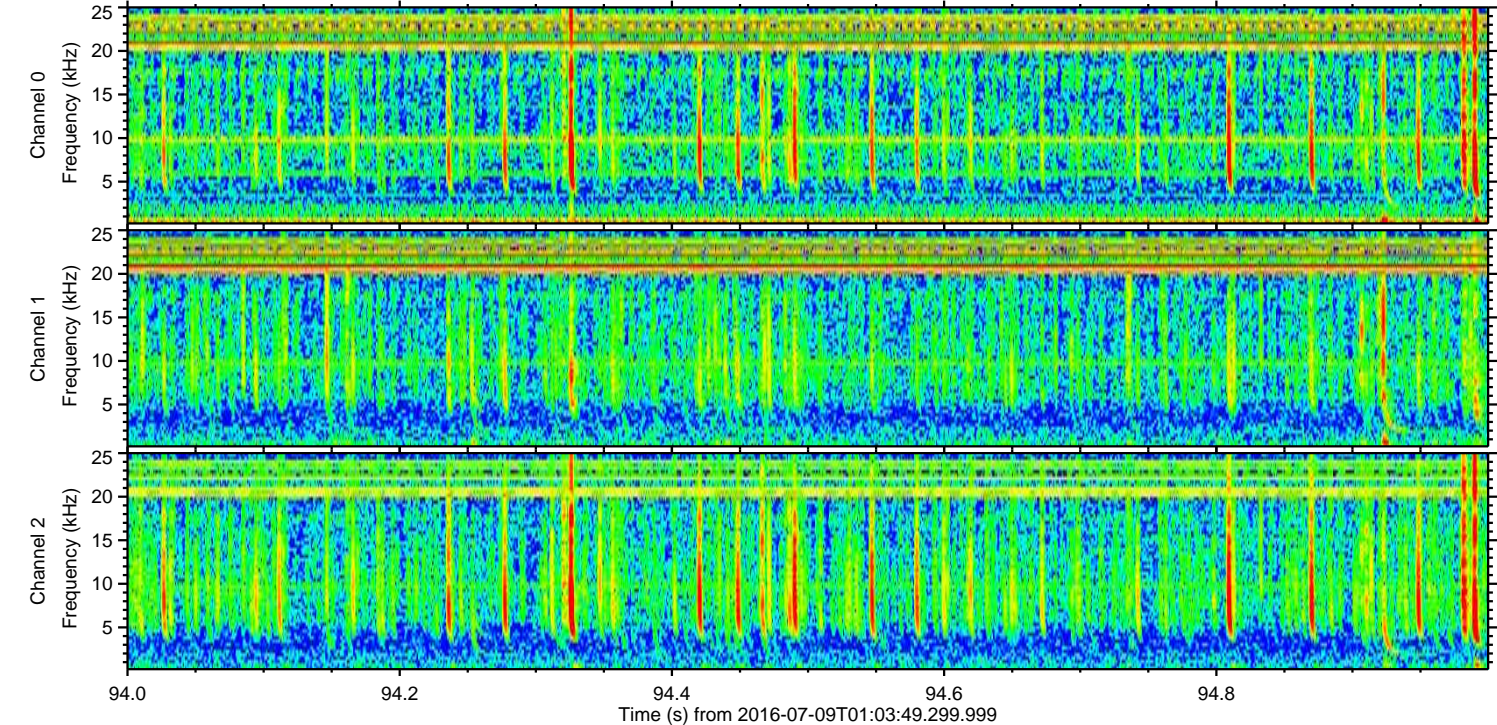
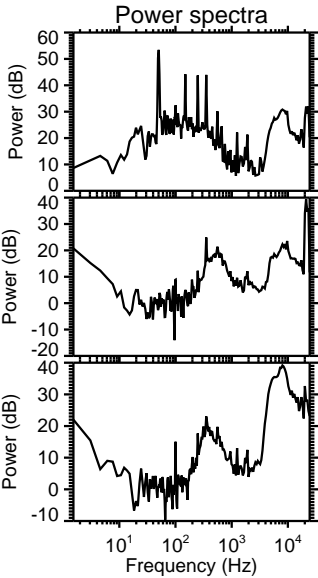
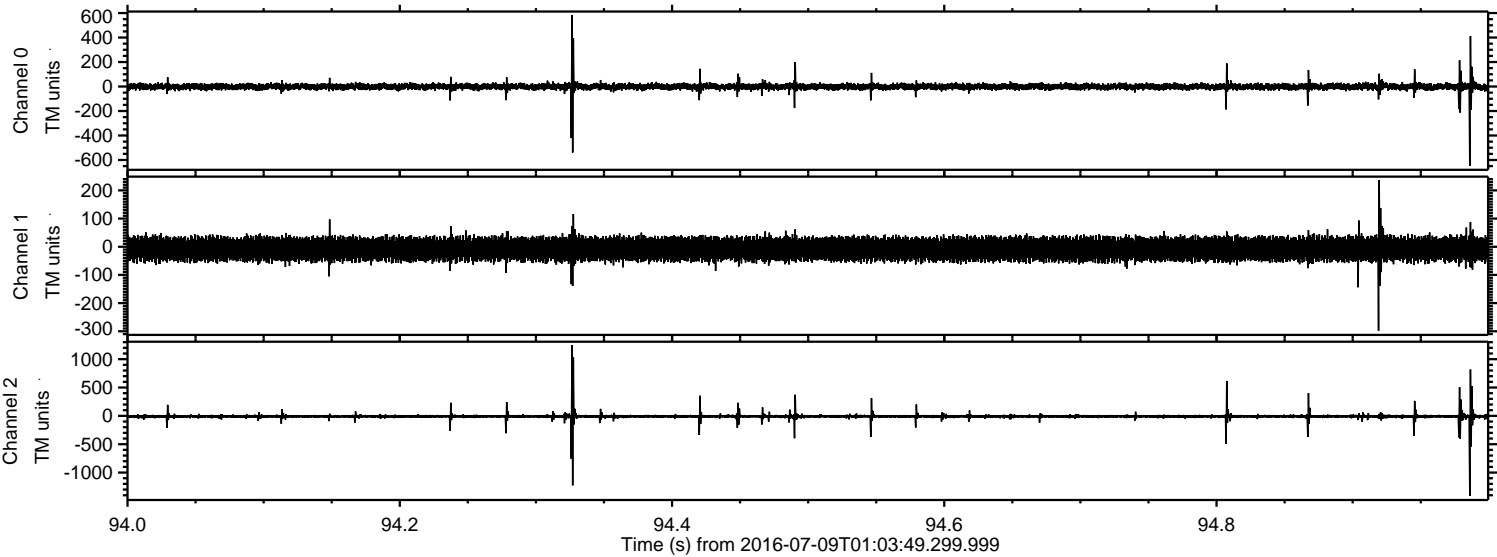
Processed Sat Jul 9 03:12:05 2016 by ELM ver.2012-10-06 from 001__elm20160709_010348__dat00.bin



Processed Sat Jul 9 03:12:06 2016 by ELM ver.2012-10-06 from 001__elm20160709_010348__dat00.bin



Processed Sat Jul 9 03:12:07 2016 by ELM ver.2012-10-06 from 001__elm20160709_010348__dat00.bin



Processed Sat Jul 9 03:12:08 2016 by ELM ver.2012-10-06 from 001__elm20160709_010348__dat00.bin

