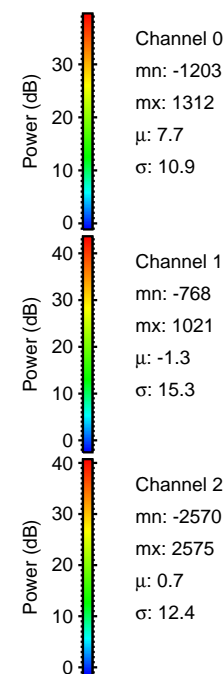
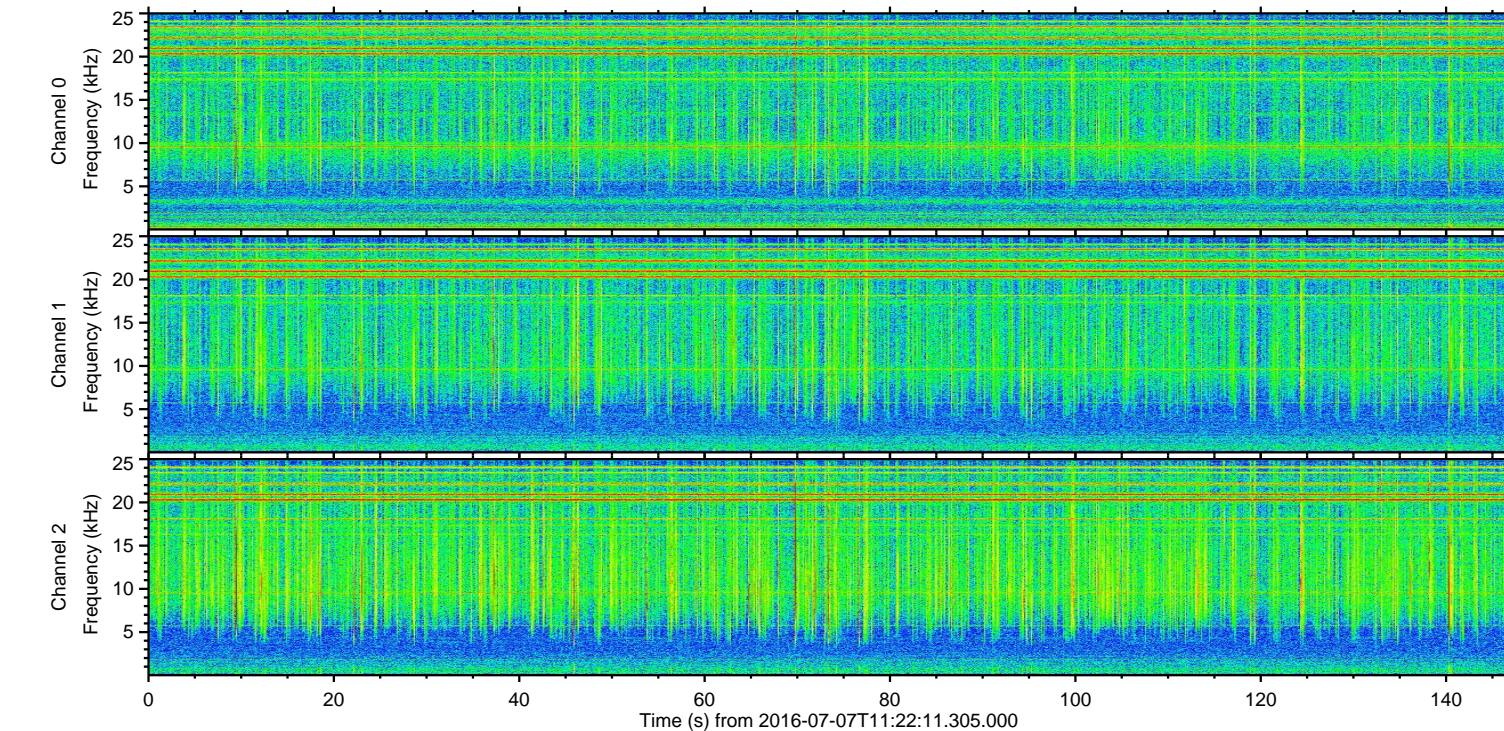
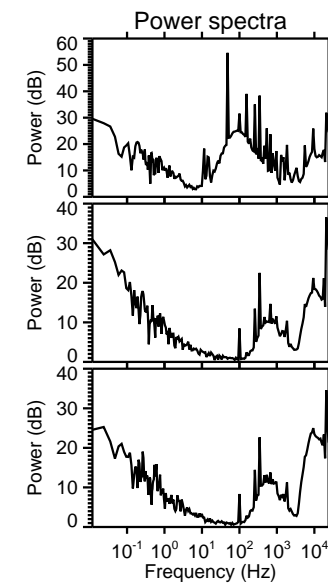
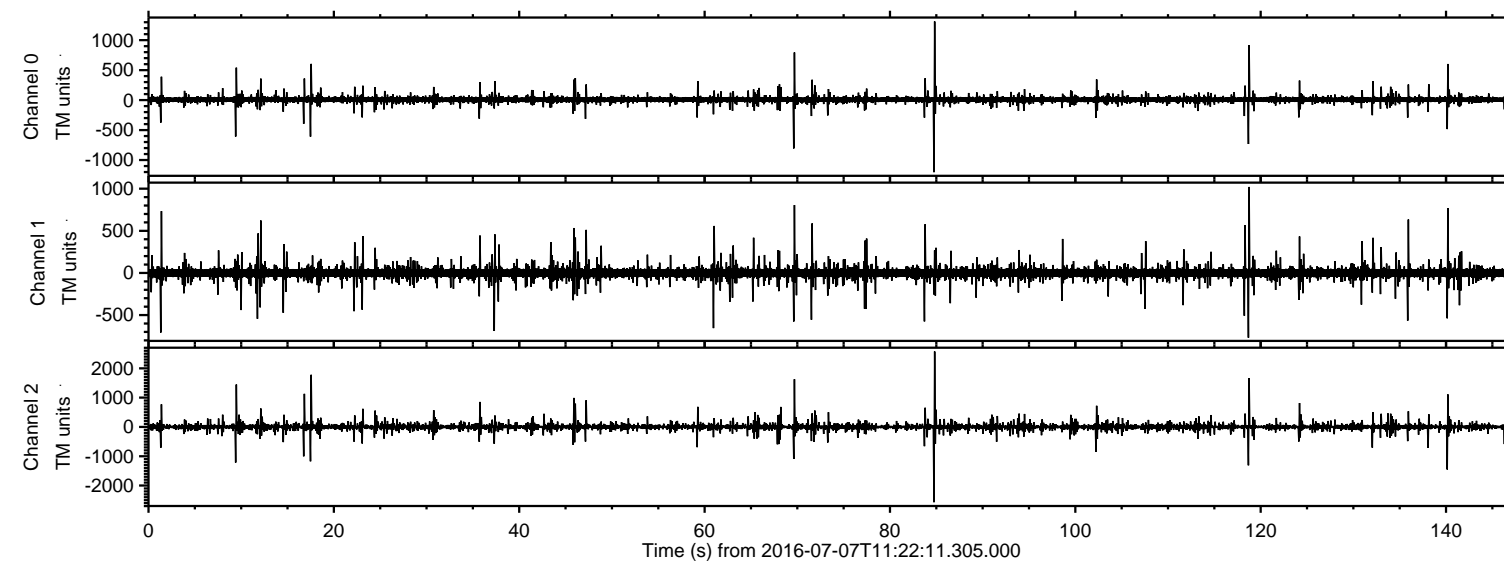


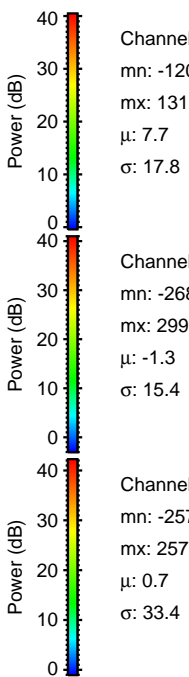
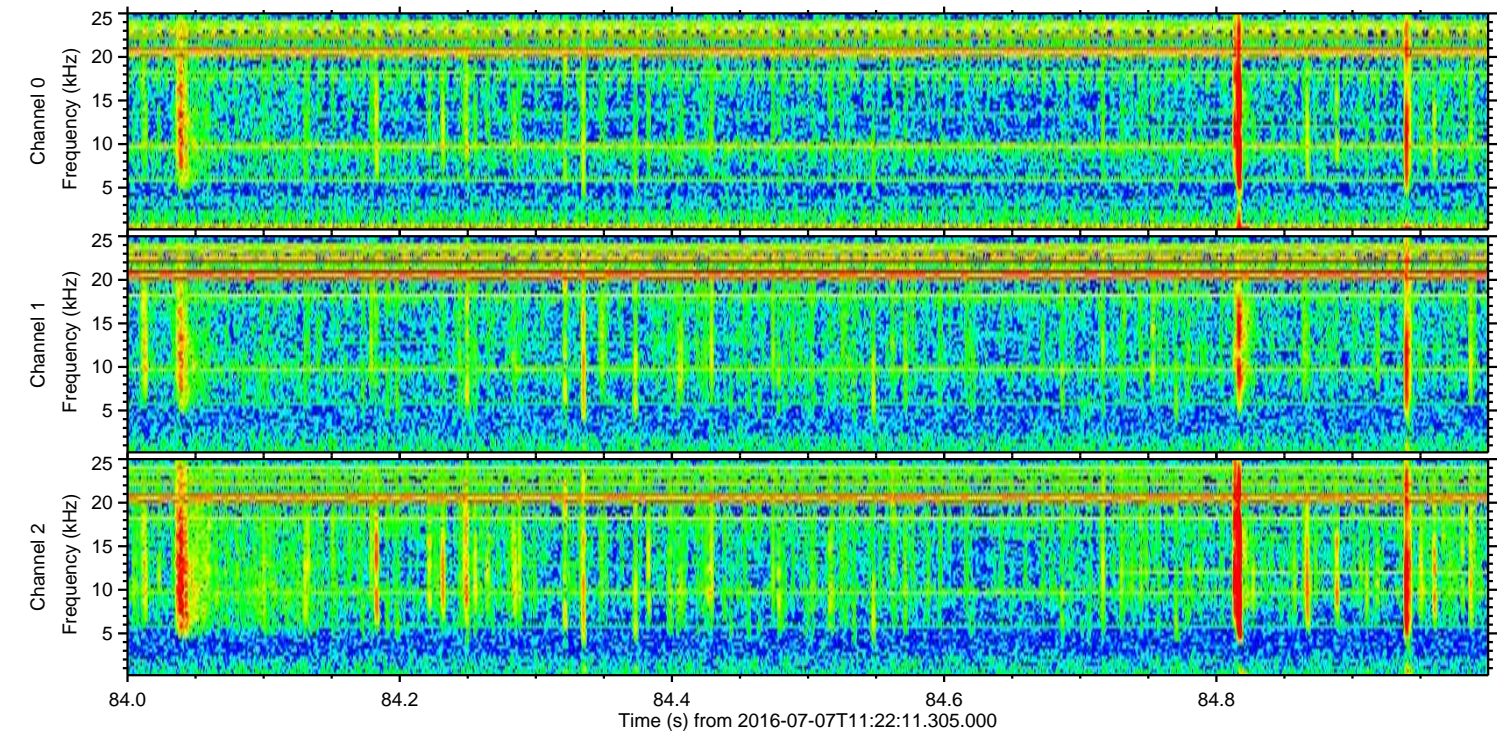
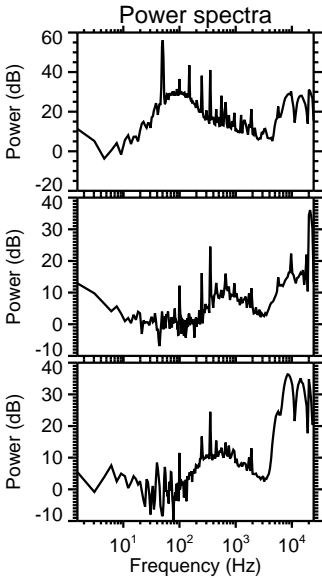
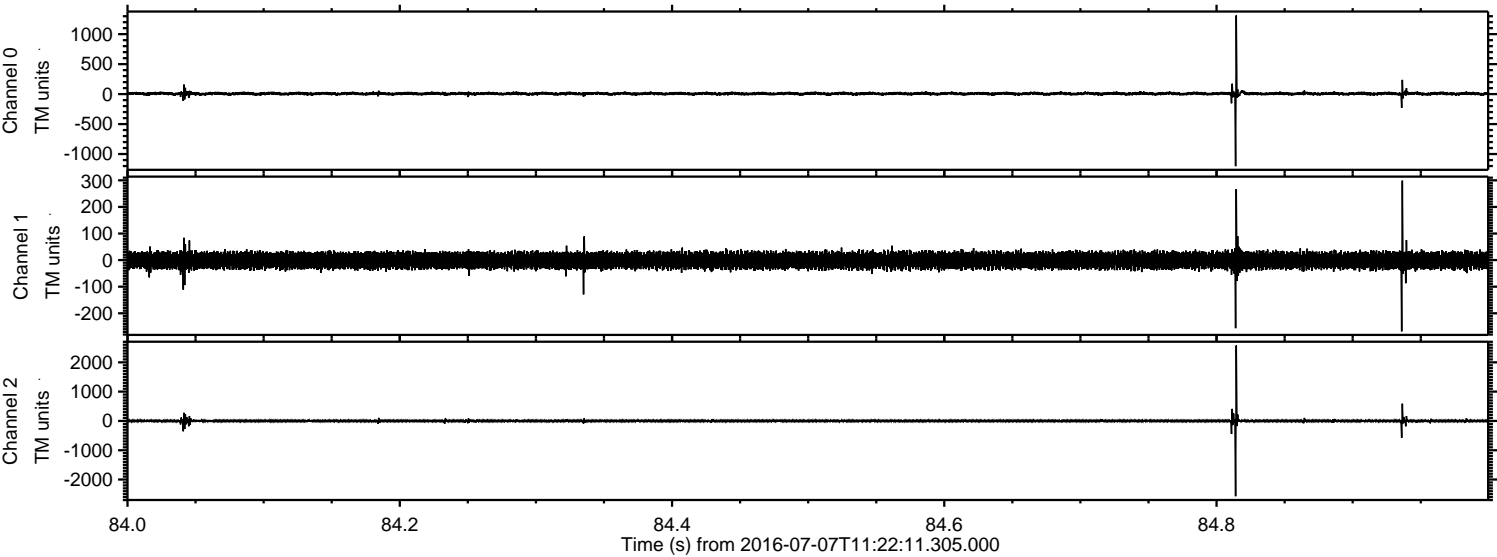
ELMAVAN 3D WAVEFORMS (Measured data sampled at 50 kHz) 51000 packets of 144 samples from 2016-07-07T11:22:11.305.000.

Processed Thu Jul 7 13:30:21 2016 by ELM ver.2012-10-06 from 001\_\_elm20160707\_112210\_\_dat00.bin



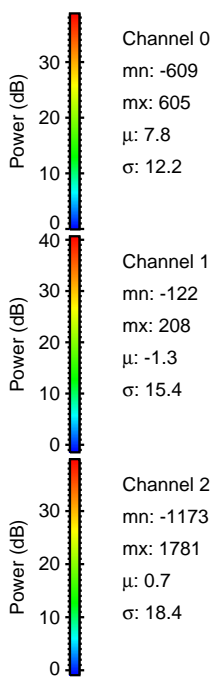
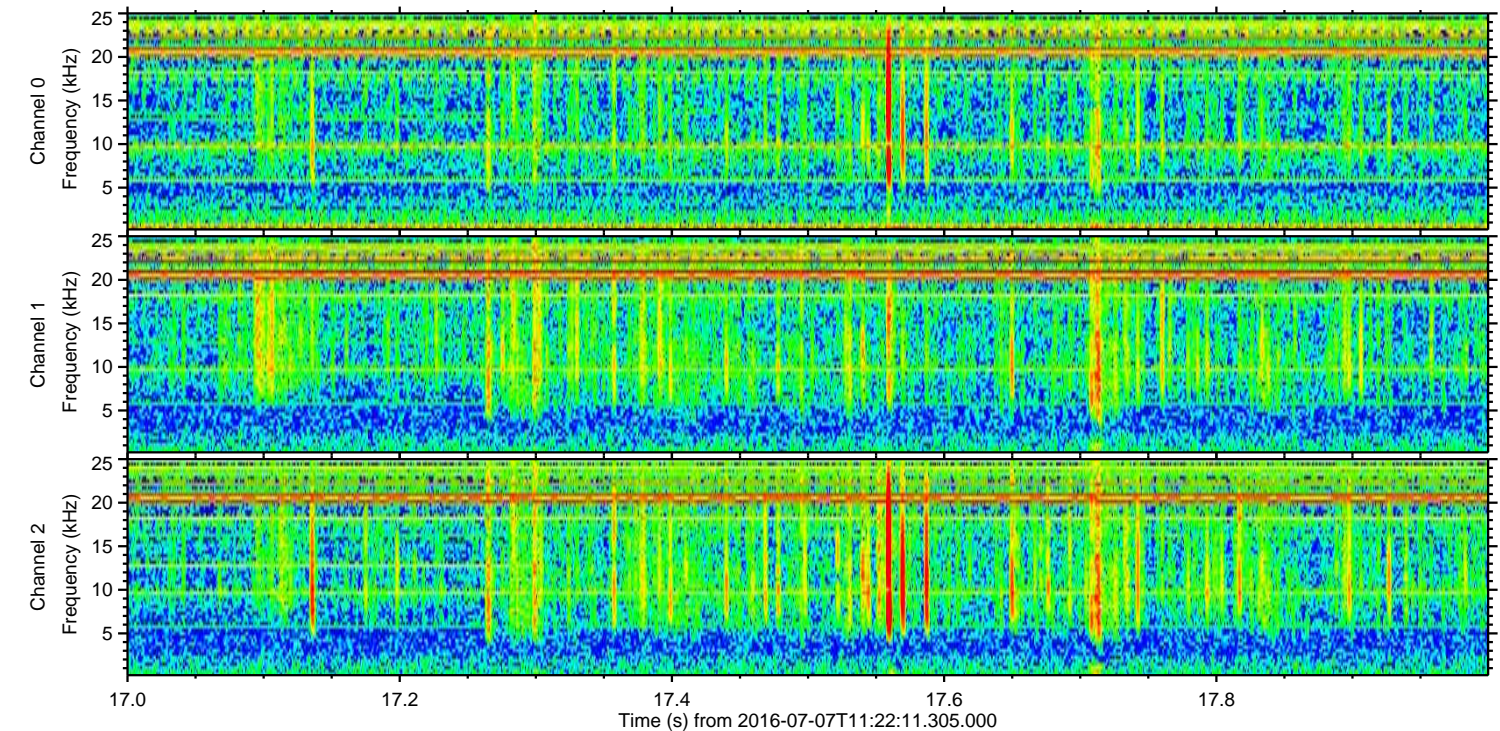
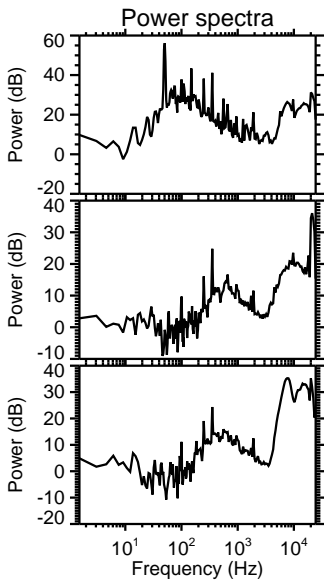
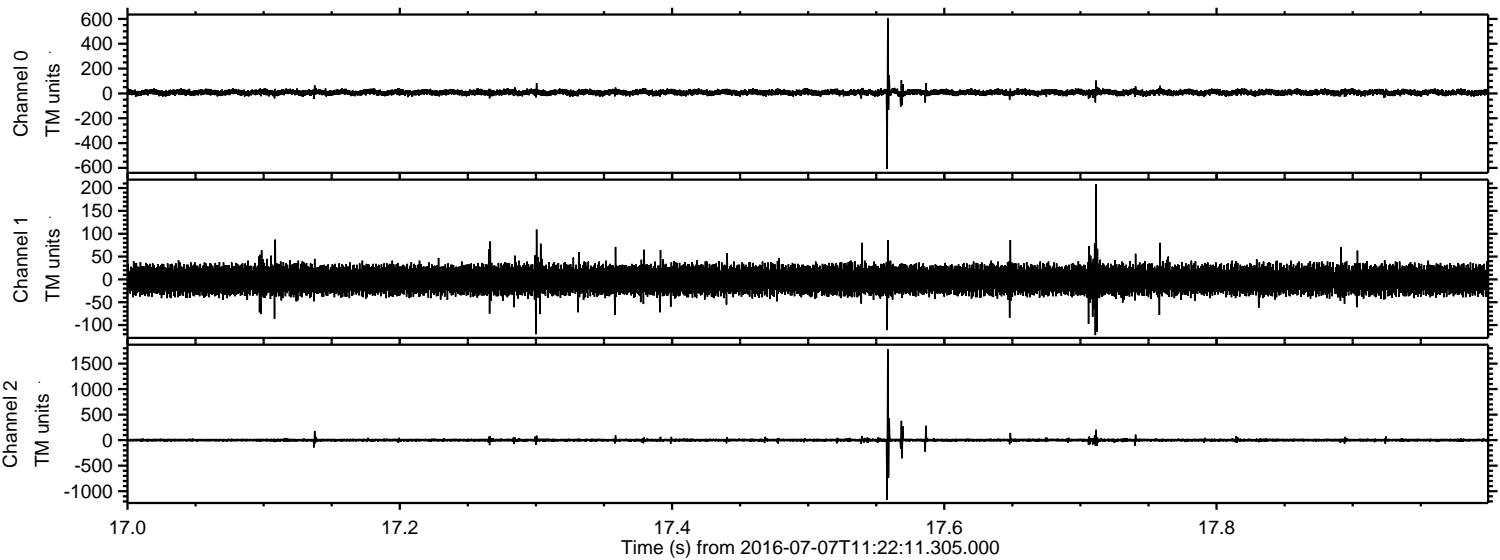


Processed Thu Jul 7 13:30:32 2016 by ELM ver.2012-10-06 from 001\_\_elm20160707\_112210\_\_dat00.bin





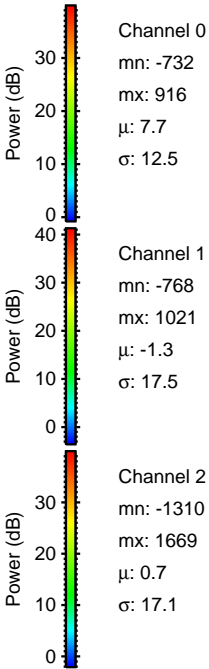
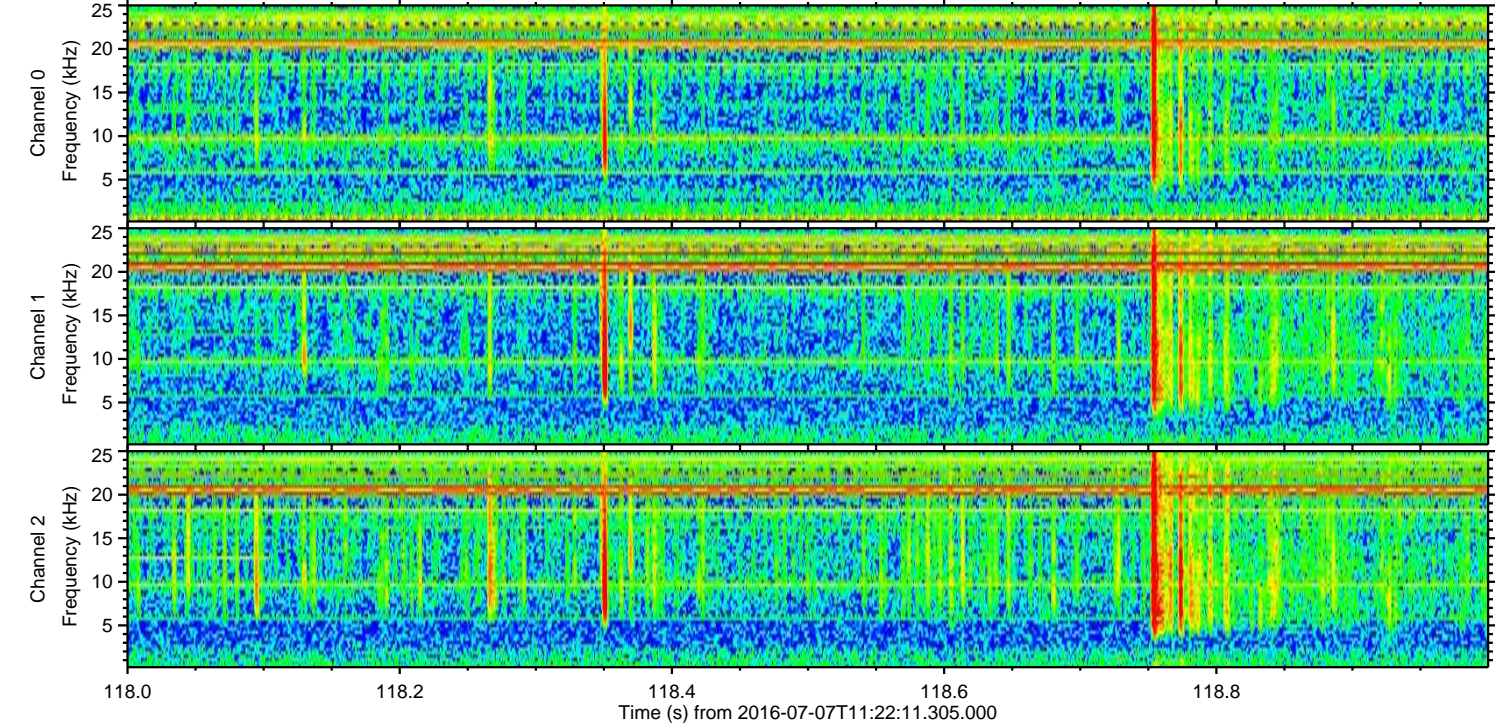
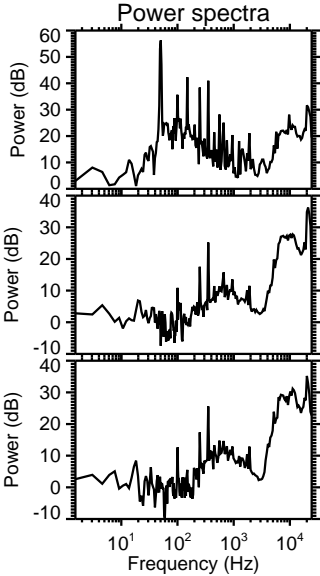
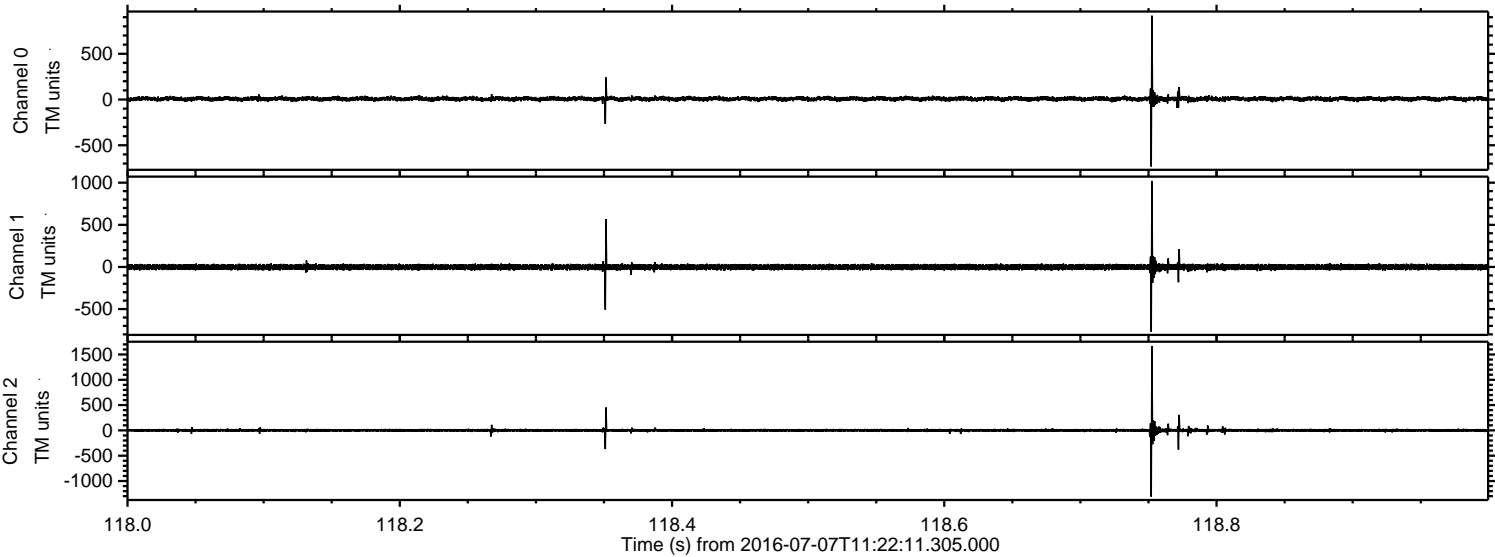
Processed Thu Jul 7 13:30:33 2016 by ELM ver.2012-10-06 from 001\_\_elm20160707\_112210\_\_dat00.bin





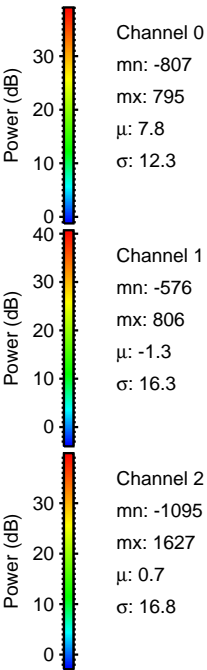
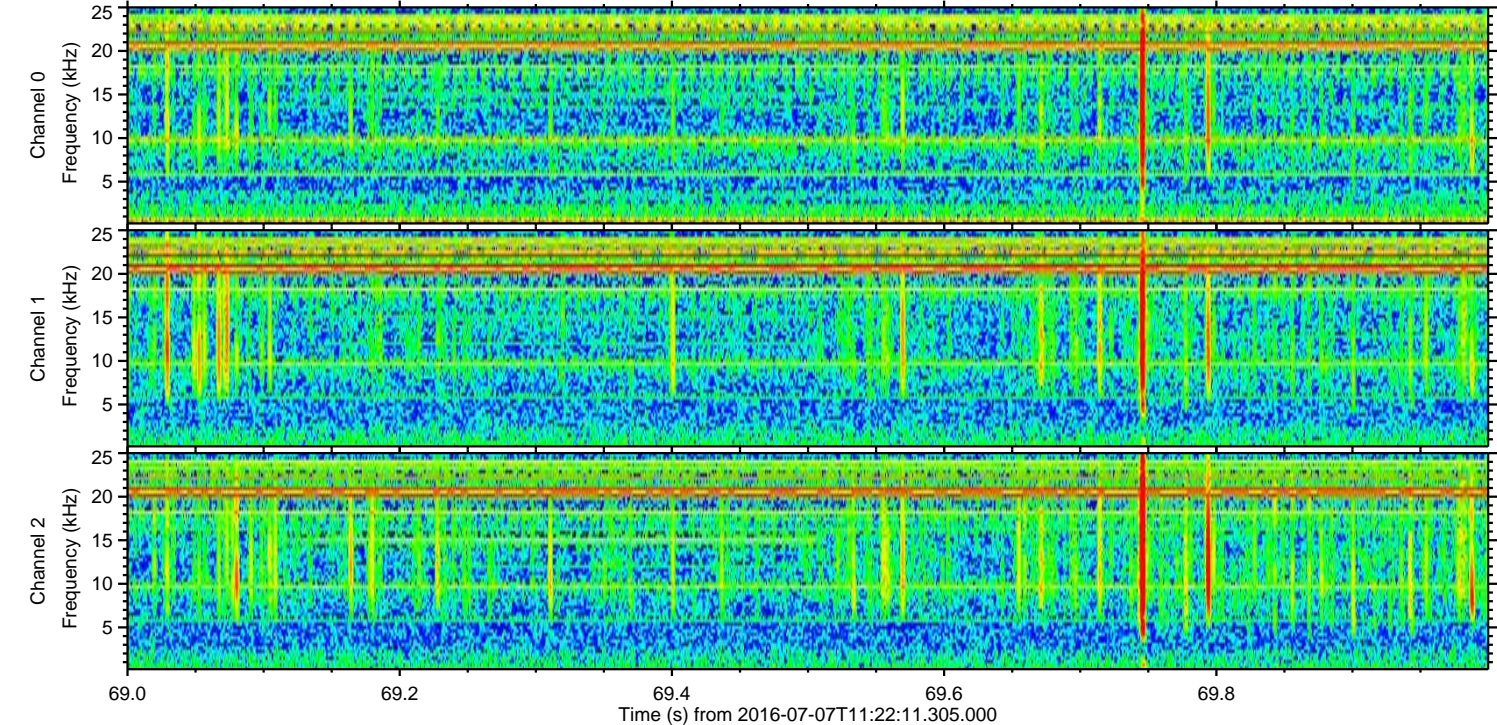
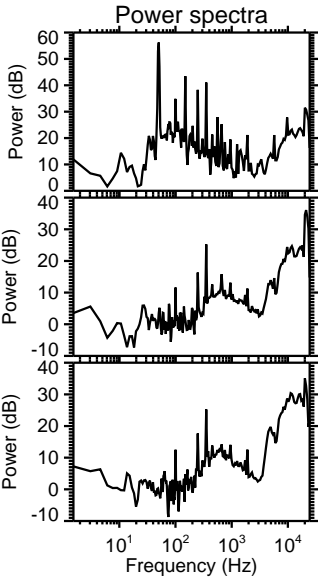
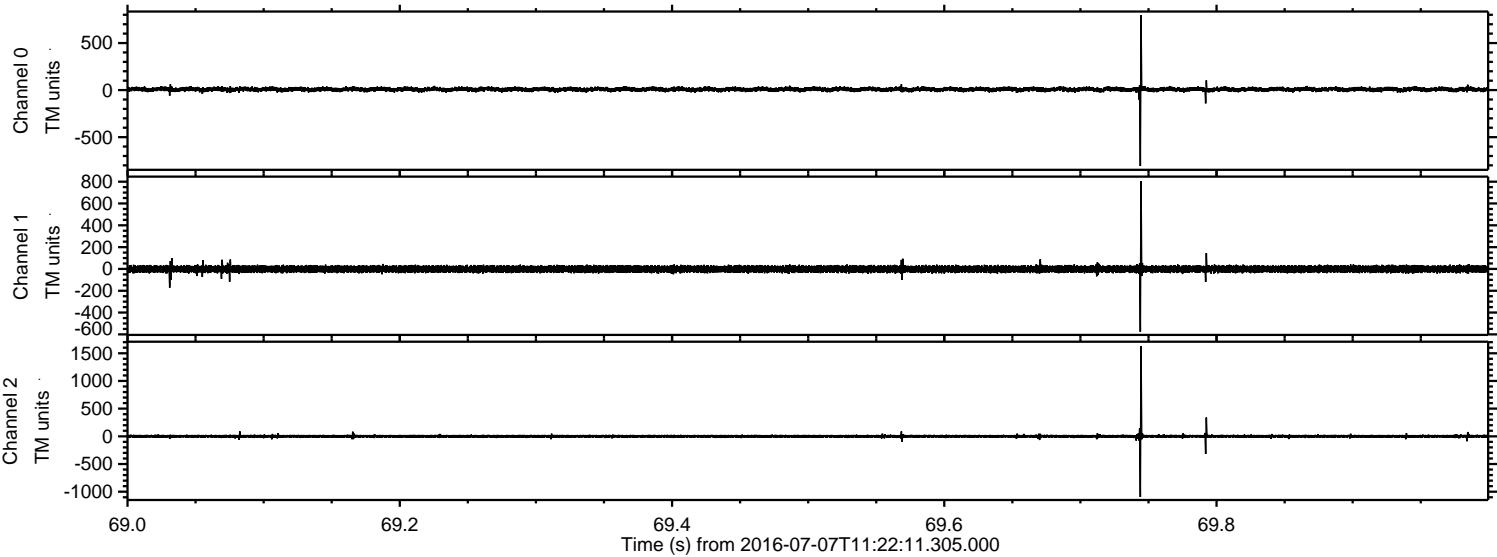
ELMAVAN 3D WAVEFORMS (Measured data sampled at 50 kHz) 51000 packets of 144 samples from 2016-07-07T11:22:11.305.000. Part 119/147

Processed Thu Jul 7 13:30:34 2016 by ELM ver.2012-10-06 from 001\_\_elm20160707\_112210\_\_dat00.bin





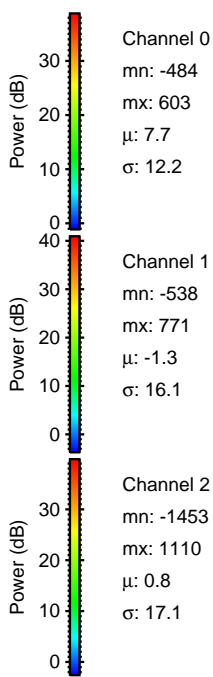
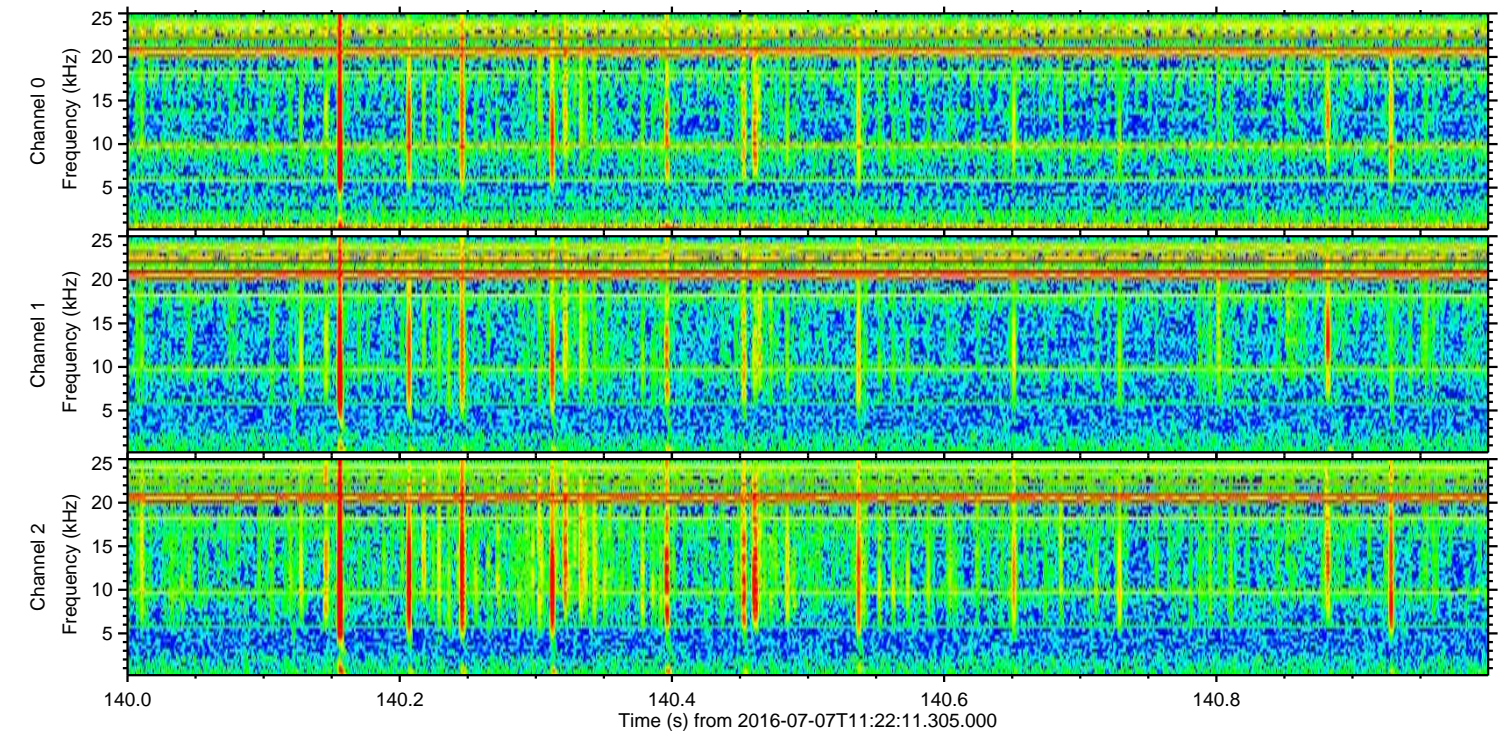
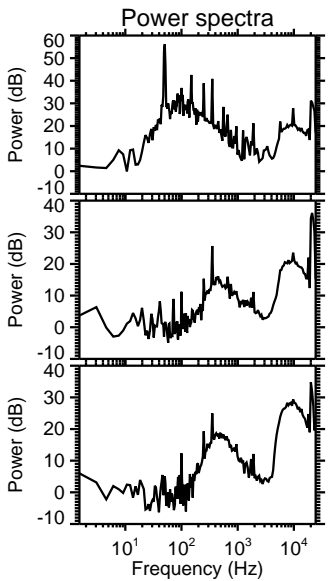
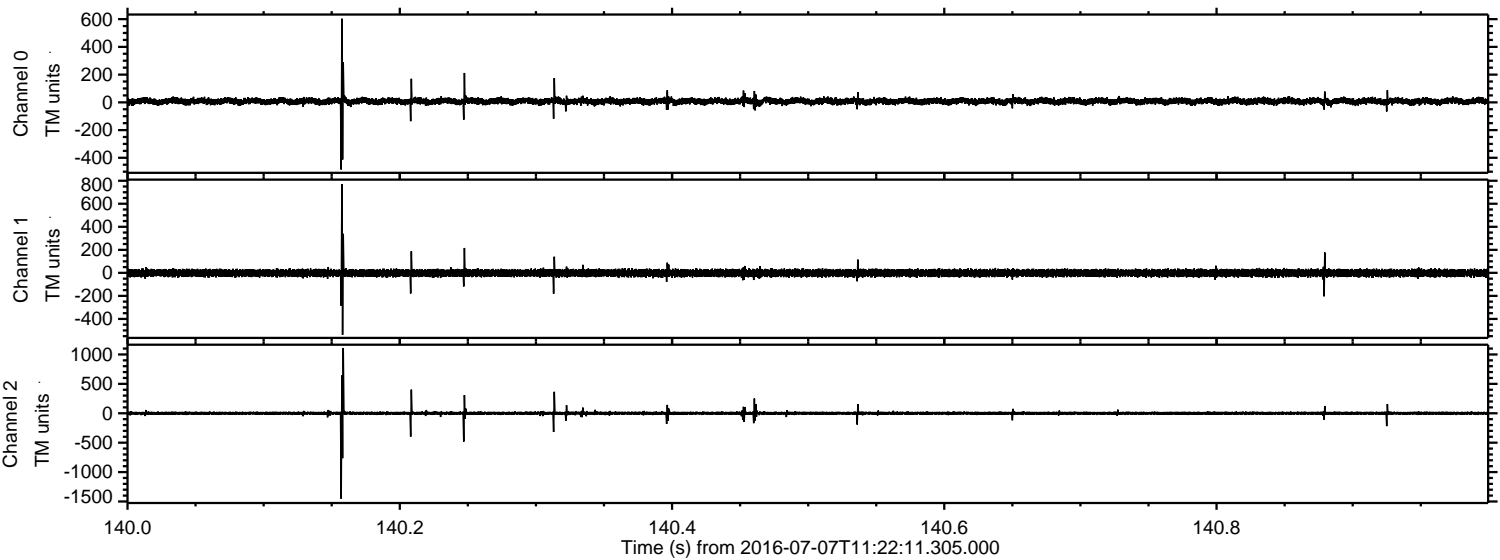
Processed Thu Jul 7 13:30:35 2016 by ELM ver.2012-10-06 from 001\_\_elm20160707\_112210\_\_dat00.bin





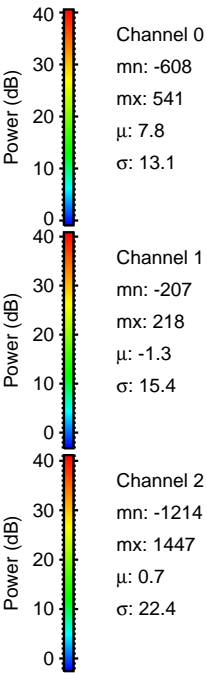
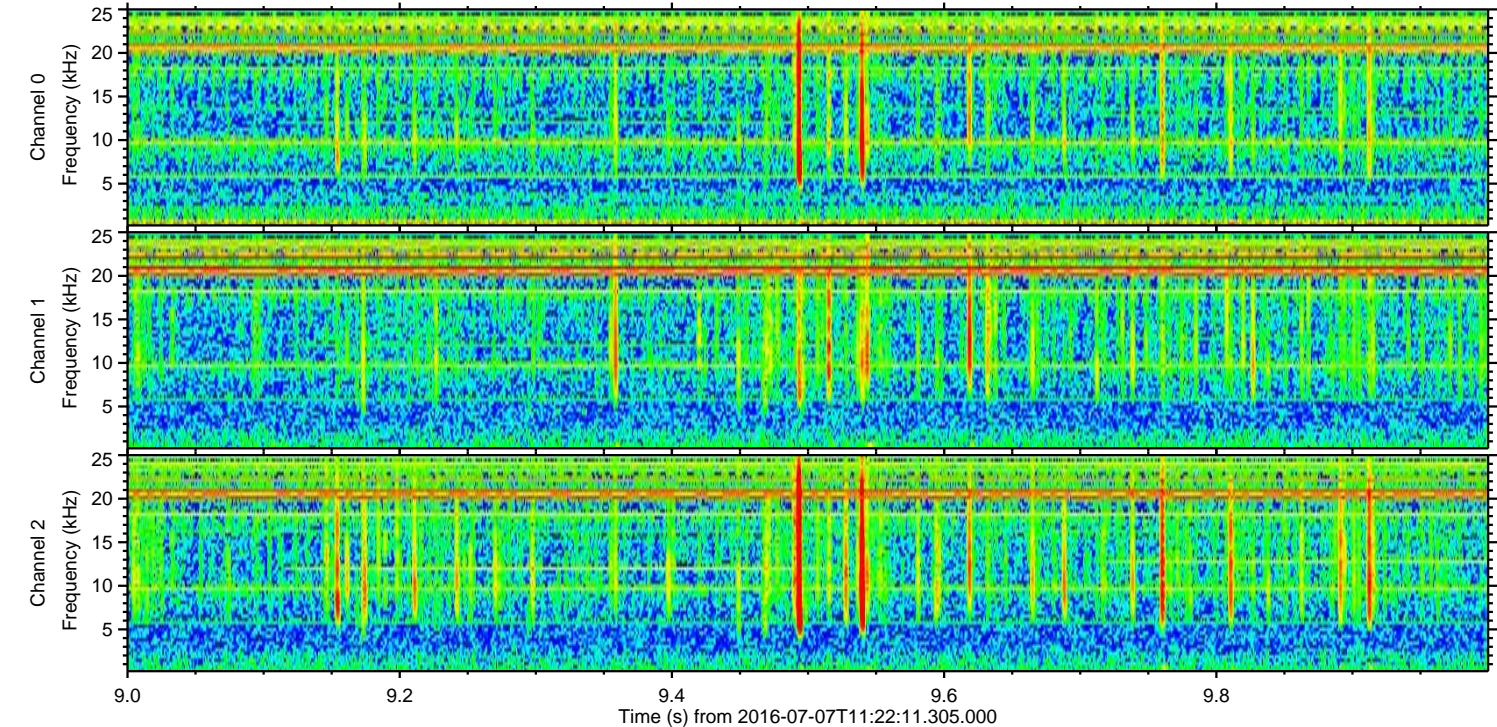
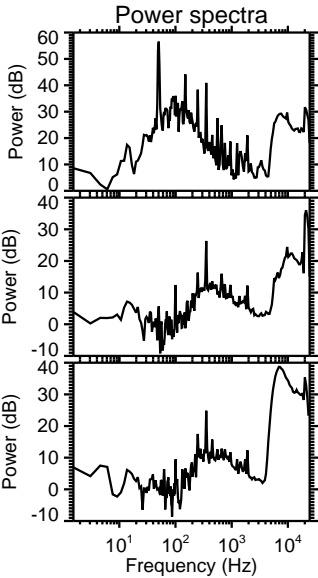
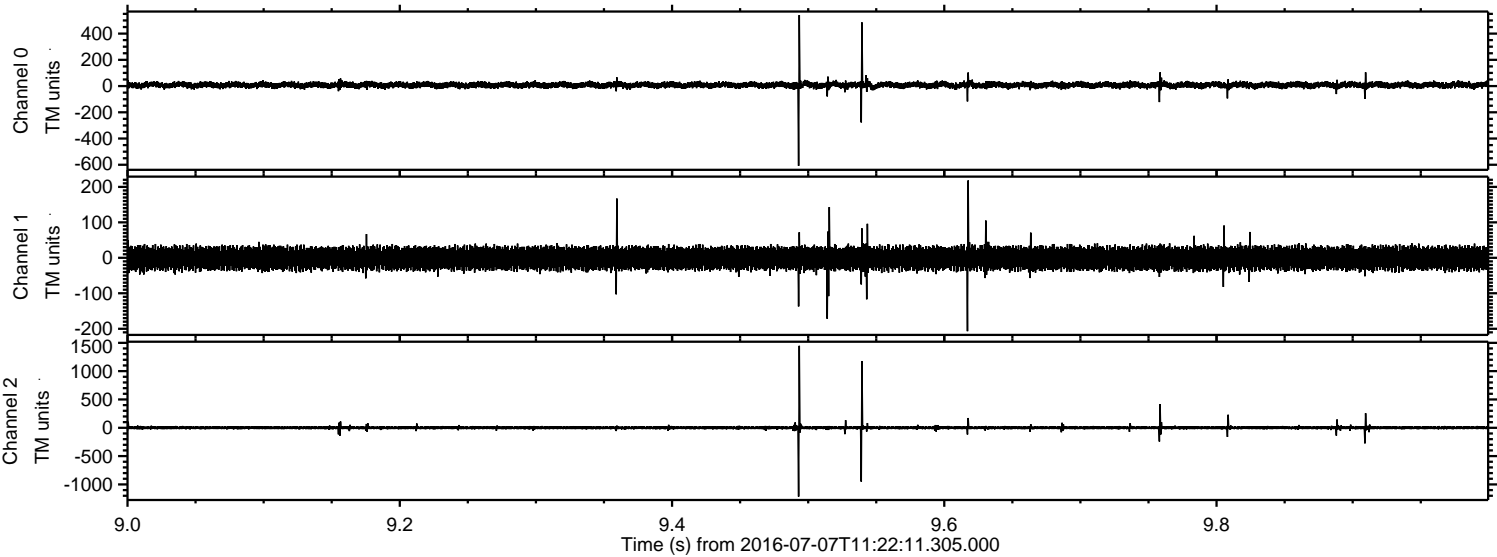
ELMAVAN 3D WAVEFORMS (Measured data sampled at 50 kHz) 51000 packets of 144 samples from 2016-07-07T11:22:11.305.000. Part 141/147

Processed Thu Jul 7 13:30:36 2016 by ELM ver.2012-10-06 from 001\_\_elm20160707\_112210\_\_dat00.bin



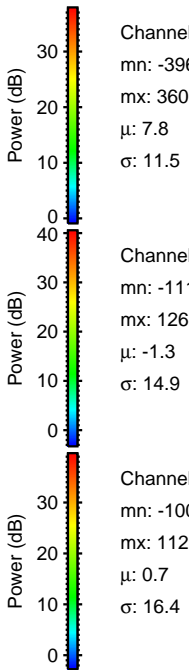
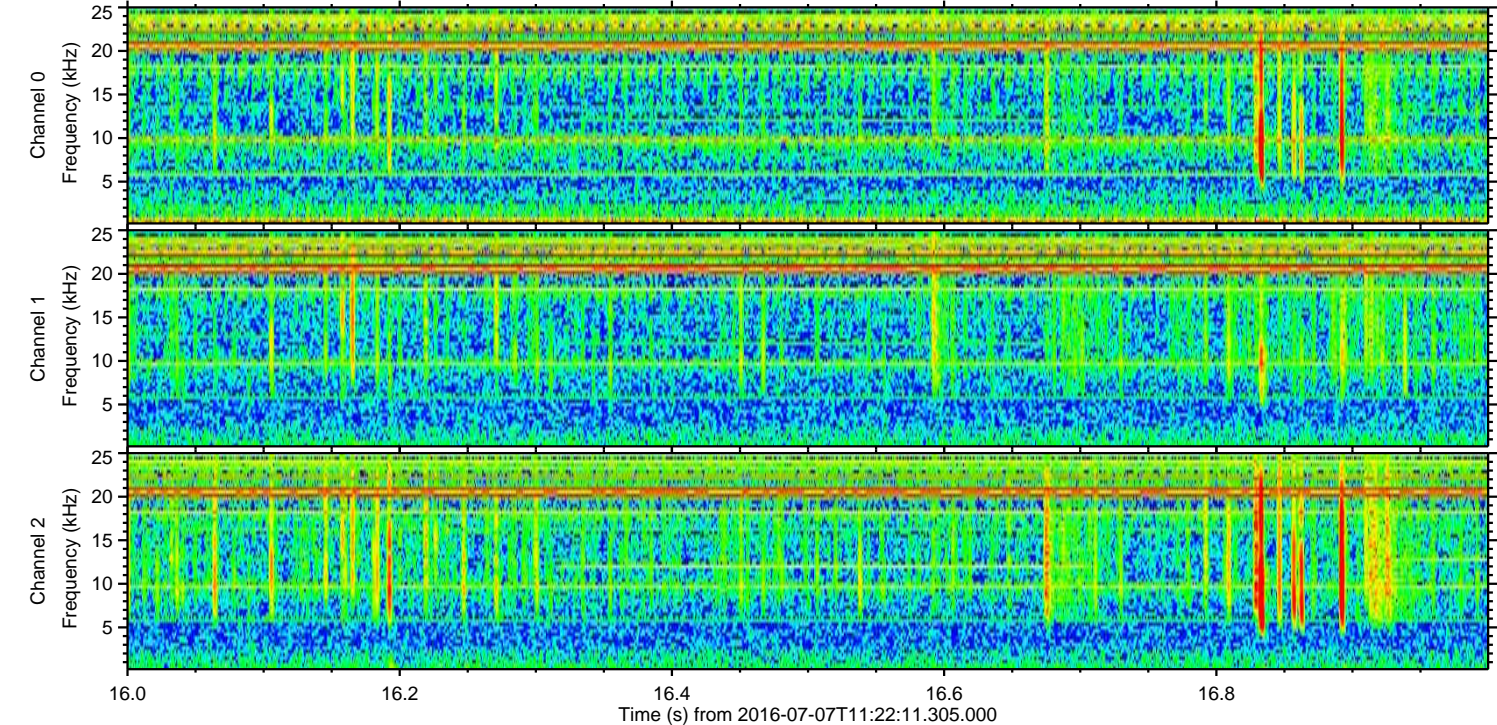
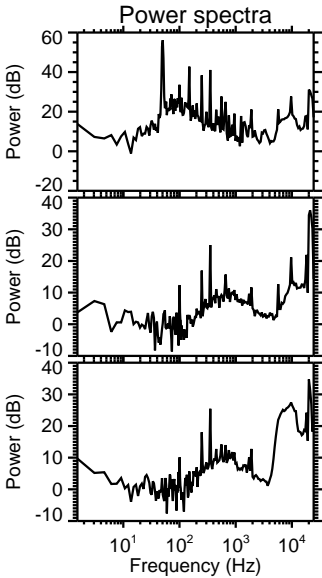
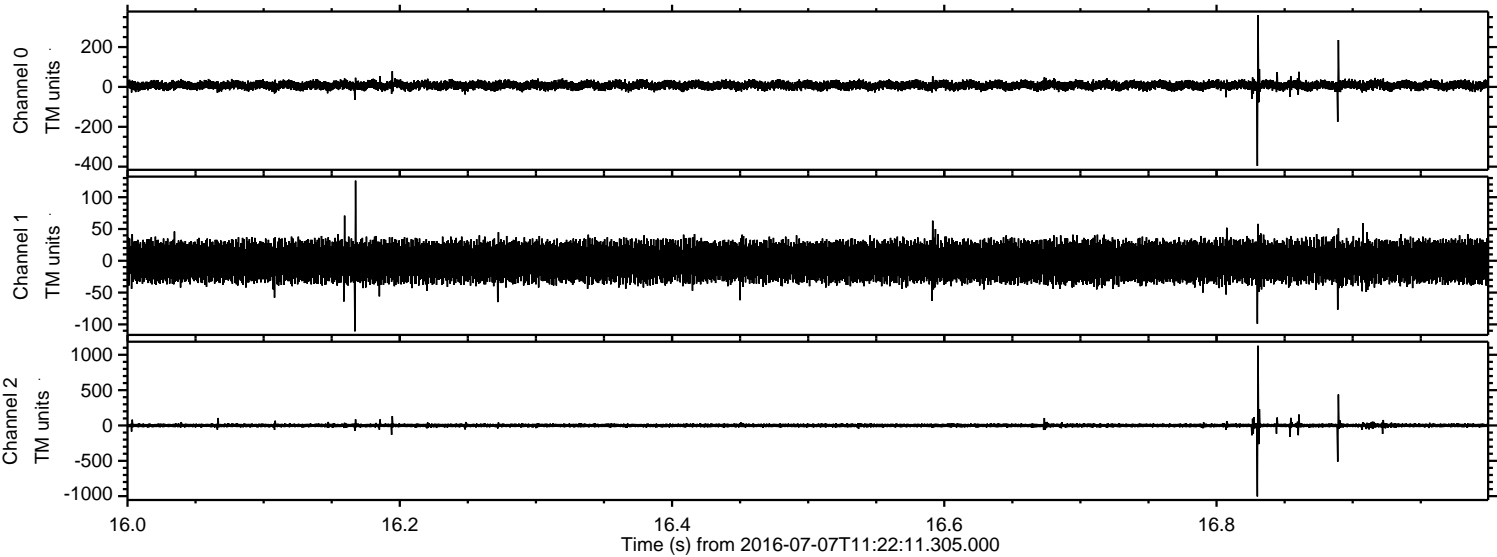


Processed Thu Jul 7 13:30:37 2016 by ELM ver.2012-10-06 from 001\_\_elm20160707\_112210\_\_dat00.bin



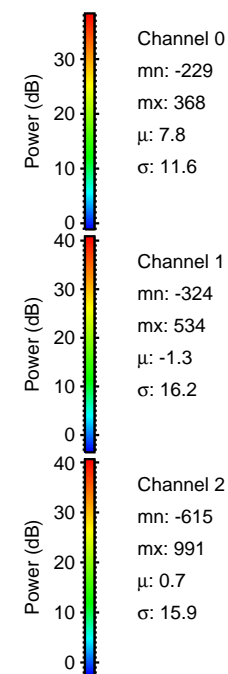
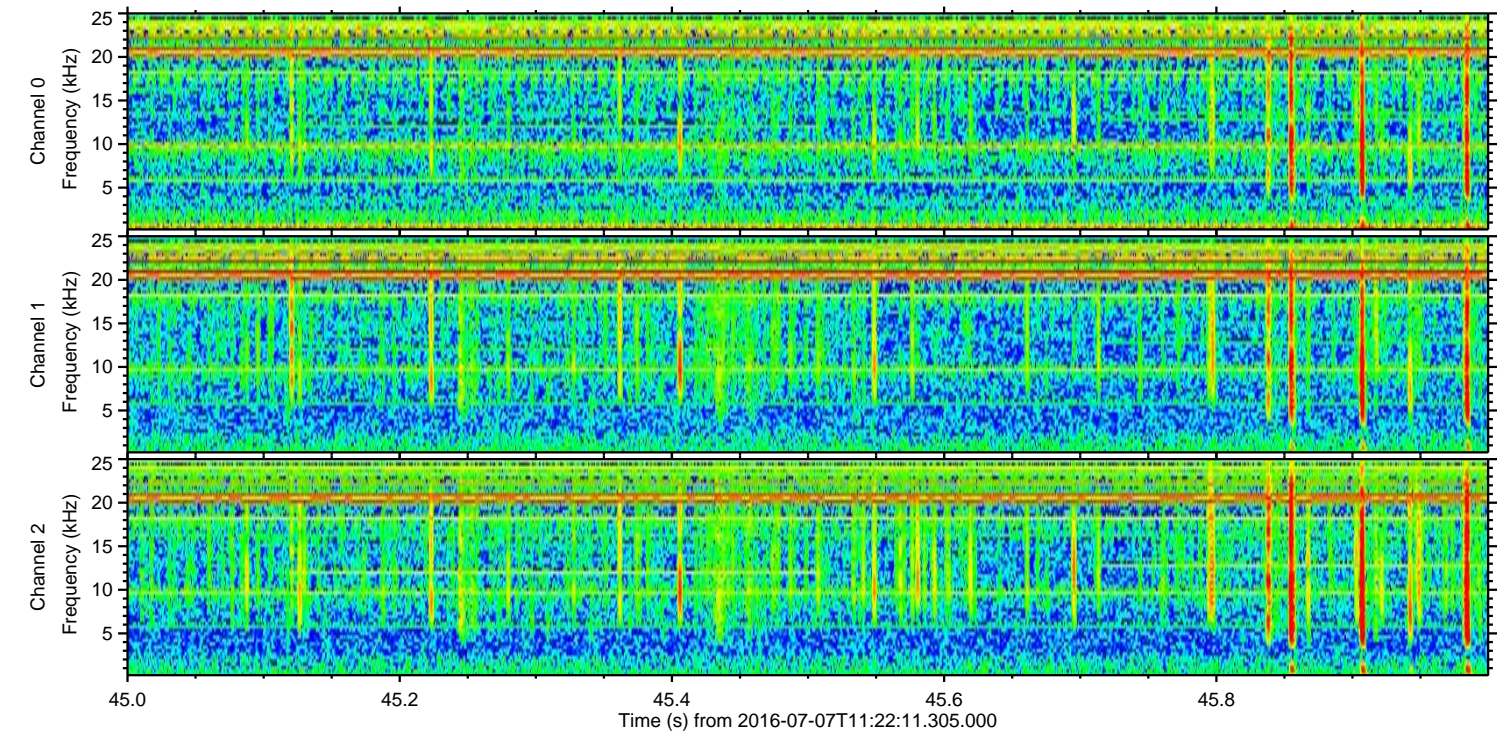
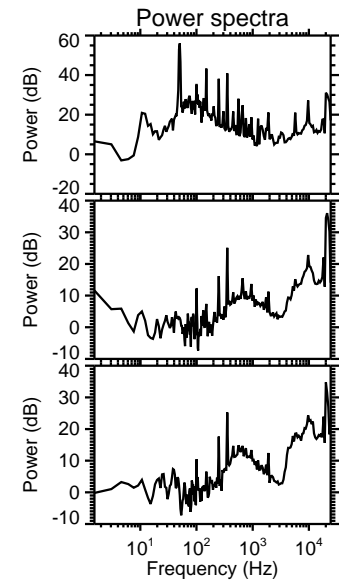
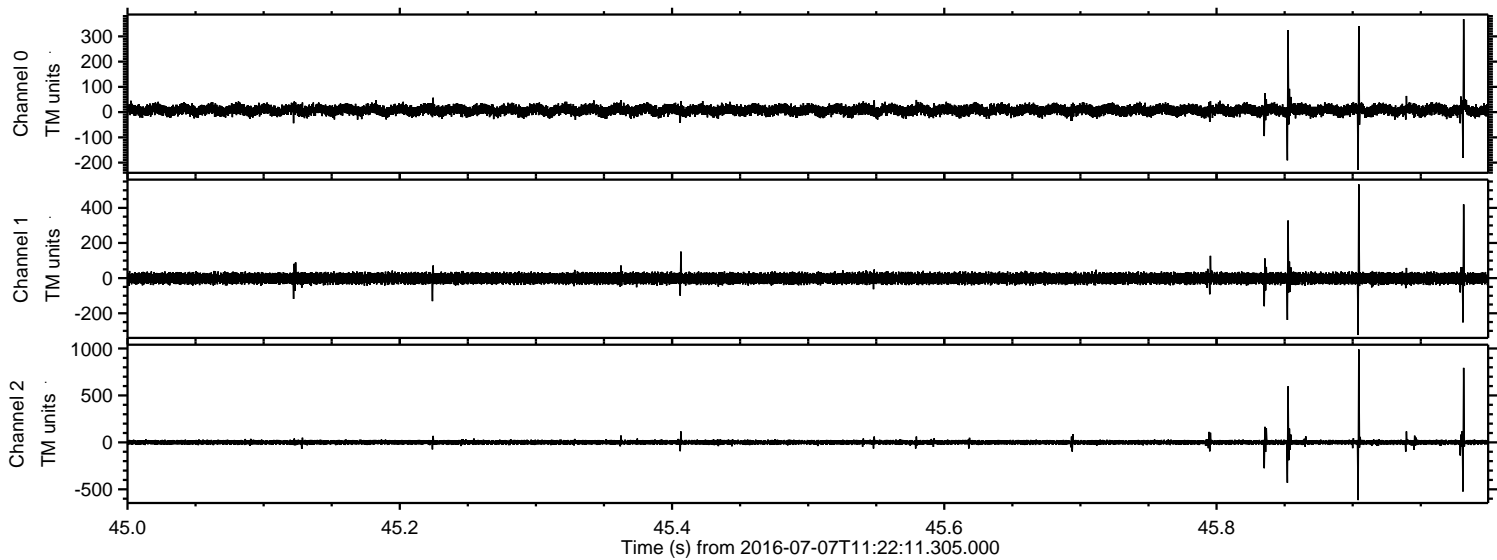


Processed Thu Jul 7 13:30:38 2016 by ELM ver.2012-10-06 from 001\_\_elm20160707\_112210\_\_dat00.bin





Processed Thu Jul 7 13:30:39 2016 by ELM ver.2012-10-06 from 001\_\_elm20160707\_112210\_\_dat00.bin





Processed Thu Jul 7 13:30:40 2016 by ELM ver.2012-10-06 from 001\_\_elm20160707\_112210\_\_dat00.bin

