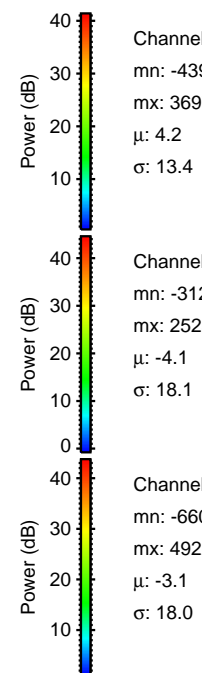
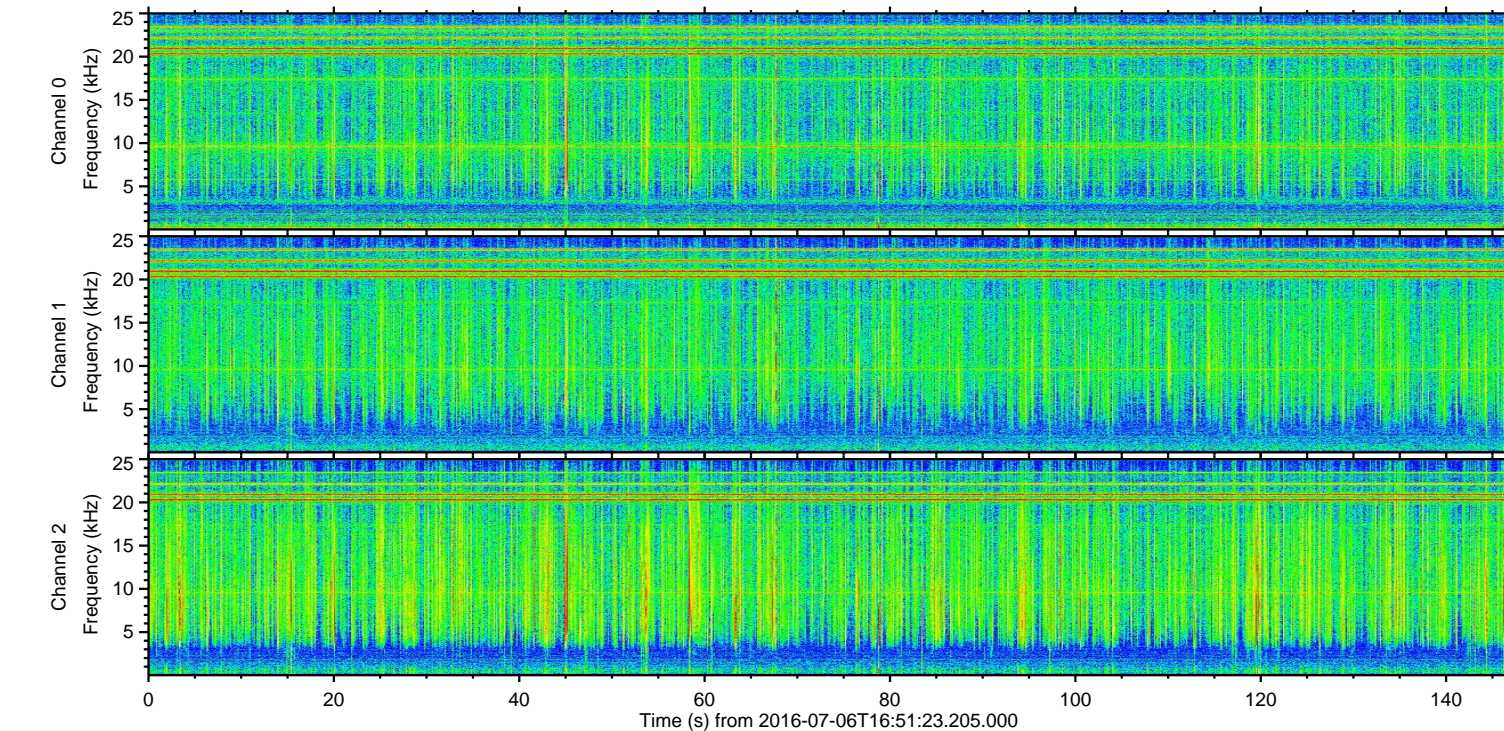
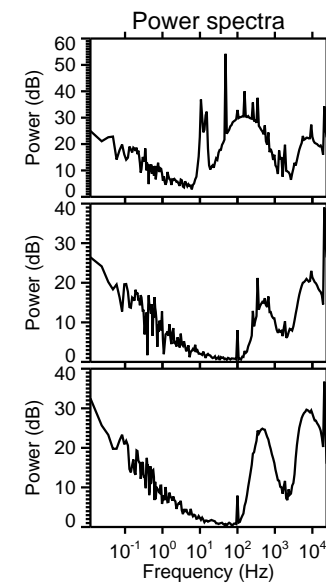
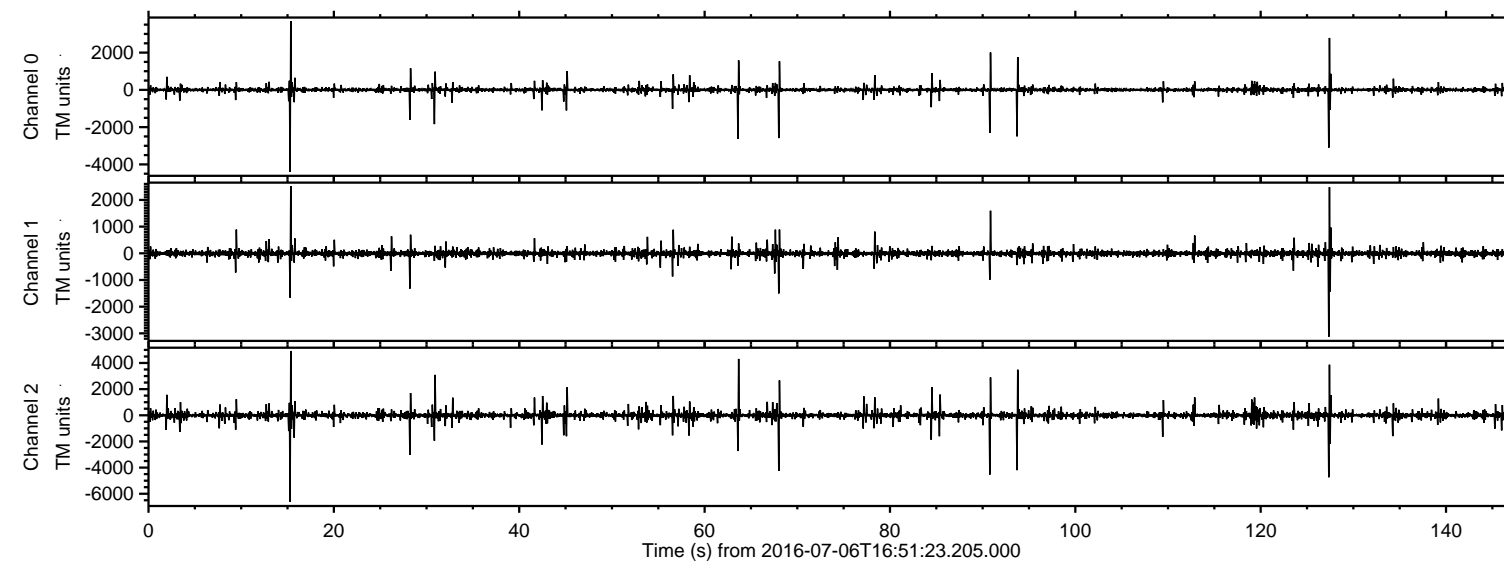


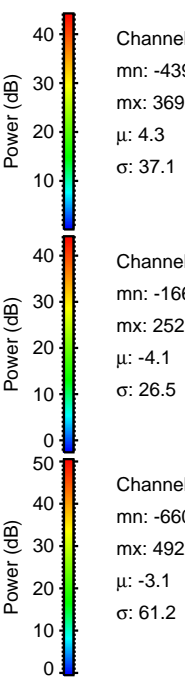
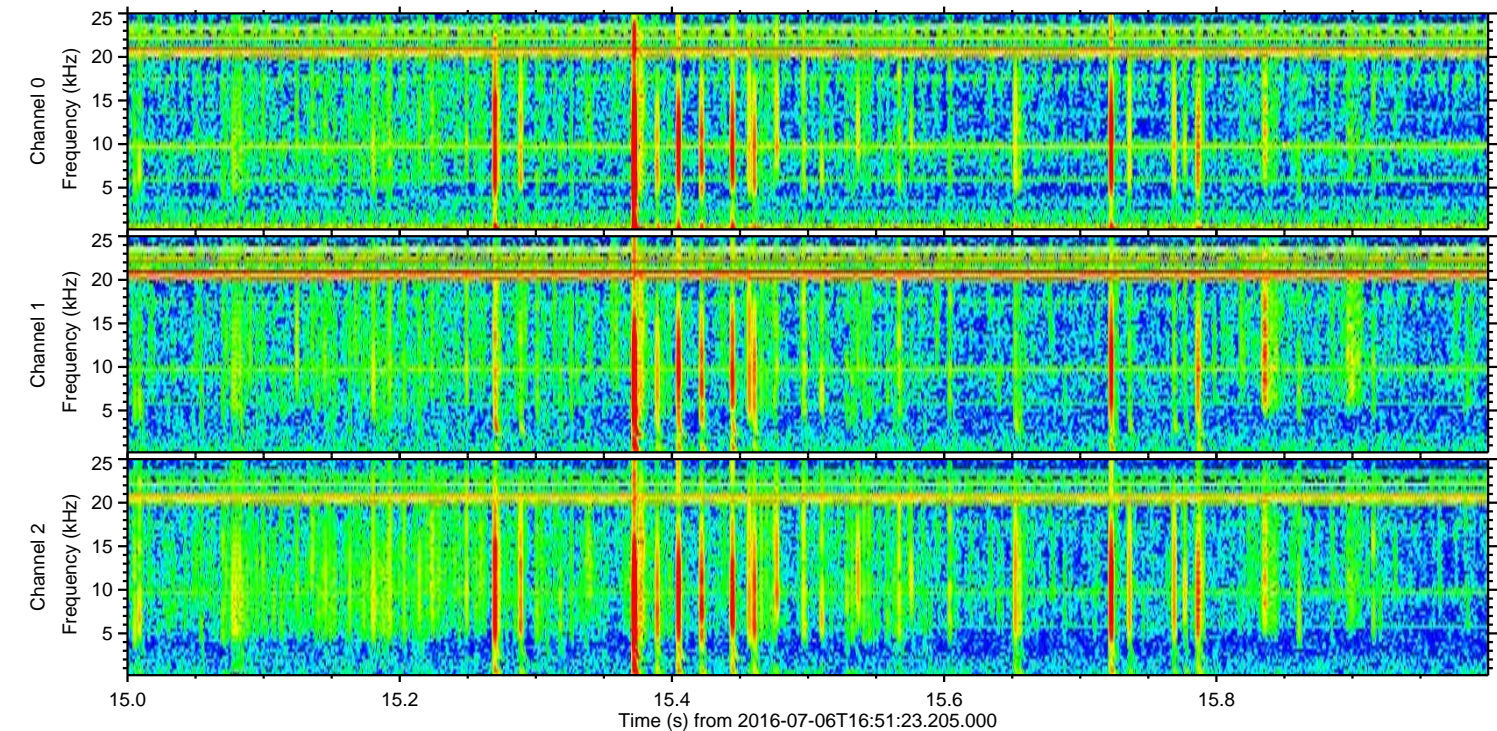
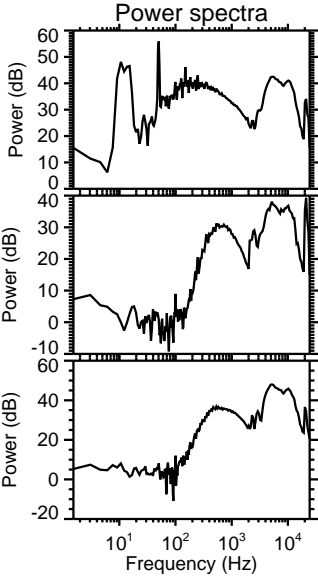
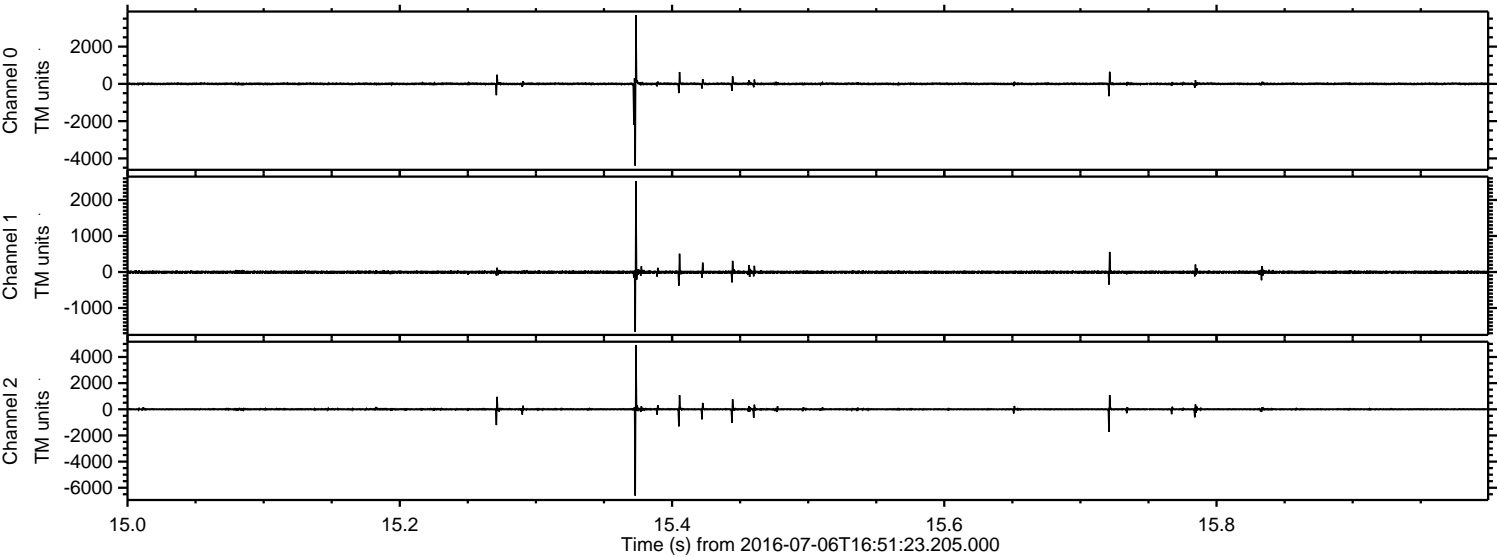
# ELMAVAN 3D WAVEFORMS (Measured data sampled at 50 kHz) 51000 packets of 144 samples from 2016-07-06T16:51:23.205.000.

Processed Wed Jul 6 18:59:42 2016 by ELM ver.2012-10-06 from 001\_\_elm20160706\_165122\_\_dat00.bin





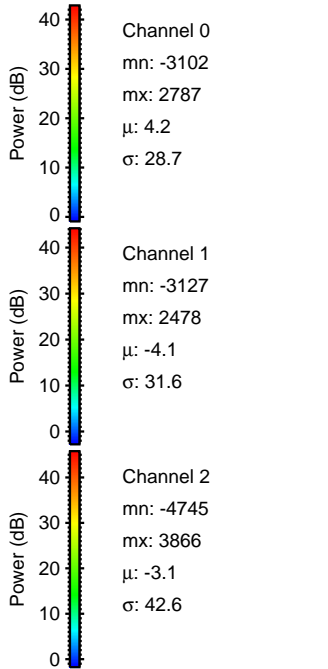
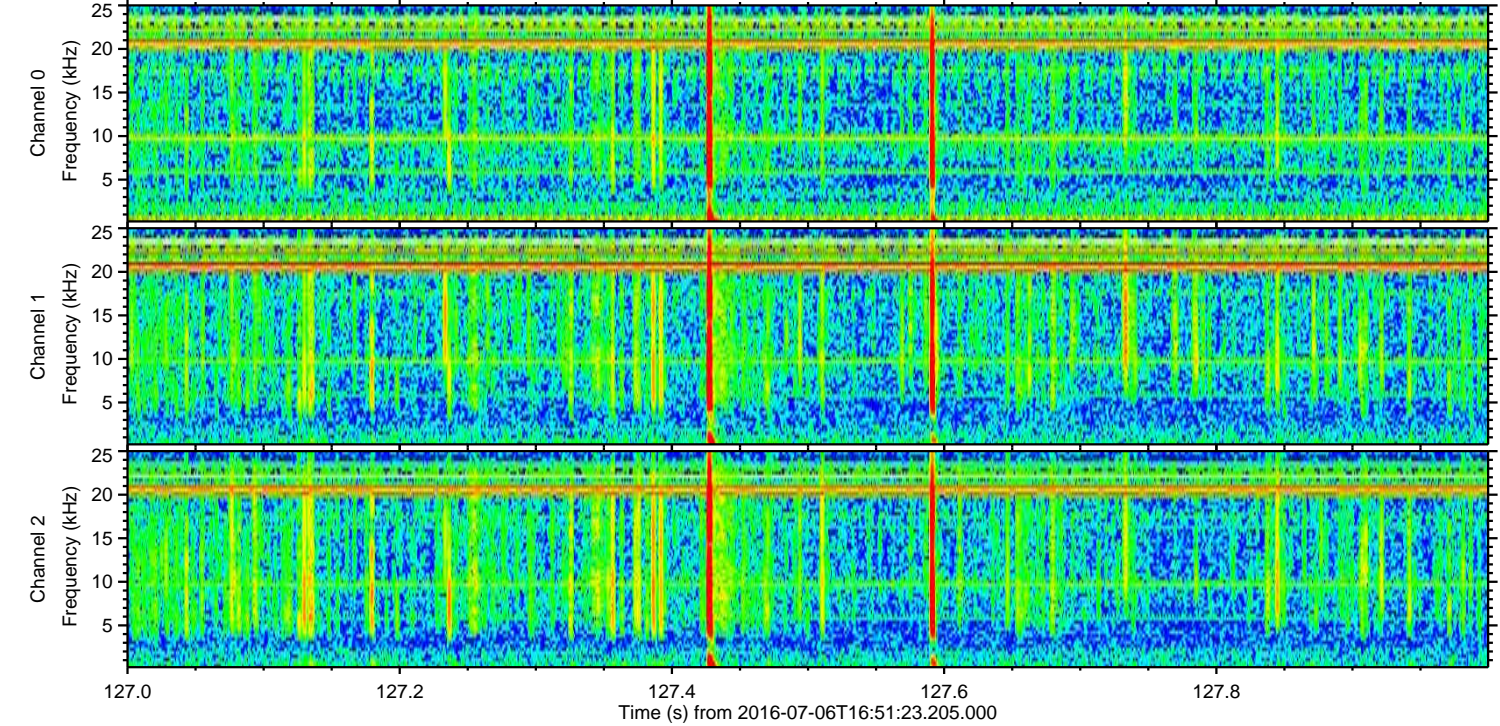
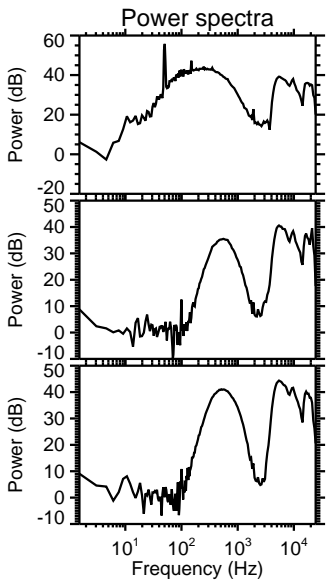
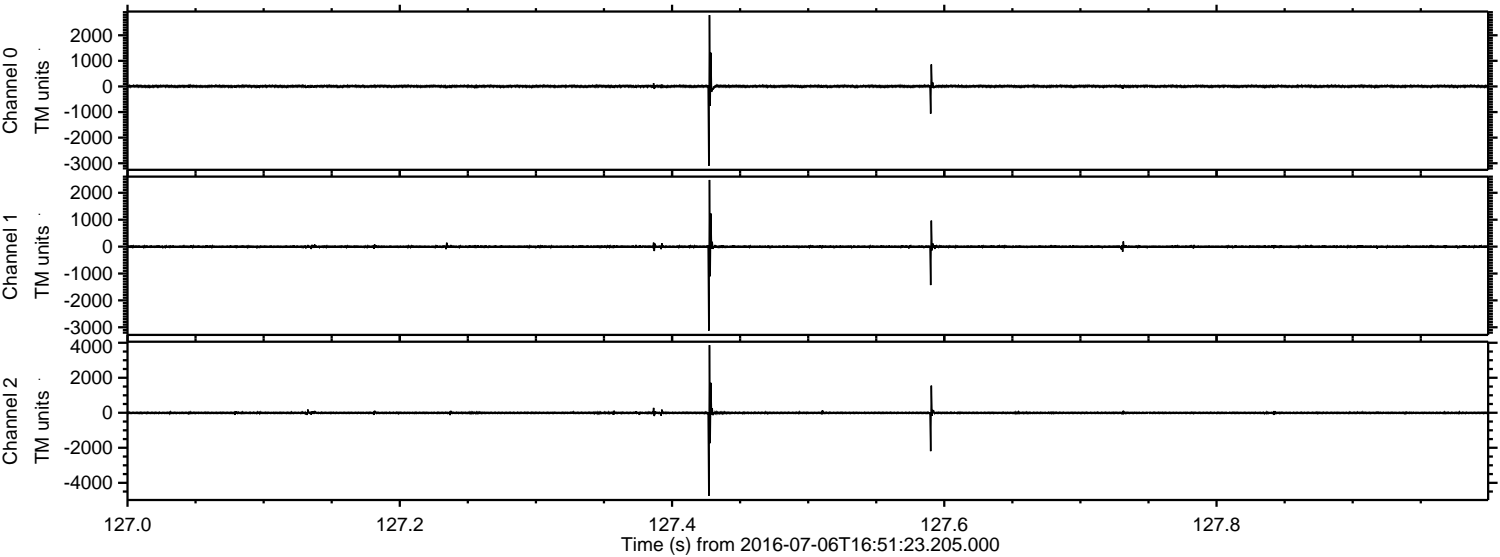
Processed Wed Jul 6 18:59:54 2016 by ELM ver.2012-10-06 from 001\_\_elm20160706\_165122\_\_dat00.bin





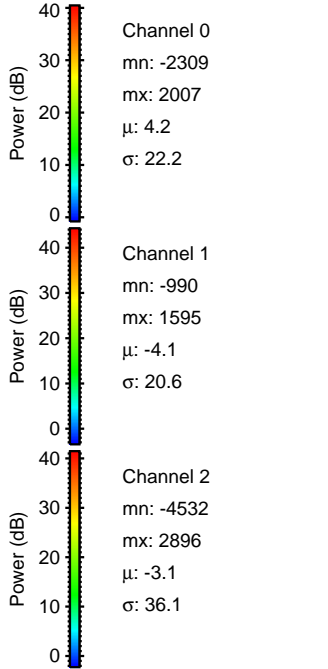
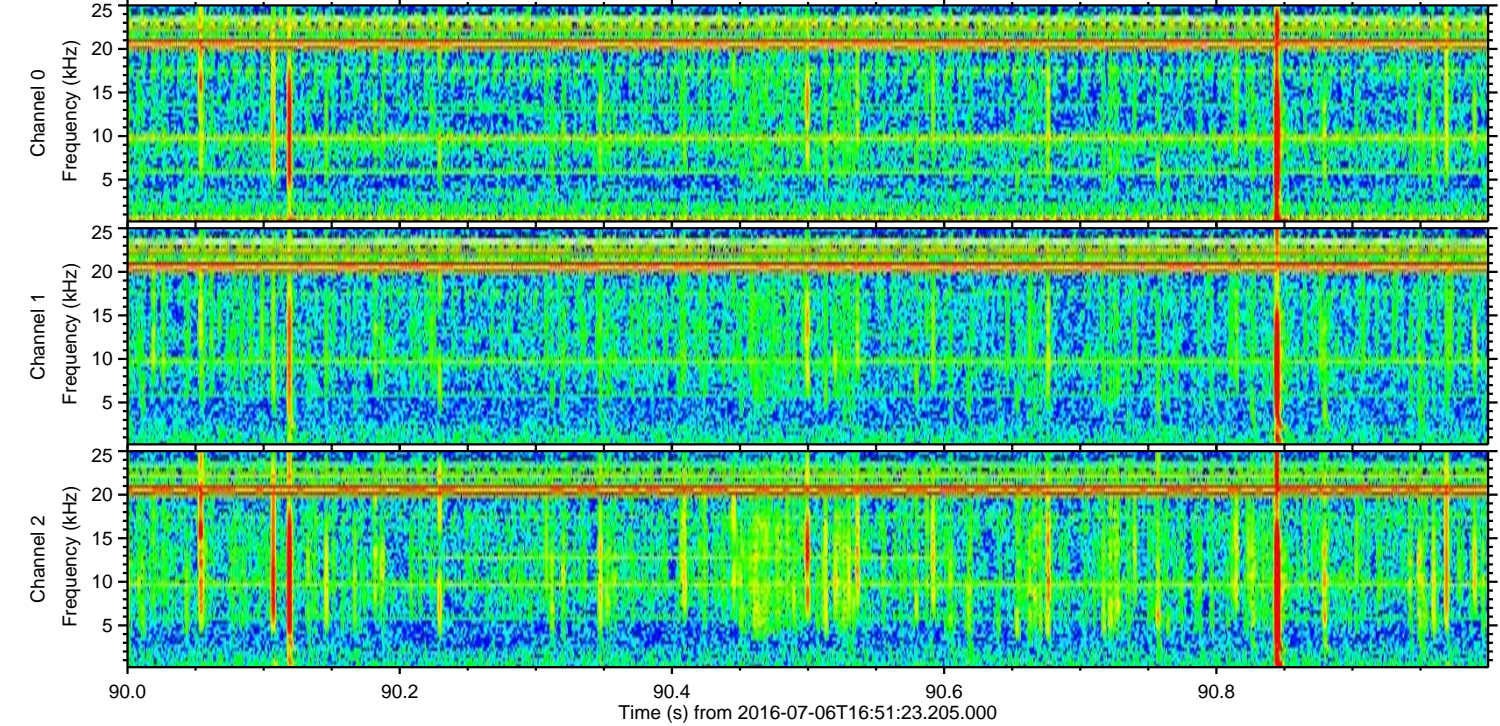
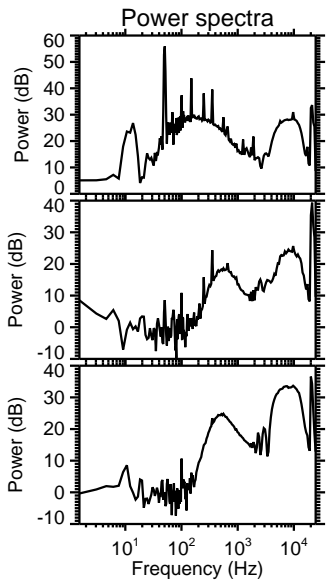
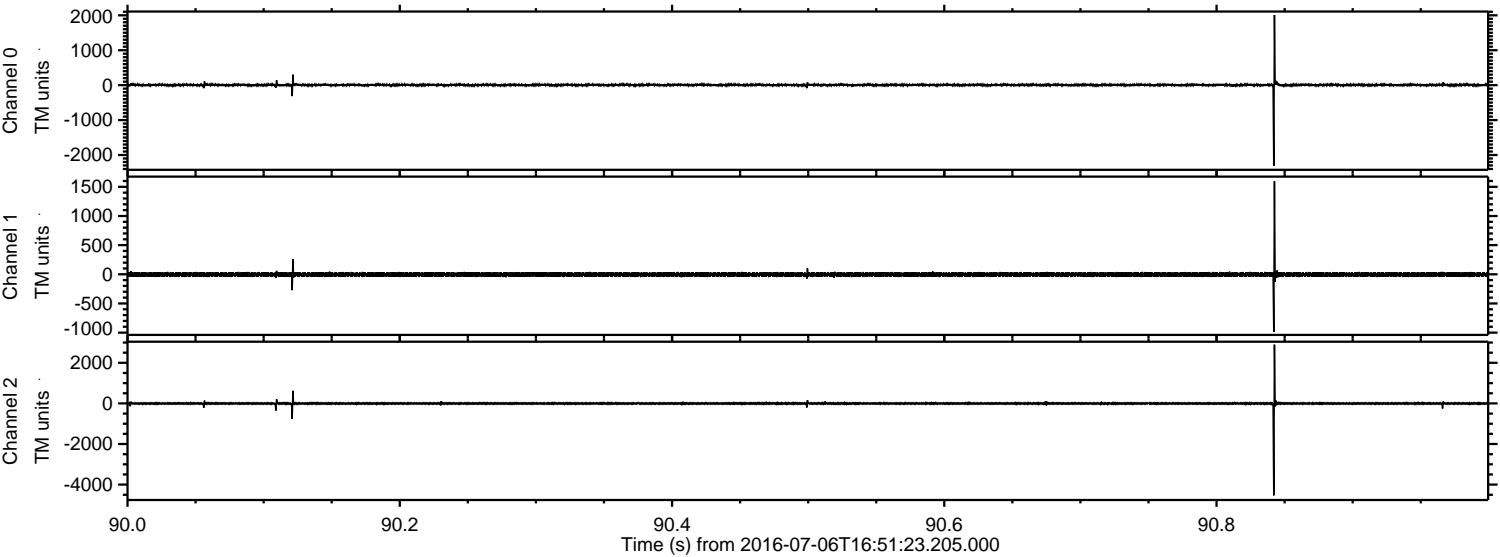
ELMAVAN 3D WAVEFORMS (Measured data sampled at 50 kHz) 51000 packets of 144 samples from 2016-07-06T16:51:23.205.000. Part 128/147

Processed Wed Jul 6 18:59:55 2016 by ELM ver.2012-10-06 from 001\_\_elm20160706\_165122\_\_dat00.bin



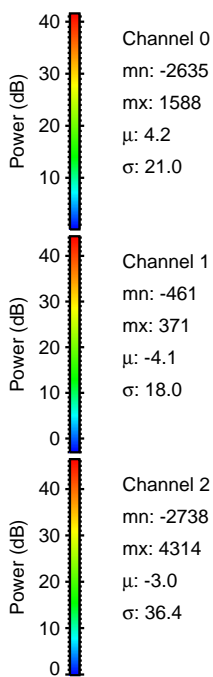
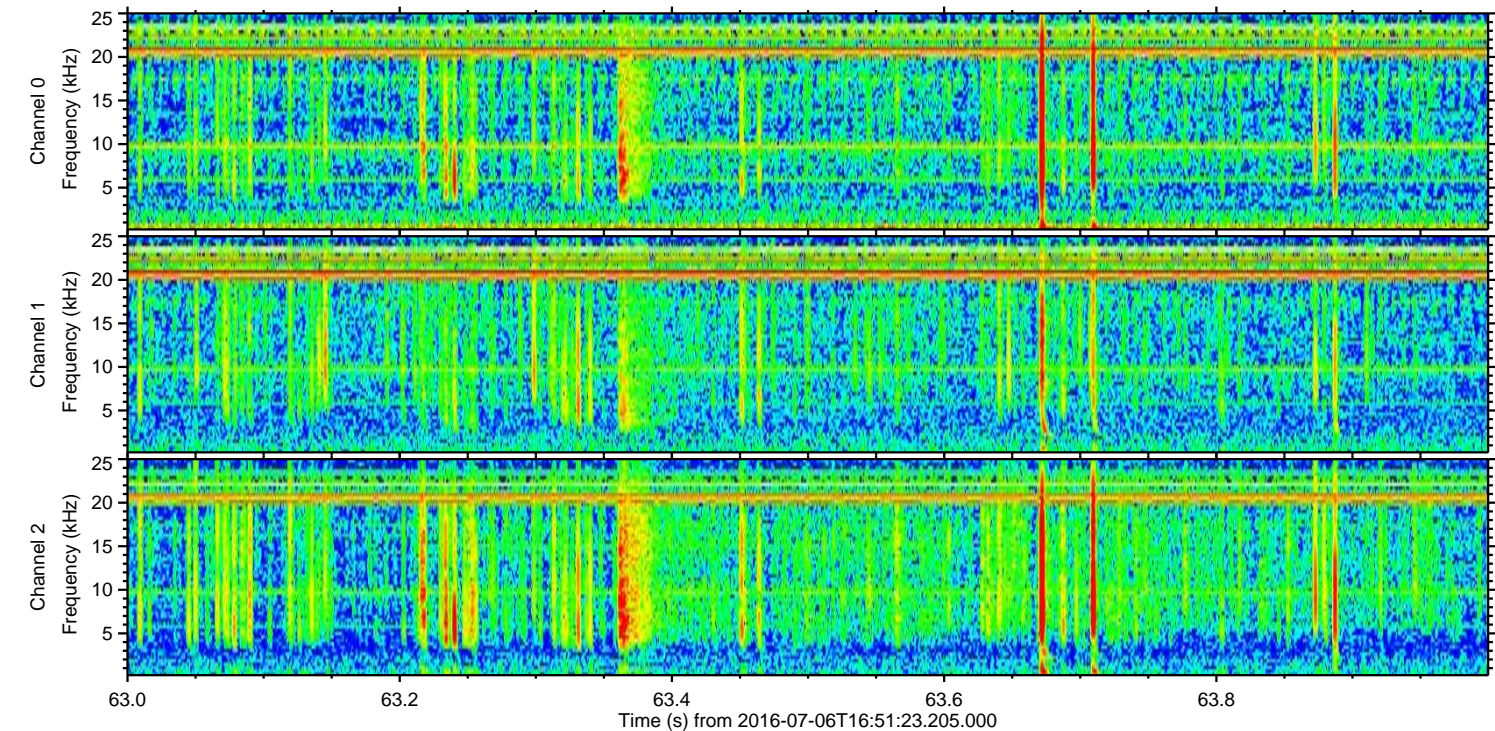
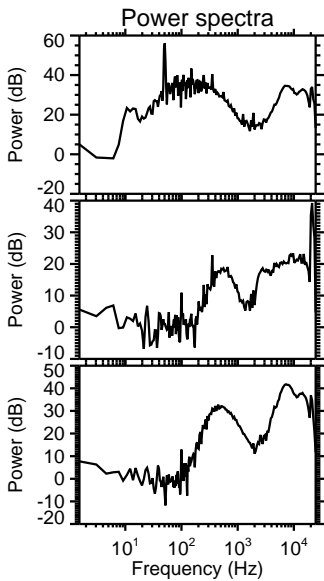
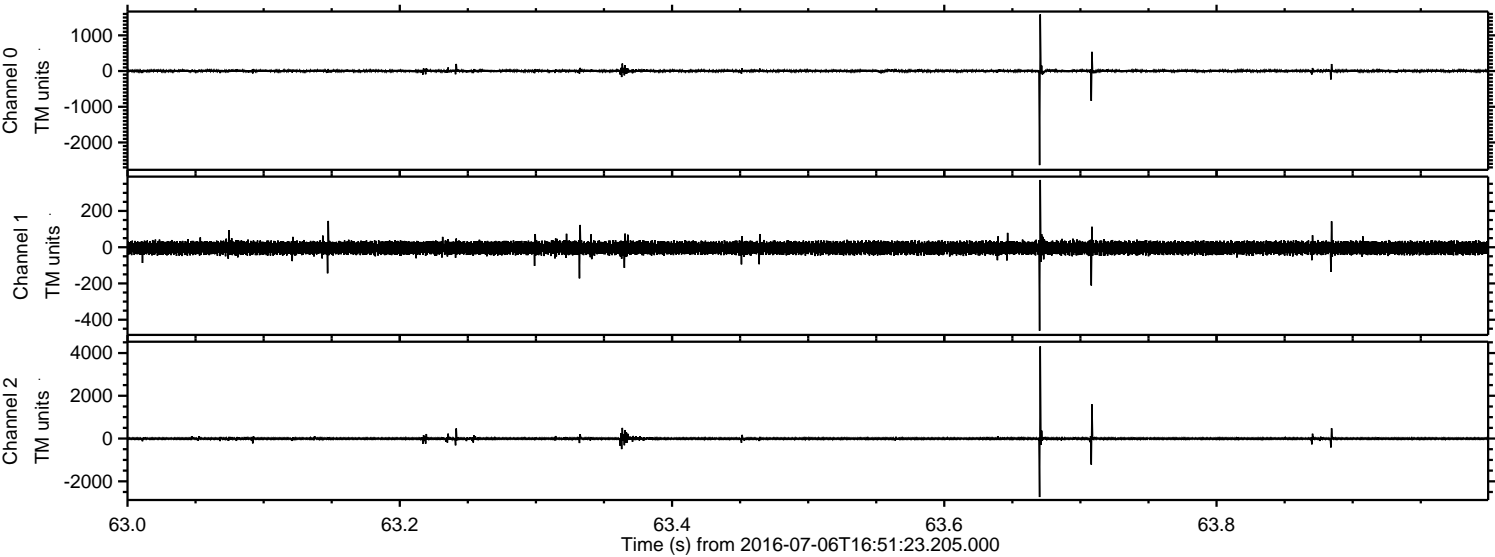


Processed Wed Jul 6 18:59:56 2016 by ELM ver.2012-10-06 from 001\_\_elm20160706\_165122\_\_dat00.bin



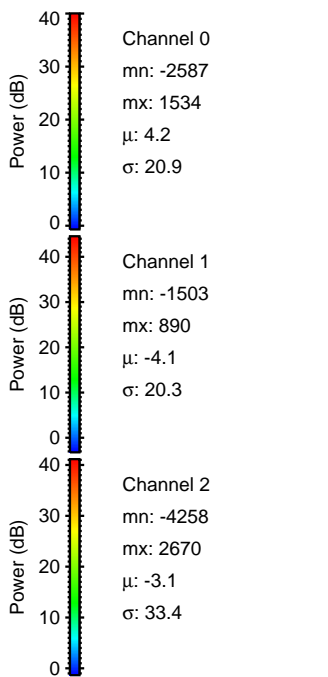
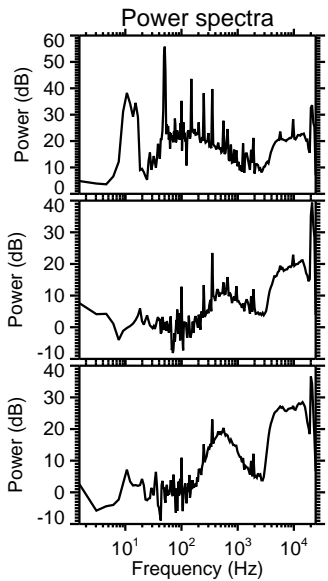
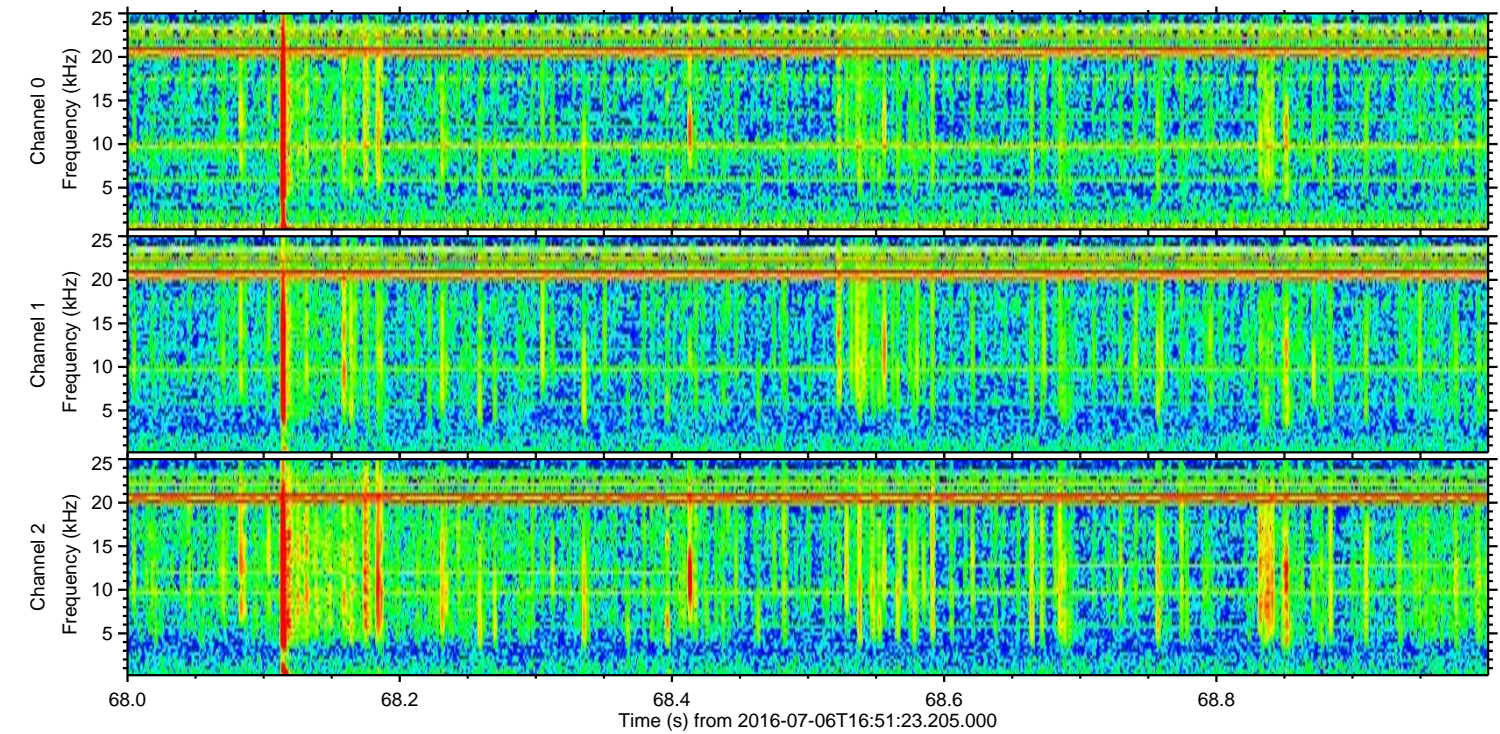
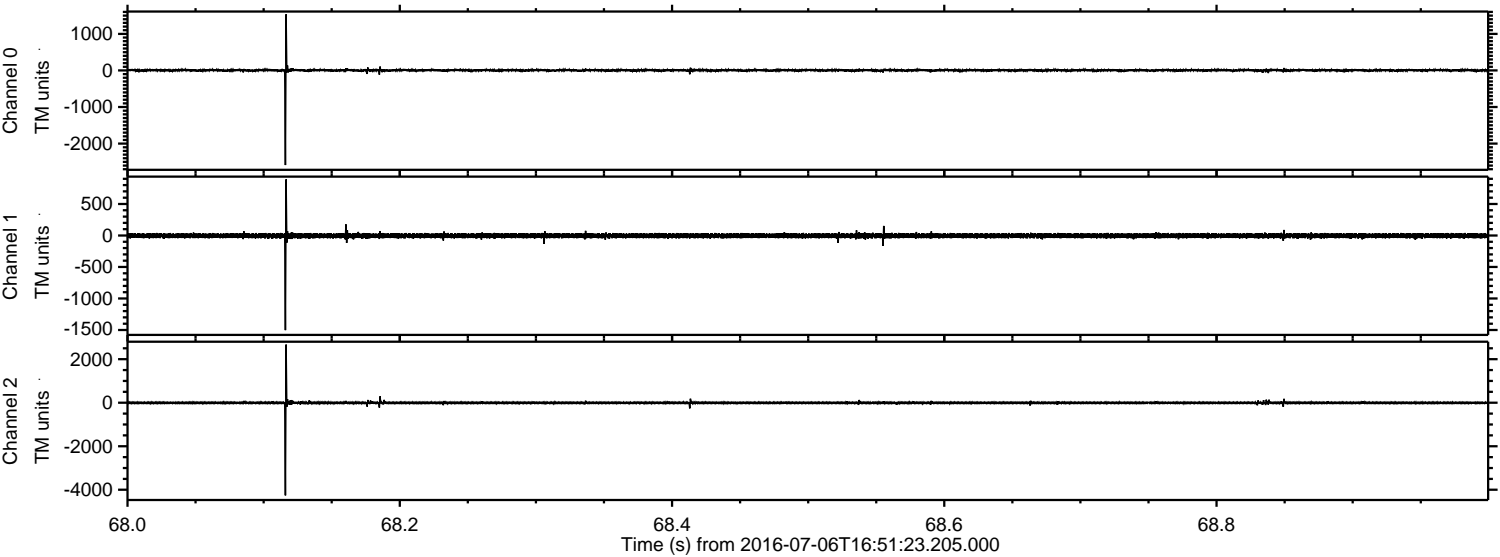


Processed Wed Jul 6 18:59:57 2016 by ELM ver.2012-10-06 from 001\_\_elm20160706\_165122\_\_dat00.bin



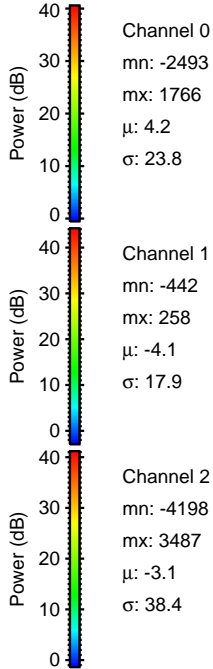
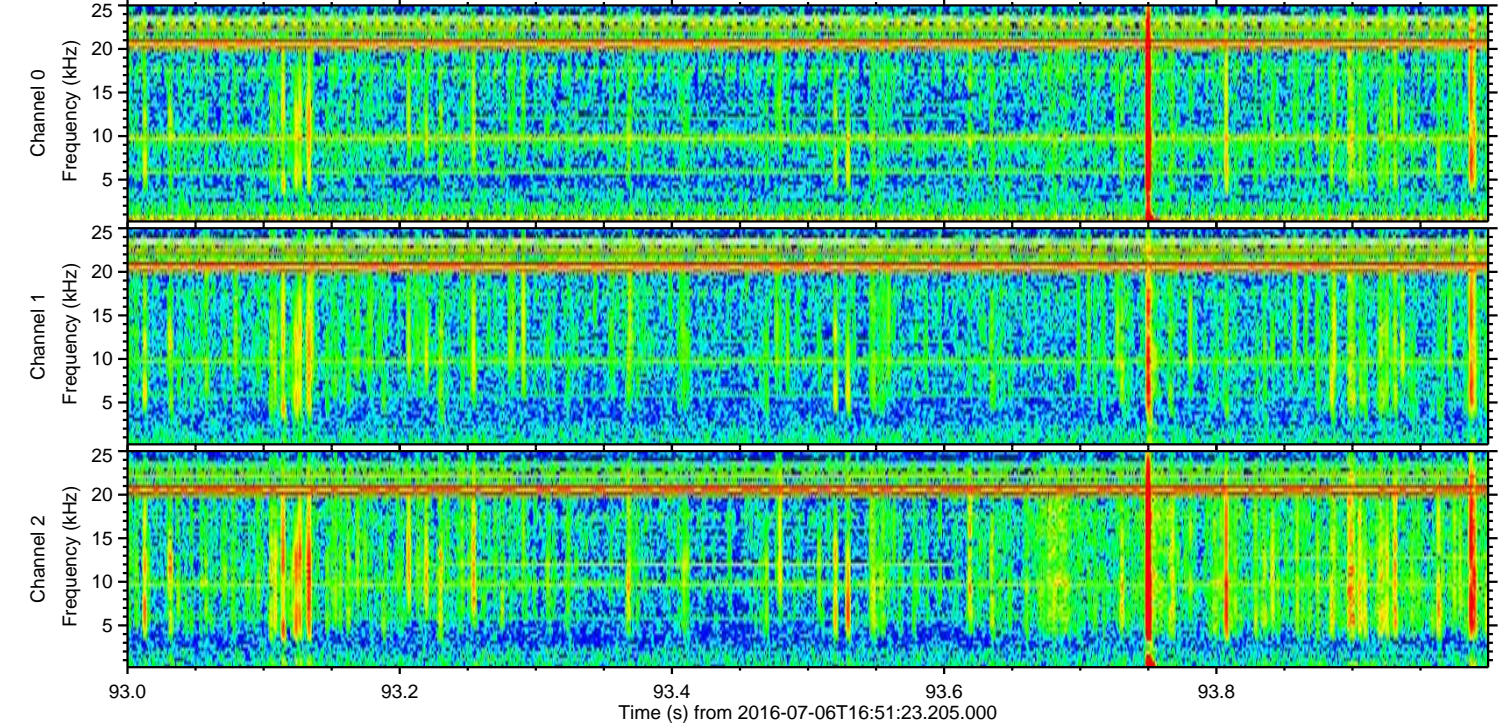
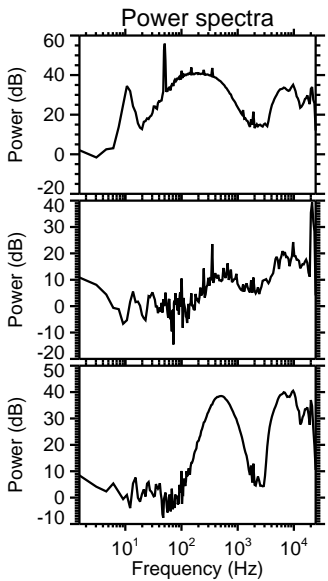
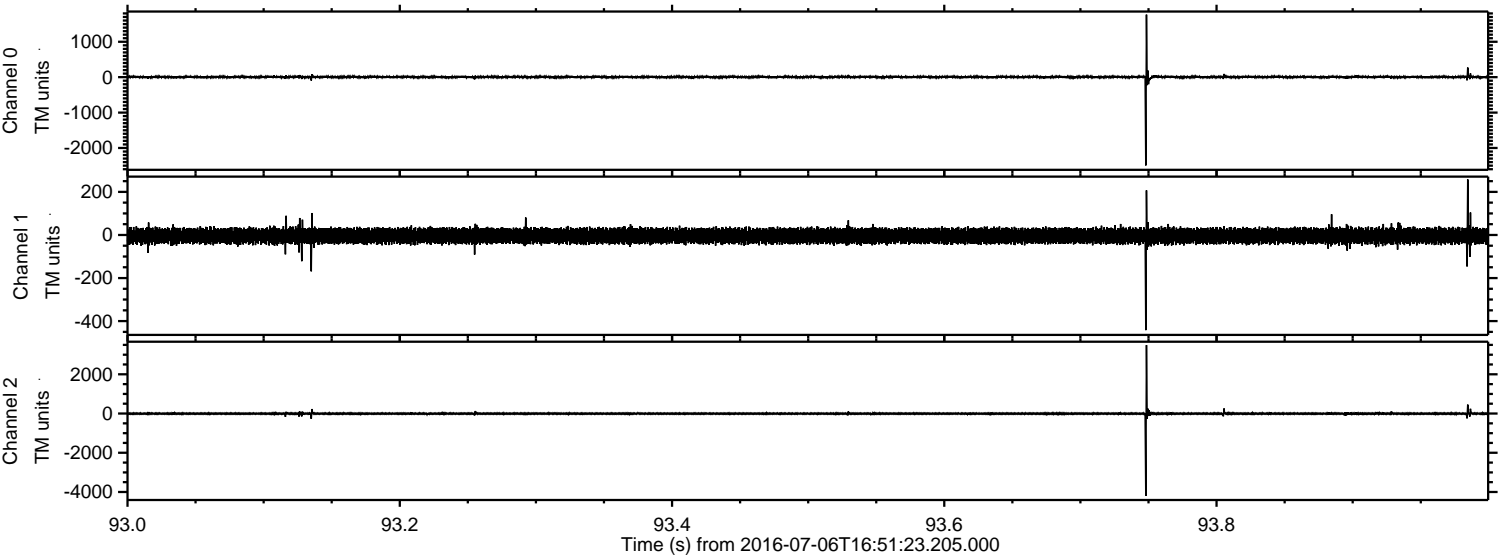


Processed Wed Jul 6 18:59:58 2016 by ELM ver.2012-10-06 from 001\_\_elm20160706\_165122\_\_dat00.bin





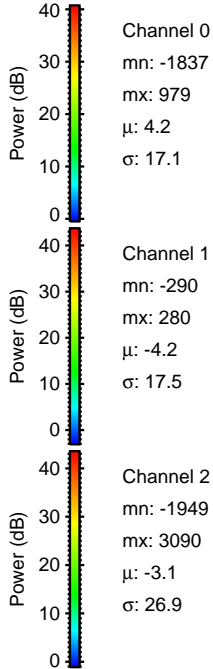
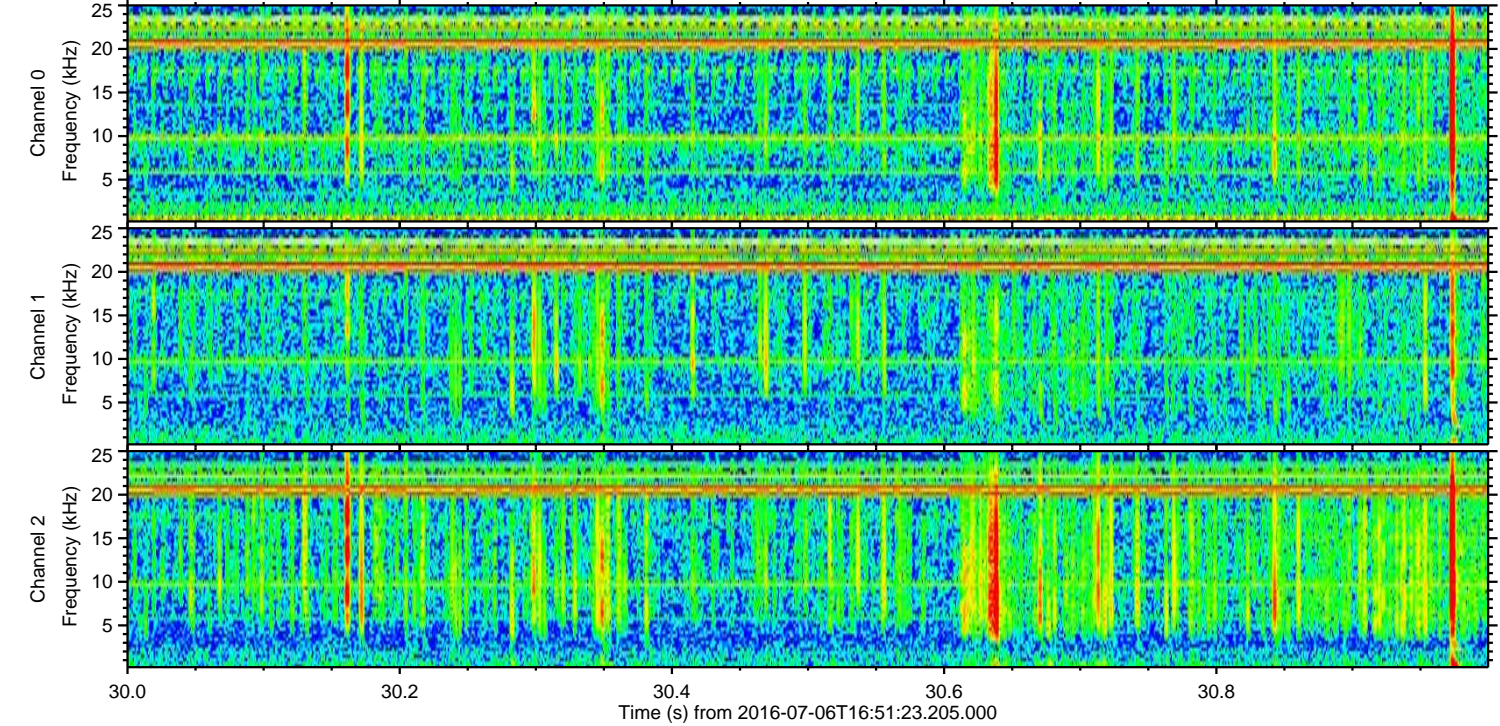
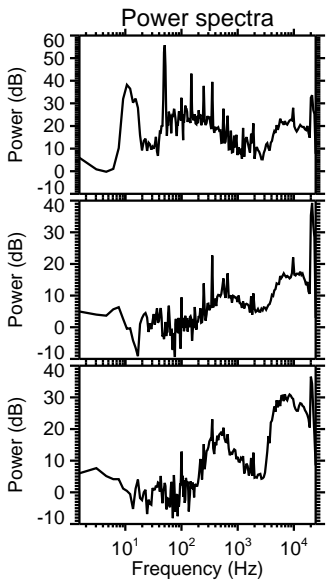
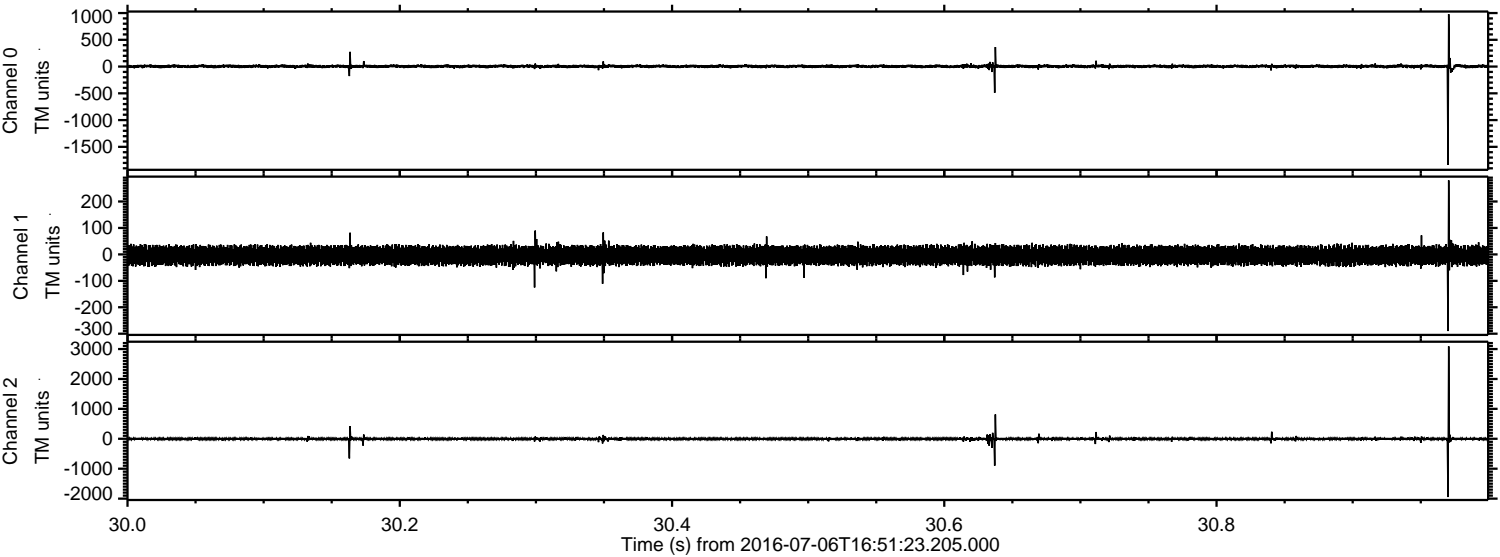
Processed Wed Jul 6 18:59:58 2016 by ELM ver.2012-10-06 from 001\_\_elm20160706\_165122\_\_dat00.bin





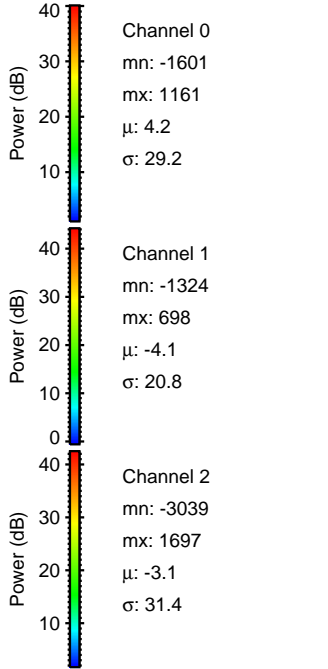
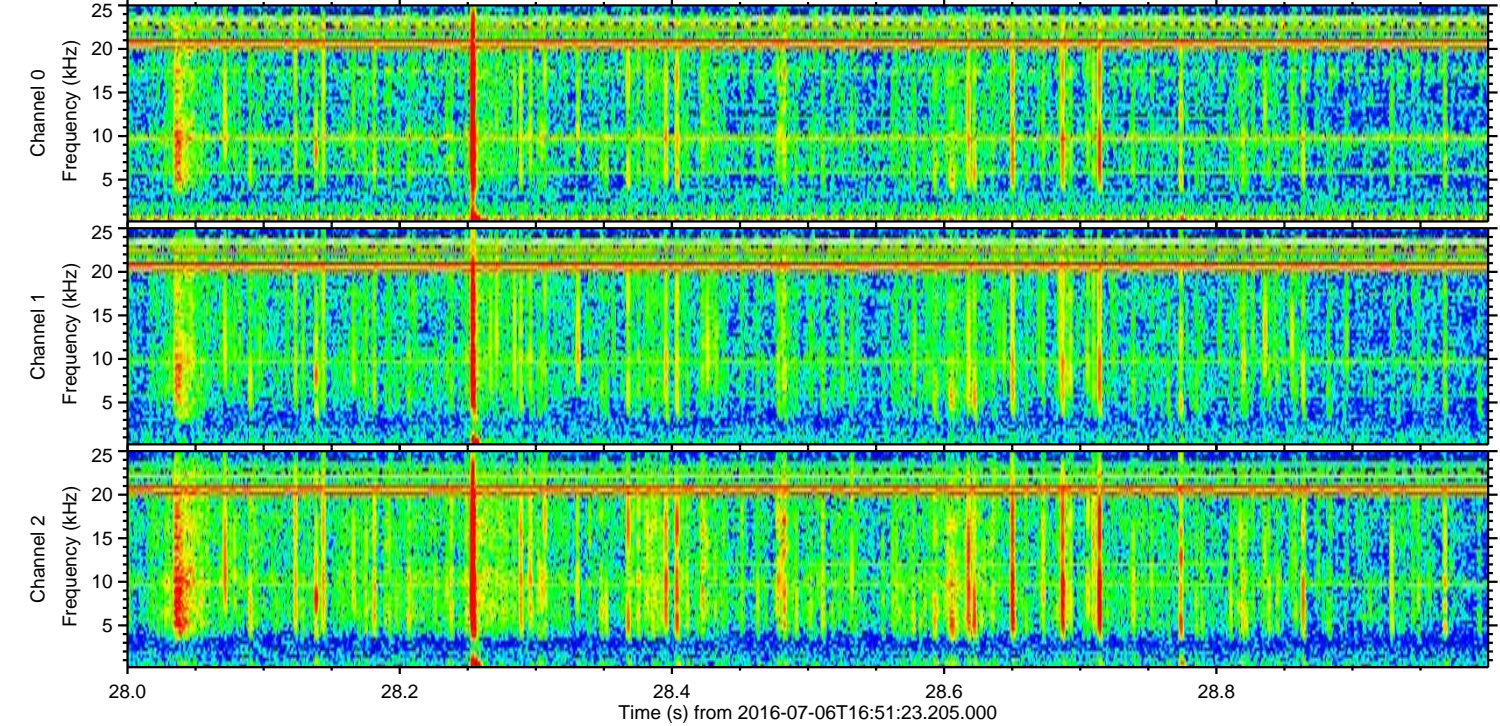
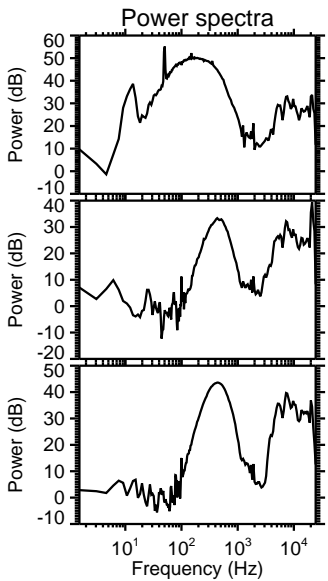
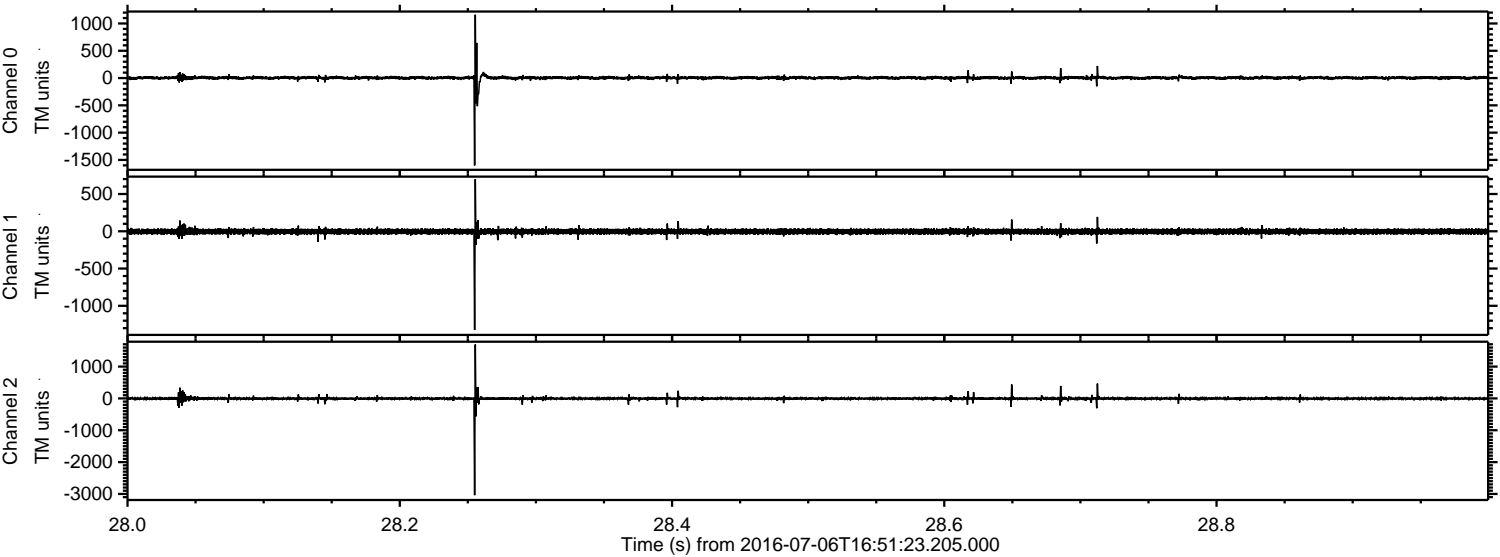
ELMAVAN 3D WAVEFORMS (Measured data sampled at 50 kHz) 51000 packets of 144 samples from 2016-07-06T16:51:23.205.000. Part 31/147

Processed Wed Jul 6 18:59:59 2016 by ELM ver.2012-10-06 from 001\_\_elm20160706\_165122\_\_dat00.bin





Processed Wed Jul 6 19:00:00 2016 by ELM ver.2012-10-06 from 001\_\_elm20160706\_165122\_\_dat00.bin





Processed Wed Jul 6 19:00:01 2016 by ELM ver.2012-10-06 from 001\_\_elm20160706\_165122\_\_dat00.bin

