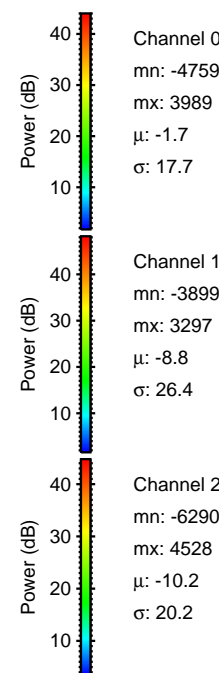
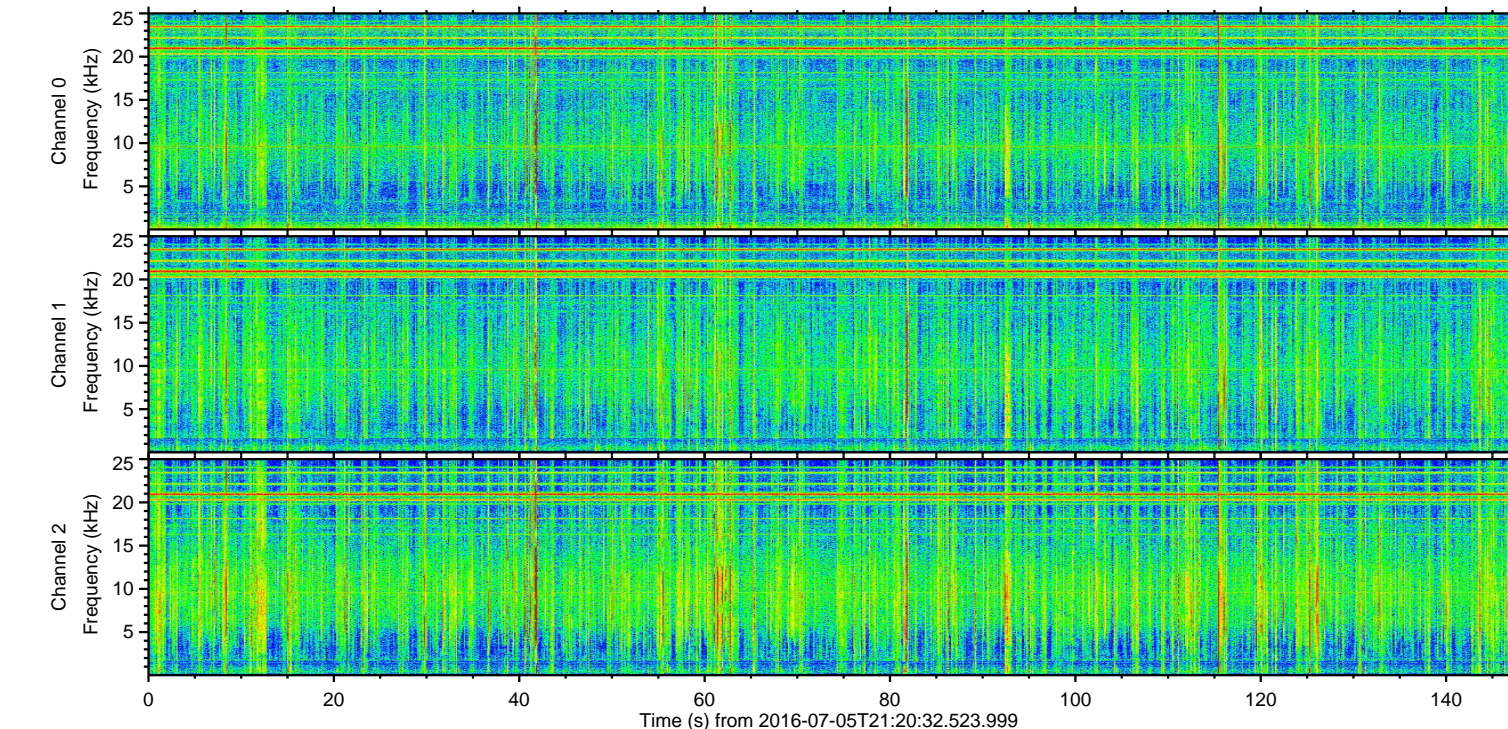
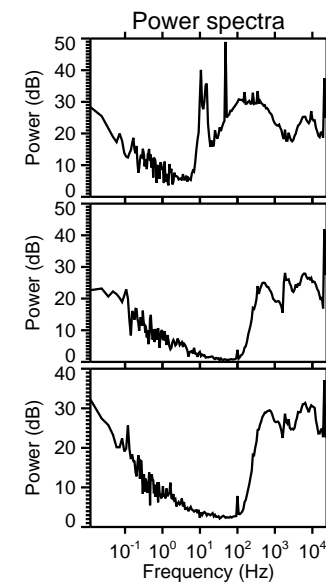
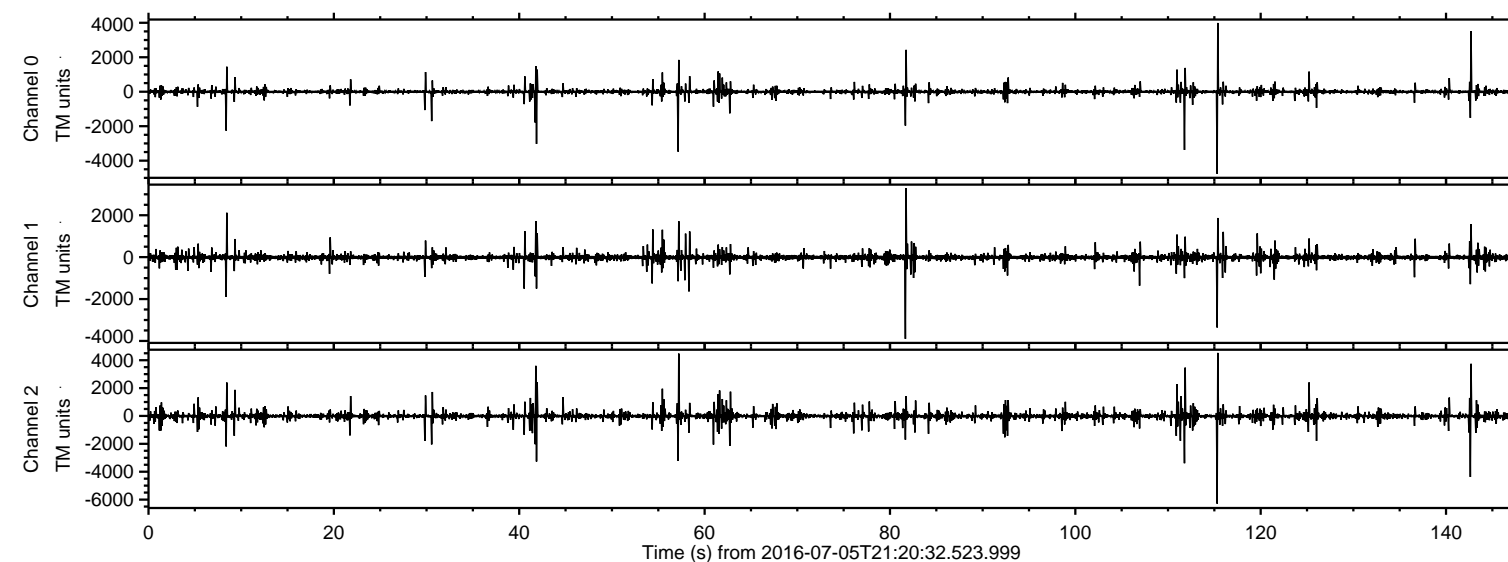


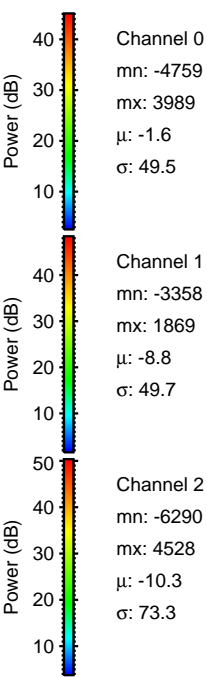
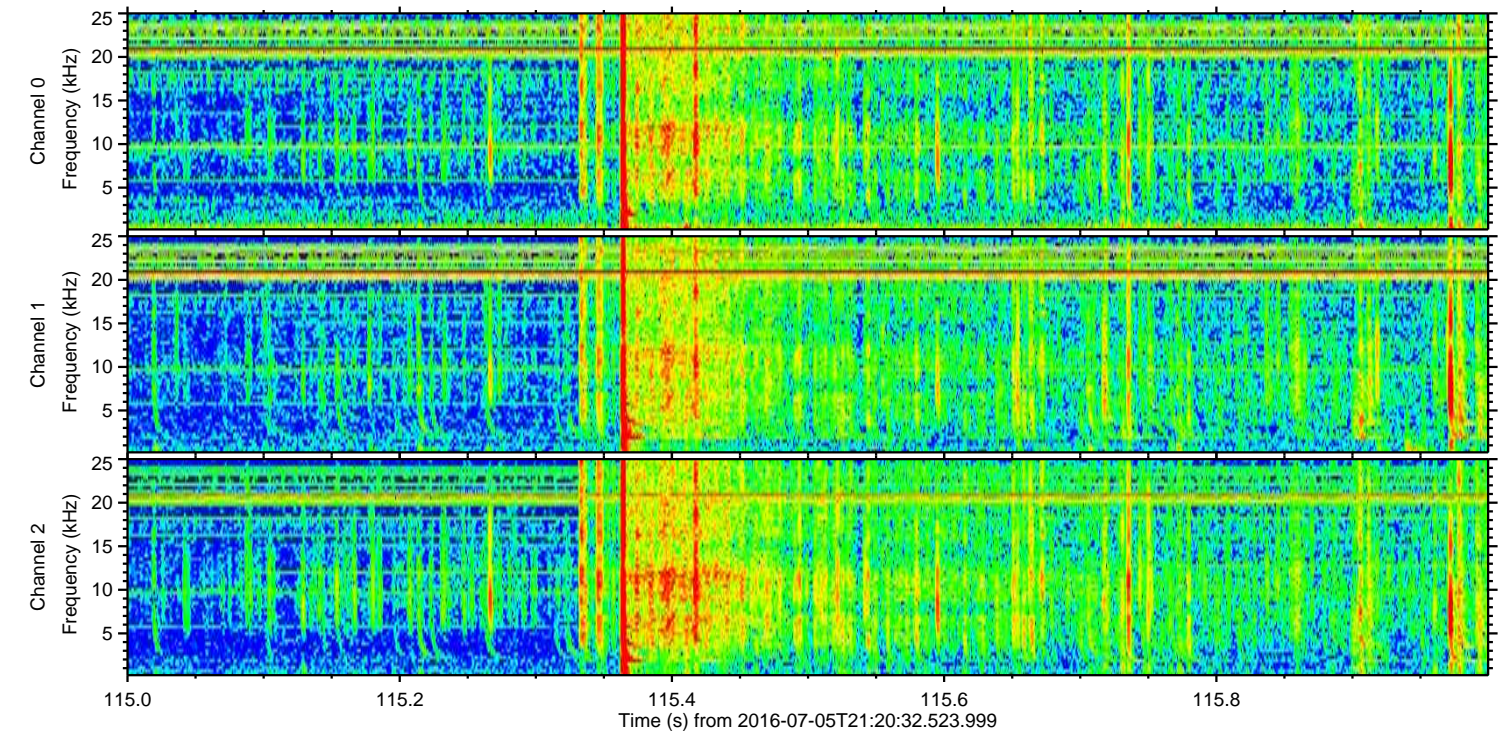
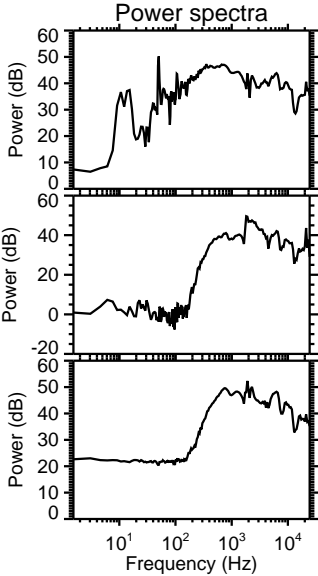
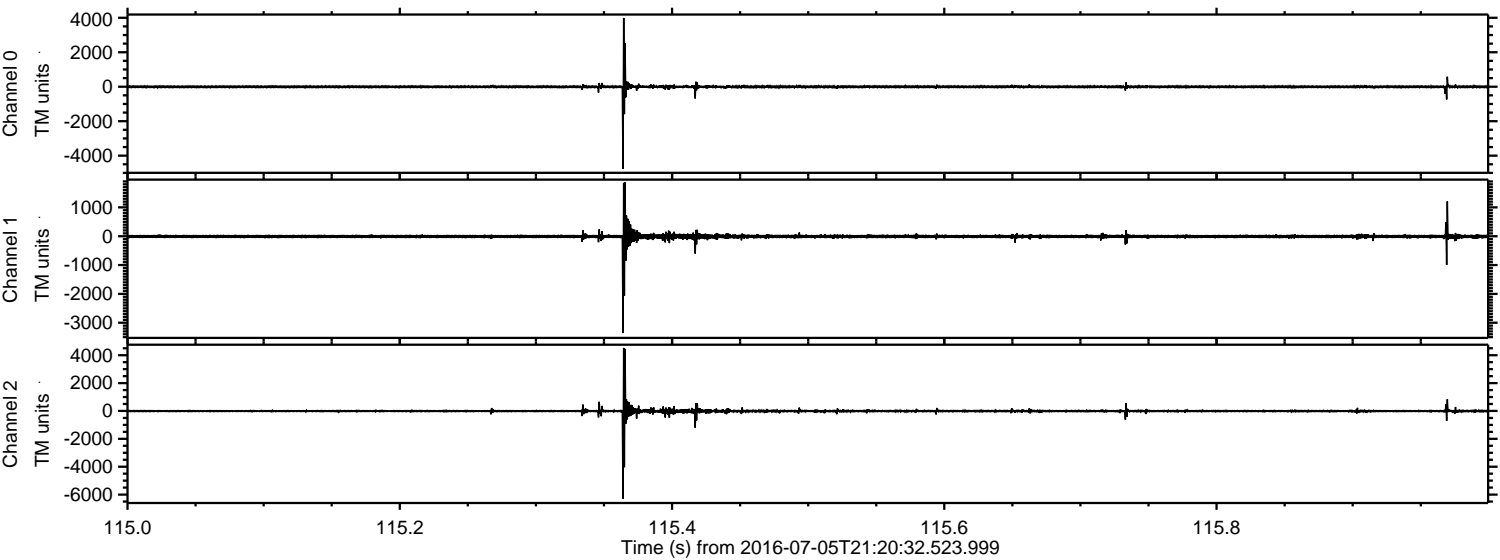
# ELMAVAN 3D WAVEFORMS (Measured data sampled at 50 kHz) 51000 packets of 144 samples from 2016-07-05T21:20:32.523.999.

Processed Tue Jul 5 23:27:57 2016 by ELM ver.2012-10-06 from 001\_\_elm20160705\_212031\_\_dat00.bin



ELMAVAN 3D WAVEFORMS (Measured data sampled at 50 kHz) 51000 packets of 144 samples from 2016-07-05T21:20:32.523.999. Part 116/147

Processed Tue Jul 5 23:28:09 2016 by ELM ver.2012-10-06 from 001\_\_elm20160705\_212031\_\_dat00.bin

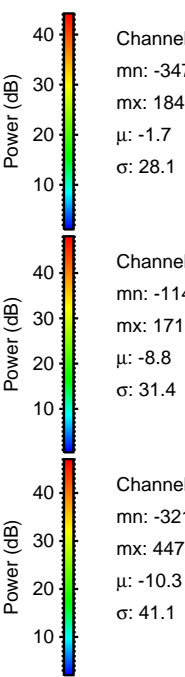
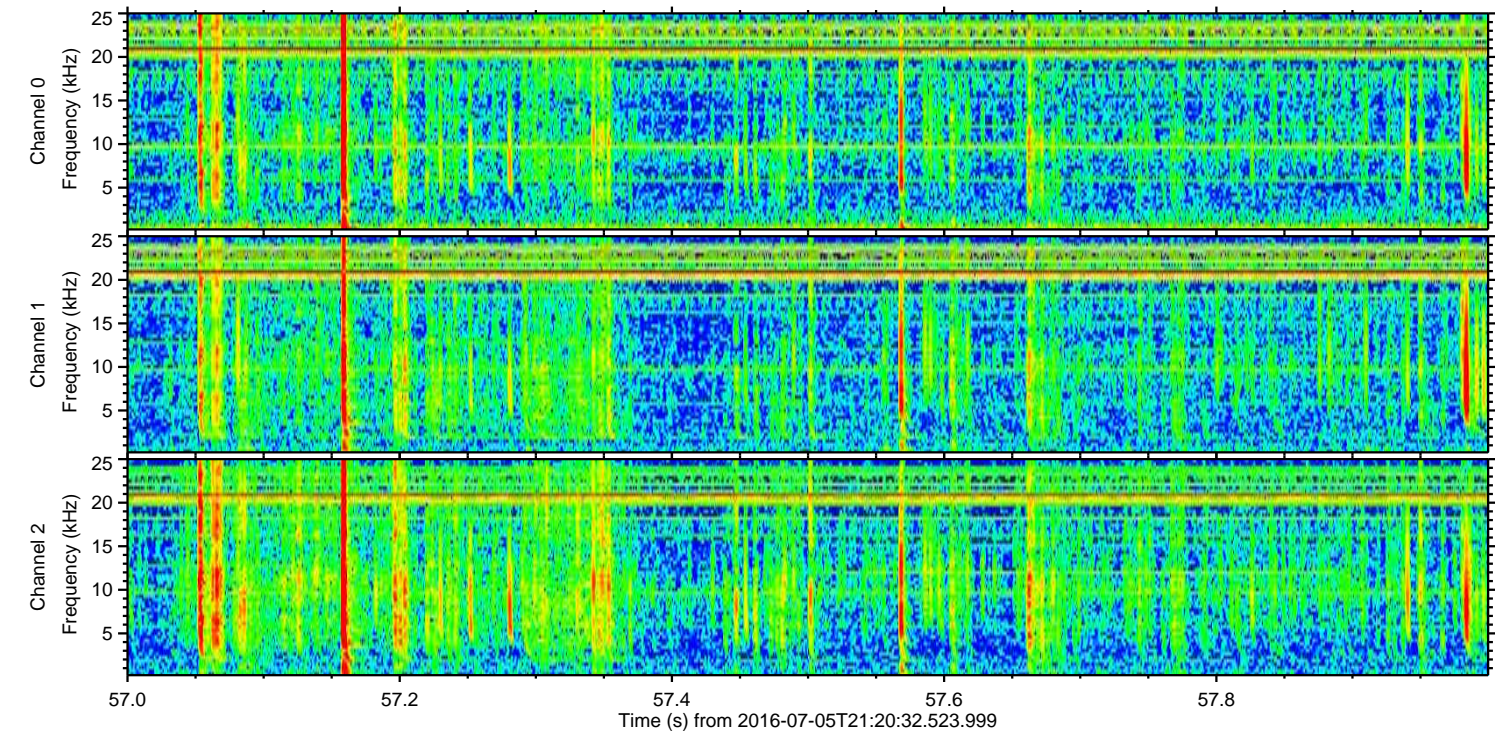
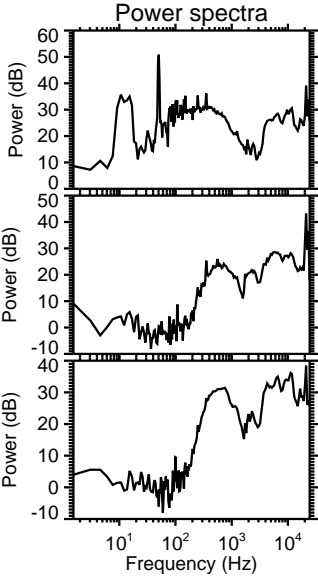
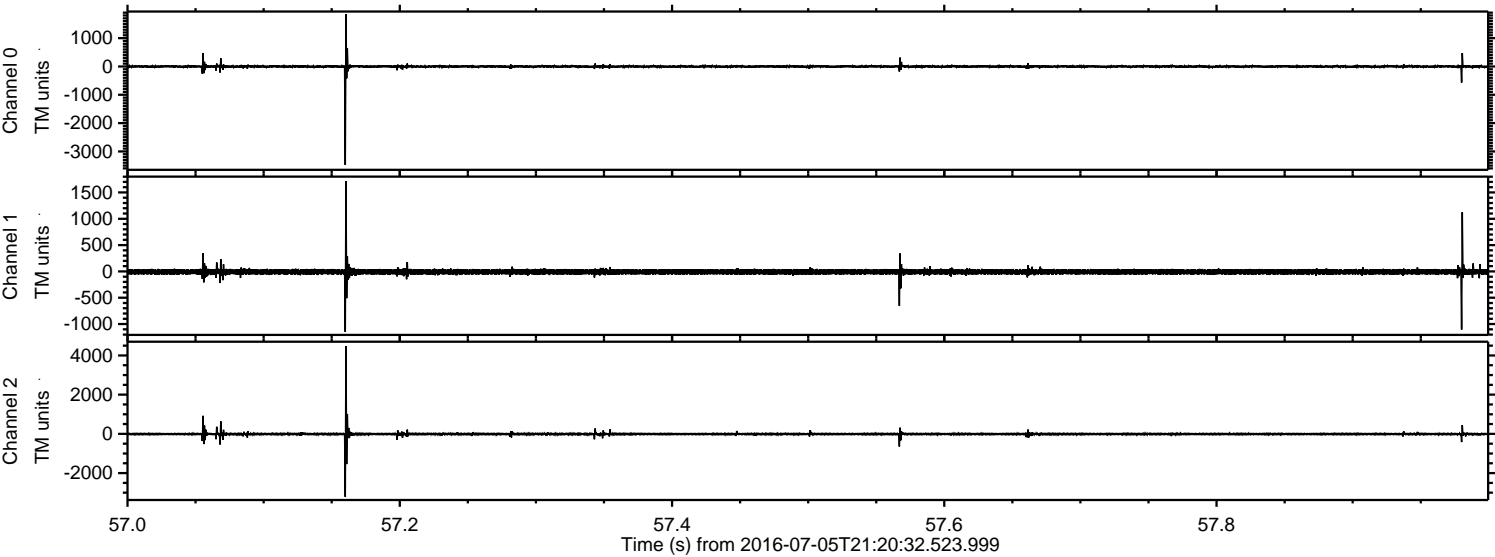


Channel 0  
mn: -4759  
mx: 3989  
 $\mu$ : -1.6  
 $\sigma$ : 49.5

Channel 1  
mn: -3358  
mx: 1869  
 $\mu$ : -8.8  
 $\sigma$ : 49.7

Channel 2  
mn: -6290  
mx: 4528  
 $\mu$ : -10.3  
 $\sigma$ : 73.3

Processed Tue Jul 5 23:28:10 2016 by ELM ver.2012-10-06 from 001\_\_elm20160705\_212031\_\_dat00.bin



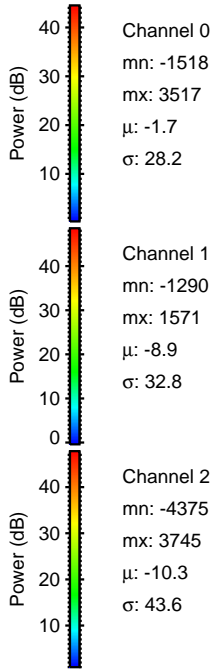
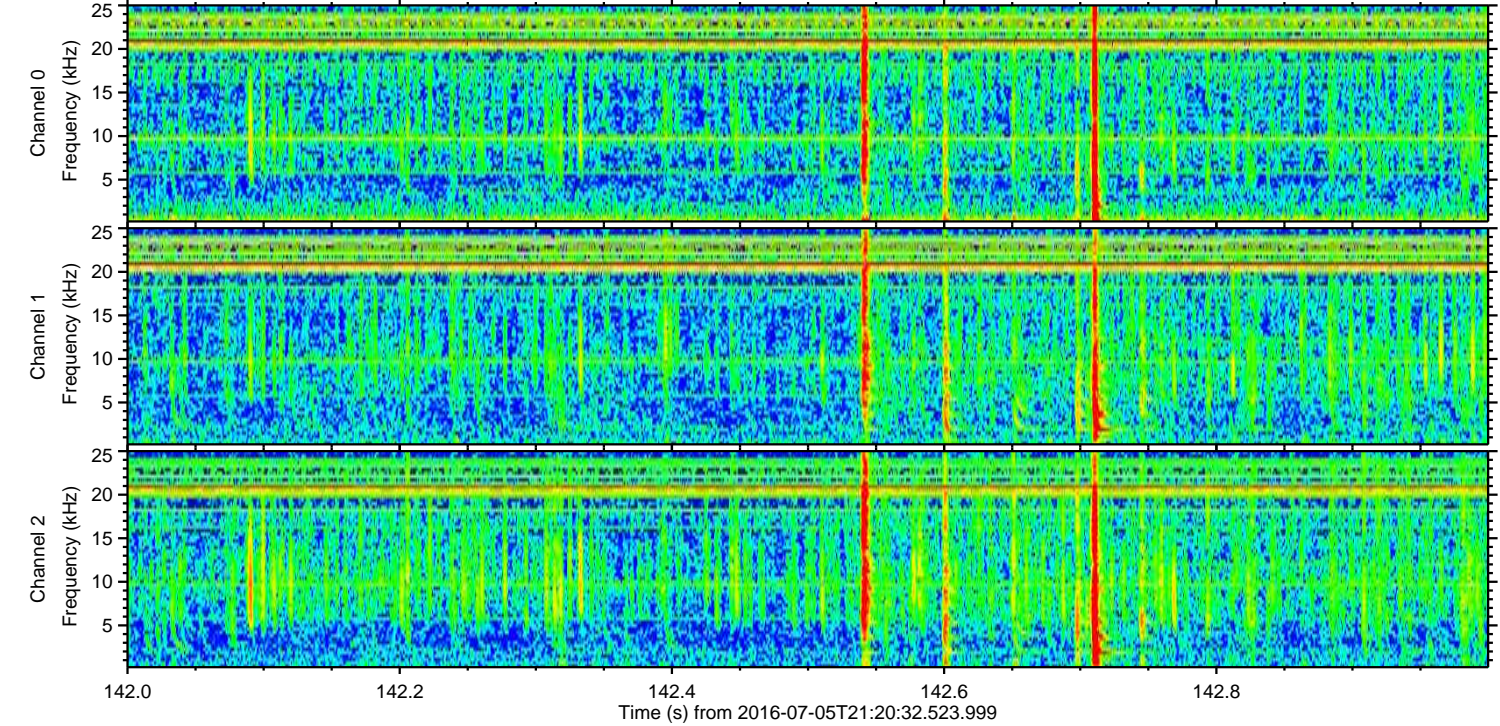
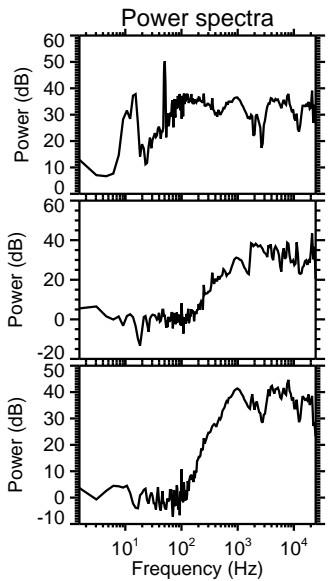
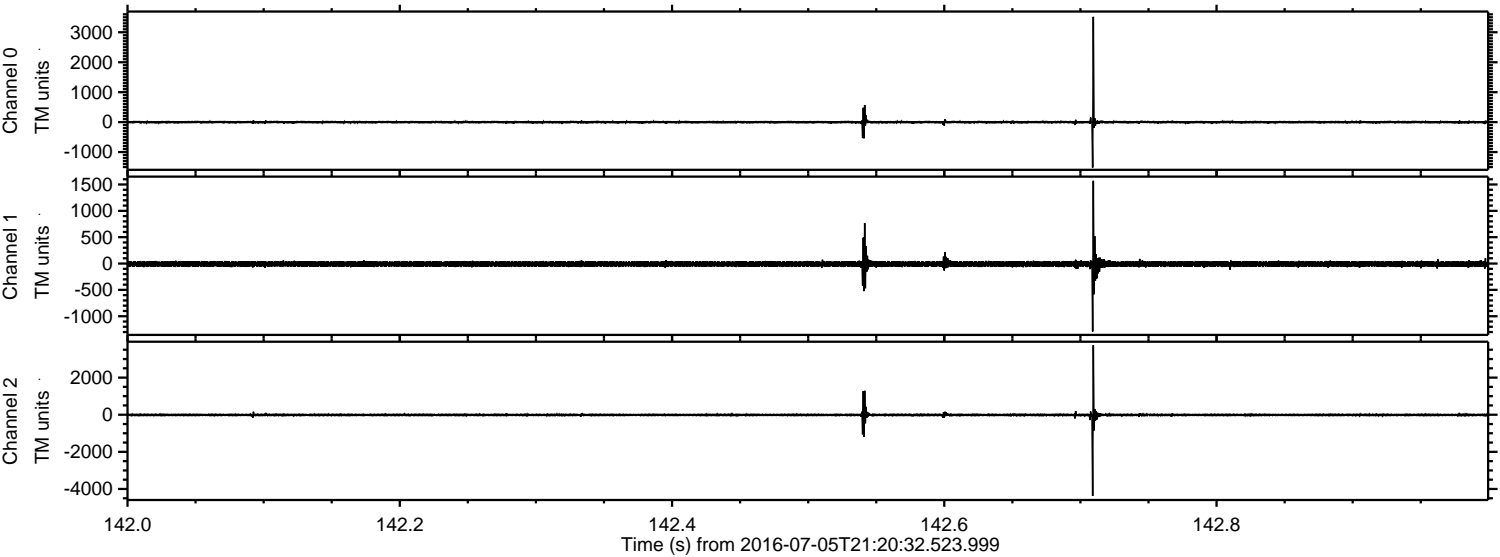
Channel 0  
mn: -3476  
mx: 1847  
 $\mu$ : -1.7  
 $\sigma$ : 28.1

Channel 1  
mn: -1149  
mx: 1715  
 $\mu$ : -8.8  
 $\sigma$ : 31.4

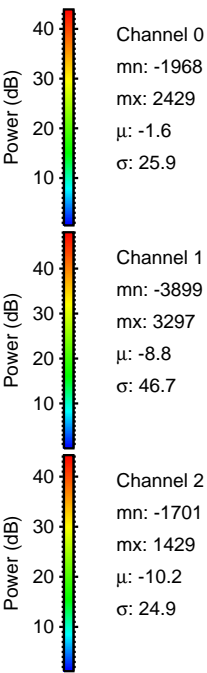
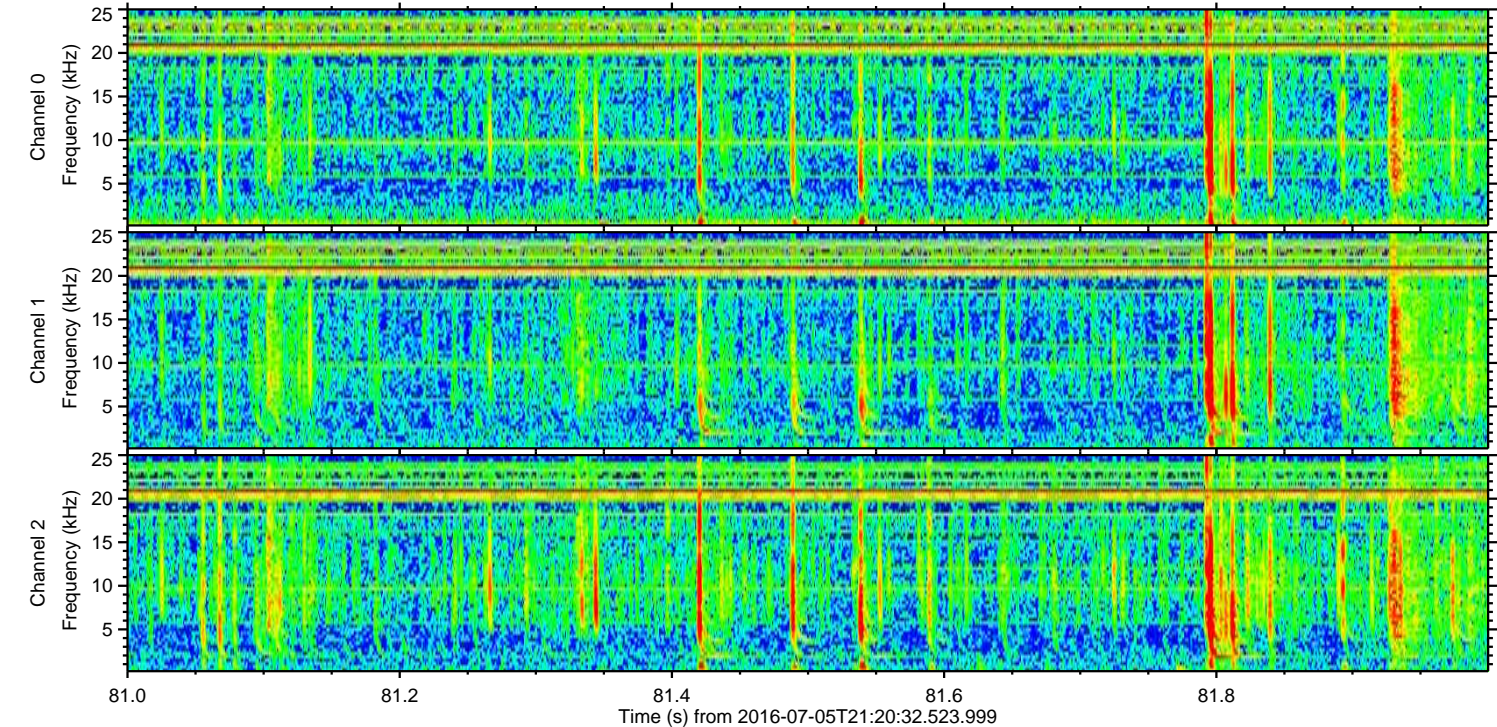
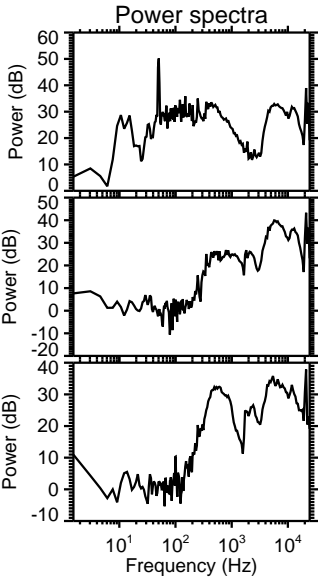
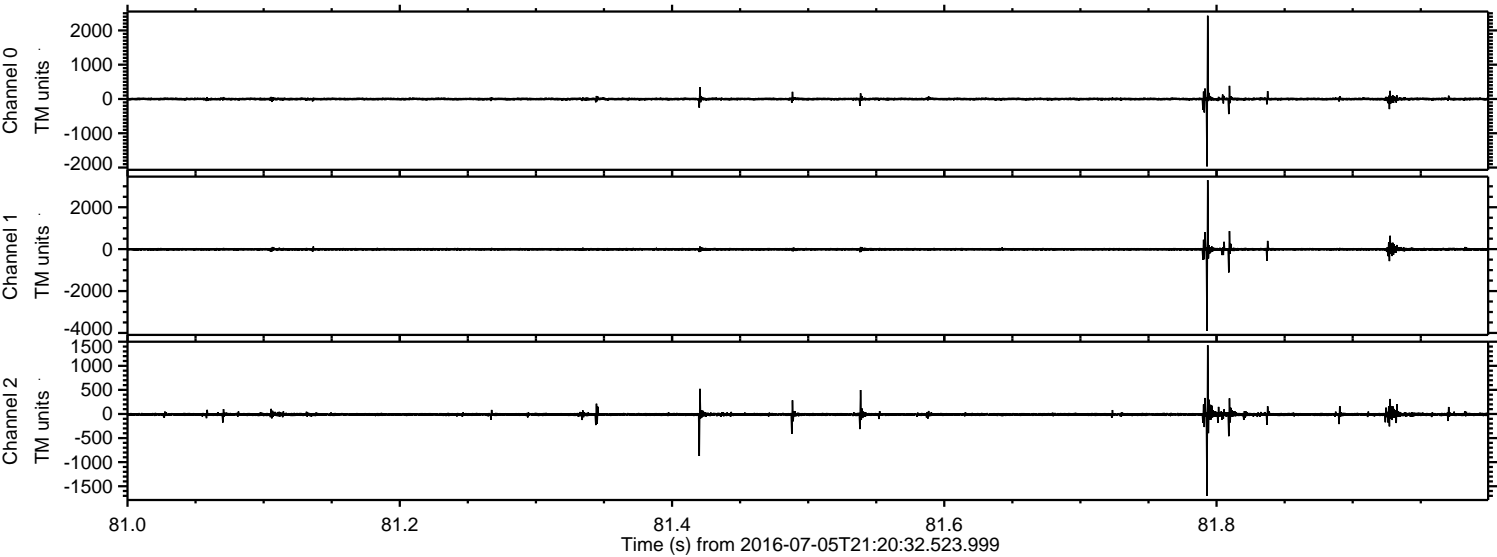
Channel 2  
mn: -3212  
mx: 4476  
 $\mu$ : -10.3  
 $\sigma$ : 41.1

ELMAVAN 3D WAVEFORMS (Measured data sampled at 50 kHz) 51000 packets of 144 samples from 2016-07-05T21:20:32.523.999. Part 143/147

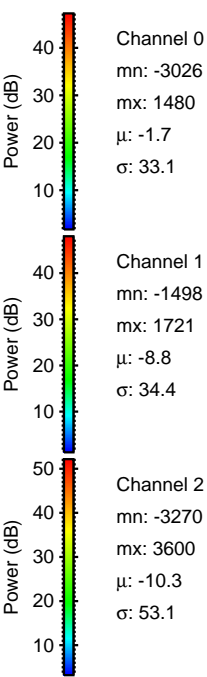
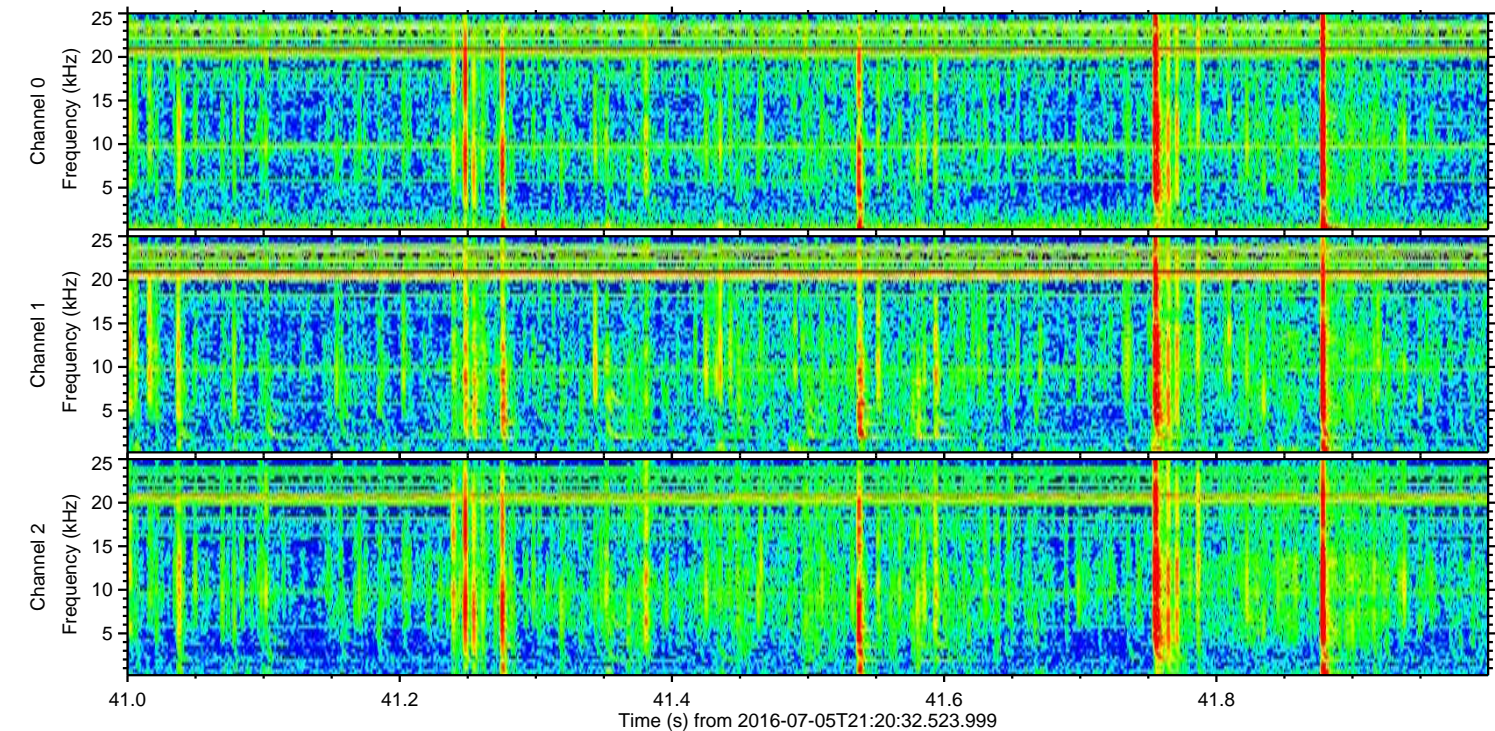
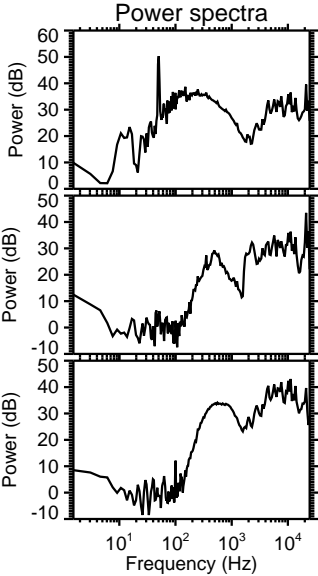
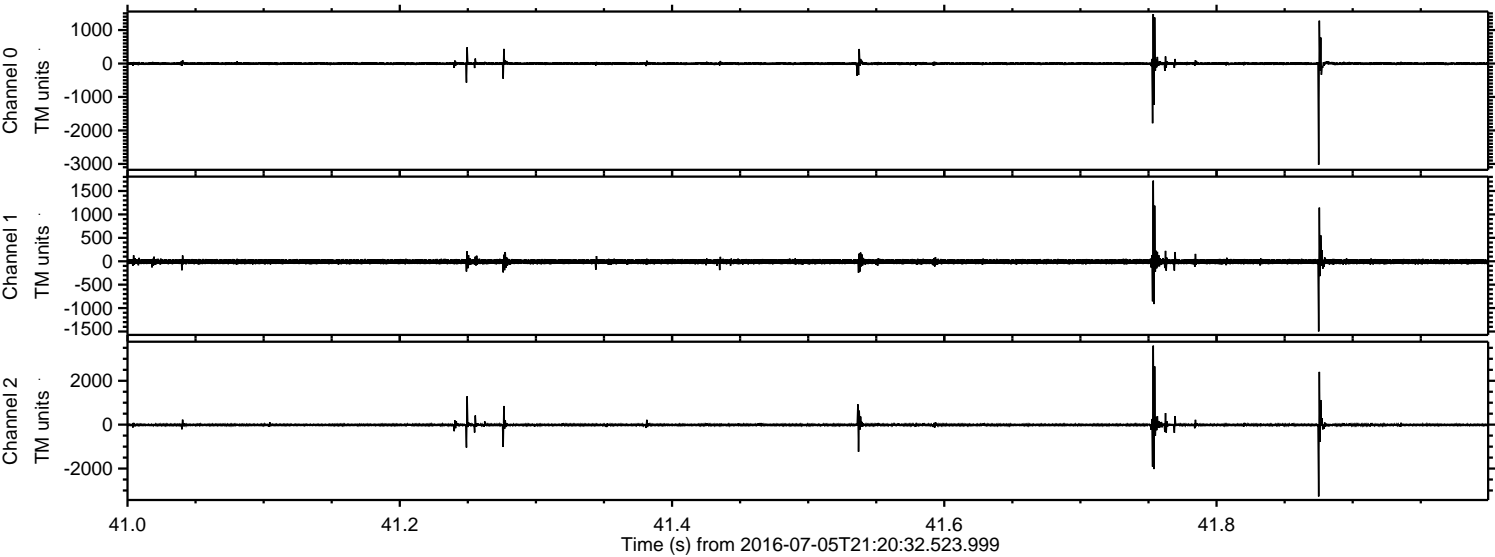
Processed Tue Jul 5 23:28:11 2016 by ELM ver.2012-10-06 from 001\_\_elm20160705\_212031\_\_dat00.bin



Processed Tue Jul 5 23:28:12 2016 by ELM ver.2012-10-06 from 001\_\_elm20160705\_212031\_\_dat00.bin

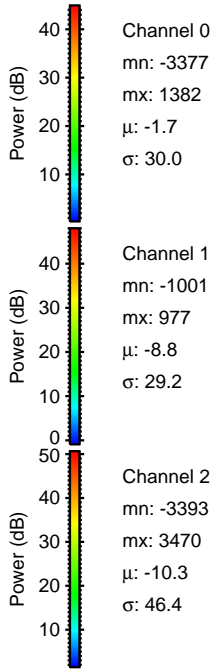
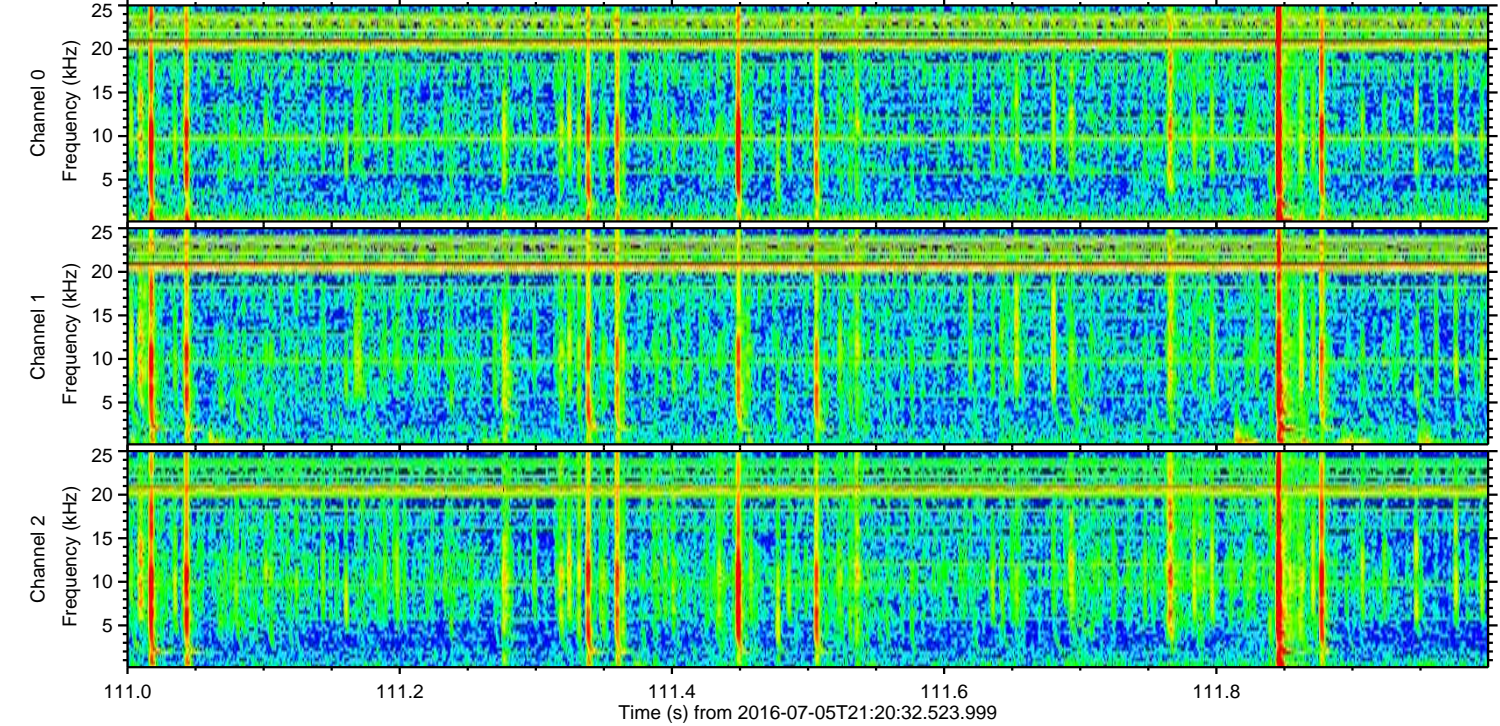
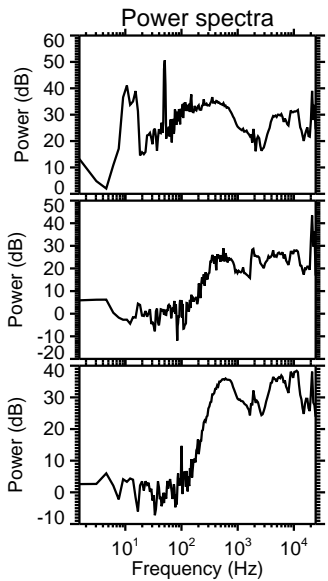
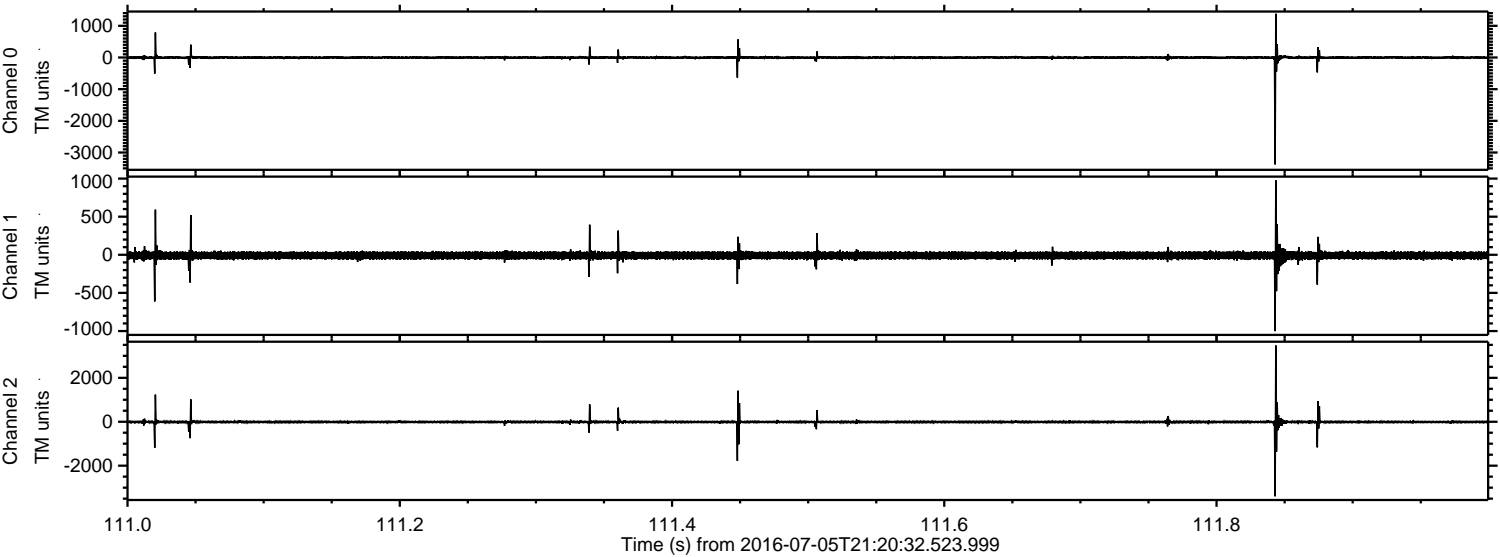


Processed Tue Jul 5 23:28:13 2016 by ELM ver.2012-10-06 from 001\_\_elm20160705\_212031\_\_dat00.bin



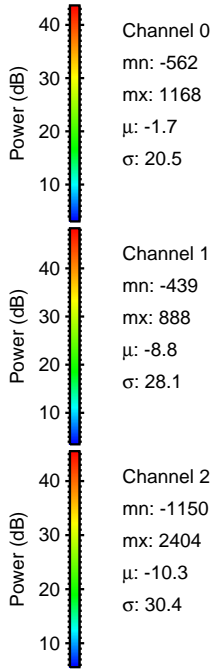
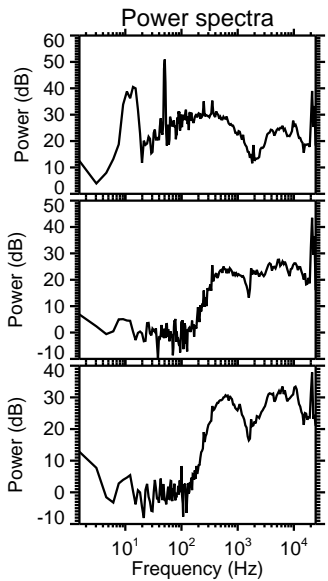
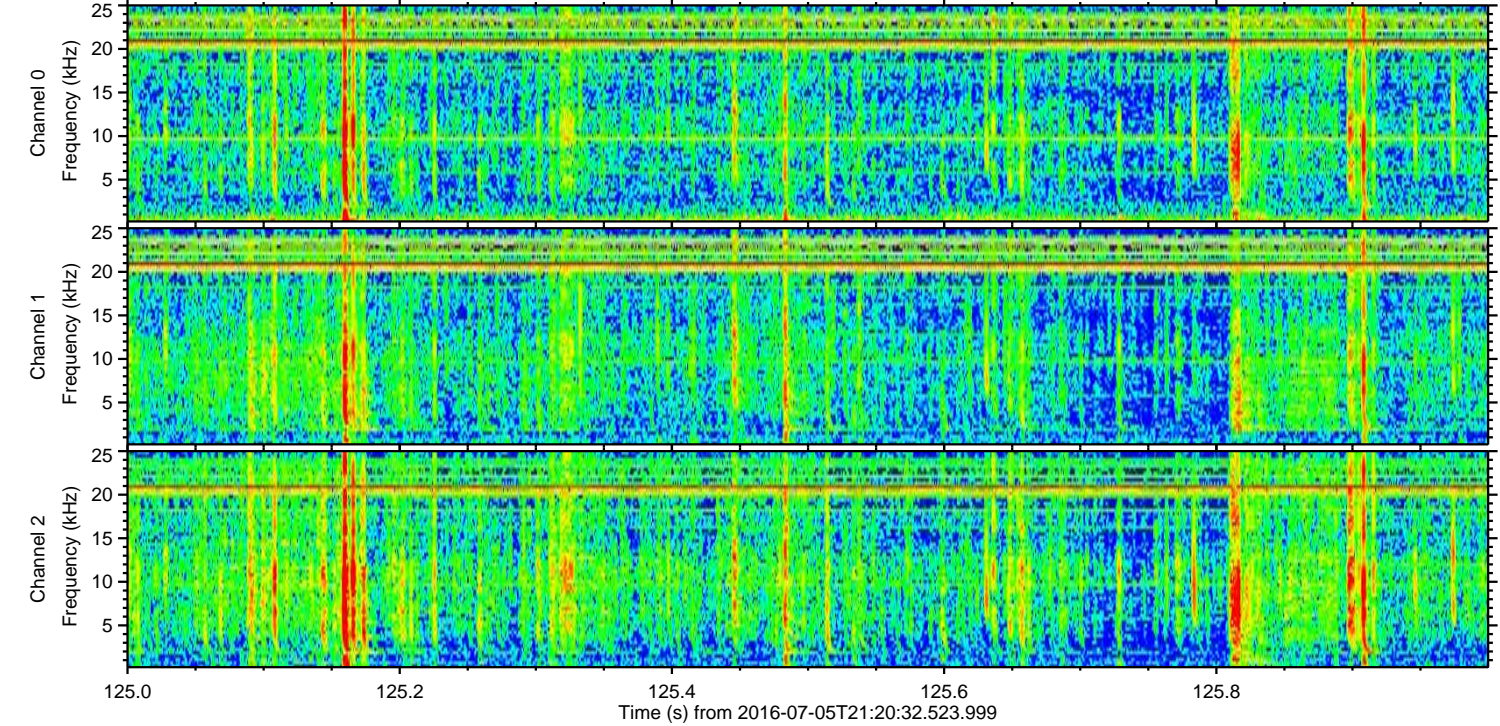
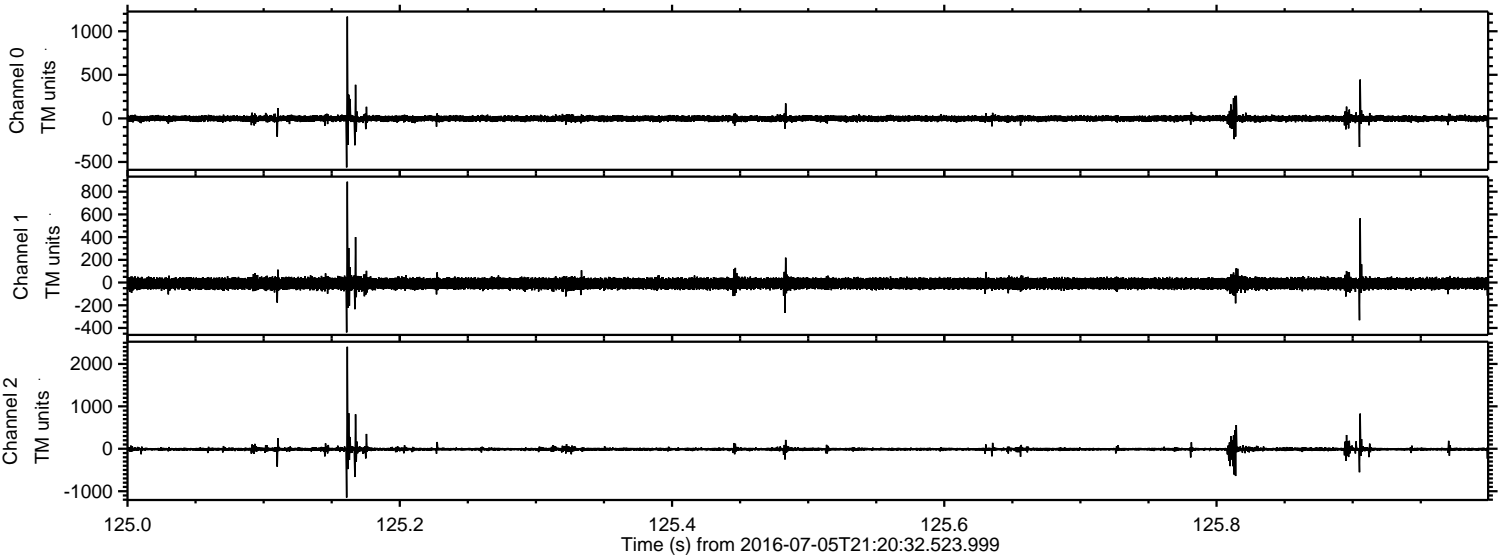
ELMAVAN 3D WAVEFORMS (Measured data sampled at 50 kHz) 51000 packets of 144 samples from 2016-07-05T21:20:32.523.999. Part 112/147

Processed Tue Jul 5 23:28:14 2016 by ELM ver.2012-10-06 from 001\_\_elm20160705\_212031\_\_dat00.bin

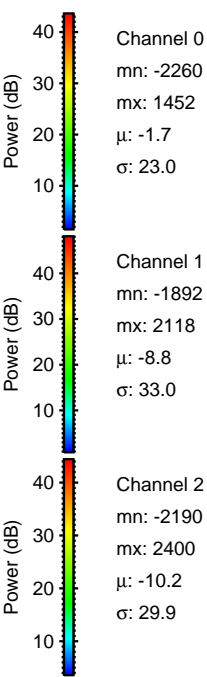
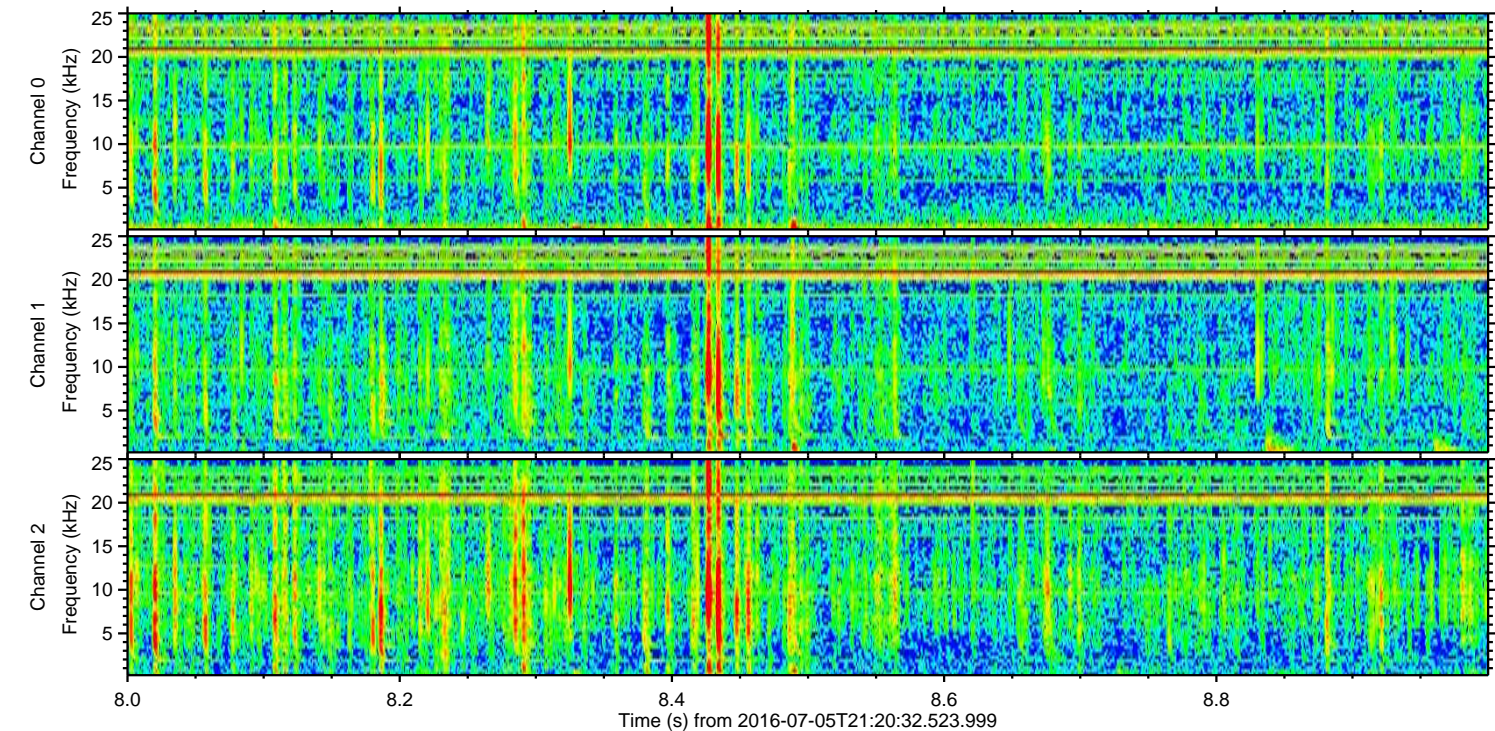
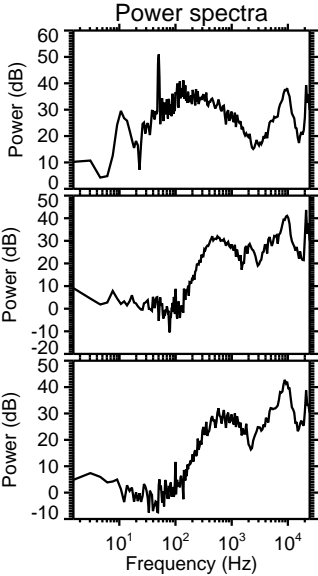
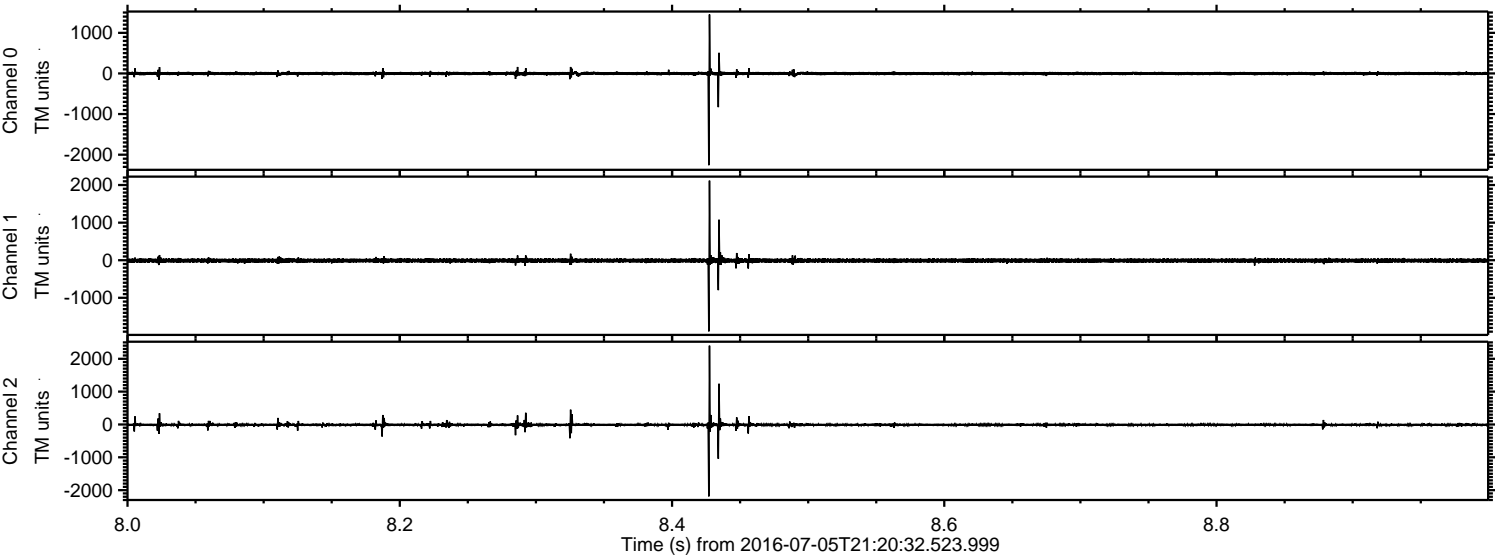


ELMAVAN 3D WAVEFORMS (Measured data sampled at 50 kHz) 51000 packets of 144 samples from 2016-07-05T21:20:32.523.999. Part 126/147

Processed Tue Jul 5 23:28:14 2016 by ELM ver.2012-10-06 from 001\_\_elm20160705\_212031\_\_dat00.bin



Processed Tue Jul 5 23:28:15 2016 by ELM ver.2012-10-06 from 001\_\_elm20160705\_212031\_\_dat00.bin



Channel 0  
mn: -2260  
mx: 1452  
 $\mu$ : -1.7  
 $\sigma$ : 23.0

Channel 1  
mn: -1892  
mx: 2118  
 $\mu$ : -8.8  
 $\sigma$ : 33.0

Channel 2  
mn: -2190  
mx: 2400  
 $\mu$ : -10.2  
 $\sigma$ : 29.9

ELMAVAN 3D WAVEFORMS (Measured data sampled at 50 kHz) 51000 packets of 144 samples from 2016-07-05T21:20:32.523.999. Part 111/147

Processed Tue Jul 5 23:28:16 2016 by ELM ver.2012-10-06 from 001\_\_elm20160705\_212031\_\_dat00.bin

