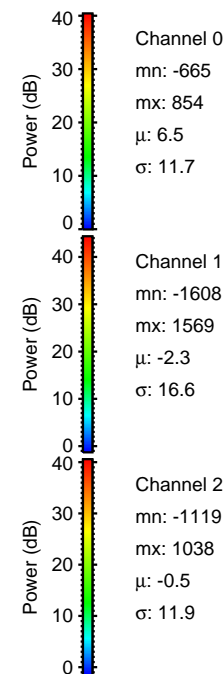
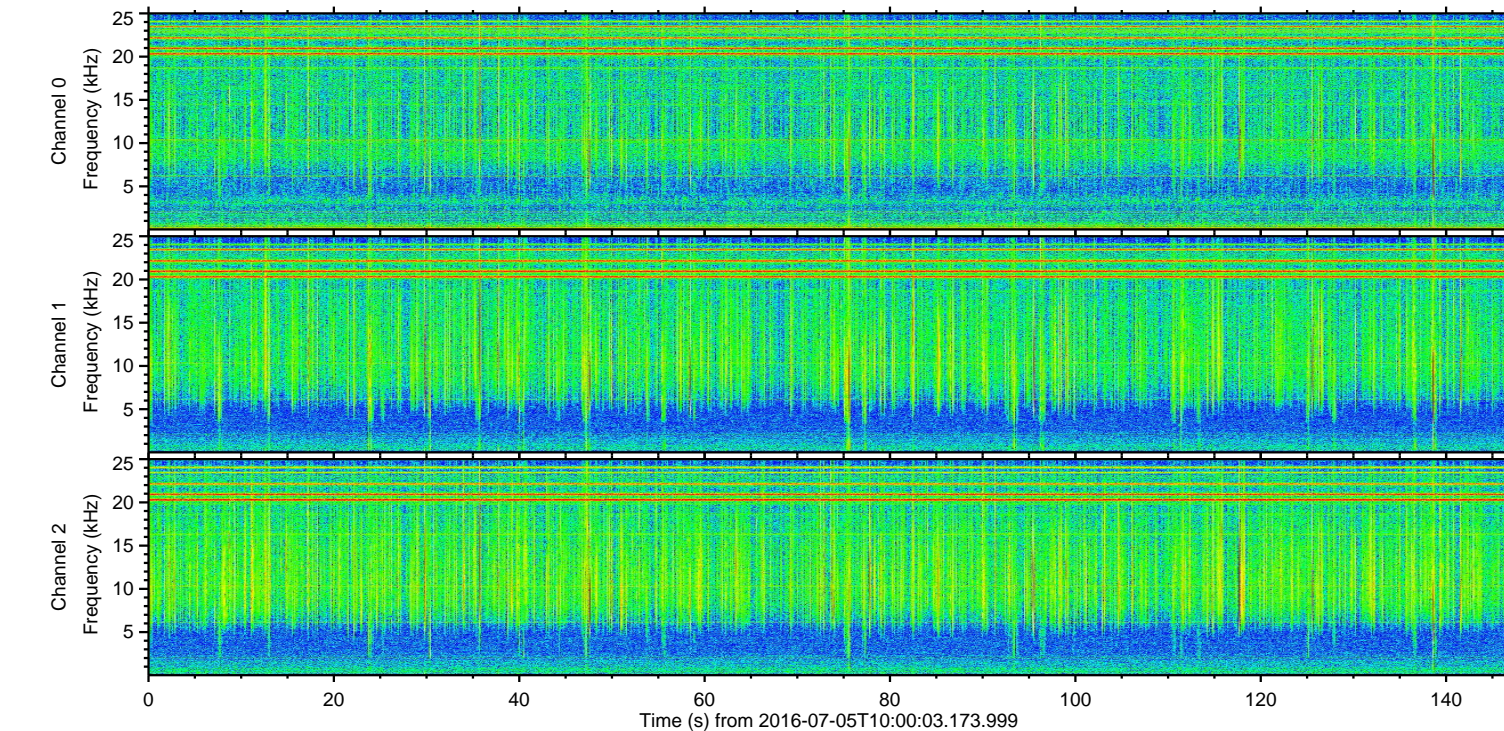
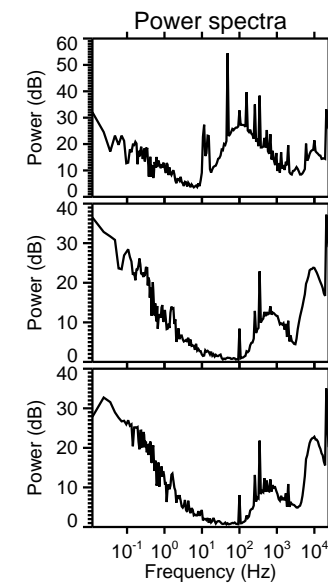
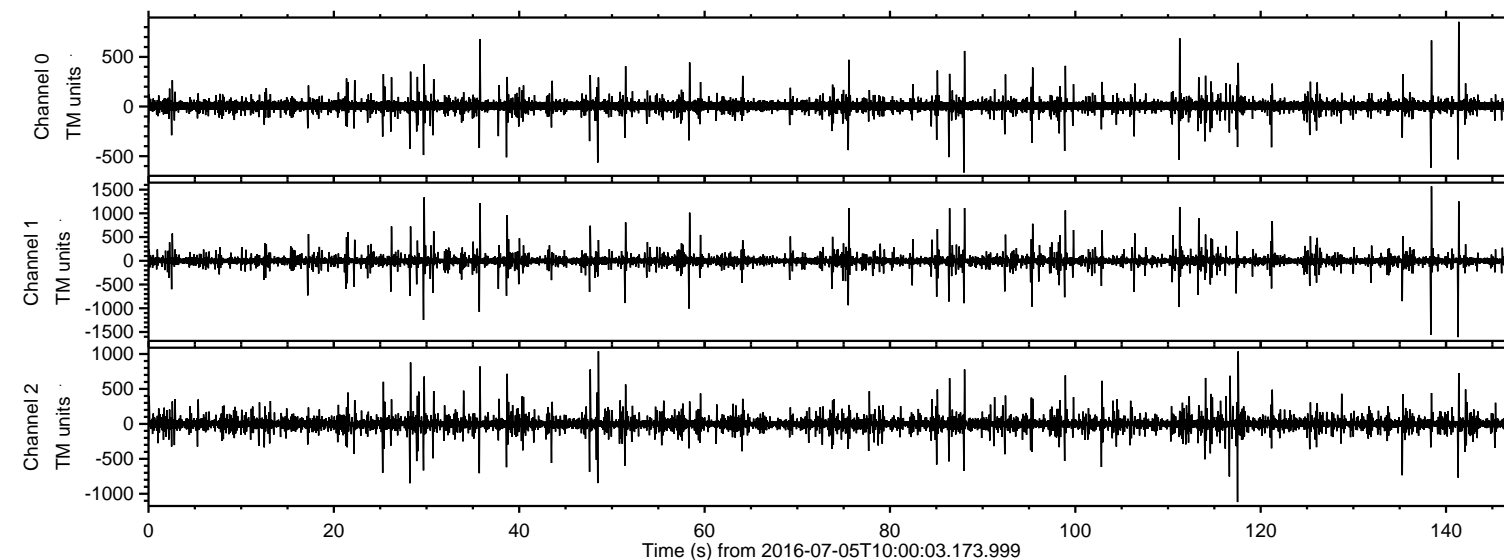


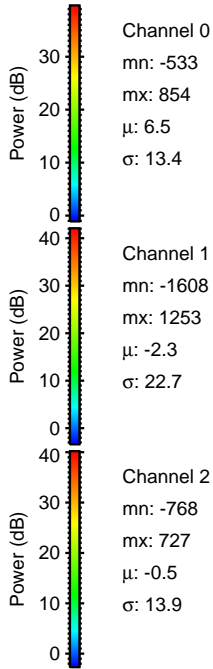
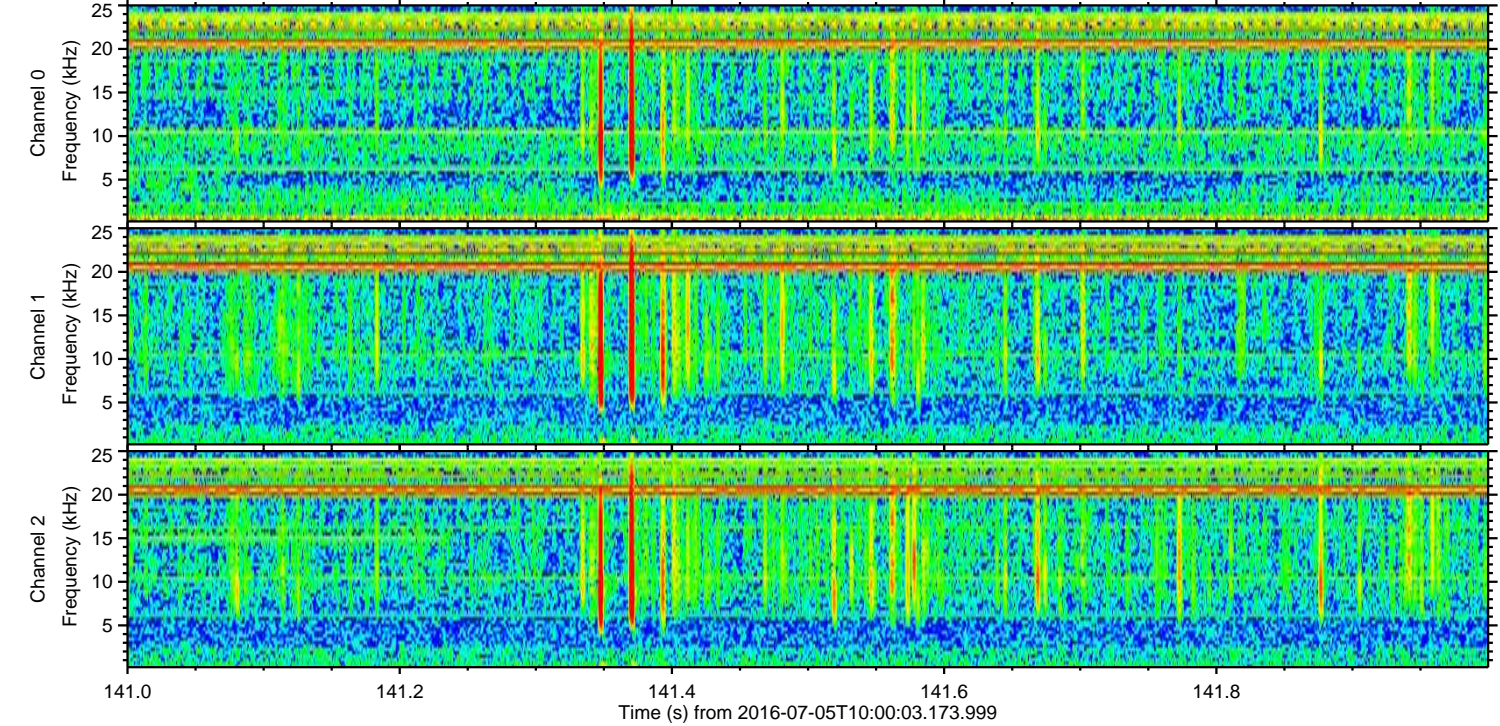
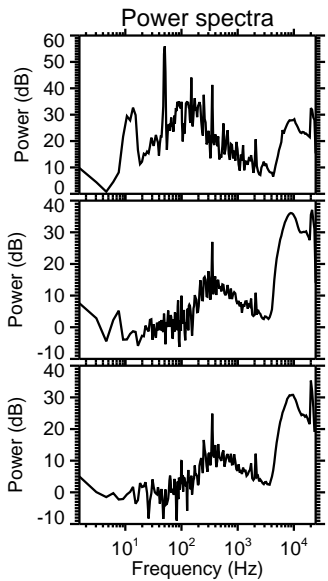
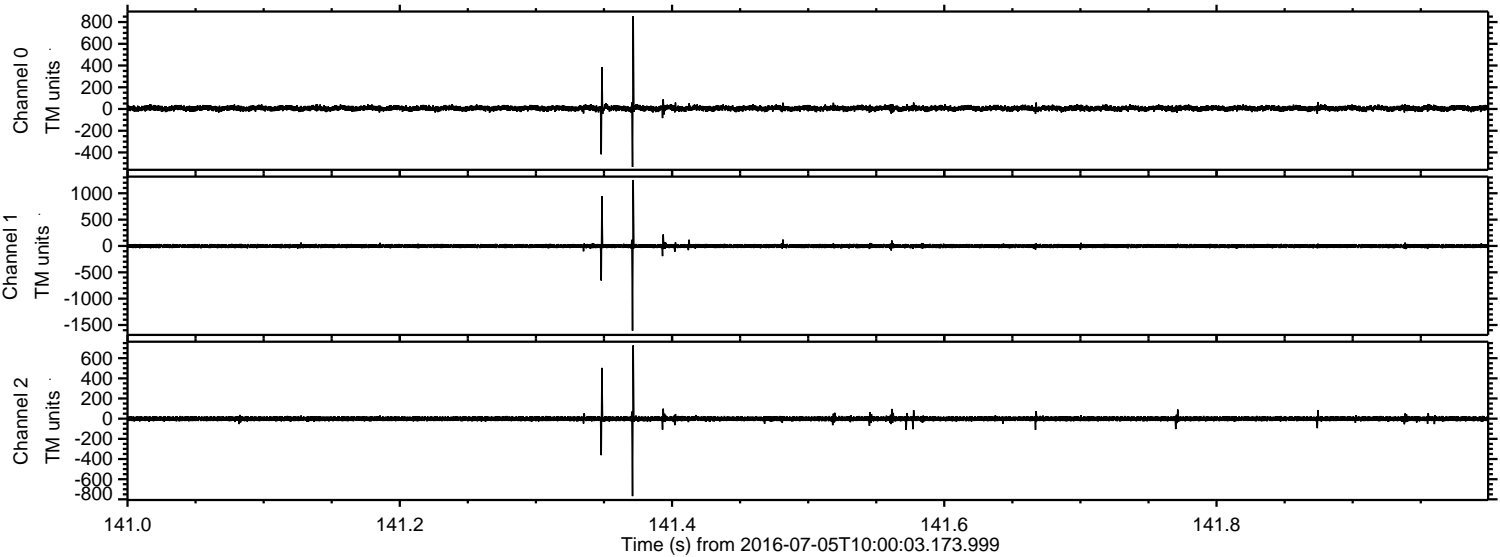
ELMAVAN 3D WAVEFORMS (Measured data sampled at 50 kHz) 51000 packets of 144 samples from 2016-07-05T10:00:03.173.999.

Processed Tue Jul 5 12:08:29 2016 by ELM ver.2012-10-06 from 001__elm20160705_100002__dat00.bin



ELMAVAN 3D WAVEFORMS (Measured data sampled at 50 kHz) 51000 packets of 144 samples from 2016-07-05T10:00:03.173.999. Part 142/147

Processed Tue Jul 5 12:08:41 2016 by ELM ver.2012-10-06 from 001__elm20160705_100002__dat00.bin



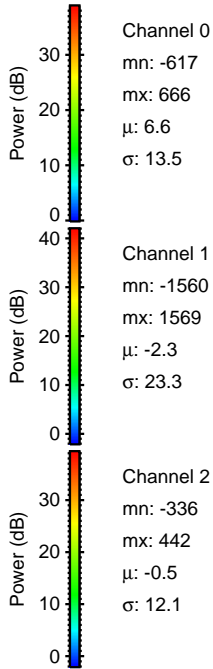
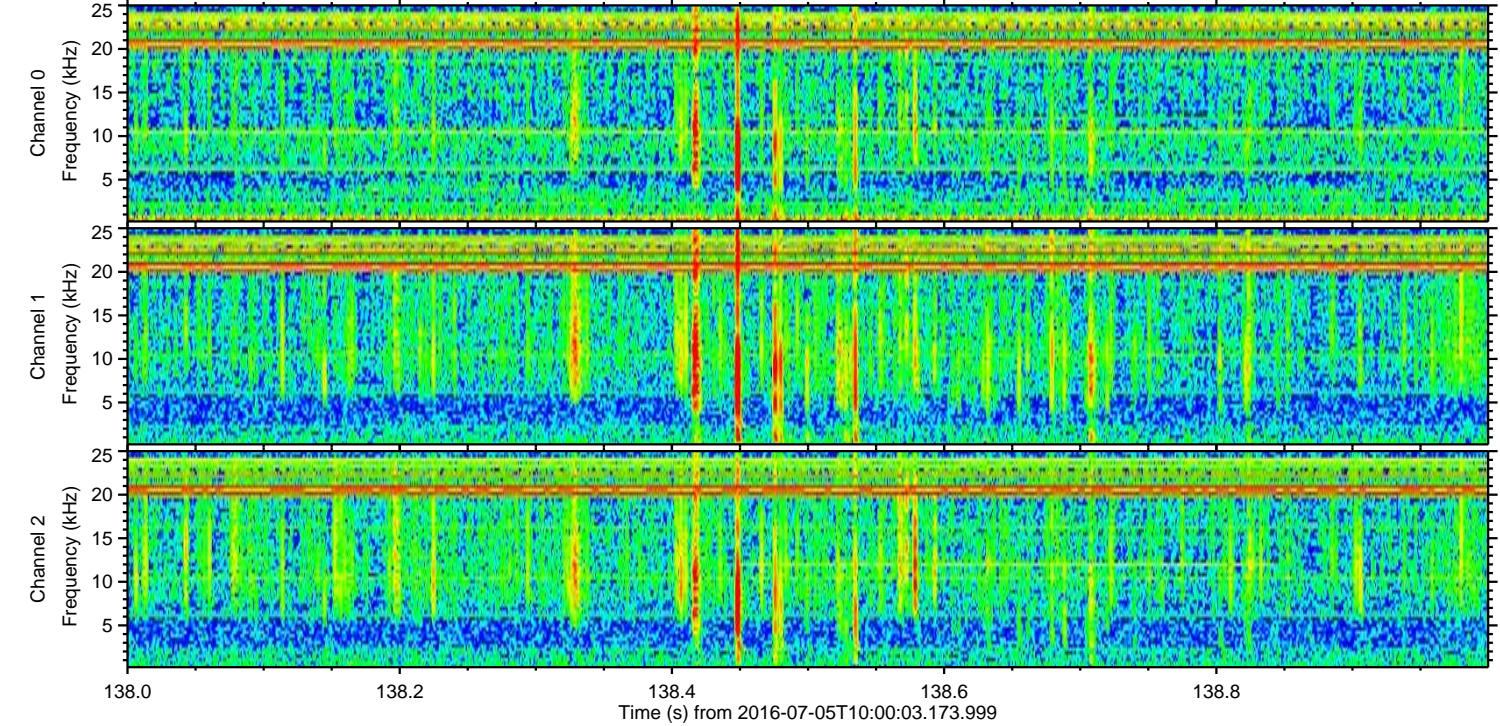
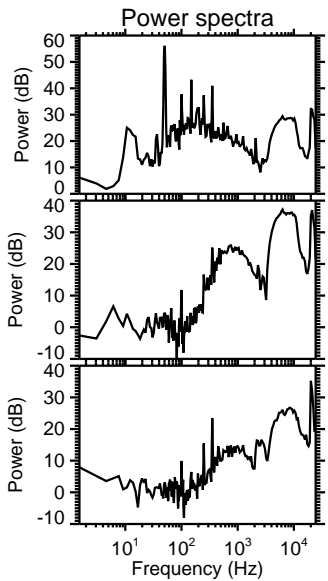
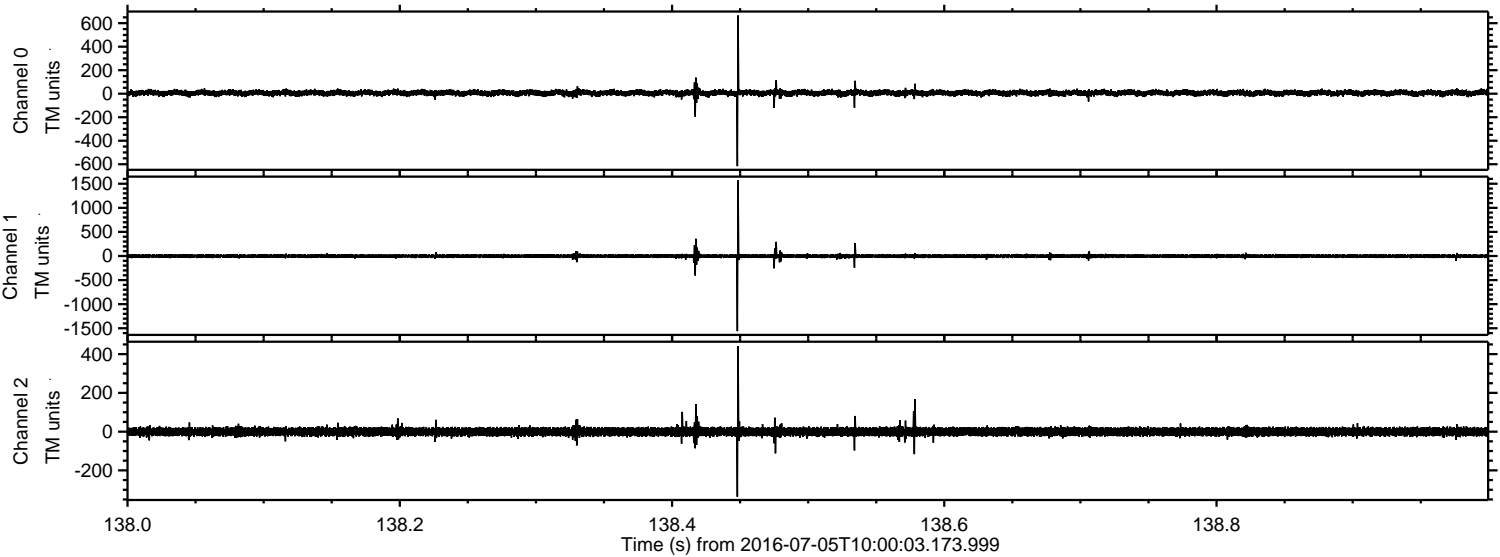
Channel 0
mn: -533
mx: 854
 μ : 6.5
 σ : 13.4

Channel 1
mn: -1608
mx: 1253
 μ : -2.3
 σ : 22.7

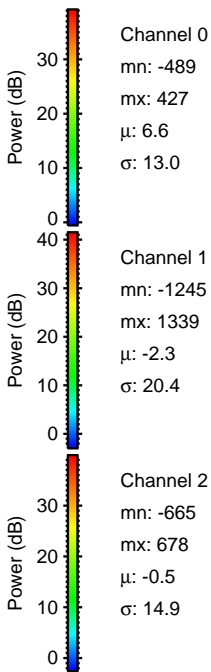
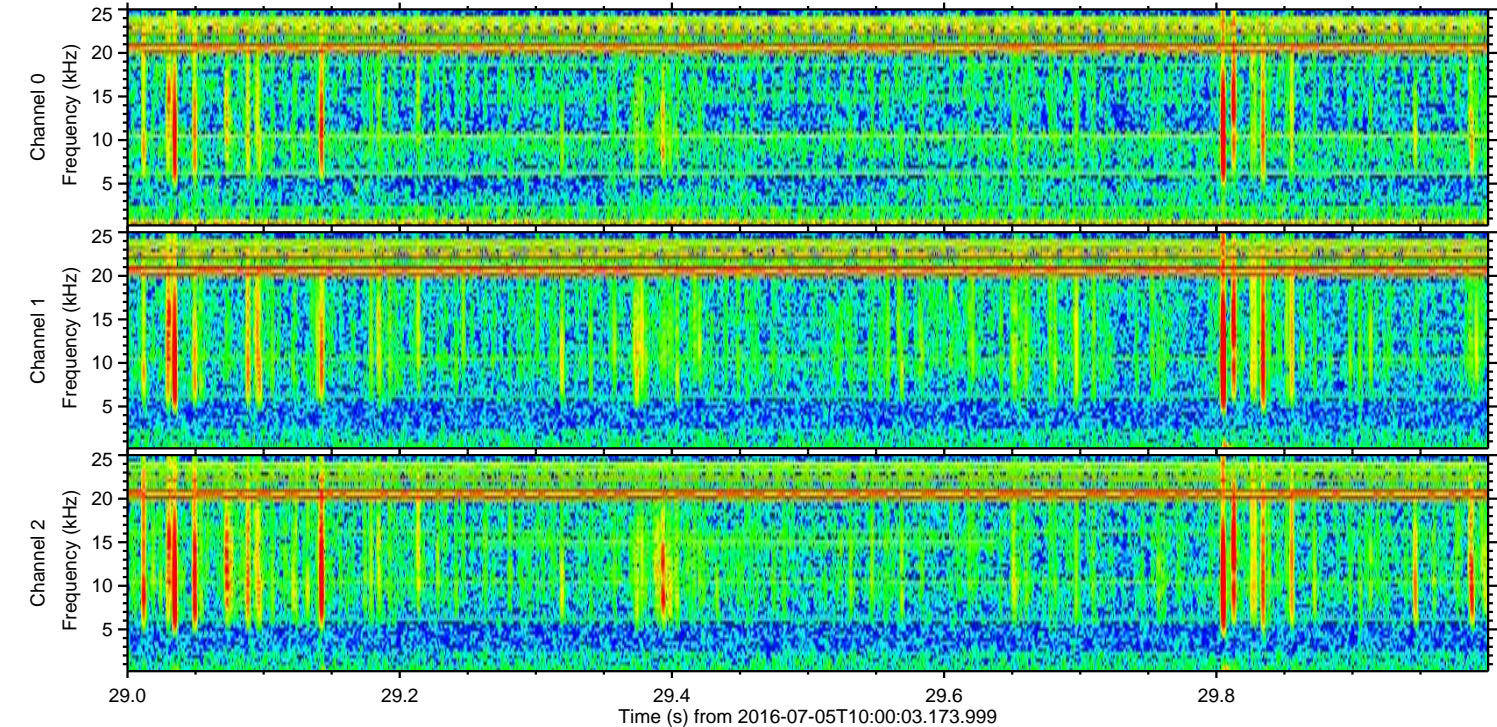
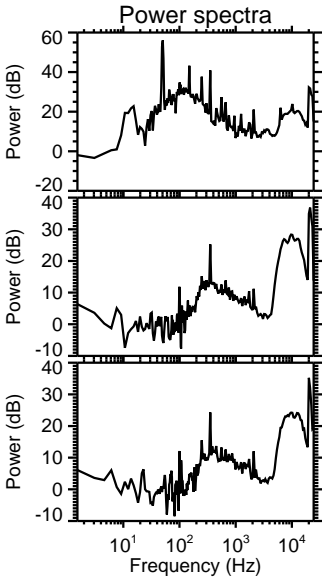
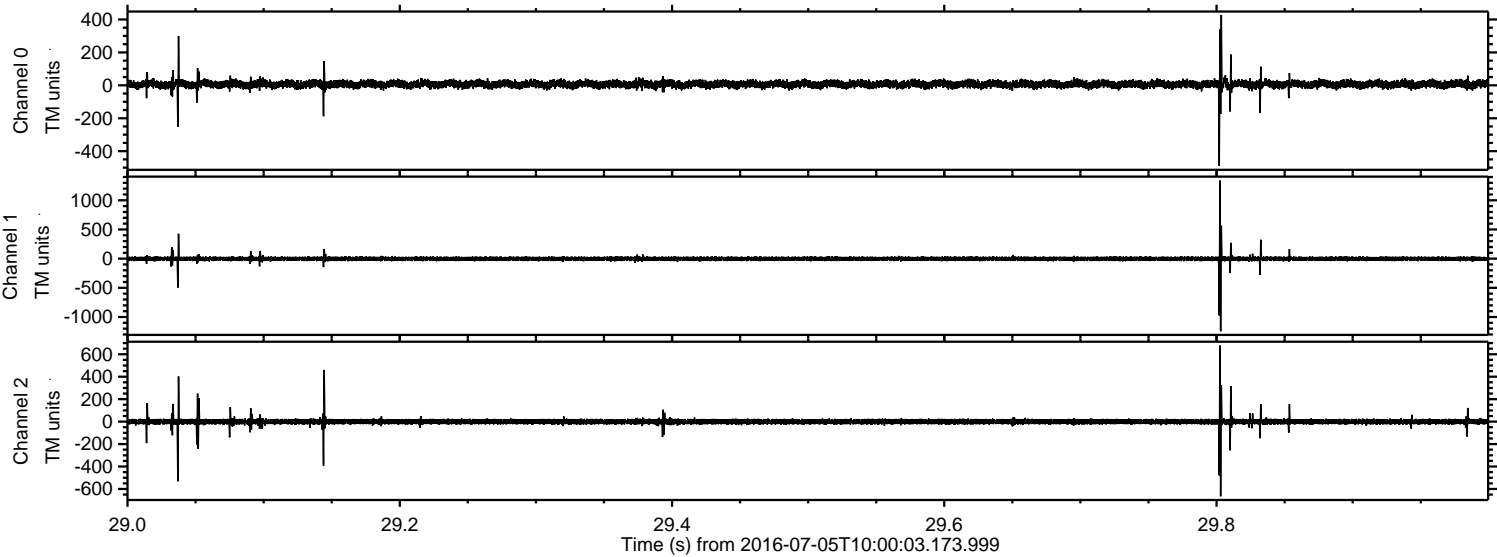
Channel 2
mn: -768
mx: 727
 μ : -0.5
 σ : 13.9

ELMAVAN 3D WAVEFORMS (Measured data sampled at 50 kHz) 51000 packets of 144 samples from 2016-07-05T10:00:03.173.999. Part 139/147

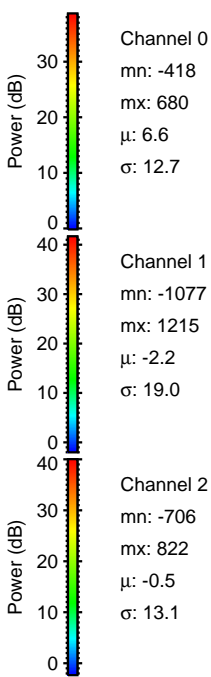
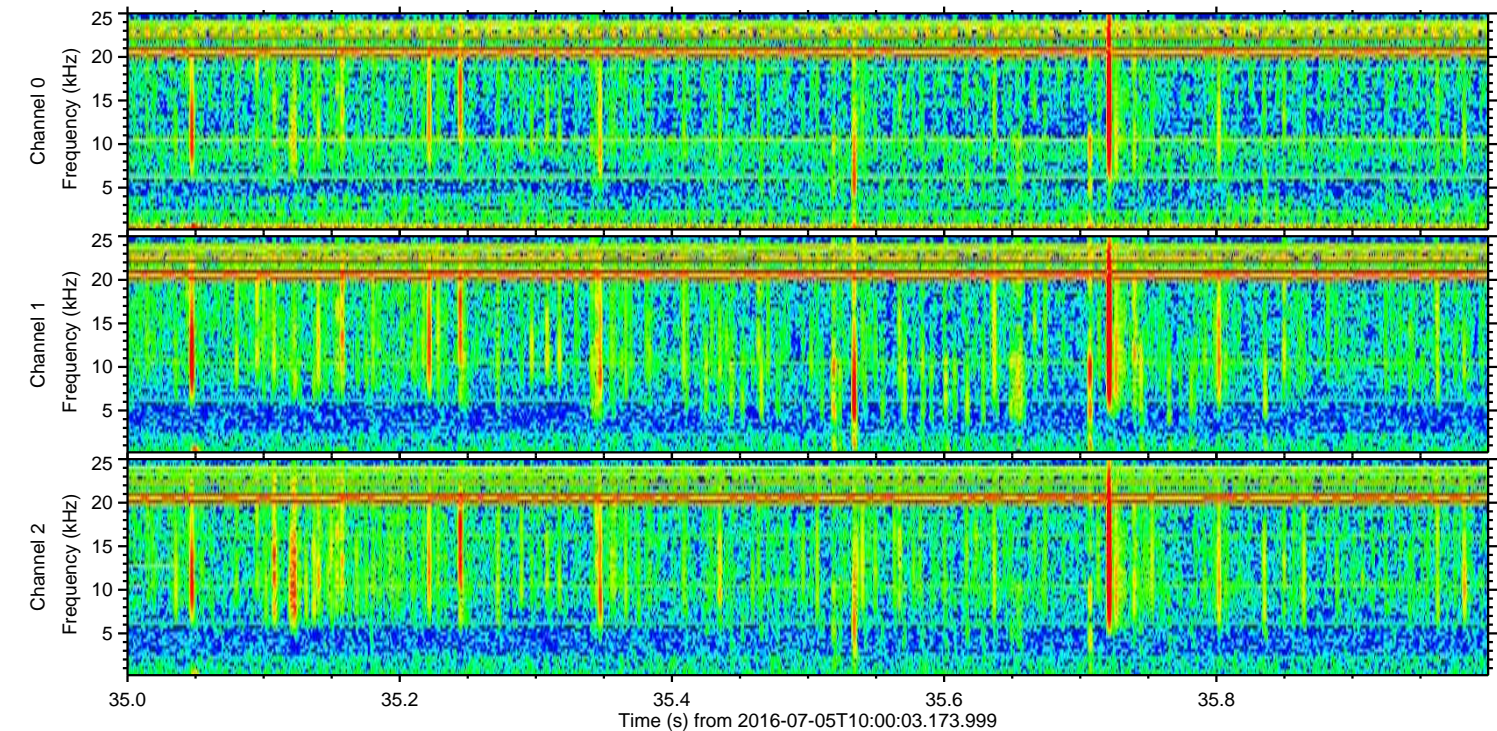
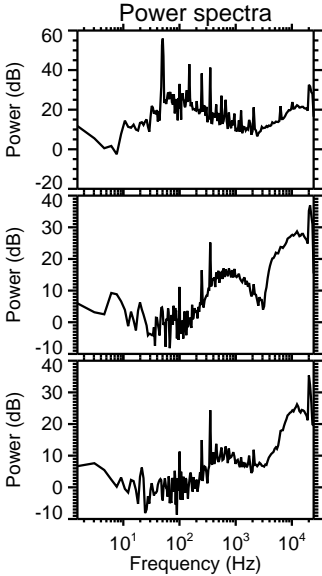
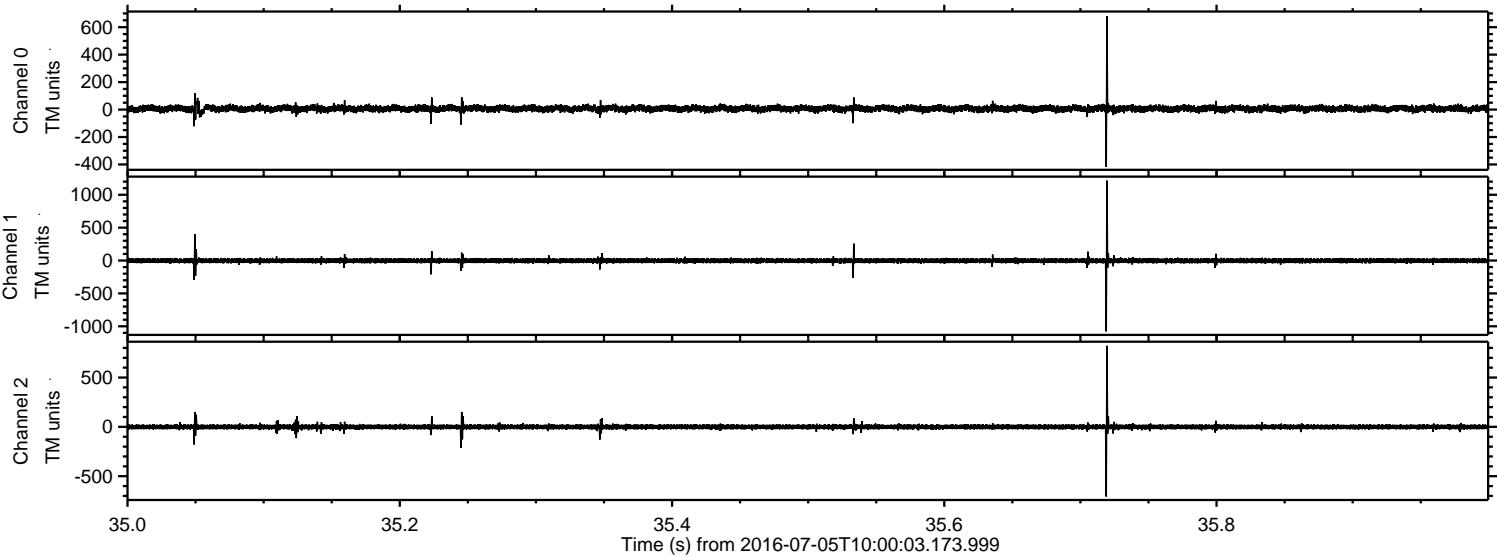
Processed Tue Jul 5 12:08:42 2016 by ELM ver.2012-10-06 from 001__elm20160705_100002__dat00.bin



Processed Tue Jul 5 12:08:43 2016 by ELM ver.2012-10-06 from 001__elm20160705_100002__dat00.bin

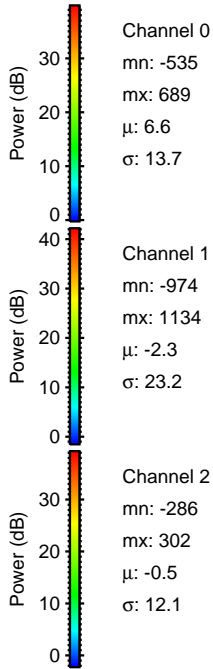
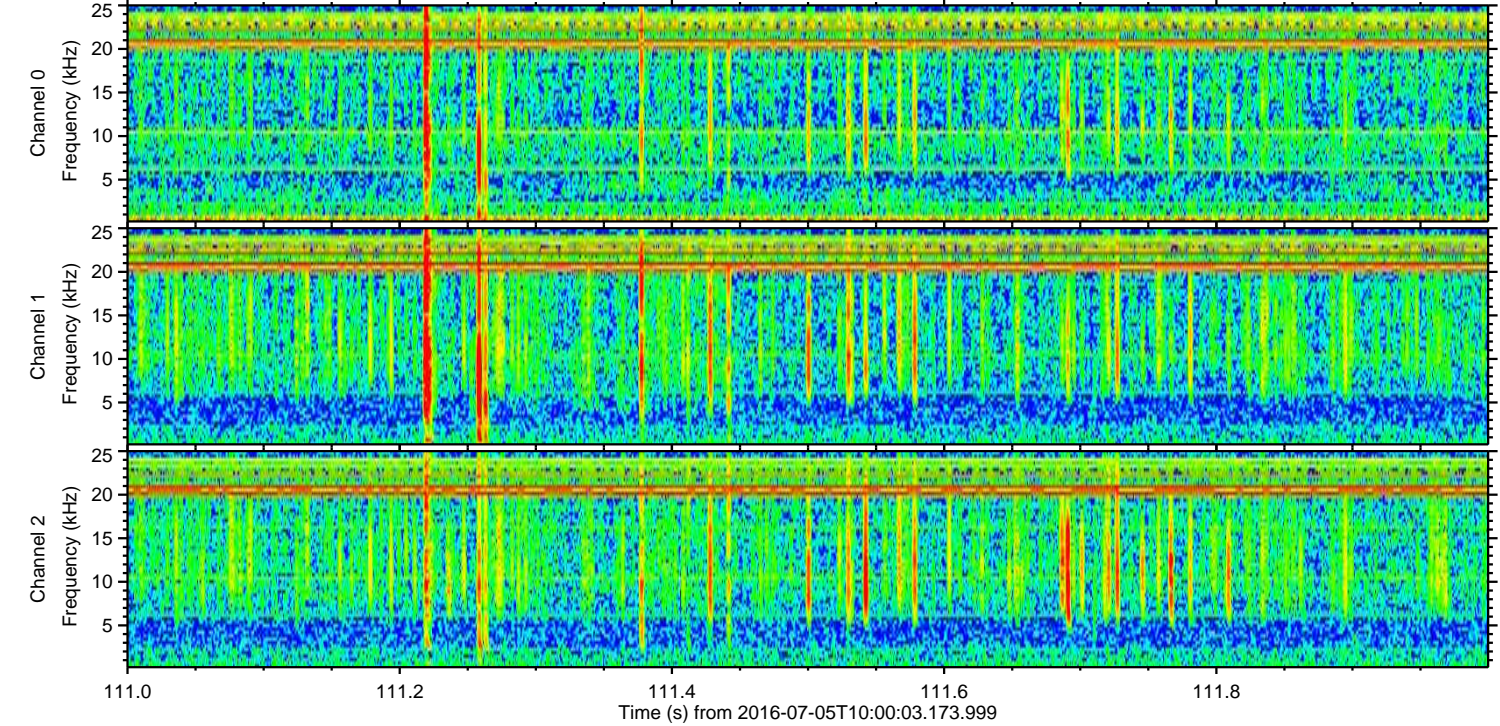
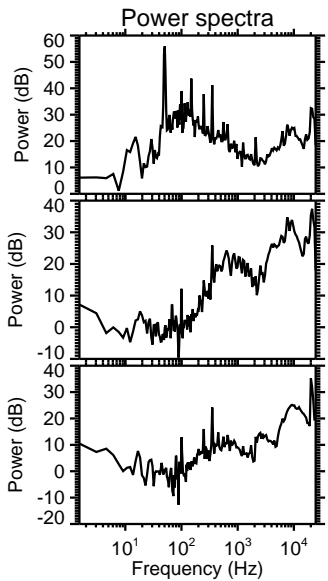
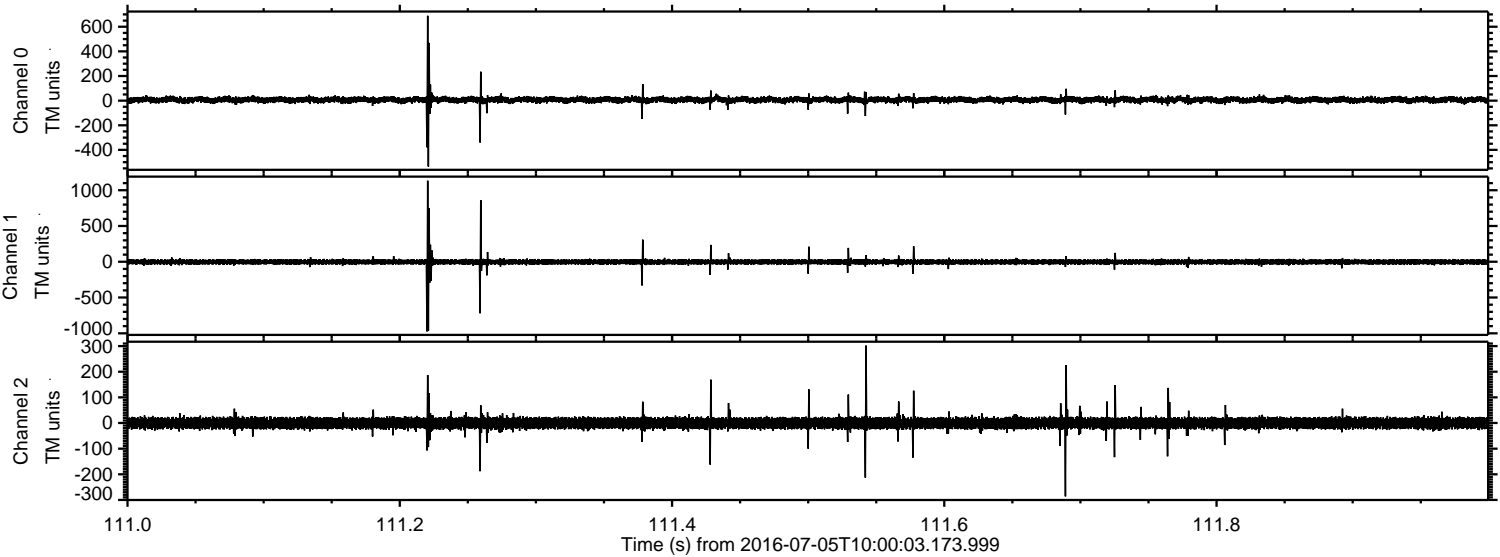


Processed Tue Jul 5 12:08:44 2016 by ELM ver.2012-10-06 from 001__elm20160705_100002__dat00.bin

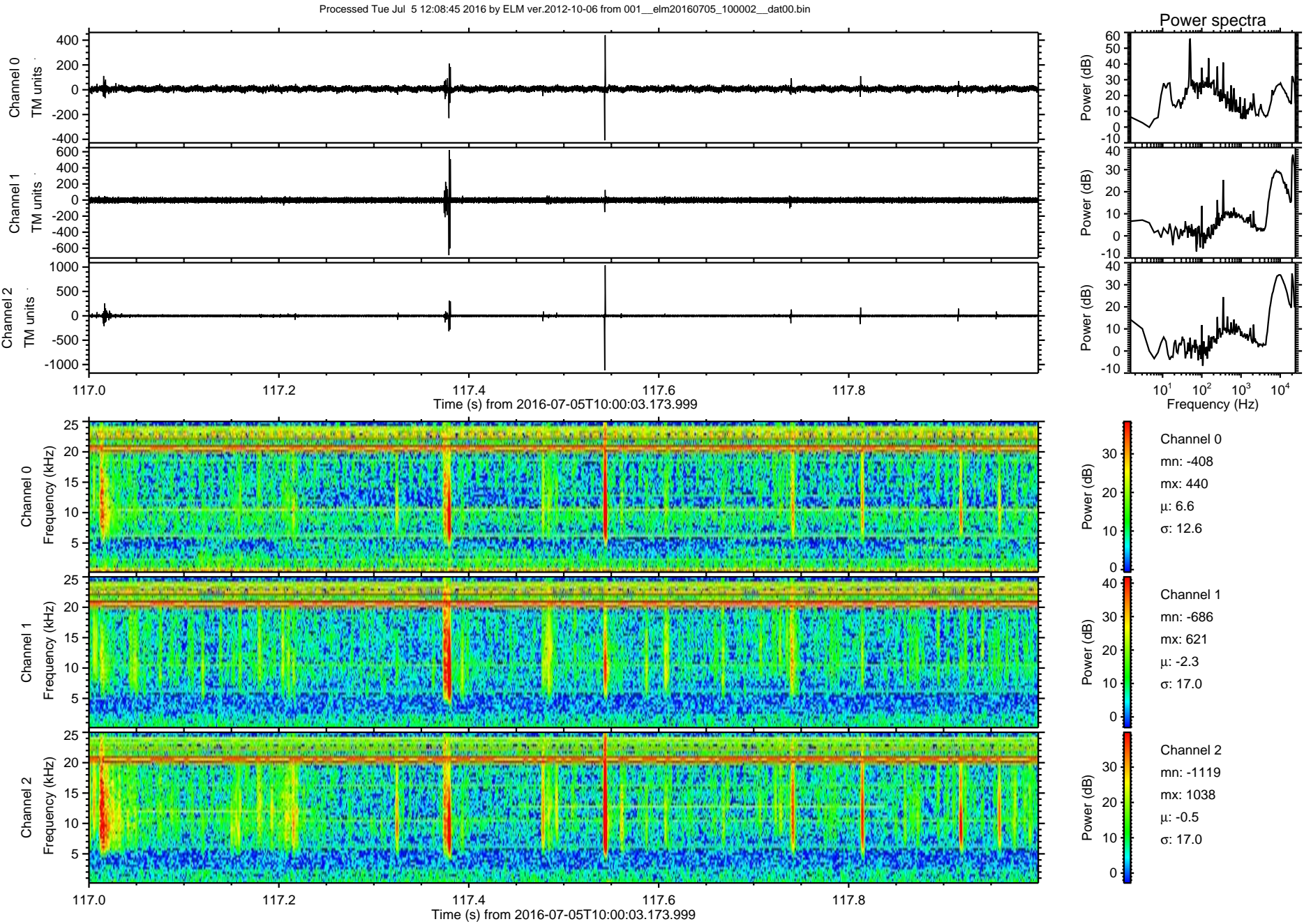


ELMAVAN 3D WAVEFORMS (Measured data sampled at 50 kHz) 51000 packets of 144 samples from 2016-07-05T10:00:03.173.999. Part 112/147

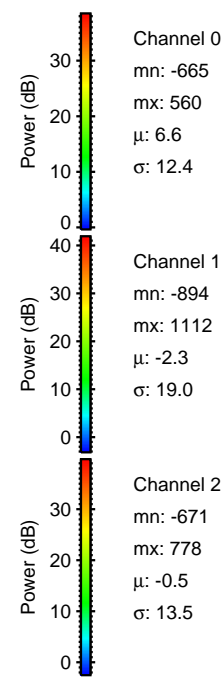
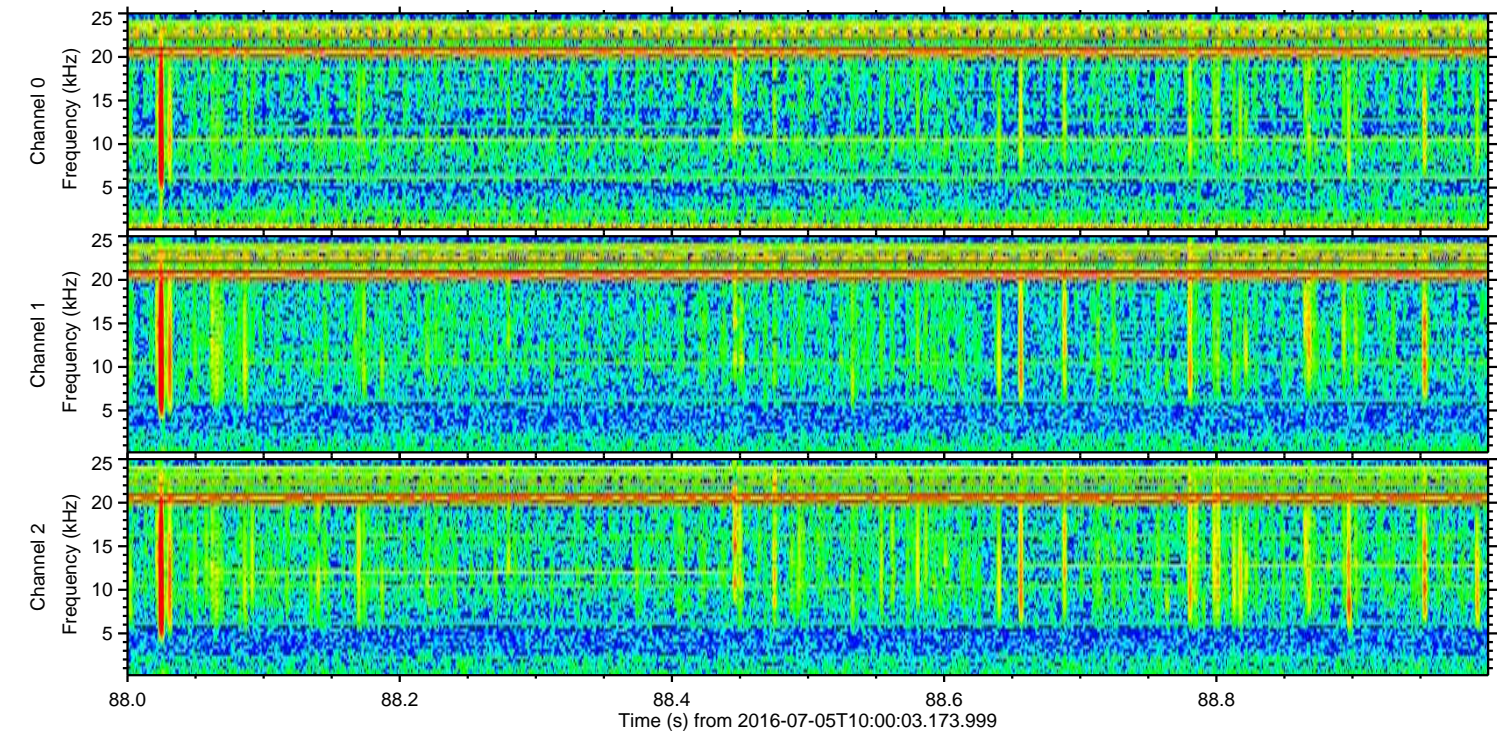
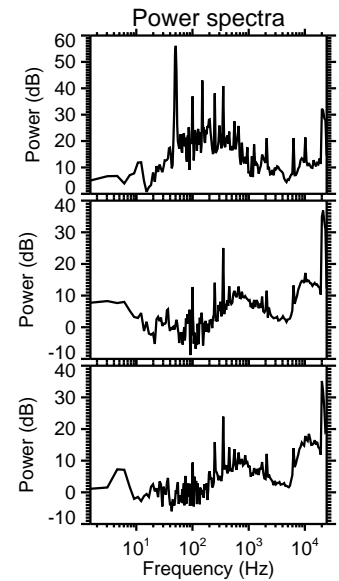
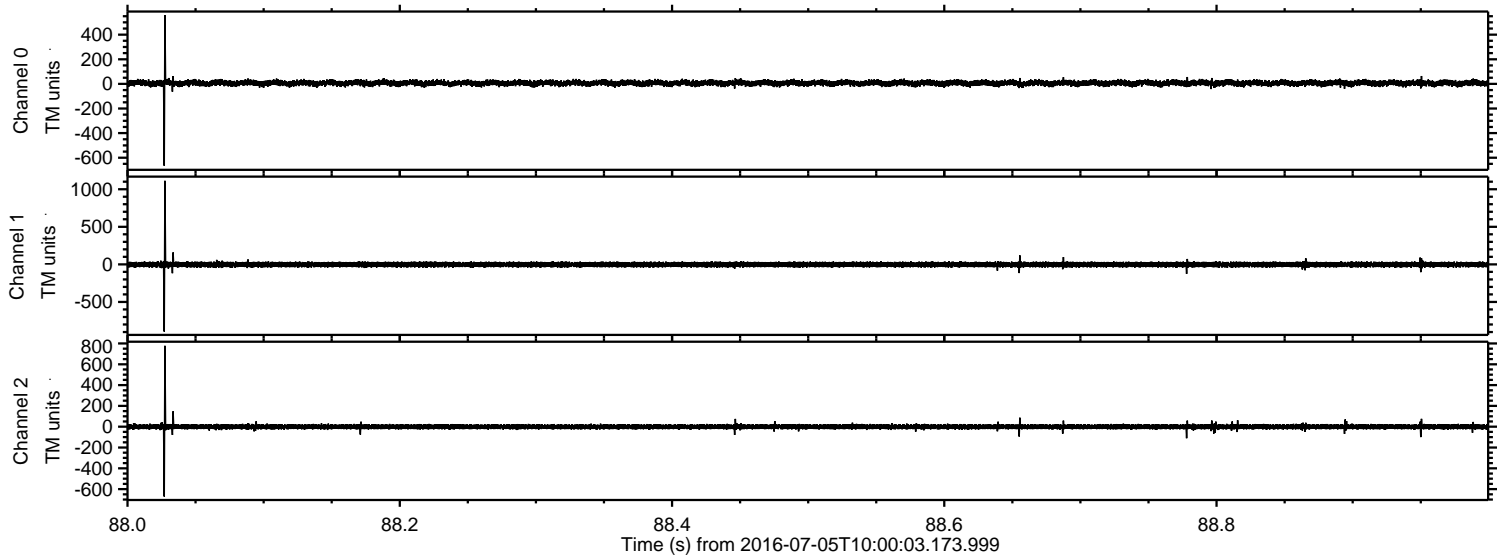
Processed Tue Jul 5 12:08:45 2016 by ELM ver.2012-10-06 from 001__elm20160705_100002__dat00.bin



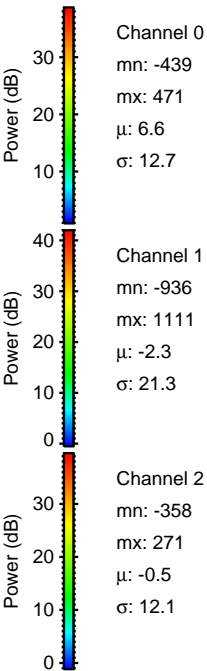
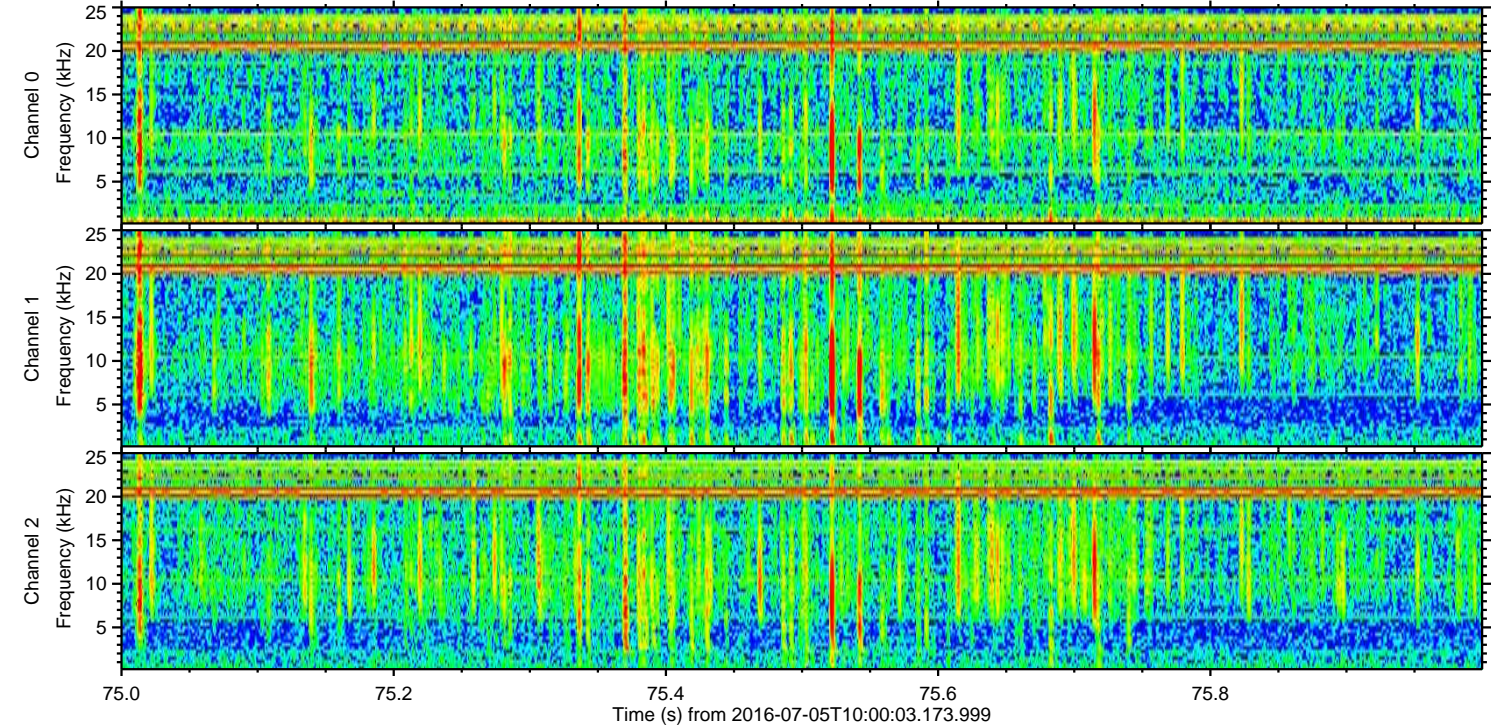
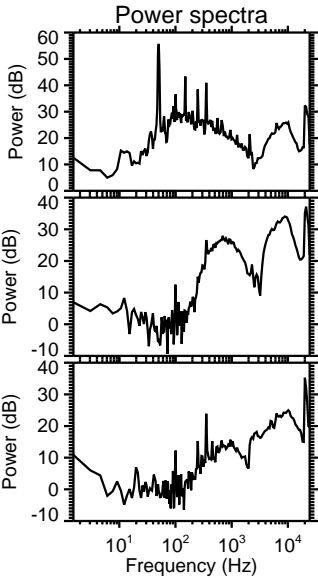
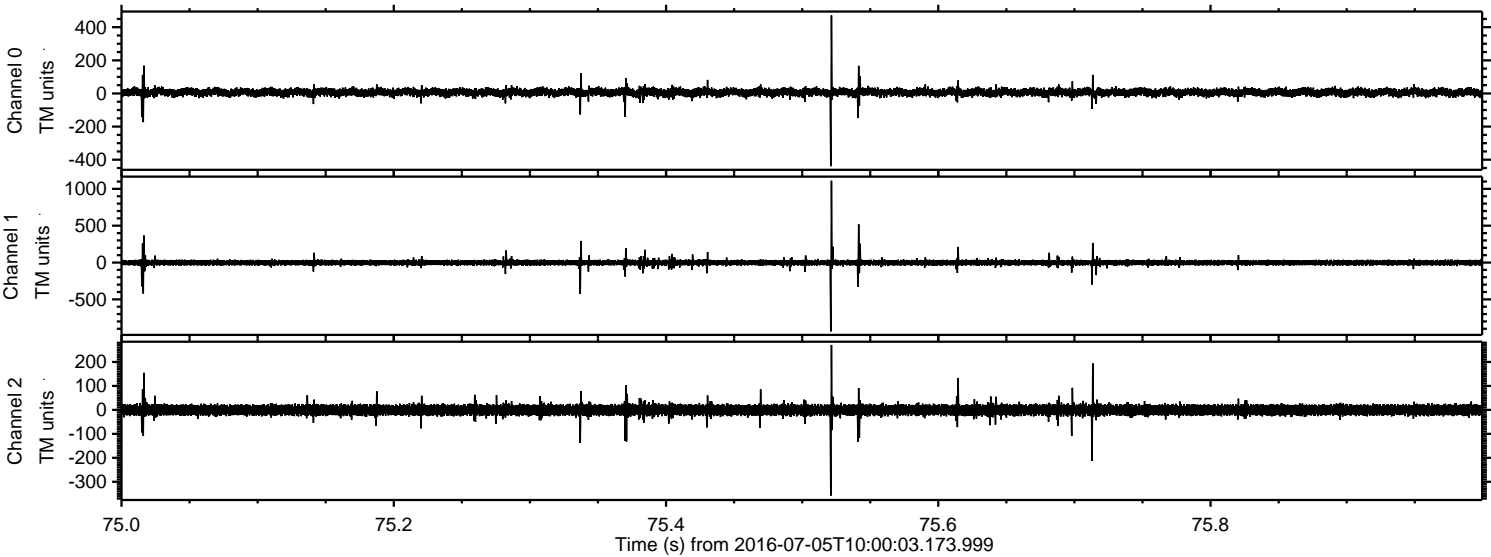
ELMAVAN 3D WAVEFORMS (Measured data sampled at 50 kHz) 51000 packets of 144 samples from 2016-07-05T10:00:03.173.999. Part 118/147



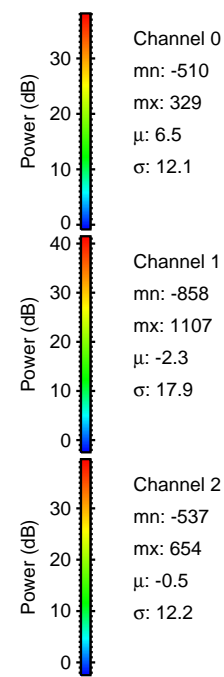
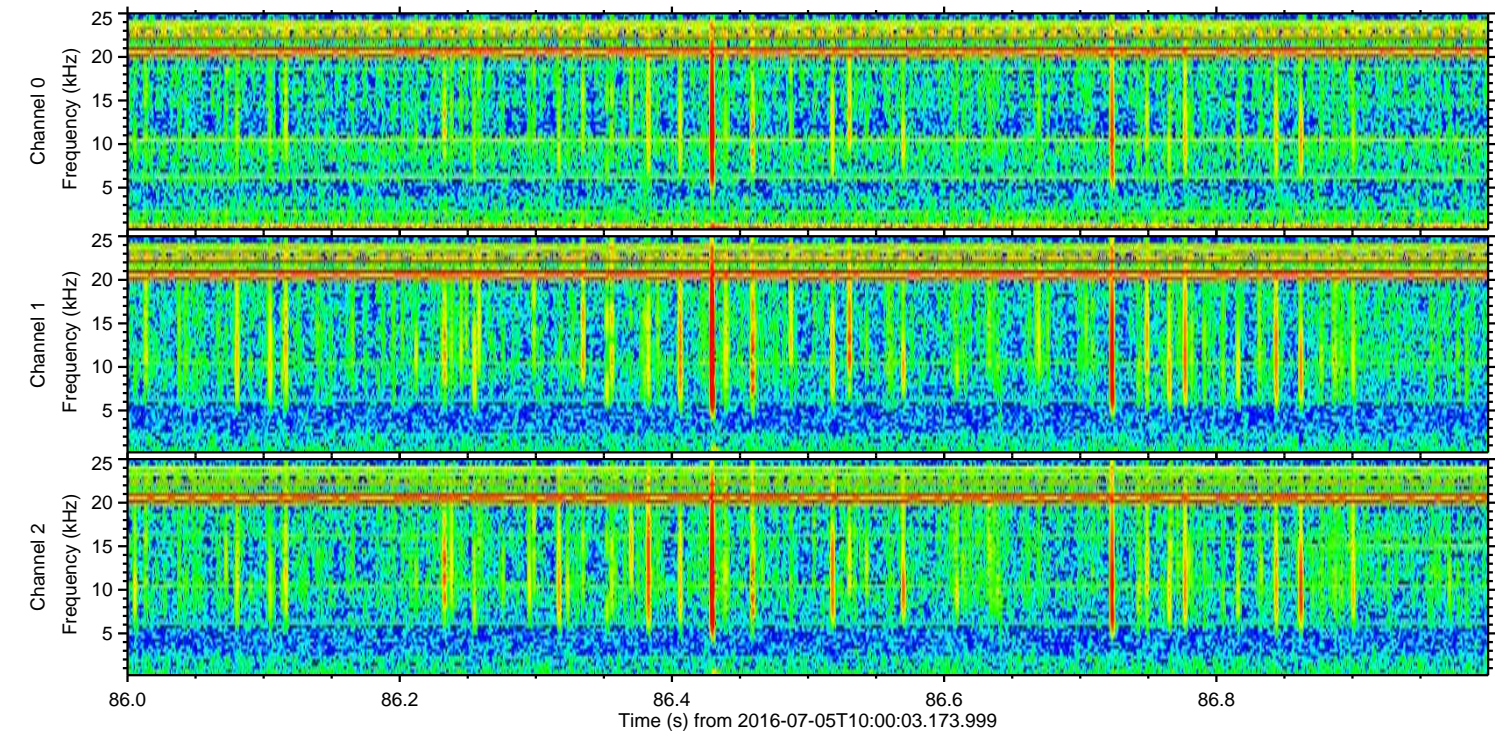
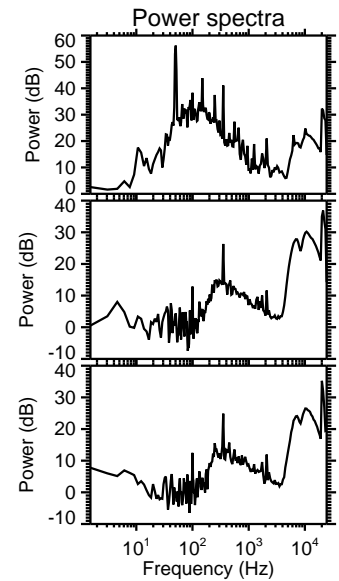
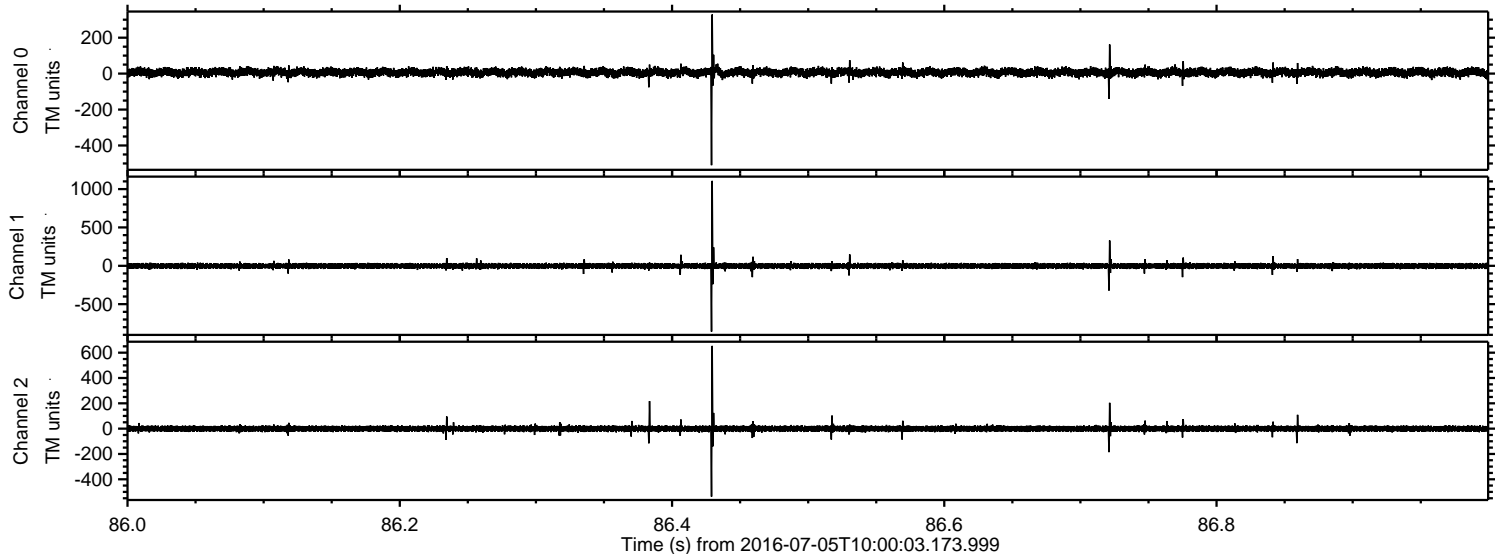
Processed Tue Jul 5 12:08:46 2016 by ELM ver.2012-10-06 from 001__elm20160705_100002__dat00.bin



Processed Tue Jul 5 12:08:47 2016 by ELM ver.2012-10-06 from 001__elm20160705_100002__dat00.bin



Processed Tue Jul 5 12:08:48 2016 by ELM ver.2012-10-06 from 001__elm20160705_100002__dat00.bin



Processed Tue Jul 5 12:08:49 2016 by ELM ver.2012-10-06 from 001__elm20160705_100002__dat00.bin

