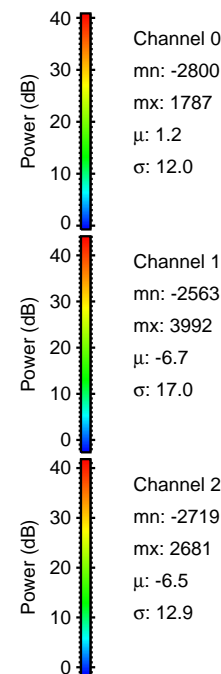
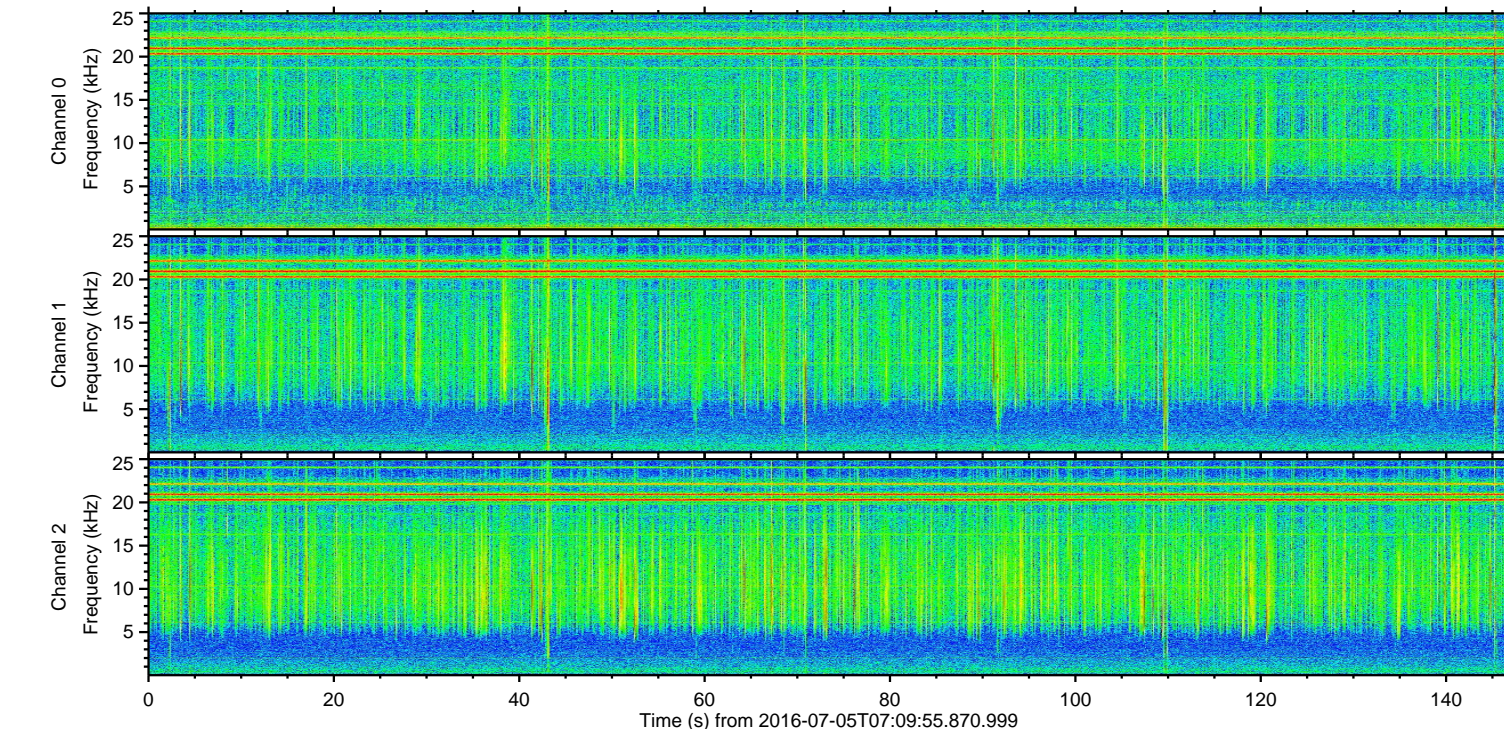
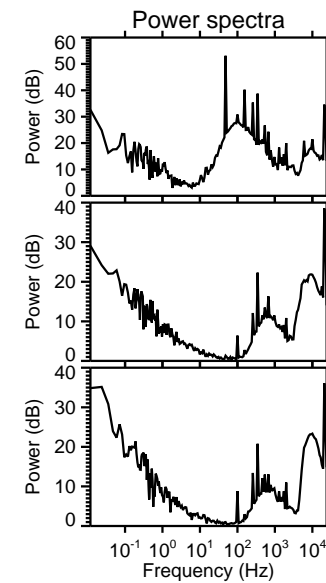
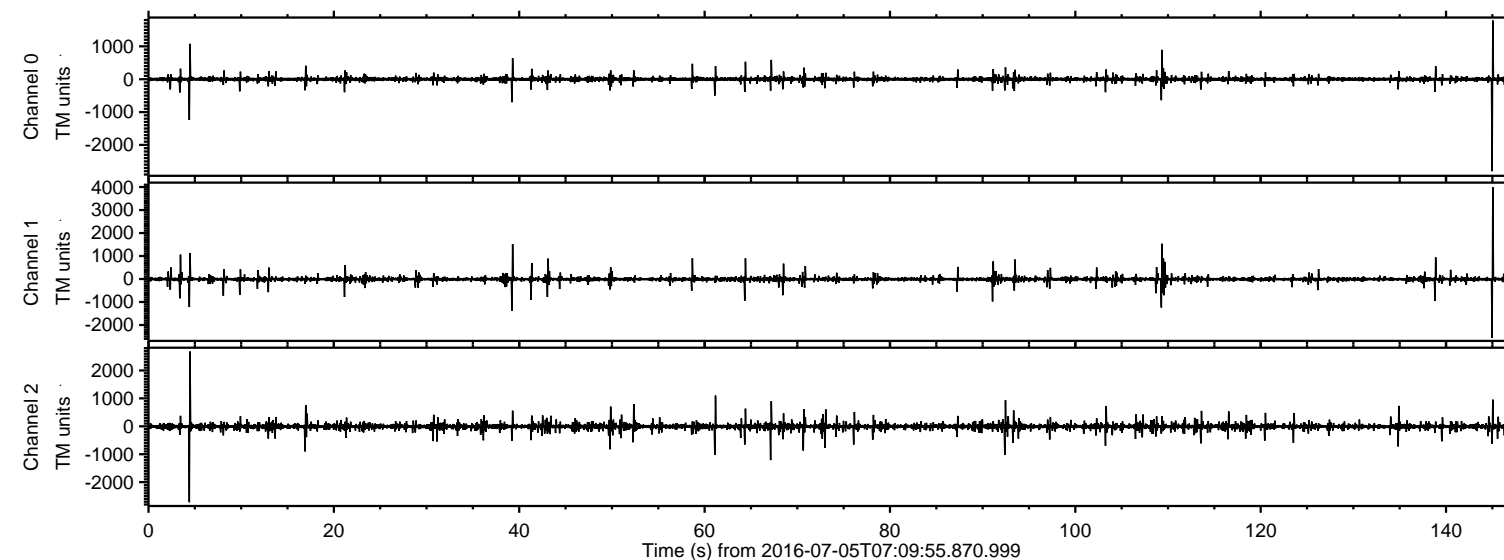


# ELMAVAN 3D WAVEFORMS (Measured data sampled at 50 kHz) 51000 packets of 144 samples from 2016-07-05T07:09:55.870.999.

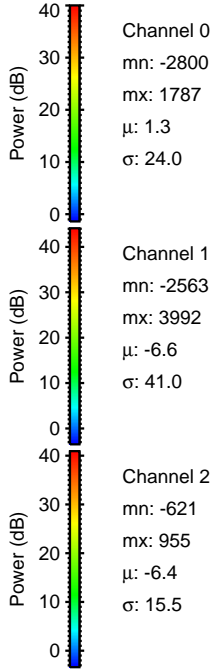
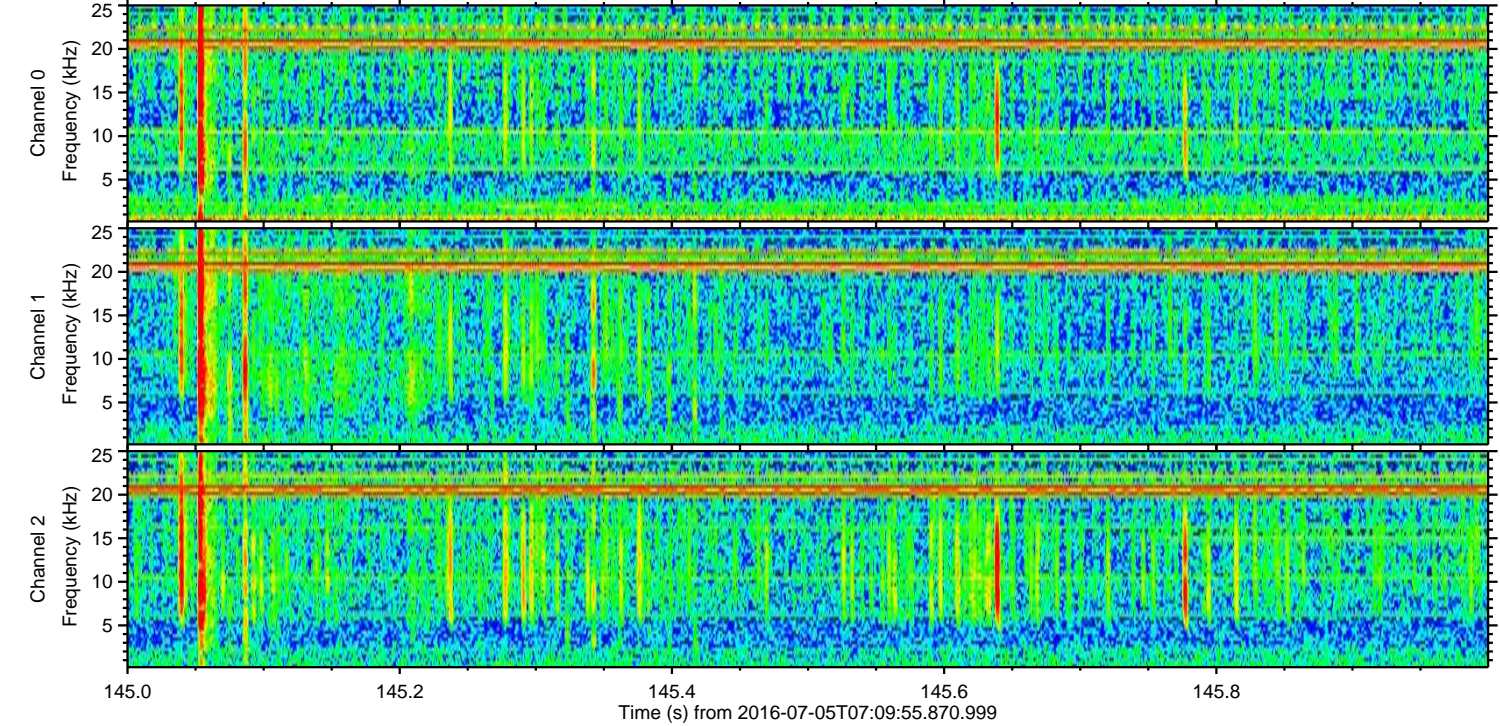
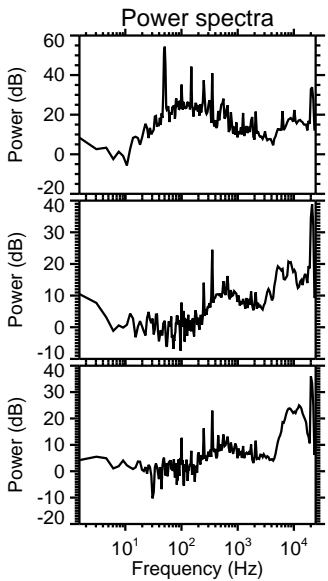
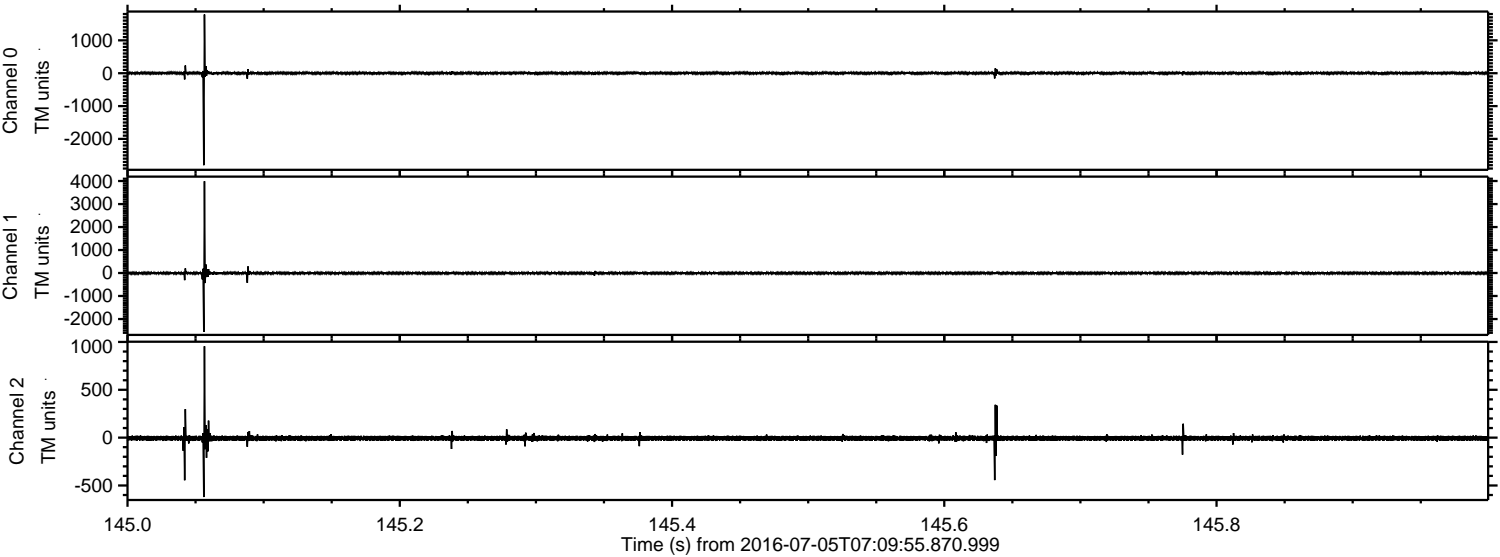
Processed Tue Jul 5 09:17:56 2016 by ELM ver.2012-10-06 from 001\_\_elm20160705\_070954\_\_dat00.bin





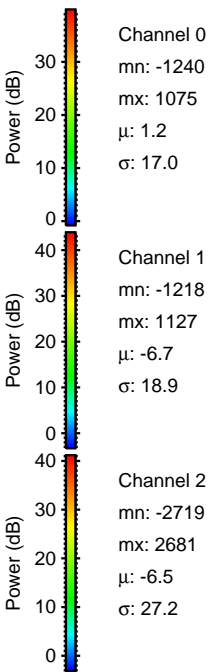
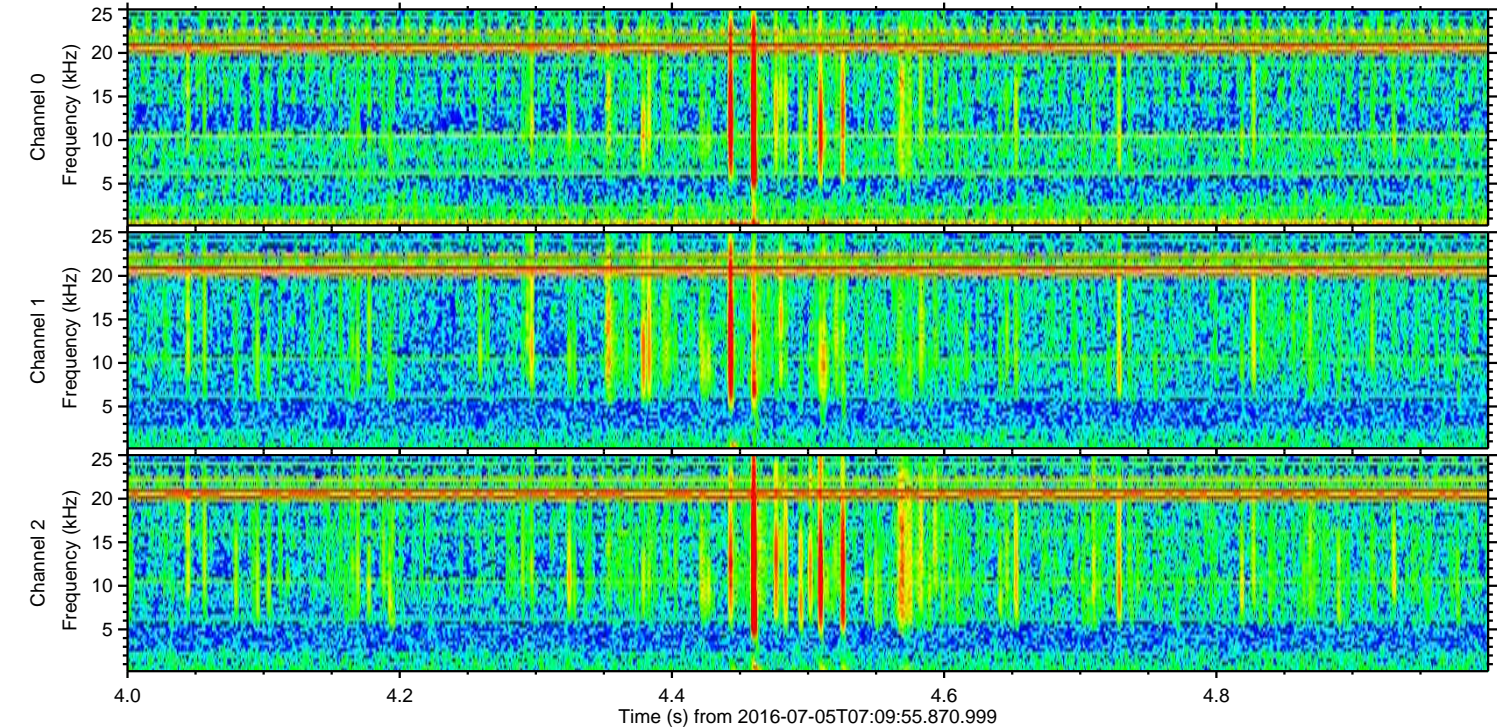
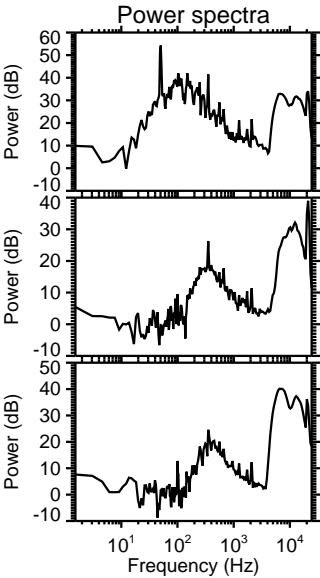
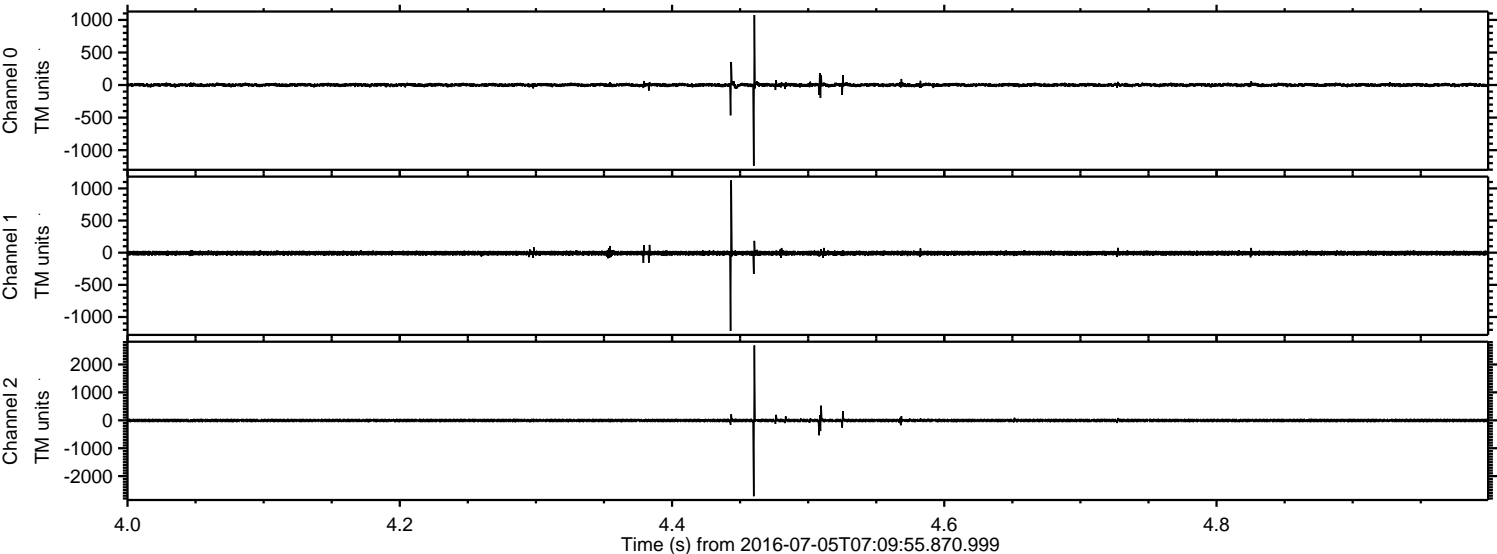
ELMAVAN 3D WAVEFORMS (Measured data sampled at 50 kHz) 51000 packets of 144 samples from 2016-07-05T07:09:55.870.999. Part 146/147

Processed Tue Jul 5 09:18:08 2016 by ELM ver.2012-10-06 from 001\_\_elm20160705\_070954\_\_dat00.bin





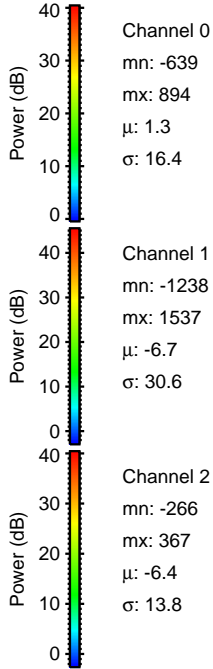
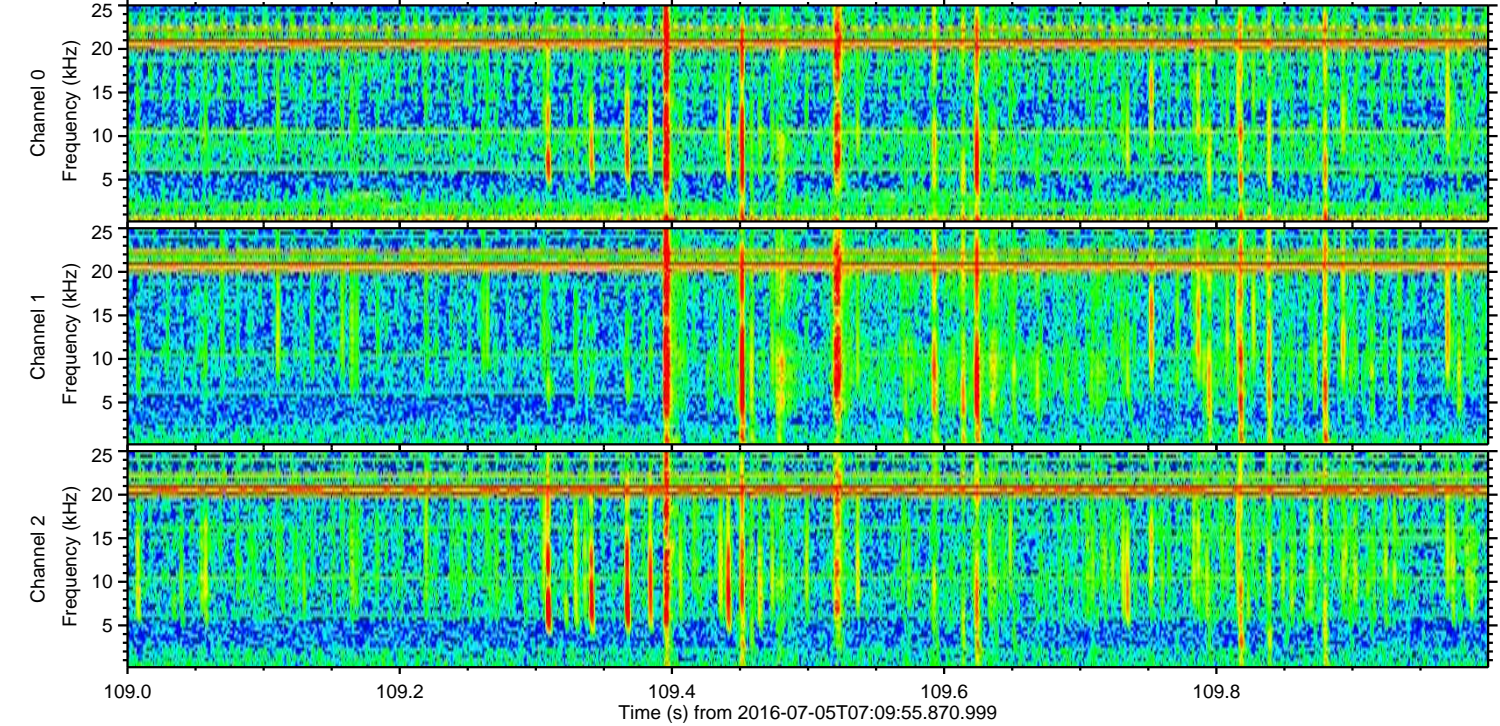
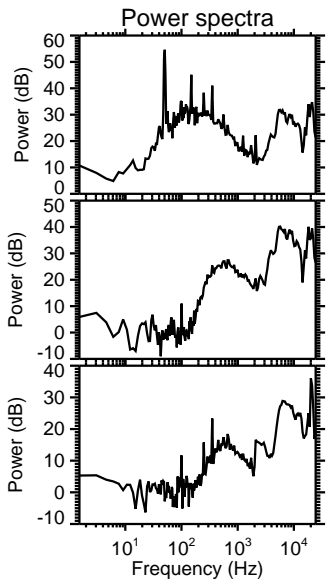
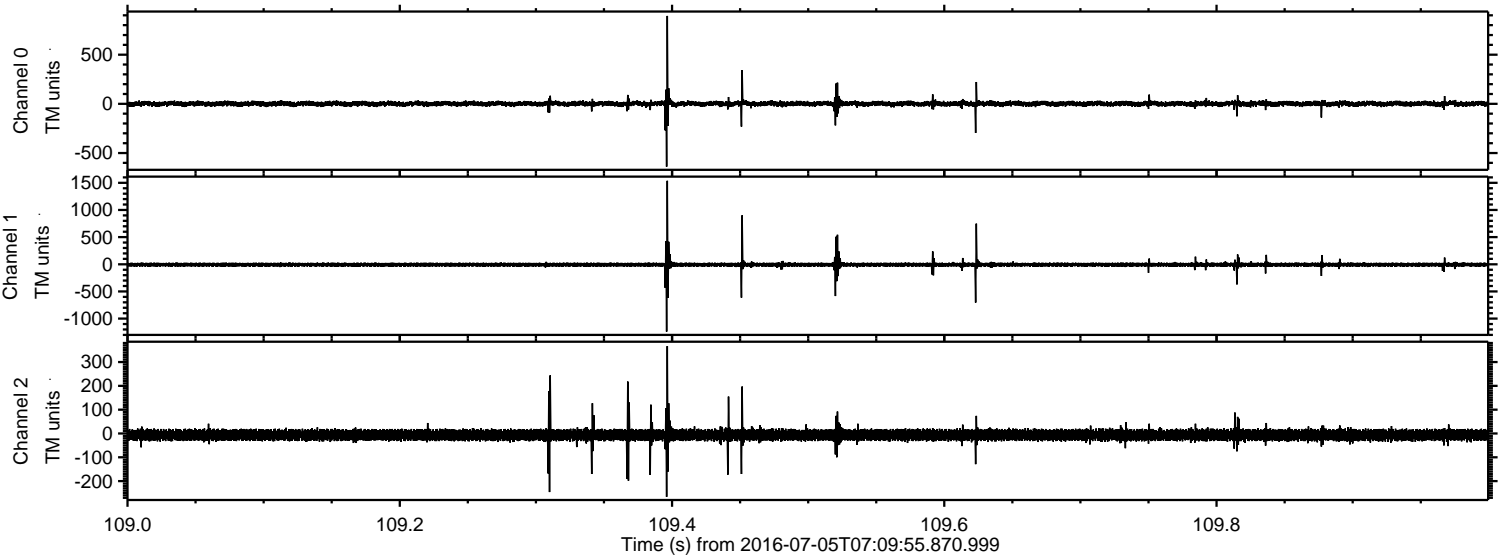
Processed Tue Jul 5 09:18:09 2016 by ELM ver.2012-10-06 from 001\_\_elm20160705\_070954\_\_dat00.bin





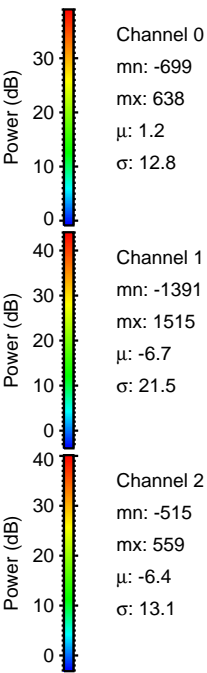
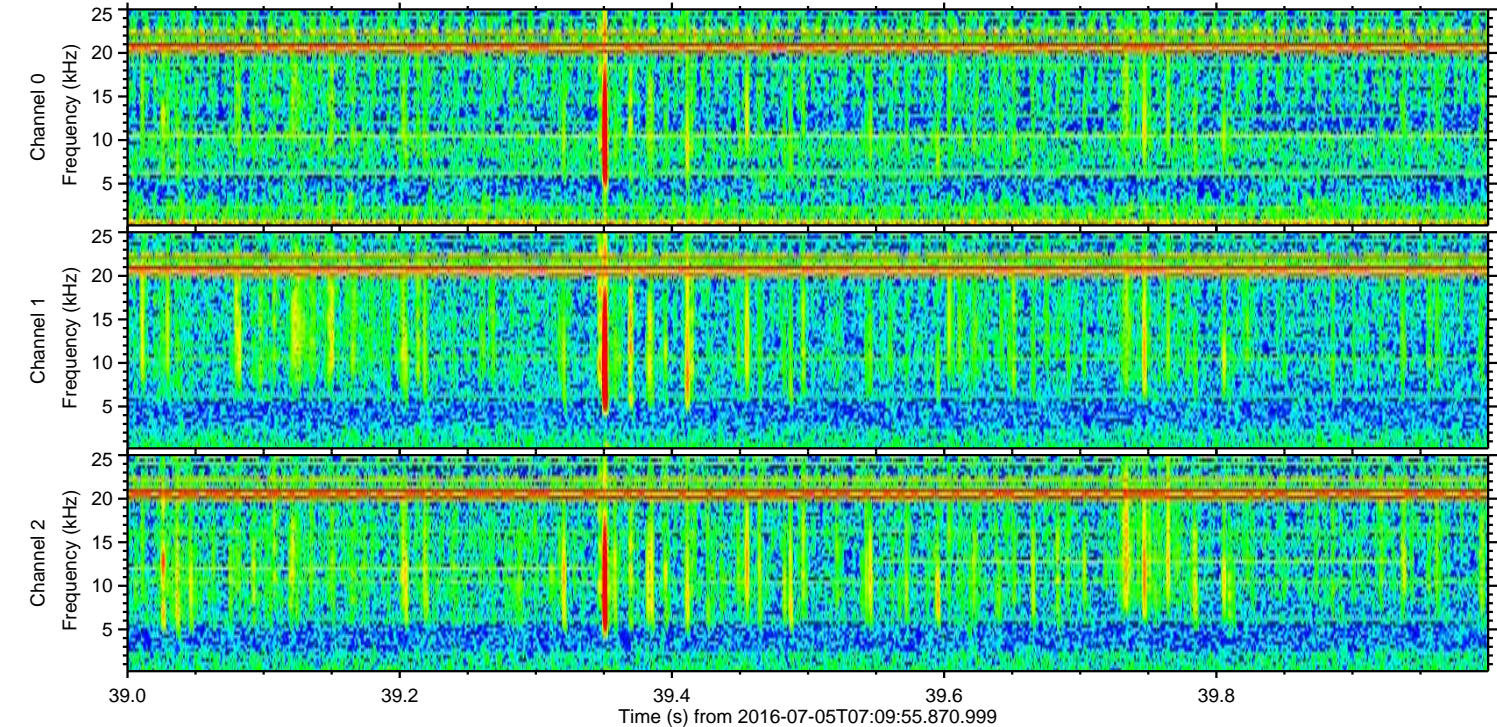
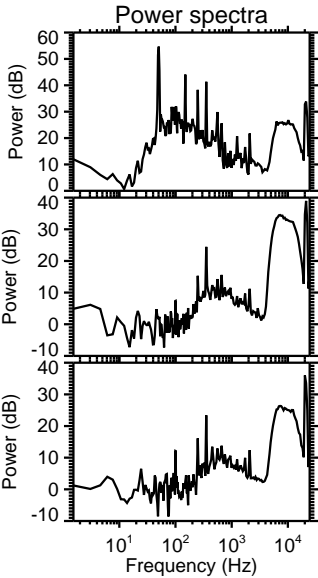
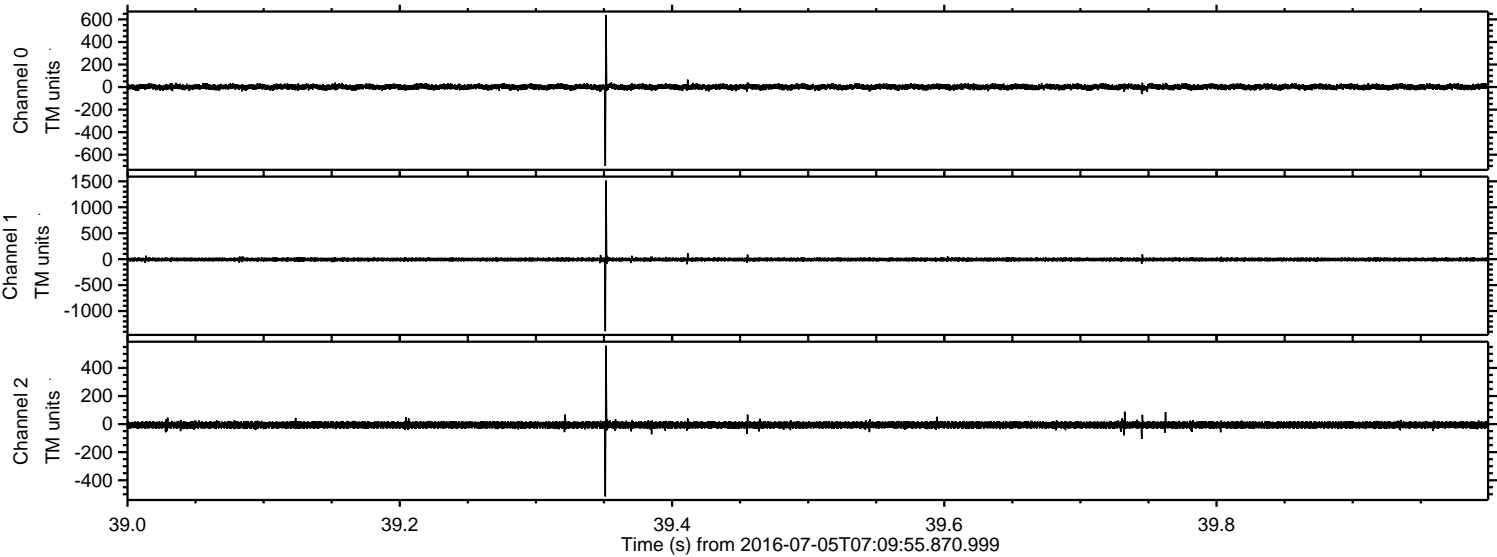
ELMAVAN 3D WAVEFORMS (Measured data sampled at 50 kHz) 51000 packets of 144 samples from 2016-07-05T07:09:55.870.999. Part 110/147

Processed Tue Jul 5 09:18:10 2016 by ELM ver.2012-10-06 from 001\_\_elm20160705\_070954\_\_dat00.bin



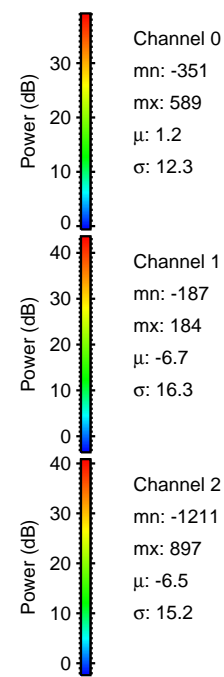
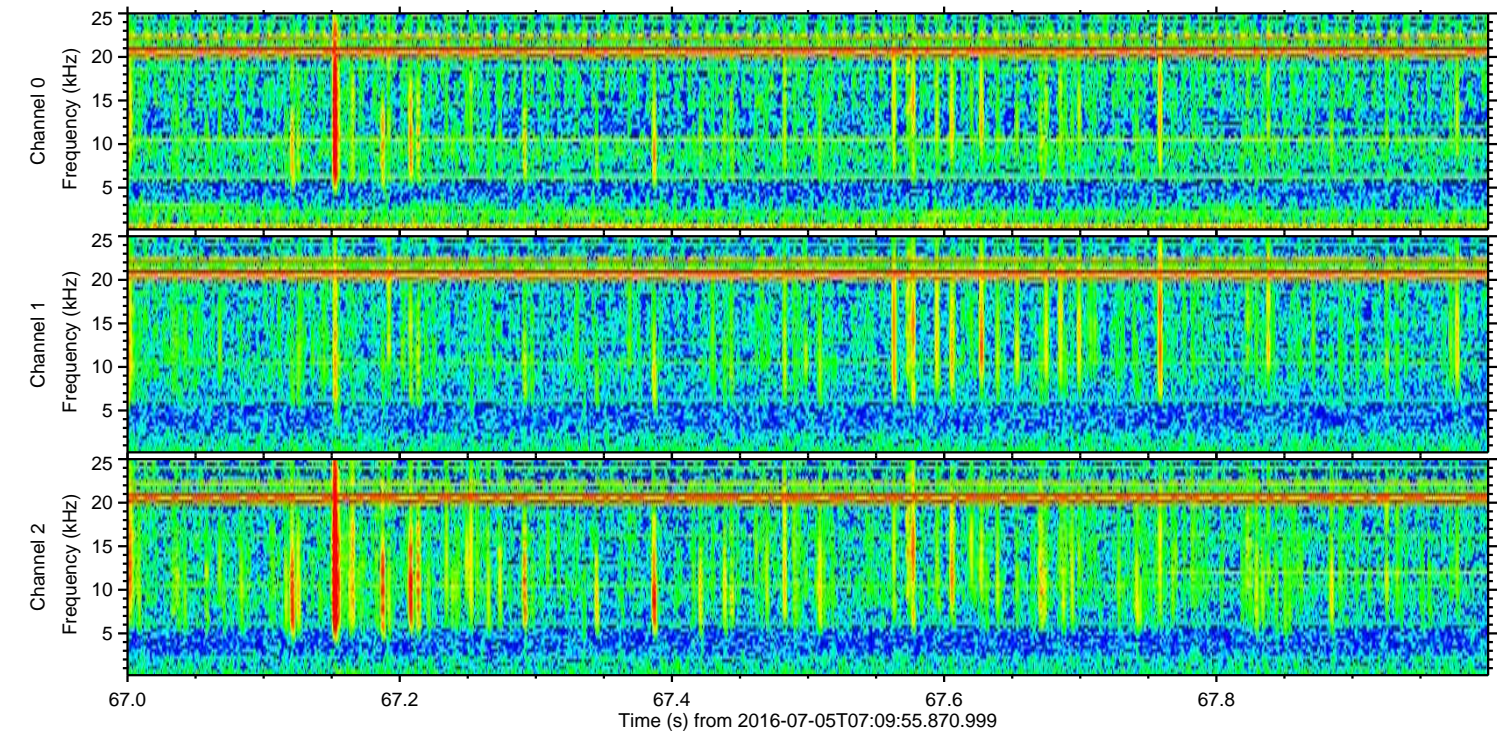
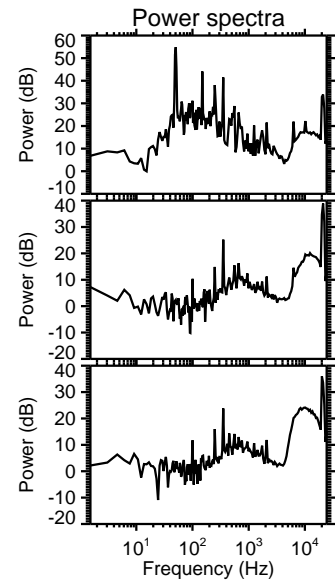
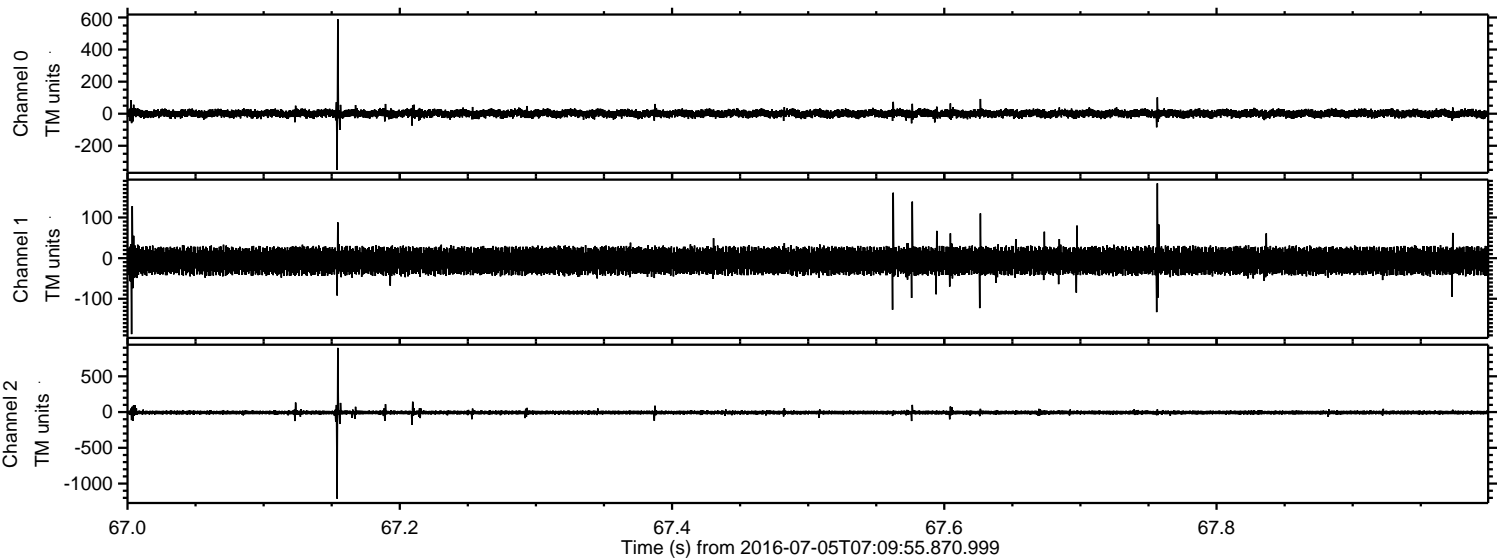


Processed Tue Jul 5 09:18:10 2016 by ELM ver.2012-10-06 from 001\_\_elm20160705\_070954\_\_dat00.bin



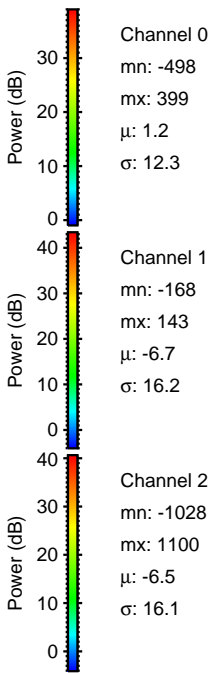
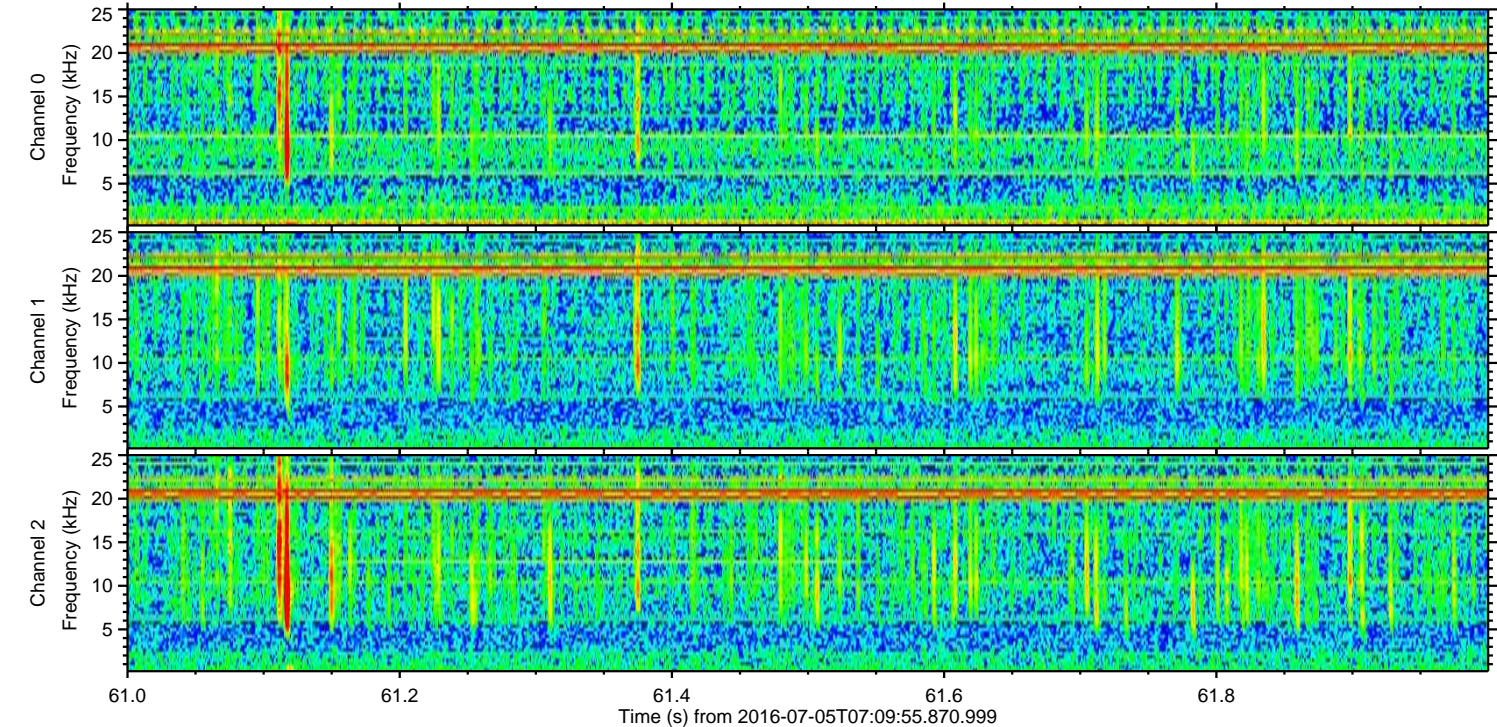
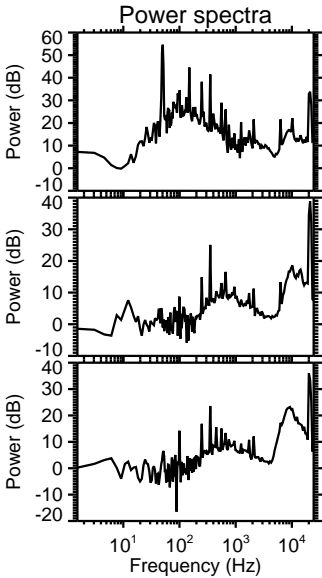
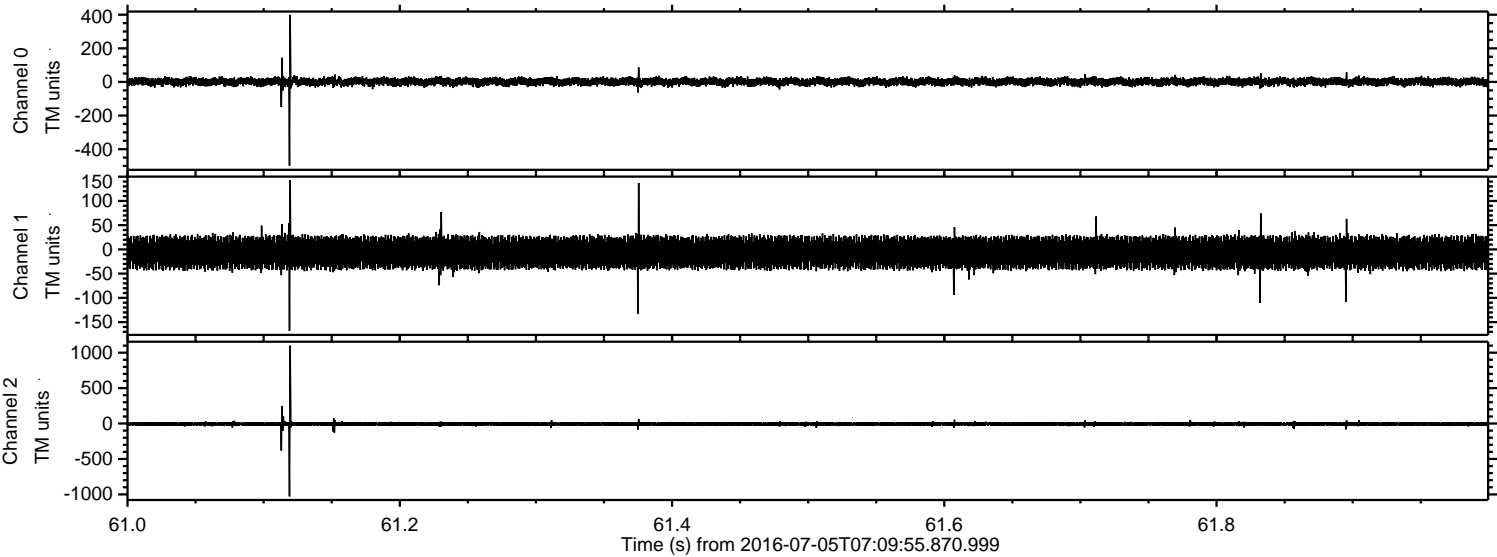


Processed Tue Jul 5 09:18:11 2016 by ELM ver.2012-10-06 from 001\_\_elm20160705\_070954\_\_dat00.bin



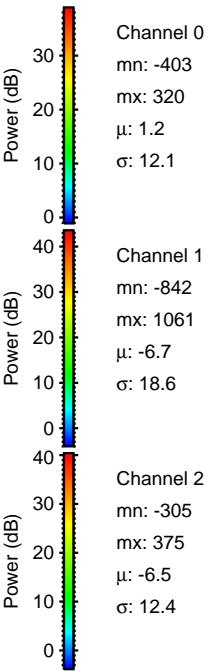
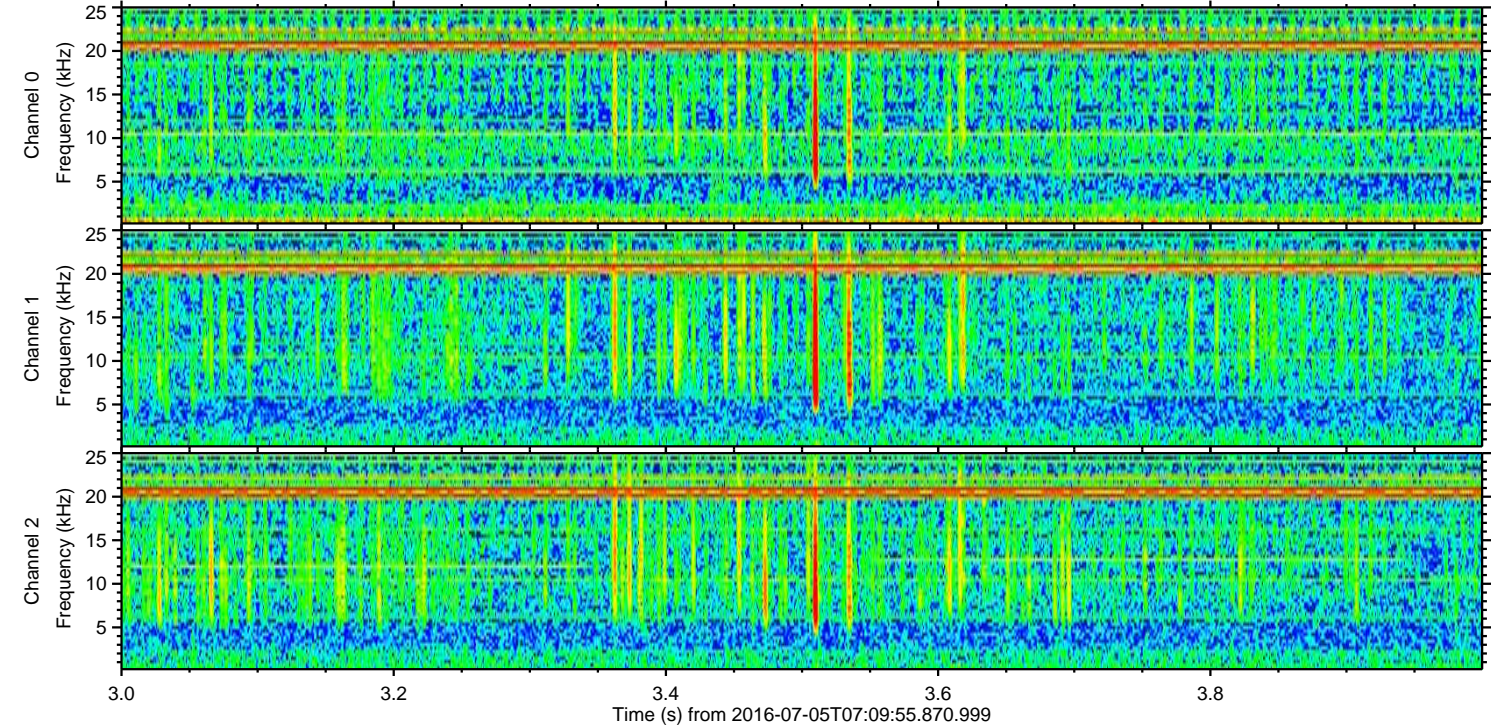
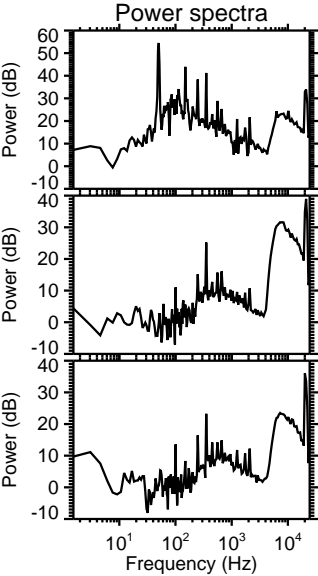
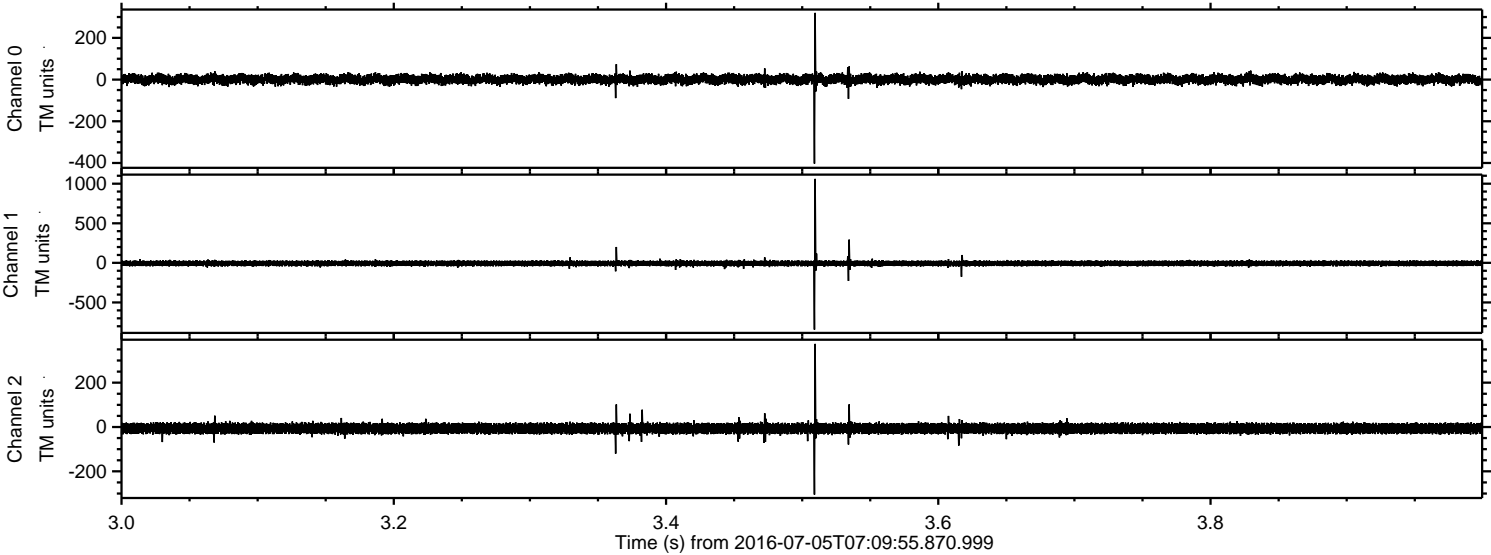


Processed Tue Jul 5 09:18:12 2016 by ELM ver.2012-10-06 from 001\_\_elm20160705\_070954\_\_dat00.bin



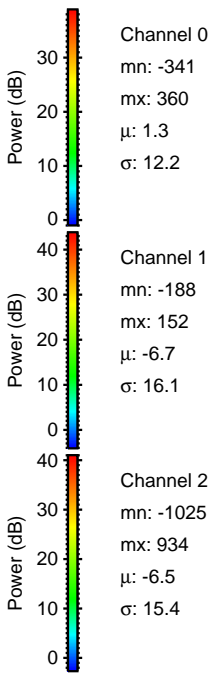
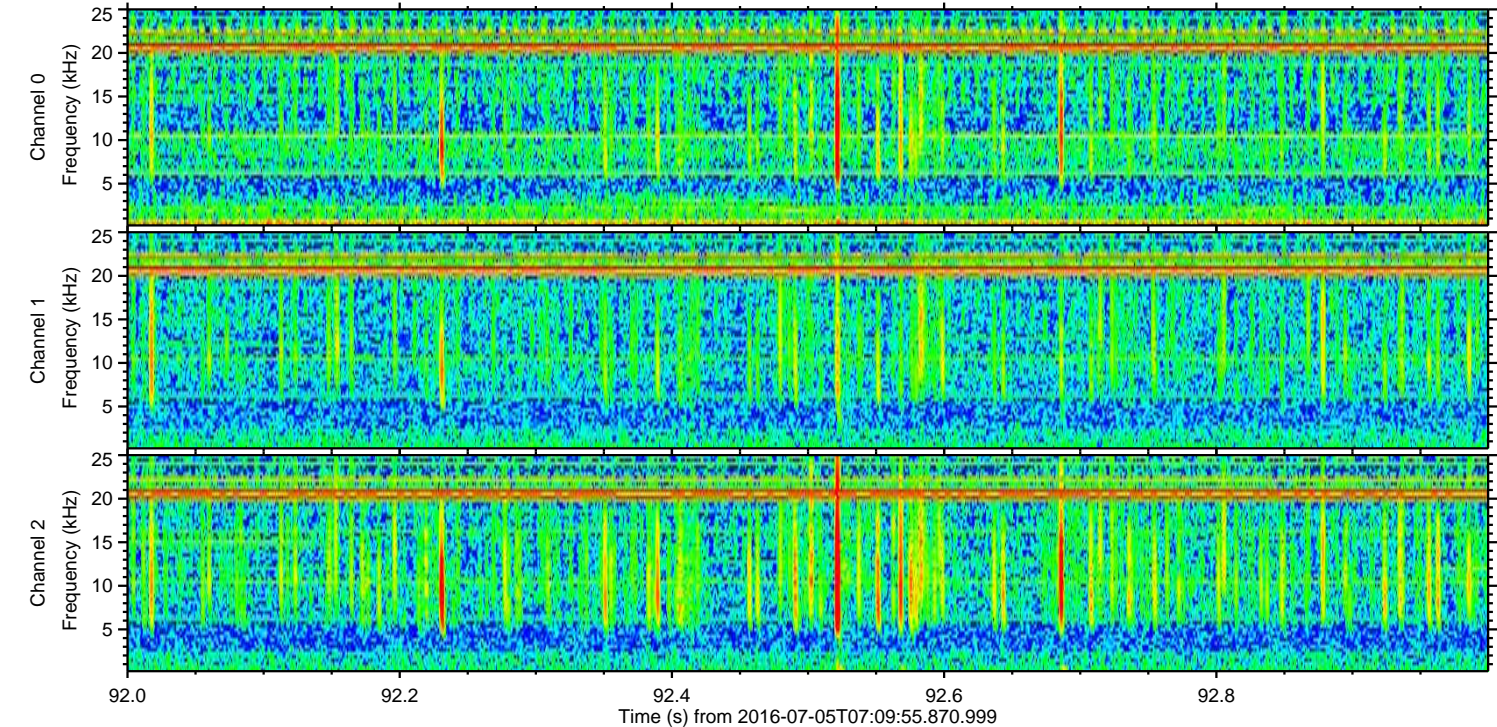
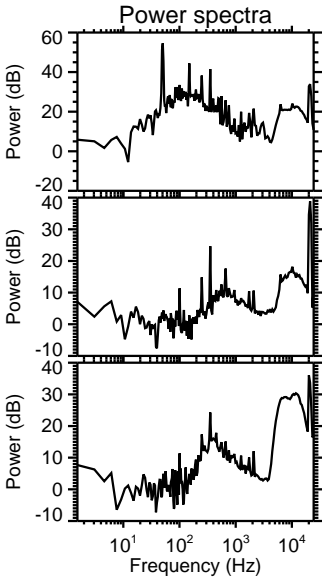
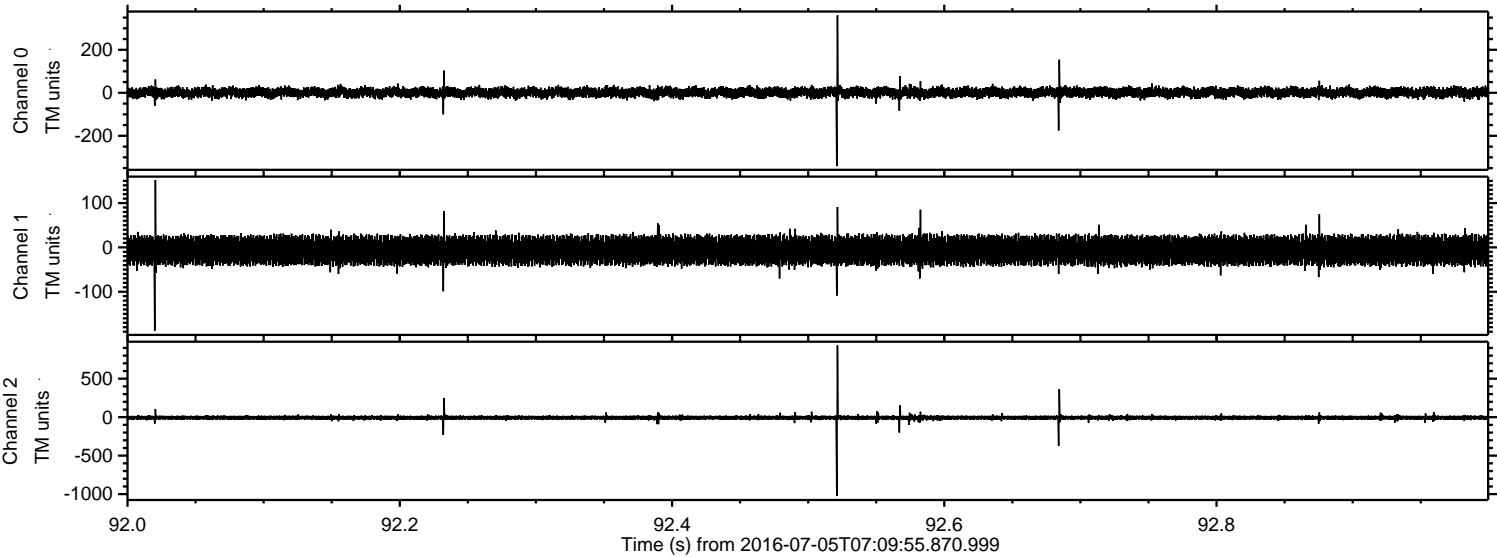


Processed Tue Jul 5 09:18:13 2016 by ELM ver.2012-10-06 from 001\_\_elm20160705\_070954\_\_dat00.bin





Processed Tue Jul 5 09:18:14 2016 by ELM ver.2012-10-06 from 001\_\_elm20160705\_070954\_\_dat00.bin





Processed Tue Jul 5 09:18:15 2016 by ELM ver.2012-10-06 from 001\_\_elm20160705\_070954\_\_dat00.bin

