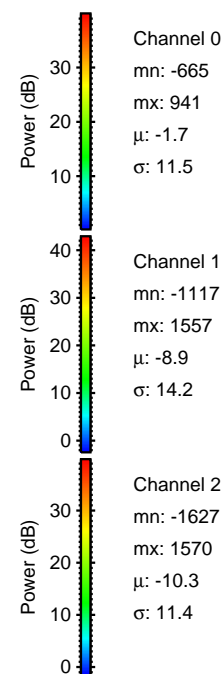
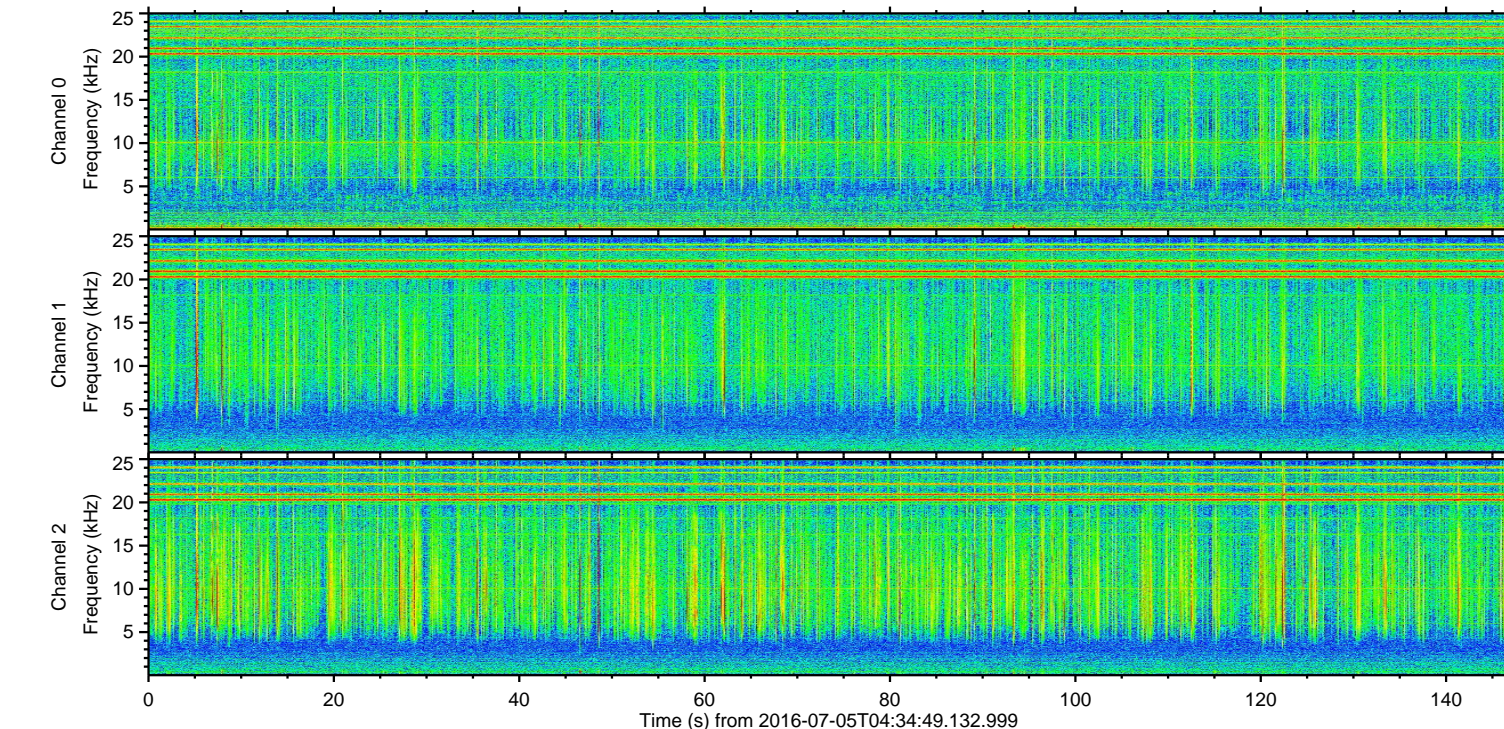
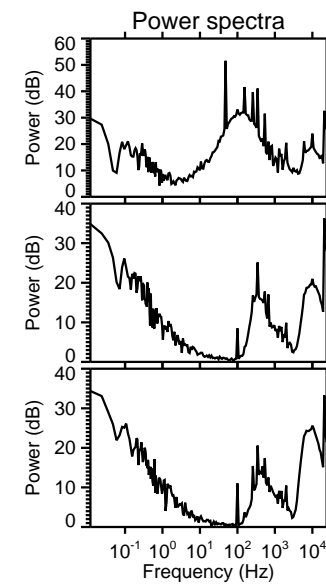
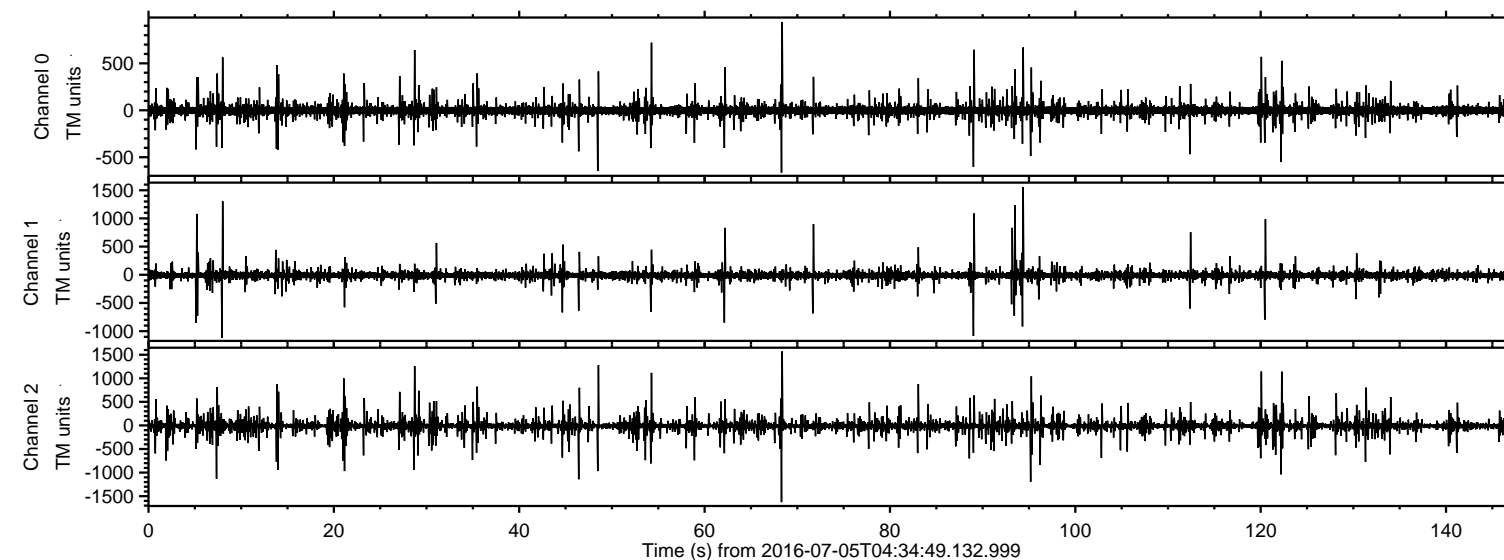


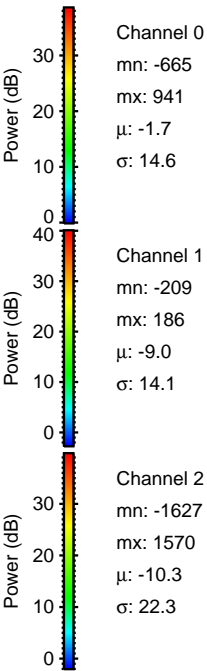
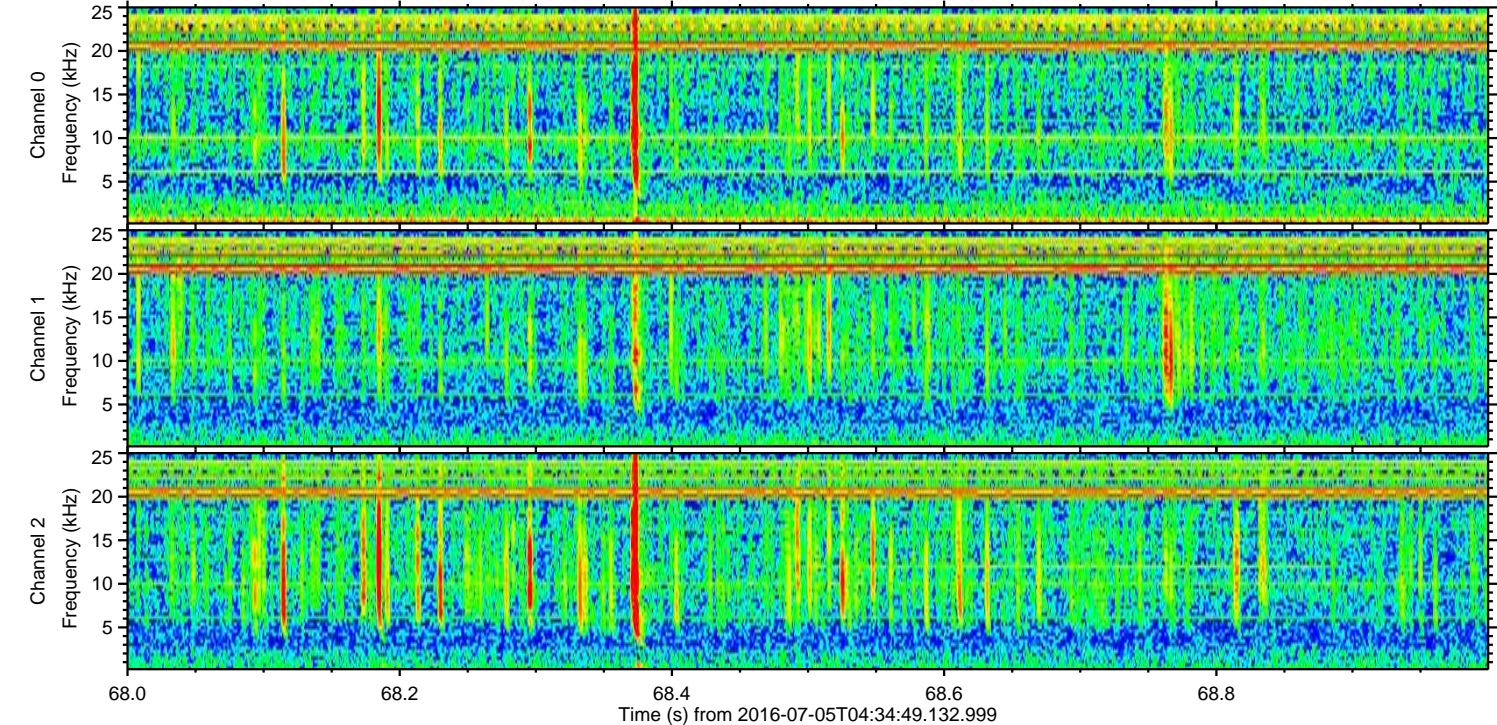
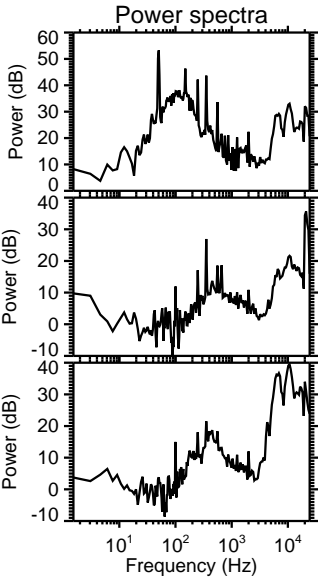
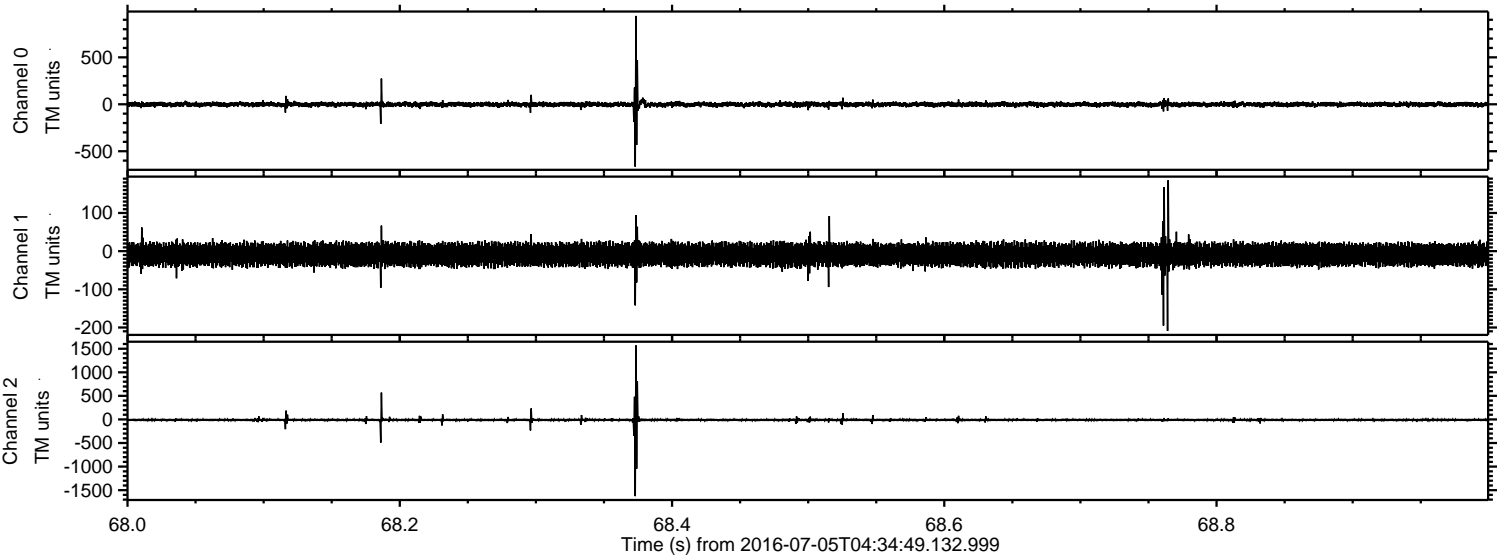
# ELMAVAN 3D WAVEFORMS (Measured data sampled at 50 kHz) 51000 packets of 144 samples from 2016-07-05T04:34:49.132.999.

Processed Tue Jul 5 06:43:07 2016 by ELM ver.2012-10-06 from 001\_\_elm20160705\_043448\_\_dat00.bin



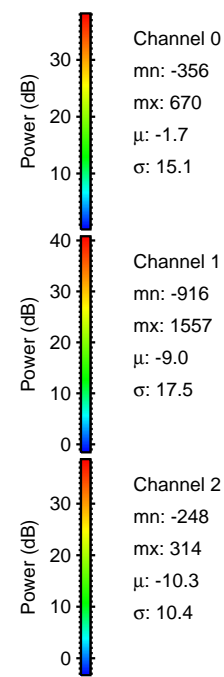
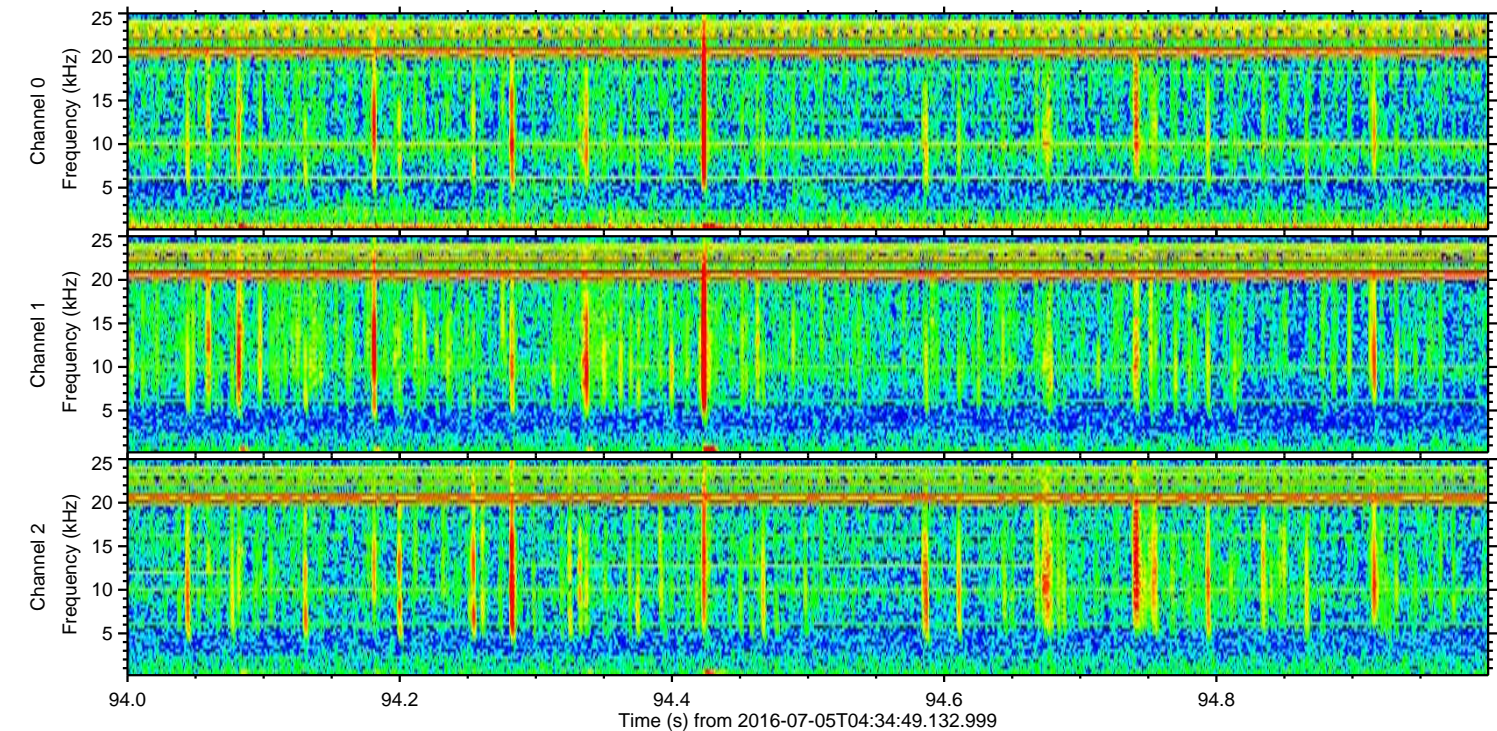
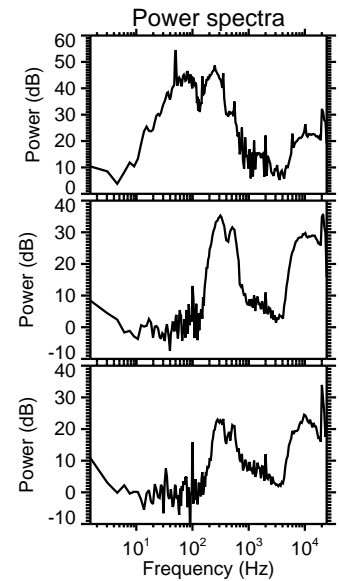
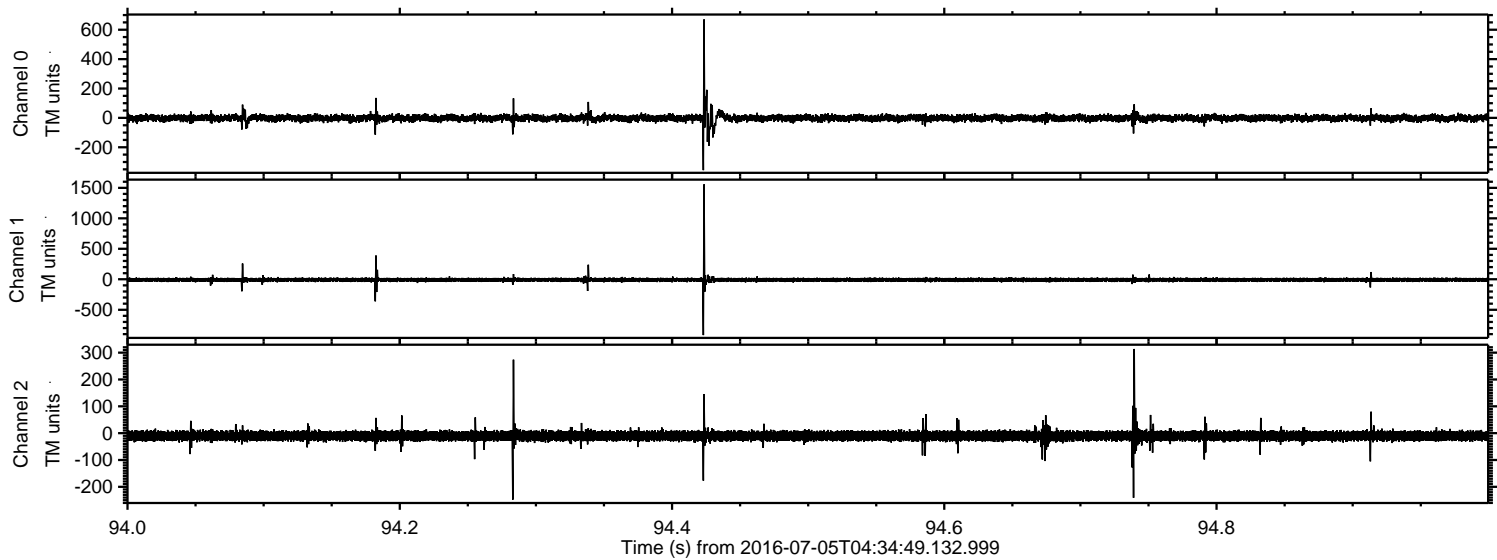


Processed Tue Jul 5 06:43:18 2016 by ELM ver.2012-10-06 from 001\_\_elm20160705\_043448\_\_dat00.bin



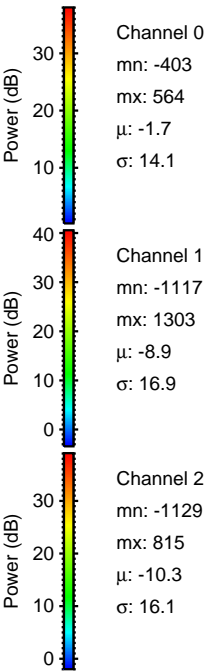
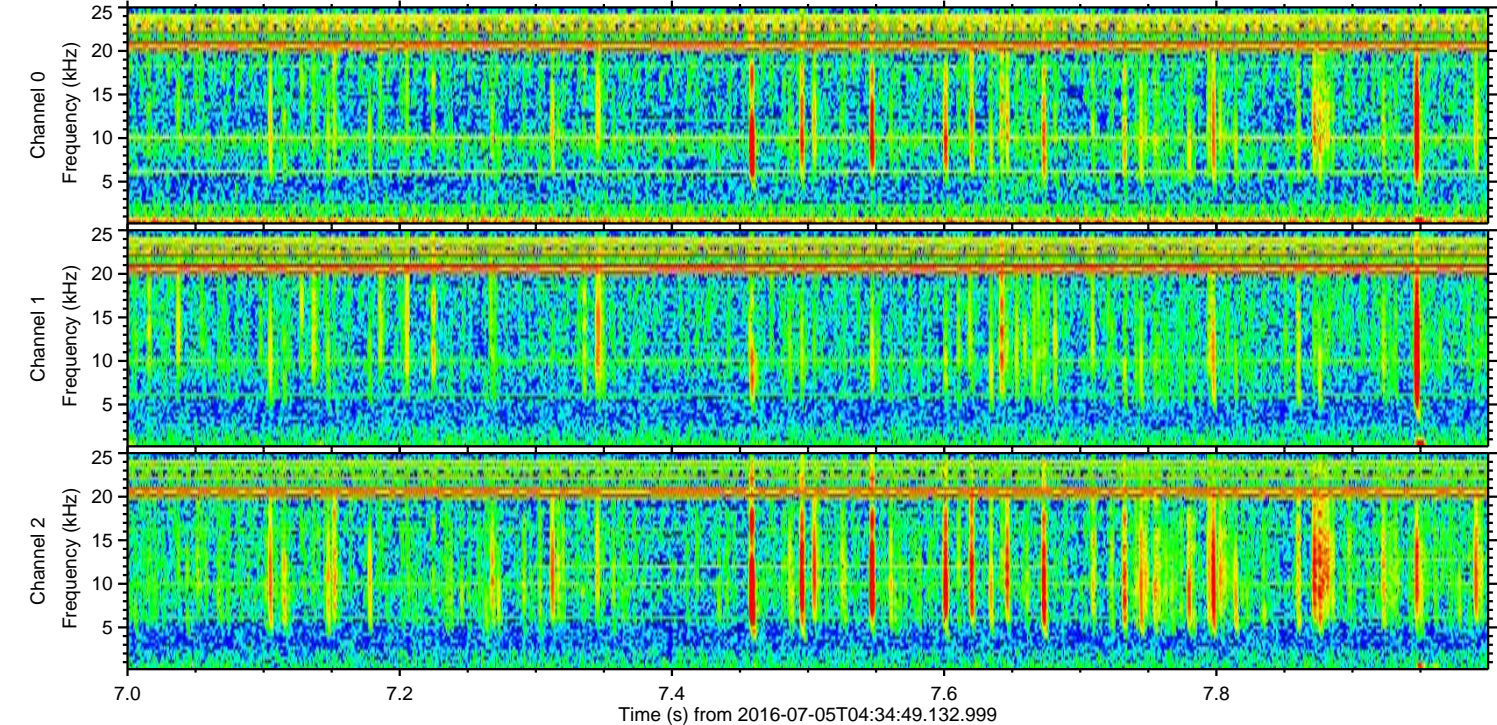
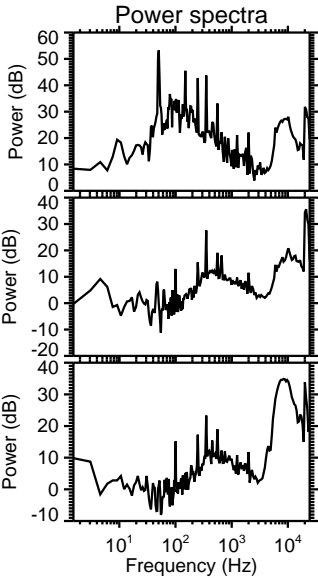
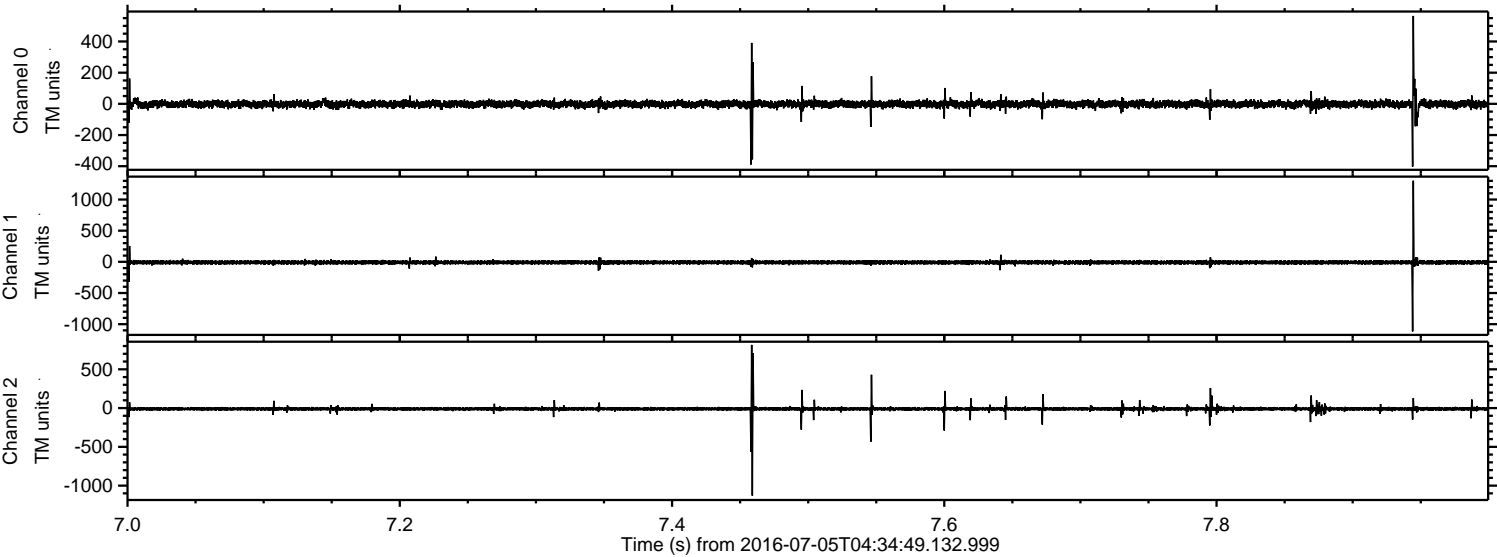


Processed Tue Jul 5 06:43:19 2016 by ELM ver.2012-10-06 from 001\_\_elm20160705\_043448\_\_dat00.bin



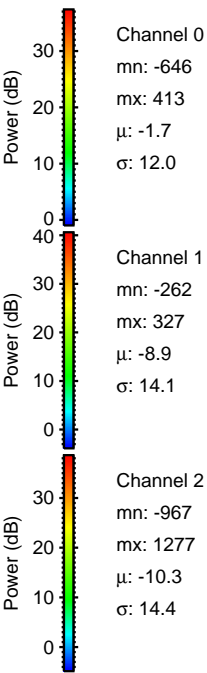
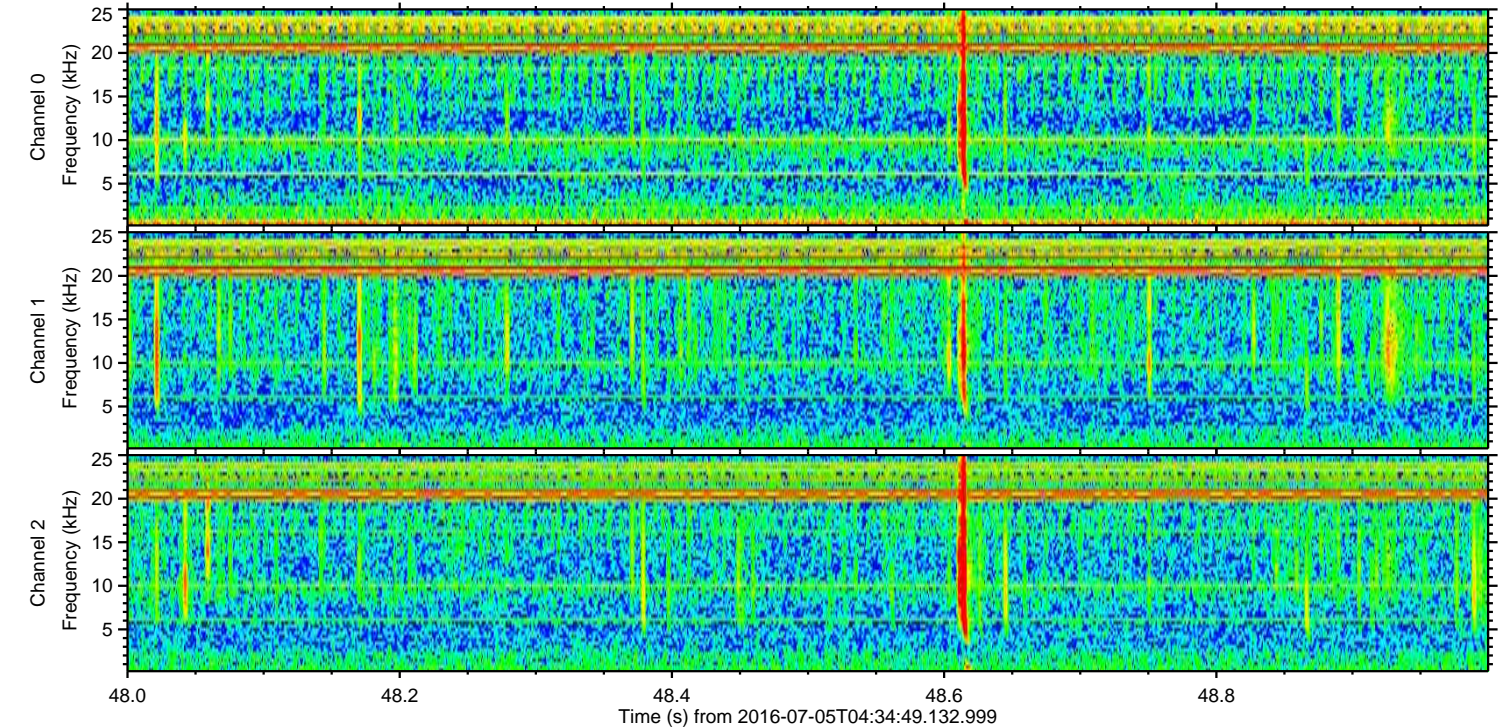
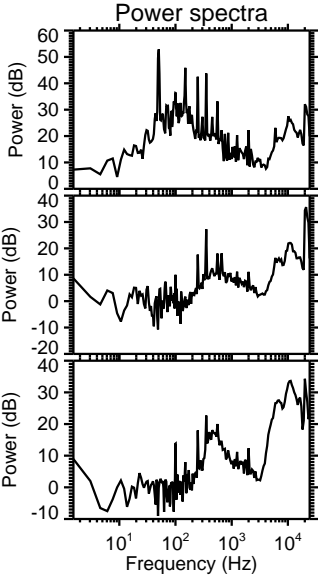
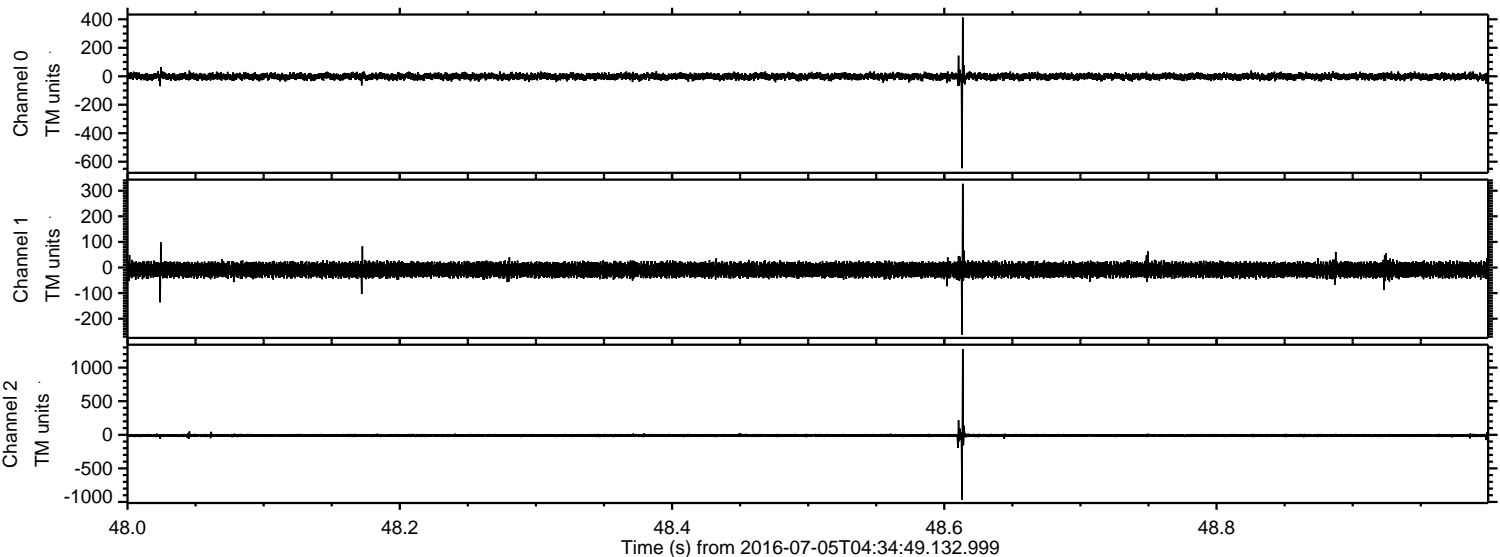


Processed Tue Jul 5 06:43:20 2016 by ELM ver.2012-10-06 from 001\_\_elm20160705\_043448\_\_dat00.bin



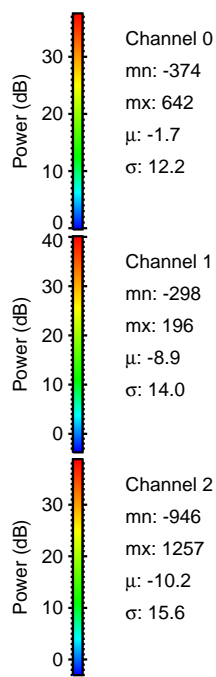
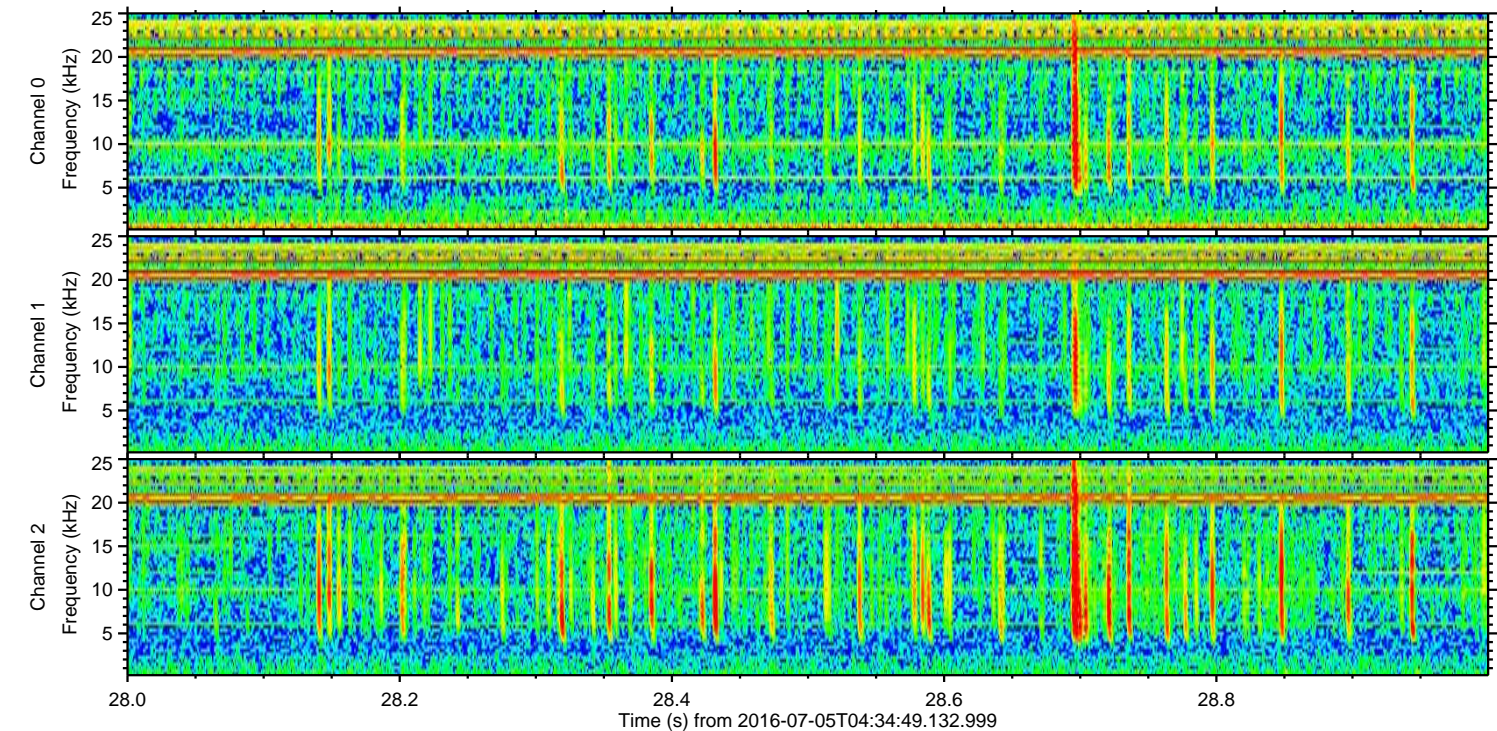
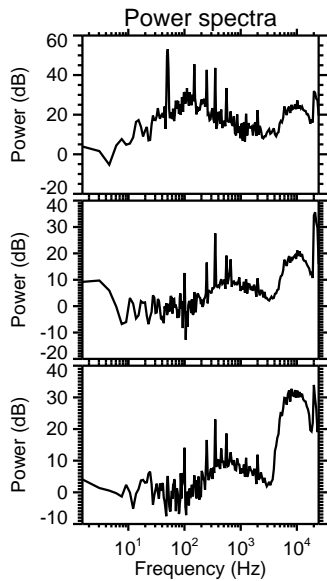
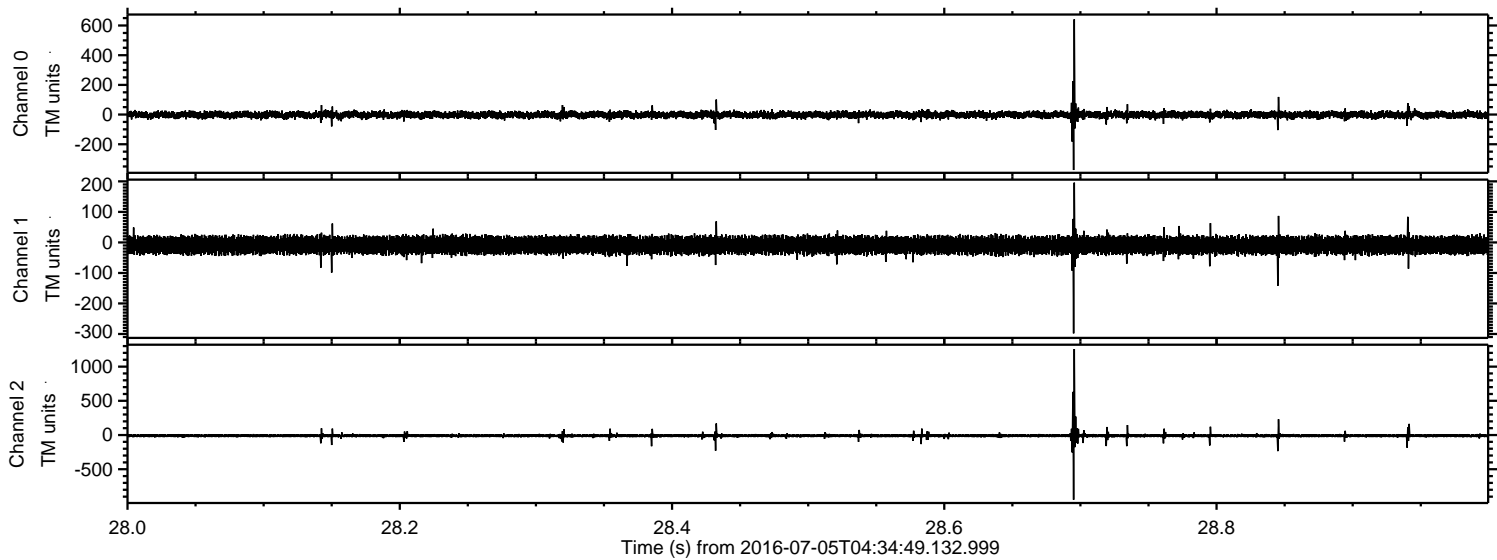


Processed Tue Jul 5 06:43:21 2016 by ELM ver.2012-10-06 from 001\_\_elm20160705\_043448\_\_dat00.bin



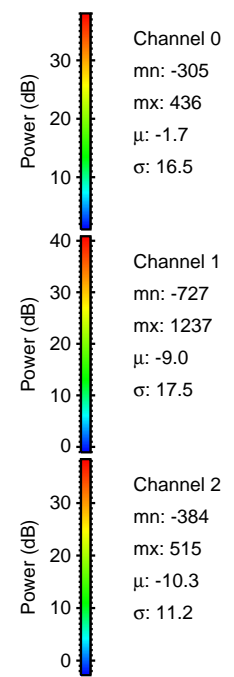
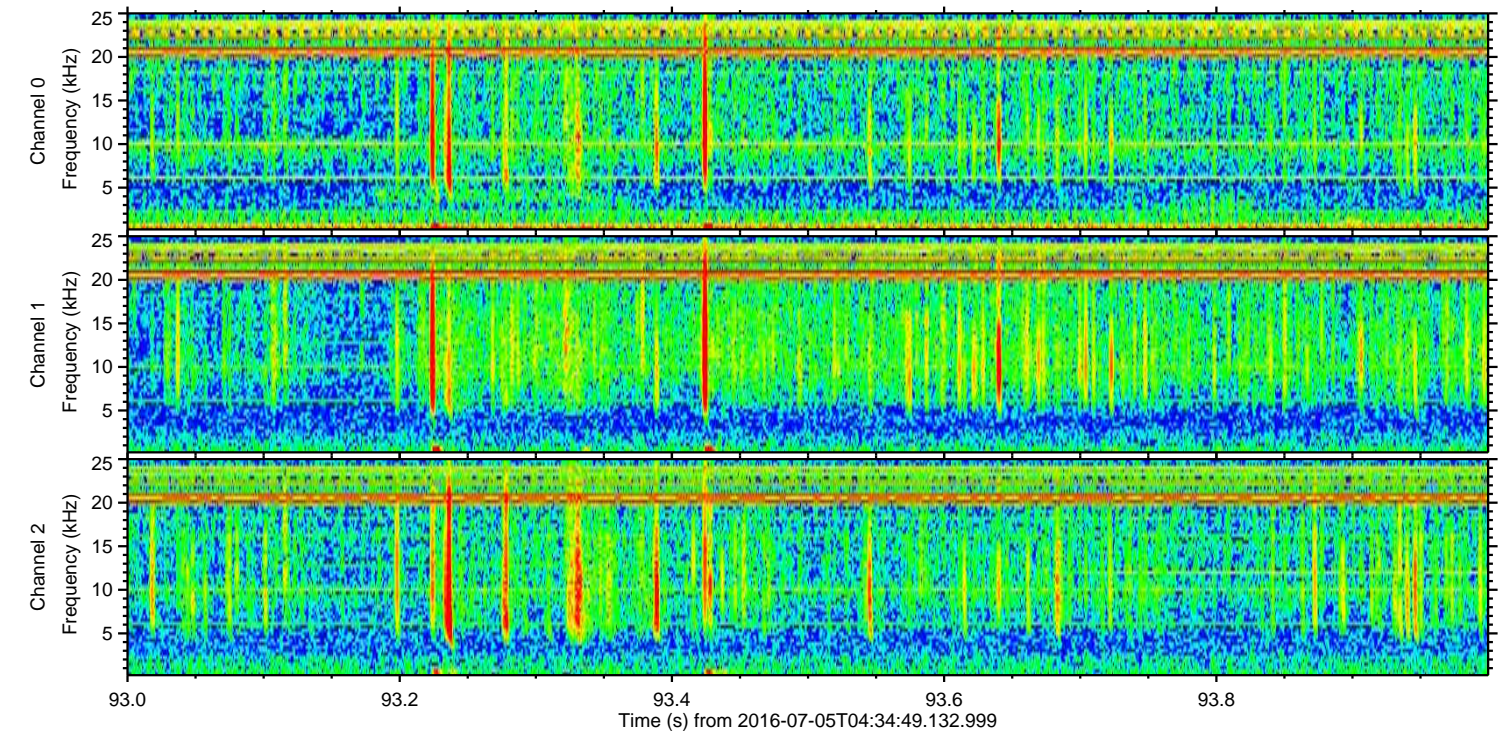
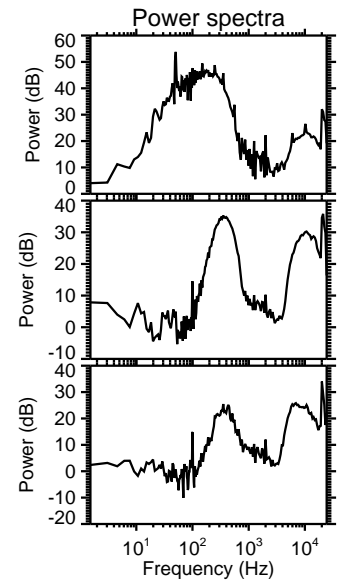
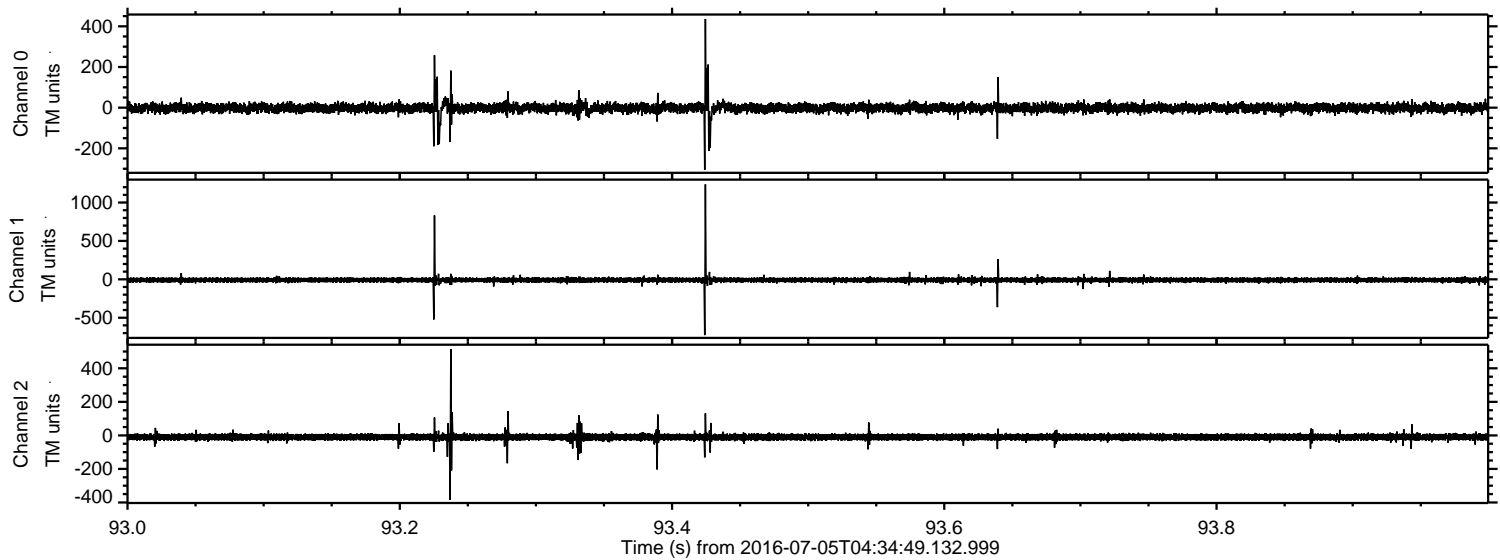


Processed Tue Jul 5 06:43:22 2016 by ELM ver.2012-10-06 from 001\_\_elm20160705\_043448\_\_dat00.bin



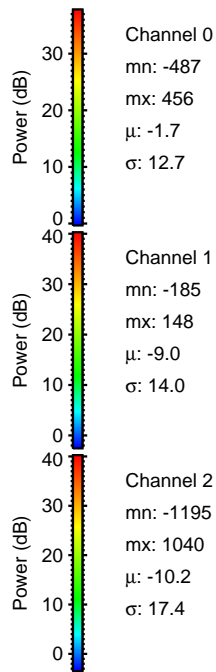
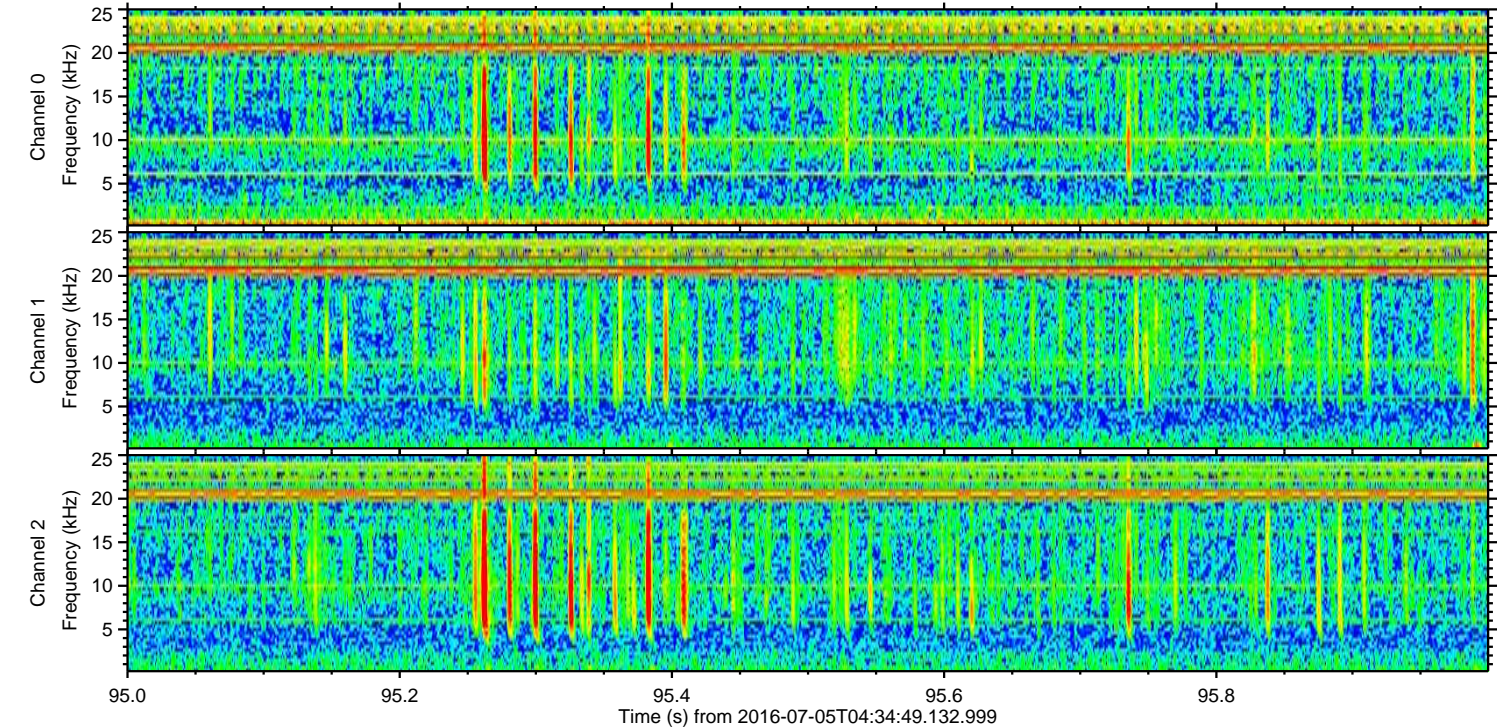
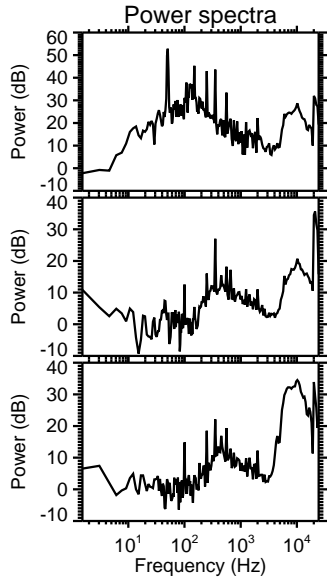
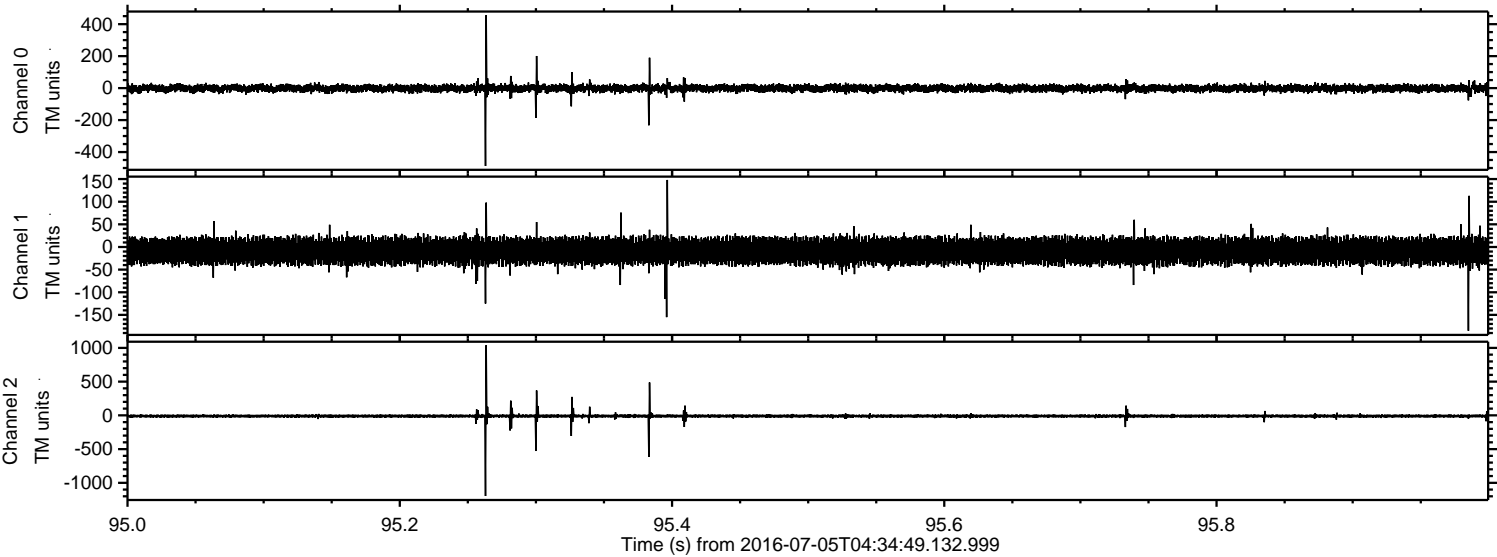


Processed Tue Jul 5 06:43:23 2016 by ELM ver.2012-10-06 from 001\_\_elm20160705\_043448\_\_dat00.bin





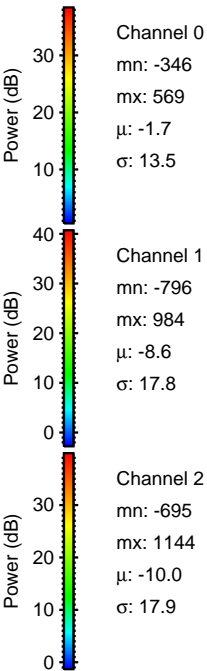
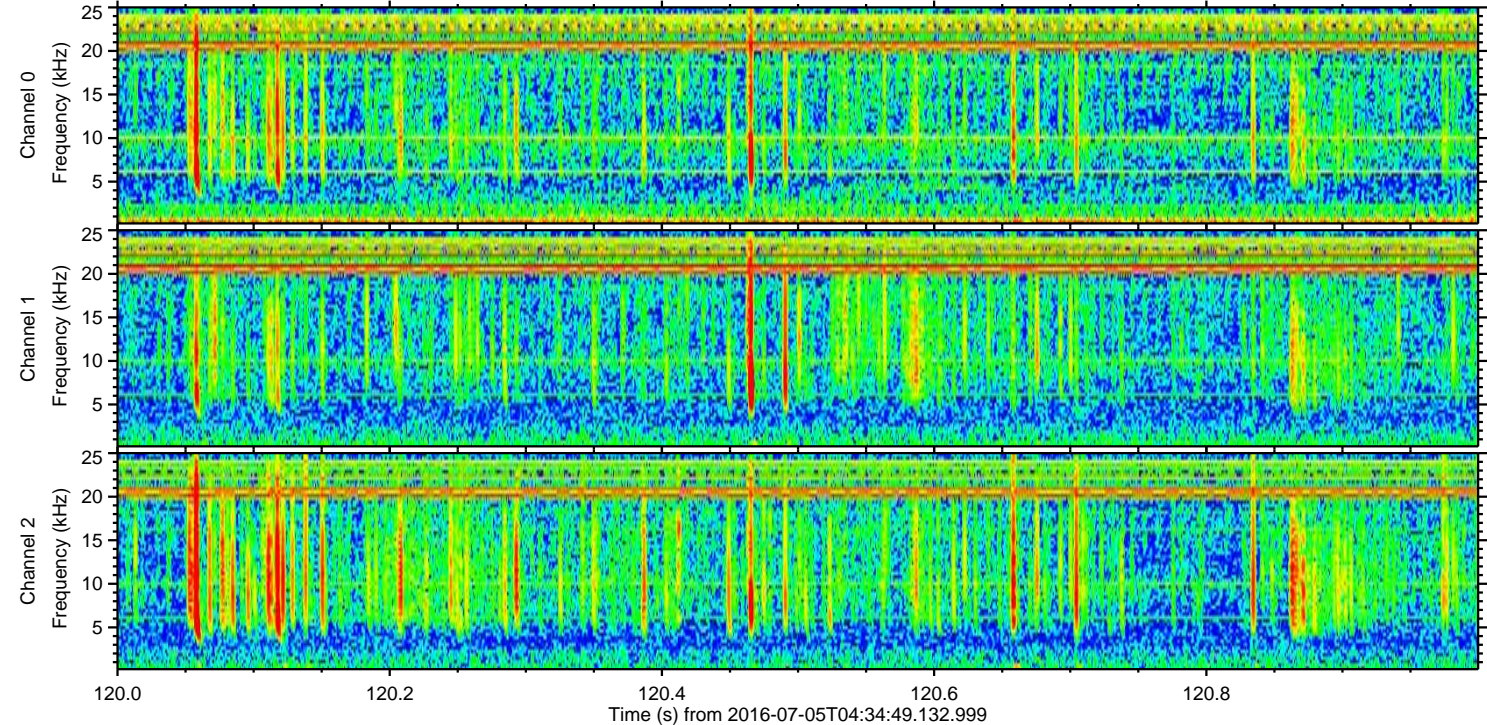
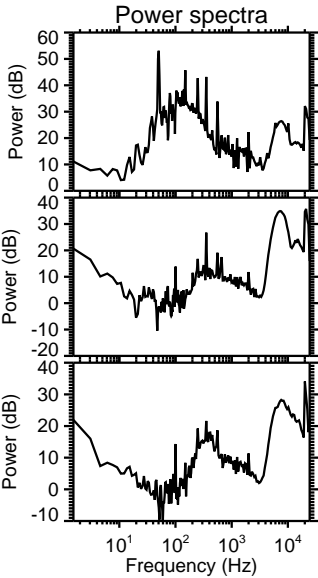
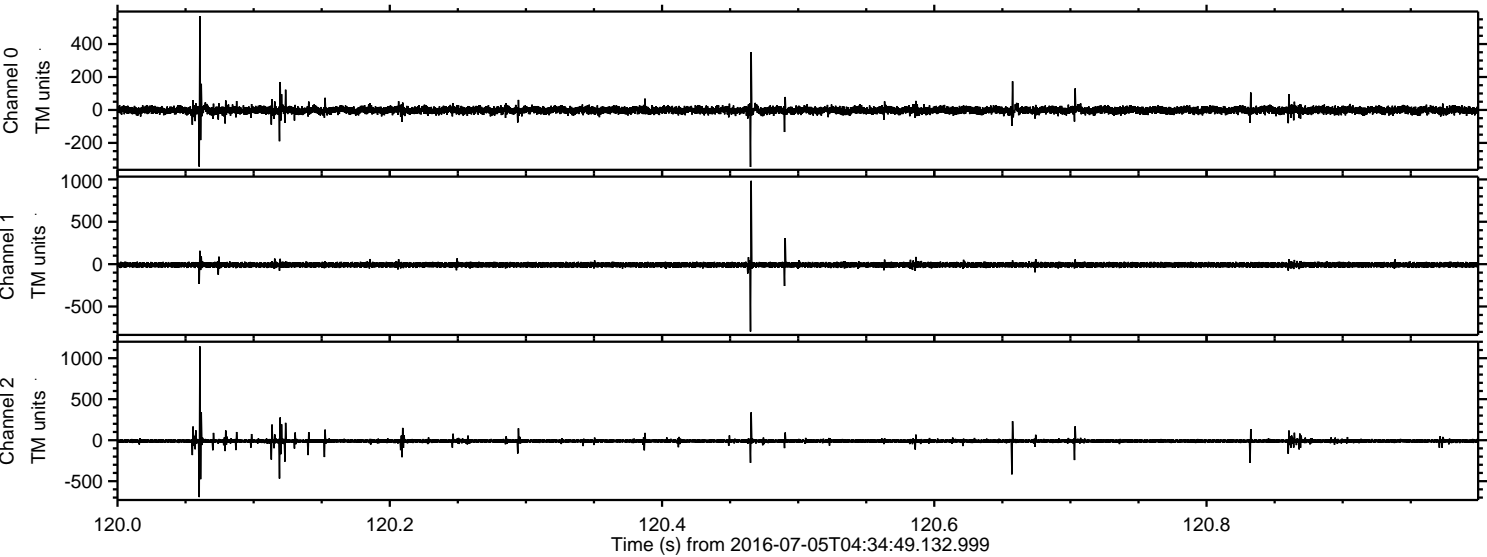
Processed Tue Jul 5 06:43:24 2016 by ELM ver.2012-10-06 from 001\_\_elm20160705\_043448\_\_dat00.bin





ELMAVAN 3D WAVEFORMS (Measured data sampled at 50 kHz) 51000 packets of 144 samples from 2016-07-05T04:34:49.132.999. Part 121/147

Processed Tue Jul 5 06:43:25 2016 by ELM ver.2012-10-06 from 001\_\_elm20160705\_043448\_\_dat00.bin





ELMAVAN 3D WAVEFORMS (Measured data sampled at 50 kHz) 51000 packets of 144 samples from 2016-07-05T04:34:49.132.999. Part 123/147

Processed Tue Jul 5 06:43:26 2016 by ELM ver.2012-10-06 from 001\_\_elm20160705\_043448\_\_dat00.bin

