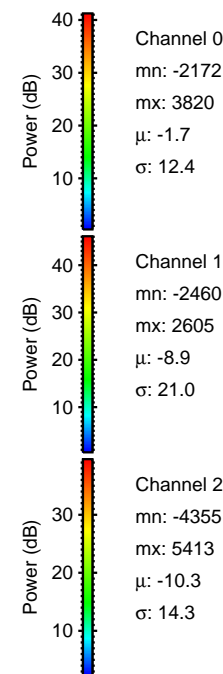
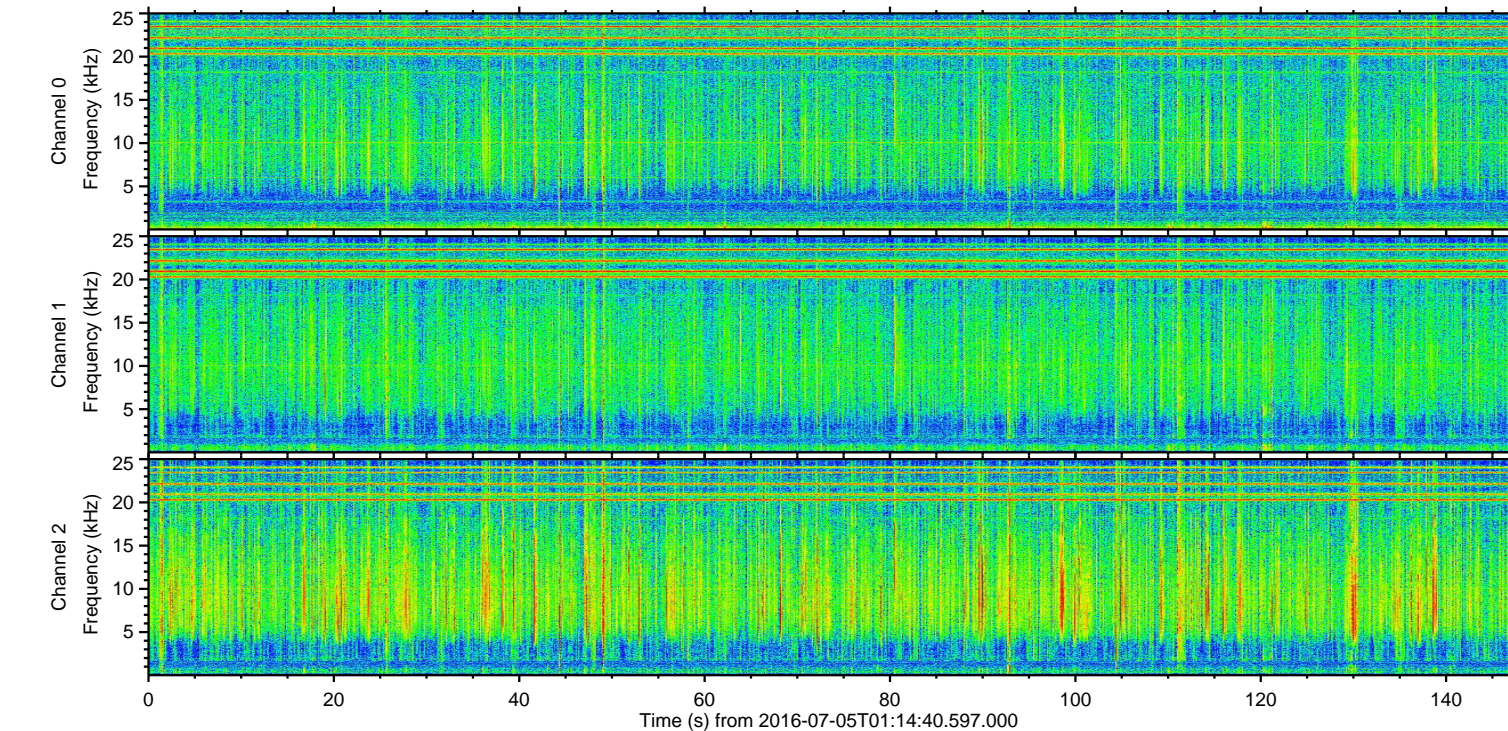
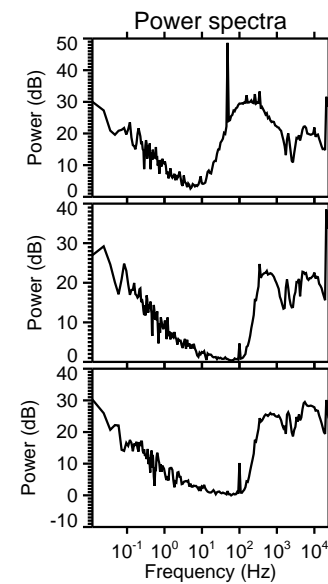
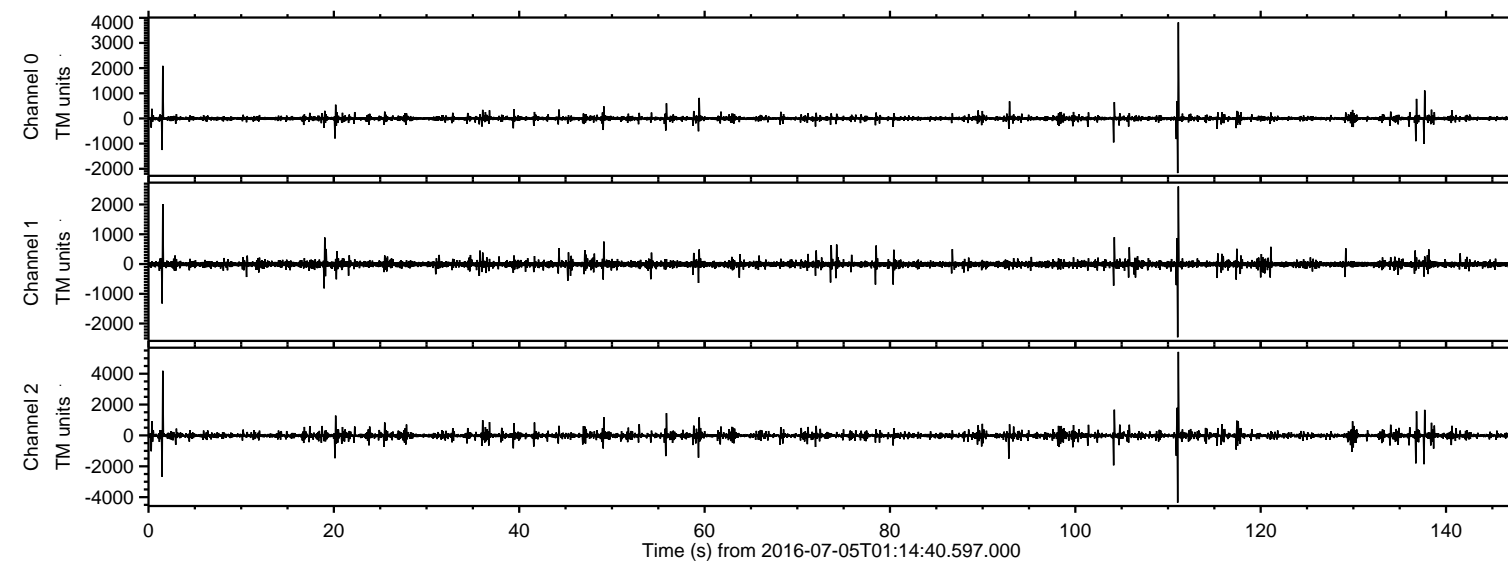


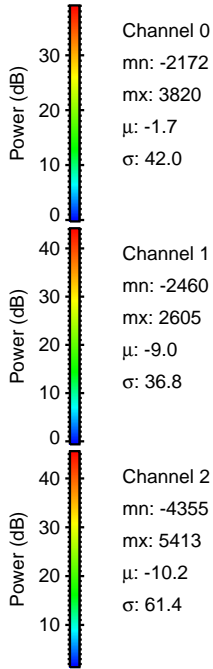
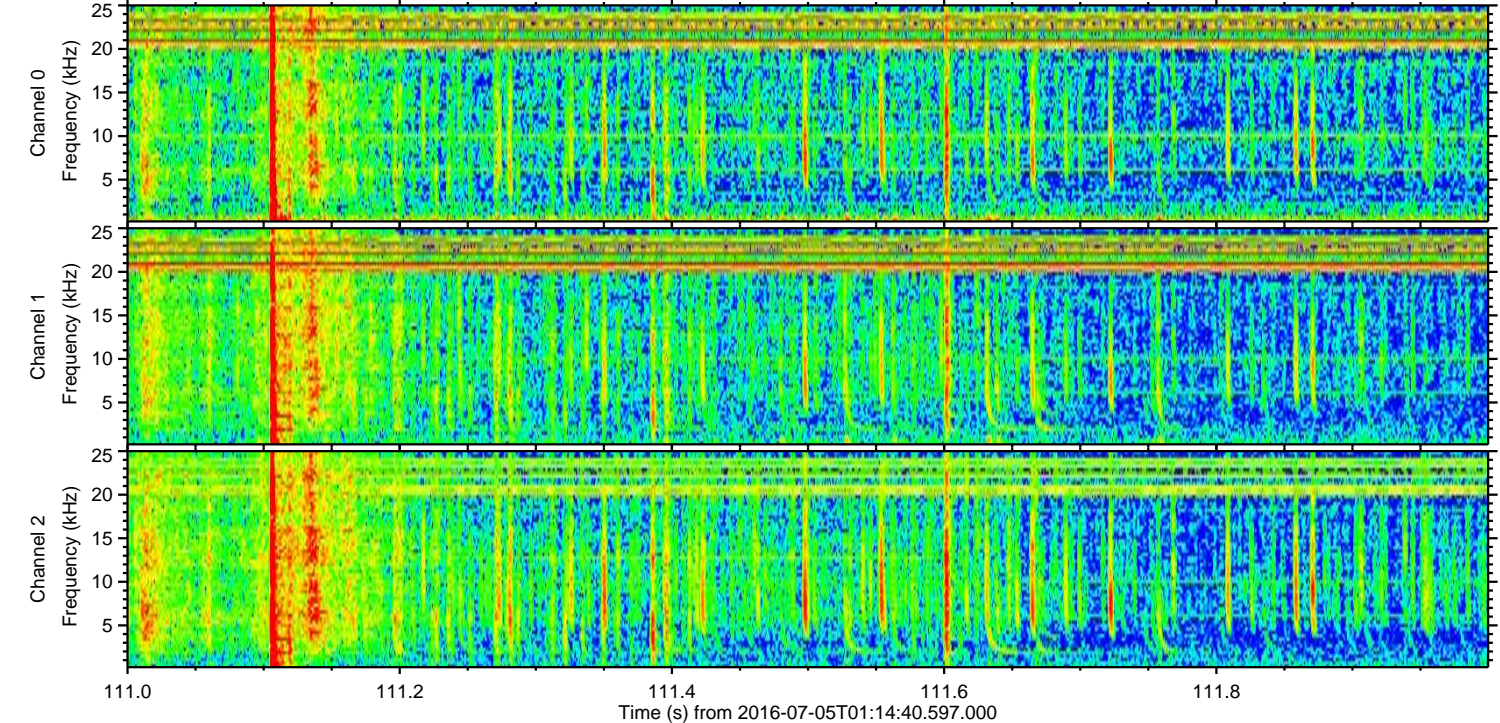
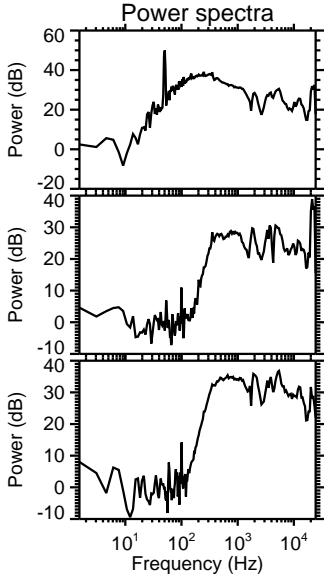
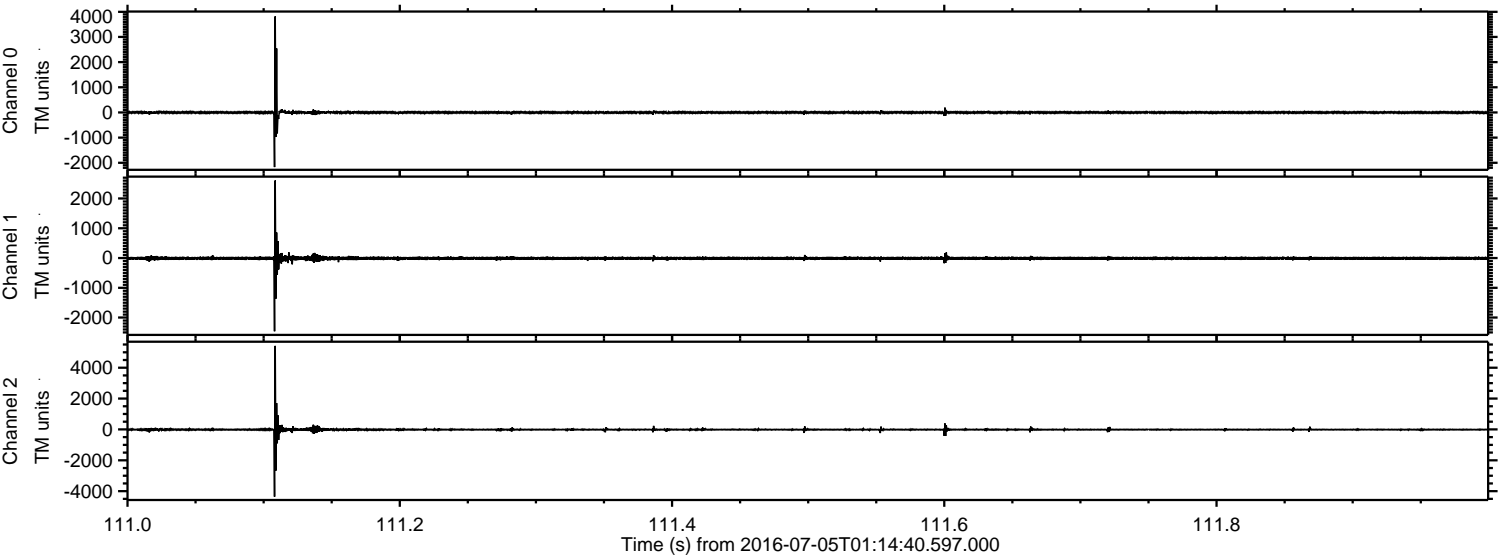
ELMAVAN 3D WAVEFORMS (Measured data sampled at 50 kHz) 51000 packets of 144 samples from 2016-07-05T01:14:40.597.000.

Processed Tue Jul 5 03:22:35 2016 by ELM ver.2012-10-06 from 001__elm20160705_011439__dat00.bin



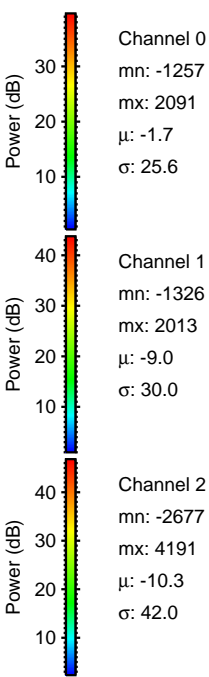
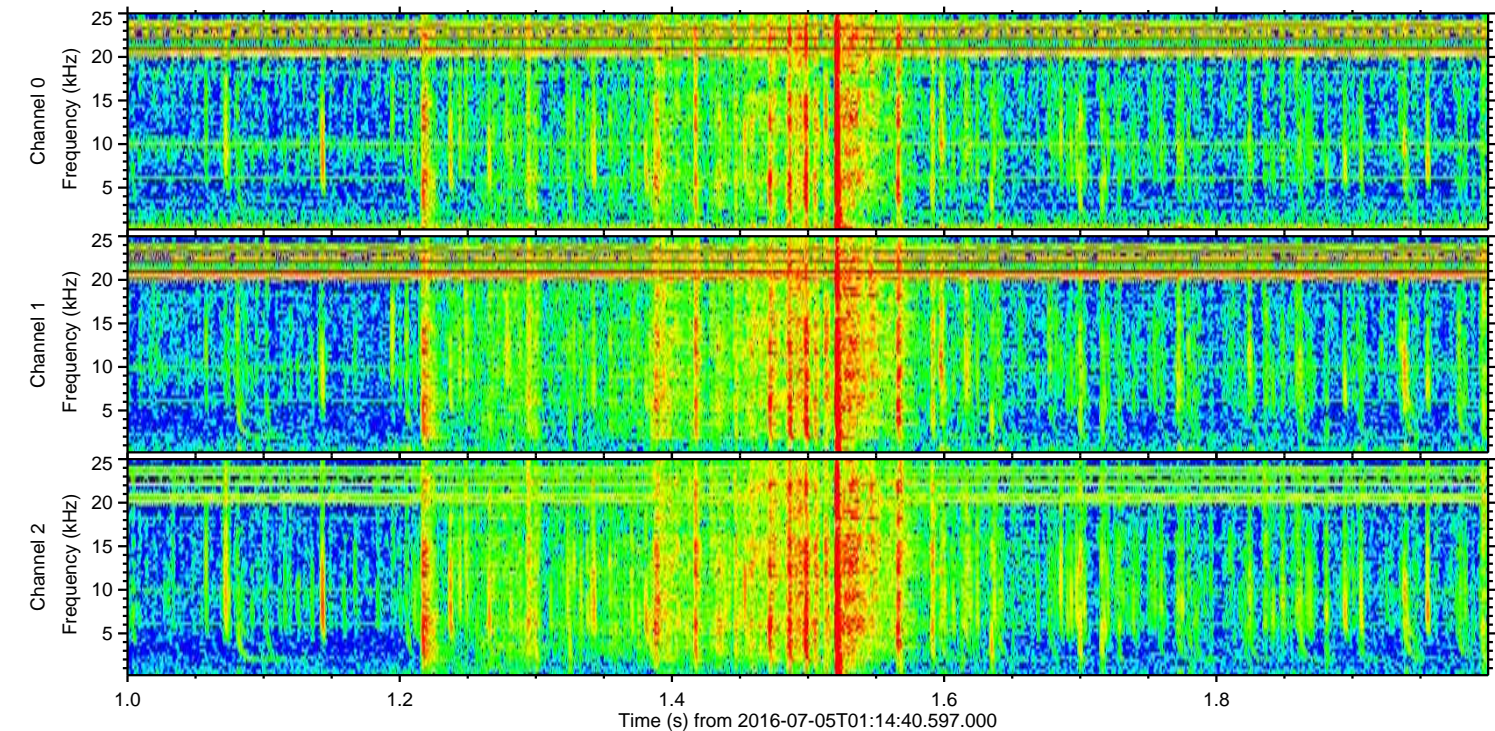
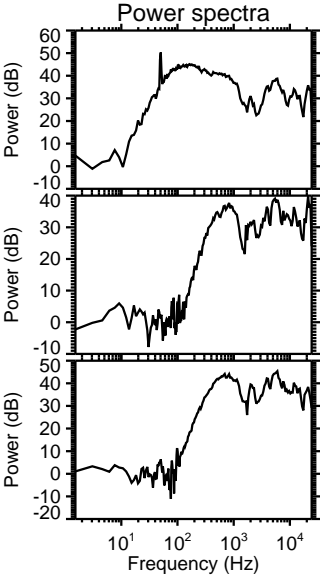
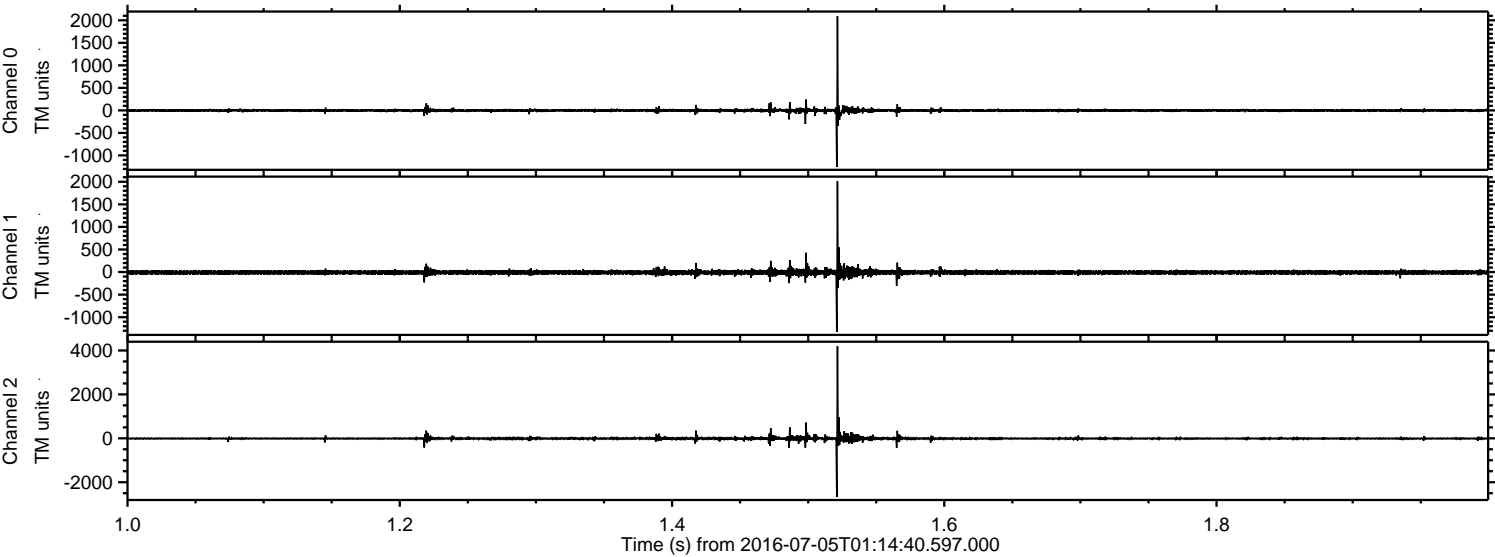
ELMAVAN 3D WAVEFORMS (Measured data sampled at 50 kHz) 51000 packets of 144 samples from 2016-07-05T01:14:40.597.000. Part 112/147

Processed Tue Jul 5 03:22:46 2016 by ELM ver.2012-10-06 from 001__elm20160705_011439__dat00.bin



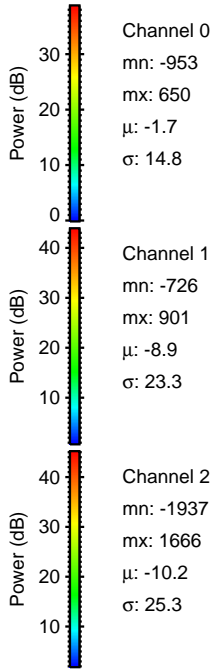
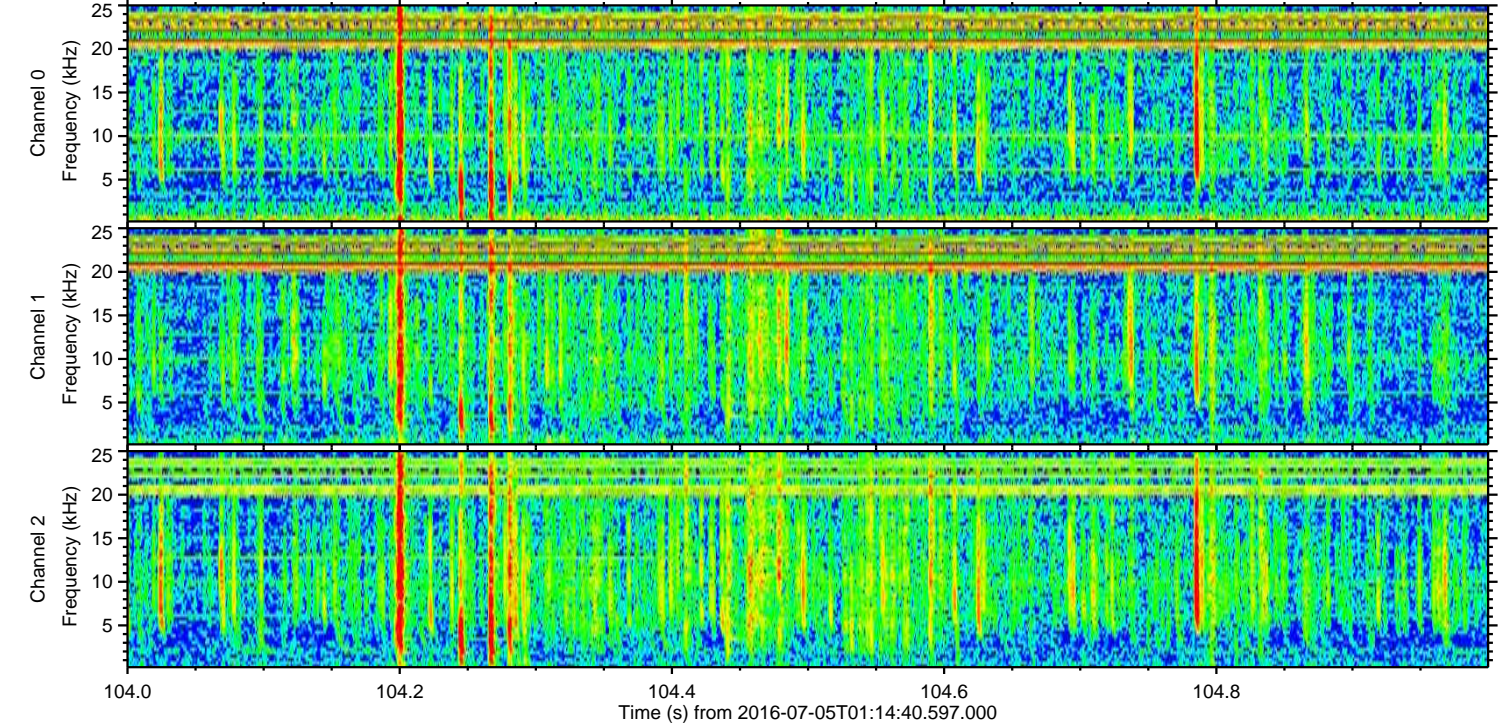
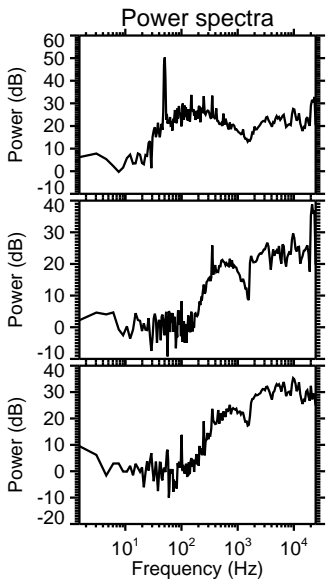
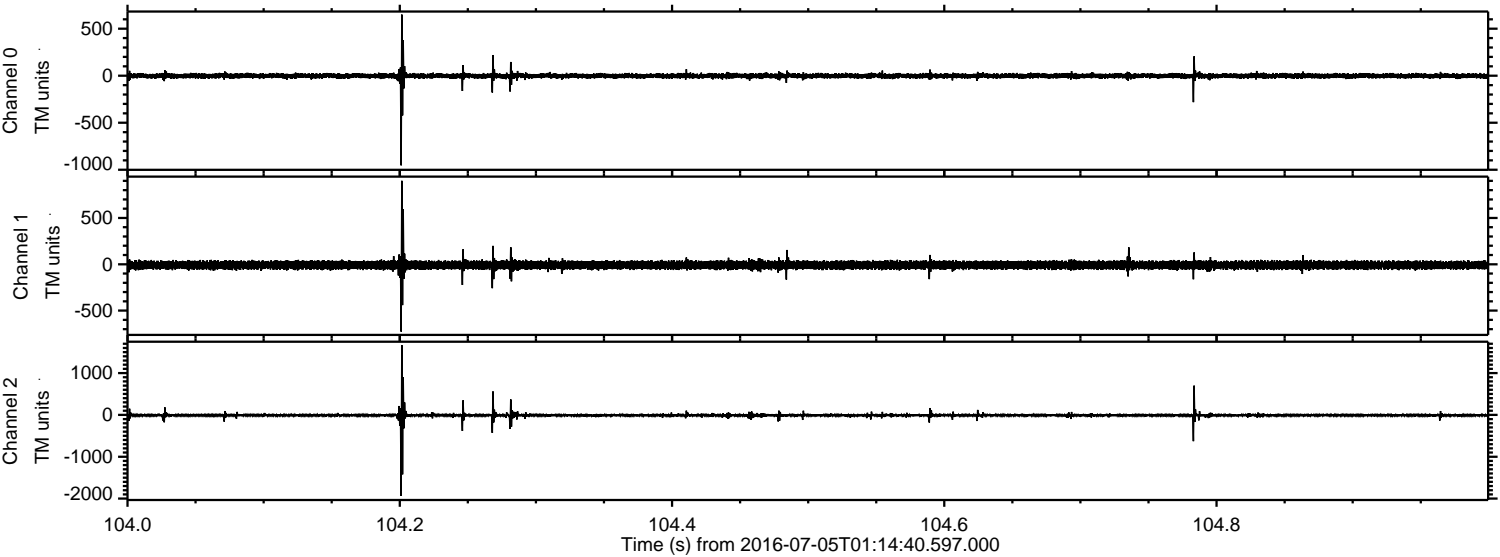
ELMAVAN 3D WAVEFORMS (Measured data sampled at 50 kHz) 51000 packets of 144 samples from 2016-07-05T01:14:40.597.000. Part 2/147

Processed Tue Jul 5 03:22:47 2016 by ELM ver.2012-10-06 from 001__elm20160705_011439__dat00.bin



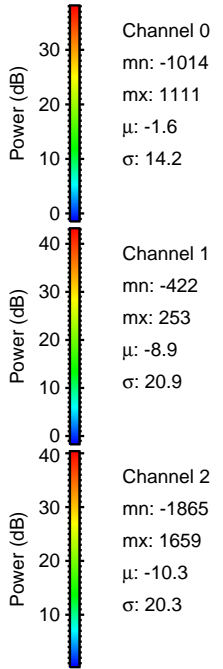
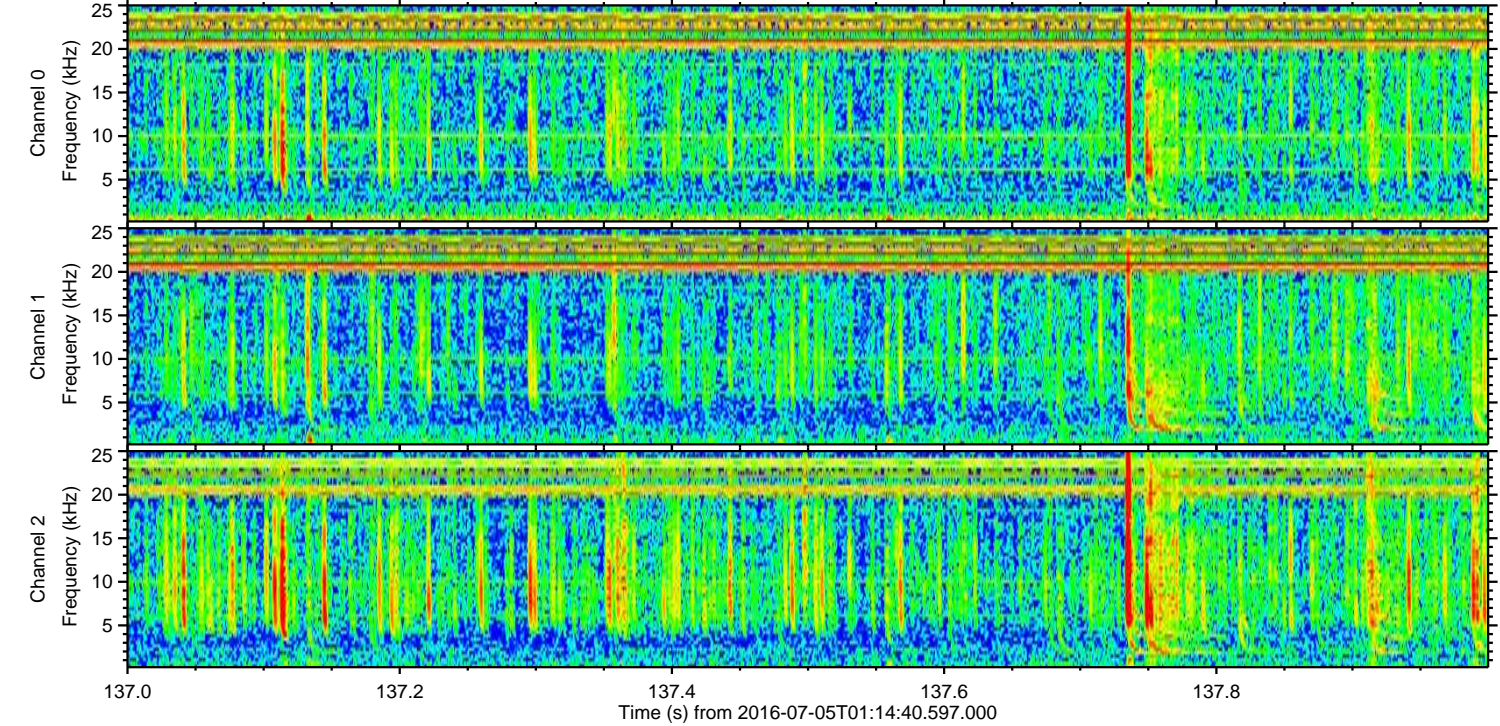
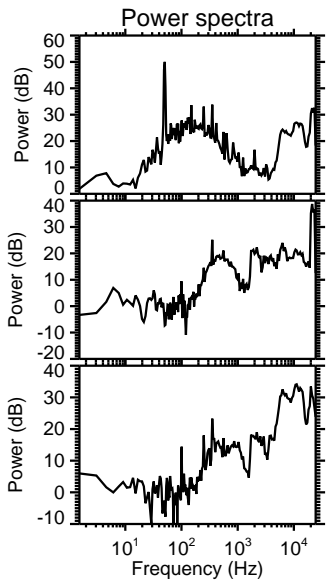
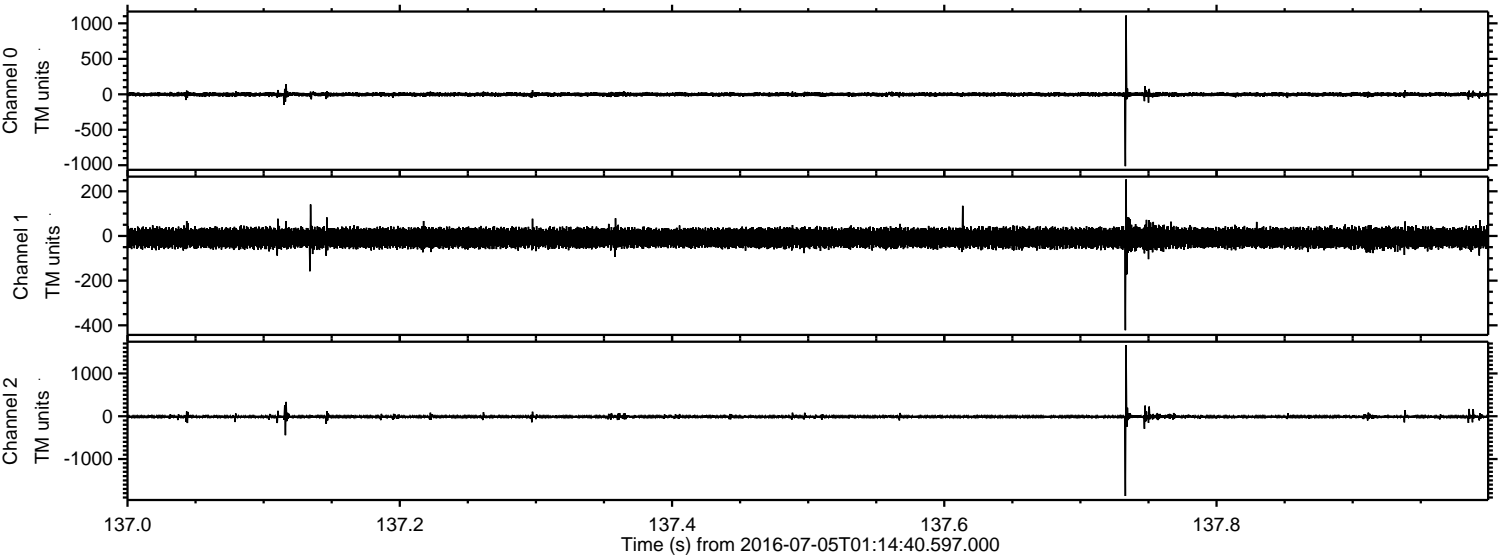
ELMAVAN 3D WAVEFORMS (Measured data sampled at 50 kHz) 51000 packets of 144 samples from 2016-07-05T01:14:40.597.000. Part 105/147

Processed Tue Jul 5 03:22:48 2016 by ELM ver.2012-10-06 from 001__elm20160705_011439__dat00.bin



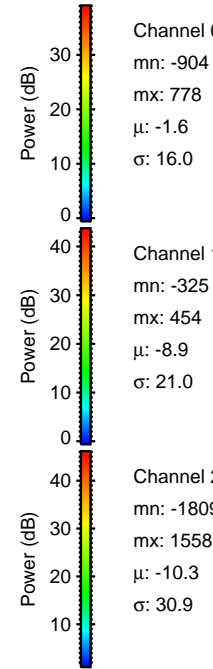
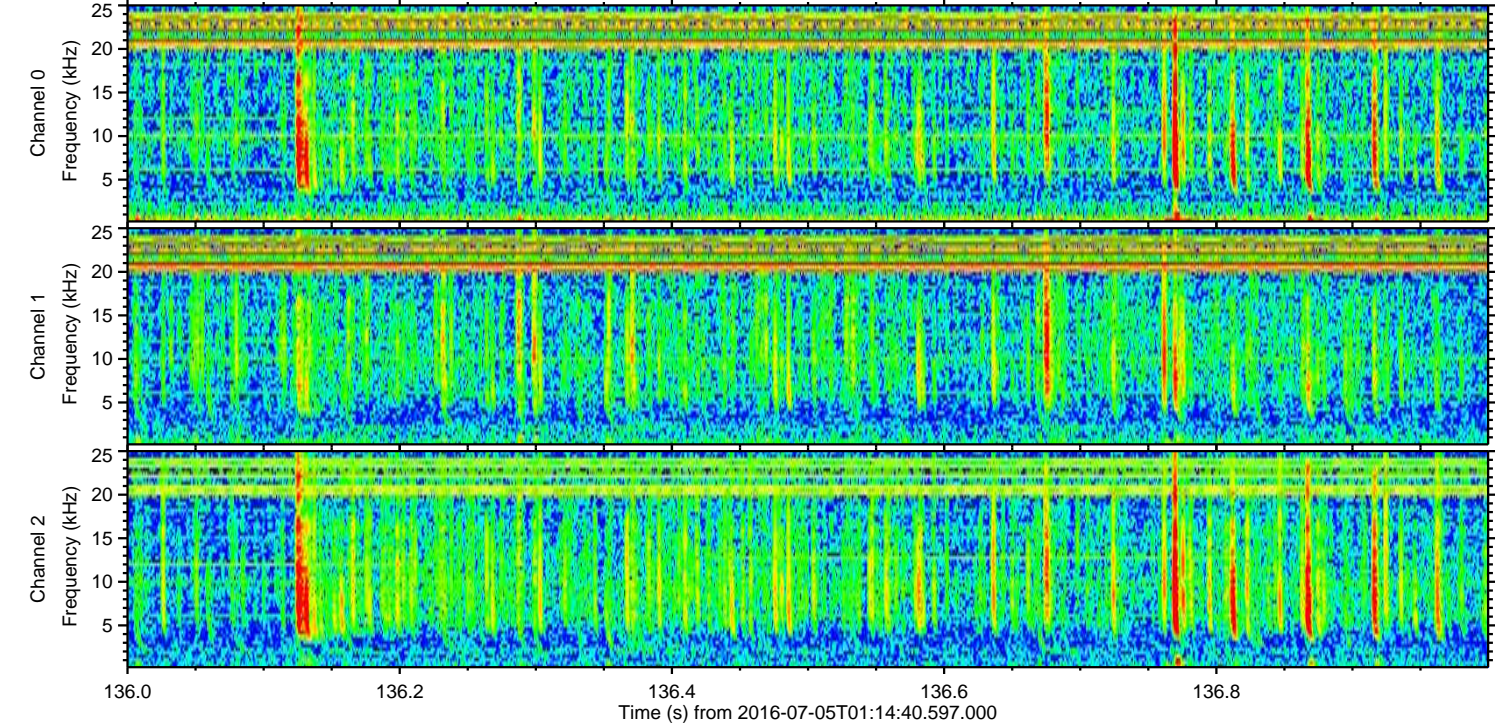
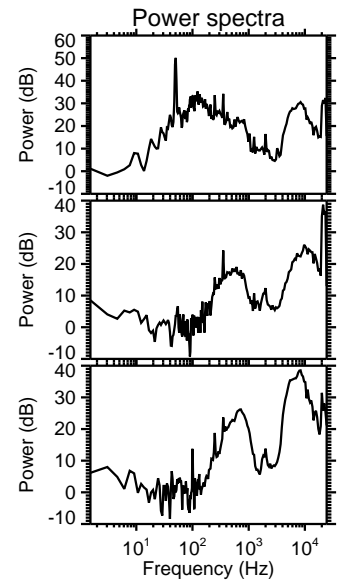
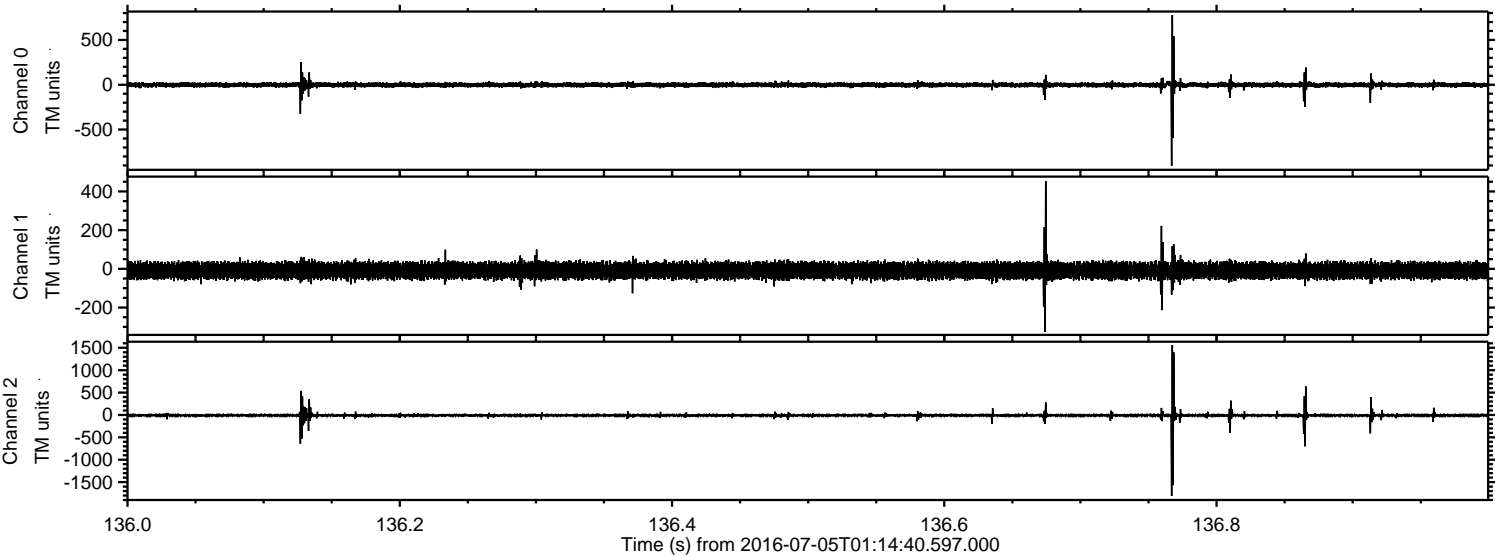
ELMAVAN 3D WAVEFORMS (Measured data sampled at 50 kHz) 51000 packets of 144 samples from 2016-07-05T01:14:40.597.000. Part 138/147

Processed Tue Jul 5 03:22:49 2016 by ELM ver.2012-10-06 from 001__elm20160705_011439__dat00.bin



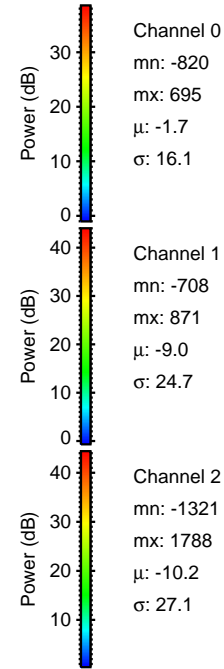
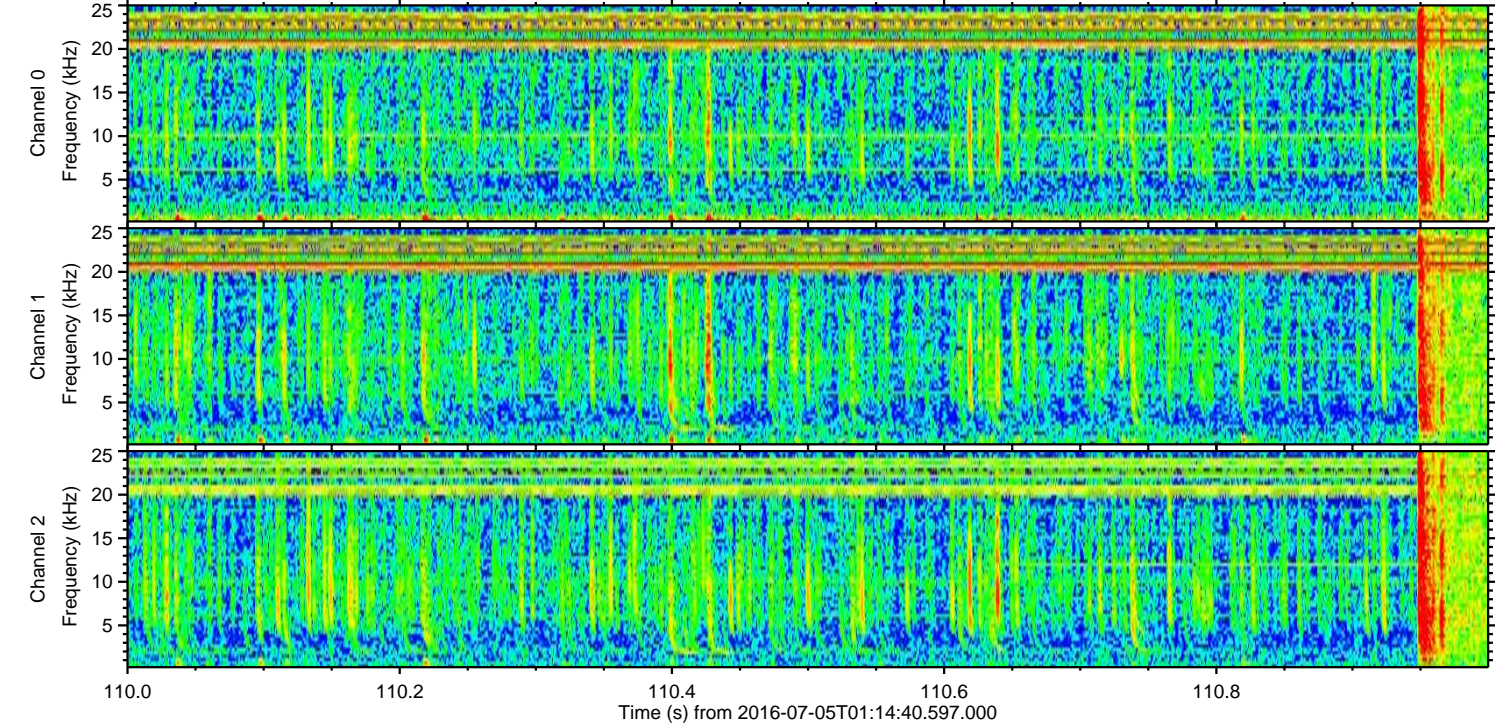
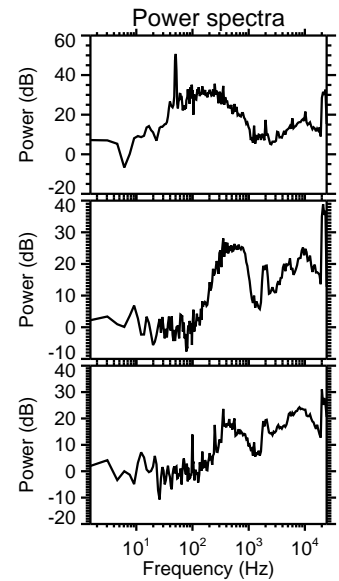
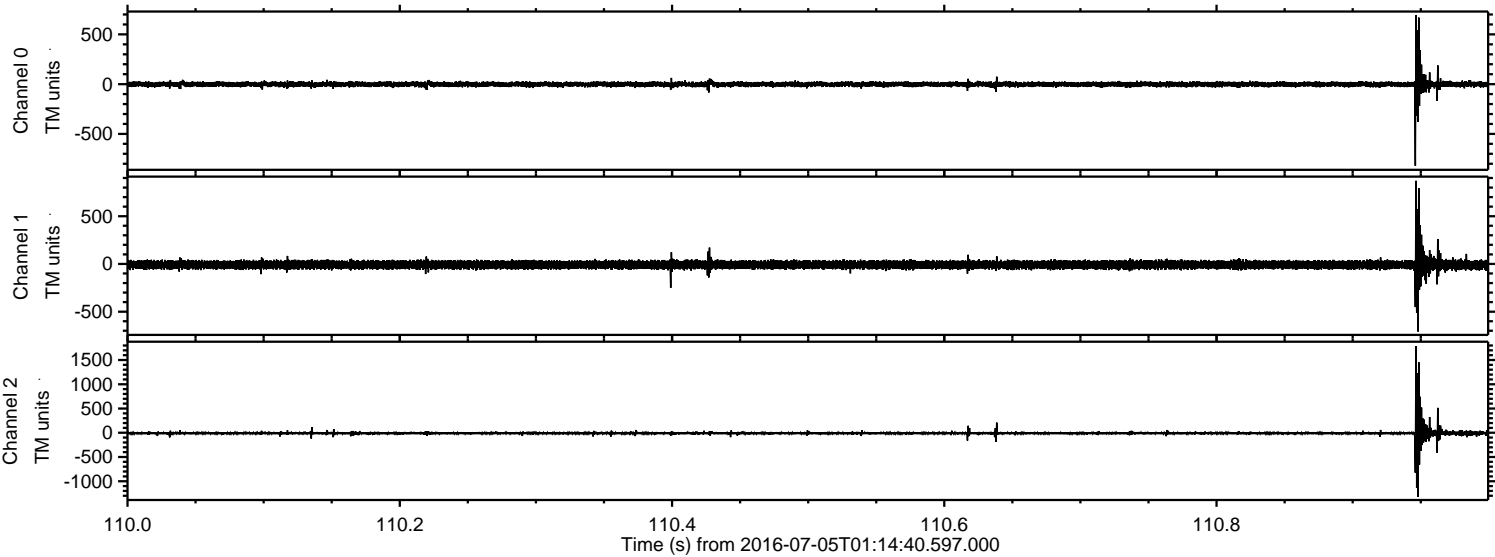
ELMAVAN 3D WAVEFORMS (Measured data sampled at 50 kHz) 51000 packets of 144 samples from 2016-07-05T01:14:40.597.000. Part 137/147

Processed Tue Jul 5 03:22:50 2016 by ELM ver.2012-10-06 from 001__elm20160705_011439__dat00.bin

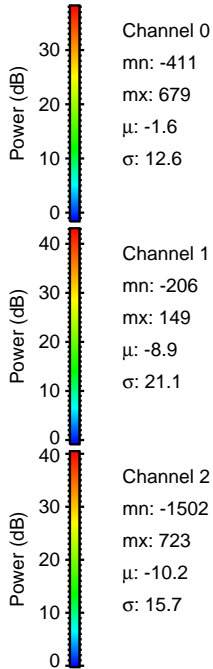
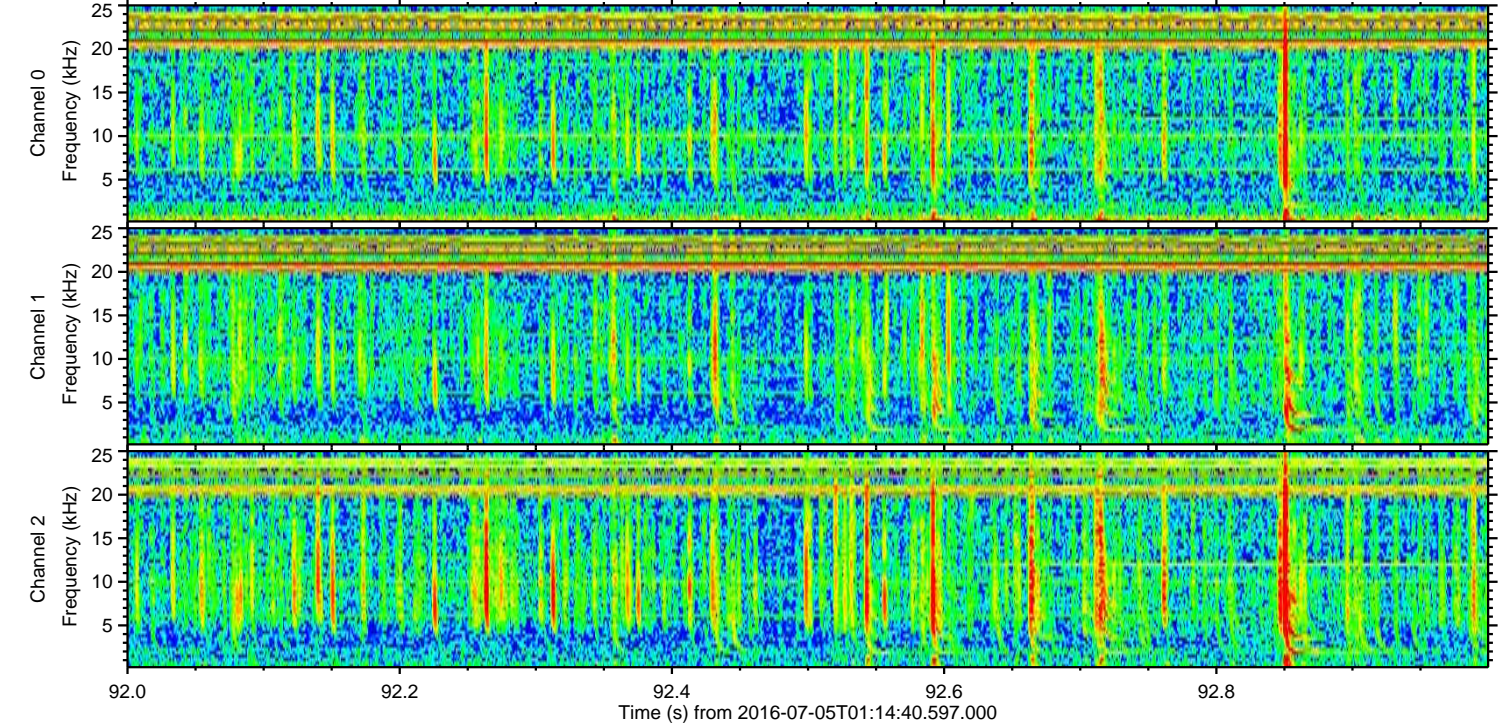
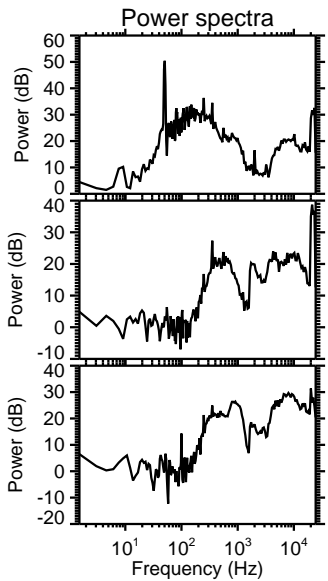
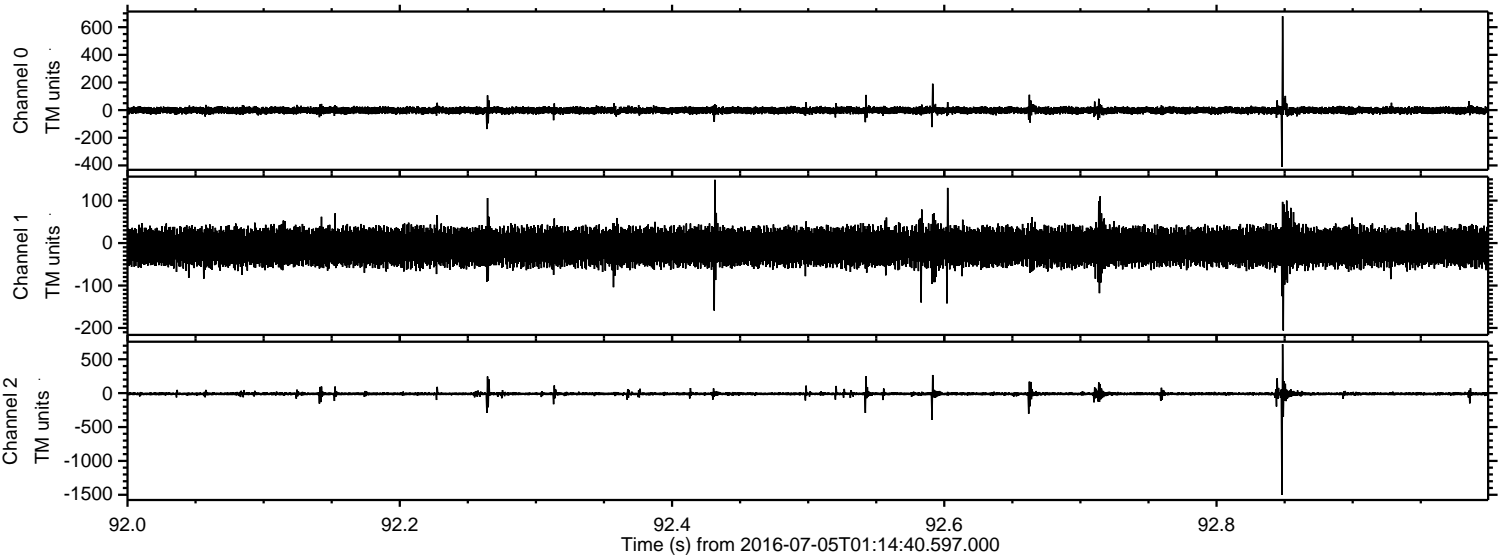


ELMAVAN 3D WAVEFORMS (Measured data sampled at 50 kHz) 51000 packets of 144 samples from 2016-07-05T01:14:40.597.000. Part 111/147

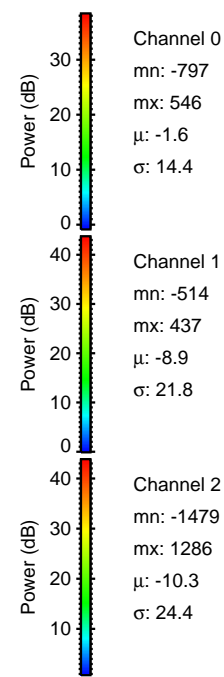
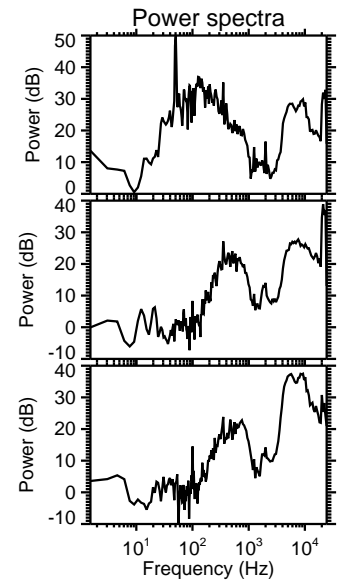
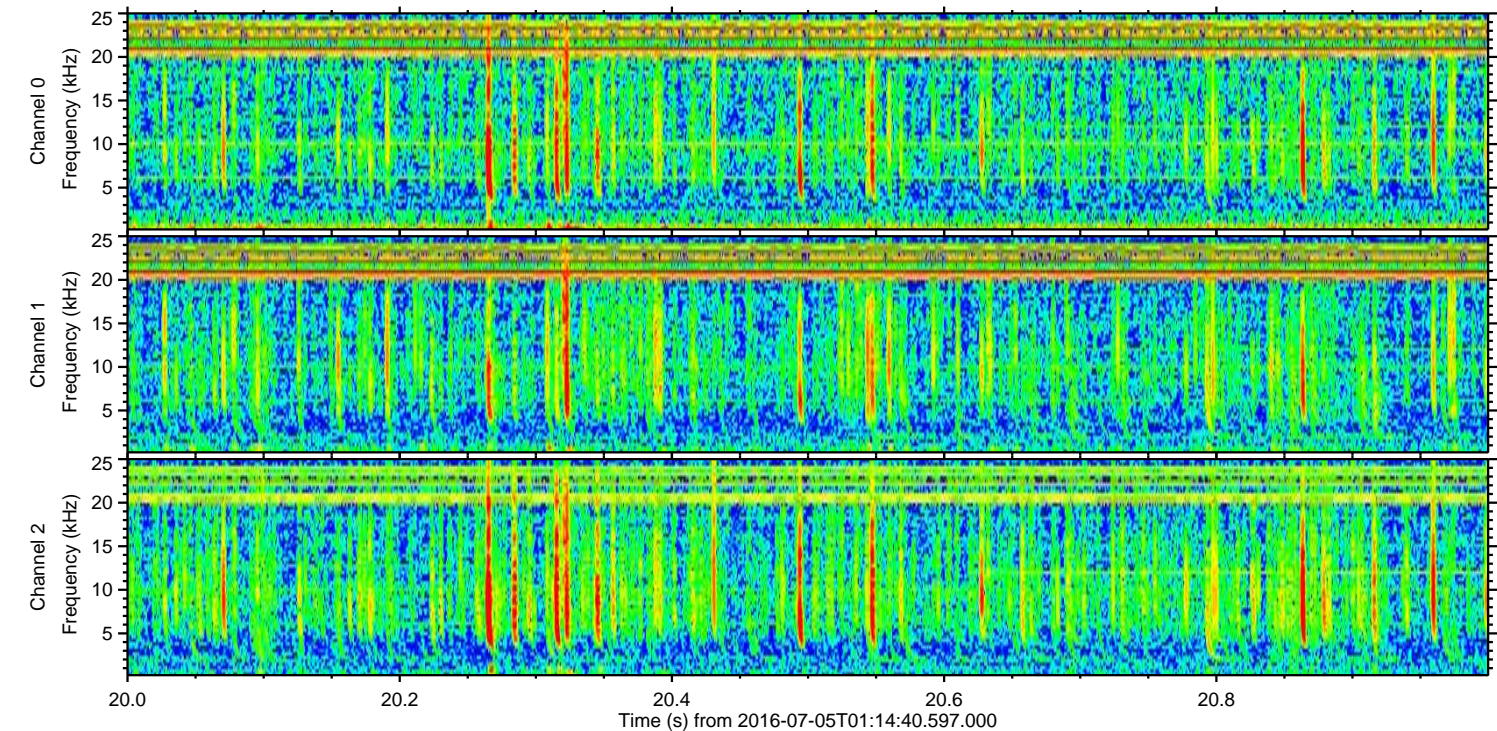
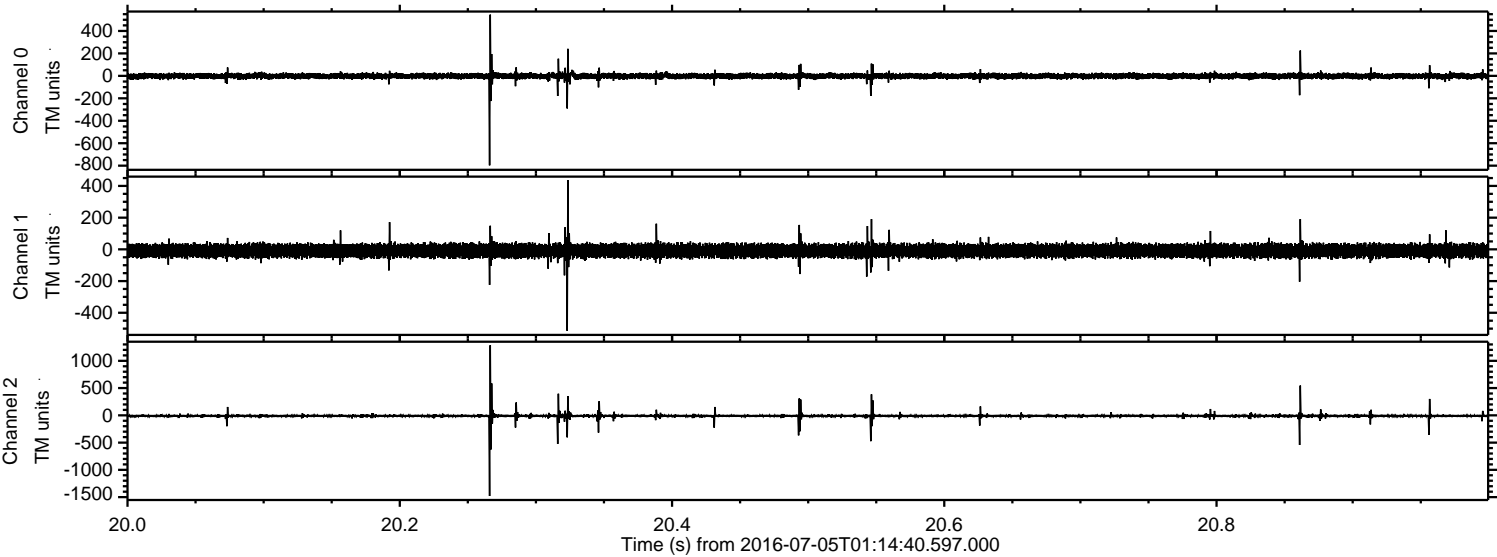
Processed Tue Jul 5 03:22:51 2016 by ELM ver.2012-10-06 from 001__elm20160705_011439__dat00.bin



Processed Tue Jul 5 03:22:52 2016 by ELM ver.2012-10-06 from 001__elm20160705_011439__dat00.bin



Processed Tue Jul 5 03:22:53 2016 by ELM ver.2012-10-06 from 001__elm20160705_011439__dat00.bin

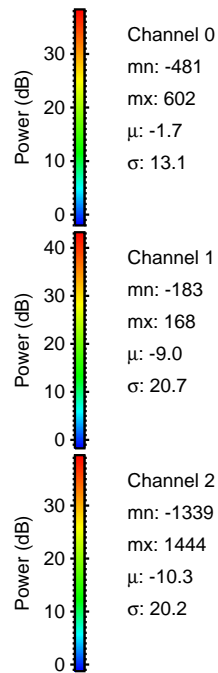
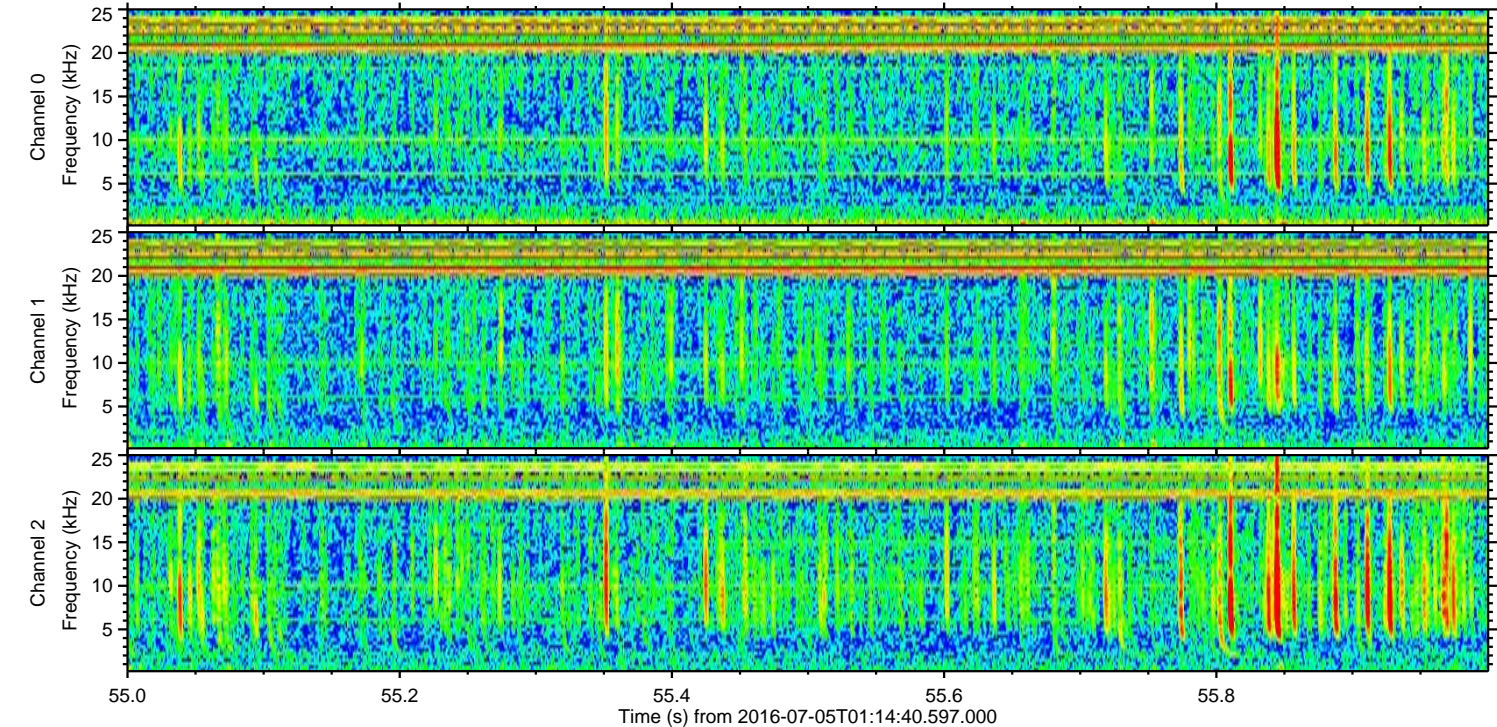
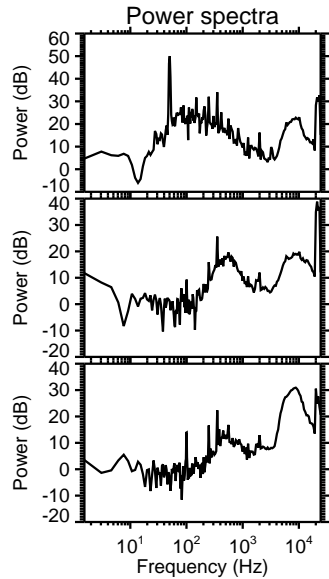
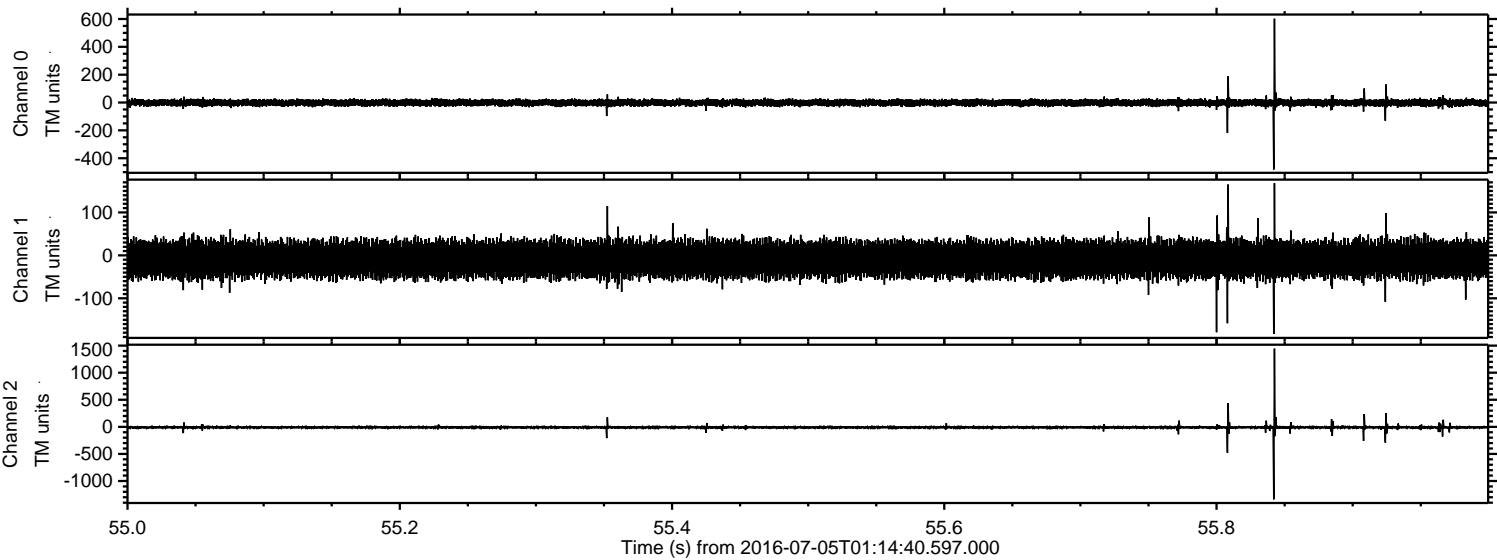


Channel 0
mn: -797
mx: 546
 μ : -1.6
 σ : 14.4

Channel 1
mn: -514
mx: 437
 μ : -8.9
 σ : 21.8

Channel 2
mn: -1479
mx: 1286
 μ : -10.3
 σ : 24.4

Processed Tue Jul 5 03:22:54 2016 by ELM ver.2012-10-06 from 001__elm20160705_011439__dat00.bin



Processed Tue Jul 5 03:22:55 2016 by ELM ver.2012-10-06 from 001__elm20160705_011439__dat00.bin

