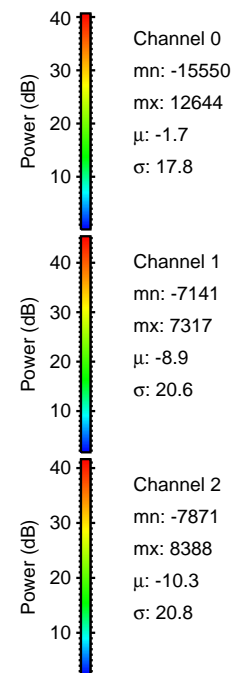
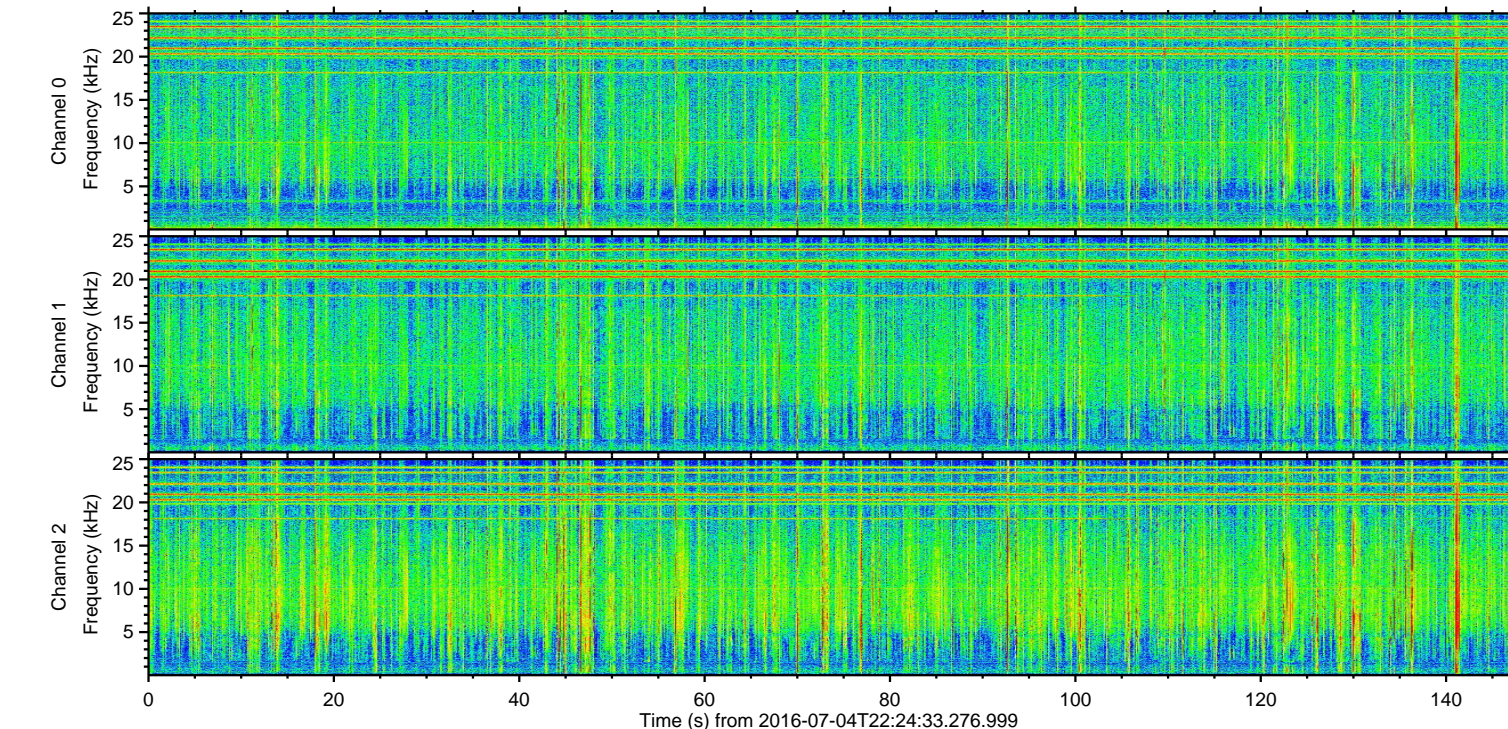
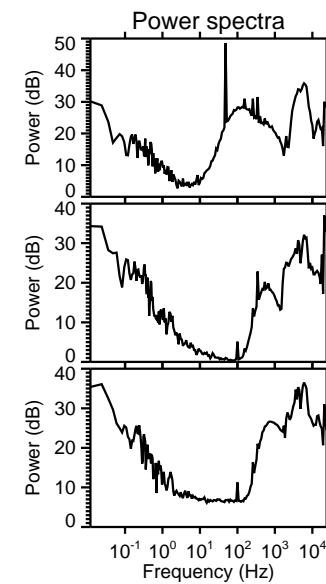
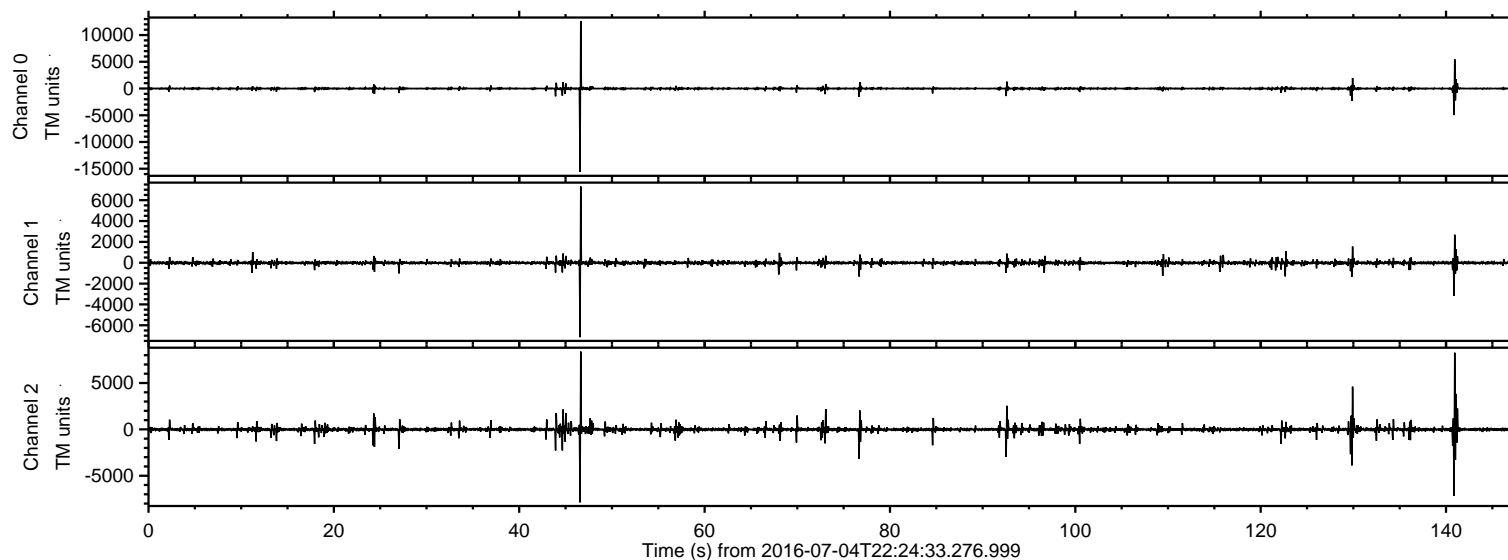
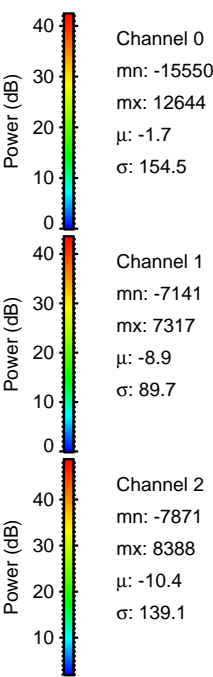
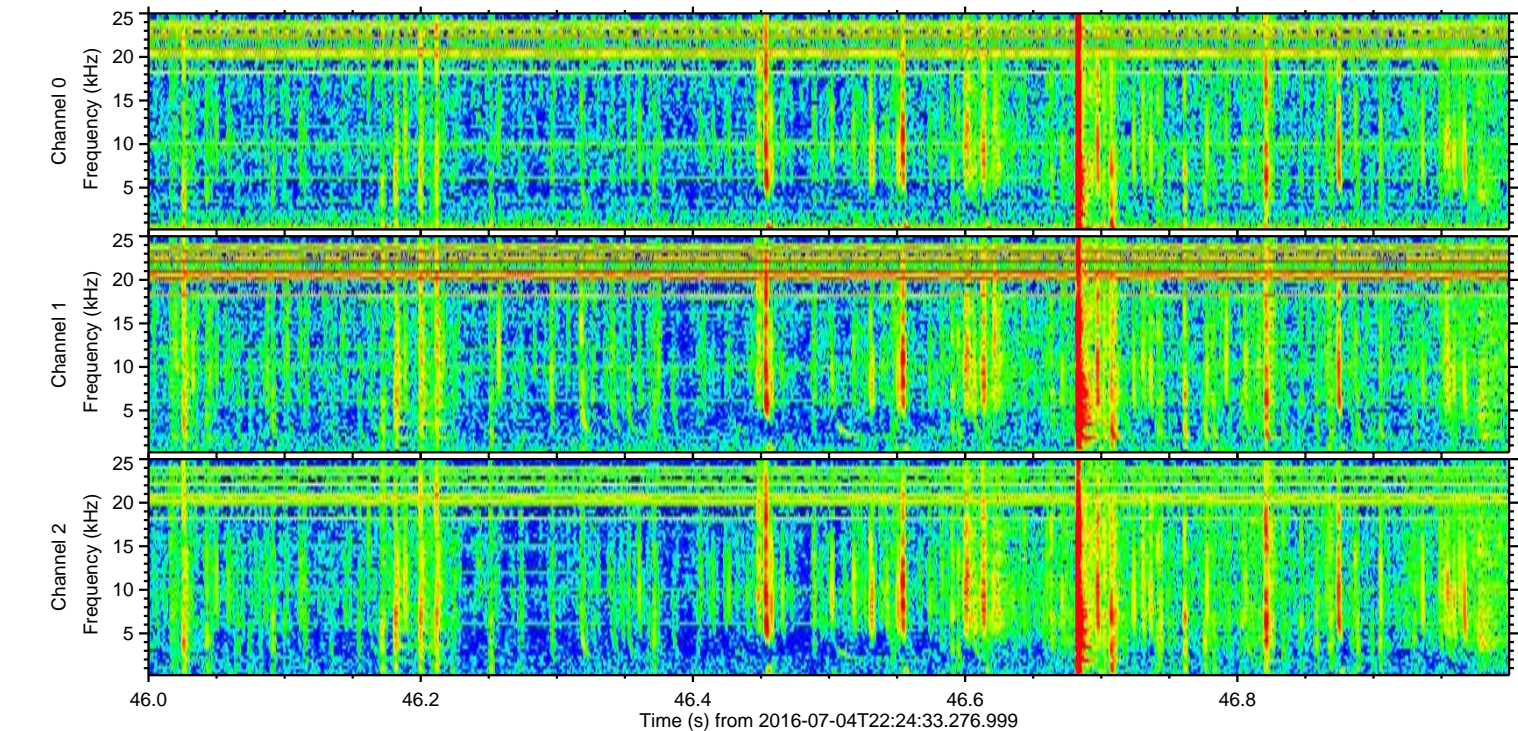
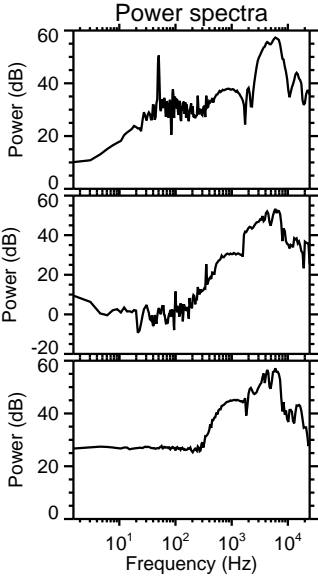
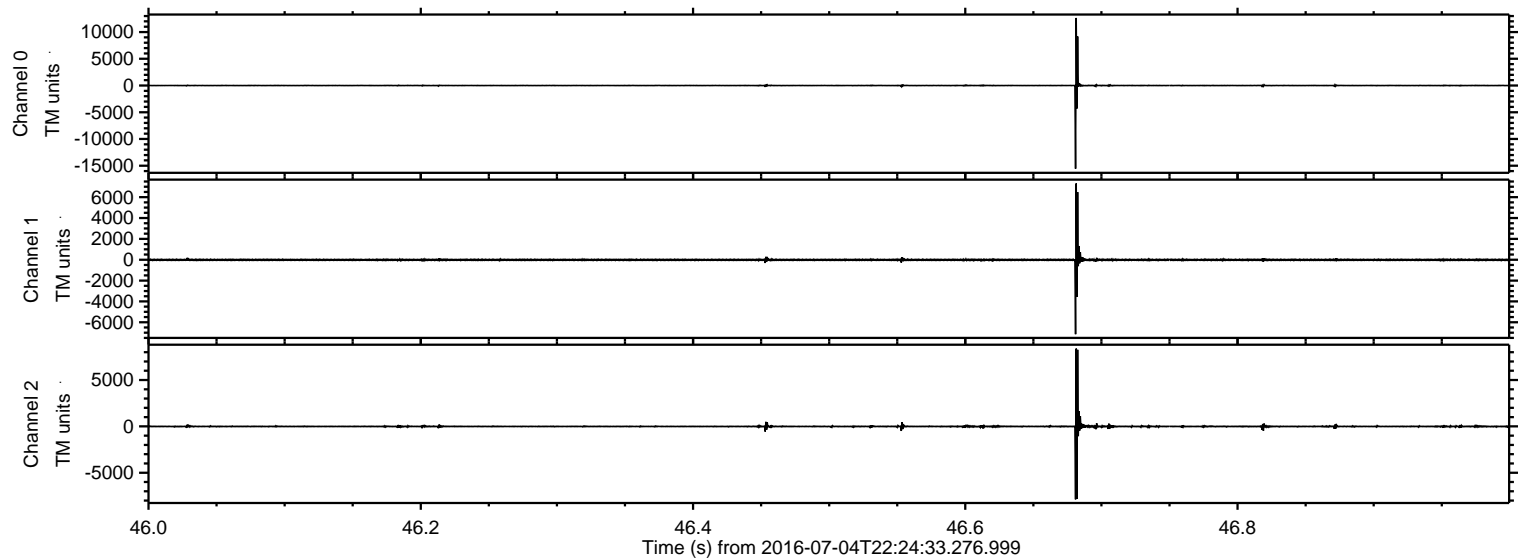


ELMAVAN 3D WAVEFORMS (Measured data sampled at 50 kHz) 51000 packets of 144 samples from 2016-07-04T22:24:33.276.999.

Processed Tue Jul 5 00:32:41 2016 by ELM ver.2012-10-06 from 001__elm20160704_222432__dat00.bin

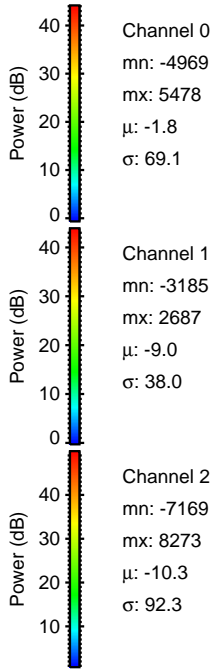
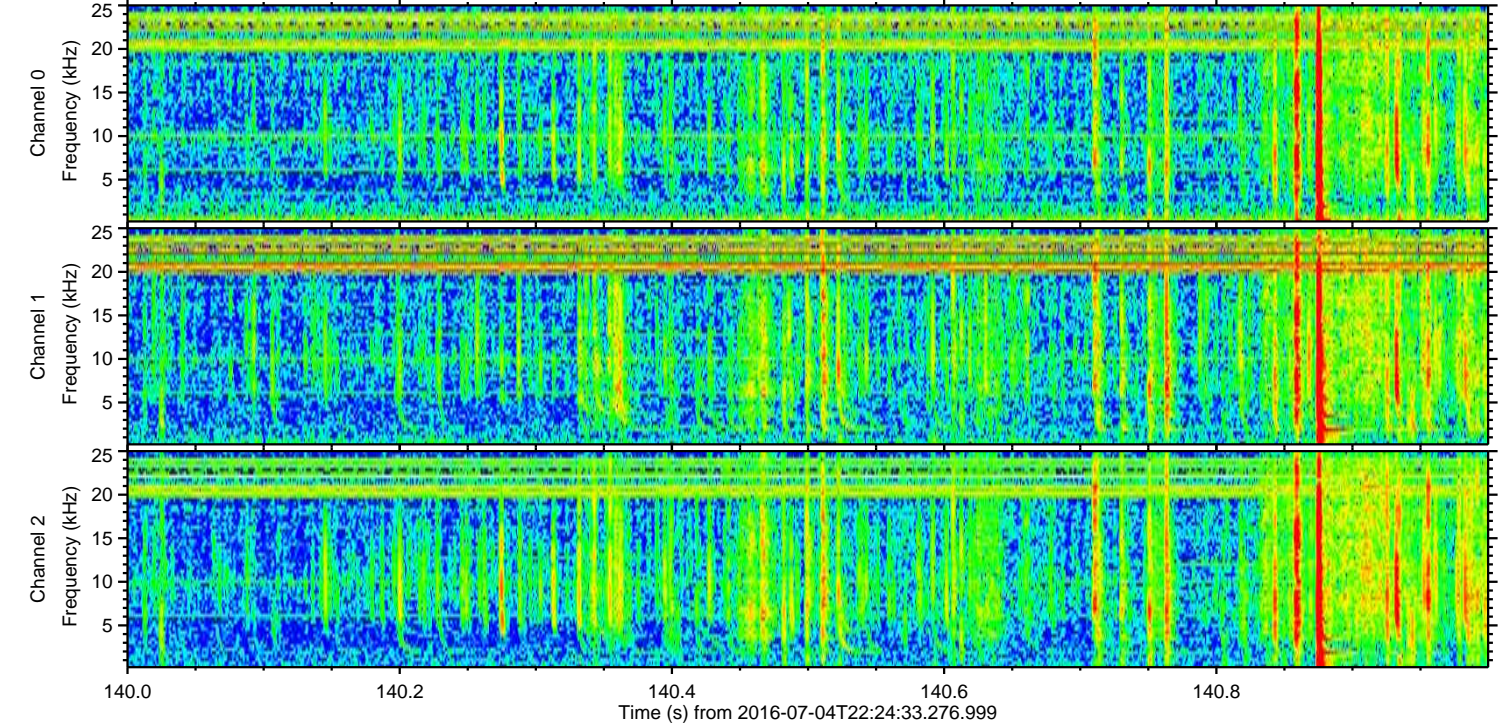
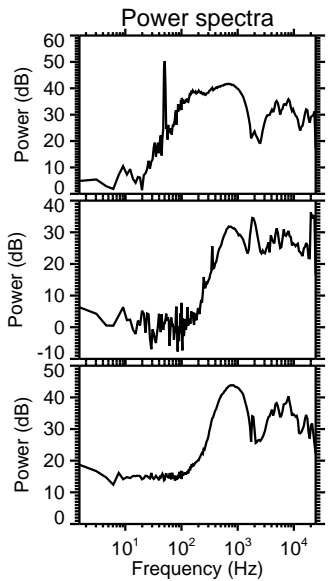
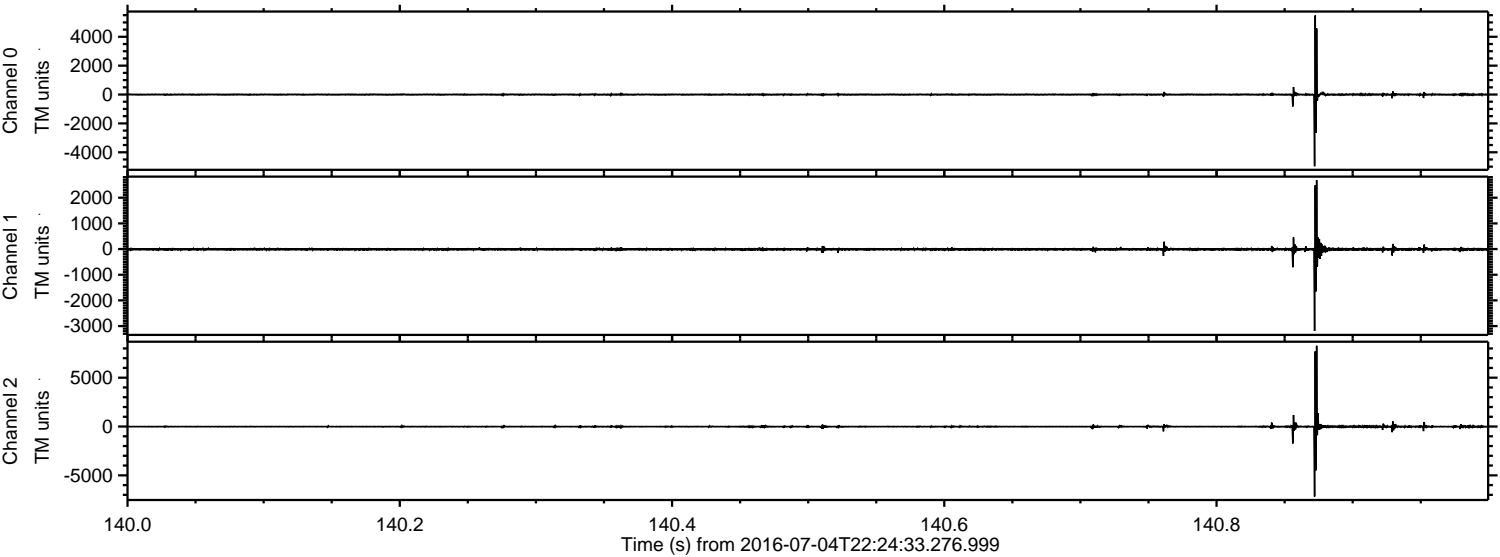


Processed Tue Jul 5 00:32:53 2016 by ELM ver.2012-10-06 from 001__elm20160704_222432__dat00.bin



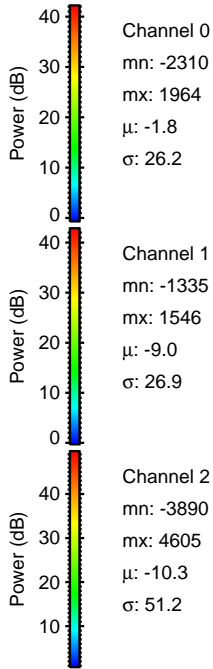
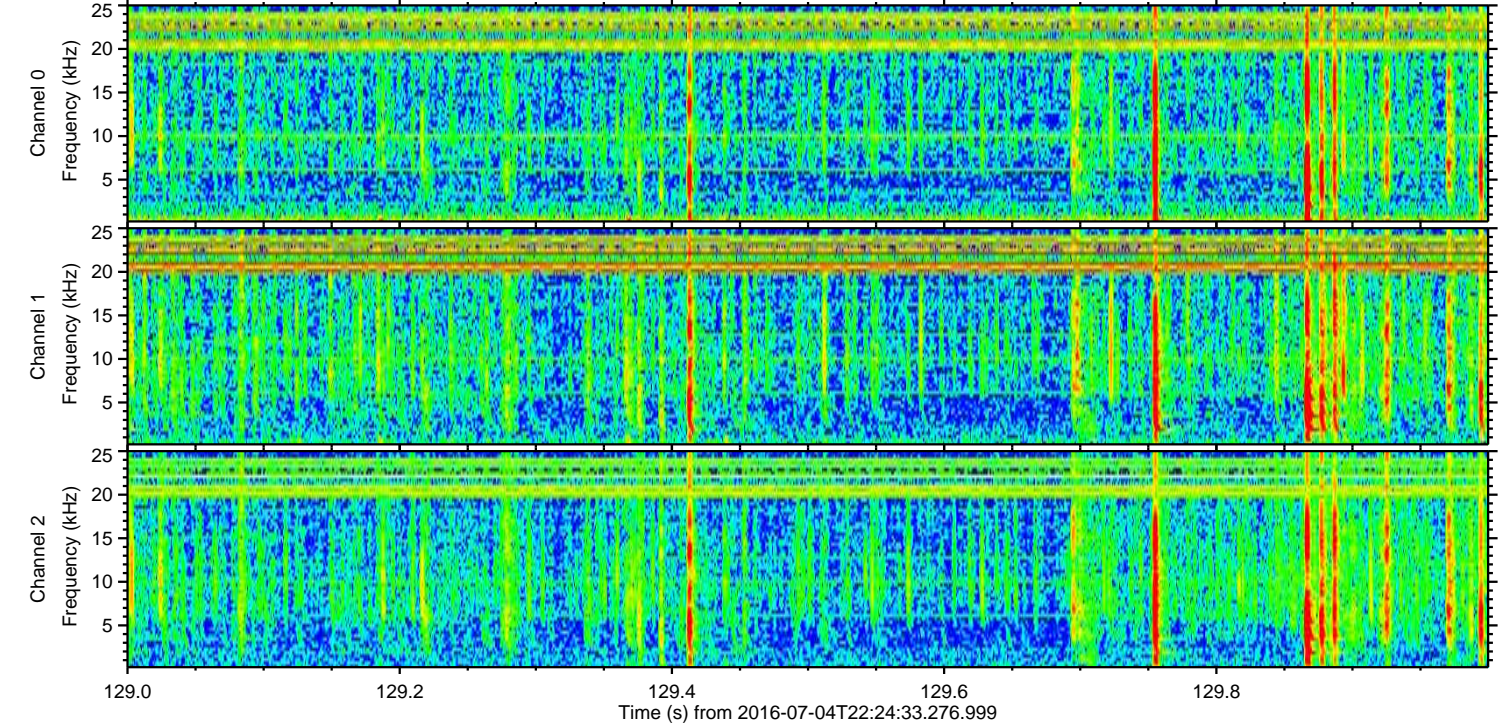
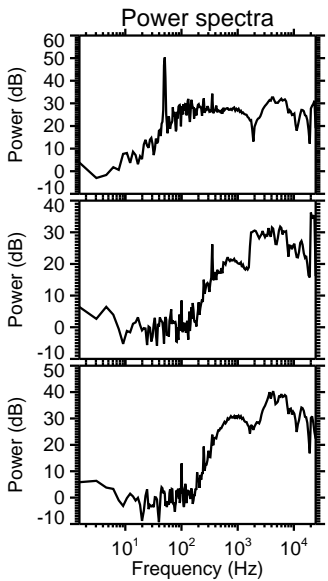
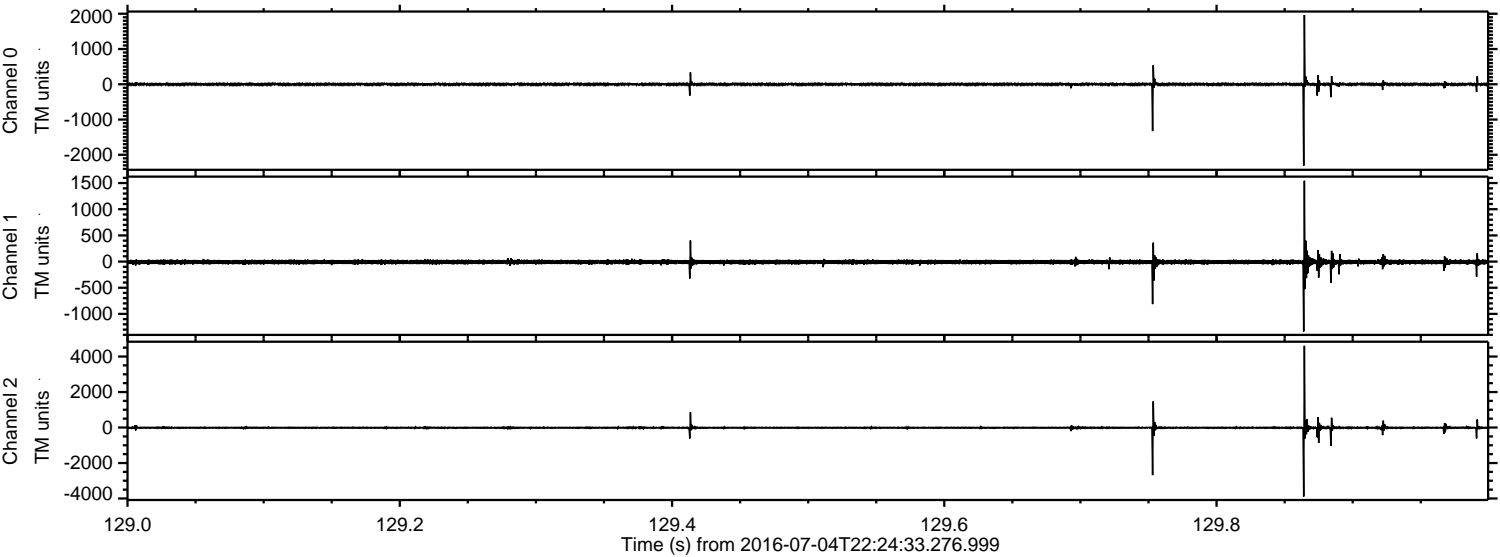
ELMAVAN 3D WAVEFORMS (Measured data sampled at 50 kHz) 51000 packets of 144 samples from 2016-07-04T22:24:33.276.999. Part 141/147

Processed Tue Jul 5 00:32:54 2016 by ELM ver.2012-10-06 from 001__elm20160704_222432__dat00.bin



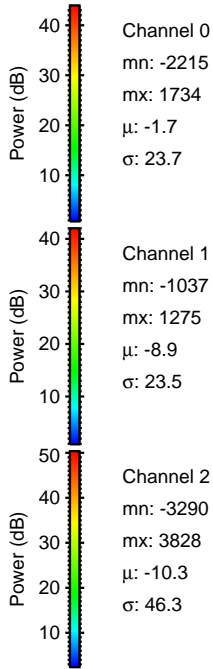
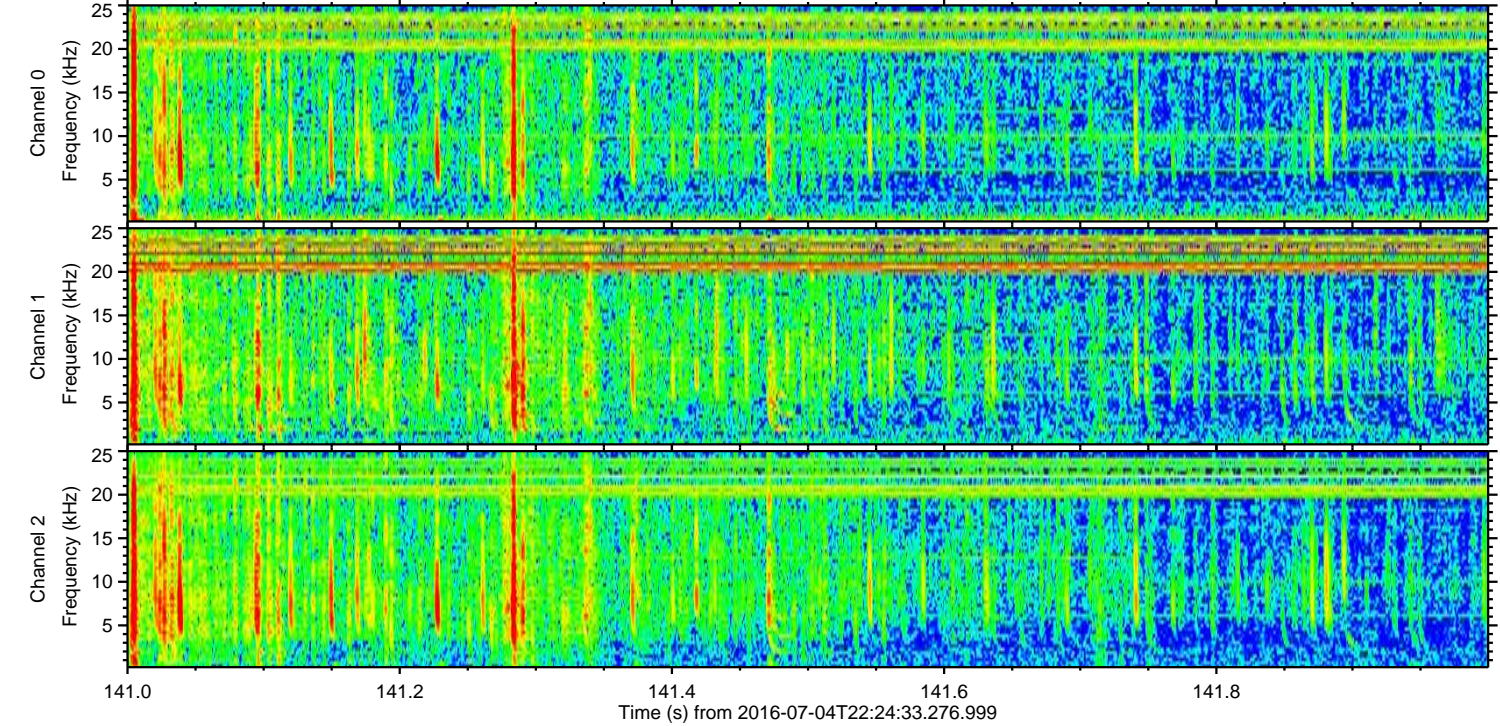
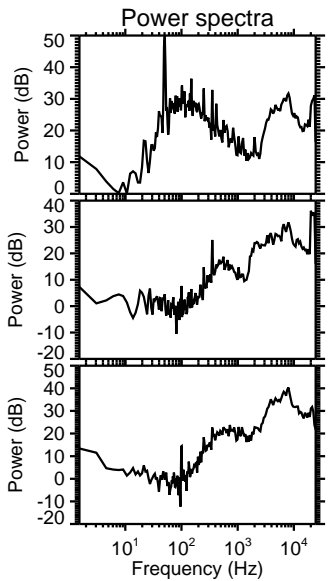
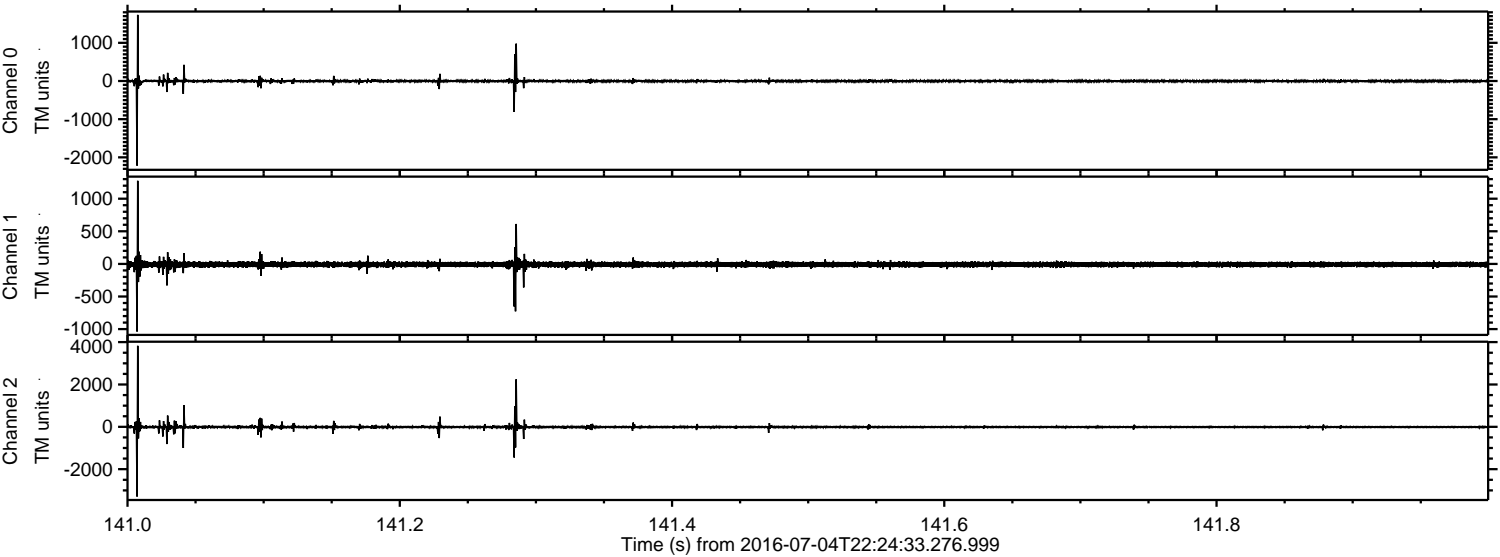
ELMAVAN 3D WAVEFORMS (Measured data sampled at 50 kHz) 51000 packets of 144 samples from 2016-07-04T22:24:33.276.999. Part 130/147

Processed Tue Jul 5 00:32:55 2016 by ELM ver.2012-10-06 from 001__elm20160704_222432__dat00.bin



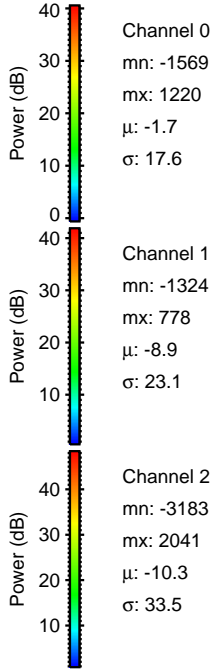
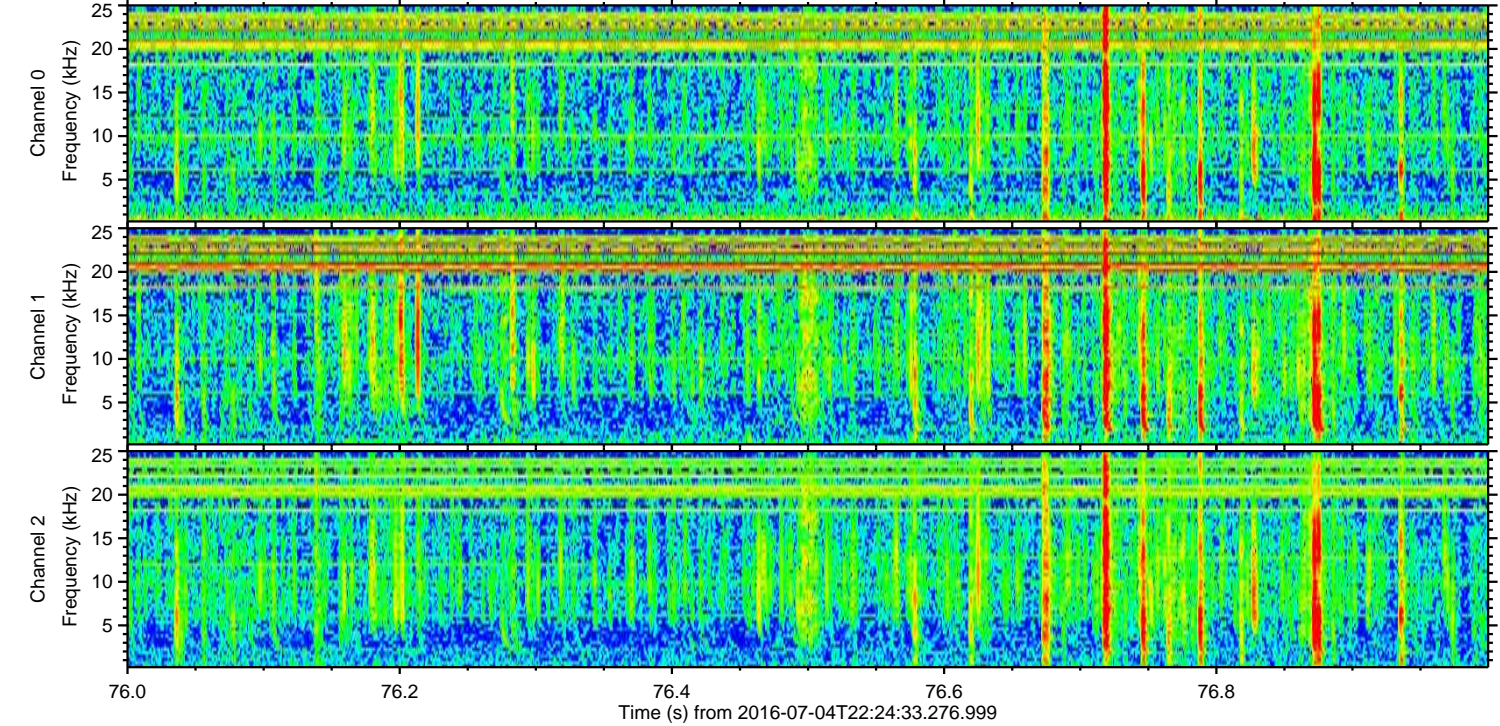
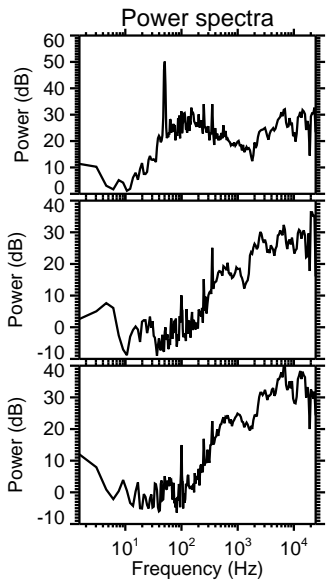
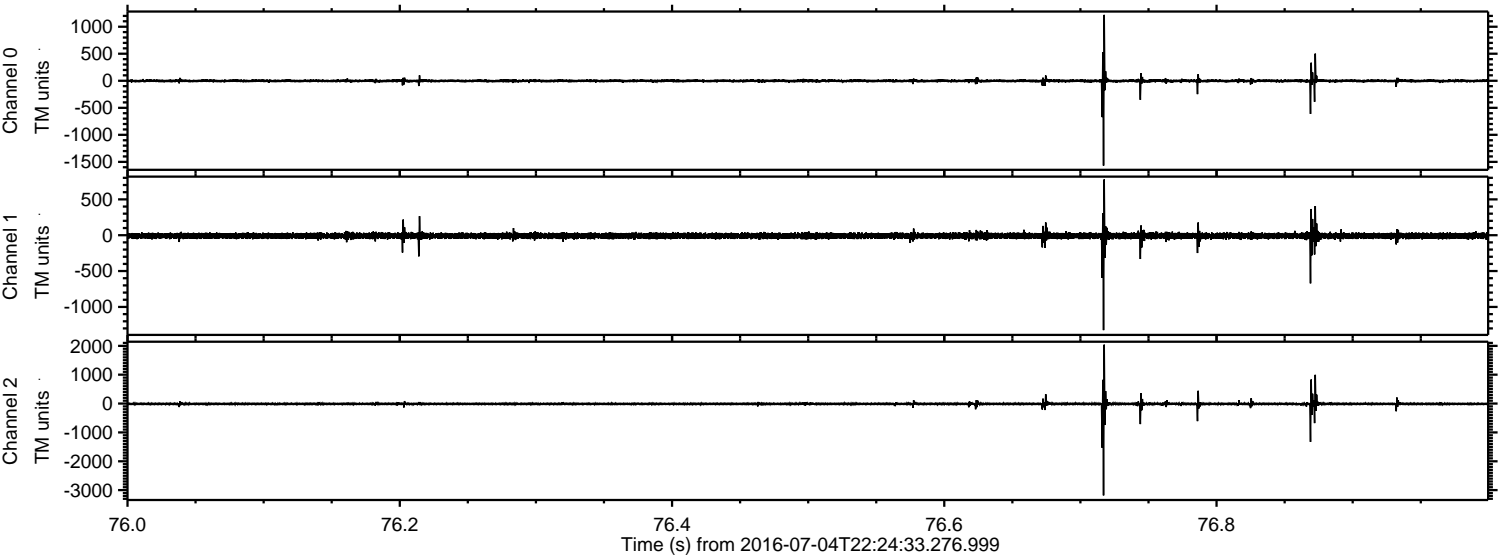
ELMAVAN 3D WAVEFORMS (Measured data sampled at 50 kHz) 51000 packets of 144 samples from 2016-07-04T22:24:33.276.999. Part 142/147

Processed Tue Jul 5 00:32:56 2016 by ELM ver.2012-10-06 from 001__elm20160704_222432__dat00.bin

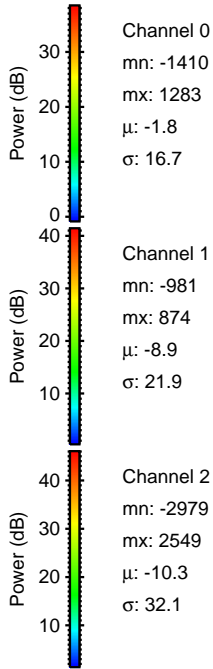
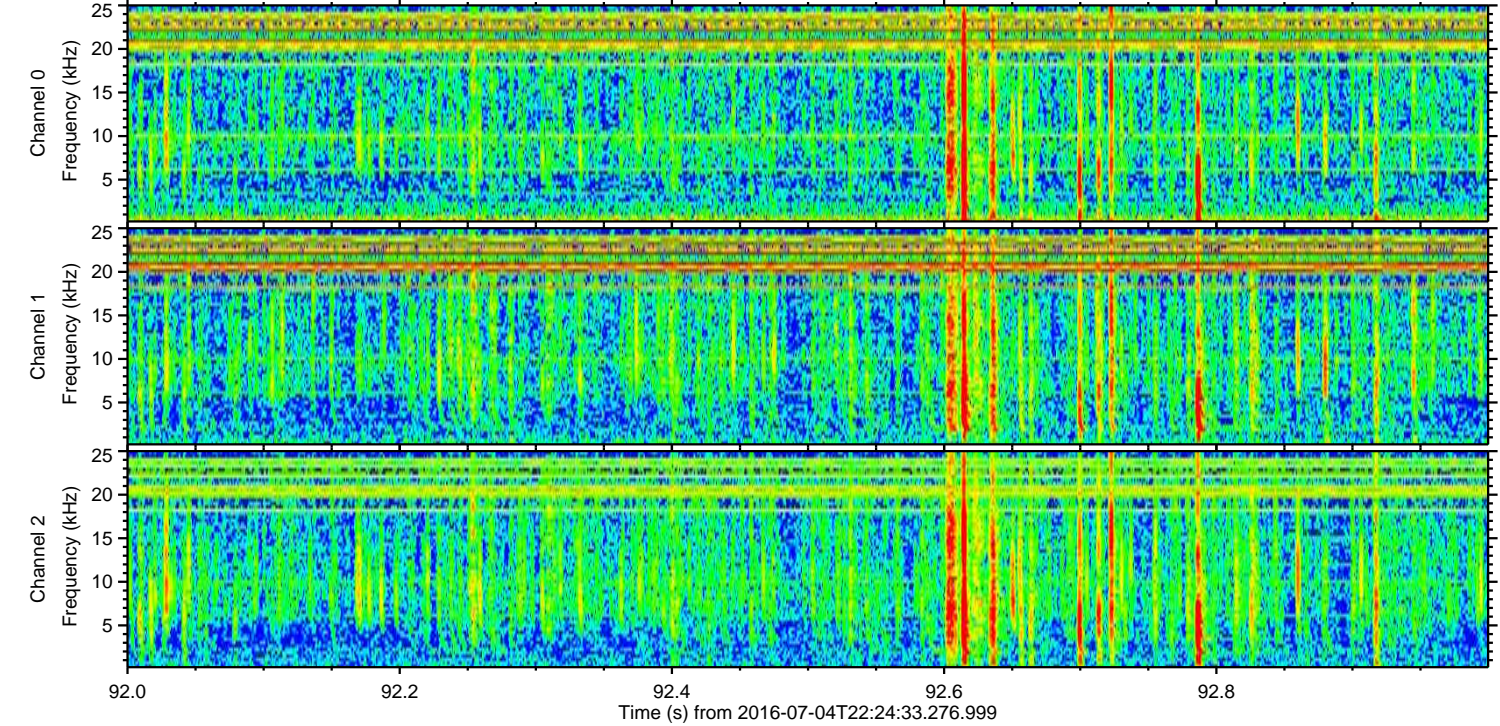
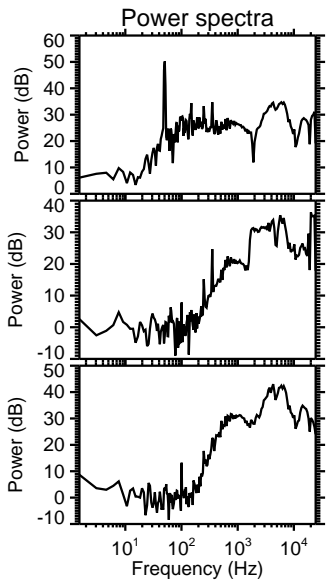
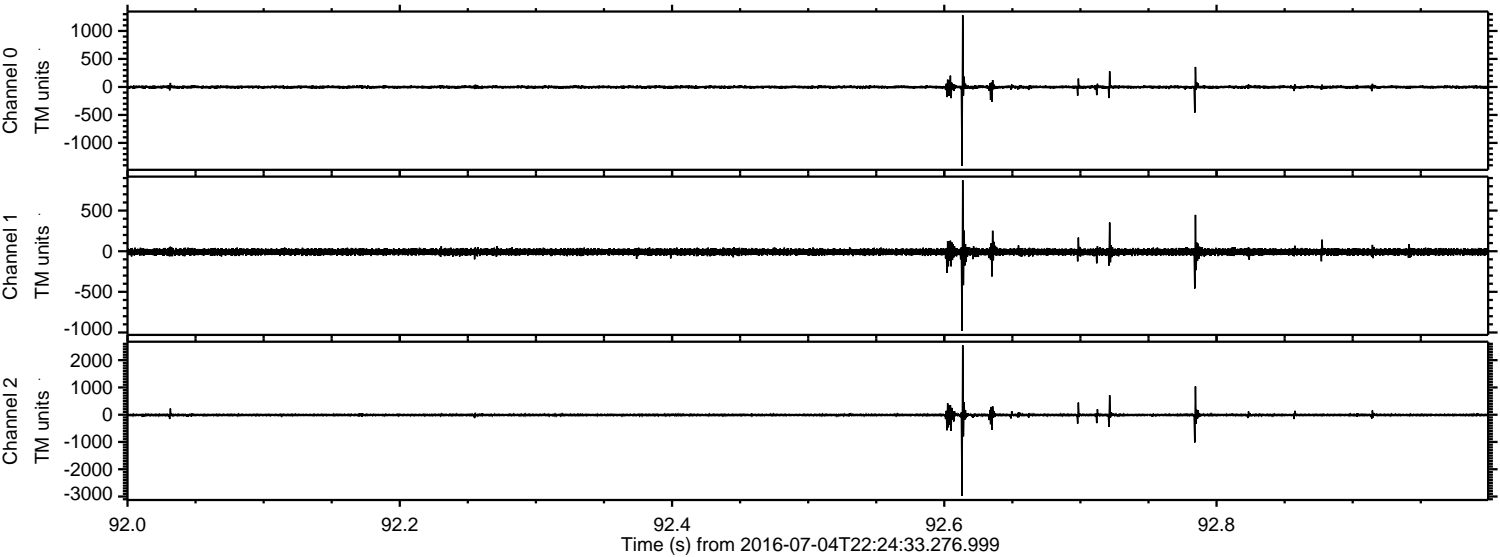


ELMAVAN 3D WAVEFORMS (Measured data sampled at 50 kHz) 51000 packets of 144 samples from 2016-07-04T22:24:33.276.999. Part 77/147

Processed Tue Jul 5 00:32:57 2016 by ELM ver.2012-10-06 from 001__elm20160704_222432__dat00.bin

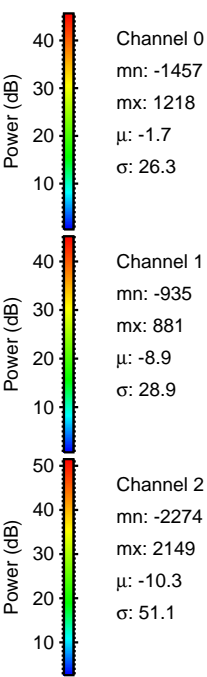
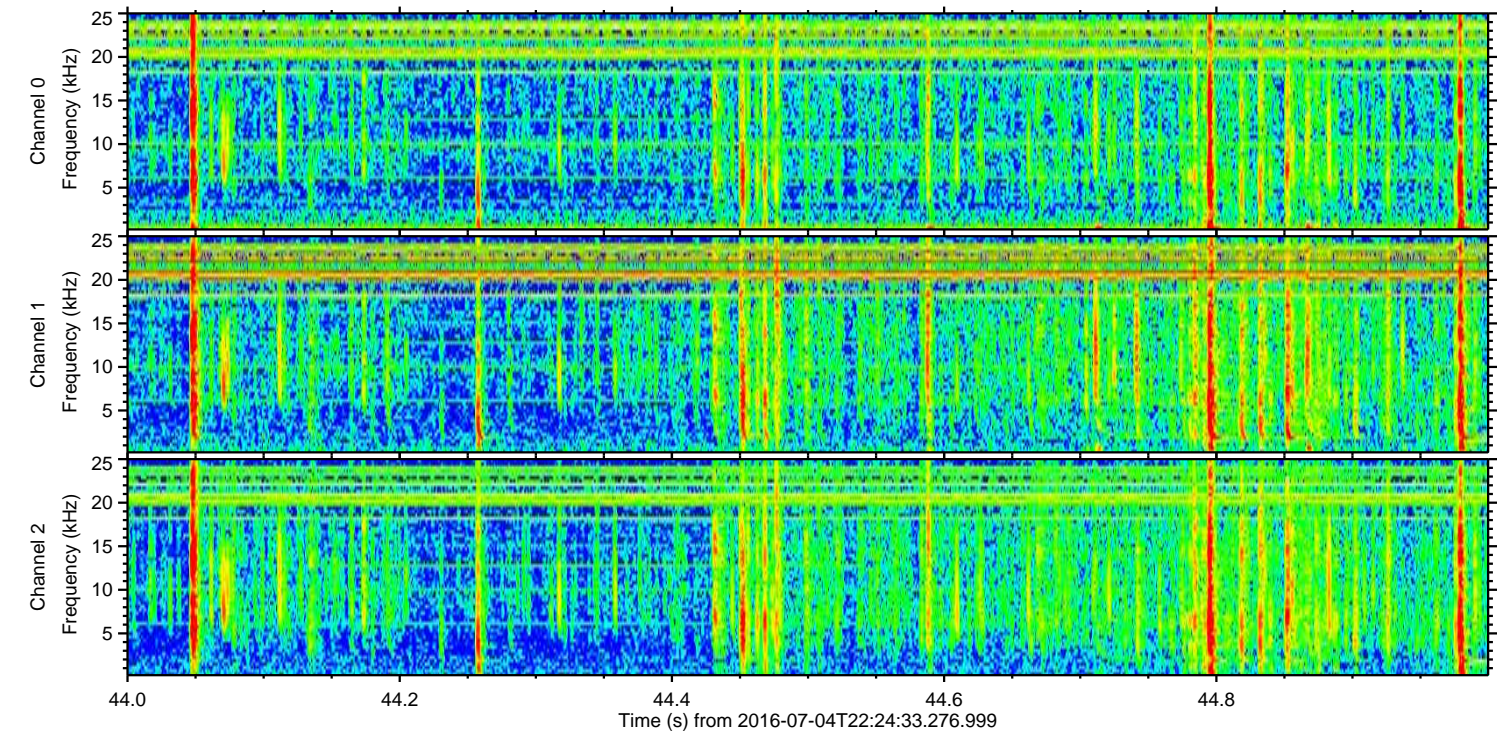
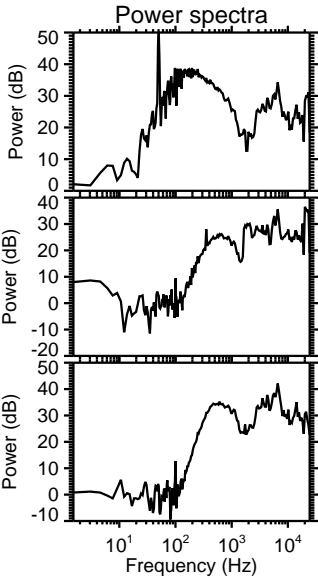
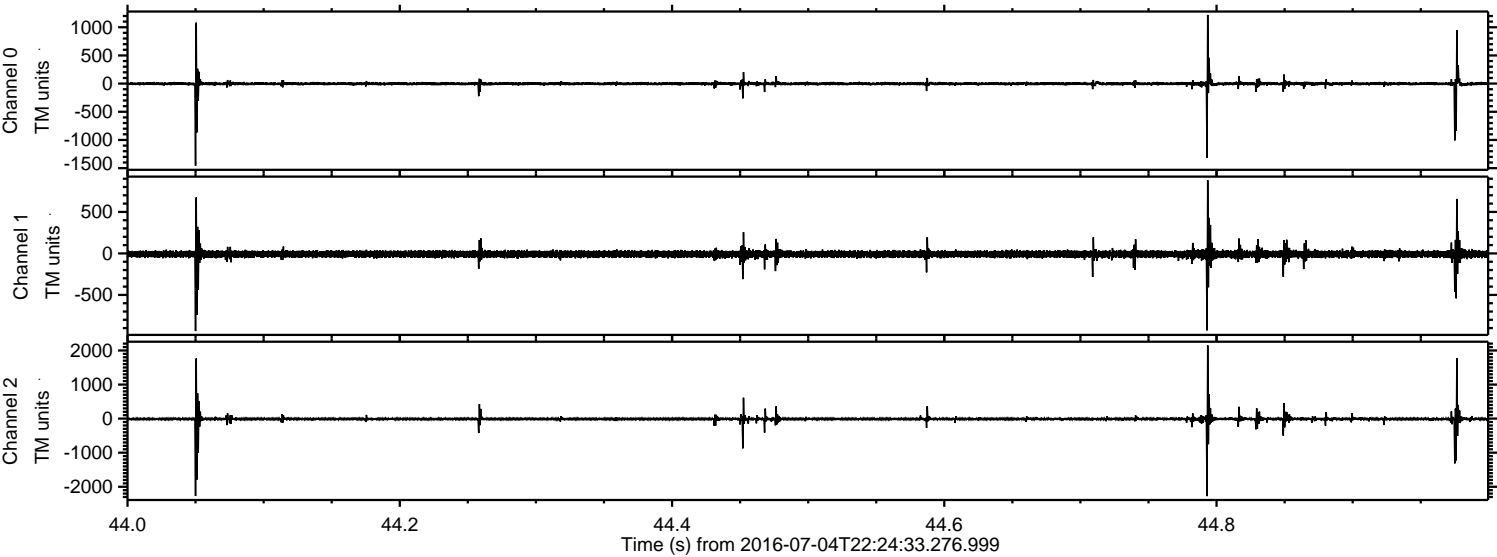


Processed Tue Jul 5 00:32:58 2016 by ELM ver.2012-10-06 from 001__elm20160704_222432__dat00.bin



ELMAVAN 3D WAVEFORMS (Measured data sampled at 50 kHz) 51000 packets of 144 samples from 2016-07-04T22:24:33.276.999. Part 45/147

Processed Tue Jul 5 00:32:59 2016 by ELM ver.2012-10-06 from 001__elm20160704_222432__dat00.bin

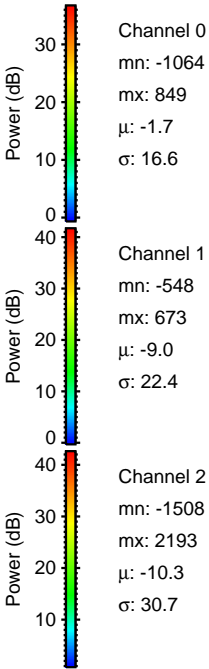
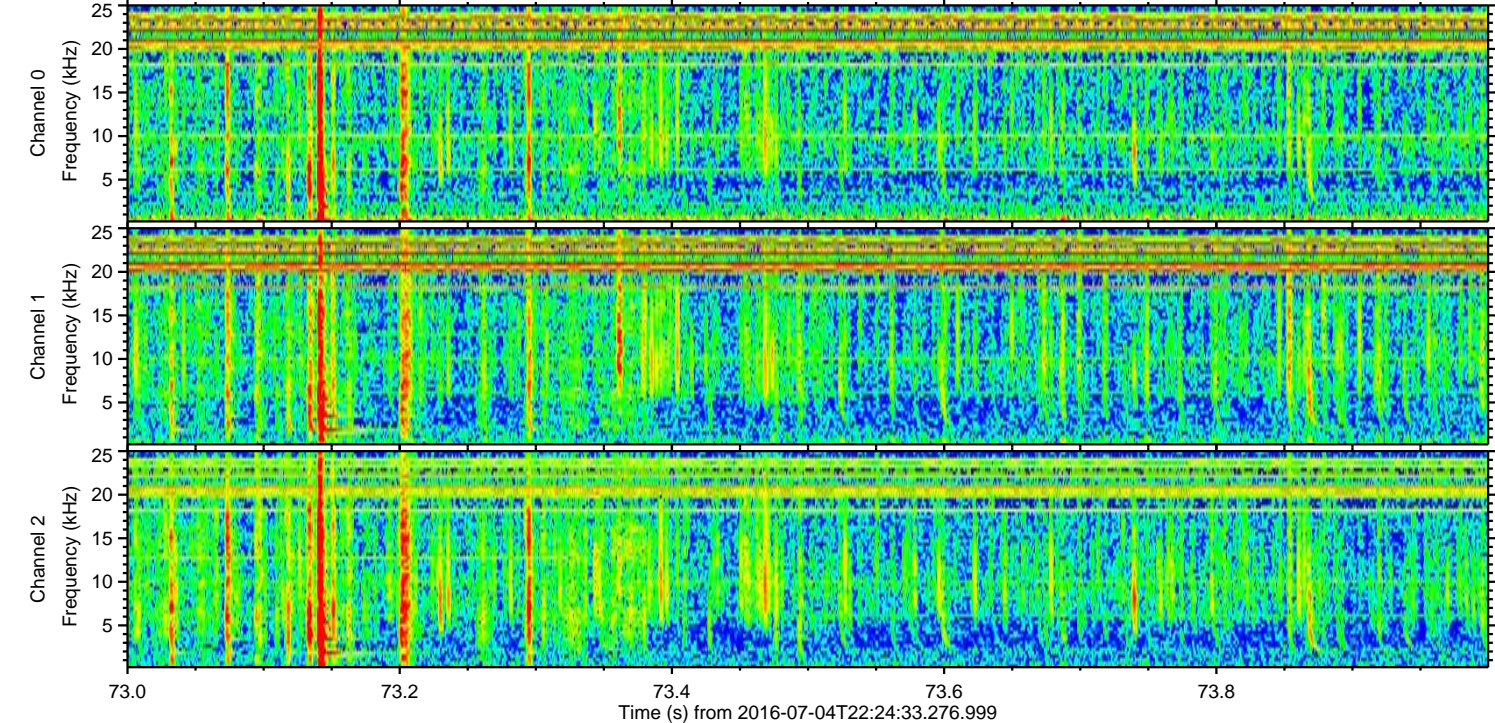
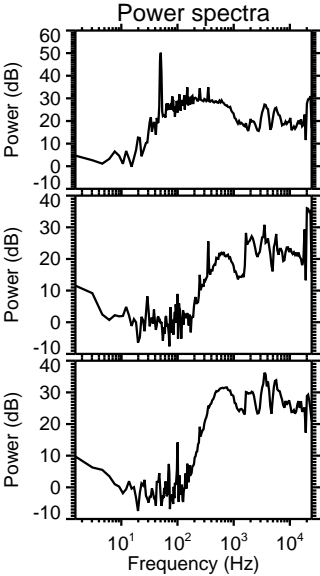
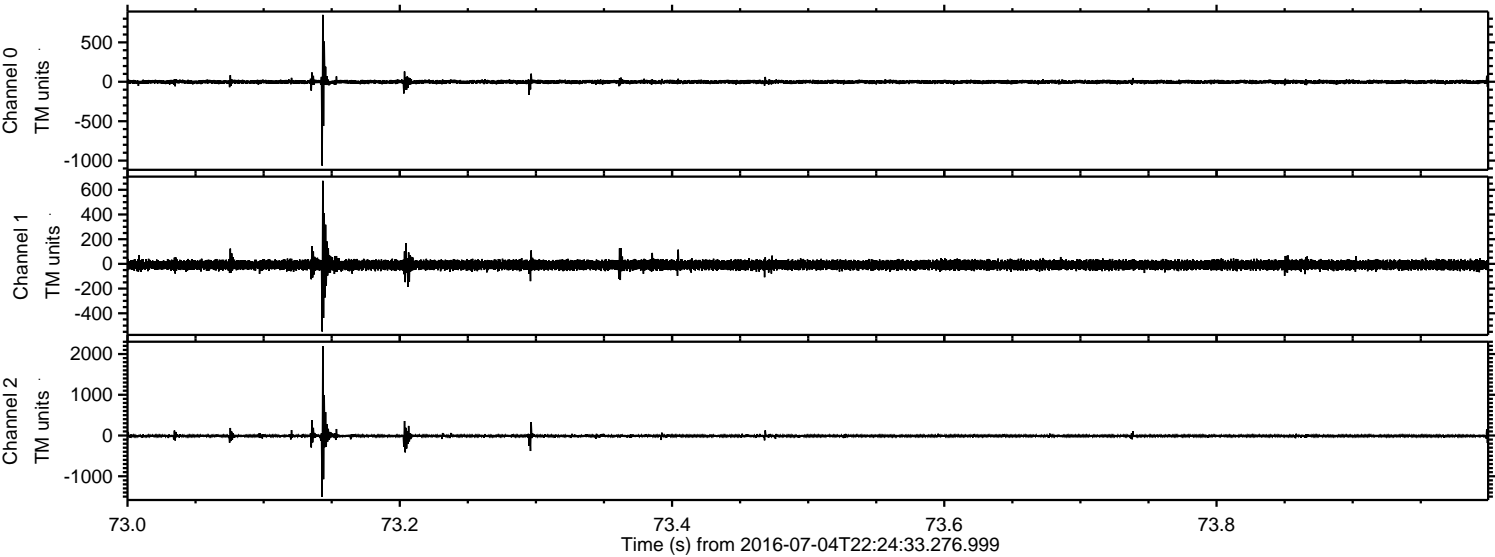


Channel 0
mn: -1457
mx: 1218
 μ : -1.7
 σ : 26.3

Channel 1
mn: -935
mx: 881
 μ : -8.9
 σ : 28.9

Channel 2
mn: -2274
mx: 2149
 μ : -10.3
 σ : 51.1

Processed Tue Jul 5 00:32:59 2016 by ELM ver.2012-10-06 from 001__elm20160704_222432__dat00.bin

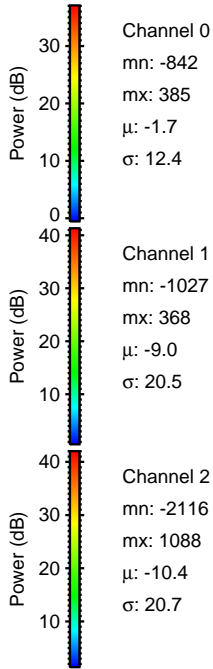
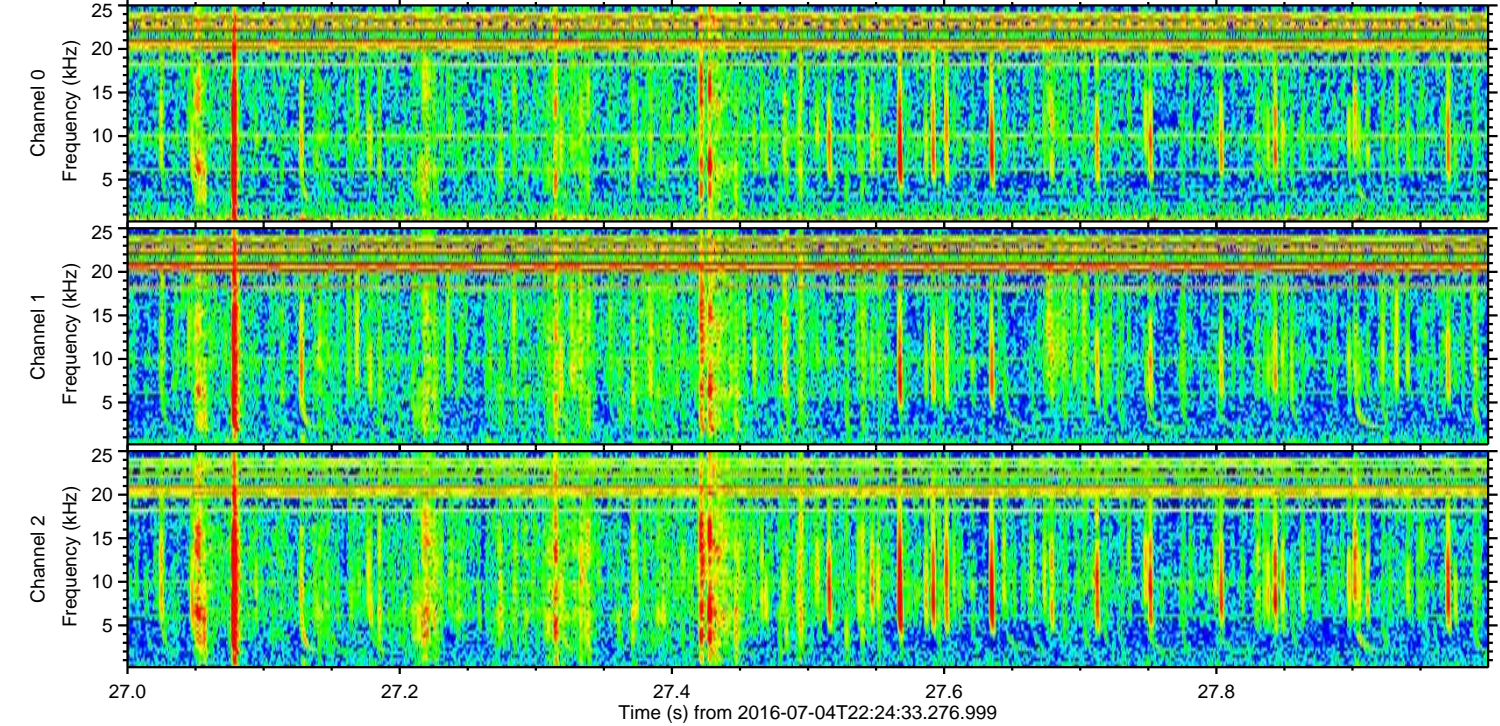
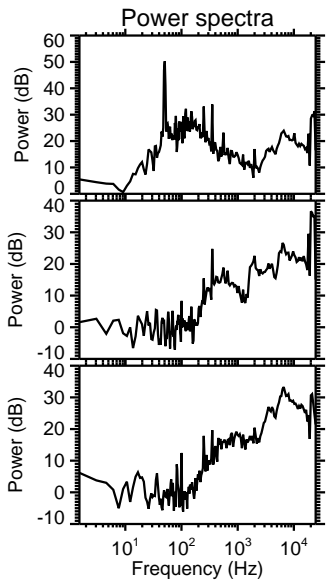
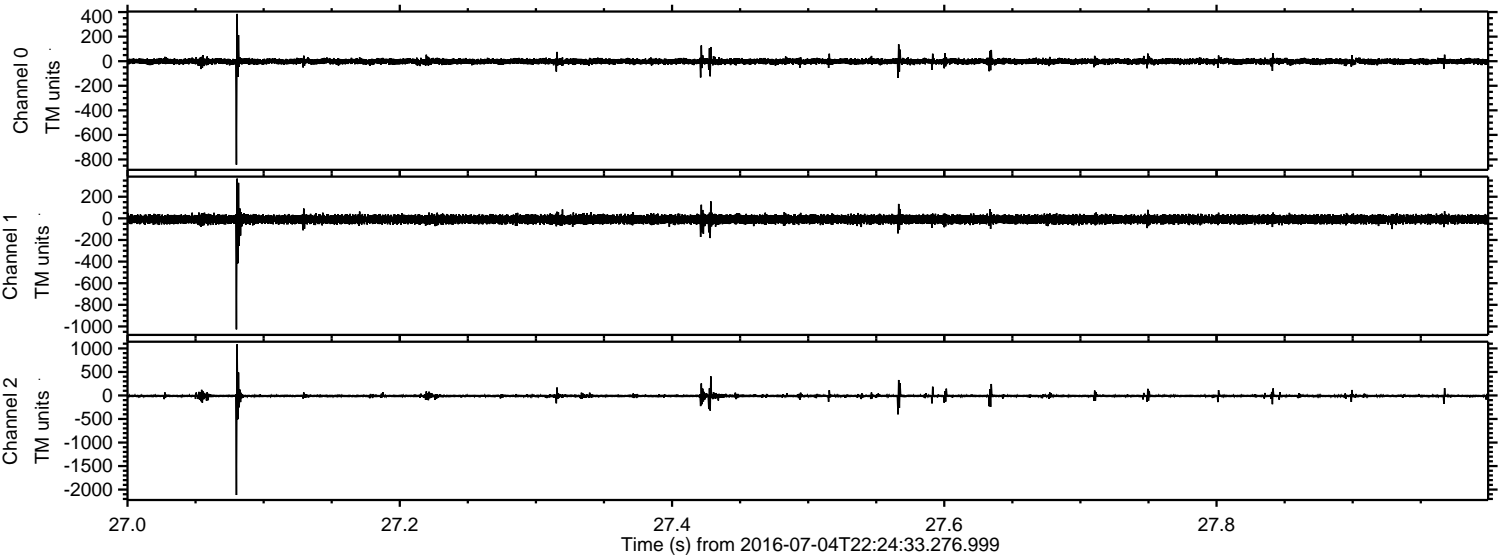


Channel 0
mn: -1064
mx: 849
 μ : -1.7
 σ : 16.6

Channel 1
mn: -548
mx: 673
 μ : -9.0
 σ : 22.4

Channel 2
mn: -1508
mx: 2193
 μ : -10.3
 σ : 30.7

Processed Tue Jul 5 00:33:00 2016 by ELM ver.2012-10-06 from 001__elm20160704_222432__dat00.bin



Channel 0
mn: -842
mx: 385
 μ : -1.7
 σ : 12.4

Channel 1
mn: -1027
mx: 368
 μ : -9.0
 σ : 20.5

Channel 2
mn: -2116
mx: 1088
 μ : -10.4
 σ : 20.7

