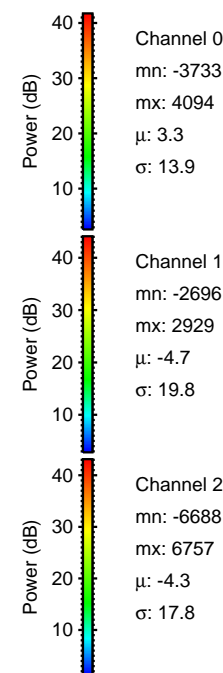
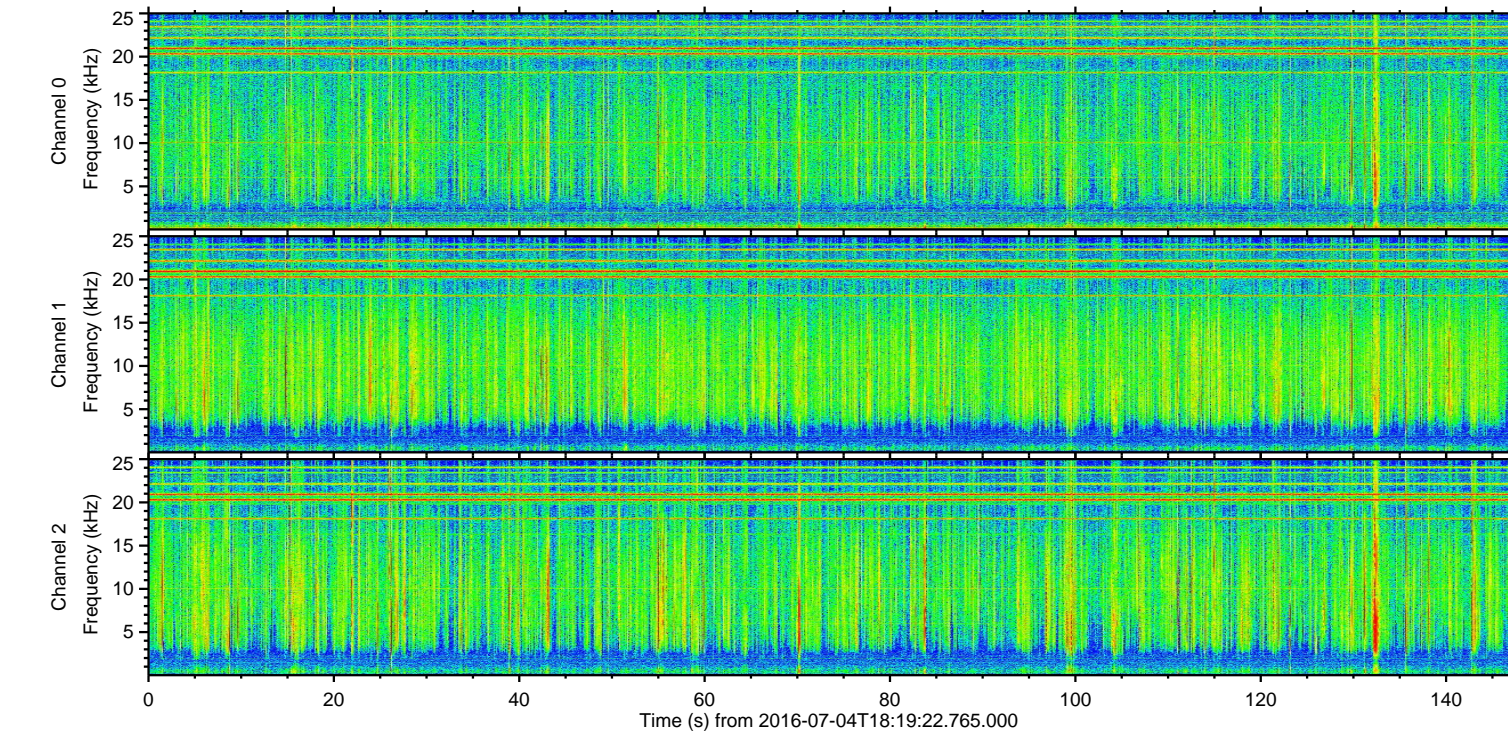
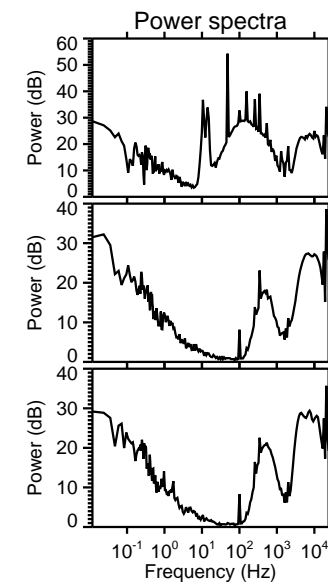
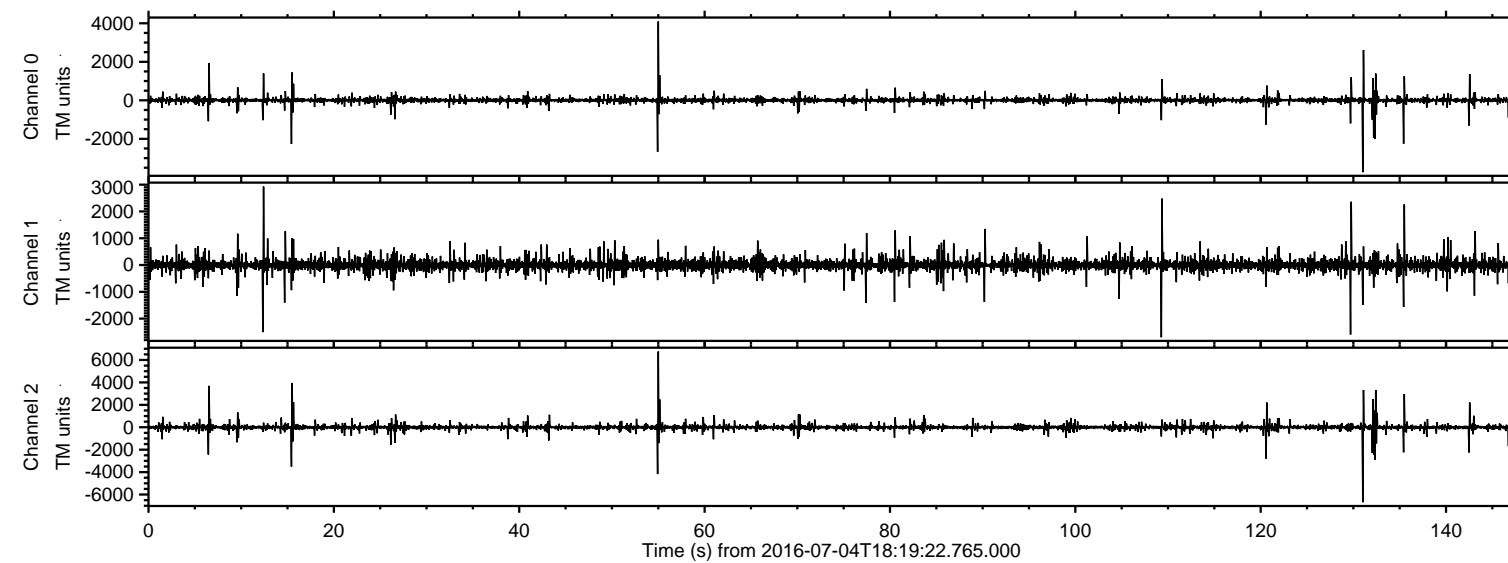
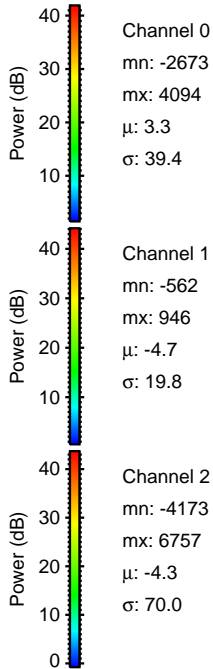
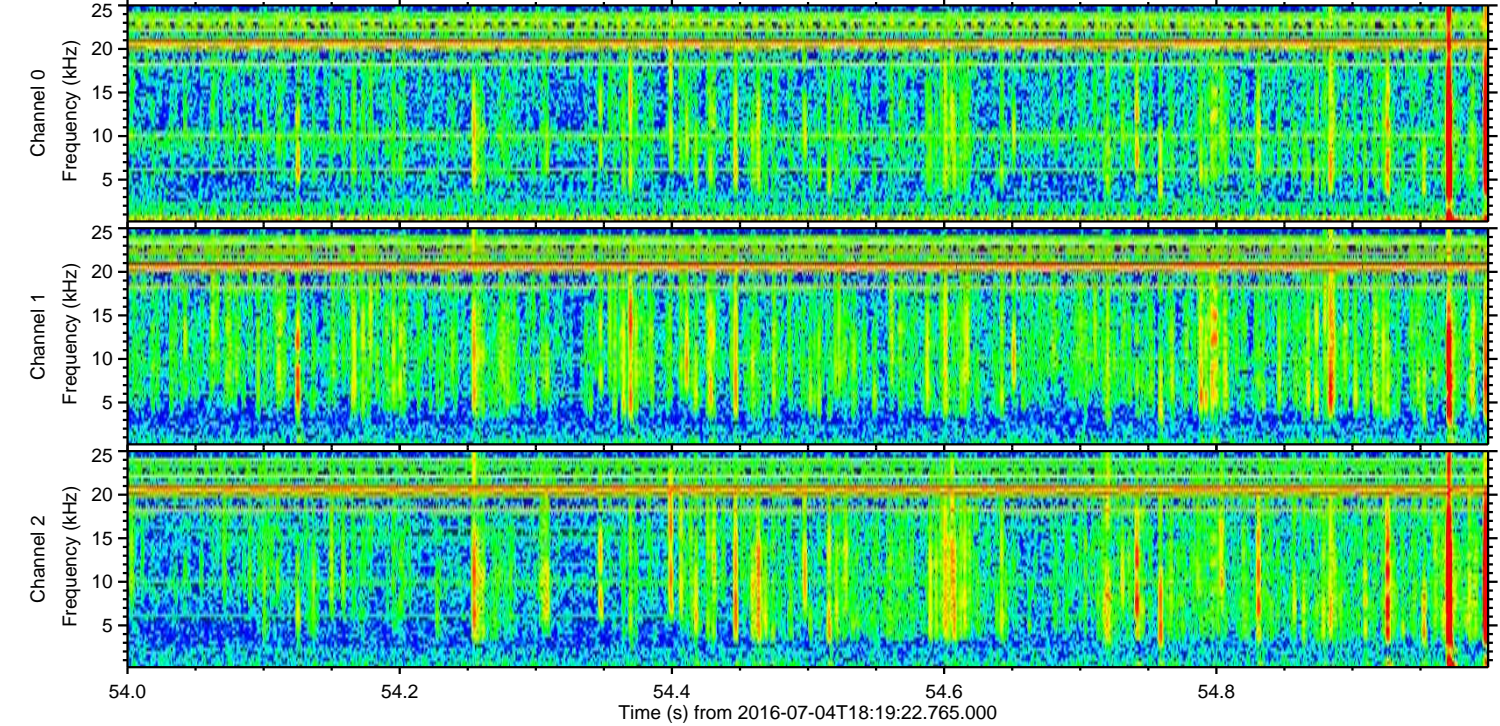
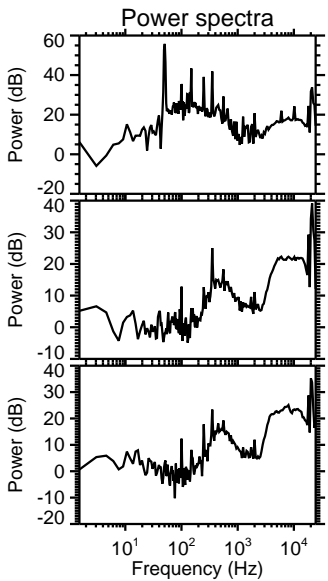
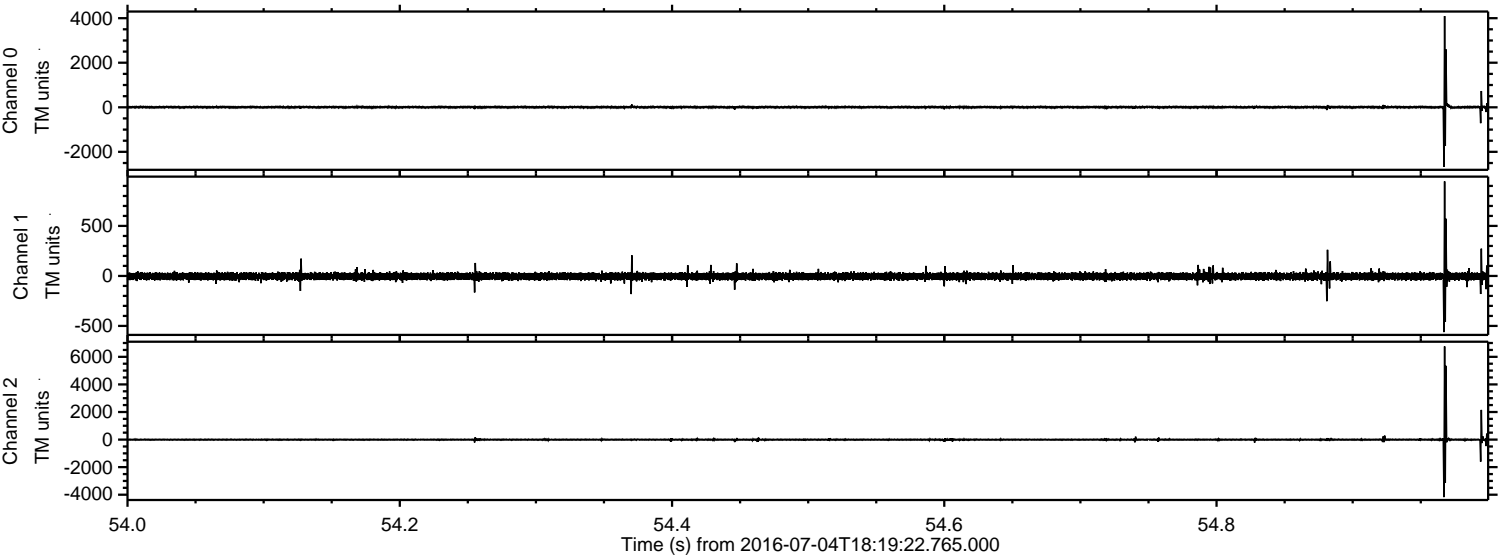


# ELMAVAN 3D WAVEFORMS (Measured data sampled at 50 kHz) 51000 packets of 144 samples from 2016-07-04T18:19:22.765.000.

Processed Mon Jul 4 20:27:25 2016 by ELM ver.2012-10-06 from 001\_\_elm20160704\_181921\_\_dat00.bin

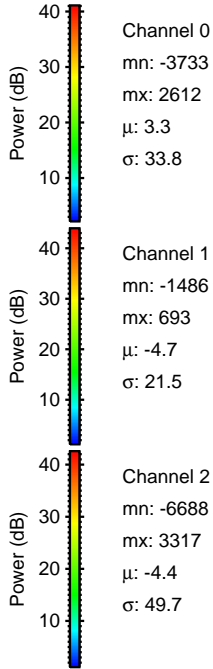
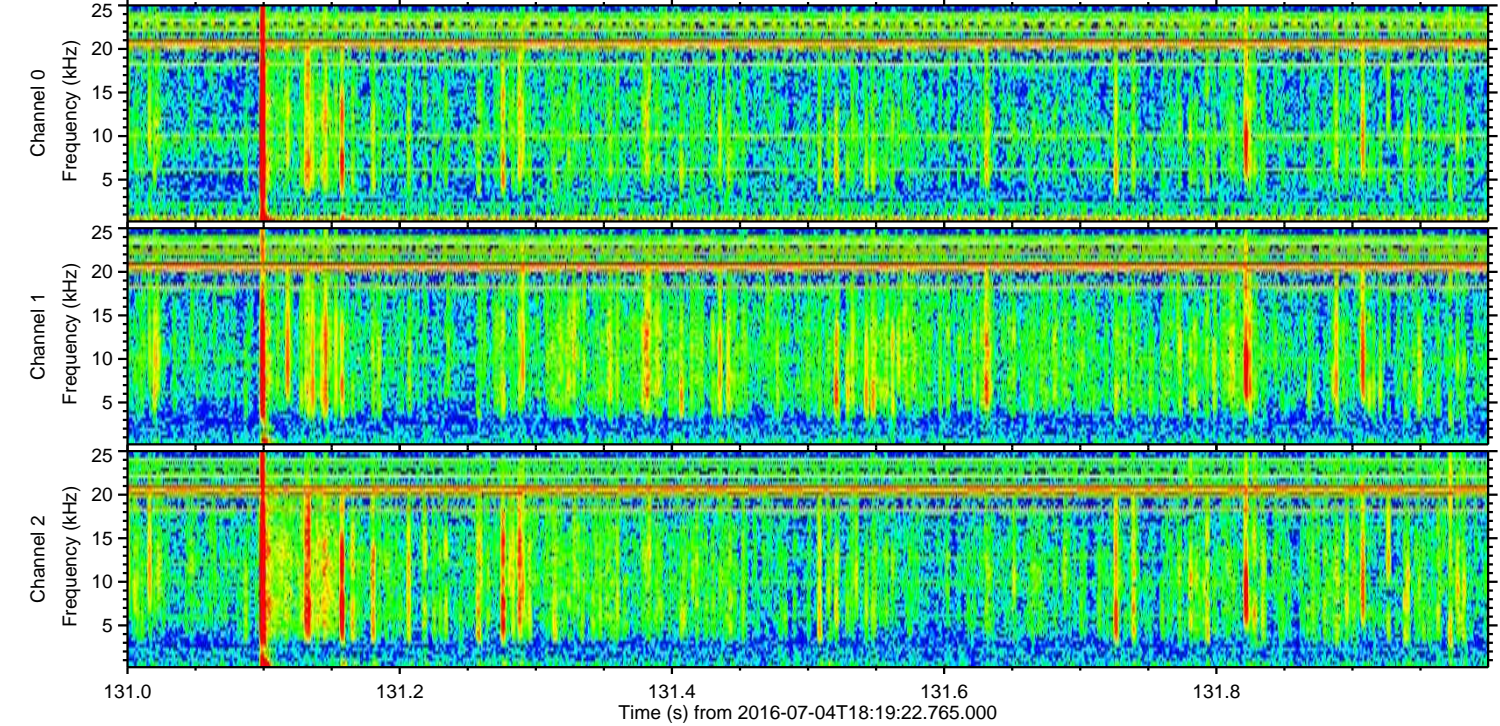
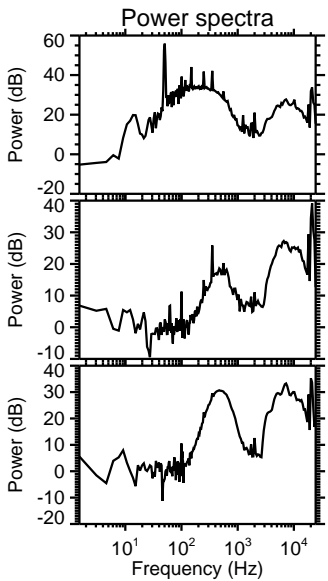
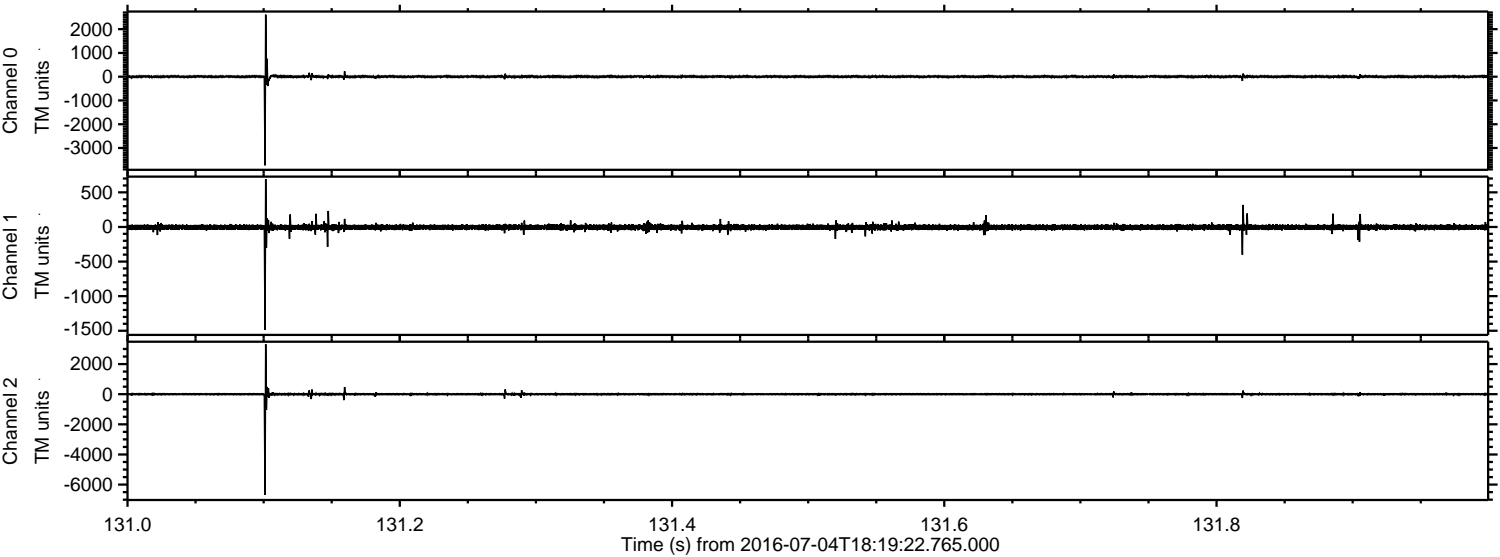


Processed Mon Jul 4 20:27:36 2016 by ELM ver.2012-10-06 from 001\_\_elm20160704\_181921\_\_dat00.bin

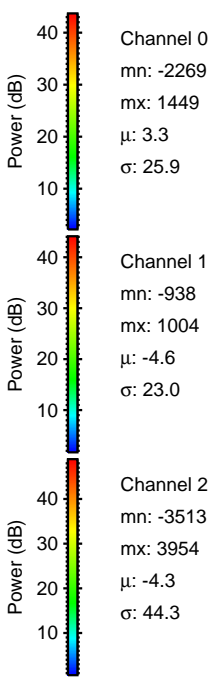
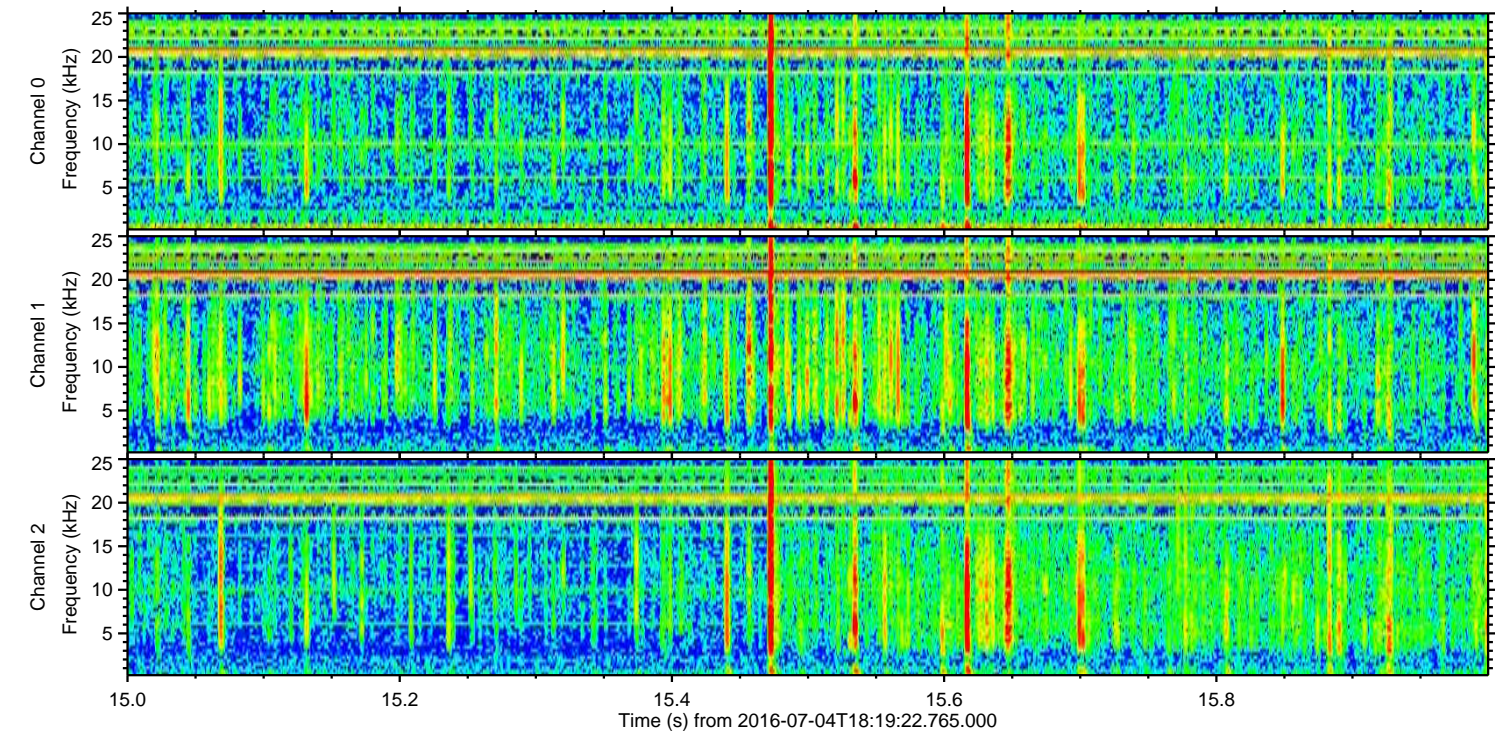
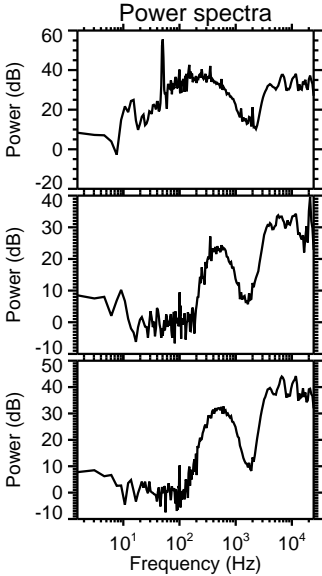
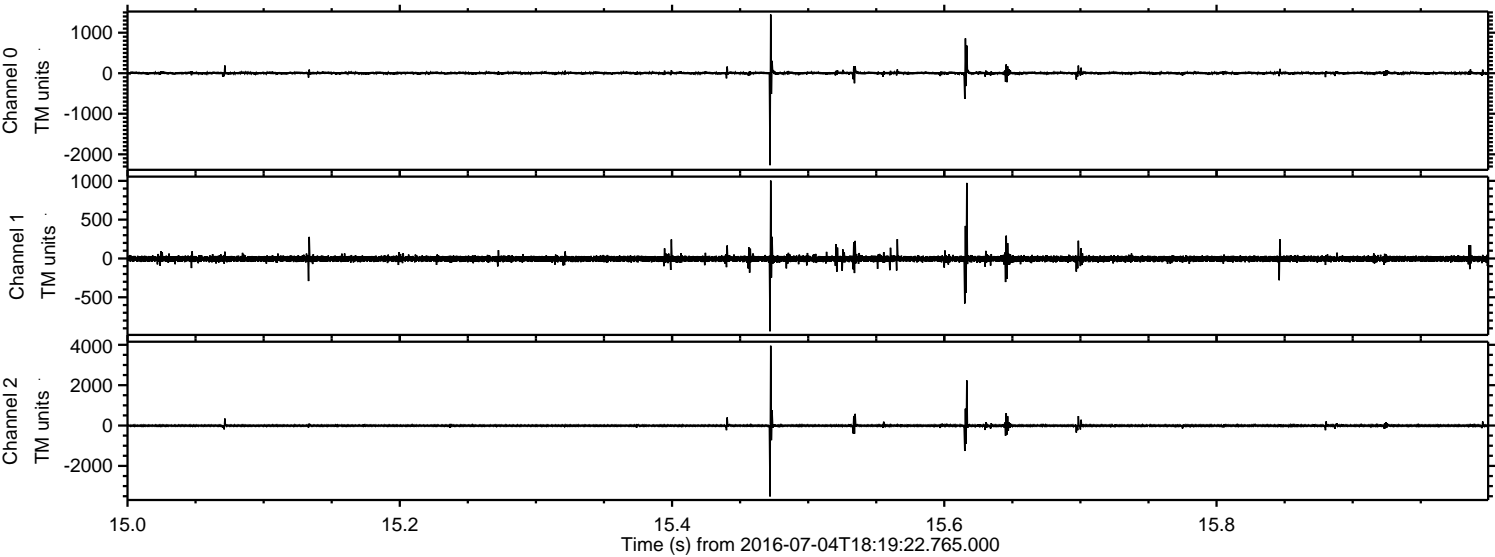


ELMAVAN 3D WAVEFORMS (Measured data sampled at 50 kHz) 51000 packets of 144 samples from 2016-07-04T18:19:22.765.000. Part 132/147

Processed Mon Jul 4 20:27:37 2016 by ELM ver.2012-10-06 from 001\_\_elm20160704\_181921\_\_dat00.bin



Processed Mon Jul 4 20:27:38 2016 by ELM ver.2012-10-06 from 001\_\_elm20160704\_181921\_\_dat00.bin

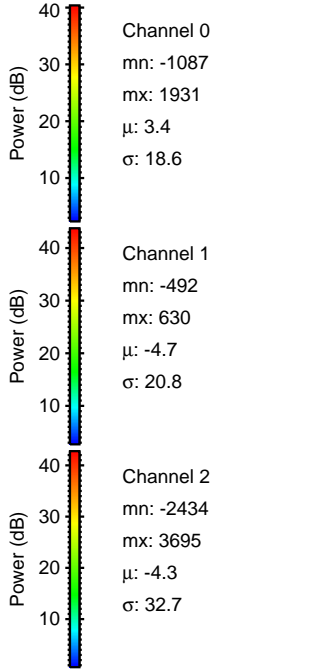
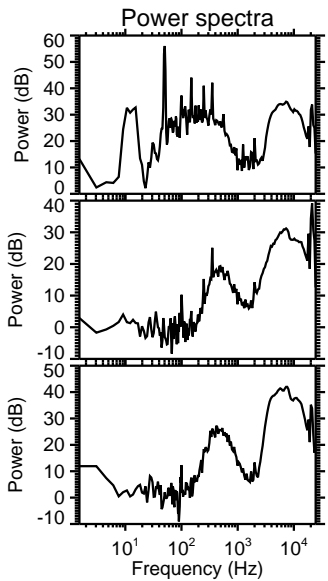
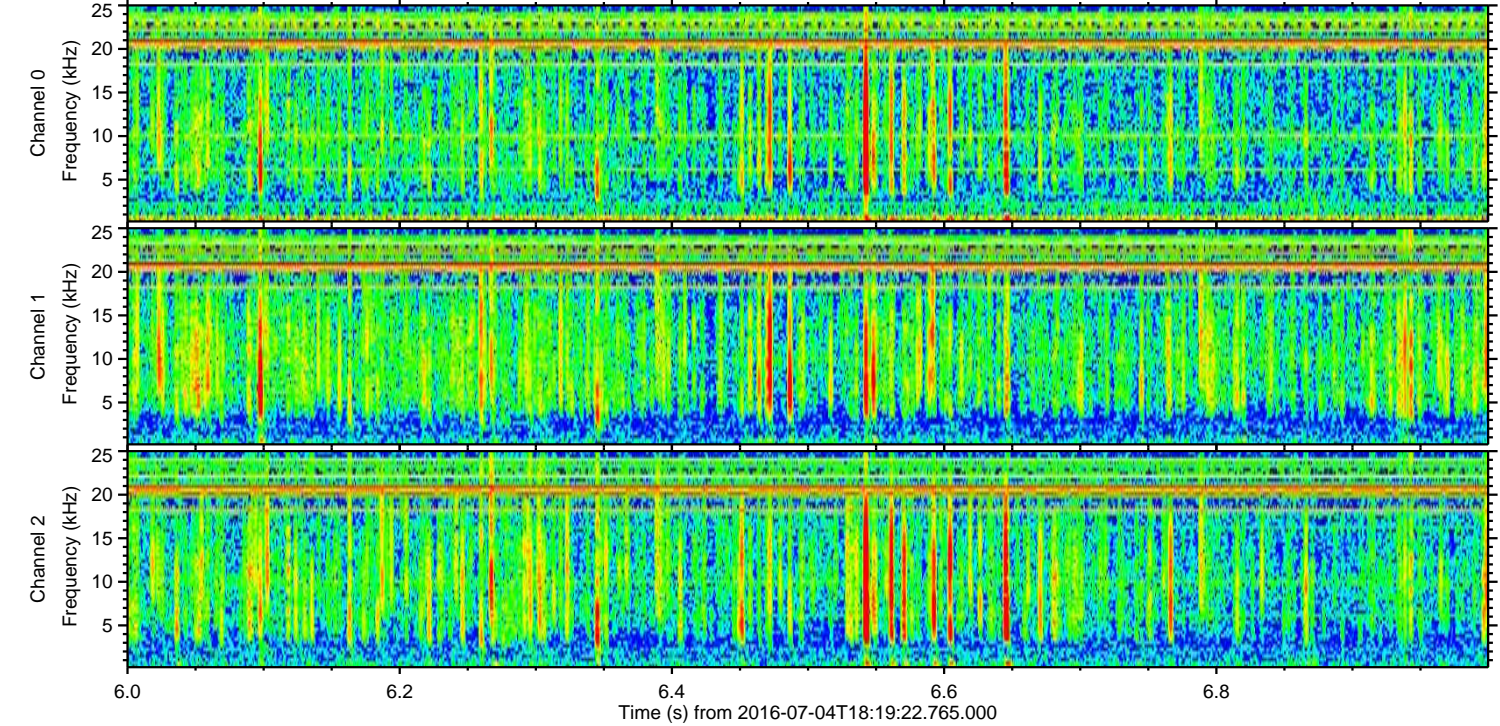
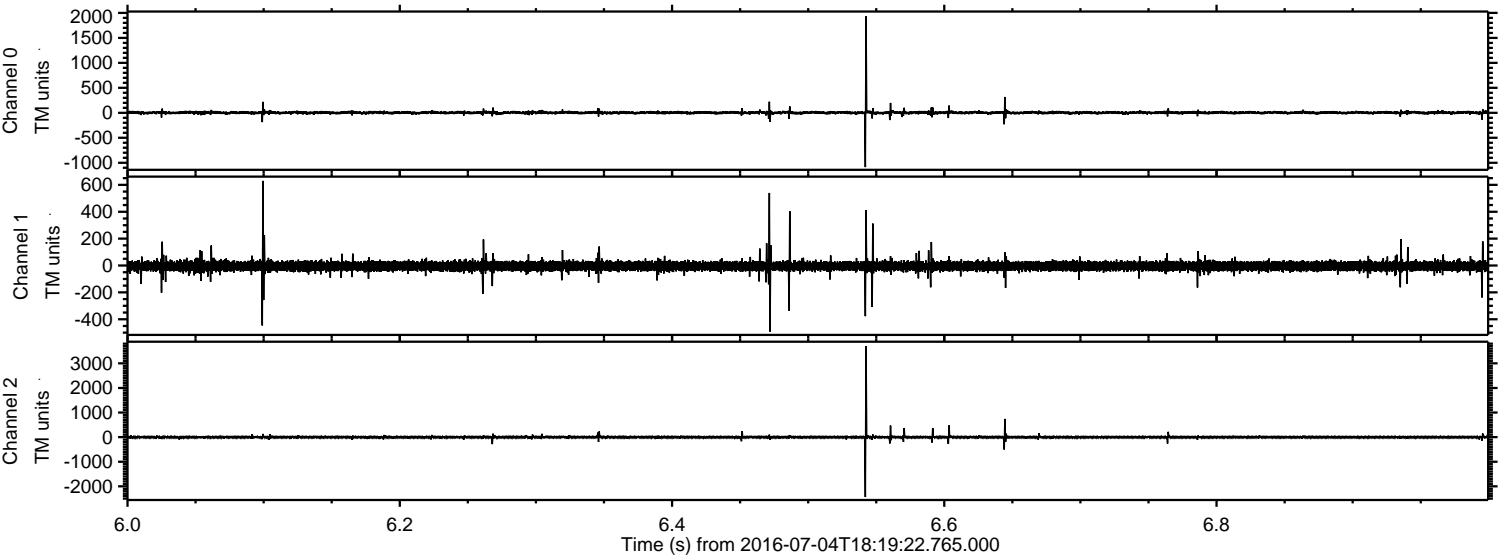


Channel 0  
mn: -2269  
mx: 1449  
 $\mu$ : 3.3  
 $\sigma$ : 25.9

Channel 1  
mn: -938  
mx: 1004  
 $\mu$ : -4.6  
 $\sigma$ : 23.0

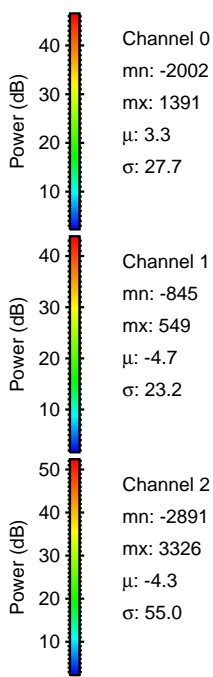
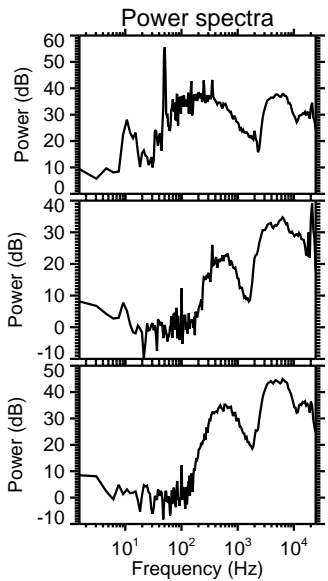
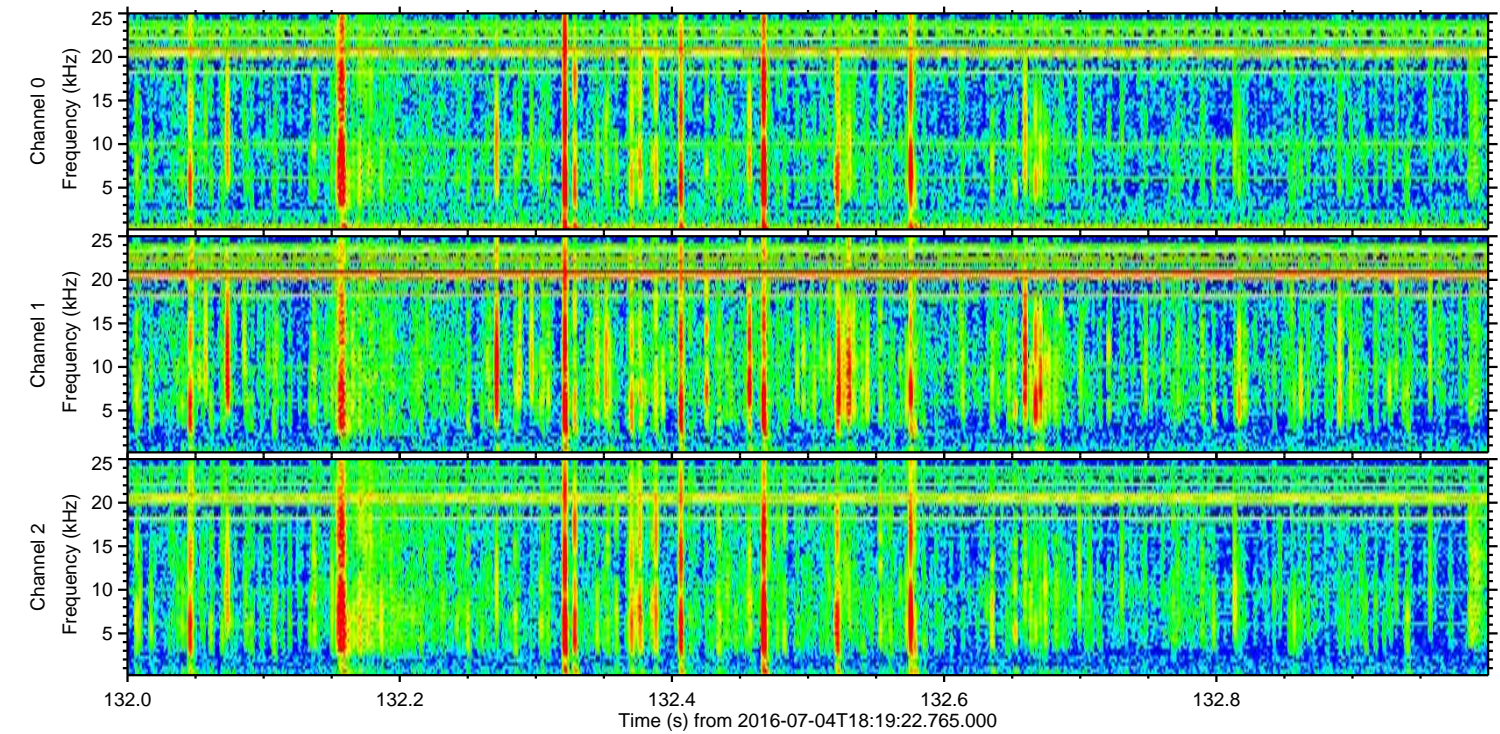
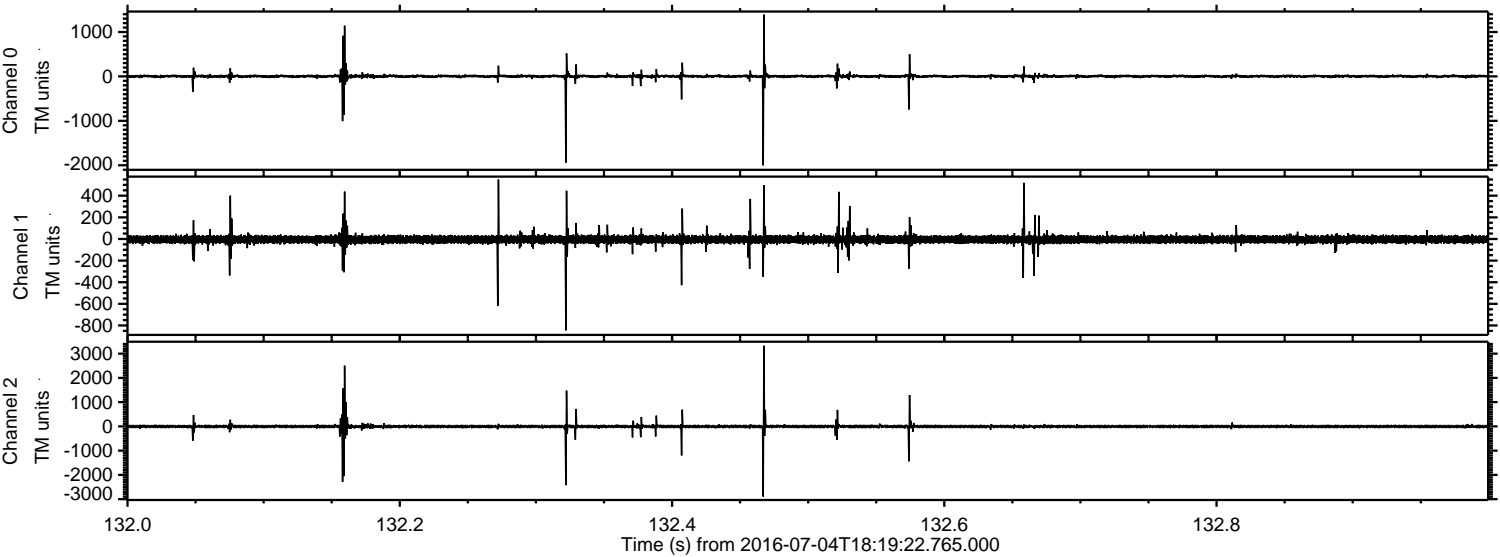
Channel 2  
mn: -3513  
mx: 3954  
 $\mu$ : -4.3  
 $\sigma$ : 44.3

Processed Mon Jul 4 20:27:39 2016 by ELM ver.2012-10-06 from 001\_\_elm20160704\_181921\_\_dat00.bin



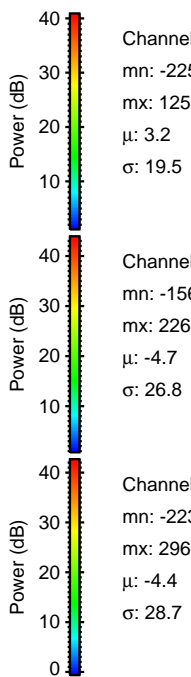
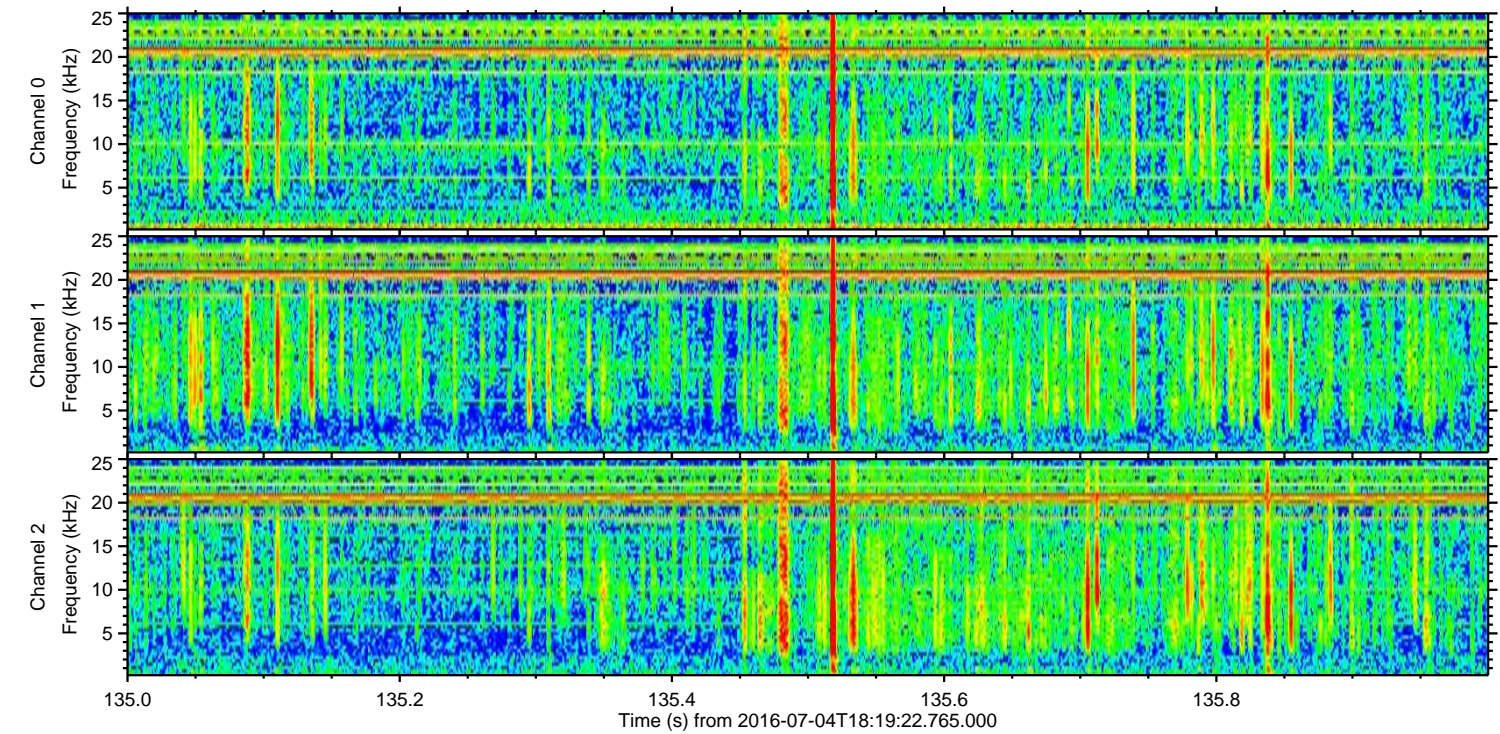
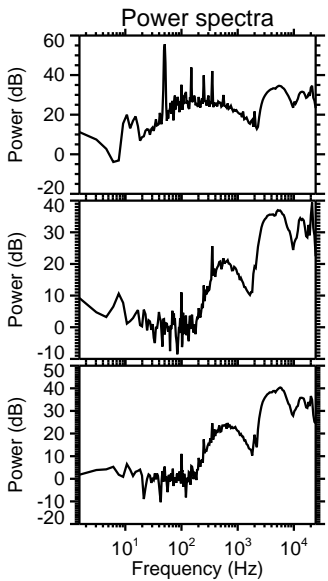
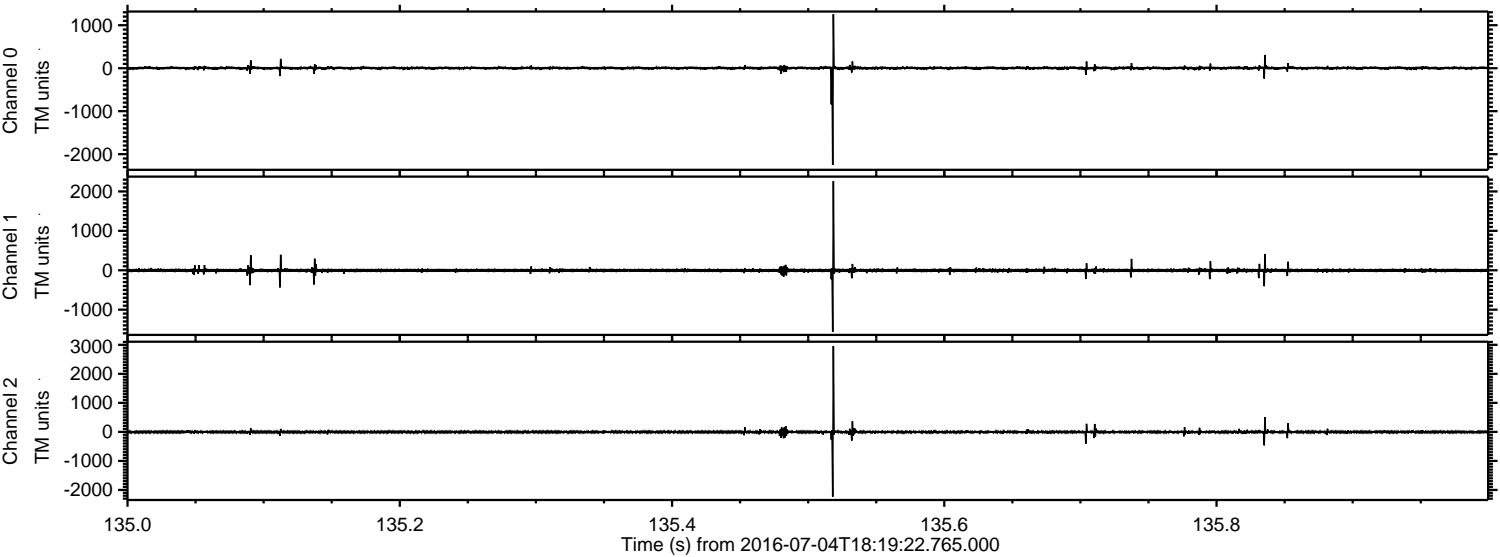
ELMAVAN 3D WAVEFORMS (Measured data sampled at 50 kHz) 51000 packets of 144 samples from 2016-07-04T18:19:22.765.000. Part 133/147

Processed Mon Jul 4 20:27:40 2016 by ELM ver.2012-10-06 from 001\_\_elm20160704\_181921\_\_dat00.bin



ELMAVAN 3D WAVEFORMS (Measured data sampled at 50 kHz) 51000 packets of 144 samples from 2016-07-04T18:19:22.765.000. Part 136/147

Processed Mon Jul 4 20:27:41 2016 by ELM ver.2012-10-06 from 001\_\_elm20160704\_181921\_\_dat00.bin



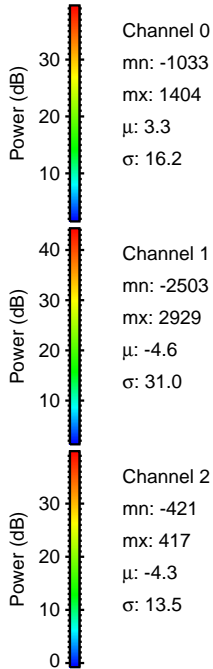
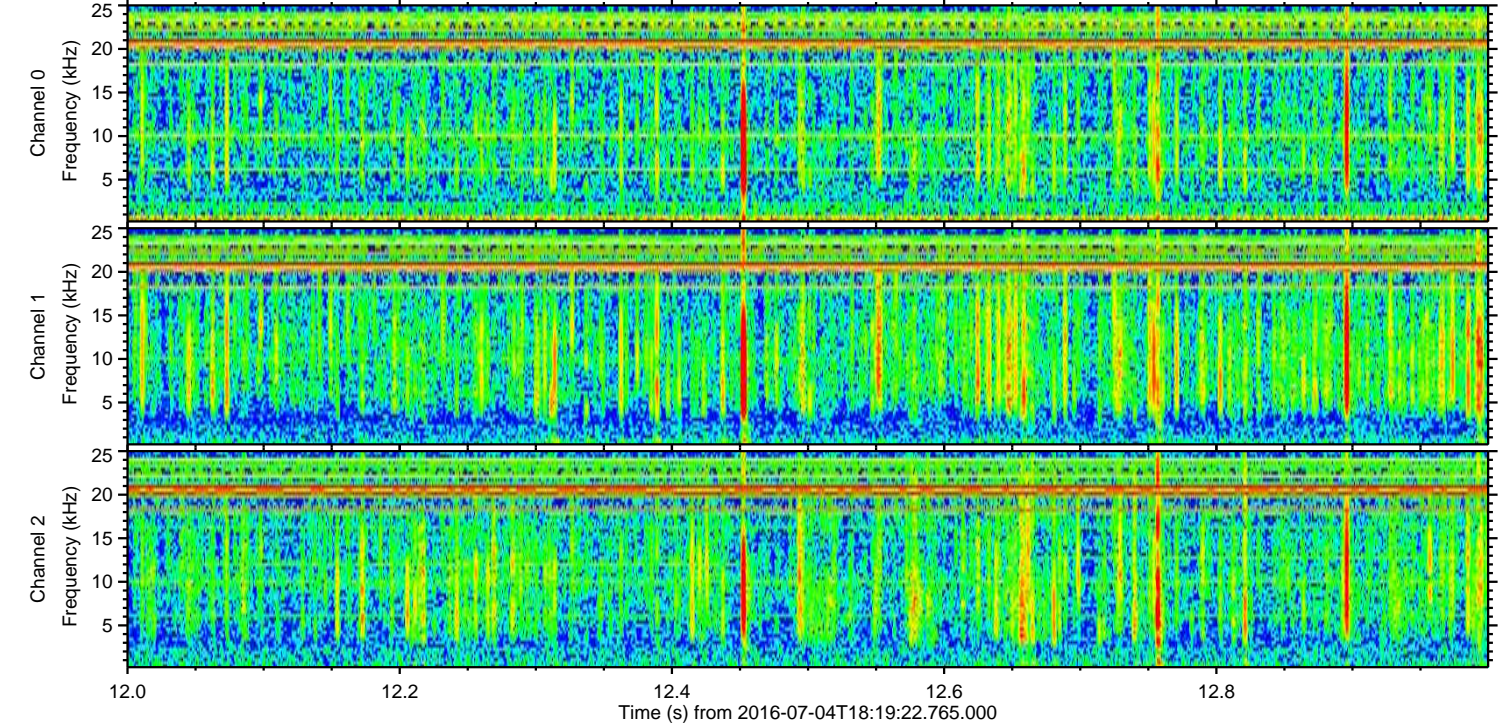
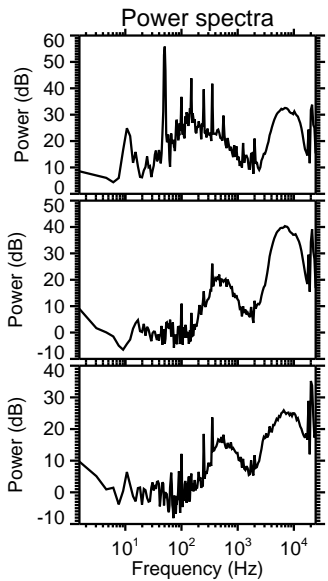
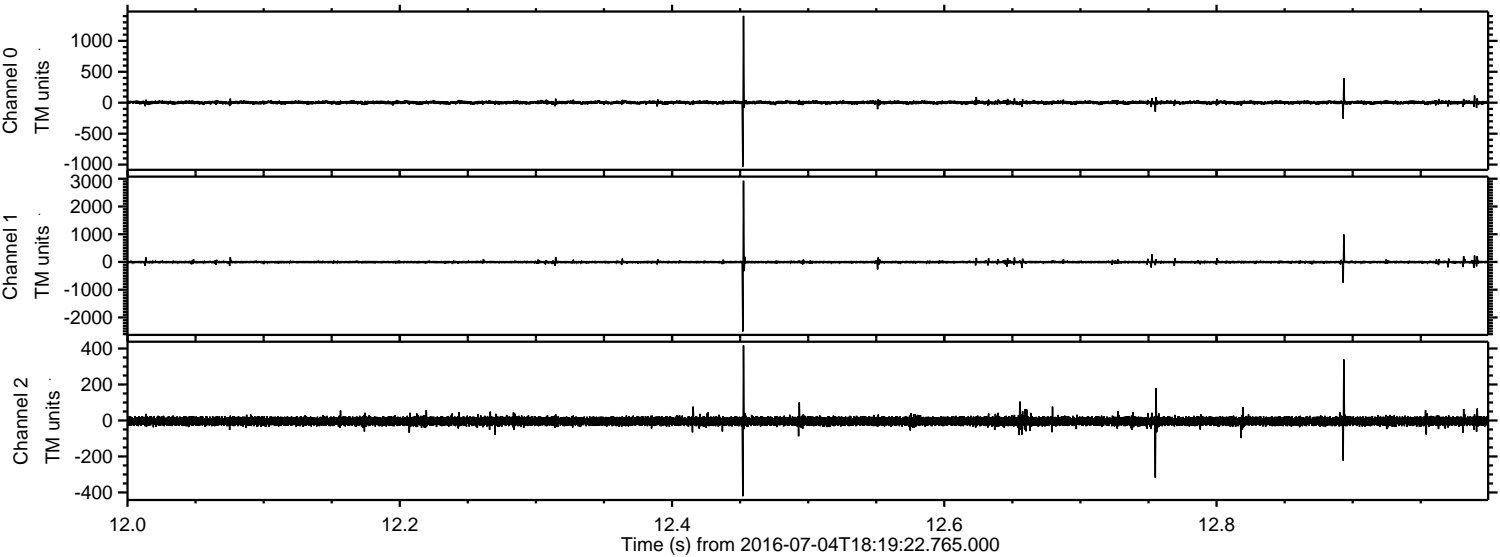
Channel 0  
mn: -2251  
mx: 1255  
 $\mu$ : 3.2  
 $\sigma$ : 19.5

Channel 1  
mn: -1563  
mx: 2263  
 $\mu$ : -4.7  
 $\sigma$ : 26.8

Channel 2  
mn: -2236  
mx: 2960  
 $\mu$ : -4.4  
 $\sigma$ : 28.7

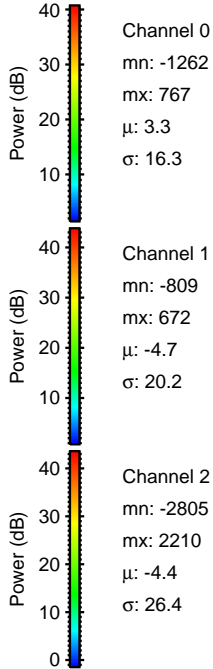
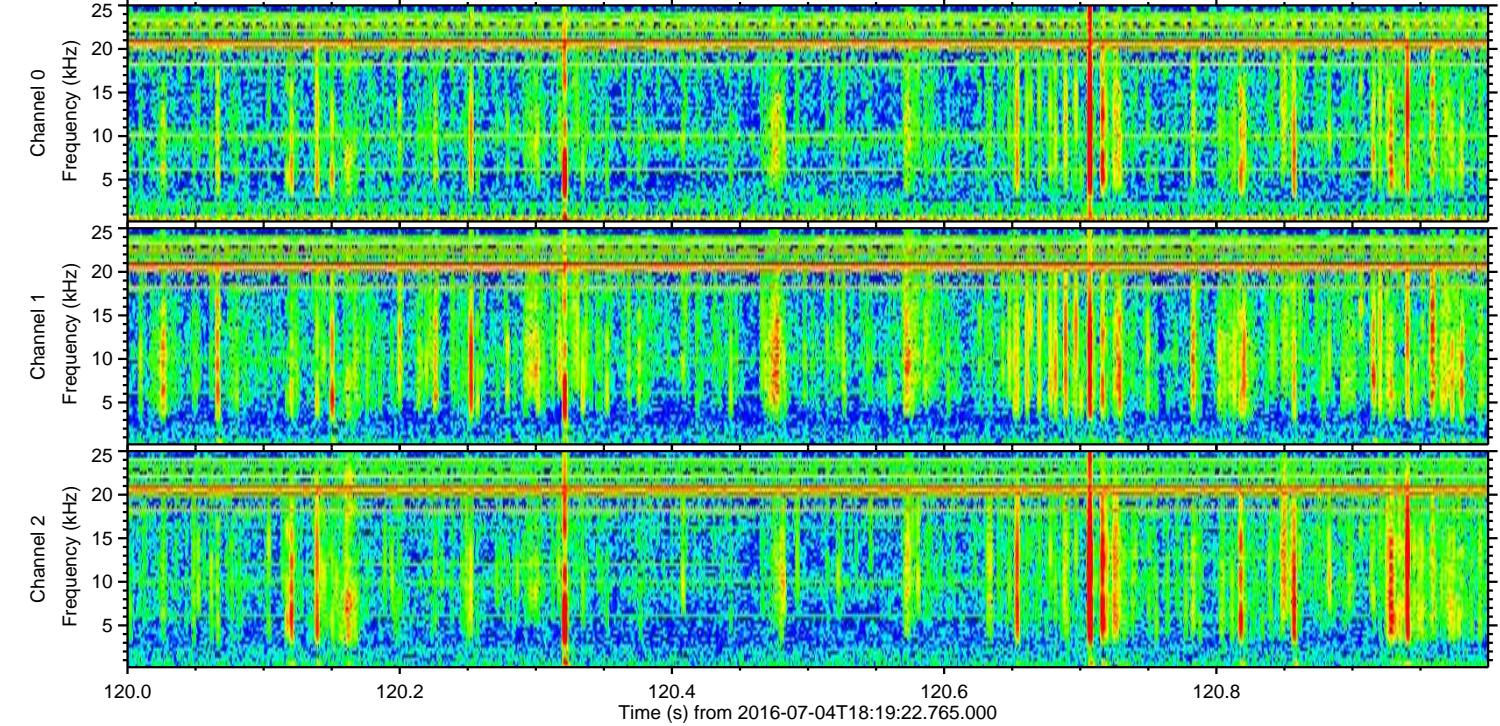
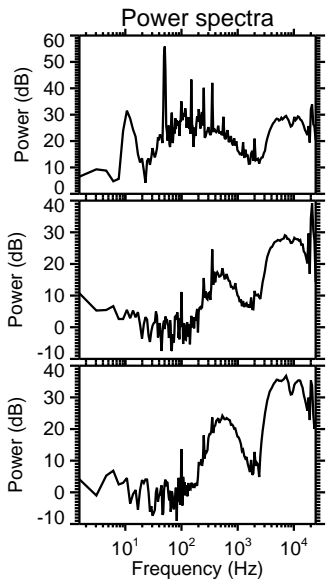
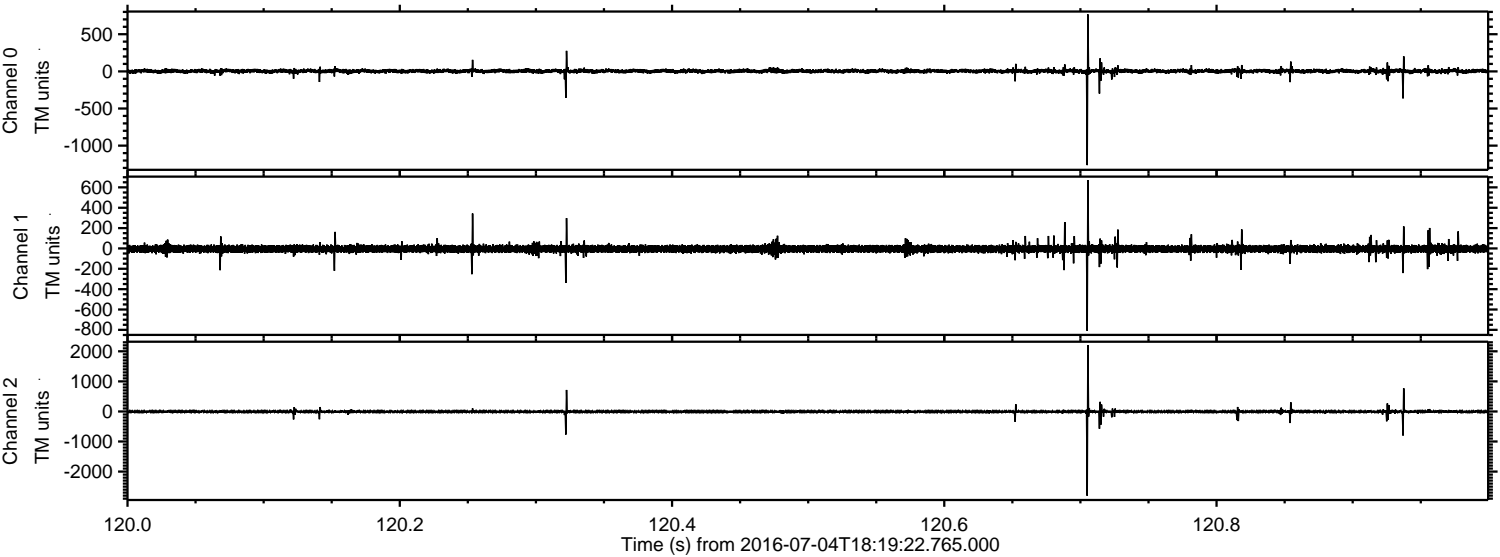
ELMAVAN 3D WAVEFORMS (Measured data sampled at 50 kHz) 51000 packets of 144 samples from 2016-07-04T18:19:22.765.000. Part 13/147

Processed Mon Jul 4 20:27:42 2016 by ELM ver.2012-10-06 from 001\_\_elm20160704\_181921\_\_dat00.bin



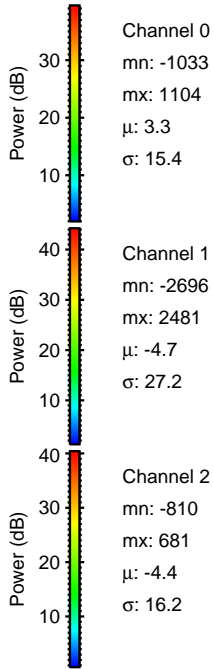
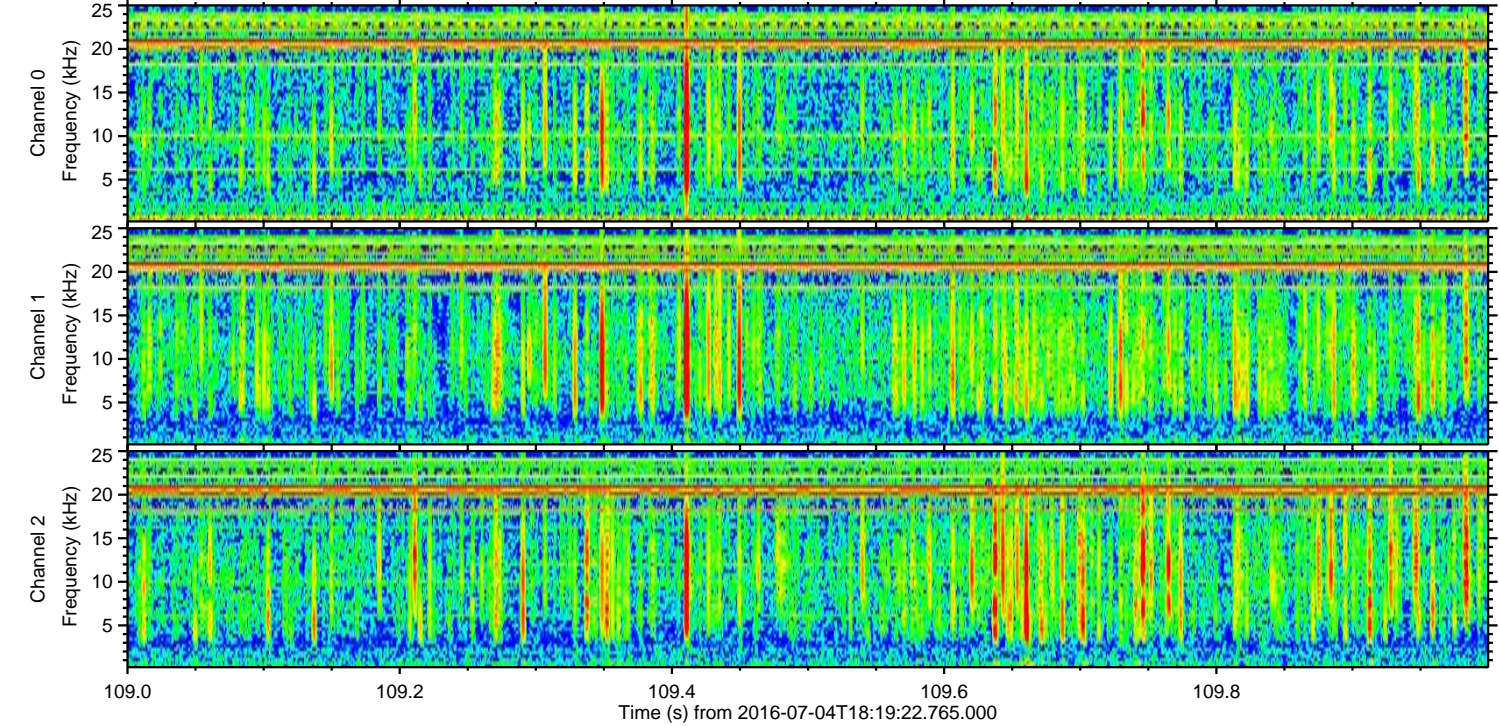
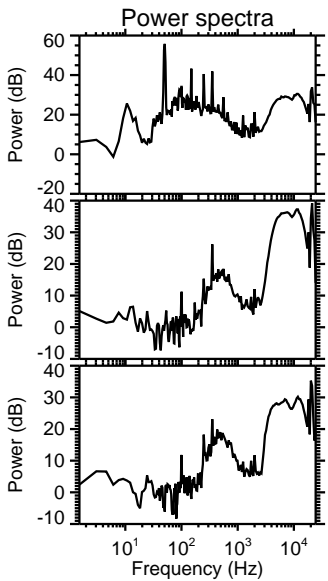
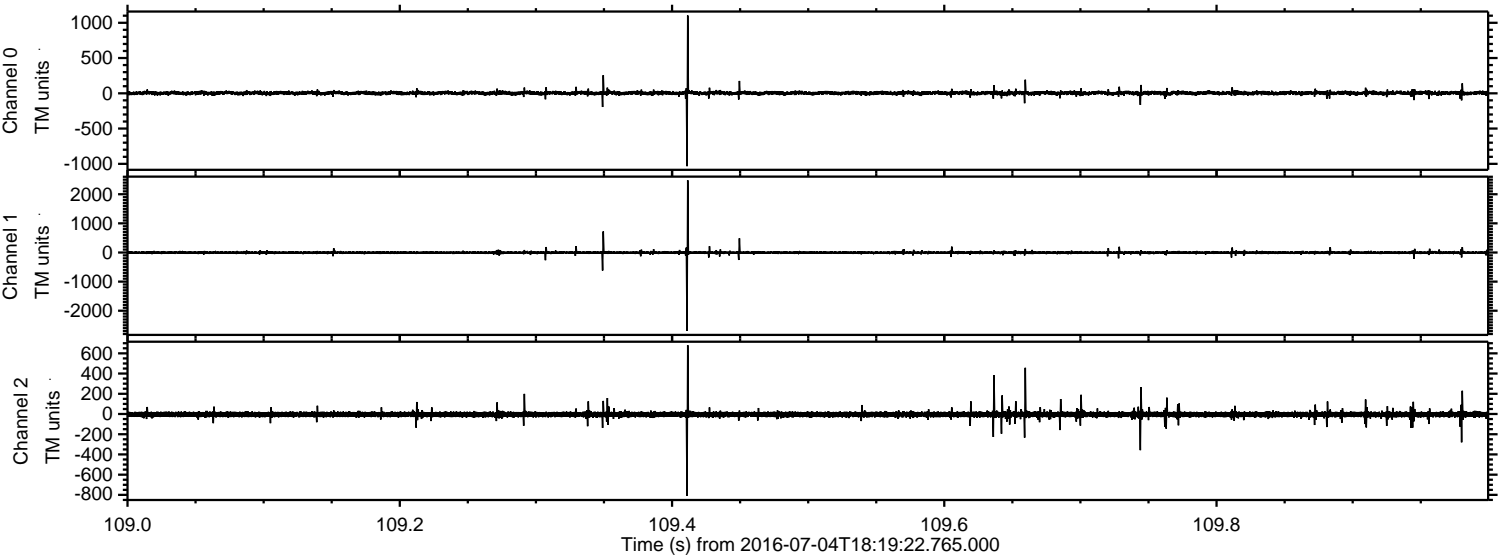
ELMAVAN 3D WAVEFORMS (Measured data sampled at 50 kHz) 51000 packets of 144 samples from 2016-07-04T18:19:22.765.000. Part 121/147

Processed Mon Jul 4 20:27:43 2016 by ELM ver.2012-10-06 from 001\_\_elm20160704\_181921\_\_dat00.bin



ELMAVAN 3D WAVEFORMS (Measured data sampled at 50 kHz) 51000 packets of 144 samples from 2016-07-04T18:19:22.765.000. Part 110/147

Processed Mon Jul 4 20:27:44 2016 by ELM ver.2012-10-06 from 001\_\_elm20160704\_181921\_\_dat00.bin



ELMAVAN 3D WAVEFORMS (Measured data sampled at 50 kHz) 51000 packets of 144 samples from 2016-07-04T18:19:22.765.000. Part 120/147

