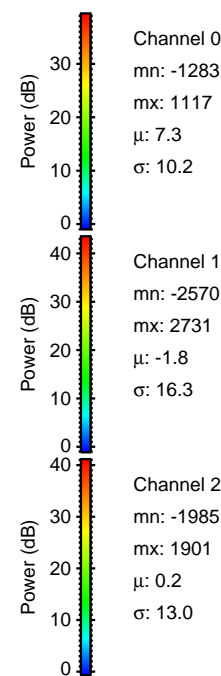
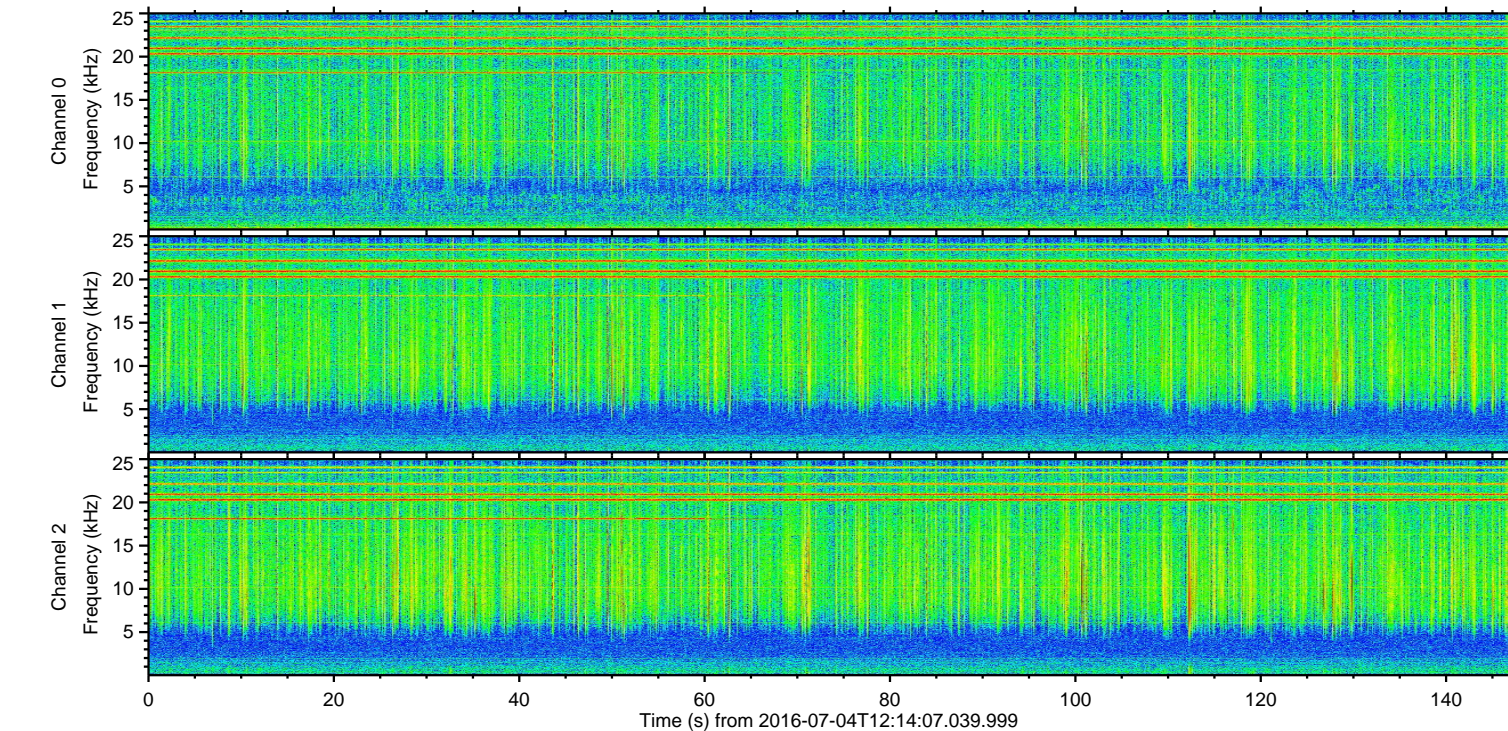
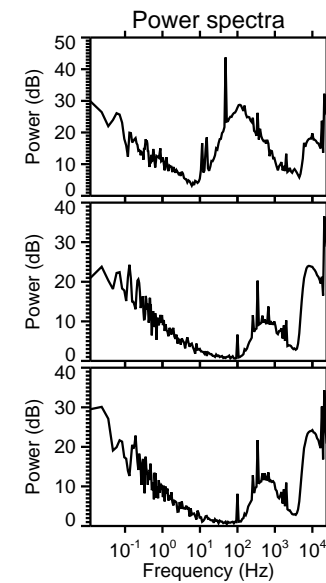
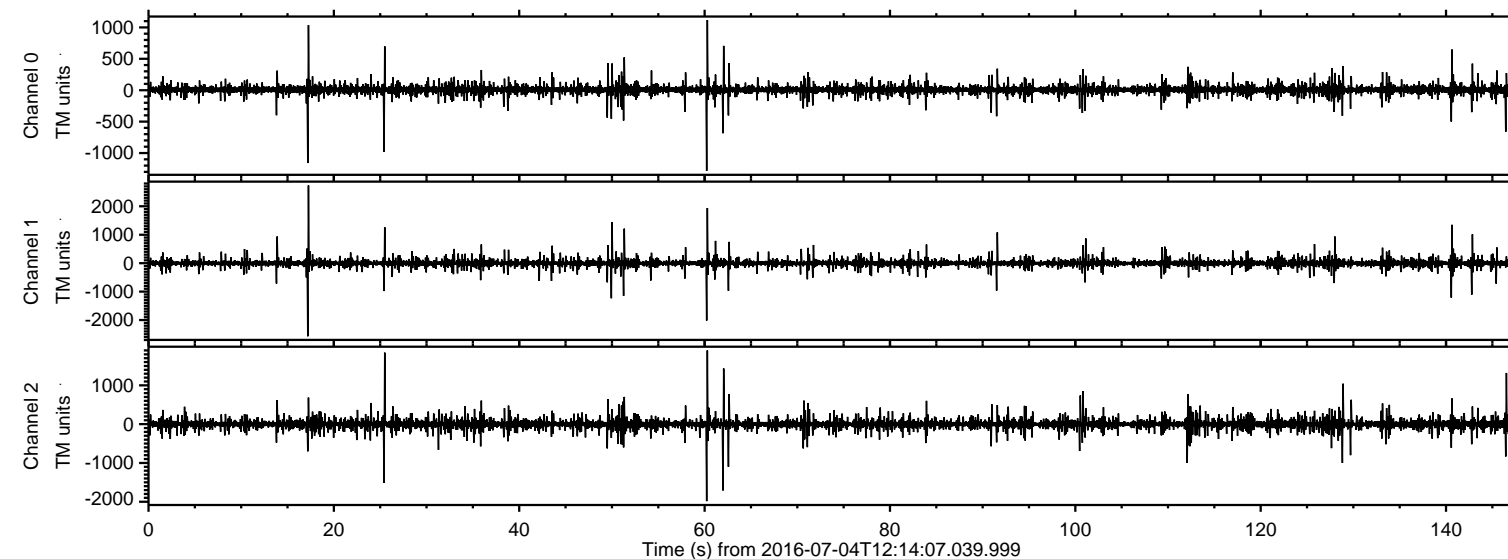


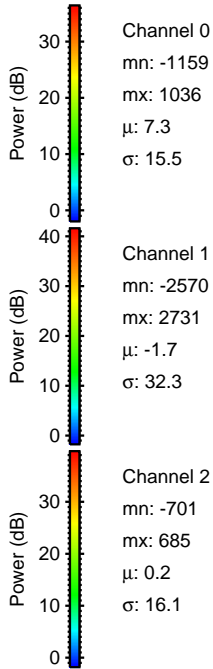
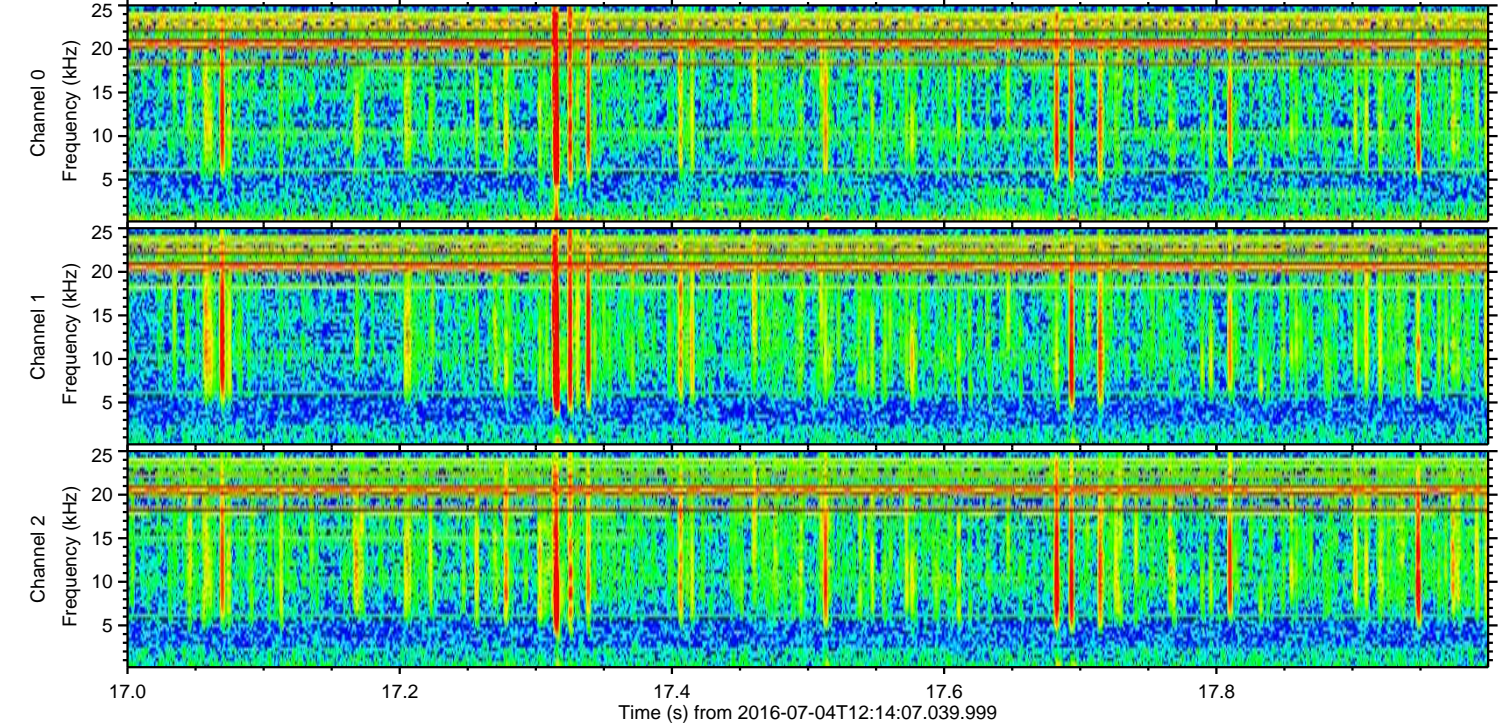
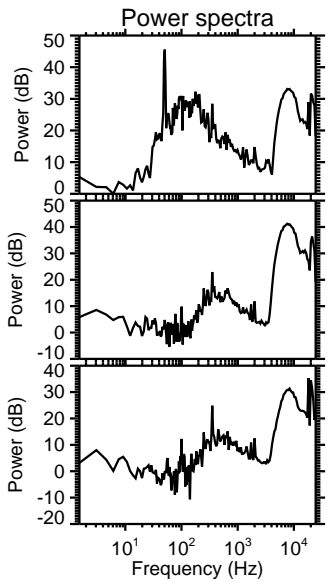
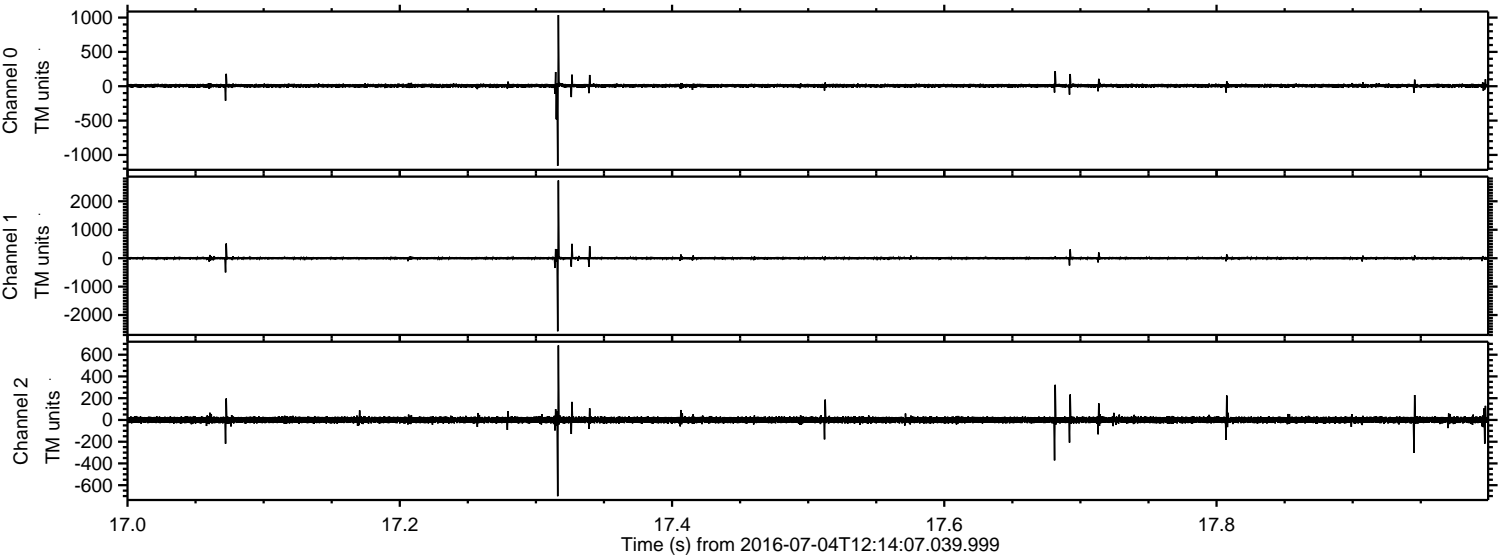
# ELMAVAN 3D WAVEFORMS (Measured data sampled at 50 kHz) 51000 packets of 144 samples from 2016-07-04T12:14:07.039.999.

Processed Mon Jul 4 14:22:11 2016 by ELM ver.2012-10-06 from 001\_\_elm20160704\_121406\_\_dat00.bin



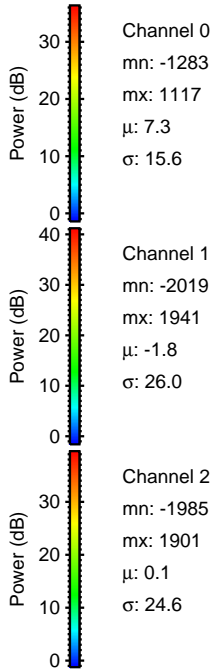
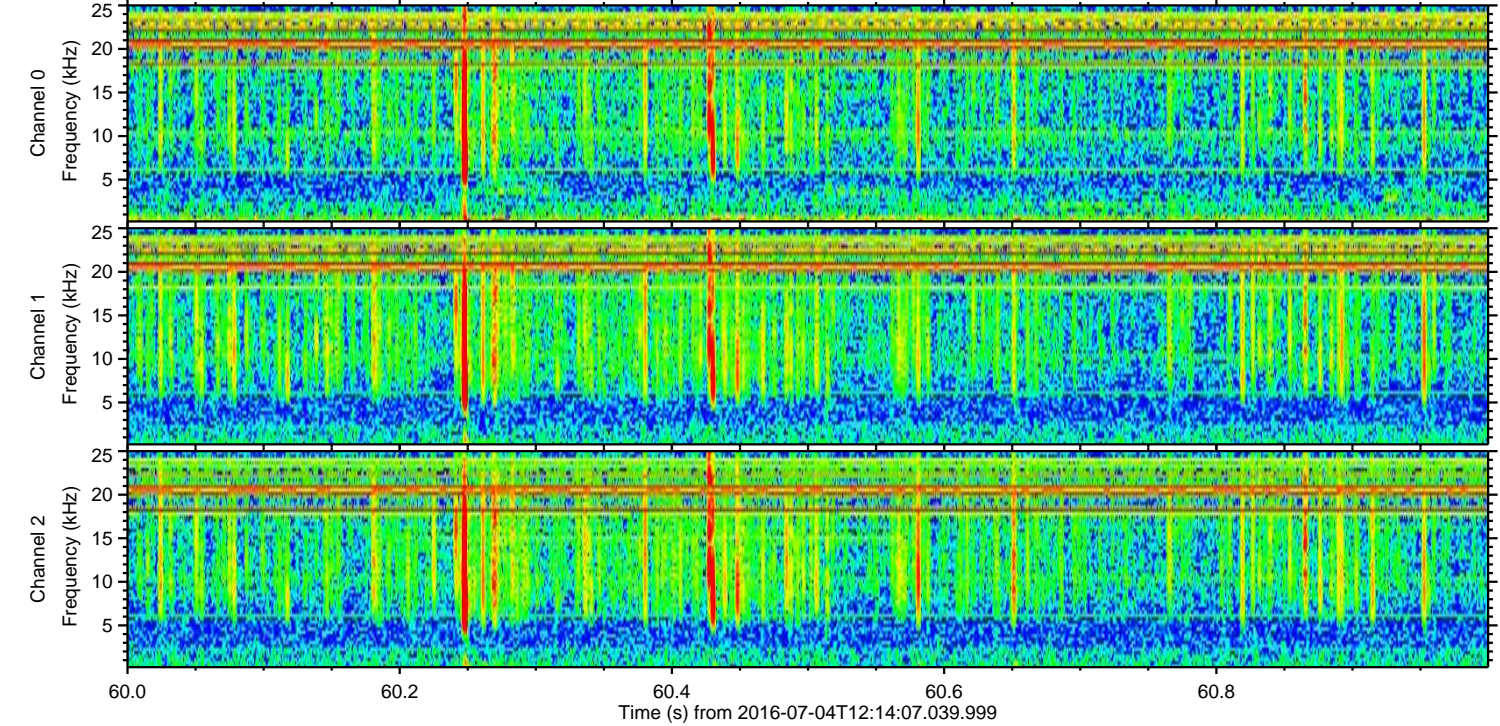
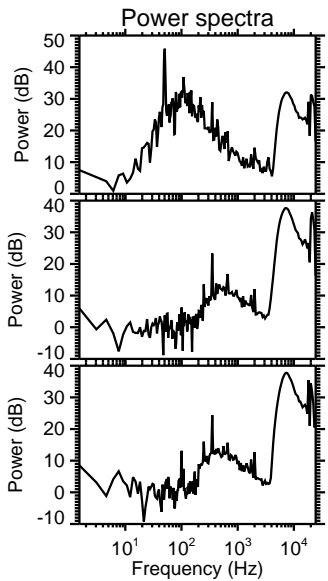
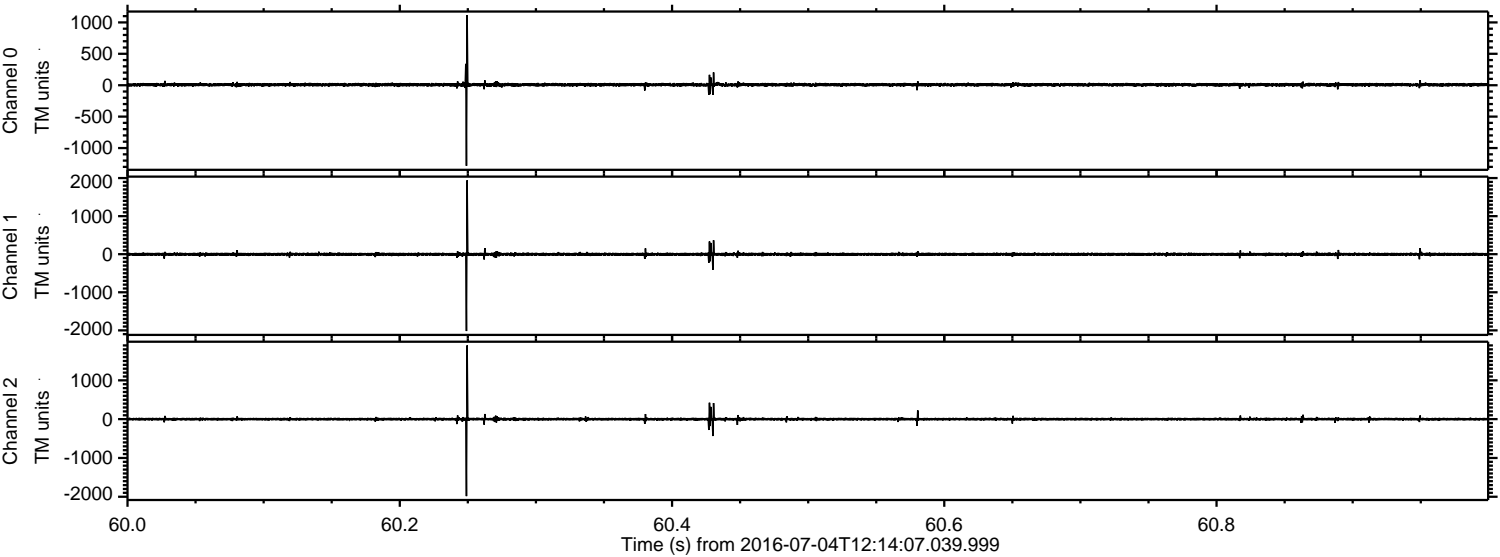


Processed Mon Jul 4 14:22:22 2016 by ELM ver.2012-10-06 from 001\_\_elm20160704\_121406\_\_dat00.bin



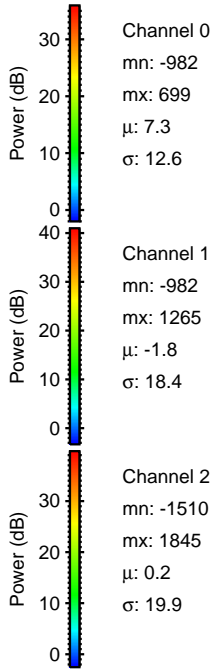
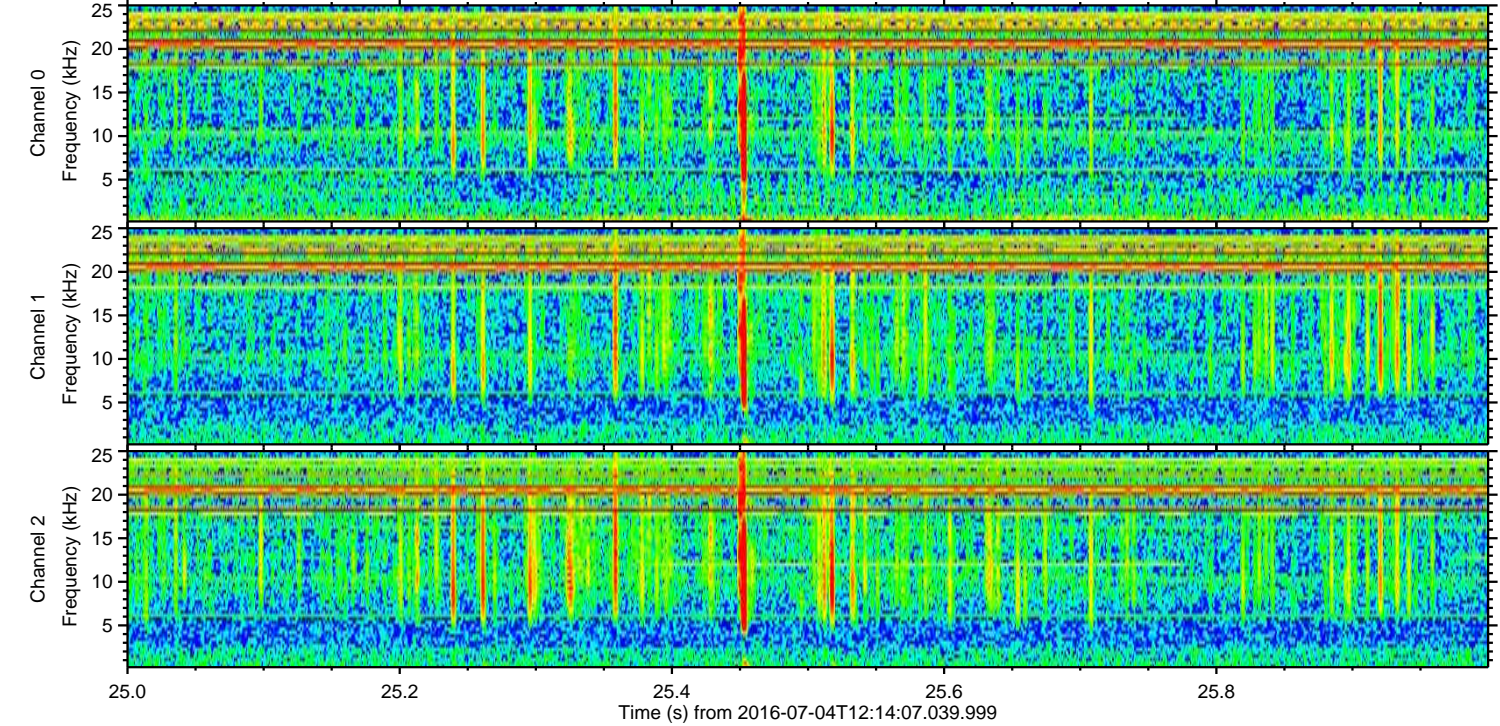
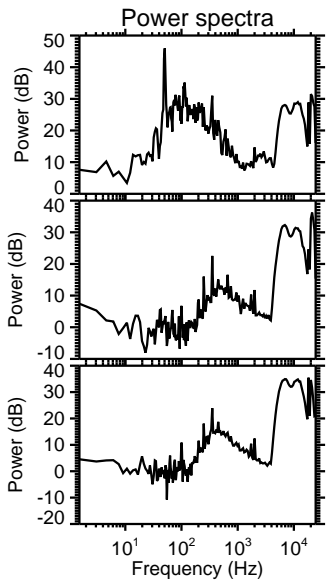
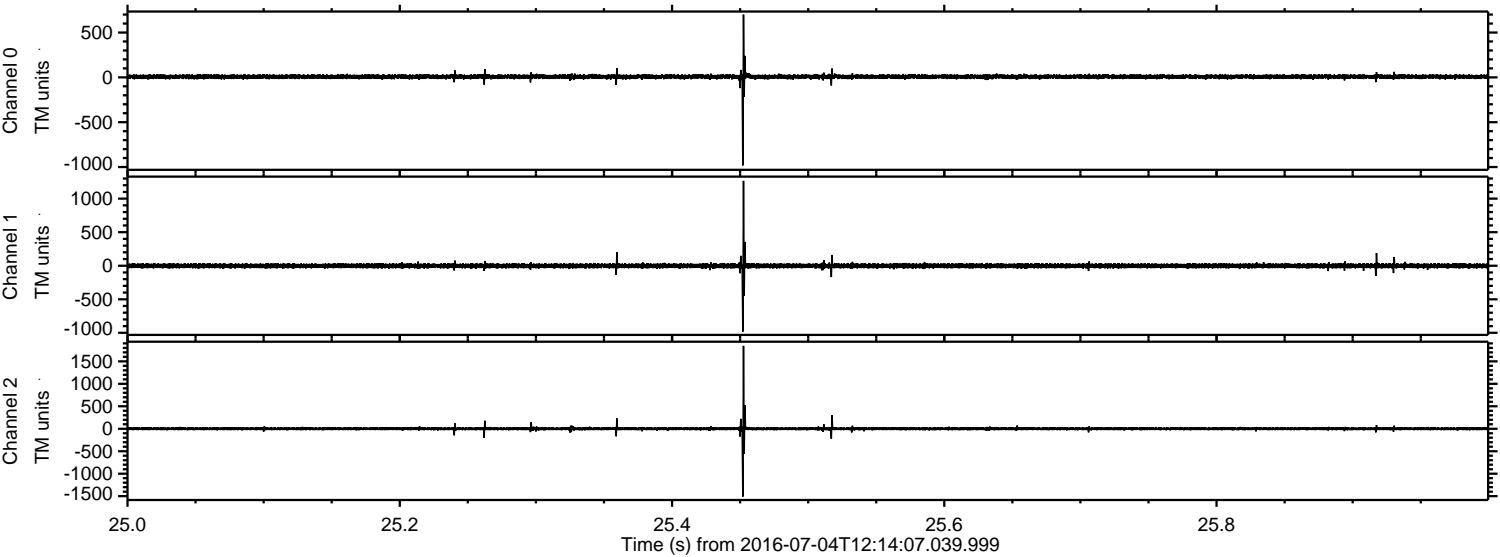


Processed Mon Jul 4 14:22:23 2016 by ELM ver.2012-10-06 from 001\_\_elm20160704\_121406\_\_dat00.bin



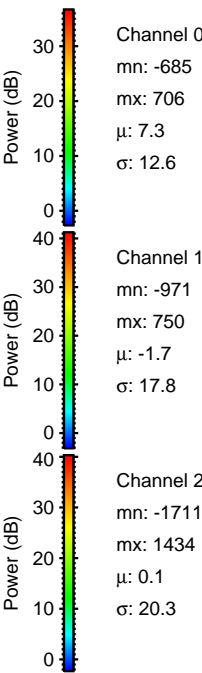
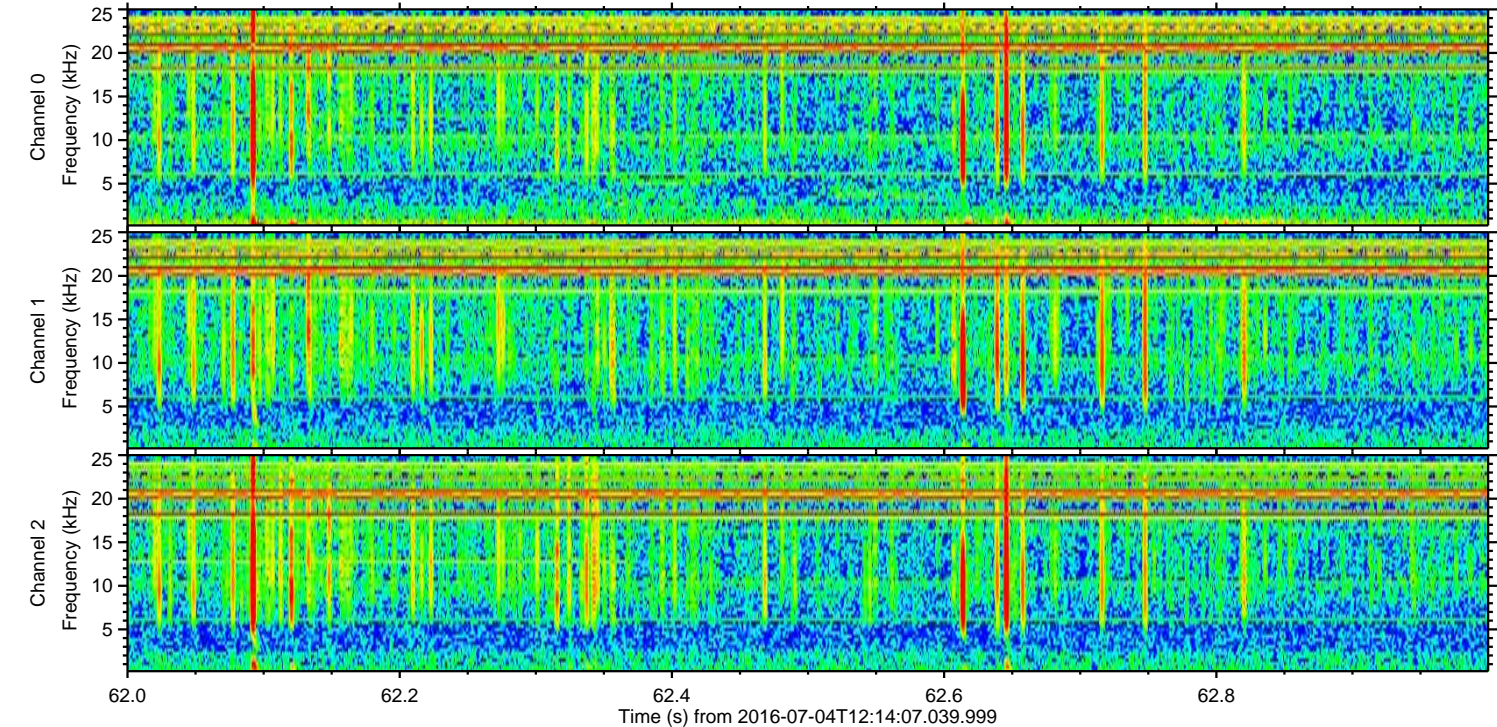
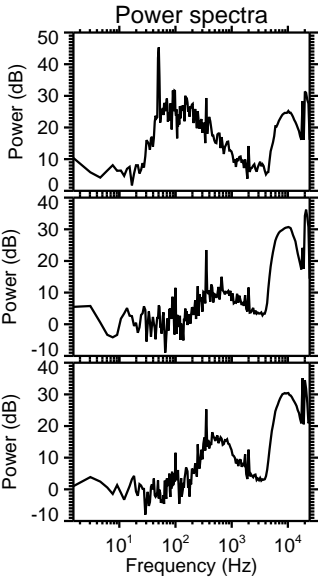
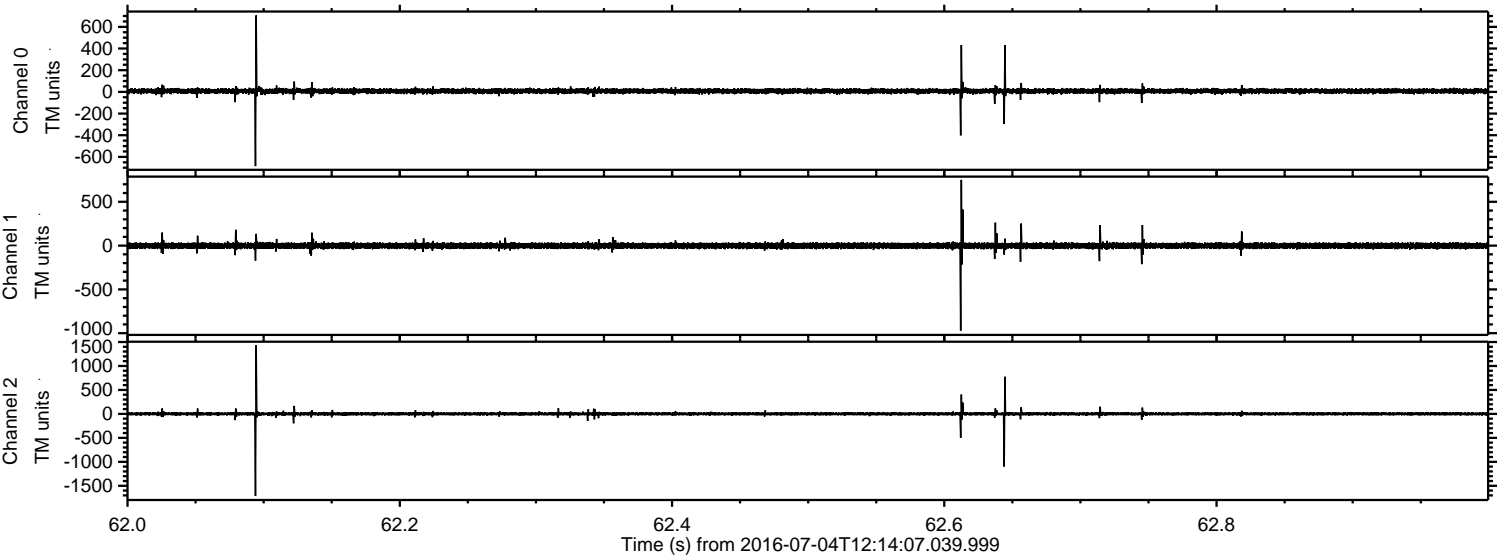


Processed Mon Jul 4 14:22:24 2016 by ELM ver.2012-10-06 from 001\_\_elm20160704\_121406\_\_dat00.bin



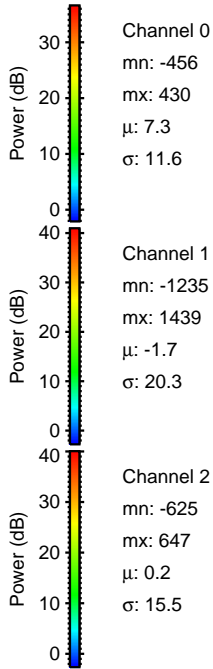
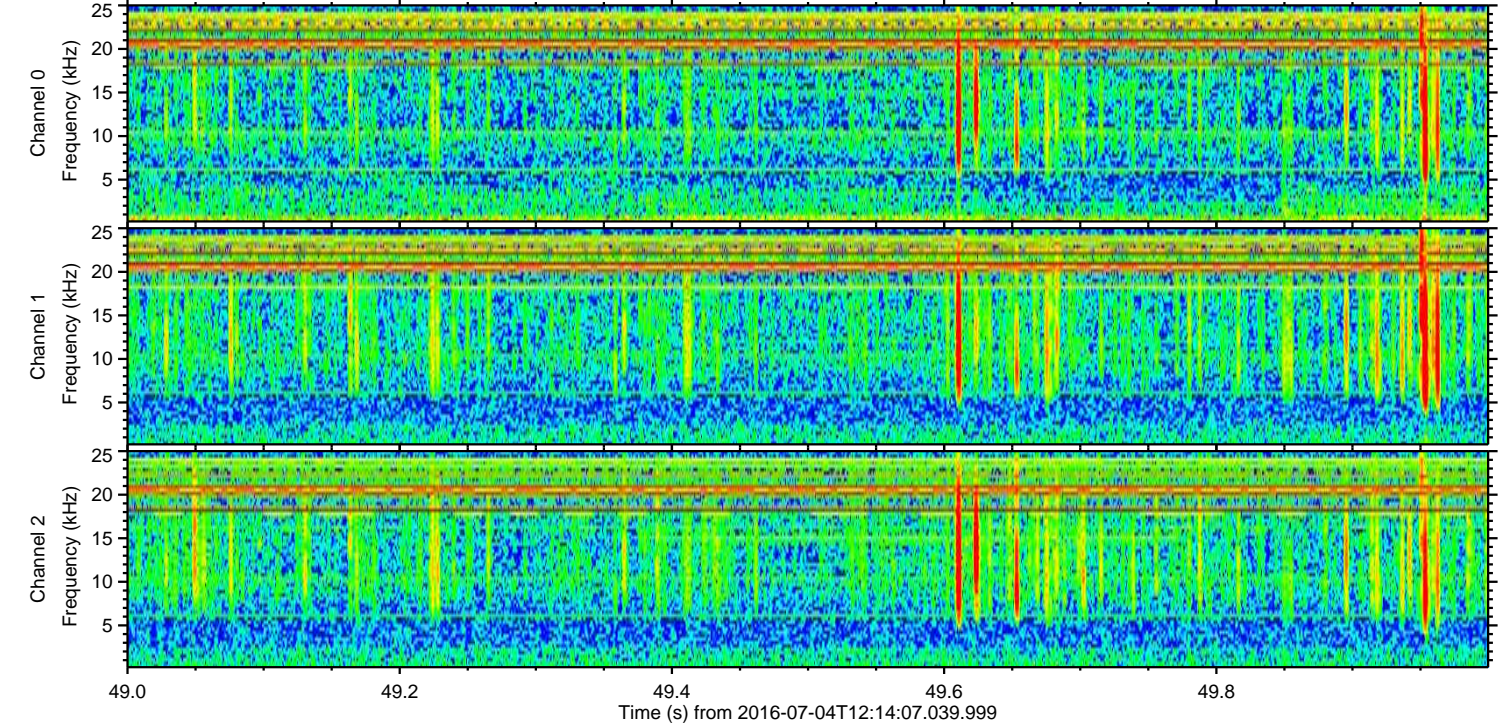
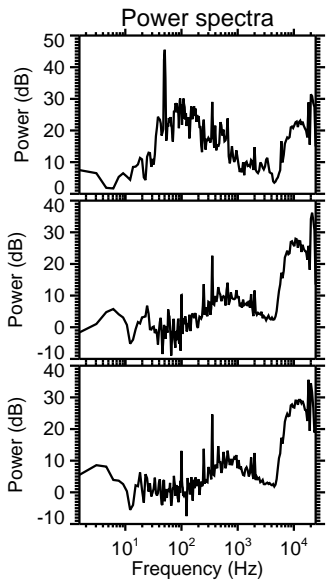
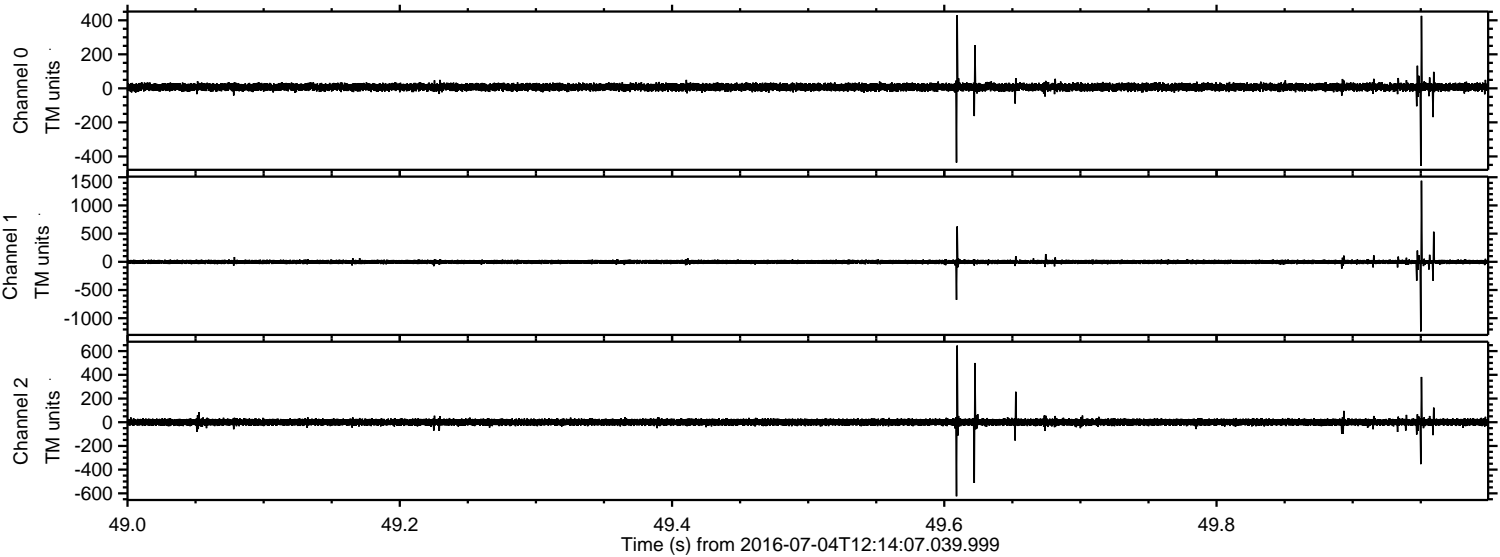


Processed Mon Jul 4 14:22:25 2016 by ELM ver.2012-10-06 from 001\_\_elm20160704\_121406\_\_dat00.bin





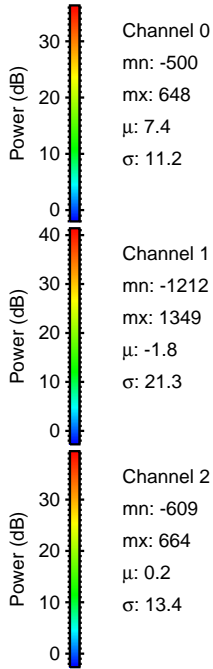
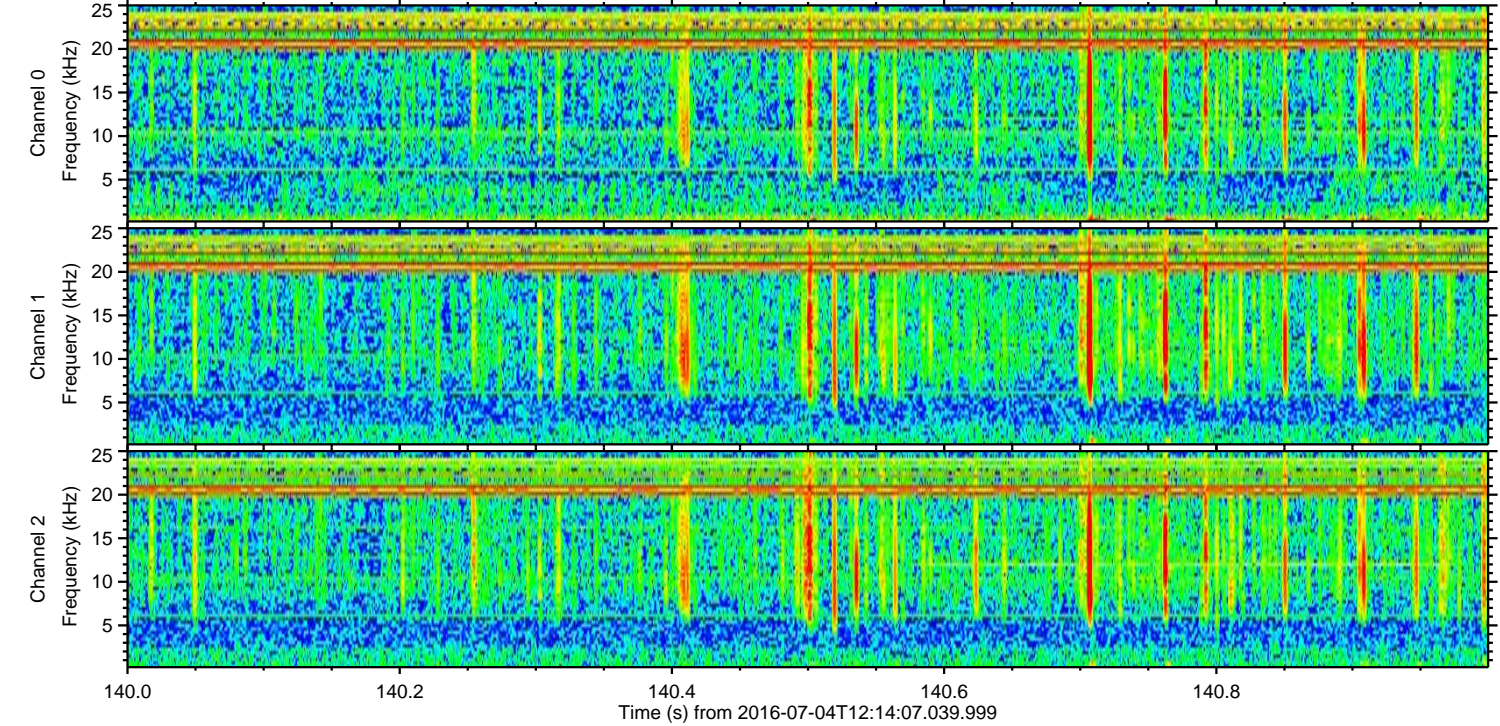
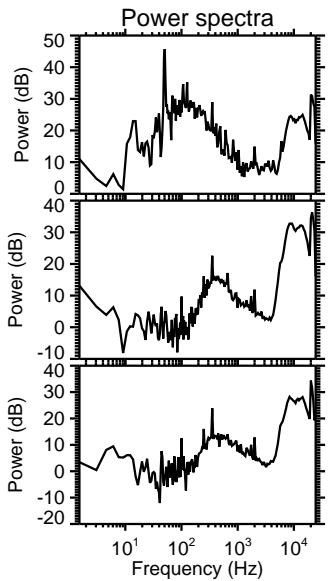
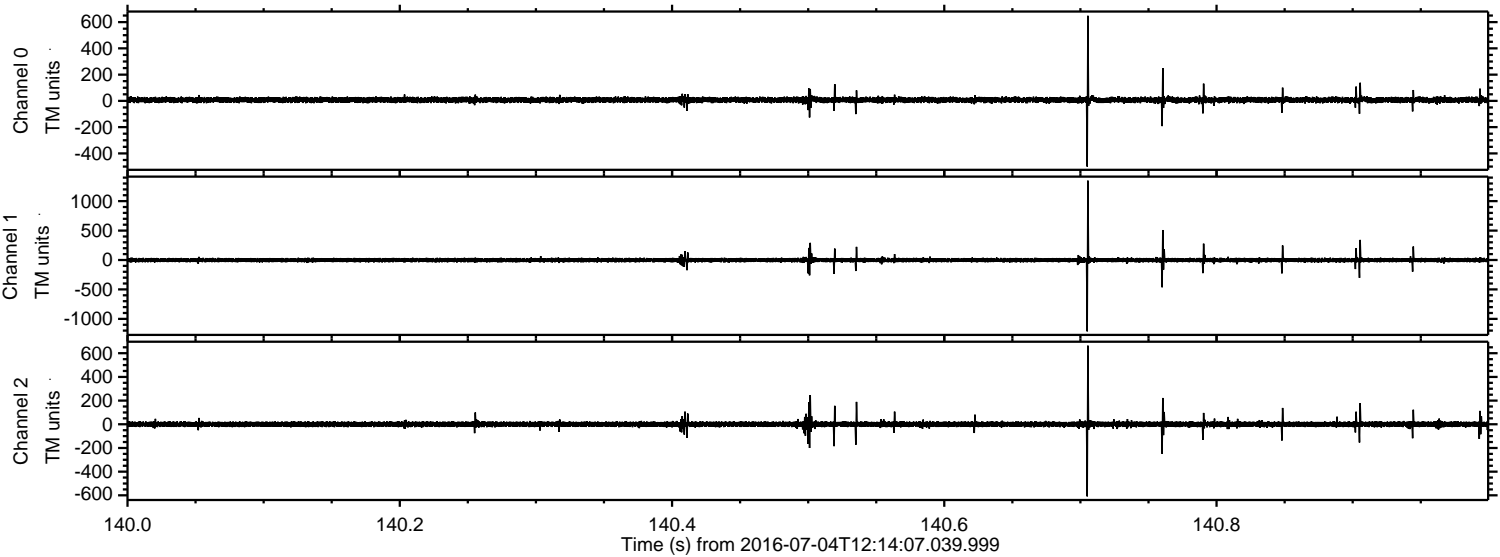
Processed Mon Jul 4 14:22:26 2016 by ELM ver.2012-10-06 from 001\_\_elm20160704\_121406\_\_dat00.bin





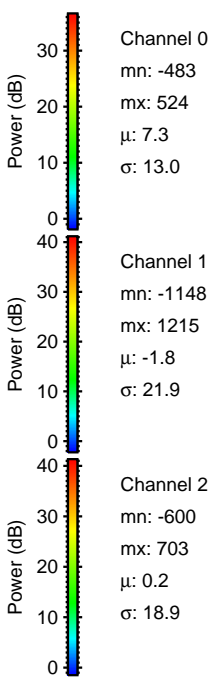
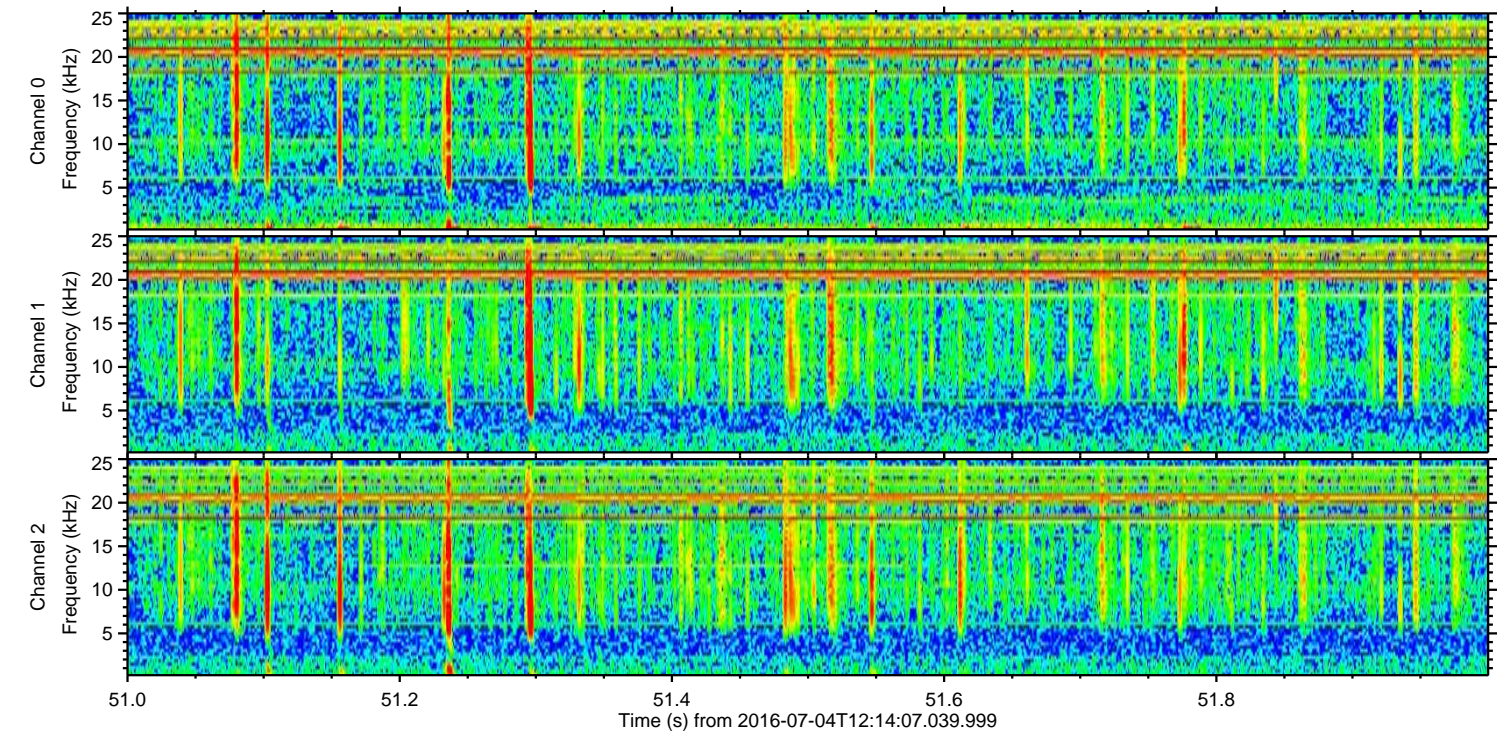
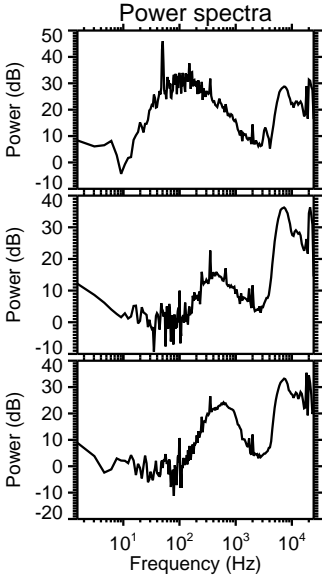
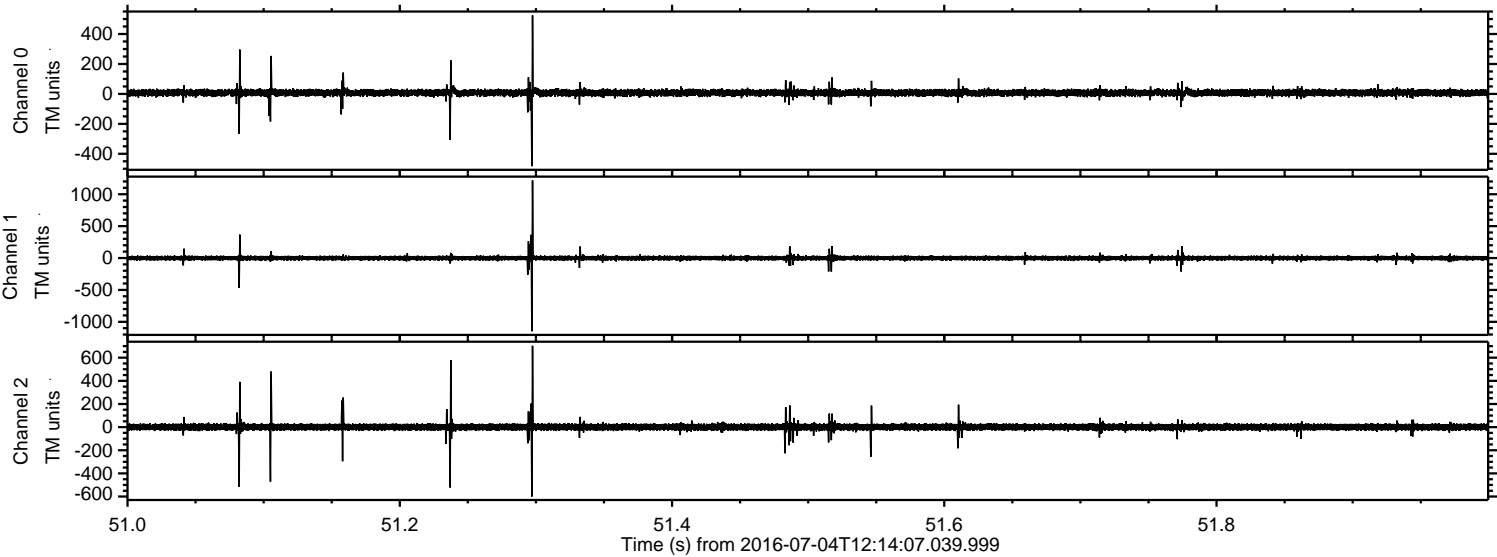
ELMAVAN 3D WAVEFORMS (Measured data sampled at 50 kHz) 51000 packets of 144 samples from 2016-07-04T12:14:07.039.999. Part 141/147

Processed Mon Jul 4 14:22:27 2016 by ELM ver.2012-10-06 from 001\_\_elm20160704\_121406\_\_dat00.bin





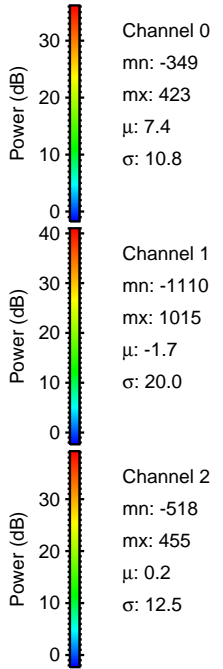
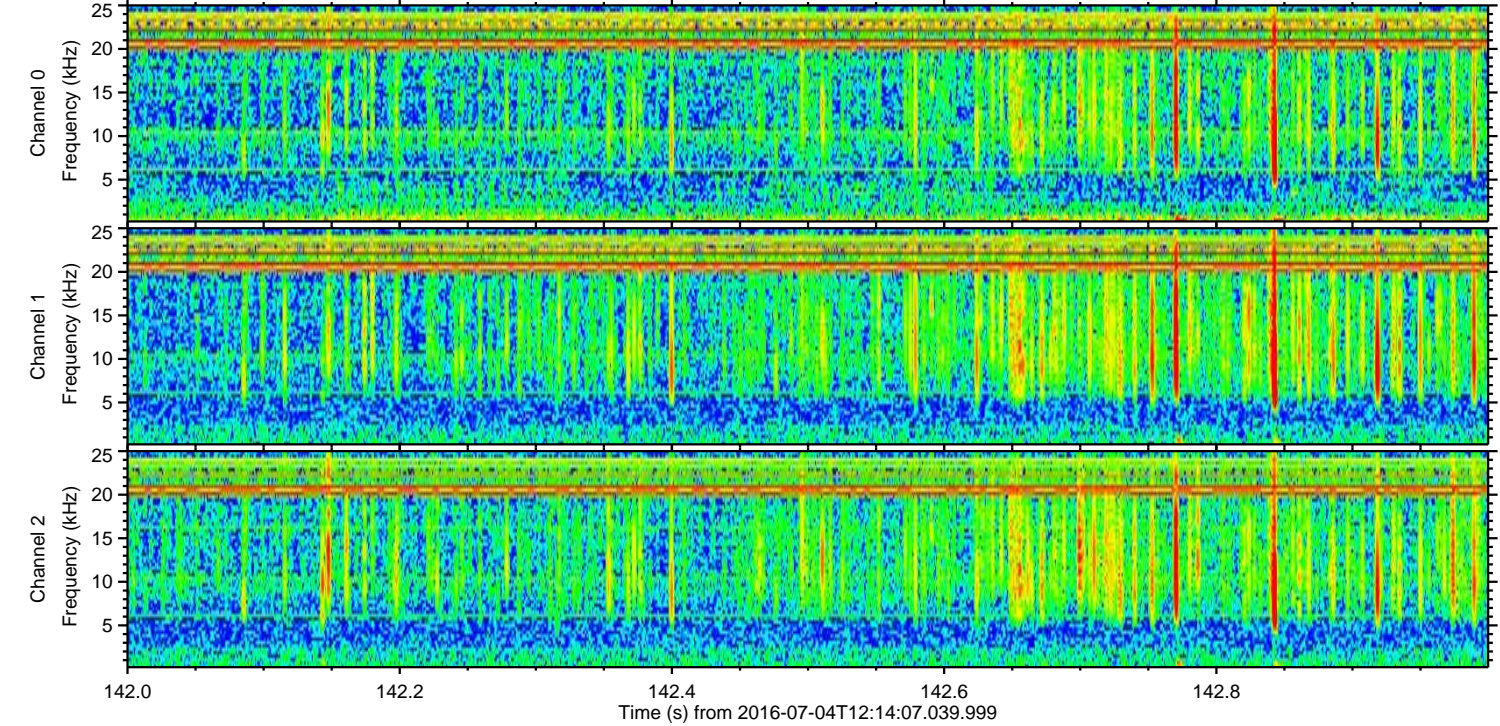
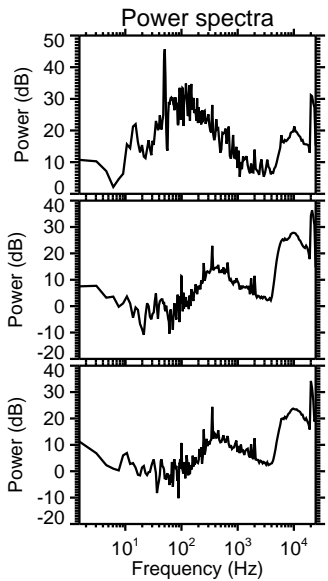
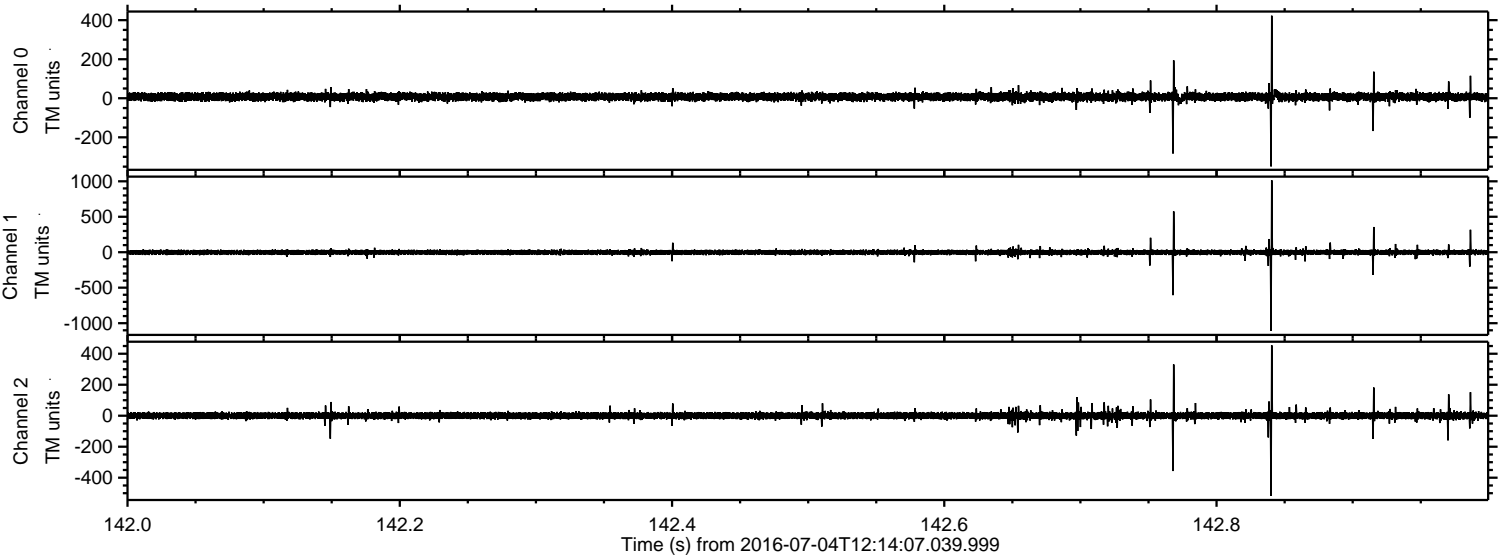
Processed Mon Jul 4 14:22:28 2016 by ELM ver.2012-10-06 from 001\_\_elm20160704\_121406\_\_dat00.bin





ELMAVAN 3D WAVEFORMS (Measured data sampled at 50 kHz) 51000 packets of 144 samples from 2016-07-04T12:14:07.039.999. Part 143/147

Processed Mon Jul 4 14:22:29 2016 by ELM ver.2012-10-06 from 001\_\_elm20160704\_121406\_\_dat00.bin





Processed Mon Jul 4 14:22:30 2016 by ELM ver.2012-10-06 from 001\_\_elm20160704\_121406\_\_dat00.bin

