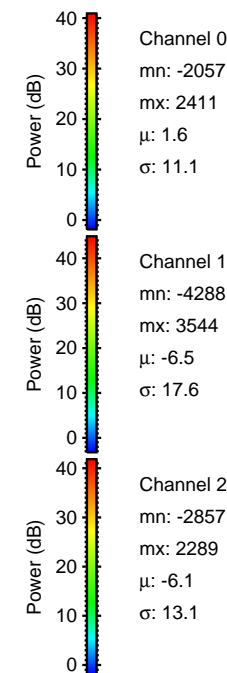
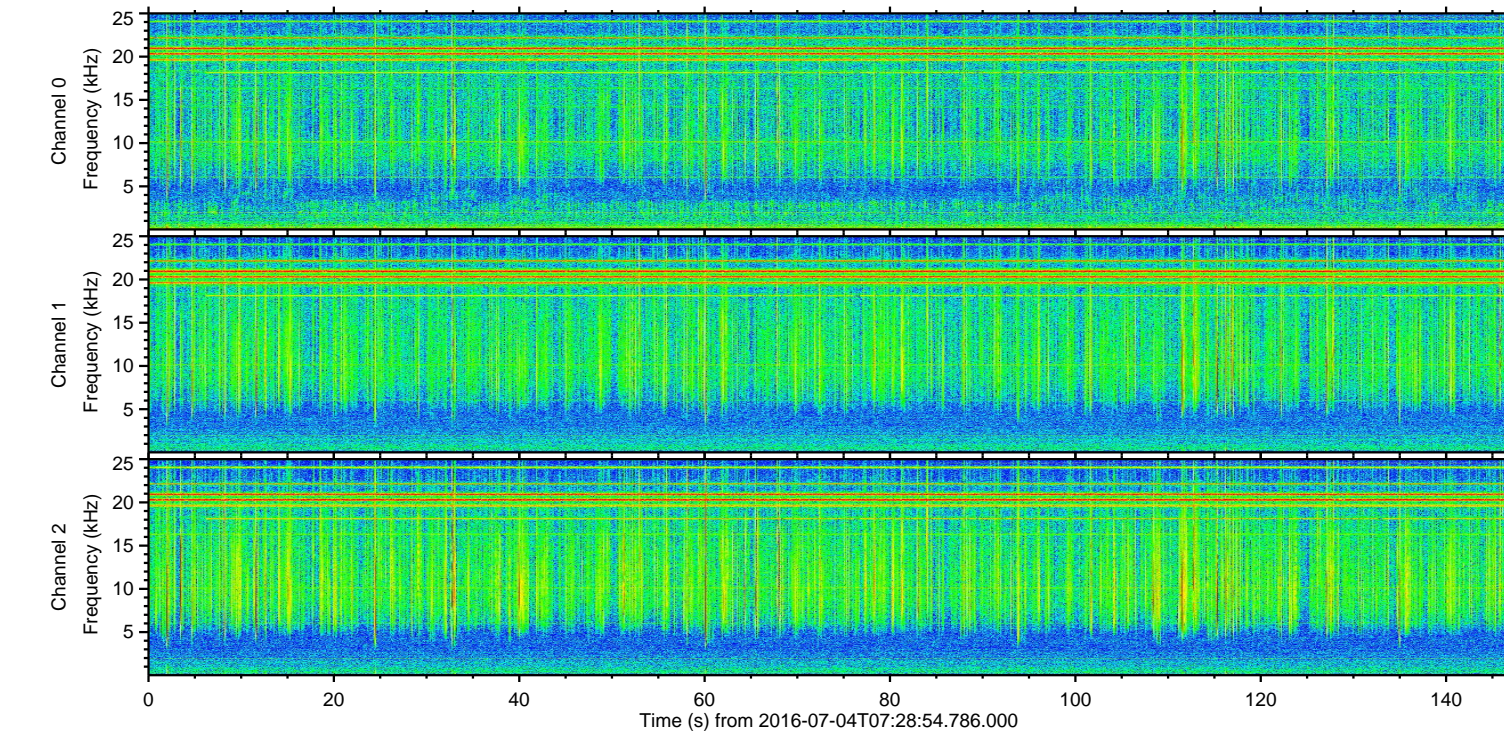
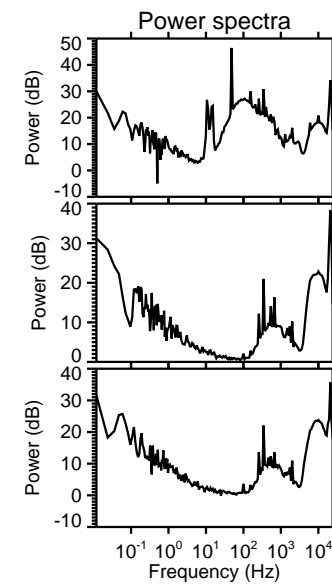
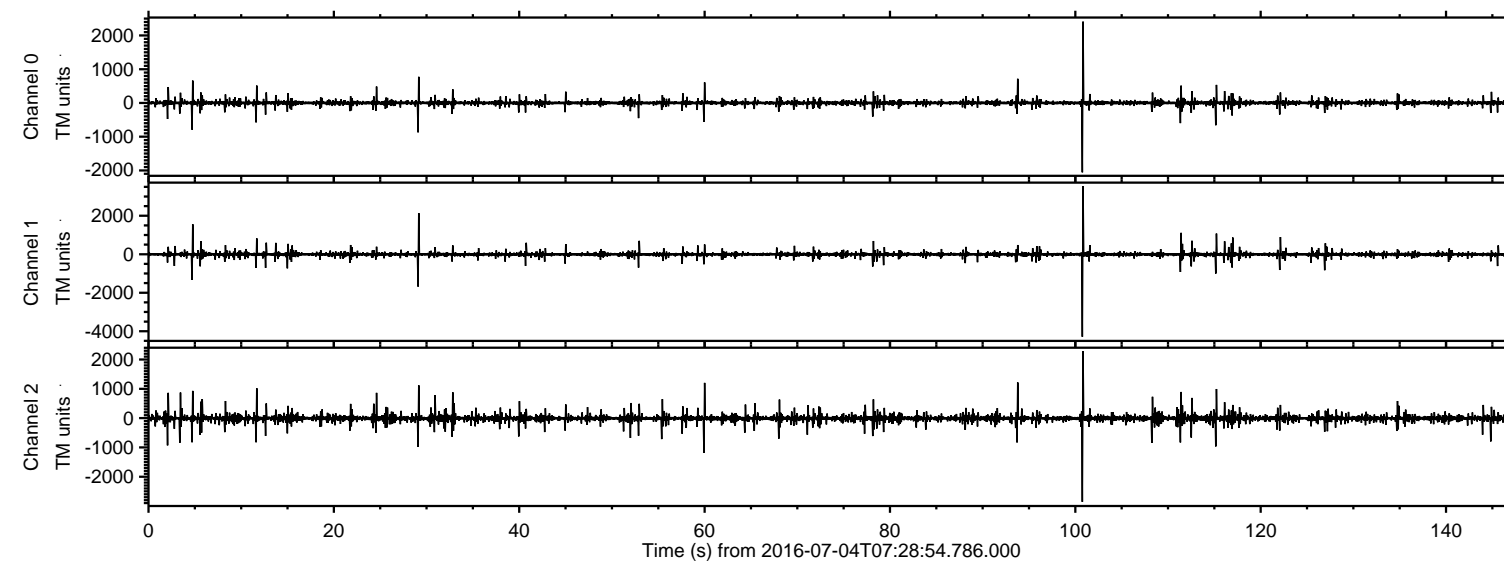


# ELMAVAN 3D WAVEFORMS (Measured data sampled at 50 kHz) 51000 packets of 144 samples from 2016-07-04T07:28:54.786.000.

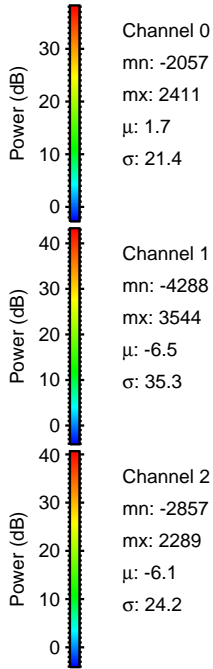
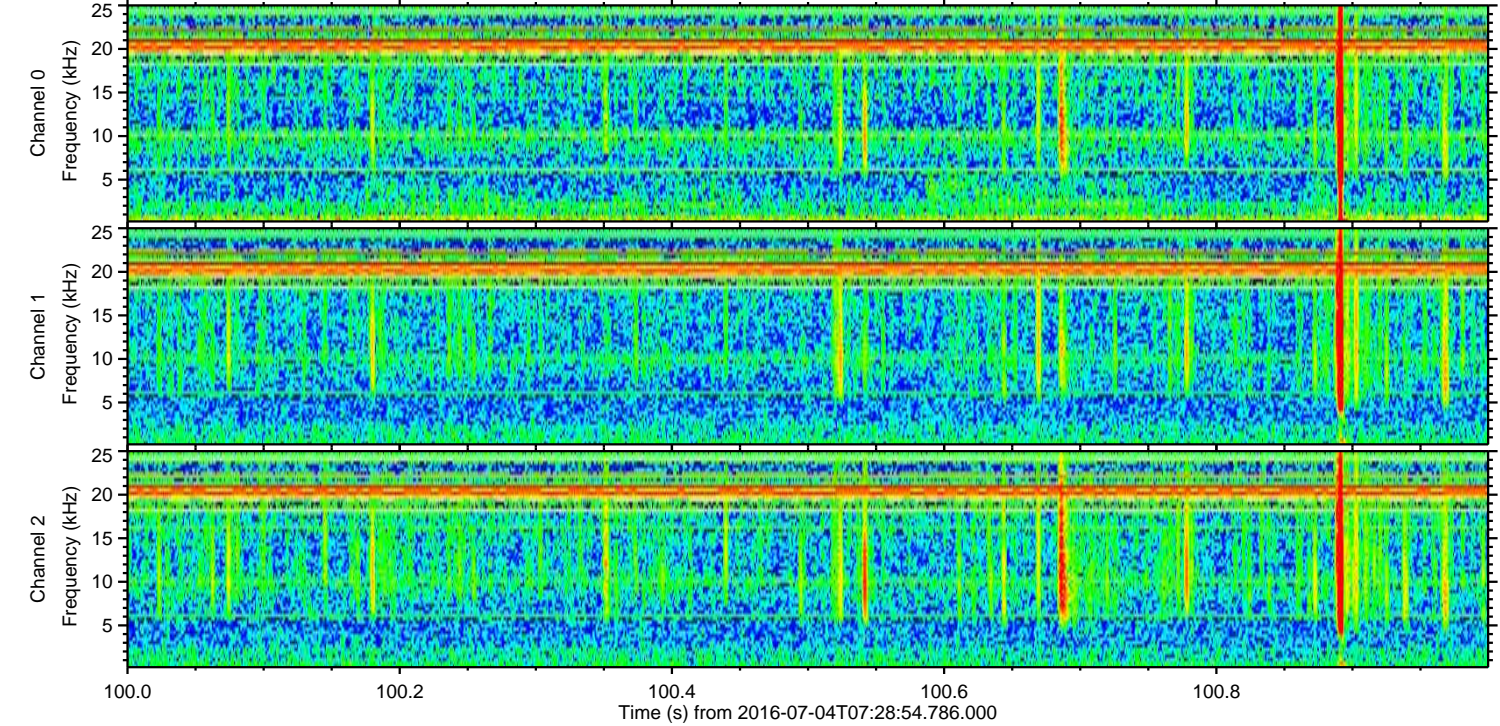
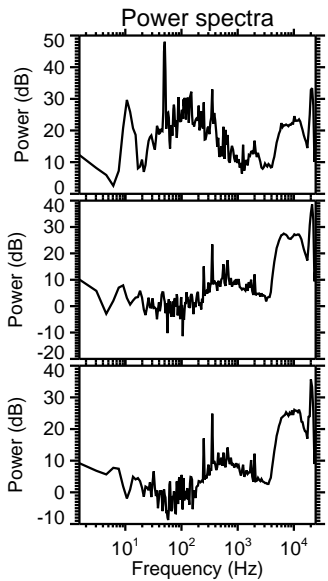
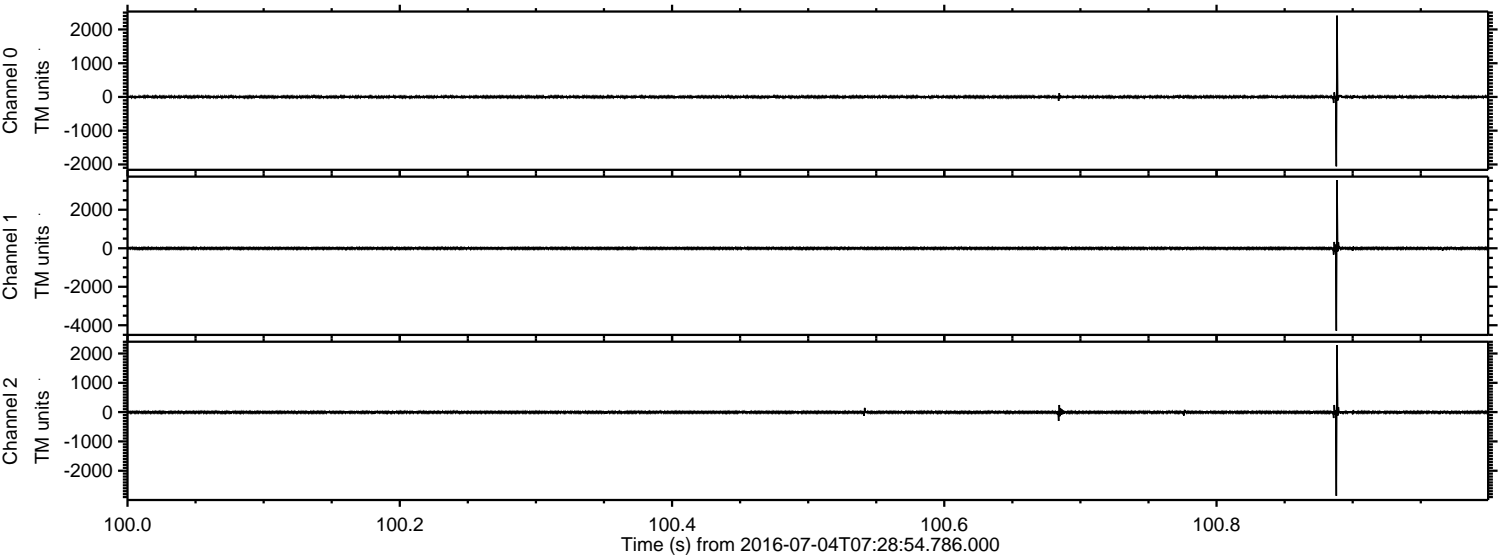
Processed Mon Jul 4 09:36:24 2016 by ELM ver.2012-10-06 from 001\_\_elm20160704\_072853\_\_dat00.bin





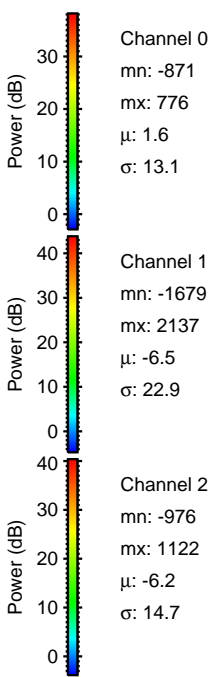
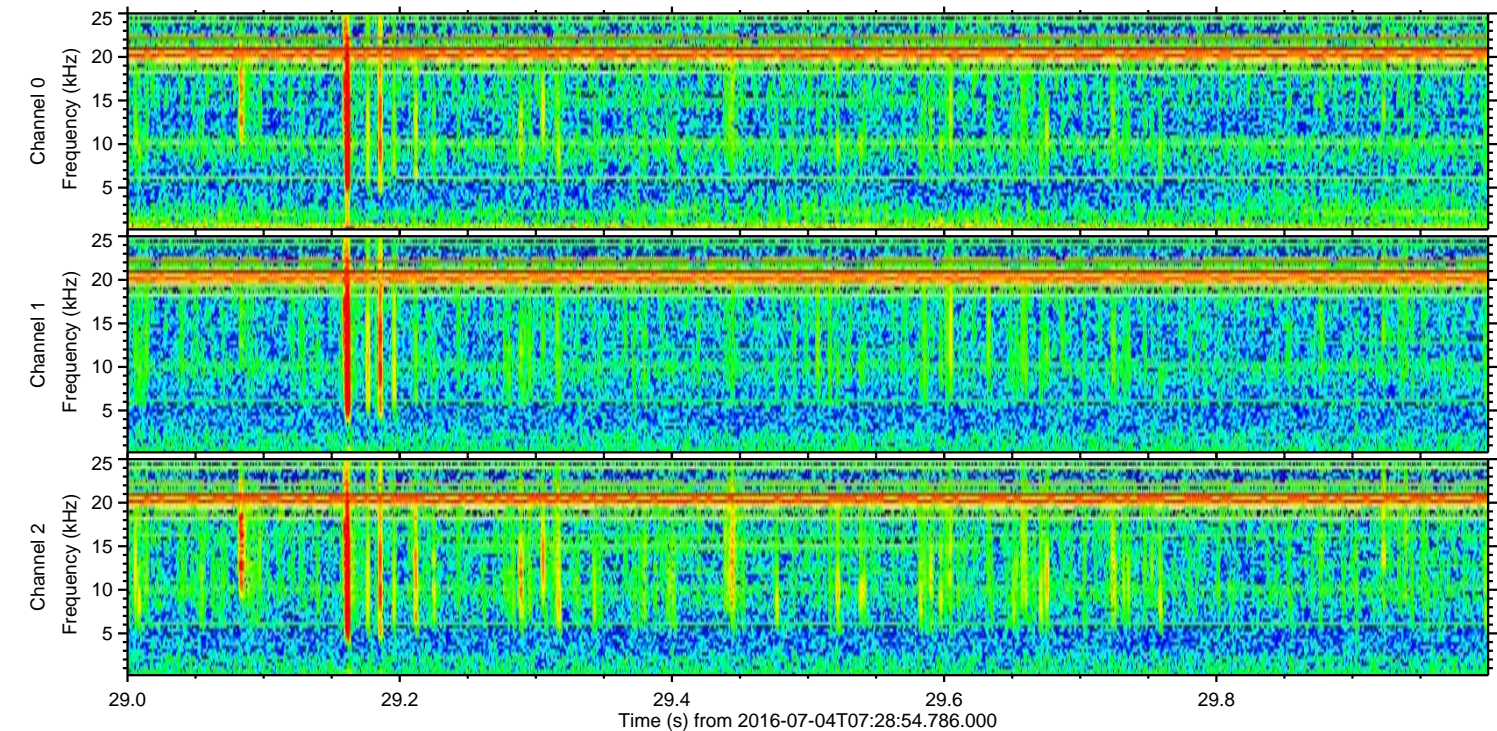
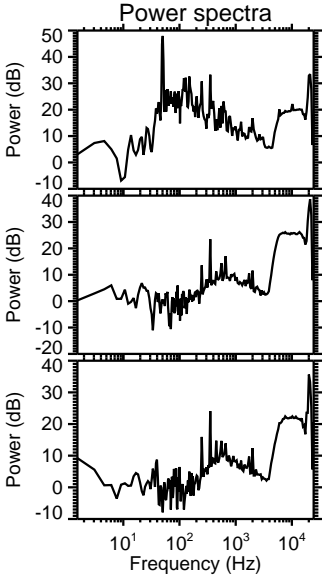
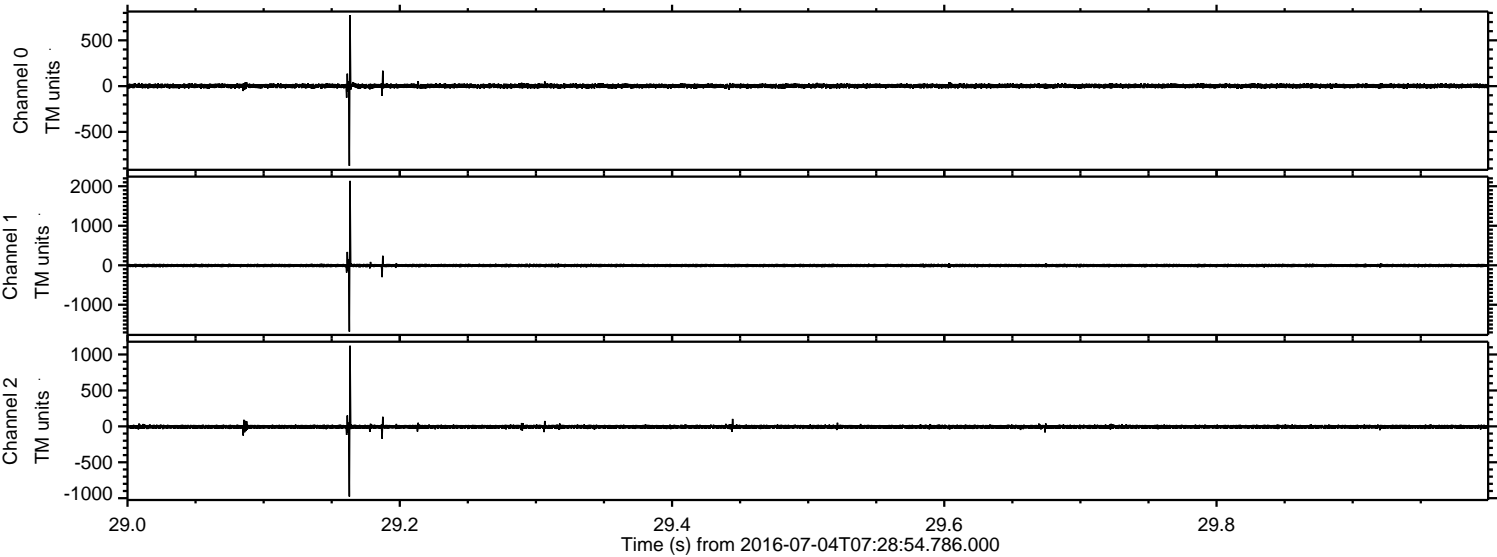
ELMAVAN 3D WAVEFORMS (Measured data sampled at 50 kHz) 51000 packets of 144 samples from 2016-07-04T07:28:54.786.000. Part 101/147

Processed Mon Jul 4 09:36:36 2016 by ELM ver.2012-10-06 from 001\_\_elm20160704\_072853\_\_dat00.bin



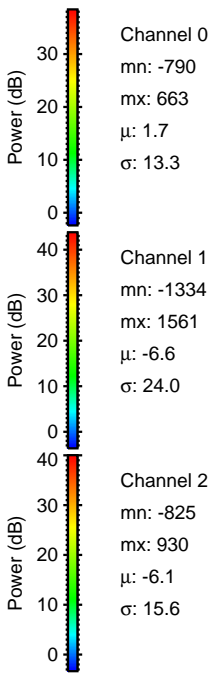
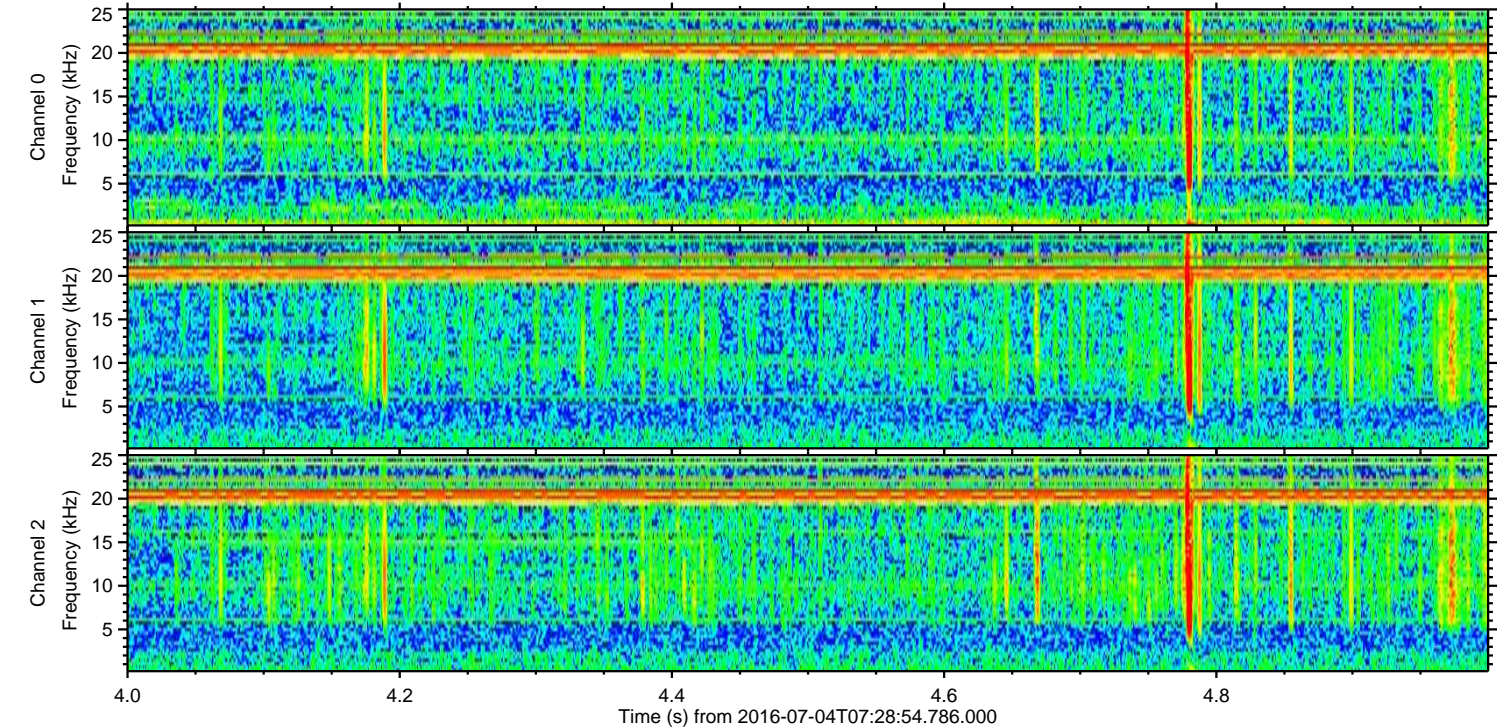
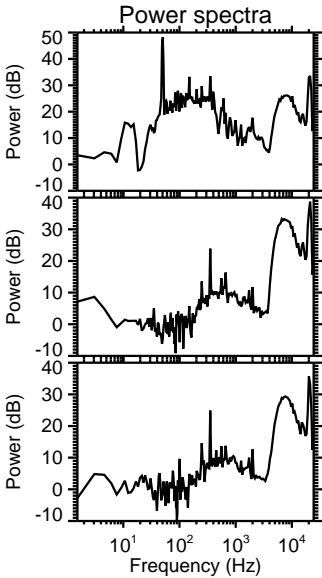
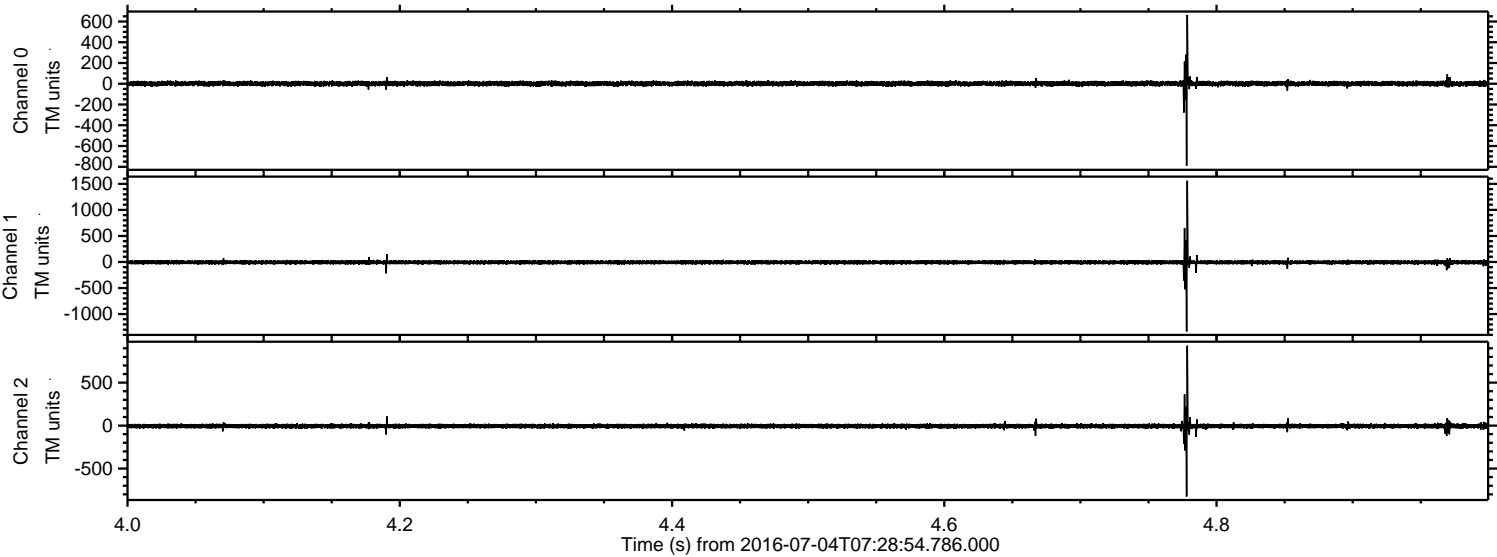


Processed Mon Jul 4 09:36:37 2016 by ELM ver.2012-10-06 from 001\_\_elm20160704\_072853\_\_dat00.bin



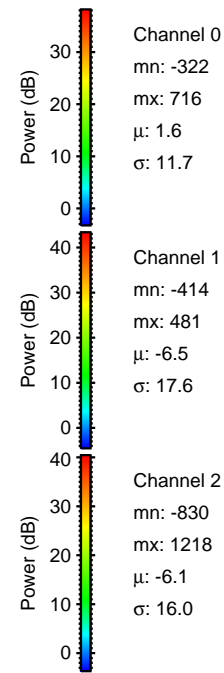
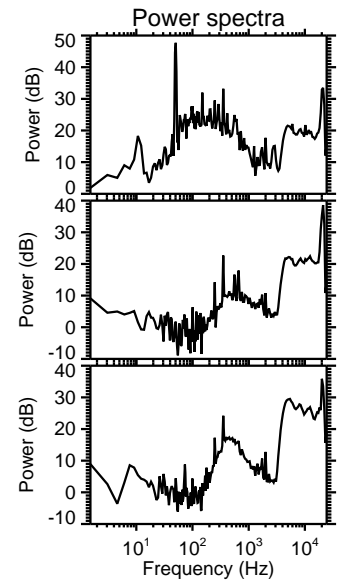
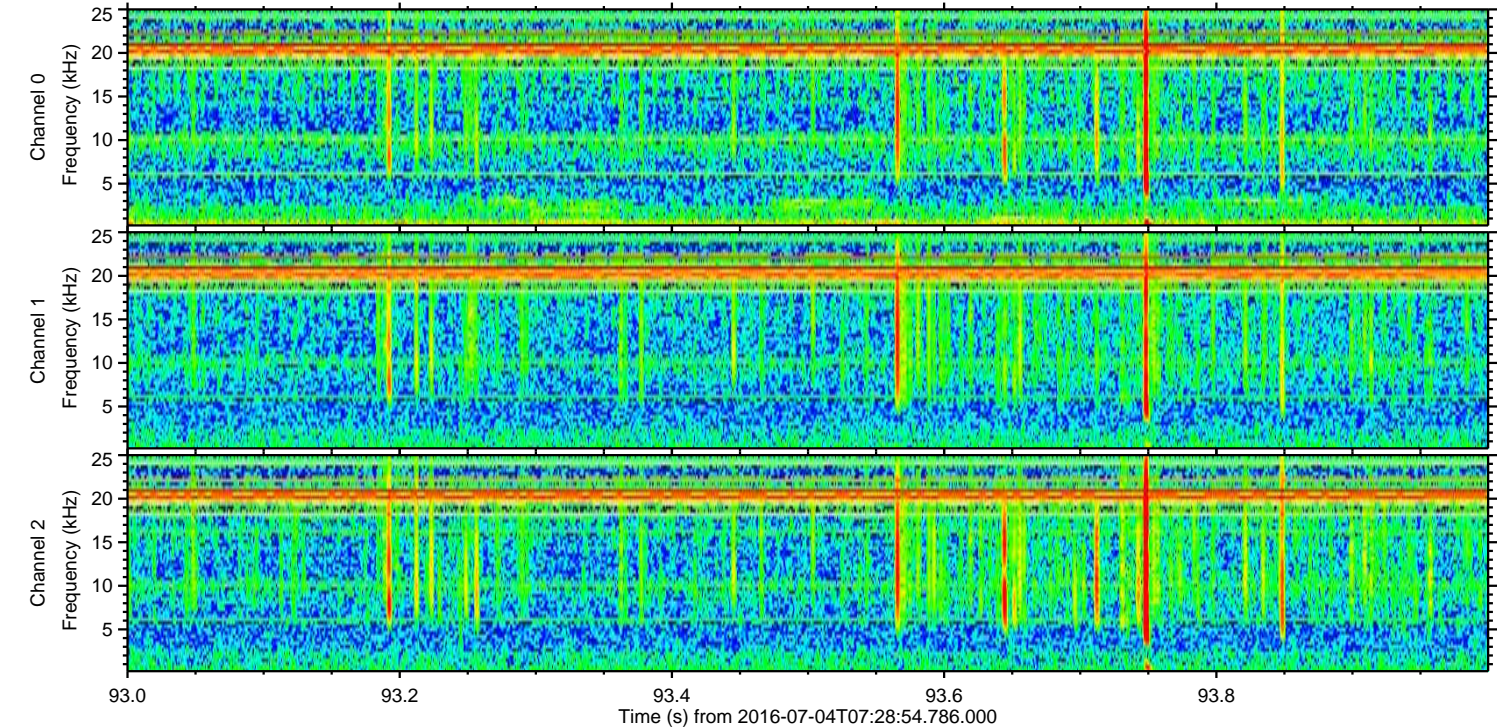
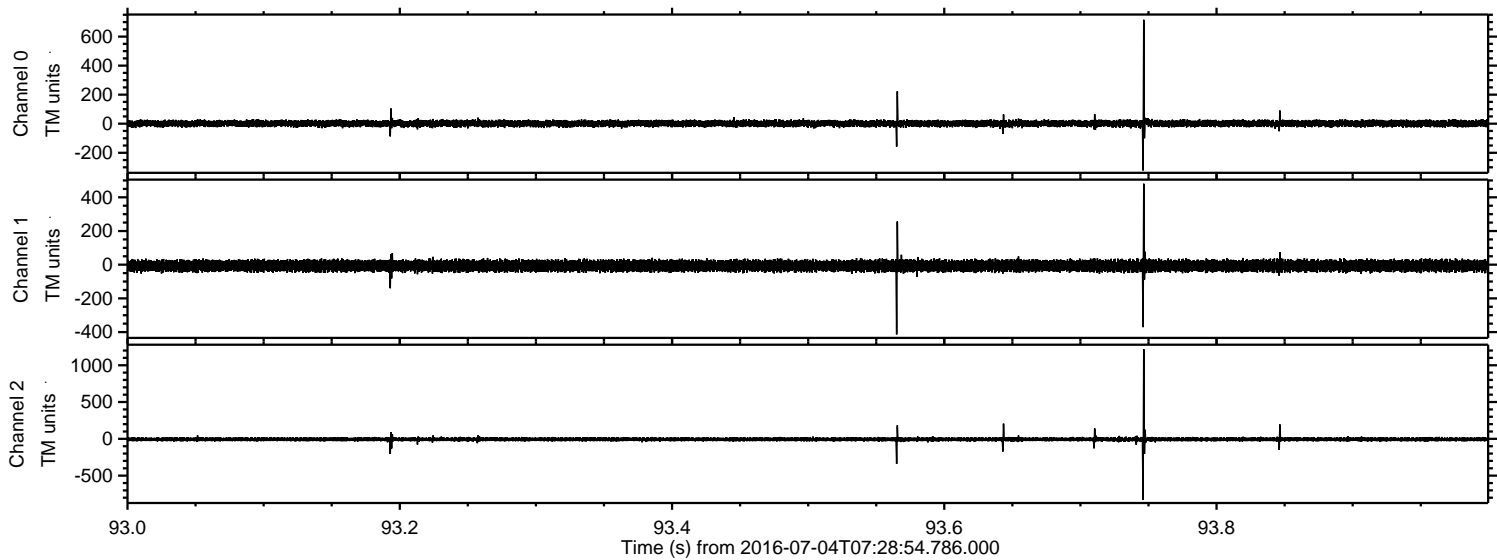


Processed Mon Jul 4 09:36:37 2016 by ELM ver.2012-10-06 from 001\_\_elm20160704\_072853\_\_dat00.bin



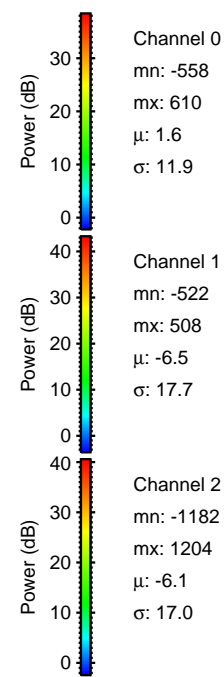
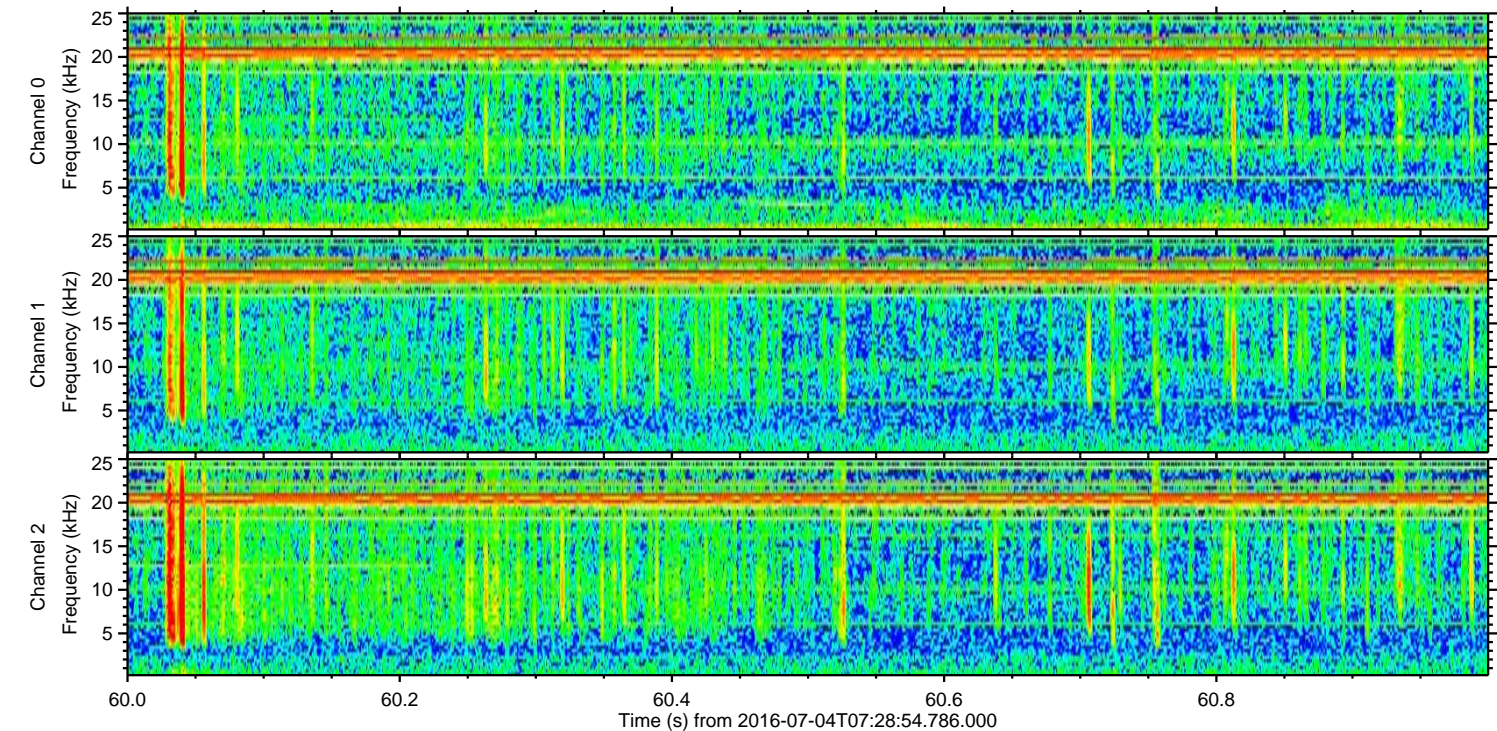
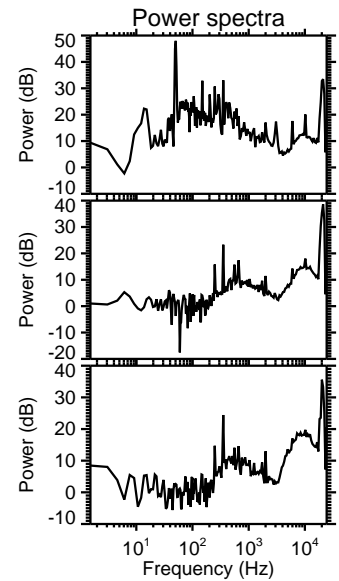
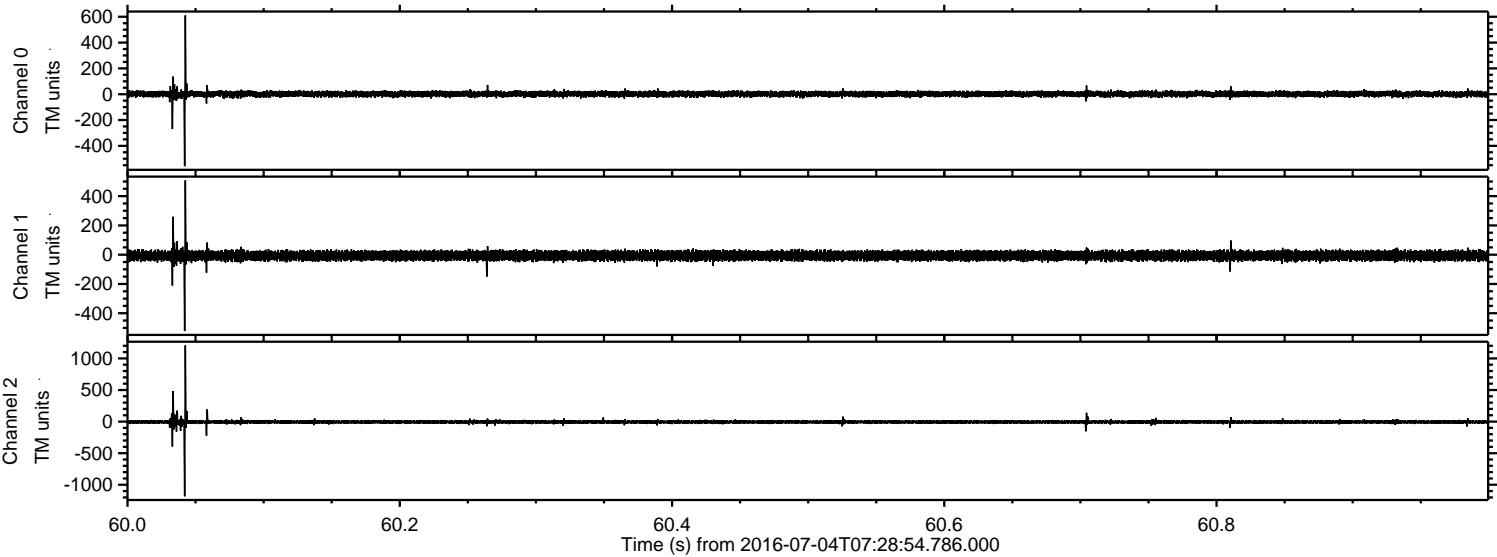


Processed Mon Jul 4 09:36:38 2016 by ELM ver.2012-10-06 from 001\_\_elm20160704\_072853\_\_dat00.bin



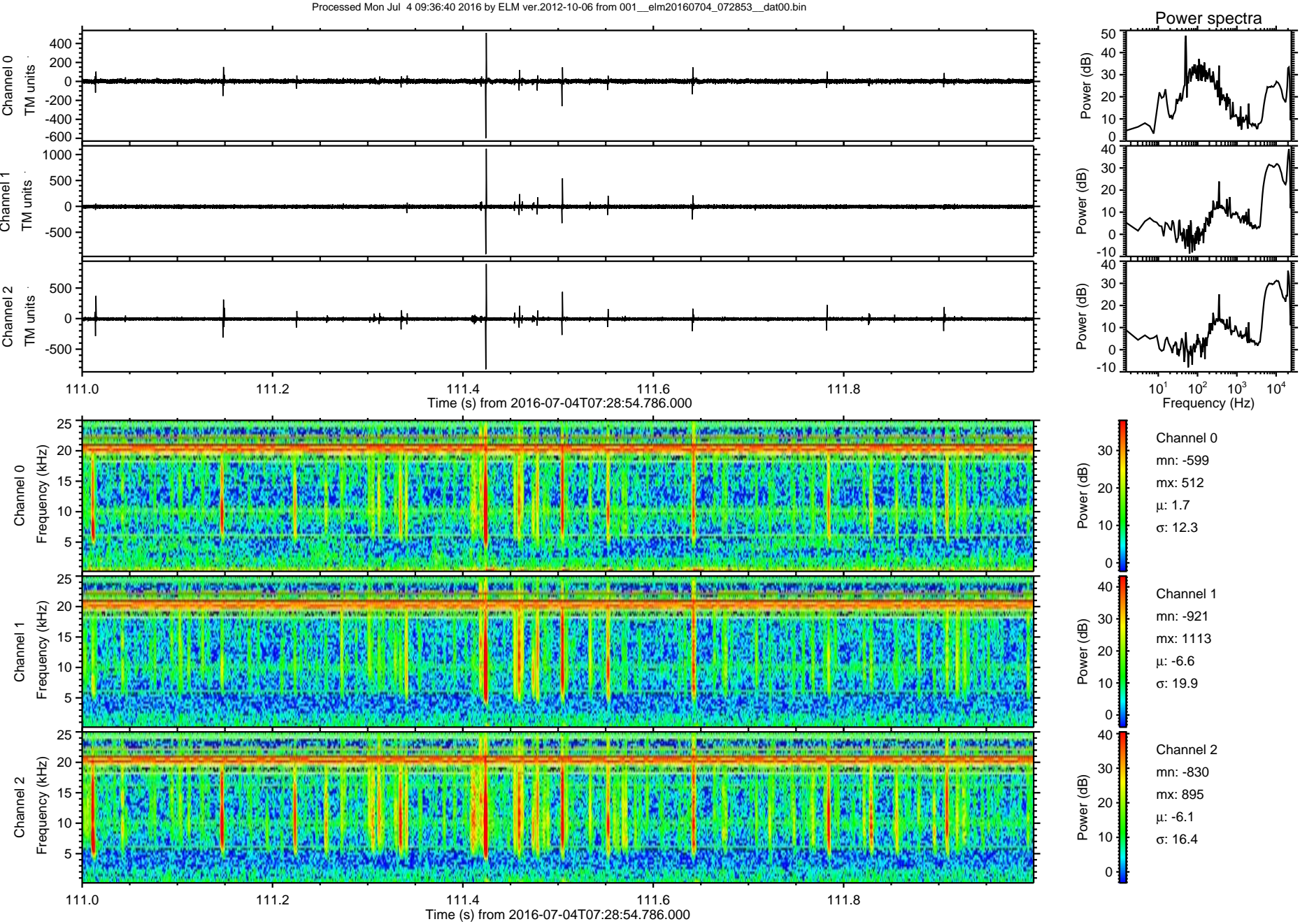


Processed Mon Jul 4 09:36:39 2016 by ELM ver.2012-10-06 from 001\_\_elm20160704\_072853\_\_dat00.bin





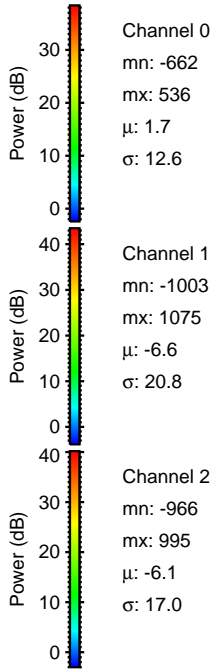
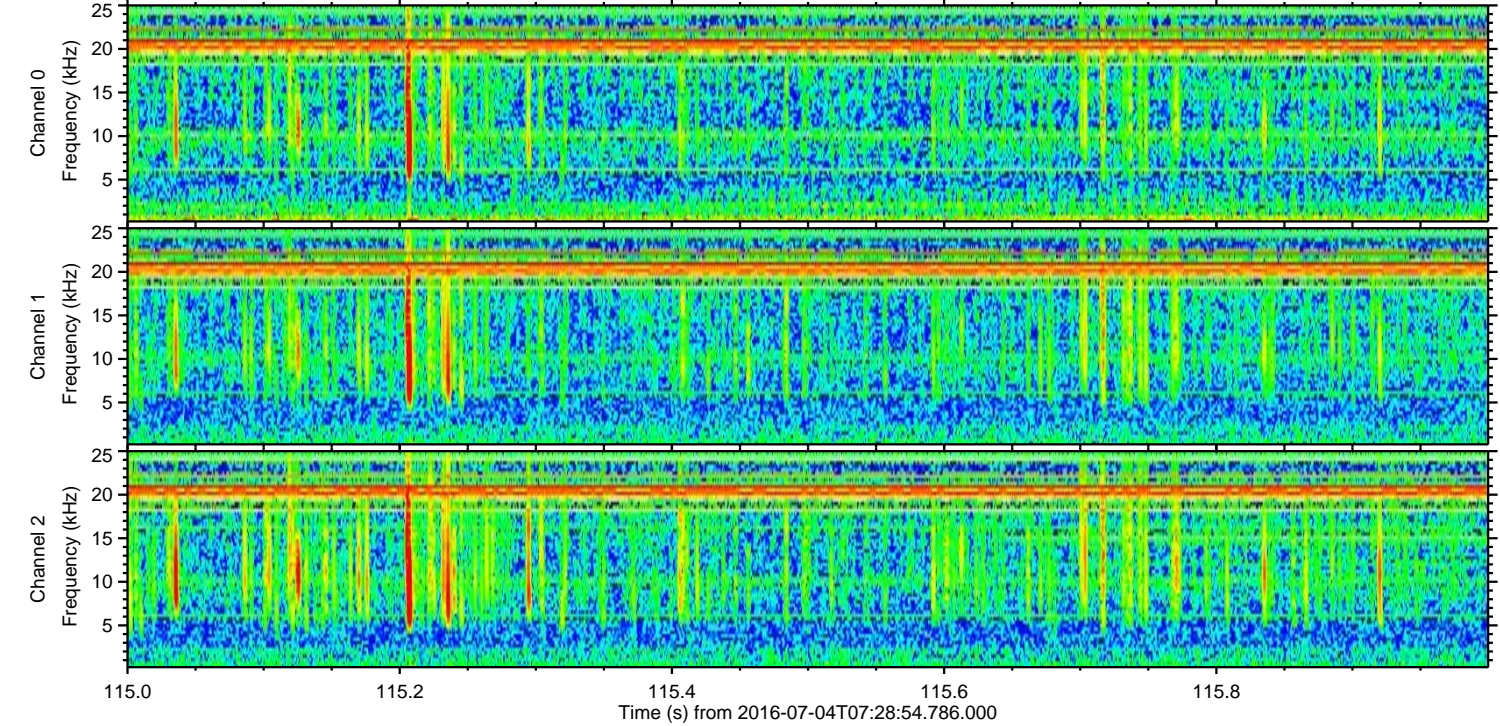
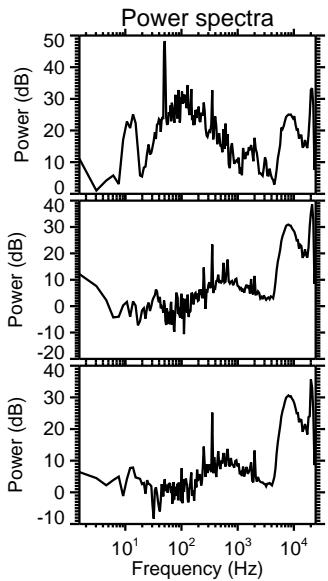
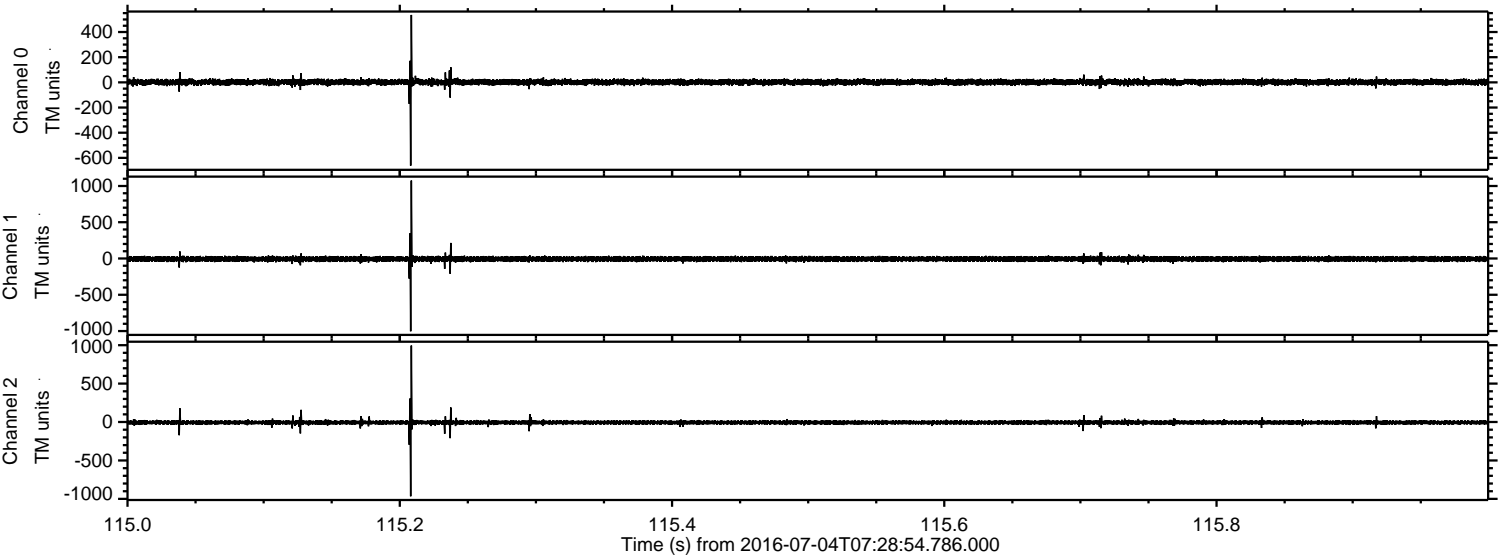
ELMAVAN 3D WAVEFORMS (Measured data sampled at 50 kHz) 51000 packets of 144 samples from 2016-07-04T07:28:54.786.000. Part 112/147





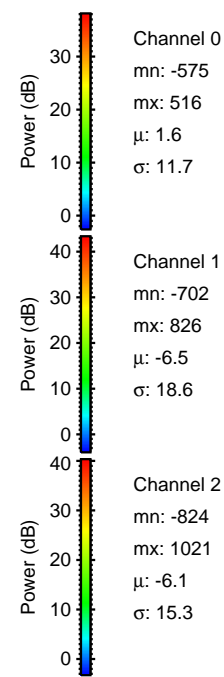
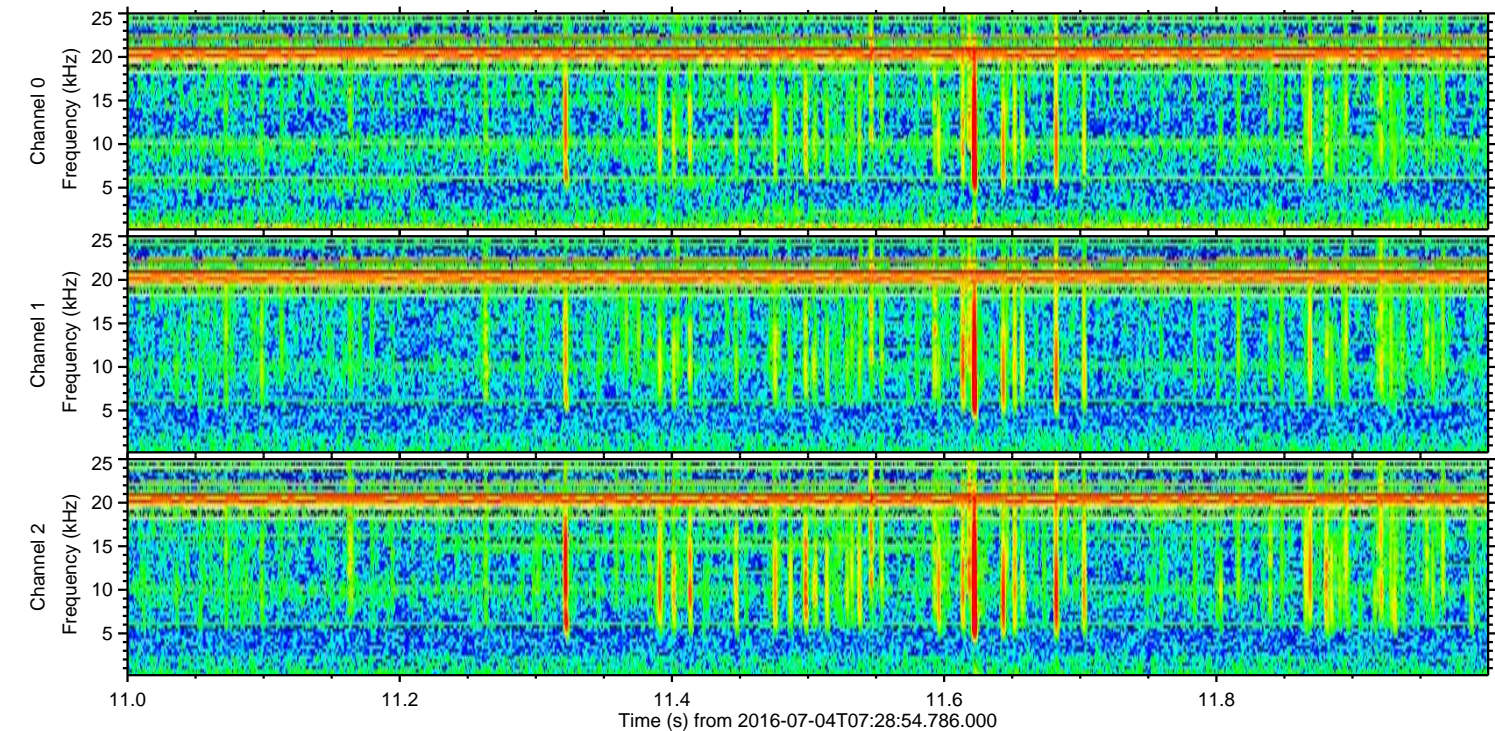
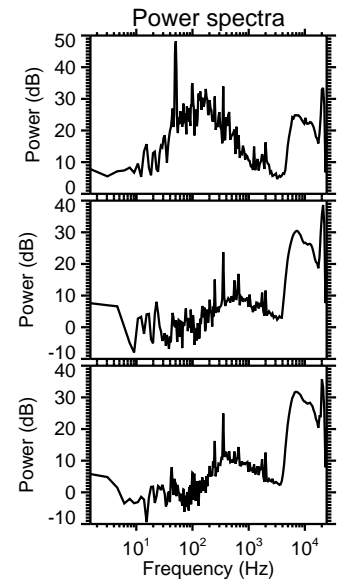
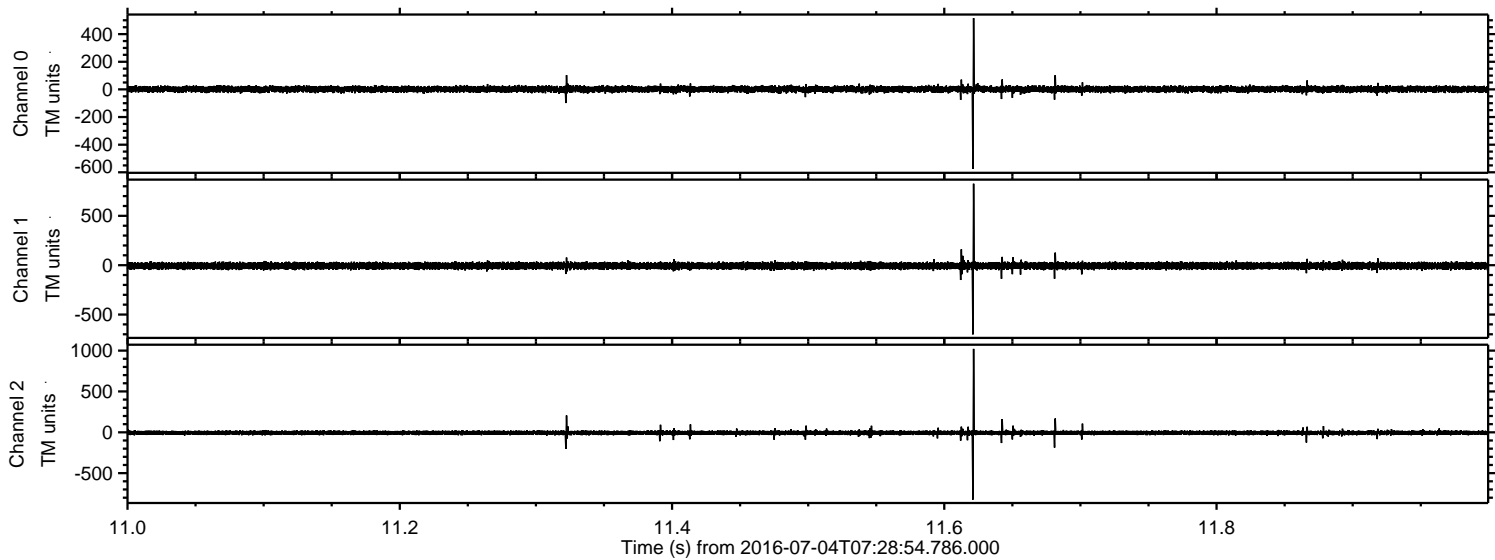
ELMAVAN 3D WAVEFORMS (Measured data sampled at 50 kHz) 51000 packets of 144 samples from 2016-07-04T07:28:54.786.000. Part 116/147

Processed Mon Jul 4 09:36:41 2016 by ELM ver.2012-10-06 from 001\_\_elm20160704\_072853\_\_dat00.bin





Processed Mon Jul 4 09:36:42 2016 by ELM ver.2012-10-06 from 001\_\_elm20160704\_072853\_\_dat00.bin





Processed Mon Jul 4 09:36:43 2016 by ELM ver.2012-10-06 from 001\_\_elm20160704\_072853\_\_dat00.bin

