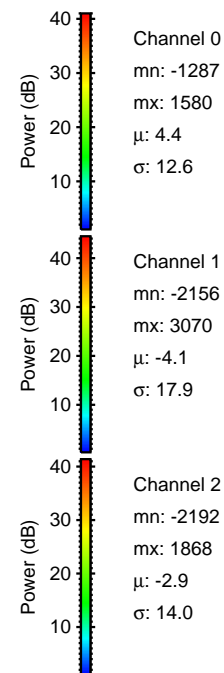
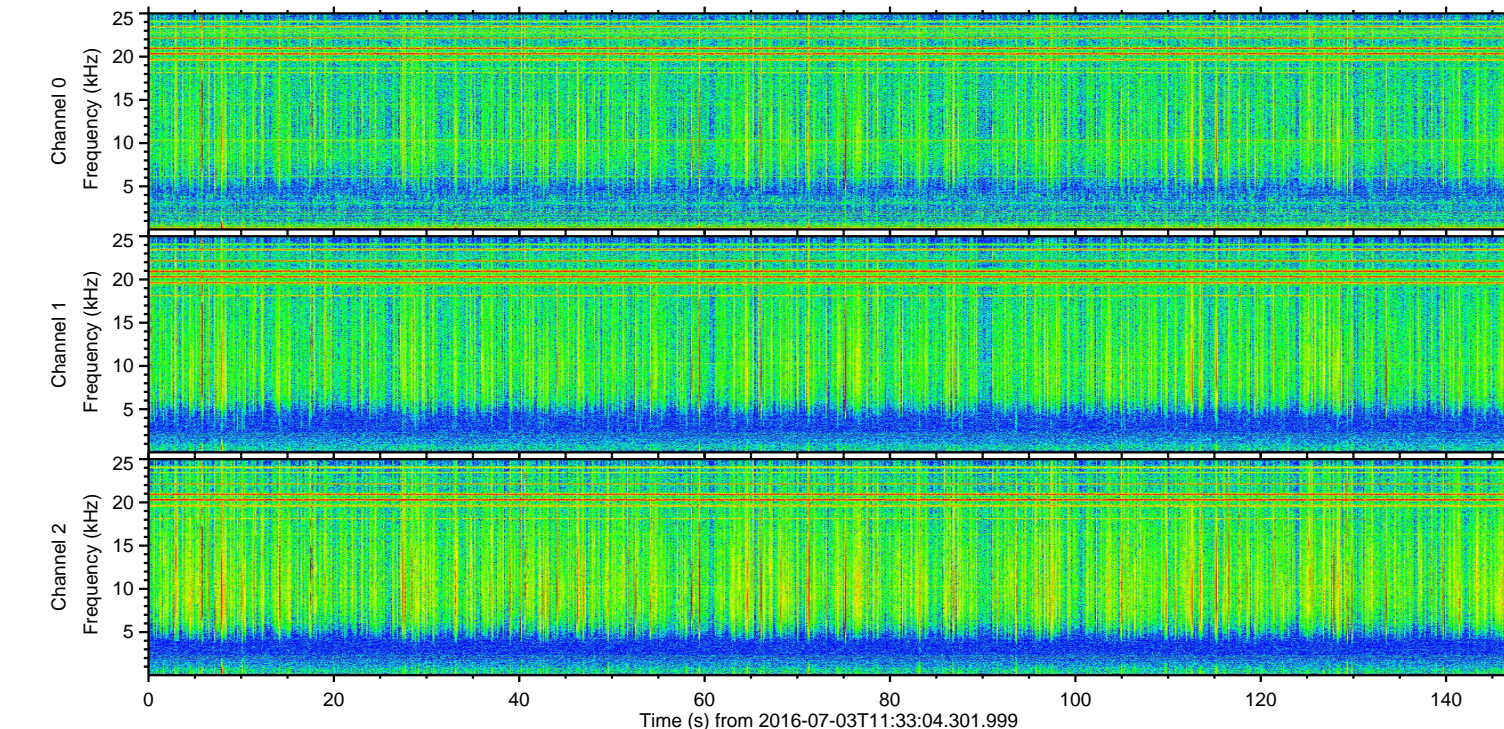
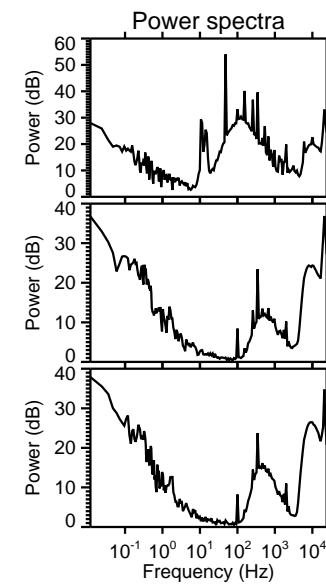
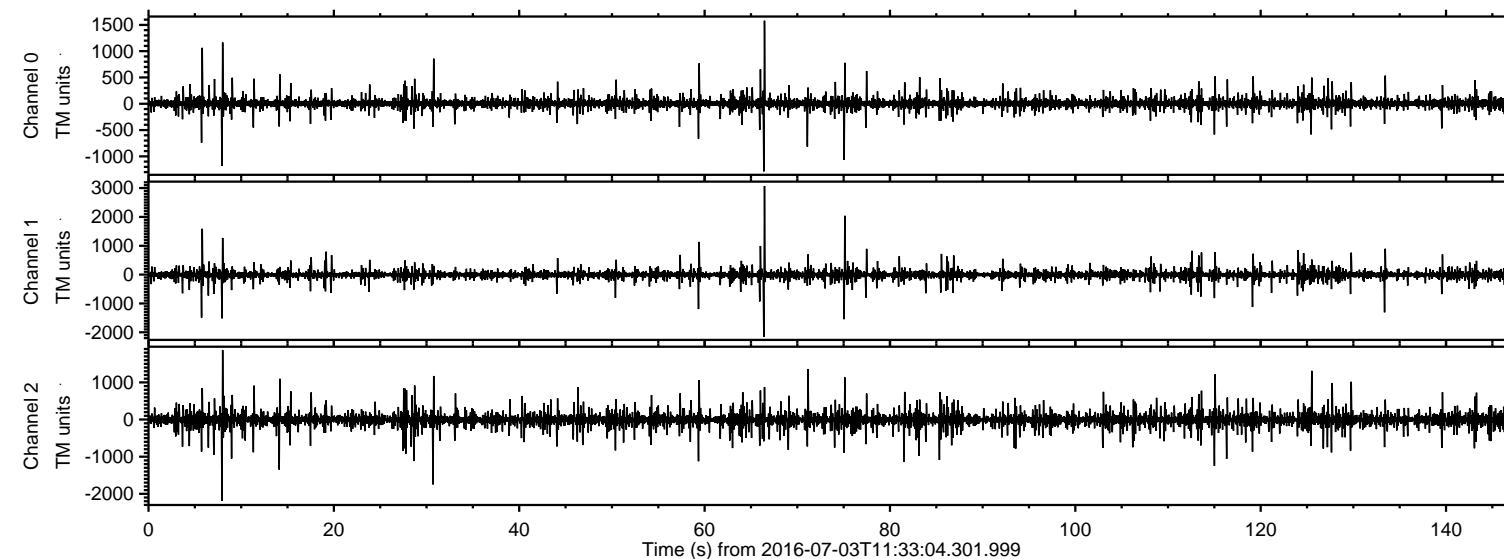


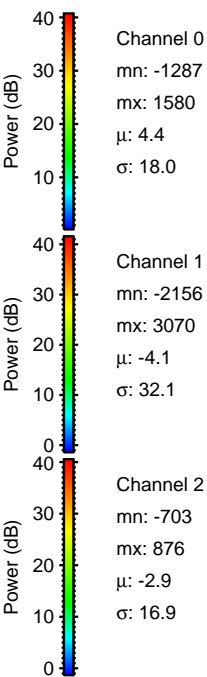
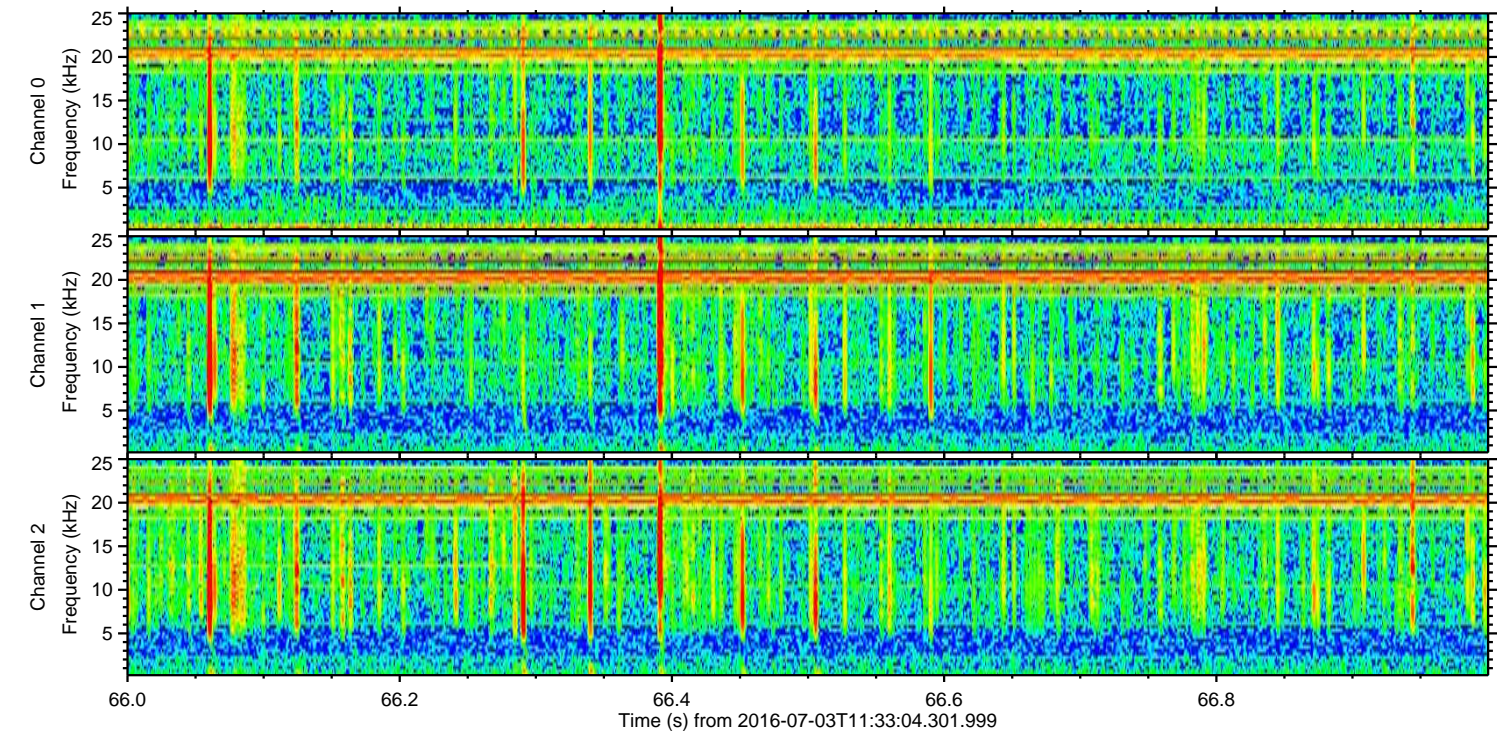
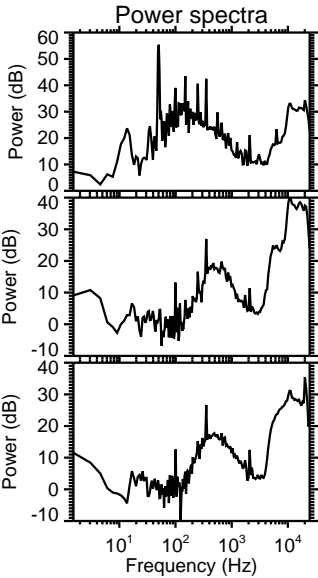
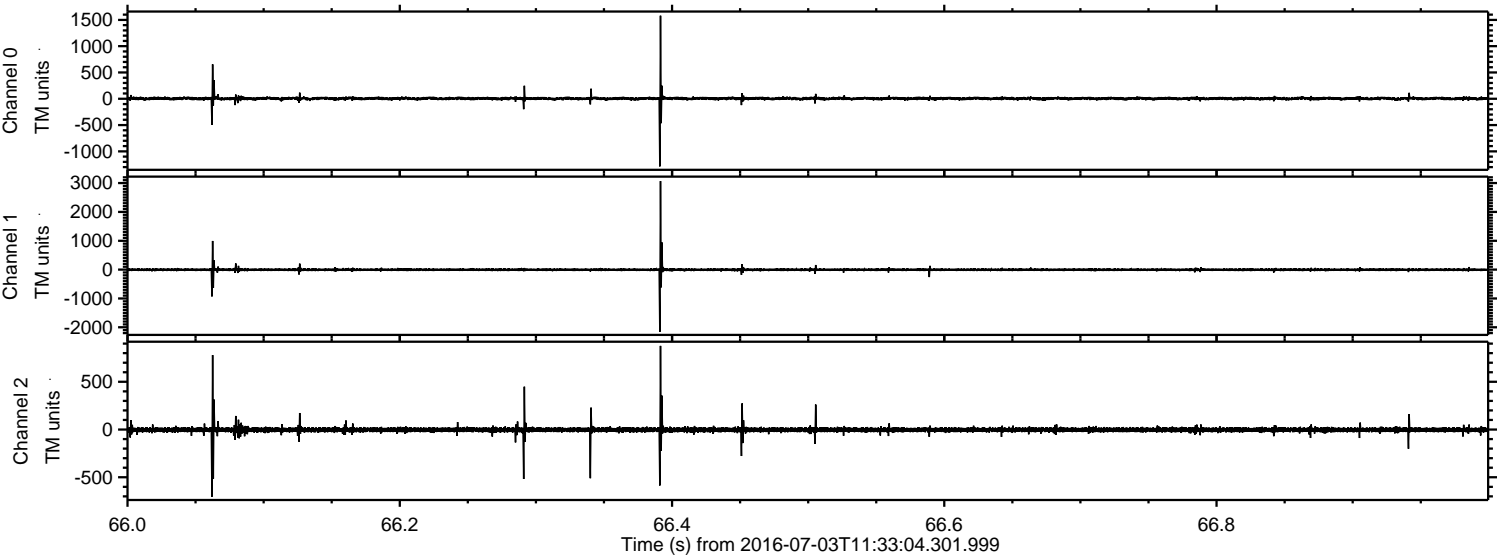
# ELMAVAN 3D WAVEFORMS (Measured data sampled at 50 kHz) 51000 packets of 144 samples from 2016-07-03T11:33:04.301.999.

Processed Sun Jul 3 13:41:34 2016 by ELM ver.2012-10-06 from 001\_\_elm20160703\_113303\_\_dat00.bin



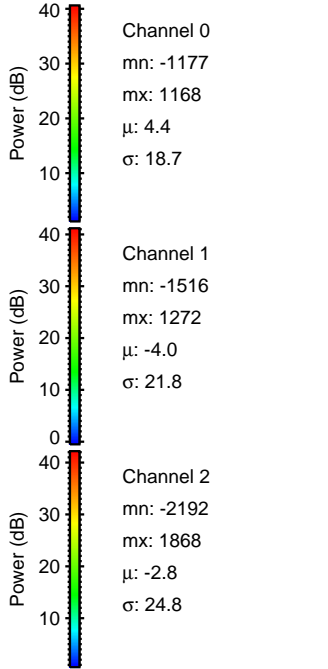
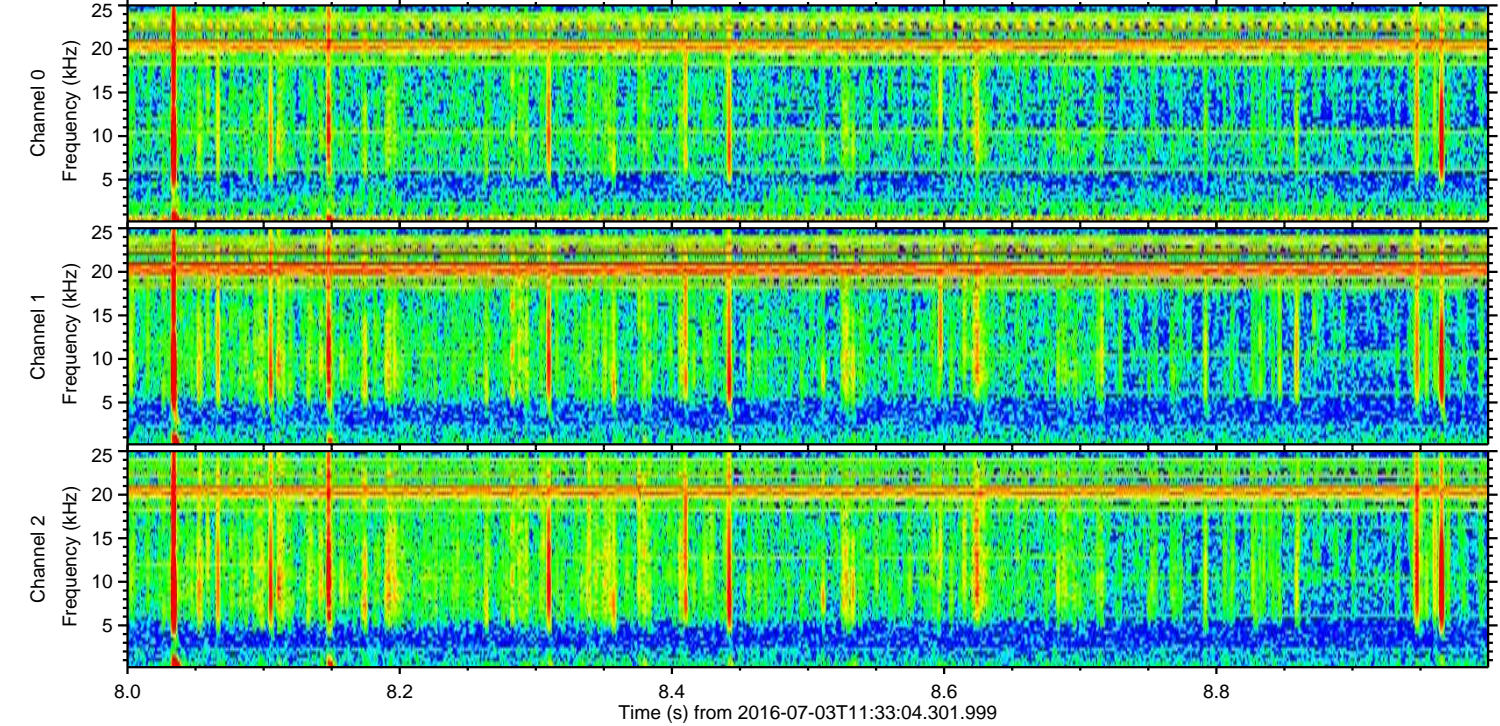
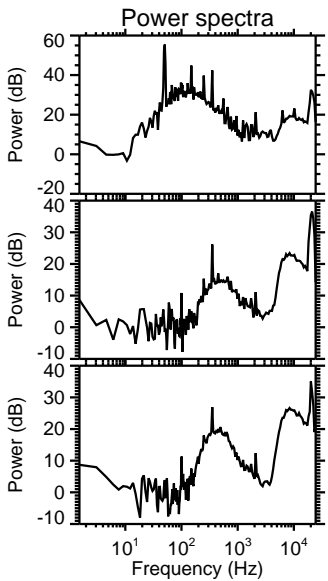
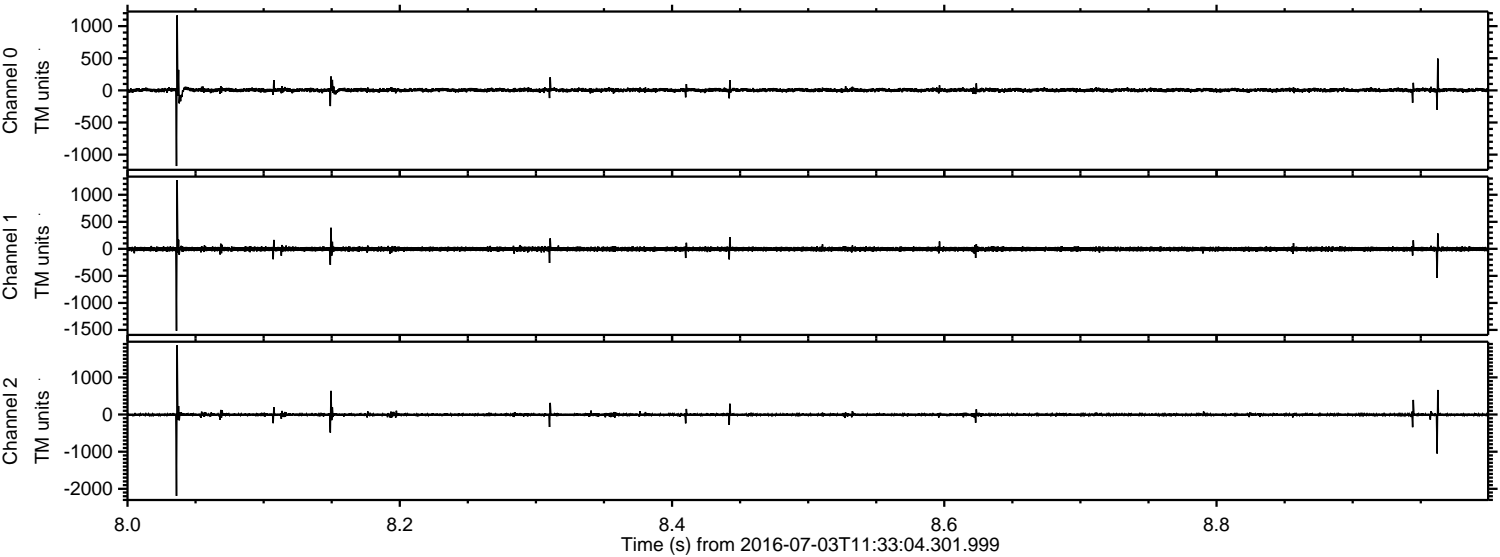


Processed Sun Jul 3 13:41:50 2016 by ELM ver.2012-10-06 from 001\_\_elm20160703\_113303\_\_dat00.bin



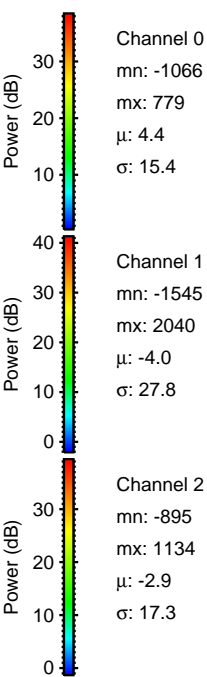
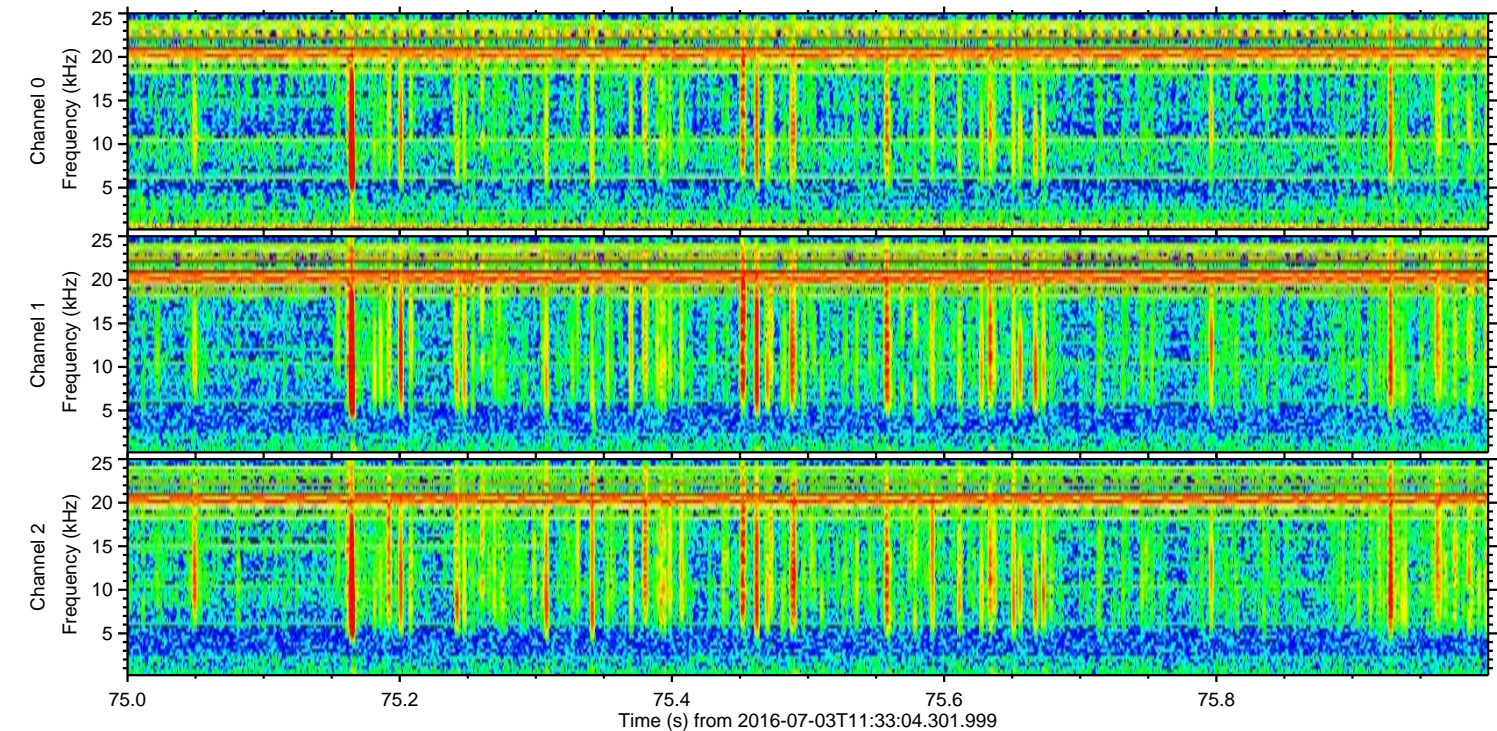
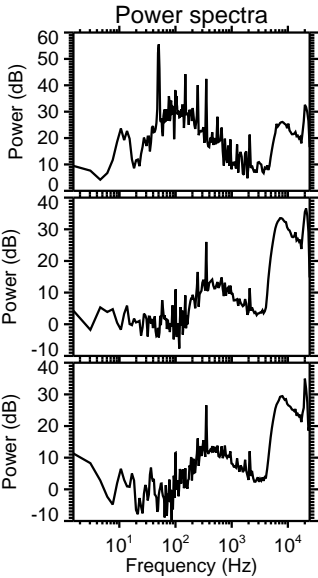
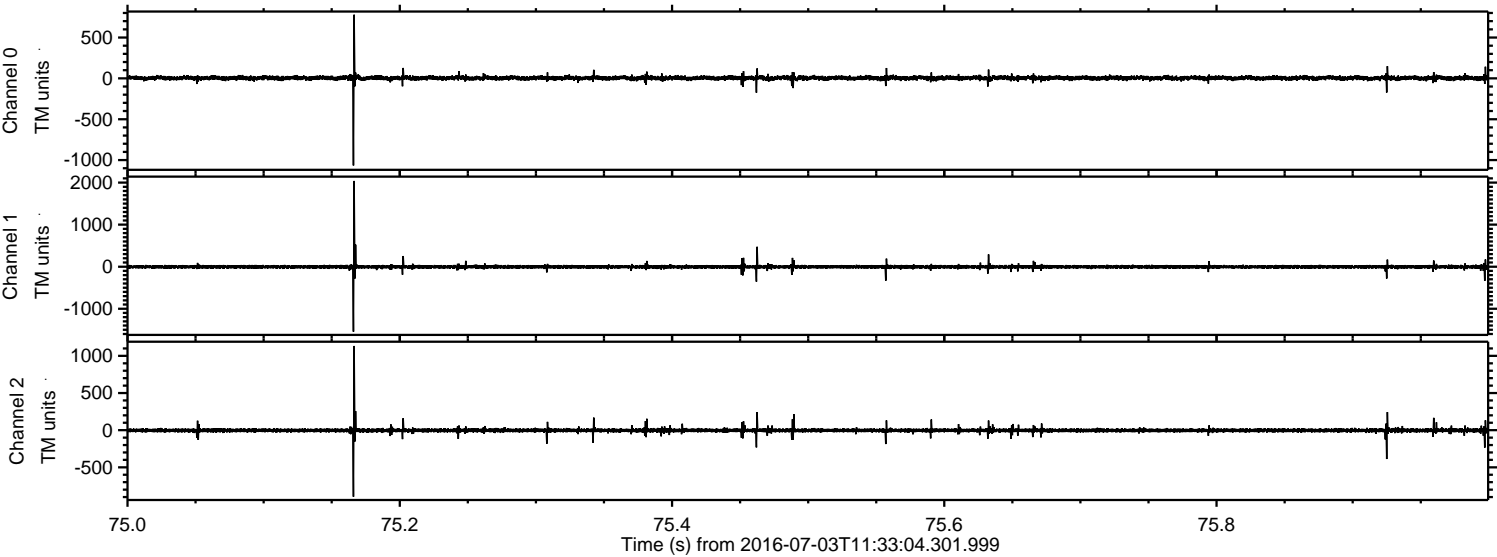


Processed Sun Jul 3 13:41:51 2016 by ELM ver.2012-10-06 from 001\_\_elm20160703\_113303\_\_dat00.bin



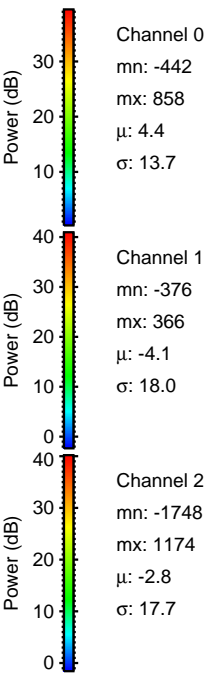
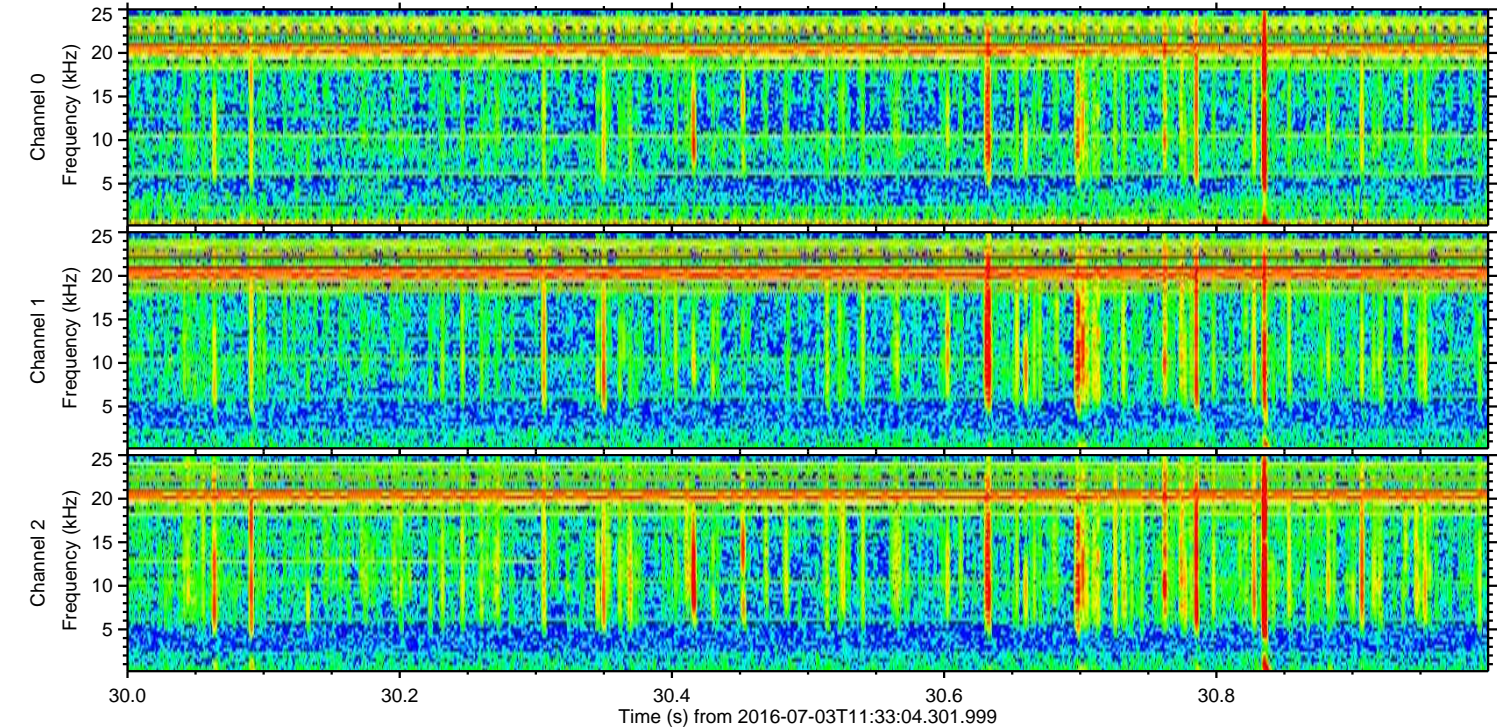
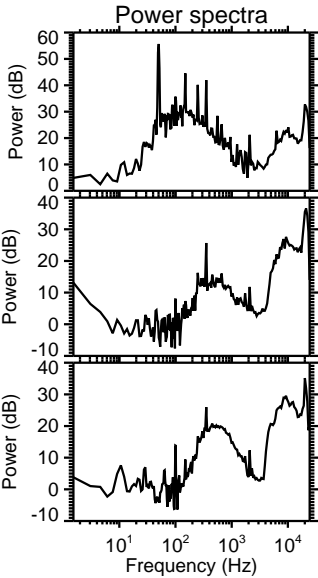
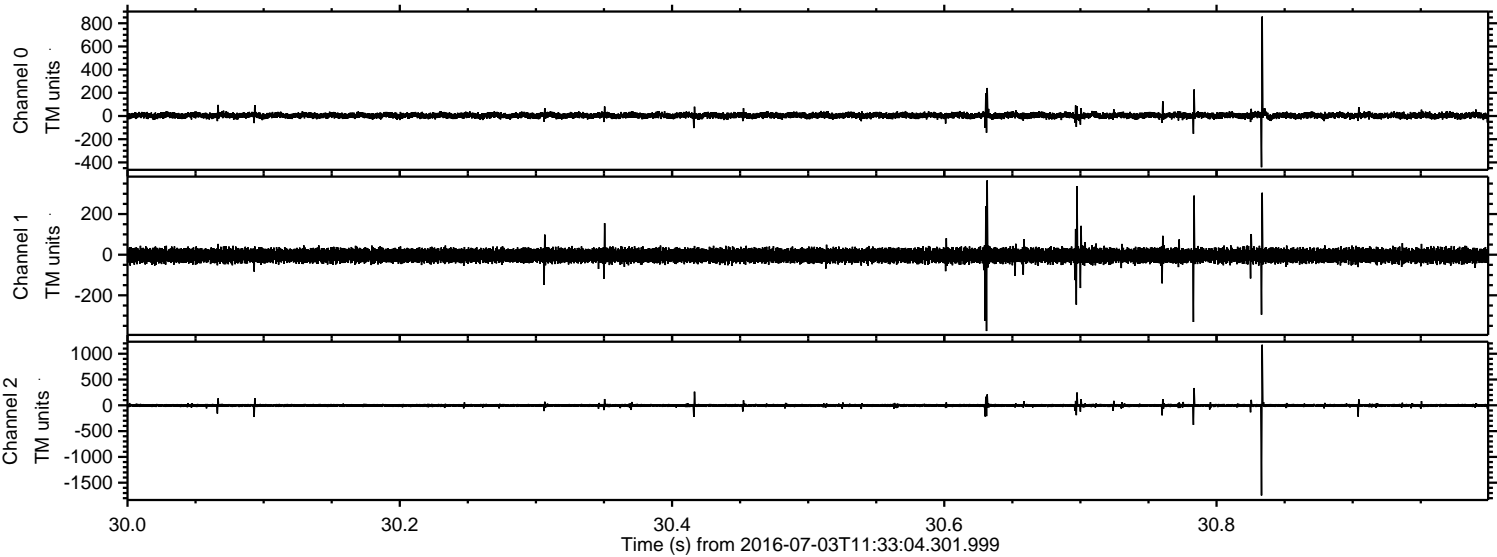


Processed Sun Jul 3 13:41:52 2016 by ELM ver.2012-10-06 from 001\_\_elm20160703\_113303\_\_dat00.bin



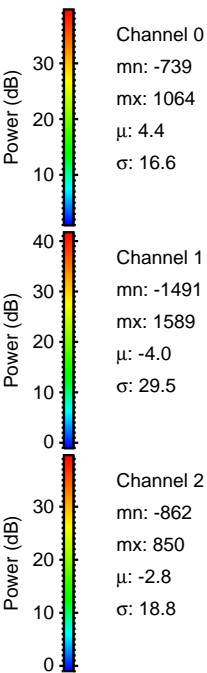
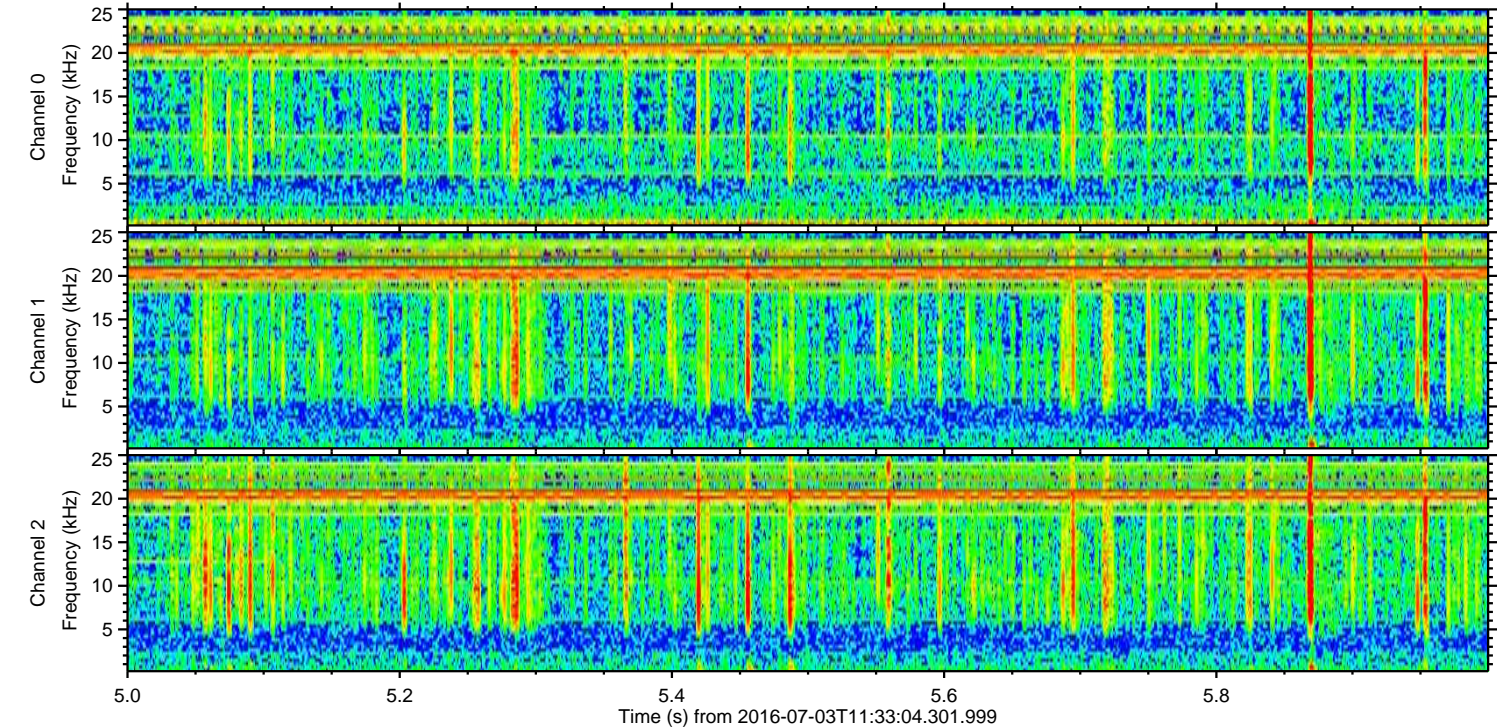
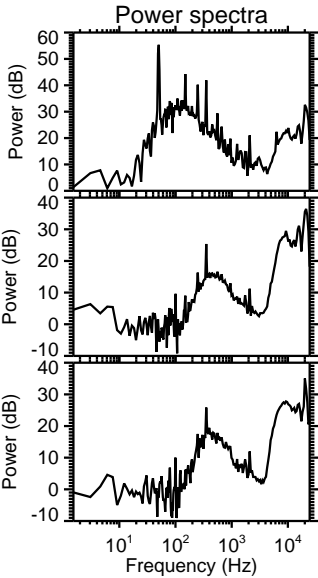
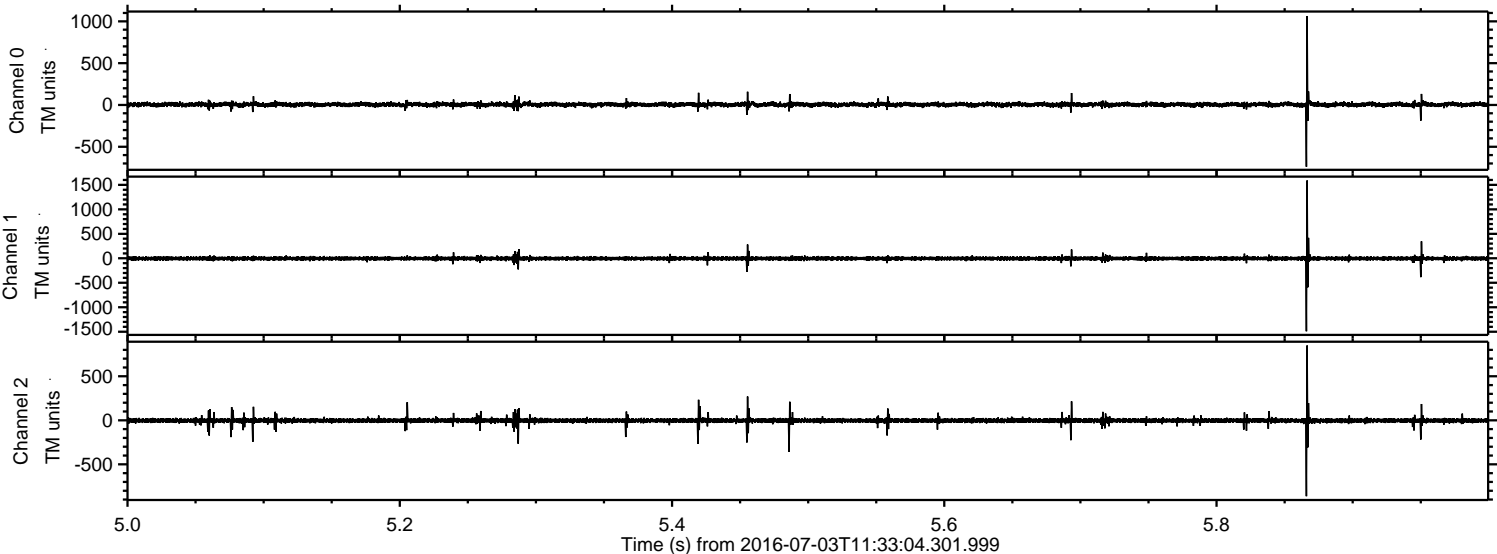


Processed Sun Jul 3 13:41:53 2016 by ELM ver.2012-10-06 from 001\_\_elm20160703\_113303\_\_dat00.bin



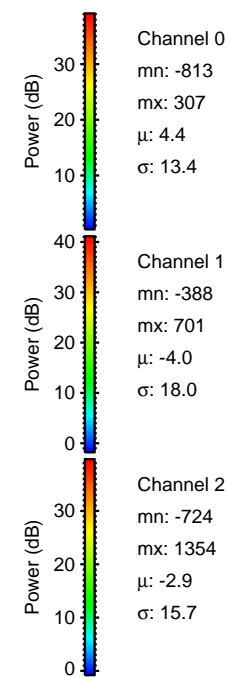
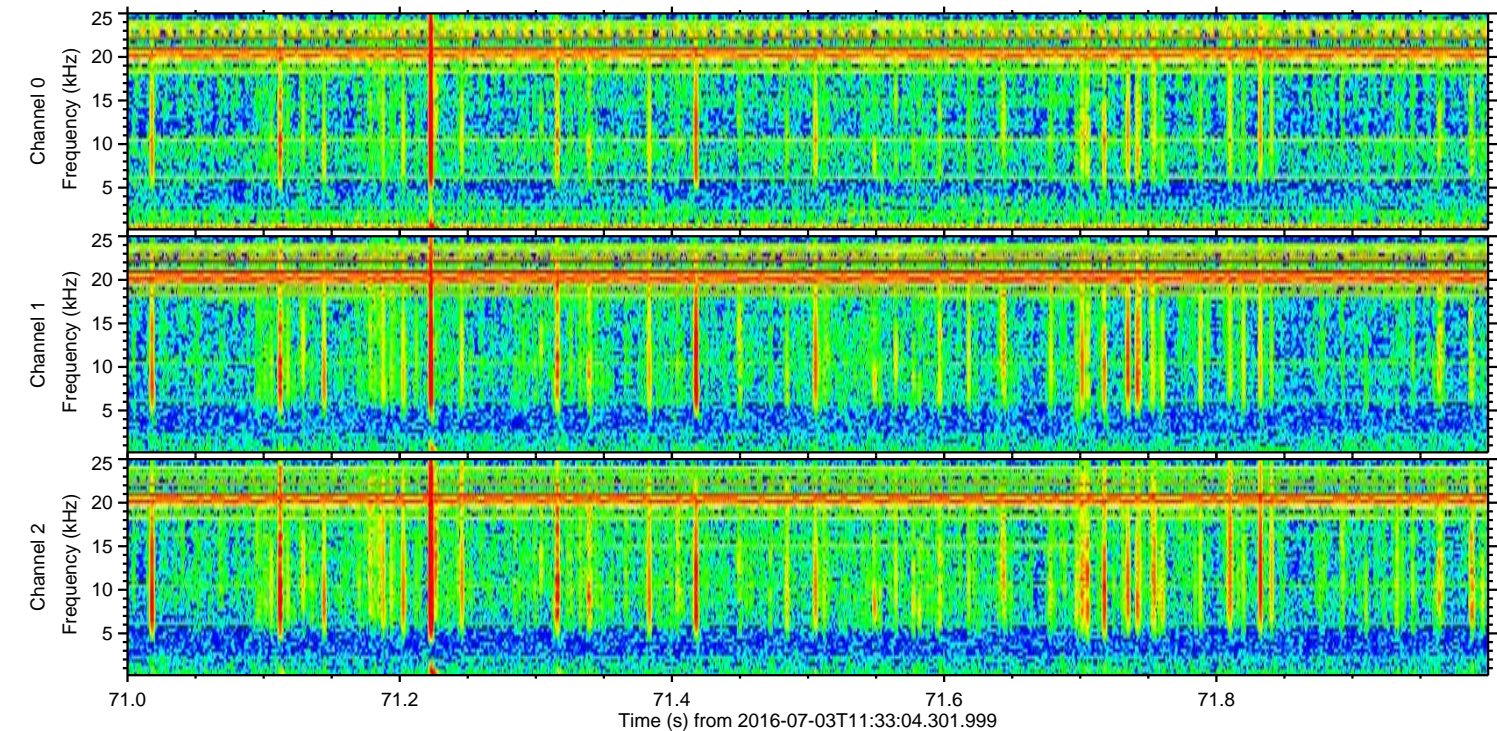
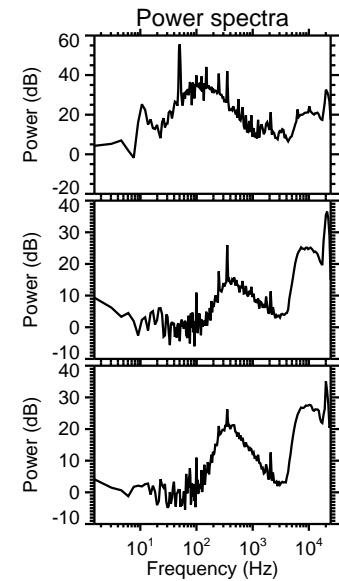
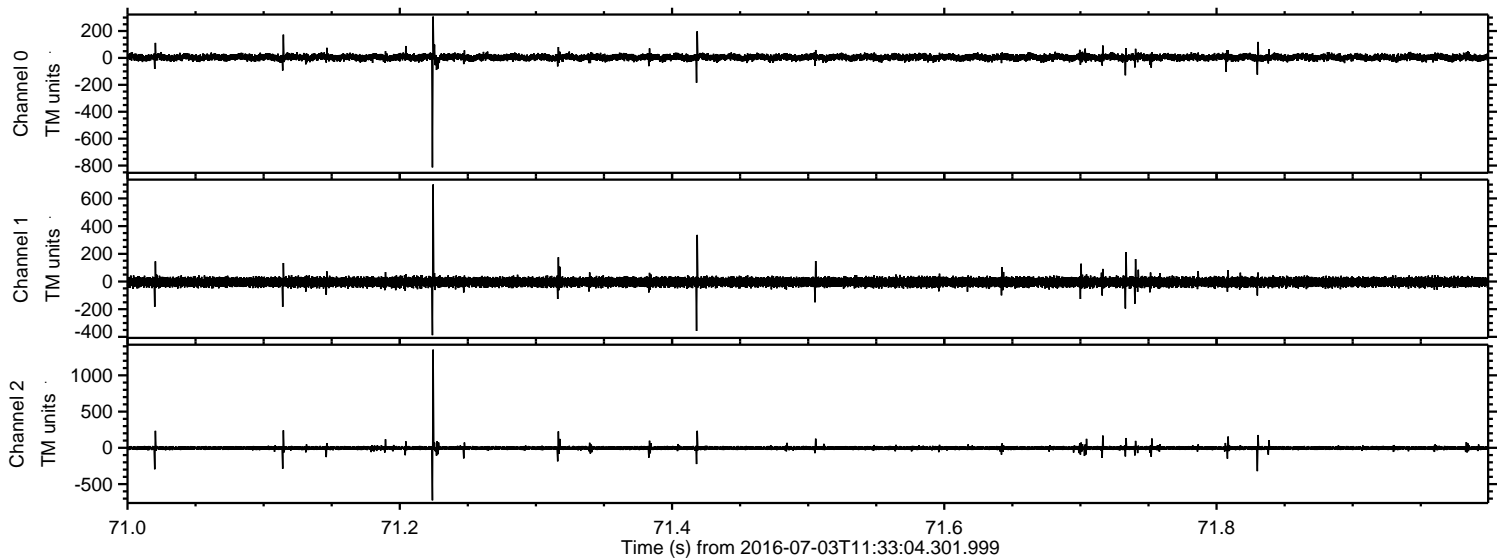


Processed Sun Jul 3 13:41:54 2016 by ELM ver.2012-10-06 from 001\_\_elm20160703\_113303\_\_dat00.bin



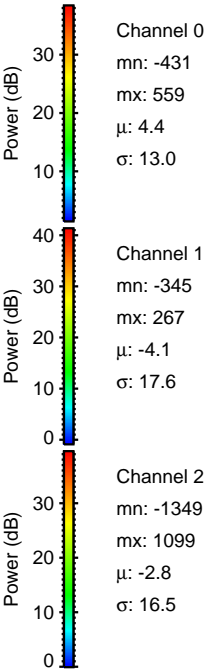
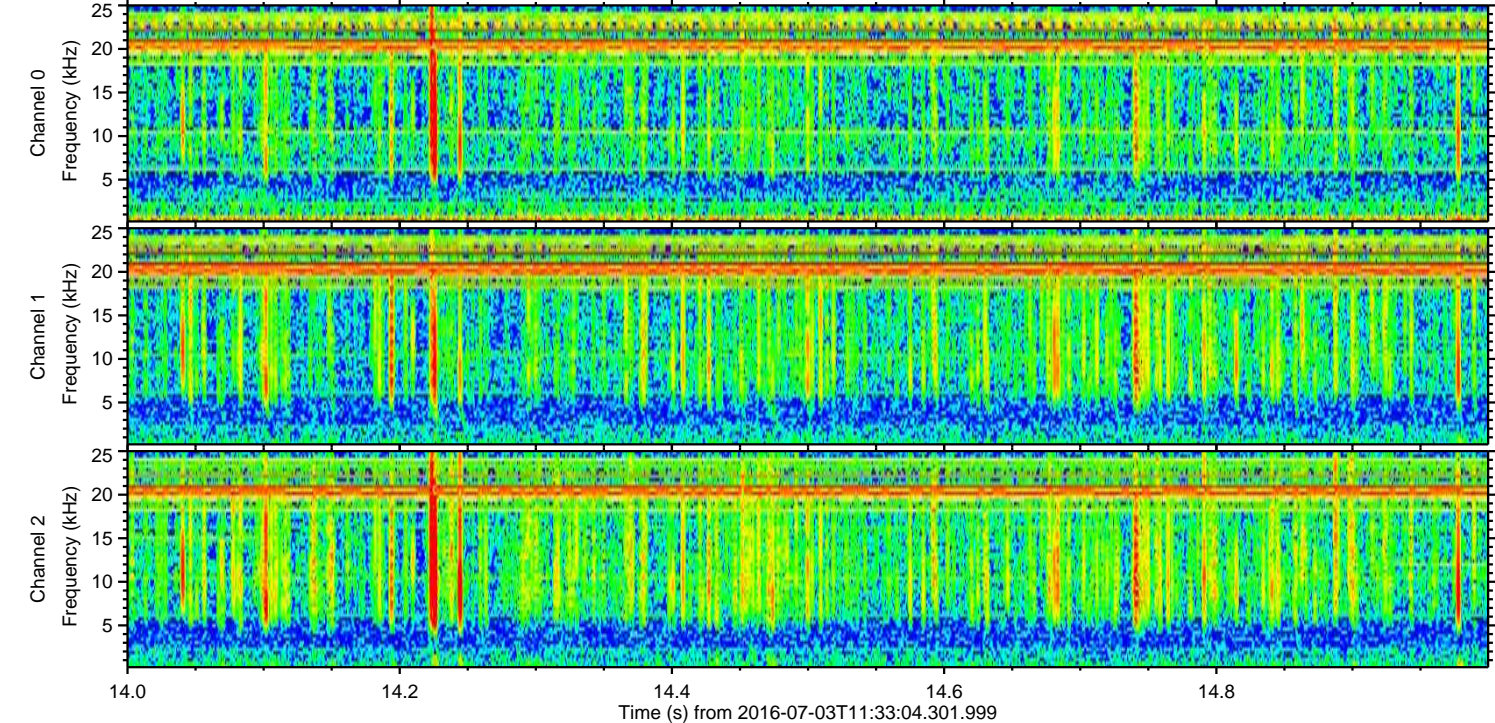
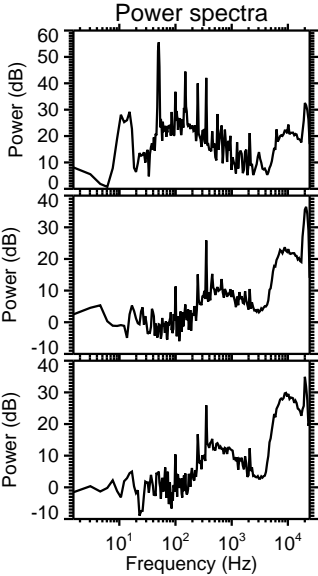
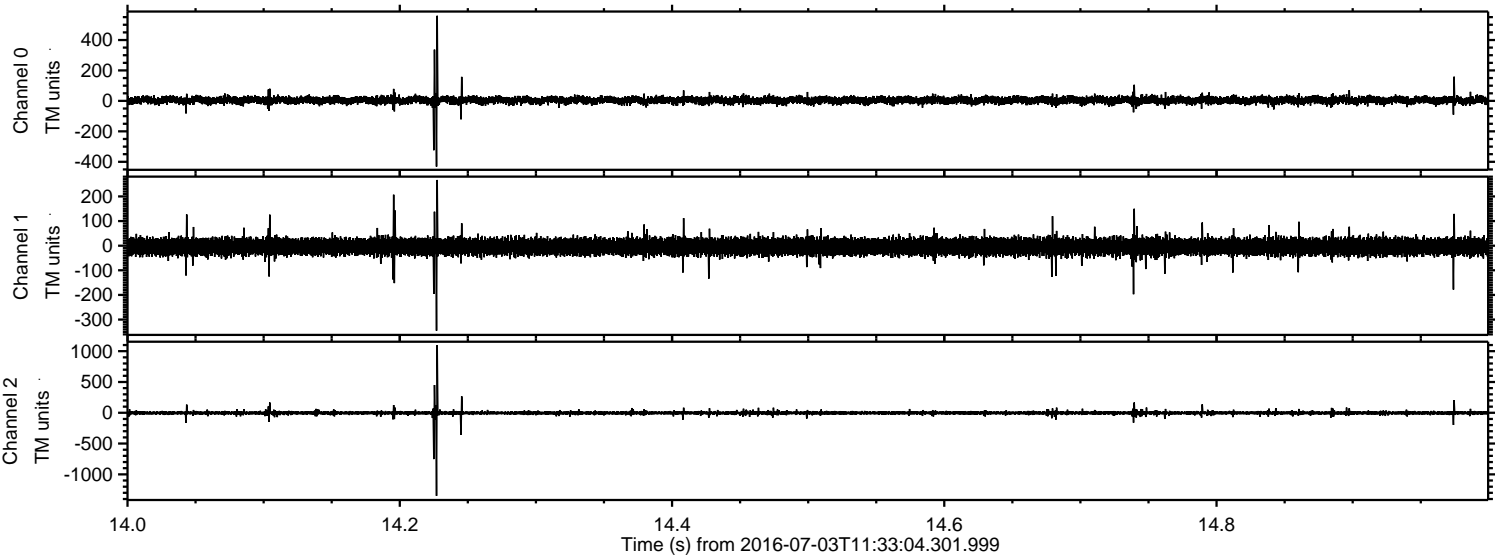


Processed Sun Jul 3 13:41:55 2016 by ELM ver.2012-10-06 from 001\_\_elm20160703\_113303\_\_dat00.bin





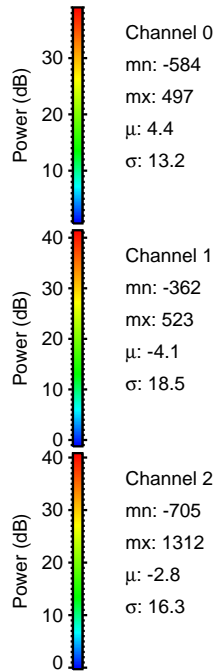
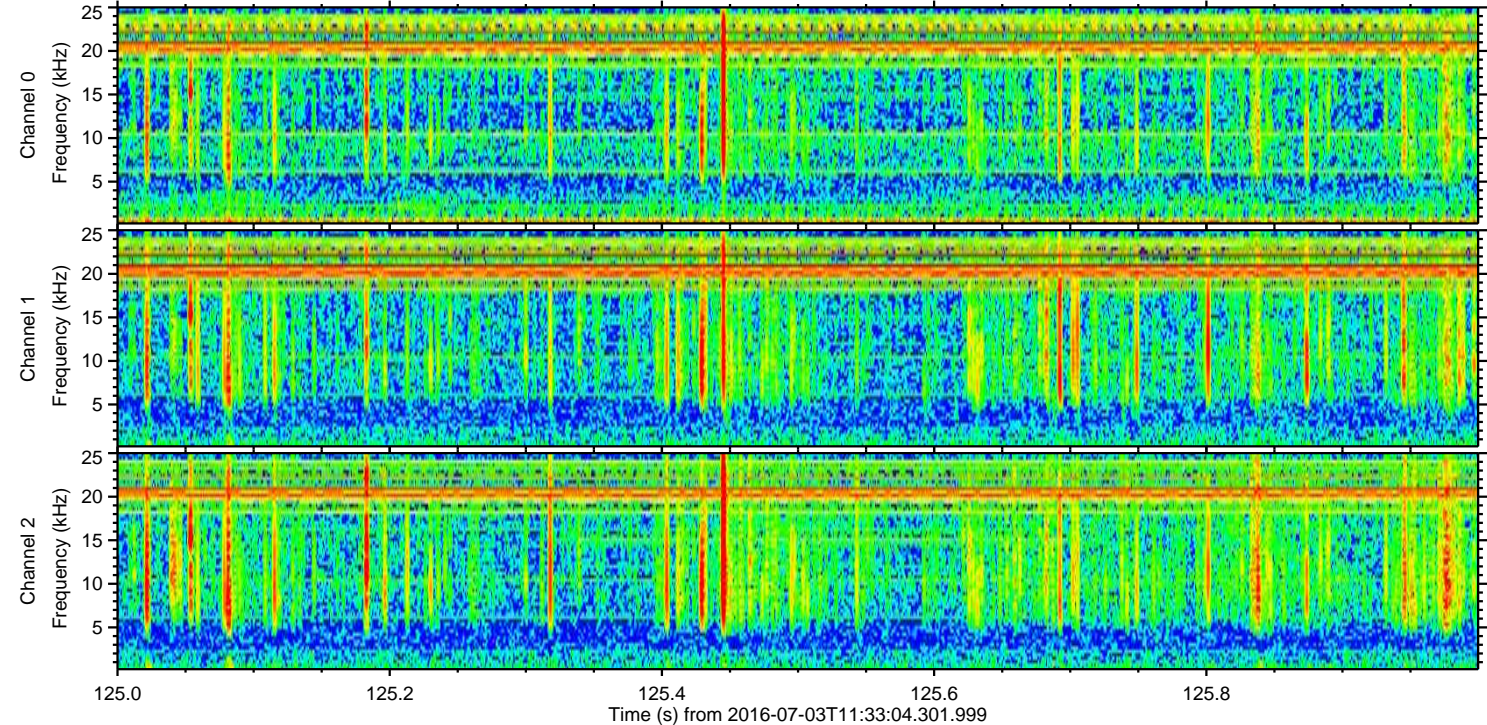
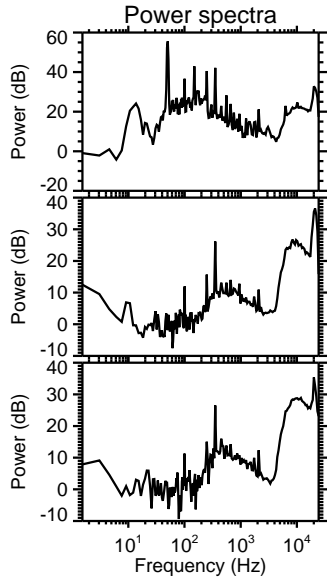
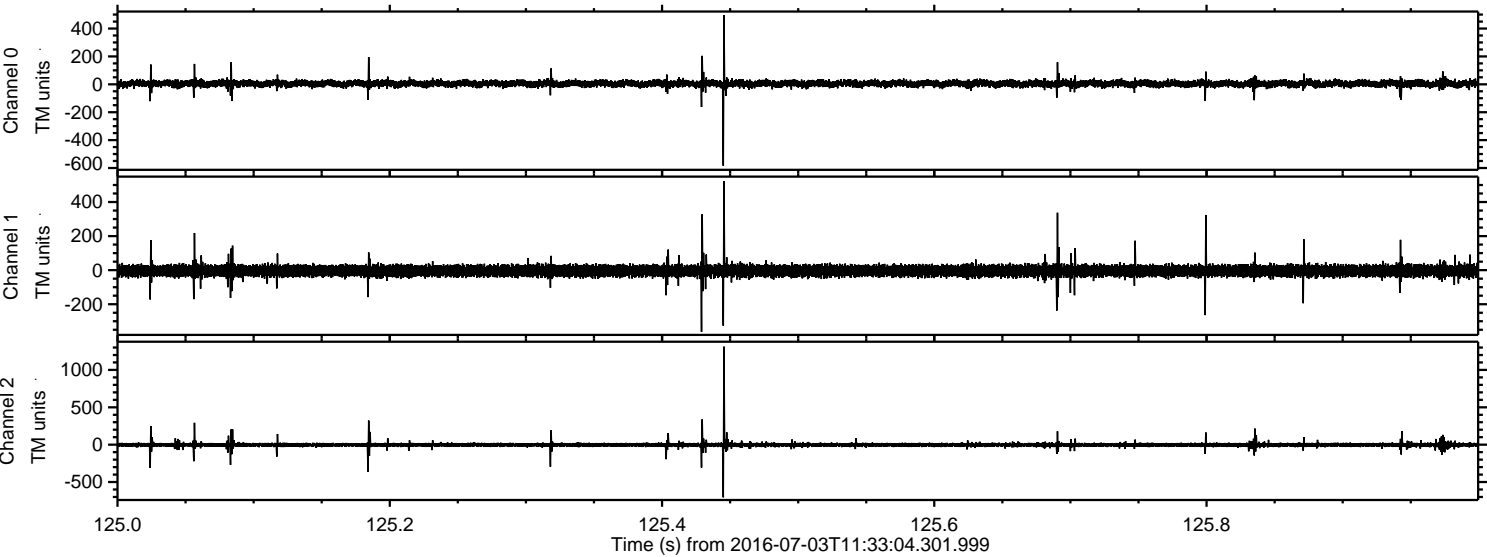
Processed Sun Jul 3 13:41:56 2016 by ELM ver.2012-10-06 from 001\_\_elm20160703\_113303\_\_dat00.bin





ELMAVAN 3D WAVEFORMS (Measured data sampled at 50 kHz) 51000 packets of 144 samples from 2016-07-03T11:33:04.301.999. Part 126/147

Processed Sun Jul 3 13:41:57 2016 by ELM ver.2012-10-06 from 001\_\_elm20160703\_113303\_\_dat00.bin





ELMAVAN 3D WAVEFORMS (Measured data sampled at 50 kHz) 51000 packets of 144 samples from 2016-07-03T11:33:04.301.999. Part 134/147

Processed Sun Jul 3 13:41:58 2016 by ELM ver.2012-10-06 from 001\_\_elm20160703\_113303\_\_dat00.bin

