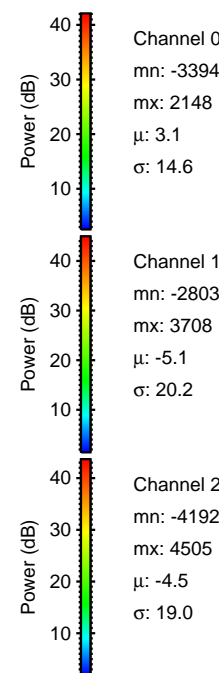
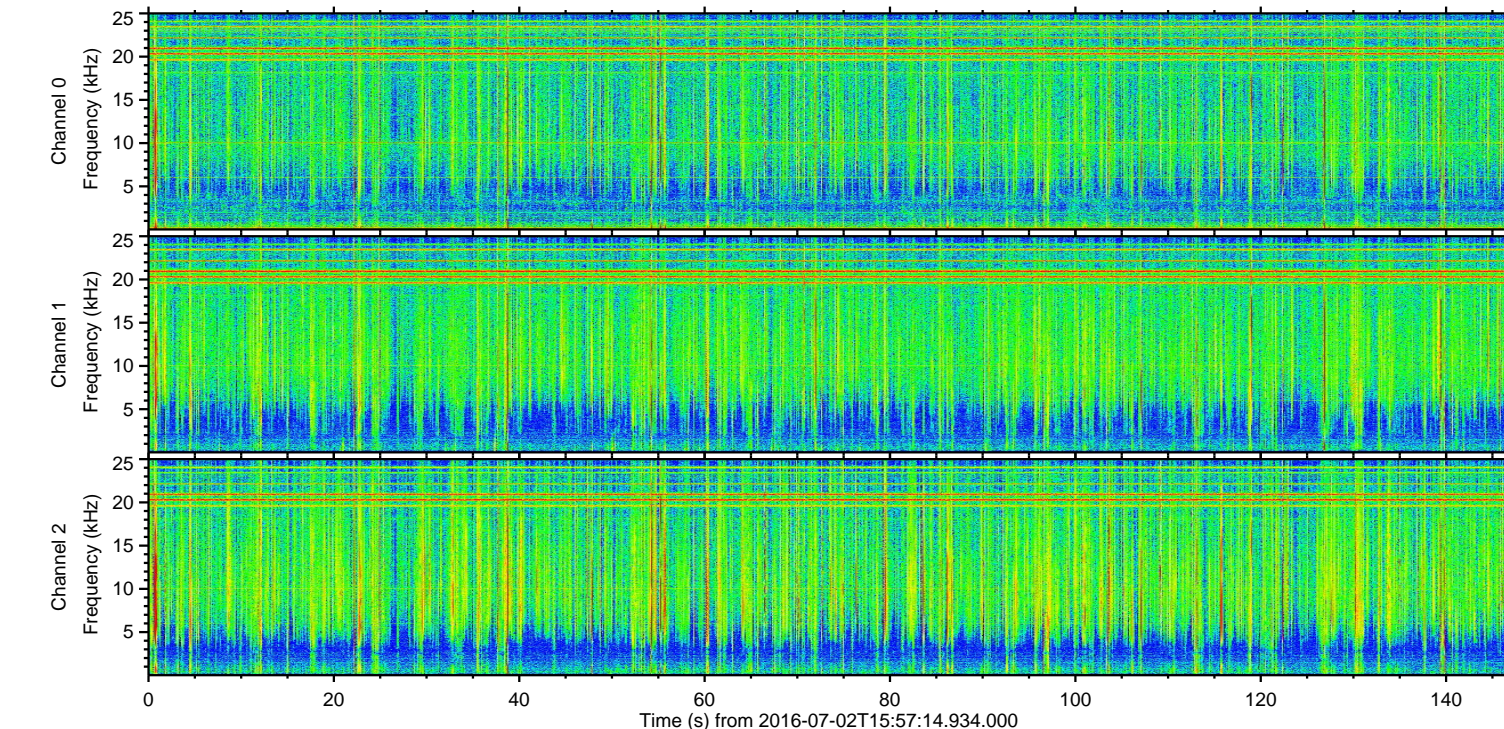
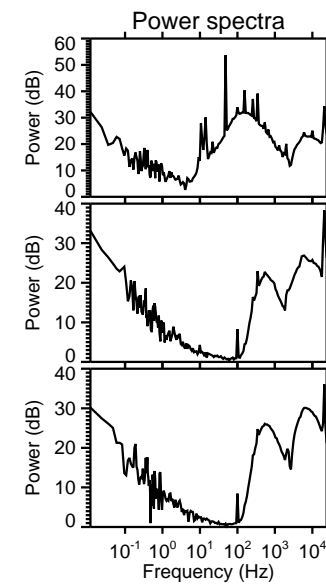
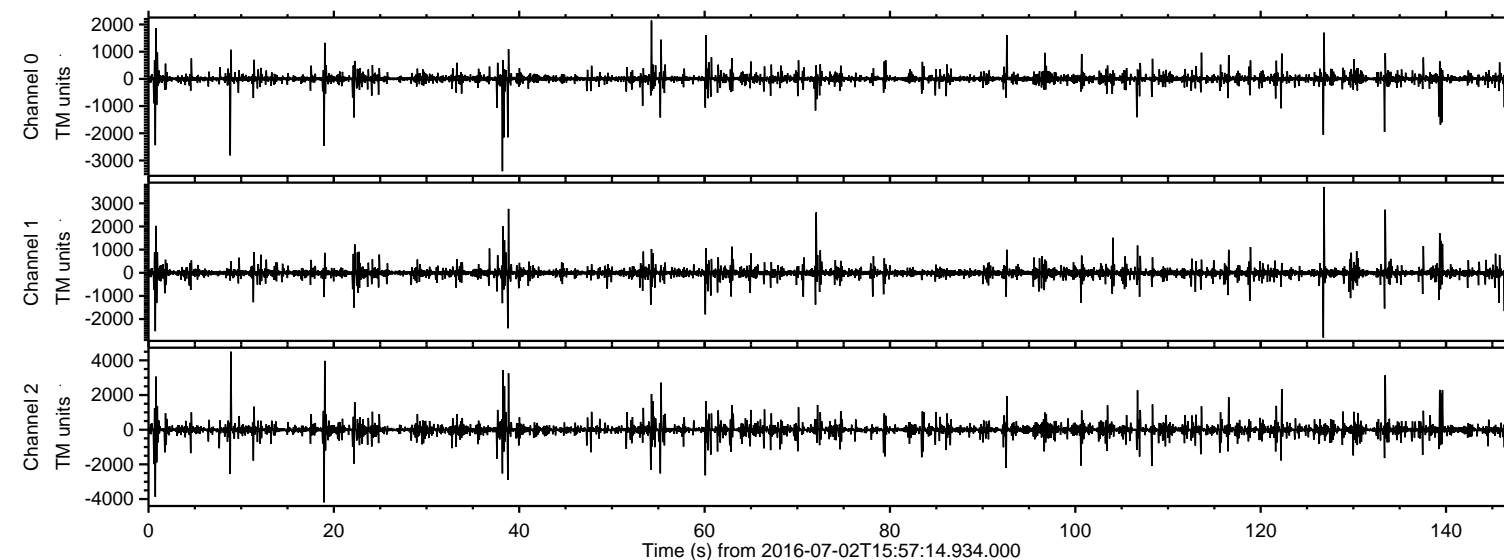
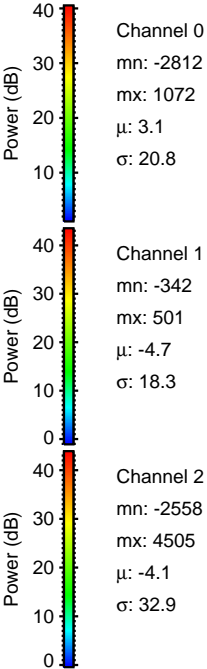
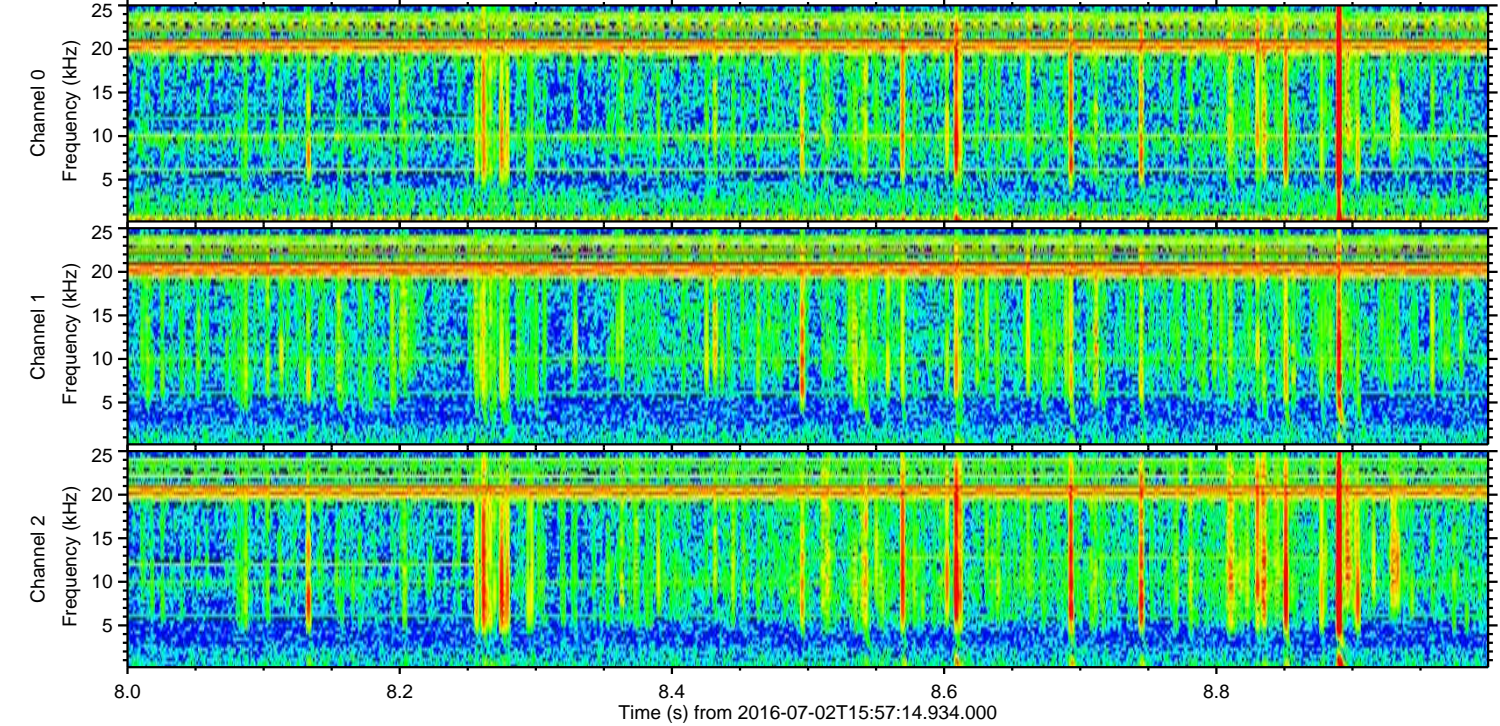
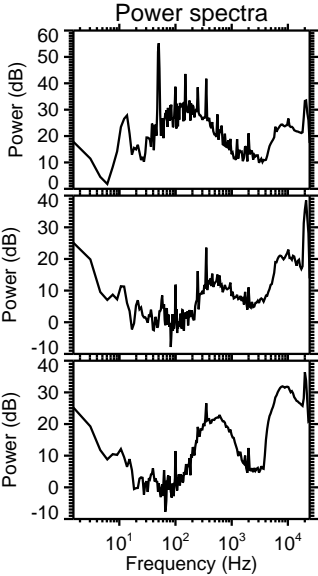
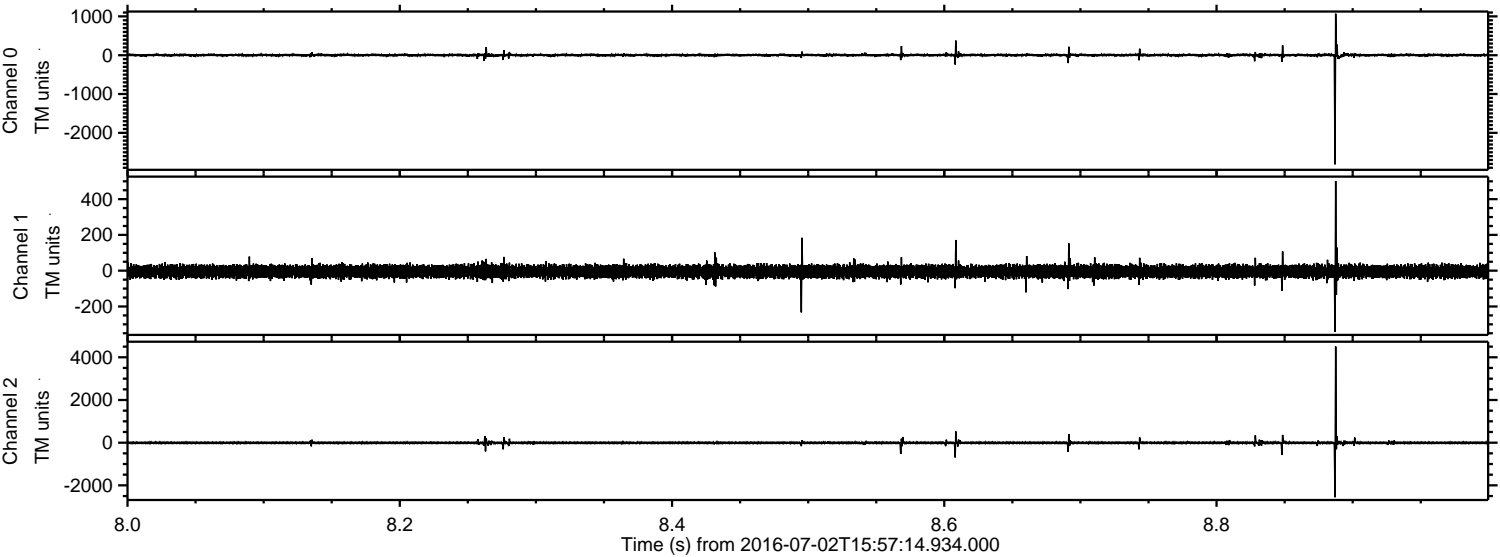


ELMAVAN 3D WAVEFORMS (Measured data sampled at 50 kHz) 51000 packets of 144 samples from 2016-07-02T15:57:14.934.000.

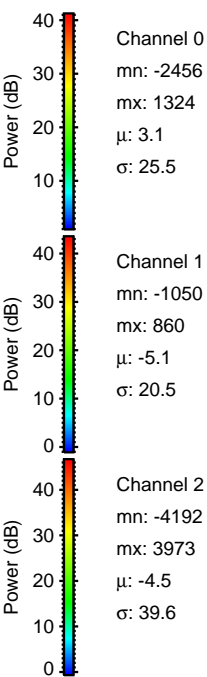
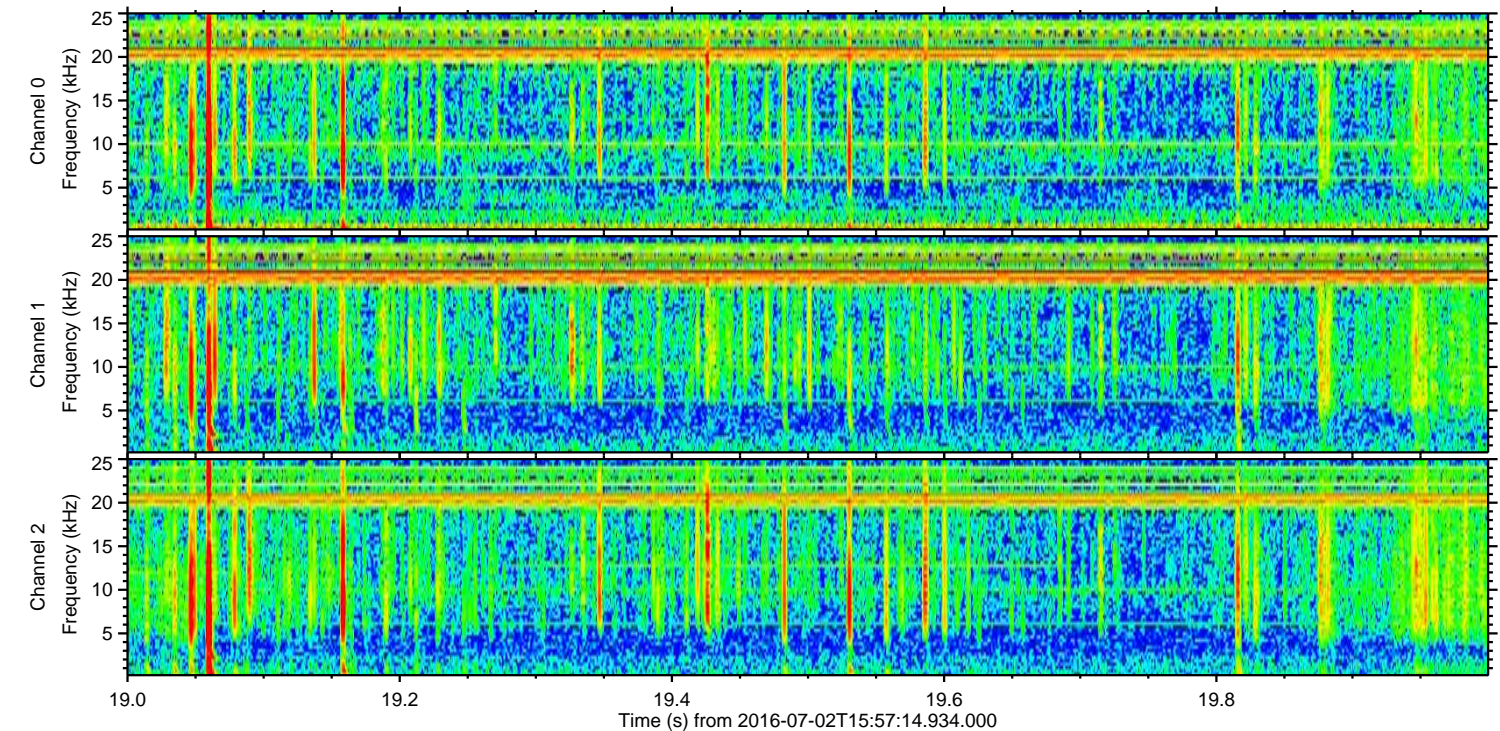
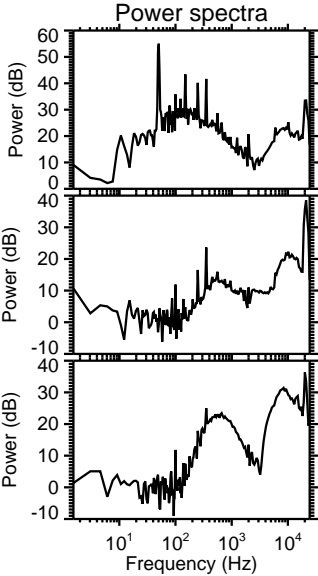
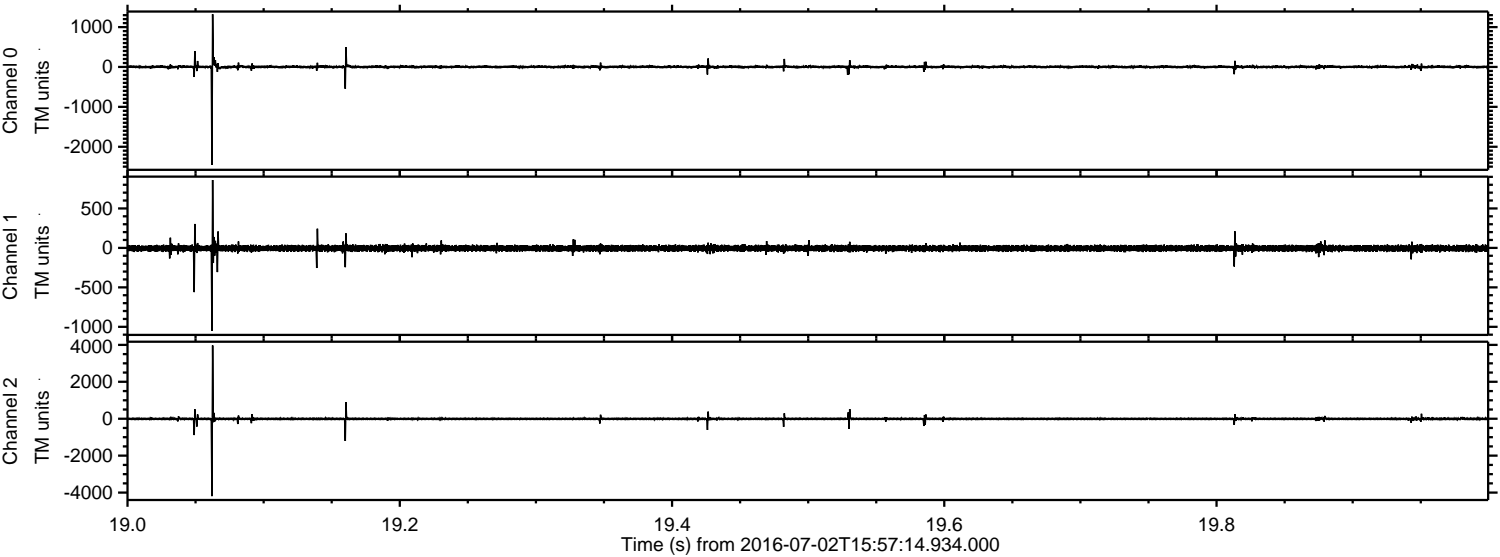
Processed Sat Jul 2 18:05:55 2016 by ELM ver.2012-10-06 from 001__elm20160702_155713__dat00.bin



Processed Sat Jul 2 18:06:06 2016 by ELM ver.2012-10-06 from 001__elm20160702_155713__dat00.bin

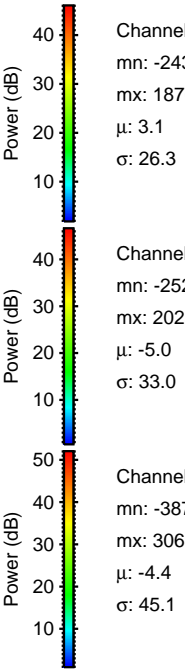
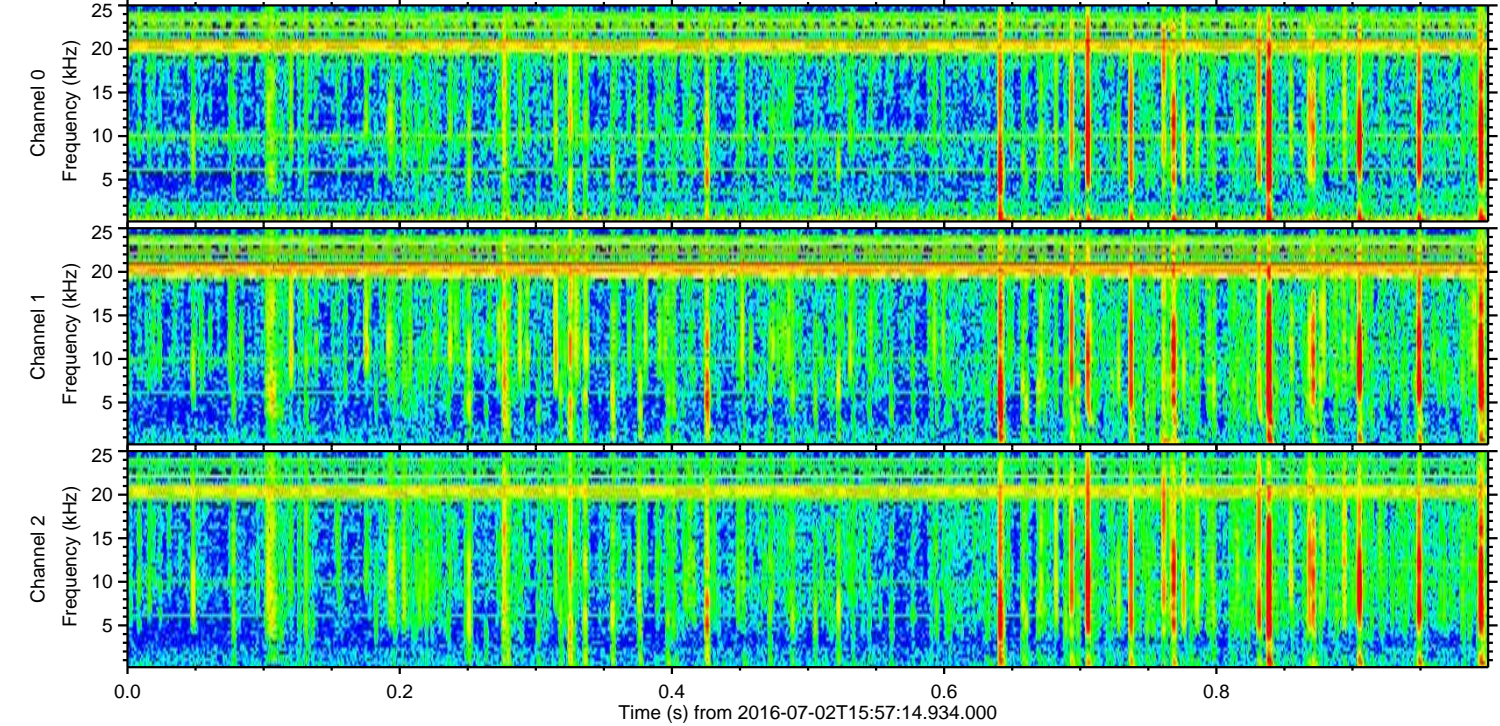
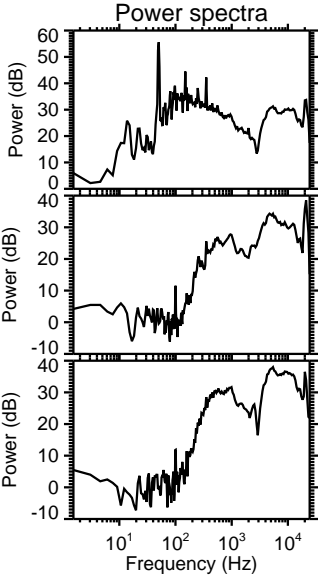
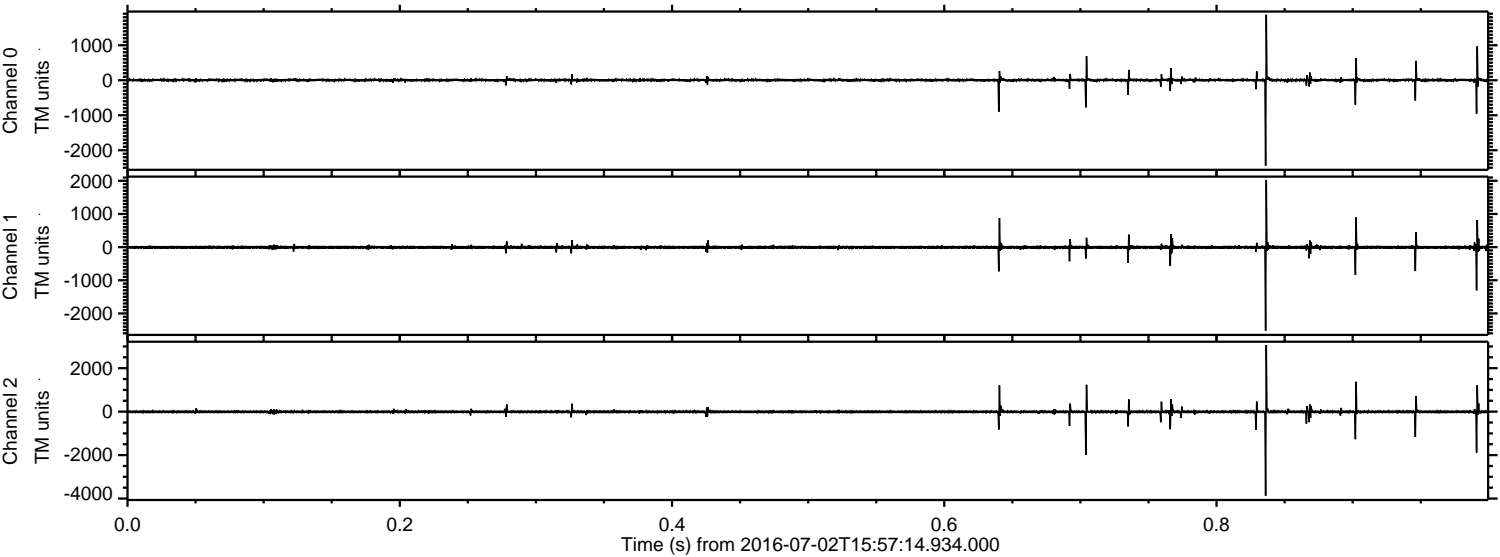


Processed Sat Jul 2 18:06:07 2016 by ELM ver.2012-10-06 from 001__elm20160702_155713__dat00.bin



ELMAVAN 3D WAVEFORMS (Measured data sampled at 50 kHz) 51000 packets of 144 samples from 2016-07-02T15:57:14.934.000. Part 1/147

Processed Sat Jul 2 18:06:08 2016 by ELM ver.2012-10-06 from 001__elm20160702_155713__dat00.bin



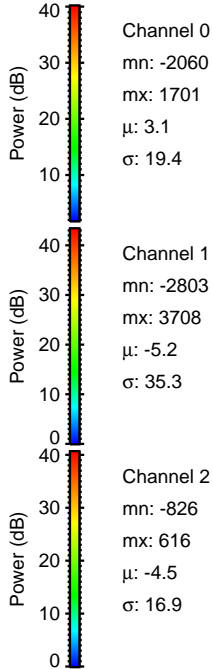
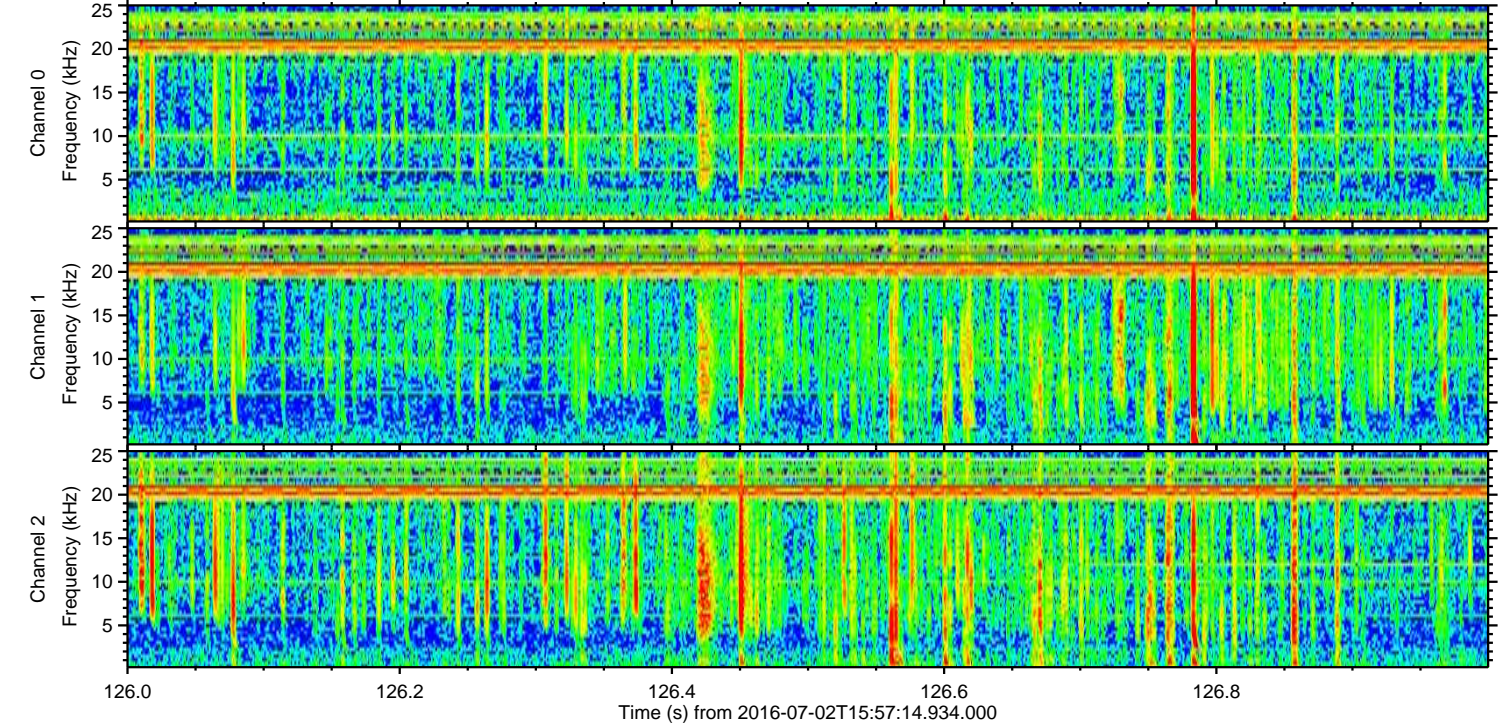
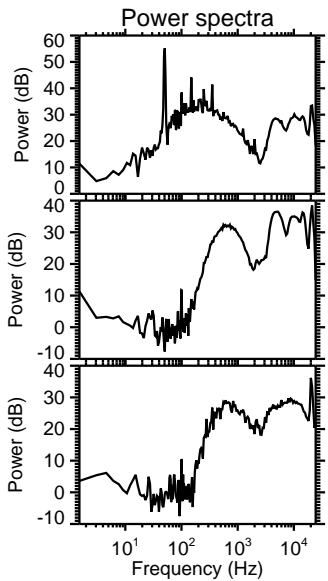
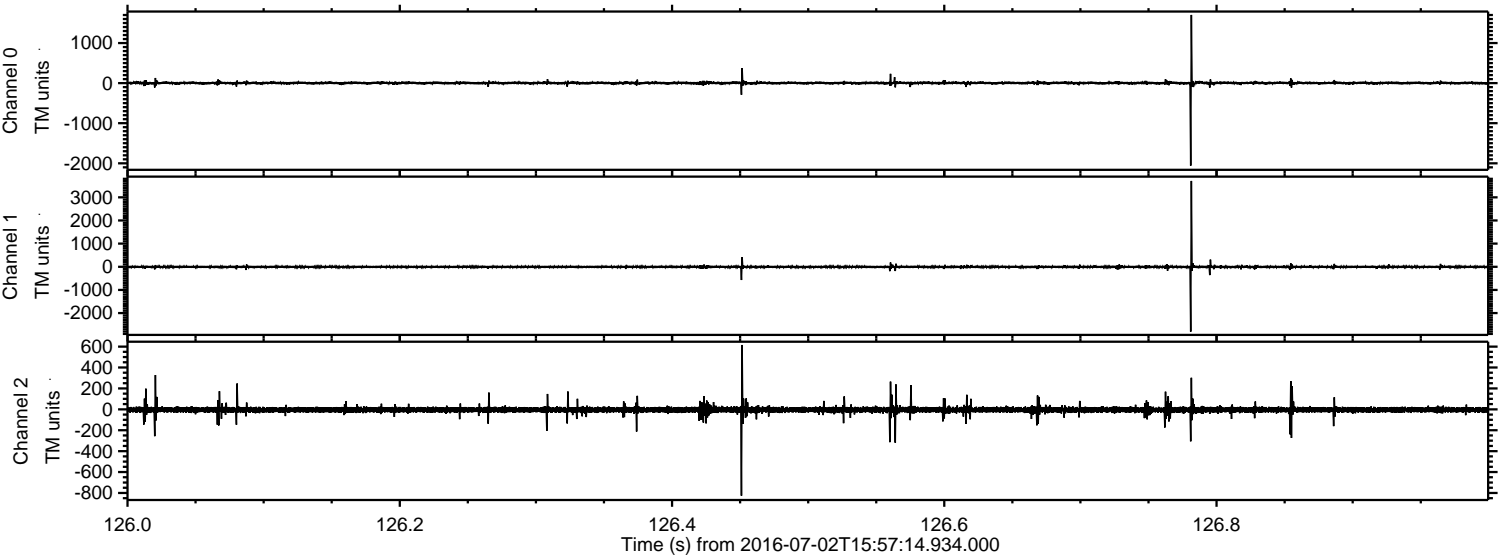
Channel 0
mn: -2438
mx: 1870
 μ : 3.1
 σ : 26.3

Channel 1
mn: -2522
mx: 2025
 μ : -5.0
 σ : 33.0

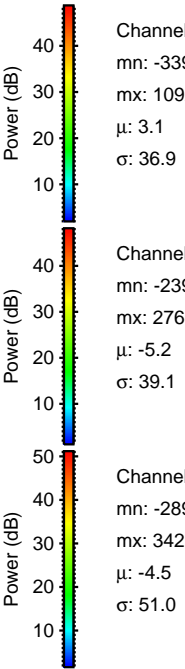
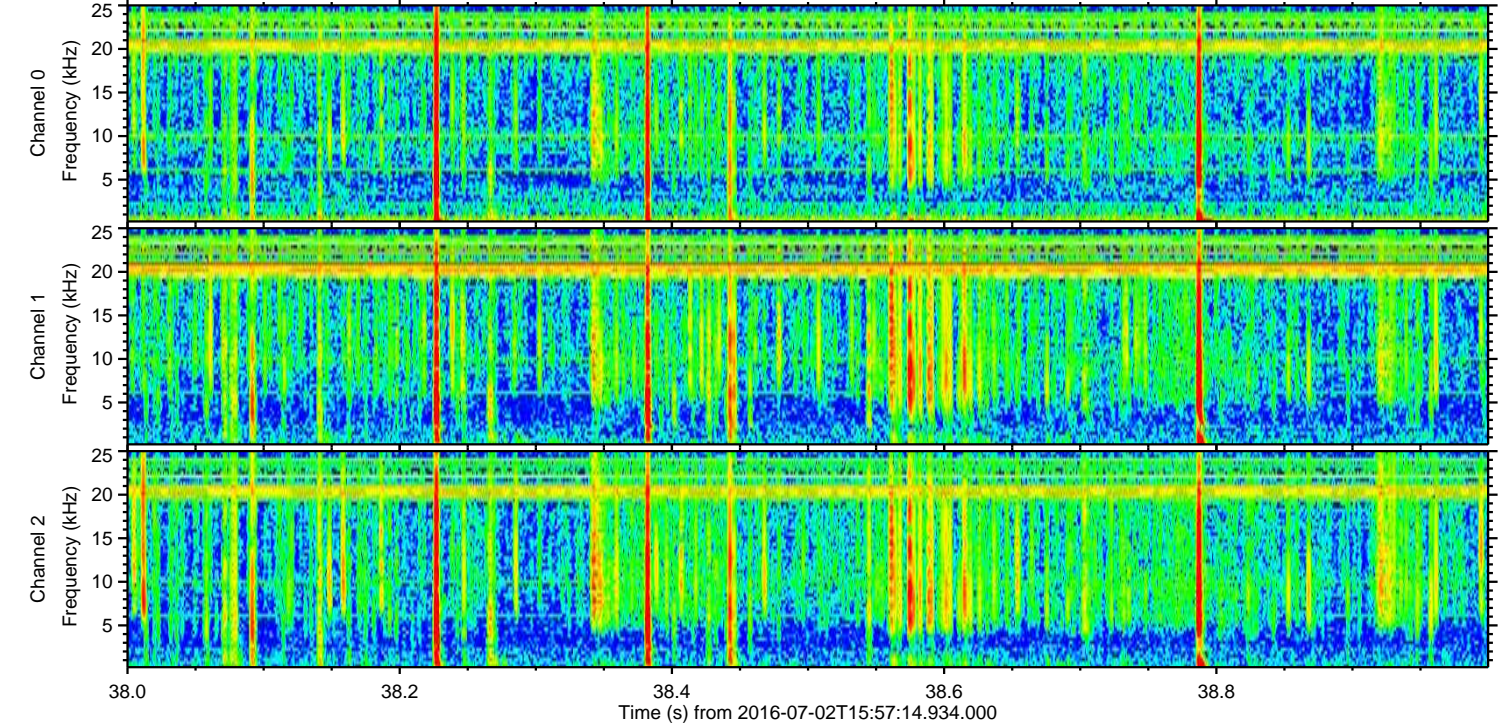
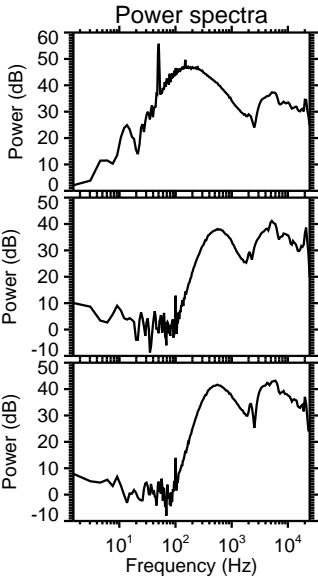
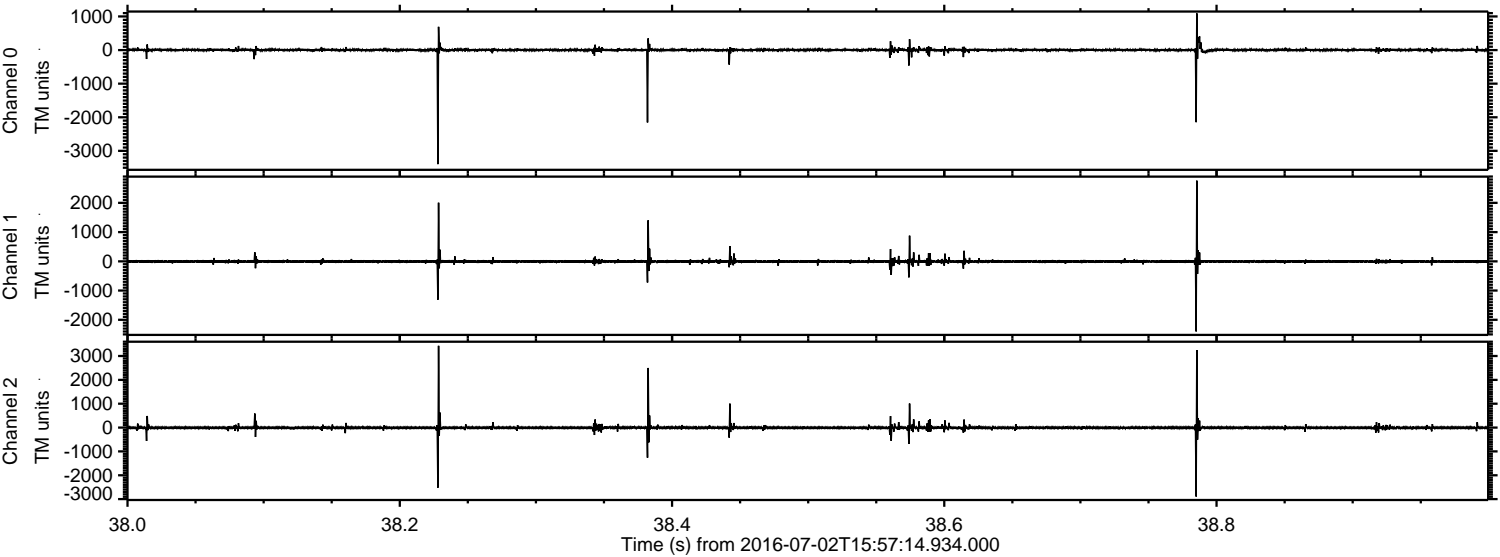
Channel 2
mn: -3873
mx: 3065
 μ : -4.4
 σ : 45.1

ELMAVAN 3D WAVEFORMS (Measured data sampled at 50 kHz) 51000 packets of 144 samples from 2016-07-02T15:57:14.934.000. Part 127/147

Processed Sat Jul 2 18:06:09 2016 by ELM ver.2012-10-06 from 001__elm20160702_155713__dat00.bin

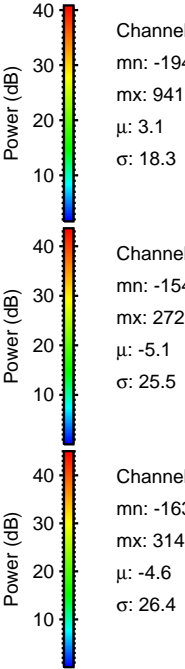
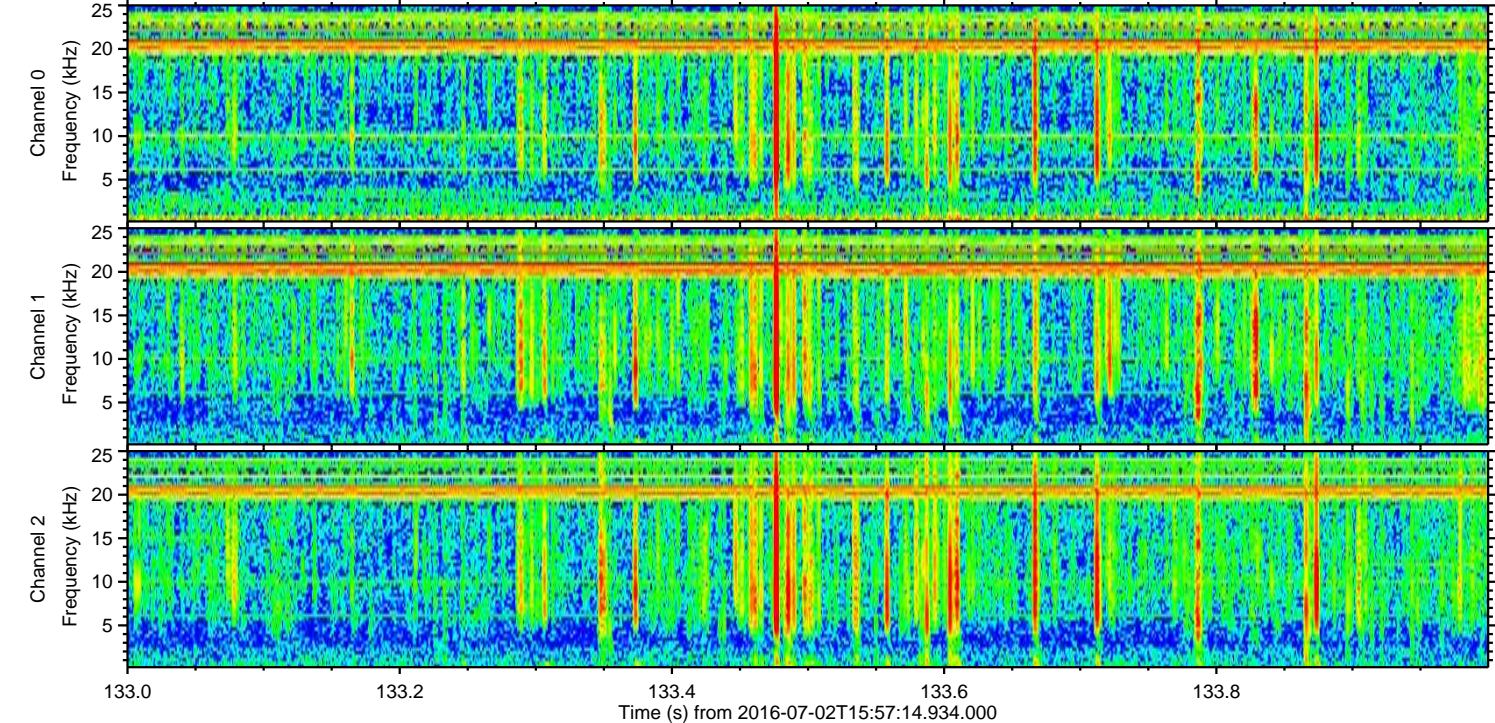
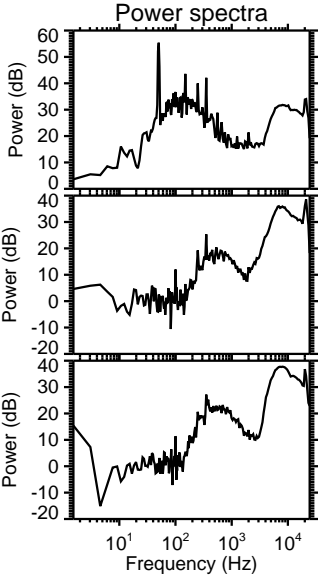
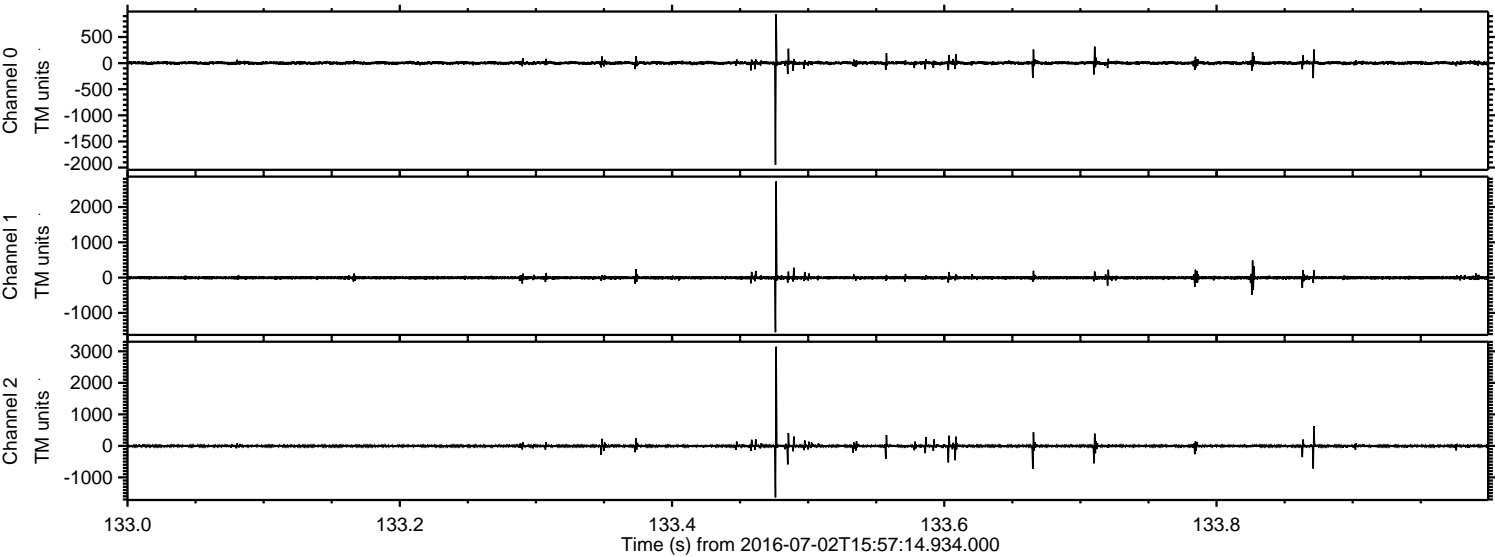


Processed Sat Jul 2 18:06:10 2016 by ELM ver.2012-10-06 from 001__elm20160702_155713__dat00.bin

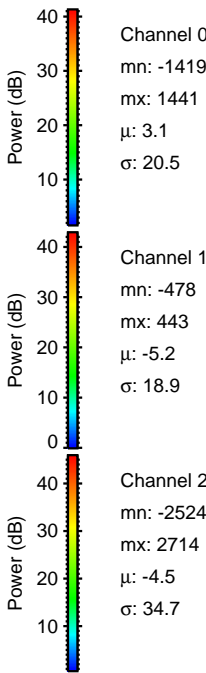
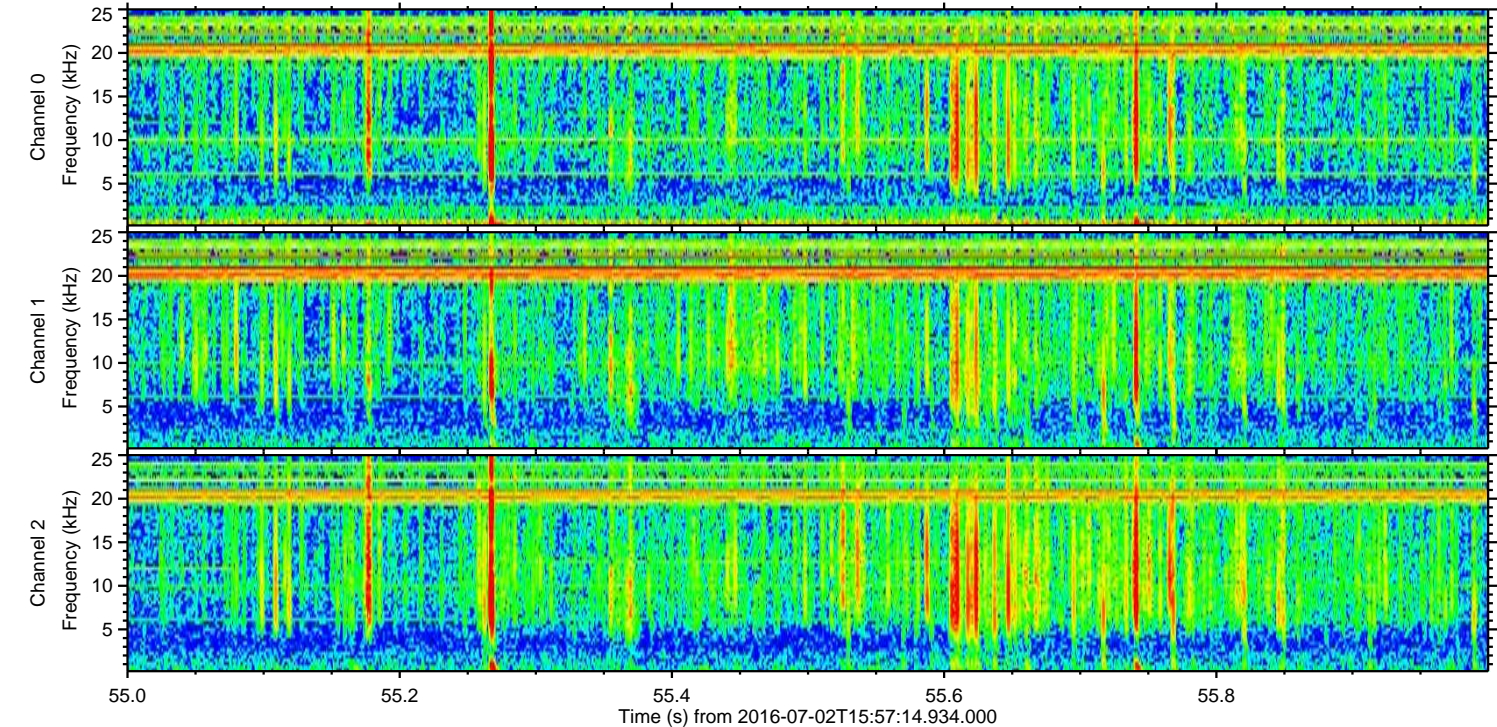
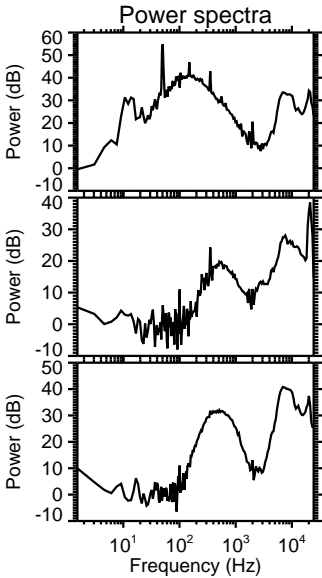
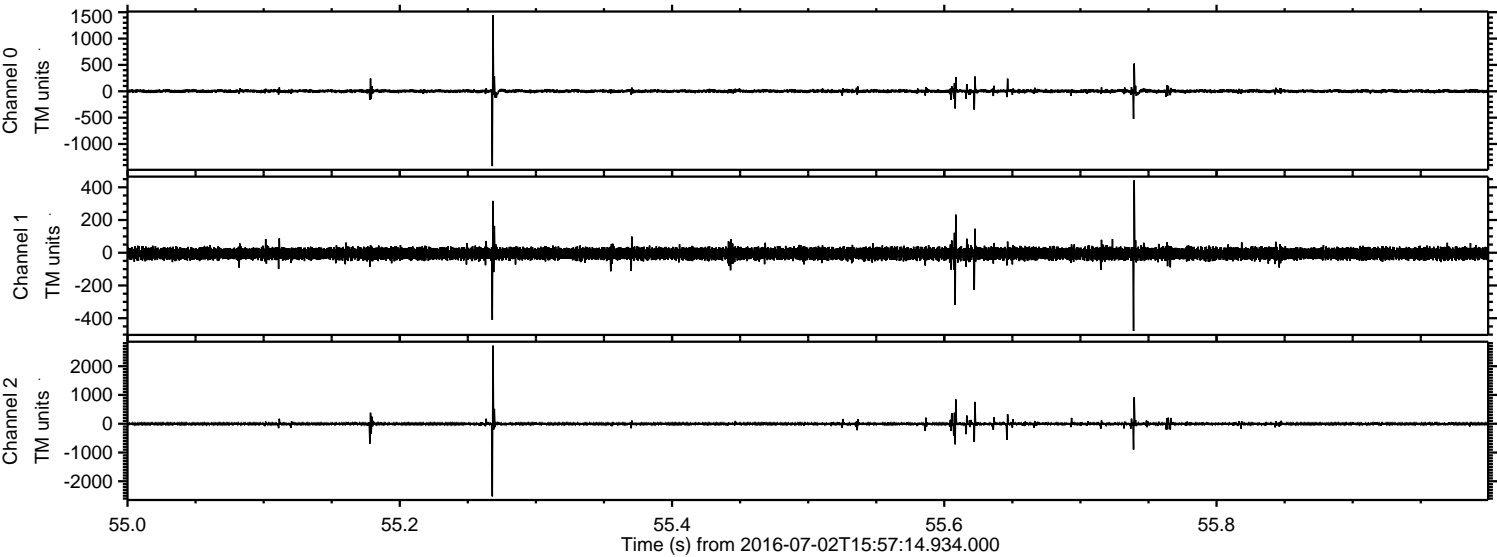


ELMAVAN 3D WAVEFORMS (Measured data sampled at 50 kHz) 51000 packets of 144 samples from 2016-07-02T15:57:14.934.000. Part 134/147

Processed Sat Jul 2 18:06:11 2016 by ELM ver.2012-10-06 from 001__elm20160702_155713__dat00.bin



Processed Sat Jul 2 18:06:12 2016 by ELM ver.2012-10-06 from 001__elm20160702_155713__dat00.bin

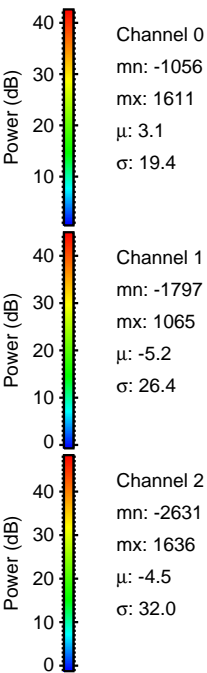
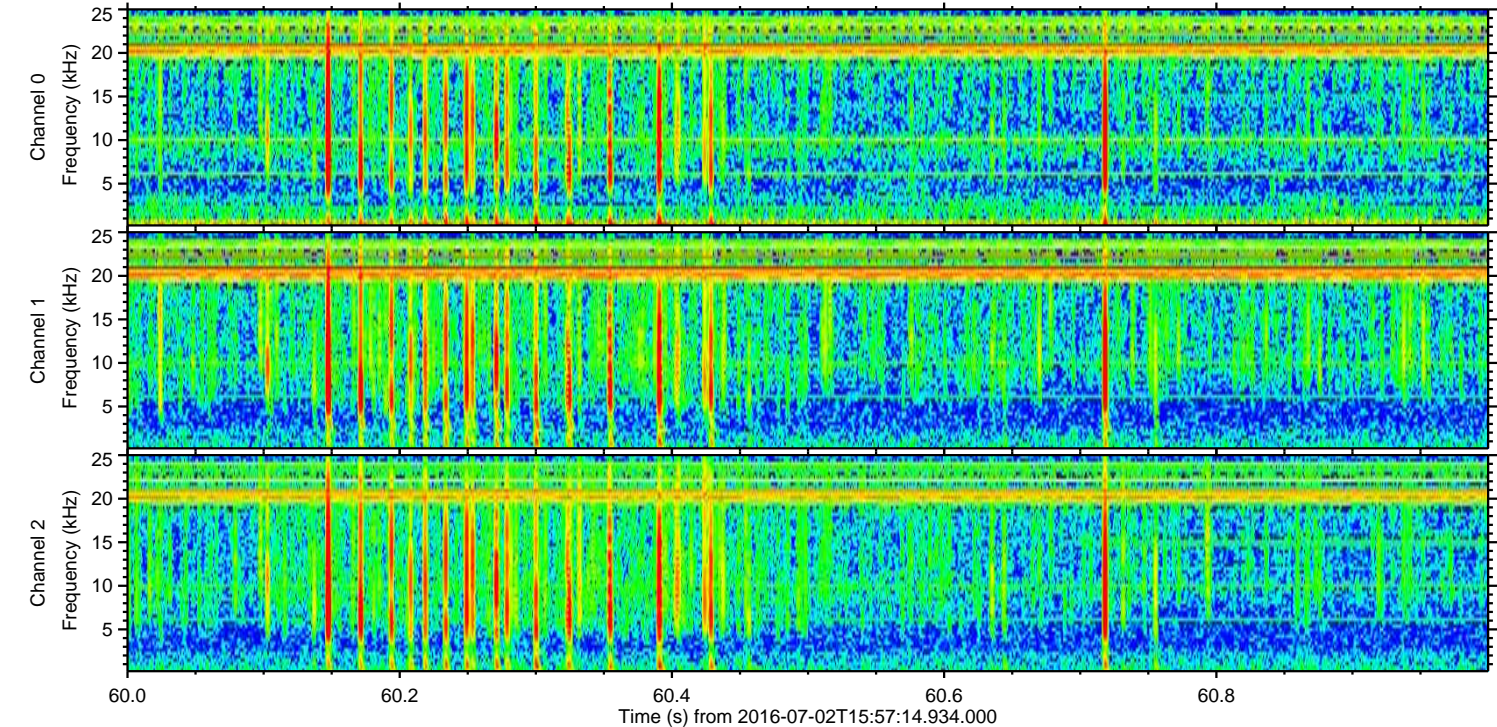
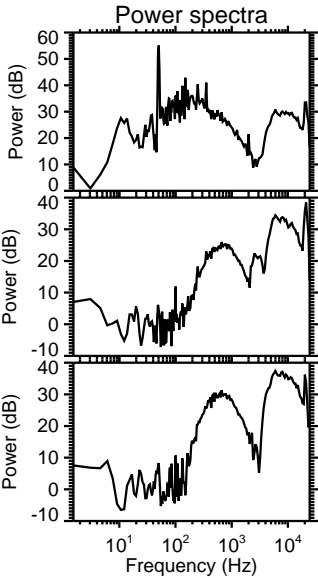
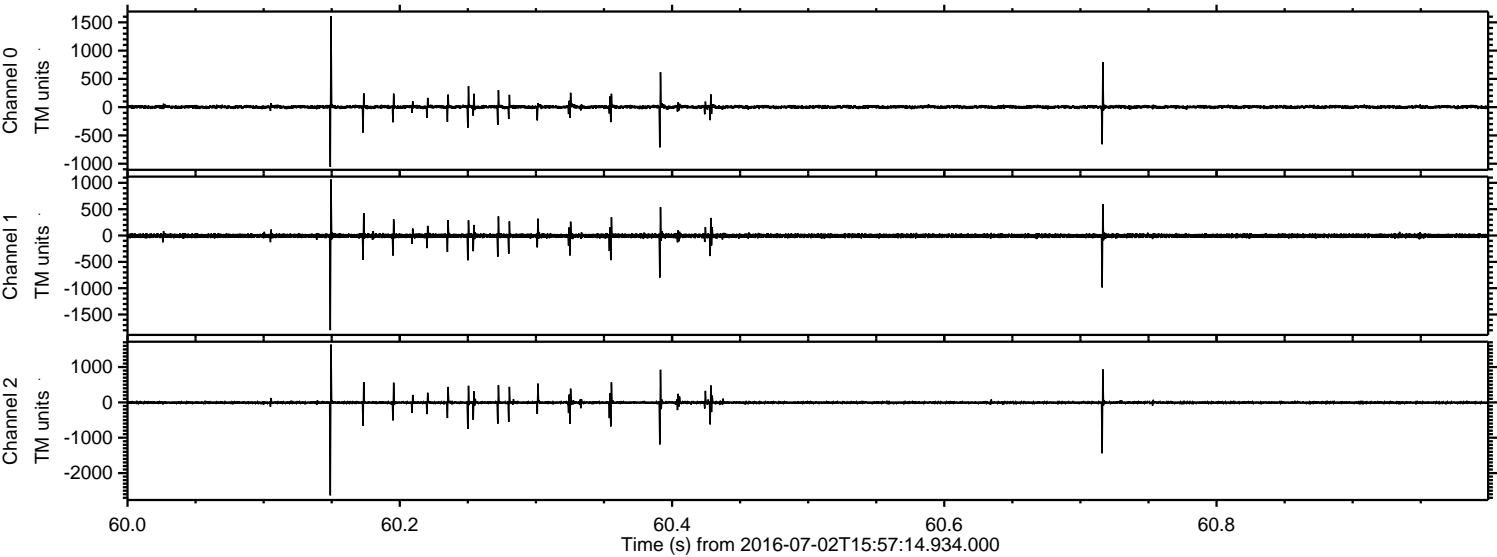


Channel 0
mn: -1419
mx: 1441
 μ : 3.1
 σ : 20.5

Channel 1
mn: -478
mx: 443
 μ : -5.2
 σ : 18.9

Channel 2
mn: -2524
mx: 2714
 μ : -4.5
 σ : 34.7

Processed Sat Jul 2 18:06:13 2016 by ELM ver.2012-10-06 from 001__elm20160702_155713__dat00.bin



Processed Sat Jul 2 18:06:14 2016 by ELM ver.2012-10-06 from 001__elm20160702_155713__dat00.bin

