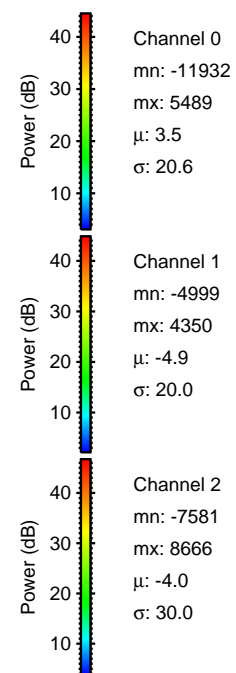
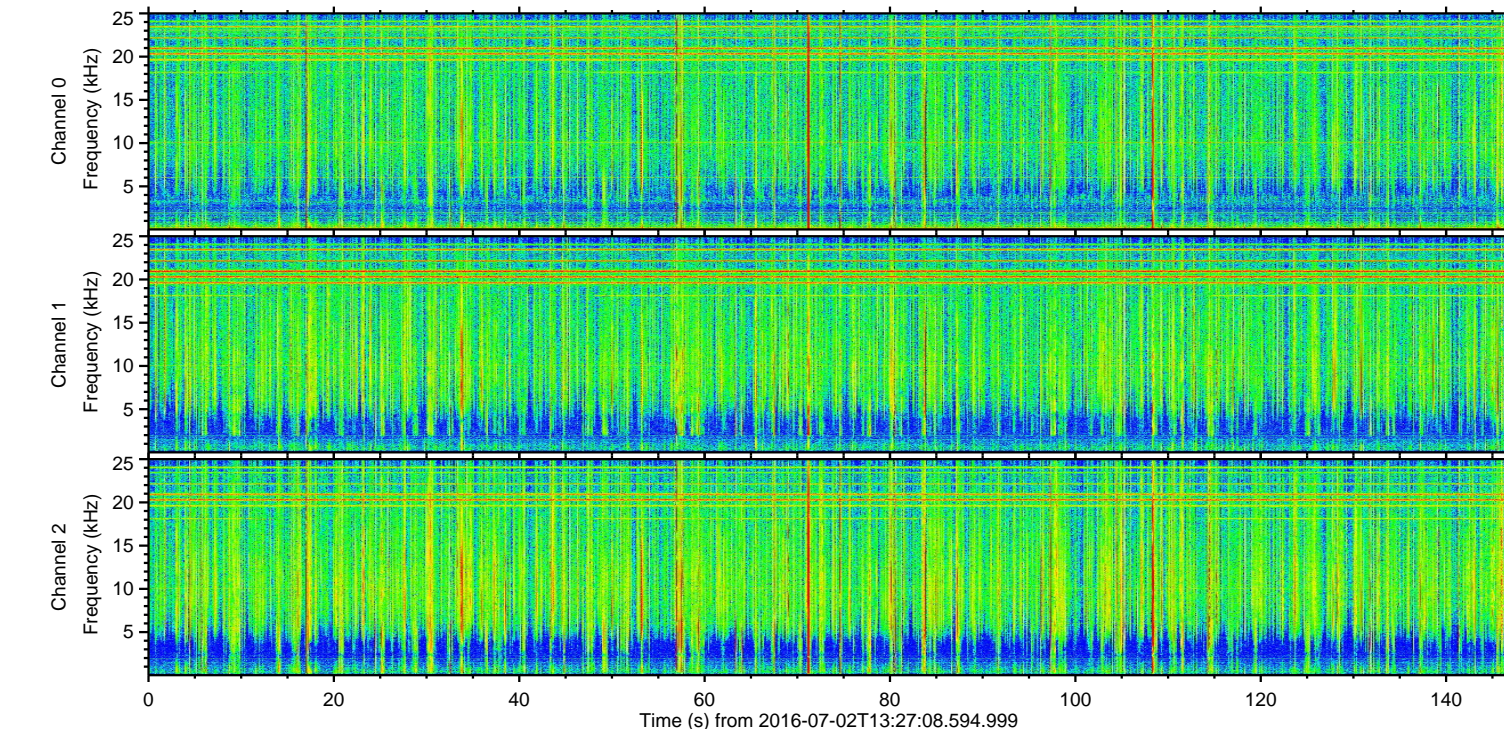
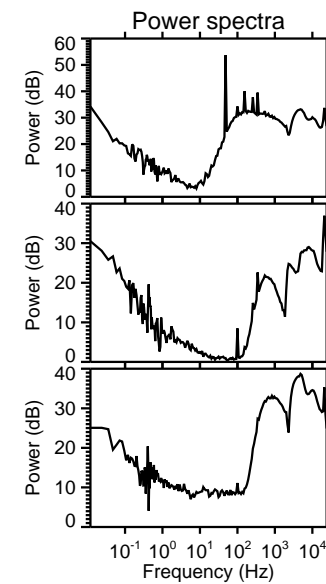
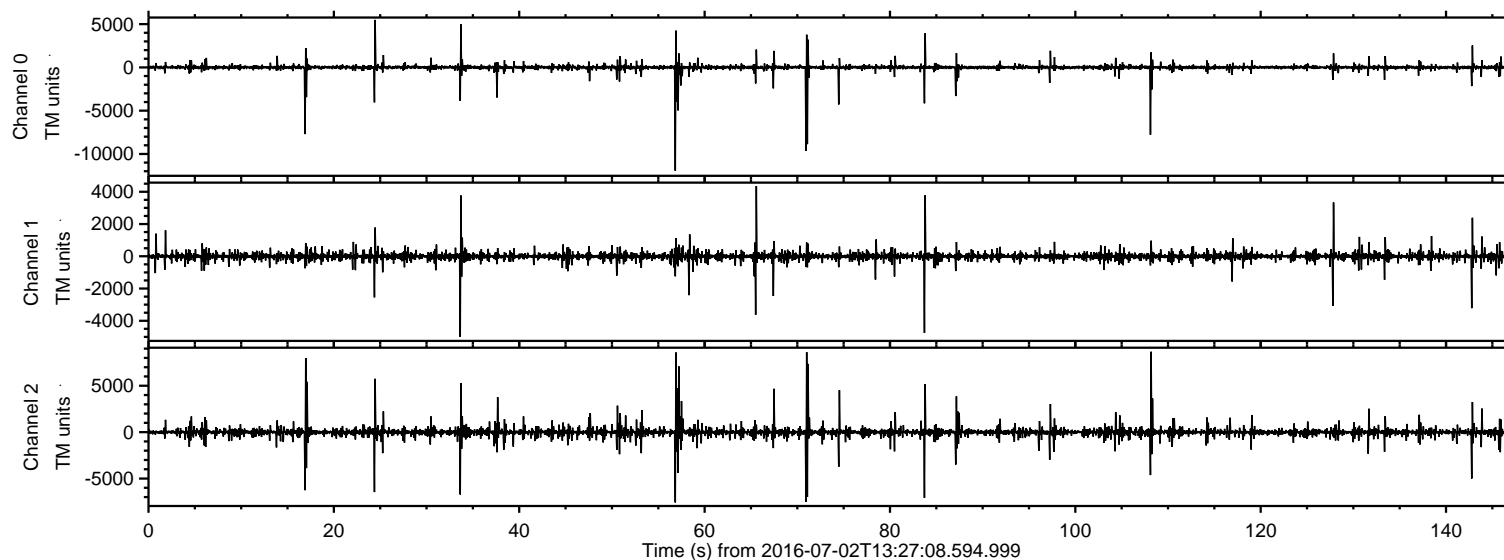


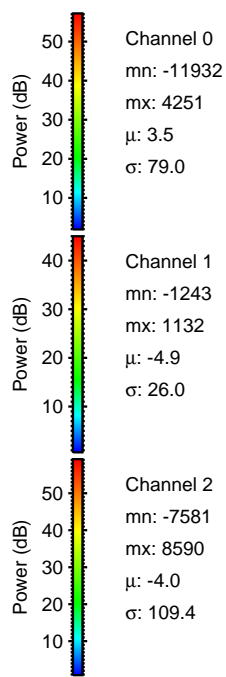
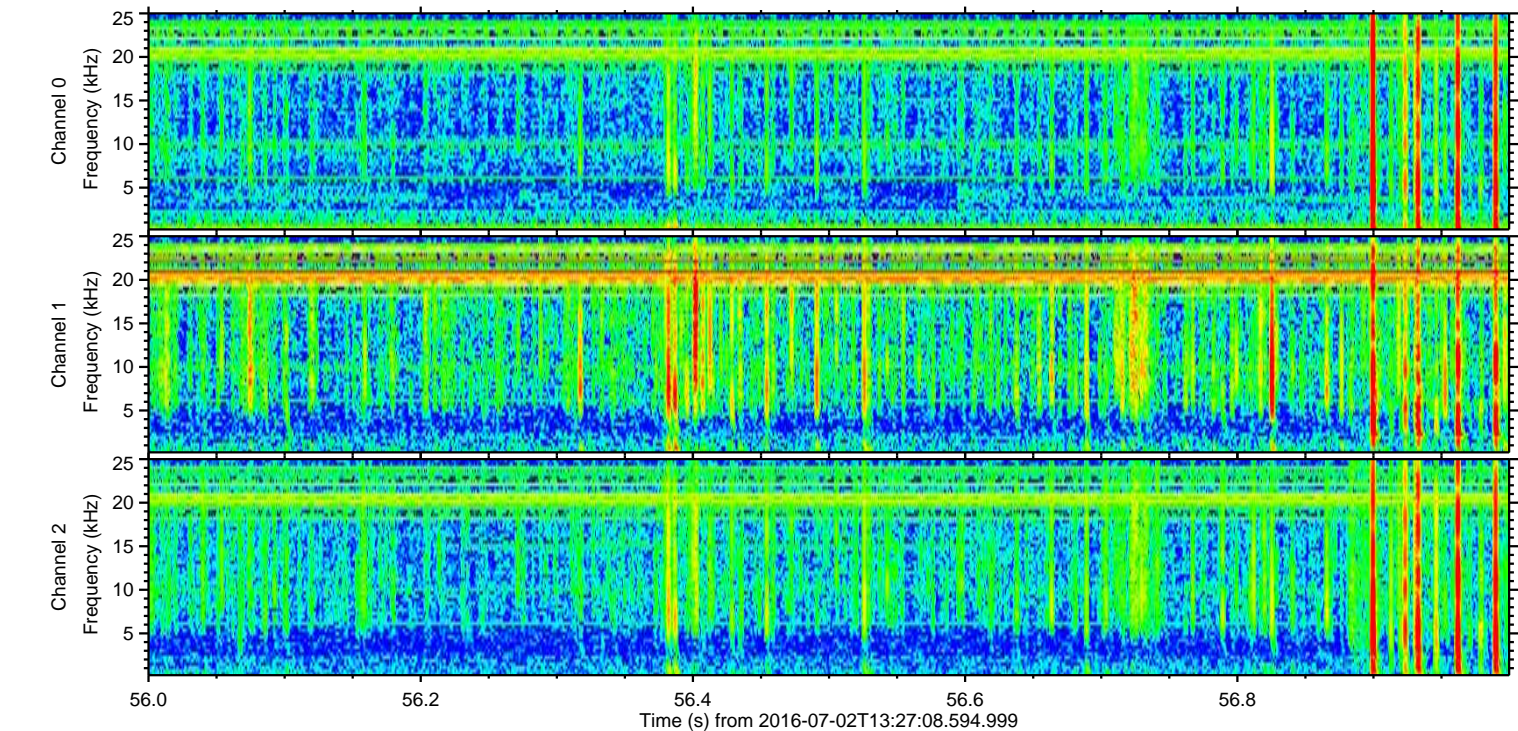
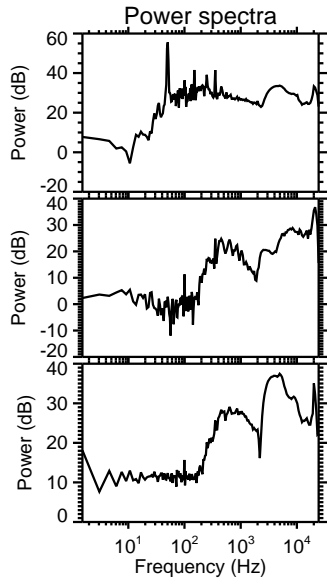
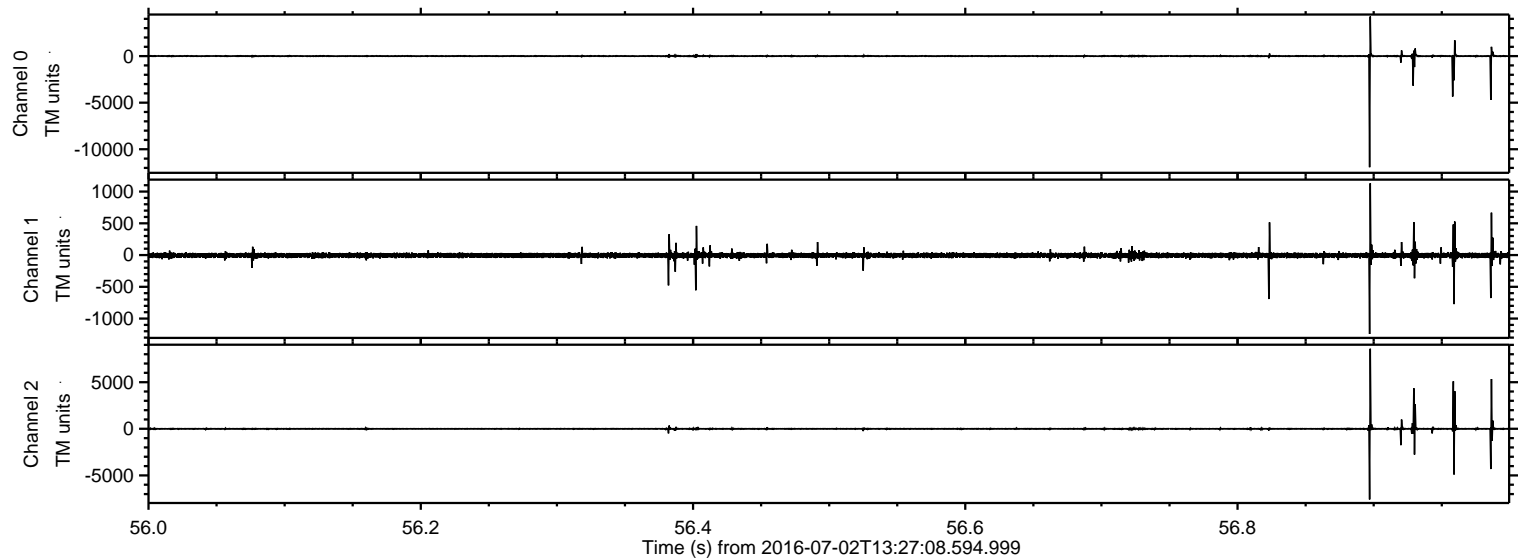
ELMAVAN 3D WAVEFORMS (Measured data sampled at 50 kHz) 51000 packets of 144 samples from 2016-07-02T13:27:08.594.999.

Processed Sat Jul 2 15:35:33 2016 by ELM ver.2012-10-06 from 001__elm20160702_132707__dat00.bin



ELMAVAN 3D WAVEFORMS (Measured data sampled at 50 kHz) 51000 packets of 144 samples from 2016-07-02T13:27:08.594.999. Part 57/147

Processed Sat Jul 2 15:35:45 2016 by ELM ver.2012-10-06 from 001__elm20160702_132707__dat00.bin

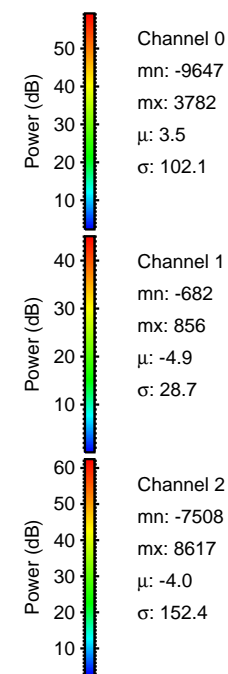
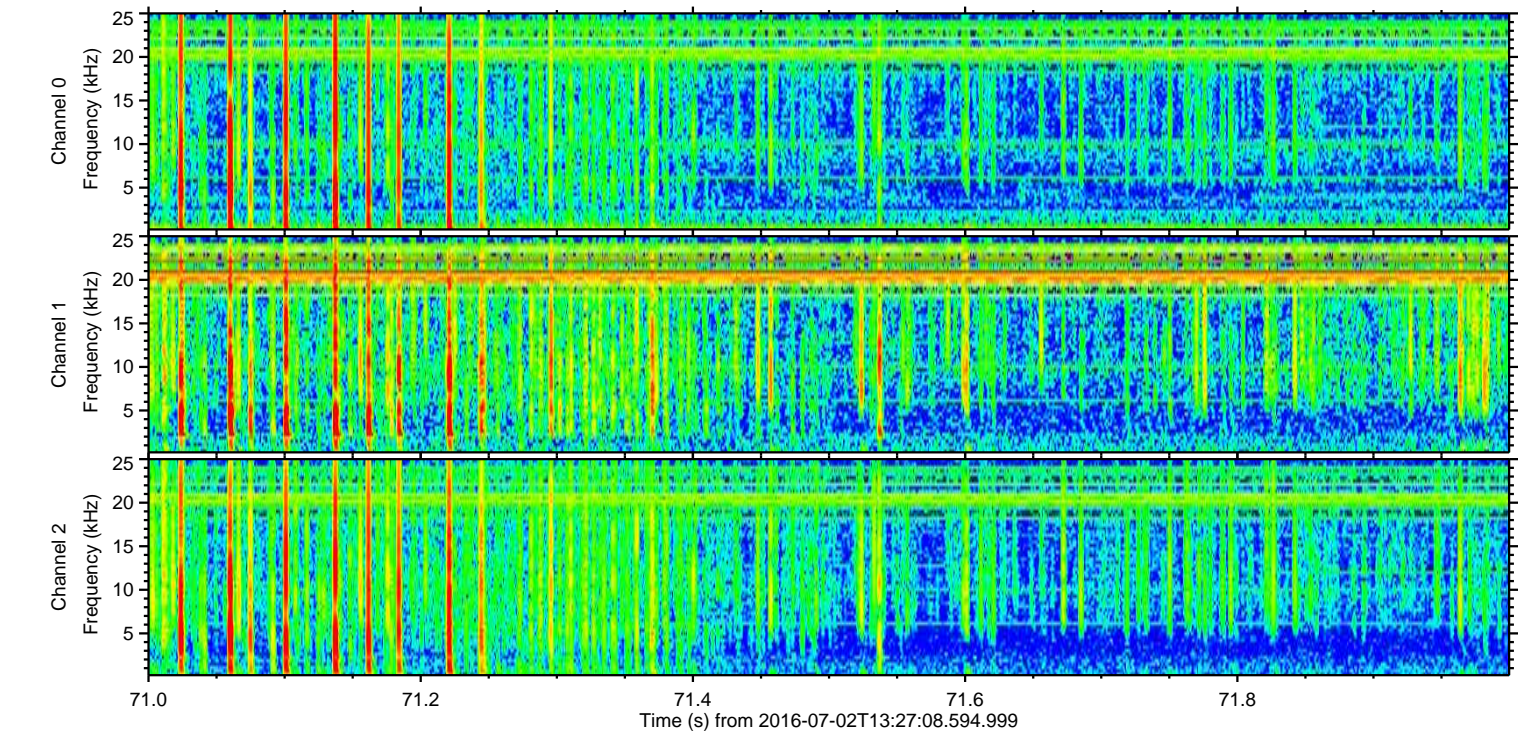
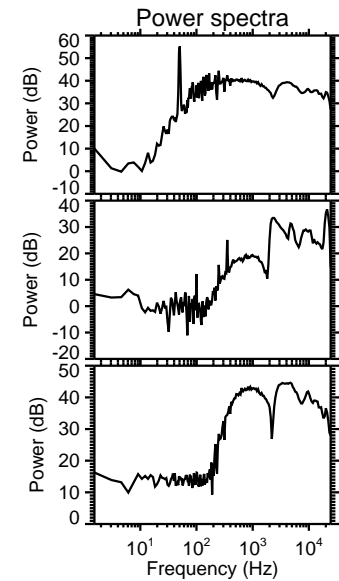
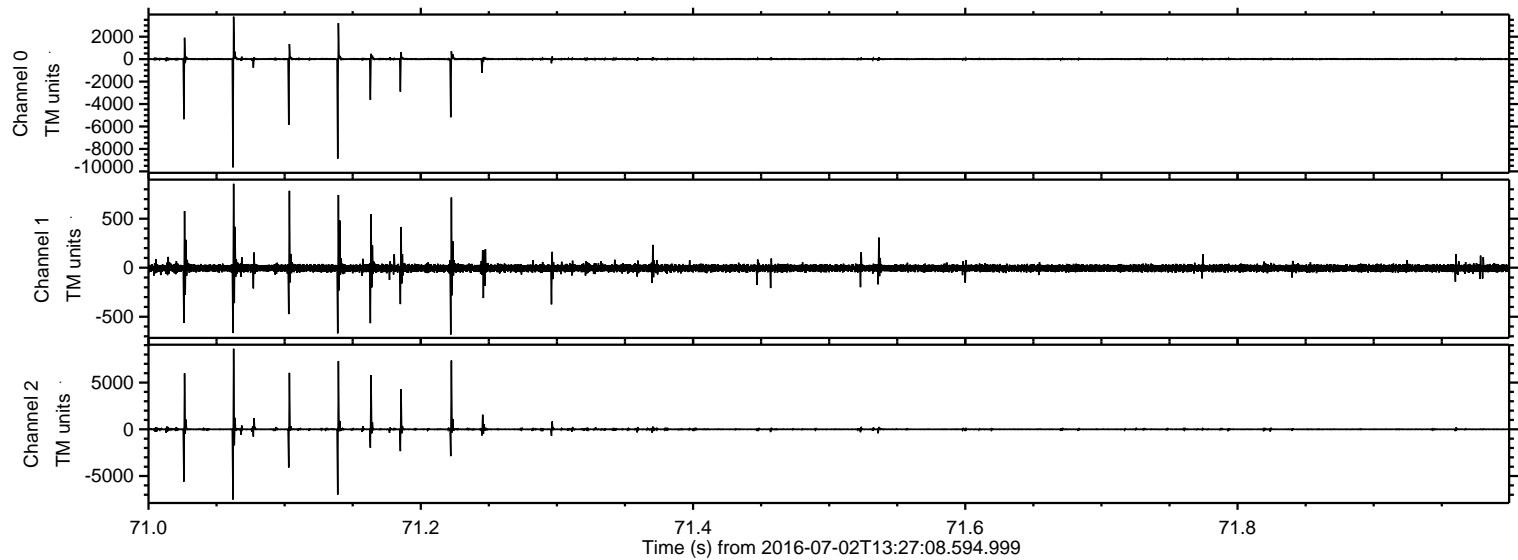


Channel 0
mn: -11932
mx: 4251
 μ : 3.5
 σ : 79.0

Channel 1
mn: -1243
mx: 1132
 μ : -4.9
 σ : 26.0

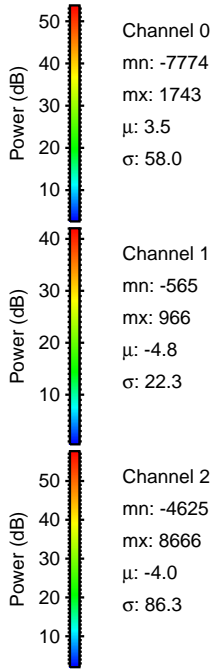
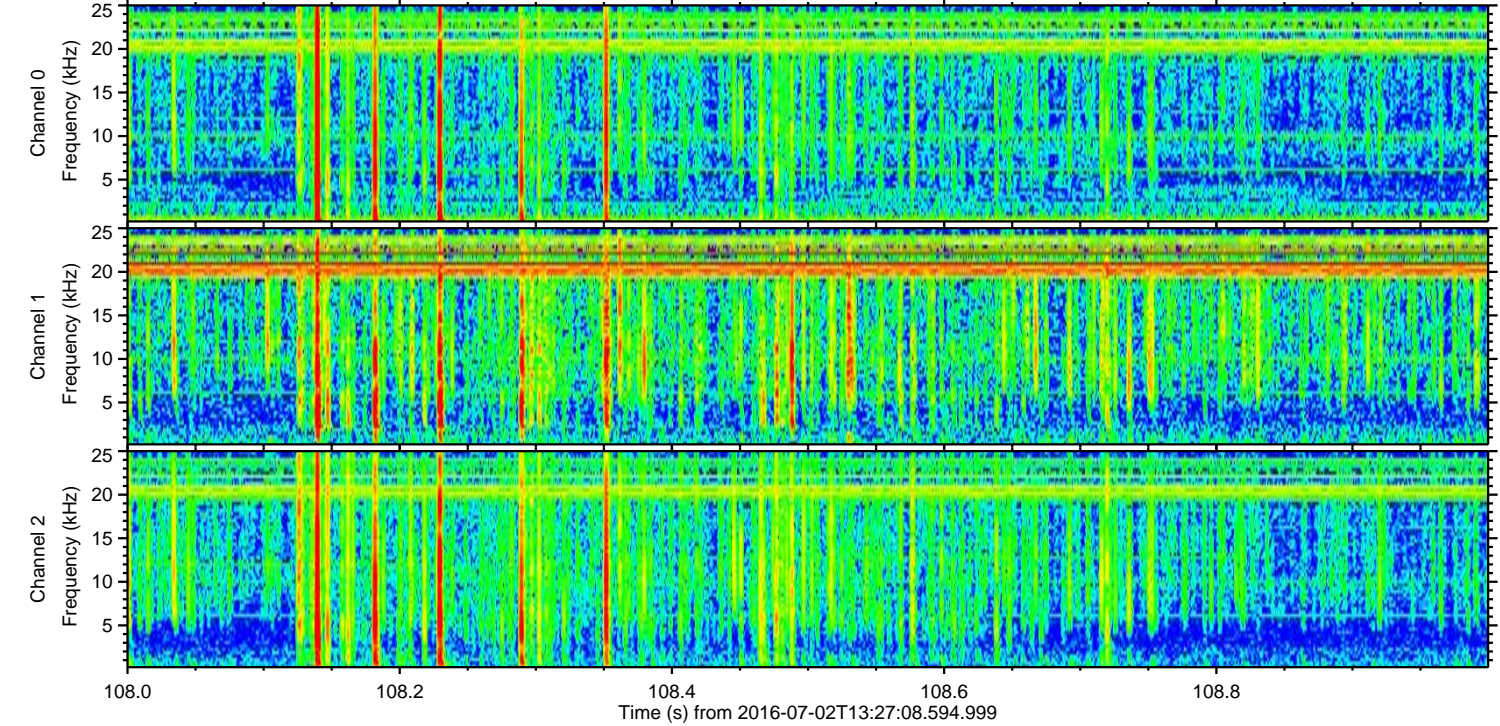
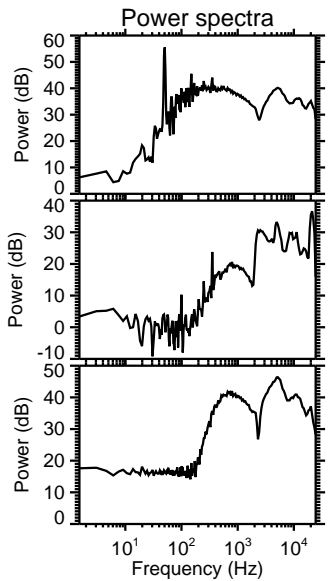
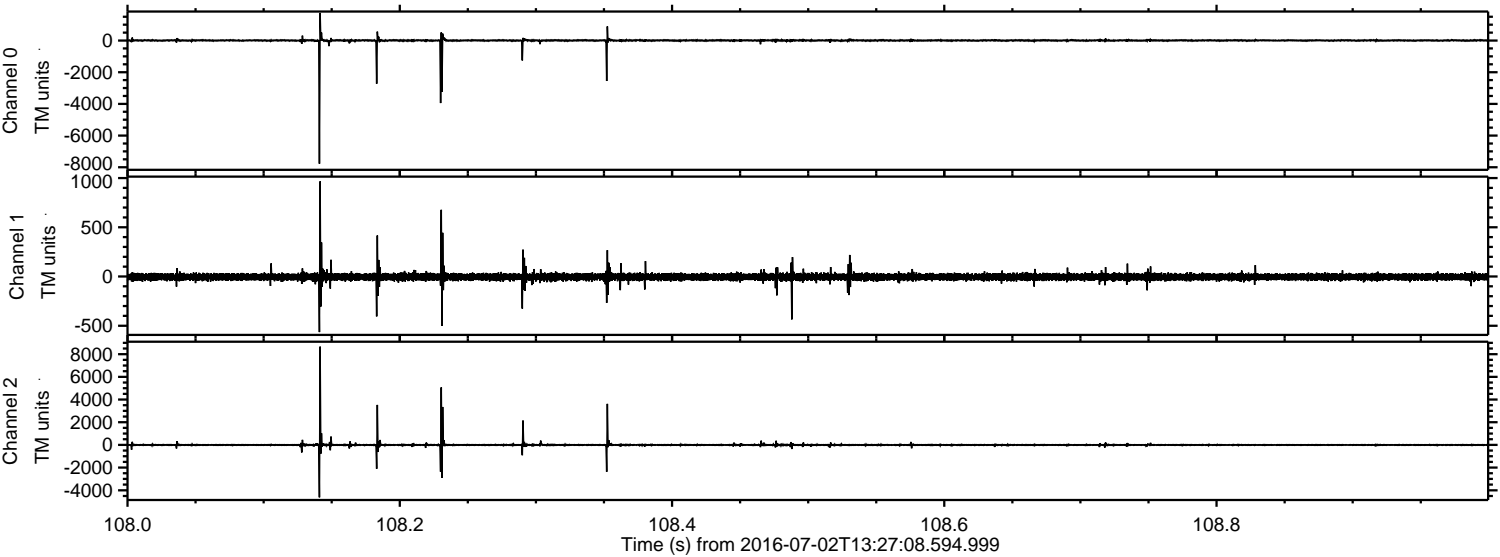
Channel 2
mn: -7581
mx: 8590
 μ : -4.0
 σ : 109.4

Processed Sat Jul 2 15:35:46 2016 by ELM ver.2012-10-06 from 001__elm20160702_132707__dat00.bin



ELMAVAN 3D WAVEFORMS (Measured data sampled at 50 kHz) 51000 packets of 144 samples from 2016-07-02T13:27:08.594.999. Part 109/147

Processed Sat Jul 2 15:35:47 2016 by ELM ver.2012-10-06 from 001__elm20160702_132707__dat00.bin



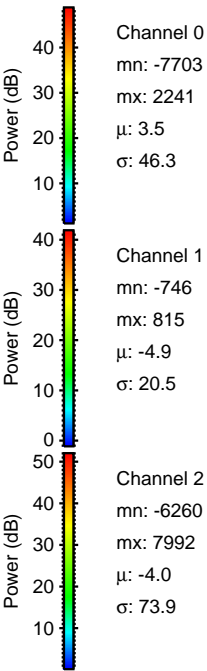
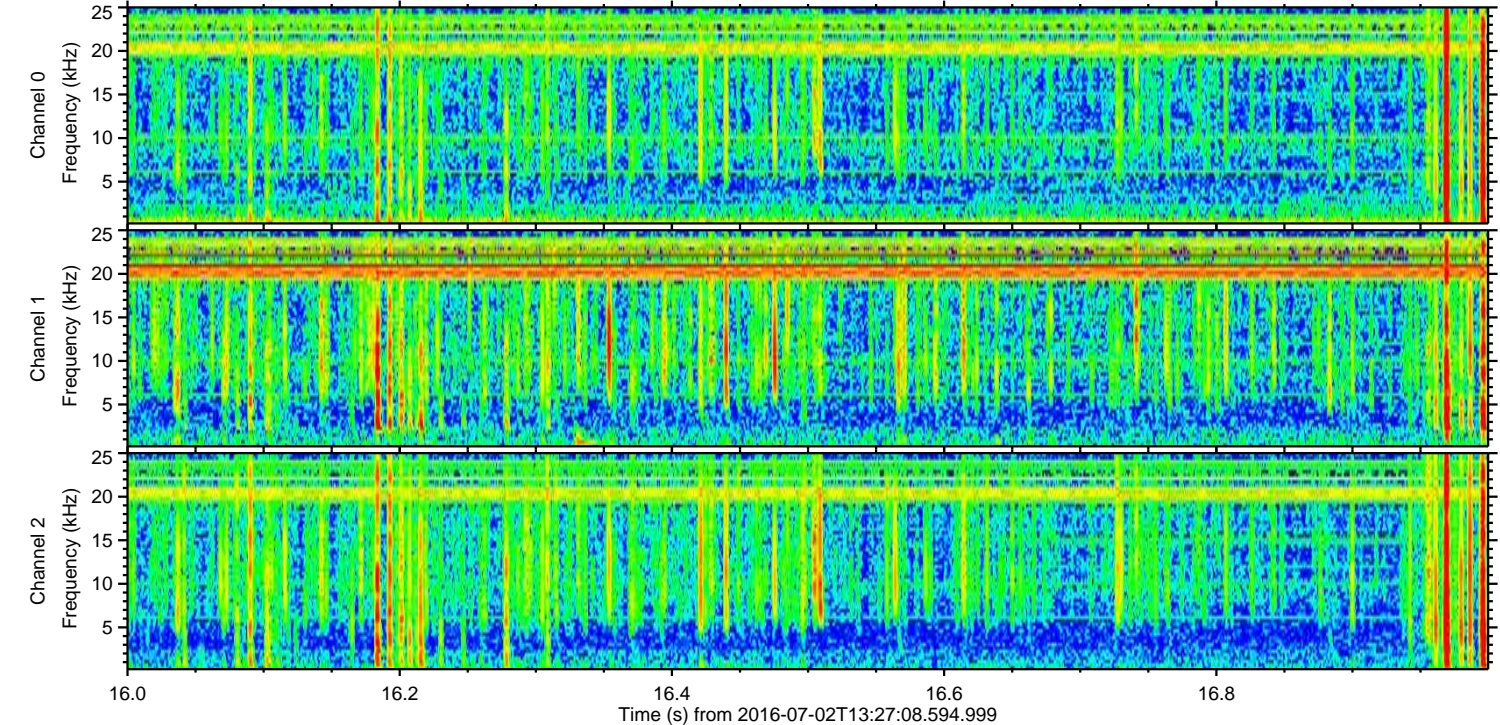
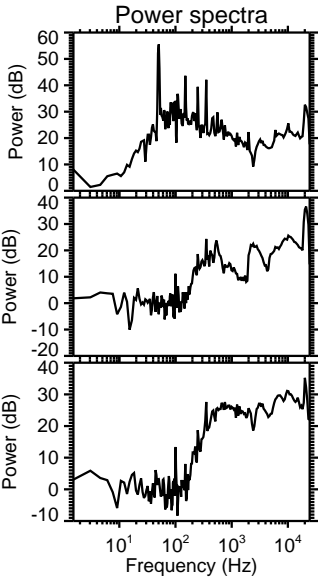
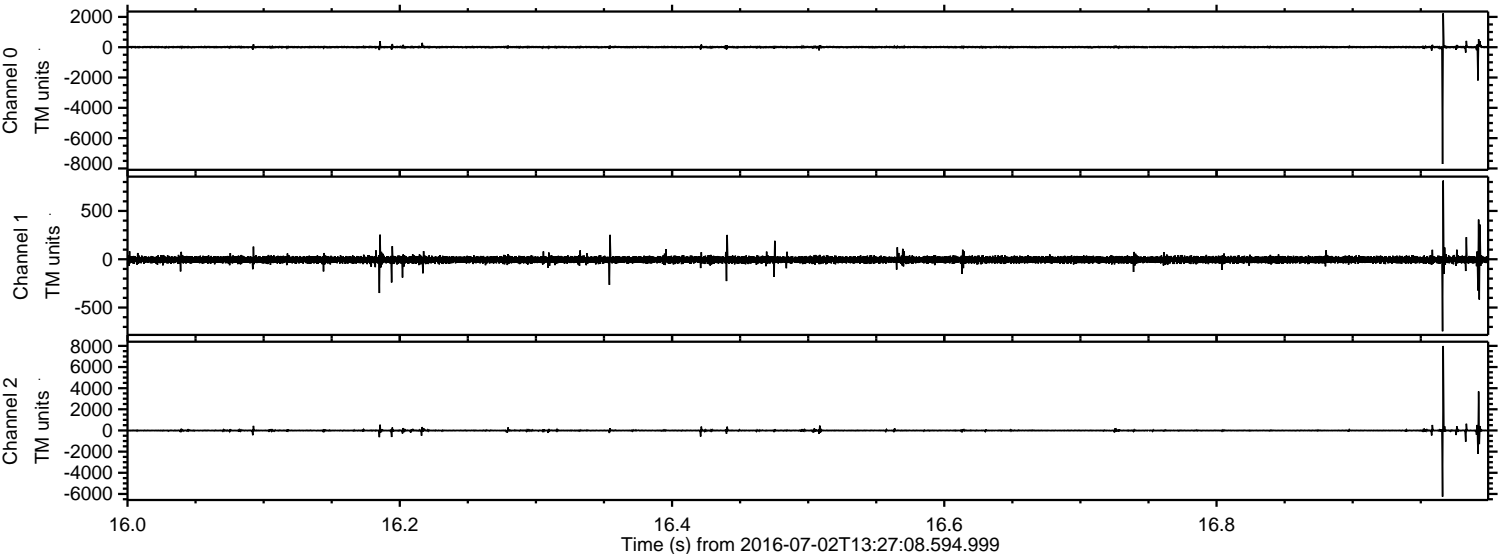
Channel 0
mn: -7774
mx: 1743
 μ : 3.5
 σ : 58.0

Channel 1
mn: -565
mx: 966
 μ : -4.8
 σ : 22.3

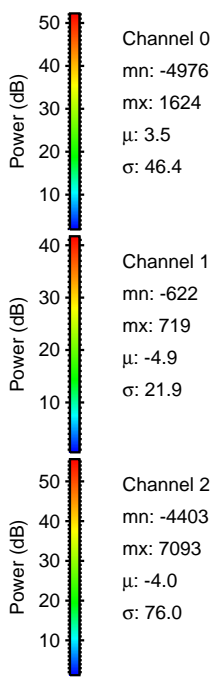
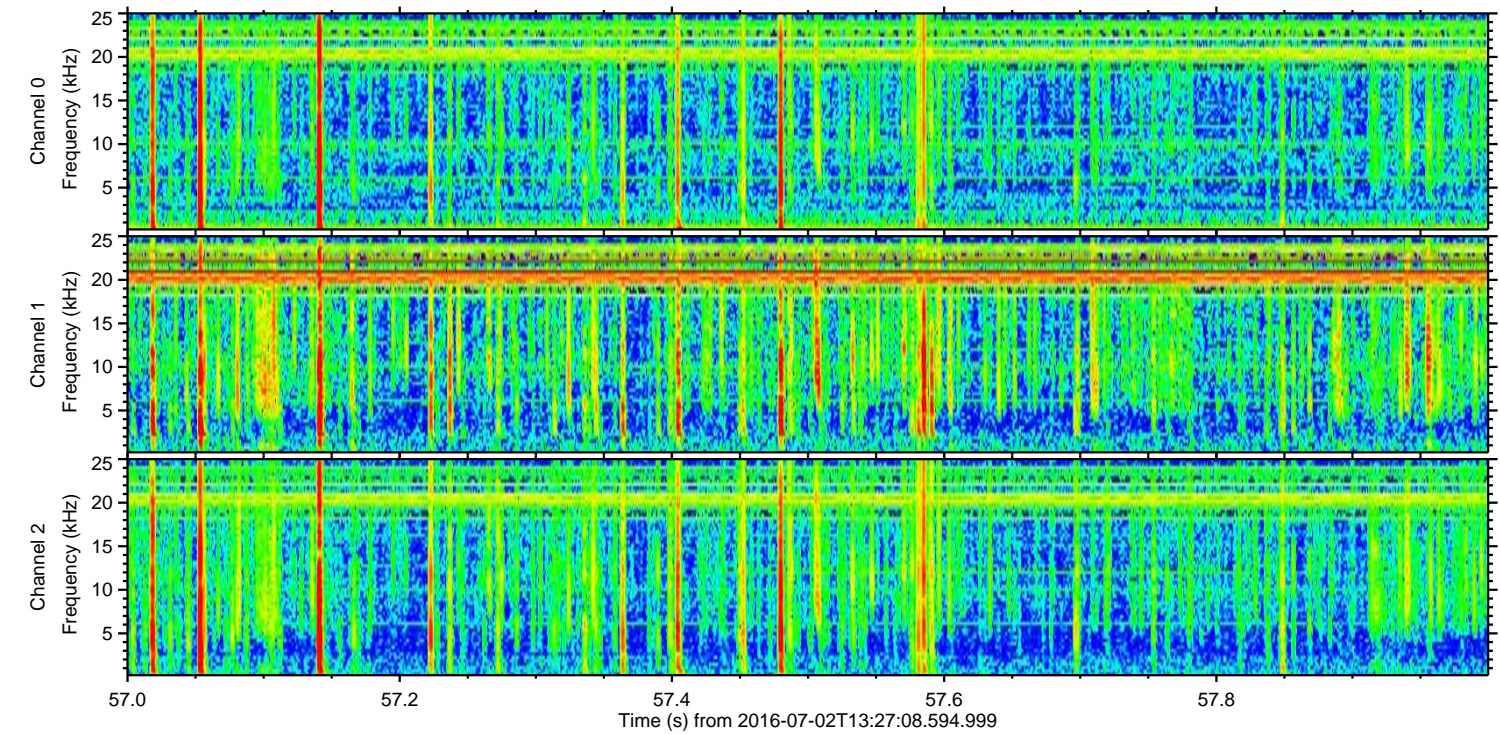
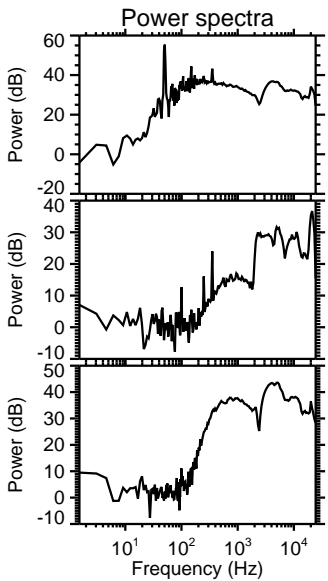
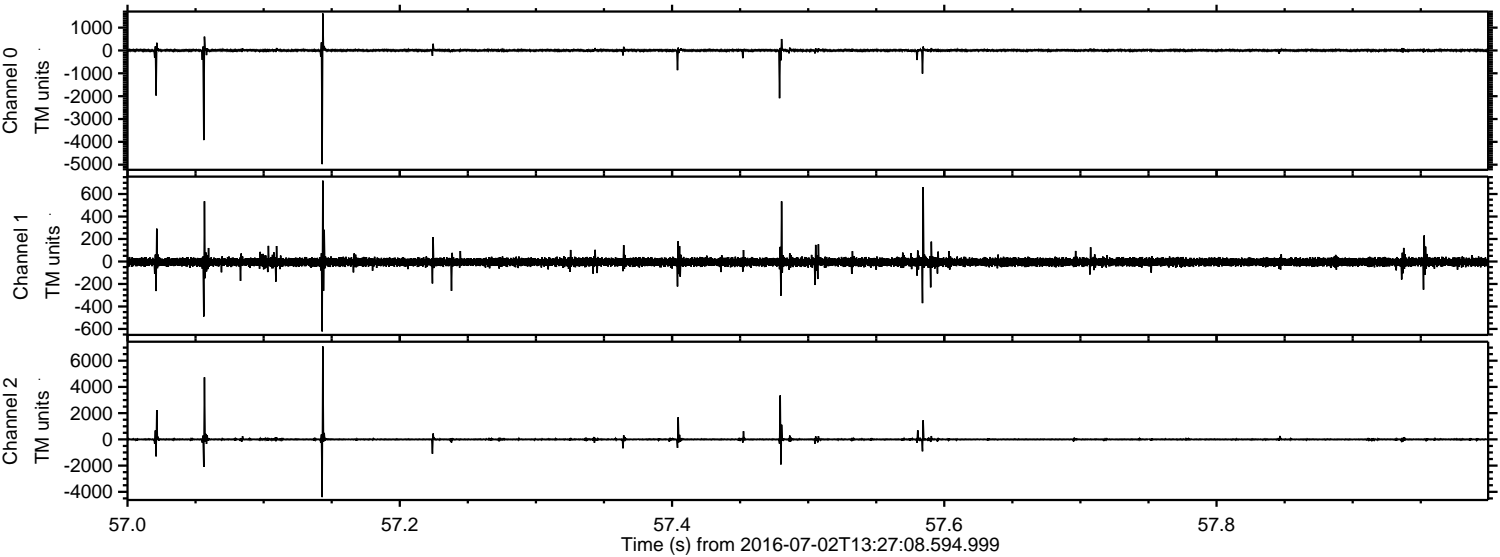
Channel 2
mn: -4625
mx: 8666
 μ : -4.0
 σ : 86.3

ELMAVAN 3D WAVEFORMS (Measured data sampled at 50 kHz) 51000 packets of 144 samples from 2016-07-02T13:27:08.594.999. Part 17/147

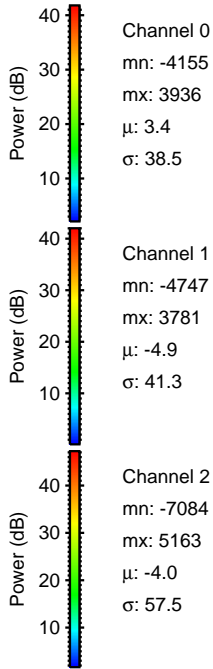
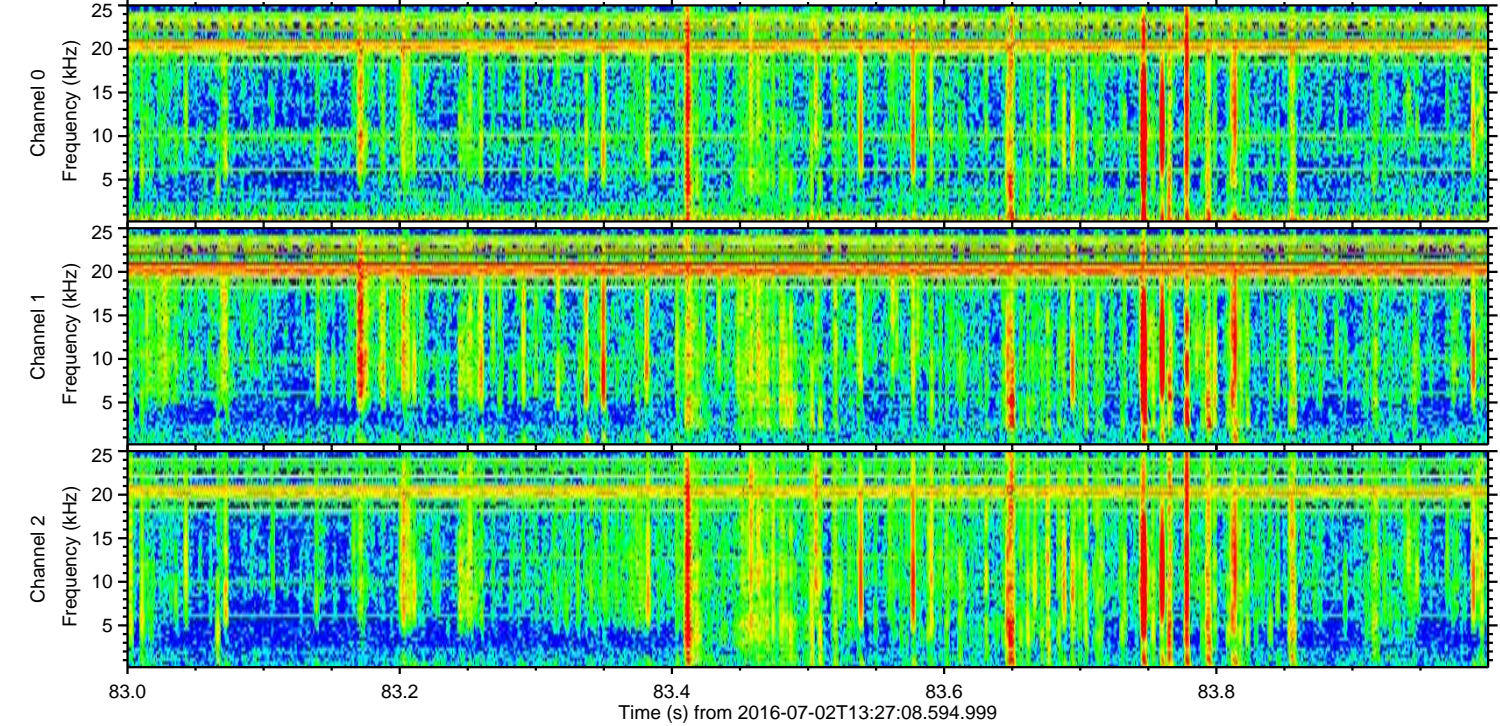
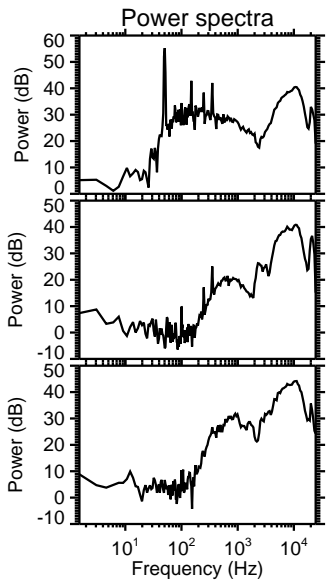
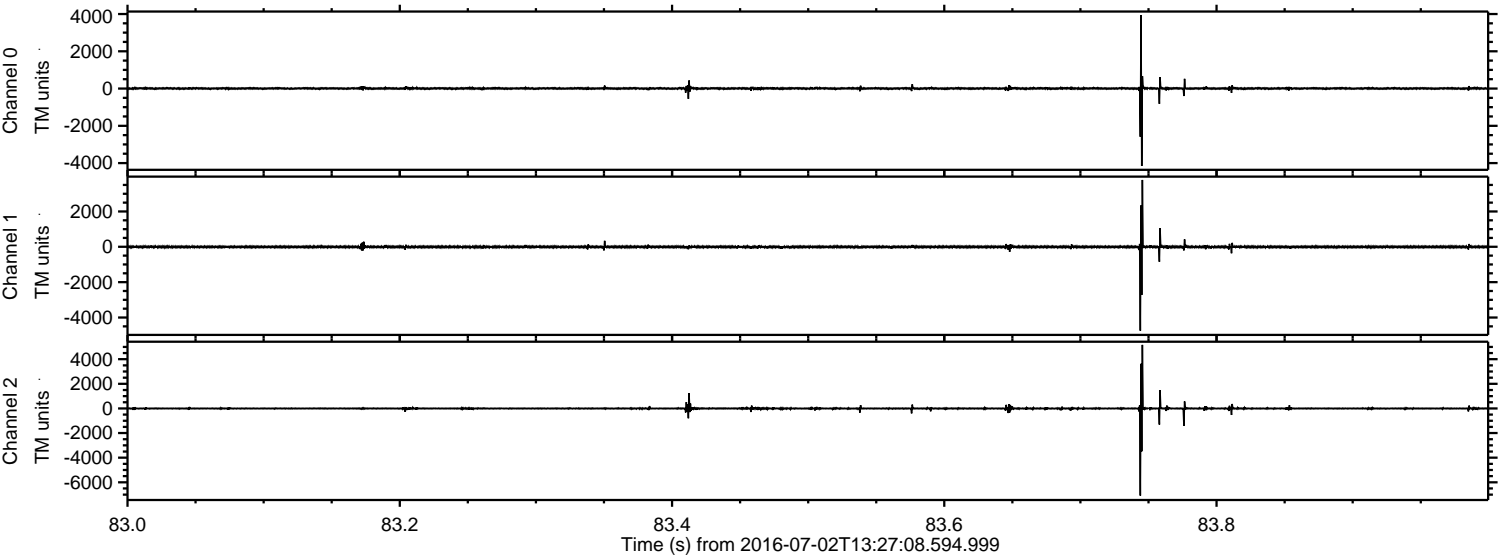
Processed Sat Jul 2 15:35:48 2016 by ELM ver.2012-10-06 from 001__elm20160702_132707__dat00.bin



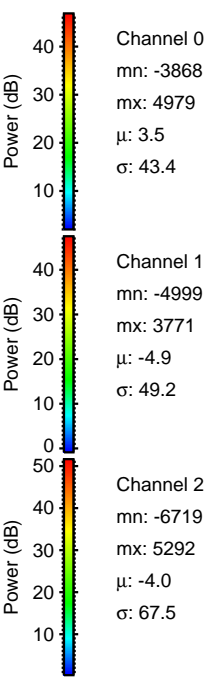
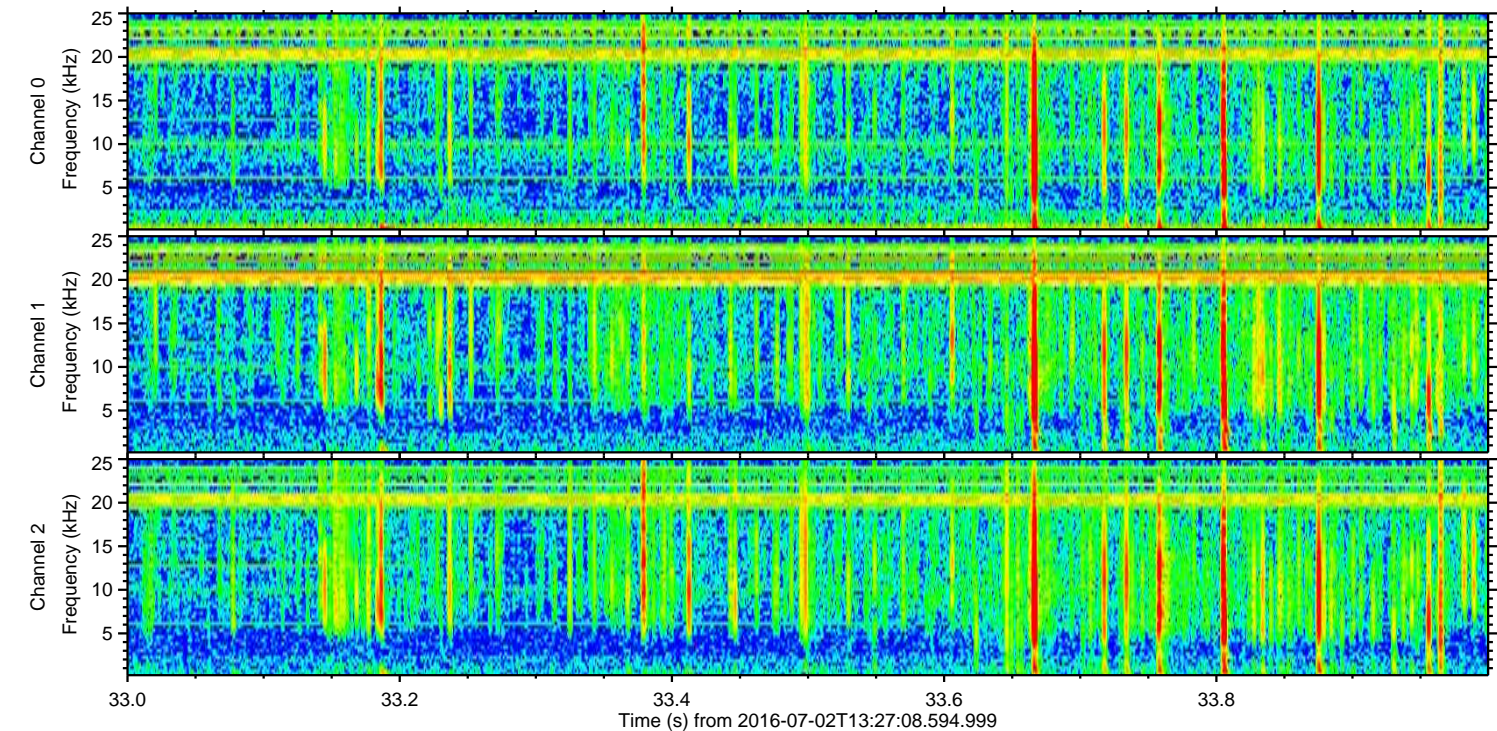
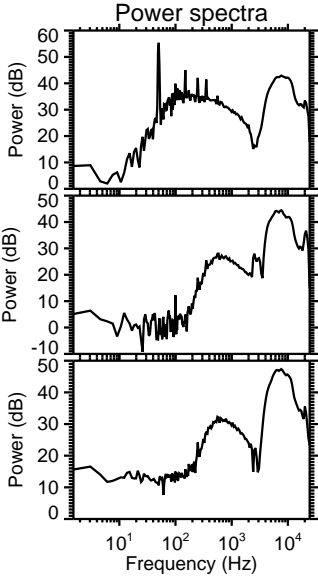
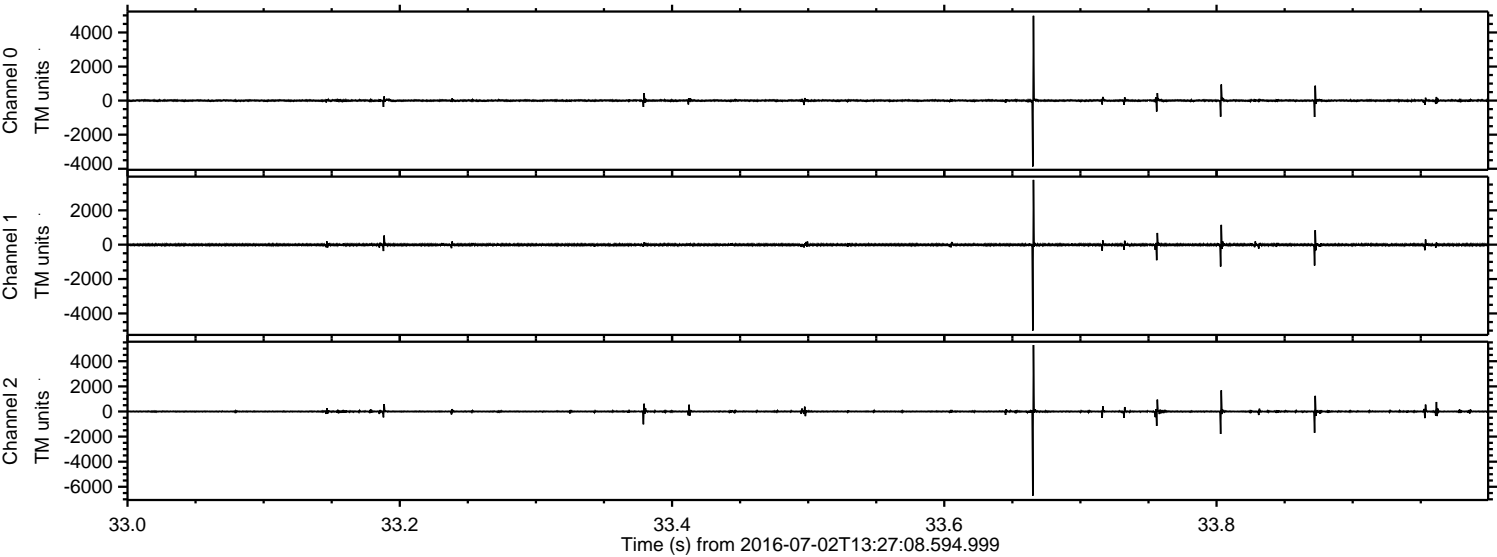
Processed Sat Jul 2 15:35:49 2016 by ELM ver.2012-10-06 from 001__elm20160702_132707__dat00.bin



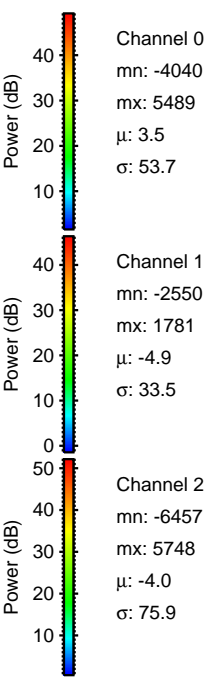
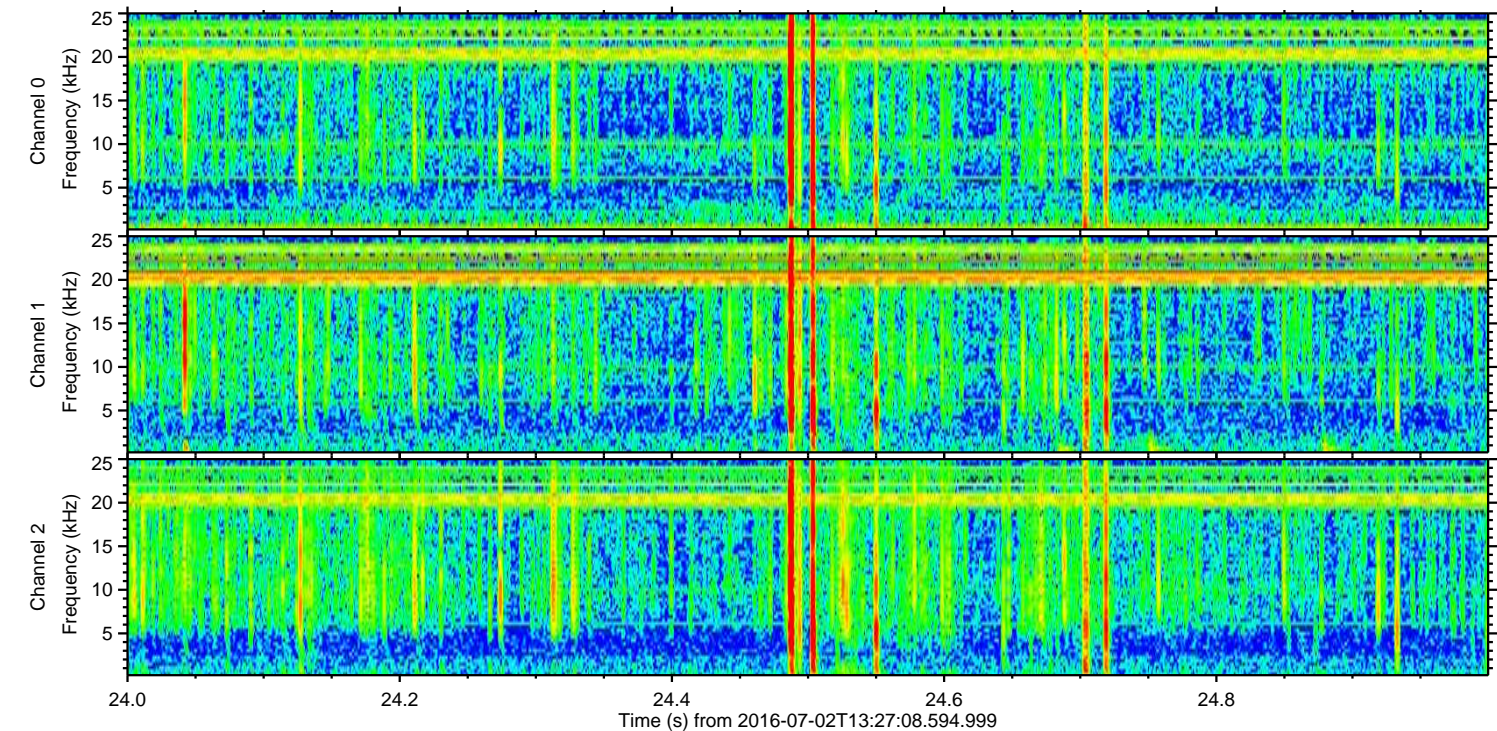
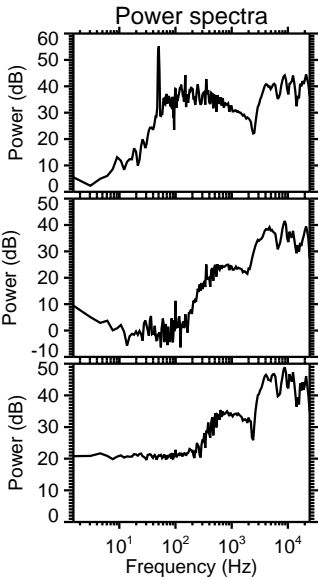
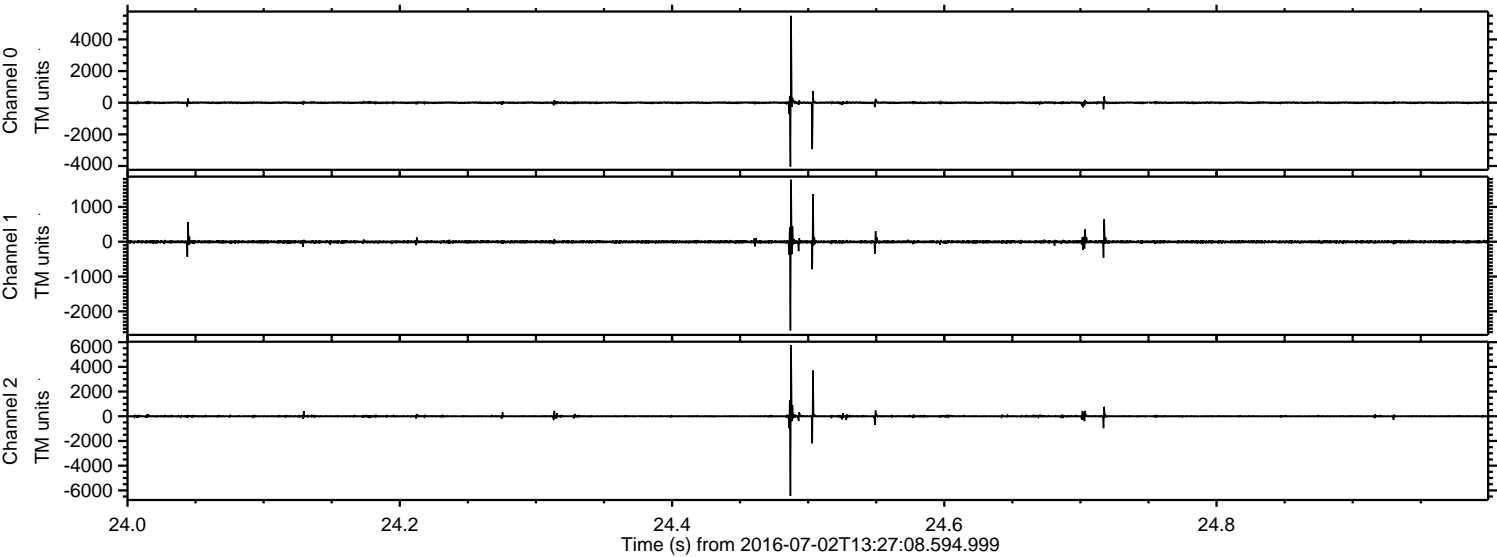
Processed Sat Jul 2 15:35:50 2016 by ELM ver.2012-10-06 from 001__elm20160702_132707__dat00.bin



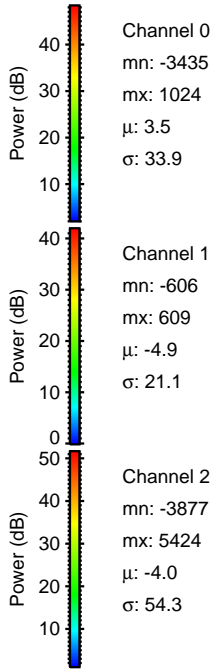
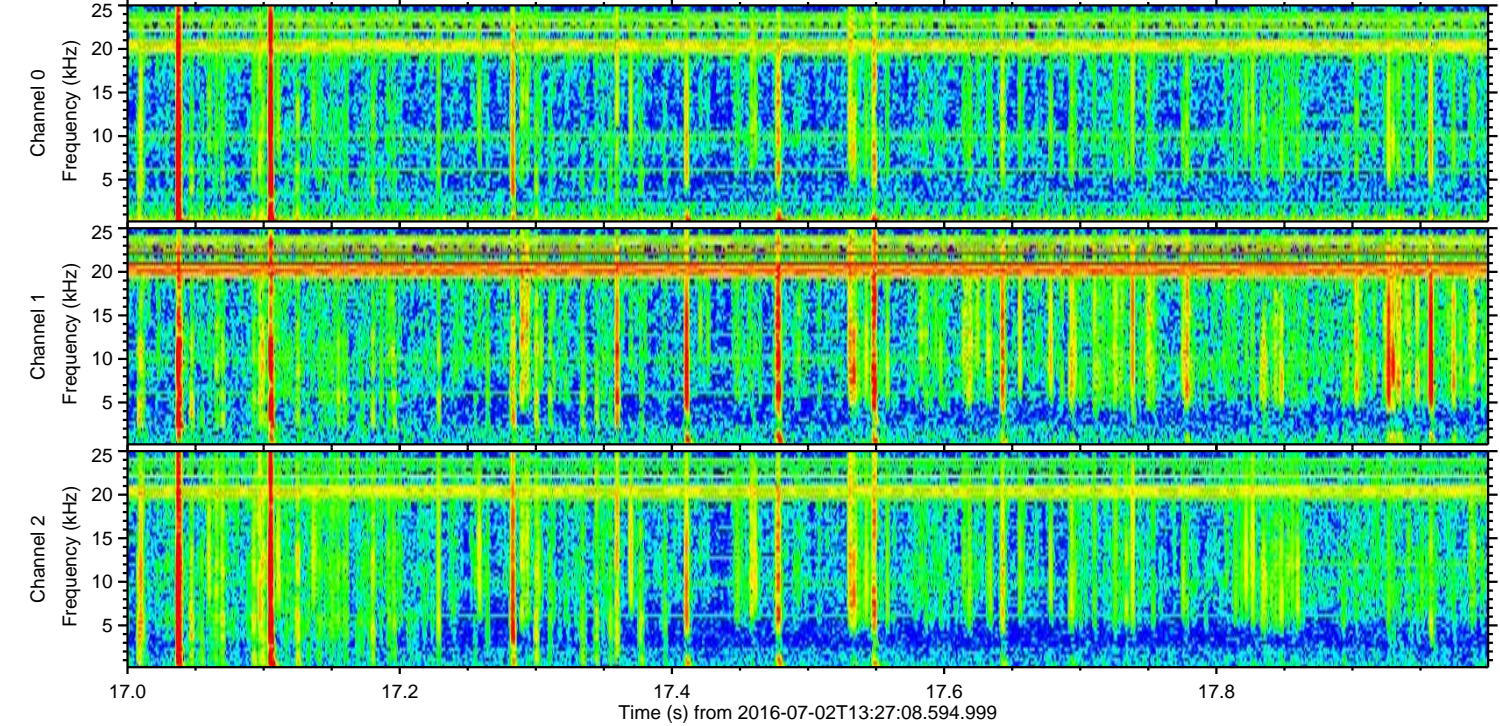
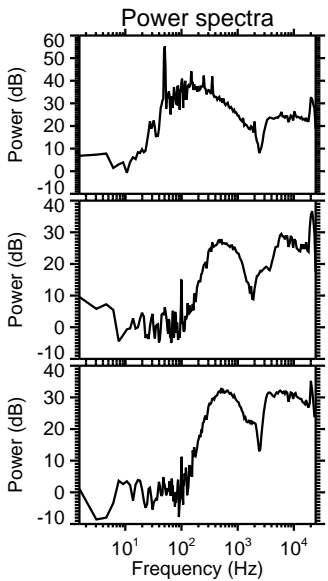
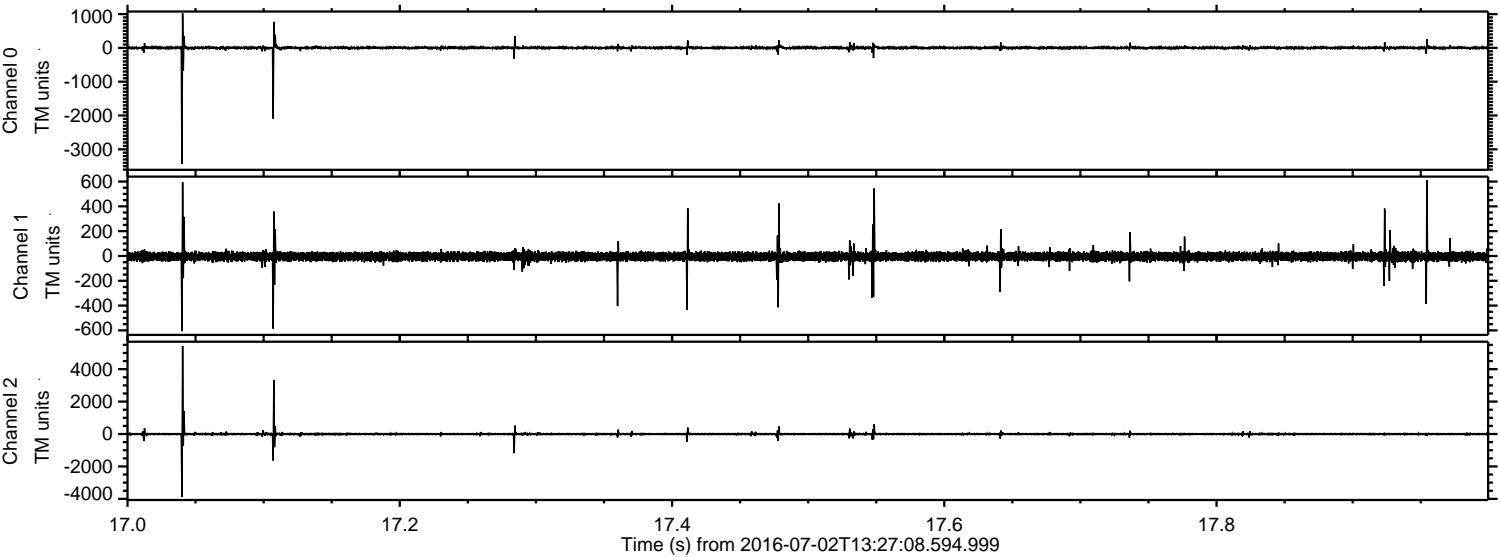
Processed Sat Jul 2 15:35:50 2016 by ELM ver.2012-10-06 from 001__elm20160702_132707__dat00.bin



Processed Sat Jul 2 15:35:51 2016 by ELM ver.2012-10-06 from 001__elm20160702_132707__dat00.bin



Processed Sat Jul 2 15:35:52 2016 by ELM ver.2012-10-06 from 001__elm20160702_132707__dat00.bin



Channel 0
mn: -3435
mx: 1024
 μ : 3.5
 σ : 33.9

Channel 1
mn: -606
mx: 609
 μ : -4.9
 σ : 21.1

Channel 2
mn: -3877
mx: 5424
 μ : -4.0
 σ : 54.3

