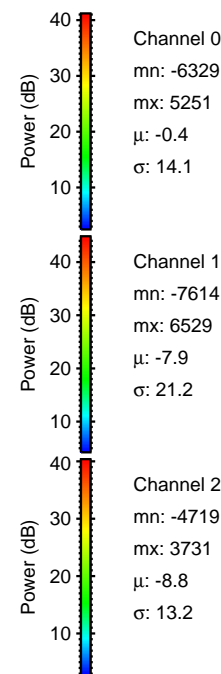
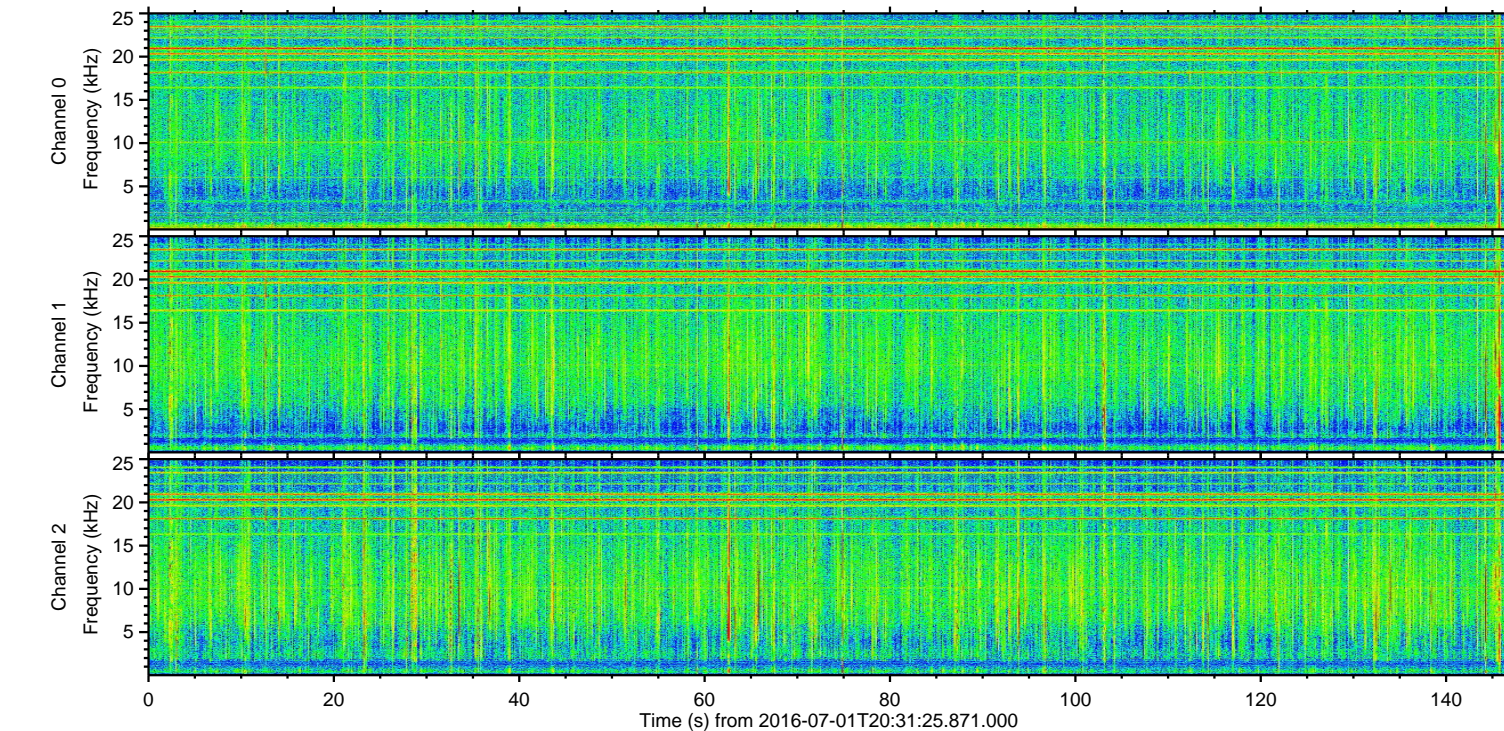
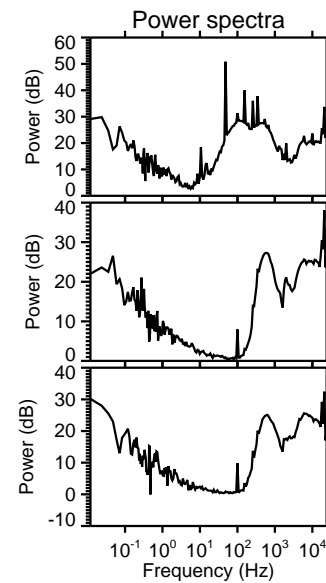
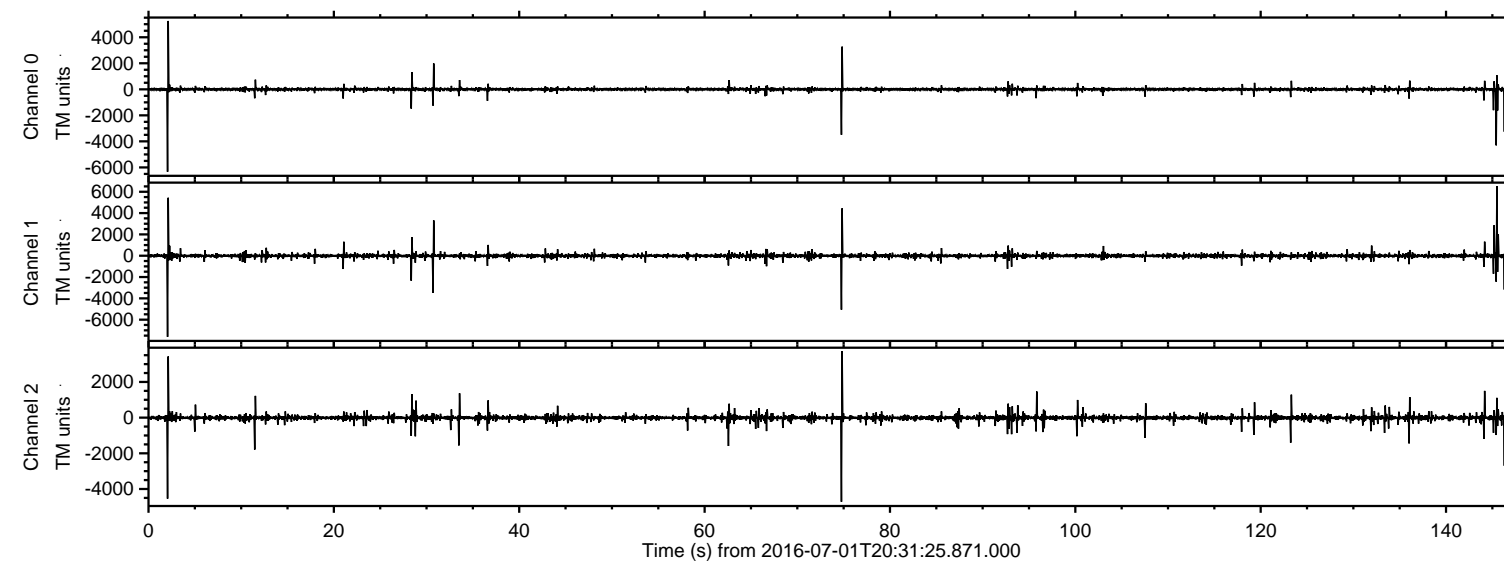


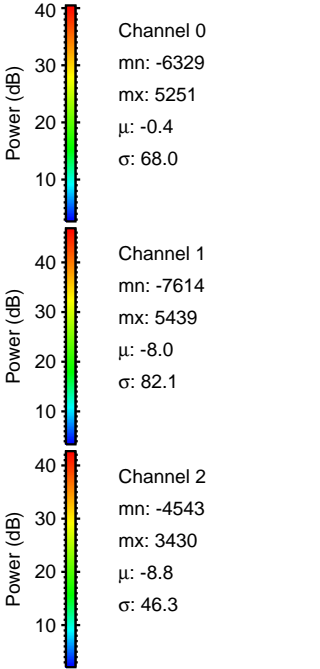
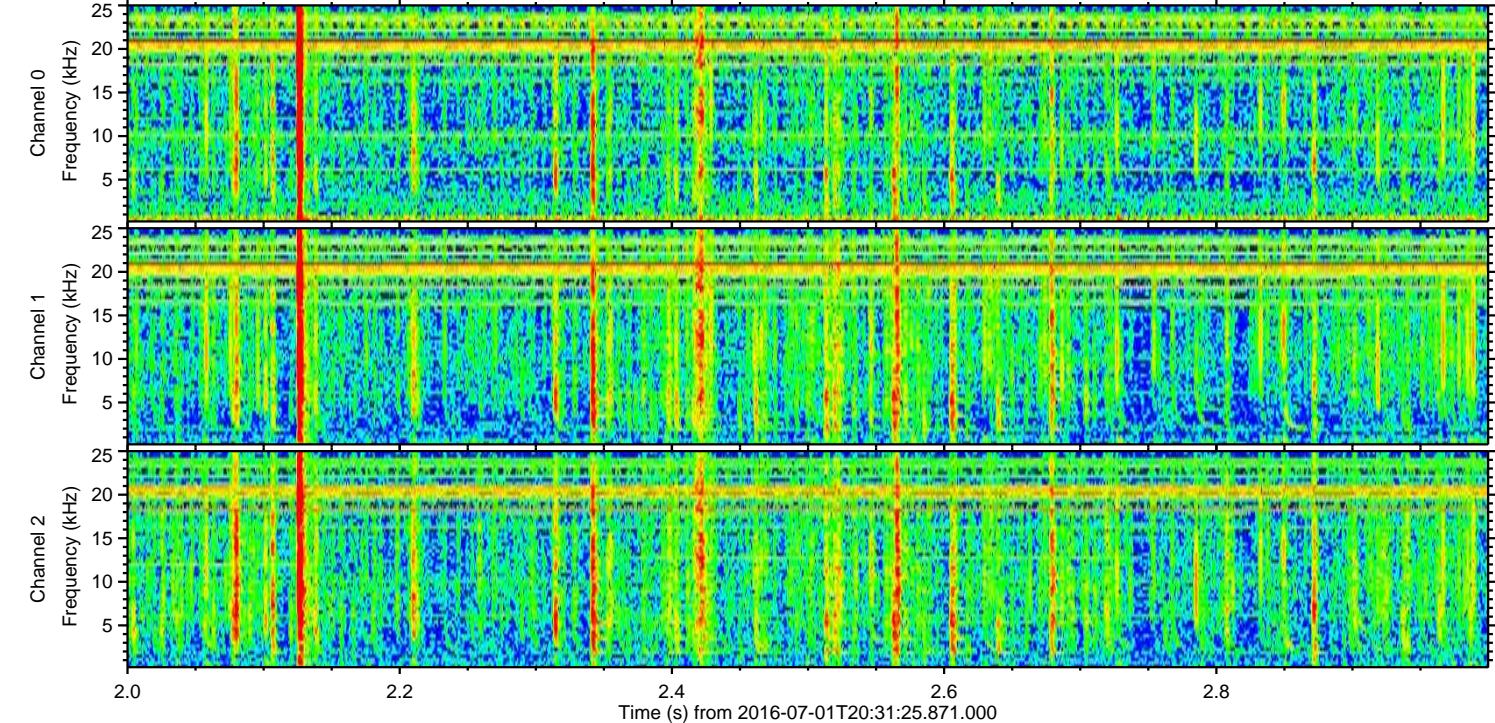
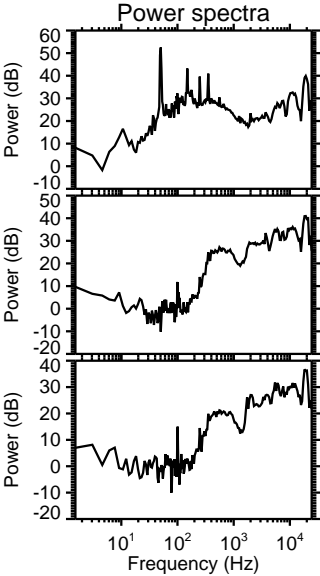
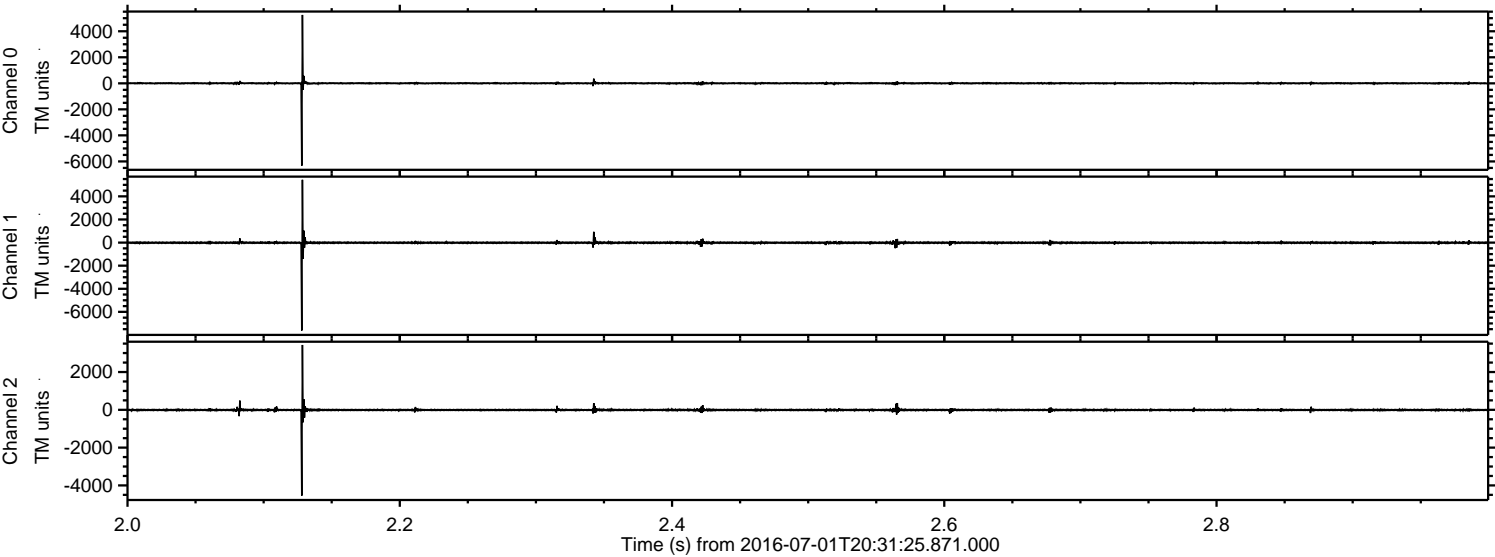
# ELMAVAN 3D WAVEFORMS (Measured data sampled at 50 kHz) 51000 packets of 144 samples from 2016-07-01T20:31:25.871.000.

Processed Fri Jul 1 22:38:58 2016 by ELM ver.2012-10-06 from 001\_\_elm20160701\_203124\_\_dat00.bin





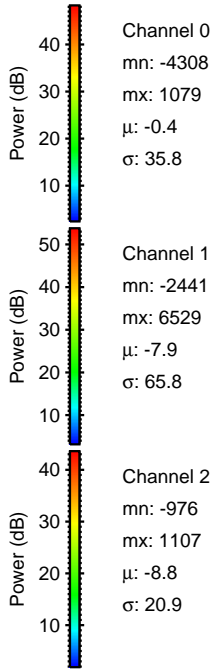
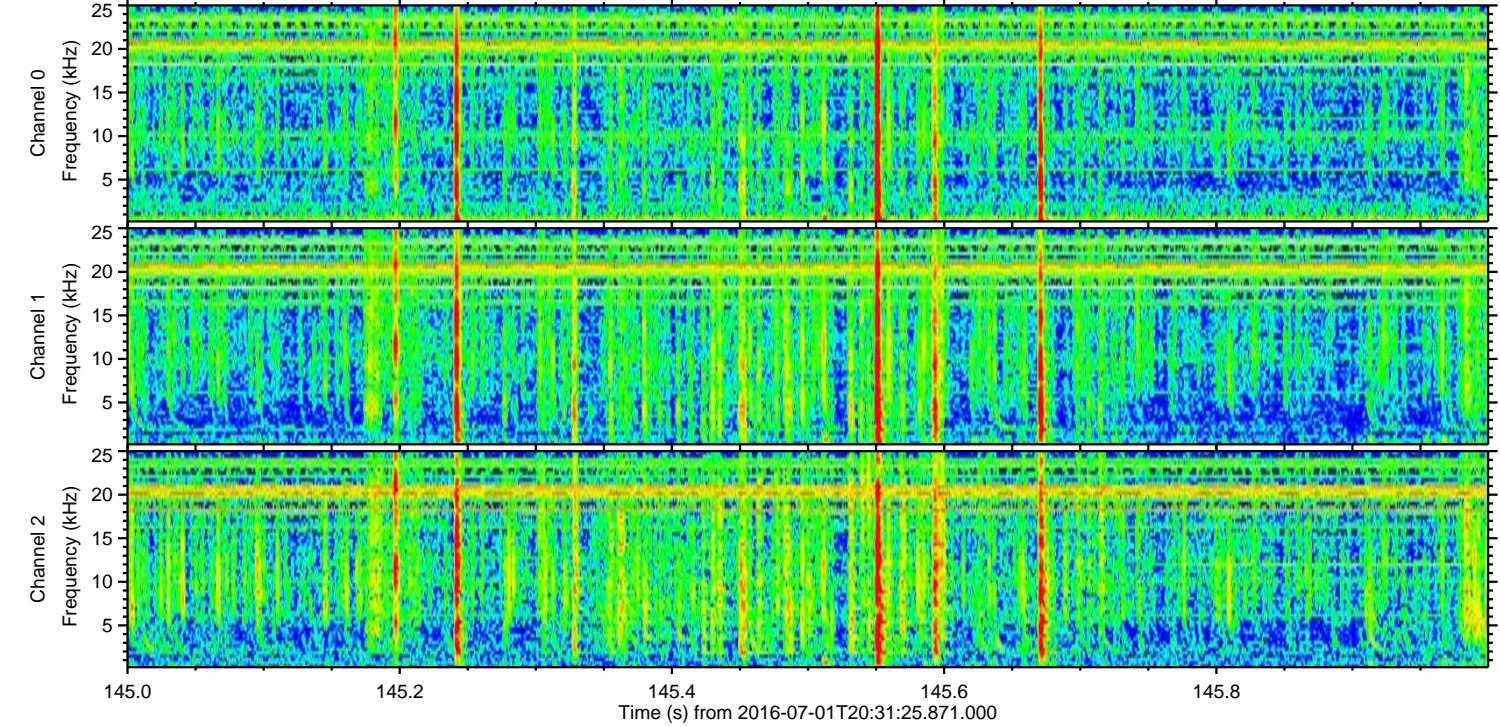
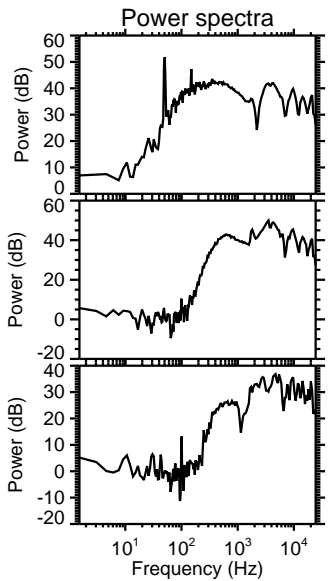
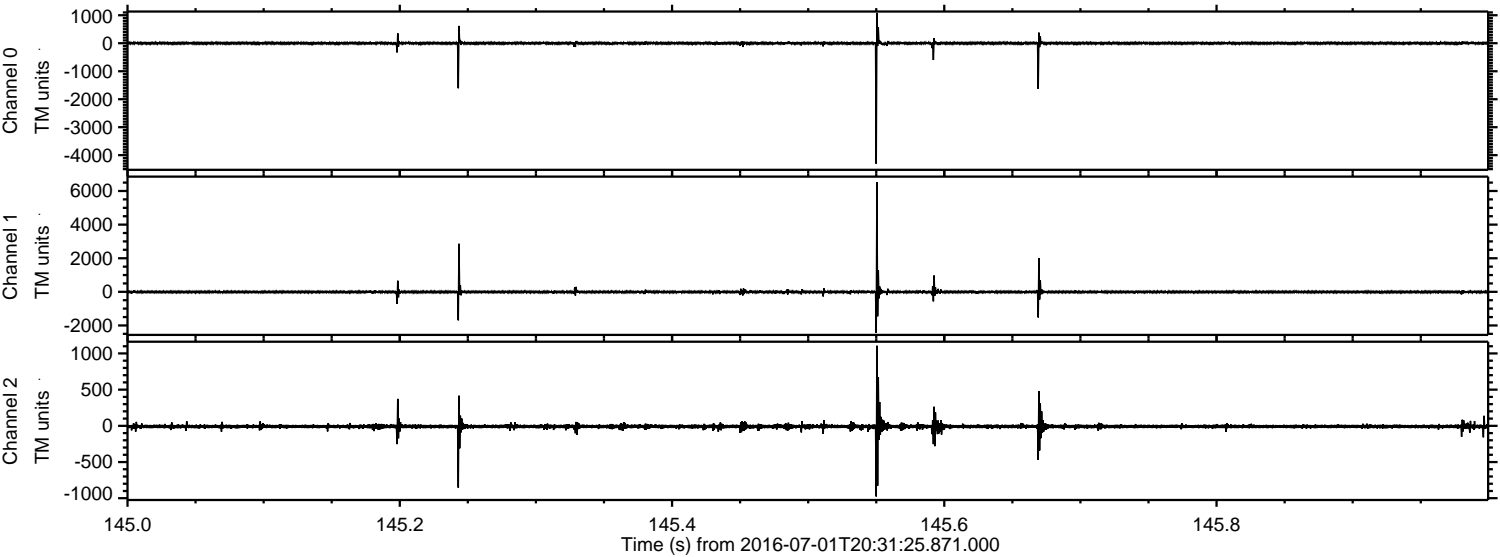
Processed Fri Jul 1 22:39:13 2016 by ELM ver.2012-10-06 from 001\_\_elm20160701\_203124\_\_dat00.bin





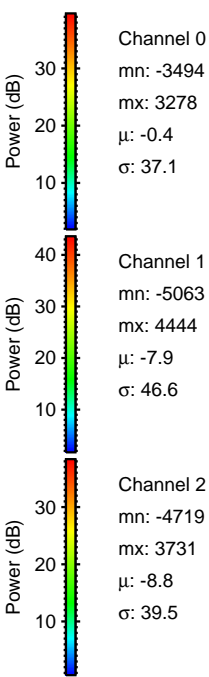
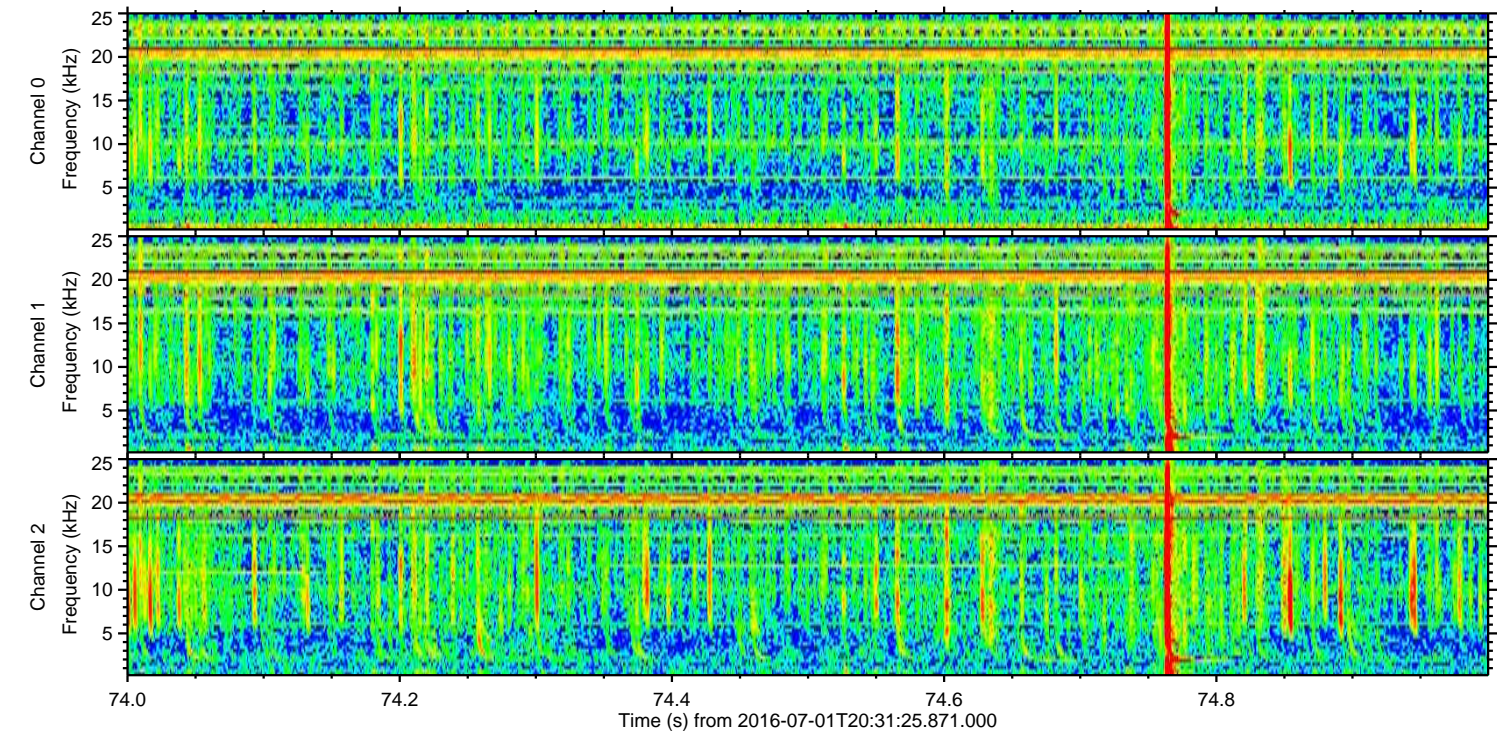
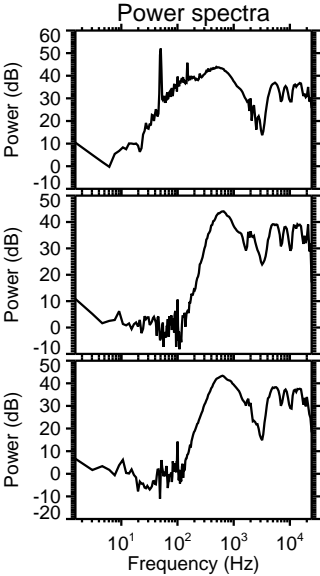
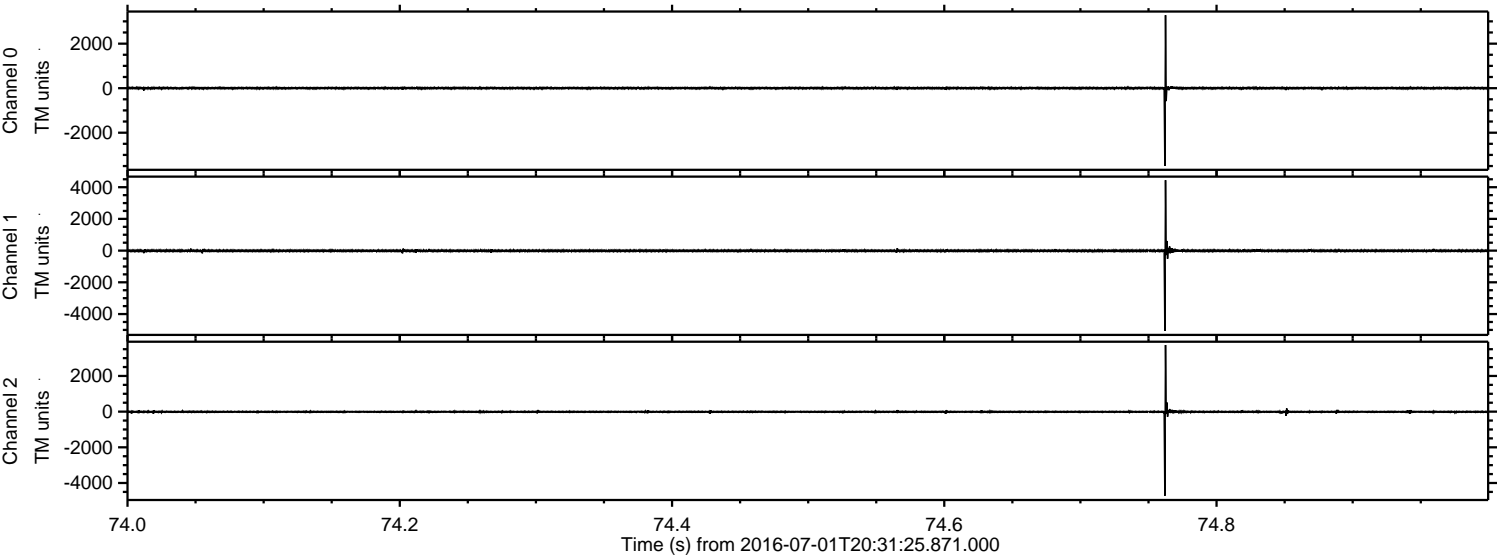
ELMAVAN 3D WAVEFORMS (Measured data sampled at 50 kHz) 51000 packets of 144 samples from 2016-07-01T20:31:25.871.000. Part 146/147

Processed Fri Jul 1 22:39:14 2016 by ELM ver.2012-10-06 from 001\_\_elm20160701\_203124\_\_dat00.bin



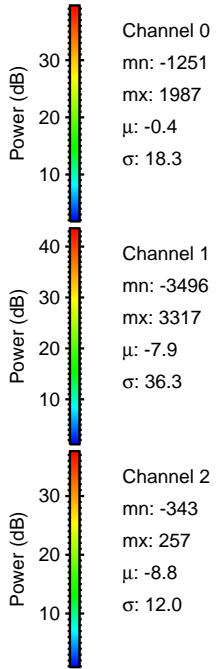
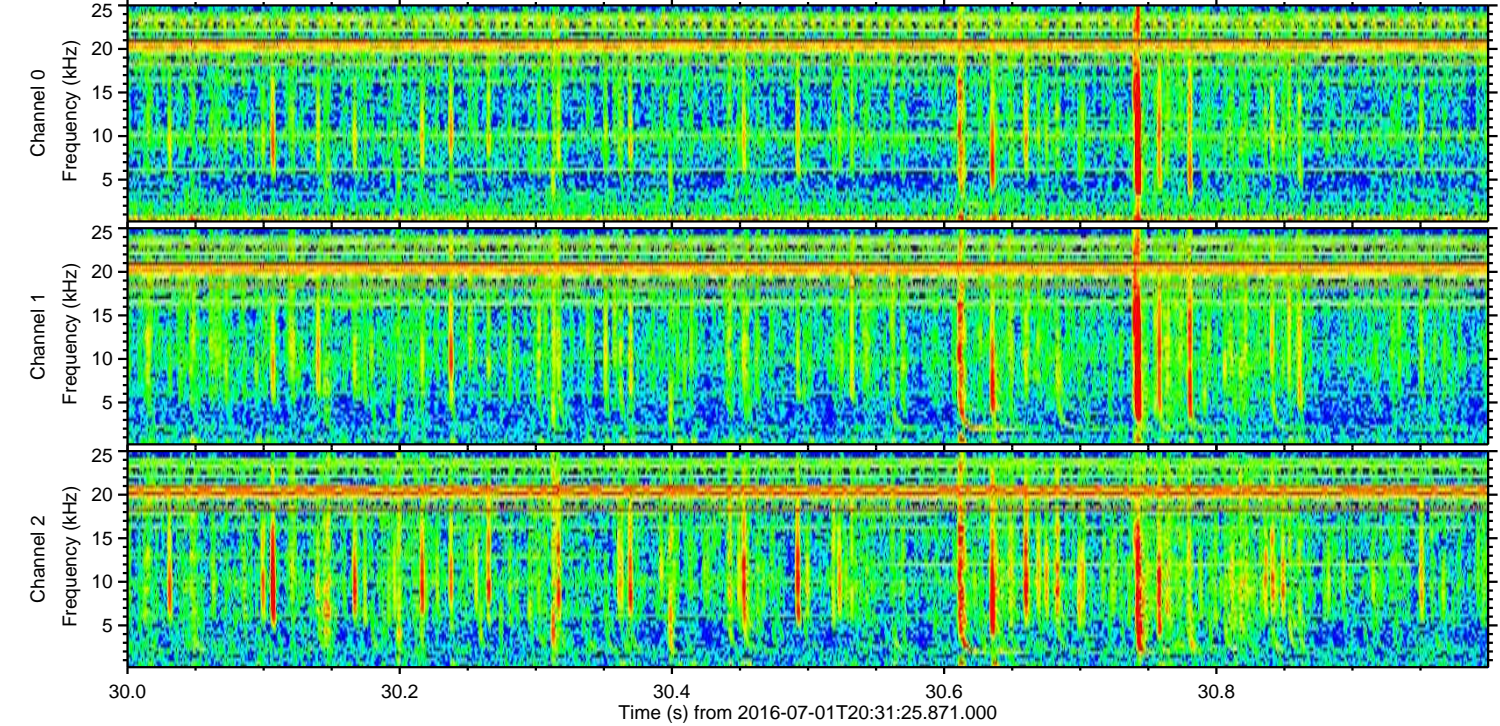
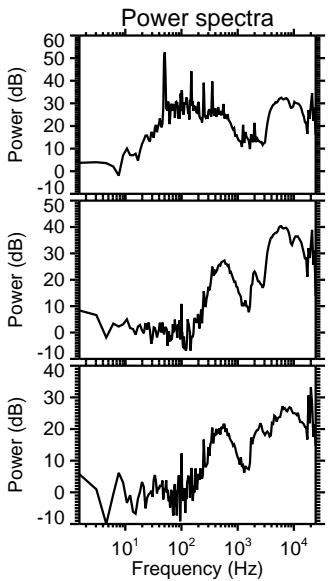
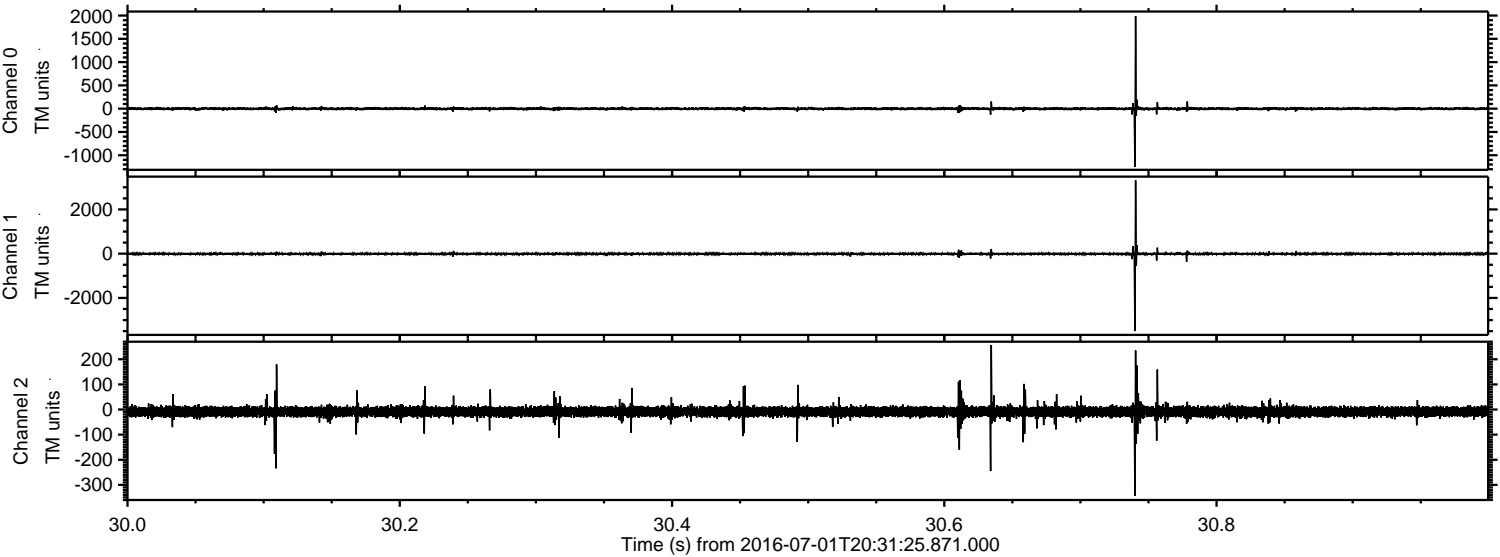


Processed Fri Jul 1 22:39:15 2016 by ELM ver.2012-10-06 from 001\_\_elm20160701\_203124\_\_dat00.bin



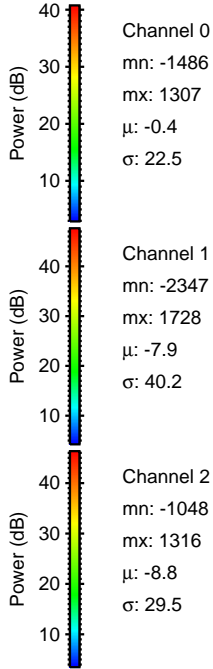
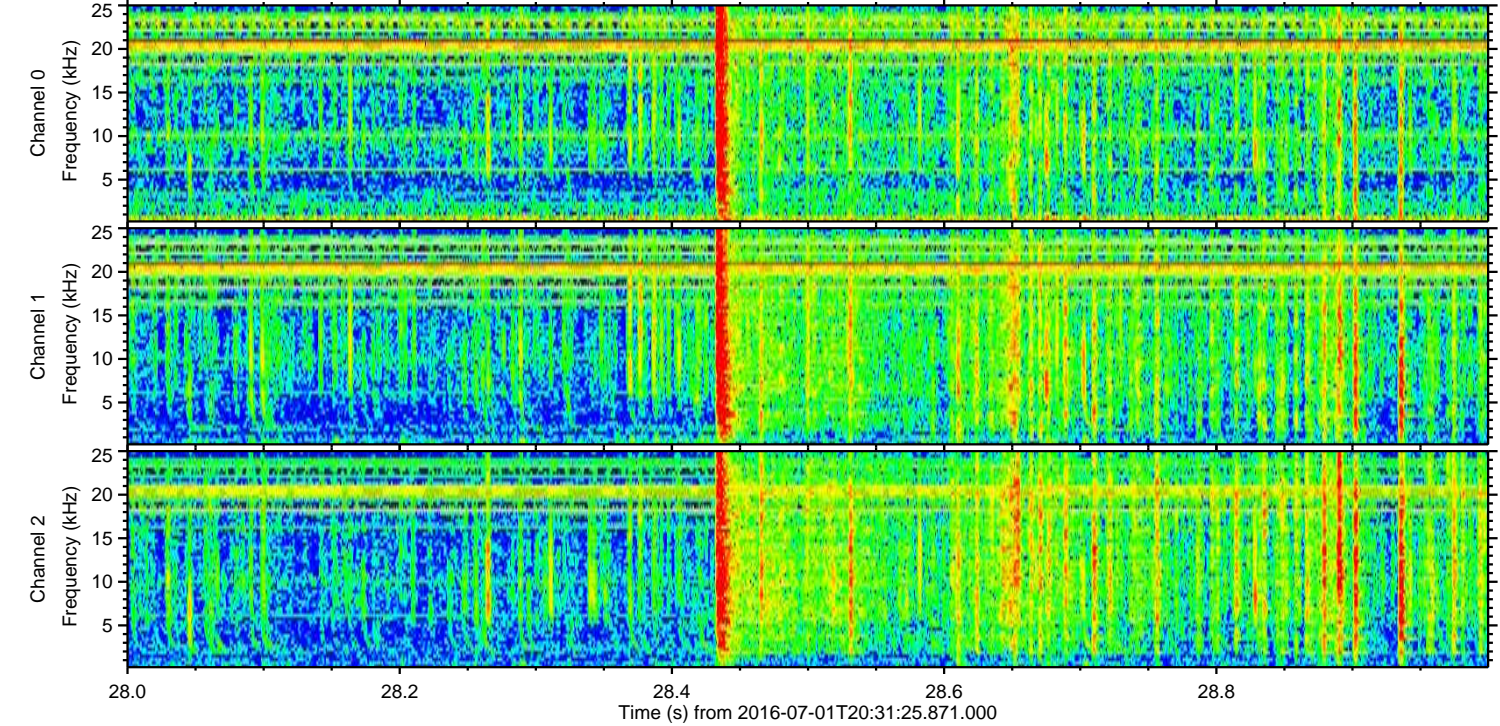
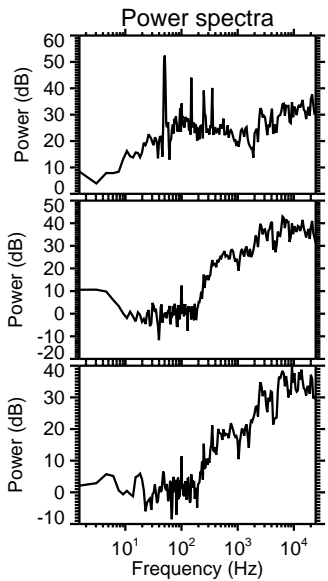
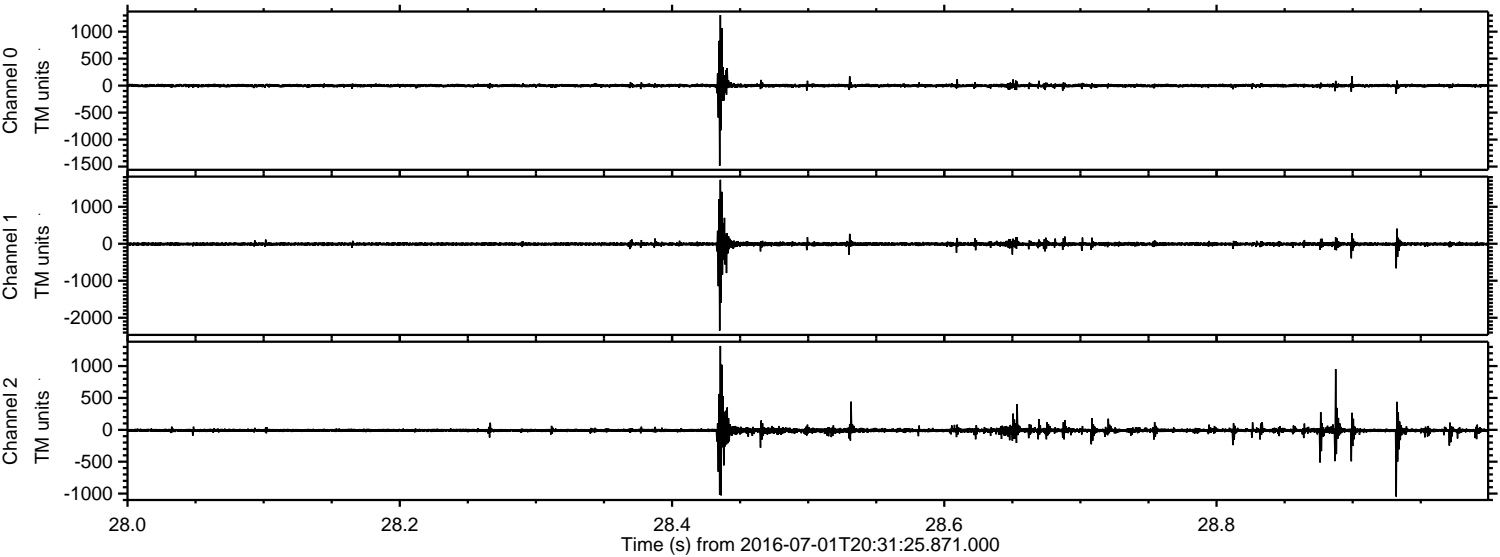


Processed Fri Jul 1 22:39:16 2016 by ELM ver.2012-10-06 from 001\_\_elm20160701\_203124\_\_dat00.bin



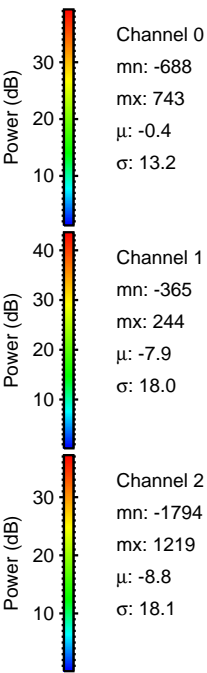
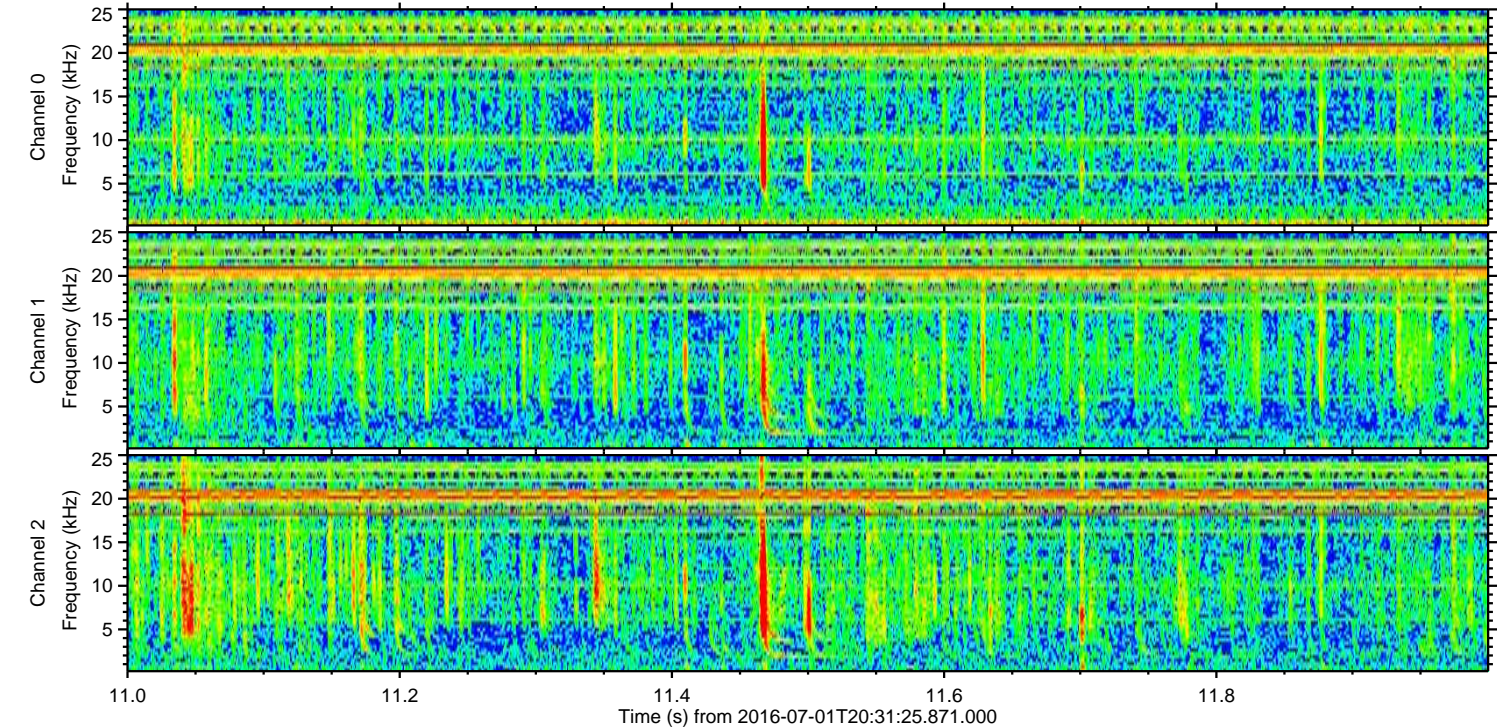
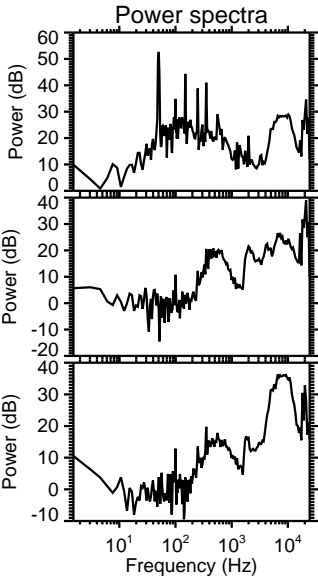
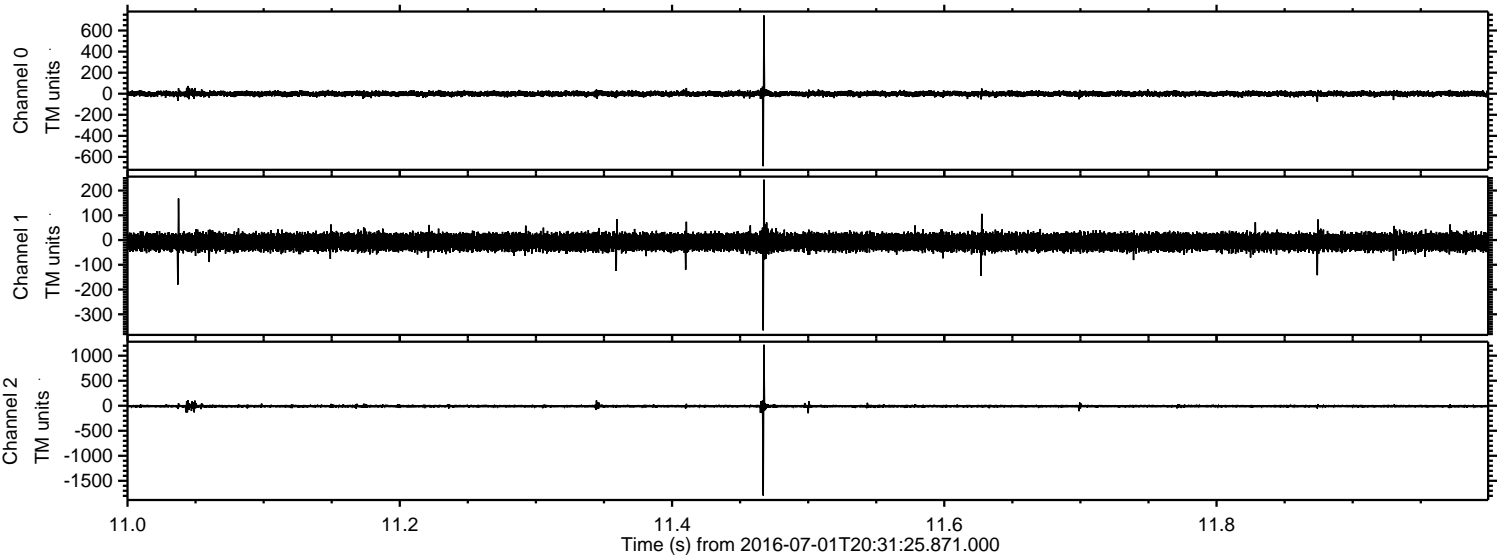


Processed Fri Jul 1 22:39:17 2016 by ELM ver.2012-10-06 from 001\_\_elm20160701\_203124\_\_dat00.bin



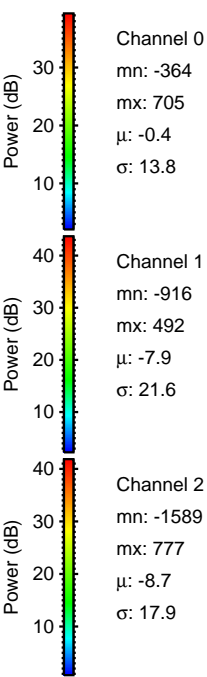
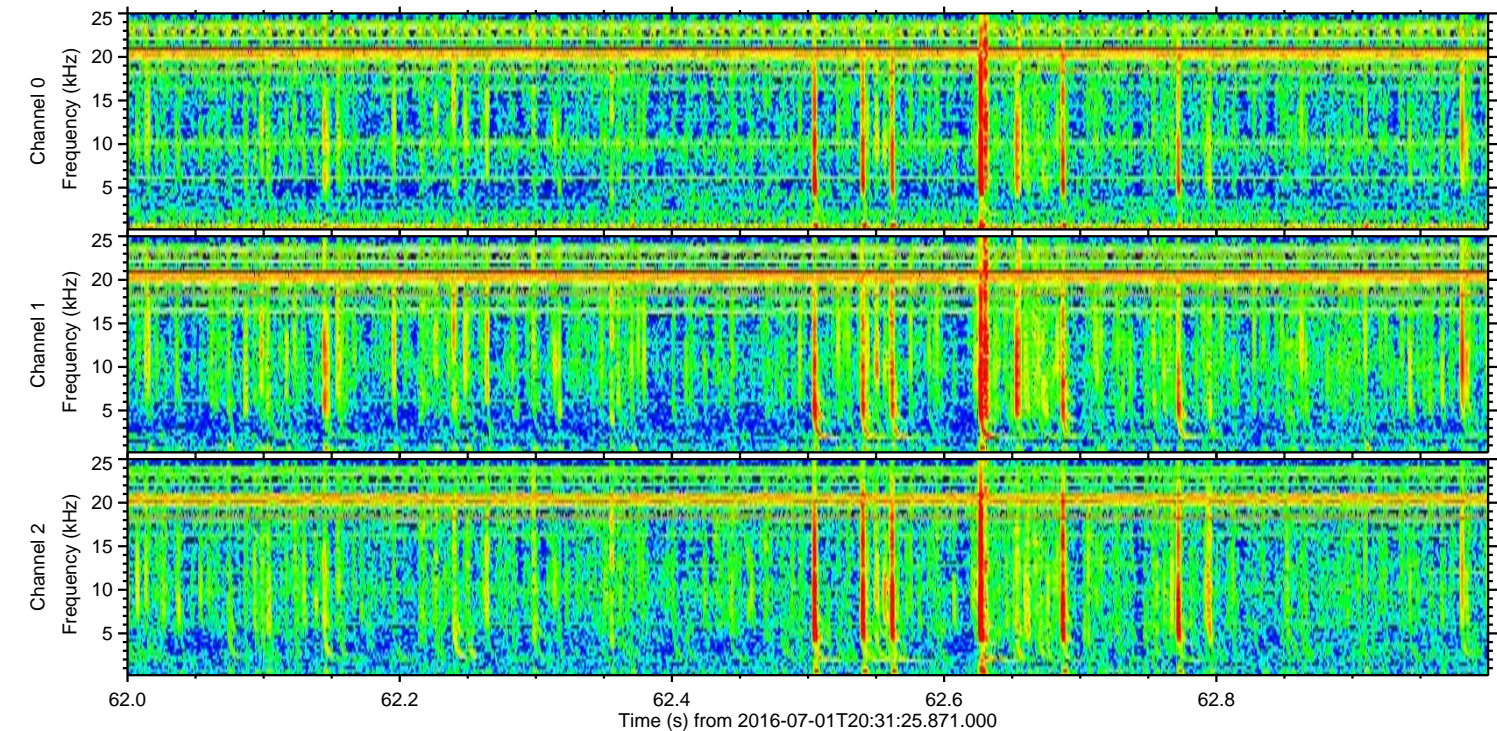
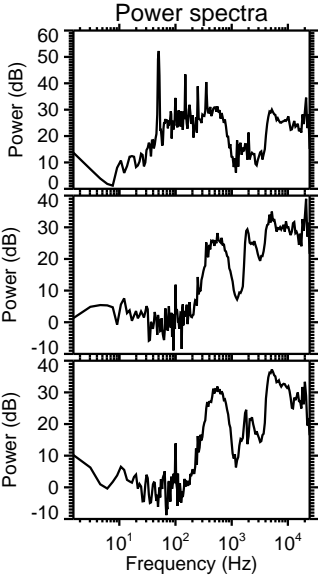
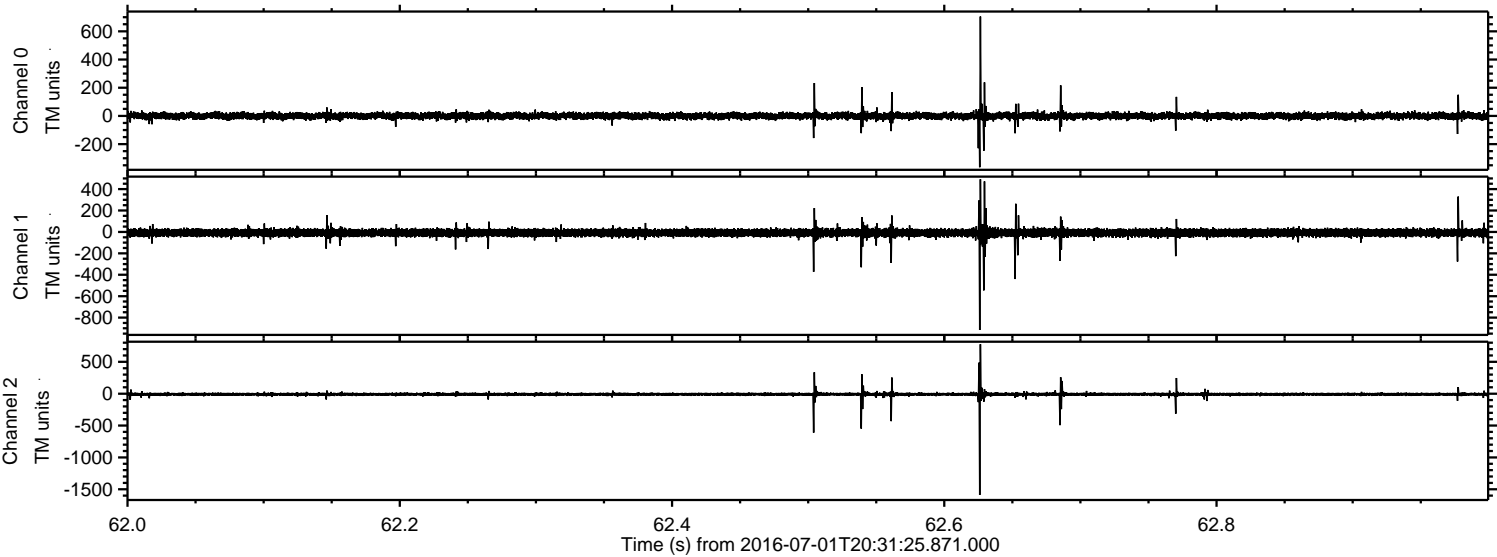


Processed Fri Jul 1 22:39:18 2016 by ELM ver.2012-10-06 from 001\_\_elm20160701\_203124\_\_dat00.bin



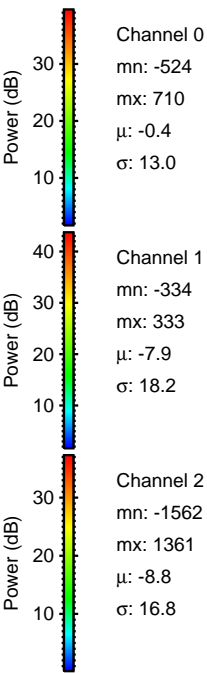
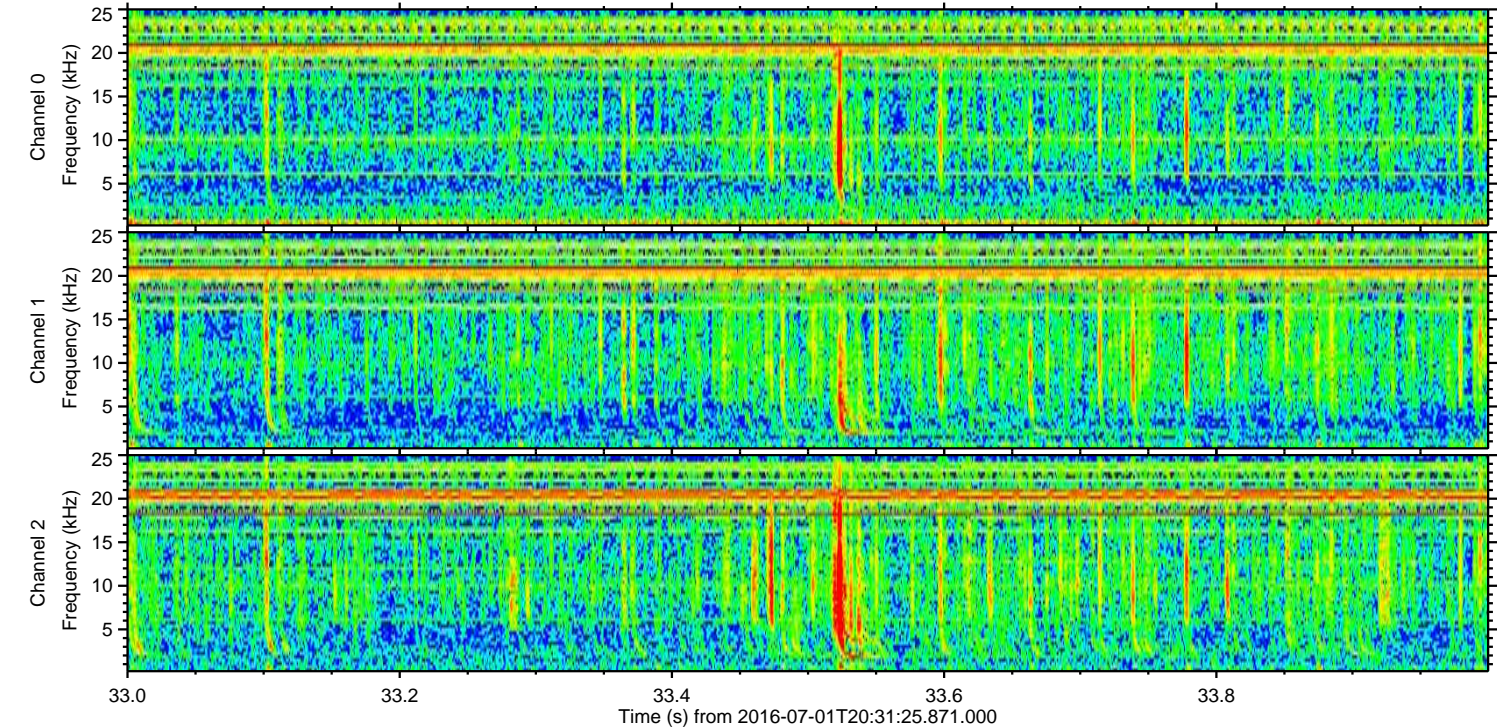
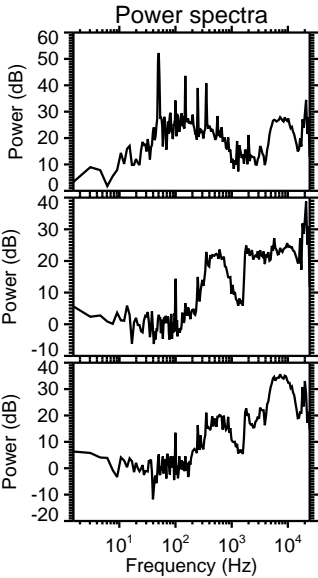
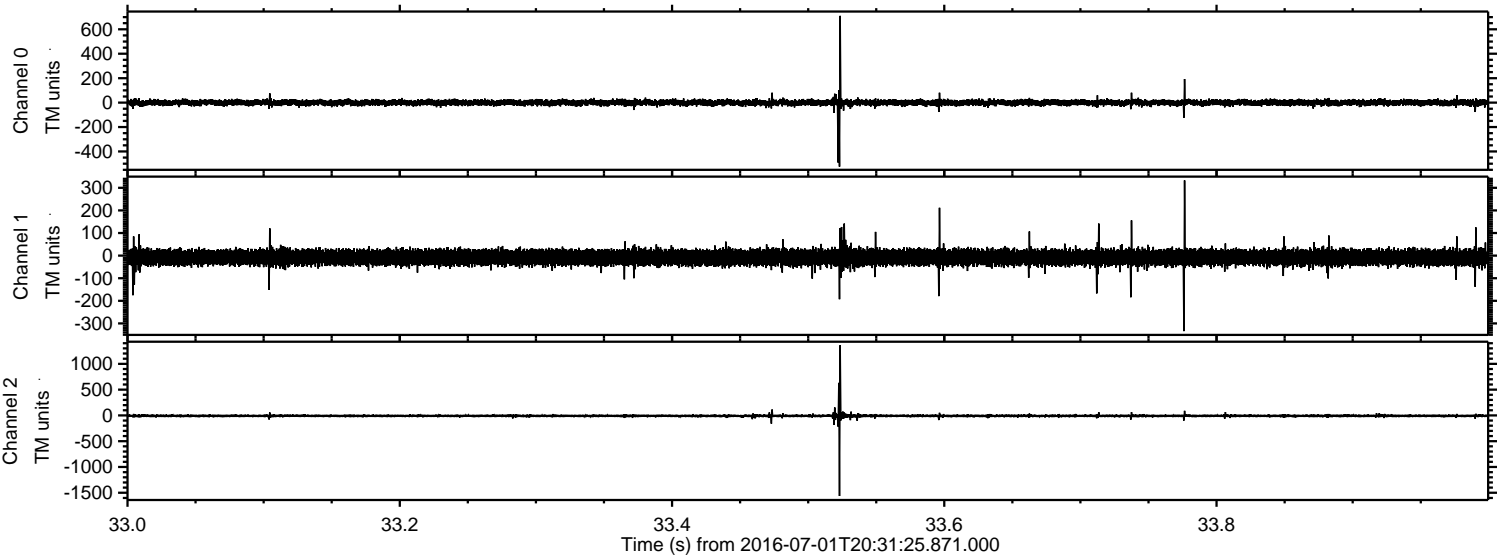


Processed Fri Jul 1 22:39:19 2016 by ELM ver.2012-10-06 from 001\_\_elm20160701\_203124\_\_dat00.bin





Processed Fri Jul 1 22:39:20 2016 by ELM ver.2012-10-06 from 001\_\_elm20160701\_203124\_\_dat00.bin





ELMAVAN 3D WAVEFORMS (Measured data sampled at 50 kHz) 51000 packets of 144 samples from 2016-07-01T20:31:25.871.000. Part 145/147

Processed Fri Jul 1 22:39:21 2016 by ELM ver.2012-10-06 from 001\_\_elm20160701\_203124\_\_dat00.bin

