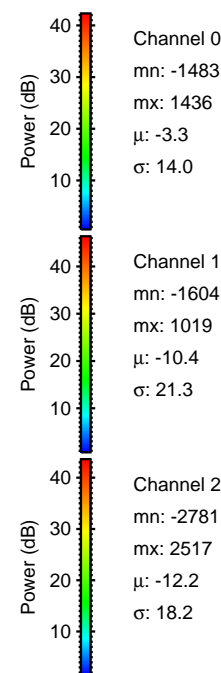
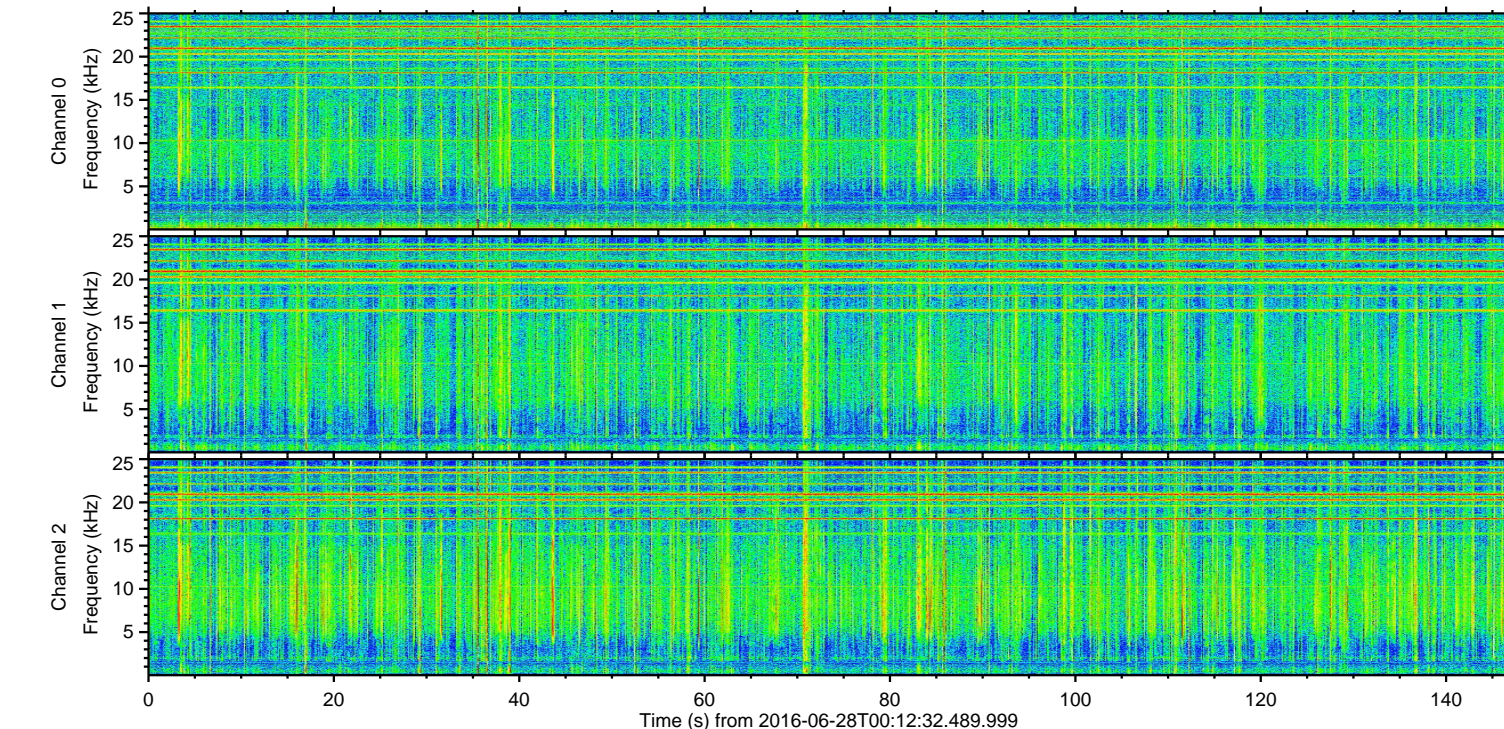
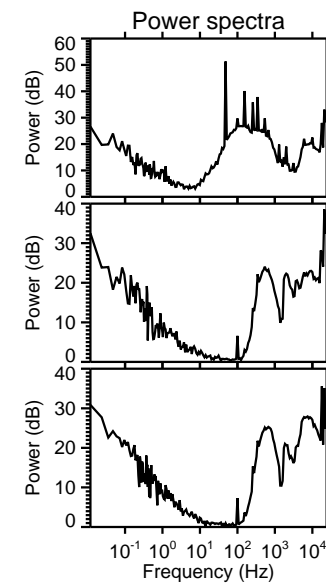
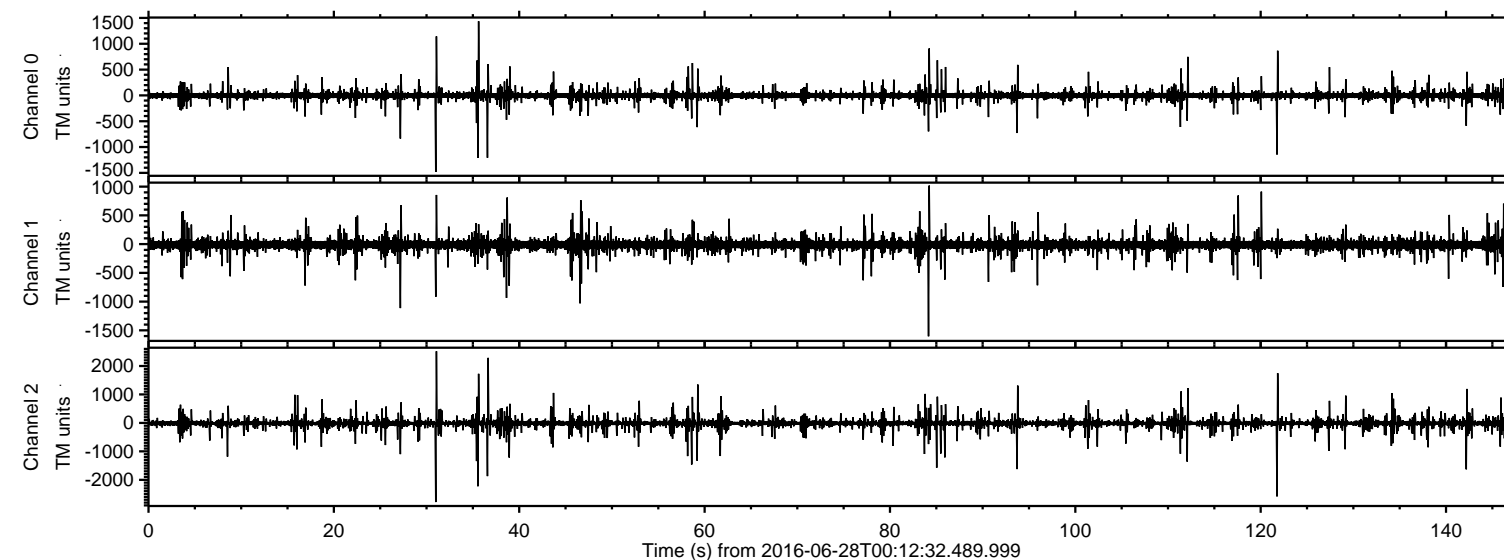


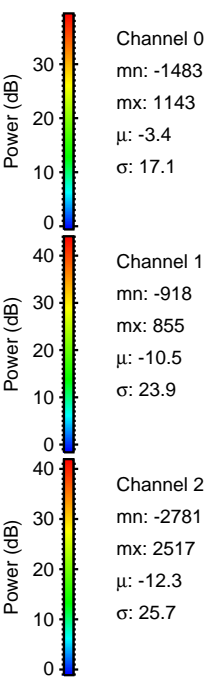
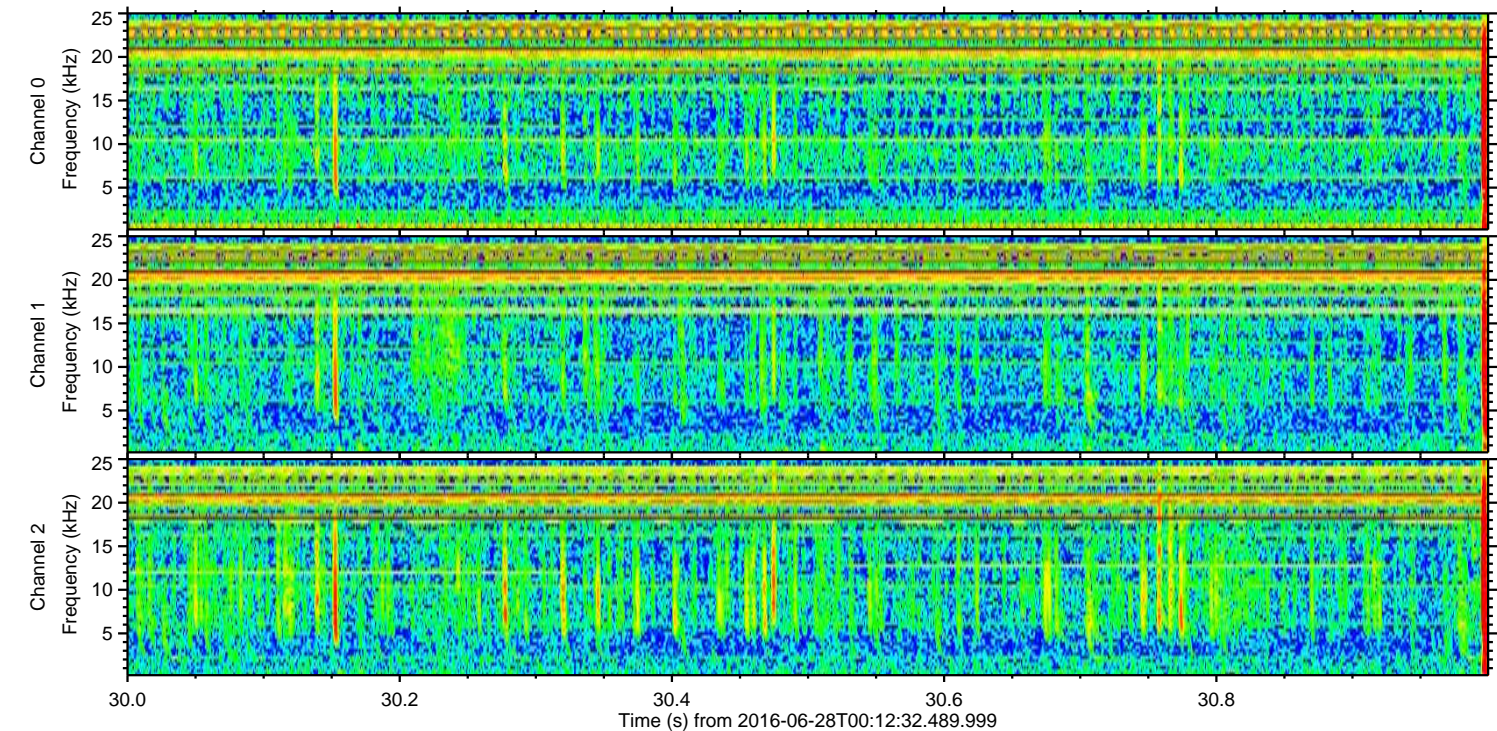
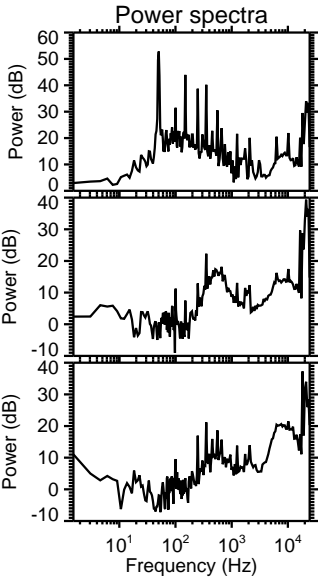
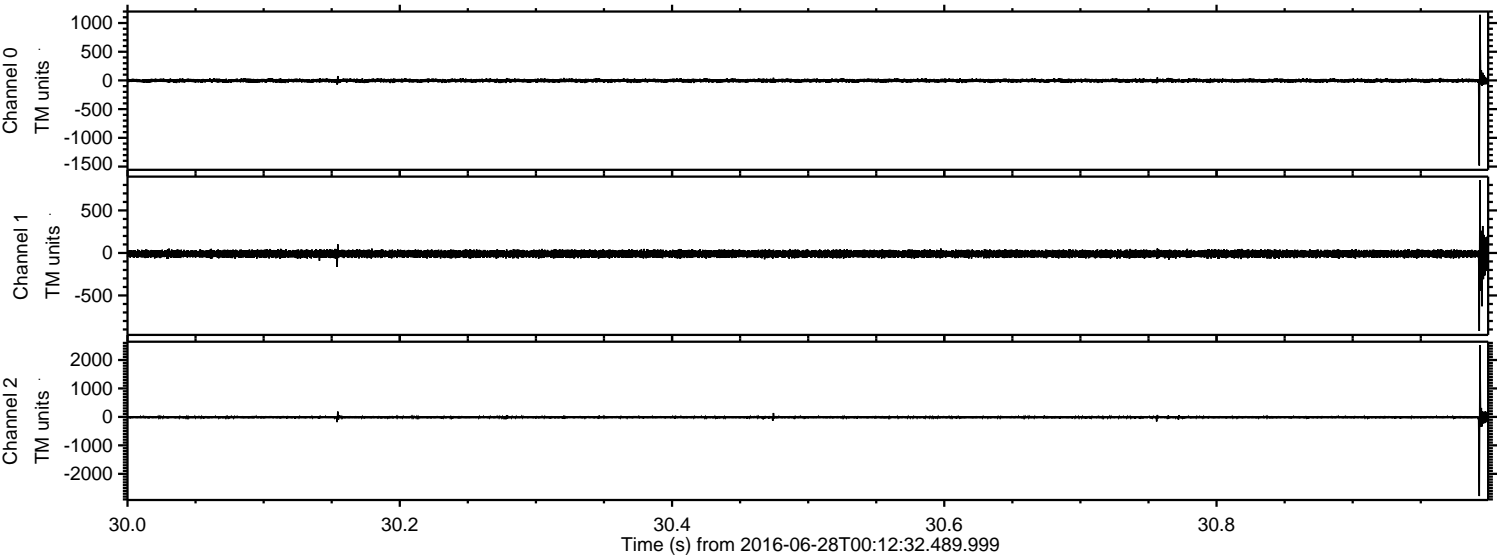
# ELMAVAN 3D WAVEFORMS (Measured data sampled at 50 kHz) 51000 packets of 144 samples from 2016-06-28T00:12:32.489.999.

Processed Tue Jun 28 02:20:30 2016 by ELM ver.2012-10-06 from 001\_\_elm20160628\_001231\_\_dat00.bin





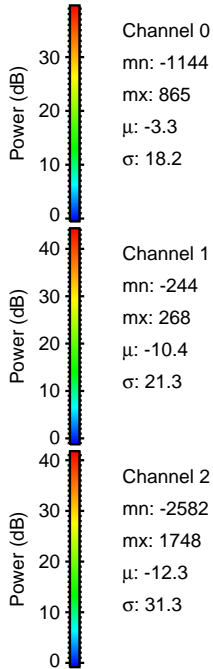
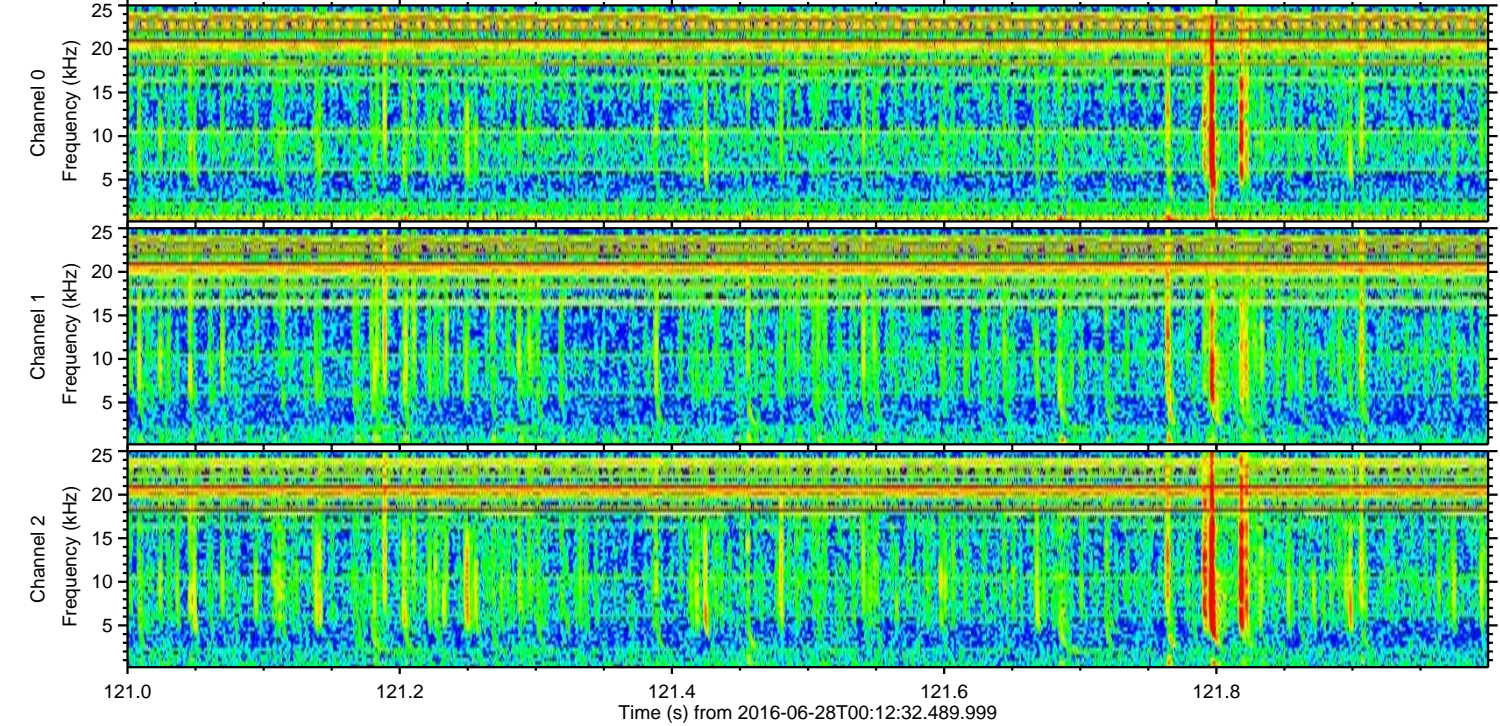
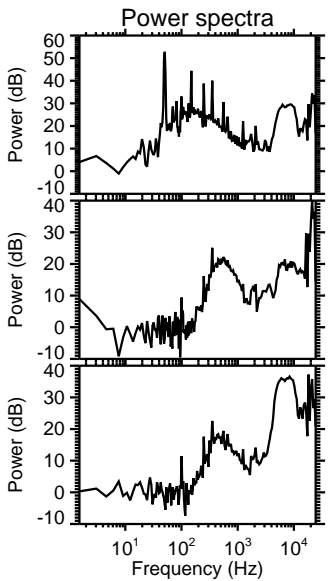
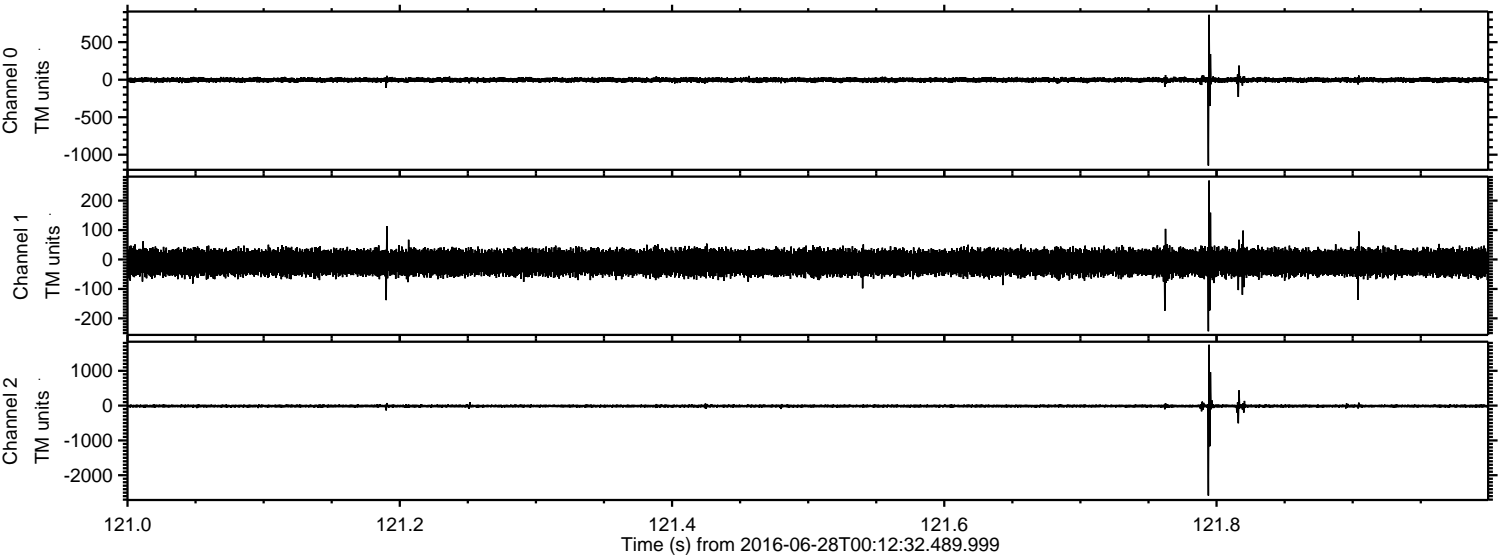
Processed Tue Jun 28 02:20:41 2016 by ELM ver.2012-10-06 from 001\_\_elm20160628\_001231\_\_dat00.bin





ELMAVAN 3D WAVEFORMS (Measured data sampled at 50 kHz) 51000 packets of 144 samples from 2016-06-28T00:12:32.489.999. Part 122/147

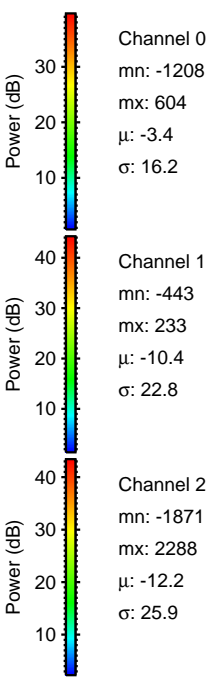
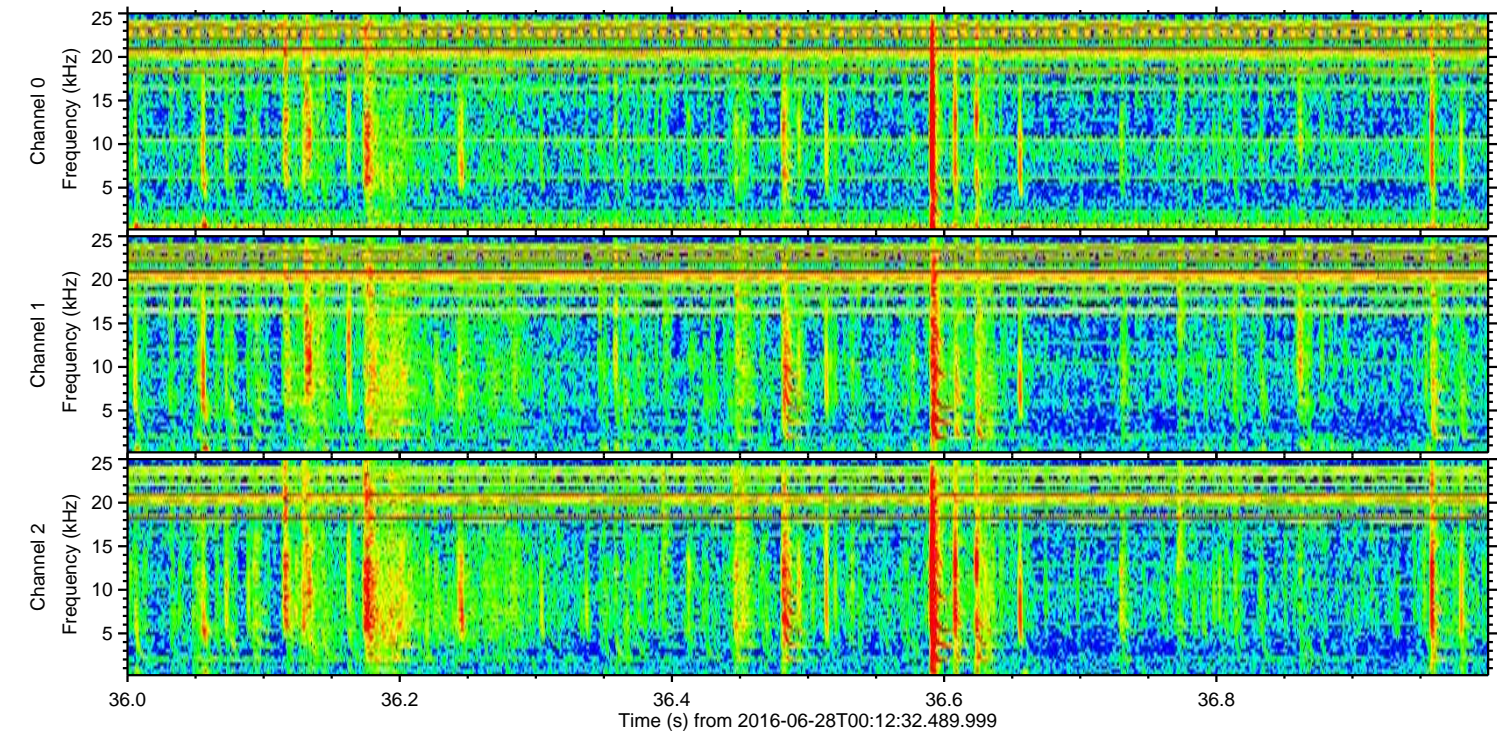
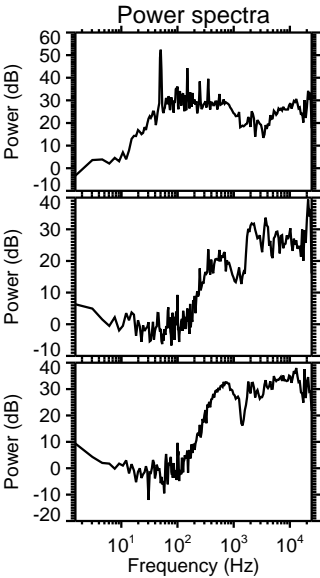
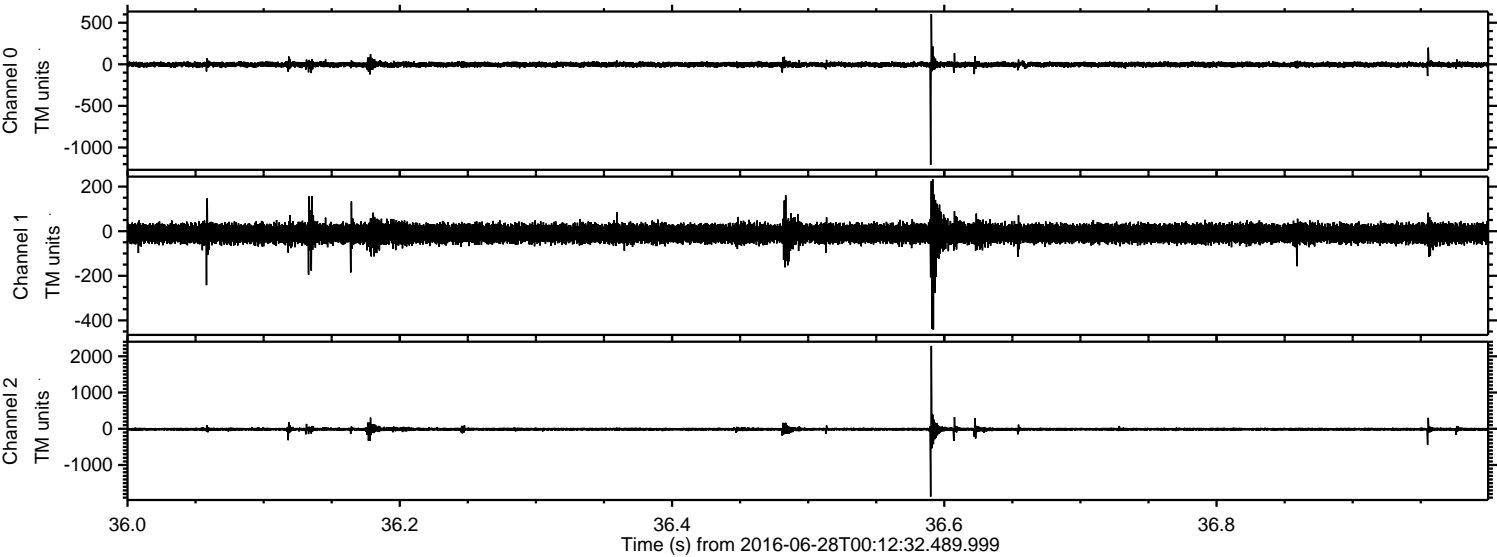
Processed Tue Jun 28 02:20:42 2016 by ELM ver.2012-10-06 from 001\_\_elm20160628\_001231\_\_dat00.bin





ELMAVAN 3D WAVEFORMS (Measured data sampled at 50 kHz) 51000 packets of 144 samples from 2016-06-28T00:12:32.489.999. Part 37/147

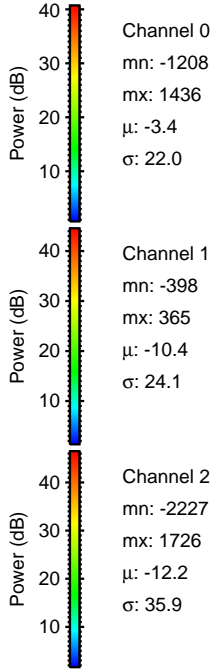
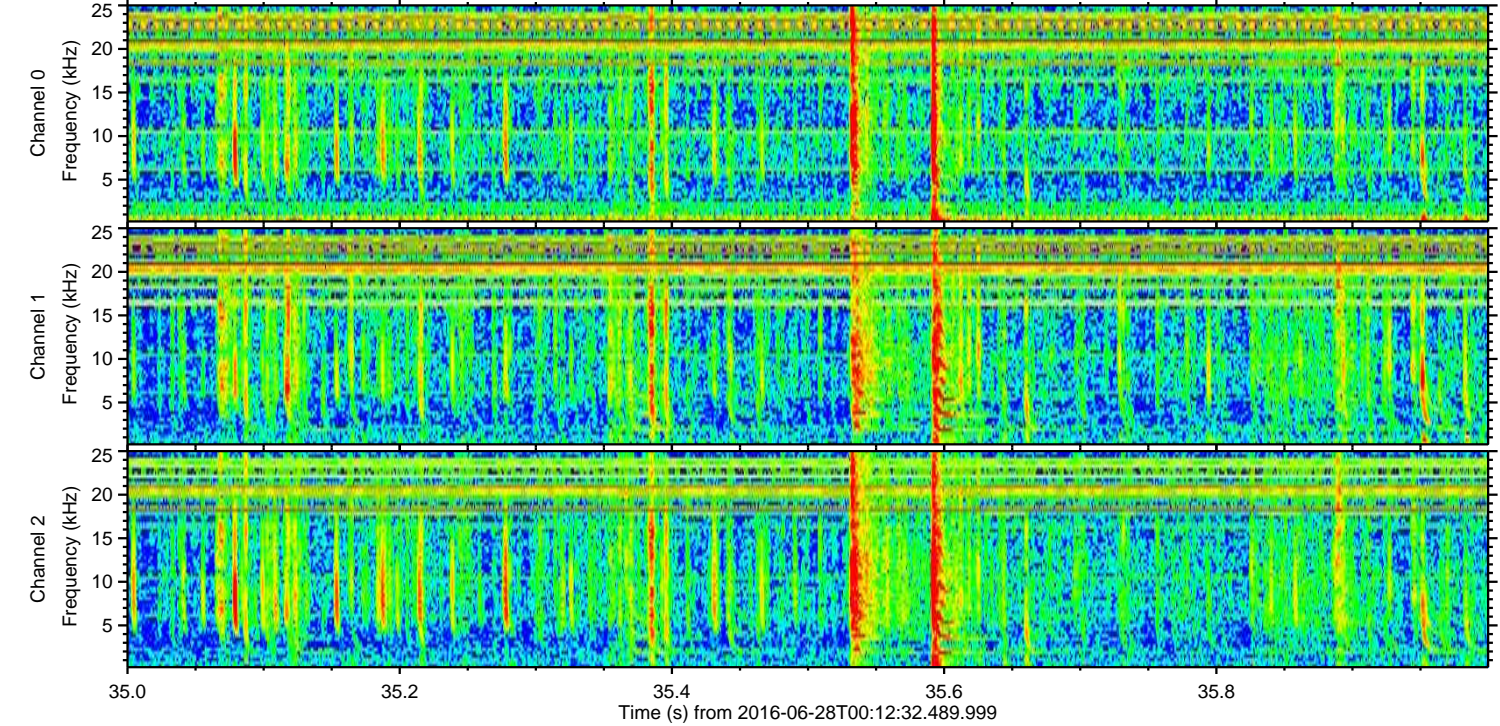
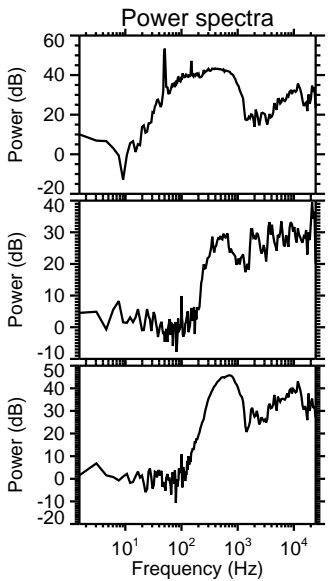
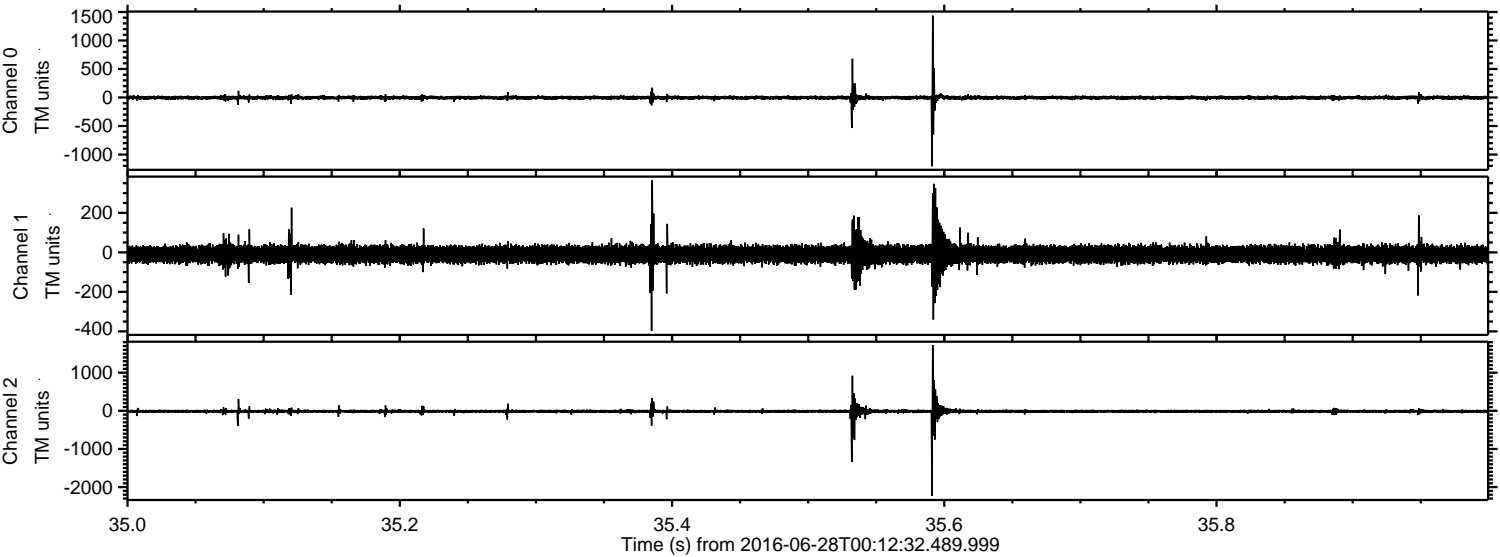
Processed Tue Jun 28 02:20:43 2016 by ELM ver.2012-10-06 from 001\_\_elm20160628\_001231\_\_dat00.bin





ELMAVAN 3D WAVEFORMS (Measured data sampled at 50 kHz) 51000 packets of 144 samples from 2016-06-28T00:12:32.489.999. Part 36/147

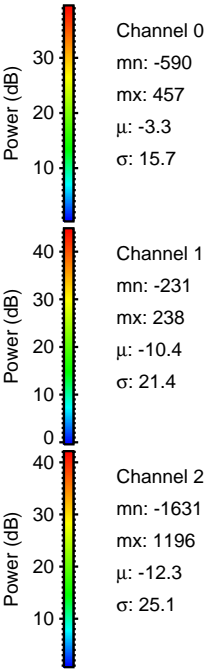
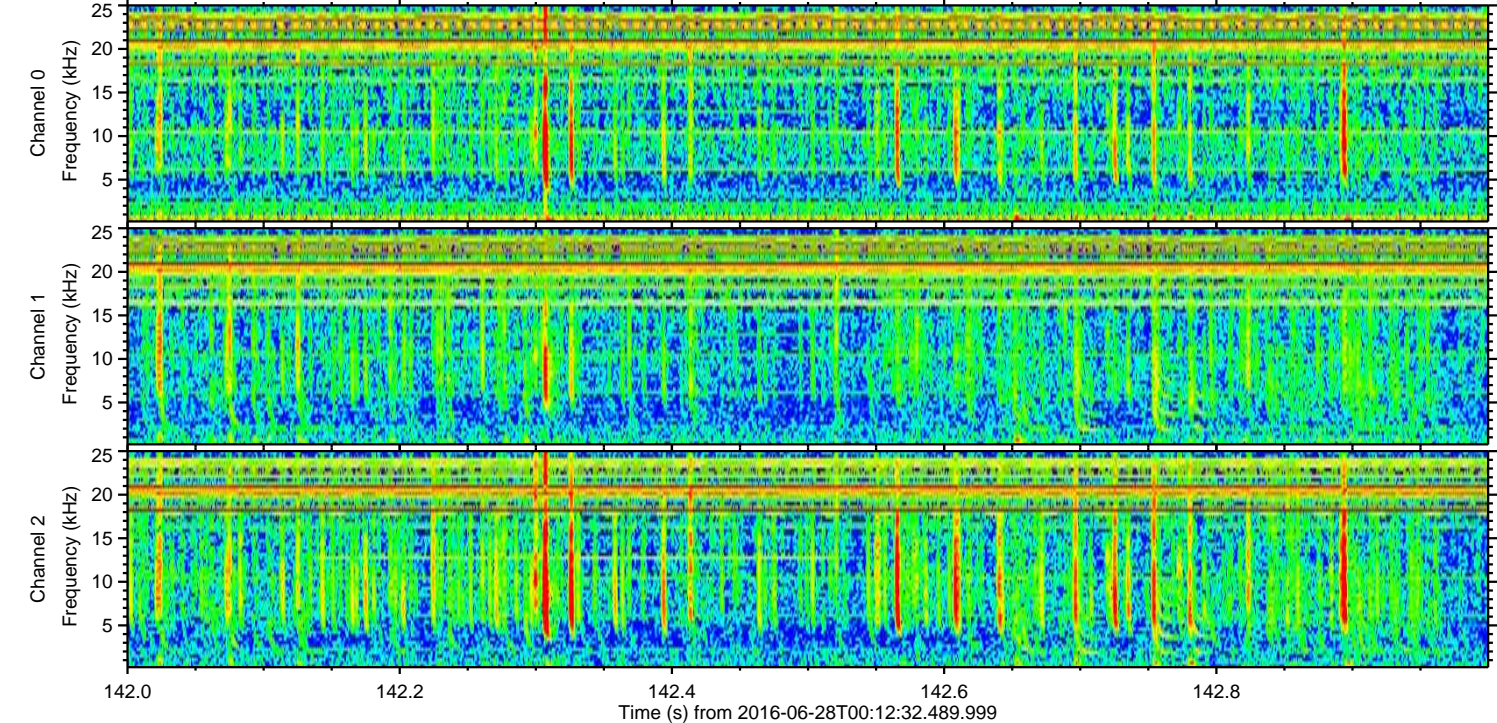
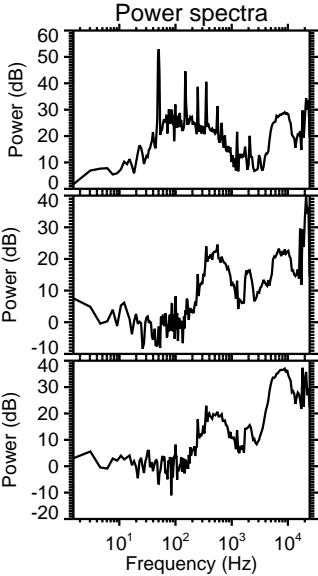
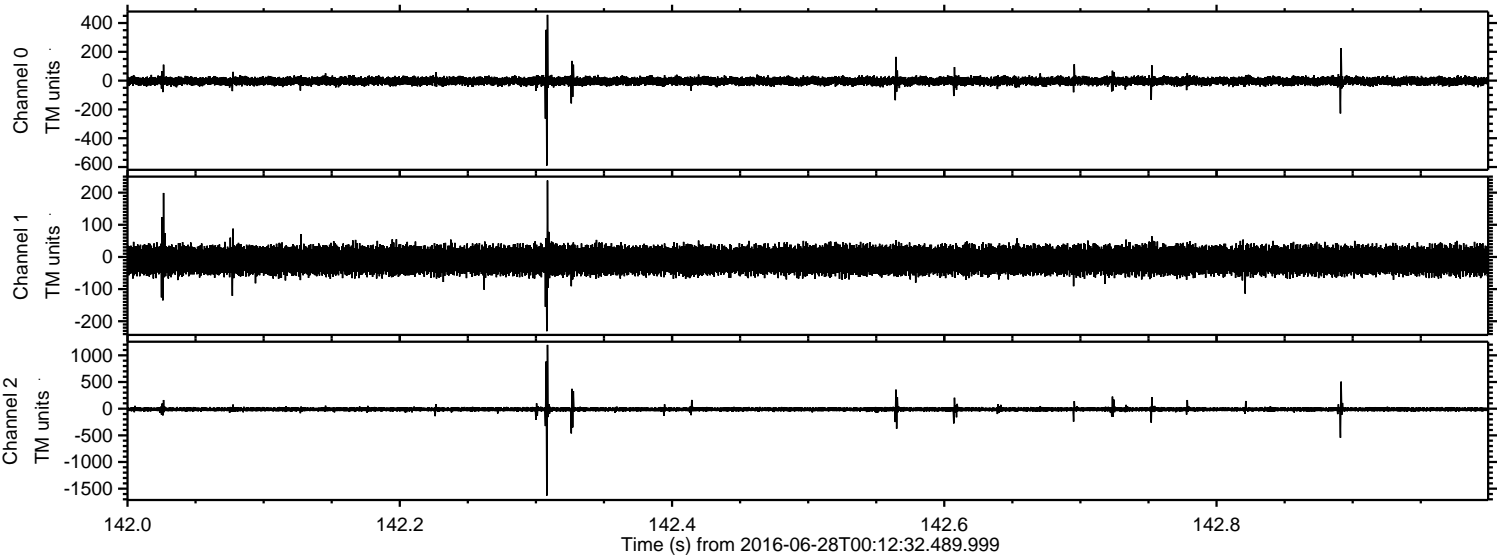
Processed Tue Jun 28 02:20:44 2016 by ELM ver.2012-10-06 from 001\_\_elm20160628\_001231\_\_dat00.bin





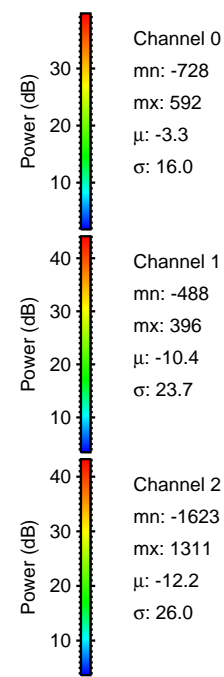
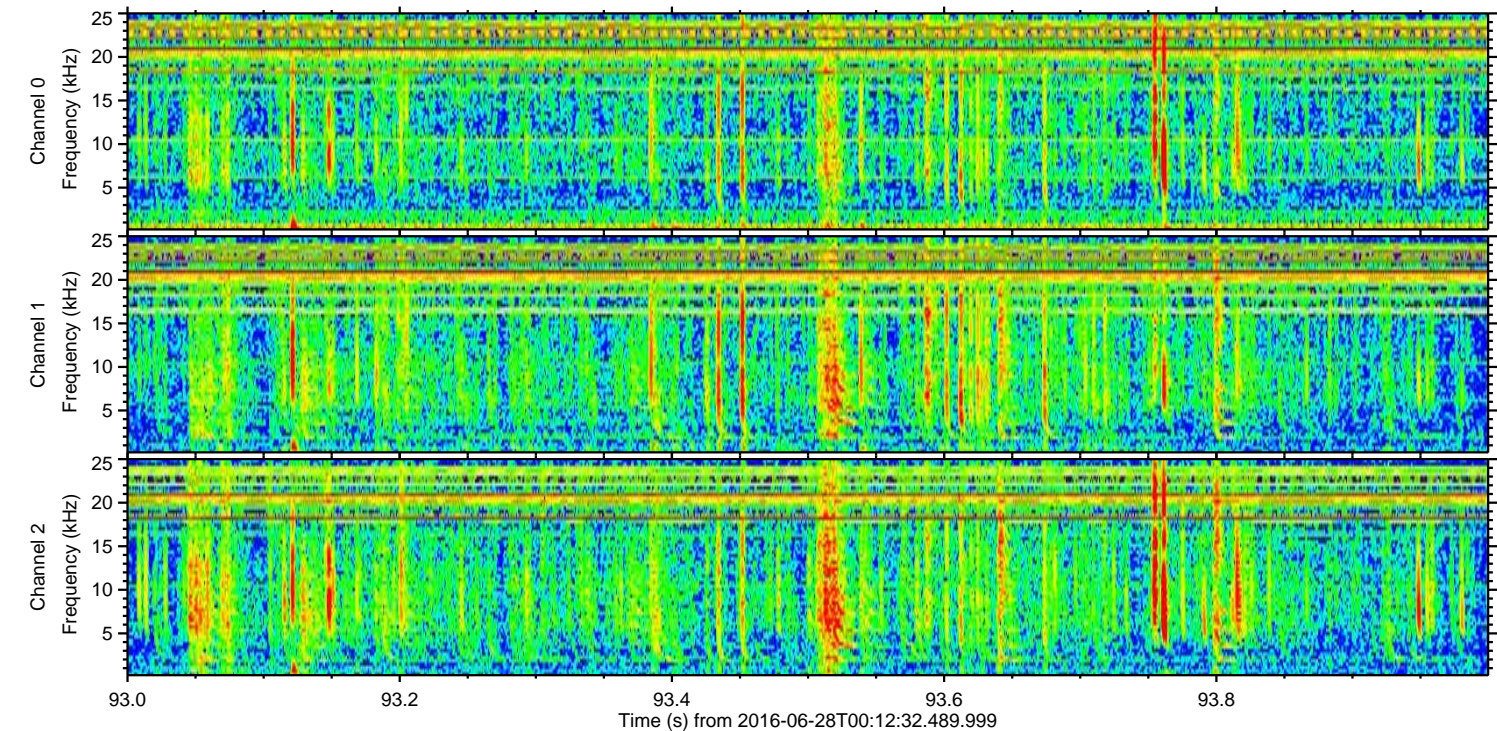
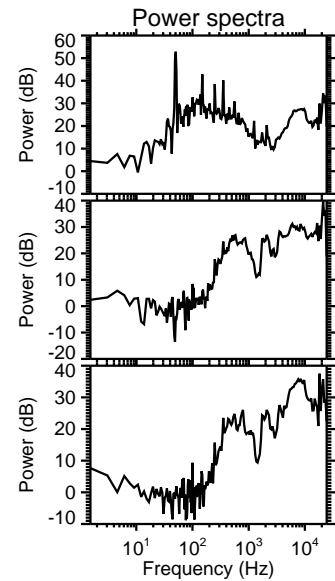
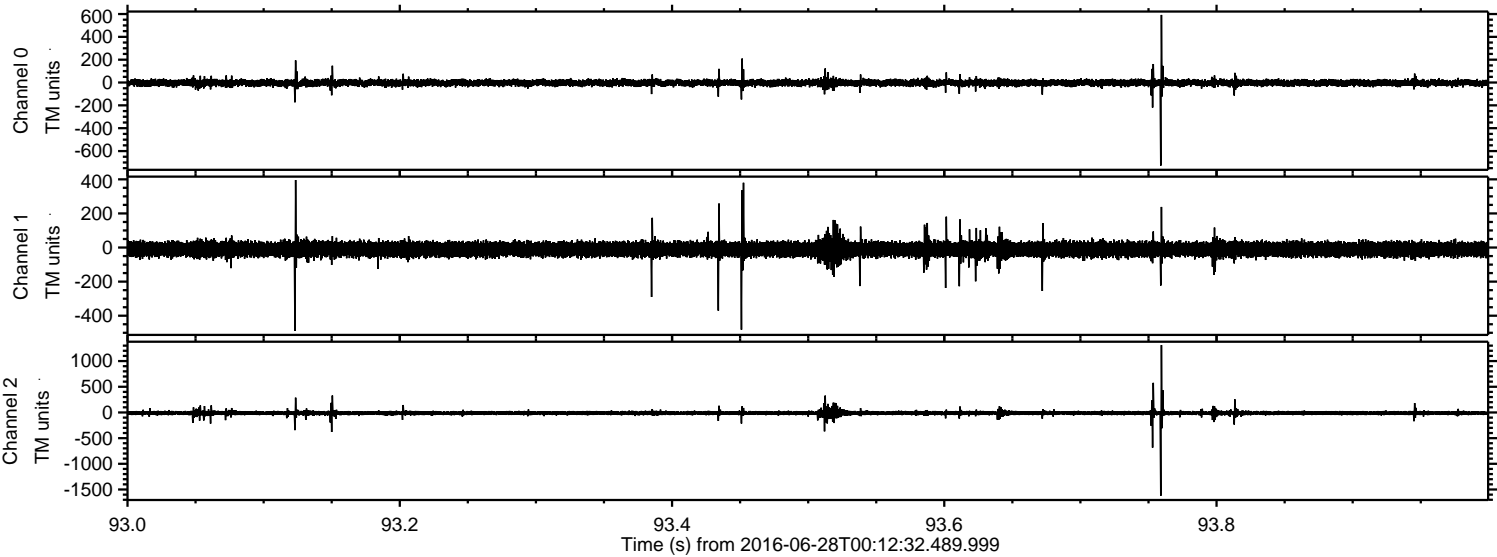
ELMAVAN 3D WAVEFORMS (Measured data sampled at 50 kHz) 51000 packets of 144 samples from 2016-06-28T00:12:32.489.999. Part 143/147

Processed Tue Jun 28 02:20:45 2016 by ELM ver.2012-10-06 from 001\_\_elm20160628\_001231\_\_dat00.bin



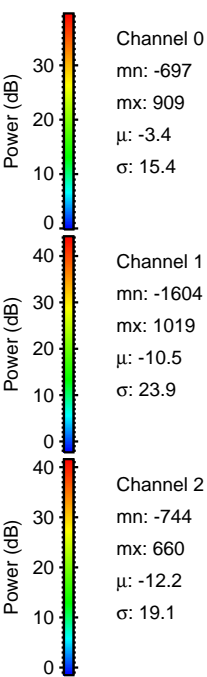
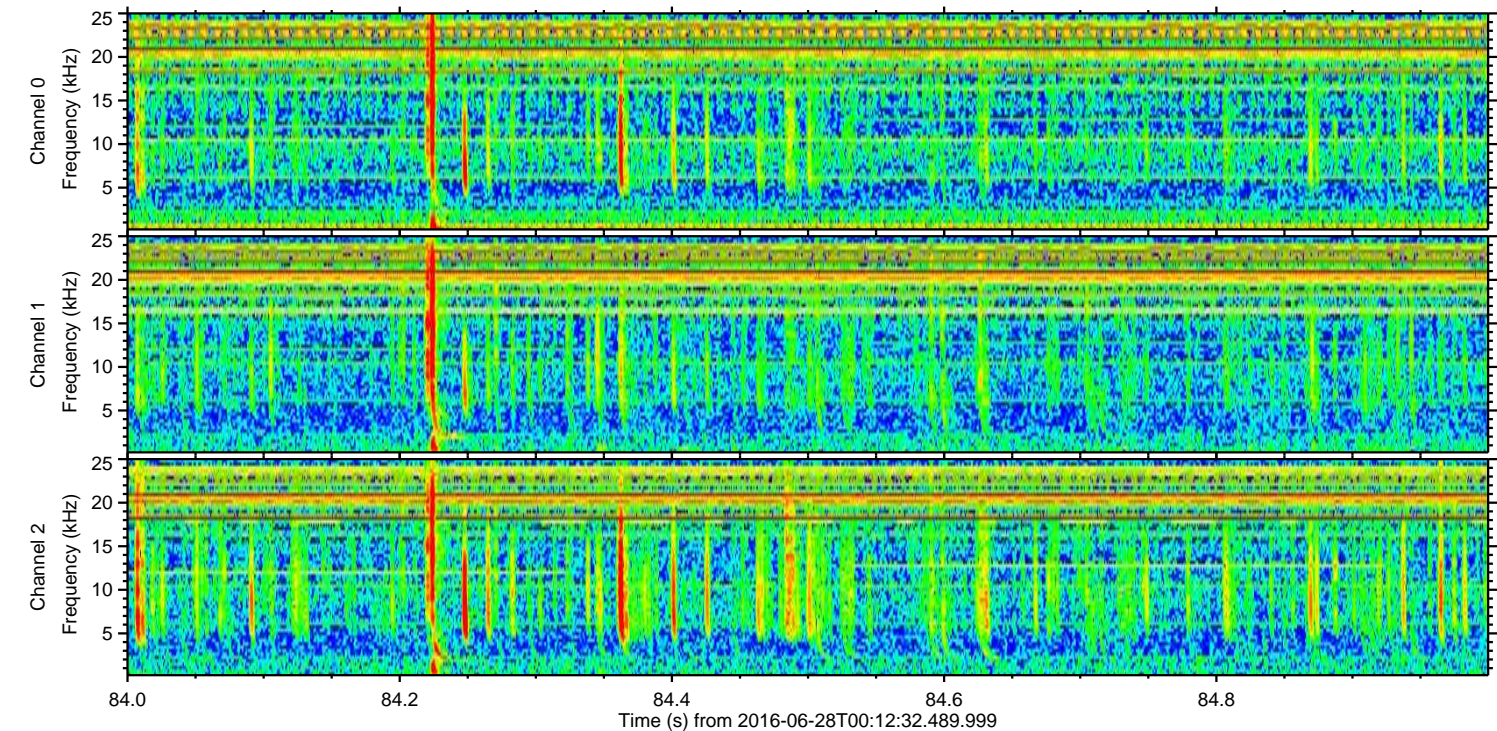
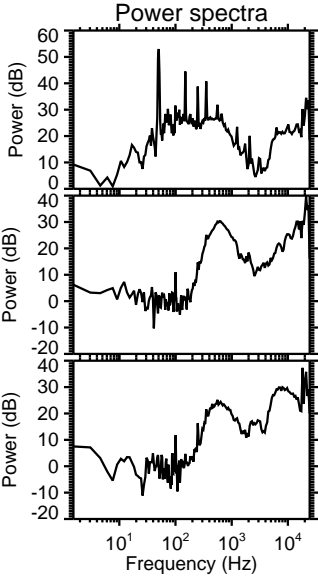
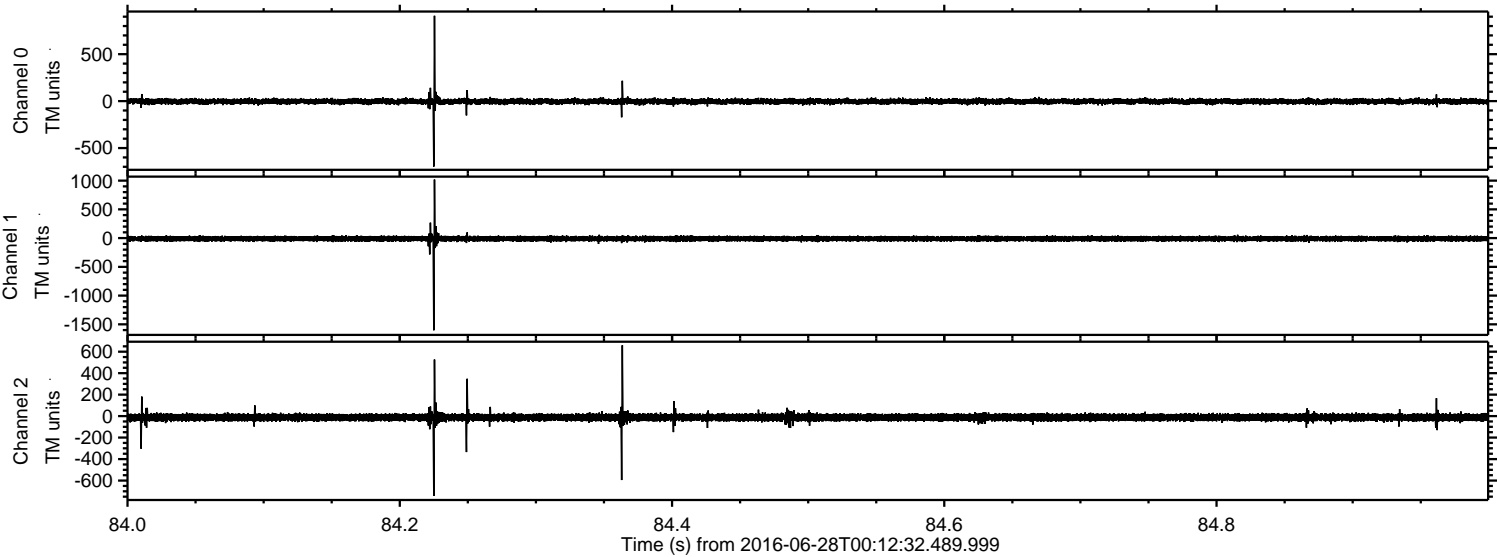


Processed Tue Jun 28 02:20:46 2016 by ELM ver.2012-10-06 from 001\_\_elm20160628\_001231\_\_dat00.bin



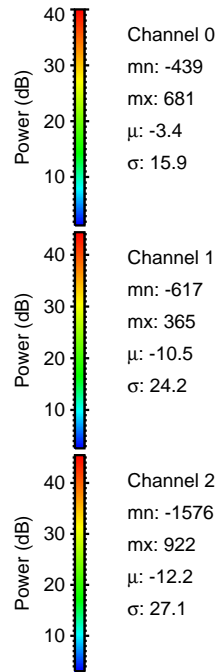
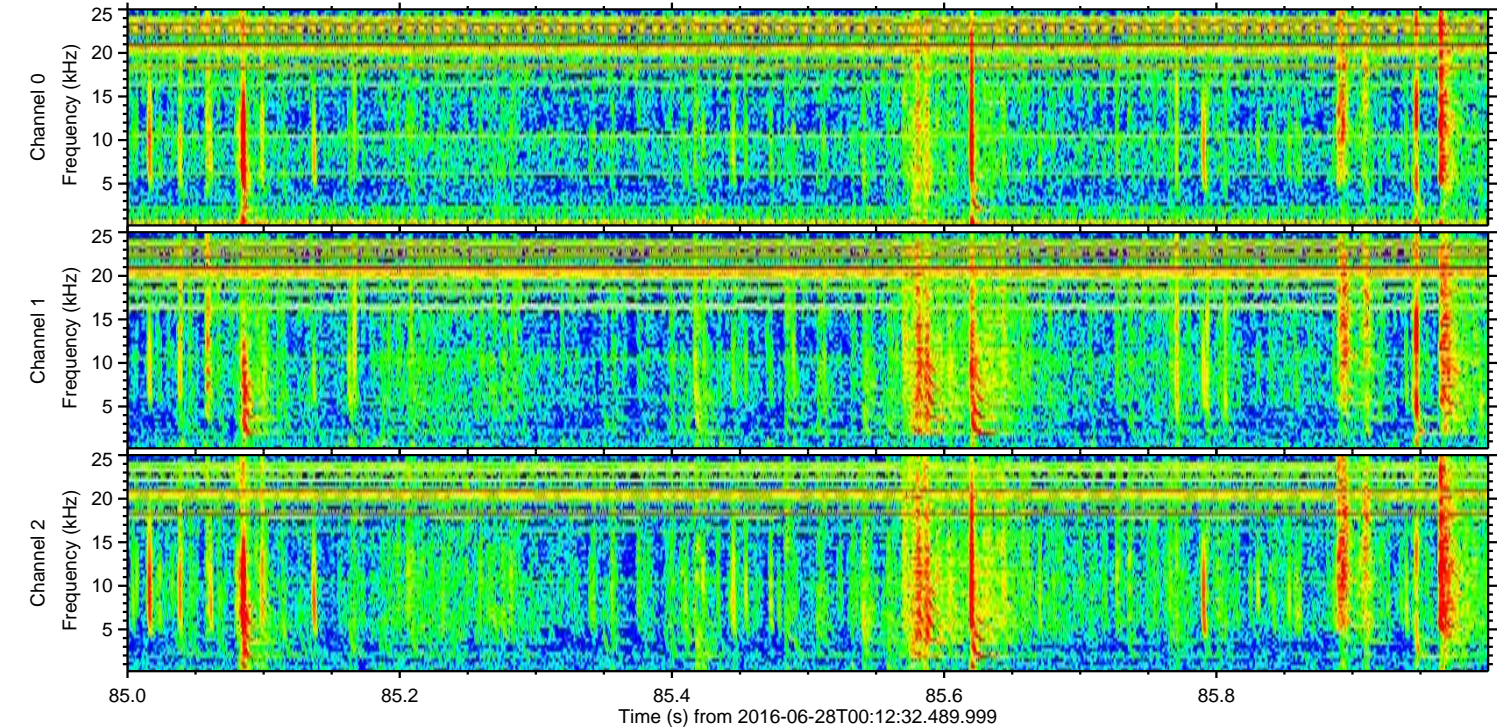
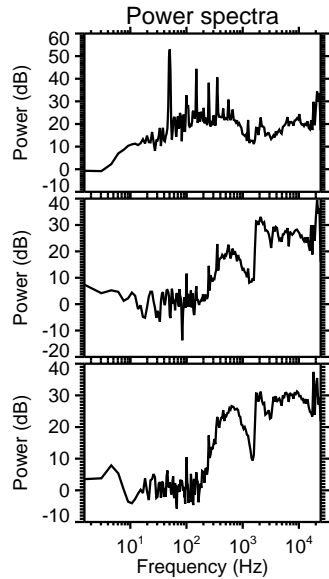
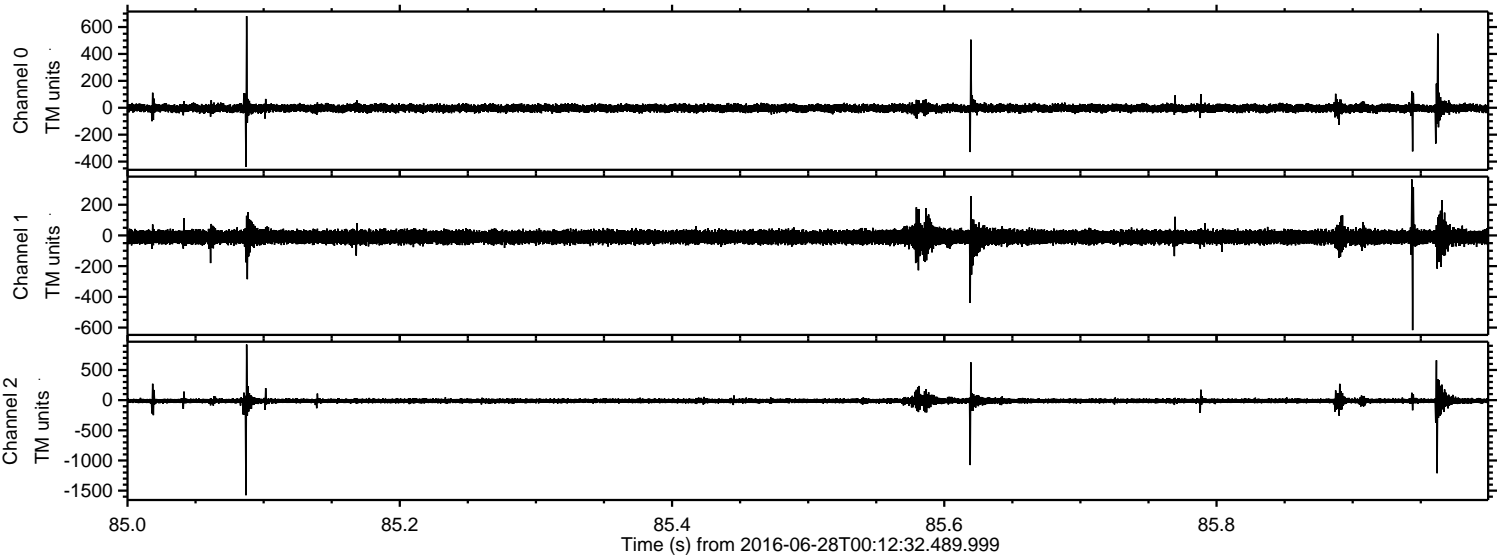


Processed Tue Jun 28 02:20:47 2016 by ELM ver.2012-10-06 from 001\_\_elm20160628\_001231\_\_dat00.bin



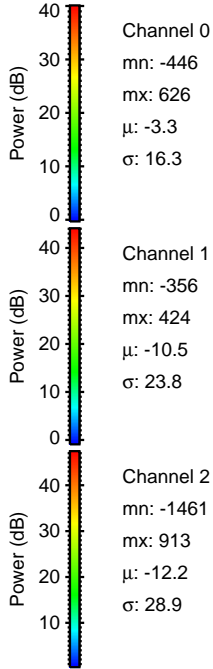
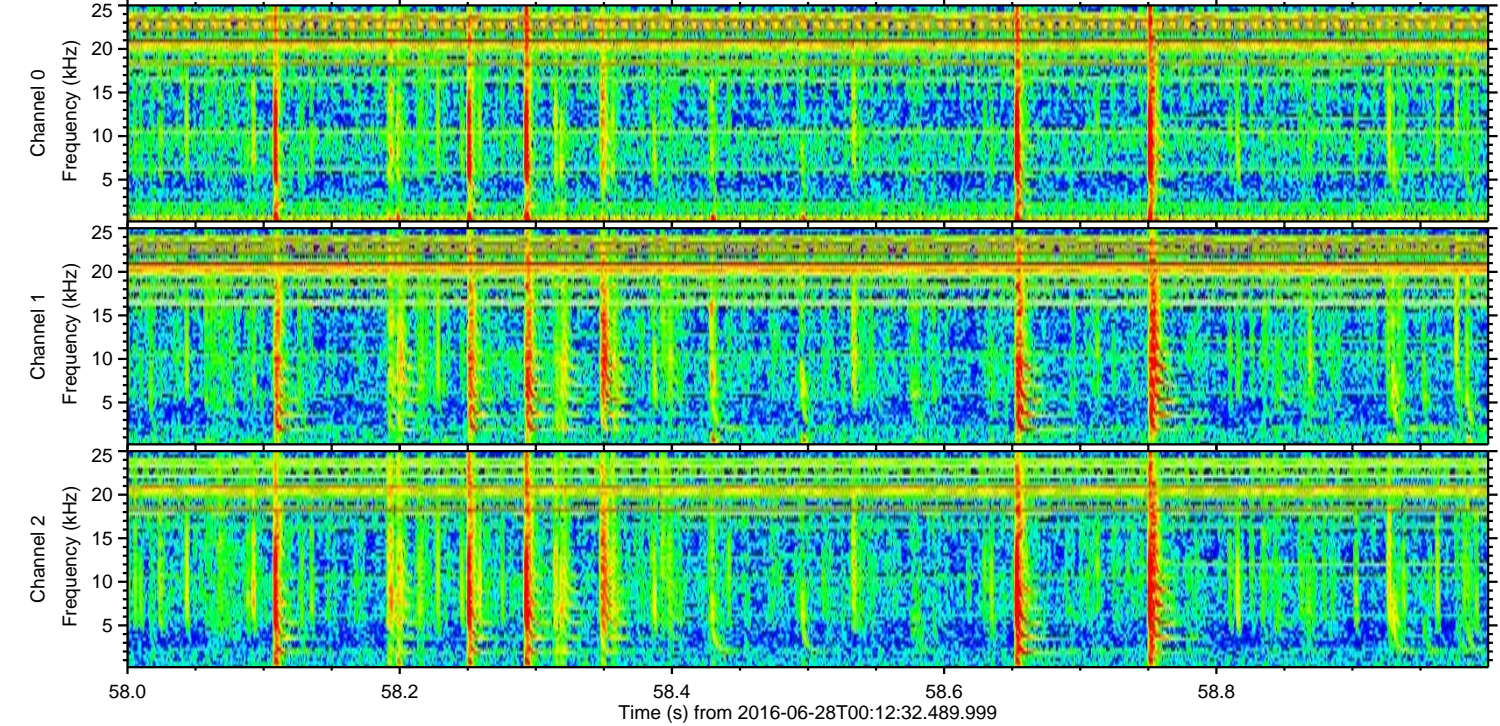
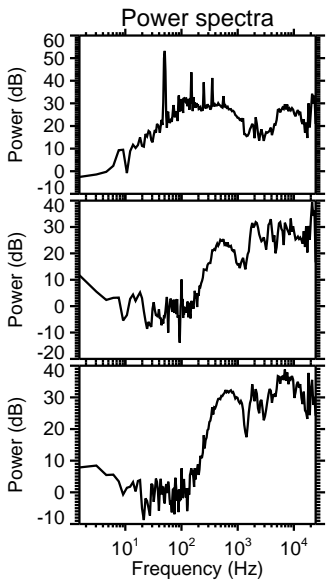
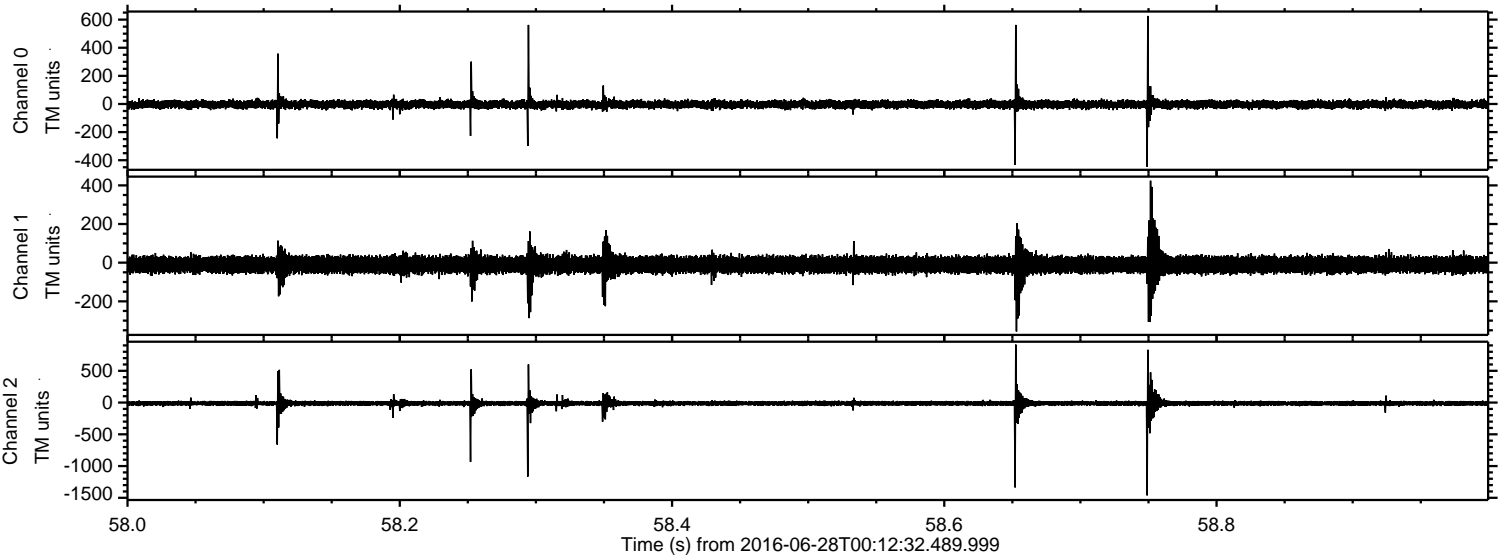


Processed Tue Jun 28 02:20:48 2016 by ELM ver.2012-10-06 from 001\_\_elm20160628\_001231\_\_dat00.bin





Processed Tue Jun 28 02:20:49 2016 by ELM ver.2012-10-06 from 001\_\_elm20160628\_001231\_\_dat00.bin





Processed Tue Jun 28 02:20:50 2016 by ELM ver.2012-10-06 from 001\_\_elm20160628\_001231\_\_dat00.bin

