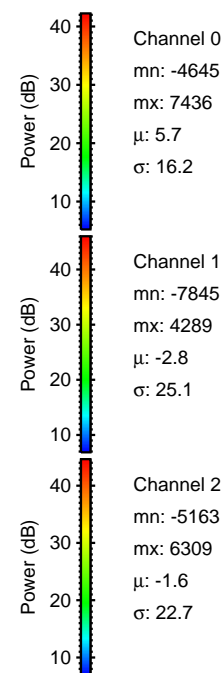
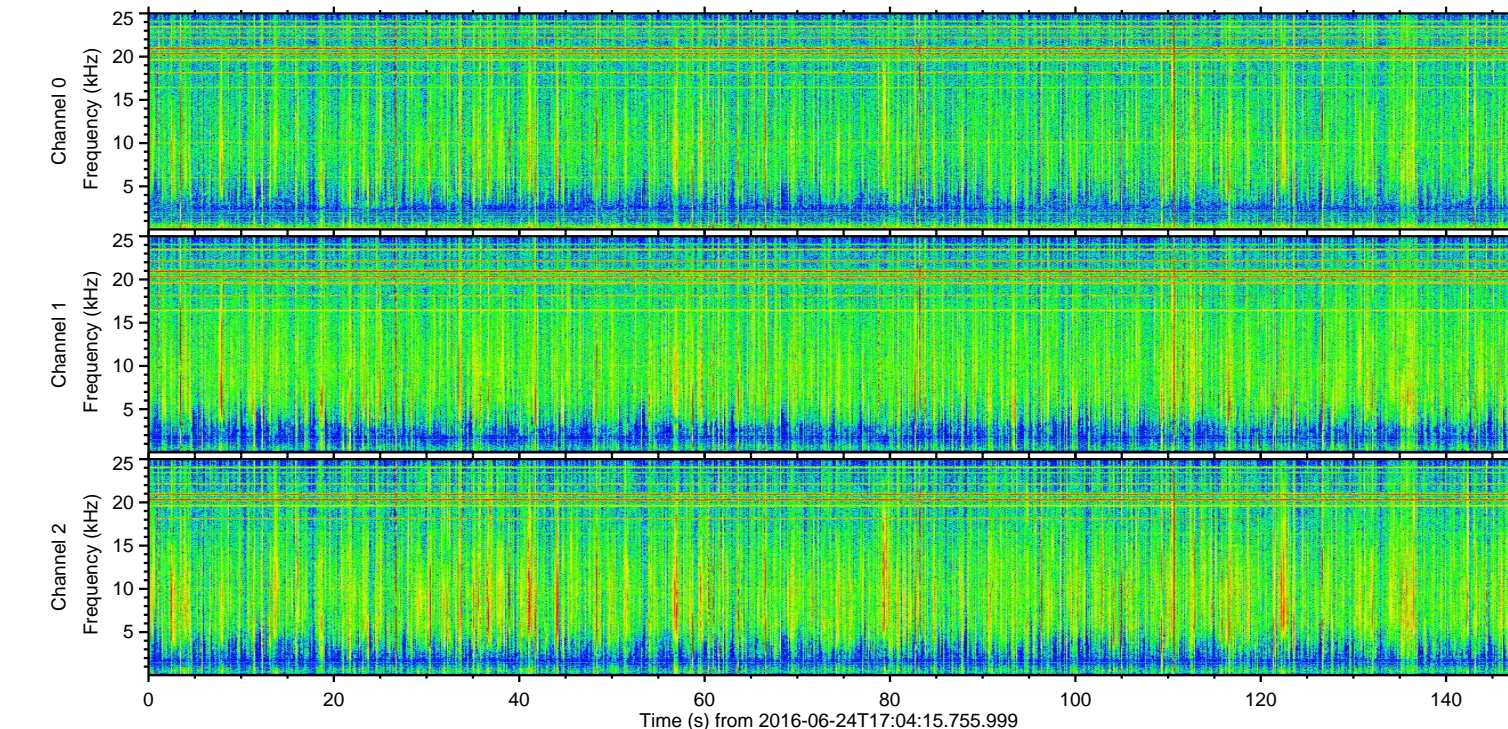
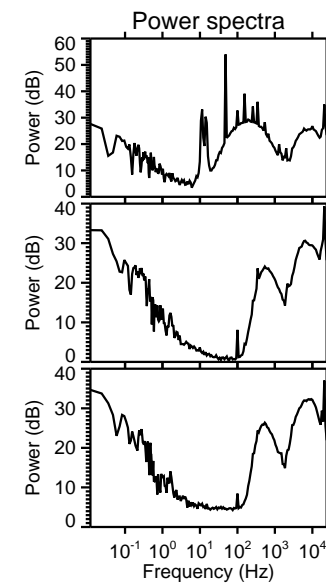
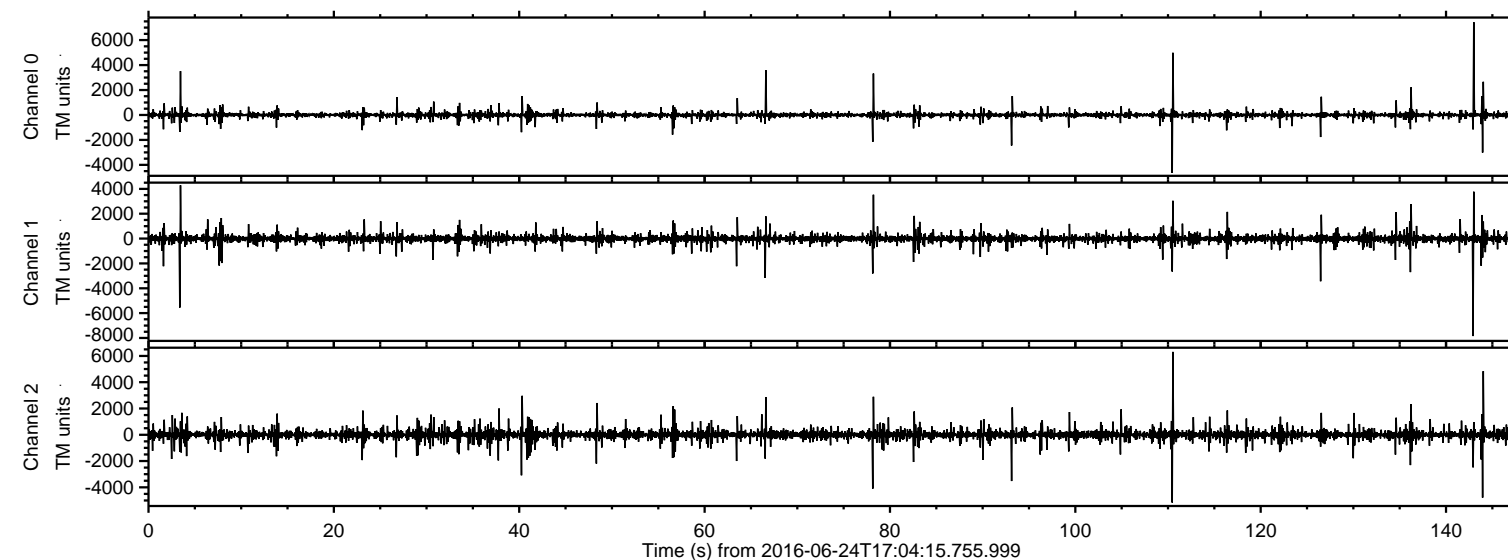


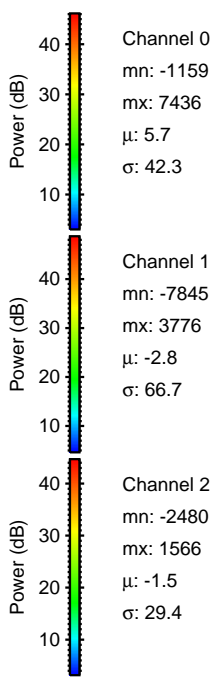
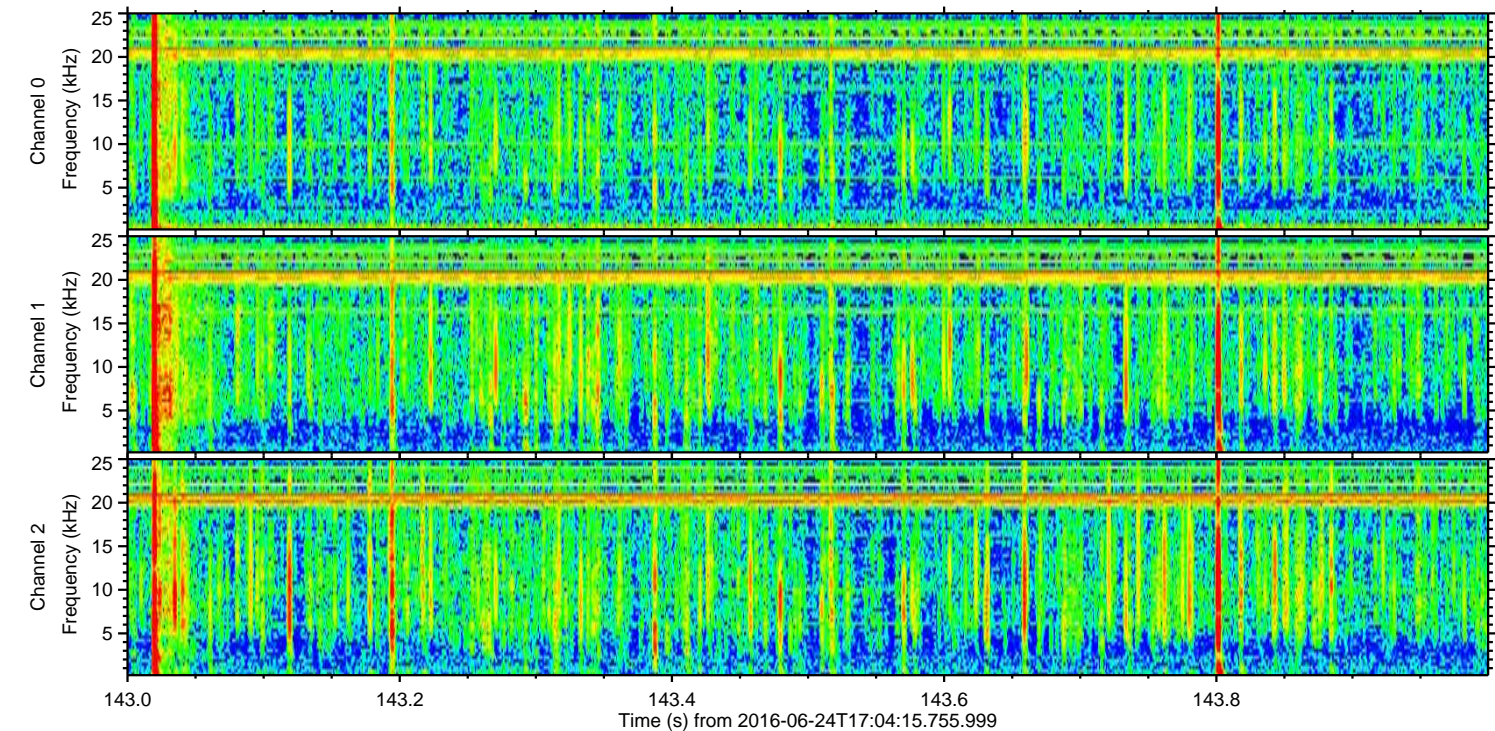
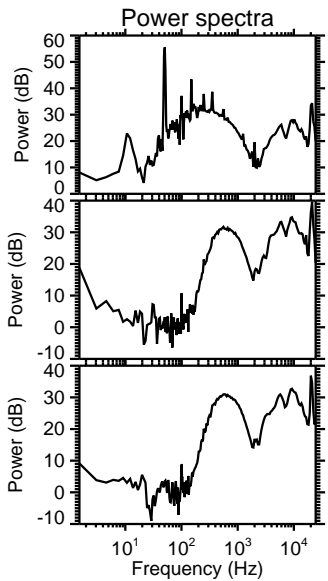
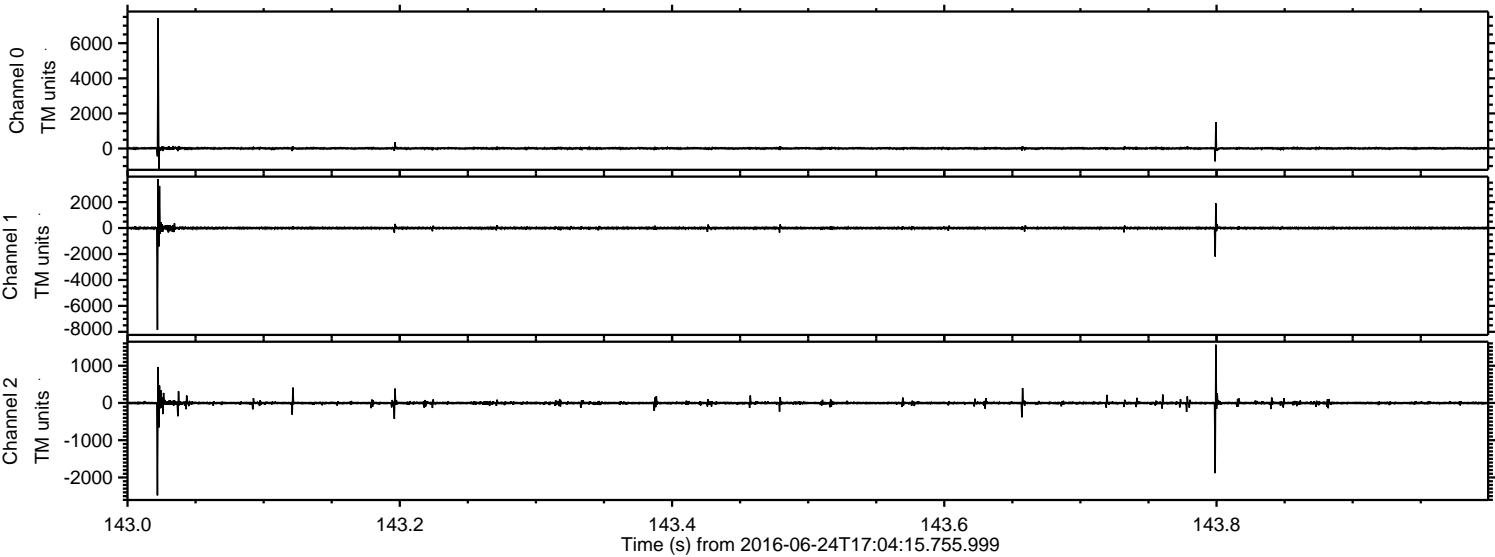
ELMAVAN 3D WAVEFORMS (Measured data sampled at 50 kHz) 51000 packets of 144 samples from 2016-06-24T17:04:15.755.999.

Processed Fri Jun 24 19:12:36 2016 by ELM ver.2012-10-06 from 001__elm20160624_170414__dat00.bin



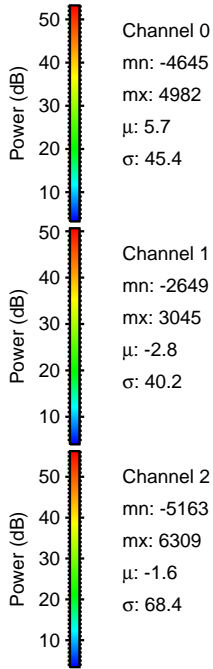
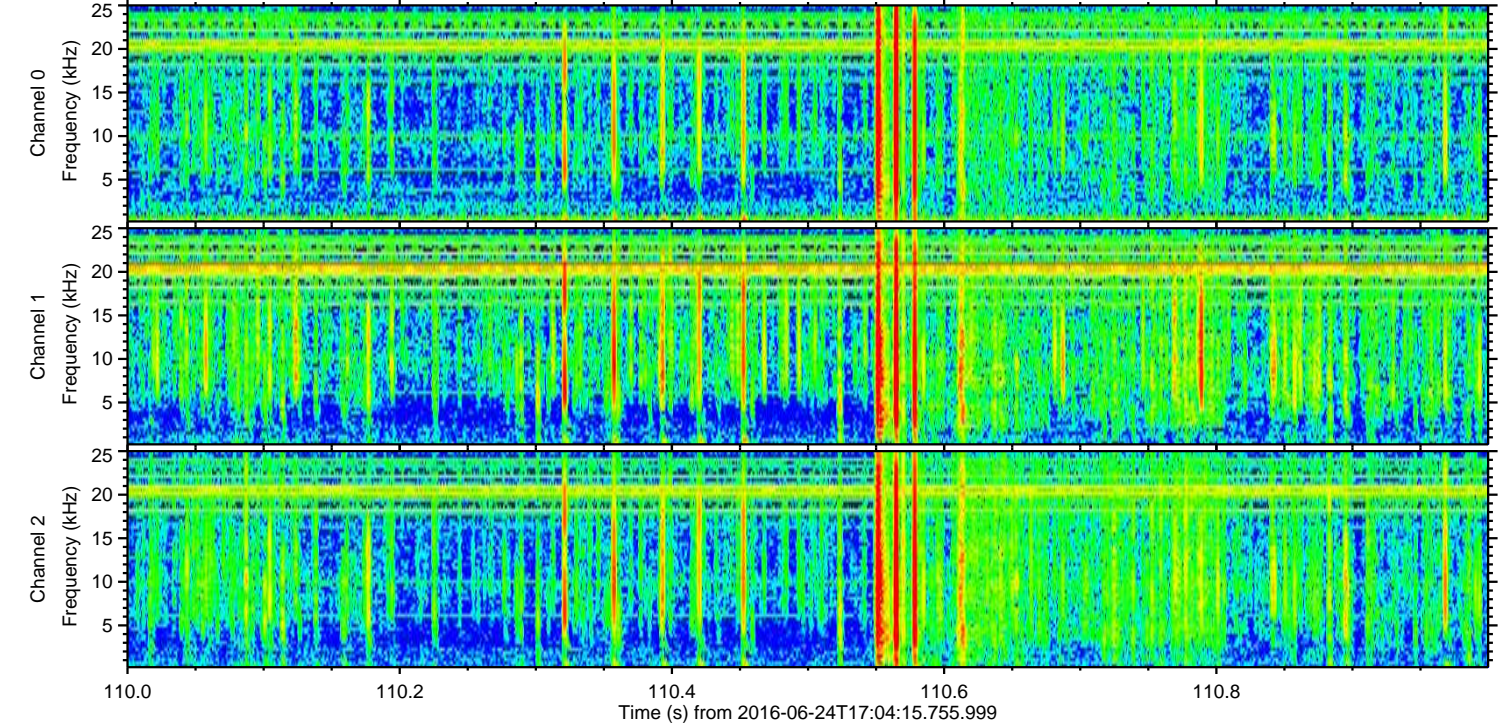
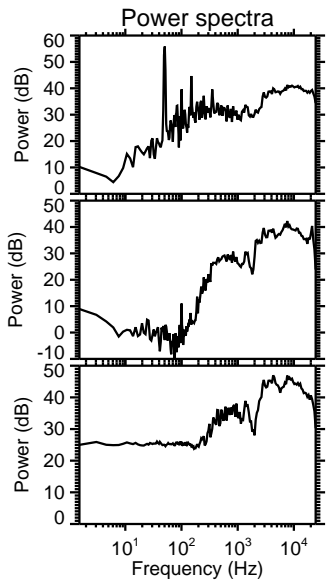
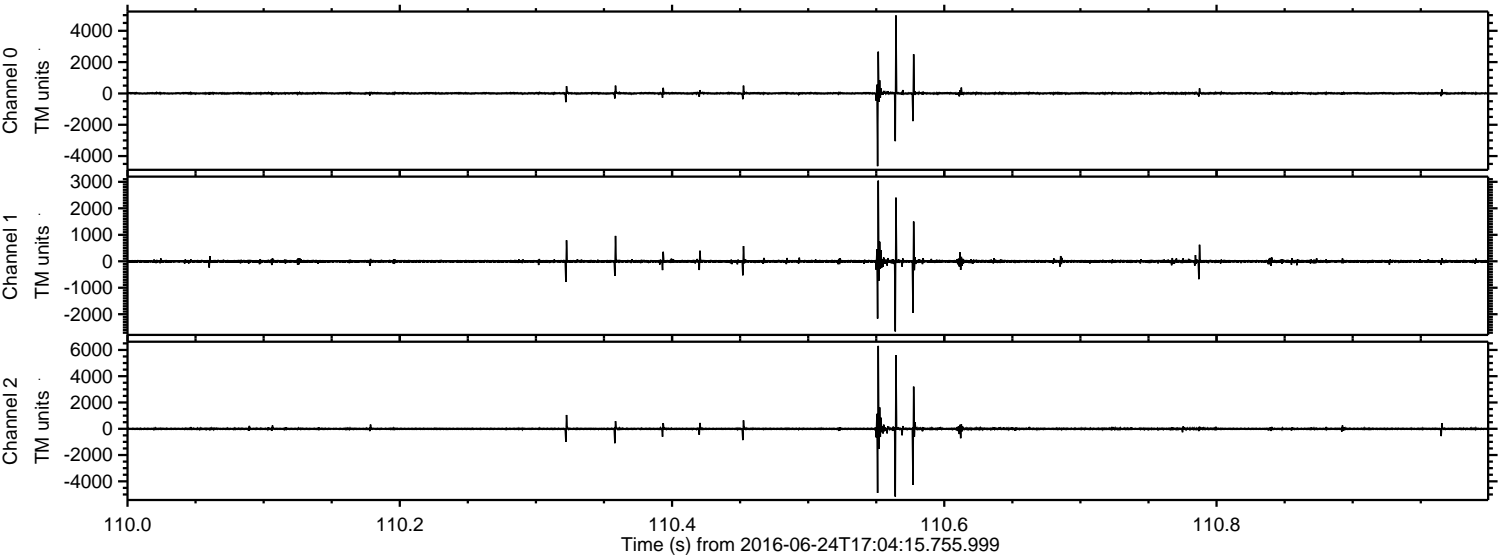
ELMAVAN 3D WAVEFORMS (Measured data sampled at 50 kHz) 51000 packets of 144 samples from 2016-06-24T17:04:15.755.999. Part 144/147

Processed Fri Jun 24 19:12:48 2016 by ELM ver.2012-10-06 from 001__elm20160624_170414__dat00.bin



ELMAVAN 3D WAVEFORMS (Measured data sampled at 50 kHz) 51000 packets of 144 samples from 2016-06-24T17:04:15.755.999. Part 111/147

Processed Fri Jun 24 19:12:48 2016 by ELM ver.2012-10-06 from 001__elm20160624_170414__dat00.bin



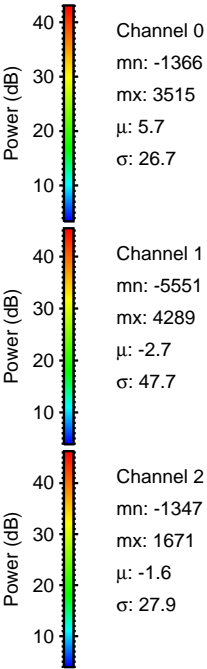
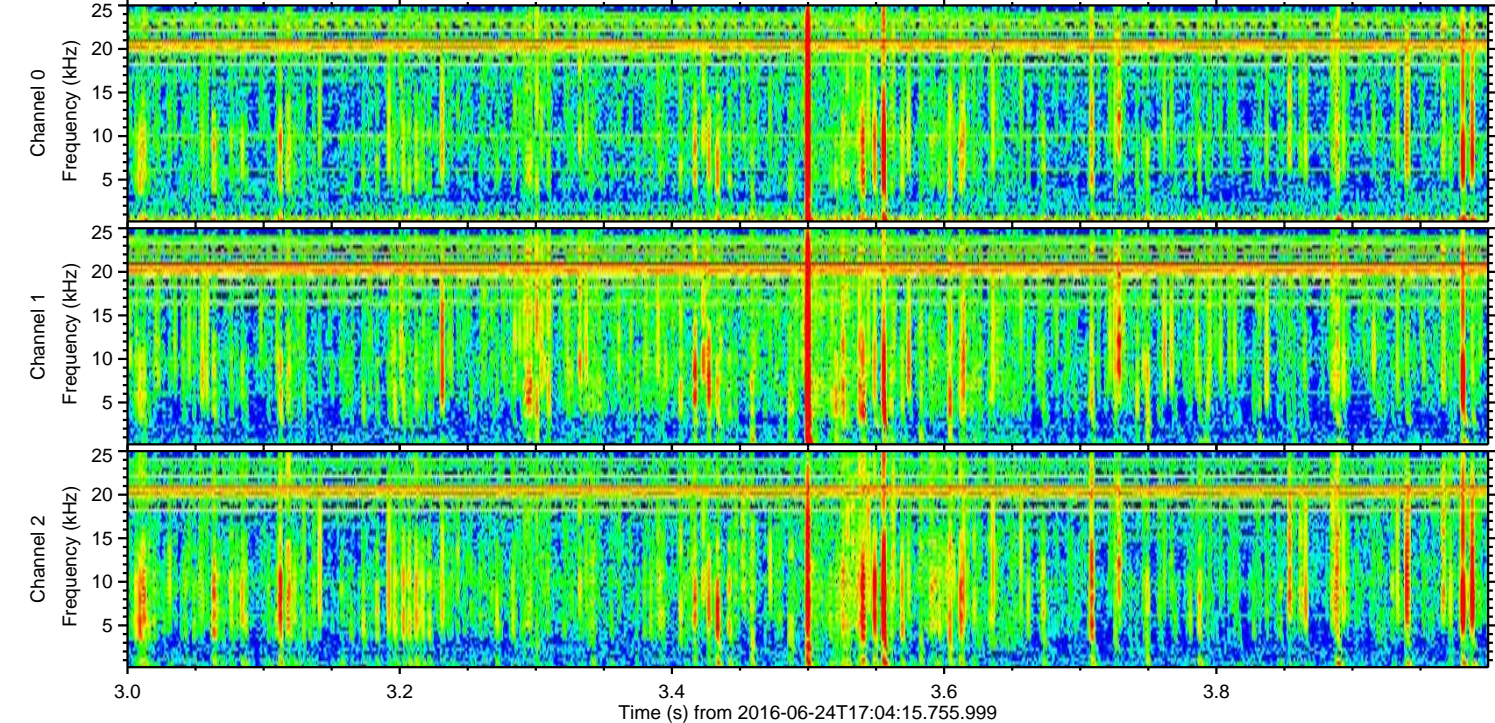
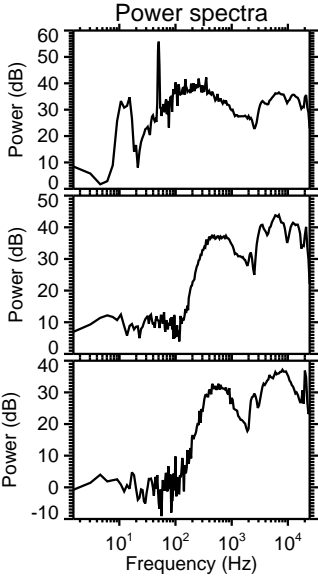
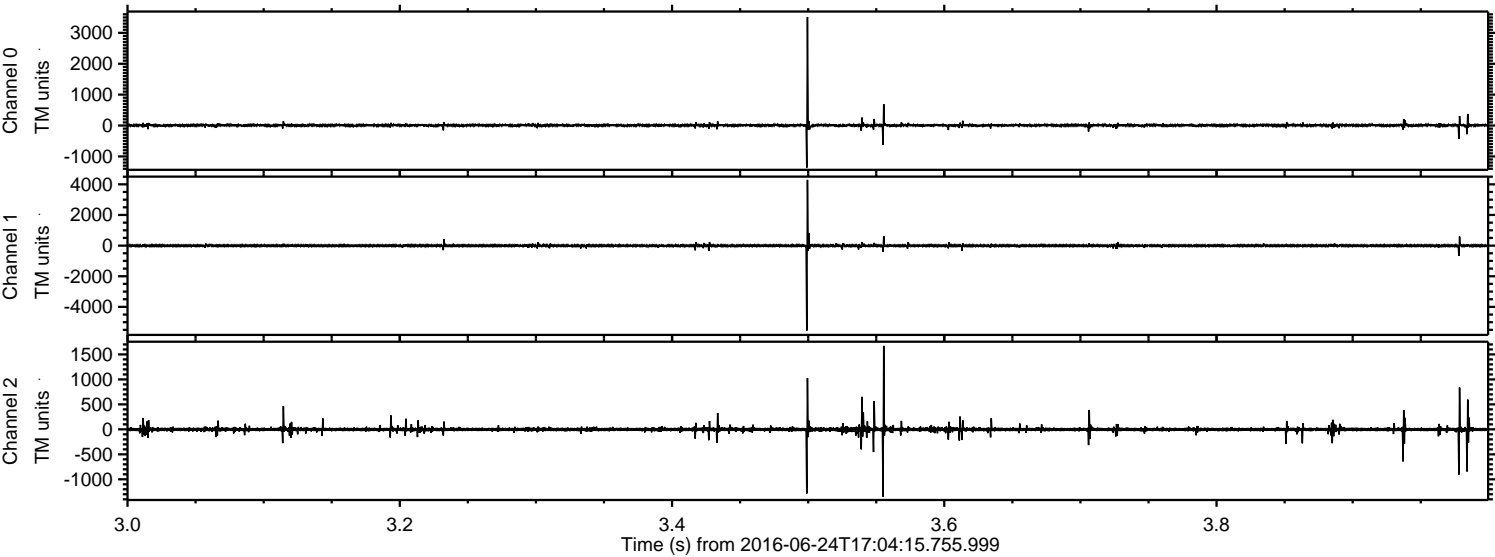
Channel 0
mn: -4645
mx: 4982
 μ : 5.7
 σ : 45.4

Channel 1
mn: -2649
mx: 3045
 μ : -2.8
 σ : 40.2

Channel 2
mn: -5163
mx: 6309
 μ : -1.6
 σ : 68.4

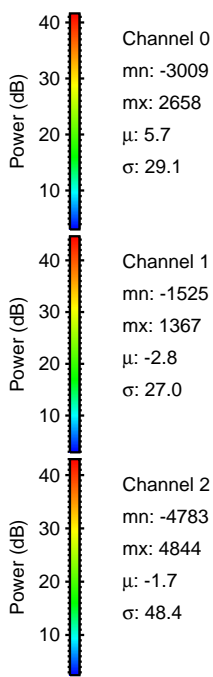
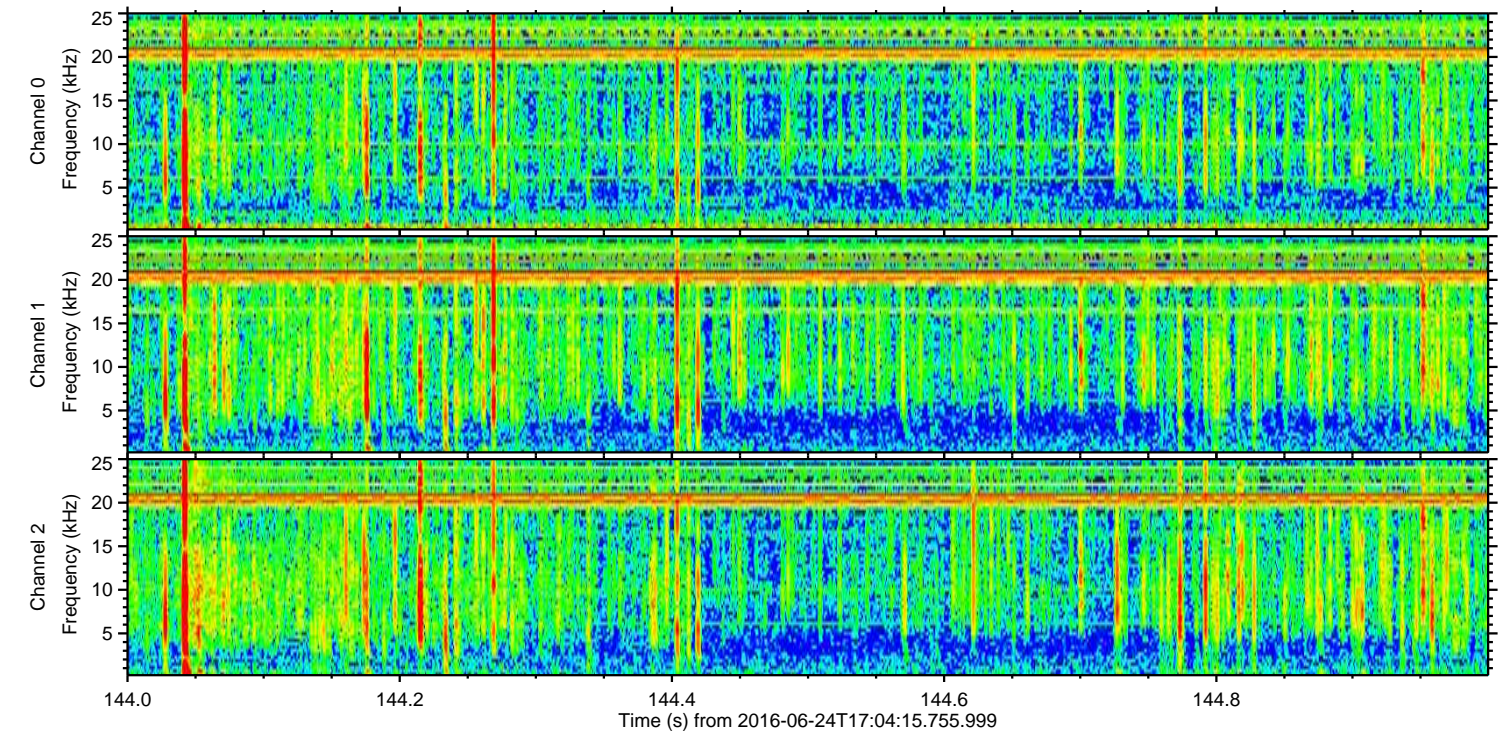
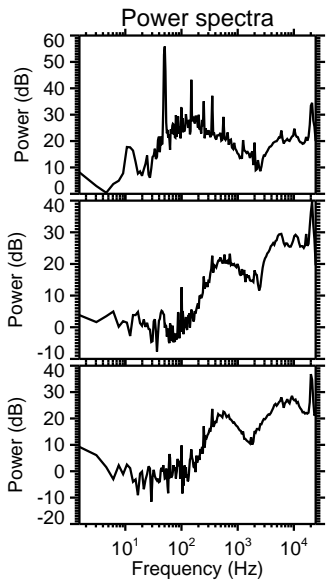
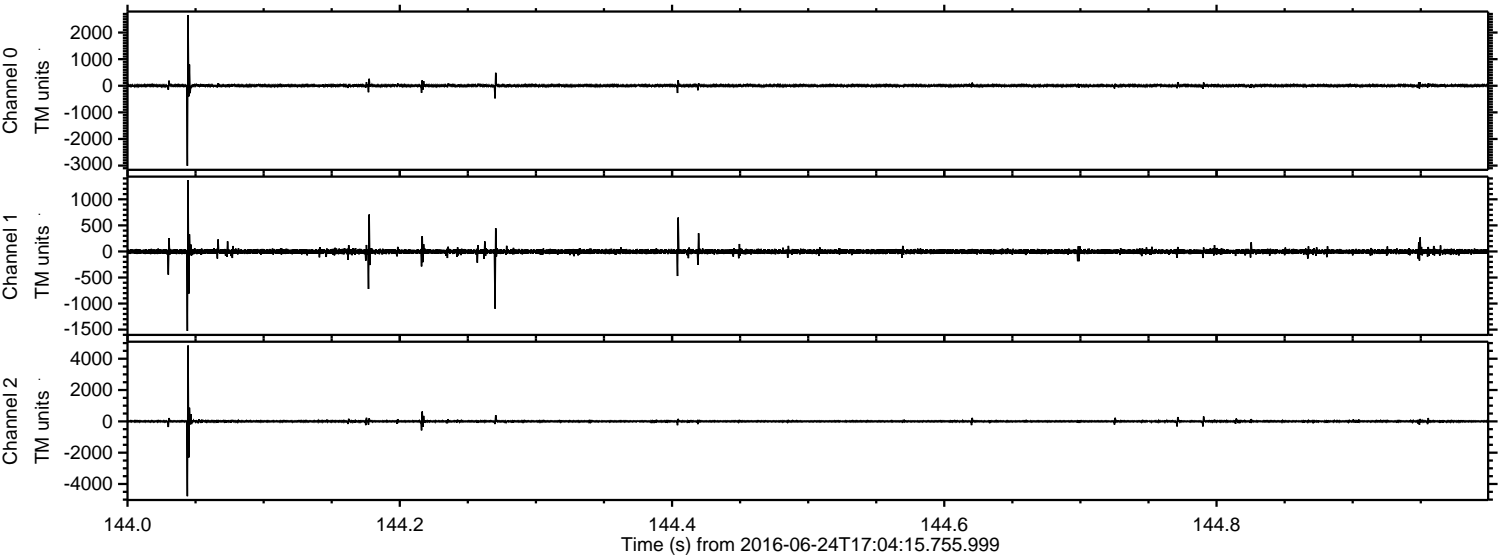
ELMAVAN 3D WAVEFORMS (Measured data sampled at 50 kHz) 51000 packets of 144 samples from 2016-06-24T17:04:15.755.999. Part 4/147

Processed Fri Jun 24 19:12:49 2016 by ELM ver.2012-10-06 from 001__elm20160624_170414__dat00.bin

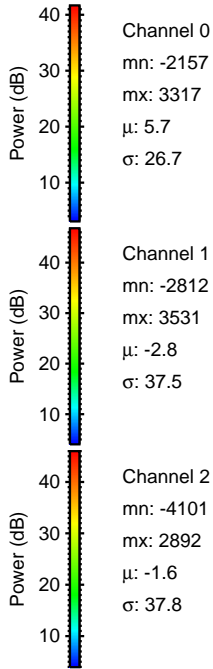
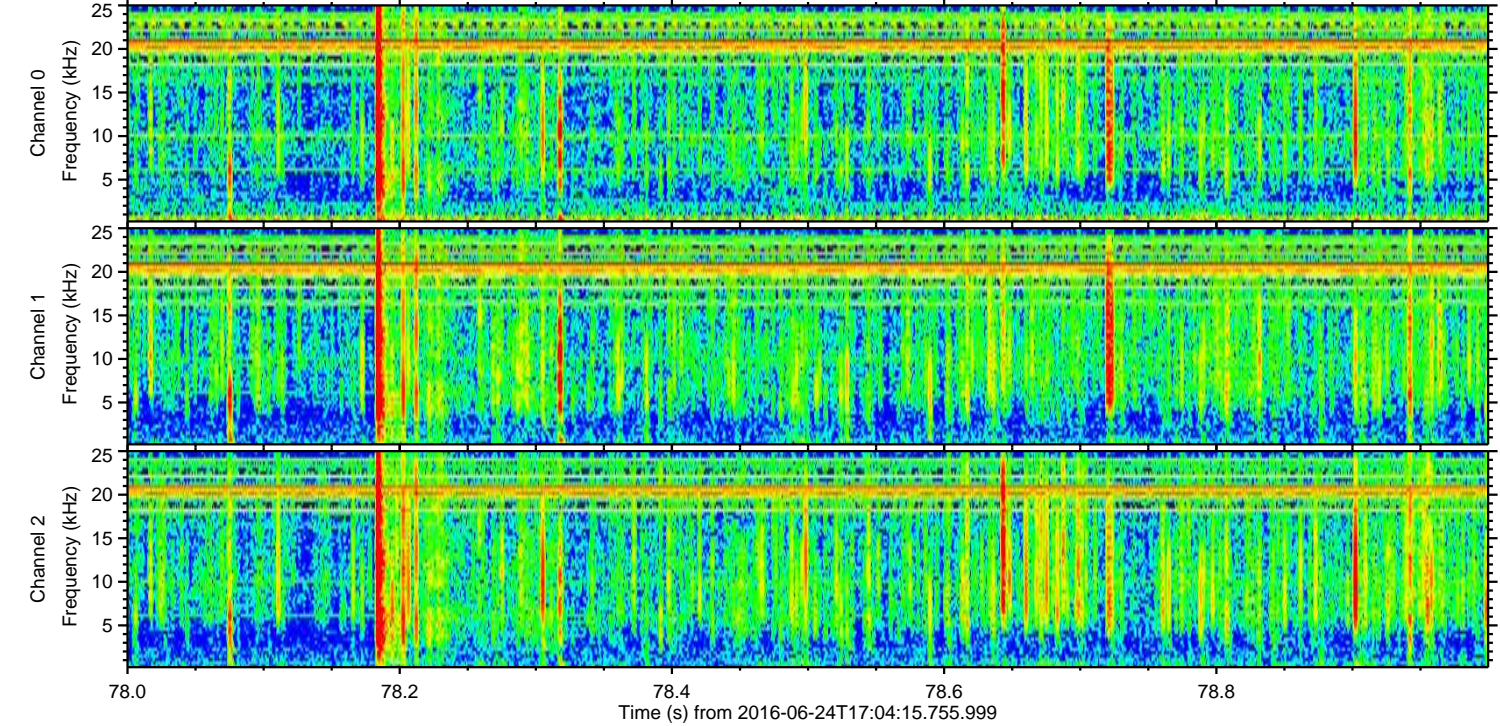
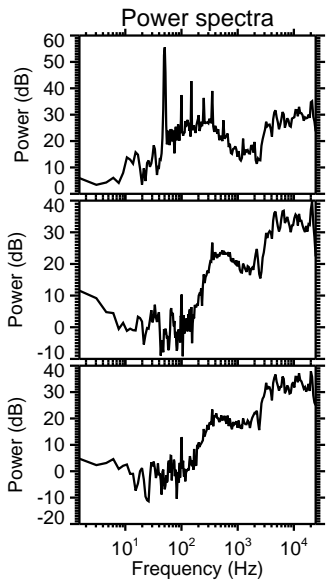
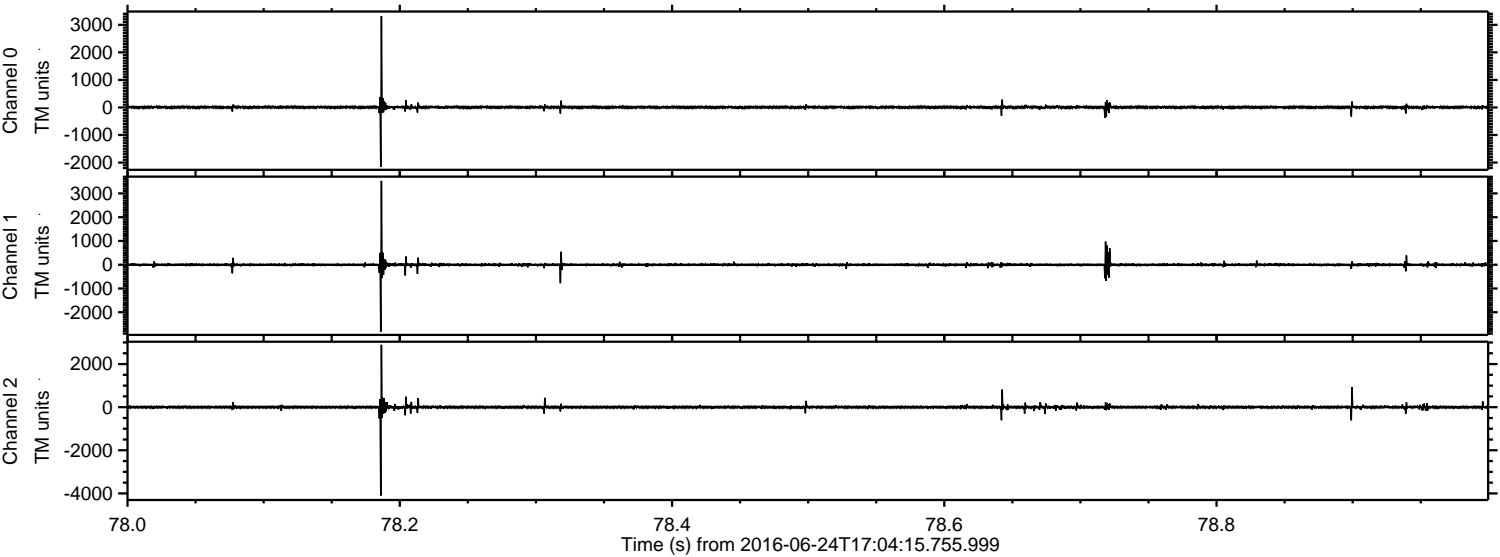


ELMAVAN 3D WAVEFORMS (Measured data sampled at 50 kHz) 51000 packets of 144 samples from 2016-06-24T17:04:15.755.999. Part 145/147

Processed Fri Jun 24 19:12:50 2016 by ELM ver.2012-10-06 from 001__elm20160624_170414__dat00.bin



Processed Fri Jun 24 19:12:51 2016 by ELM ver.2012-10-06 from 001__elm20160624_170414__dat00.bin

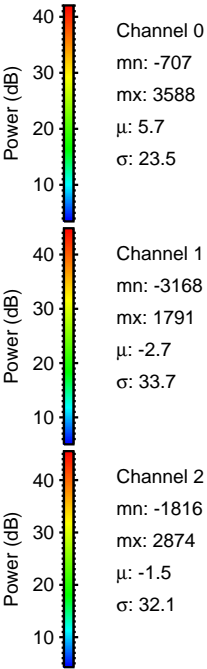
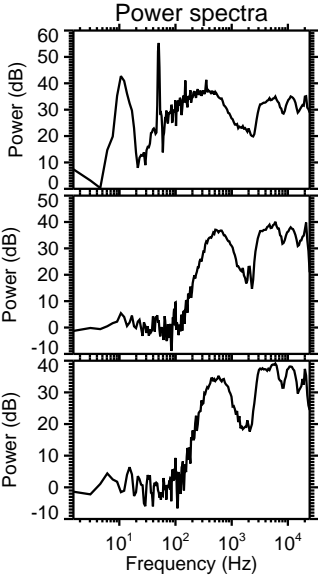
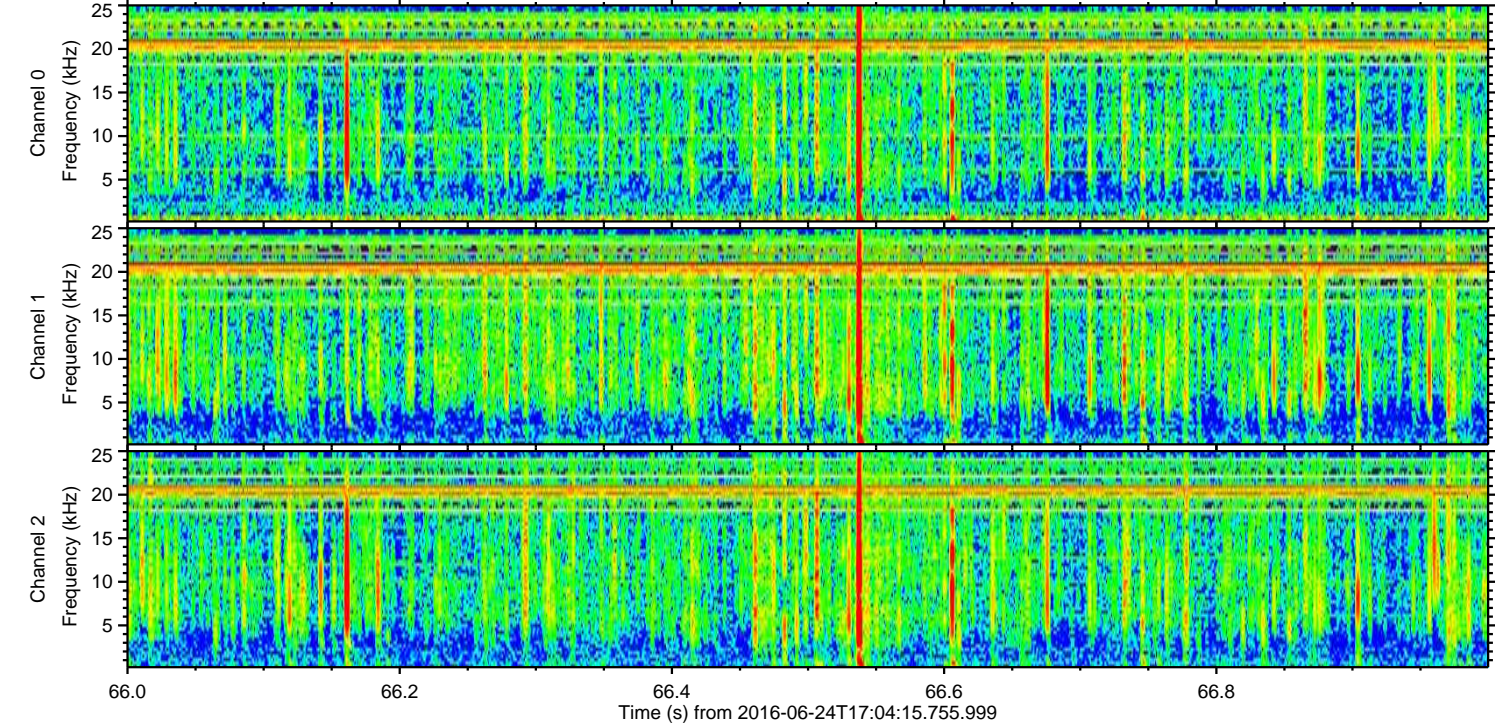
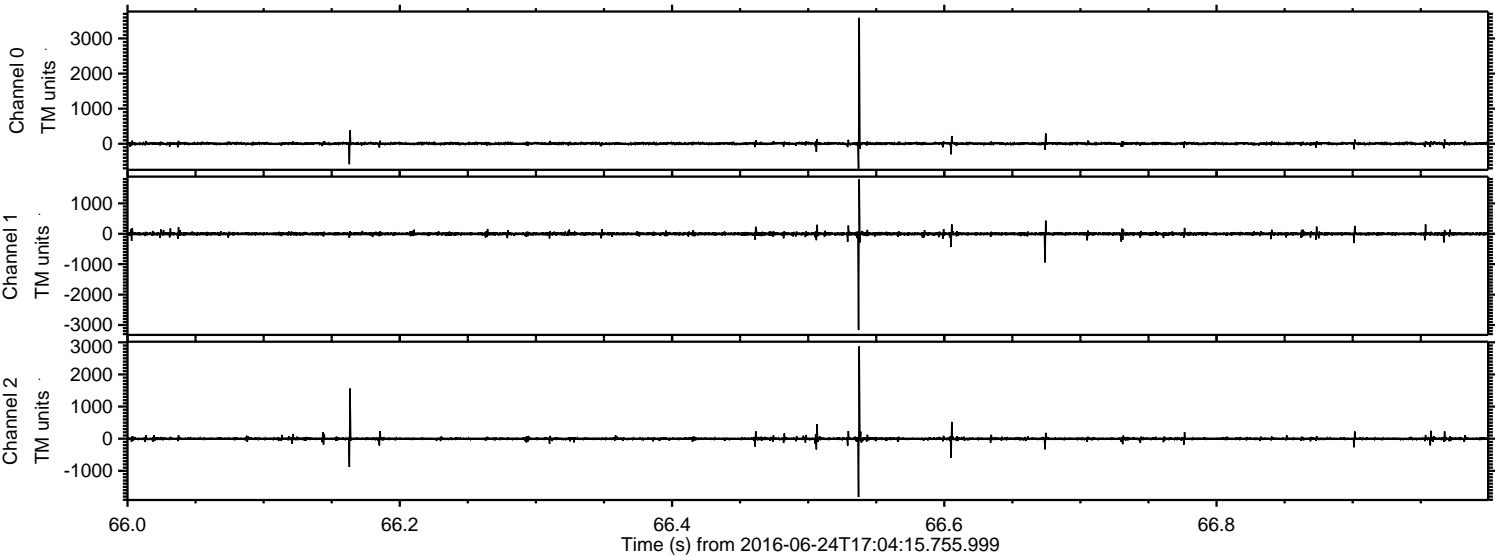


Channel 0
mn: -2157
mx: 3317
 μ : 5.7
 σ : 26.7

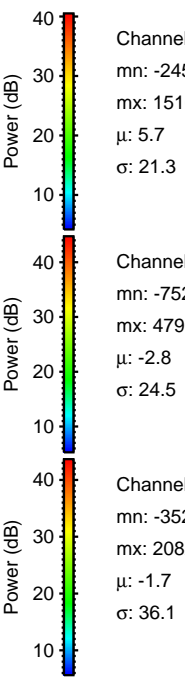
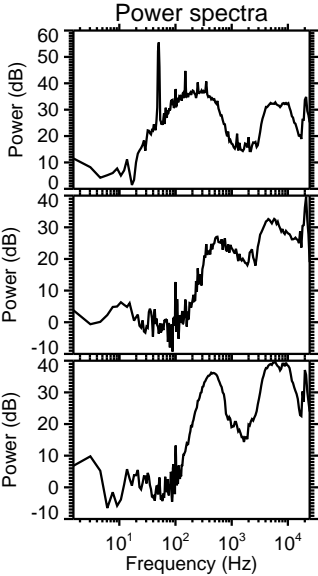
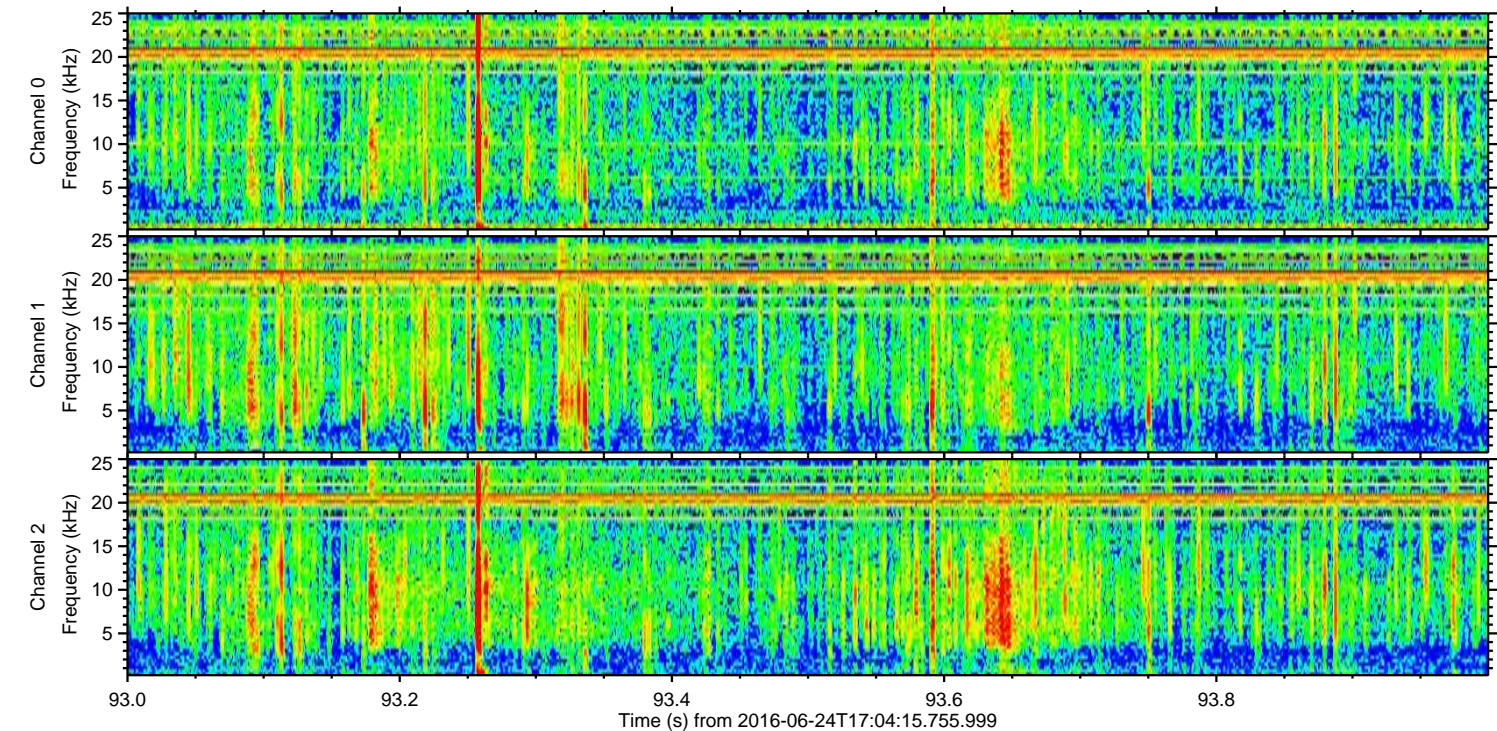
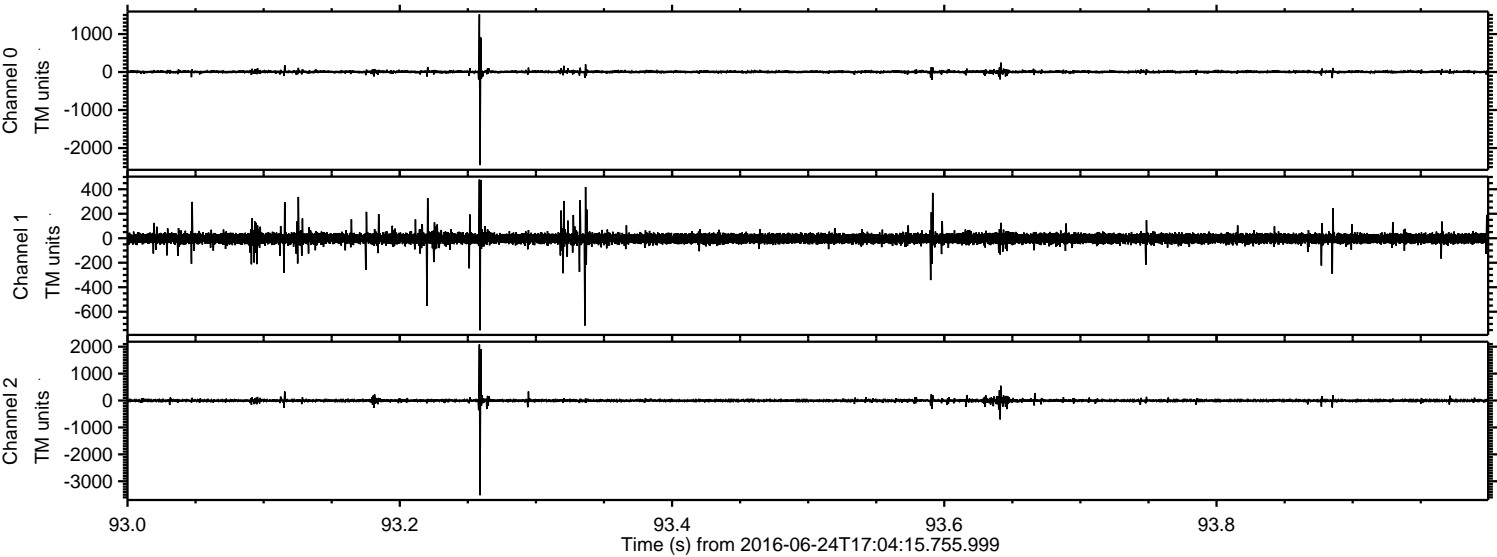
Channel 1
mn: -2812
mx: 3531
 μ : -2.8
 σ : 37.5

Channel 2
mn: -4101
mx: 2892
 μ : -1.6
 σ : 37.8

Processed Fri Jun 24 19:12:52 2016 by ELM ver.2012-10-06 from 001__elm20160624_170414__dat00.bin

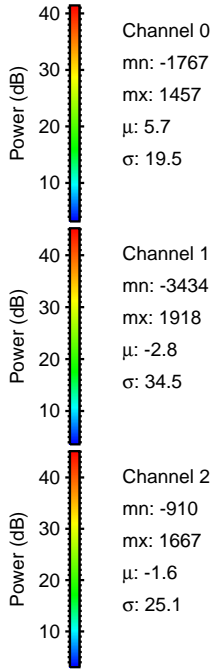
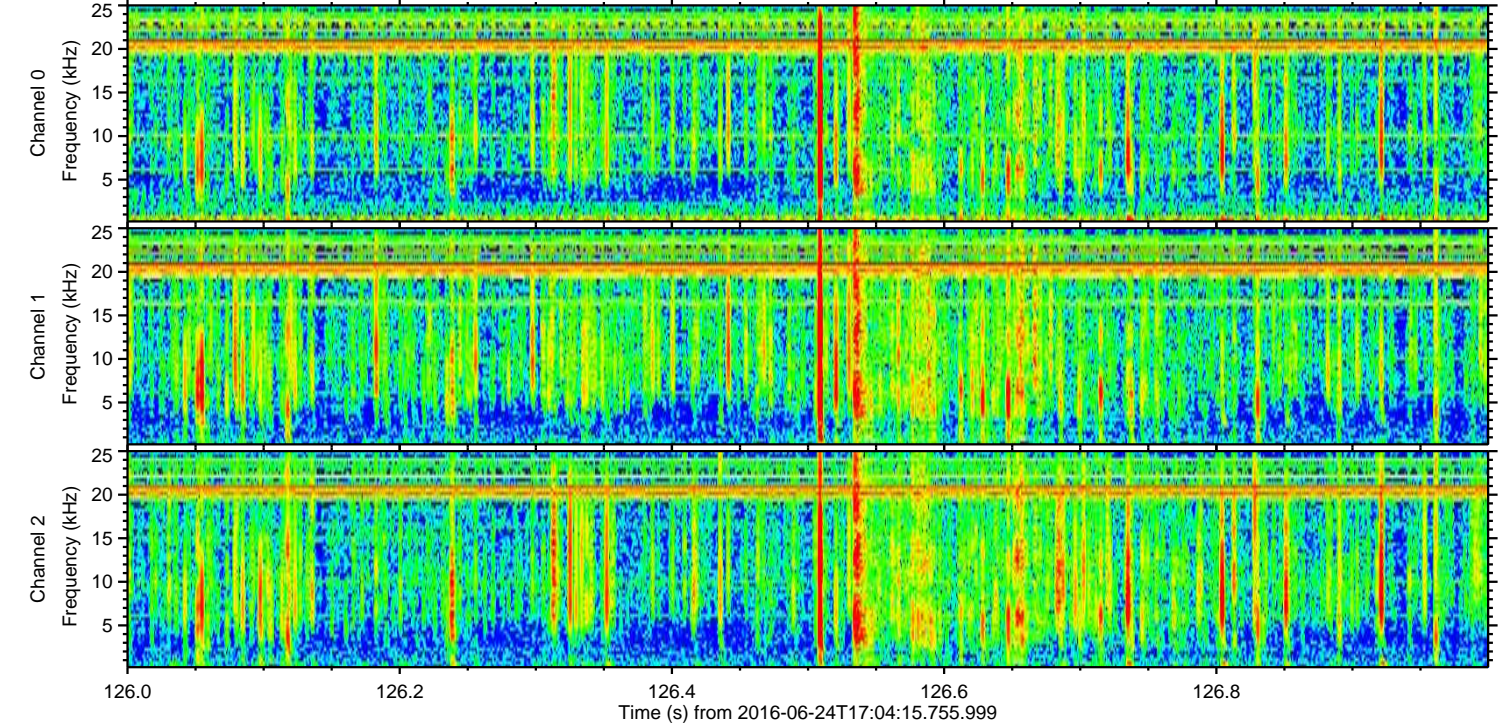
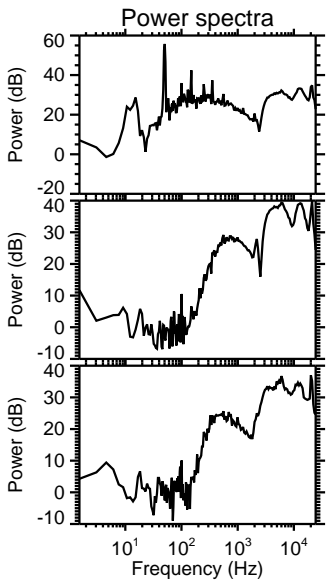
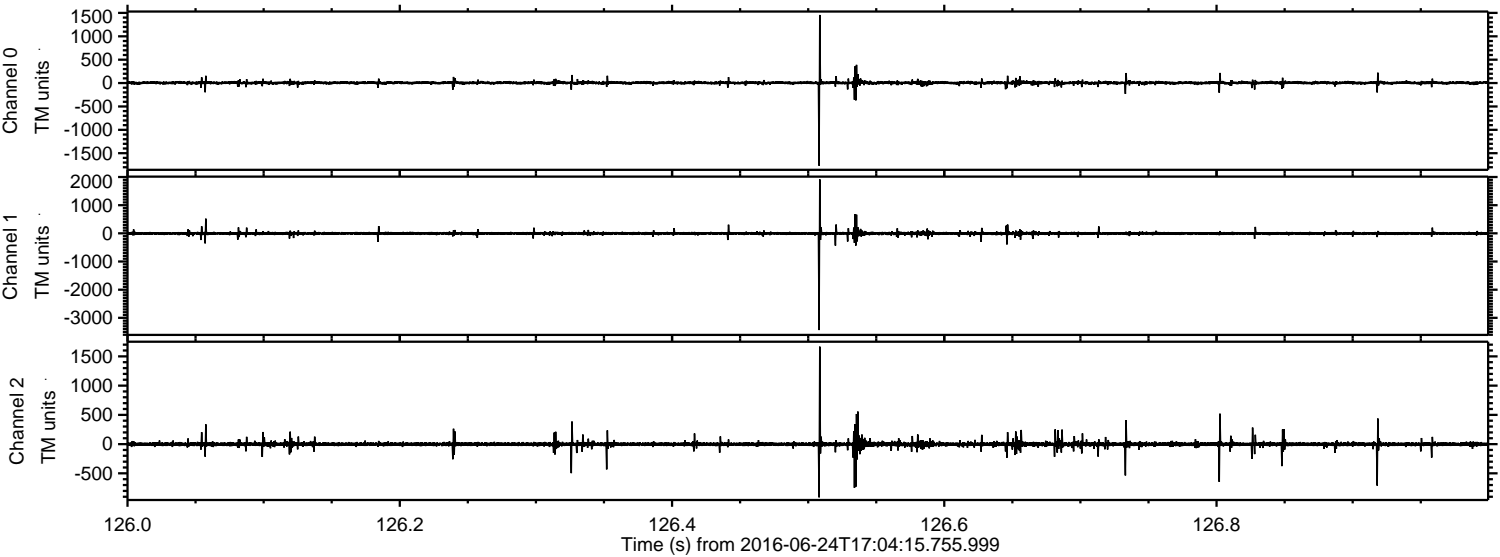


Processed Fri Jun 24 19:12:53 2016 by ELM ver.2012-10-06 from 001__elm20160624_170414__dat00.bin



ELMAVAN 3D WAVEFORMS (Measured data sampled at 50 kHz) 51000 packets of 144 samples from 2016-06-24T17:04:15.755.999. Part 127/147

Processed Fri Jun 24 19:12:54 2016 by ELM ver.2012-10-06 from 001__elm20160624_170414__dat00.bin



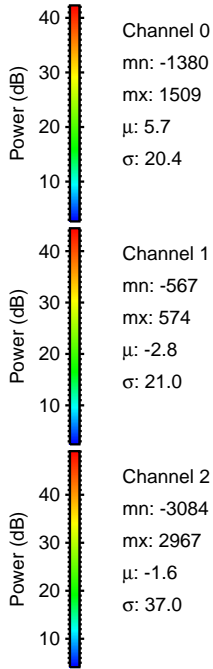
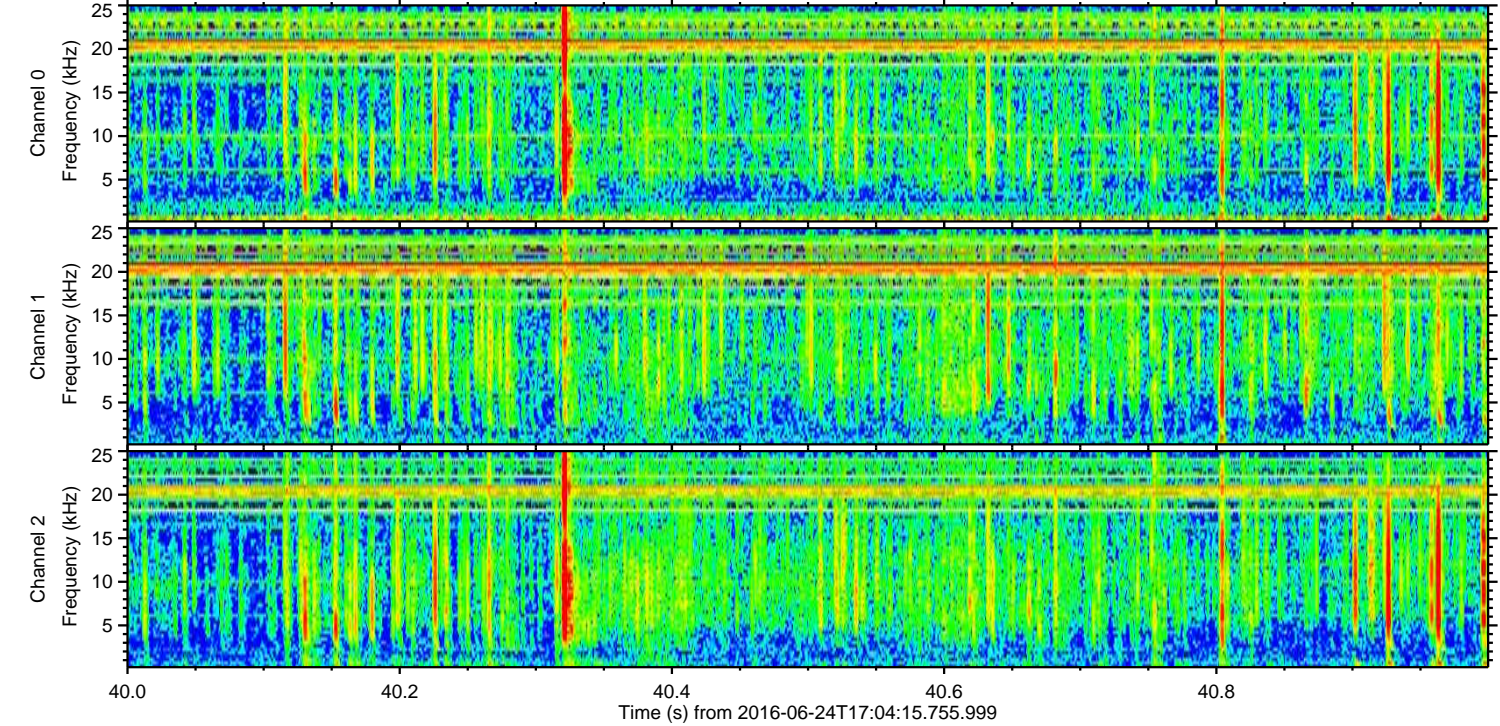
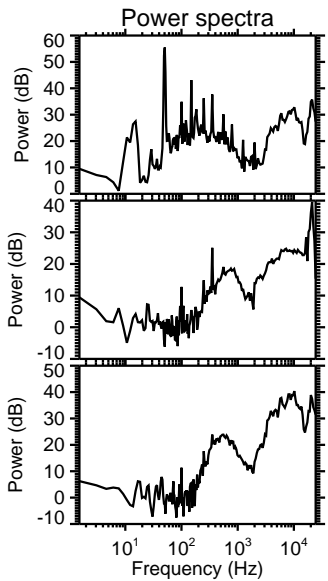
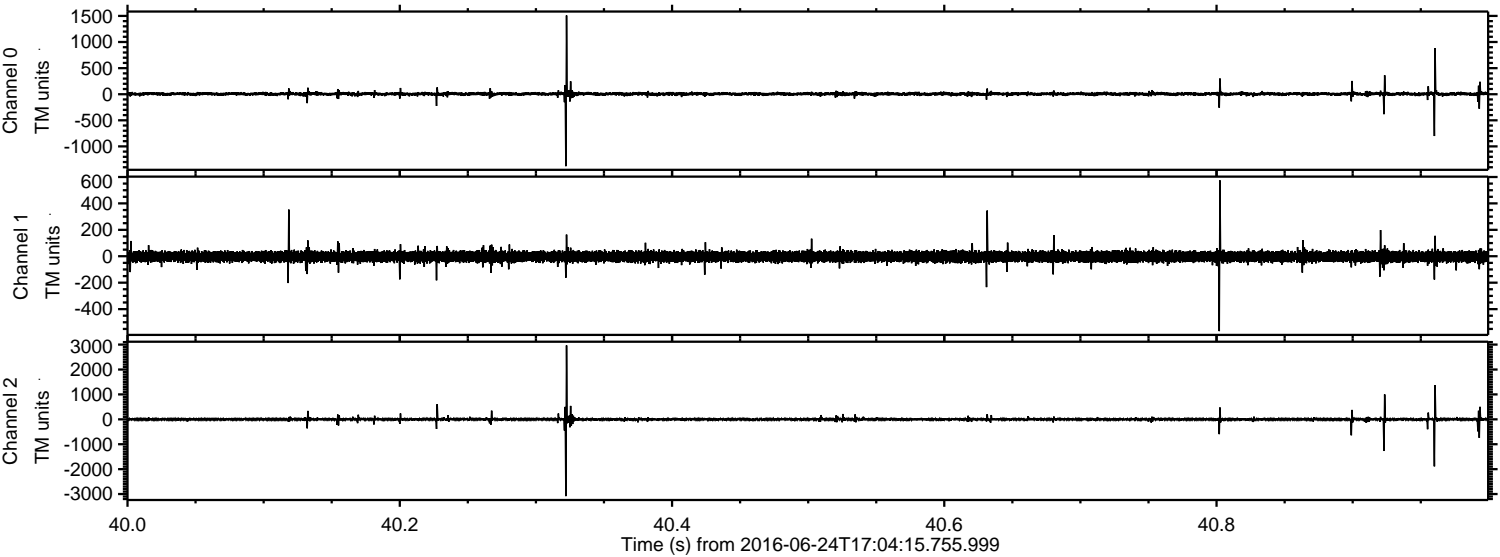
Channel 0
mn: -1767
mx: 1457
 μ : 5.7
 σ : 19.5

Channel 1
mn: -3434
mx: 1918
 μ : -2.8
 σ : 34.5

Channel 2
mn: -910
mx: 1667
 μ : -1.6
 σ : 25.1

ELMAVAN 3D WAVEFORMS (Measured data sampled at 50 kHz) 51000 packets of 144 samples from 2016-06-24T17:04:15.755.999. Part 41/147

Processed Fri Jun 24 19:12:55 2016 by ELM ver.2012-10-06 from 001__elm20160624_170414__dat00.bin



Channel 0
mn: -1380
mx: 1509
 μ : 5.7
 σ : 20.4

Channel 1
mn: -567
mx: 574
 μ : -2.8
 σ : 21.0

Channel 2
mn: -3084
mx: 2967
 μ : -1.6
 σ : 37.0

