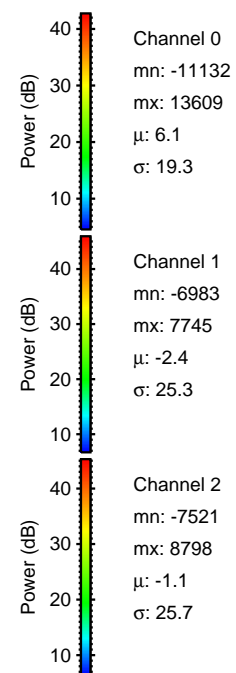
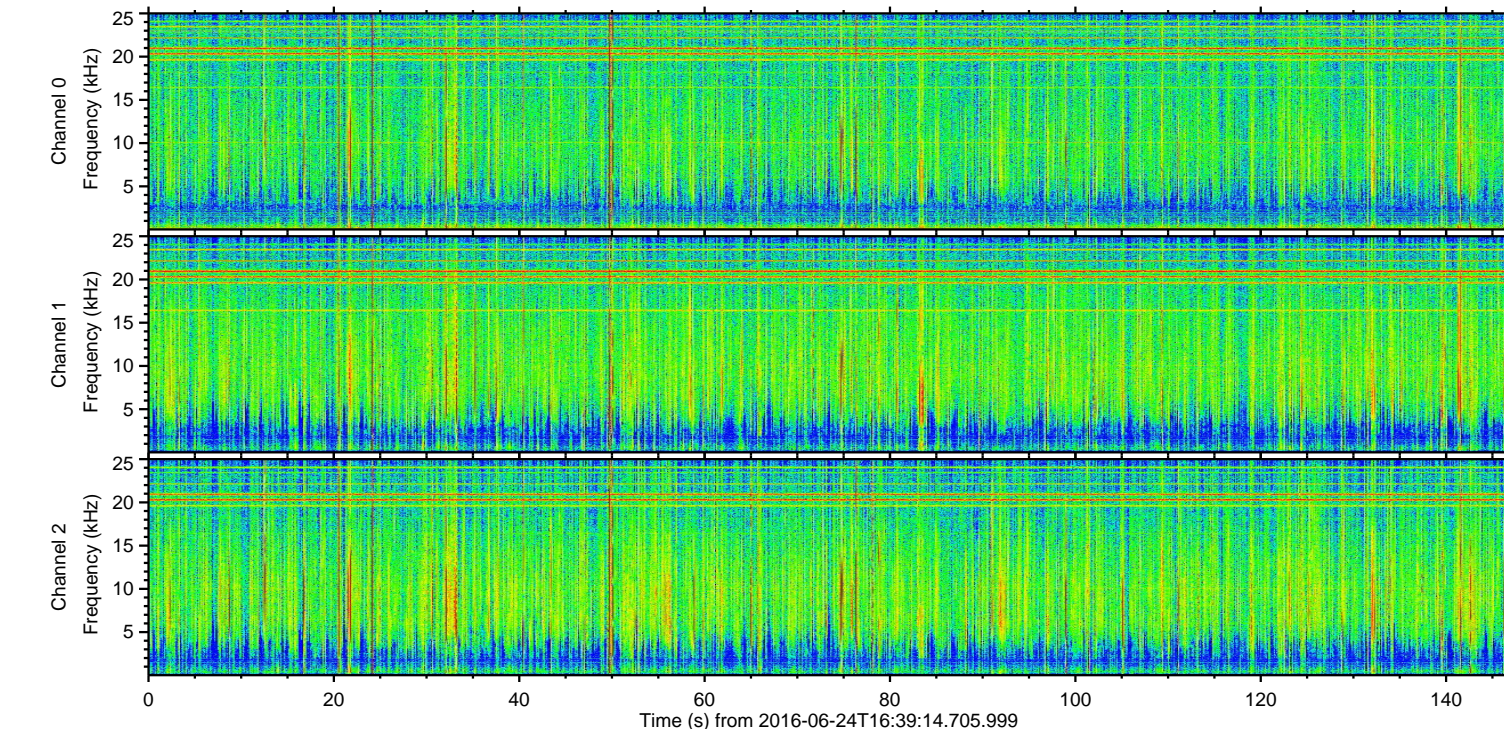
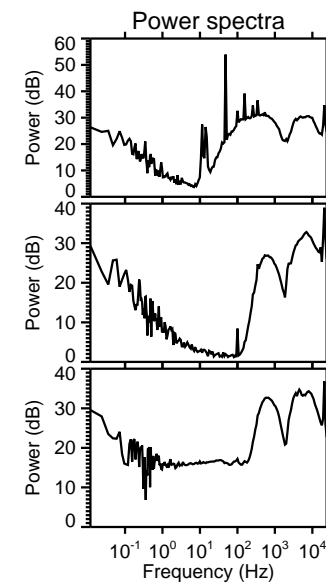
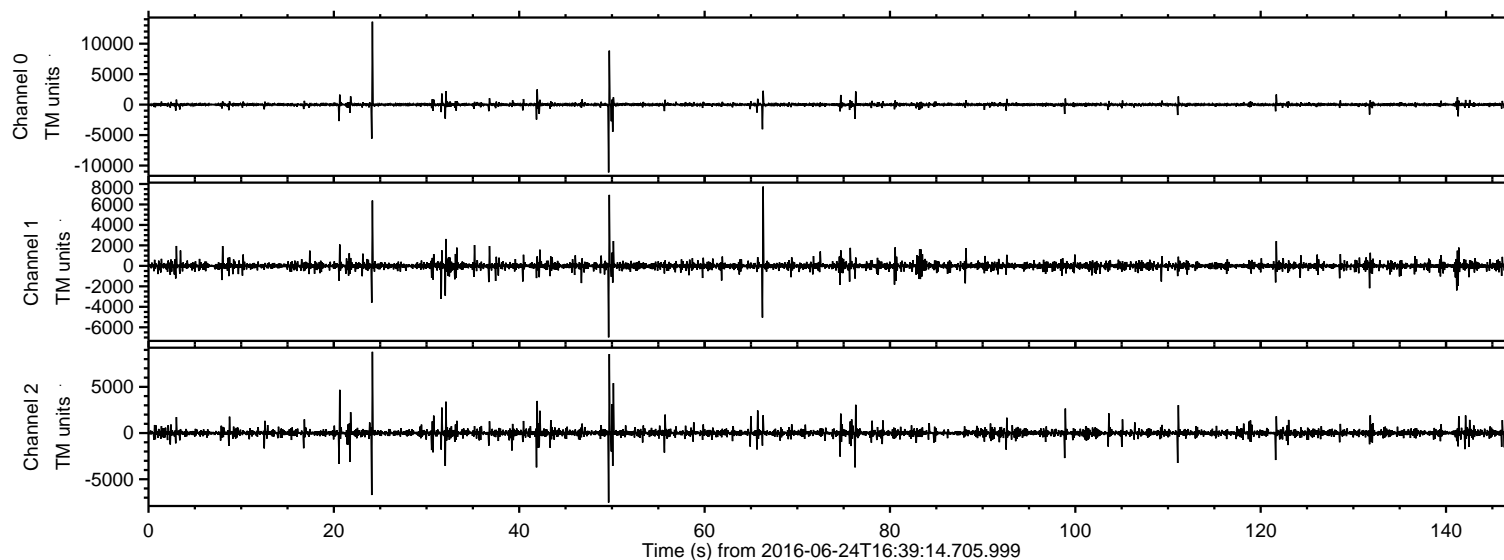
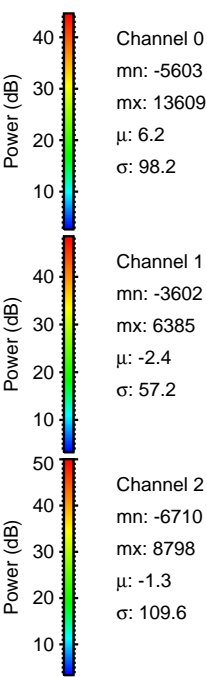
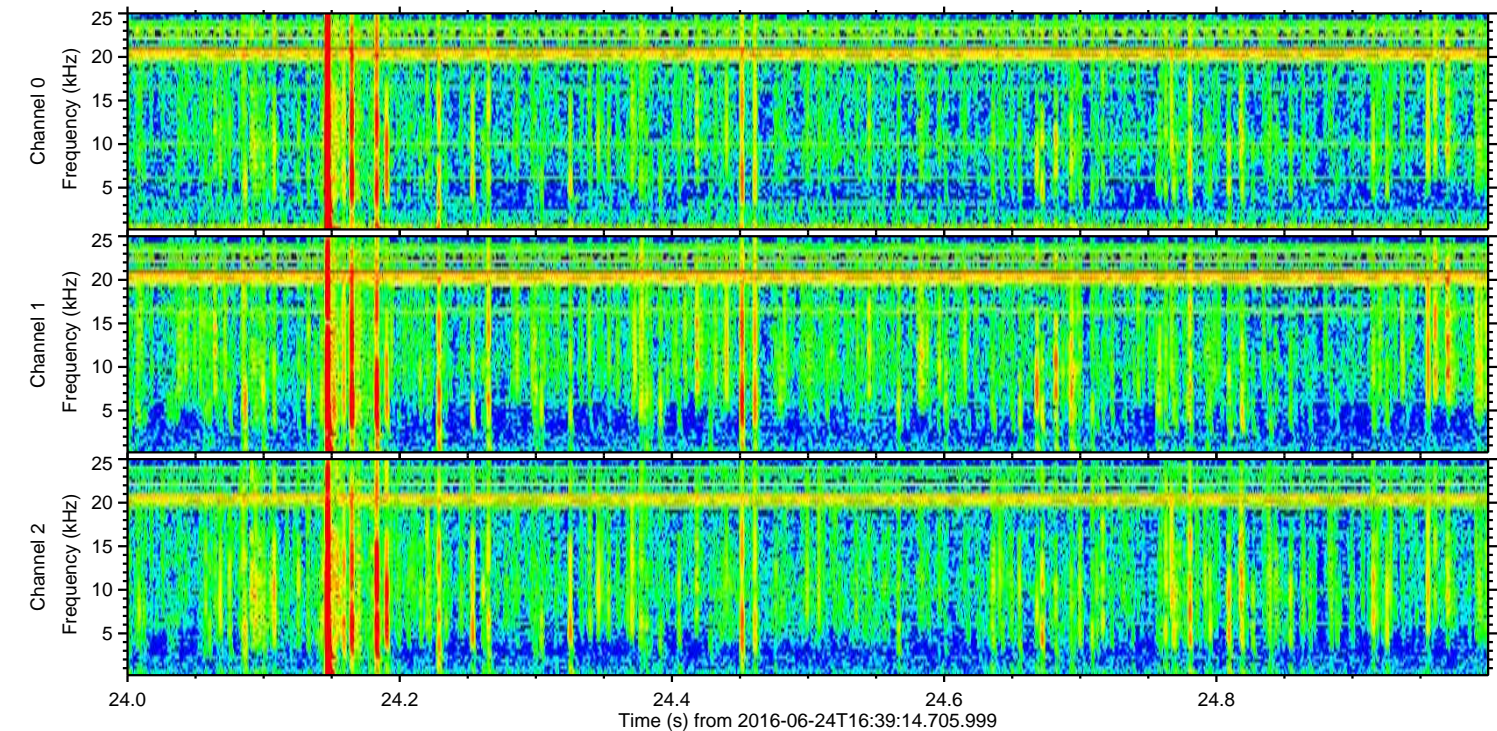
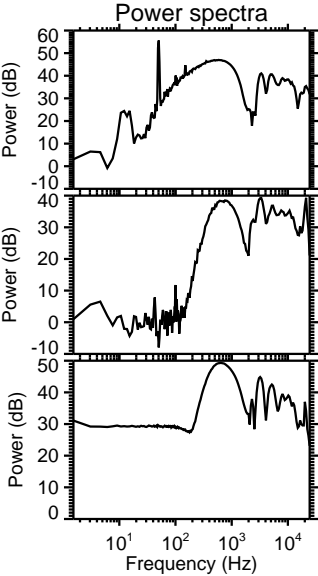
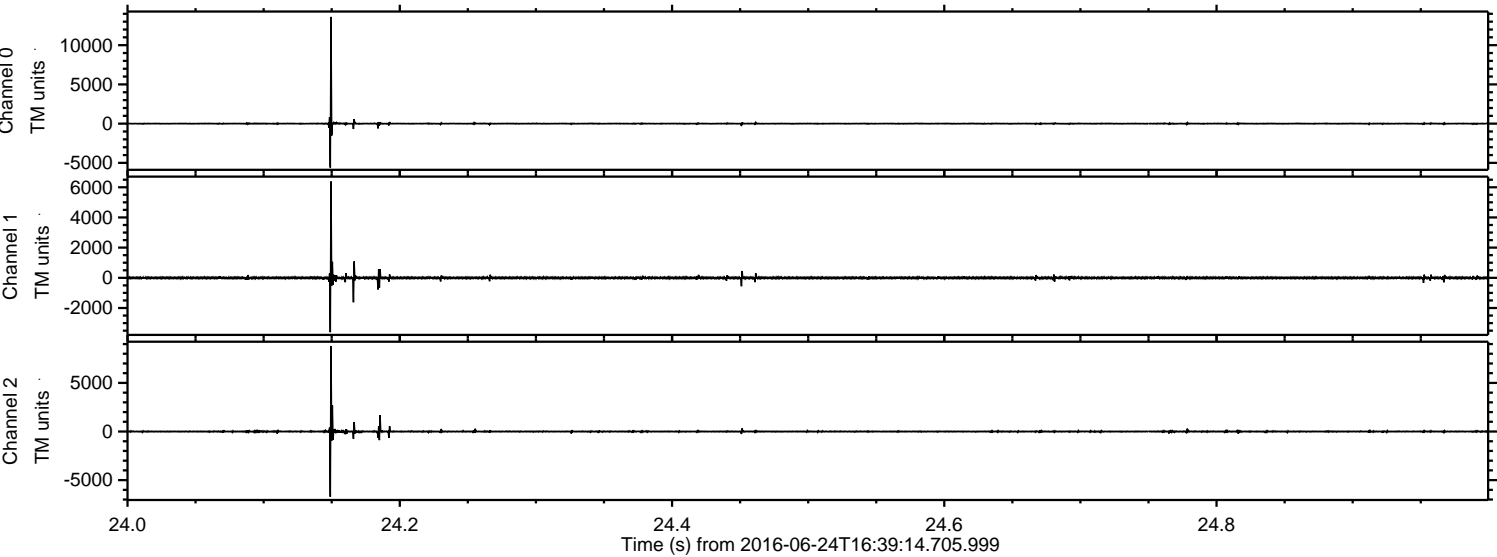


ELMAVAN 3D WAVEFORMS (Measured data sampled at 50 kHz) 51000 packets of 144 samples from 2016-06-24T16:39:14.705.999.

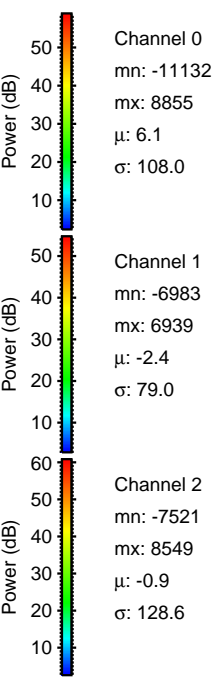
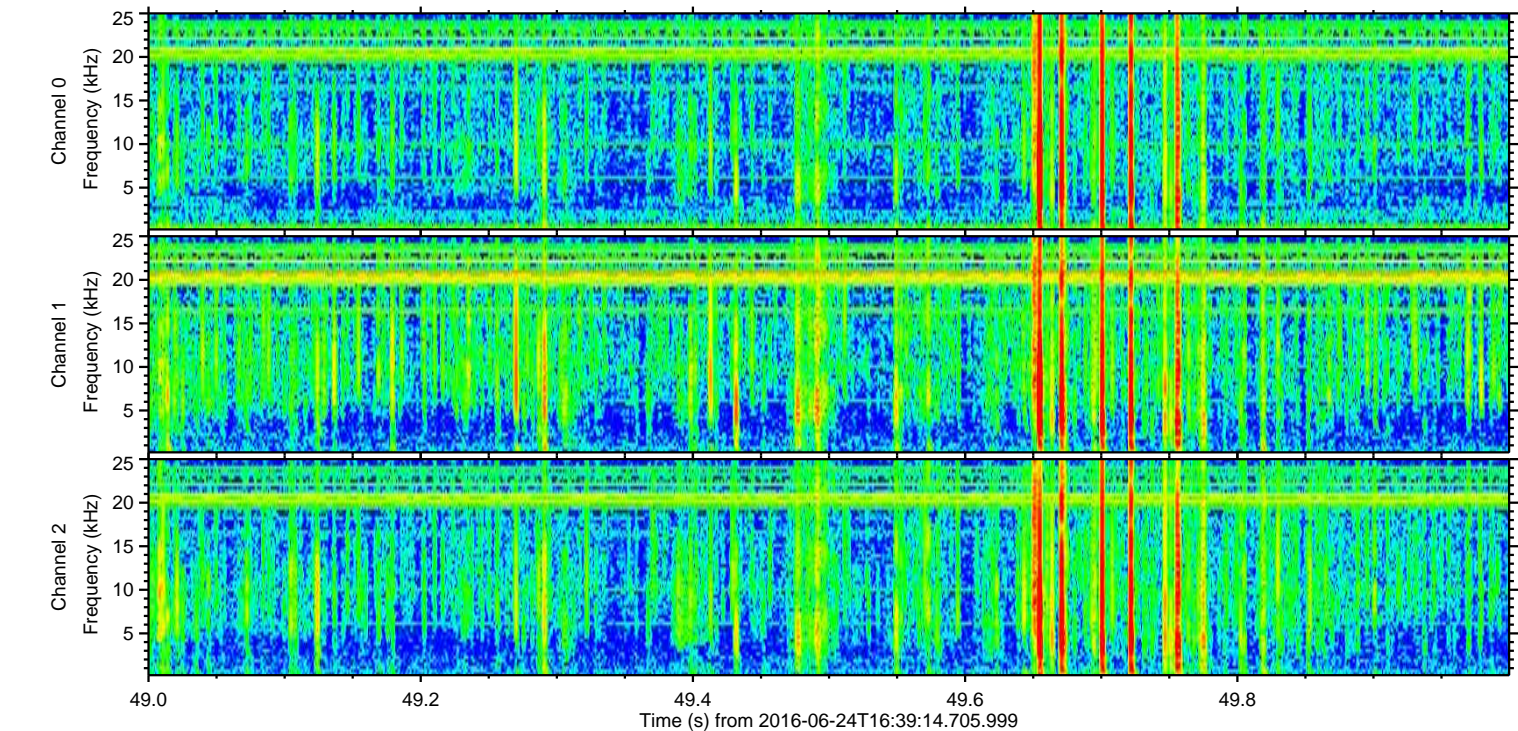
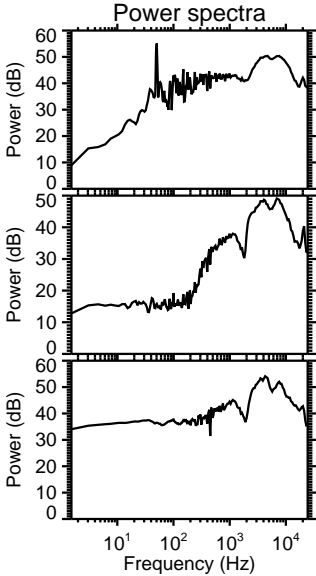
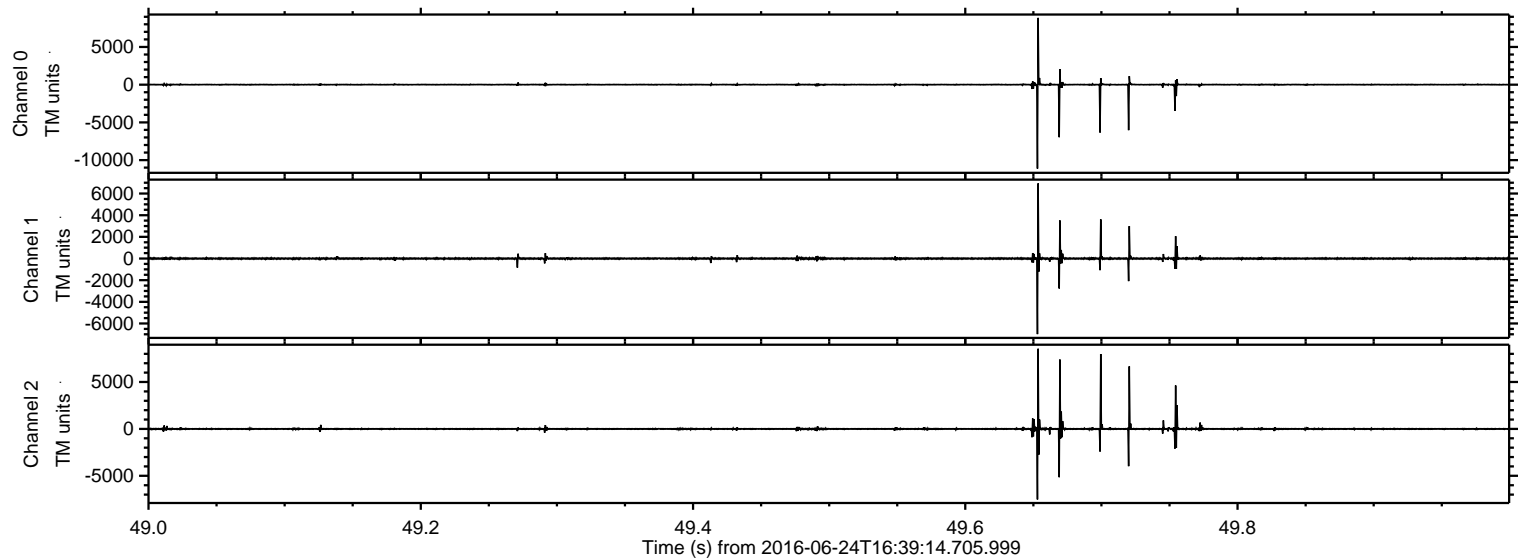
Processed Fri Jun 24 18:47:11 2016 by ELM ver.2012-10-06 from 001__elm20160624_163913__dat00.bin



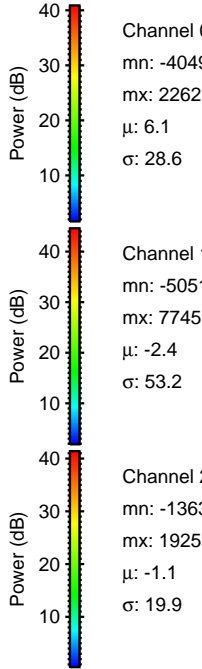
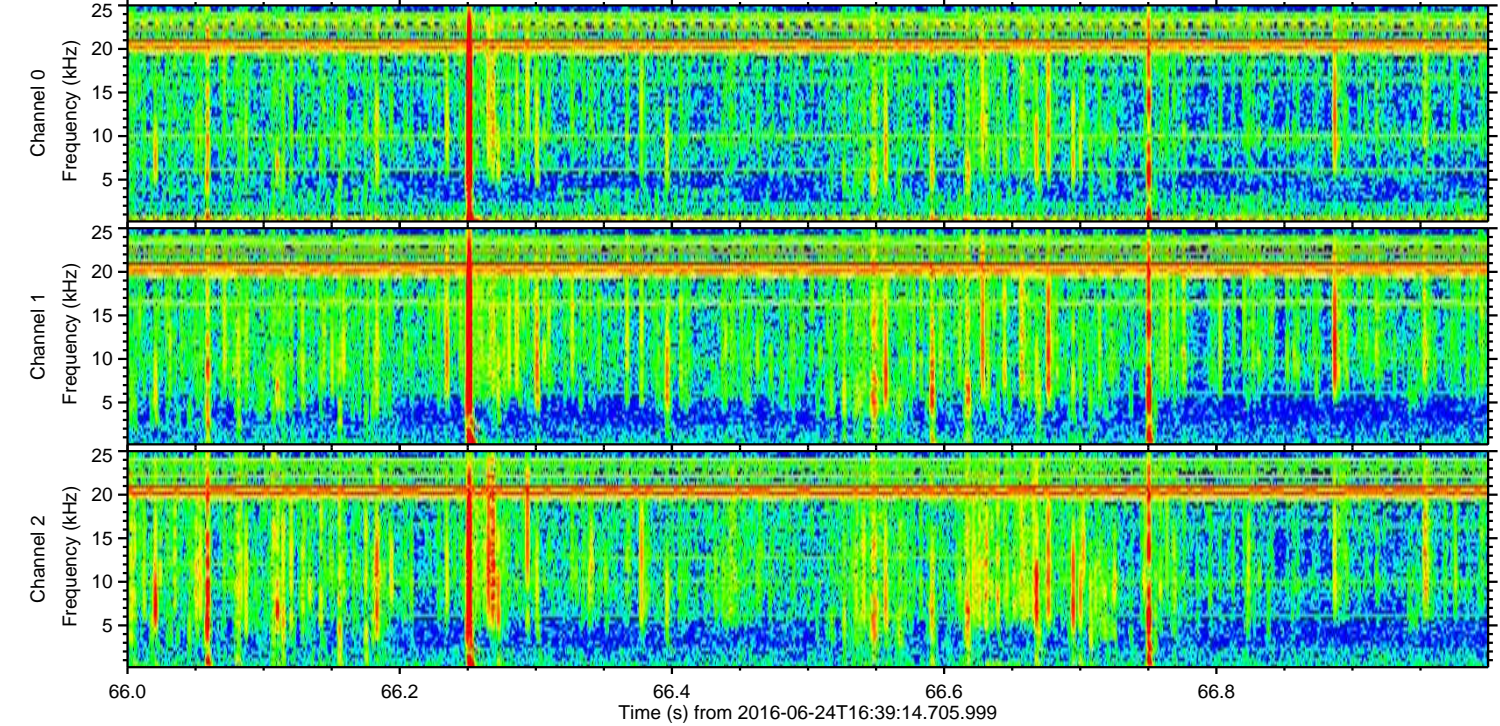
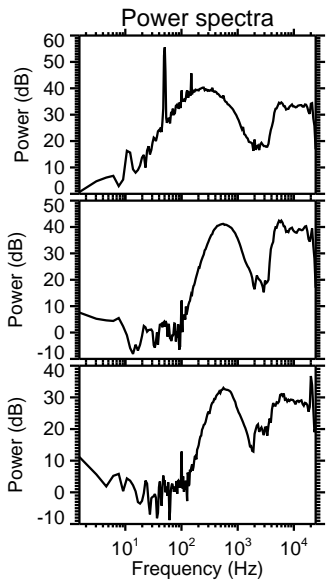
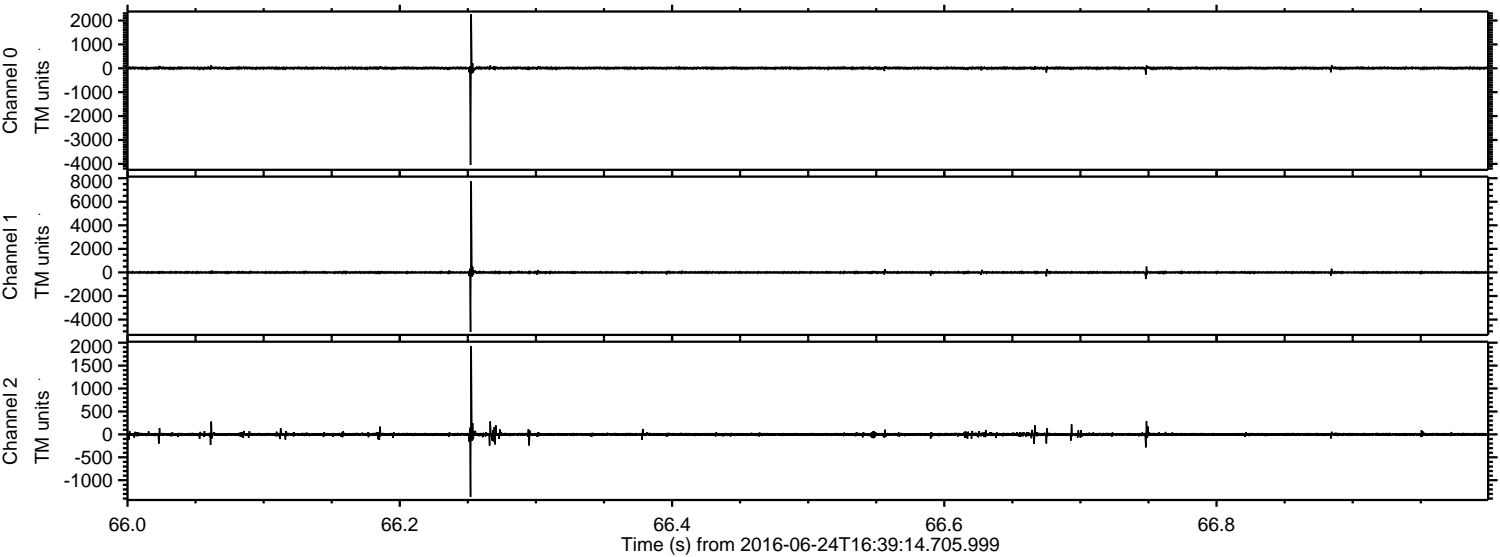
Processed Fri Jun 24 18:47:23 2016 by ELM ver.2012-10-06 from 001__elm20160624_163913__dat00.bin



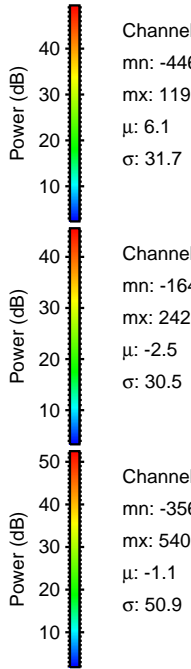
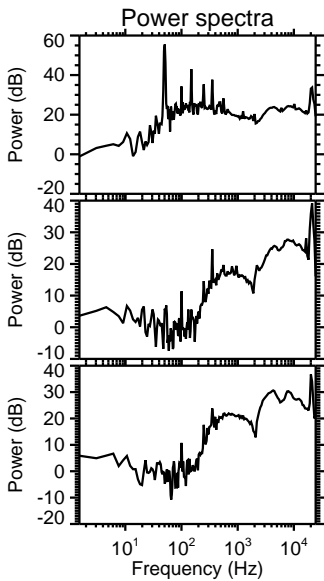
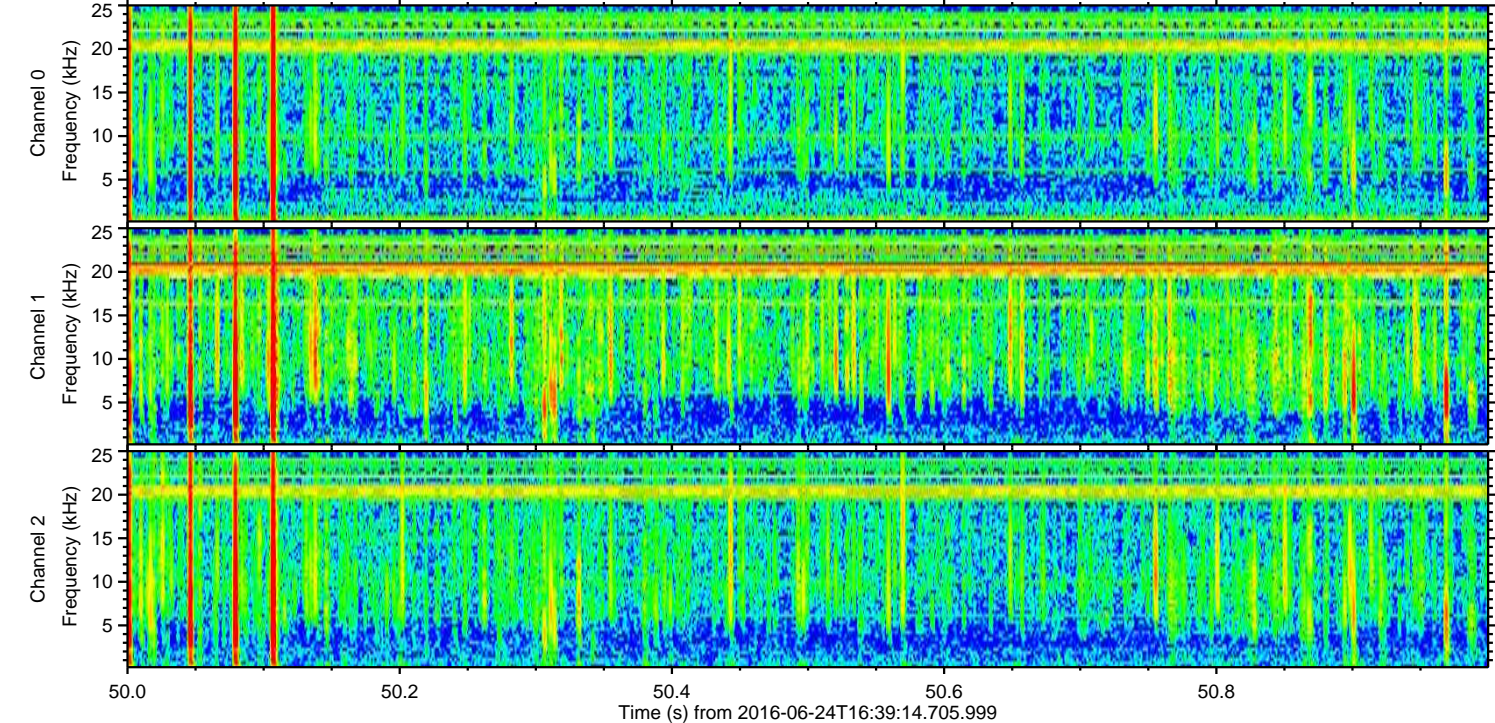
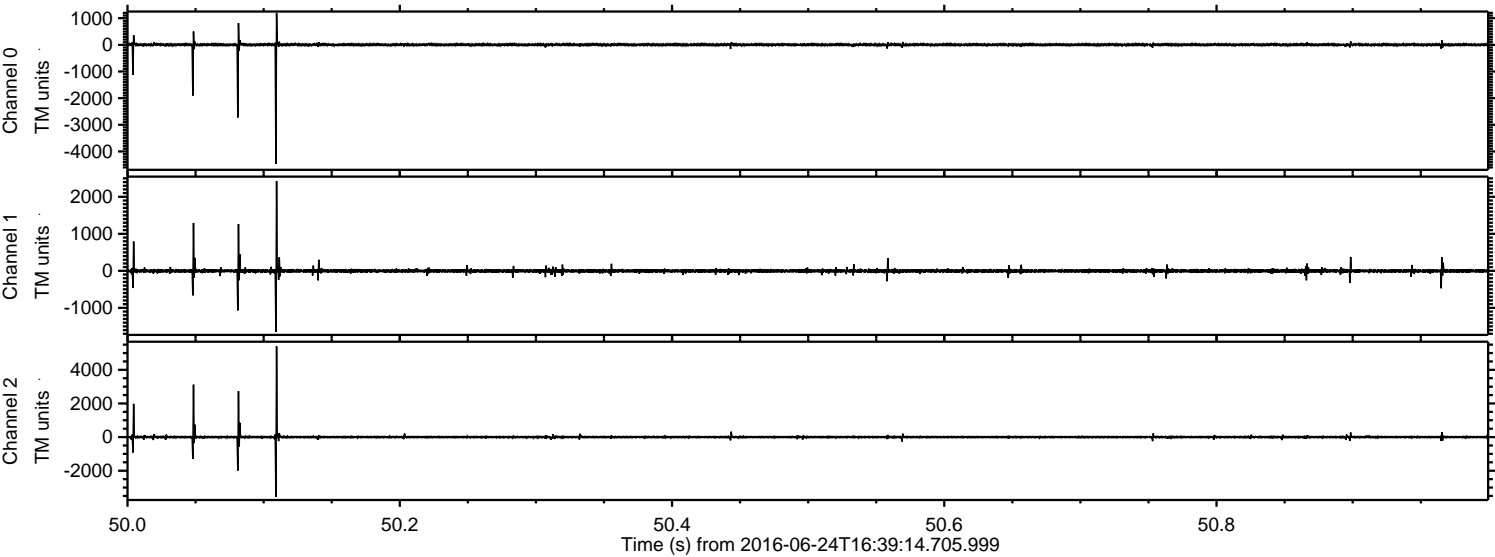
Processed Fri Jun 24 18:47:24 2016 by ELM ver.2012-10-06 from 001__elm20160624_163913__dat00.bin



Processed Fri Jun 24 18:47:25 2016 by ELM ver.2012-10-06 from 001__elm20160624_163913__dat00.bin

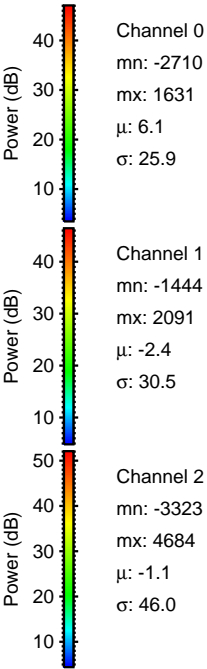
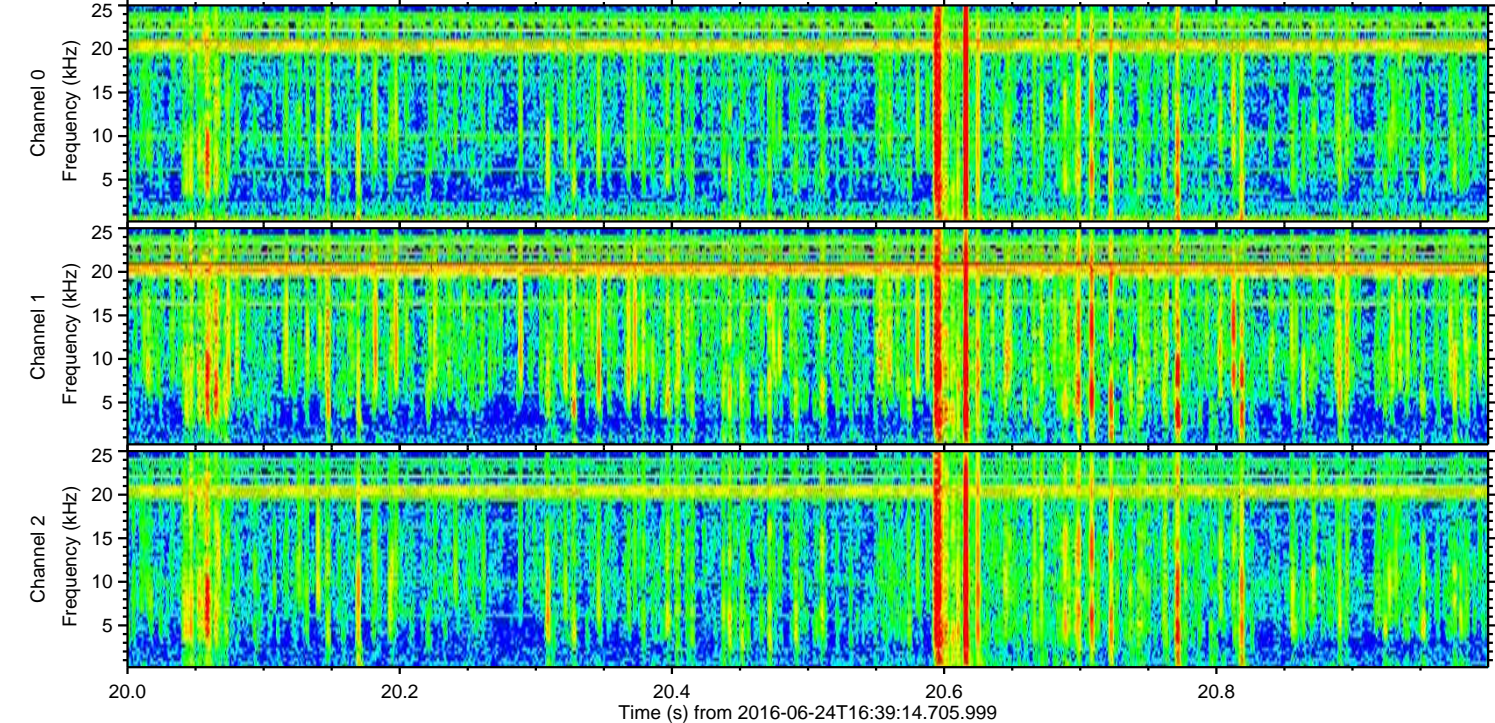
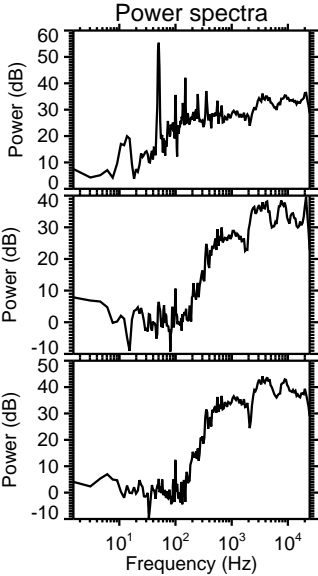
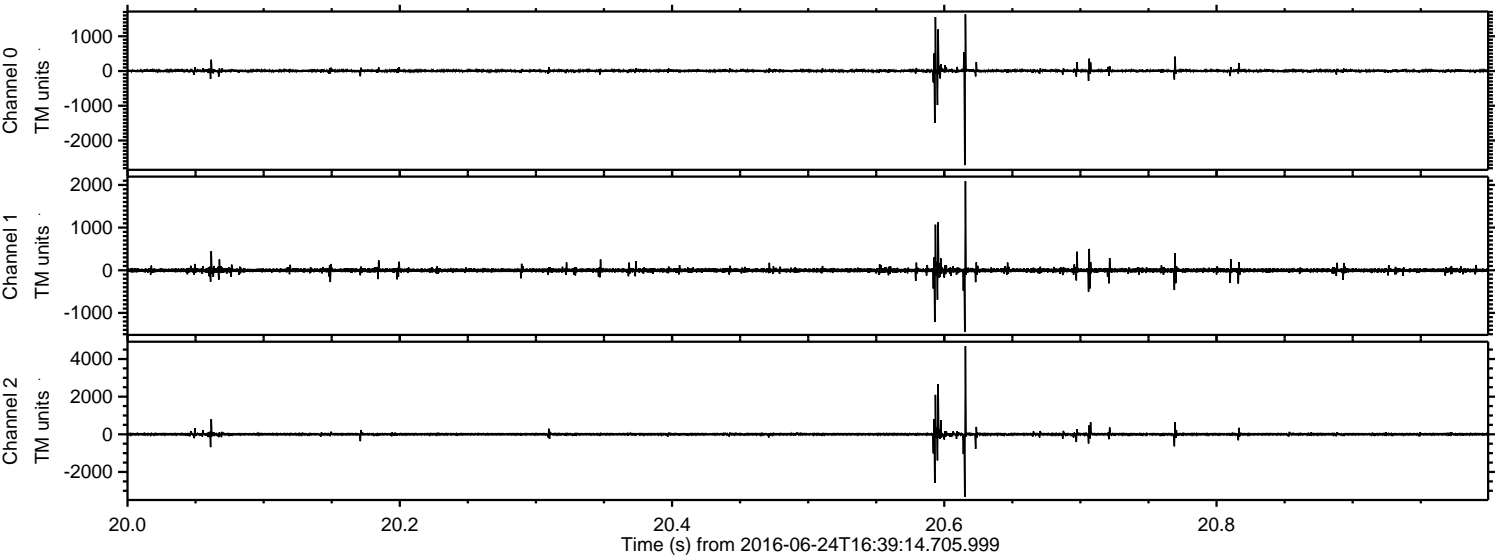


Processed Fri Jun 24 18:47:26 2016 by ELM ver.2012-10-06 from 001__elm20160624_163913__dat00.bin

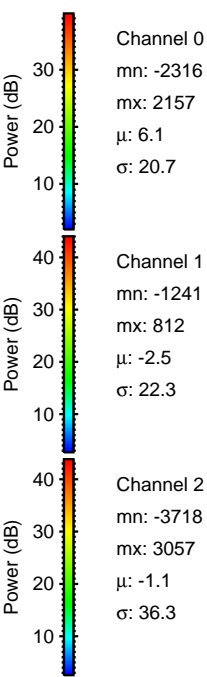
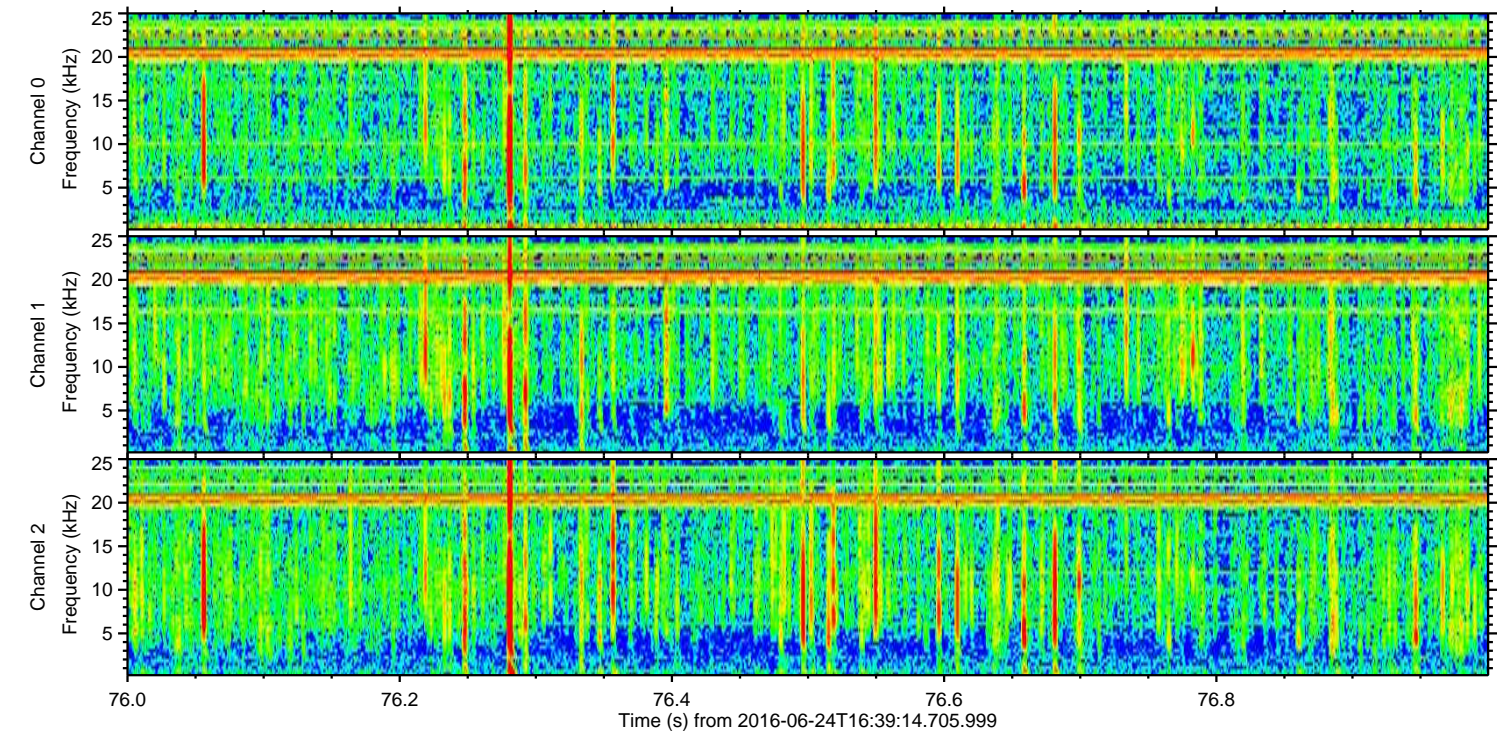
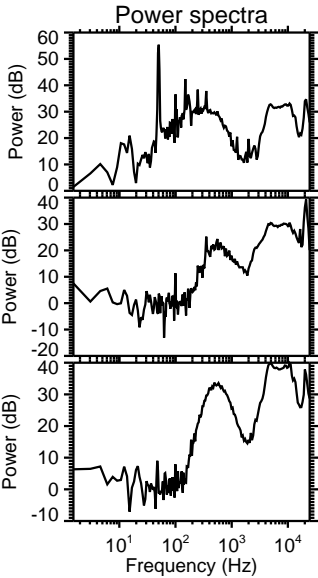
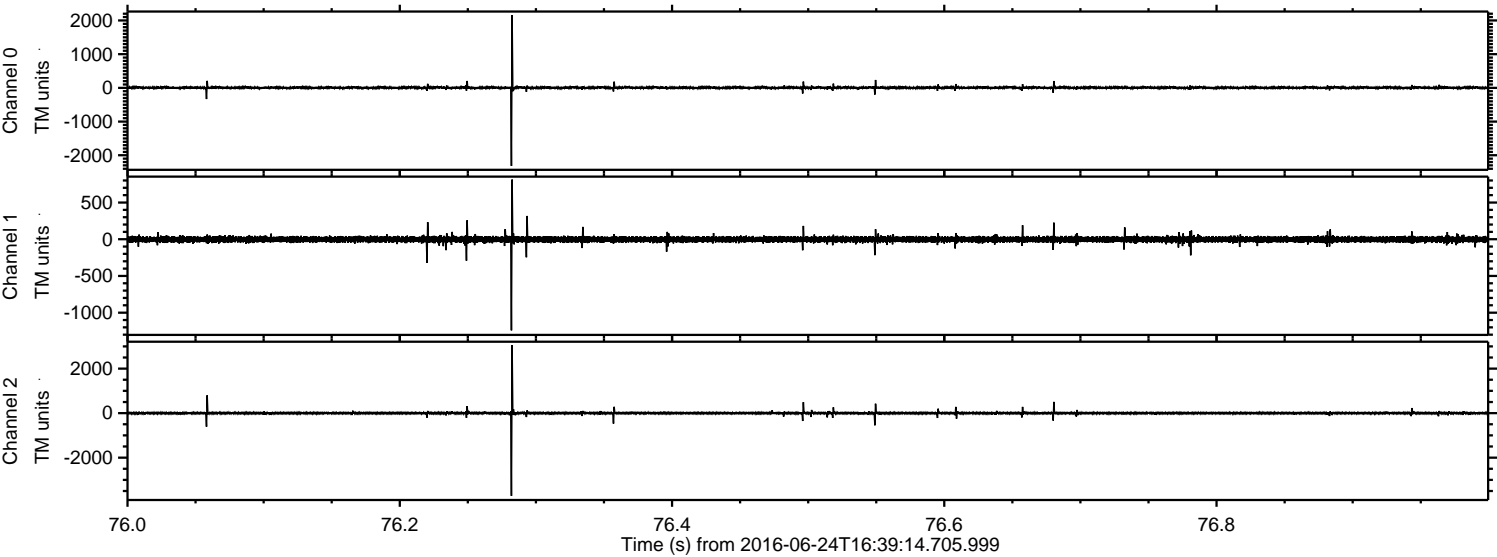


ELMAVAN 3D WAVEFORMS (Measured data sampled at 50 kHz) 51000 packets of 144 samples from 2016-06-24T16:39:14.705.999. Part 21/147

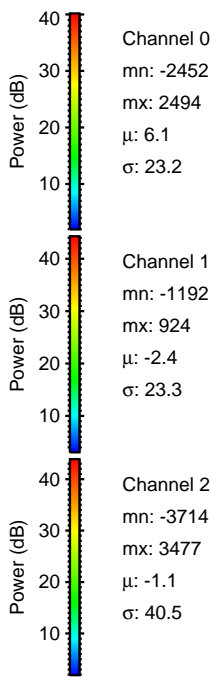
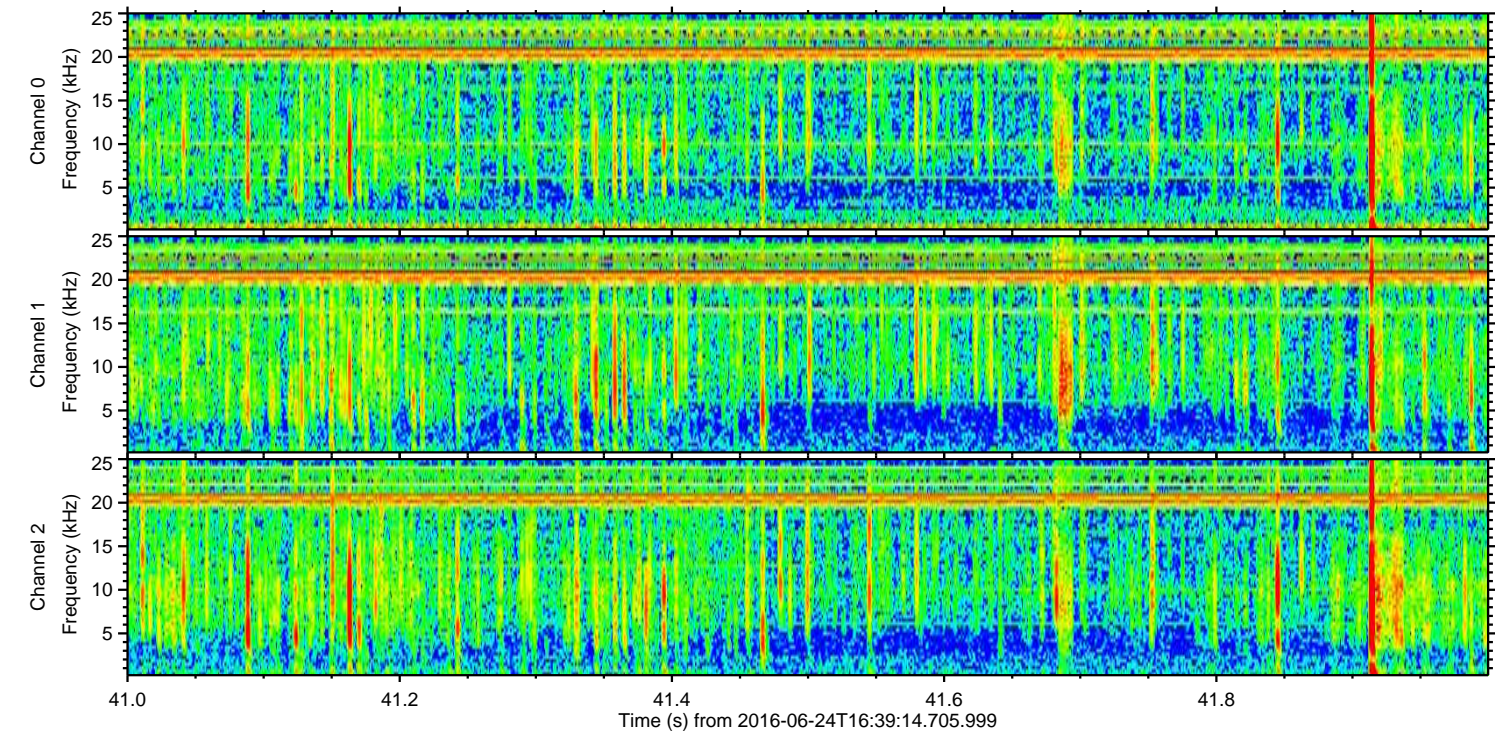
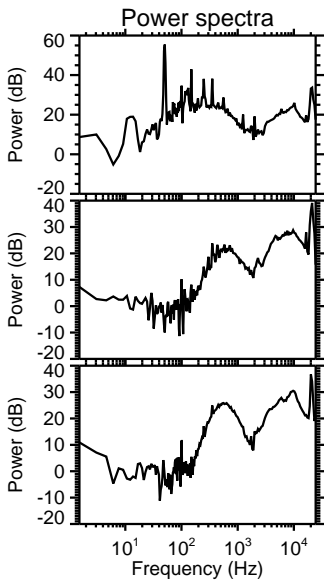
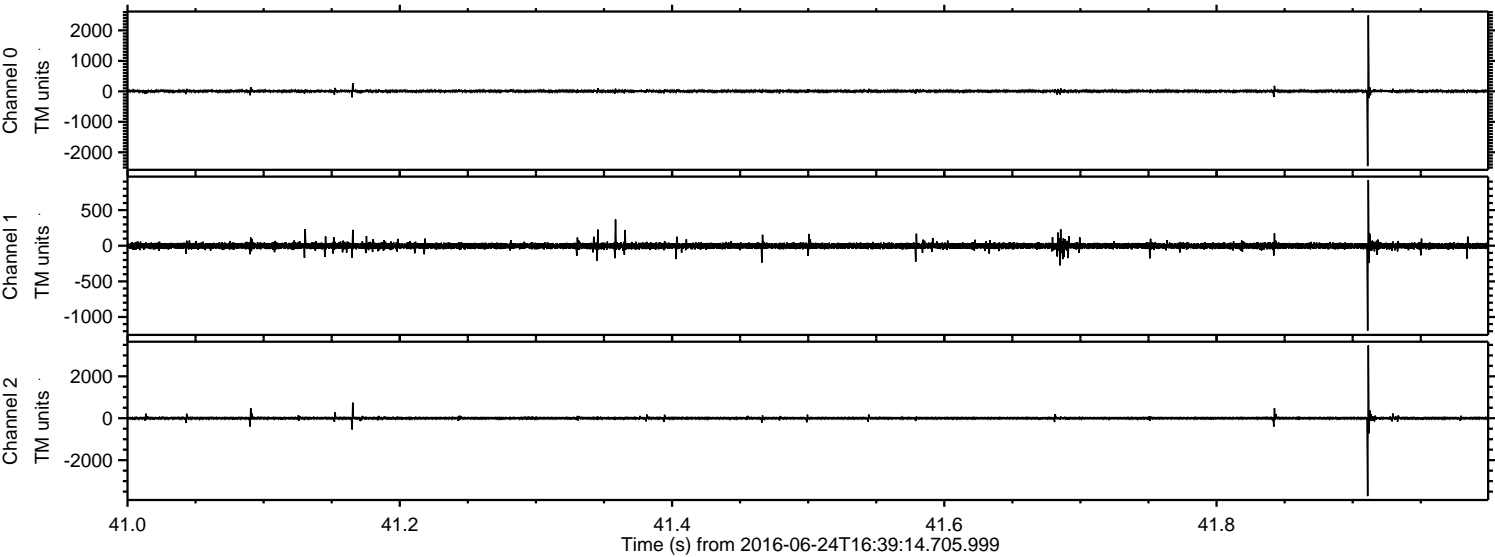
Processed Fri Jun 24 18:47:27 2016 by ELM ver.2012-10-06 from 001__elm20160624_163913__dat00.bin



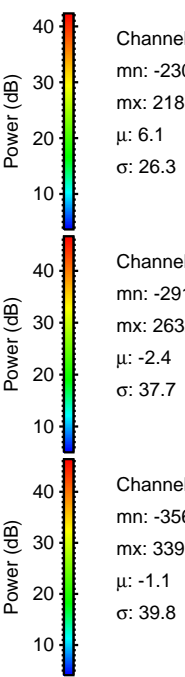
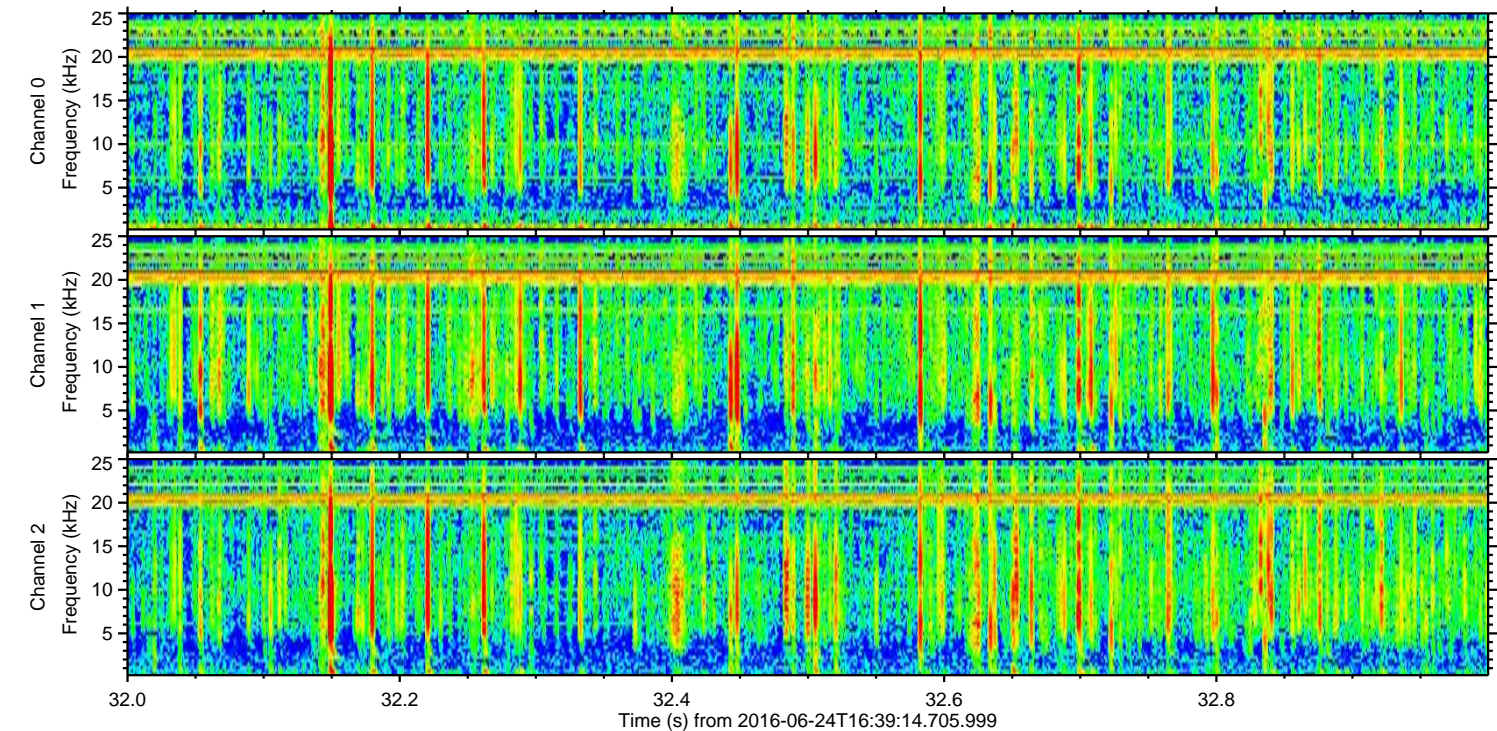
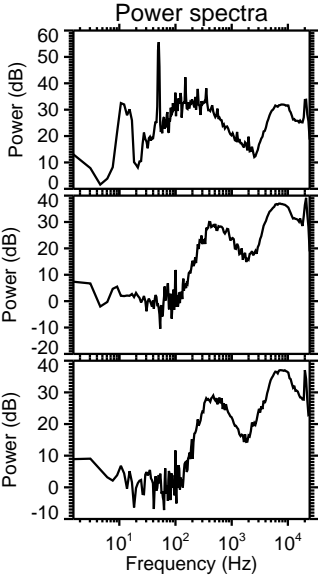
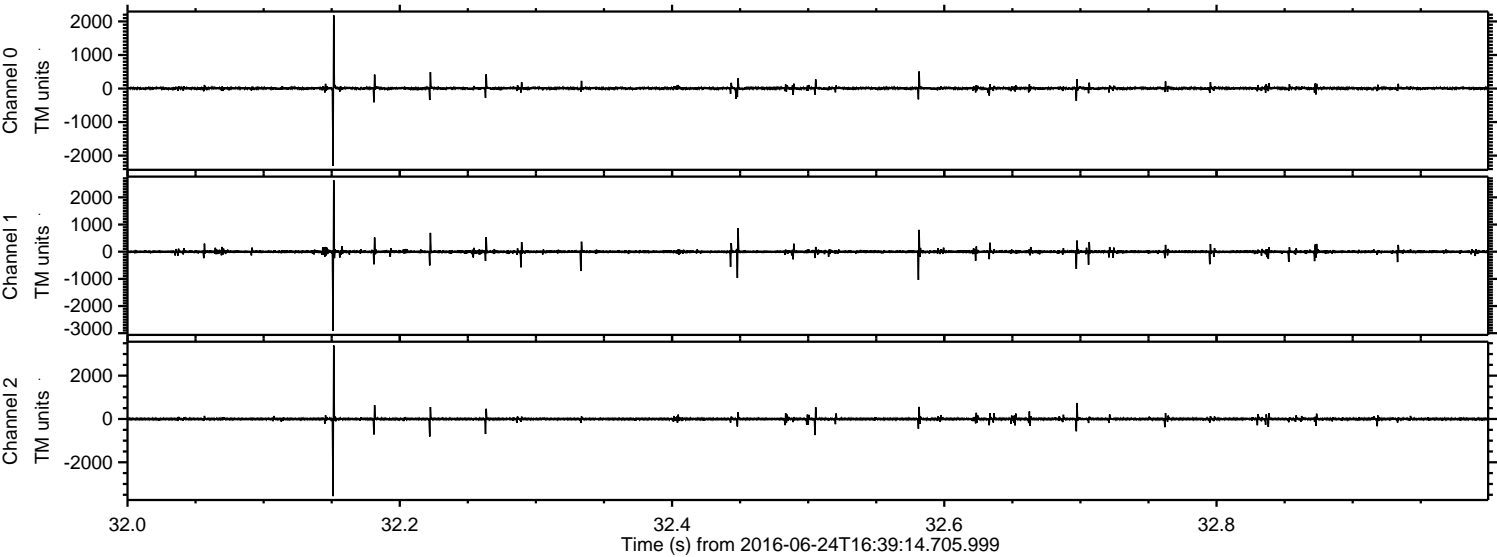
Processed Fri Jun 24 18:47:28 2016 by ELM ver.2012-10-06 from 001__elm20160624_163913__dat00.bin



Processed Fri Jun 24 18:47:28 2016 by ELM ver.2012-10-06 from 001__elm20160624_163913__dat00.bin

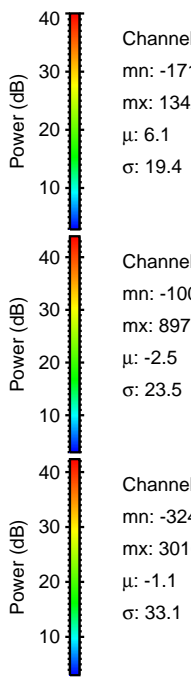
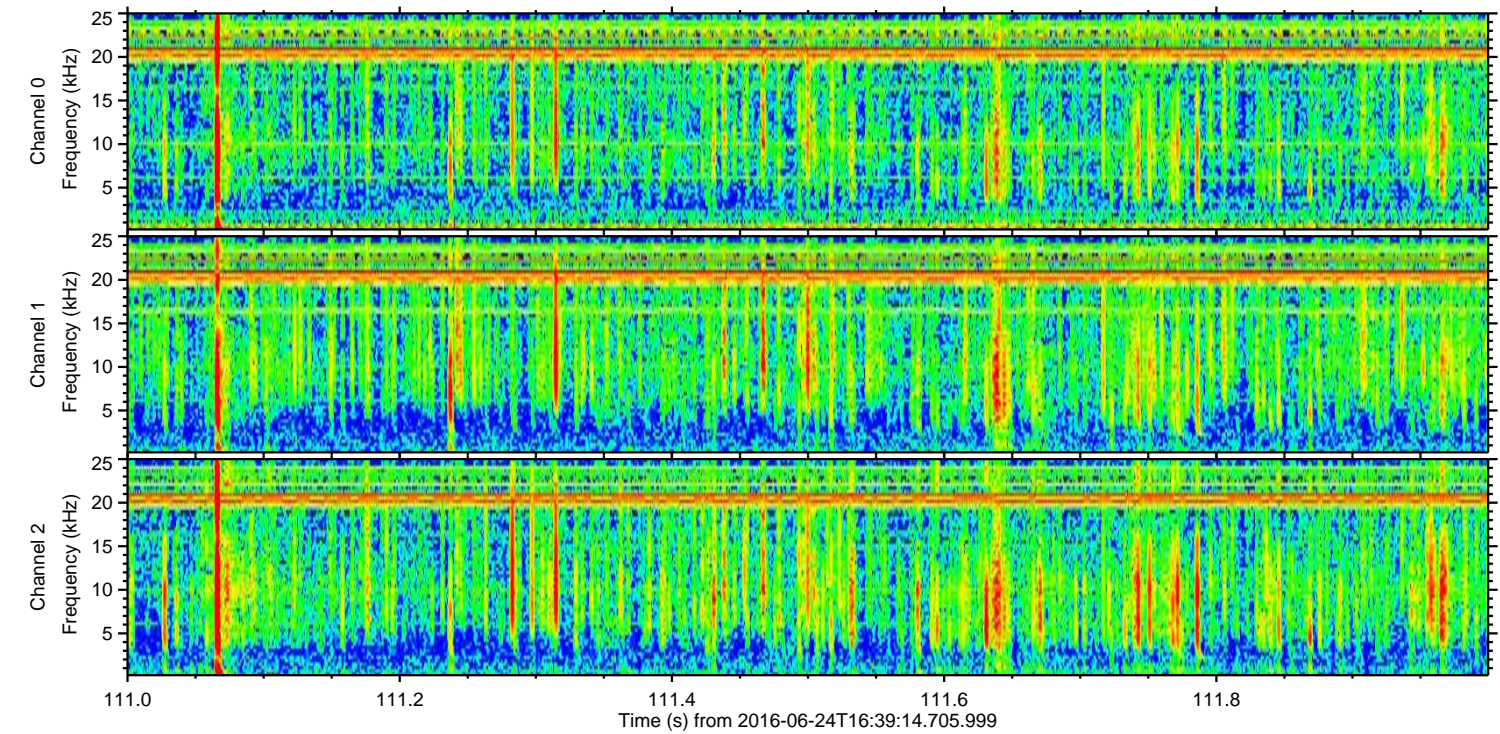
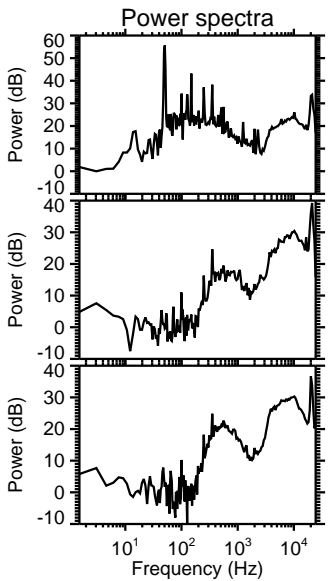
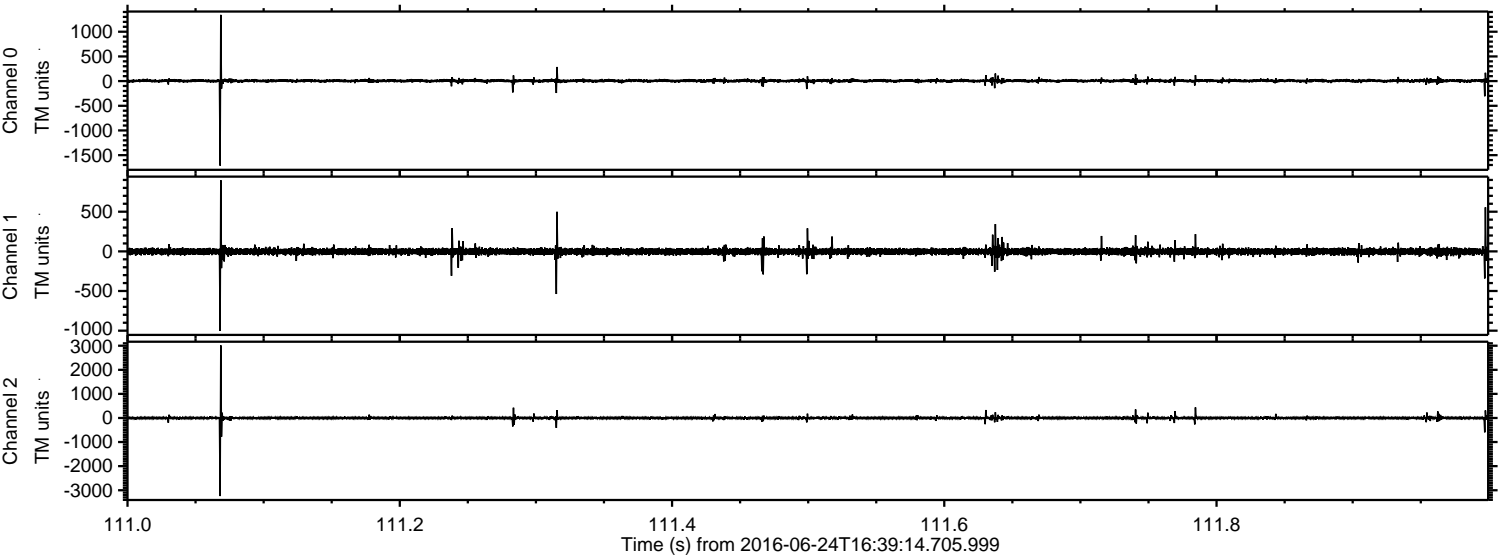


Processed Fri Jun 24 18:47:29 2016 by ELM ver.2012-10-06 from 001__elm20160624_163913__dat00.bin



ELMAVAN 3D WAVEFORMS (Measured data sampled at 50 kHz) 51000 packets of 144 samples from 2016-06-24T16:39:14.705.999. Part 112/147

Processed Fri Jun 24 18:47:30 2016 by ELM ver.2012-10-06 from 001__elm20160624_163913__dat00.bin



Channel 0
mn: -1712
mx: 1342
 μ : 6.1
 σ : 19.4

Channel 1
mn: -1003
mx: 897
 μ : -2.5
 σ : 23.5

Channel 2
mn: -3244
mx: 3016
 μ : -1.1
 σ : 33.1

