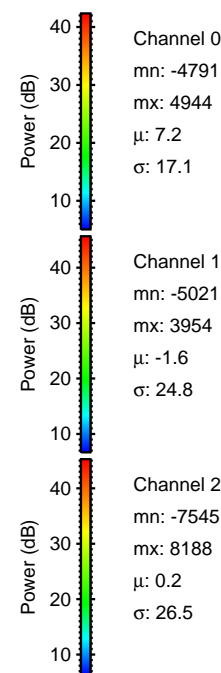
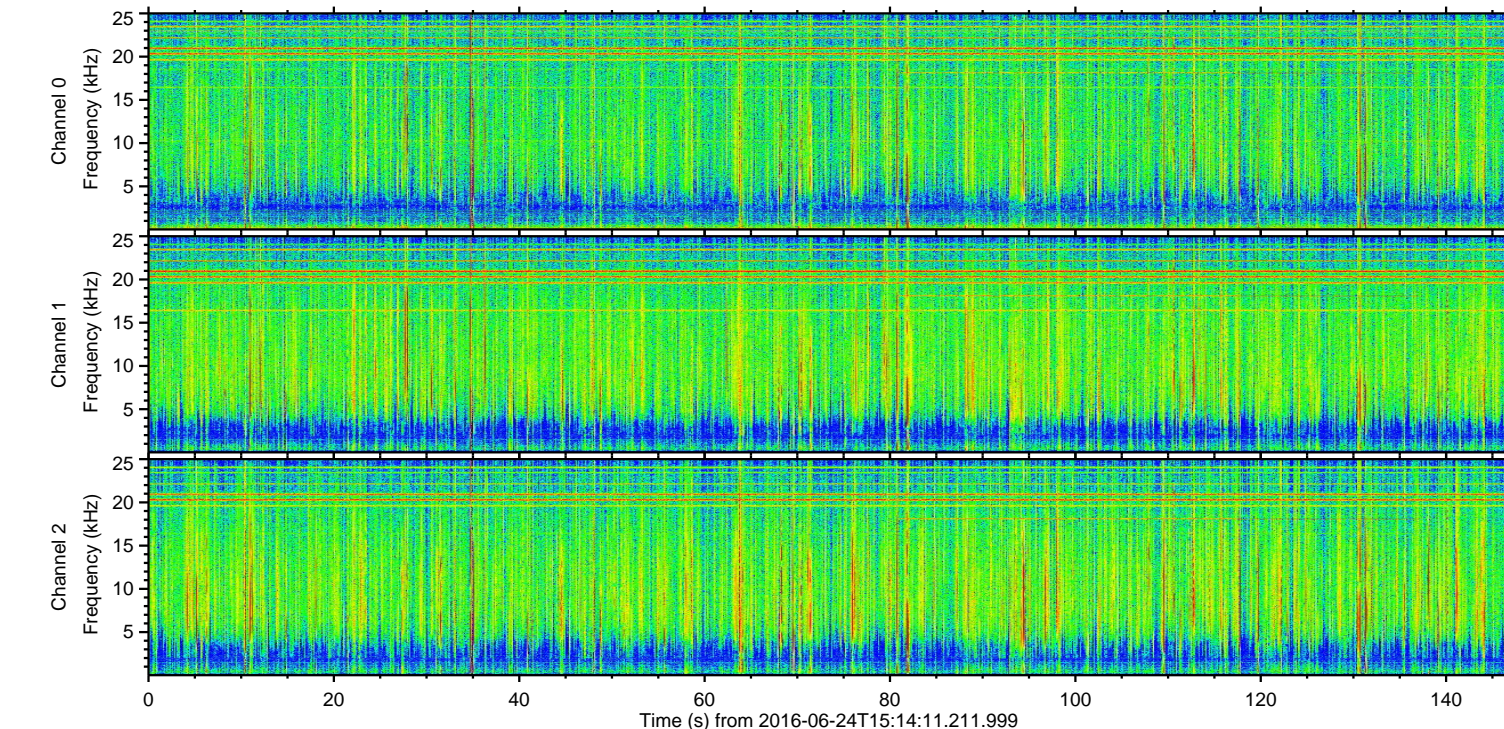
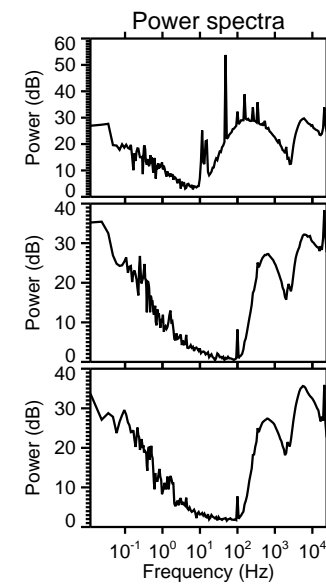
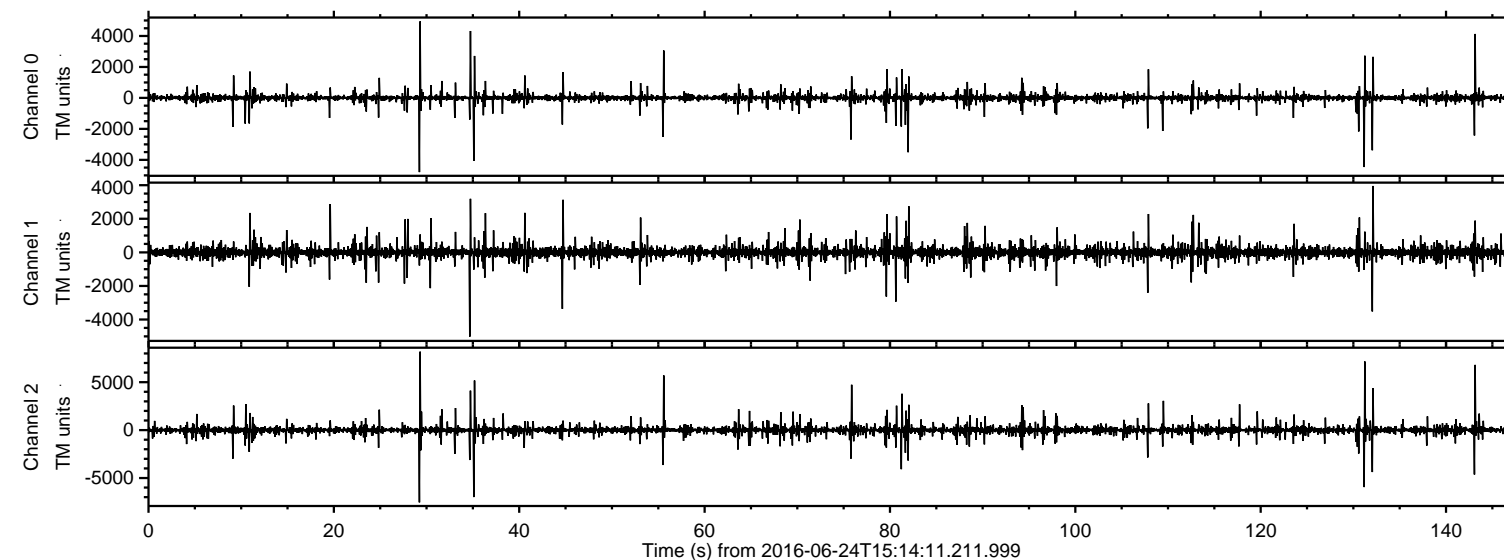
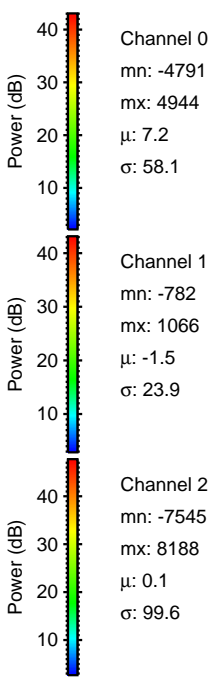
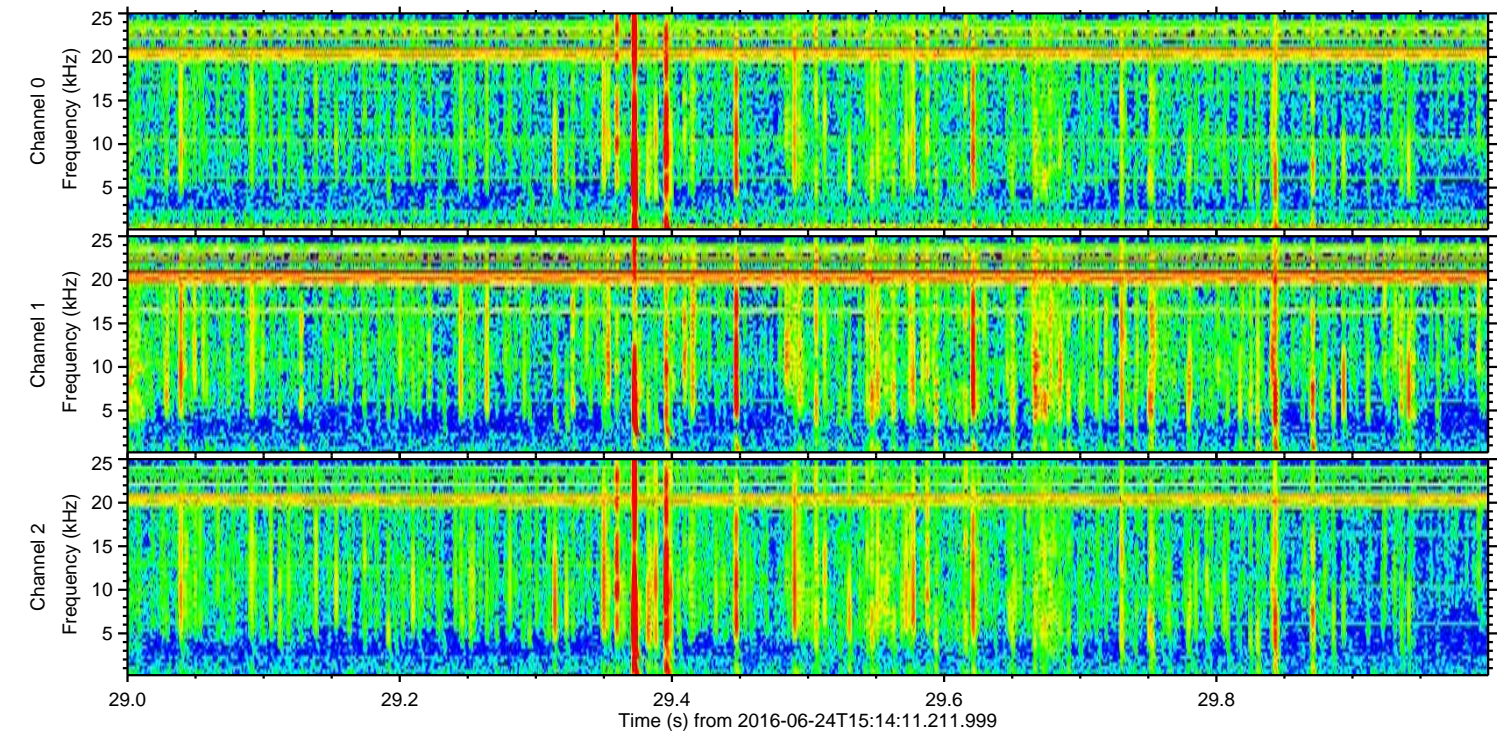
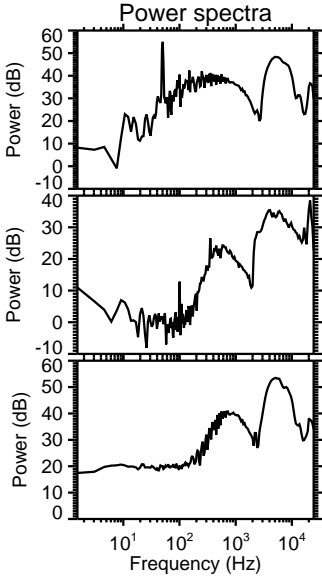
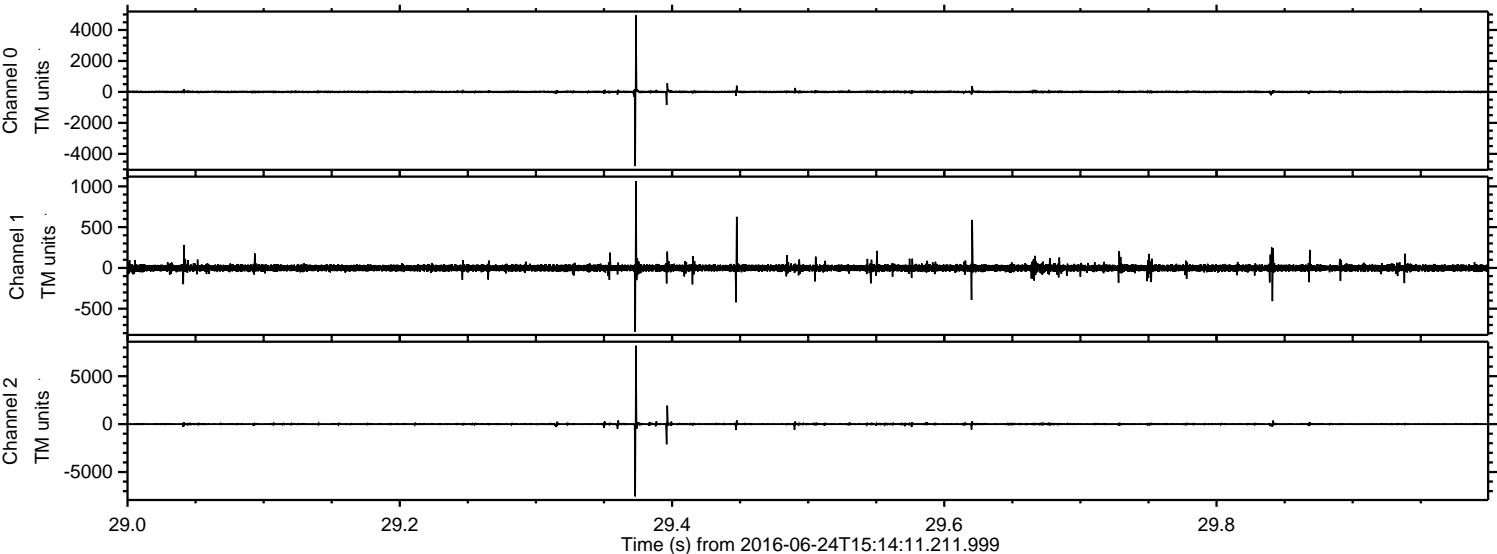


ELMAVAN 3D WAVEFORMS (Measured data sampled at 50 kHz) 51000 packets of 144 samples from 2016-06-24T15:14:11.211.999.

Processed Fri Jun 24 17:21:58 2016 by ELM ver.2012-10-06 from 001__elm20160624_151410__dat00.bin

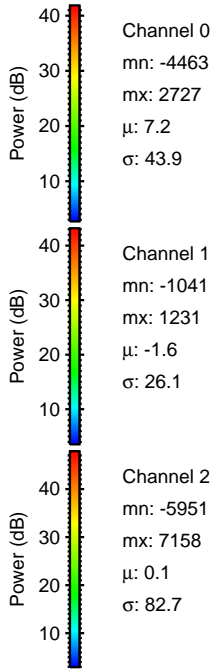
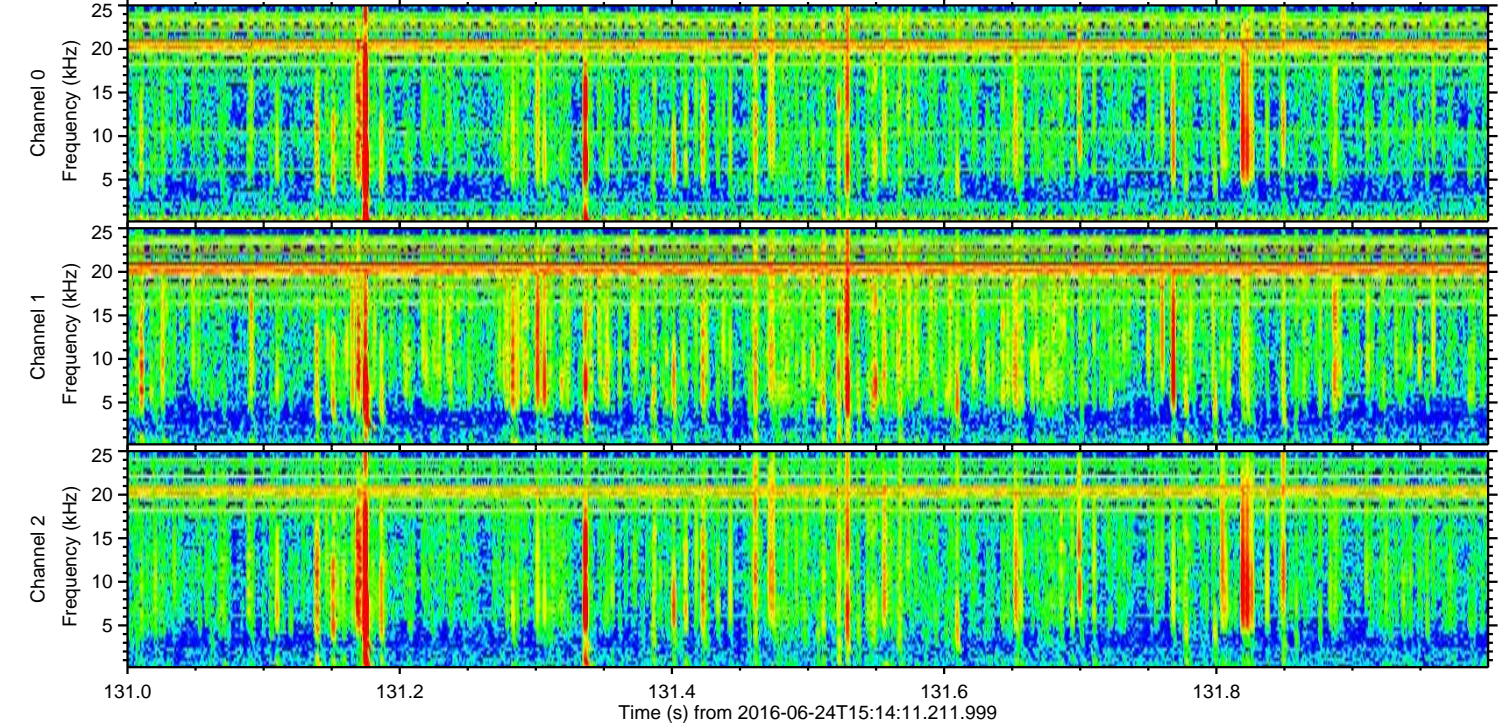
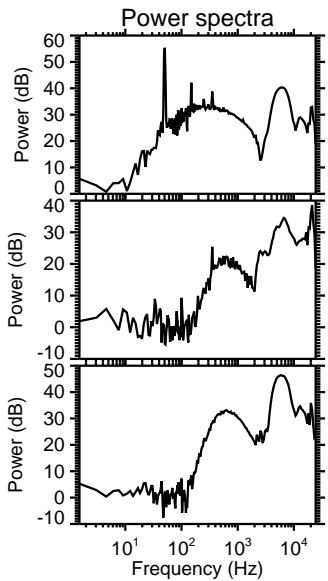
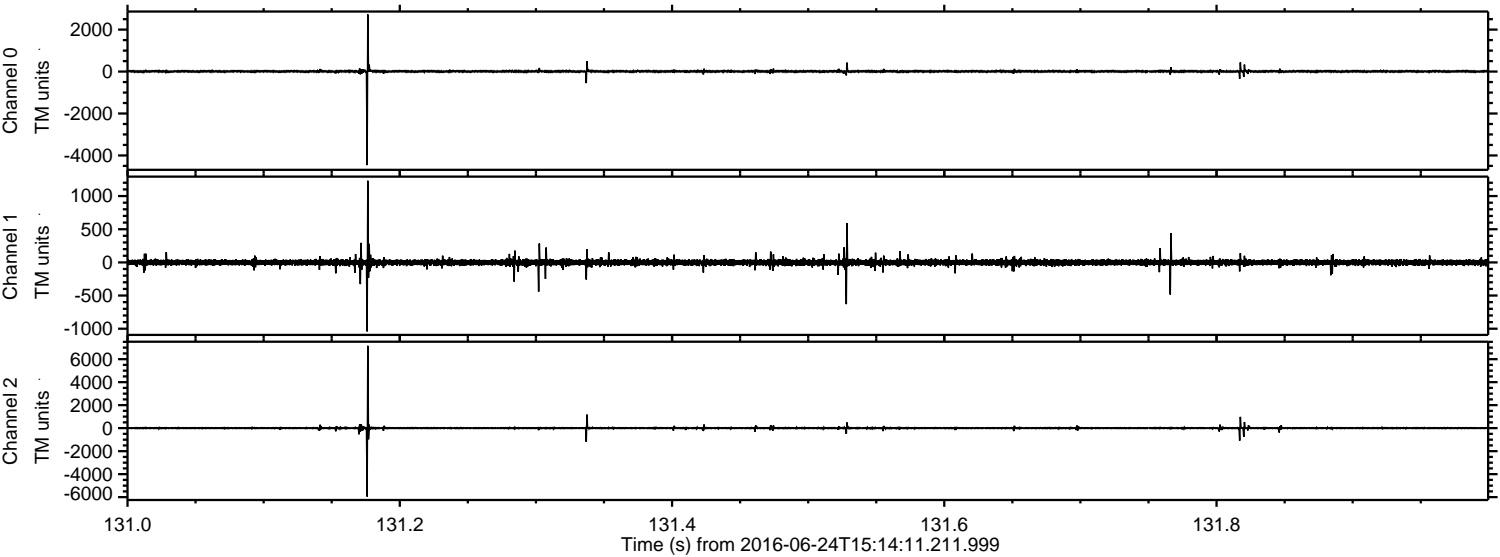


Processed Fri Jun 24 17:22:10 2016 by ELM ver.2012-10-06 from 001__elm20160624_151410__dat00.bin

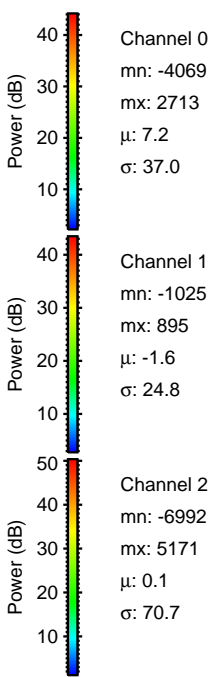
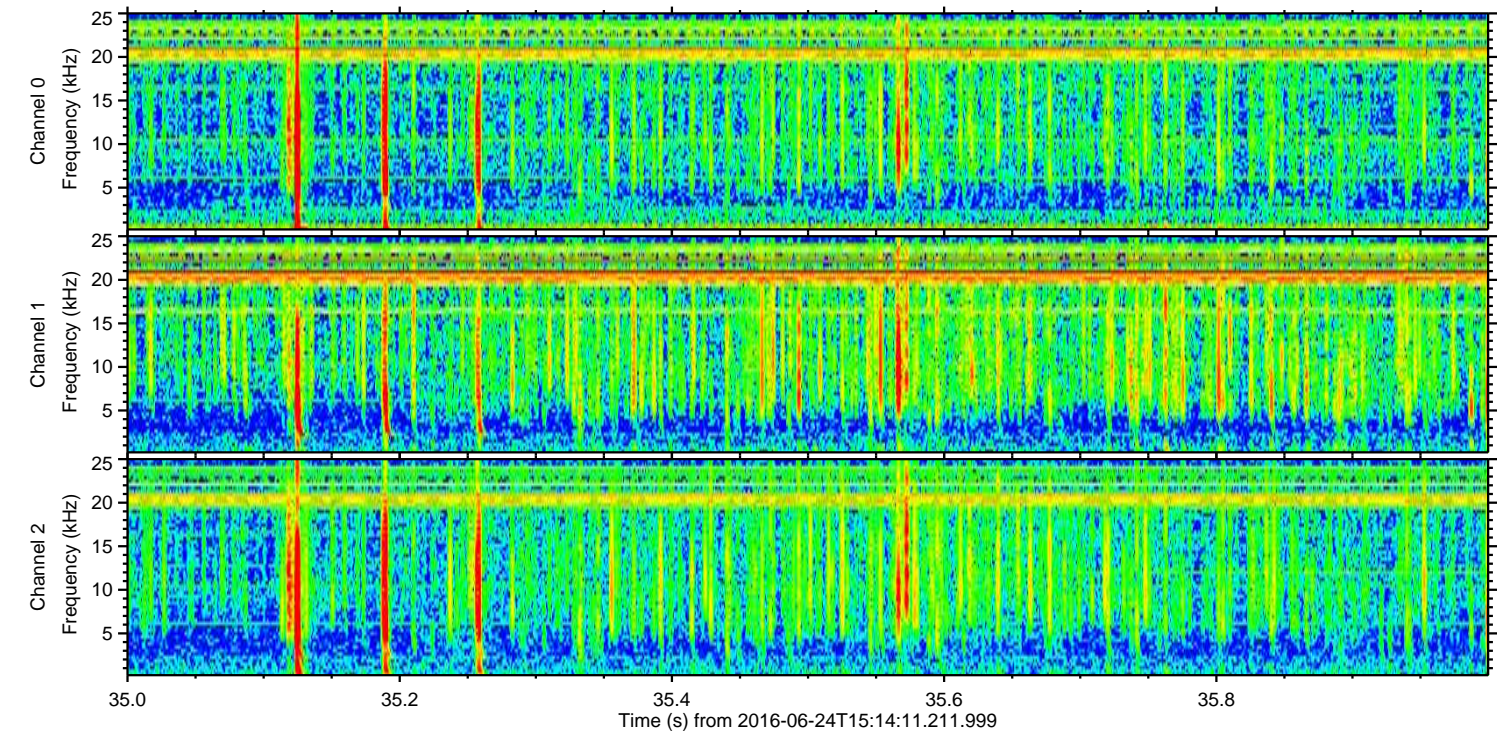
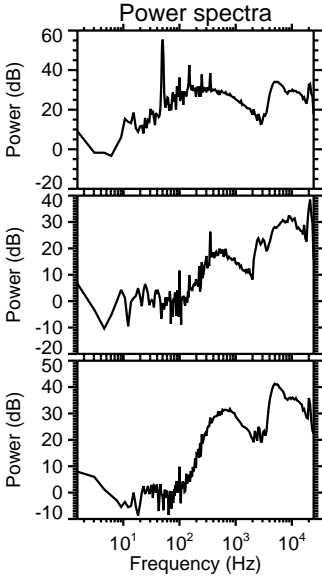
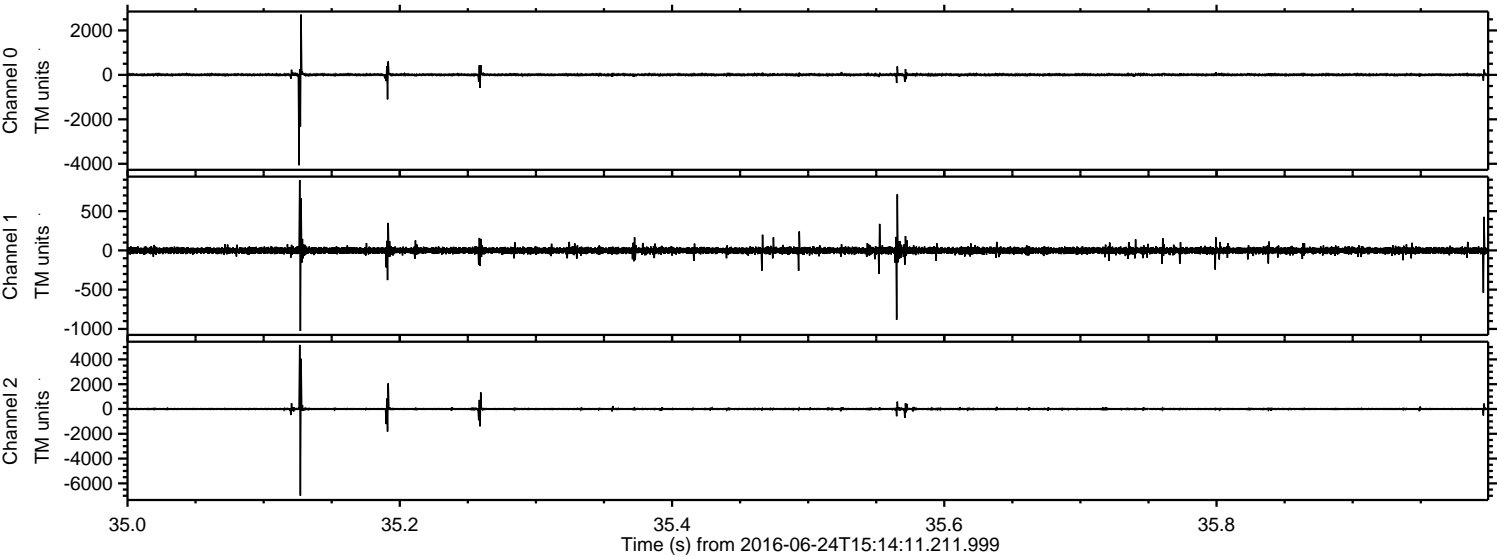


ELMAVAN 3D WAVEFORMS (Measured data sampled at 50 kHz) 51000 packets of 144 samples from 2016-06-24T15:14:11.211.999. Part 132/147

Processed Fri Jun 24 17:22:11 2016 by ELM ver.2012-10-06 from 001__elm20160624_151410__dat00.bin

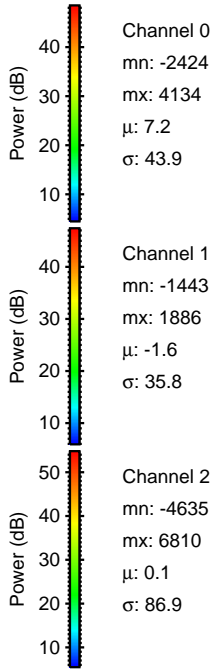
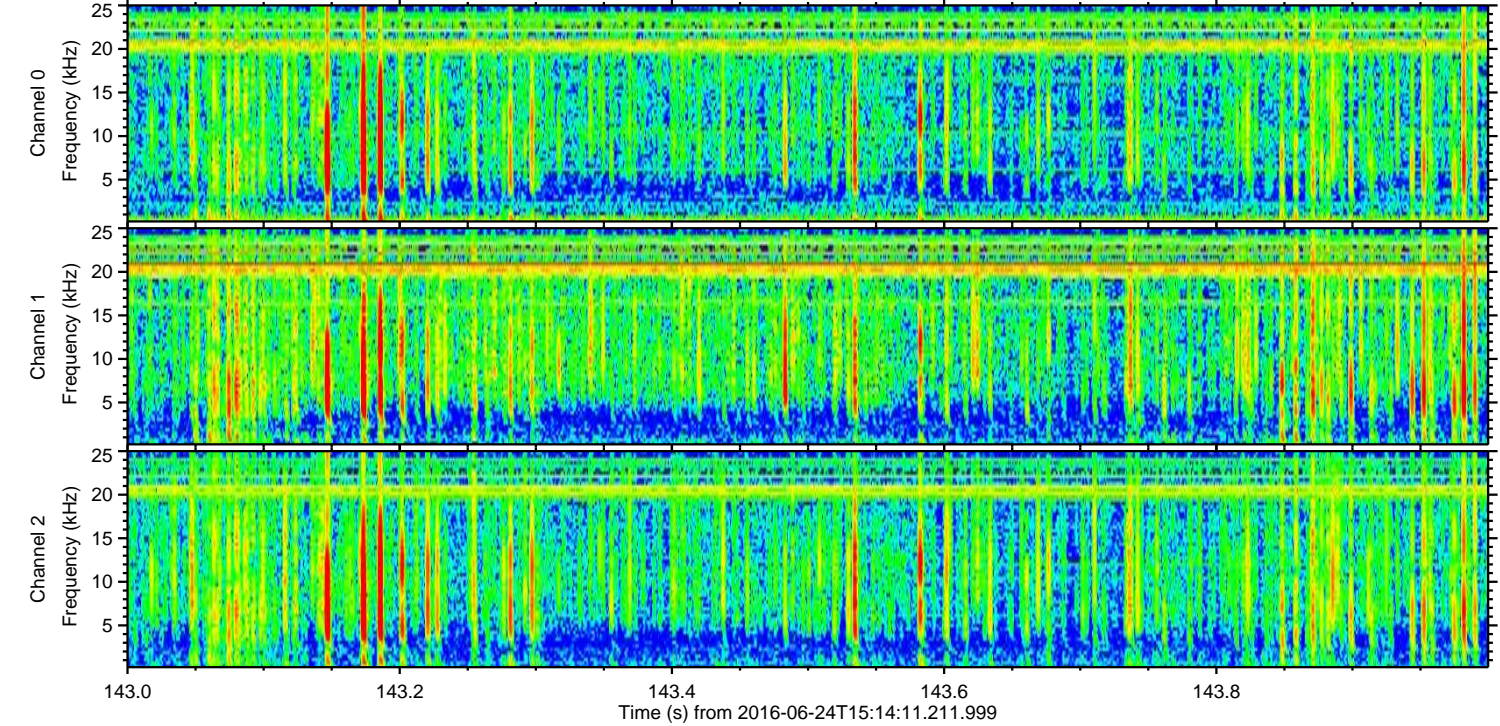
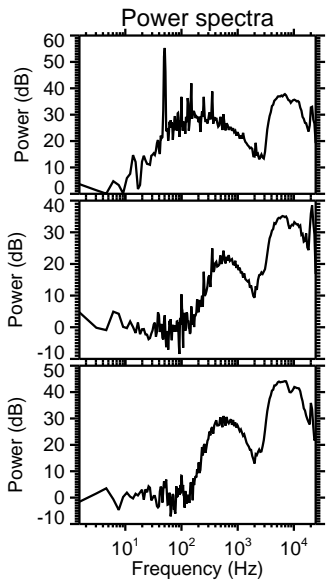
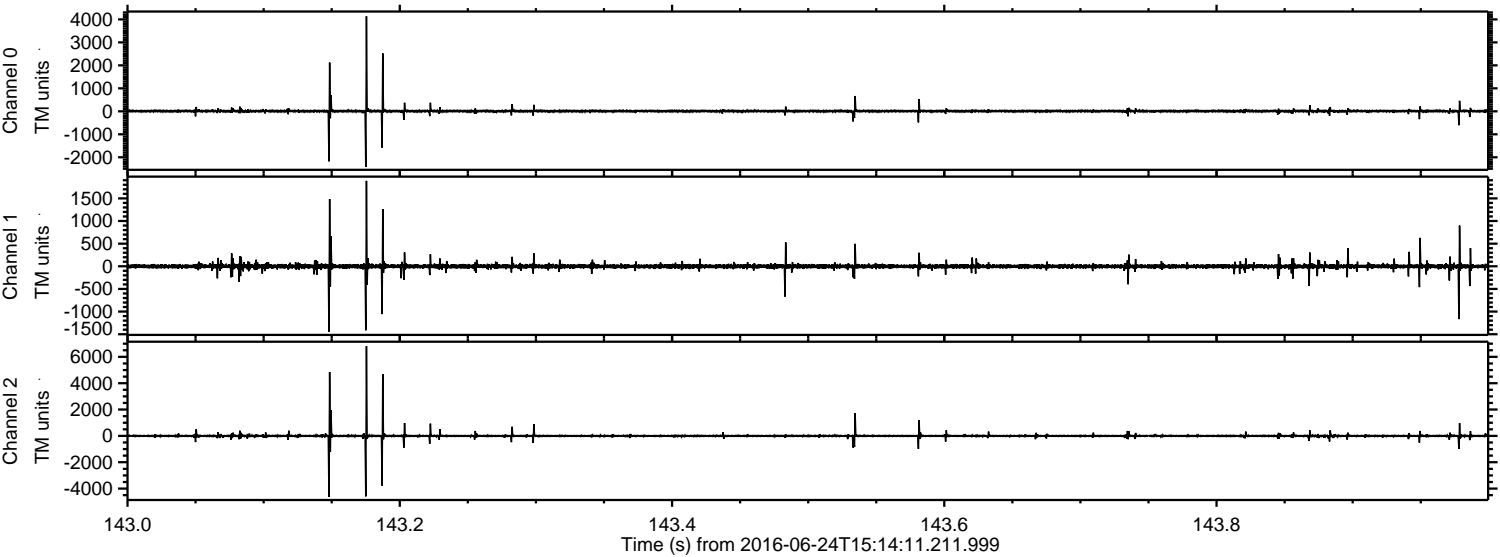


Processed Fri Jun 24 17:22:12 2016 by ELM ver.2012-10-06 from 001__elm20160624_151410__dat00.bin

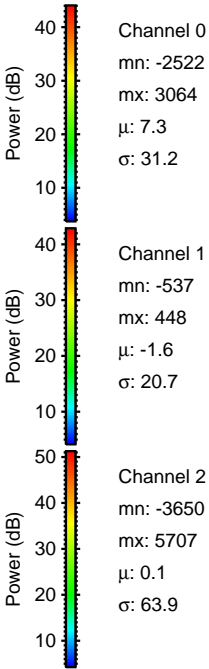
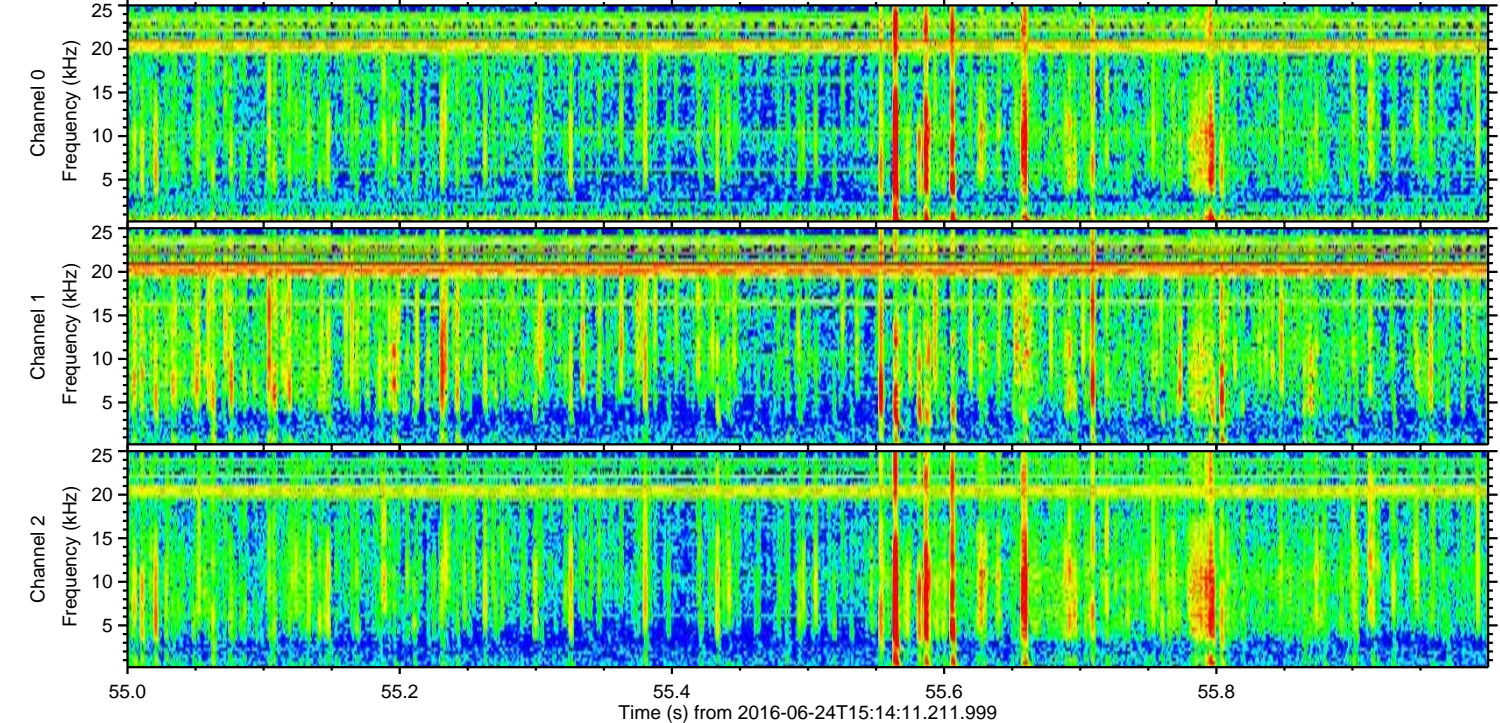
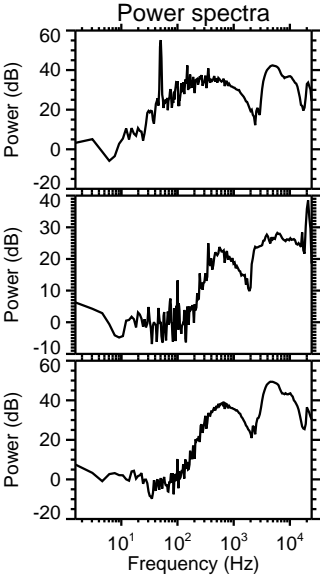
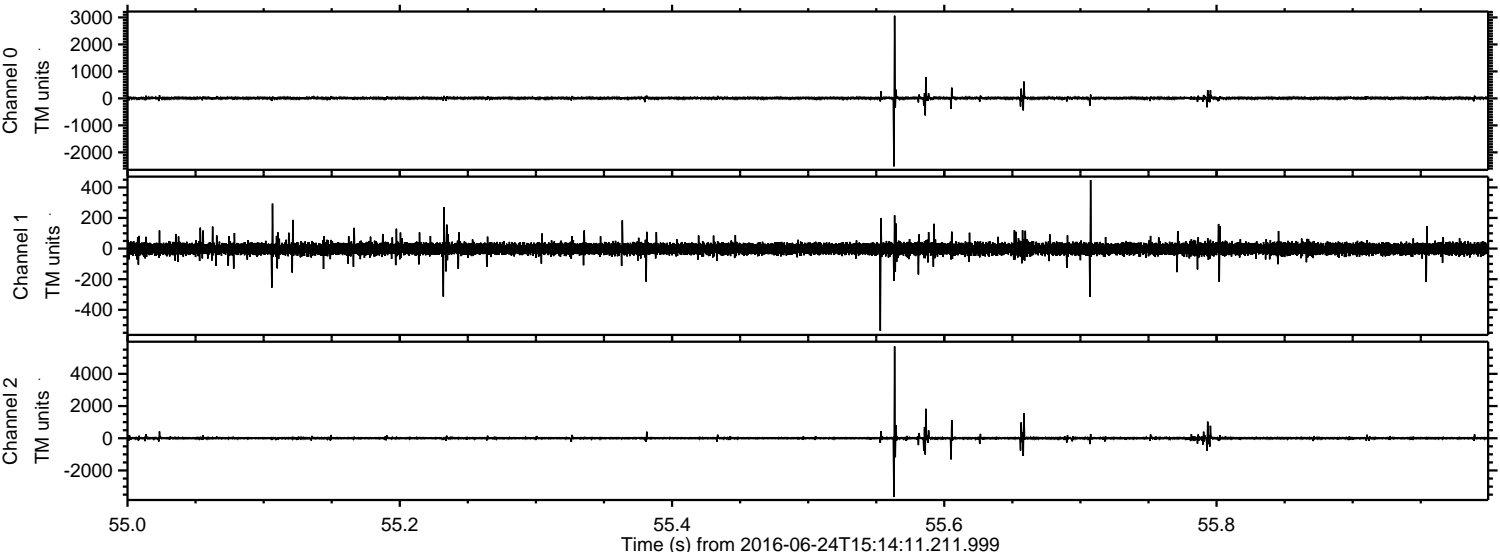


ELMAVAN 3D WAVEFORMS (Measured data sampled at 50 kHz) 51000 packets of 144 samples from 2016-06-24T15:14:11.211.999. Part 144/147

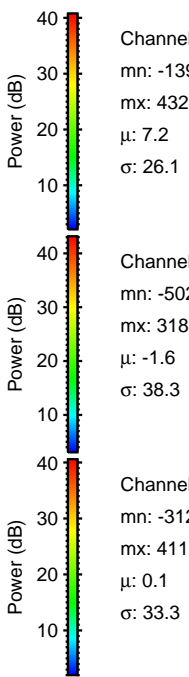
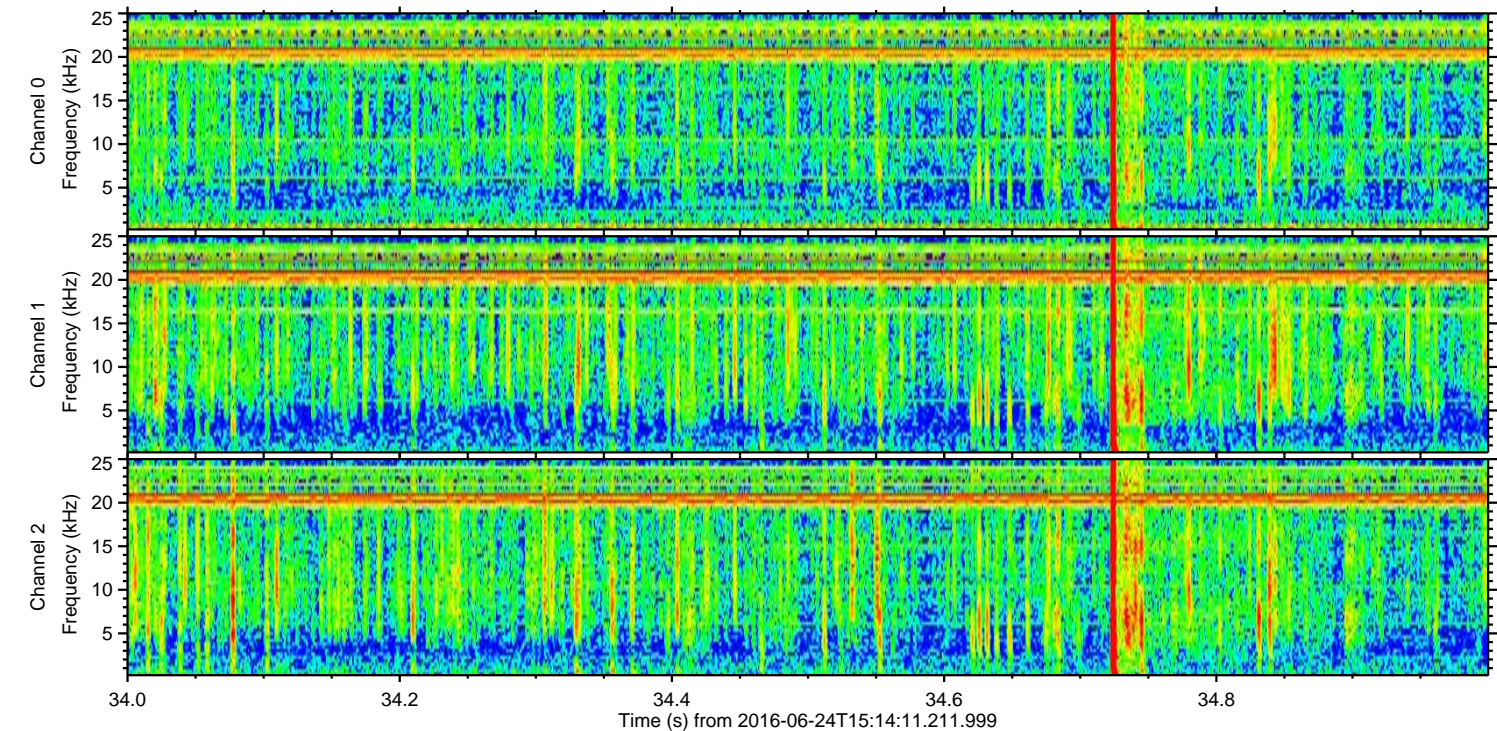
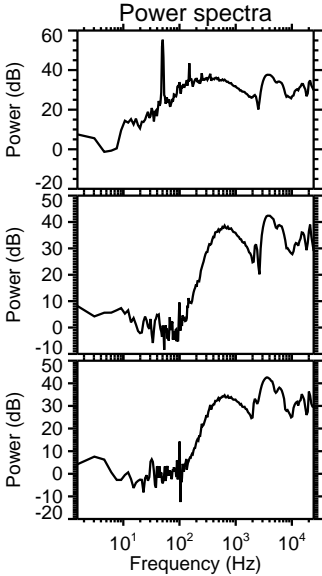
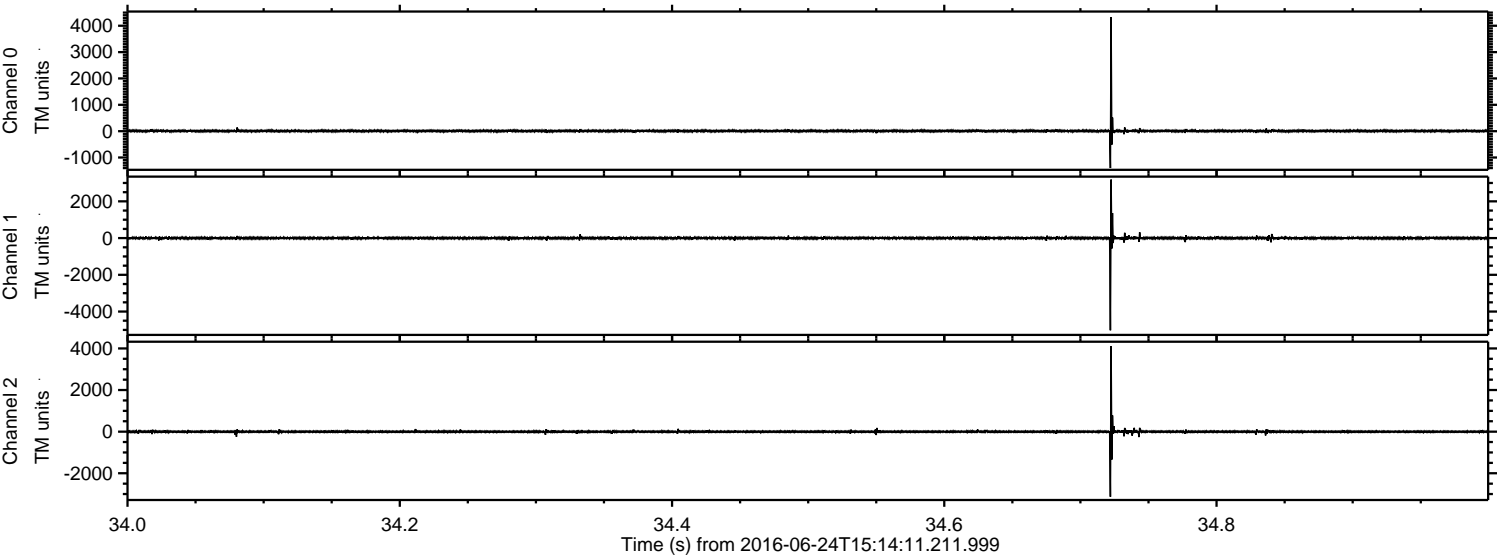
Processed Fri Jun 24 17:22:13 2016 by ELM ver.2012-10-06 from 001__elm20160624_151410__dat00.bin



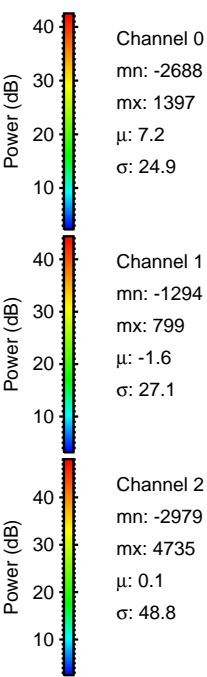
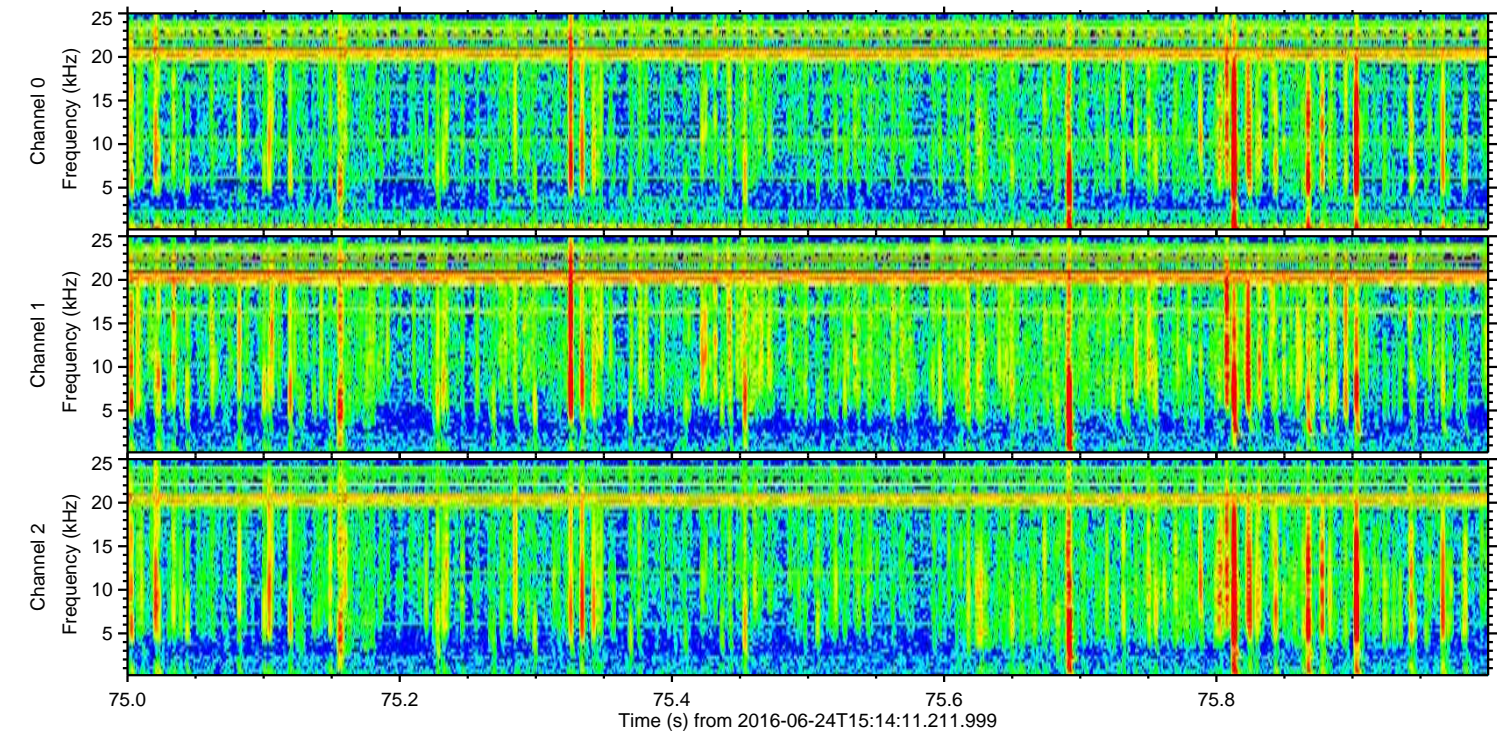
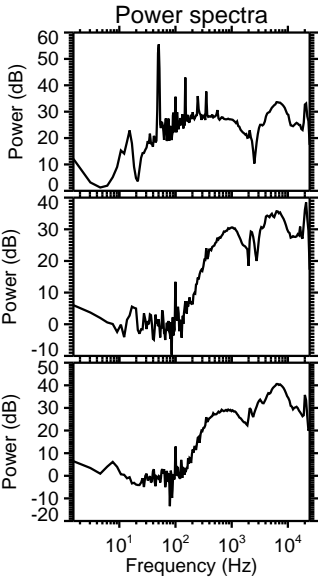
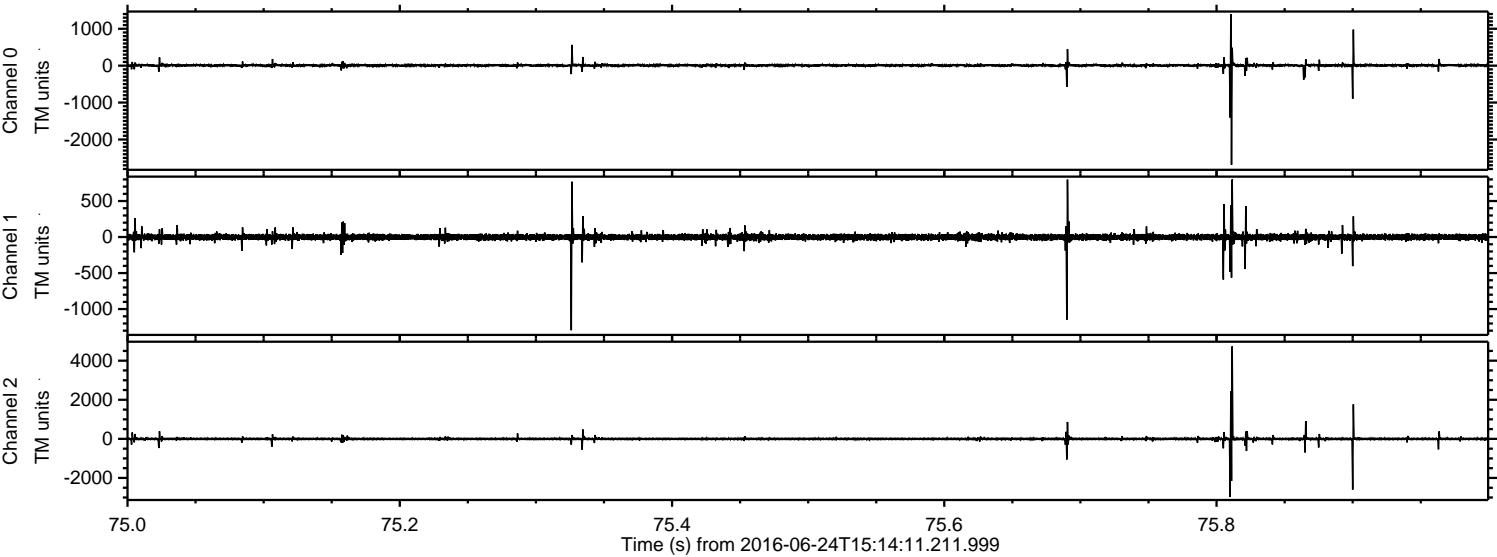
Processed Fri Jun 24 17:22:14 2016 by ELM ver.2012-10-06 from 001__elm20160624_151410__dat00.bin



Processed Fri Jun 24 17:22:14 2016 by ELM ver.2012-10-06 from 001__elm20160624_151410__dat00.bin

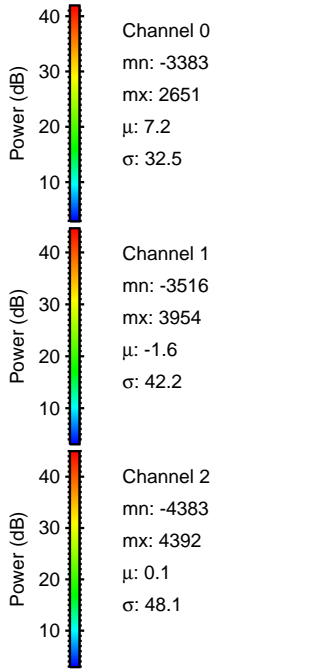
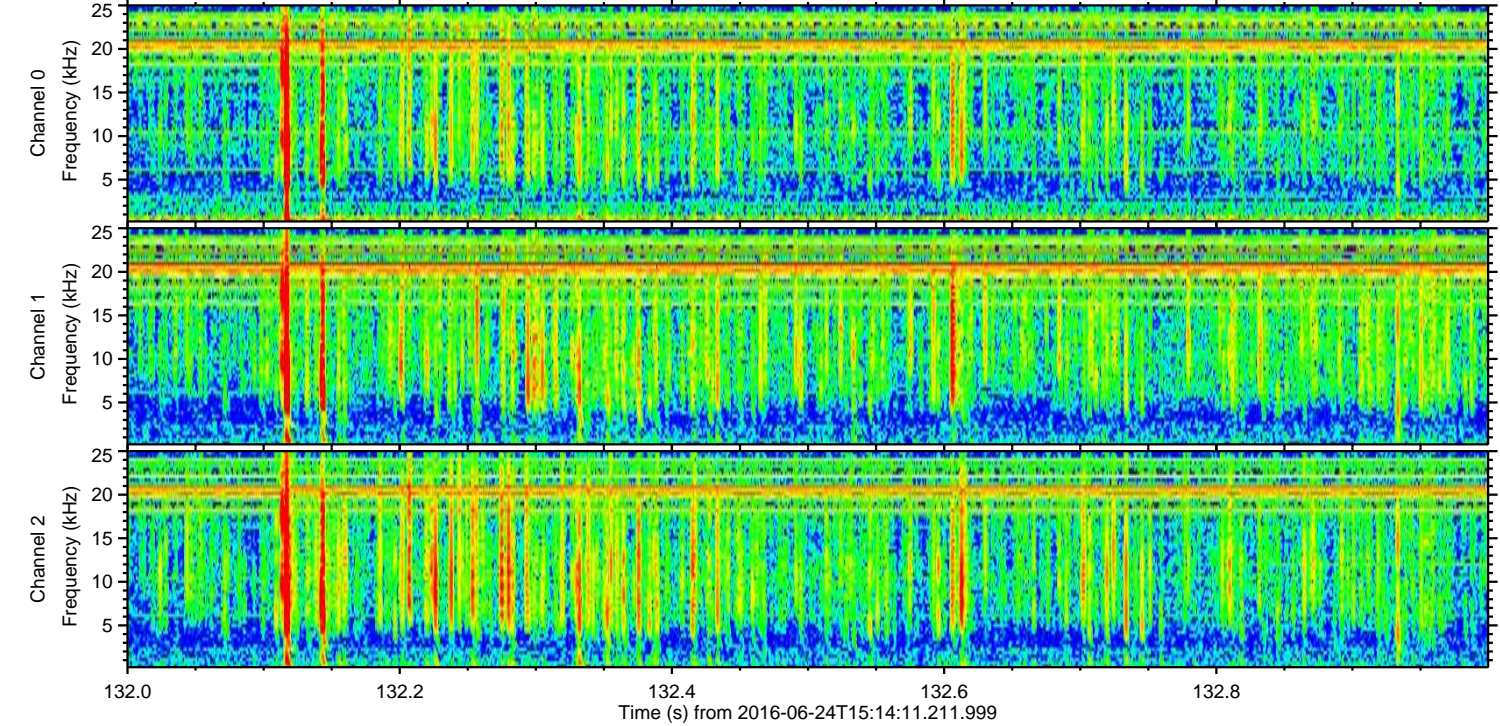
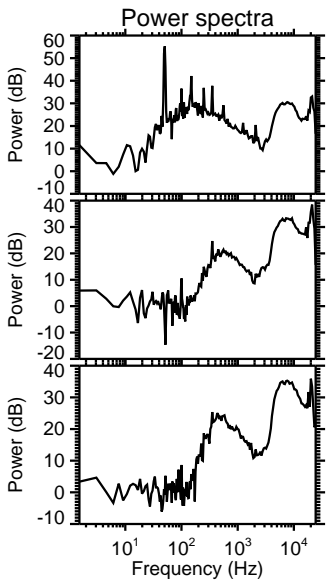
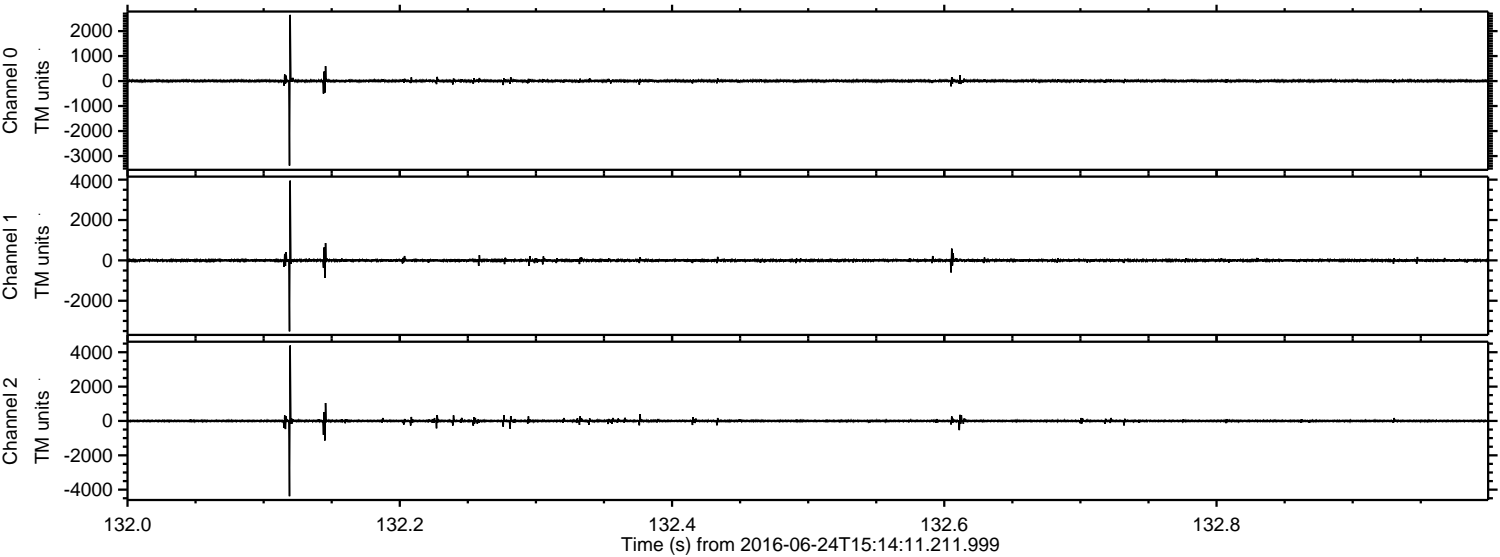


Processed Fri Jun 24 17:22:15 2016 by ELM ver.2012-10-06 from 001__elm20160624_151410__dat00.bin

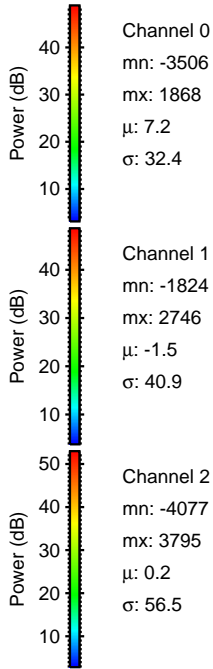
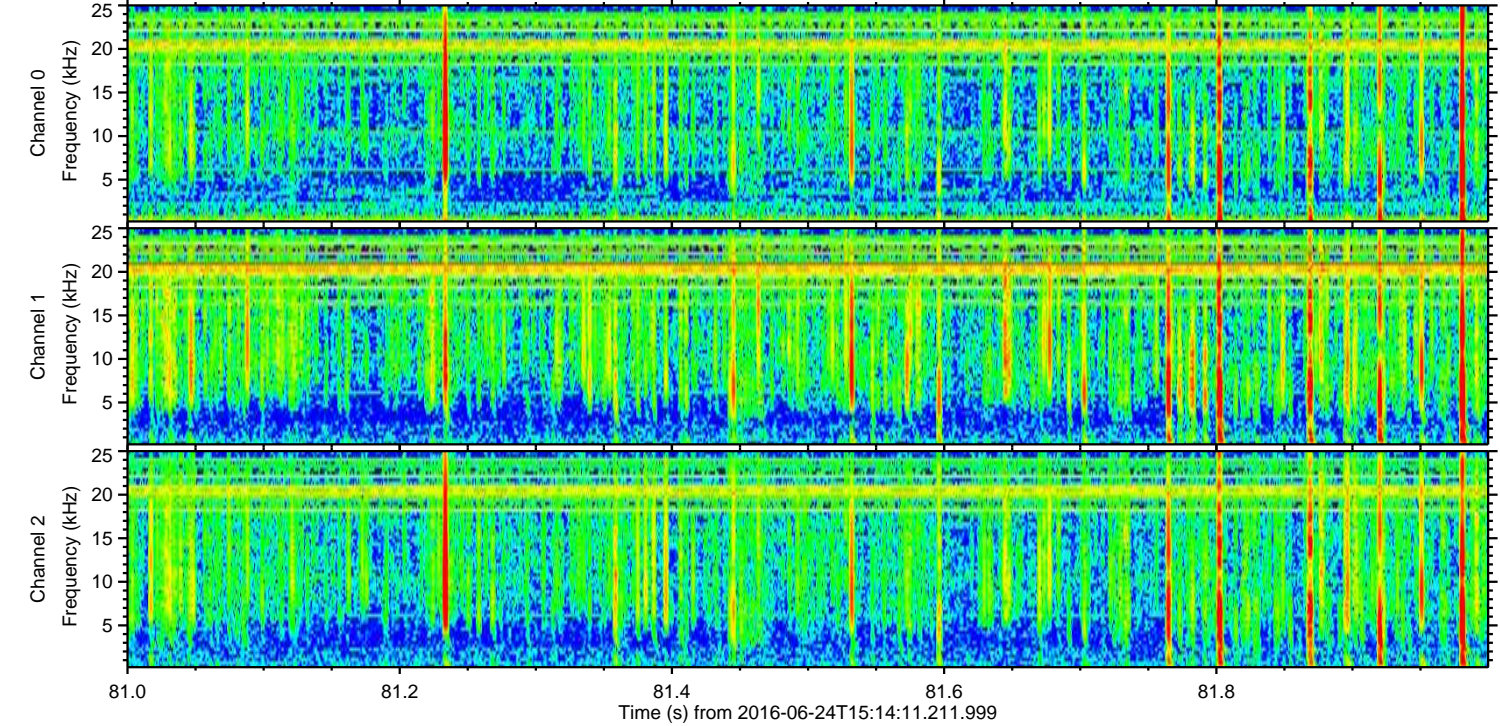
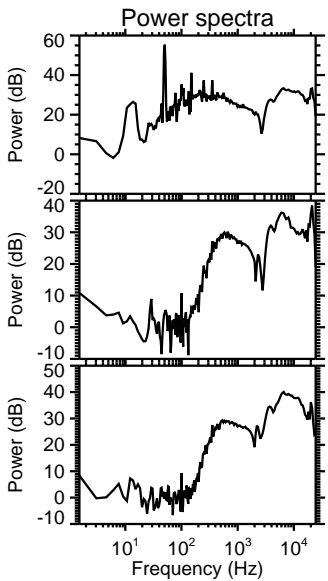
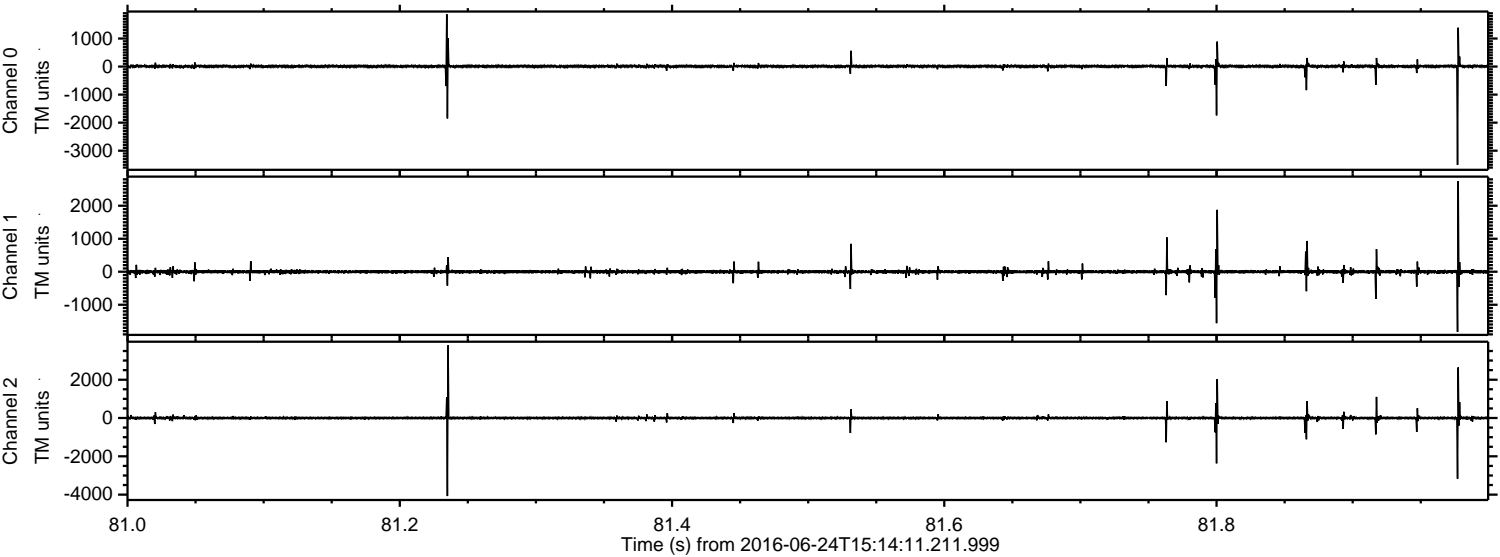


ELMAVAN 3D WAVEFORMS (Measured data sampled at 50 kHz) 51000 packets of 144 samples from 2016-06-24T15:14:11.211.999. Part 133/147

Processed Fri Jun 24 17:22:16 2016 by ELM ver.2012-10-06 from 001__elm20160624_151410__dat00.bin



Processed Fri Jun 24 17:22:17 2016 by ELM ver.2012-10-06 from 001__elm20160624_151410__dat00.bin



Channel 0
mn: -3506
mx: 1868
 μ : 7.2
 σ : 32.4

Channel 1
mn: -1824
mx: 2746
 μ : -1.5
 σ : 40.9

Channel 2
mn: -4077
mx: 3795
 μ : 0.2
 σ : 56.5

Processed Fri Jun 24 17:22:18 2016 by ELM ver.2012-10-06 from 001__elm20160624_151410__dat00.bin

