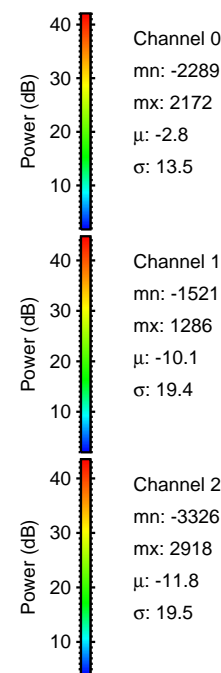
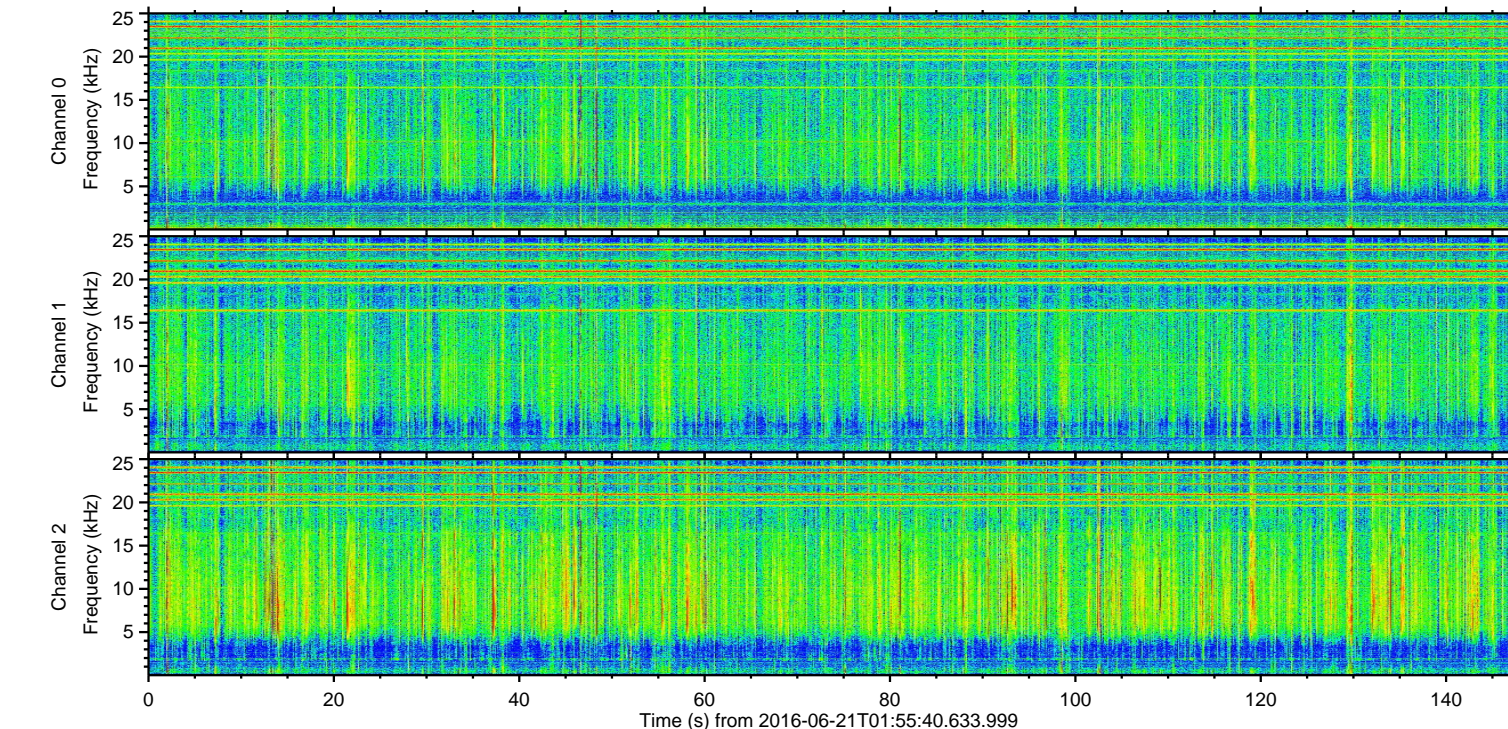
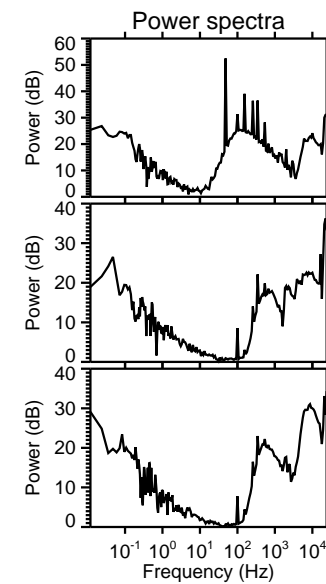
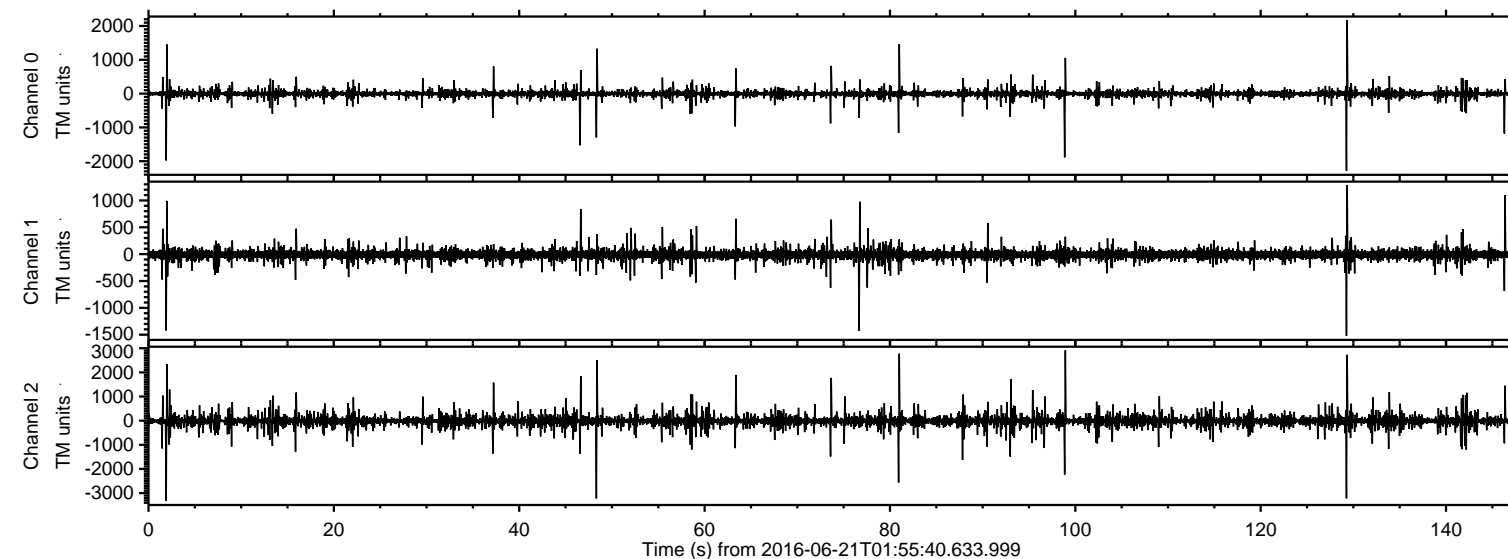


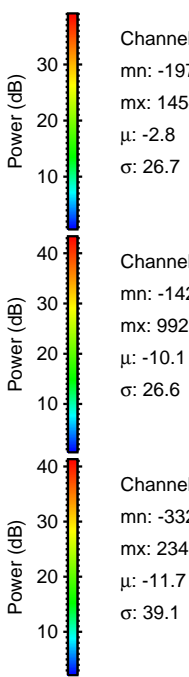
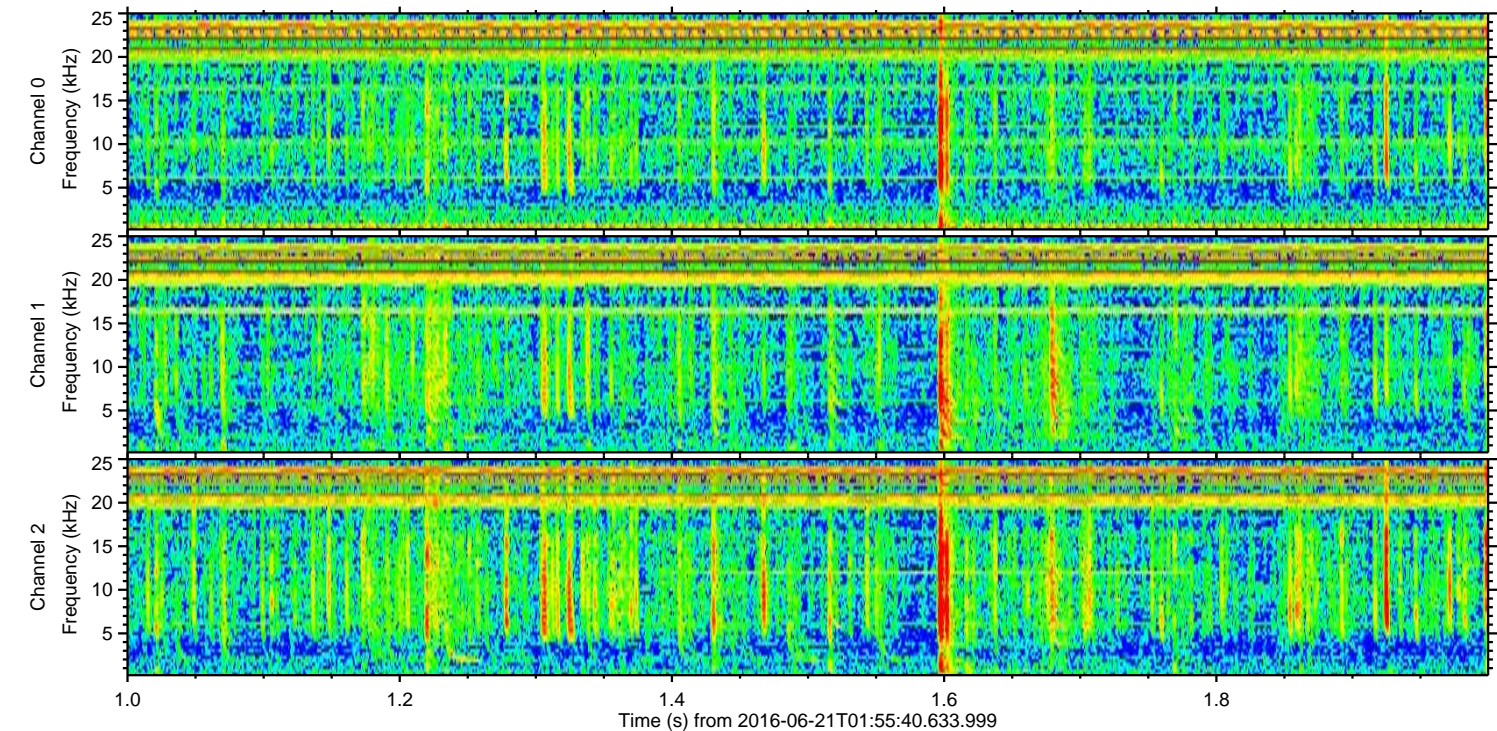
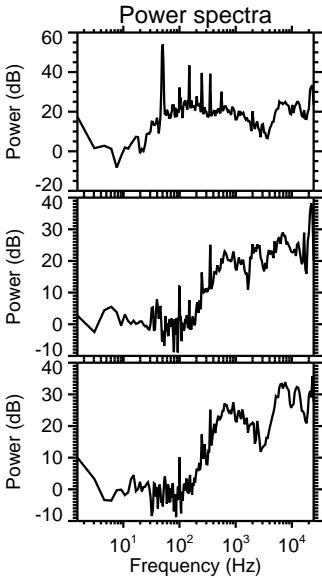
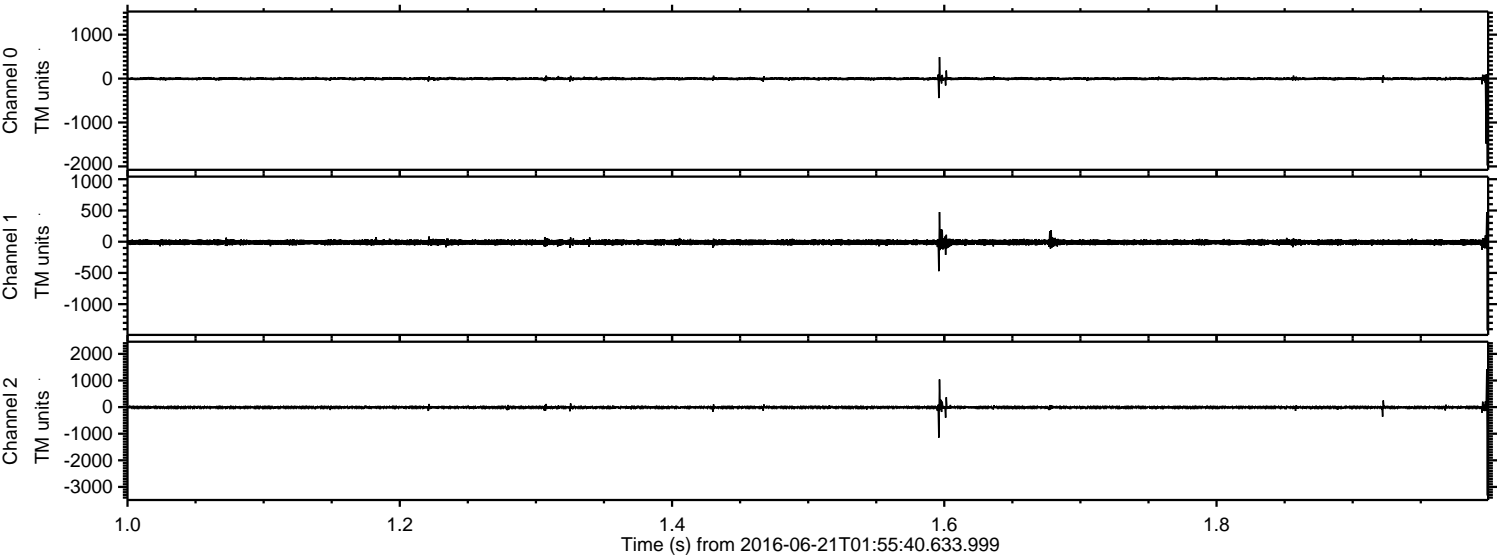
ELMAVAN 3D WAVEFORMS (Measured data sampled at 50 kHz) 51000 packets of 144 samples from 2016-06-21T01:55:40.633.999.

Processed Tue Jun 21 04:03:52 2016 by ELM ver.2012-10-06 from 001__elm20160621_015539__dat00.bin

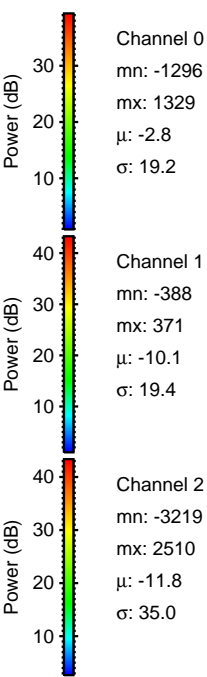
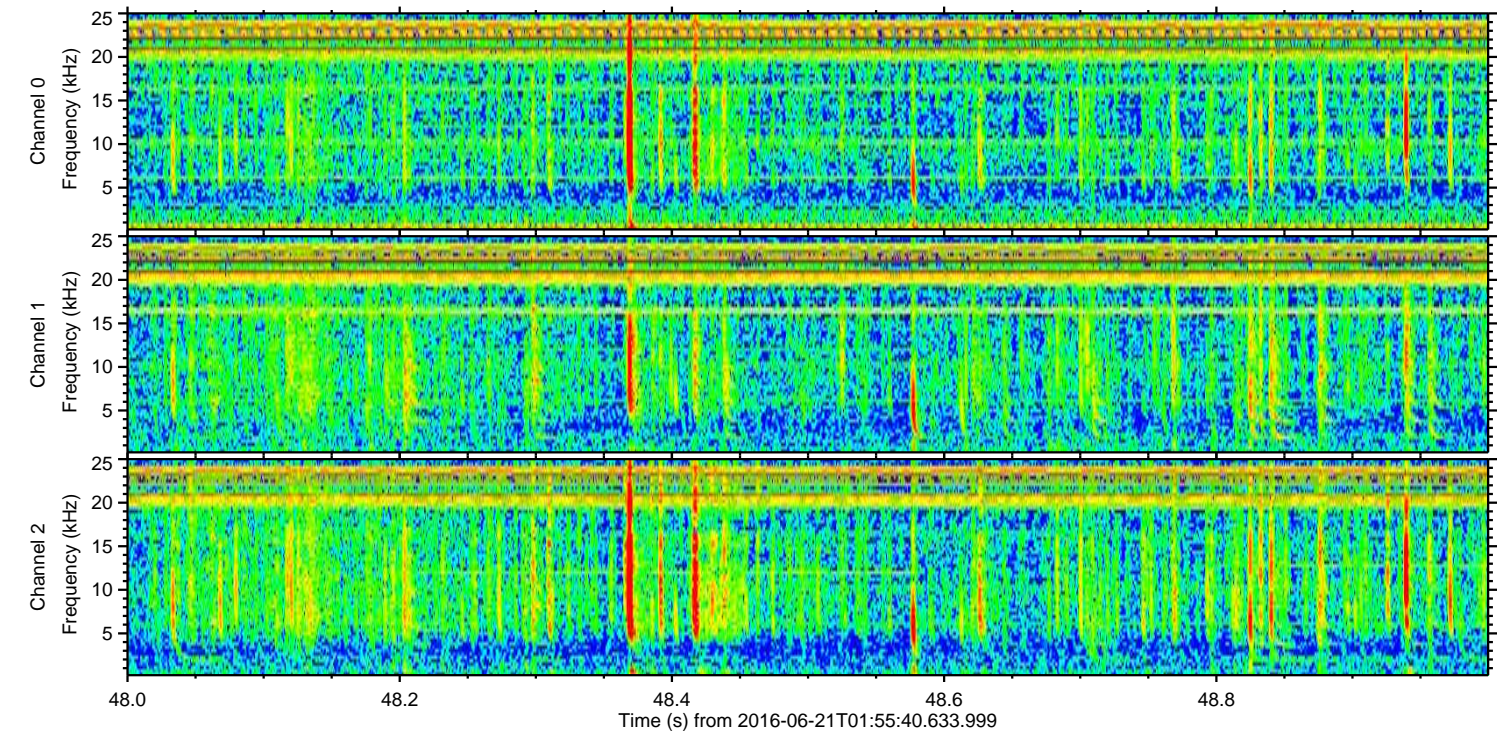
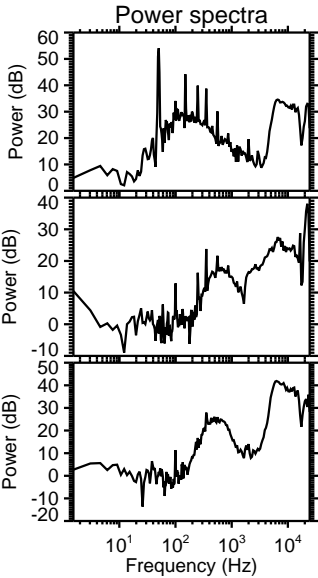
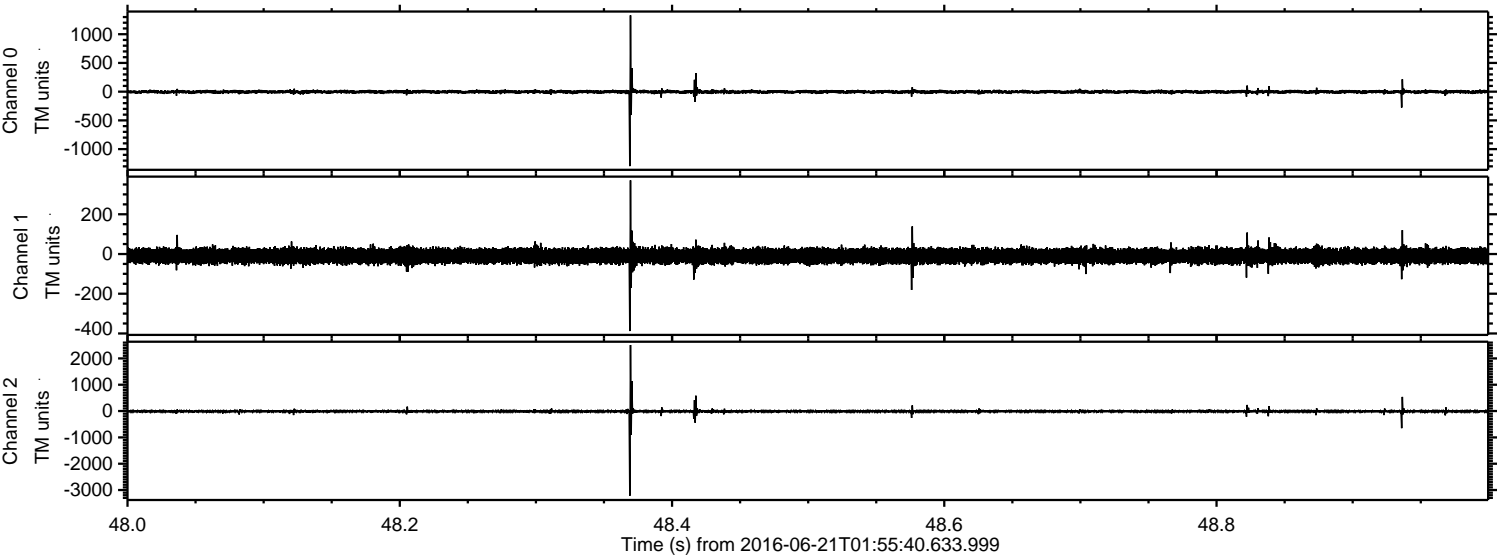


ELMAVAN 3D WAVEFORMS (Measured data sampled at 50 kHz) 51000 packets of 144 samples from 2016-06-21T01:55:40.633.999. Part 2/147

Processed Tue Jun 21 04:04:06 2016 by ELM ver.2012-10-06 from 001__elm20160621_015539__dat00.bin

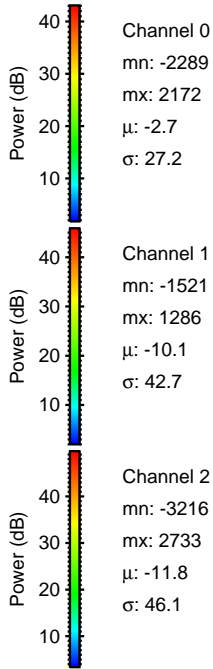
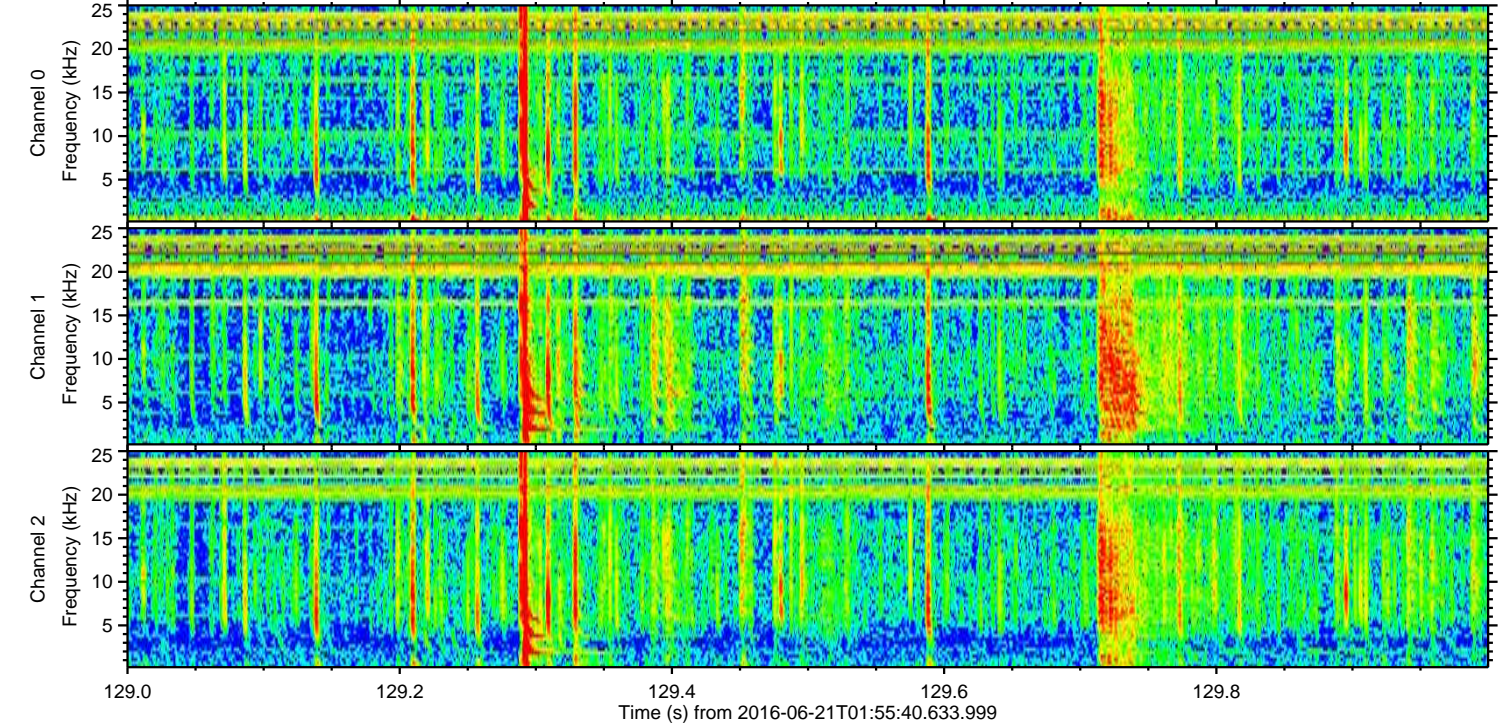
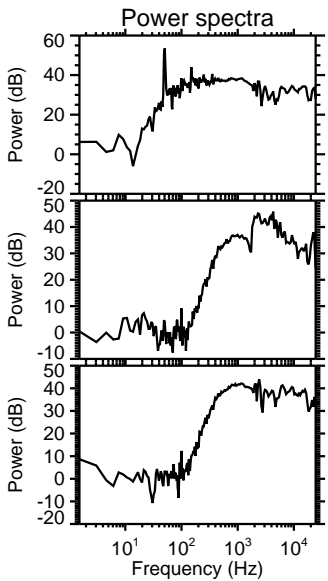
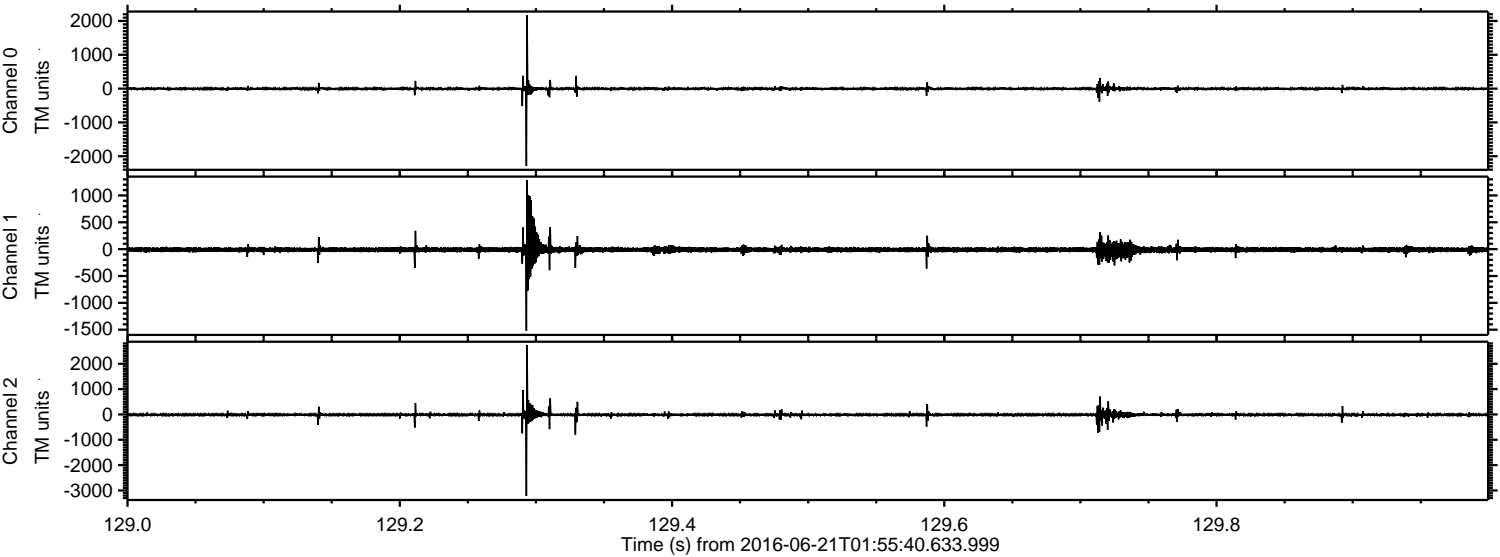


Processed Tue Jun 21 04:04:08 2016 by ELM ver.2012-10-06 from 001__elm20160621_015539__dat00.bin



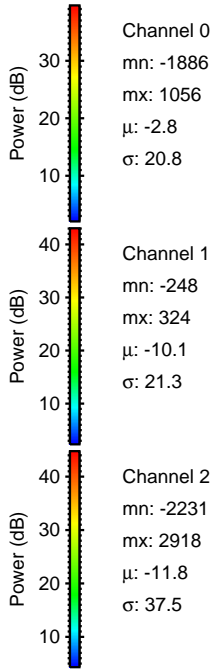
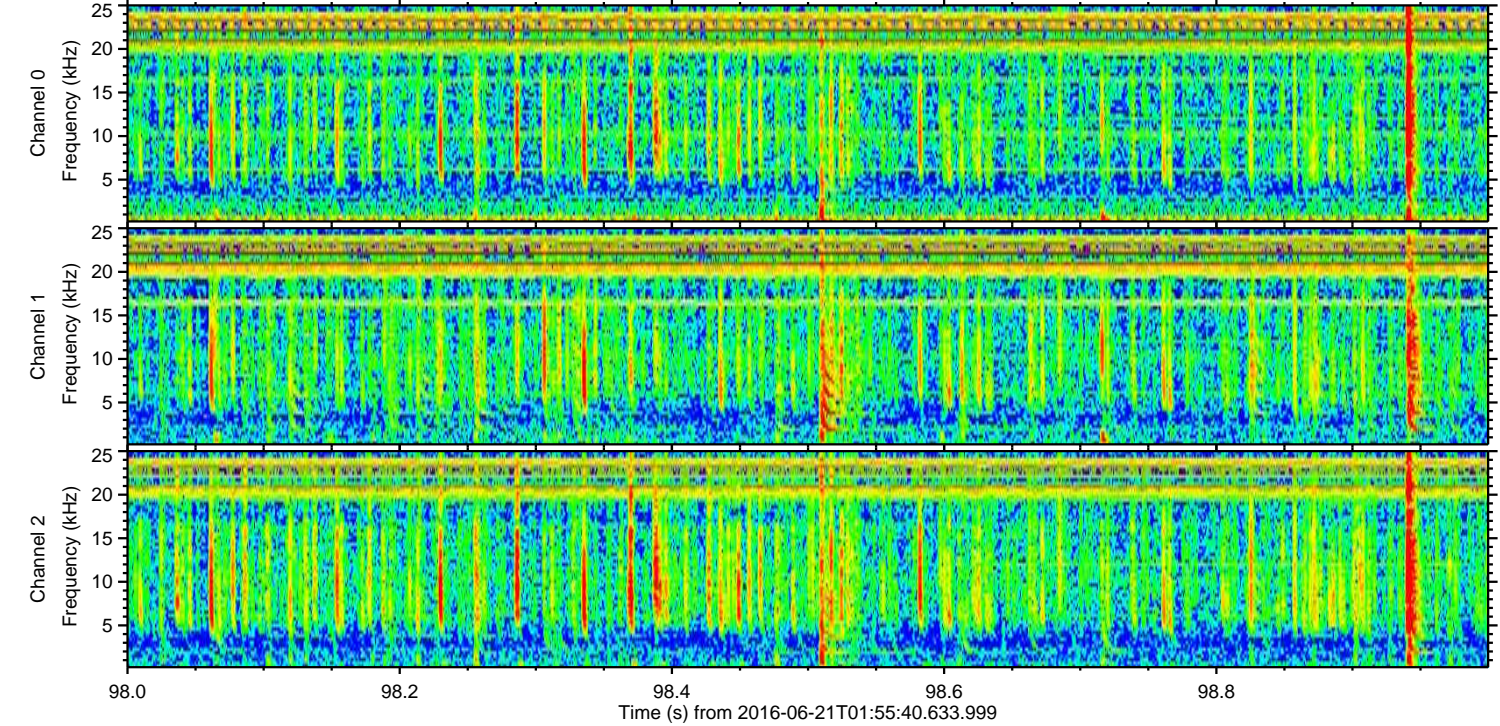
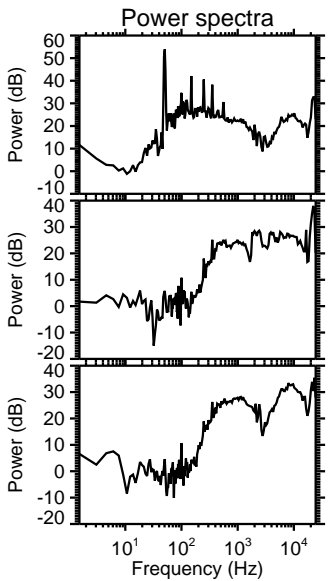
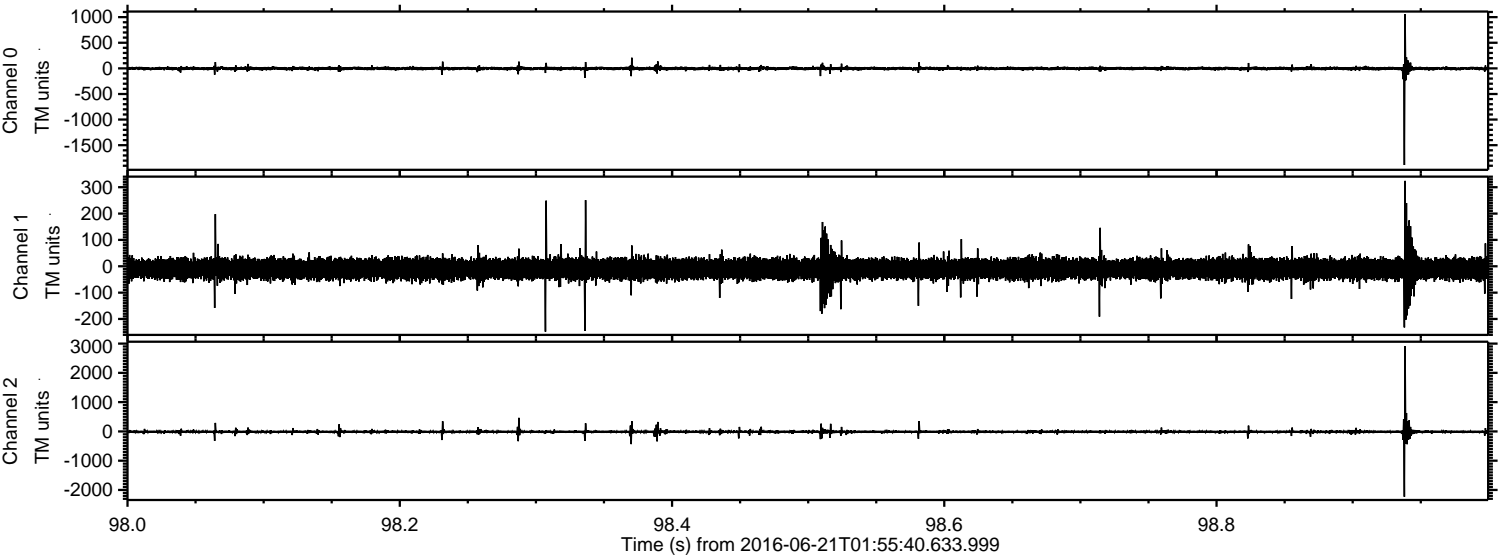
ELMAVAN 3D WAVEFORMS (Measured data sampled at 50 kHz) 51000 packets of 144 samples from 2016-06-21T01:55:40.633.999. Part 130/147

Processed Tue Jun 21 04:04:09 2016 by ELM ver.2012-10-06 from 001__elm20160621_015539__dat00.bin



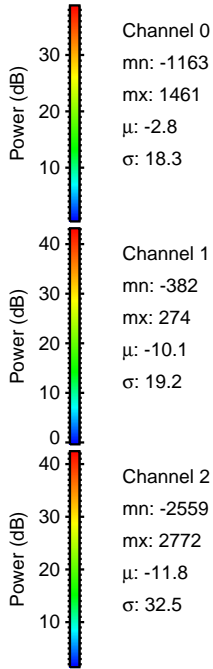
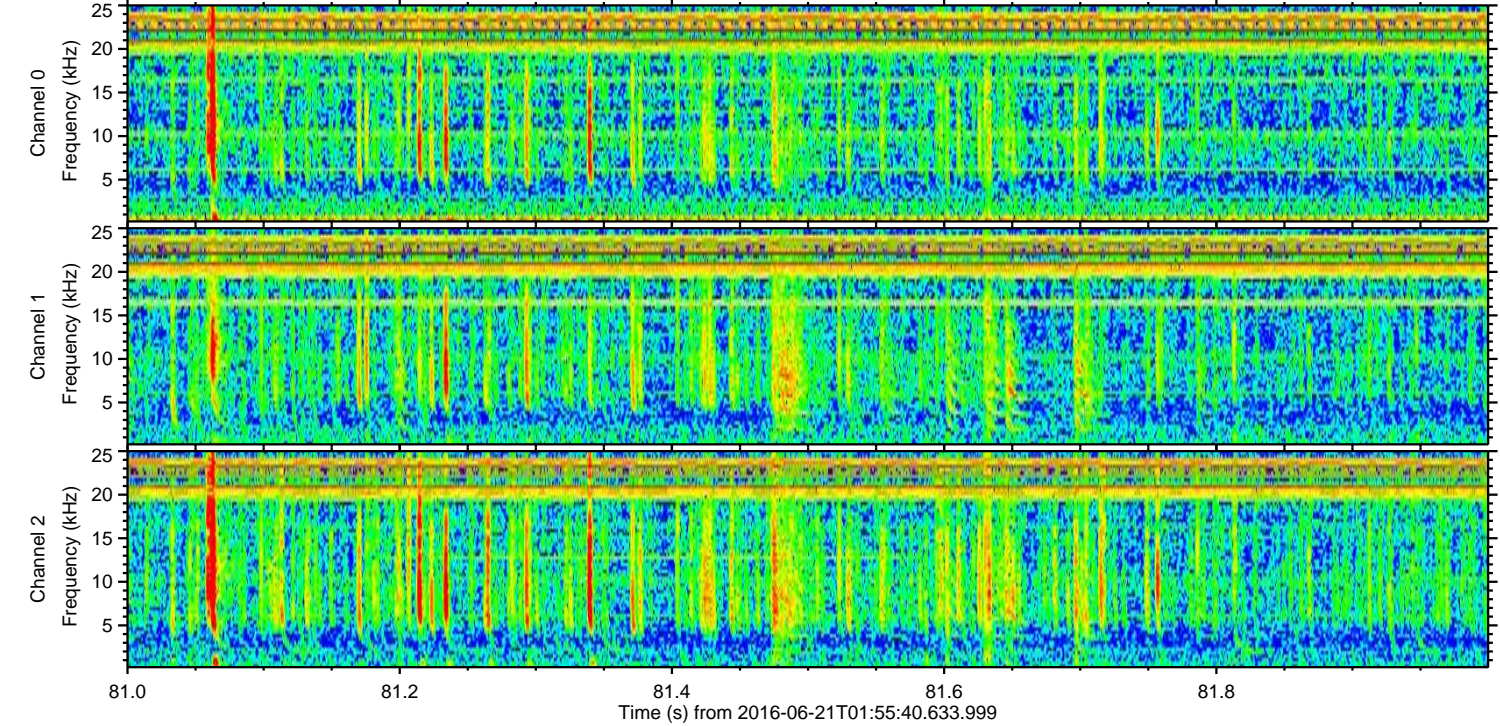
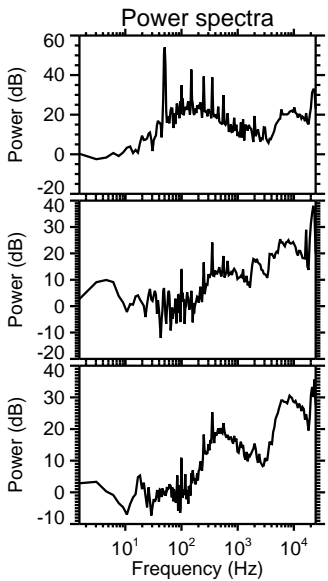
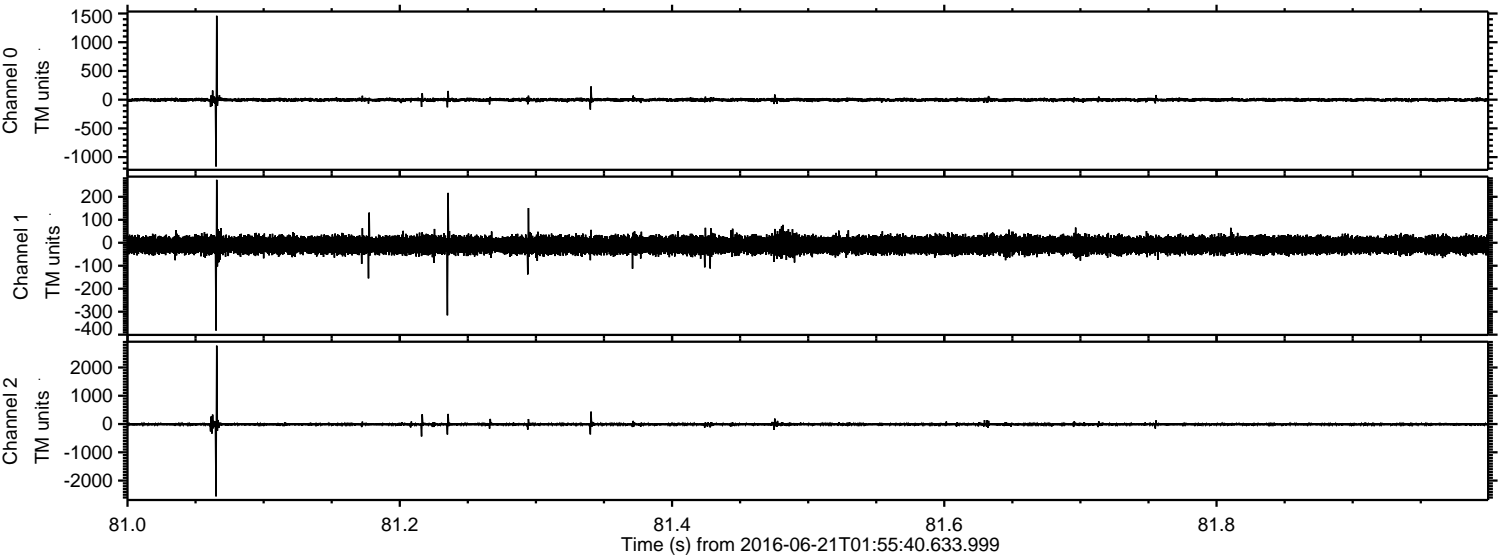
ELMAVAN 3D WAVEFORMS (Measured data sampled at 50 kHz) 51000 packets of 144 samples from 2016-06-21T01:55:40.633.999. Part 99/147

Processed Tue Jun 21 04:04:10 2016 by ELM ver.2012-10-06 from 001__elm20160621_015539__dat00.bin

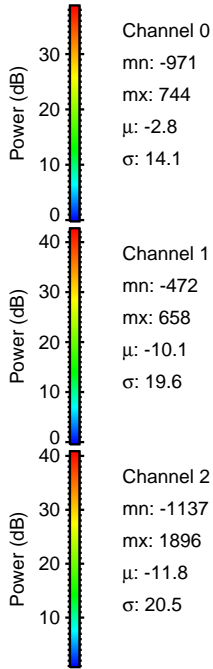
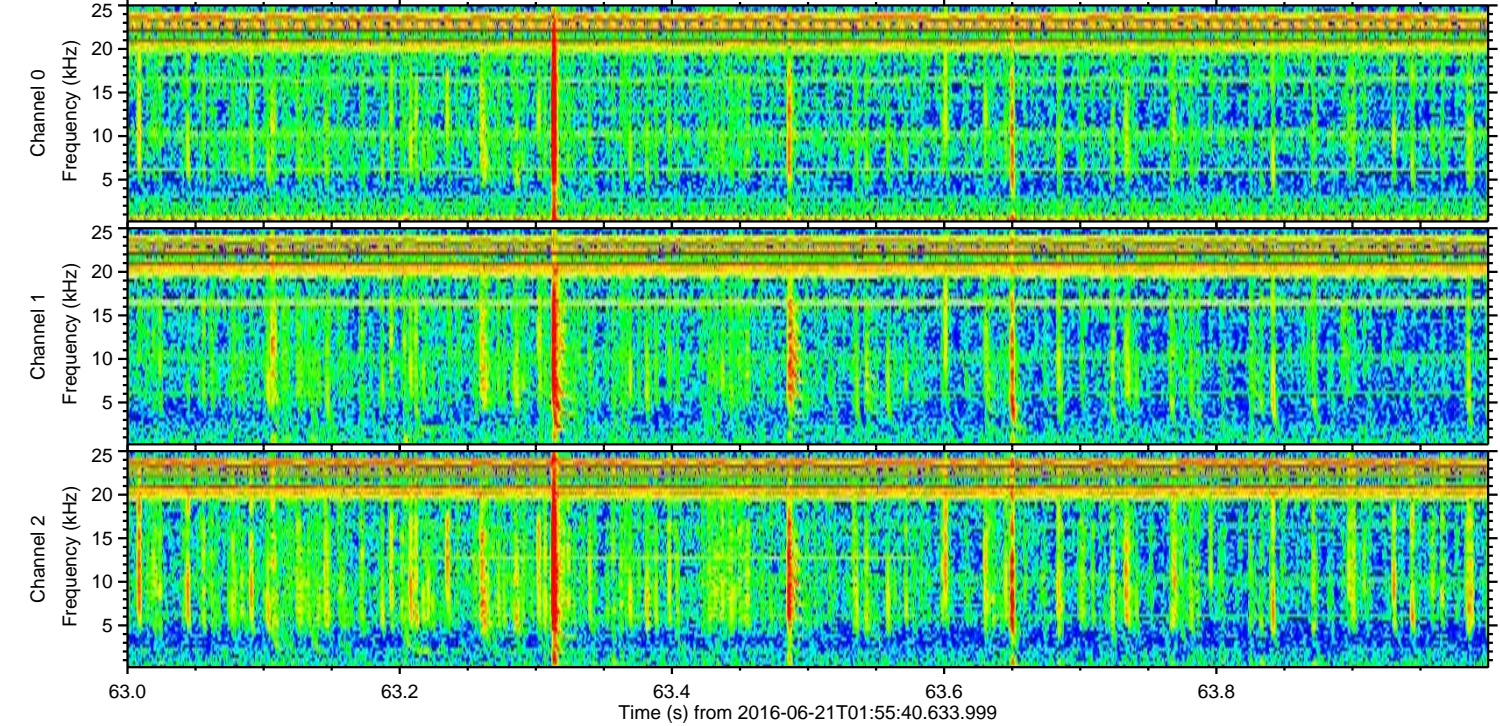
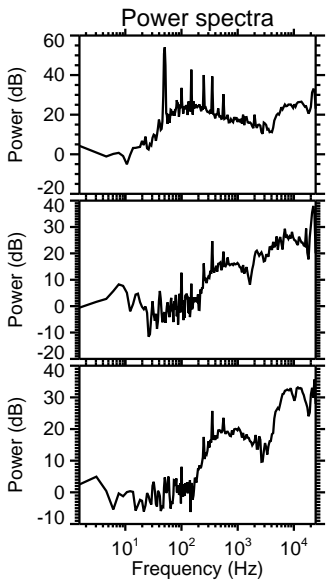
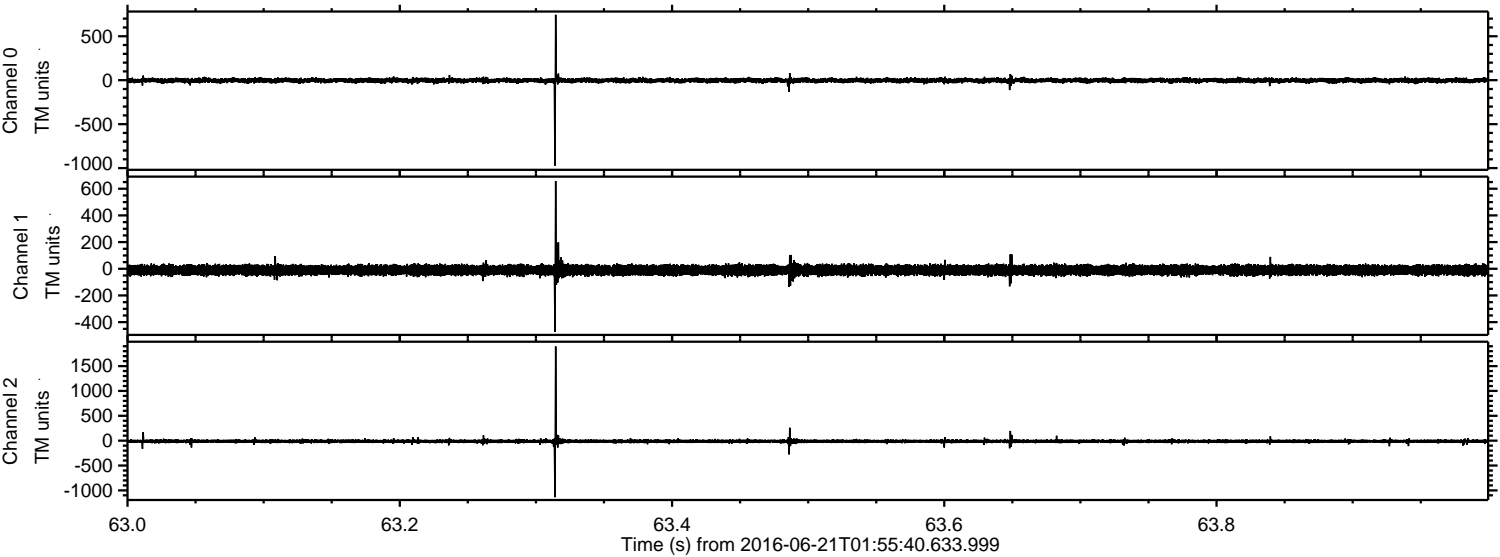


ELMAVAN 3D WAVEFORMS (Measured data sampled at 50 kHz) 51000 packets of 144 samples from 2016-06-21T01:55:40.633.999. Part 82/147

Processed Tue Jun 21 04:04:11 2016 by ELM ver.2012-10-06 from 001__elm20160621_015539__dat00.bin



Processed Tue Jun 21 04:04:12 2016 by ELM ver.2012-10-06 from 001__elm20160621_015539__dat00.bin

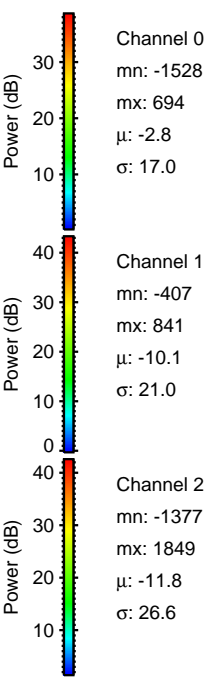
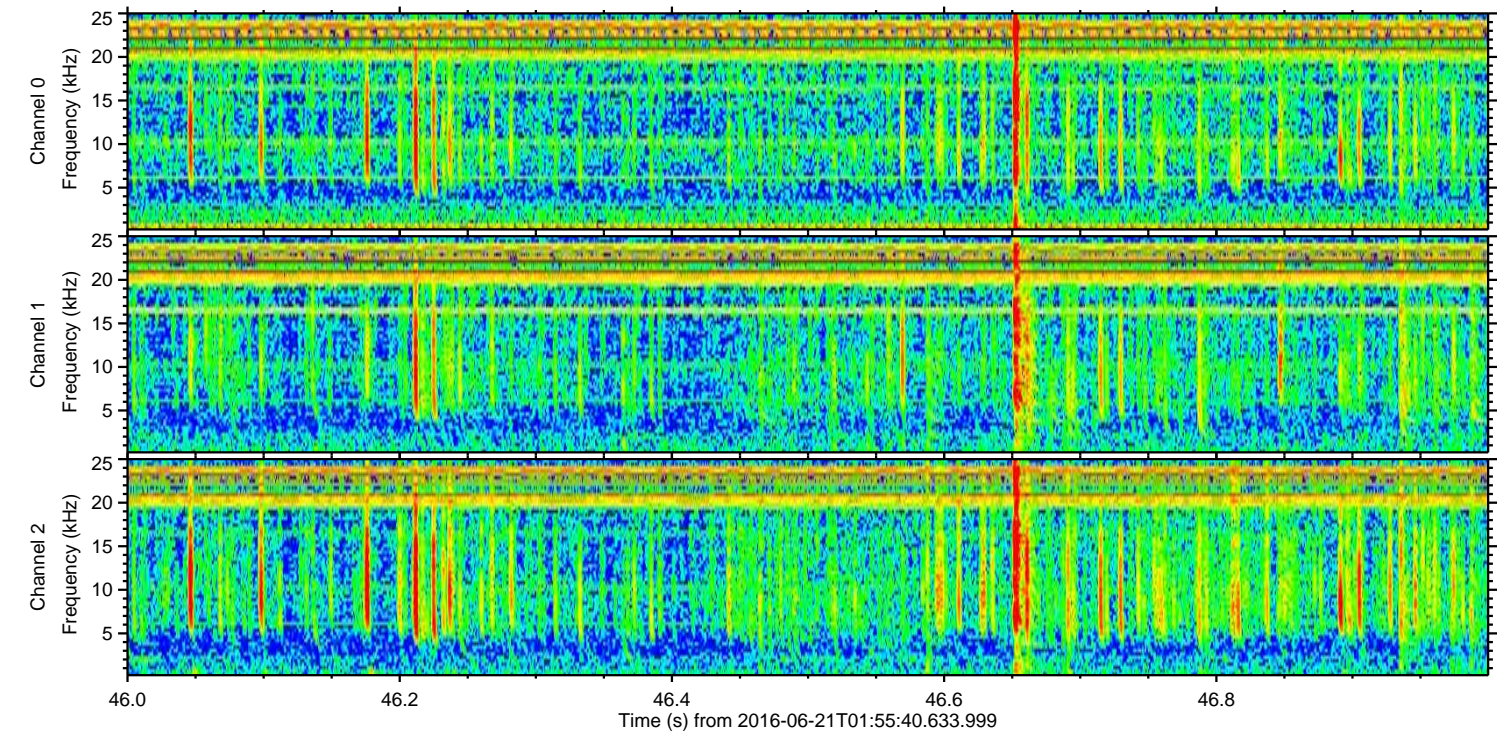
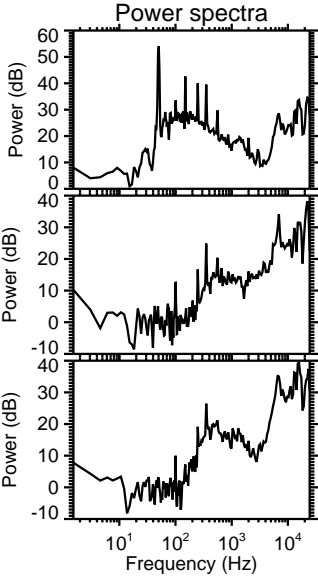
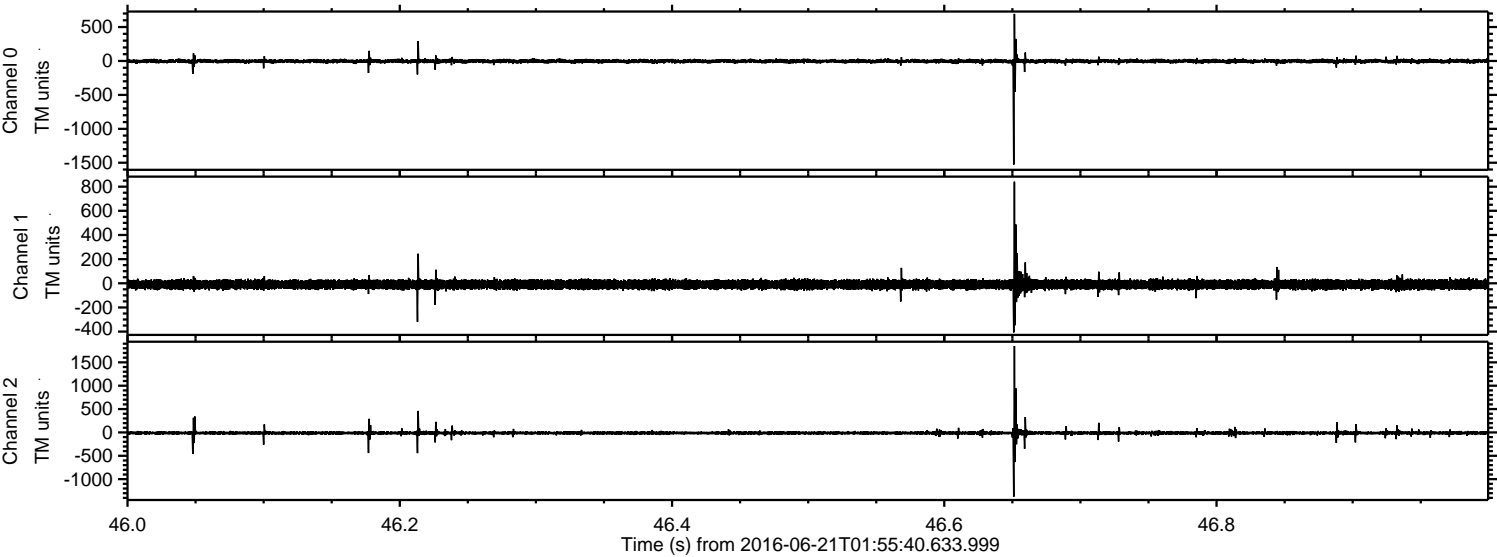


Channel 0
mn: -971
mx: 744
 μ : -2.8
 σ : 14.1

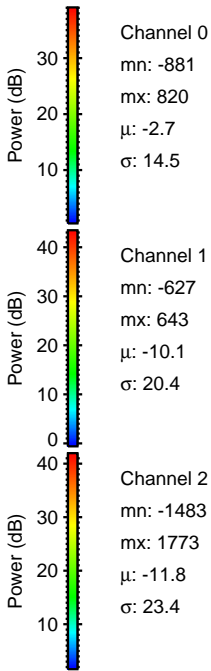
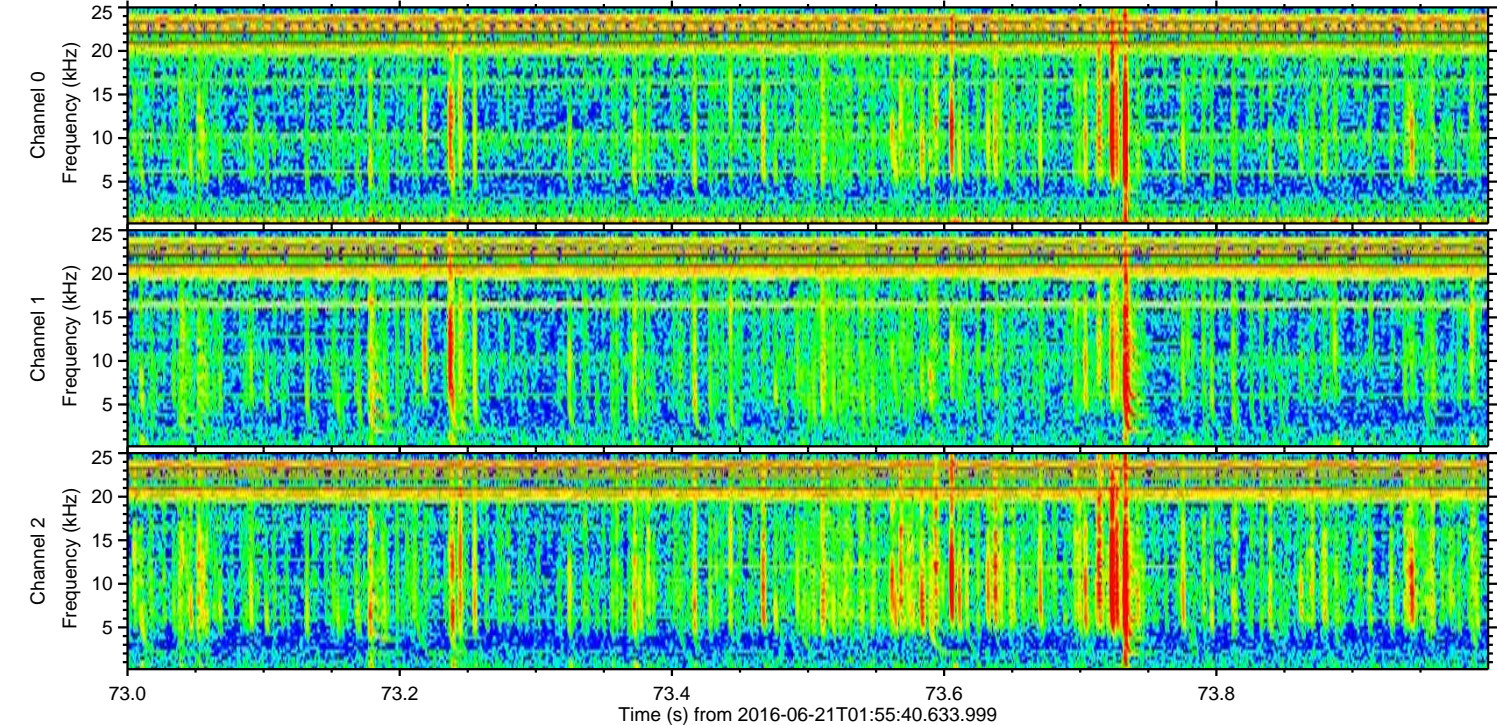
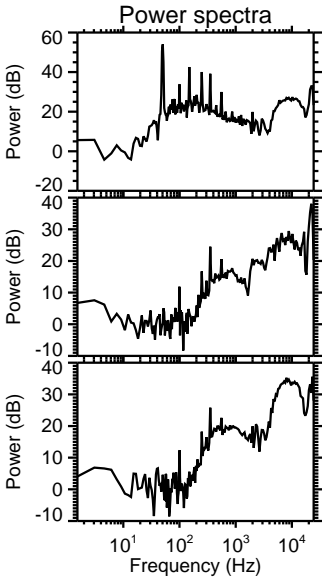
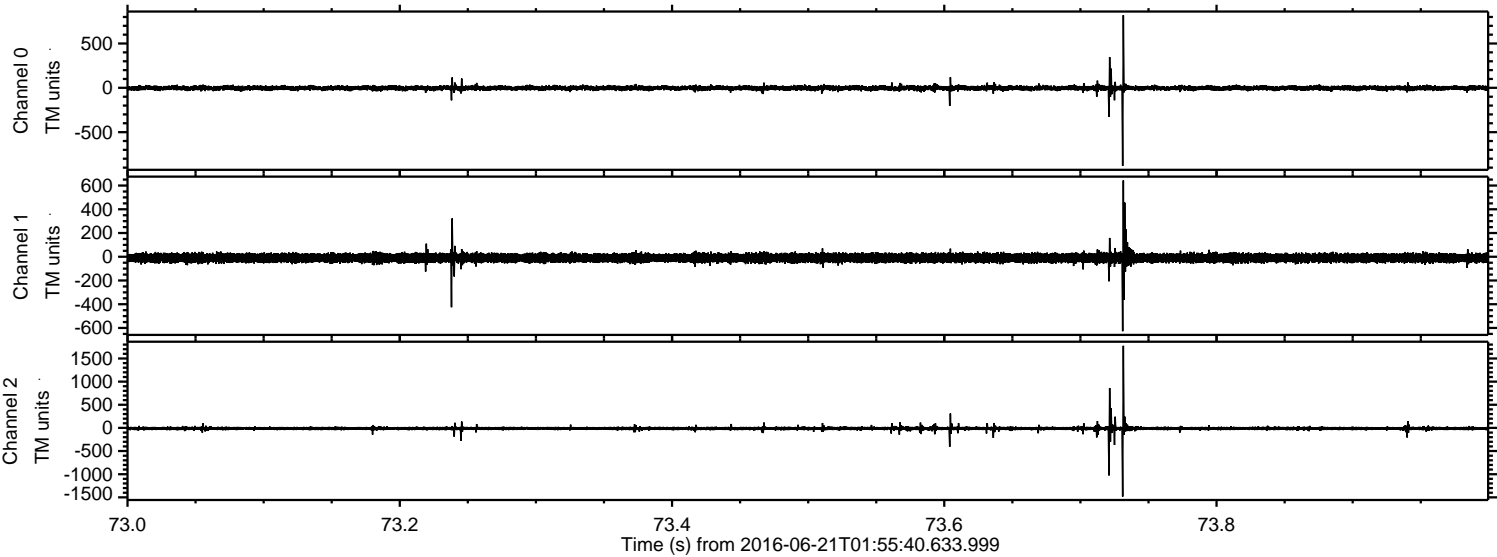
Channel 1
mn: -472
mx: 658
 μ : -10.1
 σ : 19.6

Channel 2
mn: -1137
mx: 1896
 μ : -11.8
 σ : 20.5

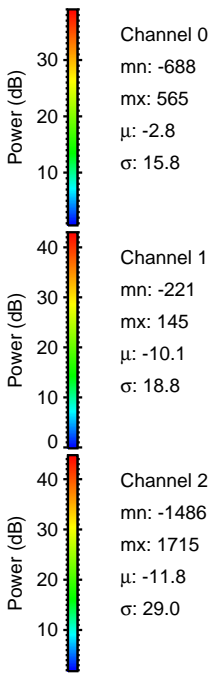
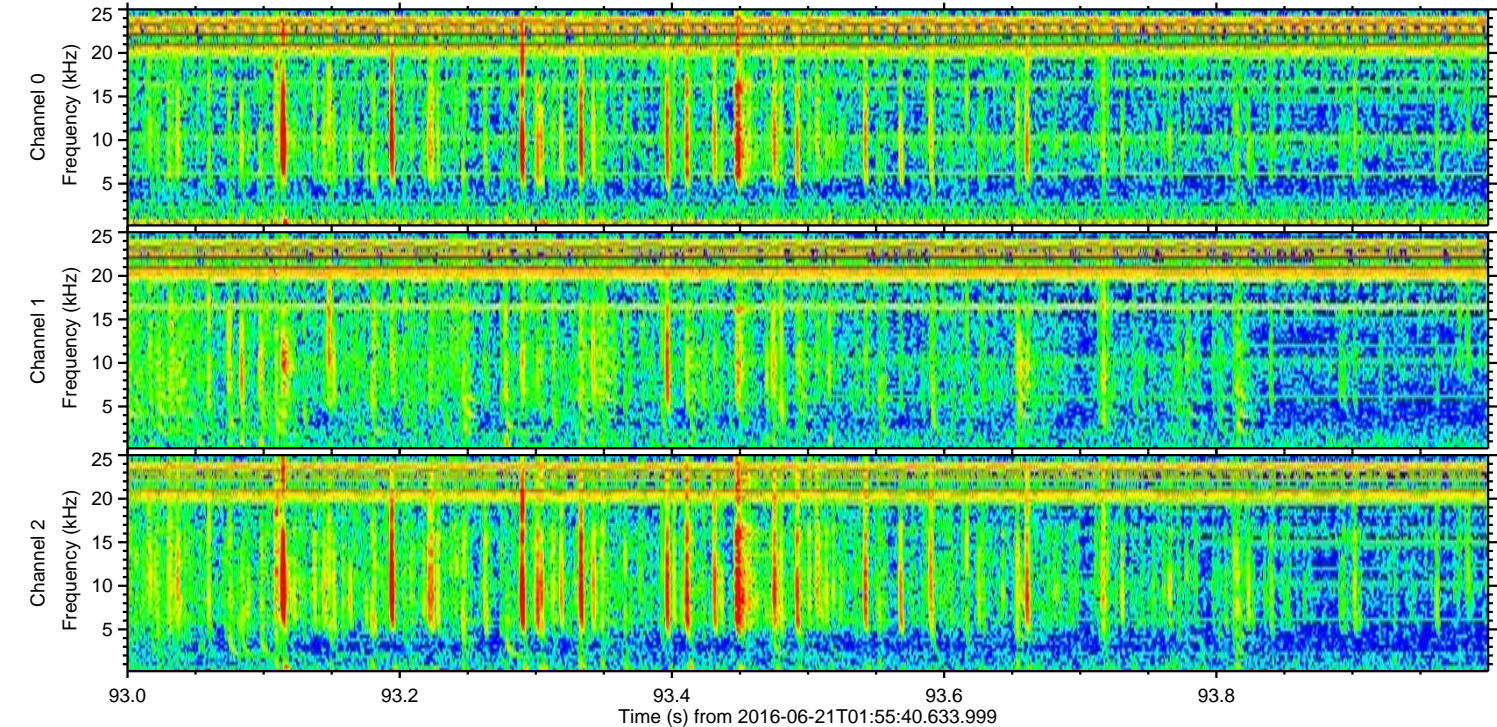
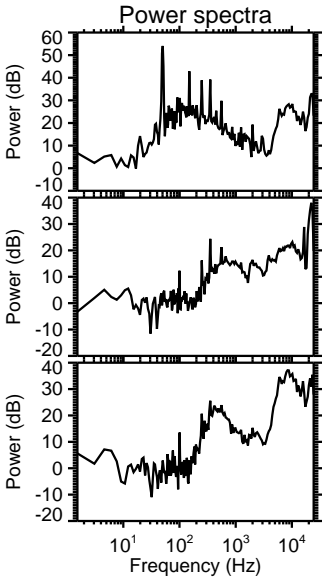
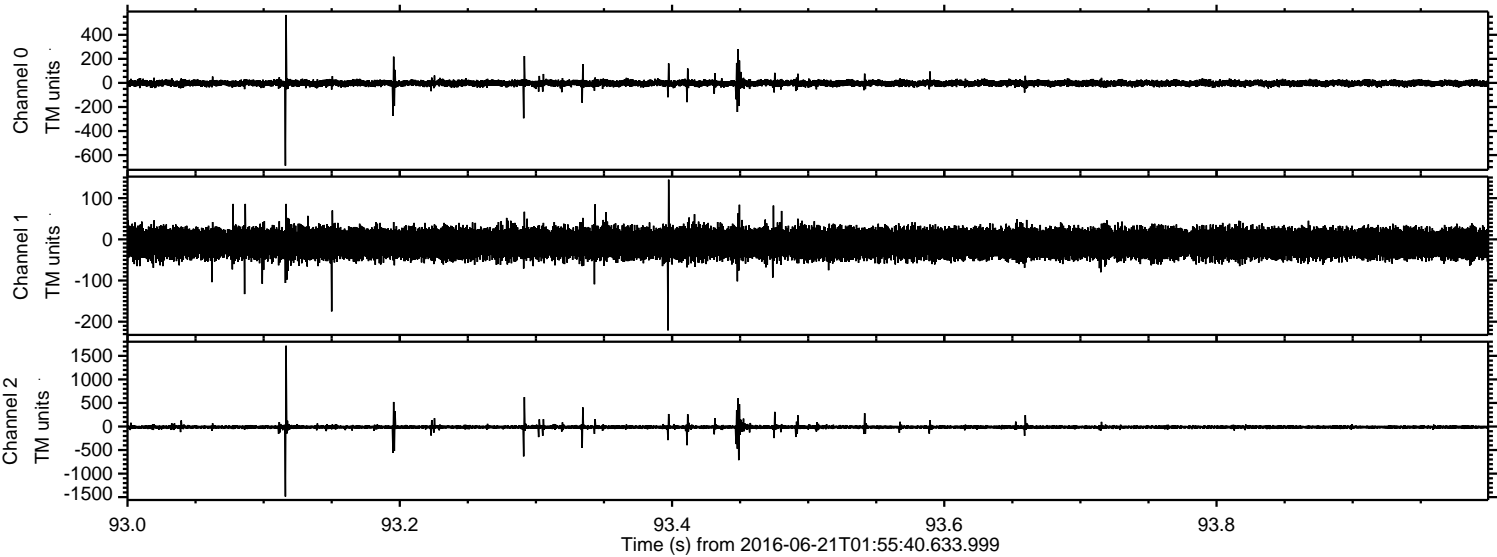
Processed Tue Jun 21 04:04:13 2016 by ELM ver.2012-10-06 from 001__elm20160621_015539__dat00.bin



Processed Tue Jun 21 04:04:14 2016 by ELM ver.2012-10-06 from 001__elm20160621_015539__dat00.bin



Processed Tue Jun 21 04:04:15 2016 by ELM ver.2012-10-06 from 001__elm20160621_015539__dat00.bin



Processed Tue Jun 21 04:04:16 2016 by ELM ver.2012-10-06 from 001__elm20160621_015539__dat00.bin

