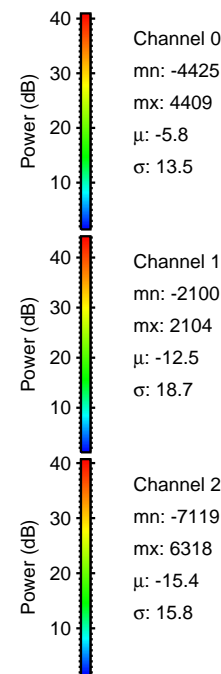
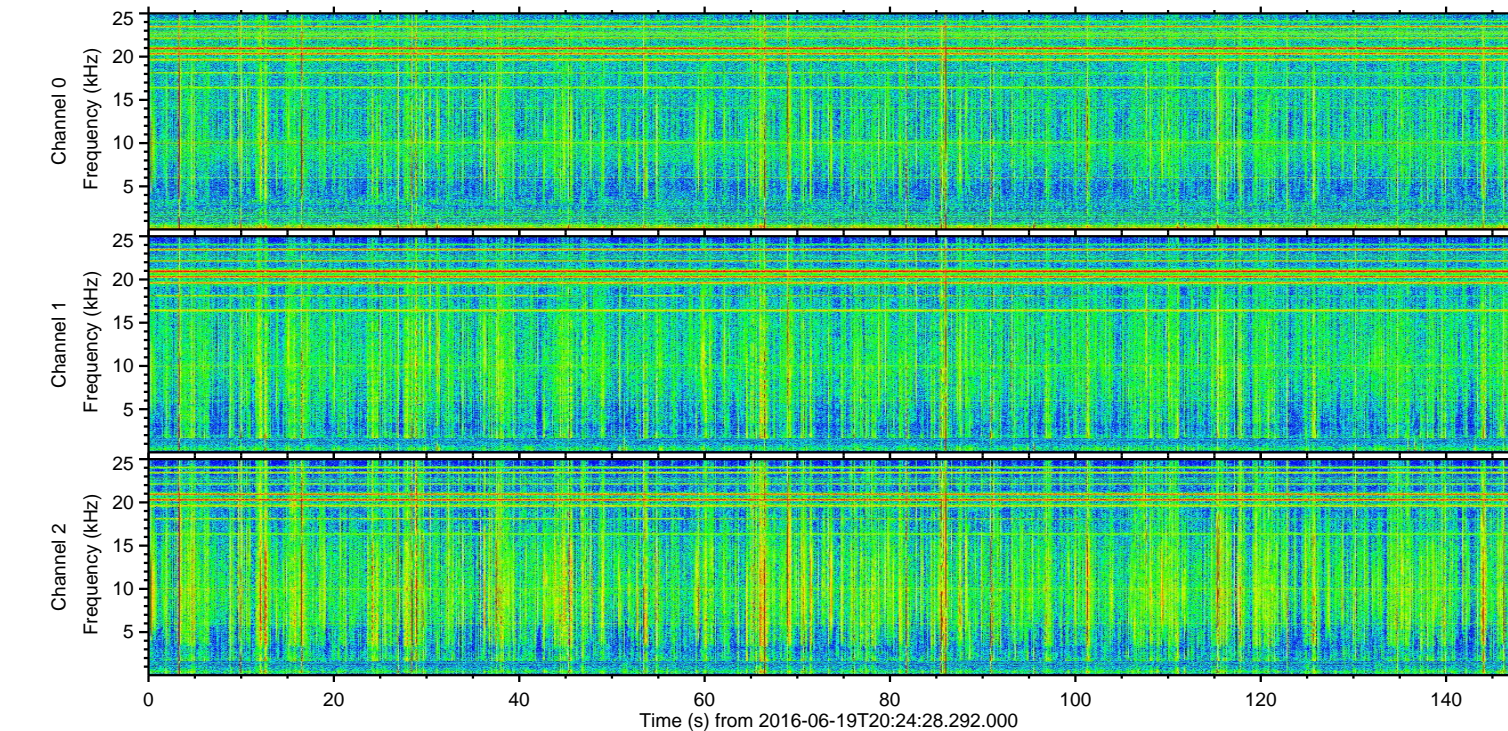
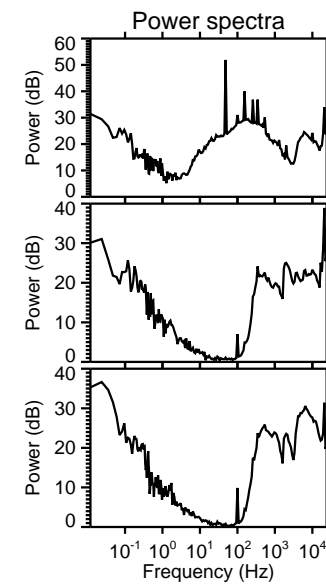
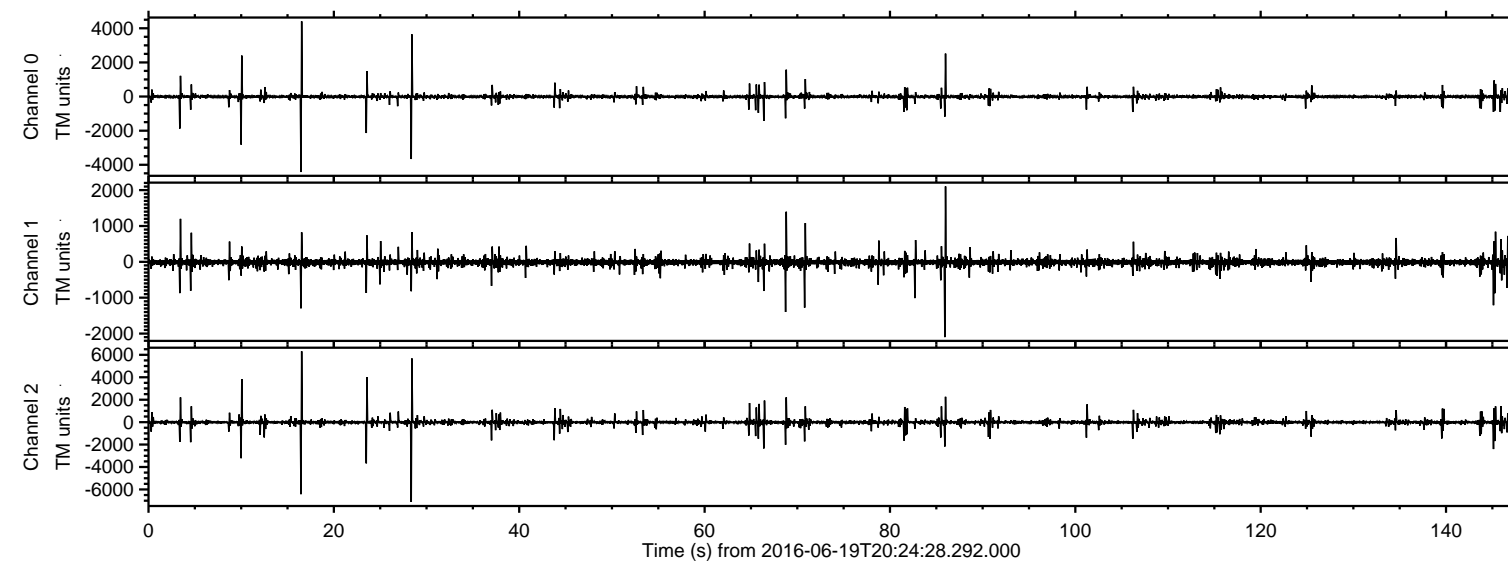
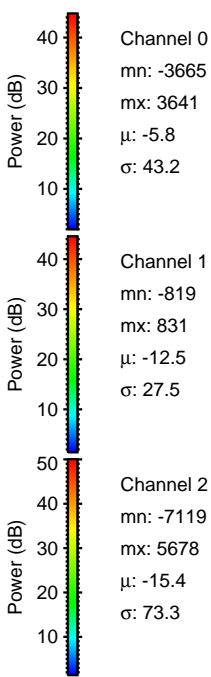
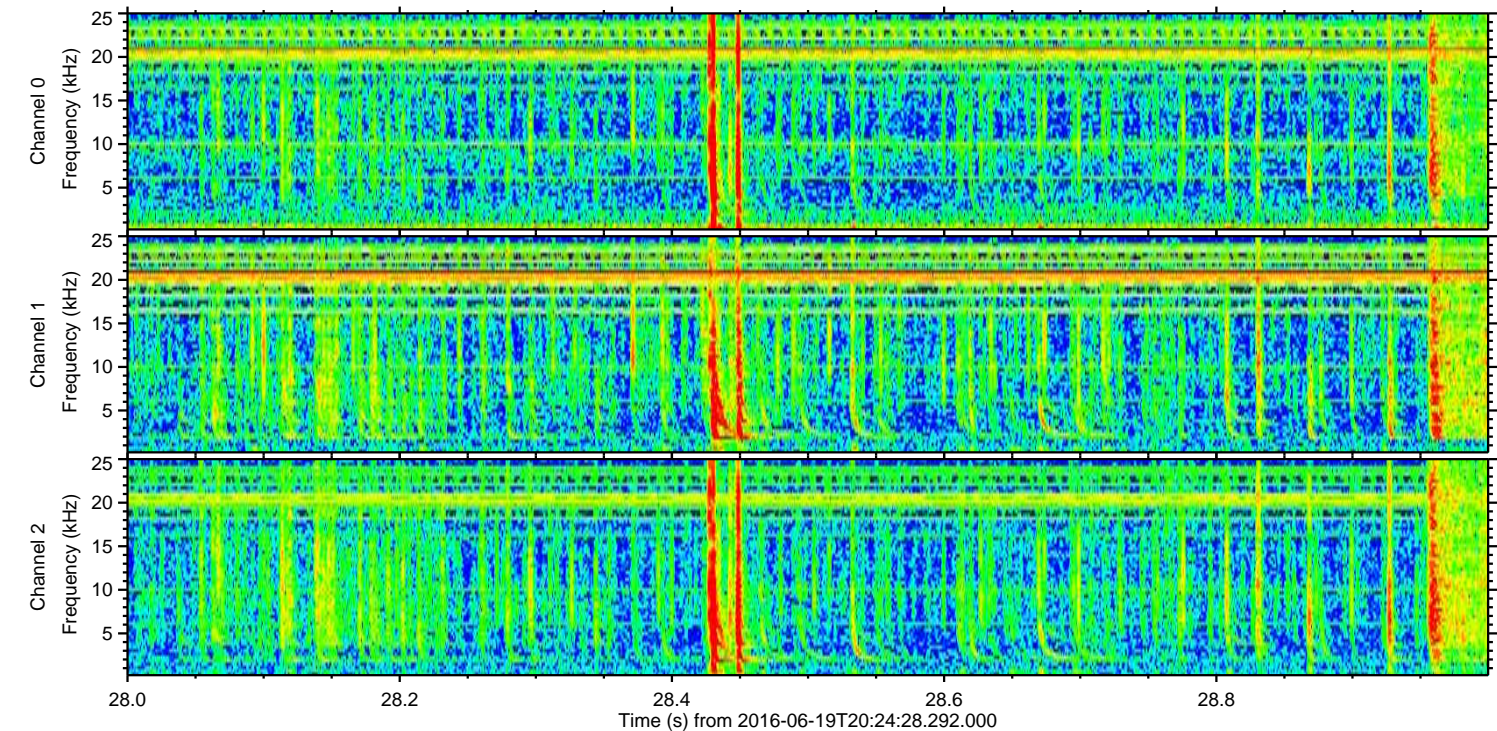
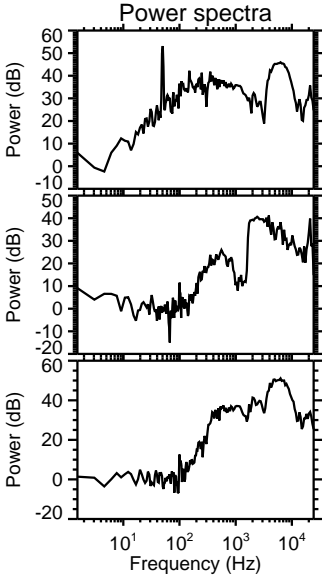
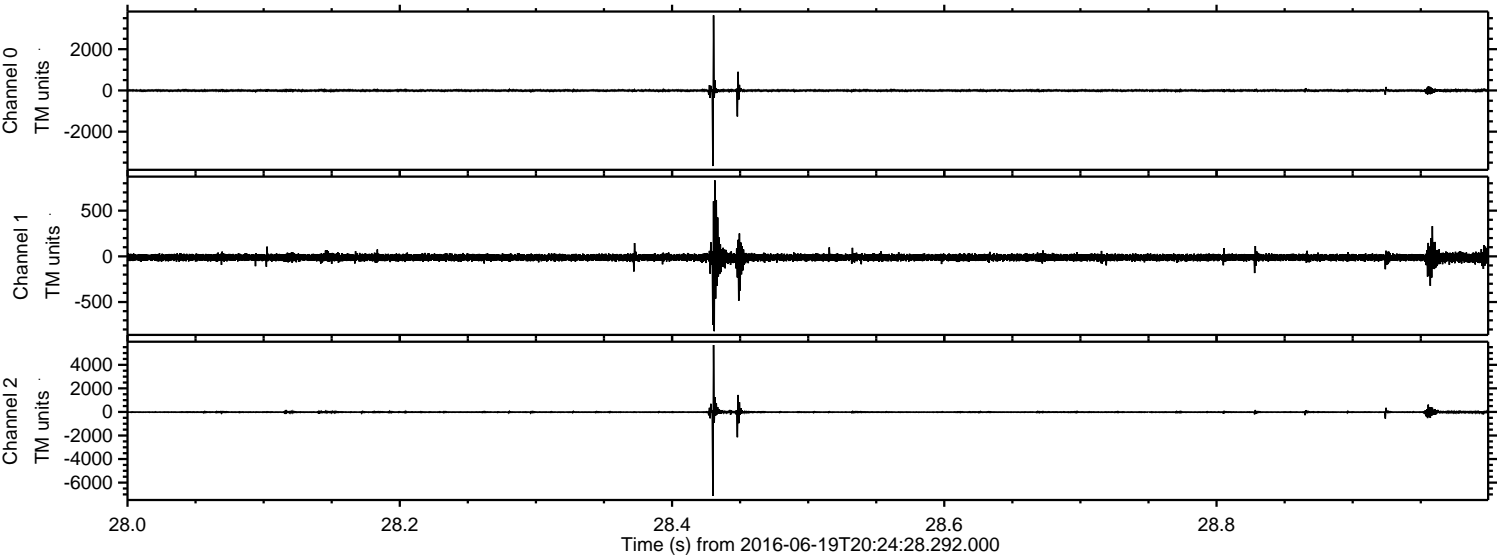


ELMAVAN 3D WAVEFORMS (Measured data sampled at 50 kHz) 51000 packets of 144 samples from 2016-06-19T20:24:28.292.000.

Processed Sun Jun 19 22:32:18 2016 by ELM ver.2012-10-06 from 001__elm20160619_202427__dat00.bin

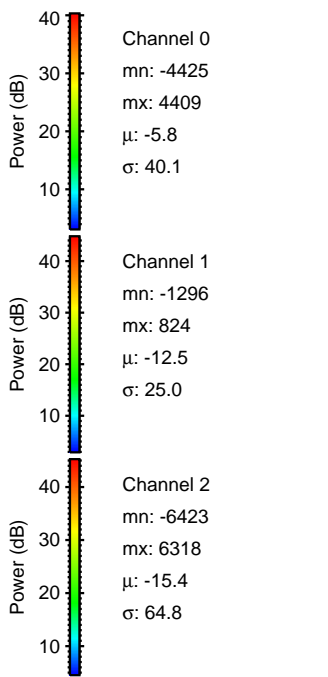
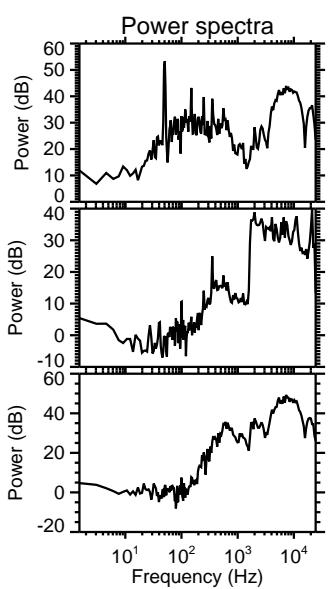
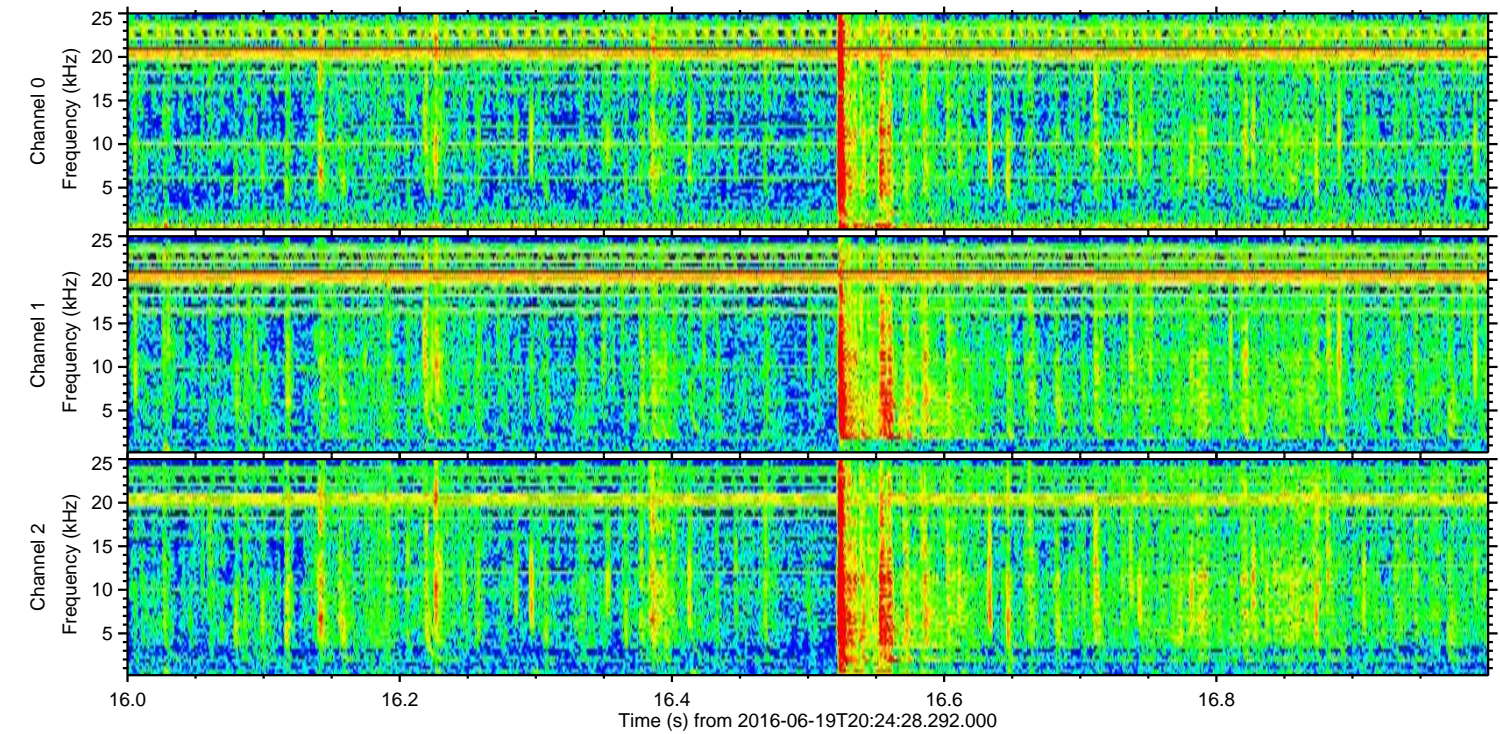
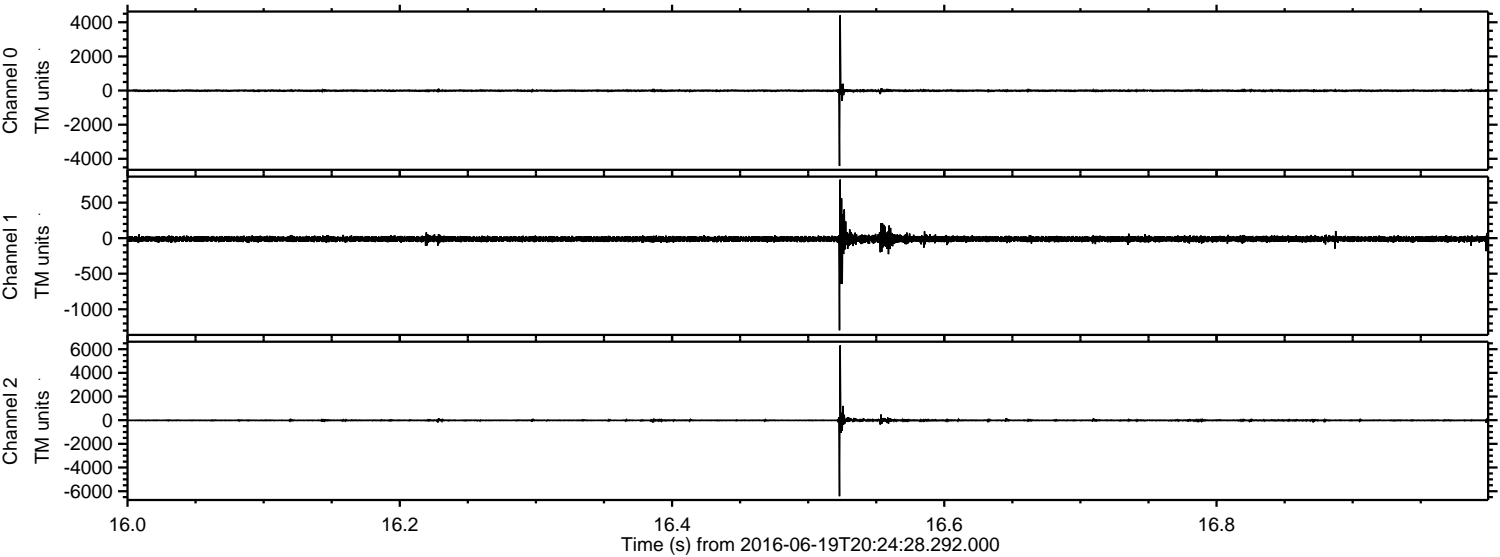


Processed Sun Jun 19 22:32:30 2016 by ELM ver.2012-10-06 from 001__elm20160619_202427__dat00.bin



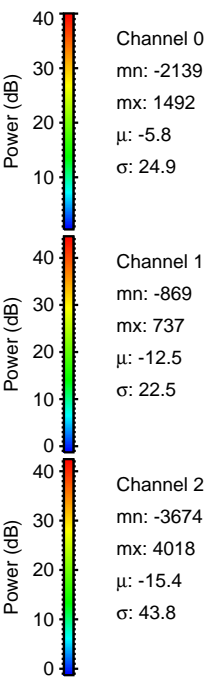
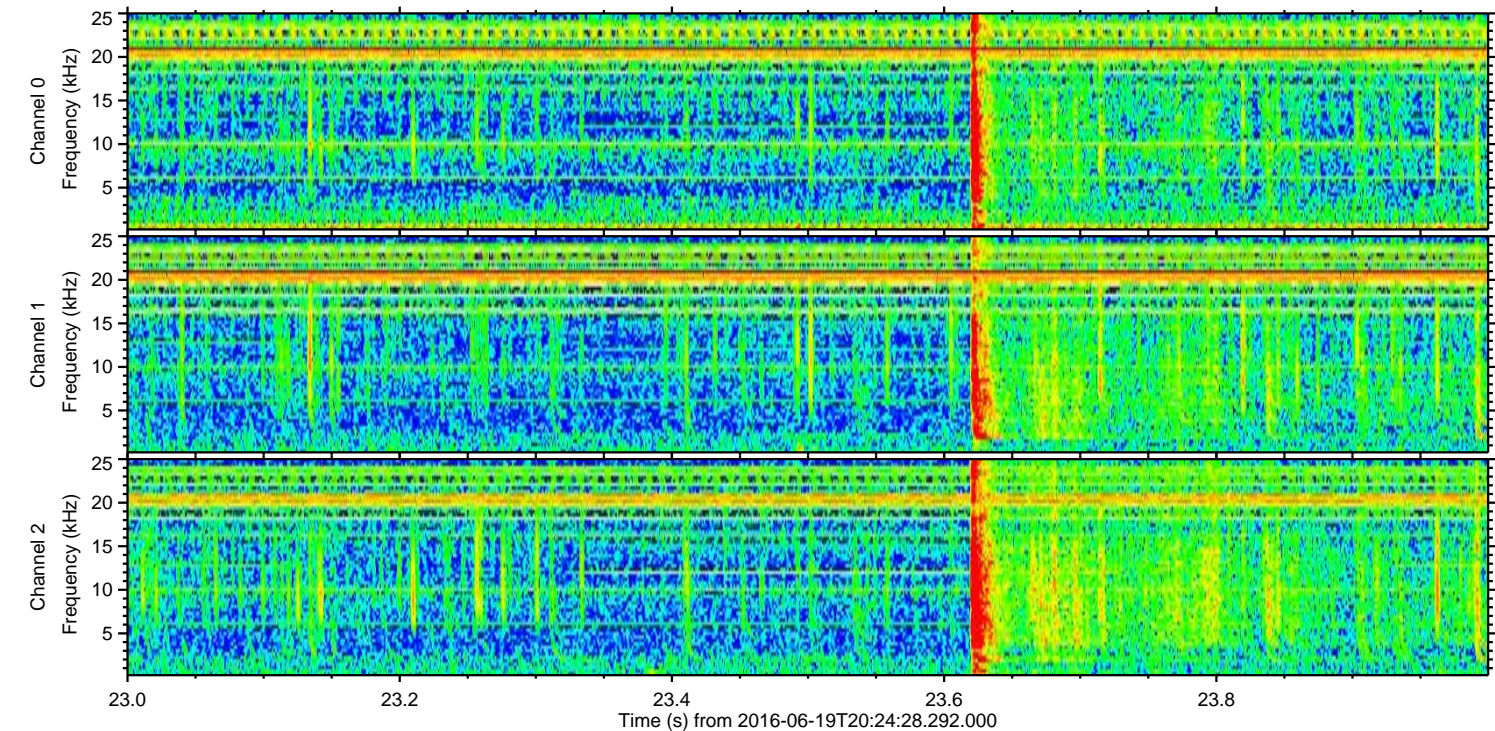
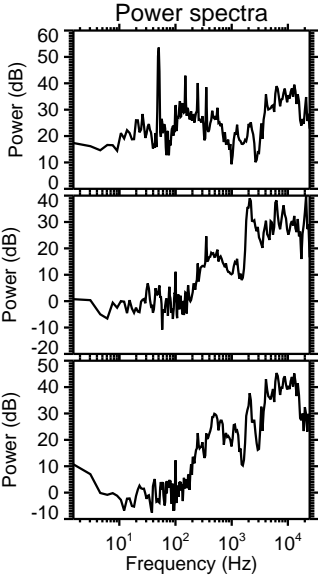
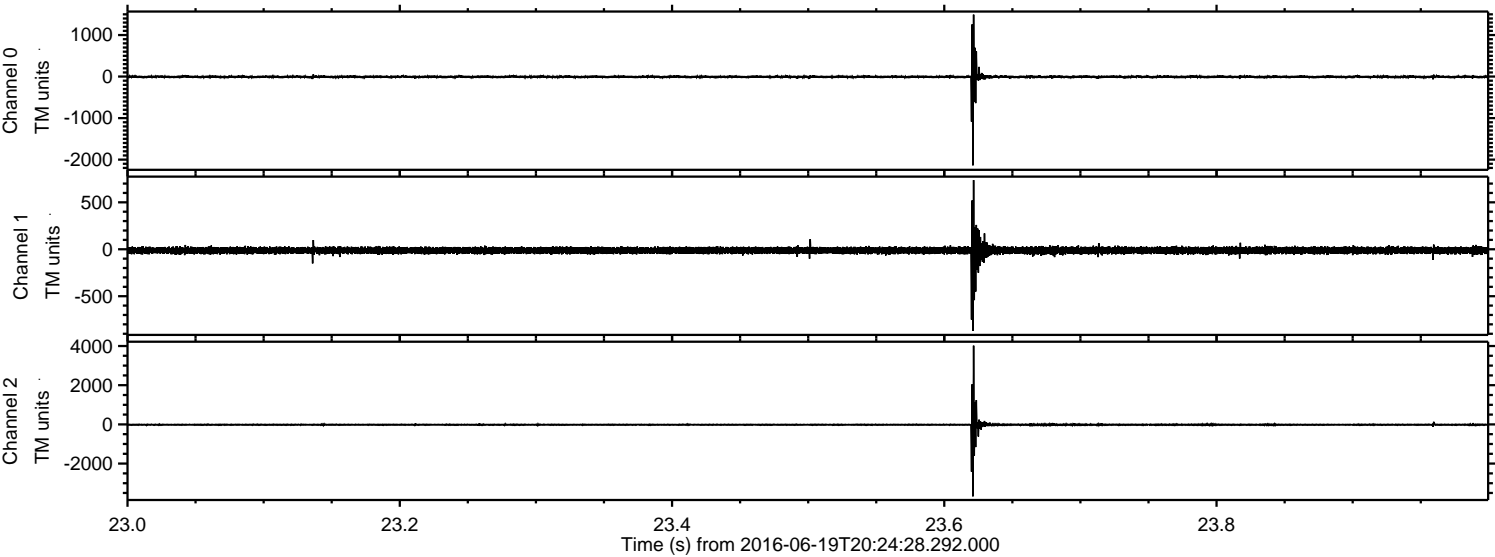
ELMAVAN 3D WAVEFORMS (Measured data sampled at 50 kHz) 51000 packets of 144 samples from 2016-06-19T20:24:28.292.000. Part 17/147

Processed Sun Jun 19 22:32:31 2016 by ELM ver.2012-10-06 from 001__elm20160619_202427__dat00.bin

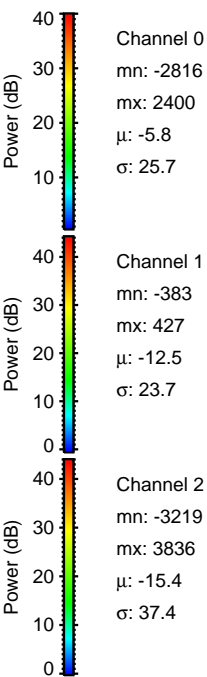
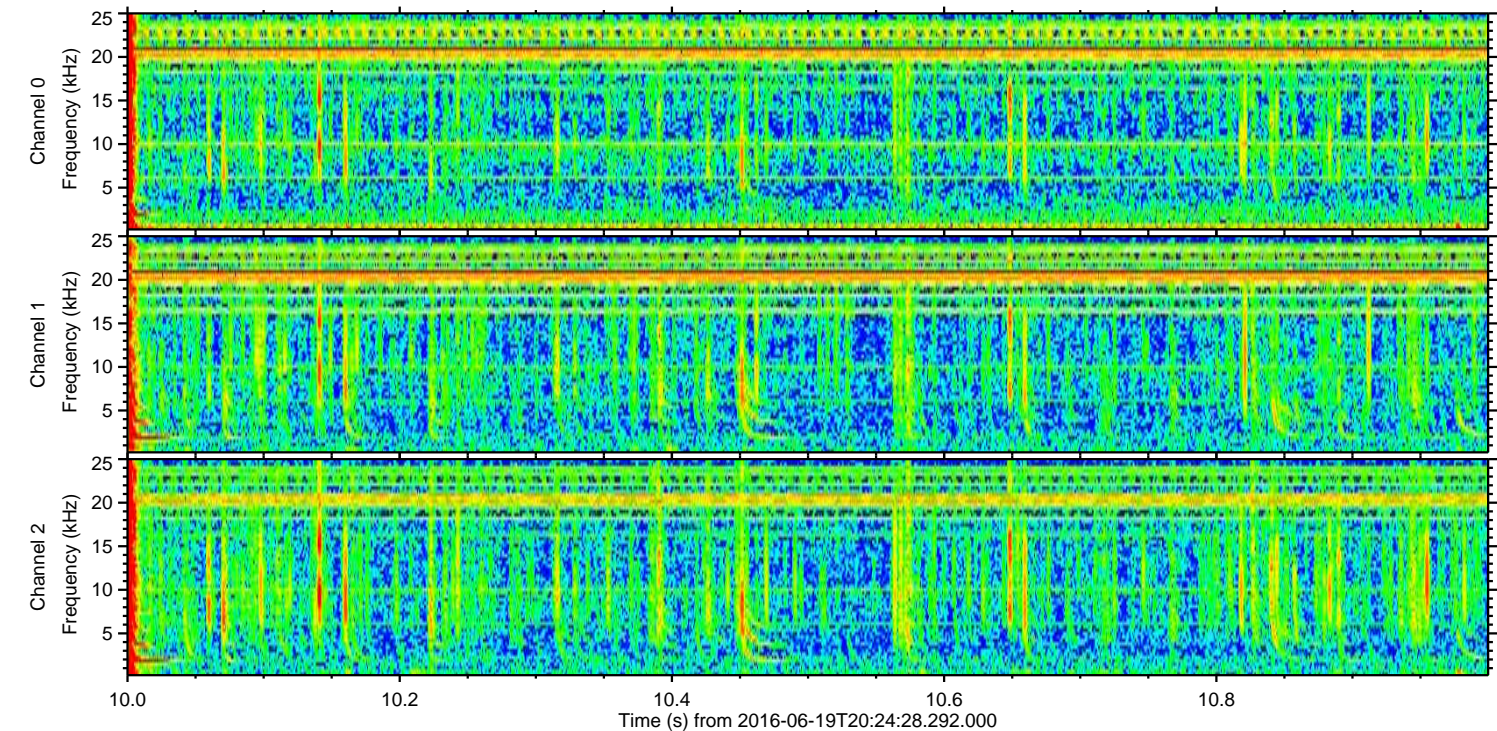
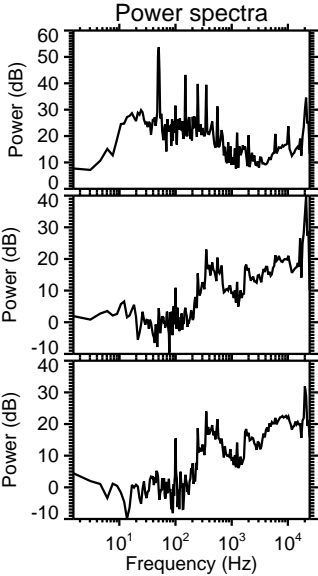
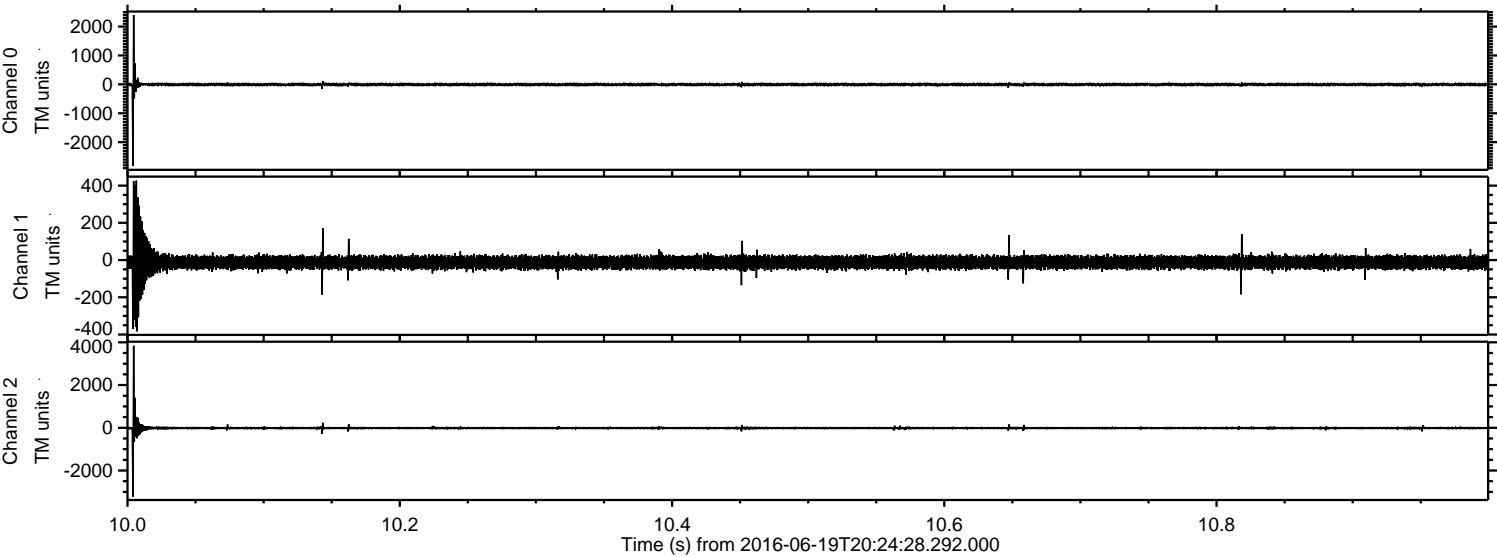


ELMAVAN 3D WAVEFORMS (Measured data sampled at 50 kHz) 51000 packets of 144 samples from 2016-06-19T20:24:28.292.000. Part 24/147

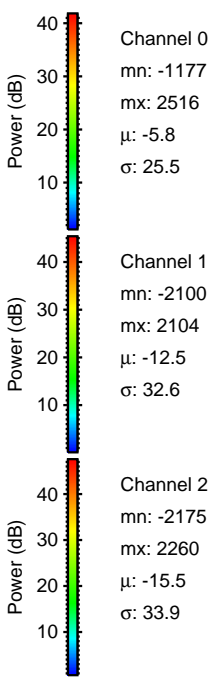
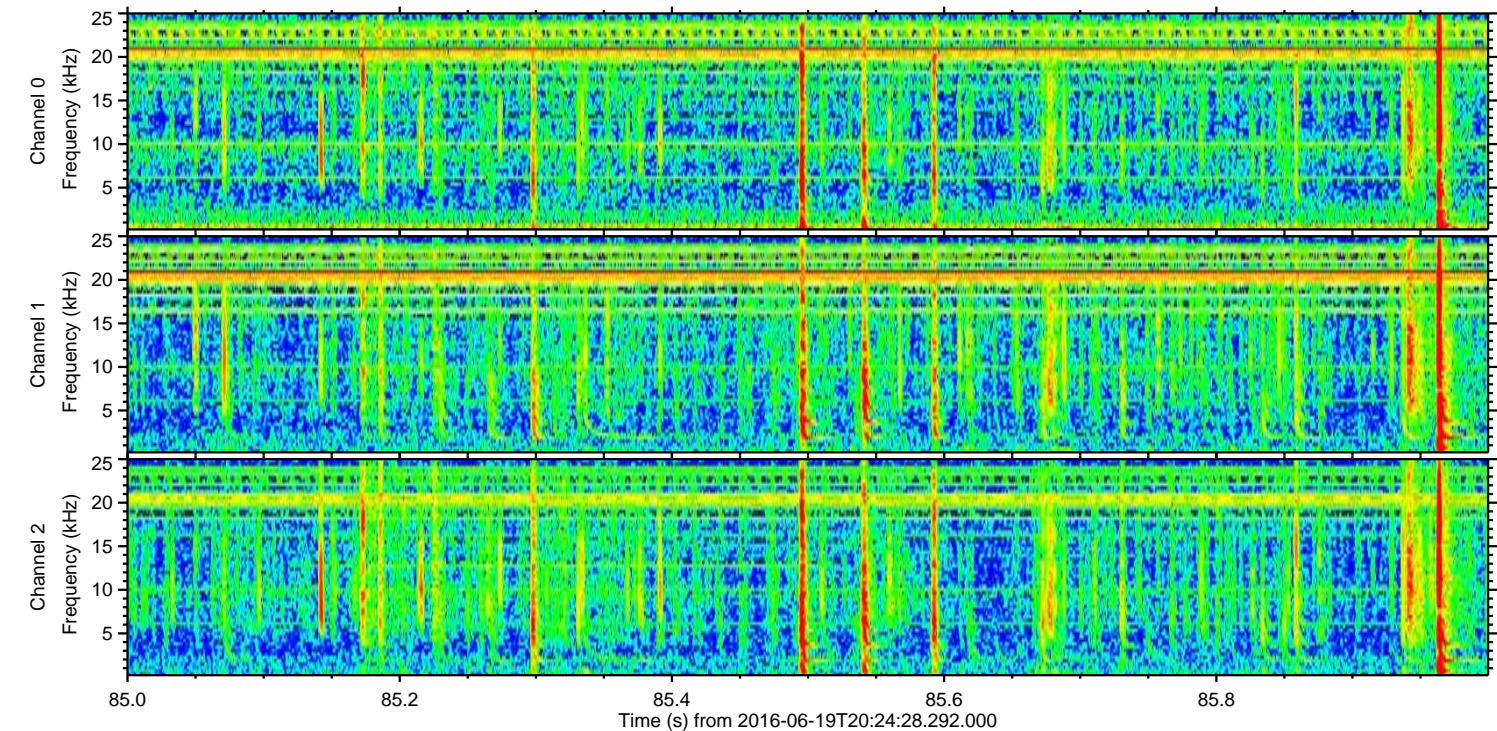
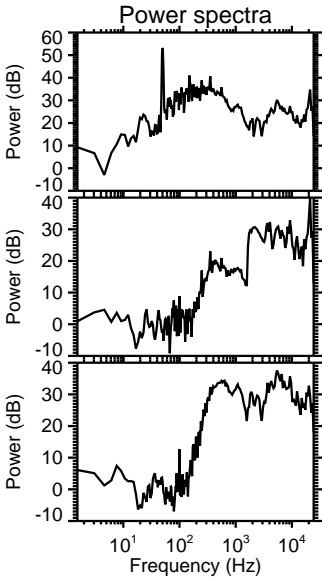
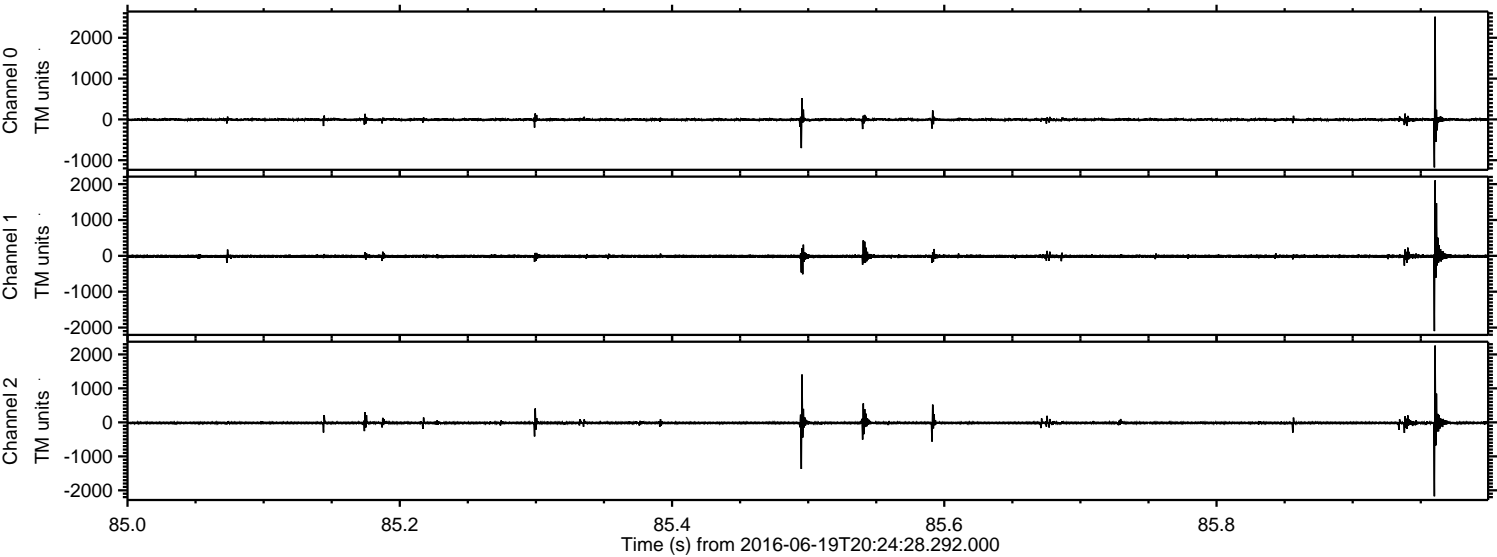
Processed Sun Jun 19 22:32:32 2016 by ELM ver.2012-10-06 from 001__elm20160619_202427__dat00.bin



Processed Sun Jun 19 22:32:33 2016 by ELM ver.2012-10-06 from 001__elm20160619_202427__dat00.bin

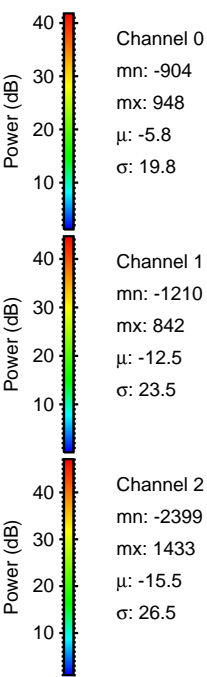
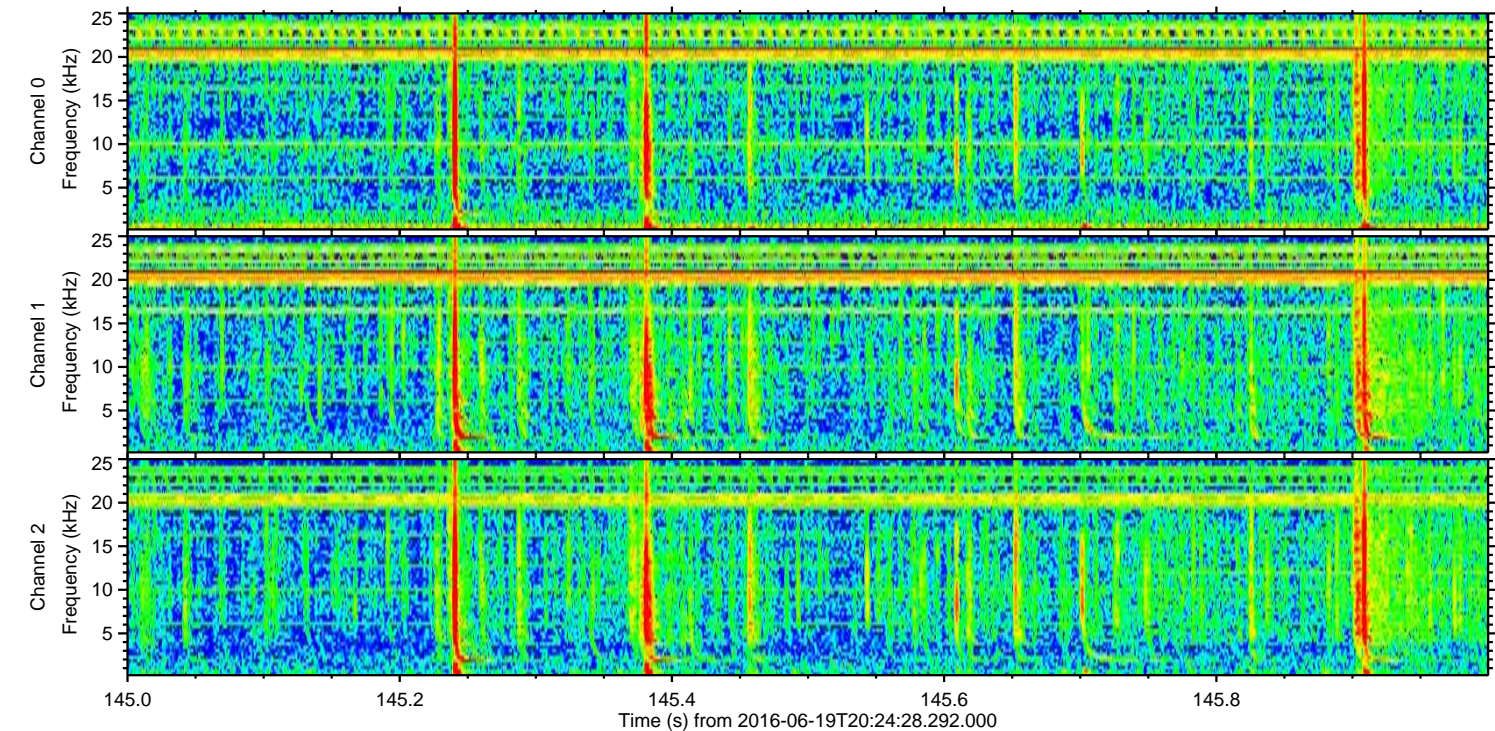
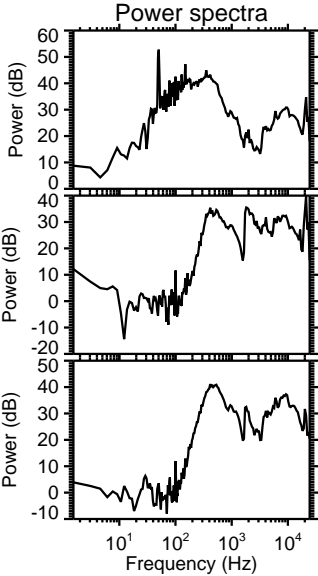
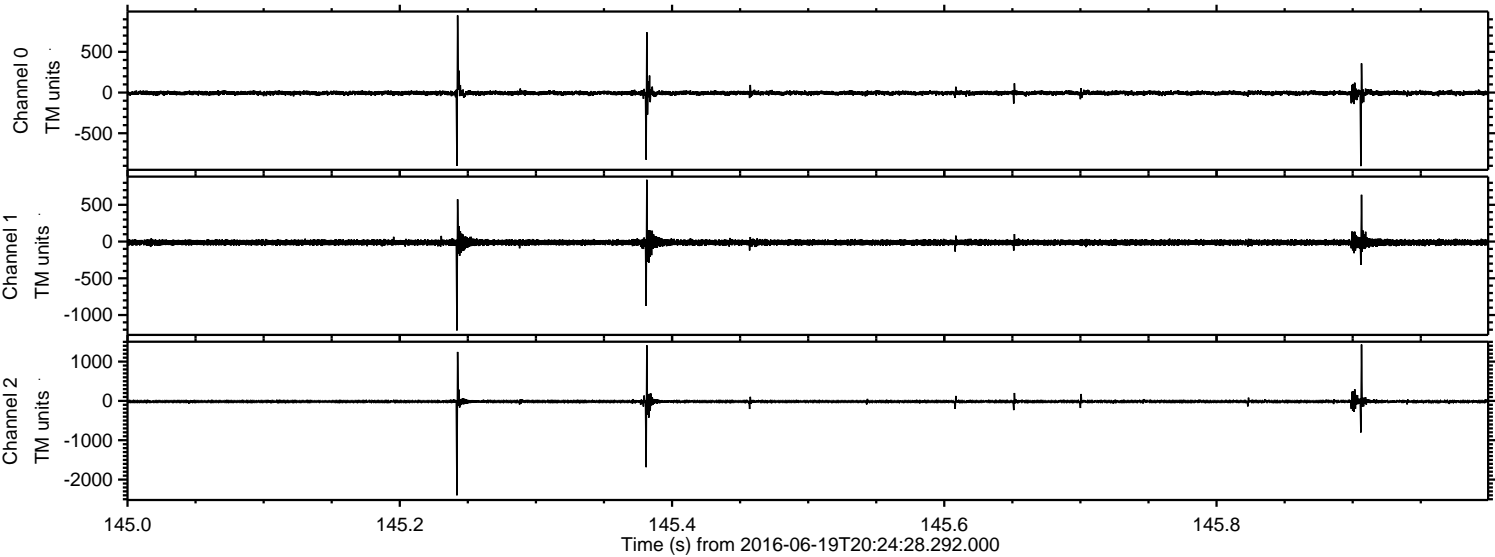


Processed Sun Jun 19 22:32:34 2016 by ELM ver.2012-10-06 from 001__elm20160619_202427__dat00.bin

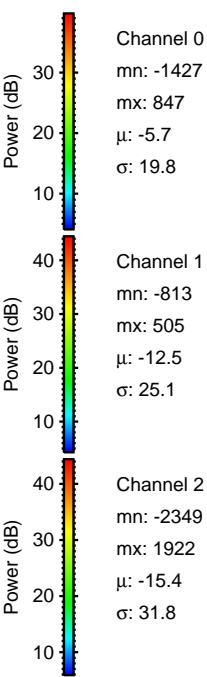
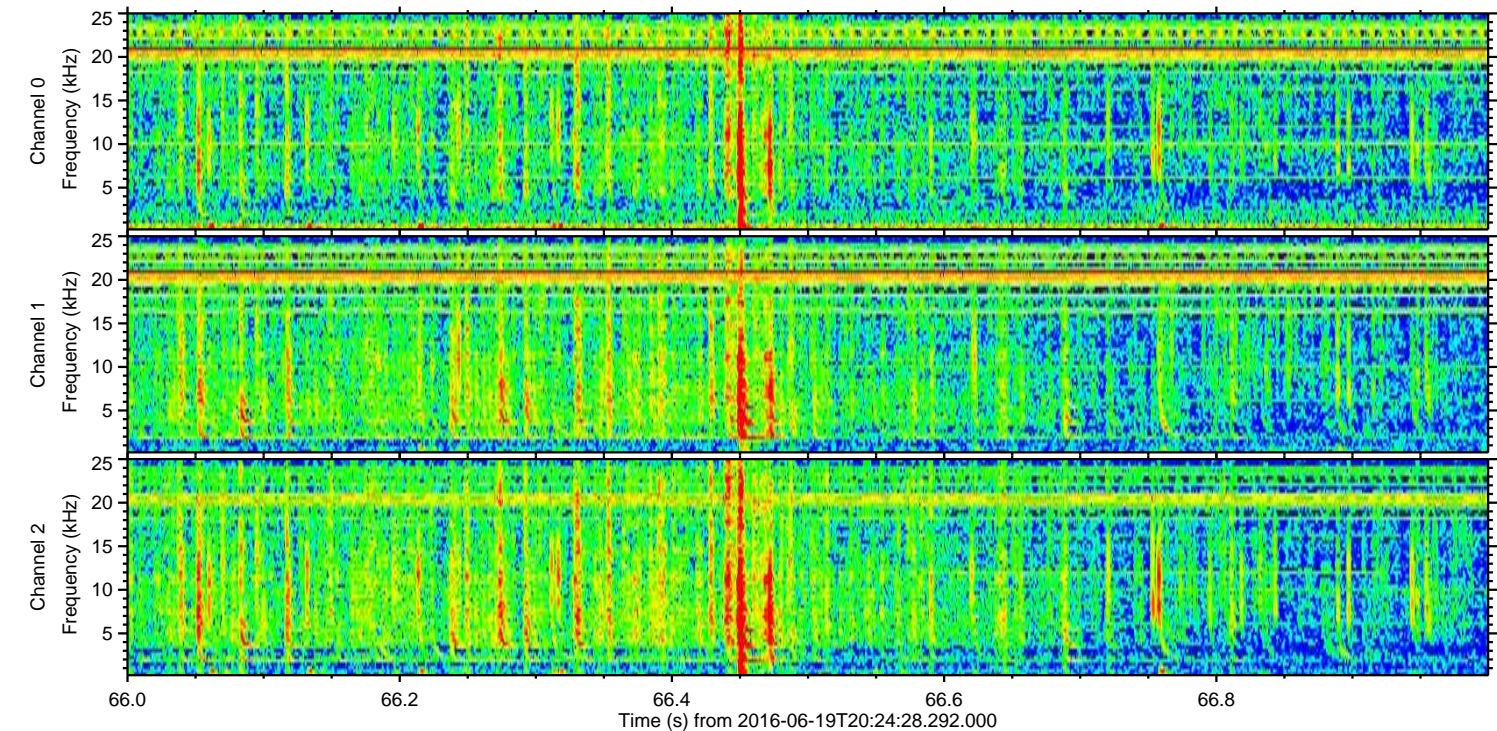
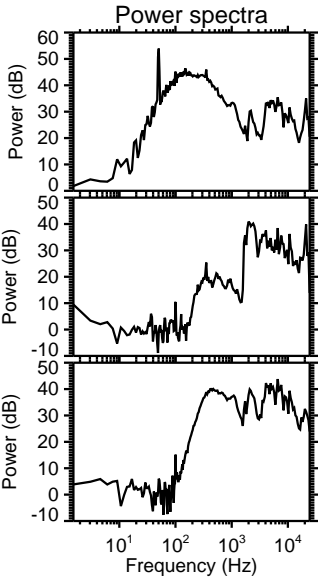
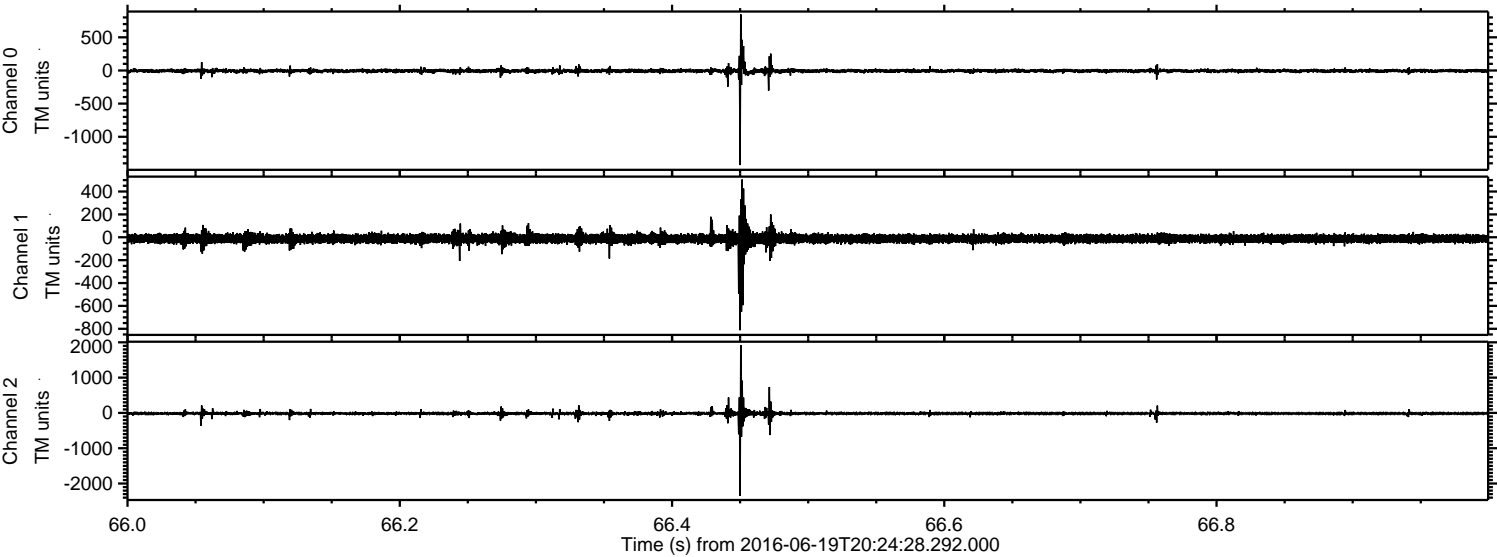


ELMAVAN 3D WAVEFORMS (Measured data sampled at 50 kHz) 51000 packets of 144 samples from 2016-06-19T20:24:28.292.000. Part 146/147

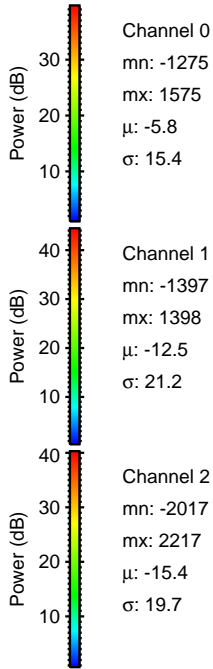
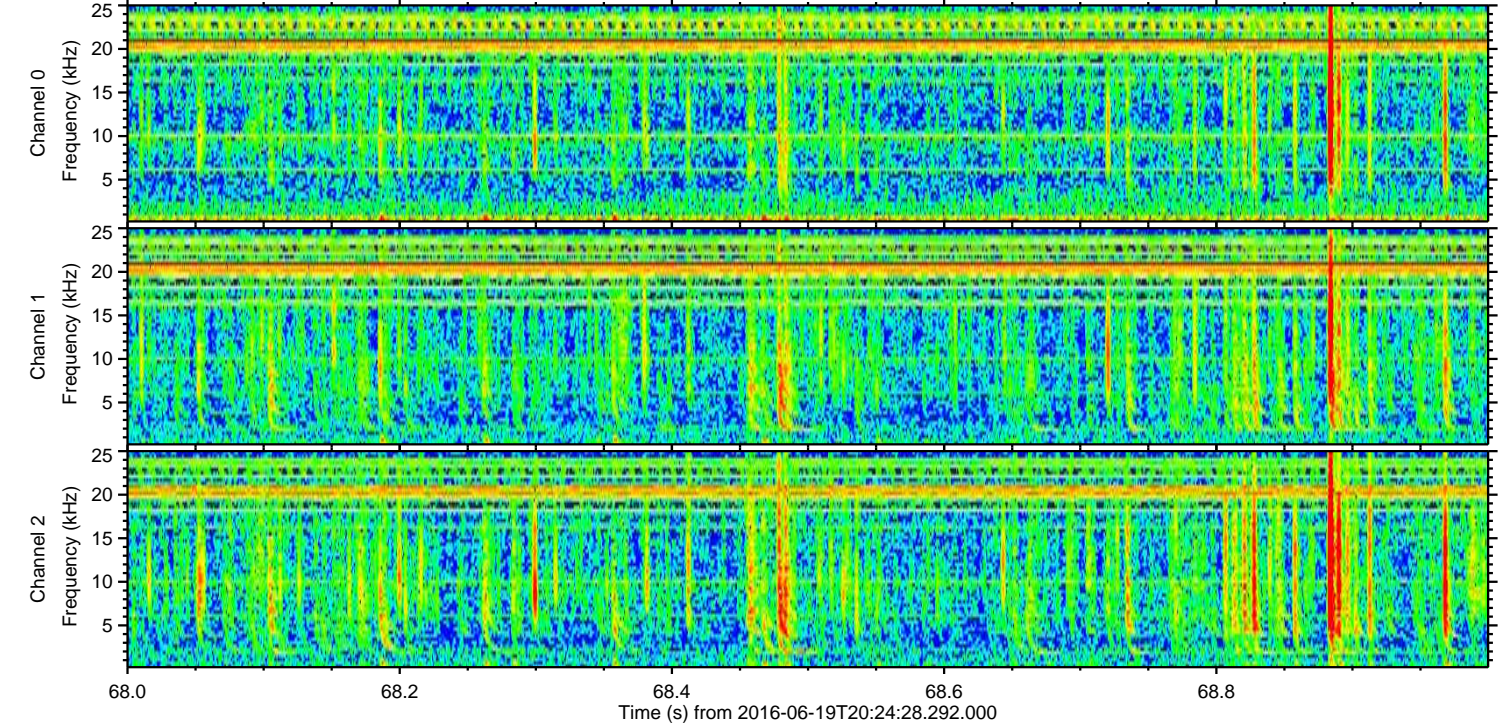
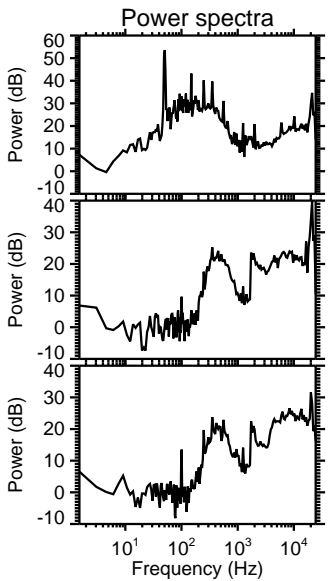
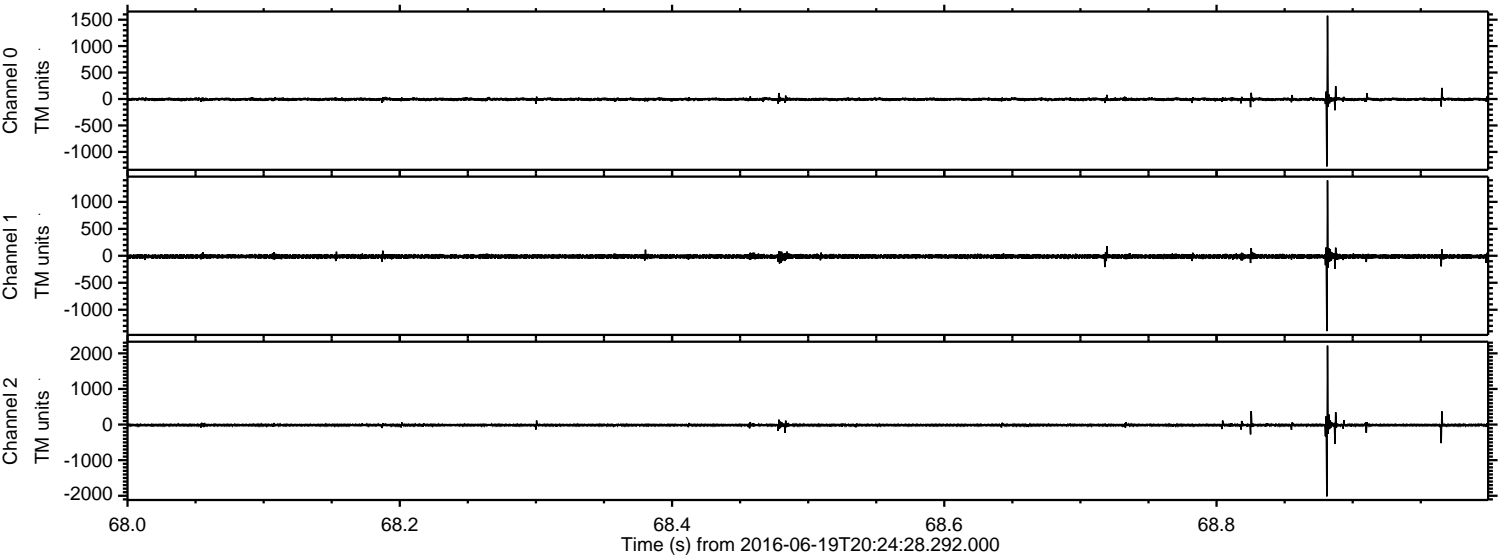
Processed Sun Jun 19 22:32:35 2016 by ELM ver.2012-10-06 from 001__elm20160619_202427__dat00.bin



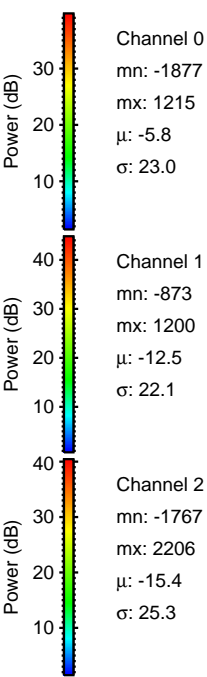
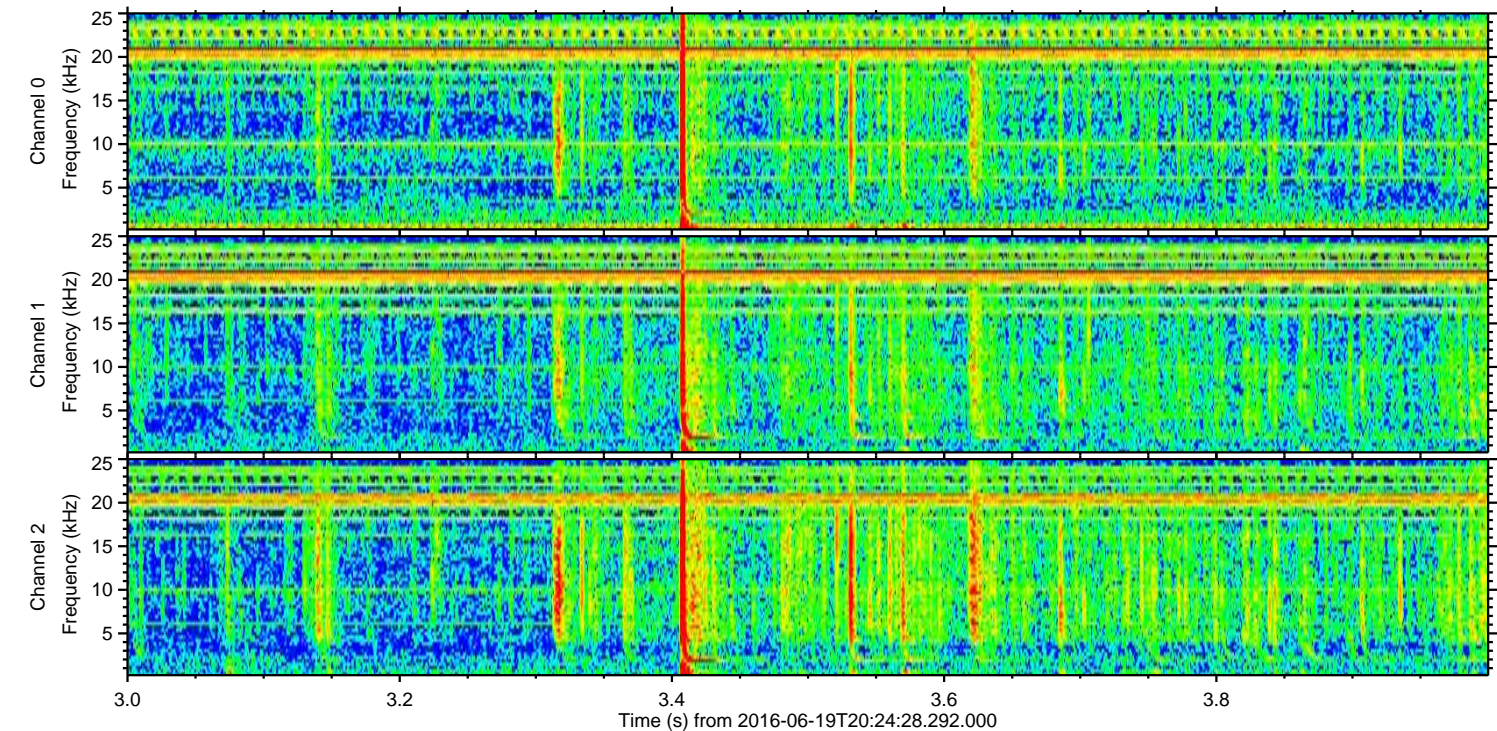
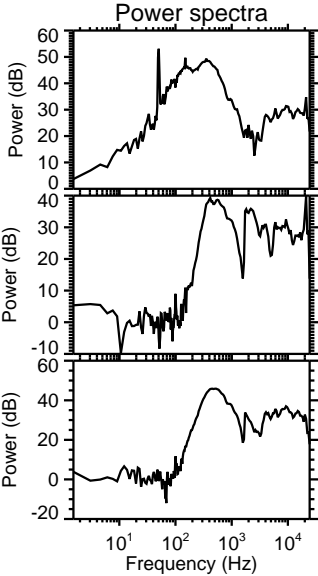
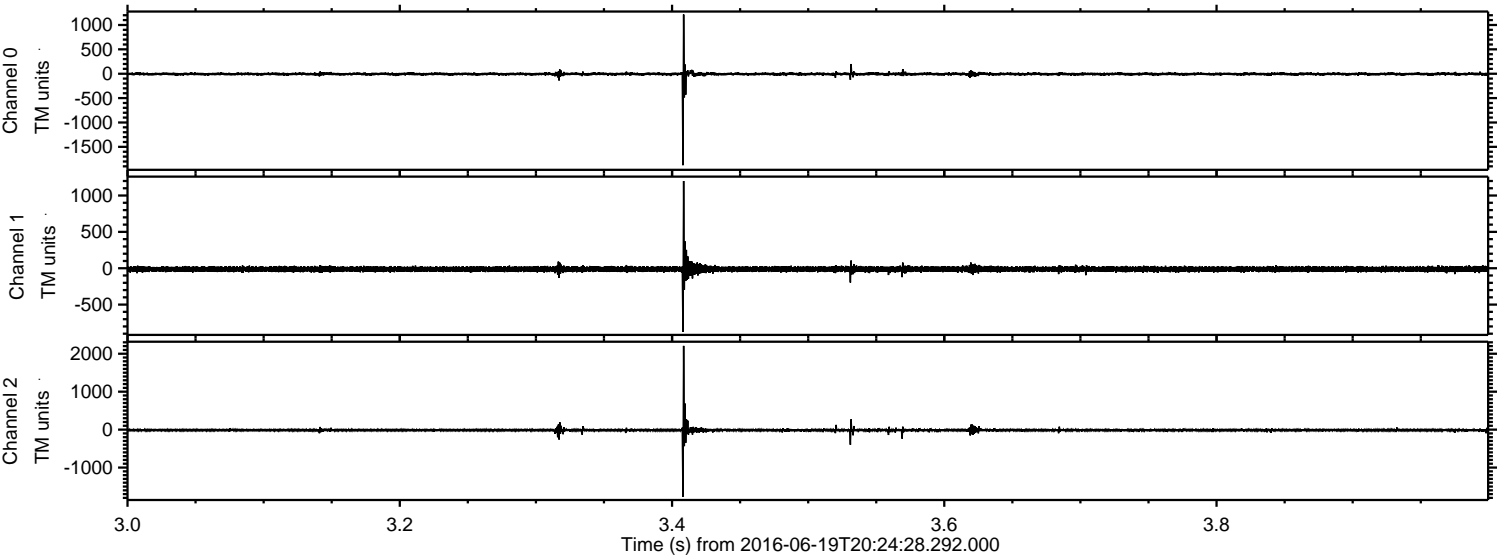
Processed Sun Jun 19 22:32:35 2016 by ELM ver.2012-10-06 from 001__elm20160619_202427__dat00.bin



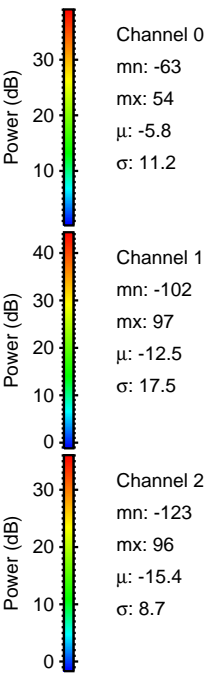
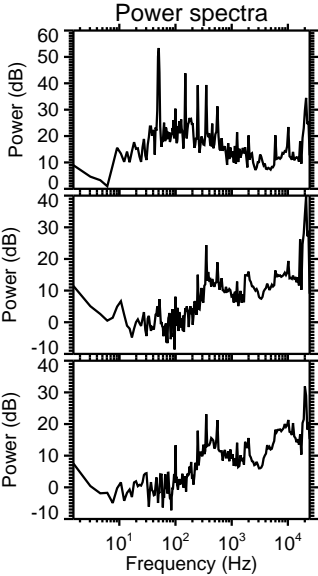
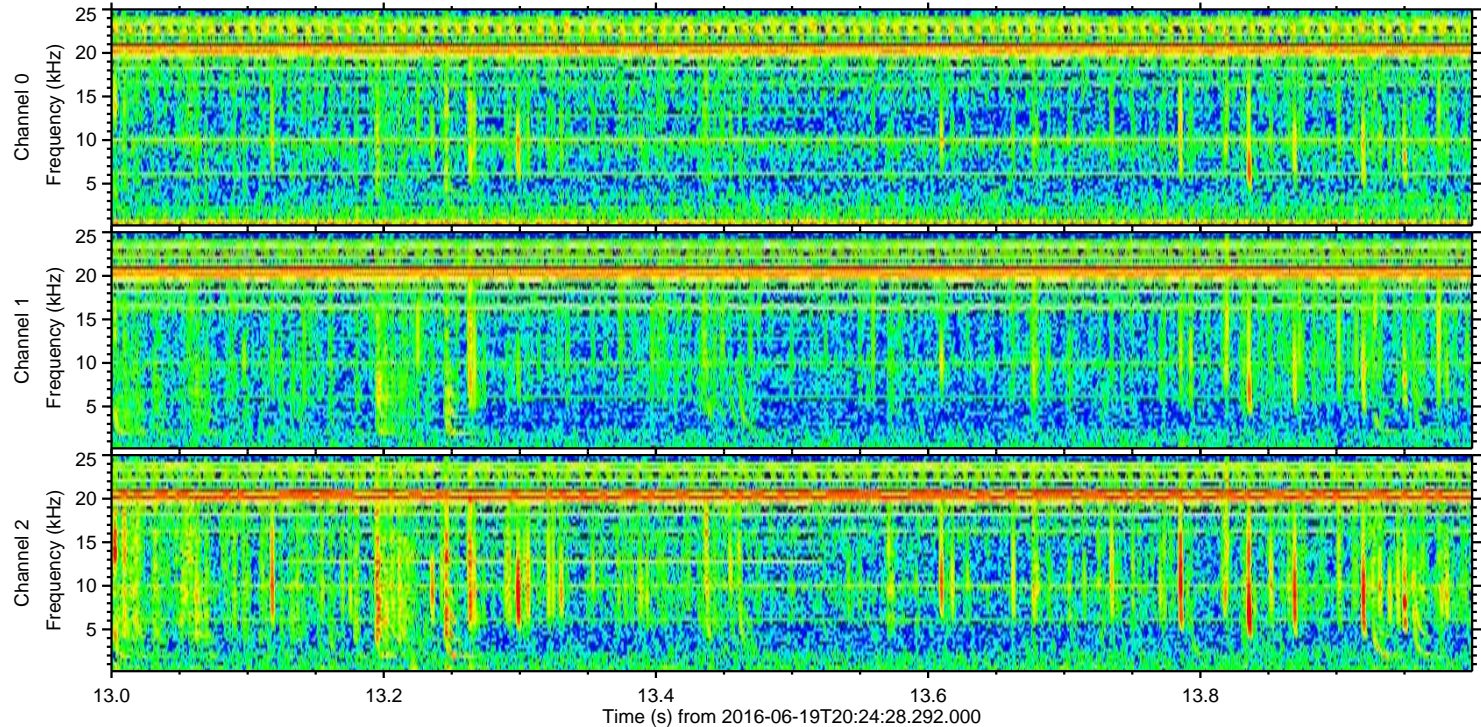
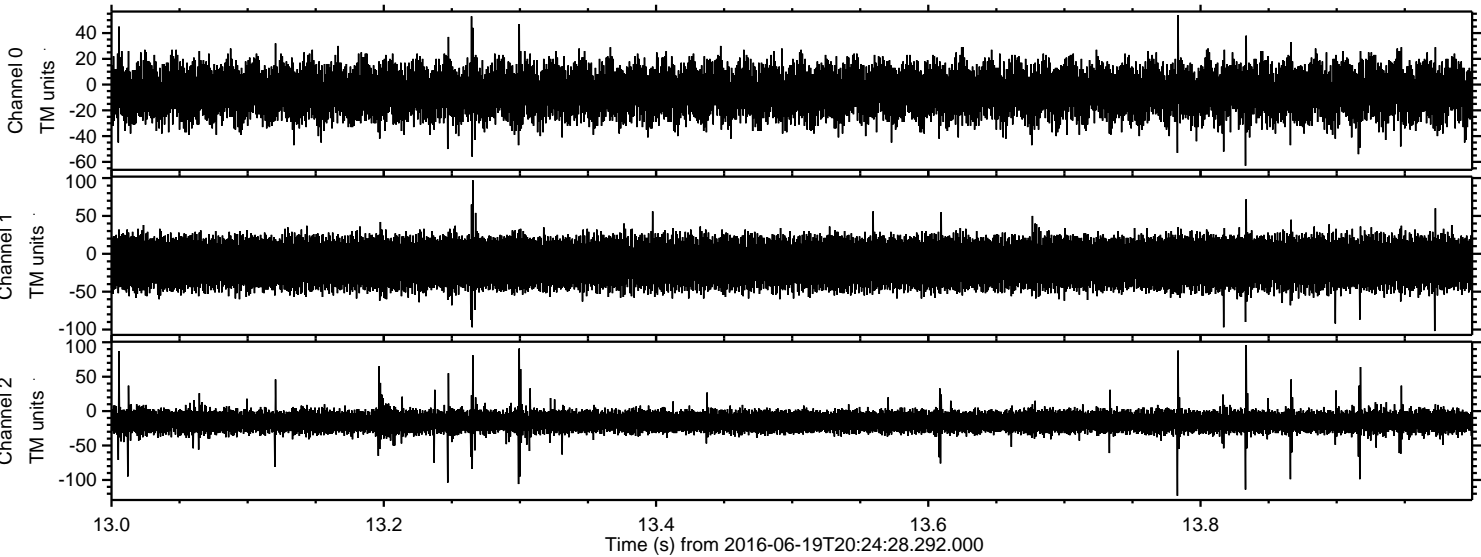
Processed Sun Jun 19 22:32:36 2016 by ELM ver.2012-10-06 from 001__elm20160619_202427__dat00.bin



Processed Sun Jun 19 22:32:37 2016 by ELM ver.2012-10-06 from 001__elm20160619_202427__dat00.bin



Processed Sun Jun 19 22:32:38 2016 by ELM ver.2012-10-06 from 001__elm20160619_202427__dat00.bin



Channel 0
mn: -63
mx: 54
 μ : -5.8
 σ : 11.2

Channel 1
mn: -102
mx: 97
 μ : -12.5
 σ : 17.5

Channel 2
mn: -123
mx: 96
 μ : -15.4
 σ : 8.7