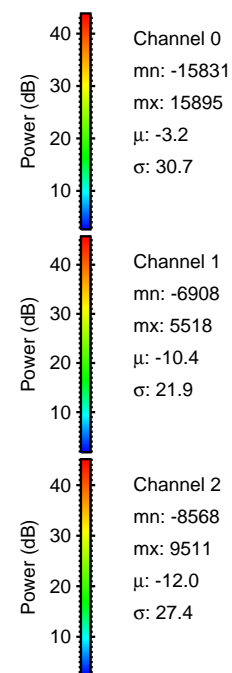
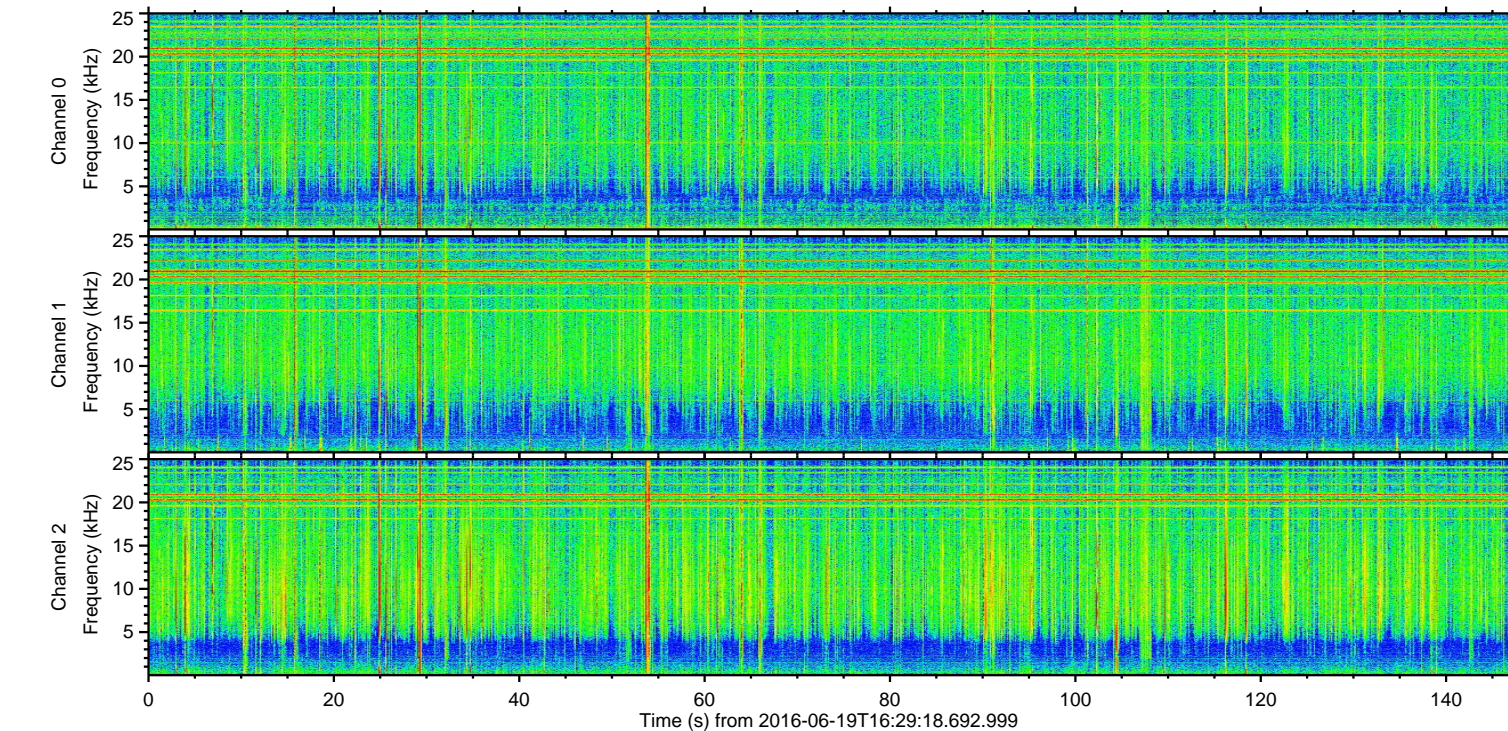
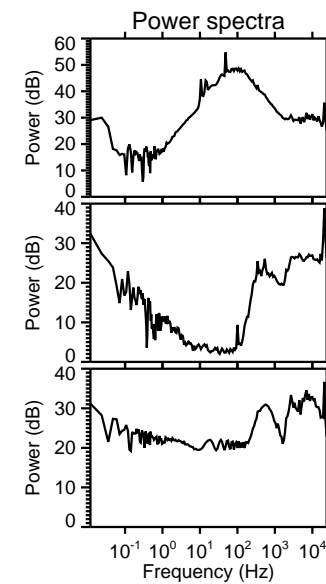
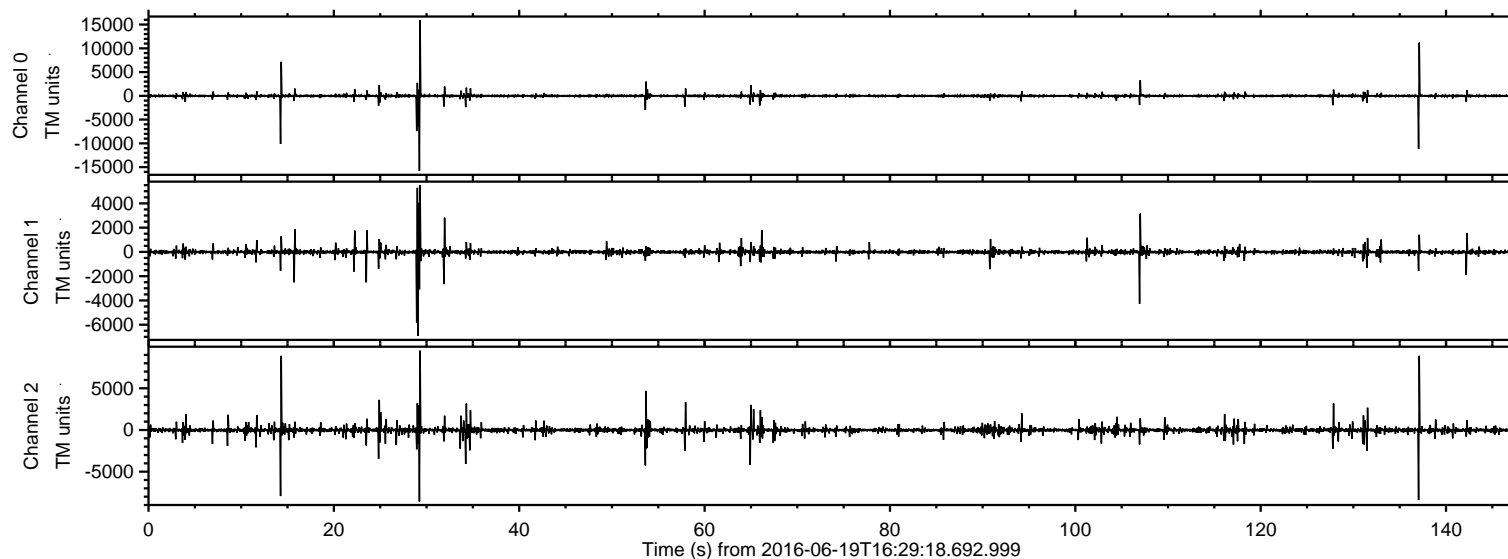


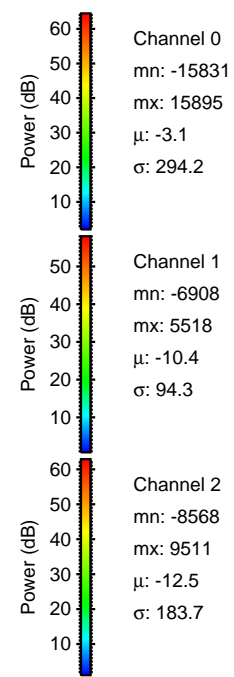
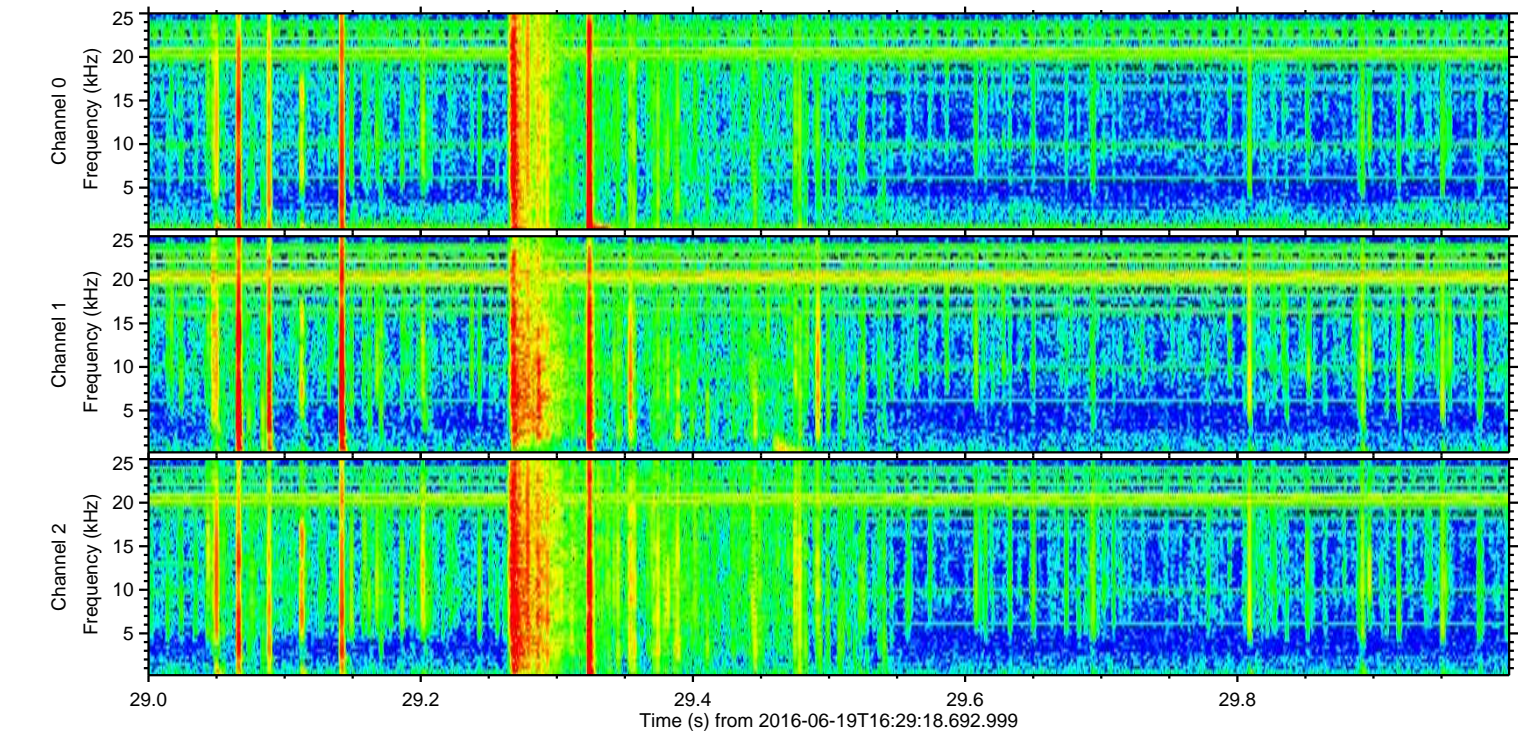
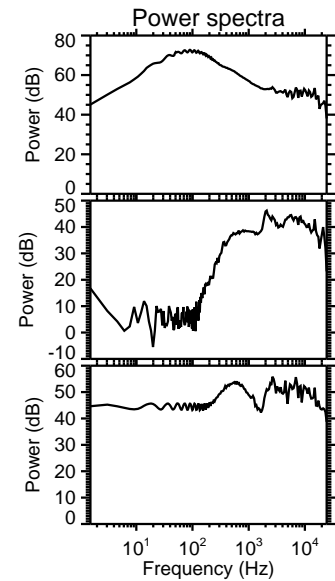
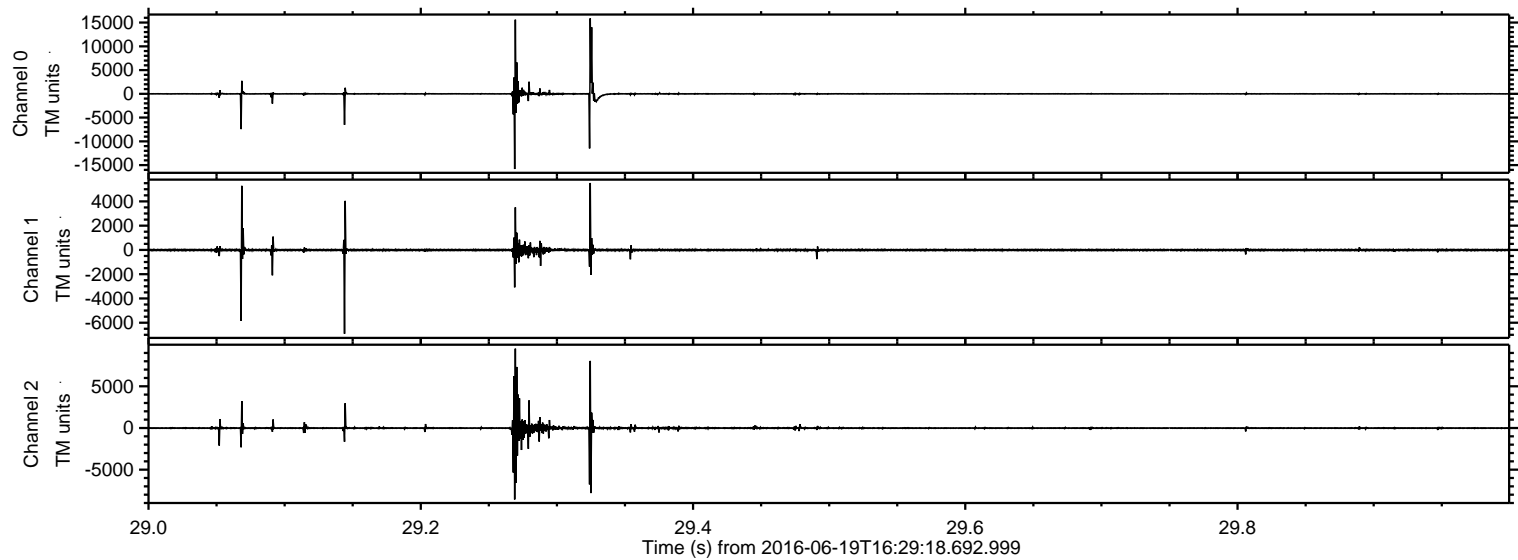
# ELMAVAN 3D WAVEFORMS (Measured data sampled at 50 kHz) 51000 packets of 144 samples from 2016-06-19T16:29:18.692.999.

Processed Sun Jun 19 18:37:10 2016 by ELM ver.2012-10-06 from 001\_\_elm20160619\_162917\_\_dat00.bin





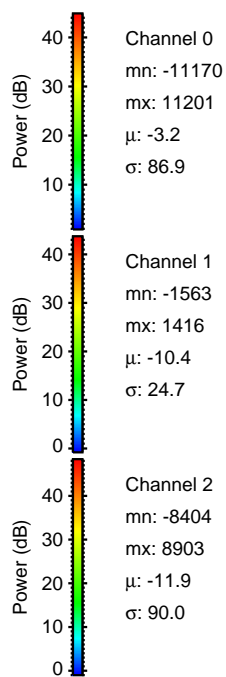
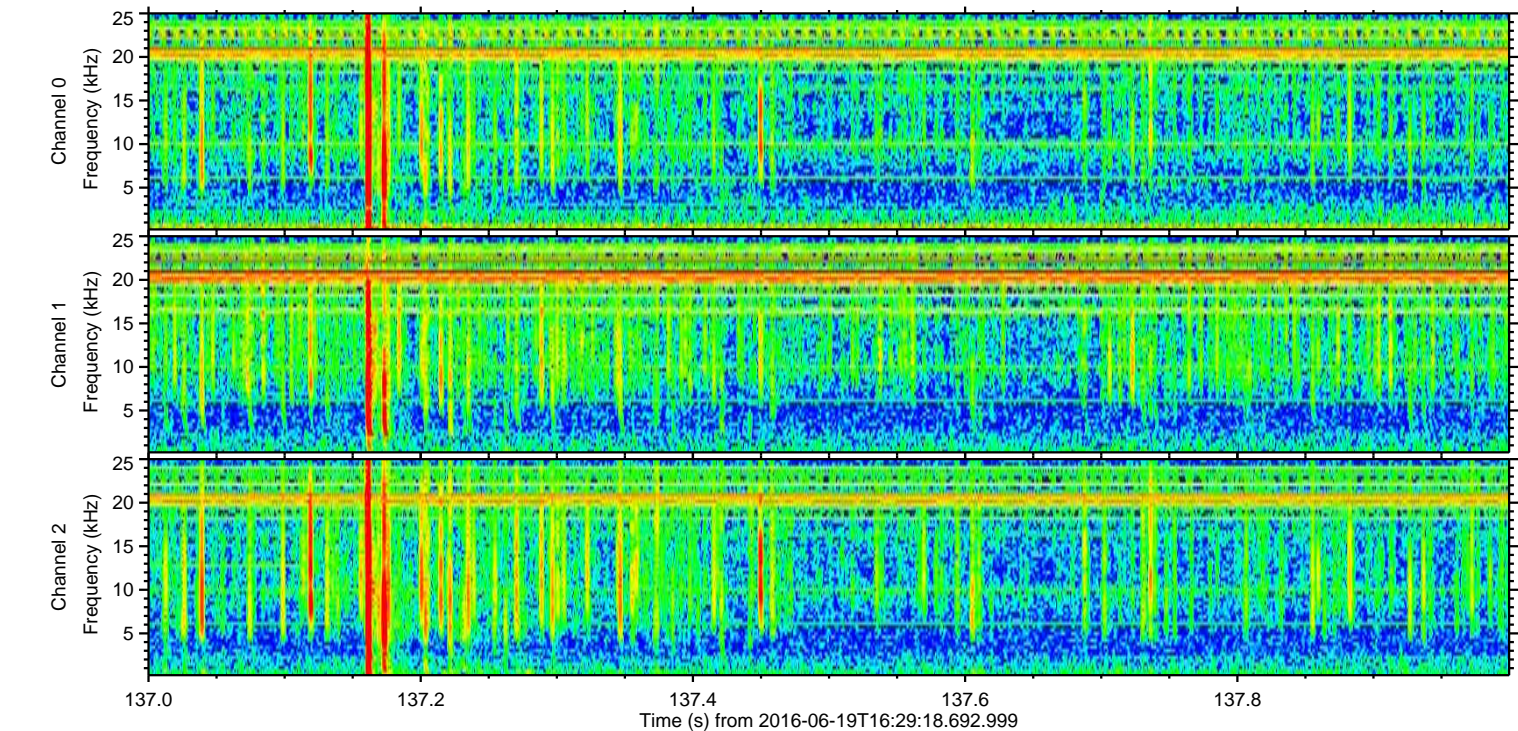
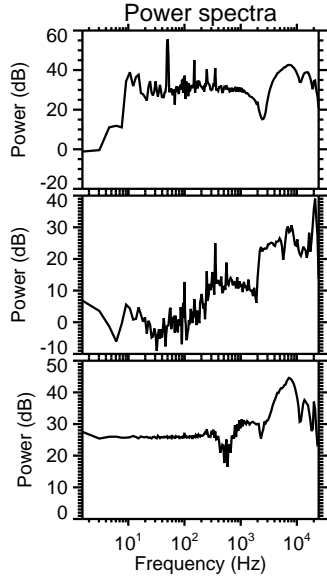
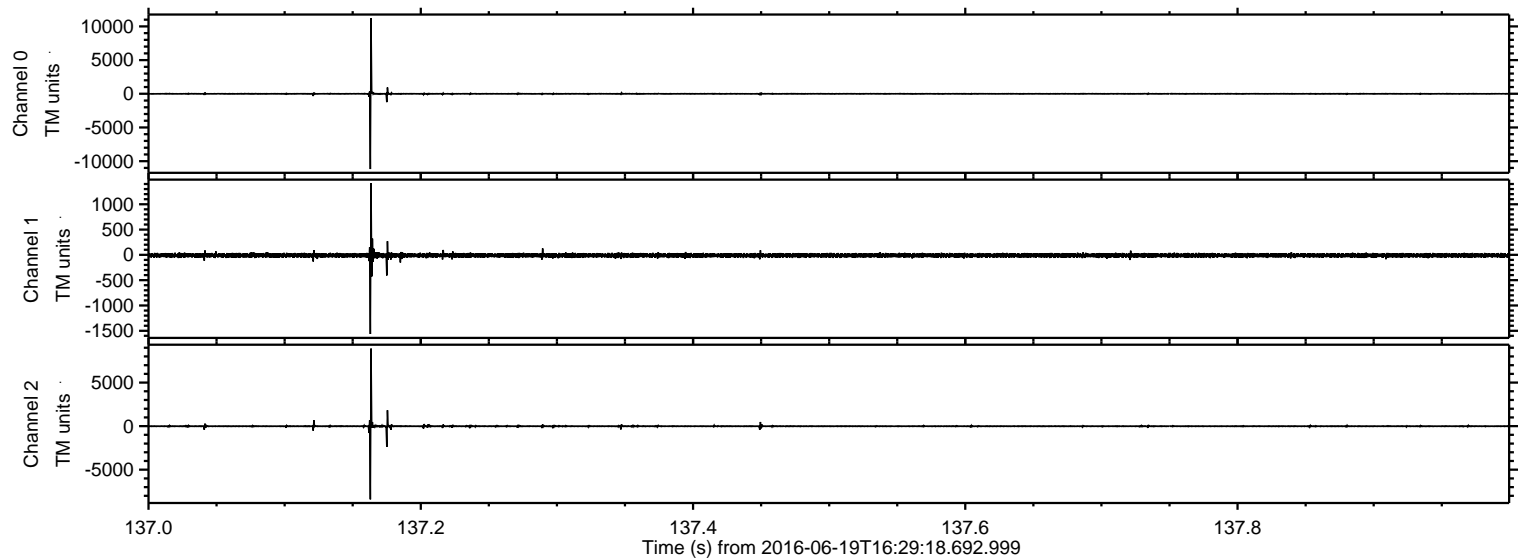
Processed Sun Jun 19 18:37:25 2016 by ELM ver.2012-10-06 from 001\_\_elm20160619\_162917\_\_dat00.bin





ELMAVAN 3D WAVEFORMS (Measured data sampled at 50 kHz) 51000 packets of 144 samples from 2016-06-19T16:29:18.692.999. Part 138/147

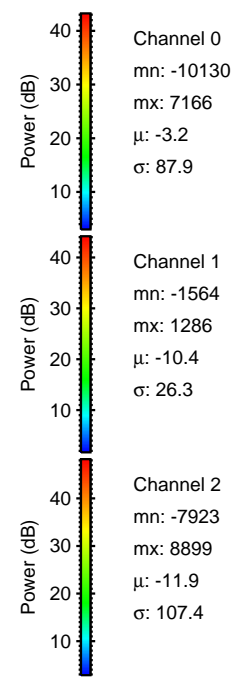
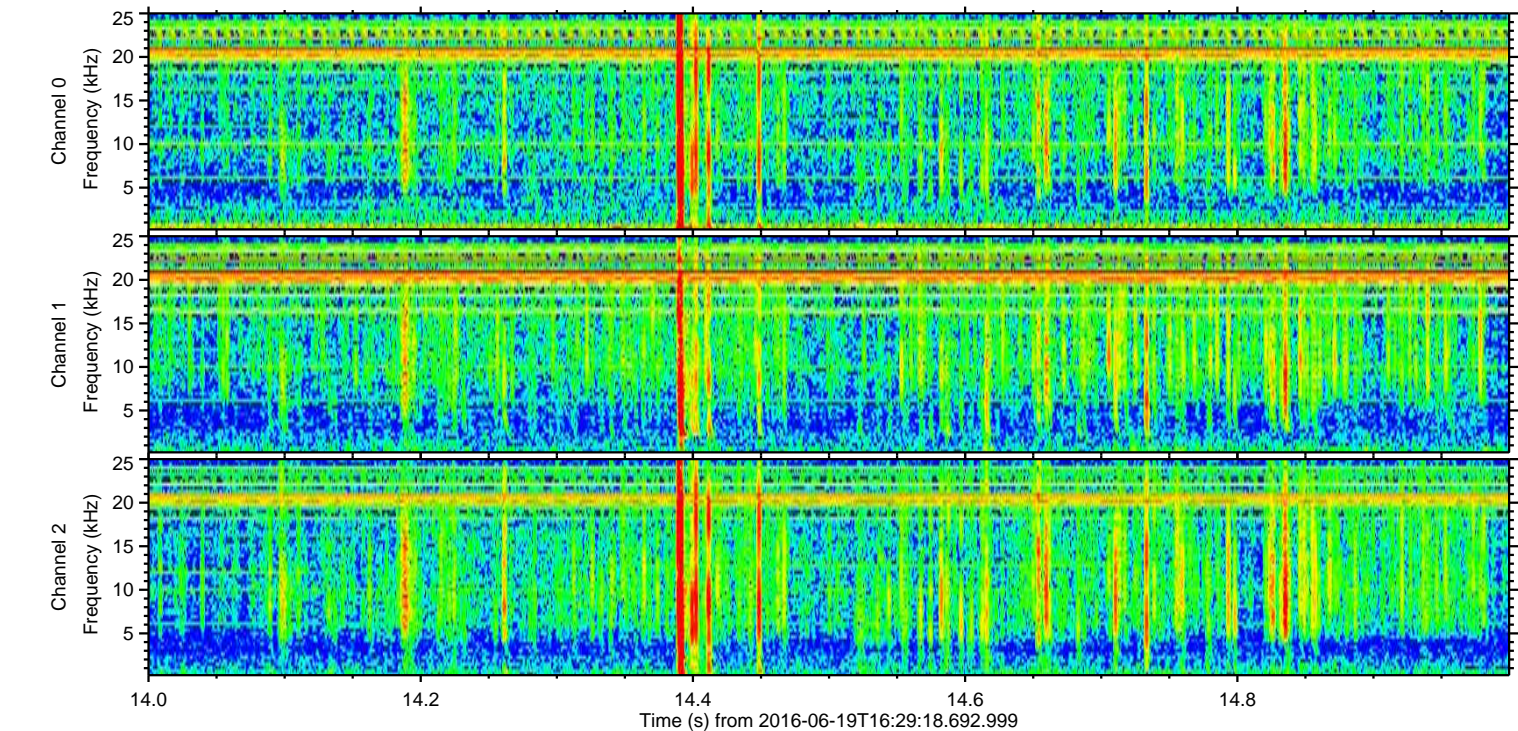
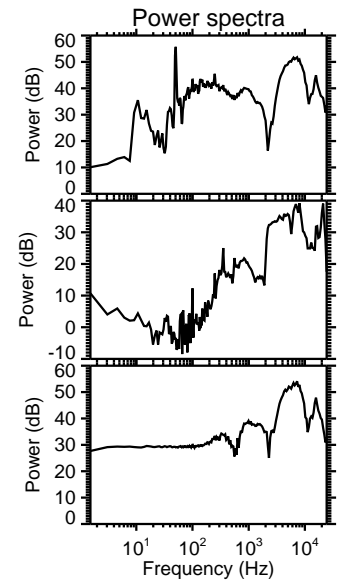
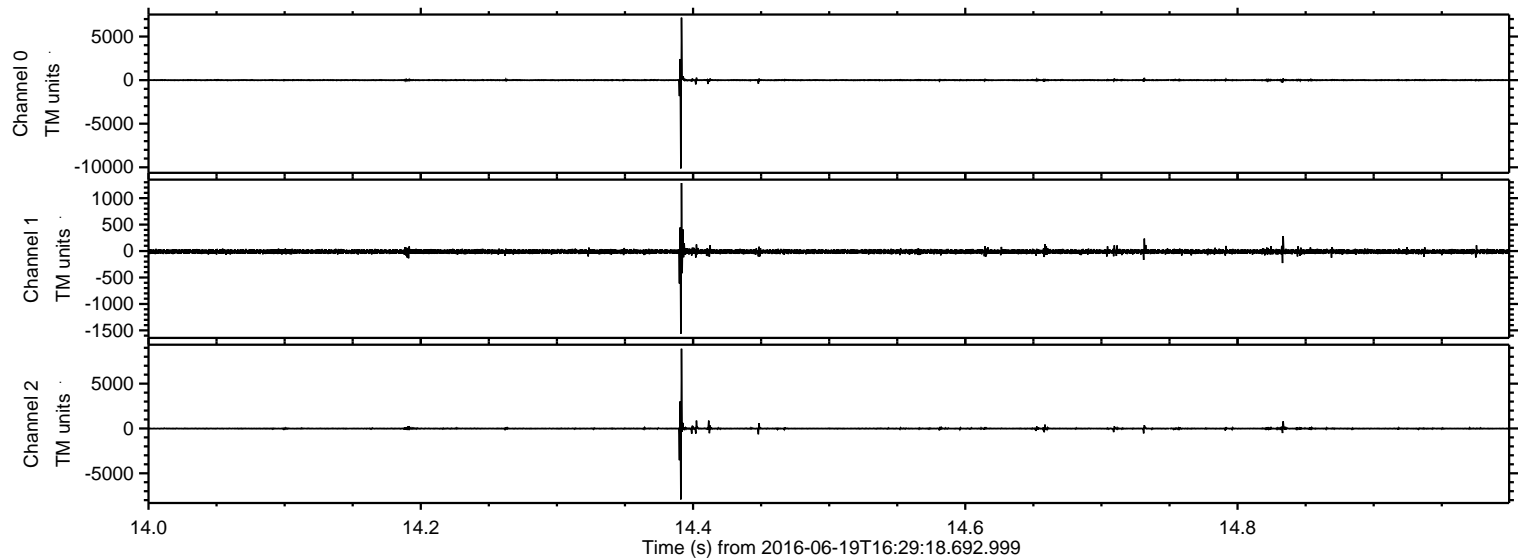
Processed Sun Jun 19 18:37:26 2016 by ELM ver.2012-10-06 from 001\_\_elm20160619\_162917\_\_dat00.bin





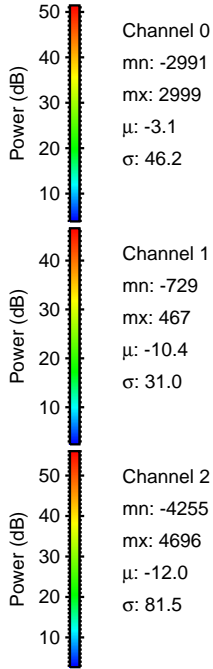
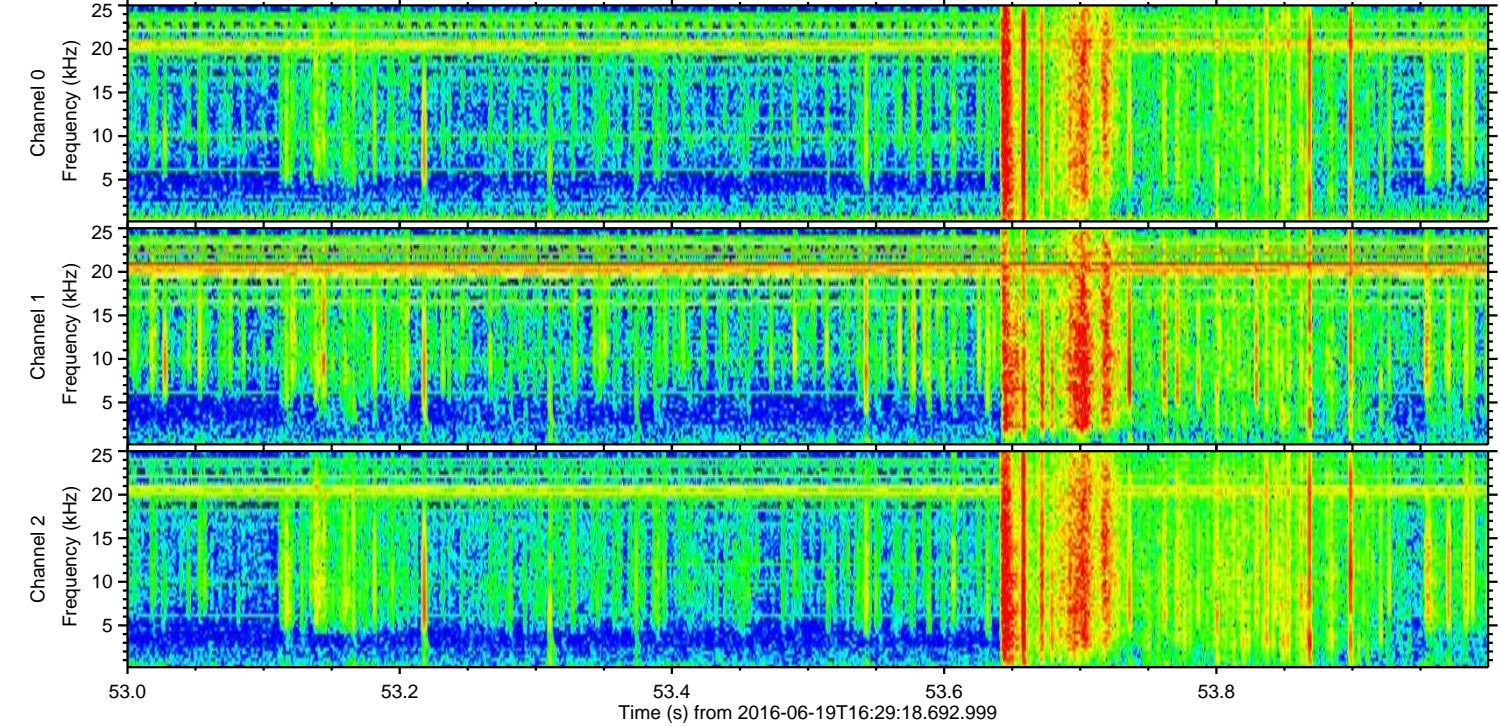
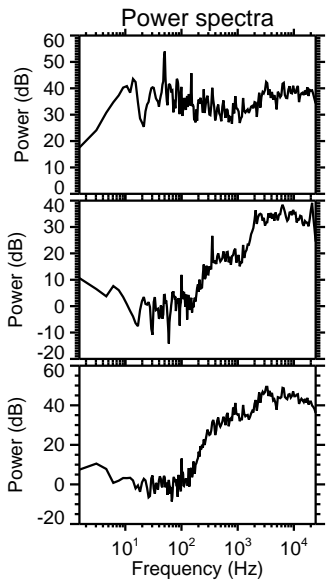
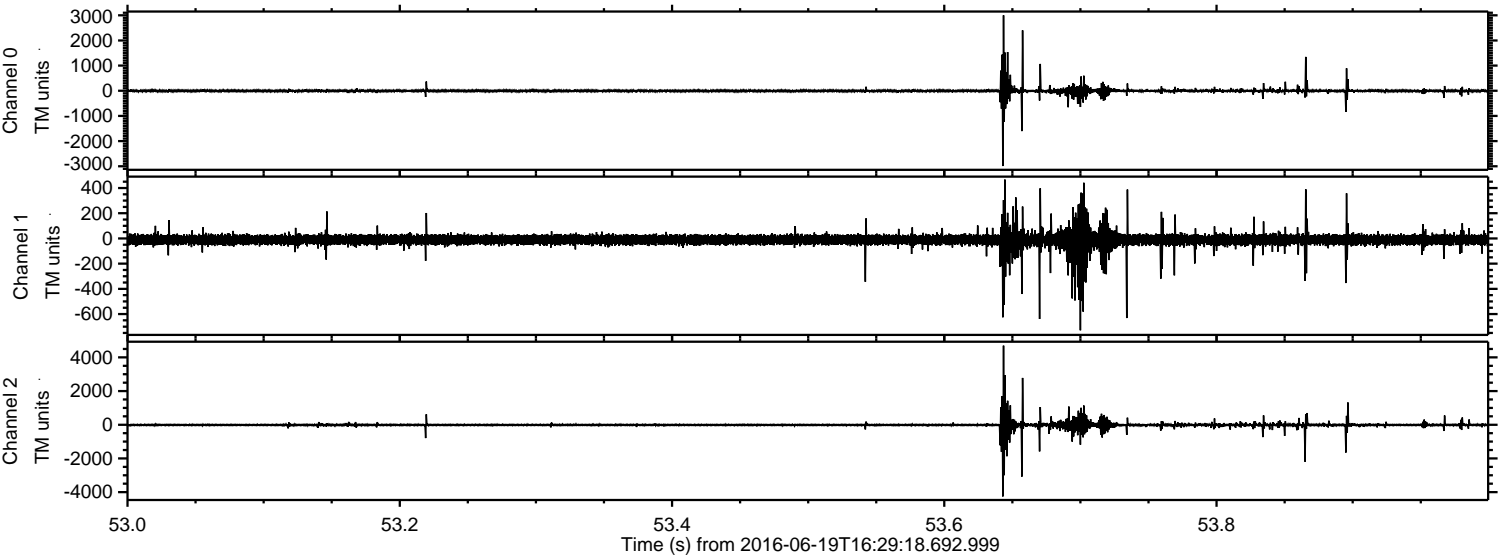
ELMAVAN 3D WAVEFORMS (Measured data sampled at 50 kHz) 51000 packets of 144 samples from 2016-06-19T16:29:18.692.999. Part 15/147

Processed Sun Jun 19 18:37:27 2016 by ELM ver.2012-10-06 from 001\_\_elm20160619\_162917\_\_dat00.bin





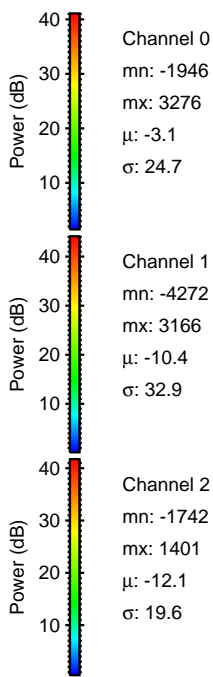
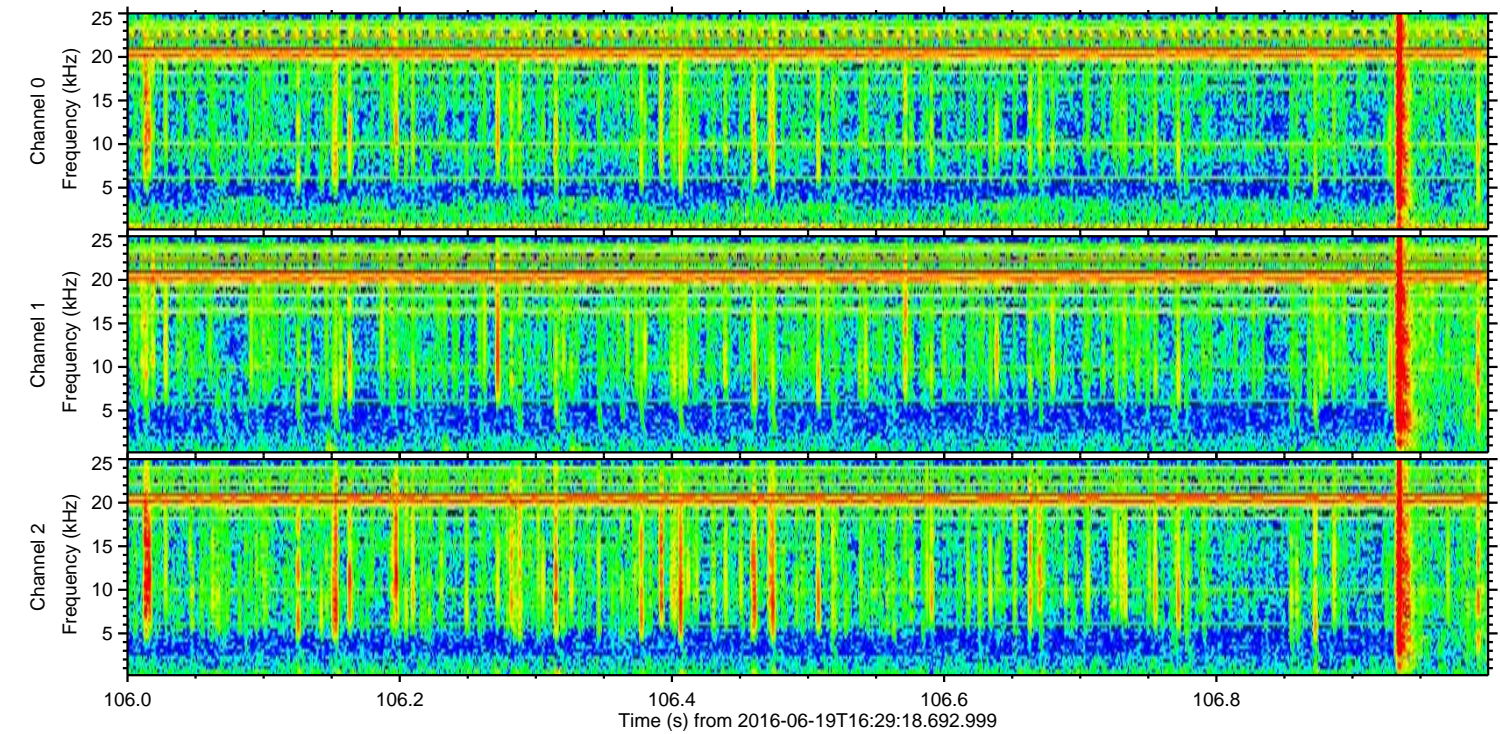
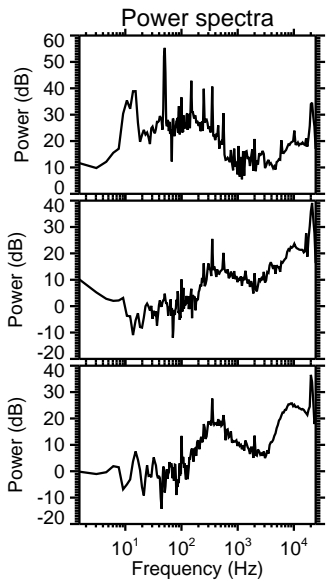
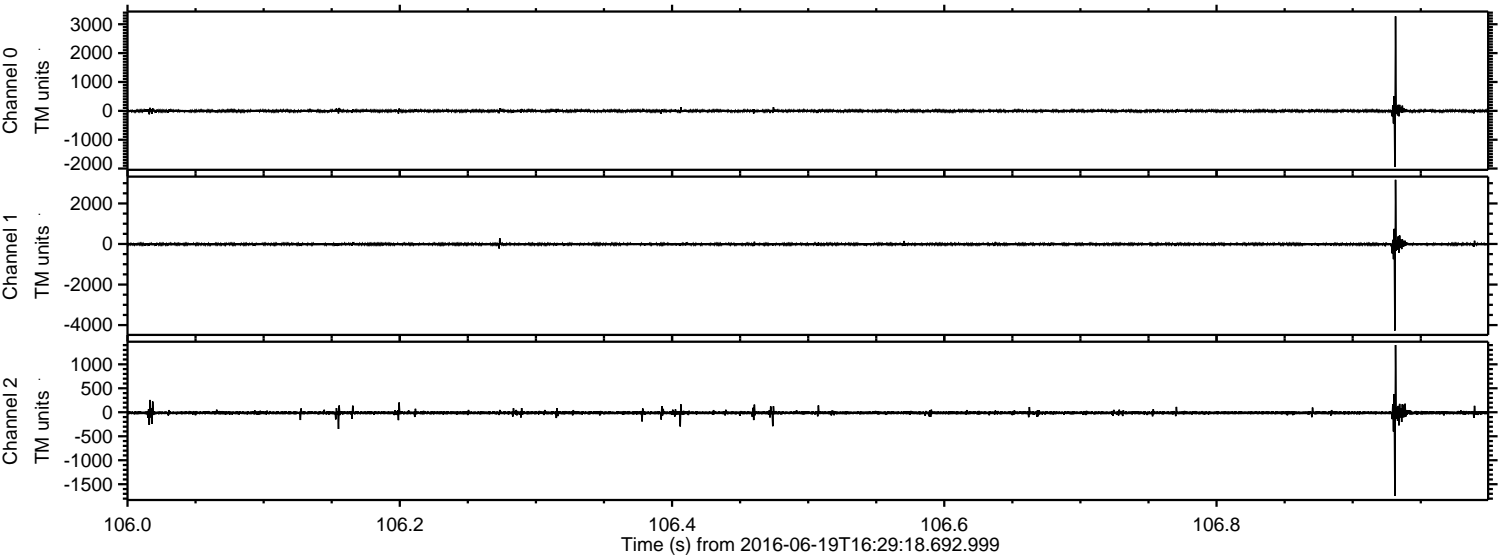
Processed Sun Jun 19 18:37:28 2016 by ELM ver.2012-10-06 from 001\_\_elm20160619\_162917\_\_dat00.bin





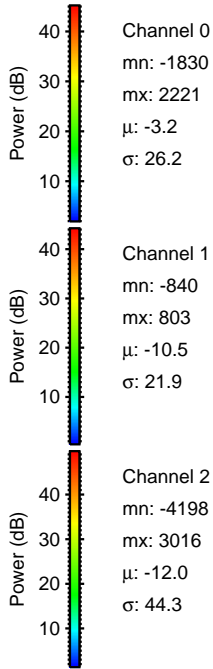
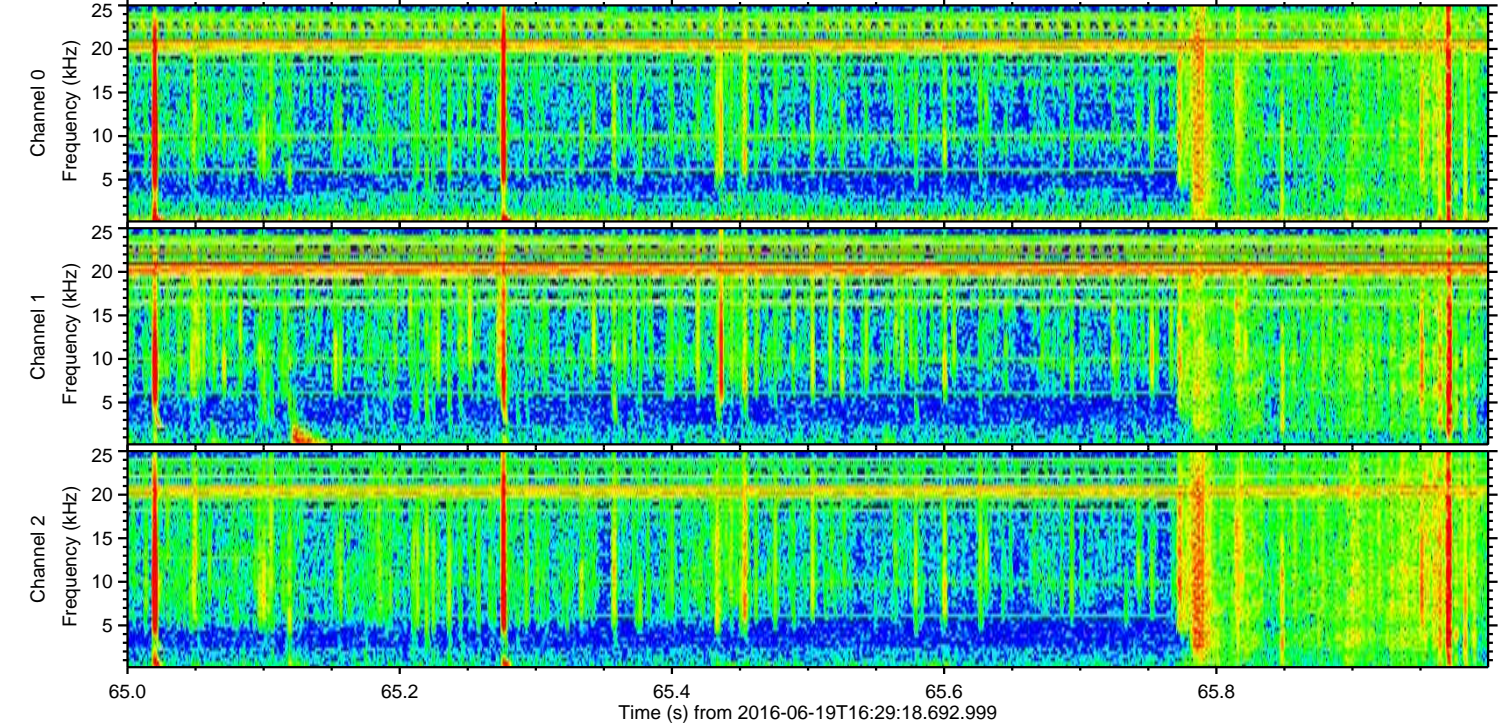
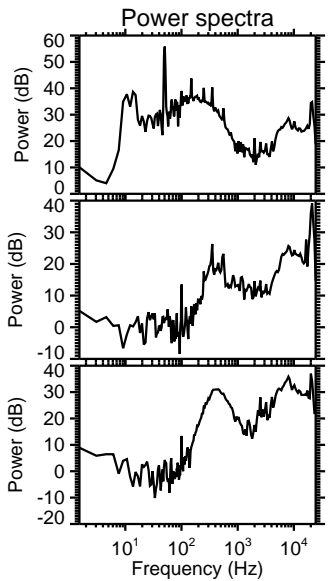
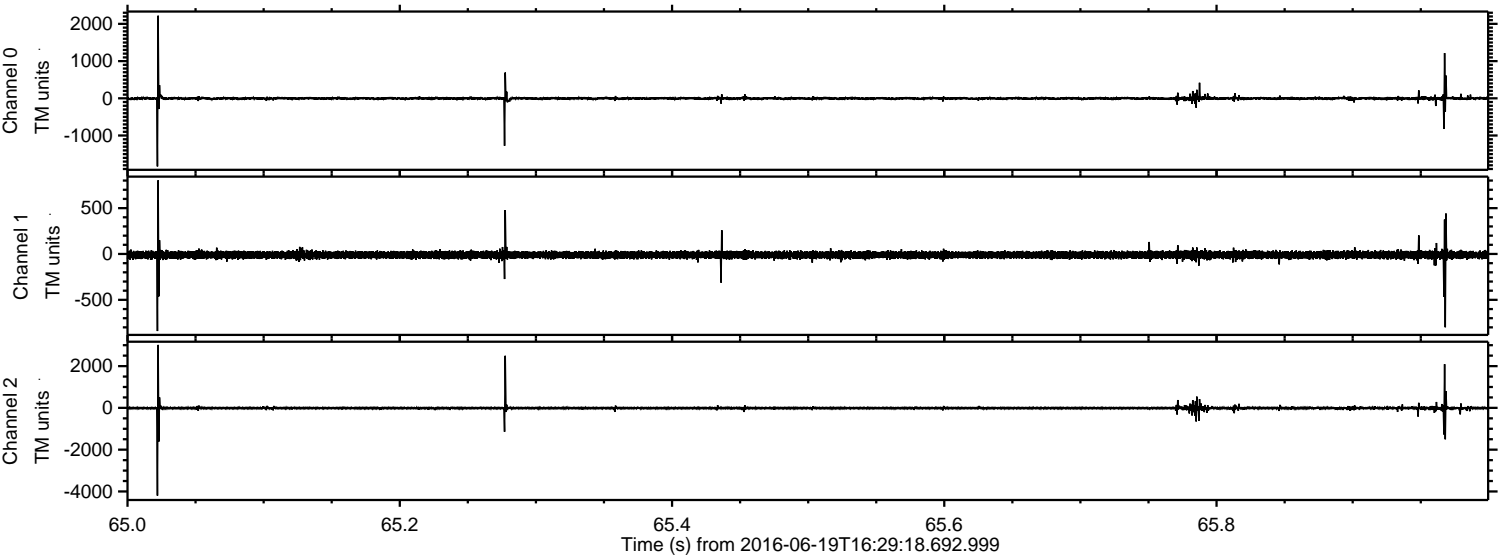
ELMAVAN 3D WAVEFORMS (Measured data sampled at 50 kHz) 51000 packets of 144 samples from 2016-06-19T16:29:18.692.999. Part 107/147

Processed Sun Jun 19 18:37:29 2016 by ELM ver.2012-10-06 from 001\_\_elm20160619\_162917\_\_dat00.bin



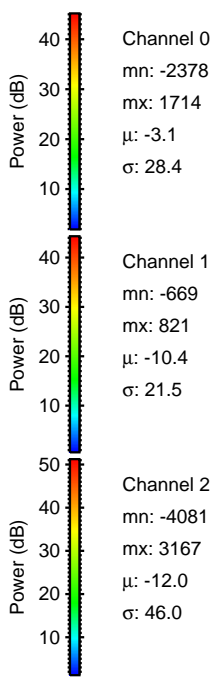
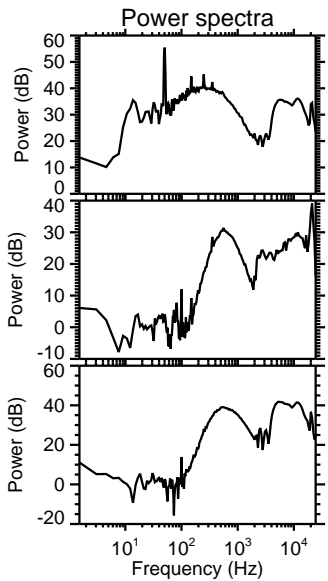
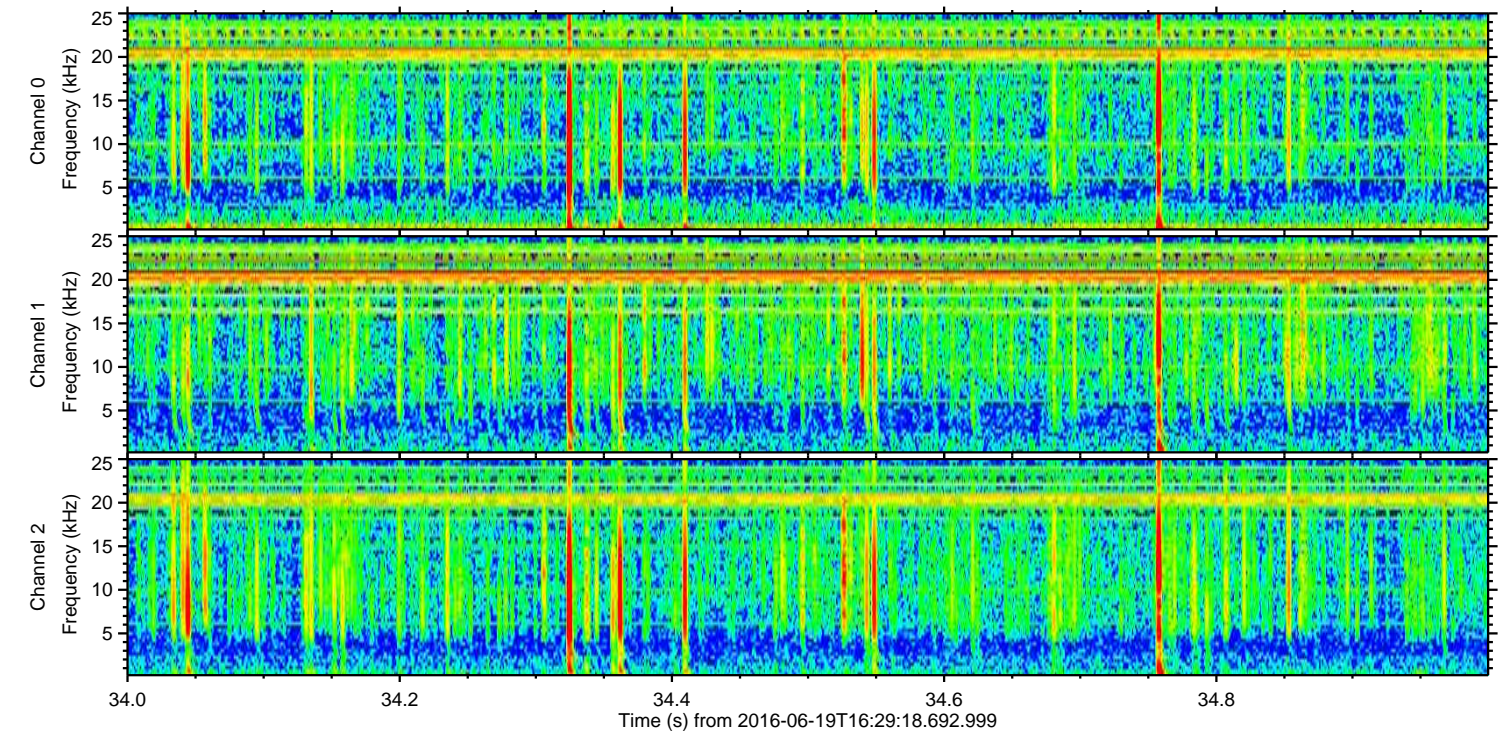
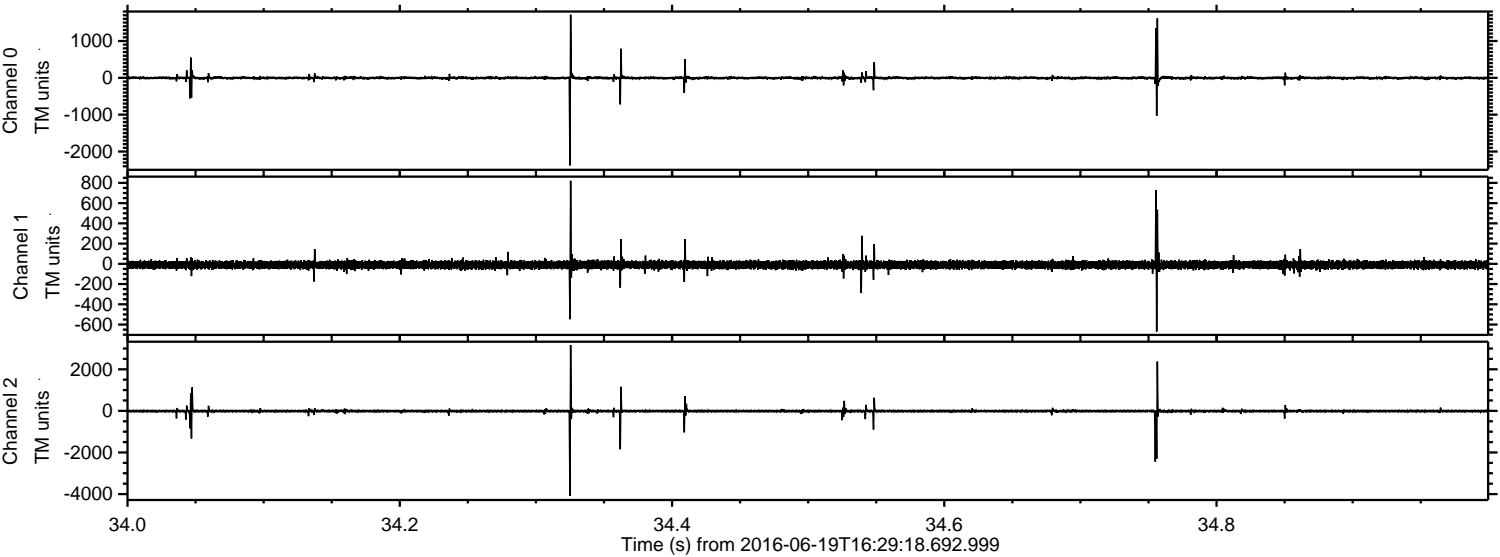


Processed Sun Jun 19 18:37:30 2016 by ELM ver.2012-10-06 from 001\_\_elm20160619\_162917\_\_dat00.bin





Processed Sun Jun 19 18:37:31 2016 by ELM ver.2012-10-06 from 001\_\_elm20160619\_162917\_\_dat00.bin



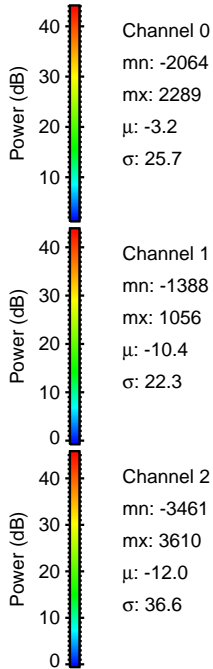
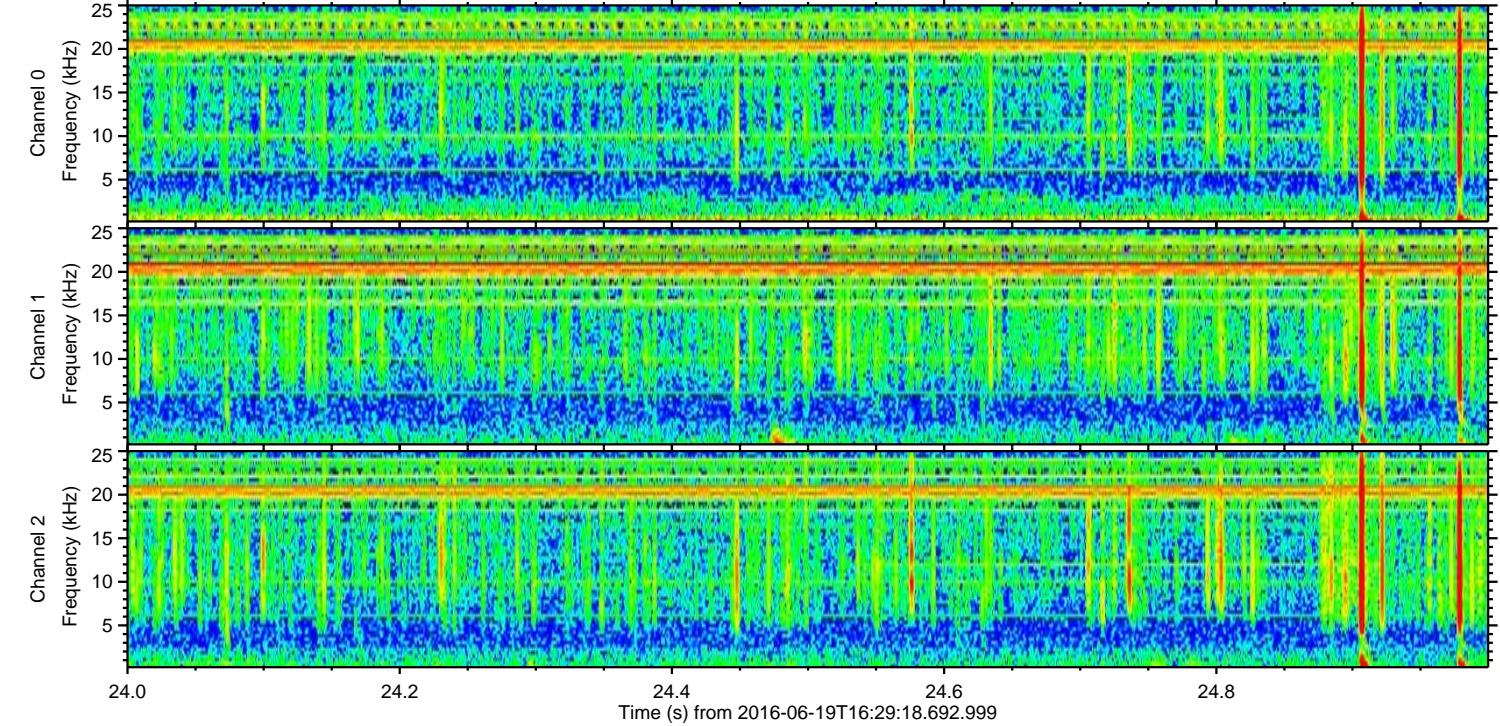
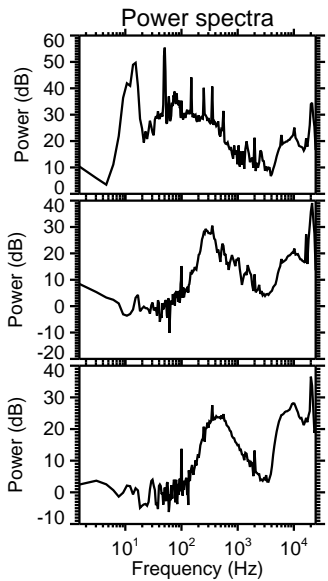
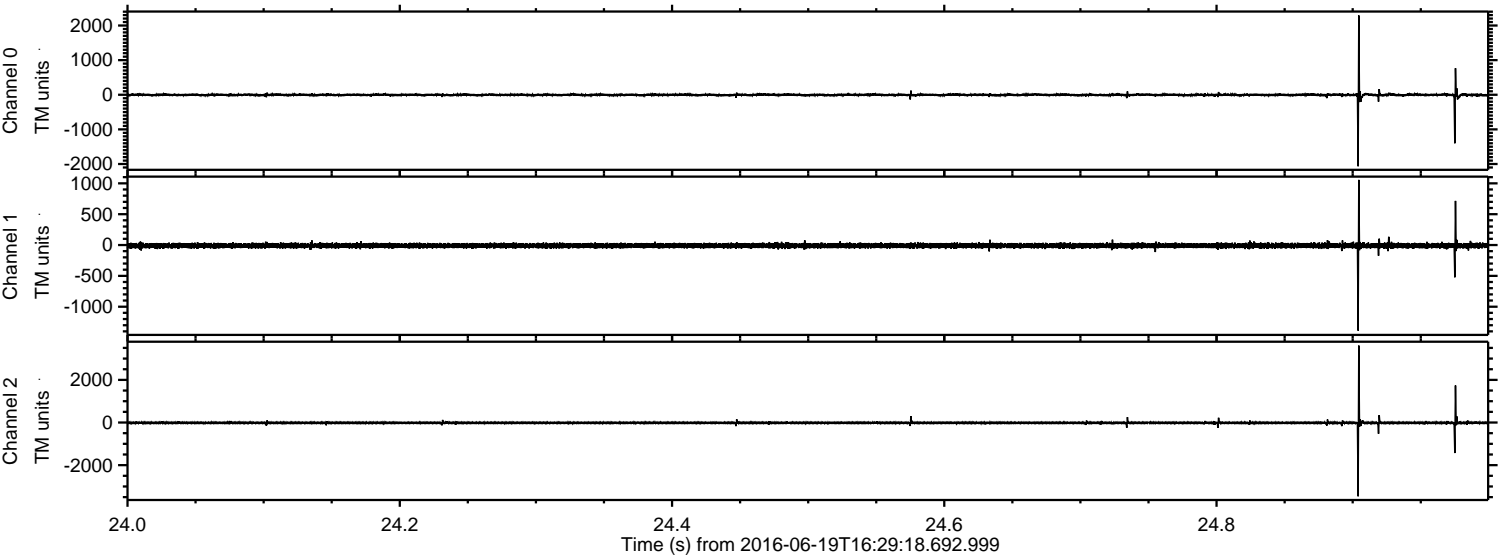
Channel 0  
mn: -2378  
mx: 1714  
μ: -3.1  
σ: 28.4

Channel 1  
mn: -669  
mx: 821  
μ: -10.4  
σ: 21.5

Channel 2  
mn: -4081  
mx: 3167  
μ: -12.0  
σ: 46.0

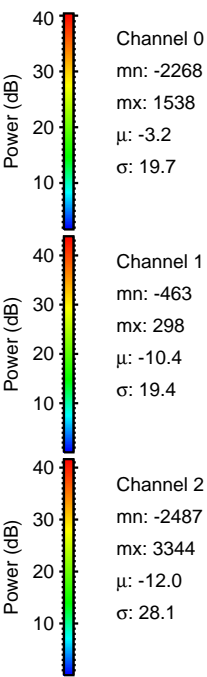
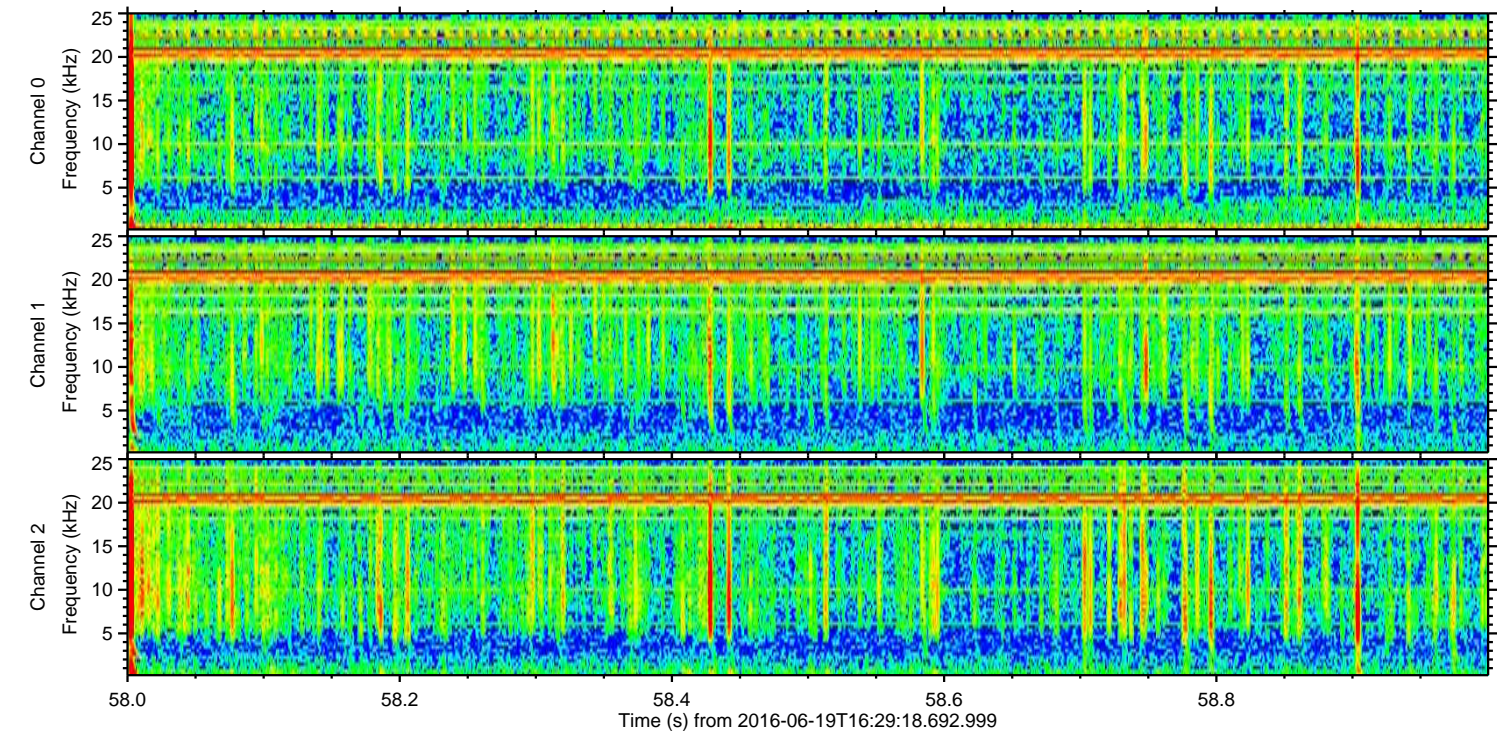
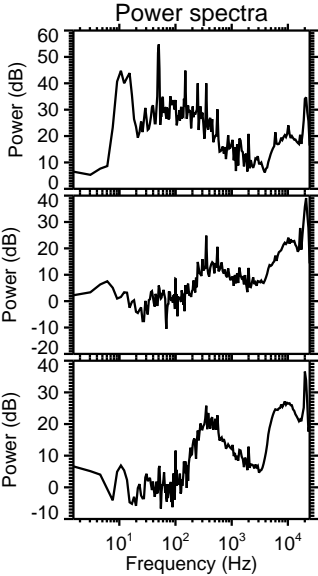
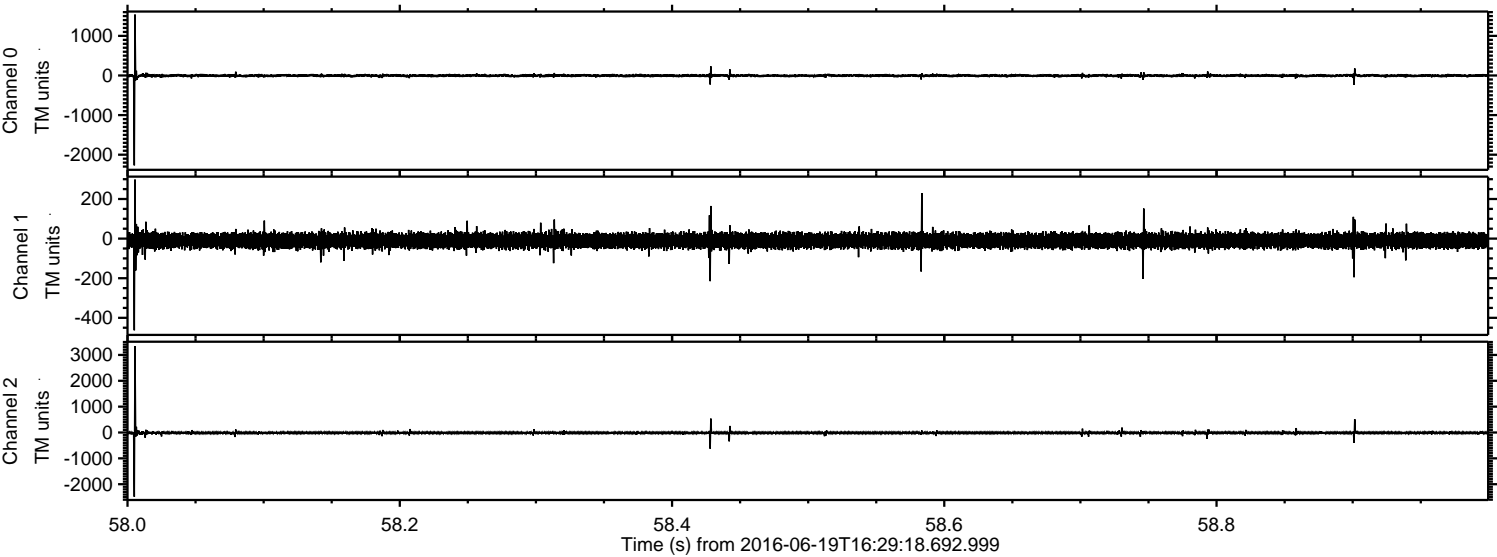


Processed Sun Jun 19 18:37:32 2016 by ELM ver.2012-10-06 from 001\_\_elm20160619\_162917\_\_dat00.bin





Processed Sun Jun 19 18:37:33 2016 by ELM ver.2012-10-06 from 001\_\_elm20160619\_162917\_\_dat00.bin





Processed Sun Jun 19 18:37:34 2016 by ELM ver.2012-10-06 from 001\_\_elm20160619\_162917\_\_dat00.bin

