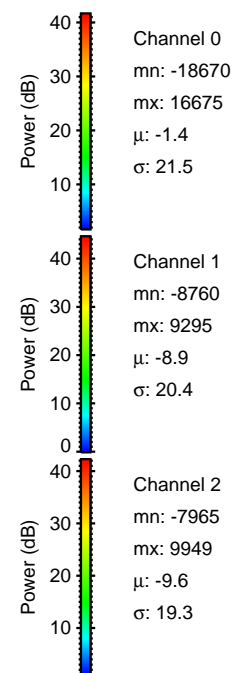
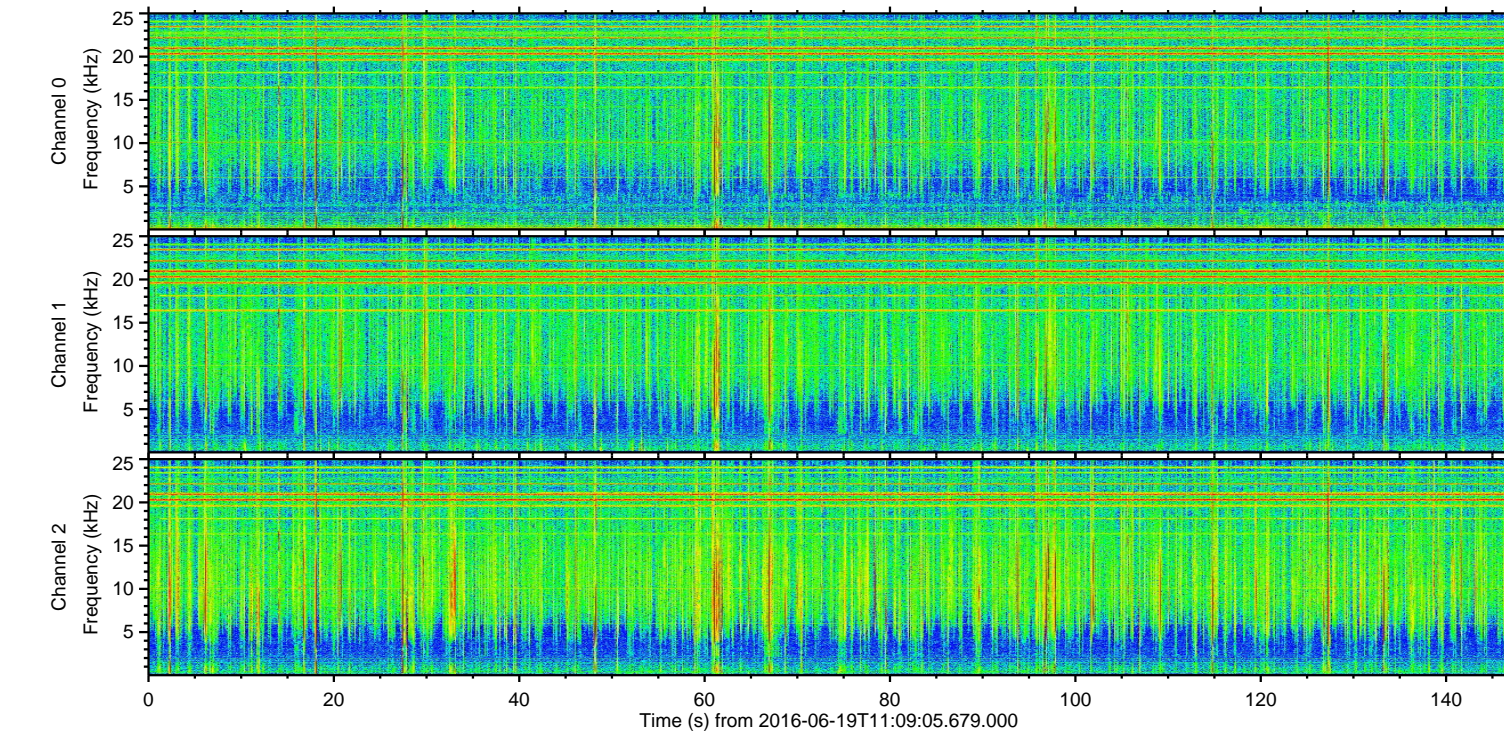
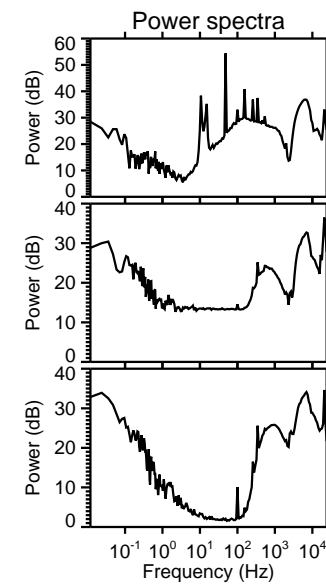
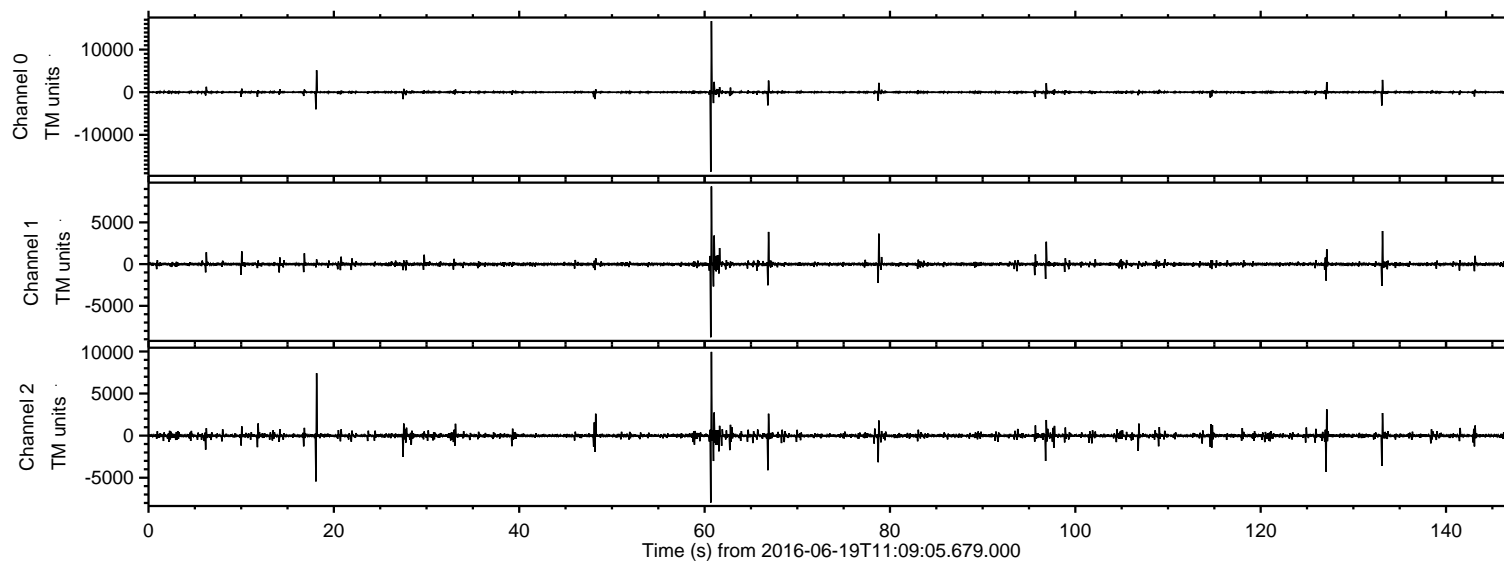
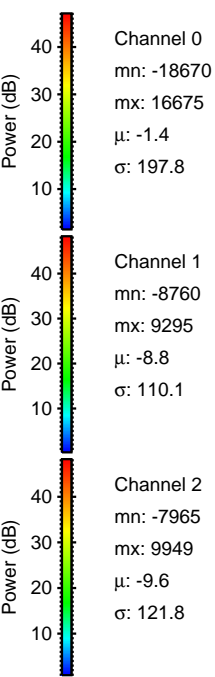
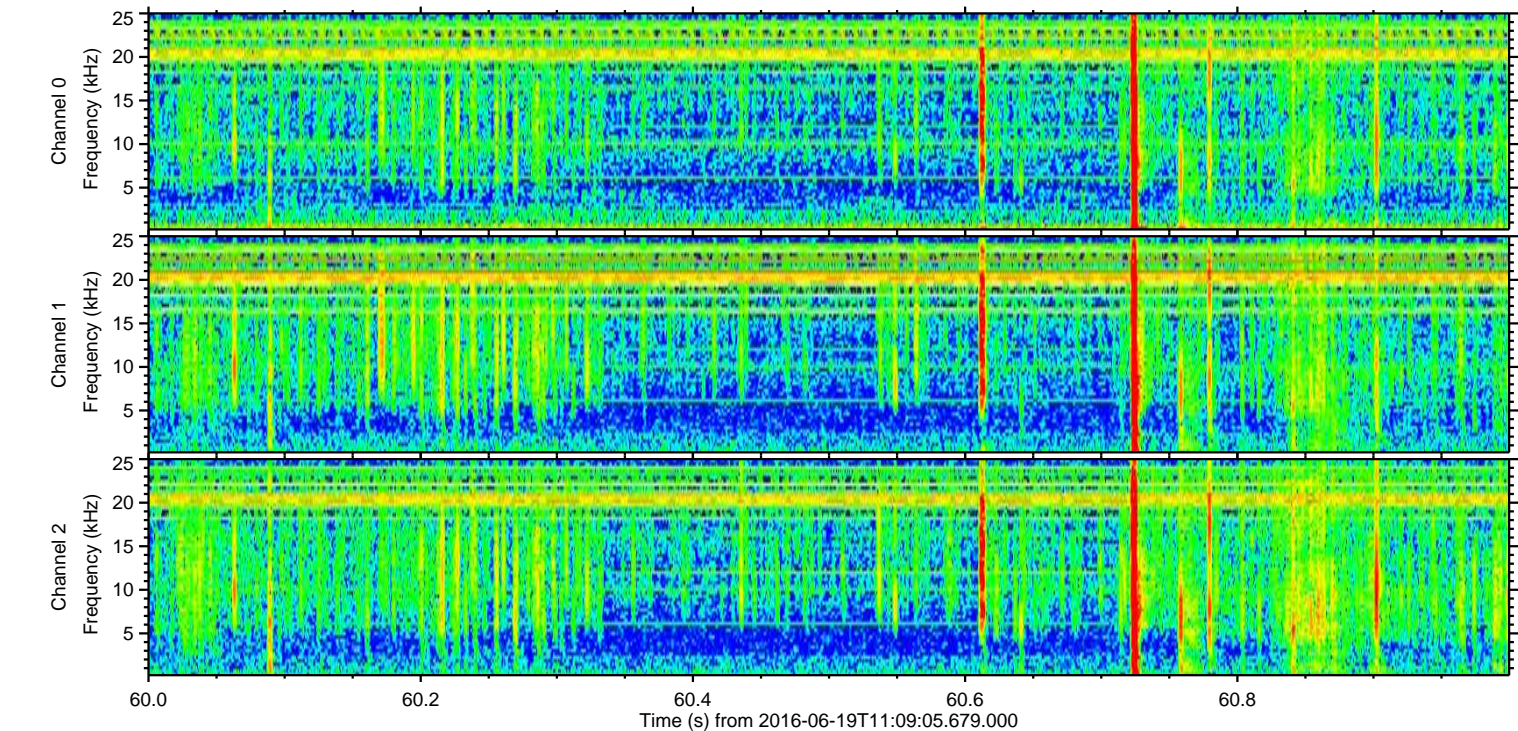
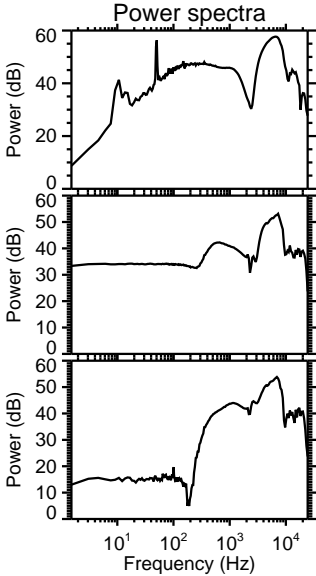
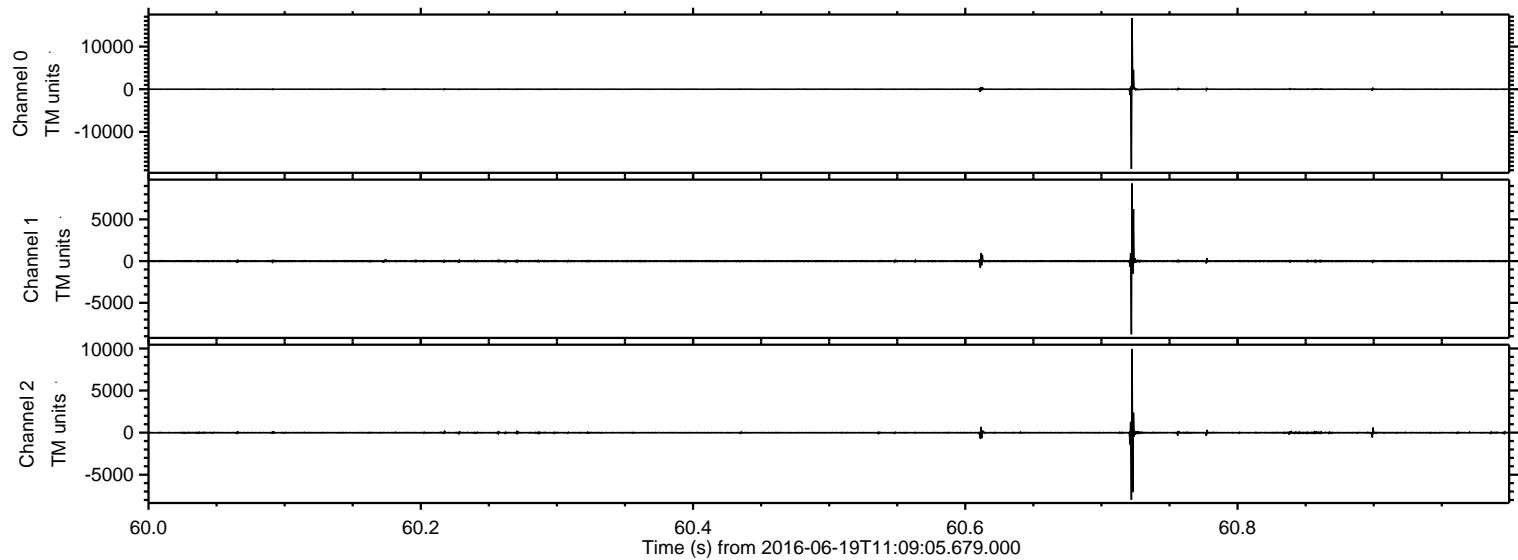


ELMAVAN 3D WAVEFORMS (Measured data sampled at 50 kHz) 51000 packets of 144 samples from 2016-06-19T11:09:05.679.000.

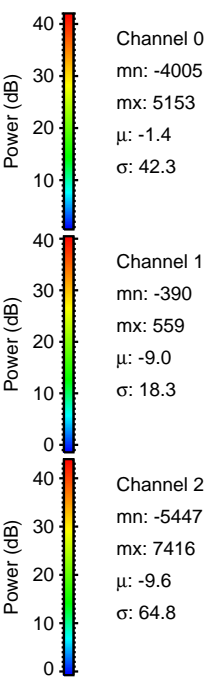
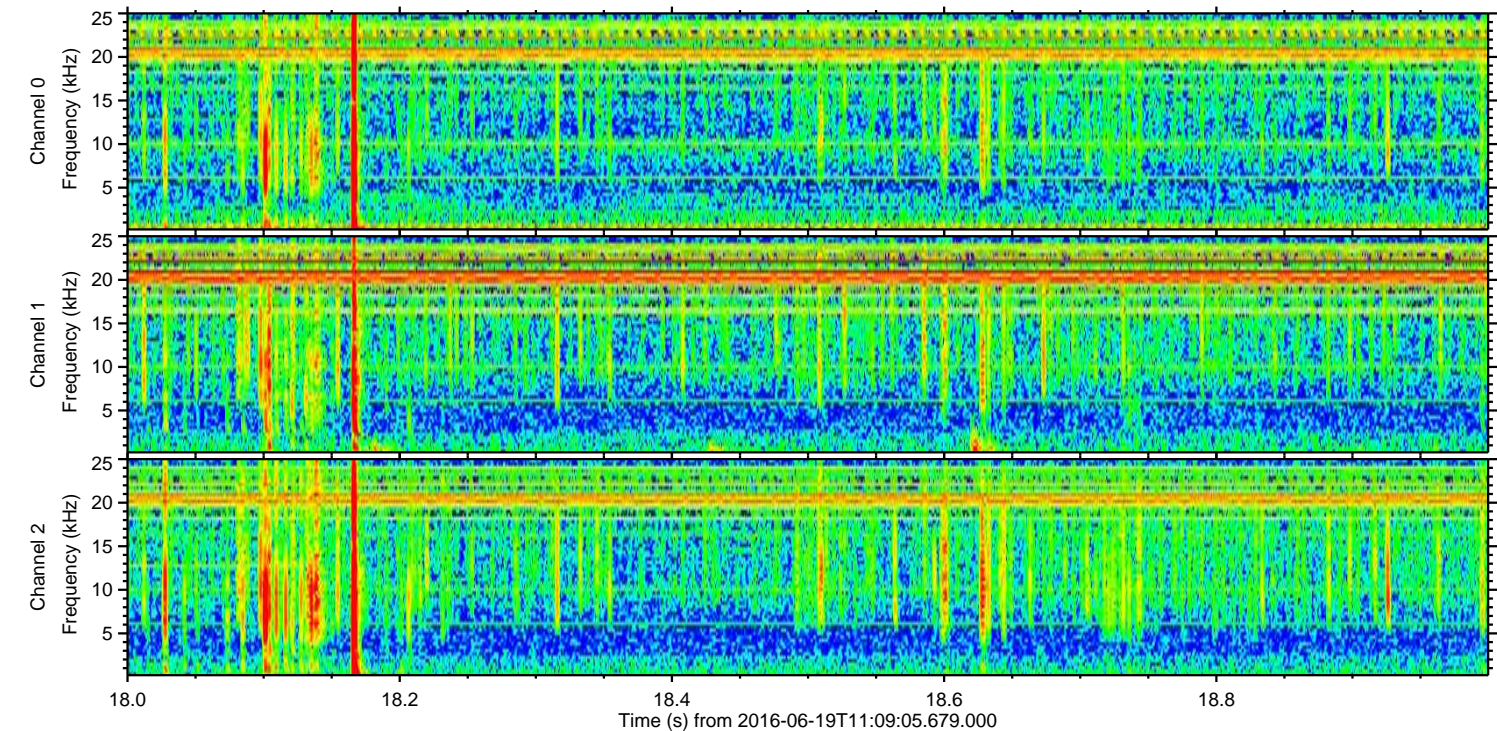
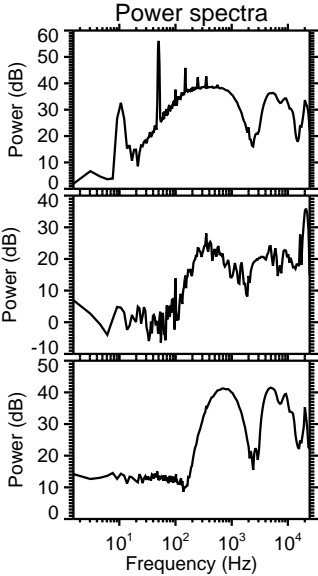
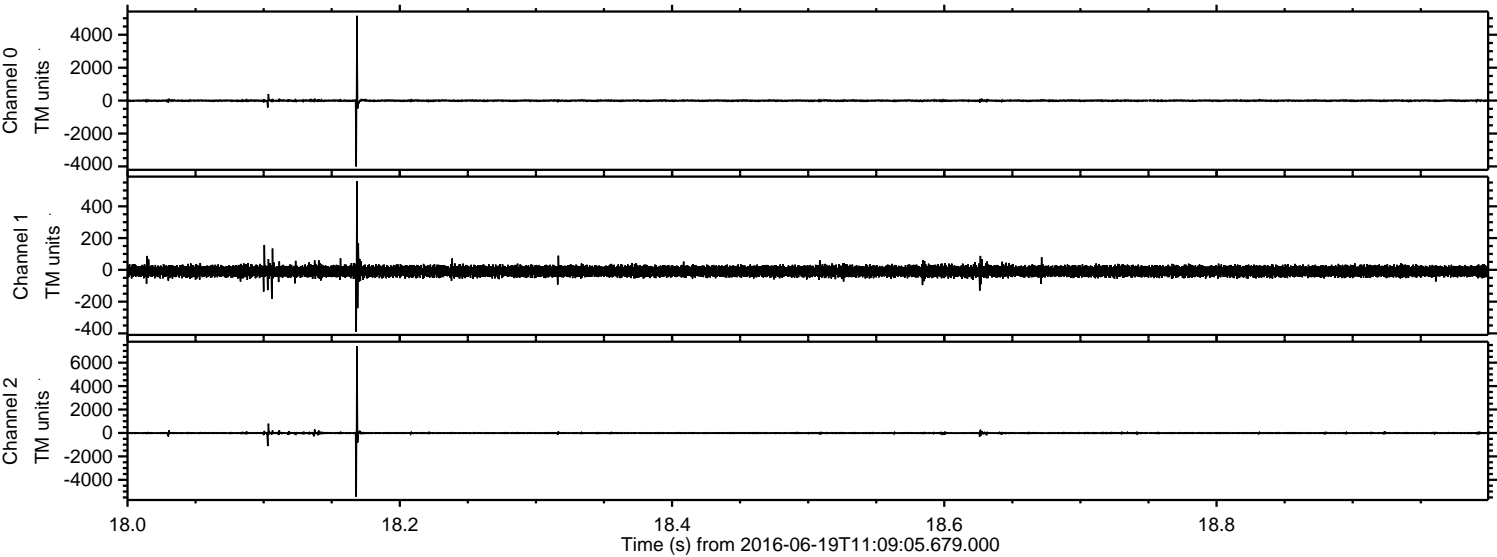
Processed Sun Jun 19 13:17:28 2016 by ELM ver.2012-10-06 from 001__elm20160619_110904__dat00.bin



Processed Sun Jun 19 13:17:43 2016 by ELM ver.2012-10-06 from 001__elm20160619_110904__dat00.bin

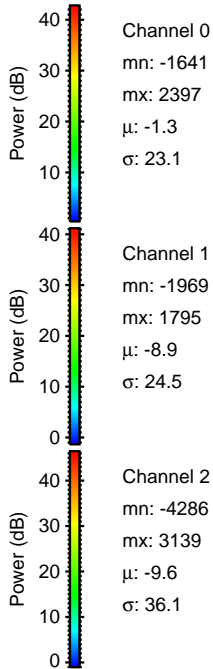
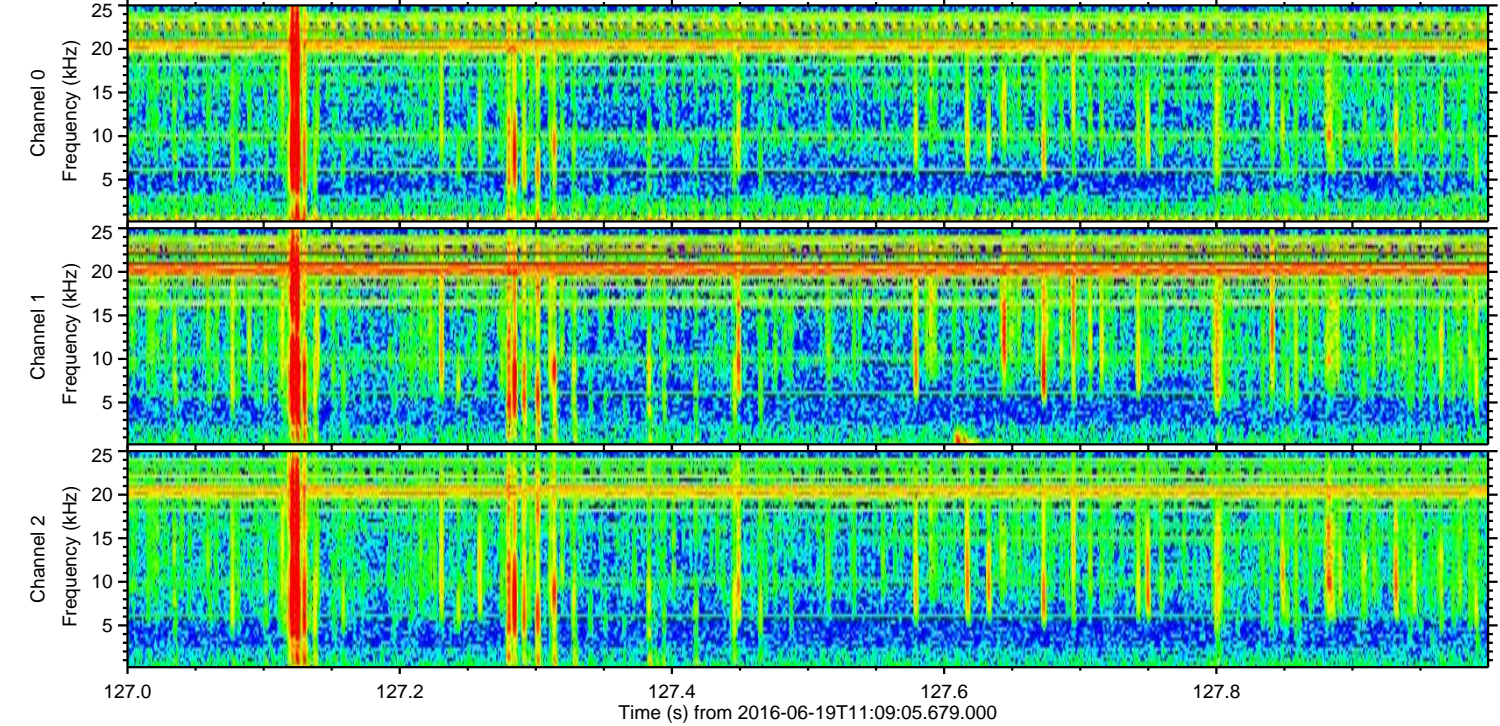
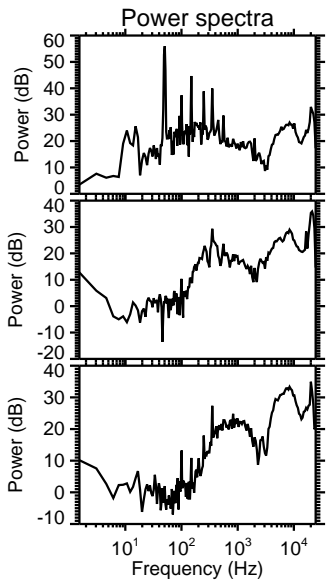
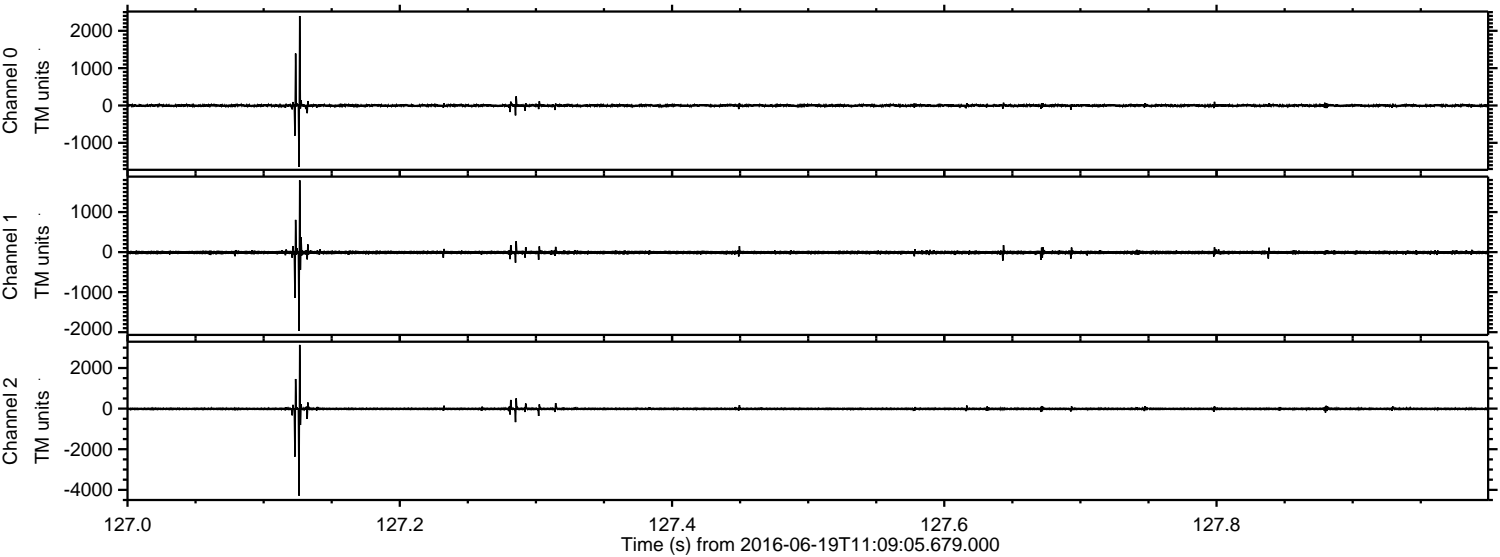


Processed Sun Jun 19 13:17:44 2016 by ELM ver.2012-10-06 from 001__elm20160619_110904__dat00.bin

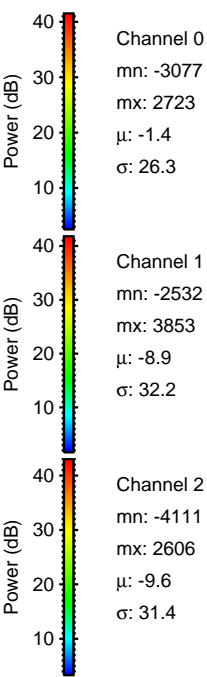
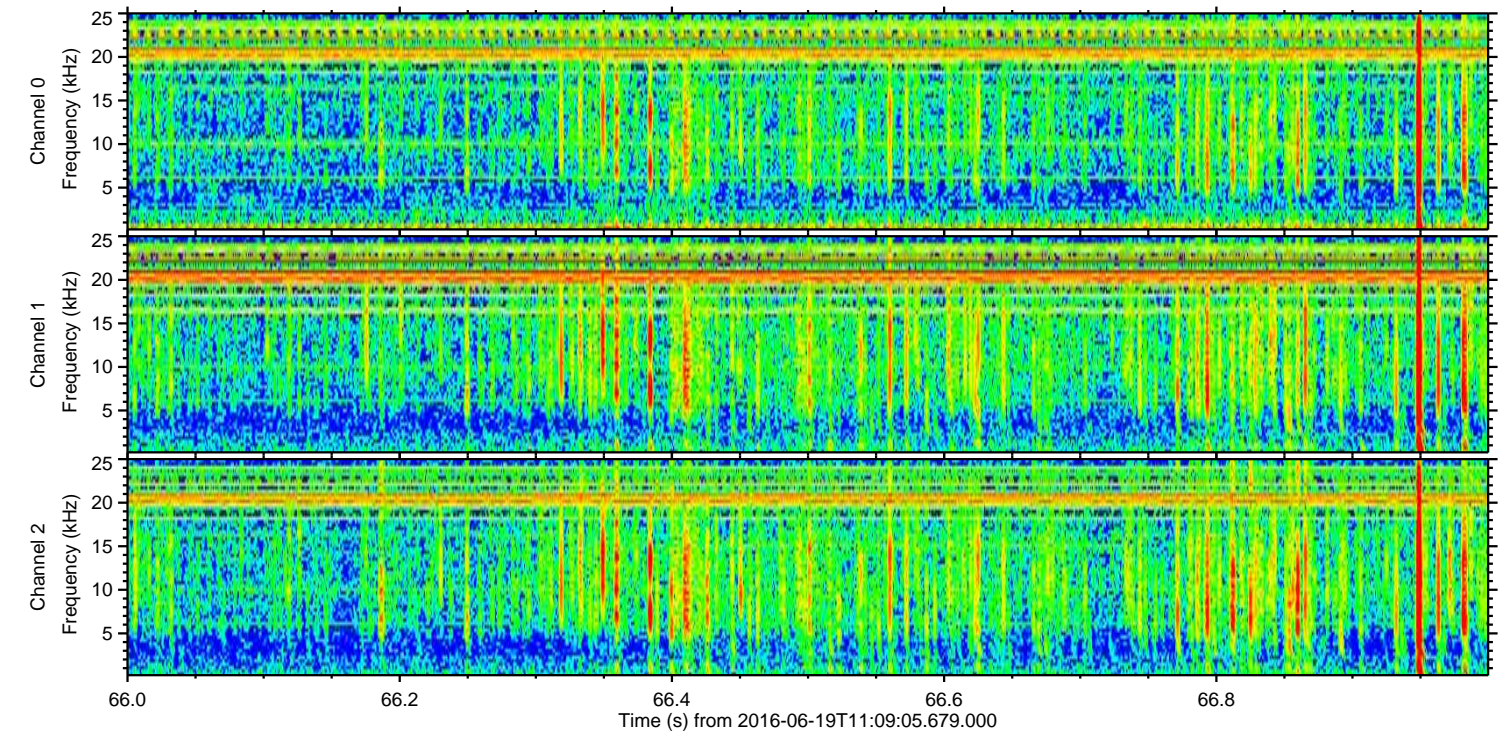
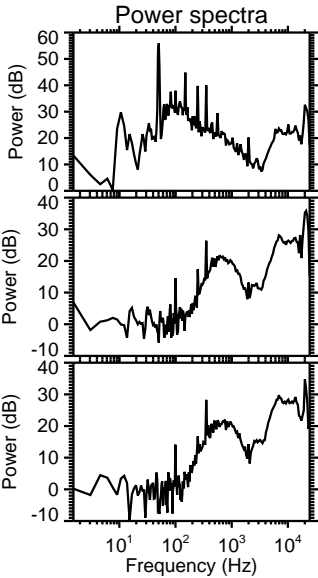
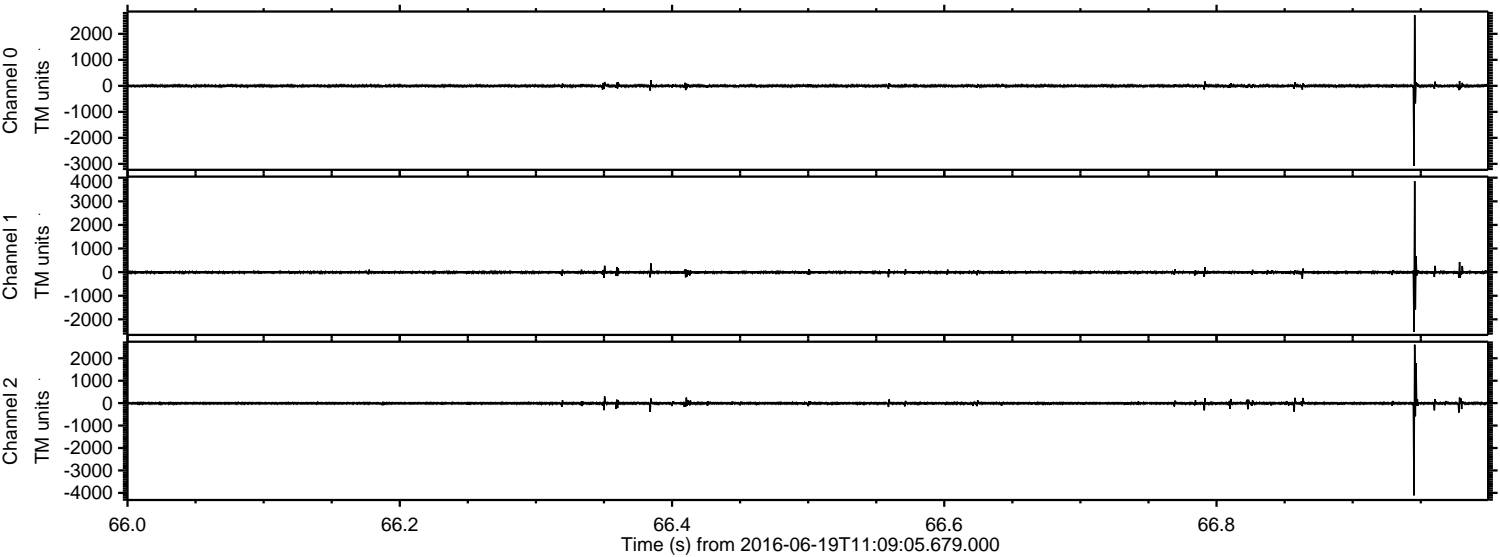


ELMAVAN 3D WAVEFORMS (Measured data sampled at 50 kHz) 51000 packets of 144 samples from 2016-06-19T11:09:05.679.000. Part 128/147

Processed Sun Jun 19 13:17:45 2016 by ELM ver.2012-10-06 from 001__elm20160619_110904__dat00.bin



Processed Sun Jun 19 13:17:47 2016 by ELM ver.2012-10-06 from 001__elm20160619_110904__dat00.bin



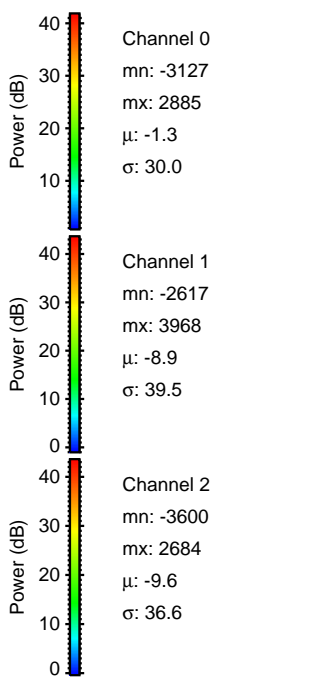
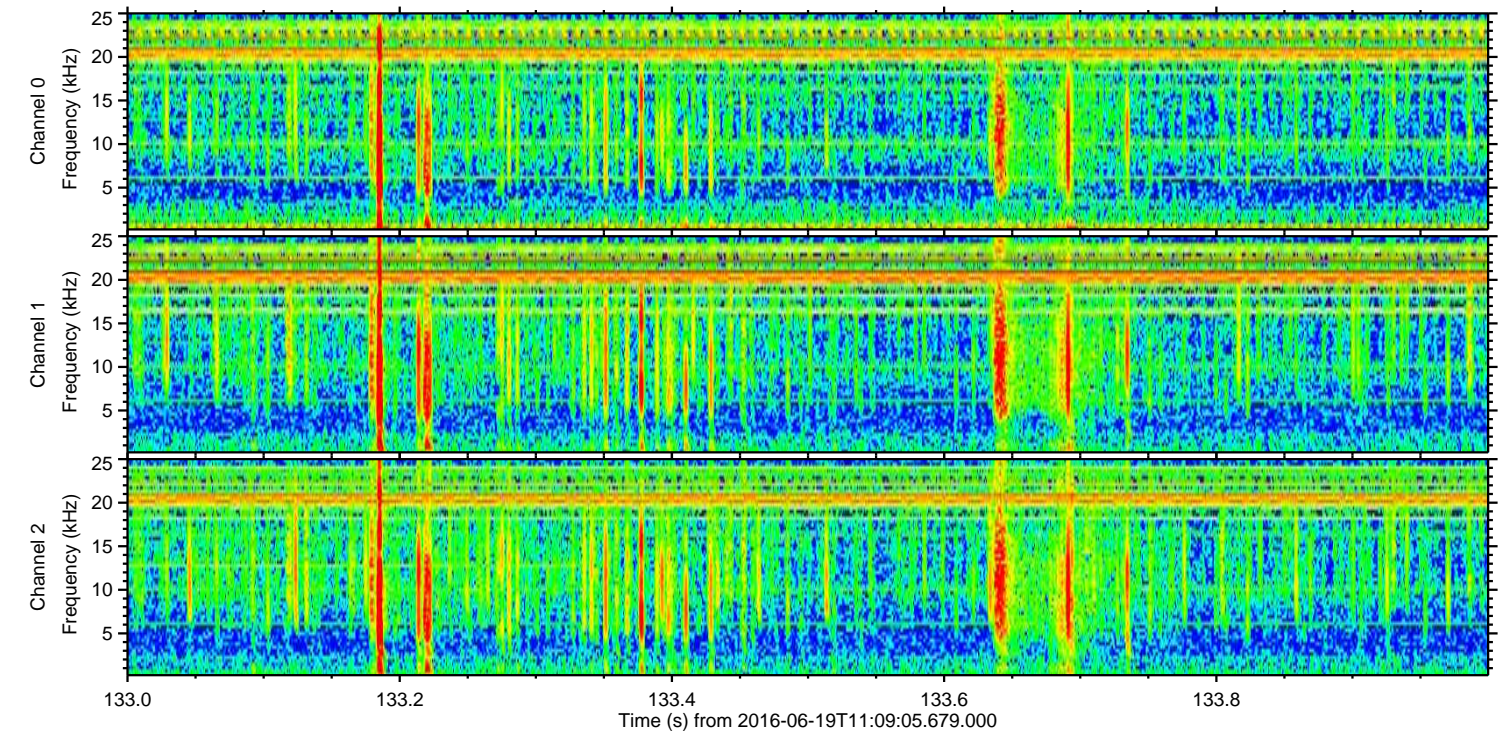
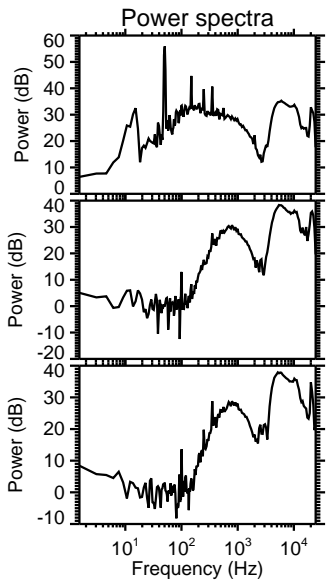
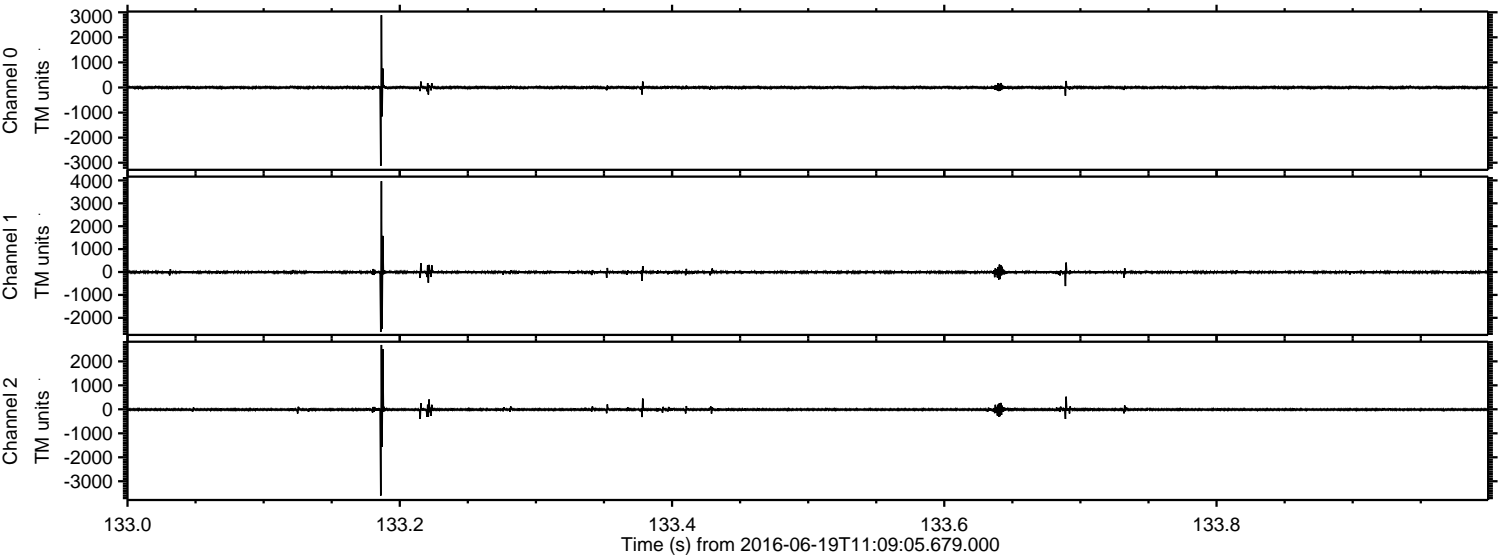
Channel 0
mn: -3077
mx: 2723
 μ : -1.4
 σ : 26.3

Channel 1
mn: -2532
mx: 3853
 μ : -8.9
 σ : 32.2

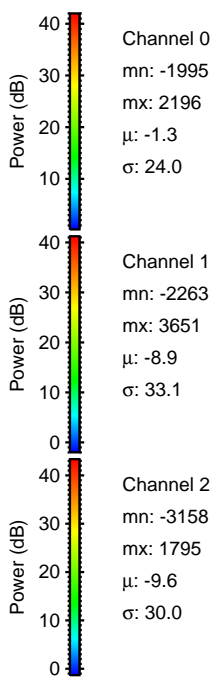
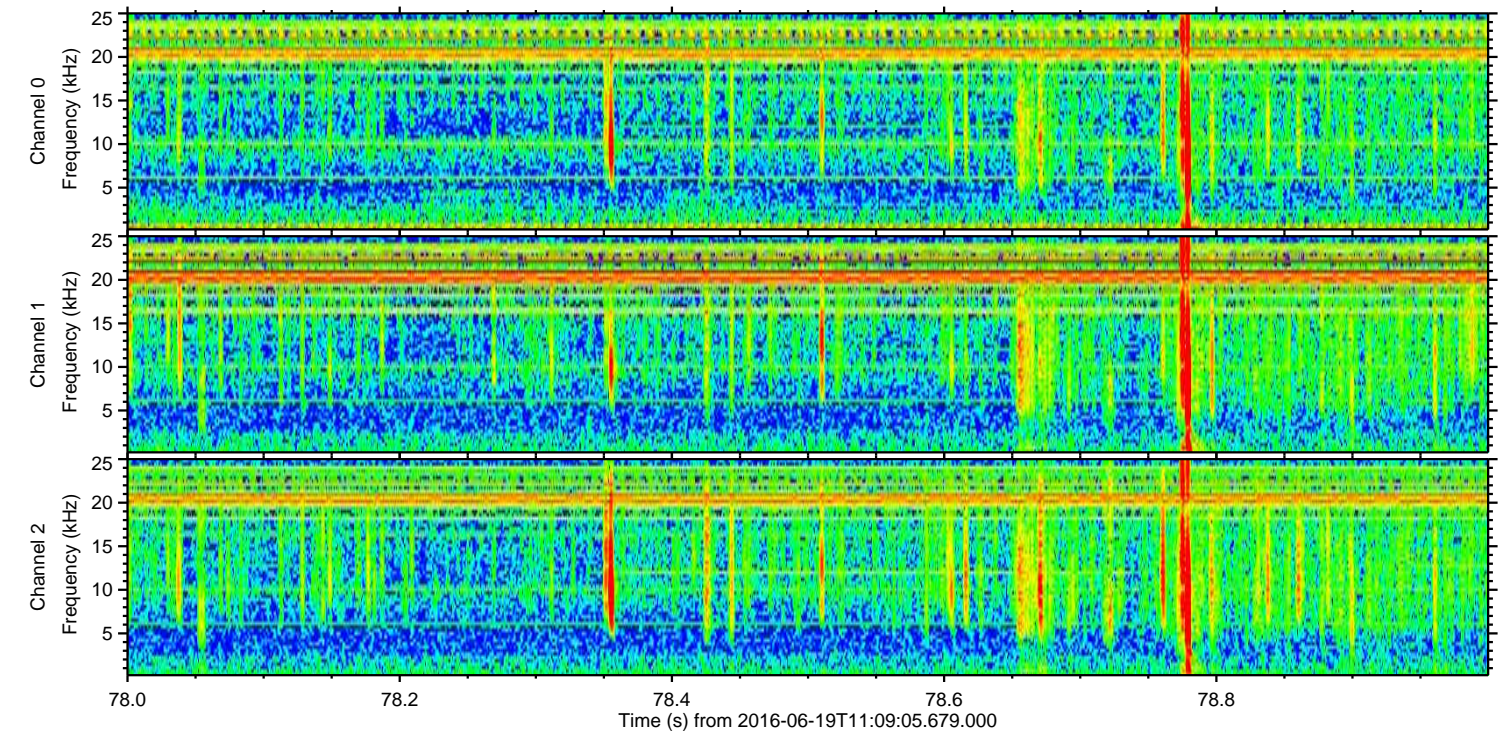
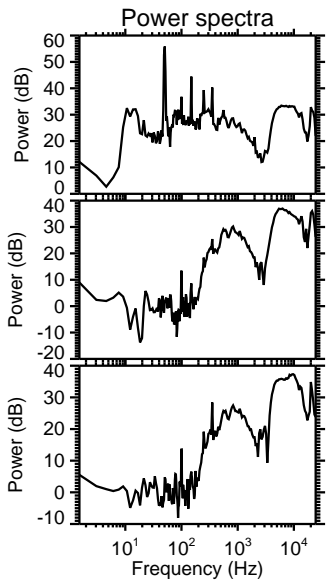
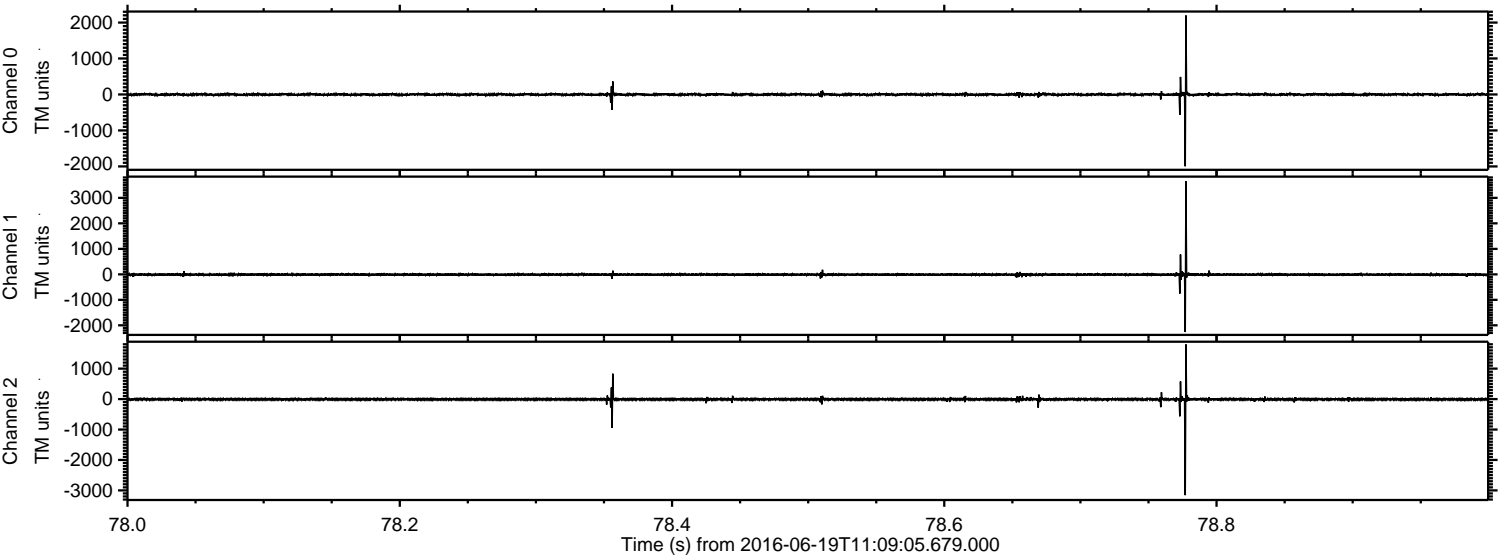
Channel 2
mn: -4111
mx: 2606
 μ : -9.6
 σ : 31.4

ELMAVAN 3D WAVEFORMS (Measured data sampled at 50 kHz) 51000 packets of 144 samples from 2016-06-19T11:09:05.679.000. Part 134/147

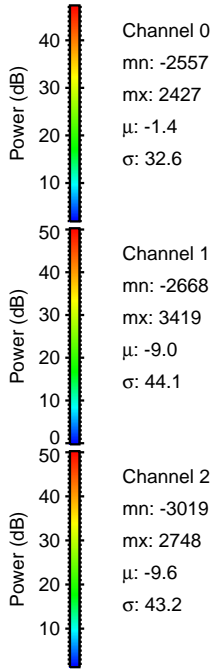
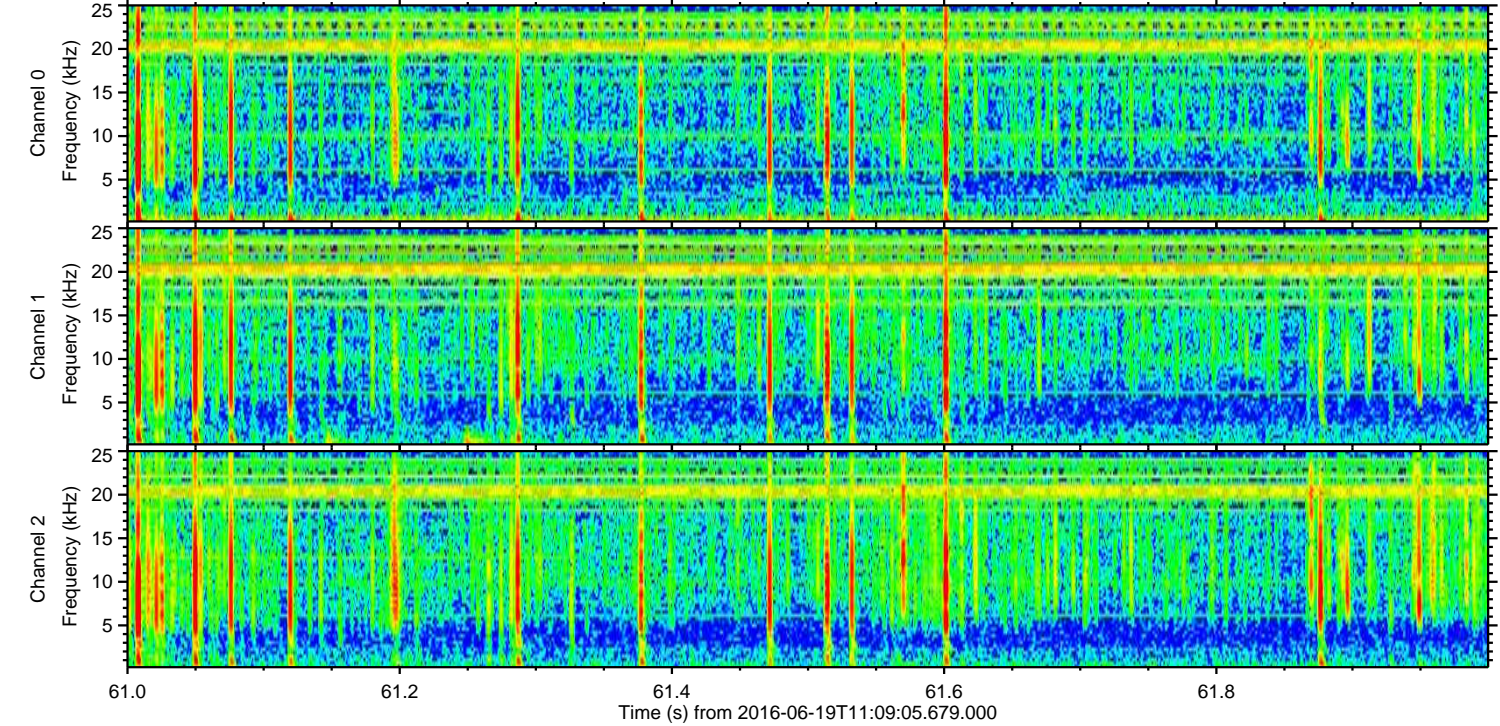
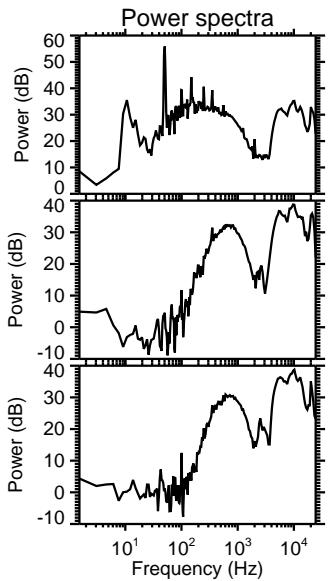
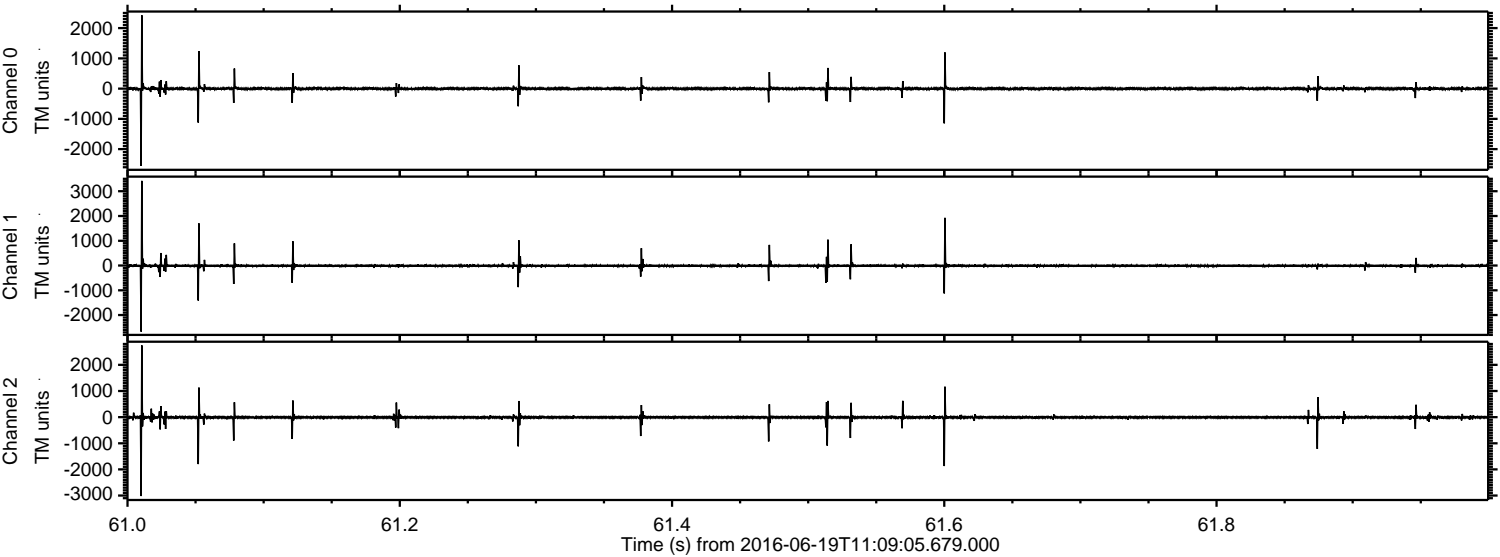
Processed Sun Jun 19 13:17:48 2016 by ELM ver.2012-10-06 from 001__elm20160619_110904__dat00.bin



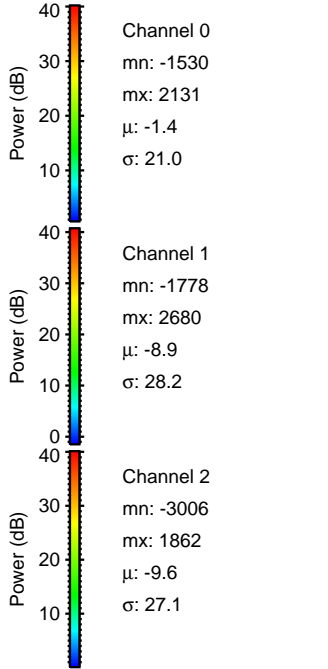
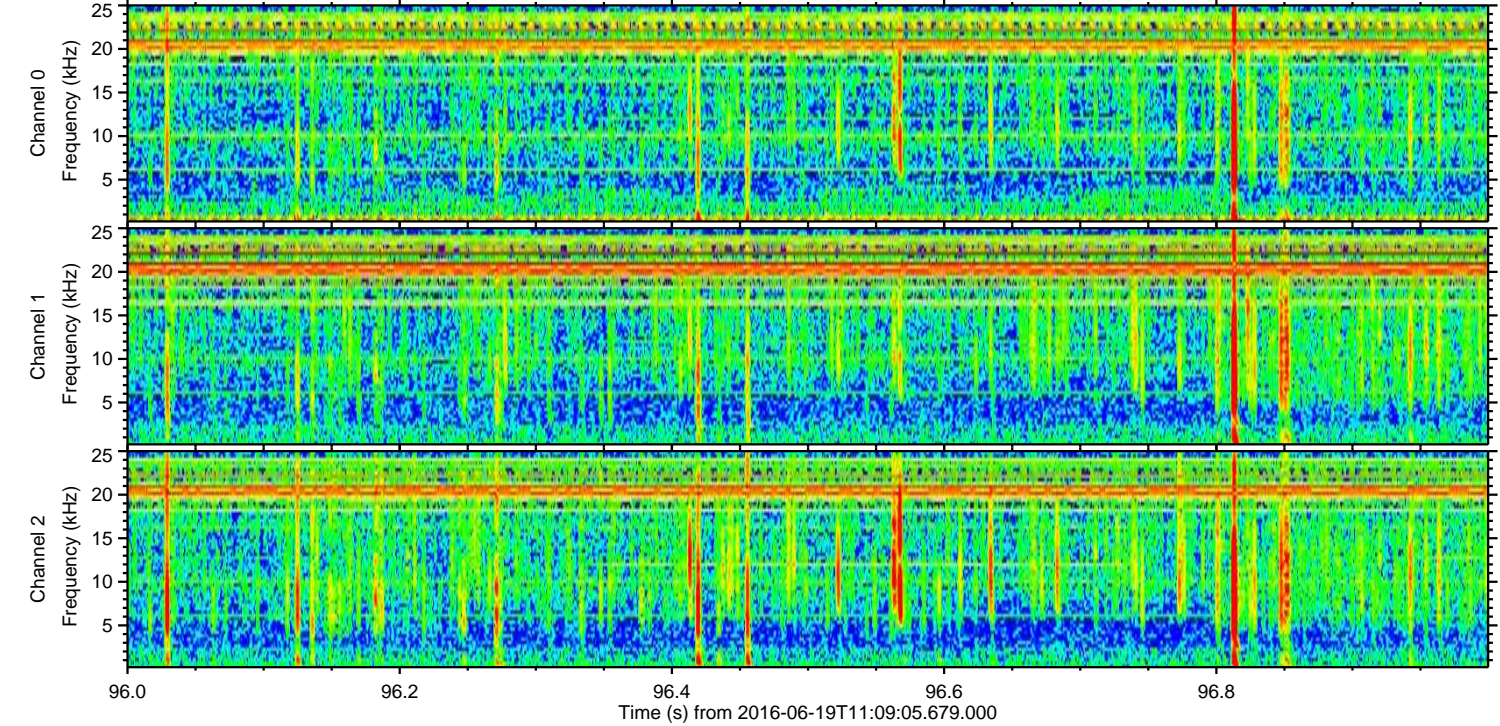
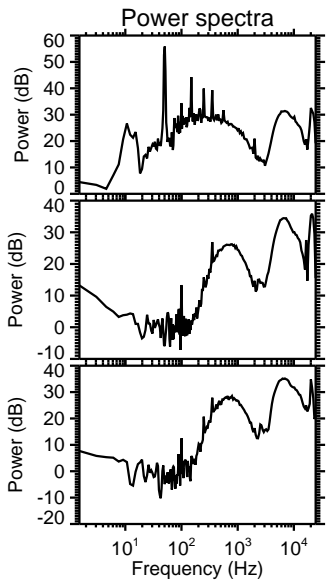
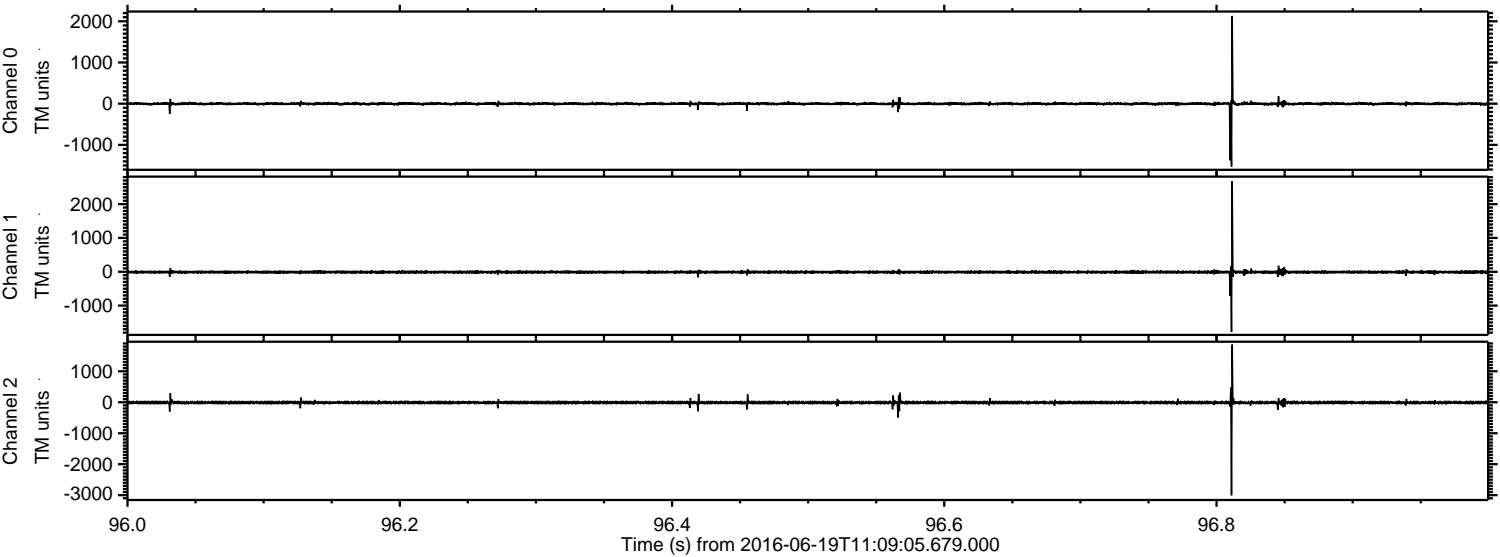
Processed Sun Jun 19 13:17:49 2016 by ELM ver.2012-10-06 from 001__elm20160619_110904__dat00.bin



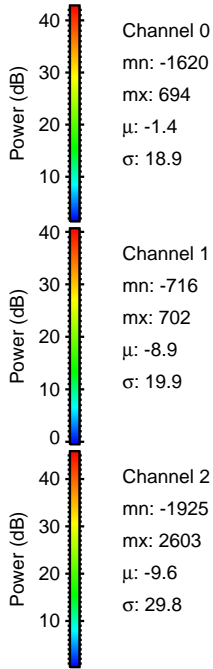
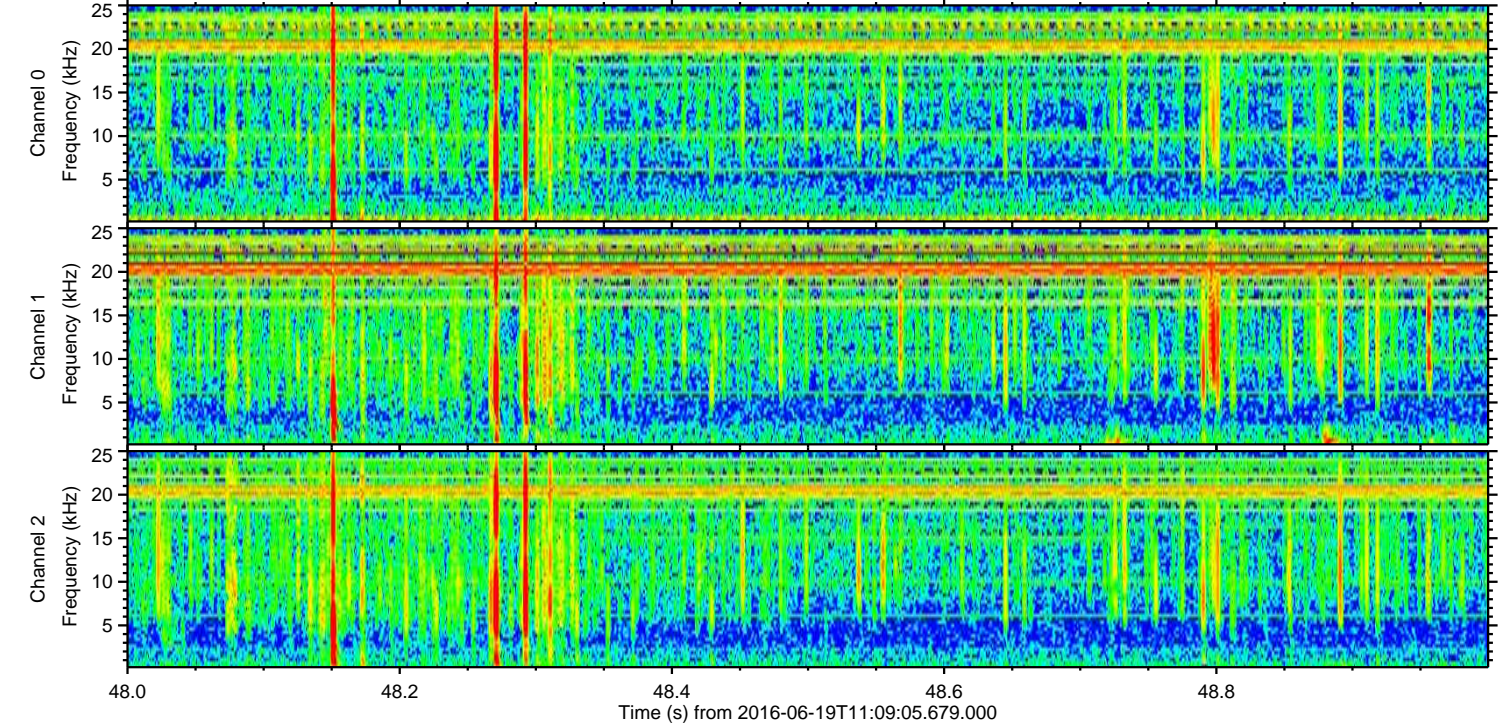
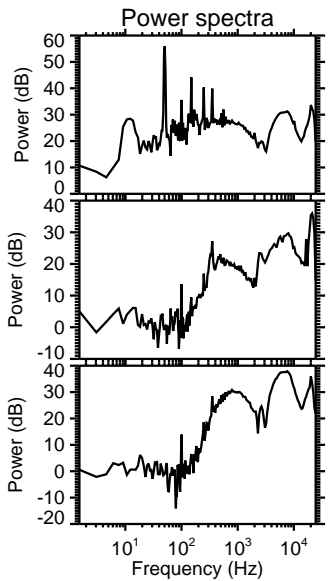
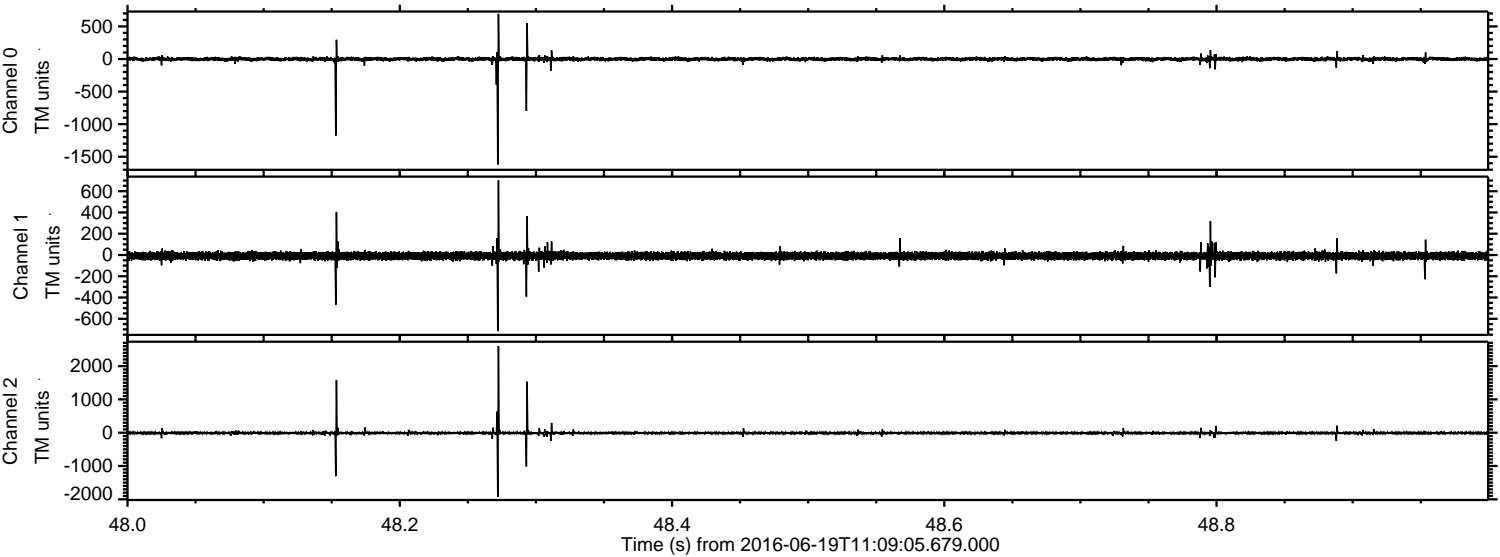
Processed Sun Jun 19 13:17:50 2016 by ELM ver.2012-10-06 from 001__elm20160619_110904__dat00.bin



Processed Sun Jun 19 13:17:51 2016 by ELM ver.2012-10-06 from 001__elm20160619_110904__dat00.bin



Processed Sun Jun 19 13:17:52 2016 by ELM ver.2012-10-06 from 001__elm20160619_110904__dat00.bin



Processed Sun Jun 19 13:17:53 2016 by ELM ver.2012-10-06 from 001__elm20160619_110904__dat00.bin

